

Data Path : Z:\pestpcbsrv\HPCHEM1\ECD_0\Data\P0072224\
 Data File : P0104888.D
 Signal(s) : Signal #1: ECD1A.ch Signal #2: ECD2B.ch
 Acq On : 22 Jul 2024 13:16
 Operator : YP/AJ
 Sample : P3317-04 10X
 Misc :
 ALS Vial : 12 Sample Multiplier: 1

Instrument :
 ECD_0
ClientSampleId :
 KMH502E-2-2

Manual Integrations
APPROVED
 Reviewed By :Yogesh Patel 07/23/2024
 Supervised By :Ankita Jodhani 07/23/2024

Integration File signal 1: autoint1.e
 Integration File signal 2: autoint2.e
 Quant Time: Jul 22 13:29:42 2024
 Quant Method : Z:\pestpcbsrv\HPCHEM1\ECD_0\methods\P0070224.M
 Quant Title : GC EXTRACTABLES
 QLast Update : Tue Jul 02 16:29:20 2024
 Response via : Initial Calibration
 Integrator: ChemStation

Volume Inj. : 2 µl
 Signal #1 Phase : ZB-MR1 Signal #2 Phase: ZB-MR2
 Signal #1 Info : 30Mx0.32mmx 0.50µ Signal #2 Info : 30M x 0.32mm x 0.25µm

| Compound | RT#1 | RT#2 | Resp#1 | Resp#2 | ng/ml | ng/ml |
|-----------------------------|--------|-------|----------|---------|--------|---------|
| ----- | | | | | | |
| System Monitoring Compounds | | | | | | |
| 1) SA Tetrachlo... | 4.426 | 3.540 | 13113216 | 4359583 | 1.465 | 1.336 |
| 2) SA Decachlor... | 10.218 | 8.434 | 3104680 | 3988592 | 0.506m | 1.902m# |

Target Compounds

(f)=RT Delta > 1/2 Window (#)=Amounts differ by > 25% (m)=manual int.

Data Path : Z:\pestpcbsrv\HPCHEM1\ECD_O\Data\PO072224\
 Data File : PO104888.D
 Signal(s) : Signal #1: ECD1A.ch Signal #2: ECD2B.ch
 Acq On : 22 Jul 2024 13:16
 Operator : YP/AJ
 Sample : P3317-04 10X
 Misc :
 ALS Vial : 12 Sample Multiplier: 1

Instrument :

ECD_O

ClientSampleId :

KMH502E-2-2

Manual Integrations

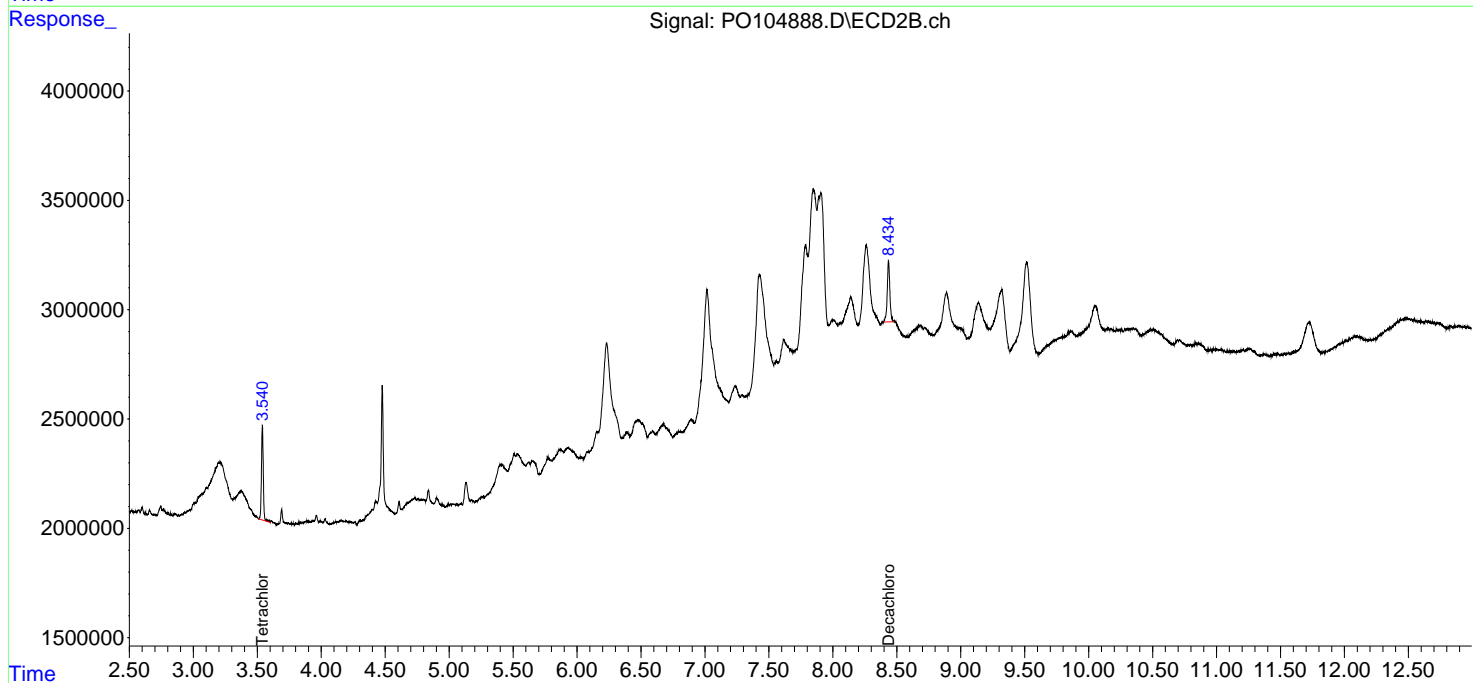
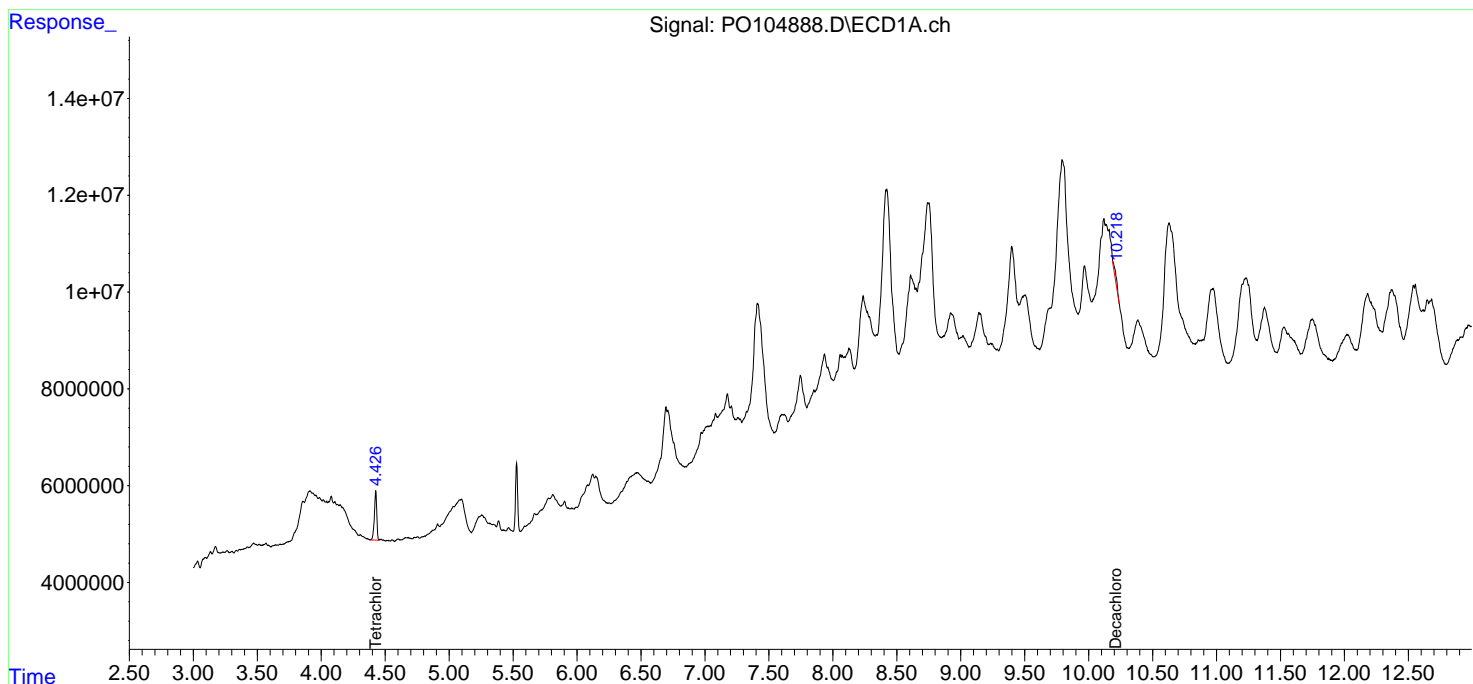
APPROVED

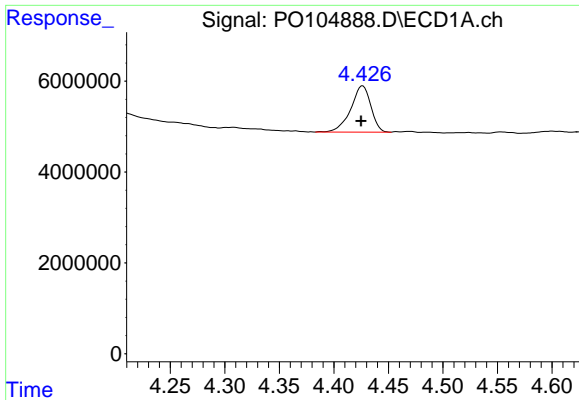
Reviewed By :Yogesh Patel 07/23/2024

Supervised By :Ankita Jodhani 07/23/2024

Integration File signal 1: autoint1.e
 Integration File signal 2: autoint2.e
 Quant Time: Jul 22 13:29:42 2024
 Quant Method : Z:\pestpcbsrv\HPCHEM1\ECD_O\methods\PO070224.M
 Quant Title : GC EXTRACTABLES
 QLast Update : Tue Jul 02 16:29:20 2024
 Response via : Initial Calibration
 Integrator: ChemStation

Volume Inj. : 2 µl
 Signal #1 Phase : ZB-MR1 Signal #2 Phase: ZB-MR2
 Signal #1 Info : 30Mx0.32mmx 0.50µm Signal #2 Info : 30M x 0.32mm x 0.25µm





#1 Tetrachloro-m-xylene

R.T.: 4.426 min
 Delta R.T.: 0.001 min
 Response: 13113216
 Conc: 1.46 ng/ml

Instrument :

ECD_O

ClientSampleId :

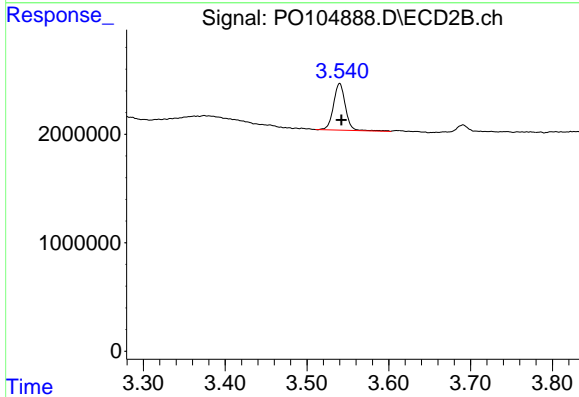
KMH502E-2-2

Manual Integrations

APPROVED

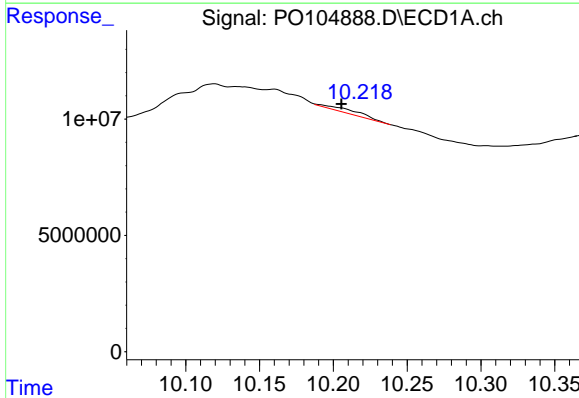
Reviewed By :Yogesh Patel 07/23/2024

Supervised By :Ankita Jodhani 07/23/2024



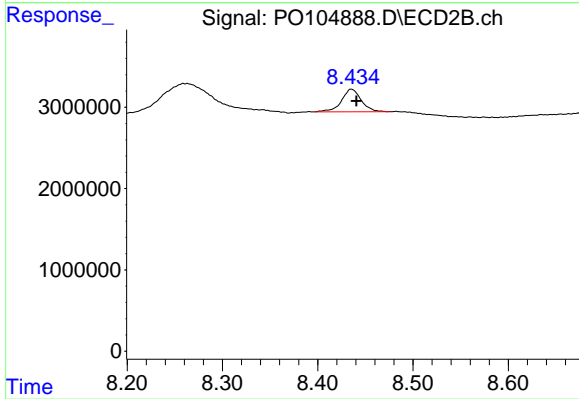
#1 Tetrachloro-m-xylene

R.T.: 3.540 min
 Delta R.T.: -0.002 min
 Response: 4359583
 Conc: 1.34 ng/ml



#2 Decachlorobiphenyl

R.T.: 10.218 min
 Delta R.T.: 0.013 min
 Response: 3104680
 Conc: 0.51 ng/ml m



#2 Decachlorobiphenyl

R.T.: 8.434 min
 Delta R.T.: -0.006 min
 Response: 3988592
 Conc: 1.90 ng/ml m