

Data Path : Z:\pestpcbsrv\HPCHEM1\ECD O\Data\PO072318\
 Data File : PO047017.D
 Signal(s) : Signal #1: ECD1A.CH Signal #2: ECD2B.CH
 Acq On : 23 Jul 2018 15:36
 Operator : SM/SJ
 Sample : AR1268ICC500
 Misc :
 ALS Vial : 14 Sample Multiplier: 1

Instrument :
 ECD_O
 ClientSampleId :
 AR1268ICC500

Integration File signal 1: autoint1.e
 Integration File signal 2: autoint2.e
 Quant Time: Jul 24 02:14:23 2018
 Quant Method : Z:\pestpcbsrv\HPCHEM1\ECD_O\methods\PO072318.M
 Quant Title : GC EXTRACTABLES
 QLast Update : Tue Jul 24 02:14:30 2018
 Response via : Initial Calibration
 Integrator: ChemStation 6890 Scale Mode: Small noise peaks clipped

Volume Inj. : 2 µl
 Signal #1 Phase : ZB-MR1 Signal #2 Phase: ZB-MR2
 Signal #1 Info : 30Mx0.32mmx 0.50µ Signal #2 Info : 30M x 0.32mm x 0.25µm

Compound	RT#1	RT#2	Resp#1	Resp#2	ng/ml	ng/ml

System Monitoring Compounds						
1) SA Tetrachlo...	4.397	3.649	8520384	10196154	50.000	50.000
2) SA Decachlor...	10.085	8.662	8980492	7292044	50.000	50.000
Target Compounds						
41) L9 AR-1268-1	8.619	7.559	7831155	6812777	500.000	500.000
42) L9 AR-1268-2	8.713	7.622	7006794	6275353	500.000	500.000
43) L9 AR-1268-3	8.935	7.832	5831465	5030247	500.000	500.000
44) L9 AR-1268-4	9.353	8.114	2526636	2190054	500.000	500.000
45) L9 AR-1268-5	9.756	8.405	18295837	15010945	500.000	500.000

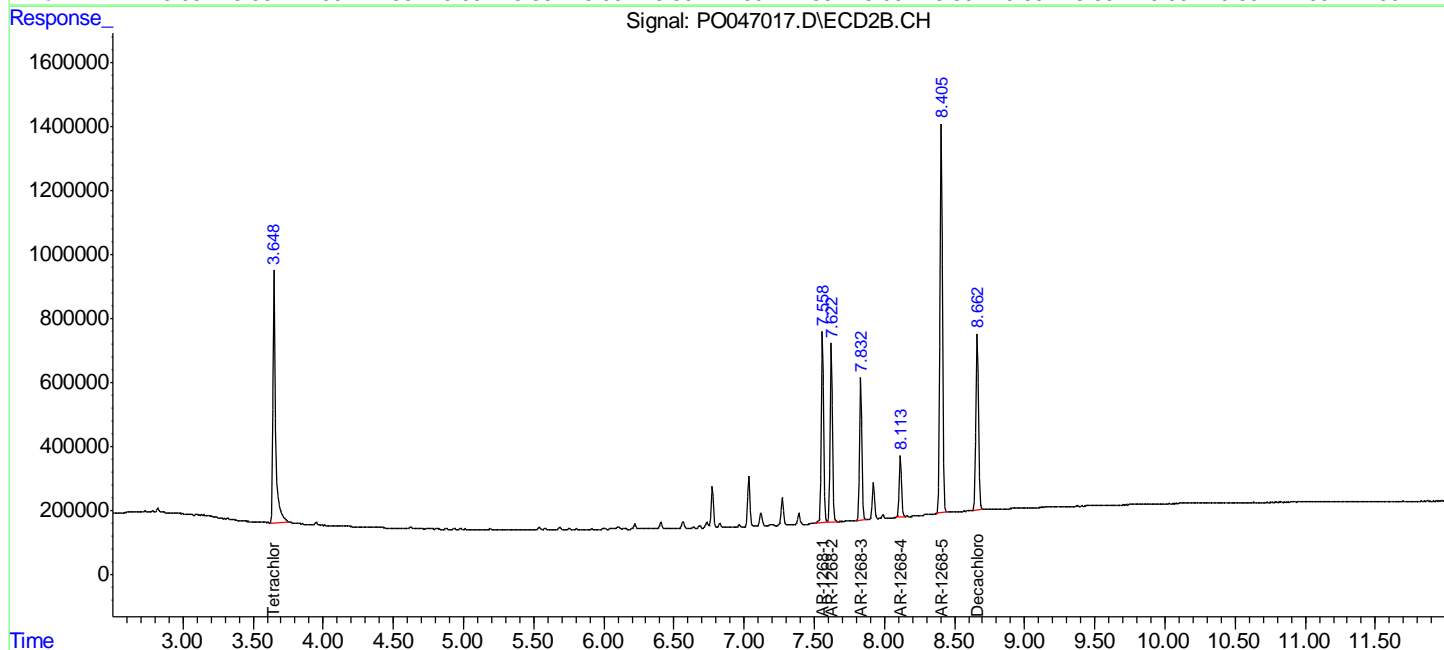
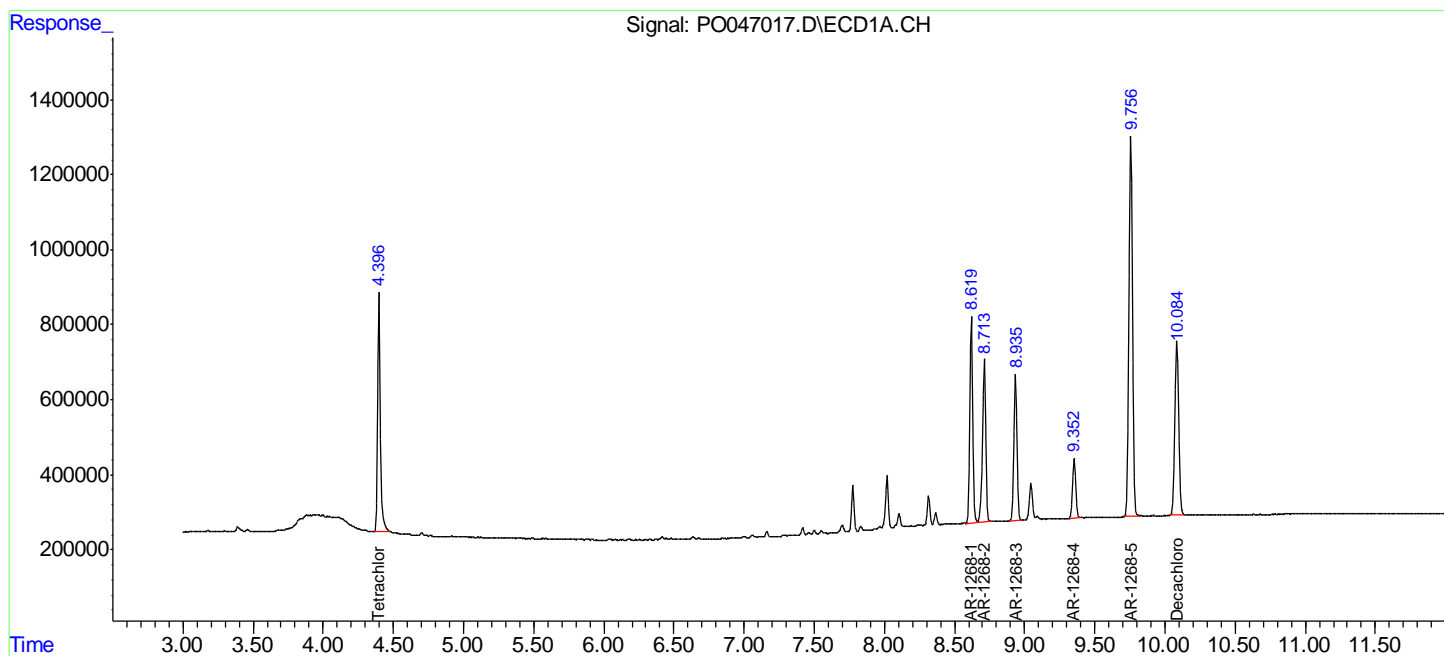
(f)=RT Delta > 1/2 Window (#)=Amounts differ by > 25% (m)=manual int.

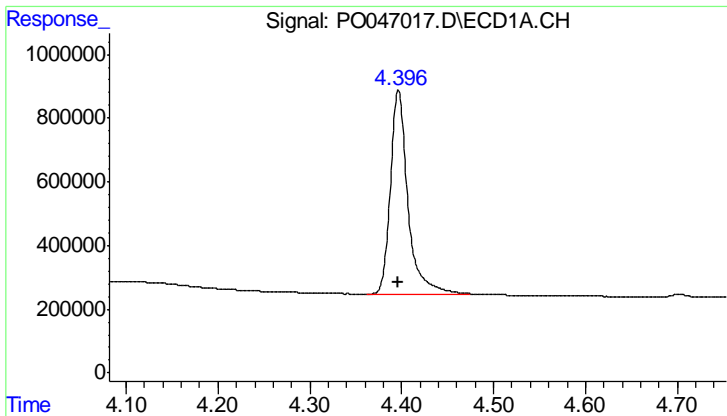
Data Path : Z:\pestpcbsrv\HPCHEM1\ECD O\Data\PO072318\
 Data File : PO047017.D
 Signal(s) : Signal #1: ECD1A.CH Signal #2: ECD2B.CH
 Acq On : 23 Jul 2018 15:36
 Operator : SM/SJ
 Sample : AR1268ICC500
 Misc :
 ALS Vial : 14 Sample Multiplier: 1

Instrument :
 ECD_O
 ClientSampled :
 AR1268ICC500

Integration File signal 1: autoint1.e
 Integration File signal 2: autoint2.e
 Quant Time: Jul 24 02:14:23 2018
 Quant Method : Z:\pestpcbsrv\HPCHEM1\ECD_O\methods\PO072318.M
 Quant Title : GC EXTRACTABLES
 QLast Update : Tue Jul 24 02:14:30 2018
 Response via : Initial Calibration
 Integrator: ChemStation 6890 Scale Mode: Small noise peaks clipped

Volume Inj. : 2 µl
 Signal #1 Phase : ZB-MR1 Signal #2 Phase: ZB-MR2
 Signal #1 Info : 30Mx0.32mmx 0.50µ Signal #2 Info : 30M x 0.32mm x 0.25µm

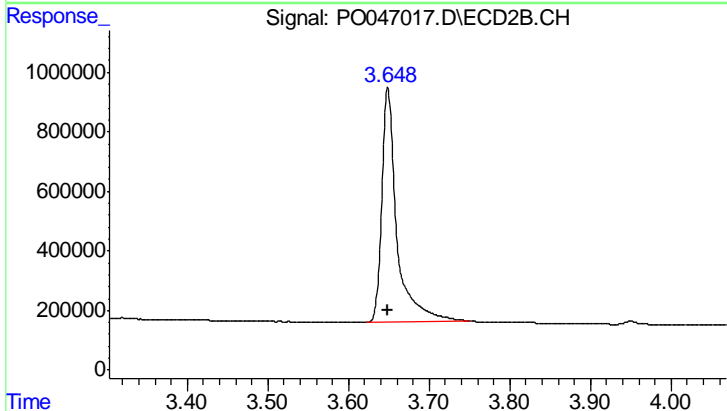




#1 Tetrachloro-m-xylene

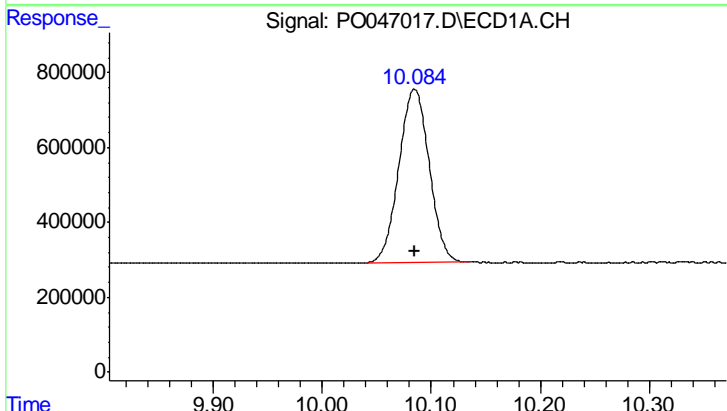
R.T.: 4.397 min
 Delta R.T.: 0.000 min
 Response: 8520384
 Conc: 50.00 ng/ml

Instrument :
 ECD_O
 ClientSampleId :
 AR1268ICC500



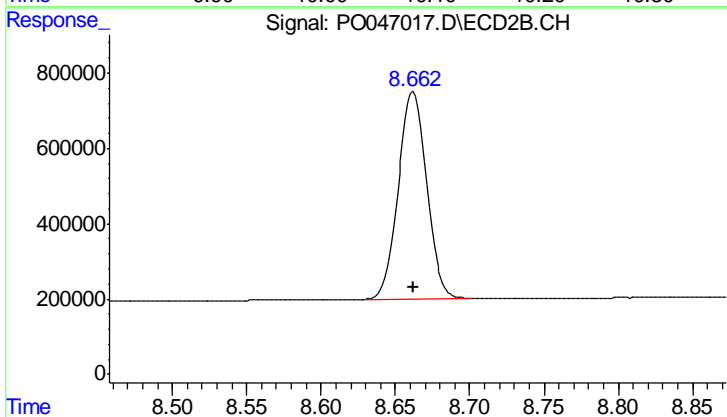
#1 Tetrachloro-m-xylene

R.T.: 3.649 min
 Delta R.T.: 0.000 min
 Response: 10196154
 Conc: 50.00 ng/ml



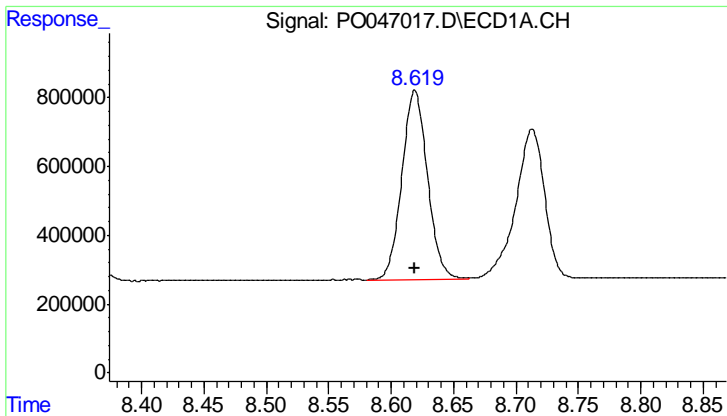
#2 Decachlorobiphenyl

R.T.: 10.085 min
 Delta R.T.: 0.000 min
 Response: 8980492
 Conc: 50.00 ng/ml



#2 Decachlorobiphenyl

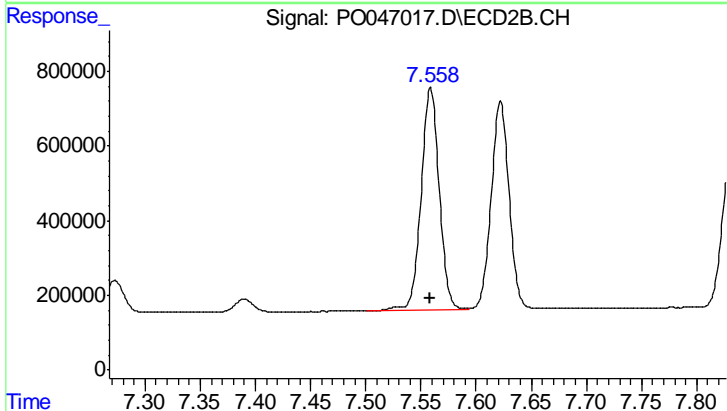
R.T.: 8.662 min
 Delta R.T.: 0.000 min
 Response: 7292044
 Conc: 50.00 ng/ml



#41 AR-1268-1

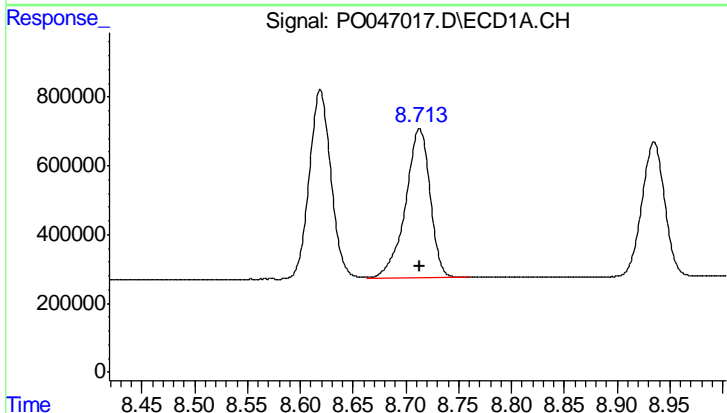
R.T.: 8.619 min
 Delta R.T.: 0.000 min
 Response: 7831155
 Conc: 500.00 ng/ml

Instrument :
 ECD_O
 ClientSampleId :
 AR1268ICC500



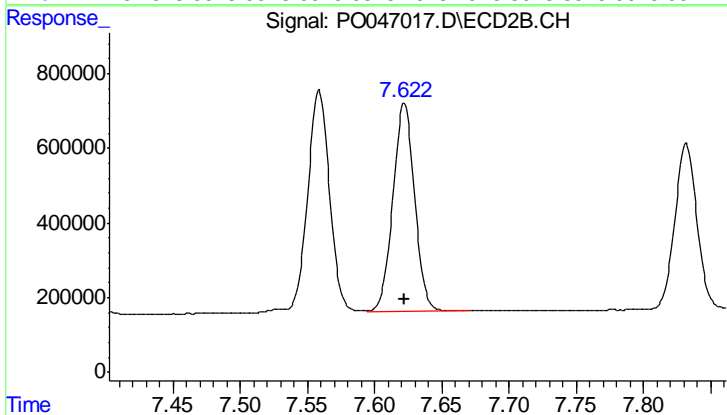
#41 AR-1268-1

R.T.: 7.559 min
 Delta R.T.: 0.000 min
 Response: 6812777
 Conc: 500.00 ng/ml



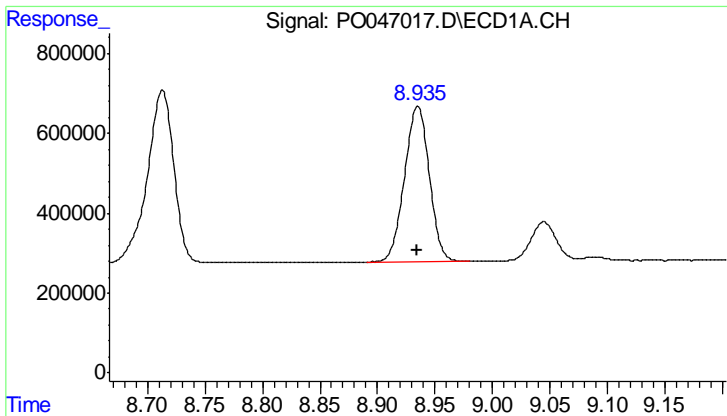
#42 AR-1268-2

R.T.: 8.713 min
 Delta R.T.: 0.000 min
 Response: 7006794
 Conc: 500.00 ng/ml



#42 AR-1268-2

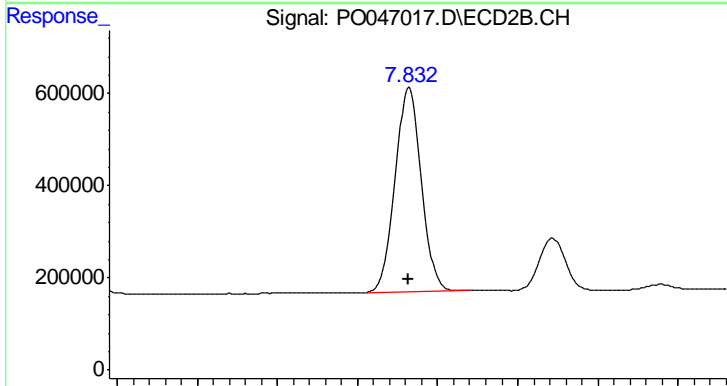
R.T.: 7.622 min
 Delta R.T.: 0.000 min
 Response: 6275353
 Conc: 500.00 ng/ml



#43 AR-1268-3

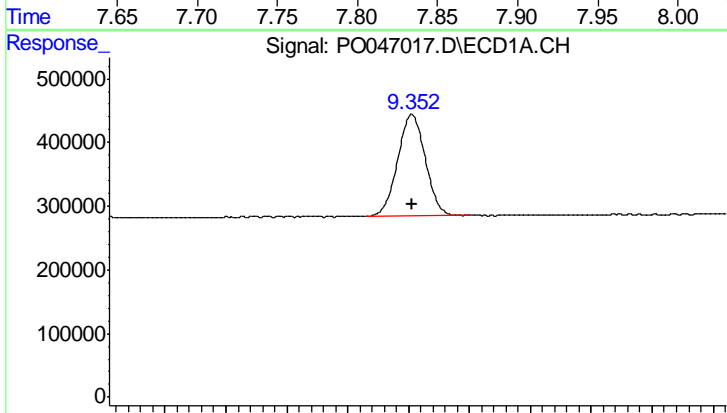
R.T.: 8.935 min
 Delta R.T.: 0.000 min
 Response: 5831465
 Conc: 500.00 ng/ml

Instrument :
 ECD_O
 ClientSampled :
 AR1268ICC500



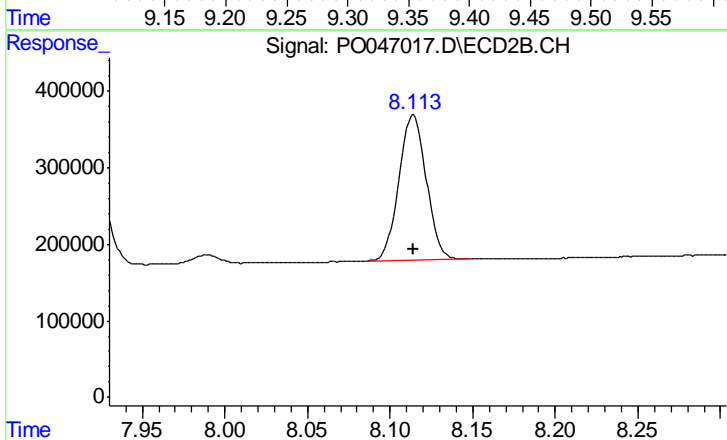
#43 AR-1268-3

R.T.: 7.832 min
 Delta R.T.: 0.000 min
 Response: 5030247
 Conc: 500.00 ng/ml



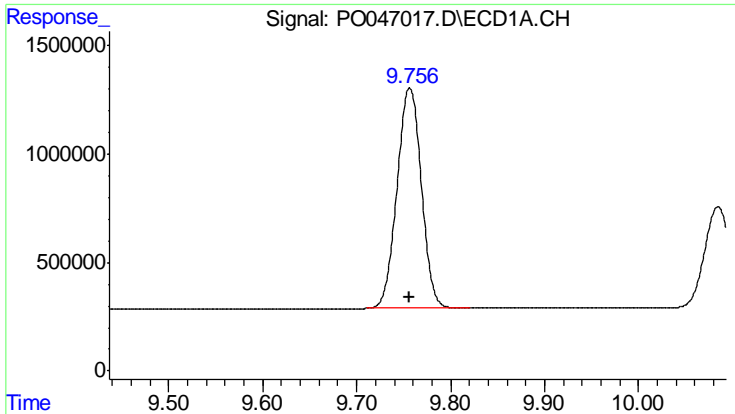
#44 AR-1268-4

R.T.: 9.353 min
 Delta R.T.: 0.000 min
 Response: 2526636
 Conc: 500.00 ng/ml



#44 AR-1268-4

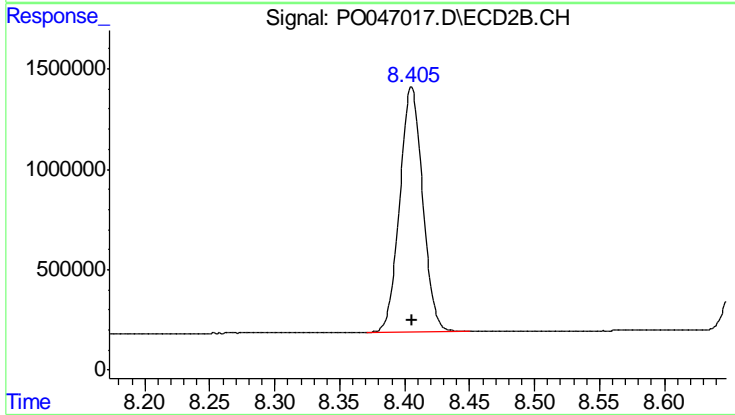
R.T.: 8.114 min
 Delta R.T.: 0.000 min
 Response: 2190054
 Conc: 500.00 ng/ml



#45 AR-1268-5

R.T.: 9.756 min
Delta R.T.: 0.000 min
Response: 18295837
Conc: 500.00 ng/ml

Instrument :
ECD_O
ClientSampleId :
AR1268ICC500



#45 AR-1268-5

R.T.: 8.405 min
Delta R.T.: 0.000 min
Response: 15010945
Conc: 500.00 ng/ml