

Data Path : Z:\pestpcbsrv\HPCHEM1\ECD\_0\Data\P0072320\  
 Data File : P0069910.D  
 Signal(s) : Signal #1: ECD1A.CH Signal #2: ECD2B.CH  
 Acq On : 23 Jul 2020 00:24  
 Operator : DD\AJ  
 Sample : L3216-02  
 Misc : AR1232 LOQ 50 PPB  
 ALS Vial : 25 Sample Multiplier: 1

Integration File signal 1: autoint1.e  
 Integration File signal 2: autoint2.e  
 Quant Time: Jul 23 02:29:38 2020  
 Quant Method : Z:\pestpcbsrv\HPCHEM1\ECD\_0\methods\P0072320.M  
 Quant Title : GC EXTRACTABLES  
 QLast Update : Thu Jul 23 02:12:36 2020  
 Response via : Initial Calibration  
 Integrator: ChemStation 6890 Scale Mode: Small noise peaks clipped

Volume Inj. : 2 µl  
 Signal #1 Phase : ZB-MR1 Signal #2 Phase: ZB-MR2  
 Signal #1 Info : 30Mx0.32mmx 0.50µ Signal #2 Info : 30M x 0.32mm x 0.25µm

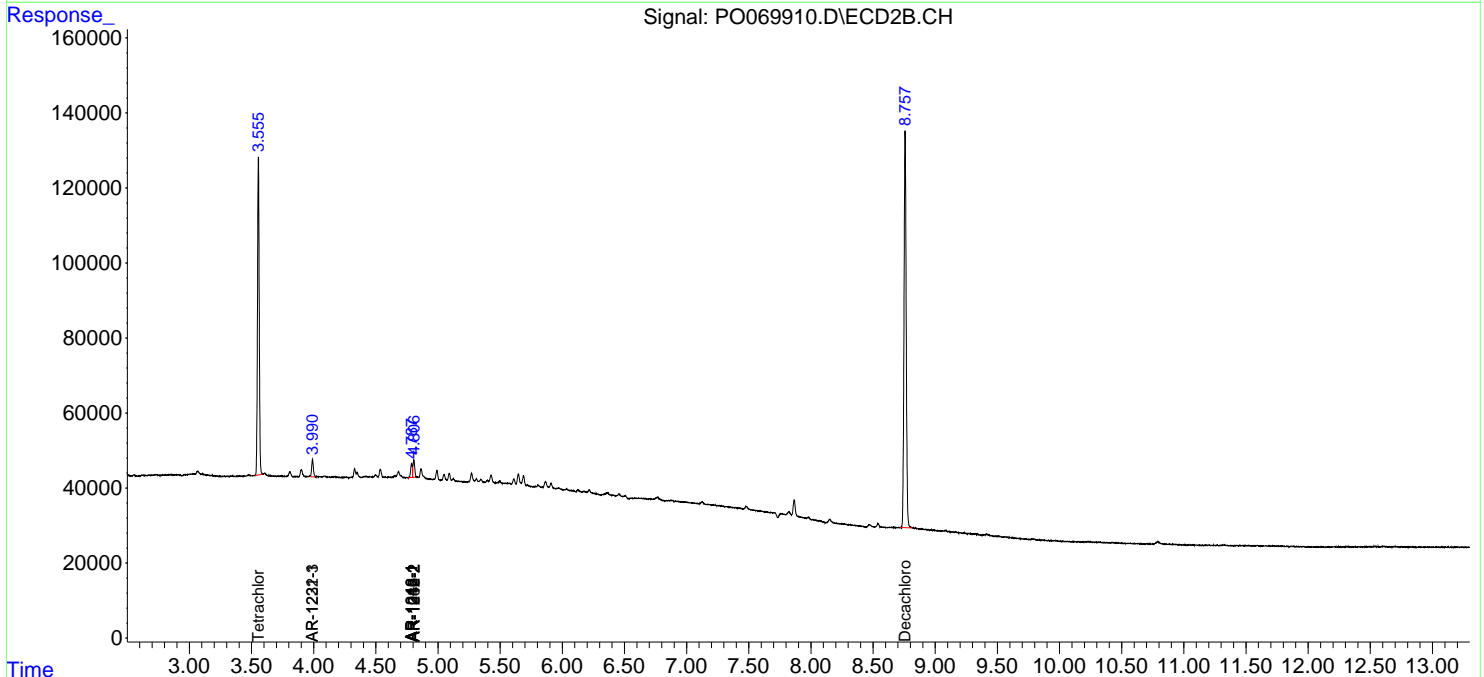
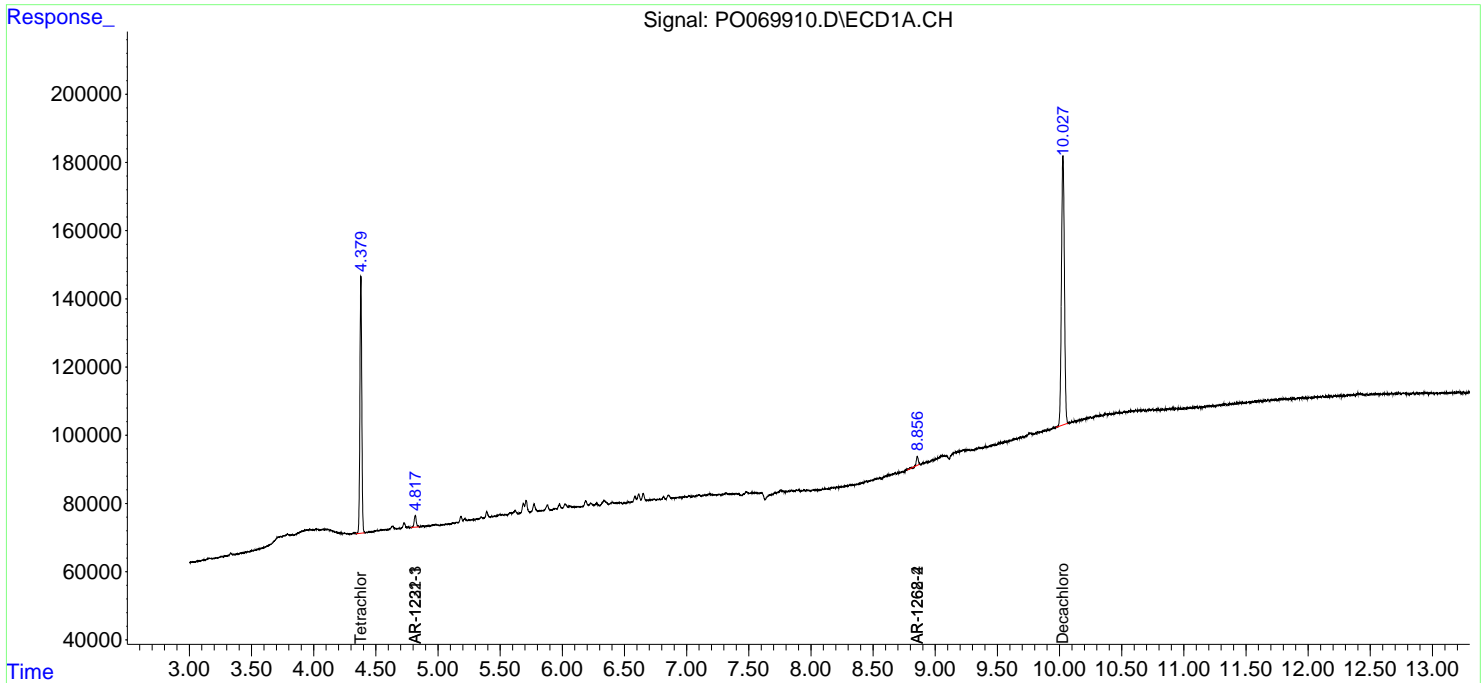
Compound	RT#1	RT#2	Resp#1	Resp#2	ng/ml	ng/ml
-----						
System Monitoring Compounds						
1) SA Tetrachlo...	4.380	3.555	785695	821413	22.888	22.789
2) SA Decachlor...	10.027	8.758	1309784	1292646	24.513	25.345
Target Compounds						
3) L1 AR-1016-1	0.000	4.788	0	35439	N.D.	22.361 #
4) L1 AR-1016-2	0.000	4.806	0	46639	N.D.	21.095 #
10) L2 AR-1221-3	4.818	3.990	41406	45827	41.113	44.033
11) L3 AR-1232-1	4.818	3.990	41406	45827	49.680	52.669
12) L3 AR-1232-2	0.000	4.806	0	46639	N.D.	47.954 #
16) L4 AR-1242-1	0.000	4.788	0	35439	N.D.	28.605 #
17) L4 AR-1242-2	0.000	4.806	0	46639	N.D.	27.159 #
21) L5 AR-1248-1	0.000	4.788	0	35439	N.D.	37.403 #
39) L8 AR-1262-4	8.856	0.000	29147	0	8.952	N.D. #
42) L9 AR-1268-2	8.856	0.000	29147	0	4.135	N.D. #

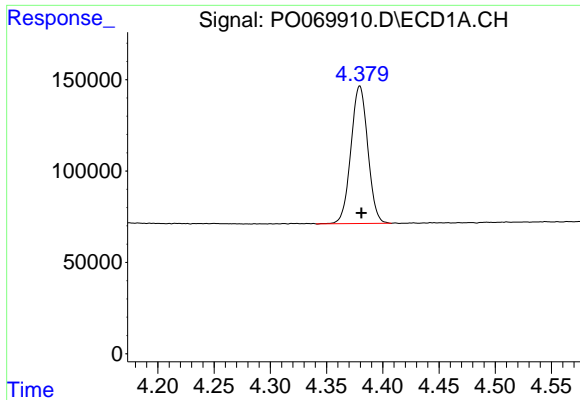
(f)=RT Delta > 1/2 Window (#)=Amounts differ by > 25% (m)=manual int.

Data Path : Z:\pestpcbsrv\HPCHEM1\ECD\_0\Data\P0072320\  
 Data File : P0069910.D  
 Signal(s) : Signal #1: ECD1A.CH Signal #2: ECD2B.CH  
 Acq On : 23 Jul 2020 00:24  
 Operator : DD\AJ  
 Sample : L3216-02  
 Misc : AR1232 LOQ 50 PPB  
 ALS Vial : 25 Sample Multiplier: 1

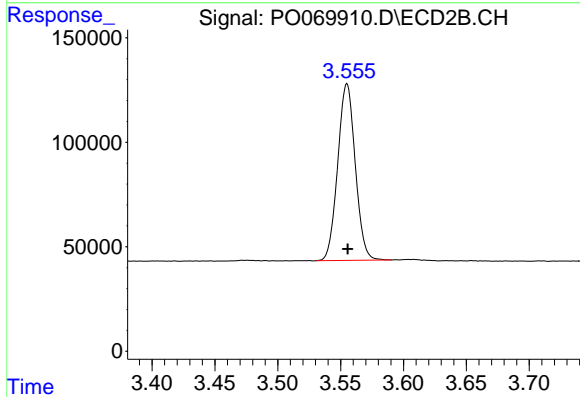
Integration File signal 1: autoint1.e  
 Integration File signal 2: autoint2.e  
 Quant Time: Jul 23 02:29:38 2020  
 Quant Method : Z:\pestpcbsrv\HPCHEM1\ECD\_0\methods\P0072320.M  
 Quant Title : GC EXTRACTABLES  
 QLast Update : Thu Jul 23 02:12:36 2020  
 Response via : Initial Calibration  
 Integrator: ChemStation 6890 Scale Mode: Small noise peaks clipped

Volume Inj. : 2 µl  
 Signal #1 Phase : ZB-MR1 Signal #2 Phase: ZB-MR2  
 Signal #1 Info : 30Mx0.32mmx 0.50µ Signal #2 Info : 30M x 0.32mm x 0.25µm

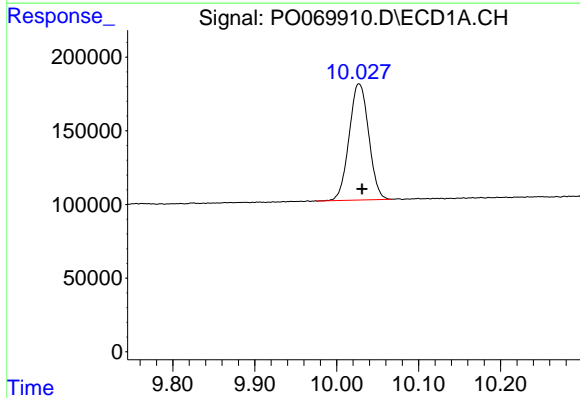




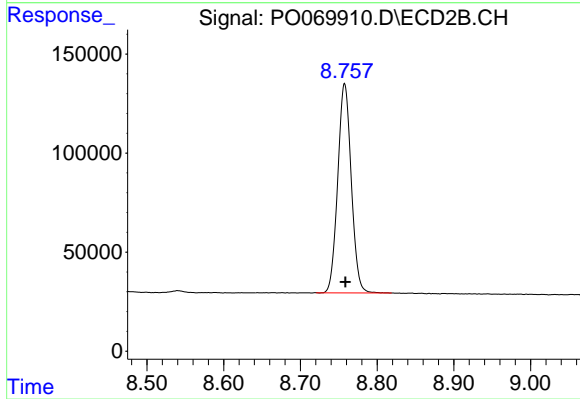
#1 Tetrachloro-m-xylene  
R.T.: 4.380 min  
Delta R.T.: -0.001 min  
Response: 785695  
Conc: 22.89 ng/ml



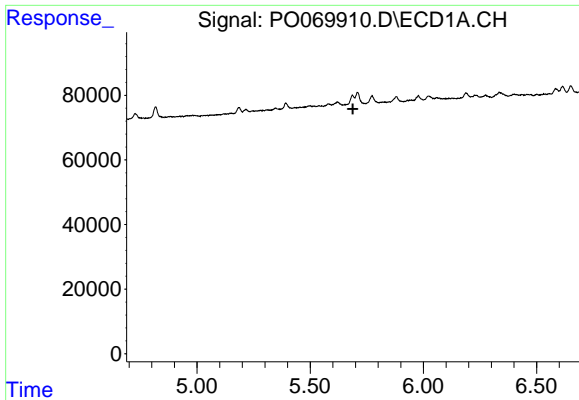
#1 Tetrachloro-m-xylene  
R.T.: 3.555 min  
Delta R.T.: 0.000 min  
Response: 821413  
Conc: 22.79 ng/ml



#2 Decachlorobiphenyl  
R.T.: 10.027 min  
Delta R.T.: -0.004 min  
Response: 1309784  
Conc: 24.51 ng/ml

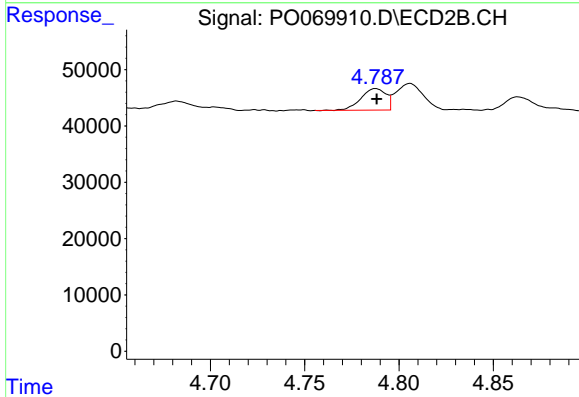


#2 Decachlorobiphenyl  
R.T.: 8.758 min  
Delta R.T.: -0.001 min  
Response: 1292646  
Conc: 25.35 ng/ml



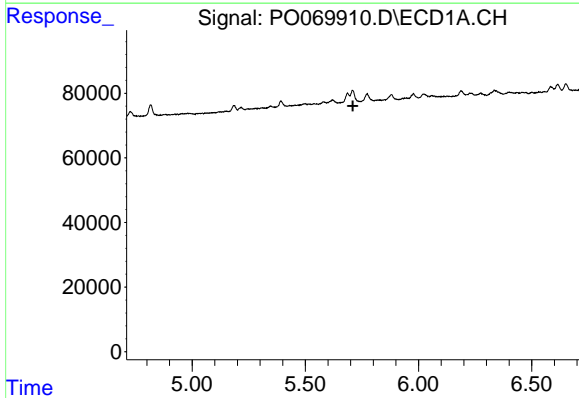
#3 AR-1016-1

R.T.: 0.000 min  
 Exp R.T. : 5.688 min  
 Response: 0  
 Conc: N.D.



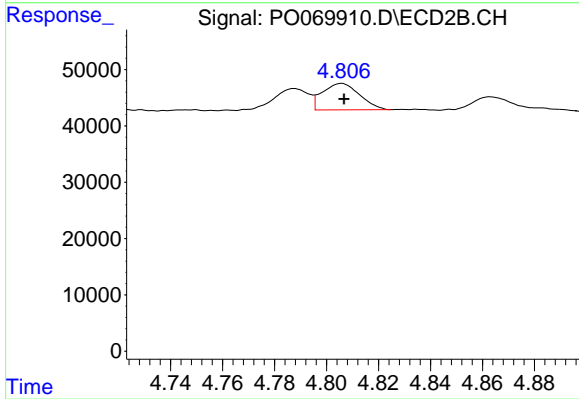
#3 AR-1016-1

R.T.: 4.788 min  
 Delta R.T.: 0.000 min  
 Response: 35439  
 Conc: 22.36 ng/ml



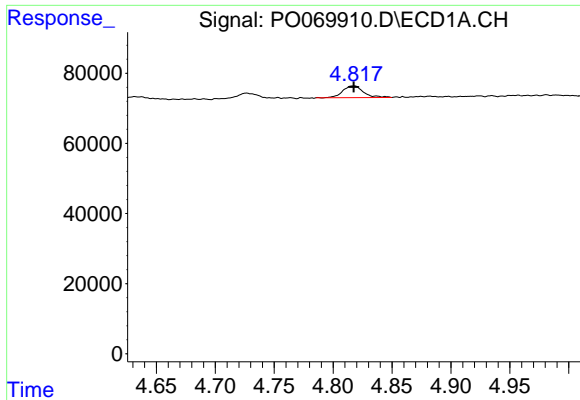
#4 AR-1016-2

R.T.: 0.000 min  
 Exp R.T. : 5.710 min  
 Response: 0  
 Conc: N.D.

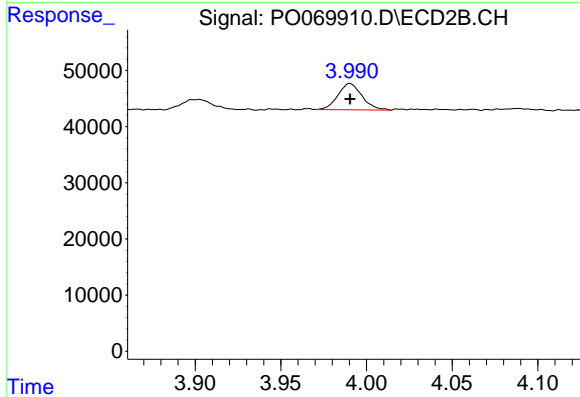


#4 AR-1016-2

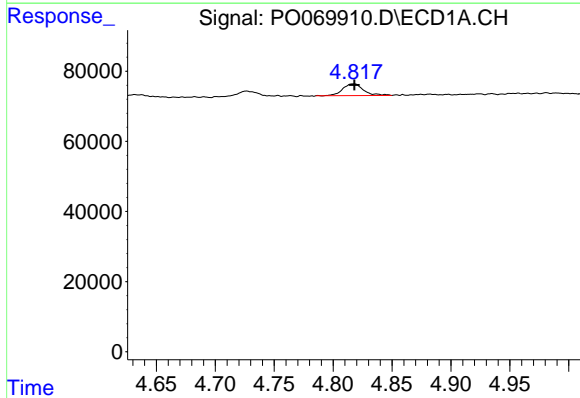
R.T.: 4.806 min  
 Delta R.T.: 0.000 min  
 Response: 46639  
 Conc: 21.09 ng/ml



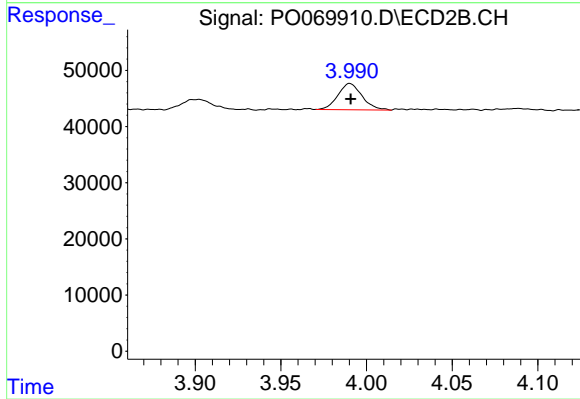
#10 AR-1221-3  
 R.T.: 4.818 min  
 Delta R.T.: 0.000 min  
 Response: 41406  
 Conc: 41.11 ng/ml



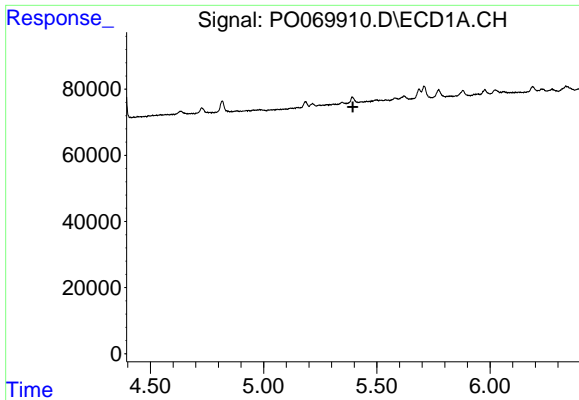
#10 AR-1221-3  
 R.T.: 3.990 min  
 Delta R.T.: 0.000 min  
 Response: 45827  
 Conc: 44.03 ng/ml



#11 AR-1232-1  
 R.T.: 4.818 min  
 Delta R.T.: 0.000 min  
 Response: 41406  
 Conc: 49.68 ng/ml

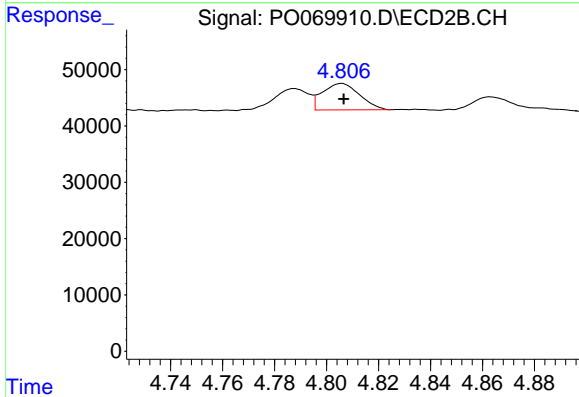


#11 AR-1232-1  
 R.T.: 3.990 min  
 Delta R.T.: 0.000 min  
 Response: 45827  
 Conc: 52.67 ng/ml



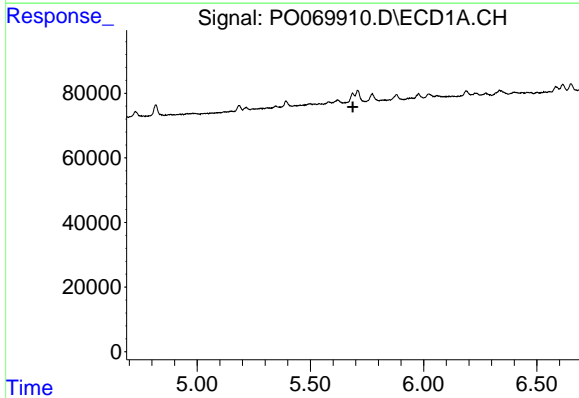
#12 AR-1232-2

R.T.: 0.000 min  
 Exp R.T. : 5.394 min  
 Response: 0  
 Conc: N.D.



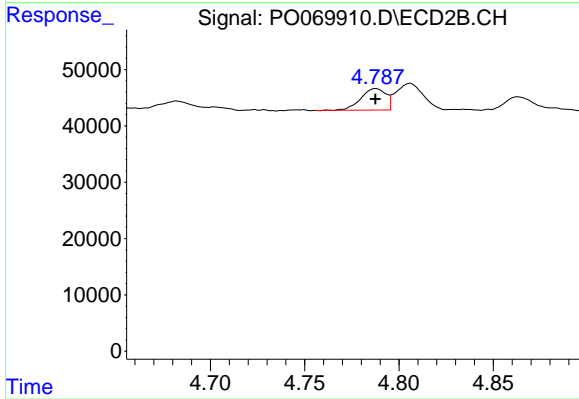
#12 AR-1232-2

R.T.: 4.806 min  
 Delta R.T.: 0.000 min  
 Response: 46639  
 Conc: 47.95 ng/ml



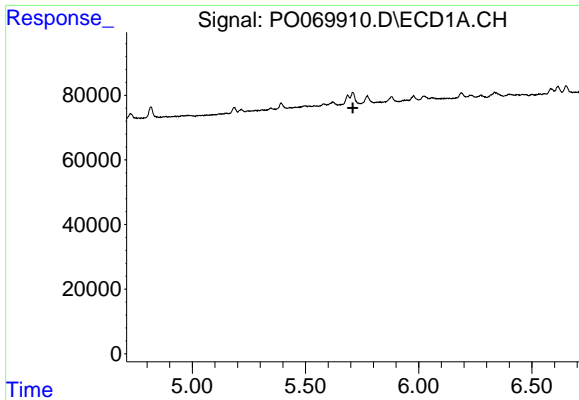
#16 AR-1242-1

R.T.: 0.000 min  
 Exp R.T. : 5.687 min  
 Response: 0  
 Conc: N.D.



#16 AR-1242-1

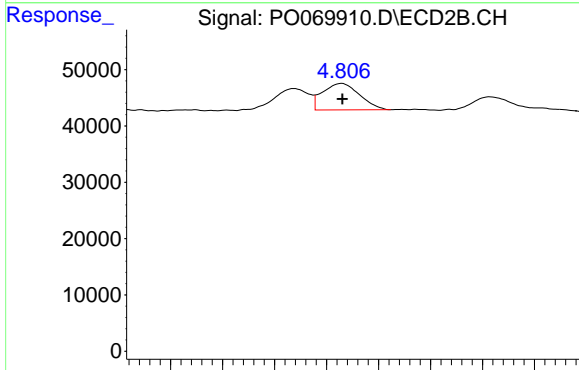
R.T.: 4.788 min  
 Delta R.T.: 0.000 min  
 Response: 35439  
 Conc: 28.61 ng/ml



#17 AR-1242-2

R.T.: 0.000 min  
 Exp R.T. : 5.709 min  
 Response: 0  
 Conc: N.D.

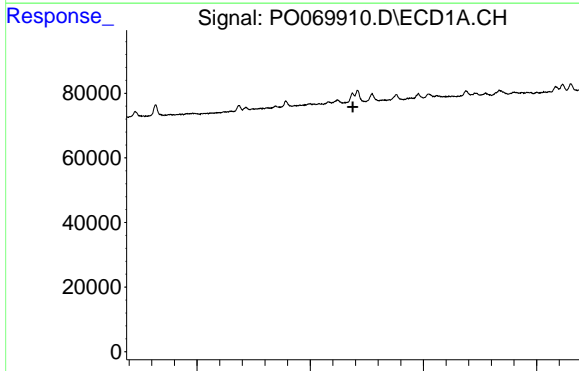
Time



#17 AR-1242-2

R.T.: 4.806 min  
 Delta R.T.: 0.000 min  
 Response: 46639  
 Conc: 27.16 ng/ml

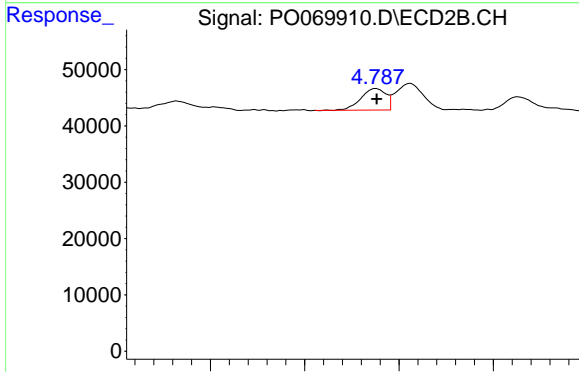
Time



#21 AR-1248-1

R.T.: 0.000 min  
 Exp R.T. : 5.688 min  
 Response: 0  
 Conc: N.D.

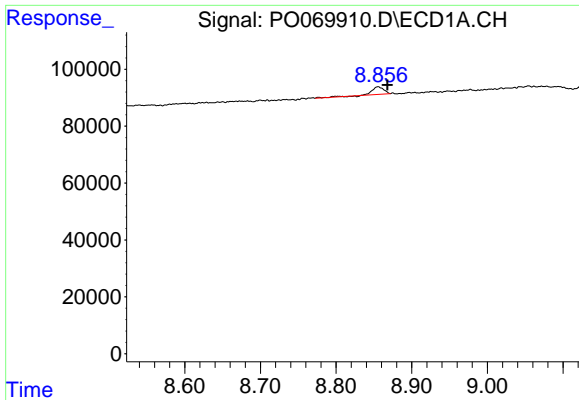
Time



#21 AR-1248-1

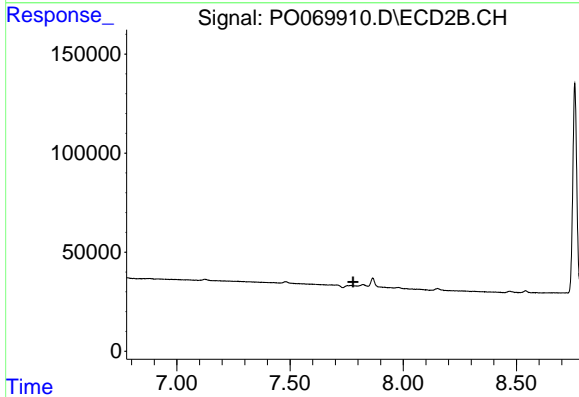
R.T.: 4.788 min  
 Delta R.T.: 0.000 min  
 Response: 35439  
 Conc: 37.40 ng/ml

Time



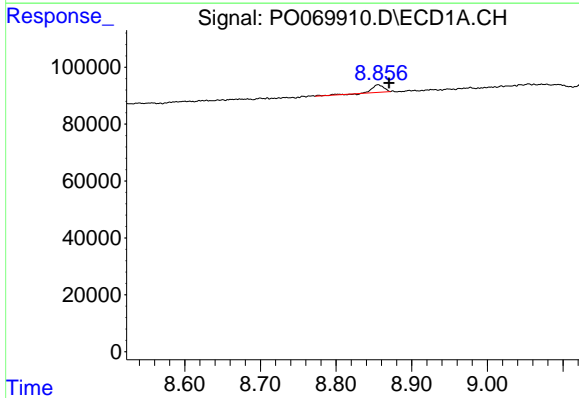
#39 AR-1262-4

R.T.: 8.856 min  
Delta R.T.: -0.012 min  
Response: 29147  
Conc: 8.95 ng/ml



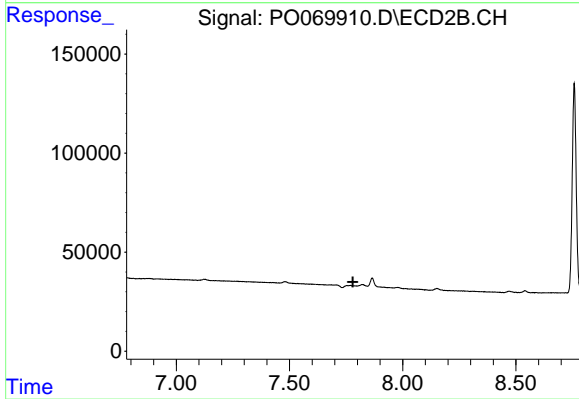
#39 AR-1262-4

R.T.: 0.000 min  
Exp R.T. : 7.778 min  
Response: 0  
Conc: N.D.



#42 AR-1268-2

R.T.: 8.856 min  
Delta R.T.: -0.014 min  
Response: 29147  
Conc: 4.13 ng/ml



#42 AR-1268-2

R.T.: 0.000 min  
Exp R.T. : 7.780 min  
Response: 0  
Conc: N.D.