

Data Path : Z:\pestpcbsrv\HPCHEM1\ECD_0\Data\P0072320\
 Data File : P0069875.D
 Signal(s) : Signal #1: ECD1A.CH Signal #2: ECD2B.CH
 Acq On : 22 Jul 2020 14:04
 Operator : DD\AJ
 Sample : AR1221ICC500
 Misc :
 ALS Vial : 8 Sample Multiplier: 1

Instrument :
 ECD_0
 ClientSampleId :
 AR1221ICC500

Integration File signal 1: autoint1.e
 Integration File signal 2: autoint2.e
 Quant Time: Jul 23 01:05:29 2020
 Quant Method : Z:\pestpcbsrv\HPCHEM1\ECD_0\methods\P0072320.M
 Quant Title : GC EXTRACTABLES
 QLast Update : Thu Jul 23 01:04:58 2020
 Response via : Initial Calibration
 Integrator: ChemStation 6890 Scale Mode: Small noise peaks clipped

Volume Inj. : 2 µl
 Signal #1 Phase : ZB-MR1 Signal #2 Phase: ZB-MR2
 Signal #1 Info : 30Mx0.32mmx 0.50µ Signal #2 Info : 30M x 0.32mm x 0.25µm

Compound	RT#1	RT#2	Resp#1	Resp#2	ng/ml	ng/ml

System Monitoring Compounds						
1) SA Tetrachlo...	4.380	3.555	1649440	1651596	50.000	50.000
2) SA Decachlor...	10.030	8.759	2431590	2258911	50.000	50.000
Target Compounds						
8) L2 AR-1221-1	4.635	3.808	196282	222878	500.000	500.000
9) L2 AR-1221-2	4.731	3.905	151533	166650	500.000	500.000
10) L2 AR-1221-3	4.817	3.990	503565	520370	500.000	500.000

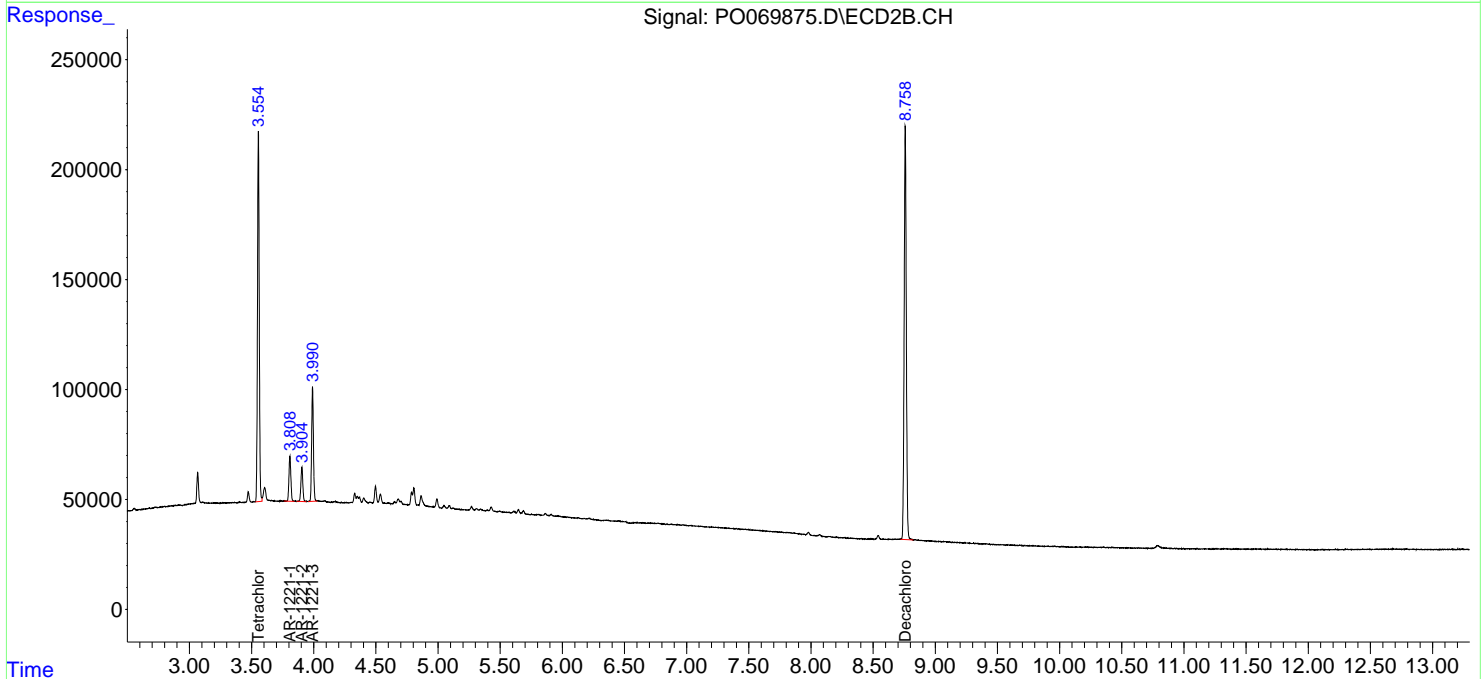
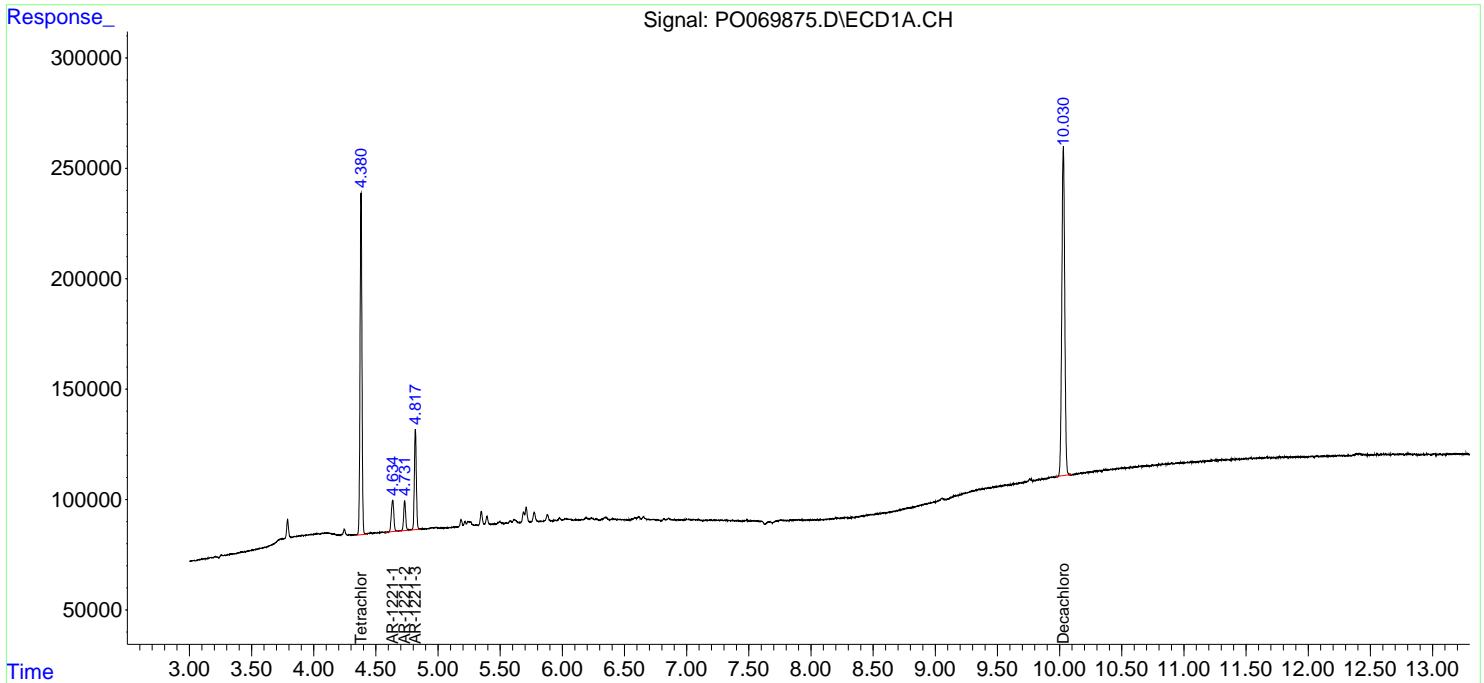
(f)=RT Delta > 1/2 Window (#)=Amounts differ by > 25% (m)=manual int.

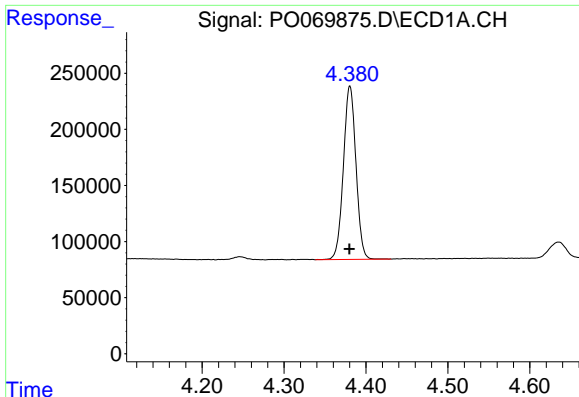
Data Path : Z:\pestpcbsrv\HPCHEM1\ECD_O\Data\P0072320\
 Data File : P0069875.D
 Signal(s) : Signal #1: ECD1A.CH Signal #2: ECD2B.CH
 Acq On : 22 Jul 2020 14:04
 Operator : DD\AJ
 Sample : AR1221ICC500
 Misc :
 ALS Vial : 8 Sample Multiplier: 1

Instrument :
 ECD_O
 ClientSampleId :
 AR1221ICC500

Integration File signal 1: autoint1.e
 Integration File signal 2: autoint2.e
 Quant Time: Jul 23 01:05:29 2020
 Quant Method : Z:\pestpcbsrv\HPCHEM1\ECD_O\methods\P0072320.M
 Quant Title : GC EXTRACTABLES
 QLast Update : Thu Jul 23 01:04:58 2020
 Response via : Initial Calibration
 Integrator: ChemStation 6890 Scale Mode: Small noise peaks clipped

Volume Inj. : 2 µl
 Signal #1 Phase : ZB-MR1 Signal #2 Phase: ZB-MR2
 Signal #1 Info : 30Mx0.32mmx 0.50µ Signal #2 Info : 30M x 0.32mm x 0.25µm

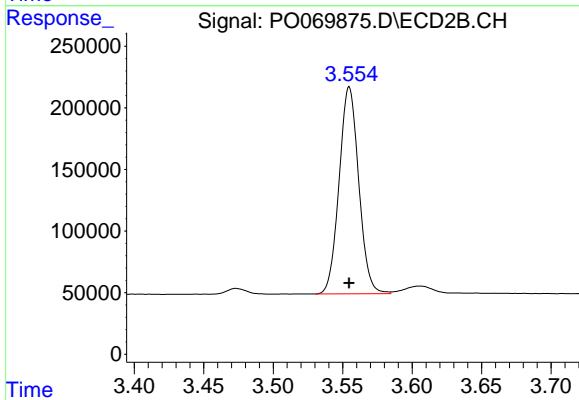




#1 Tetrachloro-m-xylene

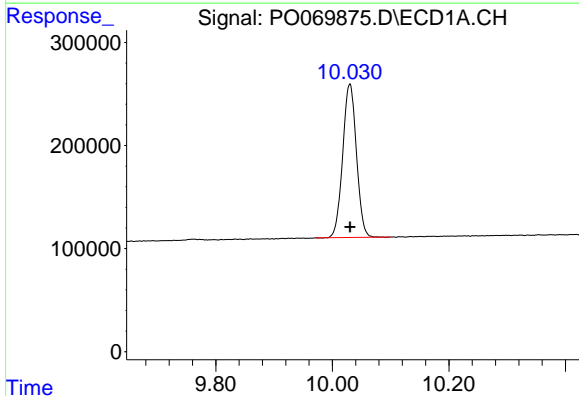
R.T.: 4.380 min
Delta R.T.: 0.000 min
Response: 1649440
Conc: 50.00 ng/ml

Instrument :
ECD_O
ClientSampleId :
AR1221ICC500



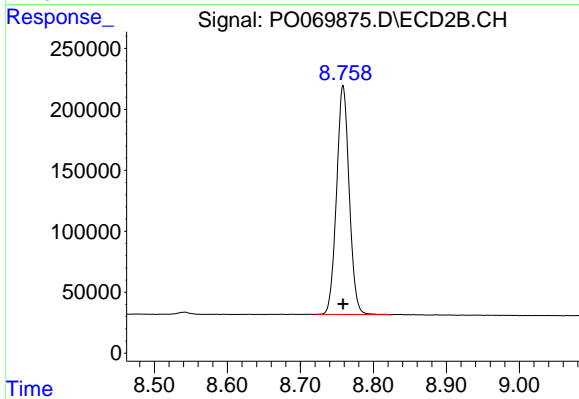
#1 Tetrachloro-m-xylene

R.T.: 3.555 min
Delta R.T.: 0.000 min
Response: 1651596
Conc: 50.00 ng/ml



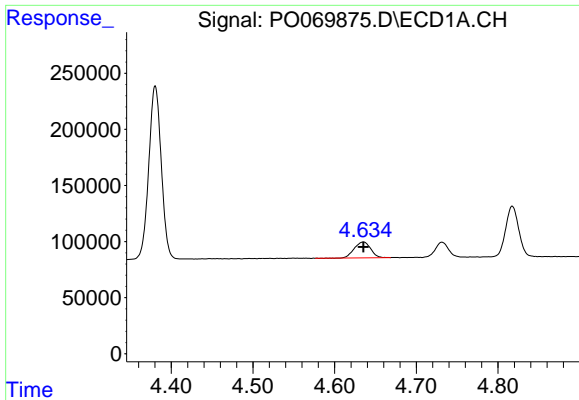
#2 Decachlorobiphenyl

R.T.: 10.030 min
Delta R.T.: 0.000 min
Response: 2431590
Conc: 50.00 ng/ml



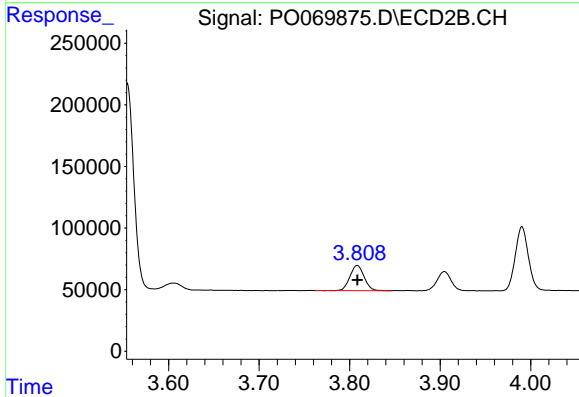
#2 Decachlorobiphenyl

R.T.: 8.759 min
Delta R.T.: 0.000 min
Response: 2258911
Conc: 50.00 ng/ml

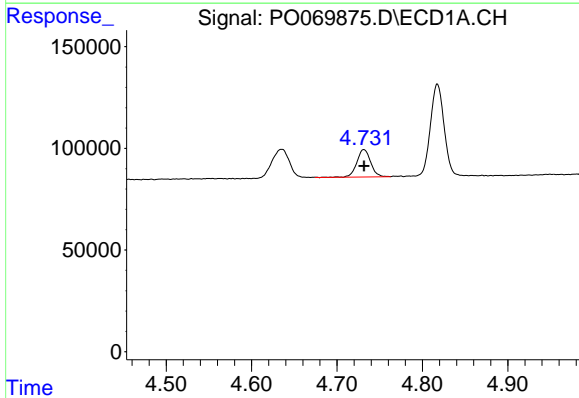


#8 AR-1221-1
 R.T.: 4.635 min
 Delta R.T.: 0.000 min
 Response: 196282
 Conc: 500.00 ng/ml

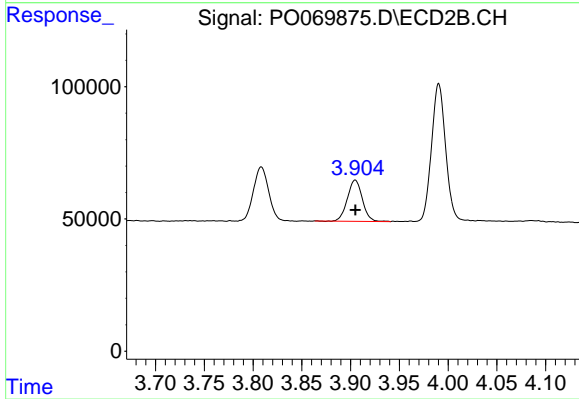
Instrument :
 ECD_O
ClientSampleId :
 AR1221ICC500



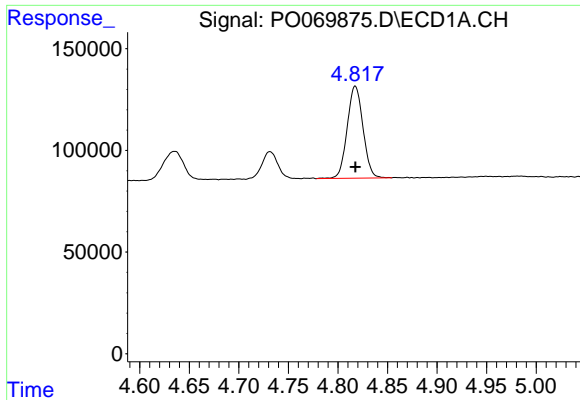
#8 AR-1221-1
 R.T.: 3.808 min
 Delta R.T.: 0.000 min
 Response: 222878
 Conc: 500.00 ng/ml



#9 AR-1221-2
 R.T.: 4.731 min
 Delta R.T.: 0.000 min
 Response: 151533
 Conc: 500.00 ng/ml



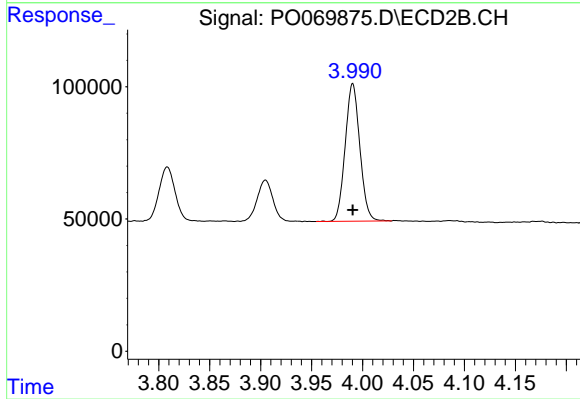
#9 AR-1221-2
 R.T.: 3.905 min
 Delta R.T.: 0.000 min
 Response: 166650
 Conc: 500.00 ng/ml



#10 AR-1221-3

R.T.: 4.817 min
Delta R.T.: 0.000 min
Response: 503565
Conc: 500.00 ng/ml

Instrument :
ECD_O
ClientSampleId :
AR1221ICC500



#10 AR-1221-3

R.T.: 3.990 min
Delta R.T.: 0.000 min
Response: 520370
Conc: 500.00 ng/ml