

Data Path : Z:\pestpcbsrv\HPCHEM1\ECD_0\Data\P0072320\
 Data File : P0069887.D
 Signal(s) : Signal #1: ECD1A.CH Signal #2: ECD2B.CH
 Acq On : 22 Jul 2020 17:31
 Operator : DD\AJ
 Sample : L3216-01
 Misc : AR1221 LOD 25 PPB
 ALS Vial : 6 Sample Multiplier: 1

Instrument :
 ECD_0
ClientSampleId :
 LOD-MDL-SOIL-01-QT3-2020

Manual Integrations
APPROVED
 Ankita
 7/23/2020 1:11:57 PM

Integration File signal 1: autoint1.e
 Integration File signal 2: autoint2.e
 Quant Time: Jul 23 05:38:10 2020
 Quant Method : Z:\pestpcbsrv\HPCHEM1\ECD_0\methods\P0072320.M
 Quant Title : GC EXTRACTABLES
 QLast Update : Thu Jul 23 02:12:36 2020
 Response via : Initial Calibration
 Integrator: ChemStation 6890 Scale Mode: Small noise peaks clipped

Volume Inj. : 2 µl
 Signal #1 Phase : ZB-MR1 Signal #2 Phase: ZB-MR2
 Signal #1 Info : 30Mx0.32mmx 0.50µ Signal #2 Info : 30M x 0.32mm x 0.25µm

Compound	RT#1	RT#2	Resp#1	Resp#2	ng/ml	ng/ml

System Monitoring Compounds						
1) SA Tetrachlo...	4.381	3.556	516135	530582	15.036	14.720
2) SA Decachlor...	10.031	8.760	863761	872385	16.166	17.105
Target Compounds						
8) L2 AR-1221-1	4.634	3.811	13299	9258	33.876m	20.769m#
9) L2 AR-1221-2	4.727	3.901	15957	16346	52.651m	49.043m
10) L2 AR-1221-3	4.818	3.992	21134	24047	20.984	23.106

(f)=RT Delta > 1/2 Window (#)=Amounts differ by > 25% (m)=manual int.

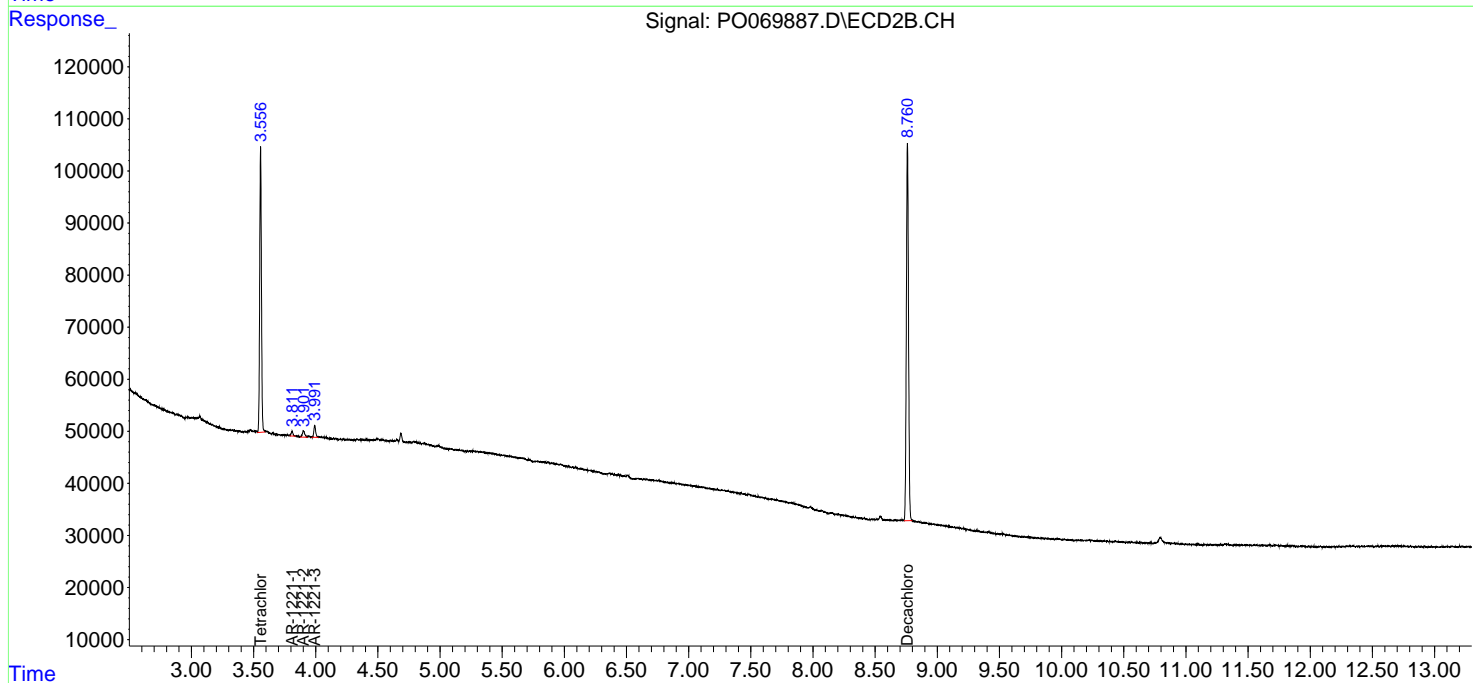
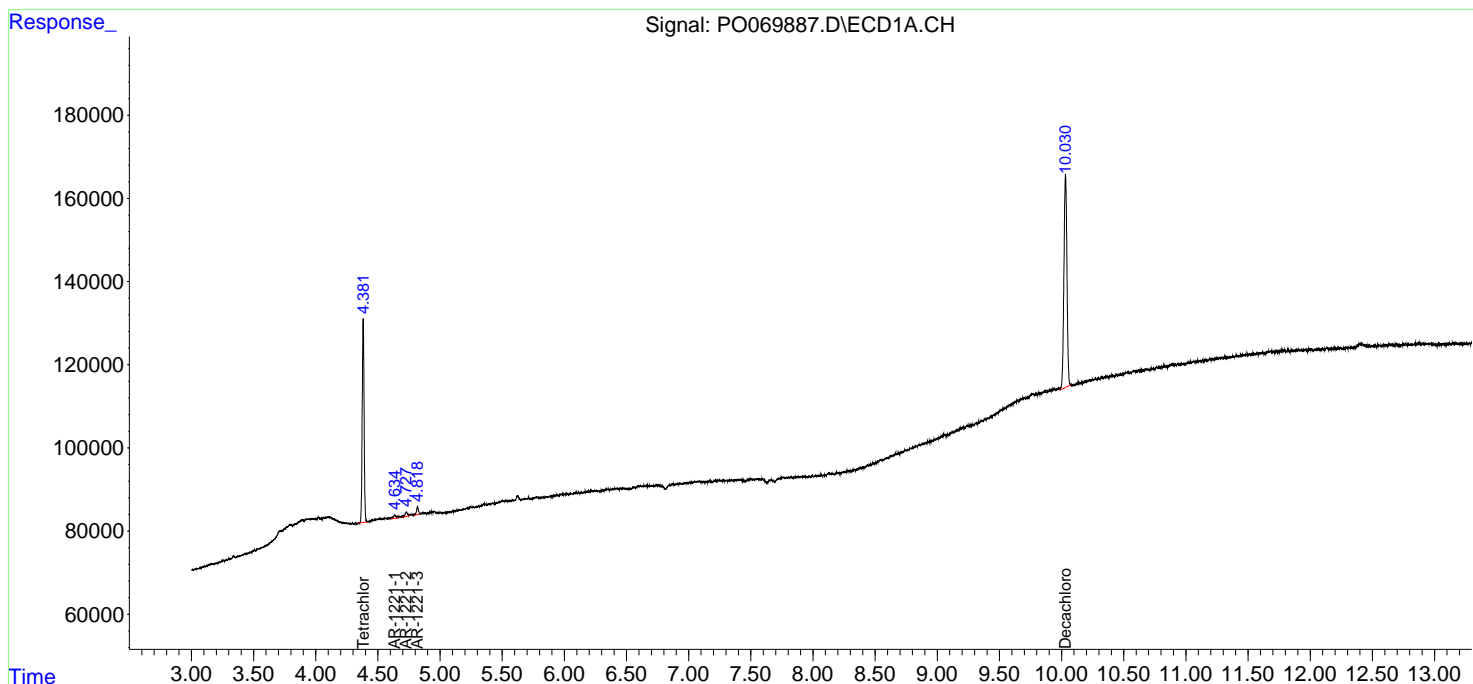
Data Path : Z:\pestpcbsrv\HPCHEM1\ECD_0\Data\P0072320\
 Data File : P0069887.D
 Signal(s) : Signal #1: ECD1A.CH Signal #2: ECD2B.CH
 Acq On : 22 Jul 2020 17:31
 Operator : DD\AJ
 Sample : L3216-01
 Misc : AR1221 LOD 25 PPB
 ALS Vial : 6 Sample Multiplier: 1

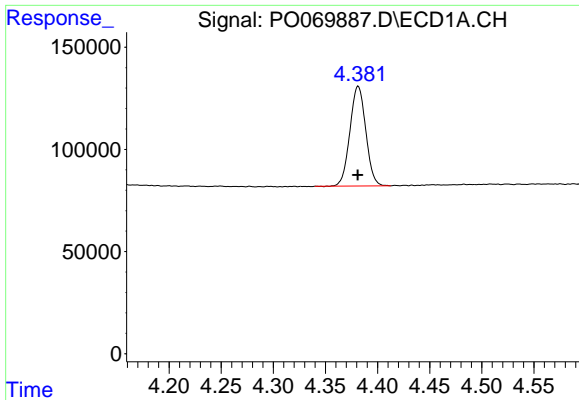
Instrument :
 ECD_O
ClientSampleId :
 LOD-MDL-SOIL-01-QT3-2020

Manual Integrations
APPROVED
 Ankita
 7/23/2020 1:11:57 PM

Integration File signal 1: autoint1.e
 Integration File signal 2: autoint2.e
 Quant Time: Jul 23 05:38:10 2020
 Quant Method : Z:\pestpcbsrv\HPCHEM1\ECD_0\methods\P0072320.M
 Quant Title : GC EXTRACTABLES
 QLast Update : Thu Jul 23 02:12:36 2020
 Response via : Initial Calibration
 Integrator: ChemStation 6890 Scale Mode: Small noise peaks clipped

Volume Inj. : 2 µl
 Signal #1 Phase : ZB-MR1 Signal #2 Phase: ZB-MR2
 Signal #1 Info : 30Mx0.32mmx 0.50µ Signal #2 Info : 30M x 0.32mm x 0.25µm

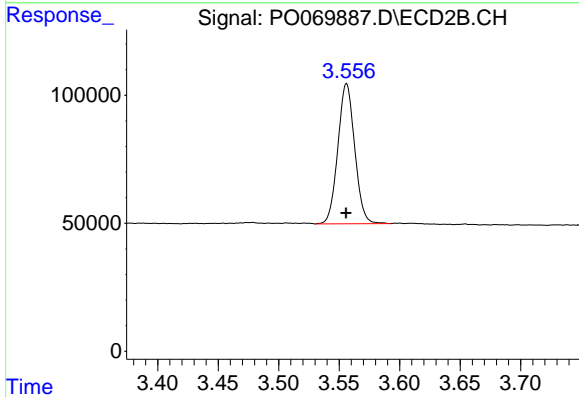




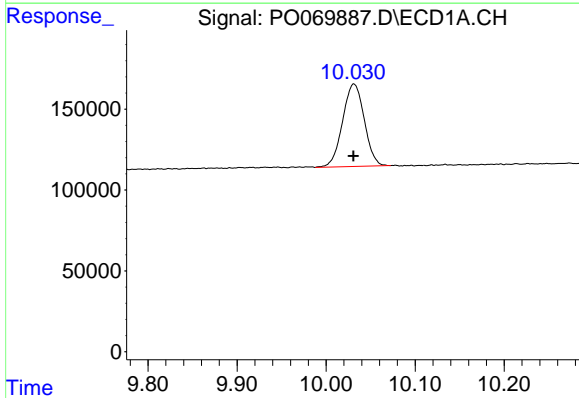
#1 Tetrachloro-m-xylene
 R.T.: 4.381 min
 Delta R.T.: 0.000 min
 Response: 516135
 Conc: 15.04 ng/ml

Instrument :
 ECD_O
 ClientSampleId :
 LOD-MDL-SOIL-01-QT3-2020

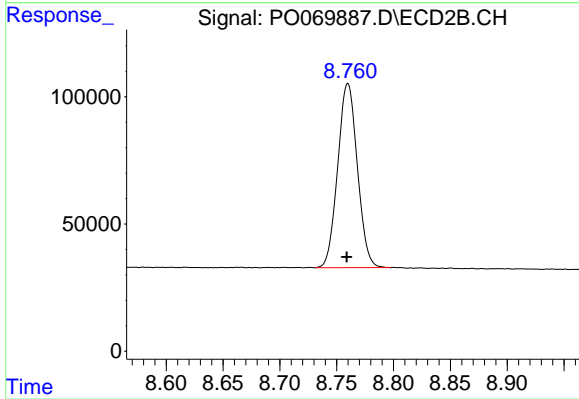
Manual Integrations
 APPROVED
 Ankita
 7/23/2020 1:11:57 PM



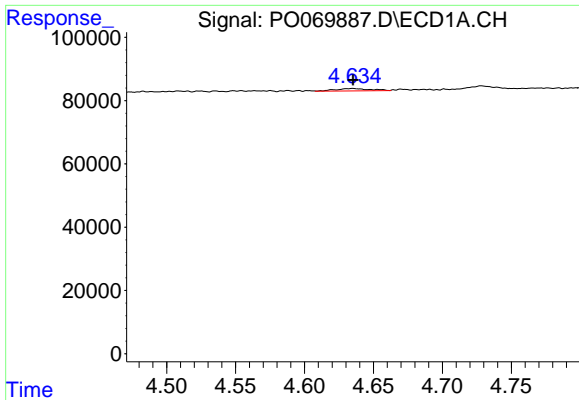
#1 Tetrachloro-m-xylene
 R.T.: 3.556 min
 Delta R.T.: 0.000 min
 Response: 530582
 Conc: 14.72 ng/ml



#2 Decachlorobiphenyl
 R.T.: 10.031 min
 Delta R.T.: 0.000 min
 Response: 863761
 Conc: 16.17 ng/ml



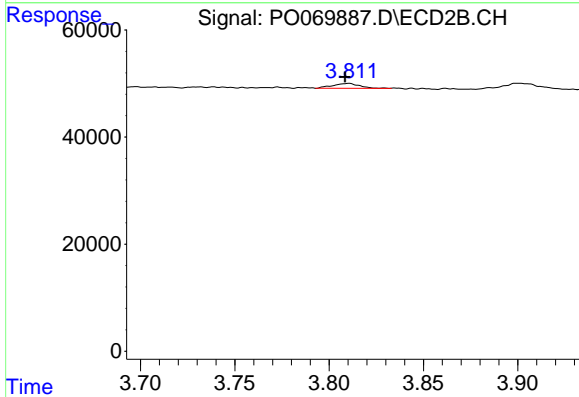
#2 Decachlorobiphenyl
 R.T.: 8.760 min
 Delta R.T.: 0.001 min
 Response: 872385
 Conc: 17.11 ng/ml



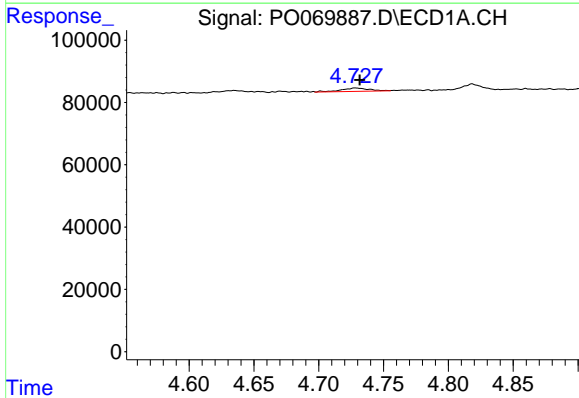
#8 AR-1221-1
 R.T.: 4.634 min
 Delta R.T.: 0.000 min
 Response: 13299
 Conc: 33.88 ng/ml m

Instrument :
 ECD_O
ClientSampled :
 LOD-MDL-SOIL-01-QT3-2020

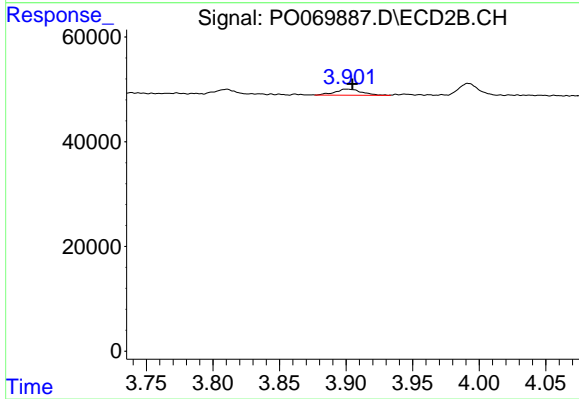
Manual Integrations
APPROVED
 Ankita
 7/23/2020 1:11:57 PM



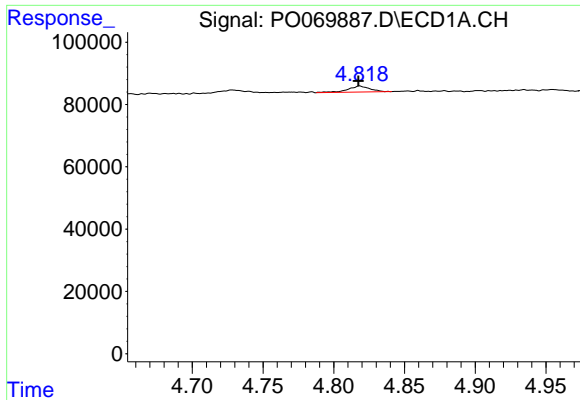
#8 AR-1221-1
 R.T.: 3.811 min
 Delta R.T.: 0.002 min
 Response: 9258
 Conc: 20.77 ng/ml m



#9 AR-1221-2
 R.T.: 4.727 min
 Delta R.T.: -0.004 min
 Response: 15957
 Conc: 52.65 ng/ml m



#9 AR-1221-2
 R.T.: 3.901 min
 Delta R.T.: -0.004 min
 Response: 16346
 Conc: 49.04 ng/ml m

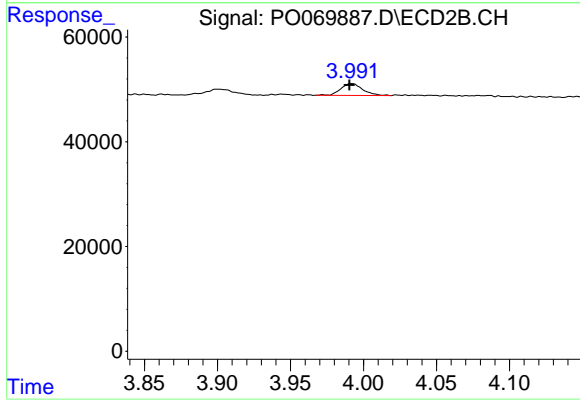


#10 AR-1221-3

R.T.: 4.818 min
 Delta R.T.: 0.000 min
 Response: 21134
 Conc: 20.98 ng/ml

Instrument :
 ECD_O
ClientSampleId :
 LOD-MDL-SOIL-01-QT3-2020

Manual Integrations
APPROVED
 Ankita
 7/23/2020 1:11:57 PM



#10 AR-1221-3

R.T.: 3.992 min
 Delta R.T.: 0.001 min
 Response: 24047
 Conc: 23.11 ng/ml