

Data Path : Z:\pestpcbsrv\HPCHEM1\ECD\_0\Data\P0072321\  
 Data File : P0079790.D  
 Signal(s) : Signal #1: ECD1A.CH Signal #2: ECD2B.CH  
 Acq On : 23 Jul 2021 13:51  
 Operator : DD\AJ  
 Sample : I.BLK  
 Misc :  
 ALS Vial : 2 Sample Multiplier: 1

Instrument :  
 ECD\_0  
 ClientSampleId :  
 I.BLK

Integration File signal 1: autoint1.e  
 Integration File signal 2: autoint2.e  
 Quant Time: Jul 26 02:18:16 2021  
 Quant Method : Z:\pestpcbsrv\HPCHEM1\ECD\_0\methods\P0072221.M  
 Quant Title : GC EXTRACTABLES  
 QLast Update : Fri Jul 23 05:30:42 2021  
 Response via : Initial Calibration  
 Integrator: ChemStation 6890 Scale Mode: Small noise peaks clipped

Volume Inj. : 2 µl  
 Signal #1 Phase : ZB-MR1 Signal #2 Phase: ZB-MR2  
 Signal #1 Info : 30Mx0.32mmx 0.50µ Signal #2 Info : 30M x 0.32mm x 0.25µm

Compound	RT#1	RT#2	Resp#1	Resp#2	ng/ml	ng/ml
-----						
System Monitoring Compounds						
1) SA Tetrachlo...	5.011	4.120	997228	398156	17.635	17.909
2) SA Decachlor...	11.125	9.539	818179	383291	20.703	22.347

Target Compounds

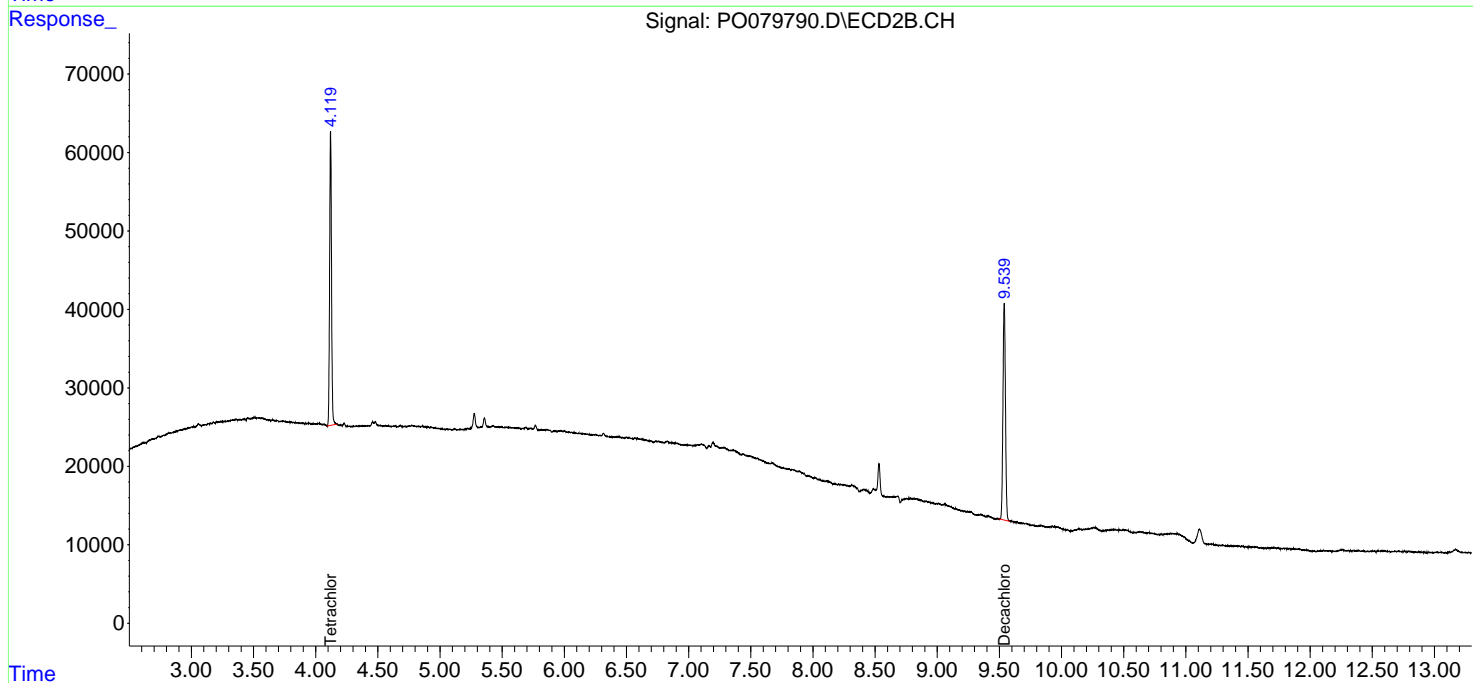
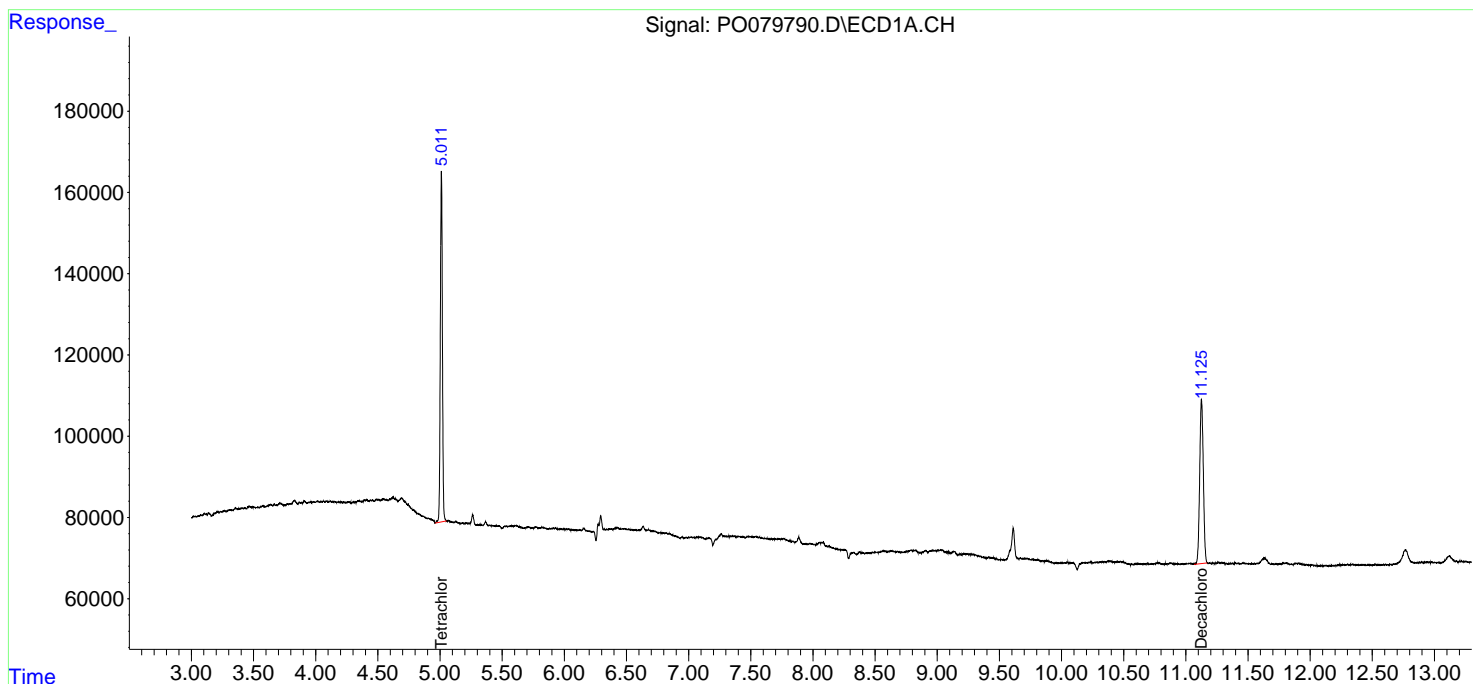
(f)=RT Delta > 1/2 Window (#)=Amounts differ by > 25% (m)=manual int.

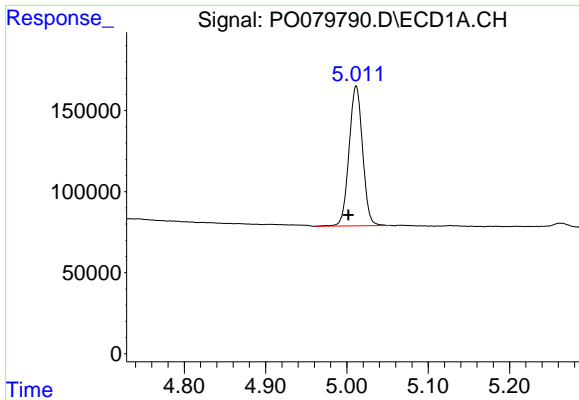
Data Path : Z:\pestpcbsrv\HPCHEM1\ECD\_0\Data\P0072321\  
 Data File : P0079790.D  
 Signal(s) : Signal #1: ECD1A.CH Signal #2: ECD2B.CH  
 Acq On : 23 Jul 2021 13:51  
 Operator : DD\AJ  
 Sample : I.BLK  
 Misc :  
 ALS Vial : 2 Sample Multiplier: 1

Instrument :  
 ECD\_O  
 ClientSampled :  
 I.BLK

Integration File signal 1: autoint1.e  
 Integration File signal 2: autoint2.e  
 Quant Time: Jul 26 02:18:16 2021  
 Quant Method : Z:\pestpcbsrv\HPCHEM1\ECD\_0\methods\P0072221.M  
 Quant Title : GC EXTRACTABLES  
 QLast Update : Fri Jul 23 05:30:42 2021  
 Response via : Initial Calibration  
 Integrator: ChemStation 6890 Scale Mode: Small noise peaks clipped

Volume Inj. : 2 µl  
 Signal #1 Phase : ZB-MR1 Signal #2 Phase: ZB-MR2  
 Signal #1 Info : 30Mx0.32mmx 0.50µ Signal #2 Info : 30M x 0.32mm x 0.25µm

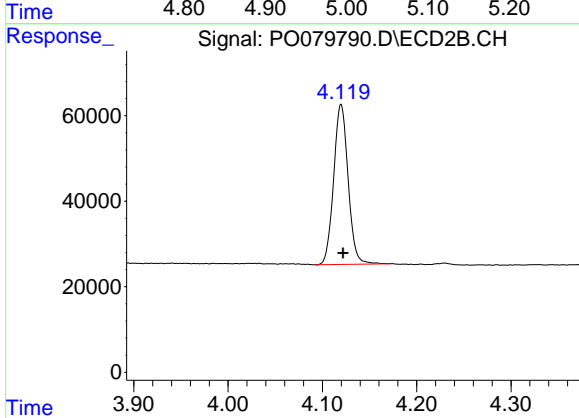




#1 Tetrachloro-m-xylene

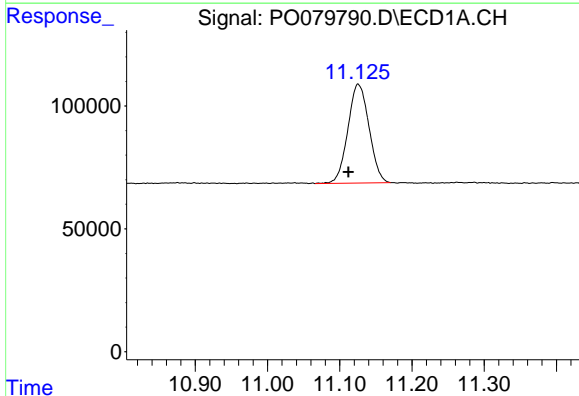
R.T.: 5.011 min  
 Delta R.T.: 0.009 min  
 Response: 997228  
 Conc: 17.63 ng/ml

Instrument :  
 ECD\_O  
 ClientSampled :  
 I.BLK



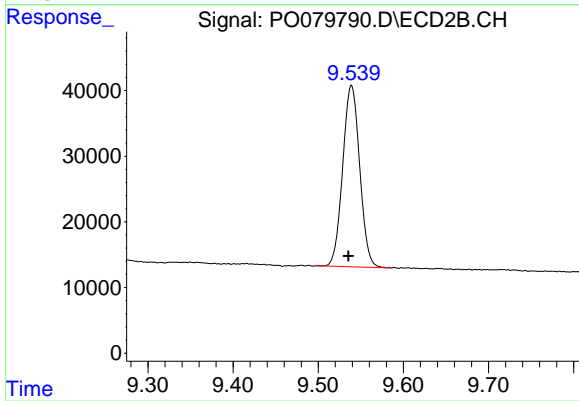
#1 Tetrachloro-m-xylene

R.T.: 4.120 min  
 Delta R.T.: -0.002 min  
 Response: 398156  
 Conc: 17.91 ng/ml



#2 Decachlorobiphenyl

R.T.: 11.125 min  
 Delta R.T.: 0.013 min  
 Response: 818179  
 Conc: 20.70 ng/ml



#2 Decachlorobiphenyl

R.T.: 9.539 min  
 Delta R.T.: 0.004 min  
 Response: 383291  
 Conc: 22.35 ng/ml