

Data Path : Z:\pestpcbsrv\HPCHEM1\ECD_0\Data\P0072321\
 Data File : P0079815.D
 Signal(s) : Signal #1: ECD1A.CH Signal #2: ECD2B.CH
 Acq On : 23 Jul 2021 21:48
 Operator : DD\AJ
 Sample : M2940-07
 Misc : AR1221 LOD 25 PPB
 ALS Vial : 27 Sample Multiplier: 1

Instrument :
 ECD_0
ClientSampleId :
 LOD-MDL-WATER-01-QT3-2021

Manual Integrations
APPROVED
 mohammad
 7/26/2021 11:58:13 AM

Integration File signal 1: autoint1.e
 Integration File signal 2: autoint2.e
 Quant Time: Jul 26 04:03:04 2021
 Quant Method : Z:\pestpcbsrv\HPCHEM1\ECD_0\methods\P0072221.M
 Quant Title : GC EXTRACTABLES
 QLast Update : Fri Jul 23 05:30:42 2021
 Response via : Initial Calibration
 Integrator: ChemStation 6890 Scale Mode: Small noise peaks clipped

Volume Inj. : 2 µl
 Signal #1 Phase : ZB-MR1 Signal #2 Phase: ZB-MR2
 Signal #1 Info : 30Mx0.32mmx 0.50µ Signal #2 Info : 30M x 0.32mm x 0.25µm

Compound	RT#1	RT#2	Resp#1	Resp#2	ng/ml	ng/ml

System Monitoring Compounds						
1) SA Tetrachlo...	5.003	4.122	1005990	418623	17.790	18.829
2) SA Decachlor...	11.115	9.534	810950	399807	20.520	23.310
Target Compounds						
8) L2 AR-1221-1	5.255	4.386	31546	9409	52.833m	36.259m#
9) L2 AR-1221-2	5.357	4.485	27241	9523	61.076m	50.129m
10) L2 AR-1221-3	5.442	4.575	42742	18654	29.300	29.977m

(f)=RT Delta > 1/2 Window (#)=Amounts differ by > 25% (m)=manual int.

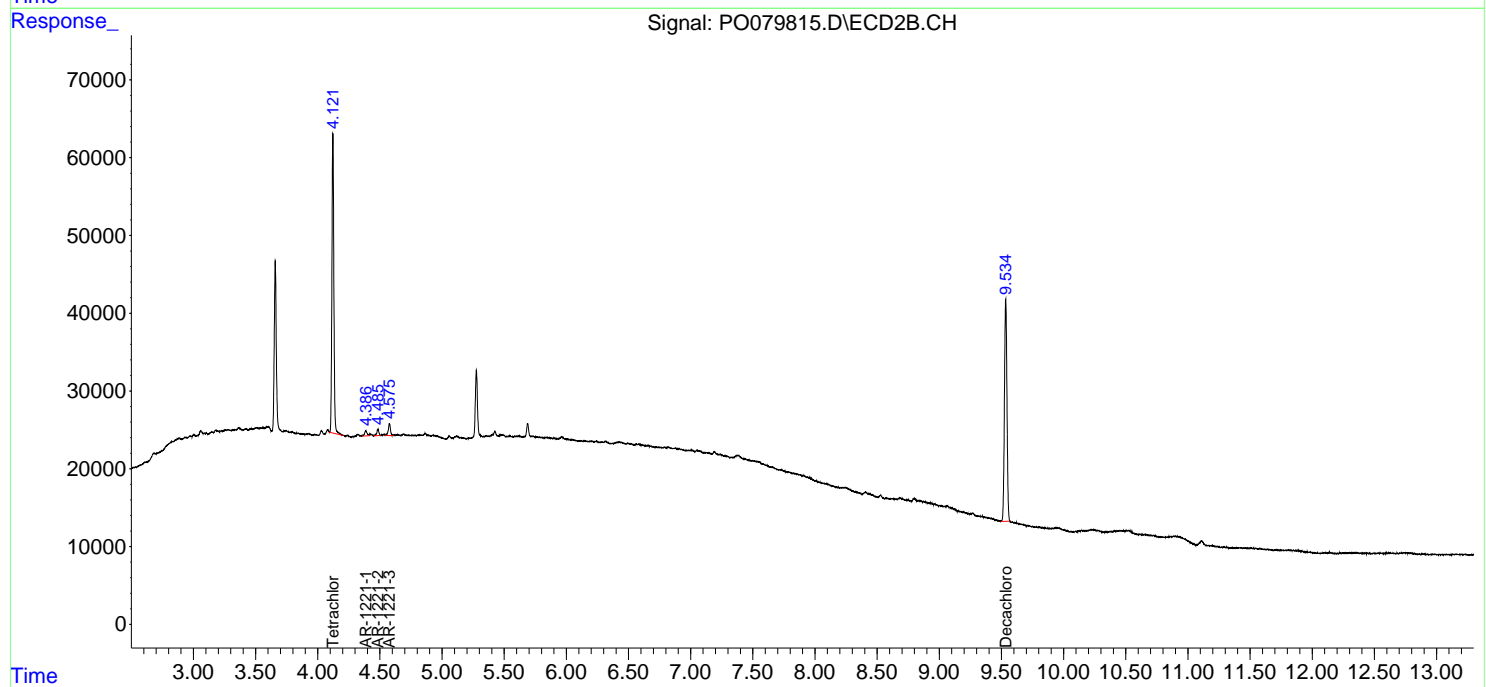
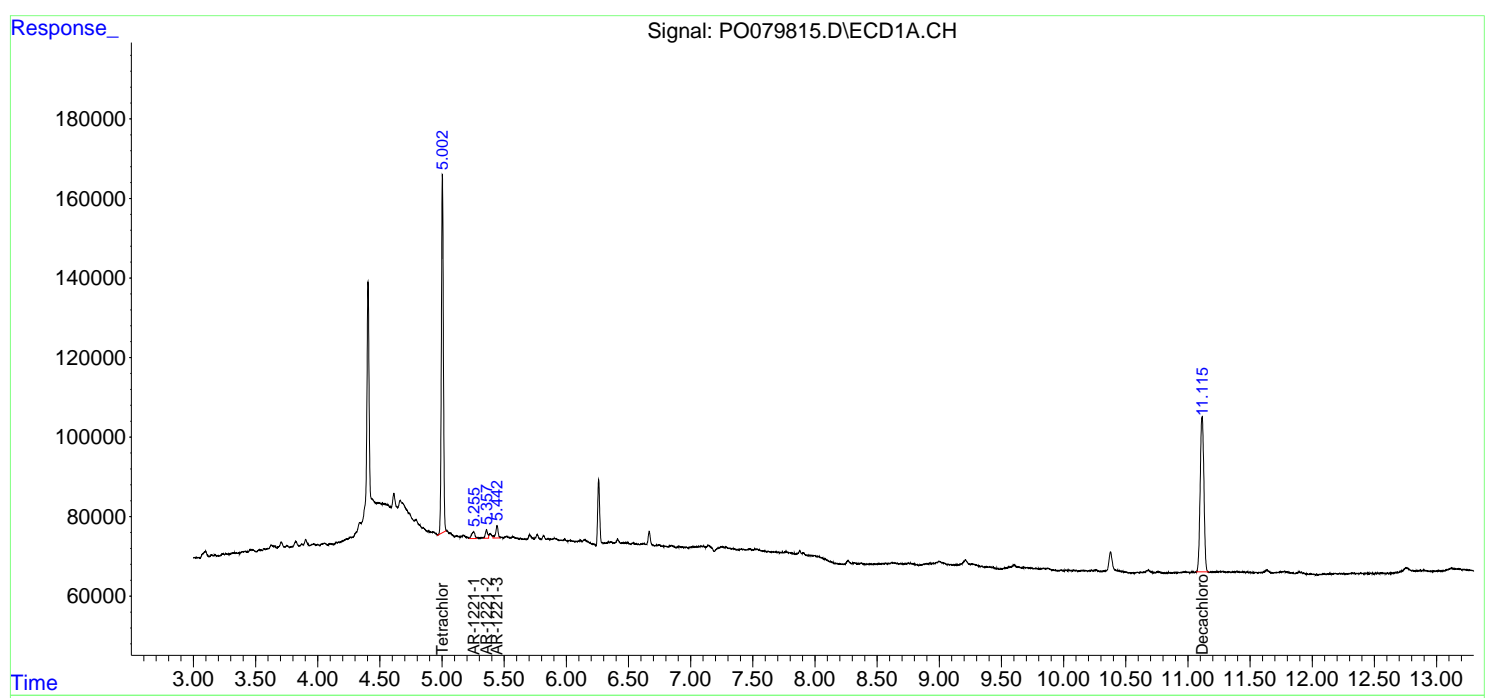
Data Path : Z:\pestpcbsrv\HPCHEM1\ECD_0\Data\PO072321\
 Data File : PO079815.D
 Signal(s) : Signal #1: ECD1A.CH Signal #2: ECD2B.CH
 Acq On : 23 Jul 2021 21:48
 Operator : DD\AJ
 Sample : M2940-07
 Misc : AR1221 LOD 25 PPB
 ALS Vial : 27 Sample Multiplier: 1

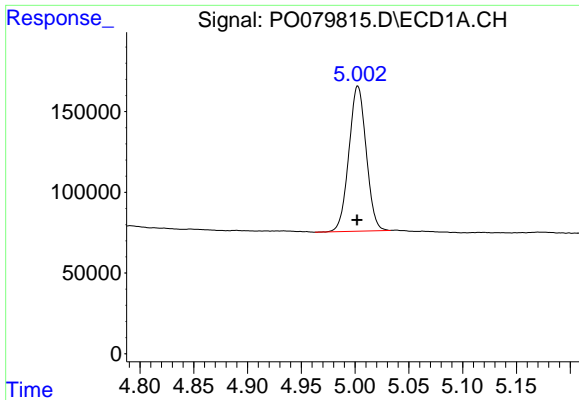
Instrument :
 ECD_O
Client Sampled :
 LOD-MDL-WATER-01-QT3-2021

Manual Integrations
APPROVED
 mohammad
 7/26/2021 11:58:13 AM

Integration File signal 1: autoint1.e
 Integration File signal 2: autoint2.e
 Quant Time: Jul 26 04:03:04 2021
 Quant Method : Z:\pestpcbsrv\HPCHEM1\ECD_0\methods\PO072221.M
 Quant Title : GC EXTRACTABLES
 QLast Update : Fri Jul 23 05:30:42 2021
 Response via : Initial Calibration
 Integrator: ChemStation 6890 Scale Mode: Small noise peaks clipped

Volume Inj. : 2 µl
 Signal #1 Phase : ZB-MR1 Signal #2 Phase: ZB-MR2
 Signal #1 Info : 30Mx0.32mmx 0.50µ Signal #2 Info : 30M x 0.32mm x 0.25µm





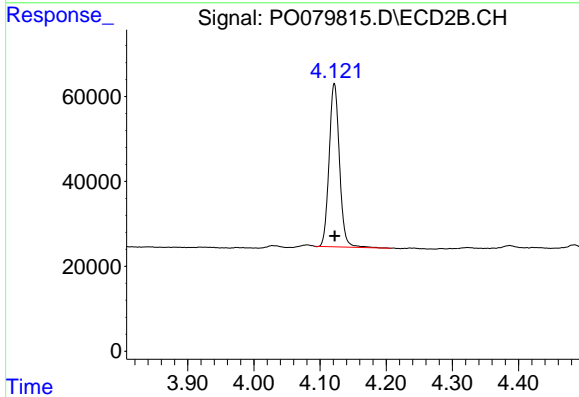
#1 Tetrachloro-m-xylene

R.T.: 5.003 min
 Delta R.T.: 0.000 min
 Response: 1005990
 Conc: 17.79 ng/ml

Instrument :
 ECD_O
 ClientSampleId :
 LOD-MDL-WATER-01-QT3-2021

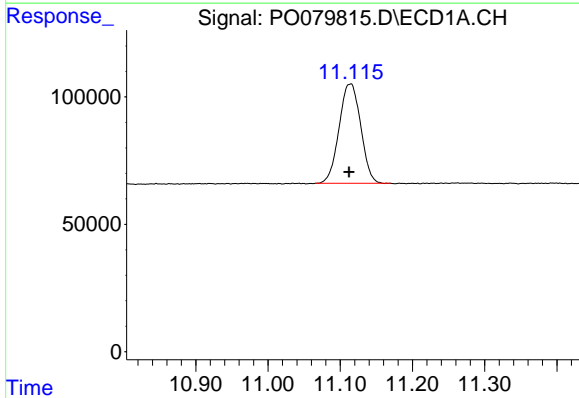
Manual Integrations
 APPROVED

mohammad
 7/26/2021 11:58:13 AM



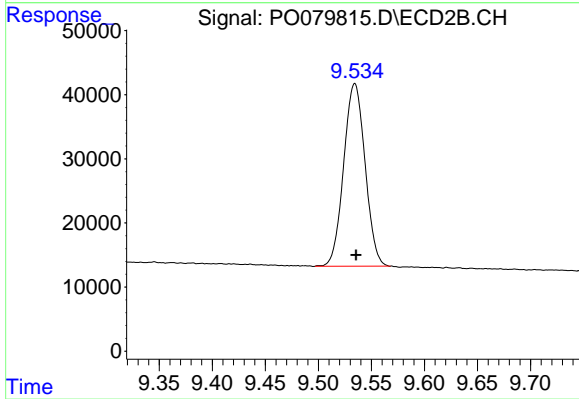
#1 Tetrachloro-m-xylene

R.T.: 4.122 min
 Delta R.T.: 0.000 min
 Response: 418623
 Conc: 18.83 ng/ml



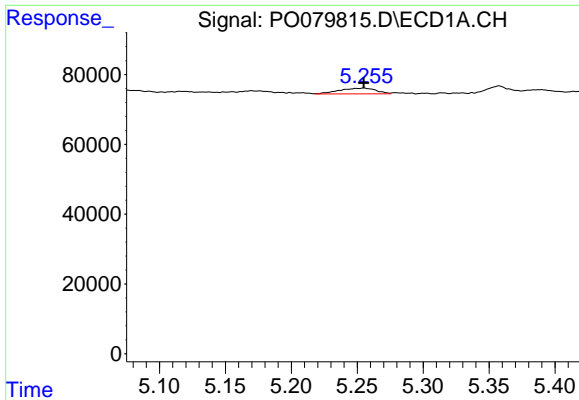
#2 Decachlorobiphenyl

R.T.: 11.115 min
 Delta R.T.: 0.002 min
 Response: 810950
 Conc: 20.52 ng/ml



#2 Decachlorobiphenyl

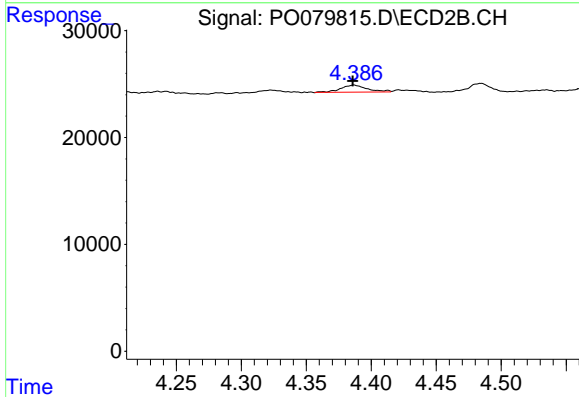
R.T.: 9.534 min
 Delta R.T.: -0.001 min
 Response: 399807
 Conc: 23.31 ng/ml



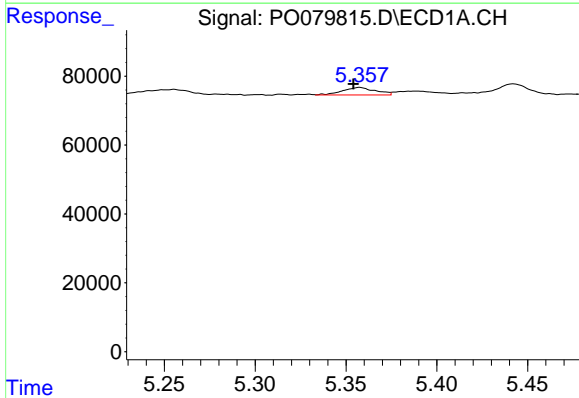
#8 AR-1221-1
 R.T.: 5.255 min
 Delta R.T.: 0.000 min
 Response: 31546
 Conc: 52.83 ng/ml m

Instrument :
 ECD_O
ClientSampled :
 LOD-MDL-WATER-01-QT3-2021

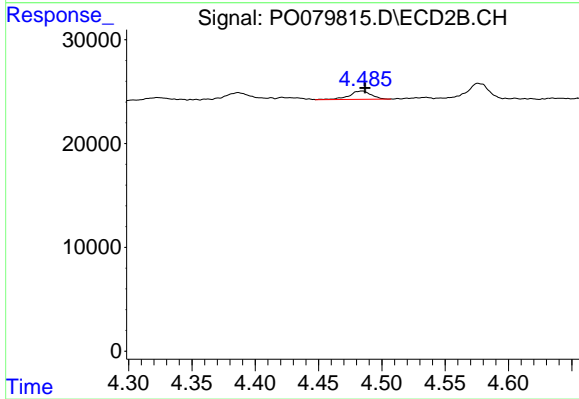
Manual Integrations
APPROVED
 mohammad
 7/26/2021 11:58:13 AM



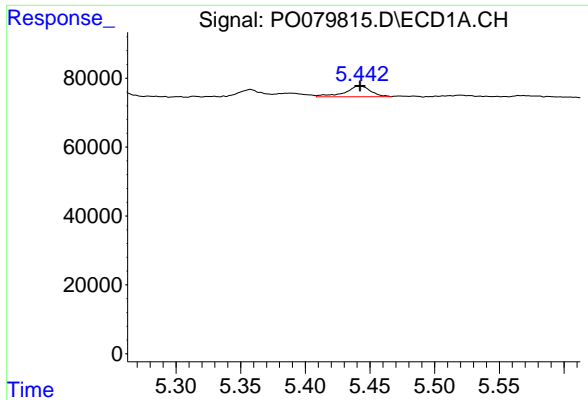
#8 AR-1221-1
 R.T.: 4.386 min
 Delta R.T.: 0.000 min
 Response: 9409
 Conc: 36.26 ng/ml m



#9 AR-1221-2
 R.T.: 5.357 min
 Delta R.T.: 0.003 min
 Response: 27241
 Conc: 61.08 ng/ml m



#9 AR-1221-2
 R.T.: 4.485 min
 Delta R.T.: -0.002 min
 Response: 9523
 Conc: 50.13 ng/ml m



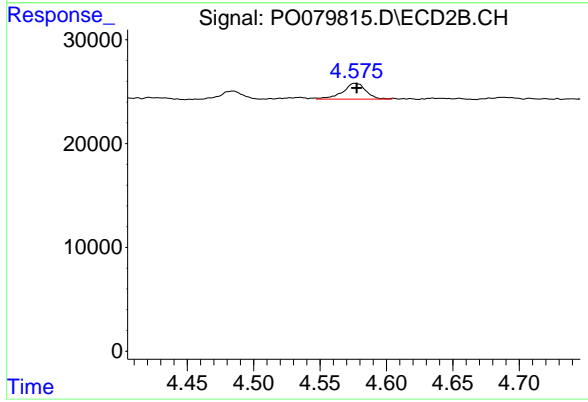
#10 AR-1221-3

R.T.: 5.442 min
Delta R.T.: 0.000 min
Response: 42742
Conc: 29.30 ng/ml

Instrument :
ECD_O
ClientSampleId :
LOD-MDL-WATER-01-QT3-2021

Manual Integrations
APPROVED

mohammad
7/26/2021 11:58:13 AM



#10 AR-1221-3

R.T.: 4.575 min
Delta R.T.: -0.002 min
Response: 18654
Conc: 29.98 ng/ml m