

Data Path : Z:\pestpcbsrv\HPCHEM1\ECD_0\Data\P0072420\
 Data File : P0069969.D
 Signal(s) : Signal #1: ECD1A.CH Signal #2: ECD2B.CH
 Acq On : 24 Jul 2020 3:44
 Operator : DD\AJ
 Sample : L3216-07
 Misc : AR1262 LOD 40 PPB
 ALS Vial : 54 Sample Multiplier: 1

Instrument :
 ECD_0
 ClientSampleId :

Integration File signal 1: autoint1.e
 Integration File signal 2: autoint2.e
 Quant Time: Jul 24 04:59:08 2020
 Quant Method : Z:\pestpcbsrv\HPCHEM1\ECD_0\methods\P0072320.M
 Quant Title : GC EXTRACTABLES
 QLast Update : Thu Jul 23 02:12:36 2020
 Response via : Initial Calibration
 Integrator: ChemStation 6890 Scale Mode: Small noise peaks clipped

Volume Inj. : 2 µl
 Signal #1 Phase : ZB-MR2 Signal #2 Phase: ZB-MR2
 Signal #1 Info : 30Mx0.32mmx 0.50µ Signal #2 Info : 30M x 0.32mm x 0.25µm

Compound	RT#1	RT#2	Resp#1	Resp#2	ng/ml	ng/ml

System Monitoring Compounds						
1) SA Tetrachlo...	4.375	3.553	705441	728872	20.550	20.221
2) SA Decachlor...	10.014f	8.754	1167480	1114277	21.850	21.848
Target Compounds						
9) L2 AR-1221-2	4.719	0.000	9628	0	31.769	N.D. #
27) L6 AR-1254-2	6.800	0.000	17734	0	6.308	N.D. #
28) L6 AR-1254-3	0.000	6.234f	0	65262	N.D.	18.209 #
30) L6 AR-1254-5	7.893	6.876	106835	94032	40.468	27.523 #
31) L7 AR-1260-1	7.341	6.350	92500	108990	42.941	45.158
32) L7 AR-1260-2	7.607	6.551	132350	130131	43.999	43.165
33) L7 AR-1260-3	7.965	6.699	195125	123654	74.802	44.893 #
34) L7 AR-1260-4	8.193	7.176	152575	168722	60.911	70.680
35) L7 AR-1260-5	8.507	7.427	329974	329235	56.422	55.509
36) L8 AR-1262-1	7.965	6.876	195125	94032	52.524	52.730
37) L8 AR-1262-2	8.507	7.427	329974	329235	49.918	52.665
38) L8 AR-1262-3	8.796	7.709	66751	152066	22.394	58.162 #
39) L8 AR-1262-4	8.856	7.772	85195	252223	26.168	53.170 #
40) L8 AR-1262-5	9.415	8.268	110694	122630	46.048	51.828
41) L9 AR-1268-1	8.796	7.709	66751	152066	8.333	20.931 #
42) L9 AR-1268-2	8.856	7.772	85195	252223	12.086	37.655 #
43) L9 AR-1268-3	9.045	0.000	36354	0	5.939	N.D. #
44) L9 AR-1268-4	9.415	8.268	110694	122630	41.564	46.691
45) L9 AR-1268-5	9.749f	8.537	50228	54441	2.613	3.041

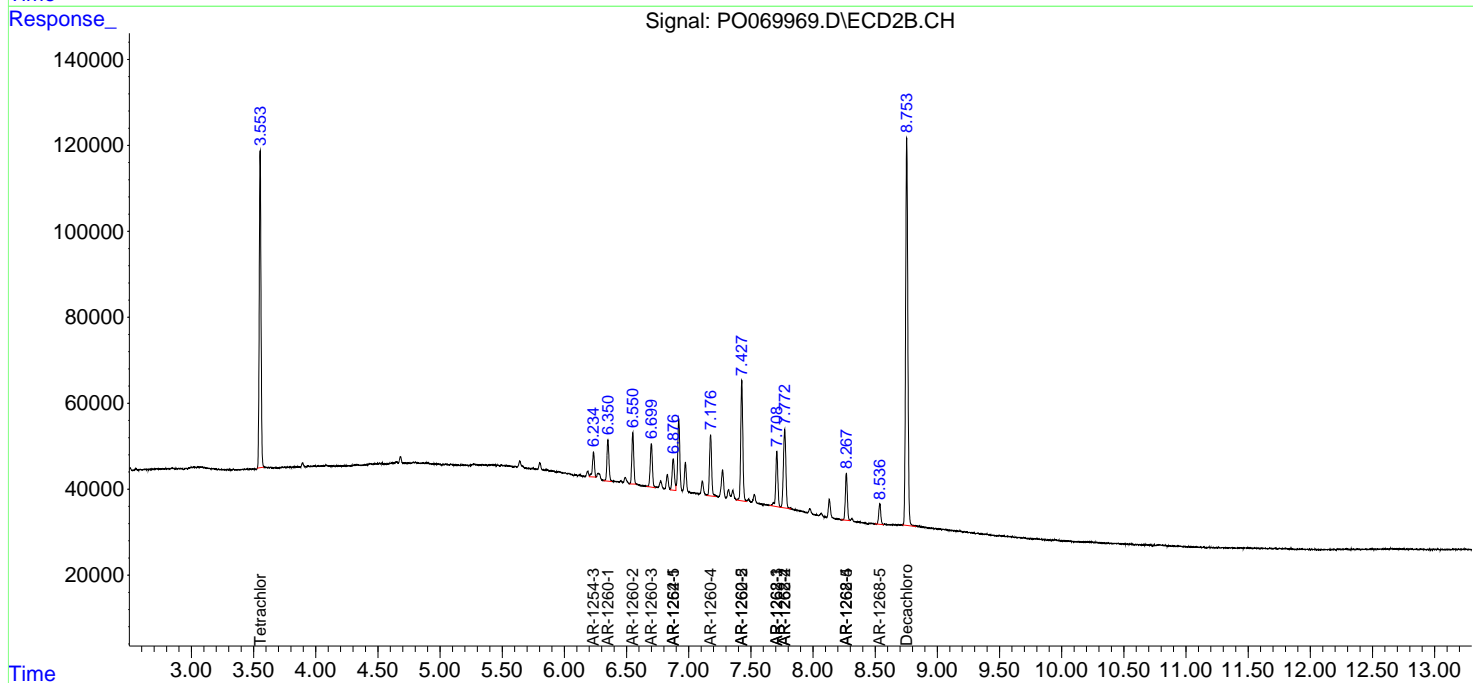
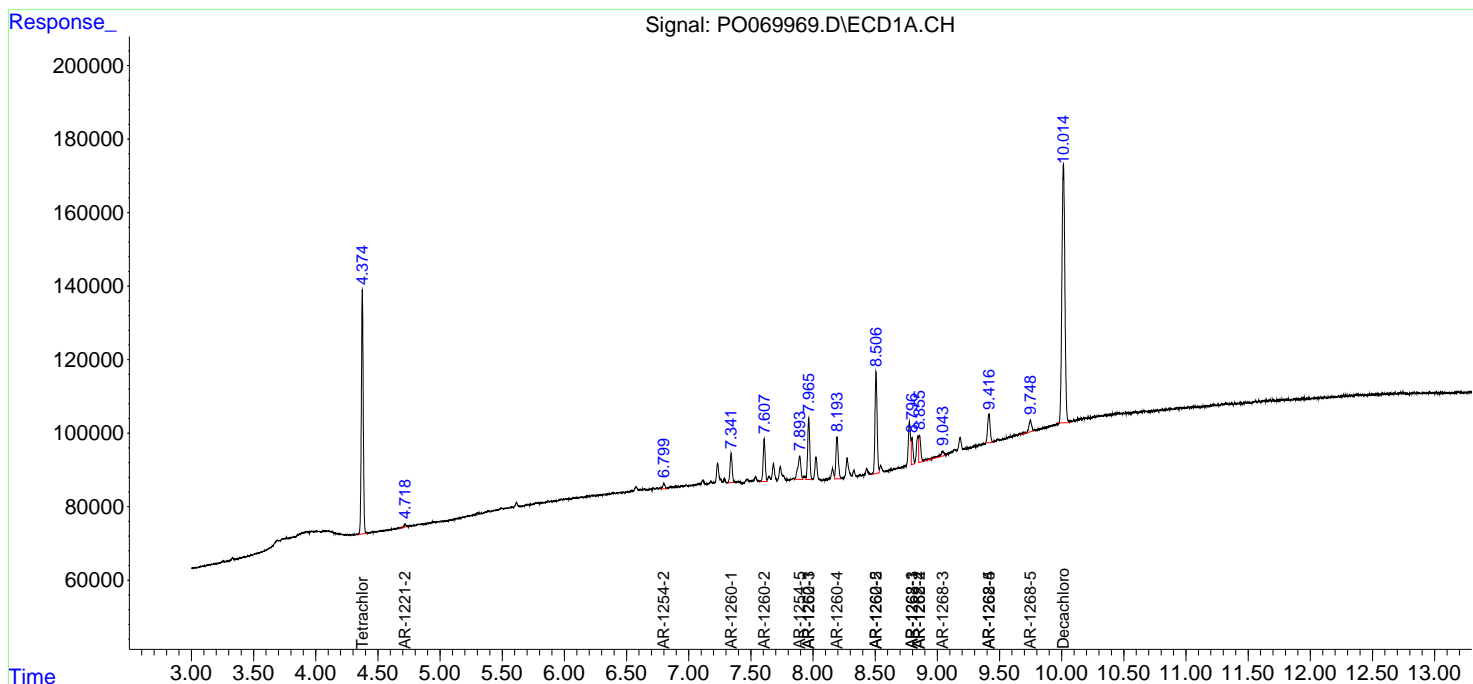
(f)=RT Delta > 1/2 Window (#)=Amounts differ by > 25% (m)=manual int.

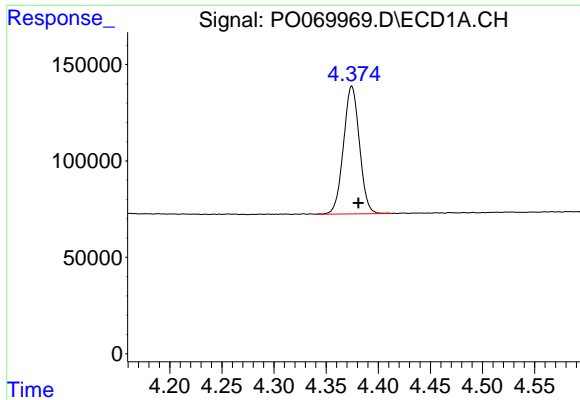
Data Path : Z:\pestpcbsrv\HPCHEM1\ECD_0\Data\P0072420\
 Data File : P0069969.D
 Signal(s) : Signal #1: ECD1A.CH Signal #2: ECD2B.CH
 Acq On : 24 Jul 2020 3:44
 Operator : DD\AJ
 Sample : L3216-07
 Misc : AR1262 LOD 40 PPB
 ALS Vial : 54 Sample Multiplier: 1

Instrument :
 ECD_O
 ClientSampled :

Integration File signal 1: autoint1.e
 Integration File signal 2: autoint2.e
 Quant Time: Jul 24 04:59:08 2020
 Quant Method : Z:\pestpcbsrv\HPCHEM1\ECD_0\methods\P0072320.M
 Quant Title : GC EXTRACTABLES
 QLast Update : Thu Jul 23 02:12:36 2020
 Response via : Initial Calibration
 Integrator: ChemStation 6890 Scale Mode: Small noise peaks clipped

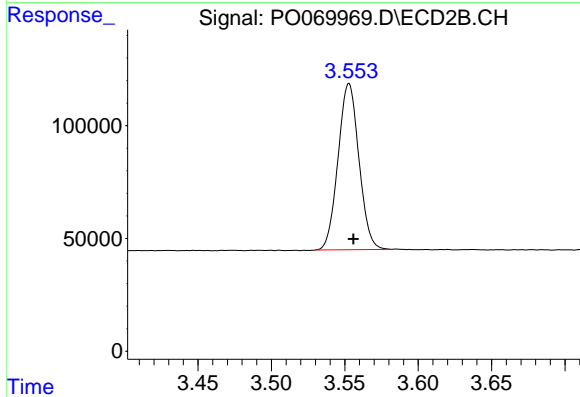
Volume Inj. : 2 µl
 Signal #1 Phase : ZB-MR1 Signal #2 Phase: ZB-MR2
 Signal #1 Info : 30Mx0.32mmx 0.50µ Signal #2 Info : 30M x 0.32mm x 0.25µm



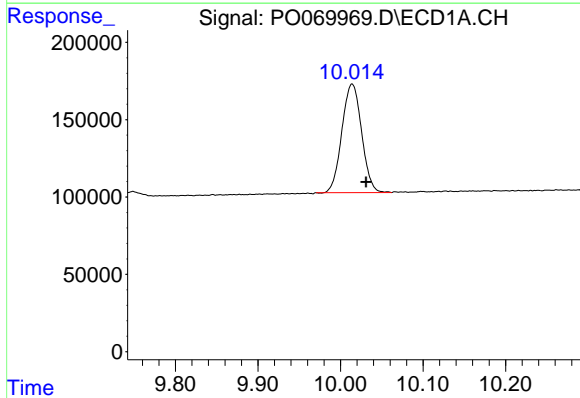


#1 Tetrachloro-m-xylene
 R.T.: 4.375 min
 Delta R.T.: -0.006 min
 Response: 705441
 Conc: 20.55 ng/ml

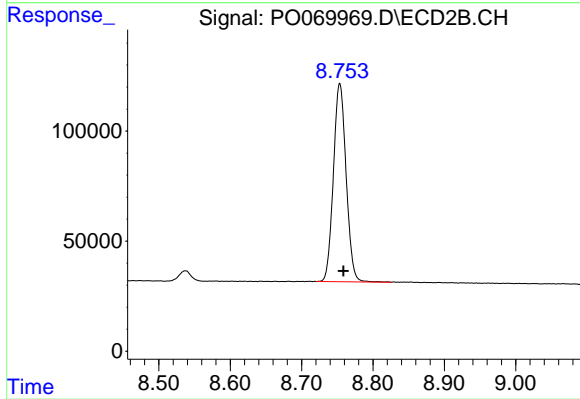
Instrument :
 ECD_O
 ClientSampled :



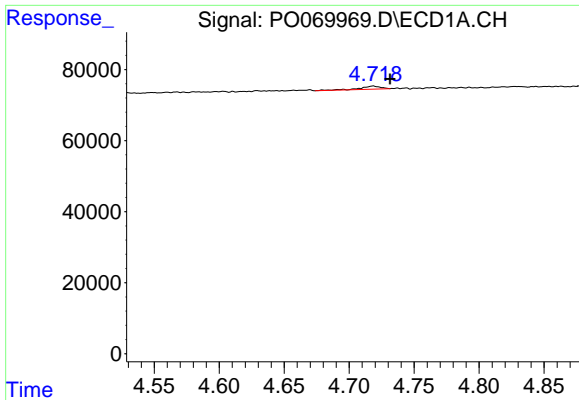
#1 Tetrachloro-m-xylene
 R.T.: 3.553 min
 Delta R.T.: -0.003 min
 Response: 728872
 Conc: 20.22 ng/ml



#2 Decachlorobiphenyl
 R.T.: 10.014 min
 Delta R.T.: -0.017 min
 Response: 1167480
 Conc: 21.85 ng/ml



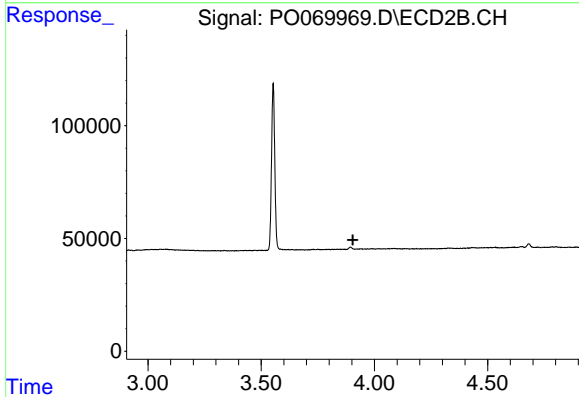
#2 Decachlorobiphenyl
 R.T.: 8.754 min
 Delta R.T.: -0.005 min
 Response: 1114277
 Conc: 21.85 ng/ml



#9 AR-1221-2

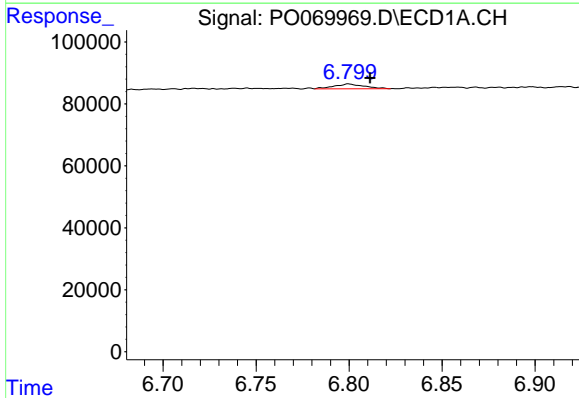
R.T.: 4.719 min
 Delta R.T.: -0.013 min
 Response: 9628
 Conc: 31.77 ng/ml

Instrument :
 ECD_O
 ClientSampled :



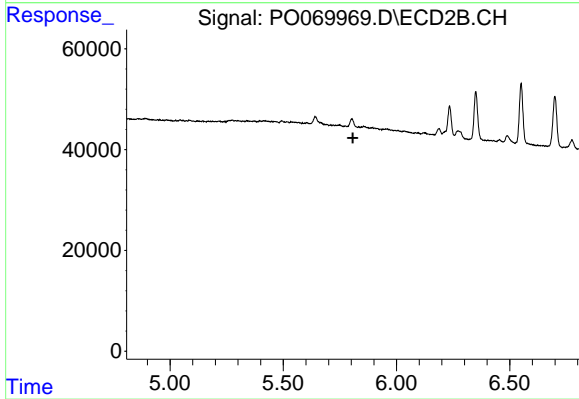
#9 AR-1221-2

R.T.: 0.000 min
 Exp R.T. : 3.905 min
 Response: 0
 Conc: N.D.



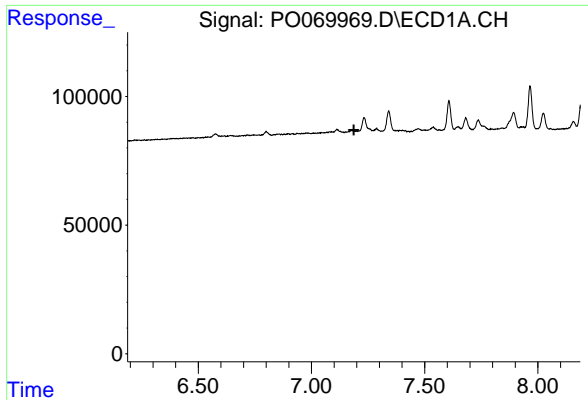
#27 AR-1254-2

R.T.: 6.800 min
 Delta R.T.: -0.012 min
 Response: 17734
 Conc: 6.31 ng/ml



#27 AR-1254-2

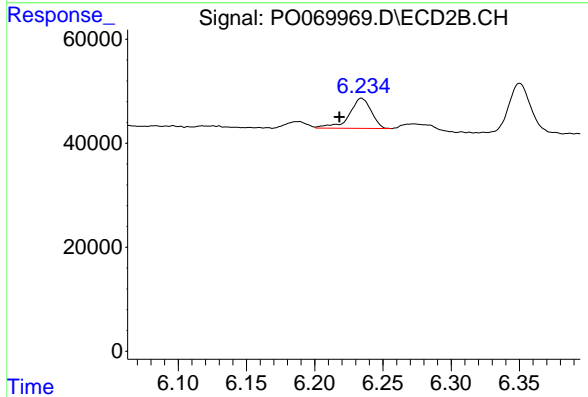
R.T.: 0.000 min
 Exp R.T. : 5.807 min
 Response: 0
 Conc: N.D.



#28 AR-1254-3

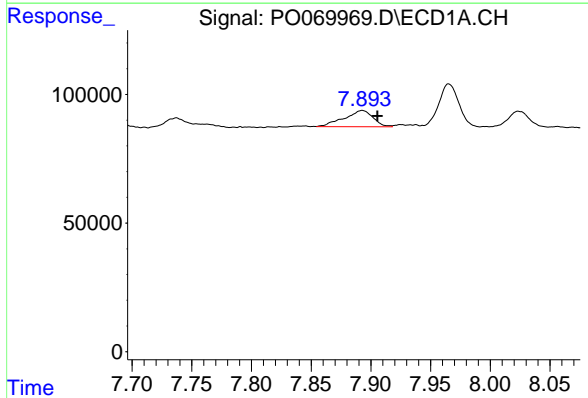
R.T.: 0.000 min
 Exp R.T.: 7.188 min
 Response: 0
 Conc: N.D.

Instrument :
 ECD_O
 ClientSampleId :



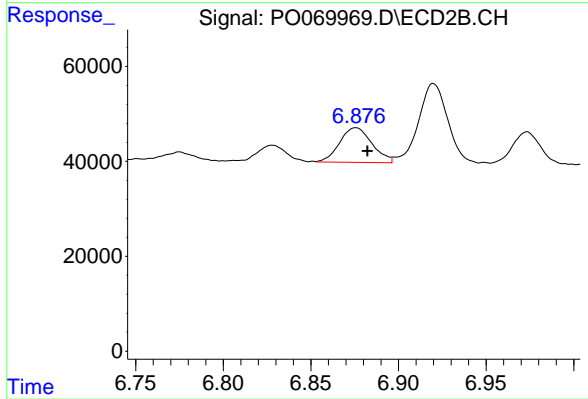
#28 AR-1254-3

R.T.: 6.234 min
 Delta R.T.: 0.016 min
 Response: 65262
 Conc: 18.21 ng/ml



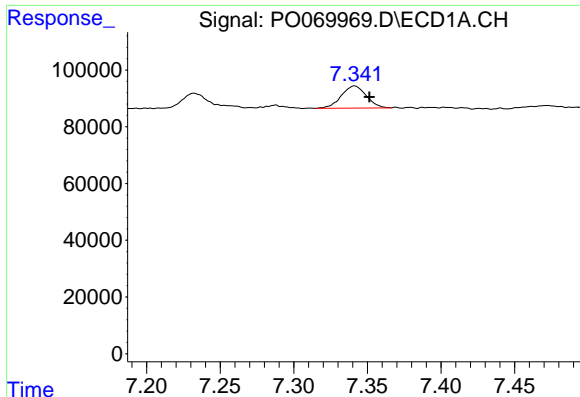
#30 AR-1254-5

R.T.: 7.893 min
 Delta R.T.: -0.013 min
 Response: 106835
 Conc: 40.47 ng/ml



#30 AR-1254-5

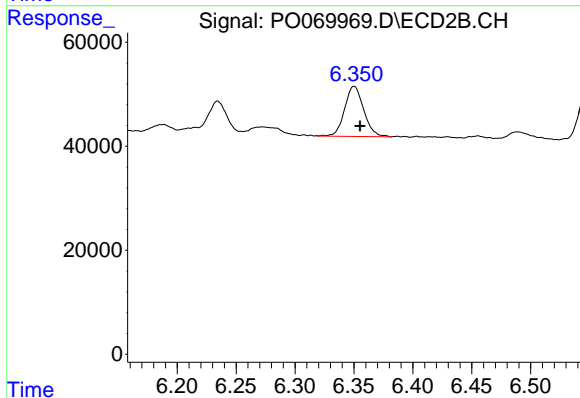
R.T.: 6.876 min
 Delta R.T.: -0.006 min
 Response: 94032
 Conc: 27.52 ng/ml



#31 AR-1260-1

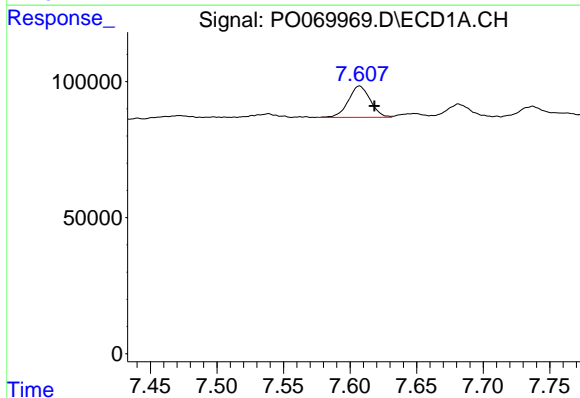
R.T.: 7.341 min
 Delta R.T.: -0.010 min
 Response: 92500
 Conc: 42.94 ng/ml

Instrument :
 ECD_O
 ClientSampleId :



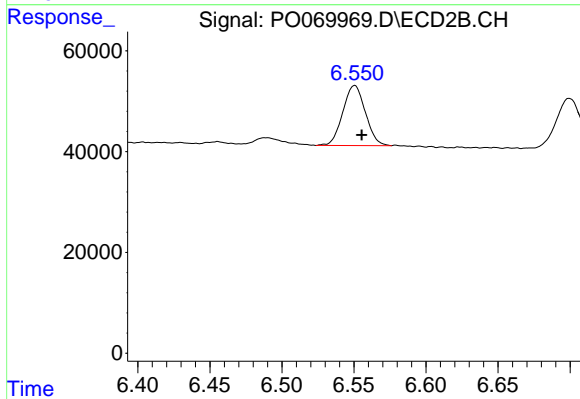
#31 AR-1260-1

R.T.: 6.350 min
 Delta R.T.: -0.005 min
 Response: 108990
 Conc: 45.16 ng/ml



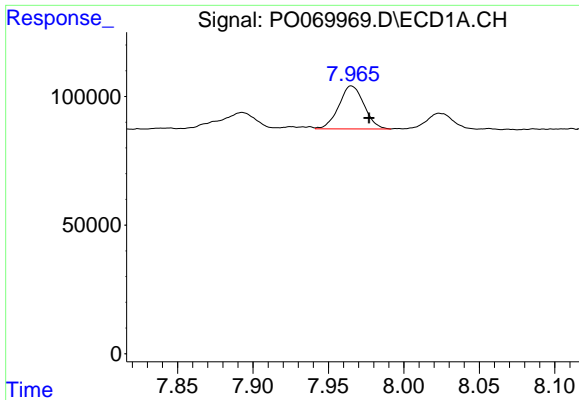
#32 AR-1260-2

R.T.: 7.607 min
 Delta R.T.: -0.011 min
 Response: 132350
 Conc: 44.00 ng/ml



#32 AR-1260-2

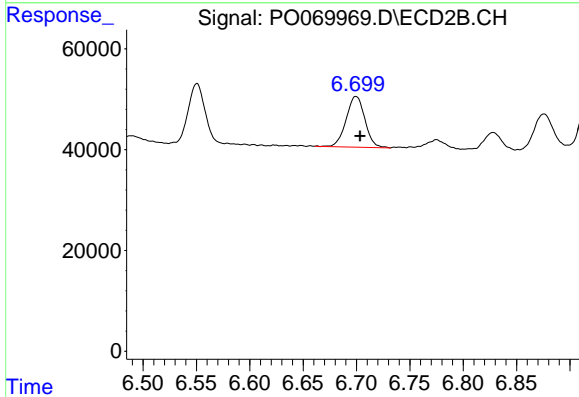
R.T.: 6.551 min
 Delta R.T.: -0.005 min
 Response: 130131
 Conc: 43.16 ng/ml



#33 AR-1260-3

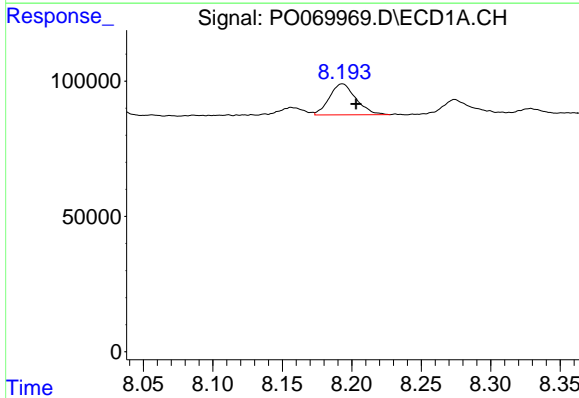
R.T.: 7.965 min
 Delta R.T.: -0.012 min
 Response: 195125
 Conc: 74.80 ng/ml

Instrument :
 ECD_O
 ClientSampled :



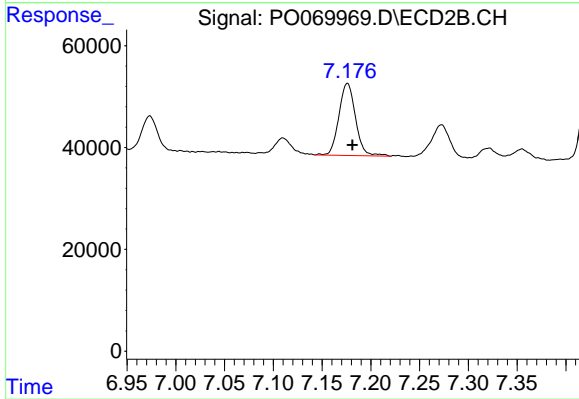
#33 AR-1260-3

R.T.: 6.699 min
 Delta R.T.: -0.004 min
 Response: 123654
 Conc: 44.89 ng/ml



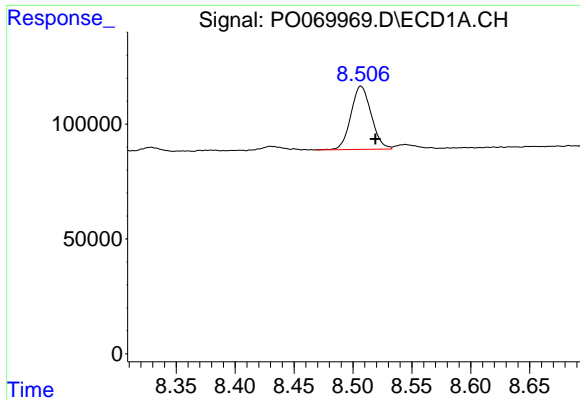
#34 AR-1260-4

R.T.: 8.193 min
 Delta R.T.: -0.010 min
 Response: 152575
 Conc: 60.91 ng/ml



#34 AR-1260-4

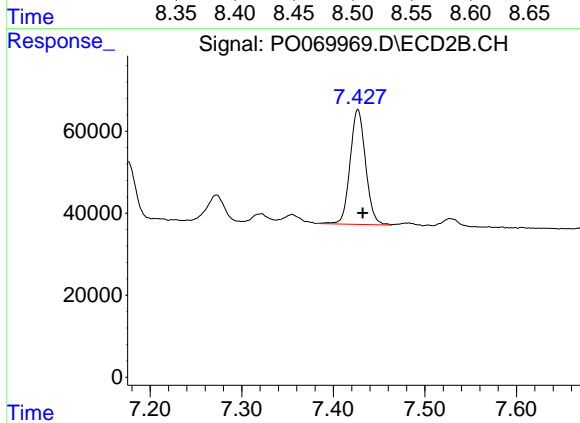
R.T.: 7.176 min
 Delta R.T.: -0.005 min
 Response: 168722
 Conc: 70.68 ng/ml



#35 AR-1260-5

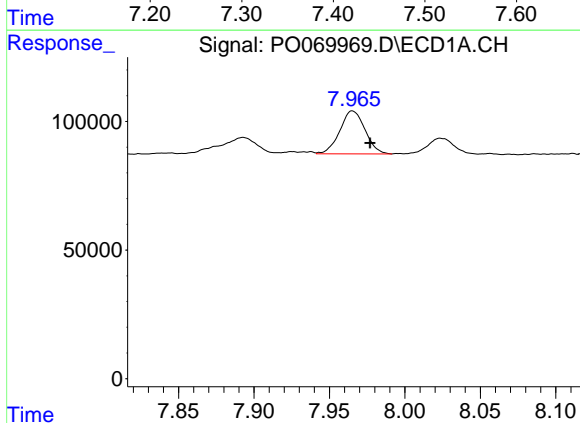
R.T.: 8.507 min
 Delta R.T.: -0.012 min
 Response: 329974
 Conc: 56.42 ng/ml

Instrument :
 ECD_O
 ClientSampleId :



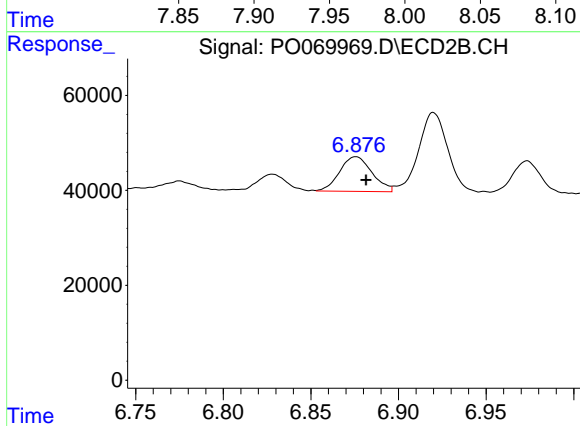
#35 AR-1260-5

R.T.: 7.427 min
 Delta R.T.: -0.005 min
 Response: 329235
 Conc: 55.51 ng/ml



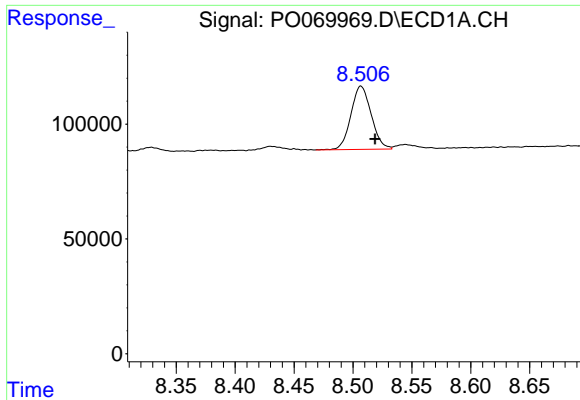
#36 AR-1262-1

R.T.: 7.965 min
 Delta R.T.: -0.012 min
 Response: 195125
 Conc: 52.52 ng/ml



#36 AR-1262-1

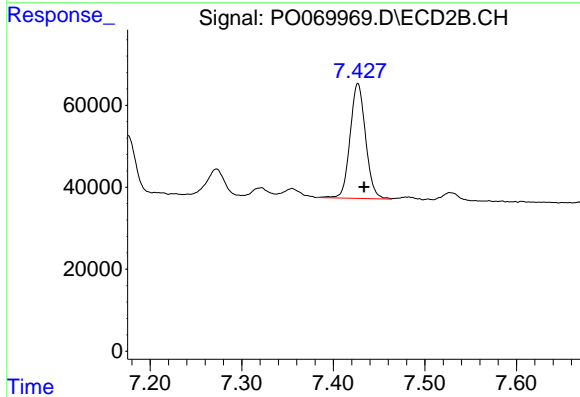
R.T.: 6.876 min
 Delta R.T.: -0.006 min
 Response: 94032
 Conc: 52.73 ng/ml



#37 AR-1262-2

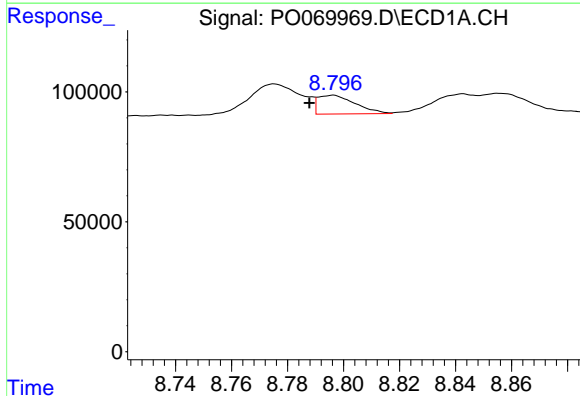
R.T.: 8.507 min
 Delta R.T.: -0.012 min
 Response: 329974
 Conc: 49.92 ng/ml

Instrument :
 ECD_O
 ClientSampleId :



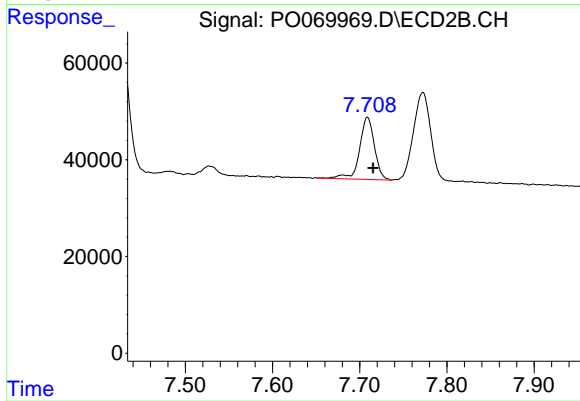
#37 AR-1262-2

R.T.: 7.427 min
 Delta R.T.: -0.007 min
 Response: 329235
 Conc: 52.66 ng/ml



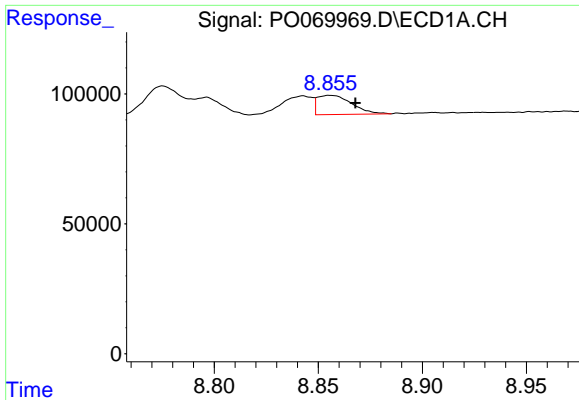
#38 AR-1262-3

R.T.: 8.796 min
 Delta R.T.: 0.008 min
 Response: 66751
 Conc: 22.39 ng/ml



#38 AR-1262-3

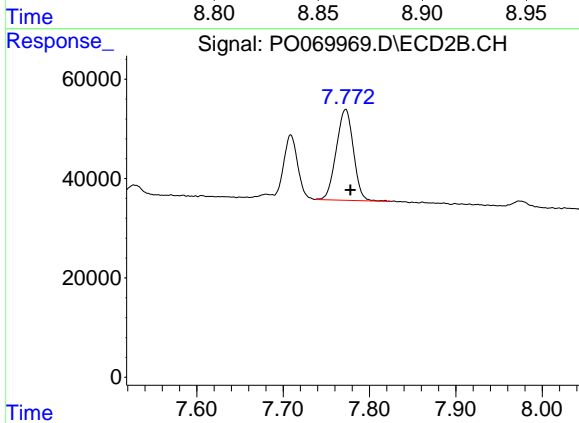
R.T.: 7.709 min
 Delta R.T.: -0.007 min
 Response: 152066
 Conc: 58.16 ng/ml



#39 AR-1262-4

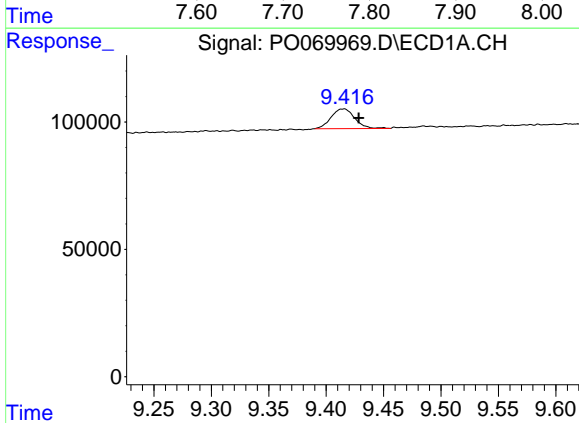
R.T.: 8.856 min
 Delta R.T.: -0.012 min
 Response: 85195
 Conc: 26.17 ng/ml

Instrument :
 ECD_O
 ClientSampleId :



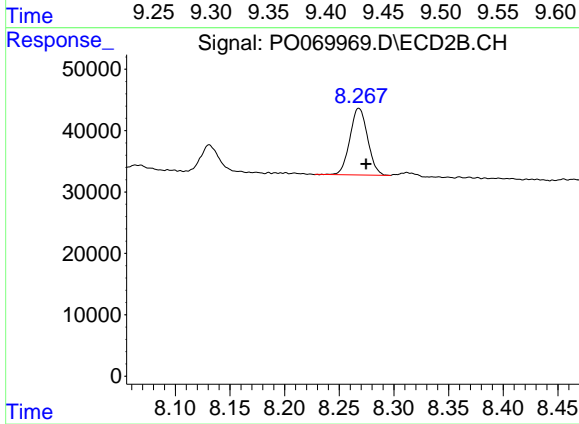
#39 AR-1262-4

R.T.: 7.772 min
 Delta R.T.: -0.006 min
 Response: 252223
 Conc: 53.17 ng/ml



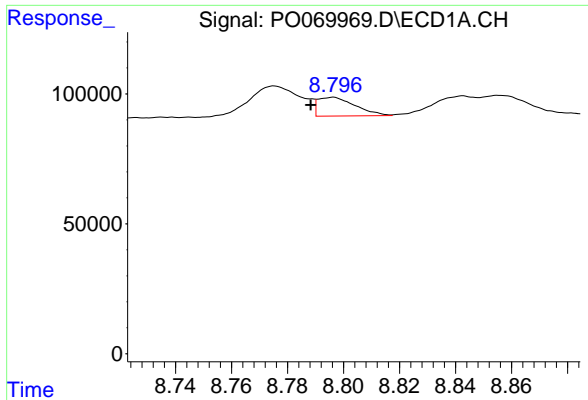
#40 AR-1262-5

R.T.: 9.415 min
 Delta R.T.: -0.013 min
 Response: 110694
 Conc: 46.05 ng/ml



#40 AR-1262-5

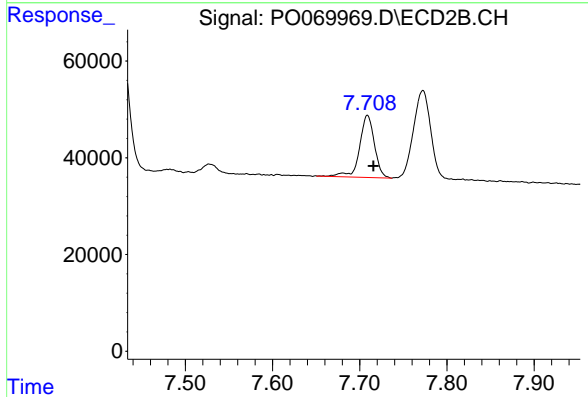
R.T.: 8.268 min
 Delta R.T.: -0.006 min
 Response: 122630
 Conc: 51.83 ng/ml



#41 AR-1268-1

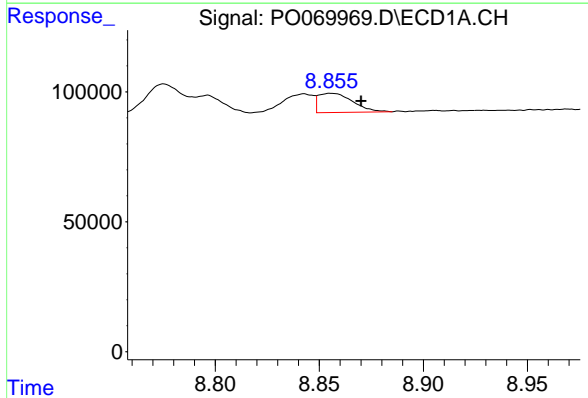
R.T.: 8.796 min
 Delta R.T.: 0.008 min
 Response: 66751
 Conc: 8.33 ng/ml

Instrument :
 ECD_O
 ClientSampleId :



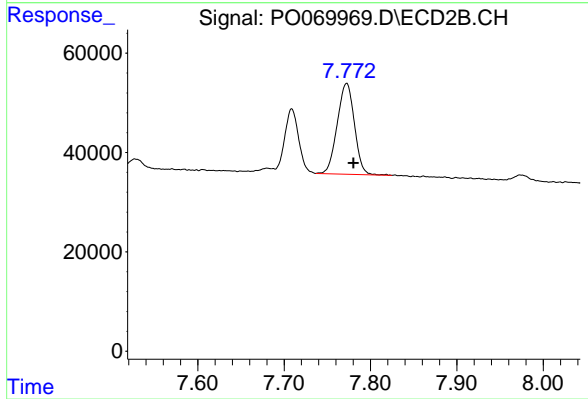
#41 AR-1268-1

R.T.: 7.709 min
 Delta R.T.: -0.007 min
 Response: 152066
 Conc: 20.93 ng/ml



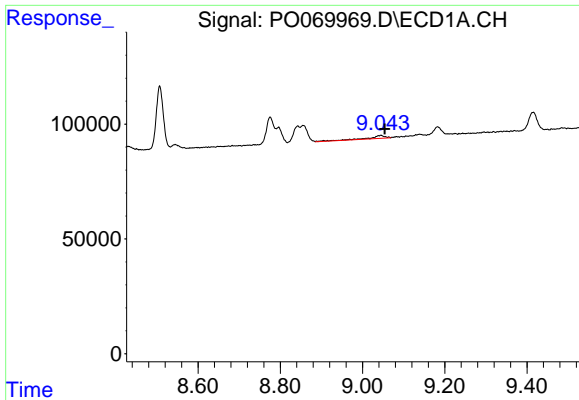
#42 AR-1268-2

R.T.: 8.856 min
 Delta R.T.: -0.014 min
 Response: 85195
 Conc: 12.09 ng/ml



#42 AR-1268-2

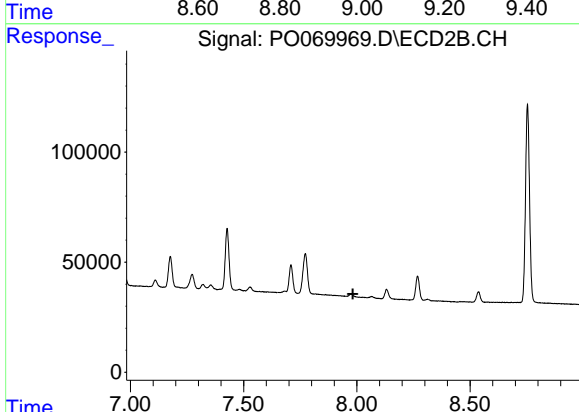
R.T.: 7.772 min
 Delta R.T.: -0.008 min
 Response: 252223
 Conc: 37.66 ng/ml



#43 AR-1268-3

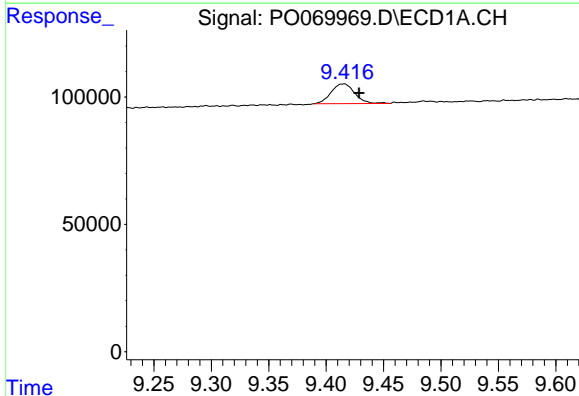
R.T.: 9.045 min
 Delta R.T.: -0.009 min
 Response: 36354
 Conc: 5.94 ng/ml

Instrument :
 ECD_O
 ClientSampled :



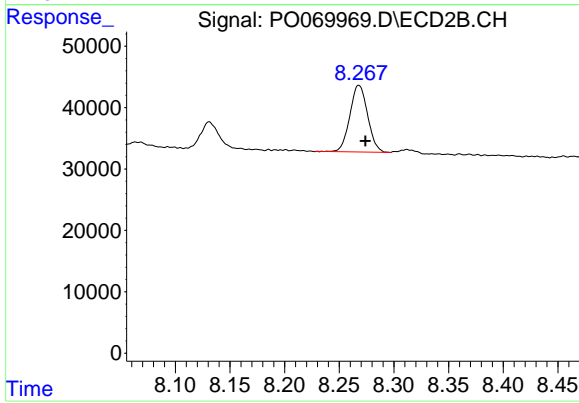
#43 AR-1268-3

R.T.: 0.000 min
 Exp R.T. : 7.982 min
 Response: 0
 Conc: N.D.



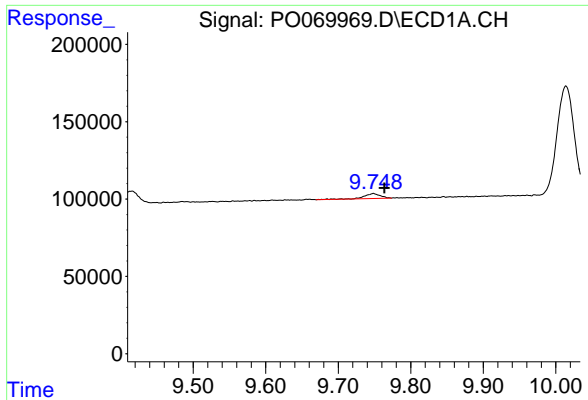
#44 AR-1268-4

R.T.: 9.415 min
 Delta R.T.: -0.013 min
 Response: 110694
 Conc: 41.56 ng/ml



#44 AR-1268-4

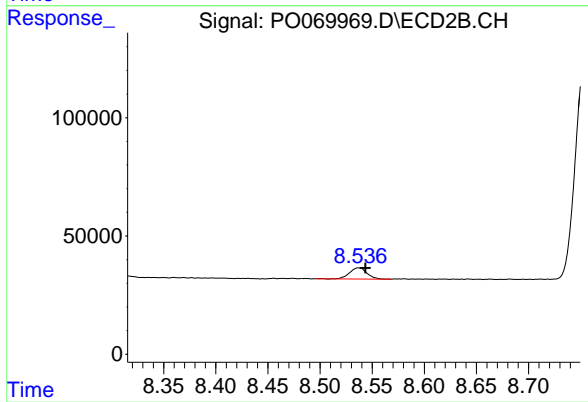
R.T.: 8.268 min
 Delta R.T.: -0.006 min
 Response: 122630
 Conc: 46.69 ng/ml



#45 AR-1268-5

R.T.: 9.749 min
Delta R.T.: -0.015 min
Response: 50228
Conc: 2.61 ng/ml

Instrument :
ECD_O
ClientSampleId :



#45 AR-1268-5

R.T.: 8.537 min
Delta R.T.: -0.006 min
Response: 54441
Conc: 3.04 ng/ml