

Data Path : Z:\pestpcbsrv\HPCHEM1\ECD\_0\Data\P0072420\  
 Data File : P0069939.D  
 Signal(s) : Signal #1: ECD1A.CH Signal #2: ECD2B.CH  
 Acq On : 23 Jul 2020 18:33  
 Operator : DD\AJ  
 Sample : L3216-03  
 Misc : AR1268 MDL 25 PPB  
 ALS Vial : 30 Sample Multiplier: 1

**Instrument :**  
 ECD\_0  
**ClientSampleId :**  
 MDL-SOIL-03-QT3-2020

Integration File signal 1: autoint1.e  
 Integration File signal 2: autoint2.e  
 Quant Time: Jul 24 02:08:27 2020  
 Quant Method : Z:\pestpcbsrv\HPCHEM1\ECD\_0\methods\P0072320.M  
 Quant Title : GC EXTRACTABLES  
 QLast Update : Thu Jul 23 02:12:36 2020  
 Response via : Initial Calibration  
 Integrator: ChemStation 6890 Scale Mode: Small noise peaks clipped

Volume Inj. : 2 µl  
 Signal #1 Phase : ZB-MR1 Signal #2 Phase: ZB-MR2  
 Signal #1 Info : 30Mx0.32mmx 0.50µ Signal #2 Info : 30M x 0.32mm x 0.25µm

Compound	RT#1	RT#2	Resp#1	Resp#2	ng/ml	ng/ml
-----						
System Monitoring Compounds						
1) SA Tetrachlo...	4.377	3.554	740551	778889	21.573	21.609
2) SA Decachlor...	10.020	8.756	1295279	1234174	24.242	24.199
Target Compounds						
41) L9 AR-1268-1	8.781	7.711	251035	264063	31.338	36.347
42) L9 AR-1268-2	8.862	7.776	214853	235783	30.479	35.201
43) L9 AR-1268-3	9.046	7.977	186461	204796	30.463	36.595
44) L9 AR-1268-4	9.419	8.270	72861	90502	27.358	34.459 #
45) L9 AR-1268-5	9.753	8.539	561972	578667	29.237	32.327
-----						

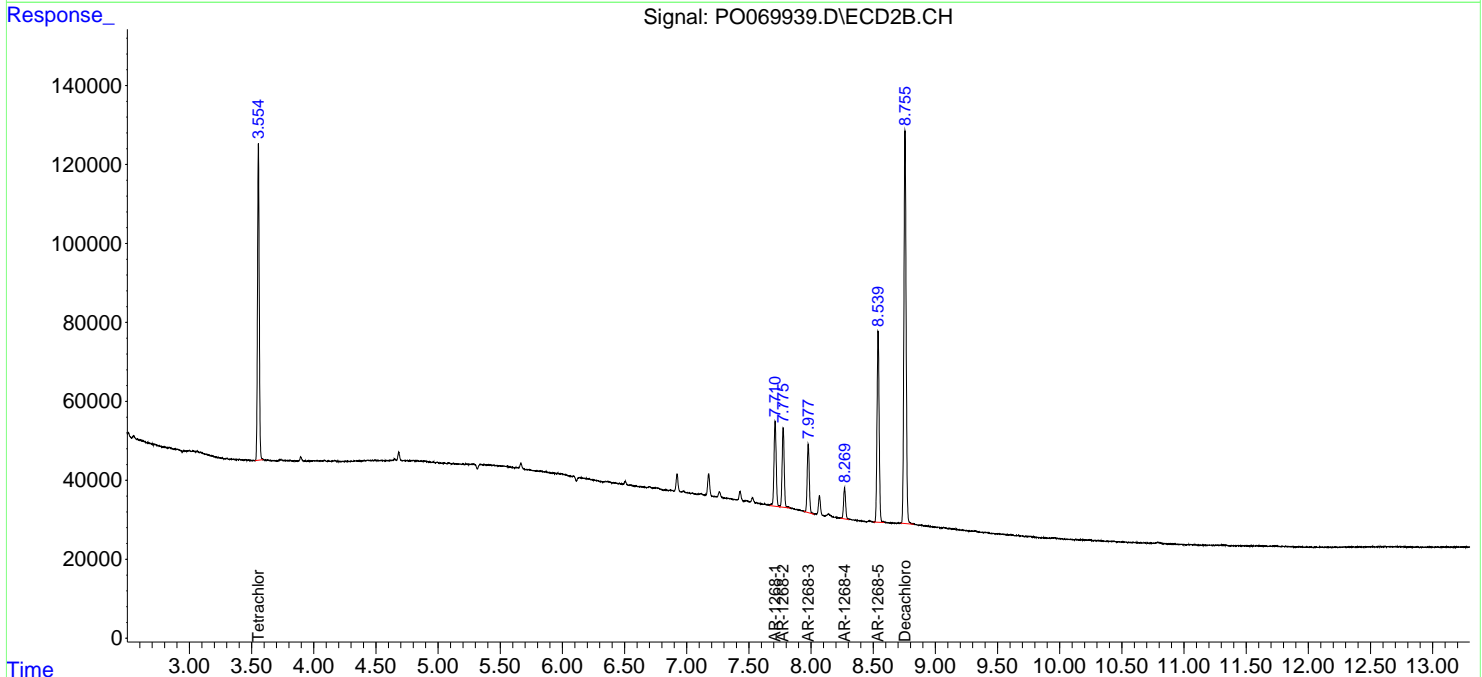
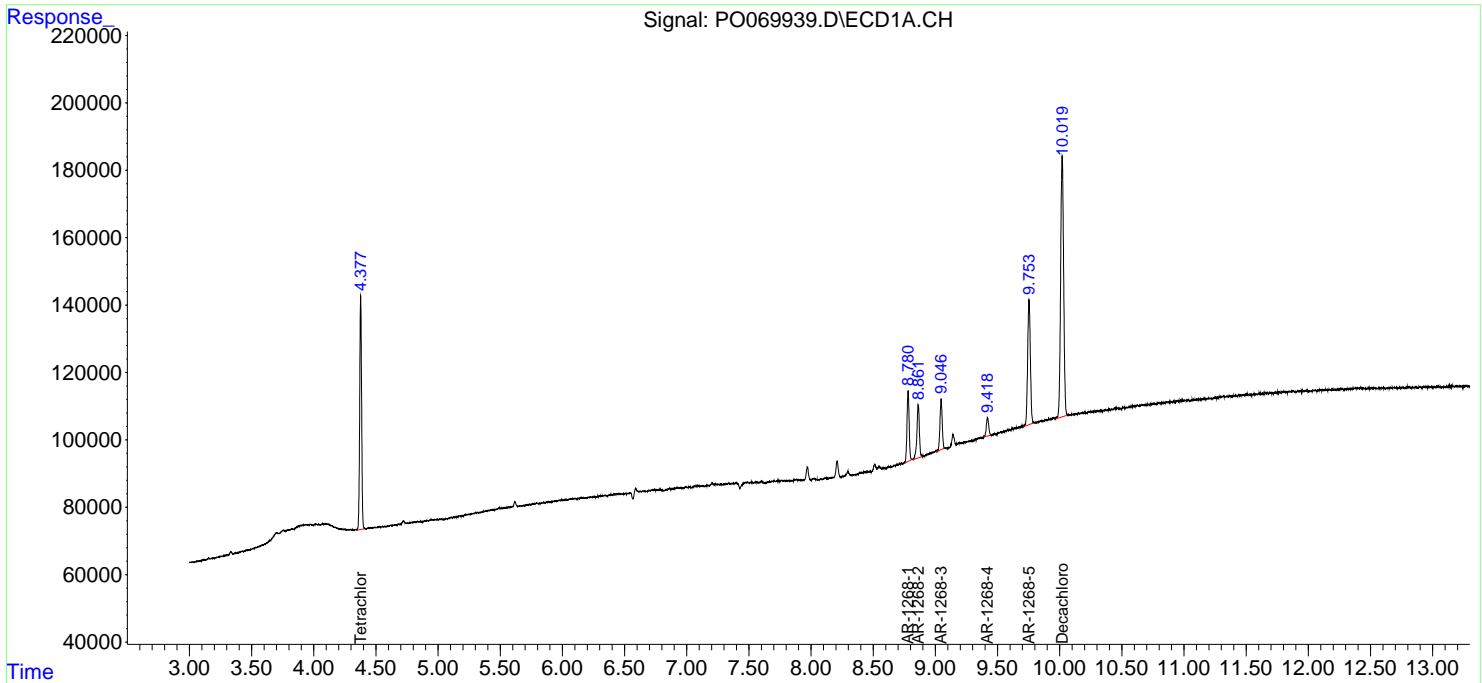
(f)=RT Delta > 1/2 Window (#)=Amounts differ by > 25% (m)=manual int.

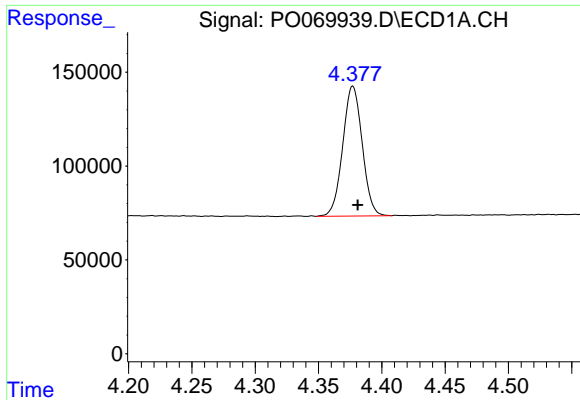
Data Path : Z:\pestpcbsrv\HPCHEM1\ECD\_0\Data\P0072420\  
 Data File : P0069939.D  
 Signal(s) : Signal #1: ECD1A.CH Signal #2: ECD2B.CH  
 Acq On : 23 Jul 2020 18:33  
 Operator : DD\AJ  
 Sample : L3216-03  
 Misc : AR1268 MDL 25 PPB  
 ALS Vial : 30 Sample Multiplier: 1

**Instrument :**  
 ECD\_0  
**Client Sampled :**  
 MDL-SOIL-03-QT3-2020

Integration File signal 1: autoint1.e  
 Integration File signal 2: autoint2.e  
 Quant Time: Jul 24 02:08:27 2020  
 Quant Method : Z:\pestpcbsrv\HPCHEM1\ECD\_0\methods\P0072320.M  
 Quant Title : GC EXTRACTABLES  
 QLast Update : Thu Jul 23 02:12:36 2020  
 Response via : Initial Calibration  
 Integrator: ChemStation 6890 Scale Mode: Small noise peaks clipped

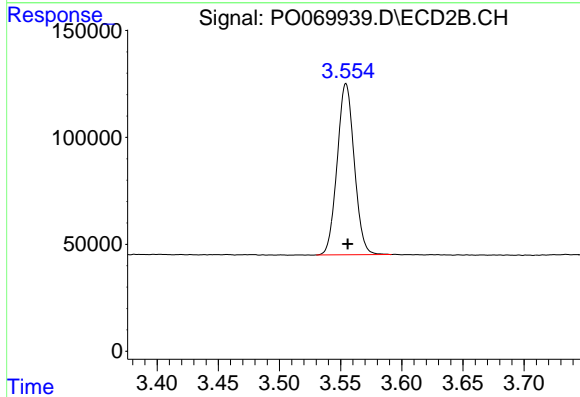
Volume Inj. : 2 µl  
 Signal #1 Phase : ZB-MR1 Signal #2 Phase: ZB-MR2  
 Signal #1 Info : 30Mx0.32mmx 0.50µ Signal #2 Info : 30M x 0.32mm x 0.25µm



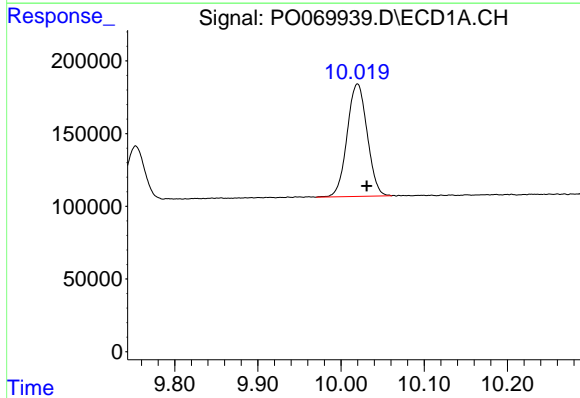


#1 Tetrachloro-m-xylene  
 R.T.: 4.377 min  
 Delta R.T.: -0.004 min  
 Response: 740551  
 Conc: 21.57 ng/ml

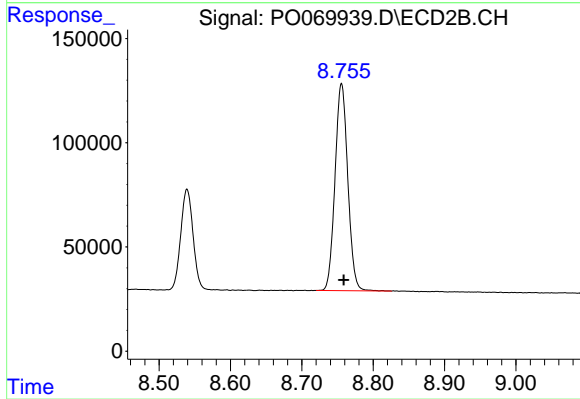
Instrument :  
 ECD\_O  
 ClientSampleId :  
 MDL-SOIL-03-QT3-2020



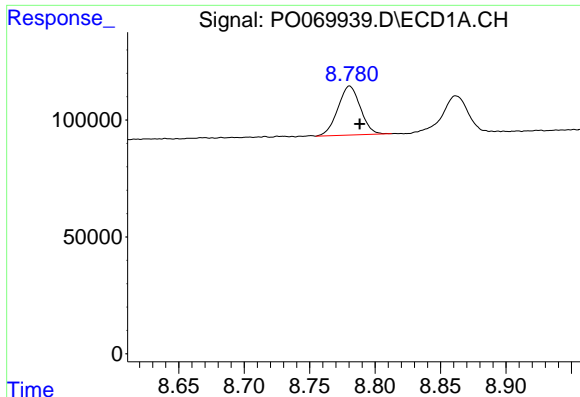
#1 Tetrachloro-m-xylene  
 R.T.: 3.554 min  
 Delta R.T.: -0.001 min  
 Response: 778889  
 Conc: 21.61 ng/ml



#2 Decachlorobiphenyl  
 R.T.: 10.020 min  
 Delta R.T.: -0.011 min  
 Response: 1295279  
 Conc: 24.24 ng/ml



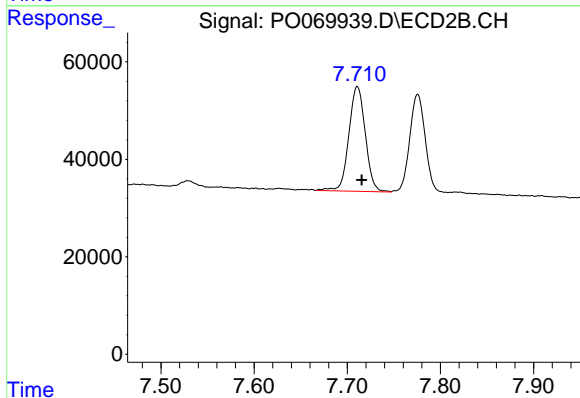
#2 Decachlorobiphenyl  
 R.T.: 8.756 min  
 Delta R.T.: -0.003 min  
 Response: 1234174  
 Conc: 24.20 ng/ml



#41 AR-1268-1

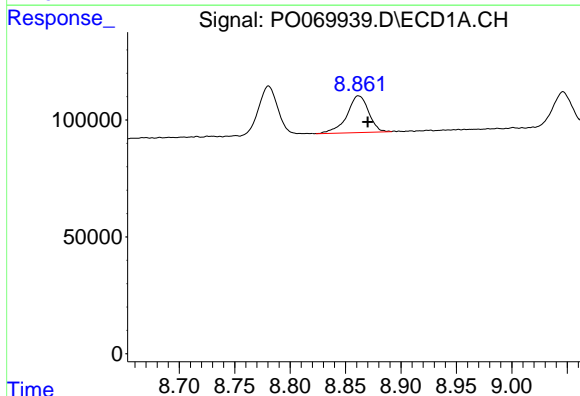
R.T.: 8.781 min  
 Delta R.T.: -0.008 min  
 Response: 251035  
 Conc: 31.34 ng/ml

Instrument :  
 ECD\_O  
 ClientSampleId :  
 MDL-SOIL-03-QT3-2020



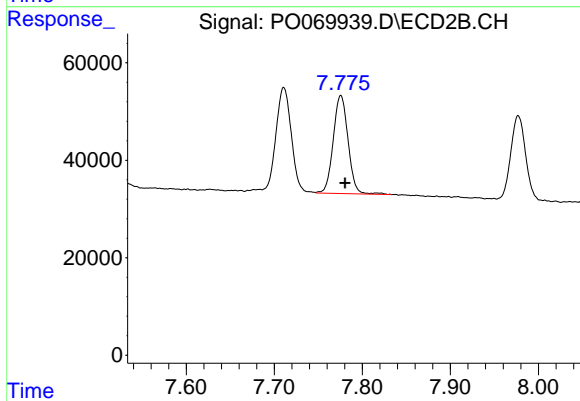
#41 AR-1268-1

R.T.: 7.711 min  
 Delta R.T.: -0.005 min  
 Response: 264063  
 Conc: 36.35 ng/ml



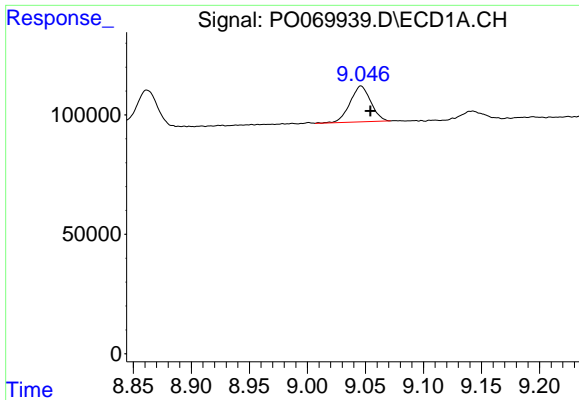
#42 AR-1268-2

R.T.: 8.862 min  
 Delta R.T.: -0.009 min  
 Response: 214853  
 Conc: 30.48 ng/ml



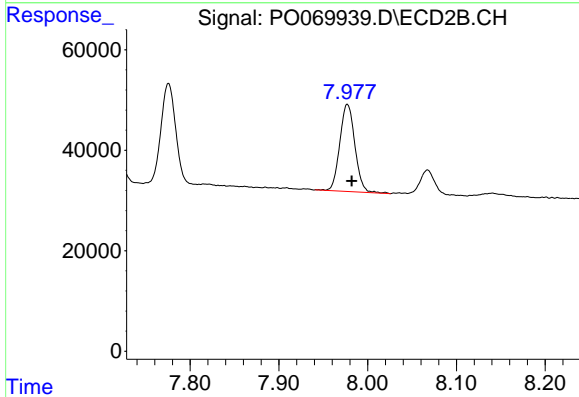
#42 AR-1268-2

R.T.: 7.776 min  
 Delta R.T.: -0.005 min  
 Response: 235783  
 Conc: 35.20 ng/ml

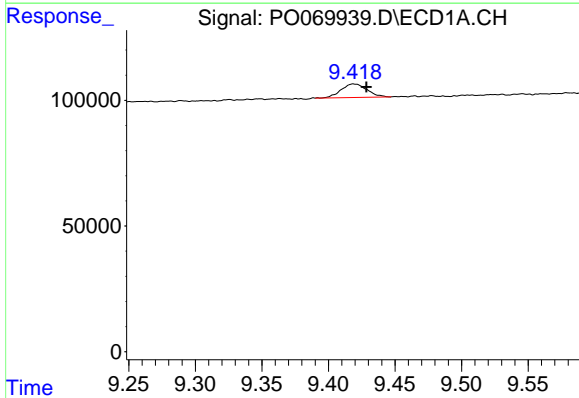


#43 AR-1268-3  
 R.T.: 9.046 min  
 Delta R.T.: -0.008 min  
 Response: 186461  
 Conc: 30.46 ng/ml

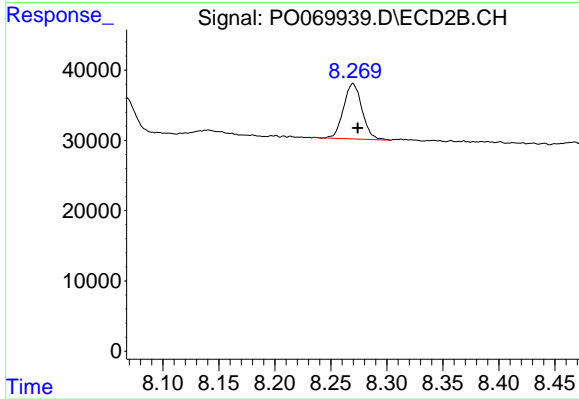
**Instrument :**  
 ECD\_O  
**ClientSampled :**  
 MDL-SOIL-03-QT3-2020



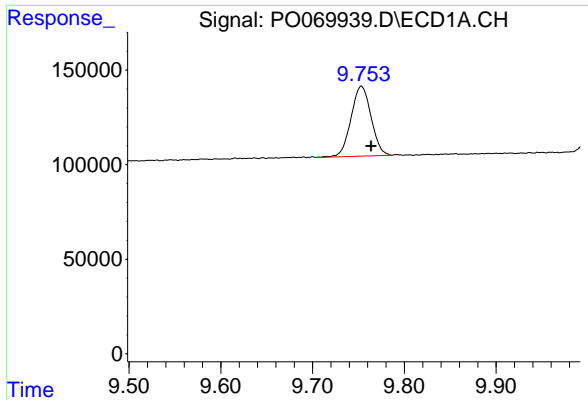
#43 AR-1268-3  
 R.T.: 7.977 min  
 Delta R.T.: -0.005 min  
 Response: 204796  
 Conc: 36.59 ng/ml



#44 AR-1268-4  
 R.T.: 9.419 min  
 Delta R.T.: -0.010 min  
 Response: 72861  
 Conc: 27.36 ng/ml



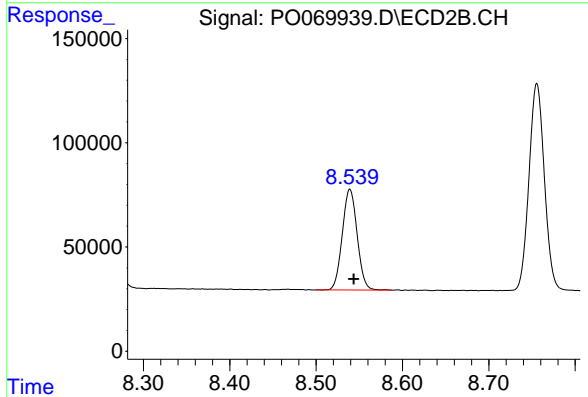
#44 AR-1268-4  
 R.T.: 8.270 min  
 Delta R.T.: -0.004 min  
 Response: 90502  
 Conc: 34.46 ng/ml



#45 AR-1268-5

R.T.: 9.753 min  
Delta R.T.: -0.011 min  
Response: 561972  
Conc: 29.24 ng/ml

Instrument :  
ECD\_O  
ClientSampleId :  
MDL-SOIL-03-QT3-2020



#45 AR-1268-5

R.T.: 8.539 min  
Delta R.T.: -0.004 min  
Response: 578667  
Conc: 32.33 ng/ml