

Data Path : Z:\pestpcbsrv\HPCHEM1\ECD\_0\Data\P0072420\  
 Data File : P0069949.D  
 Signal(s) : Signal #1: ECD1A.CH Signal #2: ECD2B.CH  
 Acq On : 23 Jul 2020 21:25  
 Operator : DD\AJ  
 Sample : L3216-09  
 Misc : AR1262 MDL 25 PPB  
 ALS Vial : 38 Sample Multiplier: 1

**Instrument :**  
 ECD\_0  
**ClientSampleId :**  
 MDL-WATER-03-QT3-2020

Integration File signal 1: autoint1.e  
 Integration File signal 2: autoint2.e  
 Quant Time: Jul 24 02:11:53 2020  
 Quant Method : Z:\pestpcbsrv\HPCHEM1\ECD\_0\methods\P0072320.M  
 Quant Title : GC EXTRACTABLES  
 QLast Update : Thu Jul 23 02:12:36 2020  
 Response via : Initial Calibration  
 Integrator: ChemStation 6890 Scale Mode: Small noise peaks clipped

Volume Inj. : 2 µl  
 Signal #1 Phase : ZB-MR1 Signal #2 Phase: ZB-MR2  
 Signal #1 Info : 30Mx0.32mmx 0.50µ Signal #2 Info : 30M x 0.32mm x 0.25µm

Compound	RT#1	RT#2	Resp#1	Resp#2	ng/ml	ng/ml
-----						
System Monitoring Compounds						
1) SA Tetrachlo...	4.376	3.554	773577	807960	22.535	22.416
2) SA Decachlor...	10.019	8.756	1299873	1240861	24.328	24.330
Target Compounds						
36) L8 AR-1262-1	7.969	6.877	138764	71112	37.353	39.878
37) L8 AR-1262-2	8.511	7.428	226594	224975	34.279	35.987
38) L8 AR-1262-3	8.779	7.710	98007	104119	32.880	39.823
39) L8 AR-1262-4	8.861	7.773	59738	171671	18.348	36.190 #
40) L8 AR-1262-5	9.419	8.270	74991	86833	31.195	36.699
-----						

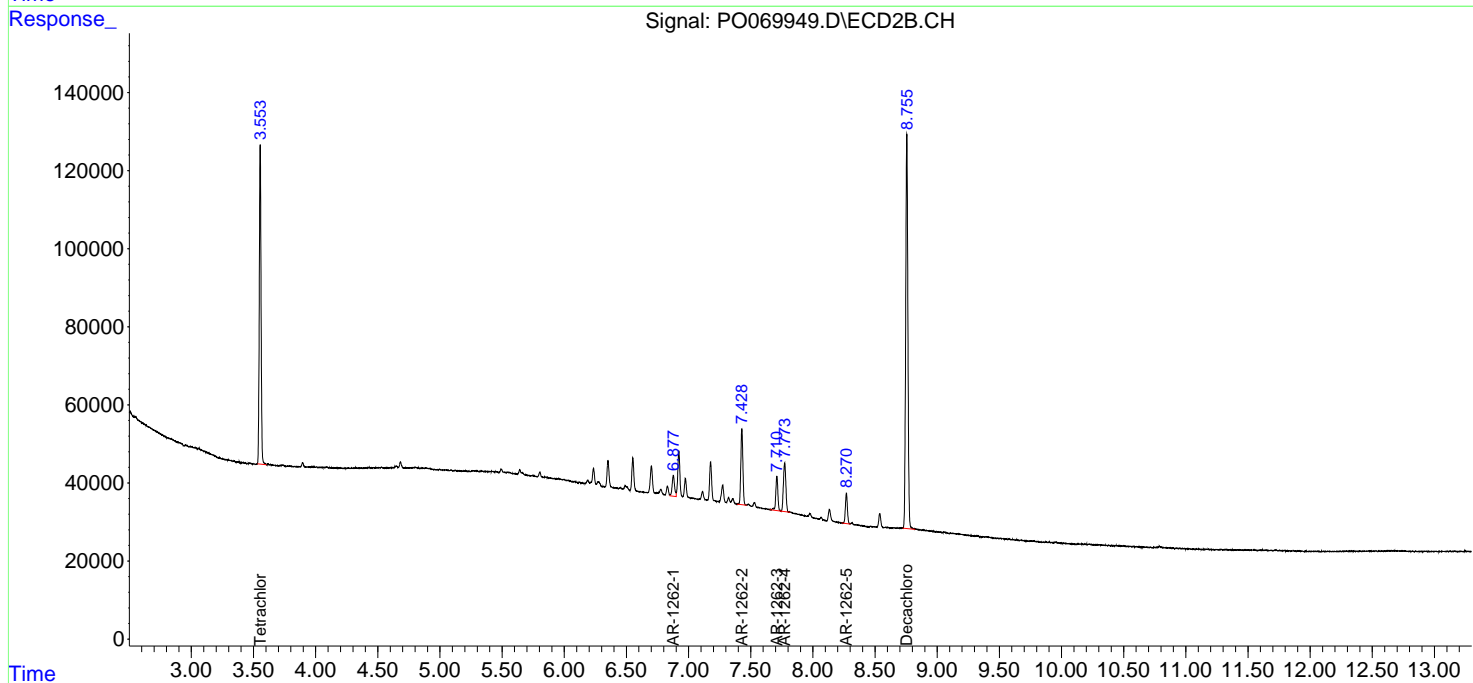
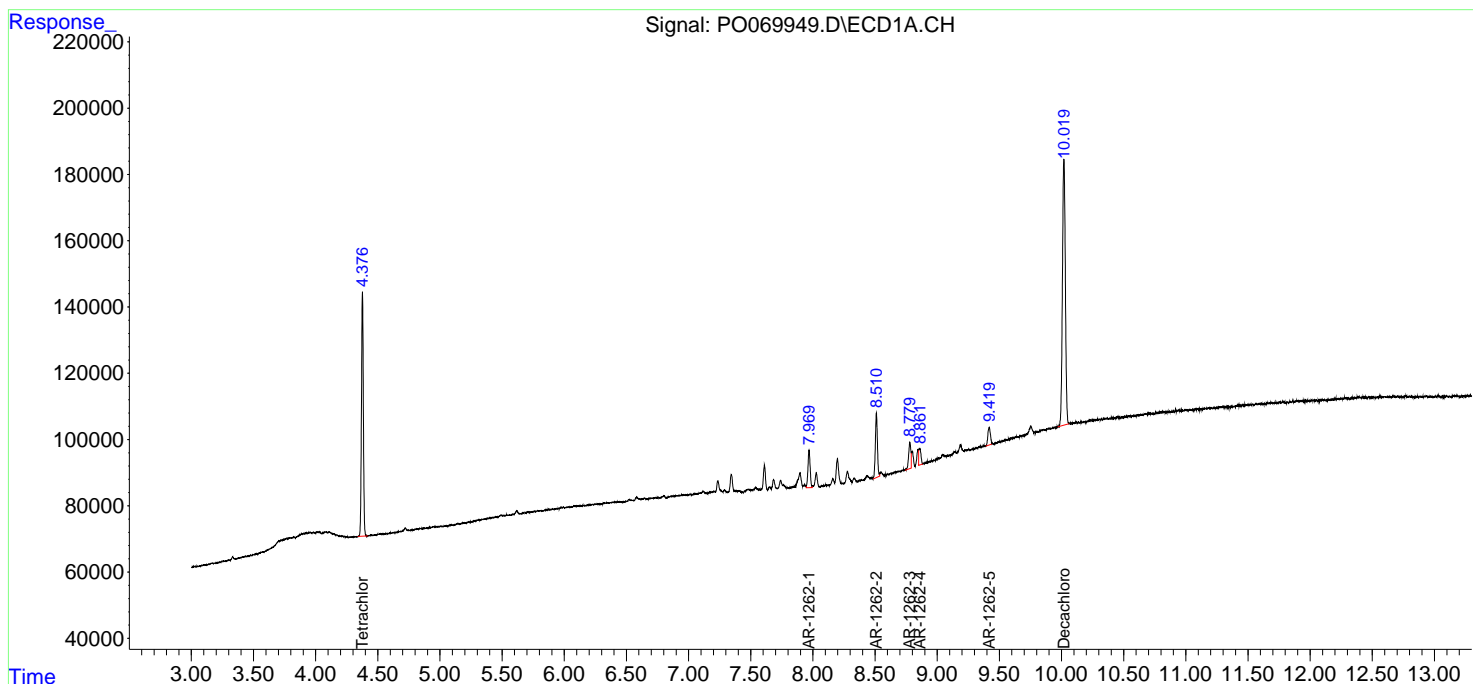
(f)=RT Delta > 1/2 Window (#)=Amounts differ by > 25% (m)=manual int.

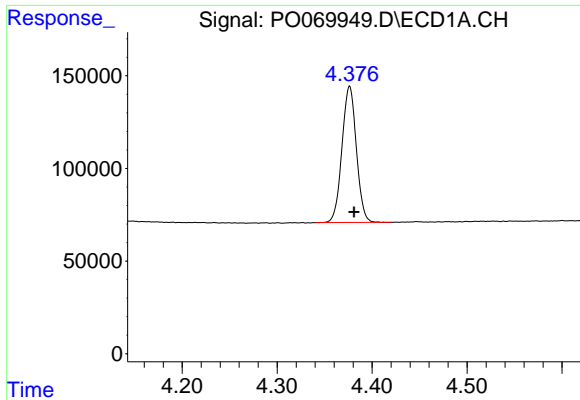
Data Path : Z:\pestpcbsrv\HPCHEM1\ECD\_0\Data\P0072420\  
 Data File : P0069949.D  
 Signal(s) : Signal #1: ECD1A.CH Signal #2: ECD2B.CH  
 Acq On : 23 Jul 2020 21:25  
 Operator : DD\AJ  
 Sample : L3216-09  
 Misc : AR1262 MDL 25 PPB  
 ALS Vial : 38 Sample Multiplier: 1

**Instrument :**  
 ECD\_O  
**Client Sampled :**  
 MDL-WATER-03-QT3-2020

Integration File signal 1: autoint1.e  
 Integration File signal 2: autoint2.e  
 Quant Time: Jul 24 02:11:53 2020  
 Quant Method : Z:\pestpcbsrv\HPCHEM1\ECD\_0\methods\P0072320.M  
 Quant Title : GC EXTRACTABLES  
 QLast Update : Thu Jul 23 02:12:36 2020  
 Response via : Initial Calibration  
 Integrator: ChemStation 6890 Scale Mode: Small noise peaks clipped

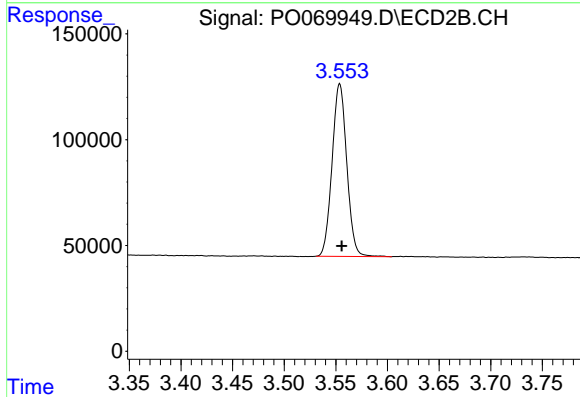
Volume Inj. : 2 µl  
 Signal #1 Phase : ZB-MR1 Signal #2 Phase: ZB-MR2  
 Signal #1 Info : 30Mx0.32mmx 0.50µ Signal #2 Info : 30M x 0.32mm x 0.25µm



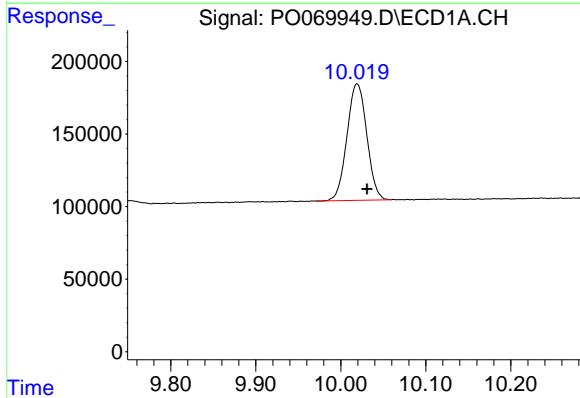


#1 Tetrachloro-m-xylene  
 R.T.: 4.376 min  
 Delta R.T.: -0.005 min  
 Response: 773577  
 Conc: 22.54 ng/ml

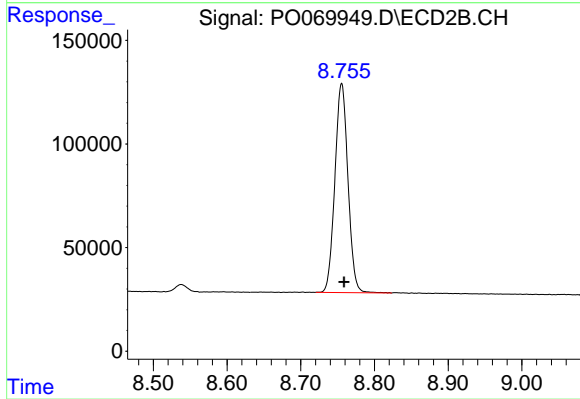
Instrument :  
 ECD\_O  
 ClientSampleId :  
 MDL-WATER-03-QT3-2020



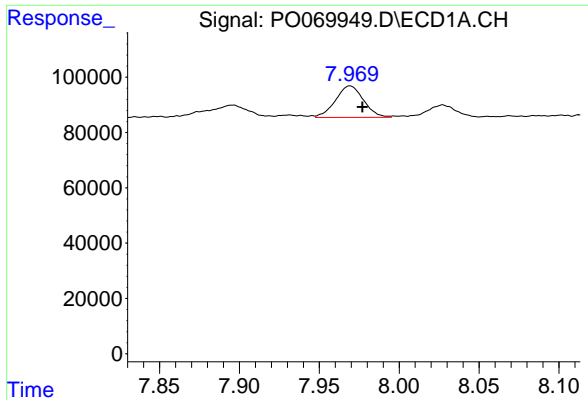
#1 Tetrachloro-m-xylene  
 R.T.: 3.554 min  
 Delta R.T.: -0.002 min  
 Response: 807960  
 Conc: 22.42 ng/ml



#2 Decachlorobiphenyl  
 R.T.: 10.019 min  
 Delta R.T.: -0.012 min  
 Response: 1299873  
 Conc: 24.33 ng/ml

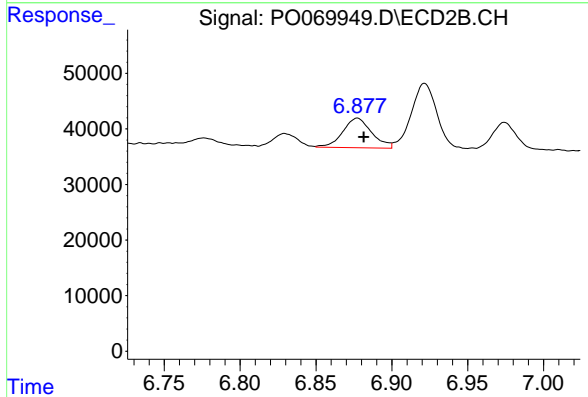


#2 Decachlorobiphenyl  
 R.T.: 8.756 min  
 Delta R.T.: -0.003 min  
 Response: 1240861  
 Conc: 24.33 ng/ml

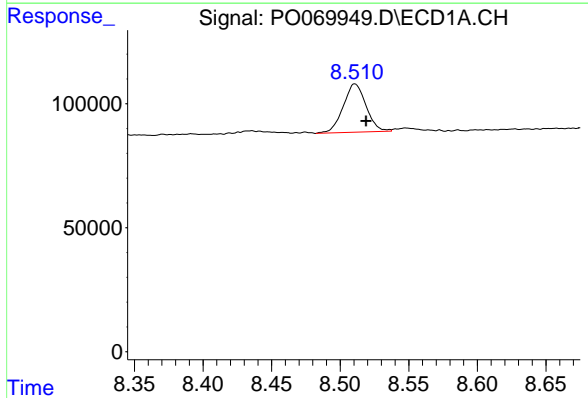


#36 AR-1262-1  
 R.T.: 7.969 min  
 Delta R.T.: -0.008 min  
 Response: 138764  
 Conc: 37.35 ng/ml

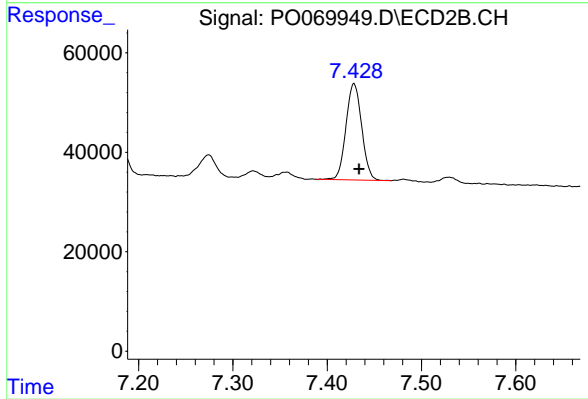
**Instrument :**  
 ECD\_O  
**ClientSampled :**  
 MDL-WATER-03-QT3-2020



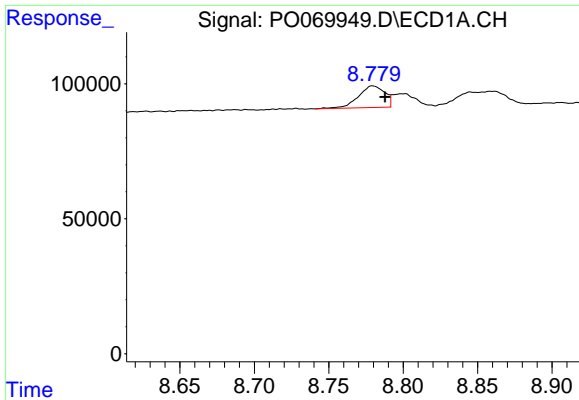
#36 AR-1262-1  
 R.T.: 6.877 min  
 Delta R.T.: -0.004 min  
 Response: 71112  
 Conc: 39.88 ng/ml



#37 AR-1262-2  
 R.T.: 8.511 min  
 Delta R.T.: -0.008 min  
 Response: 226594  
 Conc: 34.28 ng/ml



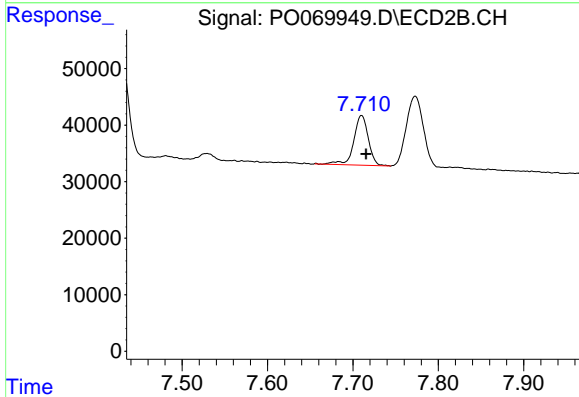
#37 AR-1262-2  
 R.T.: 7.428 min  
 Delta R.T.: -0.005 min  
 Response: 224975  
 Conc: 35.99 ng/ml



#38 AR-1262-3

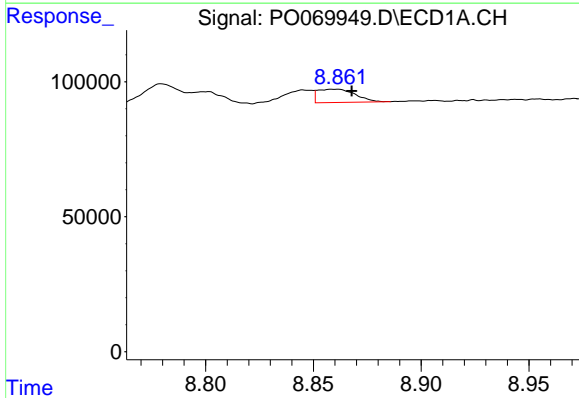
R.T.: 8.779 min  
 Delta R.T.: -0.008 min  
 Response: 98007  
 Conc: 32.88 ng/ml

Instrument :  
 ECD\_O  
 ClientSampleId :  
 MDL-WATER-03-QT3-2020



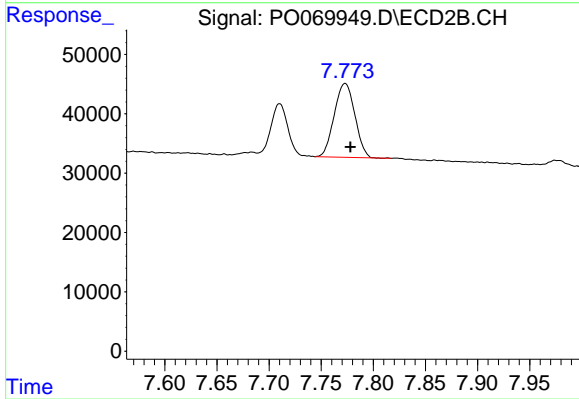
#38 AR-1262-3

R.T.: 7.710 min  
 Delta R.T.: -0.005 min  
 Response: 104119  
 Conc: 39.82 ng/ml



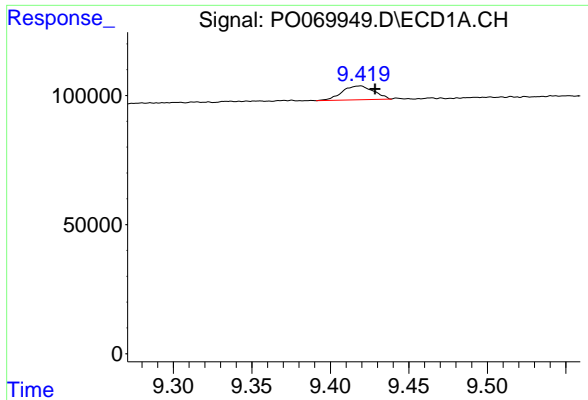
#39 AR-1262-4

R.T.: 8.861 min  
 Delta R.T.: -0.006 min  
 Response: 59738  
 Conc: 18.35 ng/ml



#39 AR-1262-4

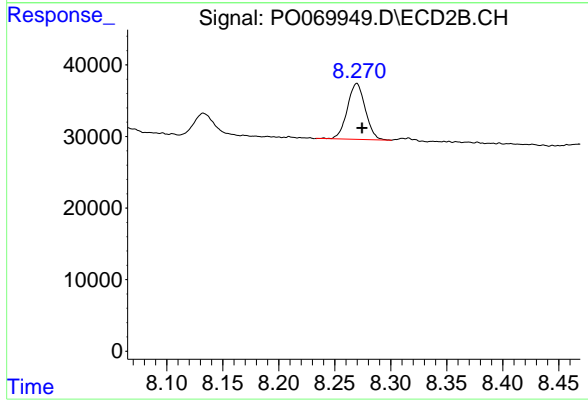
R.T.: 7.773 min  
 Delta R.T.: -0.005 min  
 Response: 171671  
 Conc: 36.19 ng/ml



#40 AR-1262-5

R.T.: 9.419 min  
Delta R.T.: -0.009 min  
Response: 74991  
Conc: 31.20 ng/ml

Instrument :  
ECD\_O  
ClientSampleId :  
MDL-WATER-03-QT3-2020



#40 AR-1262-5

R.T.: 8.270 min  
Delta R.T.: -0.005 min  
Response: 86833  
Conc: 36.70 ng/ml