

Data Path : Z:\pestpcbsrv\HPCHEM1\ECD_0\Data\P0072425\
 Data File : PO112448.D
 Signal(s) : Signal #1: ECD1A.ch Signal #2: ECD2B.ch
 Acq On : 24 Jul 2025 08:44
 Operator : YP/AJ
 Sample : HEXANE
 Misc :
 ALS Vial : 1 Sample Multiplier: 1

Instrument :
 ECD_0
 ClientSampleId :
 HEXANE

Integration File signal 1: autoint1.e
 Integration File signal 2: autoint2.e
 Quant Time: Jul 24 23:30:15 2025
 Quant Method : Z:\pestpcbsrv\HPCHEM1\ECD_0\methods\P0072325.M
 Quant Title : GC EXTRACTABLES
 QLast Update : Thu Jul 24 04:54:06 2025
 Response via : Initial Calibration
 Integrator: ChemStation

Volume Inj. : 2 µl
 Signal #1 Phase : ZB-MR1 Signal #2 Phase: ZB-MR2
 Signal #1 Info : 30Mx0.32mmx 0.50µ Signal #2 Info : 30M x 0.32mm x 0.25µm

Compound	RT#1	RT#2	Resp#1	Resp#2	ng/ml	ng/ml
System Monitoring Compounds						
1) SA Tetrachlo...	3.649	3.661	34683	120763	0.004	0.024 #
2) SA Decachlor...	8.687	8.652	136054	136299	0.019	0.077 #
Target Compounds						
3) L1 AR-1016-1	4.754	4.739	166305	349493	0.620	1.997 #
4) L1 AR-1016-2	4.776	4.752	257501	200905	0.634	0.771
5) L1 AR-1016-3	4.835	4.930	1418010	148866	5.419	1.095 #
6) L1 AR-1016-4	4.931	4.965	414106	41892	1.955	0.377 #
7) L1 AR-1016-5	5.209	5.185	8267191	445166	37.669	3.106 #
8) L2 AR-1221-1	3.837f	3.865	637531	83690	6.596	1.244 #
9) L2 AR-1221-2	3.989	3.957	175887	118395	2.448	2.334
10) L2 AR-1221-3	4.020	4.030	116457	75951	0.490	0.479
11) L3 AR-1232-1	4.020	4.030	116457	75951	0.623	0.600
12) L3 AR-1232-2	4.555	4.752	2876537	200905	26.727	1.532 #
13) L3 AR-1232-3	4.776	4.930	257501	148866	1.245	2.215 #
14) L3 AR-1232-4	4.931	5.016	414106	279808	3.954	4.677
15) L3 AR-1232-5	4.975	5.185	1720252	445166	25.342	6.827 #
16) L4 AR-1242-1	4.754	4.739	166305	349493	0.672	2.206 #
17) L4 AR-1242-2	4.776	4.752	257501	200905	0.696	0.860
18) L4 AR-1242-3	4.835	4.930	1418010	148866	5.992	1.228 #
19) L4 AR-1242-4	4.931	5.016	414106	279808	2.132	2.280
20) L4 AR-1242-5	5.623	5.531	10643735	1157316	49.757	7.190 #
21) L5 AR-1248-1	4.754	4.739	166305	349493	0.888	2.876 #
22) L5 AR-1248-2	4.975	4.965	1720252	41892	6.743	0.247 #
23) L5 AR-1248-3	5.209	5.016	8267191	279808	24.053	1.575 #
24) L5 AR-1248-4	5.564	5.185	6531098	445166	12.855	2.137 #
25) L5 AR-1248-5	5.623	5.577	10643735	1105409	30.446	5.147 #
26) L6 AR-1254-1	5.564	5.531	6531098	1157316	11.897	3.522 #
27) L6 AR-1254-2	5.717	5.682	4723784	1517154	9.721	5.241 #
28) L6 AR-1254-3	6.111	6.080	2159561	1320255	2.902	3.089
29) L6 AR-1254-4	6.338	6.316	2382944	354842	4.335	1.300 #
30) L6 AR-1254-5	6.757	6.718	731423	372152	1.033	1.114
31) L7 AR-1260-1	6.247	6.208	1853083	1250969	4.218	5.034
32) L7 AR-1260-2	6.434	6.377	2267852	6461730	3.297	19.611 #
33) L7 AR-1260-3	6.799	6.552	1381119	58578	2.349	0.228 #
34) L7 AR-1260-4	7.071	7.025	2307144	3779729	5.116	19.757 #
35) L7 AR-1260-5	7.310	7.271	2396792	827277	1.934	2.007
36) L8 AR-1262-1	6.799	6.771	1381119	143731	1.486	0.346 #
37) L8 AR-1262-2	7.310	7.271	2396792	827277	1.612	1.605
38) L8 AR-1262-3	7.586	7.537	1775059	1684076	3.007	9.029 #
39) L8 AR-1262-4	7.659	0.000	478692	0	0.482	N.D. #
40) L8 AR-1262-5	8.155	8.120	1254061	-26329	2.889	N.D. #
41) L9 AR-1268-1	7.586	7.537	1775059	1684076	1.014	3.252 #

Data Path : Z:\pestpcbsrv\HPCHEM1\ECD_0\Data\P0072425\
 Data File : P0112448.D
 Signal(s) : Signal #1: ECD1A.ch Signal #2: ECD2B.ch
 Acq On : 24 Jul 2025 08:44
 Operator : YP/AJ
 Sample : HEXANE
 Misc :
 ALS Vial : 1 Sample Multiplier: 1

Instrument :
 ECD_0
 ClientSampleId :
 HEXANE

Integration File signal 1: autoint1.e
 Integration File signal 2: autoint2.e
 Quant Time: Jul 24 23:30:15 2025
 Quant Method : Z:\pestpcbsrv\HPCHEM1\ECD_0\methods\P0072325.M
 Quant Title : GC EXTRACTABLES
 QLast Update : Thu Jul 24 04:54:06 2025
 Response via : Initial Calibration
 Integrator: ChemStation

Volume Inj. : 2 µl
 Signal #1 Phase : ZB-MR1 Signal #2 Phase: ZB-MR2
 Signal #1 Info : 30Mx0.32mmx 0.50µ Signal #2 Info : 30M x 0.32mm x 0.25µm

	Compound	RT#1	RT#2	Resp#1	Resp#2	ng/ml	ng/ml
42)	L9 AR-1268-2	7.659	0.000	478692	0	0.325	N.D. #
43)	L9 AR-1268-3	7.855	7.872f	395624	274881	0.316	0.856 #
44)	L9 AR-1268-4	8.155	8.120	1254061	-26329	2.603	N.D. #
45)	L9 AR-1268-5	8.439	8.421	896043	-1245	0.267	N.D. #

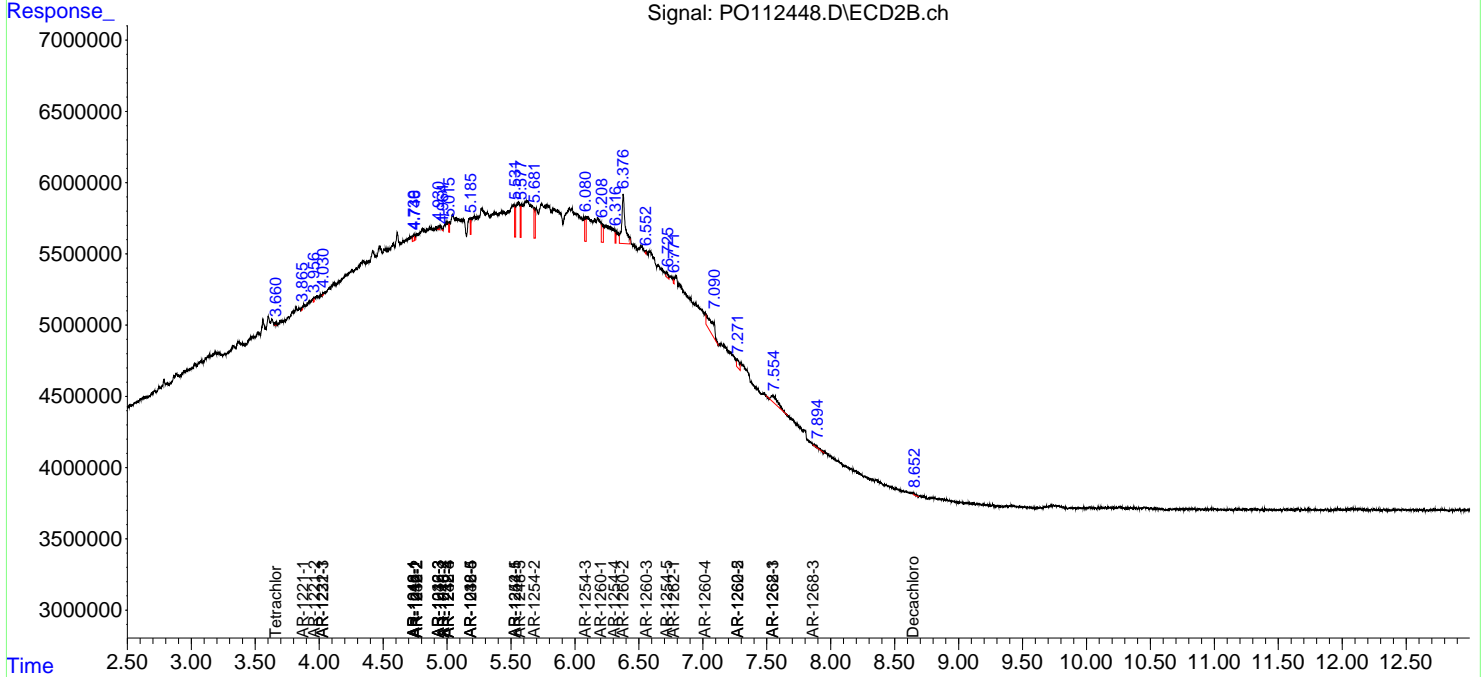
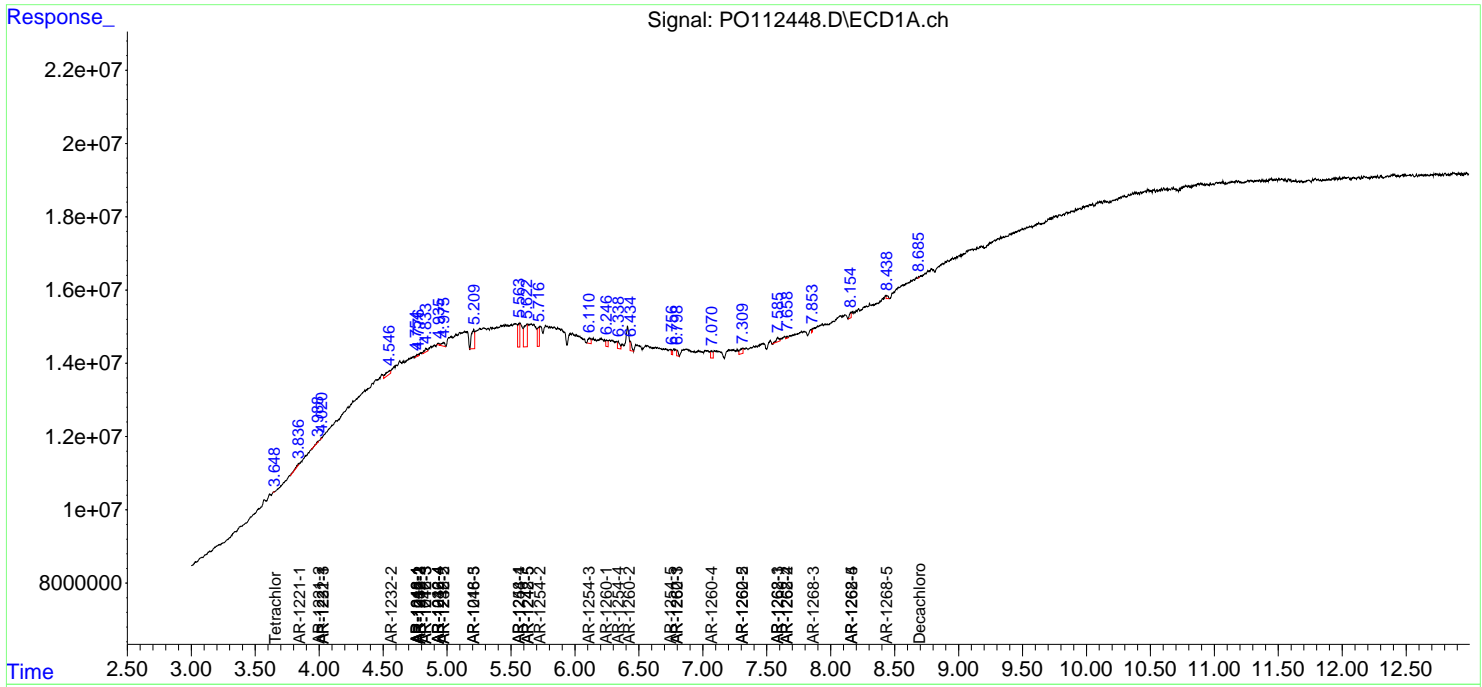
(f)=RT Delta > 1/2 Window (#)=Amounts differ by > 25% (m)=manual int.

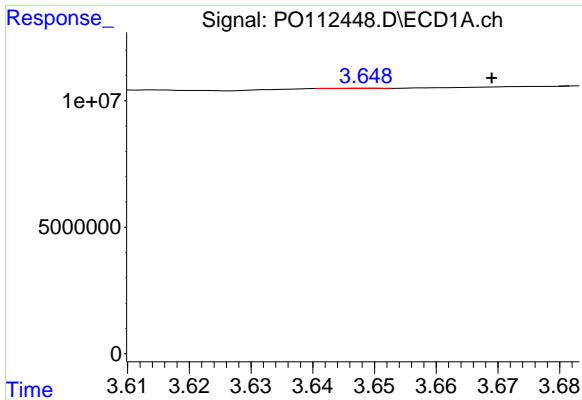
Data Path : Z:\pestpcbsrv\HPCHEM1\ECD_O\Data\PO072425\
 Data File : PO112448.D
 Signal(s) : Signal #1: ECD1A.ch Signal #2: ECD2B.ch
 Acq On : 24 Jul 2025 08:44
 Operator : YP/AJ
 Sample : HEXANE
 Misc :
 ALS Vial : 1 Sample Multiplier: 1

Instrument :
 ECD_O
 ClientSampleId :
 HEXANE

Integration File signal 1: autoint1.e
 Integration File signal 2: autoint2.e
 Quant Time: Jul 24 23:30:15 2025
 Quant Method : Z:\pestpcbsrv\HPCHEM1\ECD_O\methods\PO072325.M
 Quant Title : GC EXTRACTABLES
 QLast Update : Thu Jul 24 04:54:06 2025
 Response via : Initial Calibration
 Integrator: ChemStation

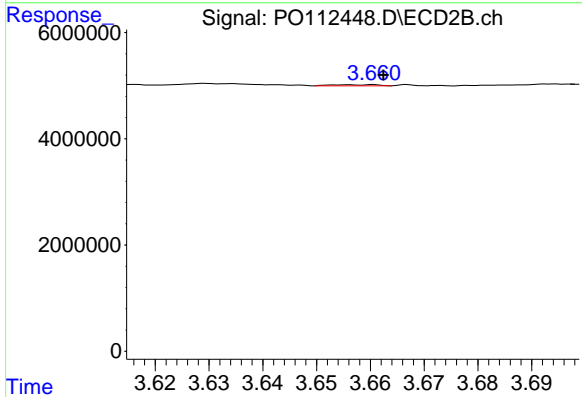
Volume Inj. : 2 µl
 Signal #1 Phase : ZB-MR1 Signal #2 Phase: ZB-MR2
 Signal #1 Info : 30Mx0.32mmx 0.50µ Signal #2 Info : 30M x 0.32mm x 0.25µm



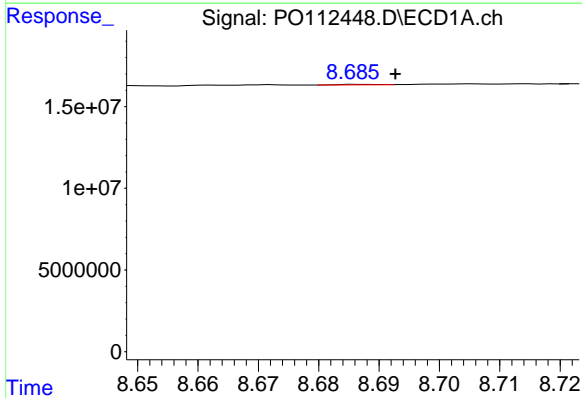


#1 Tetrachloro-m-xylene
 R.T.: 3.649 min
 Delta R.T.: -0.020 min
 Response: 34683
 Conc: 0.00 ng/ml

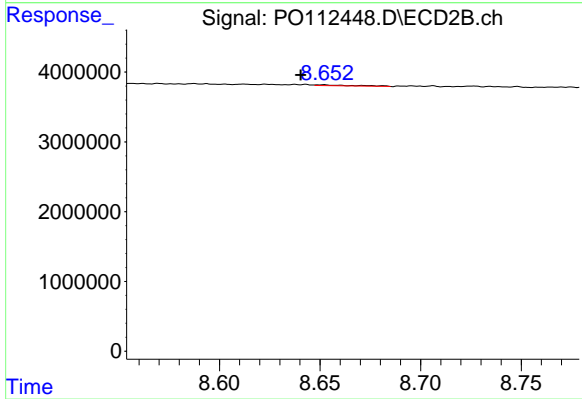
Instrument :
 ECD_O
 ClientSampleId :
 HEXANE



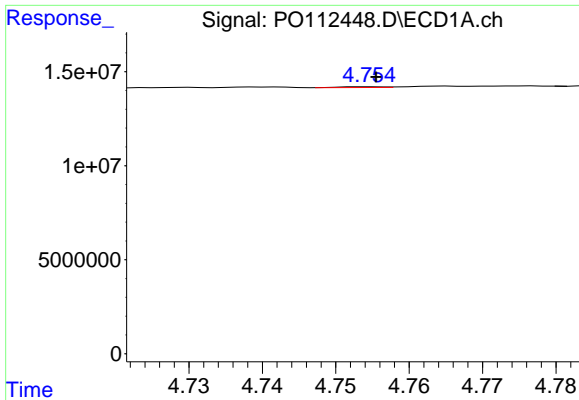
#1 Tetrachloro-m-xylene
 R.T.: 3.661 min
 Delta R.T.: -0.002 min
 Response: 120763
 Conc: 0.02 ng/ml



#2 Decachlorobiphenyl
 R.T.: 8.687 min
 Delta R.T.: -0.006 min
 Response: 136054
 Conc: 0.02 ng/ml



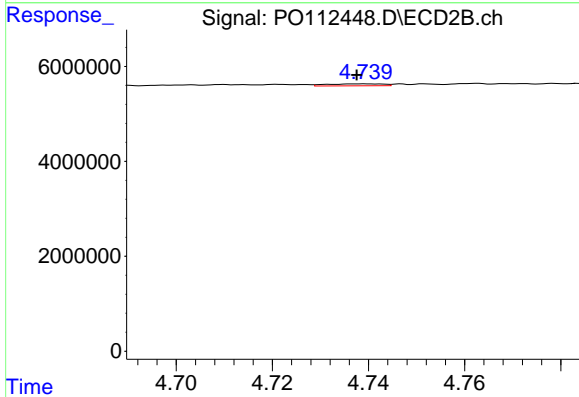
#2 Decachlorobiphenyl
 R.T.: 8.652 min
 Delta R.T.: 0.011 min
 Response: 136299
 Conc: 0.08 ng/ml



#3 AR-1016-1

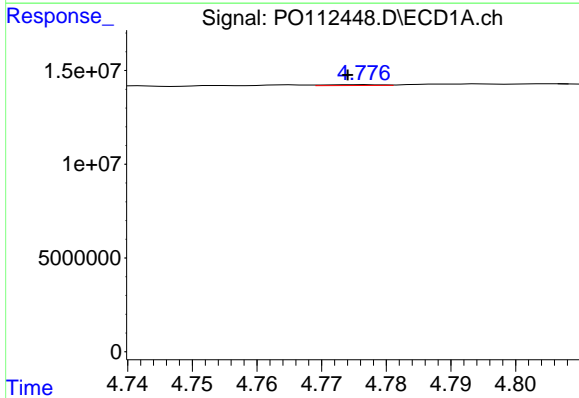
R.T.: 4.754 min
 Delta R.T.: -0.001 min
 Response: 166305
 Conc: 0.62 ng/ml

Instrument :
 ECD_O
 ClientSampleId :
 HEXANE



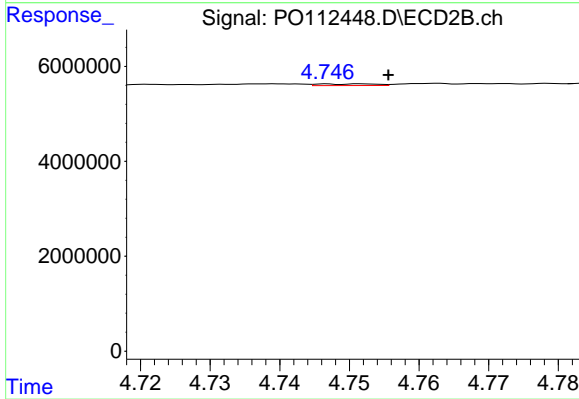
#3 AR-1016-1

R.T.: 4.739 min
 Delta R.T.: 0.002 min
 Response: 349493
 Conc: 2.00 ng/ml



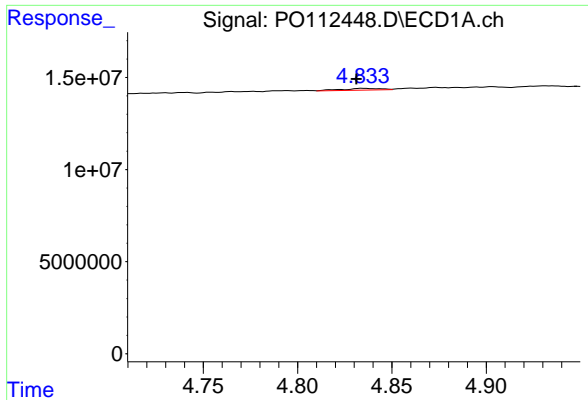
#4 AR-1016-2

R.T.: 4.776 min
 Delta R.T.: 0.002 min
 Response: 257501
 Conc: 0.63 ng/ml



#4 AR-1016-2

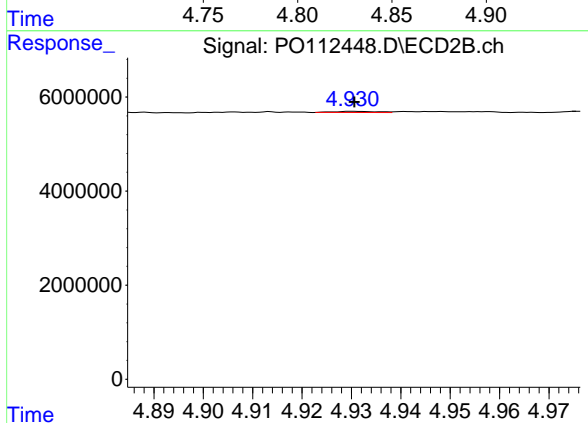
R.T.: 4.752 min
 Delta R.T.: -0.004 min
 Response: 200905
 Conc: 0.77 ng/ml



#5 AR-1016-3

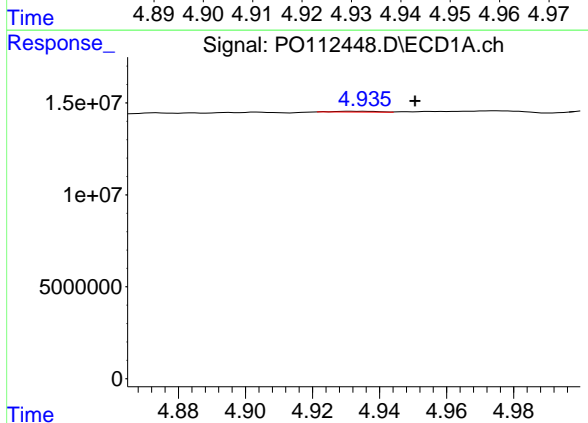
R.T.: 4.835 min
 Delta R.T.: 0.003 min
 Response: 1418010
 Conc: 5.42 ng/ml

Instrument :
 ECD_O
 ClientSampleId :
 HEXANE



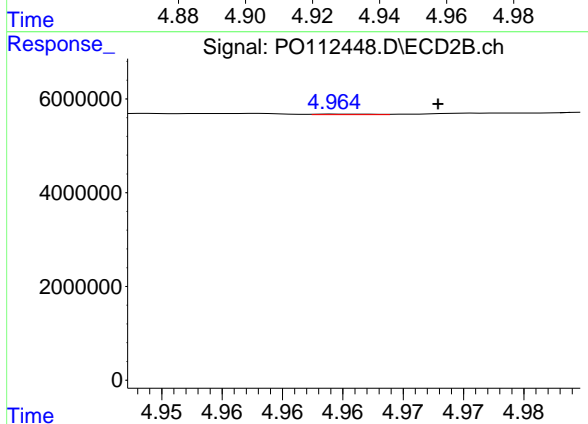
#5 AR-1016-3

R.T.: 4.930 min
 Delta R.T.: 0.000 min
 Response: 148866
 Conc: 1.09 ng/ml



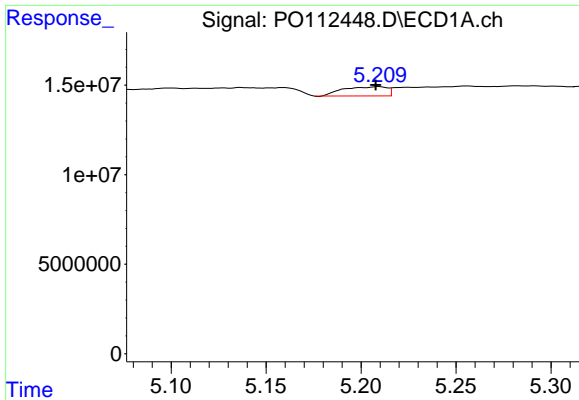
#6 AR-1016-4

R.T.: 4.931 min
 Delta R.T.: -0.019 min
 Response: 414106
 Conc: 1.95 ng/ml



#6 AR-1016-4

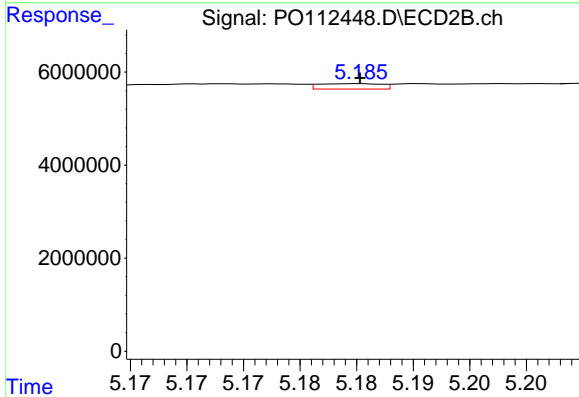
R.T.: 4.965 min
 Delta R.T.: -0.008 min
 Response: 41892
 Conc: 0.38 ng/ml



#7 AR-1016-5

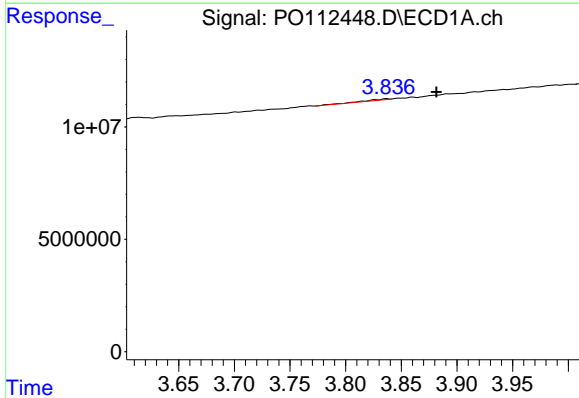
R.T.: 5.209 min
 Delta R.T.: 0.002 min
 Response: 8267191
 Conc: 37.67 ng/ml

Instrument :
 ECD_O
 ClientSampleId :
 HEXANE



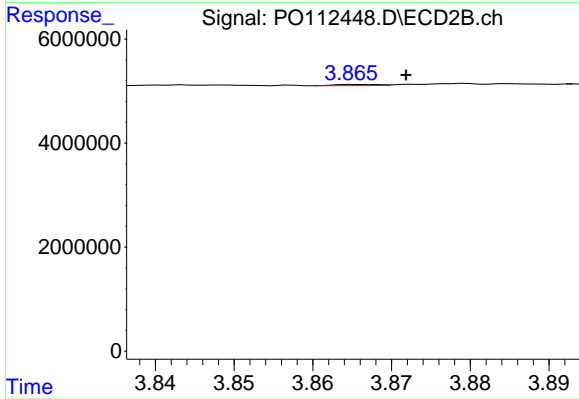
#7 AR-1016-5

R.T.: 5.185 min
 Delta R.T.: 0.000 min
 Response: 445166
 Conc: 3.11 ng/ml



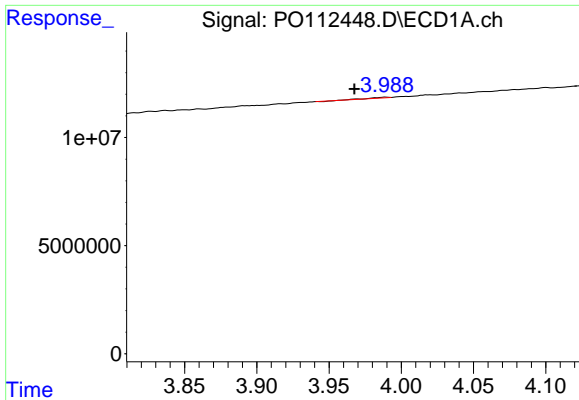
#8 AR-1221-1

R.T.: 3.837 min
 Delta R.T.: -0.045 min
 Response: 637531
 Conc: 6.60 ng/ml



#8 AR-1221-1

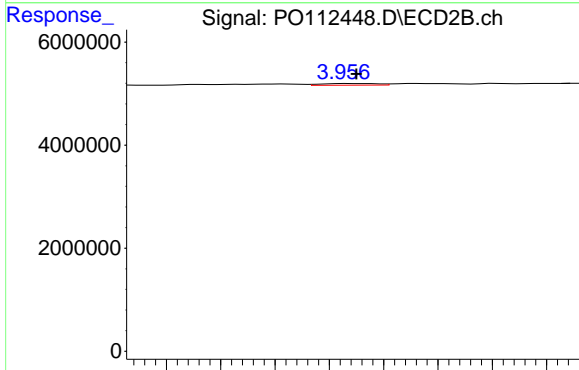
R.T.: 3.865 min
 Delta R.T.: -0.007 min
 Response: 83690
 Conc: 1.24 ng/ml



#9 AR-1221-2

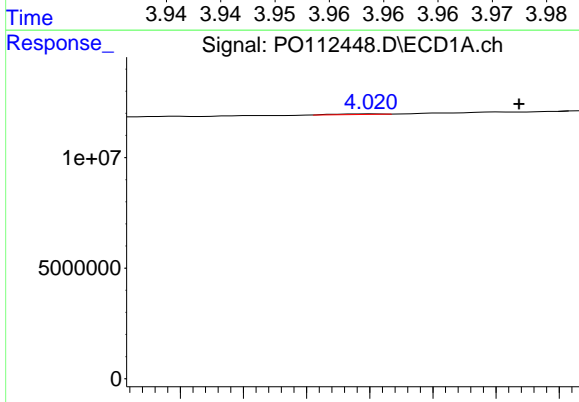
R.T.: 3.989 min
 Delta R.T.: 0.022 min
 Response: 175887
 Conc: 2.45 ng/ml

Instrument :
 ECD_O
 ClientSampleId :
 HEXANE



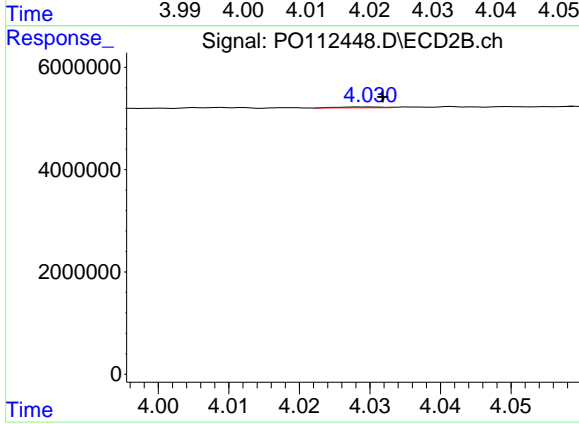
#9 AR-1221-2

R.T.: 3.957 min
 Delta R.T.: 0.000 min
 Response: 118395
 Conc: 2.33 ng/ml



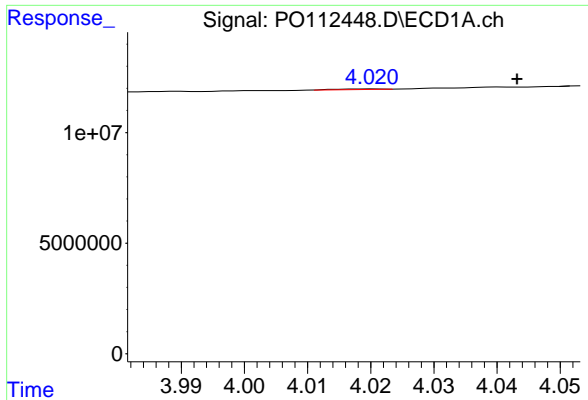
#10 AR-1221-3

R.T.: 4.020 min
 Delta R.T.: -0.024 min
 Response: 116457
 Conc: 0.49 ng/ml



#10 AR-1221-3

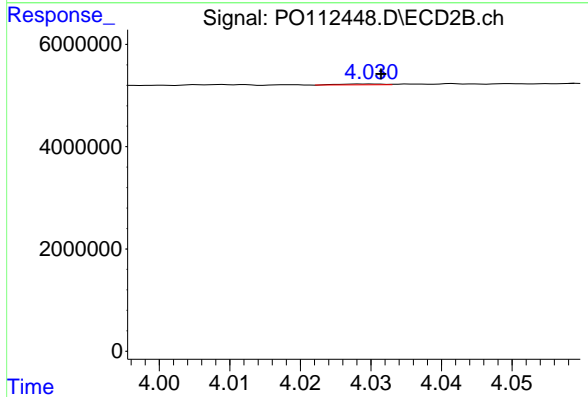
R.T.: 4.030 min
 Delta R.T.: -0.002 min
 Response: 75951
 Conc: 0.48 ng/ml



#11 AR-1232-1

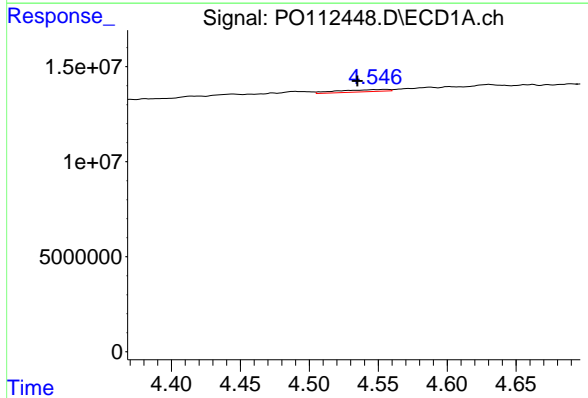
R.T.: 4.020 min
 Delta R.T.: -0.023 min
 Response: 116457
 Conc: 0.62 ng/ml

Instrument :
 ECD_O
 ClientSampleId :
 HEXANE



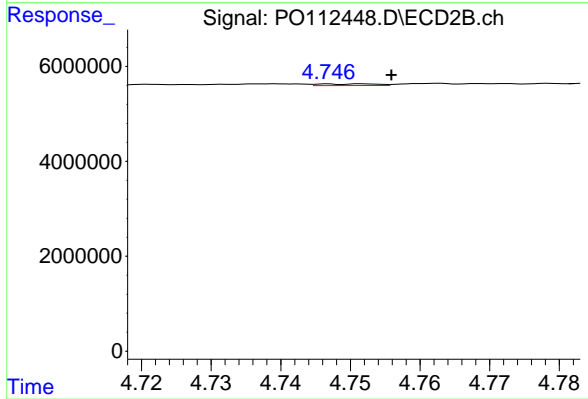
#11 AR-1232-1

R.T.: 4.030 min
 Delta R.T.: -0.002 min
 Response: 75951
 Conc: 0.60 ng/ml



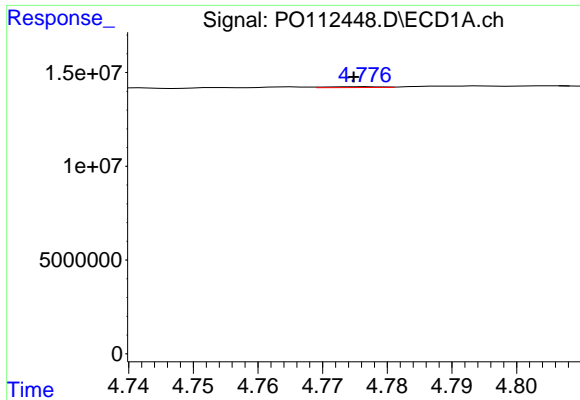
#12 AR-1232-2

R.T.: 4.555 min
 Delta R.T.: 0.020 min
 Response: 2876537
 Conc: 26.73 ng/ml



#12 AR-1232-2

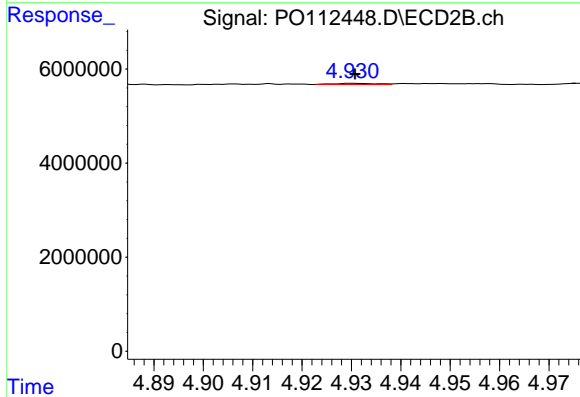
R.T.: 4.752 min
 Delta R.T.: -0.004 min
 Response: 200905
 Conc: 1.53 ng/ml



#13 AR-1232-3

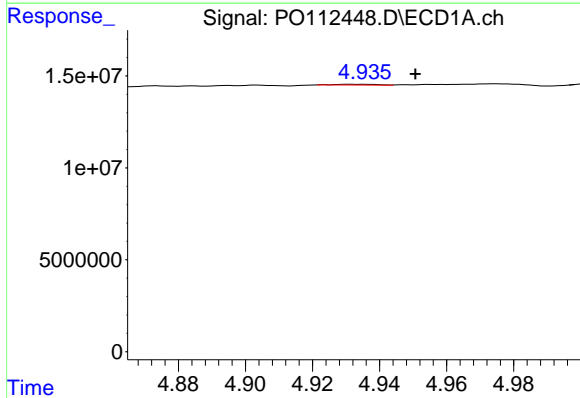
R.T.: 4.776 min
 Delta R.T.: 0.002 min
 Response: 257501
 Conc: 1.25 ng/ml

Instrument :
 ECD_O
 ClientSampleId :
 HEXANE



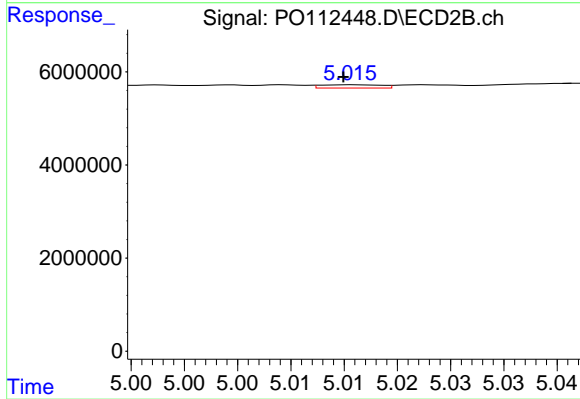
#13 AR-1232-3

R.T.: 4.930 min
 Delta R.T.: 0.000 min
 Response: 148866
 Conc: 2.22 ng/ml



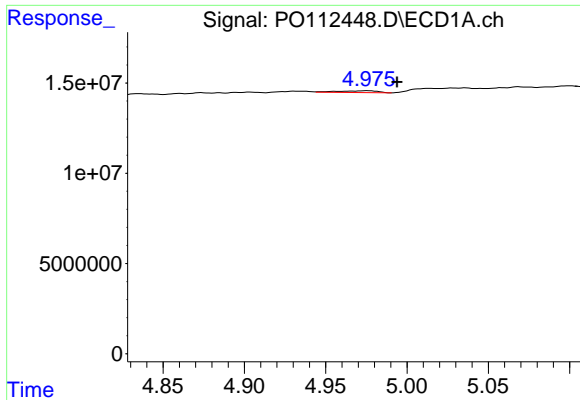
#14 AR-1232-4

R.T.: 4.931 min
 Delta R.T.: -0.019 min
 Response: 414106
 Conc: 3.95 ng/ml



#14 AR-1232-4

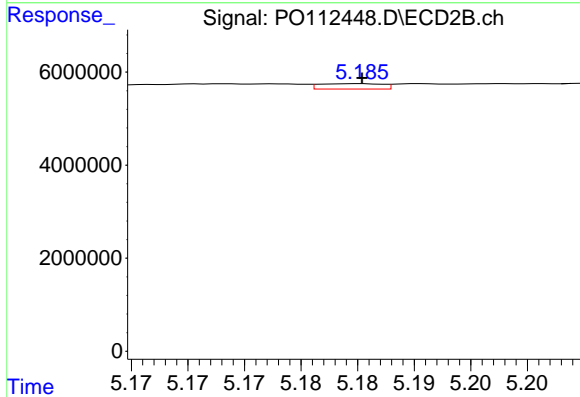
R.T.: 5.016 min
 Delta R.T.: 0.000 min
 Response: 279808
 Conc: 4.68 ng/ml



#15 AR-1232-5

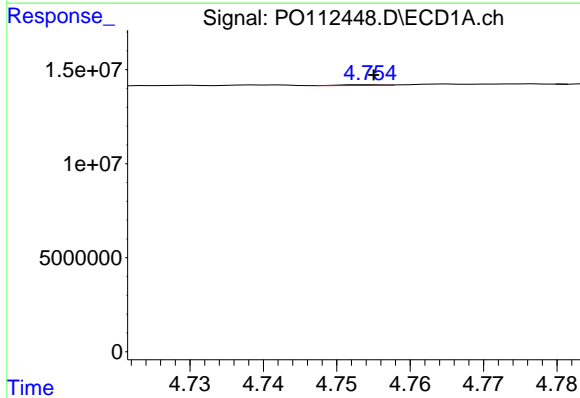
R.T.: 4.975 min
 Delta R.T.: -0.019 min
 Response: 1720252
 Conc: 25.34 ng/ml

Instrument :
 ECD_O
 ClientSampleId :
 HEXANE



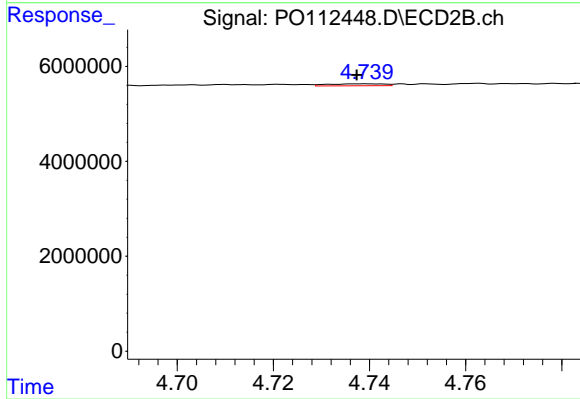
#15 AR-1232-5

R.T.: 5.185 min
 Delta R.T.: 0.000 min
 Response: 445166
 Conc: 6.83 ng/ml



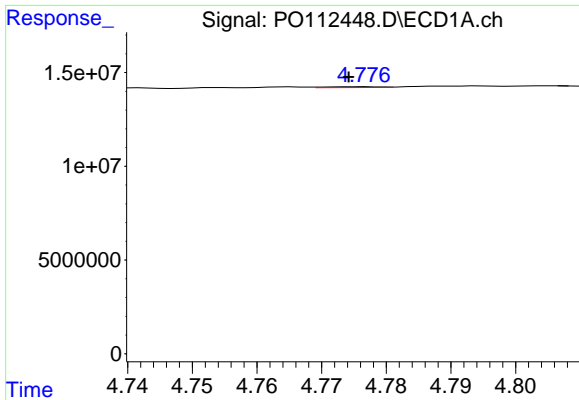
#16 AR-1242-1

R.T.: 4.754 min
 Delta R.T.: 0.000 min
 Response: 166305
 Conc: 0.67 ng/ml



#16 AR-1242-1

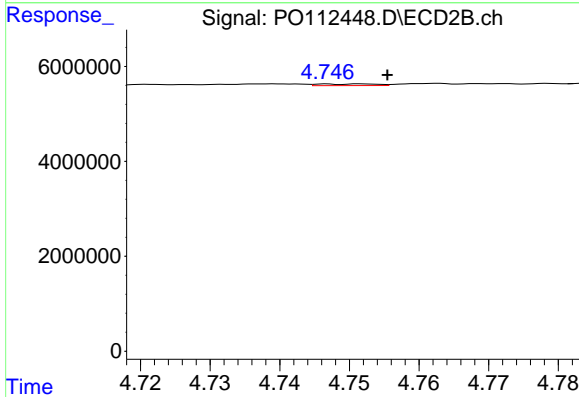
R.T.: 4.739 min
 Delta R.T.: 0.002 min
 Response: 349493
 Conc: 2.21 ng/ml



#17 AR-1242-2

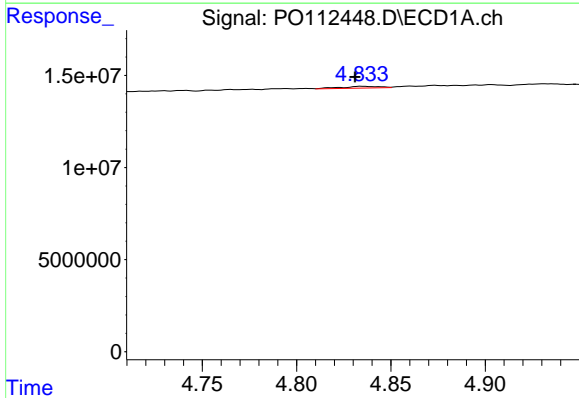
R.T.: 4.776 min
 Delta R.T.: 0.002 min
 Response: 257501
 Conc: 0.70 ng/ml

Instrument :
 ECD_O
 ClientSampleId :
 HEXANE



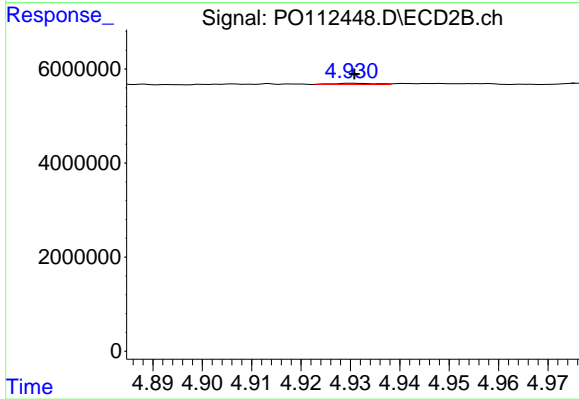
#17 AR-1242-2

R.T.: 4.752 min
 Delta R.T.: -0.004 min
 Response: 200905
 Conc: 0.86 ng/ml



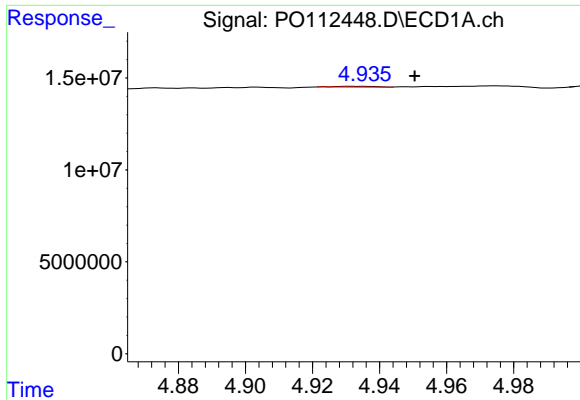
#18 AR-1242-3

R.T.: 4.835 min
 Delta R.T.: 0.004 min
 Response: 1418010
 Conc: 5.99 ng/ml



#18 AR-1242-3

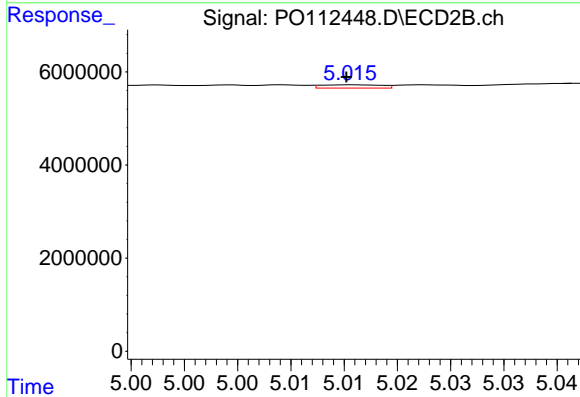
R.T.: 4.930 min
 Delta R.T.: 0.000 min
 Response: 148866
 Conc: 1.23 ng/ml



#19 AR-1242-4

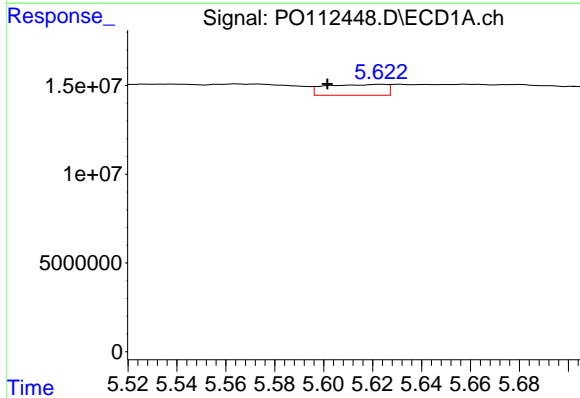
R.T.: 4.931 min
 Delta R.T.: -0.019 min
 Response: 414106
 Conc: 2.13 ng/ml

Instrument :
 ECD_O
 ClientSampleId :
 HEXANE



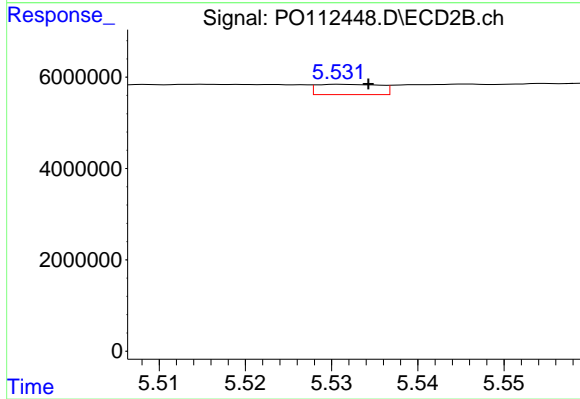
#19 AR-1242-4

R.T.: 5.016 min
 Delta R.T.: 0.000 min
 Response: 279808
 Conc: 2.28 ng/ml



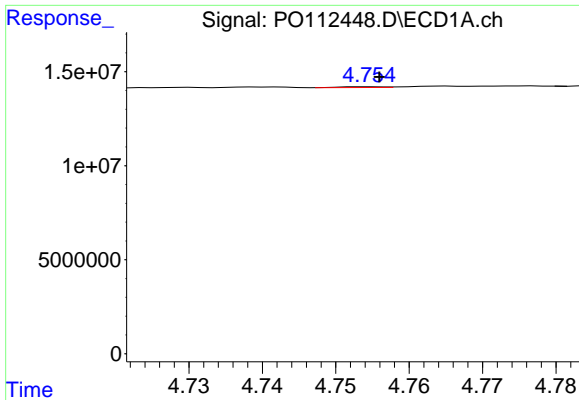
#20 AR-1242-5

R.T.: 5.623 min
 Delta R.T.: 0.022 min
 Response: 10643735
 Conc: 49.76 ng/ml



#20 AR-1242-5

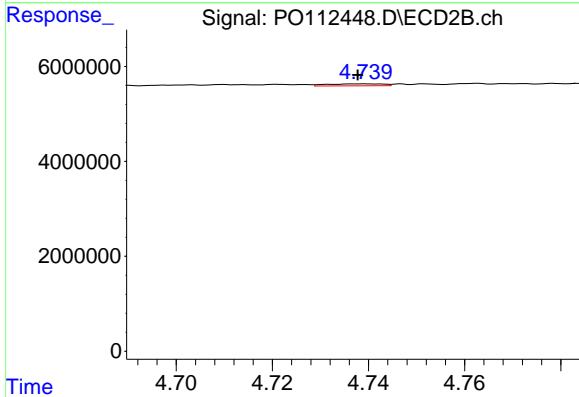
R.T.: 5.531 min
 Delta R.T.: -0.003 min
 Response: 1157316
 Conc: 7.19 ng/ml



#21 AR-1248-1

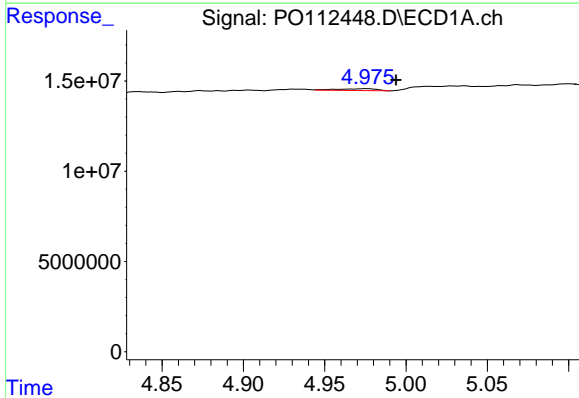
R.T.: 4.754 min
 Delta R.T.: -0.002 min
 Response: 166305
 Conc: 0.89 ng/ml

Instrument :
 ECD_O
 ClientSampleId :
 HEXANE



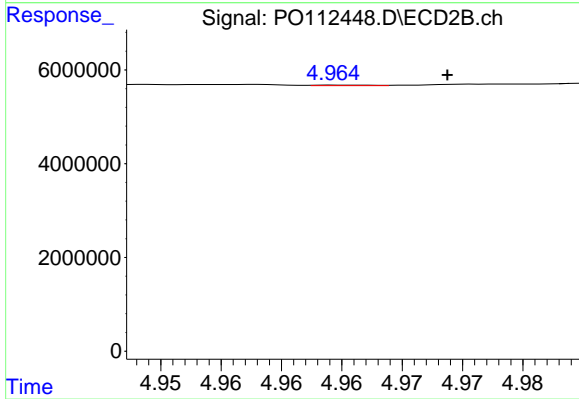
#21 AR-1248-1

R.T.: 4.739 min
 Delta R.T.: 0.002 min
 Response: 349493
 Conc: 2.88 ng/ml



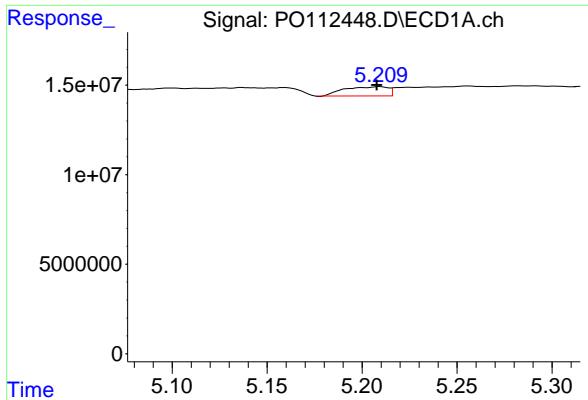
#22 AR-1248-2

R.T.: 4.975 min
 Delta R.T.: -0.019 min
 Response: 1720252
 Conc: 6.74 ng/ml



#22 AR-1248-2

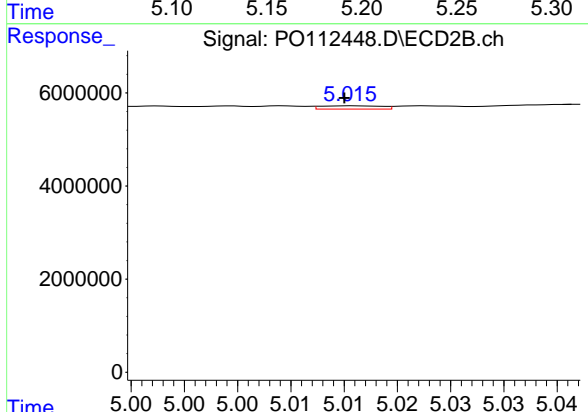
R.T.: 4.965 min
 Delta R.T.: -0.008 min
 Response: 41892
 Conc: 0.25 ng/ml



#23 AR-1248-3

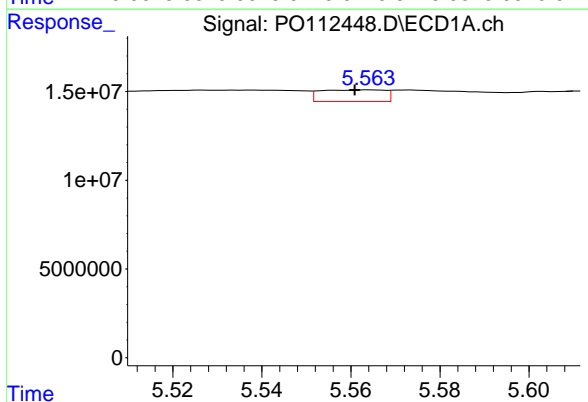
R.T.: 5.209 min
 Delta R.T.: 0.002 min
 Response: 8267191
 Conc: 24.05 ng/ml

Instrument :
 ECD_O
 ClientSampleId :
 HEXANE



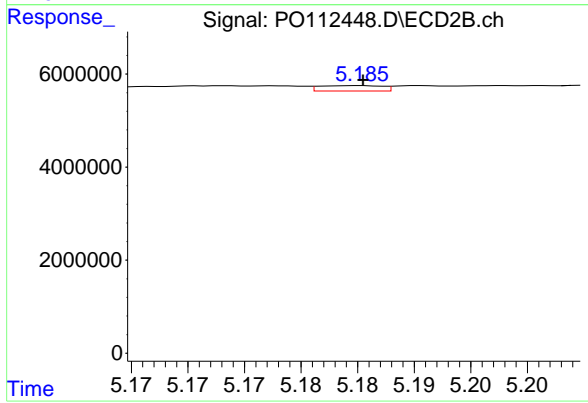
#23 AR-1248-3

R.T.: 5.016 min
 Delta R.T.: 0.000 min
 Response: 279808
 Conc: 1.58 ng/ml



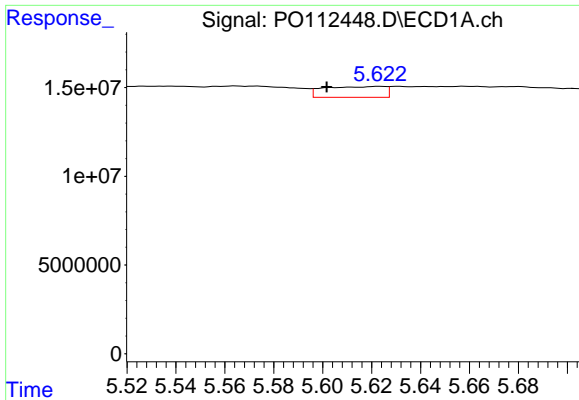
#24 AR-1248-4

R.T.: 5.564 min
 Delta R.T.: 0.003 min
 Response: 6531098
 Conc: 12.85 ng/ml



#24 AR-1248-4

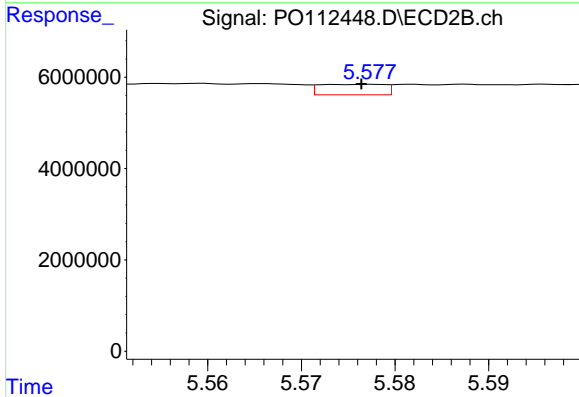
R.T.: 5.185 min
 Delta R.T.: 0.000 min
 Response: 445166
 Conc: 2.14 ng/ml



#25 AR-1248-5

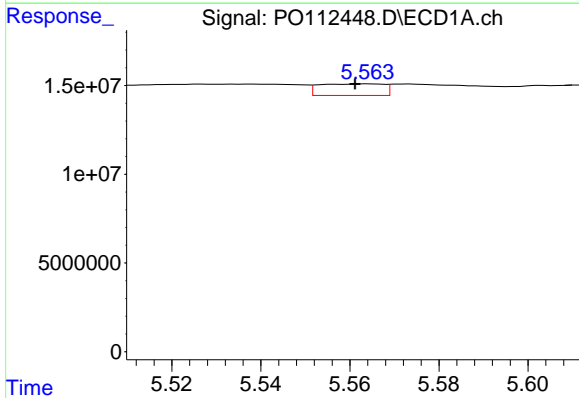
R.T.: 5.623 min
 Delta R.T.: 0.022 min
 Response: 10643735
 Conc: 30.45 ng/ml

Instrument :
 ECD_O
 ClientSampleId :
 HEXANE



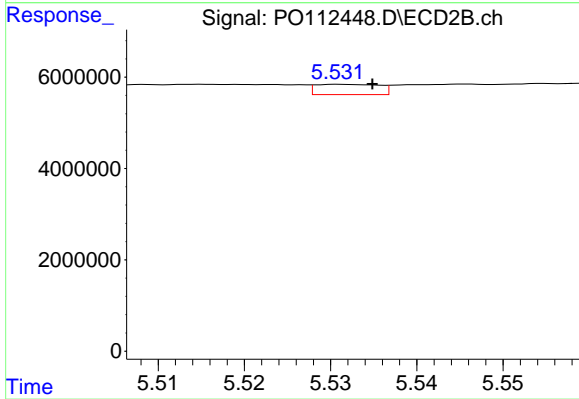
#25 AR-1248-5

R.T.: 5.577 min
 Delta R.T.: 0.000 min
 Response: 1105409
 Conc: 5.15 ng/ml



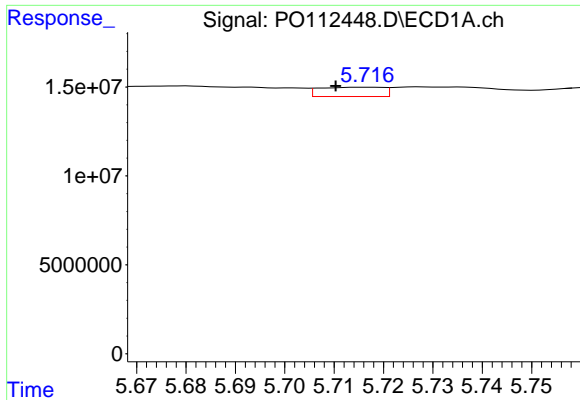
#26 AR-1254-1

R.T.: 5.564 min
 Delta R.T.: 0.003 min
 Response: 6531098
 Conc: 11.90 ng/ml



#26 AR-1254-1

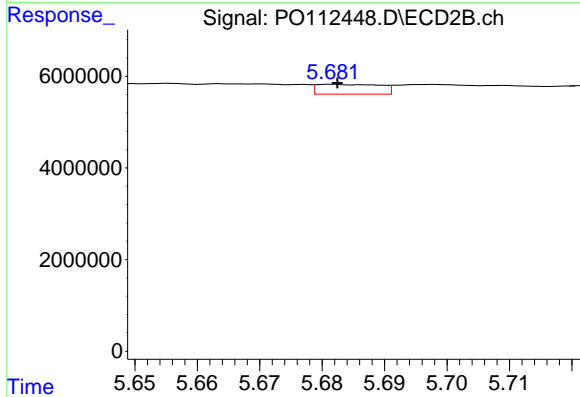
R.T.: 5.531 min
 Delta R.T.: -0.004 min
 Response: 1157316
 Conc: 3.52 ng/ml



#27 AR-1254-2

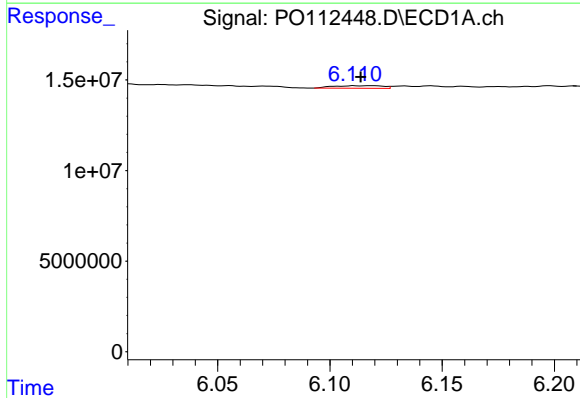
R.T.: 5.717 min
 Delta R.T.: 0.006 min
 Response: 4723784
 Conc: 9.72 ng/ml

Instrument :
 ECD_O
 ClientSampleId :
 HEXANE



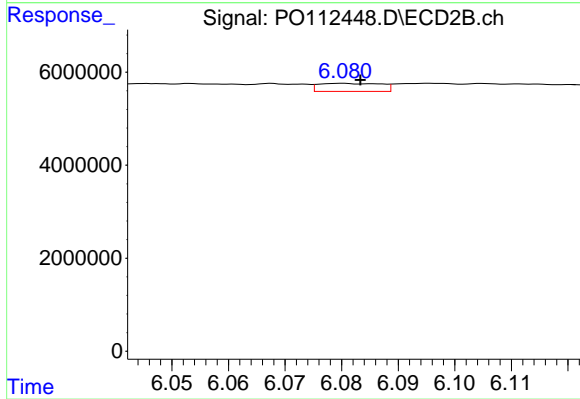
#27 AR-1254-2

R.T.: 5.682 min
 Delta R.T.: 0.000 min
 Response: 1517154
 Conc: 5.24 ng/ml



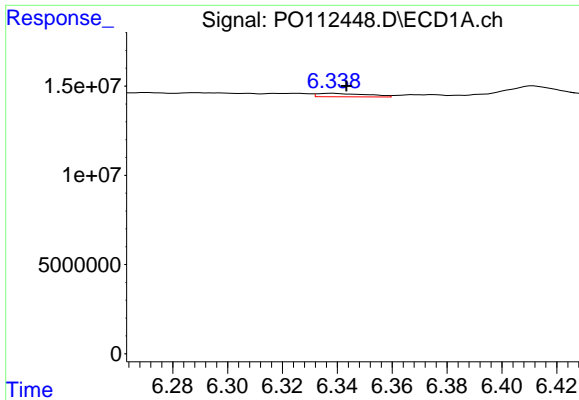
#28 AR-1254-3

R.T.: 6.111 min
 Delta R.T.: -0.003 min
 Response: 2159561
 Conc: 2.90 ng/ml



#28 AR-1254-3

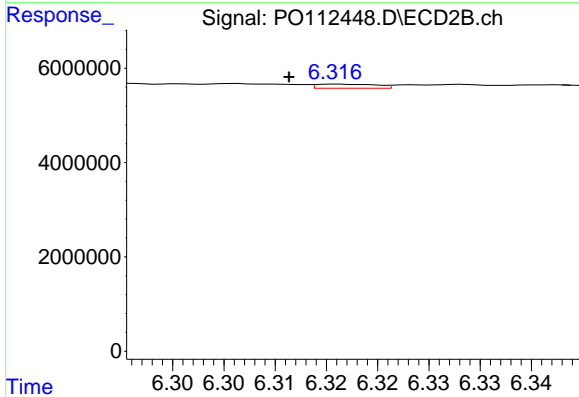
R.T.: 6.080 min
 Delta R.T.: -0.003 min
 Response: 1320255
 Conc: 3.09 ng/ml



#29 AR-1254-4

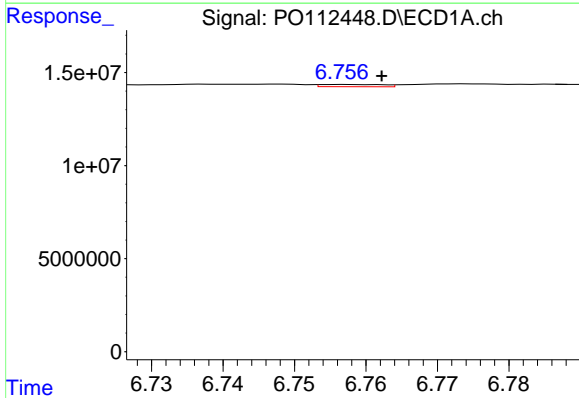
R.T.: 6.338 min
 Delta R.T.: -0.005 min
 Response: 2382944
 Conc: 4.33 ng/ml

Instrument :
 ECD_O
 ClientSampleId :
 HEXANE



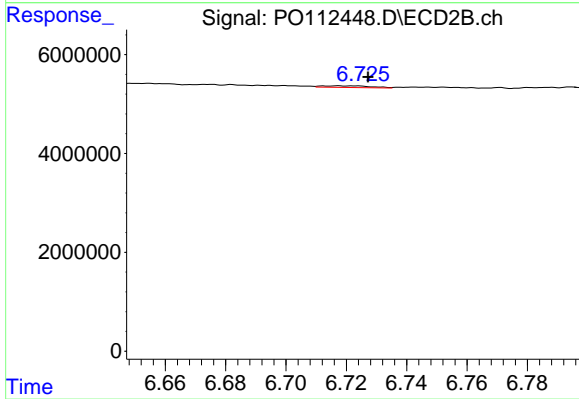
#29 AR-1254-4

R.T.: 6.316 min
 Delta R.T.: 0.005 min
 Response: 354842
 Conc: 1.30 ng/ml



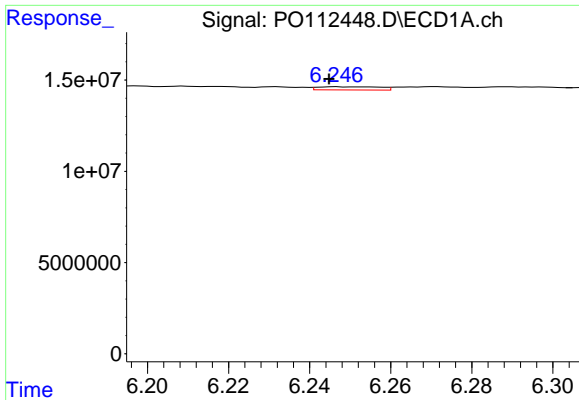
#30 AR-1254-5

R.T.: 6.757 min
 Delta R.T.: -0.006 min
 Response: 731423
 Conc: 1.03 ng/ml



#30 AR-1254-5

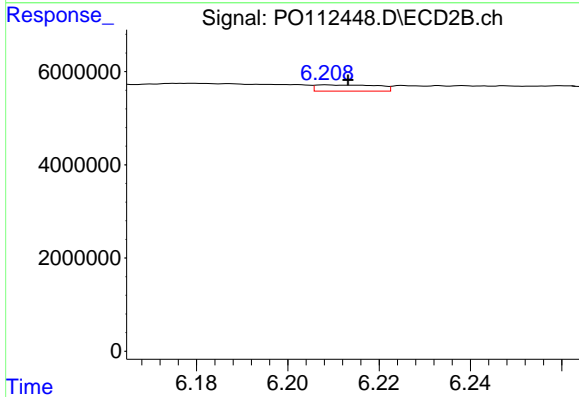
R.T.: 6.718 min
 Delta R.T.: -0.010 min
 Response: 372152
 Conc: 1.11 ng/ml



#31 AR-1260-1

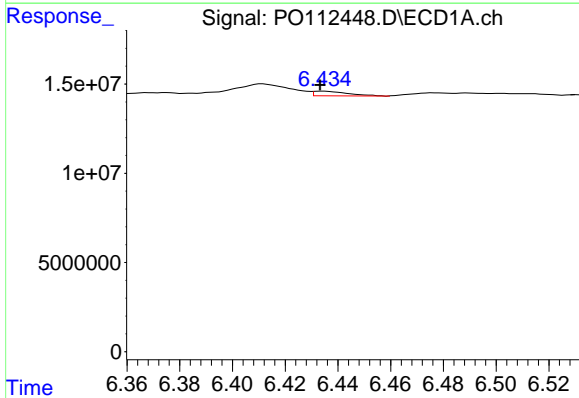
R.T.: 6.247 min
 Delta R.T.: 0.002 min
 Response: 1853083
 Conc: 4.22 ng/ml

Instrument :
 ECD_O
 ClientSampleId :
 HEXANE



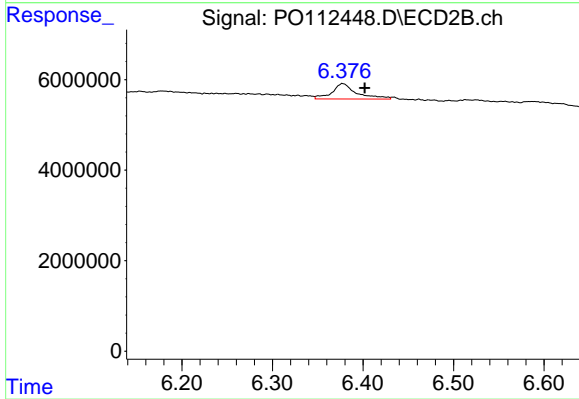
#31 AR-1260-1

R.T.: 6.208 min
 Delta R.T.: -0.005 min
 Response: 1250969
 Conc: 5.03 ng/ml



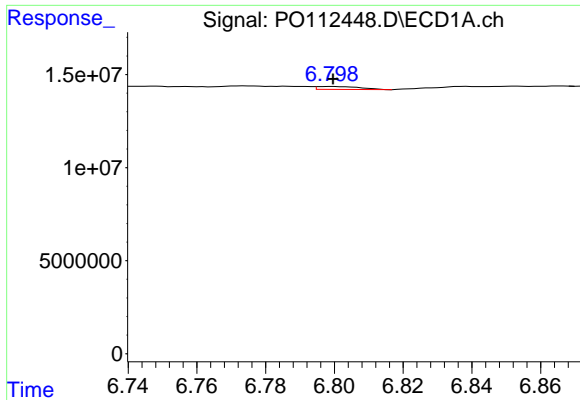
#32 AR-1260-2

R.T.: 6.434 min
 Delta R.T.: 0.001 min
 Response: 2267852
 Conc: 3.30 ng/ml



#32 AR-1260-2

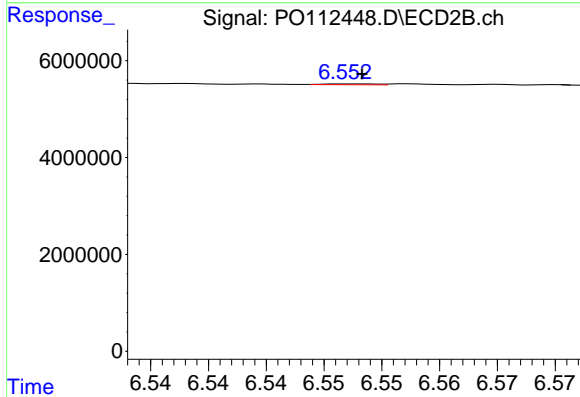
R.T.: 6.377 min
 Delta R.T.: -0.025 min
 Response: 6461730
 Conc: 19.61 ng/ml



#33 AR-1260-3

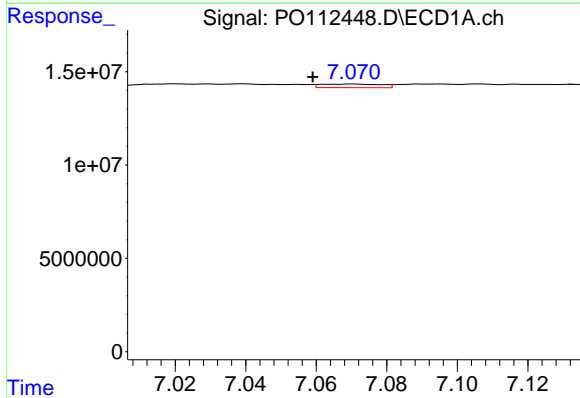
R.T.: 6.799 min
 Delta R.T.: 0.000 min
 Response: 1381119
 Conc: 2.35 ng/ml

Instrument :
 ECD_O
 ClientSampleId :
 HEXANE



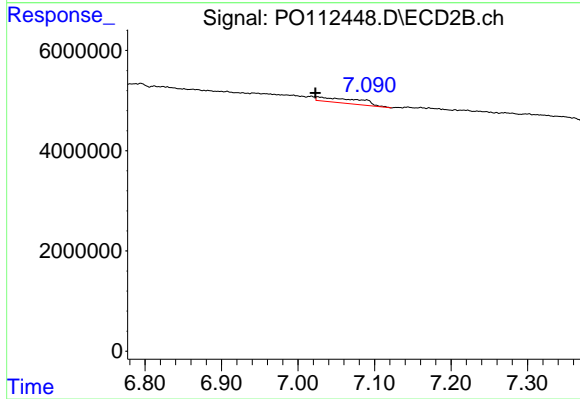
#33 AR-1260-3

R.T.: 6.552 min
 Delta R.T.: 0.000 min
 Response: 58578
 Conc: 0.23 ng/ml



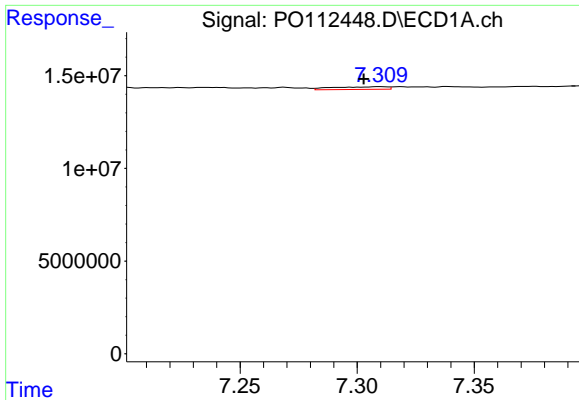
#34 AR-1260-4

R.T.: 7.071 min
 Delta R.T.: 0.012 min
 Response: 2307144
 Conc: 5.12 ng/ml



#34 AR-1260-4

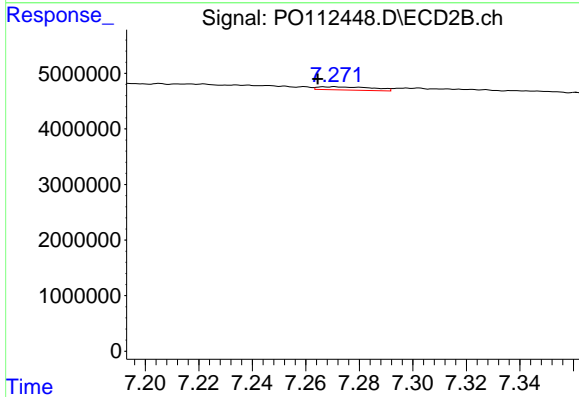
R.T.: 7.025 min
 Delta R.T.: 0.002 min
 Response: 3779729
 Conc: 19.76 ng/ml



#35 AR-1260-5

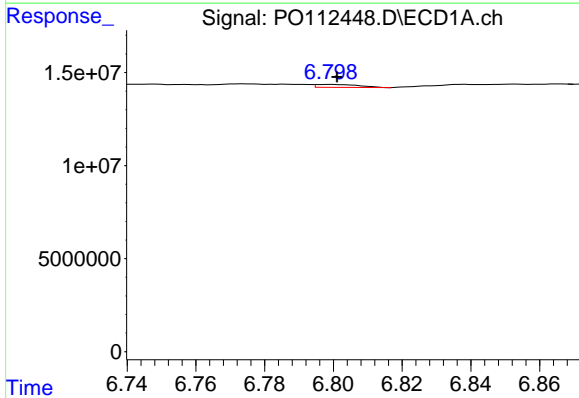
R.T.: 7.310 min
 Delta R.T.: 0.007 min
 Response: 2396792
 Conc: 1.93 ng/ml

Instrument :
 ECD_O
 ClientSampleId :
 HEXANE



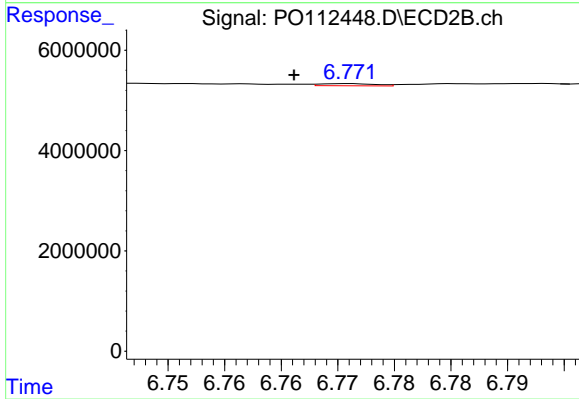
#35 AR-1260-5

R.T.: 7.271 min
 Delta R.T.: 0.006 min
 Response: 827277
 Conc: 2.01 ng/ml



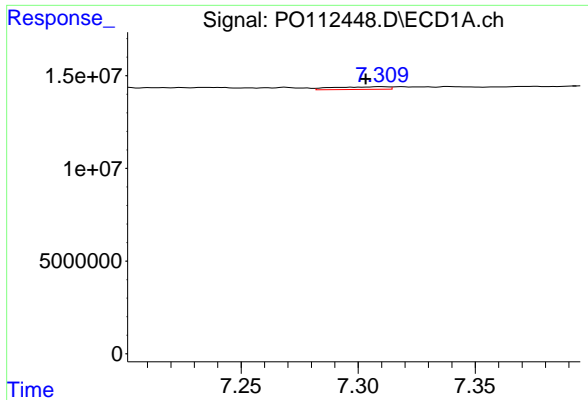
#36 AR-1262-1

R.T.: 6.799 min
 Delta R.T.: -0.002 min
 Response: 1381119
 Conc: 1.49 ng/ml



#36 AR-1262-1

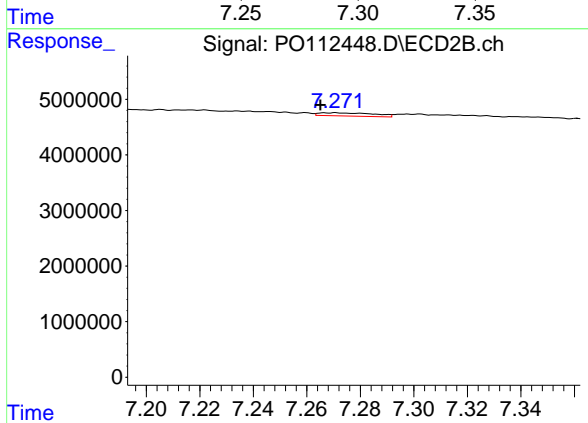
R.T.: 6.771 min
 Delta R.T.: 0.005 min
 Response: 143731
 Conc: 0.35 ng/ml



#37 AR-1262-2

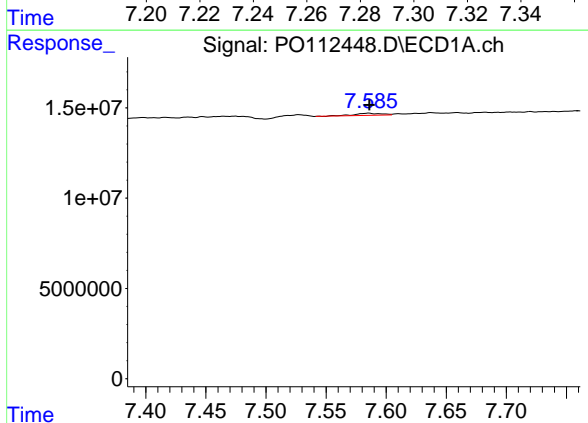
R.T.: 7.310 min
 Delta R.T.: 0.007 min
 Response: 2396792
 Conc: 1.61 ng/ml

Instrument :
 ECD_O
 ClientSampleId :
 HEXANE



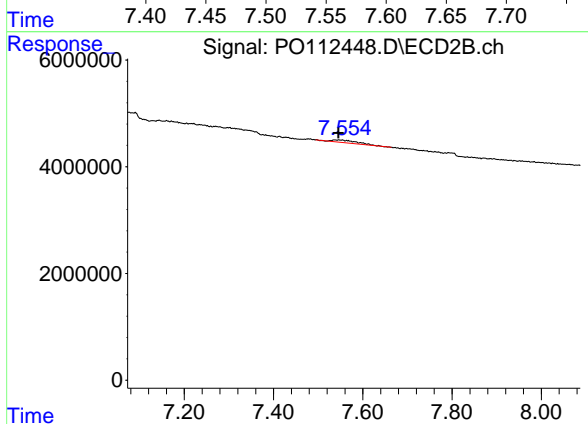
#37 AR-1262-2

R.T.: 7.271 min
 Delta R.T.: 0.006 min
 Response: 827277
 Conc: 1.60 ng/ml



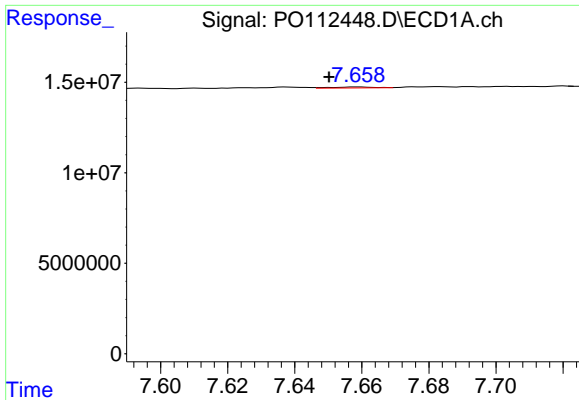
#38 AR-1262-3

R.T.: 7.586 min
 Delta R.T.: 0.000 min
 Response: 1775059
 Conc: 3.01 ng/ml



#38 AR-1262-3

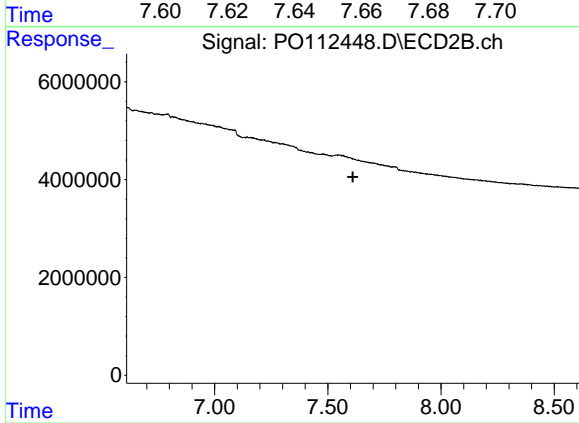
R.T.: 7.537 min
 Delta R.T.: -0.009 min
 Response: 1684076
 Conc: 9.03 ng/ml



#39 AR-1262-4

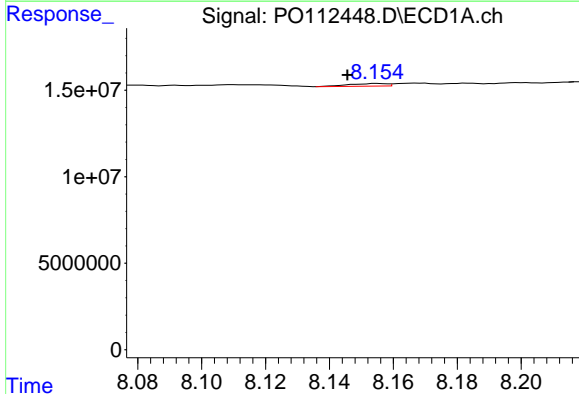
R.T.: 7.659 min
 Delta R.T.: 0.009 min
 Response: 478692
 Conc: 0.48 ng/ml

Instrument :
 ECD_O
 ClientSampleId :
 HEXANE



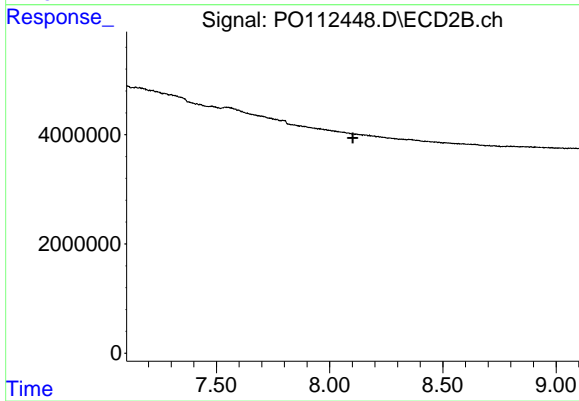
#39 AR-1262-4

R.T.: 0.000 min
 Exp R.T. : 7.611 min
 Response: 0
 Conc: N.D.



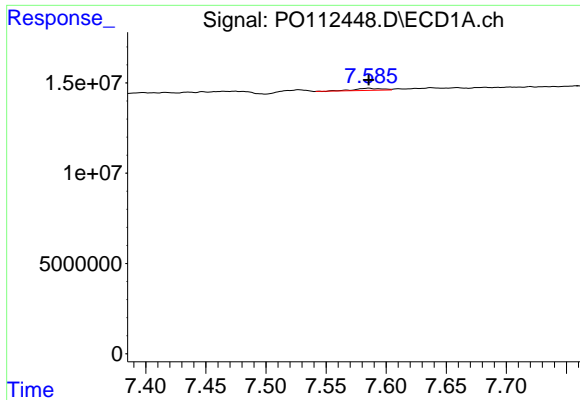
#40 AR-1262-5

R.T.: 8.155 min
 Delta R.T.: 0.010 min
 Response: 1254061
 Conc: 2.89 ng/ml



#40 AR-1262-5

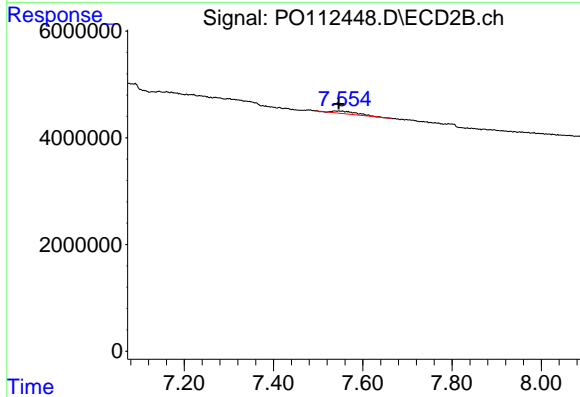
R.T.: 8.120 min
 Delta R.T.: 0.017 min
 Response: -26329
 Conc: N.D.



#41 AR-1268-1

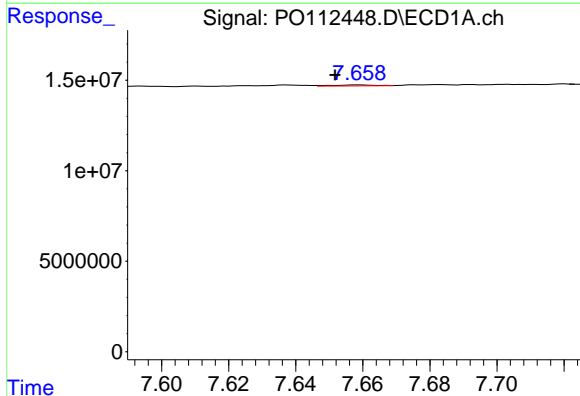
R.T.: 7.586 min
 Delta R.T.: 0.000 min
 Response: 1775059
 Conc: 1.01 ng/ml

Instrument :
 ECD_O
 ClientSampleId :
 HEXANE



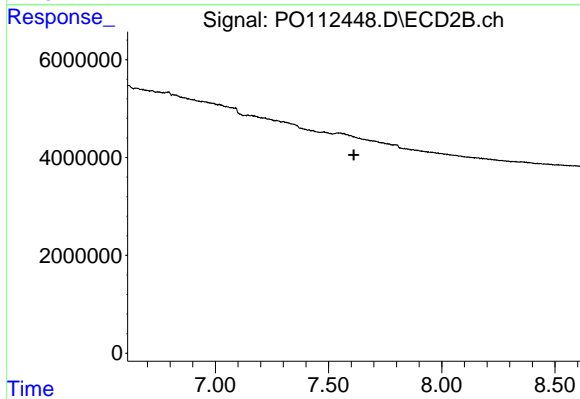
#41 AR-1268-1

R.T.: 7.537 min
 Delta R.T.: -0.009 min
 Response: 1684076
 Conc: 3.25 ng/ml



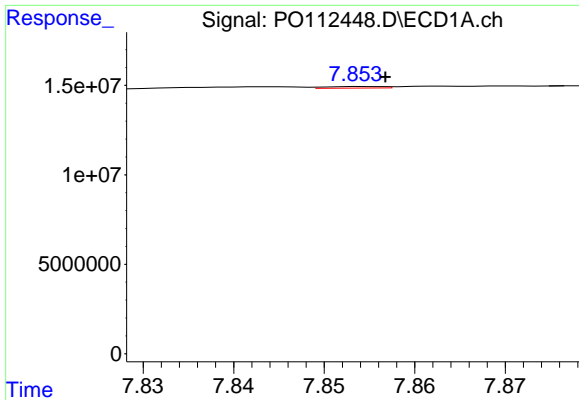
#42 AR-1268-2

R.T.: 7.659 min
 Delta R.T.: 0.007 min
 Response: 478692
 Conc: 0.32 ng/ml



#42 AR-1268-2

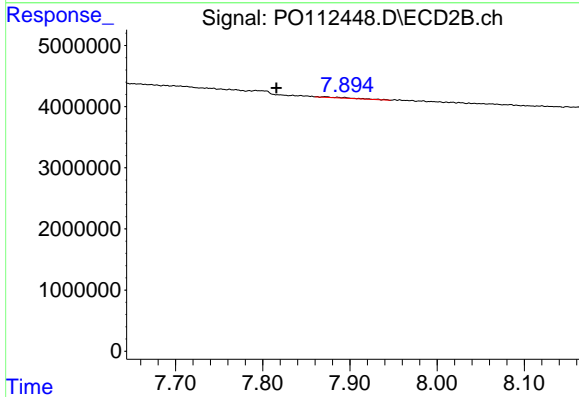
R.T.: 0.000 min
 Exp R.T. : 7.611 min
 Response: 0
 Conc: N.D.



#43 AR-1268-3

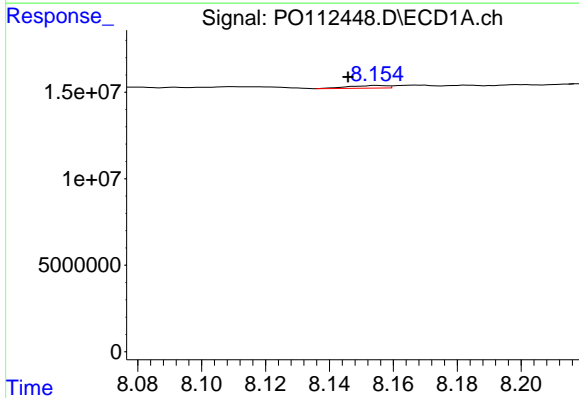
R.T.: 7.855 min
 Delta R.T.: -0.002 min
 Response: 395624
 Conc: 0.32 ng/ml

Instrument :
 ECD_O
 ClientSampleId :
 HEXANE



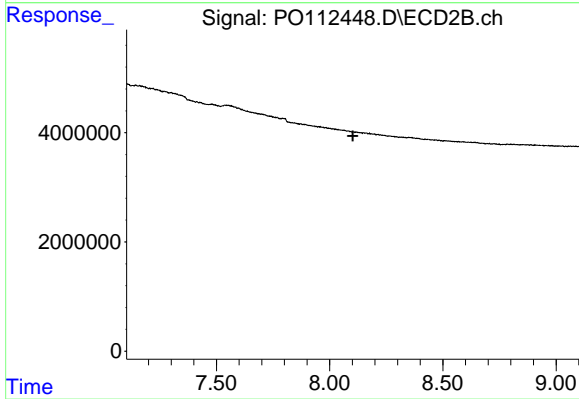
#43 AR-1268-3

R.T.: 7.872 min
 Delta R.T.: 0.056 min
 Response: 274881
 Conc: 0.86 ng/ml



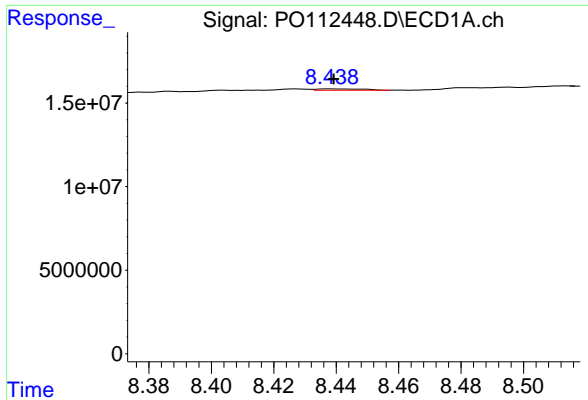
#44 AR-1268-4

R.T.: 8.155 min
 Delta R.T.: 0.009 min
 Response: 1254061
 Conc: 2.60 ng/ml



#44 AR-1268-4

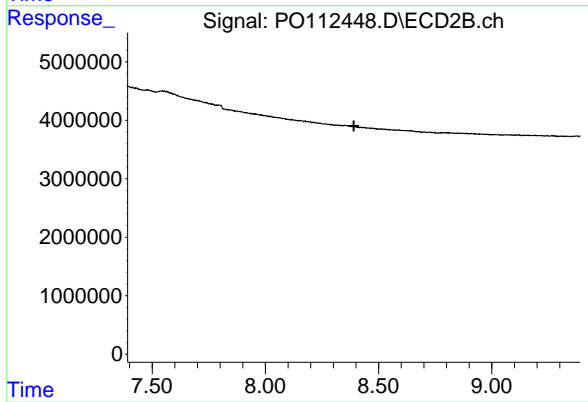
R.T.: 8.120 min
 Delta R.T.: 0.017 min
 Response: -26329
 Conc: N.D.



#45 AR-1268-5

R.T.: 8.439 min
 Delta R.T.: 0.000 min
 Response: 896043
 Conc: 0.27 ng/ml

Instrument :
 ECD_O
 ClientSampleId :
 HEXANE



#45 AR-1268-5

R.T.: 8.421 min
 Delta R.T.: 0.030 min
 Response: -1245
 Conc: N.D.