

Data Path : Z:\pestpcbsrv\HPCHEM1\ECD\_0\Data\P0072425\  
 Data File : PO112449.D  
 Signal(s) : Signal #1: ECD1A.ch Signal #2: ECD2B.ch  
 Acq On : 24 Jul 2025 09:03  
 Operator : YP/AJ  
 Sample : AR1660CCC500  
 Misc :  
 ALS Vial : 3 Sample Multiplier: 1

Instrument :  
 ECD\_0  
 ClientSampleId :  
 AR1660CCC500

Integration File signal 1: autoint1.e  
 Integration File signal 2: autoint2.e  
 Quant Time: Jul 24 23:31:01 2025  
 Quant Method : Z:\pestpcbsrv\HPCHEM1\ECD\_0\methods\P0072325.M  
 Quant Title : GC EXTRACTABLES  
 QLast Update : Thu Jul 24 04:54:06 2025  
 Response via : Initial Calibration  
 Integrator: ChemStation

Volume Inj. : 2 µl  
 Signal #1 Phase : ZB-MR1 Signal #2 Phase: ZB-MR2  
 Signal #1 Info : 30Mx0.32mmx 0.50µ Signal #2 Info : 30M x 0.32mm x 0.25µm

Compound	RT#1	RT#2	Resp#1	Resp#2	ng/ml	ng/ml
-----						
System Monitoring Compounds						
1) SA Tetrachlo...	3.669	3.661	428.7E6	253.0E6	52.724	50.918
2) SA Decachlor...	8.693	8.639	378.9E6	86508416	51.825	48.955
Target Compounds						
3) L1 AR-1016-1	4.755	4.737	141.8E6	85155795	528.388	486.585
4) L1 AR-1016-2	4.774	4.755	212.0E6	128.5E6	522.001	493.328
5) L1 AR-1016-3	4.832	4.930	136.0E6	67004319	519.775	492.800
6) L1 AR-1016-4	4.950	4.972	109.2E6	55183226	515.526	496.767
7) L1 AR-1016-5	5.208	5.184	114.9E6	71565627	523.722	499.401
8) L2 AR-1221-1	3.880	3.869	11977481	8413703	123.914	125.081
9) L2 AR-1221-2	3.968	3.956	17762304	12847351	247.172	253.260
10) L2 AR-1221-3	4.043	4.030	69884349	46336714	293.989	292.291
11) L3 AR-1232-1	4.043	4.030	69884349	46336714	373.756	366.154
12) L3 AR-1232-2	4.534	4.755	106.9E6	128.5E6	992.883	979.830
13) L3 AR-1232-3	4.774	4.930	212.0E6	67004319	1025.118	997.136
14) L3 AR-1232-4	4.950	5.014	109.2E6	65486808	1042.672	1094.565
15) L3 AR-1232-5	4.994	5.184	84661592	71565627	1247.208	1097.581
16) L4 AR-1242-1	4.755	4.737	141.8E6	85155795	572.722	537.620
17) L4 AR-1242-2	4.774	4.755	212.0E6	128.5E6	573.276	549.969
18) L4 AR-1242-3	4.832	4.930	136.0E6	67004319	574.718	552.891
19) L4 AR-1242-4	4.950	5.014	109.2E6	65486808	562.130	533.544
20) L4 AR-1242-5	5.603	5.535	29702246	73508580	138.850	456.656 #
21) L5 AR-1248-1	4.755	4.737	141.8E6	85155795	757.451	700.817
22) L5 AR-1248-2	4.994	4.972	84661592	55183226	331.860	325.988
23) L5 AR-1248-3	5.208	5.014	114.9E6	65486808	334.423	368.634
24) L5 AR-1248-4	5.561	5.184	122.7E6	71565627	241.514	343.480 #
25) L5 AR-1248-5	5.603	5.574	29702246	19309392	84.963	89.909
26) L6 AR-1254-1	5.561	5.535	122.7E6	73508580	223.529	223.688
27) L6 AR-1254-2	5.710	5.682	92001608	54756440	189.335	189.147
28) L6 AR-1254-3	6.129	6.098	175.7E6	98498966	236.095	230.428
29) L6 AR-1254-4	6.343	6.310	24592398	12480835	44.738	45.724
30) L6 AR-1254-5	6.761	6.725	315.5E6	145.5E6	445.775	435.640
31) L7 AR-1260-1	6.245	6.213	223.1E6	123.8E6	507.899	498.022
32) L7 AR-1260-2	6.434	6.401	343.0E6	160.6E6	498.591	487.522
33) L7 AR-1260-3	6.800	6.553	311.3E6	132.0E6	529.407	513.934
34) L7 AR-1260-4	7.060	7.022	227.1E6	96415788	503.641	503.975
35) L7 AR-1260-5	7.302	7.264	620.2E6	210.5E6	500.517	510.802
36) L8 AR-1262-1	6.800	6.765	311.3E6	139.3E6	335.018	335.788
37) L8 AR-1262-2	7.302	7.264	620.2E6	210.5E6	417.083	408.401
38) L8 AR-1262-3	7.585	7.545	139.3E6	44932709	236.016	240.893
39) L8 AR-1262-4	7.649	7.608	405.8E6	117.9E6	408.220	409.164
40) L8 AR-1262-5	8.146	8.101	142.2E6	31866857	327.659	320.259
41) L9 AR-1268-1	7.585	7.545	139.3E6	44932709	79.553	86.766

Data Path : Z:\pestpcbsrv\HPCHEM1\ECD\_0\Data\P0072425\  
 Data File : P0112449.D  
 Signal(s) : Signal #1: ECD1A.ch Signal #2: ECD2B.ch  
 Acq On : 24 Jul 2025 09:03  
 Operator : YP/AJ  
 Sample : AR1660CCC500  
 Misc :  
 ALS Vial : 3 Sample Multiplier: 1

Instrument :  
 ECD\_0  
 ClientSampleId :  
 AR1660CCC500

Integration File signal 1: autoint1.e  
 Integration File signal 2: autoint2.e  
 Quant Time: Jul 24 23:31:01 2025  
 Quant Method : Z:\pestpcbsrv\HPCHEM1\ECD\_0\methods\P0072325.M  
 Quant Title : GC EXTRACTABLES  
 QLast Update : Thu Jul 24 04:54:06 2025  
 Response via : Initial Calibration  
 Integrator: ChemStation

Volume Inj. : 2 µl  
 Signal #1 Phase : ZB-MR1 Signal #2 Phase: ZB-MR2  
 Signal #1 Info : 30Mx0.32mmx 0.50µ Signal #2 Info : 30M x 0.32mm x 0.25µm

	Compound	RT#1	RT#2	Resp#1	Resp#2	ng/ml	ng/ml
42)	L9 AR-1268-2	7.649	7.608	405.8E6	117.9E6	275.514	277.326
43)	L9 AR-1268-3	7.855	7.814	7420463	1673577	5.926	5.209
44)	L9 AR-1268-4	8.146	8.101	142.2E6	31866857	295.153	286.326
45)	L9 AR-1268-5	8.438	8.390	33266150	7891064	9.909	10.784

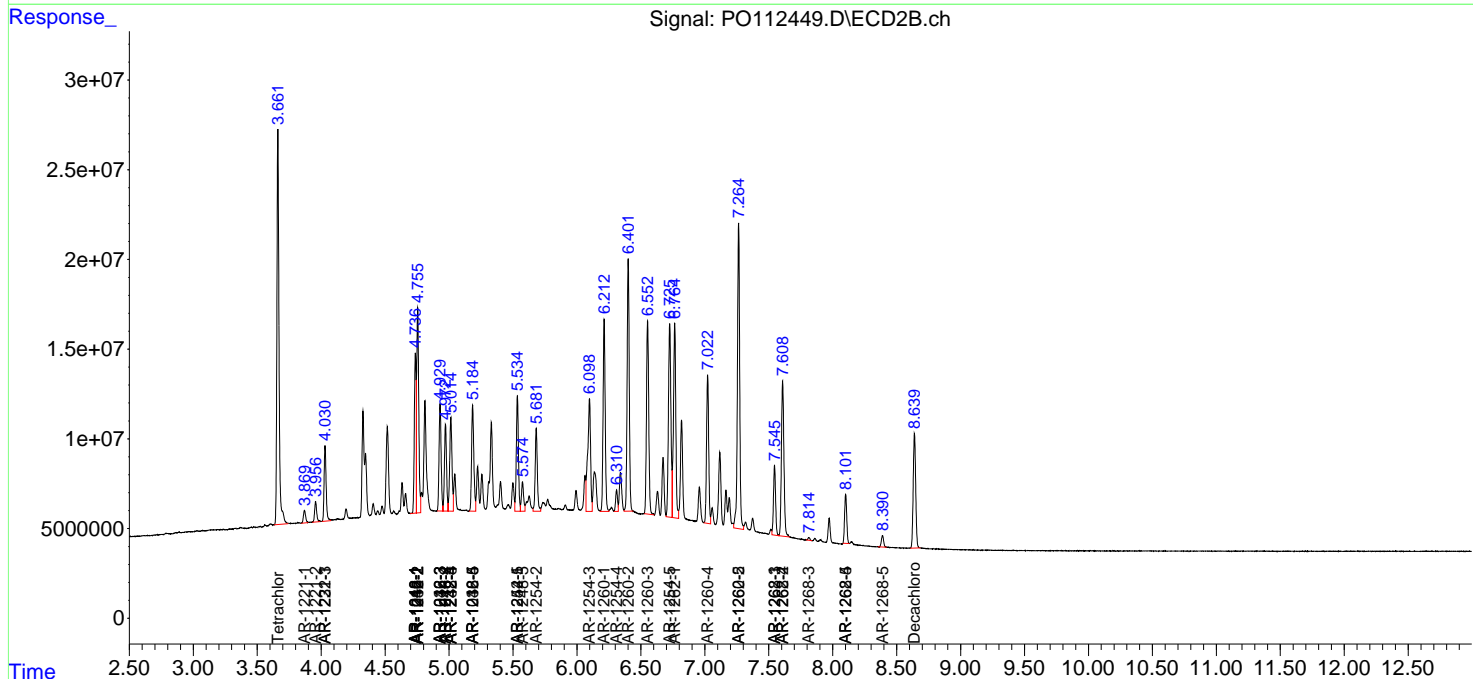
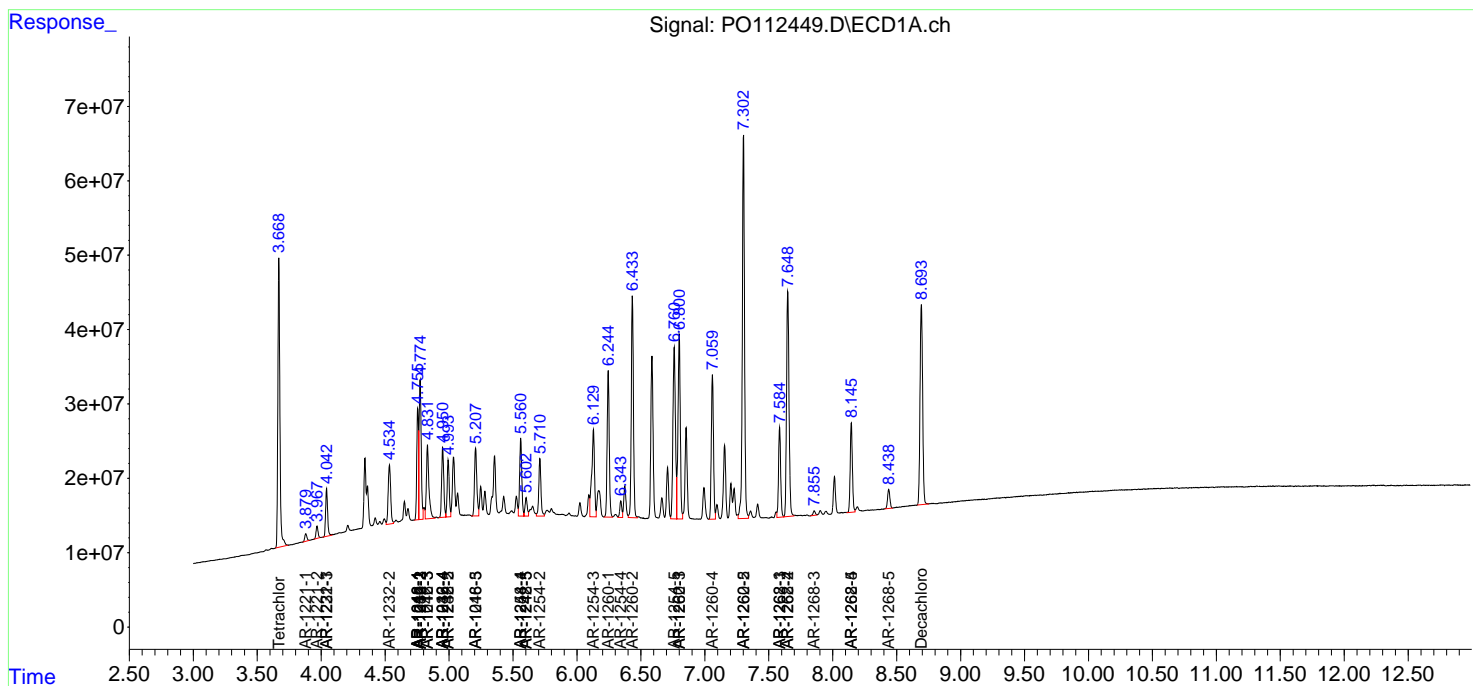
(f)=RT Delta > 1/2 Window (#)=Amounts differ by > 25% (m)=manual int.

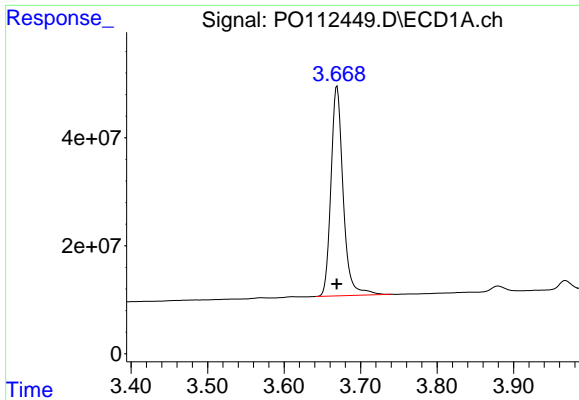
Data Path : Z:\pestpcbsrv\HPCHEM1\ECD\_O\Data\PO072425\  
 Data File : PO112449.D  
 Signal(s) : Signal #1: ECD1A.ch Signal #2: ECD2B.ch  
 Acq On : 24 Jul 2025 09:03  
 Operator : YP/AJ  
 Sample : AR1660CCC500  
 Misc :  
 ALS Vial : 3 Sample Multiplier: 1

Instrument :  
 ECD\_O  
 ClientSampleId :  
 AR1660CCC500

Integration File signal 1: autoint1.e  
 Integration File signal 2: autoint2.e  
 Quant Time: Jul 24 23:31:01 2025  
 Quant Method : Z:\pestpcbsrv\HPCHEM1\ECD\_O\methods\PO072325.M  
 Quant Title : GC EXTRACTABLES  
 QLast Update : Thu Jul 24 04:54:06 2025  
 Response via : Initial Calibration  
 Integrator: ChemStation

Volume Inj. : 2 µl  
 Signal #1 Phase : ZB-MR1 Signal #2 Phase: ZB-MR2  
 Signal #1 Info : 30Mx0.32mmx 0.50µ Signal #2 Info : 30M x 0.32mm x 0.25µm

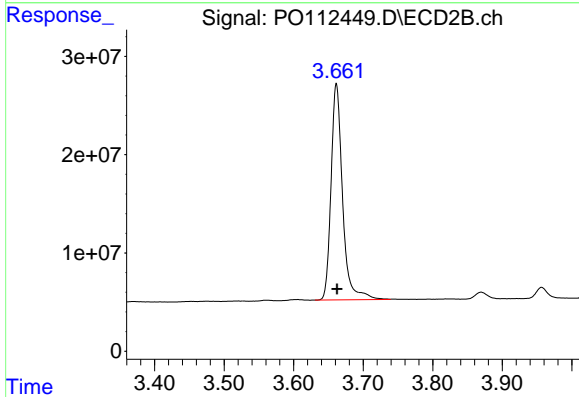




#1 Tetrachloro-m-xylene

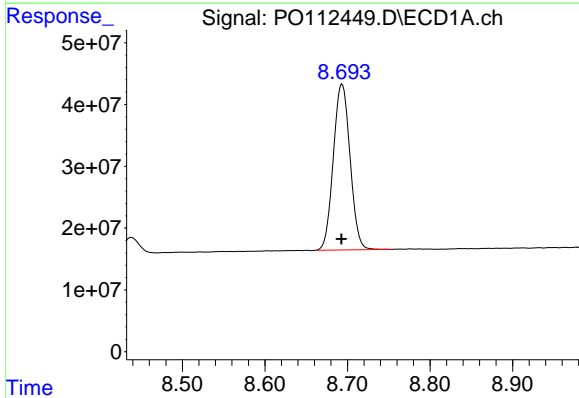
R.T.: 3.669 min  
 Delta R.T.: 0.000 min  
 Response: 428728209  
 Conc: 52.72 ng/ml

Instrument :  
 ECD\_O  
 ClientSampleId :  
 AR1660CCC500



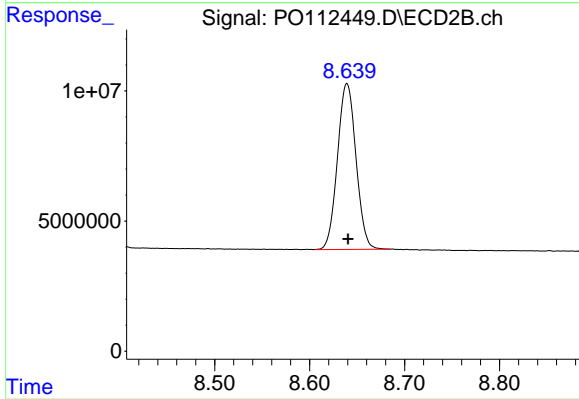
#1 Tetrachloro-m-xylene

R.T.: 3.661 min  
 Delta R.T.: 0.000 min  
 Response: 253018553  
 Conc: 50.92 ng/ml



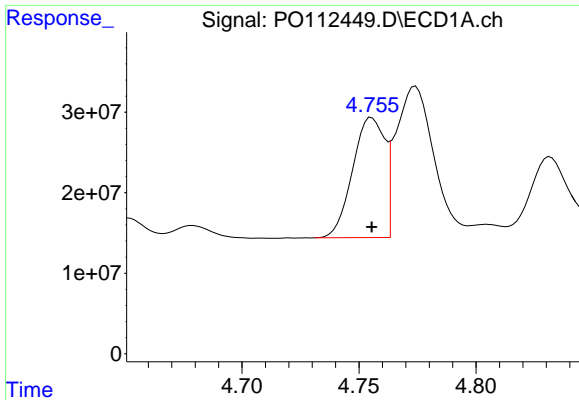
#2 Decachlorobiphenyl

R.T.: 8.693 min  
 Delta R.T.: 0.000 min  
 Response: 378931882  
 Conc: 51.82 ng/ml



#2 Decachlorobiphenyl

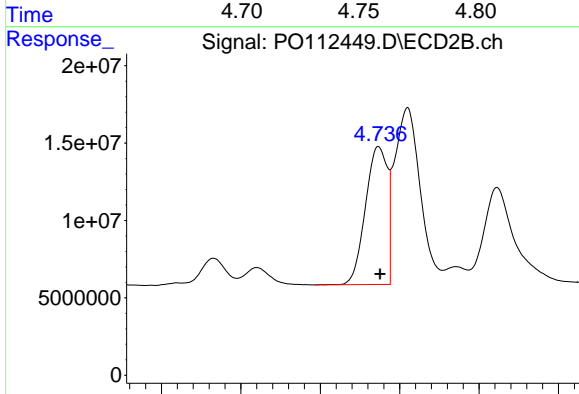
R.T.: 8.639 min  
 Delta R.T.: -0.001 min  
 Response: 86508416  
 Conc: 48.95 ng/ml



#3 AR-1016-1

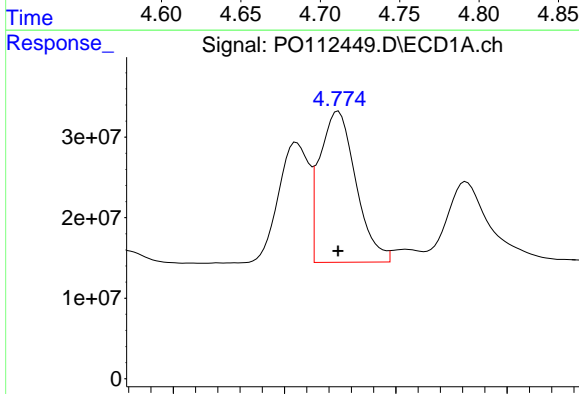
R.T.: 4.755 min  
 Delta R.T.: 0.000 min  
 Response: 141801350  
 Conc: 528.39 ng/ml

Instrument :  
 ECD\_O  
 ClientSampleId :  
 AR1660CCC500



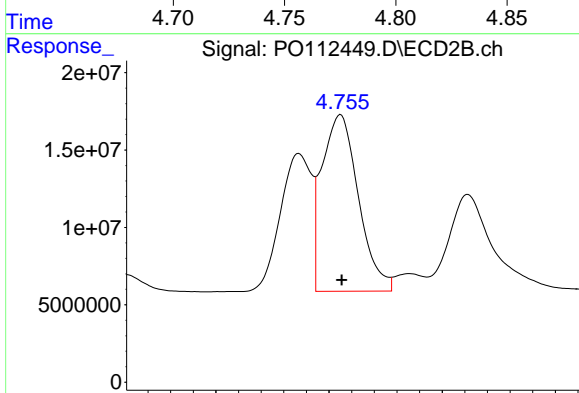
#3 AR-1016-1

R.T.: 4.737 min  
 Delta R.T.: 0.000 min  
 Response: 85155795  
 Conc: 486.58 ng/ml



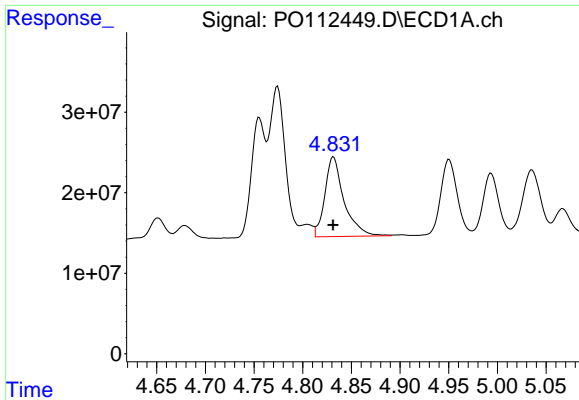
#4 AR-1016-2

R.T.: 4.774 min  
 Delta R.T.: 0.000 min  
 Response: 211993715  
 Conc: 522.00 ng/ml



#4 AR-1016-2

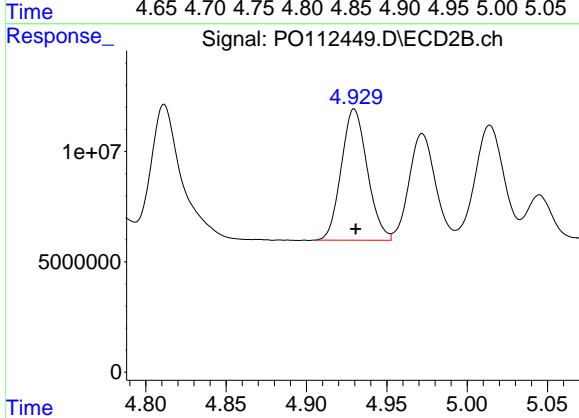
R.T.: 4.755 min  
 Delta R.T.: 0.000 min  
 Response: 128509401  
 Conc: 493.33 ng/ml



#5 AR-1016-3

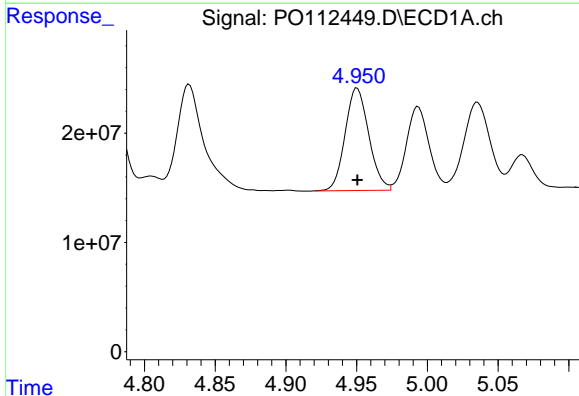
R.T.: 4.832 min  
 Delta R.T.: 0.000 min  
 Response: 136011570  
 Conc: 519.77 ng/ml

Instrument :  
 ECD\_O  
 ClientSampleId :  
 AR1660CCC500



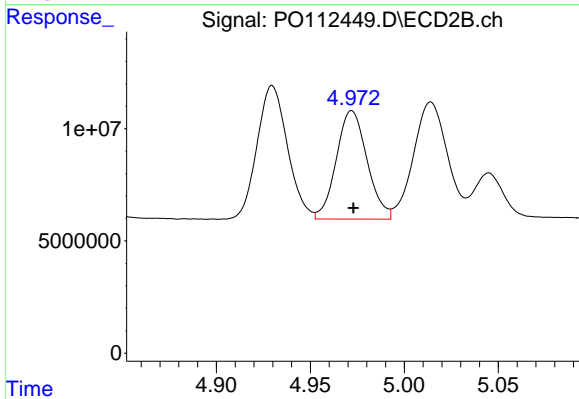
#5 AR-1016-3

R.T.: 4.930 min  
 Delta R.T.: 0.000 min  
 Response: 67004319  
 Conc: 492.80 ng/ml



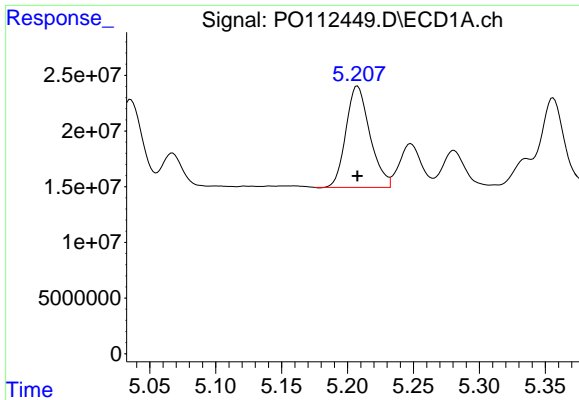
#6 AR-1016-4

R.T.: 4.950 min  
 Delta R.T.: 0.000 min  
 Response: 109209744  
 Conc: 515.53 ng/ml



#6 AR-1016-4

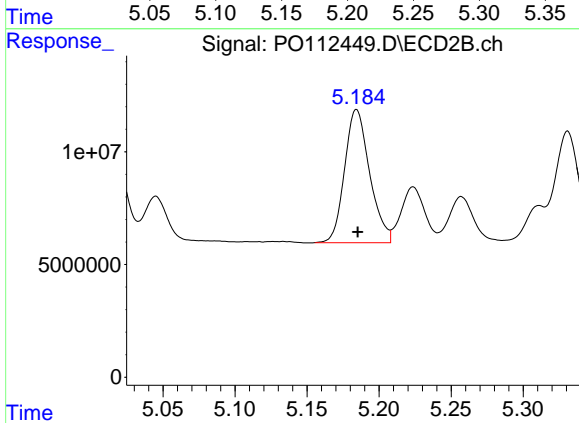
R.T.: 4.972 min  
 Delta R.T.: 0.000 min  
 Response: 55183226  
 Conc: 496.77 ng/ml



#7 AR-1016-5

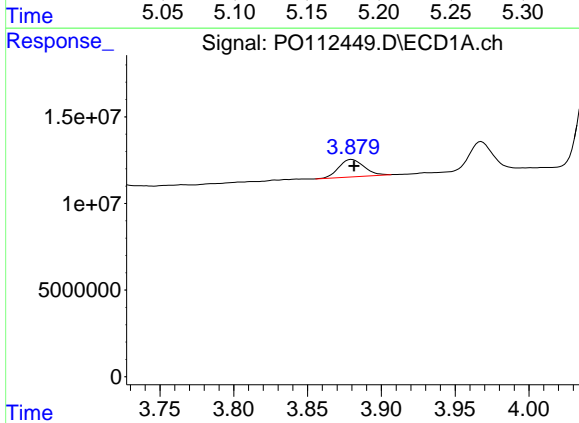
R.T.: 5.208 min  
 Delta R.T.: 0.000 min  
 Response: 114941627  
 Conc: 523.72 ng/ml

Instrument :  
 ECD\_O  
 ClientSampleId :  
 AR1660CCC500



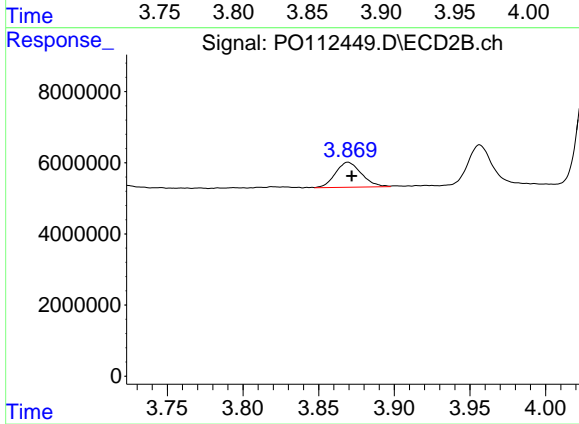
#7 AR-1016-5

R.T.: 5.184 min  
 Delta R.T.: 0.000 min  
 Response: 71565627  
 Conc: 499.40 ng/ml



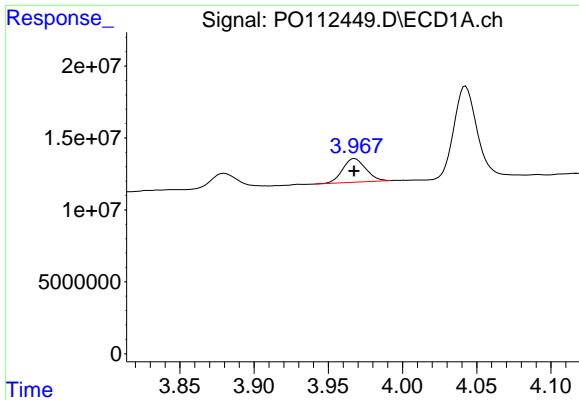
#8 AR-1221-1

R.T.: 3.880 min  
 Delta R.T.: -0.002 min  
 Response: 11977481  
 Conc: 123.91 ng/ml



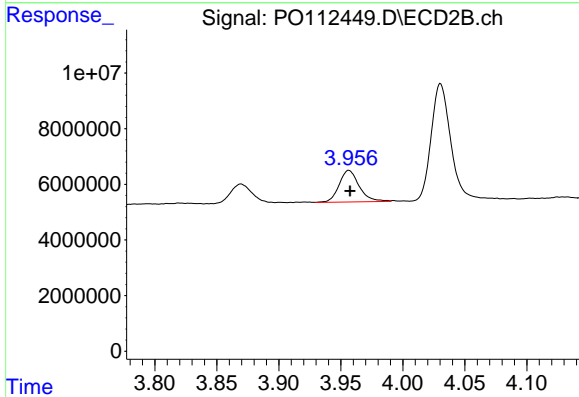
#8 AR-1221-1

R.T.: 3.869 min  
 Delta R.T.: -0.002 min  
 Response: 8413703  
 Conc: 125.08 ng/ml

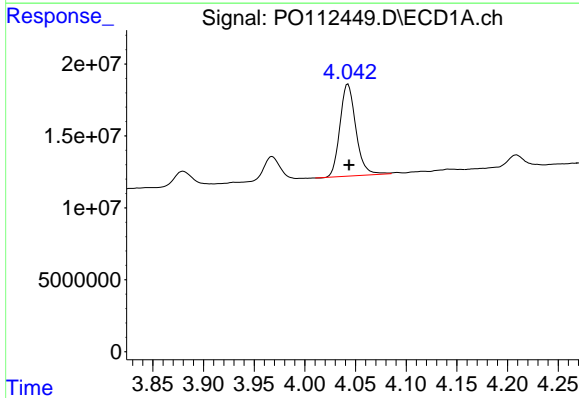


#9 AR-1221-2  
 R.T.: 3.968 min  
 Delta R.T.: 0.000 min  
 Response: 17762304  
 Conc: 247.17 ng/ml

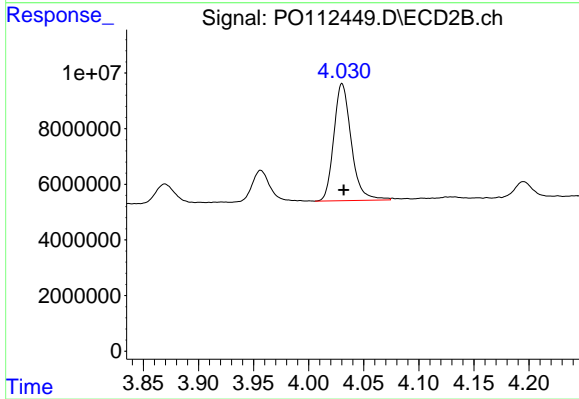
Instrument :  
 ECD\_O  
 ClientSampleId :  
 AR1660CCC500



#9 AR-1221-2  
 R.T.: 3.956 min  
 Delta R.T.: -0.001 min  
 Response: 12847351  
 Conc: 253.26 ng/ml

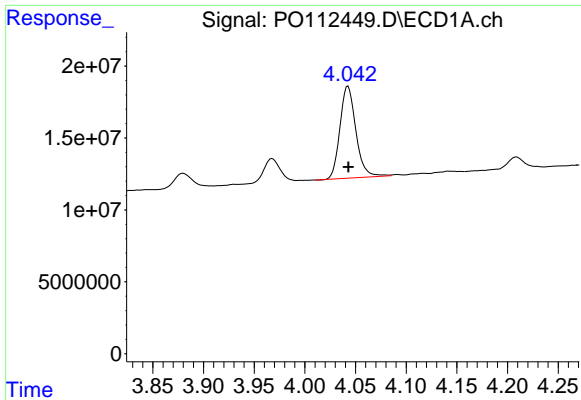


#10 AR-1221-3  
 R.T.: 4.043 min  
 Delta R.T.: -0.001 min  
 Response: 69884349  
 Conc: 293.99 ng/ml



#10 AR-1221-3  
 R.T.: 4.030 min  
 Delta R.T.: -0.002 min  
 Response: 46336714  
 Conc: 292.29 ng/ml

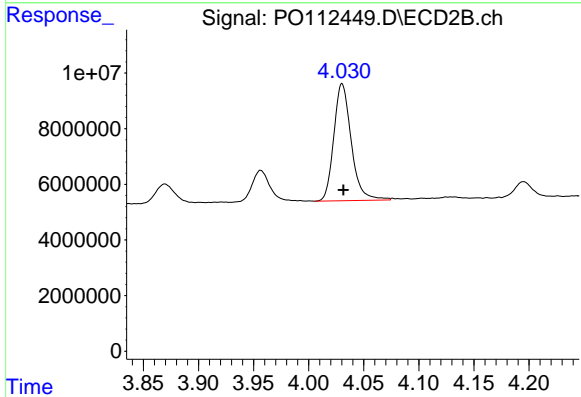




#11 AR-1232-1

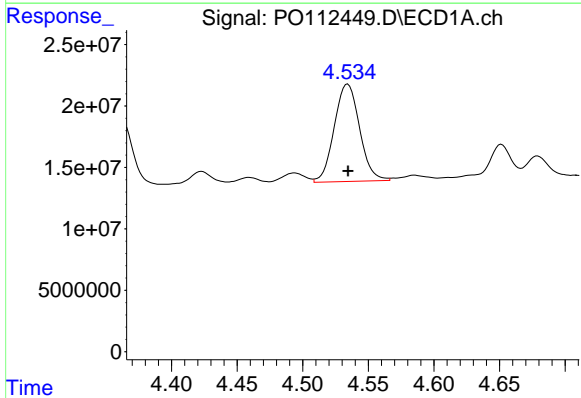
R.T.: 4.043 min  
 Delta R.T.: 0.000 min  
 Response: 69884349  
 Conc: 373.76 ng/ml

Instrument :  
 ECD\_O  
 ClientSampleId :  
 AR1660CCC500



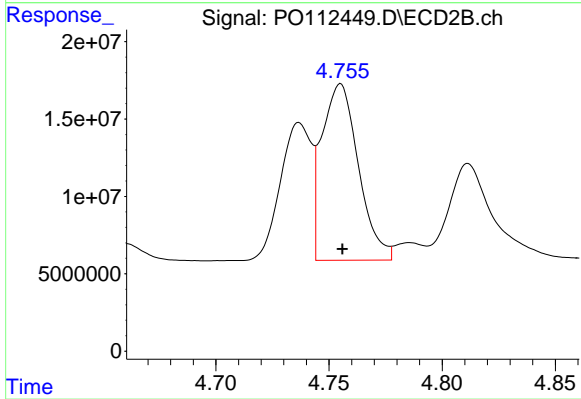
#11 AR-1232-1

R.T.: 4.030 min  
 Delta R.T.: -0.001 min  
 Response: 46336714  
 Conc: 366.15 ng/ml



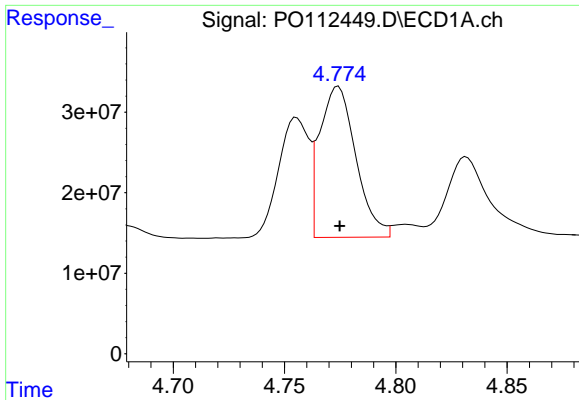
#12 AR-1232-2

R.T.: 4.534 min  
 Delta R.T.: 0.000 min  
 Response: 106858748  
 Conc: 992.88 ng/ml



#12 AR-1232-2

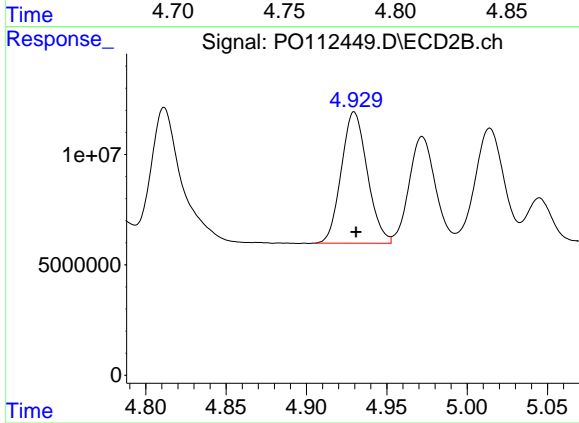
R.T.: 4.755 min  
 Delta R.T.: 0.000 min  
 Response: 128509401  
 Conc: 979.83 ng/ml



#13 AR-1232-3

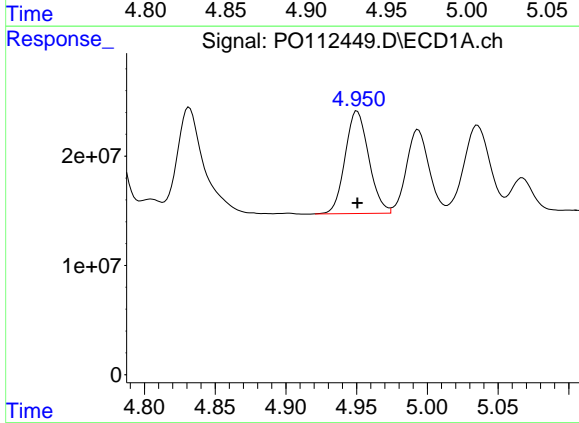
R.T.: 4.774 min  
 Delta R.T.: 0.000 min  
 Response: 211993715  
 Conc: 1025.12 ng/ml

Instrument :  
 ECD\_O  
 ClientSampleId :  
 AR1660CCC500



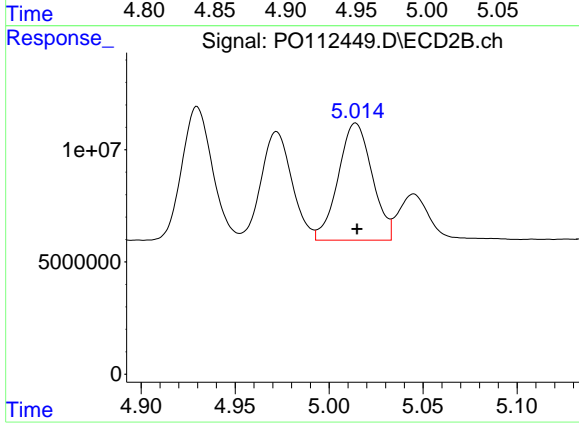
#13 AR-1232-3

R.T.: 4.930 min  
 Delta R.T.: 0.000 min  
 Response: 67004319  
 Conc: 997.14 ng/ml



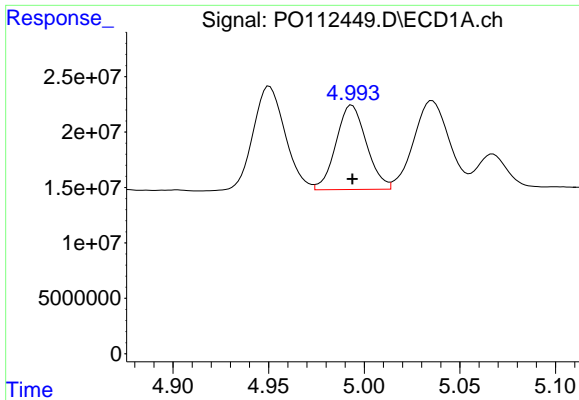
#14 AR-1232-4

R.T.: 4.950 min  
 Delta R.T.: 0.000 min  
 Response: 109209744  
 Conc: 1042.67 ng/ml



#14 AR-1232-4

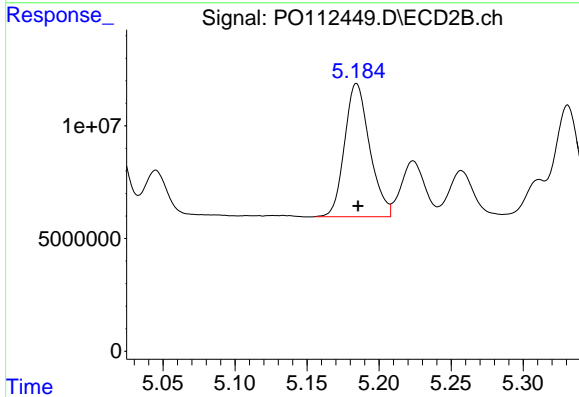
R.T.: 5.014 min  
 Delta R.T.: 0.000 min  
 Response: 65486808  
 Conc: 1094.56 ng/ml



#15 AR-1232-5

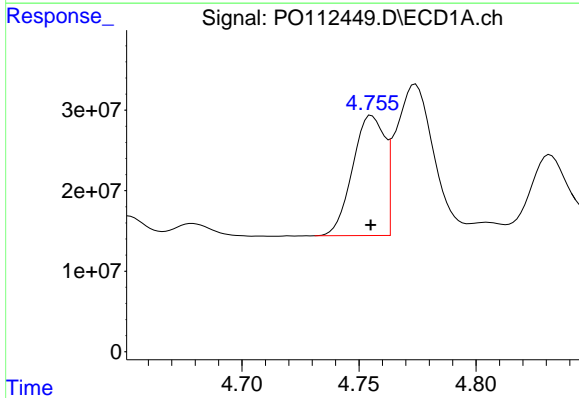
R.T.: 4.994 min  
 Delta R.T.: 0.000 min  
 Response: 84661592  
 Conc: 1247.21 ng/ml

Instrument :  
 ECD\_O  
 ClientSampleId :  
 AR1660CCC500



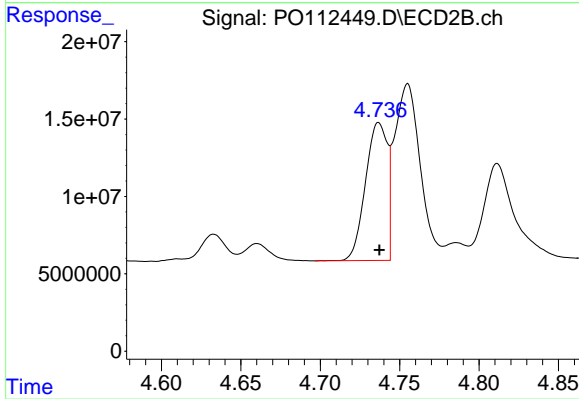
#15 AR-1232-5

R.T.: 5.184 min  
 Delta R.T.: -0.001 min  
 Response: 71565627  
 Conc: 1097.58 ng/ml



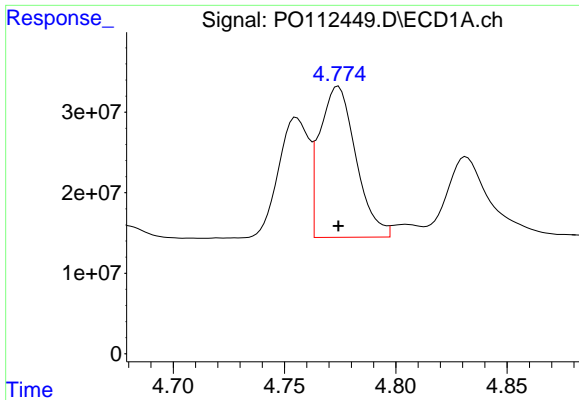
#16 AR-1242-1

R.T.: 4.755 min  
 Delta R.T.: 0.000 min  
 Response: 141801350  
 Conc: 572.72 ng/ml



#16 AR-1242-1

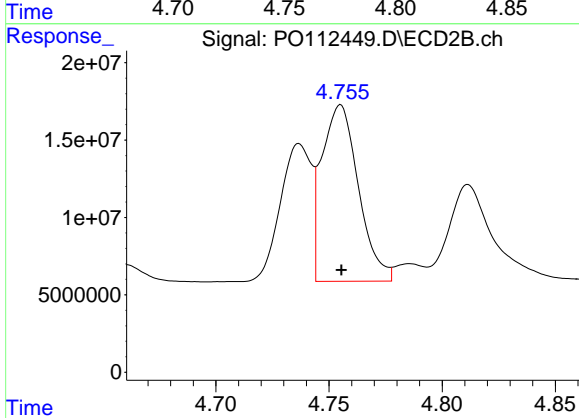
R.T.: 4.737 min  
 Delta R.T.: 0.000 min  
 Response: 85155795  
 Conc: 537.62 ng/ml



#17 AR-1242-2

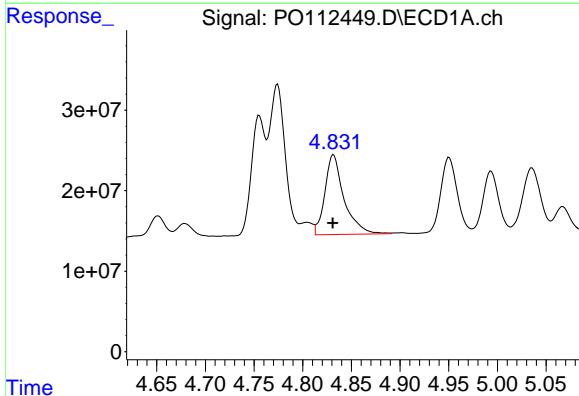
R.T.: 4.774 min  
 Delta R.T.: 0.000 min  
 Response: 211993715  
 Conc: 573.28 ng/ml

Instrument :  
 ECD\_O  
 ClientSampleId :  
 AR1660CCC500



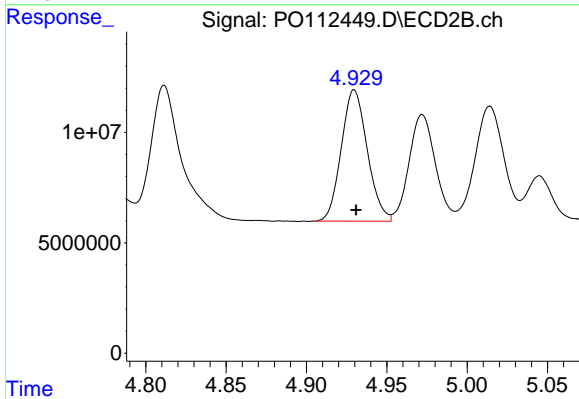
#17 AR-1242-2

R.T.: 4.755 min  
 Delta R.T.: 0.000 min  
 Response: 128509401  
 Conc: 549.97 ng/ml



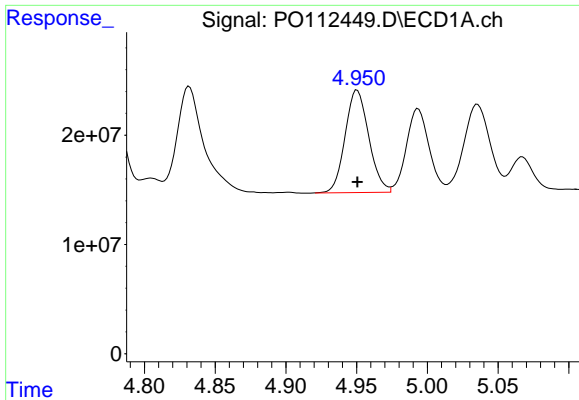
#18 AR-1242-3

R.T.: 4.832 min  
 Delta R.T.: 0.000 min  
 Response: 136011570  
 Conc: 574.72 ng/ml



#18 AR-1242-3

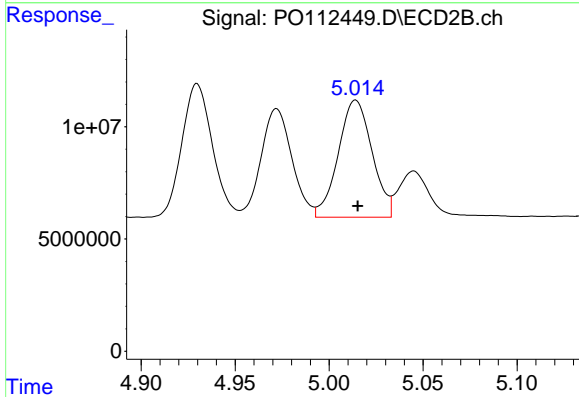
R.T.: 4.930 min  
 Delta R.T.: -0.001 min  
 Response: 67004319  
 Conc: 552.89 ng/ml



#19 AR-1242-4

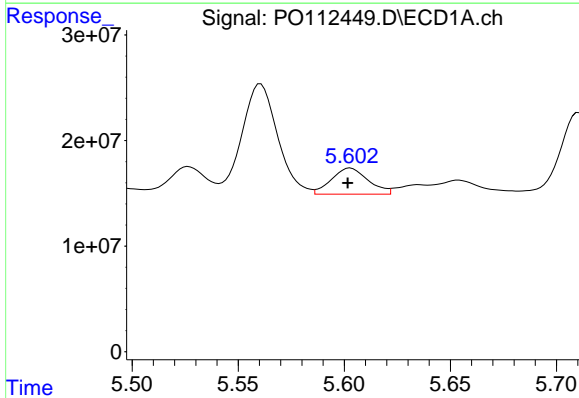
R.T.: 4.950 min  
 Delta R.T.: 0.000 min  
 Response: 109209744  
 Conc: 562.13 ng/ml

Instrument :  
 ECD\_O  
 ClientSampleId :  
 AR1660CCC500



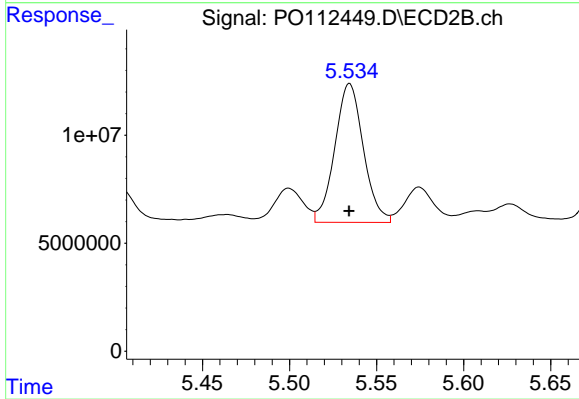
#19 AR-1242-4

R.T.: 5.014 min  
 Delta R.T.: -0.001 min  
 Response: 65486808  
 Conc: 533.54 ng/ml



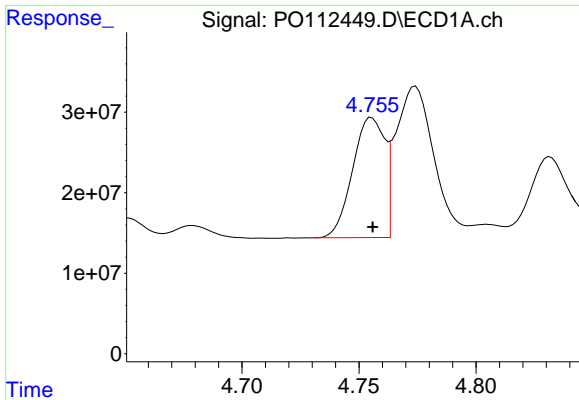
#20 AR-1242-5

R.T.: 5.603 min  
 Delta R.T.: 0.001 min  
 Response: 29702246  
 Conc: 138.85 ng/ml



#20 AR-1242-5

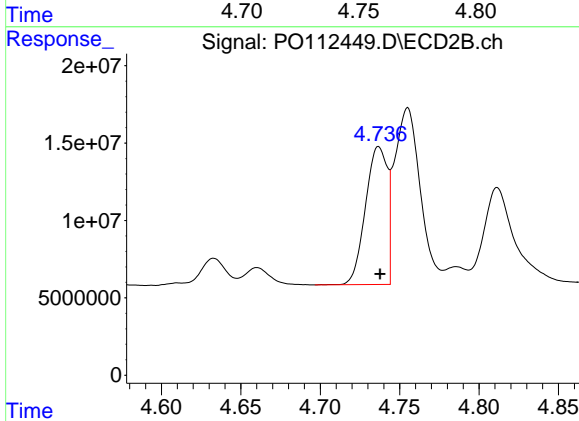
R.T.: 5.535 min  
 Delta R.T.: 0.000 min  
 Response: 73508580  
 Conc: 456.66 ng/ml



#21 AR-1248-1

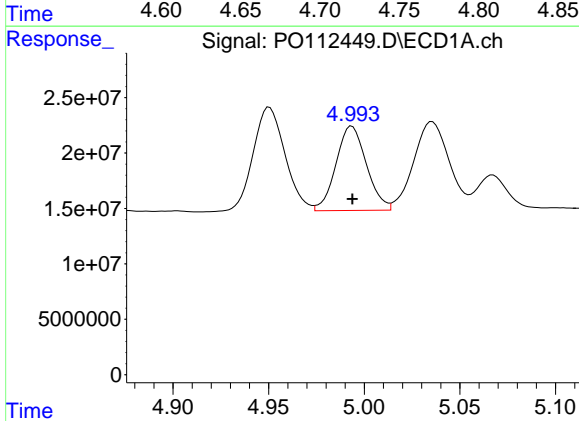
R.T.: 4.755 min  
 Delta R.T.: 0.000 min  
 Response: 141801350  
 Conc: 757.45 ng/ml

Instrument :  
 ECD\_O  
 ClientSampleId :  
 AR1660CCC500



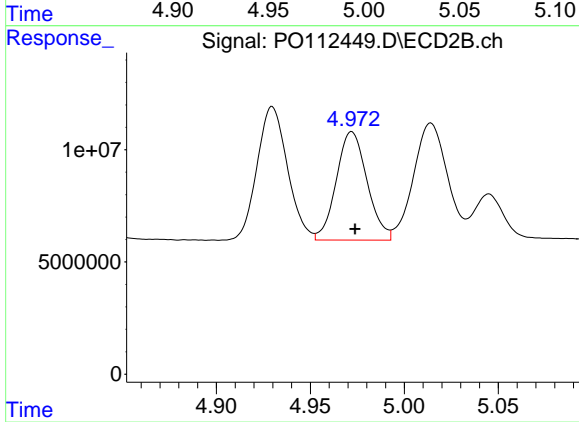
#21 AR-1248-1

R.T.: 4.737 min  
 Delta R.T.: 0.000 min  
 Response: 85155795  
 Conc: 700.82 ng/ml



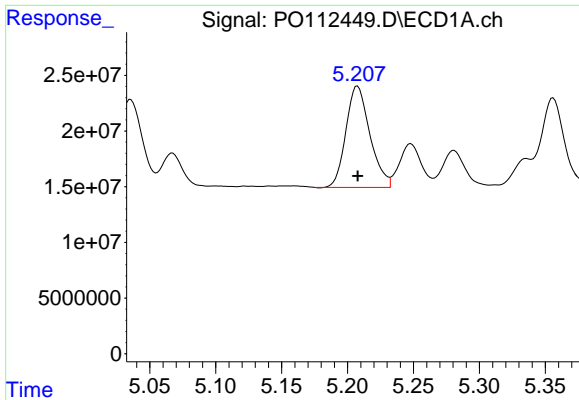
#22 AR-1248-2

R.T.: 4.994 min  
 Delta R.T.: 0.000 min  
 Response: 84661592  
 Conc: 331.86 ng/ml



#22 AR-1248-2

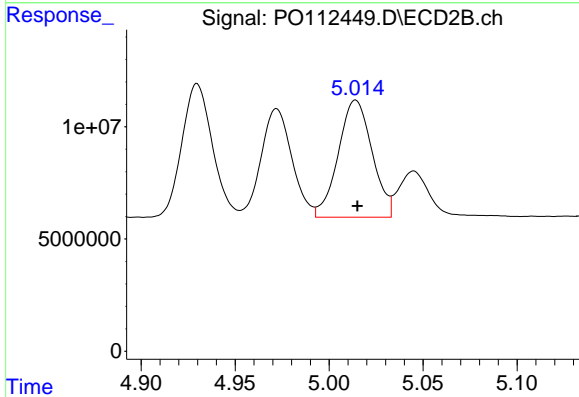
R.T.: 4.972 min  
 Delta R.T.: -0.002 min  
 Response: 55183226  
 Conc: 325.99 ng/ml



#23 AR-1248-3

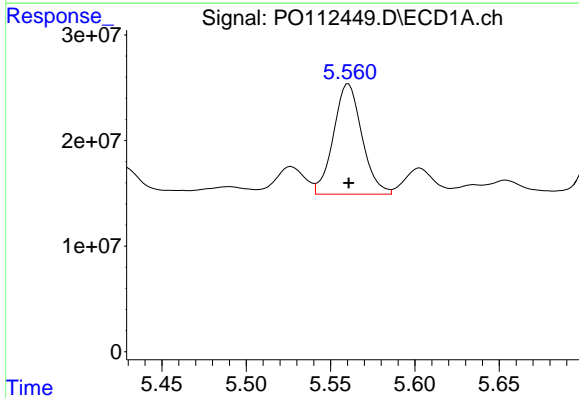
R.T.: 5.208 min  
 Delta R.T.: 0.000 min  
 Response: 114941627  
 Conc: 334.42 ng/ml

Instrument :  
 ECD\_O  
 ClientSampleId :  
 AR1660CCC500



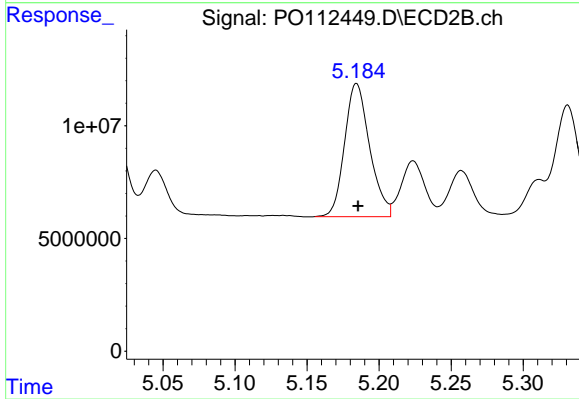
#23 AR-1248-3

R.T.: 5.014 min  
 Delta R.T.: 0.000 min  
 Response: 65486808  
 Conc: 368.63 ng/ml



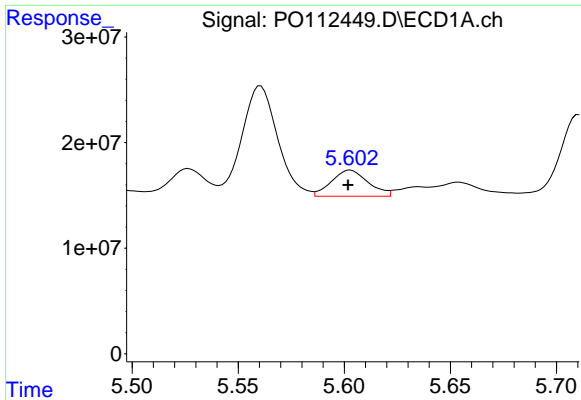
#24 AR-1248-4

R.T.: 5.561 min  
 Delta R.T.: 0.000 min  
 Response: 122708033  
 Conc: 241.51 ng/ml



#24 AR-1248-4

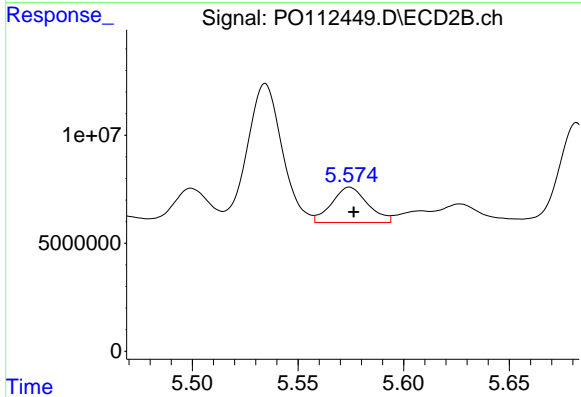
R.T.: 5.184 min  
 Delta R.T.: -0.001 min  
 Response: 71565627  
 Conc: 343.48 ng/ml



#25 AR-1248-5

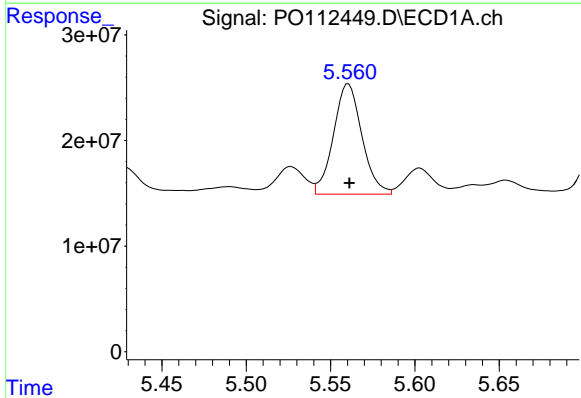
R.T.: 5.603 min  
 Delta R.T.: 0.001 min  
 Response: 29702246  
 Conc: 84.96 ng/ml

Instrument :  
 ECD\_O  
 ClientSampleId :  
 AR1660CCC500



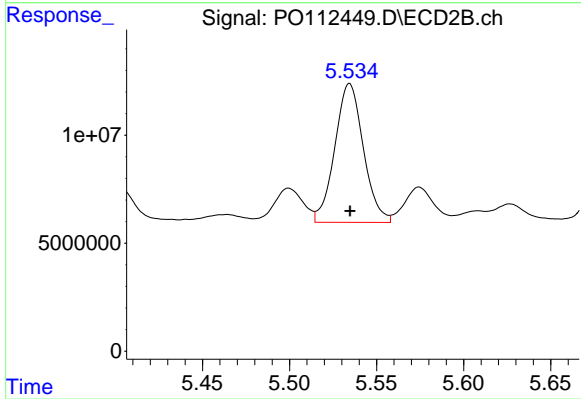
#25 AR-1248-5

R.T.: 5.574 min  
 Delta R.T.: -0.002 min  
 Response: 19309392  
 Conc: 89.91 ng/ml



#26 AR-1254-1

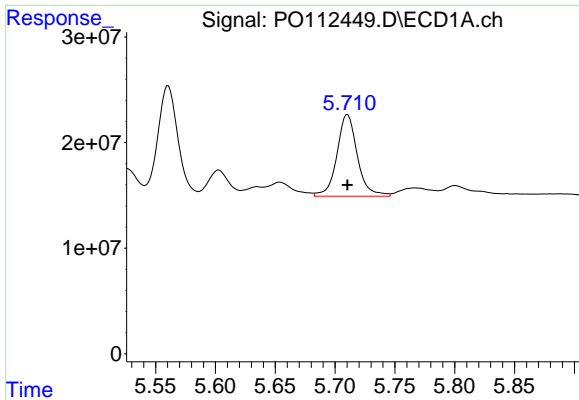
R.T.: 5.561 min  
 Delta R.T.: 0.000 min  
 Response: 122708033  
 Conc: 223.53 ng/ml



#26 AR-1254-1

R.T.: 5.535 min  
 Delta R.T.: 0.000 min  
 Response: 73508580  
 Conc: 223.69 ng/ml

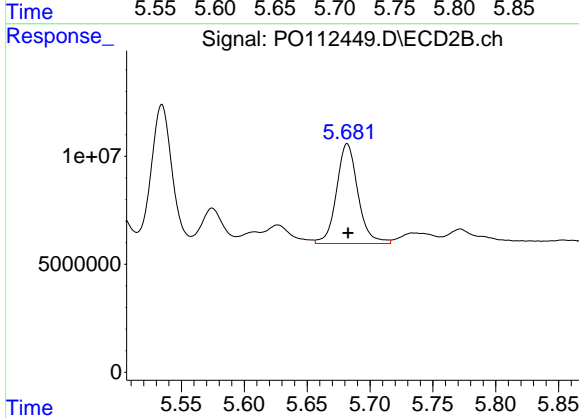




#27 AR-1254-2

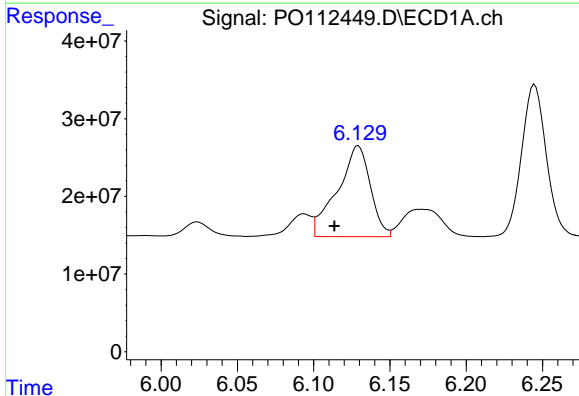
R.T.: 5.710 min  
 Delta R.T.: 0.000 min  
 Response: 92001608  
 Conc: 189.34 ng/ml

Instrument :  
 ECD\_O  
 ClientSampleId :  
 AR1660CCC500



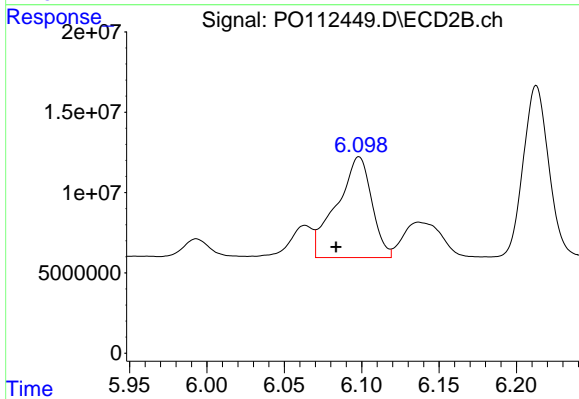
#27 AR-1254-2

R.T.: 5.682 min  
 Delta R.T.: 0.000 min  
 Response: 54756440  
 Conc: 189.15 ng/ml



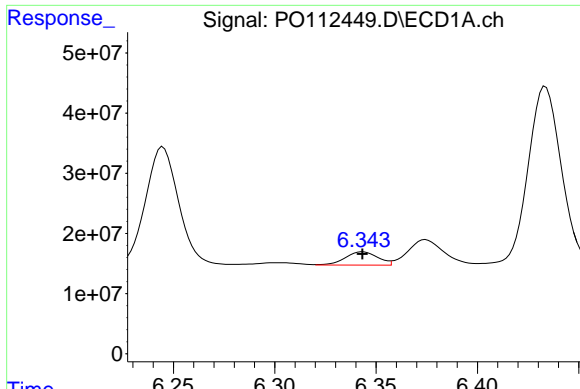
#28 AR-1254-3

R.T.: 6.129 min  
 Delta R.T.: 0.016 min  
 Response: 175722559  
 Conc: 236.10 ng/ml



#28 AR-1254-3

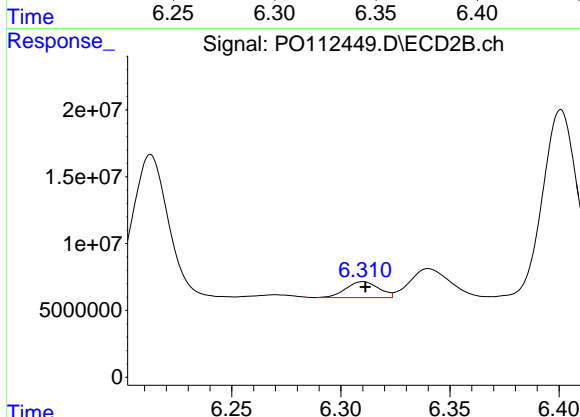
R.T.: 6.098 min  
 Delta R.T.: 0.015 min  
 Response: 98498966  
 Conc: 230.43 ng/ml



#29 AR-1254-4

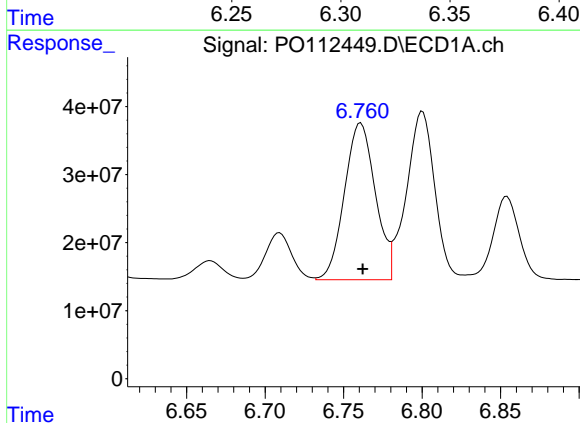
R.T.: 6.343 min  
 Delta R.T.: 0.000 min  
 Response: 24592398  
 Conc: 44.74 ng/ml

Instrument :  
 ECD\_O  
 ClientSampleId :  
 AR1660CCC500



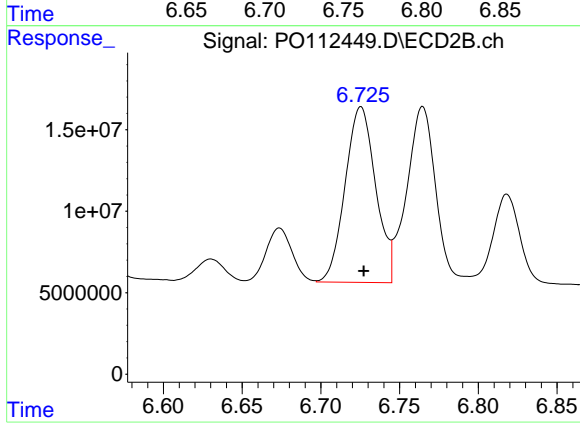
#29 AR-1254-4

R.T.: 6.310 min  
 Delta R.T.: -0.001 min  
 Response: 12480835  
 Conc: 45.72 ng/ml



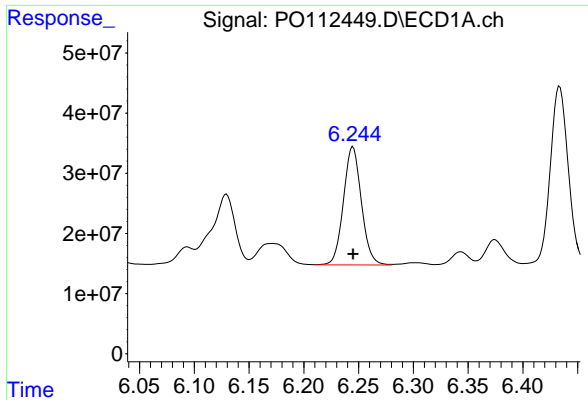
#30 AR-1254-5

R.T.: 6.761 min  
 Delta R.T.: -0.001 min  
 Response: 315530368  
 Conc: 445.78 ng/ml



#30 AR-1254-5

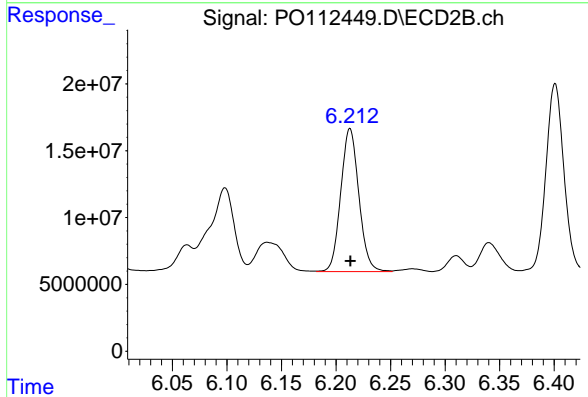
R.T.: 6.725 min  
 Delta R.T.: -0.002 min  
 Response: 145512227  
 Conc: 435.64 ng/ml



#31 AR-1260-1

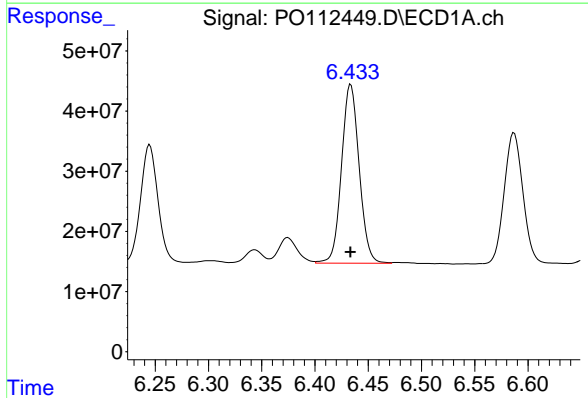
R.T.: 6.245 min  
 Delta R.T.: 0.000 min  
 Response: 223135871  
 Conc: 507.90 ng/ml

Instrument :  
 ECD\_O  
 ClientSampleId :  
 AR1660CCC500



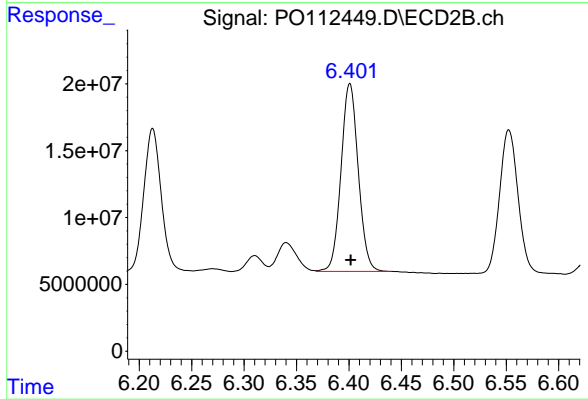
#31 AR-1260-1

R.T.: 6.213 min  
 Delta R.T.: 0.000 min  
 Response: 123763941  
 Conc: 498.02 ng/ml



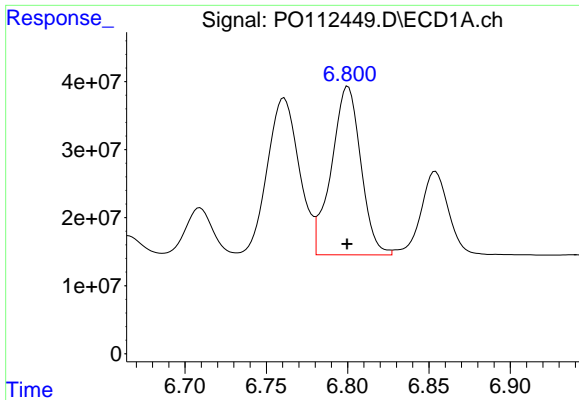
#32 AR-1260-2

R.T.: 6.434 min  
 Delta R.T.: 0.000 min  
 Response: 342977811  
 Conc: 498.59 ng/ml



#32 AR-1260-2

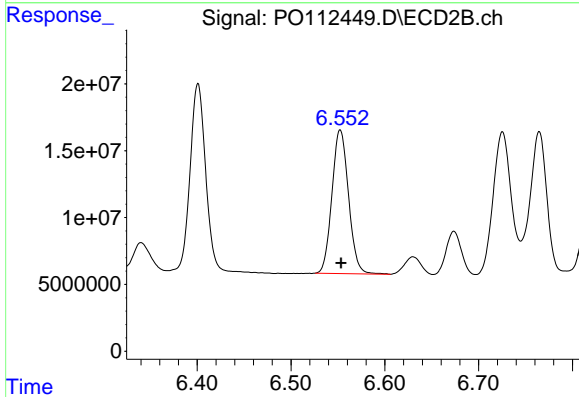
R.T.: 6.401 min  
 Delta R.T.: 0.000 min  
 Response: 160635459  
 Conc: 487.52 ng/ml



#33 AR-1260-3

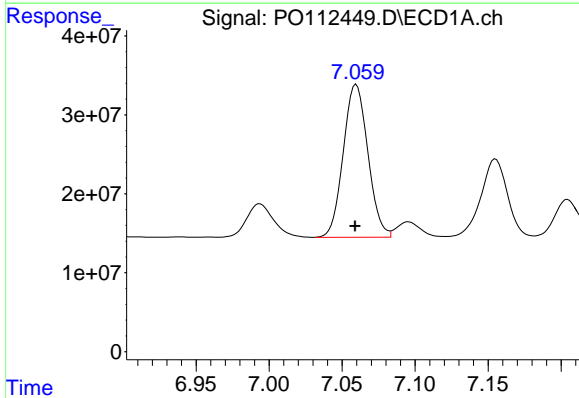
R.T.: 6.800 min  
 Delta R.T.: 0.000 min  
 Response: 311301602  
 Conc: 529.41 ng/ml

Instrument :  
 ECD\_O  
 ClientSampleId :  
 AR1660CCC500



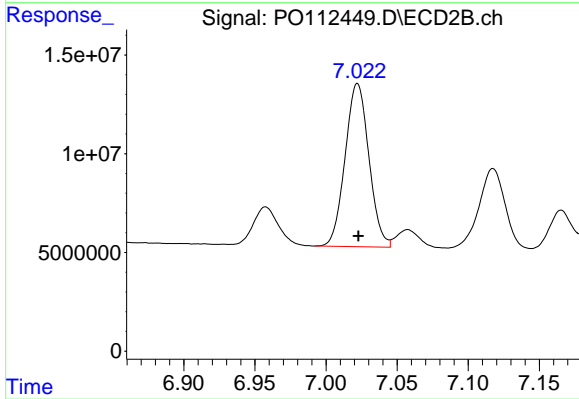
#33 AR-1260-3

R.T.: 6.553 min  
 Delta R.T.: 0.000 min  
 Response: 132040484  
 Conc: 513.93 ng/ml



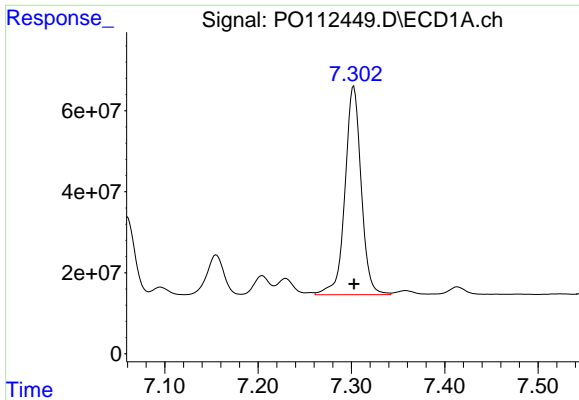
#34 AR-1260-4

R.T.: 7.060 min  
 Delta R.T.: 0.000 min  
 Response: 227144327  
 Conc: 503.64 ng/ml



#34 AR-1260-4

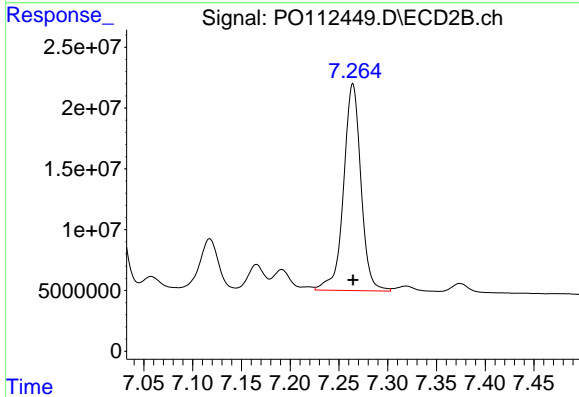
R.T.: 7.022 min  
 Delta R.T.: 0.000 min  
 Response: 96415788  
 Conc: 503.97 ng/ml



#35 AR-1260-5

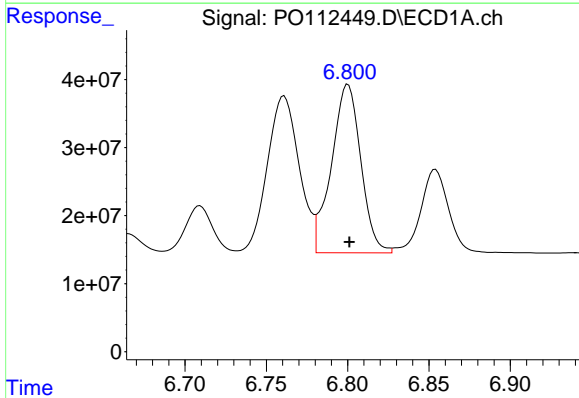
R.T.: 7.302 min  
 Delta R.T.: 0.000 min  
 Response: 620209832  
 Conc: 500.52 ng/ml

Instrument :  
 ECD\_O  
 ClientSampleId :  
 AR1660CCC500



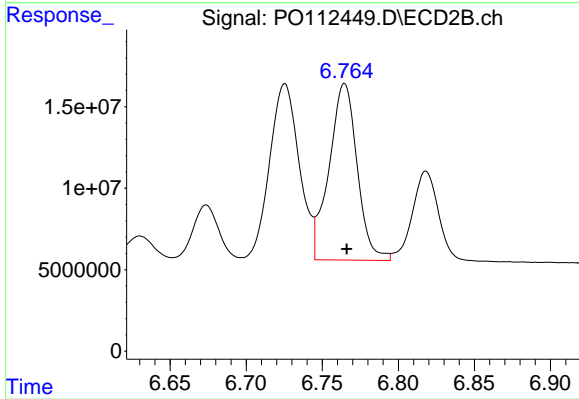
#35 AR-1260-5

R.T.: 7.264 min  
 Delta R.T.: 0.000 min  
 Response: 210549523  
 Conc: 510.80 ng/ml



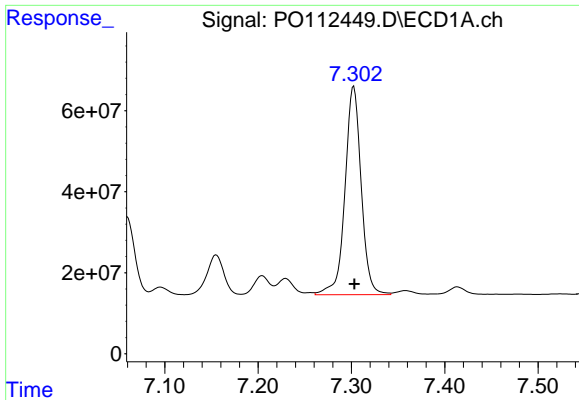
#36 AR-1262-1

R.T.: 6.800 min  
 Delta R.T.: 0.000 min  
 Response: 311301602  
 Conc: 335.02 ng/ml



#36 AR-1262-1

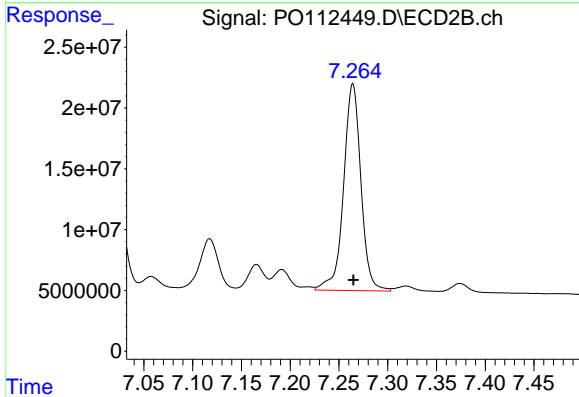
R.T.: 6.765 min  
 Delta R.T.: -0.002 min  
 Response: 139294139  
 Conc: 335.79 ng/ml



#37 AR-1262-2

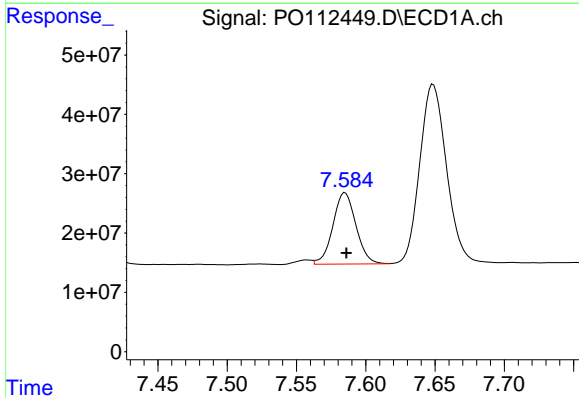
R.T.: 7.302 min  
 Delta R.T.: 0.000 min  
 Response: 620209832  
 Conc: 417.08 ng/ml

Instrument :  
 ECD\_O  
 ClientSampleId :  
 AR1660CCC500



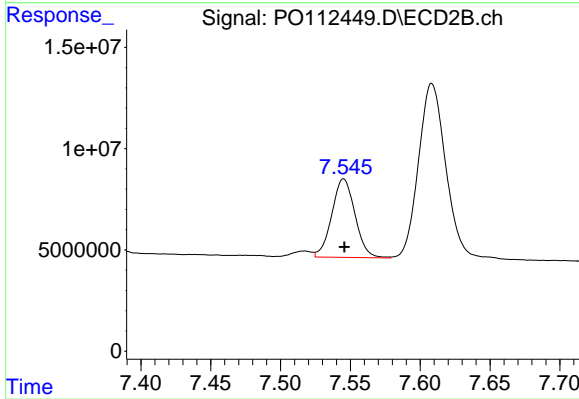
#37 AR-1262-2

R.T.: 7.264 min  
 Delta R.T.: 0.000 min  
 Response: 210549523  
 Conc: 408.40 ng/ml



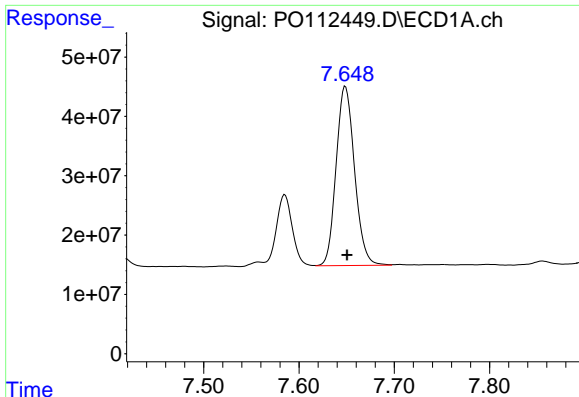
#38 AR-1262-3

R.T.: 7.585 min  
 Delta R.T.: 0.000 min  
 Response: 139309011  
 Conc: 236.02 ng/ml



#38 AR-1262-3

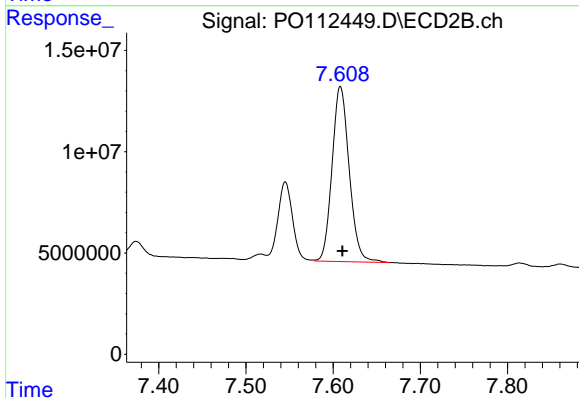
R.T.: 7.545 min  
 Delta R.T.: 0.000 min  
 Response: 44932709  
 Conc: 240.89 ng/ml



#39 AR-1262-4

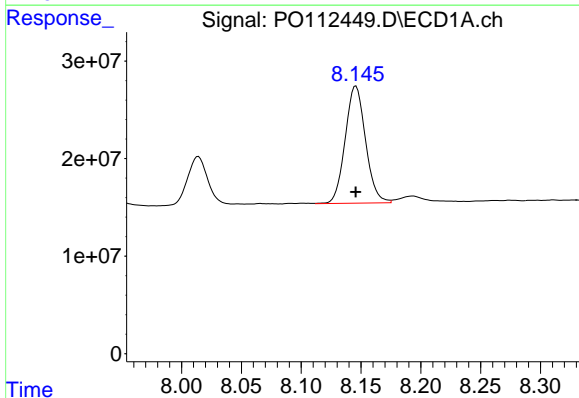
R.T.: 7.649 min  
 Delta R.T.: -0.002 min  
 Response: 405838665  
 Conc: 408.22 ng/ml

Instrument :  
 ECD\_O  
 ClientSampleId :  
 AR1660CCC500



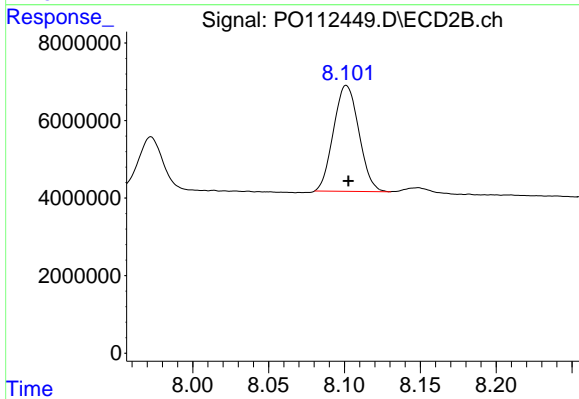
#39 AR-1262-4

R.T.: 7.608 min  
 Delta R.T.: -0.002 min  
 Response: 117881464  
 Conc: 409.16 ng/ml



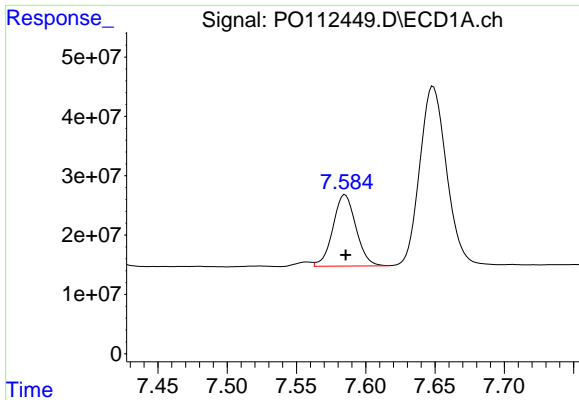
#40 AR-1262-5

R.T.: 8.146 min  
 Delta R.T.: 0.000 min  
 Response: 142223862  
 Conc: 327.66 ng/ml



#40 AR-1262-5

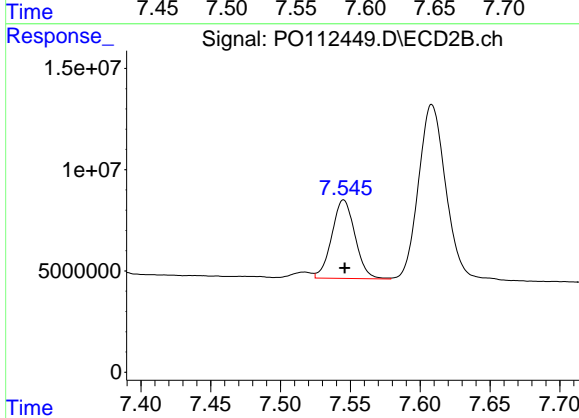
R.T.: 8.101 min  
 Delta R.T.: -0.001 min  
 Response: 31866857  
 Conc: 320.26 ng/ml



#41 AR-1268-1

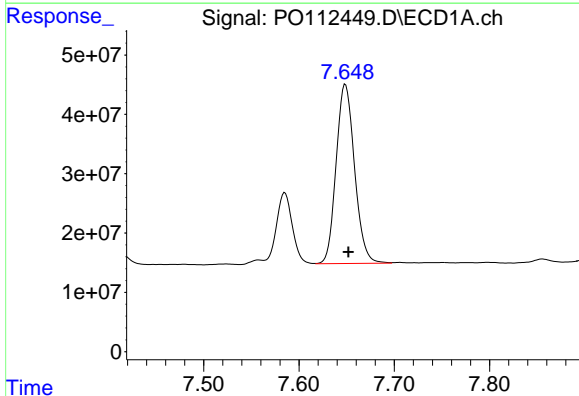
R.T.: 7.585 min  
 Delta R.T.: 0.000 min  
 Response: 139309011  
 Conc: 79.55 ng/ml

Instrument :  
 ECD\_O  
 ClientSampleId :  
 AR1660CCC500



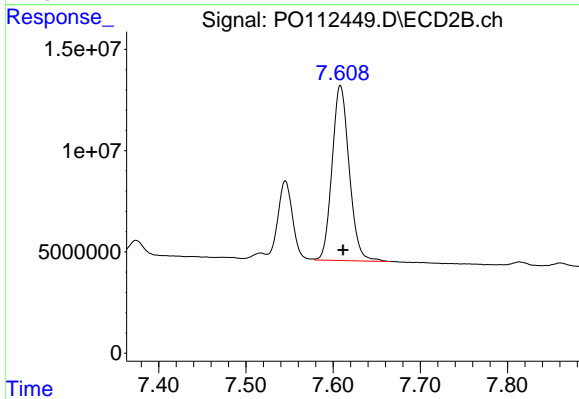
#41 AR-1268-1

R.T.: 7.545 min  
 Delta R.T.: 0.000 min  
 Response: 44932709  
 Conc: 86.77 ng/ml



#42 AR-1268-2

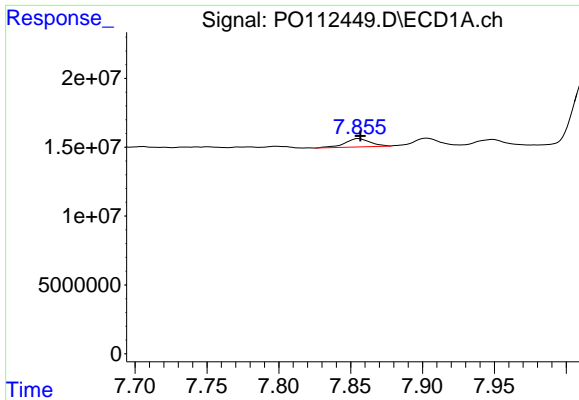
R.T.: 7.649 min  
 Delta R.T.: -0.003 min  
 Response: 405838665  
 Conc: 275.51 ng/ml



#42 AR-1268-2

R.T.: 7.608 min  
 Delta R.T.: -0.003 min  
 Response: 117881464  
 Conc: 277.33 ng/ml

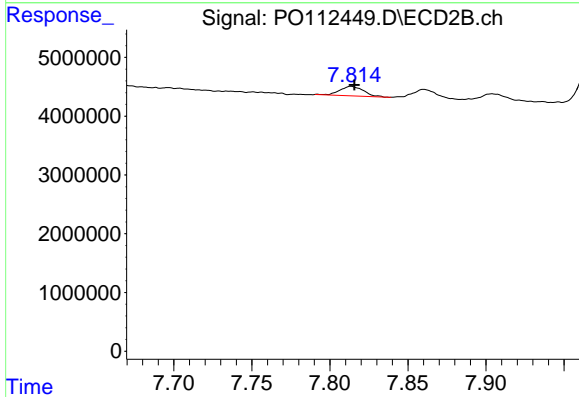




#43 AR-1268-3

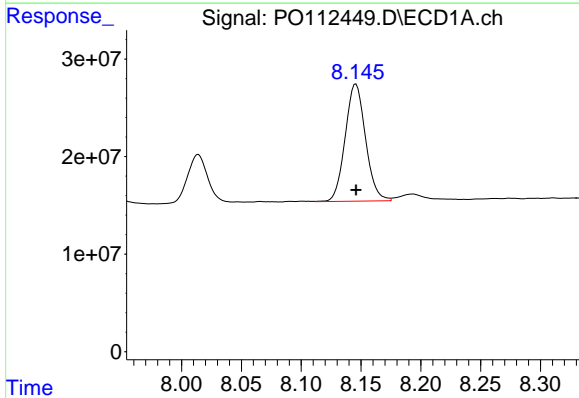
R.T.: 7.855 min  
 Delta R.T.: -0.001 min  
 Response: 7420463  
 Conc: 5.93 ng/ml

Instrument :  
 ECD\_O  
 ClientSampleId :  
 AR1660CCC500



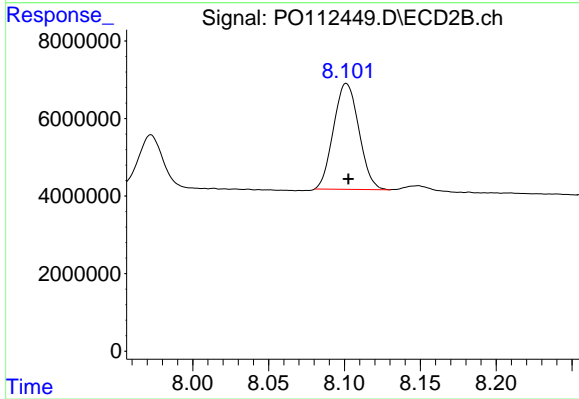
#43 AR-1268-3

R.T.: 7.814 min  
 Delta R.T.: -0.002 min  
 Response: 1673577  
 Conc: 5.21 ng/ml



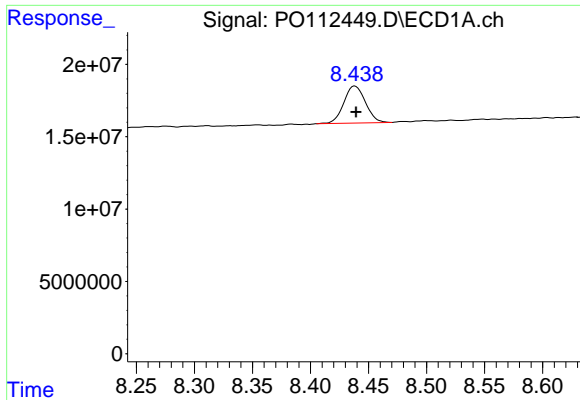
#44 AR-1268-4

R.T.: 8.146 min  
 Delta R.T.: 0.000 min  
 Response: 142223862  
 Conc: 295.15 ng/ml



#44 AR-1268-4

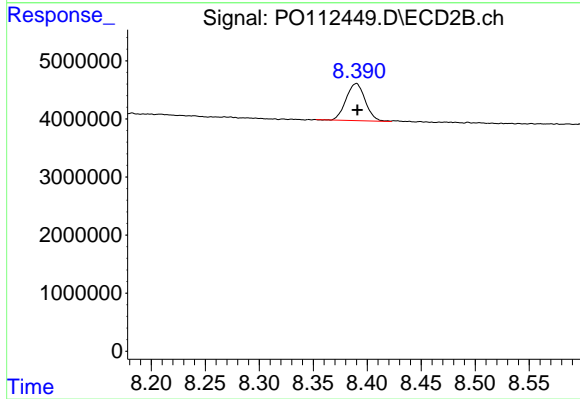
R.T.: 8.101 min  
 Delta R.T.: -0.001 min  
 Response: 31866857  
 Conc: 286.33 ng/ml



#45 AR-1268-5

R.T.: 8.438 min  
 Delta R.T.: 0.000 min  
 Response: 33266150  
 Conc: 9.91 ng/ml

Instrument :  
 ECD\_O  
 ClientSampleId :  
 AR1660CCC500



#45 AR-1268-5

R.T.: 8.390 min  
 Delta R.T.: -0.001 min  
 Response: 7891064  
 Conc: 10.78 ng/ml