

Data Path : Z:\pestpcbsrv\HPCHEM1\ECD_0\Data\P0072425\
 Data File : PO112450.D
 Signal(s) : Signal #1: ECD1A.ch Signal #2: ECD2B.ch
 Acq On : 24 Jul 2025 09:21
 Operator : YP/AJ
 Sample : AR1242CCC500
 Misc :
 ALS Vial : 4 Sample Multiplier: 1

Instrument :
 ECD_0
 ClientSampleId :
 AR1242CCC500

Integration File signal 1: autoint1.e
 Integration File signal 2: autoint2.e
 Quant Time: Jul 24 23:31:44 2025
 Quant Method : Z:\pestpcbsrv\HPCHEM1\ECD_0\methods\P0072325.M
 Quant Title : GC EXTRACTABLES
 QLast Update : Thu Jul 24 04:54:06 2025
 Response via : Initial Calibration
 Integrator: ChemStation

Volume Inj. : 2 µl
 Signal #1 Phase : ZB-MR1 Signal #2 Phase: ZB-MR2
 Signal #1 Info : 30Mx0.32mmx 0.50µ Signal #2 Info : 30M x 0.32mm x 0.25µm

Compound	RT#1	RT#2	Resp#1	Resp#2	ng/ml	ng/ml
----------	------	------	--------	--------	-------	-------

System Monitoring Compounds

1) SA Tetrachlo...	3.669	3.662	459.0E6	272.8E6	56.450	54.906
2) SA Decachlor...	8.693	8.639	401.9E6	92523787	54.971	52.359

Target Compounds

3) L1 AR-1016-1	4.756	4.737	127.5E6	79145573	474.955	452.242
4) L1 AR-1016-2	4.774	4.755	196.3E6	118.4E6	483.472	454.489
5) L1 AR-1016-3	4.831	4.930	124.1E6	62049084	474.400	456.356
6) L1 AR-1016-4	4.951	4.973	100.2E6	48118759	473.015	433.171
7) L1 AR-1016-5	5.208	5.185	107.9E6	67086848	491.829	468.147
8) L2 AR-1221-1	3.880	3.869	11922902	8419194	123.349	125.163
9) L2 AR-1221-2	3.967	3.957	17626109	12565530	245.277	247.704
10) L2 AR-1221-3	4.043	4.031	65100983	43805683	273.866	276.325
11) L3 AR-1232-1	4.043	4.031	65100983	43805683	348.173	346.153
12) L3 AR-1232-2	4.534	4.755	98111454	118.4E6	911.607	902.690
13) L3 AR-1232-3	4.774	4.930	196.3E6	62049084	949.455	923.393
14) L3 AR-1232-4	4.951	5.015	100.2E6	61414834	956.693	1026.505
15) L3 AR-1232-5	4.993	5.185	72604915	67086848	1069.593	1028.891
16) L4 AR-1242-1	4.756	4.737	127.5E6	79145573	514.806	499.675
17) L4 AR-1242-2	4.774	4.755	196.3E6	118.4E6	530.962	506.671
18) L4 AR-1242-3	4.831	4.930	124.1E6	62049084	524.547	512.002
19) L4 AR-1242-4	4.951	5.015	100.2E6	61414834	515.776	500.368
20) L4 AR-1242-5	5.602	5.534	108.5E6	81961508	507.178	509.169
21) L5 AR-1248-1	4.756	4.737	127.5E6	79145573	680.854	651.354
22) L5 AR-1248-2	4.993	4.973	72604915	48118759	284.600	284.256
23) L5 AR-1248-3	5.208	5.015	107.9E6	61414834	314.058	345.712
24) L5 AR-1248-4	5.561	5.185	136.2E6	67086848	268.050	321.984
25) L5 AR-1248-5	5.602	5.575	108.5E6	69217962	310.344	322.296
26) L6 AR-1254-1	5.561	5.534	136.2E6	81961508	248.088	249.410
27) L6 AR-1254-2	5.710	5.682	39260081	26838114	80.796	92.708
28) L6 AR-1254-3	6.114	6.082	39658472	28801361	53.284	67.378 #
29) L6 AR-1254-4	6.343	6.310	37711461	19649922	68.603	71.987
30) L6 AR-1254-5	6.763	6.725	20201767	6544123	28.541	19.592 #
31) L7 AR-1260-1	6.233	6.226	10608501	10401127	24.147	41.854 #
32) L7 AR-1260-2	6.434	6.399	8896679	3088475	12.933	9.373 #
33) L7 AR-1260-3	6.763f	6.551	20201767	2481190	34.356	9.657 #
34) L7 AR-1260-4	7.061	7.016	3578101	1111150	7.934	5.808 #
35) L7 AR-1260-5	7.300	7.241	3957256	3534284	3.194	8.574 #
36) L8 AR-1262-1	6.839f	6.800	3504866	3341204	3.772	8.054 #
37) L8 AR-1262-2	7.300	7.241	3957256	3534284	2.661	6.855 #
38) L8 AR-1262-3	7.593	7.541	1240985	125641	2.102	0.674 #
39) L8 AR-1262-4	7.651	7.603	949387	142988	0.955	0.496 #
40) L8 AR-1262-5	8.159	8.103	2140135	116131	4.930	1.167 #
41) L9 AR-1268-1	7.593	7.541	1240985	125641	0.709	0.243 #

Data Path : Z:\pestpcbsrv\HPCHEM1\ECD_0\Data\P0072425\
 Data File : P0112450.D
 Signal(s) : Signal #1: ECD1A.ch Signal #2: ECD2B.ch
 Acq On : 24 Jul 2025 09:21
 Operator : YP/AJ
 Sample : AR1242CCC500
 Misc :
 ALS Vial : 4 Sample Multiplier: 1

Instrument :
 ECD_0
 ClientSampleId :
 AR1242CCC500

Integration File signal 1: autoint1.e
 Integration File signal 2: autoint2.e
 Quant Time: Jul 24 23:31:44 2025
 Quant Method : Z:\pestpcbsrv\HPCHEM1\ECD_0\methods\P0072325.M
 Quant Title : GC EXTRACTABLES
 QLast Update : Thu Jul 24 04:54:06 2025
 Response via : Initial Calibration
 Integrator: ChemStation

Volume Inj. : 2 µl
 Signal #1 Phase : ZB-MR1 Signal #2 Phase: ZB-MR2
 Signal #1 Info : 30Mx0.32mmx 0.50µ Signal #2 Info : 30M x 0.32mm x 0.25µm

	Compound	RT#1	RT#2	Resp#1	Resp#2	ng/ml	ng/ml
42)	L9 AR-1268-2	7.651	7.603	949387	142988	0.645	0.336 #
43)	L9 AR-1268-3	7.861	7.812	-926814	462228	N.D.	1.439 #
44)	L9 AR-1268-4	8.159	8.103	2140135	116131	4.441	1.043 #
45)	L9 AR-1268-5	8.441	8.387	3682046	580611	1.097	0.793 #

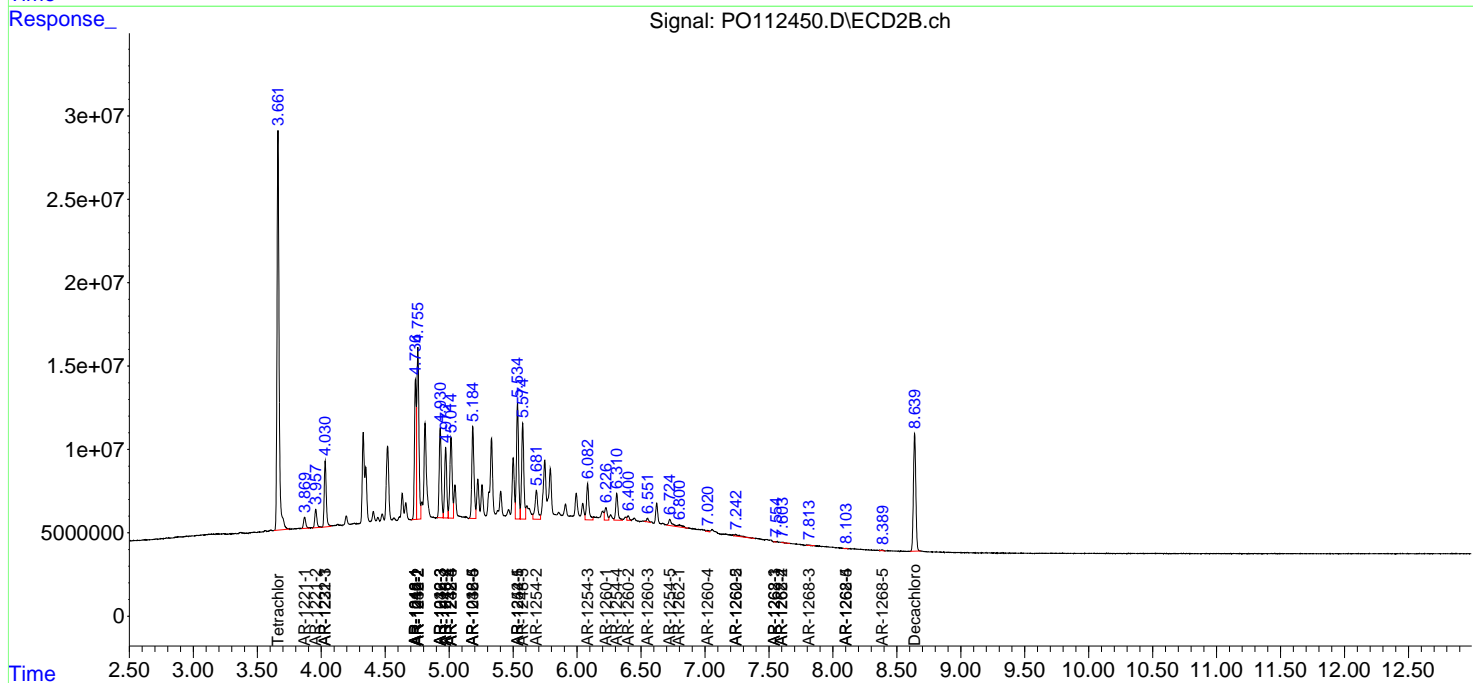
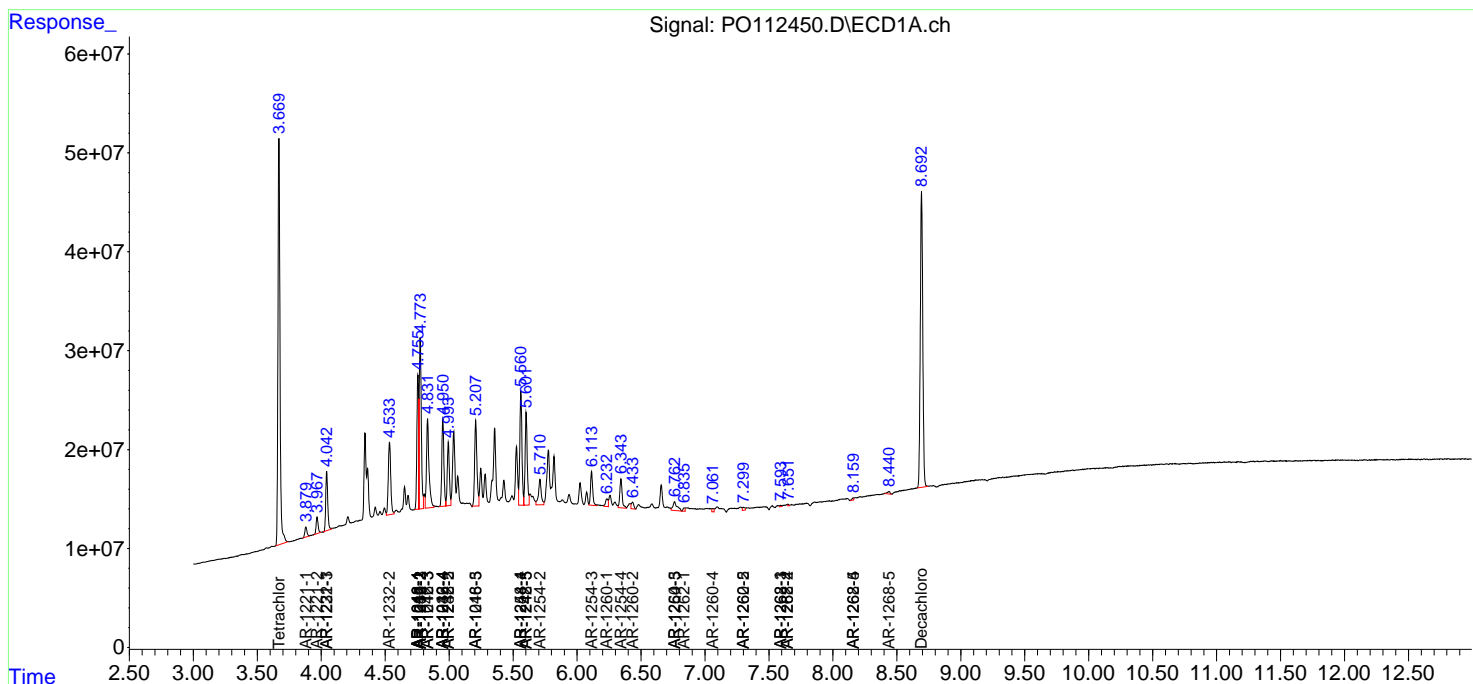
(f)=RT Delta > 1/2 Window (#)=Amounts differ by > 25% (m)=manual int.

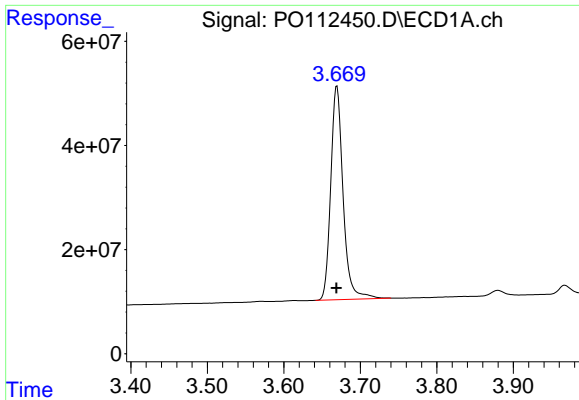
Data Path : Z:\pestpcbsrv\HPCHEM1\ECD_O\Data\PO072425\
 Data File : PO112450.D
 Signal(s) : Signal #1: ECD1A.ch Signal #2: ECD2B.ch
 Acq On : 24 Jul 2025 09:21
 Operator : YP/AJ
 Sample : AR1242CCC500
 Misc :
 ALS Vial : 4 Sample Multiplier: 1

Instrument :
 ECD_O
 ClientSampleId :
 AR1242CCC500

Integration File signal 1: autoint1.e
 Integration File signal 2: autoint2.e
 Quant Time: Jul 24 23:31:44 2025
 Quant Method : Z:\pestpcbsrv\HPCHEM1\ECD_O\methods\PO072325.M
 Quant Title : GC EXTRACTABLES
 QLast Update : Thu Jul 24 04:54:06 2025
 Response via : Initial Calibration
 Integrator: ChemStation

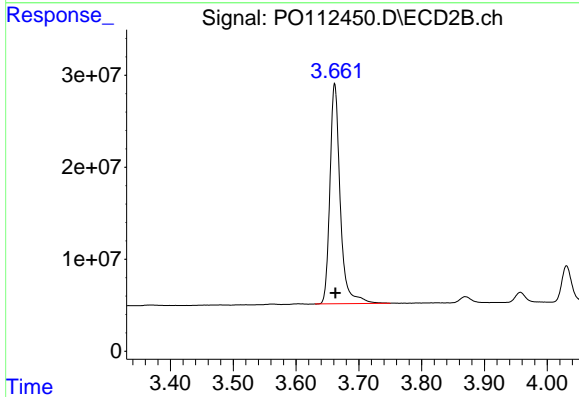
Volume Inj. : 2 µl
 Signal #1 Phase : ZB-MR1 Signal #2 Phase: ZB-MR2
 Signal #1 Info : 30Mx0.32mmx 0.50µ Signal #2 Info : 30M x 0.32mm x 0.25µm



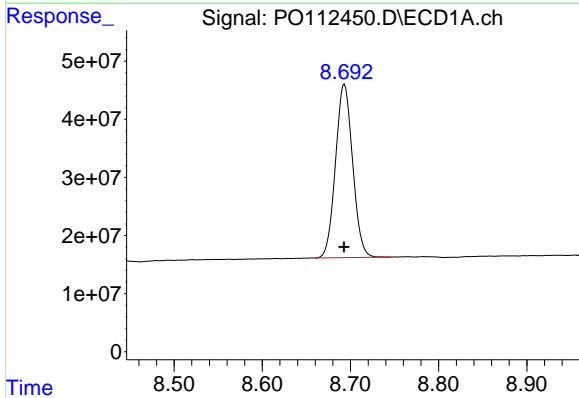


#1 Tetrachloro-m-xylene
 R.T.: 3.669 min
 Delta R.T.: 0.000 min
 Response: 459023411
 Conc: 56.45 ng/ml

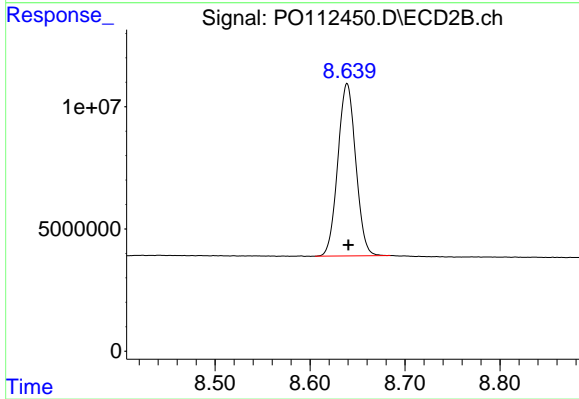
Instrument :
 ECD_O
 ClientSampleId :
 AR1242CCC500



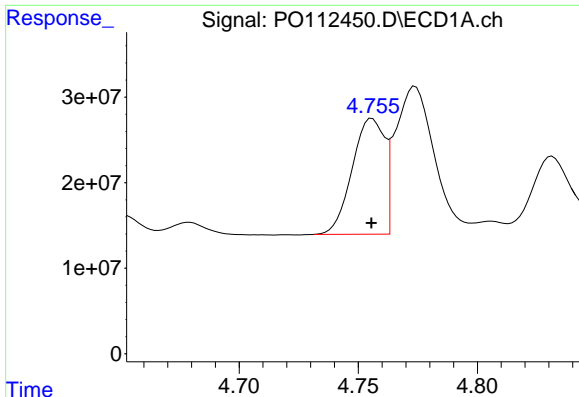
#1 Tetrachloro-m-xylene
 R.T.: 3.662 min
 Delta R.T.: 0.000 min
 Response: 272837385
 Conc: 54.91 ng/ml



#2 Decachlorobiphenyl
 R.T.: 8.693 min
 Delta R.T.: 0.000 min
 Response: 401933558
 Conc: 54.97 ng/ml



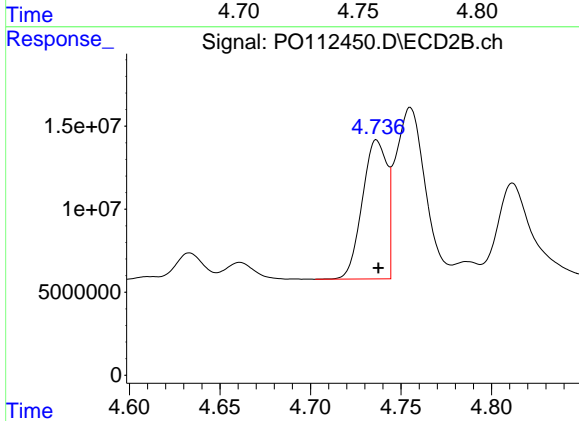
#2 Decachlorobiphenyl
 R.T.: 8.639 min
 Delta R.T.: -0.001 min
 Response: 92523787
 Conc: 52.36 ng/ml



#3 AR-1016-1

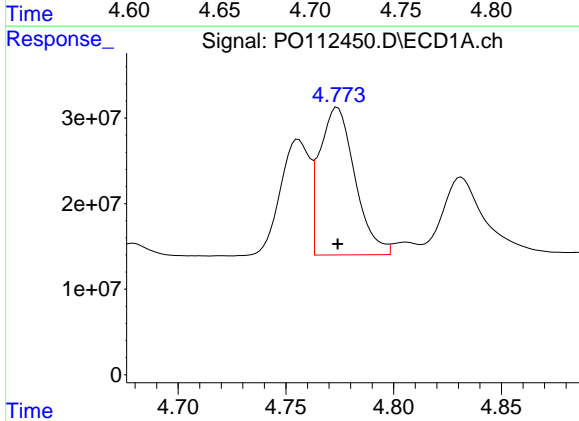
R.T.: 4.756 min
 Delta R.T.: 0.000 min
 Response: 127461799
 Conc: 474.96 ng/ml

Instrument :
 ECD_O
 ClientSampleId :
 AR1242CCC500



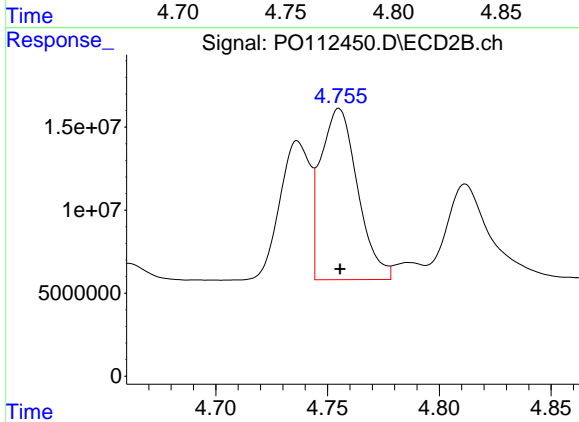
#3 AR-1016-1

R.T.: 4.737 min
 Delta R.T.: -0.001 min
 Response: 79145573
 Conc: 452.24 ng/ml



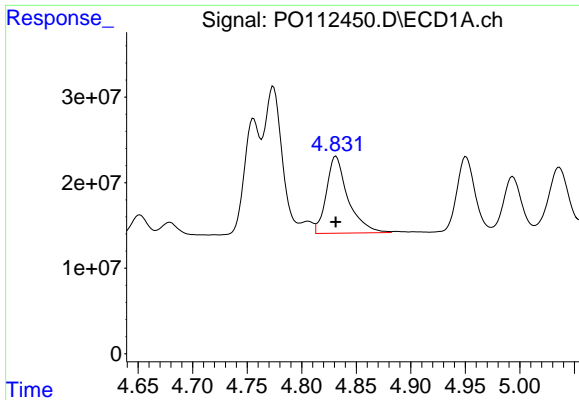
#4 AR-1016-2

R.T.: 4.774 min
 Delta R.T.: 0.000 min
 Response: 196346500
 Conc: 483.47 ng/ml



#4 AR-1016-2

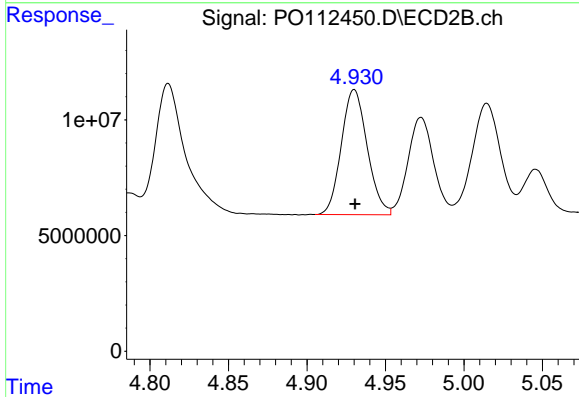
R.T.: 4.755 min
 Delta R.T.: 0.000 min
 Response: 118392091
 Conc: 454.49 ng/ml



#5 AR-1016-3

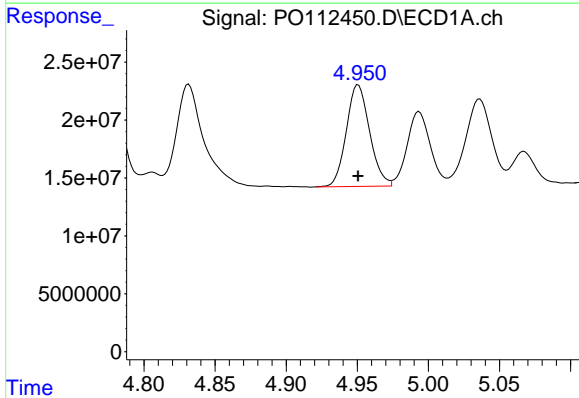
R.T.: 4.831 min
 Delta R.T.: 0.000 min
 Response: 124138208
 Conc: 474.40 ng/ml

Instrument :
 ECD_O
 ClientSampleId :
 AR1242CCC500



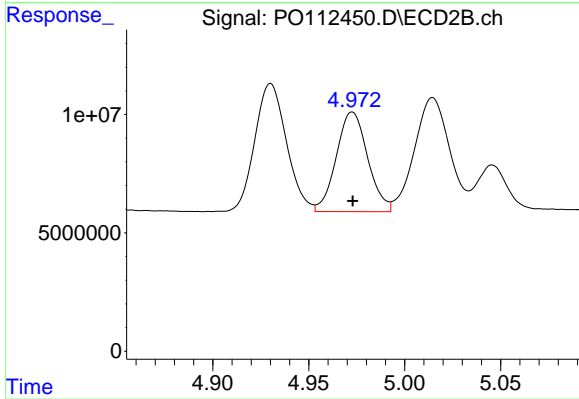
#5 AR-1016-3

R.T.: 4.930 min
 Delta R.T.: 0.000 min
 Response: 62049084
 Conc: 456.36 ng/ml



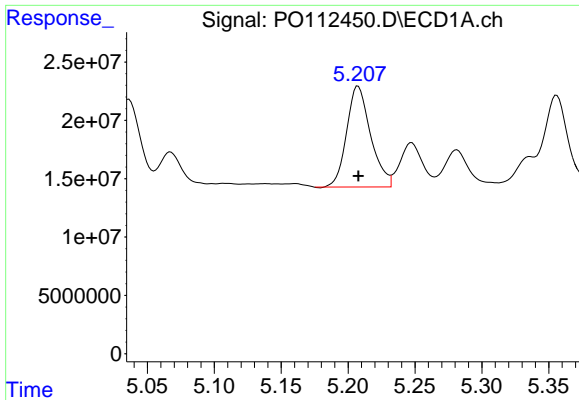
#6 AR-1016-4

R.T.: 4.951 min
 Delta R.T.: 0.000 min
 Response: 100204290
 Conc: 473.02 ng/ml



#6 AR-1016-4

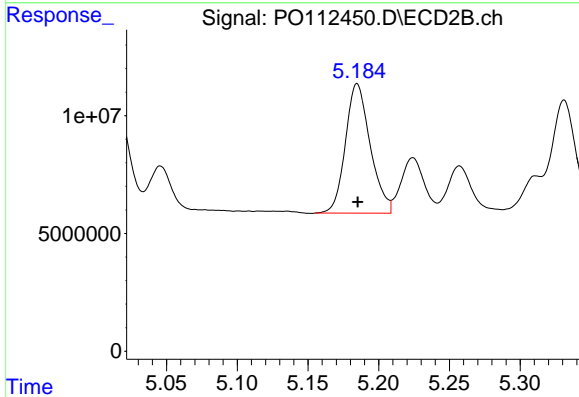
R.T.: 4.973 min
 Delta R.T.: 0.000 min
 Response: 48118759
 Conc: 433.17 ng/ml



#7 AR-1016-5

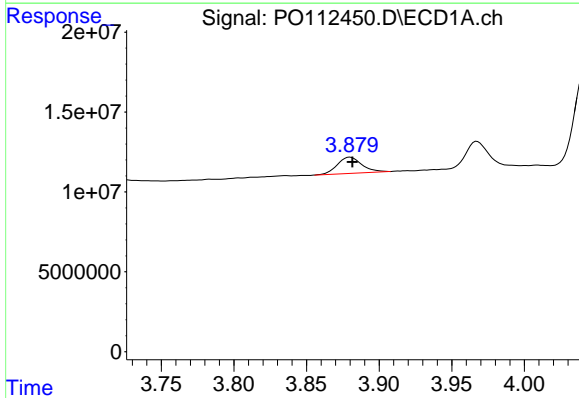
R.T.: 5.208 min
 Delta R.T.: 0.000 min
 Response: 107942073
 Conc: 491.83 ng/ml

Instrument :
 ECD_O
 ClientSampleId :
 AR1242CCC500



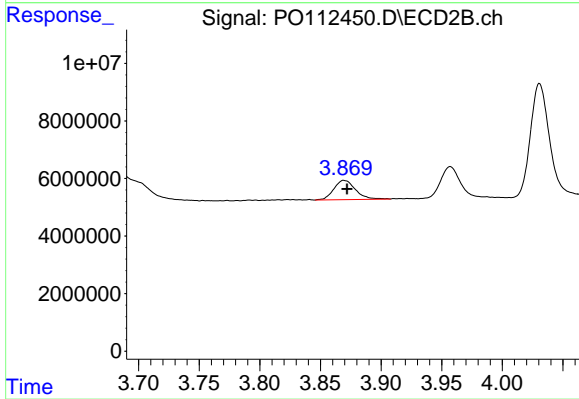
#7 AR-1016-5

R.T.: 5.185 min
 Delta R.T.: 0.000 min
 Response: 67086848
 Conc: 468.15 ng/ml



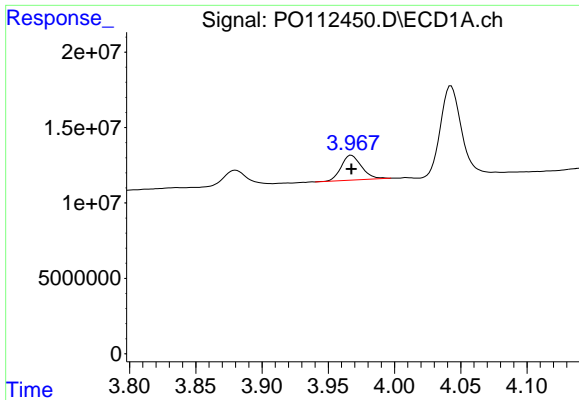
#8 AR-1221-1

R.T.: 3.880 min
 Delta R.T.: -0.002 min
 Response: 11922902
 Conc: 123.35 ng/ml



#8 AR-1221-1

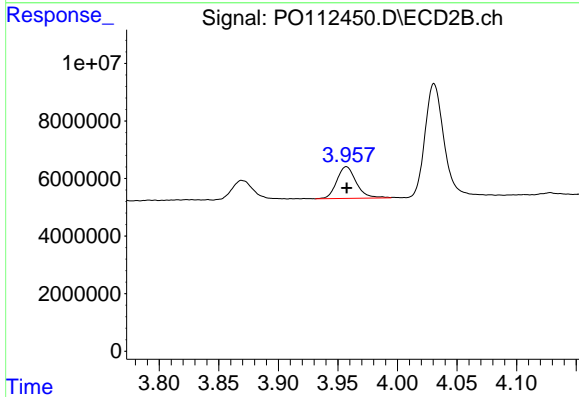
R.T.: 3.869 min
 Delta R.T.: -0.003 min
 Response: 8419194
 Conc: 125.16 ng/ml



#9 AR-1221-2

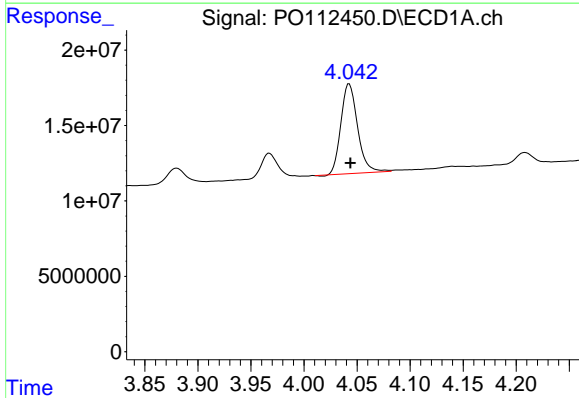
R.T.: 3.967 min
 Delta R.T.: 0.000 min
 Response: 17626109
 Conc: 245.28 ng/ml

Instrument :
 ECD_O
 ClientSampleId :
 AR1242CCC500



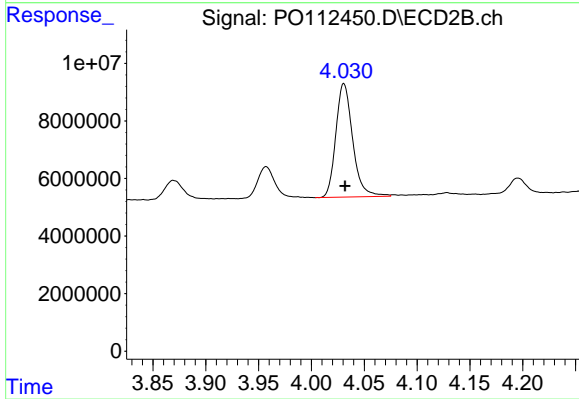
#9 AR-1221-2

R.T.: 3.957 min
 Delta R.T.: 0.000 min
 Response: 12565530
 Conc: 247.70 ng/ml



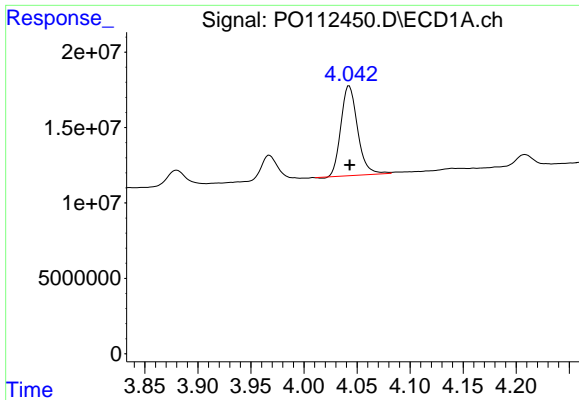
#10 AR-1221-3

R.T.: 4.043 min
 Delta R.T.: 0.000 min
 Response: 65100983
 Conc: 273.87 ng/ml



#10 AR-1221-3

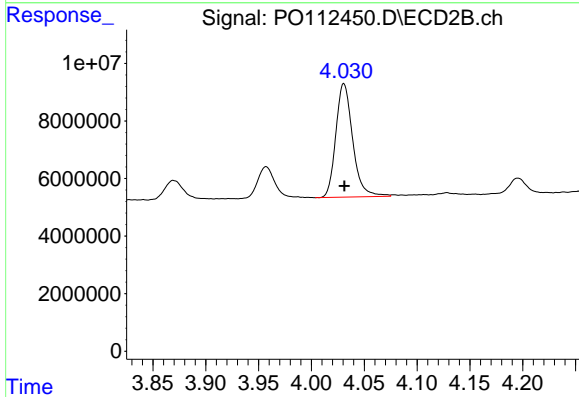
R.T.: 4.031 min
 Delta R.T.: -0.001 min
 Response: 43805683
 Conc: 276.33 ng/ml



#11 AR-1232-1

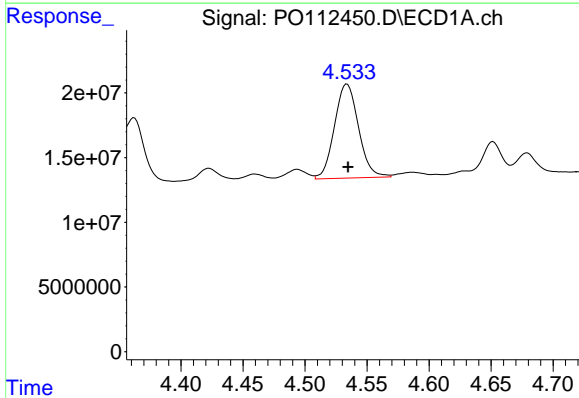
R.T.: 4.043 min
 Delta R.T.: 0.000 min
 Response: 65100983
 Conc: 348.17 ng/ml

Instrument :
 ECD_O
 ClientSampleId :
 AR1242CCC500



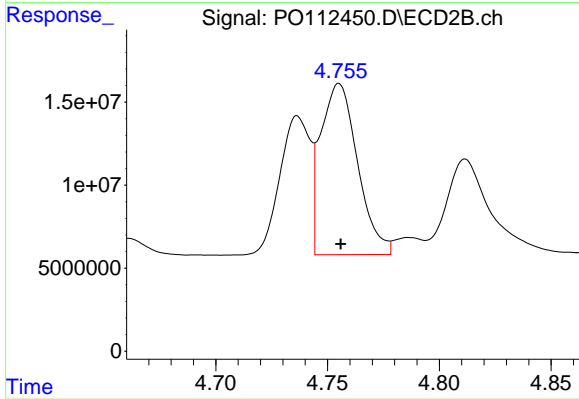
#11 AR-1232-1

R.T.: 4.031 min
 Delta R.T.: 0.000 min
 Response: 43805683
 Conc: 346.15 ng/ml



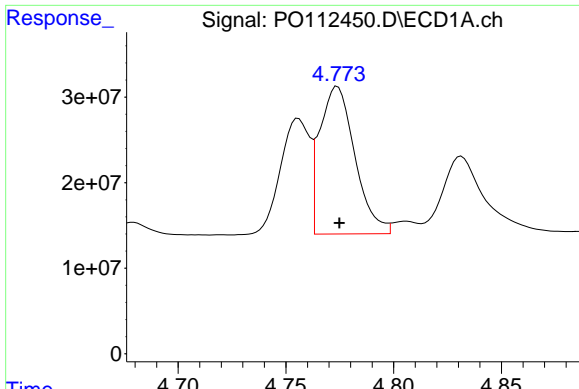
#12 AR-1232-2

R.T.: 4.534 min
 Delta R.T.: 0.000 min
 Response: 98111454
 Conc: 911.61 ng/ml



#12 AR-1232-2

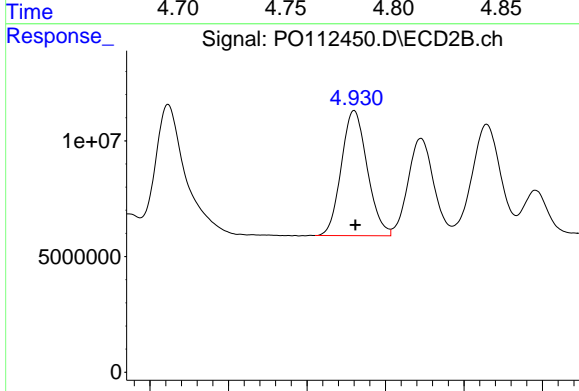
R.T.: 4.755 min
 Delta R.T.: 0.000 min
 Response: 118392091
 Conc: 902.69 ng/ml



#13 AR-1232-3

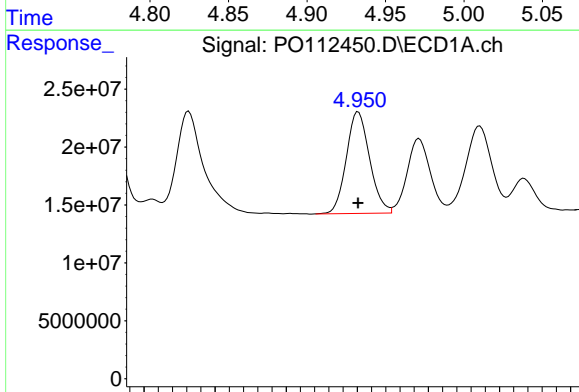
R.T.: 4.774 min
 Delta R.T.: 0.000 min
 Response: 196346500
 Conc: 949.45 ng/ml

Instrument :
 ECD_O
 ClientSampleId :
 AR1242CCC500



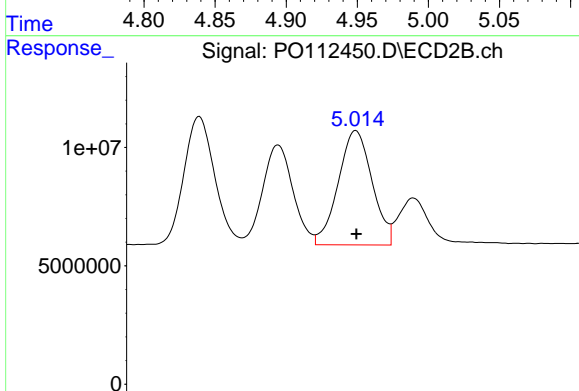
#13 AR-1232-3

R.T.: 4.930 min
 Delta R.T.: 0.000 min
 Response: 62049084
 Conc: 923.39 ng/ml



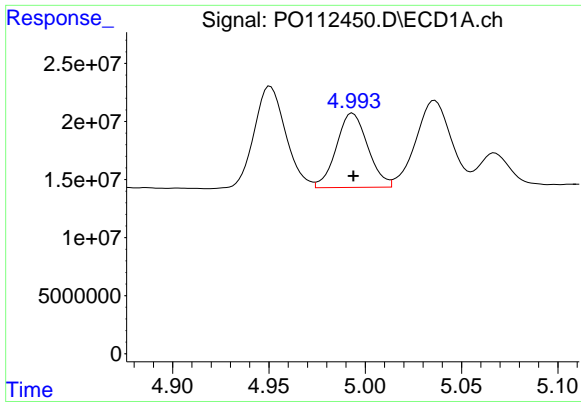
#14 AR-1232-4

R.T.: 4.951 min
 Delta R.T.: 0.000 min
 Response: 100204290
 Conc: 956.69 ng/ml



#14 AR-1232-4

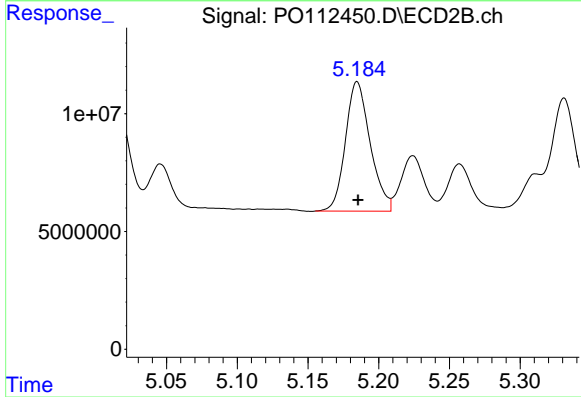
R.T.: 5.015 min
 Delta R.T.: 0.000 min
 Response: 61414834
 Conc: 1026.50 ng/ml



#15 AR-1232-5

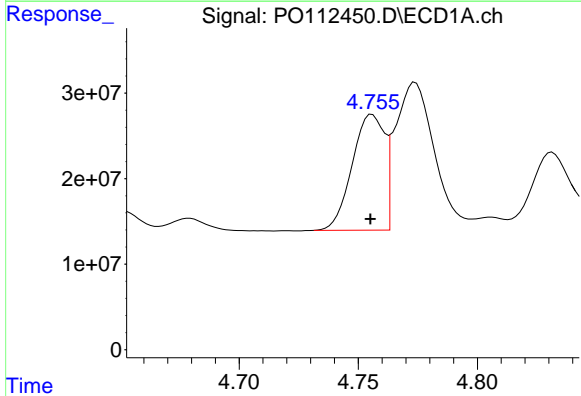
R.T.: 4.993 min
 Delta R.T.: 0.000 min
 Response: 72604915
 Conc: 1069.59 ng/ml

Instrument :
 ECD_O
 ClientSampleId :
 AR1242CCC500



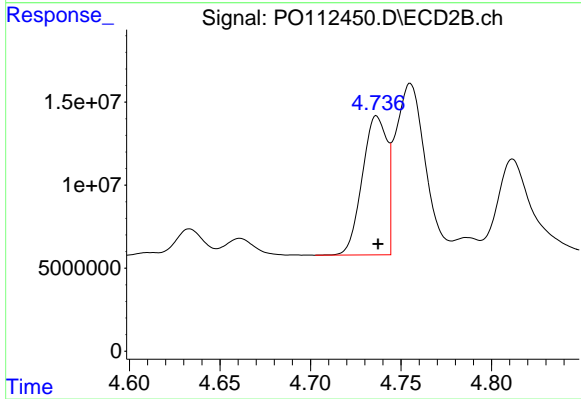
#15 AR-1232-5

R.T.: 5.185 min
 Delta R.T.: 0.000 min
 Response: 67086848
 Conc: 1028.89 ng/ml



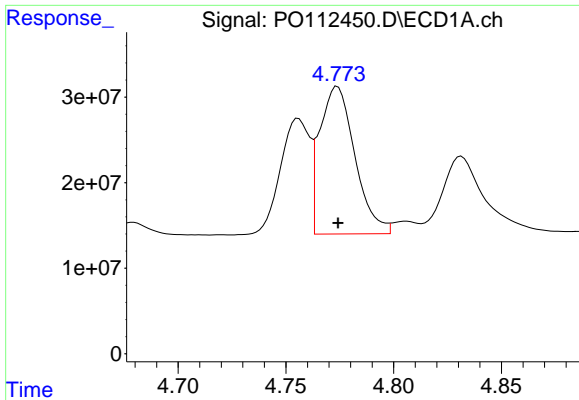
#16 AR-1242-1

R.T.: 4.756 min
 Delta R.T.: 0.000 min
 Response: 127461799
 Conc: 514.81 ng/ml



#16 AR-1242-1

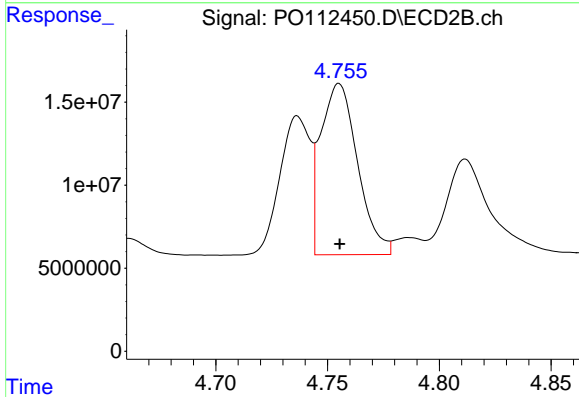
R.T.: 4.737 min
 Delta R.T.: 0.000 min
 Response: 79145573
 Conc: 499.68 ng/ml



#17 AR-1242-2

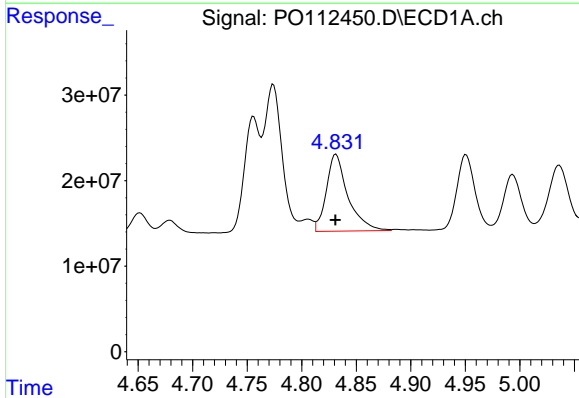
R.T.: 4.774 min
 Delta R.T.: 0.000 min
 Response: 196346500
 Conc: 530.96 ng/ml

Instrument :
 ECD_O
 ClientSampleId :
 AR1242CCC500



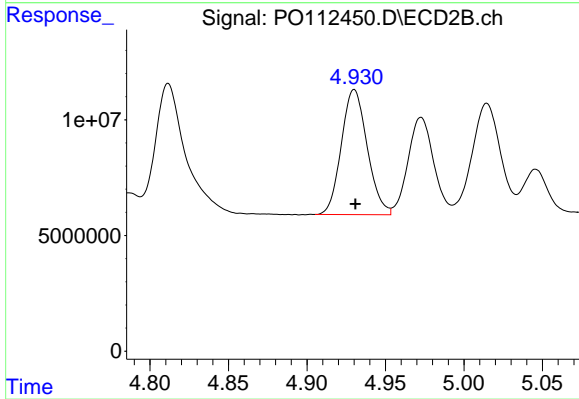
#17 AR-1242-2

R.T.: 4.755 min
 Delta R.T.: 0.000 min
 Response: 118392091
 Conc: 506.67 ng/ml



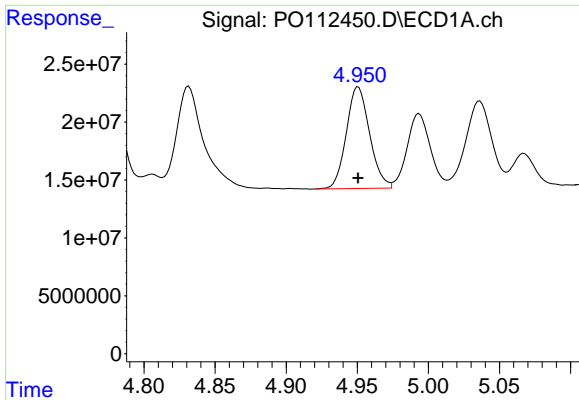
#18 AR-1242-3

R.T.: 4.831 min
 Delta R.T.: 0.000 min
 Response: 124138208
 Conc: 524.55 ng/ml



#18 AR-1242-3

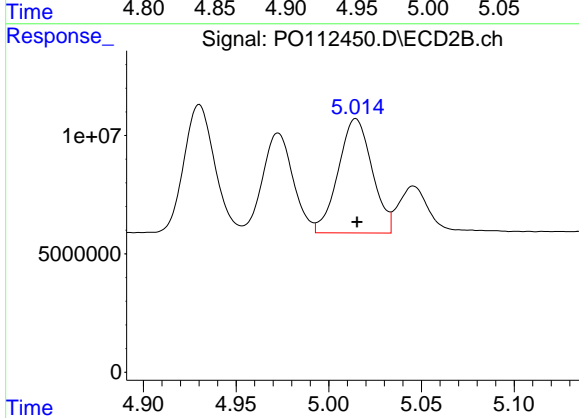
R.T.: 4.930 min
 Delta R.T.: 0.000 min
 Response: 62049084
 Conc: 512.00 ng/ml



#19 AR-1242-4

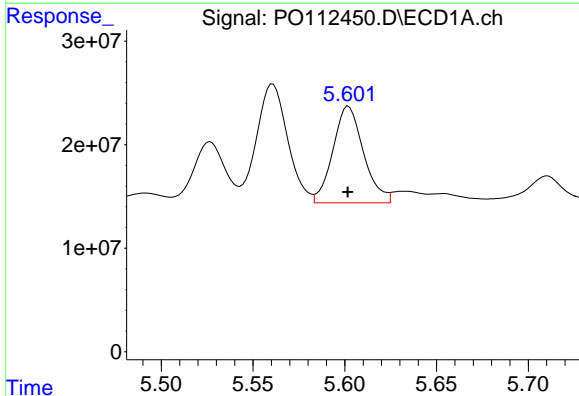
R.T.: 4.951 min
 Delta R.T.: 0.000 min
 Response: 100204290
 Conc: 515.78 ng/ml

Instrument :
 ECD_O
 ClientSampleId :
 AR1242CCC500



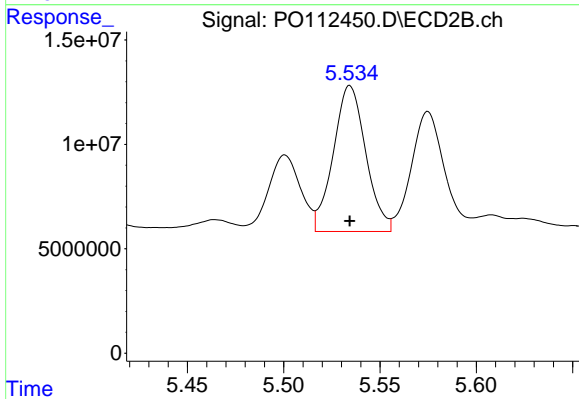
#19 AR-1242-4

R.T.: 5.015 min
 Delta R.T.: 0.000 min
 Response: 61414834
 Conc: 500.37 ng/ml



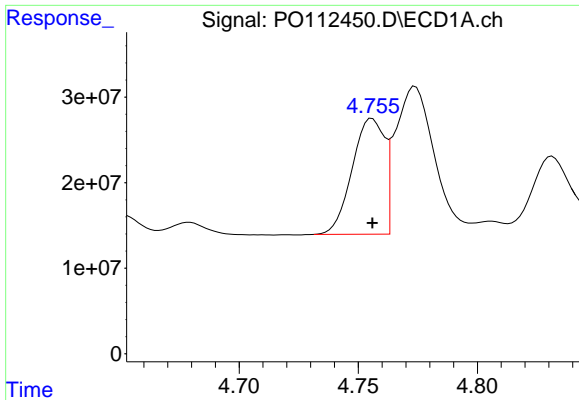
#20 AR-1242-5

R.T.: 5.602 min
 Delta R.T.: 0.000 min
 Response: 108493362
 Conc: 507.18 ng/ml



#20 AR-1242-5

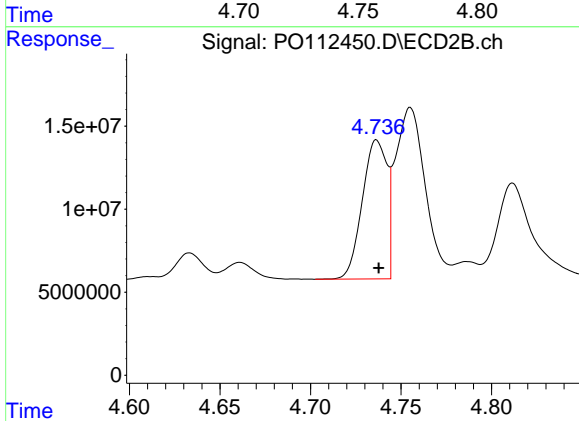
R.T.: 5.534 min
 Delta R.T.: 0.000 min
 Response: 81961508
 Conc: 509.17 ng/ml



#21 AR-1248-1

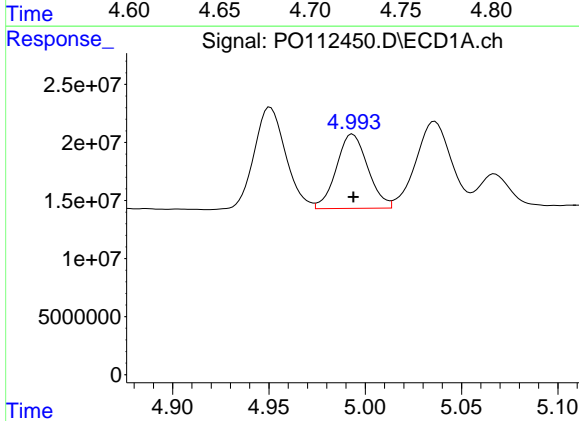
R.T.: 4.756 min
 Delta R.T.: 0.000 min
 Response: 127461799
 Conc: 680.85 ng/ml

Instrument :
 ECD_O
 ClientSampleId :
 AR1242CCC500



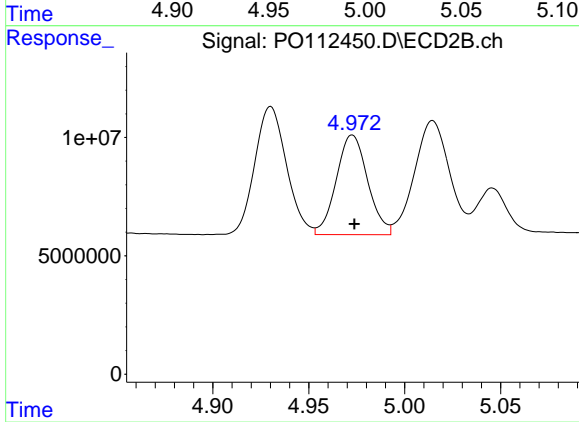
#21 AR-1248-1

R.T.: 4.737 min
 Delta R.T.: -0.001 min
 Response: 79145573
 Conc: 651.35 ng/ml



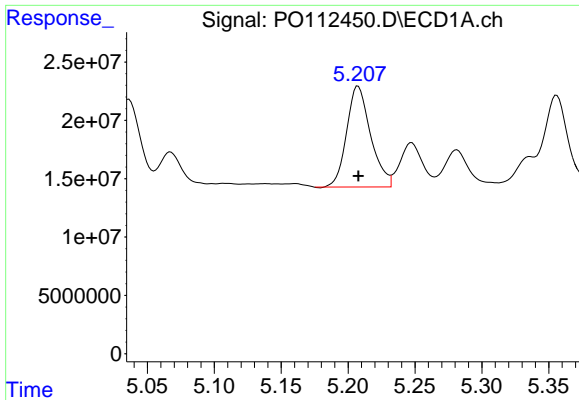
#22 AR-1248-2

R.T.: 4.993 min
 Delta R.T.: 0.000 min
 Response: 72604915
 Conc: 284.60 ng/ml



#22 AR-1248-2

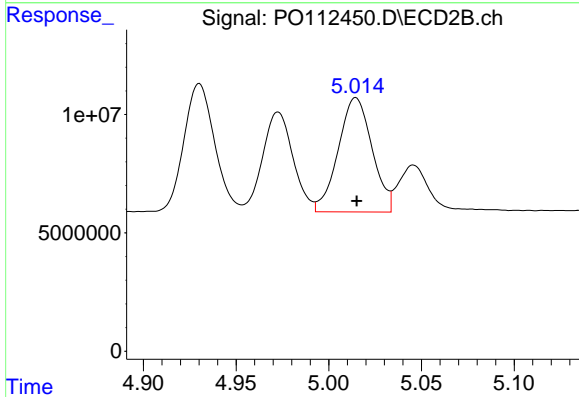
R.T.: 4.973 min
 Delta R.T.: -0.001 min
 Response: 48118759
 Conc: 284.26 ng/ml



#23 AR-1248-3

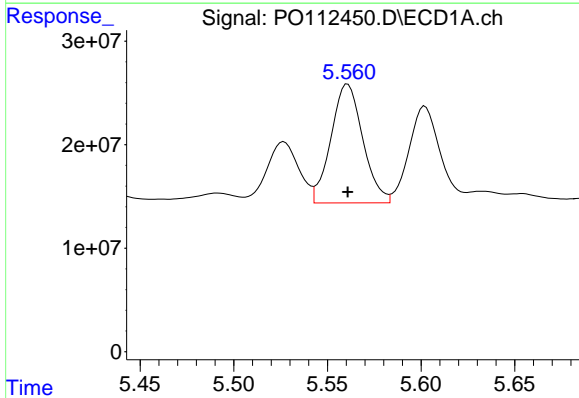
R.T.: 5.208 min
 Delta R.T.: 0.000 min
 Response: 107942073
 Conc: 314.06 ng/ml

Instrument :
 ECD_O
 ClientSampleId :
 AR1242CCC500



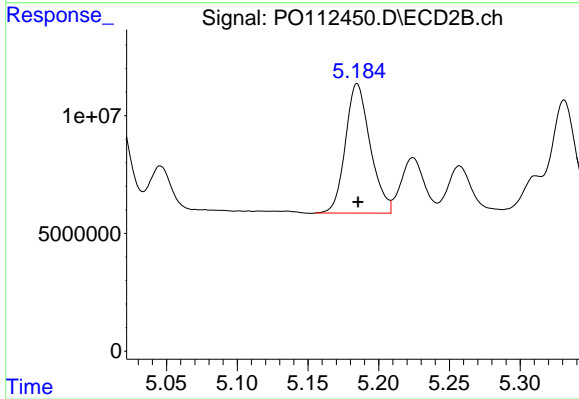
#23 AR-1248-3

R.T.: 5.015 min
 Delta R.T.: 0.000 min
 Response: 61414834
 Conc: 345.71 ng/ml



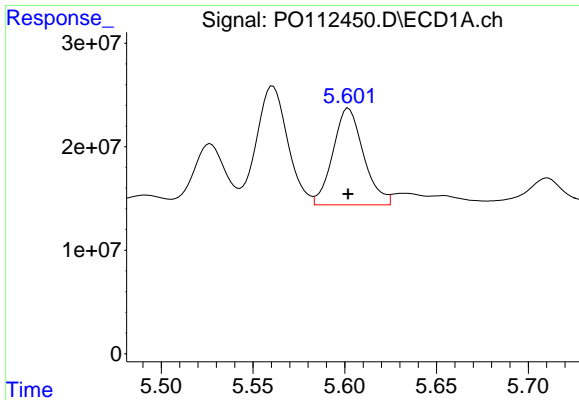
#24 AR-1248-4

R.T.: 5.561 min
 Delta R.T.: 0.000 min
 Response: 136190173
 Conc: 268.05 ng/ml



#24 AR-1248-4

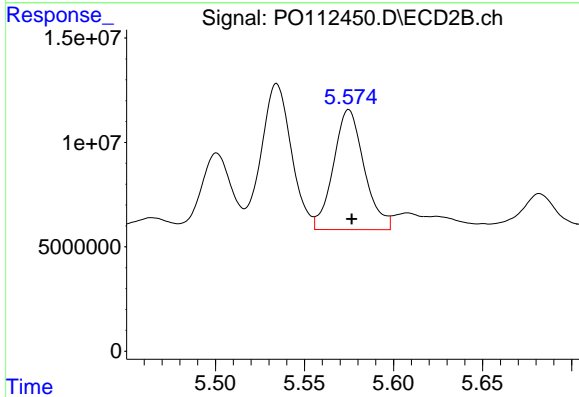
R.T.: 5.185 min
 Delta R.T.: 0.000 min
 Response: 67086848
 Conc: 321.98 ng/ml



#25 AR-1248-5

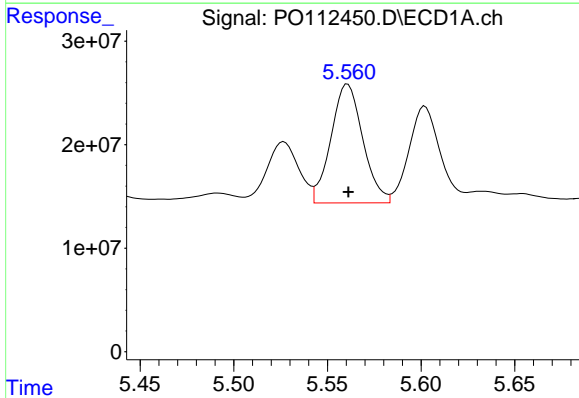
R.T.: 5.602 min
 Delta R.T.: 0.000 min
 Response: 108493362
 Conc: 310.34 ng/ml

Instrument :
 ECD_O
 ClientSampleId :
 AR1242CCC500



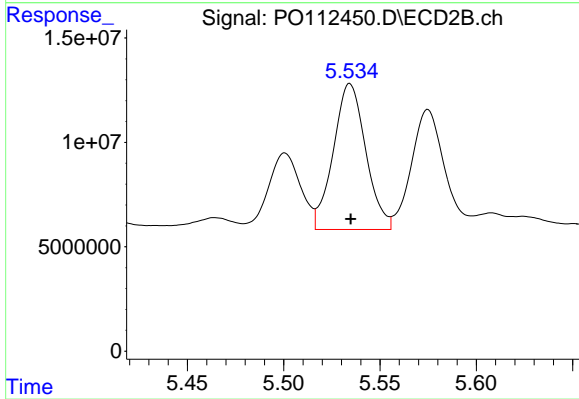
#25 AR-1248-5

R.T.: 5.575 min
 Delta R.T.: -0.002 min
 Response: 69217962
 Conc: 322.30 ng/ml



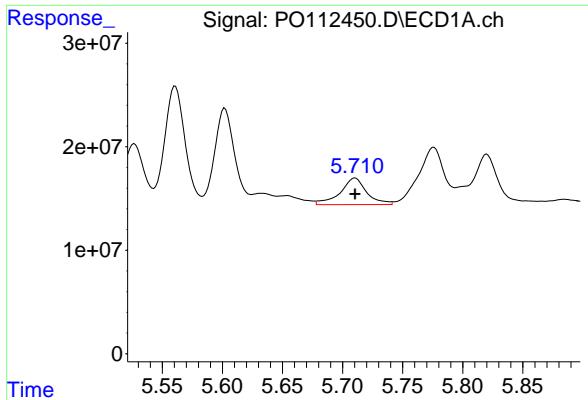
#26 AR-1254-1

R.T.: 5.561 min
 Delta R.T.: 0.000 min
 Response: 136190173
 Conc: 248.09 ng/ml



#26 AR-1254-1

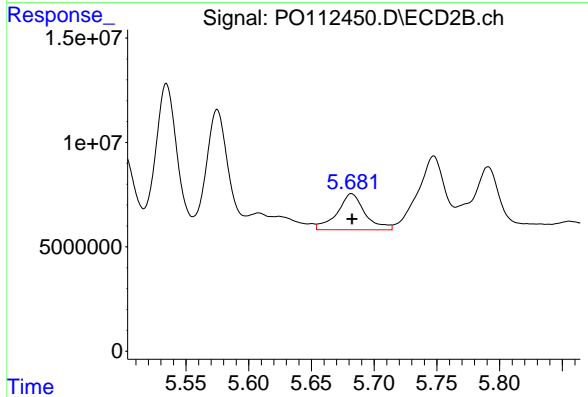
R.T.: 5.534 min
 Delta R.T.: 0.000 min
 Response: 81961508
 Conc: 249.41 ng/ml



#27 AR-1254-2

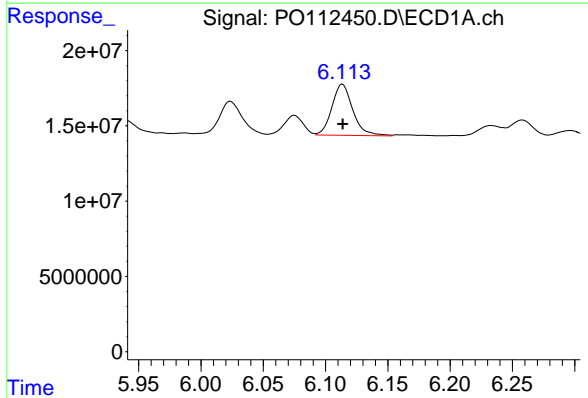
R.T.: 5.710 min
 Delta R.T.: 0.000 min
 Response: 39260081
 Conc: 80.80 ng/ml

Instrument :
 ECD_O
 ClientSampleId :
 AR1242CCC500



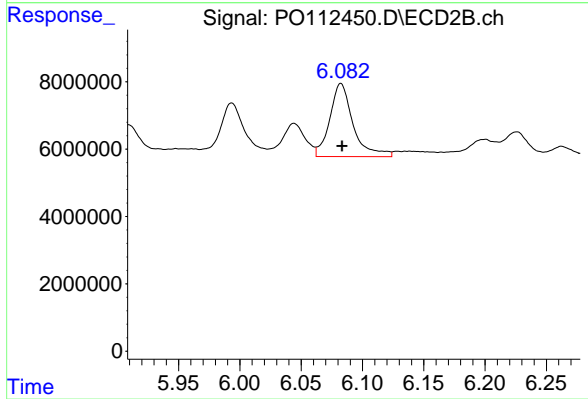
#27 AR-1254-2

R.T.: 5.682 min
 Delta R.T.: 0.000 min
 Response: 26838114
 Conc: 92.71 ng/ml



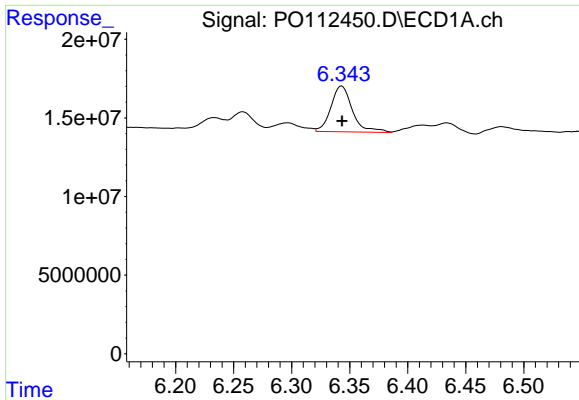
#28 AR-1254-3

R.T.: 6.114 min
 Delta R.T.: 0.000 min
 Response: 39658472
 Conc: 53.28 ng/ml



#28 AR-1254-3

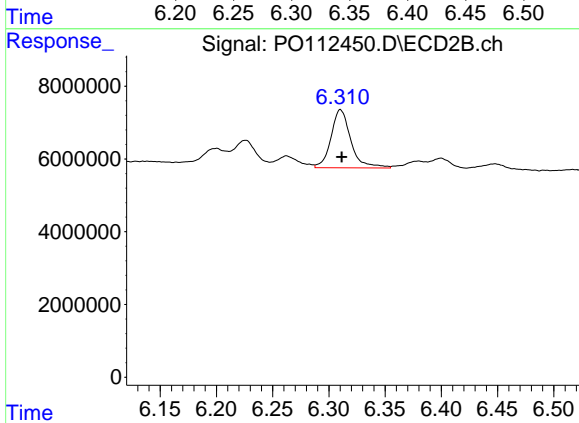
R.T.: 6.082 min
 Delta R.T.: 0.000 min
 Response: 28801361
 Conc: 67.38 ng/ml



#29 AR-1254-4

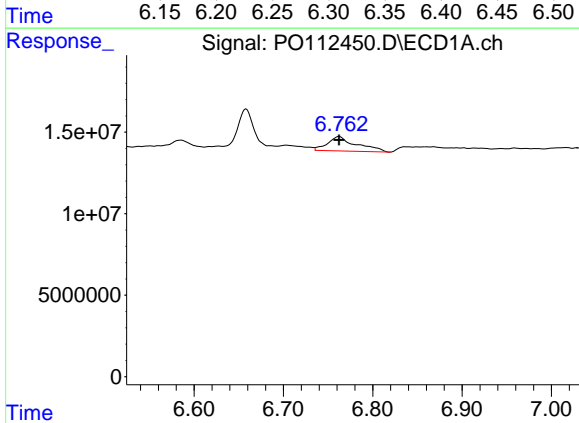
R.T.: 6.343 min
 Delta R.T.: 0.000 min
 Response: 37711461
 Conc: 68.60 ng/ml

Instrument :
 ECD_O
 ClientSampleId :
 AR1242CCC500



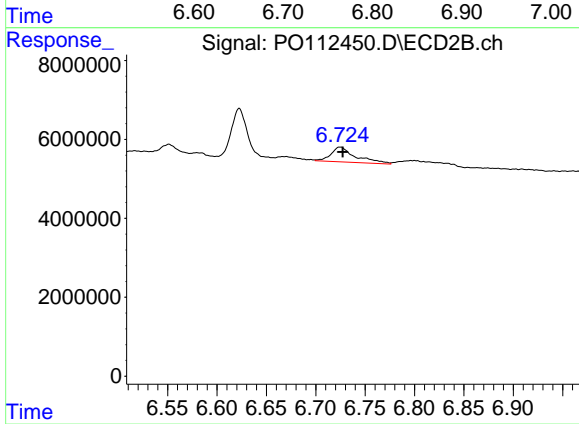
#29 AR-1254-4

R.T.: 6.310 min
 Delta R.T.: -0.001 min
 Response: 19649922
 Conc: 71.99 ng/ml



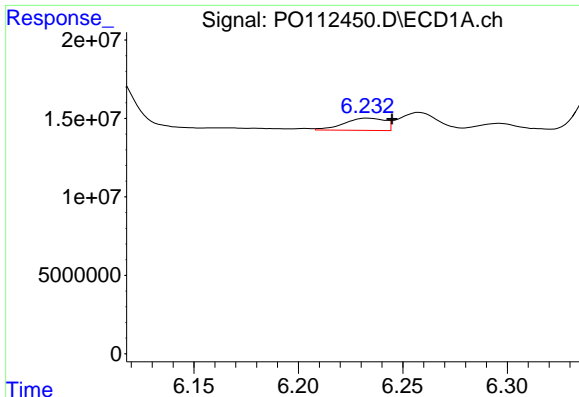
#30 AR-1254-5

R.T.: 6.763 min
 Delta R.T.: 0.000 min
 Response: 20201767
 Conc: 28.54 ng/ml



#30 AR-1254-5

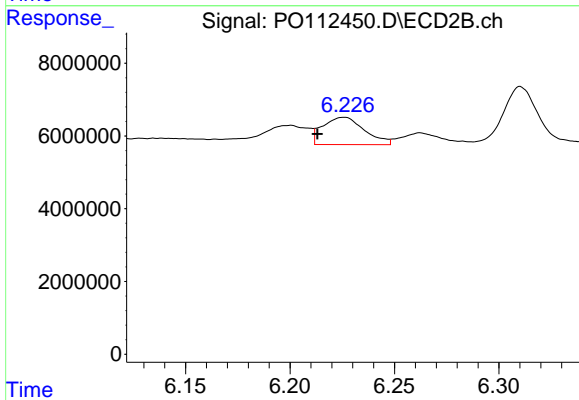
R.T.: 6.725 min
 Delta R.T.: -0.003 min
 Response: 6544123
 Conc: 19.59 ng/ml



#31 AR-1260-1

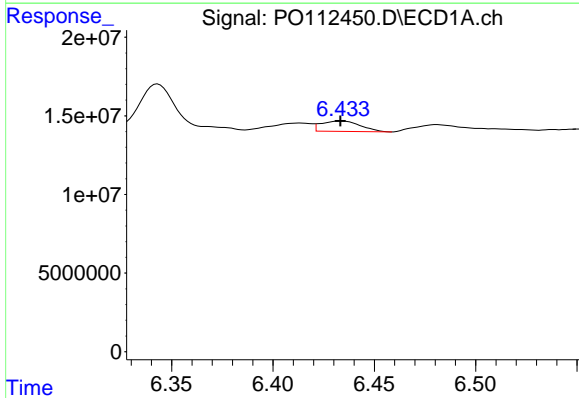
R.T.: 6.233 min
 Delta R.T.: -0.011 min
 Response: 10608501
 Conc: 24.15 ng/ml

Instrument :
 ECD_O
 ClientSampleId :
 AR1242CCC500



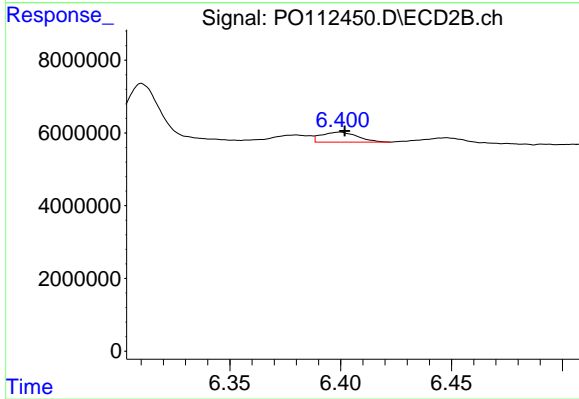
#31 AR-1260-1

R.T.: 6.226 min
 Delta R.T.: 0.013 min
 Response: 10401127
 Conc: 41.85 ng/ml



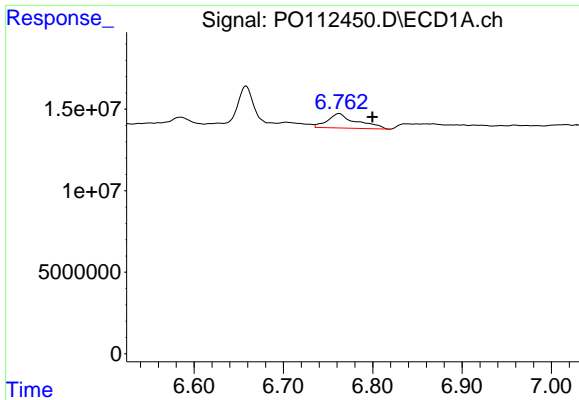
#32 AR-1260-2

R.T.: 6.434 min
 Delta R.T.: 0.000 min
 Response: 8896679
 Conc: 12.93 ng/ml



#32 AR-1260-2

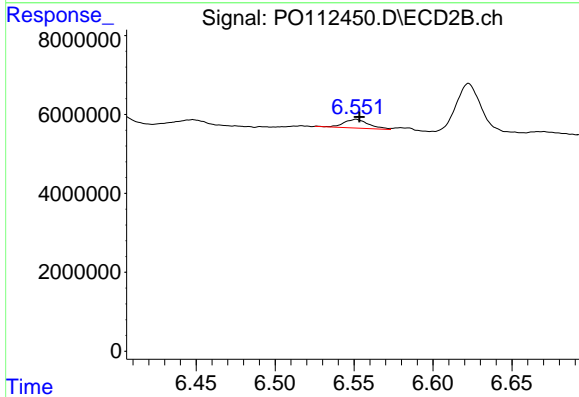
R.T.: 6.399 min
 Delta R.T.: -0.002 min
 Response: 3088475
 Conc: 9.37 ng/ml



#33 AR-1260-3

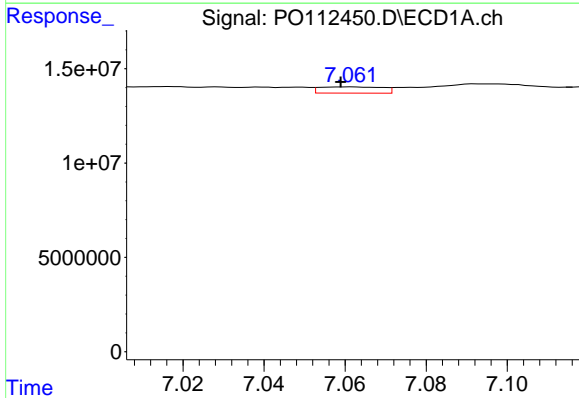
R.T.: 6.763 min
 Delta R.T.: -0.037 min
 Response: 20201767
 Conc: 34.36 ng/ml

Instrument :
 ECD_O
 ClientSampleId :
 AR1242CCC500



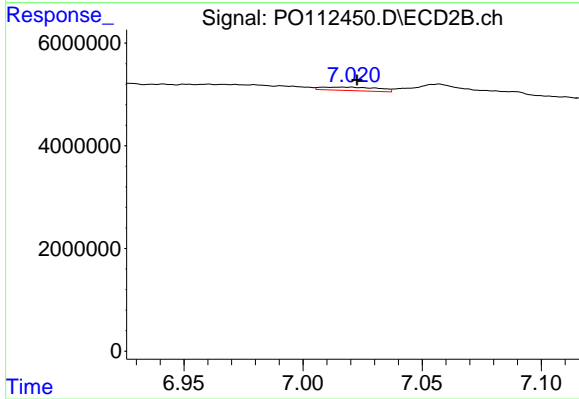
#33 AR-1260-3

R.T.: 6.551 min
 Delta R.T.: -0.002 min
 Response: 2481190
 Conc: 9.66 ng/ml



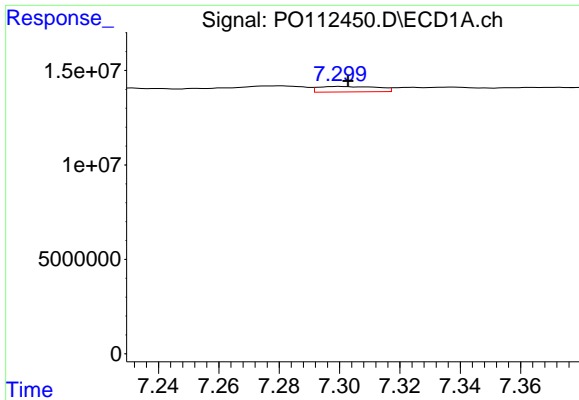
#34 AR-1260-4

R.T.: 7.061 min
 Delta R.T.: 0.002 min
 Response: 3578101
 Conc: 7.93 ng/ml



#34 AR-1260-4

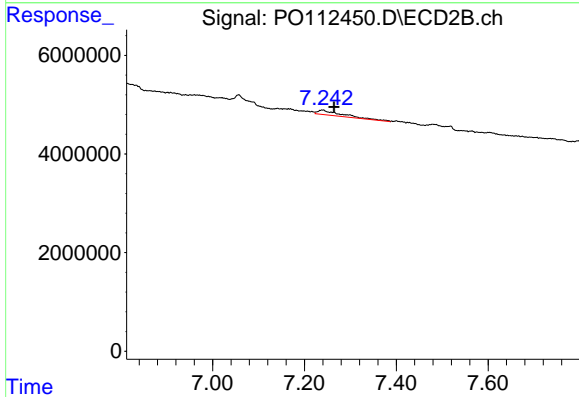
R.T.: 7.016 min
 Delta R.T.: -0.007 min
 Response: 1111150
 Conc: 5.81 ng/ml



#35 AR-1260-5

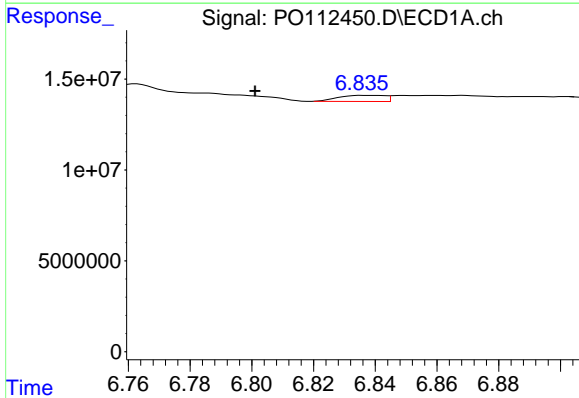
R.T.: 7.300 min
 Delta R.T.: -0.003 min
 Response: 3957256
 Conc: 3.19 ng/ml

Instrument :
 ECD_O
 ClientSampleId :
 AR1242CCC500



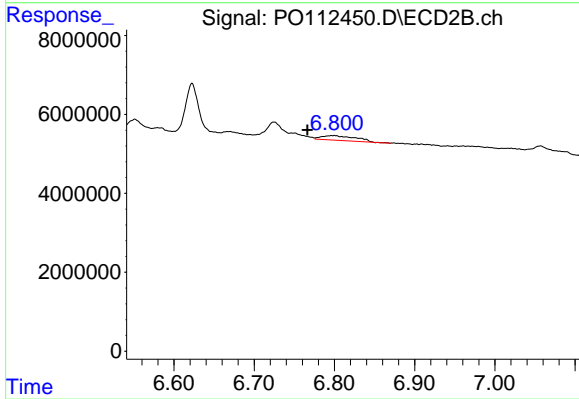
#35 AR-1260-5

R.T.: 7.241 min
 Delta R.T.: -0.024 min
 Response: 3534284
 Conc: 8.57 ng/ml



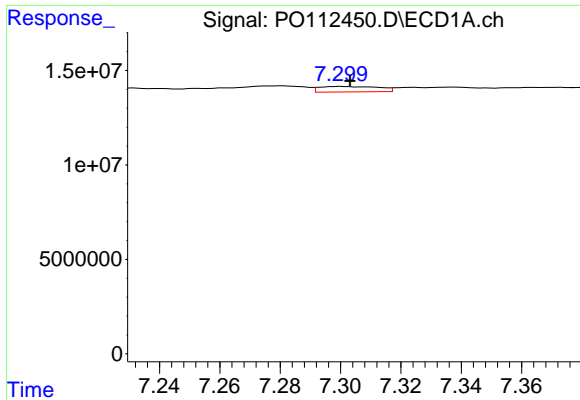
#36 AR-1262-1

R.T.: 6.839 min
 Delta R.T.: 0.038 min
 Response: 3504866
 Conc: 3.77 ng/ml



#36 AR-1262-1

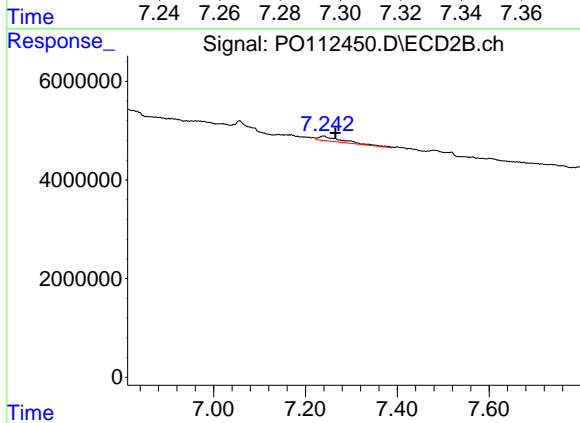
R.T.: 6.800 min
 Delta R.T.: 0.034 min
 Response: 3341204
 Conc: 8.05 ng/ml



#37 AR-1262-2

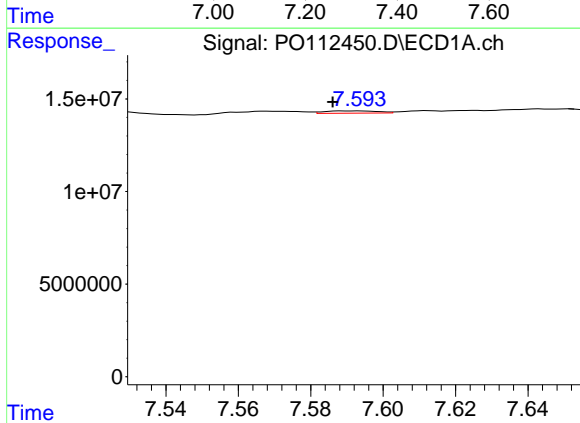
R.T.: 7.300 min
 Delta R.T.: -0.003 min
 Response: 3957256
 Conc: 2.66 ng/ml

Instrument :
 ECD_O
 ClientSampleId :
 AR1242CCC500



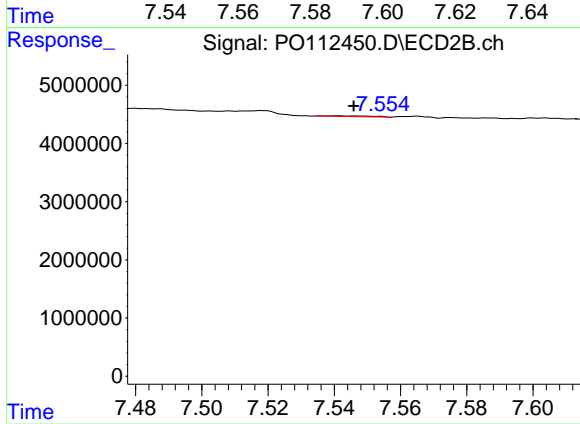
#37 AR-1262-2

R.T.: 7.241 min
 Delta R.T.: -0.024 min
 Response: 3534284
 Conc: 6.86 ng/ml



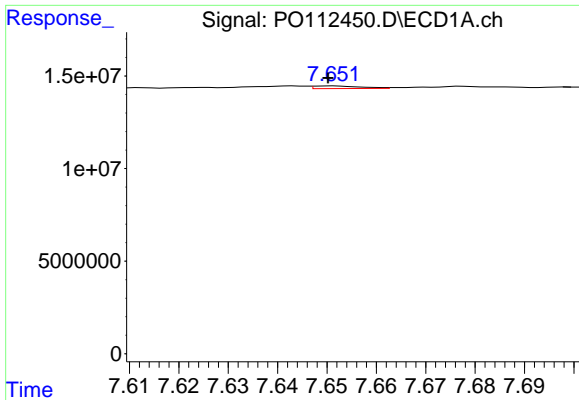
#38 AR-1262-3

R.T.: 7.593 min
 Delta R.T.: 0.007 min
 Response: 1240985
 Conc: 2.10 ng/ml



#38 AR-1262-3

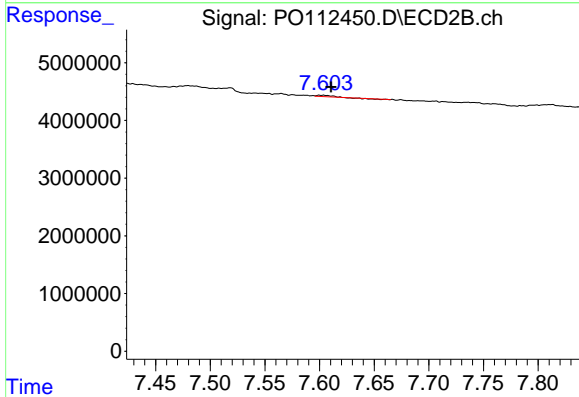
R.T.: 7.541 min
 Delta R.T.: -0.005 min
 Response: 125641
 Conc: 0.67 ng/ml



#39 AR-1262-4

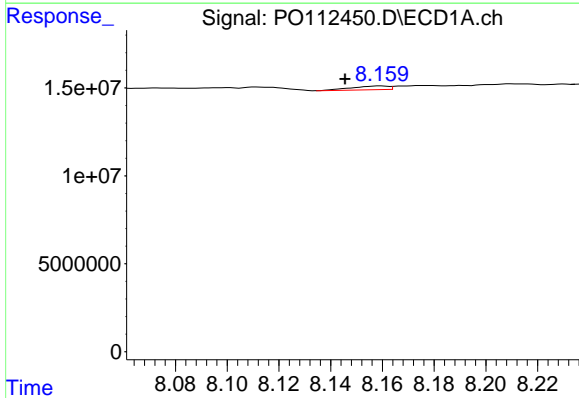
R.T.: 7.651 min
 Delta R.T.: 0.000 min
 Response: 949387
 Conc: 0.95 ng/ml

Instrument :
 ECD_O
 ClientSampleId :
 AR1242CCC500



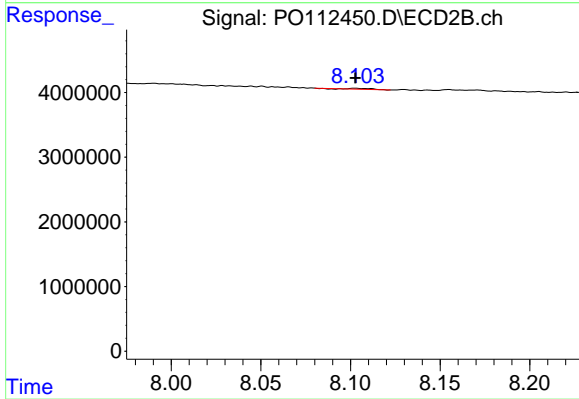
#39 AR-1262-4

R.T.: 7.603 min
 Delta R.T.: -0.007 min
 Response: 142988
 Conc: 0.50 ng/ml



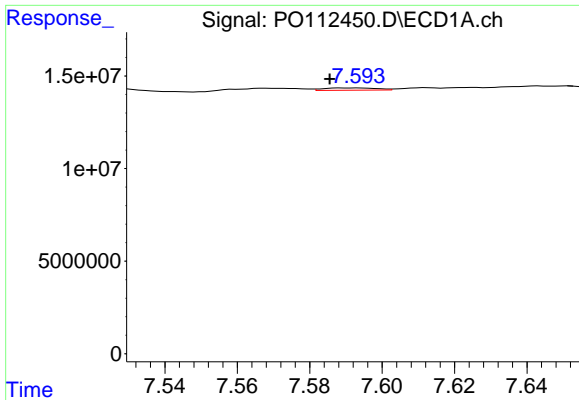
#40 AR-1262-5

R.T.: 8.159 min
 Delta R.T.: 0.014 min
 Response: 2140135
 Conc: 4.93 ng/ml



#40 AR-1262-5

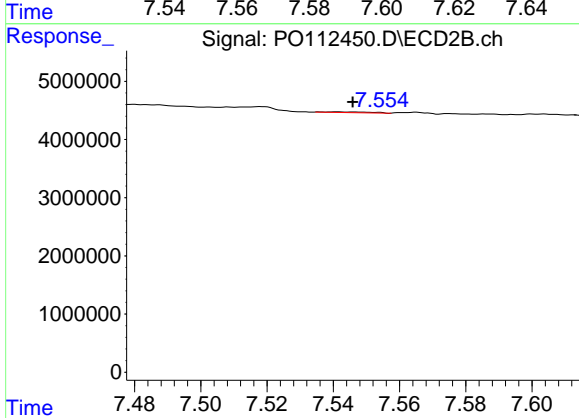
R.T.: 8.103 min
 Delta R.T.: 0.000 min
 Response: 116131
 Conc: 1.17 ng/ml



#41 AR-1268-1

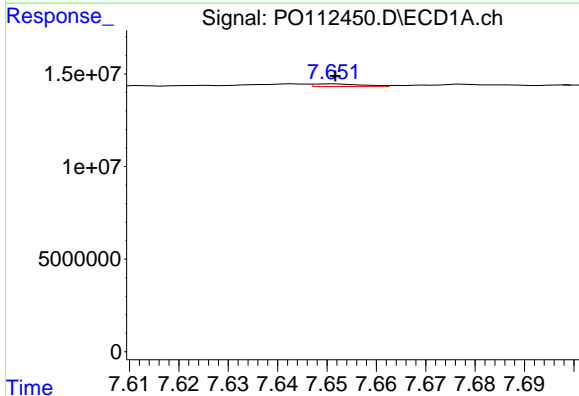
R.T.: 7.593 min
 Delta R.T.: 0.008 min
 Response: 1240985
 Conc: 0.71 ng/ml

Instrument :
 ECD_O
 ClientSampleId :
 AR1242CCC500



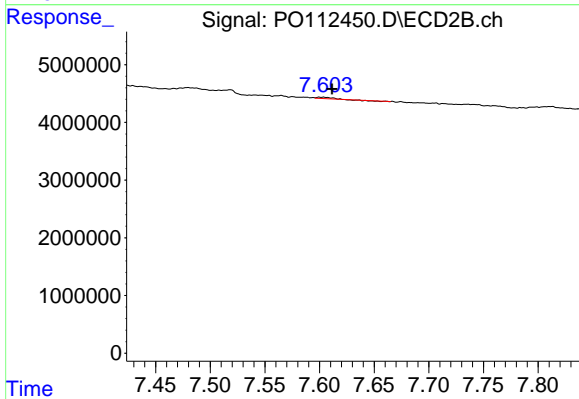
#41 AR-1268-1

R.T.: 7.541 min
 Delta R.T.: -0.005 min
 Response: 125641
 Conc: 0.24 ng/ml



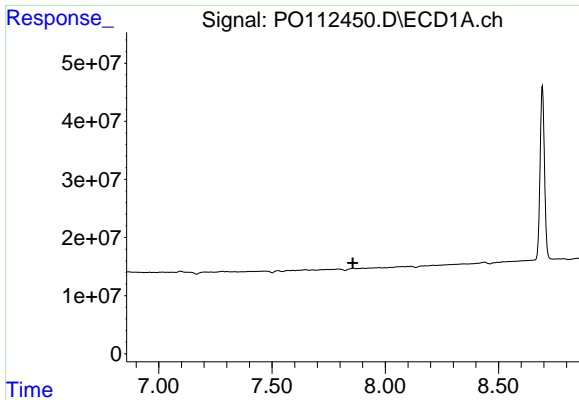
#42 AR-1268-2

R.T.: 7.651 min
 Delta R.T.: 0.000 min
 Response: 949387
 Conc: 0.64 ng/ml



#42 AR-1268-2

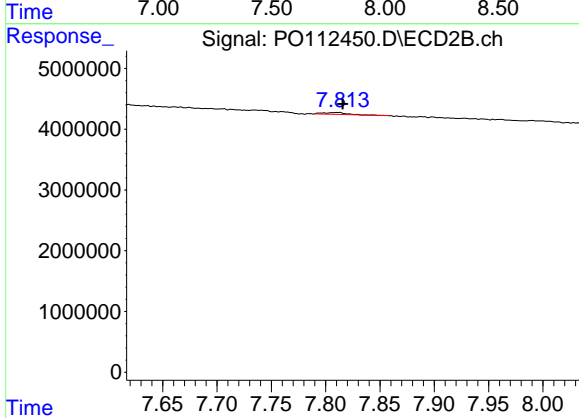
R.T.: 7.603 min
 Delta R.T.: -0.008 min
 Response: 142988
 Conc: 0.34 ng/ml



#43 AR-1268-3

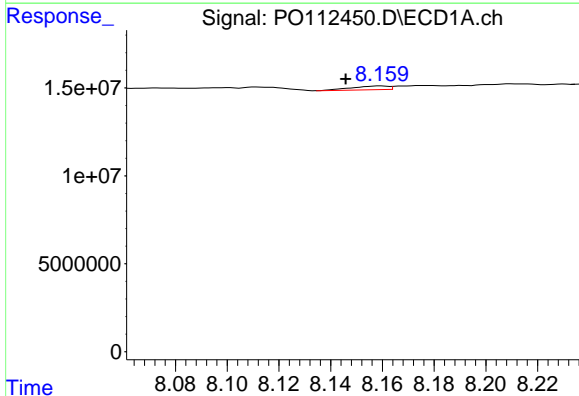
R.T.: 7.861 min
 Delta R.T.: 0.004 min
 Response: -926814
 Conc: N.D.

Instrument :
 ECD_O
 ClientSampleId :
 AR1242CCC500



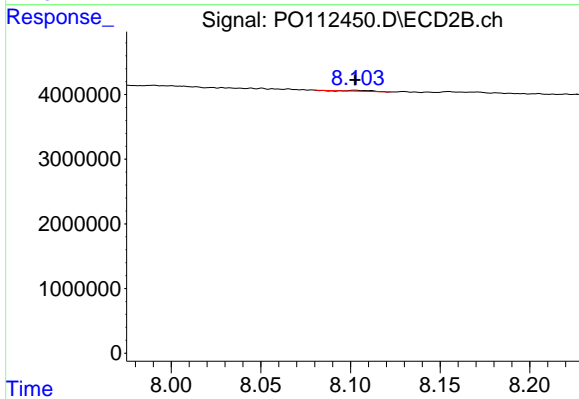
#43 AR-1268-3

R.T.: 7.812 min
 Delta R.T.: -0.004 min
 Response: 462228
 Conc: 1.44 ng/ml



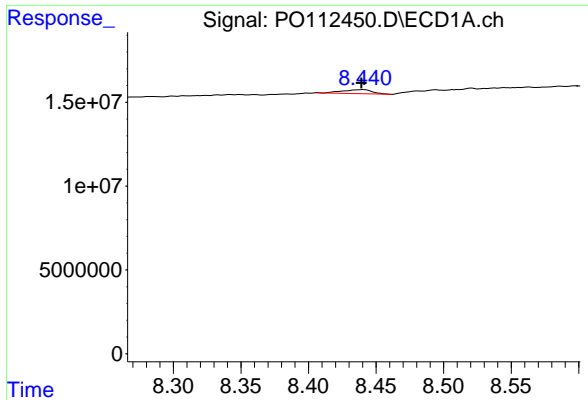
#44 AR-1268-4

R.T.: 8.159 min
 Delta R.T.: 0.013 min
 Response: 2140135
 Conc: 4.44 ng/ml



#44 AR-1268-4

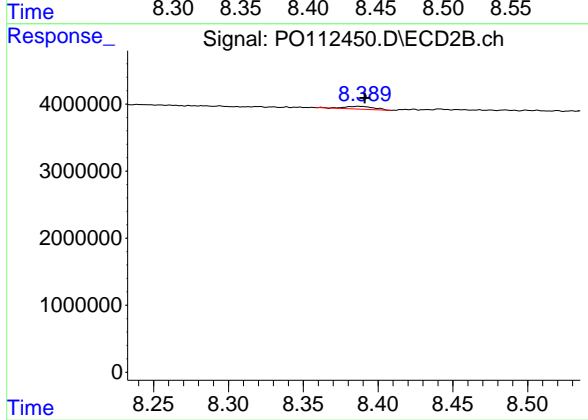
R.T.: 8.103 min
 Delta R.T.: 0.000 min
 Response: 116131
 Conc: 1.04 ng/ml



#45 AR-1268-5

R.T.: 8.441 min
 Delta R.T.: 0.001 min
 Response: 3682046
 Conc: 1.10 ng/ml

Instrument :
 ECD_O
 ClientSampleId :
 AR1242CCC500



#45 AR-1268-5

R.T.: 8.387 min
 Delta R.T.: -0.004 min
 Response: 580611
 Conc: 0.79 ng/ml