

Data Path : Z:\pestpcbsrv\HPCHEM1\ECD\_O\Data\P0072425\  
 Data File : PO112451.D  
 Signal(s) : Signal #1: ECD1A.ch Signal #2: ECD2B.ch  
 Acq On : 24 Jul 2025 09:39  
 Operator : YP/AJ  
 Sample : AR1248CCC500  
 Misc :  
 ALS Vial : 5 Sample Multiplier: 1

Instrument :  
 ECD\_O  
 ClientSampleId :  
 AR1248CCC500

Integration File signal 1: autoint1.e  
 Integration File signal 2: autoint2.e  
 Quant Time: Jul 24 23:32:27 2025  
 Quant Method : Z:\pestpcbsrv\HPCHEM1\ECD\_O\methods\P0072325.M  
 Quant Title : GC EXTRACTABLES  
 QLast Update : Thu Jul 24 04:54:06 2025  
 Response via : Initial Calibration  
 Integrator: ChemStation

Volume Inj. : 2 µl  
 Signal #1 Phase : ZB-MR2 Signal #2 Phase: ZB-MR2  
 Signal #1 Info : 30Mx0.32mmx 0.50µ Signal #2 Info : 30M x 0.32mm x 0.25µm

Compound	RT#1	RT#2	Resp#1	Resp#2	ng/ml	ng/ml
-----						
System Monitoring Compounds						
1) SA Tetrachlo...	3.670	3.662	449.2E6	266.2E6	55.238	53.565
2) SA Decachlor...	8.694	8.640	396.6E6	90846120	54.242	51.409
Target Compounds						
3) L1 AR-1016-1	4.756	4.737	96337339	59464958	358.978	339.786
4) L1 AR-1016-2	4.774	4.755	101.9E6	64549205	250.982	247.794
5) L1 AR-1016-3	4.831	4.932	57689665	41118125	220.464	302.414 #
6) L1 AR-1016-4	4.952	4.973	63980308	83663876	302.020	753.153 #
7) L1 AR-1016-5	5.208	5.185	174.5E6	106.0E6	795.061	739.696
8) L2 AR-1221-1	3.889	3.873	982316	328676	10.163	4.886 #
9) L2 AR-1221-2	3.970	3.960	6329181	4561969	88.074	89.930
10) L2 AR-1221-3	4.043	4.031	6278633	4884407	26.413	30.811
11) L3 AR-1232-1	4.043	4.031	6278633	4884407	33.579	38.597
12) L3 AR-1232-2	4.533	4.755	42076811	64549205	390.959	492.161 #
13) L3 AR-1232-3	4.774	4.932	101.9E6	41118125	492.885	611.906
14) L3 AR-1232-4	4.952	5.014	63980308	88846459	610.847	1485.004 #
15) L3 AR-1232-5	4.994	5.185	129.5E6	106.0E6	1907.272	1625.702
16) L4 AR-1242-1	4.756	4.737	96337339	59464958	389.097	375.424
17) L4 AR-1242-2	4.774	4.755	101.9E6	64549205	275.635	276.245
18) L4 AR-1242-3	4.831	4.932	57689665	41118125	243.768	339.289 #
19) L4 AR-1242-4	4.952	5.014	63980308	88846459	329.322	723.863 #
20) L4 AR-1242-5	5.602	5.534	177.3E6	152.0E6	828.812	944.218
21) L5 AR-1248-1	4.756	4.737	96337339	59464958	514.599	489.386
22) L5 AR-1248-2	4.994	4.973	129.5E6	83663876	507.491	494.235
23) L5 AR-1248-3	5.208	5.014	174.5E6	88846459	507.686	500.129
24) L5 AR-1248-4	5.561	5.185	261.6E6	106.0E6	514.799	508.751
25) L5 AR-1248-5	5.602	5.575	177.3E6	107.2E6	507.152	498.924
26) L6 AR-1254-1	5.561	5.534	261.6E6	152.0E6	476.462	462.515
27) L6 AR-1254-2	5.710	5.683	80338936	52097485	165.334	179.963
28) L6 AR-1254-3	6.114	6.083	108.8E6	68366482	146.120	159.936
29) L6 AR-1254-4	6.343	6.311	88502121	48066555	161.000	176.092
30) L6 AR-1254-5	6.762	6.726	25129521	12558818	35.502	37.599
31) L7 AR-1260-1	6.258	6.226	50190618	33689765	114.243	135.566
32) L7 AR-1260-2	6.435	6.401	11441358	5811813	16.632	17.639
33) L7 AR-1260-3	6.834	6.551	1778867	6240806	3.025	24.291 #
34) L7 AR-1260-4	7.056	7.022	1265891	1054512	2.807	5.512 #
35) L7 AR-1260-5	7.301	7.262	4192574	1677923	3.383	4.071
36) L8 AR-1262-1	6.834	6.797	1778867	2324539	1.914	5.604 #
37) L8 AR-1262-2	7.301	7.262	4192574	1677923	2.819	3.255
38) L8 AR-1262-3	7.592	7.543	3032712	1366014	5.138	7.323 #
39) L8 AR-1262-4	7.649	7.605	4363629	2941645	4.389	10.210 #
40) L8 AR-1262-5	8.147	8.077	525159	31789	1.210	0.319 #
41) L9 AR-1268-1	7.592	7.543	3032712	1366014	1.732	2.638 #

Data Path : Z:\pestpcbsrv\HPCHEM1\ECD\_0\Data\P0072425\  
 Data File : P0112451.D  
 Signal(s) : Signal #1: ECD1A.ch Signal #2: ECD2B.ch  
 Acq On : 24 Jul 2025 09:39  
 Operator : YP/AJ  
 Sample : AR1248CCC500  
 Misc :  
 ALS Vial : 5 Sample Multiplier: 1

Instrument :  
 ECD\_0  
 ClientSampleId :  
 AR1248CCC500

Integration File signal 1: autoint1.e  
 Integration File signal 2: autoint2.e  
 Quant Time: Jul 24 23:32:27 2025  
 Quant Method : Z:\pestpcbsrv\HPCHEM1\ECD\_0\methods\P0072325.M  
 Quant Title : GC EXTRACTABLES  
 QLast Update : Thu Jul 24 04:54:06 2025  
 Response via : Initial Calibration  
 Integrator: ChemStation

Volume Inj. : 2 µl  
 Signal #1 Phase : ZB-MR1 Signal #2 Phase: ZB-MR2  
 Signal #1 Info : 30Mx0.32mmx 0.50µ Signal #2 Info : 30M x 0.32mm x 0.25µm

	Compound	RT#1	RT#2	Resp#1	Resp#2	ng/ml	ng/ml
42)	L9 AR-1268-2	7.649	7.605	4363629	2941645	2.962	6.920 #
43)	L9 AR-1268-3	7.855	7.815	631293	263086	0.504	0.819 #
44)	L9 AR-1268-4	8.147	8.077	525159	31789	1.090	0.286 #
45)	L9 AR-1268-5	8.440	8.387	2680123	430552	0.798	0.588 #

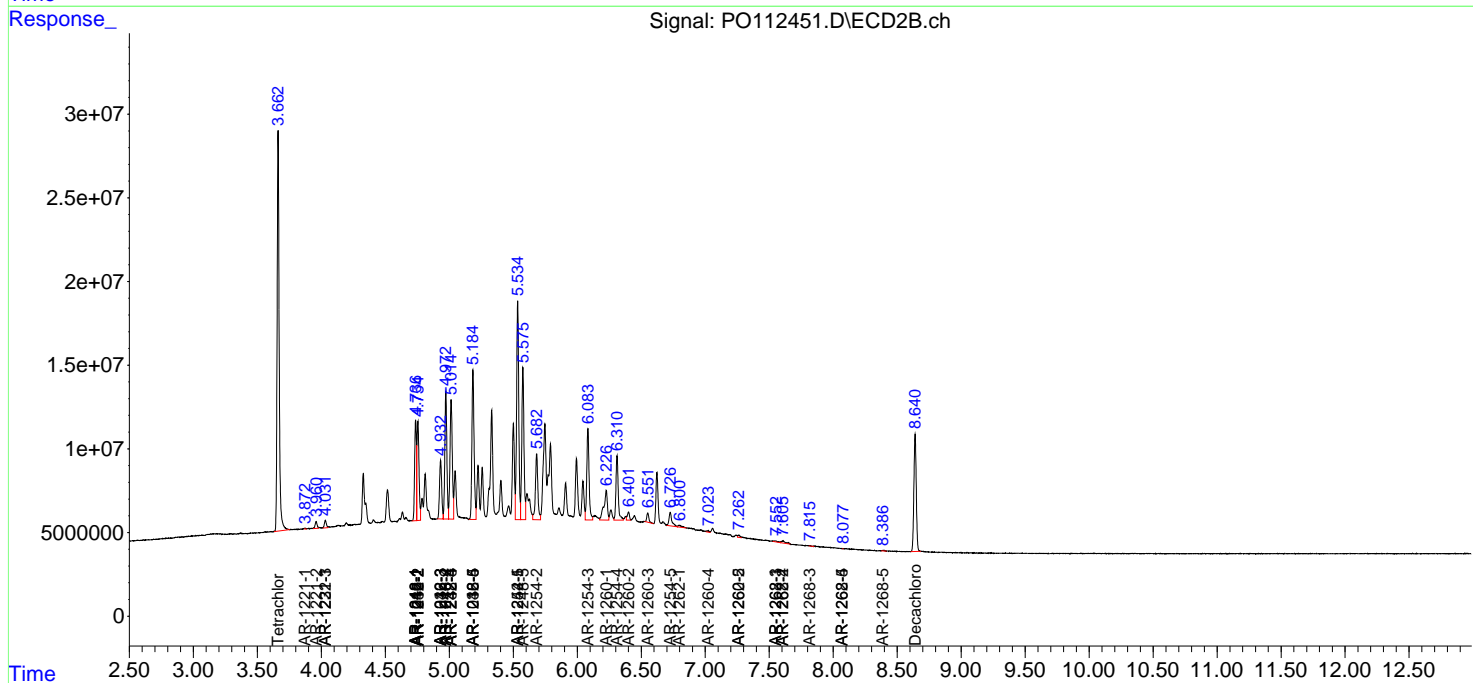
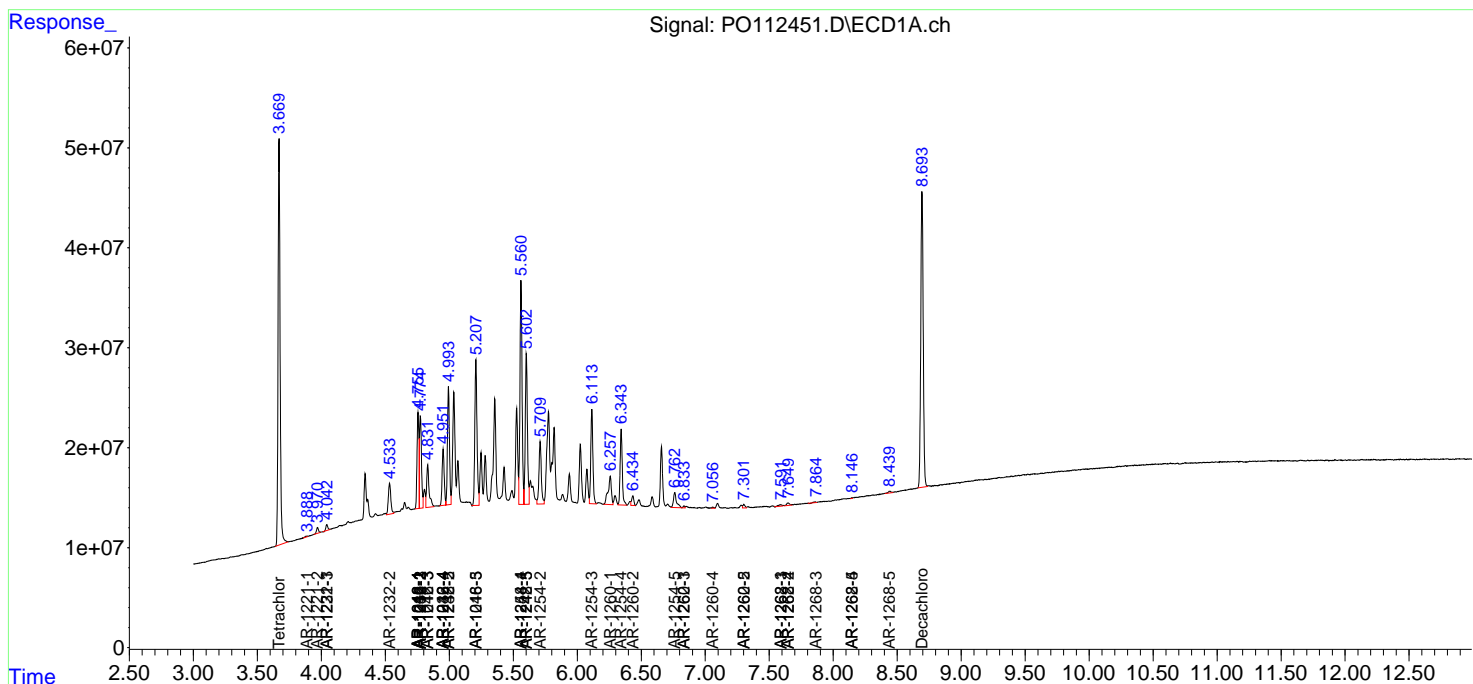
(f)=RT Delta > 1/2 Window (#)=Amounts differ by > 25% (m)=manual int.

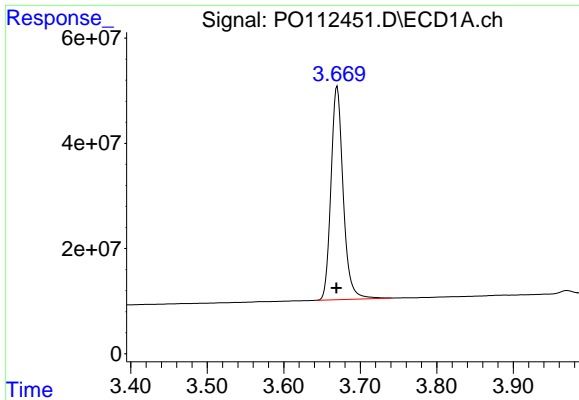
Data Path : Z:\pestpcbsrv\HPCHEM1\ECD\_O\Data\PO072425\  
 Data File : PO112451.D  
 Signal(s) : Signal #1: ECD1A.ch Signal #2: ECD2B.ch  
 Acq On : 24 Jul 2025 09:39  
 Operator : YP/AJ  
 Sample : AR1248CCC500  
 Misc :  
 ALS Vial : 5 Sample Multiplier: 1

Instrument :  
 ECD\_O  
 ClientSampleId :  
 AR1248CCC500

Integration File signal 1: autoint1.e  
 Integration File signal 2: autoint2.e  
 Quant Time: Jul 24 23:32:27 2025  
 Quant Method : Z:\pestpcbsrv\HPCHEM1\ECD\_O\methods\PO072325.M  
 Quant Title : GC EXTRACTABLES  
 QLast Update : Thu Jul 24 04:54:06 2025  
 Response via : Initial Calibration  
 Integrator: ChemStation

Volume Inj. : 2 µl  
 Signal #1 Phase : ZB-MR1 Signal #2 Phase: ZB-MR2  
 Signal #1 Info : 30Mx0.32mmx 0.50µ Signal #2 Info : 30M x 0.32mm x 0.25µm

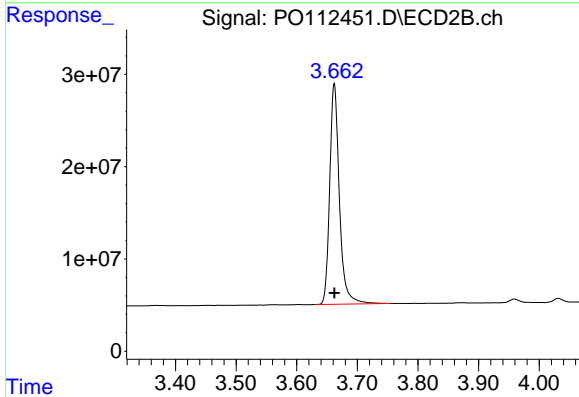




#1 Tetrachloro-m-xylene

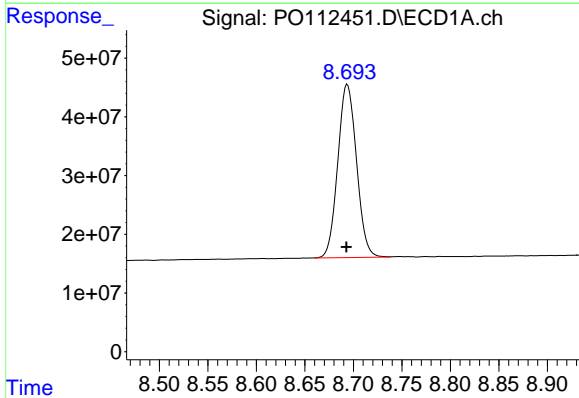
R.T.: 3.670 min  
 Delta R.T.: 0.000 min  
 Response: 449168595  
 Conc: 55.24 ng/ml

Instrument :  
 ECD\_O  
 ClientSampleId :  
 AR1248CCC500



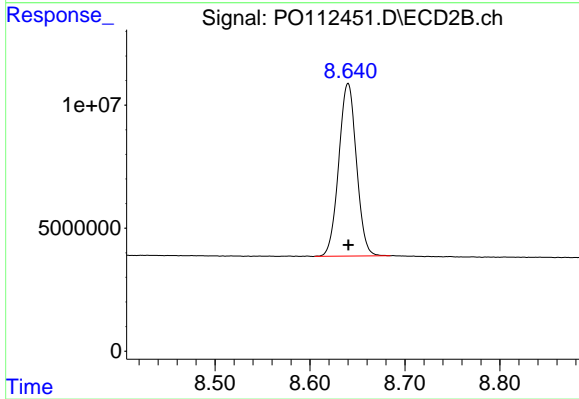
#1 Tetrachloro-m-xylene

R.T.: 3.662 min  
 Delta R.T.: 0.000 min  
 Response: 266172990  
 Conc: 53.56 ng/ml



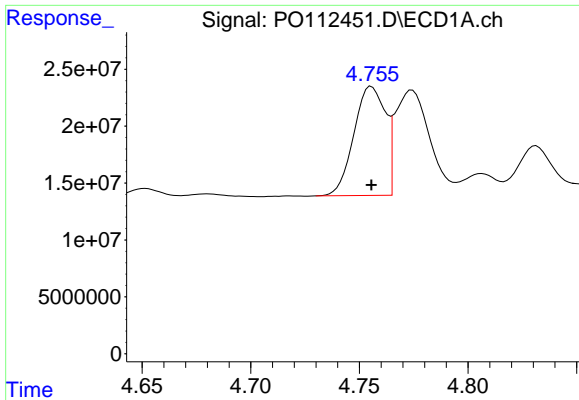
#2 Decachlorobiphenyl

R.T.: 8.694 min  
 Delta R.T.: 0.001 min  
 Response: 396609252  
 Conc: 54.24 ng/ml



#2 Decachlorobiphenyl

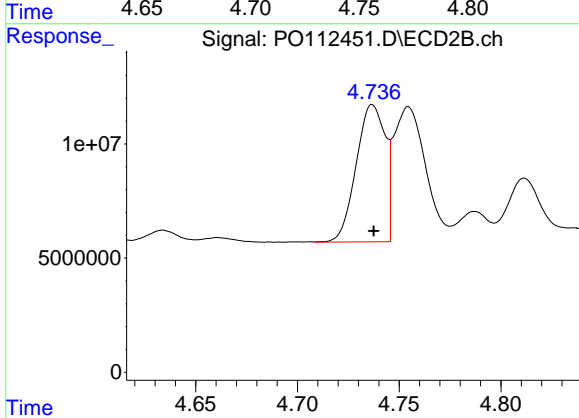
R.T.: 8.640 min  
 Delta R.T.: 0.000 min  
 Response: 90846120  
 Conc: 51.41 ng/ml



#3 AR-1016-1

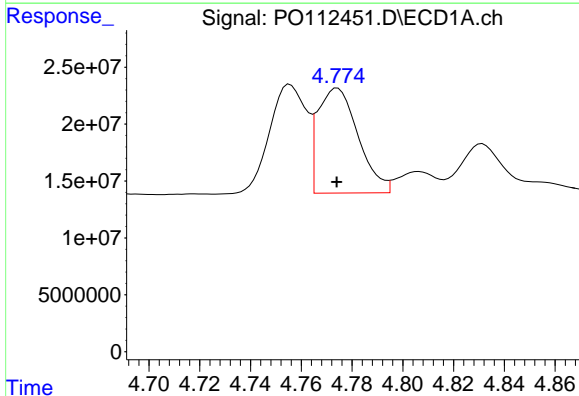
R.T.: 4.756 min  
 Delta R.T.: 0.000 min  
 Response: 96337339  
 Conc: 358.98 ng/ml

Instrument :  
 ECD\_O  
 ClientSampleId :  
 AR1248CCC500



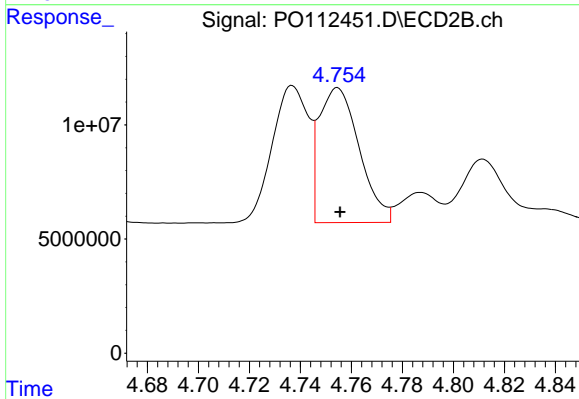
#3 AR-1016-1

R.T.: 4.737 min  
 Delta R.T.: 0.000 min  
 Response: 59464958  
 Conc: 339.79 ng/ml



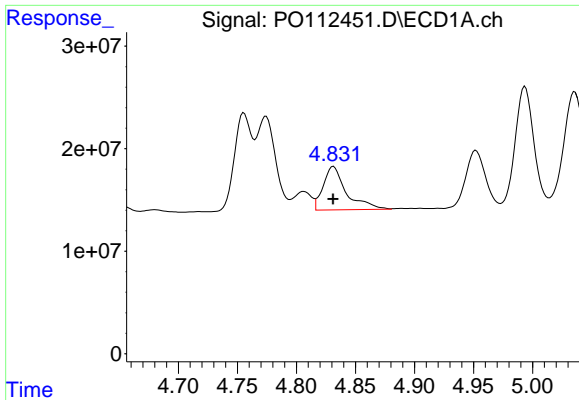
#4 AR-1016-2

R.T.: 4.774 min  
 Delta R.T.: 0.000 min  
 Response: 101928208  
 Conc: 250.98 ng/ml



#4 AR-1016-2

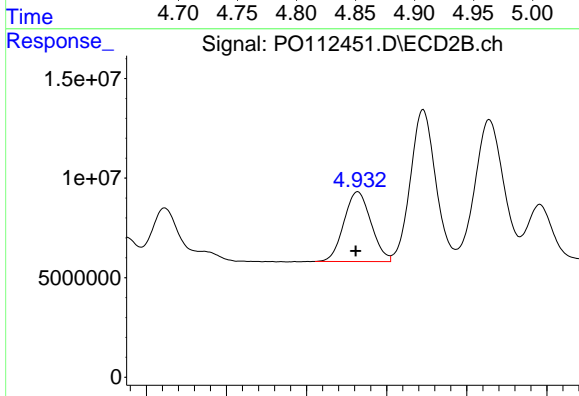
R.T.: 4.755 min  
 Delta R.T.: 0.000 min  
 Response: 64549205  
 Conc: 247.79 ng/ml



#5 AR-1016-3

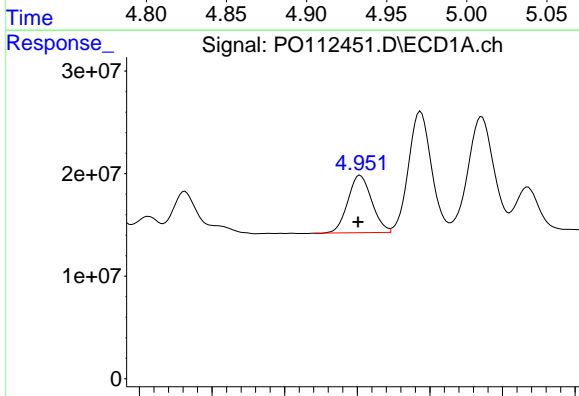
R.T.: 4.831 min  
 Delta R.T.: 0.000 min  
 Response: 57689665  
 Conc: 220.46 ng/ml

Instrument :  
 ECD\_O  
 ClientSampleId :  
 AR1248CCC500



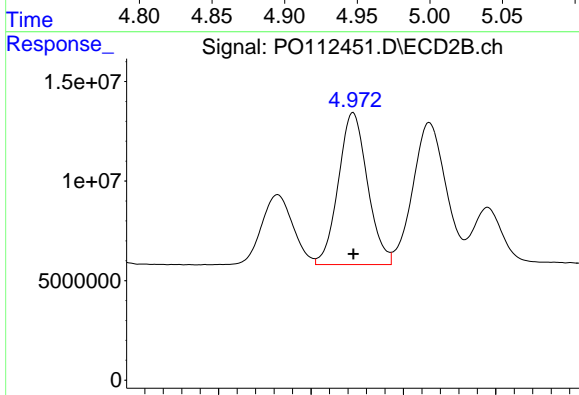
#5 AR-1016-3

R.T.: 4.932 min  
 Delta R.T.: 0.001 min  
 Response: 41118125  
 Conc: 302.41 ng/ml



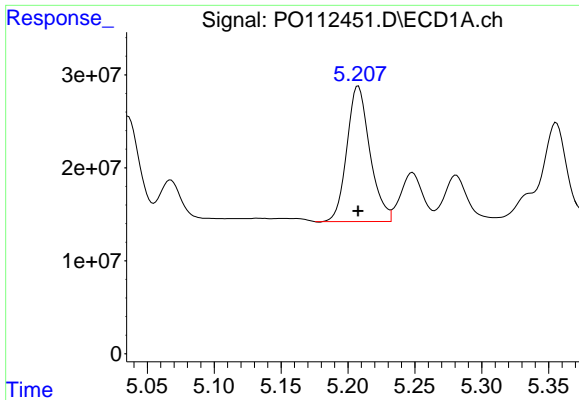
#6 AR-1016-4

R.T.: 4.952 min  
 Delta R.T.: 0.001 min  
 Response: 63980308  
 Conc: 302.02 ng/ml



#6 AR-1016-4

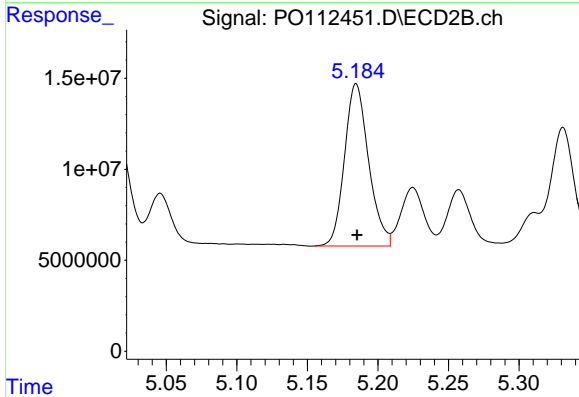
R.T.: 4.973 min  
 Delta R.T.: 0.000 min  
 Response: 83663876  
 Conc: 753.15 ng/ml



#7 AR-1016-5

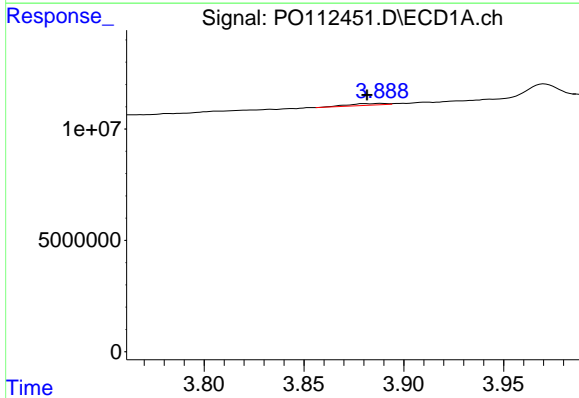
R.T.: 5.208 min  
 Delta R.T.: 0.000 min  
 Response: 174492439  
 Conc: 795.06 ng/ml

Instrument :  
 ECD\_O  
 ClientSampleId :  
 AR1248CCC500



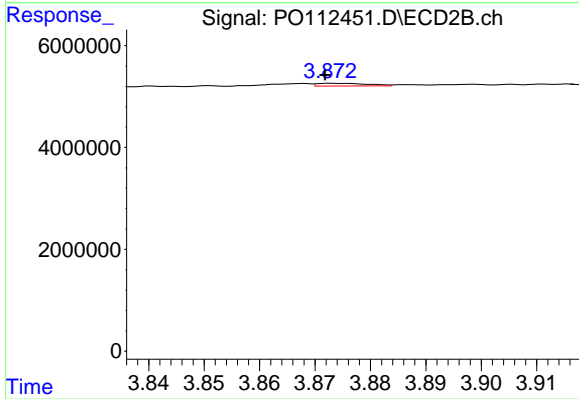
#7 AR-1016-5

R.T.: 5.185 min  
 Delta R.T.: 0.000 min  
 Response: 106000679  
 Conc: 739.70 ng/ml



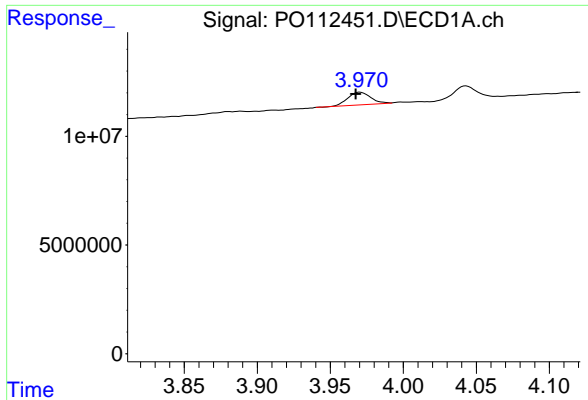
#8 AR-1221-1

R.T.: 3.889 min  
 Delta R.T.: 0.007 min  
 Response: 982316  
 Conc: 10.16 ng/ml



#8 AR-1221-1

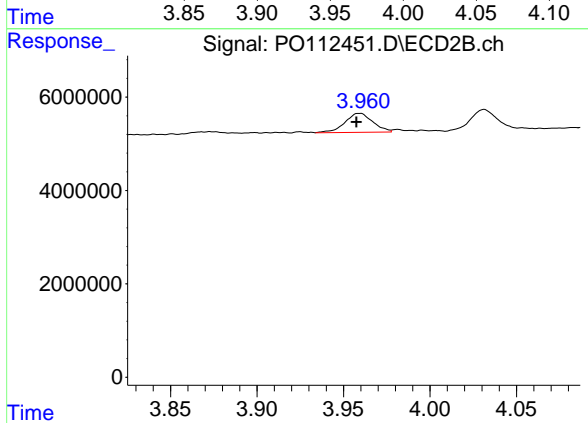
R.T.: 3.873 min  
 Delta R.T.: 0.000 min  
 Response: 328676  
 Conc: 4.89 ng/ml



#9 AR-1221-2

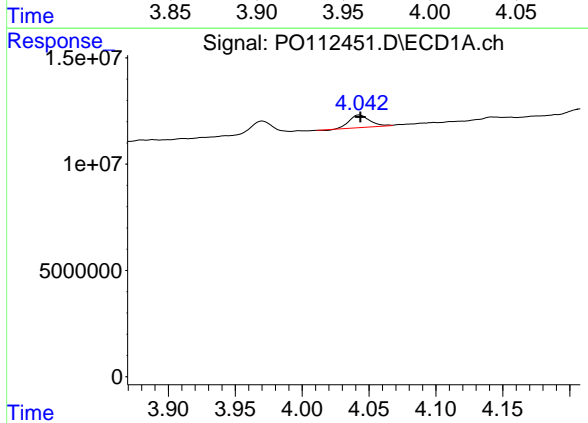
R.T.: 3.970 min  
 Delta R.T.: 0.003 min  
 Response: 6329181  
 Conc: 88.07 ng/ml

Instrument :  
 ECD\_O  
 ClientSampleId :  
 AR1248CCC500



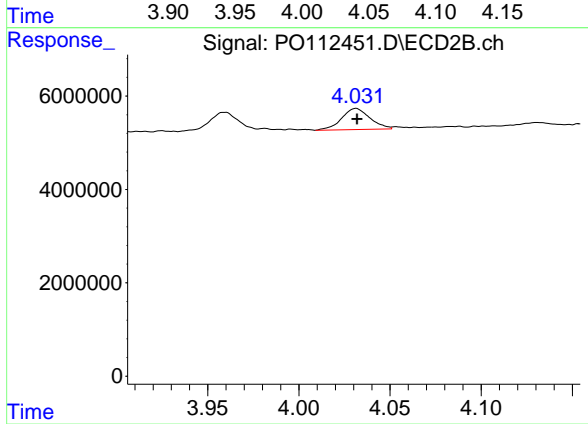
#9 AR-1221-2

R.T.: 3.960 min  
 Delta R.T.: 0.002 min  
 Response: 4561969  
 Conc: 89.93 ng/ml



#10 AR-1221-3

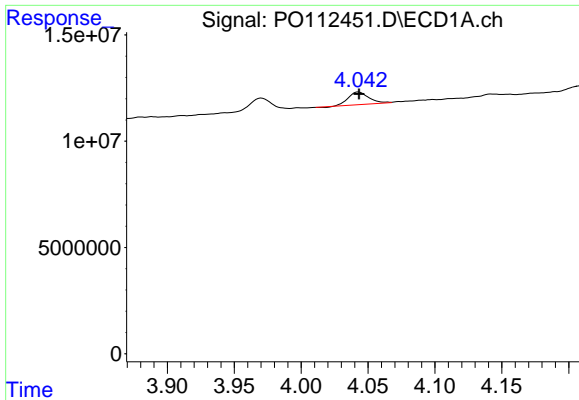
R.T.: 4.043 min  
 Delta R.T.: 0.000 min  
 Response: 6278633  
 Conc: 26.41 ng/ml



#10 AR-1221-3

R.T.: 4.031 min  
 Delta R.T.: 0.000 min  
 Response: 4884407  
 Conc: 30.81 ng/ml

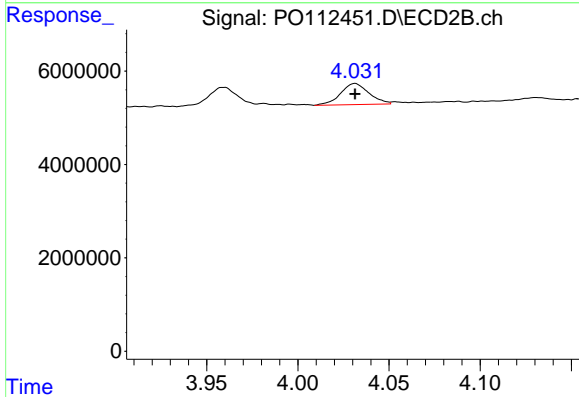




#11 AR-1232-1

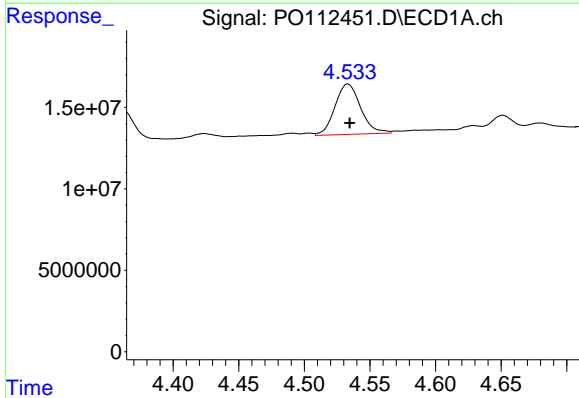
R.T.: 4.043 min  
 Delta R.T.: 0.000 min  
 Response: 6278633  
 Conc: 33.58 ng/ml

Instrument :  
 ECD\_O  
 ClientSampleId :  
 AR1248CCC500



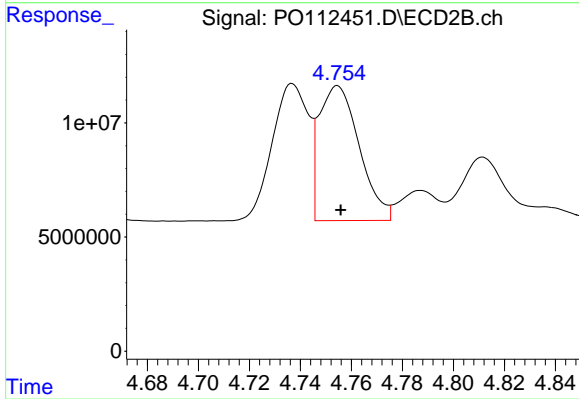
#11 AR-1232-1

R.T.: 4.031 min  
 Delta R.T.: 0.000 min  
 Response: 4884407  
 Conc: 38.60 ng/ml



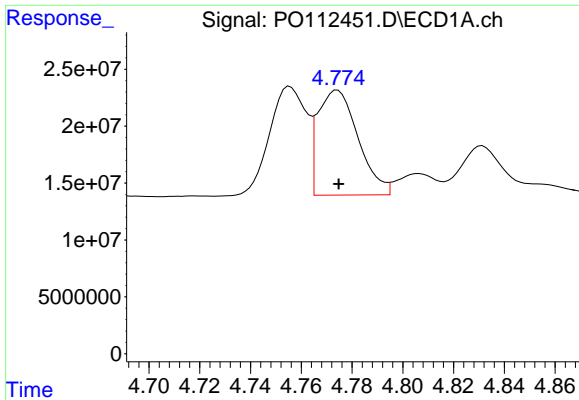
#12 AR-1232-2

R.T.: 4.533 min  
 Delta R.T.: -0.001 min  
 Response: 42076811  
 Conc: 390.96 ng/ml



#12 AR-1232-2

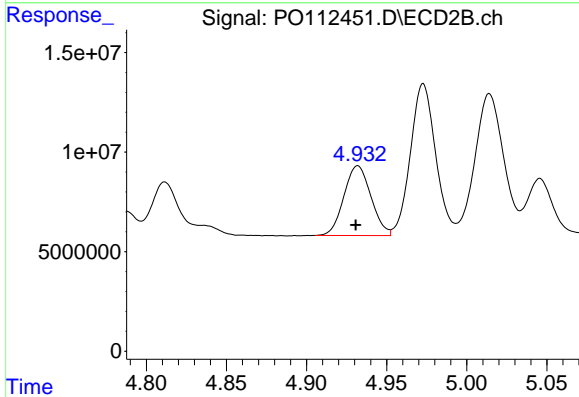
R.T.: 4.755 min  
 Delta R.T.: -0.001 min  
 Response: 64549205  
 Conc: 492.16 ng/ml



#13 AR-1232-3

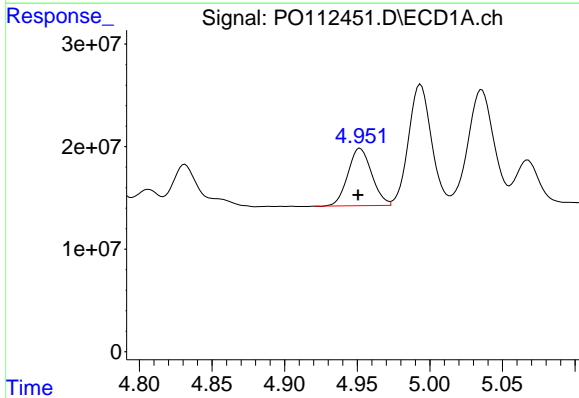
R.T.: 4.774 min  
 Delta R.T.: 0.000 min  
 Response: 101928208  
 Conc: 492.88 ng/ml

Instrument :  
 ECD\_O  
 ClientSampleId :  
 AR1248CCC500



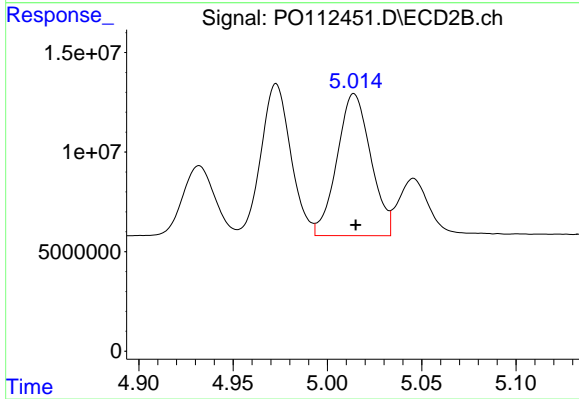
#13 AR-1232-3

R.T.: 4.932 min  
 Delta R.T.: 0.001 min  
 Response: 41118125  
 Conc: 611.91 ng/ml



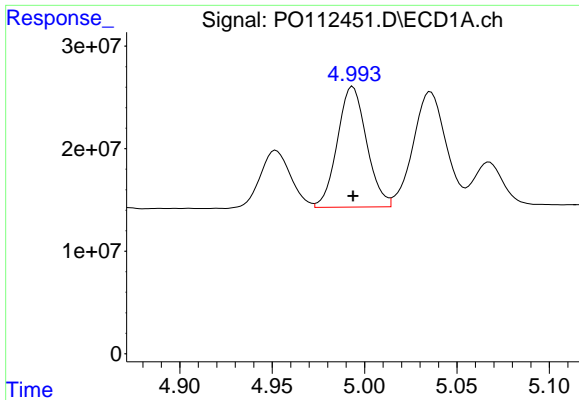
#14 AR-1232-4

R.T.: 4.952 min  
 Delta R.T.: 0.001 min  
 Response: 63980308  
 Conc: 610.85 ng/ml



#14 AR-1232-4

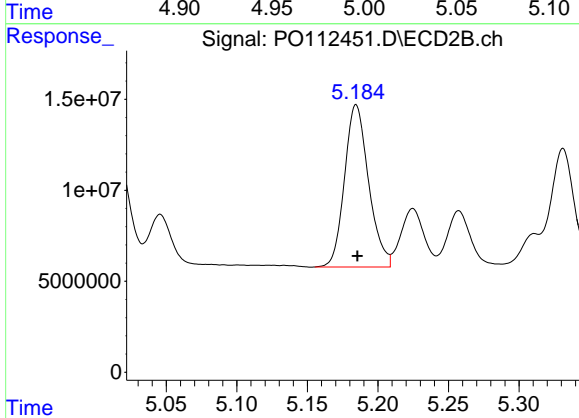
R.T.: 5.014 min  
 Delta R.T.: 0.000 min  
 Response: 88846459  
 Conc: 1485.00 ng/ml



#15 AR-1232-5

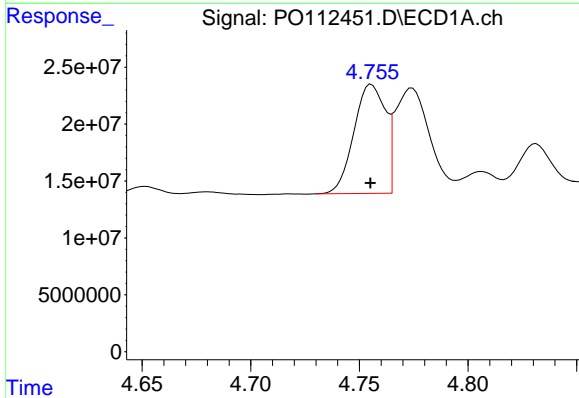
R.T.: 4.994 min  
 Delta R.T.: 0.000 min  
 Response: 129467305  
 Conc: 1907.27 ng/ml

Instrument :  
 ECD\_O  
 ClientSampleId :  
 AR1248CCC500



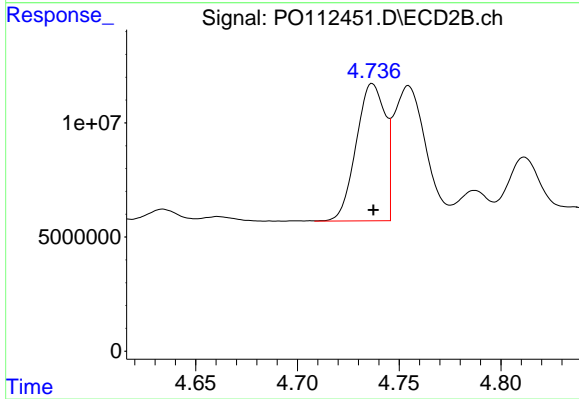
#15 AR-1232-5

R.T.: 5.185 min  
 Delta R.T.: 0.000 min  
 Response: 106000679  
 Conc: 1625.70 ng/ml



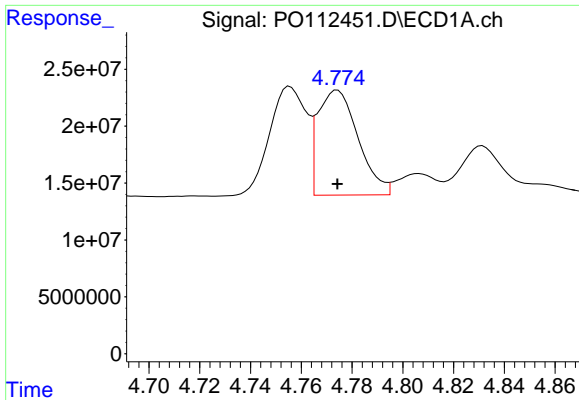
#16 AR-1242-1

R.T.: 4.756 min  
 Delta R.T.: 0.000 min  
 Response: 96337339  
 Conc: 389.10 ng/ml



#16 AR-1242-1

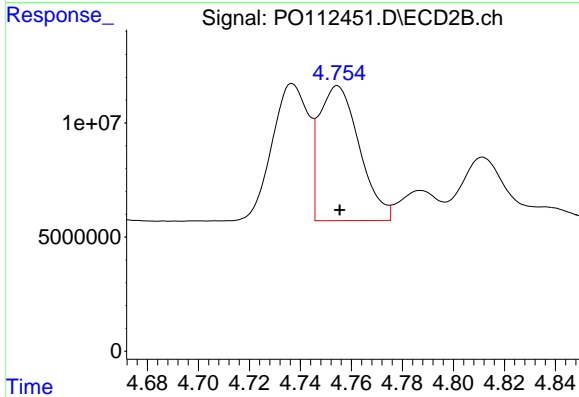
R.T.: 4.737 min  
 Delta R.T.: 0.000 min  
 Response: 59464958  
 Conc: 375.42 ng/ml



#17 AR-1242-2

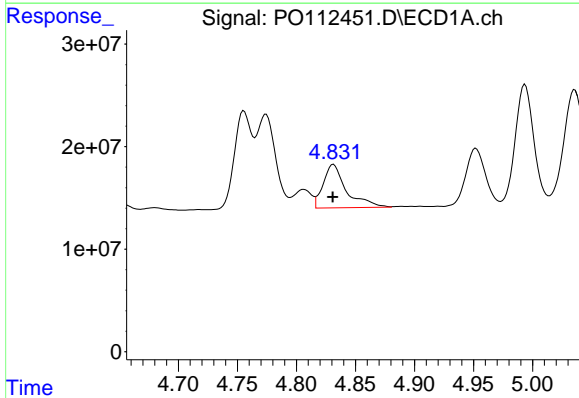
R.T.: 4.774 min  
 Delta R.T.: 0.000 min  
 Response: 101928208  
 Conc: 275.64 ng/ml

Instrument :  
 ECD\_O  
 ClientSampleId :  
 AR1248CCC500



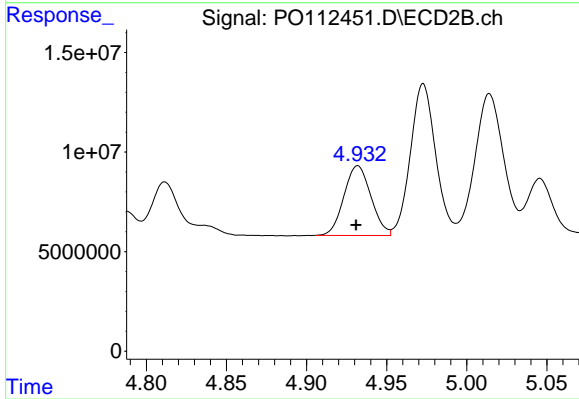
#17 AR-1242-2

R.T.: 4.755 min  
 Delta R.T.: 0.000 min  
 Response: 64549205  
 Conc: 276.25 ng/ml



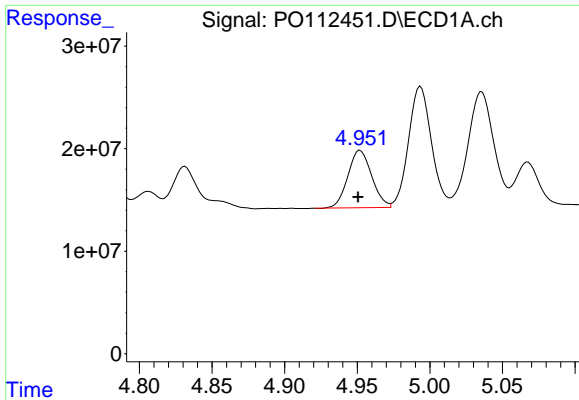
#18 AR-1242-3

R.T.: 4.831 min  
 Delta R.T.: 0.000 min  
 Response: 57689665  
 Conc: 243.77 ng/ml



#18 AR-1242-3

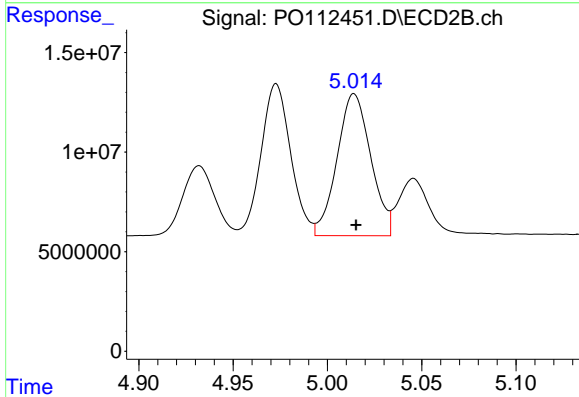
R.T.: 4.932 min  
 Delta R.T.: 0.001 min  
 Response: 41118125  
 Conc: 339.29 ng/ml



#19 AR-1242-4

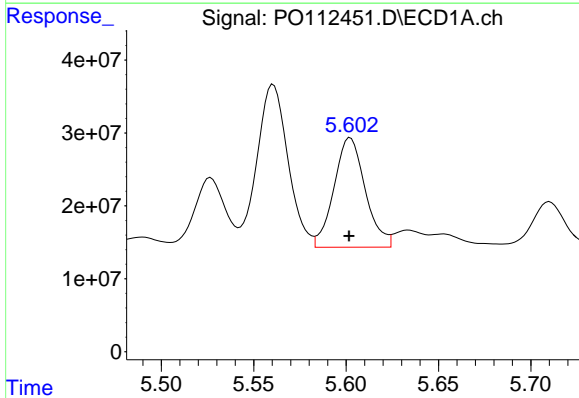
R.T.: 4.952 min  
 Delta R.T.: 0.001 min  
 Response: 63980308  
 Conc: 329.32 ng/ml

Instrument :  
 ECD\_O  
 ClientSampleId :  
 AR1248CCC500



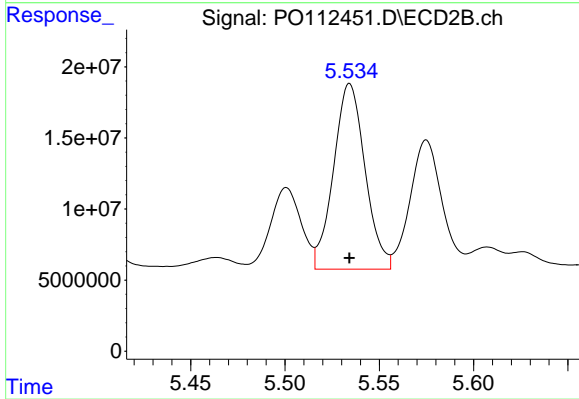
#19 AR-1242-4

R.T.: 5.014 min  
 Delta R.T.: -0.001 min  
 Response: 88846459  
 Conc: 723.86 ng/ml



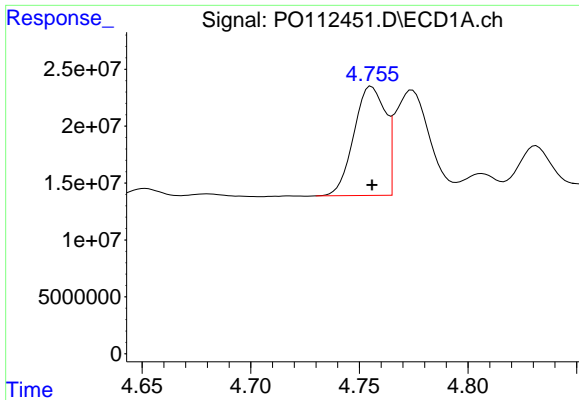
#20 AR-1242-5

R.T.: 5.602 min  
 Delta R.T.: 0.000 min  
 Response: 177295841  
 Conc: 828.81 ng/ml



#20 AR-1242-5

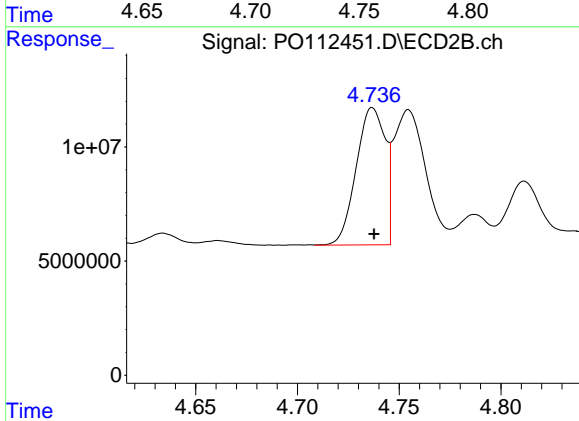
R.T.: 5.534 min  
 Delta R.T.: 0.000 min  
 Response: 151992005  
 Conc: 944.22 ng/ml



#21 AR-1248-1

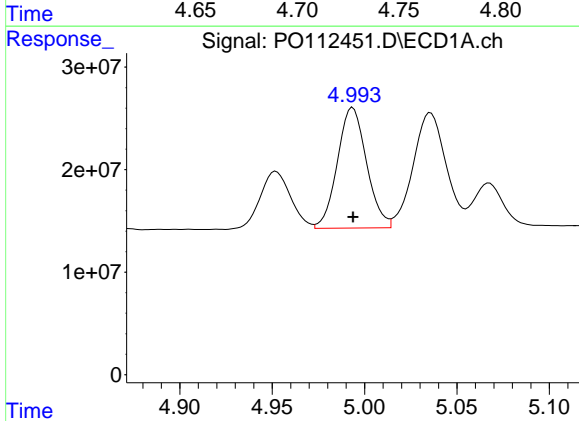
R.T.: 4.756 min  
 Delta R.T.: 0.000 min  
 Response: 96337339  
 Conc: 514.60 ng/ml

Instrument :  
 ECD\_O  
 ClientSampleId :  
 AR1248CCC500



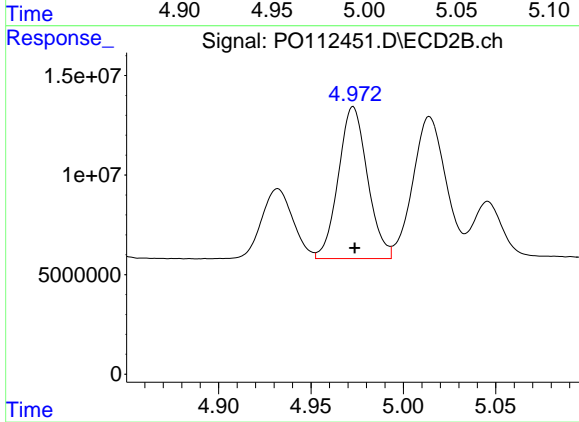
#21 AR-1248-1

R.T.: 4.737 min  
 Delta R.T.: 0.000 min  
 Response: 59464958  
 Conc: 489.39 ng/ml



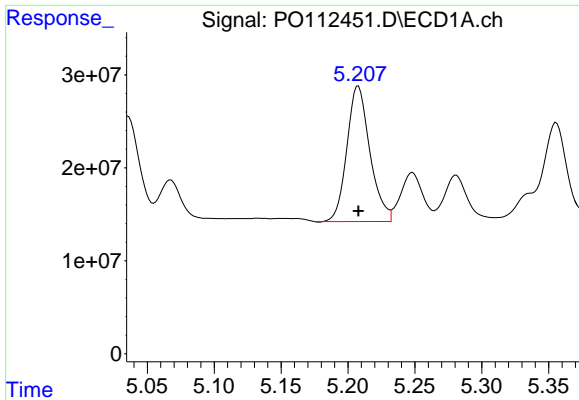
#22 AR-1248-2

R.T.: 4.994 min  
 Delta R.T.: 0.000 min  
 Response: 129467305  
 Conc: 507.49 ng/ml



#22 AR-1248-2

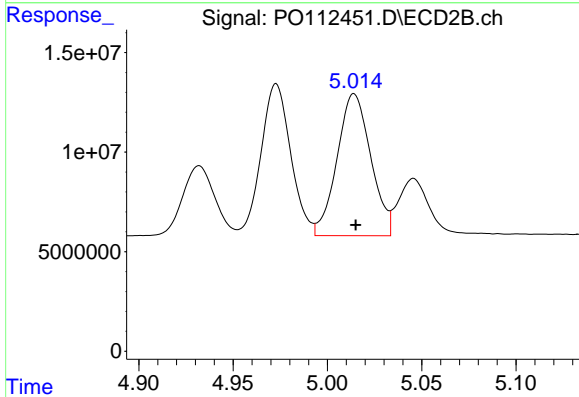
R.T.: 4.973 min  
 Delta R.T.: 0.000 min  
 Response: 83663876  
 Conc: 494.23 ng/ml



#23 AR-1248-3

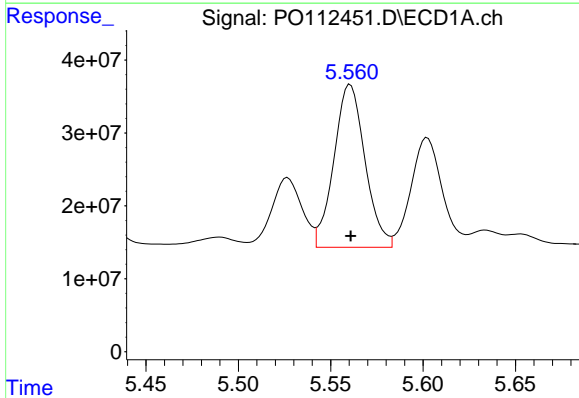
R.T.: 5.208 min  
 Delta R.T.: 0.000 min  
 Response: 174492439  
 Conc: 507.69 ng/ml

Instrument :  
 ECD\_O  
 ClientSampleId :  
 AR1248CCC500



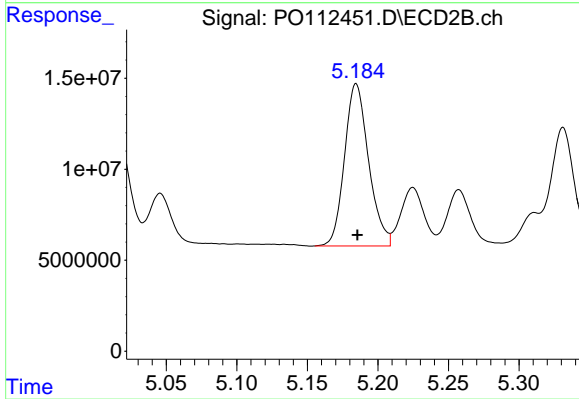
#23 AR-1248-3

R.T.: 5.014 min  
 Delta R.T.: 0.000 min  
 Response: 88846459  
 Conc: 500.13 ng/ml



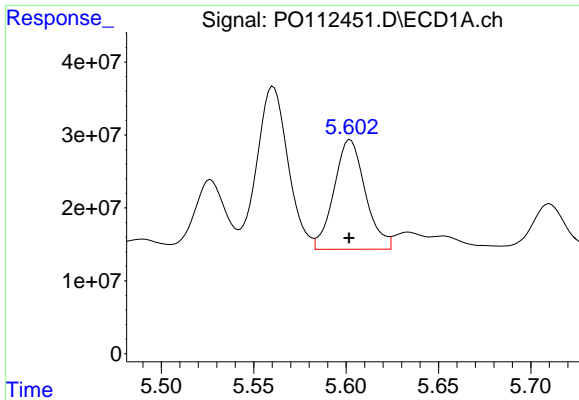
#24 AR-1248-4

R.T.: 5.561 min  
 Delta R.T.: 0.000 min  
 Response: 261558012  
 Conc: 514.80 ng/ml



#24 AR-1248-4

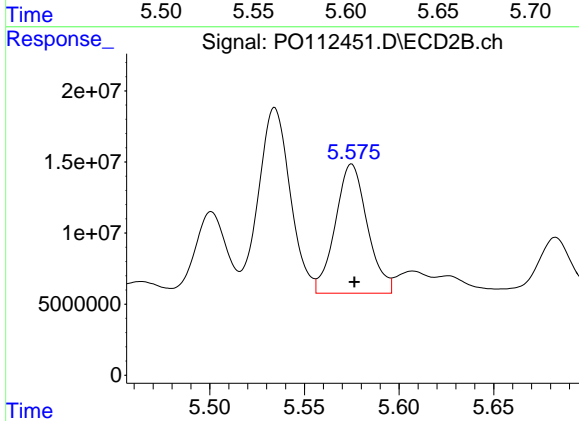
R.T.: 5.185 min  
 Delta R.T.: 0.000 min  
 Response: 106000679  
 Conc: 508.75 ng/ml



#25 AR-1248-5

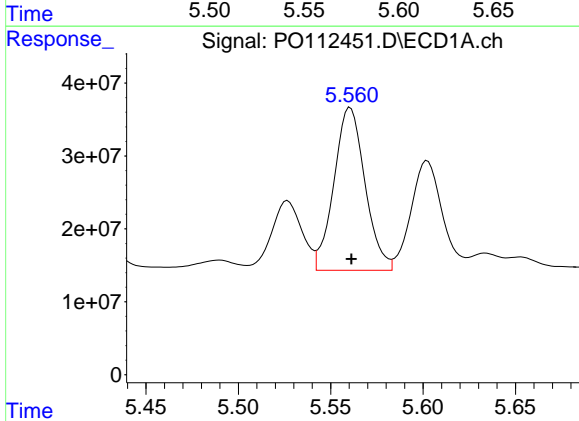
R.T.: 5.602 min  
 Delta R.T.: 0.000 min  
 Response: 177295841  
 Conc: 507.15 ng/ml

Instrument :  
 ECD\_O  
 ClientSampleId :  
 AR1248CCC500



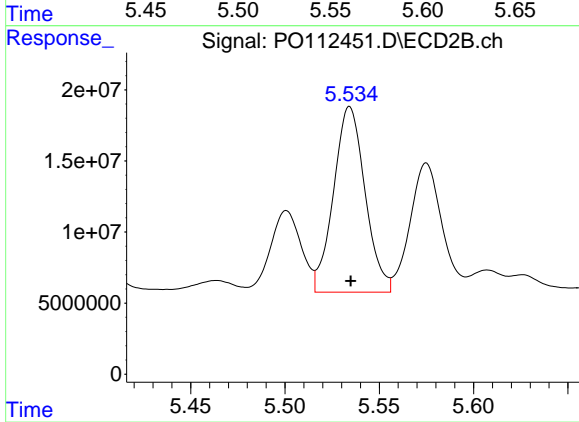
#25 AR-1248-5

R.T.: 5.575 min  
 Delta R.T.: -0.001 min  
 Response: 107151530  
 Conc: 498.92 ng/ml



#26 AR-1254-1

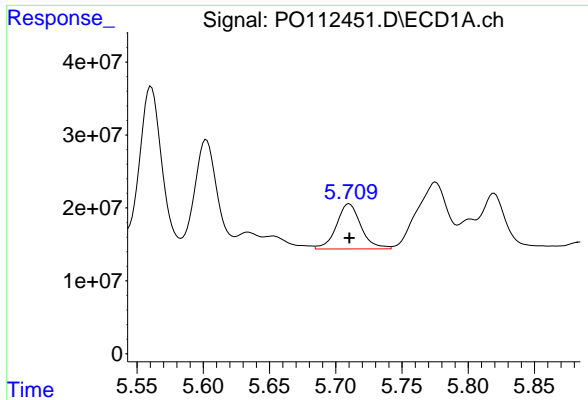
R.T.: 5.561 min  
 Delta R.T.: 0.000 min  
 Response: 261558012  
 Conc: 476.46 ng/ml



#26 AR-1254-1

R.T.: 5.534 min  
 Delta R.T.: 0.000 min  
 Response: 151992005  
 Conc: 462.51 ng/ml

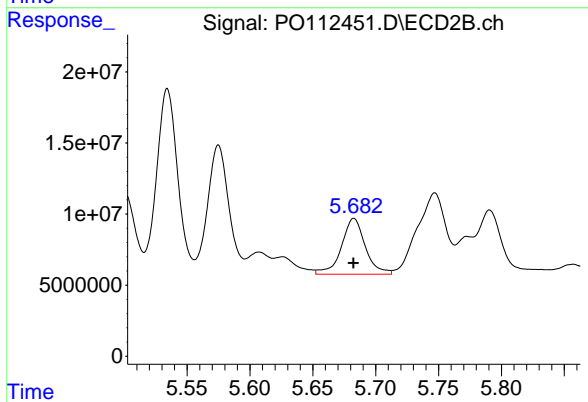




#27 AR-1254-2

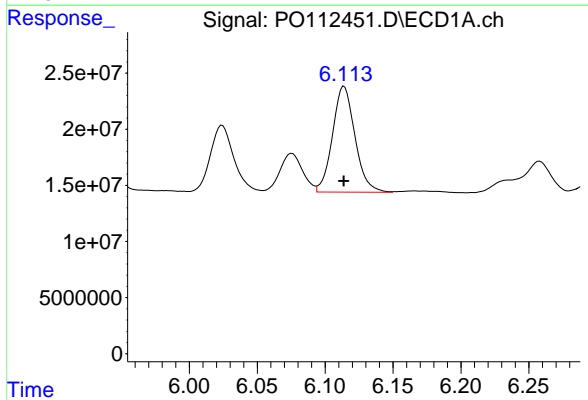
R.T.: 5.710 min  
 Delta R.T.: 0.000 min  
 Response: 80338936  
 Conc: 165.33 ng/ml

Instrument :  
 ECD\_O  
 ClientSampleId :  
 AR1248CCC500



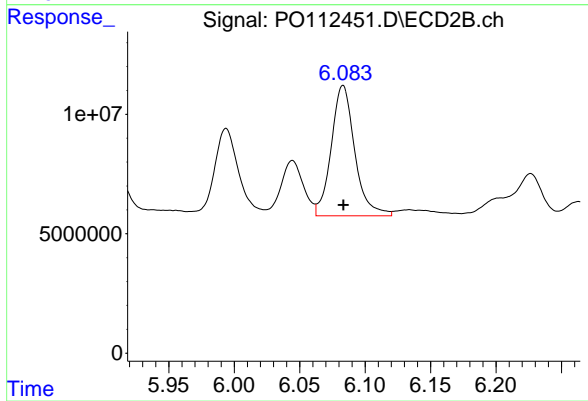
#27 AR-1254-2

R.T.: 5.683 min  
 Delta R.T.: 0.000 min  
 Response: 52097485  
 Conc: 179.96 ng/ml



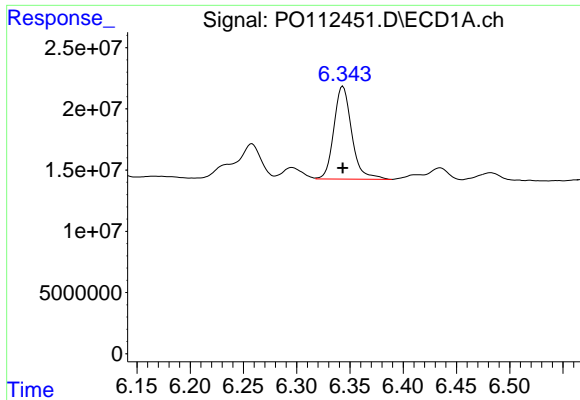
#28 AR-1254-3

R.T.: 6.114 min  
 Delta R.T.: 0.000 min  
 Response: 108755354  
 Conc: 146.12 ng/ml



#28 AR-1254-3

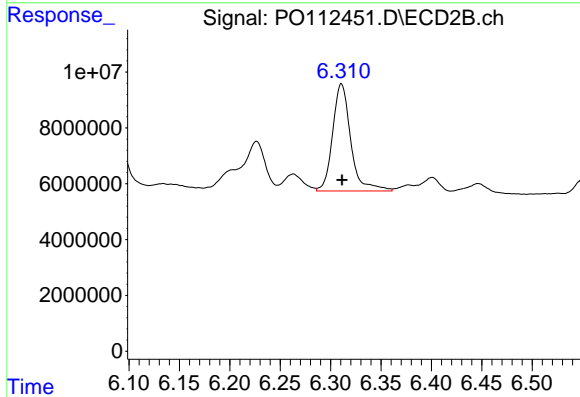
R.T.: 6.083 min  
 Delta R.T.: 0.000 min  
 Response: 68366482  
 Conc: 159.94 ng/ml



#29 AR-1254-4

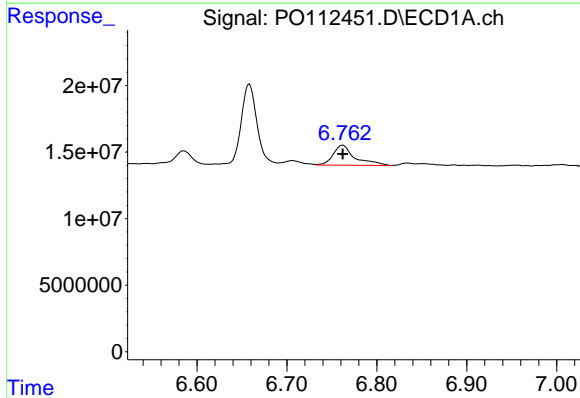
R.T.: 6.343 min  
 Delta R.T.: 0.000 min  
 Response: 88502121  
 Conc: 161.00 ng/ml

Instrument :  
 ECD\_O  
 ClientSampleId :  
 AR1248CCC500



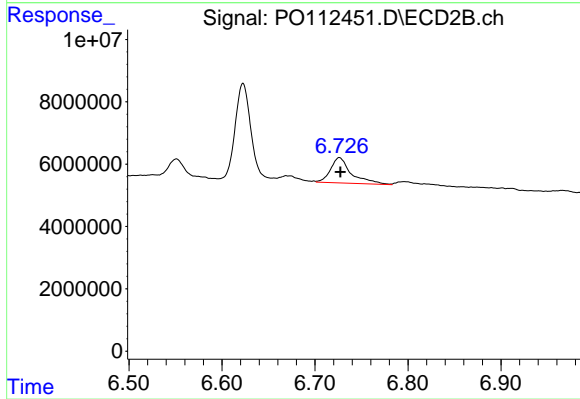
#29 AR-1254-4

R.T.: 6.311 min  
 Delta R.T.: 0.000 min  
 Response: 48066555  
 Conc: 176.09 ng/ml



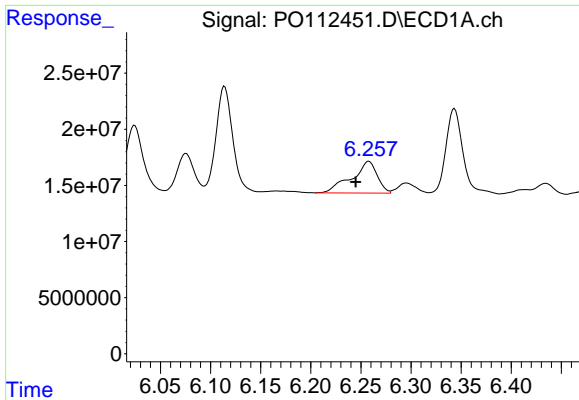
#30 AR-1254-5

R.T.: 6.762 min  
 Delta R.T.: 0.000 min  
 Response: 25129521  
 Conc: 35.50 ng/ml



#30 AR-1254-5

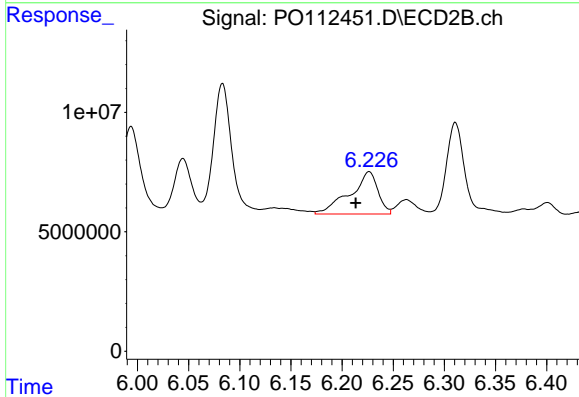
R.T.: 6.726 min  
 Delta R.T.: 0.000 min  
 Response: 12558818  
 Conc: 37.60 ng/ml



#31 AR-1260-1

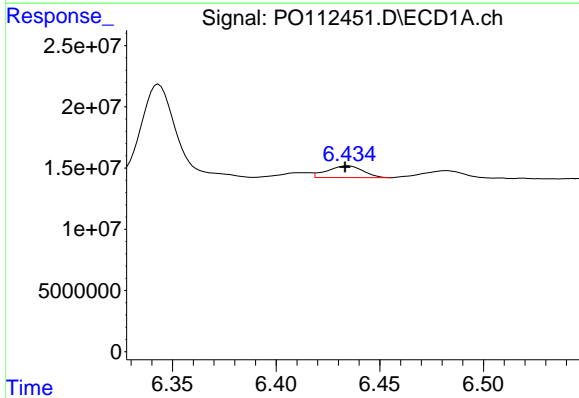
R.T.: 6.258 min  
 Delta R.T.: 0.013 min  
 Response: 50190618  
 Conc: 114.24 ng/ml

Instrument :  
 ECD\_O  
 ClientSampleId :  
 AR1248CCC500



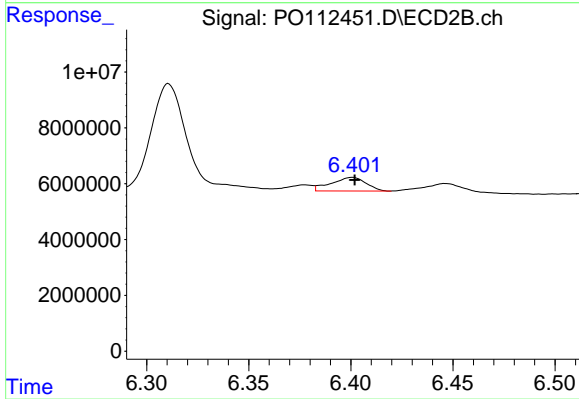
#31 AR-1260-1

R.T.: 6.226 min  
 Delta R.T.: 0.013 min  
 Response: 33689765  
 Conc: 135.57 ng/ml



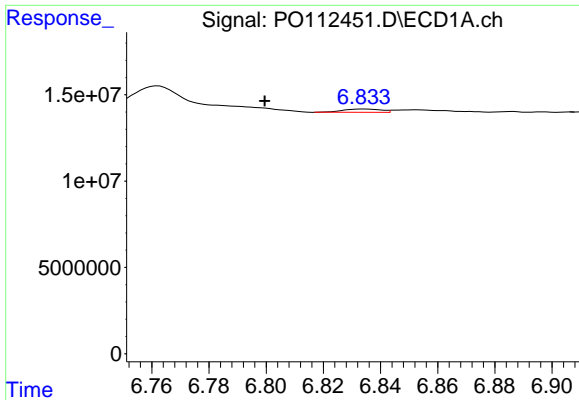
#32 AR-1260-2

R.T.: 6.435 min  
 Delta R.T.: 0.001 min  
 Response: 11441358  
 Conc: 16.63 ng/ml



#32 AR-1260-2

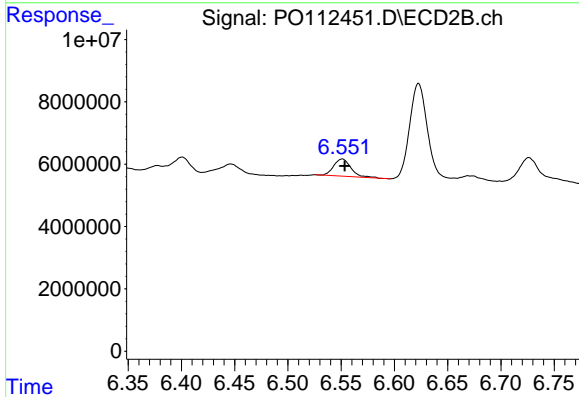
R.T.: 6.401 min  
 Delta R.T.: -0.001 min  
 Response: 5811813  
 Conc: 17.64 ng/ml



#33 AR-1260-3

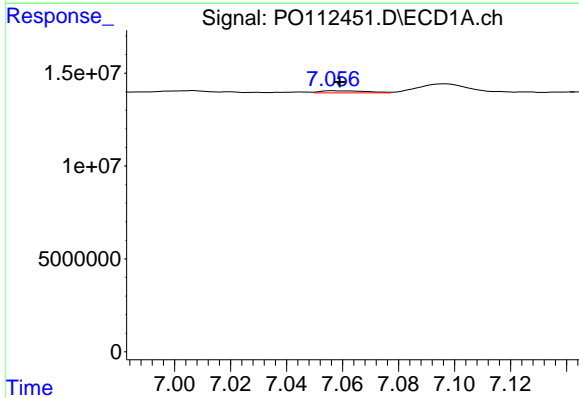
R.T.: 6.834 min  
 Delta R.T.: 0.035 min  
 Response: 1778867  
 Conc: 3.03 ng/ml

Instrument :  
 ECD\_O  
 ClientSampleId :  
 AR1248CCC500



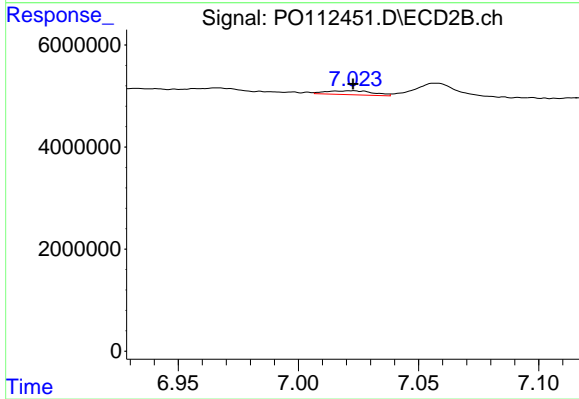
#33 AR-1260-3

R.T.: 6.551 min  
 Delta R.T.: -0.002 min  
 Response: 6240806  
 Conc: 24.29 ng/ml



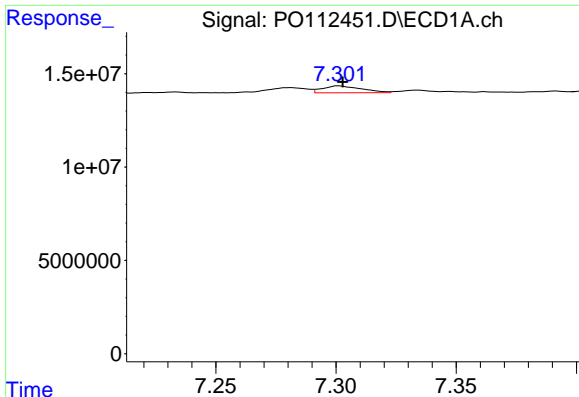
#34 AR-1260-4

R.T.: 7.056 min  
 Delta R.T.: -0.002 min  
 Response: 1265891  
 Conc: 2.81 ng/ml



#34 AR-1260-4

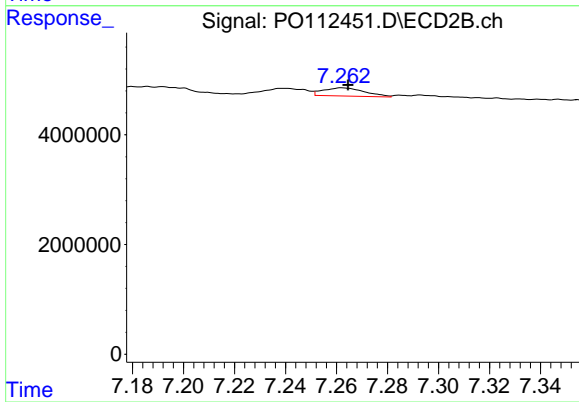
R.T.: 7.022 min  
 Delta R.T.: 0.000 min  
 Response: 1054512  
 Conc: 5.51 ng/ml



#35 AR-1260-5

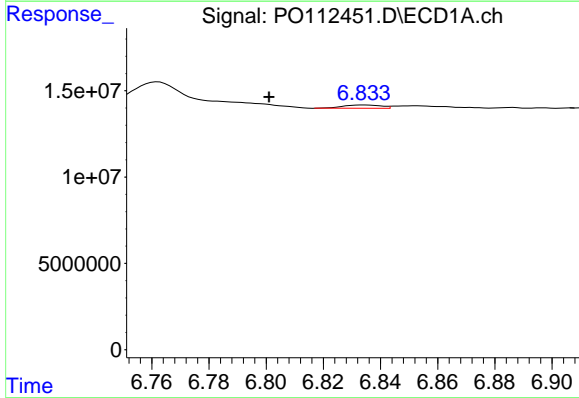
R.T.: 7.301 min  
 Delta R.T.: -0.001 min  
 Response: 4192574  
 Conc: 3.38 ng/ml

Instrument :  
 ECD\_O  
 ClientSampleId :  
 AR1248CCC500



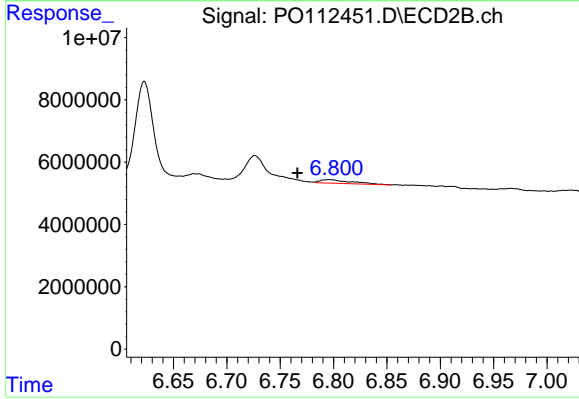
#35 AR-1260-5

R.T.: 7.262 min  
 Delta R.T.: -0.002 min  
 Response: 1677923  
 Conc: 4.07 ng/ml



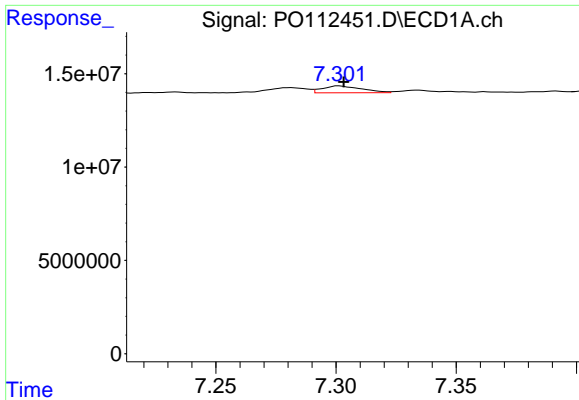
#36 AR-1262-1

R.T.: 6.834 min  
 Delta R.T.: 0.033 min  
 Response: 1778867  
 Conc: 1.91 ng/ml



#36 AR-1262-1

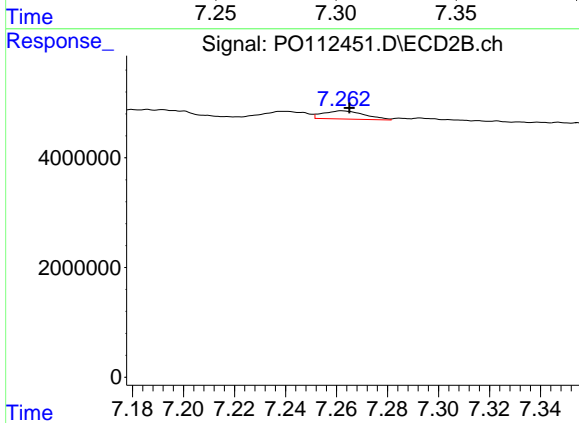
R.T.: 6.797 min  
 Delta R.T.: 0.030 min  
 Response: 2324539  
 Conc: 5.60 ng/ml



#37 AR-1262-2

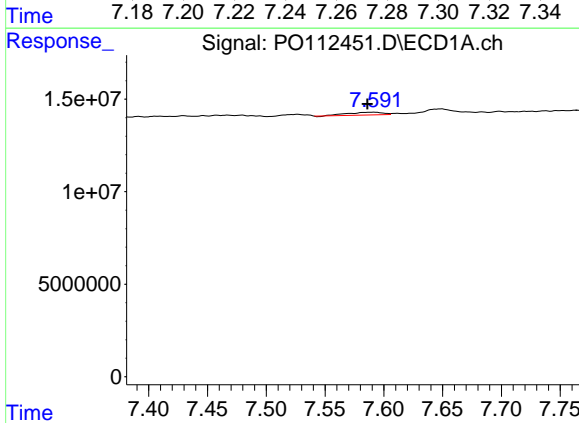
R.T.: 7.301 min  
 Delta R.T.: -0.002 min  
 Response: 4192574  
 Conc: 2.82 ng/ml

Instrument :  
 ECD\_O  
 ClientSampleId :  
 AR1248CCC500



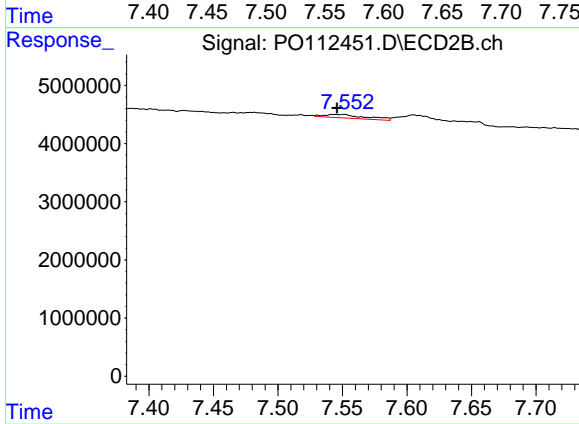
#37 AR-1262-2

R.T.: 7.262 min  
 Delta R.T.: -0.003 min  
 Response: 1677923  
 Conc: 3.25 ng/ml



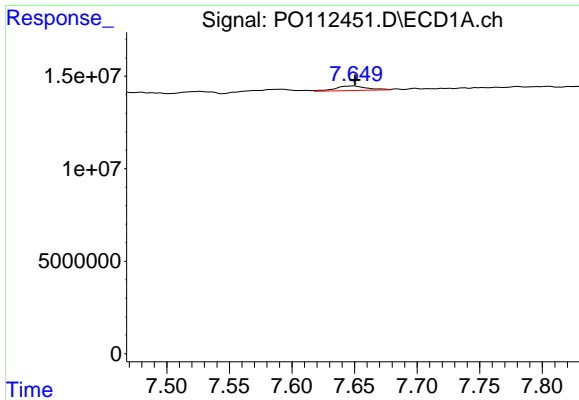
#38 AR-1262-3

R.T.: 7.592 min  
 Delta R.T.: 0.006 min  
 Response: 3032712  
 Conc: 5.14 ng/ml



#38 AR-1262-3

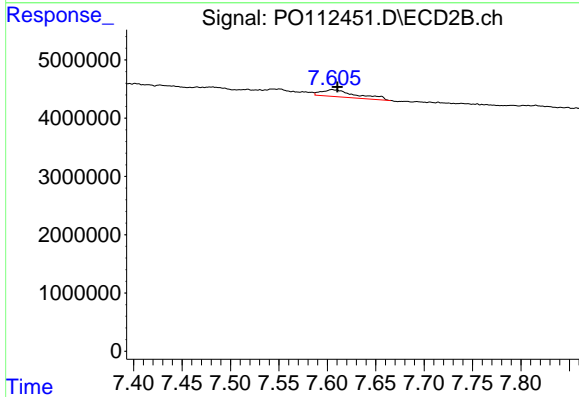
R.T.: 7.543 min  
 Delta R.T.: -0.003 min  
 Response: 1366014  
 Conc: 7.32 ng/ml



#39 AR-1262-4

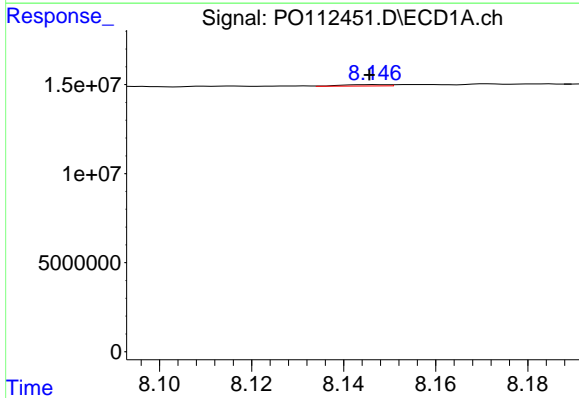
R.T.: 7.649 min  
 Delta R.T.: -0.001 min  
 Response: 4363629  
 Conc: 4.39 ng/ml

Instrument :  
 ECD\_O  
 ClientSampleId :  
 AR1248CCC500



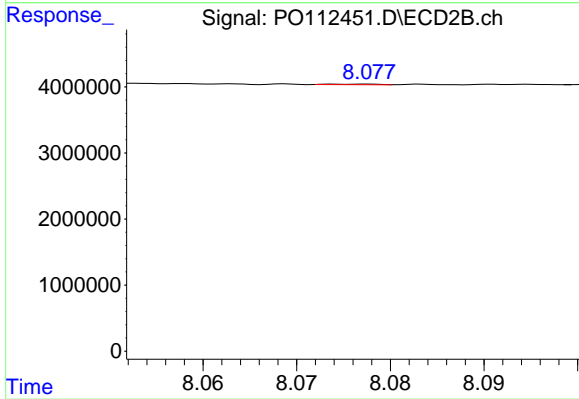
#39 AR-1262-4

R.T.: 7.605 min  
 Delta R.T.: -0.006 min  
 Response: 2941645  
 Conc: 10.21 ng/ml



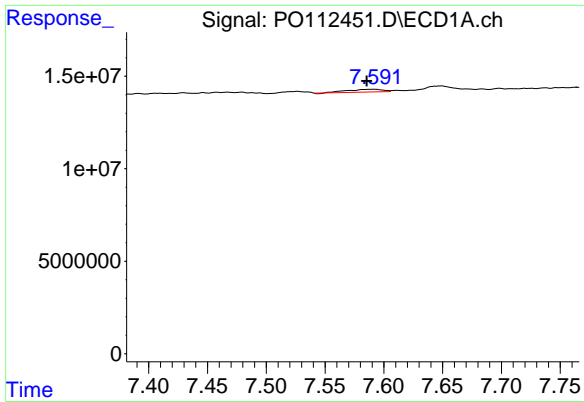
#40 AR-1262-5

R.T.: 8.147 min  
 Delta R.T.: 0.001 min  
 Response: 525159  
 Conc: 1.21 ng/ml



#40 AR-1262-5

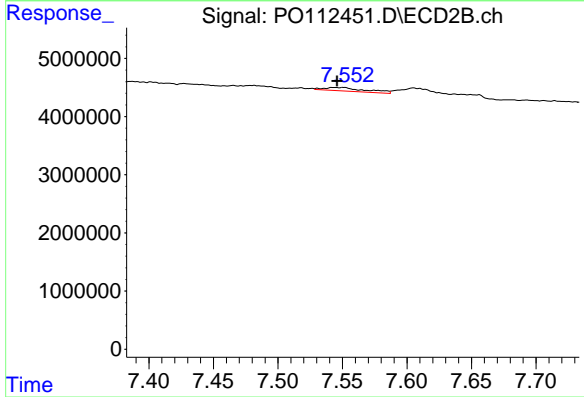
R.T.: 8.077 min  
 Delta R.T.: -0.026 min  
 Response: 31789  
 Conc: 0.32 ng/ml



#41 AR-1268-1

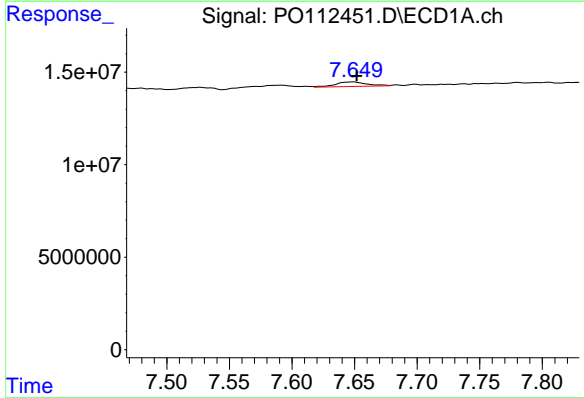
R.T.: 7.592 min  
 Delta R.T.: 0.006 min  
 Response: 3032712  
 Conc: 1.73 ng/ml

Instrument :  
 ECD\_O  
 ClientSampleId :  
 AR1248CCC500



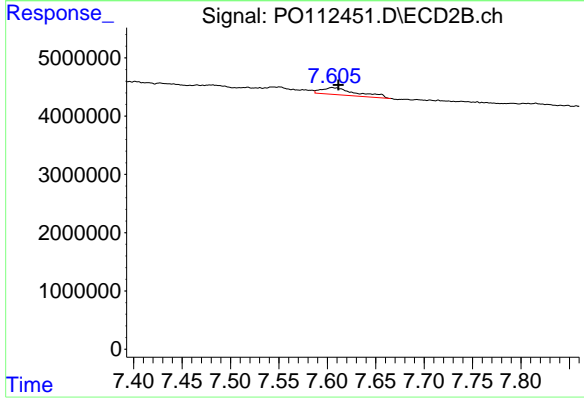
#41 AR-1268-1

R.T.: 7.543 min  
 Delta R.T.: -0.003 min  
 Response: 1366014  
 Conc: 2.64 ng/ml



#42 AR-1268-2

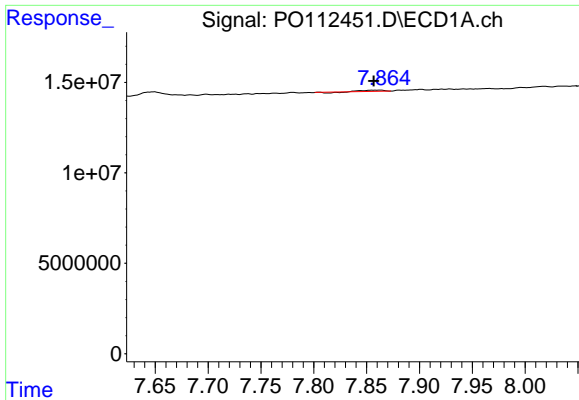
R.T.: 7.649 min  
 Delta R.T.: -0.003 min  
 Response: 4363629  
 Conc: 2.96 ng/ml



#42 AR-1268-2

R.T.: 7.605 min  
 Delta R.T.: -0.007 min  
 Response: 2941645  
 Conc: 6.92 ng/ml

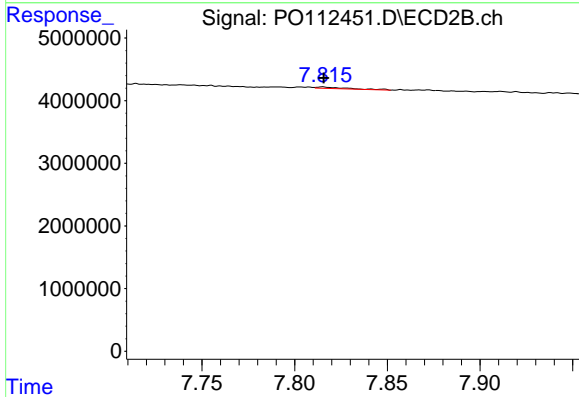




#43 AR-1268-3

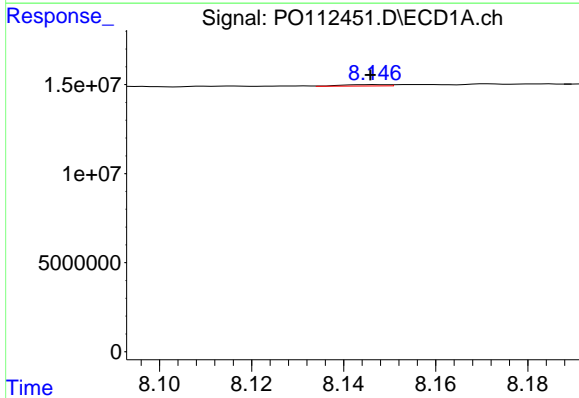
R.T.: 7.855 min  
 Delta R.T.: -0.002 min  
 Response: 631293  
 Conc: 0.50 ng/ml

Instrument :  
 ECD\_O  
 ClientSampleId :  
 AR1248CCC500



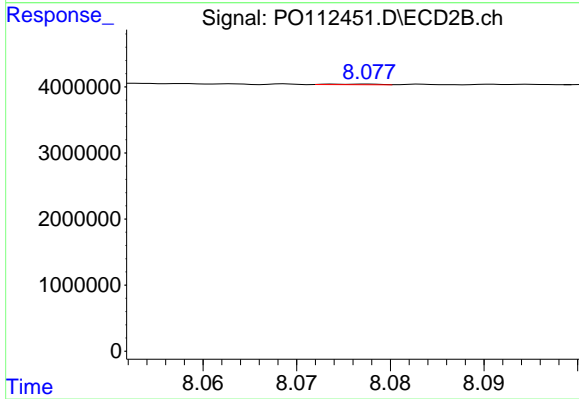
#43 AR-1268-3

R.T.: 7.815 min  
 Delta R.T.: 0.000 min  
 Response: 263086  
 Conc: 0.82 ng/ml



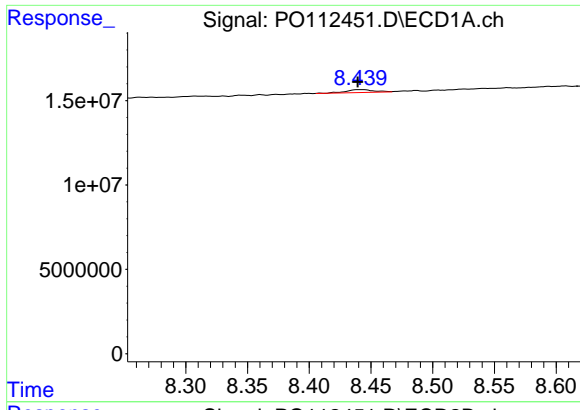
#44 AR-1268-4

R.T.: 8.147 min  
 Delta R.T.: 0.000 min  
 Response: 525159  
 Conc: 1.09 ng/ml



#44 AR-1268-4

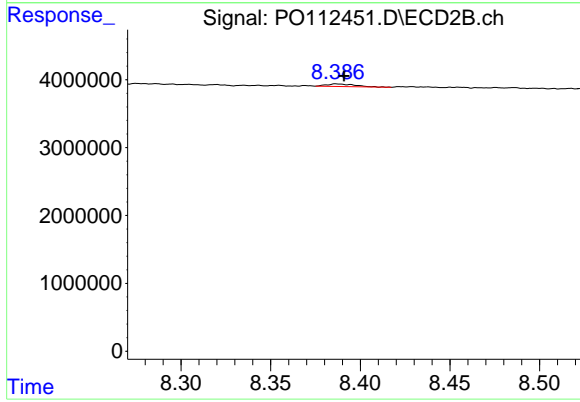
R.T.: 8.077 min  
 Delta R.T.: -0.026 min  
 Response: 31789  
 Conc: 0.29 ng/ml



#45 AR-1268-5

R.T.: 8.440 min  
 Delta R.T.: 0.001 min  
 Response: 2680123  
 Conc: 0.80 ng/ml

Instrument :  
 ECD\_O  
 ClientSampleId :  
 AR1248CCC500



#45 AR-1268-5

R.T.: 8.387 min  
 Delta R.T.: -0.004 min  
 Response: 430552  
 Conc: 0.59 ng/ml