

Data Path : Z:\pestpcbsrv\HPCHEM1\ECD_0\Data\P0072425\
 Data File : PO112452.D
 Signal(s) : Signal #1: ECD1A.ch Signal #2: ECD2B.ch
 Acq On : 24 Jul 2025 09:58
 Operator : YP/AJ
 Sample : AR1254CCC500
 Misc :
 ALS Vial : 6 Sample Multiplier: 1

Instrument :
 ECD_0
 ClientSampleId :
 AR1254CCC500

Integration File signal 1: autoint1.e
 Integration File signal 2: autoint2.e
 Quant Time: Jul 24 23:33:14 2025
 Quant Method : Z:\pestpcbsrv\HPCHEM1\ECD_0\methods\P0072325.M
 Quant Title : GC EXTRACTABLES
 QLast Update : Thu Jul 24 04:54:06 2025
 Response via : Initial Calibration
 Integrator: ChemStation

Volume Inj. : 2 µl
 Signal #1 Phase : ZB-MR1 Signal #2 Phase: ZB-MR2
 Signal #1 Info : 30Mx0.32mmx 0.50µ Signal #2 Info : 30M x 0.32mm x 0.25µm

Compound	RT#1	RT#2	Resp#1	Resp#2	ng/ml	ng/ml
System Monitoring Compounds						
1) SA Tetrachlo...	3.670	3.662	434.8E6	258.5E6	53.472	52.015
2) SA Decachlor...	8.694	8.639	394.1E6	91395666	53.892	51.720
Target Compounds						
3) L1 AR-1016-1	4.756	4.738	4375065	3633521	16.303	20.762 #
4) L1 AR-1016-2	4.774	4.756	3743536	2789898	9.218	10.710
5) L1 AR-1016-3	4.833	4.930	3292696	1554021	12.583	11.429
6) L1 AR-1016-4	4.951	4.973	2771763	65271680	13.084	587.584 #
7) L1 AR-1016-5	5.207	5.185	62823447	39968667	286.250	278.910
8) L2 AR-1221-1	3.892	3.880	562862	661907	5.823	9.840 #
9) L2 AR-1221-2	3.971	3.960	6142061	4351690	85.470	85.785
10) L2 AR-1221-3	4.051	4.032	526365	852368	2.214	5.377 #
11) L3 AR-1232-1	4.051	4.032	526365	852368	2.815	6.735 #
12) L3 AR-1232-2	4.537	4.756	4607585	2789898	42.812	21.272 #
13) L3 AR-1232-3	4.774	4.930	3743536	1554021	18.102	23.126 #
14) L3 AR-1232-4	4.951	5.014	2771763	19949193	26.463	333.436 #
15) L3 AR-1232-5	4.994	5.185	99946990	39968667	1472.388	612.988 #
16) L4 AR-1242-1	4.756	4.738	4375065	3633521	17.670	22.940 #
17) L4 AR-1242-2	4.774	4.756	3743536	2789898	10.123	11.940
18) L4 AR-1242-3	4.833	4.930	3292696	1554021	13.913	12.823
19) L4 AR-1242-4	4.951	5.014	2771763	19949193	14.267	162.533 #
20) L4 AR-1242-5	5.602	5.535	31659162	162.4E6	147.998	1008.896 #
21) L5 AR-1248-1	4.756	4.738	4375065	3633521	23.370	29.903 #
22) L5 AR-1248-2	4.994	4.973	99946990	65271680	391.776	385.585
23) L5 AR-1248-3	5.207	5.014	62823447	19949193	182.785	112.297 #
24) L5 AR-1248-4	5.561	5.185	273.9E6	39968667	539.012	191.830 #
25) L5 AR-1248-5	5.602	5.575	31659162	21165725	90.561	98.553
26) L6 AR-1254-1	5.561	5.535	273.9E6	162.4E6	498.872	494.197
27) L6 AR-1254-2	5.711	5.682	244.1E6	142.3E6	502.279	491.470
28) L6 AR-1254-3	6.114	6.083	377.6E6	211.3E6	507.289	494.300
29) L6 AR-1254-4	6.344	6.311	275.1E6	131.8E6	500.446	483.022
30) L6 AR-1254-5	6.762	6.727	363.3E6	165.9E6	513.224	496.718
31) L7 AR-1260-1	6.245	6.214	177.3E6	100.2E6	403.607	403.115
32) L7 AR-1260-2	6.434	6.401	185.9E6	86068290	270.272	261.214
33) L7 AR-1260-3	6.832	6.552	22376080	75514433	38.053	293.921 #
34) L7 AR-1260-4	7.059	7.022	23215002	7299793	51.474	38.157 #
35) L7 AR-1260-5	7.302	7.264	51331743	16378587	41.425	39.735
36) L8 AR-1262-1	6.832	6.796	22376080	12396822	24.081	29.884
37) L8 AR-1262-2	7.302	7.264	51331743	16378587	34.520	31.769
38) L8 AR-1262-3	7.587	7.544	2994097	1515875	5.073	8.127 #
39) L8 AR-1262-4	7.647	7.606	38061589	13645981	38.285	47.365
40) L8 AR-1262-5	8.160	8.105	6544247	298916	15.077	3.004 #
41) L9 AR-1268-1	7.587	7.544	2994097	1515875	1.710	2.927 #

Data Path : Z:\pestpcbsrv\HPCHEM1\ECD_0\Data\P0072425\
 Data File : P0112452.D
 Signal(s) : Signal #1: ECD1A.ch Signal #2: ECD2B.ch
 Acq On : 24 Jul 2025 09:58
 Operator : YP/AJ
 Sample : AR1254CCC500
 Misc :
 ALS Vial : 6 Sample Multiplier: 1

Instrument :
 ECD_0
 ClientSampleId :
 AR1254CCC500

Integration File signal 1: autoint1.e
 Integration File signal 2: autoint2.e
 Quant Time: Jul 24 23:33:14 2025
 Quant Method : Z:\pestpcbsrv\HPCHEM1\ECD_0\methods\P0072325.M
 Quant Title : GC EXTRACTABLES
 QLast Update : Thu Jul 24 04:54:06 2025
 Response via : Initial Calibration
 Integrator: ChemStation

Volume Inj. : 2 µl
 Signal #1 Phase : ZB-MR1 Signal #2 Phase: ZB-MR2
 Signal #1 Info : 30Mx0.32mmx 0.50µ Signal #2 Info : 30M x 0.32mm x 0.25µm

	Compound	RT#1	RT#2	Resp#1	Resp#2	ng/ml	ng/ml
42)	L9 AR-1268-2	7.647	7.606	38061589	13645981	25.839	32.103
43)	L9 AR-1268-3	7.859	7.809	2321203	434435	1.854	1.352 #
44)	L9 AR-1268-4	8.160	8.105	6544247	298916	13.581	2.686 #
45)	L9 AR-1268-5	8.438	8.387	6167535	791391	1.837	1.082 #

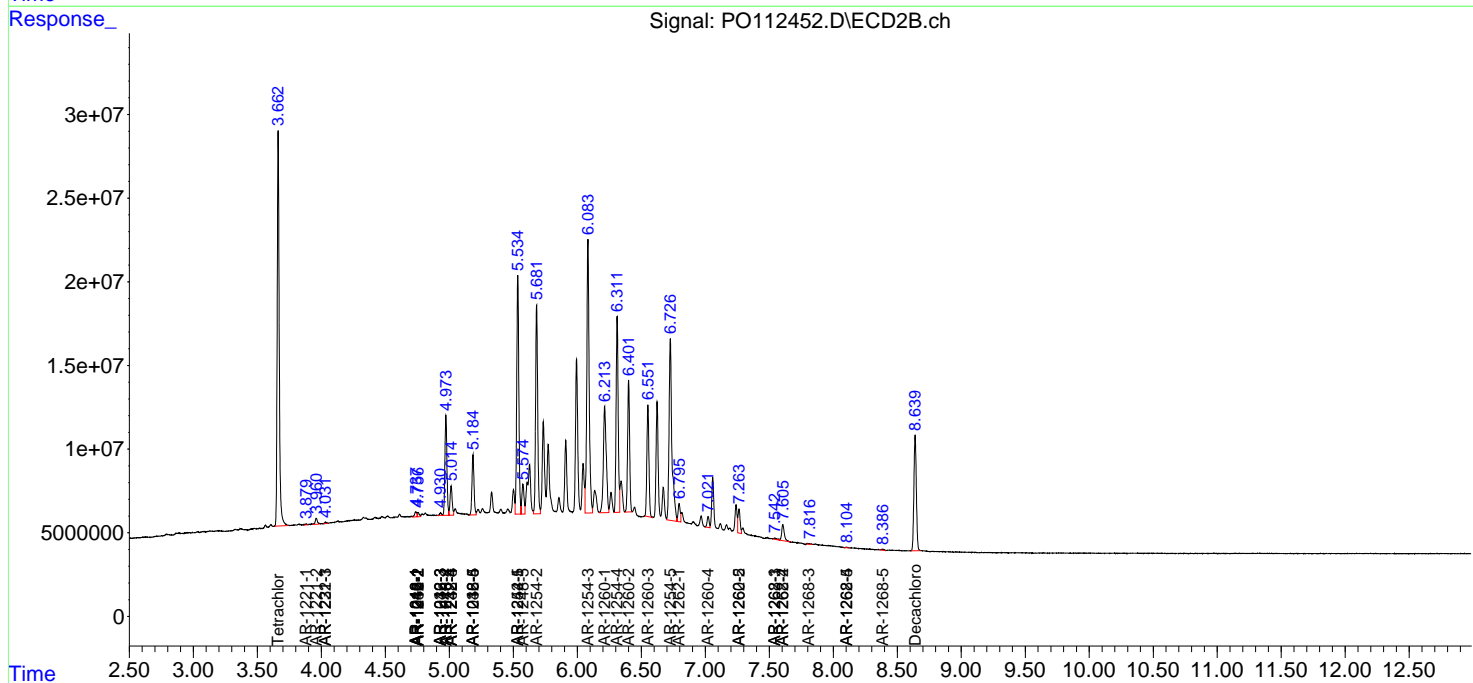
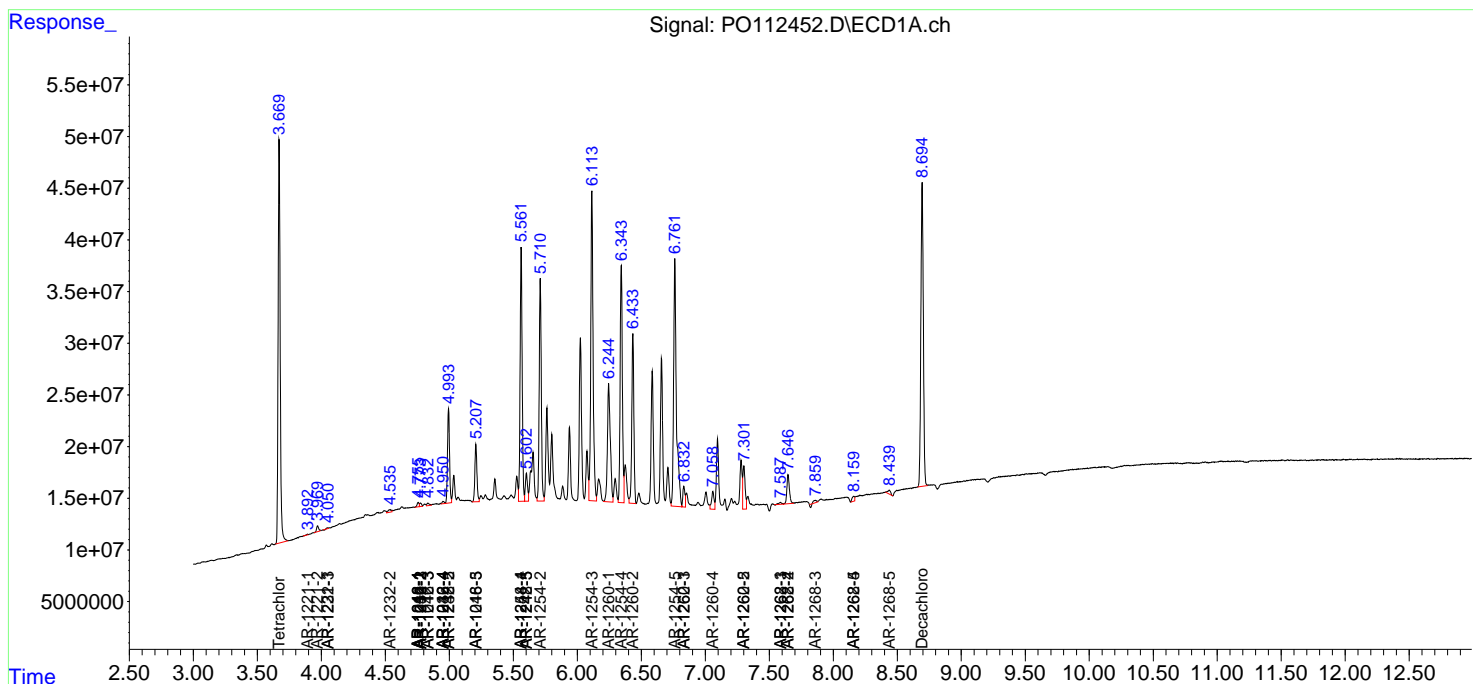
(f)=RT Delta > 1/2 Window (#)=Amounts differ by > 25% (m)=manual int.

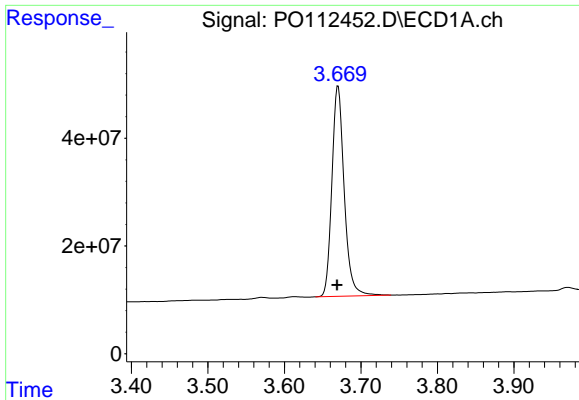
Data Path : Z:\pestpcbsrv\HPCHEM1\ECD_O\Data\PO072425\
 Data File : PO112452.D
 Signal(s) : Signal #1: ECD1A.ch Signal #2: ECD2B.ch
 Acq On : 24 Jul 2025 09:58
 Operator : YP/AJ
 Sample : AR1254CCC500
 Misc :
 ALS Vial : 6 Sample Multiplier: 1

Instrument :
 ECD_O
 ClientSampleId :
 AR1254CCC500

Integration File signal 1: autoint1.e
 Integration File signal 2: autoint2.e
 Quant Time: Jul 24 23:33:14 2025
 Quant Method : Z:\pestpcbsrv\HPCHEM1\ECD_O\methods\PO072325.M
 Quant Title : GC EXTRACTABLES
 QLast Update : Thu Jul 24 04:54:06 2025
 Response via : Initial Calibration
 Integrator: ChemStation

Volume Inj. : 2 µl
 Signal #1 Phase : ZB-MR1 Signal #2 Phase: ZB-MR2
 Signal #1 Info : 30Mx0.32mmx 0.50µ Signal #2 Info : 30M x 0.32mm x 0.25µm

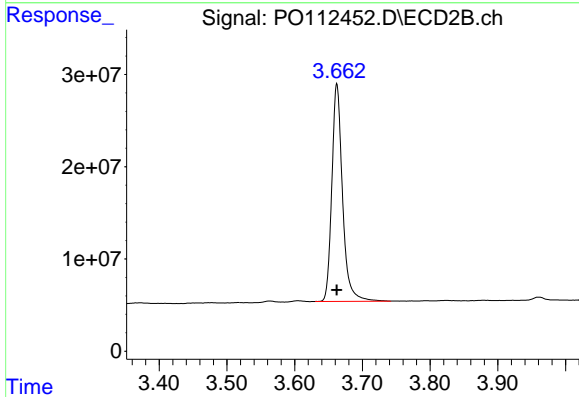




#1 Tetrachloro-m-xylene

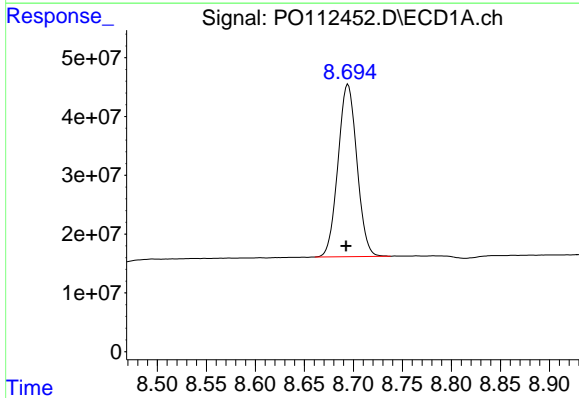
R.T.: 3.670 min
 Delta R.T.: 0.001 min
 Response: 434812970
 Conc: 53.47 ng/ml

Instrument :
 ECD_O
 ClientSampleId :
 AR1254CCC500



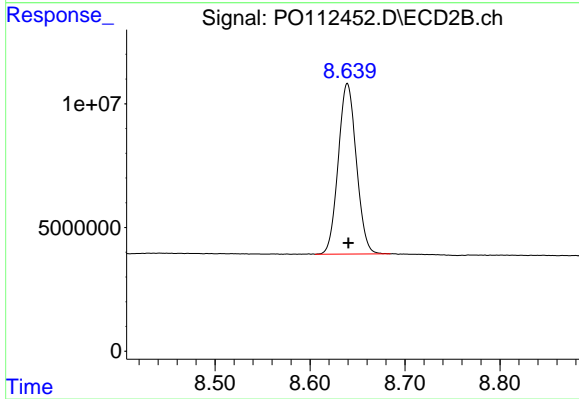
#1 Tetrachloro-m-xylene

R.T.: 3.662 min
 Delta R.T.: 0.000 min
 Response: 258469234
 Conc: 52.01 ng/ml



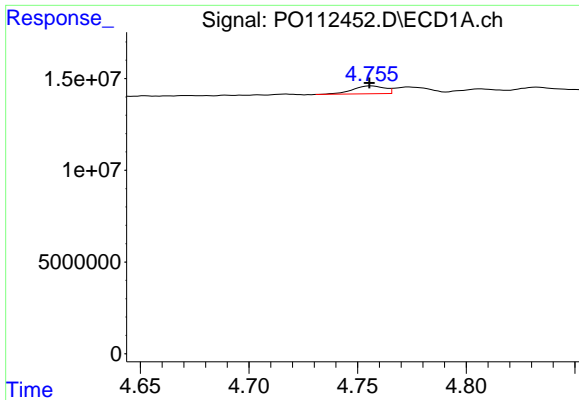
#2 Decachlorobiphenyl

R.T.: 8.694 min
 Delta R.T.: 0.002 min
 Response: 394051025
 Conc: 53.89 ng/ml



#2 Decachlorobiphenyl

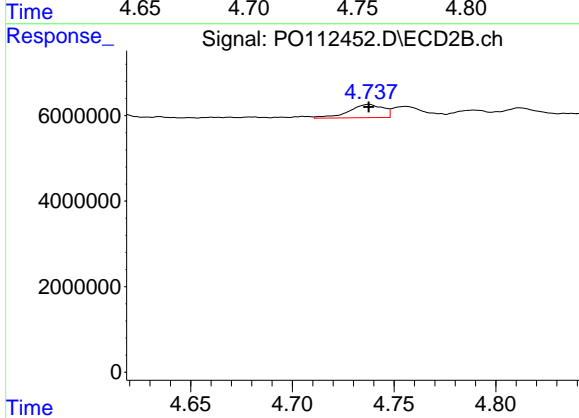
R.T.: 8.639 min
 Delta R.T.: -0.001 min
 Response: 91395666
 Conc: 51.72 ng/ml



#3 AR-1016-1

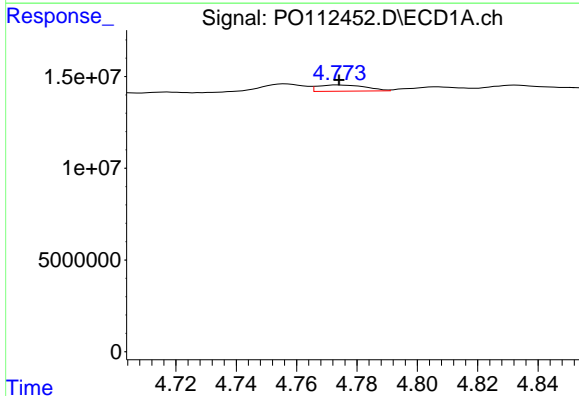
R.T.: 4.756 min
 Delta R.T.: 0.000 min
 Response: 4375065
 Conc: 16.30 ng/ml

Instrument :
 ECD_O
 ClientSampleId :
 AR1254CCC500



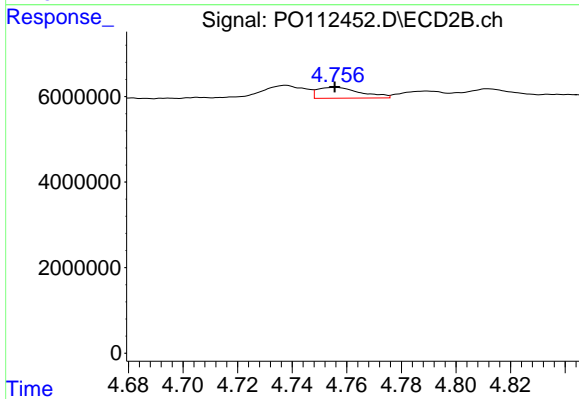
#3 AR-1016-1

R.T.: 4.738 min
 Delta R.T.: 0.000 min
 Response: 3633521
 Conc: 20.76 ng/ml



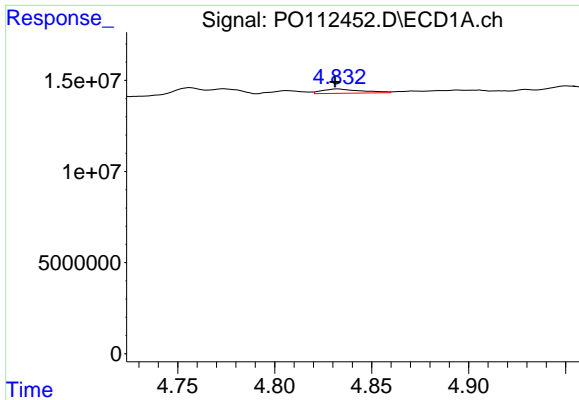
#4 AR-1016-2

R.T.: 4.774 min
 Delta R.T.: 0.000 min
 Response: 3743536
 Conc: 9.22 ng/ml



#4 AR-1016-2

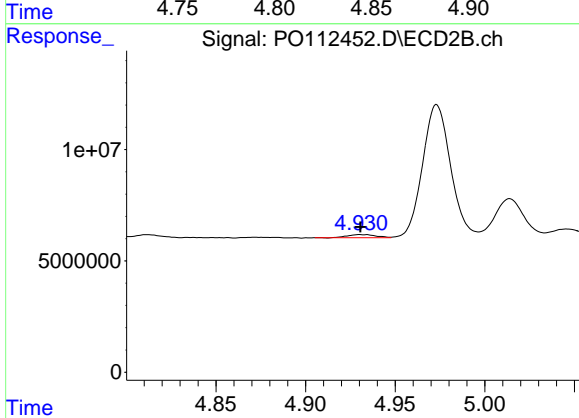
R.T.: 4.756 min
 Delta R.T.: 0.000 min
 Response: 2789898
 Conc: 10.71 ng/ml



#5 AR-1016-3

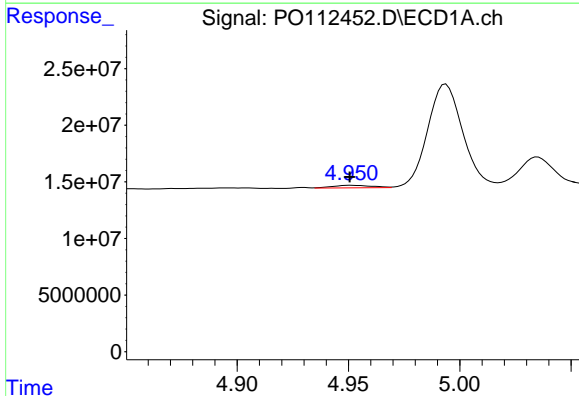
R.T.: 4.833 min
 Delta R.T.: 0.002 min
 Response: 3292696
 Conc: 12.58 ng/ml

Instrument :
 ECD_O
 ClientSampleId :
 AR1254CCC500



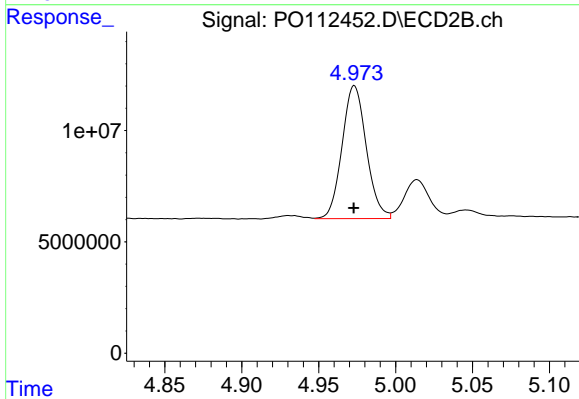
#5 AR-1016-3

R.T.: 4.930 min
 Delta R.T.: 0.000 min
 Response: 1554021
 Conc: 11.43 ng/ml



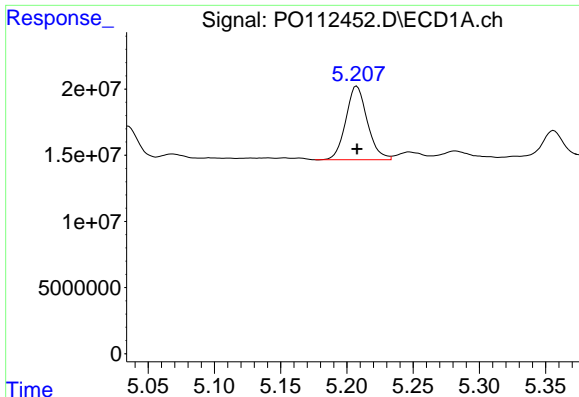
#6 AR-1016-4

R.T.: 4.951 min
 Delta R.T.: 0.000 min
 Response: 2771763
 Conc: 13.08 ng/ml



#6 AR-1016-4

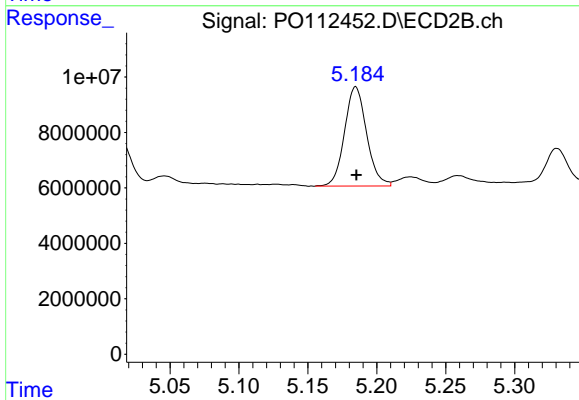
R.T.: 4.973 min
 Delta R.T.: 0.000 min
 Response: 65271680
 Conc: 587.58 ng/ml



#7 AR-1016-5

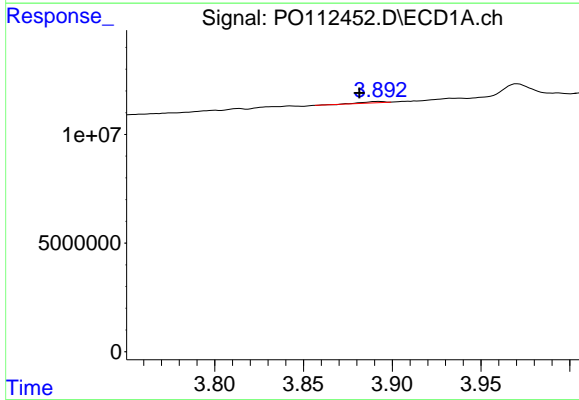
R.T.: 5.207 min
 Delta R.T.: 0.000 min
 Response: 62823447
 Conc: 286.25 ng/ml

Instrument :
 ECD_O
 ClientSampleId :
 AR1254CCC500



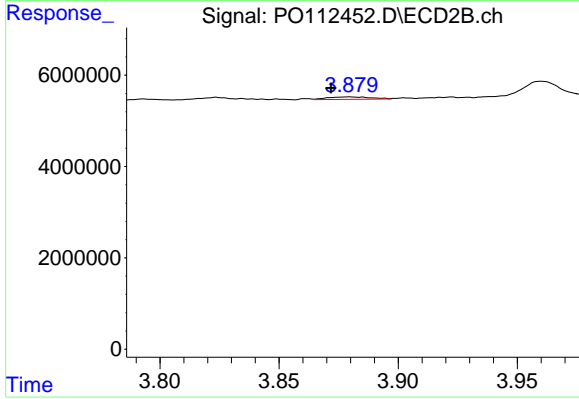
#7 AR-1016-5

R.T.: 5.185 min
 Delta R.T.: 0.000 min
 Response: 39968667
 Conc: 278.91 ng/ml



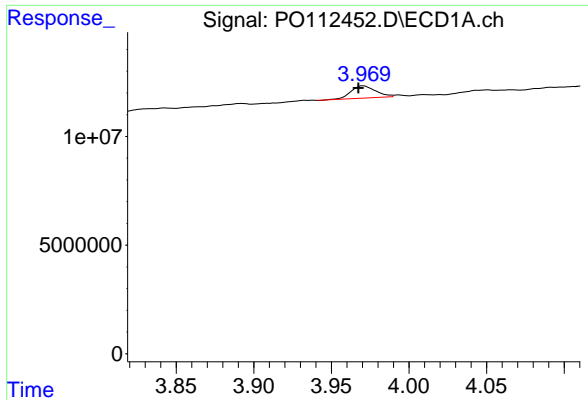
#8 AR-1221-1

R.T.: 3.892 min
 Delta R.T.: 0.011 min
 Response: 562862
 Conc: 5.82 ng/ml



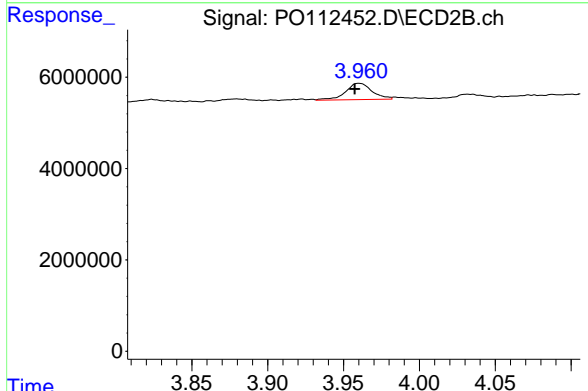
#8 AR-1221-1

R.T.: 3.880 min
 Delta R.T.: 0.008 min
 Response: 661907
 Conc: 9.84 ng/ml

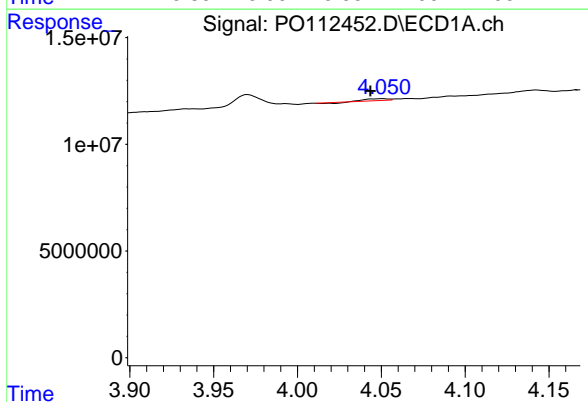


#9 AR-1221-2
 R.T.: 3.971 min
 Delta R.T.: 0.003 min
 Response: 6142061
 Conc: 85.47 ng/ml

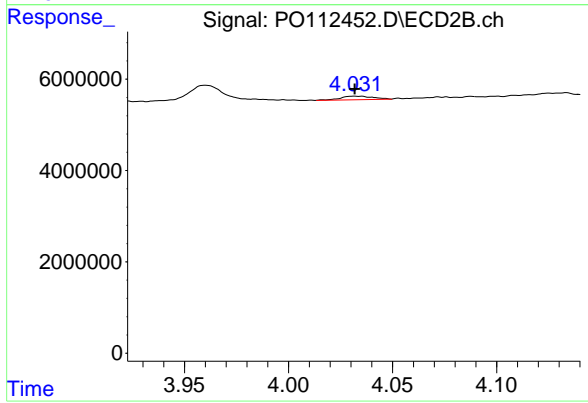
Instrument :
 ECD_O
 ClientSampleId :
 AR1254CCC500



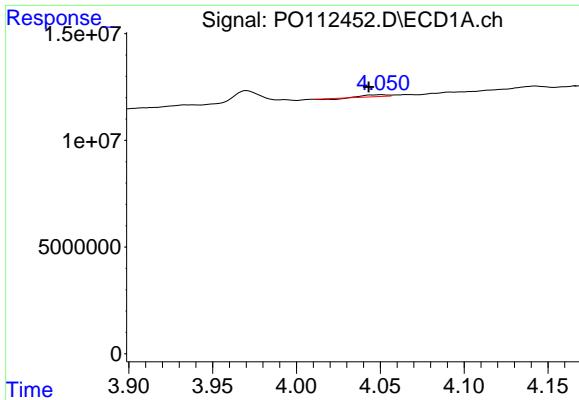
#9 AR-1221-2
 R.T.: 3.960 min
 Delta R.T.: 0.003 min
 Response: 4351690
 Conc: 85.78 ng/ml



#10 AR-1221-3
 R.T.: 4.051 min
 Delta R.T.: 0.007 min
 Response: 526365
 Conc: 2.21 ng/ml



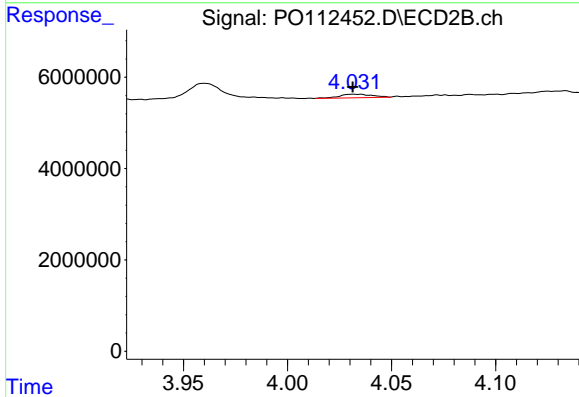
#10 AR-1221-3
 R.T.: 4.032 min
 Delta R.T.: 0.000 min
 Response: 852368
 Conc: 5.38 ng/ml



#11 AR-1232-1

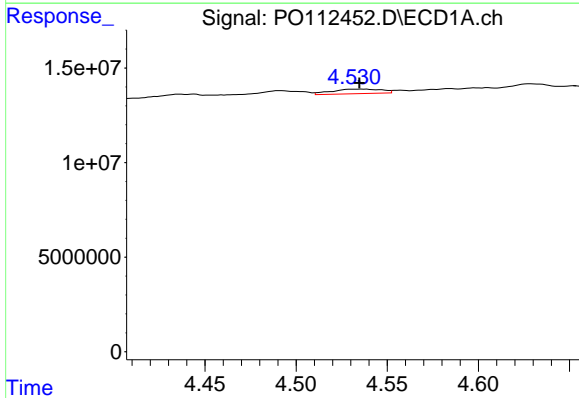
R.T.: 4.051 min
 Delta R.T.: 0.008 min
 Response: 526365
 Conc: 2.82 ng/ml

Instrument :
 ECD_O
 ClientSampleId :
 AR1254CCC500



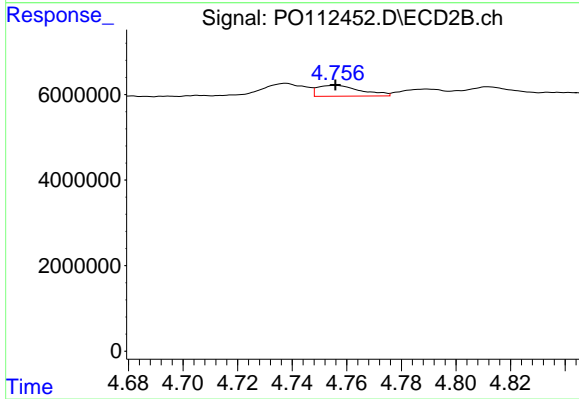
#11 AR-1232-1

R.T.: 4.032 min
 Delta R.T.: 0.000 min
 Response: 852368
 Conc: 6.74 ng/ml



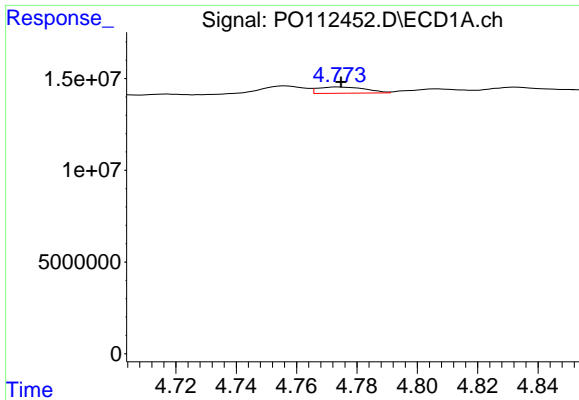
#12 AR-1232-2

R.T.: 4.537 min
 Delta R.T.: 0.002 min
 Response: 4607585
 Conc: 42.81 ng/ml



#12 AR-1232-2

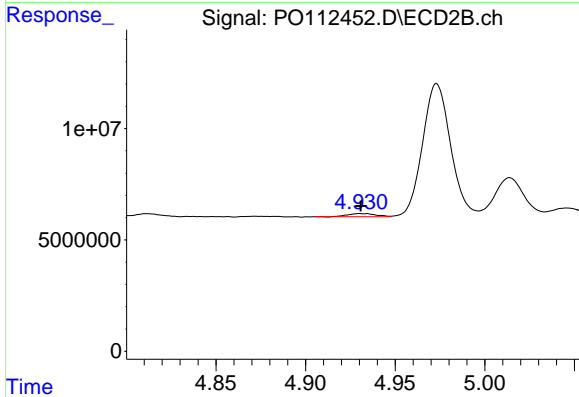
R.T.: 4.756 min
 Delta R.T.: 0.000 min
 Response: 2789898
 Conc: 21.27 ng/ml



#13 AR-1232-3

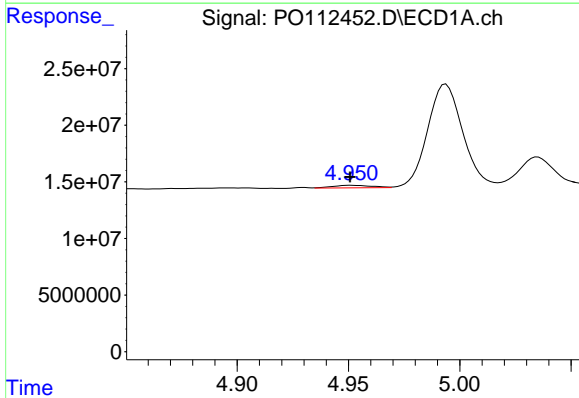
R.T.: 4.774 min
 Delta R.T.: 0.000 min
 Response: 3743536
 Conc: 18.10 ng/ml

Instrument :
 ECD_O
 ClientSampleId :
 AR1254CCC500



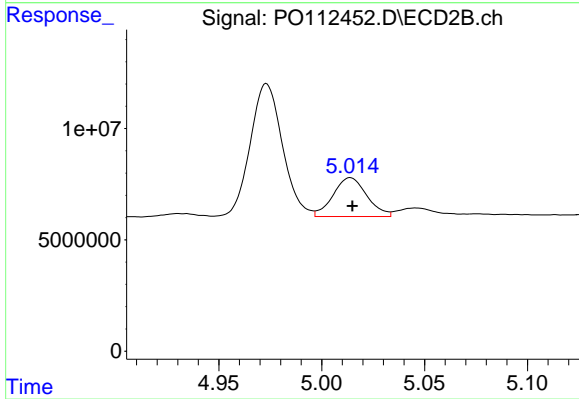
#13 AR-1232-3

R.T.: 4.930 min
 Delta R.T.: 0.000 min
 Response: 1554021
 Conc: 23.13 ng/ml



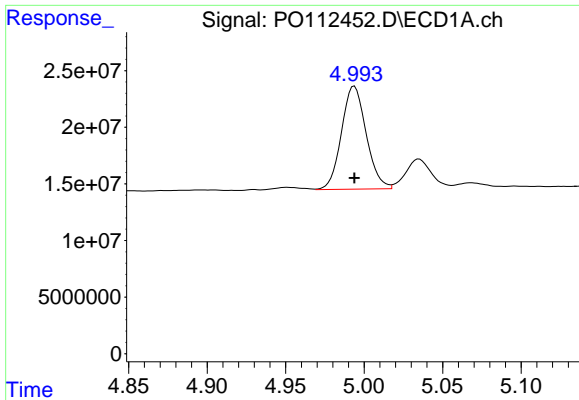
#14 AR-1232-4

R.T.: 4.951 min
 Delta R.T.: 0.000 min
 Response: 2771763
 Conc: 26.46 ng/ml



#14 AR-1232-4

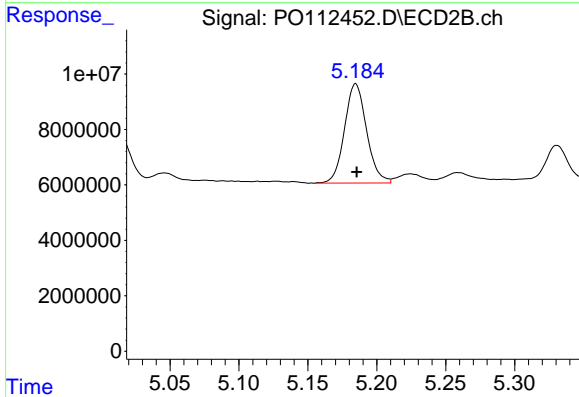
R.T.: 5.014 min
 Delta R.T.: 0.000 min
 Response: 19949193
 Conc: 333.44 ng/ml



#15 AR-1232-5

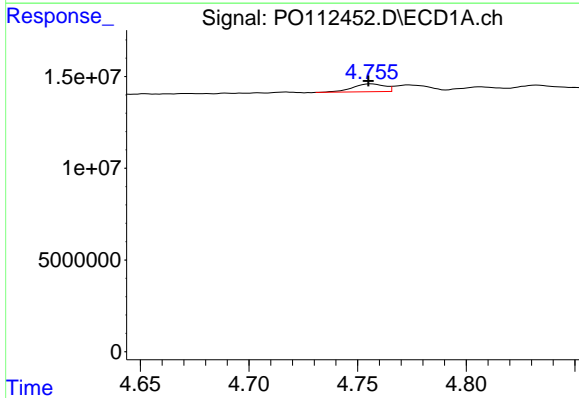
R.T.: 4.994 min
 Delta R.T.: 0.000 min
 Response: 99946990
 Conc: 1472.39 ng/ml

Instrument :
 ECD_O
 ClientSampleId :
 AR1254CCC500



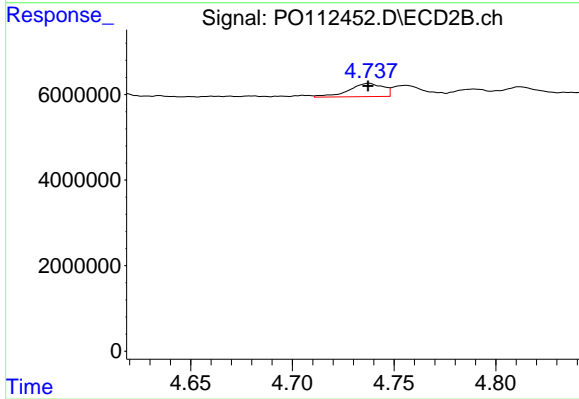
#15 AR-1232-5

R.T.: 5.185 min
 Delta R.T.: 0.000 min
 Response: 39968667
 Conc: 612.99 ng/ml



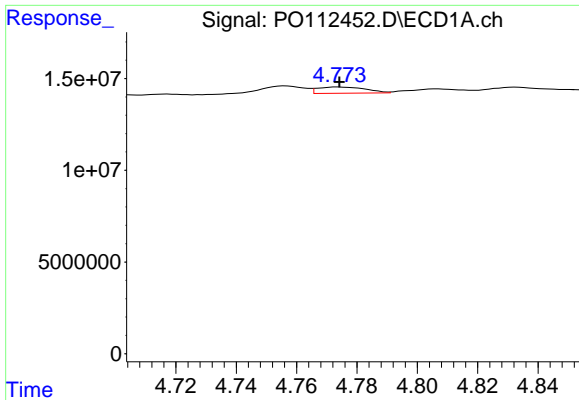
#16 AR-1242-1

R.T.: 4.756 min
 Delta R.T.: 0.001 min
 Response: 4375065
 Conc: 17.67 ng/ml



#16 AR-1242-1

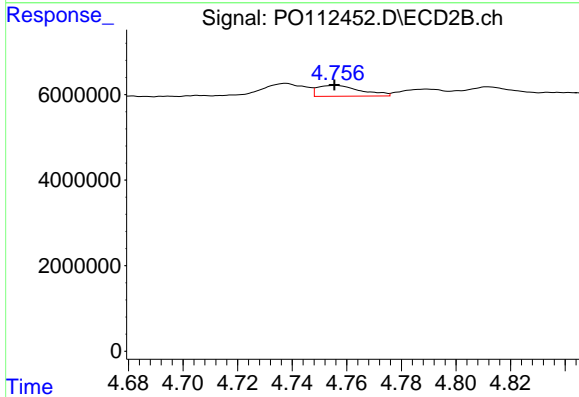
R.T.: 4.738 min
 Delta R.T.: 0.000 min
 Response: 3633521
 Conc: 22.94 ng/ml



#17 AR-1242-2

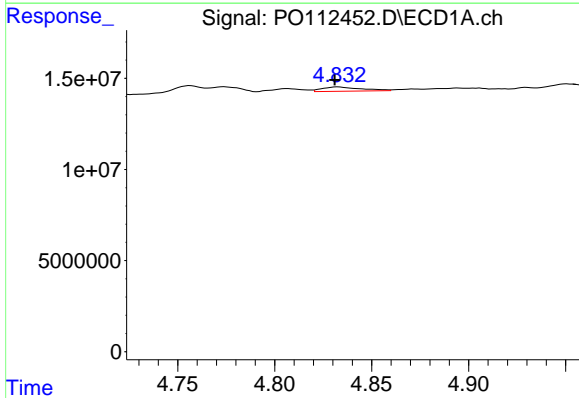
R.T.: 4.774 min
 Delta R.T.: 0.000 min
 Response: 3743536
 Conc: 10.12 ng/ml

Instrument :
 ECD_O
 ClientSampleId :
 AR1254CCC500



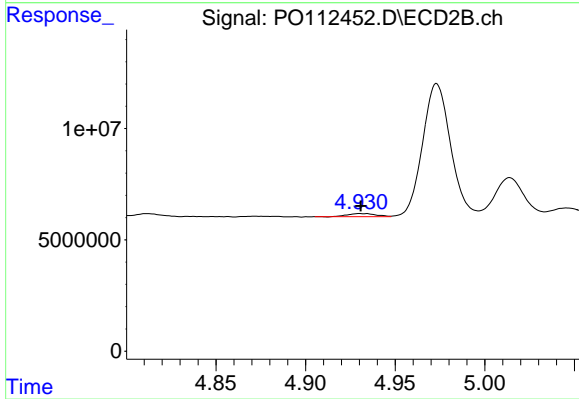
#17 AR-1242-2

R.T.: 4.756 min
 Delta R.T.: 0.000 min
 Response: 2789898
 Conc: 11.94 ng/ml



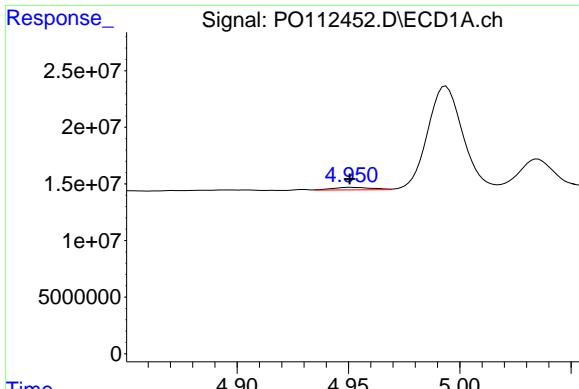
#18 AR-1242-3

R.T.: 4.833 min
 Delta R.T.: 0.002 min
 Response: 3292696
 Conc: 13.91 ng/ml



#18 AR-1242-3

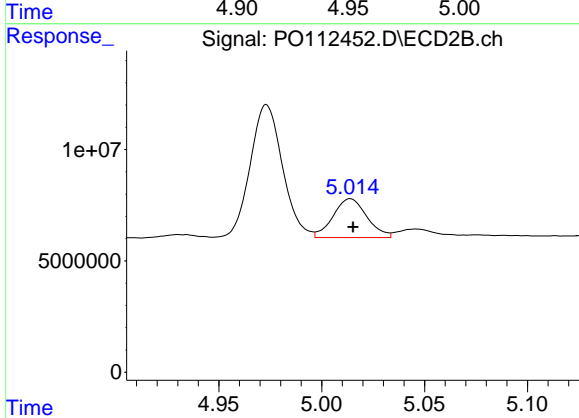
R.T.: 4.930 min
 Delta R.T.: 0.000 min
 Response: 1554021
 Conc: 12.82 ng/ml



#19 AR-1242-4

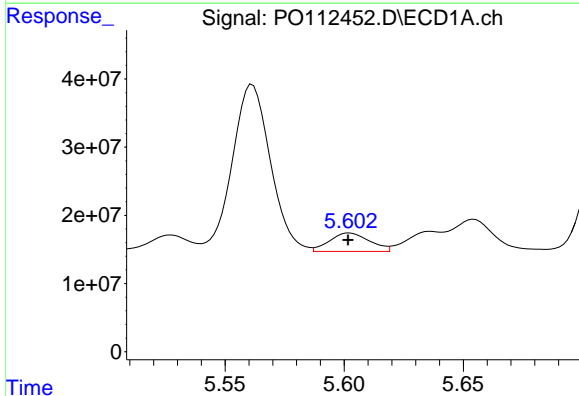
R.T.: 4.951 min
 Delta R.T.: 0.000 min
 Response: 2771763
 Conc: 14.27 ng/ml

Instrument :
 ECD_O
 ClientSampleId :
 AR1254CCC500



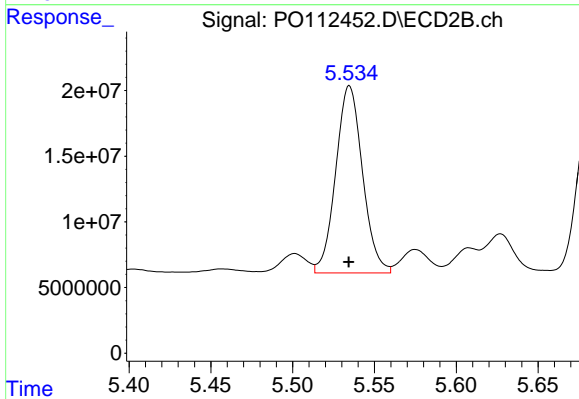
#19 AR-1242-4

R.T.: 5.014 min
 Delta R.T.: -0.001 min
 Response: 19949193
 Conc: 162.53 ng/ml



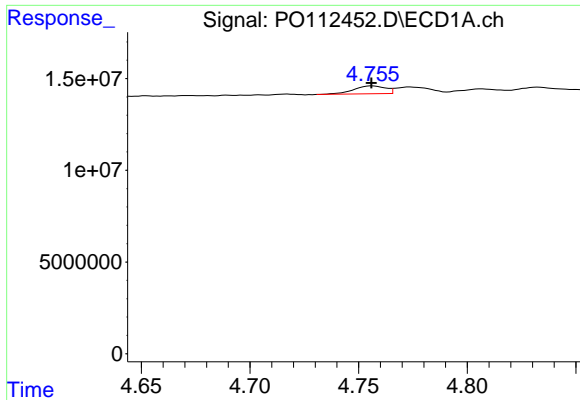
#20 AR-1242-5

R.T.: 5.602 min
 Delta R.T.: 0.000 min
 Response: 31659162
 Conc: 148.00 ng/ml



#20 AR-1242-5

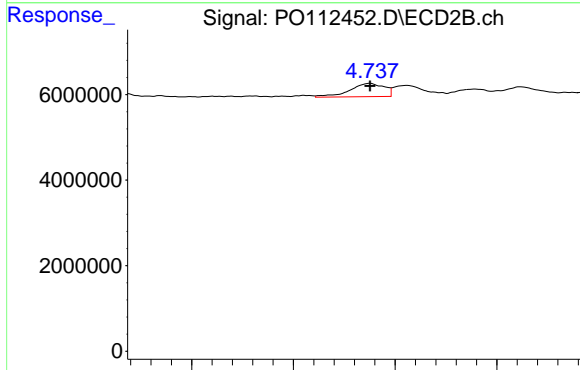
R.T.: 5.535 min
 Delta R.T.: 0.000 min
 Response: 162403357
 Conc: 1008.90 ng/ml



#21 AR-1248-1

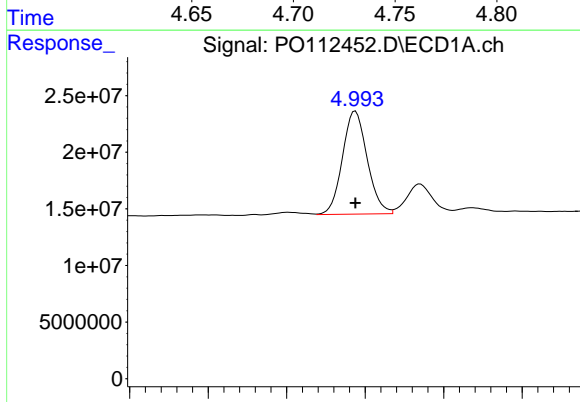
R.T.: 4.756 min
 Delta R.T.: 0.000 min
 Response: 4375065
 Conc: 23.37 ng/ml

Instrument :
 ECD_O
 ClientSampleId :
 AR1254CCC500



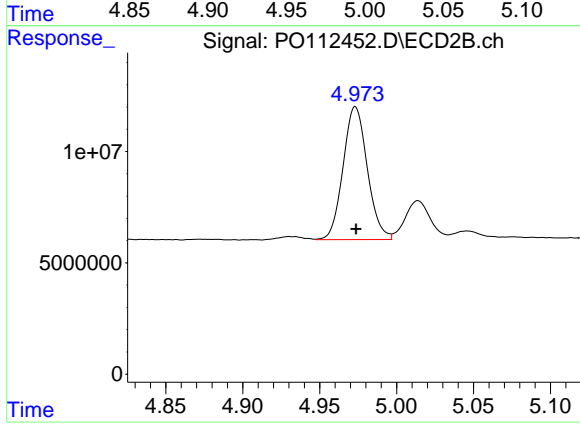
#21 AR-1248-1

R.T.: 4.738 min
 Delta R.T.: 0.000 min
 Response: 3633521
 Conc: 29.90 ng/ml



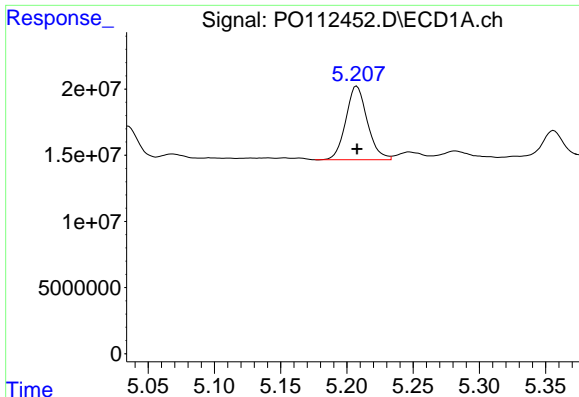
#22 AR-1248-2

R.T.: 4.994 min
 Delta R.T.: 0.000 min
 Response: 99946990
 Conc: 391.78 ng/ml



#22 AR-1248-2

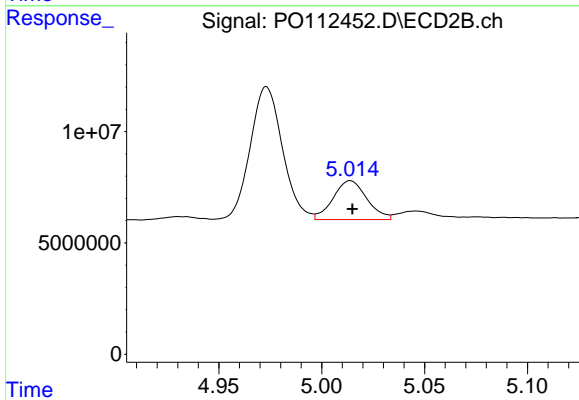
R.T.: 4.973 min
 Delta R.T.: 0.000 min
 Response: 65271680
 Conc: 385.58 ng/ml



#23 AR-1248-3

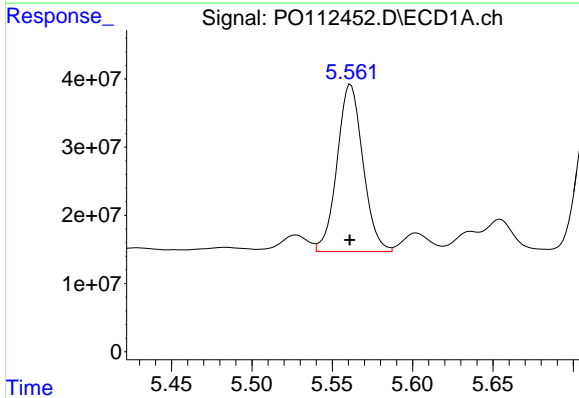
R.T.: 5.207 min
 Delta R.T.: 0.000 min
 Response: 62823447
 Conc: 182.79 ng/ml

Instrument :
 ECD_O
 ClientSampleId :
 AR1254CCC500



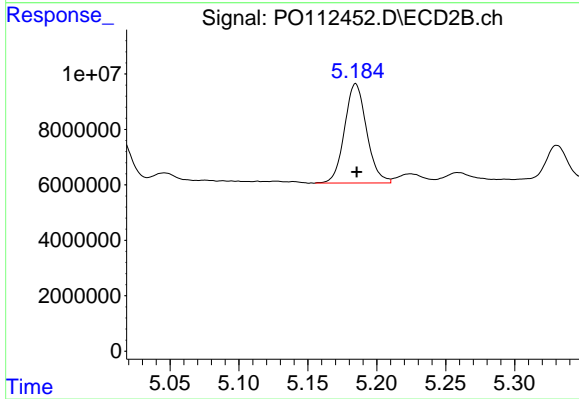
#23 AR-1248-3

R.T.: 5.014 min
 Delta R.T.: -0.001 min
 Response: 19949193
 Conc: 112.30 ng/ml



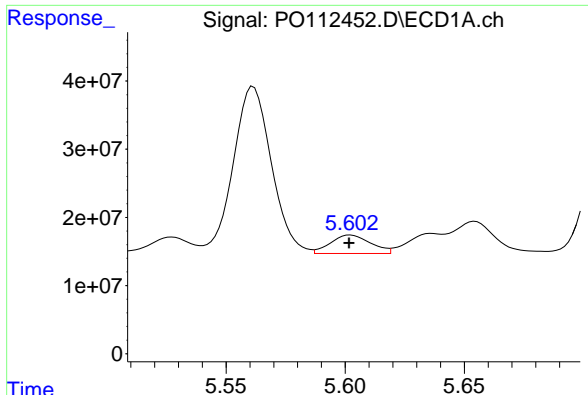
#24 AR-1248-4

R.T.: 5.561 min
 Delta R.T.: 0.000 min
 Response: 273859906
 Conc: 539.01 ng/ml



#24 AR-1248-4

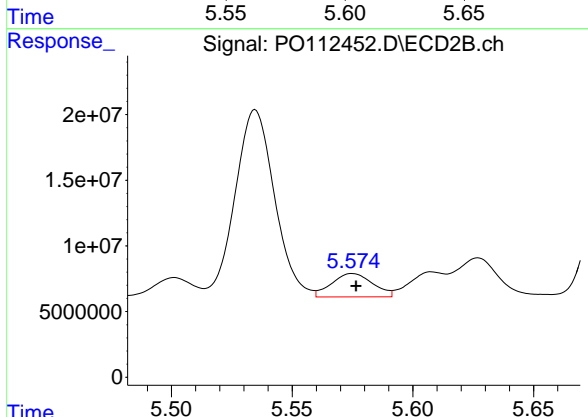
R.T.: 5.185 min
 Delta R.T.: 0.000 min
 Response: 39968667
 Conc: 191.83 ng/ml



#25 AR-1248-5

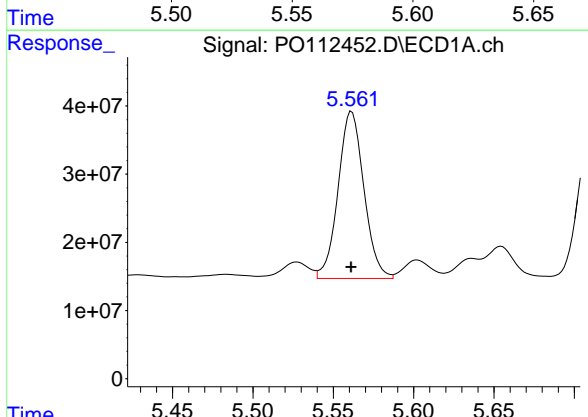
R.T.: 5.602 min
 Delta R.T.: 0.000 min
 Response: 31659162
 Conc: 90.56 ng/ml

Instrument :
 ECD_O
 ClientSampleId :
 AR1254CCC500



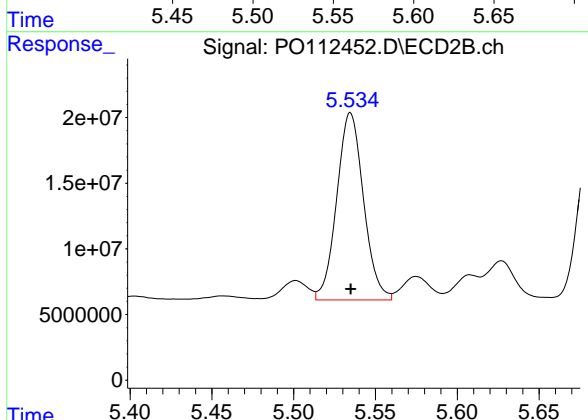
#25 AR-1248-5

R.T.: 5.575 min
 Delta R.T.: -0.001 min
 Response: 21165725
 Conc: 98.55 ng/ml



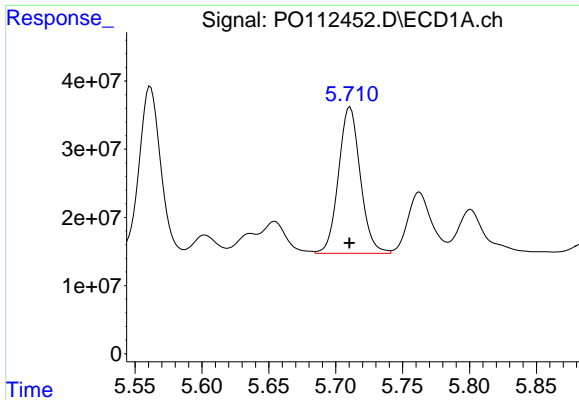
#26 AR-1254-1

R.T.: 5.561 min
 Delta R.T.: 0.000 min
 Response: 273859906
 Conc: 498.87 ng/ml



#26 AR-1254-1

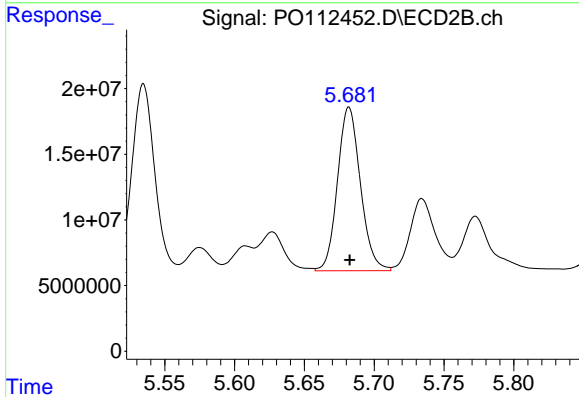
R.T.: 5.535 min
 Delta R.T.: 0.000 min
 Response: 162403357
 Conc: 494.20 ng/ml



#27 AR-1254-2

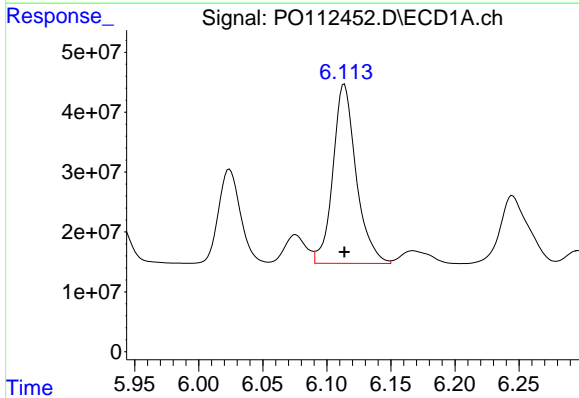
R.T.: 5.711 min
 Delta R.T.: 0.000 min
 Response: 244066677
 Conc: 502.28 ng/ml

Instrument :
 ECD_O
 ClientSampleId :
 AR1254CCC500



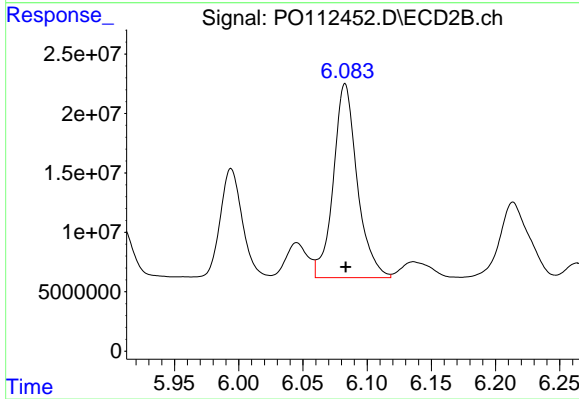
#27 AR-1254-2

R.T.: 5.682 min
 Delta R.T.: 0.000 min
 Response: 142275874
 Conc: 491.47 ng/ml



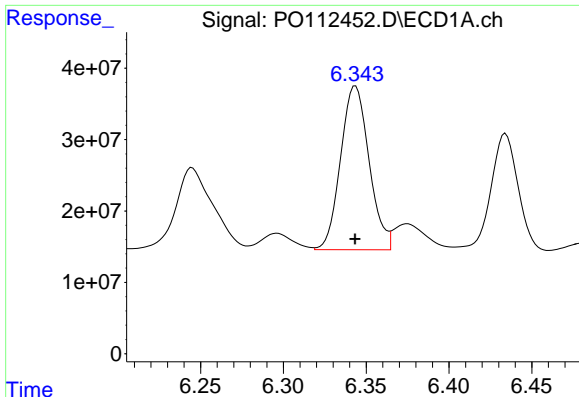
#28 AR-1254-3

R.T.: 6.114 min
 Delta R.T.: 0.000 min
 Response: 377568120
 Conc: 507.29 ng/ml



#28 AR-1254-3

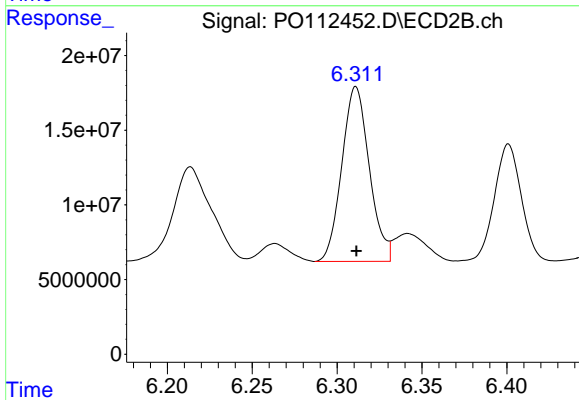
R.T.: 6.083 min
 Delta R.T.: 0.000 min
 Response: 211294303
 Conc: 494.30 ng/ml



#29 AR-1254-4

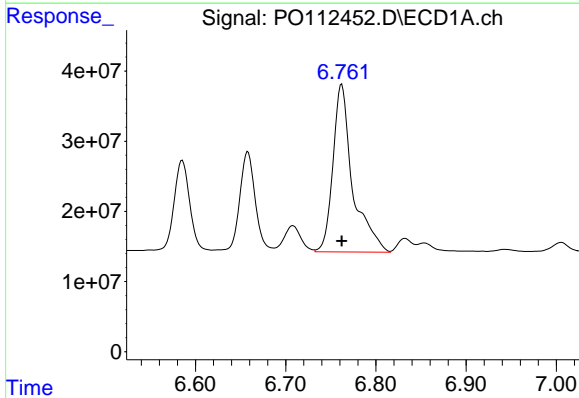
R.T.: 6.344 min
 Delta R.T.: 0.000 min
 Response: 275097158
 Conc: 500.45 ng/ml

Instrument :
 ECD_O
 ClientSampleId :
 AR1254CCC500



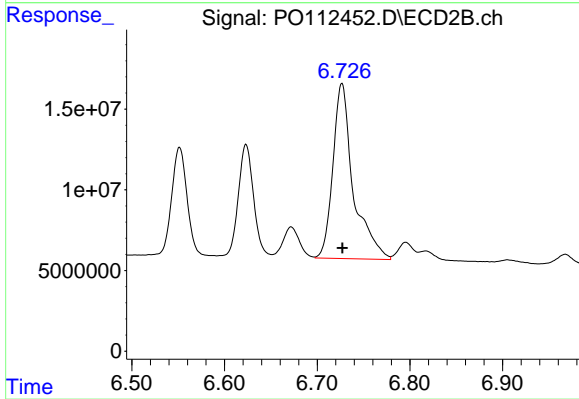
#29 AR-1254-4

R.T.: 6.311 min
 Delta R.T.: 0.000 min
 Response: 131847045
 Conc: 483.02 ng/ml



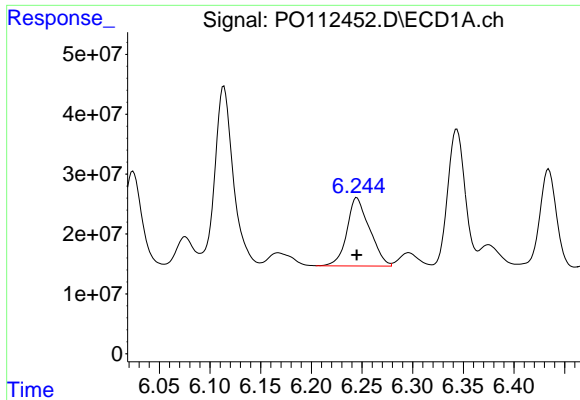
#30 AR-1254-5

R.T.: 6.762 min
 Delta R.T.: 0.000 min
 Response: 363272463
 Conc: 513.22 ng/ml



#30 AR-1254-5

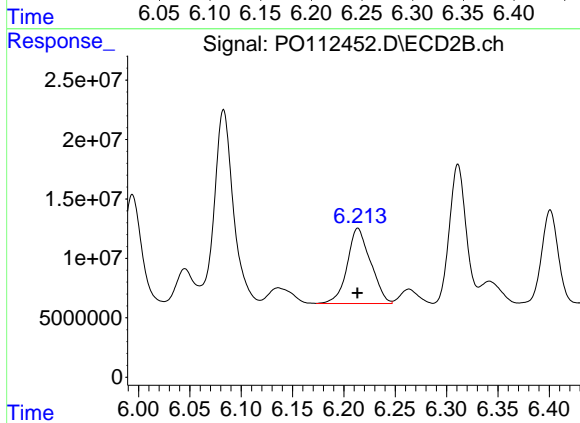
R.T.: 6.727 min
 Delta R.T.: 0.000 min
 Response: 165913447
 Conc: 496.72 ng/ml



#31 AR-1260-1

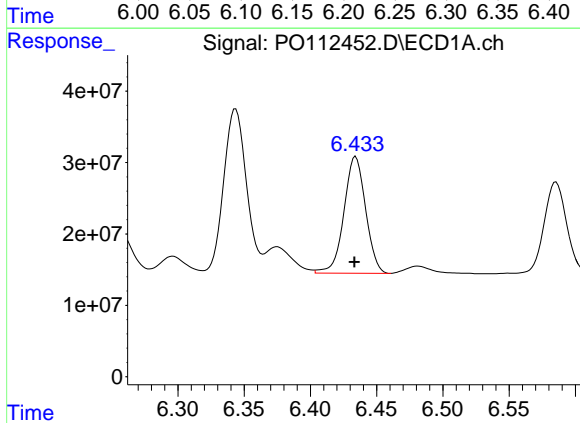
R.T.: 6.245 min
 Delta R.T.: 0.000 min
 Response: 177317026
 Conc: 403.61 ng/ml

Instrument :
 ECD_O
 ClientSampleId :
 AR1254CCC500



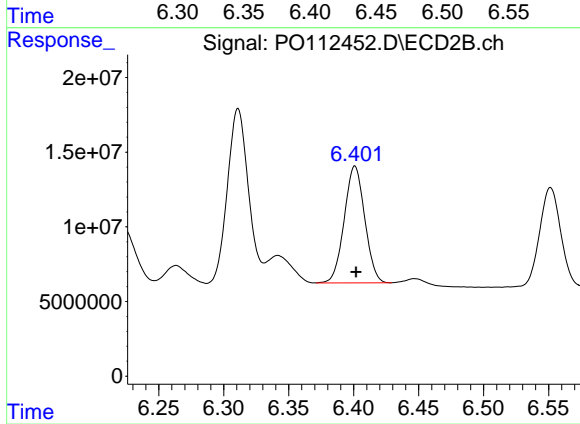
#31 AR-1260-1

R.T.: 6.214 min
 Delta R.T.: 0.000 min
 Response: 100178550
 Conc: 403.11 ng/ml



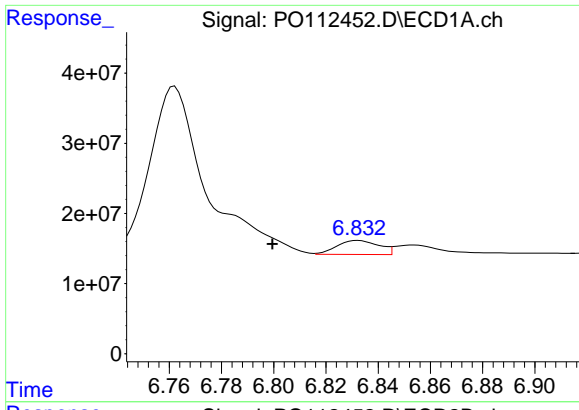
#32 AR-1260-2

R.T.: 6.434 min
 Delta R.T.: 0.000 min
 Response: 185918662
 Conc: 270.27 ng/ml



#32 AR-1260-2

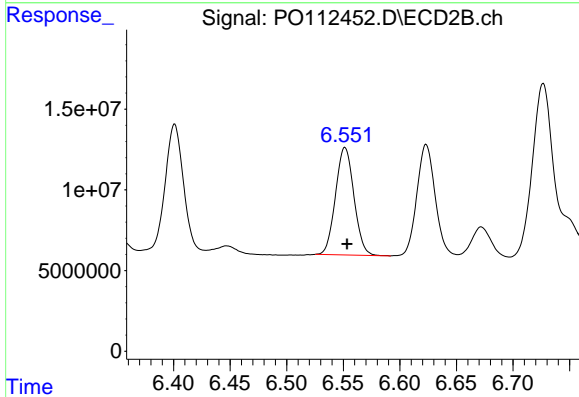
R.T.: 6.401 min
 Delta R.T.: 0.000 min
 Response: 86068290
 Conc: 261.21 ng/ml



#33 AR-1260-3

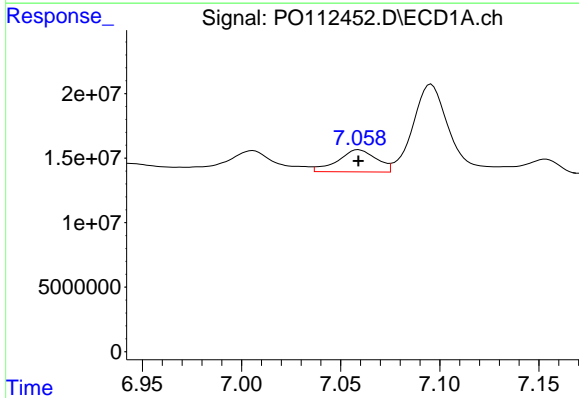
R.T.: 6.832 min
 Delta R.T.: 0.033 min
 Response: 22376080
 Conc: 38.05 ng/ml

Instrument :
 ECD_O
 ClientSampleId :
 AR1254CCC500



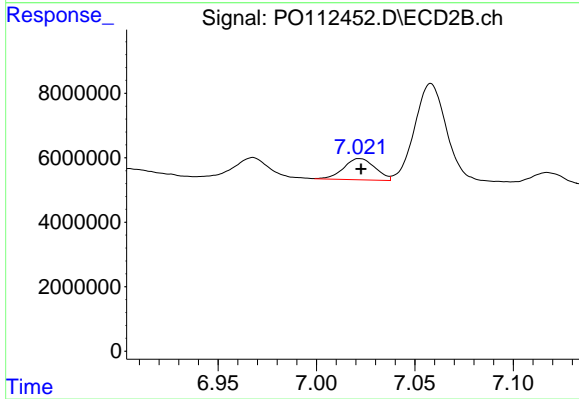
#33 AR-1260-3

R.T.: 6.552 min
 Delta R.T.: -0.002 min
 Response: 75514433
 Conc: 293.92 ng/ml



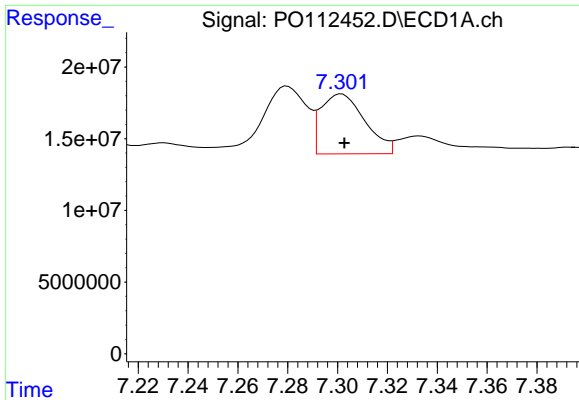
#34 AR-1260-4

R.T.: 7.059 min
 Delta R.T.: 0.000 min
 Response: 23215002
 Conc: 51.47 ng/ml



#34 AR-1260-4

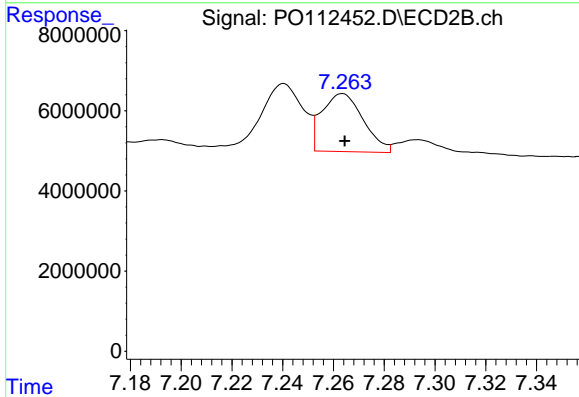
R.T.: 7.022 min
 Delta R.T.: 0.000 min
 Response: 7299793
 Conc: 38.16 ng/ml



#35 AR-1260-5

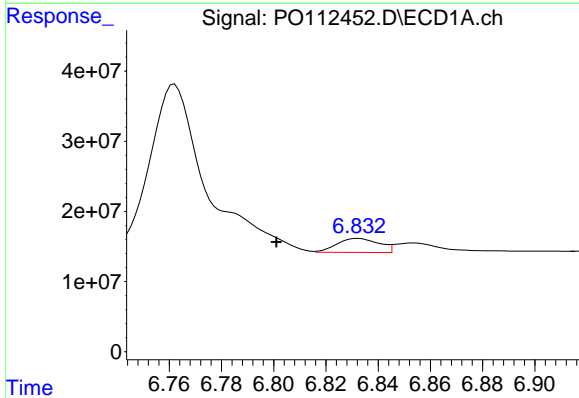
R.T.: 7.302 min
 Delta R.T.: -0.001 min
 Response: 51331743
 Conc: 41.43 ng/ml

Instrument :
 ECD_O
 ClientSampleId :
 AR1254CCC500



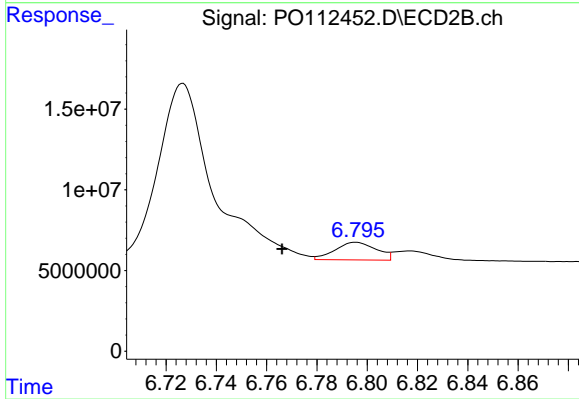
#35 AR-1260-5

R.T.: 7.264 min
 Delta R.T.: 0.000 min
 Response: 16378587
 Conc: 39.74 ng/ml



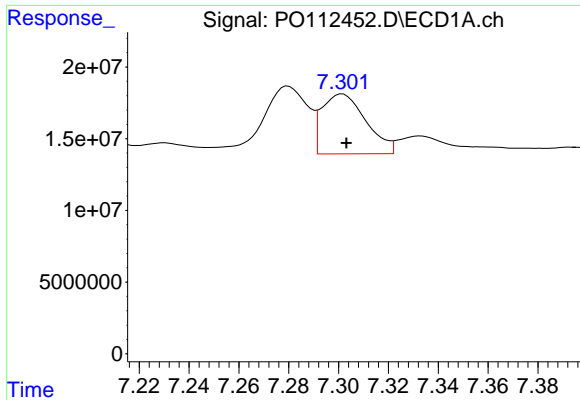
#36 AR-1262-1

R.T.: 6.832 min
 Delta R.T.: 0.031 min
 Response: 22376080
 Conc: 24.08 ng/ml



#36 AR-1262-1

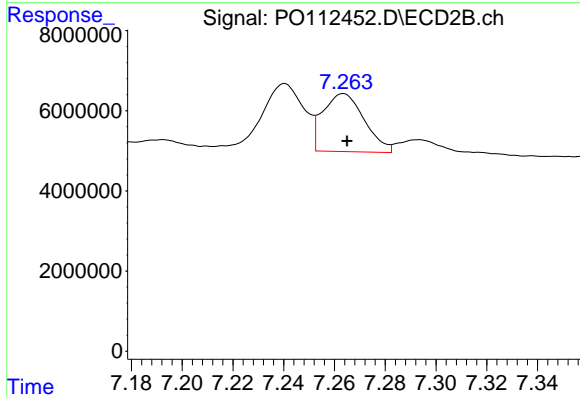
R.T.: 6.796 min
 Delta R.T.: 0.029 min
 Response: 12396822
 Conc: 29.88 ng/ml



#37 AR-1262-2

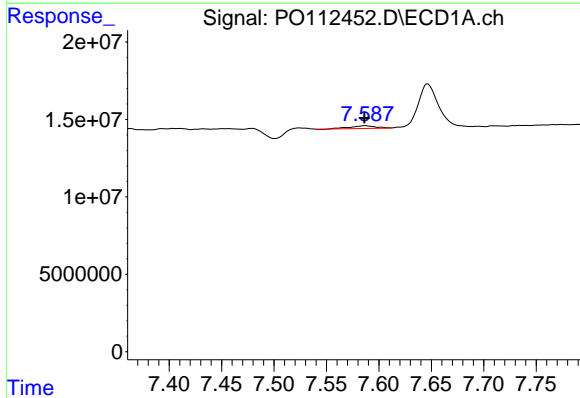
R.T.: 7.302 min
 Delta R.T.: -0.002 min
 Response: 51331743
 Conc: 34.52 ng/ml

Instrument :
 ECD_O
 ClientSampleId :
 AR1254CCC500



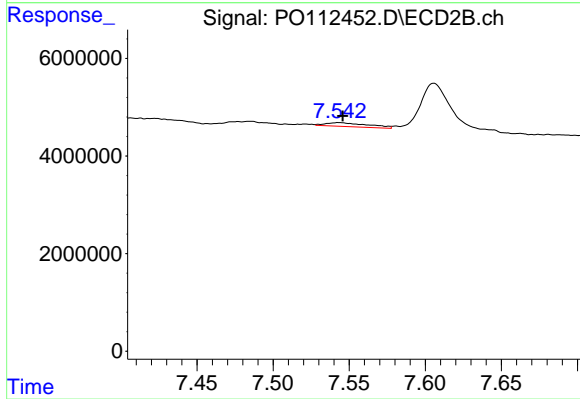
#37 AR-1262-2

R.T.: 7.264 min
 Delta R.T.: -0.001 min
 Response: 16378587
 Conc: 31.77 ng/ml



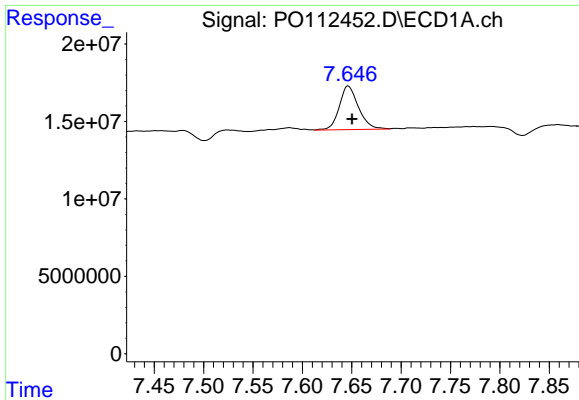
#38 AR-1262-3

R.T.: 7.587 min
 Delta R.T.: 0.000 min
 Response: 2994097
 Conc: 5.07 ng/ml



#38 AR-1262-3

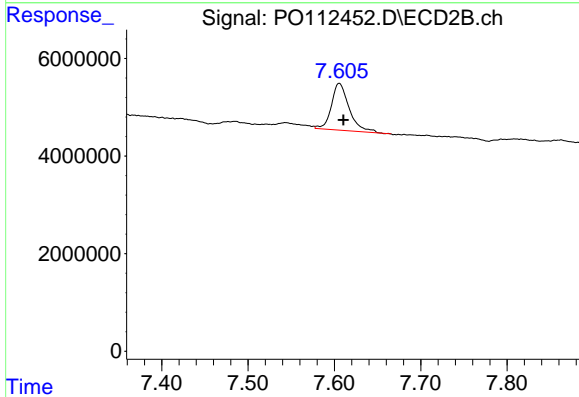
R.T.: 7.544 min
 Delta R.T.: -0.002 min
 Response: 1515875
 Conc: 8.13 ng/ml



#39 AR-1262-4

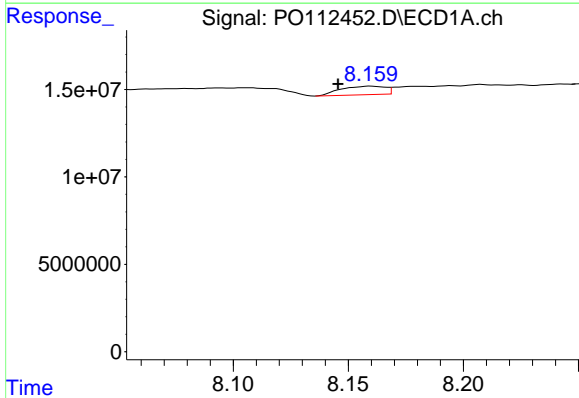
R.T.: 7.647 min
 Delta R.T.: -0.004 min
 Response: 38061589
 Conc: 38.28 ng/ml

Instrument :
 ECD_O
 ClientSampleId :
 AR1254CCC500



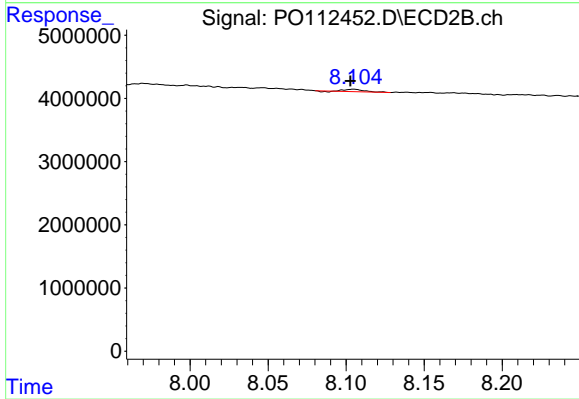
#39 AR-1262-4

R.T.: 7.606 min
 Delta R.T.: -0.005 min
 Response: 13645981
 Conc: 47.36 ng/ml



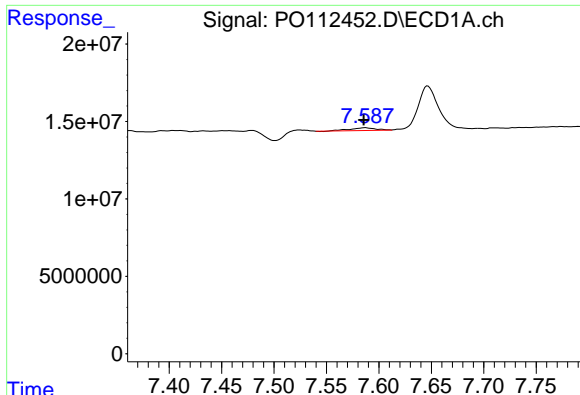
#40 AR-1262-5

R.T.: 8.160 min
 Delta R.T.: 0.014 min
 Response: 6544247
 Conc: 15.08 ng/ml



#40 AR-1262-5

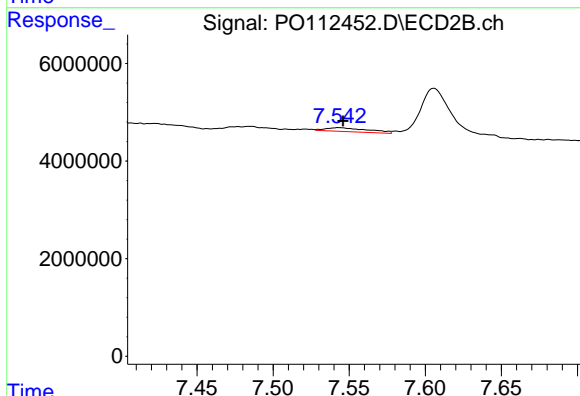
R.T.: 8.105 min
 Delta R.T.: 0.002 min
 Response: 298916
 Conc: 3.00 ng/ml



#41 AR-1268-1

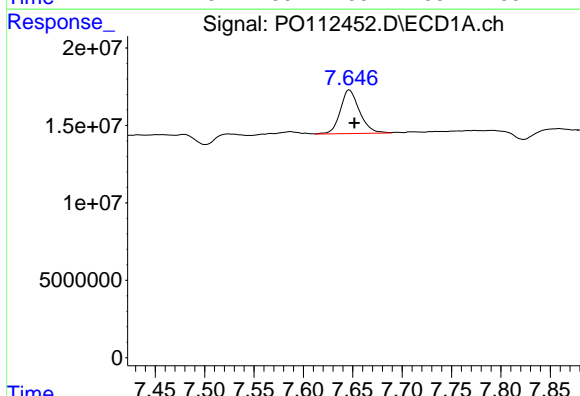
R.T.: 7.587 min
 Delta R.T.: 0.001 min
 Response: 2994097
 Conc: 1.71 ng/ml

Instrument :
 ECD_O
 ClientSampleId :
 AR1254CCC500



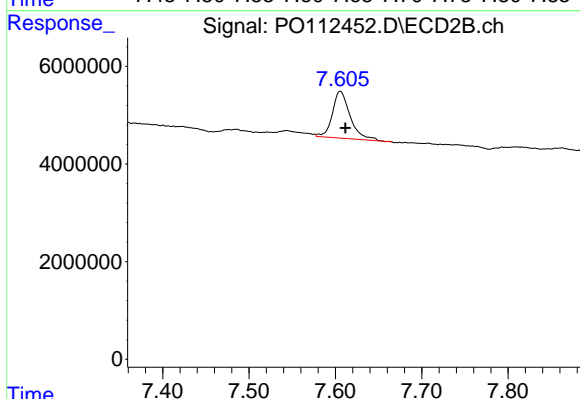
#41 AR-1268-1

R.T.: 7.544 min
 Delta R.T.: -0.002 min
 Response: 1515875
 Conc: 2.93 ng/ml



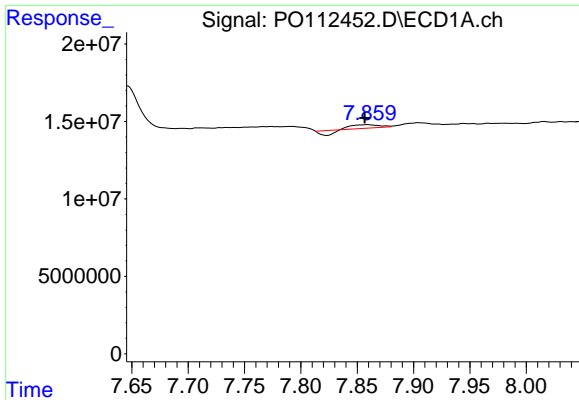
#42 AR-1268-2

R.T.: 7.647 min
 Delta R.T.: -0.005 min
 Response: 38061589
 Conc: 25.84 ng/ml



#42 AR-1268-2

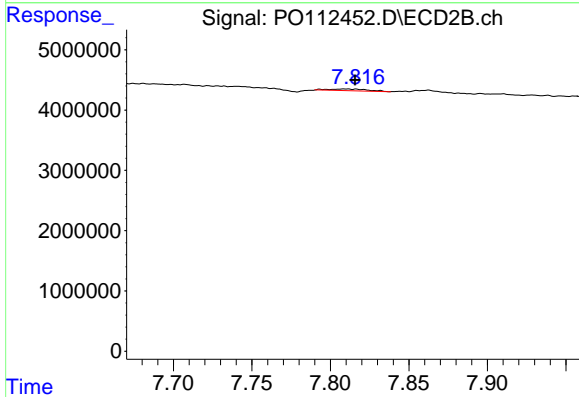
R.T.: 7.606 min
 Delta R.T.: -0.006 min
 Response: 13645981
 Conc: 32.10 ng/ml



#43 AR-1268-3

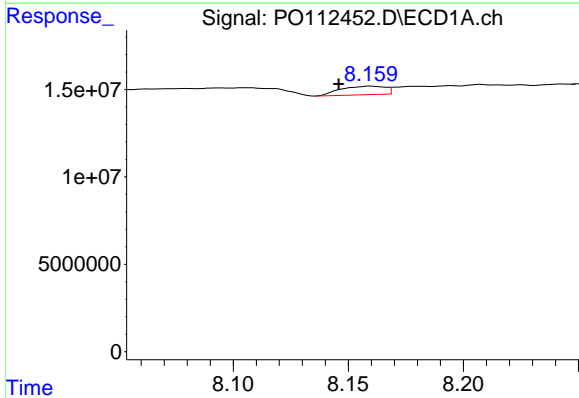
R.T.: 7.859 min
 Delta R.T.: 0.003 min
 Response: 2321203
 Conc: 1.85 ng/ml

Instrument :
 ECD_O
 ClientSampleId :
 AR1254CCC500



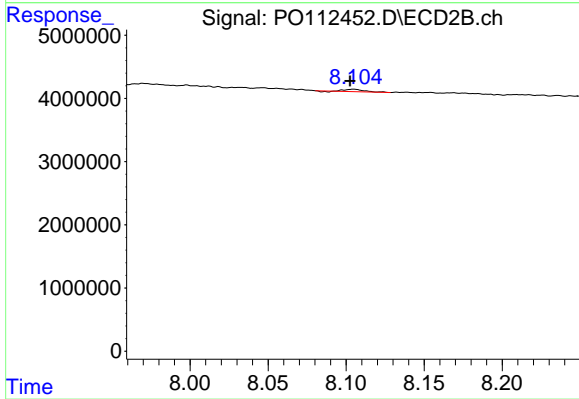
#43 AR-1268-3

R.T.: 7.809 min
 Delta R.T.: -0.006 min
 Response: 434435
 Conc: 1.35 ng/ml



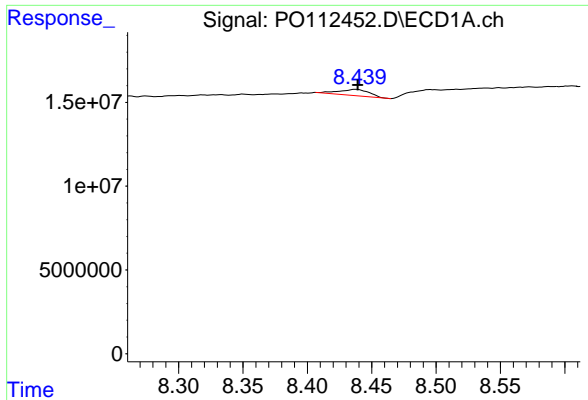
#44 AR-1268-4

R.T.: 8.160 min
 Delta R.T.: 0.014 min
 Response: 6544247
 Conc: 13.58 ng/ml



#44 AR-1268-4

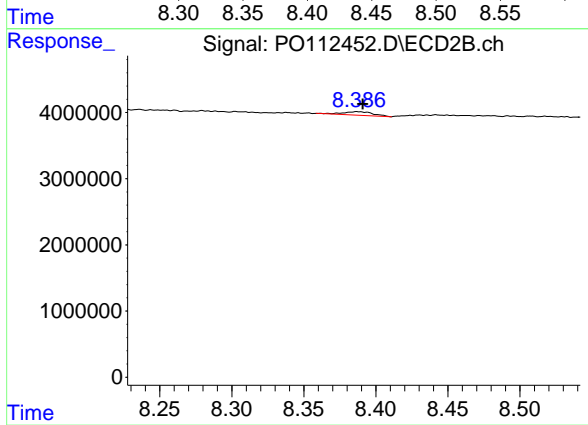
R.T.: 8.105 min
 Delta R.T.: 0.002 min
 Response: 298916
 Conc: 2.69 ng/ml



#45 AR-1268-5

R.T.: 8.438 min
 Delta R.T.: -0.001 min
 Response: 6167535
 Conc: 1.84 ng/ml

Instrument :
 ECD_O
 ClientSampleId :
 AR1254CCC500



#45 AR-1268-5

R.T.: 8.387 min
 Delta R.T.: -0.004 min
 Response: 791391
 Conc: 1.08 ng/ml