

Data Path : Z:\pestpcbsrv\HPCHEM1\ECD\_0\Data\P0072425\  
 Data File : PO112453.D  
 Signal(s) : Signal #1: ECD1A.ch Signal #2: ECD2B.ch  
 Acq On : 24 Jul 2025 10:16  
 Operator : YP/AJ  
 Sample : I.BLK  
 Misc :  
 ALS Vial : 2 Sample Multiplier: 1

Instrument :  
 ECD\_0  
 ClientSampleId :  
 I.BLK

Integration File signal 1: autoint1.e  
 Integration File signal 2: autoint2.e  
 Quant Time: Jul 24 23:34:01 2025  
 Quant Method : Z:\pestpcbsrv\HPCHEM1\ECD\_0\methods\P0072325.M  
 Quant Title : GC EXTRACTABLES  
 QLast Update : Thu Jul 24 04:54:06 2025  
 Response via : Initial Calibration  
 Integrator: ChemStation

Volume Inj. : 2 µl  
 Signal #1 Phase : ZB-MR2 Signal #2 Phase: ZB-MR2  
 Signal #1 Info : 30Mx0.32mmx 0.50µ Signal #2 Info : 30M x 0.32mm x 0.25µm

Compound	RT#1	RT#2	Resp#1	Resp#2	ng/ml	ng/ml
System Monitoring Compounds						
1) SA Tetrachlo...	3.670	3.662	161.6E6	99721410	19.874	20.068
2) SA Decachlor...	8.693	8.641	152.9E6	36149265	20.907	20.457
Target Compounds						
3) L1 AR-1016-1	4.764	4.736	390730	234049	1.456	1.337
4) L1 AR-1016-2	4.779	4.757	300730	259654	0.740	0.997 #
5) L1 AR-1016-3	4.826	4.936	594902	50447	2.273	0.371 #
6) L1 AR-1016-4	4.951	4.977	219419	167336	1.036	1.506 #
7) L1 AR-1016-5	5.204	5.187	179605	217274	0.818	1.516 #
8) L2 AR-1221-1	3.831f	3.867	833644	11644	8.625	0.173 #
9) L2 AR-1221-2	3.971	3.961	2243006	1583249	31.213	31.211
10) L2 AR-1221-3	4.023	4.027	78401	70537	0.330	0.445 #
11) L3 AR-1232-1	4.023	4.027	78401	70537	0.419	0.557 #
12) L3 AR-1232-2	4.554	4.757	3687231	259654	34.260	1.980 #
13) L3 AR-1232-3	4.779	4.936	300730	50447	1.454	0.751 #
14) L3 AR-1232-4	4.951	5.022	219419	228340	2.095	3.817 #
15) L3 AR-1232-5	4.985	5.187	217422	217274	3.203	3.332
16) L4 AR-1242-1	4.764	4.736	390730	234049	1.578	1.478
17) L4 AR-1242-2	4.779	4.757	300730	259654	0.813	1.111 #
18) L4 AR-1242-3	4.826	4.936	594902	50447	2.514	0.416 #
19) L4 AR-1242-4	4.951	5.022	219419	228340	1.129	1.860 #
20) L4 AR-1242-5	5.617	5.538	3344154	1748910	15.633	10.865 #
21) L5 AR-1248-1	4.764	4.736	390730	234049	2.087	1.926
22) L5 AR-1248-2	4.985	4.977	217422	167336	0.852	0.989
23) L5 AR-1248-3	5.204	5.022	179605	228340	0.523	1.285 #
24) L5 AR-1248-4	5.556	5.187	4525605	217274	8.907	1.043 #
25) L5 AR-1248-5	5.617	5.584	3344154	2234745	9.566	10.406
26) L6 AR-1254-1	5.556	5.538	4525605	1748910	8.244	5.322 #
27) L6 AR-1254-2	5.711	5.680	1585784	1114661	3.263	3.850
28) L6 AR-1254-3	6.110	6.075	301216	1699456	0.405	3.976 #
29) L6 AR-1254-4	6.339	6.306	1269715	838101	2.310	3.070 #
30) L6 AR-1254-5	6.757	6.726	774681	229950	1.094	0.688 #
31) L7 AR-1260-1	6.245	6.216	1157696	629147	2.635	2.532
32) L7 AR-1260-2	6.455	6.395	36428	353687	0.053	1.073 #
33) L7 AR-1260-3	6.804	6.558	503550	49198	0.856	0.191 #
34) L7 AR-1260-4	7.056	7.016	604510	531518	1.340	2.778 #
35) L7 AR-1260-5	7.312	7.268	405729	155953	0.327	0.378
36) L8 AR-1262-1	6.804	6.761	503550	687242	0.542	1.657 #
37) L8 AR-1262-2	7.312	7.268	405729	155953	0.273	0.303
38) L8 AR-1262-3	7.588	7.545	2410277	179035	4.083	0.960 #
39) L8 AR-1262-4	7.649	7.607	509263	66366	0.512	0.230 #
40) L8 AR-1262-5	8.157	8.099	1102160	68374	2.539	0.687 #
41) L9 AR-1268-1	7.588	7.545	2410277	179035	1.376	0.346 #

Data Path : Z:\pestpcbsrv\HPCHEM1\ECD\_0\Data\P0072425\  
 Data File : P0112453.D  
 Signal(s) : Signal #1: ECD1A.ch Signal #2: ECD2B.ch  
 Acq On : 24 Jul 2025 10:16  
 Operator : YP/AJ  
 Sample : I.BLK  
 Misc :  
 ALS Vial : 2 Sample Multiplier: 1

Instrument :  
 ECD\_0  
 ClientSampleId :  
 I.BLK

Integration File signal 1: autoint1.e  
 Integration File signal 2: autoint2.e  
 Quant Time: Jul 24 23:34:01 2025  
 Quant Method : Z:\pestpcbsrv\HPCHEM1\ECD\_0\methods\P0072325.M  
 Quant Title : GC EXTRACTABLES  
 QLast Update : Thu Jul 24 04:54:06 2025  
 Response via : Initial Calibration  
 Integrator: ChemStation

Volume Inj. : 2 µl  
 Signal #1 Phase : ZB-MR1 Signal #2 Phase: ZB-MR2  
 Signal #1 Info : 30Mx0.32mmx 0.50µ Signal #2 Info : 30M x 0.32mm x 0.25µm

	Compound	RT#1	RT#2	Resp#1	Resp#2	ng/ml	ng/ml
42)	L9 AR-1268-2	7.649	7.616	509263	77634	0.346	0.183 #
43)	L9 AR-1268-3	7.853	7.819	540386	68114	0.432	0.212 #
44)	L9 AR-1268-4	8.157	8.099	1102160	68374	2.287	0.614 #
45)	L9 AR-1268-5	8.442	8.389	984031	179490	0.293	0.245

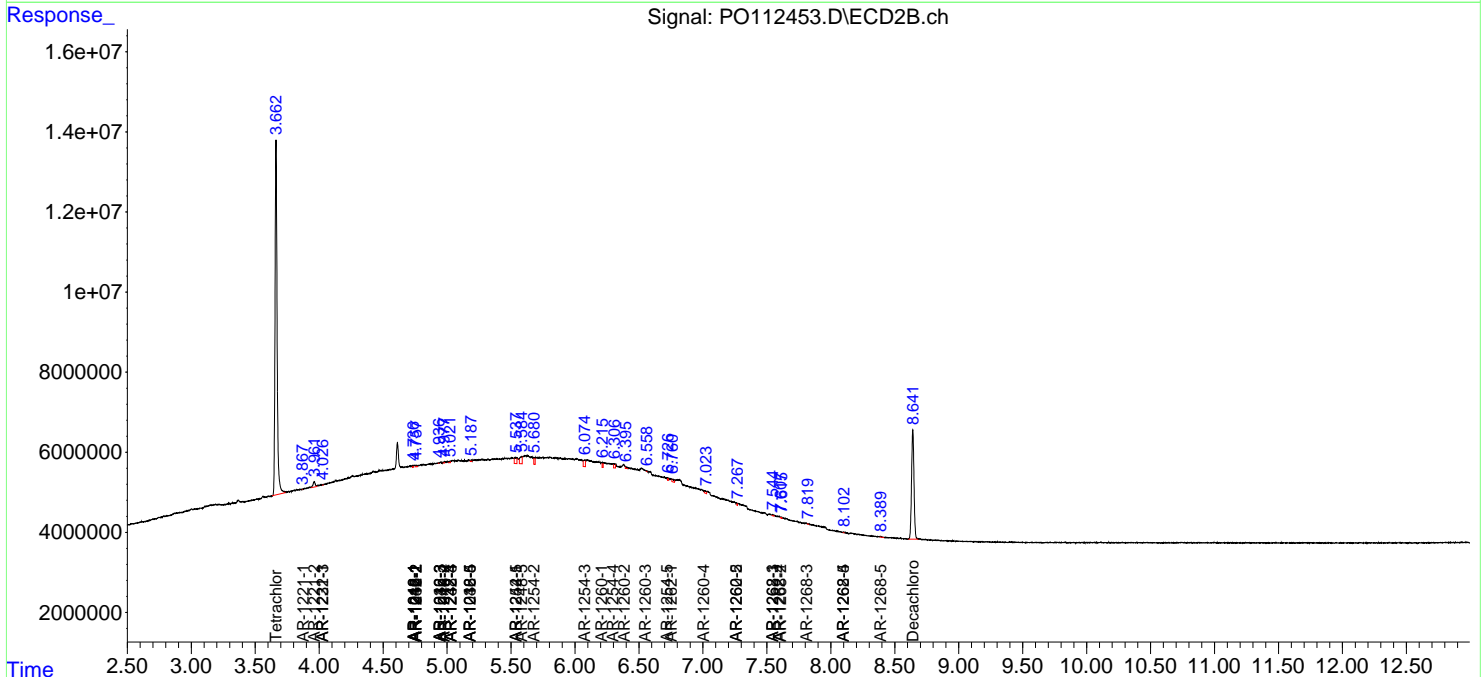
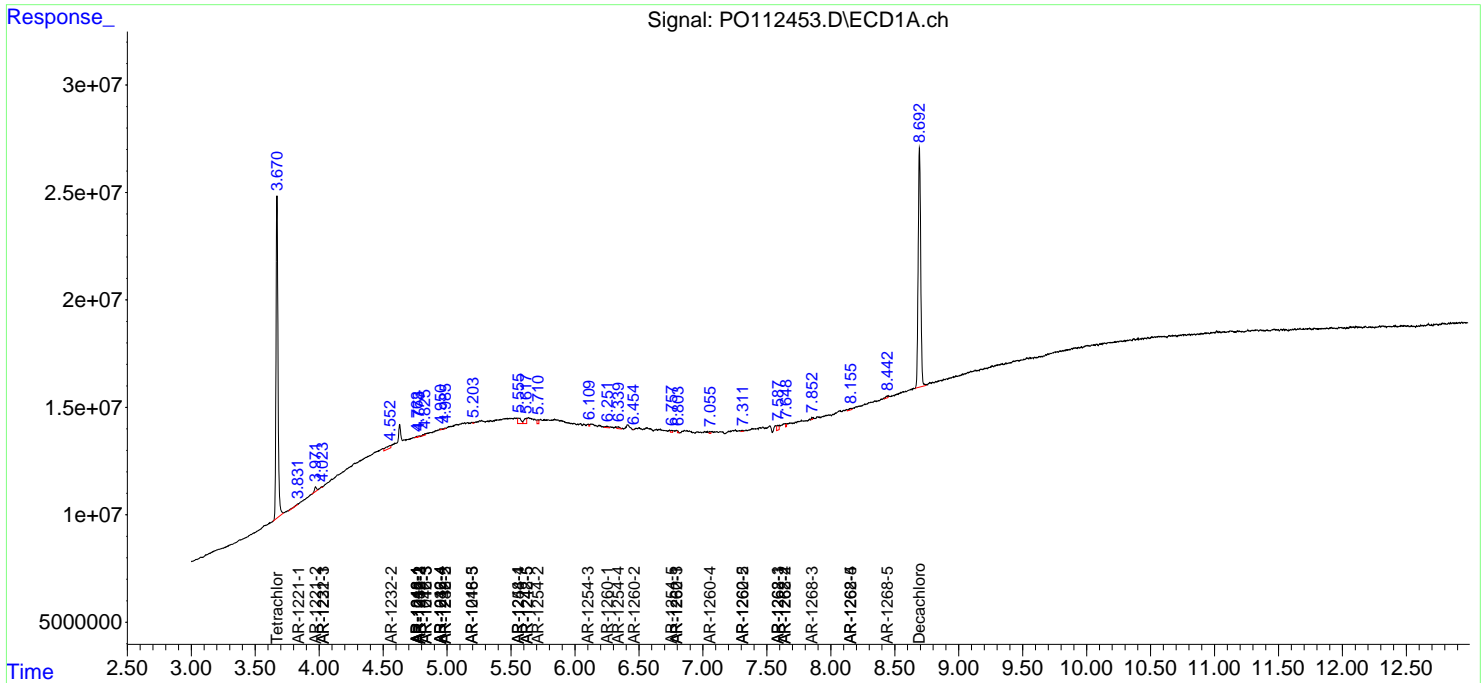
(f)=RT Delta > 1/2 Window (#)=Amounts differ by > 25% (m)=manual int.

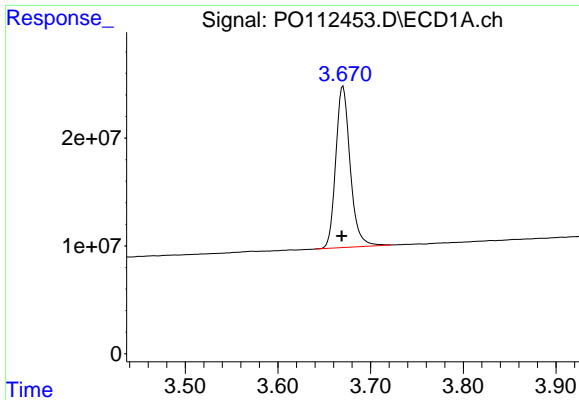
Data Path : Z:\pestpcbsrv\HPCHEM1\ECD\_O\Data\PO072425\  
 Data File : PO112453.D  
 Signal(s) : Signal #1: ECD1A.ch Signal #2: ECD2B.ch  
 Acq On : 24 Jul 2025 10:16  
 Operator : YP/AJ  
 Sample : I.BLK  
 Misc :  
 ALS Vial : 2 Sample Multiplier: 1

Instrument :  
 ECD\_O  
 ClientSampleId :  
 I.BLK

Integration File signal 1: autoint1.e  
 Integration File signal 2: autoint2.e  
 Quant Time: Jul 24 23:34:01 2025  
 Quant Method : Z:\pestpcbsrv\HPCHEM1\ECD\_O\methods\PO072325.M  
 Quant Title : GC EXTRACTABLES  
 QLast Update : Thu Jul 24 04:54:06 2025  
 Response via : Initial Calibration  
 Integrator: ChemStation

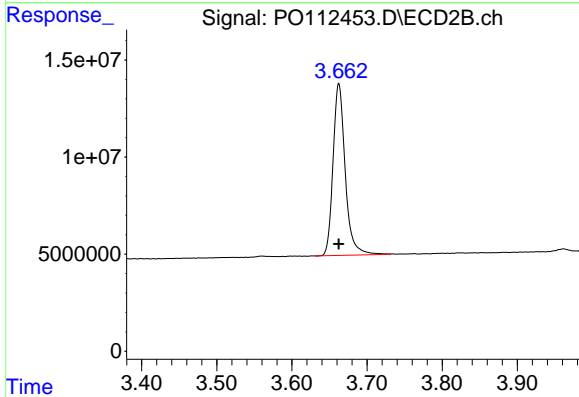
Volume Inj. : 2 µl  
 Signal #1 Phase : ZB-MR1 Signal #2 Phase: ZB-MR2  
 Signal #1 Info : 30Mx0.32mmx 0.50µ Signal #2 Info : 30M x 0.32mm x 0.25µm



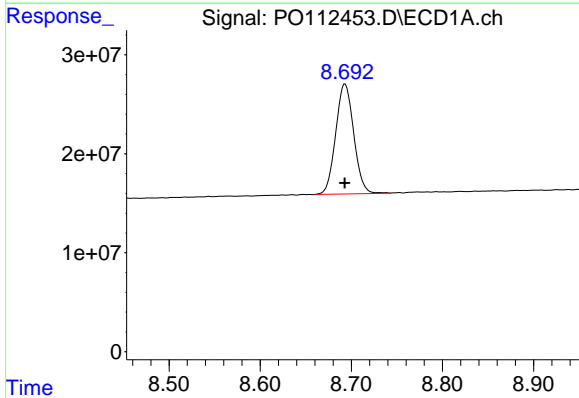


#1 Tetrachloro-m-xylene  
 R.T.: 3.670 min  
 Delta R.T.: 0.001 min  
 Response: 161610483  
 Conc: 19.87 ng/ml

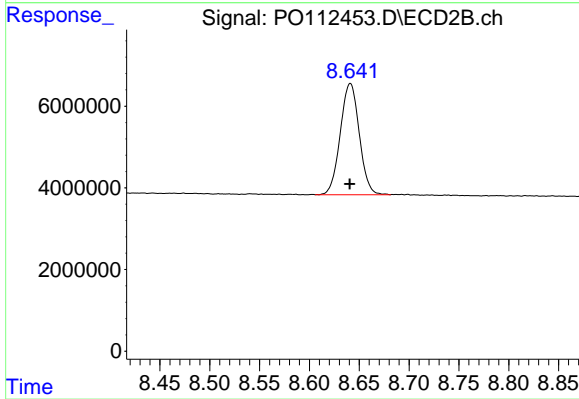
Instrument :  
 ECD\_O  
 ClientSampleId :  
 I.BLK



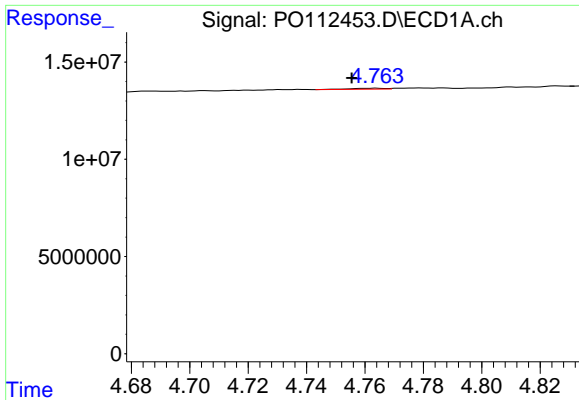
#1 Tetrachloro-m-xylene  
 R.T.: 3.662 min  
 Delta R.T.: 0.000 min  
 Response: 99721410  
 Conc: 20.07 ng/ml



#2 Decachlorobiphenyl  
 R.T.: 8.693 min  
 Delta R.T.: 0.000 min  
 Response: 152865359  
 Conc: 20.91 ng/ml



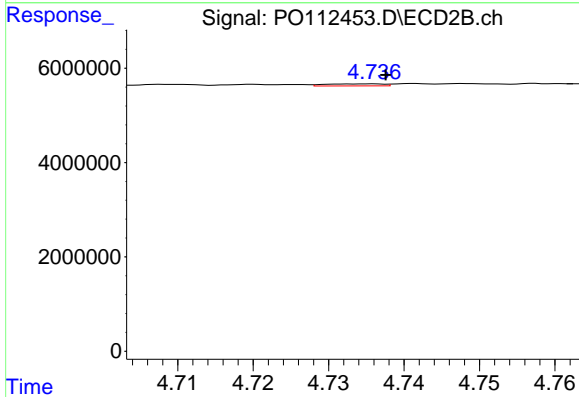
#2 Decachlorobiphenyl  
 R.T.: 8.641 min  
 Delta R.T.: 0.000 min  
 Response: 36149265  
 Conc: 20.46 ng/ml



#3 AR-1016-1

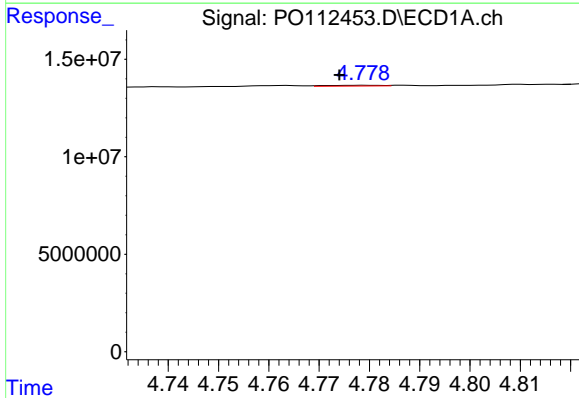
R.T.: 4.764 min  
 Delta R.T.: 0.008 min  
 Response: 390730  
 Conc: 1.46 ng/ml

Instrument :  
 ECD\_O  
 ClientSampleId :  
 I.BLK



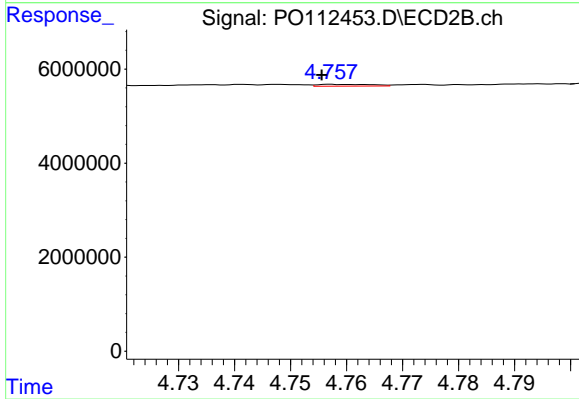
#3 AR-1016-1

R.T.: 4.736 min  
 Delta R.T.: -0.002 min  
 Response: 234049  
 Conc: 1.34 ng/ml



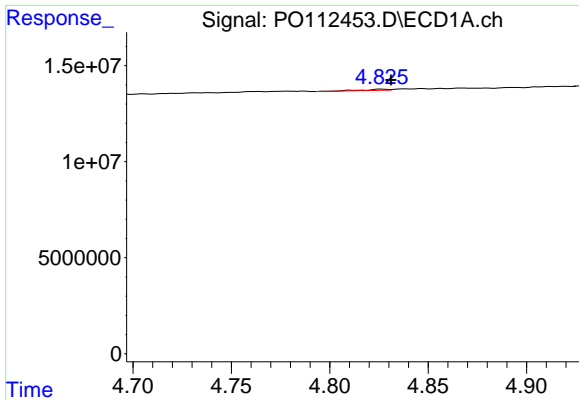
#4 AR-1016-2

R.T.: 4.779 min  
 Delta R.T.: 0.005 min  
 Response: 300730  
 Conc: 0.74 ng/ml



#4 AR-1016-2

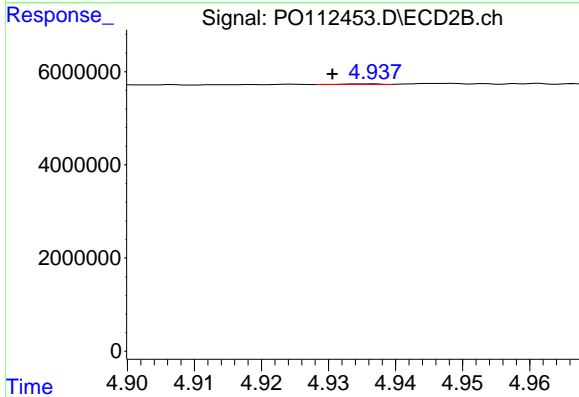
R.T.: 4.757 min  
 Delta R.T.: 0.002 min  
 Response: 259654  
 Conc: 1.00 ng/ml



#5 AR-1016-3

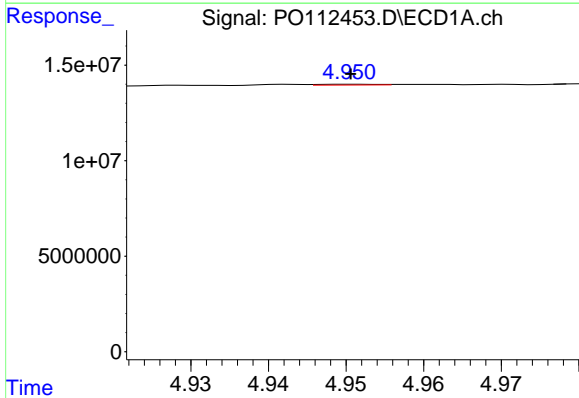
R.T.: 4.826 min  
 Delta R.T.: -0.005 min  
 Response: 594902  
 Conc: 2.27 ng/ml

Instrument :  
 ECD\_O  
 ClientSampleId :  
 I.BLK



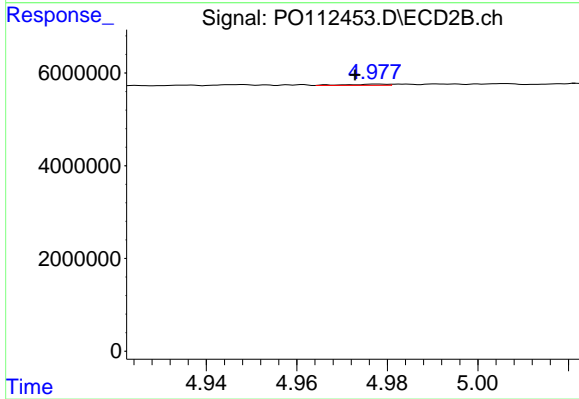
#5 AR-1016-3

R.T.: 4.936 min  
 Delta R.T.: 0.006 min  
 Response: 50447  
 Conc: 0.37 ng/ml



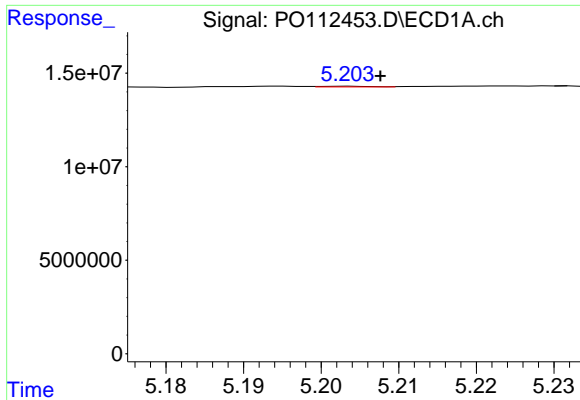
#6 AR-1016-4

R.T.: 4.951 min  
 Delta R.T.: 0.000 min  
 Response: 219419  
 Conc: 1.04 ng/ml



#6 AR-1016-4

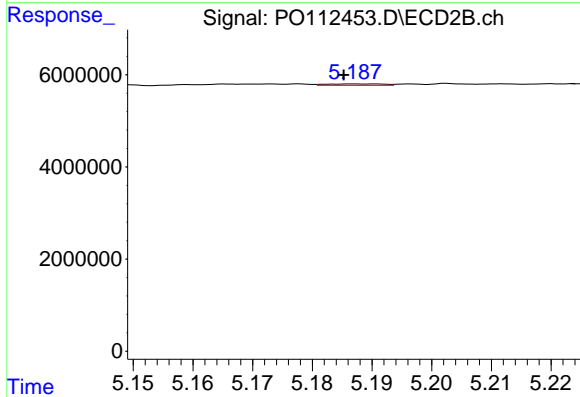
R.T.: 4.977 min  
 Delta R.T.: 0.005 min  
 Response: 167336  
 Conc: 1.51 ng/ml



#7 AR-1016-5

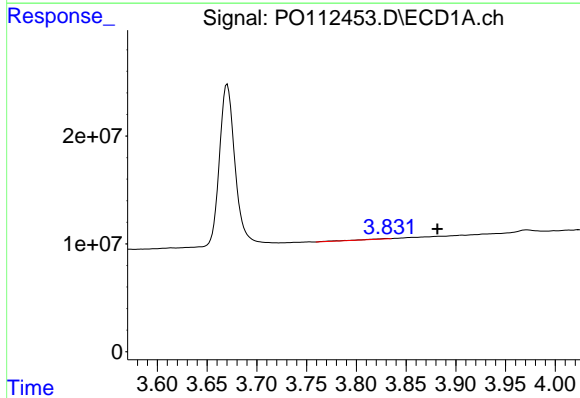
R.T.: 5.204 min  
 Delta R.T.: -0.004 min  
 Response: 179605  
 Conc: 0.82 ng/ml

Instrument :  
 ECD\_O  
 ClientSampleId :  
 I.BLK



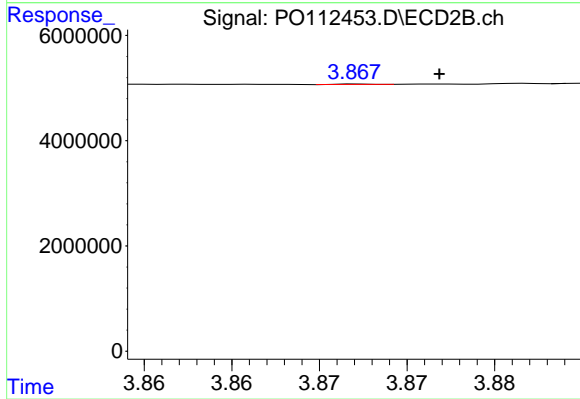
#7 AR-1016-5

R.T.: 5.187 min  
 Delta R.T.: 0.002 min  
 Response: 217274  
 Conc: 1.52 ng/ml



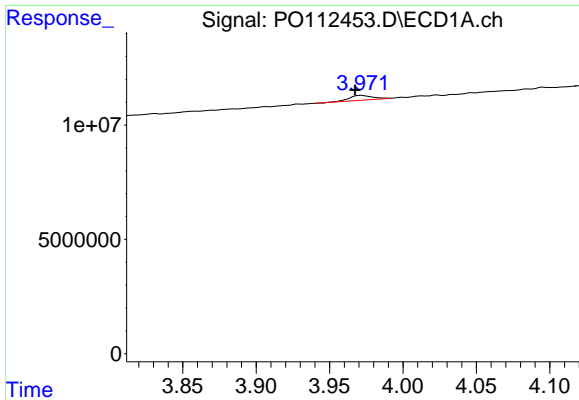
#8 AR-1221-1

R.T.: 3.831 min  
 Delta R.T.: -0.050 min  
 Response: 833644  
 Conc: 8.62 ng/ml



#8 AR-1221-1

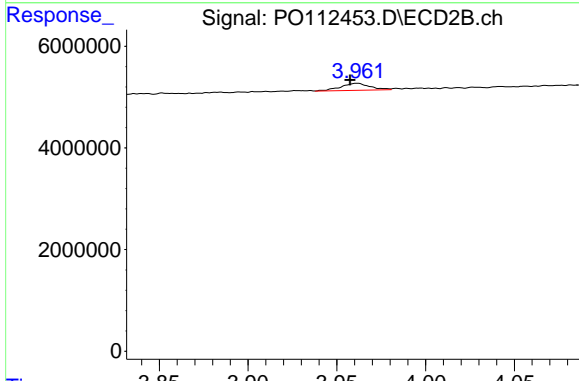
R.T.: 3.867 min  
 Delta R.T.: -0.004 min  
 Response: 11644  
 Conc: 0.17 ng/ml



#9 AR-1221-2

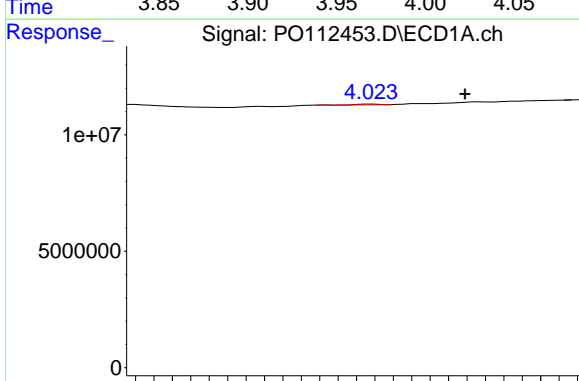
R.T.: 3.971 min  
 Delta R.T.: 0.004 min  
 Response: 2243006  
 Conc: 31.21 ng/ml

Instrument :  
 ECD\_O  
 ClientSampleId :  
 I.BLK



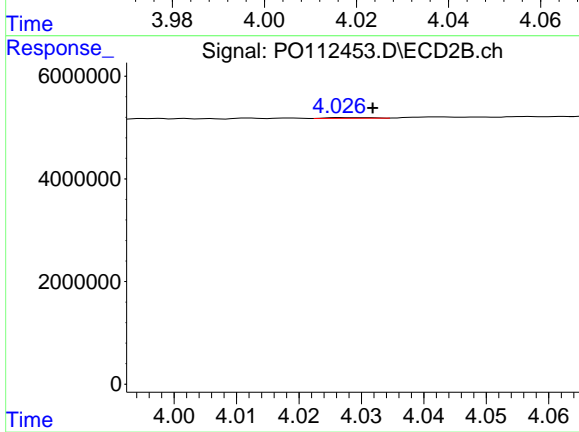
#9 AR-1221-2

R.T.: 3.961 min  
 Delta R.T.: 0.004 min  
 Response: 1583249  
 Conc: 31.21 ng/ml



#10 AR-1221-3

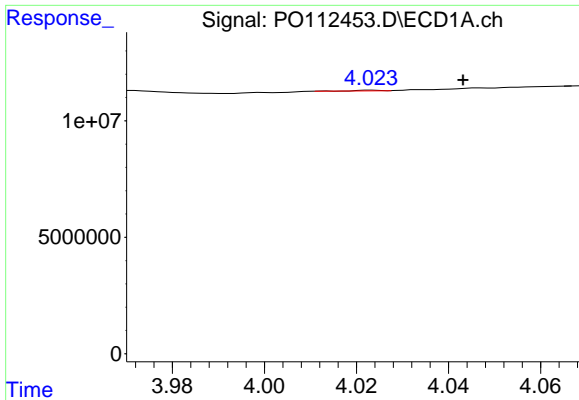
R.T.: 4.023 min  
 Delta R.T.: -0.020 min  
 Response: 78401  
 Conc: 0.33 ng/ml



#10 AR-1221-3

R.T.: 4.027 min  
 Delta R.T.: -0.005 min  
 Response: 70537  
 Conc: 0.44 ng/ml

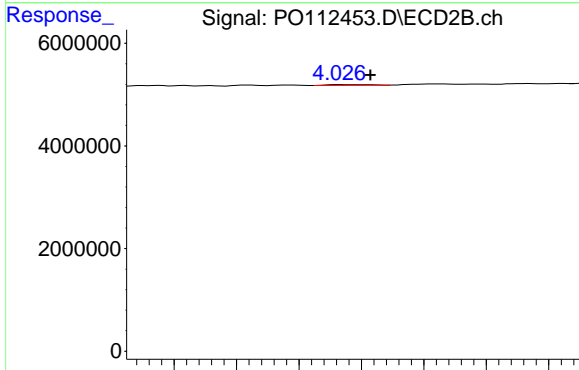




#11 AR-1232-1

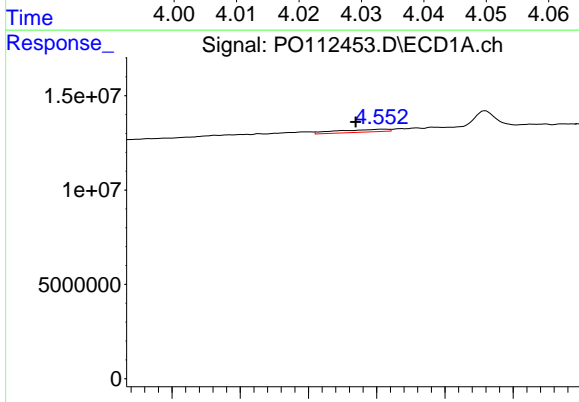
R.T.: 4.023 min  
 Delta R.T.: -0.020 min  
 Response: 78401  
 Conc: 0.42 ng/ml

Instrument :  
 ECD\_O  
 ClientSampleId :  
 I.BLK



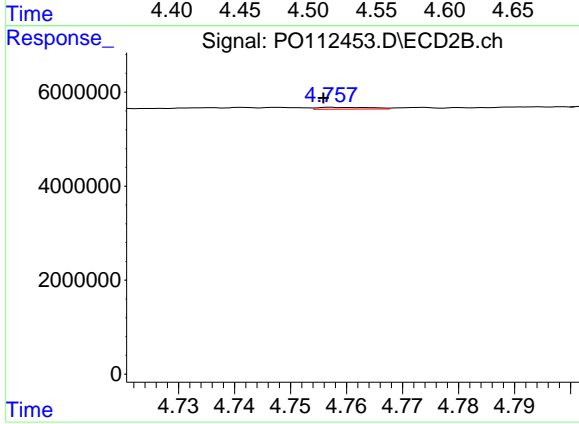
#11 AR-1232-1

R.T.: 4.027 min  
 Delta R.T.: -0.005 min  
 Response: 70537  
 Conc: 0.56 ng/ml



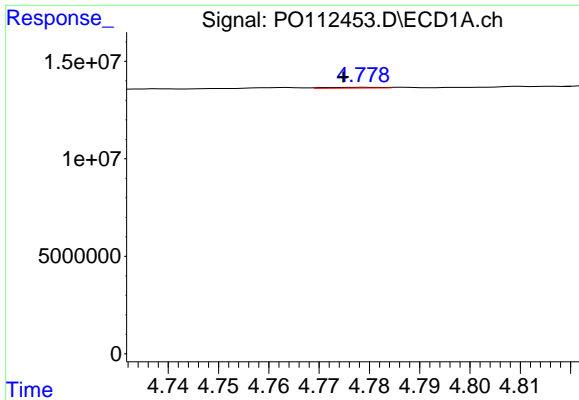
#12 AR-1232-2

R.T.: 4.554 min  
 Delta R.T.: 0.019 min  
 Response: 3687231  
 Conc: 34.26 ng/ml



#12 AR-1232-2

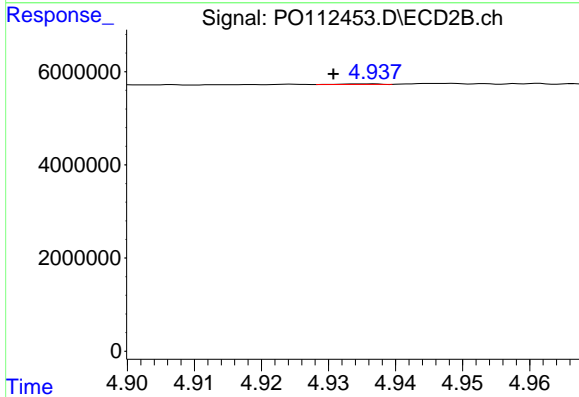
R.T.: 4.757 min  
 Delta R.T.: 0.001 min  
 Response: 259654  
 Conc: 1.98 ng/ml



#13 AR-1232-3

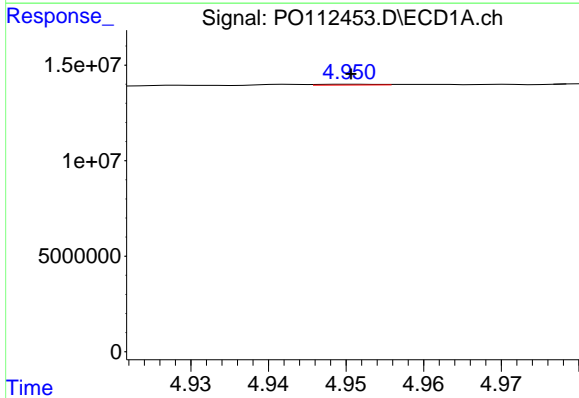
R.T.: 4.779 min  
 Delta R.T.: 0.004 min  
 Response: 300730  
 Conc: 1.45 ng/ml

Instrument :  
 ECD\_O  
 ClientSampleId :  
 I.BLK



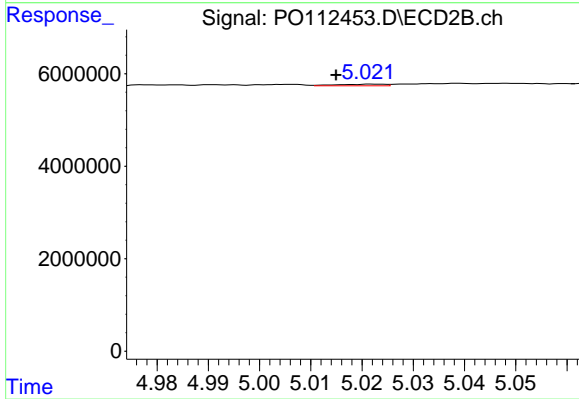
#13 AR-1232-3

R.T.: 4.936 min  
 Delta R.T.: 0.006 min  
 Response: 50447  
 Conc: 0.75 ng/ml



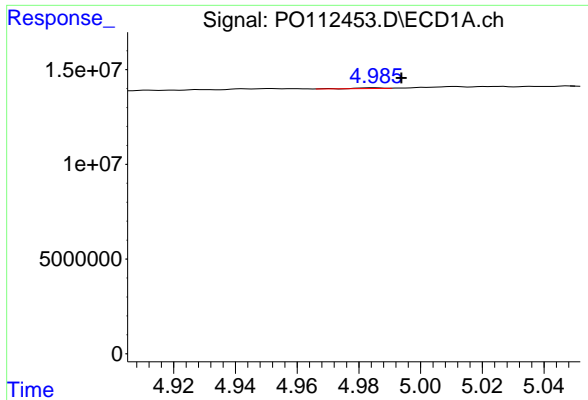
#14 AR-1232-4

R.T.: 4.951 min  
 Delta R.T.: 0.000 min  
 Response: 219419  
 Conc: 2.09 ng/ml



#14 AR-1232-4

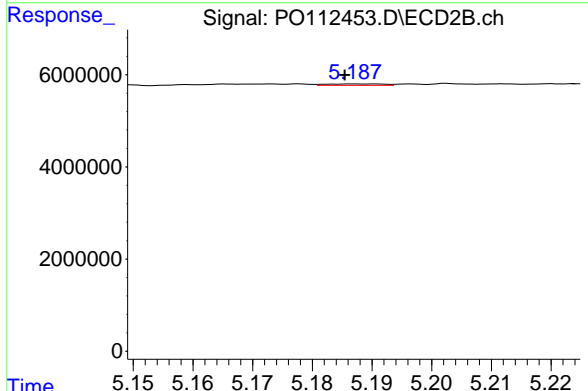
R.T.: 5.022 min  
 Delta R.T.: 0.007 min  
 Response: 228340  
 Conc: 3.82 ng/ml



#15 AR-1232-5

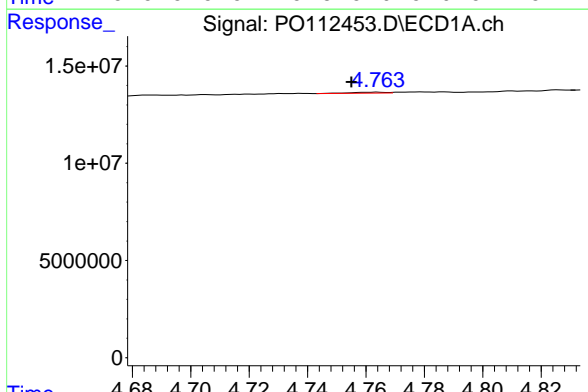
R.T.: 4.985 min  
 Delta R.T.: -0.009 min  
 Response: 217422  
 Conc: 3.20 ng/ml

Instrument :  
 ECD\_O  
 ClientSampleId :  
 I.BLK



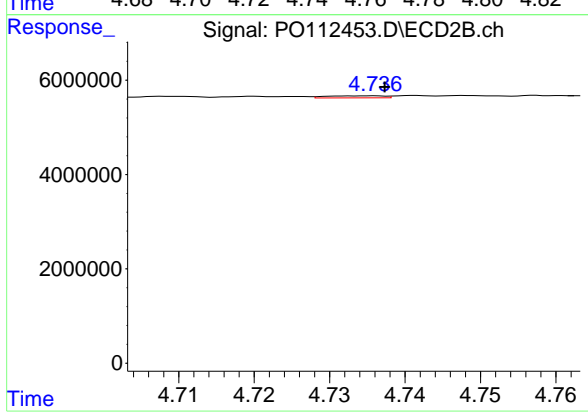
#15 AR-1232-5

R.T.: 5.187 min  
 Delta R.T.: 0.002 min  
 Response: 217274  
 Conc: 3.33 ng/ml



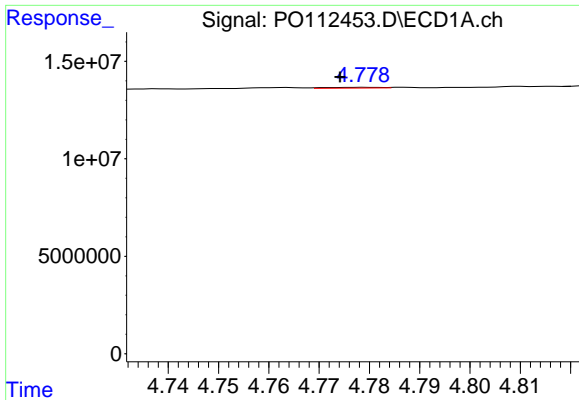
#16 AR-1242-1

R.T.: 4.764 min  
 Delta R.T.: 0.009 min  
 Response: 390730  
 Conc: 1.58 ng/ml



#16 AR-1242-1

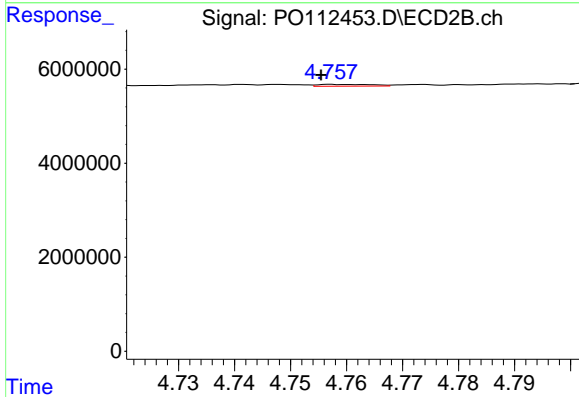
R.T.: 4.736 min  
 Delta R.T.: -0.001 min  
 Response: 234049  
 Conc: 1.48 ng/ml



#17 AR-1242-2

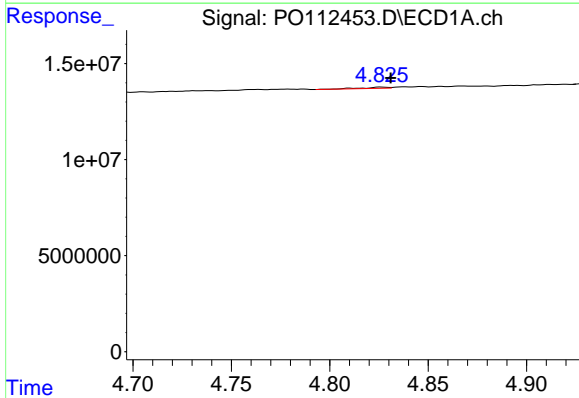
R.T.: 4.779 min  
 Delta R.T.: 0.005 min  
 Response: 300730  
 Conc: 0.81 ng/ml

Instrument :  
 ECD\_O  
 ClientSampleId :  
 I.BLK



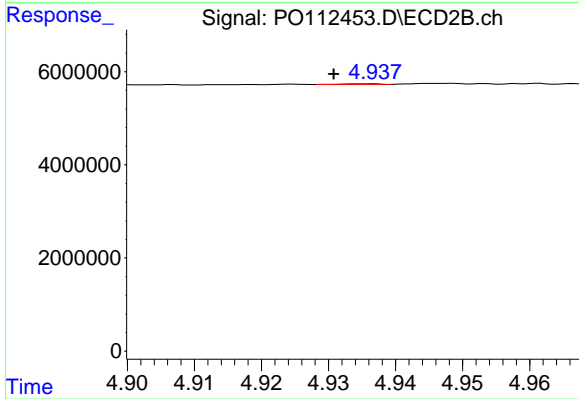
#17 AR-1242-2

R.T.: 4.757 min  
 Delta R.T.: 0.002 min  
 Response: 259654  
 Conc: 1.11 ng/ml



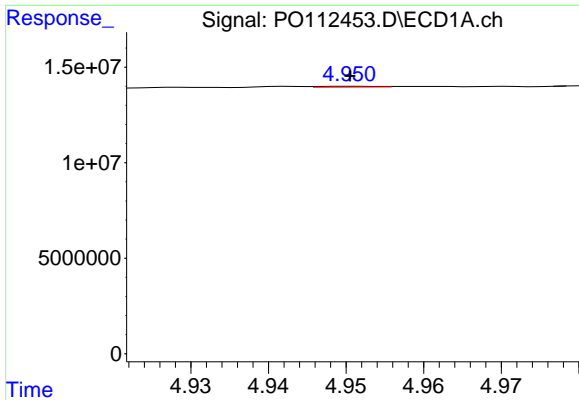
#18 AR-1242-3

R.T.: 4.826 min  
 Delta R.T.: -0.005 min  
 Response: 594902  
 Conc: 2.51 ng/ml



#18 AR-1242-3

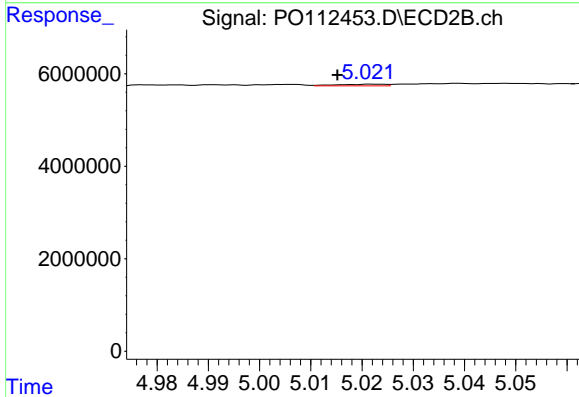
R.T.: 4.936 min  
 Delta R.T.: 0.005 min  
 Response: 50447  
 Conc: 0.42 ng/ml



#19 AR-1242-4

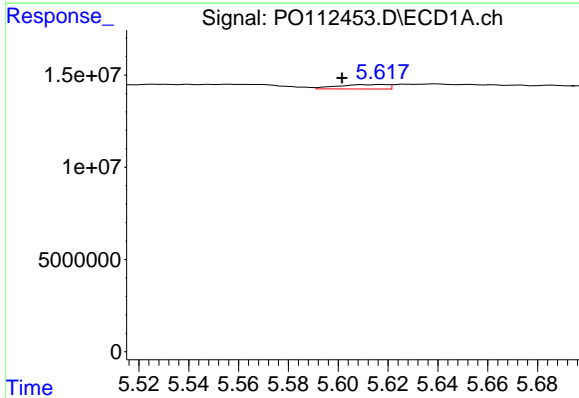
R.T.: 4.951 min  
 Delta R.T.: 0.000 min  
 Response: 219419  
 Conc: 1.13 ng/ml

Instrument :  
 ECD\_O  
 ClientSampleId :  
 I.BLK



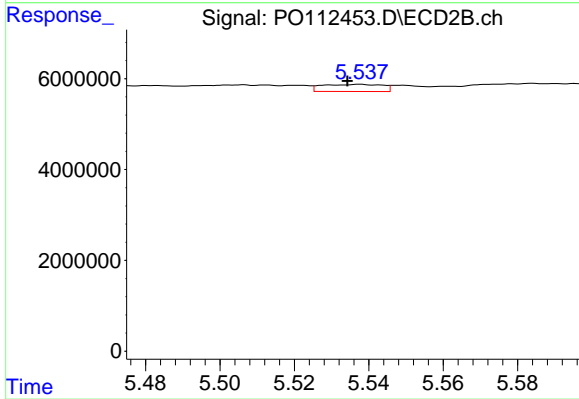
#19 AR-1242-4

R.T.: 5.022 min  
 Delta R.T.: 0.007 min  
 Response: 228340  
 Conc: 1.86 ng/ml



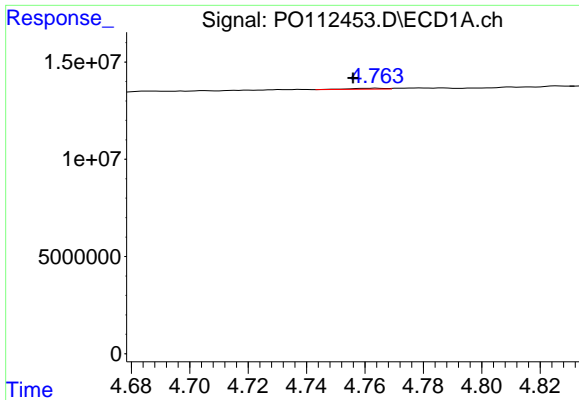
#20 AR-1242-5

R.T.: 5.617 min  
 Delta R.T.: 0.016 min  
 Response: 3344154  
 Conc: 15.63 ng/ml



#20 AR-1242-5

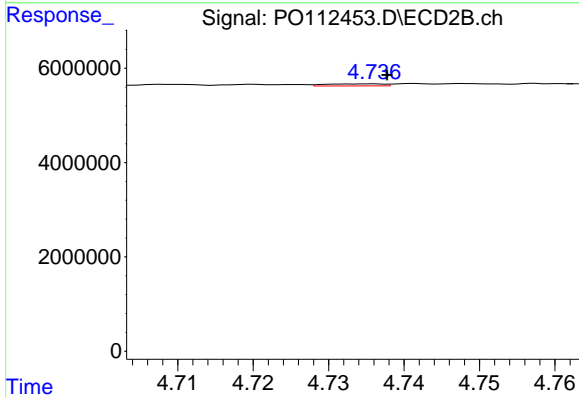
R.T.: 5.538 min  
 Delta R.T.: 0.003 min  
 Response: 1748910  
 Conc: 10.86 ng/ml



#21 AR-1248-1

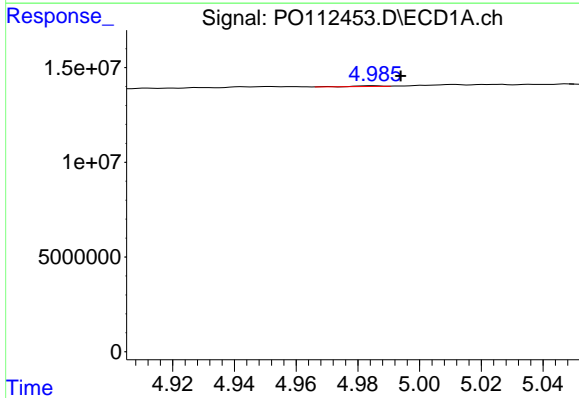
R.T.: 4.764 min  
 Delta R.T.: 0.008 min  
 Response: 390730  
 Conc: 2.09 ng/ml

Instrument :  
 ECD\_O  
 ClientSampleId :  
 I.BLK



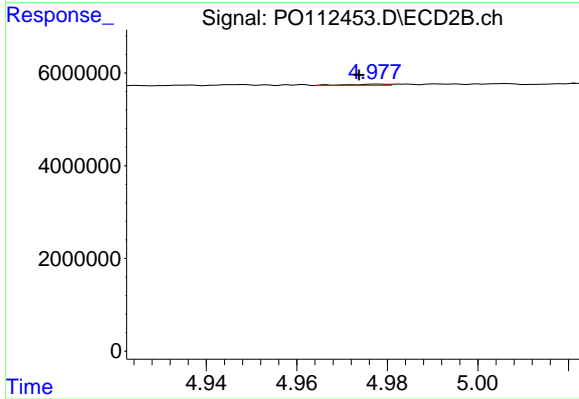
#21 AR-1248-1

R.T.: 4.736 min  
 Delta R.T.: -0.002 min  
 Response: 234049  
 Conc: 1.93 ng/ml



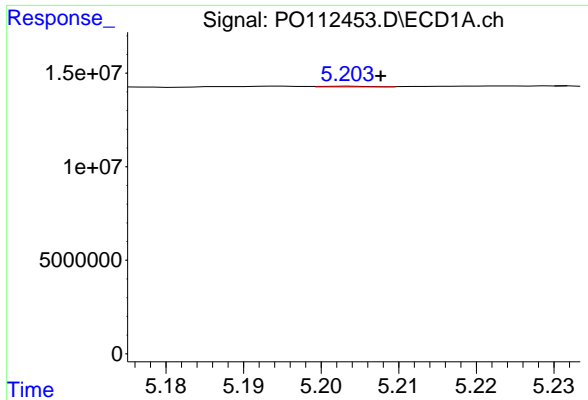
#22 AR-1248-2

R.T.: 4.985 min  
 Delta R.T.: -0.009 min  
 Response: 217422  
 Conc: 0.85 ng/ml



#22 AR-1248-2

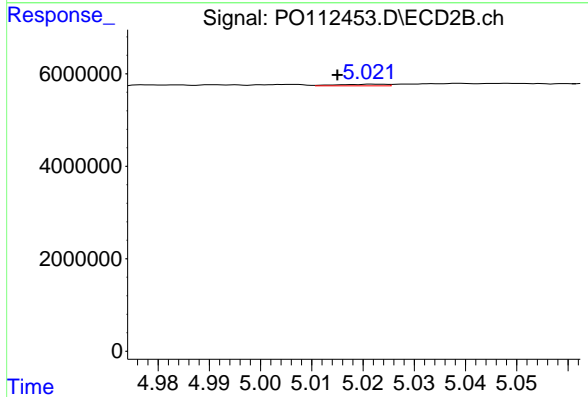
R.T.: 4.977 min  
 Delta R.T.: 0.004 min  
 Response: 167336  
 Conc: 0.99 ng/ml



#23 AR-1248-3

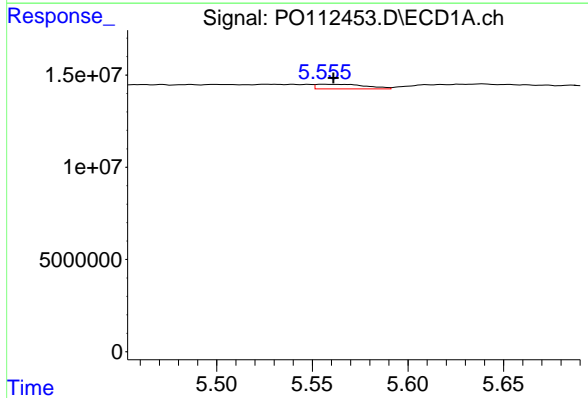
R.T.: 5.204 min  
 Delta R.T.: -0.004 min  
 Response: 179605  
 Conc: 0.52 ng/ml

Instrument :  
 ECD\_O  
 ClientSampleId :  
 I.BLK



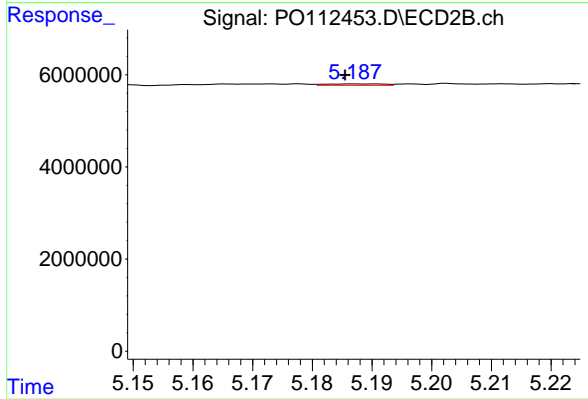
#23 AR-1248-3

R.T.: 5.022 min  
 Delta R.T.: 0.007 min  
 Response: 228340  
 Conc: 1.29 ng/ml



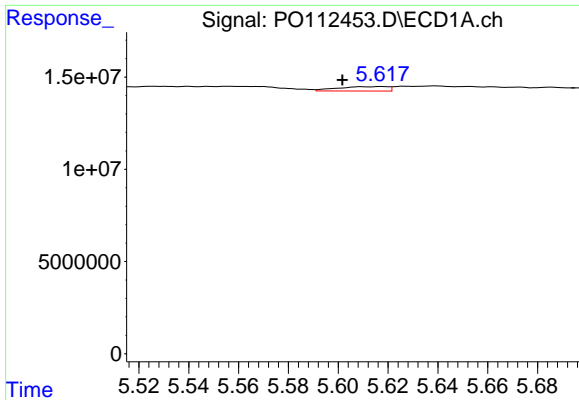
#24 AR-1248-4

R.T.: 5.556 min  
 Delta R.T.: -0.005 min  
 Response: 4525605  
 Conc: 8.91 ng/ml



#24 AR-1248-4

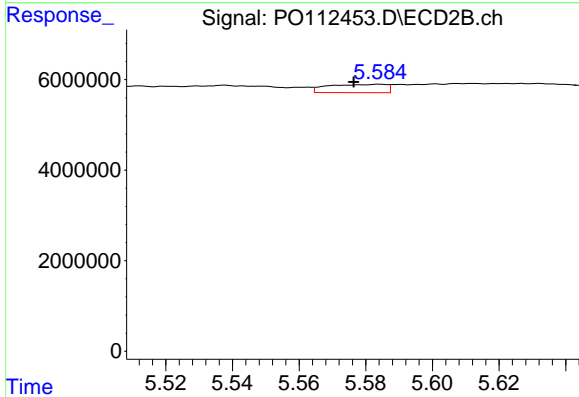
R.T.: 5.187 min  
 Delta R.T.: 0.002 min  
 Response: 217274  
 Conc: 1.04 ng/ml



#25 AR-1248-5

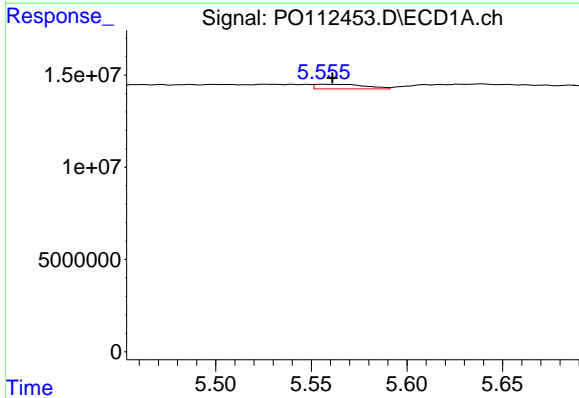
R.T.: 5.617 min  
 Delta R.T.: 0.016 min  
 Response: 3344154  
 Conc: 9.57 ng/ml

Instrument :  
 ECD\_O  
 ClientSampleId :  
 I.BLK



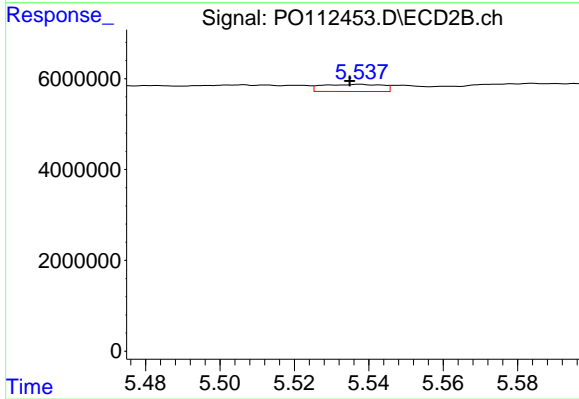
#25 AR-1248-5

R.T.: 5.584 min  
 Delta R.T.: 0.008 min  
 Response: 2234745  
 Conc: 10.41 ng/ml



#26 AR-1254-1

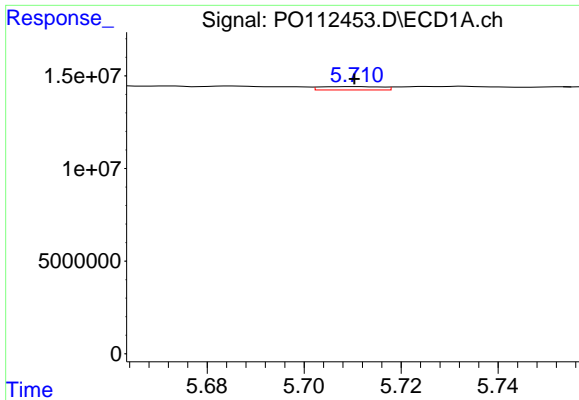
R.T.: 5.556 min  
 Delta R.T.: -0.005 min  
 Response: 4525605  
 Conc: 8.24 ng/ml



#26 AR-1254-1

R.T.: 5.538 min  
 Delta R.T.: 0.003 min  
 Response: 1748910  
 Conc: 5.32 ng/ml

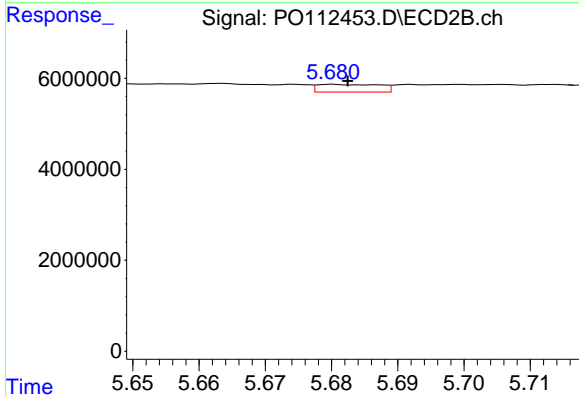




#27 AR-1254-2

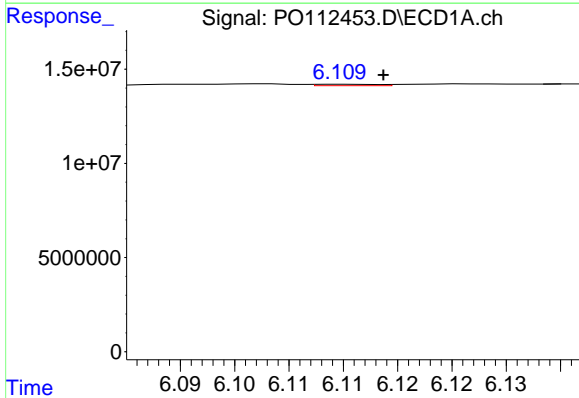
R.T.: 5.711 min  
 Delta R.T.: 0.000 min  
 Response: 1585784  
 Conc: 3.26 ng/ml

Instrument :  
 ECD\_O  
 ClientSampleId :  
 I.BLK



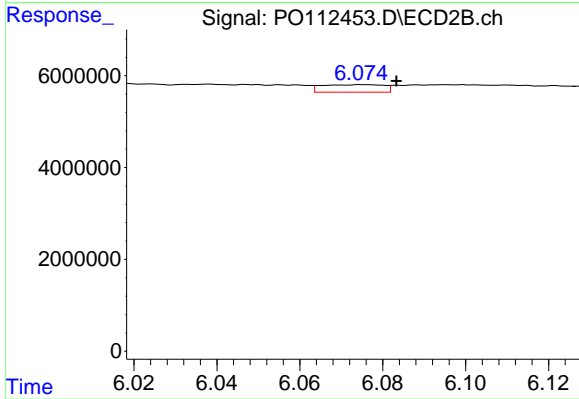
#27 AR-1254-2

R.T.: 5.680 min  
 Delta R.T.: -0.002 min  
 Response: 1114661  
 Conc: 3.85 ng/ml



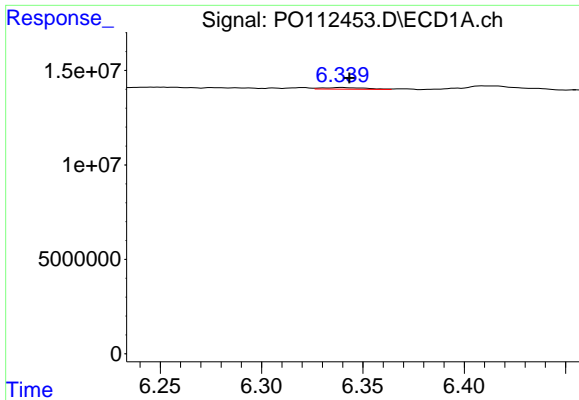
#28 AR-1254-3

R.T.: 6.110 min  
 Delta R.T.: -0.004 min  
 Response: 301216  
 Conc: 0.40 ng/ml



#28 AR-1254-3

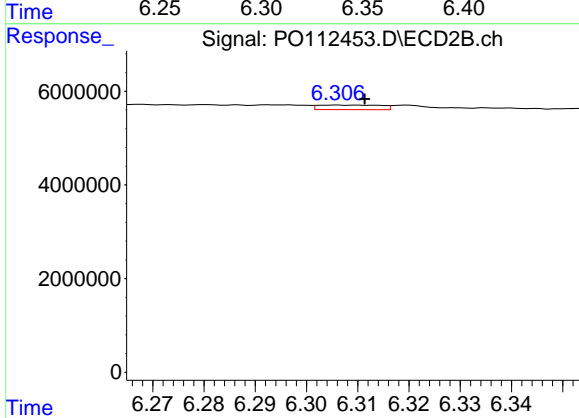
R.T.: 6.075 min  
 Delta R.T.: -0.008 min  
 Response: 1699456  
 Conc: 3.98 ng/ml



#29 AR-1254-4

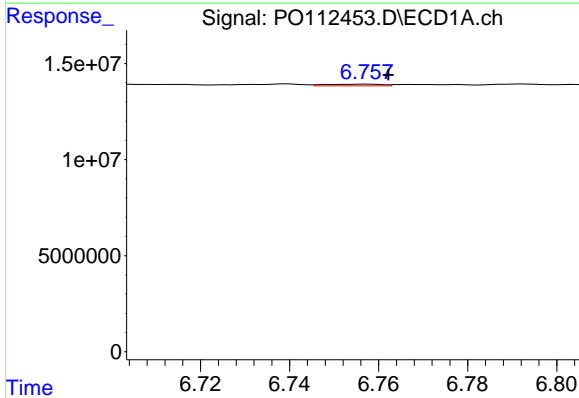
R.T.: 6.339 min  
 Delta R.T.: -0.004 min  
 Response: 1269715  
 Conc: 2.31 ng/ml

Instrument :  
 ECD\_O  
 ClientSampleId :  
 I.BLK



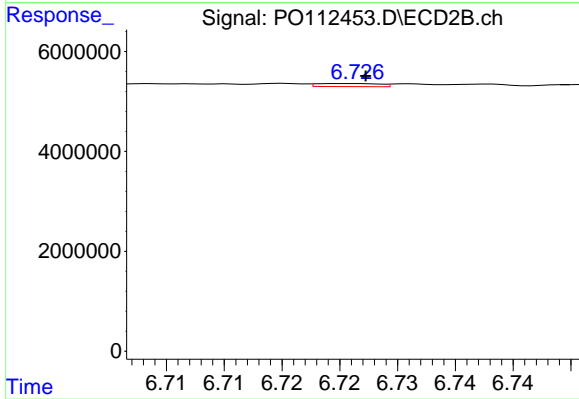
#29 AR-1254-4

R.T.: 6.306 min  
 Delta R.T.: -0.005 min  
 Response: 838101  
 Conc: 3.07 ng/ml



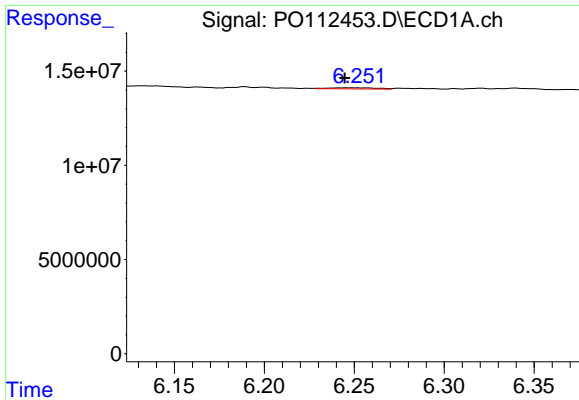
#30 AR-1254-5

R.T.: 6.757 min  
 Delta R.T.: -0.005 min  
 Response: 774681  
 Conc: 1.09 ng/ml



#30 AR-1254-5

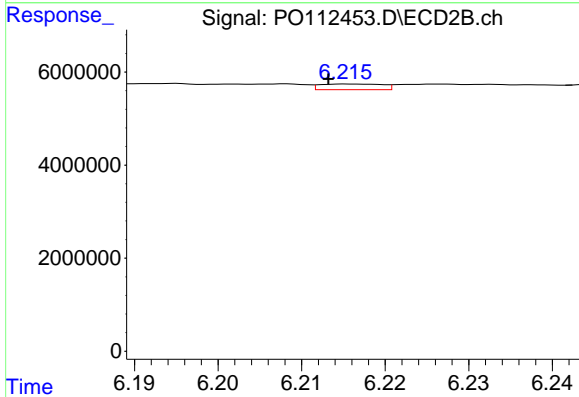
R.T.: 6.726 min  
 Delta R.T.: -0.001 min  
 Response: 229950  
 Conc: 0.69 ng/ml



#31 AR-1260-1

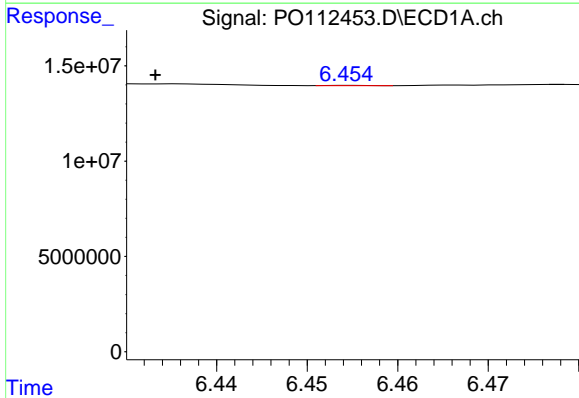
R.T.: 6.245 min  
 Delta R.T.: 0.000 min  
 Response: 1157696  
 Conc: 2.64 ng/ml

Instrument :  
 ECD\_O  
 ClientSampleId :  
 I.BLK



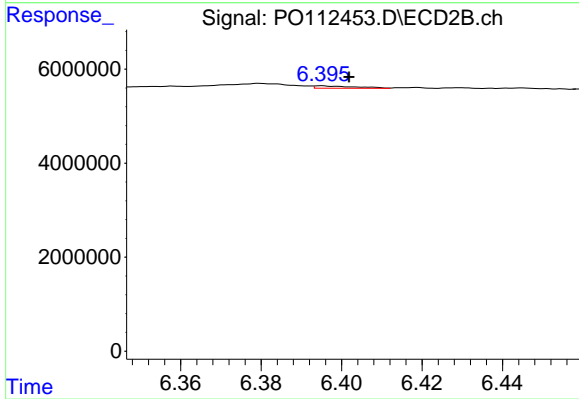
#31 AR-1260-1

R.T.: 6.216 min  
 Delta R.T.: 0.002 min  
 Response: 629147  
 Conc: 2.53 ng/ml



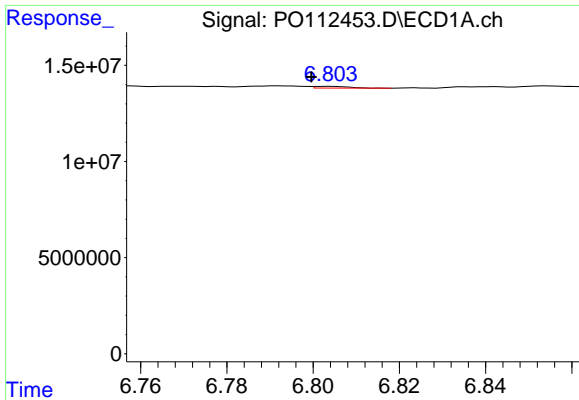
#32 AR-1260-2

R.T.: 6.455 min  
 Delta R.T.: 0.022 min  
 Response: 36428  
 Conc: 0.05 ng/ml



#32 AR-1260-2

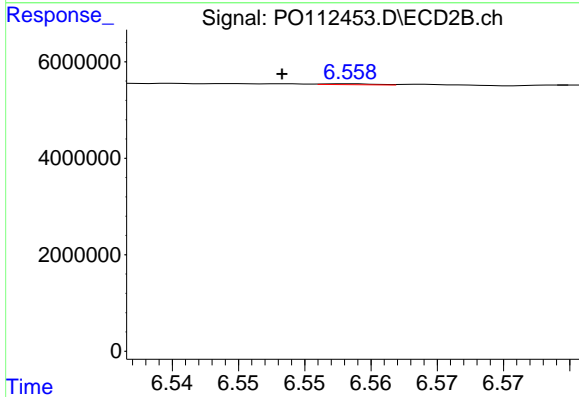
R.T.: 6.395 min  
 Delta R.T.: -0.007 min  
 Response: 353687  
 Conc: 1.07 ng/ml



#33 AR-1260-3

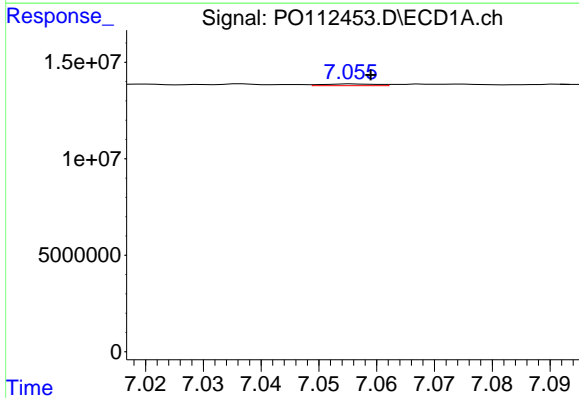
R.T.: 6.804 min  
 Delta R.T.: 0.004 min  
 Response: 503550  
 Conc: 0.86 ng/ml

Instrument :  
 ECD\_O  
 ClientSampleId :  
 I.BLK



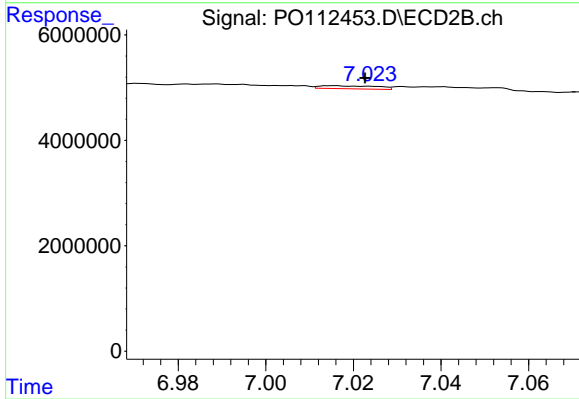
#33 AR-1260-3

R.T.: 6.558 min  
 Delta R.T.: 0.005 min  
 Response: 49198  
 Conc: 0.19 ng/ml



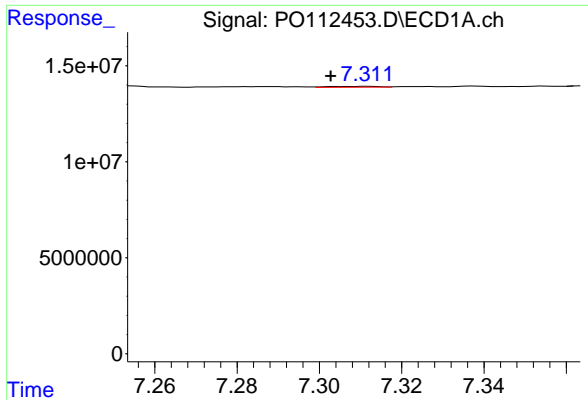
#34 AR-1260-4

R.T.: 7.056 min  
 Delta R.T.: -0.003 min  
 Response: 604510  
 Conc: 1.34 ng/ml



#34 AR-1260-4

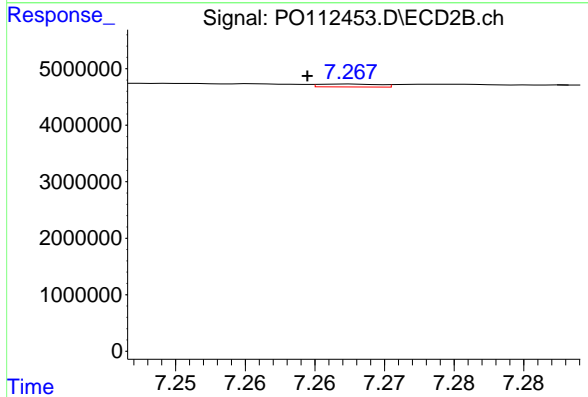
R.T.: 7.016 min  
 Delta R.T.: -0.007 min  
 Response: 531518  
 Conc: 2.78 ng/ml



#35 AR-1260-5

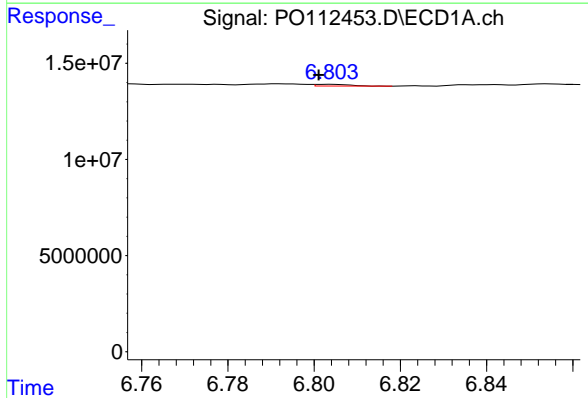
R.T.: 7.312 min  
 Delta R.T.: 0.009 min  
 Response: 405729  
 Conc: 0.33 ng/ml

Instrument :  
 ECD\_O  
 ClientSampleId :  
 I.BLK



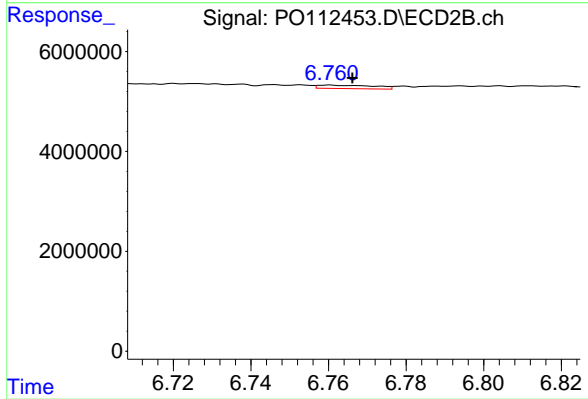
#35 AR-1260-5

R.T.: 7.268 min  
 Delta R.T.: 0.003 min  
 Response: 155953  
 Conc: 0.38 ng/ml



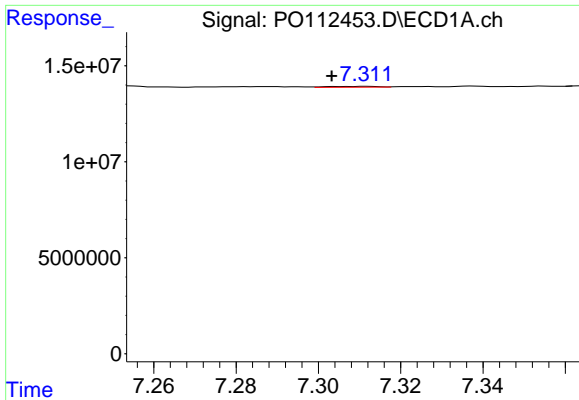
#36 AR-1262-1

R.T.: 6.804 min  
 Delta R.T.: 0.003 min  
 Response: 503550  
 Conc: 0.54 ng/ml



#36 AR-1262-1

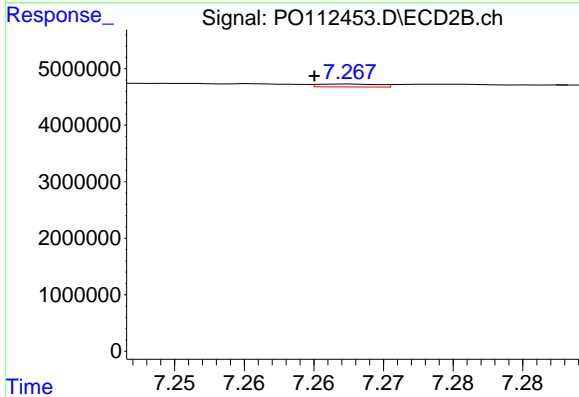
R.T.: 6.761 min  
 Delta R.T.: -0.006 min  
 Response: 687242  
 Conc: 1.66 ng/ml



#37 AR-1262-2

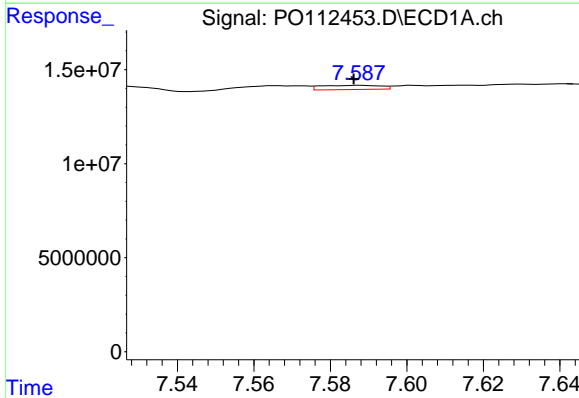
R.T.: 7.312 min  
 Delta R.T.: 0.009 min  
 Response: 405729  
 Conc: 0.27 ng/ml

Instrument :  
 ECD\_O  
 ClientSampleId :  
 I.BLK



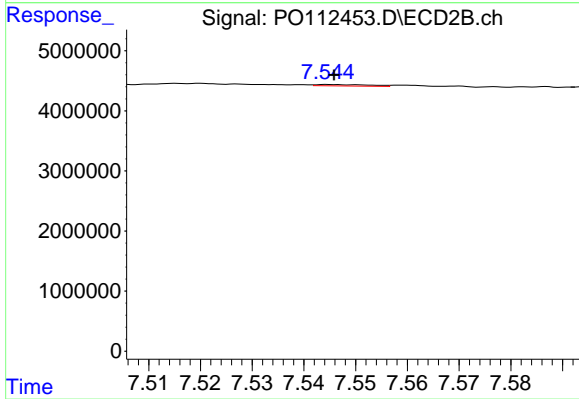
#37 AR-1262-2

R.T.: 7.268 min  
 Delta R.T.: 0.002 min  
 Response: 155953  
 Conc: 0.30 ng/ml



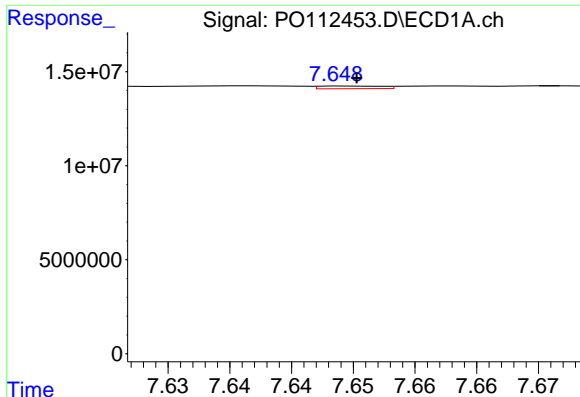
#38 AR-1262-3

R.T.: 7.588 min  
 Delta R.T.: 0.002 min  
 Response: 2410277  
 Conc: 4.08 ng/ml



#38 AR-1262-3

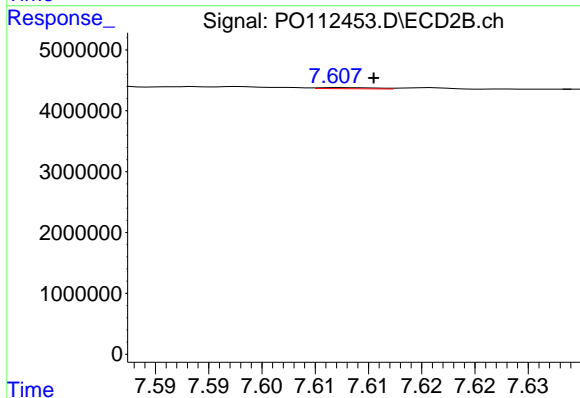
R.T.: 7.545 min  
 Delta R.T.: -0.001 min  
 Response: 179035  
 Conc: 0.96 ng/ml



#39 AR-1262-4

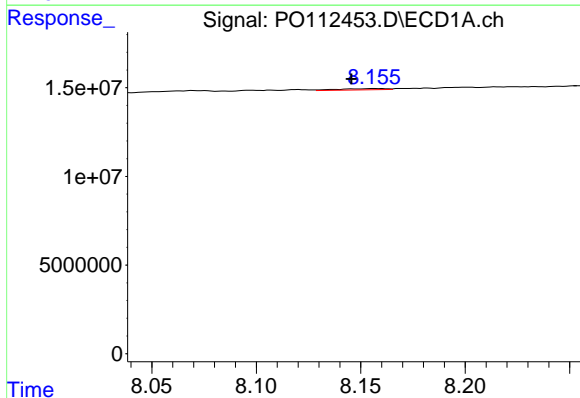
R.T.: 7.649 min  
 Delta R.T.: 0.000 min  
 Response: 509263  
 Conc: 0.51 ng/ml

Instrument :  
 ECD\_O  
 ClientSampleId :  
 I.BLK



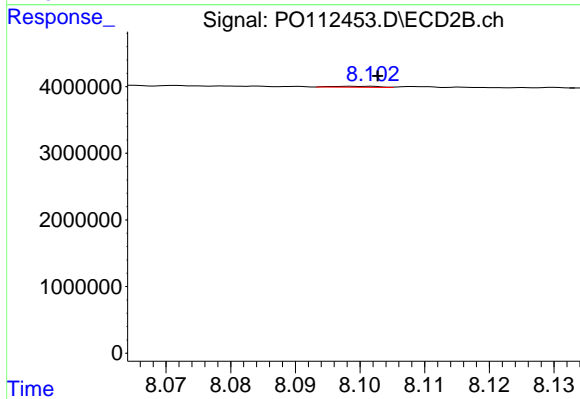
#39 AR-1262-4

R.T.: 7.607 min  
 Delta R.T.: -0.003 min  
 Response: 66366  
 Conc: 0.23 ng/ml



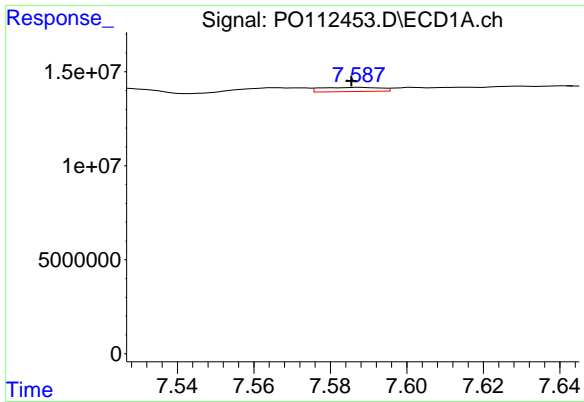
#40 AR-1262-5

R.T.: 8.157 min  
 Delta R.T.: 0.011 min  
 Response: 1102160  
 Conc: 2.54 ng/ml



#40 AR-1262-5

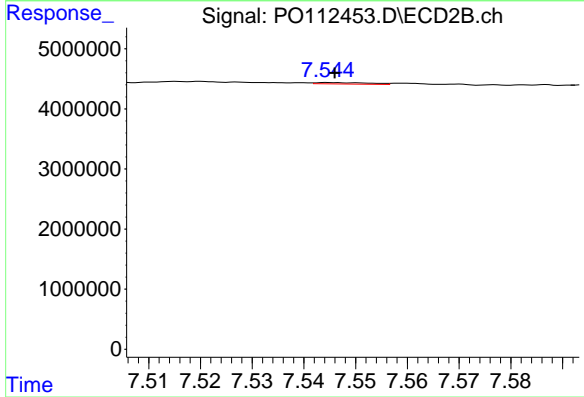
R.T.: 8.099 min  
 Delta R.T.: -0.004 min  
 Response: 68374  
 Conc: 0.69 ng/ml



#41 AR-1268-1

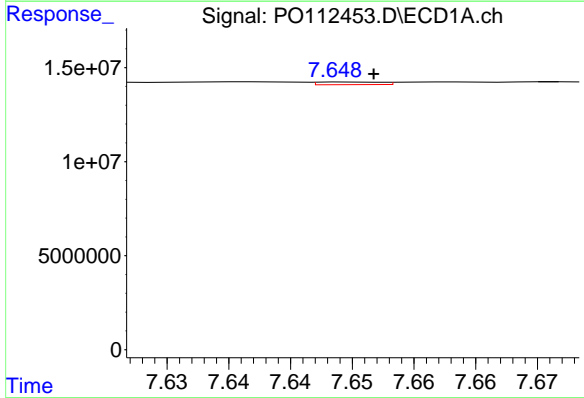
R.T.: 7.588 min  
 Delta R.T.: 0.002 min  
 Response: 2410277  
 Conc: 1.38 ng/ml

Instrument :  
 ECD\_O  
 ClientSampleId :  
 I.BLK



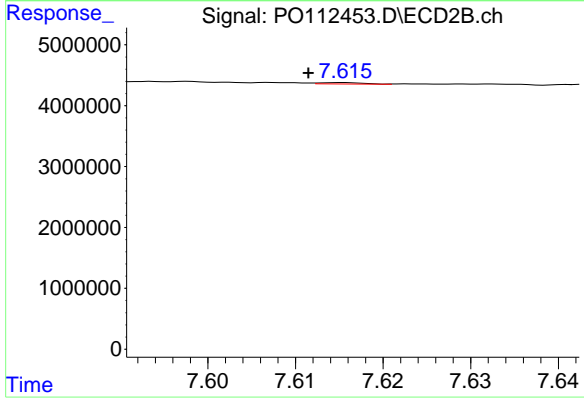
#41 AR-1268-1

R.T.: 7.545 min  
 Delta R.T.: -0.001 min  
 Response: 179035  
 Conc: 0.35 ng/ml



#42 AR-1268-2

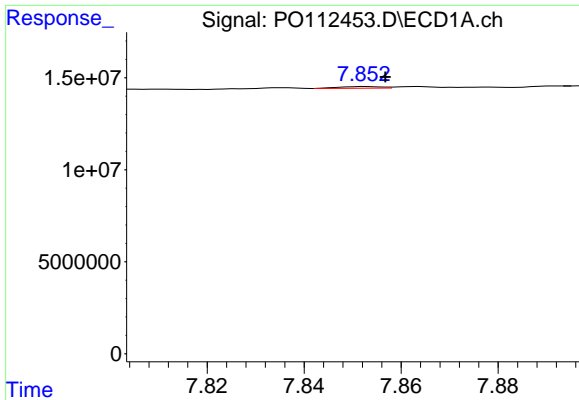
R.T.: 7.649 min  
 Delta R.T.: -0.002 min  
 Response: 509263  
 Conc: 0.35 ng/ml



#42 AR-1268-2

R.T.: 7.616 min  
 Delta R.T.: 0.004 min  
 Response: 77634  
 Conc: 0.18 ng/ml

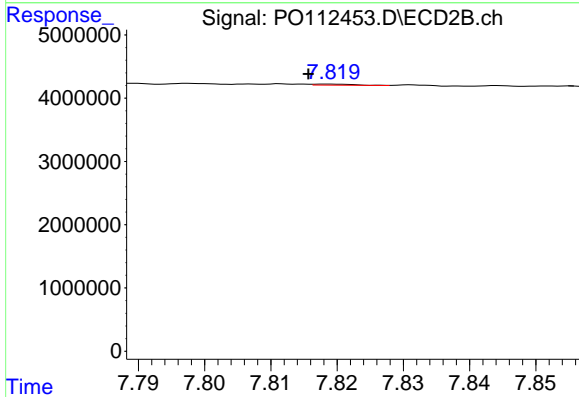




#43 AR-1268-3

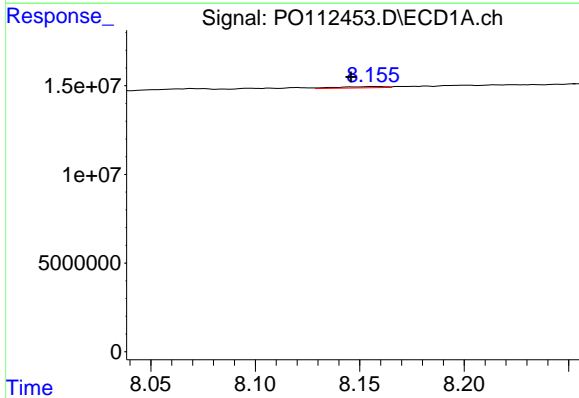
R.T.: 7.853 min  
 Delta R.T.: -0.004 min  
 Response: 540386  
 Conc: 0.43 ng/ml

Instrument :  
 ECD\_O  
 ClientSampleId :  
 I.BLK



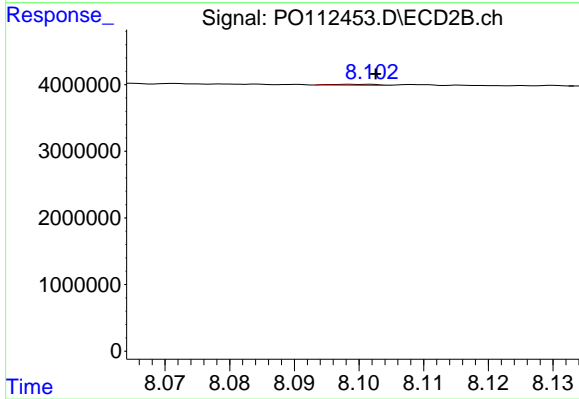
#43 AR-1268-3

R.T.: 7.819 min  
 Delta R.T.: 0.003 min  
 Response: 68114  
 Conc: 0.21 ng/ml



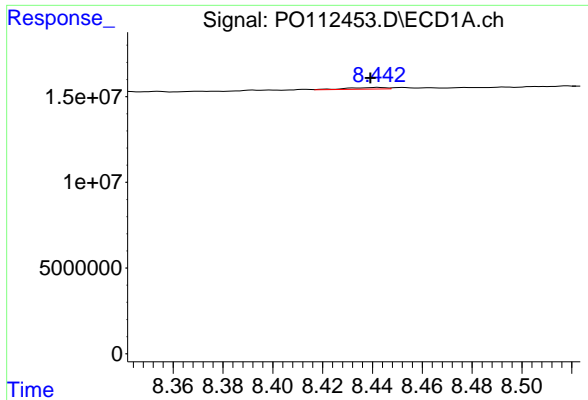
#44 AR-1268-4

R.T.: 8.157 min  
 Delta R.T.: 0.011 min  
 Response: 1102160  
 Conc: 2.29 ng/ml



#44 AR-1268-4

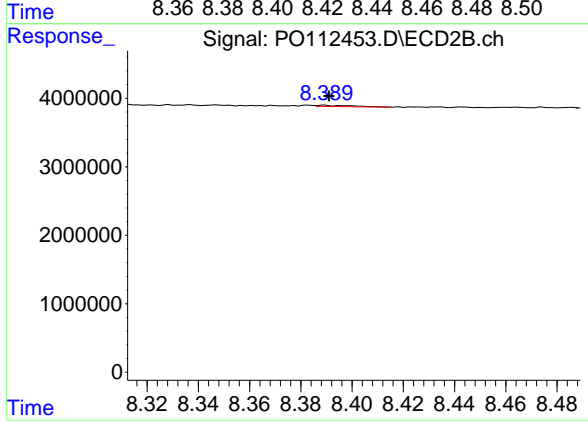
R.T.: 8.099 min  
 Delta R.T.: -0.004 min  
 Response: 68374  
 Conc: 0.61 ng/ml



#45 AR-1268-5

R.T.: 8.442 min  
 Delta R.T.: 0.003 min  
 Response: 984031  
 Conc: 0.29 ng/ml

Instrument :  
 ECD\_O  
 ClientSampleId :  
 I.BLK



#45 AR-1268-5

R.T.: 8.389 min  
 Delta R.T.: -0.002 min  
 Response: 179490  
 Conc: 0.25 ng/ml