

Data Path : Z:\pestpcbsrv\HPCHEM1\ECD_0\Data\P0072425\
 Data File : PO112454.D
 Signal(s) : Signal #1: ECD1A.ch Signal #2: ECD2B.ch
 Acq On : 24 Jul 2025 10:35
 Operator : YP/AJ
 Sample : DDT ANALOG
 Misc :
 ALS Vial : 7 Sample Multiplier: 1

Instrument :
 ECD_0
 ClientSampleId :
 DDT ANALOG

Integration File signal 1: autoint1.e
 Integration File signal 2: autoint2.e
 Quant Time: Jul 24 23:34:45 2025
 Quant Method : Z:\pestpcbsrv\HPCHEM1\ECD_0\methods\P0072325.M
 Quant Title : GC EXTRACTABLES
 QLast Update : Thu Jul 24 04:54:06 2025
 Response via : Initial Calibration
 Integrator: ChemStation

Volume Inj. : 2 µl
 Signal #1 Phase : ZB-MR2 Signal #2 Phase: ZB-MR2
 Signal #1 Info : 30Mx0.32mmx 0.50µ Signal #2 Info : 30M x 0.32mm x 0.25µm

Compound	RT#1	RT#2	Resp#1	Resp#2	ng/ml	ng/ml
System Monitoring Compounds						
1) SA Tetrachlo...	3.681	3.657	45172	80697	0.006	0.016 #
2) SA Decachlor...	8.690	8.636	690984	112064	0.095	0.063 #
Target Compounds						
3) L1 AR-1016-1	4.763	4.740	303526	668065	1.131	3.817 #
4) L1 AR-1016-2	4.774	4.757	200973	162542	0.495	0.624 #
5) L1 AR-1016-3	4.836	4.928	768875	1118842	2.938	8.229 #
6) L1 AR-1016-4	4.960	4.996	21976515	7217949	103.740	64.977 #
7) L1 AR-1016-5	5.217	5.190	61209823	15370421	278.898	107.258 #
8) L2 AR-1221-1	3.832f	3.879	993215	188231	10.275	2.798 #
9) L2 AR-1221-2	3.958	3.955	130745	63846	1.819	1.259 #
10) L2 AR-1221-3	4.008f	4.031	364503	104598	1.533	0.660 #
11) L3 AR-1232-1	4.008f	4.031	364503	104598	1.949	0.827 #
12) L3 AR-1232-2	4.545	4.757	1316828	162542	12.235	1.239 #
13) L3 AR-1232-3	4.774	4.928	200973	1118842	0.972	16.650 #
14) L3 AR-1232-4	4.960	5.016	21976515	5718692	209.819	95.584 #
15) L3 AR-1232-5	5.024	5.190	24940545	15370421	367.416	235.732 #
16) L4 AR-1242-1	4.763	4.740	303526	668065	1.226	4.218 #
17) L4 AR-1242-2	4.774	4.757	200973	162542	0.543	0.696 #
18) L4 AR-1242-3	4.836	4.928	768875	1118842	3.249	9.232 #
19) L4 AR-1242-4	4.960	5.016	21976515	5718692	113.119	46.592 #
20) L4 AR-1242-5	5.583	5.523	115.4E6	9014841	539.354	56.003 #
21) L5 AR-1248-1	4.763	4.740	303526	668065	1.621	5.498 #
22) L5 AR-1248-2	5.024	4.996	24940545	7217949	97.763	42.639 #
23) L5 AR-1248-3	5.217	5.016	61209823	5718692	178.090	32.191 #
24) L5 AR-1248-4	5.545	5.190	44082469	15370421	86.763	73.771
25) L5 AR-1248-5	5.583	5.584	115.4E6	3307543	330.032	15.401 #
26) L6 AR-1254-1	5.545	5.523	44082469	9014841	80.302	27.432 #
27) L6 AR-1254-2	5.731	5.672	95137441	4128376	195.789	14.261 #
28) L6 AR-1254-3	6.097	6.071	459963	2979026	0.618	6.969 #
29) L6 AR-1254-4	6.324	6.303	6271051	3428891	11.408	12.562
30) L6 AR-1254-5	6.760	6.725	4359.5E6	2139.7E6	6158.989	6405.848
31) L7 AR-1260-1	6.246	6.210	500496	1672226	1.139	6.729 #
32) L7 AR-1260-2	6.436	6.403	7460487	4175502	10.845	12.672
33) L7 AR-1260-3	6.827	6.530	4655125	-1908267	7.917	N.D. #
34) L7 AR-1260-4	7.058	7.026	1929937	480495	4.279	2.512 #
35) L7 AR-1260-5	7.306	7.270	1959586	548383	1.581	1.330
36) L8 AR-1262-1	6.827	6.725f	4655125	2139.7E6	5.010	5157.992 #
37) L8 AR-1262-2	7.306	7.270	1959586	548383	1.318	1.064
38) L8 AR-1262-3	7.593	7.556	15233001	13238220	25.808	70.973 #
39) L8 AR-1262-4	7.631	7.643	4301660	47397	4.327	0.165 #
40) L8 AR-1262-5	8.158	8.107	581728	43839	1.340	0.441 #
41) L9 AR-1268-1	7.593	7.556	15233001	13238220	8.699	25.563 #

Data Path : Z:\pestpcbsrv\HPCHEM1\ECD_0\Data\P0072425\
 Data File : P0112454.D
 Signal(s) : Signal #1: ECD1A.ch Signal #2: ECD2B.ch
 Acq On : 24 Jul 2025 10:35
 Operator : YP/AJ
 Sample : DDT ANALOG
 Misc :
 ALS Vial : 7 Sample Multiplier: 1

Instrument :
 ECD_0
 ClientSampleId :
 DDT ANALOG

Integration File signal 1: autoint1.e
 Integration File signal 2: autoint2.e
 Quant Time: Jul 24 23:34:45 2025
 Quant Method : Z:\pestpcbsrv\HPCHEM1\ECD_0\methods\P0072325.M
 Quant Title : GC EXTRACTABLES
 QLast Update : Thu Jul 24 04:54:06 2025
 Response via : Initial Calibration
 Integrator: ChemStation

Volume Inj. : 2 µl
 Signal #1 Phase : ZB-MR1 Signal #2 Phase: ZB-MR2
 Signal #1 Info : 30Mx0.32mmx 0.50µ Signal #2 Info : 30M x 0.32mm x 0.25µm

	Compound	RT#1	RT#2	Resp#1	Resp#2	ng/ml	ng/ml
42)	L9 AR-1268-2	7.631	7.643	4301660	47397	2.920	0.112 #
43)	L9 AR-1268-3	7.847	7.839	2751072	202827	2.197	0.631 #
44)	L9 AR-1268-4	8.158	8.107	581728	43839	1.207	0.394 #
45)	L9 AR-1268-5	8.437	8.444f	362878	29654	0.108	0.041 #

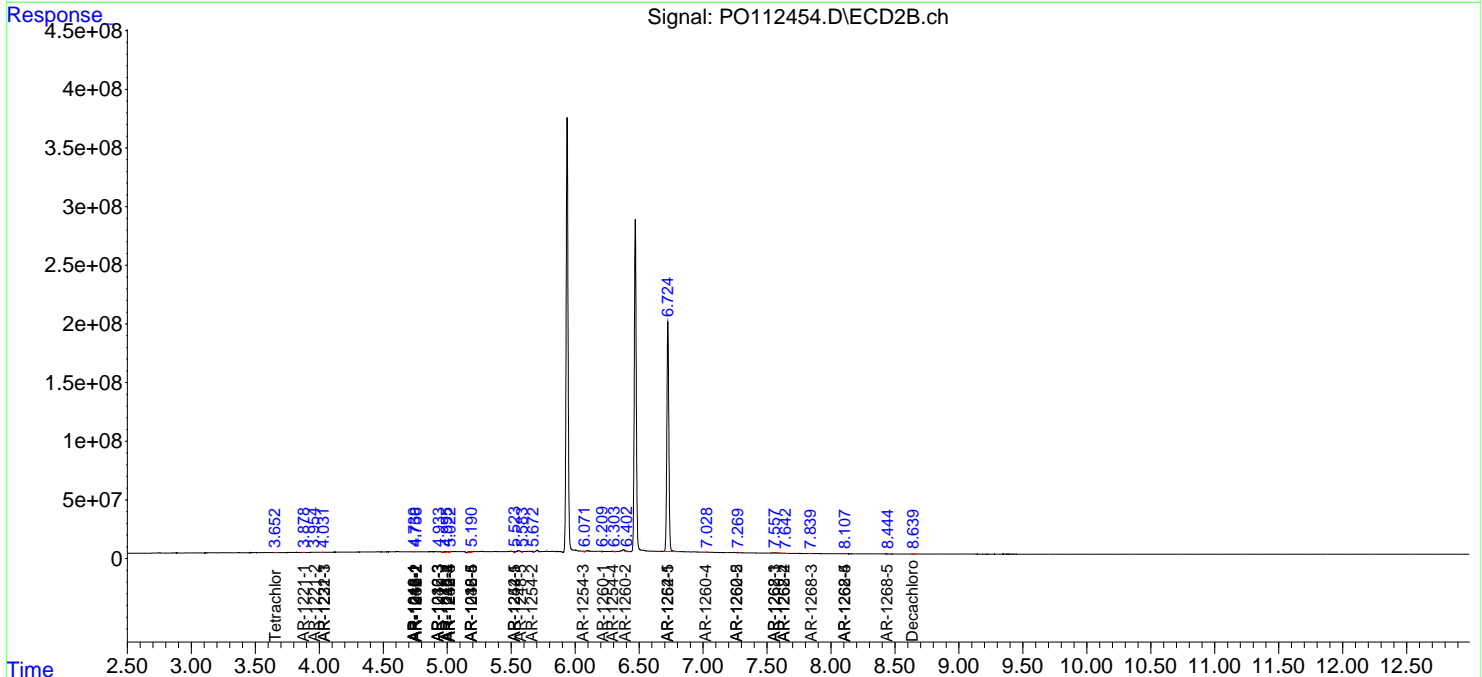
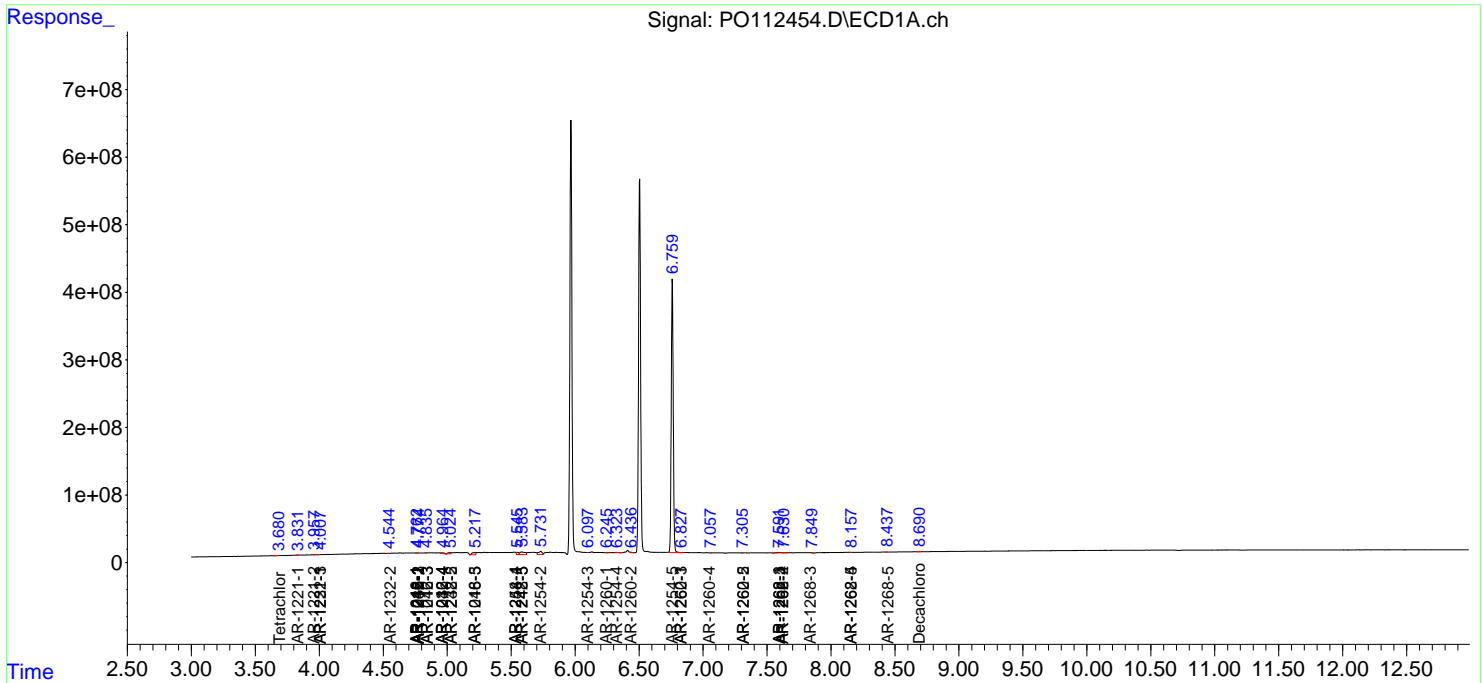
(f)=RT Delta > 1/2 Window (#)=Amounts differ by > 25% (m)=manual int.

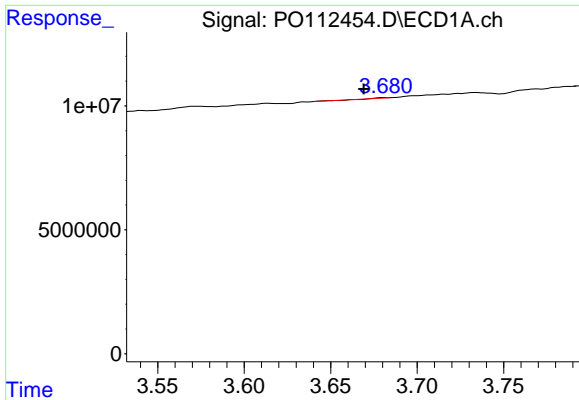
Data Path : Z:\pestpcbsrv\HPCHEM1\ECD_0\Data\P0072425\
 Data File : P0112454.D
 Signal(s) : Signal #1: ECD1A.ch Signal #2: ECD2B.ch
 Acq On : 24 Jul 2025 10:35
 Operator : YP/AJ
 Sample : DDT ANALOG
 Misc :
 ALS Vial : 7 Sample Multiplier: 1

Instrument :
 ECD_0
ClientSampleId :
 DDT ANALOG

Integration File signal 1: autoint1.e
 Integration File signal 2: autoint2.e
 Quant Time: Jul 24 23:34:45 2025
 Quant Method : Z:\pestpcbsrv\HPCHEM1\ECD_0\methods\P0072325.M
 Quant Title : GC EXTRACTABLES
 QLast Update : Thu Jul 24 04:54:06 2025
 Response via : Initial Calibration
 Integrator: ChemStation

Volume Inj. : 2 µl
 Signal #1 Phase : ZB-MR1 Signal #2 Phase: ZB-MR2
 Signal #1 Info : 30Mx0.32mmx 0.50µ Signal #2 Info : 30M x 0.32mm x 0.25µm

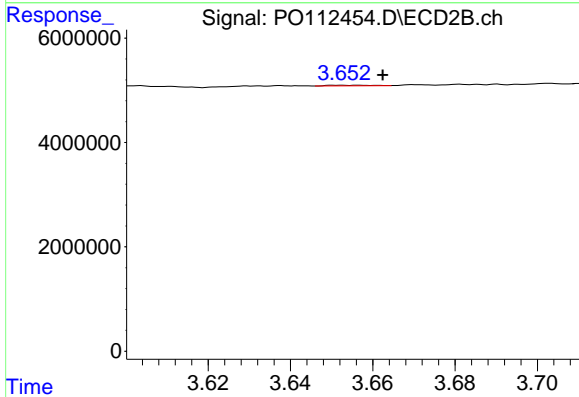




#1 Tetrachloro-m-xylene

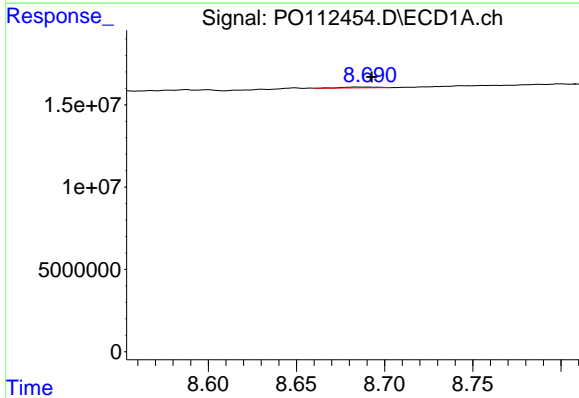
R.T.: 3.681 min
 Delta R.T.: 0.012 min
 Response: 45172
 Conc: 0.01 ng/ml

Instrument :
 ECD_O
 ClientSampleId :
 DDT ANALOG



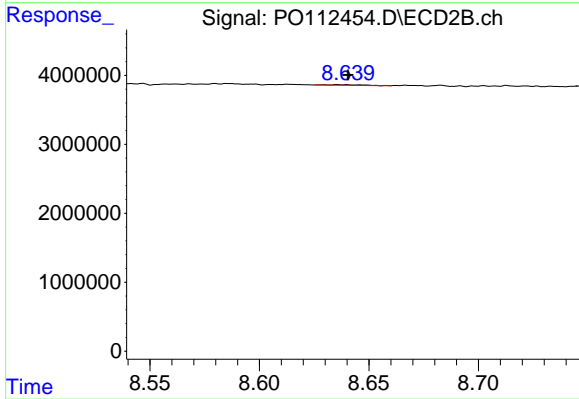
#1 Tetrachloro-m-xylene

R.T.: 3.657 min
 Delta R.T.: -0.006 min
 Response: 80697
 Conc: 0.02 ng/ml



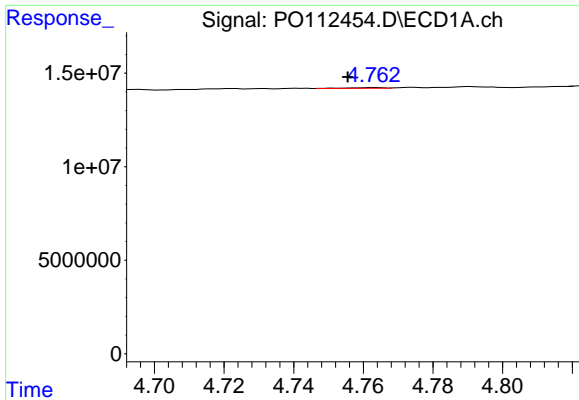
#2 Decachlorobiphenyl

R.T.: 8.690 min
 Delta R.T.: -0.002 min
 Response: 690984
 Conc: 0.09 ng/ml



#2 Decachlorobiphenyl

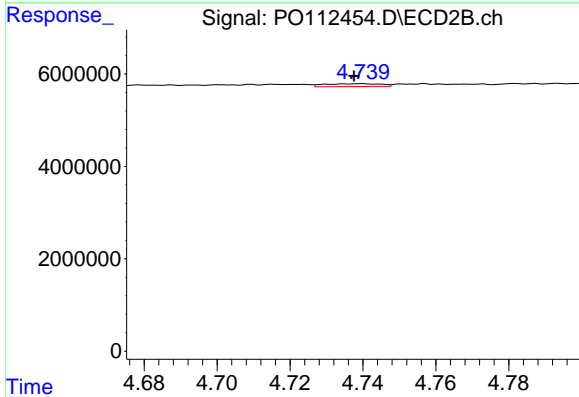
R.T.: 8.636 min
 Delta R.T.: -0.004 min
 Response: 112064
 Conc: 0.06 ng/ml



#3 AR-1016-1

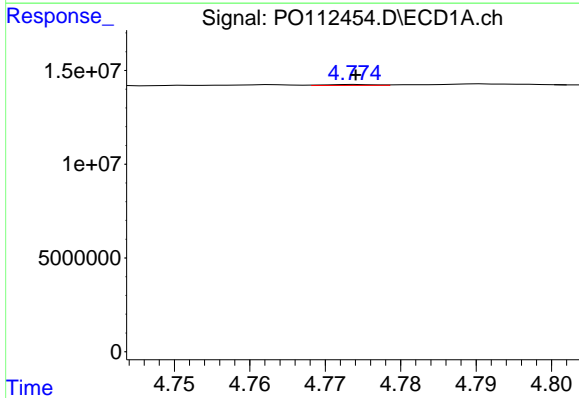
R.T.: 4.763 min
 Delta R.T.: 0.008 min
 Response: 303526
 Conc: 1.13 ng/ml

Instrument :
 ECD_O
 ClientSampleId :
 DDT ANALOG



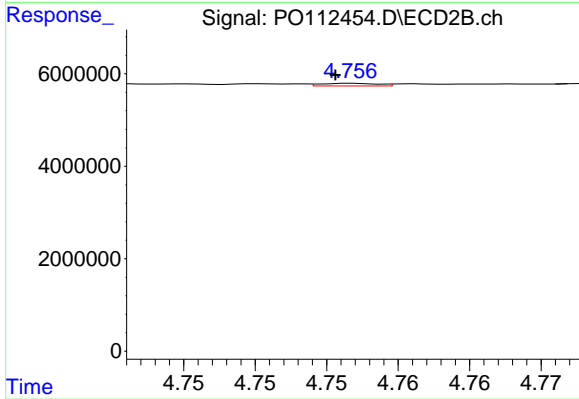
#3 AR-1016-1

R.T.: 4.740 min
 Delta R.T.: 0.002 min
 Response: 668065
 Conc: 3.82 ng/ml



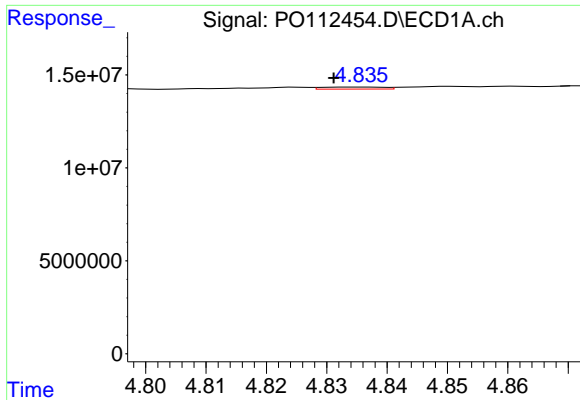
#4 AR-1016-2

R.T.: 4.774 min
 Delta R.T.: 0.000 min
 Response: 200973
 Conc: 0.49 ng/ml



#4 AR-1016-2

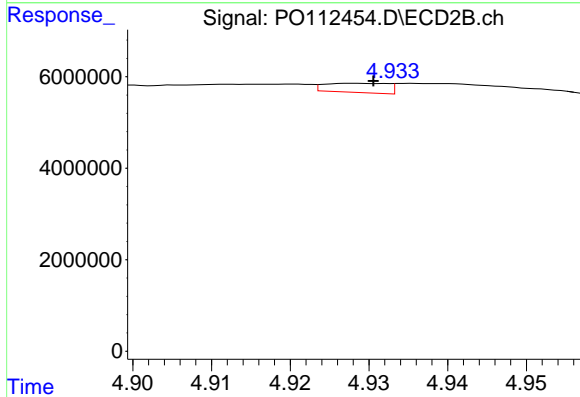
R.T.: 4.757 min
 Delta R.T.: 0.001 min
 Response: 162542
 Conc: 0.62 ng/ml



#5 AR-1016-3

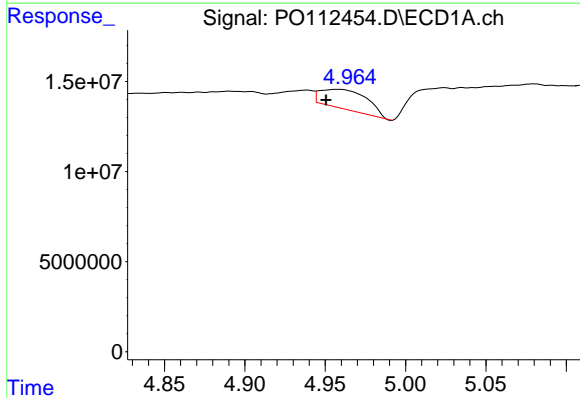
R.T.: 4.836 min
 Delta R.T.: 0.005 min
 Response: 768875
 Conc: 2.94 ng/ml

Instrument :
 ECD_O
 ClientSampleId :
 DDT ANALOG



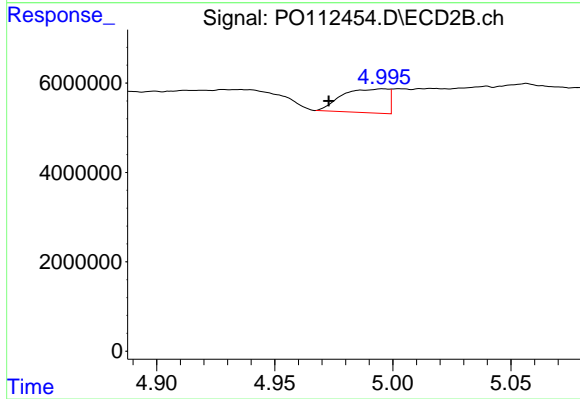
#5 AR-1016-3

R.T.: 4.928 min
 Delta R.T.: -0.002 min
 Response: 1118842
 Conc: 8.23 ng/ml



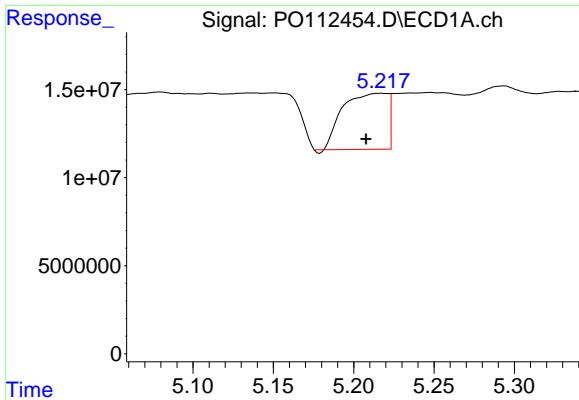
#6 AR-1016-4

R.T.: 4.960 min
 Delta R.T.: 0.009 min
 Response: 21976515
 Conc: 103.74 ng/ml



#6 AR-1016-4

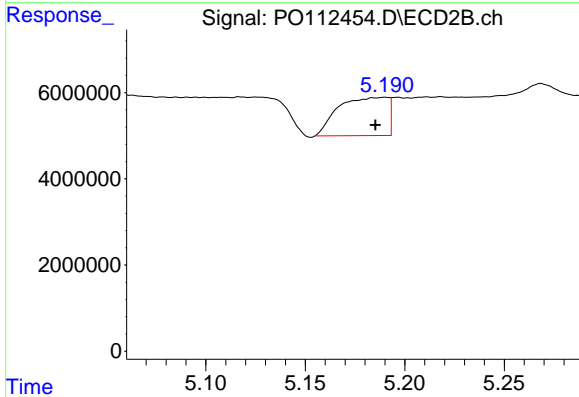
R.T.: 4.996 min
 Delta R.T.: 0.023 min
 Response: 7217949
 Conc: 64.98 ng/ml



#7 AR-1016-5

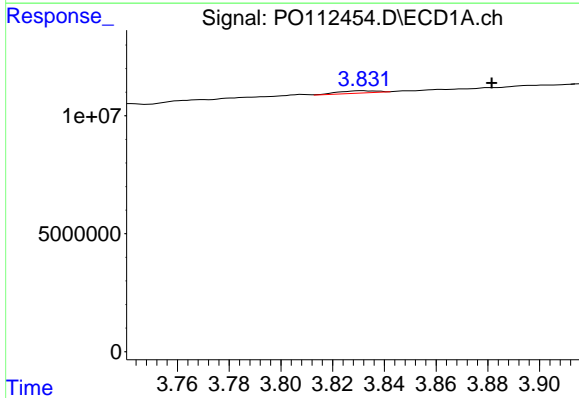
R.T.: 5.217 min
 Delta R.T.: 0.010 min
 Response: 61209823
 Conc: 278.90 ng/ml

Instrument :
 ECD_O
 ClientSampleId :
 DDT ANALOG



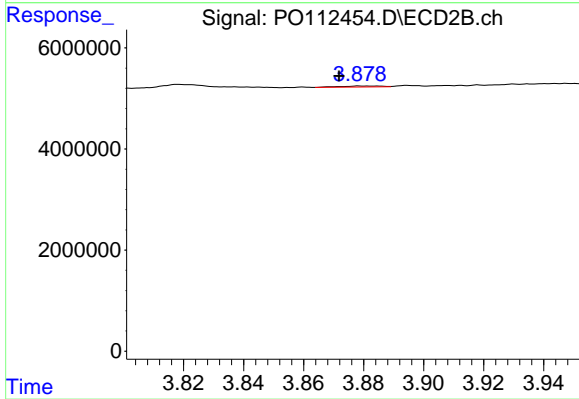
#7 AR-1016-5

R.T.: 5.190 min
 Delta R.T.: 0.005 min
 Response: 15370421
 Conc: 107.26 ng/ml



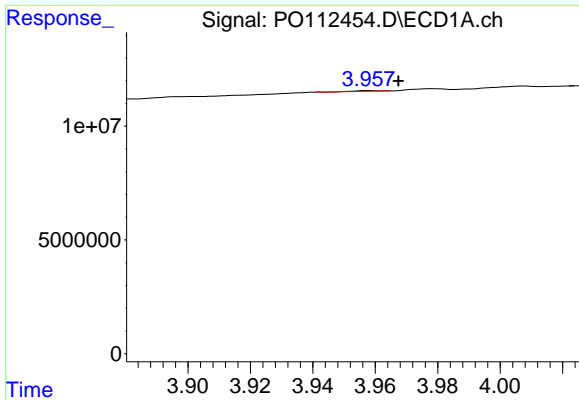
#8 AR-1221-1

R.T.: 3.832 min
 Delta R.T.: -0.050 min
 Response: 993215
 Conc: 10.28 ng/ml



#8 AR-1221-1

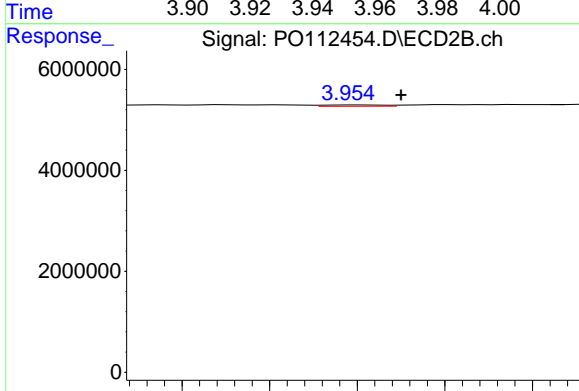
R.T.: 3.879 min
 Delta R.T.: 0.007 min
 Response: 188231
 Conc: 2.80 ng/ml



#9 AR-1221-2

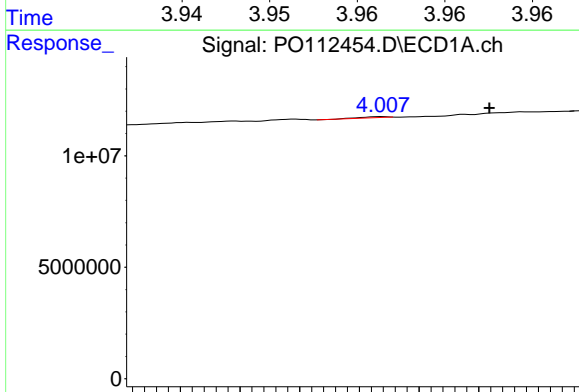
R.T.: 3.958 min
 Delta R.T.: -0.010 min
 Response: 130745
 Conc: 1.82 ng/ml

Instrument :
 ECD_O
 ClientSampleId :
 DDT ANALOG



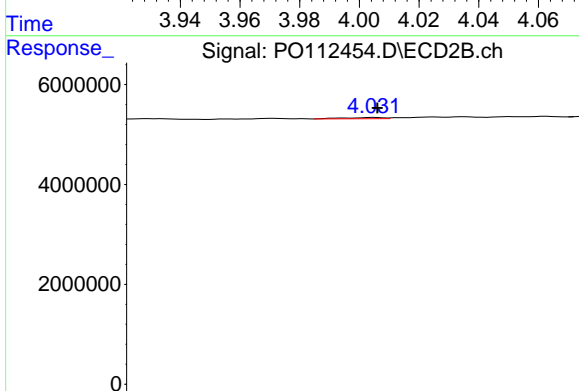
#9 AR-1221-2

R.T.: 3.955 min
 Delta R.T.: -0.002 min
 Response: 63846
 Conc: 1.26 ng/ml



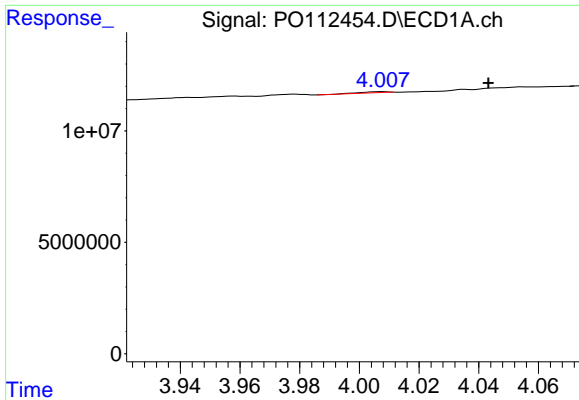
#10 AR-1221-3

R.T.: 4.008 min
 Delta R.T.: -0.036 min
 Response: 364503
 Conc: 1.53 ng/ml



#10 AR-1221-3

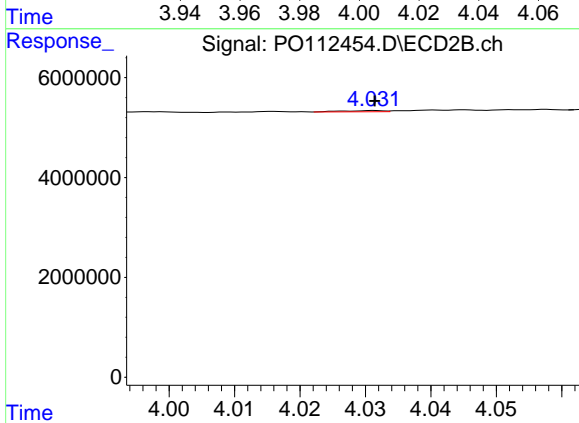
R.T.: 4.031 min
 Delta R.T.: 0.000 min
 Response: 104598
 Conc: 0.66 ng/ml



#11 AR-1232-1

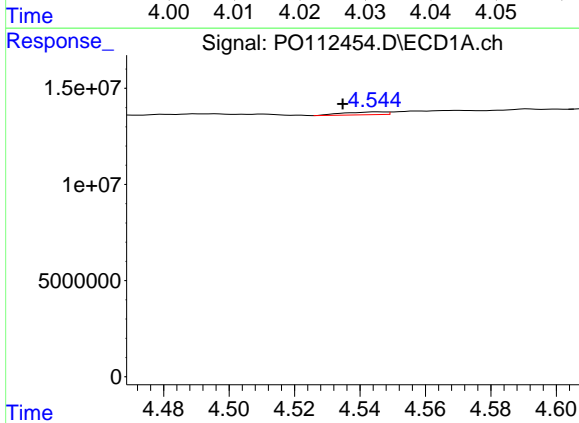
R.T.: 4.008 min
 Delta R.T.: -0.036 min
 Response: 364503
 Conc: 1.95 ng/ml

Instrument :
 ECD_O
 ClientSampleId :
 DDT ANALOG



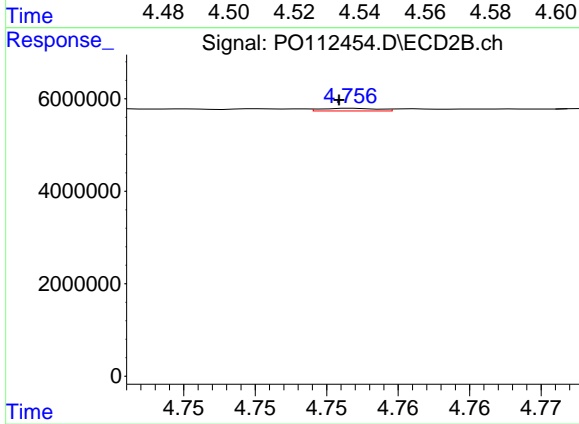
#11 AR-1232-1

R.T.: 4.031 min
 Delta R.T.: 0.000 min
 Response: 104598
 Conc: 0.83 ng/ml



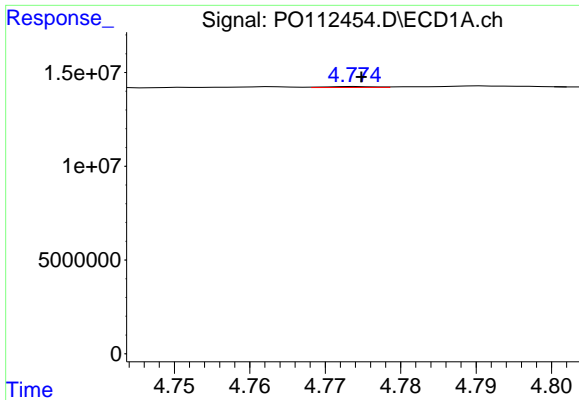
#12 AR-1232-2

R.T.: 4.545 min
 Delta R.T.: 0.011 min
 Response: 1316828
 Conc: 12.24 ng/ml



#12 AR-1232-2

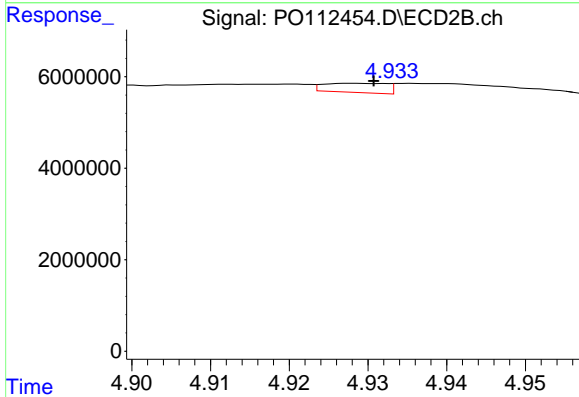
R.T.: 4.757 min
 Delta R.T.: 0.001 min
 Response: 162542
 Conc: 1.24 ng/ml



#13 AR-1232-3

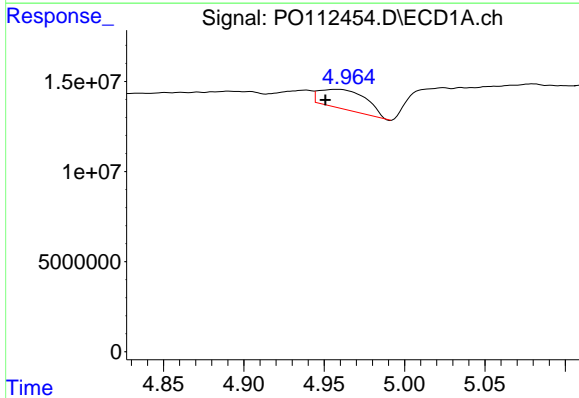
R.T.: 4.774 min
 Delta R.T.: 0.000 min
 Response: 200973
 Conc: 0.97 ng/ml

Instrument :
 ECD_O
 ClientSampleId :
 DDT ANALOG



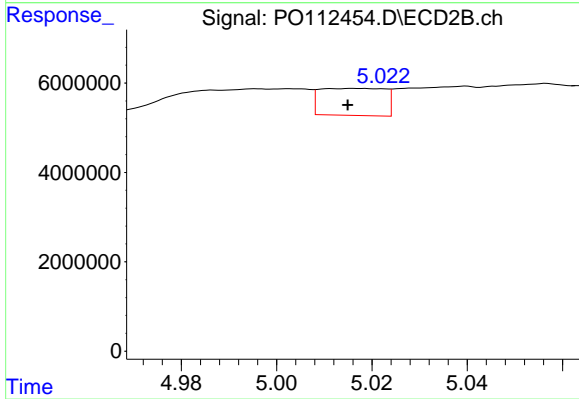
#13 AR-1232-3

R.T.: 4.928 min
 Delta R.T.: -0.003 min
 Response: 1118842
 Conc: 16.65 ng/ml



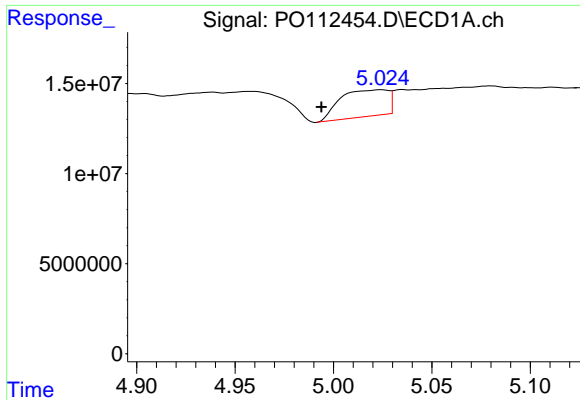
#14 AR-1232-4

R.T.: 4.960 min
 Delta R.T.: 0.009 min
 Response: 21976515
 Conc: 209.82 ng/ml



#14 AR-1232-4

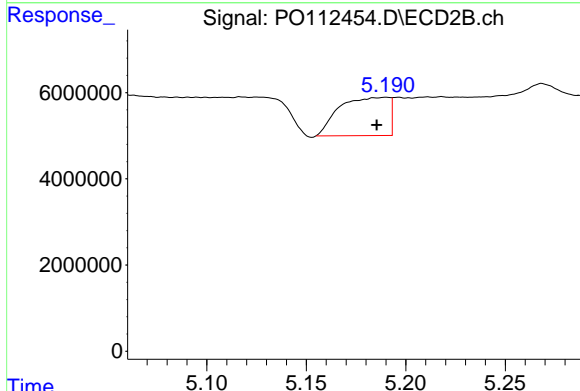
R.T.: 5.016 min
 Delta R.T.: 0.001 min
 Response: 5718692
 Conc: 95.58 ng/ml



#15 AR-1232-5

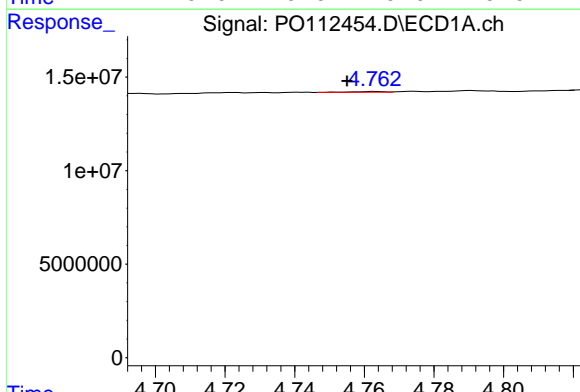
R.T.: 5.024 min
 Delta R.T.: 0.030 min
 Response: 24940545
 Conc: 367.42 ng/ml

Instrument :
 ECD_O
 ClientSampleId :
 DDT ANALOG



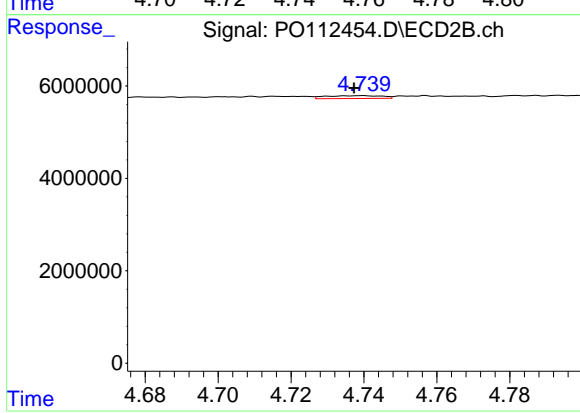
#15 AR-1232-5

R.T.: 5.190 min
 Delta R.T.: 0.005 min
 Response: 15370421
 Conc: 235.73 ng/ml



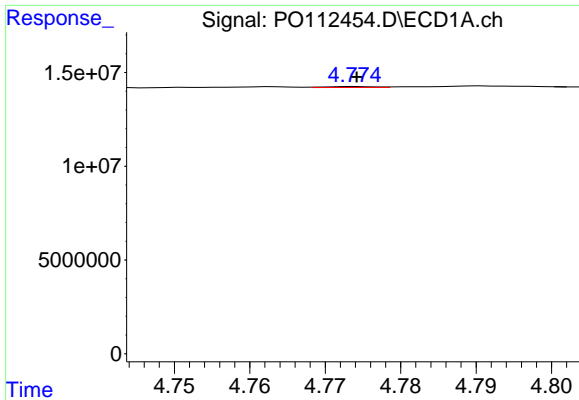
#16 AR-1242-1

R.T.: 4.763 min
 Delta R.T.: 0.008 min
 Response: 303526
 Conc: 1.23 ng/ml



#16 AR-1242-1

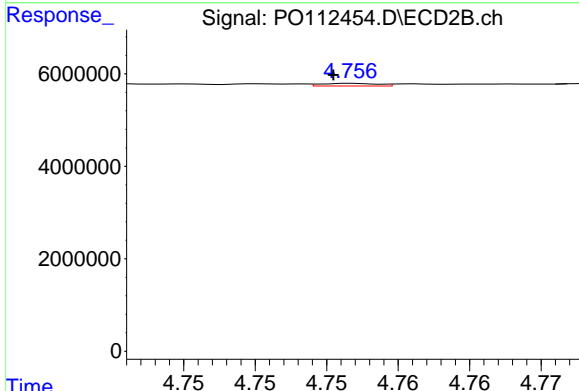
R.T.: 4.740 min
 Delta R.T.: 0.002 min
 Response: 668065
 Conc: 4.22 ng/ml



#17 AR-1242-2

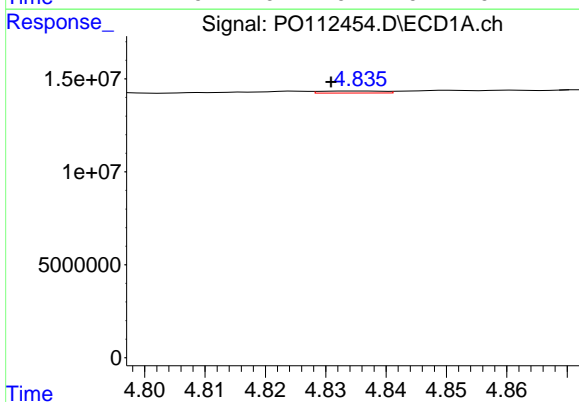
R.T.: 4.774 min
 Delta R.T.: 0.000 min
 Response: 200973
 Conc: 0.54 ng/ml

Instrument :
 ECD_O
 ClientSampleId :
 DDT ANALOG



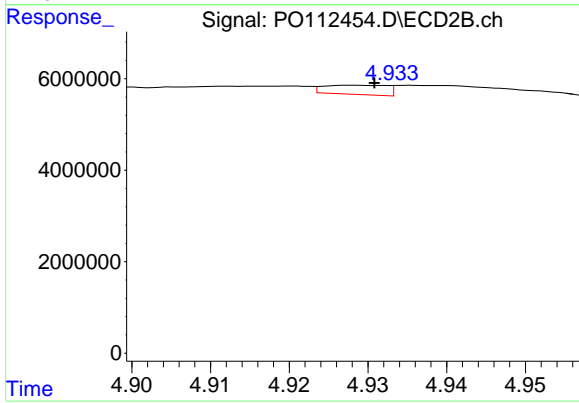
#17 AR-1242-2

R.T.: 4.757 min
 Delta R.T.: 0.001 min
 Response: 162542
 Conc: 0.70 ng/ml



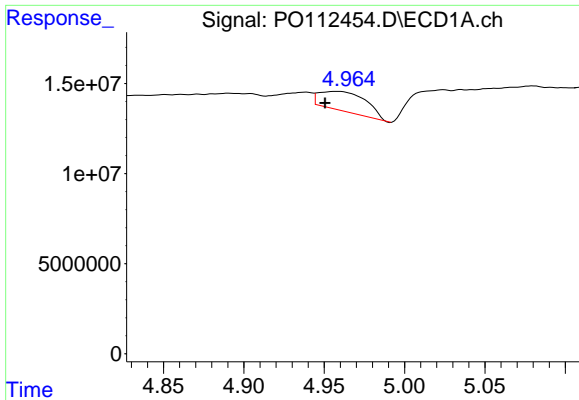
#18 AR-1242-3

R.T.: 4.836 min
 Delta R.T.: 0.005 min
 Response: 768875
 Conc: 3.25 ng/ml



#18 AR-1242-3

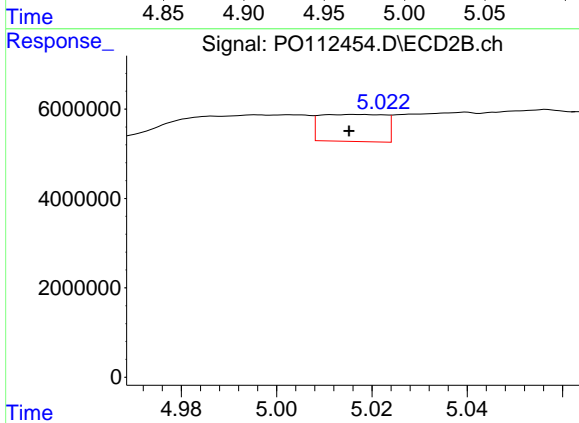
R.T.: 4.928 min
 Delta R.T.: -0.003 min
 Response: 1118842
 Conc: 9.23 ng/ml



#19 AR-1242-4

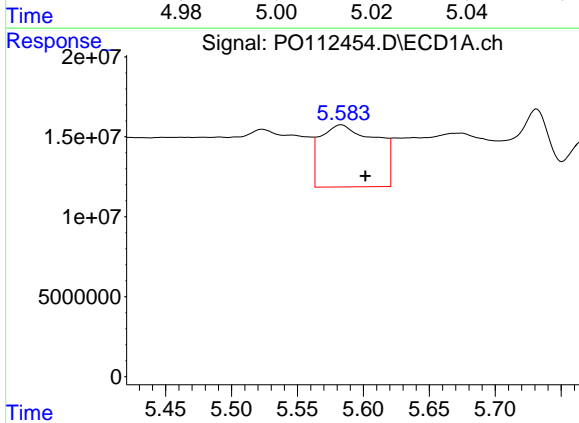
R.T.: 4.960 min
 Delta R.T.: 0.009 min
 Response: 21976515
 Conc: 113.12 ng/ml

Instrument :
 ECD_O
 ClientSampleId :
 DDT ANALOG



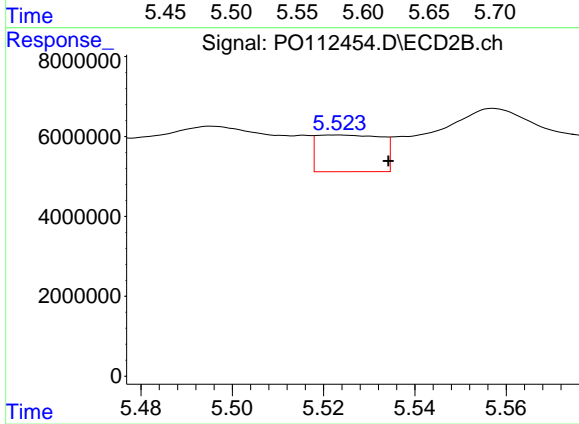
#19 AR-1242-4

R.T.: 5.016 min
 Delta R.T.: 0.000 min
 Response: 5718692
 Conc: 46.59 ng/ml



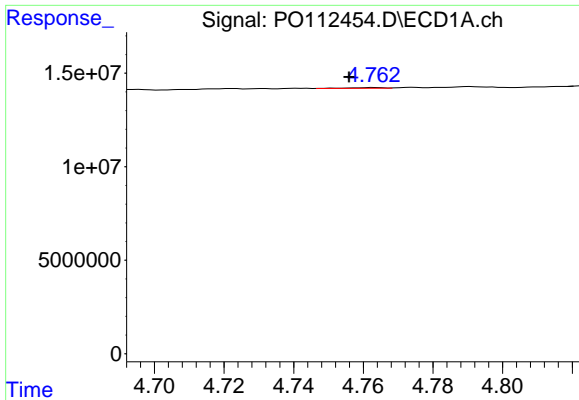
#20 AR-1242-5

R.T.: 5.583 min
 Delta R.T.: -0.018 min
 Response: 115376274
 Conc: 539.35 ng/ml



#20 AR-1242-5

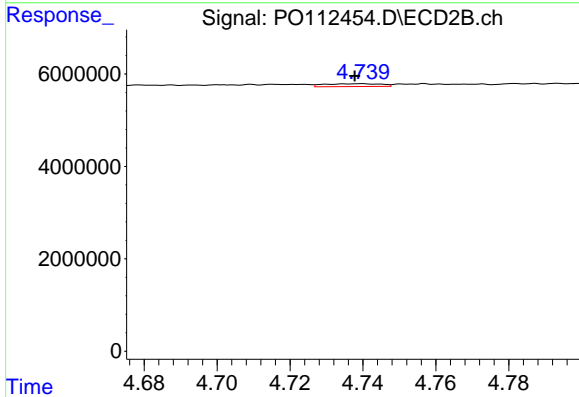
R.T.: 5.523 min
 Delta R.T.: -0.011 min
 Response: 9014841
 Conc: 56.00 ng/ml



#21 AR-1248-1

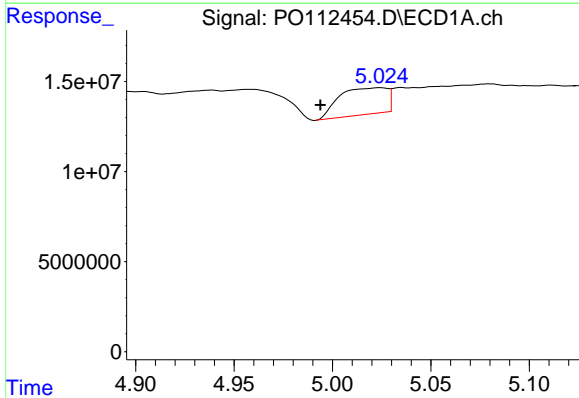
R.T.: 4.763 min
 Delta R.T.: 0.007 min
 Response: 303526
 Conc: 1.62 ng/ml

Instrument :
 ECD_O
 ClientSampleId :
 DDT ANALOG



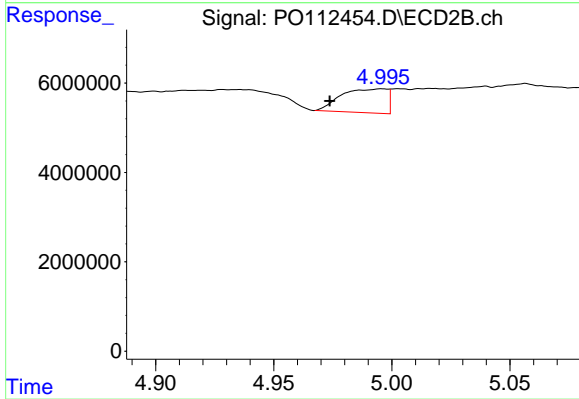
#21 AR-1248-1

R.T.: 4.740 min
 Delta R.T.: 0.002 min
 Response: 668065
 Conc: 5.50 ng/ml



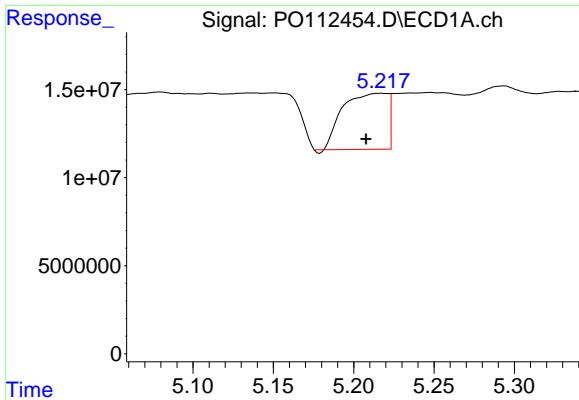
#22 AR-1248-2

R.T.: 5.024 min
 Delta R.T.: 0.030 min
 Response: 24940545
 Conc: 97.76 ng/ml



#22 AR-1248-2

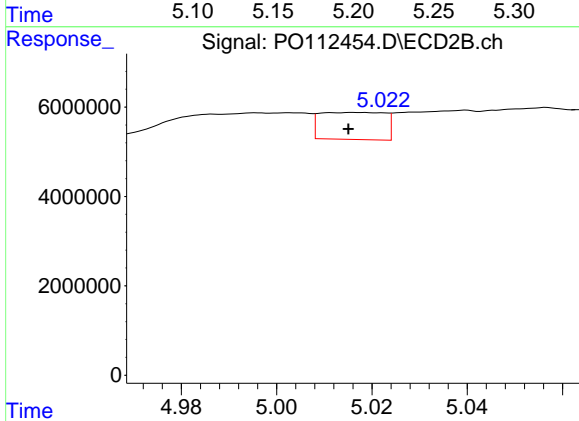
R.T.: 4.996 min
 Delta R.T.: 0.022 min
 Response: 7217949
 Conc: 42.64 ng/ml



#23 AR-1248-3

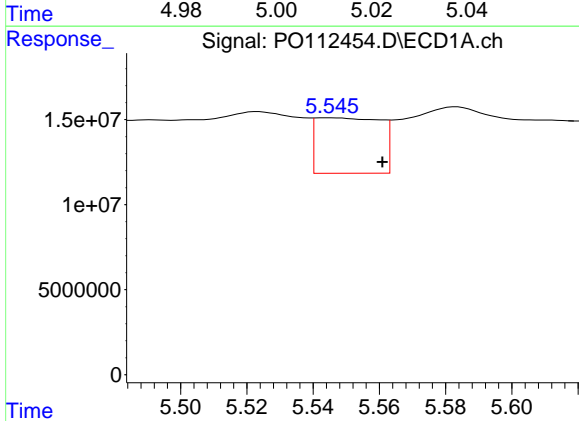
R.T.: 5.217 min
 Delta R.T.: 0.009 min
 Response: 61209823
 Conc: 178.09 ng/ml

Instrument :
 ECD_O
 ClientSampleId :
 DDT ANALOG



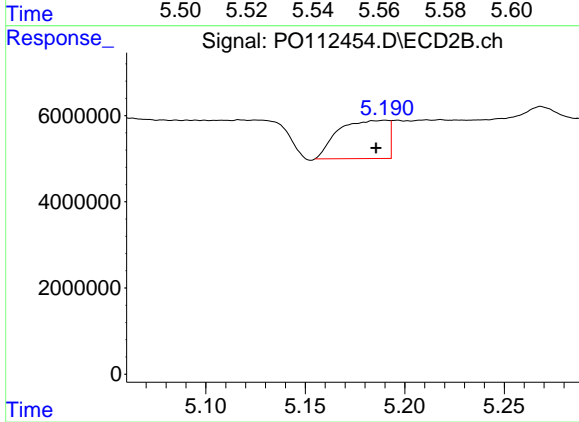
#23 AR-1248-3

R.T.: 5.016 min
 Delta R.T.: 0.000 min
 Response: 5718692
 Conc: 32.19 ng/ml



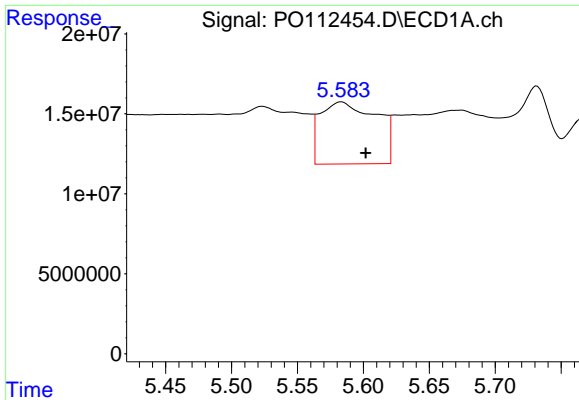
#24 AR-1248-4

R.T.: 5.545 min
 Delta R.T.: -0.016 min
 Response: 44082469
 Conc: 86.76 ng/ml



#24 AR-1248-4

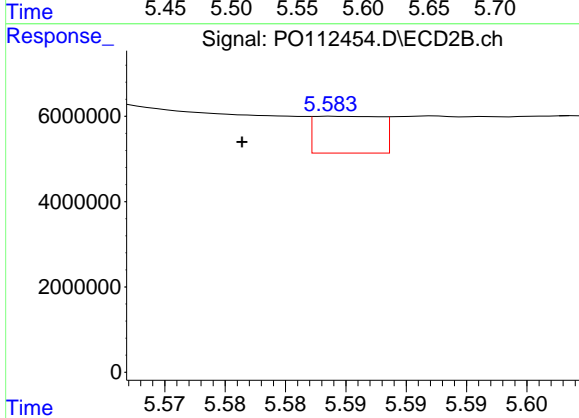
R.T.: 5.190 min
 Delta R.T.: 0.005 min
 Response: 15370421
 Conc: 73.77 ng/ml



#25 AR-1248-5

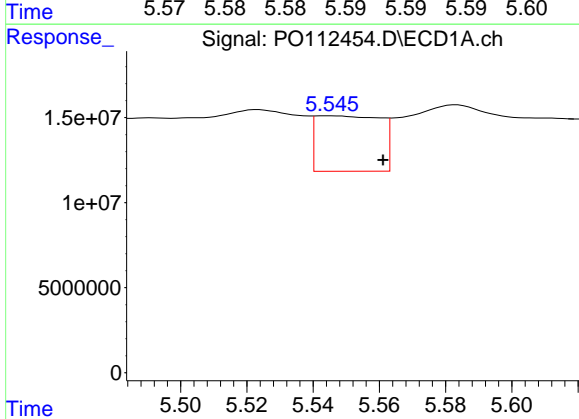
R.T.: 5.583 min
 Delta R.T.: -0.018 min
 Response: 115376274
 Conc: 330.03 ng/ml

Instrument :
 ECD_O
 ClientSampleId :
 DDT ANALOG



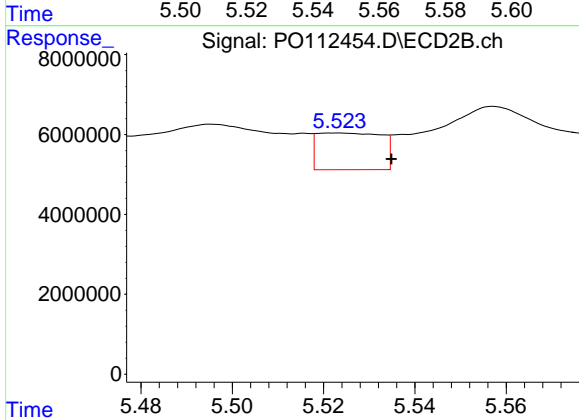
#25 AR-1248-5

R.T.: 5.584 min
 Delta R.T.: 0.008 min
 Response: 3307543
 Conc: 15.40 ng/ml



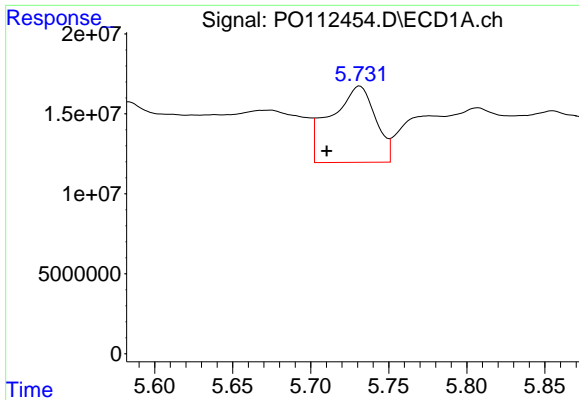
#26 AR-1254-1

R.T.: 5.545 min
 Delta R.T.: -0.016 min
 Response: 44082469
 Conc: 80.30 ng/ml



#26 AR-1254-1

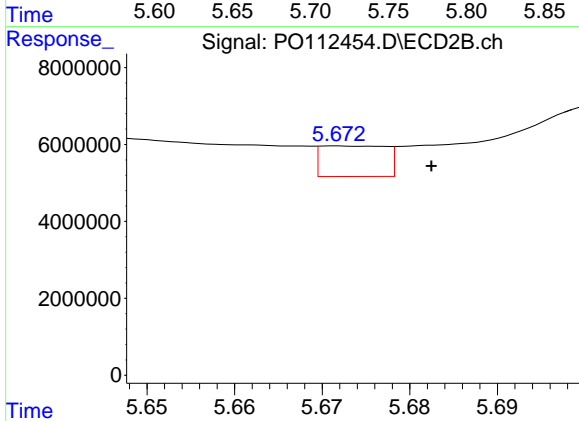
R.T.: 5.523 min
 Delta R.T.: -0.012 min
 Response: 9014841
 Conc: 27.43 ng/ml



#27 AR-1254-2

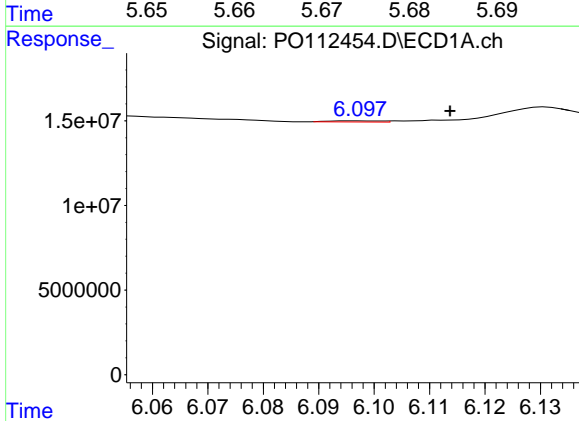
R.T.: 5.731 min
 Delta R.T.: 0.021 min
 Response: 95137441
 Conc: 195.79 ng/ml

Instrument :
 ECD_O
 ClientSampleId :
 DDT ANALOG



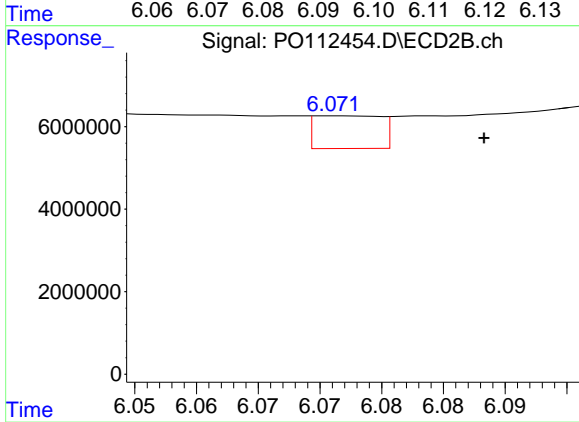
#27 AR-1254-2

R.T.: 5.672 min
 Delta R.T.: -0.011 min
 Response: 4128376
 Conc: 14.26 ng/ml



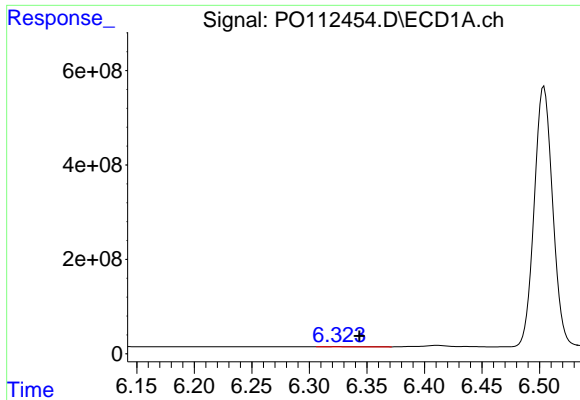
#28 AR-1254-3

R.T.: 6.097 min
 Delta R.T.: -0.017 min
 Response: 459963
 Conc: 0.62 ng/ml



#28 AR-1254-3

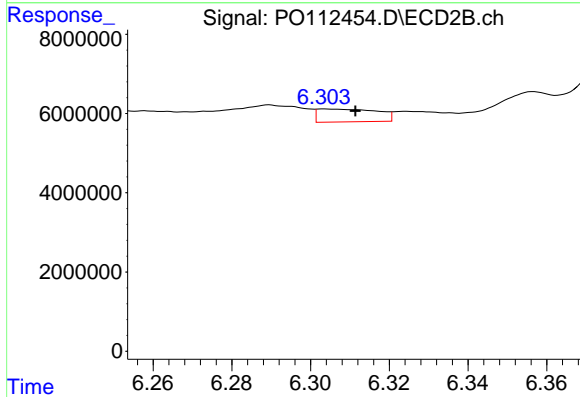
R.T.: 6.071 min
 Delta R.T.: -0.012 min
 Response: 2979026
 Conc: 6.97 ng/ml



#29 AR-1254-4

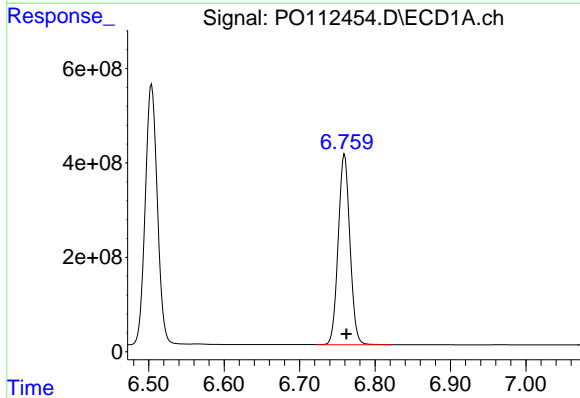
R.T.: 6.324 min
 Delta R.T.: -0.019 min
 Response: 6271051
 Conc: 11.41 ng/ml

Instrument :
 ECD_O
 ClientSampleId :
 DDT ANALOG



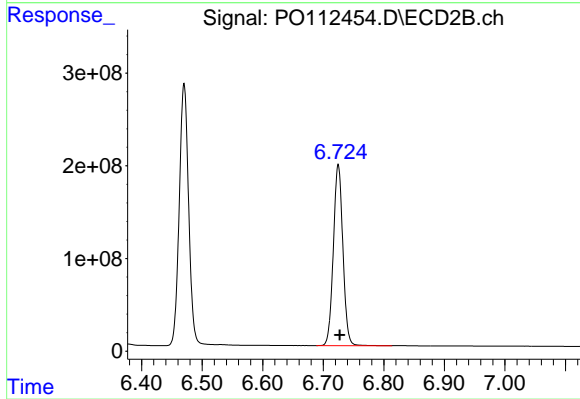
#29 AR-1254-4

R.T.: 6.303 min
 Delta R.T.: -0.008 min
 Response: 3428891
 Conc: 12.56 ng/ml



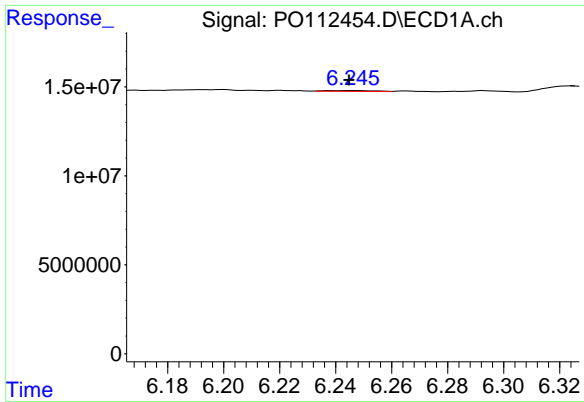
#30 AR-1254-5

R.T.: 6.760 min
 Delta R.T.: -0.003 min
 Response: 4359481386
 Conc: 6158.99 ng/ml



#30 AR-1254-5

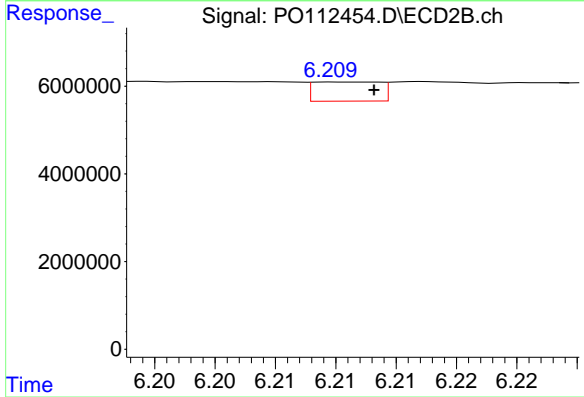
R.T.: 6.725 min
 Delta R.T.: -0.002 min
 Response: 2139679276
 Conc: 6405.85 ng/ml



#31 AR-1260-1

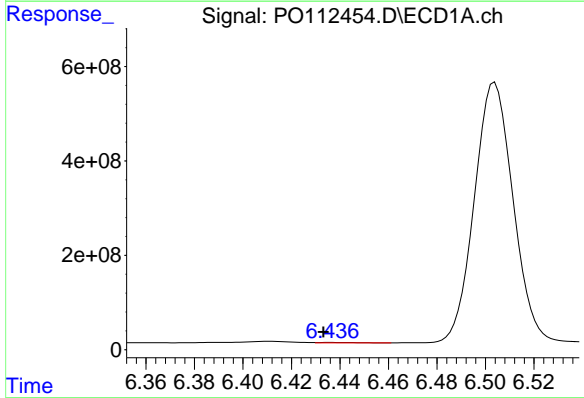
R.T.: 6.246 min
 Delta R.T.: 0.000 min
 Response: 500496
 Conc: 1.14 ng/ml

Instrument :
 ECD_O
 ClientSampleId :
 DDT ANALOG



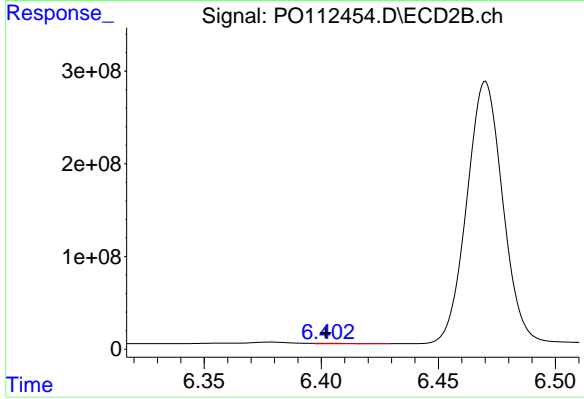
#31 AR-1260-1

R.T.: 6.210 min
 Delta R.T.: -0.003 min
 Response: 1672226
 Conc: 6.73 ng/ml



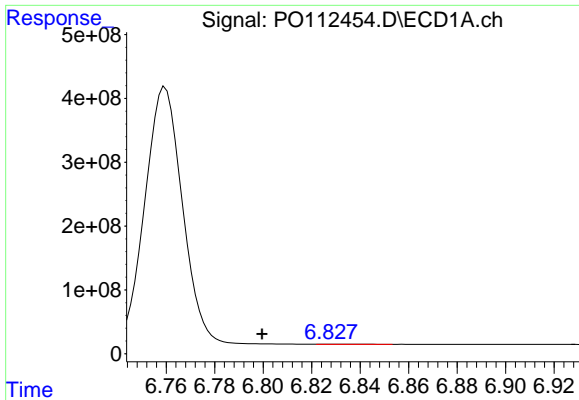
#32 AR-1260-2

R.T.: 6.436 min
 Delta R.T.: 0.003 min
 Response: 7460487
 Conc: 10.85 ng/ml



#32 AR-1260-2

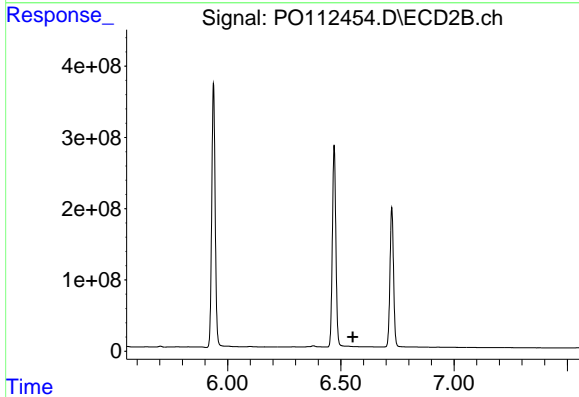
R.T.: 6.403 min
 Delta R.T.: 0.000 min
 Response: 4175502
 Conc: 12.67 ng/ml



#33 AR-1260-3

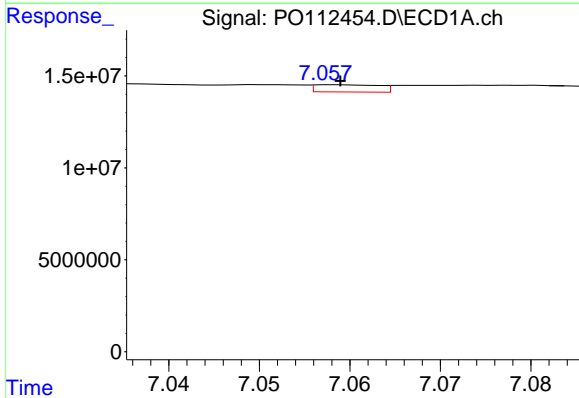
R.T.: 6.827 min
 Delta R.T.: 0.028 min
 Response: 4655125
 Conc: 7.92 ng/ml

Instrument :
 ECD_O
 ClientSampleId :
 DDT ANALOG



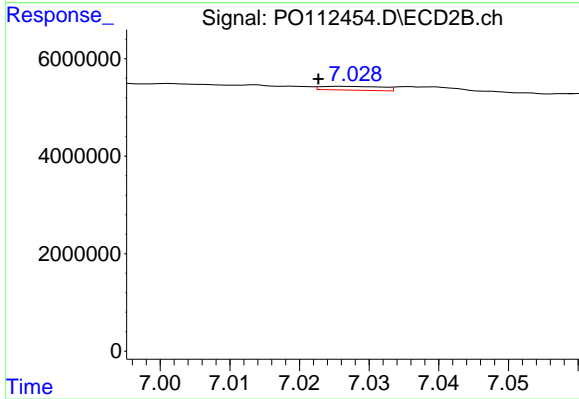
#33 AR-1260-3

R.T.: 6.530 min
 Delta R.T.: -0.023 min
 Response: -1908267
 Conc: N.D.



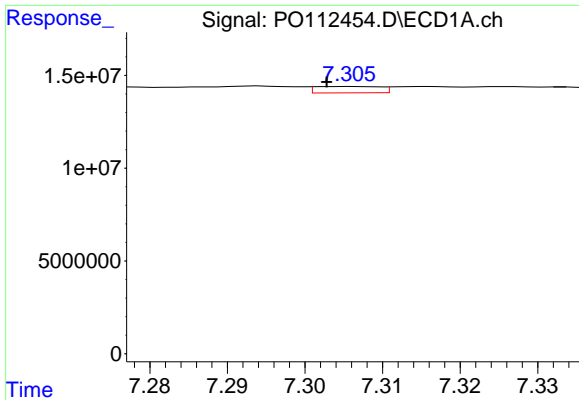
#34 AR-1260-4

R.T.: 7.058 min
 Delta R.T.: 0.000 min
 Response: 1929937
 Conc: 4.28 ng/ml



#34 AR-1260-4

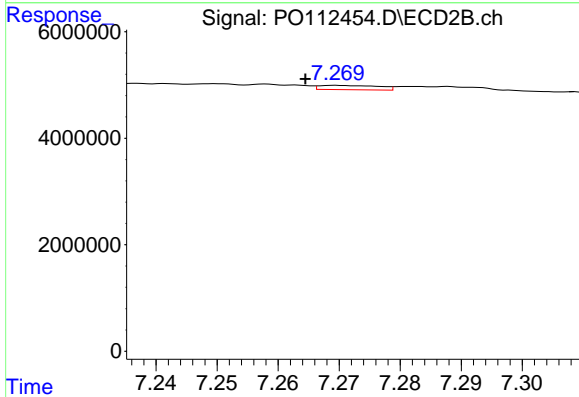
R.T.: 7.026 min
 Delta R.T.: 0.003 min
 Response: 480495
 Conc: 2.51 ng/ml



#35 AR-1260-5

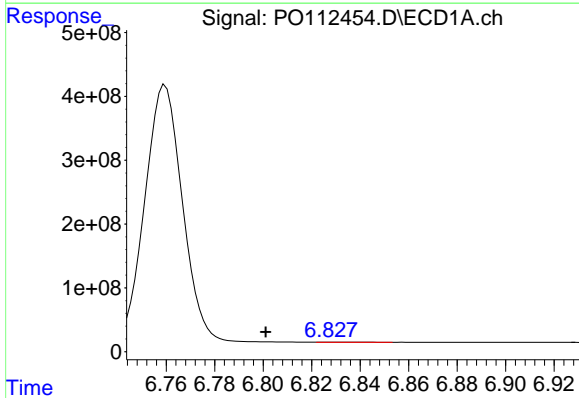
R.T.: 7.306 min
 Delta R.T.: 0.003 min
 Response: 1959586
 Conc: 1.58 ng/ml

Instrument :
 ECD_O
 ClientSampleId :
 DDT ANALOG



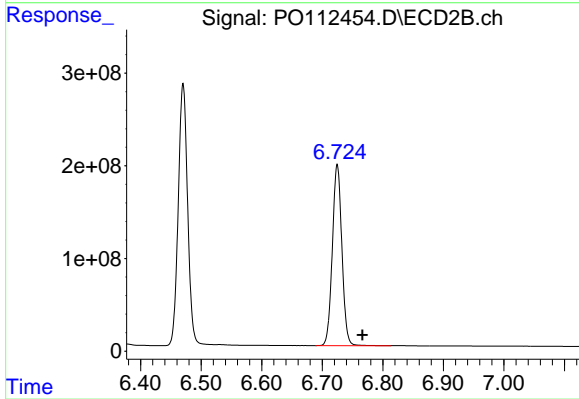
#35 AR-1260-5

R.T.: 7.270 min
 Delta R.T.: 0.005 min
 Response: 548383
 Conc: 1.33 ng/ml



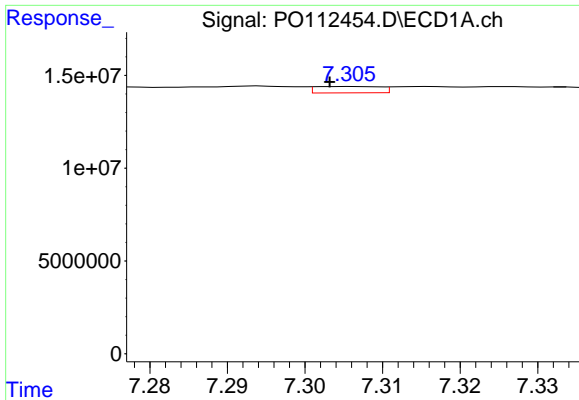
#36 AR-1262-1

R.T.: 6.827 min
 Delta R.T.: 0.026 min
 Response: 4655125
 Conc: 5.01 ng/ml



#36 AR-1262-1

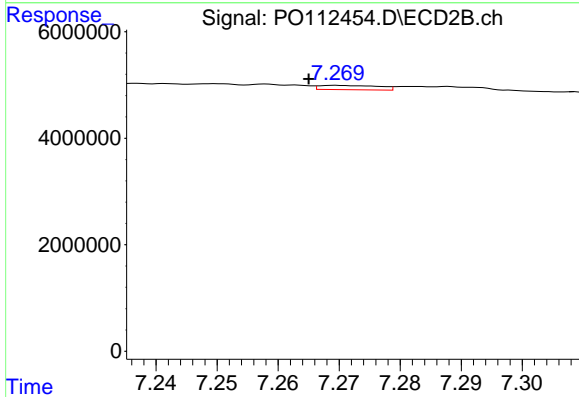
R.T.: 6.725 min
 Delta R.T.: -0.041 min
 Response: 2139679276
 Conc: 5157.99 ng/ml



#37 AR-1262-2

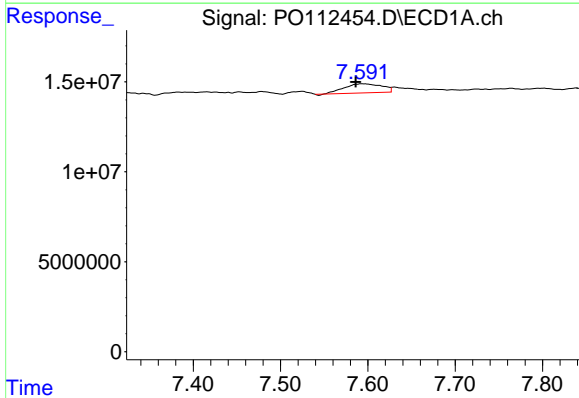
R.T.: 7.306 min
 Delta R.T.: 0.003 min
 Response: 1959586
 Conc: 1.32 ng/ml

Instrument :
 ECD_O
 ClientSampleId :
 DDT ANALOG



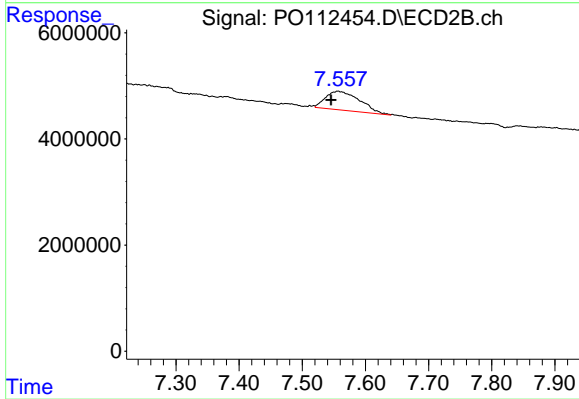
#37 AR-1262-2

R.T.: 7.270 min
 Delta R.T.: 0.005 min
 Response: 548383
 Conc: 1.06 ng/ml



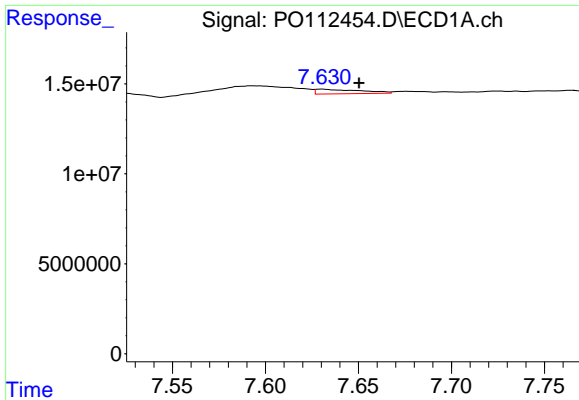
#38 AR-1262-3

R.T.: 7.593 min
 Delta R.T.: 0.007 min
 Response: 15233001
 Conc: 25.81 ng/ml



#38 AR-1262-3

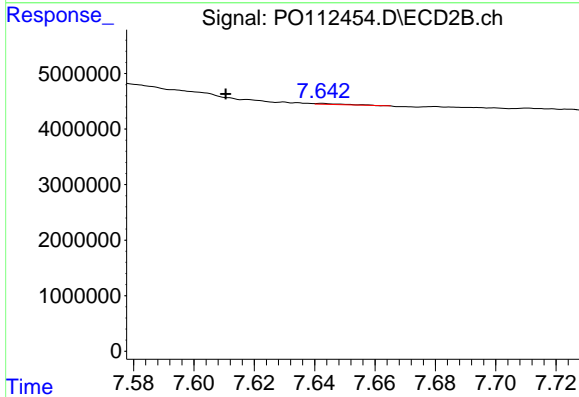
R.T.: 7.556 min
 Delta R.T.: 0.010 min
 Response: 13238220
 Conc: 70.97 ng/ml



#39 AR-1262-4

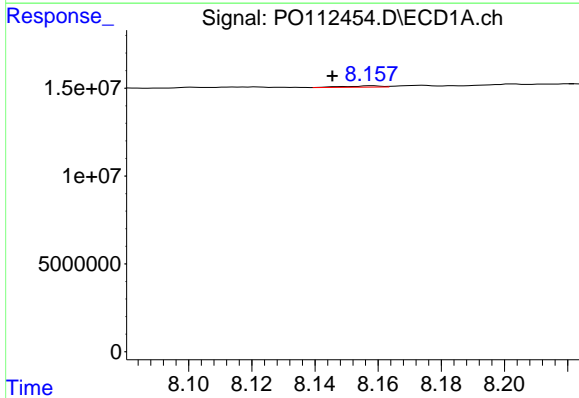
R.T.: 7.631 min
 Delta R.T.: -0.019 min
 Response: 4301660
 Conc: 4.33 ng/ml

Instrument :
 ECD_O
 ClientSampleId :
 DDT ANALOG



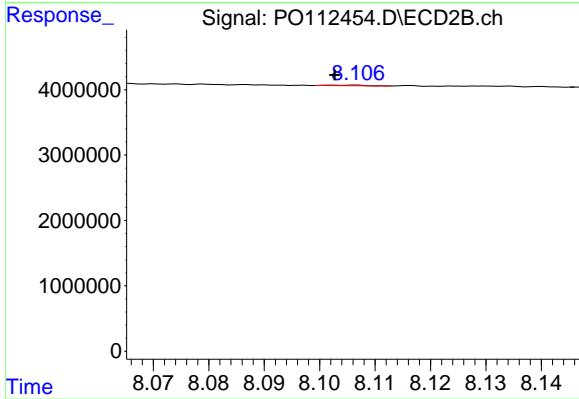
#39 AR-1262-4

R.T.: 7.643 min
 Delta R.T.: 0.032 min
 Response: 47397
 Conc: 0.16 ng/ml



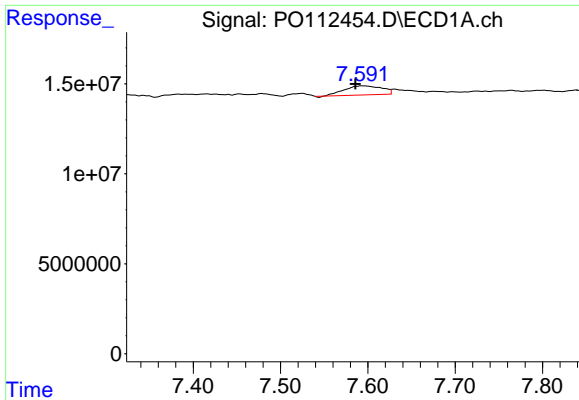
#40 AR-1262-5

R.T.: 8.158 min
 Delta R.T.: 0.012 min
 Response: 581728
 Conc: 1.34 ng/ml



#40 AR-1262-5

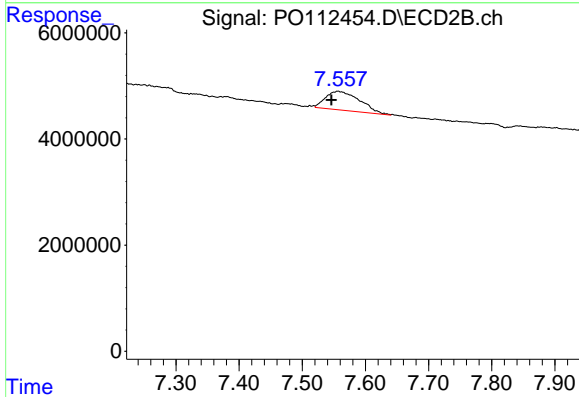
R.T.: 8.107 min
 Delta R.T.: 0.004 min
 Response: 43839
 Conc: 0.44 ng/ml



#41 AR-1268-1

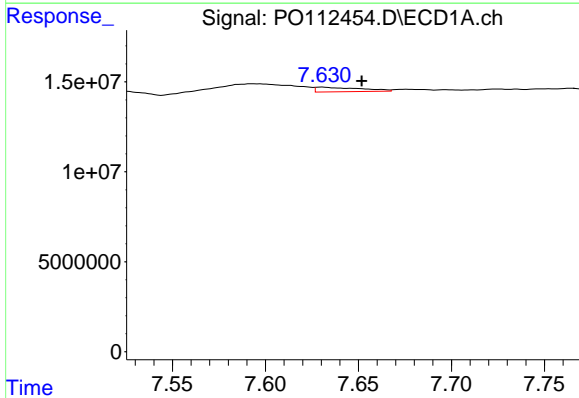
R.T.: 7.593 min
 Delta R.T.: 0.007 min
 Response: 15233001
 Conc: 8.70 ng/ml

Instrument :
 ECD_O
 ClientSampleId :
 DDT ANALOG



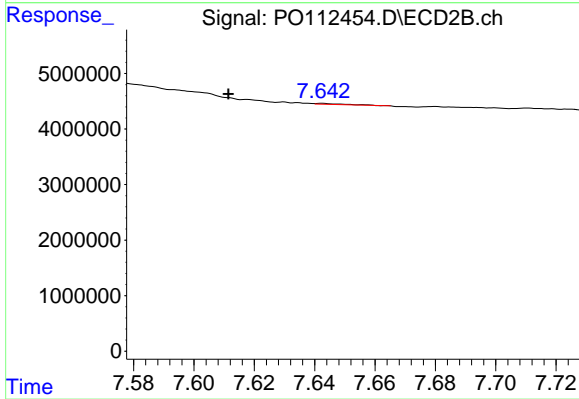
#41 AR-1268-1

R.T.: 7.556 min
 Delta R.T.: 0.010 min
 Response: 13238220
 Conc: 25.56 ng/ml



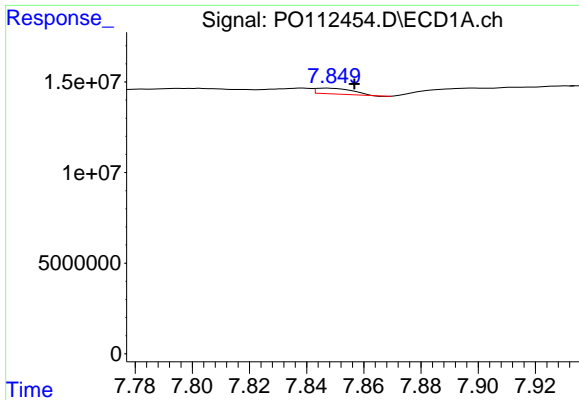
#42 AR-1268-2

R.T.: 7.631 min
 Delta R.T.: -0.021 min
 Response: 4301660
 Conc: 2.92 ng/ml



#42 AR-1268-2

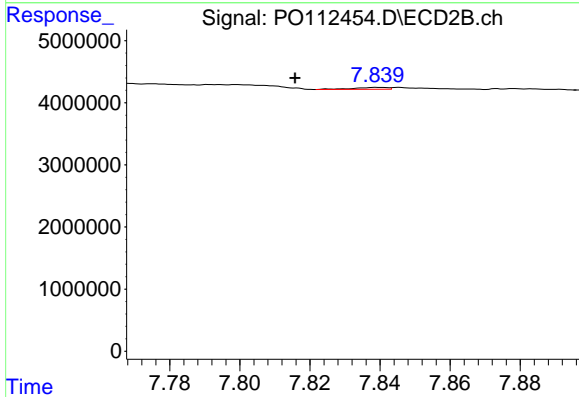
R.T.: 7.643 min
 Delta R.T.: 0.031 min
 Response: 47397
 Conc: 0.11 ng/ml



#43 AR-1268-3

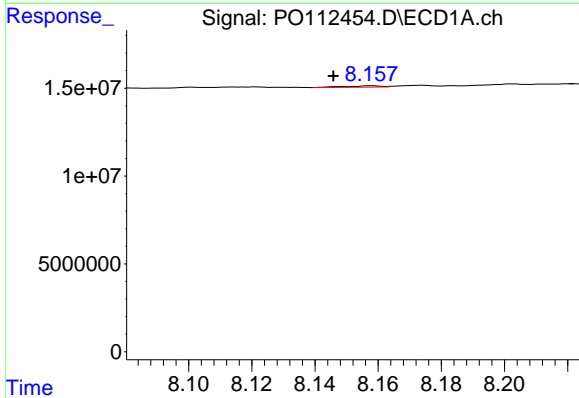
R.T.: 7.847 min
 Delta R.T.: -0.009 min
 Response: 2751072
 Conc: 2.20 ng/ml

Instrument :
 ECD_O
 ClientSampleId :
 DDT ANALOG



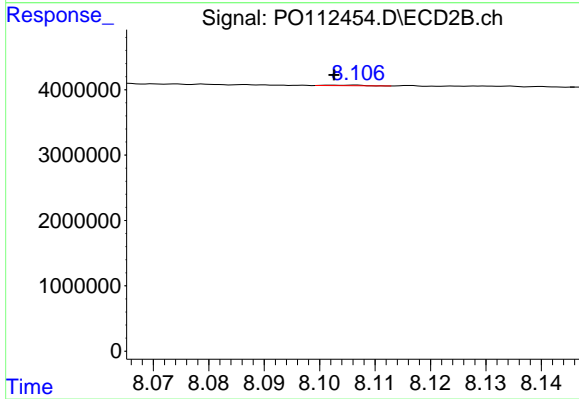
#43 AR-1268-3

R.T.: 7.839 min
 Delta R.T.: 0.024 min
 Response: 202827
 Conc: 0.63 ng/ml



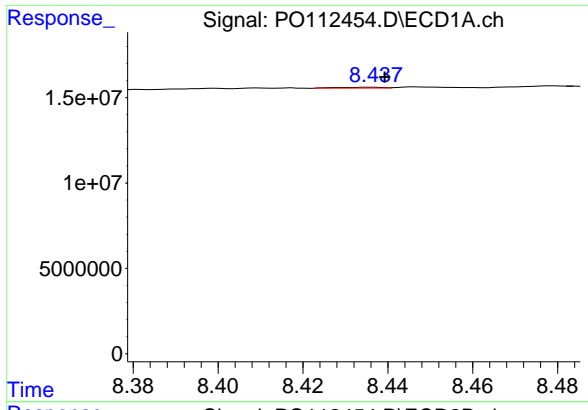
#44 AR-1268-4

R.T.: 8.158 min
 Delta R.T.: 0.012 min
 Response: 581728
 Conc: 1.21 ng/ml



#44 AR-1268-4

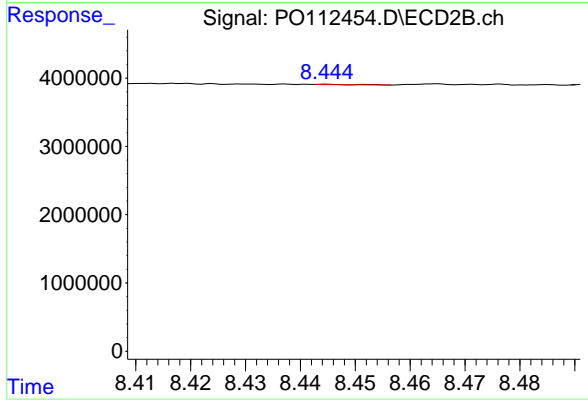
R.T.: 8.107 min
 Delta R.T.: 0.004 min
 Response: 43839
 Conc: 0.39 ng/ml



#45 AR-1268-5

R.T.: 8.437 min
 Delta R.T.: -0.003 min
 Response: 362878
 Conc: 0.11 ng/ml

Instrument :
 ECD_O
 ClientSampleId :
 DDT ANALOG



#45 AR-1268-5

R.T.: 8.444 min
 Delta R.T.: 0.053 min
 Response: 29654
 Conc: 0.04 ng/ml