

Data Path : Z:\pestpcbsrv\HPCHEM1\ECD\_0\Data\P0072425\  
 Data File : PO112455.D  
 Signal(s) : Signal #1: ECD1A.ch Signal #2: ECD2B.ch  
 Acq On : 24 Jul 2025 10:53  
 Operator : YP/AJ  
 Sample : Q2674-01  
 Misc :  
 ALS Vial : 8 Sample Multiplier: 1

Instrument :  
 ECD\_0  
 ClientSampleId :  
 TR-04-072225

Integration File signal 1: autoint1.e  
 Integration File signal 2: autoint2.e  
 Quant Time: Jul 24 23:35:20 2025  
 Quant Method : Z:\pestpcbsrv\HPCHEM1\ECD\_0\methods\P0072325.M  
 Quant Title : GC EXTRACTABLES  
 QLast Update : Thu Jul 24 04:54:06 2025  
 Response via : Initial Calibration  
 Integrator: ChemStation

Volume Inj. : 2 µl  
 Signal #1 Phase : ZB-MR1 Signal #2 Phase: ZB-MR2  
 Signal #1 Info : 30Mx0.32mmx 0.50µ Signal #2 Info : 30M x 0.32mm x 0.25µm

Compound	RT#1	RT#2	Resp#1	Resp#2	ng/ml	ng/ml
System Monitoring Compounds						
1) SA Tetrachlo...	3.671	3.663	119.8E6	80976355	14.729	16.296
2) SA Decachlor...	8.693	8.640	114.3E6	32039349	15.634	18.131
Target Compounds						
3) L1 AR-1016-1	4.723	4.752	1680957	1096629	6.264	6.266
4) L1 AR-1016-2	4.792	4.752	4849755	1096629	11.942	4.210 #
5) L1 AR-1016-3	4.844	4.948	3082382	1775871	11.779	13.061
6) L1 AR-1016-4	4.944	4.978	384011	4585949	1.813	41.283 #
7) L1 AR-1016-5	5.199	5.193	2785819	194440	12.693	1.357 #
8) L2 AR-1221-1	3.892	3.881	482688	253845	4.994	3.774
9) L2 AR-1221-2	3.980	3.965	-2750656	2599541	N.D.	51.245 #
10) L2 AR-1221-3	4.053	4.034	2462598	1534558	10.360	9.680
11) L3 AR-1232-1	4.053	4.034	2462598	1534558	13.170	12.126
12) L3 AR-1232-2	4.538	4.752	5433040	1096629	50.481	8.361 #
13) L3 AR-1232-3	4.792	4.948	4849755	1775871	23.452	26.428
14) L3 AR-1232-4	4.944	5.028	384011	1225335	3.666	20.481 #
15) L3 AR-1232-5	4.999	5.193	10870636	194440	160.143	2.982 #
16) L4 AR-1242-1	4.723	4.752	1680957	1096629	6.789	6.923
17) L4 AR-1242-2	4.792	4.752	4849755	1096629	13.115	4.693 #
18) L4 AR-1242-3	4.844	4.948	3082382	1775871	13.025	14.654
19) L4 AR-1242-4	4.944	5.028	384011	1225335	1.977	9.983 #
20) L4 AR-1242-5	5.626	5.535	15743414	1992532	73.596	12.378 #
21) L5 AR-1248-1	4.723	4.752	1680957	1096629	8.979	9.025
22) L5 AR-1248-2	4.999	4.978	10870636	4585949	42.611	27.091 #
23) L5 AR-1248-3	5.199	5.028	2785819	1225335	8.105	6.898
24) L5 AR-1248-4	5.572	5.193	12416485	194440	24.438	0.933 #
25) L5 AR-1248-5	5.626	5.583	15743414	1583356	45.034	7.373 #
26) L6 AR-1254-1	5.572	5.535	12416485	1992532	22.618	6.063 #
27) L6 AR-1254-2	5.704	5.679	12811601	4067678	26.366	14.051 #
28) L6 AR-1254-3	6.108	6.077	5901086	2605645	7.929	6.096
29) L6 AR-1254-4	6.334	6.304	2424790	788779	4.411	2.890 #
30) L6 AR-1254-5	6.763	6.722	5571618	1137410	7.871	3.405 #
31) L7 AR-1260-1	6.250	6.212	2125136	335345	4.837	1.349 #
32) L7 AR-1260-2	6.414	6.416	9300858	15795	13.521	0.048 #
33) L7 AR-1260-3	6.800	6.550	2882891	361962	4.903	1.409 #
34) L7 AR-1260-4	7.060	7.040	1398255	218466	3.100	1.142 #
35) L7 AR-1260-5	7.303	7.265	3848273	883494	3.106	2.143 #
36) L8 AR-1262-1	6.800	6.764	2882891	471327	3.103	1.136 #
37) L8 AR-1262-2	7.303	7.265	3848273	883494	2.588	1.714 #
38) L8 AR-1262-3	7.568	7.543	1452197	552318	2.460	2.961
39) L8 AR-1262-4	7.638	7.592	4858181	1926766	4.887	6.688 #
40) L8 AR-1262-5	8.149	8.099	1732131	62236	3.991	0.625 #
41) L9 AR-1268-1	7.568	7.543	1452197	552318	0.829	1.067 #

Data Path : Z:\pestpcbsrv\HPCHEM1\ECD\_0\Data\P0072425\  
 Data File : P0112455.D  
 Signal(s) : Signal #1: ECD1A.ch Signal #2: ECD2B.ch  
 Acq On : 24 Jul 2025 10:53  
 Operator : YP/AJ  
 Sample : Q2674-01  
 Misc :  
 ALS Vial : 8 Sample Multiplier: 1

Instrument :  
 ECD\_0  
 ClientSampleId :  
 TR-04-072225

Integration File signal 1: autoint1.e  
 Integration File signal 2: autoint2.e  
 Quant Time: Jul 24 23:35:20 2025  
 Quant Method : Z:\pestpcbsrv\HPCHEM1\ECD\_0\methods\P0072325.M  
 Quant Title : GC EXTRACTABLES  
 QLast Update : Thu Jul 24 04:54:06 2025  
 Response via : Initial Calibration  
 Integrator: ChemStation

Volume Inj. : 2 µl  
 Signal #1 Phase : ZB-MR1 Signal #2 Phase: ZB-MR2  
 Signal #1 Info : 30Mx0.32mmx 0.50µ Signal #2 Info : 30M x 0.32mm x 0.25µm

	Compound	RT#1	RT#2	Resp#1	Resp#2	ng/ml	ng/ml
42)	L9 AR-1268-2	7.638	7.592	4858181	1926766	3.298	4.533 #
43)	L9 AR-1268-3	7.875	7.819	1899522	117932	1.517	0.367 #
44)	L9 AR-1268-4	8.149	8.099	1732131	62236	3.595	0.559 #
45)	L9 AR-1268-5	8.467	8.386	-94380	69714	N.D.	0.095 #

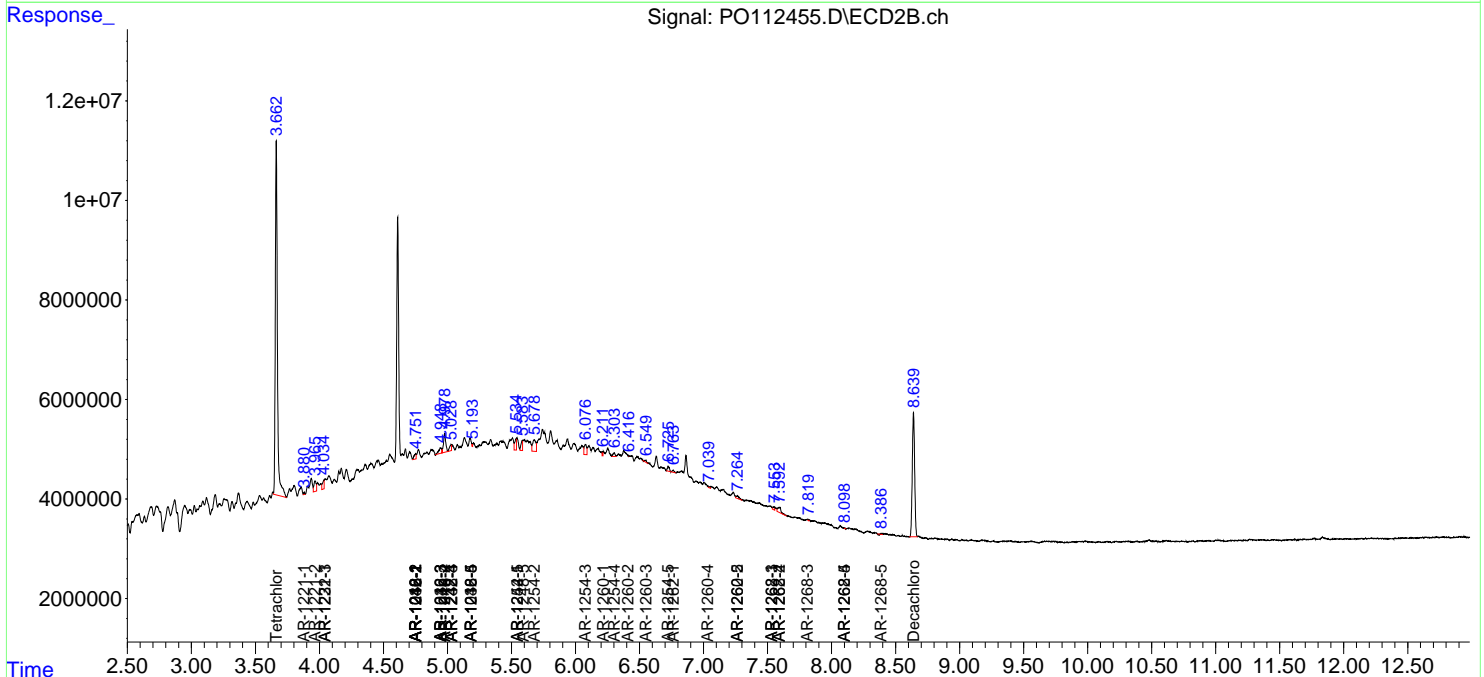
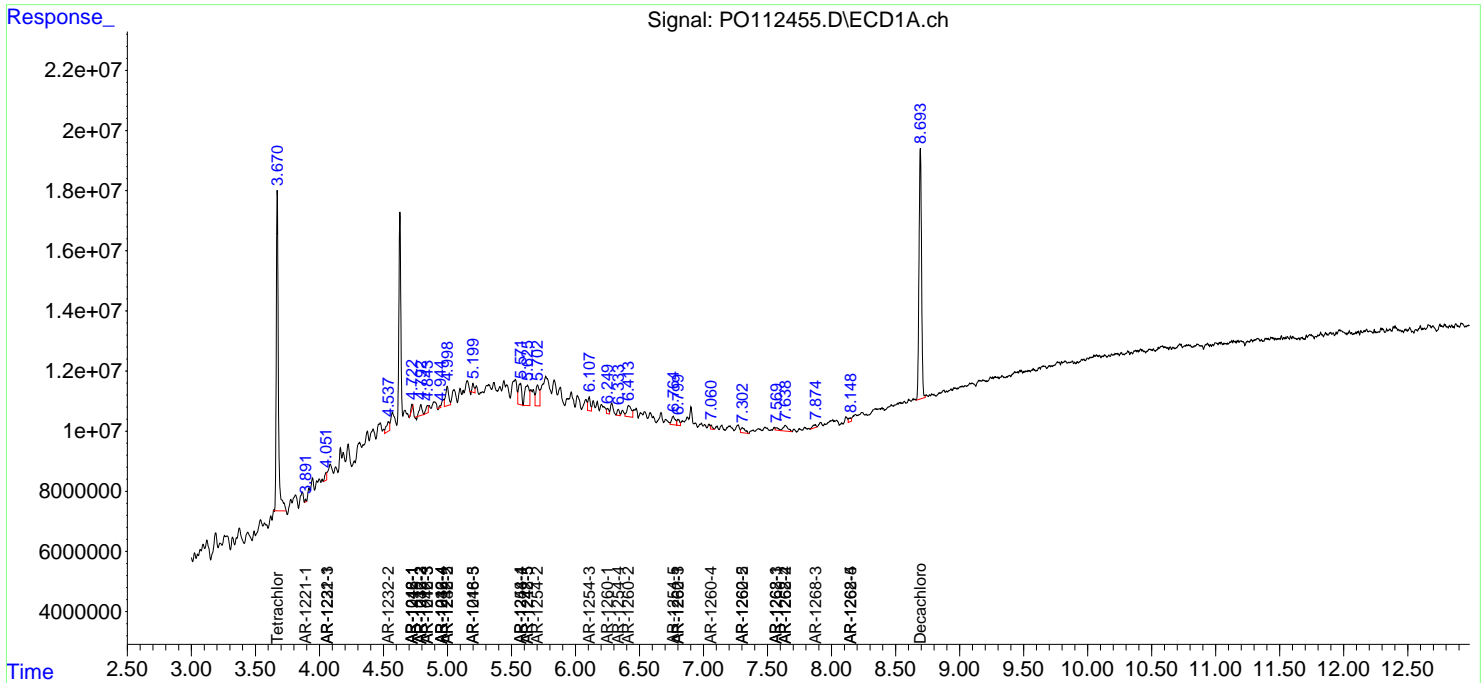
(f)=RT Delta > 1/2 Window (#)=Amounts differ by > 25% (m)=manual int.

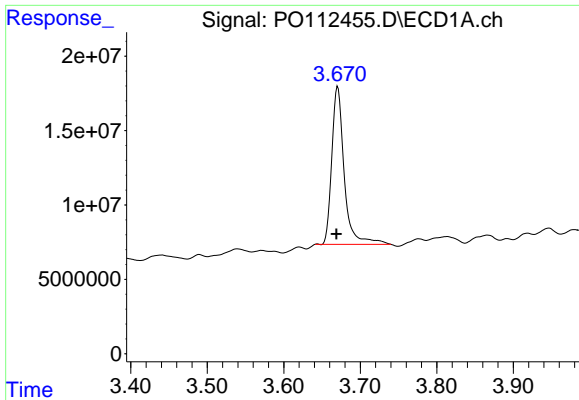
Data Path : Z:\pestpcbsrv\HPCHEM1\ECD\_O\Data\PO072425\  
 Data File : PO112455.D  
 Signal(s) : Signal #1: ECD1A.ch Signal #2: ECD2B.ch  
 Acq On : 24 Jul 2025 10:53  
 Operator : YP/AJ  
 Sample : Q2674-01  
 Misc :  
 ALS Vial : 8 Sample Multiplier: 1

Instrument :  
 ECD\_O  
 ClientSampleId :  
 TR-04-072225

Integration File signal 1: autoint1.e  
 Integration File signal 2: autoint2.e  
 Quant Time: Jul 24 23:35:20 2025  
 Quant Method : Z:\pestpcbsrv\HPCHEM1\ECD\_O\methods\PO072325.M  
 Quant Title : GC EXTRACTABLES  
 QLast Update : Thu Jul 24 04:54:06 2025  
 Response via : Initial Calibration  
 Integrator: ChemStation

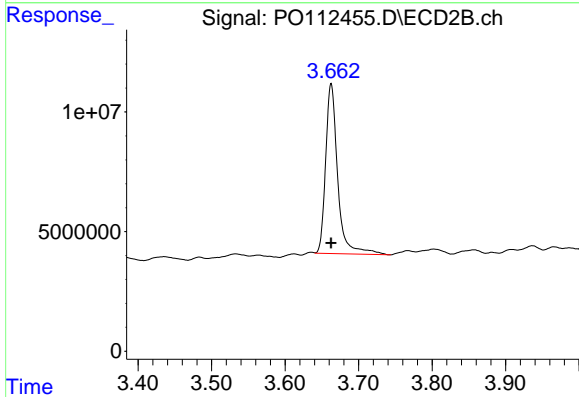
Volume Inj. : 2 µl  
 Signal #1 Phase : ZB-MR1 Signal #2 Phase: ZB-MR2  
 Signal #1 Info : 30Mx0.32mmx 0.50µ Signal #2 Info : 30M x 0.32mm x 0.25µm



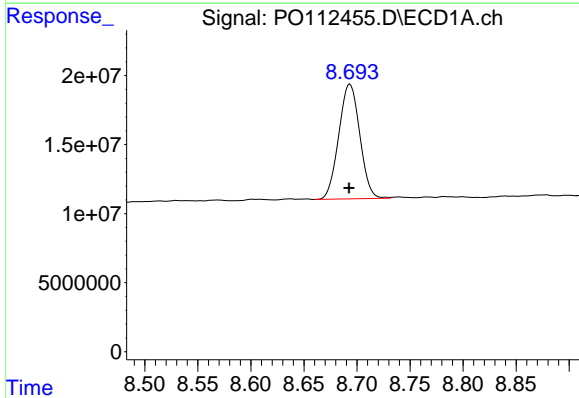


#1 Tetrachloro-m-xylene  
 R.T.: 3.671 min  
 Delta R.T.: 0.002 min  
 Response: 119773248  
 Conc: 14.73 ng/ml

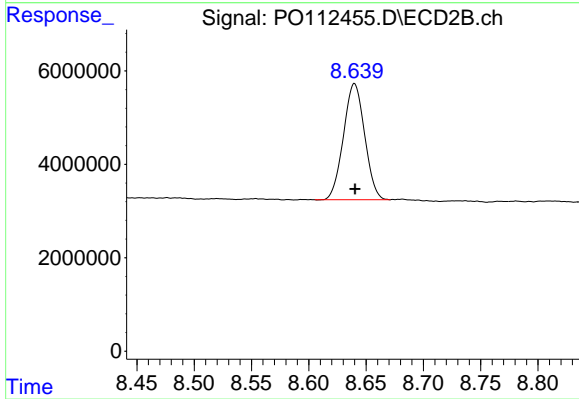
Instrument :  
 ECD\_O  
 ClientSampleId :  
 TR-04-072225



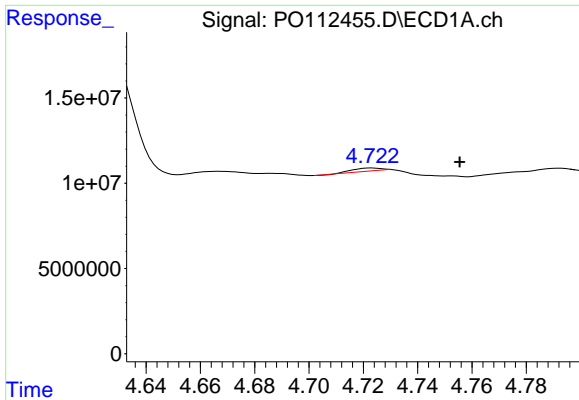
#1 Tetrachloro-m-xylene  
 R.T.: 3.663 min  
 Delta R.T.: 0.000 min  
 Response: 80976355  
 Conc: 16.30 ng/ml



#2 Decachlorobiphenyl  
 R.T.: 8.693 min  
 Delta R.T.: 0.000 min  
 Response: 114314463  
 Conc: 15.63 ng/ml



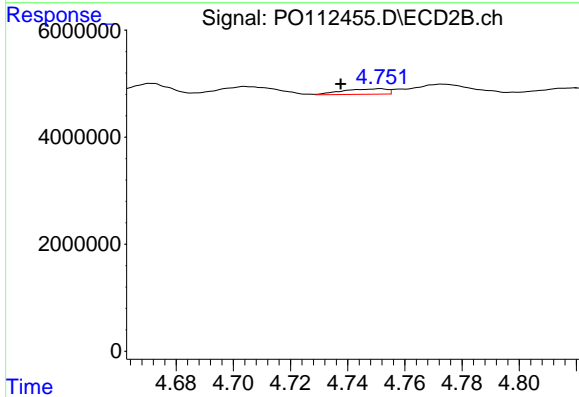
#2 Decachlorobiphenyl  
 R.T.: 8.640 min  
 Delta R.T.: 0.000 min  
 Response: 32039349  
 Conc: 18.13 ng/ml



#3 AR-1016-1

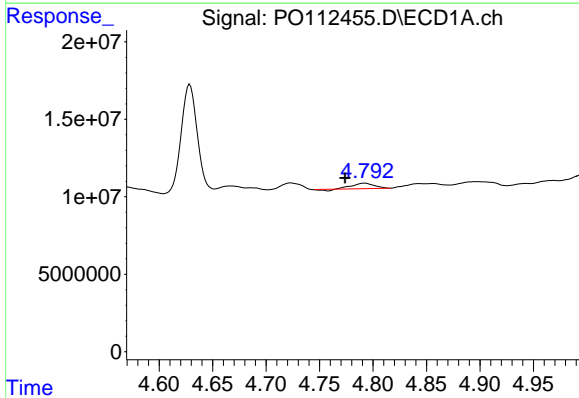
R.T.: 4.723 min  
 Delta R.T.: -0.032 min  
 Response: 1680957  
 Conc: 6.26 ng/ml

Instrument :  
 ECD\_O  
 ClientSampleId :  
 TR-04-072225



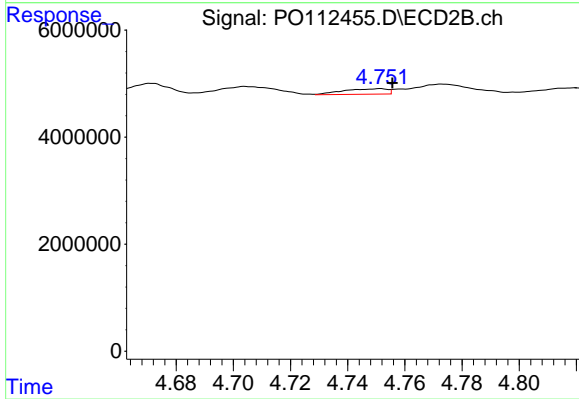
#3 AR-1016-1

R.T.: 4.752 min  
 Delta R.T.: 0.014 min  
 Response: 1096629  
 Conc: 6.27 ng/ml



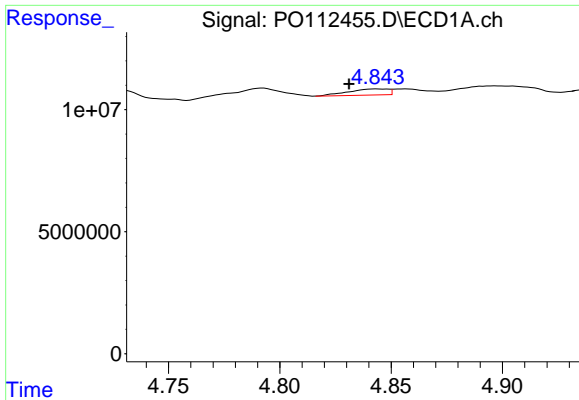
#4 AR-1016-2

R.T.: 4.792 min  
 Delta R.T.: 0.018 min  
 Response: 4849755  
 Conc: 11.94 ng/ml



#4 AR-1016-2

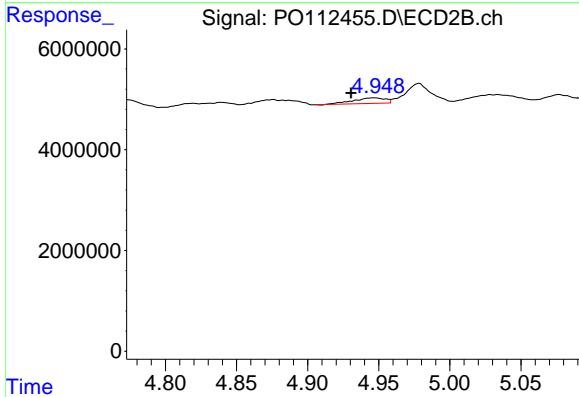
R.T.: 4.752 min  
 Delta R.T.: -0.004 min  
 Response: 1096629  
 Conc: 4.21 ng/ml



#5 AR-1016-3

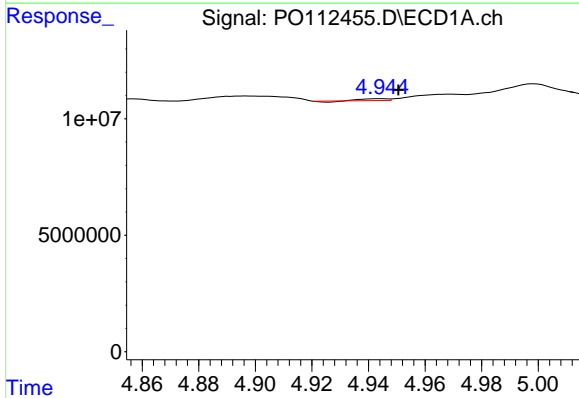
R.T.: 4.844 min  
 Delta R.T.: 0.012 min  
 Response: 3082382  
 Conc: 11.78 ng/ml

Instrument :  
 ECD\_O  
 ClientSampleId :  
 TR-04-072225



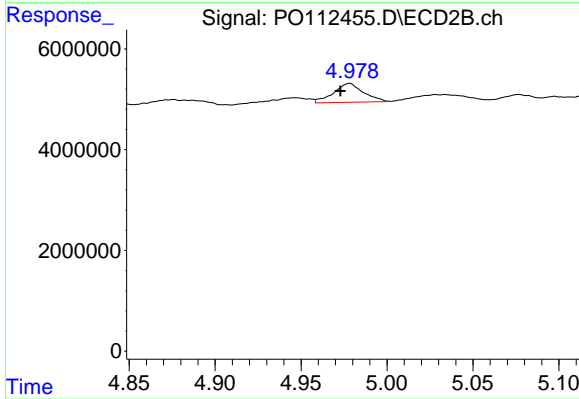
#5 AR-1016-3

R.T.: 4.948 min  
 Delta R.T.: 0.017 min  
 Response: 1775871  
 Conc: 13.06 ng/ml



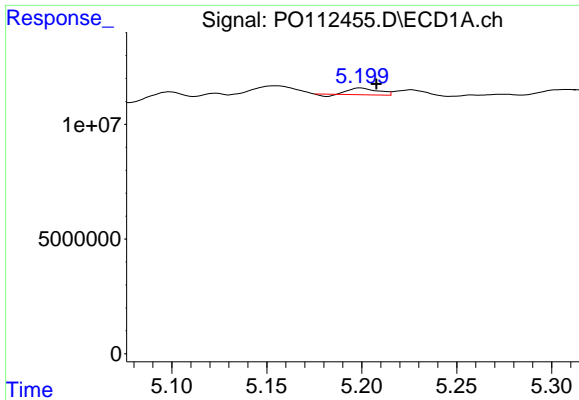
#6 AR-1016-4

R.T.: 4.944 min  
 Delta R.T.: -0.006 min  
 Response: 384011  
 Conc: 1.81 ng/ml



#6 AR-1016-4

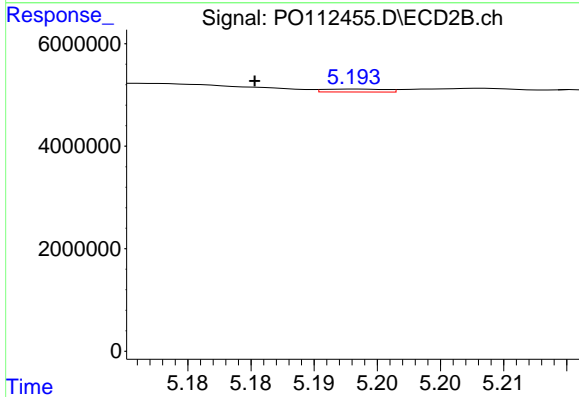
R.T.: 4.978 min  
 Delta R.T.: 0.005 min  
 Response: 4585949  
 Conc: 41.28 ng/ml



#7 AR-1016-5

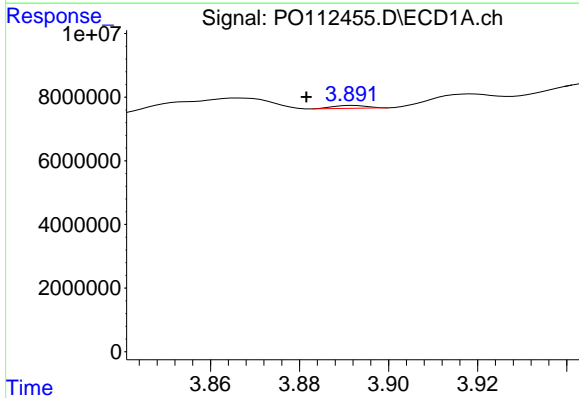
R.T.: 5.199 min  
 Delta R.T.: -0.008 min  
 Response: 2785819  
 Conc: 12.69 ng/ml

Instrument :  
 ECD\_O  
 ClientSampleId :  
 TR-04-072225



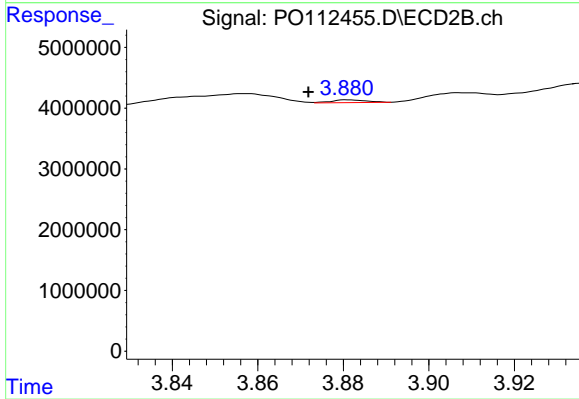
#7 AR-1016-5

R.T.: 5.193 min  
 Delta R.T.: 0.008 min  
 Response: 194440  
 Conc: 1.36 ng/ml



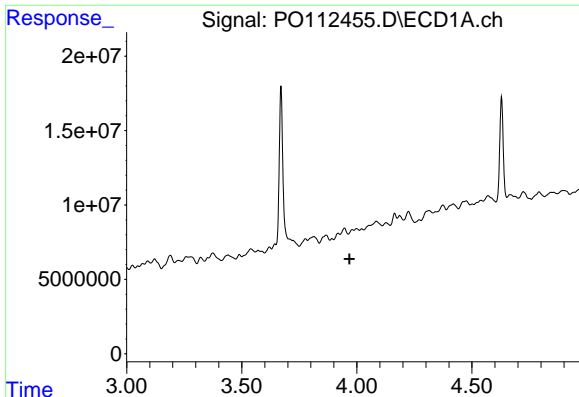
#8 AR-1221-1

R.T.: 3.892 min  
 Delta R.T.: 0.011 min  
 Response: 482688  
 Conc: 4.99 ng/ml



#8 AR-1221-1

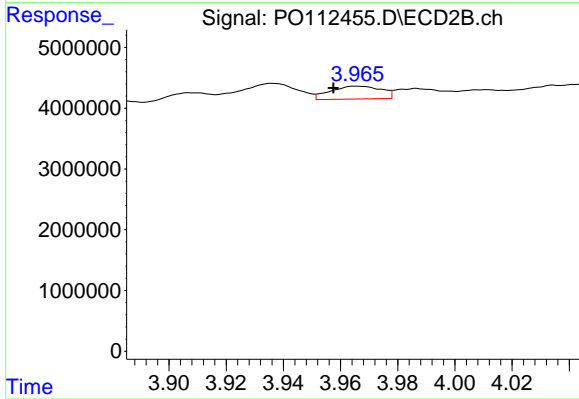
R.T.: 3.881 min  
 Delta R.T.: 0.009 min  
 Response: 253845  
 Conc: 3.77 ng/ml



#9 AR-1221-2

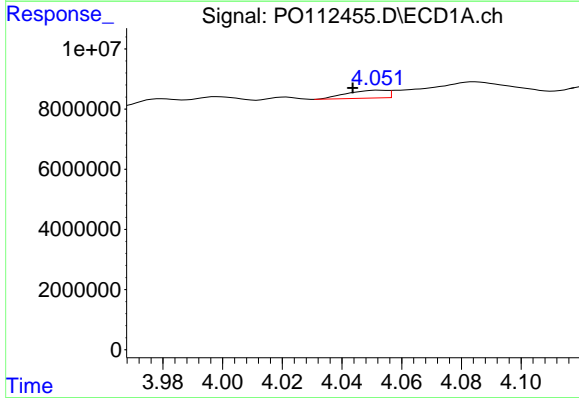
R.T.: 3.980 min  
 Delta R.T.: 0.012 min  
 Response: -2750656  
 Conc: N.D.

Instrument :  
 ECD\_O  
 ClientSampleId :  
 TR-04-072225



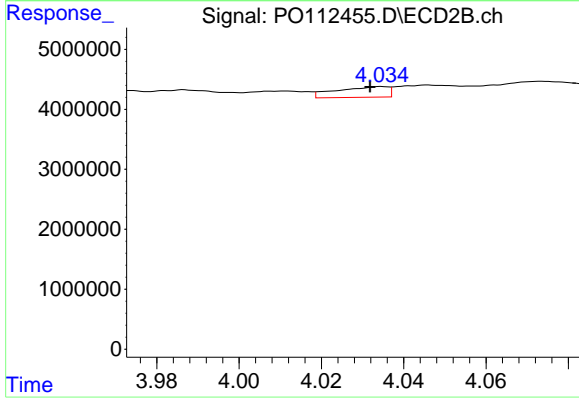
#9 AR-1221-2

R.T.: 3.965 min  
 Delta R.T.: 0.008 min  
 Response: 2599541  
 Conc: 51.24 ng/ml



#10 AR-1221-3

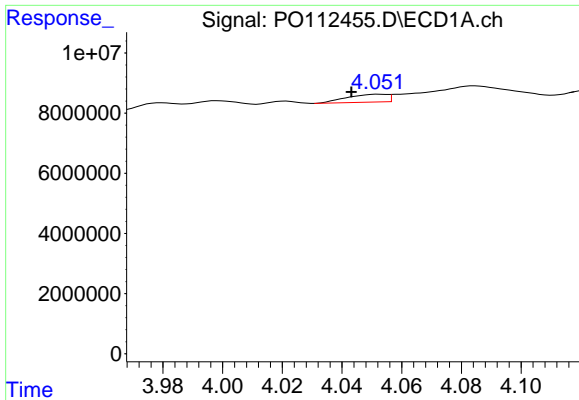
R.T.: 4.053 min  
 Delta R.T.: 0.009 min  
 Response: 2462598  
 Conc: 10.36 ng/ml



#10 AR-1221-3

R.T.: 4.034 min  
 Delta R.T.: 0.003 min  
 Response: 1534558  
 Conc: 9.68 ng/ml

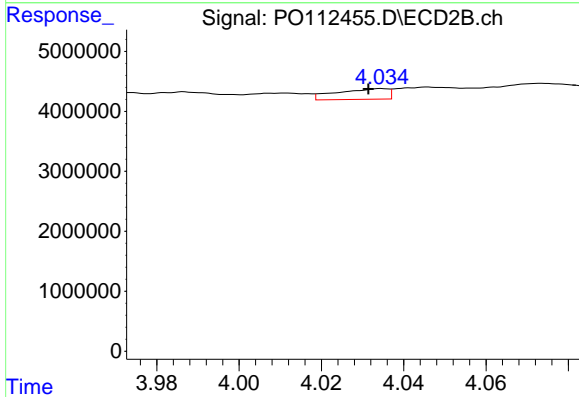




#11 AR-1232-1

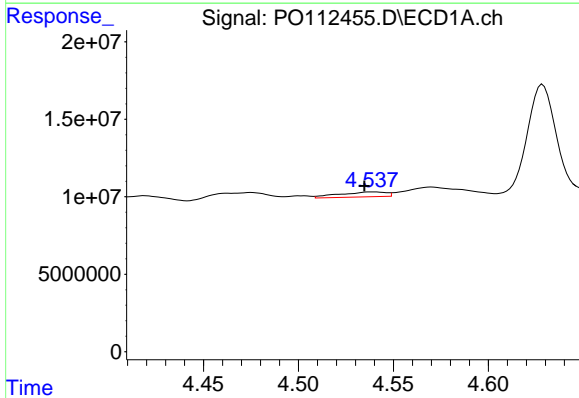
R.T.: 4.053 min  
 Delta R.T.: 0.010 min  
 Response: 2462598  
 Conc: 13.17 ng/ml

Instrument :  
 ECD\_O  
 ClientSampleId :  
 TR-04-072225



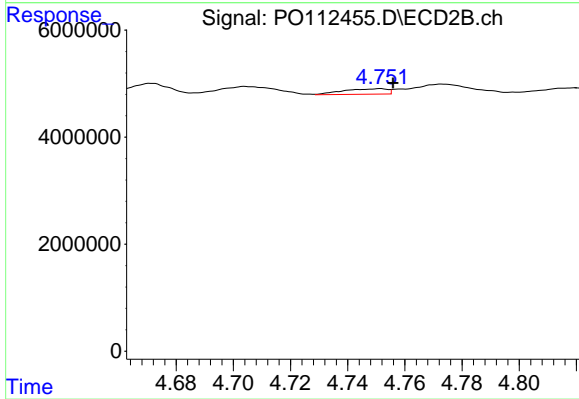
#11 AR-1232-1

R.T.: 4.034 min  
 Delta R.T.: 0.003 min  
 Response: 1534558  
 Conc: 12.13 ng/ml



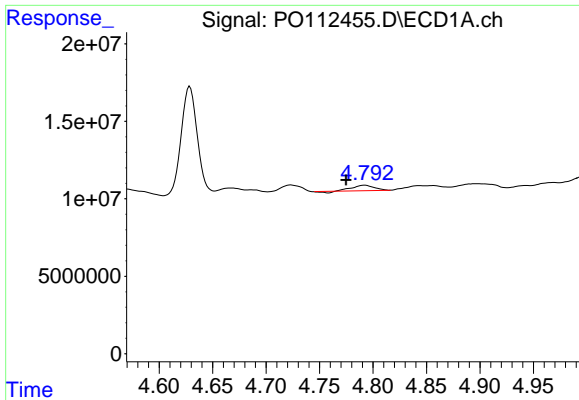
#12 AR-1232-2

R.T.: 4.538 min  
 Delta R.T.: 0.004 min  
 Response: 5433040  
 Conc: 50.48 ng/ml



#12 AR-1232-2

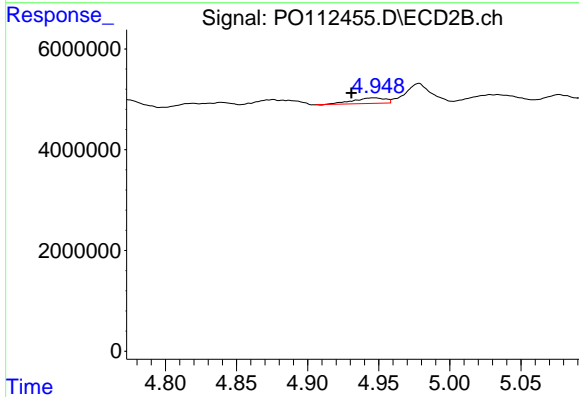
R.T.: 4.752 min  
 Delta R.T.: -0.004 min  
 Response: 1096629  
 Conc: 8.36 ng/ml



#13 AR-1232-3

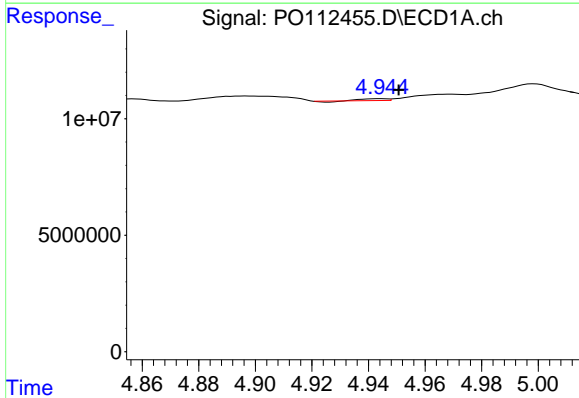
R.T.: 4.792 min  
 Delta R.T.: 0.018 min  
 Response: 4849755  
 Conc: 23.45 ng/ml

Instrument :  
 ECD\_O  
 ClientSampleId :  
 TR-04-072225



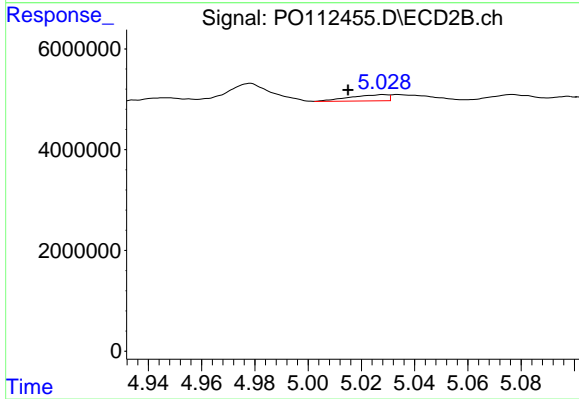
#13 AR-1232-3

R.T.: 4.948 min  
 Delta R.T.: 0.017 min  
 Response: 1775871  
 Conc: 26.43 ng/ml



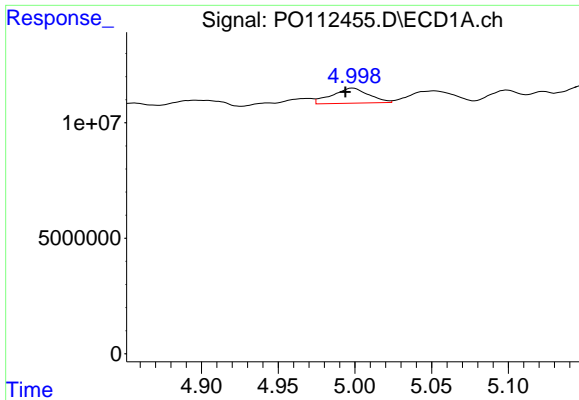
#14 AR-1232-4

R.T.: 4.944 min  
 Delta R.T.: -0.006 min  
 Response: 384011  
 Conc: 3.67 ng/ml



#14 AR-1232-4

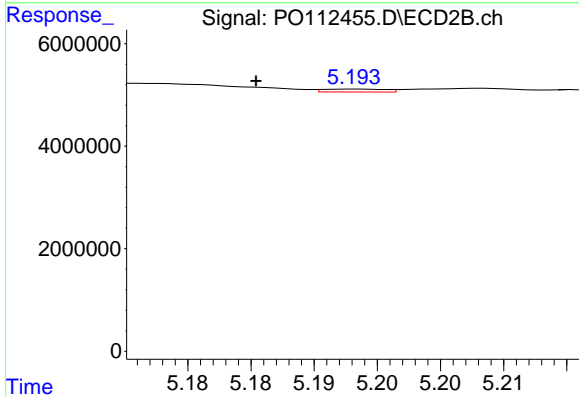
R.T.: 5.028 min  
 Delta R.T.: 0.013 min  
 Response: 1225335  
 Conc: 20.48 ng/ml



#15 AR-1232-5

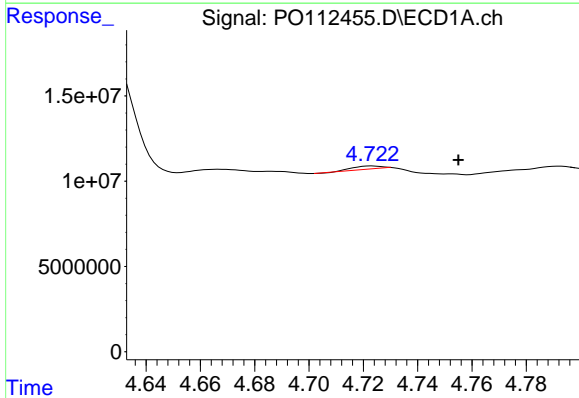
R.T.: 4.999 min  
 Delta R.T.: 0.005 min  
 Response: 10870636  
 Conc: 160.14 ng/ml

Instrument :  
 ECD\_O  
 ClientSampleId :  
 TR-04-072225



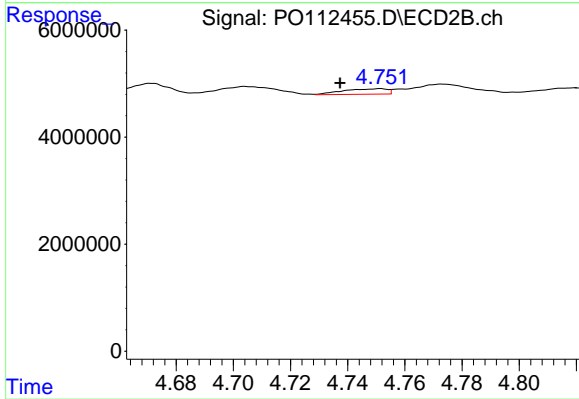
#15 AR-1232-5

R.T.: 5.193 min  
 Delta R.T.: 0.008 min  
 Response: 194440  
 Conc: 2.98 ng/ml



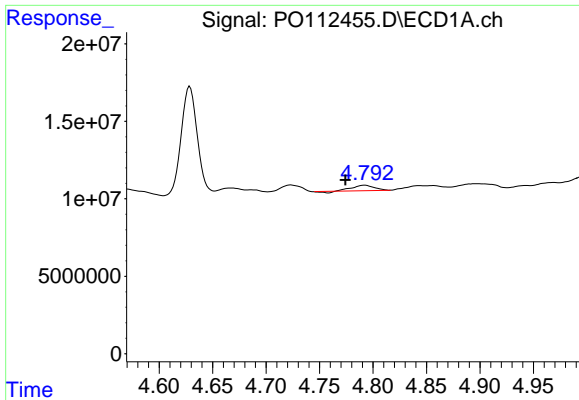
#16 AR-1242-1

R.T.: 4.723 min  
 Delta R.T.: -0.032 min  
 Response: 1680957  
 Conc: 6.79 ng/ml



#16 AR-1242-1

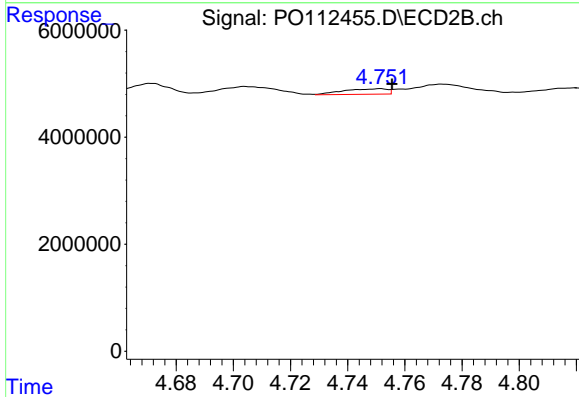
R.T.: 4.752 min  
 Delta R.T.: 0.014 min  
 Response: 1096629  
 Conc: 6.92 ng/ml



#17 AR-1242-2

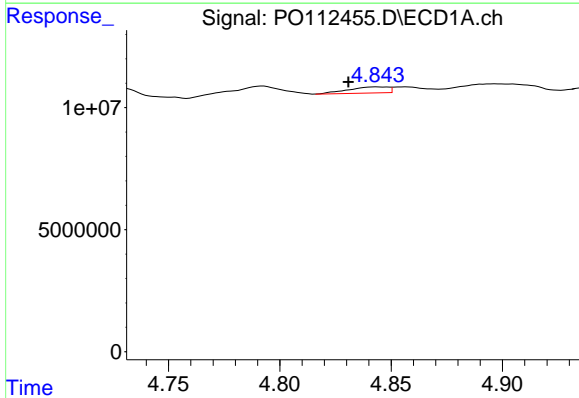
R.T.: 4.792 min  
 Delta R.T.: 0.018 min  
 Response: 4849755  
 Conc: 13.11 ng/ml

Instrument :  
 ECD\_O  
 ClientSampleId :  
 TR-04-072225



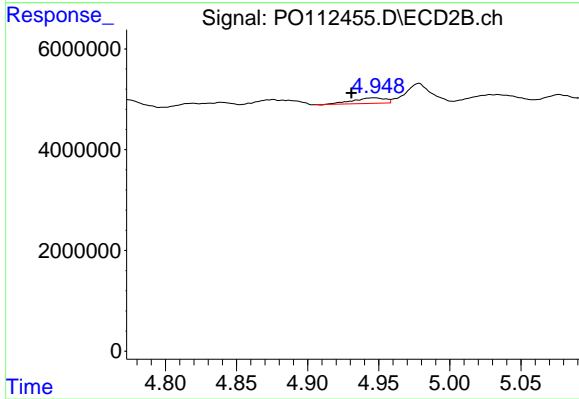
#17 AR-1242-2

R.T.: 4.752 min  
 Delta R.T.: -0.004 min  
 Response: 1096629  
 Conc: 4.69 ng/ml



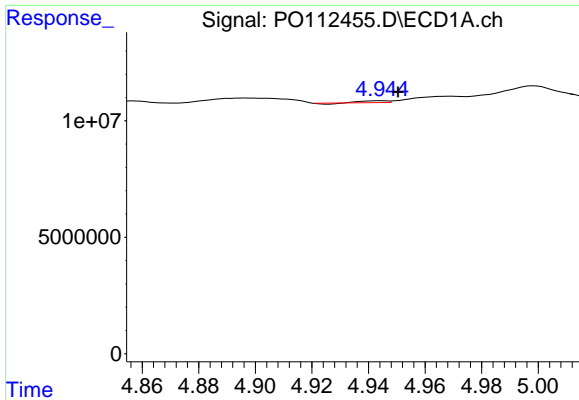
#18 AR-1242-3

R.T.: 4.844 min  
 Delta R.T.: 0.013 min  
 Response: 3082382  
 Conc: 13.02 ng/ml



#18 AR-1242-3

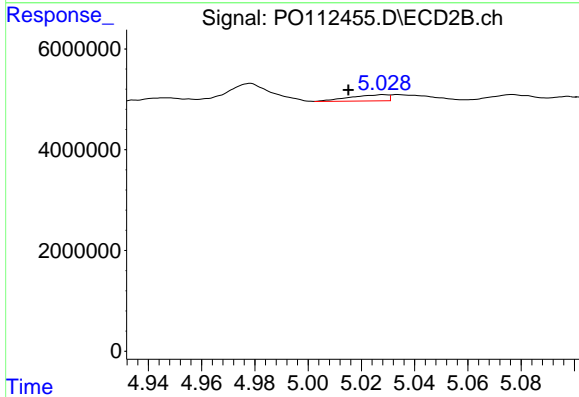
R.T.: 4.948 min  
 Delta R.T.: 0.017 min  
 Response: 1775871  
 Conc: 14.65 ng/ml



#19 AR-1242-4

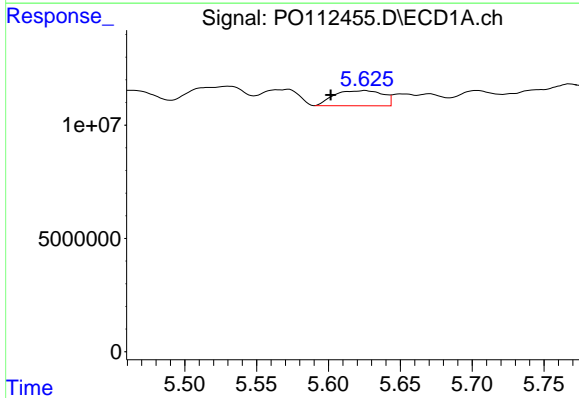
R.T.: 4.944 min  
 Delta R.T.: -0.006 min  
 Response: 384011  
 Conc: 1.98 ng/ml

Instrument :  
 ECD\_O  
 ClientSampleId :  
 TR-04-072225



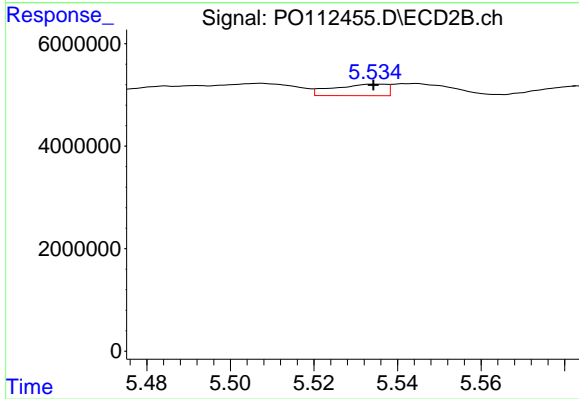
#19 AR-1242-4

R.T.: 5.028 min  
 Delta R.T.: 0.013 min  
 Response: 1225335  
 Conc: 9.98 ng/ml



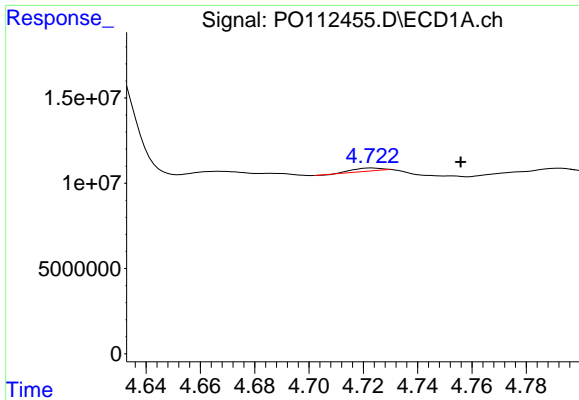
#20 AR-1242-5

R.T.: 5.626 min  
 Delta R.T.: 0.024 min  
 Response: 15743414  
 Conc: 73.60 ng/ml



#20 AR-1242-5

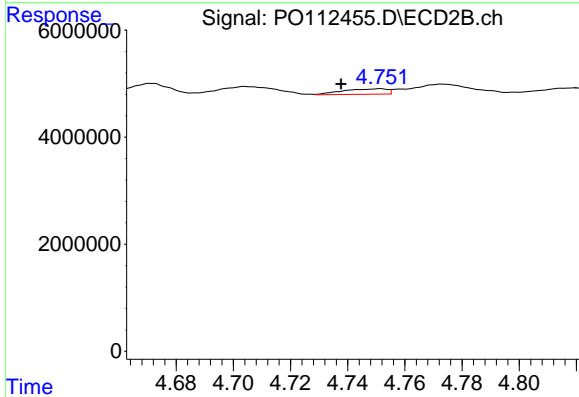
R.T.: 5.535 min  
 Delta R.T.: 0.000 min  
 Response: 1992532  
 Conc: 12.38 ng/ml



#21 AR-1248-1

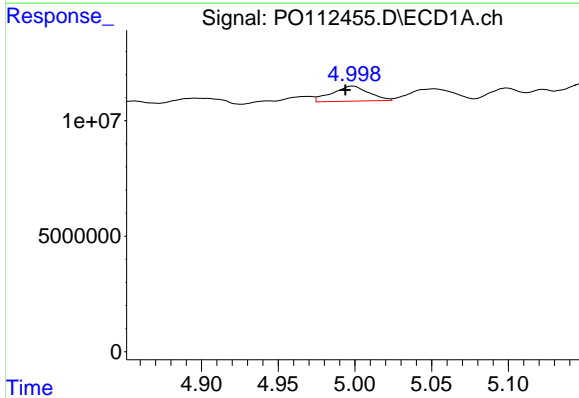
R.T.: 4.723 min  
 Delta R.T.: -0.033 min  
 Response: 1680957  
 Conc: 8.98 ng/ml

Instrument :  
 ECD\_O  
 ClientSampleId :  
 TR-04-072225



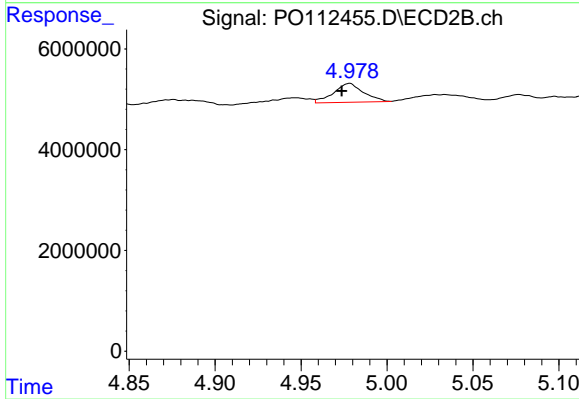
#21 AR-1248-1

R.T.: 4.752 min  
 Delta R.T.: 0.014 min  
 Response: 1096629  
 Conc: 9.03 ng/ml



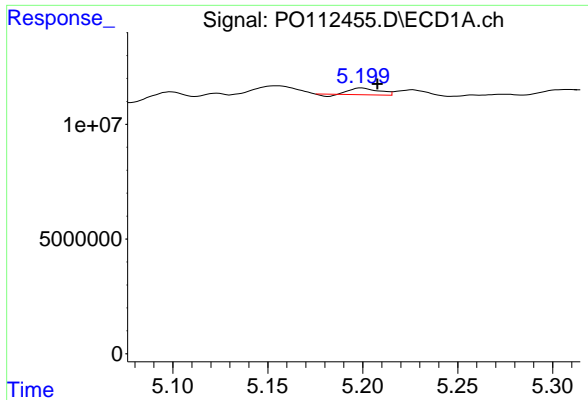
#22 AR-1248-2

R.T.: 4.999 min  
 Delta R.T.: 0.005 min  
 Response: 10870636  
 Conc: 42.61 ng/ml



#22 AR-1248-2

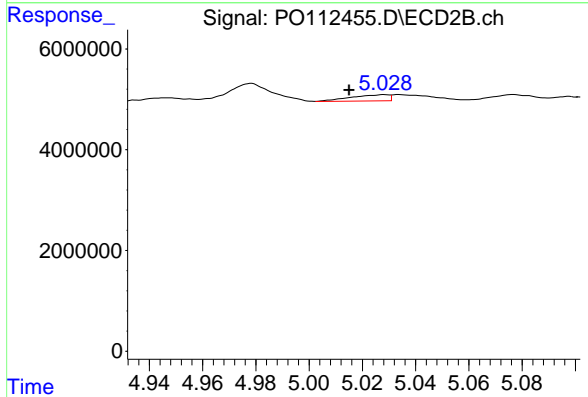
R.T.: 4.978 min  
 Delta R.T.: 0.005 min  
 Response: 4585949  
 Conc: 27.09 ng/ml



#23 AR-1248-3

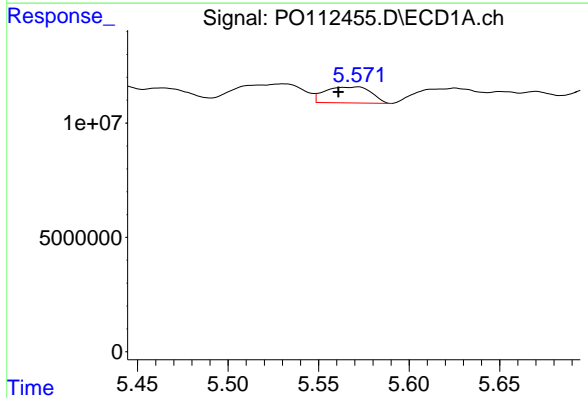
R.T.: 5.199 min  
 Delta R.T.: -0.008 min  
 Response: 2785819  
 Conc: 8.11 ng/ml

Instrument :  
 ECD\_O  
 ClientSampleId :  
 TR-04-072225



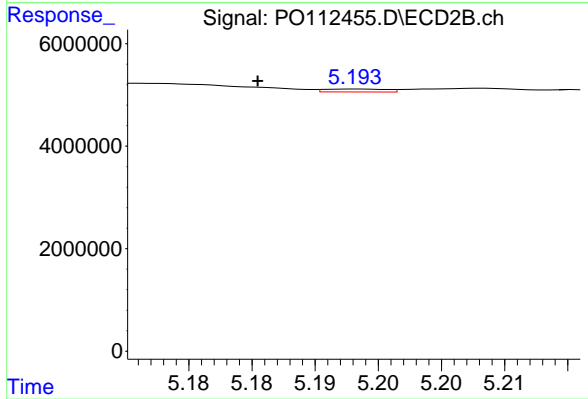
#23 AR-1248-3

R.T.: 5.028 min  
 Delta R.T.: 0.013 min  
 Response: 1225335  
 Conc: 6.90 ng/ml



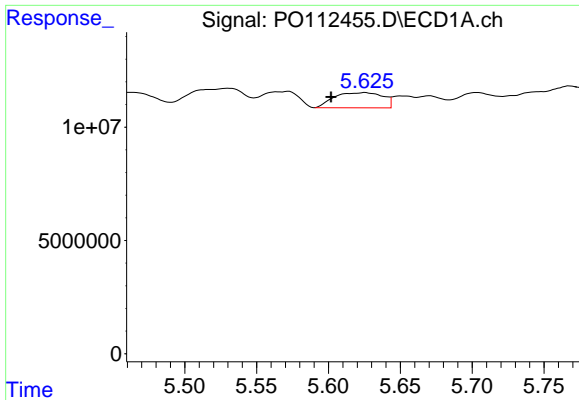
#24 AR-1248-4

R.T.: 5.572 min  
 Delta R.T.: 0.011 min  
 Response: 12416485  
 Conc: 24.44 ng/ml



#24 AR-1248-4

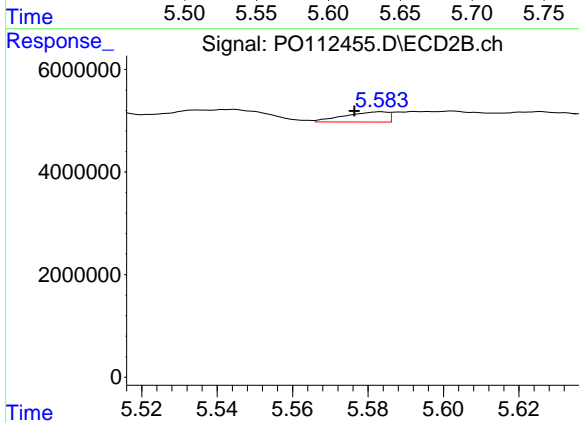
R.T.: 5.193 min  
 Delta R.T.: 0.008 min  
 Response: 194440  
 Conc: 0.93 ng/ml



#25 AR-1248-5

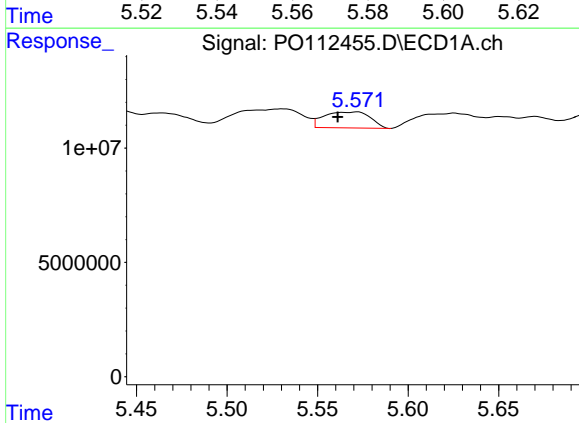
R.T.: 5.626 min  
 Delta R.T.: 0.024 min  
 Response: 15743414  
 Conc: 45.03 ng/ml

Instrument :  
 ECD\_O  
 ClientSampleId :  
 TR-04-072225



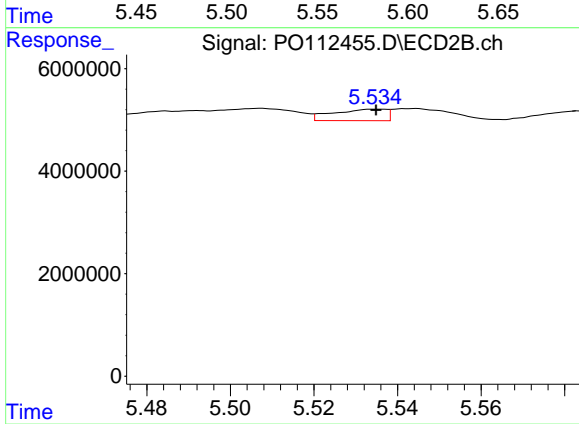
#25 AR-1248-5

R.T.: 5.583 min  
 Delta R.T.: 0.007 min  
 Response: 1583356  
 Conc: 7.37 ng/ml



#26 AR-1254-1

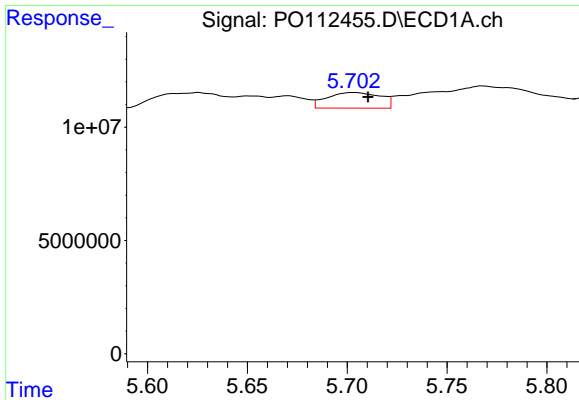
R.T.: 5.572 min  
 Delta R.T.: 0.011 min  
 Response: 12416485  
 Conc: 22.62 ng/ml



#26 AR-1254-1

R.T.: 5.535 min  
 Delta R.T.: 0.000 min  
 Response: 1992532  
 Conc: 6.06 ng/ml

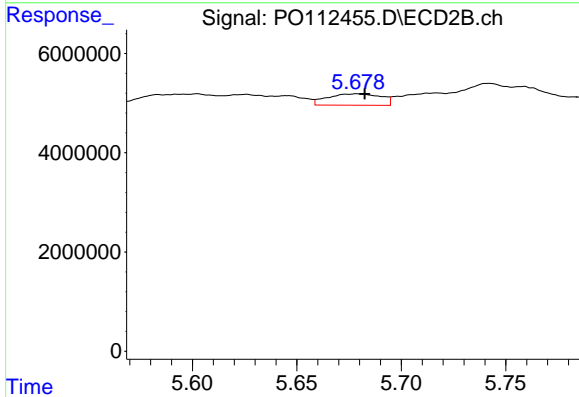




#27 AR-1254-2

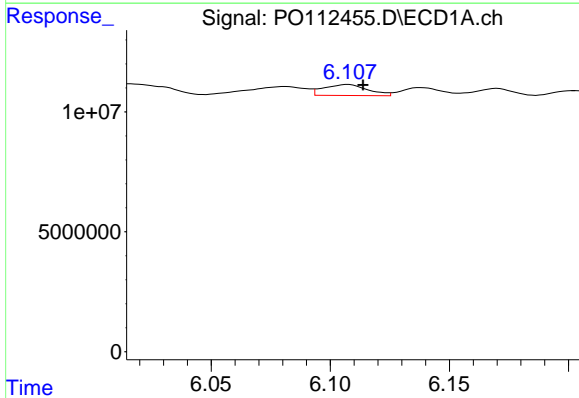
R.T.: 5.704 min  
 Delta R.T.: -0.007 min  
 Response: 12811601  
 Conc: 26.37 ng/ml

Instrument :  
 ECD\_O  
 ClientSampleId :  
 TR-04-072225



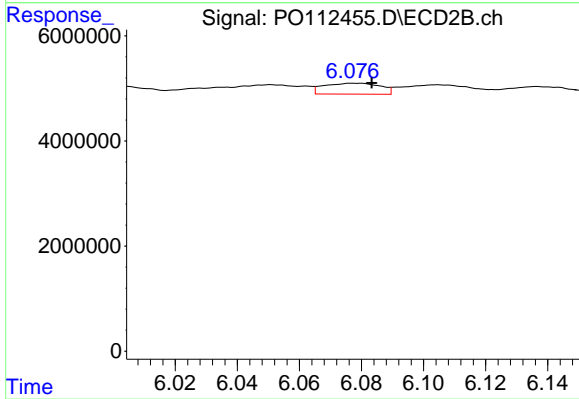
#27 AR-1254-2

R.T.: 5.679 min  
 Delta R.T.: -0.004 min  
 Response: 4067678  
 Conc: 14.05 ng/ml



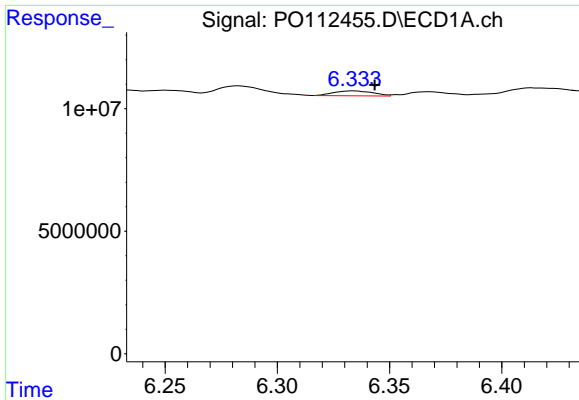
#28 AR-1254-3

R.T.: 6.108 min  
 Delta R.T.: -0.006 min  
 Response: 5901086  
 Conc: 7.93 ng/ml



#28 AR-1254-3

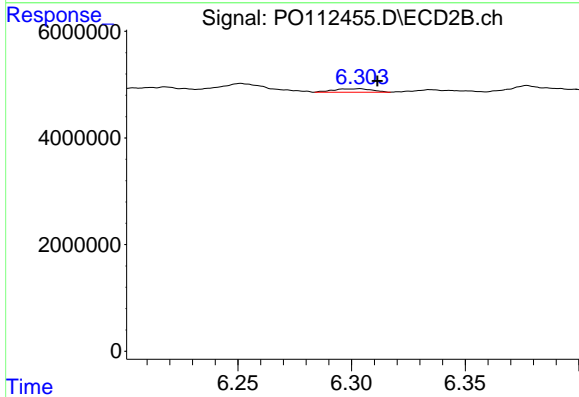
R.T.: 6.077 min  
 Delta R.T.: -0.006 min  
 Response: 2605645  
 Conc: 6.10 ng/ml



#29 AR-1254-4

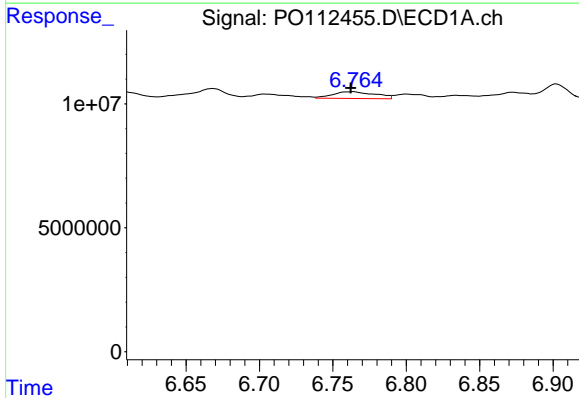
R.T.: 6.334 min  
 Delta R.T.: -0.009 min  
 Response: 2424790  
 Conc: 4.41 ng/ml

Instrument :  
 ECD\_O  
 ClientSampleId :  
 TR-04-072225



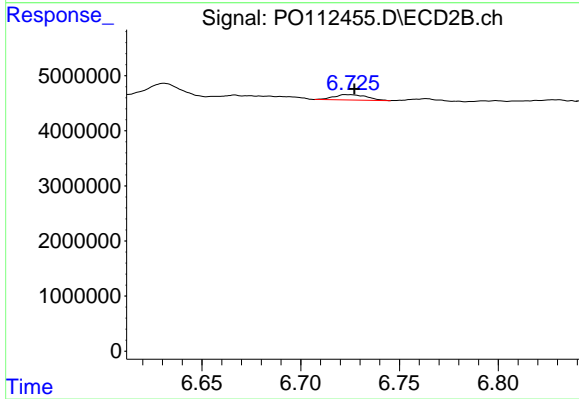
#29 AR-1254-4

R.T.: 6.304 min  
 Delta R.T.: -0.008 min  
 Response: 788779  
 Conc: 2.89 ng/ml



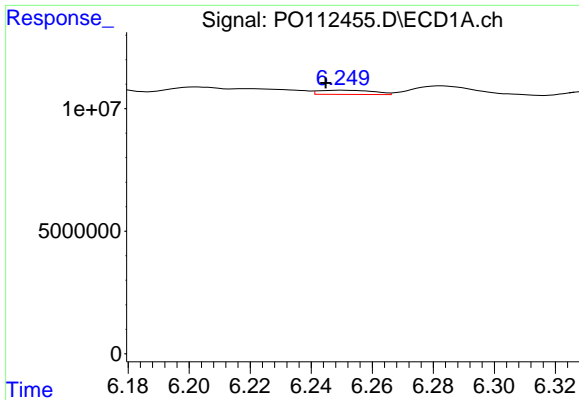
#30 AR-1254-5

R.T.: 6.763 min  
 Delta R.T.: 0.001 min  
 Response: 5571618  
 Conc: 7.87 ng/ml



#30 AR-1254-5

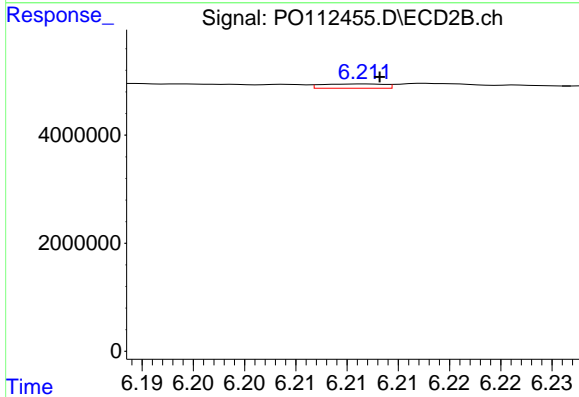
R.T.: 6.722 min  
 Delta R.T.: -0.005 min  
 Response: 1137410  
 Conc: 3.41 ng/ml



#31 AR-1260-1

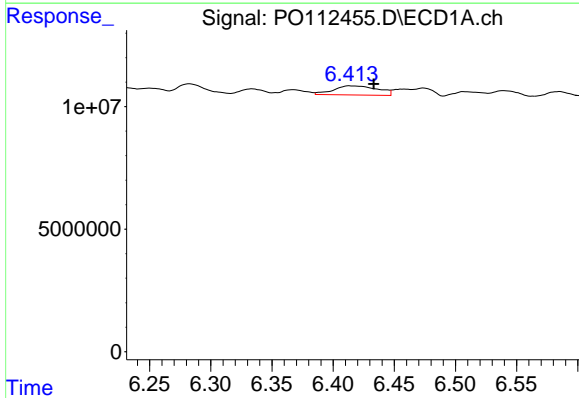
R.T.: 6.250 min  
 Delta R.T.: 0.005 min  
 Response: 2125136  
 Conc: 4.84 ng/ml

Instrument :  
 ECD\_O  
 ClientSampleId :  
 TR-04-072225



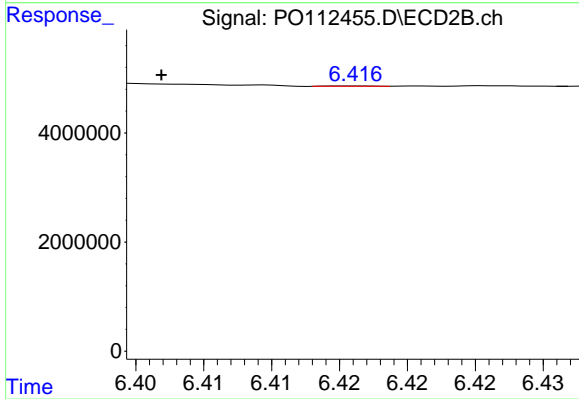
#31 AR-1260-1

R.T.: 6.212 min  
 Delta R.T.: -0.001 min  
 Response: 335345  
 Conc: 1.35 ng/ml



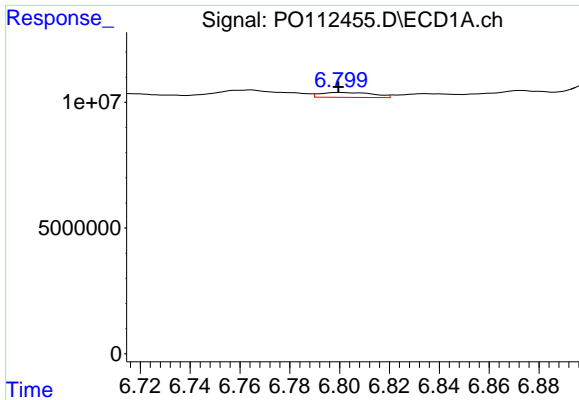
#32 AR-1260-2

R.T.: 6.414 min  
 Delta R.T.: -0.020 min  
 Response: 9300858  
 Conc: 13.52 ng/ml



#32 AR-1260-2

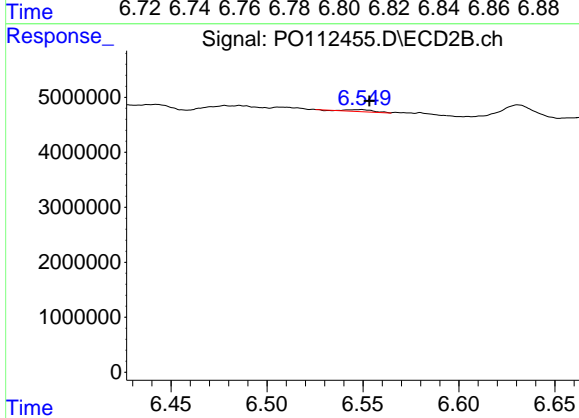
R.T.: 6.416 min  
 Delta R.T.: 0.014 min  
 Response: 15795  
 Conc: 0.05 ng/ml



#33 AR-1260-3

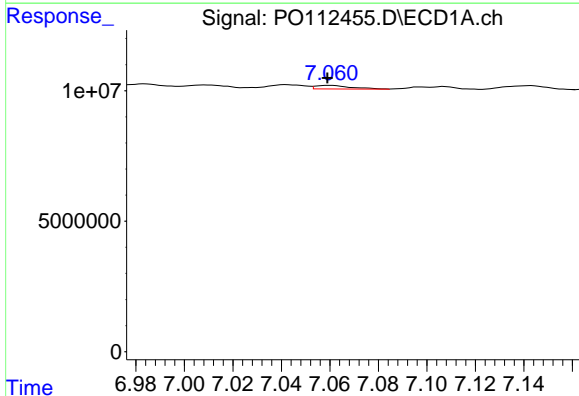
R.T.: 6.800 min  
 Delta R.T.: 0.000 min  
 Response: 2882891  
 Conc: 4.90 ng/ml

Instrument :  
 ECD\_O  
 ClientSampleId :  
 TR-04-072225



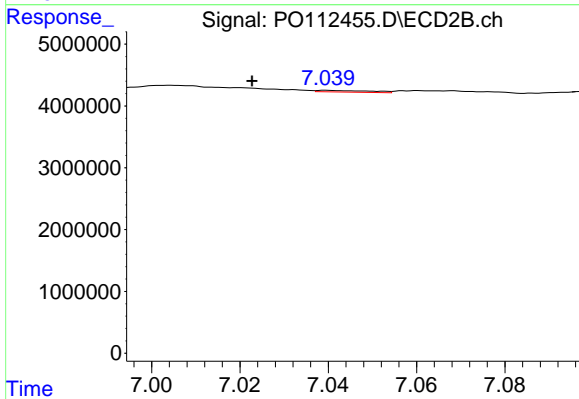
#33 AR-1260-3

R.T.: 6.550 min  
 Delta R.T.: -0.004 min  
 Response: 361962  
 Conc: 1.41 ng/ml



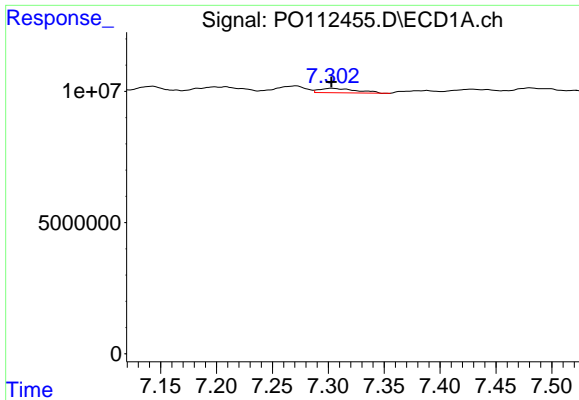
#34 AR-1260-4

R.T.: 7.060 min  
 Delta R.T.: 0.000 min  
 Response: 1398255  
 Conc: 3.10 ng/ml



#34 AR-1260-4

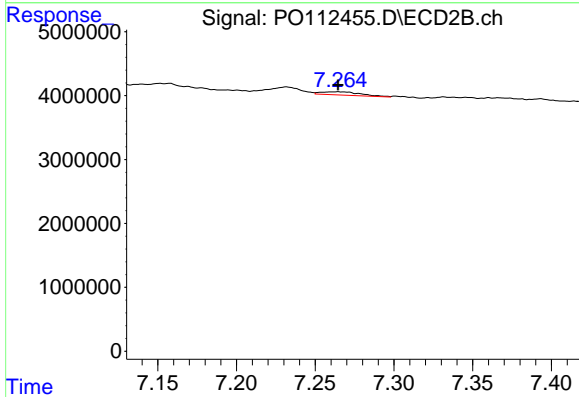
R.T.: 7.040 min  
 Delta R.T.: 0.017 min  
 Response: 218466  
 Conc: 1.14 ng/ml



#35 AR-1260-5

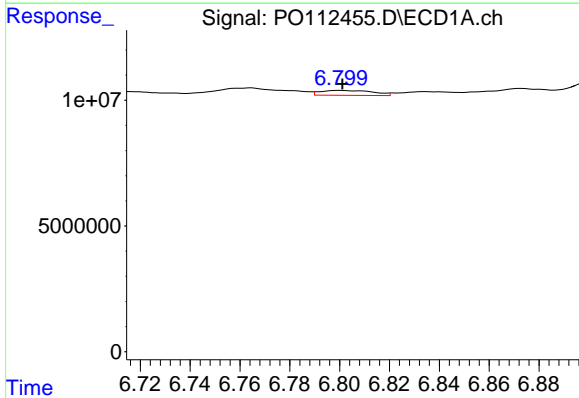
R.T.: 7.303 min  
 Delta R.T.: 0.000 min  
 Response: 3848273  
 Conc: 3.11 ng/ml

Instrument :  
 ECD\_O  
 ClientSampleId :  
 TR-04-072225



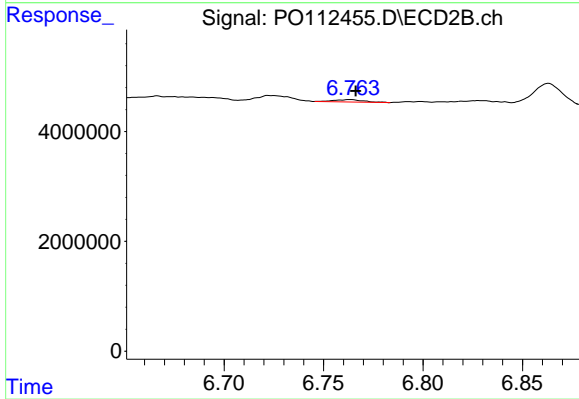
#35 AR-1260-5

R.T.: 7.265 min  
 Delta R.T.: 0.000 min  
 Response: 883494  
 Conc: 2.14 ng/ml



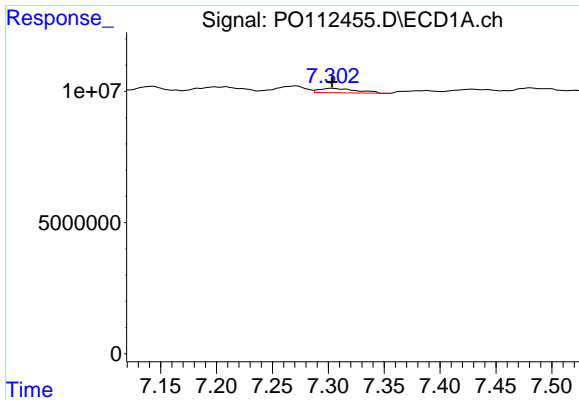
#36 AR-1262-1

R.T.: 6.800 min  
 Delta R.T.: 0.000 min  
 Response: 2882891  
 Conc: 3.10 ng/ml



#36 AR-1262-1

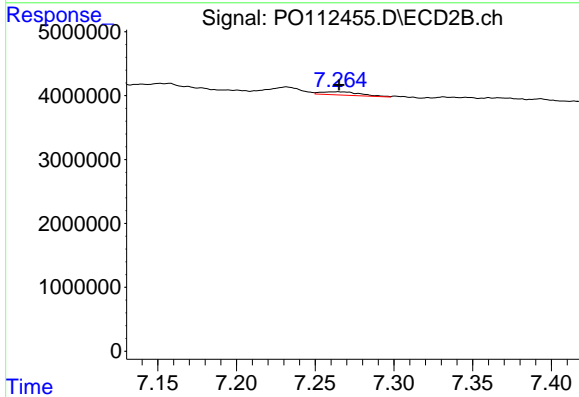
R.T.: 6.764 min  
 Delta R.T.: -0.003 min  
 Response: 471327  
 Conc: 1.14 ng/ml



#37 AR-1262-2

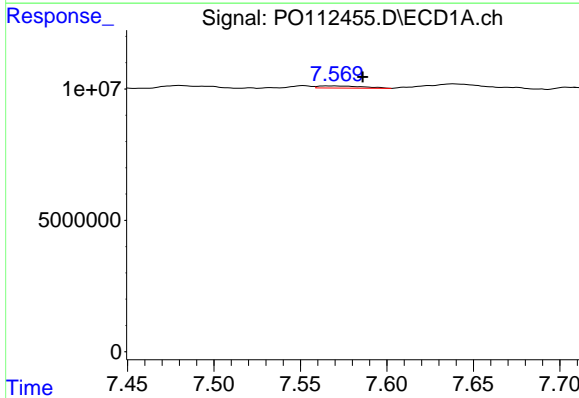
R.T.: 7.303 min  
 Delta R.T.: 0.000 min  
 Response: 3848273  
 Conc: 2.59 ng/ml

Instrument :  
 ECD\_O  
 ClientSampleId :  
 TR-04-072225



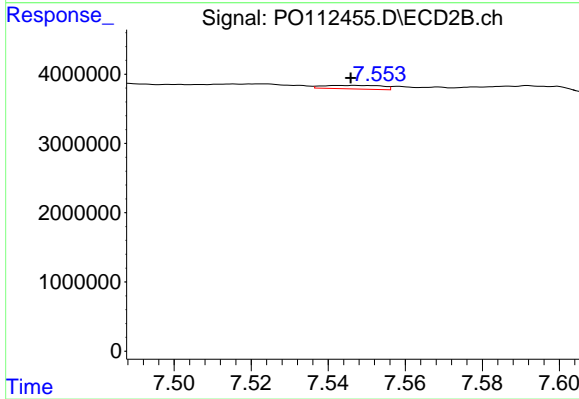
#37 AR-1262-2

R.T.: 7.265 min  
 Delta R.T.: 0.000 min  
 Response: 883494  
 Conc: 1.71 ng/ml



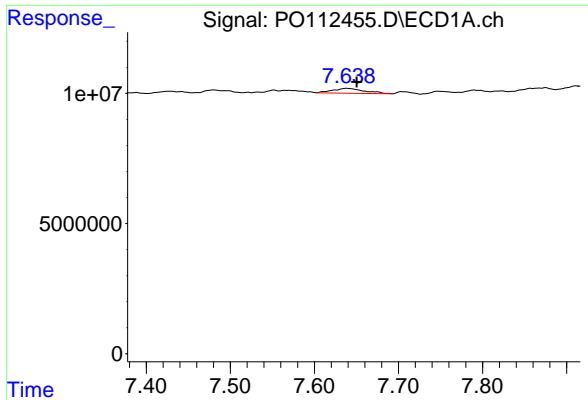
#38 AR-1262-3

R.T.: 7.568 min  
 Delta R.T.: -0.018 min  
 Response: 1452197  
 Conc: 2.46 ng/ml



#38 AR-1262-3

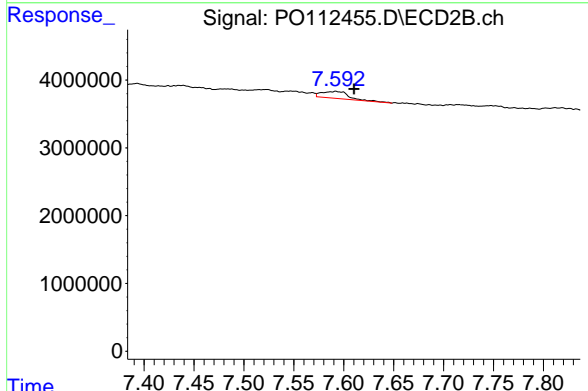
R.T.: 7.543 min  
 Delta R.T.: -0.003 min  
 Response: 552318  
 Conc: 2.96 ng/ml



#39 AR-1262-4

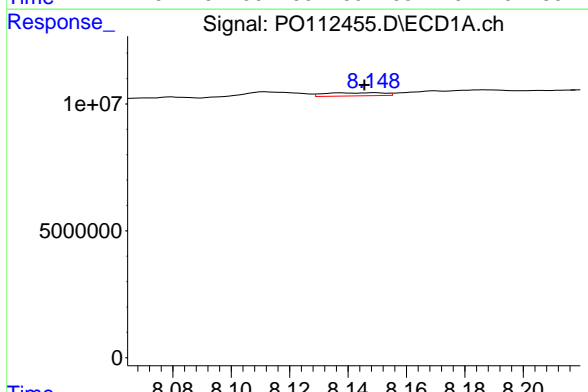
R.T.: 7.638 min  
 Delta R.T.: -0.012 min  
 Response: 4858181  
 Conc: 4.89 ng/ml

Instrument :  
 ECD\_O  
 ClientSampleId :  
 TR-04-072225



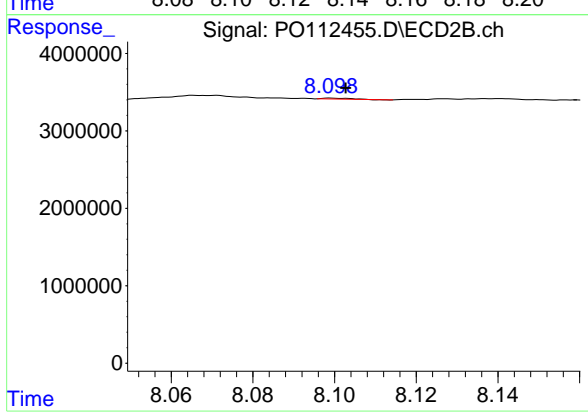
#39 AR-1262-4

R.T.: 7.592 min  
 Delta R.T.: -0.019 min  
 Response: 1926766  
 Conc: 6.69 ng/ml



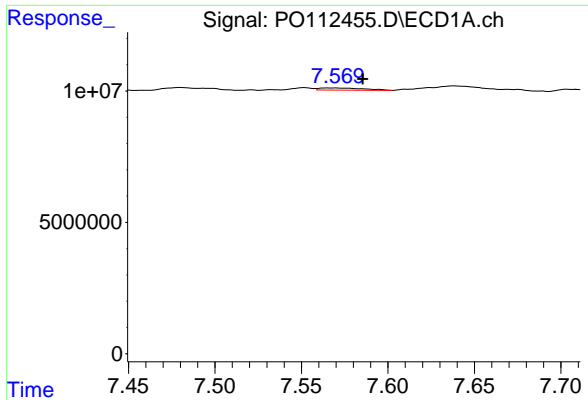
#40 AR-1262-5

R.T.: 8.149 min  
 Delta R.T.: 0.003 min  
 Response: 1732131  
 Conc: 3.99 ng/ml



#40 AR-1262-5

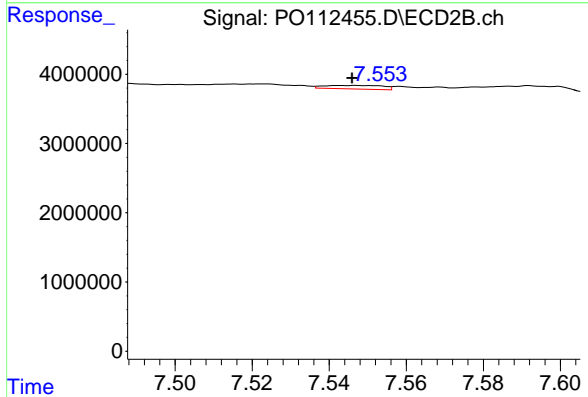
R.T.: 8.099 min  
 Delta R.T.: -0.004 min  
 Response: 62236  
 Conc: 0.63 ng/ml



#41 AR-1268-1

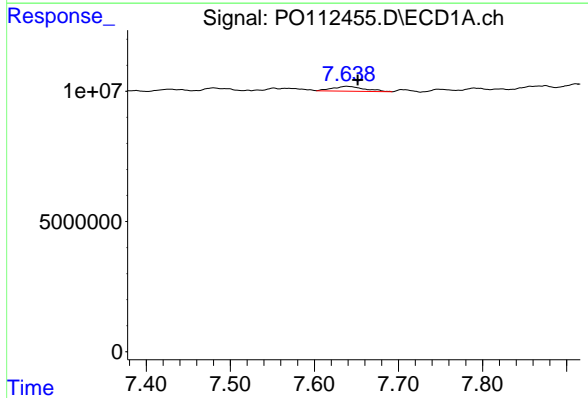
R.T.: 7.568 min  
 Delta R.T.: -0.018 min  
 Response: 1452197  
 Conc: 0.83 ng/ml

Instrument :  
 ECD\_O  
 ClientSampleId :  
 TR-04-072225



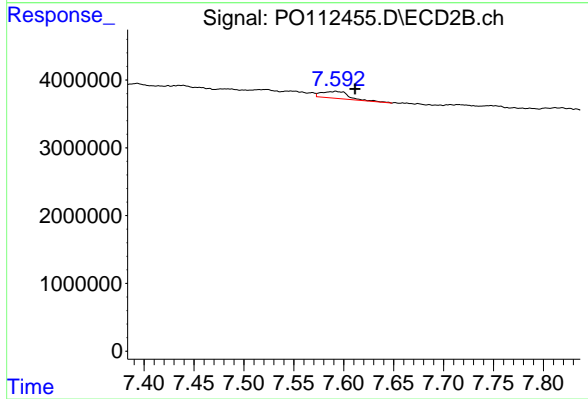
#41 AR-1268-1

R.T.: 7.543 min  
 Delta R.T.: -0.003 min  
 Response: 552318  
 Conc: 1.07 ng/ml



#42 AR-1268-2

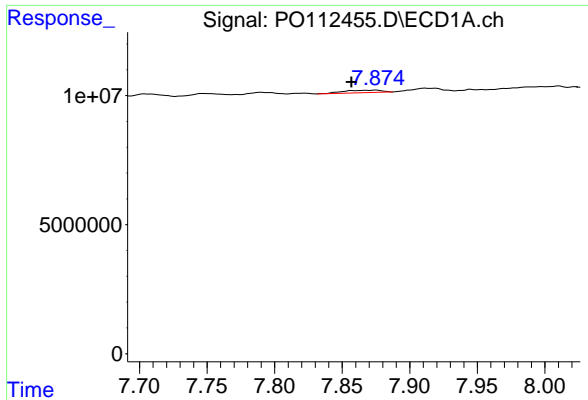
R.T.: 7.638 min  
 Delta R.T.: -0.013 min  
 Response: 4858181  
 Conc: 3.30 ng/ml



#42 AR-1268-2

R.T.: 7.592 min  
 Delta R.T.: -0.020 min  
 Response: 1926766  
 Conc: 4.53 ng/ml

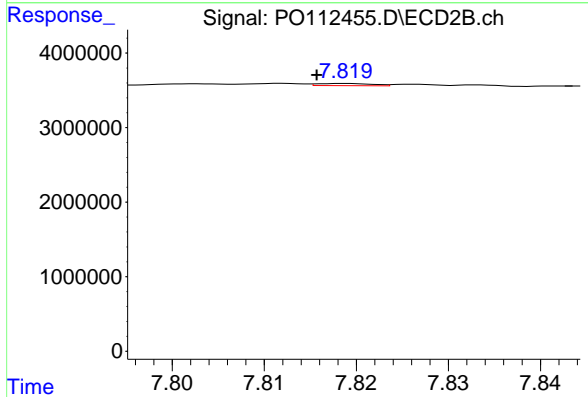




#43 AR-1268-3

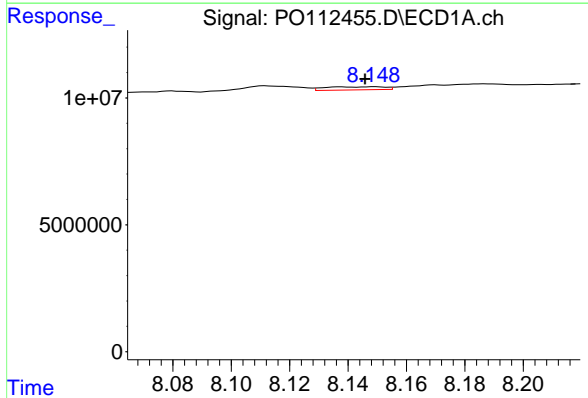
R.T.: 7.875 min  
 Delta R.T.: 0.018 min  
 Response: 1899522  
 Conc: 1.52 ng/ml

Instrument :  
 ECD\_O  
 ClientSampleId :  
 TR-04-072225



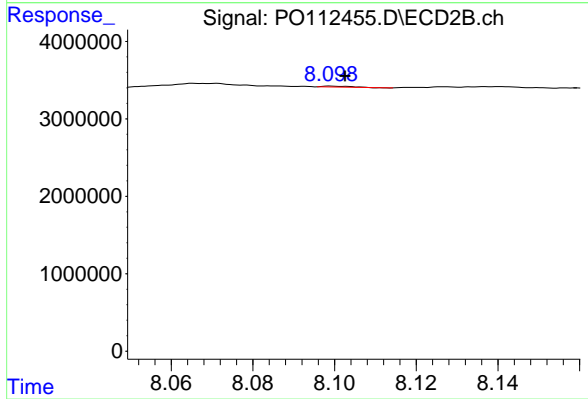
#43 AR-1268-3

R.T.: 7.819 min  
 Delta R.T.: 0.003 min  
 Response: 117932  
 Conc: 0.37 ng/ml



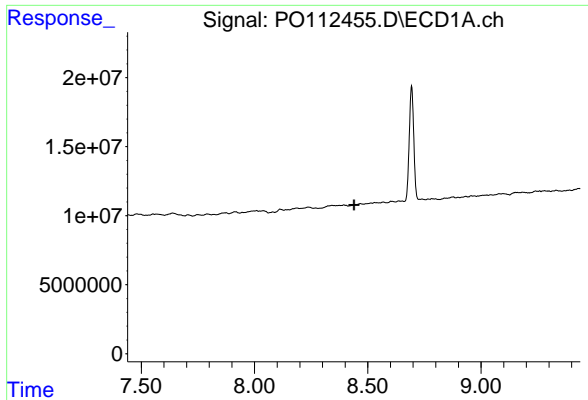
#44 AR-1268-4

R.T.: 8.149 min  
 Delta R.T.: 0.003 min  
 Response: 1732131  
 Conc: 3.59 ng/ml



#44 AR-1268-4

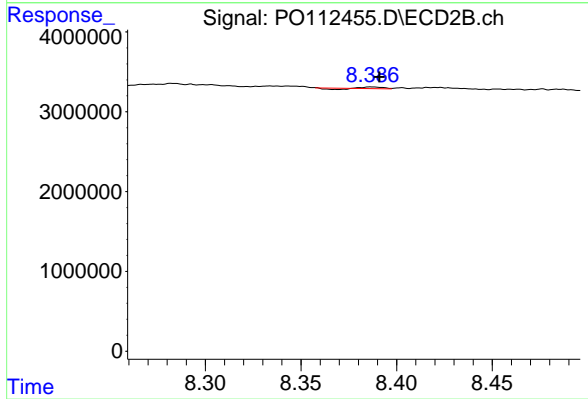
R.T.: 8.099 min  
 Delta R.T.: -0.004 min  
 Response: 62236  
 Conc: 0.56 ng/ml



#45 AR-1268-5

R.T.: 8.467 min  
 Delta R.T.: 0.028 min  
 Response: -94380  
 Conc: N.D.

Instrument :  
 ECD\_O  
 ClientSampleId :  
 TR-04-072225



#45 AR-1268-5

R.T.: 8.386 min  
 Delta R.T.: -0.005 min  
 Response: 69714  
 Conc: 0.10 ng/ml