

Data Path : Z:\pestpcbsrv\HPCHEM1\ECD_0\Data\P0072425\
 Data File : PO112456.D
 Signal(s) : Signal #1: ECD1A.ch Signal #2: ECD2B.ch
 Acq On : 24 Jul 2025 11:11
 Operator : YP/AJ
 Sample : Q2674-01MS
 Misc :
 ALS Vial : 9 Sample Multiplier: 1

Instrument :
 ECD_0
 ClientSampleId :
 TR-04-072225MS

Integration File signal 1: autoint1.e
 Integration File signal 2: autoint2.e
 Quant Time: Jul 24 23:36:05 2025
 Quant Method : Z:\pestpcbsrv\HPCHEM1\ECD_0\methods\P0072325.M
 Quant Title : GC EXTRACTABLES
 QLast Update : Thu Jul 24 04:54:06 2025
 Response via : Initial Calibration
 Integrator: ChemStation

Volume Inj. : 2 µl
 Signal #1 Phase : ZB-MR1 Signal #2 Phase: ZB-MR2
 Signal #1 Info : 30Mx0.32mmx 0.50µ Signal #2 Info : 30M x 0.32mm x 0.25µm

Compound	RT#1	RT#2	Resp#1	Resp#2	ng/ml	ng/ml
System Monitoring Compounds						
1) SA Tetrachlo...	3.671	3.663	142.3E6	91112873	17.497	18.336
2) SA Decachlor...	8.694	8.640	112.7E6	32737182	15.414	18.526
Target Compounds						
3) L1 AR-1016-1	4.756	4.737	113.5E6	84010636	422.872	480.041
4) L1 AR-1016-2	4.775	4.755	176.9E6	125.1E6	435.593	480.164
5) L1 AR-1016-3	4.831	4.930	109.2E6	65260592	417.313	479.976
6) L1 AR-1016-4	4.951	4.974	93617622	55274039	441.923	497.584
7) L1 AR-1016-5	5.208	5.185	91404940	64285225	416.479	448.596
8) L2 AR-1221-1	3.877	3.869	10073182	9364748	104.213	139.220 #
9) L2 AR-1221-2	3.968	3.958	9147927	14803972	127.299	291.830 #
10) L2 AR-1221-3	4.043	4.031	65327962	47423839	274.821	299.149
11) L3 AR-1232-1	4.043	4.031	65327962	47423839	349.387	374.744
12) L3 AR-1232-2	4.535	4.755	94162772	125.1E6	874.918	953.686
13) L3 AR-1232-3	4.775	4.930	176.9E6	65260592	855.428	971.186
14) L3 AR-1232-4	4.951	5.015	93617622	62848677	893.807	1050.470
15) L3 AR-1232-5	4.994	5.185	77961889	64285225	1148.510	985.924
16) L4 AR-1242-1	4.756	4.737	113.5E6	84010636	458.353	530.390
17) L4 AR-1242-2	4.775	4.755	176.9E6	125.1E6	478.380	535.295
18) L4 AR-1242-3	4.831	4.930	109.2E6	65260592	461.426	538.502
19) L4 AR-1242-4	4.951	5.015	93617622	62848677	481.873	512.050
20) L4 AR-1242-5	5.603	5.535	13365092	53383314	62.478	331.633 #
21) L5 AR-1248-1	4.756	4.737	113.5E6	84010636	606.192	691.393
22) L5 AR-1248-2	4.994	4.974	77961889	55274039	305.598	326.525
23) L5 AR-1248-3	5.208	5.015	91404940	62848677	265.943	353.784 #
24) L5 AR-1248-4	5.562	5.185	74511979	64285225	146.655	308.538 #
25) L5 AR-1248-5	5.603	5.575	13365092	9691921	38.231	45.128
26) L6 AR-1254-1	5.562	5.535	74511979	53383314	135.733	162.446
27) L6 AR-1254-2	5.710	5.683	81402402	54580118	167.523	188.538
28) L6 AR-1254-3	6.131	6.099	137.5E6	86678150	184.699	202.774
29) L6 AR-1254-4	6.343	6.311	15768253	9349573	28.685	34.252
30) L6 AR-1254-5	6.761	6.726	253.7E6	141.6E6	358.380	424.009
31) L7 AR-1260-1	6.245	6.213	170.9E6	111.1E6	389.018	446.945
32) L7 AR-1260-2	6.435	6.401	261.9E6	144.7E6	380.798	439.200
33) L7 AR-1260-3	6.800	6.553	194.0E6	114.9E6	329.971	447.163 #
34) L7 AR-1260-4	7.059	7.023	143.7E6	73831749	318.617	385.926
35) L7 AR-1260-5	7.303	7.265	406.8E6	167.0E6	328.283	405.263
36) L8 AR-1262-1	6.800	6.765	194.0E6	103.5E6	208.812	249.521
37) L8 AR-1262-2	7.303	7.265	406.8E6	167.0E6	273.560	324.019
38) L8 AR-1262-3	7.586	7.546	74303834	28953553	125.885	155.226
39) L8 AR-1262-4	7.649	7.608	253.4E6	91280550	254.916	316.832
40) L8 AR-1262-5	8.146	8.103	79326104	23007121	182.753	231.220 #
41) L9 AR-1268-1	7.586	7.546	74303834	28953553	42.432	55.910 #

Data Path : Z:\pestpcbsrv\HPCHEM1\ECD_0\Data\P0072425\
 Data File : P0112456.D
 Signal(s) : Signal #1: ECD1A.ch Signal #2: ECD2B.ch
 Acq On : 24 Jul 2025 11:11
 Operator : YP/AJ
 Sample : Q2674-01MS
 Misc :
 ALS Vial : 9 Sample Multiplier: 1

Instrument :
 ECD_0
 ClientSampleId :
 TR-04-072225MS

Integration File signal 1: autoint1.e
 Integration File signal 2: autoint2.e
 Quant Time: Jul 24 23:36:05 2025
 Quant Method : Z:\pestpcbsrv\HPCHEM1\ECD_0\methods\P0072325.M
 Quant Title : GC EXTRACTABLES
 QLast Update : Thu Jul 24 04:54:06 2025
 Response via : Initial Calibration
 Integrator: ChemStation

Volume Inj. : 2 µl
 Signal #1 Phase : ZB-MR1 Signal #2 Phase: ZB-MR2
 Signal #1 Info : 30Mx0.32mmx 0.50µ Signal #2 Info : 30M x 0.32mm x 0.25µm

	Compound	RT#1	RT#2	Resp#1	Resp#2	ng/ml	ng/ml
42)	L9 AR-1268-2	7.649	7.608	253.4E6	91280550	172.046	214.745
43)	L9 AR-1268-3	7.858	7.815	6100421	1942913	4.872	6.048
44)	L9 AR-1268-4	8.146	8.103	79326104	23007121	164.623	206.721 #
45)	L9 AR-1268-5	8.439	8.390	24848110	7605195	7.402	10.393 #

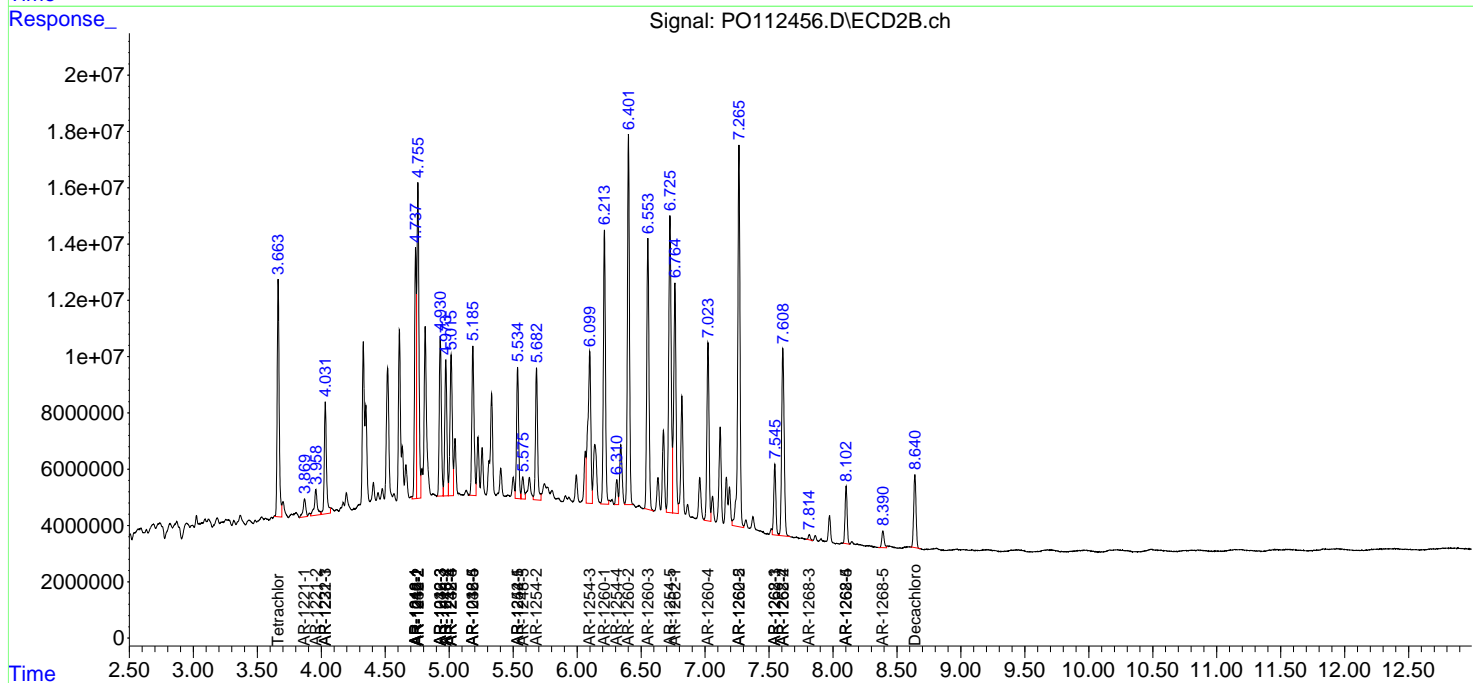
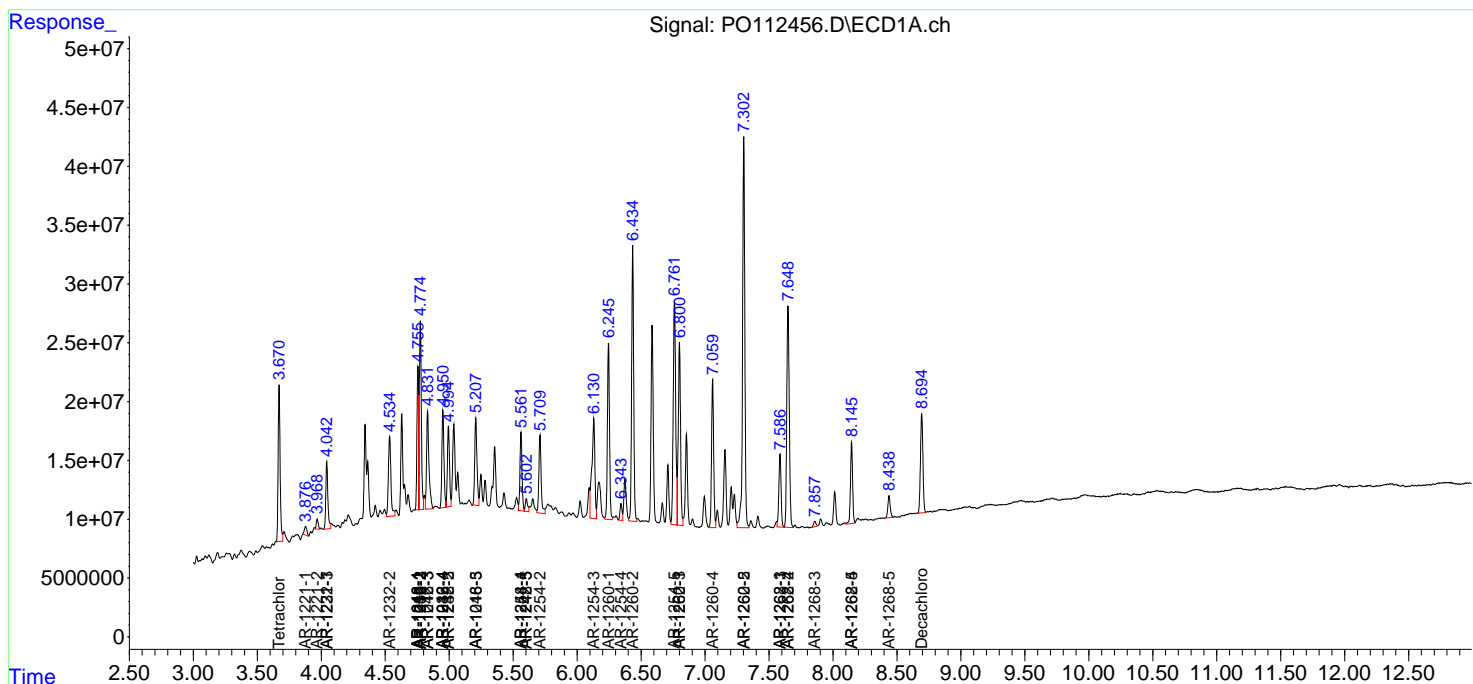
(f)=RT Delta > 1/2 Window (#)=Amounts differ by > 25% (m)=manual int.

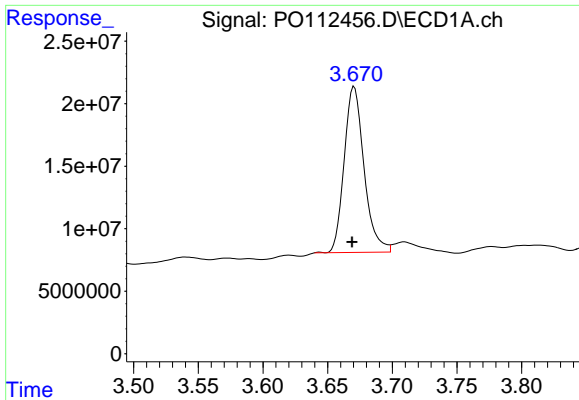
Data Path : Z:\pestpcbsrv\HPCHEM1\ECD_O\Data\PO072425\
 Data File : PO112456.D
 Signal(s) : Signal #1: ECD1A.ch Signal #2: ECD2B.ch
 Acq On : 24 Jul 2025 11:11
 Operator : YP/AJ
 Sample : Q2674-01MS
 Misc :
 ALS Vial : 9 Sample Multiplier: 1

Instrument :
 ECD_O
 ClientSampleId :
 TR-04-072225MS

Integration File signal 1: autoint1.e
 Integration File signal 2: autoint2.e
 Quant Time: Jul 24 23:36:05 2025
 Quant Method : Z:\pestpcbsrv\HPCHEM1\ECD_O\methods\PO072325.M
 Quant Title : GC EXTRACTABLES
 QLast Update : Thu Jul 24 04:54:06 2025
 Response via : Initial Calibration
 Integrator: ChemStation

Volume Inj. : 2 µl
 Signal #1 Phase : ZB-MR1 Signal #2 Phase: ZB-MR2
 Signal #1 Info : 30Mx0.32mmx 0.50µ Signal #2 Info : 30M x 0.32mm x 0.25µm

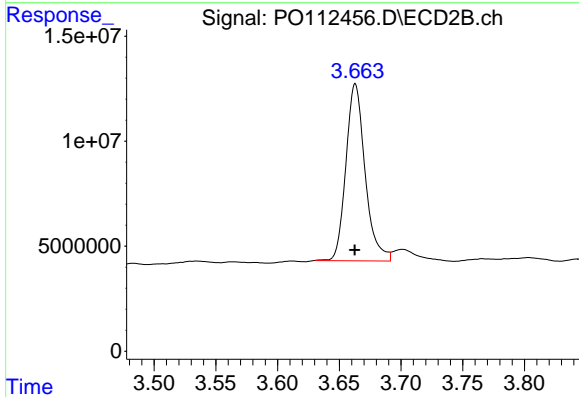




#1 Tetrachloro-m-xylene

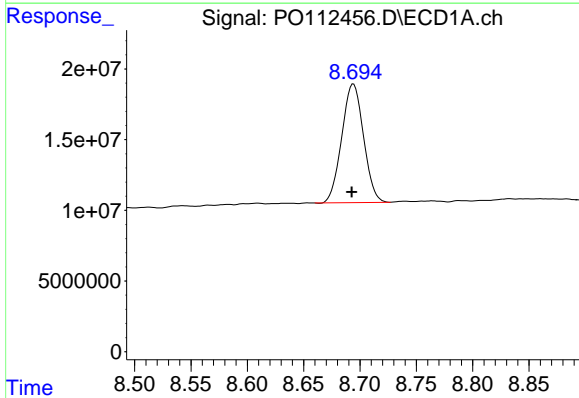
R.T.: 3.671 min
 Delta R.T.: 0.002 min
 Response: 142280465
 Conc: 17.50 ng/ml

Instrument :
 ECD_O
 ClientSampleId :
 TR-04-072225MS



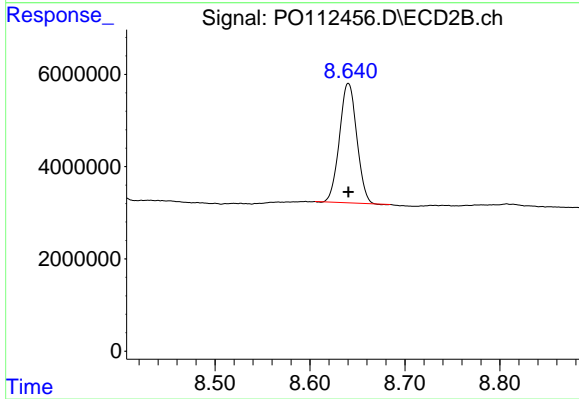
#1 Tetrachloro-m-xylene

R.T.: 3.663 min
 Delta R.T.: 0.000 min
 Response: 91112873
 Conc: 18.34 ng/ml



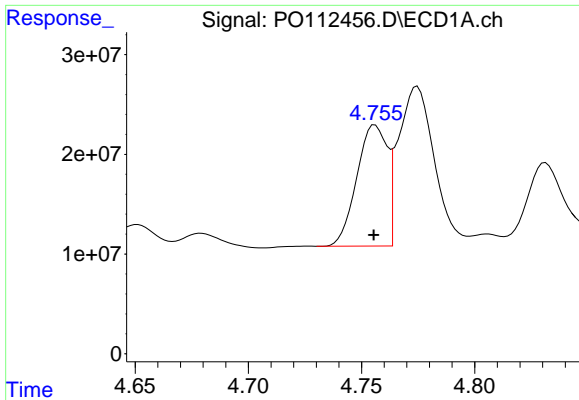
#2 Decachlorobiphenyl

R.T.: 8.694 min
 Delta R.T.: 0.001 min
 Response: 112701264
 Conc: 15.41 ng/ml



#2 Decachlorobiphenyl

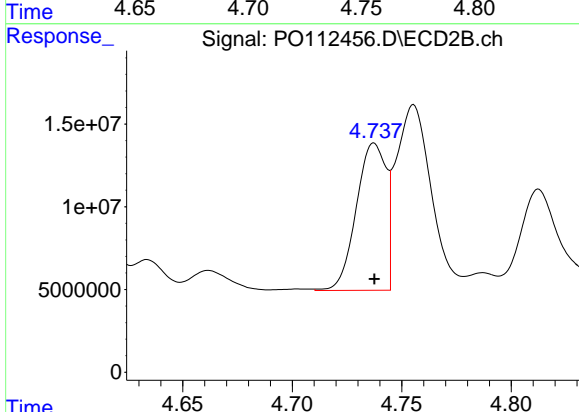
R.T.: 8.640 min
 Delta R.T.: 0.000 min
 Response: 32737182
 Conc: 18.53 ng/ml



#3 AR-1016-1

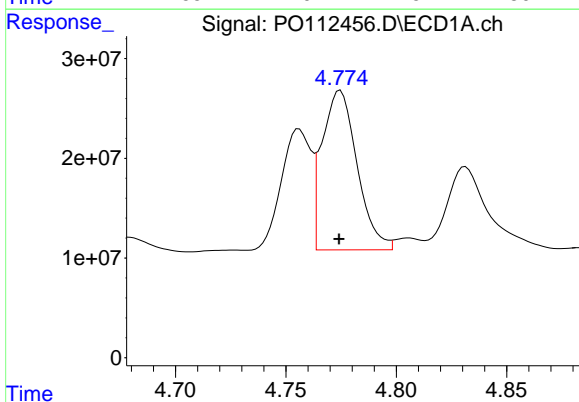
R.T.: 4.756 min
 Delta R.T.: 0.000 min
 Response: 113484450
 Conc: 422.87 ng/ml

Instrument :
 ECD_O
 ClientSampleId :
 TR-04-072225MS



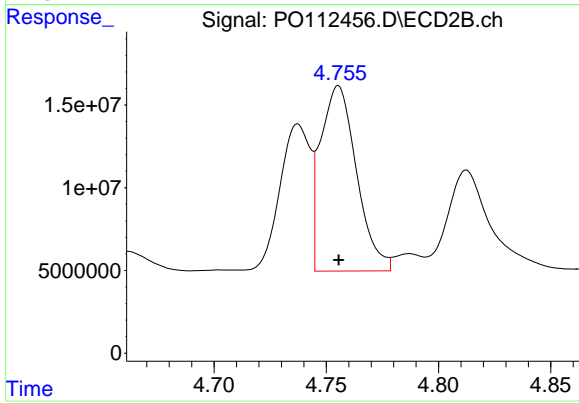
#3 AR-1016-1

R.T.: 4.737 min
 Delta R.T.: 0.000 min
 Response: 84010636
 Conc: 480.04 ng/ml



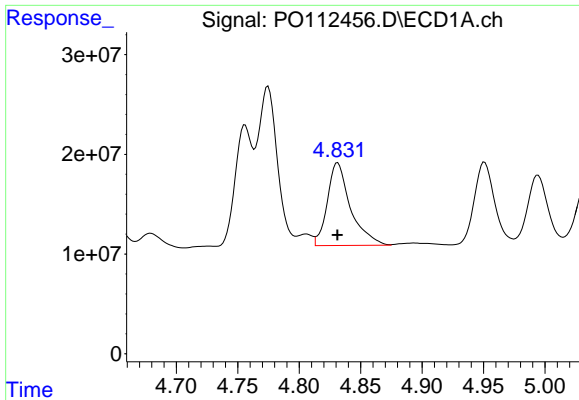
#4 AR-1016-2

R.T.: 4.775 min
 Delta R.T.: 0.000 min
 Response: 176901854
 Conc: 435.59 ng/ml



#4 AR-1016-2

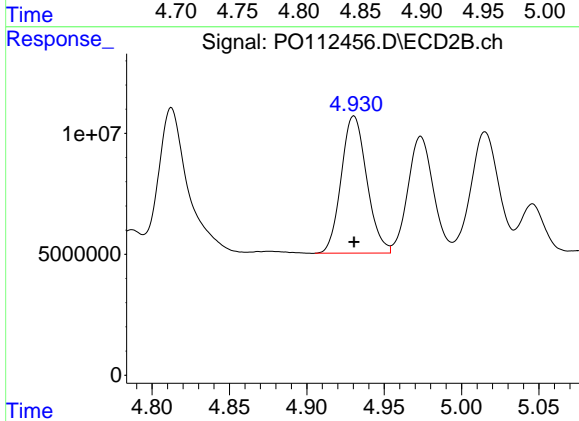
R.T.: 4.755 min
 Delta R.T.: 0.000 min
 Response: 125080440
 Conc: 480.16 ng/ml



#5 AR-1016-3

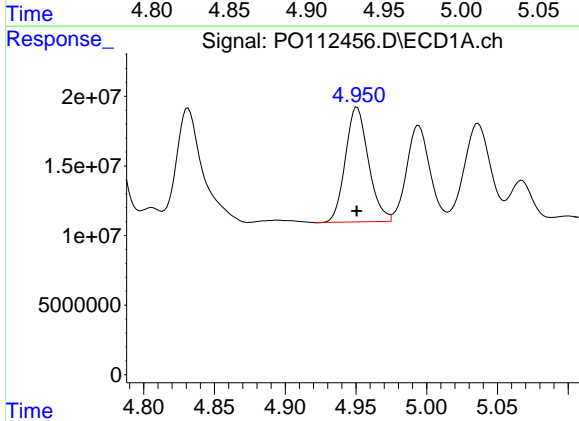
R.T.: 4.831 min
 Delta R.T.: 0.000 min
 Response: 109200037
 Conc: 417.31 ng/ml

Instrument :
 ECD_O
 ClientSampleId :
 TR-04-072225MS



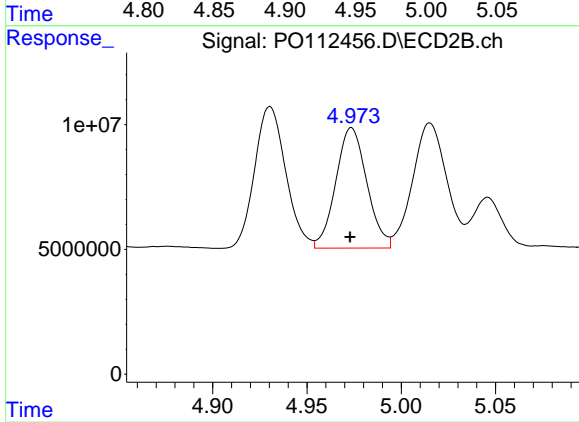
#5 AR-1016-3

R.T.: 4.930 min
 Delta R.T.: 0.000 min
 Response: 65260592
 Conc: 479.98 ng/ml



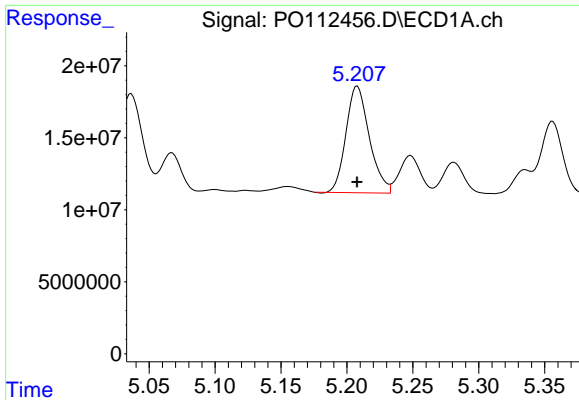
#6 AR-1016-4

R.T.: 4.951 min
 Delta R.T.: 0.000 min
 Response: 93617622
 Conc: 441.92 ng/ml



#6 AR-1016-4

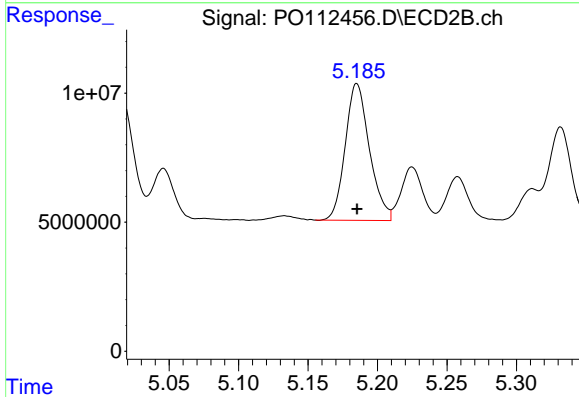
R.T.: 4.974 min
 Delta R.T.: 0.000 min
 Response: 55274039
 Conc: 497.58 ng/ml



#7 AR-1016-5

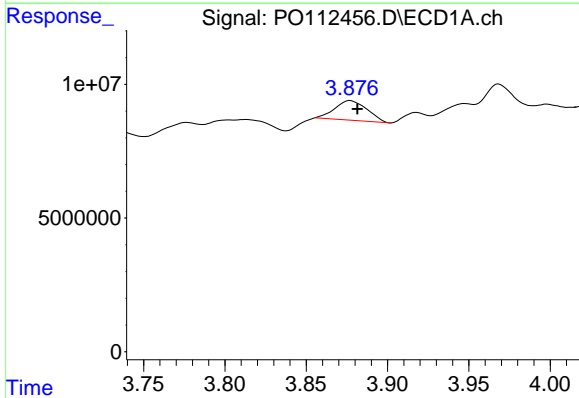
R.T.: 5.208 min
 Delta R.T.: 0.000 min
 Response: 91404940
 Conc: 416.48 ng/ml

Instrument :
 ECD_O
 ClientSampleId :
 TR-04-072225MS



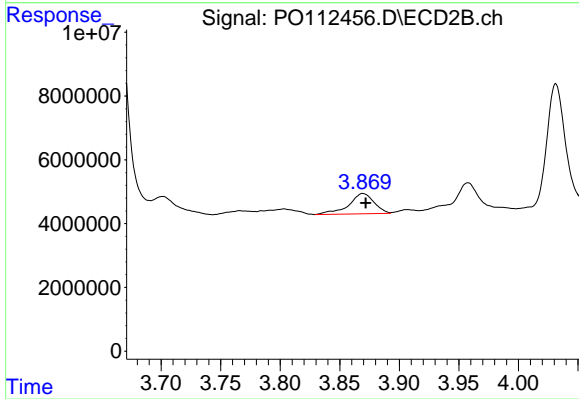
#7 AR-1016-5

R.T.: 5.185 min
 Delta R.T.: 0.000 min
 Response: 64285225
 Conc: 448.60 ng/ml



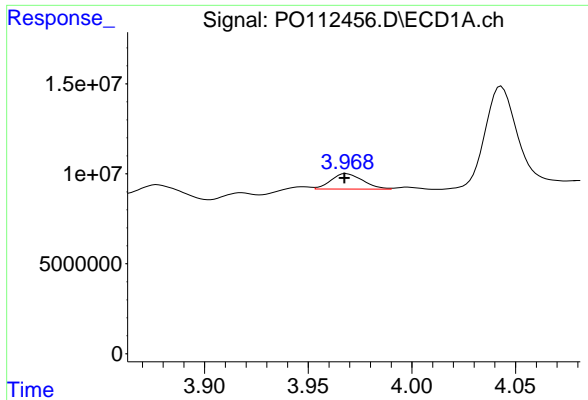
#8 AR-1221-1

R.T.: 3.877 min
 Delta R.T.: -0.004 min
 Response: 10073182
 Conc: 104.21 ng/ml



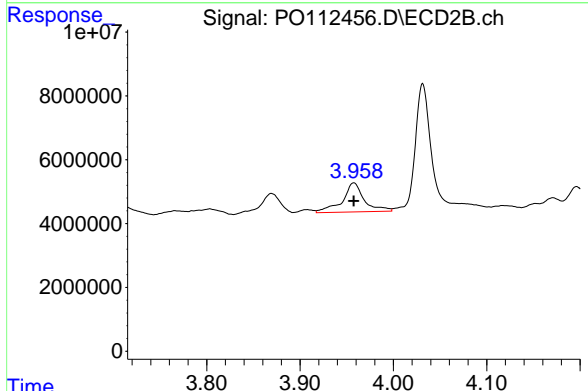
#8 AR-1221-1

R.T.: 3.869 min
 Delta R.T.: -0.003 min
 Response: 9364748
 Conc: 139.22 ng/ml

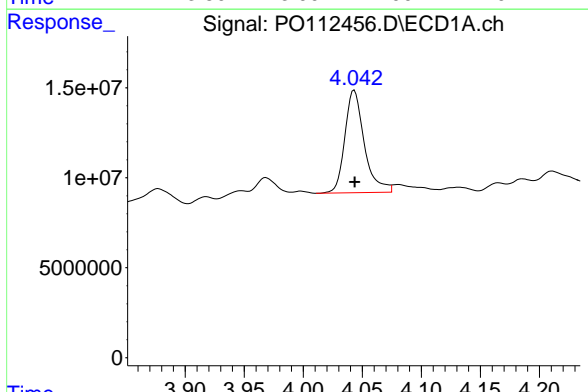


#9 AR-1221-2
 R.T.: 3.968 min
 Delta R.T.: 0.000 min
 Response: 9147927
 Conc: 127.30 ng/ml

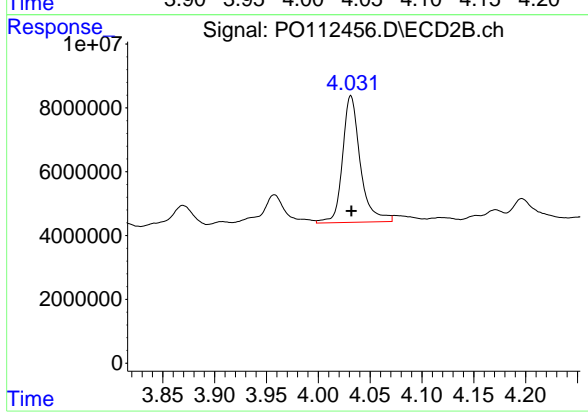
Instrument :
 ECD_O
 ClientSampleId :
 TR-04-072225MS



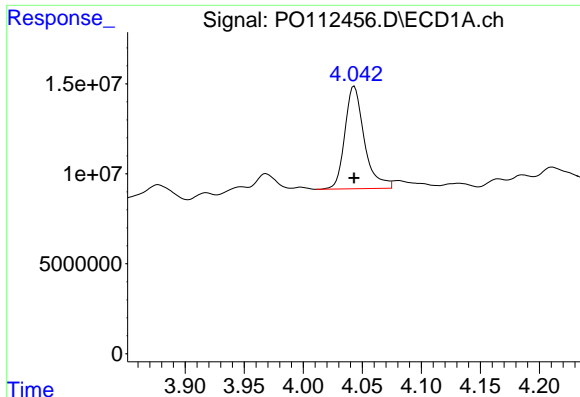
#9 AR-1221-2
 R.T.: 3.958 min
 Delta R.T.: 0.000 min
 Response: 14803972
 Conc: 291.83 ng/ml



#10 AR-1221-3
 R.T.: 4.043 min
 Delta R.T.: 0.000 min
 Response: 65327962
 Conc: 274.82 ng/ml



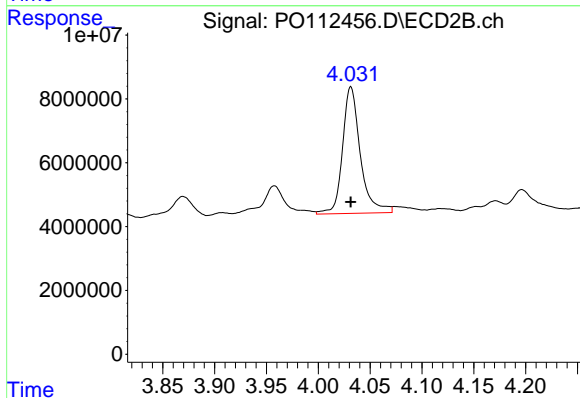
#10 AR-1221-3
 R.T.: 4.031 min
 Delta R.T.: 0.000 min
 Response: 47423839
 Conc: 299.15 ng/ml



#11 AR-1232-1

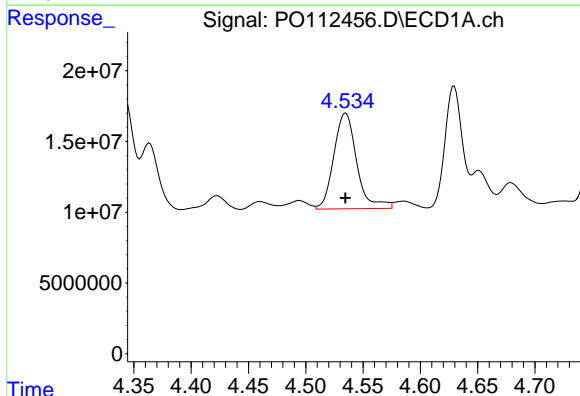
R.T.: 4.043 min
 Delta R.T.: 0.000 min
 Response: 65327962
 Conc: 349.39 ng/ml

Instrument :
 ECD_O
 ClientSampleId :
 TR-04-072225MS



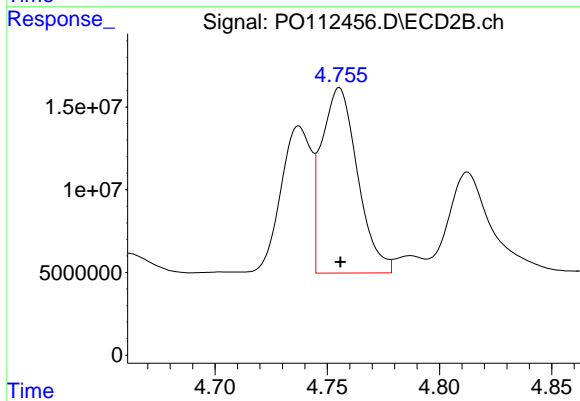
#11 AR-1232-1

R.T.: 4.031 min
 Delta R.T.: 0.000 min
 Response: 47423839
 Conc: 374.74 ng/ml



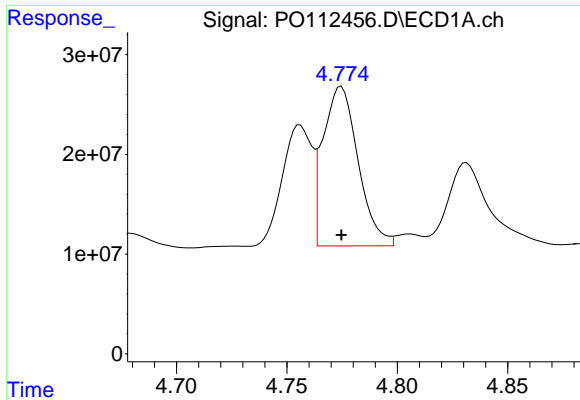
#12 AR-1232-2

R.T.: 4.535 min
 Delta R.T.: 0.000 min
 Response: 94162772
 Conc: 874.92 ng/ml



#12 AR-1232-2

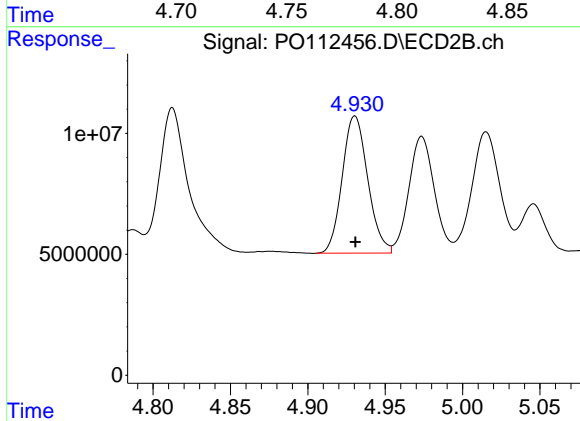
R.T.: 4.755 min
 Delta R.T.: 0.000 min
 Response: 125080440
 Conc: 953.69 ng/ml



#13 AR-1232-3

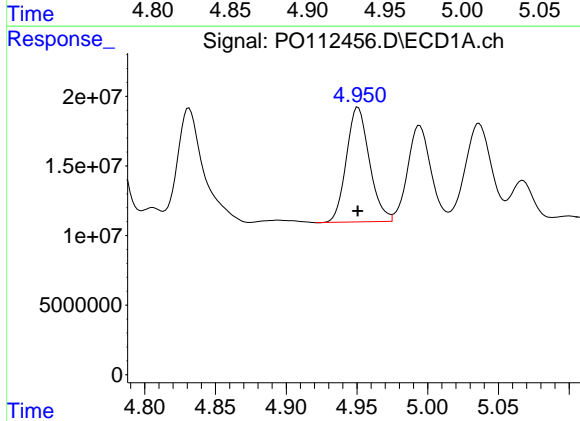
R.T.: 4.775 min
 Delta R.T.: 0.000 min
 Response: 176901854
 Conc: 855.43 ng/ml

Instrument :
 ECD_O
 ClientSampleId :
 TR-04-072225MS



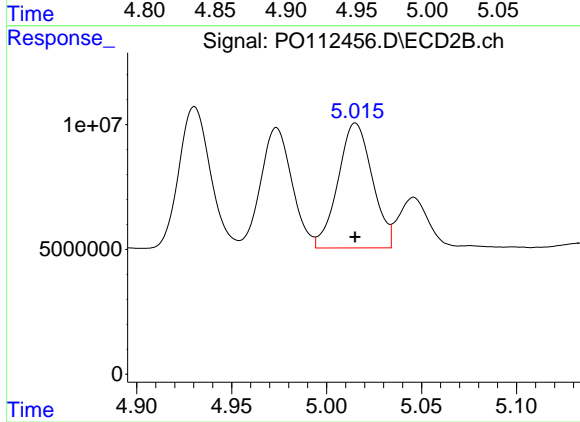
#13 AR-1232-3

R.T.: 4.930 min
 Delta R.T.: 0.000 min
 Response: 65260592
 Conc: 971.19 ng/ml



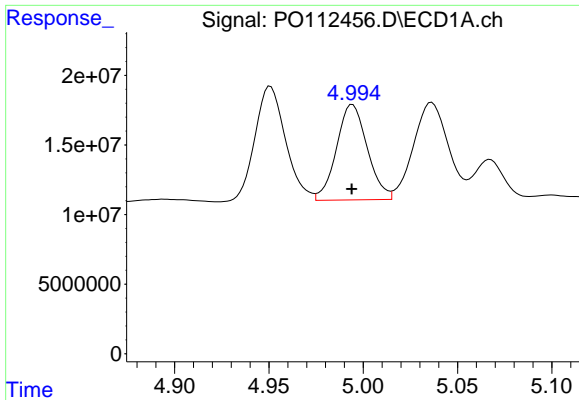
#14 AR-1232-4

R.T.: 4.951 min
 Delta R.T.: 0.000 min
 Response: 93617622
 Conc: 893.81 ng/ml



#14 AR-1232-4

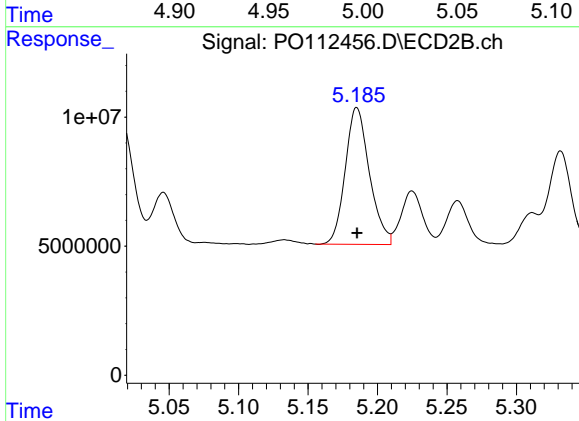
R.T.: 5.015 min
 Delta R.T.: 0.000 min
 Response: 62848677
 Conc: 1050.47 ng/ml



#15 AR-1232-5

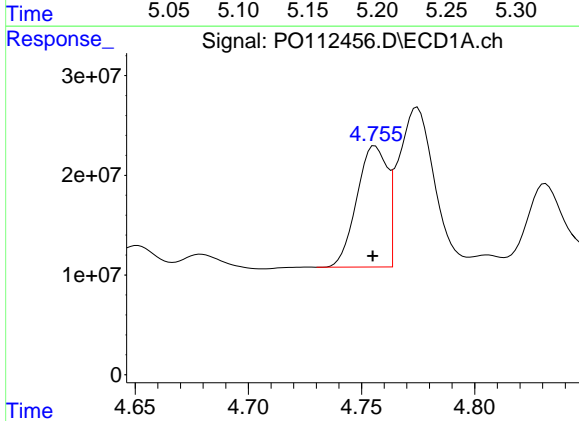
R.T.: 4.994 min
 Delta R.T.: 0.000 min
 Response: 77961889
 Conc: 1148.51 ng/ml

Instrument :
 ECD_O
 ClientSampleId :
 TR-04-072225MS



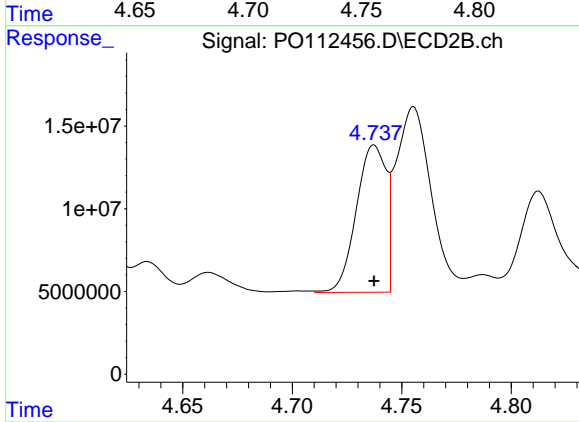
#15 AR-1232-5

R.T.: 5.185 min
 Delta R.T.: 0.000 min
 Response: 64285225
 Conc: 985.92 ng/ml



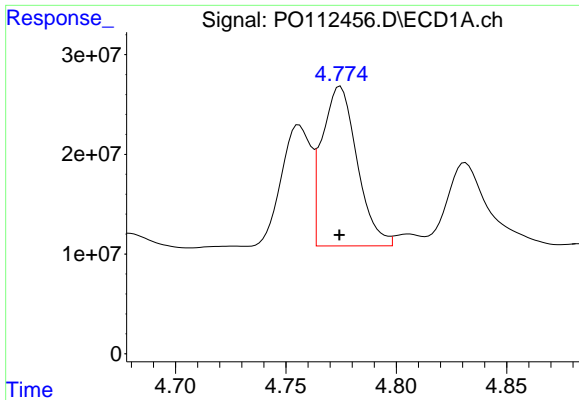
#16 AR-1242-1

R.T.: 4.756 min
 Delta R.T.: 0.000 min
 Response: 113484450
 Conc: 458.35 ng/ml



#16 AR-1242-1

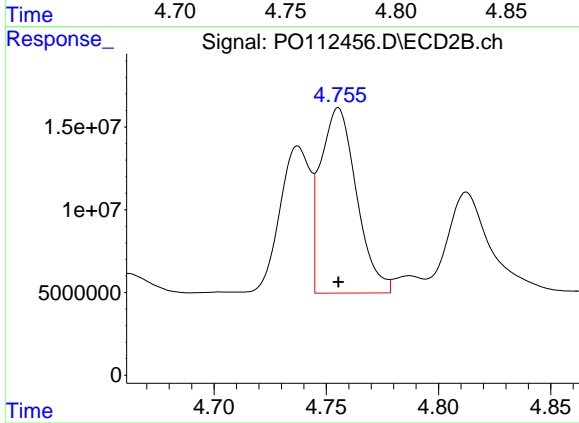
R.T.: 4.737 min
 Delta R.T.: 0.000 min
 Response: 84010636
 Conc: 530.39 ng/ml



#17 AR-1242-2

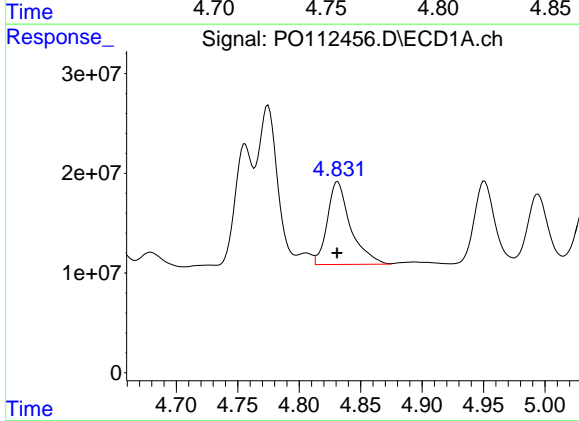
R.T.: 4.775 min
 Delta R.T.: 0.000 min
 Response: 176901854
 Conc: 478.38 ng/ml

Instrument :
 ECD_O
 ClientSampleId :
 TR-04-072225MS



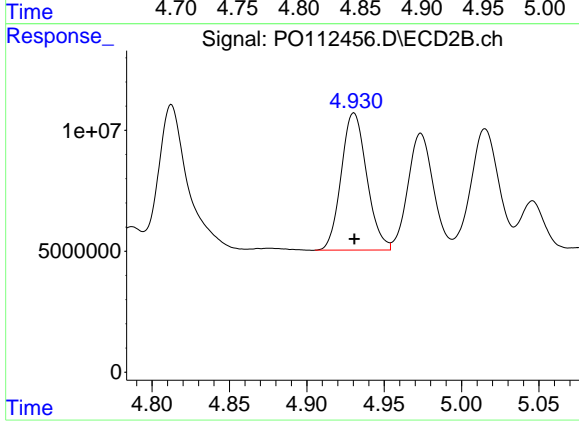
#17 AR-1242-2

R.T.: 4.755 min
 Delta R.T.: 0.000 min
 Response: 125080440
 Conc: 535.29 ng/ml



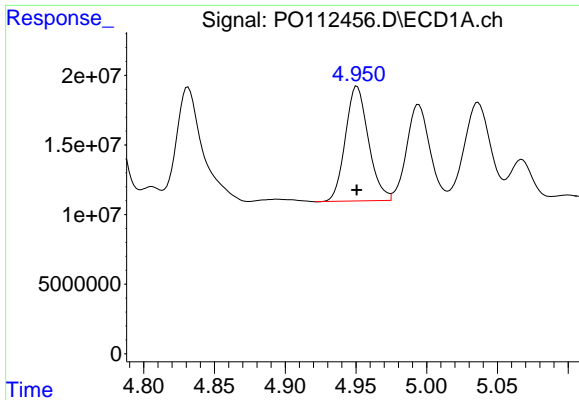
#18 AR-1242-3

R.T.: 4.831 min
 Delta R.T.: 0.000 min
 Response: 109200037
 Conc: 461.43 ng/ml



#18 AR-1242-3

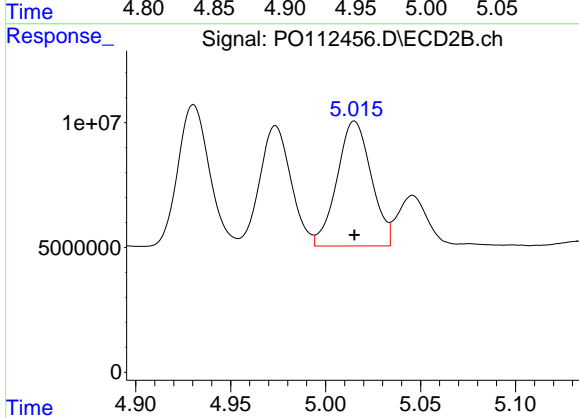
R.T.: 4.930 min
 Delta R.T.: 0.000 min
 Response: 65260592
 Conc: 538.50 ng/ml



#19 AR-1242-4

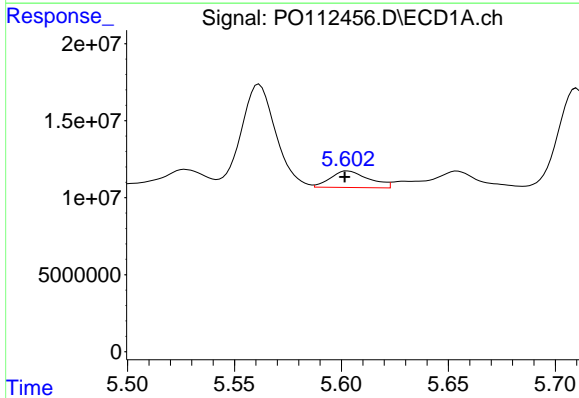
R.T.: 4.951 min
 Delta R.T.: 0.000 min
 Response: 93617622
 Conc: 481.87 ng/ml

Instrument :
 ECD_O
 ClientSampleId :
 TR-04-072225MS



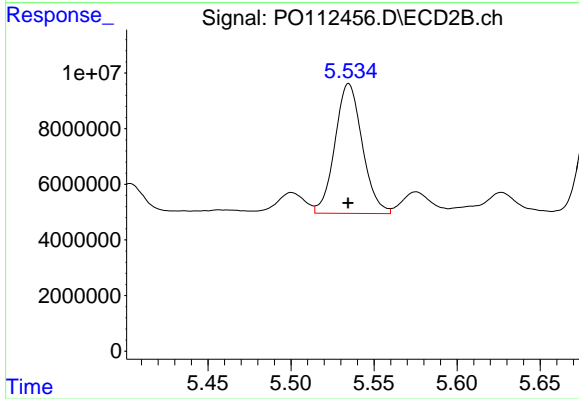
#19 AR-1242-4

R.T.: 5.015 min
 Delta R.T.: 0.000 min
 Response: 62848677
 Conc: 512.05 ng/ml



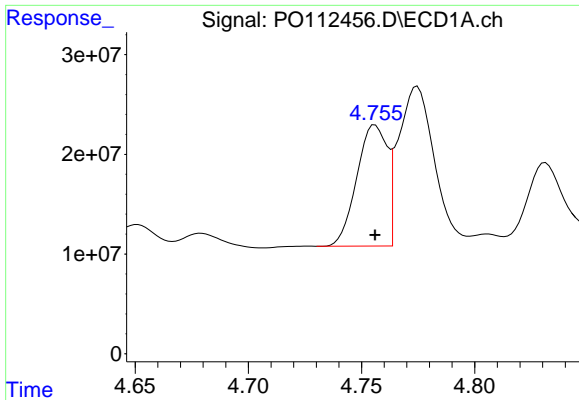
#20 AR-1242-5

R.T.: 5.603 min
 Delta R.T.: 0.001 min
 Response: 13365092
 Conc: 62.48 ng/ml



#20 AR-1242-5

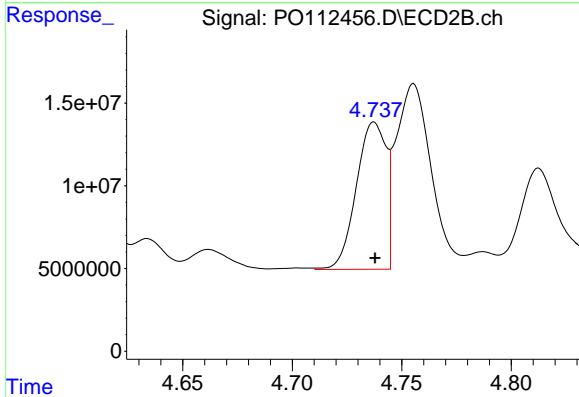
R.T.: 5.535 min
 Delta R.T.: 0.000 min
 Response: 53383314
 Conc: 331.63 ng/ml



#21 AR-1248-1

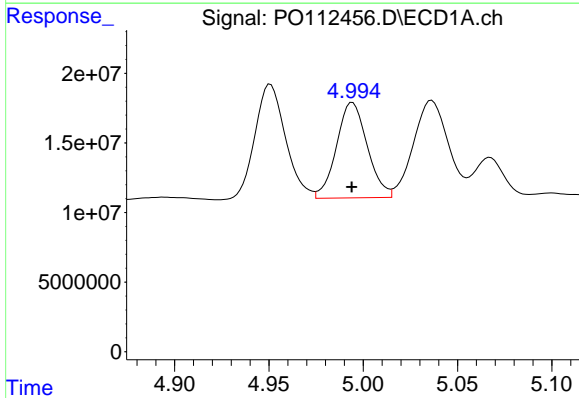
R.T.: 4.756 min
 Delta R.T.: 0.000 min
 Response: 113484450
 Conc: 606.19 ng/ml

Instrument :
 ECD_O
 ClientSampleId :
 TR-04-072225MS



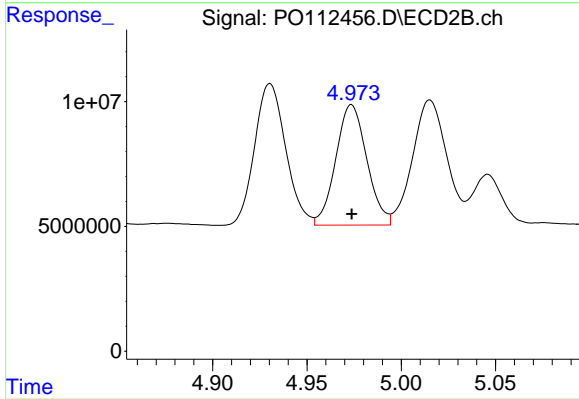
#21 AR-1248-1

R.T.: 4.737 min
 Delta R.T.: 0.000 min
 Response: 84010636
 Conc: 691.39 ng/ml



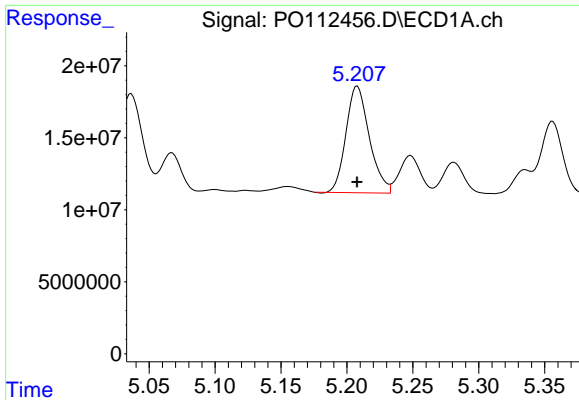
#22 AR-1248-2

R.T.: 4.994 min
 Delta R.T.: 0.000 min
 Response: 77961889
 Conc: 305.60 ng/ml



#22 AR-1248-2

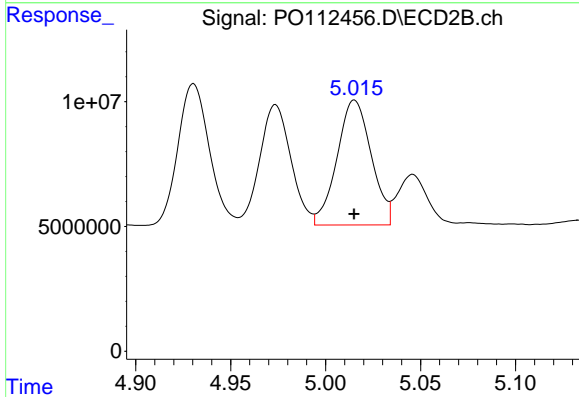
R.T.: 4.974 min
 Delta R.T.: 0.000 min
 Response: 55274039
 Conc: 326.52 ng/ml



#23 AR-1248-3

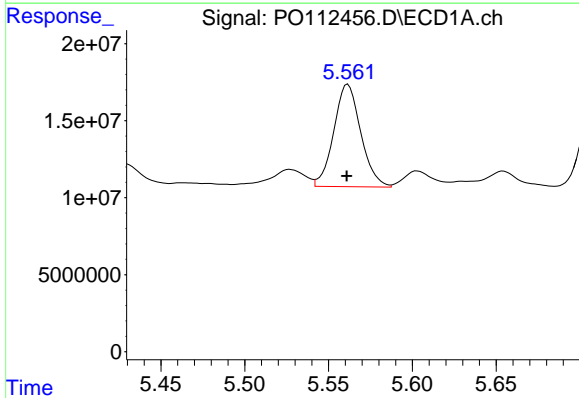
R.T.: 5.208 min
 Delta R.T.: 0.000 min
 Response: 91404940
 Conc: 265.94 ng/ml

Instrument :
 ECD_O
 ClientSampleId :
 TR-04-072225MS



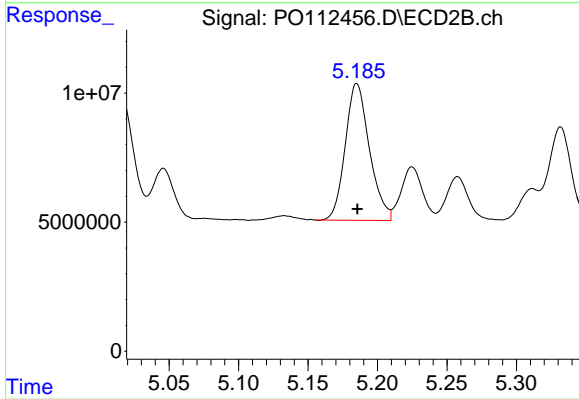
#23 AR-1248-3

R.T.: 5.015 min
 Delta R.T.: 0.000 min
 Response: 62848677
 Conc: 353.78 ng/ml



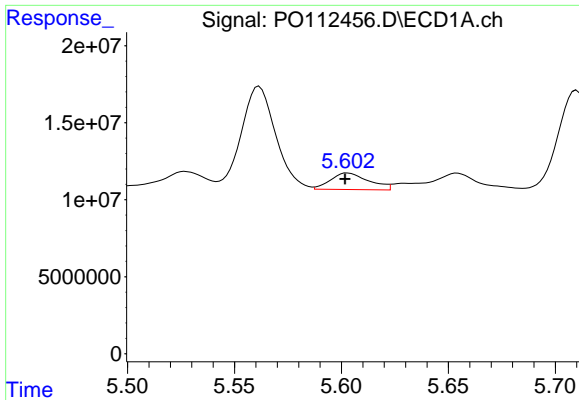
#24 AR-1248-4

R.T.: 5.562 min
 Delta R.T.: 0.000 min
 Response: 74511979
 Conc: 146.65 ng/ml



#24 AR-1248-4

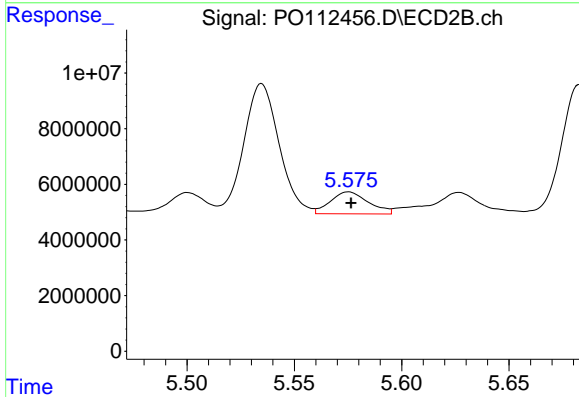
R.T.: 5.185 min
 Delta R.T.: 0.000 min
 Response: 64285225
 Conc: 308.54 ng/ml



#25 AR-1248-5

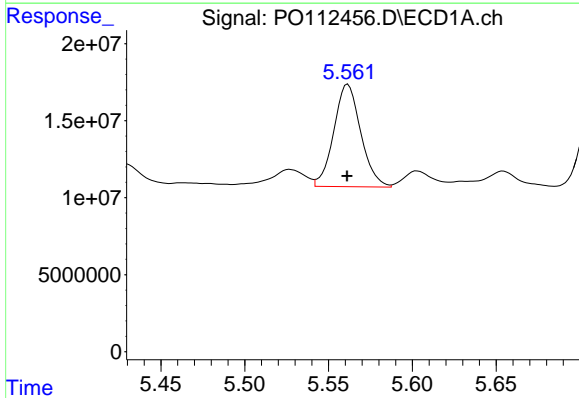
R.T.: 5.603 min
 Delta R.T.: 0.001 min
 Response: 13365092
 Conc: 38.23 ng/ml

Instrument :
 ECD_O
 ClientSampleId :
 TR-04-072225MS



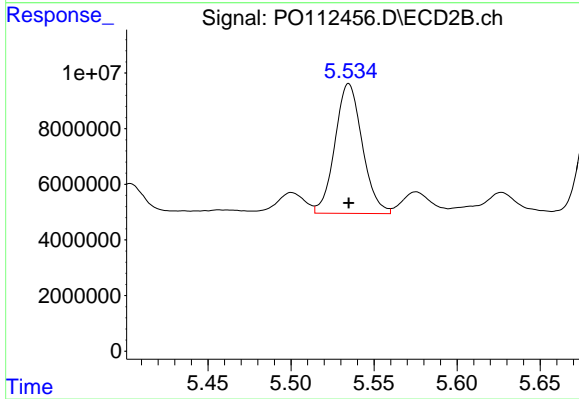
#25 AR-1248-5

R.T.: 5.575 min
 Delta R.T.: -0.001 min
 Response: 9691921
 Conc: 45.13 ng/ml



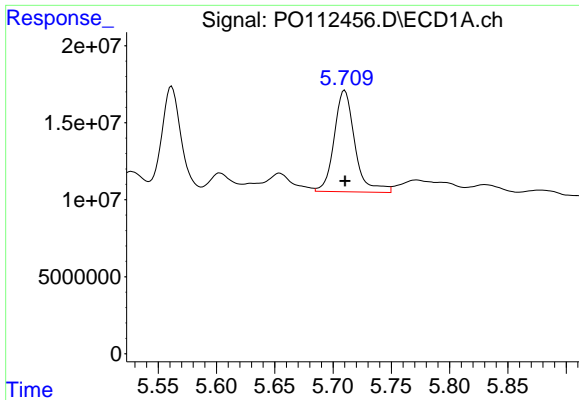
#26 AR-1254-1

R.T.: 5.562 min
 Delta R.T.: 0.000 min
 Response: 74511979
 Conc: 135.73 ng/ml



#26 AR-1254-1

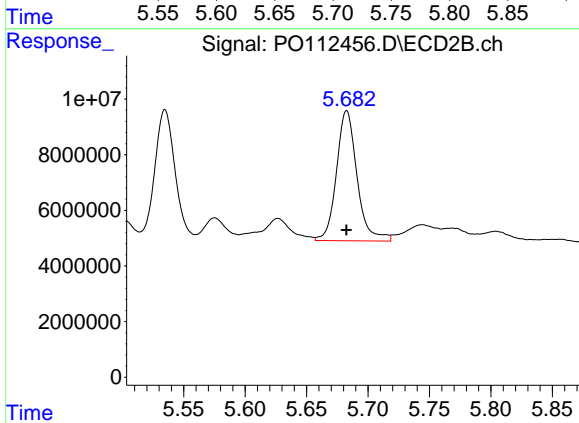
R.T.: 5.535 min
 Delta R.T.: 0.000 min
 Response: 53383314
 Conc: 162.45 ng/ml



#27 AR-1254-2

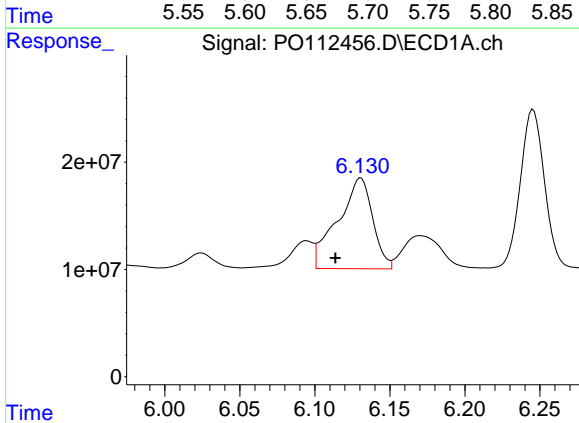
R.T.: 5.710 min
 Delta R.T.: 0.000 min
 Response: 81402402
 Conc: 167.52 ng/ml

Instrument :
 ECD_O
 ClientSampleId :
 TR-04-072225MS



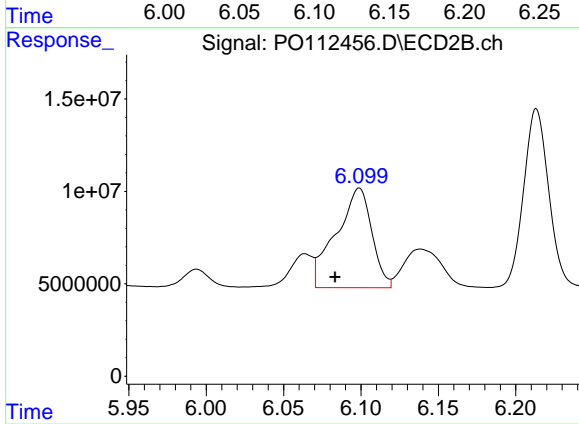
#27 AR-1254-2

R.T.: 5.683 min
 Delta R.T.: 0.000 min
 Response: 54580118
 Conc: 188.54 ng/ml



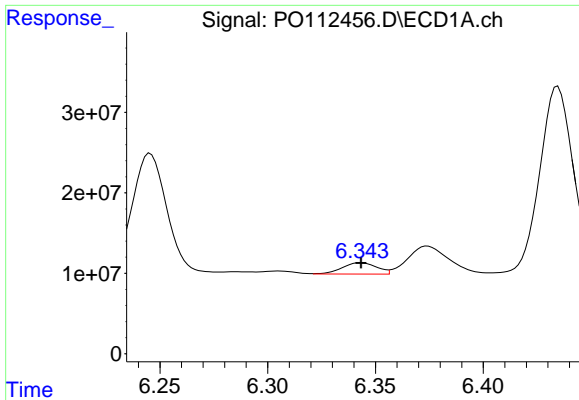
#28 AR-1254-3

R.T.: 6.131 min
 Delta R.T.: 0.017 min
 Response: 137469145
 Conc: 184.70 ng/ml



#28 AR-1254-3

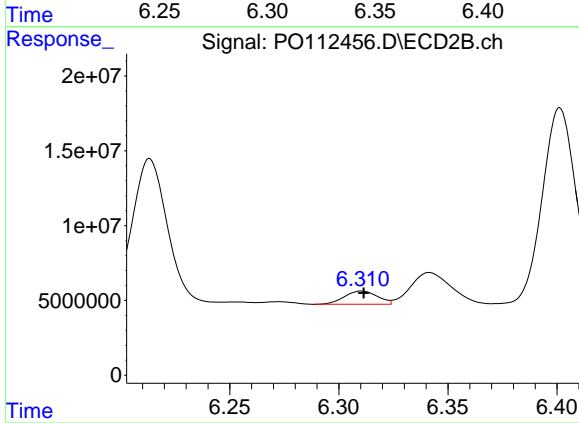
R.T.: 6.099 min
 Delta R.T.: 0.016 min
 Response: 86678150
 Conc: 202.77 ng/ml



#29 AR-1254-4

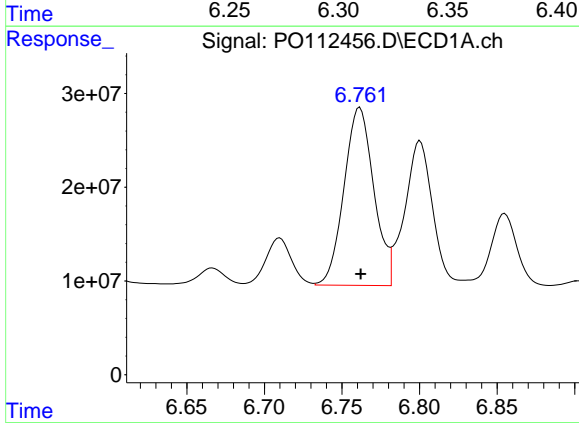
R.T.: 6.343 min
 Delta R.T.: 0.000 min
 Response: 15768253
 Conc: 28.69 ng/ml

Instrument :
 ECD_O
 ClientSampleId :
 TR-04-072225MS



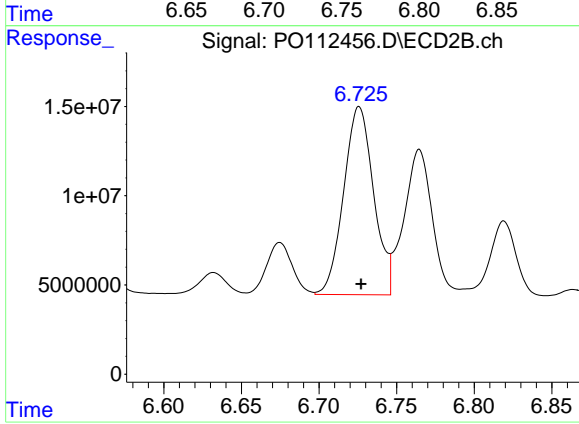
#29 AR-1254-4

R.T.: 6.311 min
 Delta R.T.: 0.000 min
 Response: 9349573
 Conc: 34.25 ng/ml



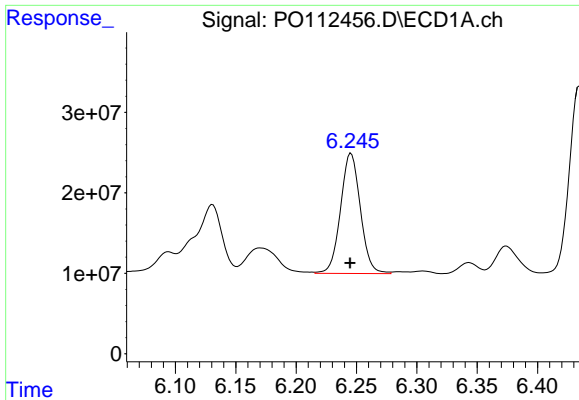
#30 AR-1254-5

R.T.: 6.761 min
 Delta R.T.: 0.000 min
 Response: 253669794
 Conc: 358.38 ng/ml



#30 AR-1254-5

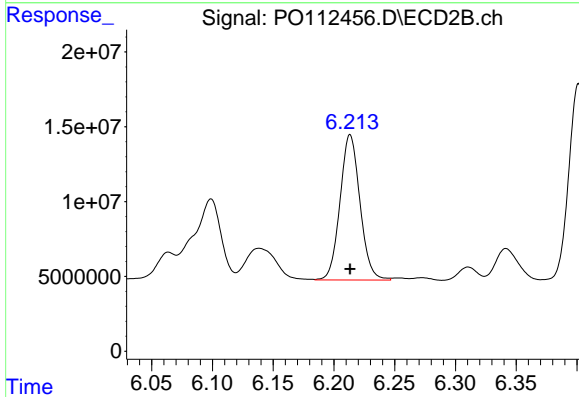
R.T.: 6.726 min
 Delta R.T.: -0.001 min
 Response: 141627175
 Conc: 424.01 ng/ml



#31 AR-1260-1

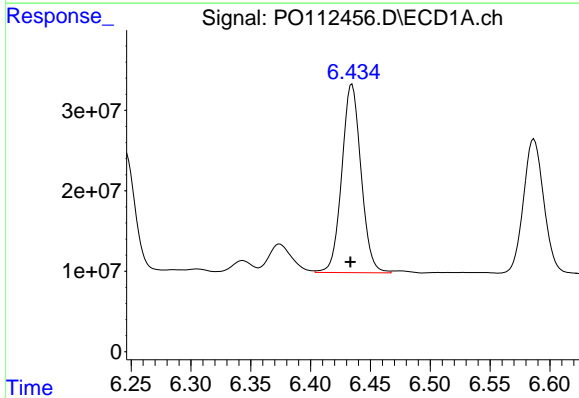
R.T.: 6.245 min
 Delta R.T.: 0.000 min
 Response: 170907555
 Conc: 389.02 ng/ml

Instrument :
 ECD_O
 ClientSampleId :
 TR-04-072225MS



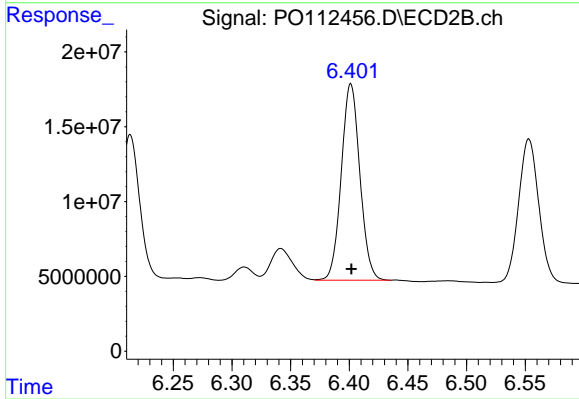
#31 AR-1260-1

R.T.: 6.213 min
 Delta R.T.: 0.000 min
 Response: 111070818
 Conc: 446.95 ng/ml



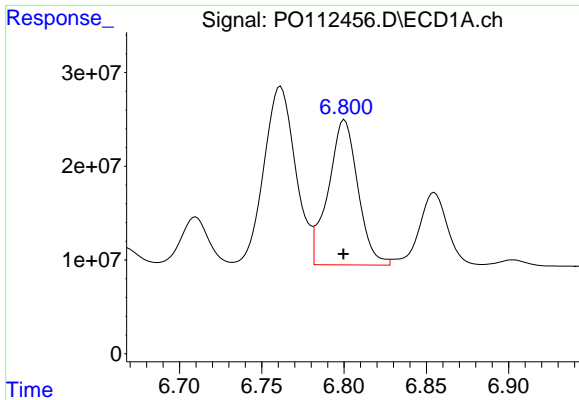
#32 AR-1260-2

R.T.: 6.435 min
 Delta R.T.: 0.001 min
 Response: 261948785
 Conc: 380.80 ng/ml



#32 AR-1260-2

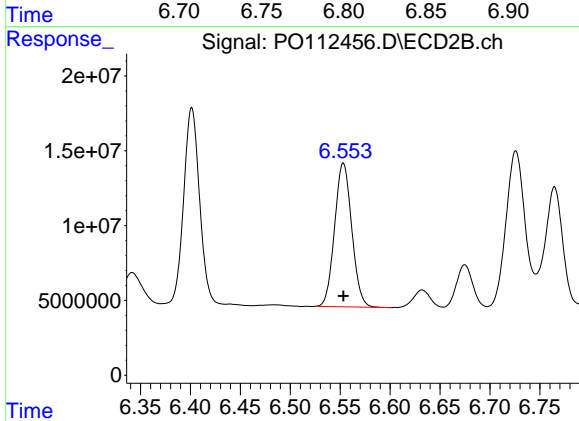
R.T.: 6.401 min
 Delta R.T.: 0.000 min
 Response: 144713600
 Conc: 439.20 ng/ml



#33 AR-1260-3

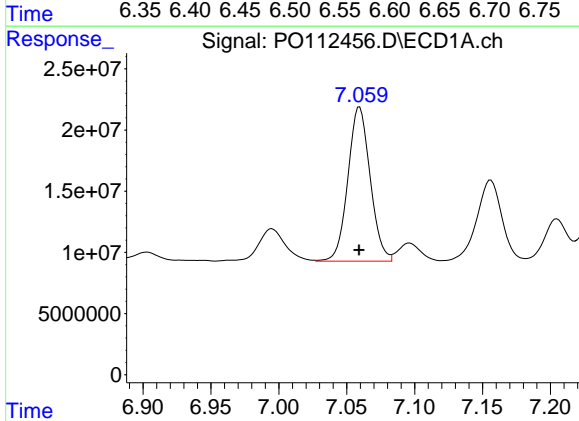
R.T.: 6.800 min
 Delta R.T.: 0.000 min
 Response: 194029603
 Conc: 329.97 ng/ml

Instrument :
 ECD_O
 ClientSampleId :
 TR-04-072225MS



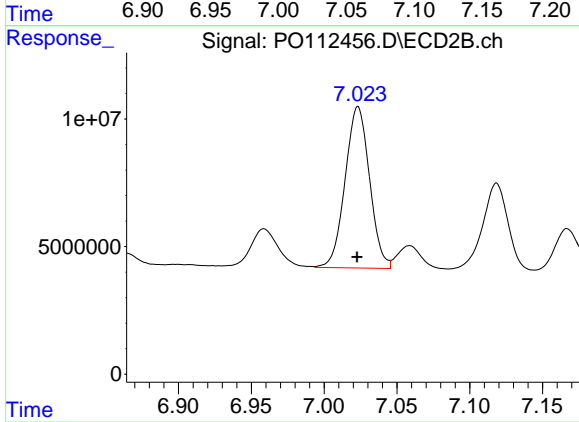
#33 AR-1260-3

R.T.: 6.553 min
 Delta R.T.: 0.000 min
 Response: 114885624
 Conc: 447.16 ng/ml



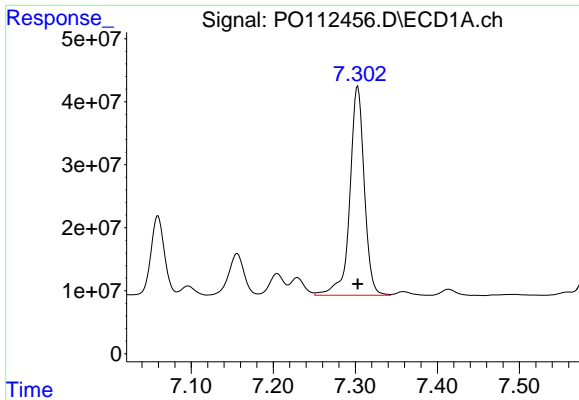
#34 AR-1260-4

R.T.: 7.059 min
 Delta R.T.: 0.000 min
 Response: 143697527
 Conc: 318.62 ng/ml



#34 AR-1260-4

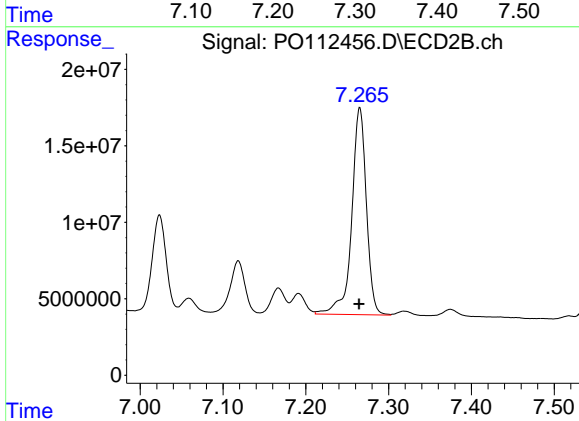
R.T.: 7.023 min
 Delta R.T.: 0.000 min
 Response: 73831749
 Conc: 385.93 ng/ml



#35 AR-1260-5

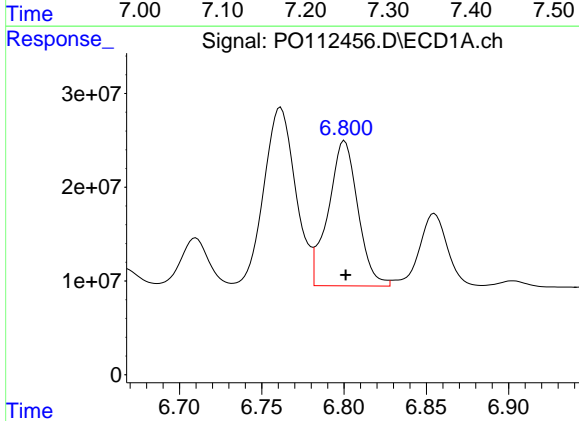
R.T.: 7.303 min
 Delta R.T.: 0.000 min
 Response: 406787997
 Conc: 328.28 ng/ml

Instrument :
 ECD_O
 ClientSampleId :
 TR-04-072225MS



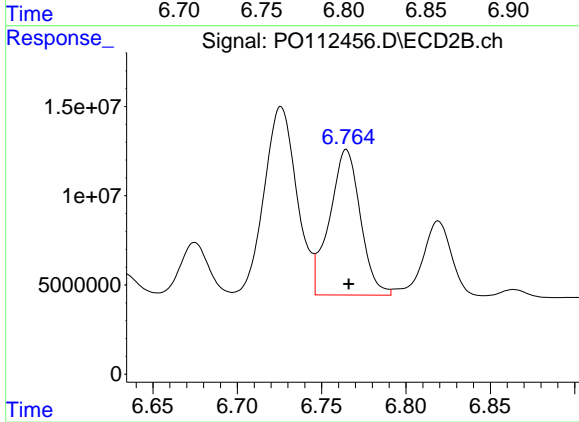
#35 AR-1260-5

R.T.: 7.265 min
 Delta R.T.: 0.000 min
 Response: 167046640
 Conc: 405.26 ng/ml



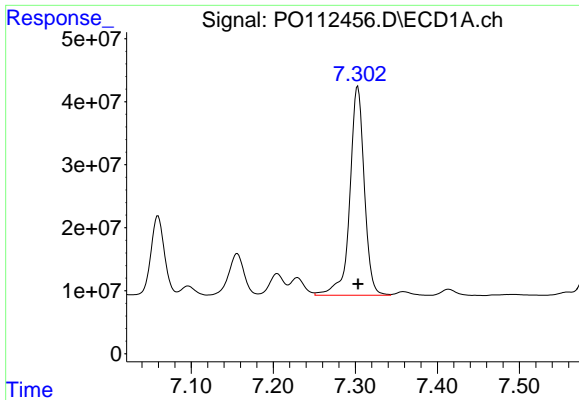
#36 AR-1262-1

R.T.: 6.800 min
 Delta R.T.: 0.000 min
 Response: 194029603
 Conc: 208.81 ng/ml



#36 AR-1262-1

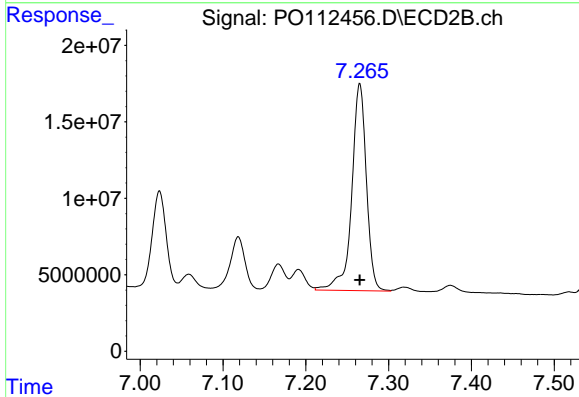
R.T.: 6.765 min
 Delta R.T.: -0.002 min
 Response: 103508173
 Conc: 249.52 ng/ml



#37 AR-1262-2

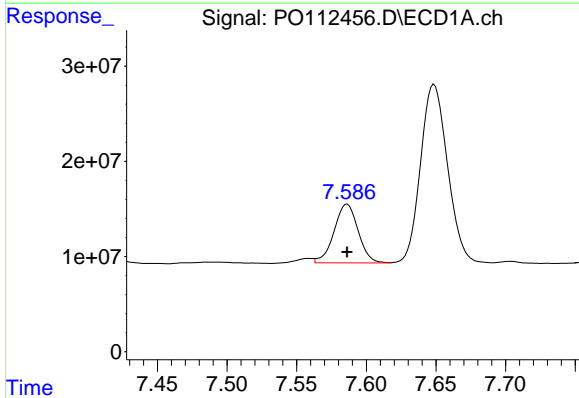
R.T.: 7.303 min
 Delta R.T.: 0.000 min
 Response: 406787997
 Conc: 273.56 ng/ml

Instrument :
 ECD_O
 ClientSampleId :
 TR-04-072225MS



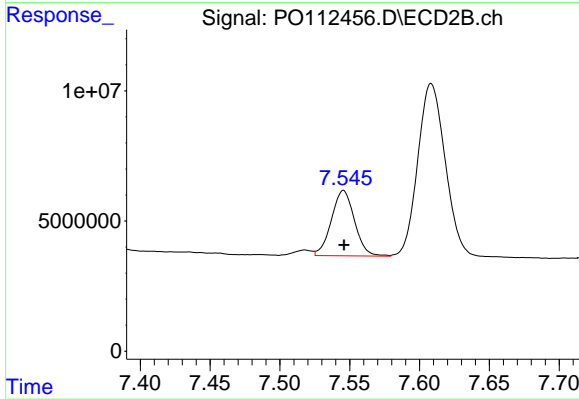
#37 AR-1262-2

R.T.: 7.265 min
 Delta R.T.: 0.000 min
 Response: 167046640
 Conc: 324.02 ng/ml



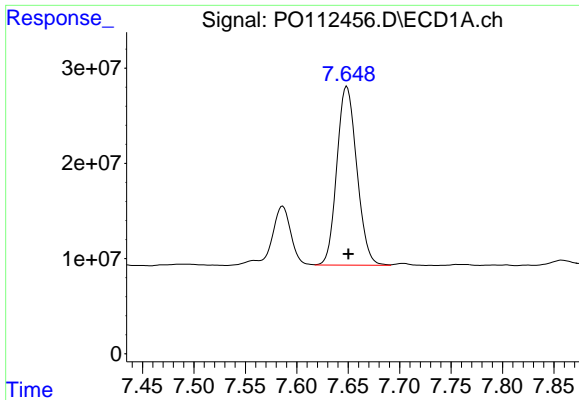
#38 AR-1262-3

R.T.: 7.586 min
 Delta R.T.: 0.000 min
 Response: 74303834
 Conc: 125.88 ng/ml



#38 AR-1262-3

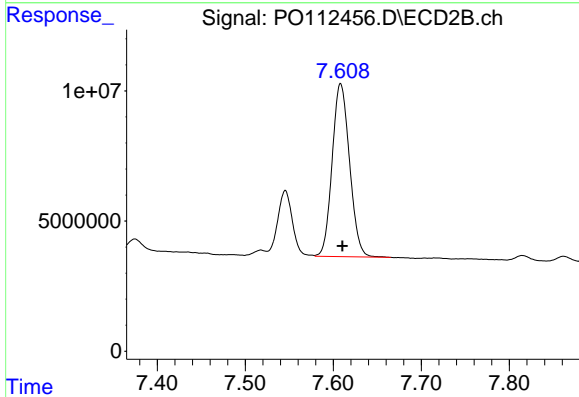
R.T.: 7.546 min
 Delta R.T.: 0.000 min
 Response: 28953553
 Conc: 155.23 ng/ml



#39 AR-1262-4

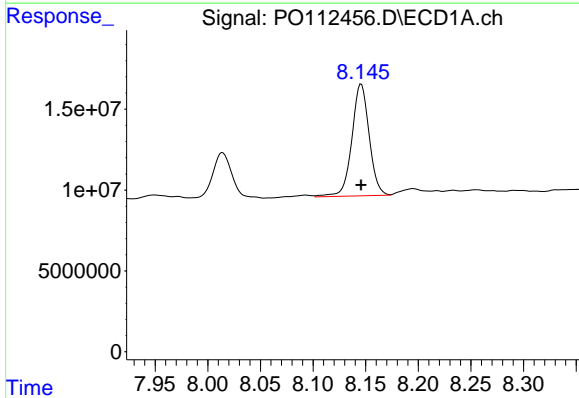
R.T.: 7.649 min
 Delta R.T.: -0.002 min
 Response: 253428466
 Conc: 254.92 ng/ml

Instrument :
 ECD_O
 ClientSampleId :
 TR-04-072225MS



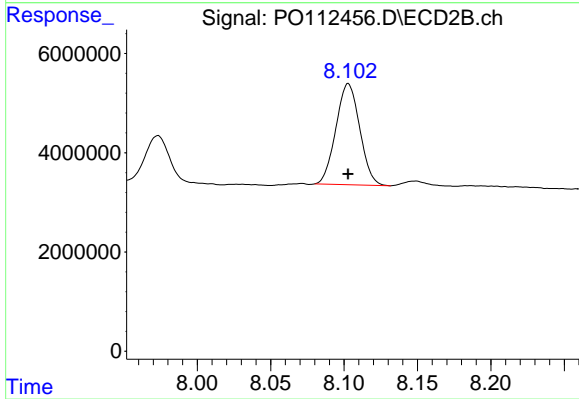
#39 AR-1262-4

R.T.: 7.608 min
 Delta R.T.: -0.002 min
 Response: 91280550
 Conc: 316.83 ng/ml



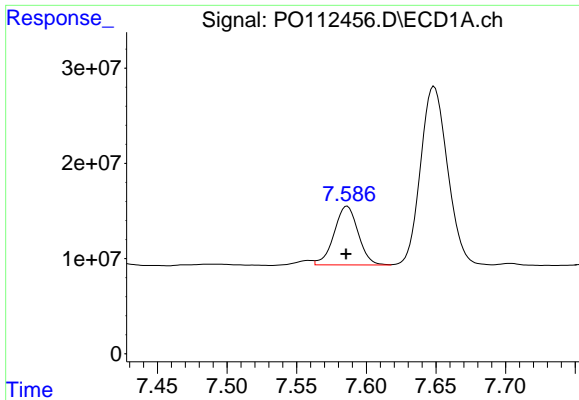
#40 AR-1262-5

R.T.: 8.146 min
 Delta R.T.: 0.000 min
 Response: 79326104
 Conc: 182.75 ng/ml



#40 AR-1262-5

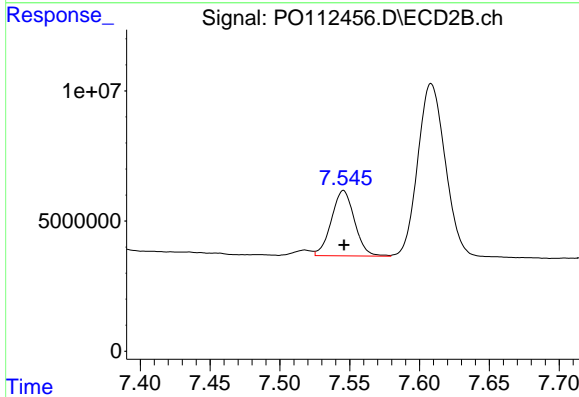
R.T.: 8.103 min
 Delta R.T.: 0.000 min
 Response: 23007121
 Conc: 231.22 ng/ml



#41 AR-1268-1

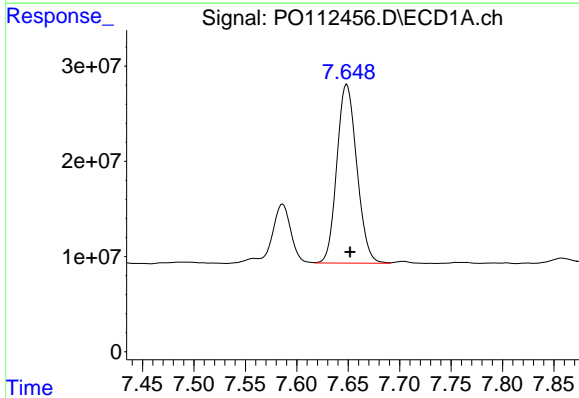
R.T.: 7.586 min
 Delta R.T.: 0.000 min
 Response: 74303834
 Conc: 42.43 ng/ml

Instrument :
 ECD_O
 ClientSampleId :
 TR-04-072225MS



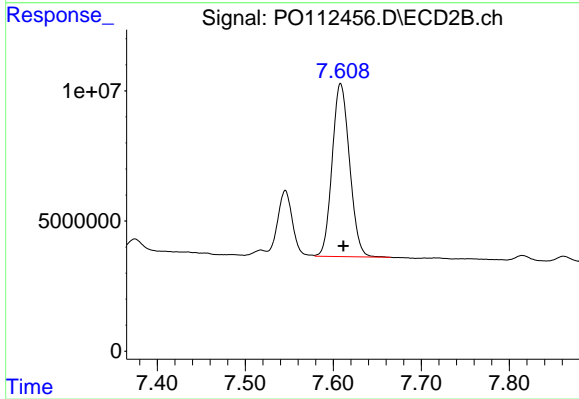
#41 AR-1268-1

R.T.: 7.546 min
 Delta R.T.: 0.000 min
 Response: 28953553
 Conc: 55.91 ng/ml



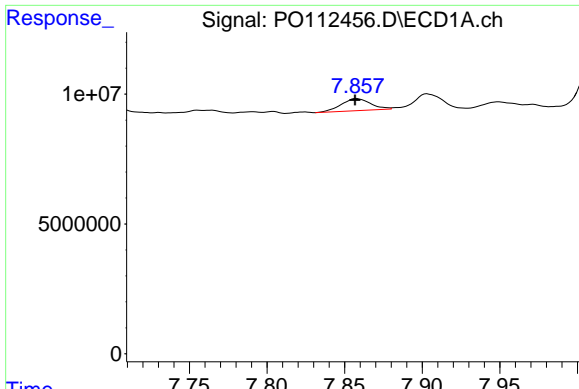
#42 AR-1268-2

R.T.: 7.649 min
 Delta R.T.: -0.003 min
 Response: 253428466
 Conc: 172.05 ng/ml



#42 AR-1268-2

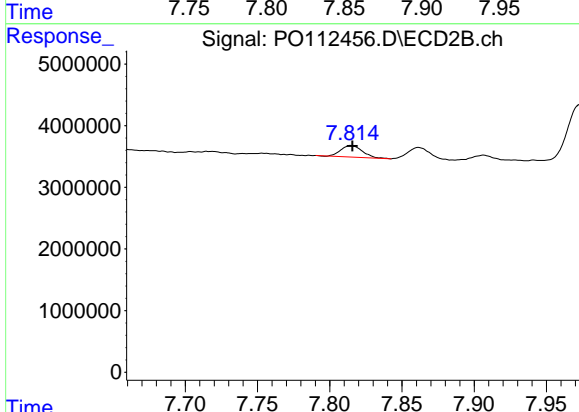
R.T.: 7.608 min
 Delta R.T.: -0.003 min
 Response: 91280550
 Conc: 214.75 ng/ml



#43 AR-1268-3

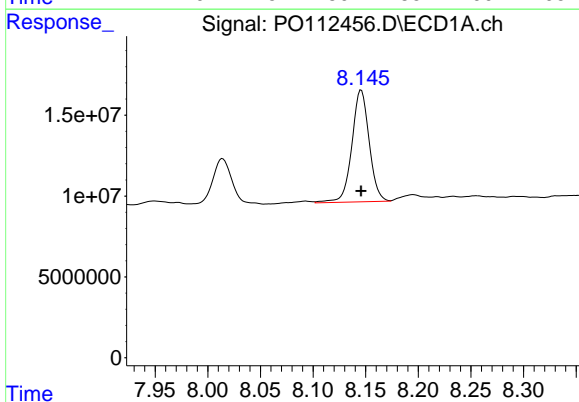
R.T.: 7.858 min
 Delta R.T.: 0.001 min
 Response: 6100421
 Conc: 4.87 ng/ml

Instrument : ECD_O
 ClientSampleId : TR-04-072225MS



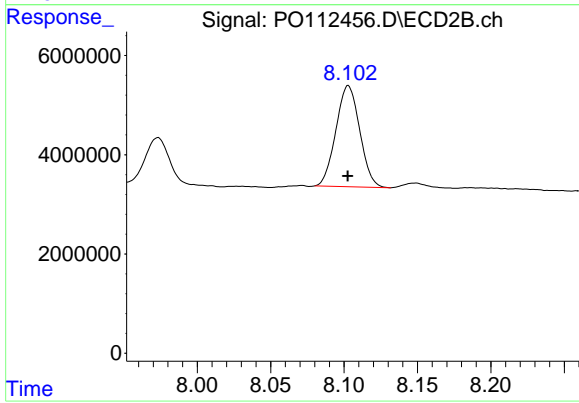
#43 AR-1268-3

R.T.: 7.815 min
 Delta R.T.: 0.000 min
 Response: 1942913
 Conc: 6.05 ng/ml



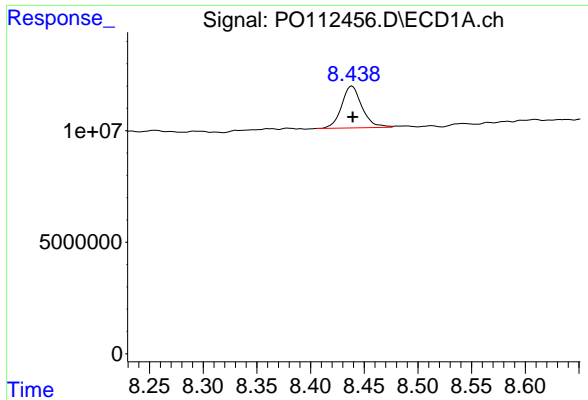
#44 AR-1268-4

R.T.: 8.146 min
 Delta R.T.: 0.000 min
 Response: 79326104
 Conc: 164.62 ng/ml



#44 AR-1268-4

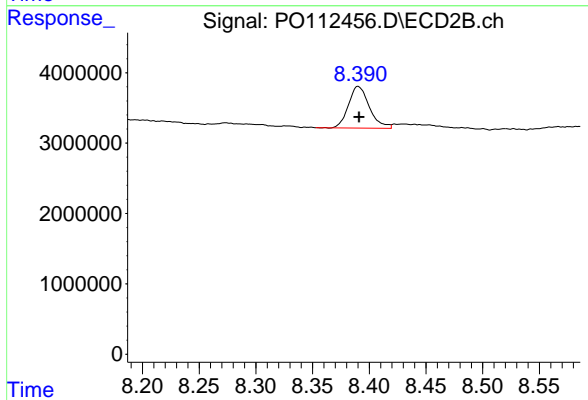
R.T.: 8.103 min
 Delta R.T.: 0.000 min
 Response: 23007121
 Conc: 206.72 ng/ml



#45 AR-1268-5

R.T.: 8.439 min
 Delta R.T.: 0.000 min
 Response: 24848110
 Conc: 7.40 ng/ml

Instrument :
 ECD_O
 ClientSampleId :
 TR-04-072225MS



#45 AR-1268-5

R.T.: 8.390 min
 Delta R.T.: 0.000 min
 Response: 7605195
 Conc: 10.39 ng/ml