

Data Path : Z:\pestpcbsrv\HPCHEM1\ECD_0\Data\P0072425\
 Data File : PO112457.D
 Signal(s) : Signal #1: ECD1A.ch Signal #2: ECD2B.ch
 Acq On : 24 Jul 2025 11:30
 Operator : YP/AJ
 Sample : Q2674-01MSD
 Misc :
 ALS Vial : 10 Sample Multiplier: 1

Instrument :
 ECD_0
 ClientSampleId :
 TR-04-072225MSD

Integration File signal 1: autoint1.e
 Integration File signal 2: autoint2.e
 Quant Time: Jul 24 23:36:48 2025
 Quant Method : Z:\pestpcbsrv\HPCHEM1\ECD_0\methods\P0072325.M
 Quant Title : GC EXTRACTABLES
 QLast Update : Thu Jul 24 04:54:06 2025
 Response via : Initial Calibration
 Integrator: ChemStation

Volume Inj. : 2 µl
 Signal #1 Phase : ZB-MR1 Signal #2 Phase: ZB-MR2
 Signal #1 Info : 30Mx0.32mmx 0.50µ Signal #2 Info : 30M x 0.32mm x 0.25µm

Compound	RT#1	RT#2	Resp#1	Resp#2	ng/ml	ng/ml
System Monitoring Compounds						
1) SA Tetrachlo...	3.671	3.663	122.3E6	80226629	15.042	16.145
2) SA Decachlor...	8.694	8.641	108.3E6	30920404	14.811	17.498
Target Compounds						
3) L1 AR-1016-1	4.756	4.738	92716098	70559576	345.484	403.181
4) L1 AR-1016-2	4.775	4.756	148.4E6	106.0E6	365.425	406.758
5) L1 AR-1016-3	4.832	4.931	89529048	54142881	342.140	398.208
6) L1 AR-1016-4	4.951	4.974	74742447	46441899	352.823	418.076
7) L1 AR-1016-5	5.208	5.185	74803136	54562207	340.834	380.747
8) L2 AR-1221-1	3.876	3.869	7484011	8083957	77.426	120.179 #
9) L2 AR-1221-2	3.968	3.957	6547670	11696949	91.115	230.582 #
10) L2 AR-1221-3	4.043	4.032	52339606	40583780	220.182	256.002
11) L3 AR-1232-1	4.043	4.032	52339606	40583780	279.923	320.694
12) L3 AR-1232-2	4.535	4.756	75229159	106.0E6	698.995	807.888
13) L3 AR-1232-3	4.775	4.931	148.4E6	54142881	717.630	805.736
14) L3 AR-1232-4	4.951	5.016	74742447	52478586	713.598	877.142
15) L3 AR-1232-5	4.995	5.185	65197029	54562207	960.462	836.805
16) L4 AR-1242-1	4.756	4.738	92716098	70559576	374.471	445.469
17) L4 AR-1242-2	4.775	4.756	148.4E6	106.0E6	401.320	453.460
18) L4 AR-1242-3	4.832	4.931	89529048	54142881	378.306	446.764
19) L4 AR-1242-4	4.951	5.016	74742447	52478586	384.718	427.561
20) L4 AR-1242-5	5.603	5.536	11756477	47871532	54.958	297.392 #
21) L5 AR-1248-1	4.756	4.738	92716098	70559576	495.255	580.693
22) L5 AR-1248-2	4.995	4.974	65197029	46441899	255.562	274.350
23) L5 AR-1248-3	5.208	5.016	74803136	52478586	217.640	295.409 #
24) L5 AR-1248-4	5.561	5.185	64993814	54562207	127.921	261.872 #
25) L5 AR-1248-5	5.603	5.576	11756477	8969311	33.629	41.763
26) L6 AR-1254-1	5.561	5.536	64993814	47871532	118.395	145.674
27) L6 AR-1254-2	5.710	5.683	69782839	47955554	143.610	165.655
28) L6 AR-1254-3	6.130	6.100	118.4E6	78003826	159.080	182.482
29) L6 AR-1254-4	6.343	6.311	14675237	8570205	26.697	31.397
30) L6 AR-1254-5	6.761	6.726	220.9E6	121.7E6	312.032	364.429
31) L7 AR-1260-1	6.245	6.214	151.4E6	101.2E6	344.586	407.270
32) L7 AR-1260-2	6.435	6.402	229.5E6	128.4E6	333.607	389.664
33) L7 AR-1260-3	6.801	6.553	170.5E6	99299660	289.974	386.499 #
34) L7 AR-1260-4	7.059	7.023	120.1E6	63626114	266.388	332.580
35) L7 AR-1260-5	7.303	7.265	358.5E6	150.2E6	289.328	364.465 #
36) L8 AR-1262-1	6.801	6.765	170.5E6	89002974	183.501	214.554
37) L8 AR-1262-2	7.303	7.265	358.5E6	150.2E6	241.098	291.400
38) L8 AR-1262-3	7.586	7.546	65447750	26000042	110.881	139.392 #
39) L8 AR-1262-4	7.648	7.609	221.0E6	80384275	222.256	279.012 #
40) L8 AR-1262-5	8.146	8.102	67457050	20028276	155.409	201.282 #
41) L9 AR-1268-1	7.586	7.546	65447750	26000042	37.374	50.206 #

Data Path : Z:\pestpcbsrv\HPCHEM1\ECD_0\Data\P0072425\
 Data File : P0112457.D
 Signal(s) : Signal #1: ECD1A.ch Signal #2: ECD2B.ch
 Acq On : 24 Jul 2025 11:30
 Operator : YP/AJ
 Sample : Q2674-01MSD
 Misc :
 ALS Vial : 10 Sample Multiplier: 1

Instrument :
 ECD_0
 ClientSampleId :
 TR-04-072225MSD

Integration File signal 1: autoint1.e
 Integration File signal 2: autoint2.e
 Quant Time: Jul 24 23:36:48 2025
 Quant Method : Z:\pestpcbsrv\HPCHEM1\ECD_0\methods\P0072325.M
 Quant Title : GC EXTRACTABLES
 QLast Update : Thu Jul 24 04:54:06 2025
 Response via : Initial Calibration
 Integrator: ChemStation

Volume Inj. : 2 µl
 Signal #1 Phase : ZB-MR1 Signal #2 Phase: ZB-MR2
 Signal #1 Info : 30Mx0.32mmx 0.50µ Signal #2 Info : 30M x 0.32mm x 0.25µm

	Compound	RT#1	RT#2	Resp#1	Resp#2	ng/ml	ng/ml
42)	L9 AR-1268-2	7.648	7.609	221.0E6	80384275	150.004	189.111 #
43)	L9 AR-1268-3	7.857	7.815	4445315	1964573	3.550	6.115 #
44)	L9 AR-1268-4	8.146	8.102	67457050	20028276	139.992	179.956 #
45)	L9 AR-1268-5	8.439	8.390	19711696	5527446	5.872	7.554 #

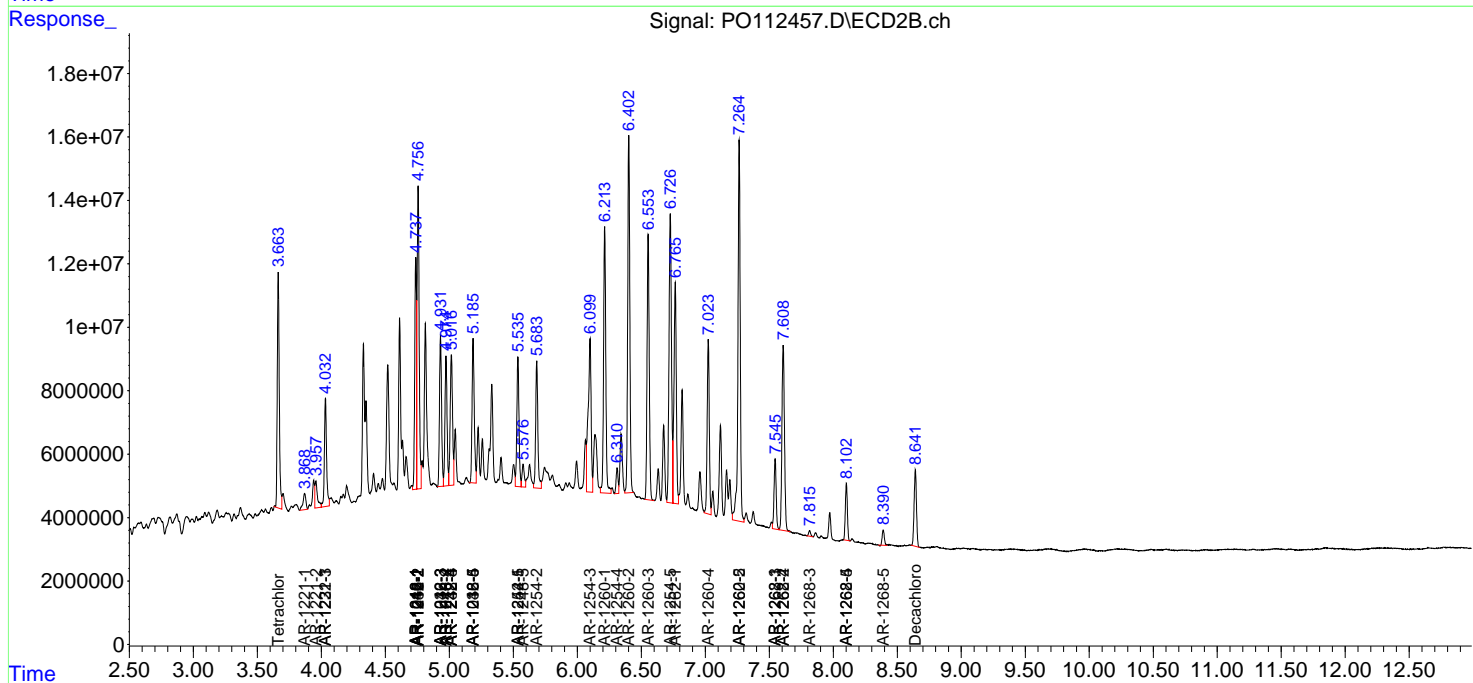
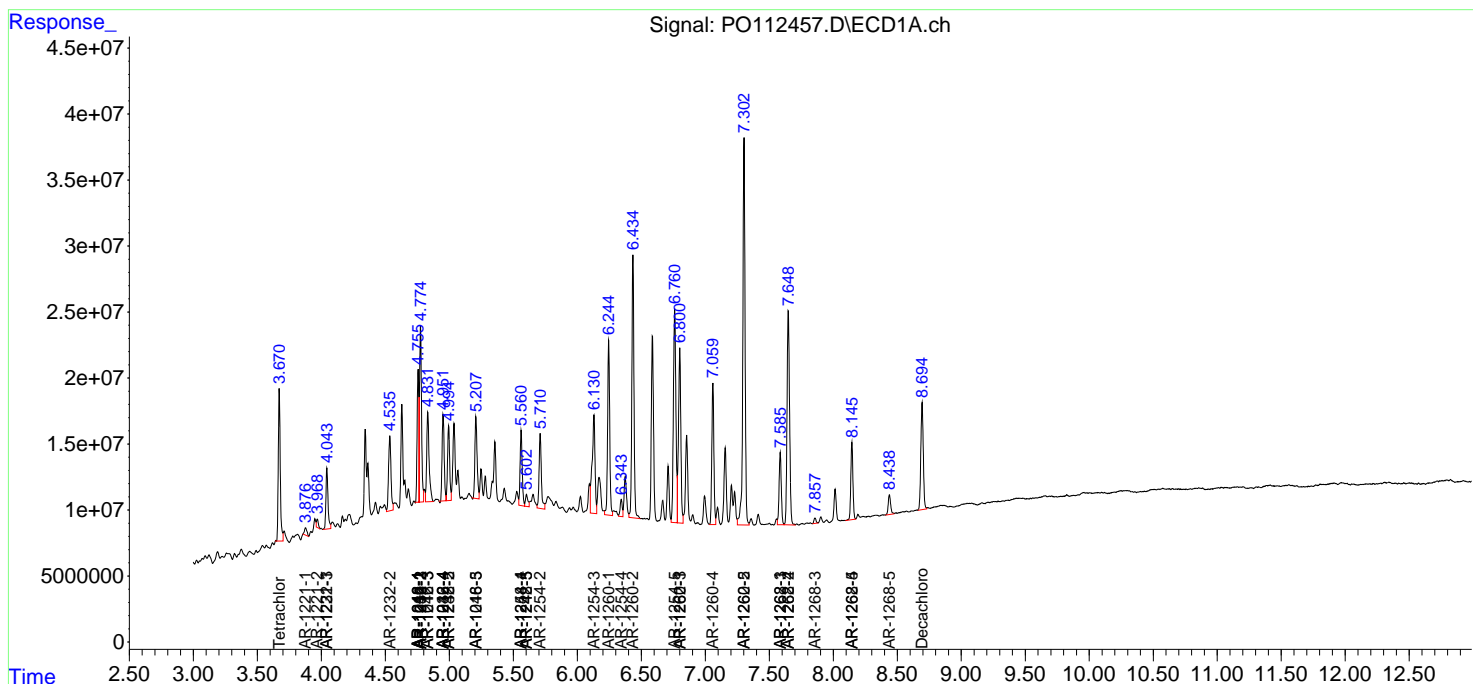
(f)=RT Delta > 1/2 Window (#)=Amounts differ by > 25% (m)=manual int.

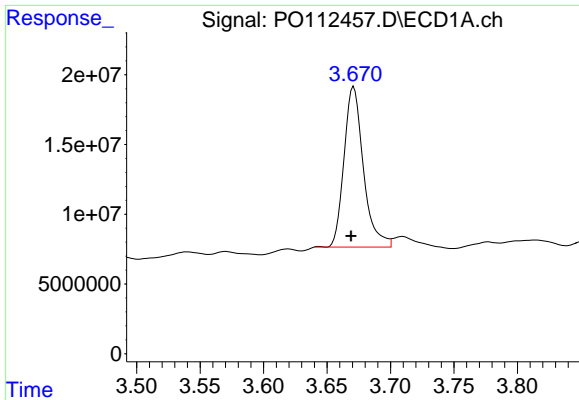
Data Path : Z:\pestpcbsrv\HPCHEM1\ECD_O\Data\PO072425\
 Data File : PO112457.D
 Signal(s) : Signal #1: ECD1A.ch Signal #2: ECD2B.ch
 Acq On : 24 Jul 2025 11:30
 Operator : YP/AJ
 Sample : Q2674-01MSD
 Misc :
 ALS Vial : 10 Sample Multiplier: 1

Instrument :
 ECD_O
 ClientSampleId :
 TR-04-072225MSD

Integration File signal 1: autoint1.e
 Integration File signal 2: autoint2.e
 Quant Time: Jul 24 23:36:48 2025
 Quant Method : Z:\pestpcbsrv\HPCHEM1\ECD_O\methods\PO072325.M
 Quant Title : GC EXTRACTABLES
 QLast Update : Thu Jul 24 04:54:06 2025
 Response via : Initial Calibration
 Integrator: ChemStation

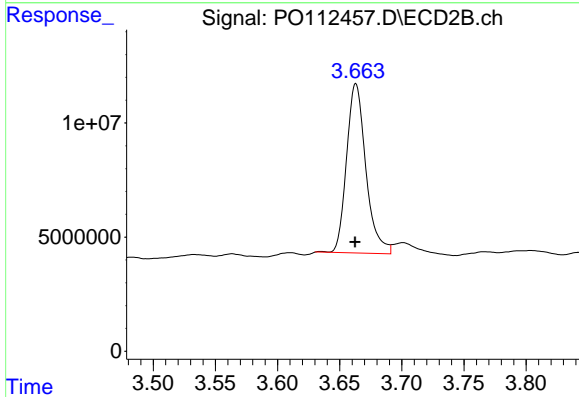
Volume Inj. : 2 µl
 Signal #1 Phase : ZB-MR1 Signal #2 Phase: ZB-MR2
 Signal #1 Info : 30Mx0.32mmx 0.50µ Signal #2 Info : 30M x 0.32mm x 0.25µm



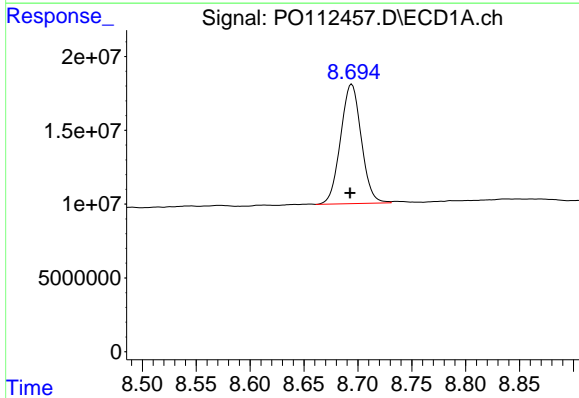


#1 Tetrachloro-m-xylene
 R.T.: 3.671 min
 Delta R.T.: 0.002 min
 Response: 122314380
 Conc: 15.04 ng/ml

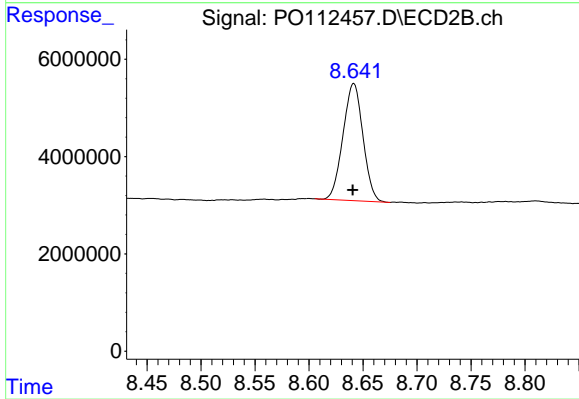
Instrument :
 ECD_O
 ClientSampleId :
 TR-04-072225MSD



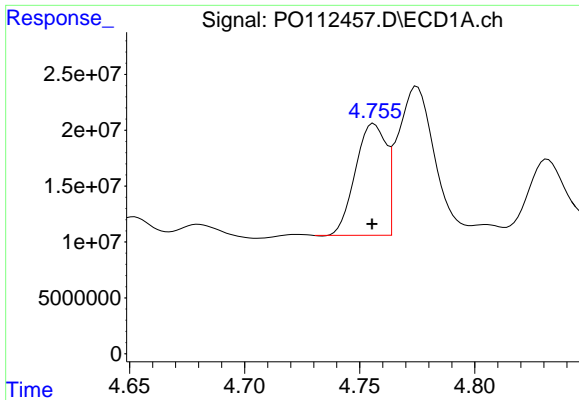
#1 Tetrachloro-m-xylene
 R.T.: 3.663 min
 Delta R.T.: 0.000 min
 Response: 80226629
 Conc: 16.14 ng/ml



#2 Decachlorobiphenyl
 R.T.: 8.694 min
 Delta R.T.: 0.002 min
 Response: 108296522
 Conc: 14.81 ng/ml



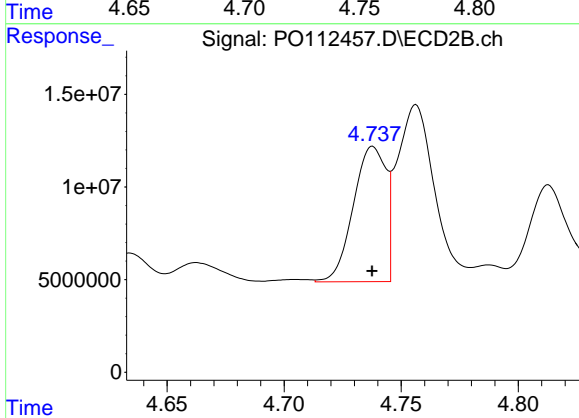
#2 Decachlorobiphenyl
 R.T.: 8.641 min
 Delta R.T.: 0.000 min
 Response: 30920404
 Conc: 17.50 ng/ml



#3 AR-1016-1

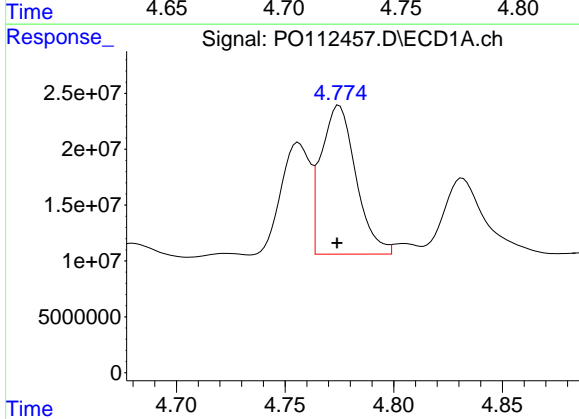
R.T.: 4.756 min
 Delta R.T.: 0.000 min
 Response: 92716098
 Conc: 345.48 ng/ml

Instrument :
 ECD_O
 ClientSampleId :
 TR-04-072225MSD



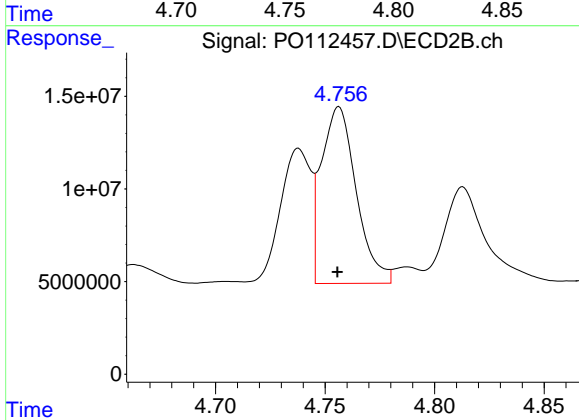
#3 AR-1016-1

R.T.: 4.738 min
 Delta R.T.: 0.000 min
 Response: 70559576
 Conc: 403.18 ng/ml



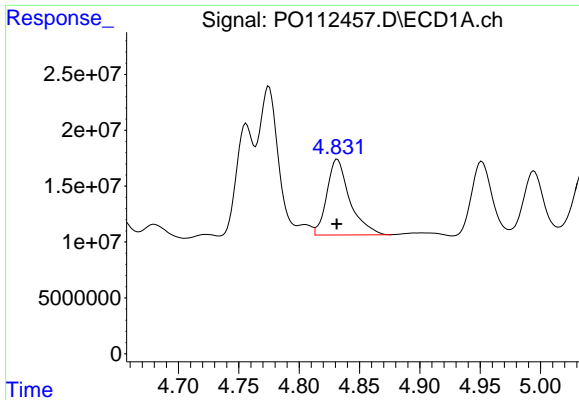
#4 AR-1016-2

R.T.: 4.775 min
 Delta R.T.: 0.000 min
 Response: 148405437
 Conc: 365.42 ng/ml



#4 AR-1016-2

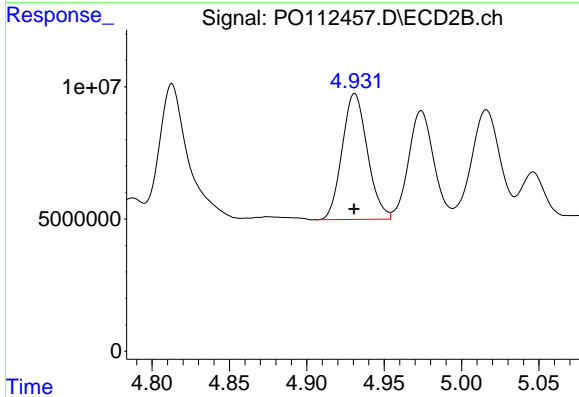
R.T.: 4.756 min
 Delta R.T.: 0.000 min
 Response: 105958400
 Conc: 406.76 ng/ml



#5 AR-1016-3

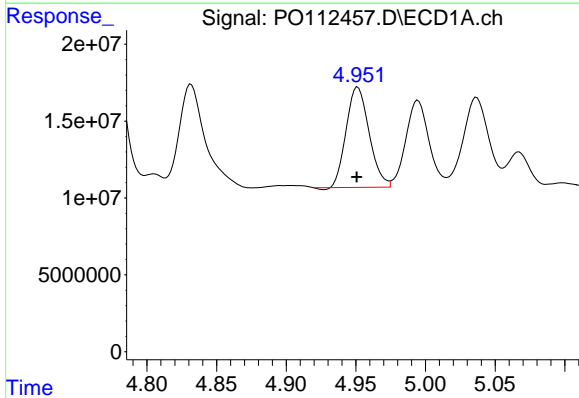
R.T.: 4.832 min
 Delta R.T.: 0.000 min
 Response: 89529048
 Conc: 342.14 ng/ml

Instrument :
 ECD_O
 ClientSampleId :
 TR-04-072225MSD



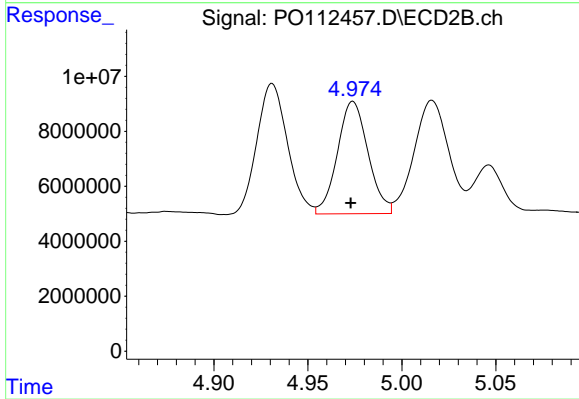
#5 AR-1016-3

R.T.: 4.931 min
 Delta R.T.: 0.000 min
 Response: 54142881
 Conc: 398.21 ng/ml



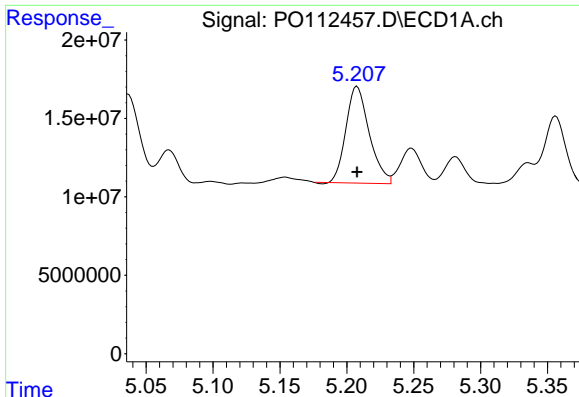
#6 AR-1016-4

R.T.: 4.951 min
 Delta R.T.: 0.000 min
 Response: 74742447
 Conc: 352.82 ng/ml



#6 AR-1016-4

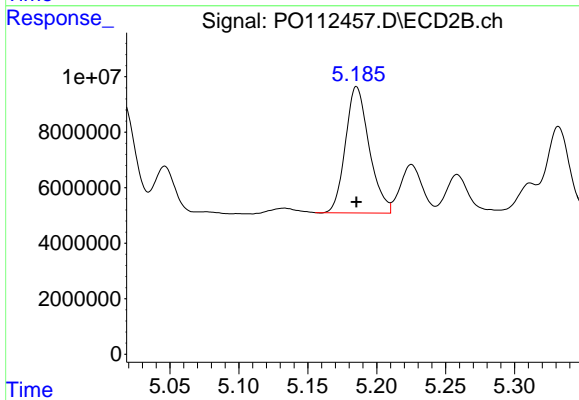
R.T.: 4.974 min
 Delta R.T.: 0.001 min
 Response: 46441899
 Conc: 418.08 ng/ml



#7 AR-1016-5

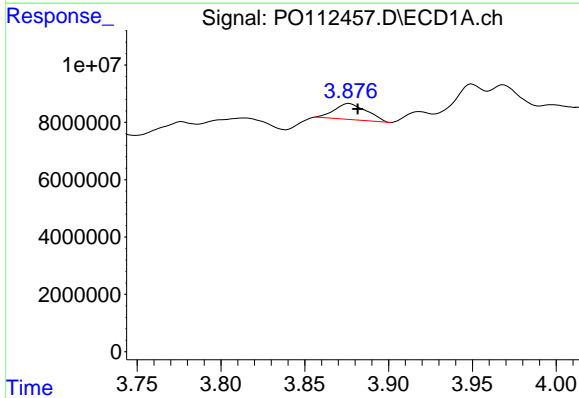
R.T.: 5.208 min
 Delta R.T.: 0.000 min
 Response: 74803136
 Conc: 340.83 ng/ml

Instrument :
 ECD_O
 ClientSampleId :
 TR-04-072225MSD



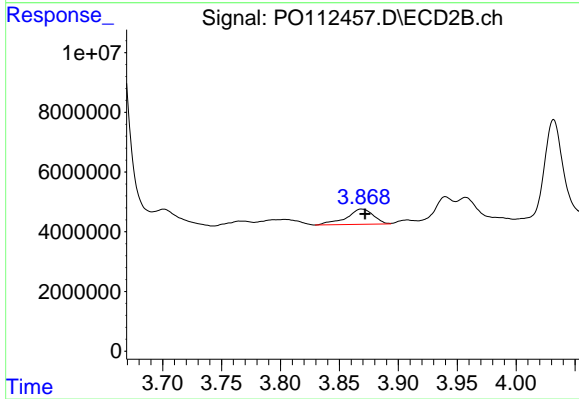
#7 AR-1016-5

R.T.: 5.185 min
 Delta R.T.: 0.000 min
 Response: 54562207
 Conc: 380.75 ng/ml



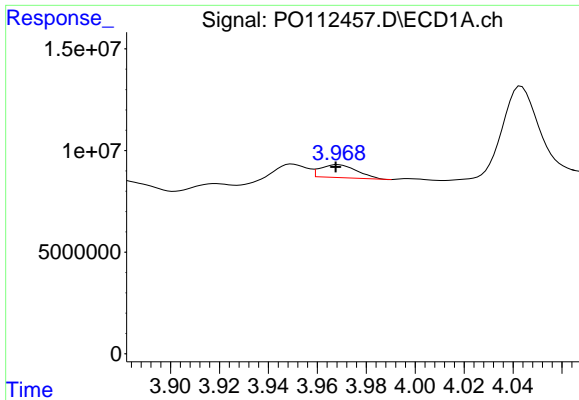
#8 AR-1221-1

R.T.: 3.876 min
 Delta R.T.: -0.005 min
 Response: 7484011
 Conc: 77.43 ng/ml



#8 AR-1221-1

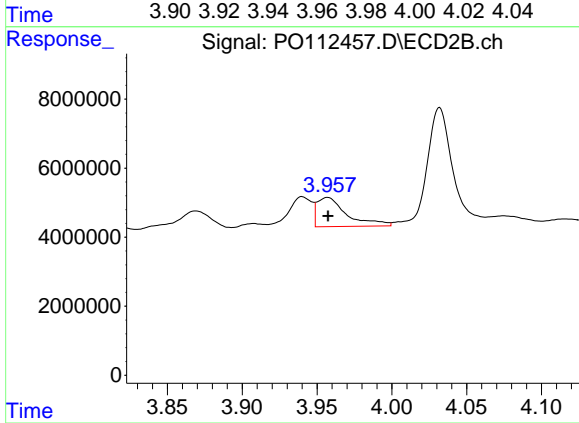
R.T.: 3.869 min
 Delta R.T.: -0.003 min
 Response: 8083957
 Conc: 120.18 ng/ml



#9 AR-1221-2

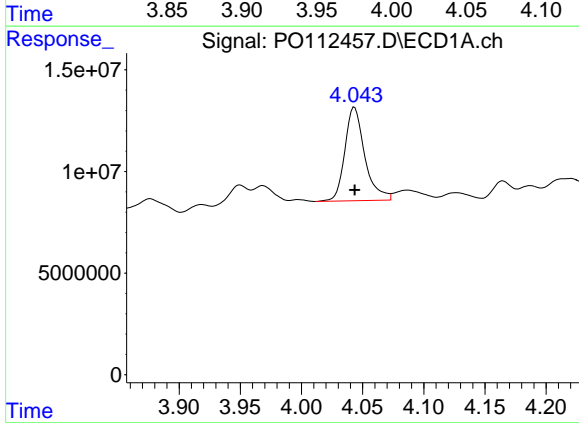
R.T.: 3.968 min
 Delta R.T.: 0.000 min
 Response: 6547670
 Conc: 91.11 ng/ml

Instrument :
 ECD_O
 ClientSampleId :
 TR-04-072225MSD



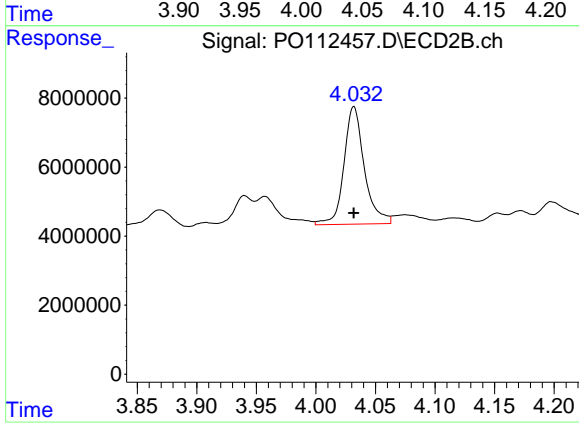
#9 AR-1221-2

R.T.: 3.957 min
 Delta R.T.: 0.000 min
 Response: 11696949
 Conc: 230.58 ng/ml



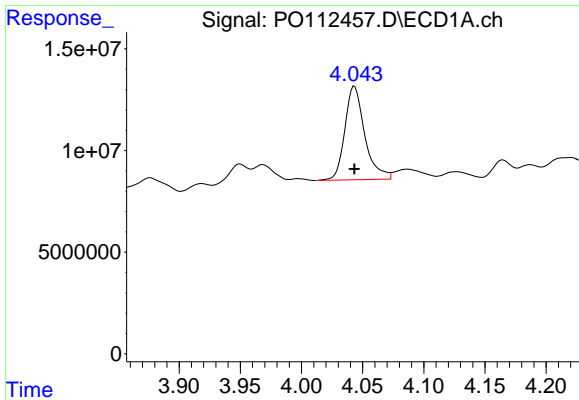
#10 AR-1221-3

R.T.: 4.043 min
 Delta R.T.: 0.000 min
 Response: 52339606
 Conc: 220.18 ng/ml



#10 AR-1221-3

R.T.: 4.032 min
 Delta R.T.: 0.000 min
 Response: 40583780
 Conc: 256.00 ng/ml

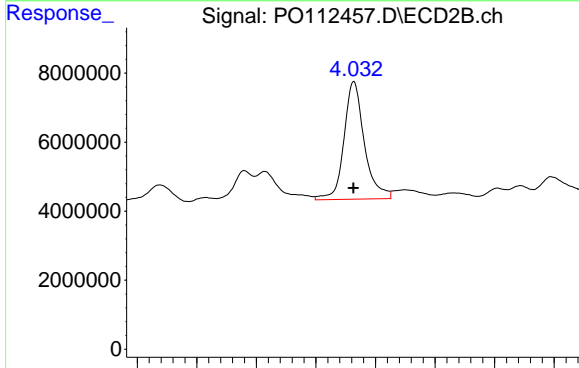


#11 AR-1232-1

R.T.: 4.043 min
 Delta R.T.: 0.000 min
 Response: 52339606
 Conc: 279.92 ng/ml

Instrument :
 ECD_O
 ClientSampleId :
 TR-04-072225MSD

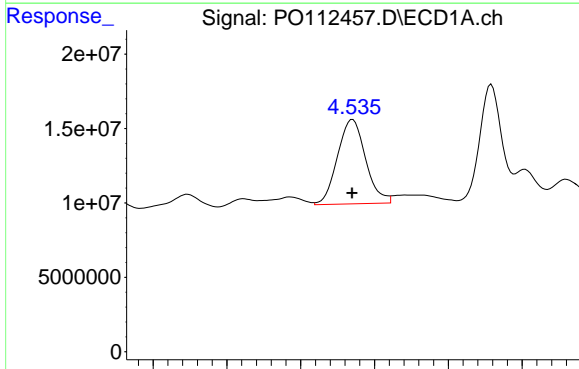
Time 3.90 3.95 4.00 4.05 4.10 4.15 4.20



#11 AR-1232-1

R.T.: 4.032 min
 Delta R.T.: 0.000 min
 Response: 40583780
 Conc: 320.69 ng/ml

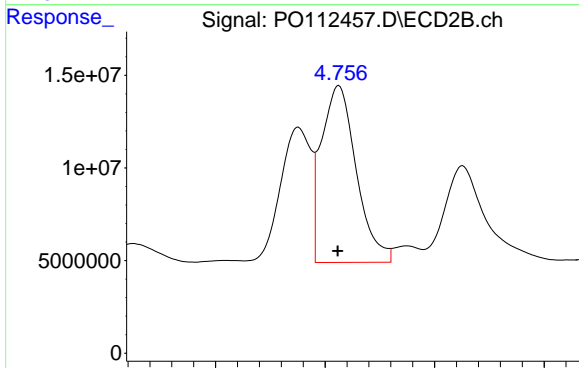
Time 3.85 3.90 3.95 4.00 4.05 4.10 4.15 4.20



#12 AR-1232-2

R.T.: 4.535 min
 Delta R.T.: 0.000 min
 Response: 75229159
 Conc: 699.00 ng/ml

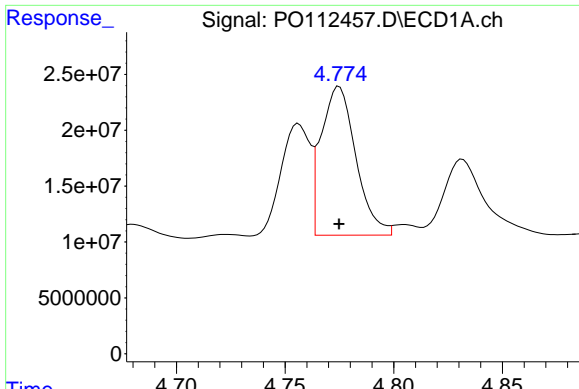
Time 4.40 4.45 4.50 4.55 4.60 4.65



#12 AR-1232-2

R.T.: 4.756 min
 Delta R.T.: 0.000 min
 Response: 105958400
 Conc: 807.89 ng/ml

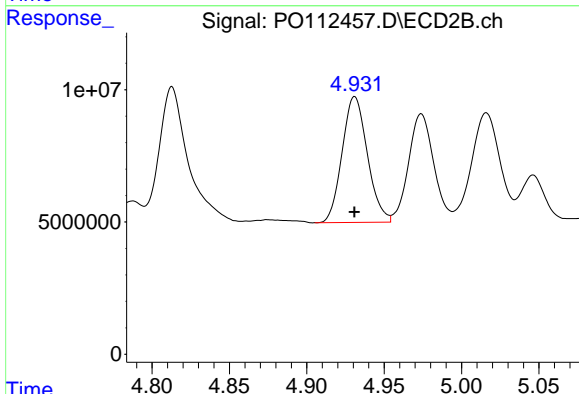
Time 4.70 4.75 4.80 4.85



#13 AR-1232-3

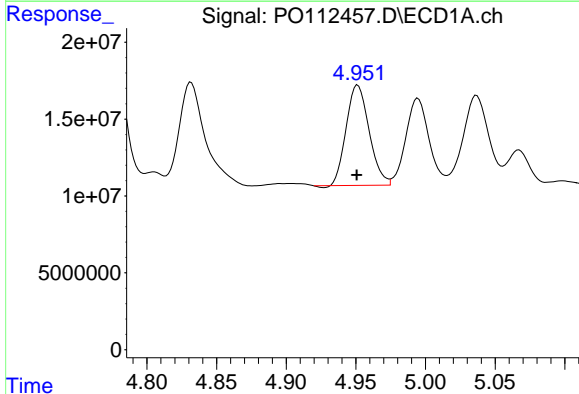
R.T.: 4.775 min
 Delta R.T.: 0.000 min
 Response: 148405437
 Conc: 717.63 ng/ml

Instrument :
 ECD_O
 ClientSampleId :
 TR-04-072225MSD



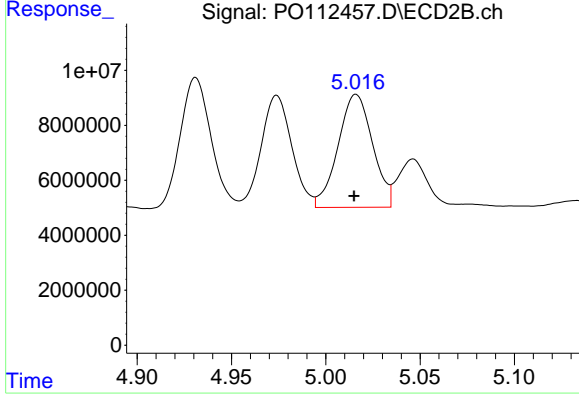
#13 AR-1232-3

R.T.: 4.931 min
 Delta R.T.: 0.000 min
 Response: 54142881
 Conc: 805.74 ng/ml



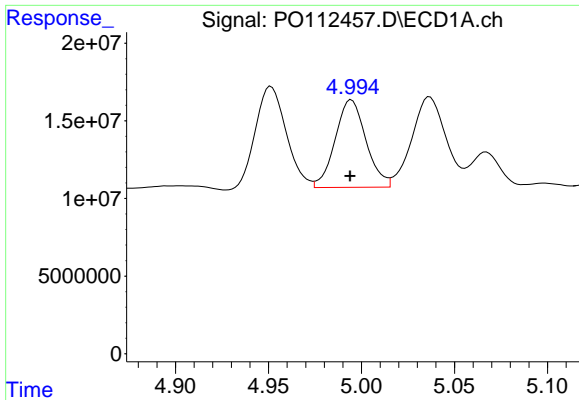
#14 AR-1232-4

R.T.: 4.951 min
 Delta R.T.: 0.000 min
 Response: 74742447
 Conc: 713.60 ng/ml



#14 AR-1232-4

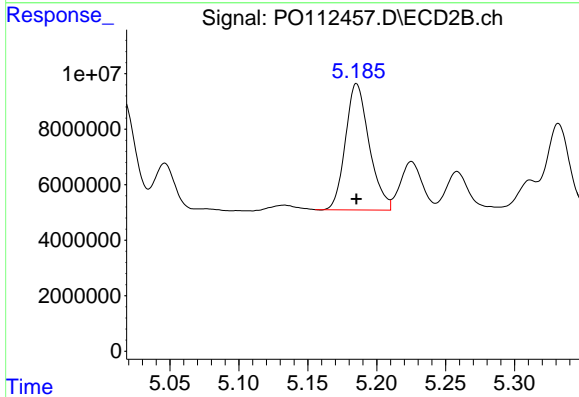
R.T.: 5.016 min
 Delta R.T.: 0.001 min
 Response: 52478586
 Conc: 877.14 ng/ml



#15 AR-1232-5

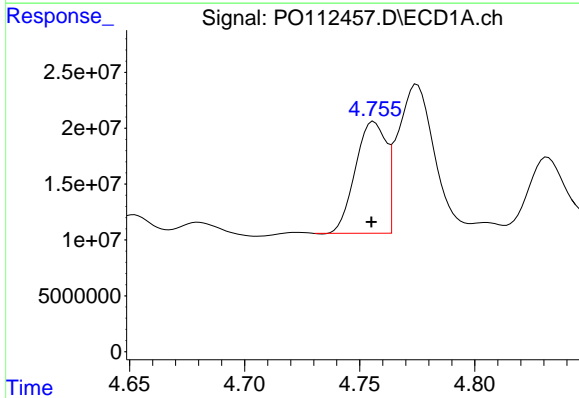
R.T.: 4.995 min
 Delta R.T.: 0.000 min
 Response: 65197029
 Conc: 960.46 ng/ml

Instrument :
 ECD_O
 ClientSampleId :
 TR-04-072225MSD



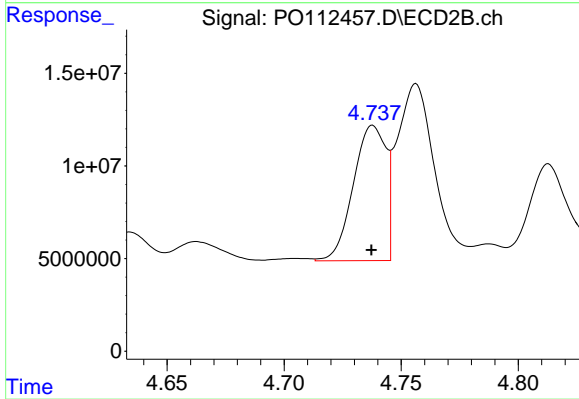
#15 AR-1232-5

R.T.: 5.185 min
 Delta R.T.: 0.000 min
 Response: 54562207
 Conc: 836.80 ng/ml



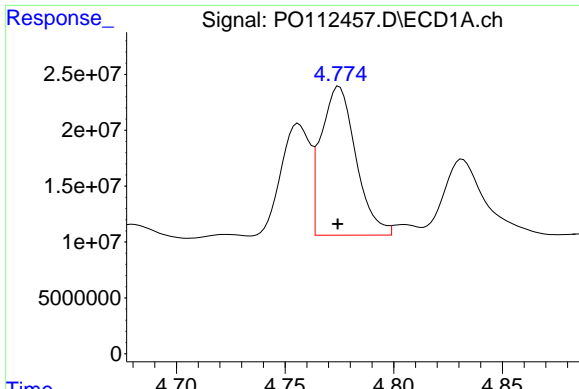
#16 AR-1242-1

R.T.: 4.756 min
 Delta R.T.: 0.001 min
 Response: 92716098
 Conc: 374.47 ng/ml



#16 AR-1242-1

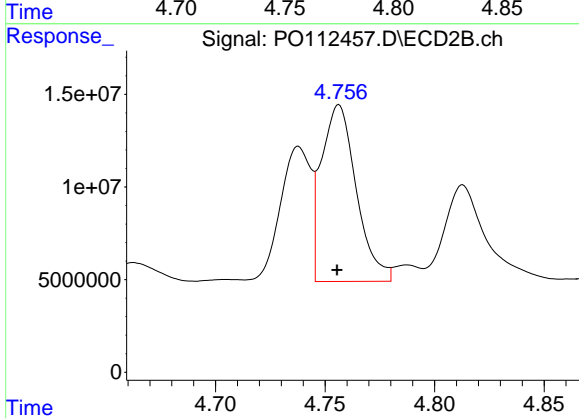
R.T.: 4.738 min
 Delta R.T.: 0.000 min
 Response: 70559576
 Conc: 445.47 ng/ml



#17 AR-1242-2

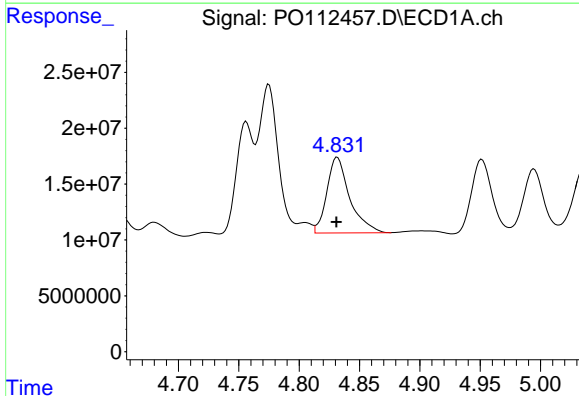
R.T.: 4.775 min
 Delta R.T.: 0.000 min
 Response: 148405437
 Conc: 401.32 ng/ml

Instrument :
 ECD_O
 ClientSampleId :
 TR-04-072225MSD



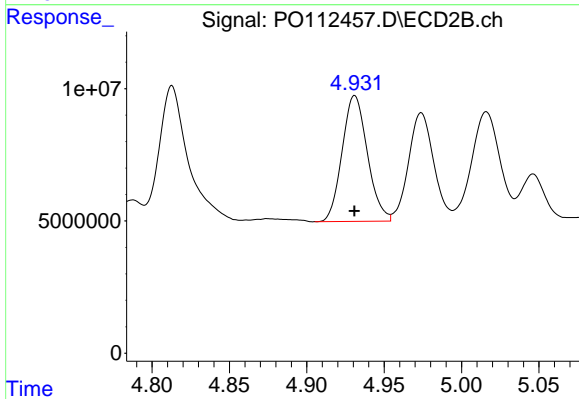
#17 AR-1242-2

R.T.: 4.756 min
 Delta R.T.: 0.000 min
 Response: 105958400
 Conc: 453.46 ng/ml



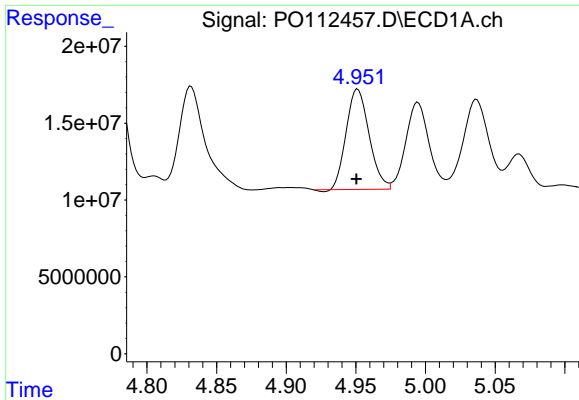
#18 AR-1242-3

R.T.: 4.832 min
 Delta R.T.: 0.000 min
 Response: 89529048
 Conc: 378.31 ng/ml



#18 AR-1242-3

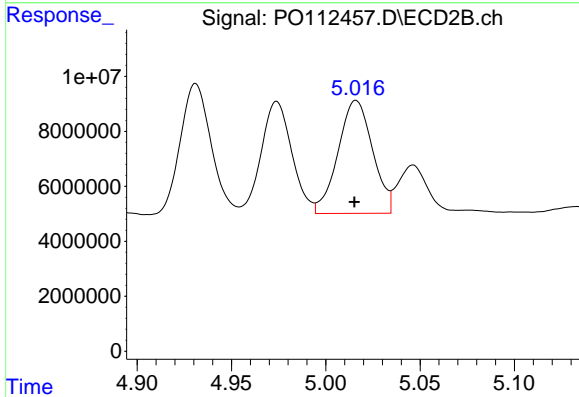
R.T.: 4.931 min
 Delta R.T.: 0.000 min
 Response: 54142881
 Conc: 446.76 ng/ml



#19 AR-1242-4

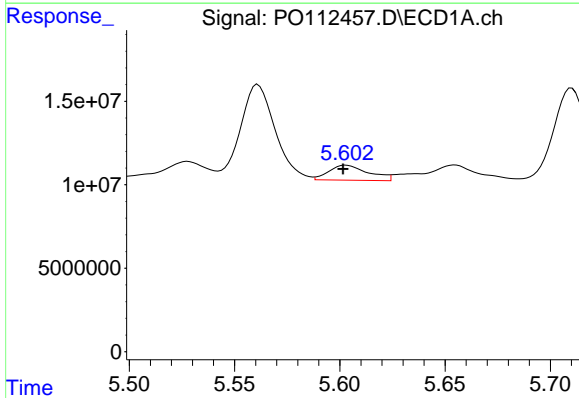
R.T.: 4.951 min
 Delta R.T.: 0.000 min
 Response: 74742447
 Conc: 384.72 ng/ml

Instrument :
 ECD_O
 ClientSampleId :
 TR-04-072225MSD



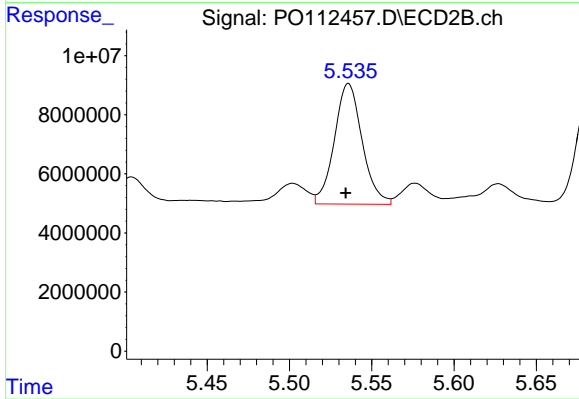
#19 AR-1242-4

R.T.: 5.016 min
 Delta R.T.: 0.000 min
 Response: 52478586
 Conc: 427.56 ng/ml



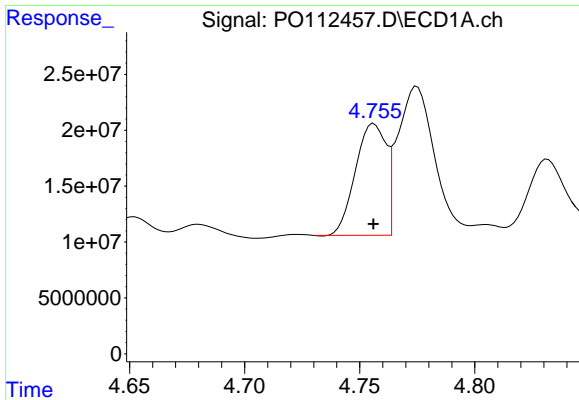
#20 AR-1242-5

R.T.: 5.603 min
 Delta R.T.: 0.001 min
 Response: 11756477
 Conc: 54.96 ng/ml



#20 AR-1242-5

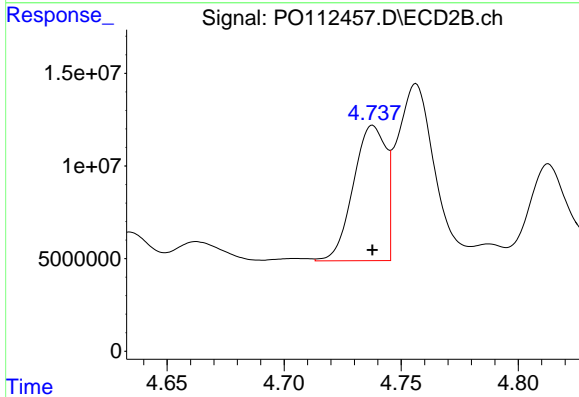
R.T.: 5.536 min
 Delta R.T.: 0.002 min
 Response: 47871532
 Conc: 297.39 ng/ml



#21 AR-1248-1

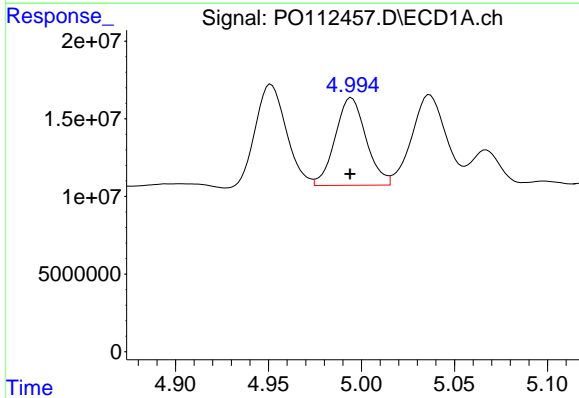
R.T.: 4.756 min
 Delta R.T.: 0.000 min
 Response: 92716098
 Conc: 495.26 ng/ml

Instrument :
 ECD_O
 ClientSampleId :
 TR-04-072225MSD



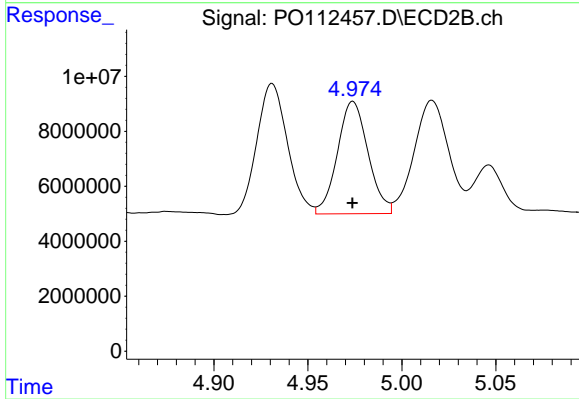
#21 AR-1248-1

R.T.: 4.738 min
 Delta R.T.: 0.000 min
 Response: 70559576
 Conc: 580.69 ng/ml



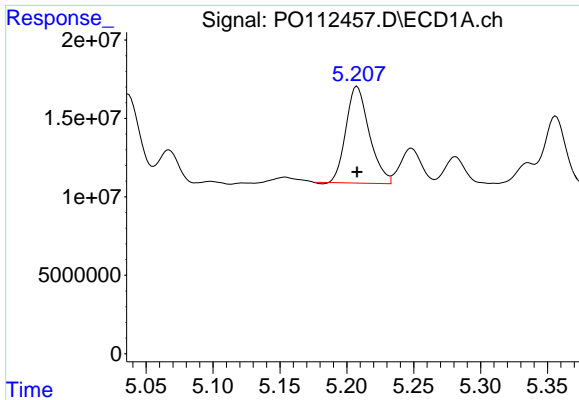
#22 AR-1248-2

R.T.: 4.995 min
 Delta R.T.: 0.000 min
 Response: 65197029
 Conc: 255.56 ng/ml



#22 AR-1248-2

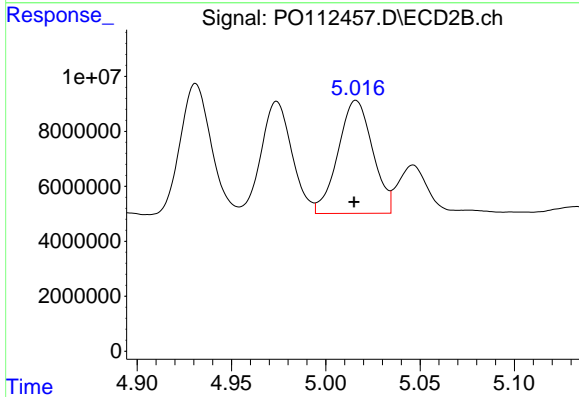
R.T.: 4.974 min
 Delta R.T.: 0.000 min
 Response: 46441899
 Conc: 274.35 ng/ml



#23 AR-1248-3

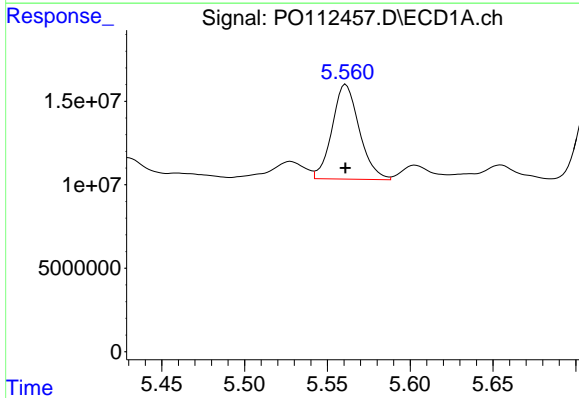
R.T.: 5.208 min
 Delta R.T.: 0.000 min
 Response: 74803136
 Conc: 217.64 ng/ml

Instrument :
 ECD_O
 ClientSampleId :
 TR-04-072225MSD



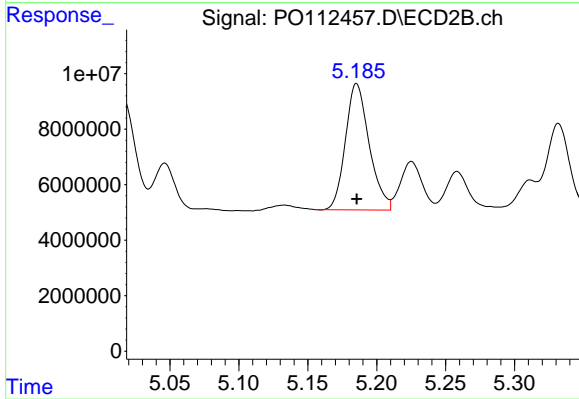
#23 AR-1248-3

R.T.: 5.016 min
 Delta R.T.: 0.001 min
 Response: 52478586
 Conc: 295.41 ng/ml



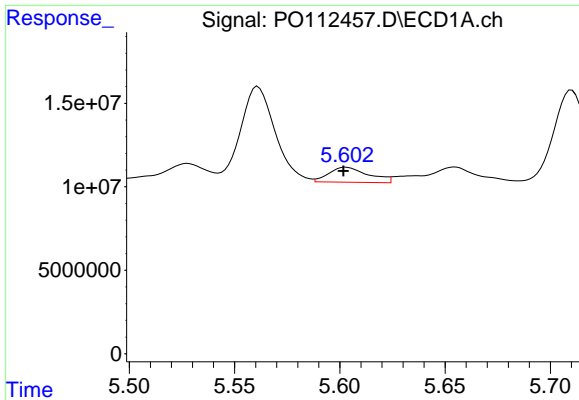
#24 AR-1248-4

R.T.: 5.561 min
 Delta R.T.: 0.000 min
 Response: 64993814
 Conc: 127.92 ng/ml



#24 AR-1248-4

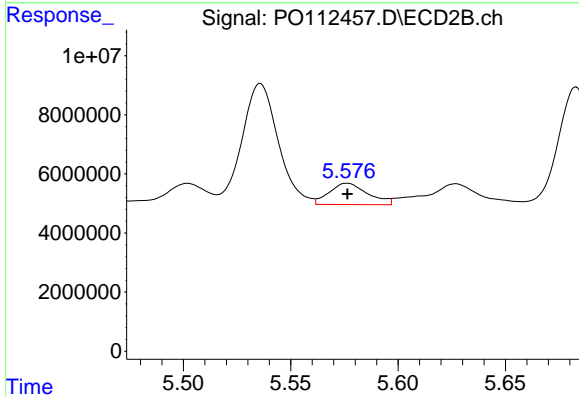
R.T.: 5.185 min
 Delta R.T.: 0.000 min
 Response: 54562207
 Conc: 261.87 ng/ml



#25 AR-1248-5

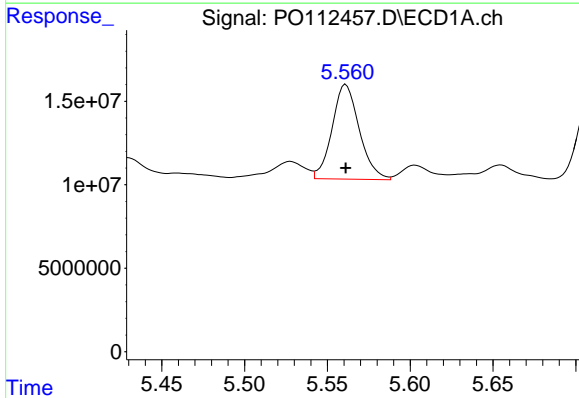
R.T.: 5.603 min
 Delta R.T.: 0.001 min
 Response: 11756477
 Conc: 33.63 ng/ml

Instrument :
 ECD_O
 ClientSampleId :
 TR-04-072225MSD



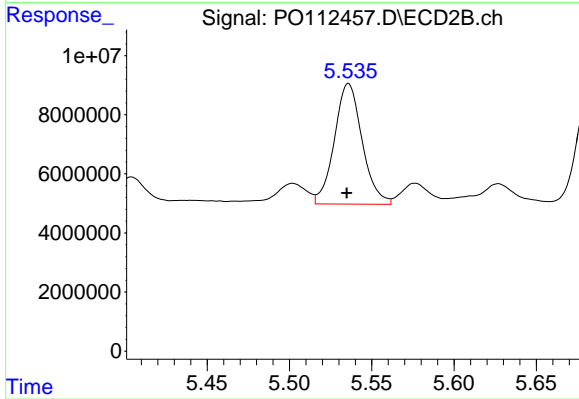
#25 AR-1248-5

R.T.: 5.576 min
 Delta R.T.: 0.000 min
 Response: 8969311
 Conc: 41.76 ng/ml



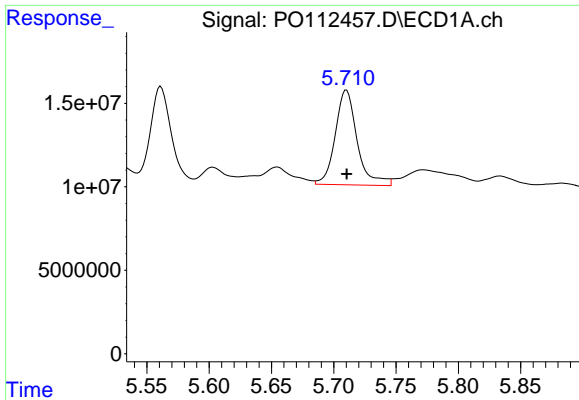
#26 AR-1254-1

R.T.: 5.561 min
 Delta R.T.: 0.000 min
 Response: 64993814
 Conc: 118.39 ng/ml



#26 AR-1254-1

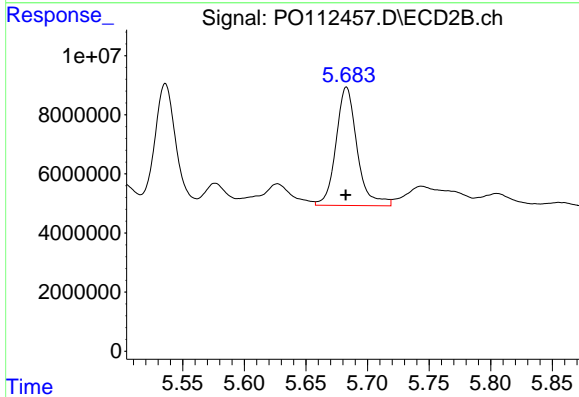
R.T.: 5.536 min
 Delta R.T.: 0.000 min
 Response: 47871532
 Conc: 145.67 ng/ml



#27 AR-1254-2

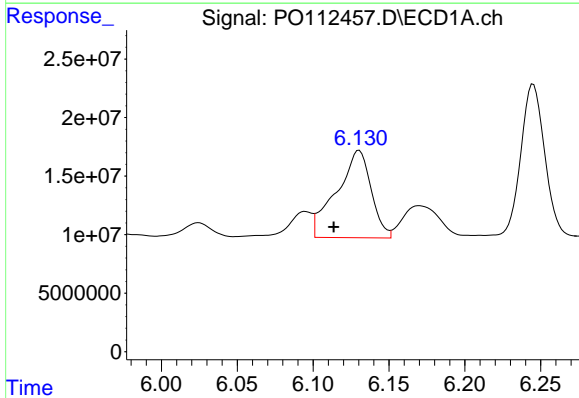
R.T.: 5.710 min
 Delta R.T.: 0.000 min
 Response: 69782839
 Conc: 143.61 ng/ml

Instrument :
 ECD_O
 ClientSampleId :
 TR-04-072225MSD



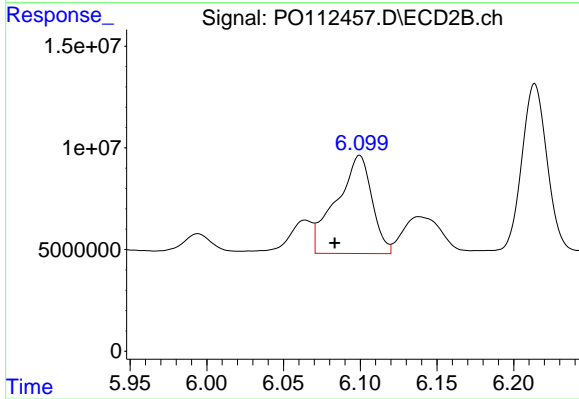
#27 AR-1254-2

R.T.: 5.683 min
 Delta R.T.: 0.000 min
 Response: 47955554
 Conc: 165.65 ng/ml



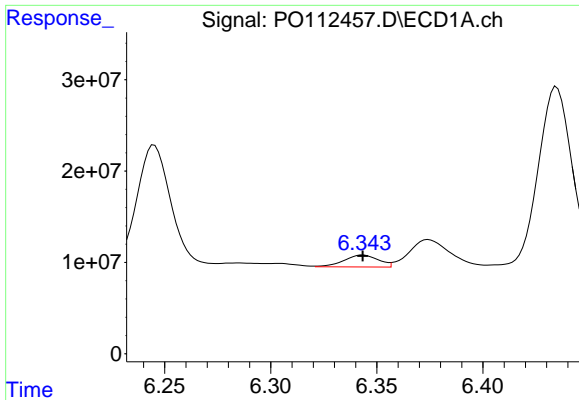
#28 AR-1254-3

R.T.: 6.130 min
 Delta R.T.: 0.017 min
 Response: 118401068
 Conc: 159.08 ng/ml



#28 AR-1254-3

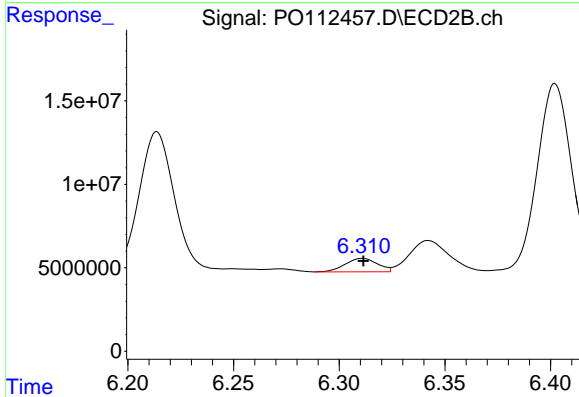
R.T.: 6.100 min
 Delta R.T.: 0.016 min
 Response: 78003826
 Conc: 182.48 ng/ml



#29 AR-1254-4

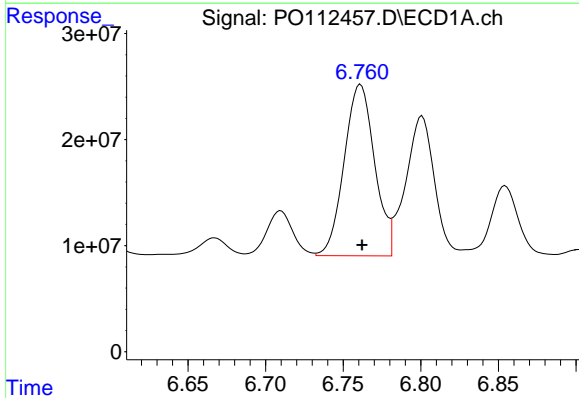
R.T.: 6.343 min
 Delta R.T.: 0.000 min
 Response: 14675237
 Conc: 26.70 ng/ml

Instrument :
 ECD_O
 ClientSampleId :
 TR-04-072225MSD



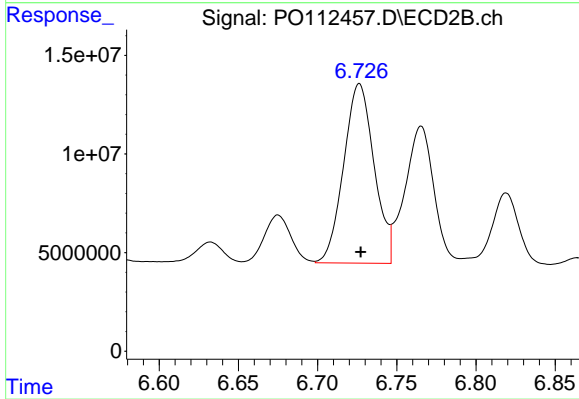
#29 AR-1254-4

R.T.: 6.311 min
 Delta R.T.: 0.000 min
 Response: 8570205
 Conc: 31.40 ng/ml



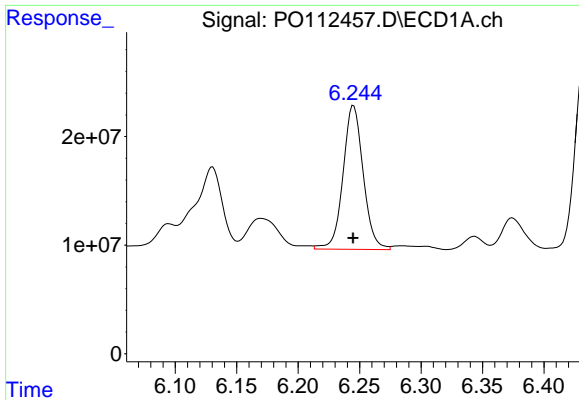
#30 AR-1254-5

R.T.: 6.761 min
 Delta R.T.: -0.001 min
 Response: 220863550
 Conc: 312.03 ng/ml



#30 AR-1254-5

R.T.: 6.726 min
 Delta R.T.: 0.000 min
 Response: 121726460
 Conc: 364.43 ng/ml

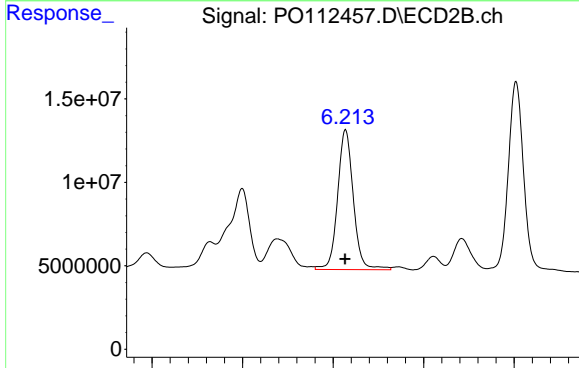


#31 AR-1260-1

R.T.: 6.245 min
 Delta R.T.: 0.000 min
 Response: 151387337
 Conc: 344.59 ng/ml

Instrument :
 ECD_O
 ClientSampleId :
 TR-04-072225MSD

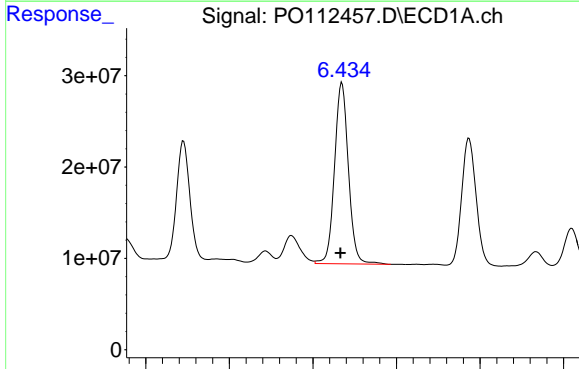
Time 6.10 6.15 6.20 6.25 6.30 6.35 6.40



#31 AR-1260-1

R.T.: 6.214 min
 Delta R.T.: 0.000 min
 Response: 101211200
 Conc: 407.27 ng/ml

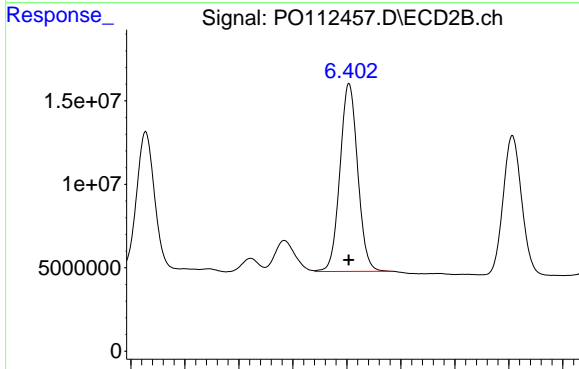
Time 6.00 6.10 6.20 6.30 6.40



#32 AR-1260-2

R.T.: 6.435 min
 Delta R.T.: 0.002 min
 Response: 229486178
 Conc: 333.61 ng/ml

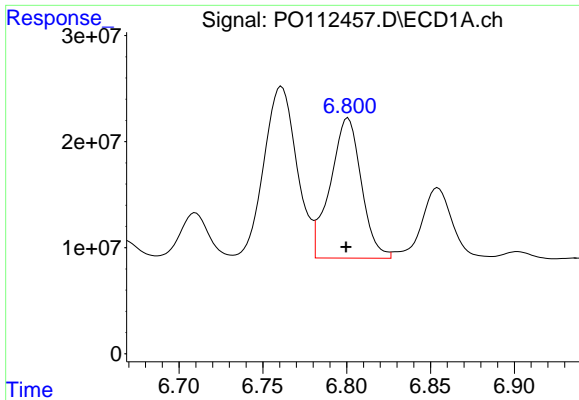
Time 6.20 6.30 6.40 6.50 6.60



#32 AR-1260-2

R.T.: 6.402 min
 Delta R.T.: 0.000 min
 Response: 128391799
 Conc: 389.66 ng/ml

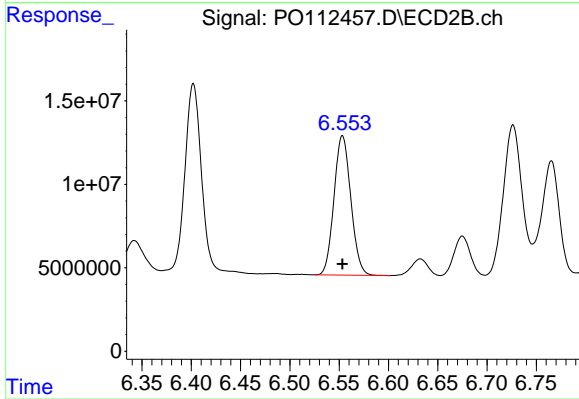
Time 6.20 6.25 6.30 6.35 6.40 6.45 6.50 6.55



#33 AR-1260-3

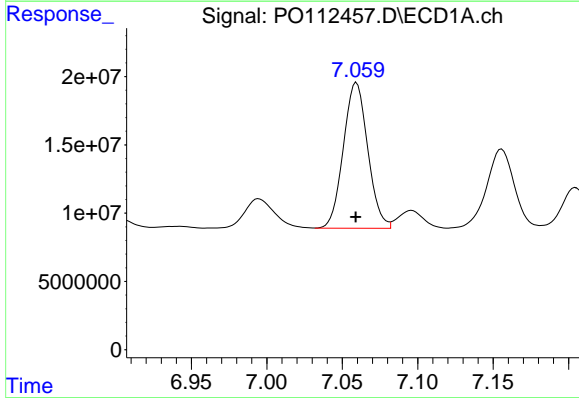
R.T.: 6.801 min
 Delta R.T.: 0.001 min
 Response: 170510489
 Conc: 289.97 ng/ml

Instrument :
 ECD_O
 ClientSampleId :
 TR-04-072225MSD



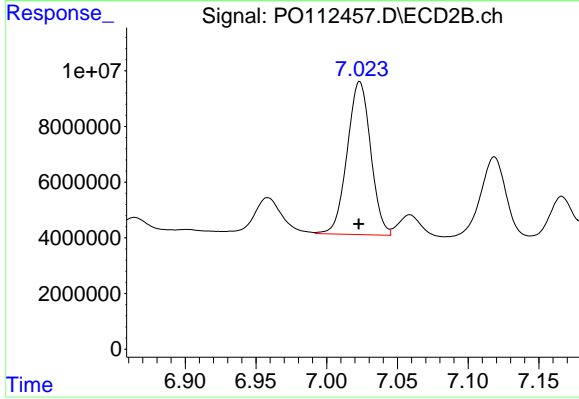
#33 AR-1260-3

R.T.: 6.553 min
 Delta R.T.: 0.000 min
 Response: 99299660
 Conc: 386.50 ng/ml



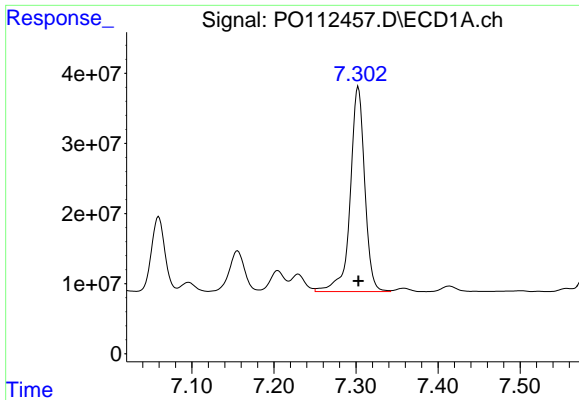
#34 AR-1260-4

R.T.: 7.059 min
 Delta R.T.: 0.000 min
 Response: 120142331
 Conc: 266.39 ng/ml



#34 AR-1260-4

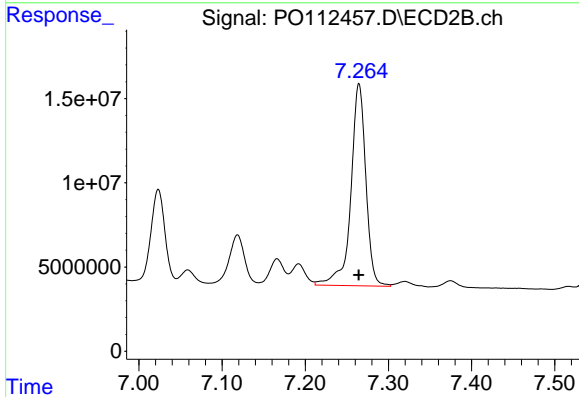
R.T.: 7.023 min
 Delta R.T.: 0.000 min
 Response: 63626114
 Conc: 332.58 ng/ml



#35 AR-1260-5

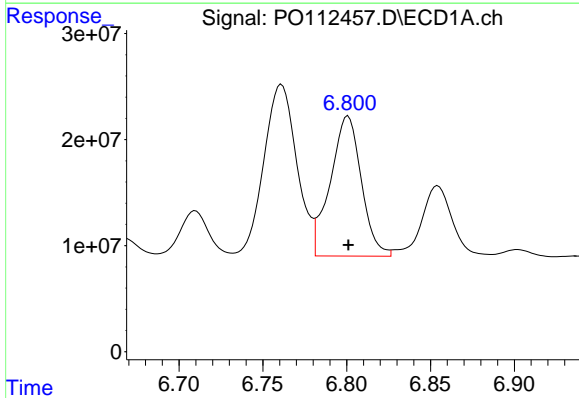
R.T.: 7.303 min
 Delta R.T.: 0.000 min
 Response: 358517149
 Conc: 289.33 ng/ml

Instrument :
 ECD_O
 ClientSampleId :
 TR-04-072225MSD



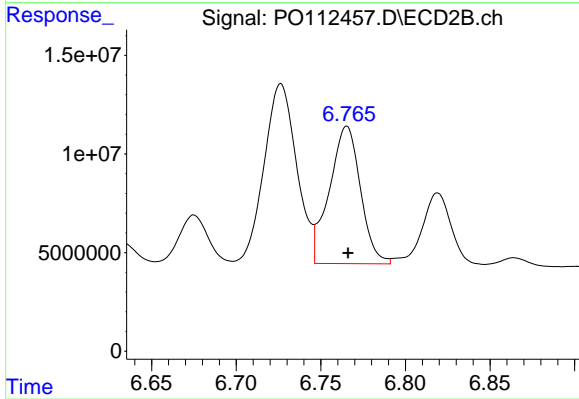
#35 AR-1260-5

R.T.: 7.265 min
 Delta R.T.: 0.000 min
 Response: 150230072
 Conc: 364.46 ng/ml



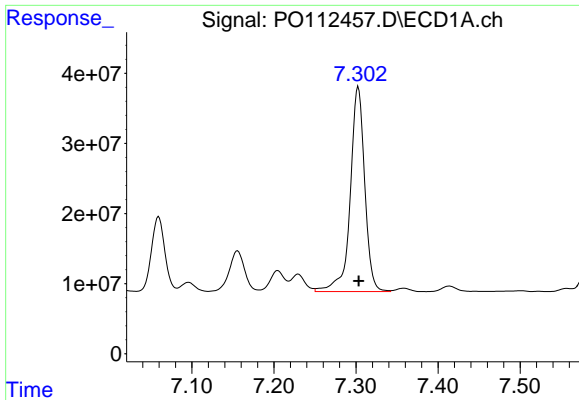
#36 AR-1262-1

R.T.: 6.801 min
 Delta R.T.: 0.000 min
 Response: 170510489
 Conc: 183.50 ng/ml



#36 AR-1262-1

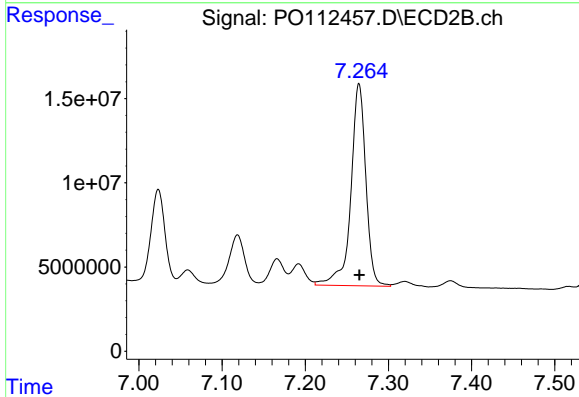
R.T.: 6.765 min
 Delta R.T.: 0.000 min
 Response: 89002974
 Conc: 214.55 ng/ml



#37 AR-1262-2

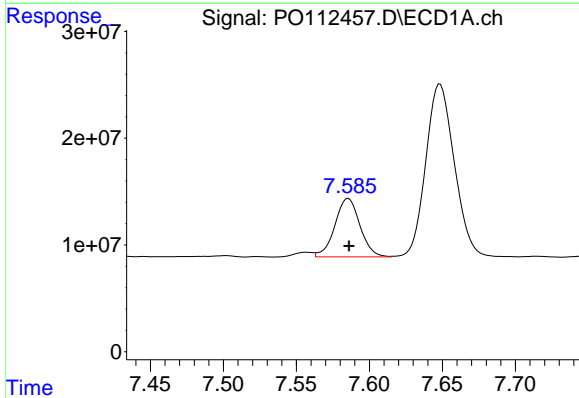
R.T.: 7.303 min
 Delta R.T.: 0.000 min
 Response: 358517149
 Conc: 241.10 ng/ml

Instrument :
 ECD_O
 ClientSampleId :
 TR-04-072225MSD



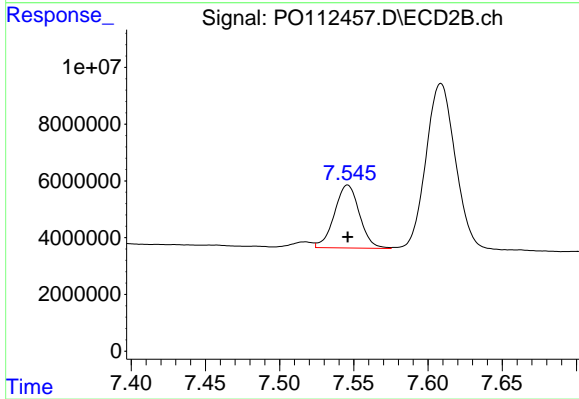
#37 AR-1262-2

R.T.: 7.265 min
 Delta R.T.: 0.000 min
 Response: 150230072
 Conc: 291.40 ng/ml



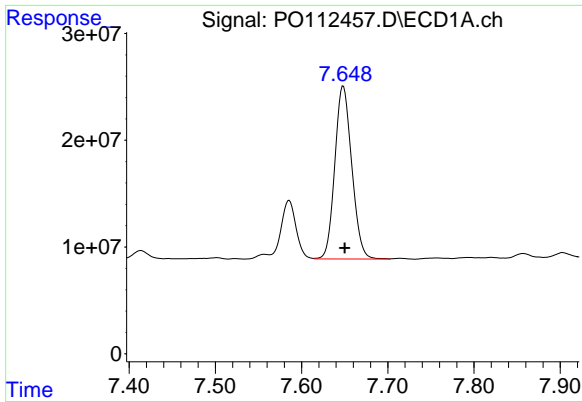
#38 AR-1262-3

R.T.: 7.586 min
 Delta R.T.: 0.000 min
 Response: 65447750
 Conc: 110.88 ng/ml



#38 AR-1262-3

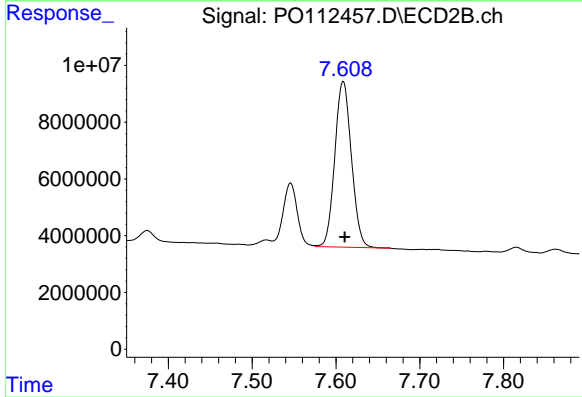
R.T.: 7.546 min
 Delta R.T.: 0.000 min
 Response: 26000042
 Conc: 139.39 ng/ml



#39 AR-1262-4

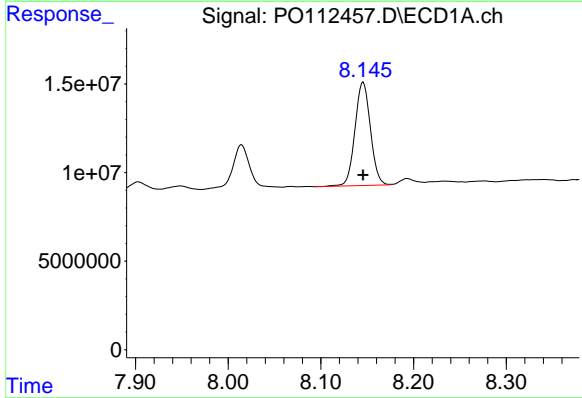
R.T.: 7.648 min
 Delta R.T.: -0.002 min
 Response: 220959931
 Conc: 222.26 ng/ml

Instrument :
 ECD_O
 ClientSampleId :
 TR-04-072225MSD



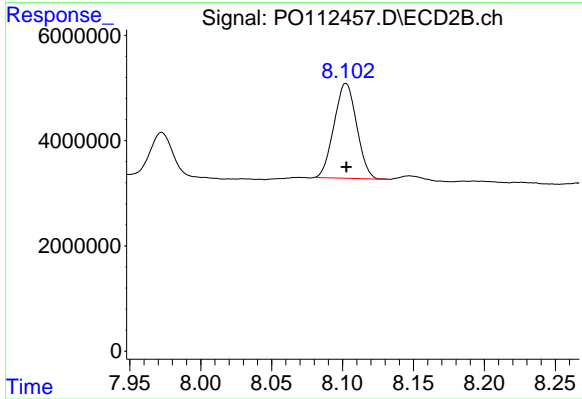
#39 AR-1262-4

R.T.: 7.609 min
 Delta R.T.: -0.002 min
 Response: 80384275
 Conc: 279.01 ng/ml



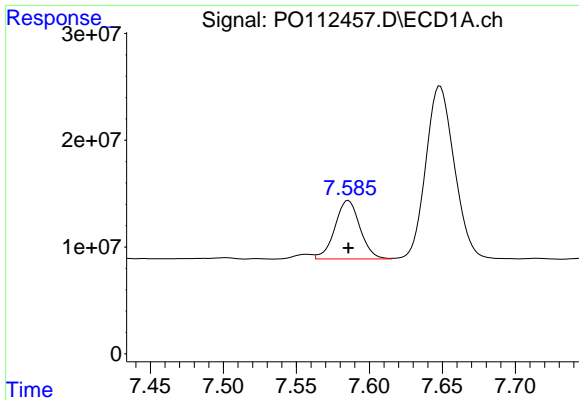
#40 AR-1262-5

R.T.: 8.146 min
 Delta R.T.: 0.000 min
 Response: 67457050
 Conc: 155.41 ng/ml



#40 AR-1262-5

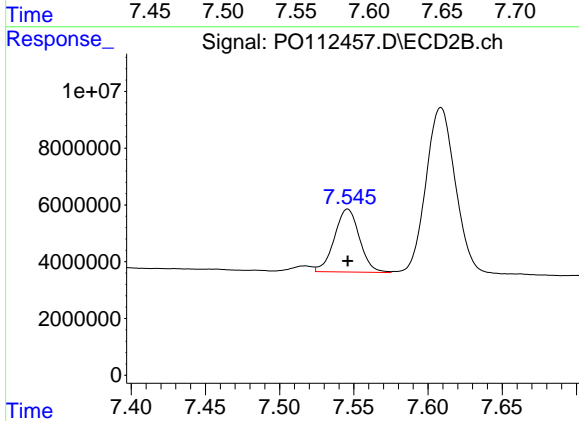
R.T.: 8.102 min
 Delta R.T.: 0.000 min
 Response: 20028276
 Conc: 201.28 ng/ml



#41 AR-1268-1

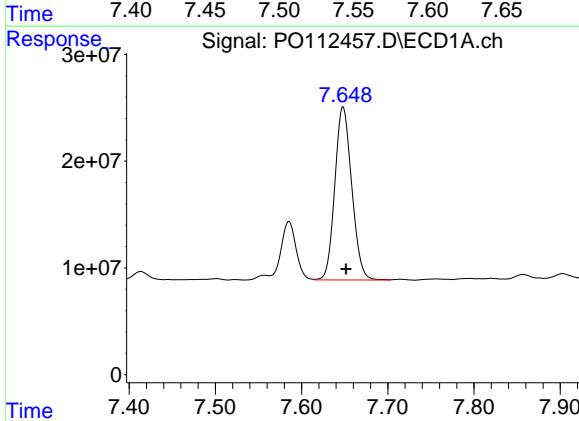
R.T.: 7.586 min
 Delta R.T.: 0.000 min
 Response: 65447750
 Conc: 37.37 ng/ml

Instrument :
 ECD_O
 ClientSampleId :
 TR-04-072225MSD



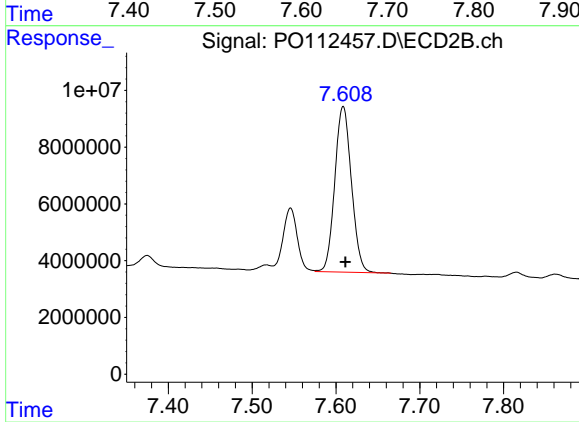
#41 AR-1268-1

R.T.: 7.546 min
 Delta R.T.: 0.000 min
 Response: 26000042
 Conc: 50.21 ng/ml



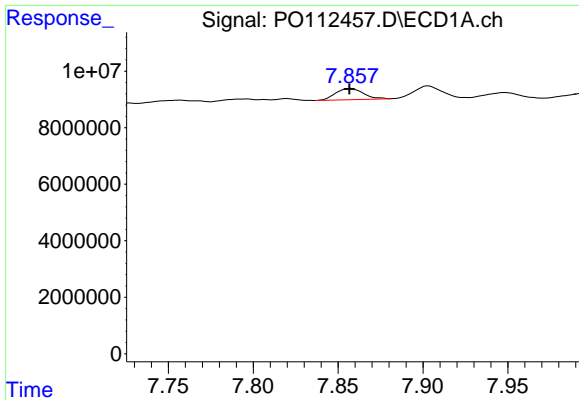
#42 AR-1268-2

R.T.: 7.648 min
 Delta R.T.: -0.003 min
 Response: 220959931
 Conc: 150.00 ng/ml



#42 AR-1268-2

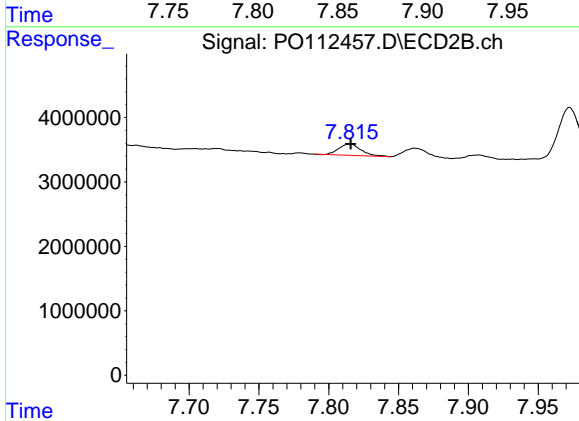
R.T.: 7.609 min
 Delta R.T.: -0.003 min
 Response: 80384275
 Conc: 189.11 ng/ml



#43 AR-1268-3

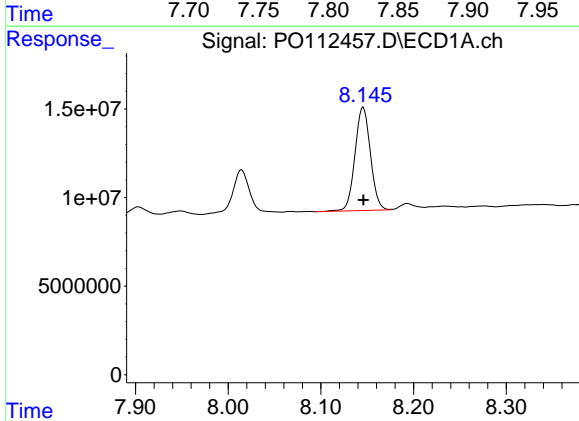
R.T.: 7.857 min
 Delta R.T.: 0.000 min
 Response: 4445315
 Conc: 3.55 ng/ml

Instrument :
 ECD_O
 ClientSampleId :
 TR-04-072225MSD



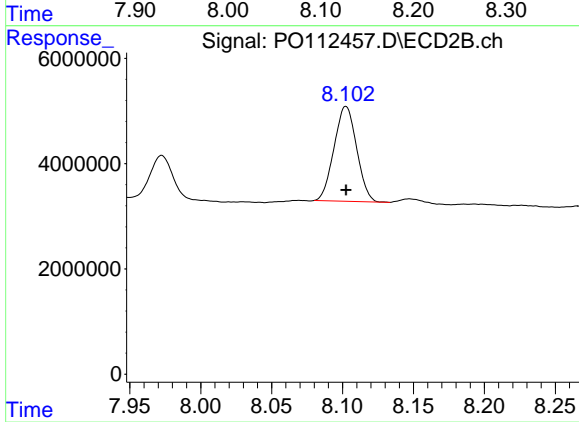
#43 AR-1268-3

R.T.: 7.815 min
 Delta R.T.: 0.000 min
 Response: 1964573
 Conc: 6.12 ng/ml



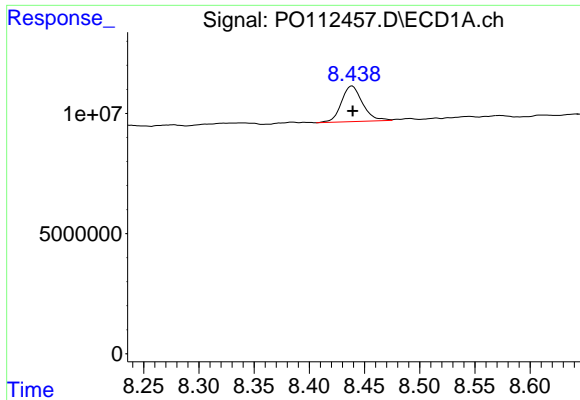
#44 AR-1268-4

R.T.: 8.146 min
 Delta R.T.: 0.000 min
 Response: 67457050
 Conc: 139.99 ng/ml



#44 AR-1268-4

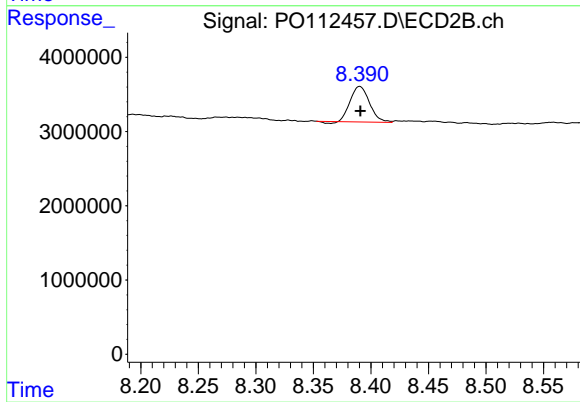
R.T.: 8.102 min
 Delta R.T.: 0.000 min
 Response: 20028276
 Conc: 179.96 ng/ml



#45 AR-1268-5

R.T.: 8.439 min
Delta R.T.: 0.000 min
Response: 19711696
Conc: 5.87 ng/ml

Instrument :
ECD_O
ClientSampleId :
TR-04-072225MSD



#45 AR-1268-5

R.T.: 8.390 min
Delta R.T.: 0.000 min
Response: 5527446
Conc: 7.55 ng/ml