

Data Path : Z:\pestpcbsrv\HPCHEM1\ECD_0\Data\P0072425\
 Data File : PO112458.D
 Signal(s) : Signal #1: ECD1A.ch Signal #2: ECD2B.ch
 Acq On : 24 Jul 2025 11:48
 Operator : YP/AJ
 Sample : Q2676-03
 Misc :
 ALS Vial : 11 Sample Multiplier: 1

Instrument :
 ECD_0
 ClientSampleId :
 HD-02-07222025

Integration File signal 1: autoint1.e
 Integration File signal 2: autoint2.e
 Quant Time: Jul 24 23:37:34 2025
 Quant Method : Z:\pestpcbsrv\HPCHEM1\ECD_0\methods\P0072325.M
 Quant Title : GC EXTRACTABLES
 QLast Update : Thu Jul 24 04:54:06 2025
 Response via : Initial Calibration
 Integrator: ChemStation

Volume Inj. : 2 µl
 Signal #1 Phase : ZB-MR1 Signal #2 Phase: ZB-MR2
 Signal #1 Info : 30Mx0.32mmx 0.50µ Signal #2 Info : 30M x 0.32mm x 0.25µm

Compound	RT#1	RT#2	Resp#1	Resp#2	ng/ml	ng/ml
System Monitoring Compounds						
1) SA Tetrachlo...	3.671	3.663	172.8E6	105.2E6	21.249	21.179
2) SA Decachlor...	8.696	8.641	98809291	27680906	13.514	15.664
Target Compounds						
3) L1 AR-1016-1	4.763	4.743	2783822	6332941	10.373	36.187 #
4) L1 AR-1016-2	4.763	4.743	2783822	6332941	6.855	24.311 #
5) L1 AR-1016-3	4.838	4.934	4824424	2654132	18.437	19.520
6) L1 AR-1016-4	4.957	4.978	8556600	11223684	40.392	101.037 #
7) L1 AR-1016-5	5.221	5.199	29141455	11118419	132.781	77.587 #
8) L2 AR-1221-1	3.892	3.879	558582	833950	5.779	12.398 #
9) L2 AR-1221-2	3.979	3.961	739180	4010183	10.286	79.053 #
10) L2 AR-1221-3	4.050	4.033	4689229	4735181	19.727	29.869 #
11) L3 AR-1232-1	4.050	4.033	4689229	4735181	25.079	37.417 #
12) L3 AR-1232-2	4.540	4.743	10744929	6332941	99.837	48.286 #
13) L3 AR-1232-3	4.763	4.934	2783822	2654132	13.461	39.498 #
14) L3 AR-1232-4	4.957	5.022	8556600	2260595	81.693	37.784 #
15) L3 AR-1232-5	5.000	5.199	21721917	11118419	320.000	170.520 #
16) L4 AR-1242-1	4.763	4.743	2783822	6332941	11.244	39.982 #
17) L4 AR-1242-2	4.763	4.743	2783822	6332941	7.528	27.102 #
18) L4 AR-1242-3	4.838	4.934	4824424	2654132	20.386	21.901
19) L4 AR-1242-4	4.957	5.022	8556600	2260595	44.043	18.418 #
20) L4 AR-1242-5	5.608	5.537	8852638	13903501	41.384	86.373 #
21) L5 AR-1248-1	4.763	4.743	2783822	6332941	14.870	52.119 #
22) L5 AR-1248-2	5.000	4.978	21721917	11223684	85.146	66.303
23) L5 AR-1248-3	5.221	5.022	29141455	2260595	84.787	12.725 #
24) L5 AR-1248-4	5.564	5.199	22175253	11118419	43.645	53.363
25) L5 AR-1248-5	5.608	5.579	8852638	5099713	25.323	23.746
26) L6 AR-1254-1	5.564	5.537	22175253	13903501	40.395	42.309
27) L6 AR-1254-2	5.709	5.682	18072111	11434476	37.192	39.499
28) L6 AR-1254-3	6.115	6.083	18990098	14686685	25.515	34.358 #
29) L6 AR-1254-4	6.345	6.311	8844175	4581463	16.089	16.784
30) L6 AR-1254-5	6.762	6.726	20042690	11150169	28.316	33.382
31) L7 AR-1260-1	6.248	6.214	9136917	6488572	20.797	26.110 #
32) L7 AR-1260-2	6.435	6.401	10218546	6546552	14.855	19.869 #
33) L7 AR-1260-3	6.802	6.552	7699801	143088	13.094	0.557 #
34) L7 AR-1260-4	7.061	7.022	4303900	2169043	9.543	11.338
35) L7 AR-1260-5	7.303	7.265	7535731	4933473	6.081	11.969 #
36) L8 AR-1262-1	6.802	6.763	7699801	2836537	8.286	6.838
37) L8 AR-1262-2	7.303	7.265	7535731	4933473	5.068	9.569 #
38) L8 AR-1262-3	7.589	7.545	1770480	1324296	3.000	7.100 #
39) L8 AR-1262-4	7.631	7.609	17330748	4045880	17.432	14.043
40) L8 AR-1262-5	8.148	8.102	2288772	336934	5.273	3.386 #
41) L9 AR-1268-1	7.589	7.545	1770480	1324296	1.011	2.557 #

Data Path : Z:\pestpcbsrv\HPCHEM1\ECD_0\Data\P0072425\
 Data File : P0112458.D
 Signal(s) : Signal #1: ECD1A.ch Signal #2: ECD2B.ch
 Acq On : 24 Jul 2025 11:48
 Operator : YP/AJ
 Sample : Q2676-03
 Misc :
 ALS Vial : 11 Sample Multiplier: 1

Instrument :
 ECD_0
 ClientSampleId :
 HD-02-07222025

Integration File signal 1: autoint1.e
 Integration File signal 2: autoint2.e
 Quant Time: Jul 24 23:37:34 2025
 Quant Method : Z:\pestpcbsrv\HPCHEM1\ECD_0\methods\P0072325.M
 Quant Title : GC EXTRACTABLES
 QLast Update : Thu Jul 24 04:54:06 2025
 Response via : Initial Calibration
 Integrator: ChemStation

Volume Inj. : 2 µl
 Signal #1 Phase : ZB-MR1 Signal #2 Phase: ZB-MR2
 Signal #1 Info : 30Mx0.32mmx 0.50µ Signal #2 Info : 30M x 0.32mm x 0.25µm

	Compound	RT#1	RT#2	Resp#1	Resp#2	ng/ml	ng/ml
42)	L9 AR-1268-2	7.631	7.609	17330748	4045880	11.765	9.518
43)	L9 AR-1268-3	7.864	7.818	912004	636141	0.728	1.980 #
44)	L9 AR-1268-4	8.148	8.102	2288772	336934	4.750	3.027 #
45)	L9 AR-1268-5	8.441	8.391	1340760	121727	0.399	0.166 #

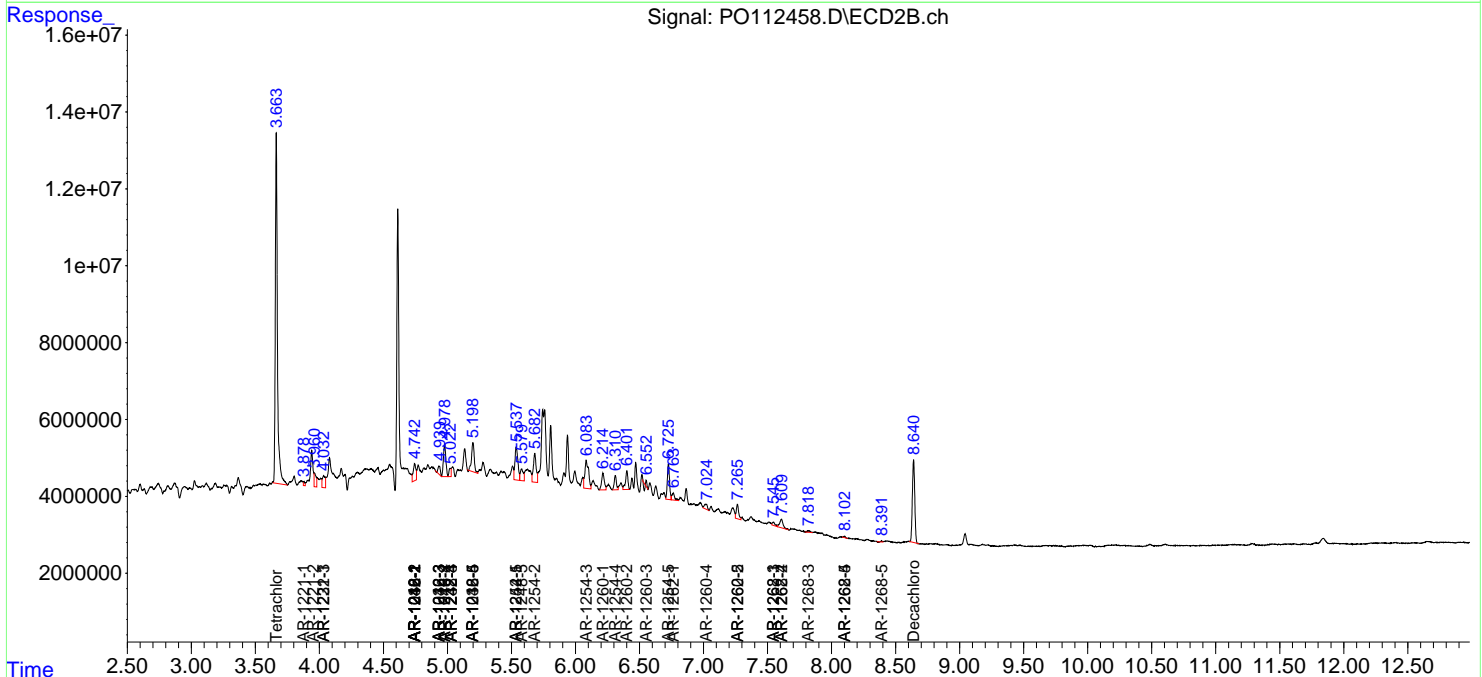
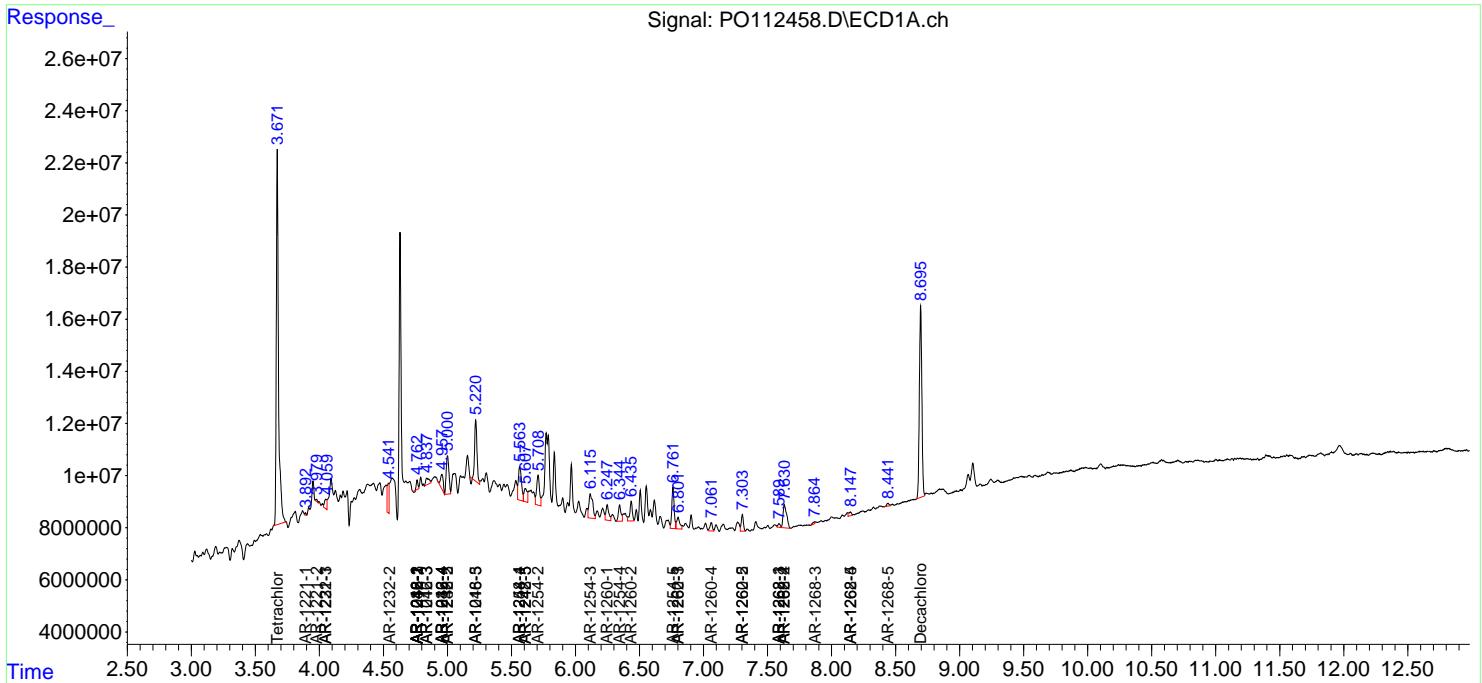
(f)=RT Delta > 1/2 Window (#)=Amounts differ by > 25% (m)=manual int.

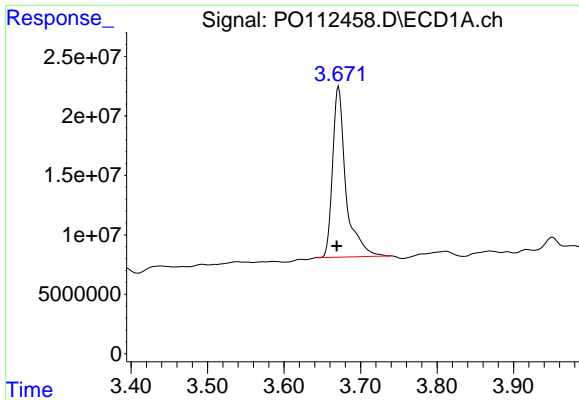
Data Path : Z:\pestpcbsrv\HPCHEM1\ECD_O\Data\PO072425\
 Data File : PO112458.D
 Signal(s) : Signal #1: ECD1A.ch Signal #2: ECD2B.ch
 Acq On : 24 Jul 2025 11:48
 Operator : YP/AJ
 Sample : Q2676-03
 Misc :
 ALS Vial : 11 Sample Multiplier: 1

Instrument :
 ECD_O
 ClientSampleId :
 HD-02-07222025

Integration File signal 1: autoint1.e
 Integration File signal 2: autoint2.e
 Quant Time: Jul 24 23:37:34 2025
 Quant Method : Z:\pestpcbsrv\HPCHEM1\ECD_O\methods\PO072325.M
 Quant Title : GC EXTRACTABLES
 QLast Update : Thu Jul 24 04:54:06 2025
 Response via : Initial Calibration
 Integrator: ChemStation

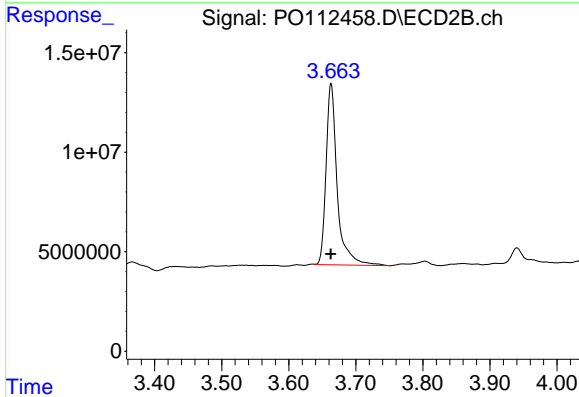
Volume Inj. : 2 µl
 Signal #1 Phase : ZB-MR1 Signal #2 Phase: ZB-MR2
 Signal #1 Info : 30Mx0.32mmx 0.50µ Signal #2 Info : 30M x 0.32mm x 0.25µm



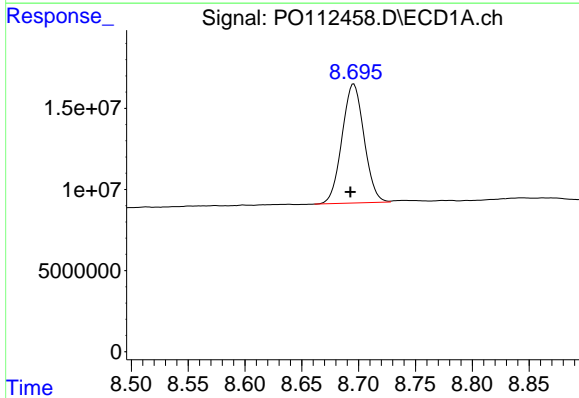


#1 Tetrachloro-m-xylene
 R.T.: 3.671 min
 Delta R.T.: 0.002 min
 Response: 172791231
 Conc: 21.25 ng/ml

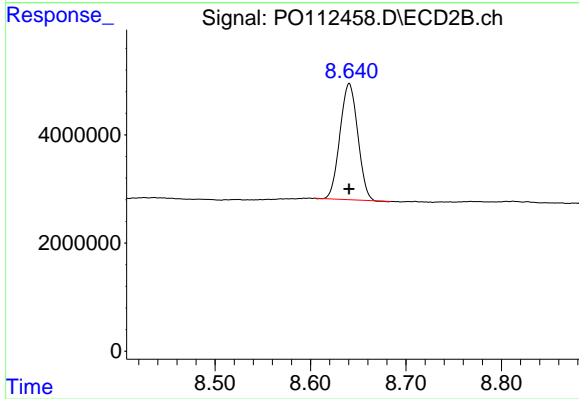
Instrument :
 ECD_O
 ClientSampleId :
 HD-02-07222025



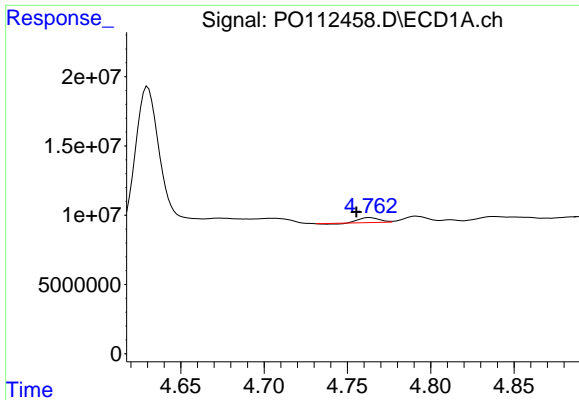
#1 Tetrachloro-m-xylene
 R.T.: 3.663 min
 Delta R.T.: 0.000 min
 Response: 105241170
 Conc: 21.18 ng/ml



#2 Decachlorobiphenyl
 R.T.: 8.696 min
 Delta R.T.: 0.003 min
 Response: 98809291
 Conc: 13.51 ng/ml



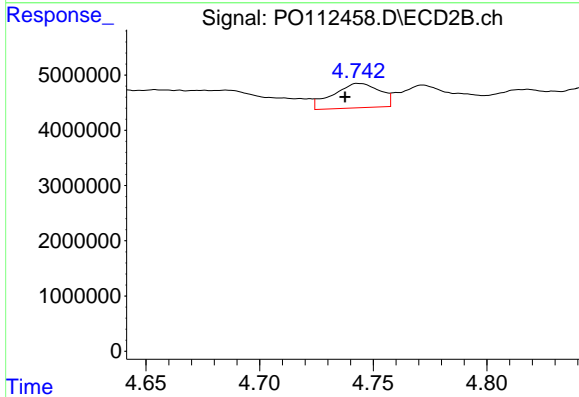
#2 Decachlorobiphenyl
 R.T.: 8.641 min
 Delta R.T.: 0.000 min
 Response: 27680906
 Conc: 15.66 ng/ml



#3 AR-1016-1

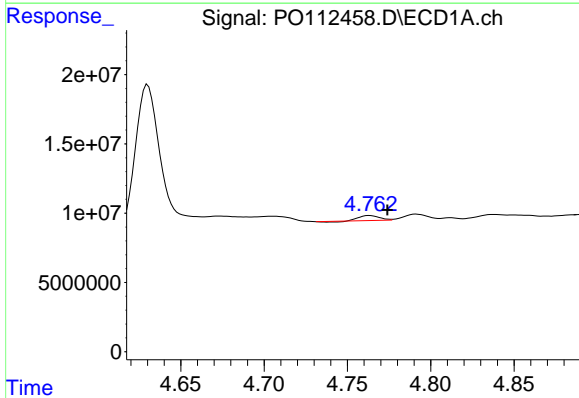
R.T.: 4.763 min
 Delta R.T.: 0.008 min
 Response: 2783822
 Conc: 10.37 ng/ml

Instrument :
 ECD_O
 ClientSampleId :
 HD-02-07222025



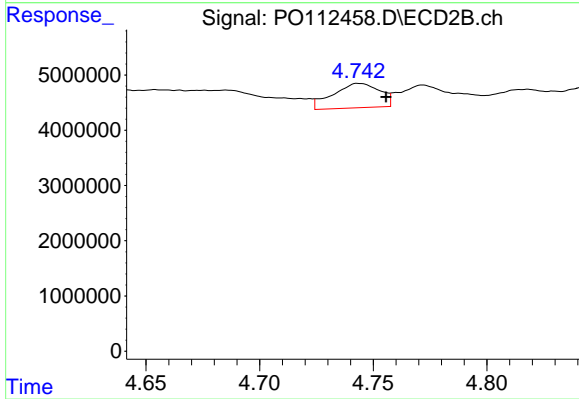
#3 AR-1016-1

R.T.: 4.743 min
 Delta R.T.: 0.006 min
 Response: 6332941
 Conc: 36.19 ng/ml



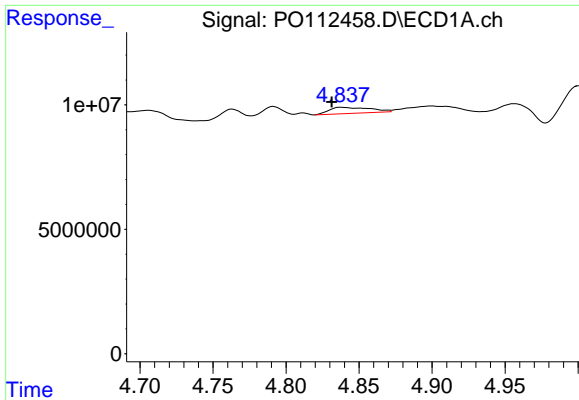
#4 AR-1016-2

R.T.: 4.763 min
 Delta R.T.: -0.011 min
 Response: 2783822
 Conc: 6.85 ng/ml



#4 AR-1016-2

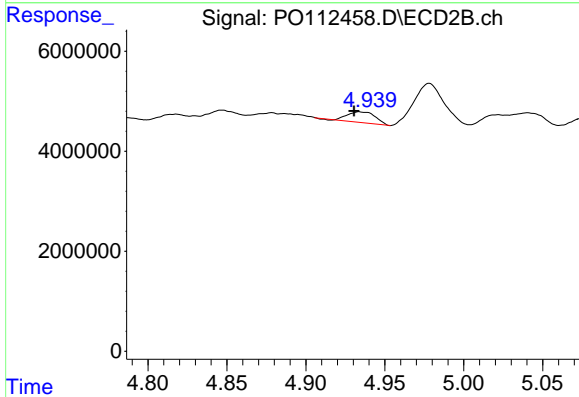
R.T.: 4.743 min
 Delta R.T.: -0.012 min
 Response: 6332941
 Conc: 24.31 ng/ml



#5 AR-1016-3

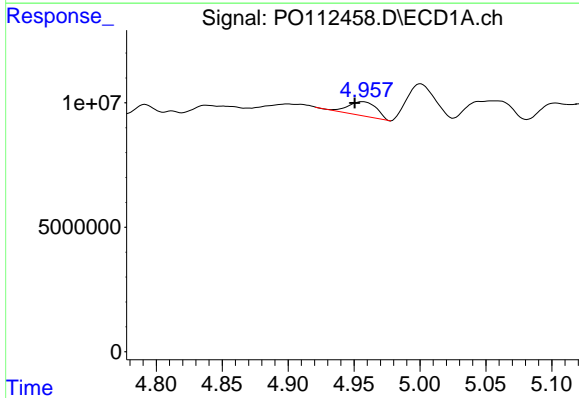
R.T.: 4.838 min
 Delta R.T.: 0.007 min
 Response: 4824424
 Conc: 18.44 ng/ml

Instrument :
 ECD_O
 ClientSampleId :
 HD-02-07222025



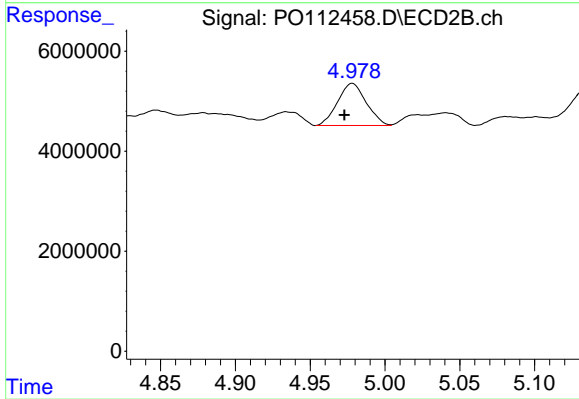
#5 AR-1016-3

R.T.: 4.934 min
 Delta R.T.: 0.003 min
 Response: 2654132
 Conc: 19.52 ng/ml



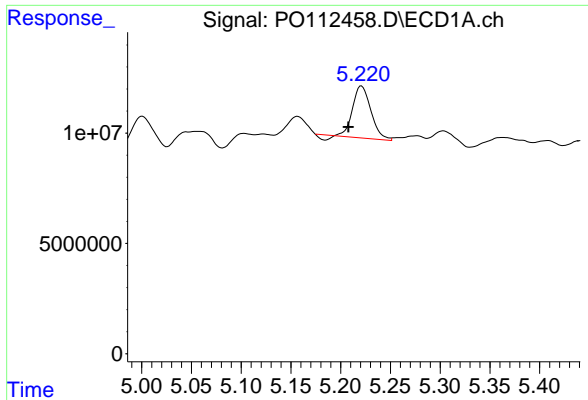
#6 AR-1016-4

R.T.: 4.957 min
 Delta R.T.: 0.006 min
 Response: 8556600
 Conc: 40.39 ng/ml



#6 AR-1016-4

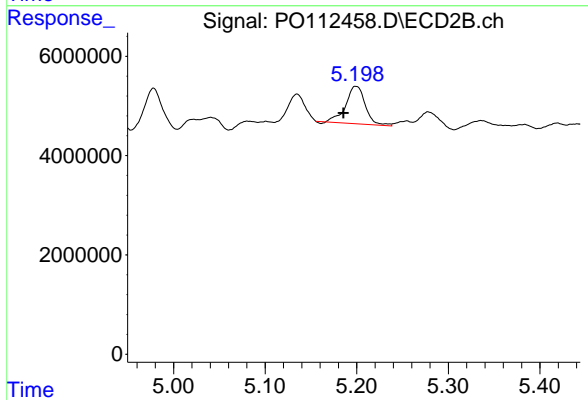
R.T.: 4.978 min
 Delta R.T.: 0.005 min
 Response: 11223684
 Conc: 101.04 ng/ml



#7 AR-1016-5

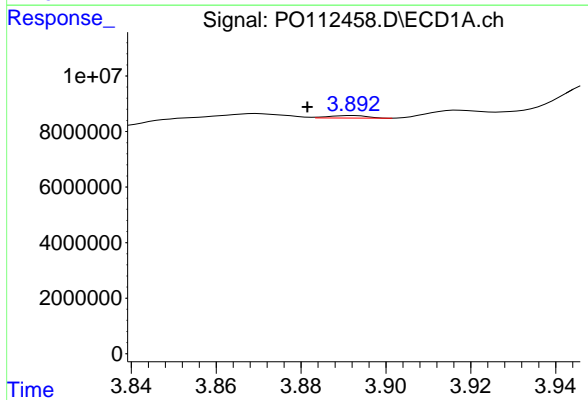
R.T.: 5.221 min
 Delta R.T.: 0.013 min
 Response: 29141455
 Conc: 132.78 ng/ml

Instrument :
 ECD_O
 ClientSampleId :
 HD-02-07222025



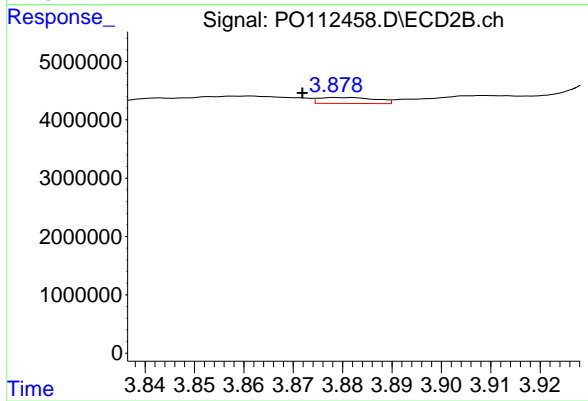
#7 AR-1016-5

R.T.: 5.199 min
 Delta R.T.: 0.014 min
 Response: 11118419
 Conc: 77.59 ng/ml



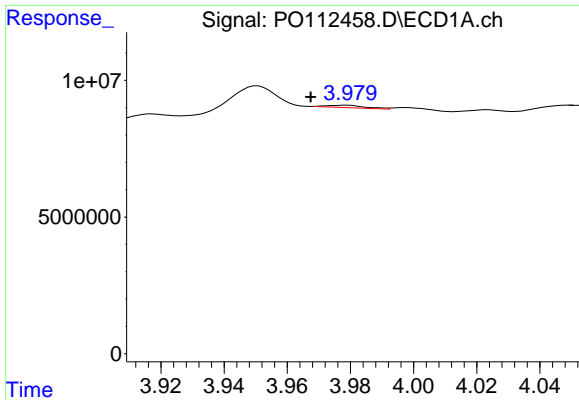
#8 AR-1221-1

R.T.: 3.892 min
 Delta R.T.: 0.011 min
 Response: 558582
 Conc: 5.78 ng/ml



#8 AR-1221-1

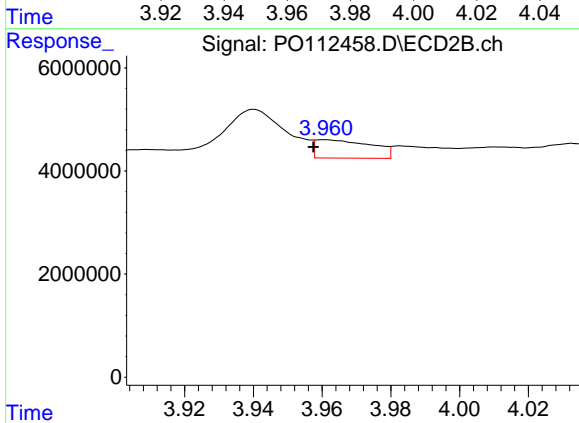
R.T.: 3.879 min
 Delta R.T.: 0.007 min
 Response: 833950
 Conc: 12.40 ng/ml



#9 AR-1221-2

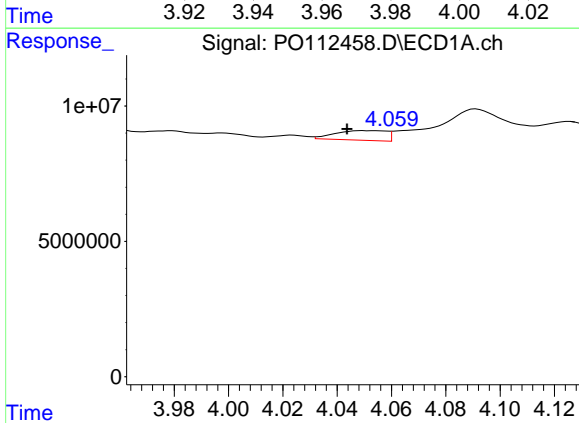
R.T.: 3.979 min
 Delta R.T.: 0.011 min
 Response: 739180
 Conc: 10.29 ng/ml

Instrument :
 ECD_O
 ClientSampleId :
 HD-02-07222025



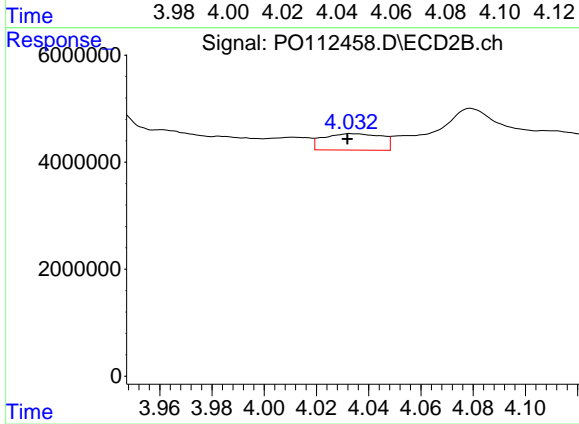
#9 AR-1221-2

R.T.: 3.961 min
 Delta R.T.: 0.003 min
 Response: 4010183
 Conc: 79.05 ng/ml



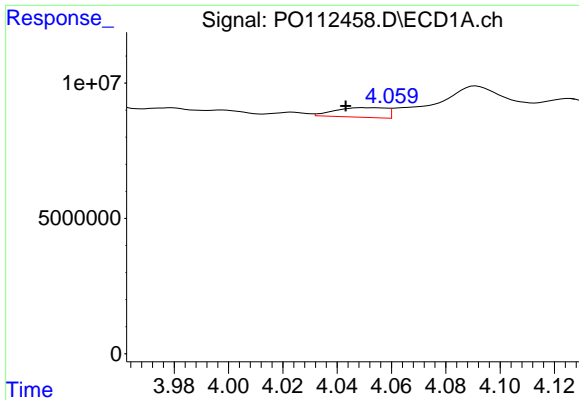
#10 AR-1221-3

R.T.: 4.050 min
 Delta R.T.: 0.006 min
 Response: 4689229
 Conc: 19.73 ng/ml



#10 AR-1221-3

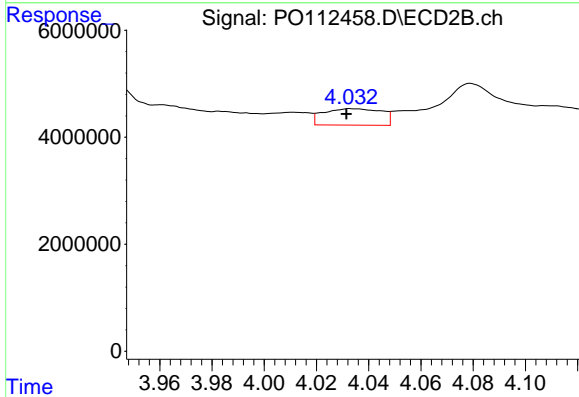
R.T.: 4.033 min
 Delta R.T.: 0.000 min
 Response: 4735181
 Conc: 29.87 ng/ml



#11 AR-1232-1

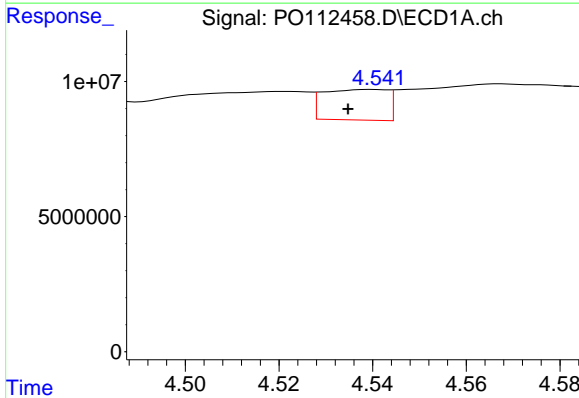
R.T.: 4.050 min
 Delta R.T.: 0.006 min
 Response: 4689229
 Conc: 25.08 ng/ml

Instrument :
 ECD_O
 ClientSampleId :
 HD-02-07222025



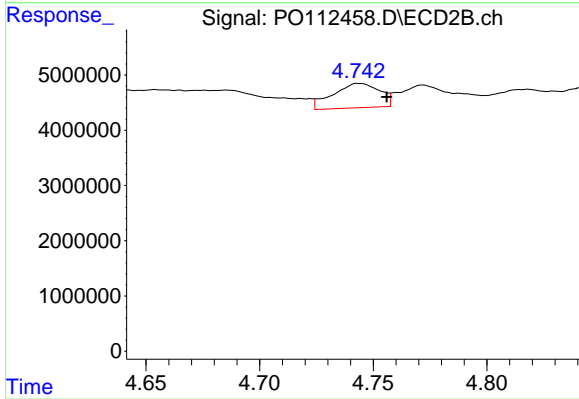
#11 AR-1232-1

R.T.: 4.033 min
 Delta R.T.: 0.001 min
 Response: 4735181
 Conc: 37.42 ng/ml



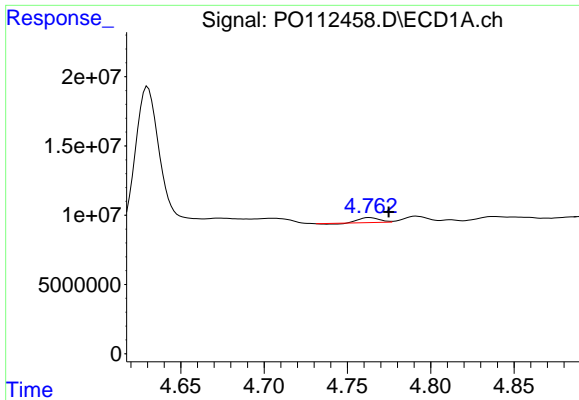
#12 AR-1232-2

R.T.: 4.540 min
 Delta R.T.: 0.005 min
 Response: 10744929
 Conc: 99.84 ng/ml



#12 AR-1232-2

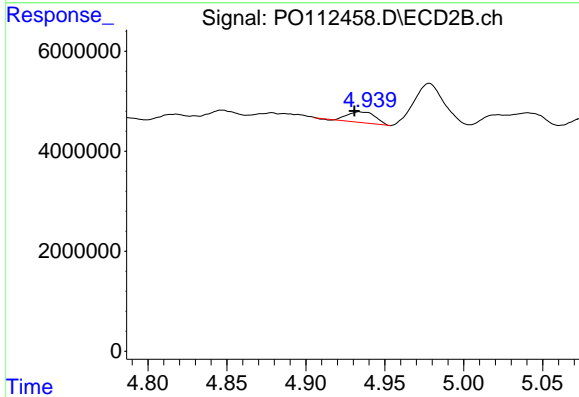
R.T.: 4.743 min
 Delta R.T.: -0.013 min
 Response: 6332941
 Conc: 48.29 ng/ml



#13 AR-1232-3

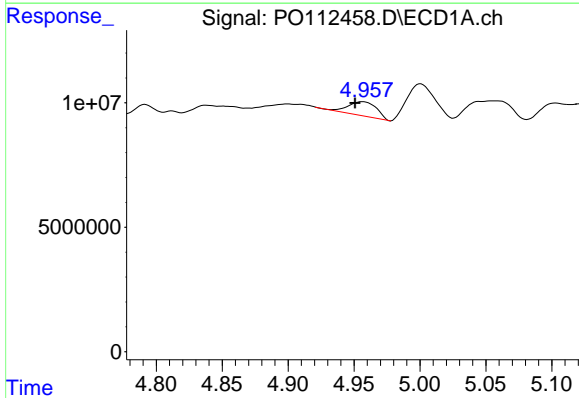
R.T.: 4.763 min
 Delta R.T.: -0.012 min
 Response: 2783822
 Conc: 13.46 ng/ml

Instrument :
 ECD_O
 ClientSampleId :
 HD-02-07222025



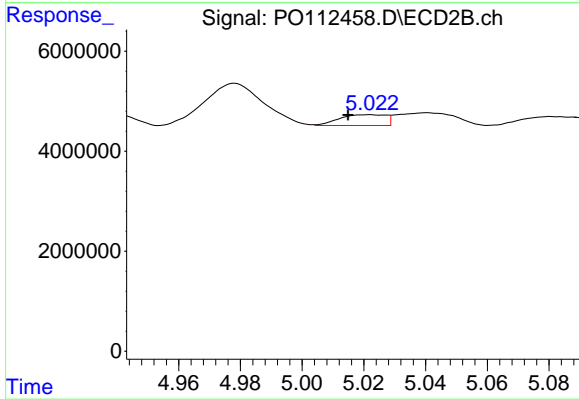
#13 AR-1232-3

R.T.: 4.934 min
 Delta R.T.: 0.003 min
 Response: 2654132
 Conc: 39.50 ng/ml



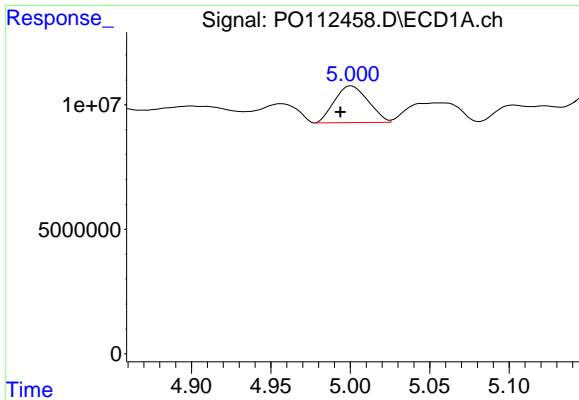
#14 AR-1232-4

R.T.: 4.957 min
 Delta R.T.: 0.006 min
 Response: 8556600
 Conc: 81.69 ng/ml



#14 AR-1232-4

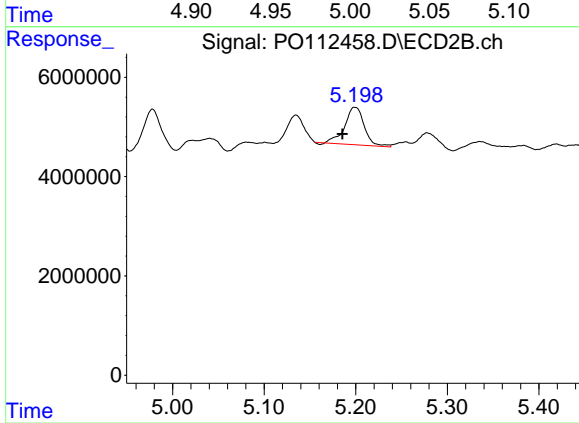
R.T.: 5.022 min
 Delta R.T.: 0.007 min
 Response: 2260595
 Conc: 37.78 ng/ml



#15 AR-1232-5

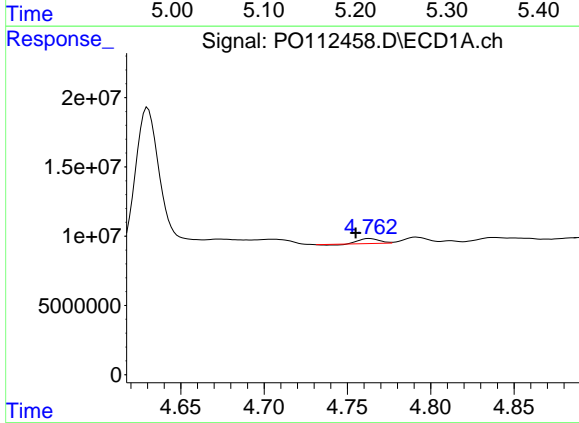
R.T.: 5.000 min
 Delta R.T.: 0.007 min
 Response: 21721917
 Conc: 320.00 ng/ml

Instrument :
 ECD_O
 ClientSampleId :
 HD-02-07222025



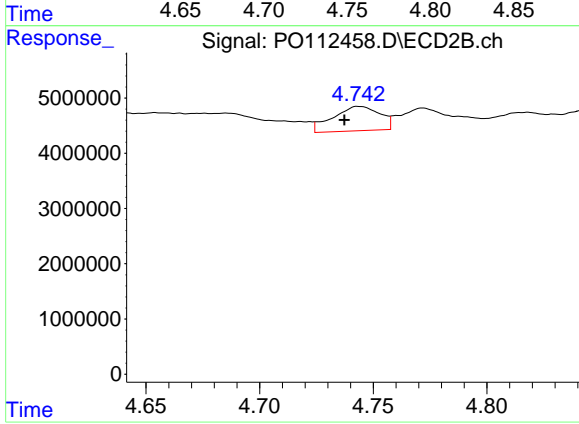
#15 AR-1232-5

R.T.: 5.199 min
 Delta R.T.: 0.014 min
 Response: 11118419
 Conc: 170.52 ng/ml



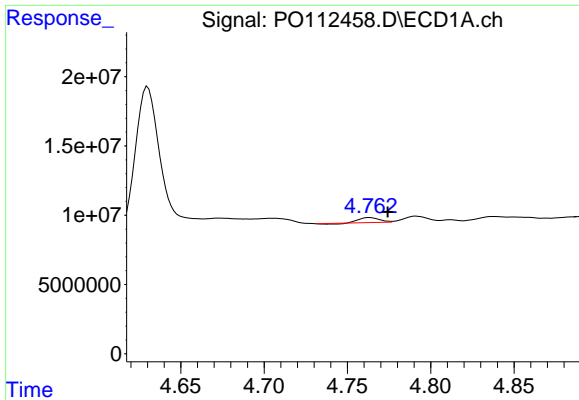
#16 AR-1242-1

R.T.: 4.763 min
 Delta R.T.: 0.008 min
 Response: 2783822
 Conc: 11.24 ng/ml



#16 AR-1242-1

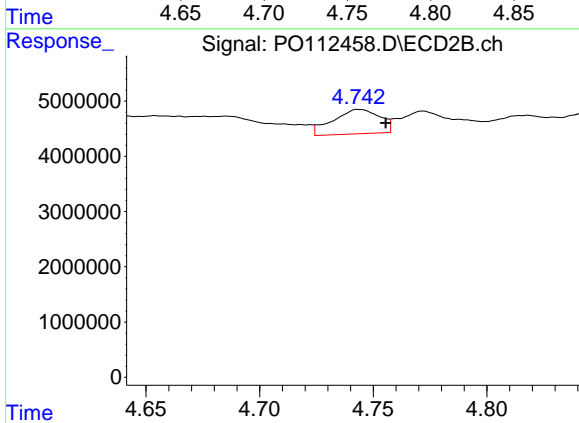
R.T.: 4.743 min
 Delta R.T.: 0.006 min
 Response: 6332941
 Conc: 39.98 ng/ml



#17 AR-1242-2

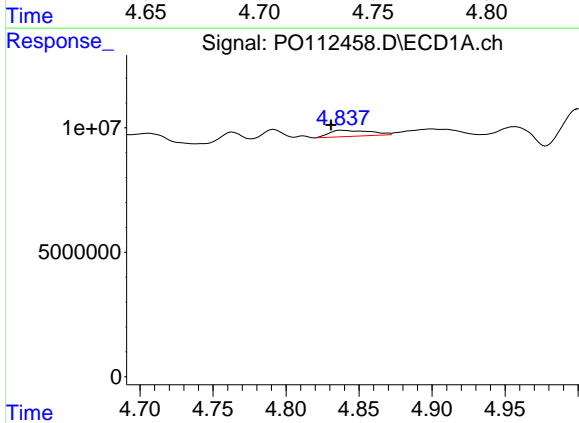
R.T.: 4.763 min
 Delta R.T.: -0.011 min
 Response: 2783822
 Conc: 7.53 ng/ml

Instrument :
 ECD_O
 ClientSampleId :
 HD-02-07222025



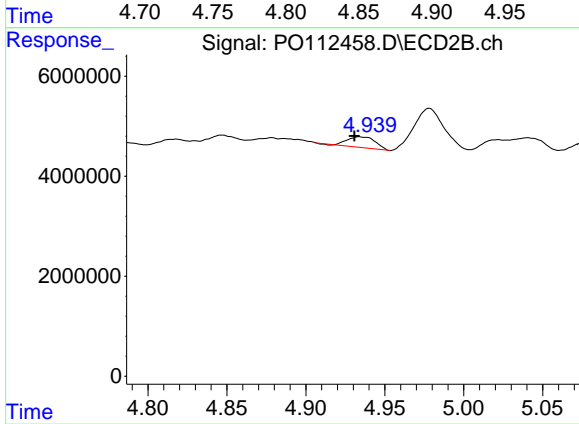
#17 AR-1242-2

R.T.: 4.743 min
 Delta R.T.: -0.012 min
 Response: 6332941
 Conc: 27.10 ng/ml



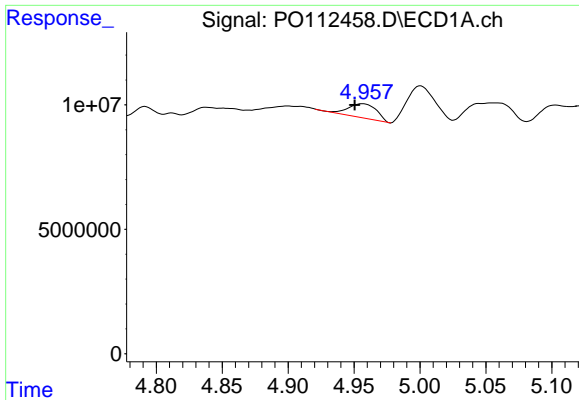
#18 AR-1242-3

R.T.: 4.838 min
 Delta R.T.: 0.007 min
 Response: 4824424
 Conc: 20.39 ng/ml



#18 AR-1242-3

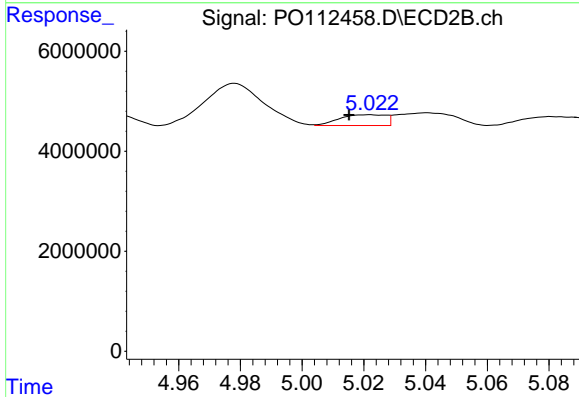
R.T.: 4.934 min
 Delta R.T.: 0.003 min
 Response: 2654132
 Conc: 21.90 ng/ml



#19 AR-1242-4

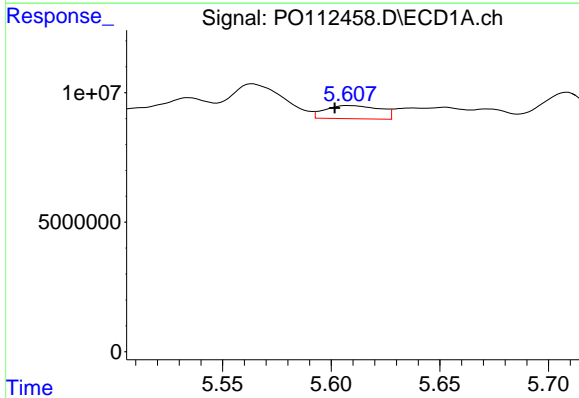
R.T.: 4.957 min
 Delta R.T.: 0.006 min
 Response: 8556600
 Conc: 44.04 ng/ml

Instrument :
 ECD_O
 ClientSampleId :
 HD-02-07222025



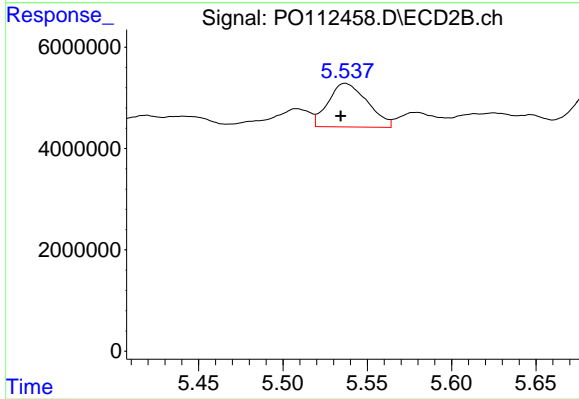
#19 AR-1242-4

R.T.: 5.022 min
 Delta R.T.: 0.007 min
 Response: 2260595
 Conc: 18.42 ng/ml



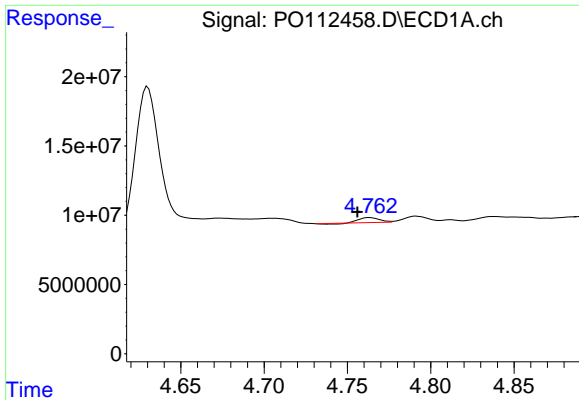
#20 AR-1242-5

R.T.: 5.608 min
 Delta R.T.: 0.006 min
 Response: 8852638
 Conc: 41.38 ng/ml



#20 AR-1242-5

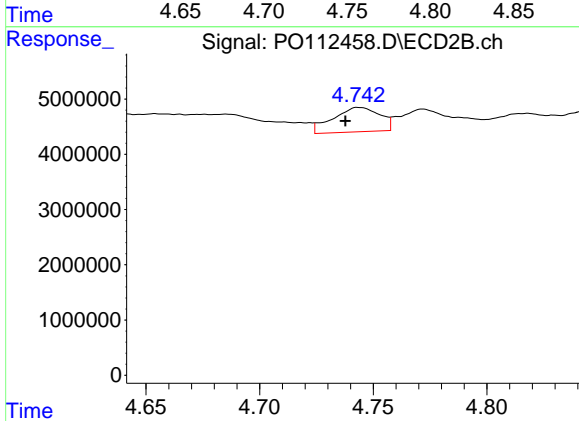
R.T.: 5.537 min
 Delta R.T.: 0.003 min
 Response: 13903501
 Conc: 86.37 ng/ml



#21 AR-1248-1

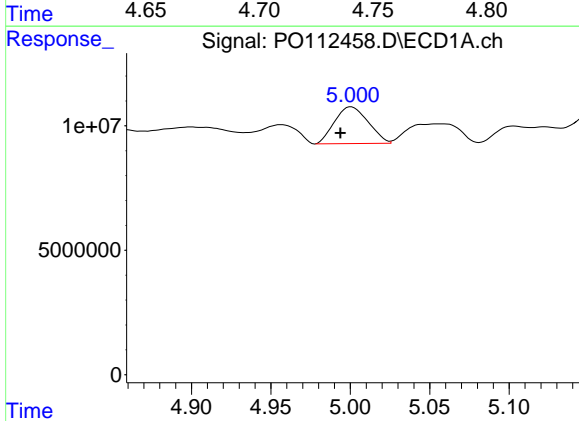
R.T.: 4.763 min
 Delta R.T.: 0.007 min
 Response: 2783822
 Conc: 14.87 ng/ml

Instrument :
 ECD_O
 ClientSampleId :
 HD-02-07222025



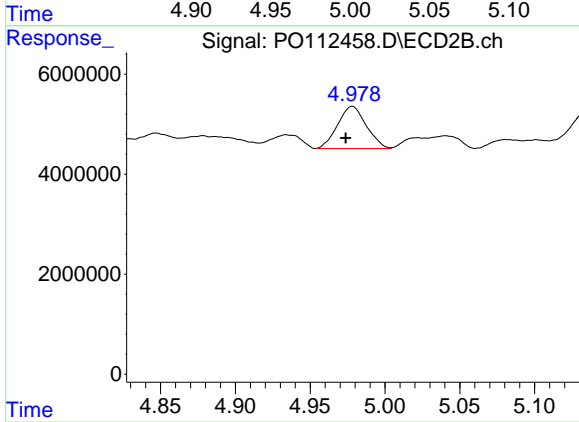
#21 AR-1248-1

R.T.: 4.743 min
 Delta R.T.: 0.005 min
 Response: 6332941
 Conc: 52.12 ng/ml



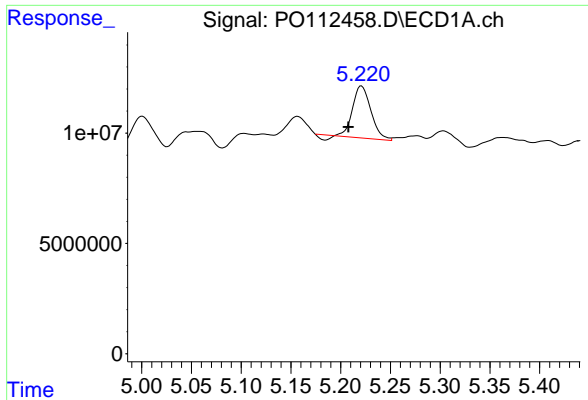
#22 AR-1248-2

R.T.: 5.000 min
 Delta R.T.: 0.007 min
 Response: 21721917
 Conc: 85.15 ng/ml



#22 AR-1248-2

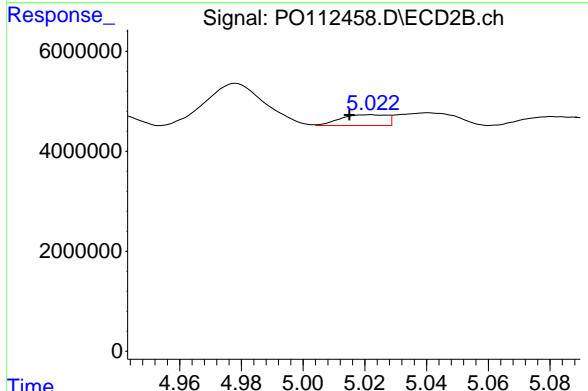
R.T.: 4.978 min
 Delta R.T.: 0.004 min
 Response: 11223684
 Conc: 66.30 ng/ml



#23 AR-1248-3

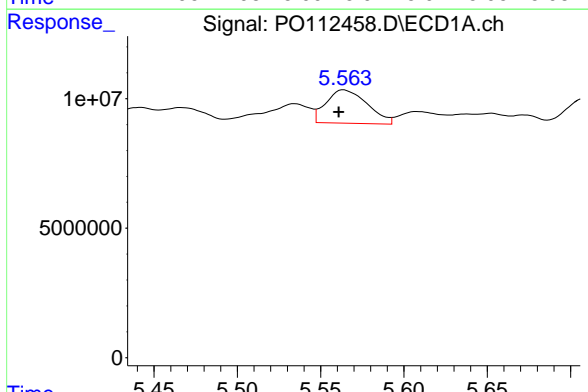
R.T.: 5.221 min
 Delta R.T.: 0.013 min
 Response: 29141455
 Conc: 84.79 ng/ml

Instrument :
 ECD_O
 ClientSampleId :
 HD-02-07222025



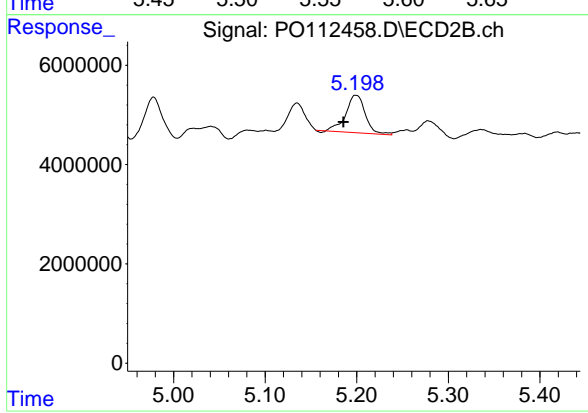
#23 AR-1248-3

R.T.: 5.022 min
 Delta R.T.: 0.007 min
 Response: 2260595
 Conc: 12.73 ng/ml



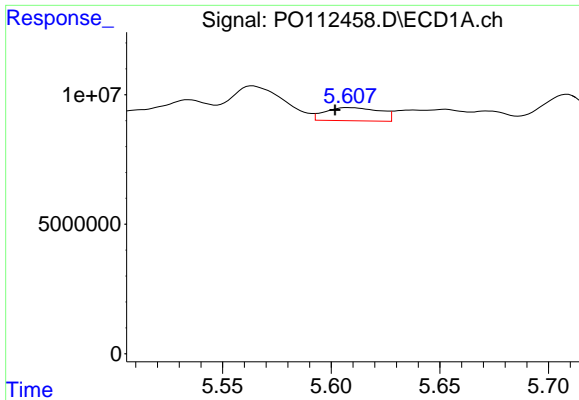
#24 AR-1248-4

R.T.: 5.564 min
 Delta R.T.: 0.003 min
 Response: 22175253
 Conc: 43.65 ng/ml



#24 AR-1248-4

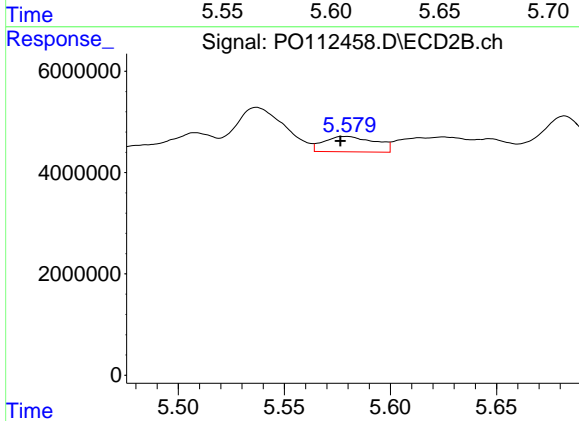
R.T.: 5.199 min
 Delta R.T.: 0.014 min
 Response: 11118419
 Conc: 53.36 ng/ml



#25 AR-1248-5

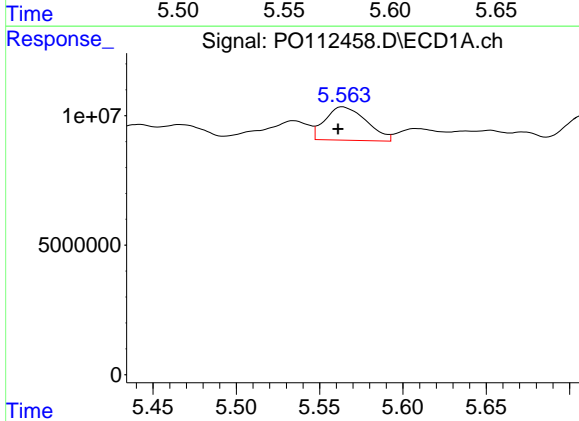
R.T.: 5.608 min
 Delta R.T.: 0.006 min
 Response: 8852638
 Conc: 25.32 ng/ml

Instrument :
 ECD_O
 ClientSampleId :
 HD-02-07222025



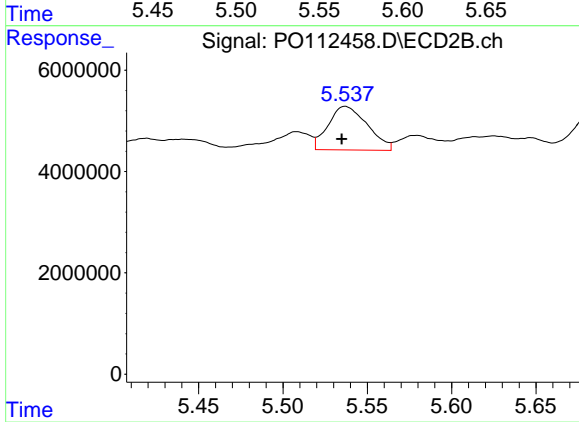
#25 AR-1248-5

R.T.: 5.579 min
 Delta R.T.: 0.002 min
 Response: 5099713
 Conc: 23.75 ng/ml



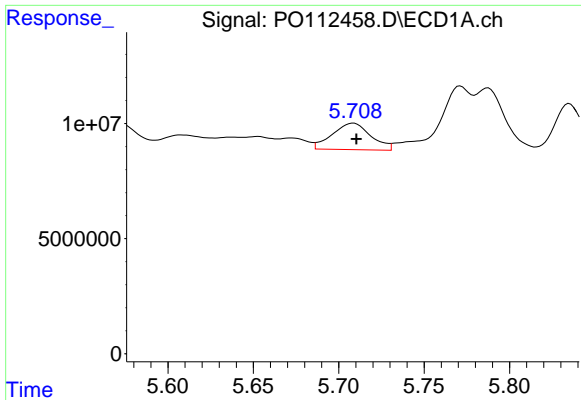
#26 AR-1254-1

R.T.: 5.564 min
 Delta R.T.: 0.003 min
 Response: 22175253
 Conc: 40.40 ng/ml



#26 AR-1254-1

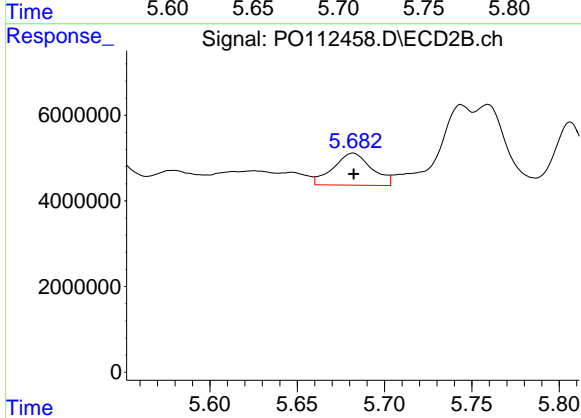
R.T.: 5.537 min
 Delta R.T.: 0.002 min
 Response: 13903501
 Conc: 42.31 ng/ml



#27 AR-1254-2

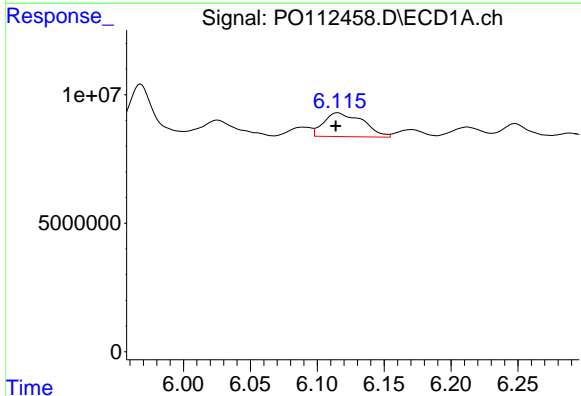
R.T.: 5.709 min
 Delta R.T.: -0.002 min
 Response: 18072111
 Conc: 37.19 ng/ml

Instrument :
 ECD_O
 ClientSampleId :
 HD-02-07222025



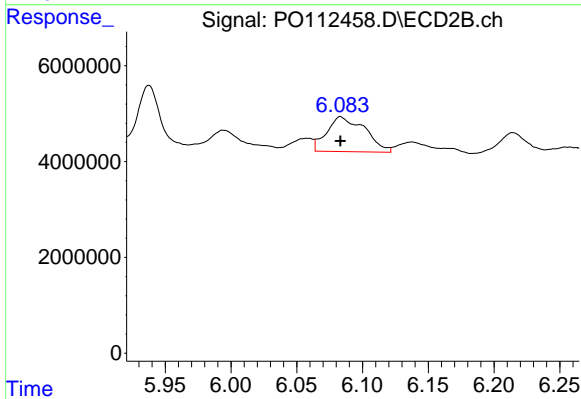
#27 AR-1254-2

R.T.: 5.682 min
 Delta R.T.: 0.000 min
 Response: 11434476
 Conc: 39.50 ng/ml



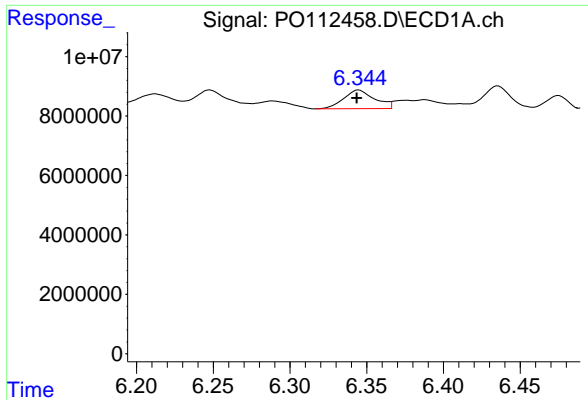
#28 AR-1254-3

R.T.: 6.115 min
 Delta R.T.: 0.002 min
 Response: 18990098
 Conc: 25.51 ng/ml



#28 AR-1254-3

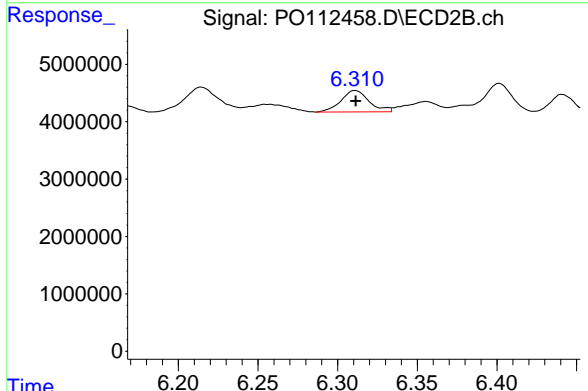
R.T.: 6.083 min
 Delta R.T.: 0.000 min
 Response: 14686685
 Conc: 34.36 ng/ml



#29 AR-1254-4

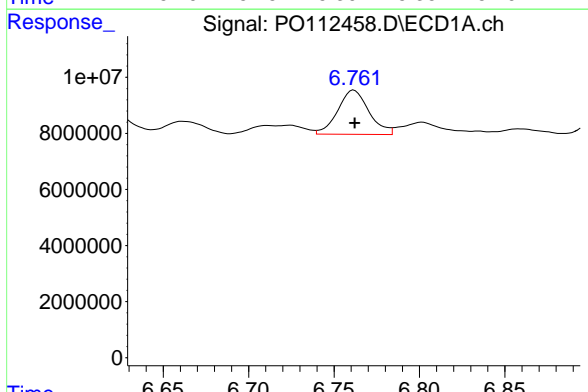
R.T.: 6.345 min
 Delta R.T.: 0.001 min
 Response: 8844175
 Conc: 16.09 ng/ml

Instrument :
 ECD_O
 ClientSampleId :
 HD-02-07222025



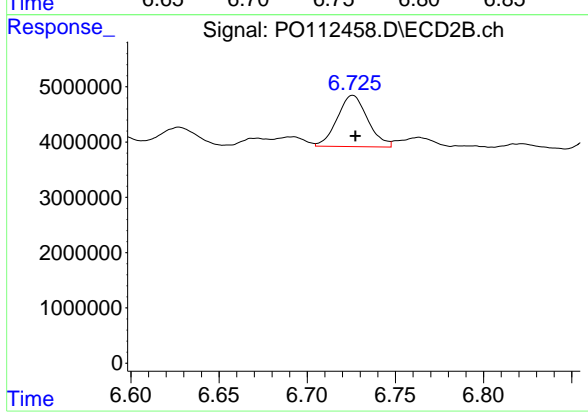
#29 AR-1254-4

R.T.: 6.311 min
 Delta R.T.: 0.000 min
 Response: 4581463
 Conc: 16.78 ng/ml



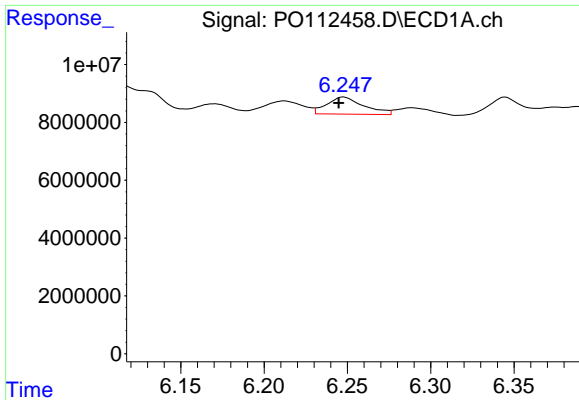
#30 AR-1254-5

R.T.: 6.762 min
 Delta R.T.: 0.000 min
 Response: 20042690
 Conc: 28.32 ng/ml



#30 AR-1254-5

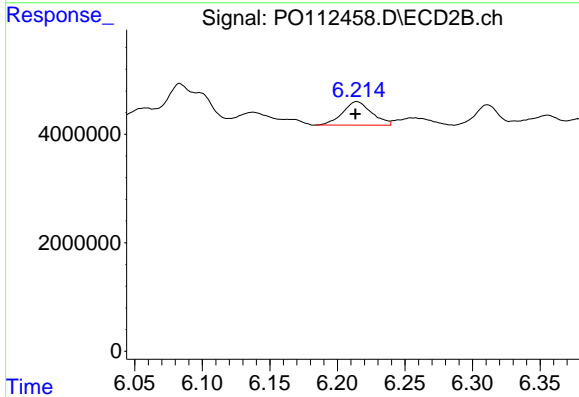
R.T.: 6.726 min
 Delta R.T.: -0.001 min
 Response: 11150169
 Conc: 33.38 ng/ml



#31 AR-1260-1

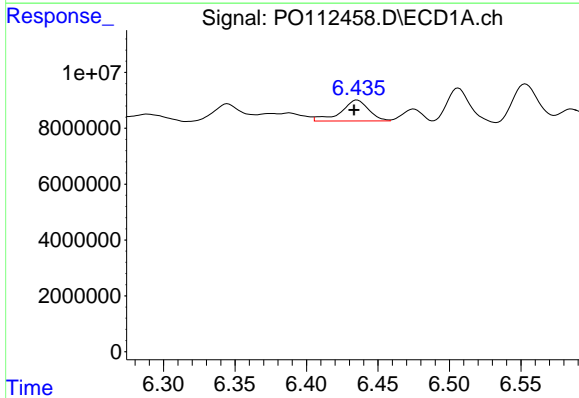
R.T.: 6.248 min
 Delta R.T.: 0.003 min
 Response: 9136917
 Conc: 20.80 ng/ml

Instrument :
 ECD_O
 ClientSampleId :
 HD-02-07222025



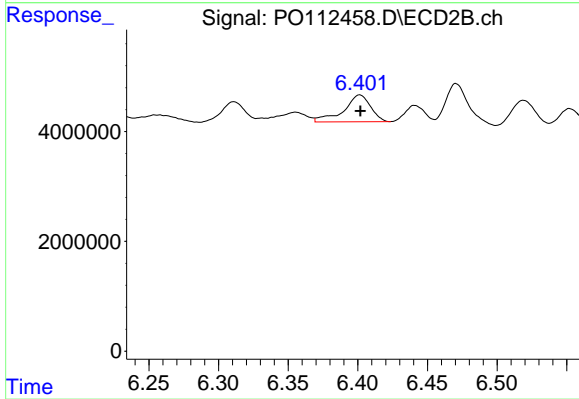
#31 AR-1260-1

R.T.: 6.214 min
 Delta R.T.: 0.001 min
 Response: 6488572
 Conc: 26.11 ng/ml



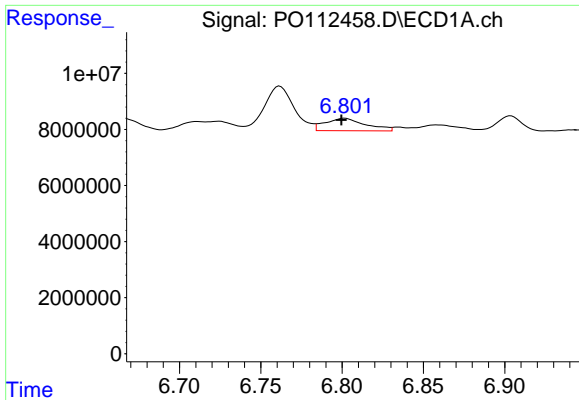
#32 AR-1260-2

R.T.: 6.435 min
 Delta R.T.: 0.002 min
 Response: 10218546
 Conc: 14.85 ng/ml



#32 AR-1260-2

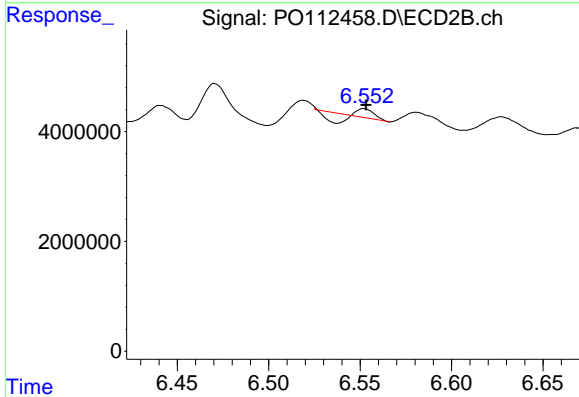
R.T.: 6.401 min
 Delta R.T.: 0.000 min
 Response: 6546552
 Conc: 19.87 ng/ml



#33 AR-1260-3

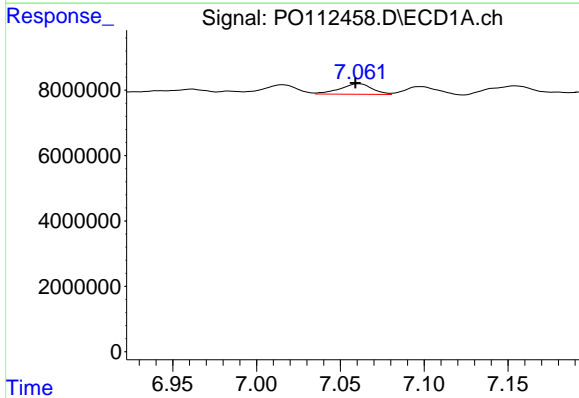
R.T.: 6.802 min
 Delta R.T.: 0.002 min
 Response: 7699801
 Conc: 13.09 ng/ml

Instrument :
 ECD_O
 ClientSampleId :
 HD-02-07222025



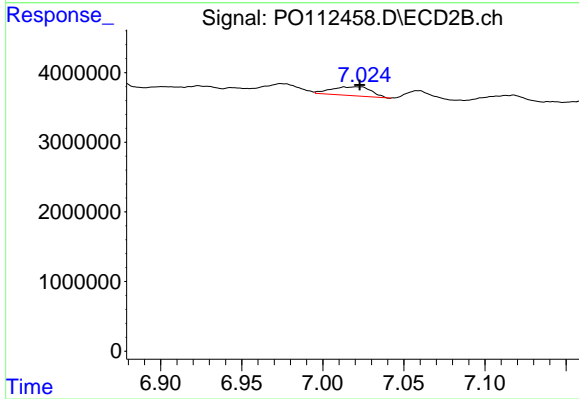
#33 AR-1260-3

R.T.: 6.552 min
 Delta R.T.: -0.001 min
 Response: 143088
 Conc: 0.56 ng/ml



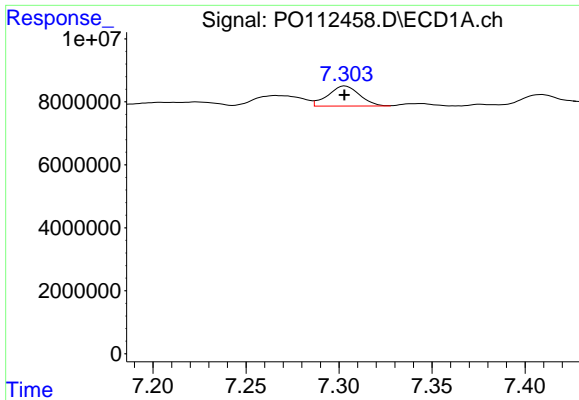
#34 AR-1260-4

R.T.: 7.061 min
 Delta R.T.: 0.002 min
 Response: 4303900
 Conc: 9.54 ng/ml



#34 AR-1260-4

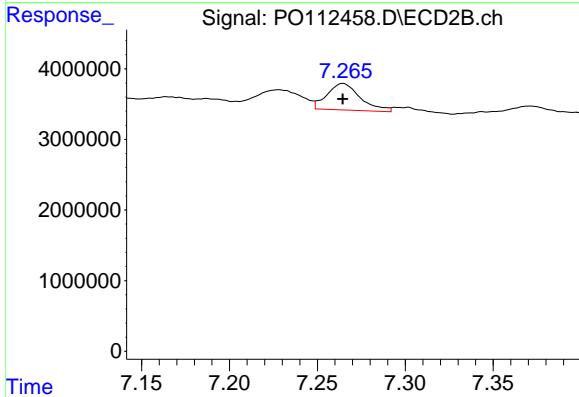
R.T.: 7.022 min
 Delta R.T.: -0.001 min
 Response: 2169043
 Conc: 11.34 ng/ml



#35 AR-1260-5

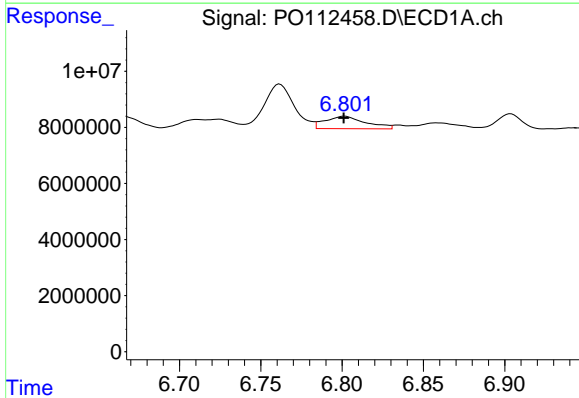
R.T.: 7.303 min
 Delta R.T.: 0.000 min
 Response: 7535731
 Conc: 6.08 ng/ml

Instrument :
 ECD_O
 ClientSampleId :
 HD-02-07222025



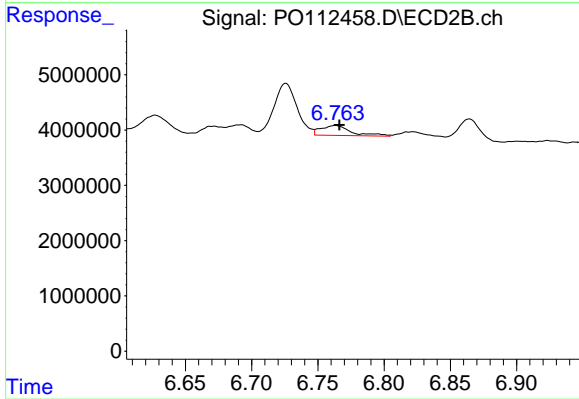
#35 AR-1260-5

R.T.: 7.265 min
 Delta R.T.: 0.000 min
 Response: 4933473
 Conc: 11.97 ng/ml



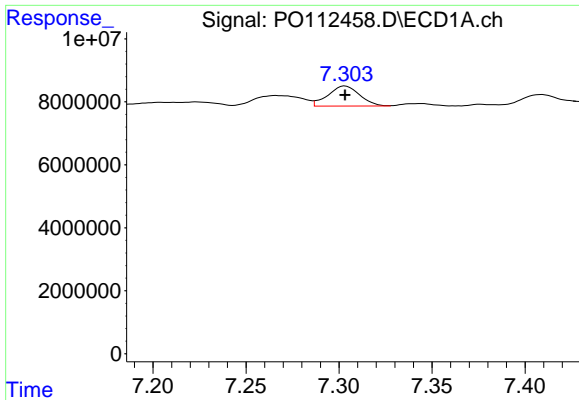
#36 AR-1262-1

R.T.: 6.802 min
 Delta R.T.: 0.000 min
 Response: 7699801
 Conc: 8.29 ng/ml



#36 AR-1262-1

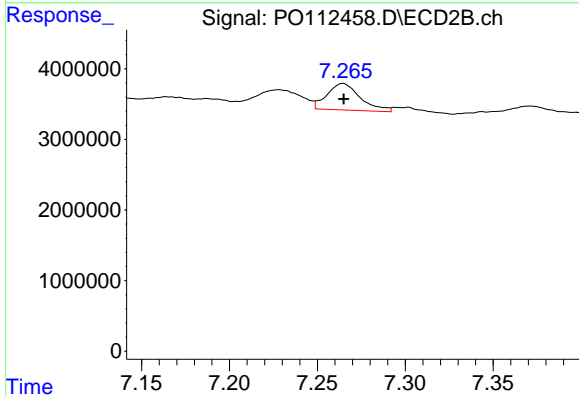
R.T.: 6.763 min
 Delta R.T.: -0.003 min
 Response: 2836537
 Conc: 6.84 ng/ml



#37 AR-1262-2

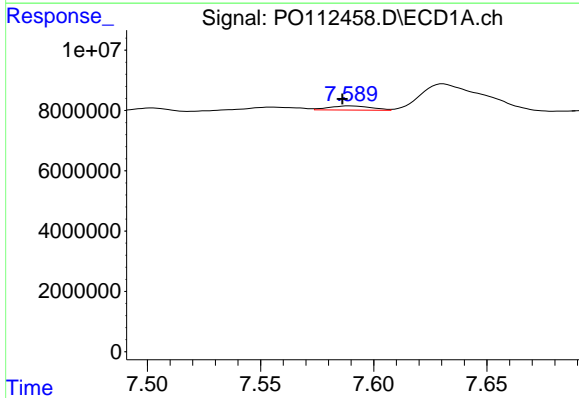
R.T.: 7.303 min
 Delta R.T.: 0.000 min
 Response: 7535731
 Conc: 5.07 ng/ml

Instrument :
 ECD_O
 ClientSampleId :
 HD-02-07222025



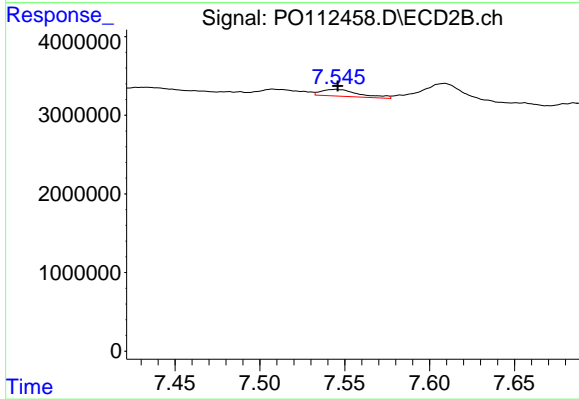
#37 AR-1262-2

R.T.: 7.265 min
 Delta R.T.: 0.000 min
 Response: 4933473
 Conc: 9.57 ng/ml



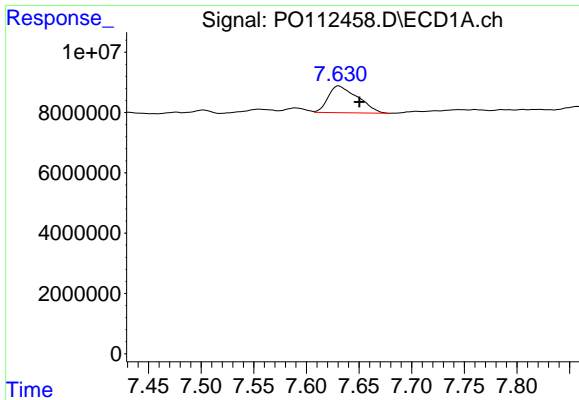
#38 AR-1262-3

R.T.: 7.589 min
 Delta R.T.: 0.003 min
 Response: 1770480
 Conc: 3.00 ng/ml



#38 AR-1262-3

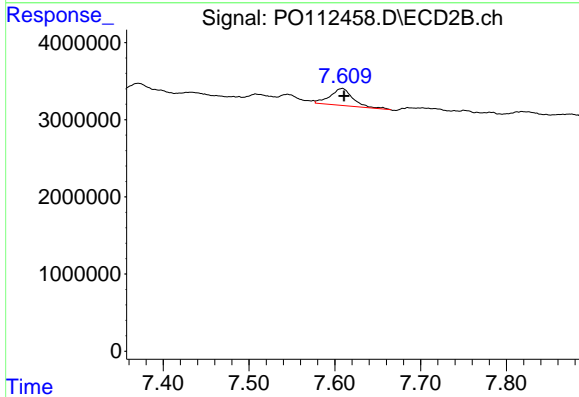
R.T.: 7.545 min
 Delta R.T.: -0.001 min
 Response: 1324296
 Conc: 7.10 ng/ml



#39 AR-1262-4

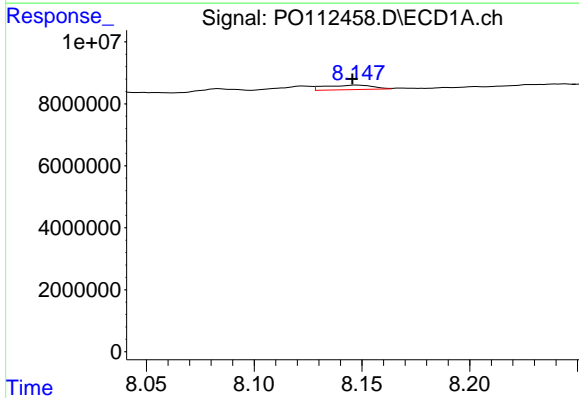
R.T.: 7.631 min
 Delta R.T.: -0.020 min
 Response: 17330748
 Conc: 17.43 ng/ml

Instrument :
 ECD_O
 ClientSampleId :
 HD-02-07222025



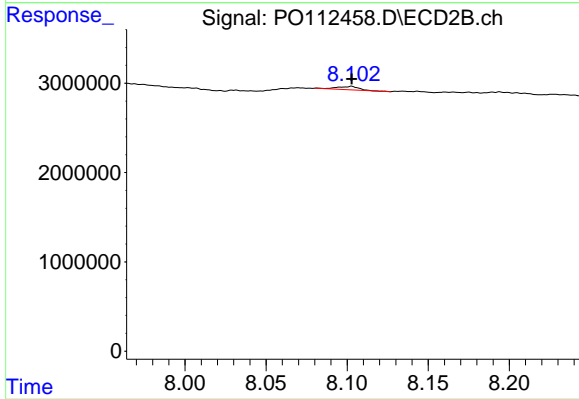
#39 AR-1262-4

R.T.: 7.609 min
 Delta R.T.: -0.002 min
 Response: 4045880
 Conc: 14.04 ng/ml



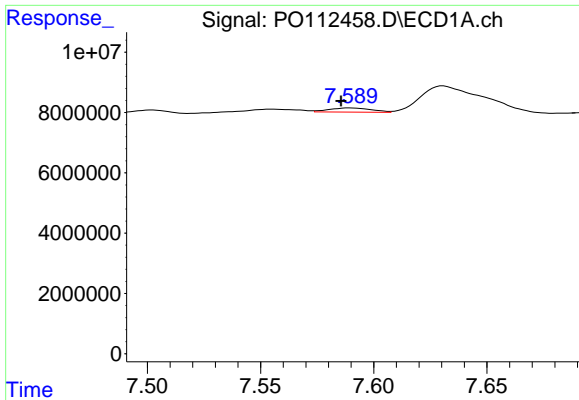
#40 AR-1262-5

R.T.: 8.148 min
 Delta R.T.: 0.002 min
 Response: 2288772
 Conc: 5.27 ng/ml



#40 AR-1262-5

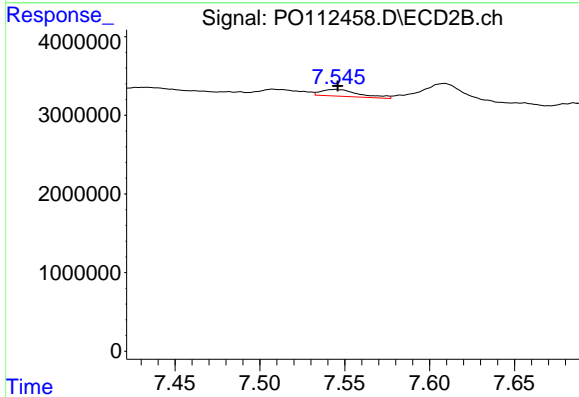
R.T.: 8.102 min
 Delta R.T.: 0.000 min
 Response: 336934
 Conc: 3.39 ng/ml



#41 AR-1268-1

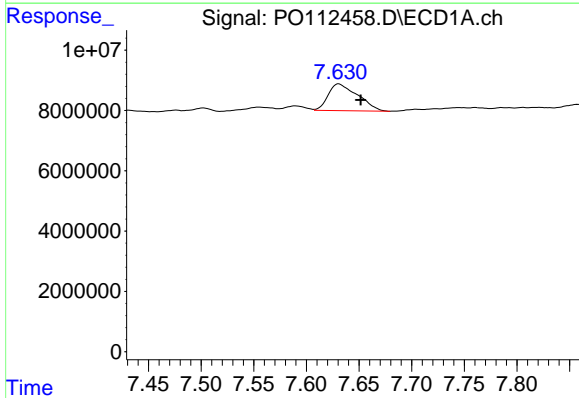
R.T.: 7.589 min
 Delta R.T.: 0.004 min
 Response: 1770480
 Conc: 1.01 ng/ml

Instrument :
 ECD_O
 ClientSampleId :
 HD-02-07222025



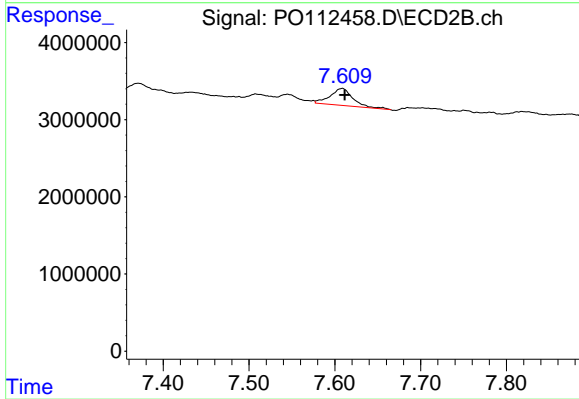
#41 AR-1268-1

R.T.: 7.545 min
 Delta R.T.: -0.001 min
 Response: 1324296
 Conc: 2.56 ng/ml



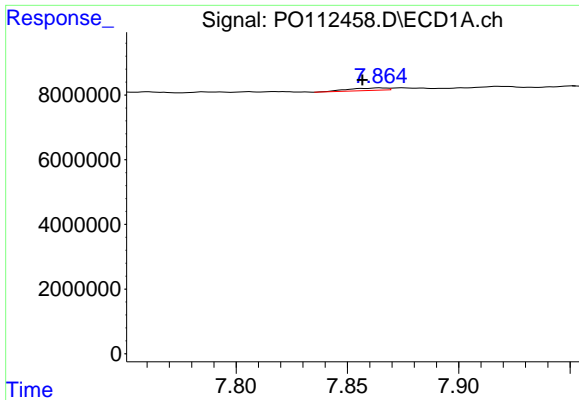
#42 AR-1268-2

R.T.: 7.631 min
 Delta R.T.: -0.021 min
 Response: 17330748
 Conc: 11.77 ng/ml



#42 AR-1268-2

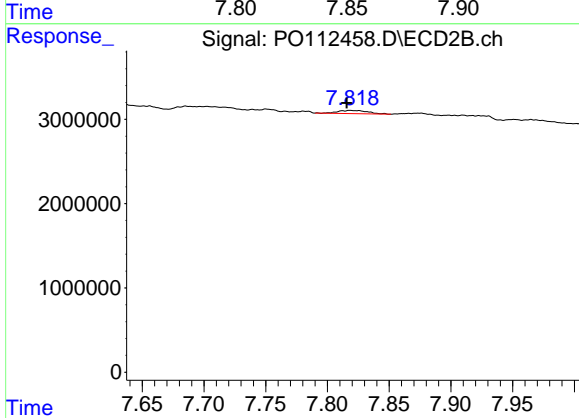
R.T.: 7.609 min
 Delta R.T.: -0.003 min
 Response: 4045880
 Conc: 9.52 ng/ml



#43 AR-1268-3

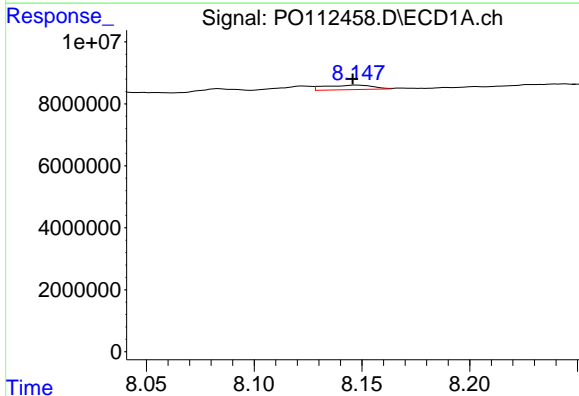
R.T.: 7.864 min
 Delta R.T.: 0.008 min
 Response: 912004
 Conc: 0.73 ng/ml

Instrument :
 ECD_O
 ClientSampleId :
 HD-02-07222025



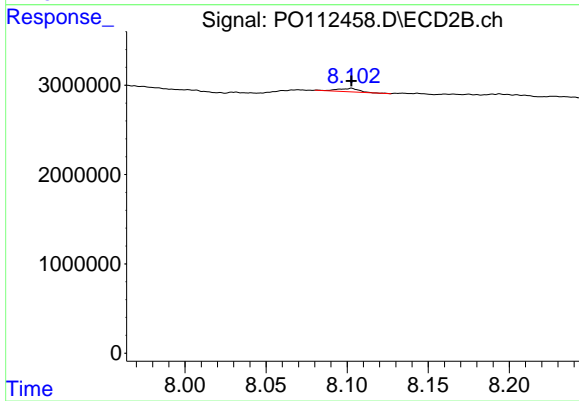
#43 AR-1268-3

R.T.: 7.818 min
 Delta R.T.: 0.003 min
 Response: 636141
 Conc: 1.98 ng/ml



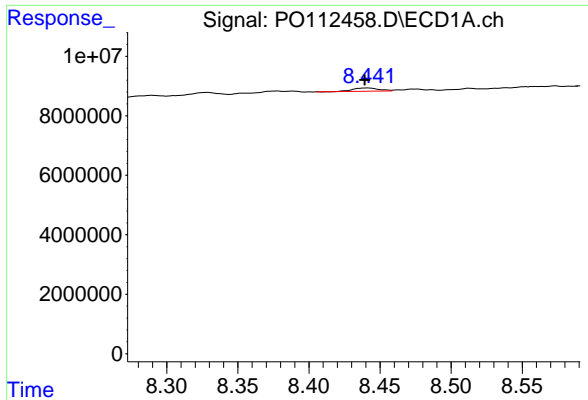
#44 AR-1268-4

R.T.: 8.148 min
 Delta R.T.: 0.002 min
 Response: 2288772
 Conc: 4.75 ng/ml



#44 AR-1268-4

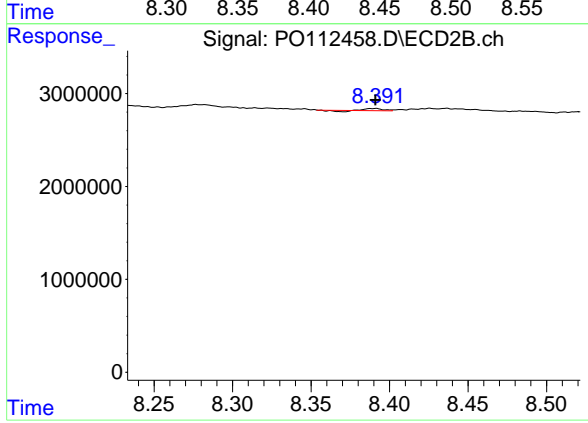
R.T.: 8.102 min
 Delta R.T.: 0.000 min
 Response: 336934
 Conc: 3.03 ng/ml



#45 AR-1268-5

R.T.: 8.441 min
 Delta R.T.: 0.002 min
 Response: 1340760
 Conc: 0.40 ng/ml

Instrument :
 ECD_O
 ClientSampleId :
 HD-02-07222025



#45 AR-1268-5

R.T.: 8.391 min
 Delta R.T.: 0.000 min
 Response: 121727
 Conc: 0.17 ng/ml