

Data Path : Z:\pestpcbsrv\HPCHEM1\ECD_0\Data\P0072425\
 Data File : PO112459.D
 Signal(s) : Signal #1: ECD1A.ch Signal #2: ECD2B.ch
 Acq On : 24 Jul 2025 12:07
 Operator : YP/AJ
 Sample : Q2654-01
 Misc :
 ALS Vial : 12 Sample Multiplier: 1

Instrument :
 ECD_0
 ClientSampleId :
 71125-A

Integration File signal 1: autoint1.e
 Integration File signal 2: autoint2.e
 Quant Time: Jul 24 23:38:16 2025
 Quant Method : Z:\pestpcbsrv\HPCHEM1\ECD_0\methods\P0072325.M
 Quant Title : GC EXTRACTABLES
 QLast Update : Thu Jul 24 04:54:06 2025
 Response via : Initial Calibration
 Integrator: ChemStation

Volume Inj. : 2 µl
 Signal #1 Phase : ZB-MR1 Signal #2 Phase: ZB-MR2
 Signal #1 Info : 30Mx0.32mmx 0.50µ Signal #2 Info : 30M x 0.32mm x 0.25µm

Compound	RT#1	RT#2	Resp#1	Resp#2	ng/ml	ng/ml
System Monitoring Compounds						
1) SA Tetrachlo...	3.671	3.663	177.2E6	96786755	21.795	19.477
2) SA Decachlor...	8.695	8.640	86921618	27614282	11.888	15.627 #
Target Compounds						
3) L1 AR-1016-1	4.757	4.738	-10424	1129944	N.D.	6.457 #
4) L1 AR-1016-2	4.778	4.755	245034	1372203	0.603	5.268 #
5) L1 AR-1016-3	4.834	4.931	732057	538960	2.798	3.964 #
6) L1 AR-1016-4	4.956	4.969	879486	938993	4.152	8.453 #
7) L1 AR-1016-5	5.184	5.179	2183704	380803	9.950	2.657 #
8) L2 AR-1221-1	3.867	3.865	162417	59697	1.680	0.887 #
9) L2 AR-1221-2	3.969	3.941	1219673	4946880	16.972	97.518 #
10) L2 AR-1221-3	4.040	4.032	588276	337217	2.475	2.127
11) L3 AR-1232-1	4.040	4.032	588276	337217	3.146	2.665
12) L3 AR-1232-2	4.535	4.755	376059	1372203	3.494	10.462 #
13) L3 AR-1232-3	4.778	4.931	245034	538960	1.185	8.021 #
14) L3 AR-1232-4	4.956	5.009	879486	1356038	8.397	22.665 #
15) L3 AR-1232-5	4.989	5.179	624505	380803	9.200	5.840 #
16) L4 AR-1242-1	4.757	4.738	-10424	1129944	N.D.	7.134 #
17) L4 AR-1242-2	4.778	4.755	245034	1372203	0.663	5.872 #
18) L4 AR-1242-3	4.834	4.931	732057	538960	3.093	4.447 #
19) L4 AR-1242-4	4.956	5.009	879486	1356038	4.527	11.048 #
20) L4 AR-1242-5	5.612	5.538	5285913	3053005	24.710	18.966
21) L5 AR-1248-1	4.757	4.738	-10424	1129944	N.D.	9.299 #
22) L5 AR-1248-2	4.989	4.969	624505	938993	2.448	5.547 #
23) L5 AR-1248-3	5.184	5.009	2183704	1356038	6.353	7.633
24) L5 AR-1248-4	5.558	5.179	8366844	380803	16.468	1.828 #
25) L5 AR-1248-5	5.612	5.584	5285913	4339655	15.120	20.207 #
26) L6 AR-1254-1	5.558	5.538	8366844	3053005	15.241	9.290 #
27) L6 AR-1254-2	5.738	5.682	9944857	2206010	20.466	7.620 #
28) L6 AR-1254-3	6.115	6.100	3075048	5000847	4.132	11.699 #
29) L6 AR-1254-4	6.375	6.340	4528745	1432055	8.239	5.246 #
30) L6 AR-1254-5	6.771	6.701	4939152	1700919	6.978	5.092 #
31) L7 AR-1260-1	6.245	6.208	3504315	2619488	7.976	10.541 #
32) L7 AR-1260-2	6.412	6.377	8701903	2015930	12.650	6.118 #
33) L7 AR-1260-3	6.795	6.590f	994549	-274907	1.691	N.D. #
34) L7 AR-1260-4	7.046	7.003	1088271	1156295	2.413	6.044 #
35) L7 AR-1260-5	7.294	7.267	699252	785606	0.564	1.906 #
36) L8 AR-1262-1	6.806	6.802f	1961741	309787	2.111	0.747 #
37) L8 AR-1262-2	7.294	7.267	699252	785606	0.470	1.524 #
38) L8 AR-1262-3	7.592	7.566	316977	964193	0.537	5.169 #
39) L8 AR-1262-4	7.655	7.586	461623	706668	0.464	2.453 #
40) L8 AR-1262-5	8.130	8.093	153163	144867	0.353	1.456 #
41) L9 AR-1268-1	7.592	7.566	316977	964193	0.181	1.862 #

Data Path : Z:\pestpcbsrv\HPCHEM1\ECD_0\Data\P0072425\
 Data File : P0112459.D
 Signal(s) : Signal #1: ECD1A.ch Signal #2: ECD2B.ch
 Acq On : 24 Jul 2025 12:07
 Operator : YP/AJ
 Sample : Q2654-01
 Misc :
 ALS Vial : 12 Sample Multiplier: 1

Instrument :
 ECD_0
 ClientSampleId :
 71125-A

Integration File signal 1: autoint1.e
 Integration File signal 2: autoint2.e
 Quant Time: Jul 24 23:38:16 2025
 Quant Method : Z:\pestpcbsrv\HPCHEM1\ECD_0\methods\P0072325.M
 Quant Title : GC EXTRACTABLES
 QLast Update : Thu Jul 24 04:54:06 2025
 Response via : Initial Calibration
 Integrator: ChemStation

Volume Inj. : 2 µl
 Signal #1 Phase : ZB-MR1 Signal #2 Phase: ZB-MR2
 Signal #1 Info : 30Mx0.32mmx 0.50µ Signal #2 Info : 30M x 0.32mm x 0.25µm

	Compound	RT#1	RT#2	Resp#1	Resp#2	ng/ml	ng/ml
42)	L9 AR-1268-2	7.655	7.586	461623	706668	0.313	1.662 #
43)	L9 AR-1268-3	7.860	7.810	720629	234329	0.575	0.729 #
44)	L9 AR-1268-4	8.130	8.093	153163	144867	0.318	1.302 #
45)	L9 AR-1268-5	8.431	8.388	1237088	534774	0.368	0.731 #

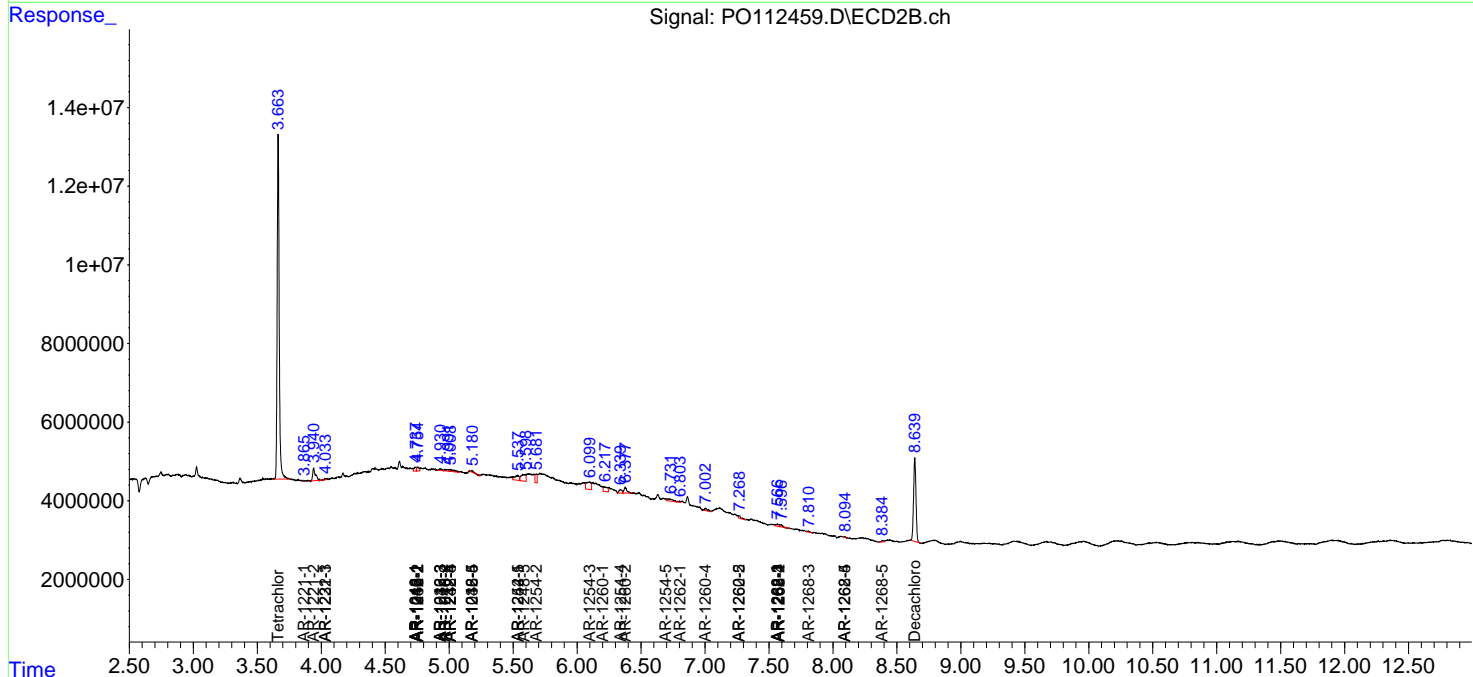
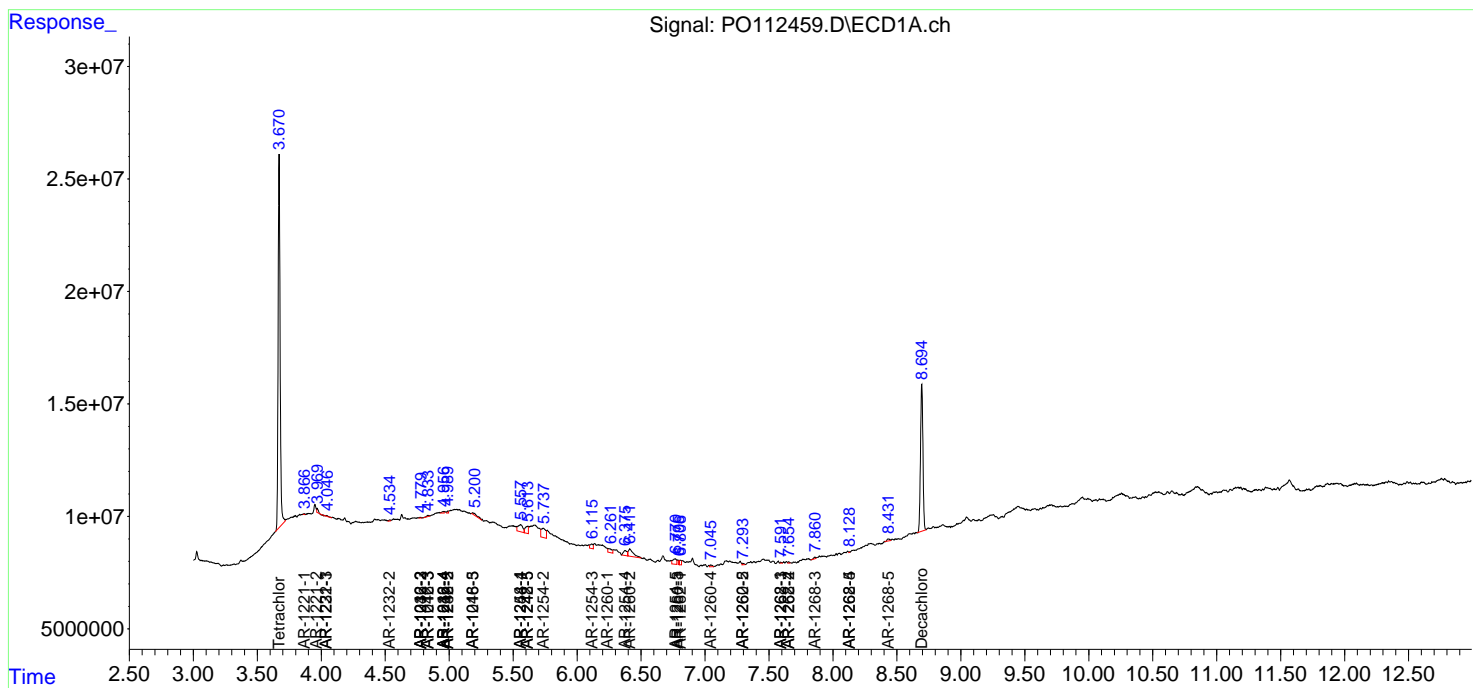
(f)=RT Delta > 1/2 Window (#)=Amounts differ by > 25% (m)=manual int.

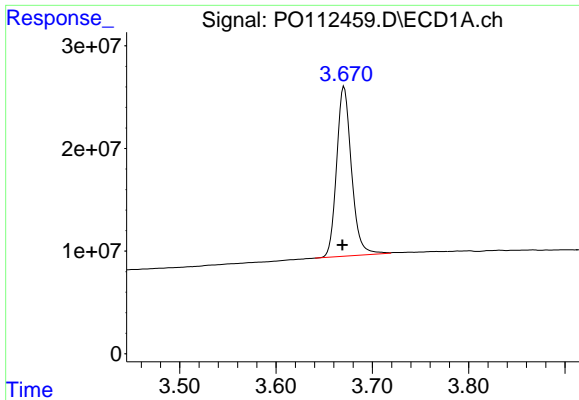
Data Path : Z:\pestpcbsrv\HPCHEM1\ECD_O\Data\PO072425\
 Data File : PO112459.D
 Signal(s) : Signal #1: ECD1A.ch Signal #2: ECD2B.ch
 Acq On : 24 Jul 2025 12:07
 Operator : YP/AJ
 Sample : Q2654-01
 Misc :
 ALS Vial : 12 Sample Multiplier: 1

Instrument :
 ECD_O
 ClientSampleId :
 71125-A

Integration File signal 1: autoint1.e
 Integration File signal 2: autoint2.e
 Quant Time: Jul 24 23:38:16 2025
 Quant Method : Z:\pestpcbsrv\HPCHEM1\ECD_O\methods\PO072325.M
 Quant Title : GC EXTRACTABLES
 QLast Update : Thu Jul 24 04:54:06 2025
 Response via : Initial Calibration
 Integrator: ChemStation

Volume Inj. : 2 µl
 Signal #1 Phase : ZB-MR1 Signal #2 Phase: ZB-MR2
 Signal #1 Info : 30Mx0.32mmx 0.50µ Signal #2 Info : 30M x 0.32mm x 0.25µm

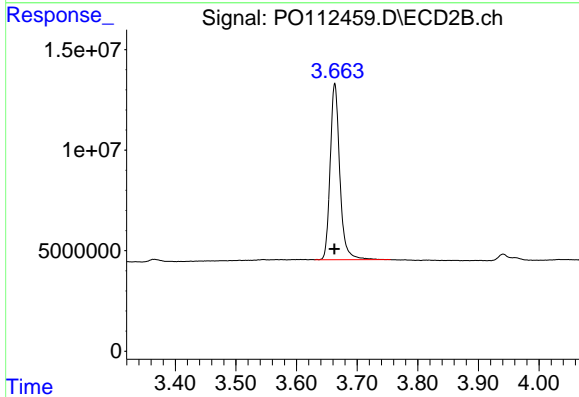




#1 Tetrachloro-m-xylene

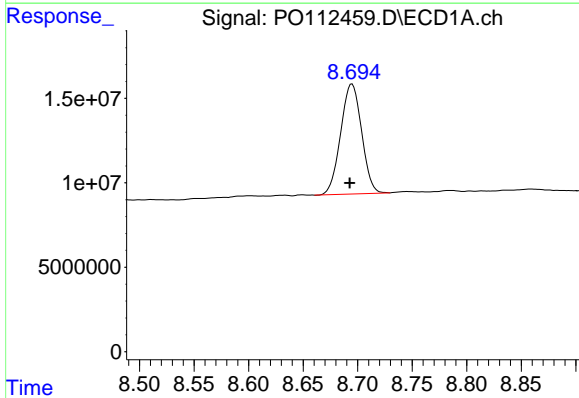
R.T.: 3.671 min
 Delta R.T.: 0.002 min
 Response: 177231439
 Conc: 21.80 ng/ml

Instrument :
 ECD_O
 ClientSampleId :
 71125-A



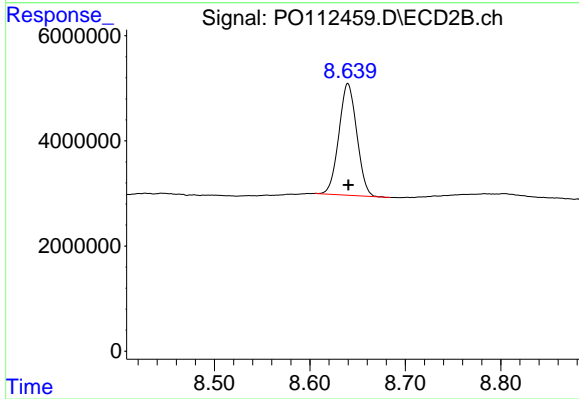
#1 Tetrachloro-m-xylene

R.T.: 3.663 min
 Delta R.T.: 0.000 min
 Response: 96786755
 Conc: 19.48 ng/ml



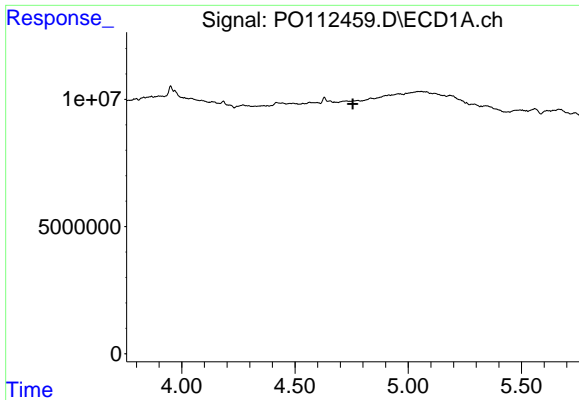
#2 Decachlorobiphenyl

R.T.: 8.695 min
 Delta R.T.: 0.002 min
 Response: 86921618
 Conc: 11.89 ng/ml



#2 Decachlorobiphenyl

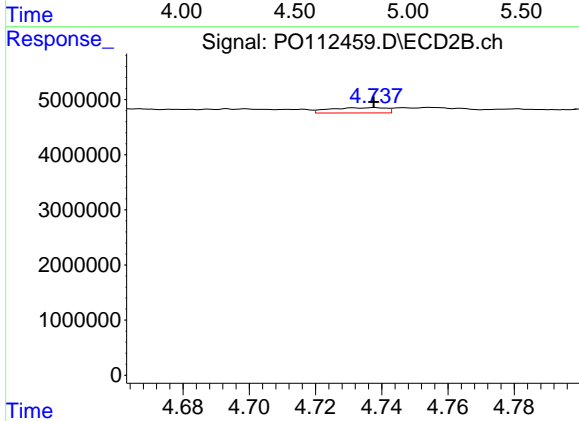
R.T.: 8.640 min
 Delta R.T.: 0.000 min
 Response: 27614282
 Conc: 15.63 ng/ml



#3 AR-1016-1

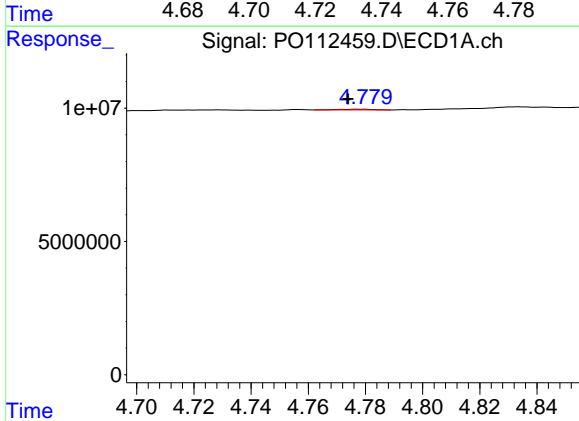
R.T.: 4.757 min
 Delta R.T.: 0.001 min
 Response: -10424
 Conc: N.D.

Instrument :
 ECD_O
 ClientSampleId :
 71125-A



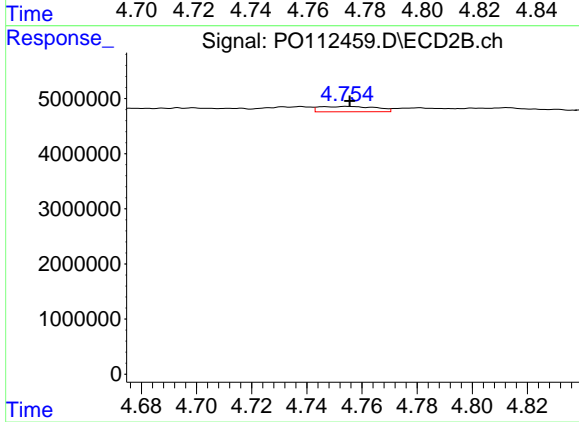
#3 AR-1016-1

R.T.: 4.738 min
 Delta R.T.: 0.000 min
 Response: 1129944
 Conc: 6.46 ng/ml



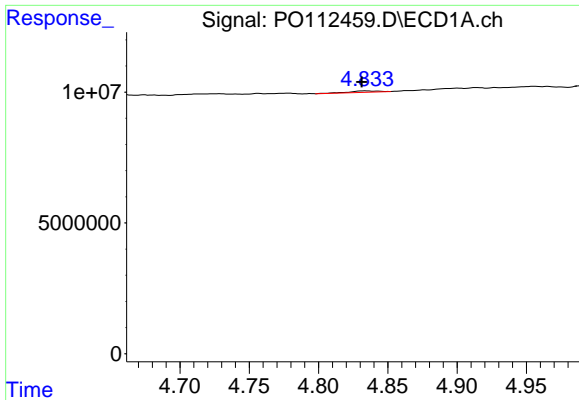
#4 AR-1016-2

R.T.: 4.778 min
 Delta R.T.: 0.004 min
 Response: 245034
 Conc: 0.60 ng/ml



#4 AR-1016-2

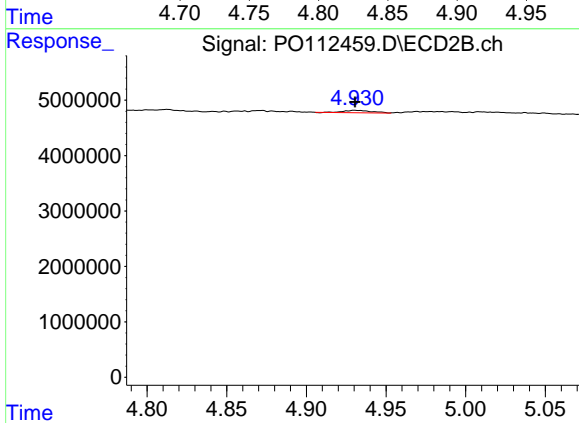
R.T.: 4.755 min
 Delta R.T.: 0.000 min
 Response: 1372203
 Conc: 5.27 ng/ml



#5 AR-1016-3

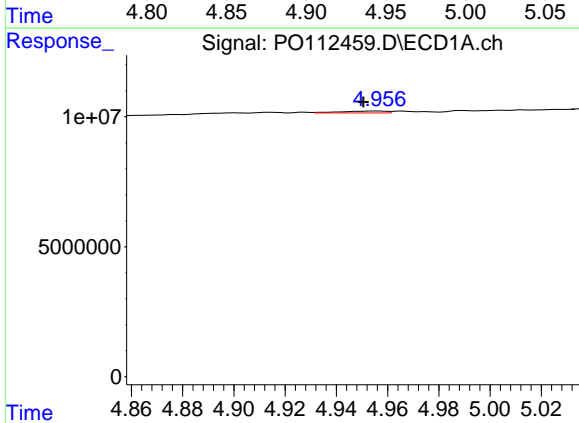
R.T.: 4.834 min
 Delta R.T.: 0.003 min
 Response: 732057
 Conc: 2.80 ng/ml

Instrument :
 ECD_O
 ClientSampleId :
 71125-A



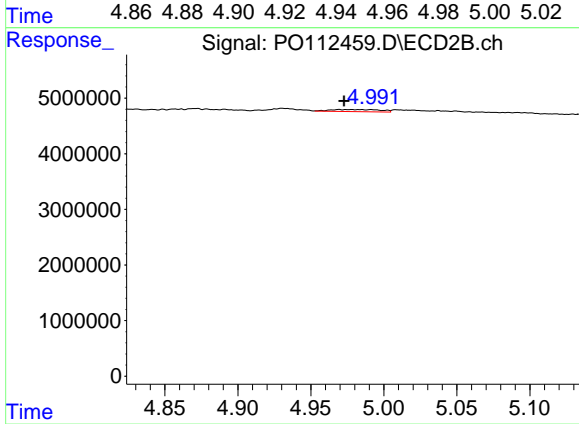
#5 AR-1016-3

R.T.: 4.931 min
 Delta R.T.: 0.000 min
 Response: 538960
 Conc: 3.96 ng/ml



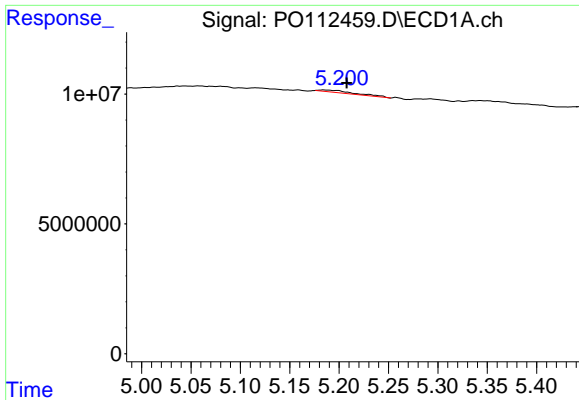
#6 AR-1016-4

R.T.: 4.956 min
 Delta R.T.: 0.005 min
 Response: 879486
 Conc: 4.15 ng/ml



#6 AR-1016-4

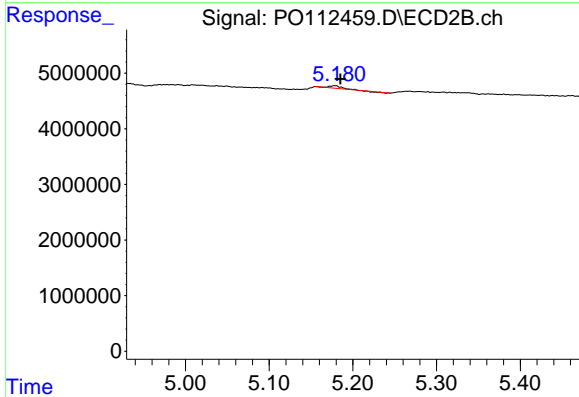
R.T.: 4.969 min
 Delta R.T.: -0.003 min
 Response: 938993
 Conc: 8.45 ng/ml



#7 AR-1016-5

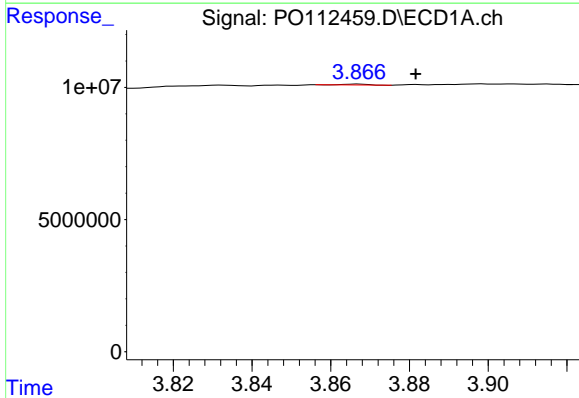
R.T.: 5.184 min
 Delta R.T.: -0.023 min
 Response: 2183704
 Conc: 9.95 ng/ml

Instrument :
 ECD_O
 ClientSampleId :
 71125-A



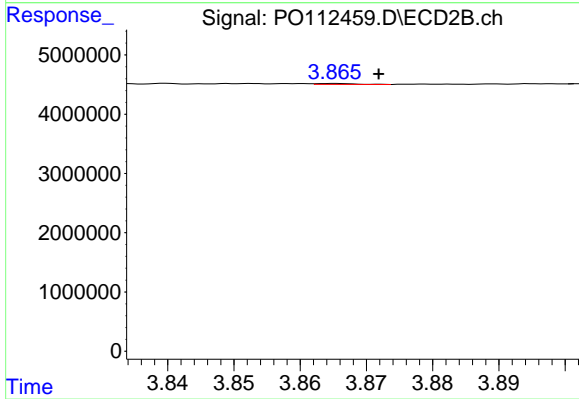
#7 AR-1016-5

R.T.: 5.179 min
 Delta R.T.: -0.006 min
 Response: 380803
 Conc: 2.66 ng/ml



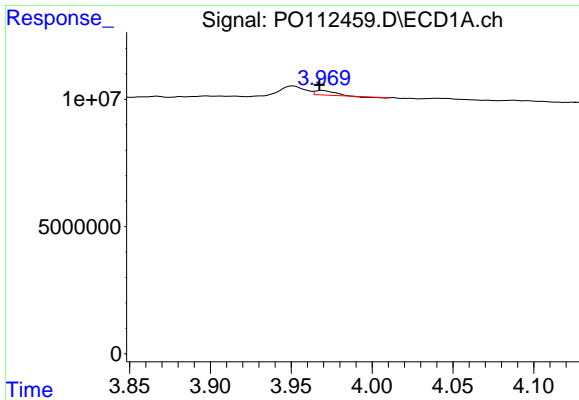
#8 AR-1221-1

R.T.: 3.867 min
 Delta R.T.: -0.015 min
 Response: 162417
 Conc: 1.68 ng/ml



#8 AR-1221-1

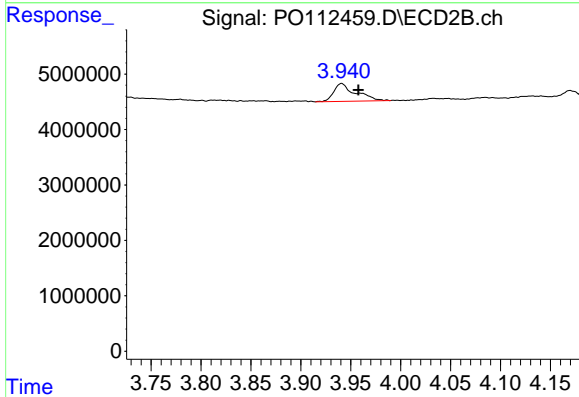
R.T.: 3.865 min
 Delta R.T.: -0.007 min
 Response: 59697
 Conc: 0.89 ng/ml



#9 AR-1221-2

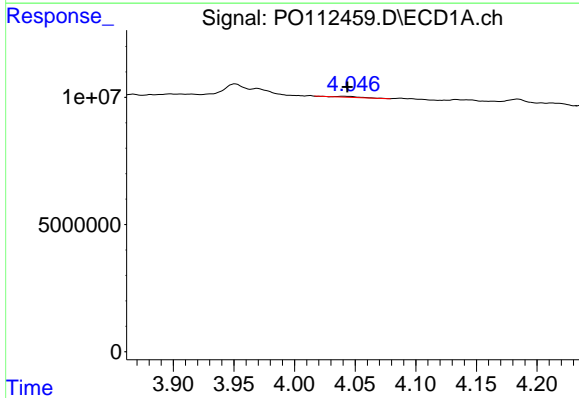
R.T.: 3.969 min
 Delta R.T.: 0.002 min
 Response: 1219673
 Conc: 16.97 ng/ml

Instrument :
 ECD_O
 ClientSampleId :
 71125-A



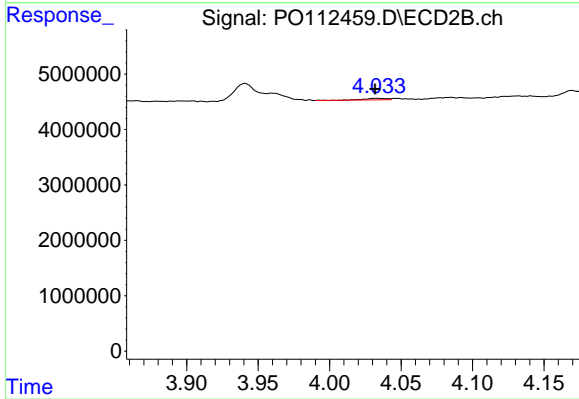
#9 AR-1221-2

R.T.: 3.941 min
 Delta R.T.: -0.017 min
 Response: 4946880
 Conc: 97.52 ng/ml



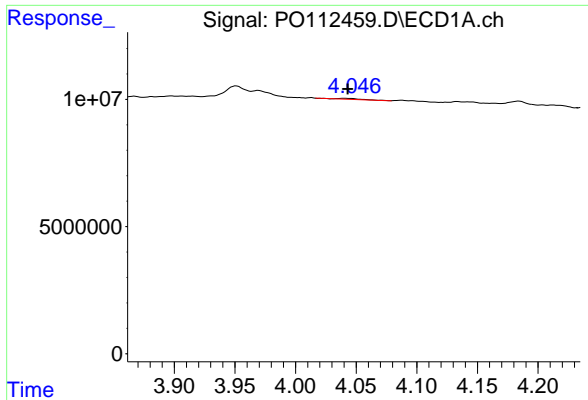
#10 AR-1221-3

R.T.: 4.040 min
 Delta R.T.: -0.004 min
 Response: 588276
 Conc: 2.47 ng/ml



#10 AR-1221-3

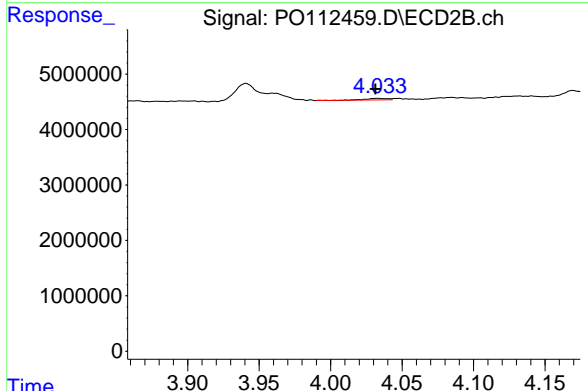
R.T.: 4.032 min
 Delta R.T.: 0.000 min
 Response: 337217
 Conc: 2.13 ng/ml



#11 AR-1232-1

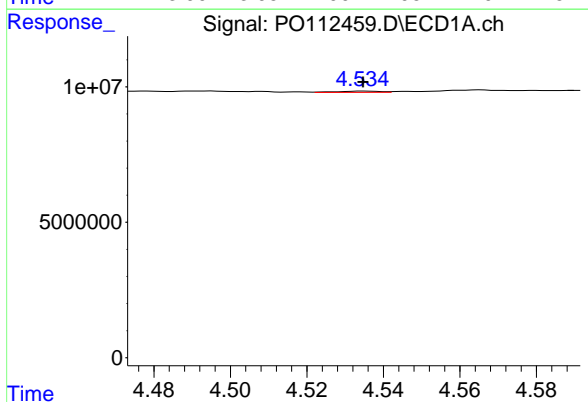
R.T.: 4.040 min
 Delta R.T.: -0.003 min
 Response: 588276
 Conc: 3.15 ng/ml

Instrument :
 ECD_O
 ClientSampleId :
 71125-A



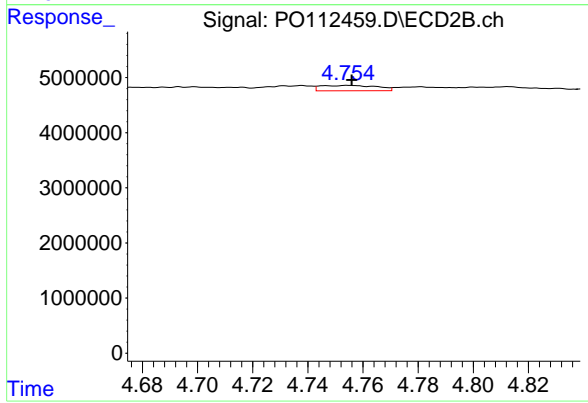
#11 AR-1232-1

R.T.: 4.032 min
 Delta R.T.: 0.001 min
 Response: 337217
 Conc: 2.66 ng/ml



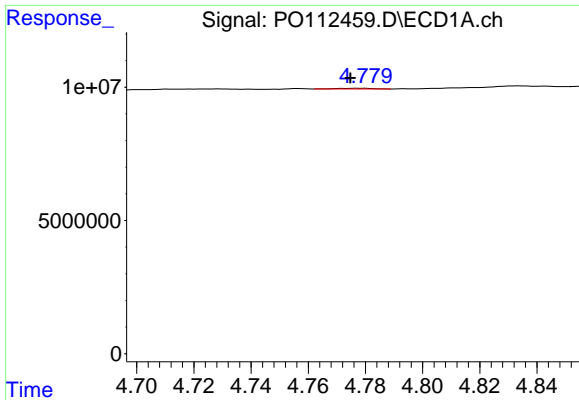
#12 AR-1232-2

R.T.: 4.535 min
 Delta R.T.: 0.000 min
 Response: 376059
 Conc: 3.49 ng/ml



#12 AR-1232-2

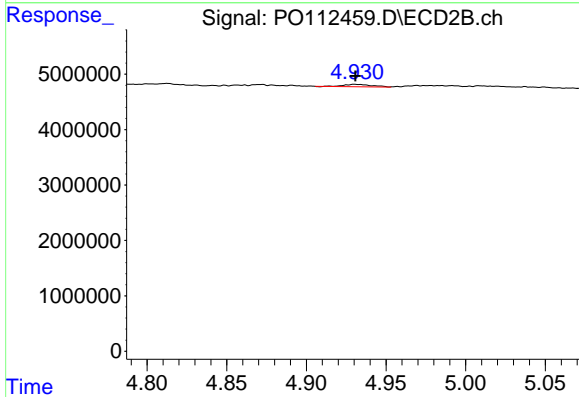
R.T.: 4.755 min
 Delta R.T.: -0.001 min
 Response: 1372203
 Conc: 10.46 ng/ml



#13 AR-1232-3

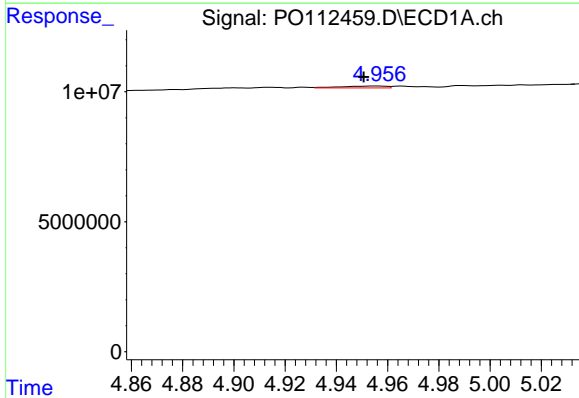
R.T.: 4.778 min
 Delta R.T.: 0.003 min
 Response: 245034
 Conc: 1.18 ng/ml

Instrument :
 ECD_O
 ClientSampleId :
 71125-A



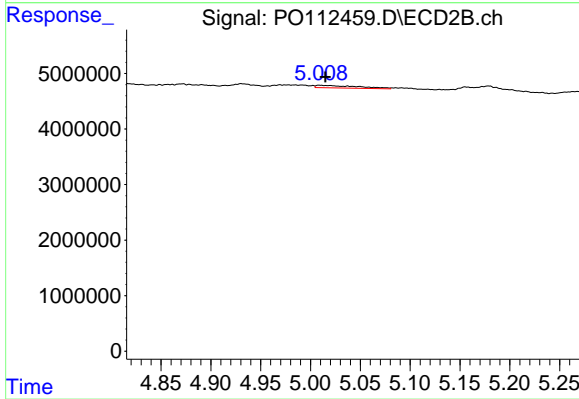
#13 AR-1232-3

R.T.: 4.931 min
 Delta R.T.: 0.000 min
 Response: 538960
 Conc: 8.02 ng/ml



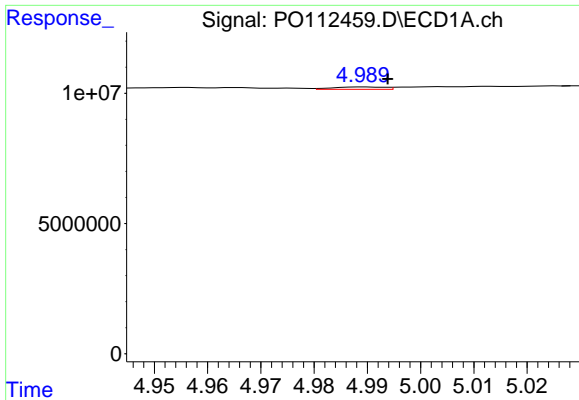
#14 AR-1232-4

R.T.: 4.956 min
 Delta R.T.: 0.005 min
 Response: 879486
 Conc: 8.40 ng/ml



#14 AR-1232-4

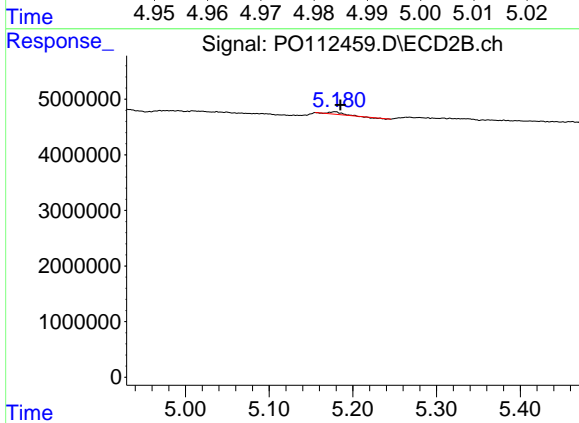
R.T.: 5.009 min
 Delta R.T.: -0.006 min
 Response: 1356038
 Conc: 22.67 ng/ml



#15 AR-1232-5

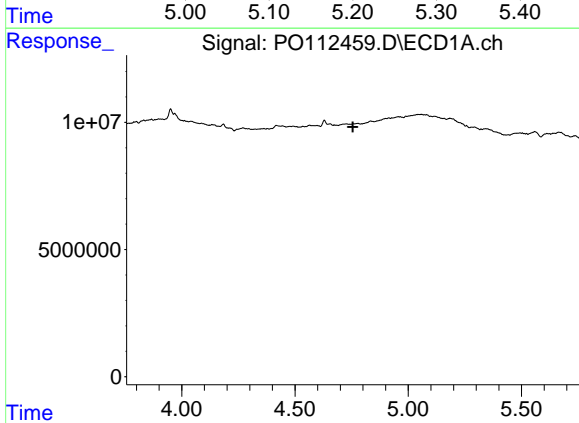
R.T.: 4.989 min
 Delta R.T.: -0.005 min
 Response: 624505
 Conc: 9.20 ng/ml

Instrument :
 ECD_O
 ClientSampleId :
 71125-A



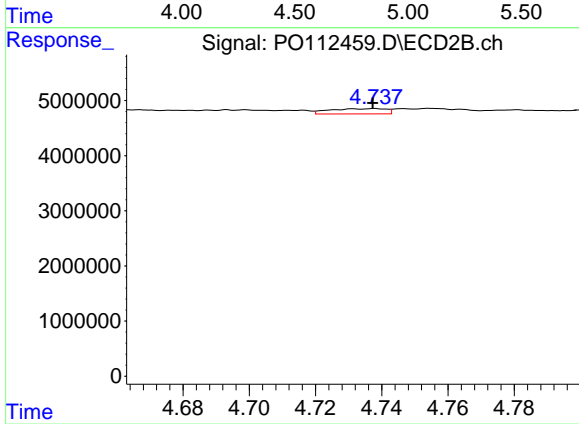
#15 AR-1232-5

R.T.: 5.179 min
 Delta R.T.: -0.007 min
 Response: 380803
 Conc: 5.84 ng/ml



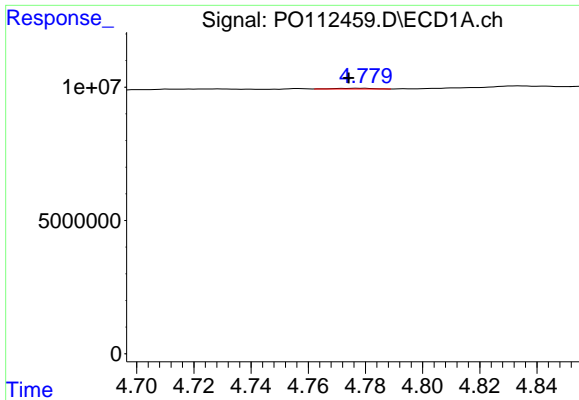
#16 AR-1242-1

R.T.: 4.757 min
 Delta R.T.: 0.002 min
 Response: -10424
 Conc: N.D.



#16 AR-1242-1

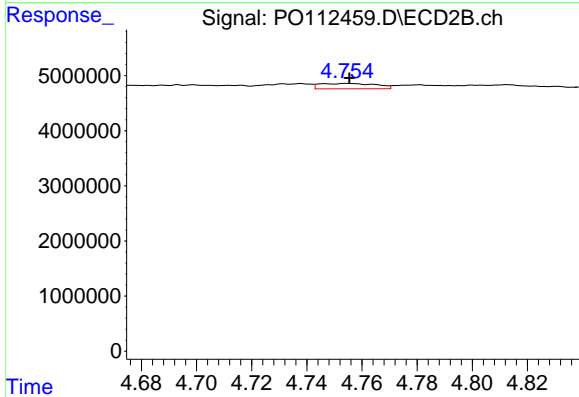
R.T.: 4.738 min
 Delta R.T.: 0.000 min
 Response: 1129944
 Conc: 7.13 ng/ml



#17 AR-1242-2

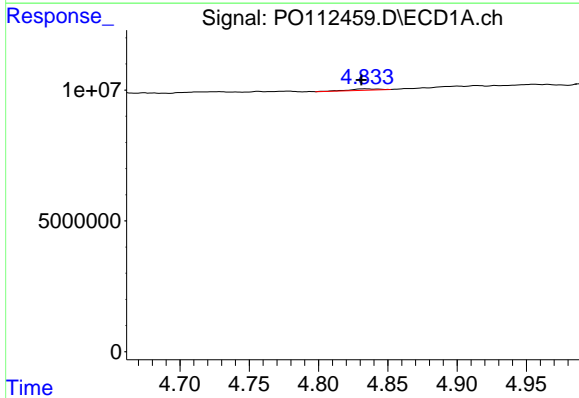
R.T.: 4.778 min
 Delta R.T.: 0.004 min
 Response: 245034
 Conc: 0.66 ng/ml

Instrument :
 ECD_O
 ClientSampleId :
 71125-A



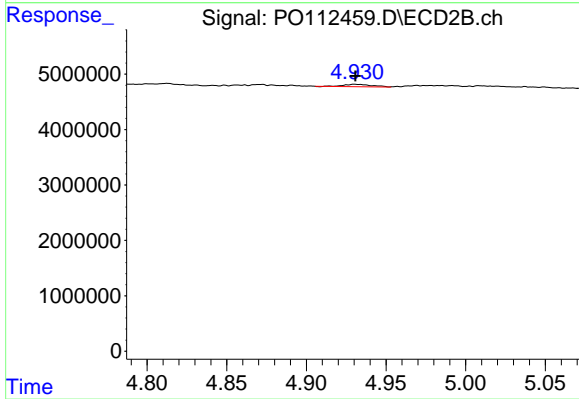
#17 AR-1242-2

R.T.: 4.755 min
 Delta R.T.: 0.000 min
 Response: 1372203
 Conc: 5.87 ng/ml



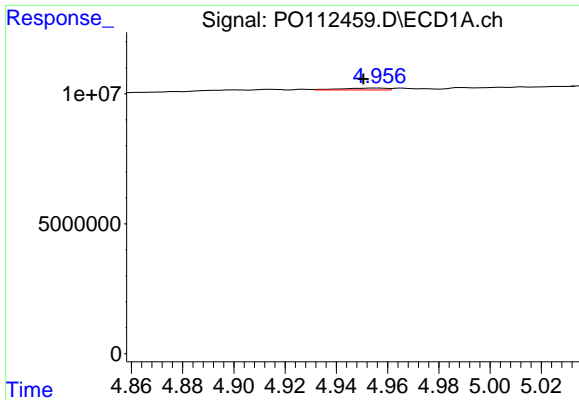
#18 AR-1242-3

R.T.: 4.834 min
 Delta R.T.: 0.003 min
 Response: 732057
 Conc: 3.09 ng/ml



#18 AR-1242-3

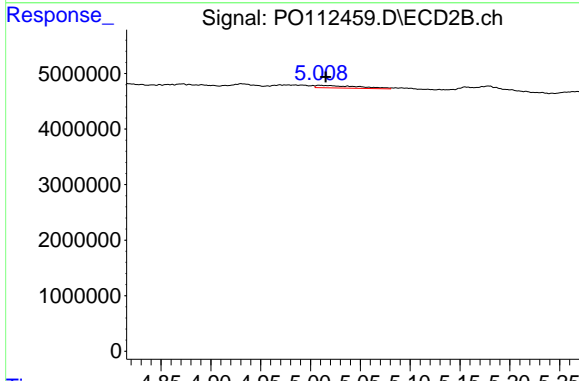
R.T.: 4.931 min
 Delta R.T.: 0.000 min
 Response: 538960
 Conc: 4.45 ng/ml



#19 AR-1242-4

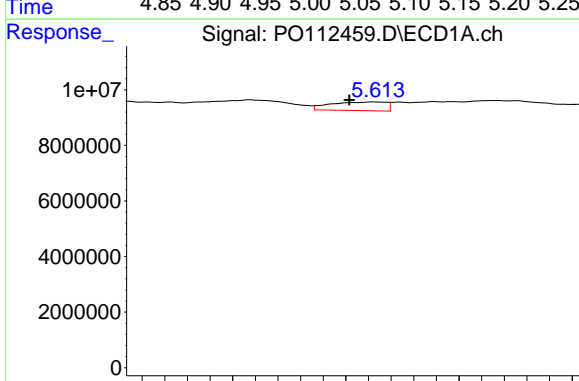
R.T.: 4.956 min
 Delta R.T.: 0.005 min
 Response: 879486
 Conc: 4.53 ng/ml

Instrument :
 ECD_O
 ClientSampleId :
 71125-A



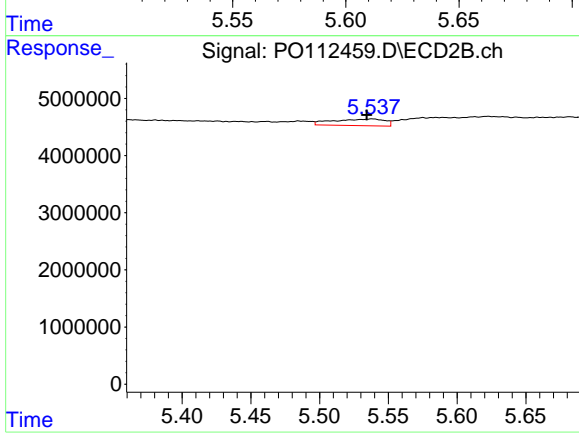
#19 AR-1242-4

R.T.: 5.009 min
 Delta R.T.: -0.006 min
 Response: 1356038
 Conc: 11.05 ng/ml



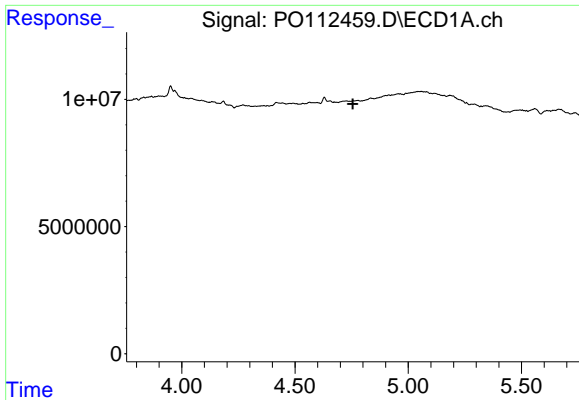
#20 AR-1242-5

R.T.: 5.612 min
 Delta R.T.: 0.011 min
 Response: 5285913
 Conc: 24.71 ng/ml



#20 AR-1242-5

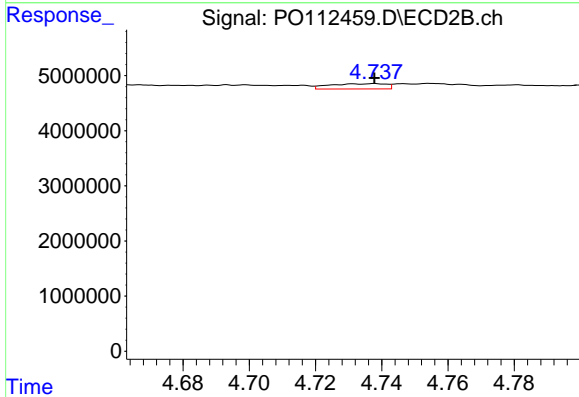
R.T.: 5.538 min
 Delta R.T.: 0.004 min
 Response: 3053005
 Conc: 18.97 ng/ml



#21 AR-1248-1

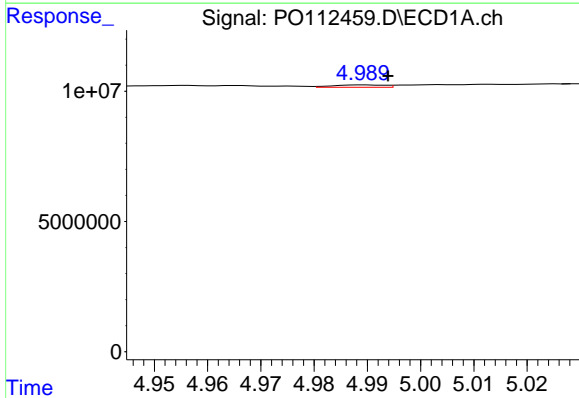
R.T.: 4.757 min
 Delta R.T.: 0.000 min
 Response: -10424
 Conc: N.D.

Instrument :
 ECD_O
 ClientSampleId :
 71125-A



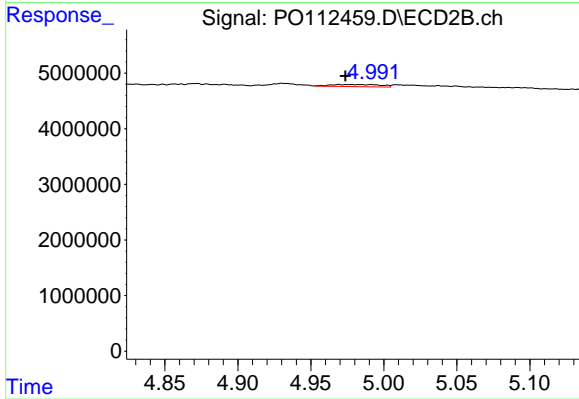
#21 AR-1248-1

R.T.: 4.738 min
 Delta R.T.: 0.000 min
 Response: 1129944
 Conc: 9.30 ng/ml



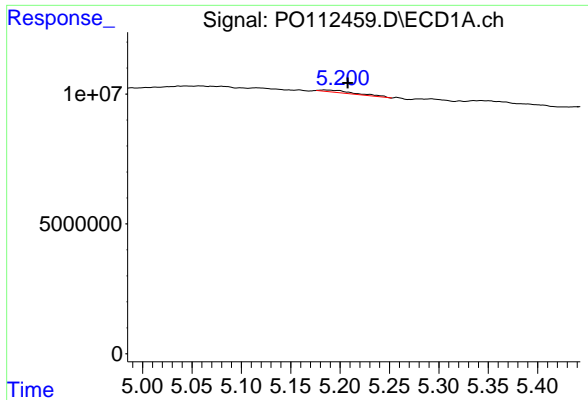
#22 AR-1248-2

R.T.: 4.989 min
 Delta R.T.: -0.005 min
 Response: 624505
 Conc: 2.45 ng/ml



#22 AR-1248-2

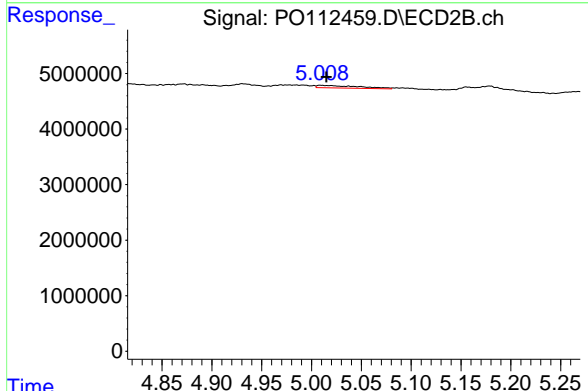
R.T.: 4.969 min
 Delta R.T.: -0.004 min
 Response: 938993
 Conc: 5.55 ng/ml



#23 AR-1248-3

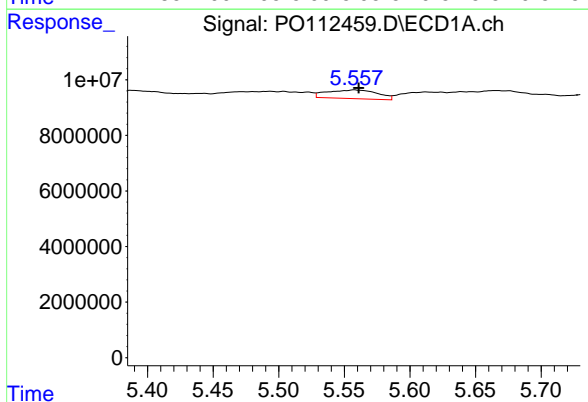
R.T.: 5.184 min
 Delta R.T.: -0.023 min
 Response: 2183704
 Conc: 6.35 ng/ml

Instrument :
 ECD_O
 ClientSampleId :
 71125-A



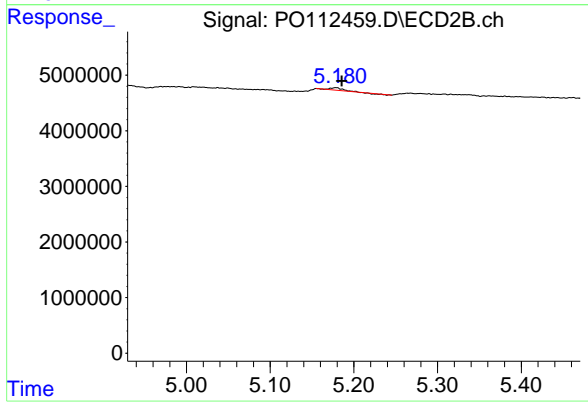
#23 AR-1248-3

R.T.: 5.009 min
 Delta R.T.: -0.006 min
 Response: 1356038
 Conc: 7.63 ng/ml



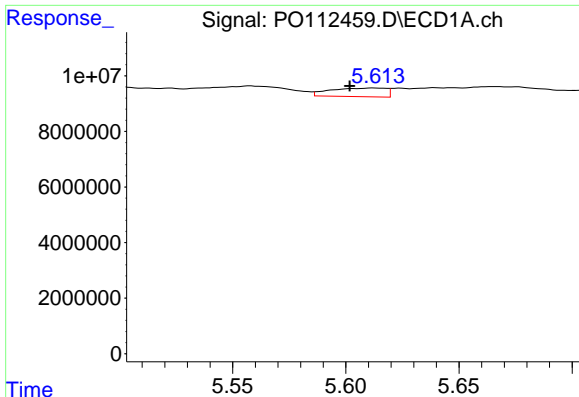
#24 AR-1248-4

R.T.: 5.558 min
 Delta R.T.: -0.003 min
 Response: 8366844
 Conc: 16.47 ng/ml



#24 AR-1248-4

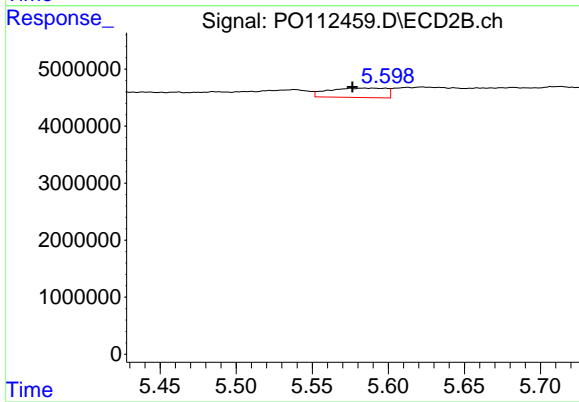
R.T.: 5.179 min
 Delta R.T.: -0.007 min
 Response: 380803
 Conc: 1.83 ng/ml



#25 AR-1248-5

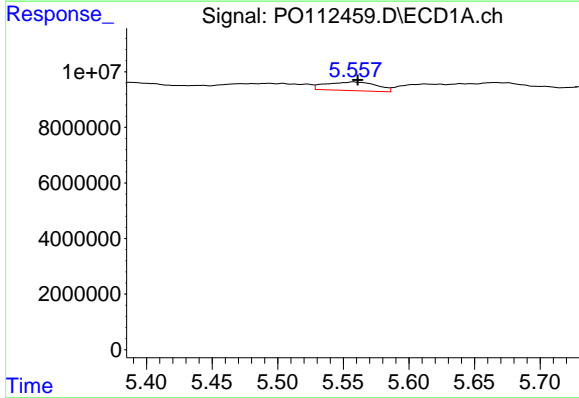
R.T.: 5.612 min
 Delta R.T.: 0.010 min
 Response: 5285913
 Conc: 15.12 ng/ml

Instrument :
 ECD_O
 ClientSampleId :
 71125-A



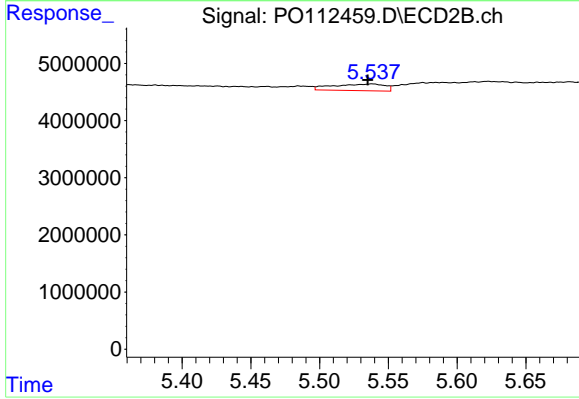
#25 AR-1248-5

R.T.: 5.584 min
 Delta R.T.: 0.008 min
 Response: 4339655
 Conc: 20.21 ng/ml



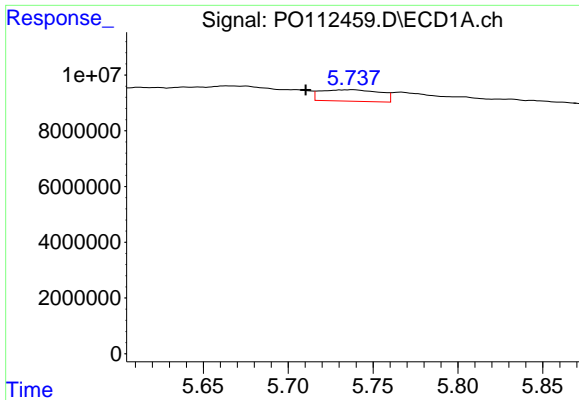
#26 AR-1254-1

R.T.: 5.558 min
 Delta R.T.: -0.003 min
 Response: 8366844
 Conc: 15.24 ng/ml



#26 AR-1254-1

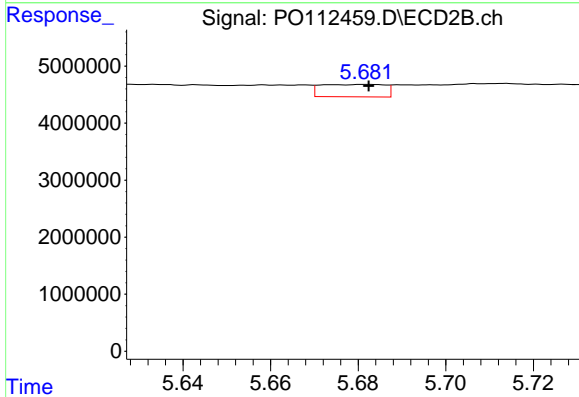
R.T.: 5.538 min
 Delta R.T.: 0.004 min
 Response: 3053005
 Conc: 9.29 ng/ml



#27 AR-1254-2

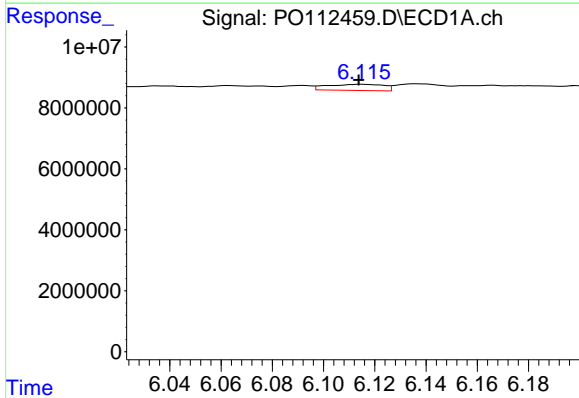
R.T.: 5.738 min
 Delta R.T.: 0.028 min
 Response: 9944857
 Conc: 20.47 ng/ml

Instrument :
 ECD_O
 ClientSampleId :
 71125-A



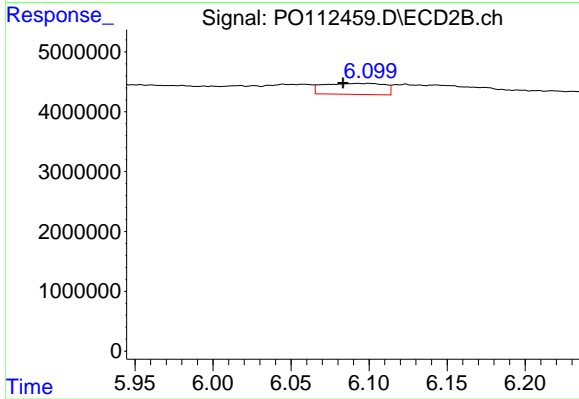
#27 AR-1254-2

R.T.: 5.682 min
 Delta R.T.: 0.000 min
 Response: 2206010
 Conc: 7.62 ng/ml



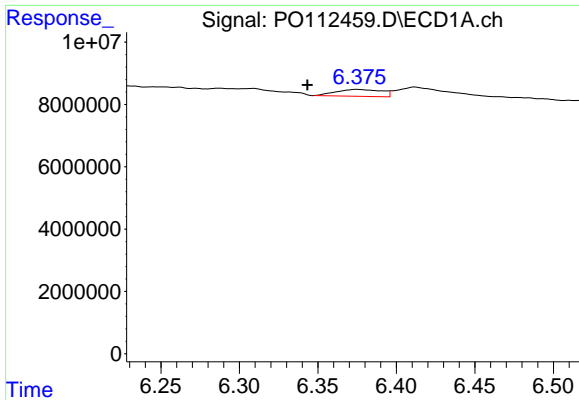
#28 AR-1254-3

R.T.: 6.115 min
 Delta R.T.: 0.001 min
 Response: 3075048
 Conc: 4.13 ng/ml



#28 AR-1254-3

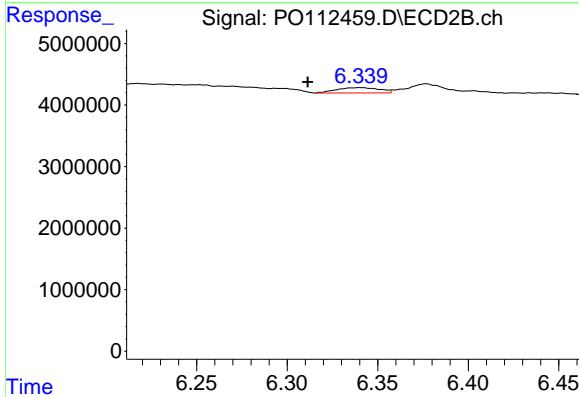
R.T.: 6.100 min
 Delta R.T.: 0.017 min
 Response: 5000847
 Conc: 11.70 ng/ml



#29 AR-1254-4

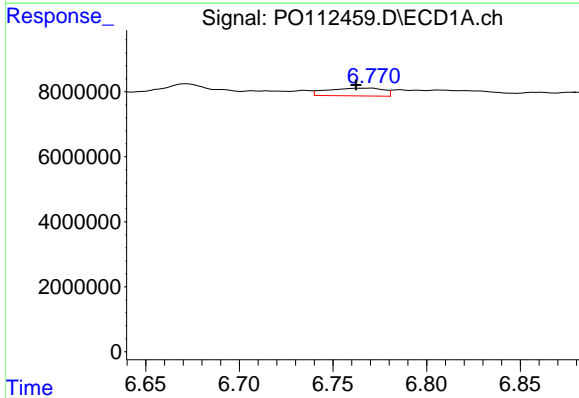
R.T.: 6.375 min
 Delta R.T.: 0.032 min
 Response: 4528745
 Conc: 8.24 ng/ml

Instrument :
 ECD_O
 ClientSampleId :
 71125-A



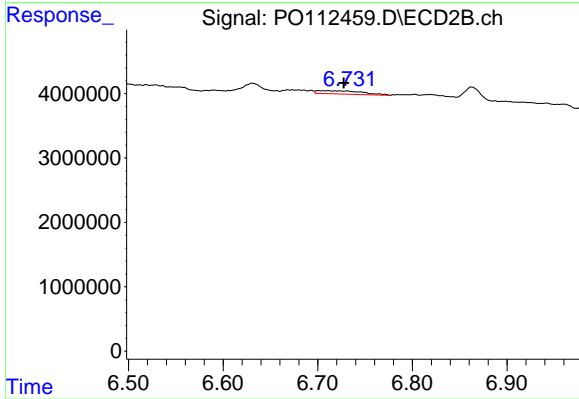
#29 AR-1254-4

R.T.: 6.340 min
 Delta R.T.: 0.029 min
 Response: 1432055
 Conc: 5.25 ng/ml



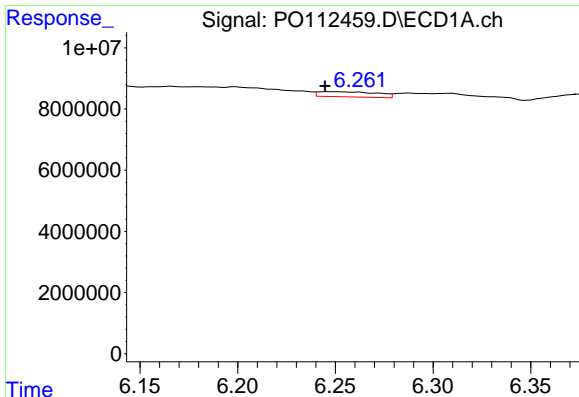
#30 AR-1254-5

R.T.: 6.771 min
 Delta R.T.: 0.008 min
 Response: 4939152
 Conc: 6.98 ng/ml



#30 AR-1254-5

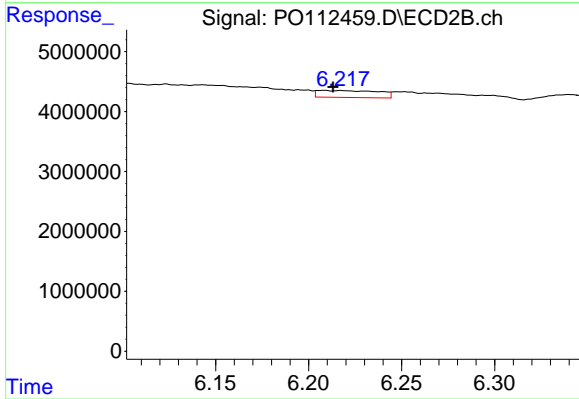
R.T.: 6.701 min
 Delta R.T.: -0.026 min
 Response: 1700919
 Conc: 5.09 ng/ml



#31 AR-1260-1

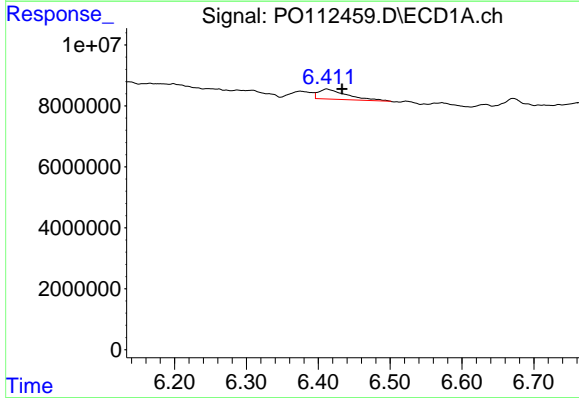
R.T.: 6.245 min
 Delta R.T.: 0.000 min
 Response: 3504315
 Conc: 7.98 ng/ml

Instrument :
 ECD_O
 ClientSampleId :
 71125-A



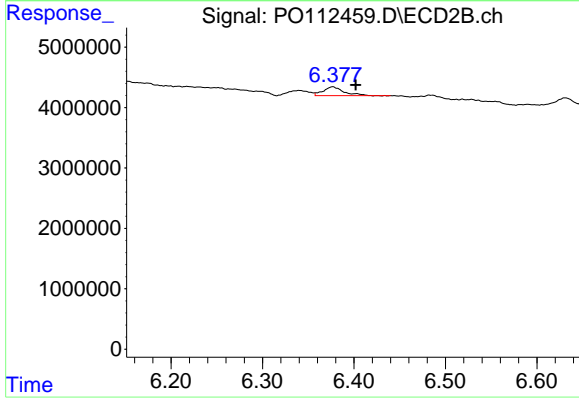
#31 AR-1260-1

R.T.: 6.208 min
 Delta R.T.: -0.005 min
 Response: 2619488
 Conc: 10.54 ng/ml



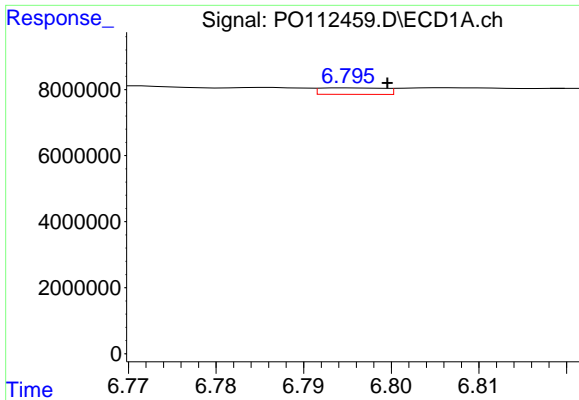
#32 AR-1260-2

R.T.: 6.412 min
 Delta R.T.: -0.021 min
 Response: 8701903
 Conc: 12.65 ng/ml



#32 AR-1260-2

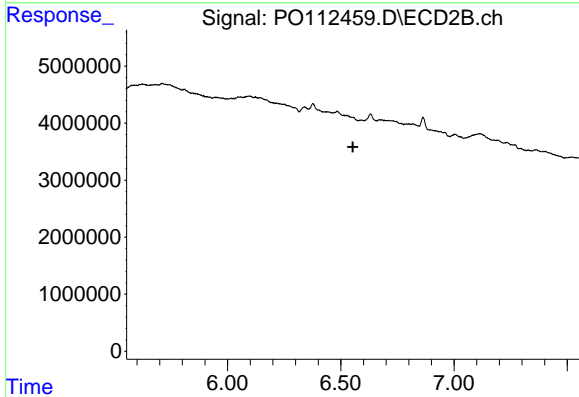
R.T.: 6.377 min
 Delta R.T.: -0.025 min
 Response: 2015930
 Conc: 6.12 ng/ml



#33 AR-1260-3

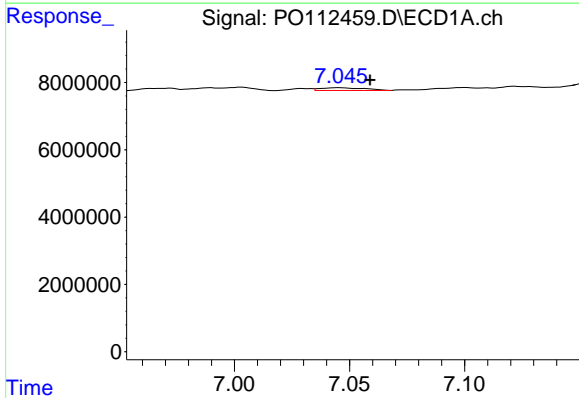
R.T.: 6.795 min
 Delta R.T.: -0.004 min
 Response: 994549
 Conc: 1.69 ng/ml

Instrument :
 ECD_O
 ClientSampleId :
 71125-A



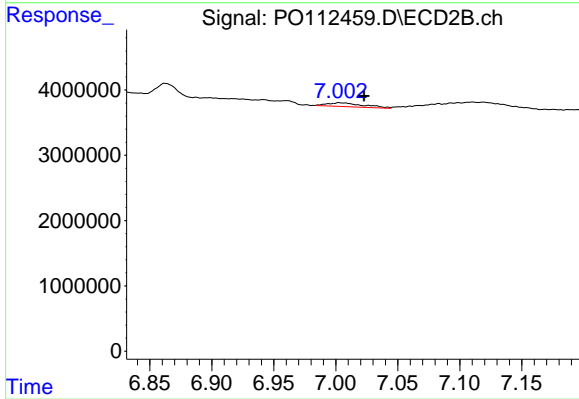
#33 AR-1260-3

R.T.: 6.590 min
 Delta R.T.: 0.037 min
 Response: -274907
 Conc: N.D.



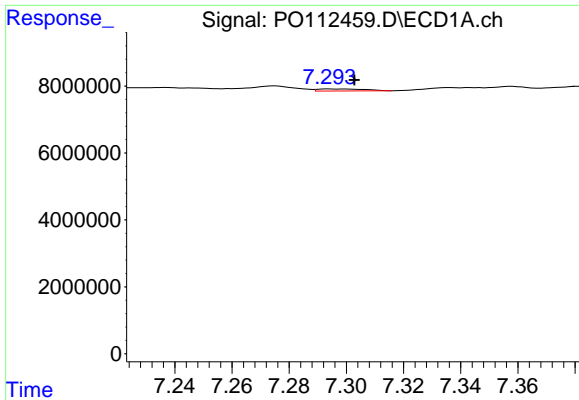
#34 AR-1260-4

R.T.: 7.046 min
 Delta R.T.: -0.013 min
 Response: 1088271
 Conc: 2.41 ng/ml



#34 AR-1260-4

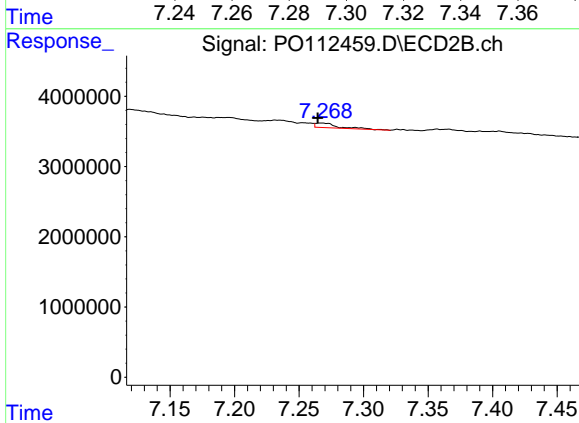
R.T.: 7.003 min
 Delta R.T.: -0.020 min
 Response: 1156295
 Conc: 6.04 ng/ml



#35 AR-1260-5

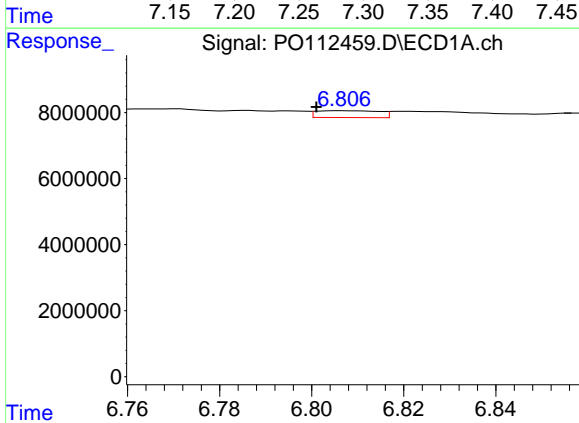
R.T.: 7.294 min
 Delta R.T.: -0.009 min
 Response: 699252
 Conc: 0.56 ng/ml

Instrument :
 ECD_O
 ClientSampleId :
 71125-A



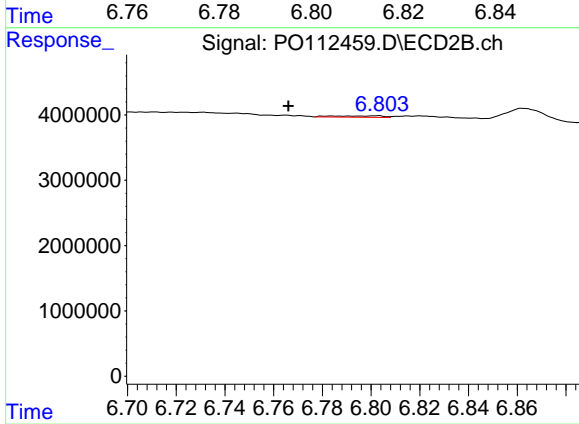
#35 AR-1260-5

R.T.: 7.267 min
 Delta R.T.: 0.003 min
 Response: 785606
 Conc: 1.91 ng/ml



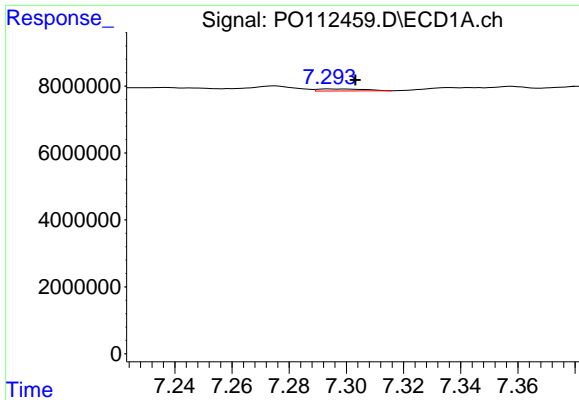
#36 AR-1262-1

R.T.: 6.806 min
 Delta R.T.: 0.005 min
 Response: 1961741
 Conc: 2.11 ng/ml



#36 AR-1262-1

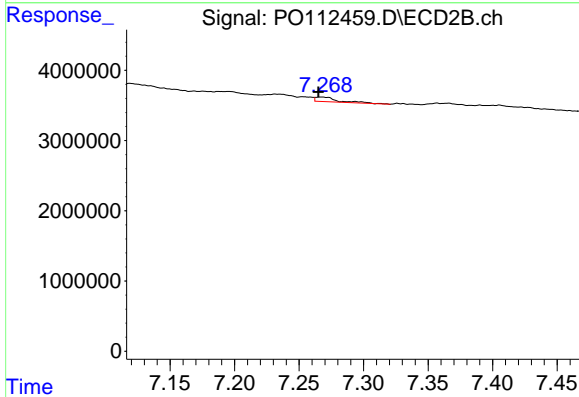
R.T.: 6.802 min
 Delta R.T.: 0.036 min
 Response: 309787
 Conc: 0.75 ng/ml



#37 AR-1262-2

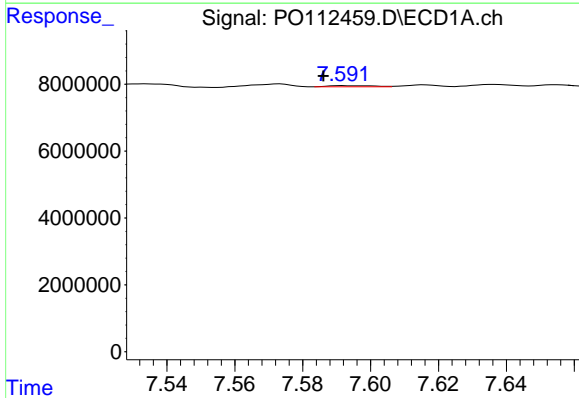
R.T.: 7.294 min
 Delta R.T.: -0.009 min
 Response: 699252
 Conc: 0.47 ng/ml

Instrument :
 ECD_O
 ClientSampleId :
 71125-A



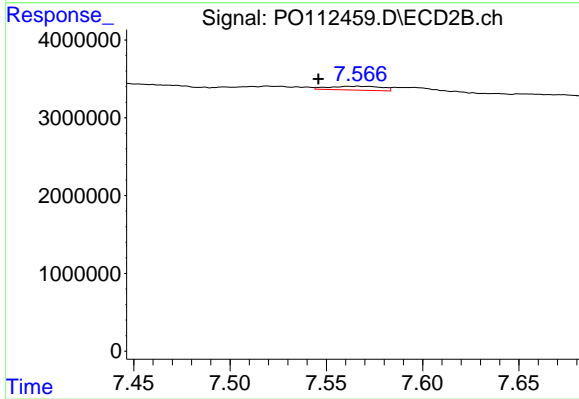
#37 AR-1262-2

R.T.: 7.267 min
 Delta R.T.: 0.002 min
 Response: 785606
 Conc: 1.52 ng/ml



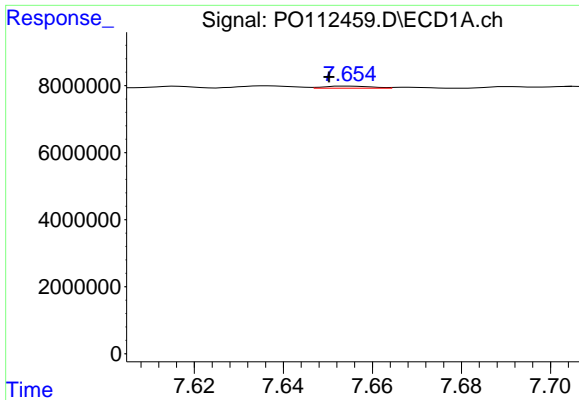
#38 AR-1262-3

R.T.: 7.592 min
 Delta R.T.: 0.006 min
 Response: 316977
 Conc: 0.54 ng/ml



#38 AR-1262-3

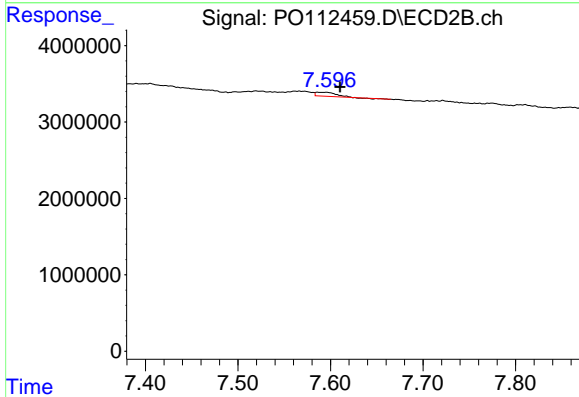
R.T.: 7.566 min
 Delta R.T.: 0.020 min
 Response: 964193
 Conc: 5.17 ng/ml



#39 AR-1262-4

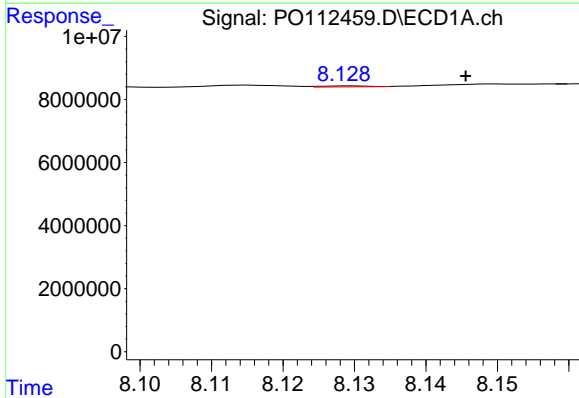
R.T.: 7.655 min
 Delta R.T.: 0.004 min
 Response: 461623
 Conc: 0.46 ng/ml

Instrument :
 ECD_O
 ClientSampleId :
 71125-A



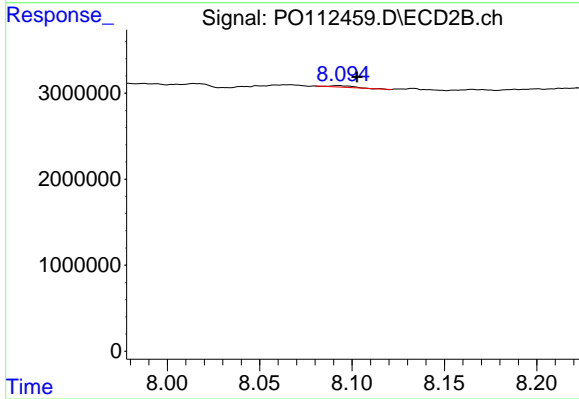
#39 AR-1262-4

R.T.: 7.586 min
 Delta R.T.: -0.024 min
 Response: 706668
 Conc: 2.45 ng/ml



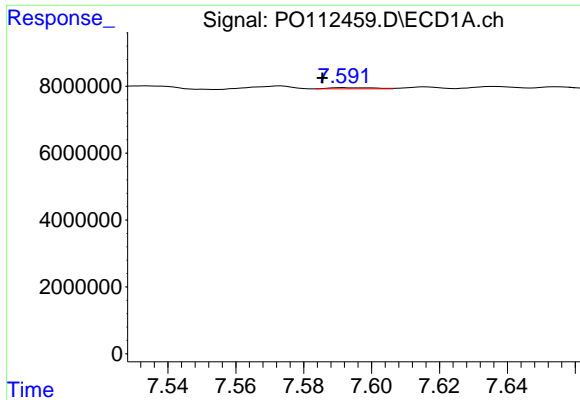
#40 AR-1262-5

R.T.: 8.130 min
 Delta R.T.: -0.016 min
 Response: 153163
 Conc: 0.35 ng/ml



#40 AR-1262-5

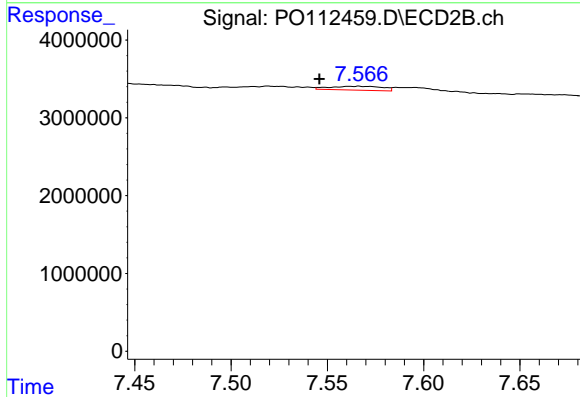
R.T.: 8.093 min
 Delta R.T.: -0.010 min
 Response: 144867
 Conc: 1.46 ng/ml



#41 AR-1268-1

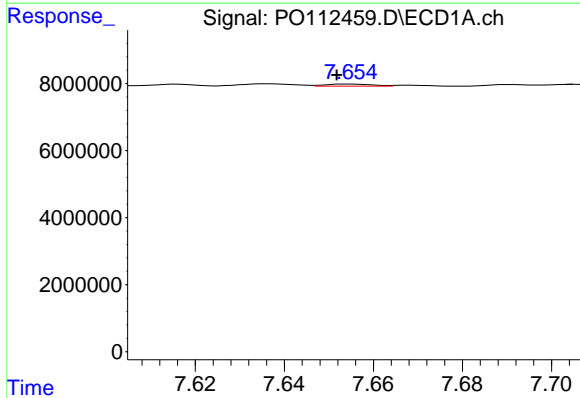
R.T.: 7.592 min
 Delta R.T.: 0.006 min
 Response: 316977
 Conc: 0.18 ng/ml

Instrument :
 ECD_O
 ClientSampleId :
 71125-A



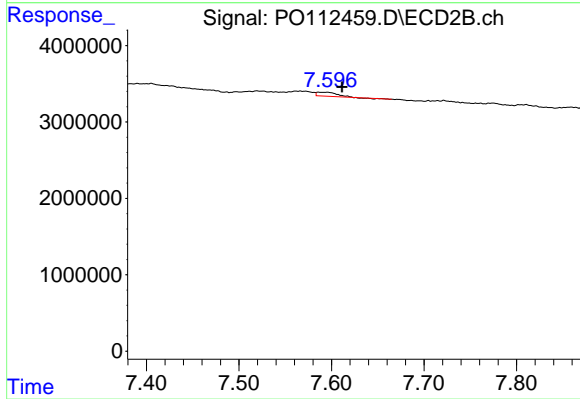
#41 AR-1268-1

R.T.: 7.566 min
 Delta R.T.: 0.020 min
 Response: 964193
 Conc: 1.86 ng/ml



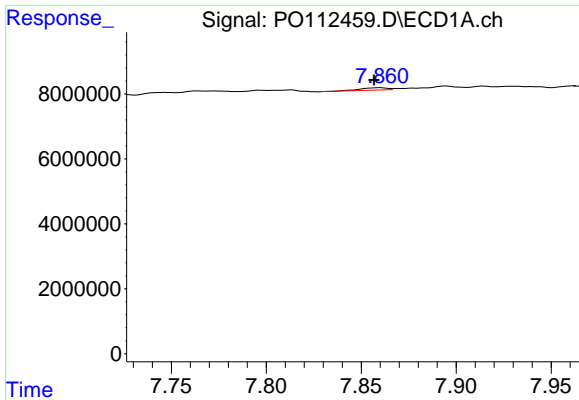
#42 AR-1268-2

R.T.: 7.655 min
 Delta R.T.: 0.003 min
 Response: 461623
 Conc: 0.31 ng/ml



#42 AR-1268-2

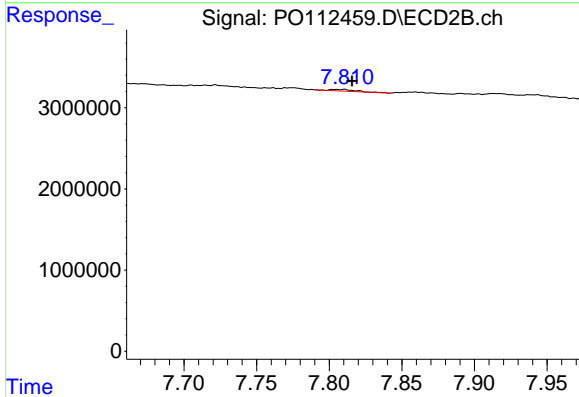
R.T.: 7.586 min
 Delta R.T.: -0.025 min
 Response: 706668
 Conc: 1.66 ng/ml



#43 AR-1268-3

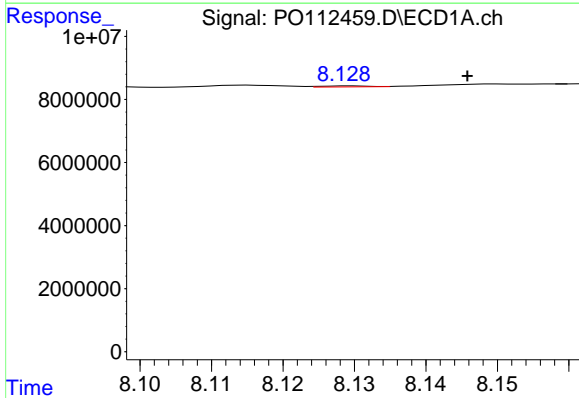
R.T.: 7.860 min
 Delta R.T.: 0.003 min
 Response: 720629
 Conc: 0.58 ng/ml

Instrument :
 ECD_O
 ClientSampleId :
 71125-A



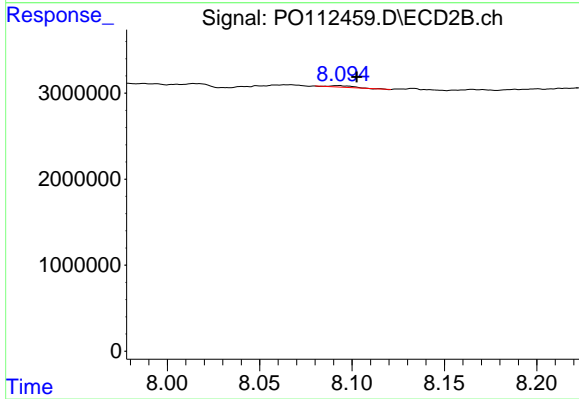
#43 AR-1268-3

R.T.: 7.810 min
 Delta R.T.: -0.006 min
 Response: 234329
 Conc: 0.73 ng/ml



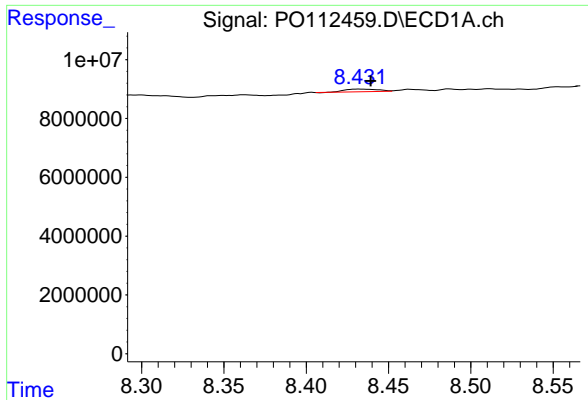
#44 AR-1268-4

R.T.: 8.130 min
 Delta R.T.: -0.016 min
 Response: 153163
 Conc: 0.32 ng/ml



#44 AR-1268-4

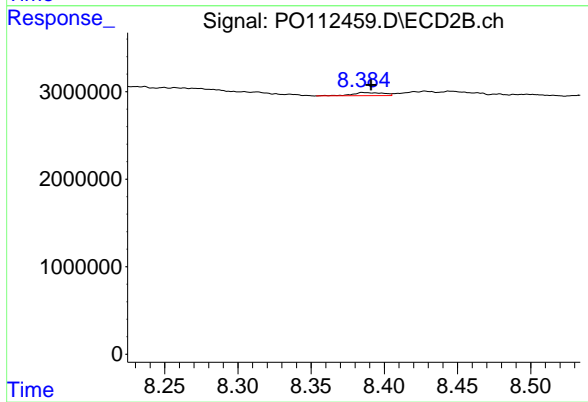
R.T.: 8.093 min
 Delta R.T.: -0.010 min
 Response: 144867
 Conc: 1.30 ng/ml



#45 AR-1268-5

R.T.: 8.431 min
Delta R.T.: -0.008 min
Response: 1237088
Conc: 0.37 ng/ml

Instrument :
ECD_O
ClientSampleId :
71125-A



#45 AR-1268-5

R.T.: 8.388 min
Delta R.T.: -0.003 min
Response: 534774
Conc: 0.73 ng/ml