

Data Path : Z:\pestpcbsrv\HPCHEM1\ECD_0\Data\P0072425\
 Data File : PO112460.D
 Signal(s) : Signal #1: ECD1A.ch Signal #2: ECD2B.ch
 Acq On : 24 Jul 2025 12:24
 Operator : YP/AJ
 Sample : Q2658-02
 Misc :
 ALS Vial : 13 Sample Multiplier: 1

Instrument :
 ECD_0
 ClientSampleId :
 PAD-072125-2

Integration File signal 1: autoint1.e
 Integration File signal 2: autoint2.e
 Quant Time: Jul 24 23:39:03 2025
 Quant Method : Z:\pestpcbsrv\HPCHEM1\ECD_0\methods\P0072325.M
 Quant Title : GC EXTRACTABLES
 QLast Update : Thu Jul 24 04:54:06 2025
 Response via : Initial Calibration
 Integrator: ChemStation

Volume Inj. : 2 µl
 Signal #1 Phase : ZB-MR1 Signal #2 Phase: ZB-MR2
 Signal #1 Info : 30Mx0.32mmx 0.50µ Signal #2 Info : 30M x 0.32mm x 0.25µm

Compound	RT#1	RT#2	Resp#1	Resp#2	ng/ml	ng/ml

System Monitoring Compounds						
1) SA Tetrachlo...	3.669	3.663	157.9E6	98116426	19.419	19.745
2) SA Decachlor...	8.693	8.640	87424192	25751504	11.957	14.573
Target Compounds						
3) L1 AR-1016-1	4.771	4.739	-126022	634357	N.D.	3.625 #
4) L1 AR-1016-2	4.771	4.752	-126022	924927	N.D.	3.551 #
5) L1 AR-1016-3	4.830	4.931	1491485	278824	5.700	2.051 #
6) L1 AR-1016-4	4.975	4.984	446354	98308	2.107	0.885 #
7) L1 AR-1016-5	5.202	5.177	5047688	1169558	22.999	8.161 #
8) L2 AR-1221-1	3.889	3.878	168022	122360	1.738	1.819
9) L2 AR-1221-2	3.974	3.962	1751430	2678325	24.372	52.798 #
10) L2 AR-1221-3	4.047	4.033	566028	167891	2.381	1.059 #
11) L3 AR-1232-1	4.047	4.033	566028	167891	3.027	1.327 #
12) L3 AR-1232-2	4.566	4.752	4413958	924927	41.012	7.052 #
13) L3 AR-1232-3	4.771	4.931	-126022	278824	N.D.	4.149 #
14) L3 AR-1232-4	4.975	5.017	446354	146588	4.262	2.450 #
15) L3 AR-1232-5	4.997	5.177	245999	1169558	3.624	17.937 #
16) L4 AR-1242-1	4.771	4.739	-126022	634357	N.D.	4.005 #
17) L4 AR-1242-2	4.771	4.752	-126022	924927	N.D.	3.958 #
18) L4 AR-1242-3	4.830	4.931	1491485	278824	6.302	2.301 #
19) L4 AR-1242-4	4.975	5.017	446354	146588	2.297	1.194 #
20) L4 AR-1242-5	5.613	5.536	5421908	2119513	25.346	13.167 #
21) L5 AR-1248-1	4.771	4.739	-126022	634357	N.D.	5.221 #
22) L5 AR-1248-2	4.997	4.984	245999	98308	0.964	0.581 #
23) L5 AR-1248-3	5.202	5.017	5047688	146588	14.686	0.825 #
24) L5 AR-1248-4	5.540	5.177	3738835	1169558	7.359	5.613
25) L5 AR-1248-5	5.613	5.580	5421908	2828820	15.509	13.172
26) L6 AR-1254-1	5.540	5.536	3738835	2119513	6.811	6.450
27) L6 AR-1254-2	5.740	5.687	618381	1401287	1.273	4.841 #
28) L6 AR-1254-3	6.116	6.086	3331363	1919011	4.476	4.489
29) L6 AR-1254-4	6.370	6.332	4136442	667035	7.525	2.444 #
30) L6 AR-1254-5	6.797	6.723	16894064	771270	23.868	2.309 #
31) L7 AR-1260-1	6.194f	6.213	5357491	3378380	12.195	13.594
32) L7 AR-1260-2	6.409	6.380	7760095	3855230	11.281	11.700
33) L7 AR-1260-3	6.797	6.551	16894064	100826	28.730	0.392 #
34) L7 AR-1260-4	7.054	7.001	572175	853806	1.269	4.463 #
35) L7 AR-1260-5	7.302	7.267	3863938	1214213	3.118	2.946
36) L8 AR-1262-1	6.797	6.759	16894064	420874	18.181	1.015 #
37) L8 AR-1262-2	7.302	7.267	3863938	1214213	2.598	2.355
38) L8 AR-1262-3	7.563	7.541	872062	137956	1.477	0.740 #
39) L8 AR-1262-4	7.642	7.616	1093842	76915	1.100	0.267 #
40) L8 AR-1262-5	8.154	8.095	386770	37152	0.891	0.373 #
41) L9 AR-1268-1	7.563	7.541	872062	137956	0.498	0.266 #

Data Path : Z:\pestpcbsrv\HPCHEM1\ECD_0\Data\P0072425\
 Data File : P0112460.D
 Signal(s) : Signal #1: ECD1A.ch Signal #2: ECD2B.ch
 Acq On : 24 Jul 2025 12:24
 Operator : YP/AJ
 Sample : Q2658-02
 Misc :
 ALS Vial : 13 Sample Multiplier: 1

Instrument :
 ECD_0
 ClientSampleId :
 PAD-072125-2

Integration File signal 1: autoint1.e
 Integration File signal 2: autoint2.e
 Quant Time: Jul 24 23:39:03 2025
 Quant Method : Z:\pestpcbsrv\HPCHEM1\ECD_0\methods\P0072325.M
 Quant Title : GC EXTRACTABLES
 QLast Update : Thu Jul 24 04:54:06 2025
 Response via : Initial Calibration
 Integrator: ChemStation

Volume Inj. : 2 µl
 Signal #1 Phase : ZB-MR1 Signal #2 Phase: ZB-MR2
 Signal #1 Info : 30Mx0.32mmx 0.50µ Signal #2 Info : 30M x 0.32mm x 0.25µm

	Compound	RT#1	RT#2	Resp#1	Resp#2	ng/ml	ng/ml
42)	L9 AR-1268-2	7.642	7.616	1093842	76915	0.743	0.181 #
43)	L9 AR-1268-3	7.839	7.817	936037	66291	0.747	0.206 #
44)	L9 AR-1268-4	8.154	8.095	386770	37152	0.803	0.334 #
45)	L9 AR-1268-5	8.442	8.392	969223	133083	0.289	0.182 #

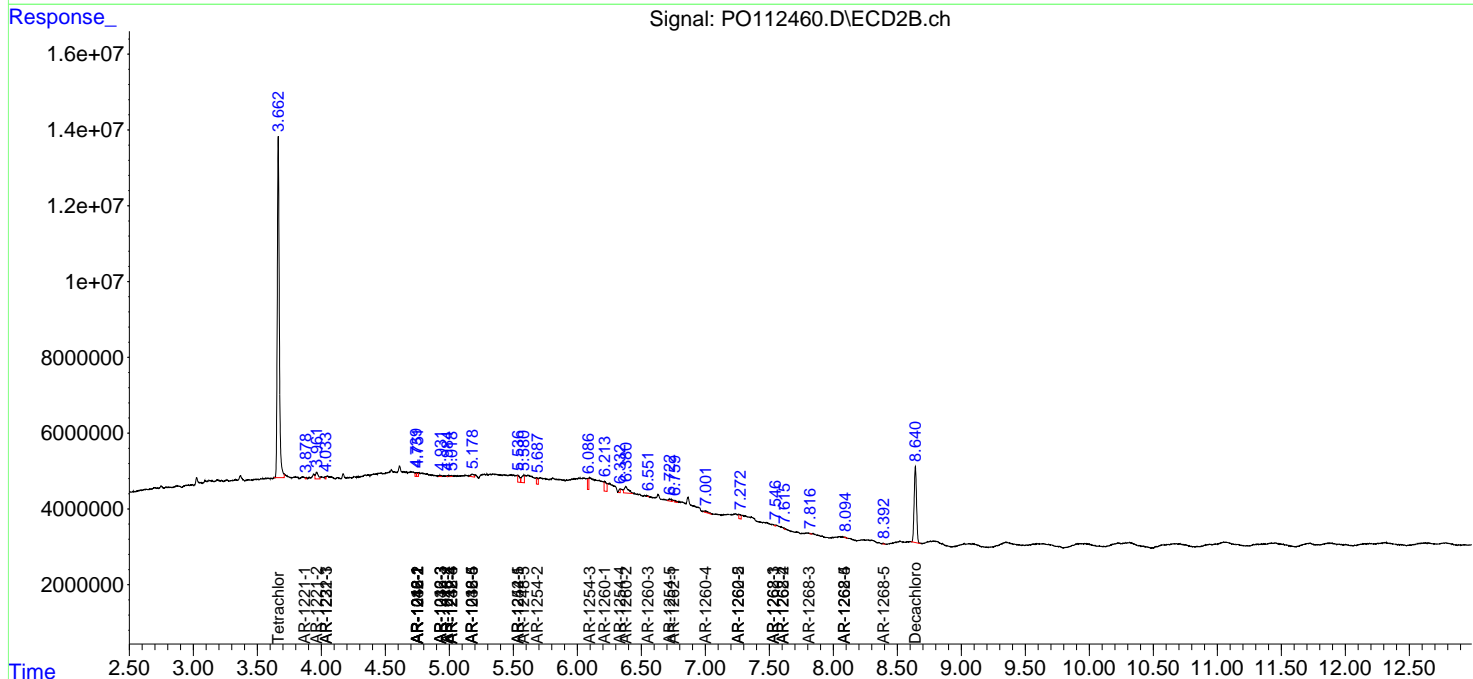
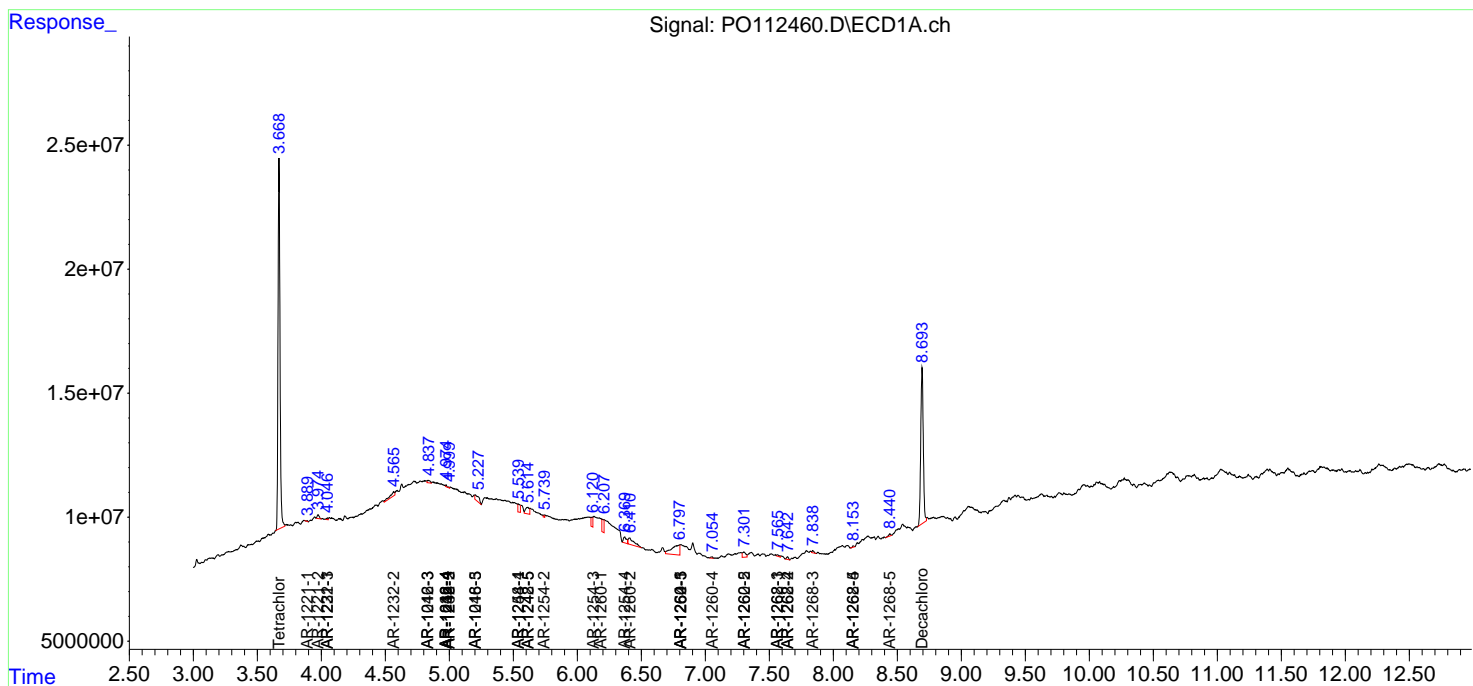
(f)=RT Delta > 1/2 Window (#)=Amounts differ by > 25% (m)=manual int.

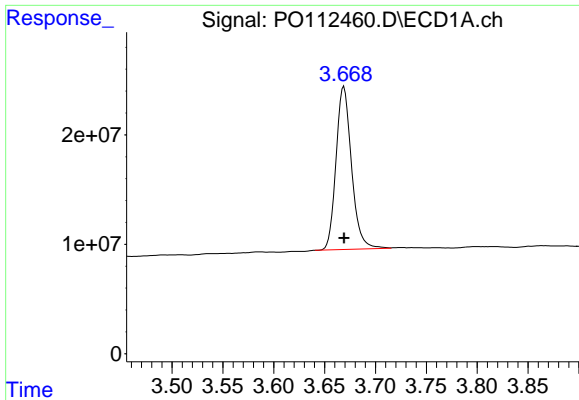
Data Path : Z:\pestpcbsrv\HPCHEM1\ECD_O\Data\PO072425\
 Data File : PO112460.D
 Signal(s) : Signal #1: ECD1A.ch Signal #2: ECD2B.ch
 Acq On : 24 Jul 2025 12:24
 Operator : YP/AJ
 Sample : Q2658-02
 Misc :
 ALS Vial : 13 Sample Multiplier: 1

Instrument :
 ECD_O
 ClientSampleId :
 PAD-072125-2

Integration File signal 1: autoint1.e
 Integration File signal 2: autoint2.e
 Quant Time: Jul 24 23:39:03 2025
 Quant Method : Z:\pestpcbsrv\HPCHEM1\ECD_O\methods\PO072325.M
 Quant Title : GC EXTRACTABLES
 QLast Update : Thu Jul 24 04:54:06 2025
 Response via : Initial Calibration
 Integrator: ChemStation

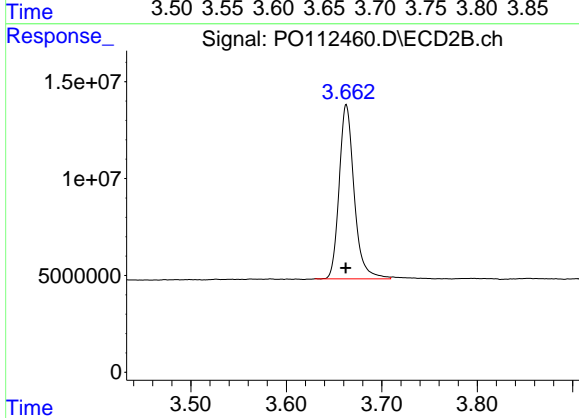
Volume Inj. : 2 µl
 Signal #1 Phase : ZB-MR1 Signal #2 Phase: ZB-MR2
 Signal #1 Info : 30Mx0.32mmx 0.50µ Signal #2 Info : 30M x 0.32mm x 0.25µm



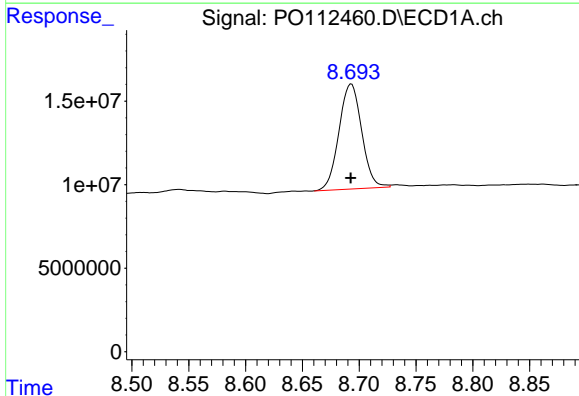


#1 Tetrachloro-m-xylene
 R.T.: 3.669 min
 Delta R.T.: 0.000 min
 Response: 157910545
 Conc: 19.42 ng/ml

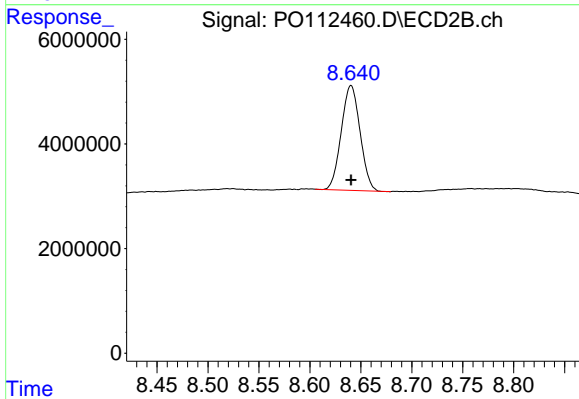
Instrument :
 ECD_O
 ClientSampleId :
 PAD-072125-2



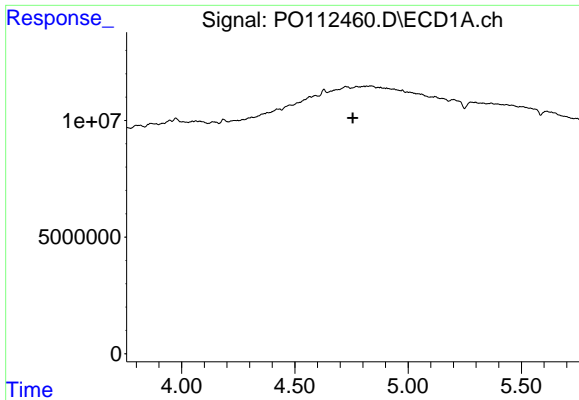
#1 Tetrachloro-m-xylene
 R.T.: 3.663 min
 Delta R.T.: 0.000 min
 Response: 98116426
 Conc: 19.75 ng/ml



#2 Decachlorobiphenyl
 R.T.: 8.693 min
 Delta R.T.: 0.000 min
 Response: 87424192
 Conc: 11.96 ng/ml



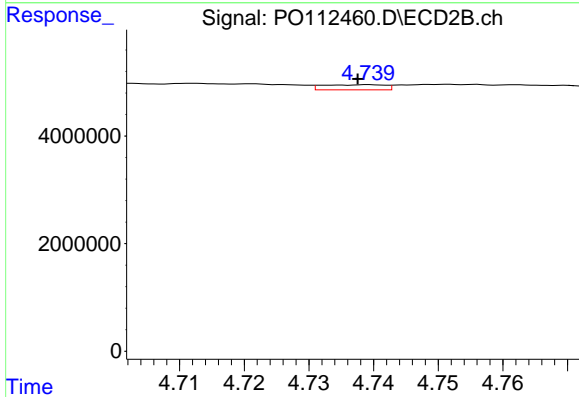
#2 Decachlorobiphenyl
 R.T.: 8.640 min
 Delta R.T.: 0.000 min
 Response: 25751504
 Conc: 14.57 ng/ml



#3 AR-1016-1

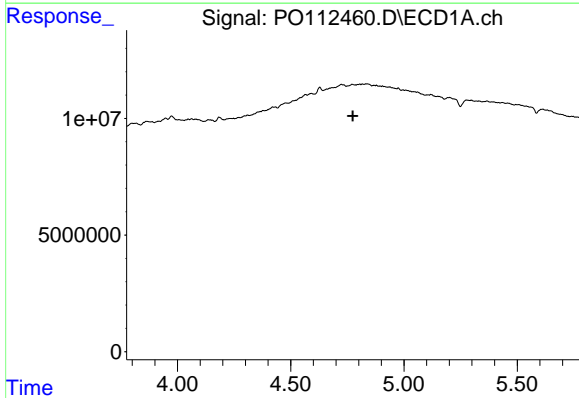
R.T.: 4.771 min
 Delta R.T.: 0.015 min
 Response: -126022
 Conc: N.D.

Instrument :
 ECD_O
 ClientSampleId :
 PAD-072125-2



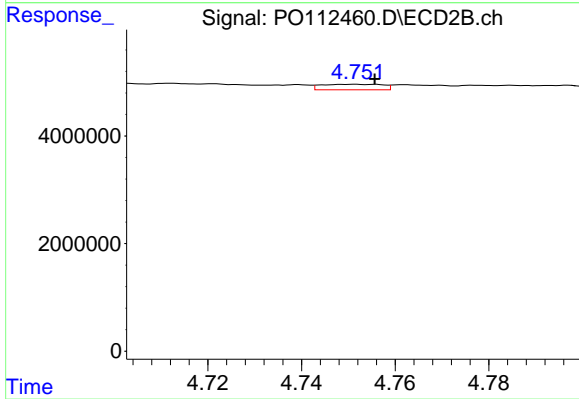
#3 AR-1016-1

R.T.: 4.739 min
 Delta R.T.: 0.002 min
 Response: 634357
 Conc: 3.62 ng/ml



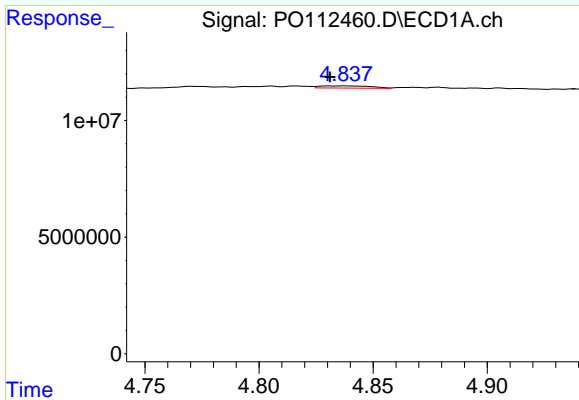
#4 AR-1016-2

R.T.: 4.771 min
 Delta R.T.: -0.003 min
 Response: -126022
 Conc: N.D.



#4 AR-1016-2

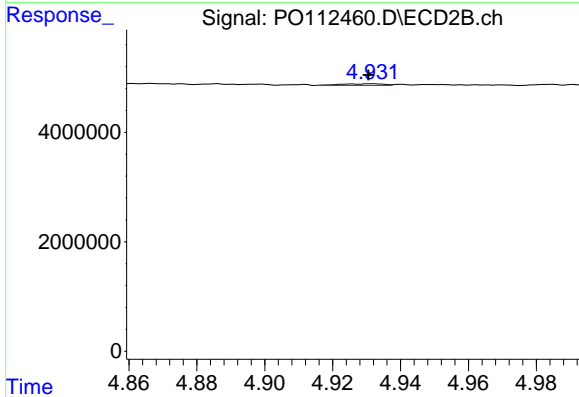
R.T.: 4.752 min
 Delta R.T.: -0.004 min
 Response: 924927
 Conc: 3.55 ng/ml



#5 AR-1016-3

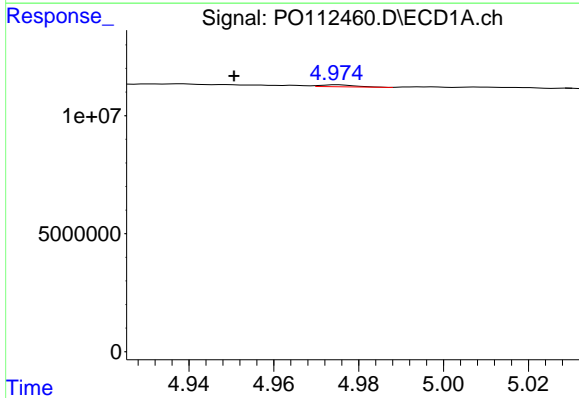
R.T.: 4.830 min
 Delta R.T.: 0.000 min
 Response: 1491485
 Conc: 5.70 ng/ml

Instrument :
 ECD_O
 ClientSampleId :
 PAD-072125-2



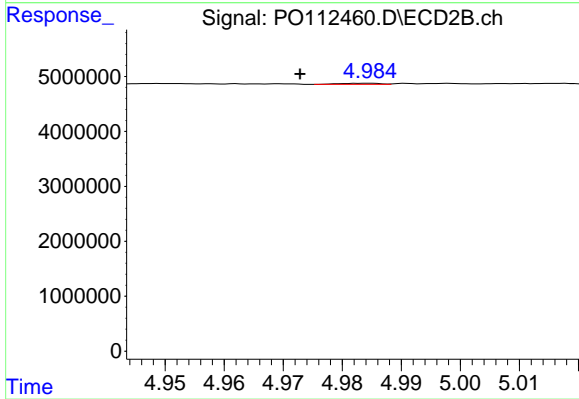
#5 AR-1016-3

R.T.: 4.931 min
 Delta R.T.: 0.000 min
 Response: 278824
 Conc: 2.05 ng/ml



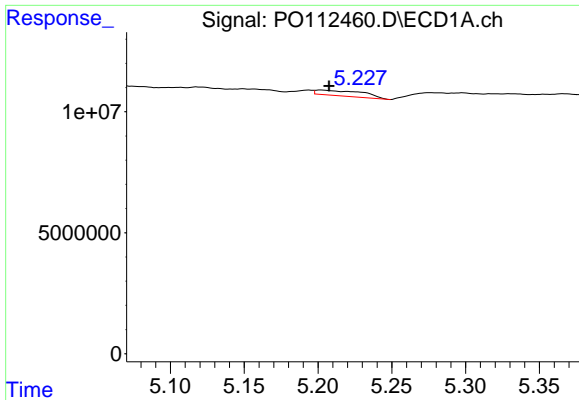
#6 AR-1016-4

R.T.: 4.975 min
 Delta R.T.: 0.024 min
 Response: 446354
 Conc: 2.11 ng/ml



#6 AR-1016-4

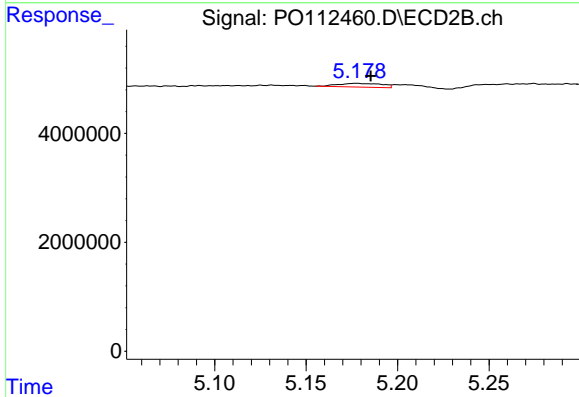
R.T.: 4.984 min
 Delta R.T.: 0.012 min
 Response: 98308
 Conc: 0.88 ng/ml



#7 AR-1016-5

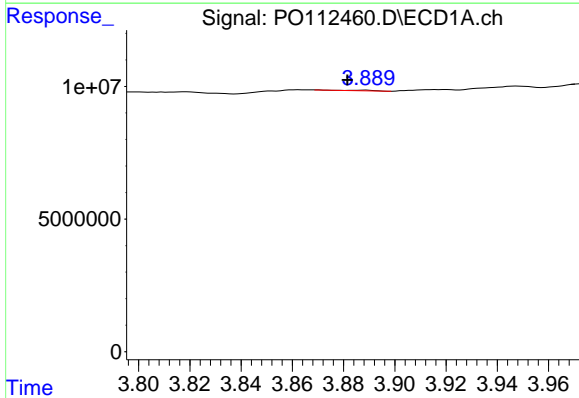
R.T.: 5.202 min
 Delta R.T.: -0.005 min
 Response: 5047688
 Conc: 23.00 ng/ml

Instrument :
 ECD_O
 ClientSampleId :
 PAD-072125-2



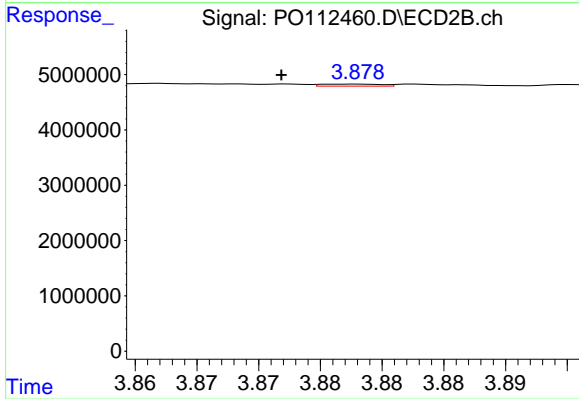
#7 AR-1016-5

R.T.: 5.177 min
 Delta R.T.: -0.008 min
 Response: 1169558
 Conc: 8.16 ng/ml



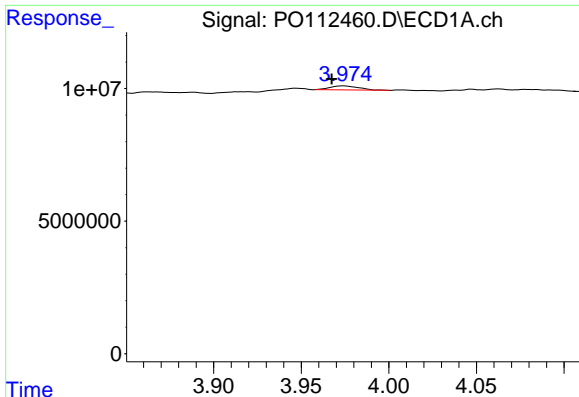
#8 AR-1221-1

R.T.: 3.889 min
 Delta R.T.: 0.007 min
 Response: 168022
 Conc: 1.74 ng/ml



#8 AR-1221-1

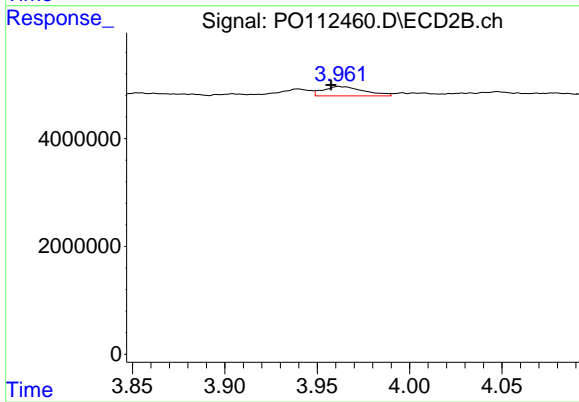
R.T.: 3.878 min
 Delta R.T.: 0.006 min
 Response: 122360
 Conc: 1.82 ng/ml



#9 AR-1221-2

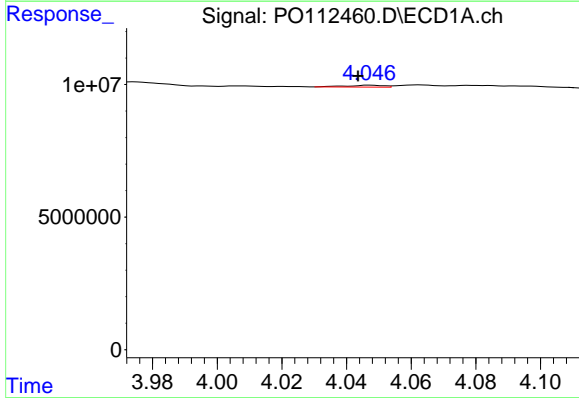
R.T.: 3.974 min
 Delta R.T.: 0.007 min
 Response: 1751430
 Conc: 24.37 ng/ml

Instrument :
 ECD_O
 ClientSampleId :
 PAD-072125-2



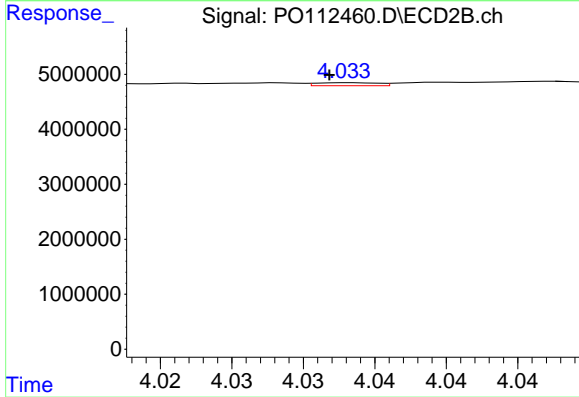
#9 AR-1221-2

R.T.: 3.962 min
 Delta R.T.: 0.004 min
 Response: 2678325
 Conc: 52.80 ng/ml



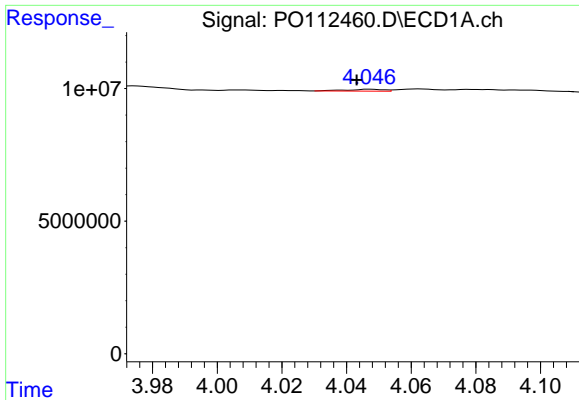
#10 AR-1221-3

R.T.: 4.047 min
 Delta R.T.: 0.004 min
 Response: 566028
 Conc: 2.38 ng/ml



#10 AR-1221-3

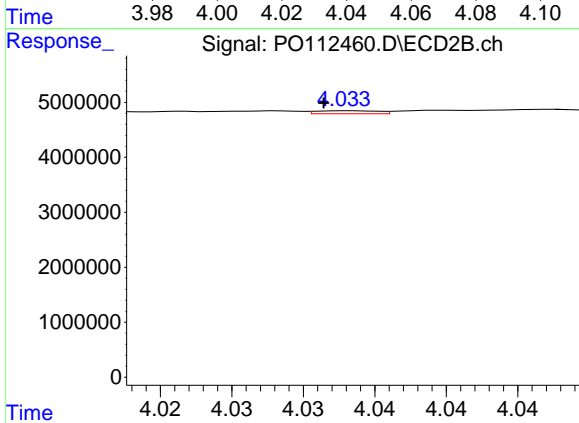
R.T.: 4.033 min
 Delta R.T.: 0.001 min
 Response: 167891
 Conc: 1.06 ng/ml



#11 AR-1232-1

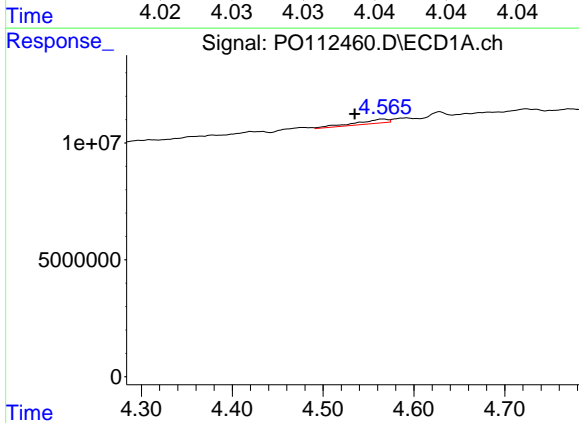
R.T.: 4.047 min
 Delta R.T.: 0.004 min
 Response: 566028
 Conc: 3.03 ng/ml

Instrument :
 ECD_O
 ClientSampleId :
 PAD-072125-2



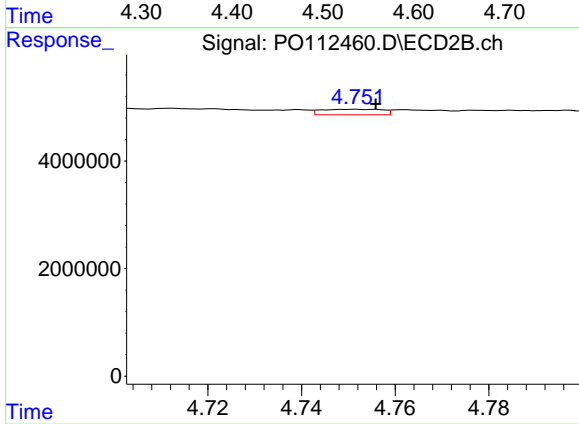
#11 AR-1232-1

R.T.: 4.033 min
 Delta R.T.: 0.002 min
 Response: 167891
 Conc: 1.33 ng/ml



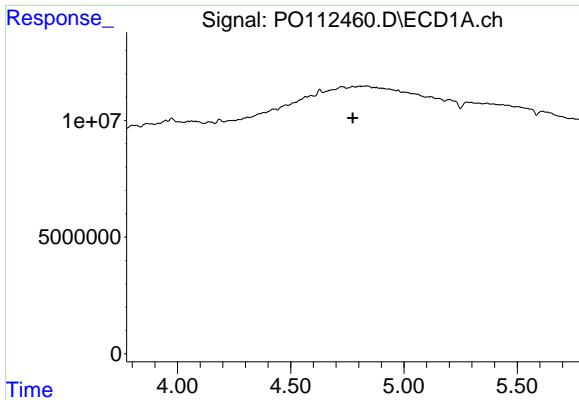
#12 AR-1232-2

R.T.: 4.566 min
 Delta R.T.: 0.031 min
 Response: 4413958
 Conc: 41.01 ng/ml



#12 AR-1232-2

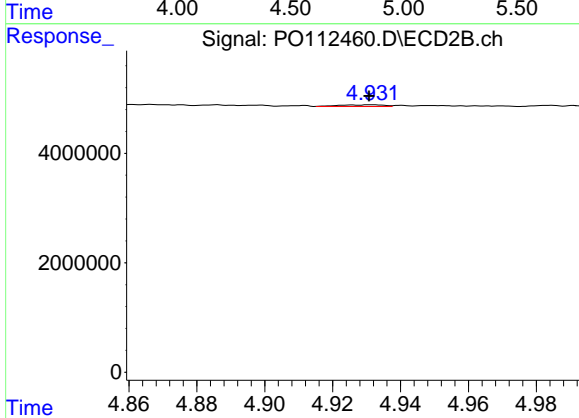
R.T.: 4.752 min
 Delta R.T.: -0.004 min
 Response: 924927
 Conc: 7.05 ng/ml



#13 AR-1232-3

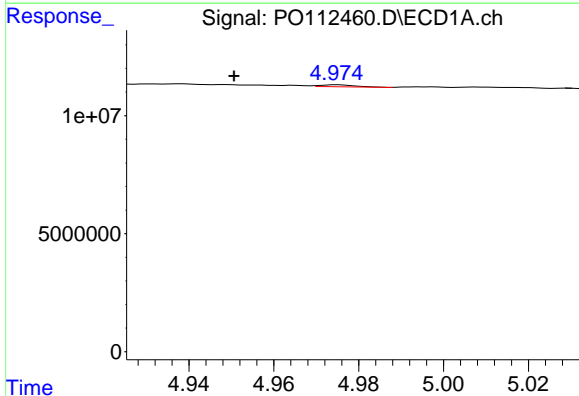
R.T.: 4.771 min
 Delta R.T.: -0.004 min
 Response: -126022
 Conc: N.D.

Instrument :
 ECD_O
 ClientSampleId :
 PAD-072125-2



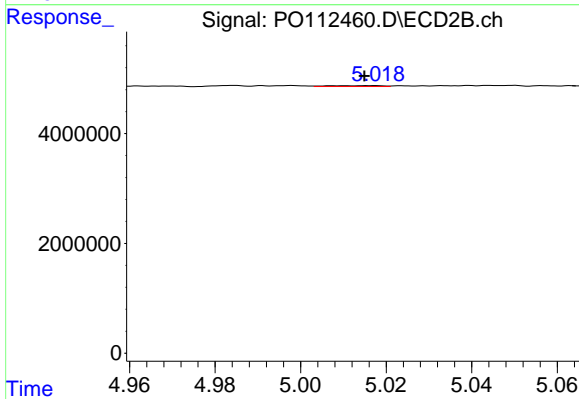
#13 AR-1232-3

R.T.: 4.931 min
 Delta R.T.: 0.000 min
 Response: 278824
 Conc: 4.15 ng/ml



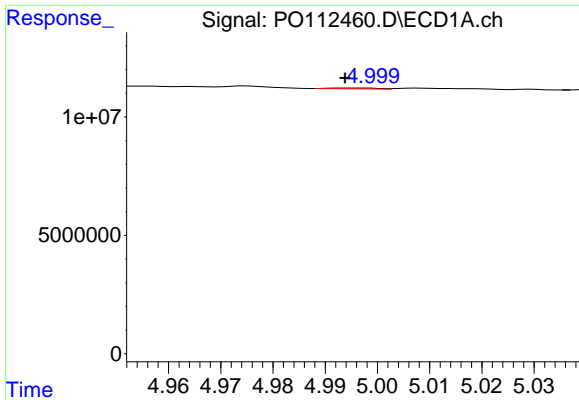
#14 AR-1232-4

R.T.: 4.975 min
 Delta R.T.: 0.024 min
 Response: 446354
 Conc: 4.26 ng/ml



#14 AR-1232-4

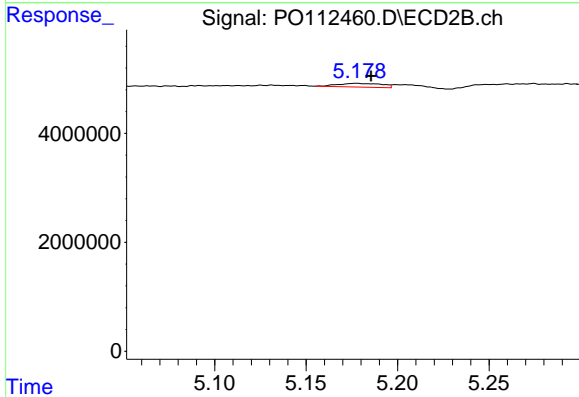
R.T.: 5.017 min
 Delta R.T.: 0.003 min
 Response: 146588
 Conc: 2.45 ng/ml



#15 AR-1232-5

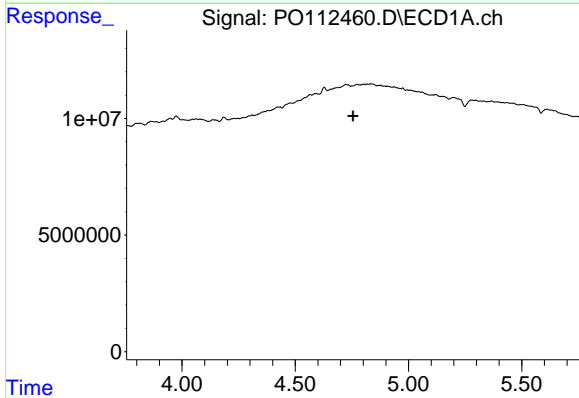
R.T.: 4.997 min
 Delta R.T.: 0.003 min
 Response: 245999
 Conc: 3.62 ng/ml

Instrument :
 ECD_O
 ClientSampleId :
 PAD-072125-2



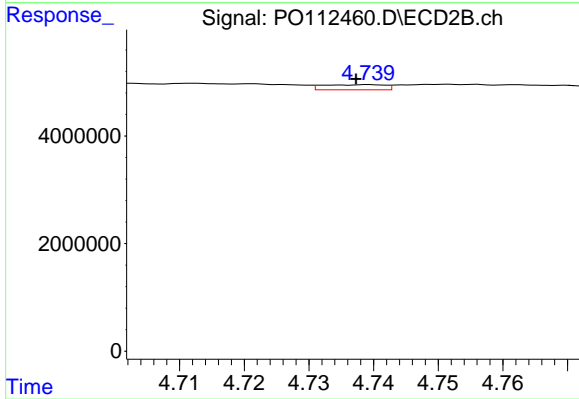
#15 AR-1232-5

R.T.: 5.177 min
 Delta R.T.: -0.008 min
 Response: 1169558
 Conc: 17.94 ng/ml



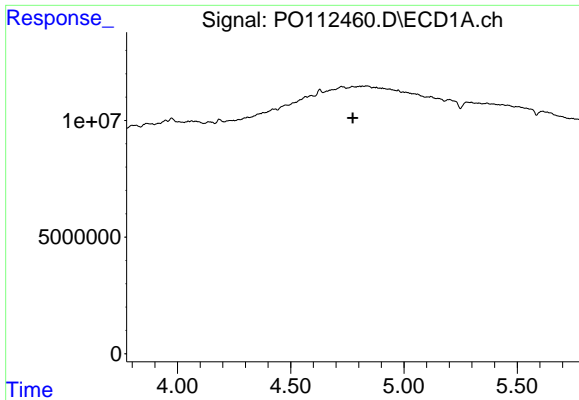
#16 AR-1242-1

R.T.: 4.771 min
 Delta R.T.: 0.016 min
 Response: -126022
 Conc: N.D.



#16 AR-1242-1

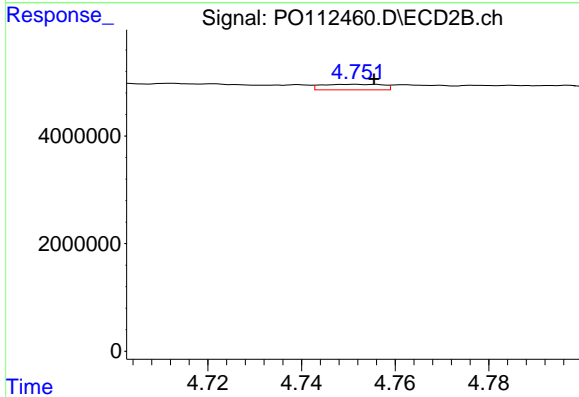
R.T.: 4.739 min
 Delta R.T.: 0.002 min
 Response: 634357
 Conc: 4.00 ng/ml



#17 AR-1242-2

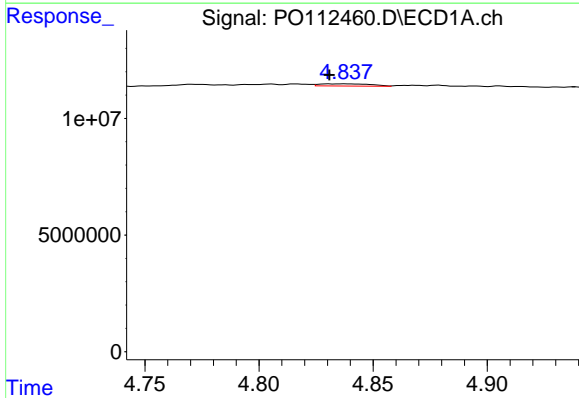
R.T.: 4.771 min
 Delta R.T.: -0.003 min
 Response: -126022
 Conc: N.D.

Instrument :
 ECD_O
 ClientSampleId :
 PAD-072125-2



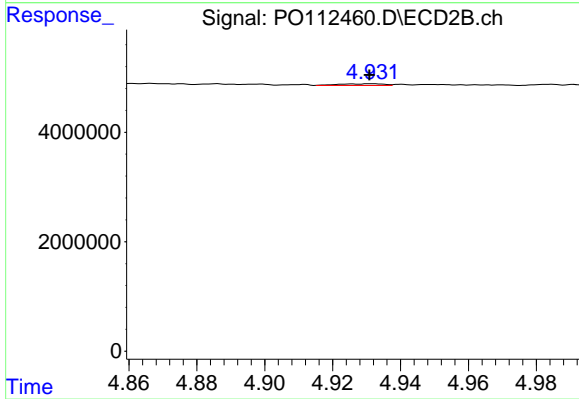
#17 AR-1242-2

R.T.: 4.752 min
 Delta R.T.: -0.004 min
 Response: 924927
 Conc: 3.96 ng/ml



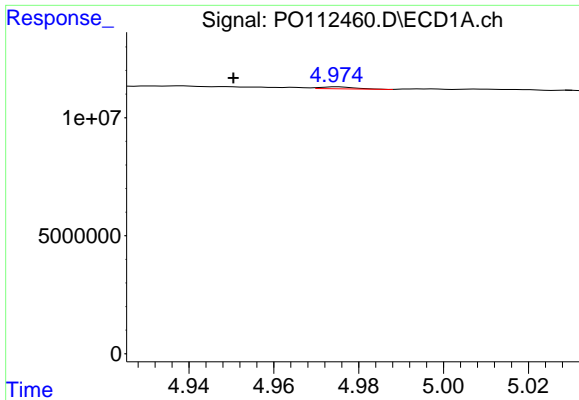
#18 AR-1242-3

R.T.: 4.830 min
 Delta R.T.: 0.000 min
 Response: 1491485
 Conc: 6.30 ng/ml



#18 AR-1242-3

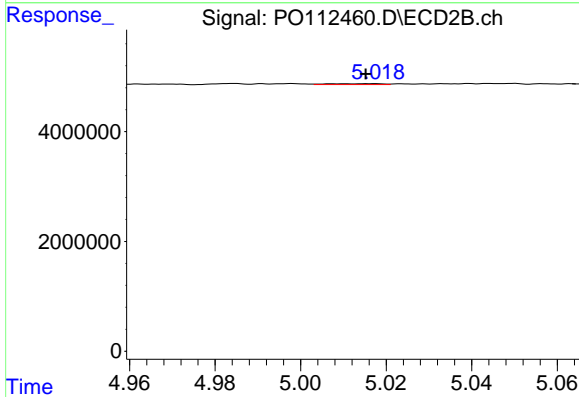
R.T.: 4.931 min
 Delta R.T.: 0.000 min
 Response: 278824
 Conc: 2.30 ng/ml



#19 AR-1242-4

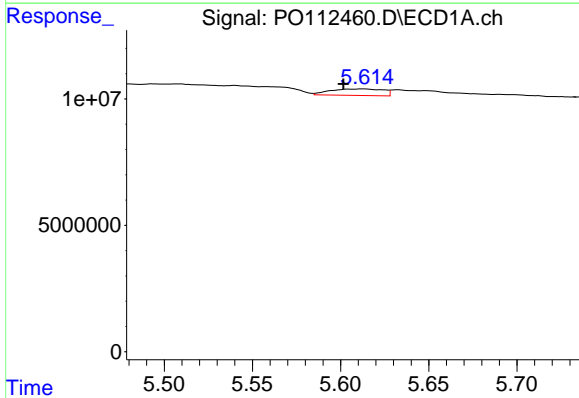
R.T.: 4.975 min
 Delta R.T.: 0.024 min
 Response: 446354
 Conc: 2.30 ng/ml

Instrument :
 ECD_O
 ClientSampleId :
 PAD-072125-2



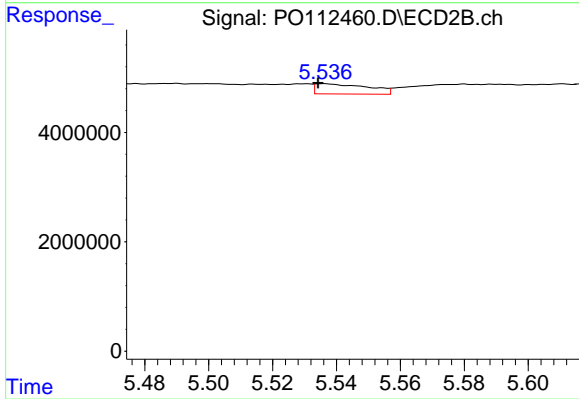
#19 AR-1242-4

R.T.: 5.017 min
 Delta R.T.: 0.002 min
 Response: 146588
 Conc: 1.19 ng/ml



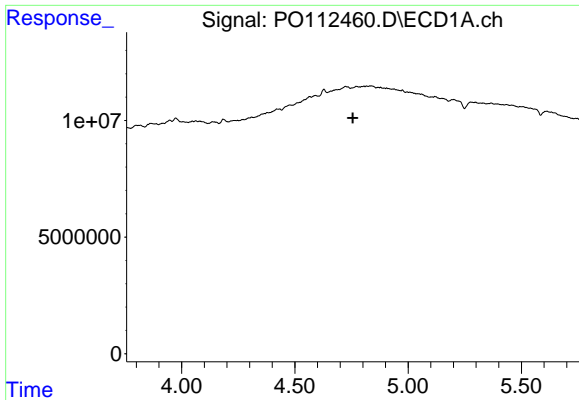
#20 AR-1242-5

R.T.: 5.613 min
 Delta R.T.: 0.012 min
 Response: 5421908
 Conc: 25.35 ng/ml



#20 AR-1242-5

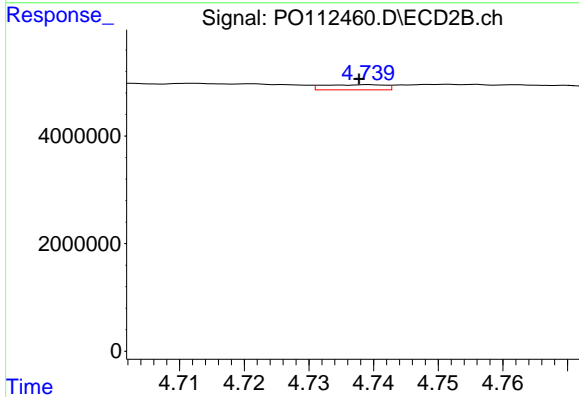
R.T.: 5.536 min
 Delta R.T.: 0.002 min
 Response: 2119513
 Conc: 13.17 ng/ml



#21 AR-1248-1

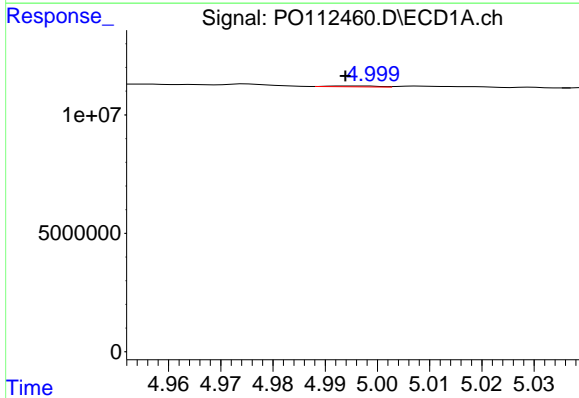
R.T.: 4.771 min
 Delta R.T.: 0.015 min
 Response: -126022
 Conc: N.D.

Instrument :
 ECD_O
 ClientSampleId :
 PAD-072125-2



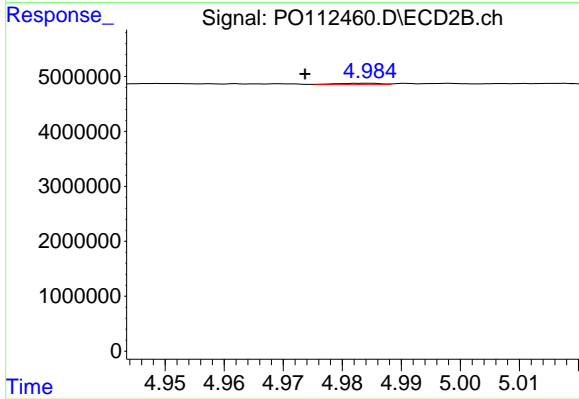
#21 AR-1248-1

R.T.: 4.739 min
 Delta R.T.: 0.002 min
 Response: 634357
 Conc: 5.22 ng/ml



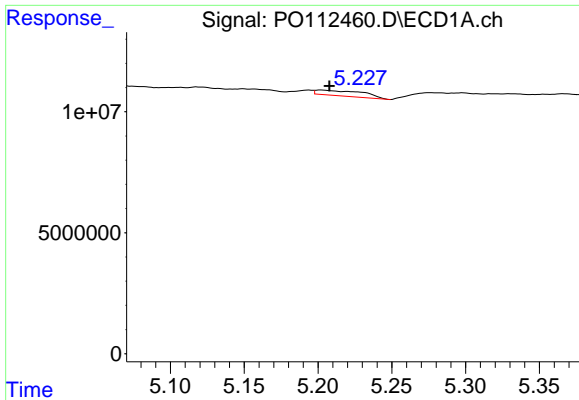
#22 AR-1248-2

R.T.: 4.997 min
 Delta R.T.: 0.003 min
 Response: 245999
 Conc: 0.96 ng/ml



#22 AR-1248-2

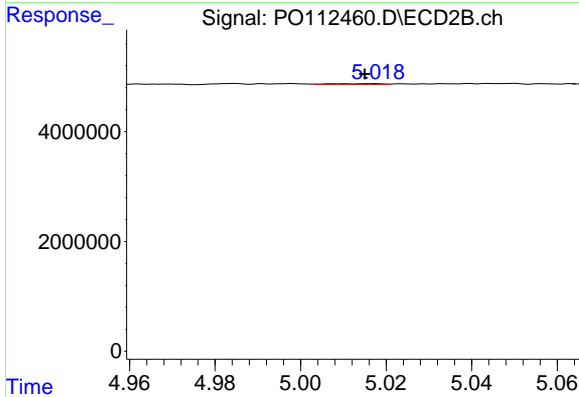
R.T.: 4.984 min
 Delta R.T.: 0.011 min
 Response: 98308
 Conc: 0.58 ng/ml



#23 AR-1248-3

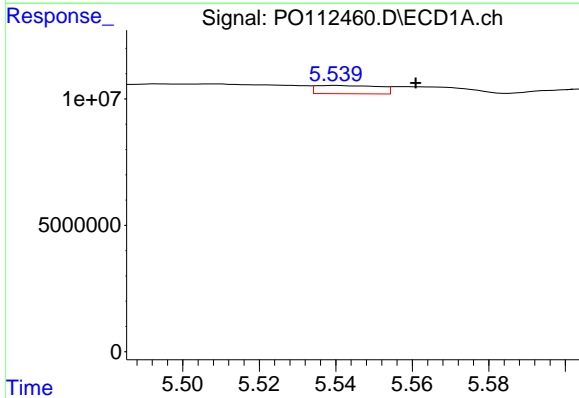
R.T.: 5.202 min
 Delta R.T.: -0.005 min
 Response: 5047688
 Conc: 14.69 ng/ml

Instrument :
 ECD_O
 ClientSampleId :
 PAD-072125-2



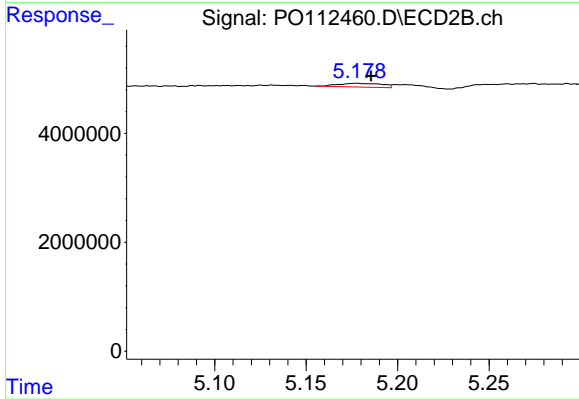
#23 AR-1248-3

R.T.: 5.017 min
 Delta R.T.: 0.002 min
 Response: 146588
 Conc: 0.83 ng/ml



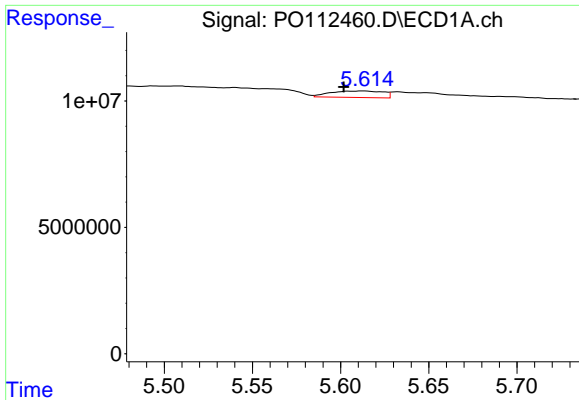
#24 AR-1248-4

R.T.: 5.540 min
 Delta R.T.: -0.021 min
 Response: 3738835
 Conc: 7.36 ng/ml



#24 AR-1248-4

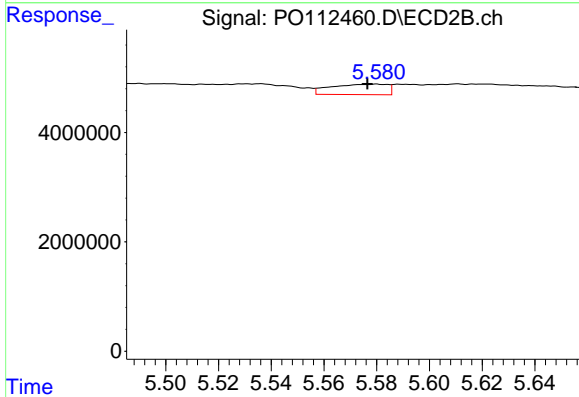
R.T.: 5.177 min
 Delta R.T.: -0.008 min
 Response: 1169558
 Conc: 5.61 ng/ml



#25 AR-1248-5

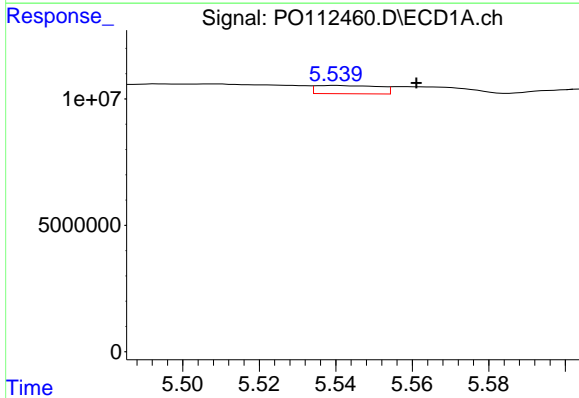
R.T.: 5.613 min
 Delta R.T.: 0.012 min
 Response: 5421908
 Conc: 15.51 ng/ml

Instrument :
 ECD_O
 ClientSampleId :
 PAD-072125-2



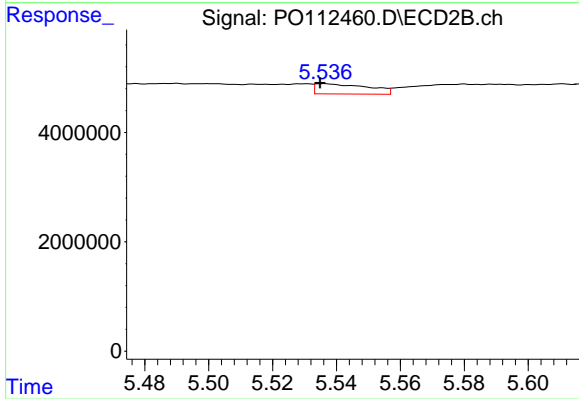
#25 AR-1248-5

R.T.: 5.580 min
 Delta R.T.: 0.004 min
 Response: 2828820
 Conc: 13.17 ng/ml



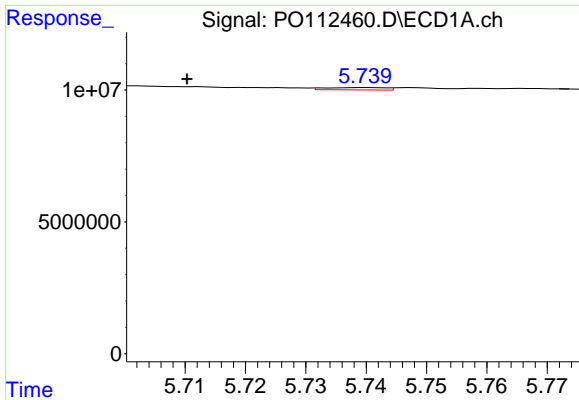
#26 AR-1254-1

R.T.: 5.540 min
 Delta R.T.: -0.021 min
 Response: 3738835
 Conc: 6.81 ng/ml



#26 AR-1254-1

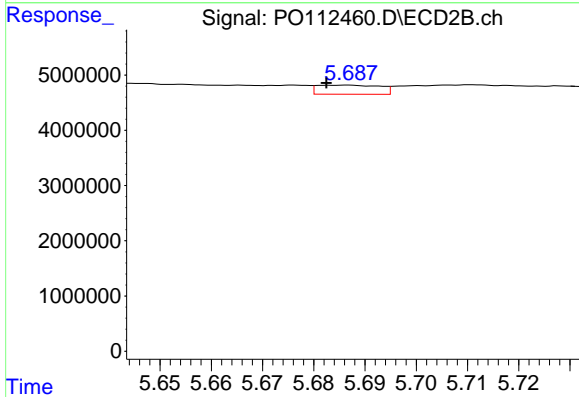
R.T.: 5.536 min
 Delta R.T.: 0.001 min
 Response: 2119513
 Conc: 6.45 ng/ml



#27 AR-1254-2

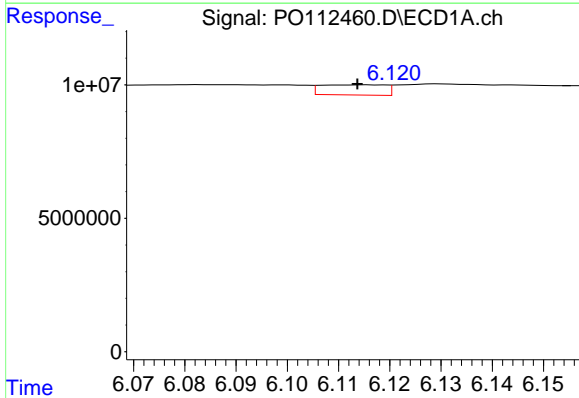
R.T.: 5.740 min
 Delta R.T.: 0.030 min
 Response: 618381
 Conc: 1.27 ng/ml

Instrument :
 ECD_O
 ClientSampleId :
 PAD-072125-2



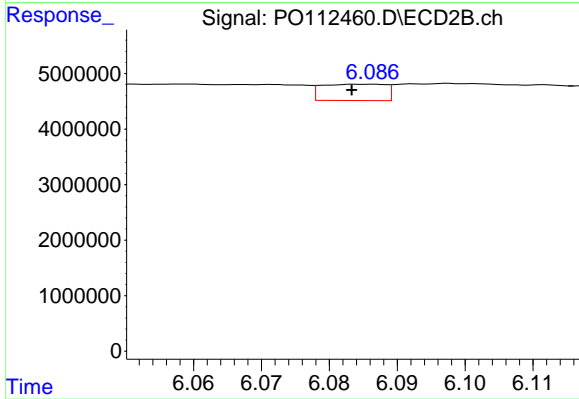
#27 AR-1254-2

R.T.: 5.687 min
 Delta R.T.: 0.005 min
 Response: 1401287
 Conc: 4.84 ng/ml



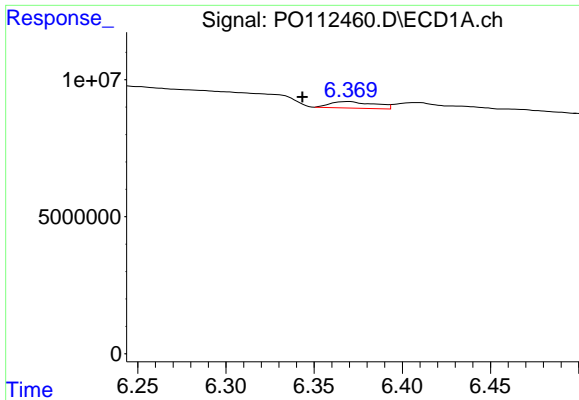
#28 AR-1254-3

R.T.: 6.116 min
 Delta R.T.: 0.002 min
 Response: 3331363
 Conc: 4.48 ng/ml



#28 AR-1254-3

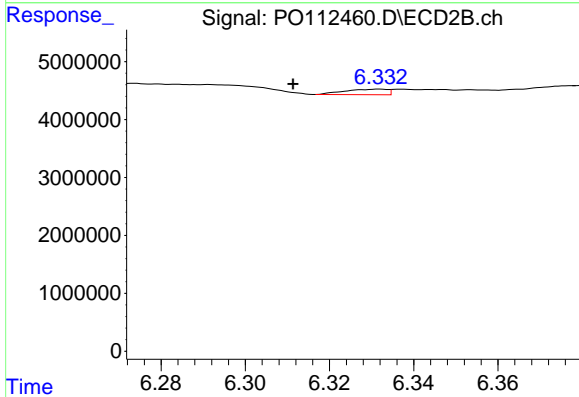
R.T.: 6.086 min
 Delta R.T.: 0.003 min
 Response: 1919011
 Conc: 4.49 ng/ml



#29 AR-1254-4

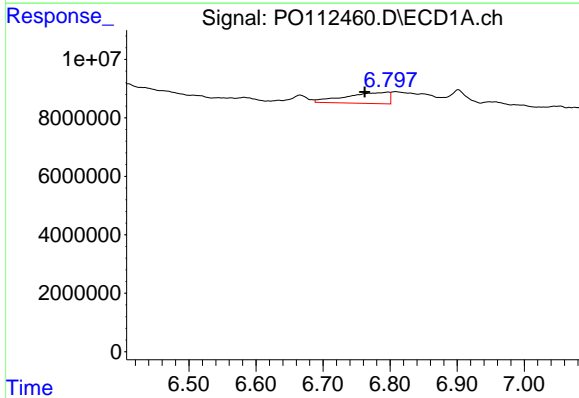
R.T.: 6.370 min
 Delta R.T.: 0.026 min
 Response: 4136442
 Conc: 7.52 ng/ml

Instrument :
 ECD_O
 ClientSampleId :
 PAD-072125-2



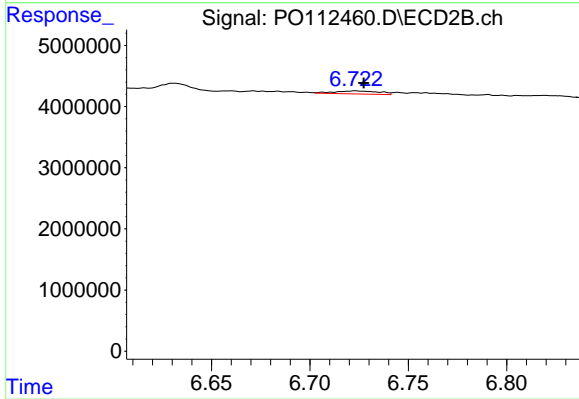
#29 AR-1254-4

R.T.: 6.332 min
 Delta R.T.: 0.021 min
 Response: 667035
 Conc: 2.44 ng/ml



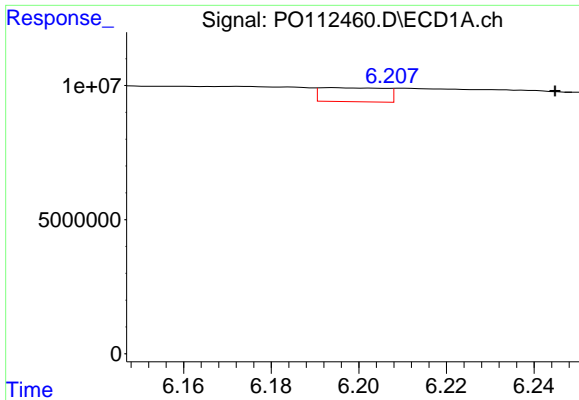
#30 AR-1254-5

R.T.: 6.797 min
 Delta R.T.: 0.035 min
 Response: 16894064
 Conc: 23.87 ng/ml



#30 AR-1254-5

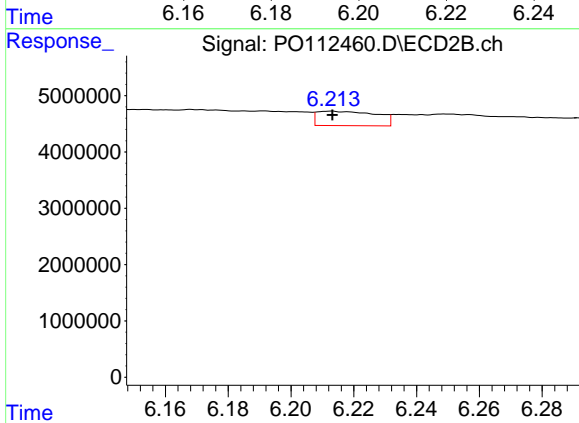
R.T.: 6.723 min
 Delta R.T.: -0.004 min
 Response: 771270
 Conc: 2.31 ng/ml



#31 AR-1260-1

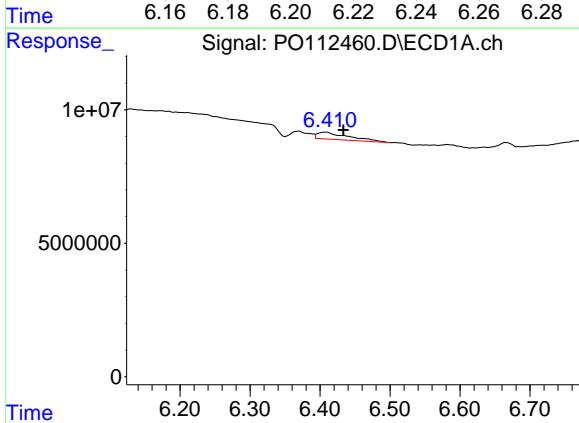
R.T.: 6.194 min
 Delta R.T.: -0.051 min
 Response: 5357491
 Conc: 12.19 ng/ml

Instrument :
 ECD_O
 ClientSampleId :
 PAD-072125-2



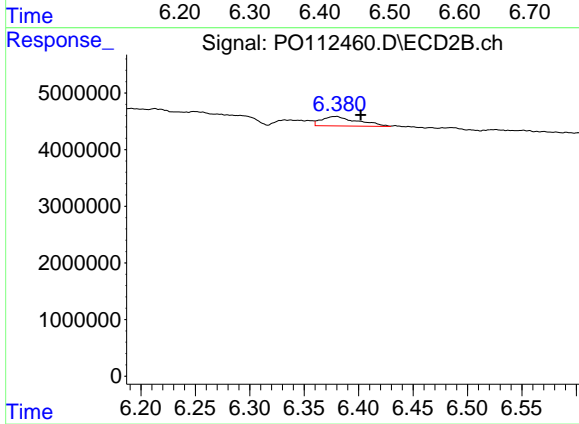
#31 AR-1260-1

R.T.: 6.213 min
 Delta R.T.: 0.000 min
 Response: 3378380
 Conc: 13.59 ng/ml



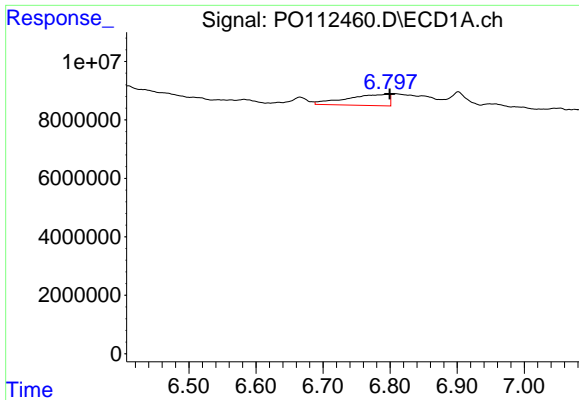
#32 AR-1260-2

R.T.: 6.409 min
 Delta R.T.: -0.024 min
 Response: 7760095
 Conc: 11.28 ng/ml



#32 AR-1260-2

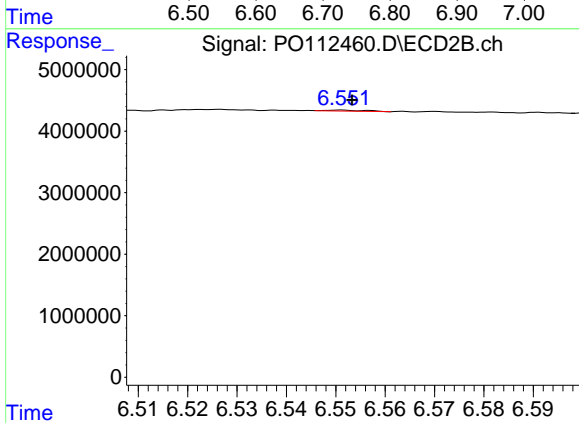
R.T.: 6.380 min
 Delta R.T.: -0.022 min
 Response: 3855230
 Conc: 11.70 ng/ml



#33 AR-1260-3

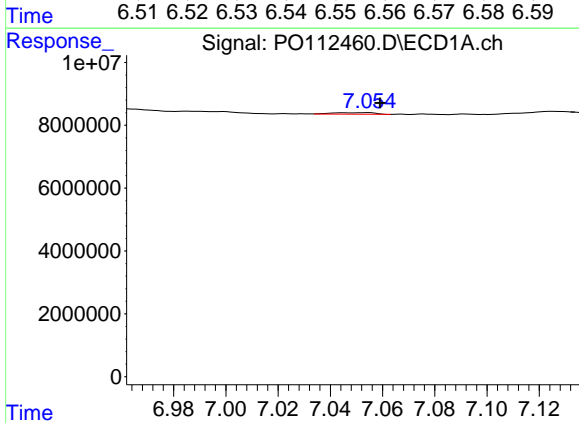
R.T.: 6.797 min
 Delta R.T.: -0.003 min
 Response: 16894064
 Conc: 28.73 ng/ml

Instrument :
 ECD_O
 ClientSampleId :
 PAD-072125-2



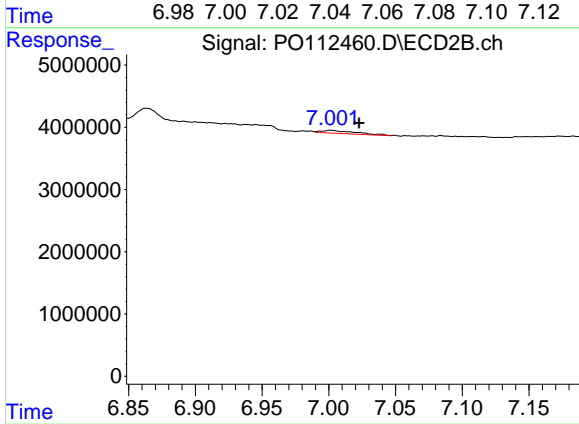
#33 AR-1260-3

R.T.: 6.551 min
 Delta R.T.: -0.002 min
 Response: 100826
 Conc: 0.39 ng/ml



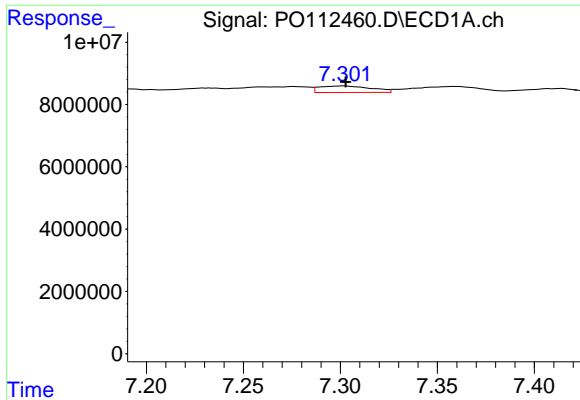
#34 AR-1260-4

R.T.: 7.054 min
 Delta R.T.: -0.005 min
 Response: 572175
 Conc: 1.27 ng/ml



#34 AR-1260-4

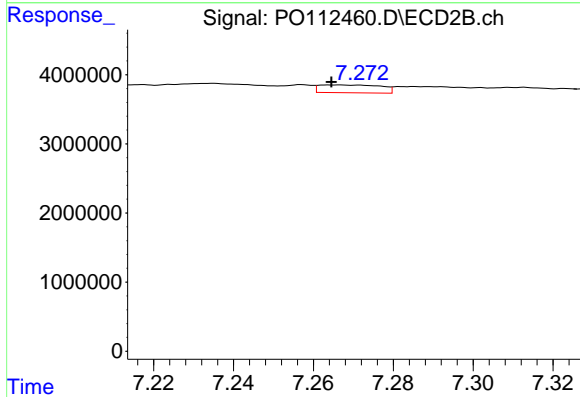
R.T.: 7.001 min
 Delta R.T.: -0.021 min
 Response: 853806
 Conc: 4.46 ng/ml



#35 AR-1260-5

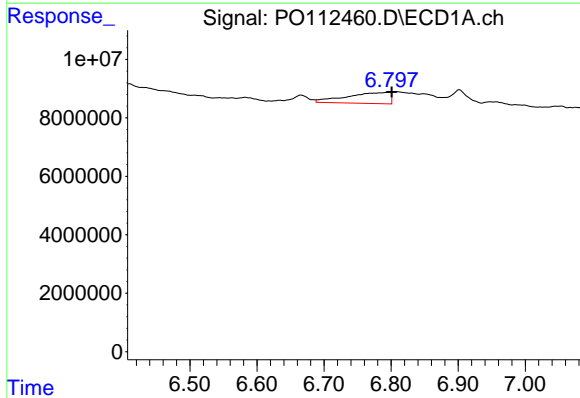
R.T.: 7.302 min
 Delta R.T.: 0.000 min
 Response: 3863938
 Conc: 3.12 ng/ml

Instrument :
 ECD_O
 ClientSampleId :
 PAD-072125-2



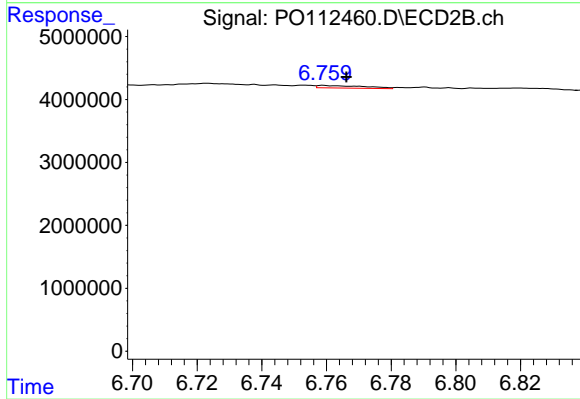
#35 AR-1260-5

R.T.: 7.267 min
 Delta R.T.: 0.002 min
 Response: 1214213
 Conc: 2.95 ng/ml



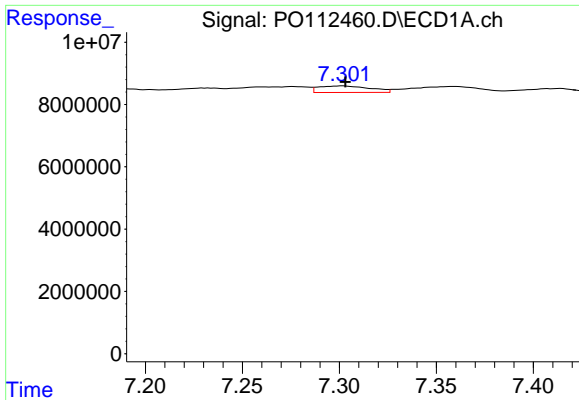
#36 AR-1262-1

R.T.: 6.797 min
 Delta R.T.: -0.004 min
 Response: 16894064
 Conc: 18.18 ng/ml



#36 AR-1262-1

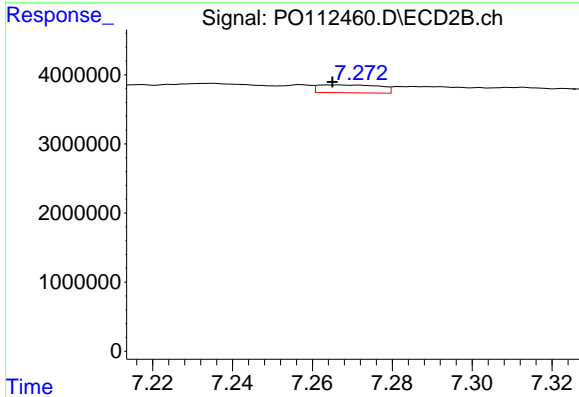
R.T.: 6.759 min
 Delta R.T.: -0.007 min
 Response: 420874
 Conc: 1.01 ng/ml



#37 AR-1262-2

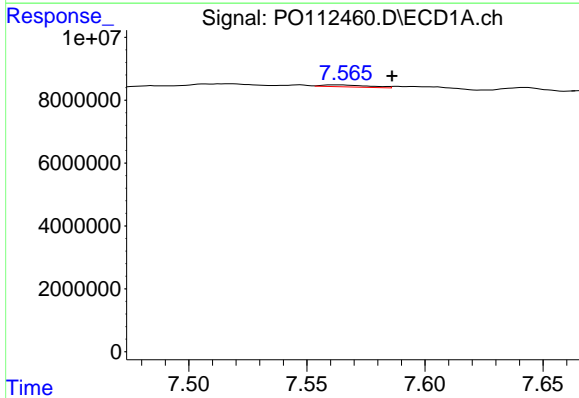
R.T.: 7.302 min
 Delta R.T.: -0.001 min
 Response: 3863938
 Conc: 2.60 ng/ml

Instrument :
 ECD_O
 ClientSampleId :
 PAD-072125-2



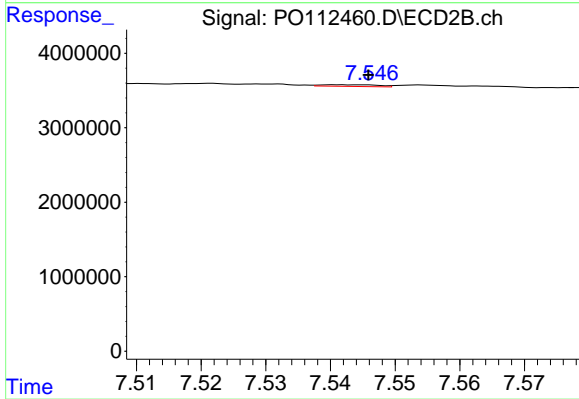
#37 AR-1262-2

R.T.: 7.267 min
 Delta R.T.: 0.002 min
 Response: 1214213
 Conc: 2.36 ng/ml



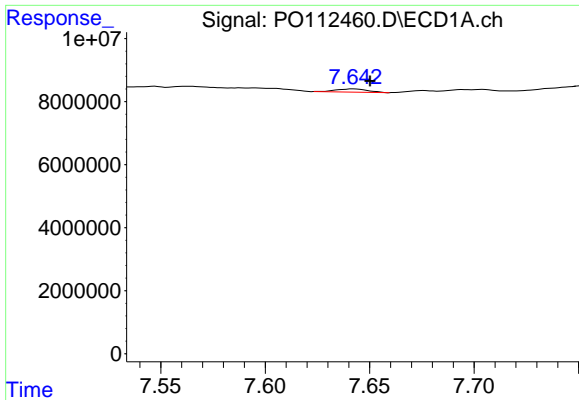
#38 AR-1262-3

R.T.: 7.563 min
 Delta R.T.: -0.024 min
 Response: 872062
 Conc: 1.48 ng/ml



#38 AR-1262-3

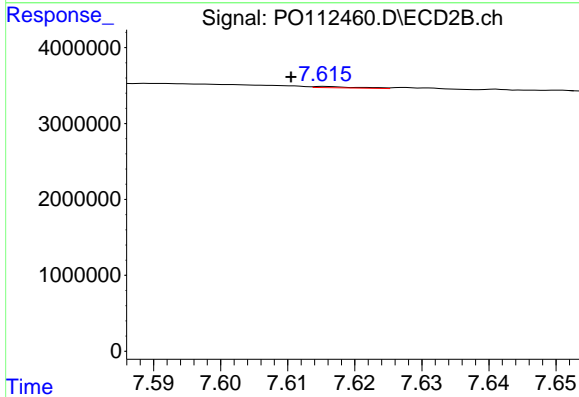
R.T.: 7.541 min
 Delta R.T.: -0.004 min
 Response: 137956
 Conc: 0.74 ng/ml



#39 AR-1262-4

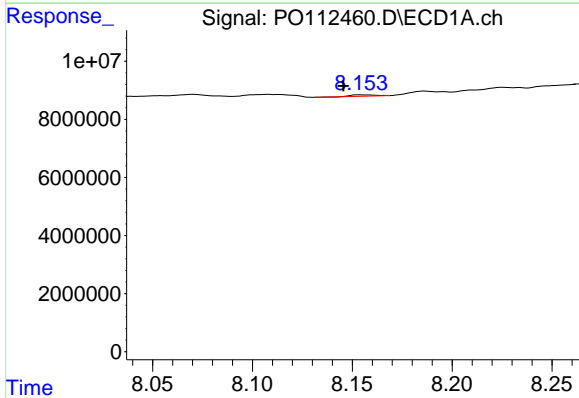
R.T.: 7.642 min
 Delta R.T.: -0.008 min
 Response: 1093842
 Conc: 1.10 ng/ml

Instrument :
 ECD_O
 ClientSampleId :
 PAD-072125-2



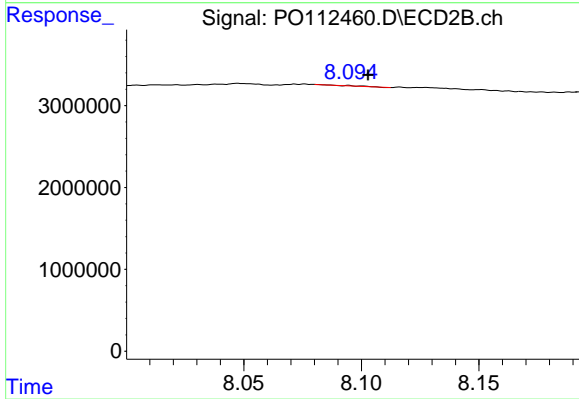
#39 AR-1262-4

R.T.: 7.616 min
 Delta R.T.: 0.005 min
 Response: 76915
 Conc: 0.27 ng/ml



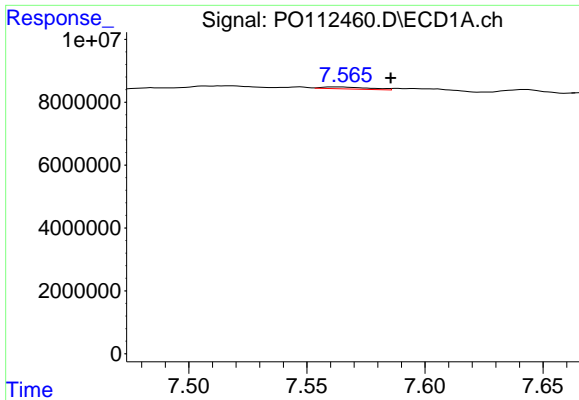
#40 AR-1262-5

R.T.: 8.154 min
 Delta R.T.: 0.008 min
 Response: 386770
 Conc: 0.89 ng/ml



#40 AR-1262-5

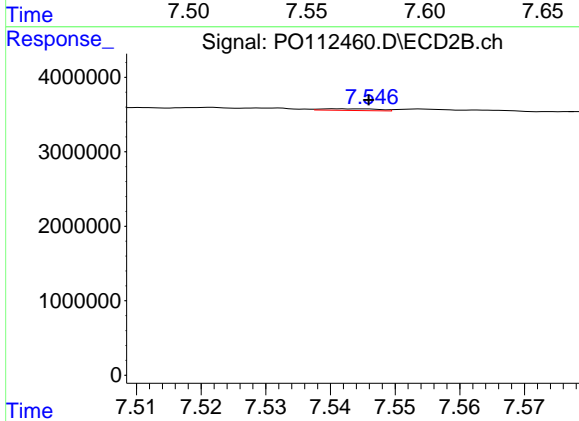
R.T.: 8.095 min
 Delta R.T.: -0.008 min
 Response: 37152
 Conc: 0.37 ng/ml



#41 AR-1268-1

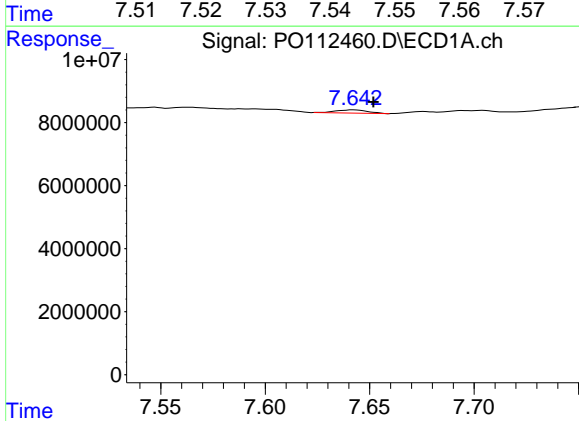
R.T.: 7.563 min
 Delta R.T.: -0.023 min
 Response: 872062
 Conc: 0.50 ng/ml

Instrument :
 ECD_O
 ClientSampleId :
 PAD-072125-2



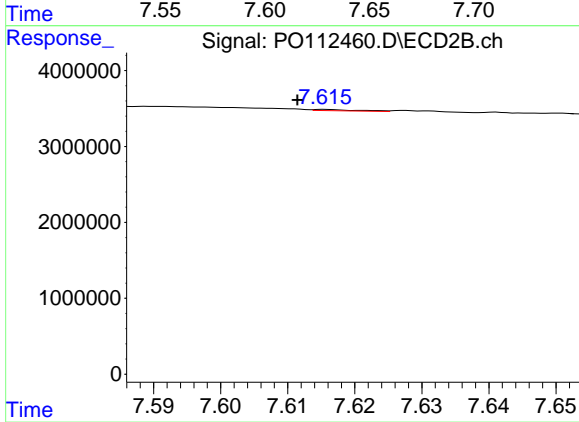
#41 AR-1268-1

R.T.: 7.541 min
 Delta R.T.: -0.005 min
 Response: 137956
 Conc: 0.27 ng/ml



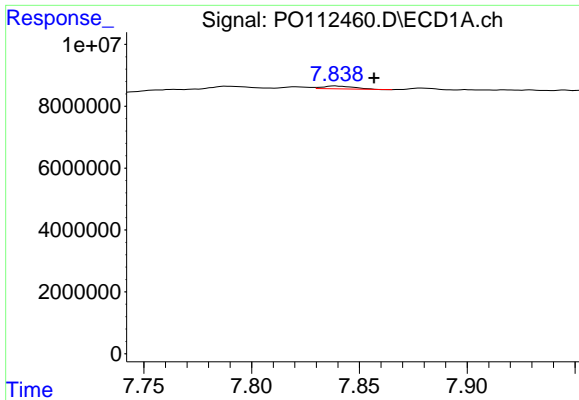
#42 AR-1268-2

R.T.: 7.642 min
 Delta R.T.: -0.009 min
 Response: 1093842
 Conc: 0.74 ng/ml



#42 AR-1268-2

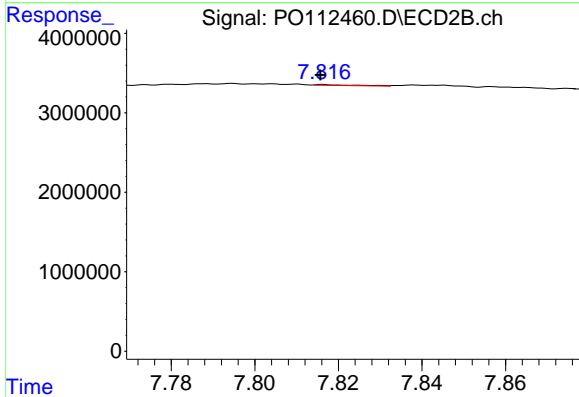
R.T.: 7.616 min
 Delta R.T.: 0.004 min
 Response: 76915
 Conc: 0.18 ng/ml



#43 AR-1268-3

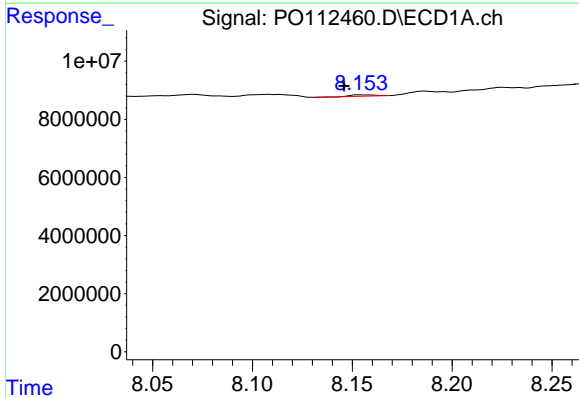
R.T.: 7.839 min
 Delta R.T.: -0.018 min
 Response: 936037
 Conc: 0.75 ng/ml

Instrument :
 ECD_O
 ClientSampleId :
 PAD-072125-2



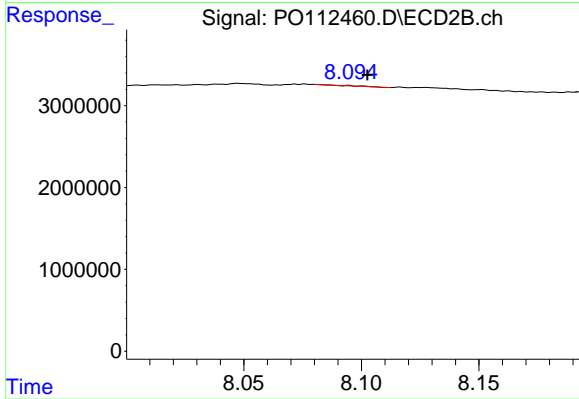
#43 AR-1268-3

R.T.: 7.817 min
 Delta R.T.: 0.000 min
 Response: 66291
 Conc: 0.21 ng/ml



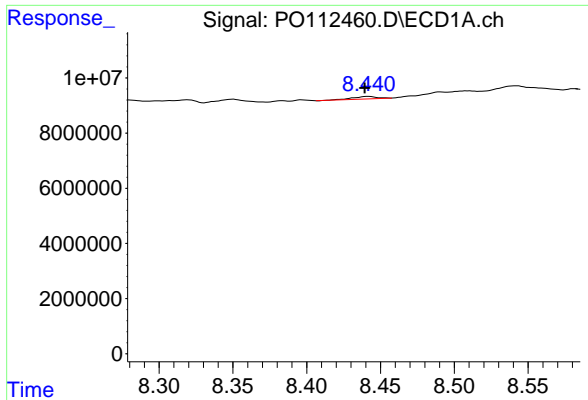
#44 AR-1268-4

R.T.: 8.154 min
 Delta R.T.: 0.008 min
 Response: 386770
 Conc: 0.80 ng/ml



#44 AR-1268-4

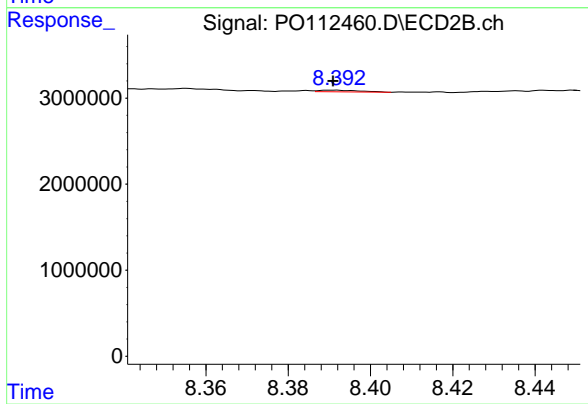
R.T.: 8.095 min
 Delta R.T.: -0.008 min
 Response: 37152
 Conc: 0.33 ng/ml



#45 AR-1268-5

R.T.: 8.442 min
 Delta R.T.: 0.002 min
 Response: 969223
 Conc: 0.29 ng/ml

Instrument :
 ECD_O
 ClientSampleId :
 PAD-072125-2



#45 AR-1268-5

R.T.: 8.392 min
 Delta R.T.: 0.000 min
 Response: 133083
 Conc: 0.18 ng/ml