

Data Path : Z:\pestpcbsrv\HPCHEM1\ECD_0\Data\P0072425\
 Data File : PO112461.D
 Signal(s) : Signal #1: ECD1A.ch Signal #2: ECD2B.ch
 Acq On : 24 Jul 2025 12:43
 Operator : YP/AJ
 Sample : Q2656-01
 Misc :
 ALS Vial : 14 Sample Multiplier: 1

Instrument :
 ECD_0
 ClientSampleId :
 71525-A

Integration File signal 1: autoint1.e
 Integration File signal 2: autoint2.e
 Quant Time: Jul 24 23:39:42 2025
 Quant Method : Z:\pestpcbsrv\HPCHEM1\ECD_0\methods\P0072325.M
 Quant Title : GC EXTRACTABLES
 QLast Update : Thu Jul 24 04:54:06 2025
 Response via : Initial Calibration
 Integrator: ChemStation

Volume Inj. : 2 µl
 Signal #1 Phase : ZB-MR1 Signal #2 Phase: ZB-MR2
 Signal #1 Info : 30Mx0.32mmx 0.50µ Signal #2 Info : 30M x 0.32mm x 0.25µm

Compound	RT#1	RT#2	Resp#1	Resp#2	ng/ml	ng/ml
System Monitoring Compounds						
1) SA Tetrachlo...	3.671	3.663	198.8E6	119.3E6	24.454	24.016
2) SA Decachlor...	8.695	8.640	107.4E6	31565328	14.692	17.863
Target Compounds						
3) L1 AR-1016-1	4.757	4.738	3271279	3152147	12.190	18.012 #
4) L1 AR-1016-2	4.774	4.756	5268159	5082768	12.972	19.512 #
5) L1 AR-1016-3	4.831	4.930	3567484	4488566	13.633	33.012 #
6) L1 AR-1016-4	4.952	4.974	5444765	11155189	25.702	100.420 #
7) L1 AR-1016-5	5.208	5.185	57363900	34055019	261.374	237.643
8) L2 AR-1221-1	3.817f	3.872	240661	61109	2.490	0.908 #
9) L2 AR-1221-2	3.951	3.941	13047267	20560349	181.560	405.306 #
10) L2 AR-1221-3	4.053	4.032	1313041	960293	5.524	6.058
11) L3 AR-1232-1	4.053	4.032	1313041	960293	7.022	7.588
12) L3 AR-1232-2	4.534	4.756	5716451	5082768	53.115	38.754 #
13) L3 AR-1232-3	4.774	4.930	5268159	4488566	25.475	66.797 #
14) L3 AR-1232-4	4.952	5.015	5444765	13280234	51.983	221.970 #
15) L3 AR-1232-5	4.995	5.185	13591822	34055019	200.230	522.292 #
16) L4 AR-1242-1	4.757	4.738	3271279	3152147	13.212	19.901 #
17) L4 AR-1242-2	4.774	4.756	5268159	5082768	14.246	21.752 #
18) L4 AR-1242-3	4.831	4.930	3567484	4488566	15.074	37.038 #
19) L4 AR-1242-4	4.952	5.015	5444765	13280234	28.026	108.199 #
20) L4 AR-1242-5	5.602	5.535	122.0E6	94431336	570.119	586.635
21) L5 AR-1248-1	4.757	4.738	3271279	3152147	17.474	25.942 #
22) L5 AR-1248-2	4.995	4.974	13591822	11155189	53.278	65.898
23) L5 AR-1248-3	5.208	5.015	57363900	13280234	166.900	74.756 #
24) L5 AR-1248-4	5.561	5.185	163.1E6	34055019	320.953	163.447 #
25) L5 AR-1248-5	5.602	5.575	122.0E6	73560418	348.857	342.516
26) L6 AR-1254-1	5.561	5.535	163.1E6	94431336	297.052	287.356
27) L6 AR-1254-2	5.710	5.683	41028707	25101772	84.435	86.710
28) L6 AR-1254-3	6.114	6.083	65487649	43706950	87.987	102.248
29) L6 AR-1254-4	6.343	6.310	39937342	27338096	72.652	100.153 #
30) L6 AR-1254-5	6.762	6.727	29659884	11607377	41.903	34.751
31) L7 AR-1260-1	6.257	6.225	42017784	27993691	95.640	112.646
32) L7 AR-1260-2	6.435	6.402	13197704	8771034	19.186	26.620 #
33) L7 AR-1260-3	6.799	6.552	10932371	4596870	18.592	17.892
34) L7 AR-1260-4	7.060	7.022	4918682	2278339	10.906	11.909
35) L7 AR-1260-5	7.304	7.264	6938017	4711486	5.599	11.430 #
36) L8 AR-1262-1	6.799	6.763	10932371	2550037	11.765	6.147 #
37) L8 AR-1262-2	7.304	7.264	6938017	4711486	4.666	9.139 #
38) L8 AR-1262-3	7.589	7.544	447815	448893	0.759	2.407 #
39) L8 AR-1262-4	7.650	7.607	2327032	673077	2.341	2.336
40) L8 AR-1262-5	8.150	8.100	6181988	254468	14.242	2.557 #
41) L9 AR-1268-1	7.589	7.544	447815	448893	0.256	0.867 #

Data Path : Z:\pestpcbsrv\HPCHEM1\ECD_0\Data\P0072425\
 Data File : P0112461.D
 Signal(s) : Signal #1: ECD1A.ch Signal #2: ECD2B.ch
 Acq On : 24 Jul 2025 12:43
 Operator : YP/AJ
 Sample : Q2656-01
 Misc :
 ALS Vial : 14 Sample Multiplier: 1

Instrument :
 ECD_0
 ClientSampleId :
 71525-A

Integration File signal 1: autoint1.e
 Integration File signal 2: autoint2.e
 Quant Time: Jul 24 23:39:42 2025
 Quant Method : Z:\pestpcbsrv\HPCHEM1\ECD_0\methods\P0072325.M
 Quant Title : GC EXTRACTABLES
 QLast Update : Thu Jul 24 04:54:06 2025
 Response via : Initial Calibration
 Integrator: ChemStation

Volume Inj. : 2 µl
 Signal #1 Phase : ZB-MR1 Signal #2 Phase: ZB-MR2
 Signal #1 Info : 30Mx0.32mmx 0.50µ Signal #2 Info : 30M x 0.32mm x 0.25µm

	Compound	RT#1	RT#2	Resp#1	Resp#2	ng/ml	ng/ml
42)	L9 AR-1268-2	7.650	7.607	2327032	673077	1.580	1.583
43)	L9 AR-1268-3	7.852	7.809	859380	217771	0.686	0.678
44)	L9 AR-1268-4	8.150	8.100	6181988	254468	12.829	2.286 #
45)	L9 AR-1268-5	8.453	8.392	1332169	177349	0.397	0.242 #

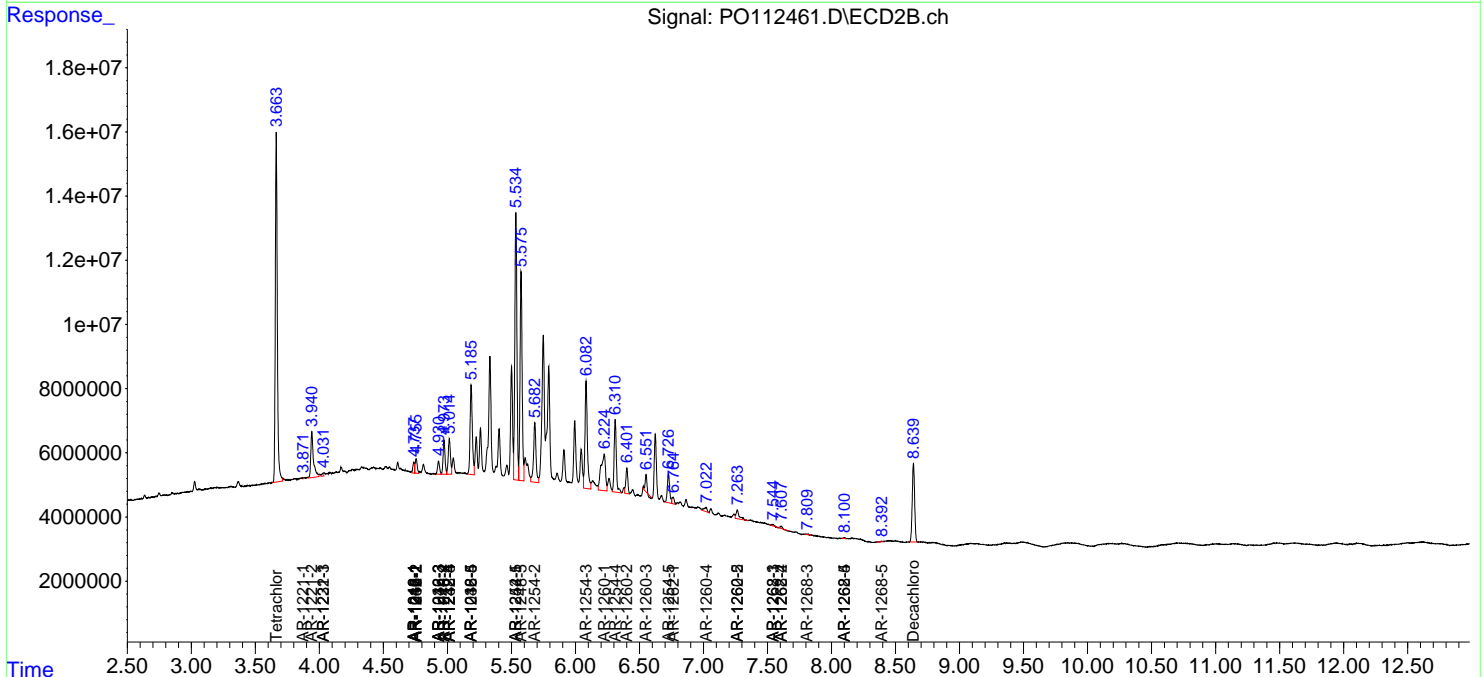
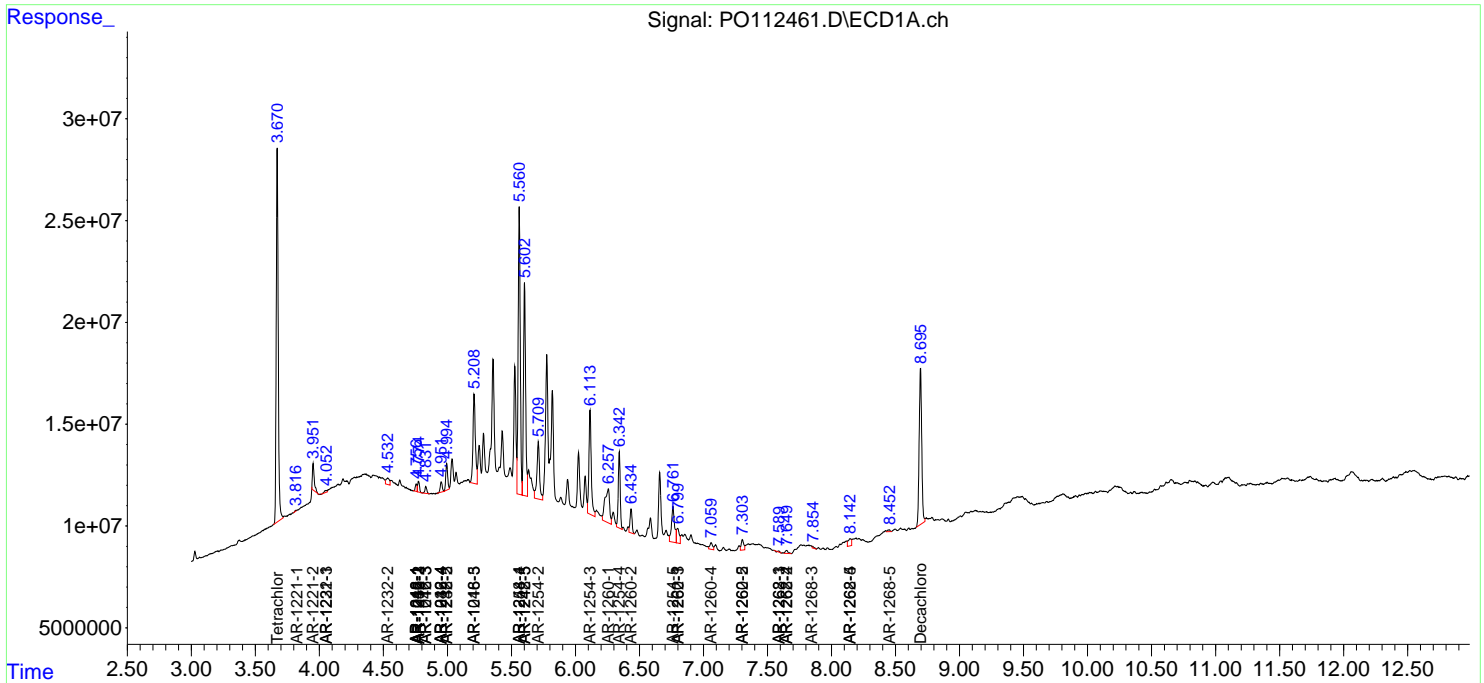
(f)=RT Delta > 1/2 Window (#)=Amounts differ by > 25% (m)=manual int.

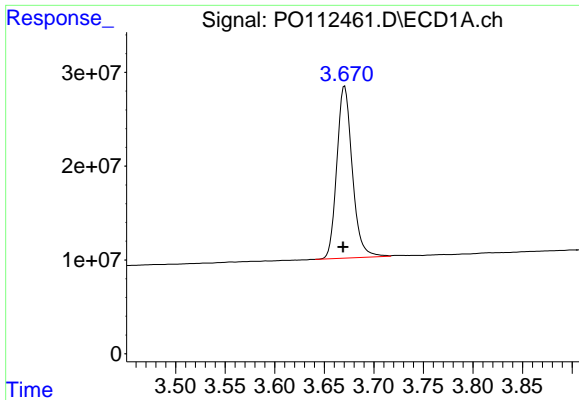
Data Path : Z:\pestpcbsrv\HPCHEM1\ECD_O\Data\PO072425\
 Data File : PO112461.D
 Signal(s) : Signal #1: ECD1A.ch Signal #2: ECD2B.ch
 Acq On : 24 Jul 2025 12:43
 Operator : YP/AJ
 Sample : Q2656-01
 Misc :
 ALS Vial : 14 Sample Multiplier: 1

Instrument :
 ECD_O
 ClientSampleId :
 71525-A

Integration File signal 1: autoint1.e
 Integration File signal 2: autoint2.e
 Quant Time: Jul 24 23:39:42 2025
 Quant Method : Z:\pestpcbsrv\HPCHEM1\ECD_O\methods\PO072325.M
 Quant Title : GC EXTRACTABLES
 QLast Update : Thu Jul 24 04:54:06 2025
 Response via : Initial Calibration
 Integrator: ChemStation

Volume Inj. : 2 µl
 Signal #1 Phase : ZB-MR1 Signal #2 Phase: ZB-MR2
 Signal #1 Info : 30Mx0.32mmx 0.50µ Signal #2 Info : 30M x 0.32mm x 0.25µm

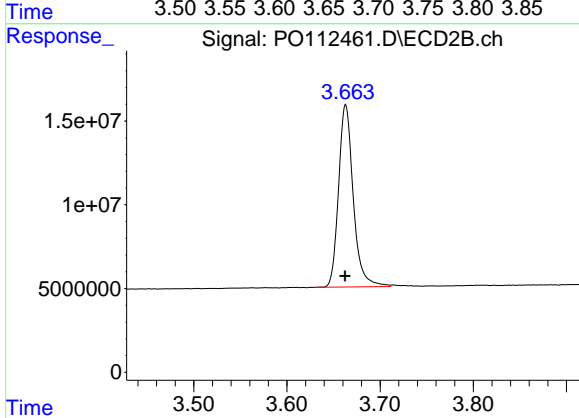




#1 Tetrachloro-m-xylene

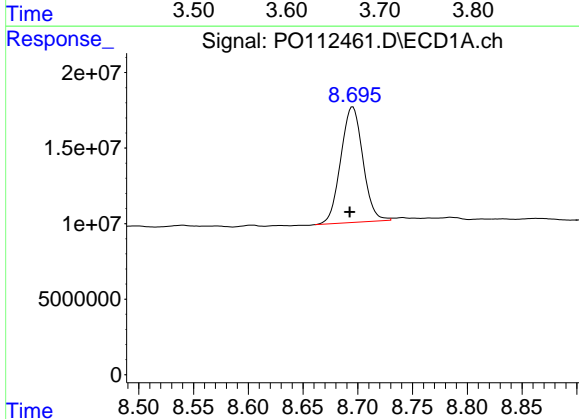
R.T.: 3.671 min
 Delta R.T.: 0.002 min
 Response: 198846592
 Conc: 24.45 ng/ml

Instrument :
 ECD_O
 ClientSampleId :
 71525-A



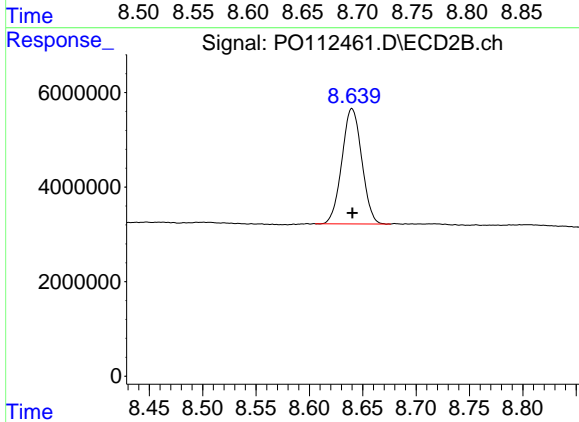
#1 Tetrachloro-m-xylene

R.T.: 3.663 min
 Delta R.T.: 0.000 min
 Response: 119340832
 Conc: 24.02 ng/ml



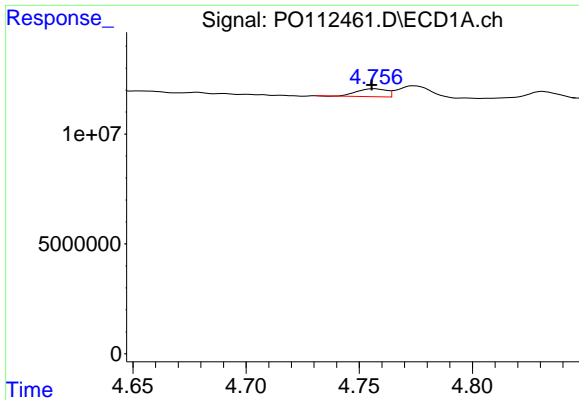
#2 Decachlorobiphenyl

R.T.: 8.695 min
 Delta R.T.: 0.003 min
 Response: 107424838
 Conc: 14.69 ng/ml



#2 Decachlorobiphenyl

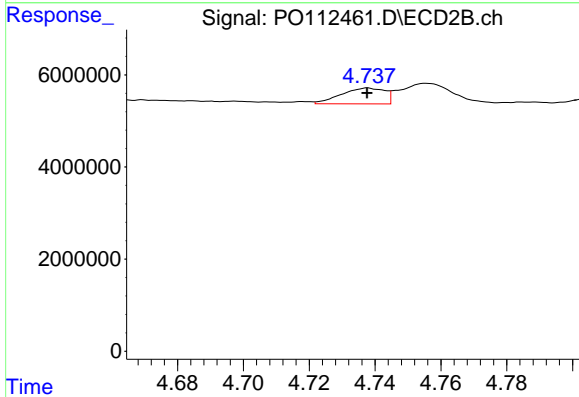
R.T.: 8.640 min
 Delta R.T.: 0.000 min
 Response: 31565328
 Conc: 17.86 ng/ml



#3 AR-1016-1

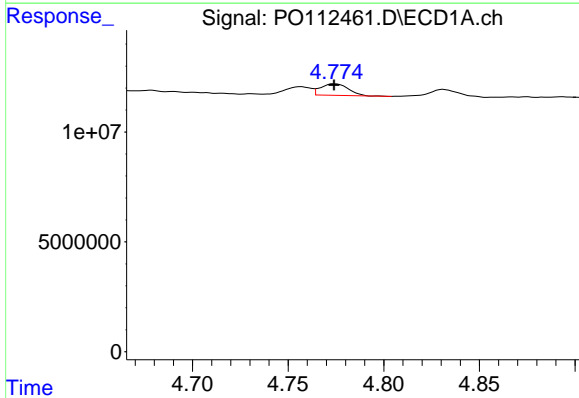
R.T.: 4.757 min
 Delta R.T.: 0.001 min
 Response: 3271279
 Conc: 12.19 ng/ml

Instrument :
 ECD_O
 ClientSampleId :
 71525-A



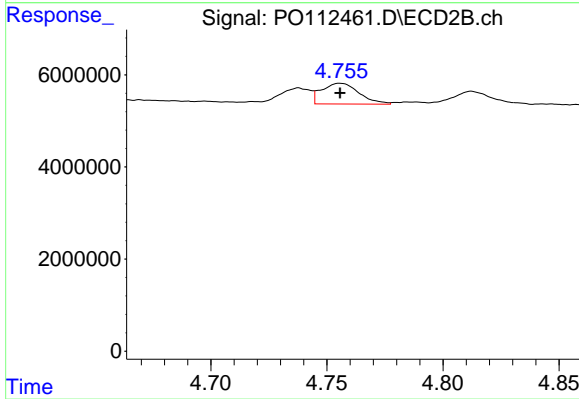
#3 AR-1016-1

R.T.: 4.738 min
 Delta R.T.: 0.000 min
 Response: 3152147
 Conc: 18.01 ng/ml



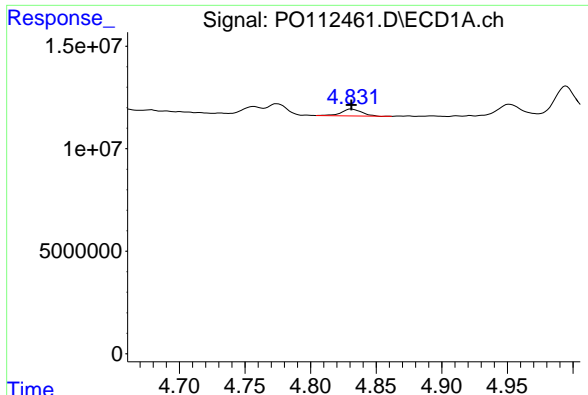
#4 AR-1016-2

R.T.: 4.774 min
 Delta R.T.: 0.000 min
 Response: 5268159
 Conc: 12.97 ng/ml



#4 AR-1016-2

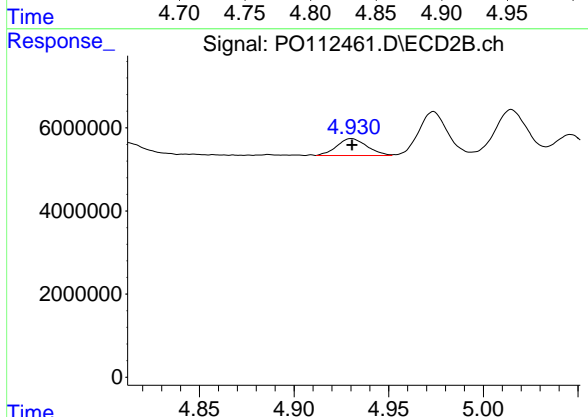
R.T.: 4.756 min
 Delta R.T.: 0.000 min
 Response: 5082768
 Conc: 19.51 ng/ml



#5 AR-1016-3

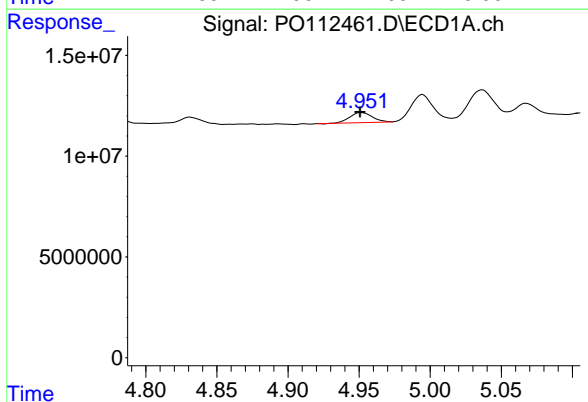
R.T.: 4.831 min
 Delta R.T.: 0.000 min
 Response: 3567484
 Conc: 13.63 ng/ml

Instrument :
 ECD_O
 ClientSampleId :
 71525-A



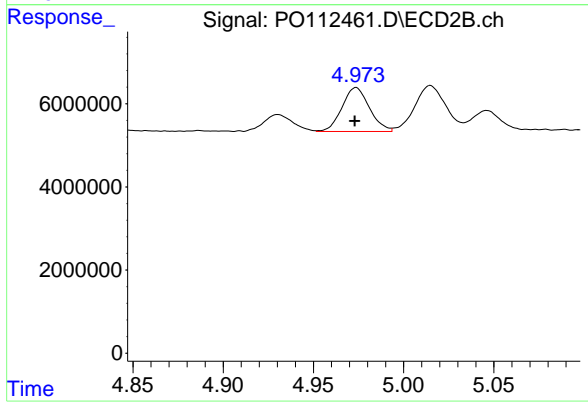
#5 AR-1016-3

R.T.: 4.930 min
 Delta R.T.: 0.000 min
 Response: 4488566
 Conc: 33.01 ng/ml



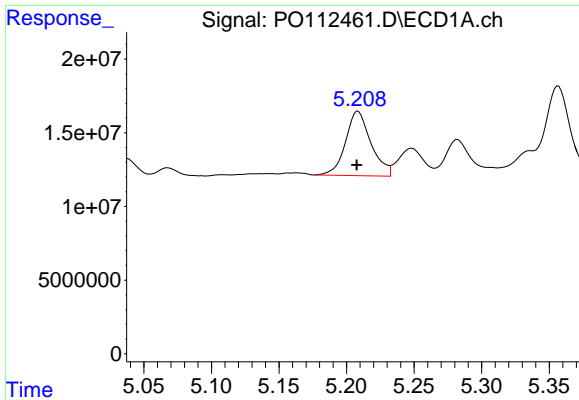
#6 AR-1016-4

R.T.: 4.952 min
 Delta R.T.: 0.001 min
 Response: 5444765
 Conc: 25.70 ng/ml



#6 AR-1016-4

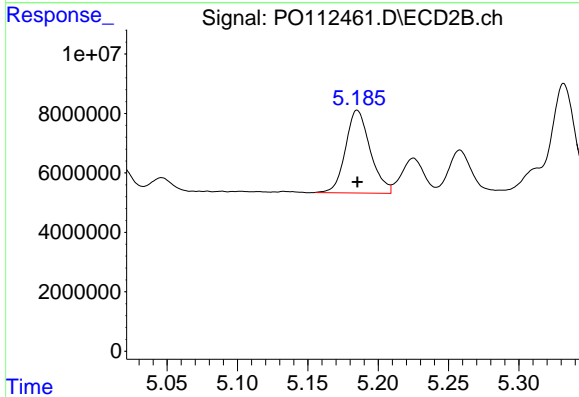
R.T.: 4.974 min
 Delta R.T.: 0.000 min
 Response: 11155189
 Conc: 100.42 ng/ml



#7 AR-1016-5

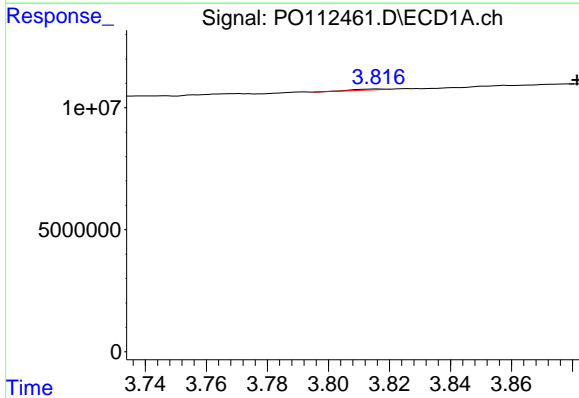
R.T.: 5.208 min
 Delta R.T.: 0.000 min
 Response: 57363900
 Conc: 261.37 ng/ml

Instrument :
 ECD_O
 ClientSampleId :
 71525-A



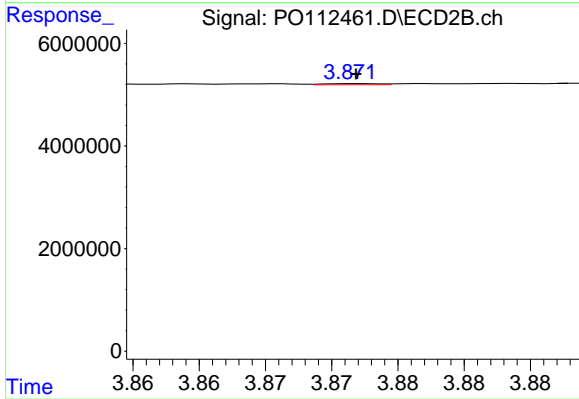
#7 AR-1016-5

R.T.: 5.185 min
 Delta R.T.: 0.000 min
 Response: 34055019
 Conc: 237.64 ng/ml



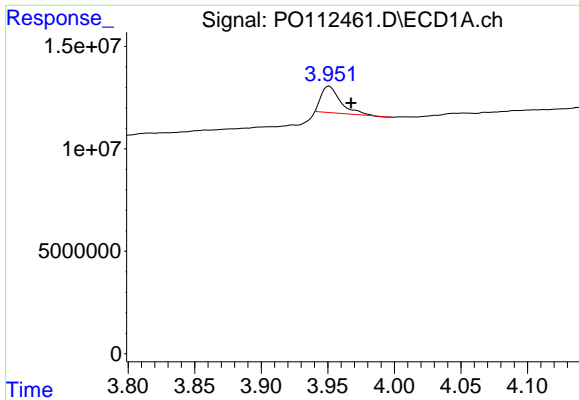
#8 AR-1221-1

R.T.: 3.817 min
 Delta R.T.: -0.065 min
 Response: 240661
 Conc: 2.49 ng/ml



#8 AR-1221-1

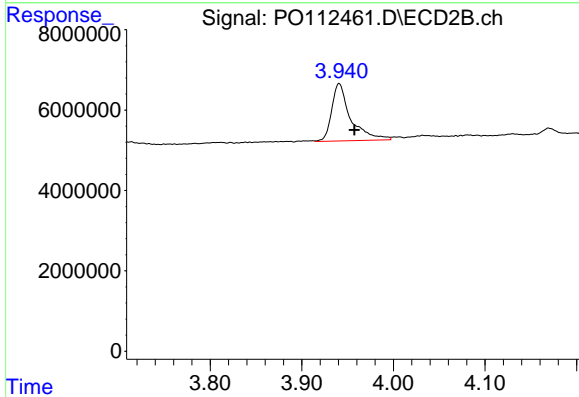
R.T.: 3.872 min
 Delta R.T.: 0.000 min
 Response: 61109
 Conc: 0.91 ng/ml



#9 AR-1221-2

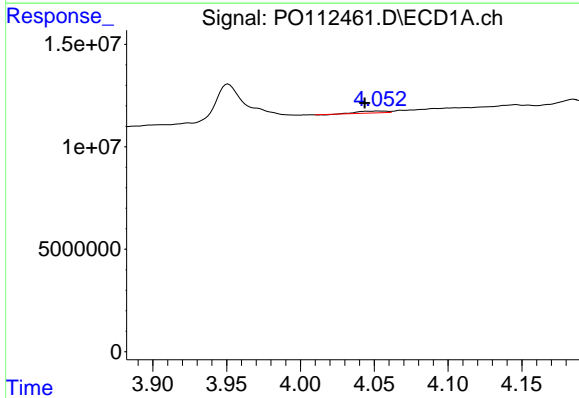
R.T.: 3.951 min
 Delta R.T.: -0.016 min
 Response: 13047267
 Conc: 181.56 ng/ml

Instrument :
 ECD_O
 ClientSampleId :
 71525-A



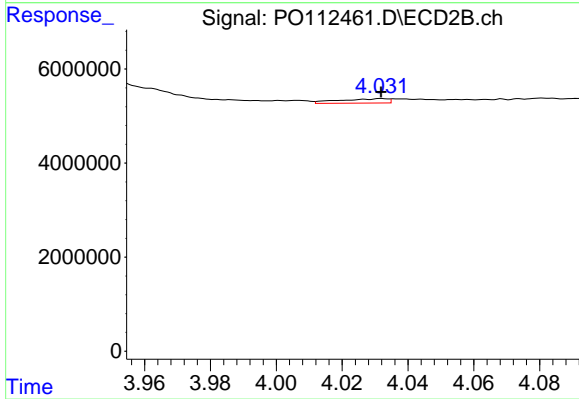
#9 AR-1221-2

R.T.: 3.941 min
 Delta R.T.: -0.017 min
 Response: 20560349
 Conc: 405.31 ng/ml



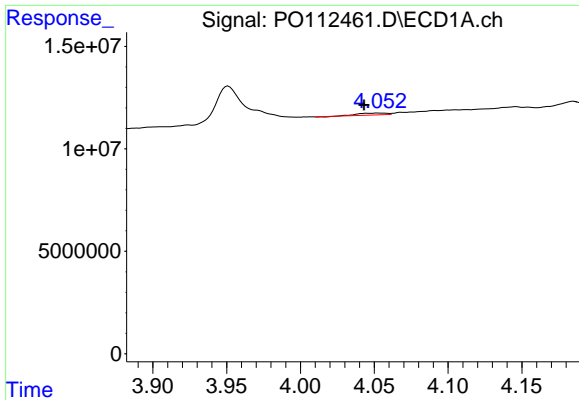
#10 AR-1221-3

R.T.: 4.053 min
 Delta R.T.: 0.009 min
 Response: 1313041
 Conc: 5.52 ng/ml



#10 AR-1221-3

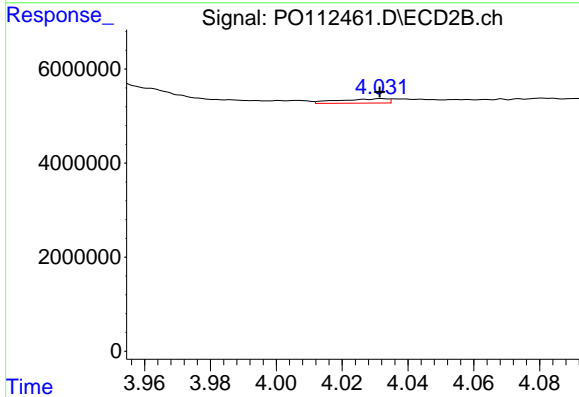
R.T.: 4.032 min
 Delta R.T.: 0.000 min
 Response: 960293
 Conc: 6.06 ng/ml



#11 AR-1232-1

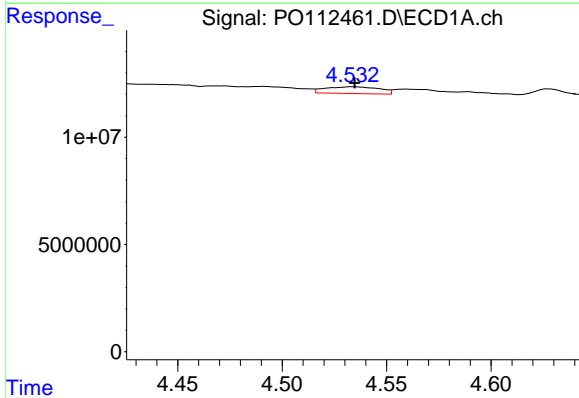
R.T.: 4.053 min
 Delta R.T.: 0.010 min
 Response: 1313041
 Conc: 7.02 ng/ml

Instrument :
 ECD_O
 ClientSampleId :
 71525-A



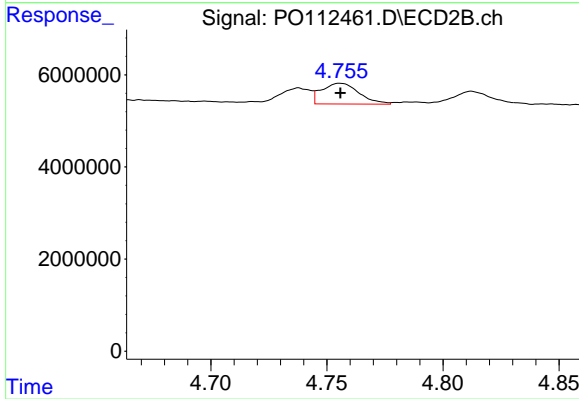
#11 AR-1232-1

R.T.: 4.032 min
 Delta R.T.: 0.000 min
 Response: 960293
 Conc: 7.59 ng/ml



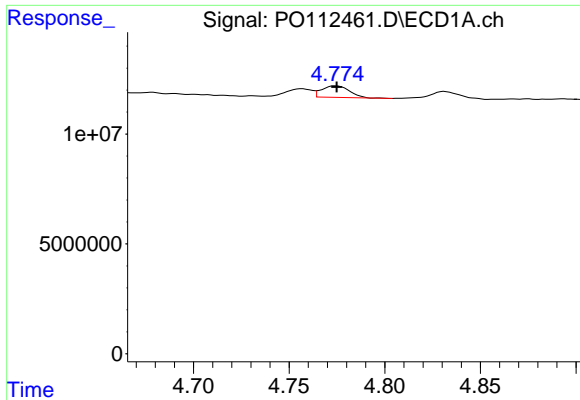
#12 AR-1232-2

R.T.: 4.534 min
 Delta R.T.: -0.001 min
 Response: 5716451
 Conc: 53.11 ng/ml



#12 AR-1232-2

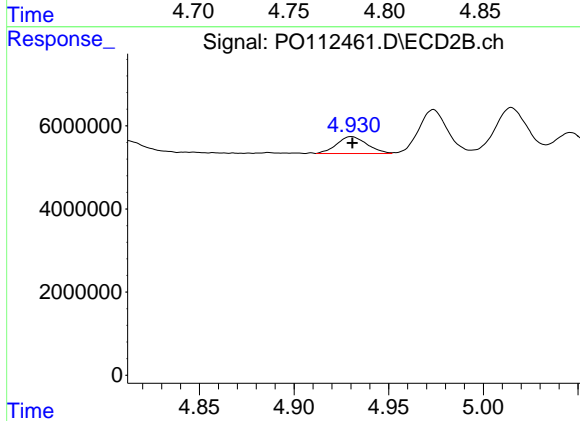
R.T.: 4.756 min
 Delta R.T.: 0.000 min
 Response: 5082768
 Conc: 38.75 ng/ml



#13 AR-1232-3

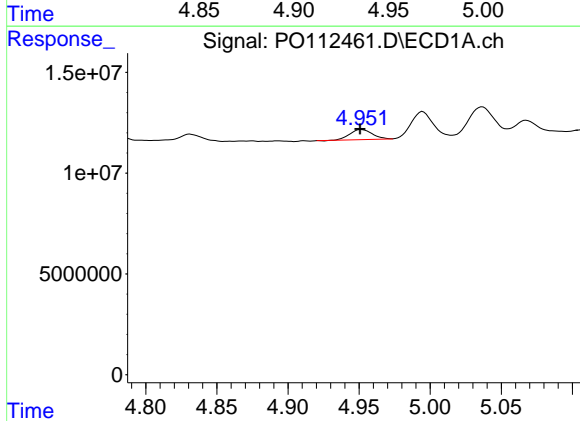
R.T.: 4.774 min
 Delta R.T.: 0.000 min
 Response: 5268159
 Conc: 25.47 ng/ml

Instrument :
 ECD_O
 ClientSampleId :
 71525-A



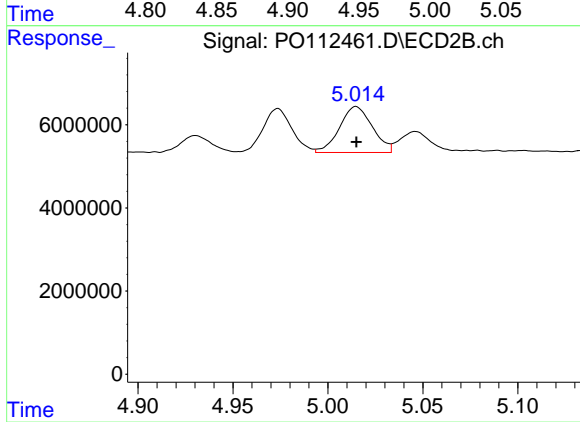
#13 AR-1232-3

R.T.: 4.930 min
 Delta R.T.: 0.000 min
 Response: 4488566
 Conc: 66.80 ng/ml



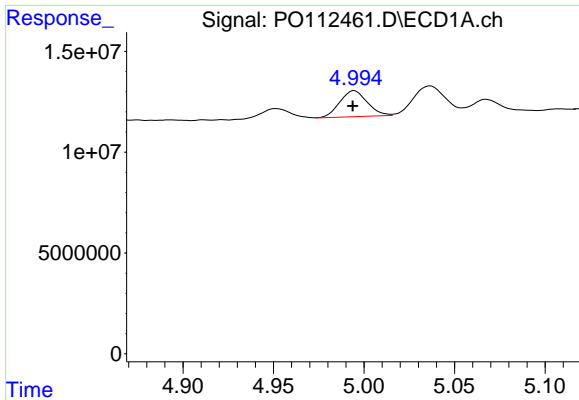
#14 AR-1232-4

R.T.: 4.952 min
 Delta R.T.: 0.001 min
 Response: 5444765
 Conc: 51.98 ng/ml



#14 AR-1232-4

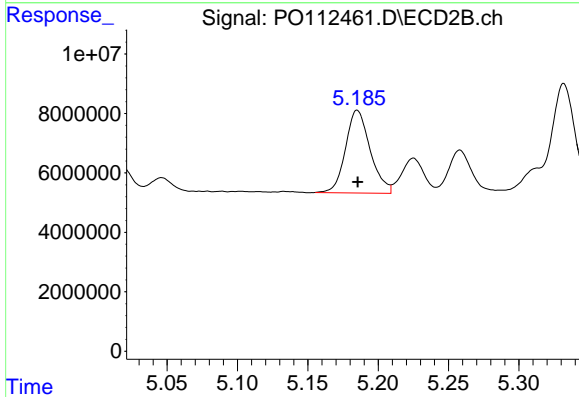
R.T.: 5.015 min
 Delta R.T.: 0.000 min
 Response: 13280234
 Conc: 221.97 ng/ml



#15 AR-1232-5

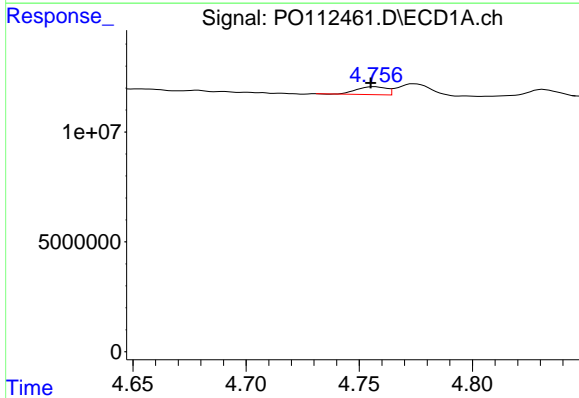
R.T.: 4.995 min
 Delta R.T.: 0.000 min
 Response: 13591822
 Conc: 200.23 ng/ml

Instrument :
 ECD_O
 ClientSampleId :
 71525-A



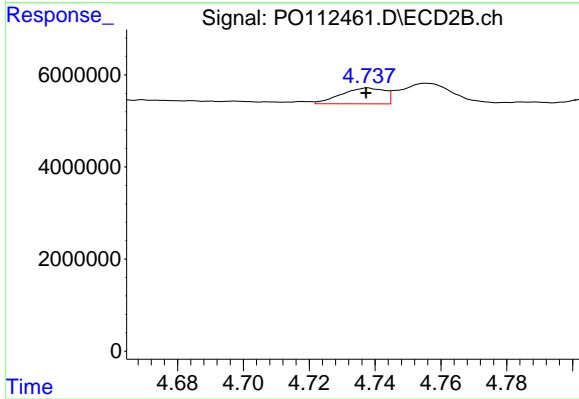
#15 AR-1232-5

R.T.: 5.185 min
 Delta R.T.: 0.000 min
 Response: 34055019
 Conc: 522.29 ng/ml



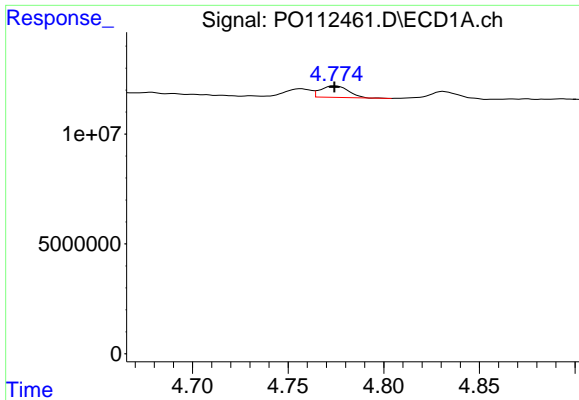
#16 AR-1242-1

R.T.: 4.757 min
 Delta R.T.: 0.002 min
 Response: 3271279
 Conc: 13.21 ng/ml



#16 AR-1242-1

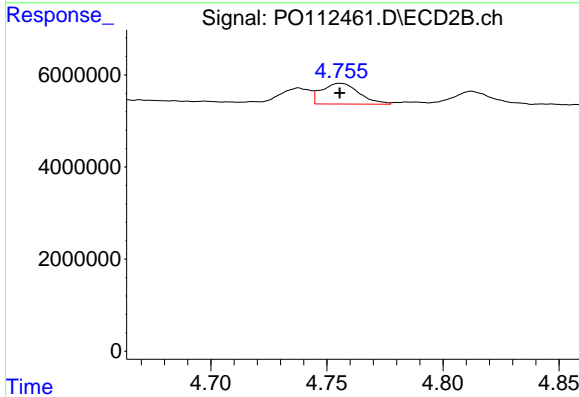
R.T.: 4.738 min
 Delta R.T.: 0.000 min
 Response: 3152147
 Conc: 19.90 ng/ml



#17 AR-1242-2

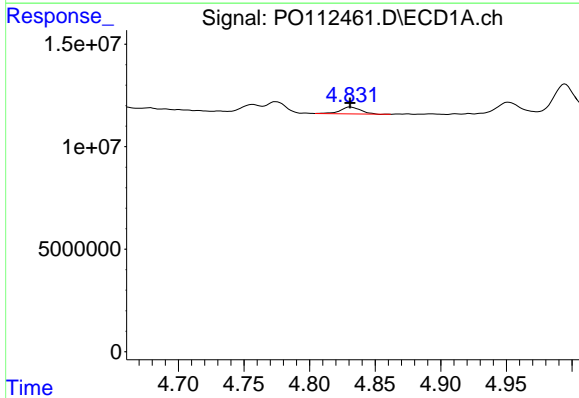
R.T.: 4.774 min
 Delta R.T.: 0.000 min
 Response: 5268159
 Conc: 14.25 ng/ml

Instrument :
 ECD_O
 ClientSampleId :
 71525-A



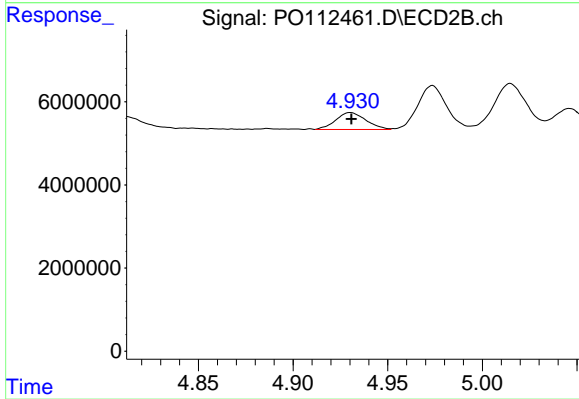
#17 AR-1242-2

R.T.: 4.756 min
 Delta R.T.: 0.000 min
 Response: 5082768
 Conc: 21.75 ng/ml



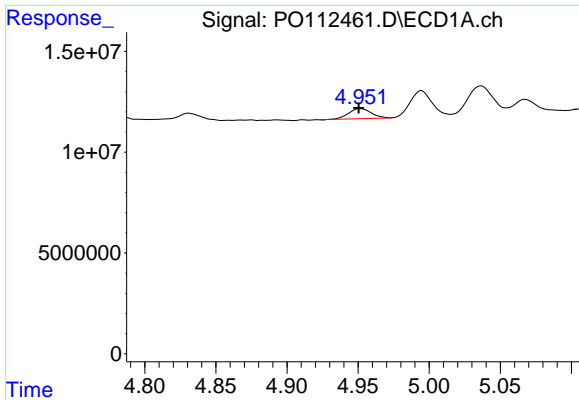
#18 AR-1242-3

R.T.: 4.831 min
 Delta R.T.: 0.000 min
 Response: 3567484
 Conc: 15.07 ng/ml



#18 AR-1242-3

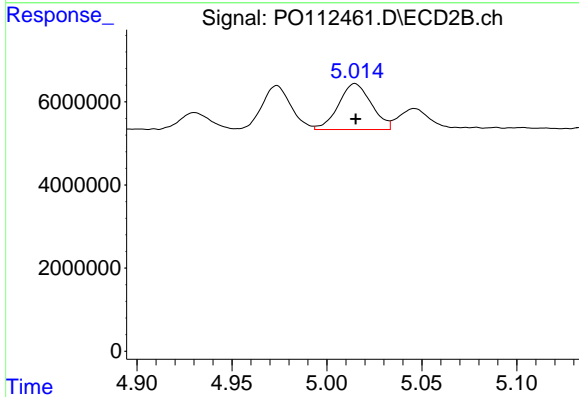
R.T.: 4.930 min
 Delta R.T.: 0.000 min
 Response: 4488566
 Conc: 37.04 ng/ml



#19 AR-1242-4

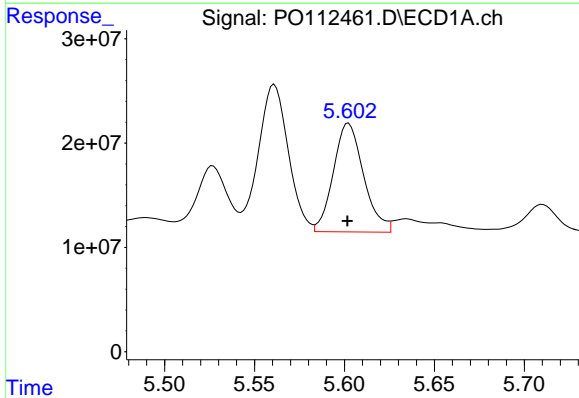
R.T.: 4.952 min
 Delta R.T.: 0.001 min
 Response: 5444765
 Conc: 28.03 ng/ml

Instrument :
 ECD_O
 ClientSampleId :
 71525-A



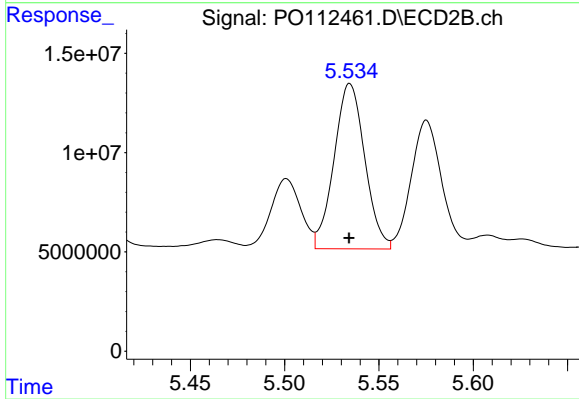
#19 AR-1242-4

R.T.: 5.015 min
 Delta R.T.: 0.000 min
 Response: 13280234
 Conc: 108.20 ng/ml



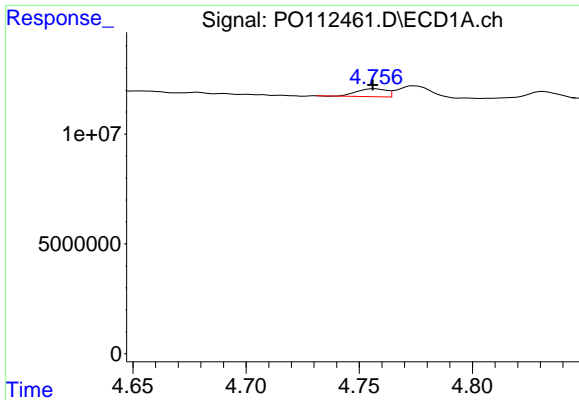
#20 AR-1242-5

R.T.: 5.602 min
 Delta R.T.: 0.000 min
 Response: 121957364
 Conc: 570.12 ng/ml



#20 AR-1242-5

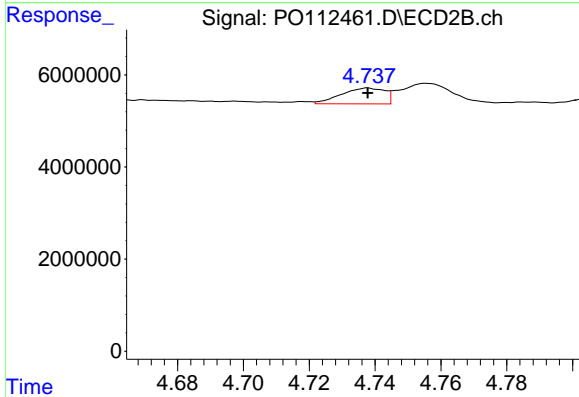
R.T.: 5.535 min
 Delta R.T.: 0.000 min
 Response: 94431336
 Conc: 586.63 ng/ml



#21 AR-1248-1

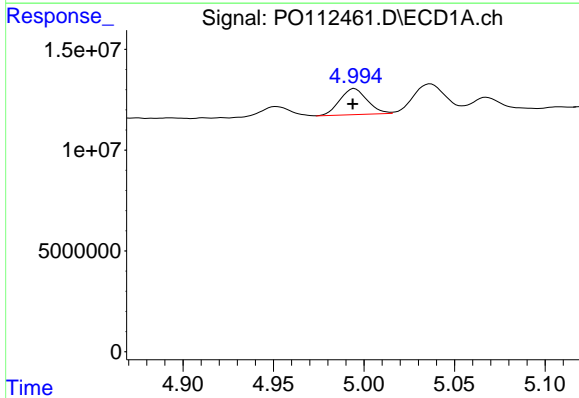
R.T.: 4.757 min
 Delta R.T.: 0.000 min
 Response: 3271279
 Conc: 17.47 ng/ml

Instrument :
 ECD_O
 ClientSampleId :
 71525-A



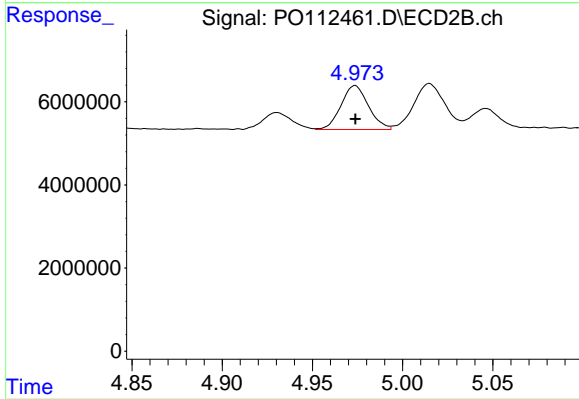
#21 AR-1248-1

R.T.: 4.738 min
 Delta R.T.: 0.000 min
 Response: 3152147
 Conc: 25.94 ng/ml



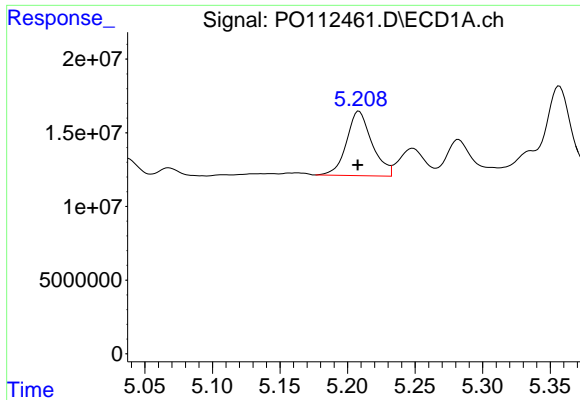
#22 AR-1248-2

R.T.: 4.995 min
 Delta R.T.: 0.000 min
 Response: 13591822
 Conc: 53.28 ng/ml



#22 AR-1248-2

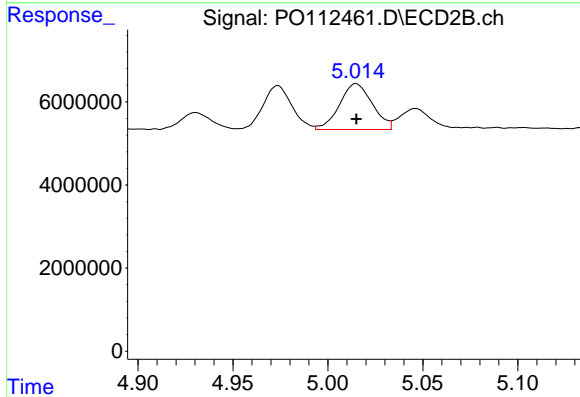
R.T.: 4.974 min
 Delta R.T.: 0.000 min
 Response: 11155189
 Conc: 65.90 ng/ml



#23 AR-1248-3

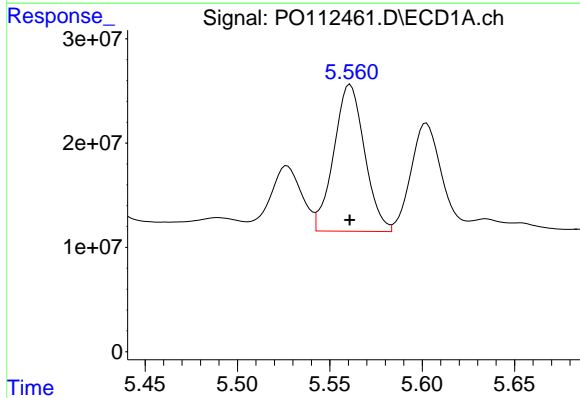
R.T.: 5.208 min
 Delta R.T.: 0.000 min
 Response: 57363900
 Conc: 166.90 ng/ml

Instrument :
 ECD_O
 ClientSampleId :
 71525-A



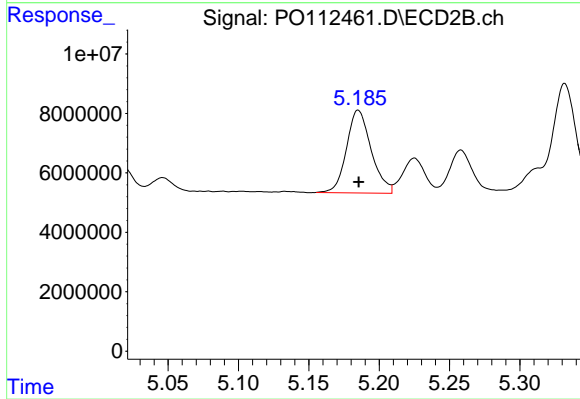
#23 AR-1248-3

R.T.: 5.015 min
 Delta R.T.: 0.000 min
 Response: 13280234
 Conc: 74.76 ng/ml



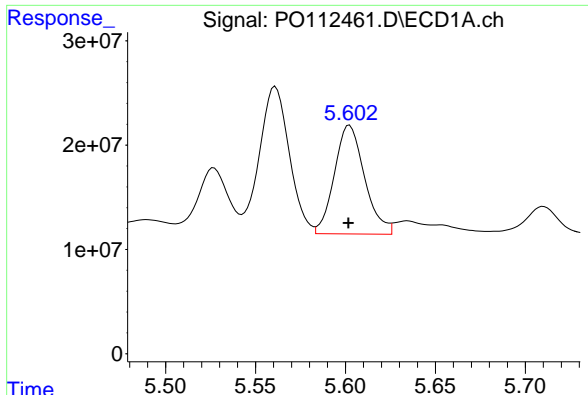
#24 AR-1248-4

R.T.: 5.561 min
 Delta R.T.: 0.000 min
 Response: 163069178
 Conc: 320.95 ng/ml



#24 AR-1248-4

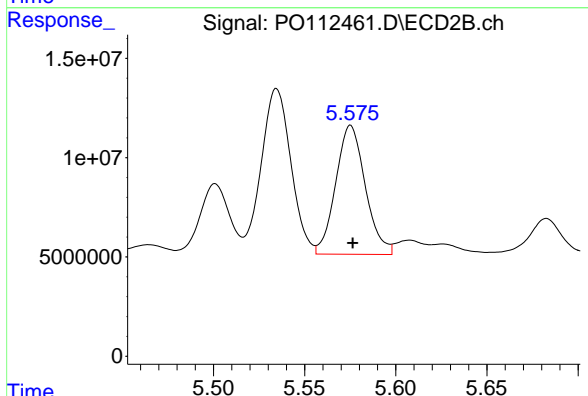
R.T.: 5.185 min
 Delta R.T.: 0.000 min
 Response: 34055019
 Conc: 163.45 ng/ml



#25 AR-1248-5

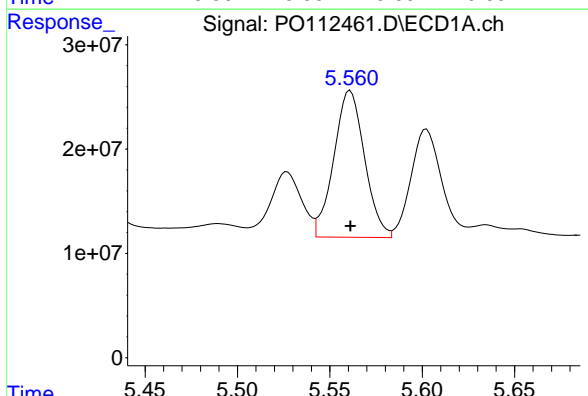
R.T.: 5.602 min
 Delta R.T.: 0.000 min
 Response: 121957364
 Conc: 348.86 ng/ml

Instrument :
 ECD_O
 ClientSampleId :
 71525-A



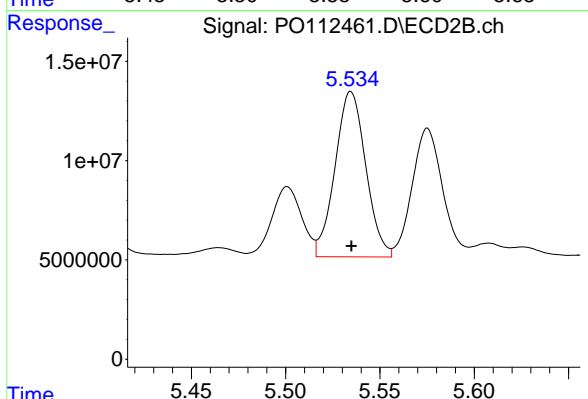
#25 AR-1248-5

R.T.: 5.575 min
 Delta R.T.: -0.001 min
 Response: 73560418
 Conc: 342.52 ng/ml



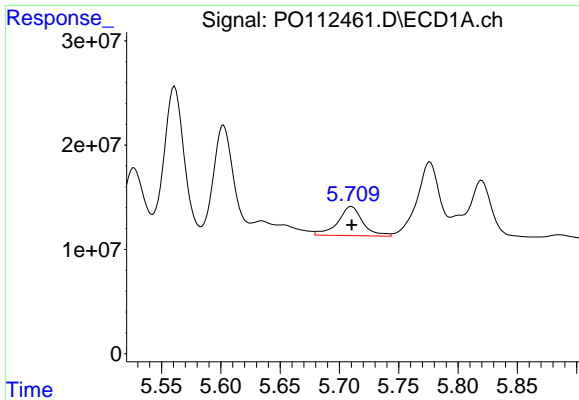
#26 AR-1254-1

R.T.: 5.561 min
 Delta R.T.: 0.000 min
 Response: 163069178
 Conc: 297.05 ng/ml



#26 AR-1254-1

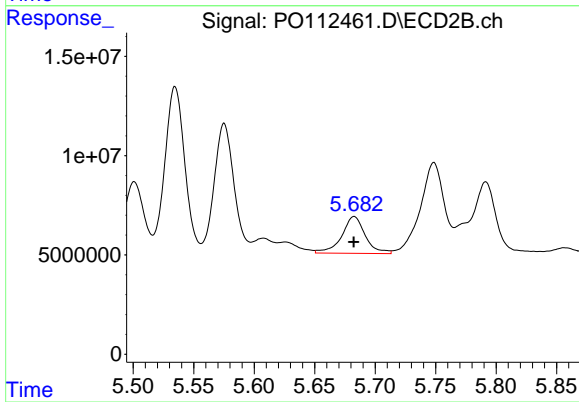
R.T.: 5.535 min
 Delta R.T.: 0.000 min
 Response: 94431336
 Conc: 287.36 ng/ml



#27 AR-1254-2

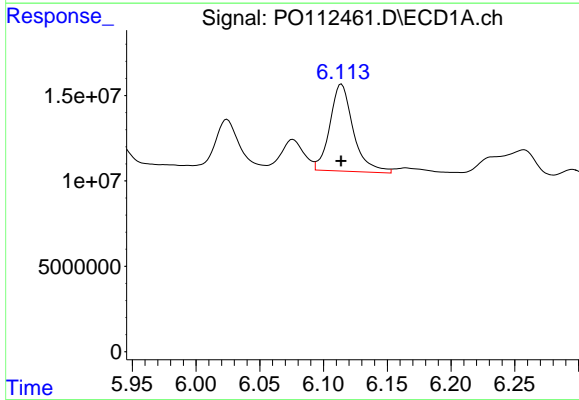
R.T.: 5.710 min
Delta R.T.: 0.000 min
Response: 41028707
Conc: 84.44 ng/ml

Instrument :
ECD_O
ClientSampleId :
71525-A



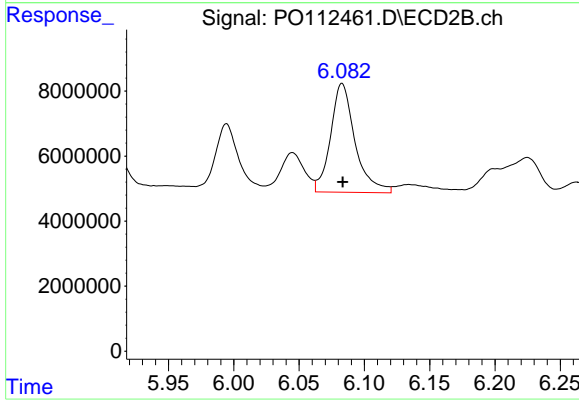
#27 AR-1254-2

R.T.: 5.683 min
Delta R.T.: 0.000 min
Response: 25101772
Conc: 86.71 ng/ml



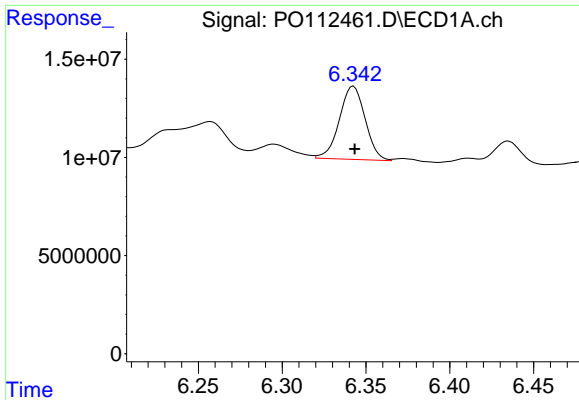
#28 AR-1254-3

R.T.: 6.114 min
Delta R.T.: 0.000 min
Response: 65487649
Conc: 87.99 ng/ml



#28 AR-1254-3

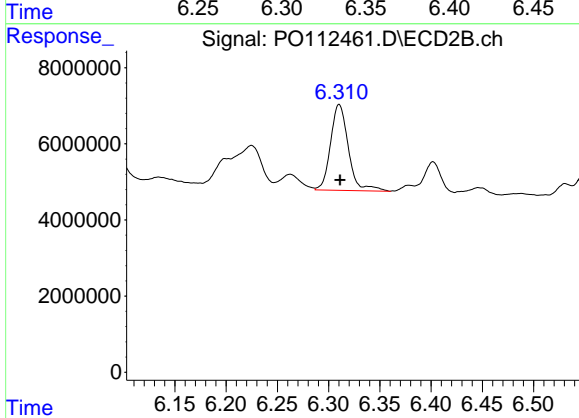
R.T.: 6.083 min
Delta R.T.: 0.000 min
Response: 43706950
Conc: 102.25 ng/ml



#29 AR-1254-4

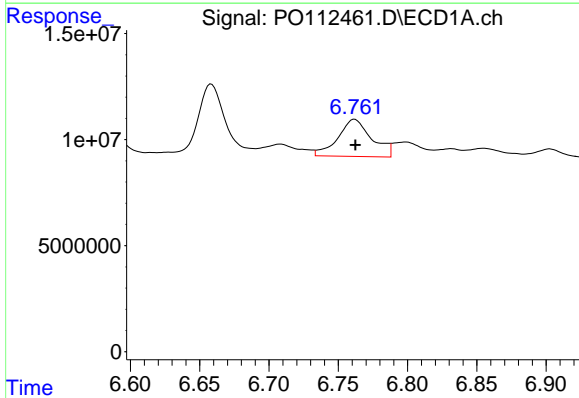
R.T.: 6.343 min
 Delta R.T.: 0.000 min
 Response: 39937342
 Conc: 72.65 ng/ml

Instrument :
 ECD_O
 ClientSampleId :
 71525-A



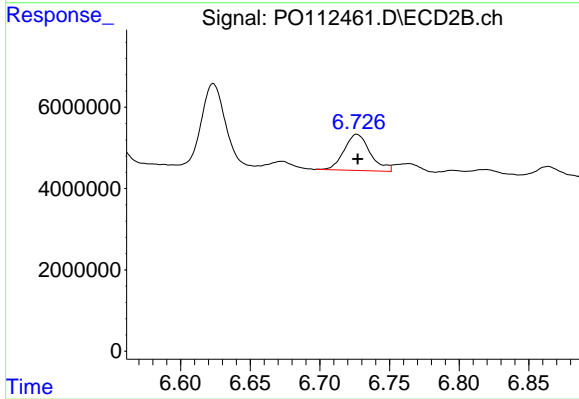
#29 AR-1254-4

R.T.: 6.310 min
 Delta R.T.: -0.001 min
 Response: 27338096
 Conc: 100.15 ng/ml



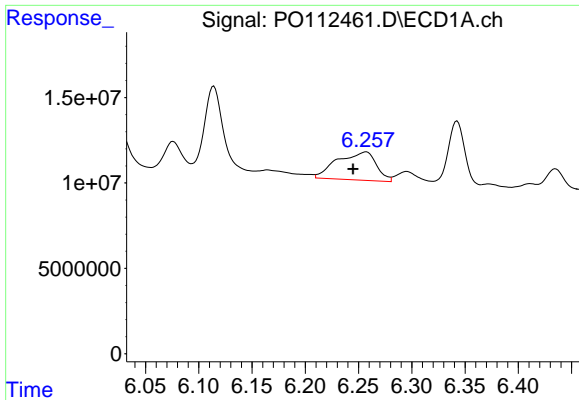
#30 AR-1254-5

R.T.: 6.762 min
 Delta R.T.: 0.000 min
 Response: 29659884
 Conc: 41.90 ng/ml



#30 AR-1254-5

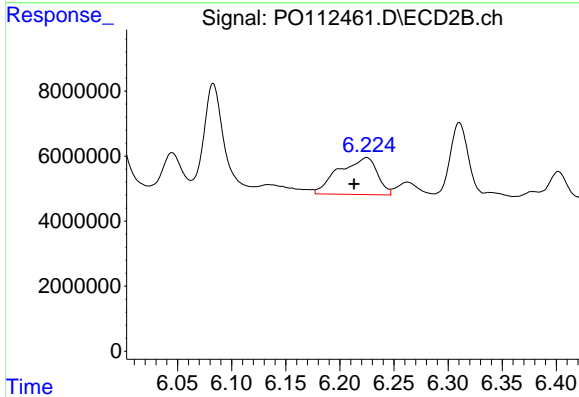
R.T.: 6.727 min
 Delta R.T.: 0.000 min
 Response: 11607377
 Conc: 34.75 ng/ml



#31 AR-1260-1

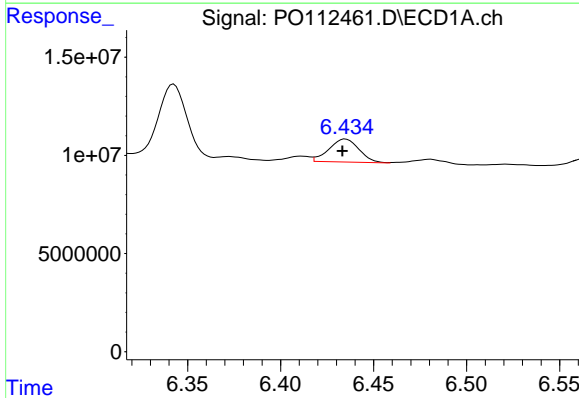
R.T.: 6.257 min
 Delta R.T.: 0.012 min
 Response: 42017784
 Conc: 95.64 ng/ml

Instrument :
 ECD_O
 ClientSampleId :
 71525-A



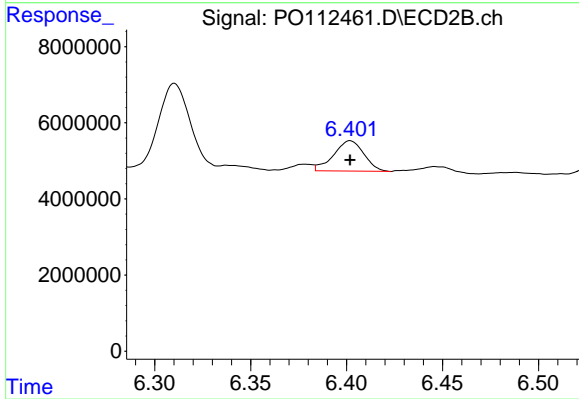
#31 AR-1260-1

R.T.: 6.225 min
 Delta R.T.: 0.012 min
 Response: 27993691
 Conc: 112.65 ng/ml



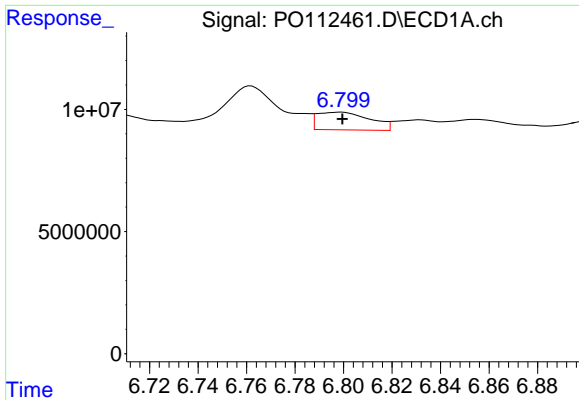
#32 AR-1260-2

R.T.: 6.435 min
 Delta R.T.: 0.002 min
 Response: 13197704
 Conc: 19.19 ng/ml



#32 AR-1260-2

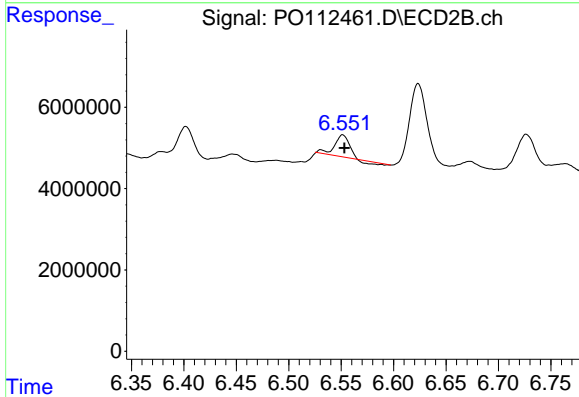
R.T.: 6.402 min
 Delta R.T.: 0.000 min
 Response: 8771034
 Conc: 26.62 ng/ml



#33 AR-1260-3

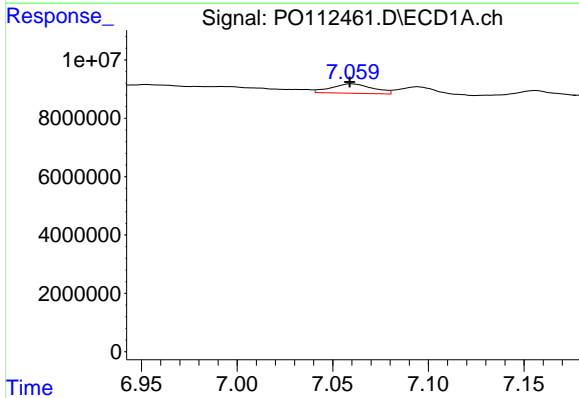
R.T.: 6.799 min
 Delta R.T.: 0.000 min
 Response: 10932371
 Conc: 18.59 ng/ml

Instrument :
 ECD_O
 ClientSampleId :
 71525-A



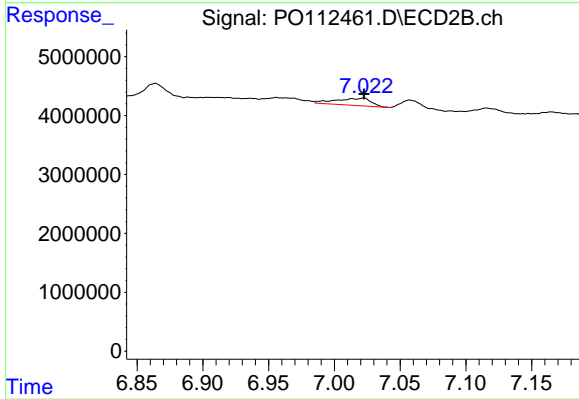
#33 AR-1260-3

R.T.: 6.552 min
 Delta R.T.: -0.002 min
 Response: 4596870
 Conc: 17.89 ng/ml



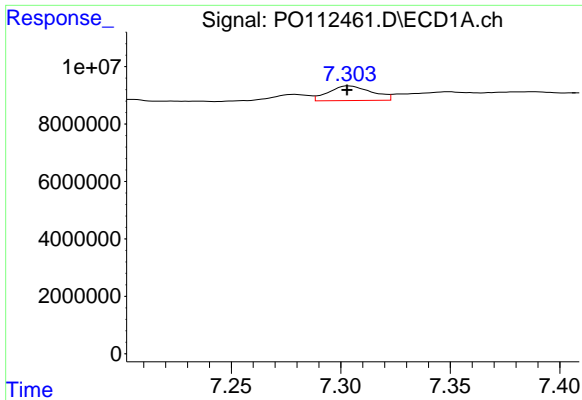
#34 AR-1260-4

R.T.: 7.060 min
 Delta R.T.: 0.000 min
 Response: 4918682
 Conc: 10.91 ng/ml



#34 AR-1260-4

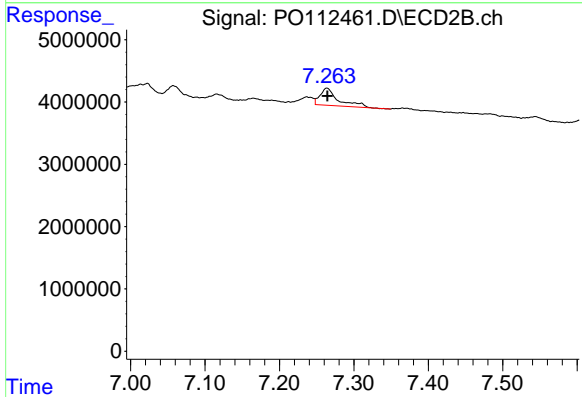
R.T.: 7.022 min
 Delta R.T.: 0.000 min
 Response: 2278339
 Conc: 11.91 ng/ml



#35 AR-1260-5

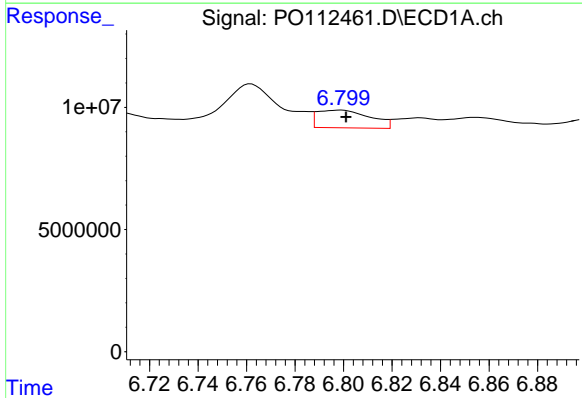
R.T.: 7.304 min
 Delta R.T.: 0.001 min
 Response: 6938017
 Conc: 5.60 ng/ml

Instrument :
 ECD_O
 ClientSampleId :
 71525-A



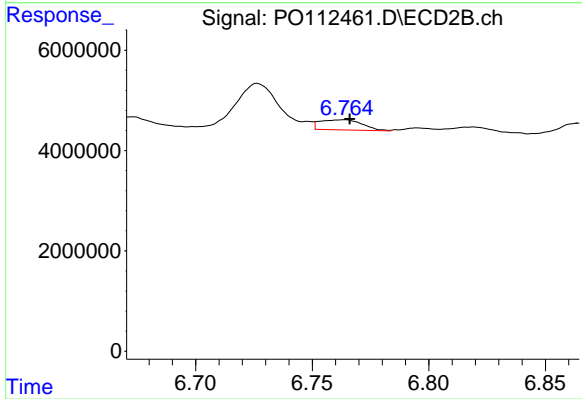
#35 AR-1260-5

R.T.: 7.264 min
 Delta R.T.: 0.000 min
 Response: 4711486
 Conc: 11.43 ng/ml



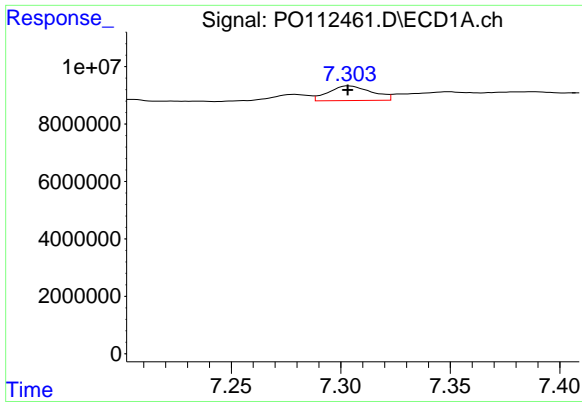
#36 AR-1262-1

R.T.: 6.799 min
 Delta R.T.: -0.002 min
 Response: 10932371
 Conc: 11.77 ng/ml



#36 AR-1262-1

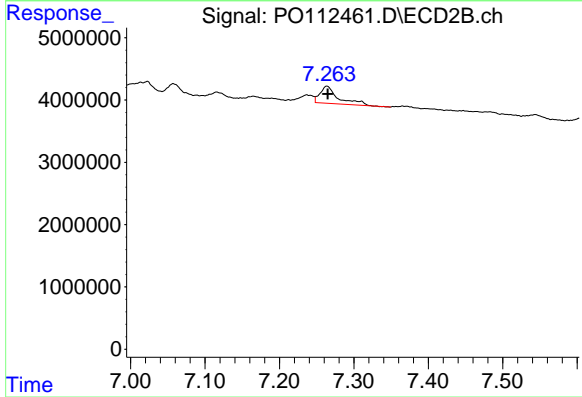
R.T.: 6.763 min
 Delta R.T.: -0.003 min
 Response: 2550037
 Conc: 6.15 ng/ml



#37 AR-1262-2

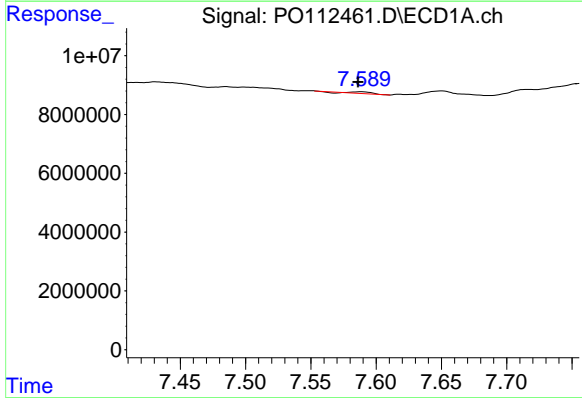
R.T.: 7.304 min
 Delta R.T.: 0.000 min
 Response: 6938017
 Conc: 4.67 ng/ml

Instrument :
 ECD_O
 ClientSampleId :
 71525-A



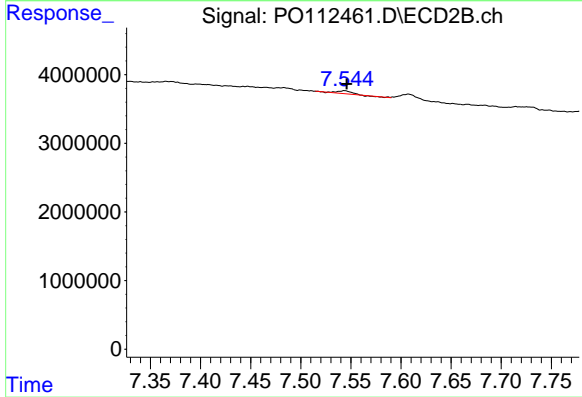
#37 AR-1262-2

R.T.: 7.264 min
 Delta R.T.: -0.001 min
 Response: 4711486
 Conc: 9.14 ng/ml



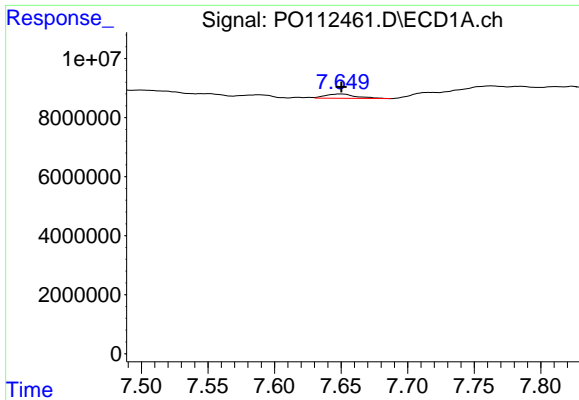
#38 AR-1262-3

R.T.: 7.589 min
 Delta R.T.: 0.002 min
 Response: 447815
 Conc: 0.76 ng/ml



#38 AR-1262-3

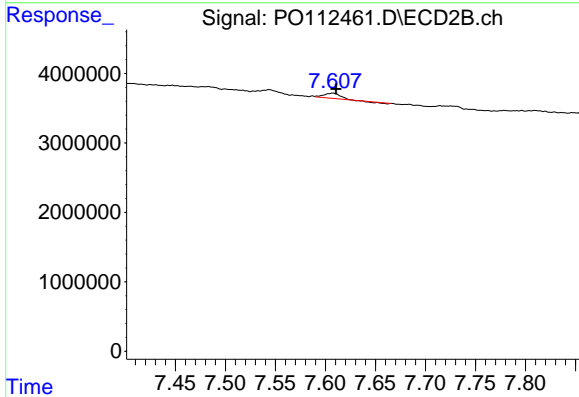
R.T.: 7.544 min
 Delta R.T.: -0.002 min
 Response: 448893
 Conc: 2.41 ng/ml



#39 AR-1262-4

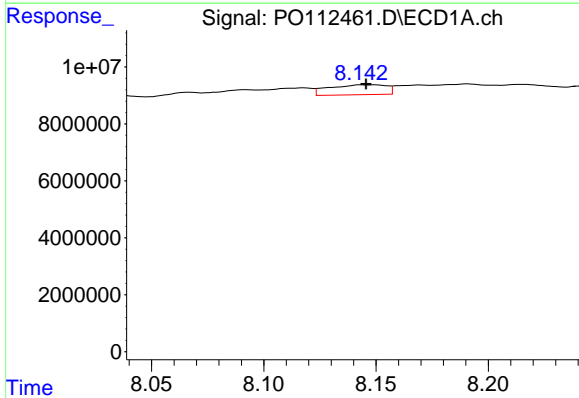
R.T.: 7.650 min
 Delta R.T.: 0.000 min
 Response: 2327032
 Conc: 2.34 ng/ml

Instrument :
 ECD_O
 ClientSampleId :
 71525-A



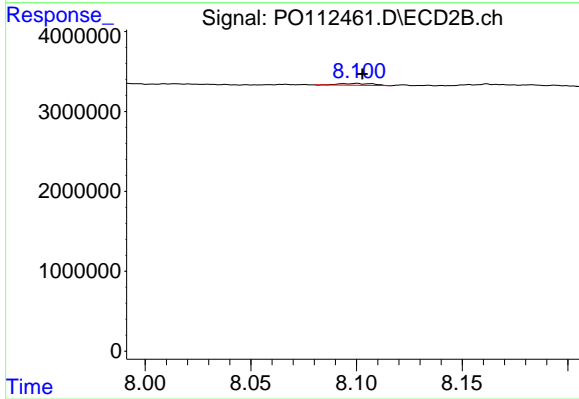
#39 AR-1262-4

R.T.: 7.607 min
 Delta R.T.: -0.003 min
 Response: 673077
 Conc: 2.34 ng/ml



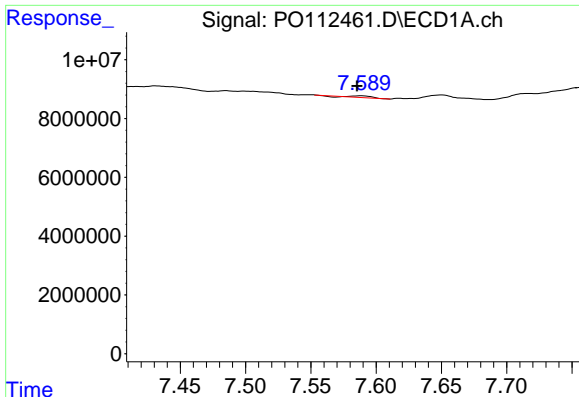
#40 AR-1262-5

R.T.: 8.150 min
 Delta R.T.: 0.004 min
 Response: 6181988
 Conc: 14.24 ng/ml



#40 AR-1262-5

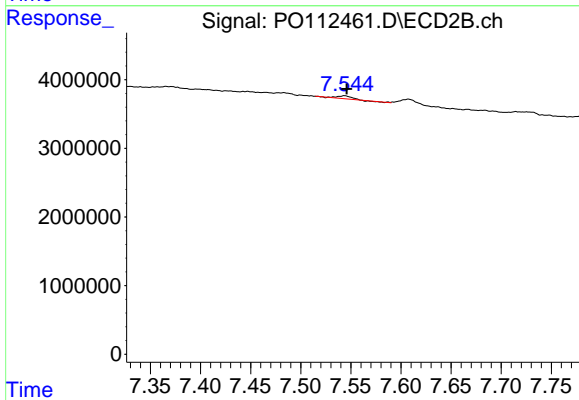
R.T.: 8.100 min
 Delta R.T.: -0.003 min
 Response: 254468
 Conc: 2.56 ng/ml



#41 AR-1268-1

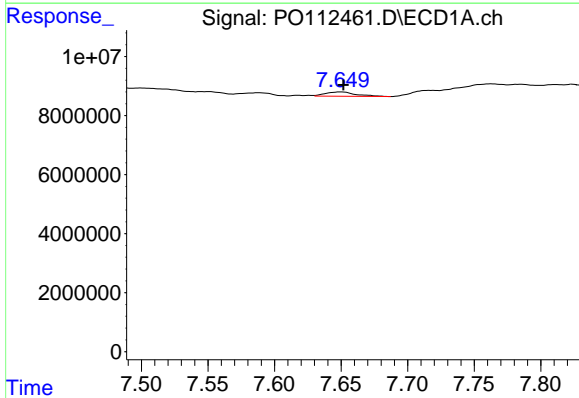
R.T.: 7.589 min
 Delta R.T.: 0.003 min
 Response: 447815
 Conc: 0.26 ng/ml

Instrument :
 ECD_O
 ClientSampleId :
 71525-A



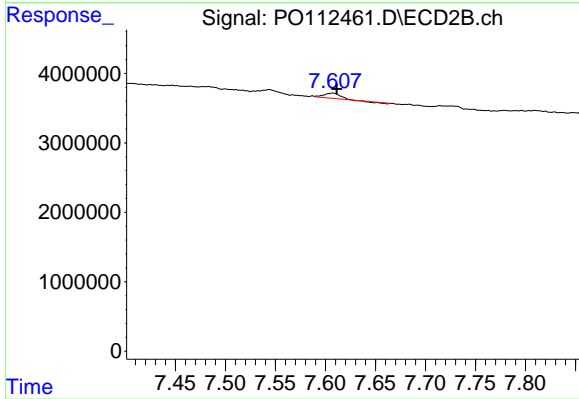
#41 AR-1268-1

R.T.: 7.544 min
 Delta R.T.: -0.002 min
 Response: 448893
 Conc: 0.87 ng/ml



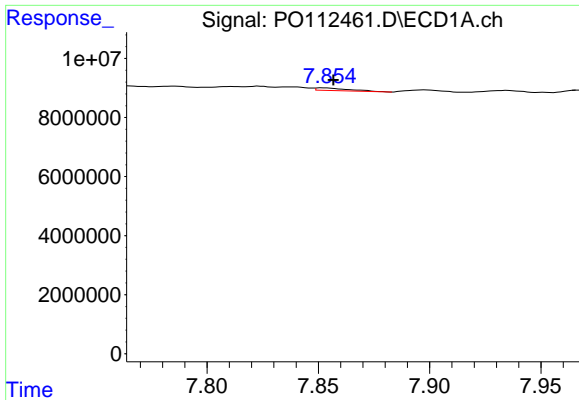
#42 AR-1268-2

R.T.: 7.650 min
 Delta R.T.: -0.002 min
 Response: 2327032
 Conc: 1.58 ng/ml



#42 AR-1268-2

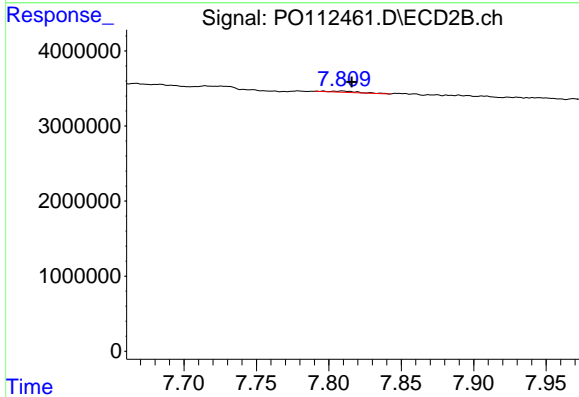
R.T.: 7.607 min
 Delta R.T.: -0.004 min
 Response: 673077
 Conc: 1.58 ng/ml



#43 AR-1268-3

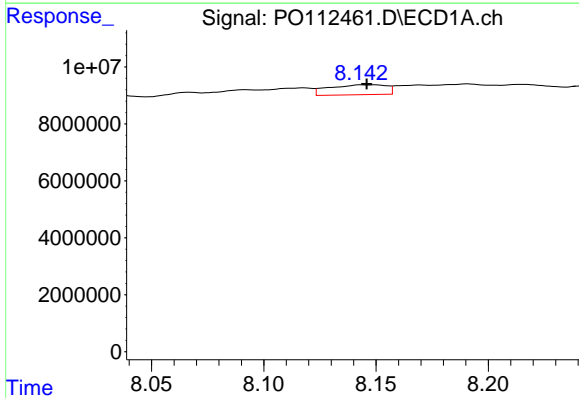
R.T.: 7.852 min
 Delta R.T.: -0.004 min
 Response: 859380
 Conc: 0.69 ng/ml

Instrument :
 ECD_O
 ClientSampleId :
 71525-A



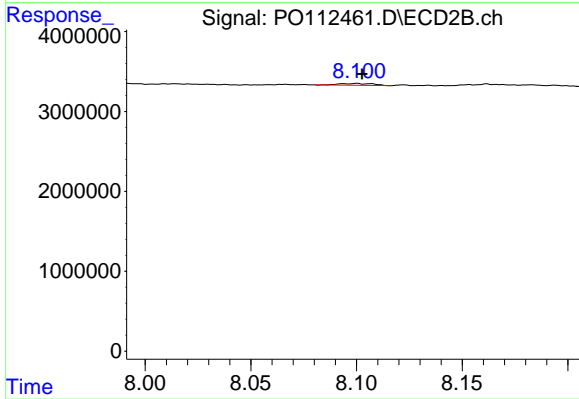
#43 AR-1268-3

R.T.: 7.809 min
 Delta R.T.: -0.006 min
 Response: 217771
 Conc: 0.68 ng/ml



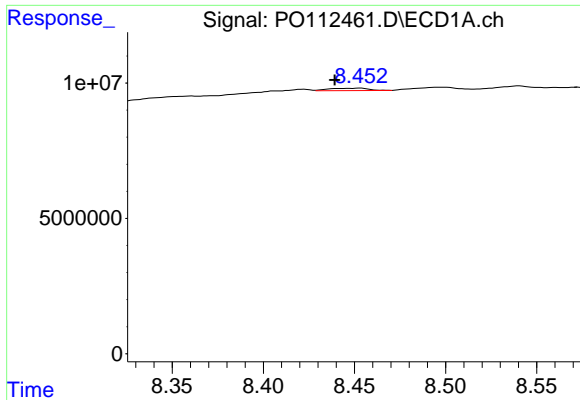
#44 AR-1268-4

R.T.: 8.150 min
 Delta R.T.: 0.004 min
 Response: 6181988
 Conc: 12.83 ng/ml



#44 AR-1268-4

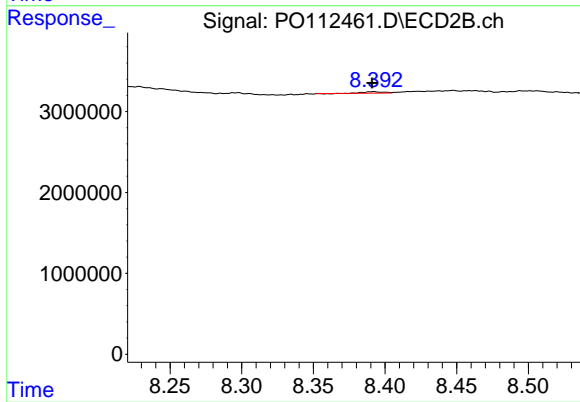
R.T.: 8.100 min
 Delta R.T.: -0.002 min
 Response: 254468
 Conc: 2.29 ng/ml



#45 AR-1268-5

R.T.: 8.453 min
 Delta R.T.: 0.014 min
 Response: 1332169
 Conc: 0.40 ng/ml

Instrument :
 ECD_O
 ClientSampleId :
 71525-A



#45 AR-1268-5

R.T.: 8.392 min
 Delta R.T.: 0.000 min
 Response: 177349
 Conc: 0.24 ng/ml