

Data Path : Z:\pestpcbsrv\HPCHEM1\ECD_0\Data\P0072425\
 Data File : PO112462.D
 Signal(s) : Signal #1: ECD1A.ch Signal #2: ECD2B.ch
 Acq On : 24 Jul 2025 13:01
 Operator : YP/AJ
 Sample : Q2656-03
 Misc :
 ALS Vial : 15 Sample Multiplier: 1

Instrument :
 ECD_0
 ClientSampleId :
 71525-C

Integration File signal 1: autoint1.e
 Integration File signal 2: autoint2.e
 Quant Time: Jul 24 23:40:28 2025
 Quant Method : Z:\pestpcbsrv\HPCHEM1\ECD_0\methods\P0072325.M
 Quant Title : GC EXTRACTABLES
 QLast Update : Thu Jul 24 04:54:06 2025
 Response via : Initial Calibration
 Integrator: ChemStation

Volume Inj. : 2 µl
 Signal #1 Phase : ZB-MR1 Signal #2 Phase: ZB-MR2
 Signal #1 Info : 30Mx0.32mmx 0.50µ Signal #2 Info : 30M x 0.32mm x 0.25µm

Compound	RT#1	RT#2	Resp#1	Resp#2	ng/ml	ng/ml
System Monitoring Compounds						
1) SA Tetrachlo...	3.671	3.663	204.6E6	123.2E6	25.157	24.795
2) SA Decachlor...	8.695	8.641	108.7E6	34285990	14.861	19.402 #
Target Compounds						
3) L1 AR-1016-1	4.755	4.739	3828302	3652829	14.265	20.872 #
4) L1 AR-1016-2	4.776	4.756	7272597	5673580	17.908	21.780
5) L1 AR-1016-3	4.831	4.932	5618298	4054421	21.471	29.819 #
6) L1 AR-1016-4	4.951	4.973	5186886	7958214	24.485	71.641 #
7) L1 AR-1016-5	5.208	5.185	27781740	21394335	126.585	149.294
8) L2 AR-1221-1	3.827f	3.865	554790	100163	5.740	1.489 #
9) L2 AR-1221-2	3.952	3.941	24896843	35929382	346.454	708.275 #
10) L2 AR-1221-3	4.050	4.034	29973	1534478	0.126	9.679 #
11) L3 AR-1232-1	4.050	4.034	29973	1534478	0.160	12.125 #
12) L3 AR-1232-2	4.536	4.756	4675570	5673580	43.443	43.259
13) L3 AR-1232-3	4.776	4.932	7272597	4054421	35.167	60.337 #
14) L3 AR-1232-4	4.951	5.016	5186886	9647114	49.521	161.245 #
15) L3 AR-1232-5	4.994	5.185	10031469	21394335	147.780	328.119 #
16) L4 AR-1242-1	4.755	4.739	3828302	3652829	15.462	23.062 #
17) L4 AR-1242-2	4.776	4.756	7272597	5673580	19.667	24.281
18) L4 AR-1242-3	4.831	4.932	5618298	4054421	23.740	33.455 #
19) L4 AR-1242-4	4.951	5.016	5186886	9647114	26.698	78.598 #
20) L4 AR-1242-5	5.602	5.535	65221611	55360531	304.894	343.916
21) L5 AR-1248-1	4.755	4.739	3828302	3652829	20.449	30.062 #
22) L5 AR-1248-2	4.994	4.973	10031469	7958214	39.322	47.012
23) L5 AR-1248-3	5.208	5.016	27781740	9647114	80.831	54.305 #
24) L5 AR-1248-4	5.561	5.185	84403319	21394335	166.123	102.682 #
25) L5 AR-1248-5	5.602	5.575	65221611	42809476	186.565	199.332
26) L6 AR-1254-1	5.561	5.535	84403319	55360531	153.752	168.463
27) L6 AR-1254-2	5.711	5.682	40957171	19016091	84.288	65.688
28) L6 AR-1254-3	6.114	6.083	29404382	21633728	39.507	50.610 #
29) L6 AR-1254-4	6.342	6.310	18028761	11396428	32.797	41.751 #
30) L6 AR-1254-5	6.762	6.727	8564346	5869638	12.100	17.573 #
31) L7 AR-1260-1	6.257	6.226	19167452	12818068	43.629	51.579
32) L7 AR-1260-2	6.435	6.401	8263665	4502264	12.013	13.664
33) L7 AR-1260-3	6.800	6.552	1652571	3999989	2.810	15.569 #
34) L7 AR-1260-4	7.059	7.019	3854258	1943267	8.546	10.158
35) L7 AR-1260-5	7.303	7.265	5928983	5886394	4.785	14.281 #
36) L8 AR-1262-1	6.800	6.764	1652571	1215364	1.778	2.930 #
37) L8 AR-1262-2	7.303	7.265	5928983	5886394	3.987	11.418 #
38) L8 AR-1262-3	7.585	7.543	522417	343289	0.885	1.840 #
39) L8 AR-1262-4	7.647	7.602	1608685	735027	1.618	2.551 #
40) L8 AR-1262-5	8.081f	8.096	854597	191288	1.969	1.922
41) L9 AR-1268-1	7.585	7.543	522417	343289	0.298	0.663 #

Data Path : Z:\pestpcbsrv\HPCHEM1\ECD_0\Data\P0072425\
 Data File : P0112462.D
 Signal(s) : Signal #1: ECD1A.ch Signal #2: ECD2B.ch
 Acq On : 24 Jul 2025 13:01
 Operator : YP/AJ
 Sample : Q2656-03
 Misc :
 ALS Vial : 15 Sample Multiplier: 1

Instrument :
 ECD_0
 ClientSampleId :
 71525-C

Integration File signal 1: autoint1.e
 Integration File signal 2: autoint2.e
 Quant Time: Jul 24 23:40:28 2025
 Quant Method : Z:\pestpcbsrv\HPCHEM1\ECD_0\methods\P0072325.M
 Quant Title : GC EXTRACTABLES
 QLast Update : Thu Jul 24 04:54:06 2025
 Response via : Initial Calibration
 Integrator: ChemStation

Volume Inj. : 2 µl
 Signal #1 Phase : ZB-MR1 Signal #2 Phase: ZB-MR2
 Signal #1 Info : 30Mx0.32mmx 0.50µ Signal #2 Info : 30M x 0.32mm x 0.25µm

	Compound	RT#1	RT#2	Resp#1	Resp#2	ng/ml	ng/ml
42)	L9 AR-1268-2	7.647	7.602	1608685	735027	1.092	1.729 #
43)	L9 AR-1268-3	7.881	7.884f	417574	163198	0.333	0.508 #
44)	L9 AR-1268-4	8.081f	8.096	854597	191288	1.774	1.719
45)	L9 AR-1268-5	8.438	8.384	714038	75378	0.213	0.103 #

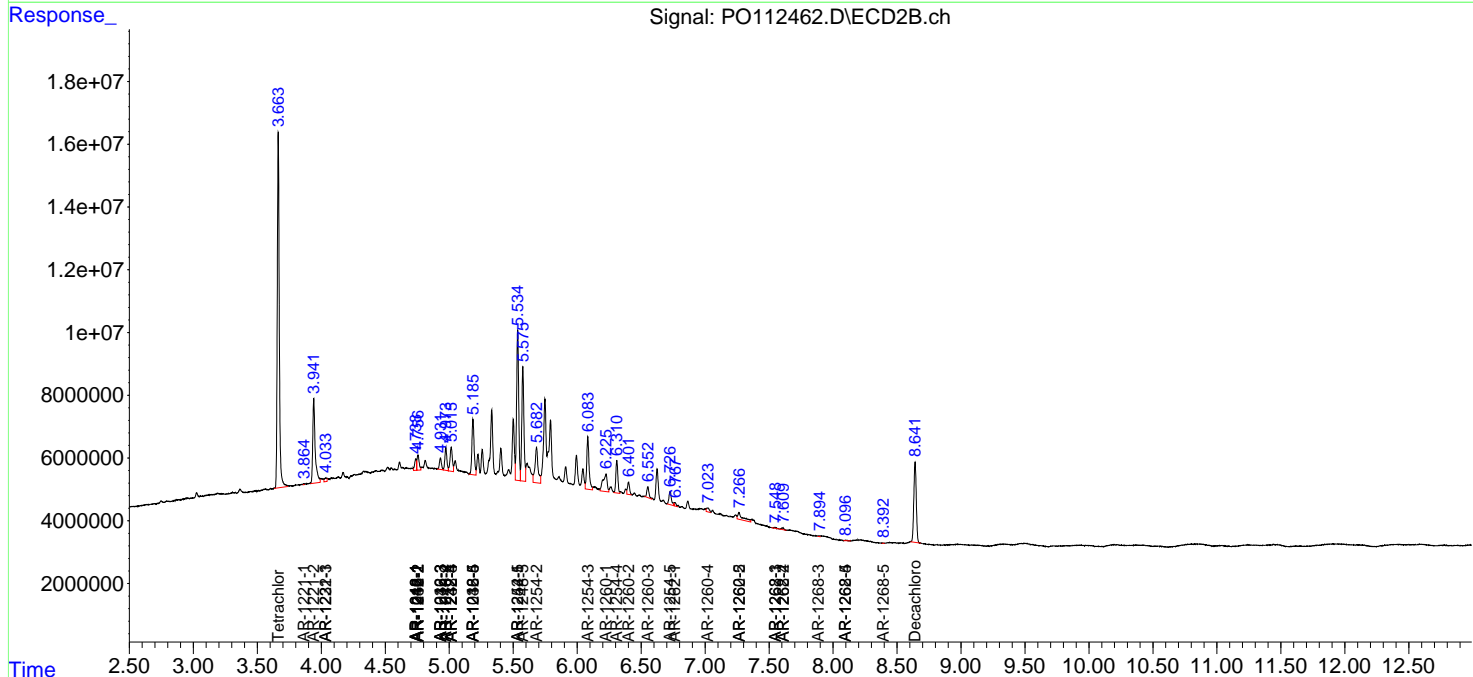
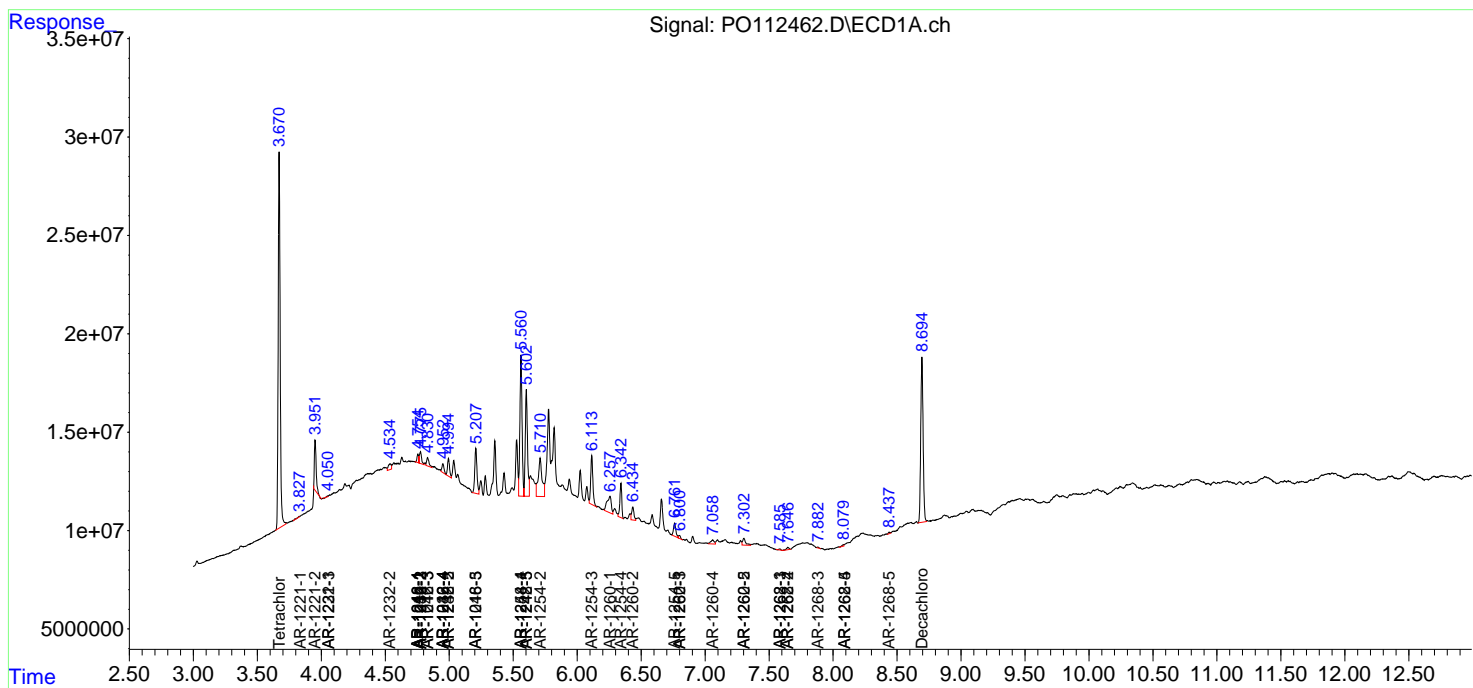
(f)=RT Delta > 1/2 Window (#)=Amounts differ by > 25% (m)=manual int.

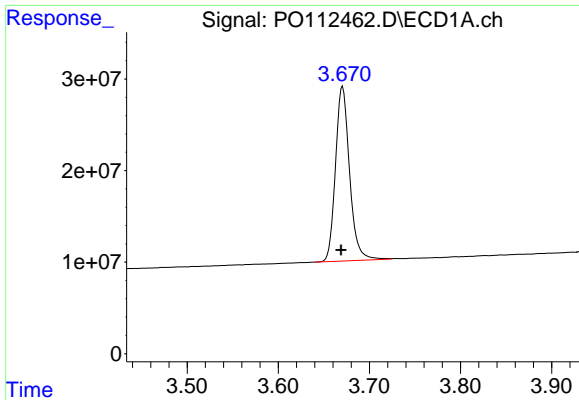
Data Path : Z:\pestpcbsrv\HPCHEM1\ECD_O\Data\PO072425\
 Data File : PO112462.D
 Signal(s) : Signal #1: ECD1A.ch Signal #2: ECD2B.ch
 Acq On : 24 Jul 2025 13:01
 Operator : YP/AJ
 Sample : Q2656-03
 Misc :
 ALS Vial : 15 Sample Multiplier: 1

Instrument :
 ECD_O
 ClientSampleId :
 71525-C

Integration File signal 1: autoint1.e
 Integration File signal 2: autoint2.e
 Quant Time: Jul 24 23:40:28 2025
 Quant Method : Z:\pestpcbsrv\HPCHEM1\ECD_O\methods\PO072325.M
 Quant Title : GC EXTRACTABLES
 QLast Update : Thu Jul 24 04:54:06 2025
 Response via : Initial Calibration
 Integrator: ChemStation

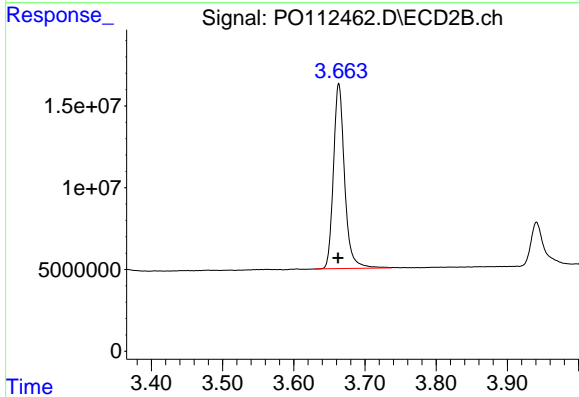
Volume Inj. : 2 µl
 Signal #1 Phase : ZB-MR1 Signal #2 Phase: ZB-MR2
 Signal #1 Info : 30Mx0.32mmx 0.50µ Signal #2 Info : 30M x 0.32mm x 0.25µm



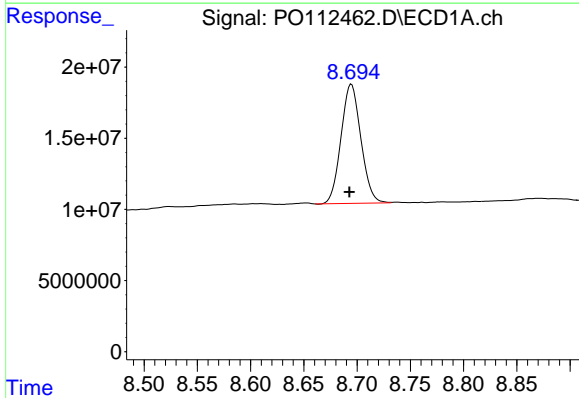


#1 Tetrachloro-m-xylene
 R.T.: 3.671 min
 Delta R.T.: 0.002 min
 Response: 204566793
 Conc: 25.16 ng/ml

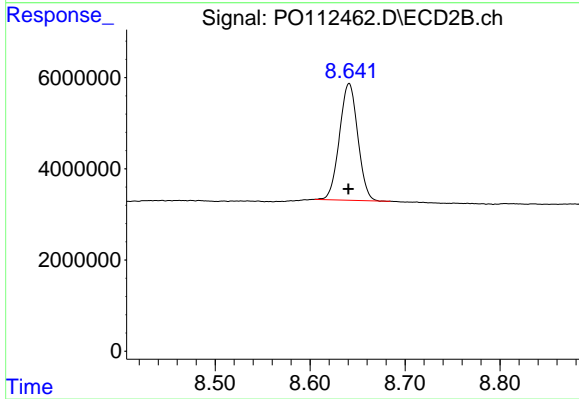
Instrument :
 ECD_O
 ClientSampleId :
 71525-C



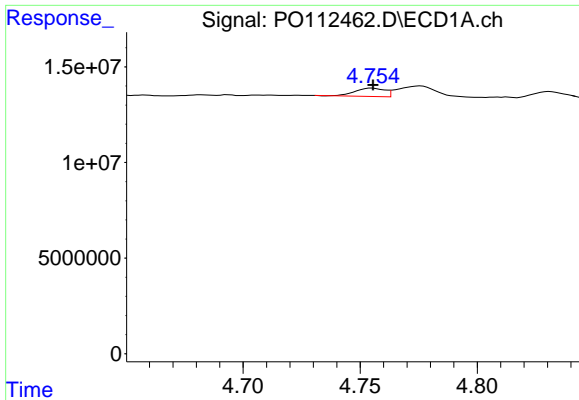
#1 Tetrachloro-m-xylene
 R.T.: 3.663 min
 Delta R.T.: 0.000 min
 Response: 123212000
 Conc: 24.80 ng/ml



#2 Decachlorobiphenyl
 R.T.: 8.695 min
 Delta R.T.: 0.002 min
 Response: 108663101
 Conc: 14.86 ng/ml



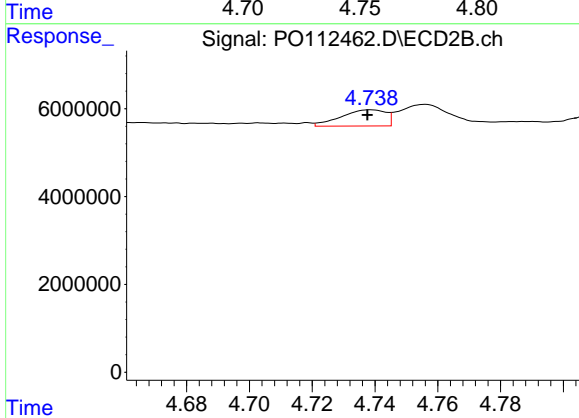
#2 Decachlorobiphenyl
 R.T.: 8.641 min
 Delta R.T.: 0.000 min
 Response: 34285990
 Conc: 19.40 ng/ml



#3 AR-1016-1

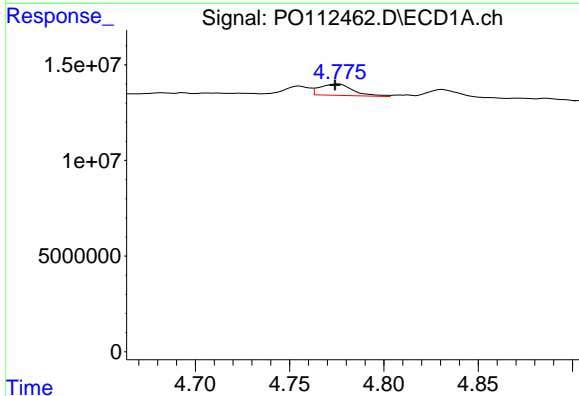
R.T.: 4.755 min
 Delta R.T.: 0.000 min
 Response: 3828302
 Conc: 14.27 ng/ml

Instrument :
 ECD_O
 ClientSampleId :
 71525-C



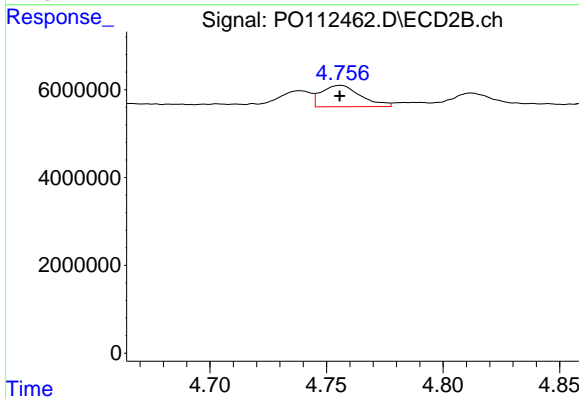
#3 AR-1016-1

R.T.: 4.739 min
 Delta R.T.: 0.000 min
 Response: 3652829
 Conc: 20.87 ng/ml



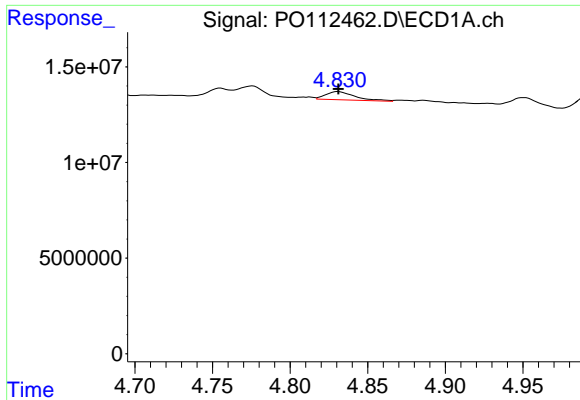
#4 AR-1016-2

R.T.: 4.776 min
 Delta R.T.: 0.002 min
 Response: 7272597
 Conc: 17.91 ng/ml



#4 AR-1016-2

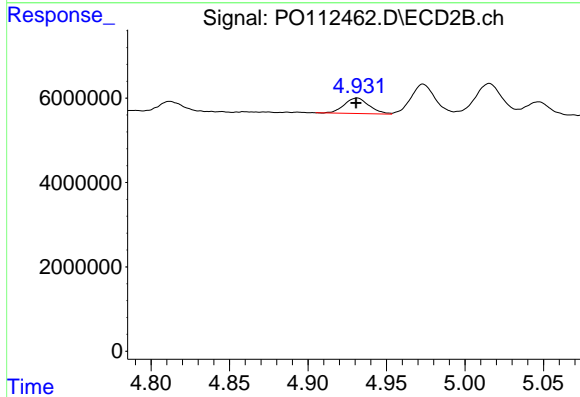
R.T.: 4.756 min
 Delta R.T.: 0.000 min
 Response: 5673580
 Conc: 21.78 ng/ml



#5 AR-1016-3

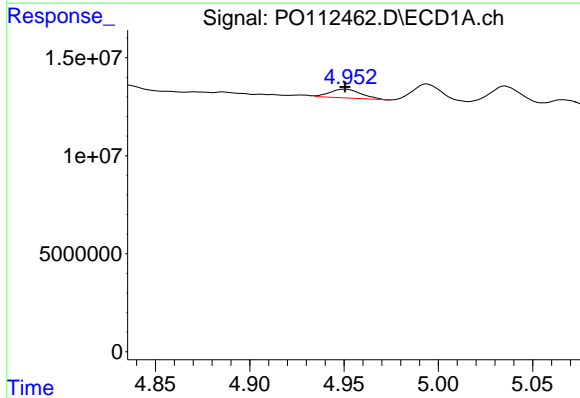
R.T.: 4.831 min
 Delta R.T.: 0.000 min
 Response: 5618298
 Conc: 21.47 ng/ml

Instrument :
 ECD_O
 ClientSampleId :
 71525-C



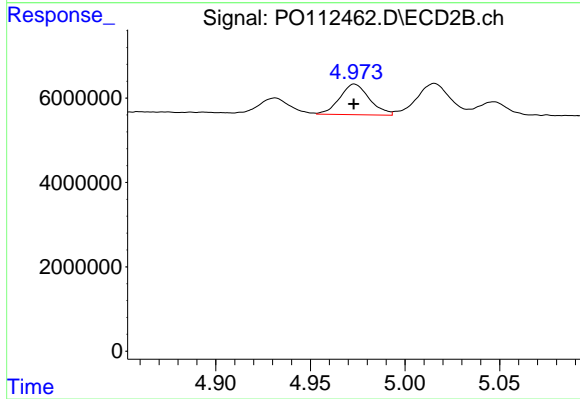
#5 AR-1016-3

R.T.: 4.932 min
 Delta R.T.: 0.000 min
 Response: 4054421
 Conc: 29.82 ng/ml



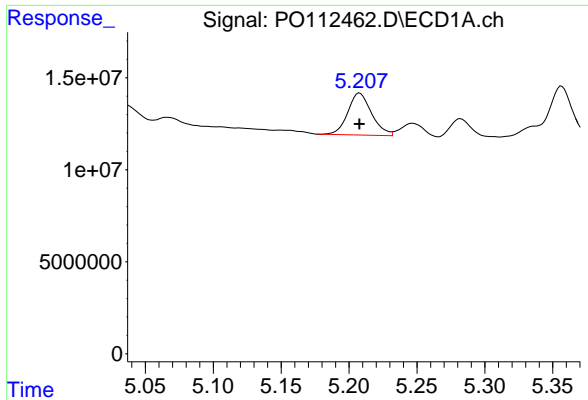
#6 AR-1016-4

R.T.: 4.951 min
 Delta R.T.: 0.000 min
 Response: 5186886
 Conc: 24.48 ng/ml



#6 AR-1016-4

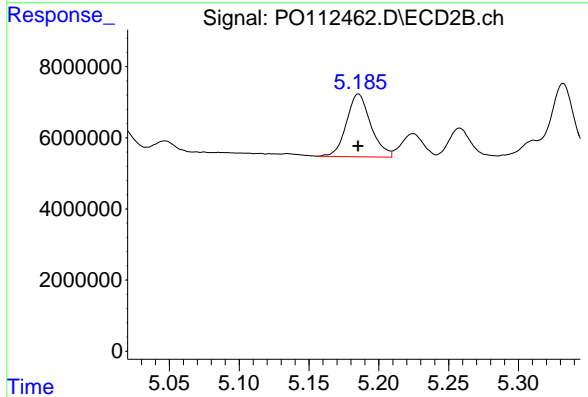
R.T.: 4.973 min
 Delta R.T.: 0.000 min
 Response: 7958214
 Conc: 71.64 ng/ml



#7 AR-1016-5

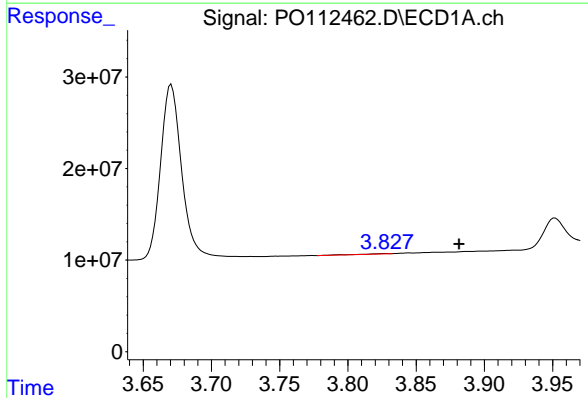
R.T.: 5.208 min
 Delta R.T.: 0.000 min
 Response: 27781740
 Conc: 126.59 ng/ml

Instrument :
 ECD_O
 ClientSampleId :
 71525-C



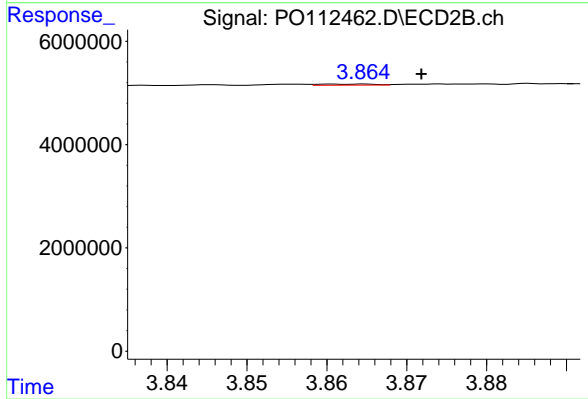
#7 AR-1016-5

R.T.: 5.185 min
 Delta R.T.: 0.000 min
 Response: 21394335
 Conc: 149.29 ng/ml



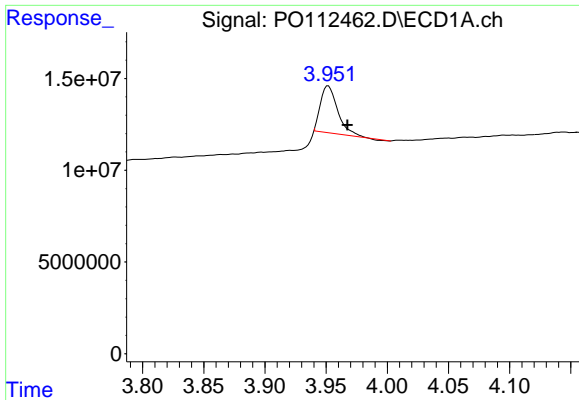
#8 AR-1221-1

R.T.: 3.827 min
 Delta R.T.: -0.054 min
 Response: 554790
 Conc: 5.74 ng/ml



#8 AR-1221-1

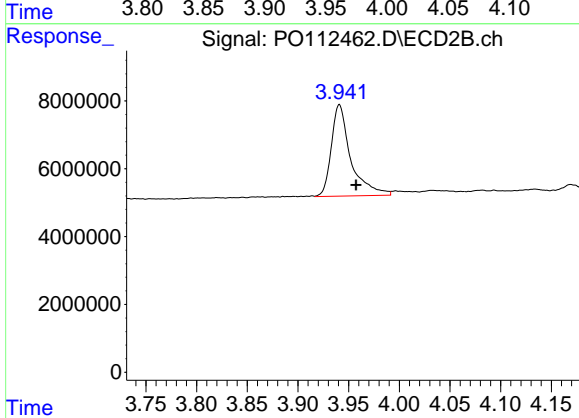
R.T.: 3.865 min
 Delta R.T.: -0.007 min
 Response: 100163
 Conc: 1.49 ng/ml



#9 AR-1221-2

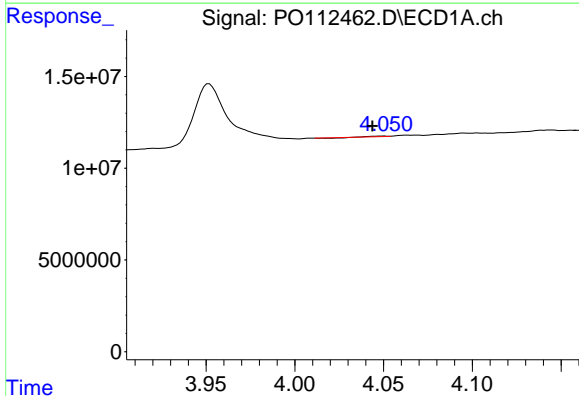
R.T.: 3.952 min
 Delta R.T.: -0.016 min
 Response: 24896843
 Conc: 346.45 ng/ml

Instrument :
 ECD_O
 ClientSampleId :
 71525-C



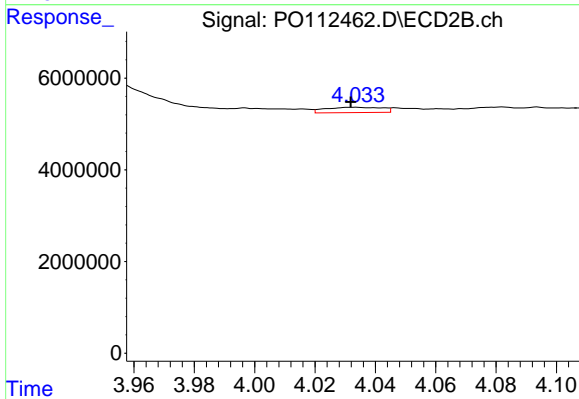
#9 AR-1221-2

R.T.: 3.941 min
 Delta R.T.: -0.017 min
 Response: 35929382
 Conc: 708.28 ng/ml



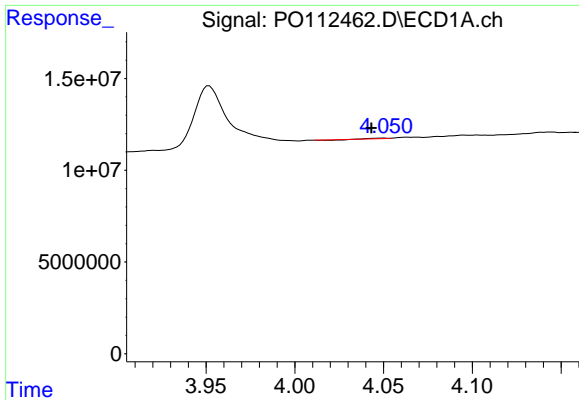
#10 AR-1221-3

R.T.: 4.050 min
 Delta R.T.: 0.006 min
 Response: 29973
 Conc: 0.13 ng/ml



#10 AR-1221-3

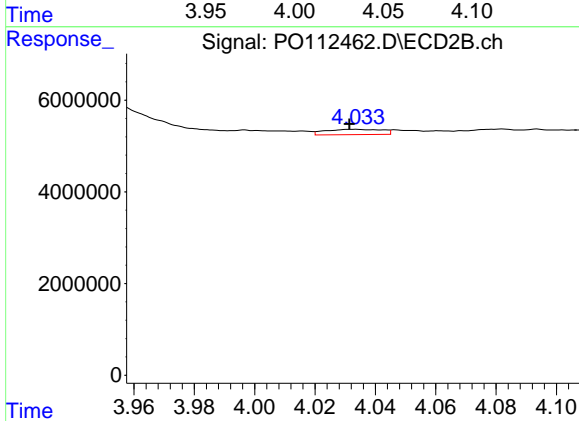
R.T.: 4.034 min
 Delta R.T.: 0.002 min
 Response: 1534478
 Conc: 9.68 ng/ml



#11 AR-1232-1

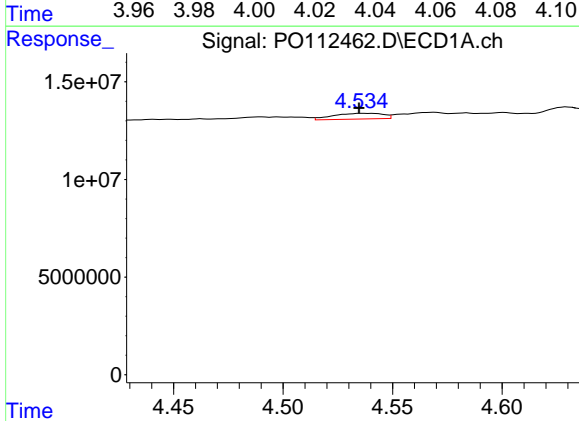
R.T.: 4.050 min
 Delta R.T.: 0.007 min
 Response: 29973
 Conc: 0.16 ng/ml

Instrument :
 ECD_O
 ClientSampleId :
 71525-C



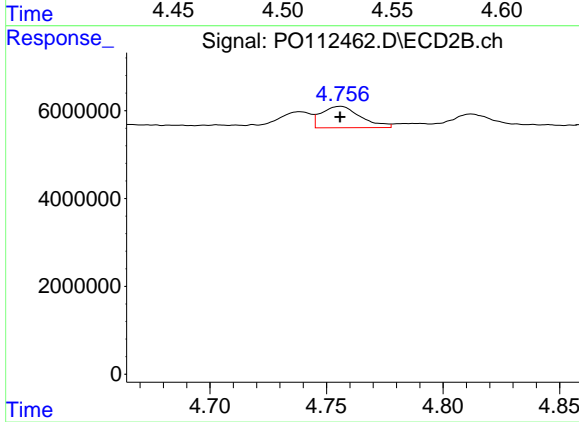
#11 AR-1232-1

R.T.: 4.034 min
 Delta R.T.: 0.002 min
 Response: 1534478
 Conc: 12.13 ng/ml



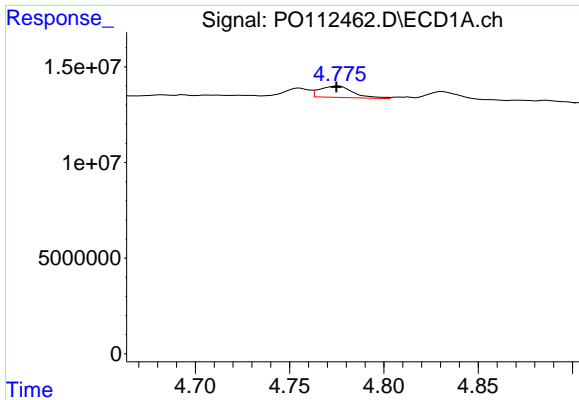
#12 AR-1232-2

R.T.: 4.536 min
 Delta R.T.: 0.001 min
 Response: 4675570
 Conc: 43.44 ng/ml



#12 AR-1232-2

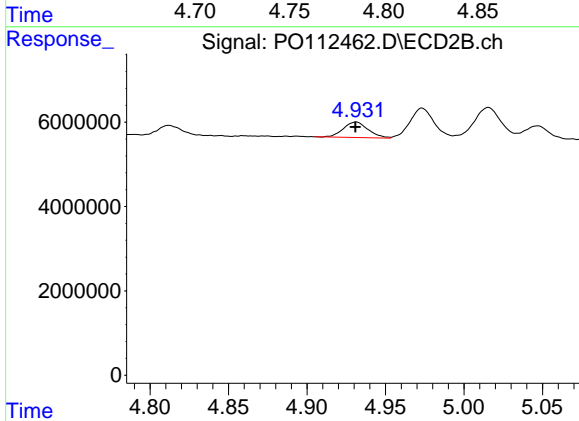
R.T.: 4.756 min
 Delta R.T.: 0.000 min
 Response: 5673580
 Conc: 43.26 ng/ml



#13 AR-1232-3

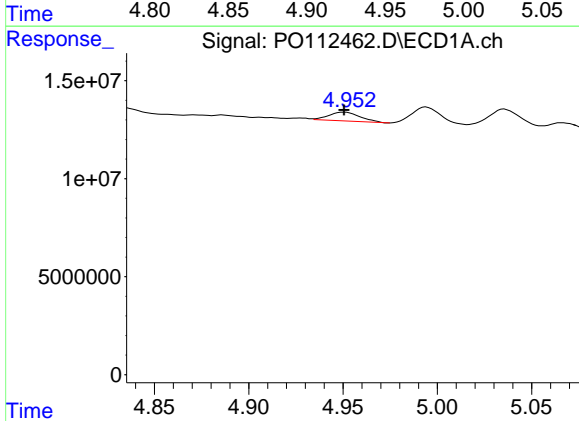
R.T.: 4.776 min
 Delta R.T.: 0.000 min
 Response: 7272597
 Conc: 35.17 ng/ml

Instrument :
 ECD_O
 ClientSampleId :
 71525-C



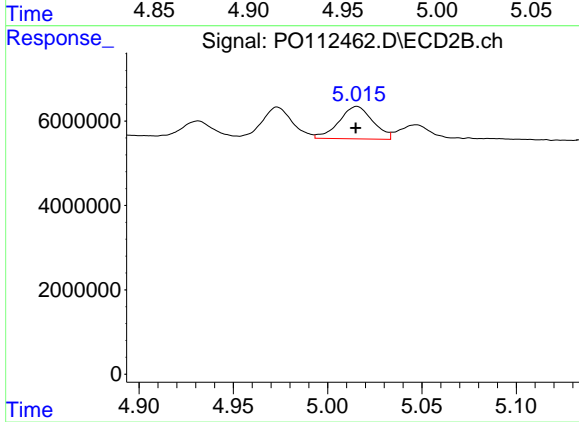
#13 AR-1232-3

R.T.: 4.932 min
 Delta R.T.: 0.000 min
 Response: 4054421
 Conc: 60.34 ng/ml



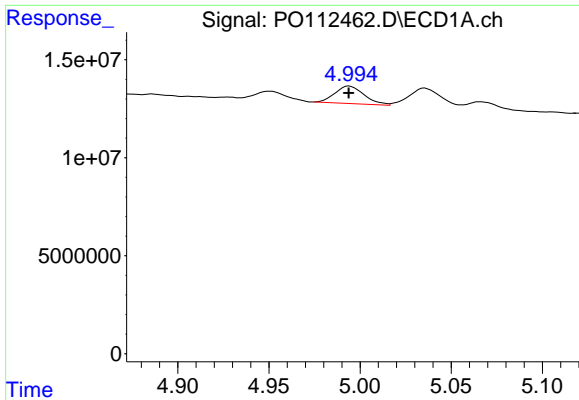
#14 AR-1232-4

R.T.: 4.951 min
 Delta R.T.: 0.000 min
 Response: 5186886
 Conc: 49.52 ng/ml



#14 AR-1232-4

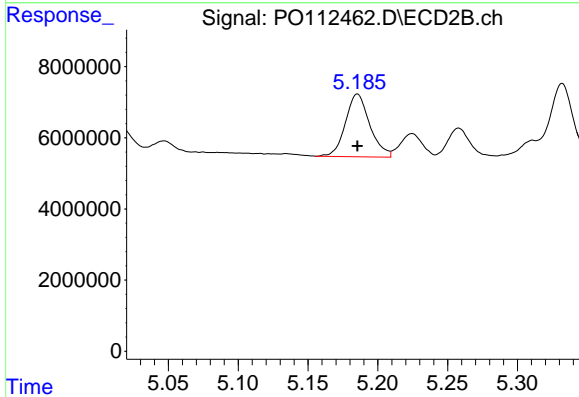
R.T.: 5.016 min
 Delta R.T.: 0.000 min
 Response: 9647114
 Conc: 161.24 ng/ml



#15 AR-1232-5

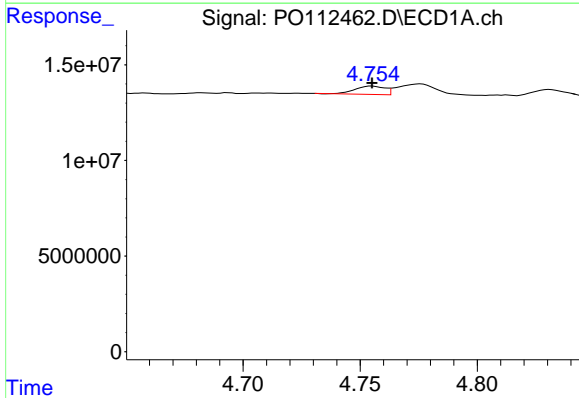
R.T.: 4.994 min
 Delta R.T.: 0.000 min
 Response: 10031469
 Conc: 147.78 ng/ml

Instrument :
 ECD_O
 ClientSampleId :
 71525-C



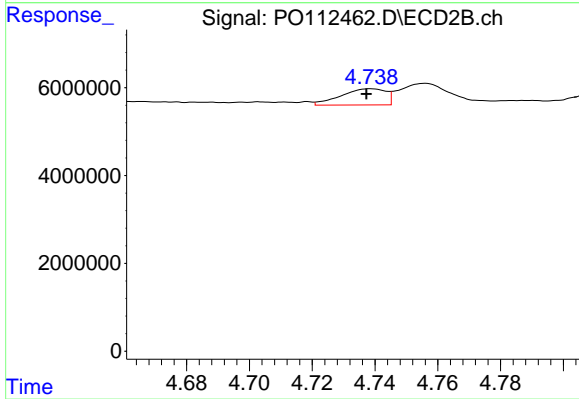
#15 AR-1232-5

R.T.: 5.185 min
 Delta R.T.: 0.000 min
 Response: 21394335
 Conc: 328.12 ng/ml



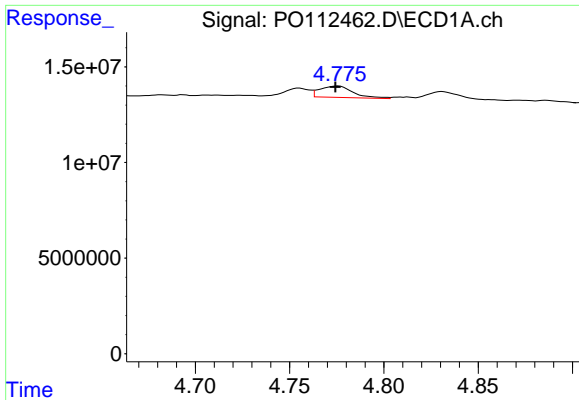
#16 AR-1242-1

R.T.: 4.755 min
 Delta R.T.: 0.000 min
 Response: 3828302
 Conc: 15.46 ng/ml



#16 AR-1242-1

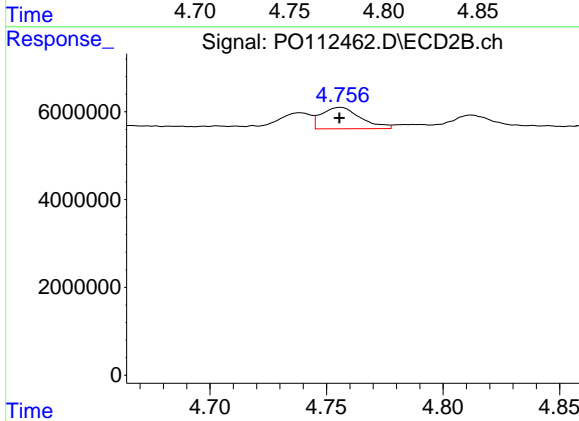
R.T.: 4.739 min
 Delta R.T.: 0.001 min
 Response: 3652829
 Conc: 23.06 ng/ml



#17 AR-1242-2

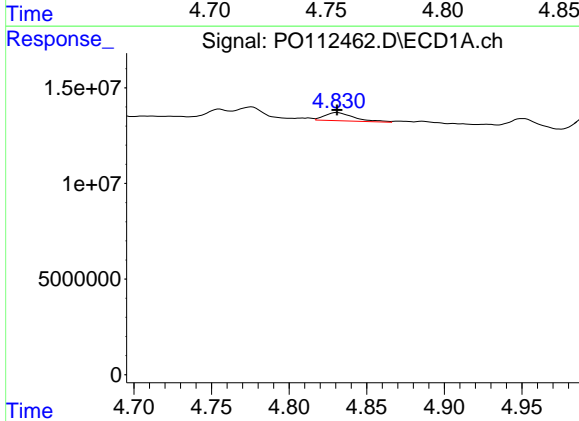
R.T.: 4.776 min
 Delta R.T.: 0.001 min
 Response: 7272597
 Conc: 19.67 ng/ml

Instrument :
 ECD_O
 ClientSampleId :
 71525-C



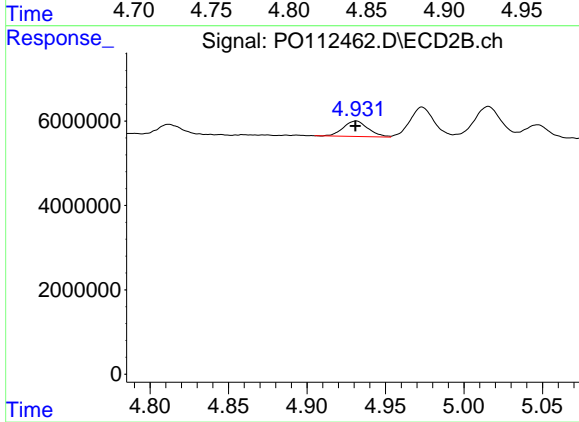
#17 AR-1242-2

R.T.: 4.756 min
 Delta R.T.: 0.000 min
 Response: 5673580
 Conc: 24.28 ng/ml



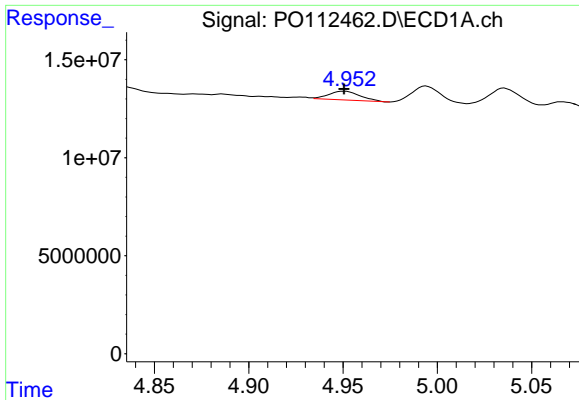
#18 AR-1242-3

R.T.: 4.831 min
 Delta R.T.: 0.000 min
 Response: 5618298
 Conc: 23.74 ng/ml



#18 AR-1242-3

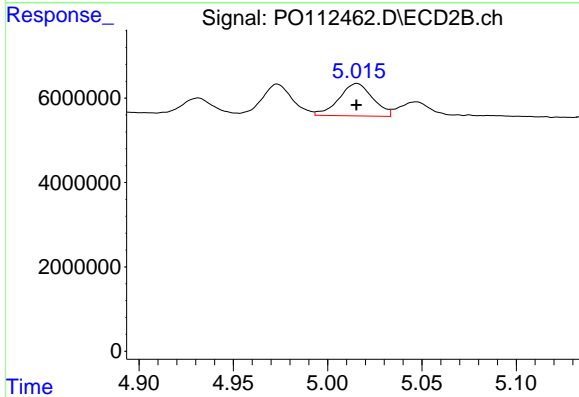
R.T.: 4.932 min
 Delta R.T.: 0.000 min
 Response: 4054421
 Conc: 33.46 ng/ml



#19 AR-1242-4

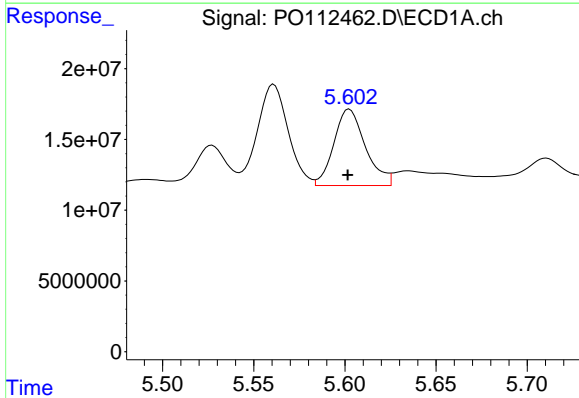
R.T.: 4.951 min
 Delta R.T.: 0.000 min
 Response: 5186886
 Conc: 26.70 ng/ml

Instrument :
 ECD_O
 ClientSampleId :
 71525-C



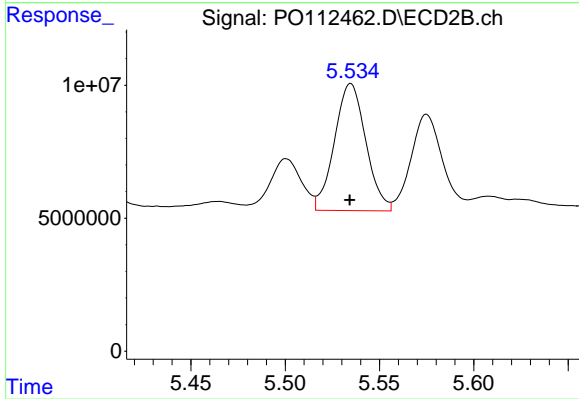
#19 AR-1242-4

R.T.: 5.016 min
 Delta R.T.: 0.000 min
 Response: 9647114
 Conc: 78.60 ng/ml



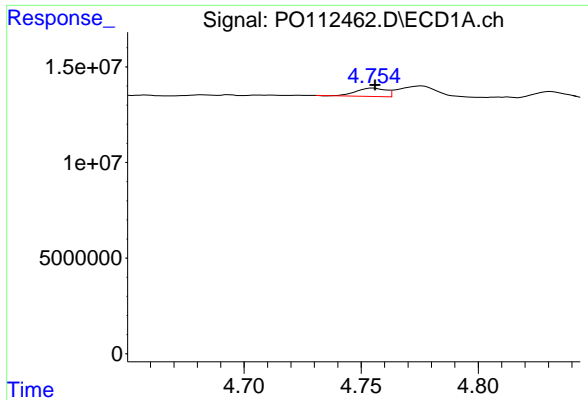
#20 AR-1242-5

R.T.: 5.602 min
 Delta R.T.: 0.000 min
 Response: 65221611
 Conc: 304.89 ng/ml



#20 AR-1242-5

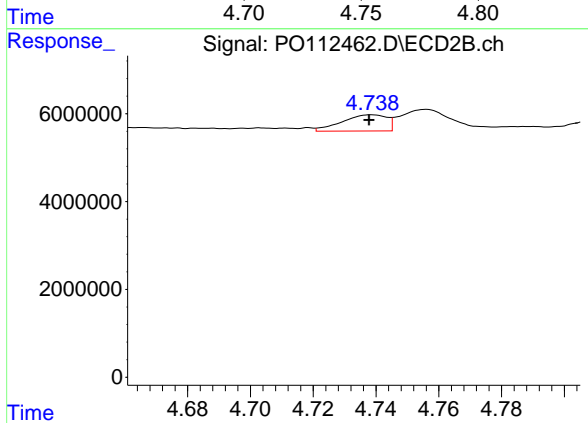
R.T.: 5.535 min
 Delta R.T.: 0.000 min
 Response: 55360531
 Conc: 343.92 ng/ml



#21 AR-1248-1

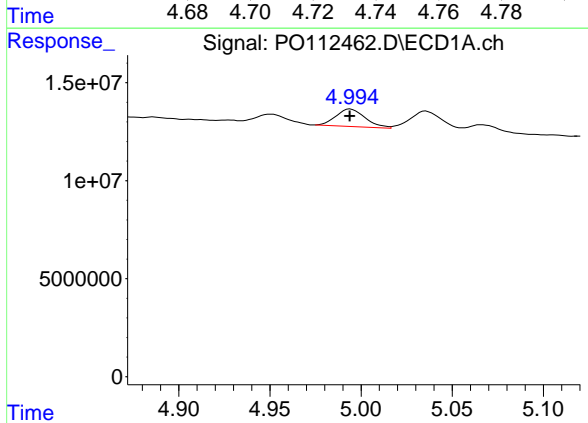
R.T.: 4.755 min
 Delta R.T.: 0.000 min
 Response: 3828302
 Conc: 20.45 ng/ml

Instrument :
 ECD_O
 ClientSampleId :
 71525-C



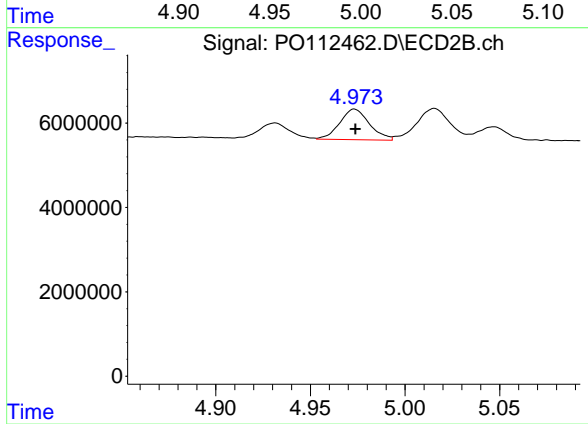
#21 AR-1248-1

R.T.: 4.739 min
 Delta R.T.: 0.000 min
 Response: 3652829
 Conc: 30.06 ng/ml



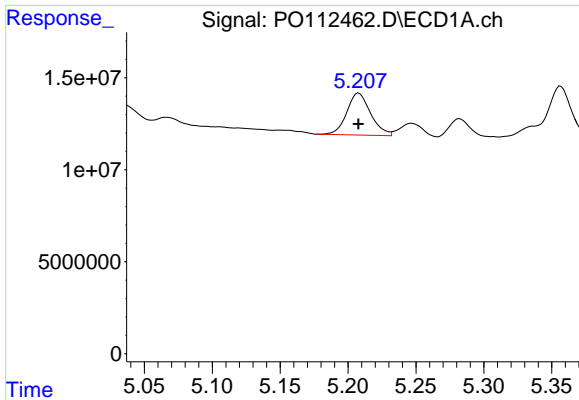
#22 AR-1248-2

R.T.: 4.994 min
 Delta R.T.: 0.000 min
 Response: 10031469
 Conc: 39.32 ng/ml



#22 AR-1248-2

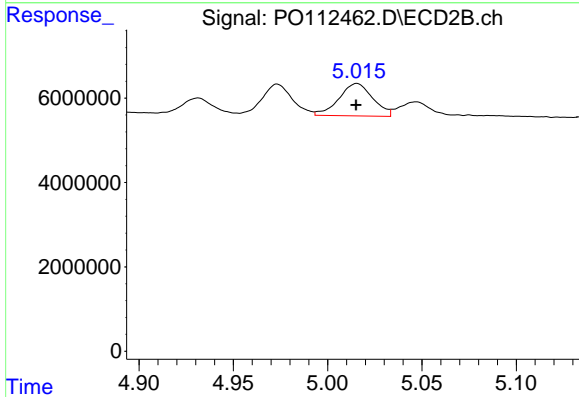
R.T.: 4.973 min
 Delta R.T.: 0.000 min
 Response: 7958214
 Conc: 47.01 ng/ml



#23 AR-1248-3

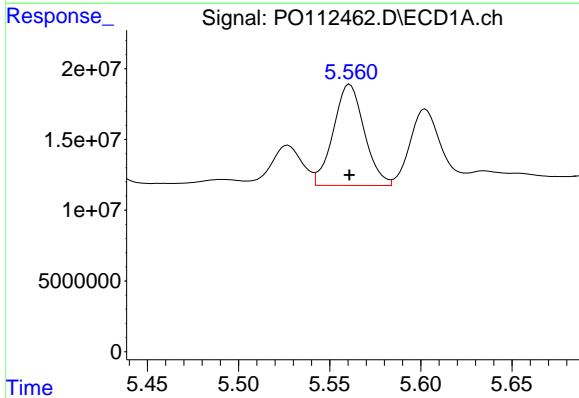
R.T.: 5.208 min
 Delta R.T.: 0.000 min
 Response: 27781740
 Conc: 80.83 ng/ml

Instrument :
 ECD_O
 ClientSampleId :
 71525-C



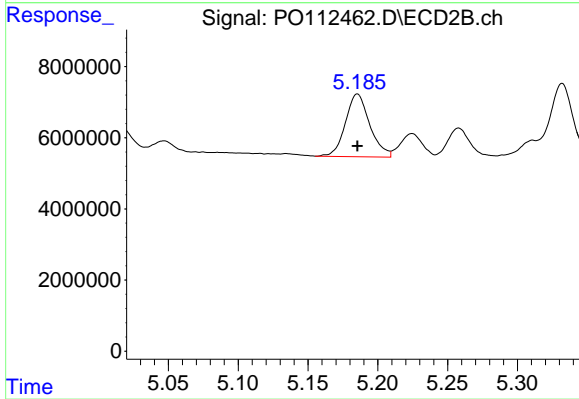
#23 AR-1248-3

R.T.: 5.016 min
 Delta R.T.: 0.000 min
 Response: 9647114
 Conc: 54.30 ng/ml



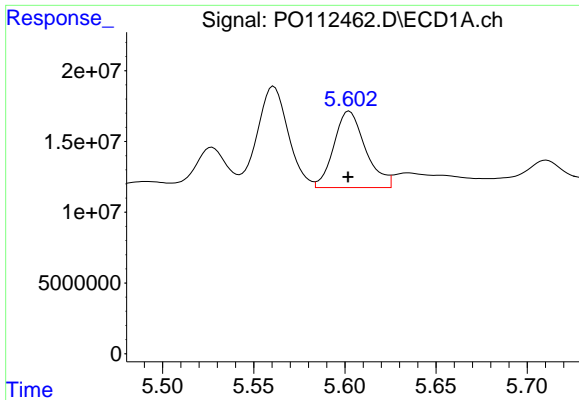
#24 AR-1248-4

R.T.: 5.561 min
 Delta R.T.: 0.000 min
 Response: 84403319
 Conc: 166.12 ng/ml



#24 AR-1248-4

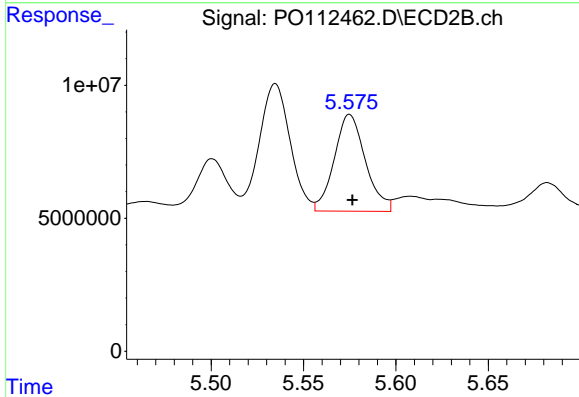
R.T.: 5.185 min
 Delta R.T.: 0.000 min
 Response: 21394335
 Conc: 102.68 ng/ml



#25 AR-1248-5

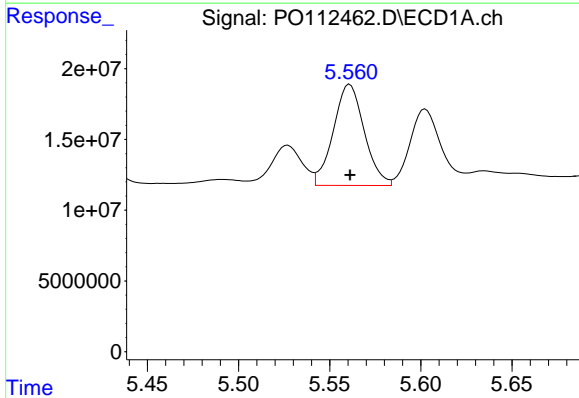
R.T.: 5.602 min
 Delta R.T.: 0.000 min
 Response: 65221611
 Conc: 186.57 ng/ml

Instrument :
 ECD_O
 ClientSampleId :
 71525-C



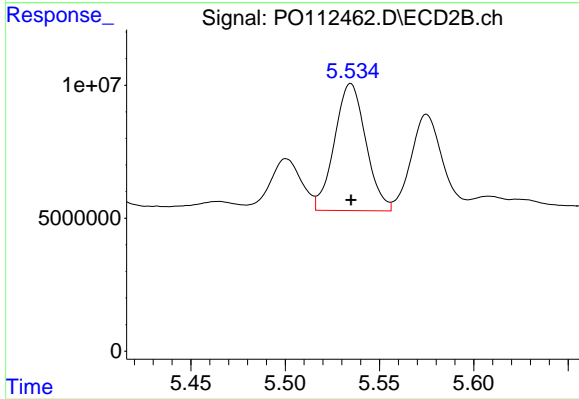
#25 AR-1248-5

R.T.: 5.575 min
 Delta R.T.: -0.001 min
 Response: 42809476
 Conc: 199.33 ng/ml



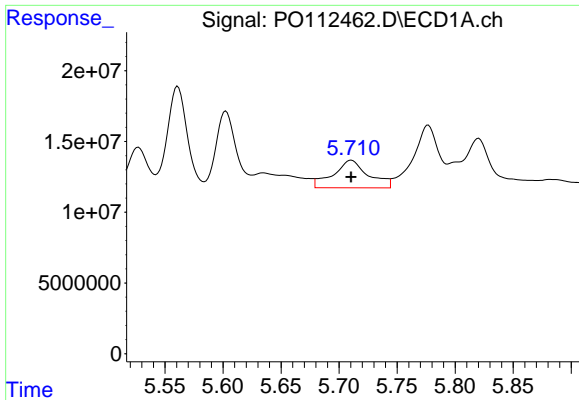
#26 AR-1254-1

R.T.: 5.561 min
 Delta R.T.: 0.000 min
 Response: 84403319
 Conc: 153.75 ng/ml



#26 AR-1254-1

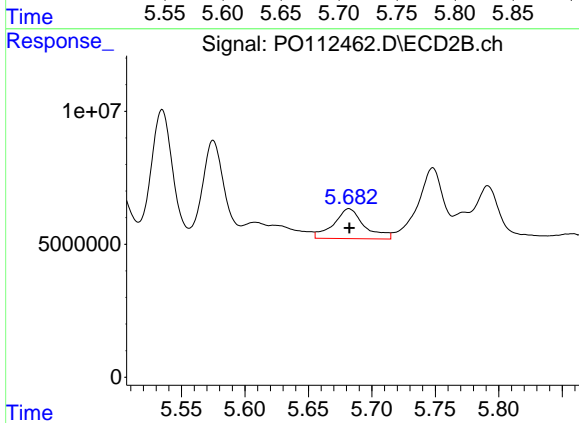
R.T.: 5.535 min
 Delta R.T.: 0.000 min
 Response: 55360531
 Conc: 168.46 ng/ml



#27 AR-1254-2

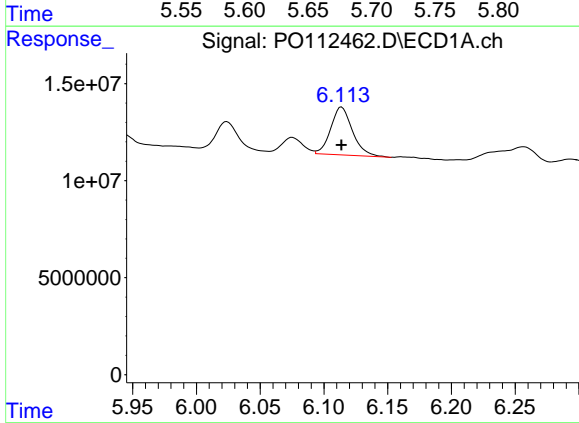
R.T.: 5.711 min
 Delta R.T.: 0.000 min
 Response: 40957171
 Conc: 84.29 ng/ml

Instrument :
 ECD_O
 ClientSampleId :
 71525-C



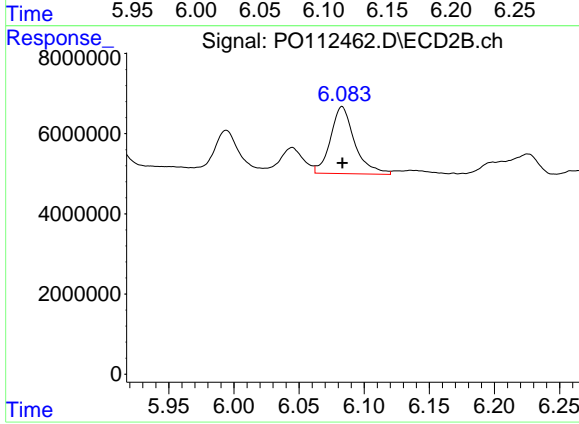
#27 AR-1254-2

R.T.: 5.682 min
 Delta R.T.: 0.000 min
 Response: 19016091
 Conc: 65.69 ng/ml



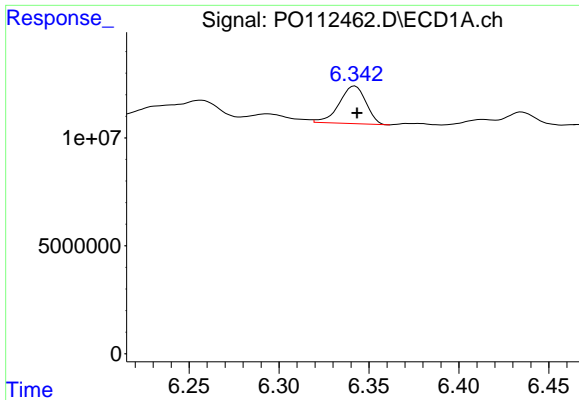
#28 AR-1254-3

R.T.: 6.114 min
 Delta R.T.: 0.000 min
 Response: 29404382
 Conc: 39.51 ng/ml



#28 AR-1254-3

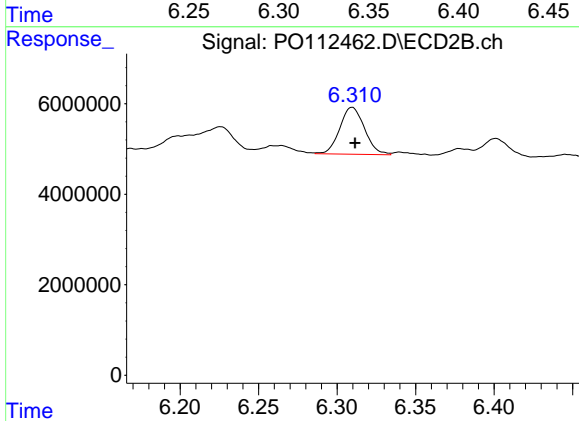
R.T.: 6.083 min
 Delta R.T.: 0.000 min
 Response: 21633728
 Conc: 50.61 ng/ml



#29 AR-1254-4

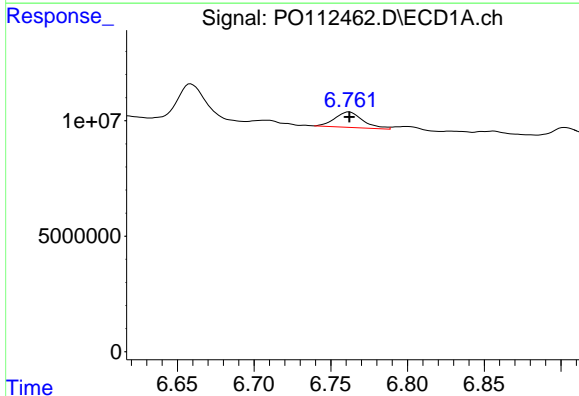
R.T.: 6.342 min
 Delta R.T.: -0.001 min
 Response: 18028761
 Conc: 32.80 ng/ml

Instrument :
 ECD_O
 ClientSampleId :
 71525-C



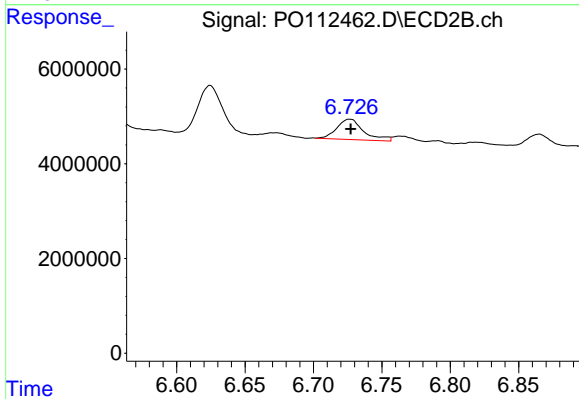
#29 AR-1254-4

R.T.: 6.310 min
 Delta R.T.: -0.002 min
 Response: 11396428
 Conc: 41.75 ng/ml



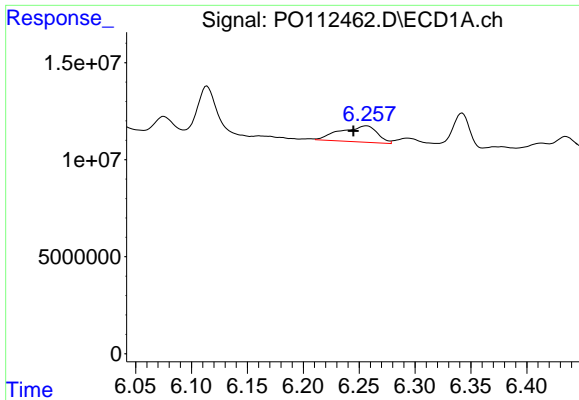
#30 AR-1254-5

R.T.: 6.762 min
 Delta R.T.: 0.000 min
 Response: 8564346
 Conc: 12.10 ng/ml



#30 AR-1254-5

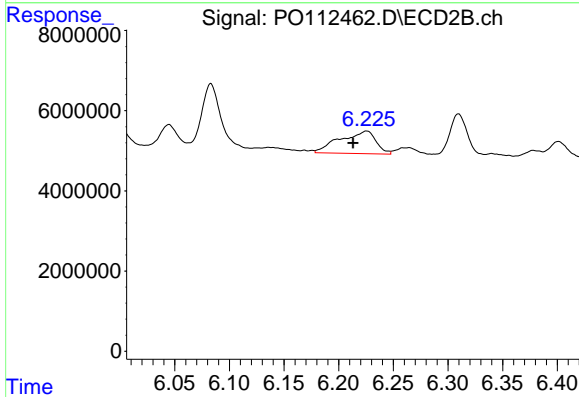
R.T.: 6.727 min
 Delta R.T.: 0.000 min
 Response: 5869638
 Conc: 17.57 ng/ml



#31 AR-1260-1

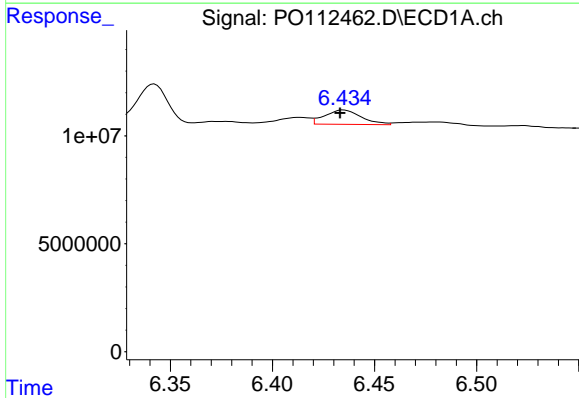
R.T.: 6.257 min
 Delta R.T.: 0.012 min
 Response: 19167452
 Conc: 43.63 ng/ml

Instrument :
 ECD_O
 ClientSampleId :
 71525-C



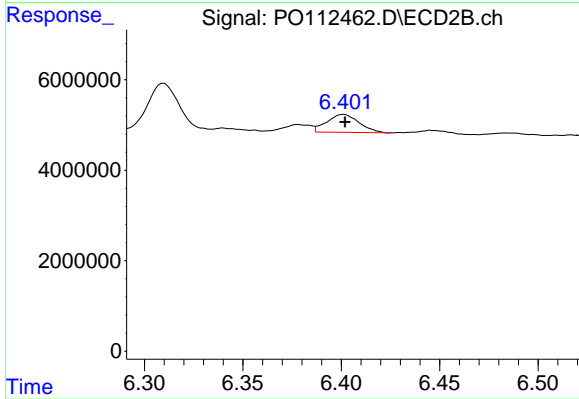
#31 AR-1260-1

R.T.: 6.226 min
 Delta R.T.: 0.012 min
 Response: 12818068
 Conc: 51.58 ng/ml



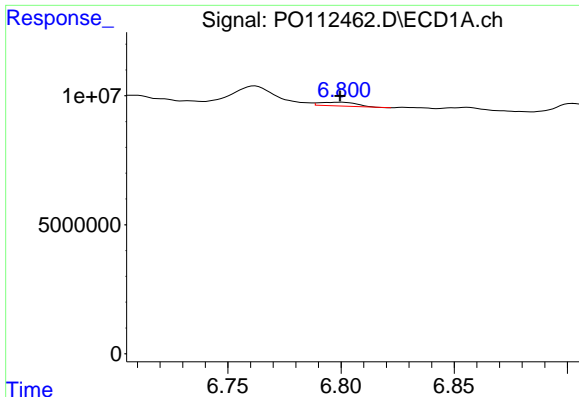
#32 AR-1260-2

R.T.: 6.435 min
 Delta R.T.: 0.002 min
 Response: 8263665
 Conc: 12.01 ng/ml



#32 AR-1260-2

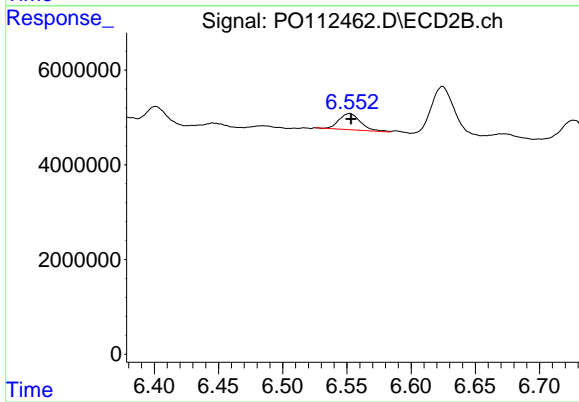
R.T.: 6.401 min
 Delta R.T.: 0.000 min
 Response: 4502264
 Conc: 13.66 ng/ml



#33 AR-1260-3

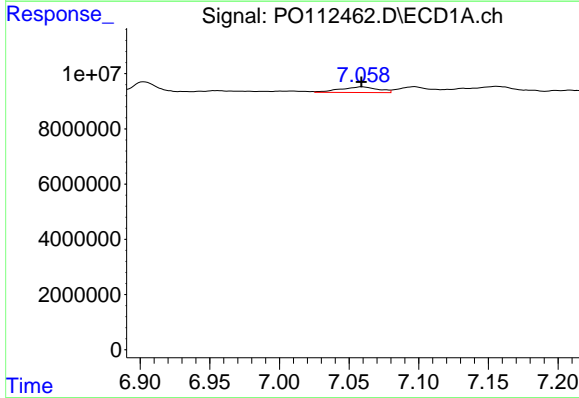
R.T.: 6.800 min
 Delta R.T.: 0.000 min
 Response: 1652571
 Conc: 2.81 ng/ml

Instrument :
 ECD_O
 ClientSampleId :
 71525-C



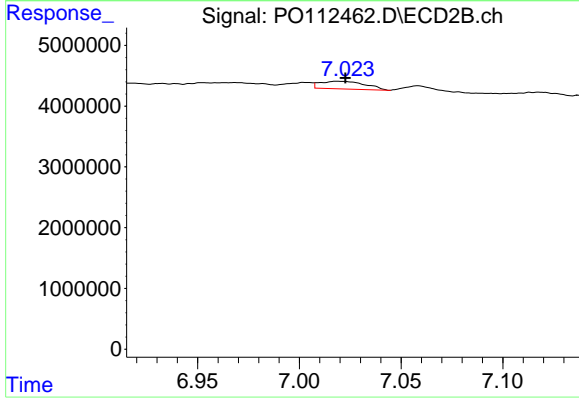
#33 AR-1260-3

R.T.: 6.552 min
 Delta R.T.: -0.001 min
 Response: 3999989
 Conc: 15.57 ng/ml



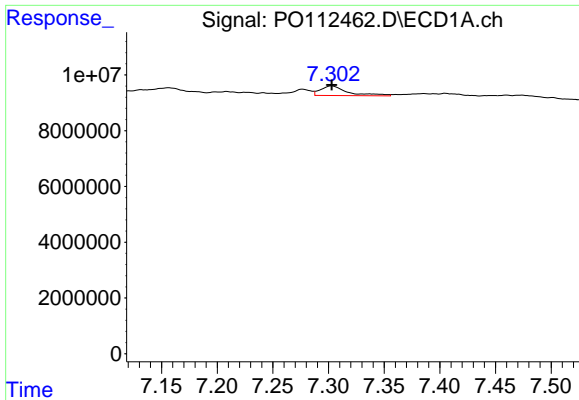
#34 AR-1260-4

R.T.: 7.059 min
 Delta R.T.: 0.000 min
 Response: 3854258
 Conc: 8.55 ng/ml



#34 AR-1260-4

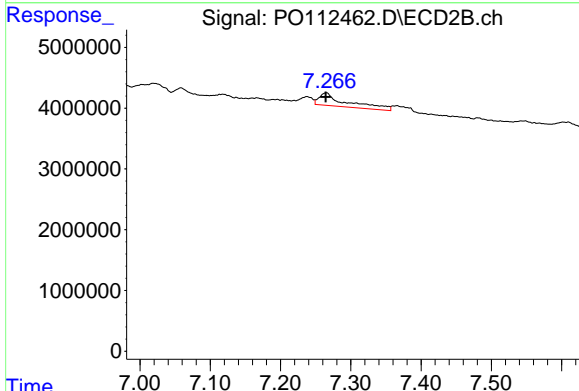
R.T.: 7.019 min
 Delta R.T.: -0.004 min
 Response: 1943267
 Conc: 10.16 ng/ml



#35 AR-1260-5

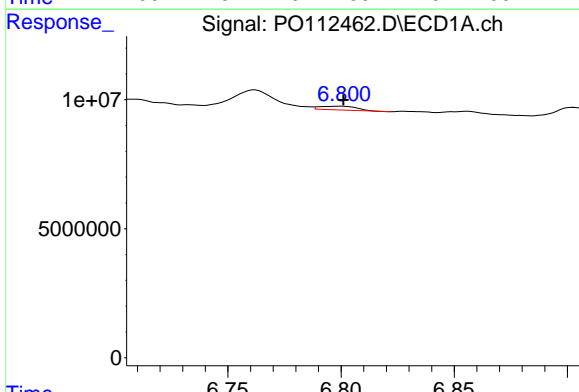
R.T.: 7.303 min
 Delta R.T.: 0.000 min
 Response: 5928983
 Conc: 4.78 ng/ml

Instrument :
 ECD_O
 ClientSampleId :
 71525-C



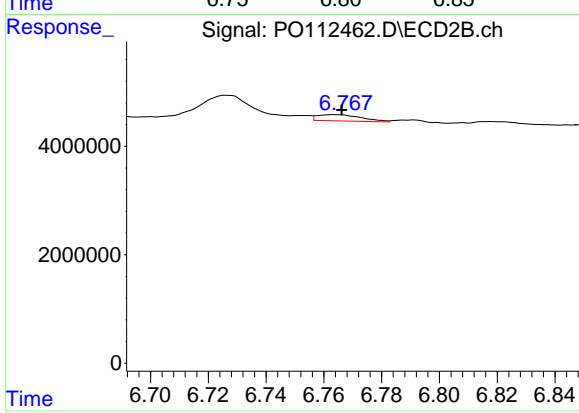
#35 AR-1260-5

R.T.: 7.265 min
 Delta R.T.: 0.000 min
 Response: 5886394
 Conc: 14.28 ng/ml



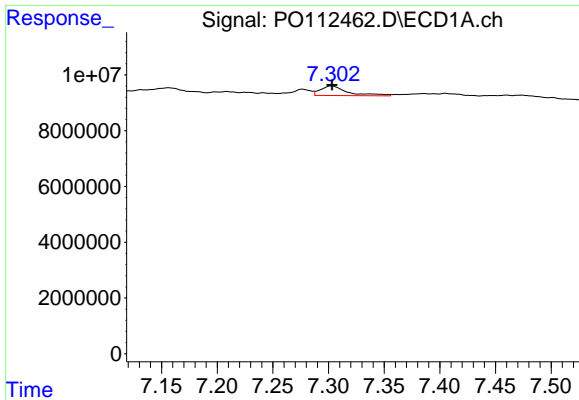
#36 AR-1262-1

R.T.: 6.800 min
 Delta R.T.: -0.001 min
 Response: 1652571
 Conc: 1.78 ng/ml



#36 AR-1262-1

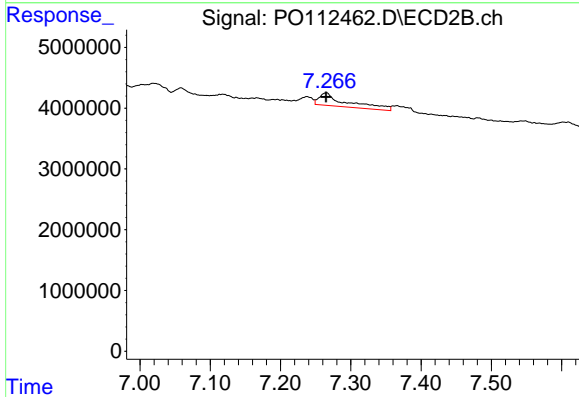
R.T.: 6.764 min
 Delta R.T.: -0.003 min
 Response: 1215364
 Conc: 2.93 ng/ml



#37 AR-1262-2

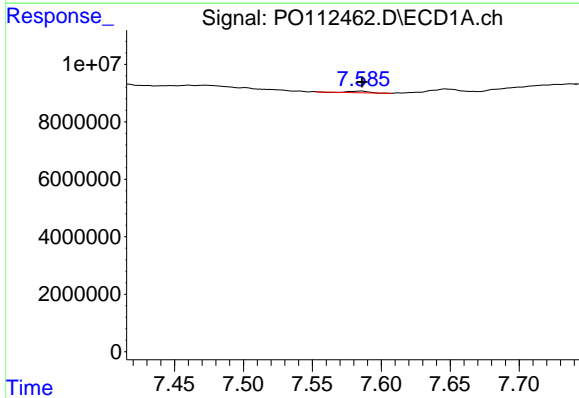
R.T.: 7.303 min
 Delta R.T.: 0.000 min
 Response: 5928983
 Conc: 3.99 ng/ml

Instrument :
 ECD_O
 ClientSampleId :
 71525-C



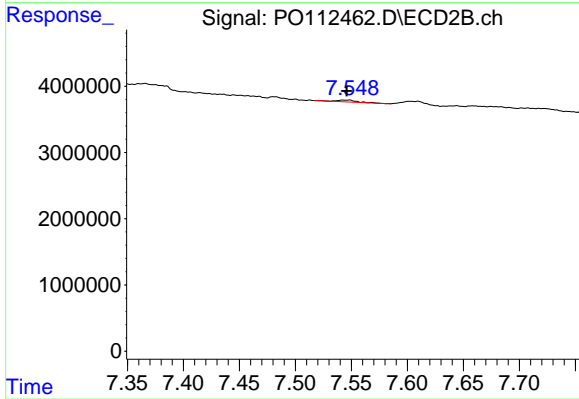
#37 AR-1262-2

R.T.: 7.265 min
 Delta R.T.: 0.000 min
 Response: 5886394
 Conc: 11.42 ng/ml



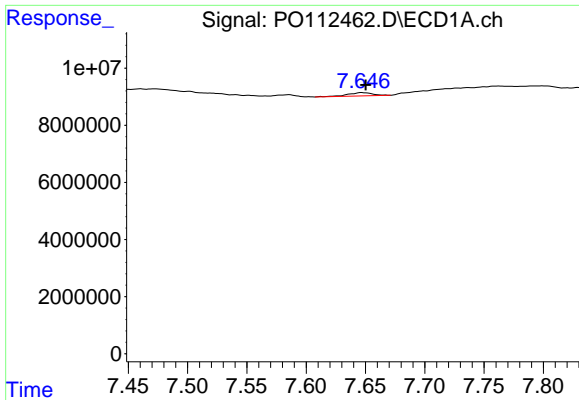
#38 AR-1262-3

R.T.: 7.585 min
 Delta R.T.: 0.000 min
 Response: 522417
 Conc: 0.89 ng/ml



#38 AR-1262-3

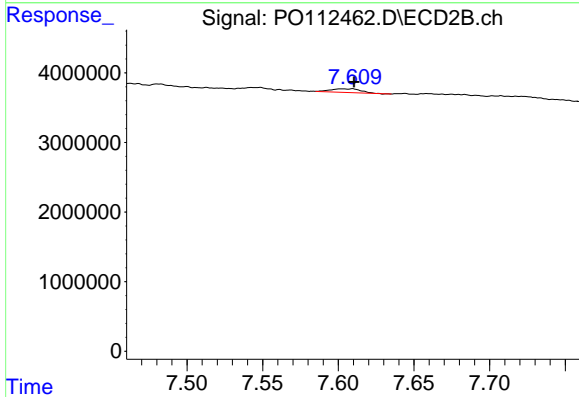
R.T.: 7.543 min
 Delta R.T.: -0.003 min
 Response: 343289
 Conc: 1.84 ng/ml



#39 AR-1262-4

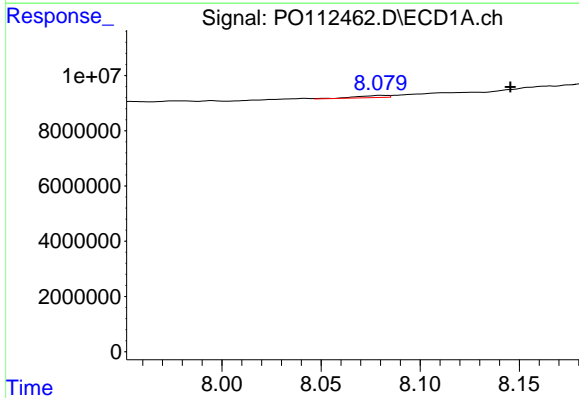
R.T.: 7.647 min
 Delta R.T.: -0.003 min
 Response: 1608685
 Conc: 1.62 ng/ml

Instrument :
 ECD_O
 ClientSampleId :
 71525-C



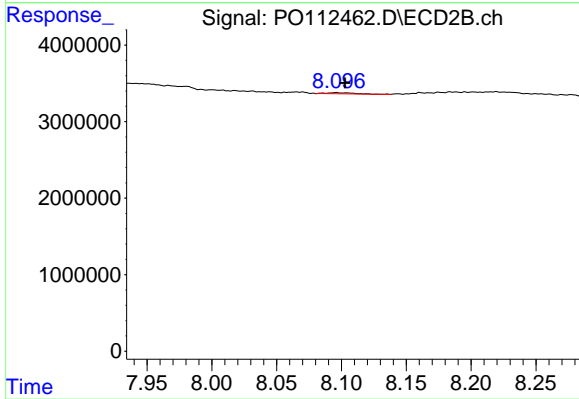
#39 AR-1262-4

R.T.: 7.602 min
 Delta R.T.: -0.008 min
 Response: 735027
 Conc: 2.55 ng/ml



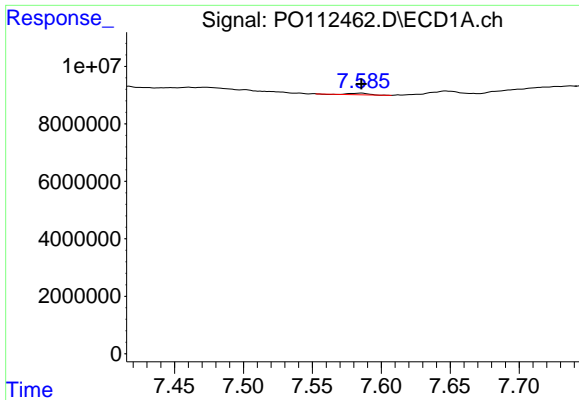
#40 AR-1262-5

R.T.: 8.081 min
 Delta R.T.: -0.065 min
 Response: 854597
 Conc: 1.97 ng/ml



#40 AR-1262-5

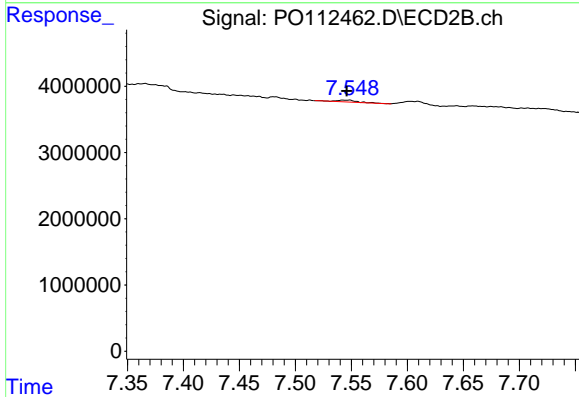
R.T.: 8.096 min
 Delta R.T.: -0.007 min
 Response: 191288
 Conc: 1.92 ng/ml



#41 AR-1268-1

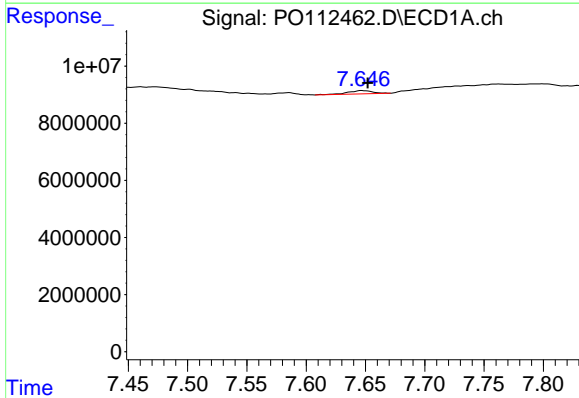
R.T.: 7.585 min
 Delta R.T.: 0.000 min
 Response: 522417
 Conc: 0.30 ng/ml

Instrument :
 ECD_O
 ClientSampleId :
 71525-C



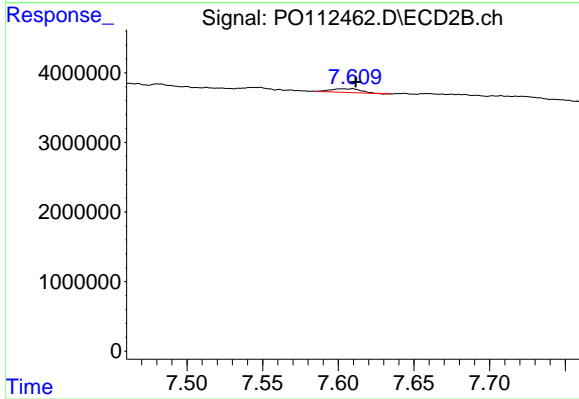
#41 AR-1268-1

R.T.: 7.543 min
 Delta R.T.: -0.003 min
 Response: 343289
 Conc: 0.66 ng/ml



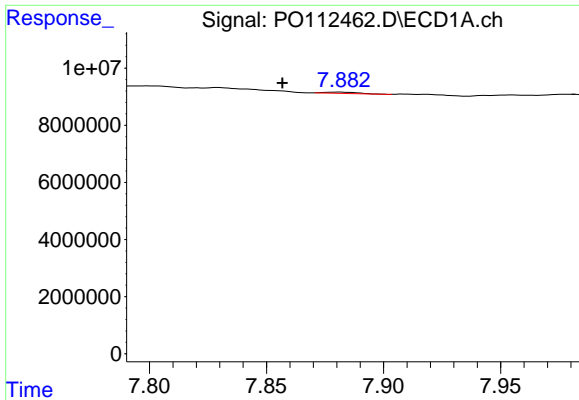
#42 AR-1268-2

R.T.: 7.647 min
 Delta R.T.: -0.005 min
 Response: 1608685
 Conc: 1.09 ng/ml



#42 AR-1268-2

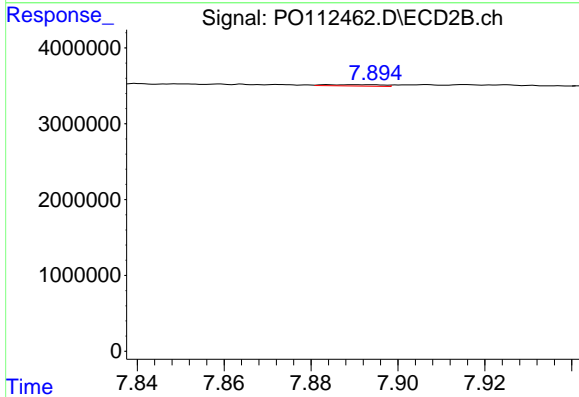
R.T.: 7.602 min
 Delta R.T.: -0.009 min
 Response: 735027
 Conc: 1.73 ng/ml



#43 AR-1268-3

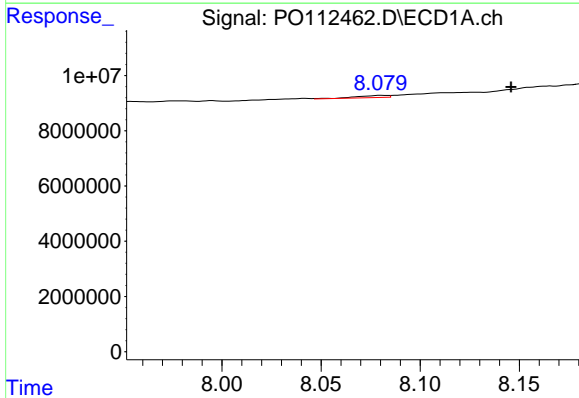
R.T.: 7.881 min
 Delta R.T.: 0.024 min
 Response: 417574
 Conc: 0.33 ng/ml

Instrument :
 ECD_O
 ClientSampleId :
 71525-C



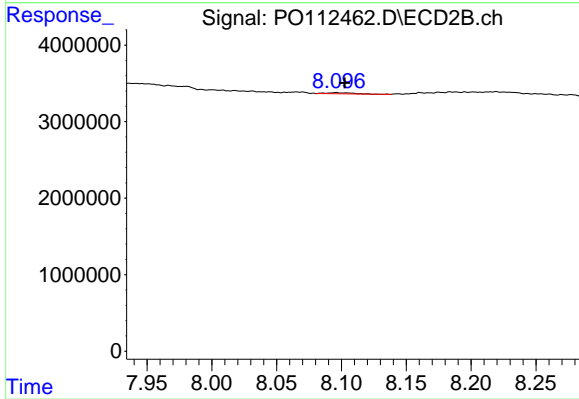
#43 AR-1268-3

R.T.: 7.884 min
 Delta R.T.: 0.068 min
 Response: 163198
 Conc: 0.51 ng/ml



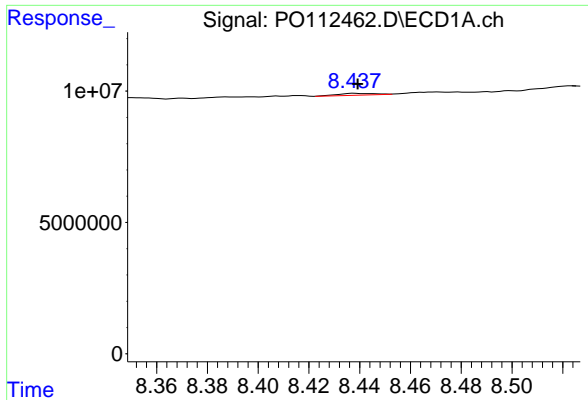
#44 AR-1268-4

R.T.: 8.081 min
 Delta R.T.: -0.065 min
 Response: 854597
 Conc: 1.77 ng/ml



#44 AR-1268-4

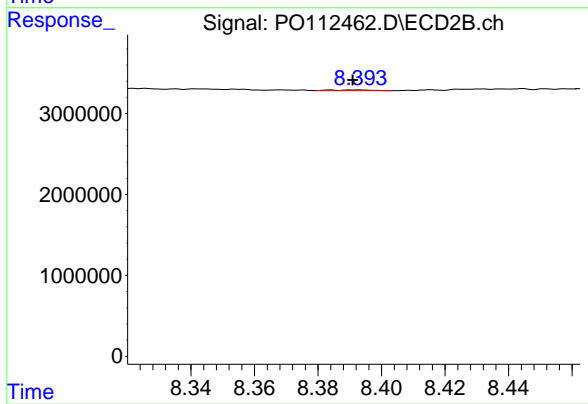
R.T.: 8.096 min
 Delta R.T.: -0.007 min
 Response: 191288
 Conc: 1.72 ng/ml



#45 AR-1268-5

R.T.: 8.438 min
 Delta R.T.: -0.001 min
 Response: 714038
 Conc: 0.21 ng/ml

Instrument :
 ECD_O
 ClientSampleId :
 71525-C



#45 AR-1268-5

R.T.: 8.384 min
 Delta R.T.: -0.007 min
 Response: 75378
 Conc: 0.10 ng/ml