

Data Path : Z:\pestpcbsrv\HPCHEM1\ECD_0\Data\P0072425\
 Data File : PO112463.D
 Signal(s) : Signal #1: ECD1A.ch Signal #2: ECD2B.ch
 Acq On : 24 Jul 2025 13:19
 Operator : YP/AJ
 Sample : Q2663-13 10X
 Misc :
 ALS Vial : 16 Sample Multiplier: 1

Instrument :
 ECD_0
 ClientSampleId :
 HEH700H-1-1

Integration File signal 1: autoint1.e
 Integration File signal 2: autoint2.e
 Quant Time: Jul 24 23:41:03 2025
 Quant Method : Z:\pestpcbsrv\HPCHEM1\ECD_0\methods\P0072325.M
 Quant Title : GC EXTRACTABLES
 QLast Update : Thu Jul 24 04:54:06 2025
 Response via : Initial Calibration
 Integrator: ChemStation

Volume Inj. : 2 µl
 Signal #1 Phase : ZB-MR2 Signal #2 Phase: ZB-MR2
 Signal #1 Info : 30Mx0.32mmx 0.50µ Signal #2 Info : 30M x 0.32mm x 0.25µm

Compound	RT#1	RT#2	Resp#1	Resp#2	ng/ml	ng/ml
System Monitoring Compounds						
1) SA Tetrachlo...	3.670	3.662	10010833	6784585	1.231	1.365
2) SA Decachlor...	8.696	8.642	6029125	1288512	0.825	0.729
Target Compounds						
3) L1 AR-1016-1	4.777	4.742	873217	635912	3.254	3.634
4) L1 AR-1016-2	4.777	4.753	873217	747459	2.150	2.869 #
5) L1 AR-1016-3	4.842	4.932	3221231	285334	12.310	2.099 #
6) L1 AR-1016-4	4.938	4.978	2974825	1039730	14.043	9.360 #
7) L1 AR-1016-5	5.213	5.187	31656449	7120231	144.240	49.687 #
8) L2 AR-1221-1	3.869	3.863	316561	152935	3.275	2.274 #
9) L2 AR-1221-2	3.961	3.955	99740	93160	1.388	1.836 #
10) L2 AR-1221-3	4.039	4.030	420732	249340	1.770	1.573
11) L3 AR-1232-1	4.039	4.030	420732	249340	2.250	1.970
12) L3 AR-1232-2	4.545	4.753	2983032	747459	27.717	5.699 #
13) L3 AR-1232-3	4.777	4.932	873217	285334	4.223	4.246
14) L3 AR-1232-4	4.938	5.014	2974825	2092641	28.402	34.977
15) L3 AR-1232-5	4.974	5.187	4945972	7120231	72.863	109.201 #
16) L4 AR-1242-1	4.777	4.742	873217	635912	3.527	4.015
17) L4 AR-1242-2	4.777	4.753	873217	747459	2.361	3.199 #
18) L4 AR-1242-3	4.842	4.932	3221231	285334	13.611	2.354 #
19) L4 AR-1242-4	4.938	5.014	2974825	2092641	15.312	17.049
20) L4 AR-1242-5	5.605	5.533	964360	9009814	4.508	55.972 #
21) L5 AR-1248-1	4.777	4.742	873217	635912	4.664	5.233
22) L5 AR-1248-2	4.974	4.978	4945972	1039730	19.387	6.142 #
23) L5 AR-1248-3	5.213	5.014	31656449	2092641	92.105	11.780 #
24) L5 AR-1248-4	5.561	5.187	3611324	7120231	7.108	34.174 #
25) L5 AR-1248-5	5.605	5.576	964360	4903068	2.759	22.830 #
26) L6 AR-1254-1	5.561	5.533	3611324	9009814	6.578	27.417 #
27) L6 AR-1254-2	5.708	5.681	3146915	7918809	6.476	27.354 #
28) L6 AR-1254-3	6.113	6.082	5312884	6008115	7.138	14.055 #
29) L6 AR-1254-4	6.342	6.311	5019632	2154829	9.132	7.894
30) L6 AR-1254-5	6.762	6.724	4415188	2416912	6.238	7.236
31) L7 AR-1260-1	6.243	6.212	4649782	3378833	10.584	13.596 #
32) L7 AR-1260-2	6.432	6.402	2597767	1037123	3.776	3.148
33) L7 AR-1260-3	6.787	6.551	3195661	1421085	5.435	5.531
34) L7 AR-1260-4	7.057	7.023	2123177	763183	4.708	3.989
35) L7 AR-1260-5	7.306	7.265	876503	521056	0.707	1.264 #
36) L8 AR-1262-1	6.787	6.753	3195661	939485	3.439	2.265 #
37) L8 AR-1262-2	7.306	7.265	876503	521056	0.589	1.011 #
38) L8 AR-1262-3	7.591	7.537	952559	306667	1.614	1.644
39) L8 AR-1262-4	7.647	7.605	1803620	296826	1.814	1.030 #
40) L8 AR-1262-5	8.158	8.100	456167	26407	1.051	0.265 #
41) L9 AR-1268-1	7.591	7.537	952559	306667	0.544	0.592

Data Path : Z:\pestpcbsrv\HPCHEM1\ECD_0\Data\P0072425\
 Data File : P0112463.D
 Signal(s) : Signal #1: ECD1A.ch Signal #2: ECD2B.ch
 Acq On : 24 Jul 2025 13:19
 Operator : YP/AJ
 Sample : Q2663-13 10X
 Misc :
 ALS Vial : 16 Sample Multiplier: 1

Instrument :
 ECD_0
 ClientSampleId :
 HEH700H-1-1

Integration File signal 1: autoint1.e
 Integration File signal 2: autoint2.e
 Quant Time: Jul 24 23:41:03 2025
 Quant Method : Z:\pestpcbsrv\HPCHEM1\ECD_0\methods\P0072325.M
 Quant Title : GC EXTRACTABLES
 QLast Update : Thu Jul 24 04:54:06 2025
 Response via : Initial Calibration
 Integrator: ChemStation

Volume Inj. : 2 µl
 Signal #1 Phase : ZB-MR1 Signal #2 Phase: ZB-MR2
 Signal #1 Info : 30Mx0.32mmx 0.50µ Signal #2 Info : 30M x 0.32mm x 0.25µm

	Compound	RT#1	RT#2	Resp#1	Resp#2	ng/ml	ng/ml
42)	L9 AR-1268-2	7.647	7.605	1803620	296826	1.224	0.698 #
43)	L9 AR-1268-3	7.859	7.814	252003	96411	0.201	0.300 #
44)	L9 AR-1268-4	8.158	8.100	456167	26407	0.947	0.237 #
45)	L9 AR-1268-5	8.445	8.390	739161	9762	0.220	0.013 #

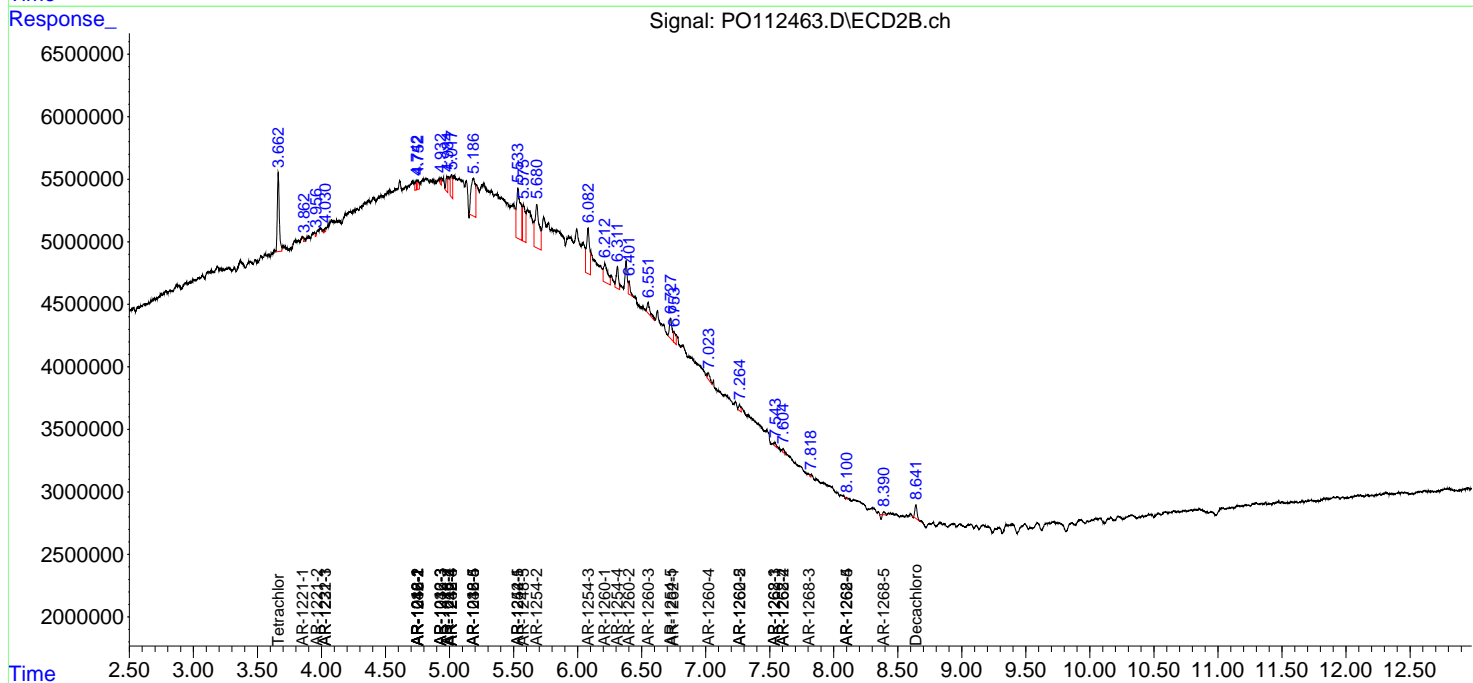
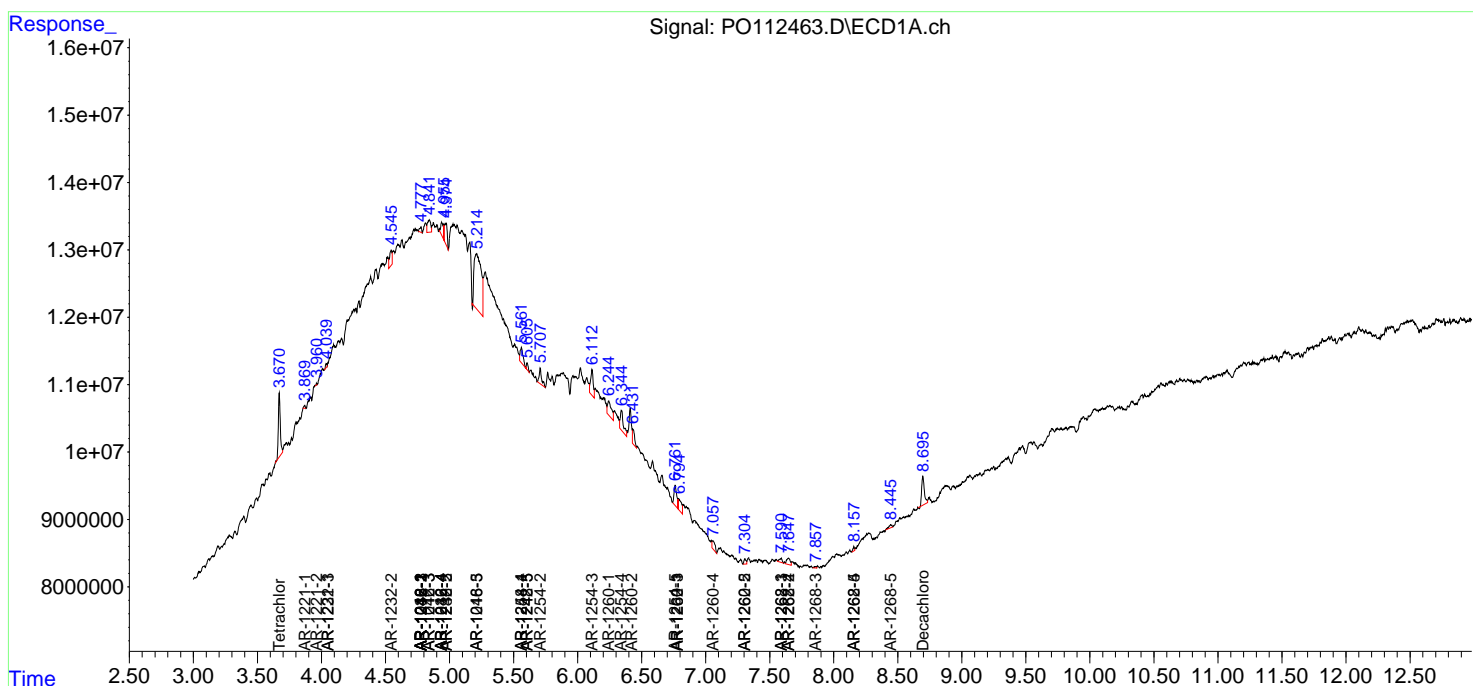
(f)=RT Delta > 1/2 Window (#)=Amounts differ by > 25% (m)=manual int.

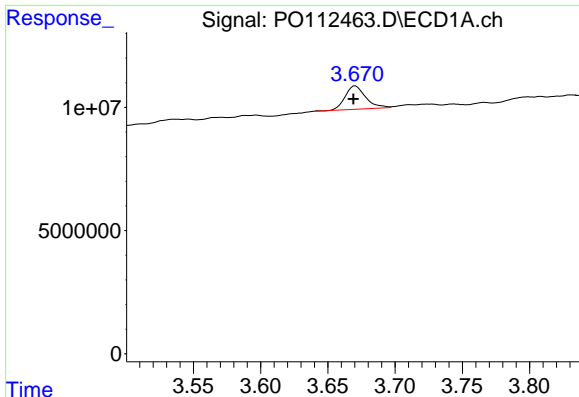
Data Path : Z:\pestpcbsrv\HPCHEM1\ECD_O\Data\PO072425\
 Data File : PO112463.D
 Signal(s) : Signal #1: ECD1A.ch Signal #2: ECD2B.ch
 Acq On : 24 Jul 2025 13:19
 Operator : YP/AJ
 Sample : Q2663-13 10X
 Misc :
 ALS Vial : 16 Sample Multiplier: 1

Instrument :
 ECD_O
 ClientSampleId :
 HEH700H-1-1

Integration File signal 1: autoint1.e
 Integration File signal 2: autoint2.e
 Quant Time: Jul 24 23:41:03 2025
 Quant Method : Z:\pestpcbsrv\HPCHEM1\ECD_O\methods\PO072325.M
 Quant Title : GC EXTRACTABLES
 QLast Update : Thu Jul 24 04:54:06 2025
 Response via : Initial Calibration
 Integrator: ChemStation

Volume Inj. : 2 µl
 Signal #1 Phase : ZB-MR1 Signal #2 Phase: ZB-MR2
 Signal #1 Info : 30Mx0.32mmx 0.50µ Signal #2 Info : 30M x 0.32mm x 0.25µm

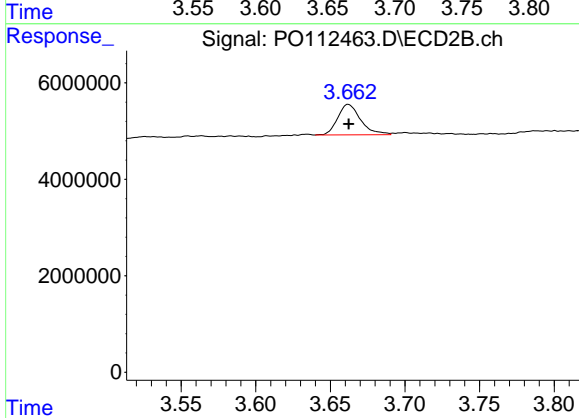




#1 Tetrachloro-m-xylene

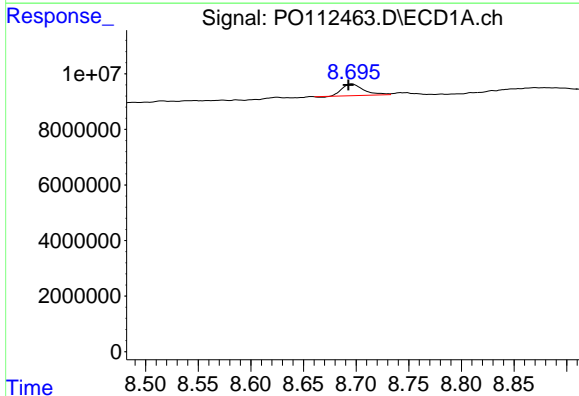
R.T.: 3.670 min
 Delta R.T.: 0.001 min
 Response: 10010833
 Conc: 1.23 ng/ml

Instrument :
 ECD_O
 ClientSampleId :
 HEH700H-1-1



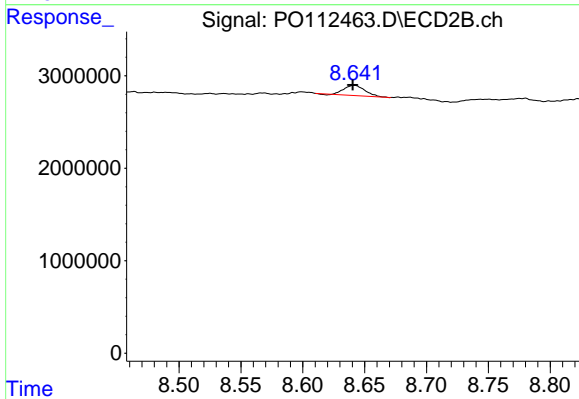
#1 Tetrachloro-m-xylene

R.T.: 3.662 min
 Delta R.T.: 0.000 min
 Response: 6784585
 Conc: 1.37 ng/ml



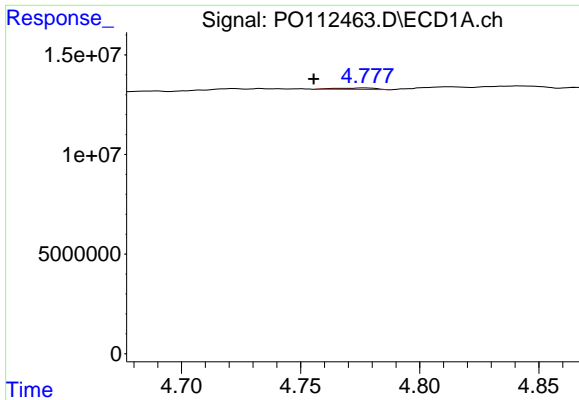
#2 Decachlorobiphenyl

R.T.: 8.696 min
 Delta R.T.: 0.003 min
 Response: 6029125
 Conc: 0.82 ng/ml



#2 Decachlorobiphenyl

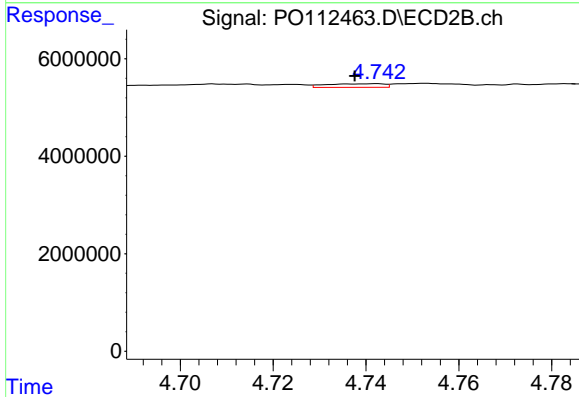
R.T.: 8.642 min
 Delta R.T.: 0.001 min
 Response: 1288512
 Conc: 0.73 ng/ml



#3 AR-1016-1

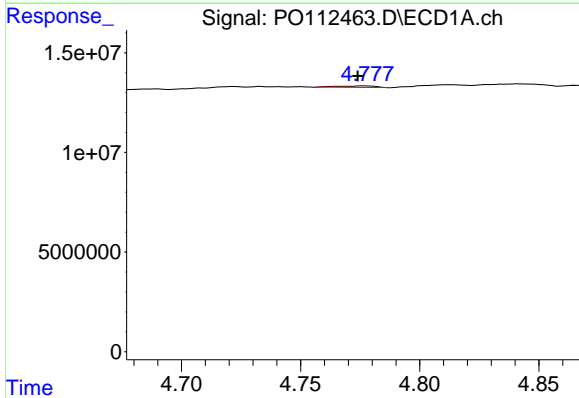
R.T.: 4.777 min
 Delta R.T.: 0.022 min
 Response: 873217
 Conc: 3.25 ng/ml

Instrument :
 ECD_O
 ClientSampleId :
 HEH700H-1-1



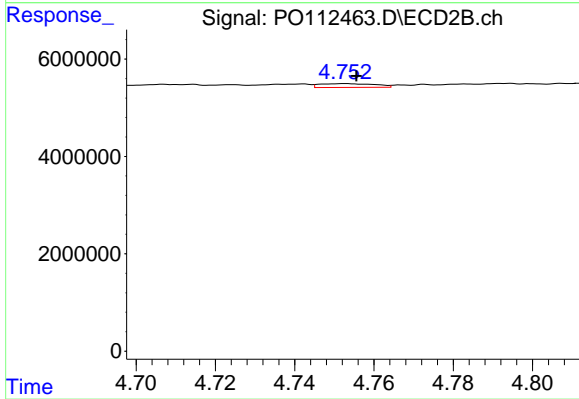
#3 AR-1016-1

R.T.: 4.742 min
 Delta R.T.: 0.005 min
 Response: 635912
 Conc: 3.63 ng/ml



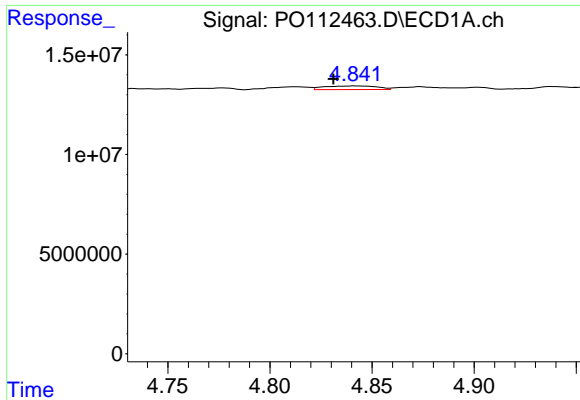
#4 AR-1016-2

R.T.: 4.777 min
 Delta R.T.: 0.003 min
 Response: 873217
 Conc: 2.15 ng/ml



#4 AR-1016-2

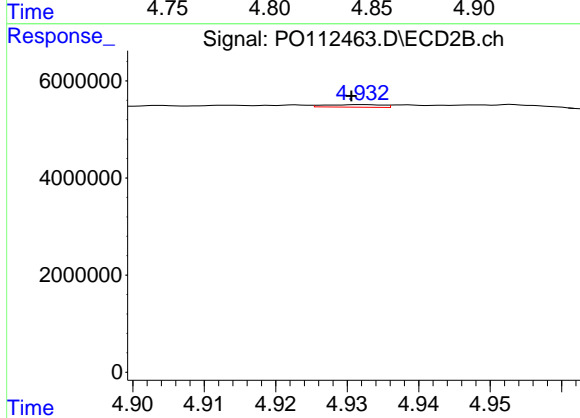
R.T.: 4.753 min
 Delta R.T.: -0.003 min
 Response: 747459
 Conc: 2.87 ng/ml



#5 AR-1016-3

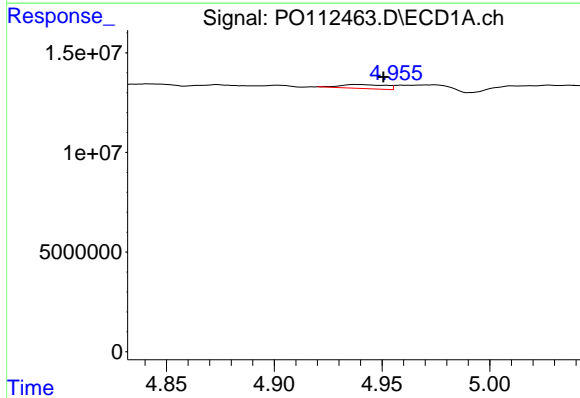
R.T.: 4.842 min
 Delta R.T.: 0.011 min
 Response: 3221231
 Conc: 12.31 ng/ml

Instrument :
 ECD_O
 ClientSampleId :
 HEH700H-1-1



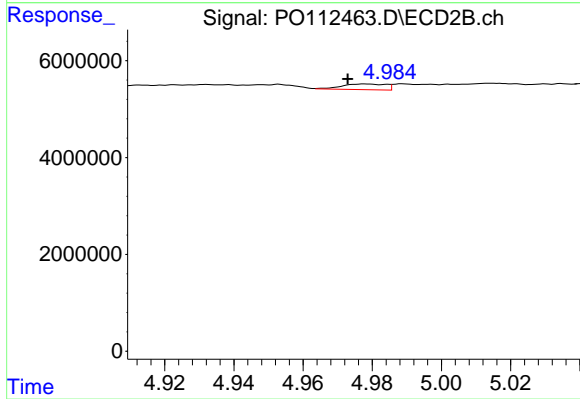
#5 AR-1016-3

R.T.: 4.932 min
 Delta R.T.: 0.002 min
 Response: 285334
 Conc: 2.10 ng/ml



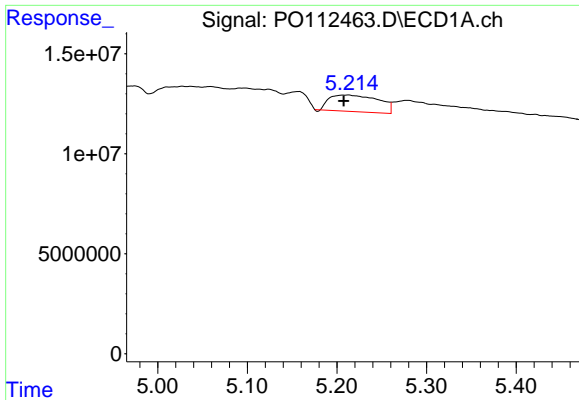
#6 AR-1016-4

R.T.: 4.938 min
 Delta R.T.: -0.012 min
 Response: 2974825
 Conc: 14.04 ng/ml



#6 AR-1016-4

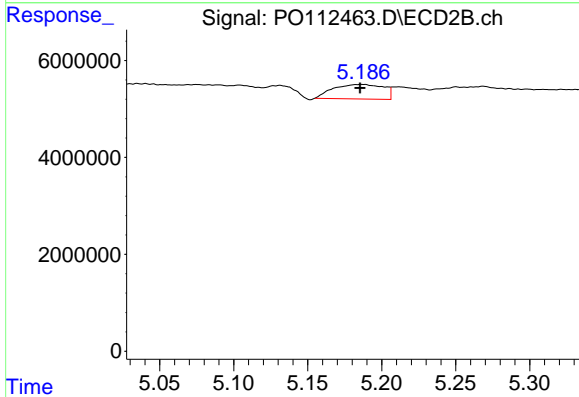
R.T.: 4.978 min
 Delta R.T.: 0.005 min
 Response: 1039730
 Conc: 9.36 ng/ml



#7 AR-1016-5

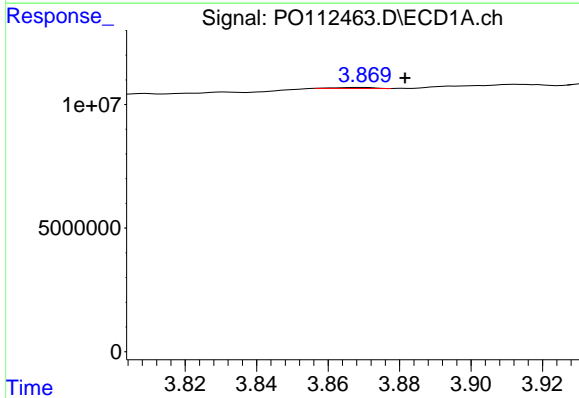
R.T.: 5.213 min
 Delta R.T.: 0.005 min
 Response: 31656449
 Conc: 144.24 ng/ml

Instrument :
 ECD_O
 ClientSampleId :
 HEH700H-1-1



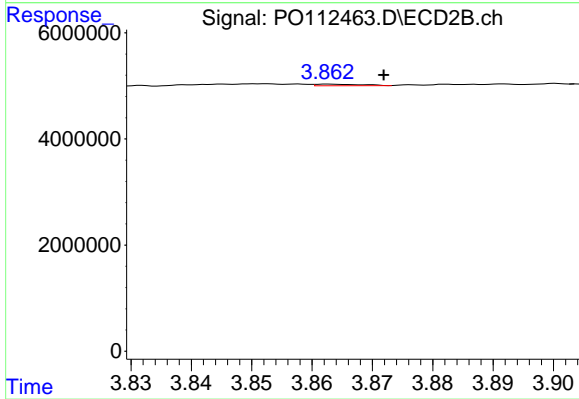
#7 AR-1016-5

R.T.: 5.187 min
 Delta R.T.: 0.001 min
 Response: 7120231
 Conc: 49.69 ng/ml



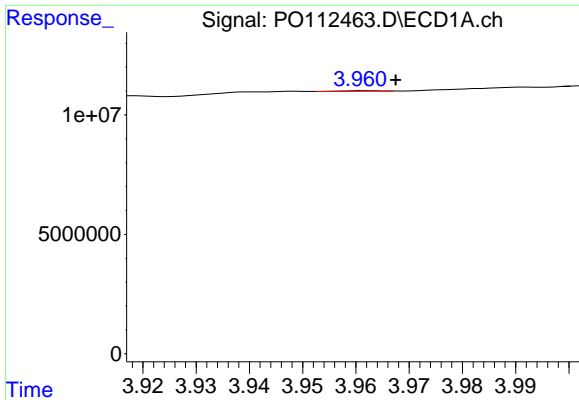
#8 AR-1221-1

R.T.: 3.869 min
 Delta R.T.: -0.012 min
 Response: 316561
 Conc: 3.28 ng/ml



#8 AR-1221-1

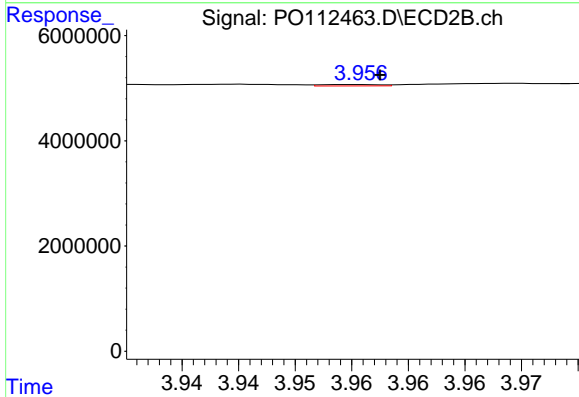
R.T.: 3.863 min
 Delta R.T.: -0.009 min
 Response: 152935
 Conc: 2.27 ng/ml



#9 AR-1221-2

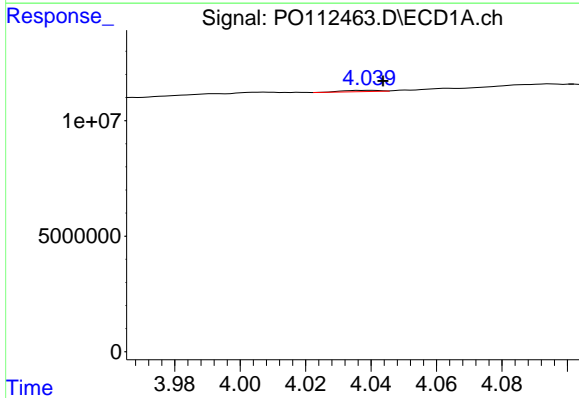
R.T.: 3.961 min
 Delta R.T.: -0.006 min
 Response: 99740
 Conc: 1.39 ng/ml

Instrument :
 ECD_O
 ClientSampleId :
 HEH700H-1-1



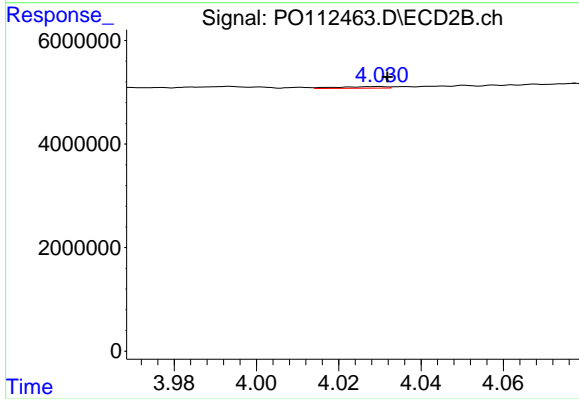
#9 AR-1221-2

R.T.: 3.955 min
 Delta R.T.: -0.002 min
 Response: 93160
 Conc: 1.84 ng/ml



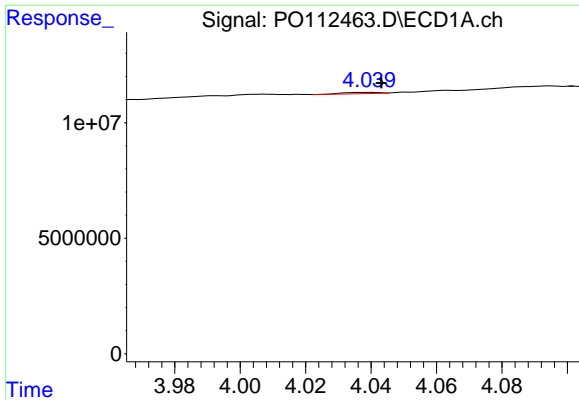
#10 AR-1221-3

R.T.: 4.039 min
 Delta R.T.: -0.005 min
 Response: 420732
 Conc: 1.77 ng/ml



#10 AR-1221-3

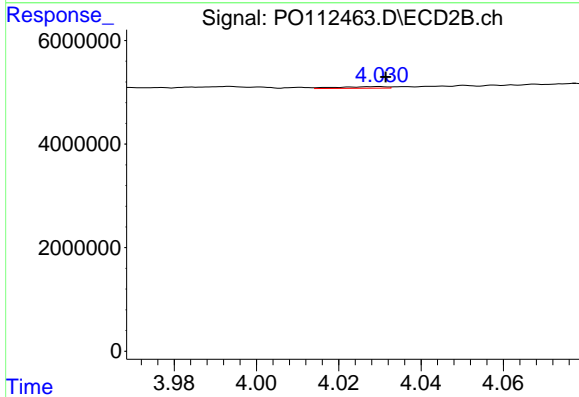
R.T.: 4.030 min
 Delta R.T.: -0.002 min
 Response: 249340
 Conc: 1.57 ng/ml



#11 AR-1232-1

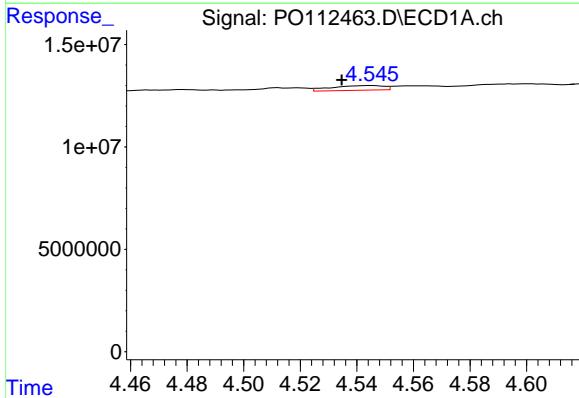
R.T.: 4.039 min
 Delta R.T.: -0.004 min
 Response: 420732
 Conc: 2.25 ng/ml

Instrument :
 ECD_O
 ClientSampleId :
 HEH700H-1-1



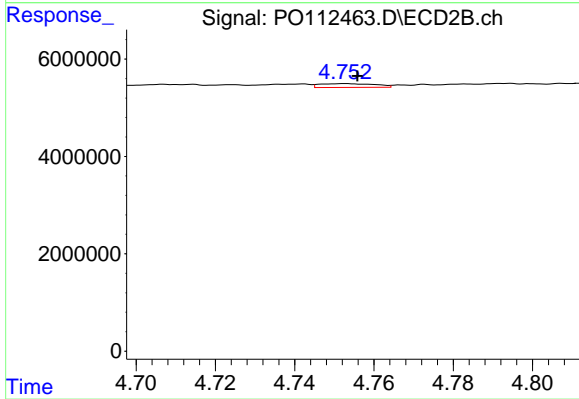
#11 AR-1232-1

R.T.: 4.030 min
 Delta R.T.: -0.001 min
 Response: 249340
 Conc: 1.97 ng/ml



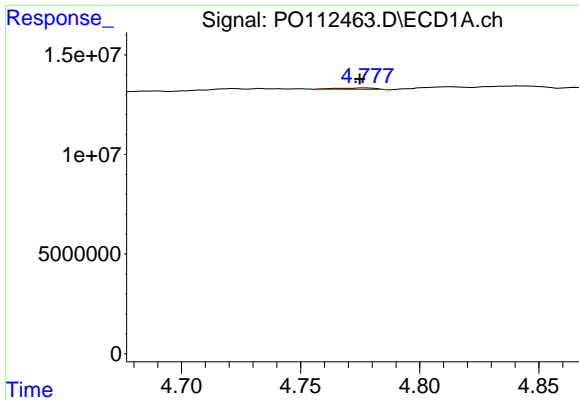
#12 AR-1232-2

R.T.: 4.545 min
 Delta R.T.: 0.010 min
 Response: 2983032
 Conc: 27.72 ng/ml



#12 AR-1232-2

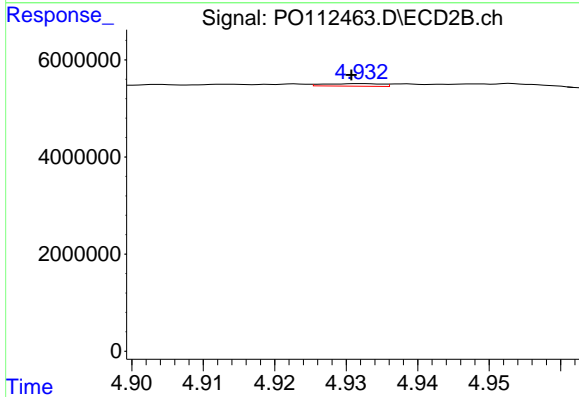
R.T.: 4.753 min
 Delta R.T.: -0.003 min
 Response: 747459
 Conc: 5.70 ng/ml



#13 AR-1232-3

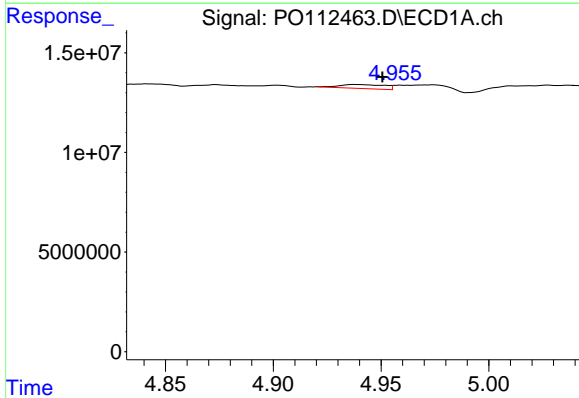
R.T.: 4.777 min
 Delta R.T.: 0.002 min
 Response: 873217
 Conc: 4.22 ng/ml

Instrument :
 ECD_O
 ClientSampleId :
 HEH700H-1-1



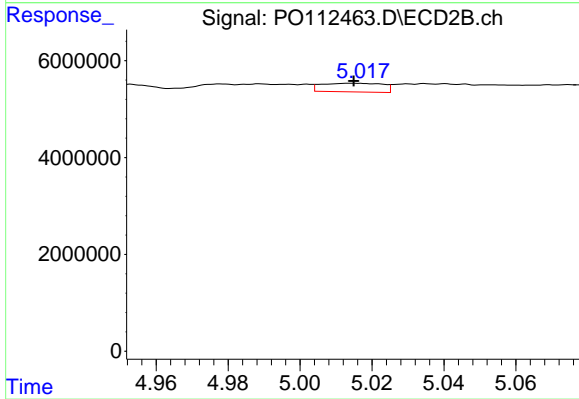
#13 AR-1232-3

R.T.: 4.932 min
 Delta R.T.: 0.001 min
 Response: 285334
 Conc: 4.25 ng/ml



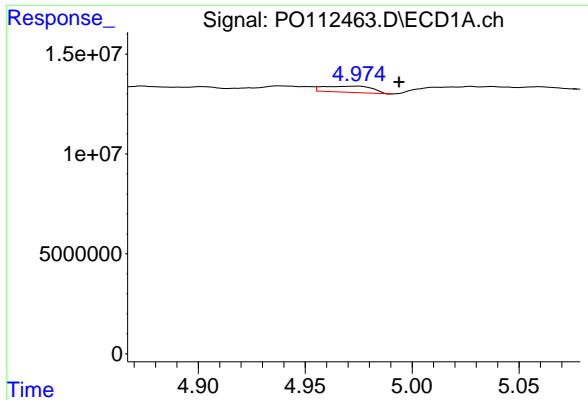
#14 AR-1232-4

R.T.: 4.938 min
 Delta R.T.: -0.013 min
 Response: 2974825
 Conc: 28.40 ng/ml



#14 AR-1232-4

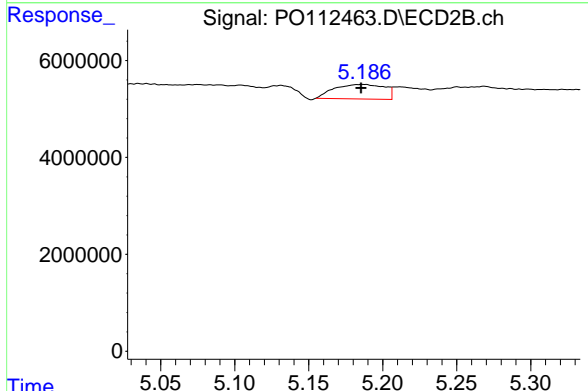
R.T.: 5.014 min
 Delta R.T.: 0.000 min
 Response: 2092641
 Conc: 34.98 ng/ml



#15 AR-1232-5

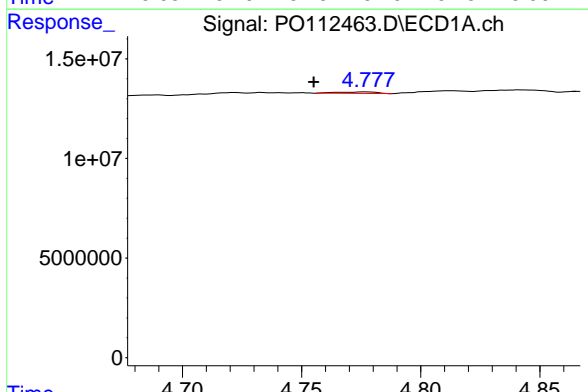
R.T.: 4.974 min
 Delta R.T.: -0.019 min
 Response: 4945972
 Conc: 72.86 ng/ml

Instrument :
 ECD_O
 ClientSampleId :
 HEH700H-1-1



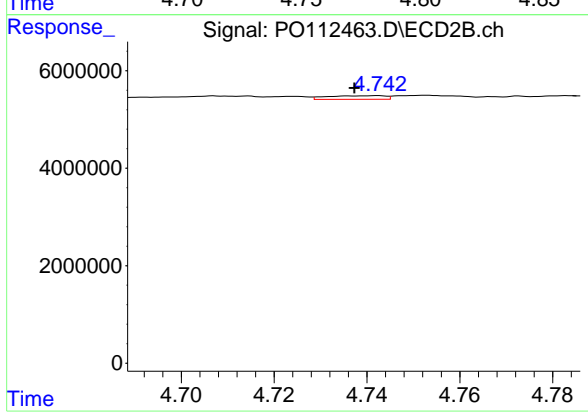
#15 AR-1232-5

R.T.: 5.187 min
 Delta R.T.: 0.001 min
 Response: 7120231
 Conc: 109.20 ng/ml



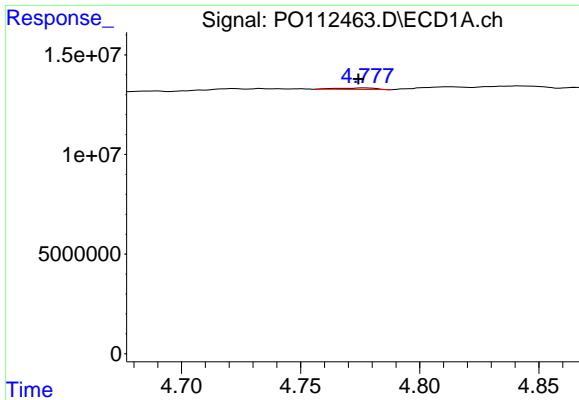
#16 AR-1242-1

R.T.: 4.777 min
 Delta R.T.: 0.022 min
 Response: 873217
 Conc: 3.53 ng/ml



#16 AR-1242-1

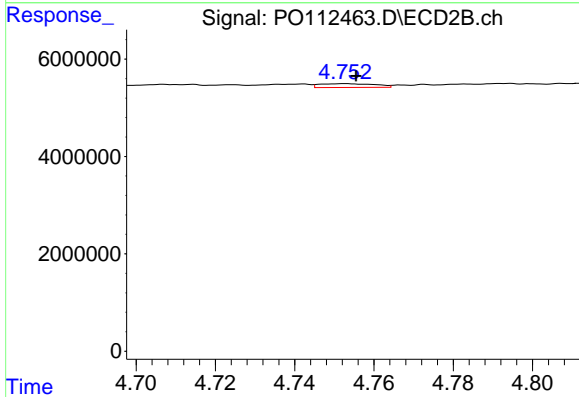
R.T.: 4.742 min
 Delta R.T.: 0.005 min
 Response: 635912
 Conc: 4.01 ng/ml



#17 AR-1242-2

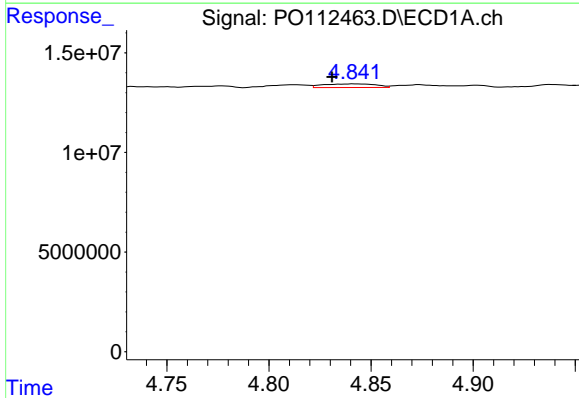
R.T.: 4.777 min
 Delta R.T.: 0.003 min
 Response: 873217
 Conc: 2.36 ng/ml

Instrument :
 ECD_O
 ClientSampleId :
 HEH700H-1-1



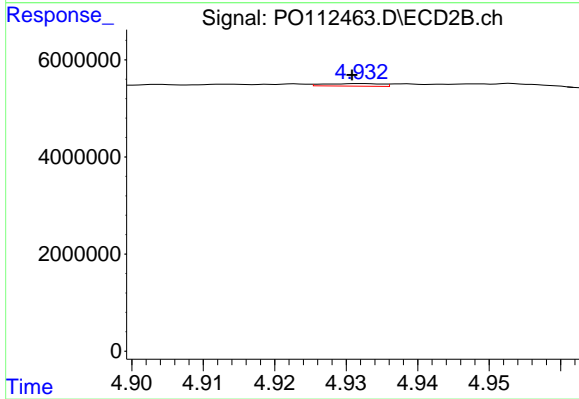
#17 AR-1242-2

R.T.: 4.753 min
 Delta R.T.: -0.003 min
 Response: 747459
 Conc: 3.20 ng/ml



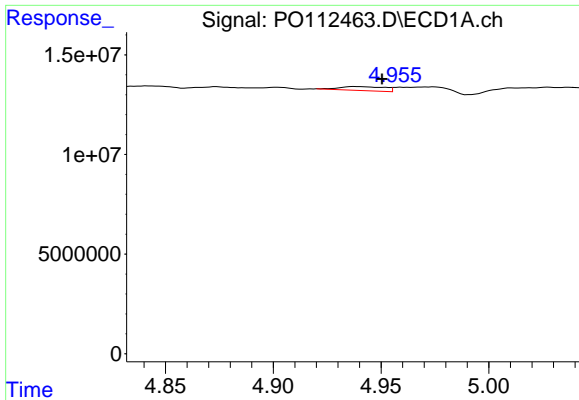
#18 AR-1242-3

R.T.: 4.842 min
 Delta R.T.: 0.011 min
 Response: 3221231
 Conc: 13.61 ng/ml



#18 AR-1242-3

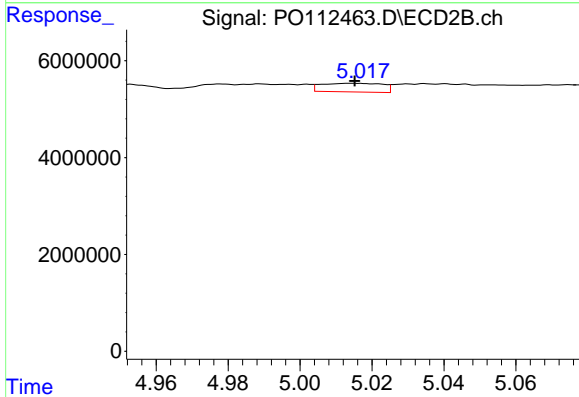
R.T.: 4.932 min
 Delta R.T.: 0.001 min
 Response: 285334
 Conc: 2.35 ng/ml



#19 AR-1242-4

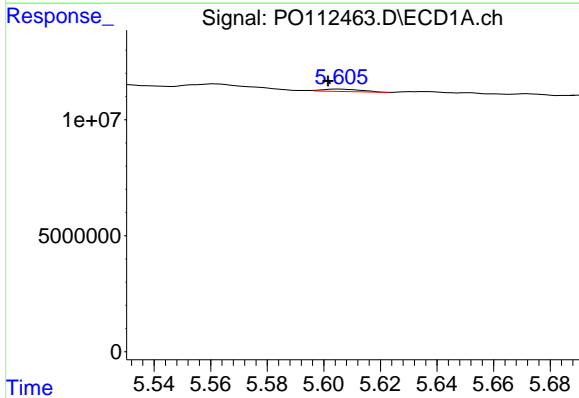
R.T.: 4.938 min
 Delta R.T.: -0.012 min
 Response: 2974825
 Conc: 15.31 ng/ml

Instrument :
 ECD_O
 ClientSampleId :
 HEH700H-1-1



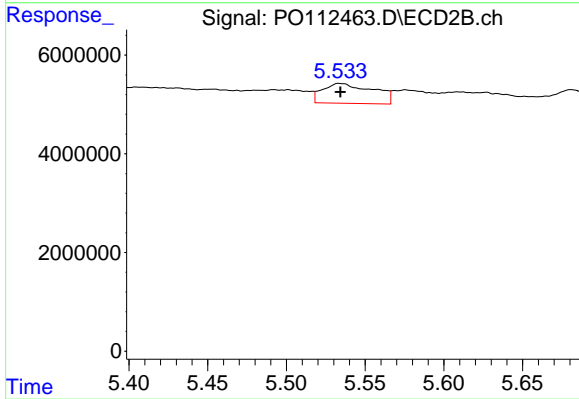
#19 AR-1242-4

R.T.: 5.014 min
 Delta R.T.: 0.000 min
 Response: 2092641
 Conc: 17.05 ng/ml



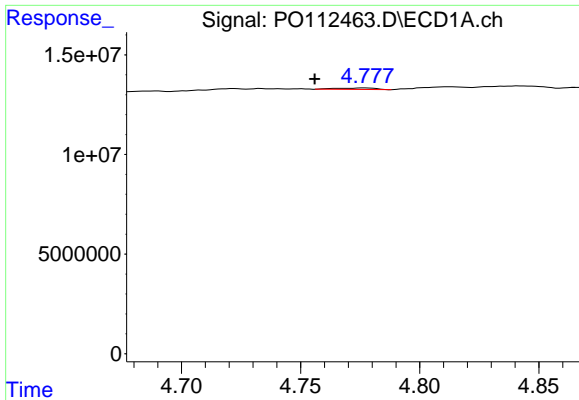
#20 AR-1242-5

R.T.: 5.605 min
 Delta R.T.: 0.004 min
 Response: 964360
 Conc: 4.51 ng/ml



#20 AR-1242-5

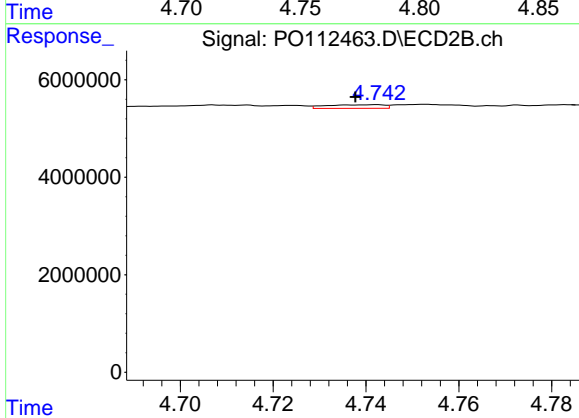
R.T.: 5.533 min
 Delta R.T.: -0.001 min
 Response: 9009814
 Conc: 55.97 ng/ml



#21 AR-1248-1

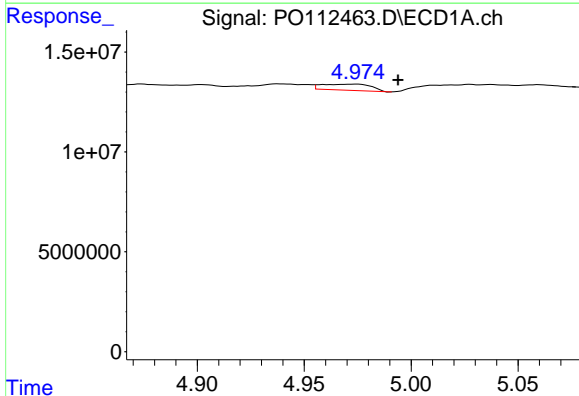
R.T.: 4.777 min
 Delta R.T.: 0.021 min
 Response: 873217
 Conc: 4.66 ng/ml

Instrument :
 ECD_O
 ClientSampleId :
 HEH700H-1-1



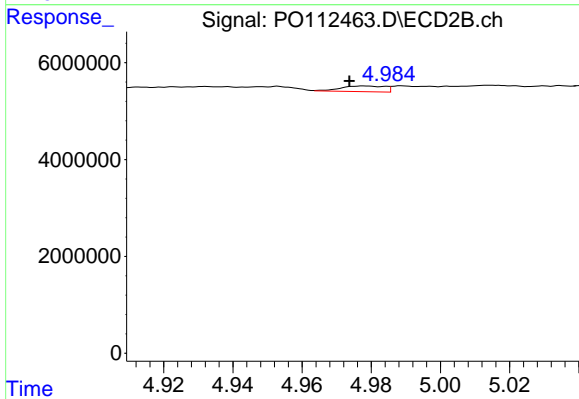
#21 AR-1248-1

R.T.: 4.742 min
 Delta R.T.: 0.005 min
 Response: 635912
 Conc: 5.23 ng/ml



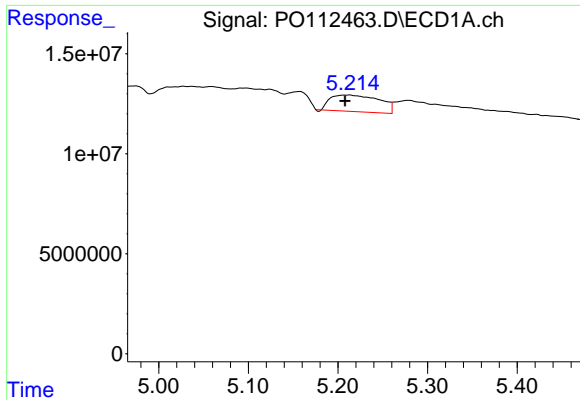
#22 AR-1248-2

R.T.: 4.974 min
 Delta R.T.: -0.019 min
 Response: 4945972
 Conc: 19.39 ng/ml



#22 AR-1248-2

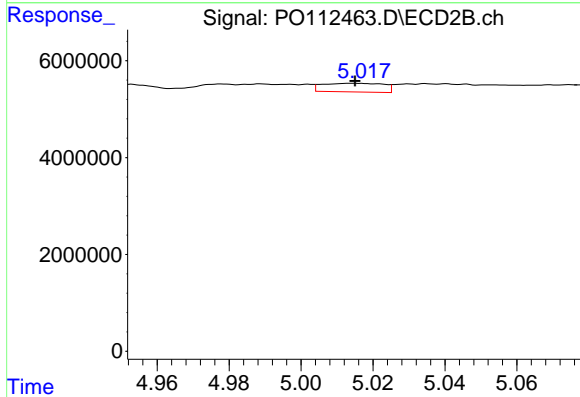
R.T.: 4.978 min
 Delta R.T.: 0.004 min
 Response: 1039730
 Conc: 6.14 ng/ml



#23 AR-1248-3

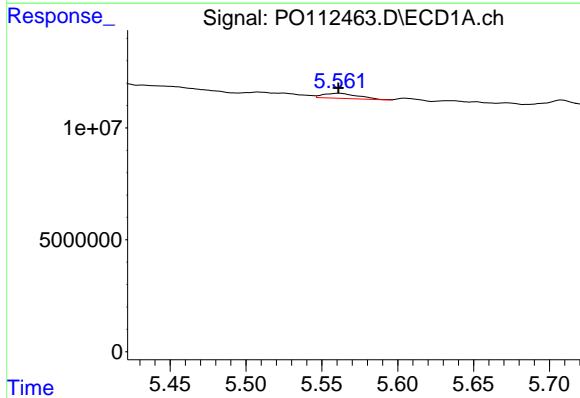
R.T.: 5.213 min
 Delta R.T.: 0.005 min
 Response: 31656449
 Conc: 92.10 ng/ml

Instrument :
 ECD_O
 ClientSampleId :
 HEH700H-1-1



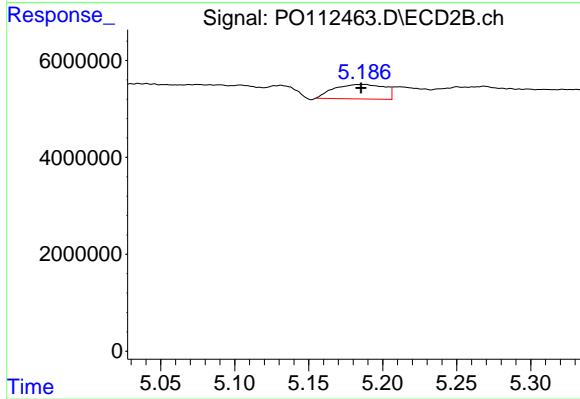
#23 AR-1248-3

R.T.: 5.014 min
 Delta R.T.: 0.000 min
 Response: 2092641
 Conc: 11.78 ng/ml



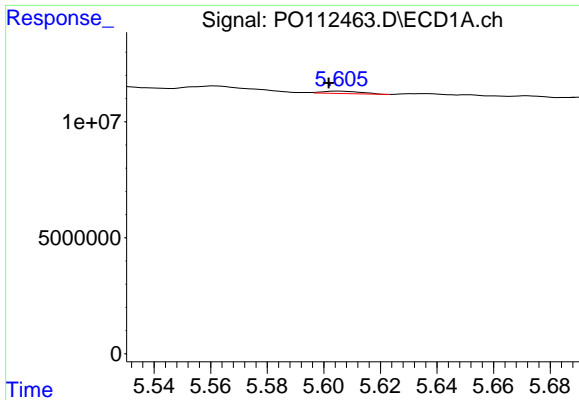
#24 AR-1248-4

R.T.: 5.561 min
 Delta R.T.: 0.000 min
 Response: 3611324
 Conc: 7.11 ng/ml



#24 AR-1248-4

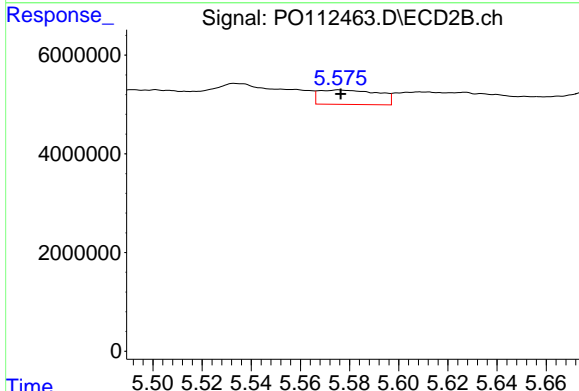
R.T.: 5.187 min
 Delta R.T.: 0.001 min
 Response: 7120231
 Conc: 34.17 ng/ml



#25 AR-1248-5

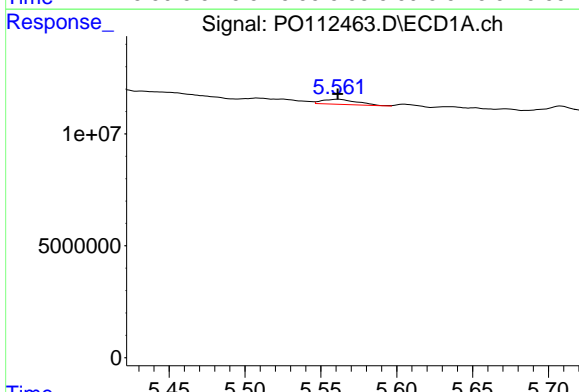
R.T.: 5.605 min
 Delta R.T.: 0.003 min
 Response: 964360
 Conc: 2.76 ng/ml

Instrument :
 ECD_O
 ClientSampleId :
 HEH700H-1-1



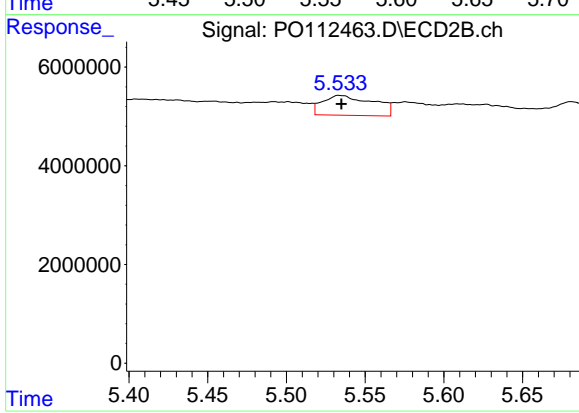
#25 AR-1248-5

R.T.: 5.576 min
 Delta R.T.: 0.000 min
 Response: 4903068
 Conc: 22.83 ng/ml



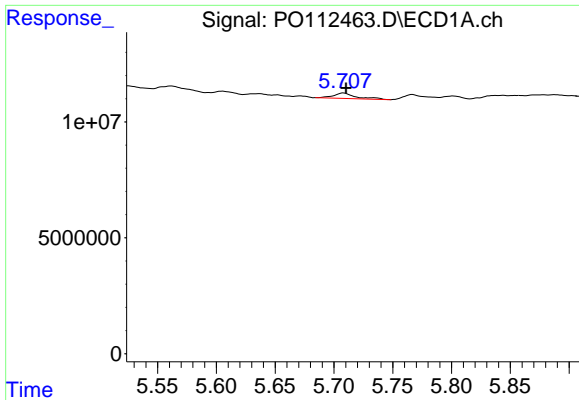
#26 AR-1254-1

R.T.: 5.561 min
 Delta R.T.: 0.000 min
 Response: 3611324
 Conc: 6.58 ng/ml



#26 AR-1254-1

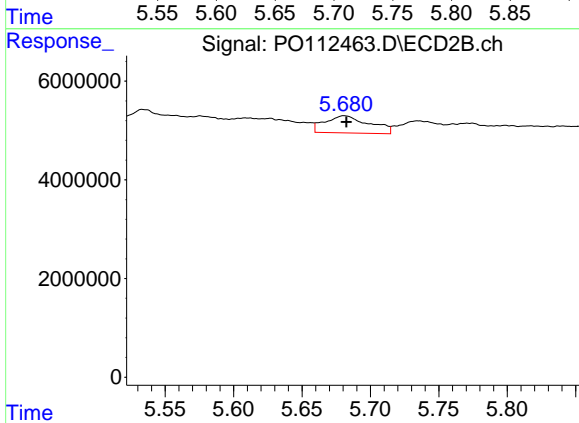
R.T.: 5.533 min
 Delta R.T.: -0.002 min
 Response: 9009814
 Conc: 27.42 ng/ml



#27 AR-1254-2

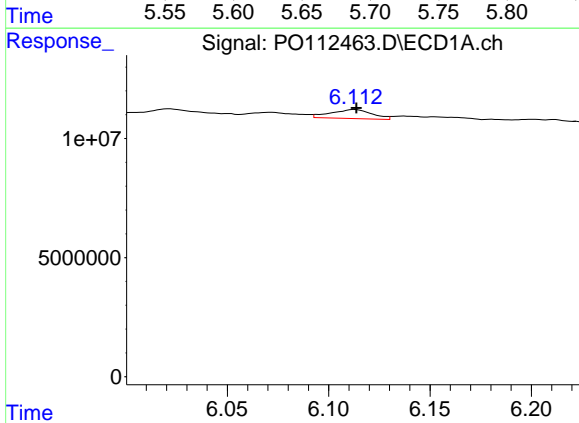
R.T.: 5.708 min
 Delta R.T.: -0.002 min
 Response: 3146915
 Conc: 6.48 ng/ml

Instrument :
 ECD_O
 ClientSampleId :
 HEH700H-1-1



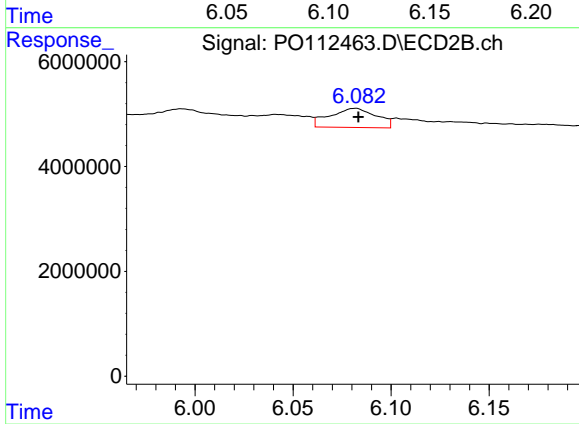
#27 AR-1254-2

R.T.: 5.681 min
 Delta R.T.: -0.002 min
 Response: 7918809
 Conc: 27.35 ng/ml



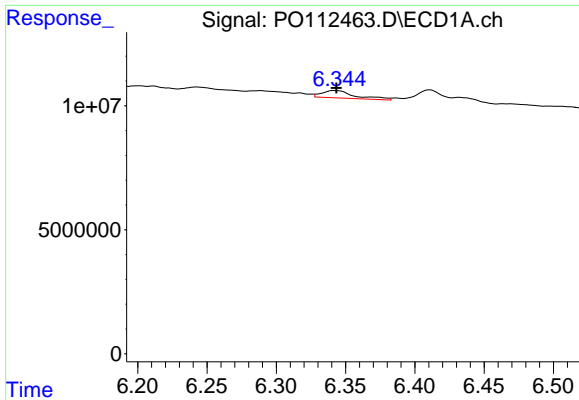
#28 AR-1254-3

R.T.: 6.113 min
 Delta R.T.: 0.000 min
 Response: 5312884
 Conc: 7.14 ng/ml



#28 AR-1254-3

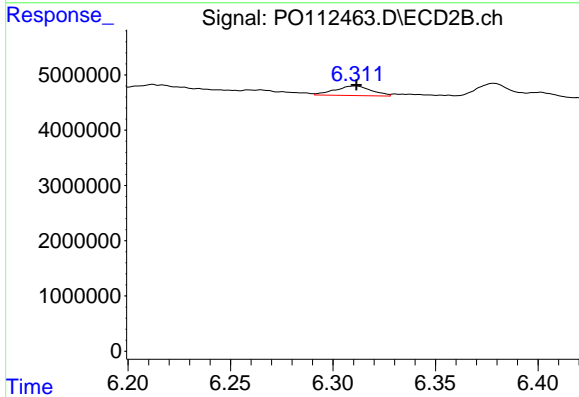
R.T.: 6.082 min
 Delta R.T.: -0.001 min
 Response: 6008115
 Conc: 14.06 ng/ml



#29 AR-1254-4

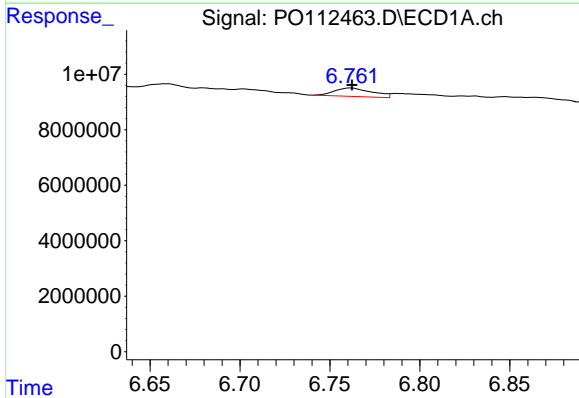
R.T.: 6.342 min
 Delta R.T.: -0.001 min
 Response: 5019632
 Conc: 9.13 ng/ml

Instrument :
 ECD_O
 ClientSampleId :
 HEH700H-1-1



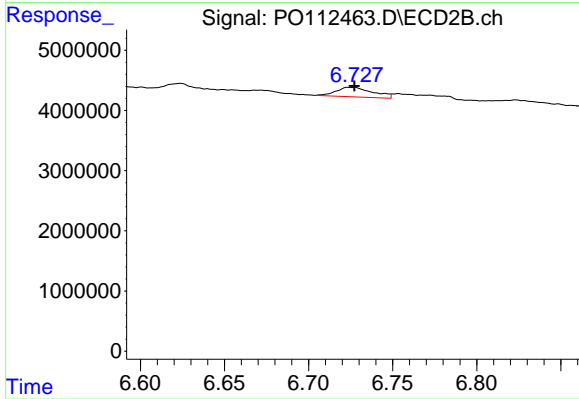
#29 AR-1254-4

R.T.: 6.311 min
 Delta R.T.: 0.000 min
 Response: 2154829
 Conc: 7.89 ng/ml



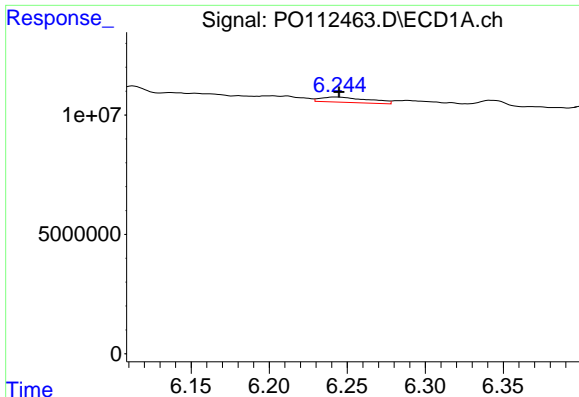
#30 AR-1254-5

R.T.: 6.762 min
 Delta R.T.: 0.000 min
 Response: 4415188
 Conc: 6.24 ng/ml



#30 AR-1254-5

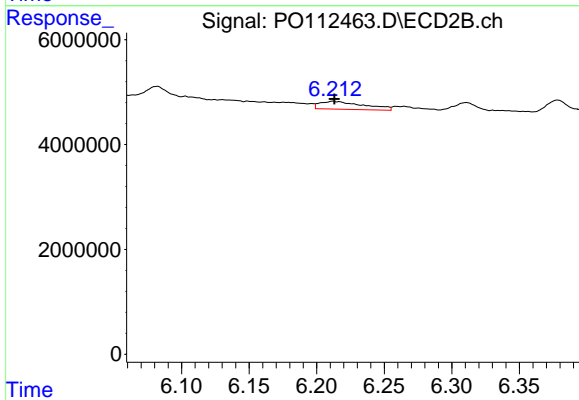
R.T.: 6.724 min
 Delta R.T.: -0.004 min
 Response: 2416912
 Conc: 7.24 ng/ml



#31 AR-1260-1

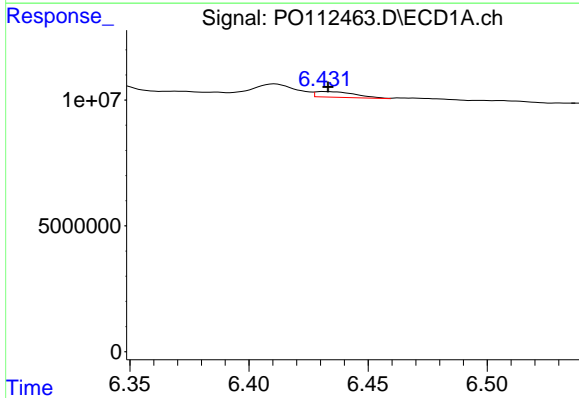
R.T.: 6.243 min
 Delta R.T.: -0.002 min
 Response: 4649782
 Conc: 10.58 ng/ml

Instrument :
 ECD_O
 ClientSampleId :
 HEH700H-1-1



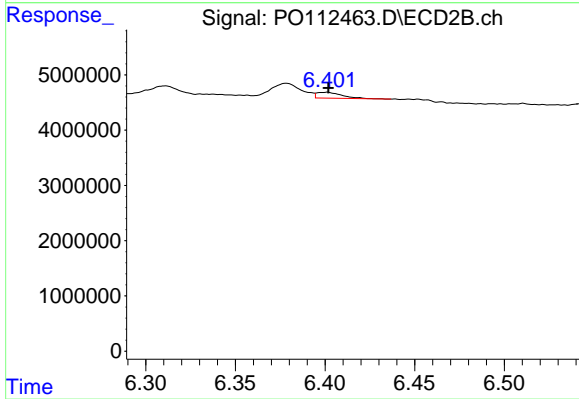
#31 AR-1260-1

R.T.: 6.212 min
 Delta R.T.: -0.001 min
 Response: 3378833
 Conc: 13.60 ng/ml



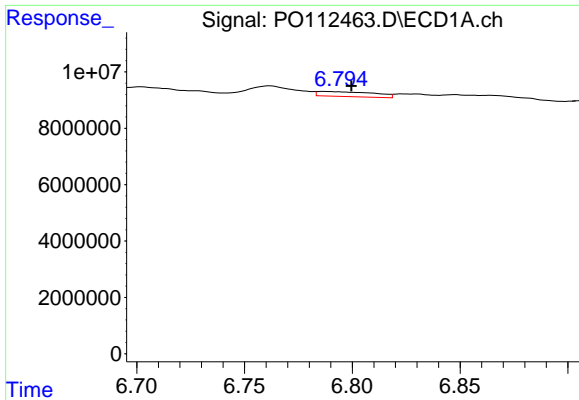
#32 AR-1260-2

R.T.: 6.432 min
 Delta R.T.: -0.001 min
 Response: 2597767
 Conc: 3.78 ng/ml



#32 AR-1260-2

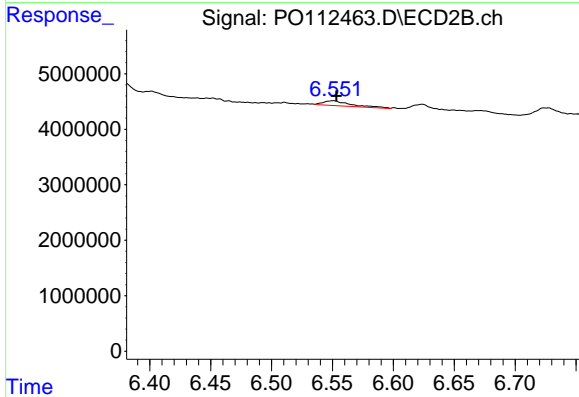
R.T.: 6.402 min
 Delta R.T.: 0.000 min
 Response: 1037123
 Conc: 3.15 ng/ml



#33 AR-1260-3

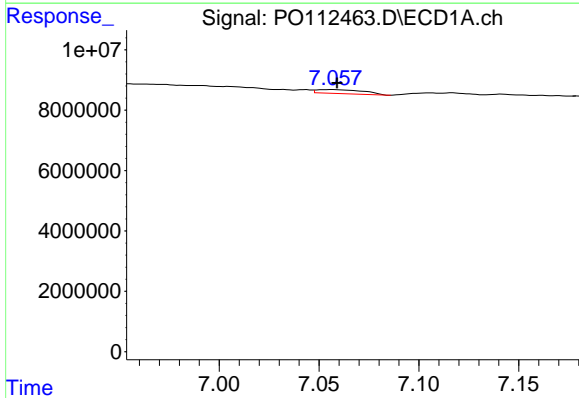
R.T.: 6.787 min
 Delta R.T.: -0.012 min
 Response: 3195661
 Conc: 5.43 ng/ml

Instrument :
 ECD_O
 ClientSampleId :
 HEH700H-1-1



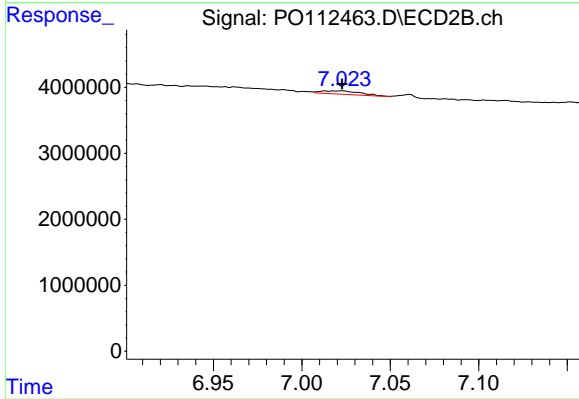
#33 AR-1260-3

R.T.: 6.551 min
 Delta R.T.: -0.002 min
 Response: 1421085
 Conc: 5.53 ng/ml



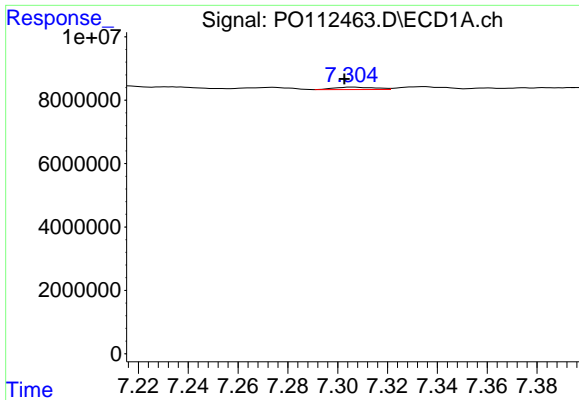
#34 AR-1260-4

R.T.: 7.057 min
 Delta R.T.: -0.002 min
 Response: 2123177
 Conc: 4.71 ng/ml



#34 AR-1260-4

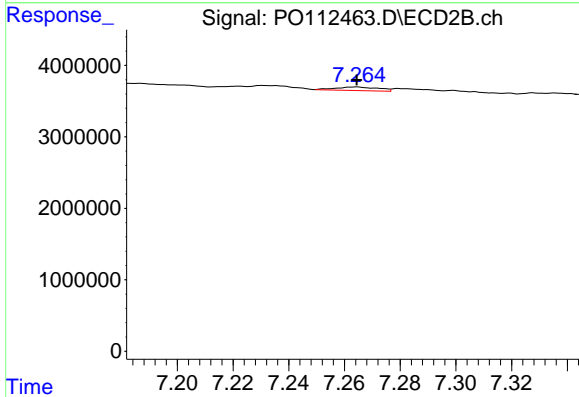
R.T.: 7.023 min
 Delta R.T.: 0.000 min
 Response: 763183
 Conc: 3.99 ng/ml



#35 AR-1260-5

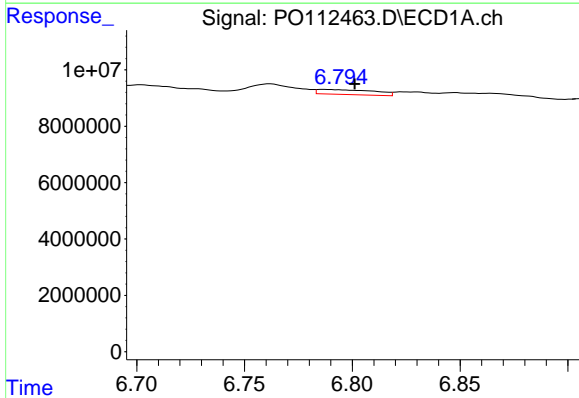
R.T.: 7.306 min
 Delta R.T.: 0.003 min
 Response: 876503
 Conc: 0.71 ng/ml

Instrument :
 ECD_O
 ClientSampleId :
 HEH700H-1-1



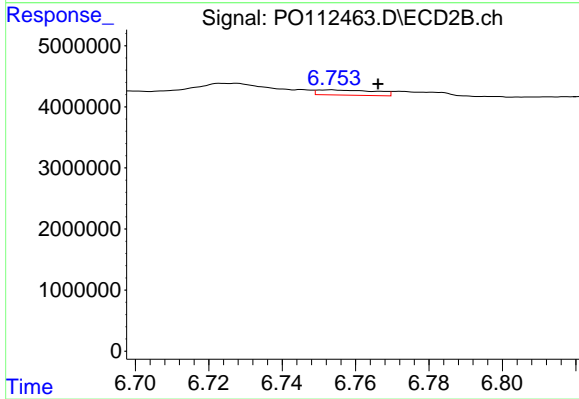
#35 AR-1260-5

R.T.: 7.265 min
 Delta R.T.: 0.000 min
 Response: 521056
 Conc: 1.26 ng/ml



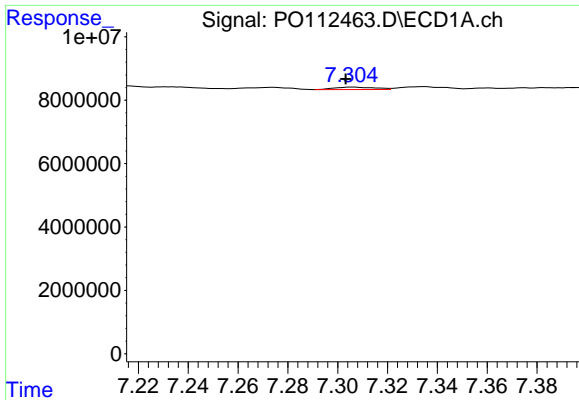
#36 AR-1262-1

R.T.: 6.787 min
 Delta R.T.: -0.014 min
 Response: 3195661
 Conc: 3.44 ng/ml



#36 AR-1262-1

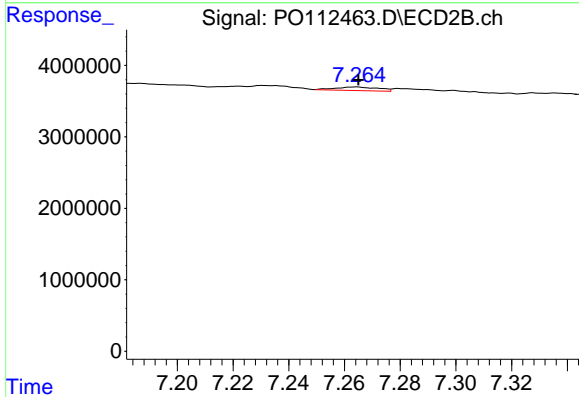
R.T.: 6.753 min
 Delta R.T.: -0.013 min
 Response: 939485
 Conc: 2.26 ng/ml



#37 AR-1262-2

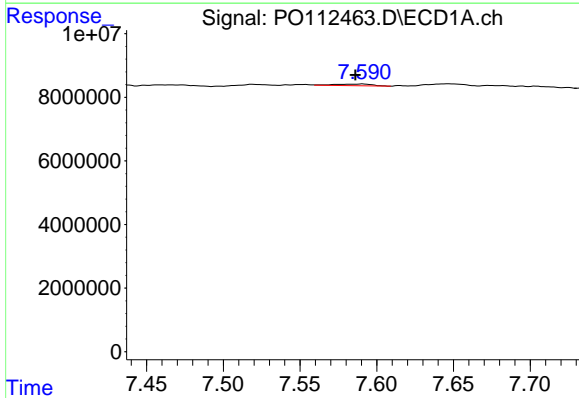
R.T.: 7.306 min
 Delta R.T.: 0.003 min
 Response: 876503
 Conc: 0.59 ng/ml

Instrument :
 ECD_O
 ClientSampleId :
 HEH700H-1-1



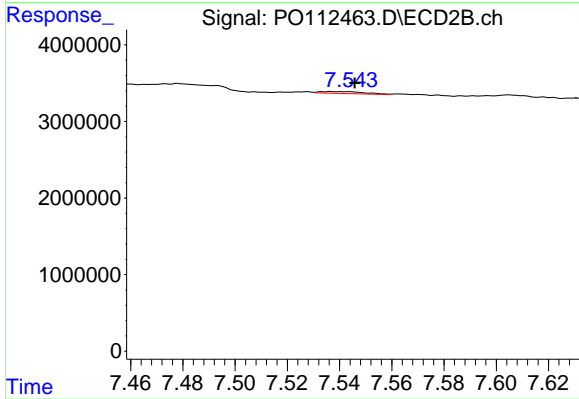
#37 AR-1262-2

R.T.: 7.265 min
 Delta R.T.: 0.000 min
 Response: 521056
 Conc: 1.01 ng/ml



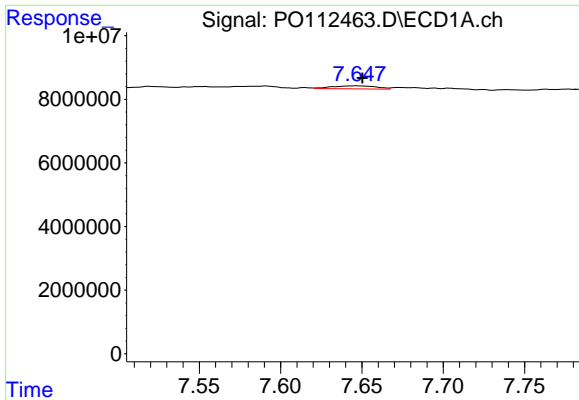
#38 AR-1262-3

R.T.: 7.591 min
 Delta R.T.: 0.005 min
 Response: 952559
 Conc: 1.61 ng/ml



#38 AR-1262-3

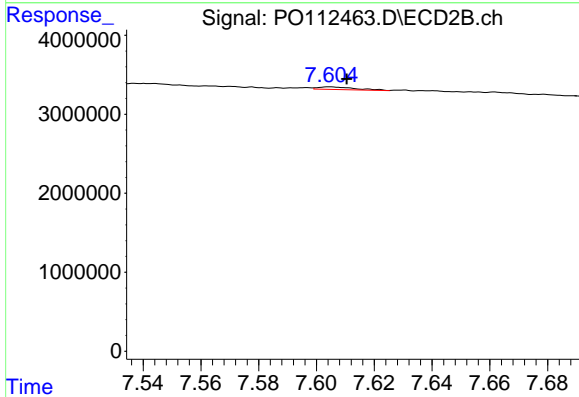
R.T.: 7.537 min
 Delta R.T.: -0.009 min
 Response: 306667
 Conc: 1.64 ng/ml



#39 AR-1262-4

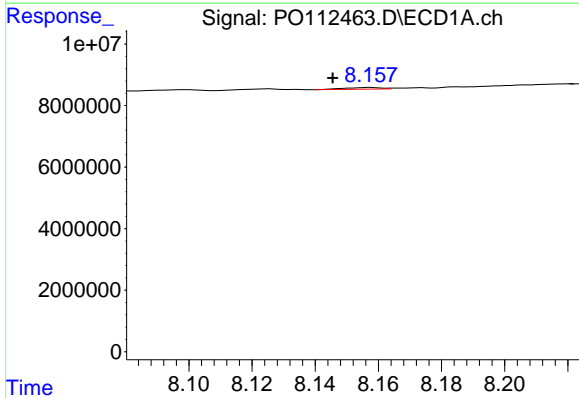
R.T.: 7.647 min
 Delta R.T.: -0.003 min
 Response: 1803620
 Conc: 1.81 ng/ml

Instrument :
 ECD_O
 ClientSampleId :
 HEH700H-1-1



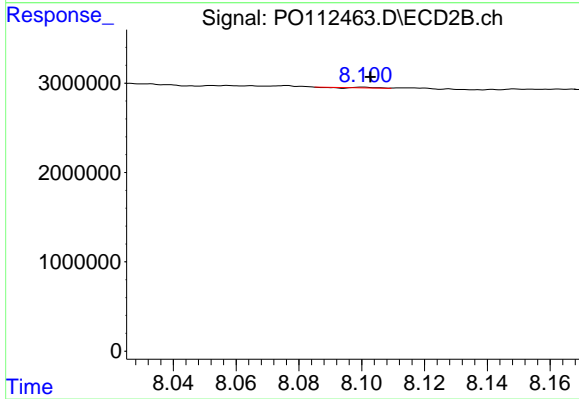
#39 AR-1262-4

R.T.: 7.605 min
 Delta R.T.: -0.006 min
 Response: 296826
 Conc: 1.03 ng/ml



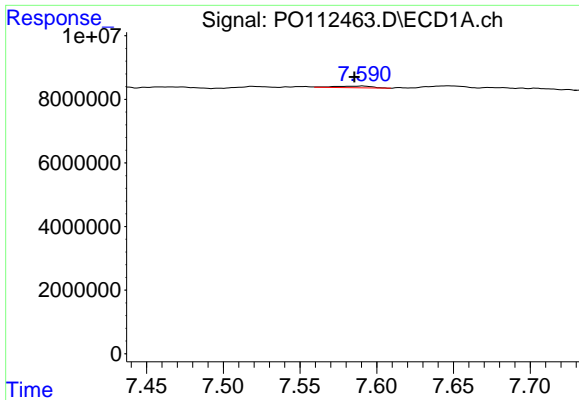
#40 AR-1262-5

R.T.: 8.158 min
 Delta R.T.: 0.012 min
 Response: 456167
 Conc: 1.05 ng/ml



#40 AR-1262-5

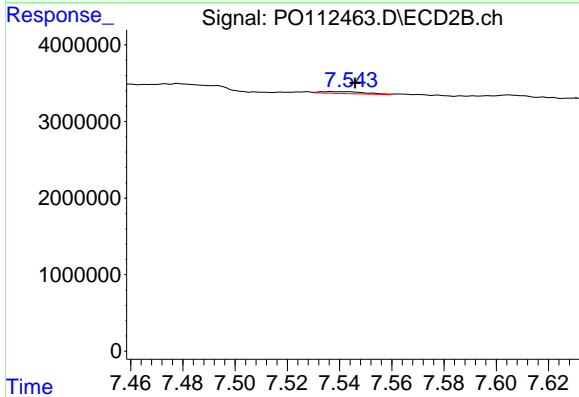
R.T.: 8.100 min
 Delta R.T.: -0.002 min
 Response: 26407
 Conc: 0.27 ng/ml



#41 AR-1268-1

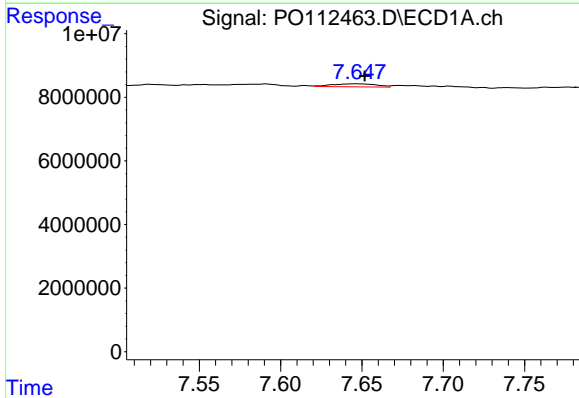
R.T.: 7.591 min
 Delta R.T.: 0.005 min
 Response: 952559
 Conc: 0.54 ng/ml

Instrument :
 ECD_O
 ClientSampleId :
 HEH700H-1-1



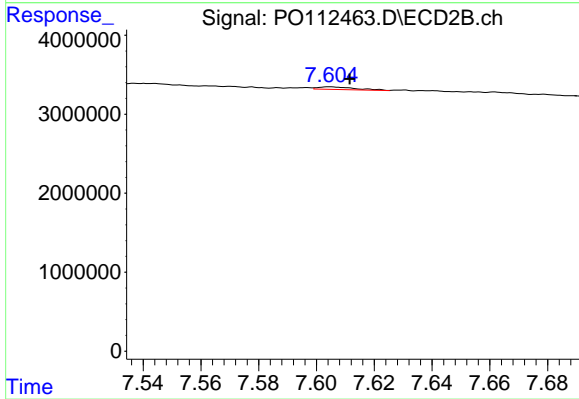
#41 AR-1268-1

R.T.: 7.537 min
 Delta R.T.: -0.009 min
 Response: 306667
 Conc: 0.59 ng/ml



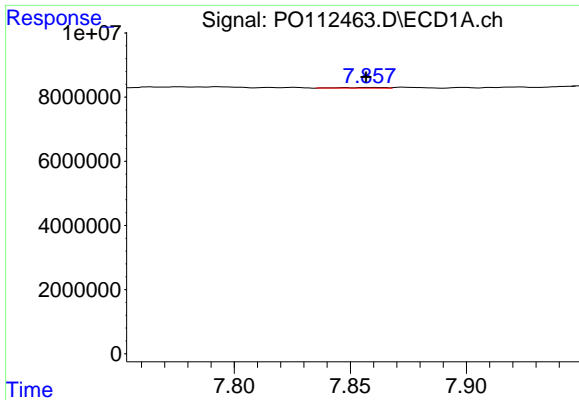
#42 AR-1268-2

R.T.: 7.647 min
 Delta R.T.: -0.005 min
 Response: 1803620
 Conc: 1.22 ng/ml



#42 AR-1268-2

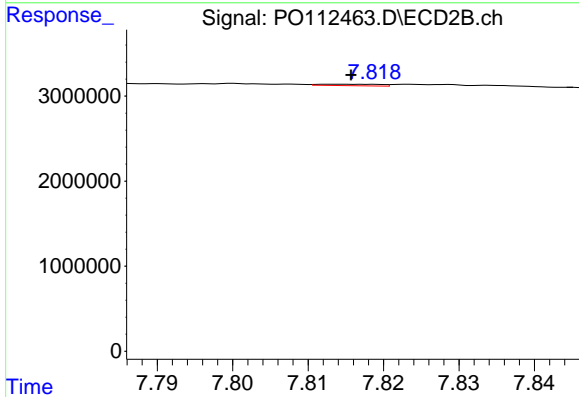
R.T.: 7.605 min
 Delta R.T.: -0.007 min
 Response: 296826
 Conc: 0.70 ng/ml



#43 AR-1268-3

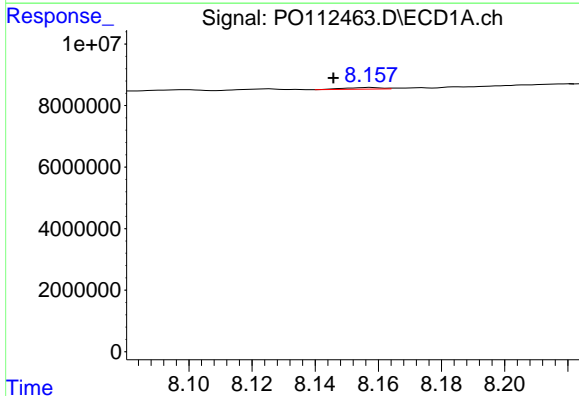
R.T.: 7.859 min
Delta R.T.: 0.002 min
Response: 252003
Conc: 0.20 ng/ml

Instrument :
ECD_O
ClientSampleId :
HEH700H-1-1



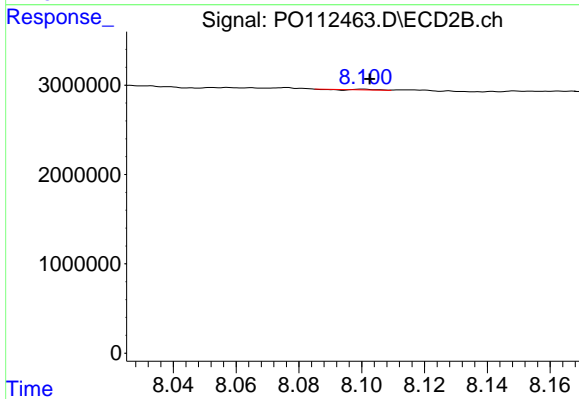
#43 AR-1268-3

R.T.: 7.814 min
Delta R.T.: -0.002 min
Response: 96411
Conc: 0.30 ng/ml



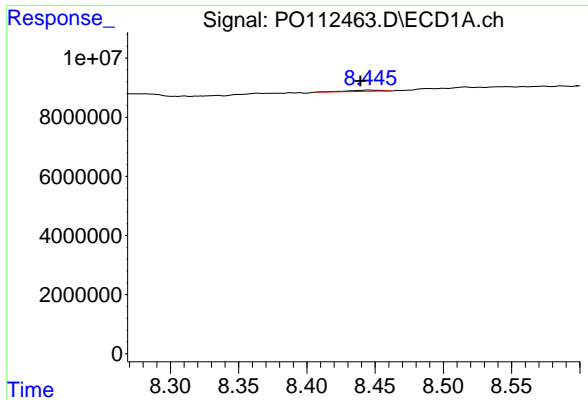
#44 AR-1268-4

R.T.: 8.158 min
Delta R.T.: 0.012 min
Response: 456167
Conc: 0.95 ng/ml



#44 AR-1268-4

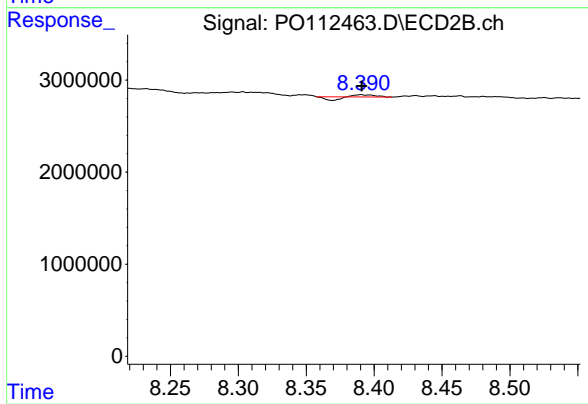
R.T.: 8.100 min
Delta R.T.: -0.002 min
Response: 26407
Conc: 0.24 ng/ml



#45 AR-1268-5

R.T.: 8.445 min
Delta R.T.: 0.006 min
Response: 739161
Conc: 0.22 ng/ml

Instrument :
ECD_O
ClientSampleId :
HEH700H-1-1



#45 AR-1268-5

R.T.: 8.390 min
Delta R.T.: 0.000 min
Response: 9762
Conc: 0.01 ng/ml