

Data Path : Z:\pestpcbsrv\HPCHEM1\ECD_0\Data\P0072425\
 Data File : PO112464.D
 Signal(s) : Signal #1: ECD1A.ch Signal #2: ECD2B.ch
 Acq On : 24 Jul 2025 15:23
 Operator : YP/AJ
 Sample : AR1660CCC500
 Misc :
 ALS Vial : 3 Sample Multiplier: 1

Instrument :
 ECD_0
 ClientSampleId :
 AR1660CCC500

Integration File signal 1: autoint1.e
 Integration File signal 2: autoint2.e
 Quant Time: Jul 24 23:41:46 2025
 Quant Method : Z:\pestpcbsrv\HPCHEM1\ECD_0\methods\P0072325.M
 Quant Title : GC EXTRACTABLES
 QLast Update : Thu Jul 24 04:54:06 2025
 Response via : Initial Calibration
 Integrator: ChemStation

Volume Inj. : 2 µl
 Signal #1 Phase : ZB-MR2 Signal #2 Phase: ZB-MR2
 Signal #1 Info : 30Mx0.32mmx 0.50µ Signal #2 Info : 30M x 0.32mm x 0.25µm

Compound	RT#1	RT#2	Resp#1	Resp#2	ng/ml	ng/ml
System Monitoring Compounds						
1) SA Tetrachlo...	3.668	3.662	443.2E6	267.9E6	54.500	53.910
2) SA Decachlor...	8.692	8.640	270.1E6	79053765	36.939	44.736
Target Compounds						
3) L1 AR-1016-1	4.754	4.737	147.2E6	93094863	548.370	531.949
4) L1 AR-1016-2	4.773	4.756	219.6E6	135.4E6	540.630	519.685
5) L1 AR-1016-3	4.829	4.930	139.9E6	72194026	534.751	530.969
6) L1 AR-1016-4	4.949	4.973	113.8E6	58405713	537.251	525.776
7) L1 AR-1016-5	5.206	5.185	129.5E6	78762533	590.124	549.622
8) L2 AR-1221-1	3.878	3.870	12581486	9351317	130.163	139.020
9) L2 AR-1221-2	3.966	3.957	19527580	13893254	271.737	273.877
10) L2 AR-1221-3	4.041	4.031	73141687	49615880	307.691	312.976
11) L3 AR-1232-1	4.041	4.031	73141687	49615880	391.177	392.066
12) L3 AR-1232-2	4.533	4.756	110.3E6	135.4E6	1025.140	1032.180
13) L3 AR-1232-3	4.773	4.930	219.6E6	72194026	1061.703	1074.367
14) L3 AR-1232-4	4.949	5.015	113.8E6	71098539	1086.611	1188.361
15) L3 AR-1232-5	4.992	5.185	86335171	78762533	1271.863	1207.958
16) L4 AR-1242-1	4.754	4.737	147.2E6	93094863	594.380	587.742
17) L4 AR-1242-2	4.773	4.756	219.6E6	135.4E6	593.735	579.353
18) L4 AR-1242-3	4.829	4.930	139.9E6	72194026	591.278	595.714
19) L4 AR-1242-4	4.949	5.015	113.8E6	71098539	585.818	579.264
20) L4 AR-1242-5	5.601	5.534	34396077	80041552	160.793	497.241 #
21) L5 AR-1248-1	4.754	4.737	147.2E6	93094863	786.094	766.154
22) L5 AR-1248-2	4.992	4.973	86335171	58405713	338.420	345.025
23) L5 AR-1248-3	5.206	5.015	129.5E6	71098539	376.824	400.223
24) L5 AR-1248-4	5.559	5.185	132.3E6	78762533	260.378	378.022 #
25) L5 AR-1248-5	5.601	5.575	34396077	22501985	98.389	104.775
26) L6 AR-1254-1	5.559	5.534	132.3E6	80041552	240.988	243.568
27) L6 AR-1254-2	5.708	5.682	101.2E6	61033740	208.172	210.831
28) L6 AR-1254-3	6.127	6.098	183.8E6	106.5E6	247.002	249.222
29) L6 AR-1254-4	6.341	6.310	25814548	15429636	46.961	56.526
30) L6 AR-1254-5	6.759	6.726	248.5E6	141.5E6	351.115	423.708
31) L7 AR-1260-1	6.243	6.213	223.6E6	133.5E6	508.963	537.197
32) L7 AR-1260-2	6.432	6.402	308.8E6	170.0E6	448.904	515.911
33) L7 AR-1260-3	6.799	6.553	241.0E6	130.3E6	409.894	506.987
34) L7 AR-1260-4	7.058	7.022	201.5E6	89506342	446.710	467.859
35) L7 AR-1260-5	7.301	7.264	613.3E6	195.8E6	494.951	475.057
36) L8 AR-1262-1	6.799	6.765	241.0E6	130.7E6	259.388	315.061
37) L8 AR-1262-2	7.301	7.264	613.3E6	195.8E6	412.445	379.822
38) L8 AR-1262-3	7.584	7.545	108.2E6	38257278	183.229	205.105
39) L8 AR-1262-4	7.647	7.609	308.1E6	104.3E6	309.900	362.103
40) L8 AR-1262-5	8.144	8.102	99335805	29842991	228.852	299.919 #
41) L9 AR-1268-1	7.584	7.545	108.2E6	38257278	61.761	73.875

Data Path : Z:\pestpcbsrv\HPCHEM1\ECD_0\Data\P0072425\
 Data File : P0112464.D
 Signal(s) : Signal #1: ECD1A.ch Signal #2: ECD2B.ch
 Acq On : 24 Jul 2025 15:23
 Operator : YP/AJ
 Sample : AR1660CCC500
 Misc :
 ALS Vial : 3 Sample Multiplier: 1

Instrument :
 ECD_0
 ClientSampleId :
 AR1660CCC500

Integration File signal 1: autoint1.e
 Integration File signal 2: autoint2.e
 Quant Time: Jul 24 23:41:46 2025
 Quant Method : Z:\pestpcbsrv\HPCHEM1\ECD_0\methods\P0072325.M
 Quant Title : GC EXTRACTABLES
 QLast Update : Thu Jul 24 04:54:06 2025
 Response via : Initial Calibration
 Integrator: ChemStation

Volume Inj. : 2 µl
 Signal #1 Phase : ZB-MR1 Signal #2 Phase: ZB-MR2
 Signal #1 Info : 30Mx0.32mmx 0.50µ Signal #2 Info : 30M x 0.32mm x 0.25µm

	Compound	RT#1	RT#2	Resp#1	Resp#2	ng/ml	ng/ml
42)	L9 AR-1268-2	7.647	7.609	308.1E6	104.3E6	209.156	245.430
43)	L9 AR-1268-3	7.855	7.814	4122597	1577272	3.292	4.910 #
44)	L9 AR-1268-4	8.144	8.102	99335805	29842991	206.149	268.142 #
45)	L9 AR-1268-5	8.437	8.390	24692223	7385494	7.355	10.093 #

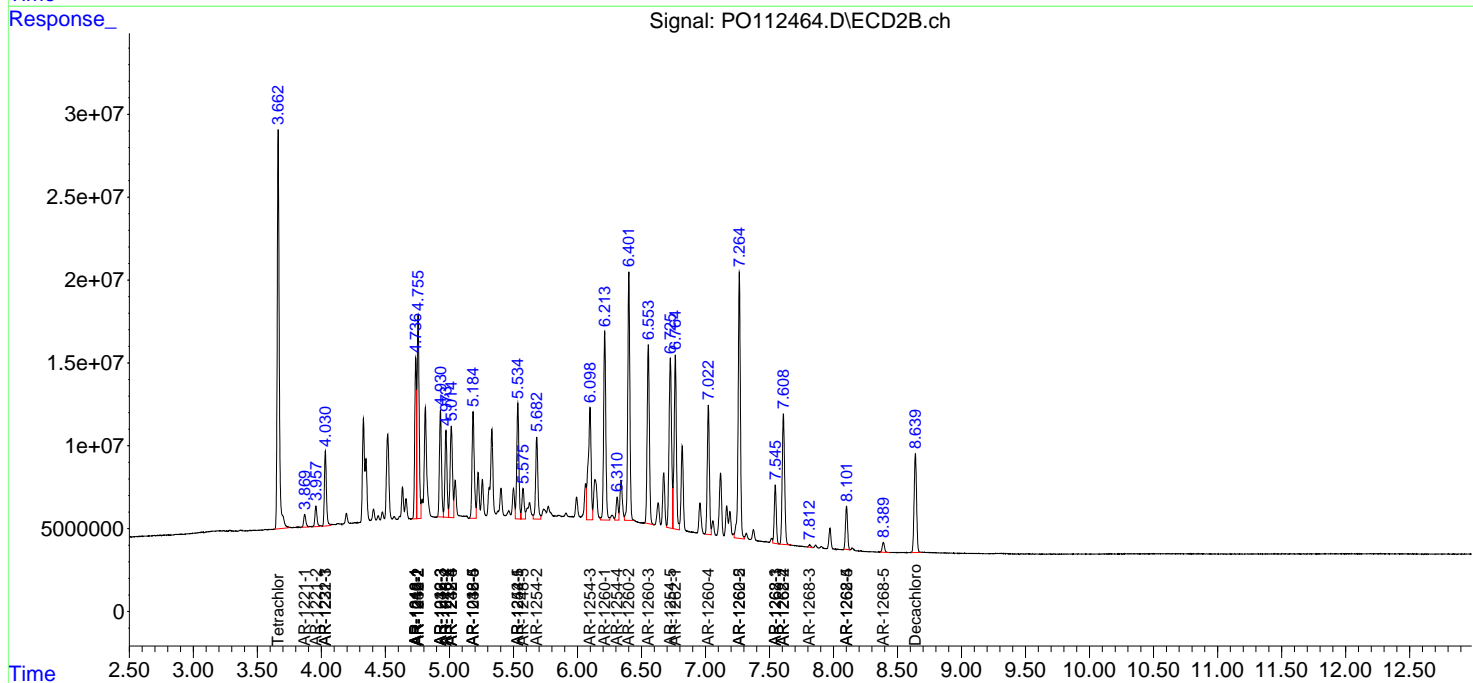
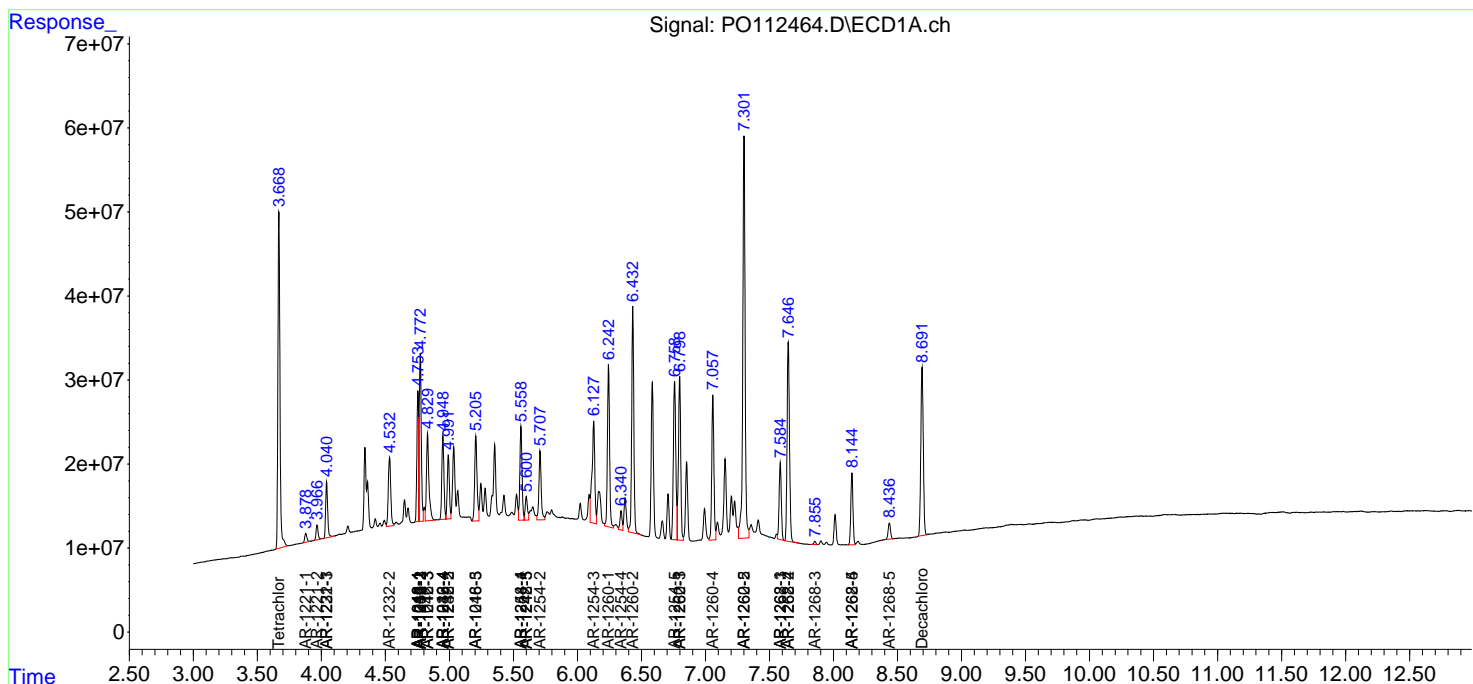
(f)=RT Delta > 1/2 Window (#)=Amounts differ by > 25% (m)=manual int.

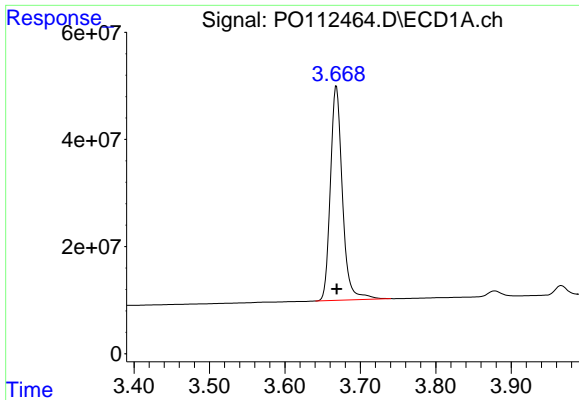
Data Path : Z:\pestpcbsrv\HPCHEM1\ECD_O\Data\PO072425\
 Data File : PO112464.D
 Signal(s) : Signal #1: ECD1A.ch Signal #2: ECD2B.ch
 Acq On : 24 Jul 2025 15:23
 Operator : YP/AJ
 Sample : AR1660CCC500
 Misc :
 ALS Vial : 3 Sample Multiplier: 1

Instrument :
 ECD_O
 ClientSampleId :
 AR1660CCC500

Integration File signal 1: autoint1.e
 Integration File signal 2: autoint2.e
 Quant Time: Jul 24 23:41:46 2025
 Quant Method : Z:\pestpcbsrv\HPCHEM1\ECD_O\methods\PO072325.M
 Quant Title : GC EXTRACTABLES
 QLast Update : Thu Jul 24 04:54:06 2025
 Response via : Initial Calibration
 Integrator: ChemStation

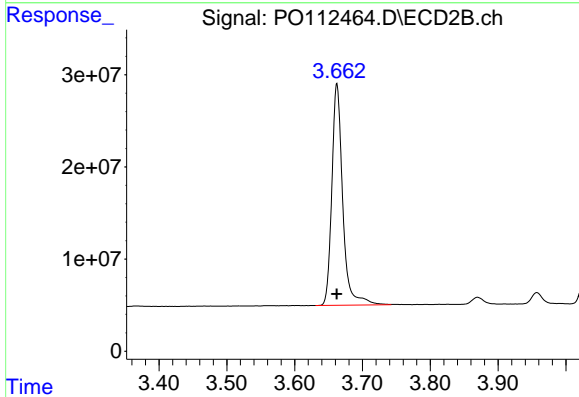
Volume Inj. : 2 µl
 Signal #1 Phase : ZB-MR1 Signal #2 Phase: ZB-MR2
 Signal #1 Info : 30Mx0.32mmx 0.50µ Signal #2 Info : 30M x 0.32mm x 0.25µm



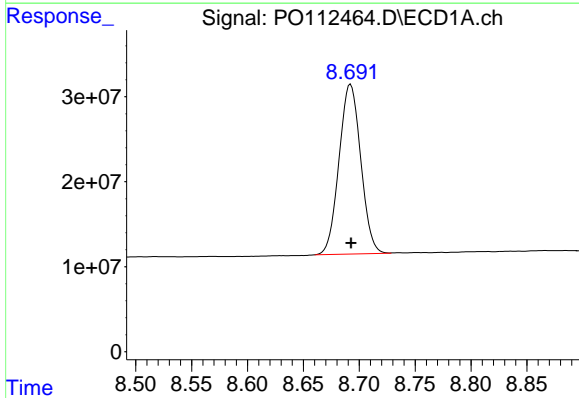


#1 Tetrachloro-m-xylene
 R.T.: 3.668 min
 Delta R.T.: 0.000 min
 Response: 443170249
 Conc: 54.50 ng/ml

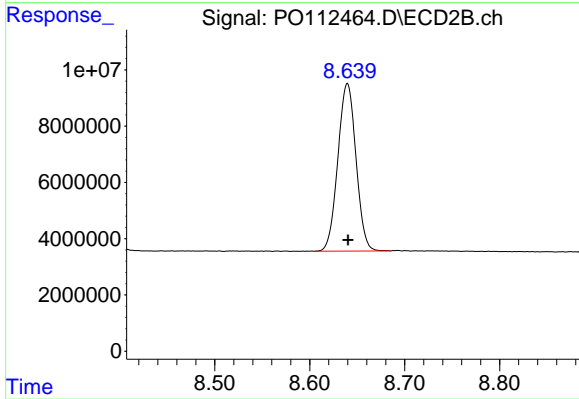
Instrument :
 ECD_O
 ClientSampleId :
 AR1660CCC500



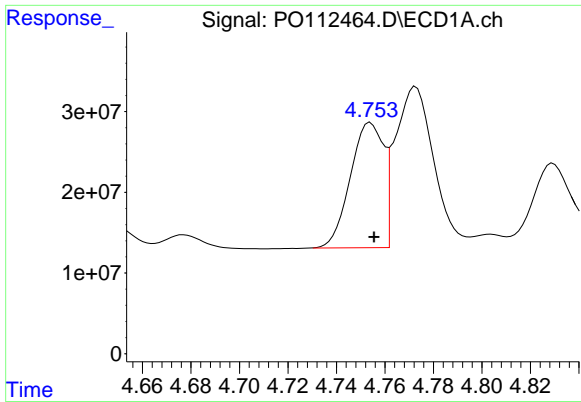
#1 Tetrachloro-m-xylene
 R.T.: 3.662 min
 Delta R.T.: 0.000 min
 Response: 267887805
 Conc: 53.91 ng/ml



#2 Decachlorobiphenyl
 R.T.: 8.692 min
 Delta R.T.: 0.000 min
 Response: 270092613
 Conc: 36.94 ng/ml



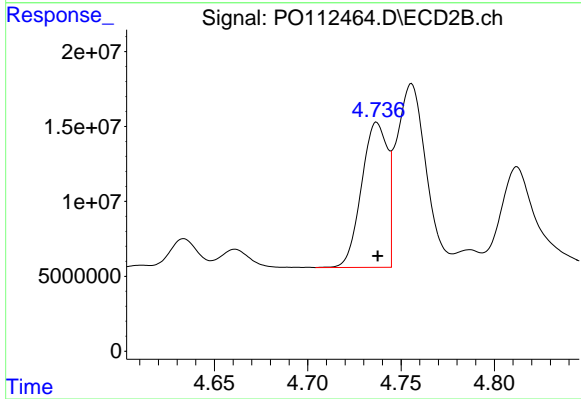
#2 Decachlorobiphenyl
 R.T.: 8.640 min
 Delta R.T.: 0.000 min
 Response: 79053765
 Conc: 44.74 ng/ml



#3 AR-1016-1

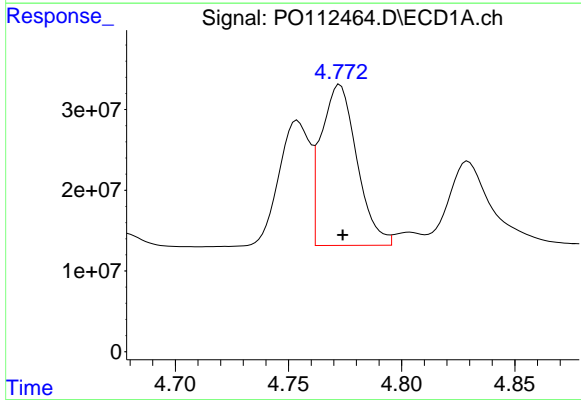
R.T.: 4.754 min
 Delta R.T.: -0.001 min
 Response: 147163667
 Conc: 548.37 ng/ml

Instrument :
 ECD_O
 ClientSampleId :
 AR1660CCC500



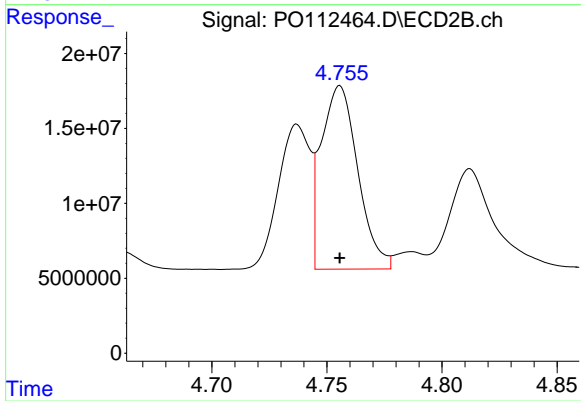
#3 AR-1016-1

R.T.: 4.737 min
 Delta R.T.: 0.000 min
 Response: 93094863
 Conc: 531.95 ng/ml



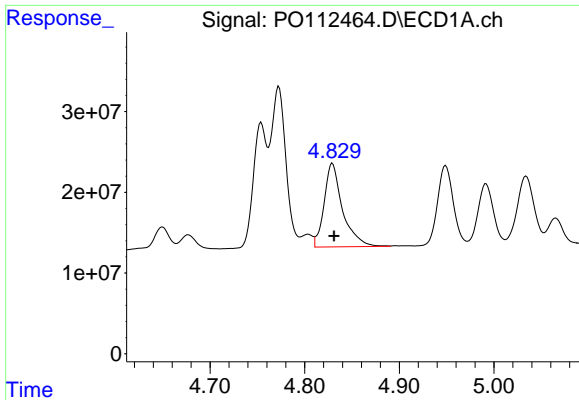
#4 AR-1016-2

R.T.: 4.773 min
 Delta R.T.: -0.001 min
 Response: 219559449
 Conc: 540.63 ng/ml



#4 AR-1016-2

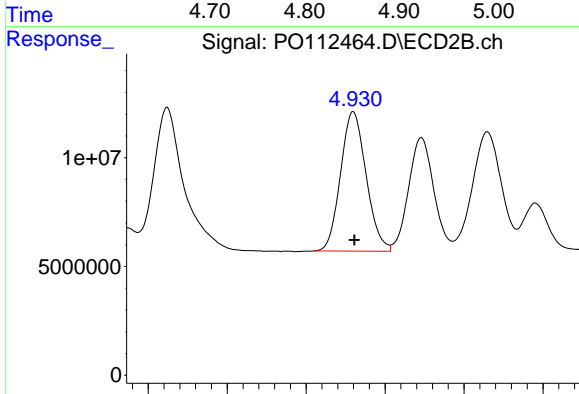
R.T.: 4.756 min
 Delta R.T.: 0.000 min
 Response: 135375281
 Conc: 519.68 ng/ml



#5 AR-1016-3

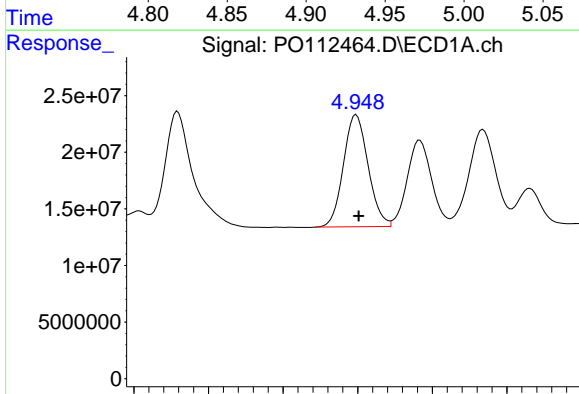
R.T.: 4.829 min
 Delta R.T.: -0.002 min
 Response: 139930510
 Conc: 534.75 ng/ml

Instrument :
 ECD_O
 ClientSampleId :
 AR1660CCC500



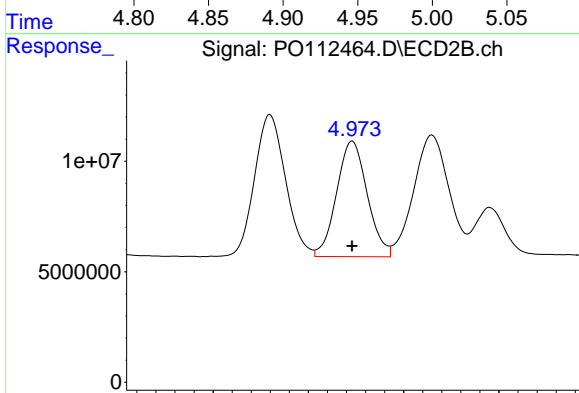
#5 AR-1016-3

R.T.: 4.930 min
 Delta R.T.: 0.000 min
 Response: 72194026
 Conc: 530.97 ng/ml



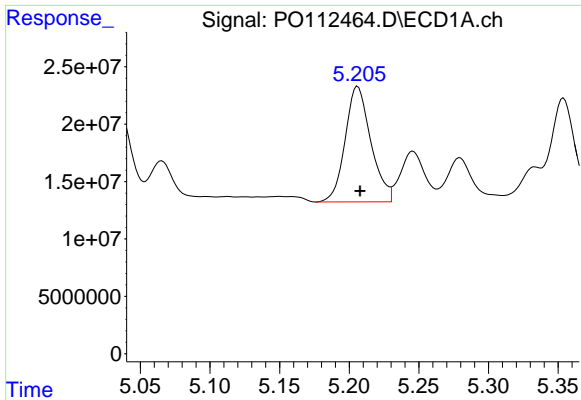
#6 AR-1016-4

R.T.: 4.949 min
 Delta R.T.: -0.002 min
 Response: 113811955
 Conc: 537.25 ng/ml



#6 AR-1016-4

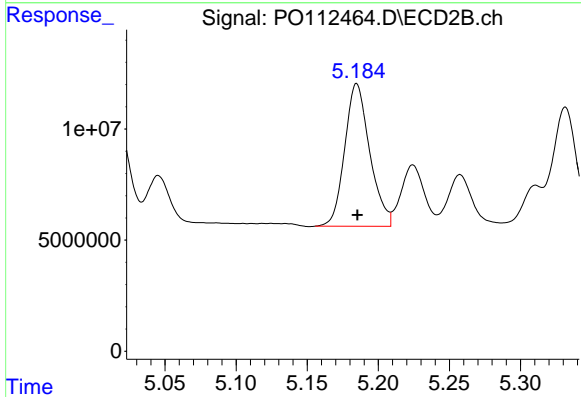
R.T.: 4.973 min
 Delta R.T.: 0.000 min
 Response: 58405713
 Conc: 525.78 ng/ml



#7 AR-1016-5

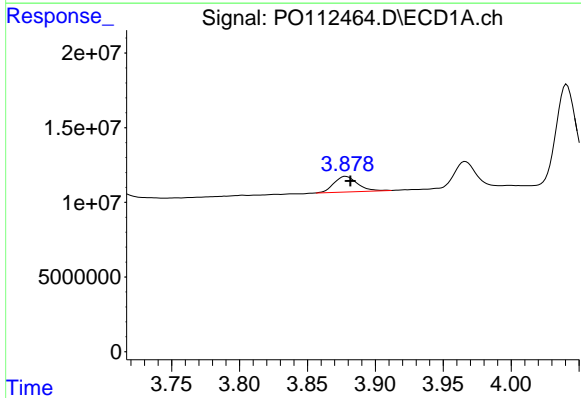
R.T.: 5.206 min
 Delta R.T.: -0.001 min
 Response: 129514796
 Conc: 590.12 ng/ml

Instrument :
 ECD_O
 ClientSampleId :
 AR1660CCC500



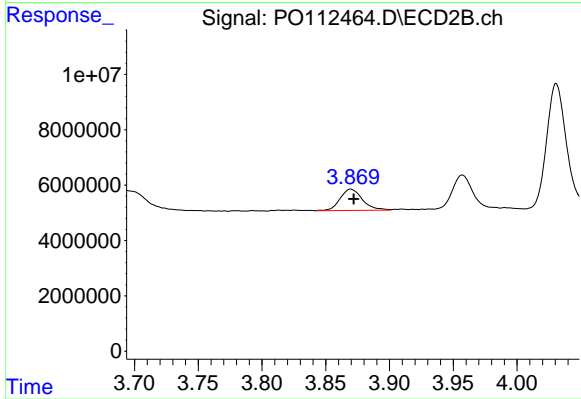
#7 AR-1016-5

R.T.: 5.185 min
 Delta R.T.: 0.000 min
 Response: 78762533
 Conc: 549.62 ng/ml



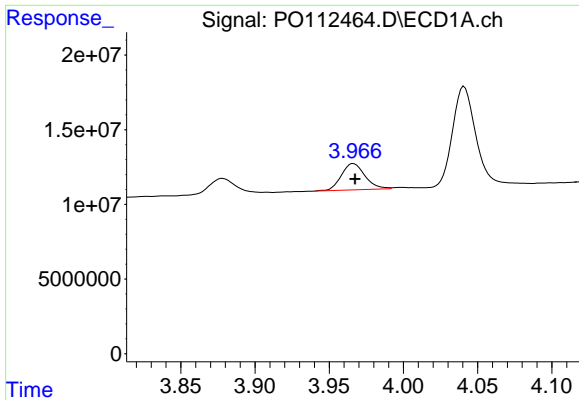
#8 AR-1221-1

R.T.: 3.878 min
 Delta R.T.: -0.003 min
 Response: 12581486
 Conc: 130.16 ng/ml



#8 AR-1221-1

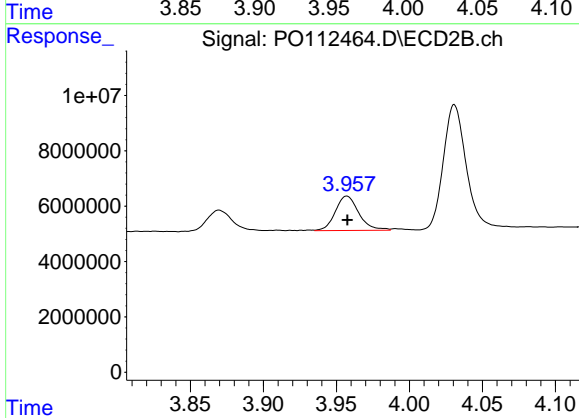
R.T.: 3.870 min
 Delta R.T.: -0.002 min
 Response: 9351317
 Conc: 139.02 ng/ml



#9 AR-1221-2

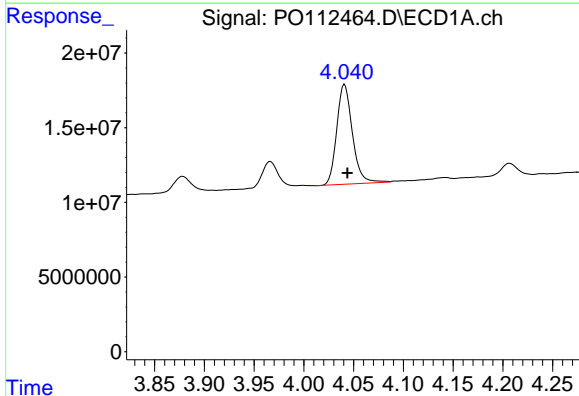
R.T.: 3.966 min
 Delta R.T.: -0.001 min
 Response: 19527580
 Conc: 271.74 ng/ml

Instrument :
 ECD_O
 ClientSampleId :
 AR1660CCC500



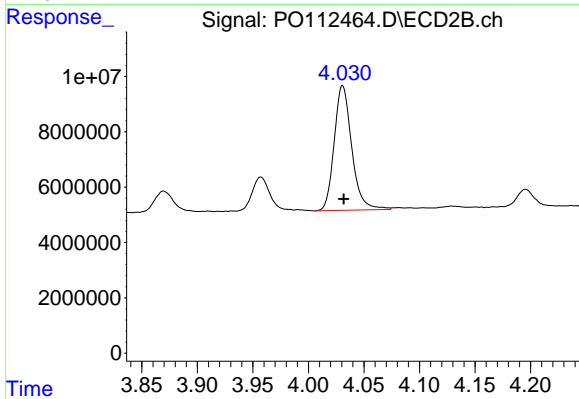
#9 AR-1221-2

R.T.: 3.957 min
 Delta R.T.: 0.000 min
 Response: 13893254
 Conc: 273.88 ng/ml



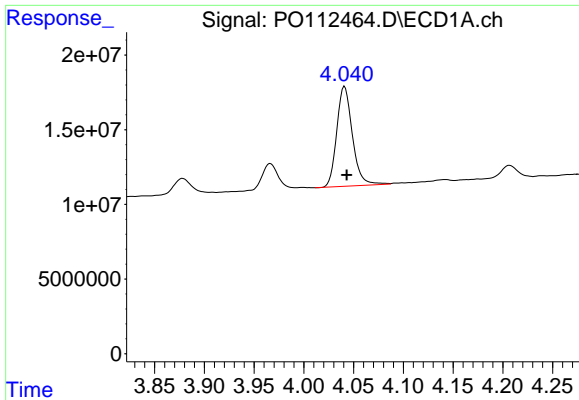
#10 AR-1221-3

R.T.: 4.041 min
 Delta R.T.: -0.003 min
 Response: 73141687
 Conc: 307.69 ng/ml



#10 AR-1221-3

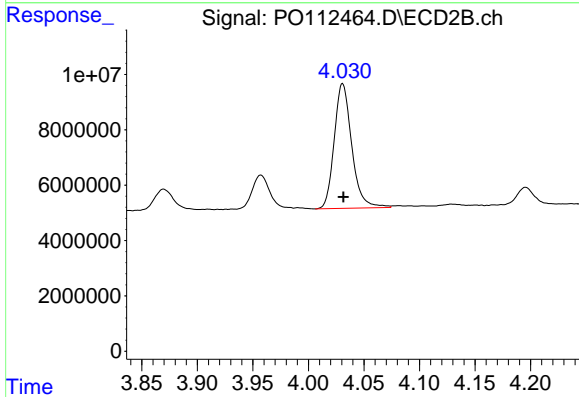
R.T.: 4.031 min
 Delta R.T.: -0.001 min
 Response: 49615880
 Conc: 312.98 ng/ml



#11 AR-1232-1

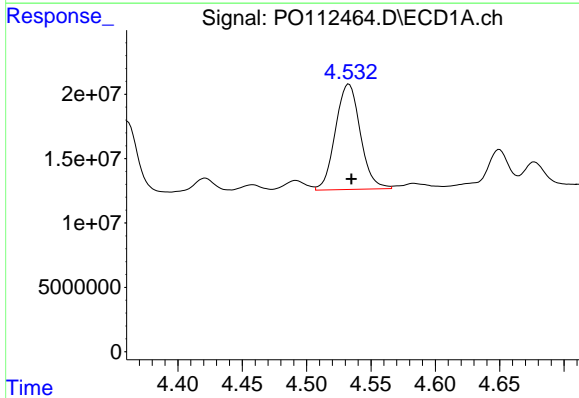
R.T.: 4.041 min
 Delta R.T.: -0.002 min
 Response: 73141687
 Conc: 391.18 ng/ml

Instrument :
 ECD_O
 ClientSampleId :
 AR1660CCC500



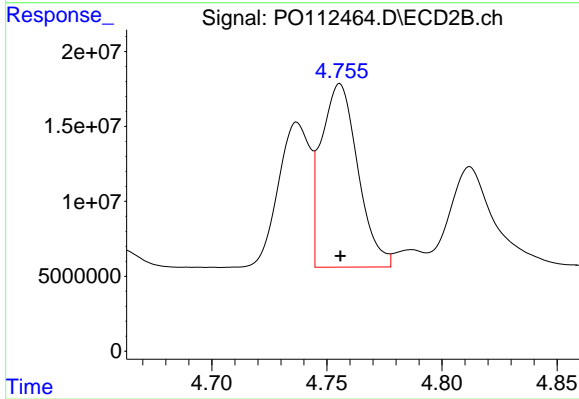
#11 AR-1232-1

R.T.: 4.031 min
 Delta R.T.: 0.000 min
 Response: 49615880
 Conc: 392.07 ng/ml



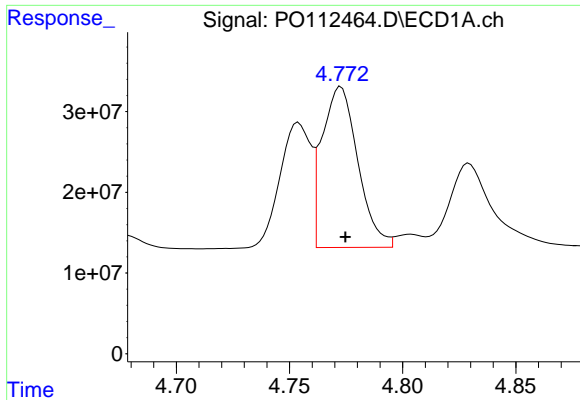
#12 AR-1232-2

R.T.: 4.533 min
 Delta R.T.: -0.002 min
 Response: 110330372
 Conc: 1025.14 ng/ml



#12 AR-1232-2

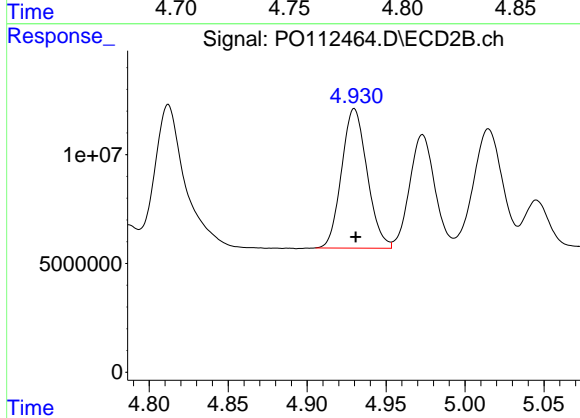
R.T.: 4.756 min
 Delta R.T.: 0.000 min
 Response: 135375281
 Conc: 1032.18 ng/ml



#13 AR-1232-3

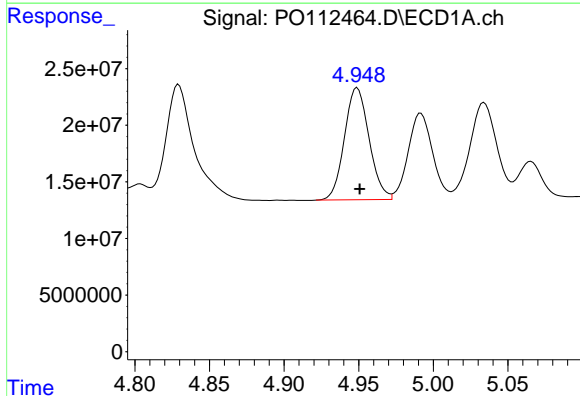
R.T.: 4.773 min
 Delta R.T.: -0.002 min
 Response: 219559449
 Conc: 1061.70 ng/ml

Instrument :
 ECD_O
 ClientSampleId :
 AR1660CCC500



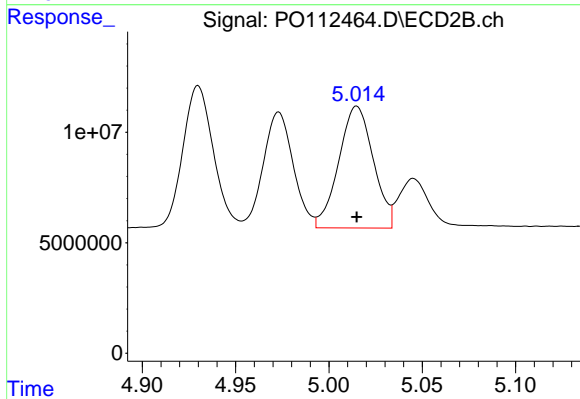
#13 AR-1232-3

R.T.: 4.930 min
 Delta R.T.: 0.000 min
 Response: 72194026
 Conc: 1074.37 ng/ml



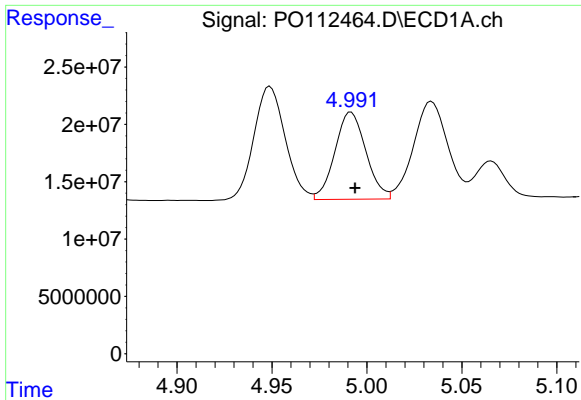
#14 AR-1232-4

R.T.: 4.949 min
 Delta R.T.: -0.002 min
 Response: 113811955
 Conc: 1086.61 ng/ml



#14 AR-1232-4

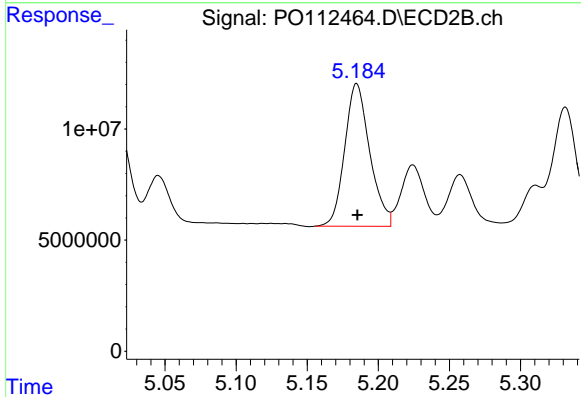
R.T.: 5.015 min
 Delta R.T.: 0.000 min
 Response: 71098539
 Conc: 1188.36 ng/ml



#15 AR-1232-5

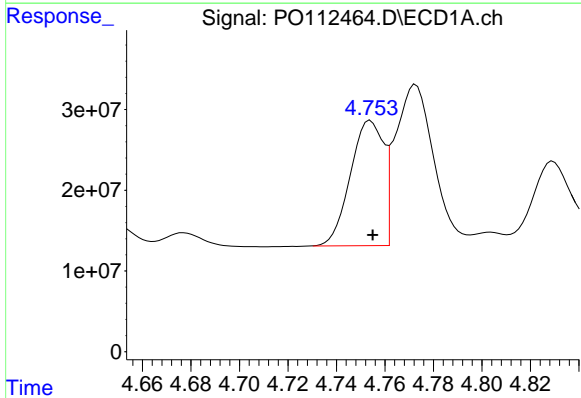
R.T.: 4.992 min
 Delta R.T.: -0.002 min
 Response: 86335171
 Conc: 1271.86 ng/ml

Instrument :
 ECD_O
 ClientSampleId :
 AR1660CCC500



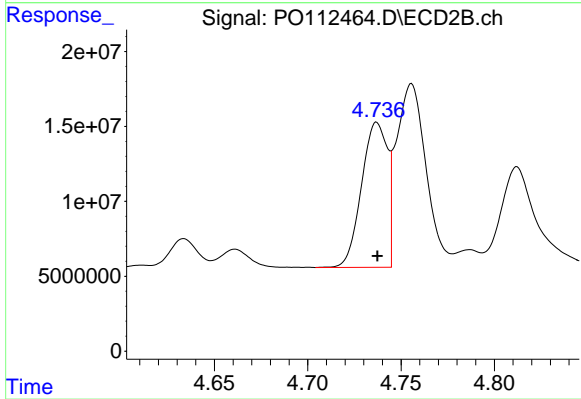
#15 AR-1232-5

R.T.: 5.185 min
 Delta R.T.: 0.000 min
 Response: 78762533
 Conc: 1207.96 ng/ml



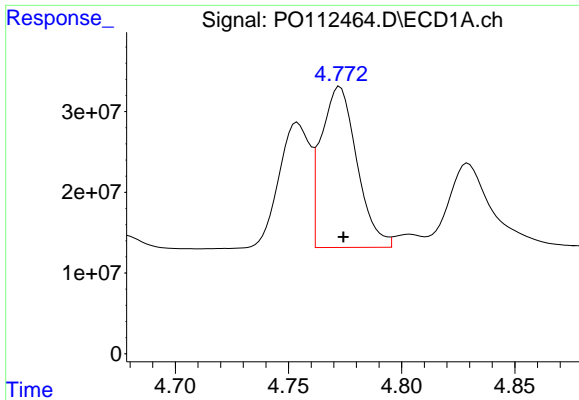
#16 AR-1242-1

R.T.: 4.754 min
 Delta R.T.: -0.001 min
 Response: 147163667
 Conc: 594.38 ng/ml



#16 AR-1242-1

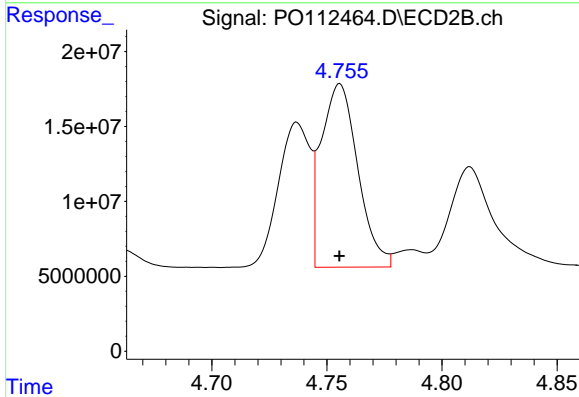
R.T.: 4.737 min
 Delta R.T.: 0.000 min
 Response: 93094863
 Conc: 587.74 ng/ml



#17 AR-1242-2

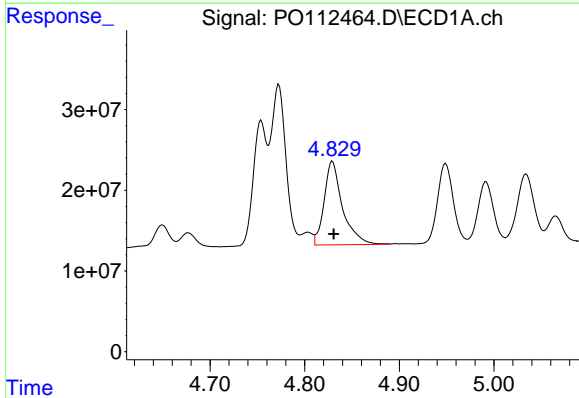
R.T.: 4.773 min
 Delta R.T.: -0.001 min
 Response: 219559449
 Conc: 593.74 ng/ml

Instrument :
 ECD_O
 ClientSampleId :
 AR1660CCC500



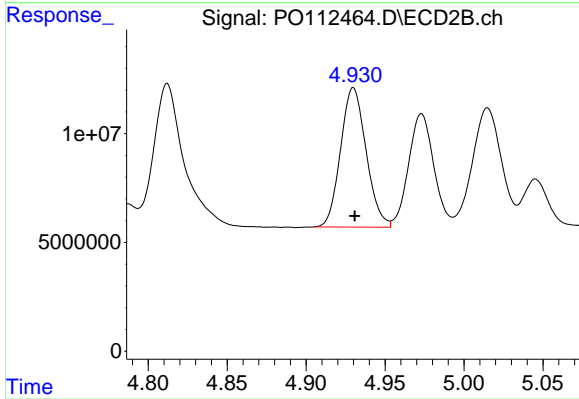
#17 AR-1242-2

R.T.: 4.756 min
 Delta R.T.: 0.000 min
 Response: 135375281
 Conc: 579.35 ng/ml



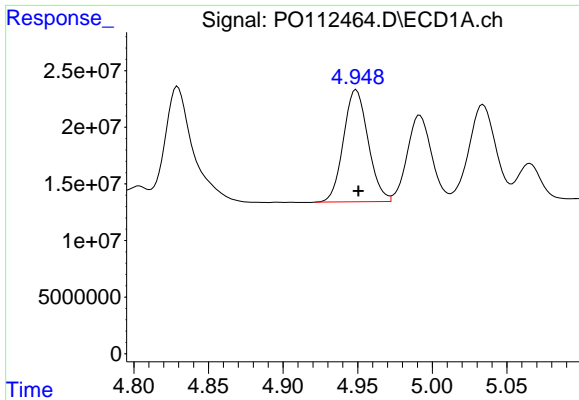
#18 AR-1242-3

R.T.: 4.829 min
 Delta R.T.: -0.002 min
 Response: 139930510
 Conc: 591.28 ng/ml



#18 AR-1242-3

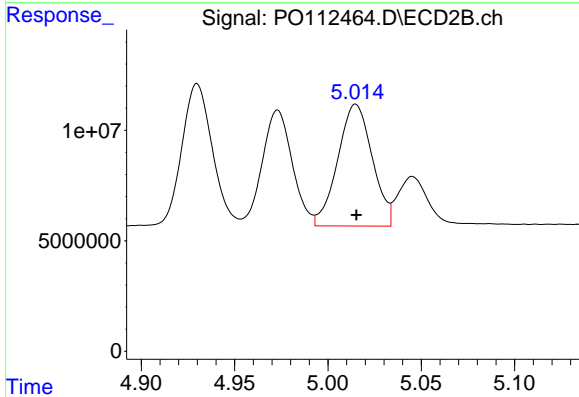
R.T.: 4.930 min
 Delta R.T.: 0.000 min
 Response: 72194026
 Conc: 595.71 ng/ml



#19 AR-1242-4

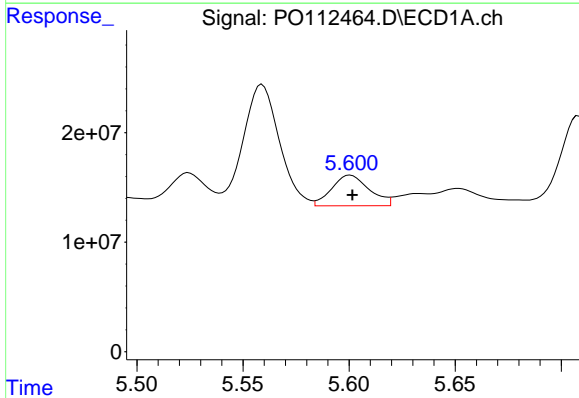
R.T.: 4.949 min
 Delta R.T.: -0.001 min
 Response: 113811955
 Conc: 585.82 ng/ml

Instrument :
 ECD_O
 ClientSampleId :
 AR1660CCC500



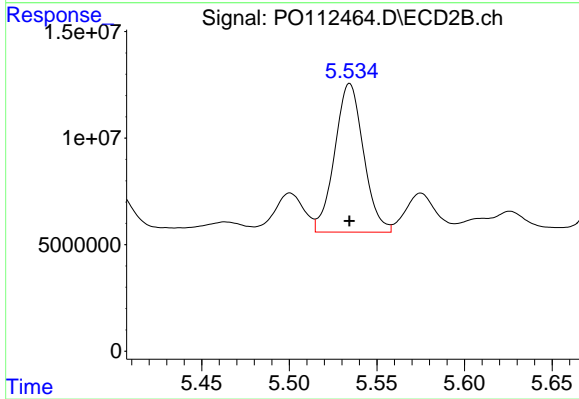
#19 AR-1242-4

R.T.: 5.015 min
 Delta R.T.: 0.000 min
 Response: 71098539
 Conc: 579.26 ng/ml



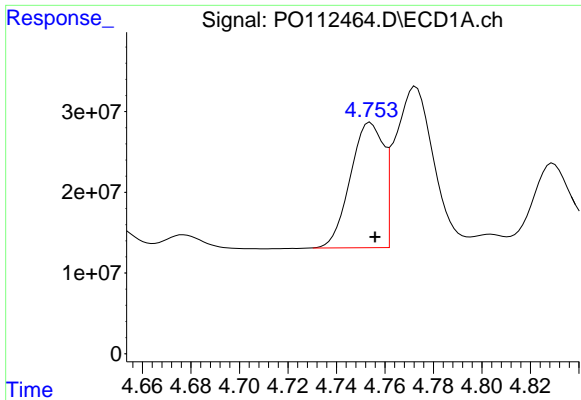
#20 AR-1242-5

R.T.: 5.601 min
 Delta R.T.: 0.000 min
 Response: 34396077
 Conc: 160.79 ng/ml



#20 AR-1242-5

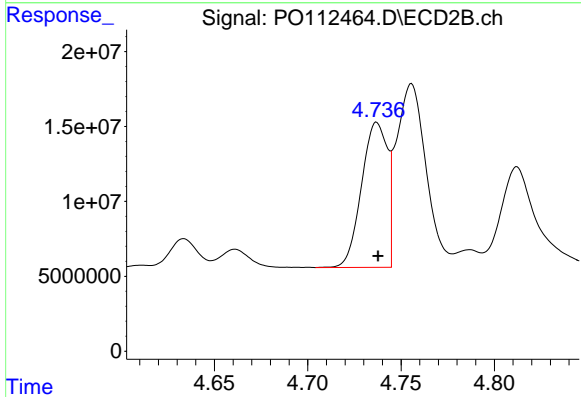
R.T.: 5.534 min
 Delta R.T.: 0.000 min
 Response: 80041552
 Conc: 497.24 ng/ml



#21 AR-1248-1

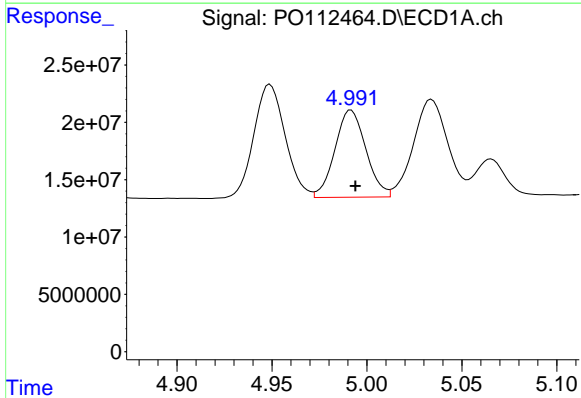
R.T.: 4.754 min
 Delta R.T.: -0.002 min
 Response: 147163667
 Conc: 786.09 ng/ml

Instrument :
 ECD_O
 ClientSampleId :
 AR1660CCC500



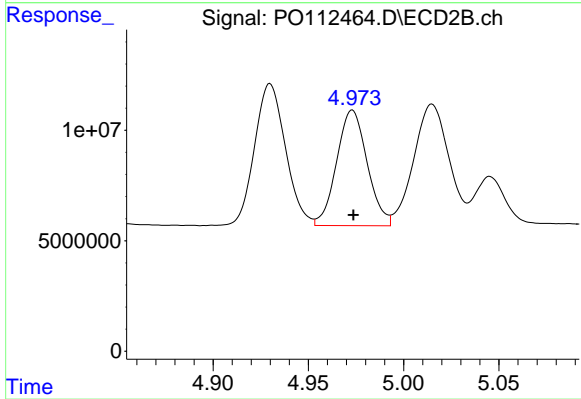
#21 AR-1248-1

R.T.: 4.737 min
 Delta R.T.: 0.000 min
 Response: 93094863
 Conc: 766.15 ng/ml



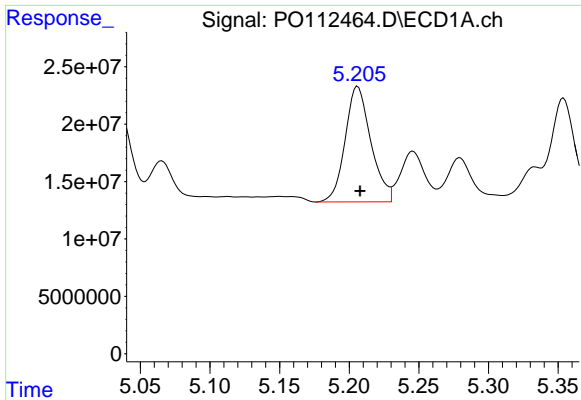
#22 AR-1248-2

R.T.: 4.992 min
 Delta R.T.: -0.002 min
 Response: 86335171
 Conc: 338.42 ng/ml



#22 AR-1248-2

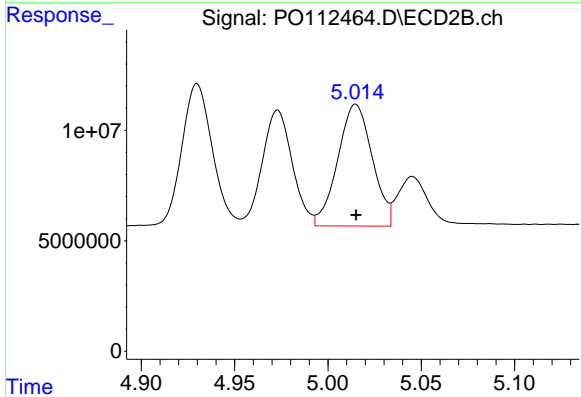
R.T.: 4.973 min
 Delta R.T.: 0.000 min
 Response: 58405713
 Conc: 345.02 ng/ml



#23 AR-1248-3

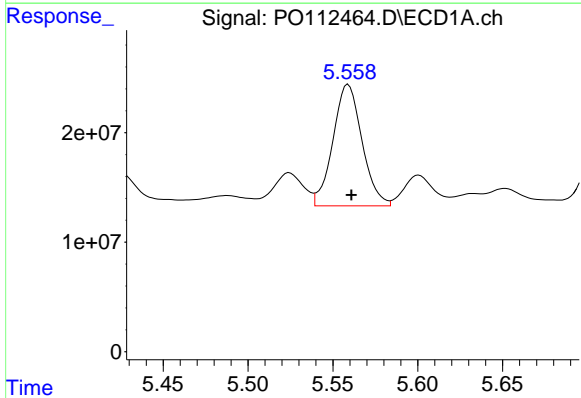
R.T.: 5.206 min
 Delta R.T.: -0.002 min
 Response: 129514796
 Conc: 376.82 ng/ml

Instrument :
 ECD_O
 ClientSampleId :
 AR1660CCC500



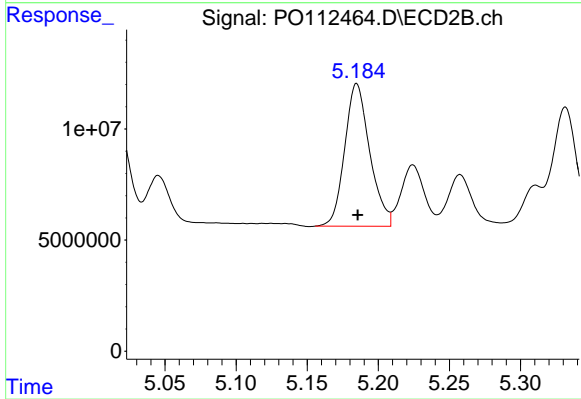
#23 AR-1248-3

R.T.: 5.015 min
 Delta R.T.: 0.000 min
 Response: 71098539
 Conc: 400.22 ng/ml



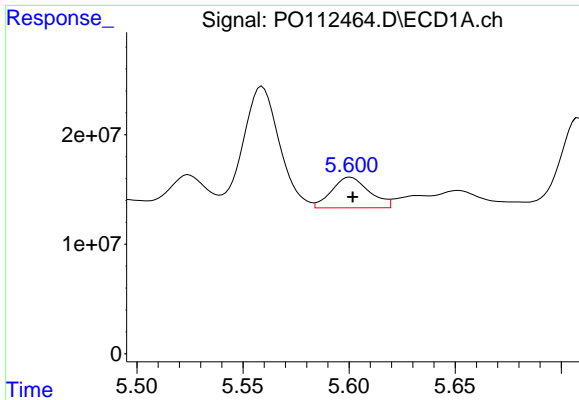
#24 AR-1248-4

R.T.: 5.559 min
 Delta R.T.: -0.002 min
 Response: 132292466
 Conc: 260.38 ng/ml



#24 AR-1248-4

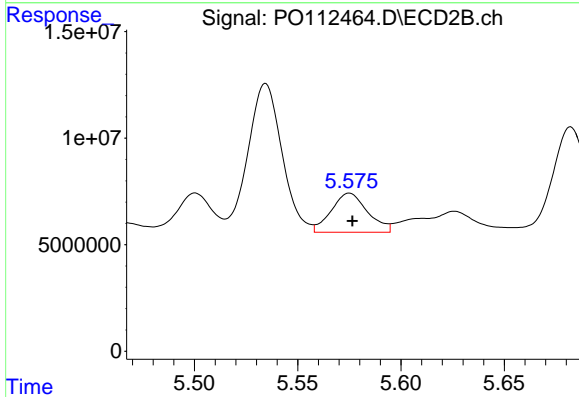
R.T.: 5.185 min
 Delta R.T.: 0.000 min
 Response: 78762533
 Conc: 378.02 ng/ml



#25 AR-1248-5

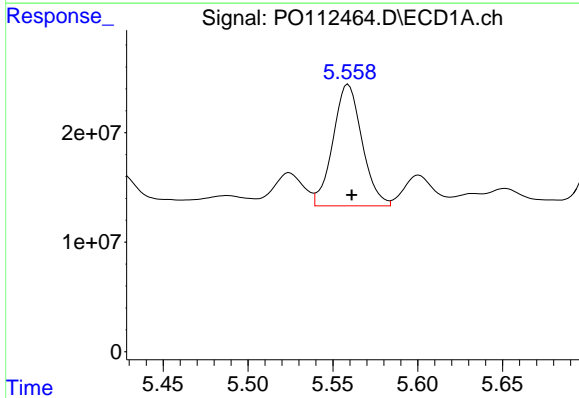
R.T.: 5.601 min
 Delta R.T.: -0.001 min
 Response: 34396077
 Conc: 98.39 ng/ml

Instrument :
 ECD_O
 ClientSampleId :
 AR1660CCC500



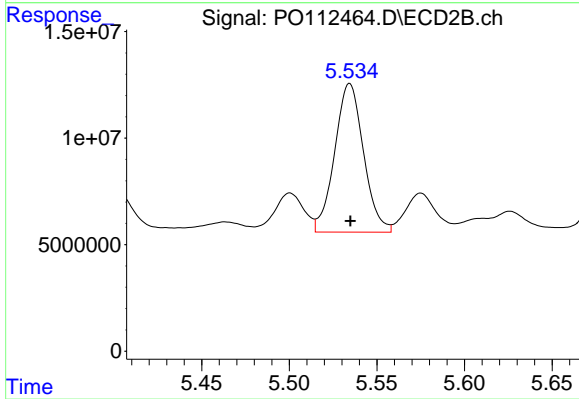
#25 AR-1248-5

R.T.: 5.575 min
 Delta R.T.: -0.001 min
 Response: 22501985
 Conc: 104.77 ng/ml



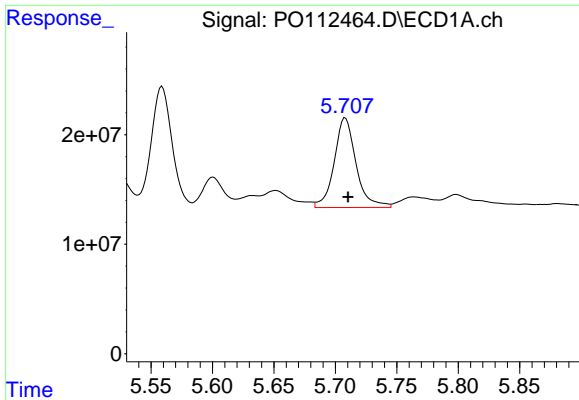
#26 AR-1254-1

R.T.: 5.559 min
 Delta R.T.: -0.002 min
 Response: 132292466
 Conc: 240.99 ng/ml



#26 AR-1254-1

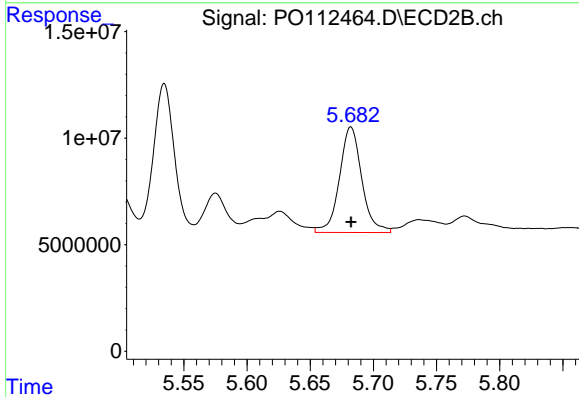
R.T.: 5.534 min
 Delta R.T.: 0.000 min
 Response: 80041552
 Conc: 243.57 ng/ml



#27 AR-1254-2

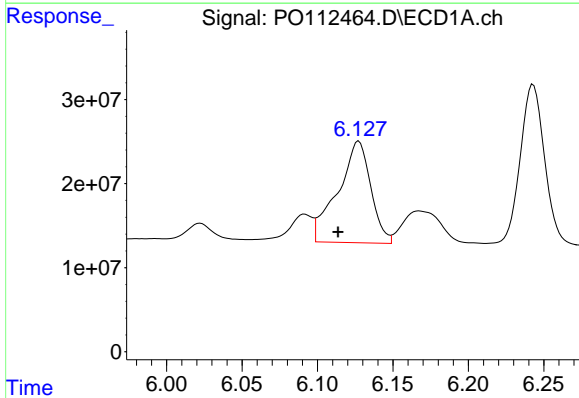
R.T.: 5.708 min
 Delta R.T.: -0.002 min
 Response: 101154675
 Conc: 208.17 ng/ml

Instrument :
 ECD_O
 ClientSampleId :
 AR1660CCC500



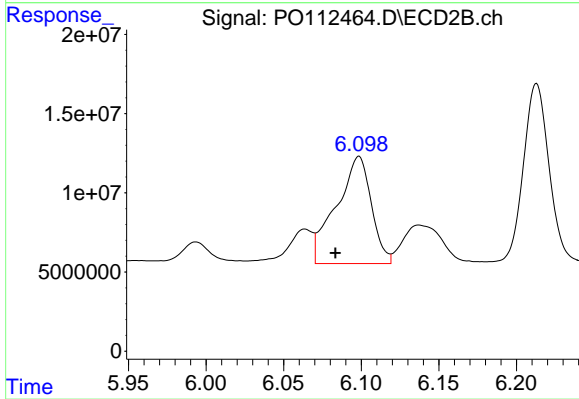
#27 AR-1254-2

R.T.: 5.682 min
 Delta R.T.: 0.000 min
 Response: 61033740
 Conc: 210.83 ng/ml



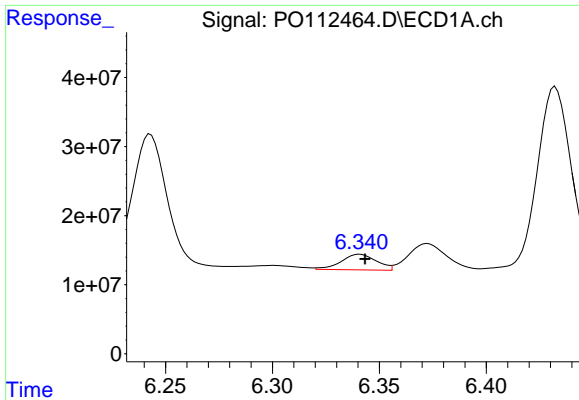
#28 AR-1254-3

R.T.: 6.127 min
 Delta R.T.: 0.014 min
 Response: 183839996
 Conc: 247.00 ng/ml



#28 AR-1254-3

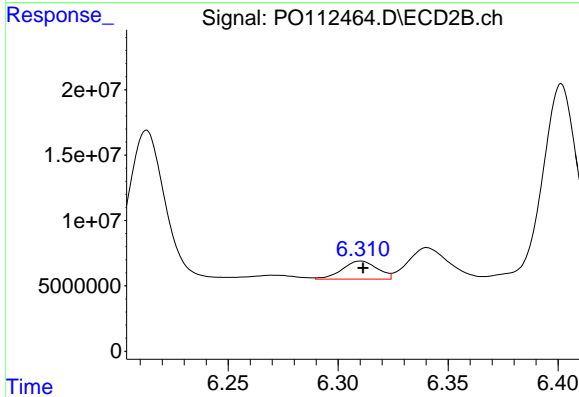
R.T.: 6.098 min
 Delta R.T.: 0.015 min
 Response: 106532649
 Conc: 249.22 ng/ml



#29 AR-1254-4

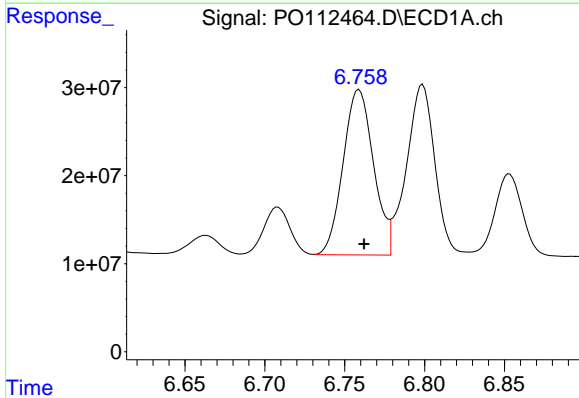
R.T.: 6.341 min
 Delta R.T.: -0.002 min
 Response: 25814548
 Conc: 46.96 ng/ml

Instrument :
 ECD_O
 ClientSampleId :
 AR1660CCC500



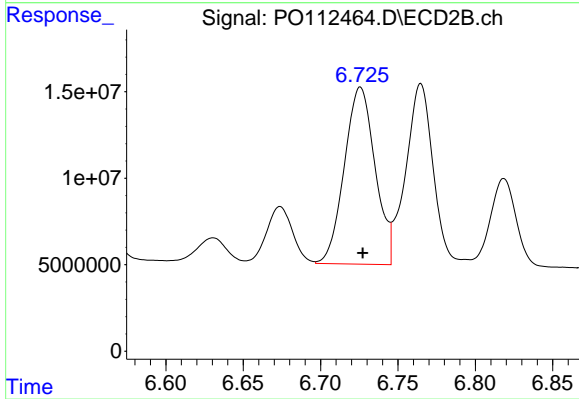
#29 AR-1254-4

R.T.: 6.310 min
 Delta R.T.: -0.001 min
 Response: 15429636
 Conc: 56.53 ng/ml



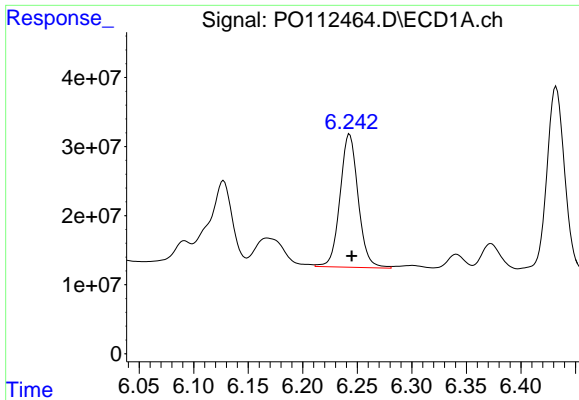
#30 AR-1254-5

R.T.: 6.759 min
 Delta R.T.: -0.003 min
 Response: 248527651
 Conc: 351.11 ng/ml



#30 AR-1254-5

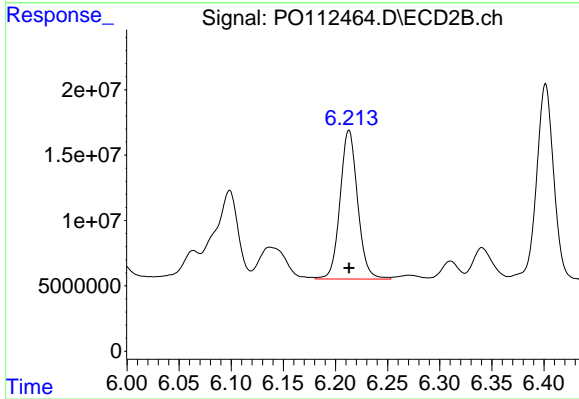
R.T.: 6.726 min
 Delta R.T.: -0.002 min
 Response: 141526738
 Conc: 423.71 ng/ml



#31 AR-1260-1

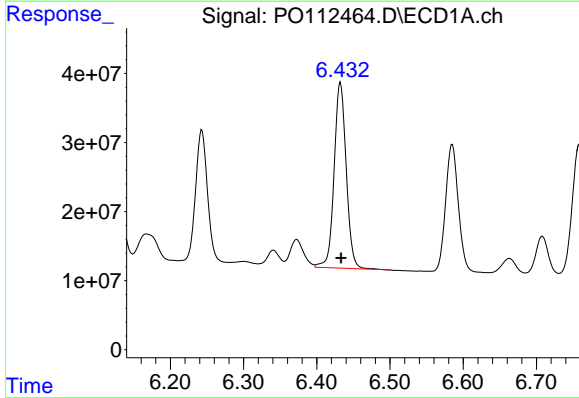
R.T.: 6.243 min
 Delta R.T.: -0.002 min
 Response: 223603086
 Conc: 508.96 ng/ml

Instrument :
 ECD_O
 ClientSampleId :
 AR1660CCC500



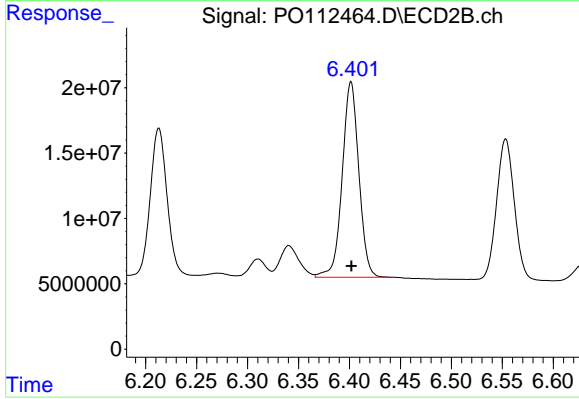
#31 AR-1260-1

R.T.: 6.213 min
 Delta R.T.: 0.000 min
 Response: 133499343
 Conc: 537.20 ng/ml



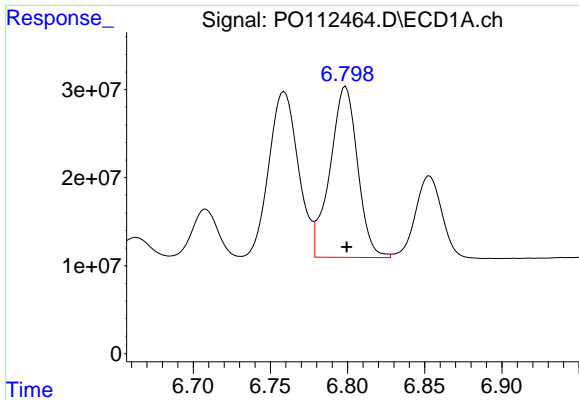
#32 AR-1260-2

R.T.: 6.432 min
 Delta R.T.: 0.000 min
 Response: 308798499
 Conc: 448.90 ng/ml



#32 AR-1260-2

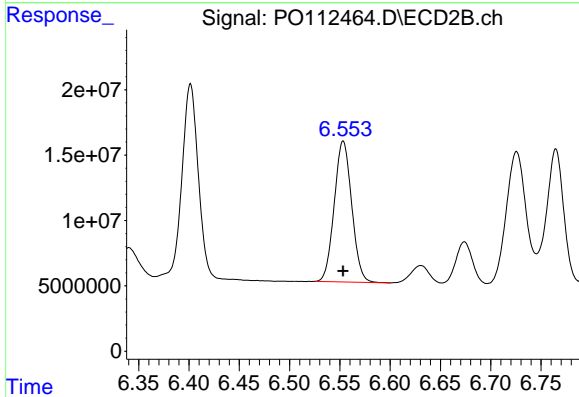
R.T.: 6.402 min
 Delta R.T.: 0.000 min
 Response: 169989286
 Conc: 515.91 ng/ml



#33 AR-1260-3

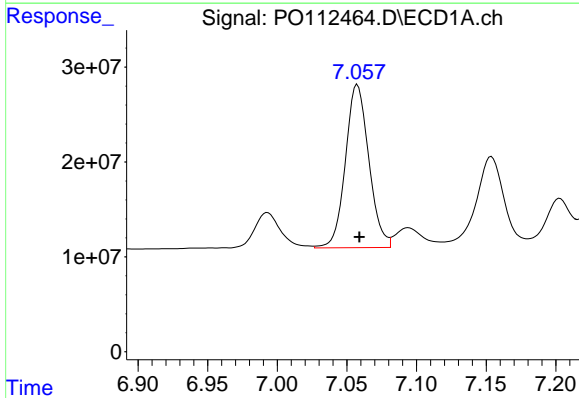
R.T.: 6.799 min
 Delta R.T.: 0.000 min
 Response: 241025762
 Conc: 409.89 ng/ml

Instrument :
 ECD_O
 ClientSampleId :
 AR1660CCC500



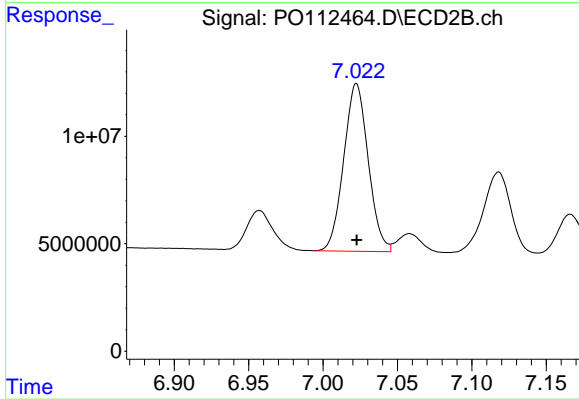
#33 AR-1260-3

R.T.: 6.553 min
 Delta R.T.: 0.000 min
 Response: 130255761
 Conc: 506.99 ng/ml



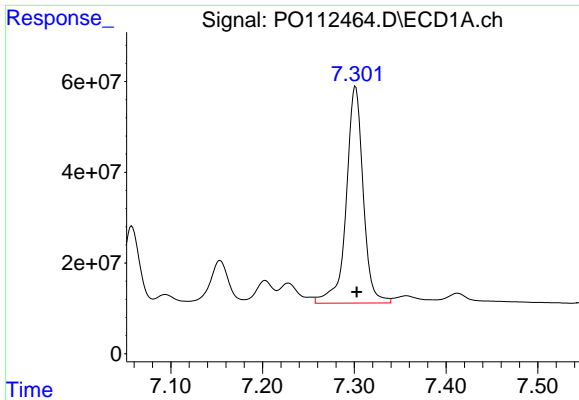
#34 AR-1260-4

R.T.: 7.058 min
 Delta R.T.: -0.001 min
 Response: 201468448
 Conc: 446.71 ng/ml



#34 AR-1260-4

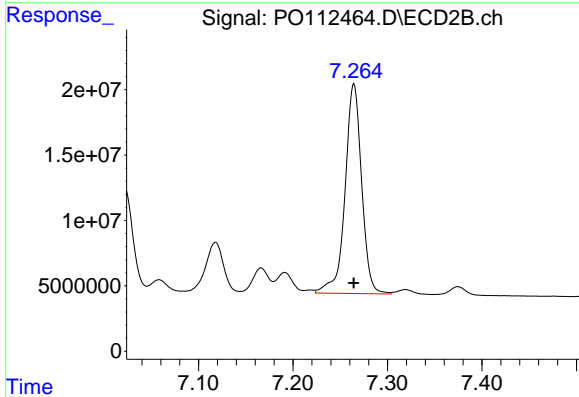
R.T.: 7.022 min
 Delta R.T.: 0.000 min
 Response: 89506342
 Conc: 467.86 ng/ml



#35 AR-1260-5

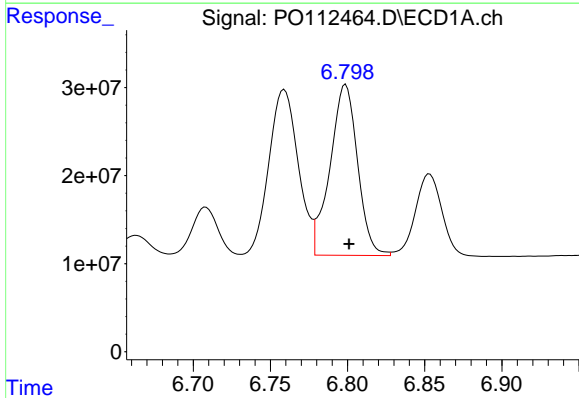
R.T.: 7.301 min
 Delta R.T.: -0.001 min
 Response: 613313018
 Conc: 494.95 ng/ml

Instrument :
 ECD_O
 ClientSampleId :
 AR1660CCC500



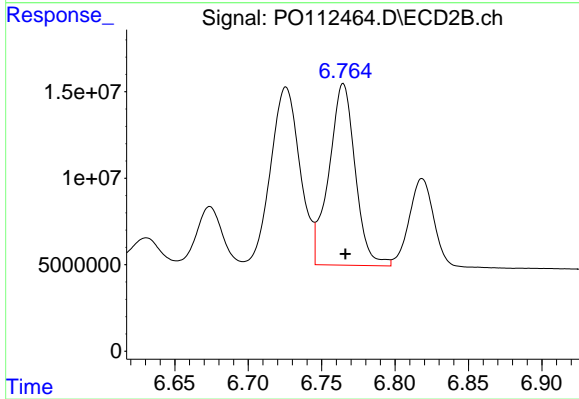
#35 AR-1260-5

R.T.: 7.264 min
 Delta R.T.: 0.000 min
 Response: 195815581
 Conc: 475.06 ng/ml



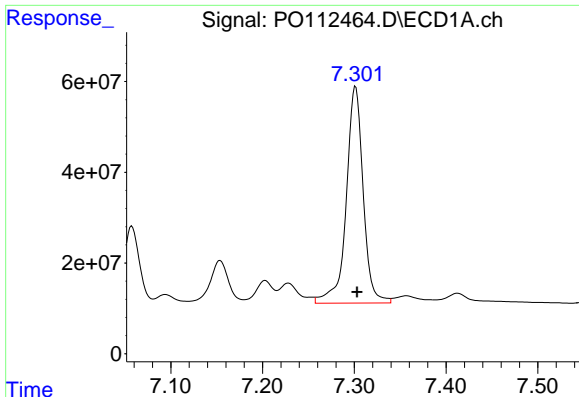
#36 AR-1262-1

R.T.: 6.799 min
 Delta R.T.: -0.002 min
 Response: 241025762
 Conc: 259.39 ng/ml



#36 AR-1262-1

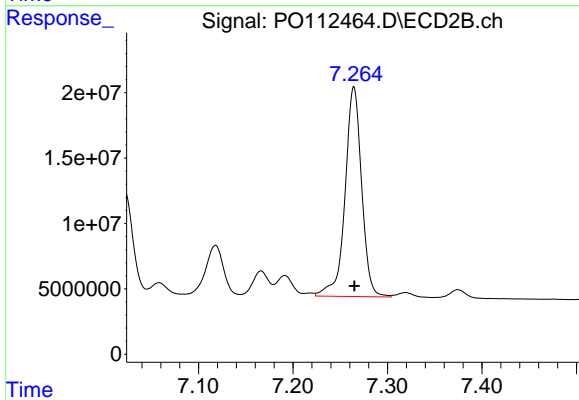
R.T.: 6.765 min
 Delta R.T.: -0.001 min
 Response: 130696242
 Conc: 315.06 ng/ml



#37 AR-1262-2

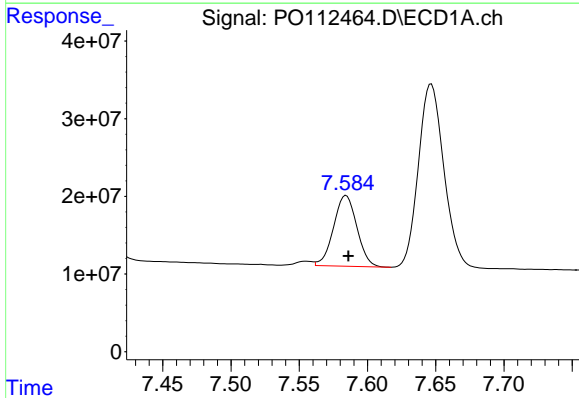
R.T.: 7.301 min
 Delta R.T.: -0.002 min
 Response: 613313018
 Conc: 412.45 ng/ml

Instrument :
 ECD_O
 ClientSampleId :
 AR1660CCC500



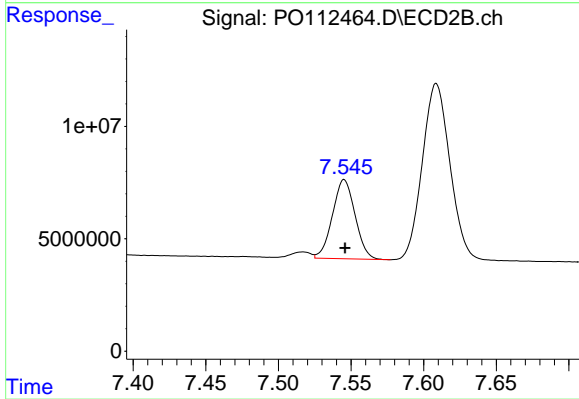
#37 AR-1262-2

R.T.: 7.264 min
 Delta R.T.: 0.000 min
 Response: 195815581
 Conc: 379.82 ng/ml



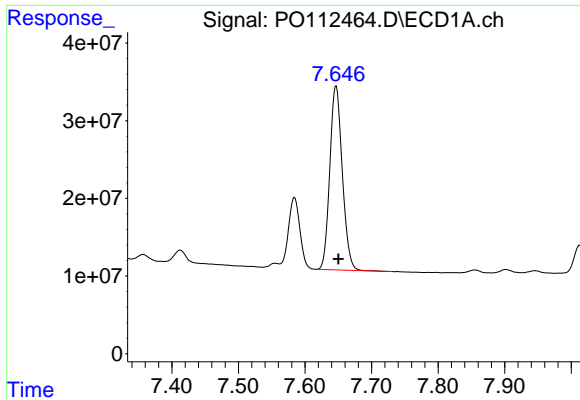
#38 AR-1262-3

R.T.: 7.584 min
 Delta R.T.: -0.002 min
 Response: 108151663
 Conc: 183.23 ng/ml



#38 AR-1262-3

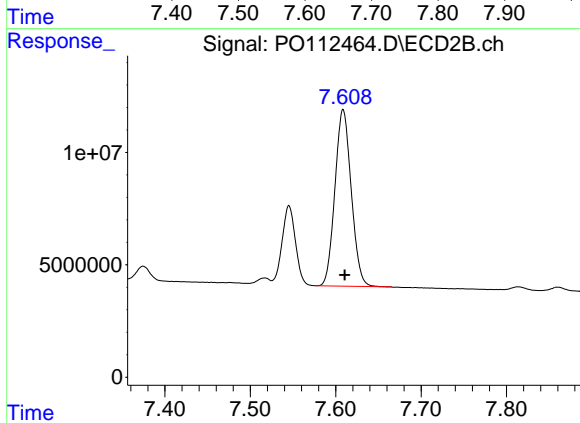
R.T.: 7.545 min
 Delta R.T.: 0.000 min
 Response: 38257278
 Conc: 205.11 ng/ml



#39 AR-1262-4

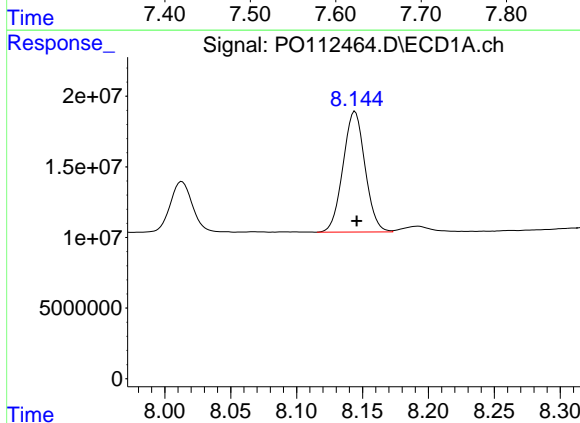
R.T.: 7.647 min
 Delta R.T.: -0.004 min
 Response: 308092429
 Conc: 309.90 ng/ml

Instrument :
 ECD_O
 ClientSampleId :
 AR1660CCC500



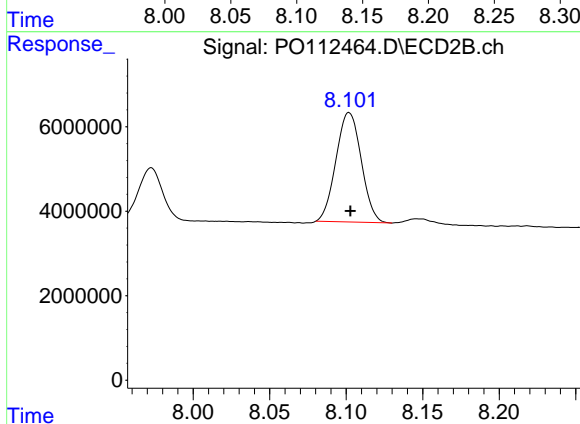
#39 AR-1262-4

R.T.: 7.609 min
 Delta R.T.: -0.002 min
 Response: 104323267
 Conc: 362.10 ng/ml



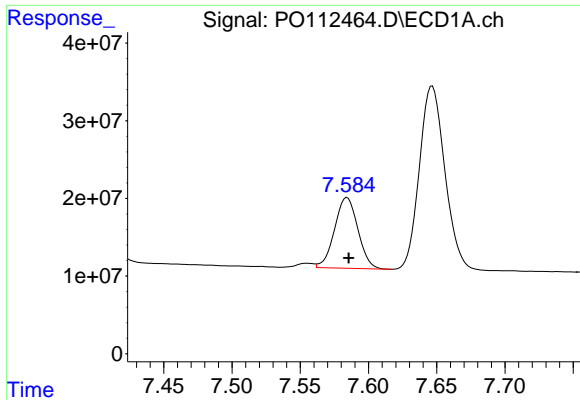
#40 AR-1262-5

R.T.: 8.144 min
 Delta R.T.: -0.001 min
 Response: 99335805
 Conc: 228.85 ng/ml



#40 AR-1262-5

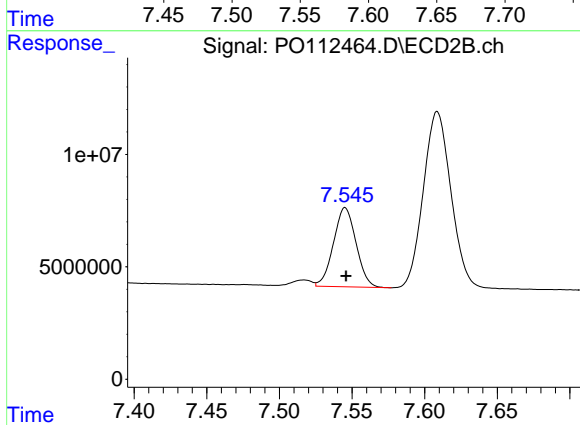
R.T.: 8.102 min
 Delta R.T.: 0.000 min
 Response: 29842991
 Conc: 299.92 ng/ml



#41 AR-1268-1

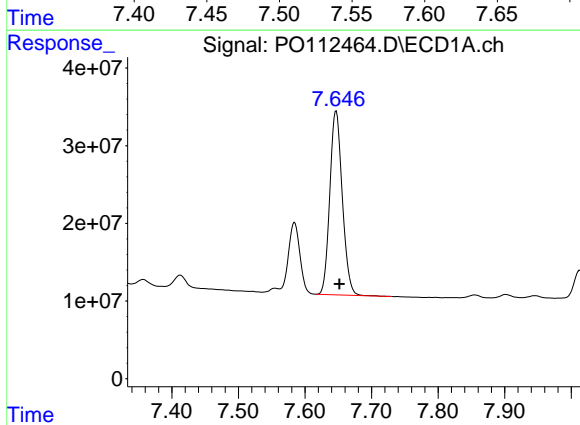
R.T.: 7.584 min
 Delta R.T.: -0.001 min
 Response: 108151663
 Conc: 61.76 ng/ml

Instrument :
 ECD_O
 ClientSampleId :
 AR1660CCC500



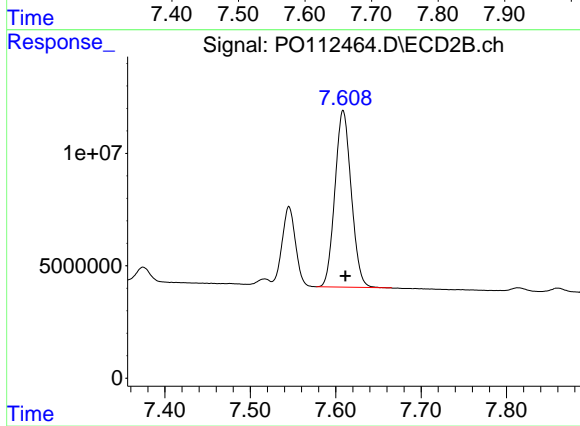
#41 AR-1268-1

R.T.: 7.545 min
 Delta R.T.: 0.000 min
 Response: 38257278
 Conc: 73.88 ng/ml



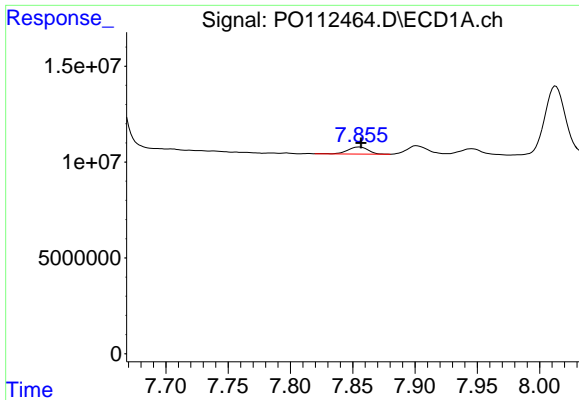
#42 AR-1268-2

R.T.: 7.647 min
 Delta R.T.: -0.005 min
 Response: 308092429
 Conc: 209.16 ng/ml



#42 AR-1268-2

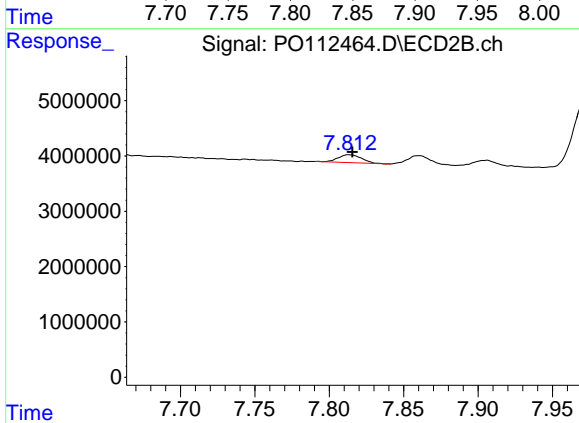
R.T.: 7.609 min
 Delta R.T.: -0.003 min
 Response: 104323267
 Conc: 245.43 ng/ml



#43 AR-1268-3

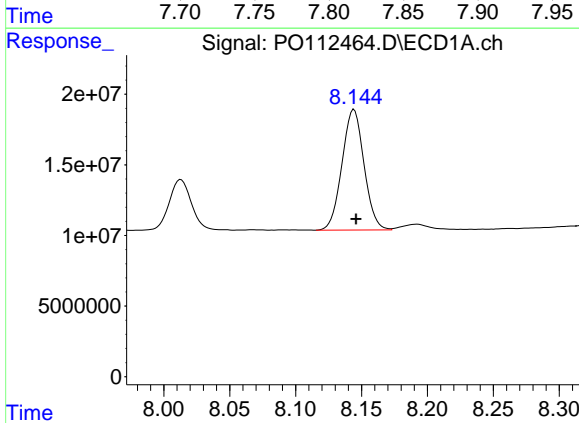
R.T.: 7.855 min
 Delta R.T.: -0.002 min
 Response: 4122597
 Conc: 3.29 ng/ml

Instrument :
 ECD_O
 ClientSampleId :
 AR1660CCC500



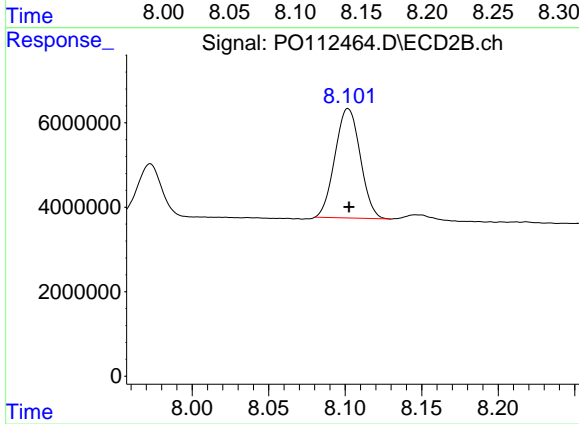
#43 AR-1268-3

R.T.: 7.814 min
 Delta R.T.: -0.002 min
 Response: 1577272
 Conc: 4.91 ng/ml



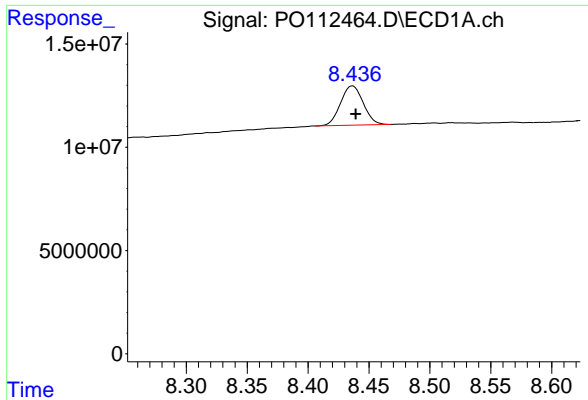
#44 AR-1268-4

R.T.: 8.144 min
 Delta R.T.: -0.002 min
 Response: 99335805
 Conc: 206.15 ng/ml



#44 AR-1268-4

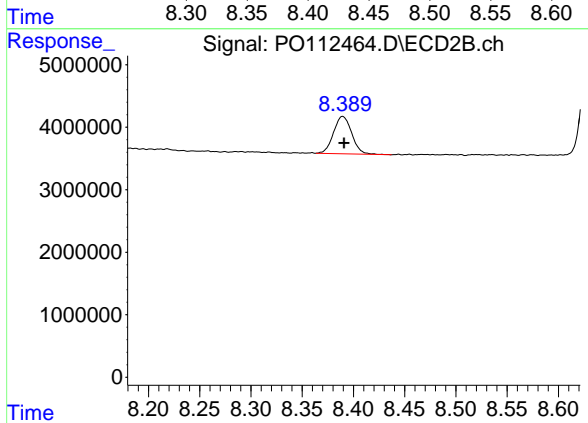
R.T.: 8.102 min
 Delta R.T.: 0.000 min
 Response: 29842991
 Conc: 268.14 ng/ml



#45 AR-1268-5

R.T.: 8.437 min
 Delta R.T.: -0.003 min
 Response: 24692223
 Conc: 7.36 ng/ml

Instrument :
 ECD_O
 ClientSampleId :
 AR1660CCC500



#45 AR-1268-5

R.T.: 8.390 min
 Delta R.T.: -0.001 min
 Response: 7385494
 Conc: 10.09 ng/ml