

Data Path : Z:\pestpcbsrv\HPCHEM1\ECD\_O\Data\P0072425\  
 Data File : PO112465.D  
 Signal(s) : Signal #1: ECD1A.ch Signal #2: ECD2B.ch  
 Acq On : 24 Jul 2025 15:42  
 Operator : YP/AJ  
 Sample : AR1242CCC500  
 Misc :  
 ALS Vial : 4 Sample Multiplier: 1

Instrument :  
 ECD\_O  
 ClientSampleId :  
 AR1242CCC500

Integration File signal 1: autoint1.e  
 Integration File signal 2: autoint2.e  
 Quant Time: Jul 24 23:42:16 2025  
 Quant Method : Z:\pestpcbsrv\HPCHEM1\ECD\_O\methods\P0072325.M  
 Quant Title : GC EXTRACTABLES  
 QLast Update : Thu Jul 24 04:54:06 2025  
 Response via : Initial Calibration  
 Integrator: ChemStation

Volume Inj. : 2 µl  
 Signal #1 Phase : ZB-MR1 Signal #2 Phase: ZB-MR2  
 Signal #1 Info : 30Mx0.32mmx 0.50µ Signal #2 Info : 30M x 0.32mm x 0.25µm

Compound	RT#1	RT#2	Resp#1	Resp#2	ng/ml	ng/ml
System Monitoring Compounds						
1) SA Tetrachlo...	3.670	3.663	479.3E6	289.6E6	58.939	58.286
2) SA Decachlor...	8.693	8.640	293.7E6	85317513	40.170	48.281
Target Compounds						
3) L1 AR-1016-1	4.756	4.738	134.2E6	84187820	499.992	481.054
4) L1 AR-1016-2	4.774	4.756	199.2E6	125.0E6	490.539	480.040
5) L1 AR-1016-3	4.831	4.931	128.1E6	66011574	489.356	485.499
6) L1 AR-1016-4	4.951	4.974	102.9E6	50387598	485.887	453.596
7) L1 AR-1016-5	5.208	5.186	118.9E6	72782925	541.963	507.895
8) L2 AR-1221-1	3.881	3.870	11834117	8861373	122.431	131.737
9) L2 AR-1221-2	3.968	3.958	18443355	13707832	256.650	270.222
10) L2 AR-1221-3	4.043	4.032	67667320	46501081	284.662	293.328
11) L3 AR-1232-1	4.043	4.032	67667320	46501081	361.899	367.452
12) L3 AR-1232-2	4.534	4.756	100.8E6	125.0E6	936.337	953.439
13) L3 AR-1232-3	4.774	4.931	199.2E6	66011574	963.332	982.362
14) L3 AR-1232-4	4.951	5.015	102.9E6	65148035	982.725	1088.902
15) L3 AR-1232-5	4.994	5.186	71670335	72782925	1055.825	1116.251
16) L4 AR-1242-1	4.756	4.738	134.2E6	84187820	541.943	531.509
17) L4 AR-1242-2	4.774	4.756	199.2E6	125.0E6	538.723	535.156
18) L4 AR-1242-3	4.831	4.931	128.1E6	66011574	541.084	544.699
19) L4 AR-1242-4	4.951	5.015	102.9E6	65148035	529.811	530.783
20) L4 AR-1242-5	5.601	5.535	115.8E6	87643167	541.224	544.465
21) L5 AR-1248-1	4.756	4.738	134.2E6	84187820	716.745	692.851
22) L5 AR-1248-2	4.994	4.974	71670335	50387598	280.936	297.659
23) L5 AR-1248-3	5.208	5.015	118.9E6	65148035	346.070	366.727
24) L5 AR-1248-4	5.560	5.186	144.6E6	72782925	284.663	349.322
25) L5 AR-1248-5	5.601	5.575	115.8E6	74320309	331.176	346.054
26) L6 AR-1254-1	5.560	5.535	144.6E6	87643167	263.464	266.700
27) L6 AR-1254-2	5.710	5.682	46208901	29160278	95.096	100.730
28) L6 AR-1254-3	6.113	6.083	47261964	31456754	63.500	73.590
29) L6 AR-1254-4	6.342	6.311	39514235	21279025	71.883	77.956
30) L6 AR-1254-5	6.760	6.726	7236920	6795466	10.224	20.345 #
31) L7 AR-1260-1	6.258	6.226	19771961	11252545	45.005	45.280
32) L7 AR-1260-2	6.433	6.400	5917799	2675909	8.603	8.121
33) L7 AR-1260-3	6.813	6.550	46704	2318768	0.079	9.025 #
34) L7 AR-1260-4	7.096f	7.025	6449729	187011	14.301	0.978 #
35) L7 AR-1260-5	7.312	7.265	11708703	425687	9.449	1.033 #
36) L8 AR-1262-1	6.813	6.786	46704	691645	0.050	1.667 #
37) L8 AR-1262-2	7.312	7.265	11708703	425687	7.874	0.826 #
38) L8 AR-1262-3	0.000	7.526	0	921539	N.D.	4.941 #
39) L8 AR-1262-4	0.000	7.606	0	1114701	N.D.	3.869 #
40) L8 AR-1262-5	8.146	0.000	259707	0	0.598	N.D. #
41) L9 AR-1268-1	0.000	7.526	0	921539	N.D.	1.780 #

Data Path : Z:\pestpcbsrv\HPCHEM1\ECD\_0\Data\P0072425\  
 Data File : P0112465.D  
 Signal(s) : Signal #1: ECD1A.ch Signal #2: ECD2B.ch  
 Acq On : 24 Jul 2025 15:42  
 Operator : YP/AJ  
 Sample : AR1242CCC500  
 Misc :  
 ALS Vial : 4 Sample Multiplier: 1

Instrument :  
 ECD\_0  
 ClientSampleId :  
 AR1242CCC500

Integration File signal 1: autoint1.e  
 Integration File signal 2: autoint2.e  
 Quant Time: Jul 24 23:42:16 2025  
 Quant Method : Z:\pestpcbsrv\HPCHEM1\ECD\_0\methods\P0072325.M  
 Quant Title : GC EXTRACTABLES  
 QLast Update : Thu Jul 24 04:54:06 2025  
 Response via : Initial Calibration  
 Integrator: ChemStation

Volume Inj. : 2 µl  
 Signal #1 Phase : ZB-MR1 Signal #2 Phase: ZB-MR2  
 Signal #1 Info : 30Mx0.32mmx 0.50µ Signal #2 Info : 30M x 0.32mm x 0.25µm

	Compound	RT#1	RT#2	Resp#1	Resp#2	ng/ml	ng/ml
42)	L9 AR-1268-2	0.000	7.606	0	1114701	N.D.	2.622 #
43)	L9 AR-1268-3	7.852	7.810	538538	271919	0.430	0.846 #
44)	L9 AR-1268-4	8.146	0.000	259707	0	0.539	N.D. #
45)	L9 AR-1268-5	8.446	8.391	1203267	410080	0.358	0.560 #

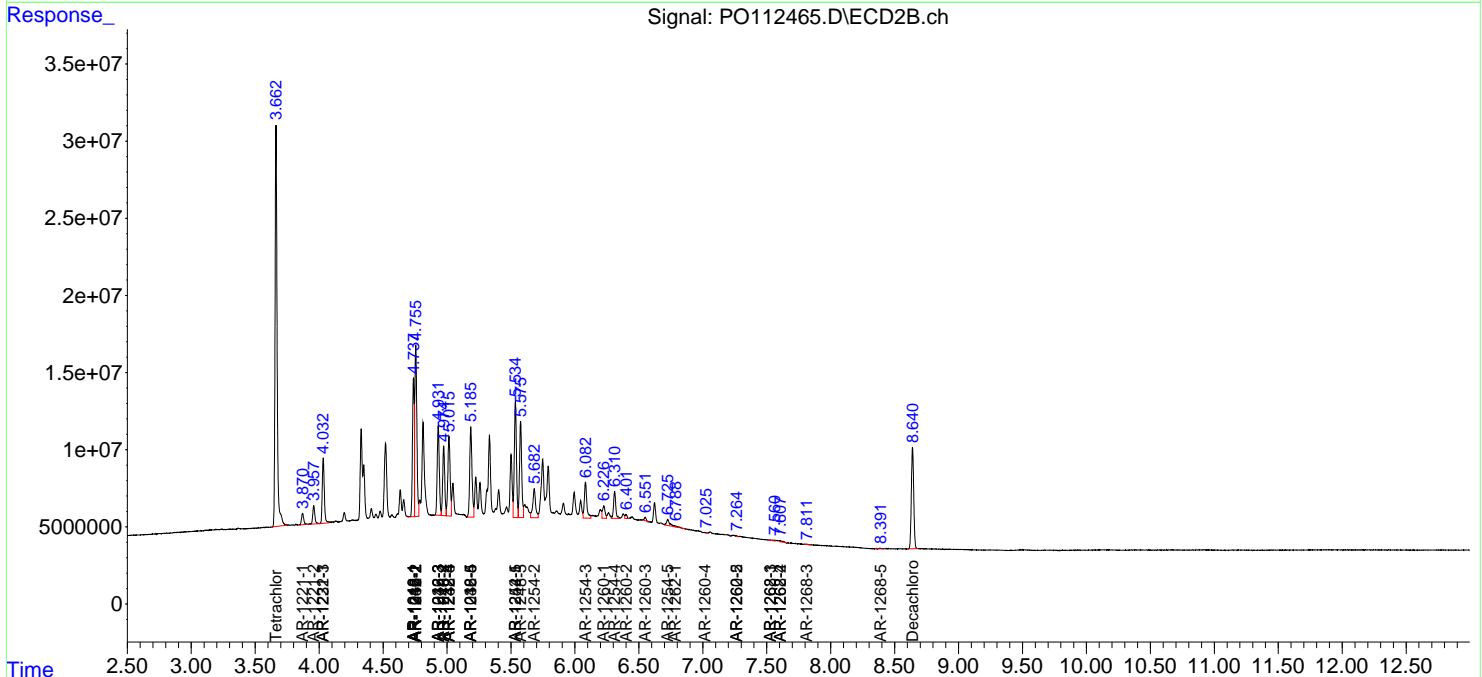
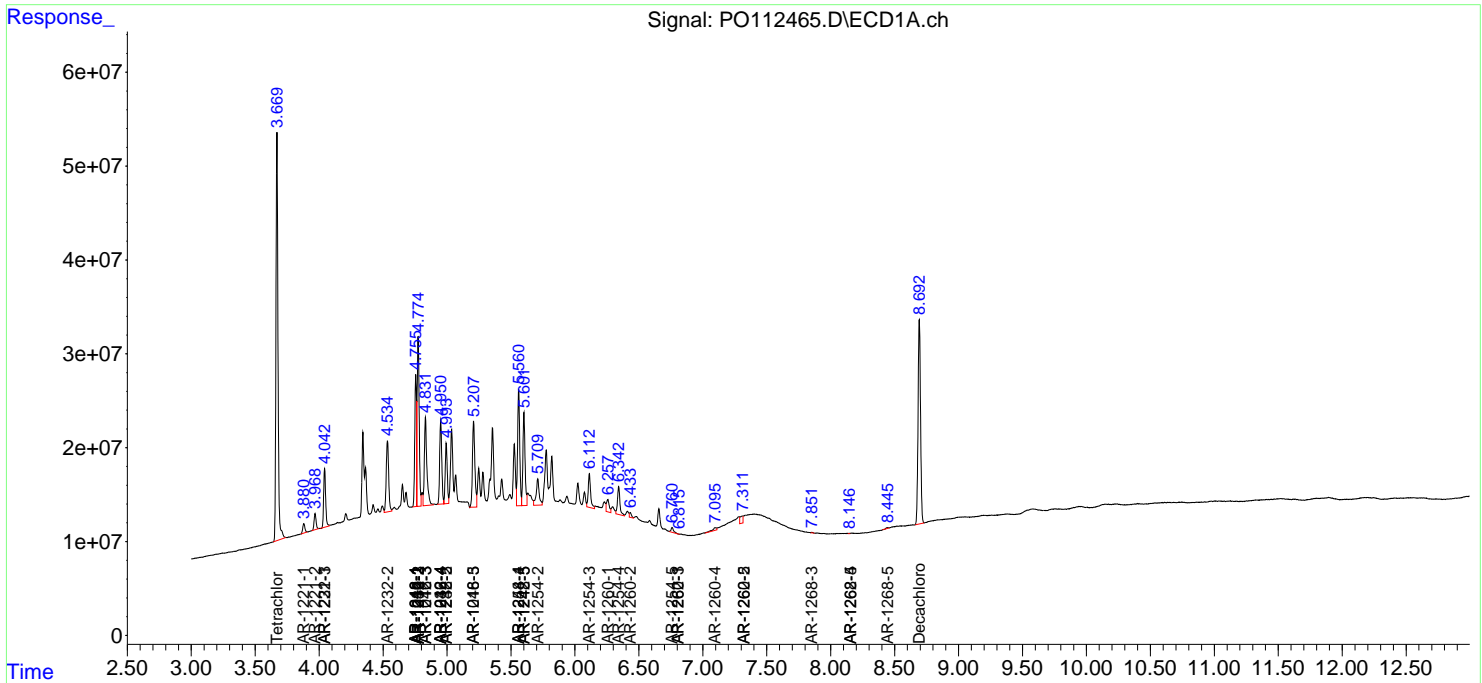
(f)=RT Delta > 1/2 Window (#)=Amounts differ by > 25% (m)=manual int.

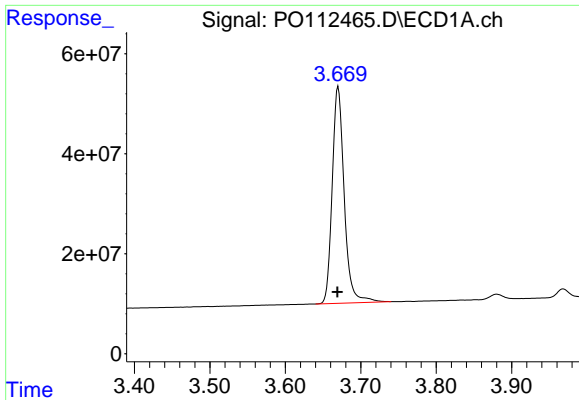
Data Path : Z:\pestpcbsrv\HPCHEM1\ECD\_O\Data\PO072425\  
 Data File : PO112465.D  
 Signal(s) : Signal #1: ECD1A.ch Signal #2: ECD2B.ch  
 Acq On : 24 Jul 2025 15:42  
 Operator : YP/AJ  
 Sample : AR1242CCC500  
 Misc :  
 ALS Vial : 4 Sample Multiplier: 1

Instrument :  
 ECD\_O  
 ClientSampleId :  
 AR1242CCC500

Integration File signal 1: autoint1.e  
 Integration File signal 2: autoint2.e  
 Quant Time: Jul 24 23:42:16 2025  
 Quant Method : Z:\pestpcbsrv\HPCHEM1\ECD\_O\methods\PO072325.M  
 Quant Title : GC EXTRACTABLES  
 QLast Update : Thu Jul 24 04:54:06 2025  
 Response via : Initial Calibration  
 Integrator: ChemStation

Volume Inj. : 2 µl  
 Signal #1 Phase : ZB-MR1 Signal #2 Phase: ZB-MR2  
 Signal #1 Info : 30Mx0.32mmx 0.50µ Signal #2 Info : 30M x 0.32mm x 0.25µm

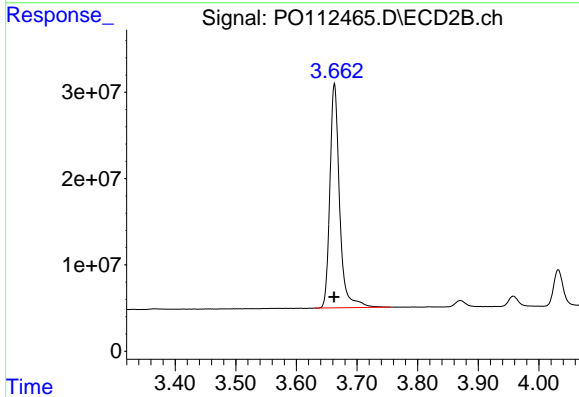




#1 Tetrachloro-m-xylene

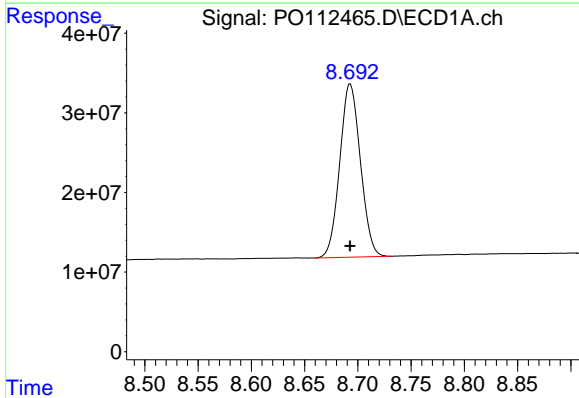
R.T.: 3.670 min  
 Delta R.T.: 0.001 min  
 Response: 479268334  
 Conc: 58.94 ng/ml

Instrument :  
 ECD\_O  
 ClientSampleId :  
 AR1242CCC500



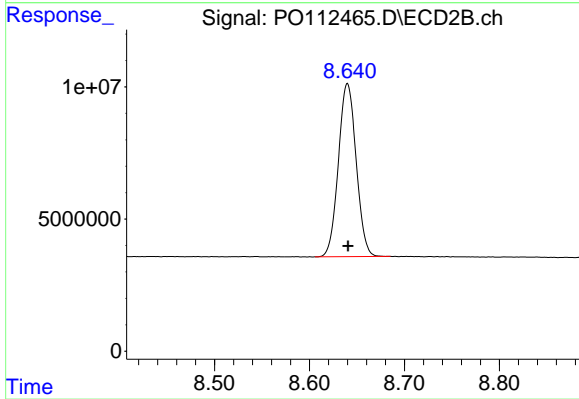
#1 Tetrachloro-m-xylene

R.T.: 3.663 min  
 Delta R.T.: 0.000 min  
 Response: 289631196  
 Conc: 58.29 ng/ml



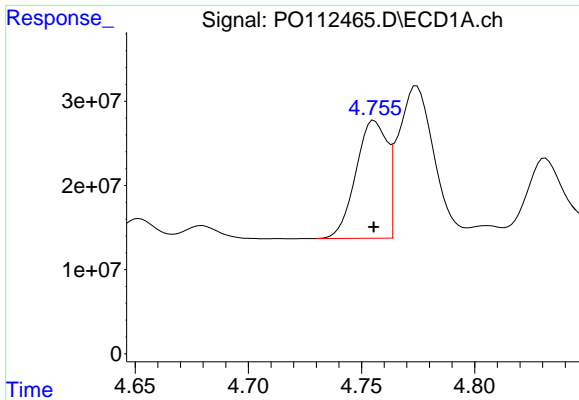
#2 Decachlorobiphenyl

R.T.: 8.693 min  
 Delta R.T.: 0.000 min  
 Response: 293712705  
 Conc: 40.17 ng/ml



#2 Decachlorobiphenyl

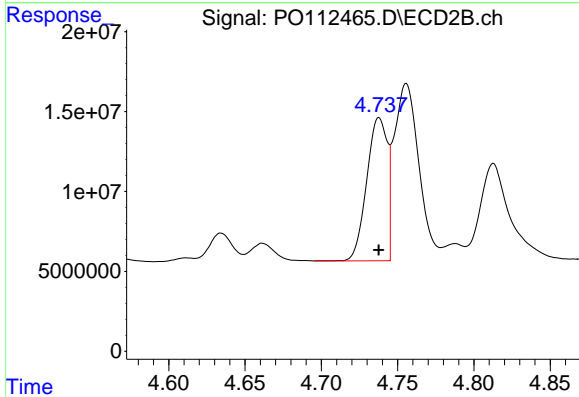
R.T.: 8.640 min  
 Delta R.T.: 0.000 min  
 Response: 85317513  
 Conc: 48.28 ng/ml



#3 AR-1016-1

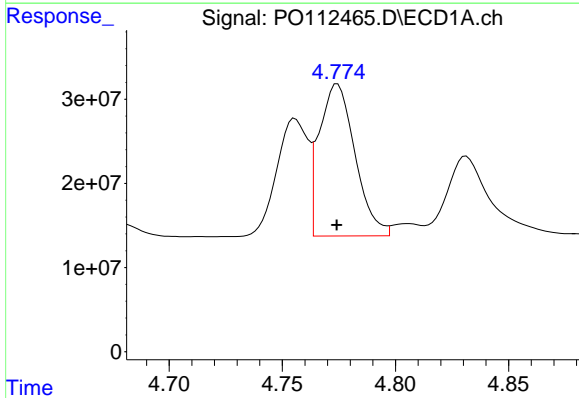
R.T.: 4.756 min  
 Delta R.T.: 0.000 min  
 Response: 134180863  
 Conc: 499.99 ng/ml

Instrument :  
 ECD\_O  
 ClientSampleId :  
 AR1242CCC500



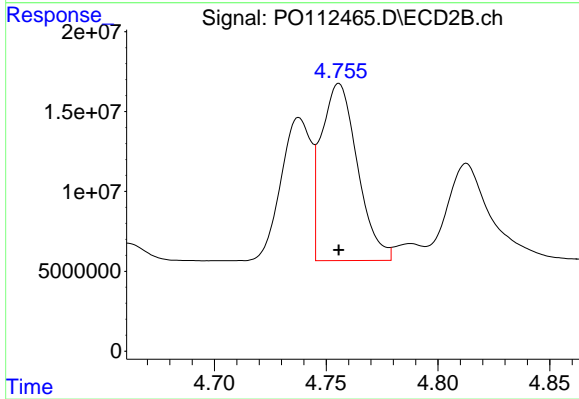
#3 AR-1016-1

R.T.: 4.738 min  
 Delta R.T.: 0.000 min  
 Response: 84187820  
 Conc: 481.05 ng/ml



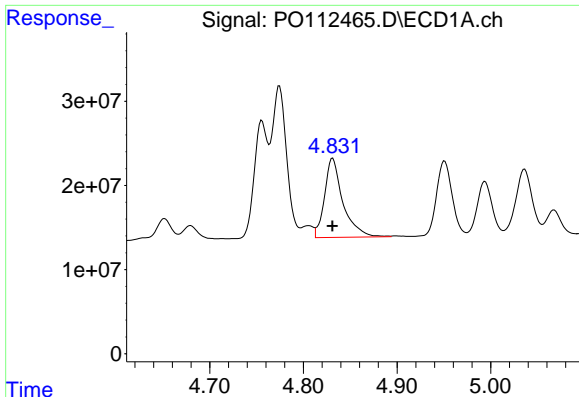
#4 AR-1016-2

R.T.: 4.774 min  
 Delta R.T.: 0.000 min  
 Response: 199216287  
 Conc: 490.54 ng/ml



#4 AR-1016-2

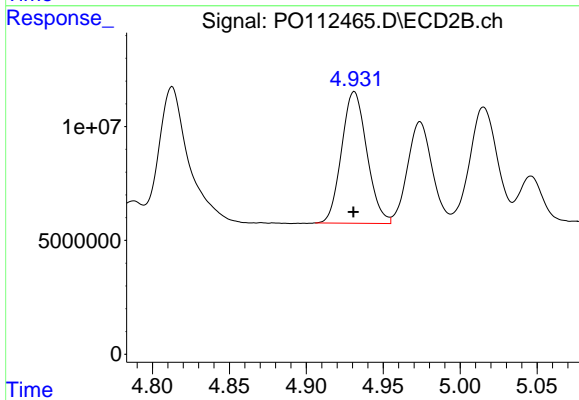
R.T.: 4.756 min  
 Delta R.T.: 0.000 min  
 Response: 125048033  
 Conc: 480.04 ng/ml



#5 AR-1016-3

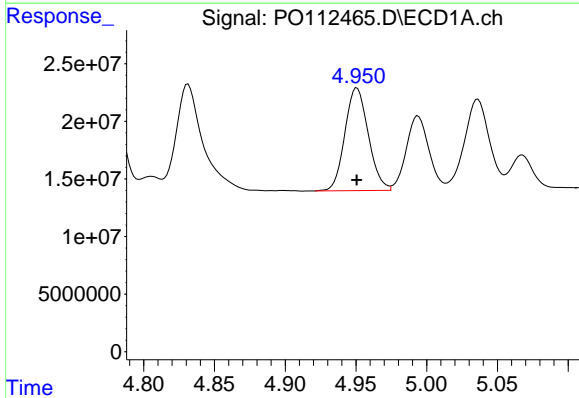
R.T.: 4.831 min  
 Delta R.T.: 0.000 min  
 Response: 128051690  
 Conc: 489.36 ng/ml

Instrument :  
 ECD\_O  
 ClientSampleId :  
 AR1242CCC500



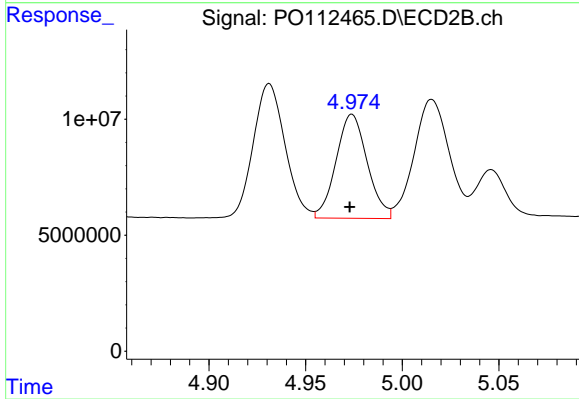
#5 AR-1016-3

R.T.: 4.931 min  
 Delta R.T.: 0.000 min  
 Response: 66011574  
 Conc: 485.50 ng/ml



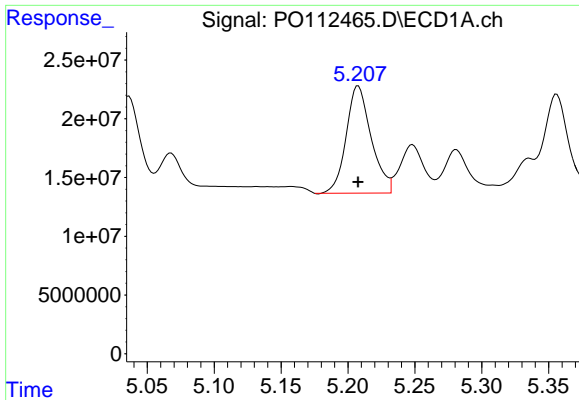
#6 AR-1016-4

R.T.: 4.951 min  
 Delta R.T.: 0.000 min  
 Response: 102930918  
 Conc: 485.89 ng/ml



#6 AR-1016-4

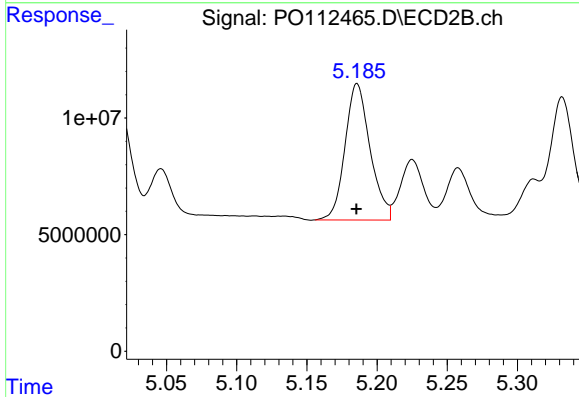
R.T.: 4.974 min  
 Delta R.T.: 0.001 min  
 Response: 50387598  
 Conc: 453.60 ng/ml



#7 AR-1016-5

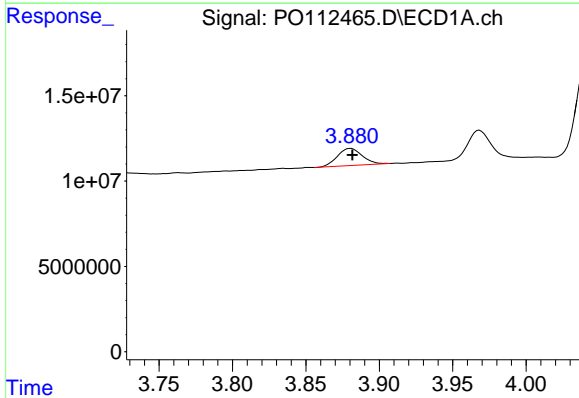
R.T.: 5.208 min  
 Delta R.T.: 0.000 min  
 Response: 118944851  
 Conc: 541.96 ng/ml

Instrument :  
 ECD\_O  
 ClientSampleId :  
 AR1242CCC500



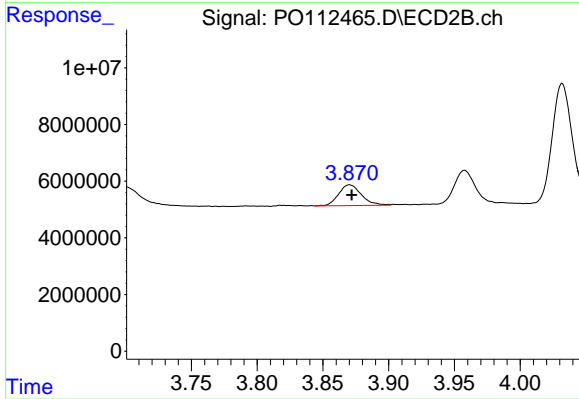
#7 AR-1016-5

R.T.: 5.186 min  
 Delta R.T.: 0.000 min  
 Response: 72782925  
 Conc: 507.90 ng/ml



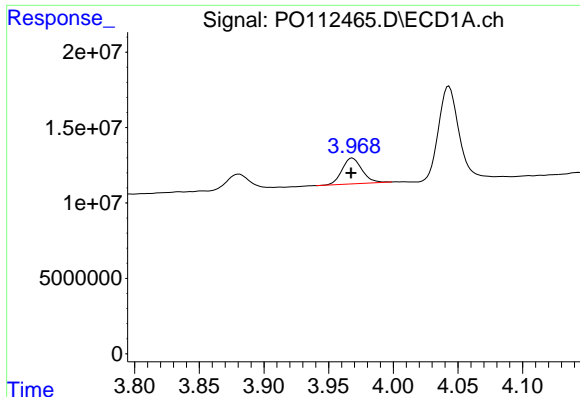
#8 AR-1221-1

R.T.: 3.881 min  
 Delta R.T.: -0.001 min  
 Response: 11834117  
 Conc: 122.43 ng/ml



#8 AR-1221-1

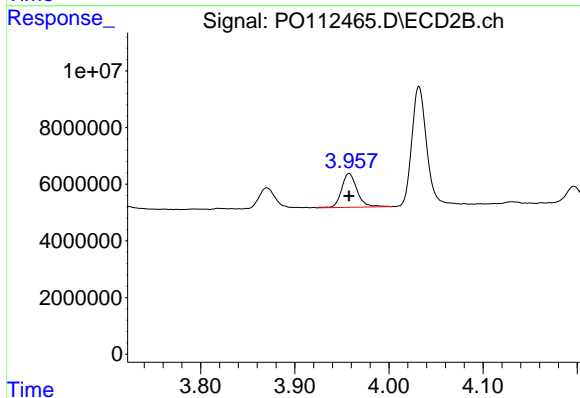
R.T.: 3.870 min  
 Delta R.T.: -0.002 min  
 Response: 8861373  
 Conc: 131.74 ng/ml



#9 AR-1221-2

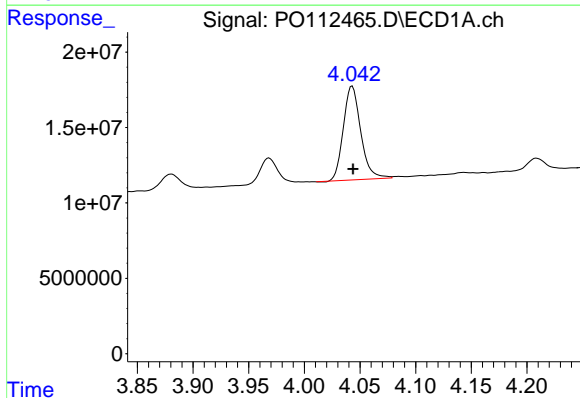
R.T.: 3.968 min  
 Delta R.T.: 0.000 min  
 Response: 18443355  
 Conc: 256.65 ng/ml

Instrument :  
 ECD\_O  
 ClientSampleId :  
 AR1242CCC500



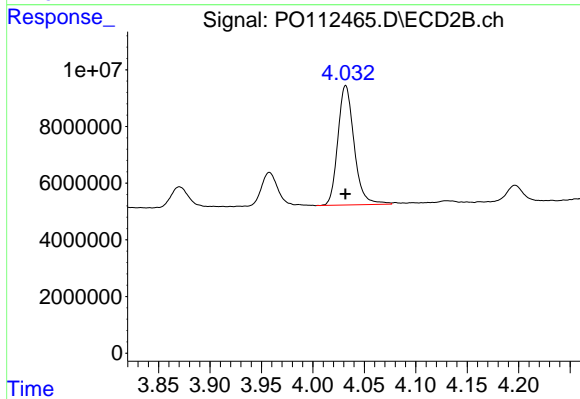
#9 AR-1221-2

R.T.: 3.958 min  
 Delta R.T.: 0.000 min  
 Response: 13707832  
 Conc: 270.22 ng/ml



#10 AR-1221-3

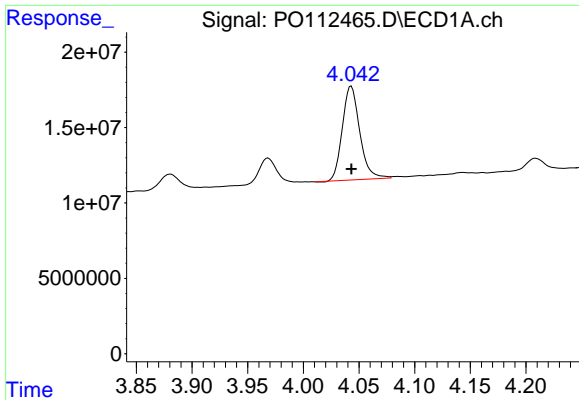
R.T.: 4.043 min  
 Delta R.T.: 0.000 min  
 Response: 67667320  
 Conc: 284.66 ng/ml



#10 AR-1221-3

R.T.: 4.032 min  
 Delta R.T.: 0.000 min  
 Response: 46501081  
 Conc: 293.33 ng/ml

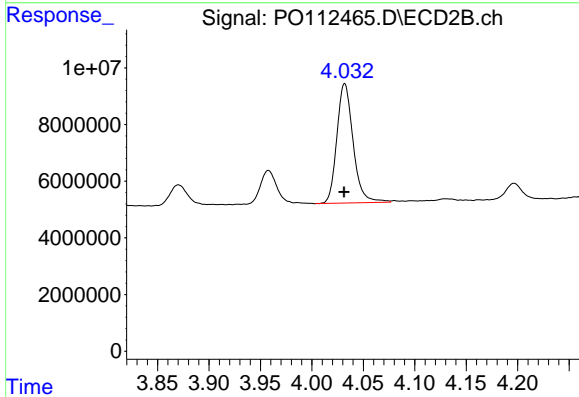




#11 AR-1232-1

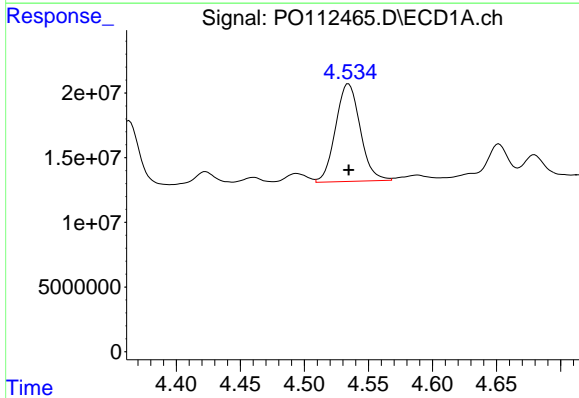
R.T.: 4.043 min  
 Delta R.T.: 0.000 min  
 Response: 67667320  
 Conc: 361.90 ng/ml

Instrument :  
 ECD\_O  
 ClientSampleId :  
 AR1242CCC500



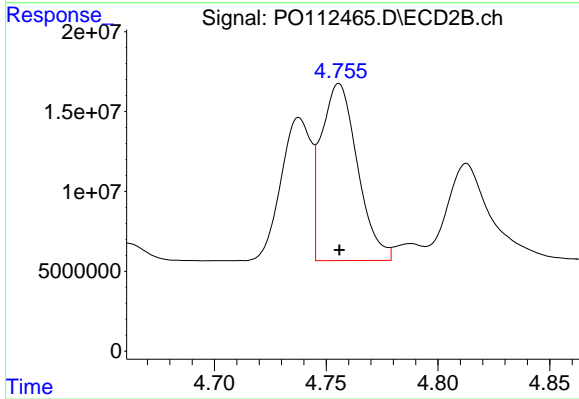
#11 AR-1232-1

R.T.: 4.032 min  
 Delta R.T.: 0.000 min  
 Response: 46501081  
 Conc: 367.45 ng/ml



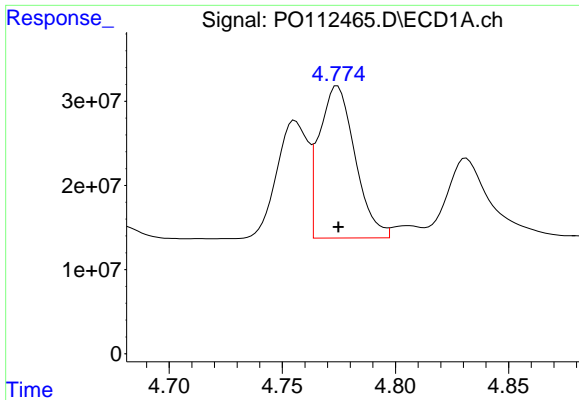
#12 AR-1232-2

R.T.: 4.534 min  
 Delta R.T.: 0.000 min  
 Response: 100773022  
 Conc: 936.34 ng/ml



#12 AR-1232-2

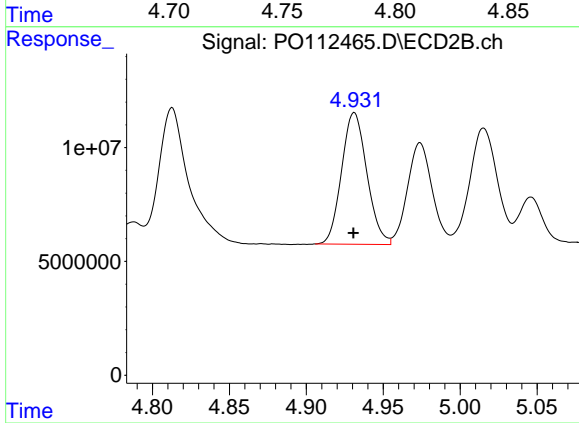
R.T.: 4.756 min  
 Delta R.T.: 0.000 min  
 Response: 125048033  
 Conc: 953.44 ng/ml



#13 AR-1232-3

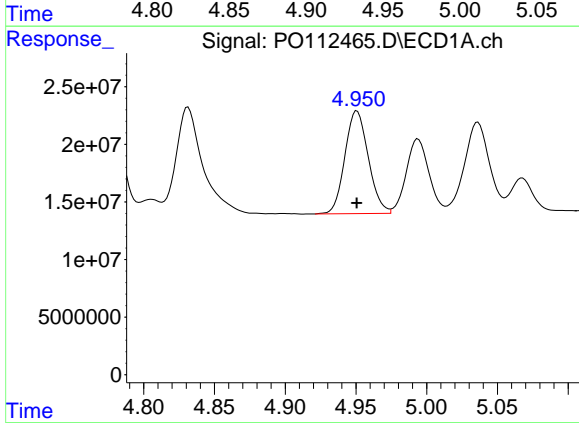
R.T.: 4.774 min  
 Delta R.T.: 0.000 min  
 Response: 199216287  
 Conc: 963.33 ng/ml

Instrument :  
 ECD\_O  
 ClientSampleId :  
 AR1242CCC500



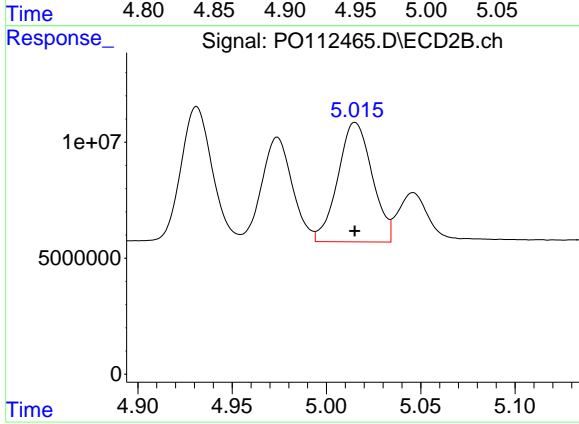
#13 AR-1232-3

R.T.: 4.931 min  
 Delta R.T.: 0.000 min  
 Response: 66011574  
 Conc: 982.36 ng/ml



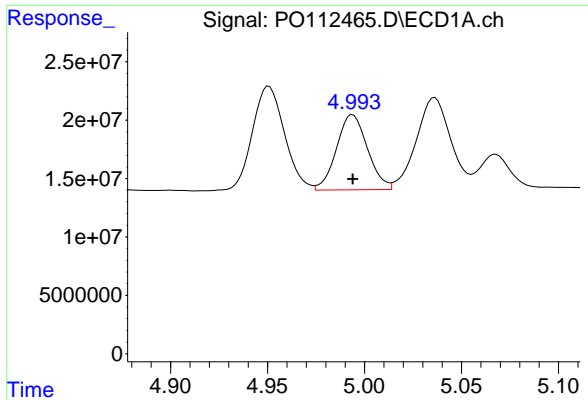
#14 AR-1232-4

R.T.: 4.951 min  
 Delta R.T.: 0.000 min  
 Response: 102930918  
 Conc: 982.73 ng/ml



#14 AR-1232-4

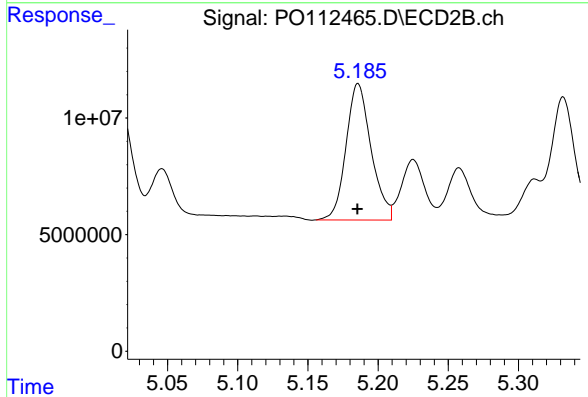
R.T.: 5.015 min  
 Delta R.T.: 0.000 min  
 Response: 65148035  
 Conc: 1088.90 ng/ml



#15 AR-1232-5

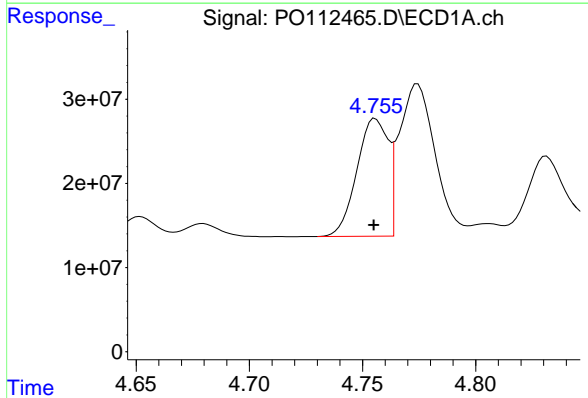
R.T.: 4.994 min  
 Delta R.T.: 0.000 min  
 Response: 71670335  
 Conc: 1055.82 ng/ml

Instrument :  
 ECD\_O  
 ClientSampleId :  
 AR1242CCC500



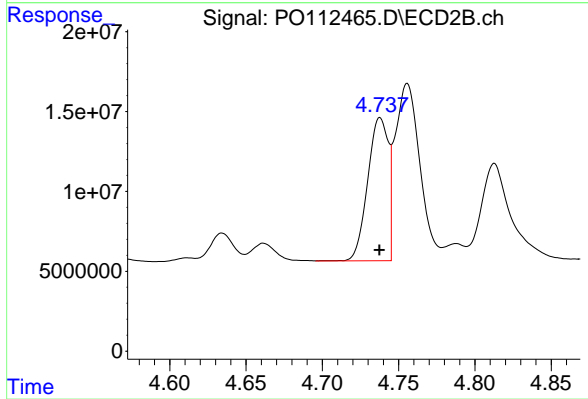
#15 AR-1232-5

R.T.: 5.186 min  
 Delta R.T.: 0.000 min  
 Response: 72782925  
 Conc: 1116.25 ng/ml



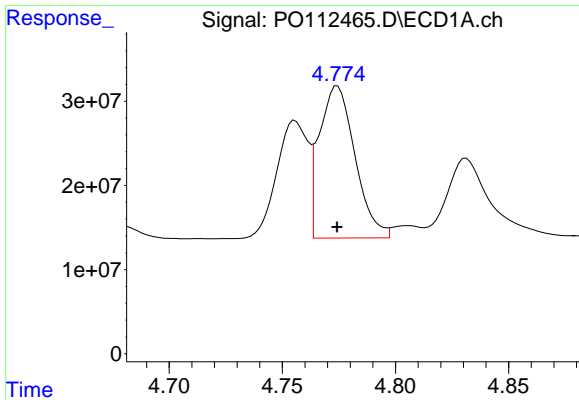
#16 AR-1242-1

R.T.: 4.756 min  
 Delta R.T.: 0.000 min  
 Response: 134180863  
 Conc: 541.94 ng/ml



#16 AR-1242-1

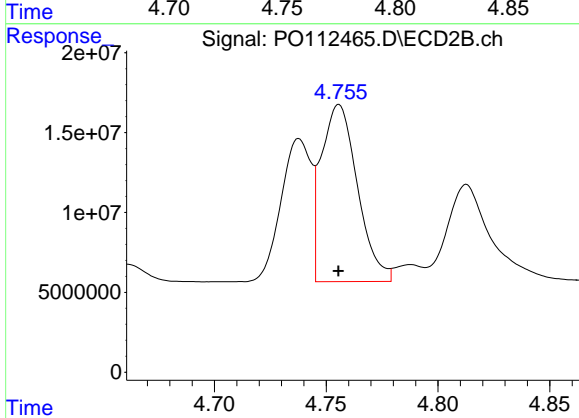
R.T.: 4.738 min  
 Delta R.T.: 0.000 min  
 Response: 84187820  
 Conc: 531.51 ng/ml



#17 AR-1242-2

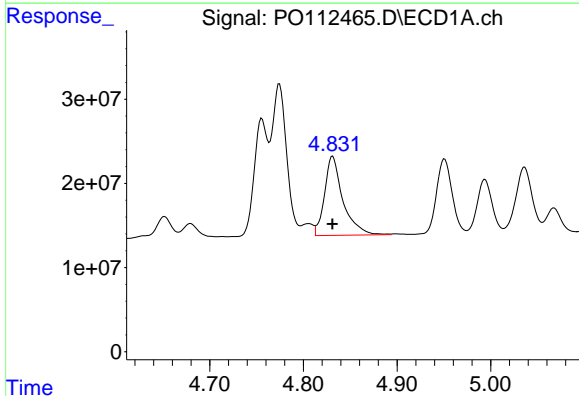
R.T.: 4.774 min  
 Delta R.T.: 0.000 min  
 Response: 199216287  
 Conc: 538.72 ng/ml

Instrument :  
 ECD\_O  
 ClientSampleId :  
 AR1242CCC500



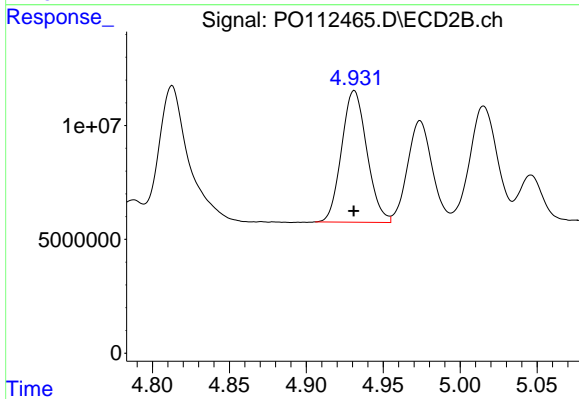
#17 AR-1242-2

R.T.: 4.756 min  
 Delta R.T.: 0.000 min  
 Response: 125048033  
 Conc: 535.16 ng/ml



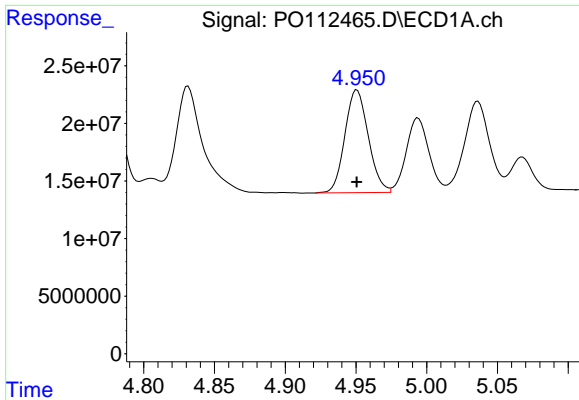
#18 AR-1242-3

R.T.: 4.831 min  
 Delta R.T.: 0.000 min  
 Response: 128051690  
 Conc: 541.08 ng/ml



#18 AR-1242-3

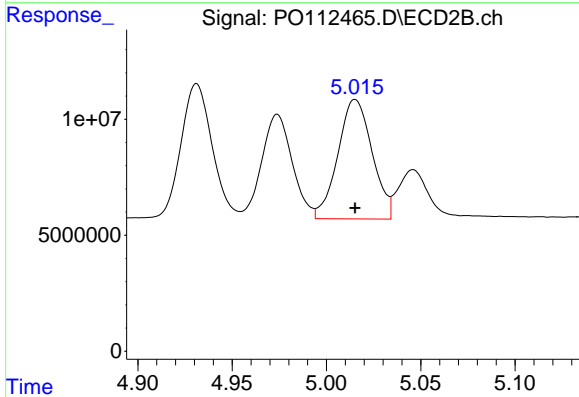
R.T.: 4.931 min  
 Delta R.T.: 0.000 min  
 Response: 66011574  
 Conc: 544.70 ng/ml



#19 AR-1242-4

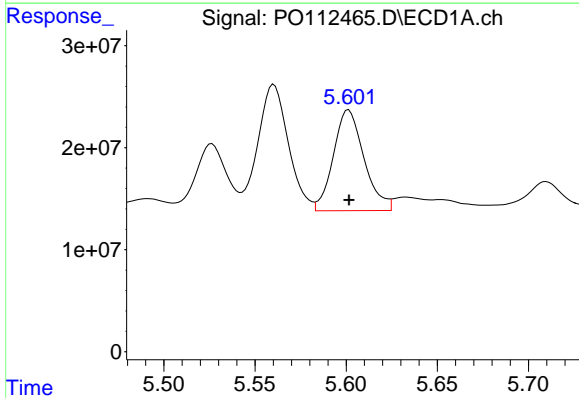
R.T.: 4.951 min  
 Delta R.T.: 0.000 min  
 Response: 102930918  
 Conc: 529.81 ng/ml

Instrument :  
 ECD\_O  
 ClientSampleId :  
 AR1242CCC500



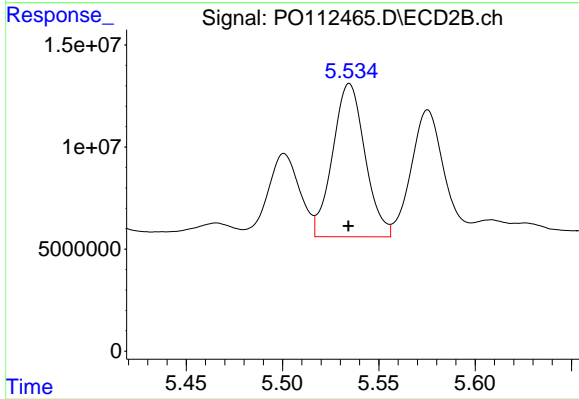
#19 AR-1242-4

R.T.: 5.015 min  
 Delta R.T.: 0.000 min  
 Response: 65148035  
 Conc: 530.78 ng/ml



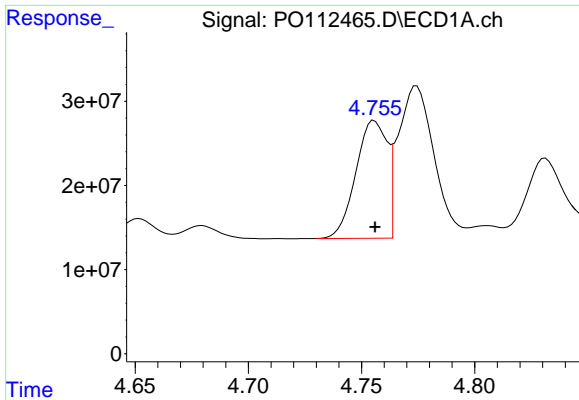
#20 AR-1242-5

R.T.: 5.601 min  
 Delta R.T.: 0.000 min  
 Response: 115776330  
 Conc: 541.22 ng/ml



#20 AR-1242-5

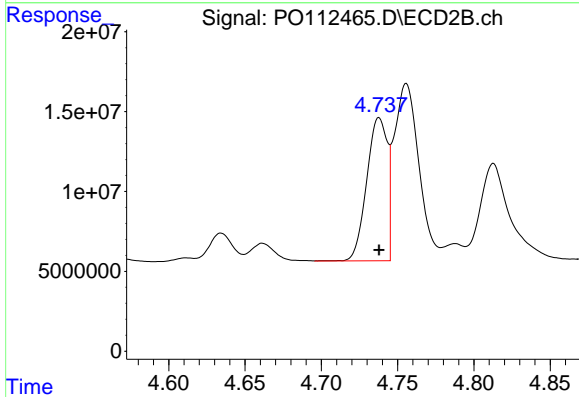
R.T.: 5.535 min  
 Delta R.T.: 0.000 min  
 Response: 87643167  
 Conc: 544.46 ng/ml



#21 AR-1248-1

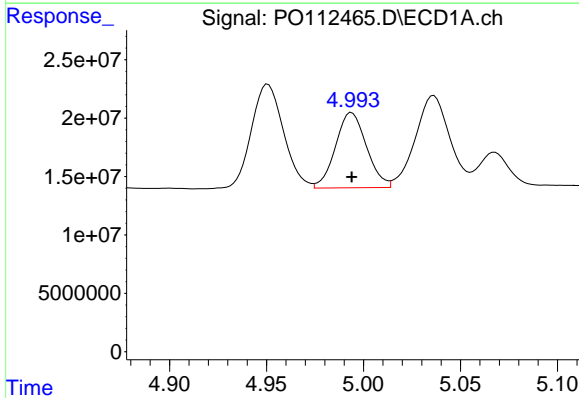
R.T.: 4.756 min  
 Delta R.T.: 0.000 min  
 Response: 134180863  
 Conc: 716.74 ng/ml

Instrument :  
 ECD\_O  
 ClientSampleId :  
 AR1242CCC500



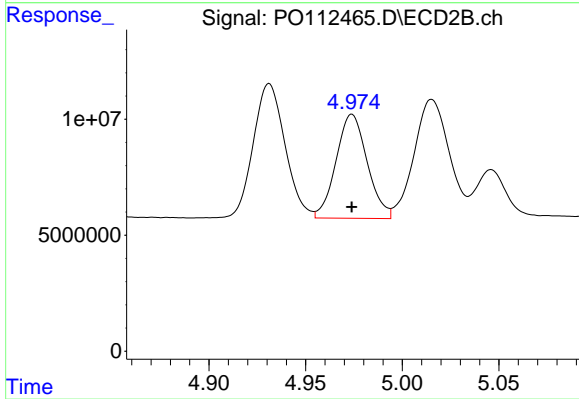
#21 AR-1248-1

R.T.: 4.738 min  
 Delta R.T.: 0.000 min  
 Response: 84187820  
 Conc: 692.85 ng/ml



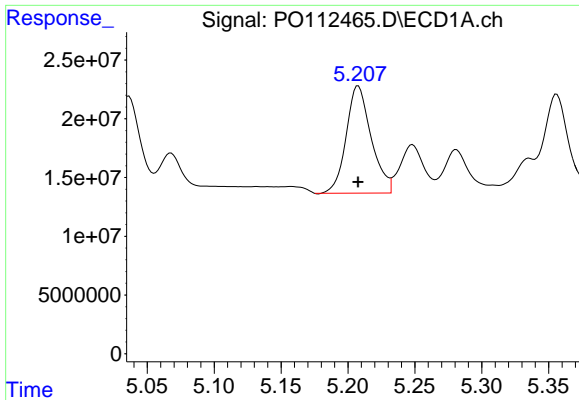
#22 AR-1248-2

R.T.: 4.994 min  
 Delta R.T.: 0.000 min  
 Response: 71670335  
 Conc: 280.94 ng/ml



#22 AR-1248-2

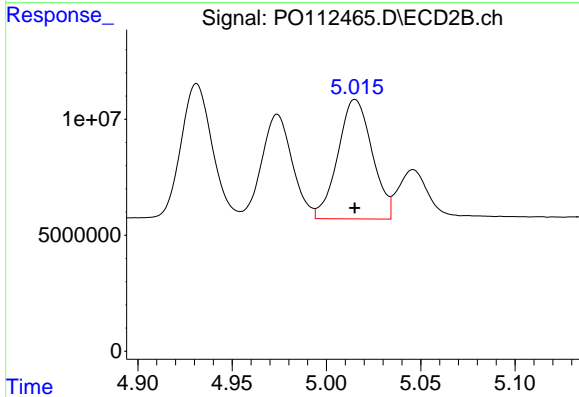
R.T.: 4.974 min  
 Delta R.T.: 0.000 min  
 Response: 50387598  
 Conc: 297.66 ng/ml



#23 AR-1248-3

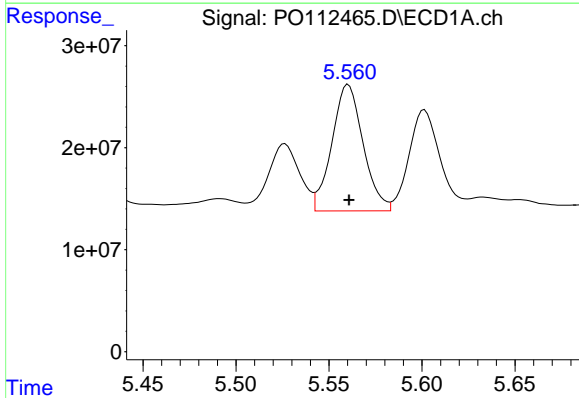
R.T.: 5.208 min  
 Delta R.T.: 0.000 min  
 Response: 118944851  
 Conc: 346.07 ng/ml

Instrument :  
 ECD\_O  
 ClientSampleId :  
 AR1242CCC500



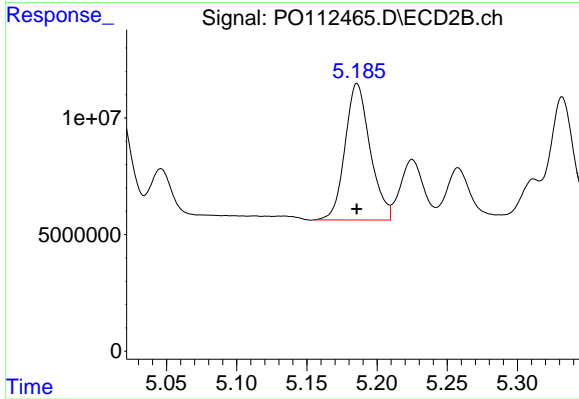
#23 AR-1248-3

R.T.: 5.015 min  
 Delta R.T.: 0.000 min  
 Response: 65148035  
 Conc: 366.73 ng/ml



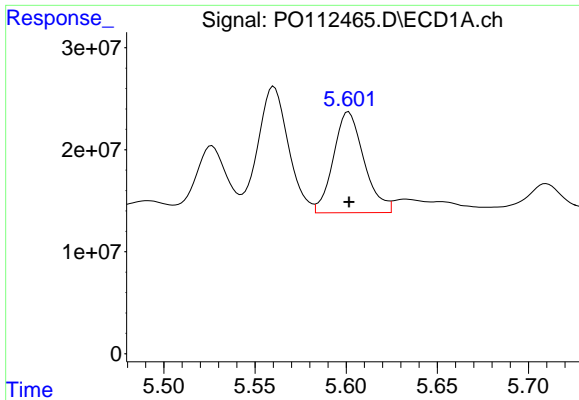
#24 AR-1248-4

R.T.: 5.560 min  
 Delta R.T.: 0.000 min  
 Response: 144631019  
 Conc: 284.66 ng/ml



#24 AR-1248-4

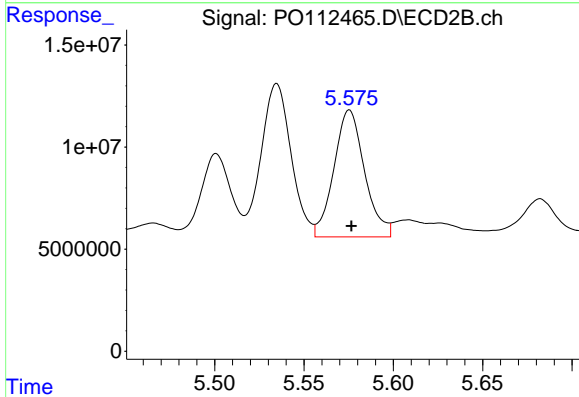
R.T.: 5.186 min  
 Delta R.T.: 0.000 min  
 Response: 72782925  
 Conc: 349.32 ng/ml



#25 AR-1248-5

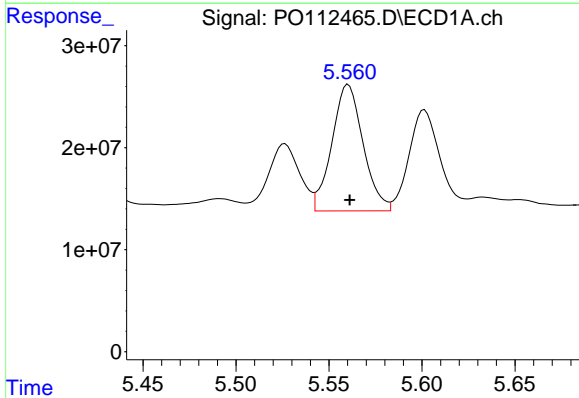
R.T.: 5.601 min  
 Delta R.T.: 0.000 min  
 Response: 115776330  
 Conc: 331.18 ng/ml

Instrument :  
 ECD\_O  
 ClientSampleId :  
 AR1242CCC500



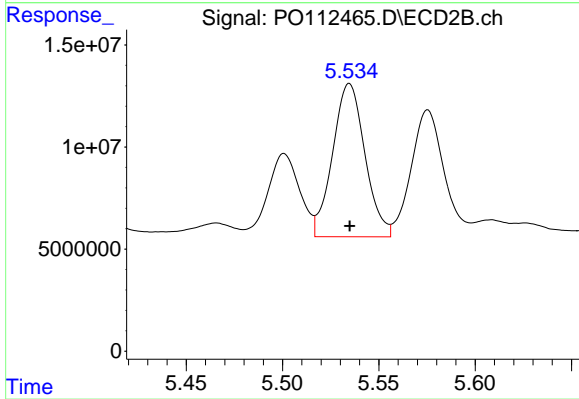
#25 AR-1248-5

R.T.: 5.575 min  
 Delta R.T.: -0.001 min  
 Response: 74320309  
 Conc: 346.05 ng/ml



#26 AR-1254-1

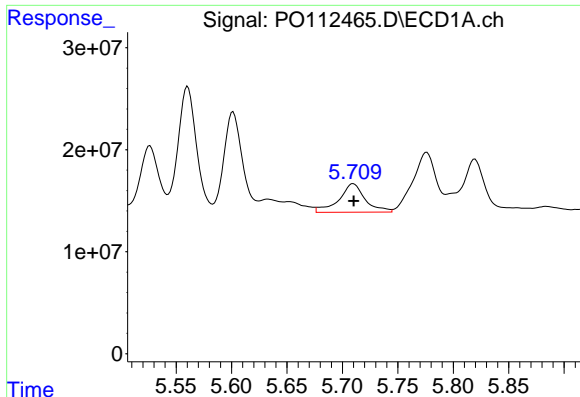
R.T.: 5.560 min  
 Delta R.T.: 0.000 min  
 Response: 144631019  
 Conc: 263.46 ng/ml



#26 AR-1254-1

R.T.: 5.535 min  
 Delta R.T.: 0.000 min  
 Response: 87643167  
 Conc: 266.70 ng/ml

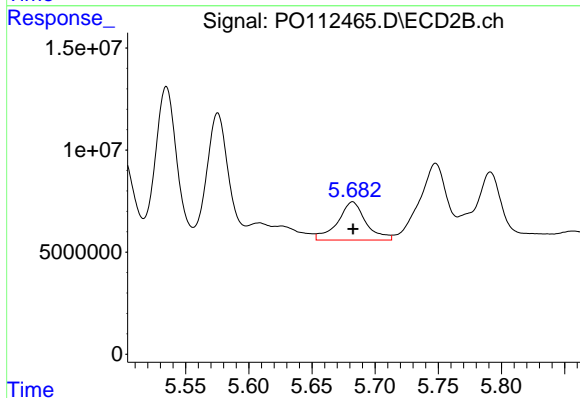




#27 AR-1254-2

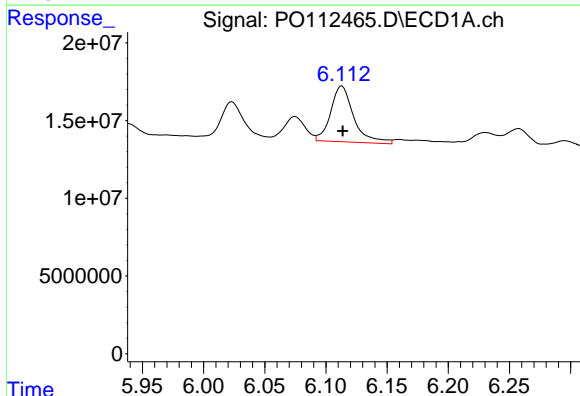
R.T.: 5.710 min  
 Delta R.T.: 0.000 min  
 Response: 46208901  
 Conc: 95.10 ng/ml

Instrument :  
 ECD\_O  
 ClientSampleId :  
 AR1242CCC500



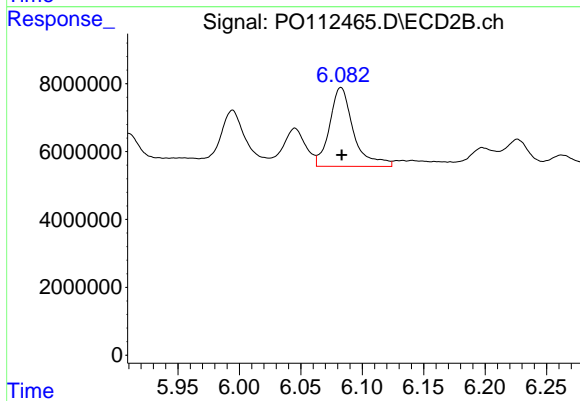
#27 AR-1254-2

R.T.: 5.682 min  
 Delta R.T.: 0.000 min  
 Response: 29160278  
 Conc: 100.73 ng/ml



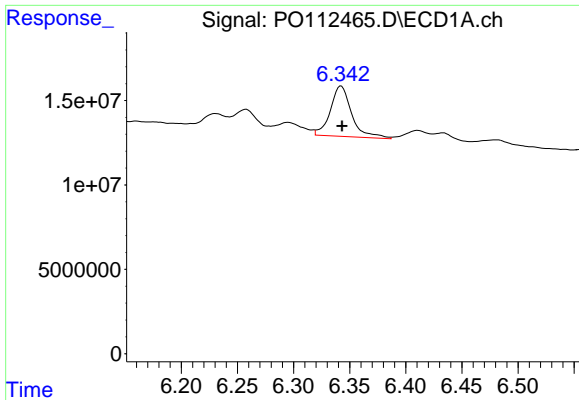
#28 AR-1254-3

R.T.: 6.113 min  
 Delta R.T.: 0.000 min  
 Response: 47261964  
 Conc: 63.50 ng/ml



#28 AR-1254-3

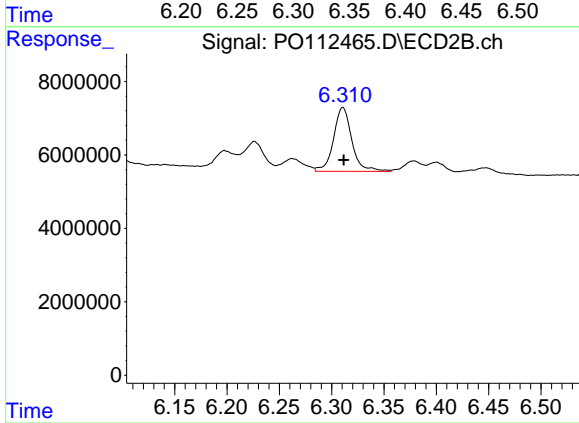
R.T.: 6.083 min  
 Delta R.T.: 0.000 min  
 Response: 31456754  
 Conc: 73.59 ng/ml



#29 AR-1254-4

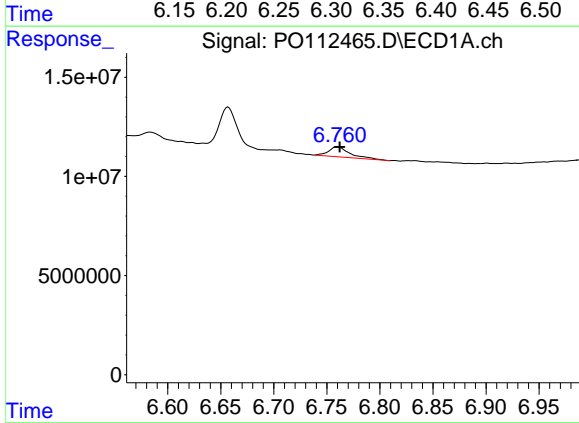
R.T.: 6.342 min  
 Delta R.T.: -0.001 min  
 Response: 39514235  
 Conc: 71.88 ng/ml

Instrument :  
 ECD\_O  
 ClientSampleId :  
 AR1242CCC500



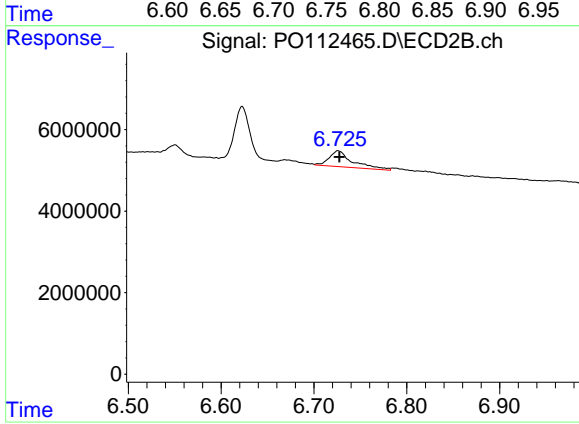
#29 AR-1254-4

R.T.: 6.311 min  
 Delta R.T.: 0.000 min  
 Response: 21279025  
 Conc: 77.96 ng/ml



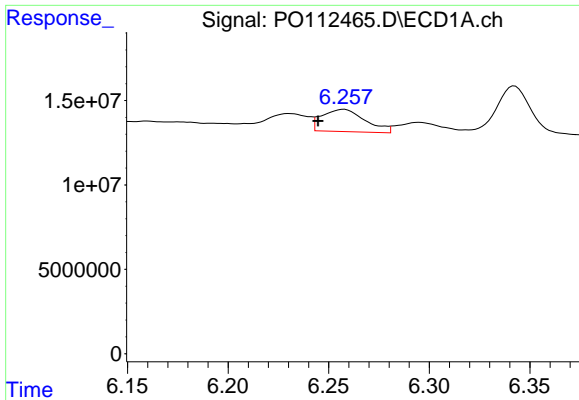
#30 AR-1254-5

R.T.: 6.760 min  
 Delta R.T.: -0.002 min  
 Response: 7236920  
 Conc: 10.22 ng/ml



#30 AR-1254-5

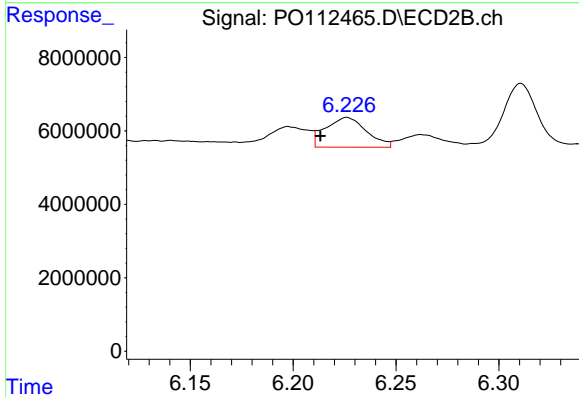
R.T.: 6.726 min  
 Delta R.T.: -0.001 min  
 Response: 6795466  
 Conc: 20.34 ng/ml



#31 AR-1260-1

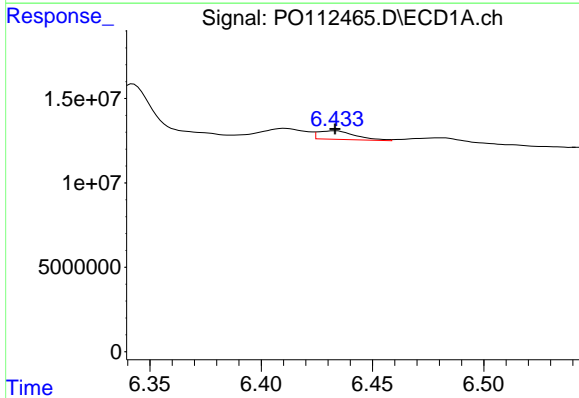
R.T.: 6.258 min  
 Delta R.T.: 0.013 min  
 Response: 19771961  
 Conc: 45.00 ng/ml

Instrument :  
 ECD\_O  
 ClientSampleId :  
 AR1242CCC500



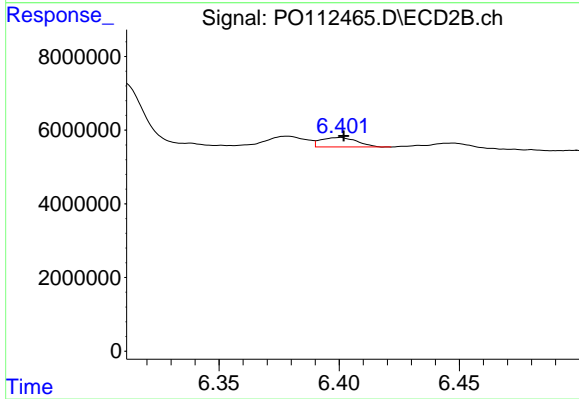
#31 AR-1260-1

R.T.: 6.226 min  
 Delta R.T.: 0.013 min  
 Response: 11252545  
 Conc: 45.28 ng/ml



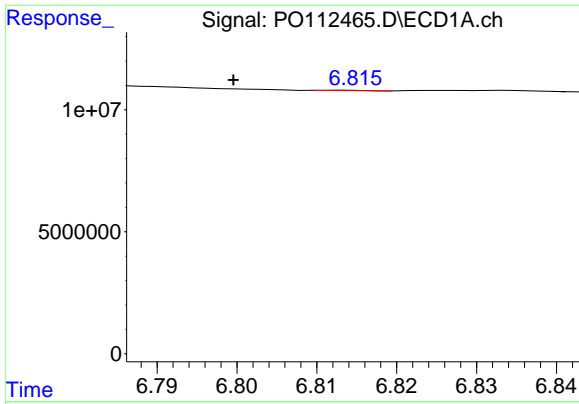
#32 AR-1260-2

R.T.: 6.433 min  
 Delta R.T.: 0.000 min  
 Response: 5917799  
 Conc: 8.60 ng/ml



#32 AR-1260-2

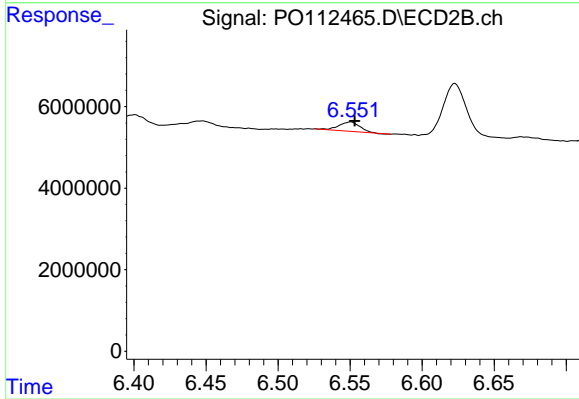
R.T.: 6.400 min  
 Delta R.T.: -0.002 min  
 Response: 2675909  
 Conc: 8.12 ng/ml



#33 AR-1260-3

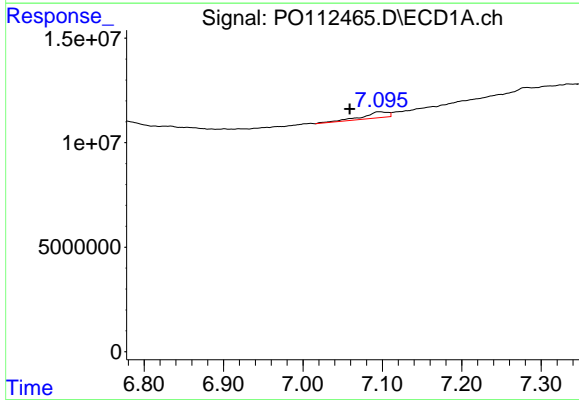
R.T.: 6.813 min  
 Delta R.T.: 0.014 min  
 Response: 46704  
 Conc: 0.08 ng/ml

Instrument :  
 ECD\_O  
 ClientSampleId :  
 AR1242CCC500



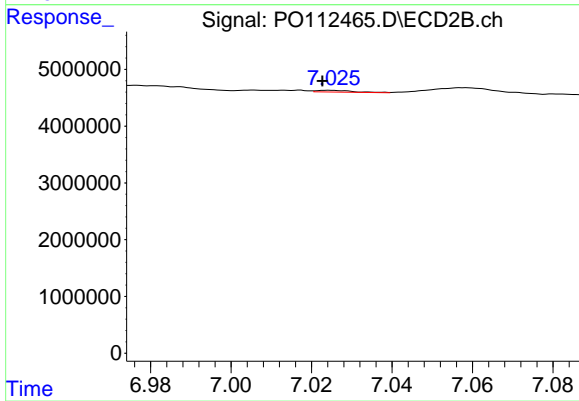
#33 AR-1260-3

R.T.: 6.550 min  
 Delta R.T.: -0.003 min  
 Response: 2318768  
 Conc: 9.03 ng/ml



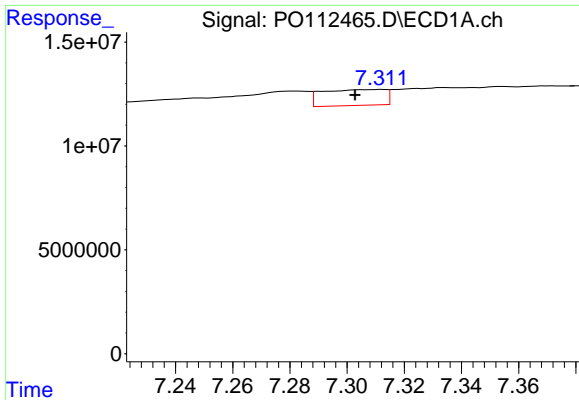
#34 AR-1260-4

R.T.: 7.096 min  
 Delta R.T.: 0.038 min  
 Response: 6449729  
 Conc: 14.30 ng/ml



#34 AR-1260-4

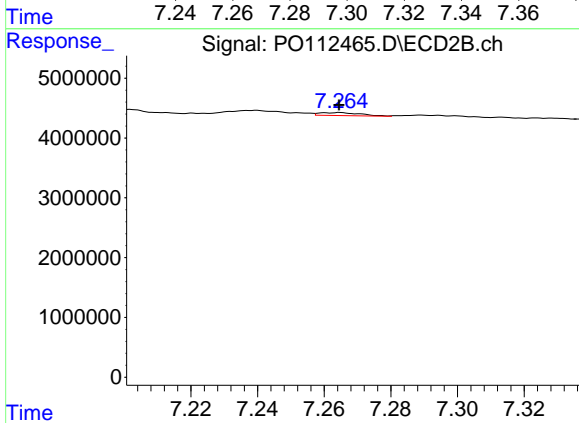
R.T.: 7.025 min  
 Delta R.T.: 0.002 min  
 Response: 187011  
 Conc: 0.98 ng/ml



#35 AR-1260-5

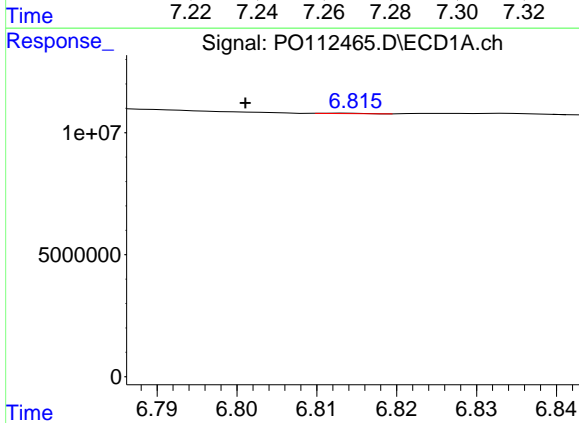
R.T.: 7.312 min  
 Delta R.T.: 0.009 min  
 Response: 11708703  
 Conc: 9.45 ng/ml

Instrument :  
 ECD\_O  
 ClientSampleId :  
 AR1242CCC500



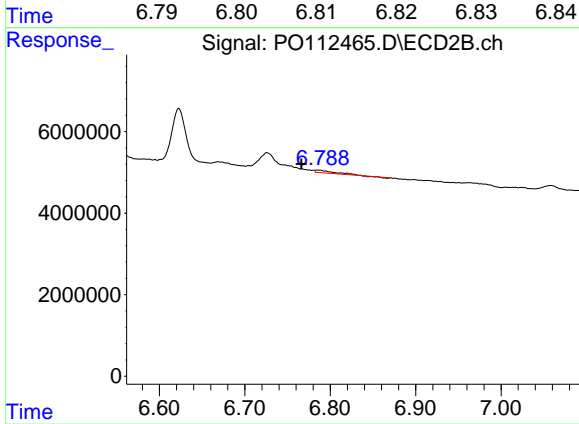
#35 AR-1260-5

R.T.: 7.265 min  
 Delta R.T.: 0.000 min  
 Response: 425687  
 Conc: 1.03 ng/ml



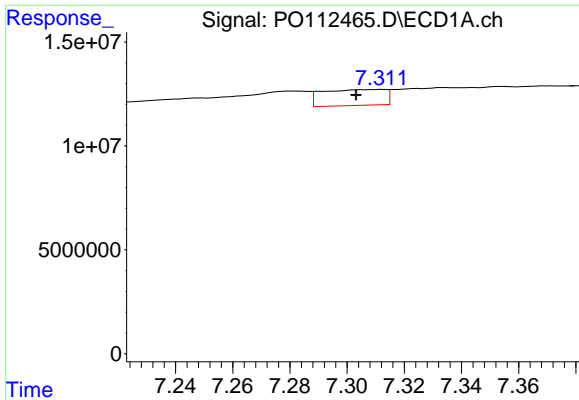
#36 AR-1262-1

R.T.: 6.813 min  
 Delta R.T.: 0.012 min  
 Response: 46704  
 Conc: 0.05 ng/ml



#36 AR-1262-1

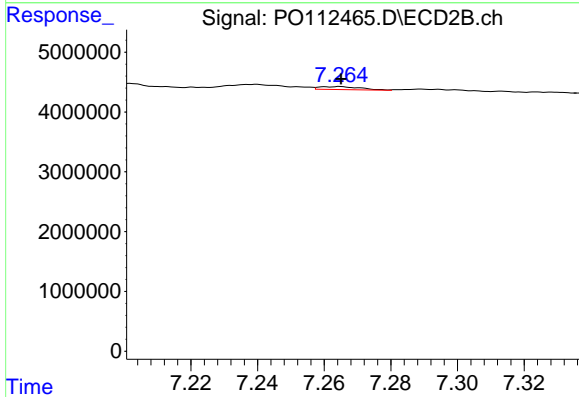
R.T.: 6.786 min  
 Delta R.T.: 0.020 min  
 Response: 691645  
 Conc: 1.67 ng/ml



#37 AR-1262-2

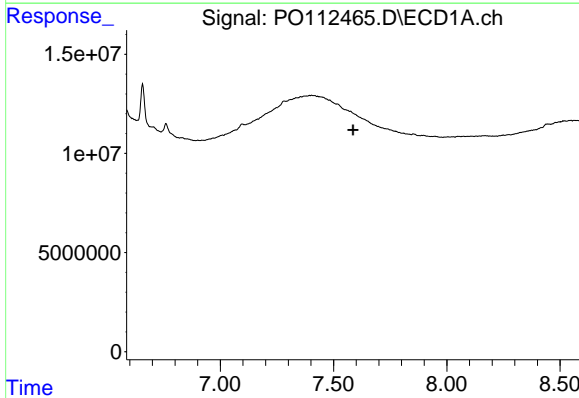
R.T.: 7.312 min  
 Delta R.T.: 0.009 min  
 Response: 11708703  
 Conc: 7.87 ng/ml

Instrument :  
 ECD\_O  
 ClientSampleId :  
 AR1242CCC500



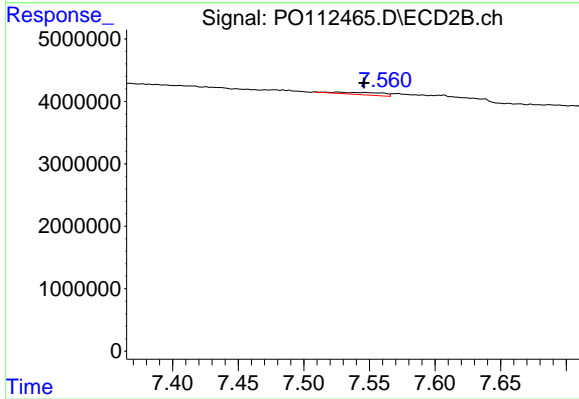
#37 AR-1262-2

R.T.: 7.265 min  
 Delta R.T.: 0.000 min  
 Response: 425687  
 Conc: 0.83 ng/ml



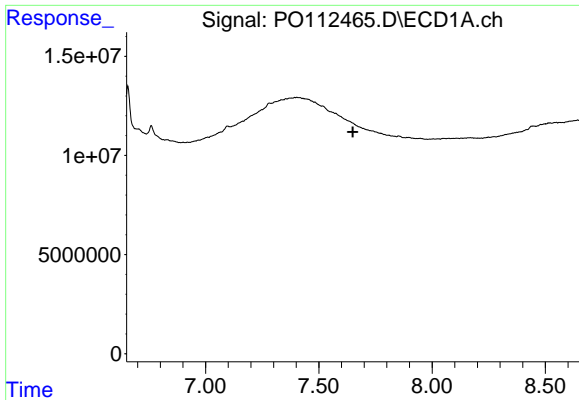
#38 AR-1262-3

R.T.: 0.000 min  
 Exp R.T. : 7.586 min  
 Response: 0  
 Conc: N.D.



#38 AR-1262-3

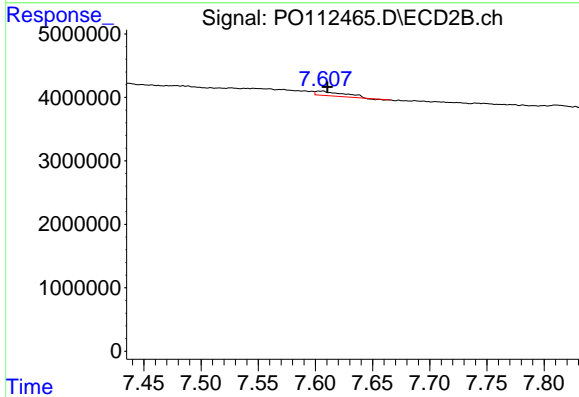
R.T.: 7.526 min  
 Delta R.T.: -0.020 min  
 Response: 921539  
 Conc: 4.94 ng/ml



#39 AR-1262-4

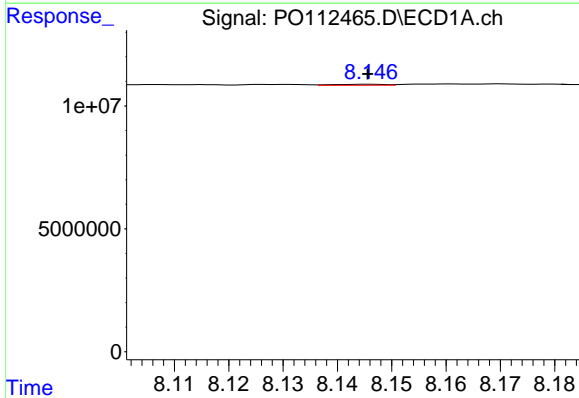
R.T.: 0.000 min  
 Exp R.T.: 7.650 min  
 Response: 0  
 Conc: N.D.

Instrument :  
 ECD\_O  
 ClientSampleId :  
 AR1242CCC500



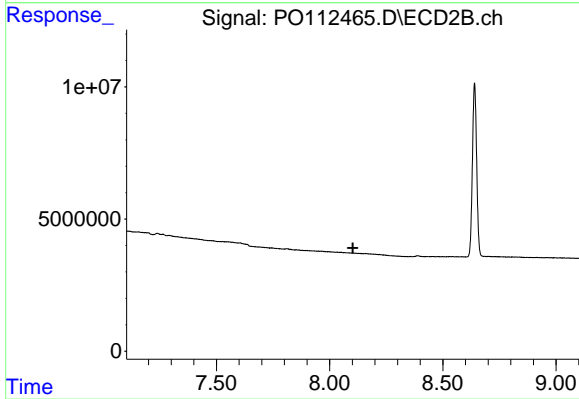
#39 AR-1262-4

R.T.: 7.606 min  
 Delta R.T.: -0.004 min  
 Response: 1114701  
 Conc: 3.87 ng/ml



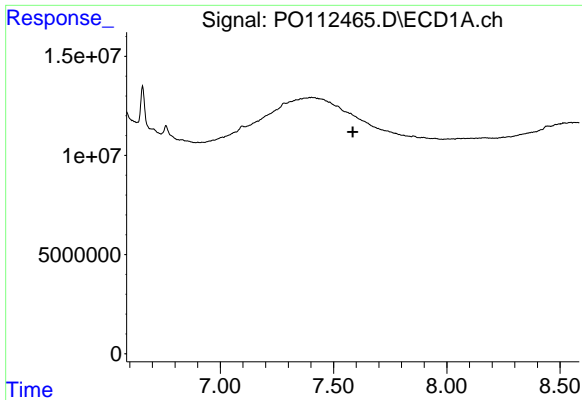
#40 AR-1262-5

R.T.: 8.146 min  
 Delta R.T.: 0.000 min  
 Response: 259707  
 Conc: 0.60 ng/ml



#40 AR-1262-5

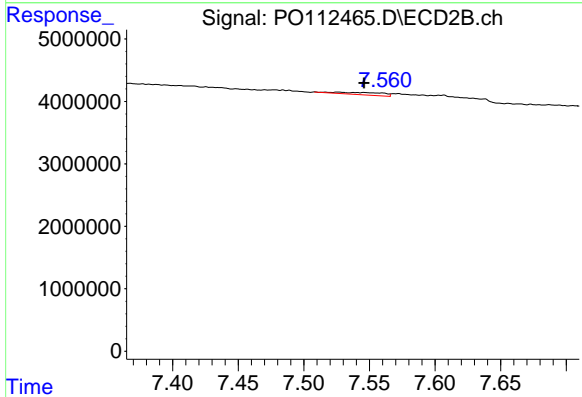
R.T.: 0.000 min  
 Exp R.T.: 8.103 min  
 Response: 0  
 Conc: N.D.



#41 AR-1268-1

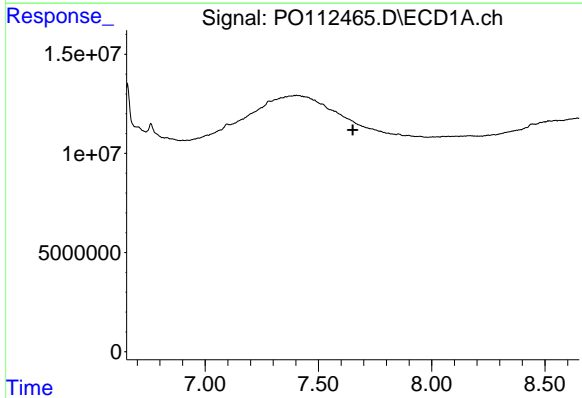
R.T.: 0.000 min  
 Exp R.T.: 7.586 min  
 Response: 0  
 Conc: N.D.

Instrument :  
 ECD\_O  
 ClientSampleId :  
 AR1242CCC500



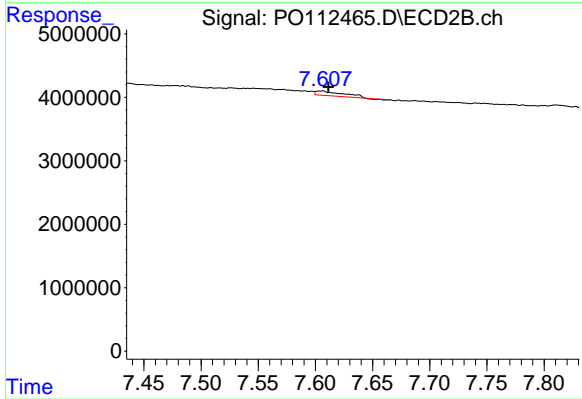
#41 AR-1268-1

R.T.: 7.526 min  
 Delta R.T.: -0.020 min  
 Response: 921539  
 Conc: 1.78 ng/ml



#42 AR-1268-2

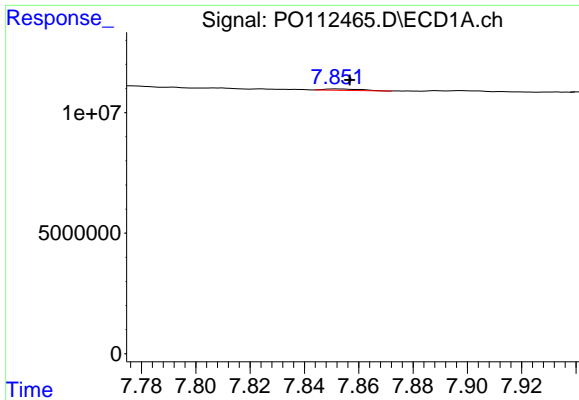
R.T.: 0.000 min  
 Exp R.T.: 7.652 min  
 Response: 0  
 Conc: N.D.



#42 AR-1268-2

R.T.: 7.606 min  
 Delta R.T.: -0.005 min  
 Response: 1114701  
 Conc: 2.62 ng/ml

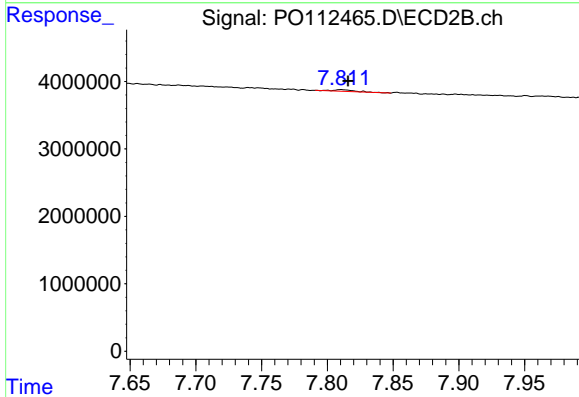




#43 AR-1268-3

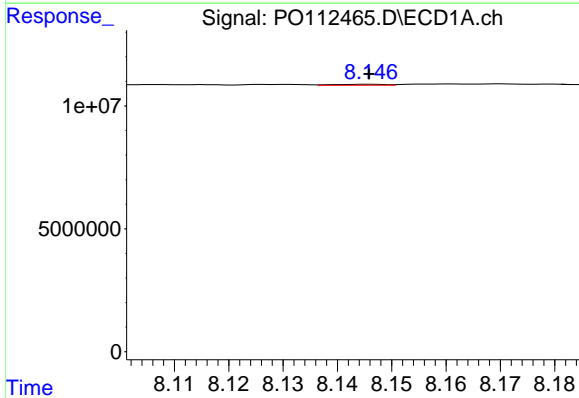
R.T.: 7.852 min  
 Delta R.T.: -0.005 min  
 Response: 538538  
 Conc: 0.43 ng/ml

Instrument :  
 ECD\_O  
 ClientSampleId :  
 AR1242CCC500



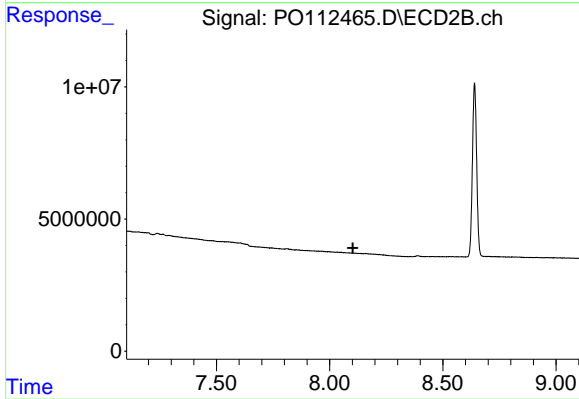
#43 AR-1268-3

R.T.: 7.810 min  
 Delta R.T.: -0.005 min  
 Response: 271919  
 Conc: 0.85 ng/ml



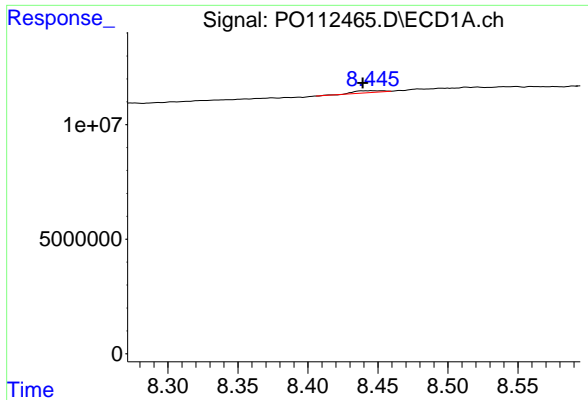
#44 AR-1268-4

R.T.: 8.146 min  
 Delta R.T.: 0.000 min  
 Response: 259707  
 Conc: 0.54 ng/ml



#44 AR-1268-4

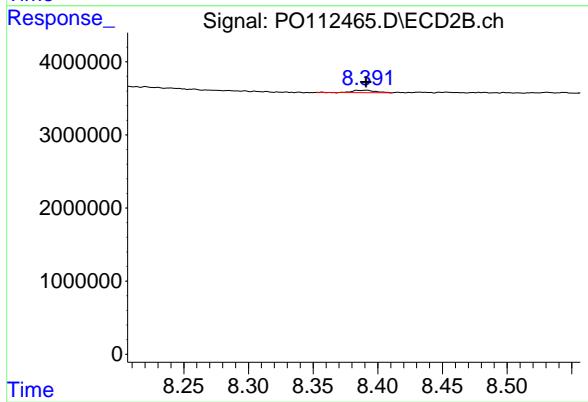
R.T.: 0.000 min  
 Exp R.T. : 8.103 min  
 Response: 0  
 Conc: N.D.



#45 AR-1268-5

R.T.: 8.446 min  
 Delta R.T.: 0.007 min  
 Response: 1203267  
 Conc: 0.36 ng/ml

Instrument :  
 ECD\_O  
 ClientSampleId :  
 AR1242CCC500



#45 AR-1268-5

R.T.: 8.391 min  
 Delta R.T.: 0.000 min  
 Response: 410080  
 Conc: 0.56 ng/ml