

Data Path : Z:\pestpcbsrv\HPCHEM1\ECD_O\Data\P0072425\
 Data File : PO112466.D
 Signal(s) : Signal #1: ECD1A.ch Signal #2: ECD2B.ch
 Acq On : 24 Jul 2025 16:00
 Operator : YP/AJ
 Sample : AR1248CCC500
 Misc :
 ALS Vial : 5 Sample Multiplier: 1

Instrument :
 ECD_O
 ClientSampleId :
 AR1248CCC500

Integration File signal 1: autoint1.e
 Integration File signal 2: autoint2.e
 Quant Time: Jul 24 23:42:57 2025
 Quant Method : Z:\pestpcbsrv\HPCHEM1\ECD_O\methods\P0072325.M
 Quant Title : GC EXTRACTABLES
 QLast Update : Thu Jul 24 04:54:06 2025
 Response via : Initial Calibration
 Integrator: ChemStation

Volume Inj. : 2 µl
 Signal #1 Phase : ZB-MR2 Signal #2 Phase: ZB-MR2
 Signal #1 Info : 30Mx0.32mmx 0.50µ Signal #2 Info : 30M x 0.32mm x 0.25µm

Compound	RT#1	RT#2	Resp#1	Resp#2	ng/ml	ng/ml
System Monitoring Compounds						
1) SA Tetrachlo...	3.670	3.663	462.8E6	277.0E6	56.909	55.748
2) SA Decachlor...	8.695	8.641	291.3E6	84347253	39.834	47.732
Target Compounds						
3) L1 AR-1016-1	4.756	4.738	98038876	63106632	365.318	360.595
4) L1 AR-1016-2	4.774	4.756	104.5E6	67144608	257.399	257.758
5) L1 AR-1016-3	4.831	4.932	58967649	43066306	225.348	316.742 #
6) L1 AR-1016-4	4.953	4.973	66776037	87091246	315.217	784.007 #
7) L1 AR-1016-5	5.208	5.185	181.4E6	111.4E6	826.674	777.488
8) L2 AR-1221-1	3.887	3.872	649535	689310	6.720	10.248 #
9) L2 AR-1221-2	3.971	3.960	6625687	4859755	92.200	95.800
10) L2 AR-1221-3	4.044	4.032	5547809	4963849	23.338	31.312 #
11) L3 AR-1232-1	4.044	4.032	5547809	4963849	29.671	39.224 #
12) L3 AR-1232-2	4.534	4.756	44558663	67144608	414.019	511.949
13) L3 AR-1232-3	4.774	4.932	104.5E6	43066306	505.486	640.898 #
14) L3 AR-1232-4	4.953	5.015	66776037	92804591	637.539	1551.162 #
15) L3 AR-1232-5	4.994	5.185	132.0E6	111.4E6	1943.947	1708.762
16) L4 AR-1242-1	4.756	4.738	98038876	63106632	395.969	398.415
17) L4 AR-1242-2	4.774	4.756	104.5E6	67144608	282.683	287.352
18) L4 AR-1242-3	4.831	4.932	58967649	43066306	249.168	355.365 #
19) L4 AR-1242-4	4.953	5.015	66776037	92804591	343.713	756.111 #
20) L4 AR-1242-5	5.602	5.534	183.2E6	159.9E6	856.314	993.200
21) L5 AR-1248-1	4.756	4.738	98038876	63106632	523.688	519.356
22) L5 AR-1248-2	4.994	4.973	132.0E6	87091246	517.250	514.481
23) L5 AR-1248-3	5.208	5.015	181.4E6	92804591	527.873	522.410
24) L5 AR-1248-4	5.561	5.185	269.0E6	111.4E6	529.440	534.744
25) L5 AR-1248-5	5.602	5.576	183.2E6	113.7E6	523.981	529.258
26) L6 AR-1254-1	5.561	5.534	269.0E6	159.9E6	490.013	486.508
27) L6 AR-1254-2	5.711	5.683	84891494	54112983	174.703	186.925
28) L6 AR-1254-3	6.114	6.083	117.3E6	71817940	157.602	168.010
29) L6 AR-1254-4	6.344	6.311	98408542	51051546	179.021	187.027
30) L6 AR-1254-5	6.762	6.727	18446205	13129107	26.060	39.306 #
31) L7 AR-1260-1	6.235	6.226	18517426	35956774	42.149	144.689 #
32) L7 AR-1260-2	6.435	6.400	13100674	5833854	19.045	17.706
33) L7 AR-1260-3	6.827	6.551	1405554	6281935	2.390	24.451 #
34) L7 AR-1260-4	7.059	7.021	670069	1244424	1.486	6.505 #
35) L7 AR-1260-5	7.303	7.264	5495461	1981208	4.435	4.806
36) L8 AR-1262-1	6.827	6.795	1405554	2036525	1.513	4.909 #
37) L8 AR-1262-2	7.303	7.264	5495461	1981208	3.696	3.843
38) L8 AR-1262-3	7.586	7.542	4554851	974391	7.717	5.224 #
39) L8 AR-1262-4	7.646	7.607	5295875	1029076	5.327	3.572 #
40) L8 AR-1262-5	8.143	8.100	1167440	268512	2.690	2.699
41) L9 AR-1268-1	7.586	7.542	4554851	974391	2.601	1.882 #

Data Path : Z:\pestpcbsrv\HPCHEM1\ECD_0\Data\P0072425\
 Data File : P0112466.D
 Signal(s) : Signal #1: ECD1A.ch Signal #2: ECD2B.ch
 Acq On : 24 Jul 2025 16:00
 Operator : YP/AJ
 Sample : AR1248CCC500
 Misc :
 ALS Vial : 5 Sample Multiplier: 1

Instrument :
 ECD_0
 ClientSampleId :
 AR1248CCC500

Integration File signal 1: autoint1.e
 Integration File signal 2: autoint2.e
 Quant Time: Jul 24 23:42:57 2025
 Quant Method : Z:\pestpcbsrv\HPCHEM1\ECD_0\methods\P0072325.M
 Quant Title : GC EXTRACTABLES
 QLast Update : Thu Jul 24 04:54:06 2025
 Response via : Initial Calibration
 Integrator: ChemStation

Volume Inj. : 2 µl
 Signal #1 Phase : ZB-MR1 Signal #2 Phase: ZB-MR2
 Signal #1 Info : 30Mx0.32mmx 0.50µ Signal #2 Info : 30M x 0.32mm x 0.25µm

	Compound	RT#1	RT#2	Resp#1	Resp#2	ng/ml	ng/ml
42)	L9 AR-1268-2	7.646	7.607	5295875	1029076	3.595	2.421 #
43)	L9 AR-1268-3	0.000	7.809	0	179242	N.D.	0.558 #
44)	L9 AR-1268-4	8.143	8.100	1167440	268512	2.423	2.413
45)	L9 AR-1268-5	8.437	8.391	1774136	396088	0.528	0.541

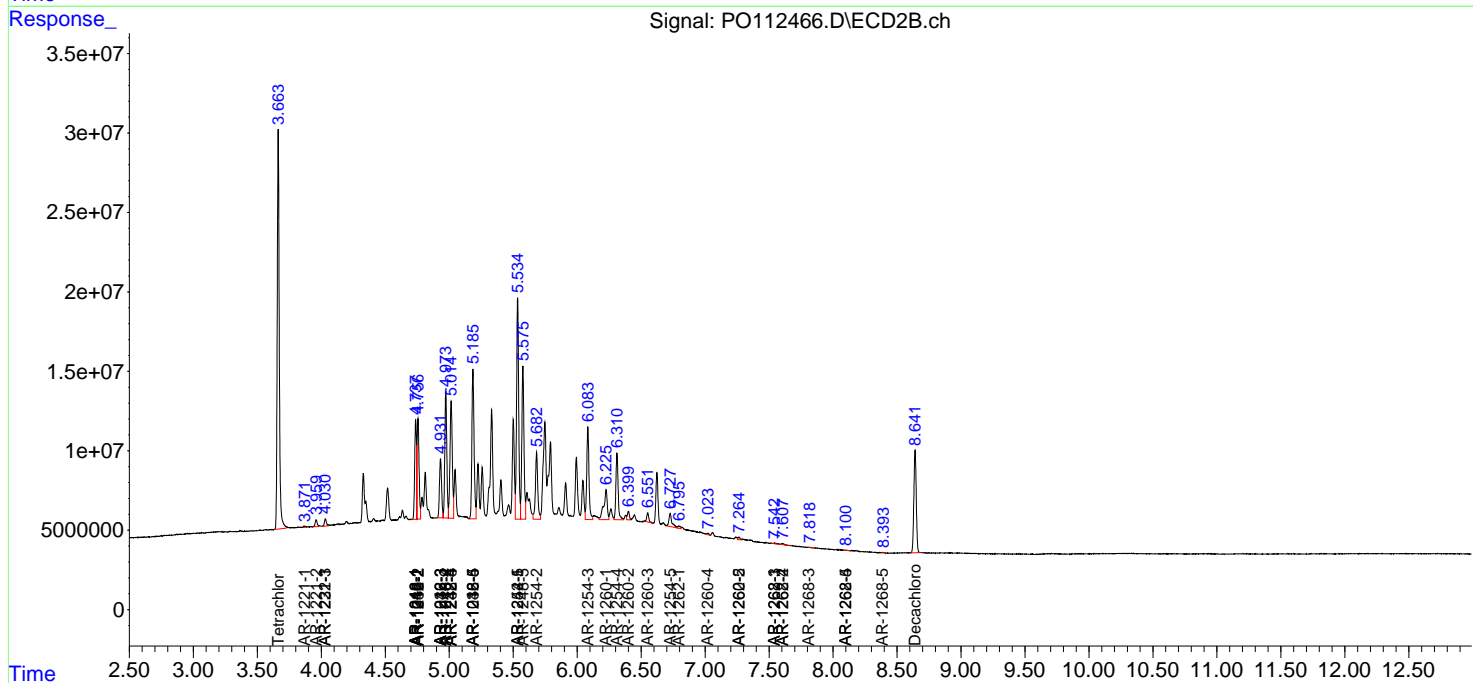
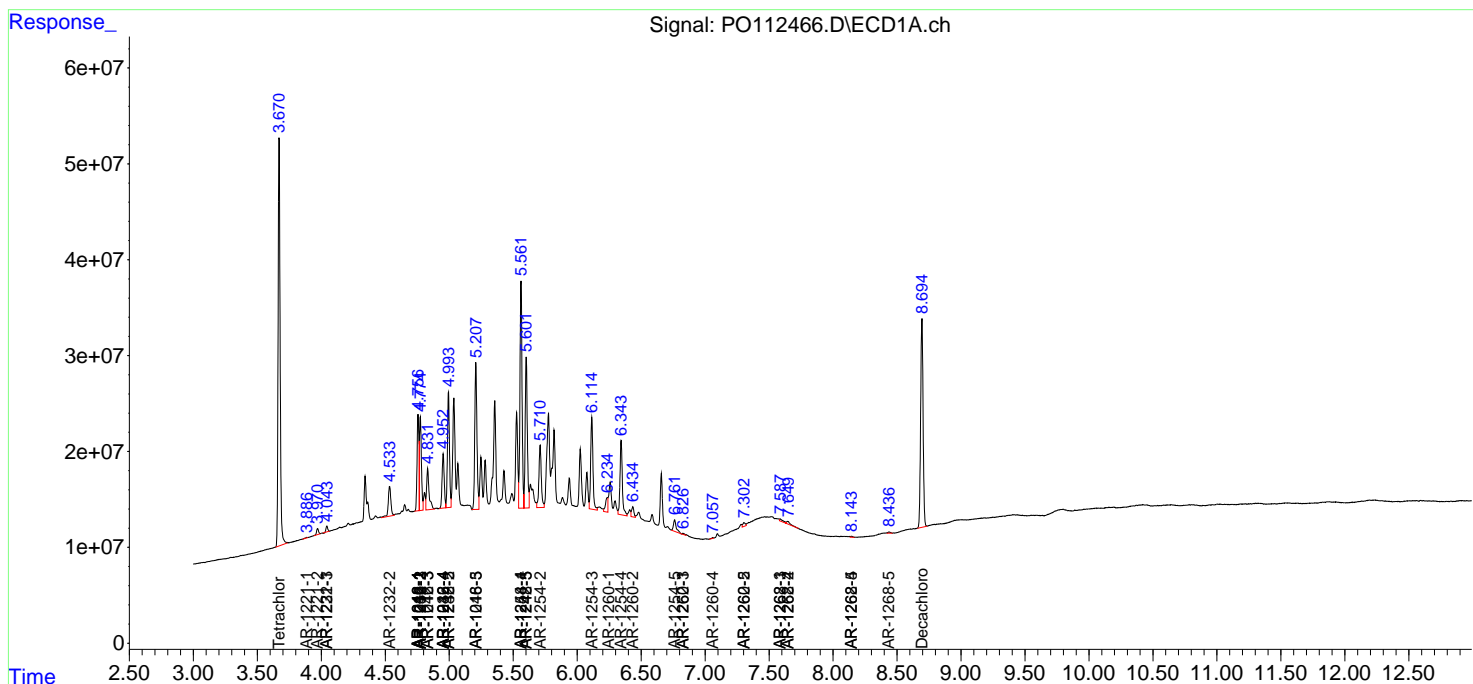
(f)=RT Delta > 1/2 Window (#)=Amounts differ by > 25% (m)=manual int.

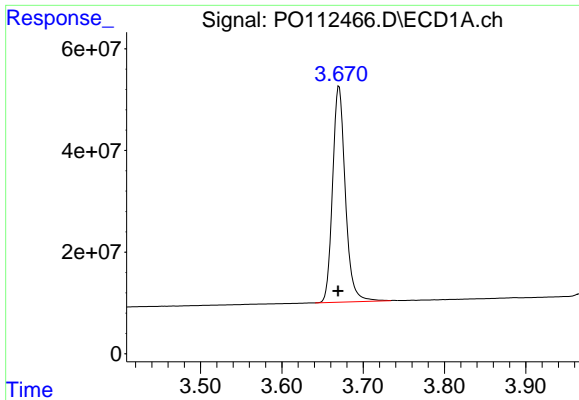
Data Path : Z:\pestpcbsrv\HPCHEM1\ECD_O\Data\P0072425\
 Data File : P0112466.D
 Signal(s) : Signal #1: ECD1A.ch Signal #2: ECD2B.ch
 Acq On : 24 Jul 2025 16:00
 Operator : YP/AJ
 Sample : AR1248CCC500
 Misc :
 ALS Vial : 5 Sample Multiplier: 1

Instrument :
 ECD_O
 ClientSampleId :
 AR1248CCC500

Integration File signal 1: autoint1.e
 Integration File signal 2: autoint2.e
 Quant Time: Jul 24 23:42:57 2025
 Quant Method : Z:\pestpcbsrv\HPCHEM1\ECD_O\methods\P0072325.M
 Quant Title : GC EXTRACTABLES
 QLast Update : Thu Jul 24 04:54:06 2025
 Response via : Initial Calibration
 Integrator: ChemStation

Volume Inj. : 2 µl
 Signal #1 Phase : ZB-MR1 Signal #2 Phase: ZB-MR2
 Signal #1 Info : 30Mx0.32mmx 0.50µ Signal #2 Info : 30M x 0.32mm x 0.25µm

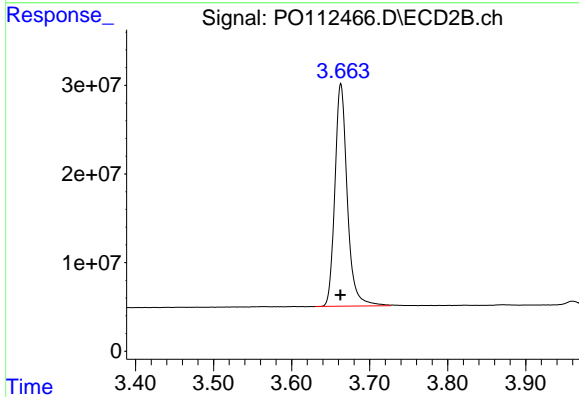




#1 Tetrachloro-m-xylene

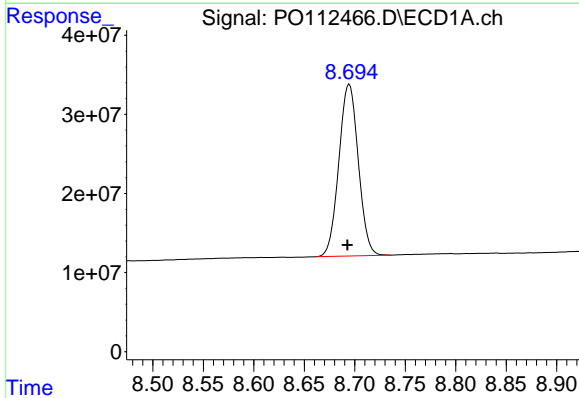
R.T.: 3.670 min
 Delta R.T.: 0.001 min
 Response: 462760703
 Conc: 56.91 ng/ml

Instrument :
 ECD_O
 ClientSampleId :
 AR1248CCC500



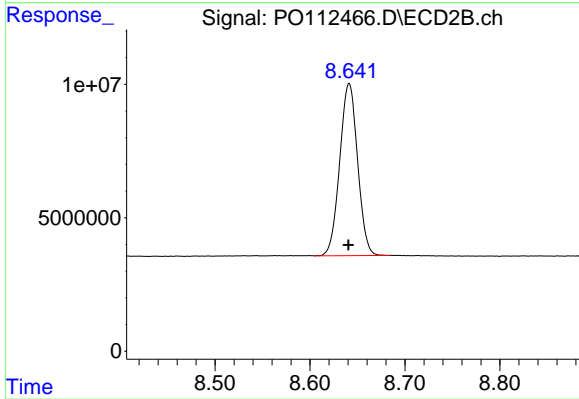
#1 Tetrachloro-m-xylene

R.T.: 3.663 min
 Delta R.T.: 0.000 min
 Response: 277021187
 Conc: 55.75 ng/ml



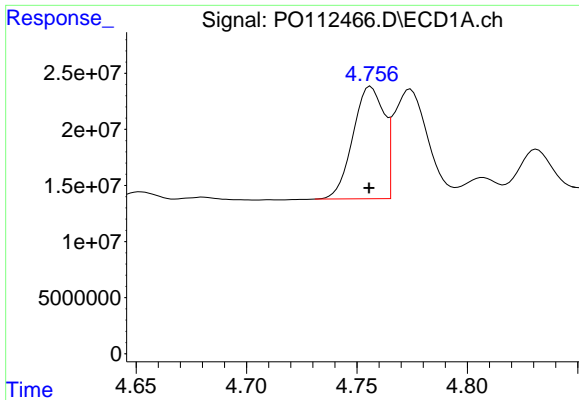
#2 Decachlorobiphenyl

R.T.: 8.695 min
 Delta R.T.: 0.002 min
 Response: 291258840
 Conc: 39.83 ng/ml



#2 Decachlorobiphenyl

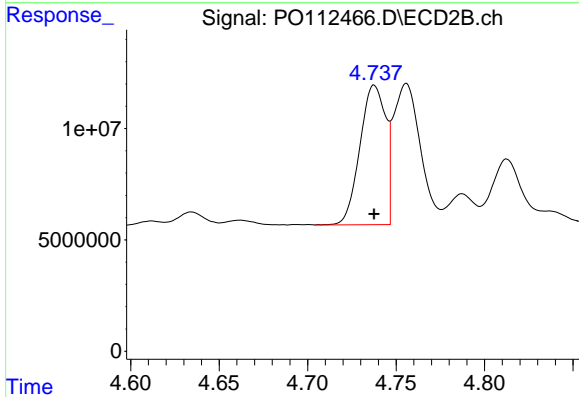
R.T.: 8.641 min
 Delta R.T.: 0.000 min
 Response: 84347253
 Conc: 47.73 ng/ml



#3 AR-1016-1

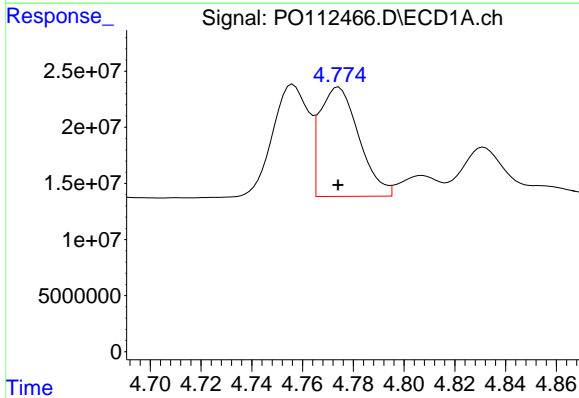
R.T.: 4.756 min
 Delta R.T.: 0.000 min
 Response: 98038876
 Conc: 365.32 ng/ml

Instrument :
 ECD_O
 ClientSampleId :
 AR1248CCC500



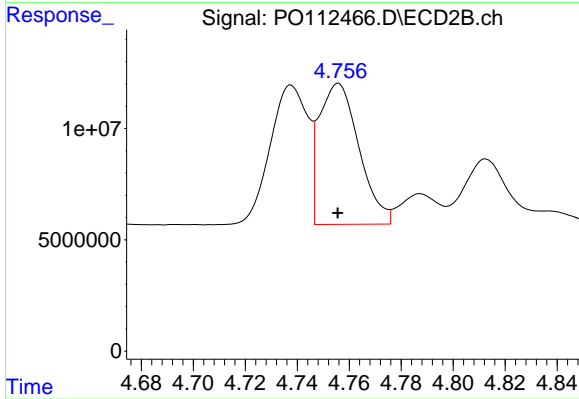
#3 AR-1016-1

R.T.: 4.738 min
 Delta R.T.: 0.000 min
 Response: 63106632
 Conc: 360.59 ng/ml



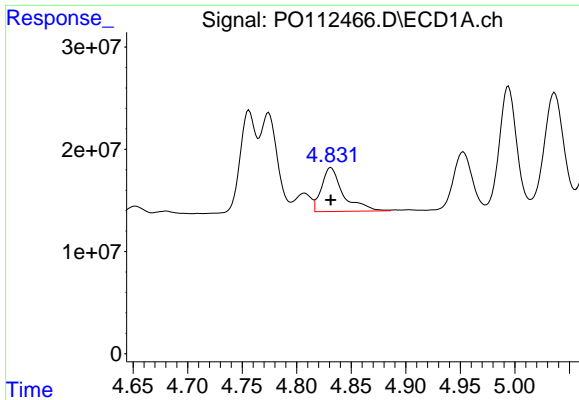
#4 AR-1016-2

R.T.: 4.774 min
 Delta R.T.: 0.000 min
 Response: 104534180
 Conc: 257.40 ng/ml



#4 AR-1016-2

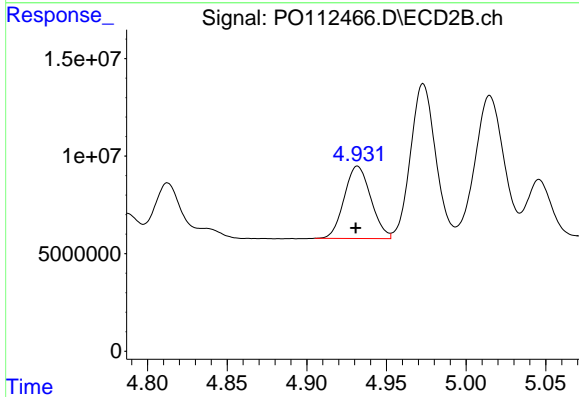
R.T.: 4.756 min
 Delta R.T.: 0.000 min
 Response: 67144608
 Conc: 257.76 ng/ml



#5 AR-1016-3

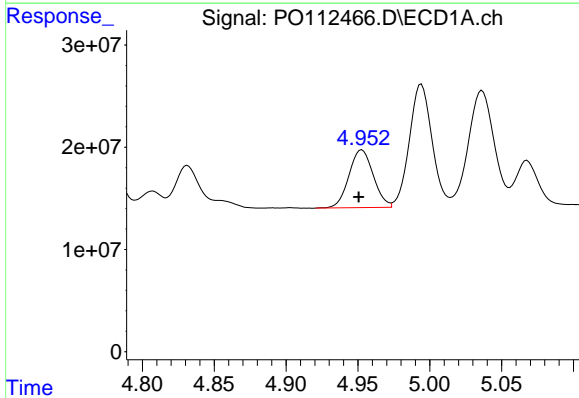
R.T.: 4.831 min
 Delta R.T.: 0.000 min
 Response: 58967649
 Conc: 225.35 ng/ml

Instrument :
 ECD_O
 ClientSampleId :
 AR1248CCC500



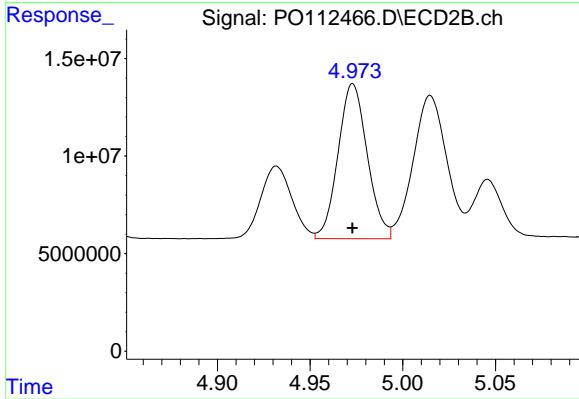
#5 AR-1016-3

R.T.: 4.932 min
 Delta R.T.: 0.001 min
 Response: 43066306
 Conc: 316.74 ng/ml



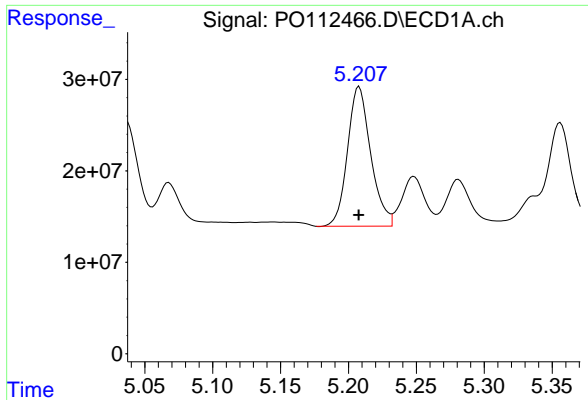
#6 AR-1016-4

R.T.: 4.953 min
 Delta R.T.: 0.002 min
 Response: 66776037
 Conc: 315.22 ng/ml



#6 AR-1016-4

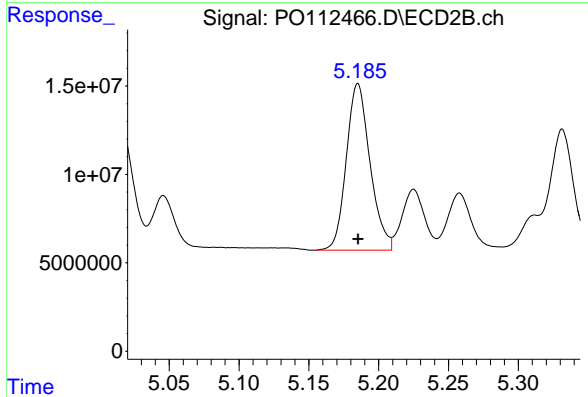
R.T.: 4.973 min
 Delta R.T.: 0.000 min
 Response: 87091246
 Conc: 784.01 ng/ml



#7 AR-1016-5

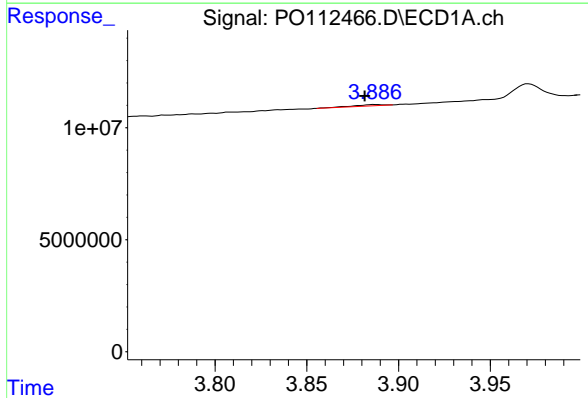
R.T.: 5.208 min
 Delta R.T.: 0.000 min
 Response: 181430546
 Conc: 826.67 ng/ml

Instrument :
 ECD_O
 ClientSampleId :
 AR1248CCC500



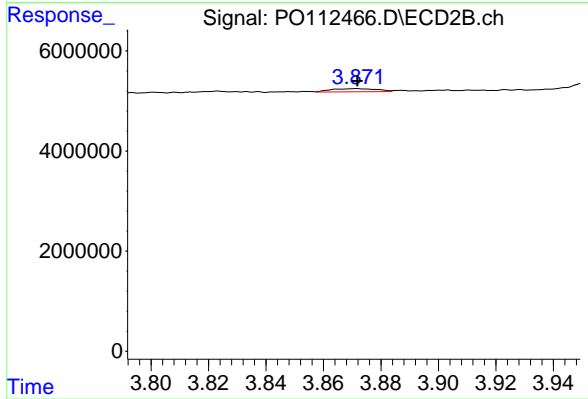
#7 AR-1016-5

R.T.: 5.185 min
 Delta R.T.: 0.000 min
 Response: 111416439
 Conc: 777.49 ng/ml



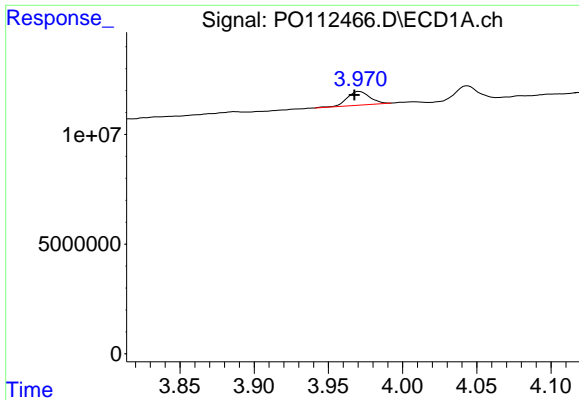
#8 AR-1221-1

R.T.: 3.887 min
 Delta R.T.: 0.006 min
 Response: 649535
 Conc: 6.72 ng/ml



#8 AR-1221-1

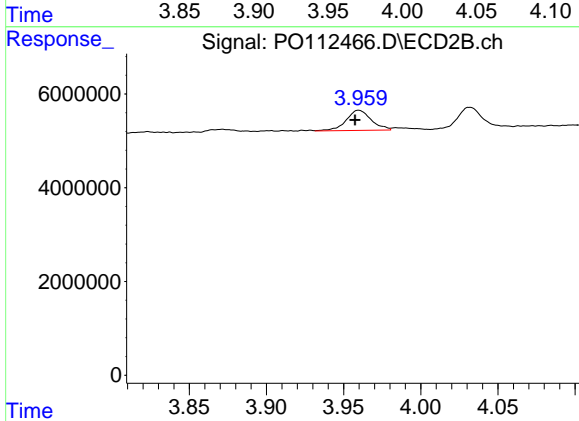
R.T.: 3.872 min
 Delta R.T.: 0.000 min
 Response: 689310
 Conc: 10.25 ng/ml



#9 AR-1221-2

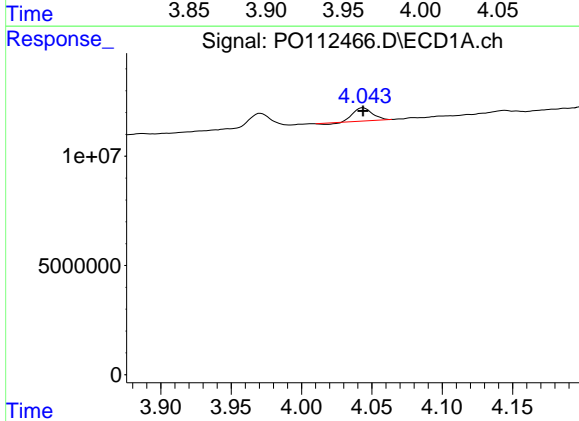
R.T.: 3.971 min
 Delta R.T.: 0.003 min
 Response: 6625687
 Conc: 92.20 ng/ml

Instrument :
 ECD_O
 ClientSampleId :
 AR1248CCC500



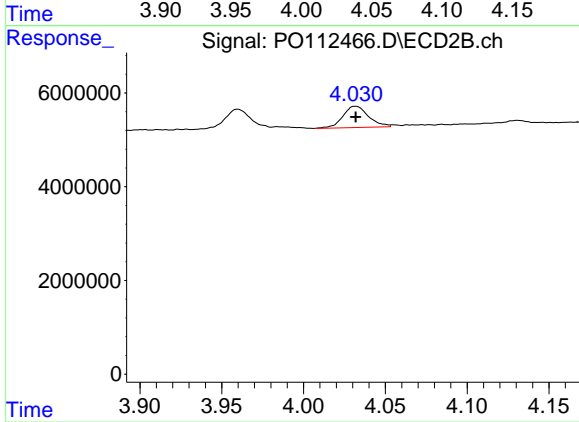
#9 AR-1221-2

R.T.: 3.960 min
 Delta R.T.: 0.002 min
 Response: 4859755
 Conc: 95.80 ng/ml



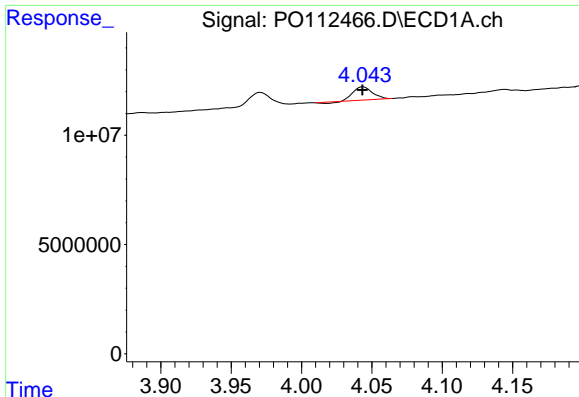
#10 AR-1221-3

R.T.: 4.044 min
 Delta R.T.: 0.000 min
 Response: 5547809
 Conc: 23.34 ng/ml



#10 AR-1221-3

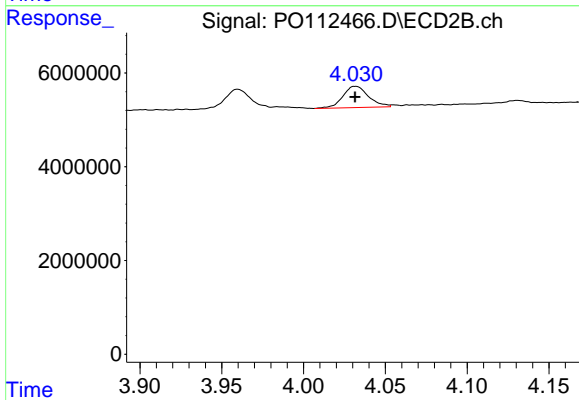
R.T.: 4.032 min
 Delta R.T.: 0.000 min
 Response: 4963849
 Conc: 31.31 ng/ml



#11 AR-1232-1

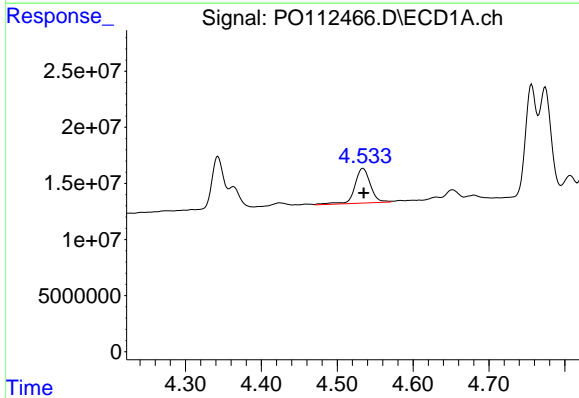
R.T.: 4.044 min
 Delta R.T.: 0.000 min
 Response: 5547809
 Conc: 29.67 ng/ml

Instrument :
 ECD_O
 ClientSampleId :
 AR1248CCC500



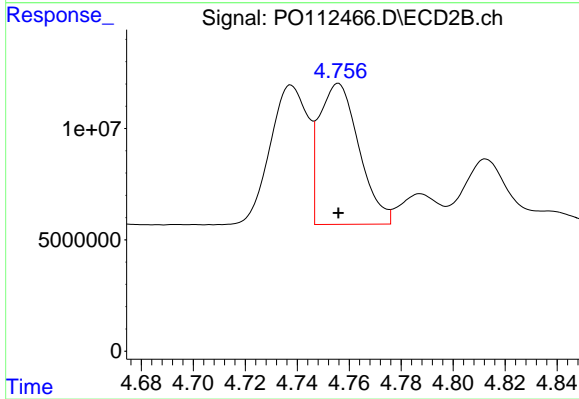
#11 AR-1232-1

R.T.: 4.032 min
 Delta R.T.: 0.000 min
 Response: 4963849
 Conc: 39.22 ng/ml



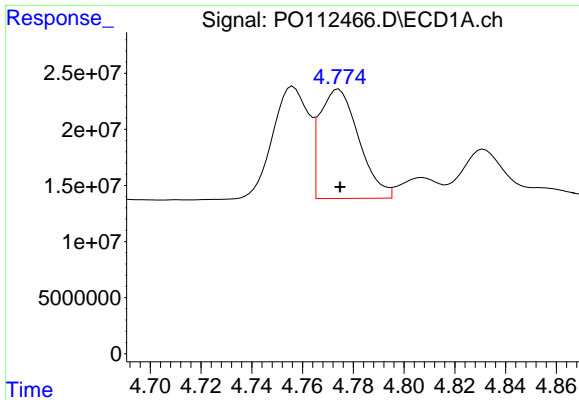
#12 AR-1232-2

R.T.: 4.534 min
 Delta R.T.: 0.000 min
 Response: 44558663
 Conc: 414.02 ng/ml



#12 AR-1232-2

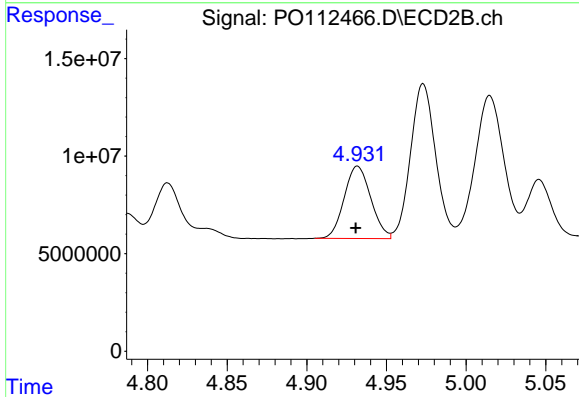
R.T.: 4.756 min
 Delta R.T.: 0.000 min
 Response: 67144608
 Conc: 511.95 ng/ml



#13 AR-1232-3

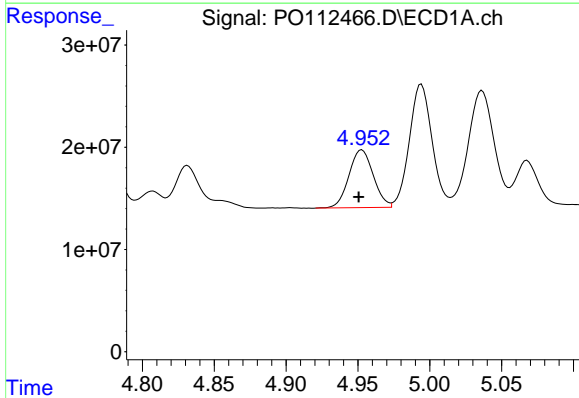
R.T.: 4.774 min
 Delta R.T.: 0.000 min
 Response: 104534180
 Conc: 505.49 ng/ml

Instrument :
 ECD_O
 ClientSampleId :
 AR1248CCC500



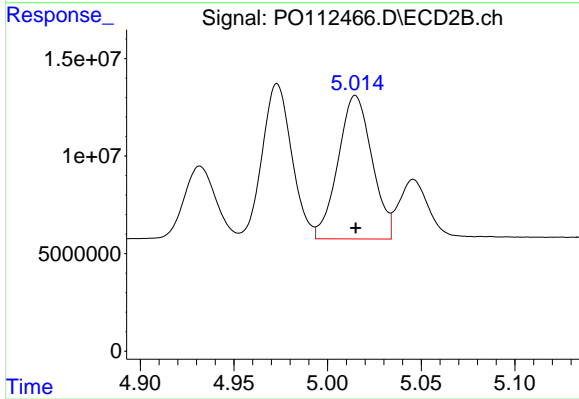
#13 AR-1232-3

R.T.: 4.932 min
 Delta R.T.: 0.001 min
 Response: 43066306
 Conc: 640.90 ng/ml



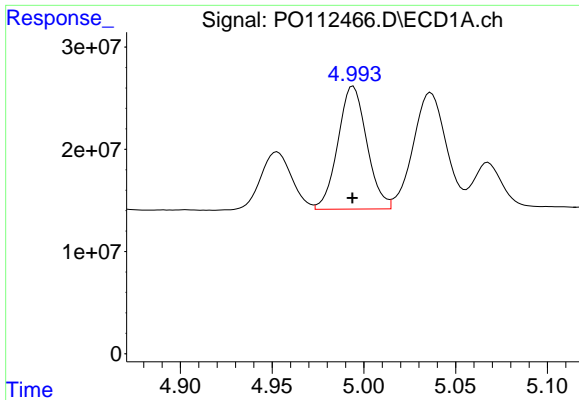
#14 AR-1232-4

R.T.: 4.953 min
 Delta R.T.: 0.002 min
 Response: 66776037
 Conc: 637.54 ng/ml



#14 AR-1232-4

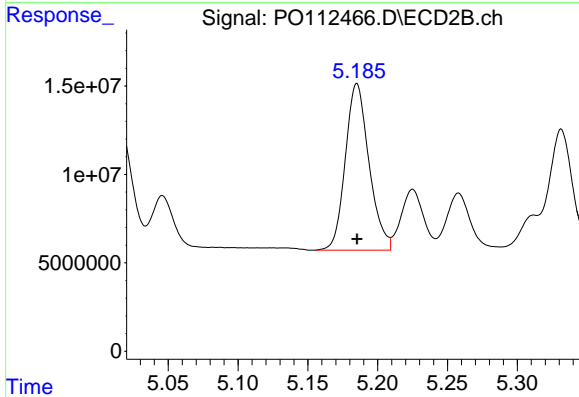
R.T.: 5.015 min
 Delta R.T.: 0.000 min
 Response: 92804591
 Conc: 1551.16 ng/ml



#15 AR-1232-5

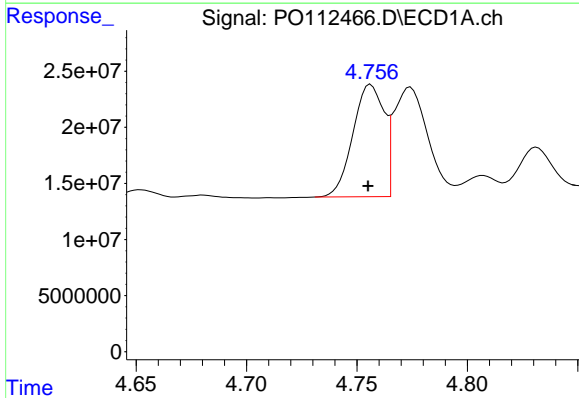
R.T.: 4.994 min
 Delta R.T.: 0.000 min
 Response: 131956843
 Conc: 1943.95 ng/ml

Instrument :
 ECD_O
 ClientSampleId :
 AR1248CCC500



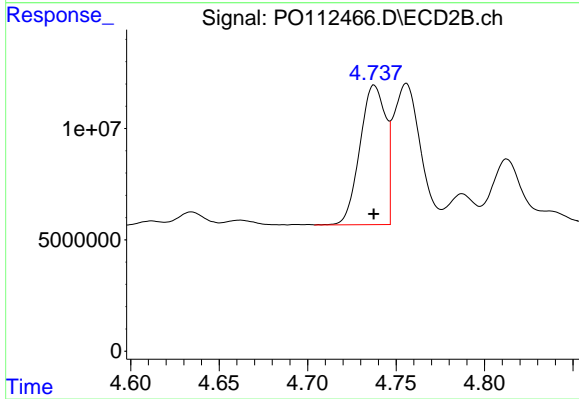
#15 AR-1232-5

R.T.: 5.185 min
 Delta R.T.: 0.000 min
 Response: 111416439
 Conc: 1708.76 ng/ml



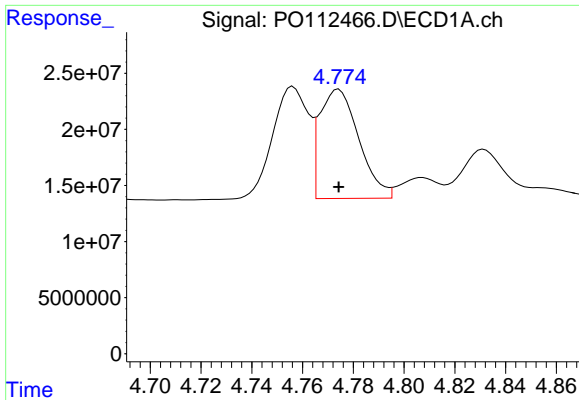
#16 AR-1242-1

R.T.: 4.756 min
 Delta R.T.: 0.001 min
 Response: 98038876
 Conc: 395.97 ng/ml



#16 AR-1242-1

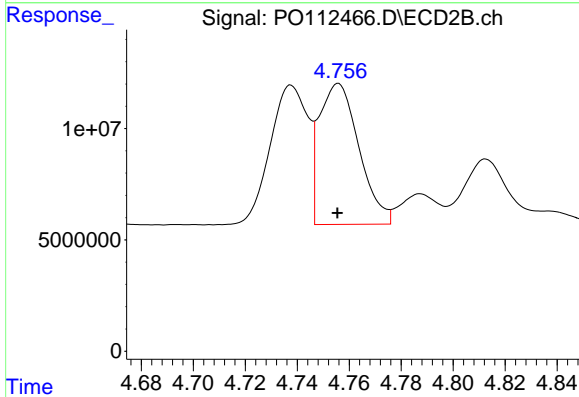
R.T.: 4.738 min
 Delta R.T.: 0.000 min
 Response: 63106632
 Conc: 398.42 ng/ml



#17 AR-1242-2

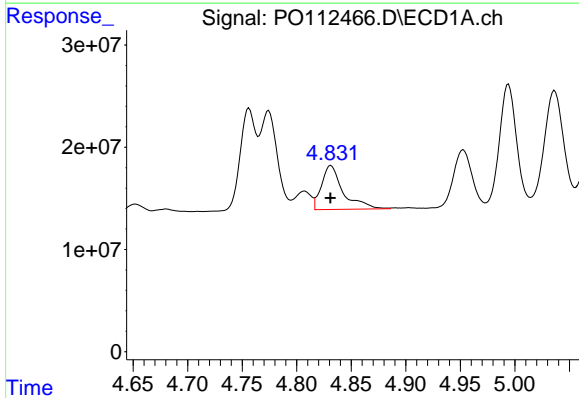
R.T.: 4.774 min
 Delta R.T.: 0.000 min
 Response: 104534180
 Conc: 282.68 ng/ml

Instrument :
 ECD_O
 ClientSampleId :
 AR1248CCC500



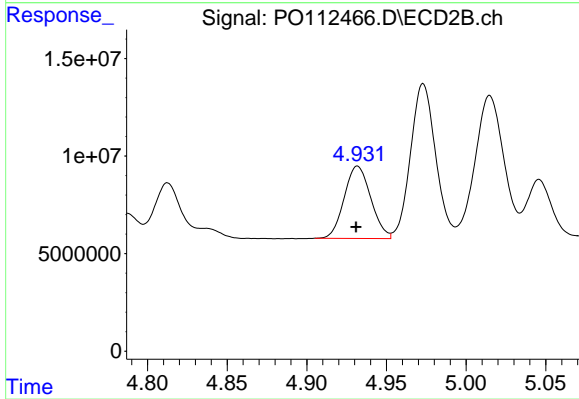
#17 AR-1242-2

R.T.: 4.756 min
 Delta R.T.: 0.000 min
 Response: 67144608
 Conc: 287.35 ng/ml



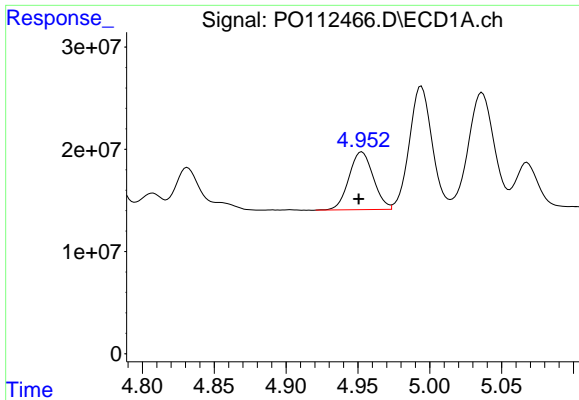
#18 AR-1242-3

R.T.: 4.831 min
 Delta R.T.: 0.000 min
 Response: 58967649
 Conc: 249.17 ng/ml



#18 AR-1242-3

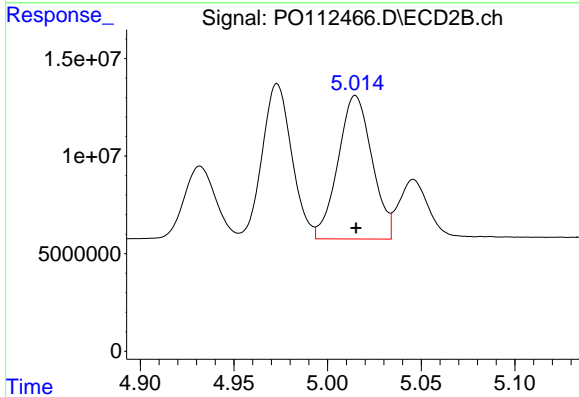
R.T.: 4.932 min
 Delta R.T.: 0.001 min
 Response: 43066306
 Conc: 355.36 ng/ml



#19 AR-1242-4

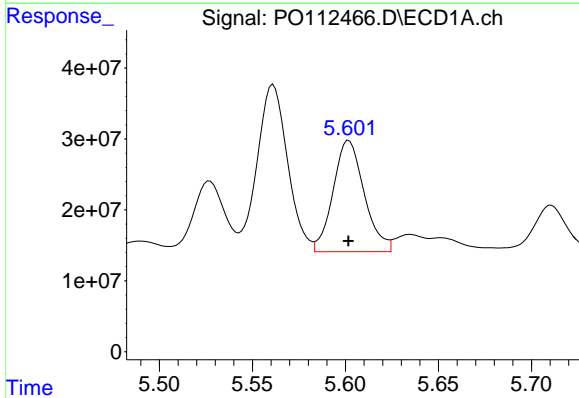
R.T.: 4.953 min
 Delta R.T.: 0.002 min
 Response: 66776037
 Conc: 343.71 ng/ml

Instrument :
 ECD_O
 ClientSampleId :
 AR1248CCC500



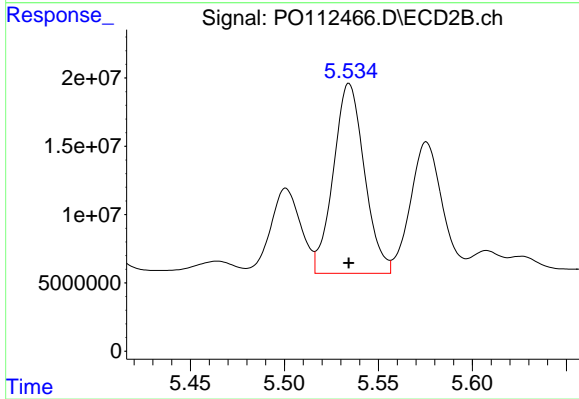
#19 AR-1242-4

R.T.: 5.015 min
 Delta R.T.: 0.000 min
 Response: 92804591
 Conc: 756.11 ng/ml



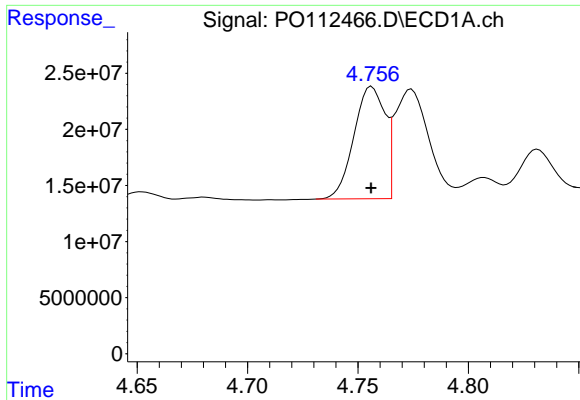
#20 AR-1242-5

R.T.: 5.602 min
 Delta R.T.: 0.000 min
 Response: 183178960
 Conc: 856.31 ng/ml



#20 AR-1242-5

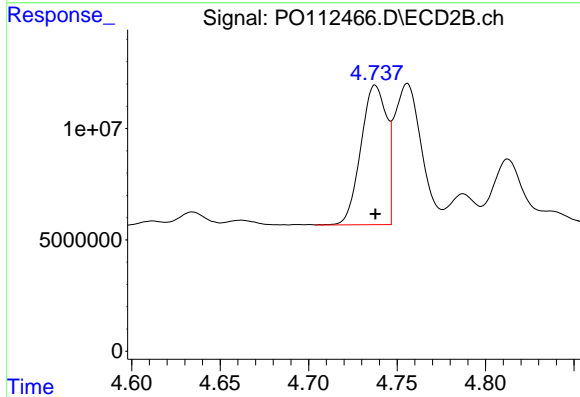
R.T.: 5.534 min
 Delta R.T.: 0.000 min
 Response: 159876710
 Conc: 993.20 ng/ml



#21 AR-1248-1

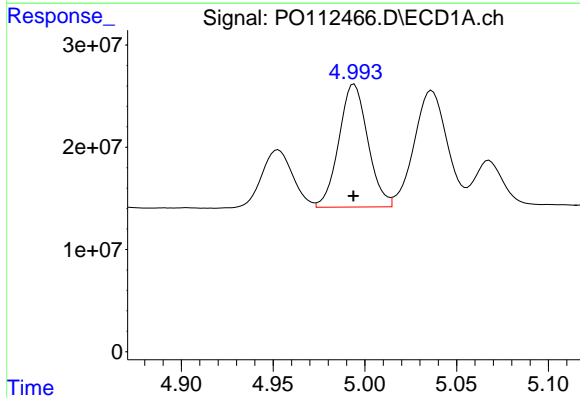
R.T.: 4.756 min
 Delta R.T.: 0.000 min
 Response: 98038876
 Conc: 523.69 ng/ml

Instrument :
 ECD_O
 ClientSampleId :
 AR1248CCC500



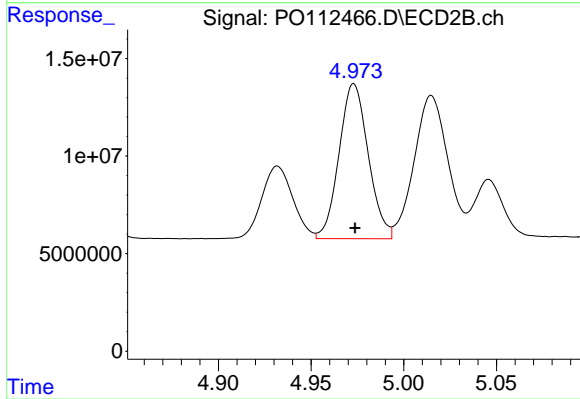
#21 AR-1248-1

R.T.: 4.738 min
 Delta R.T.: 0.000 min
 Response: 63106632
 Conc: 519.36 ng/ml



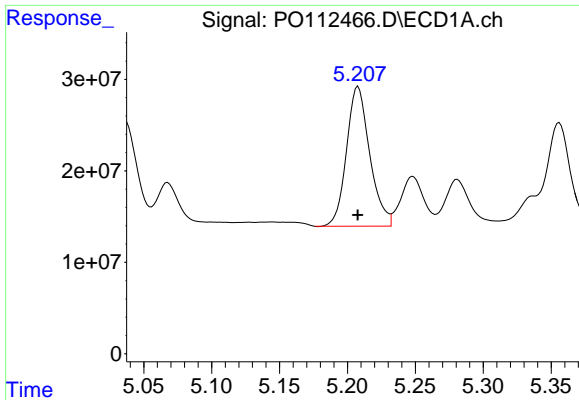
#22 AR-1248-2

R.T.: 4.994 min
 Delta R.T.: 0.000 min
 Response: 131956843
 Conc: 517.25 ng/ml



#22 AR-1248-2

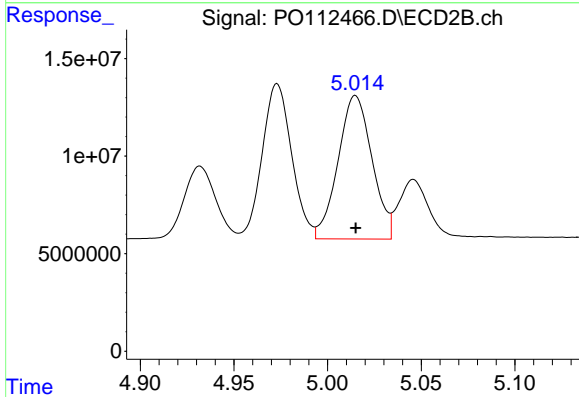
R.T.: 4.973 min
 Delta R.T.: 0.000 min
 Response: 87091246
 Conc: 514.48 ng/ml



#23 AR-1248-3

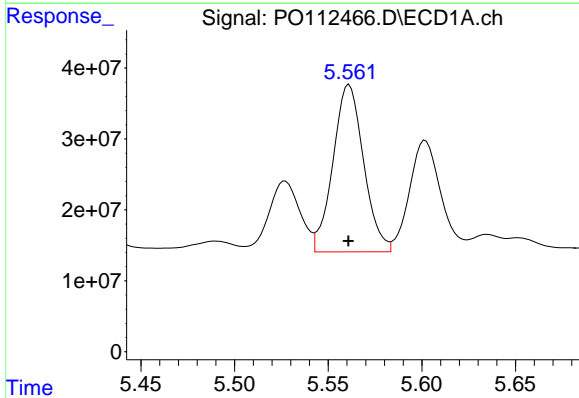
R.T.: 5.208 min
 Delta R.T.: 0.000 min
 Response: 181430546
 Conc: 527.87 ng/ml

Instrument :
 ECD_O
 ClientSampleId :
 AR1248CCC500



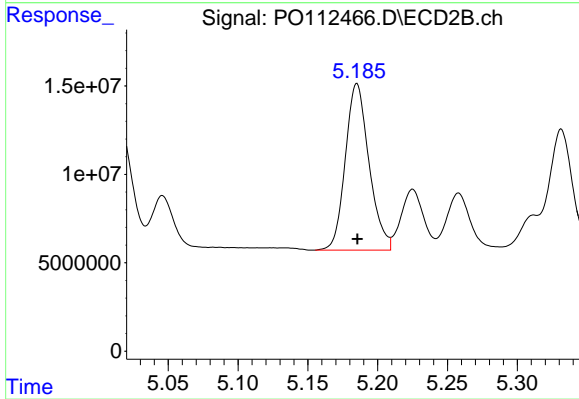
#23 AR-1248-3

R.T.: 5.015 min
 Delta R.T.: 0.000 min
 Response: 92804591
 Conc: 522.41 ng/ml



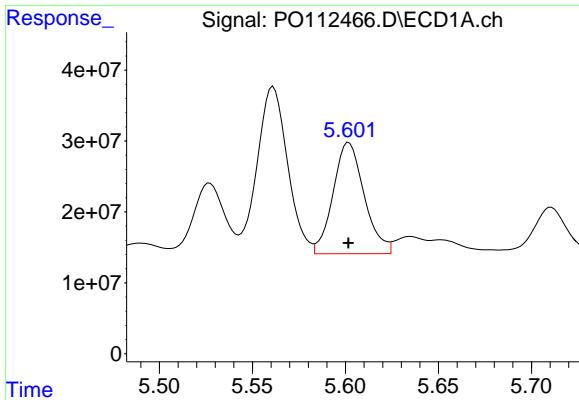
#24 AR-1248-4

R.T.: 5.561 min
 Delta R.T.: 0.000 min
 Response: 268996842
 Conc: 529.44 ng/ml



#24 AR-1248-4

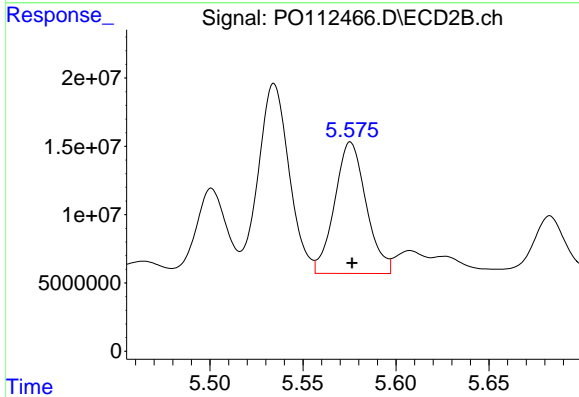
R.T.: 5.185 min
 Delta R.T.: 0.000 min
 Response: 111416439
 Conc: 534.74 ng/ml



#25 AR-1248-5

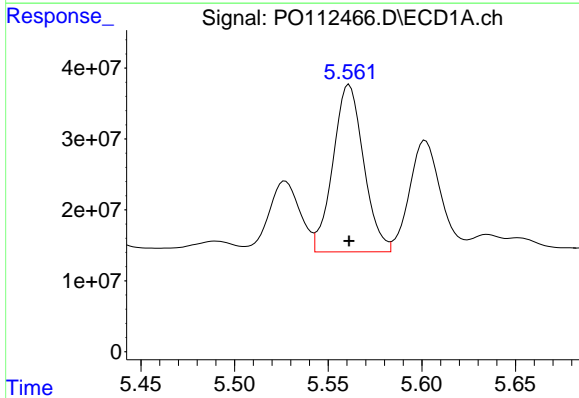
R.T.: 5.602 min
 Delta R.T.: 0.000 min
 Response: 183178960
 Conc: 523.98 ng/ml

Instrument :
 ECD_O
 ClientSampleId :
 AR1248CCC500



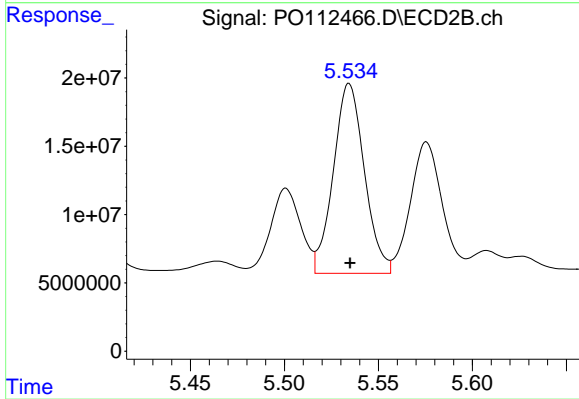
#25 AR-1248-5

R.T.: 5.576 min
 Delta R.T.: 0.000 min
 Response: 113666073
 Conc: 529.26 ng/ml



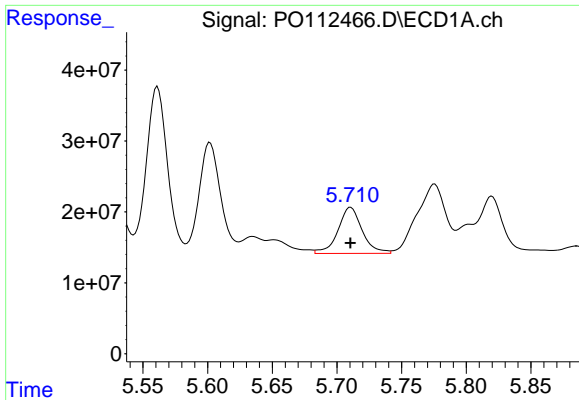
#26 AR-1254-1

R.T.: 5.561 min
 Delta R.T.: 0.000 min
 Response: 268996842
 Conc: 490.01 ng/ml



#26 AR-1254-1

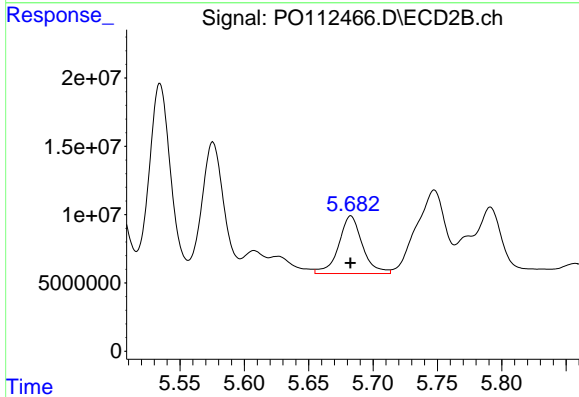
R.T.: 5.534 min
 Delta R.T.: 0.000 min
 Response: 159876710
 Conc: 486.51 ng/ml



#27 AR-1254-2

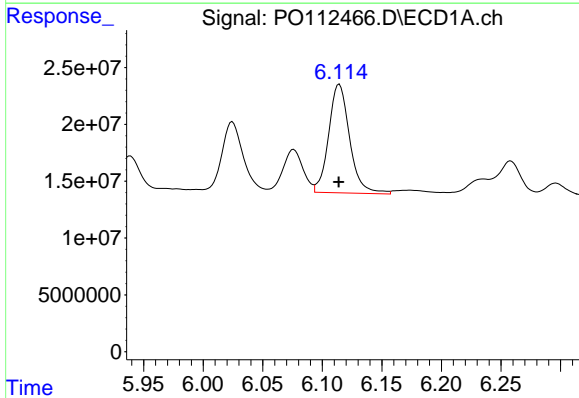
R.T.: 5.711 min
 Delta R.T.: 0.000 min
 Response: 84891494
 Conc: 174.70 ng/ml

Instrument :
 ECD_O
 ClientSampleId :
 AR1248CCC500



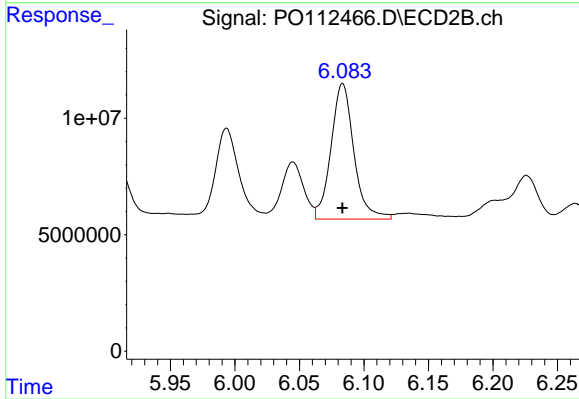
#27 AR-1254-2

R.T.: 5.683 min
 Delta R.T.: 0.000 min
 Response: 54112983
 Conc: 186.92 ng/ml



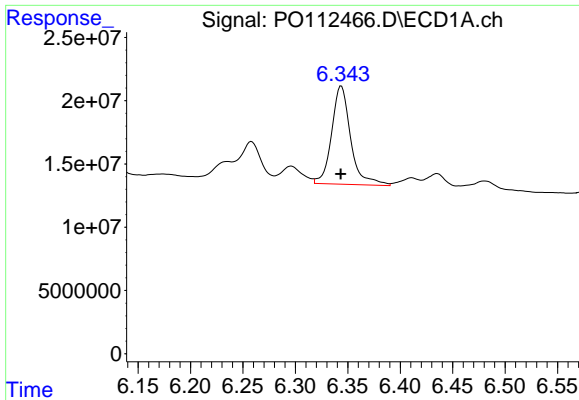
#28 AR-1254-3

R.T.: 6.114 min
 Delta R.T.: 0.000 min
 Response: 117301179
 Conc: 157.60 ng/ml



#28 AR-1254-3

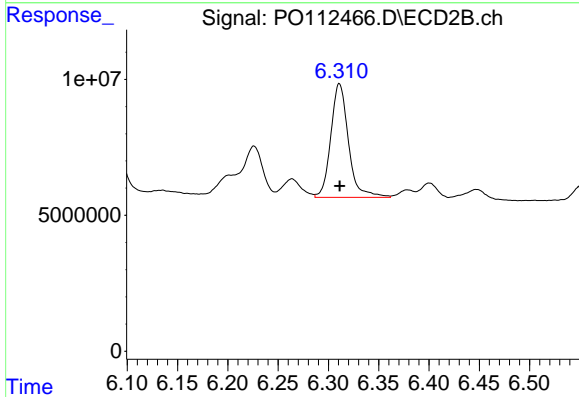
R.T.: 6.083 min
 Delta R.T.: 0.000 min
 Response: 71817940
 Conc: 168.01 ng/ml



#29 AR-1254-4

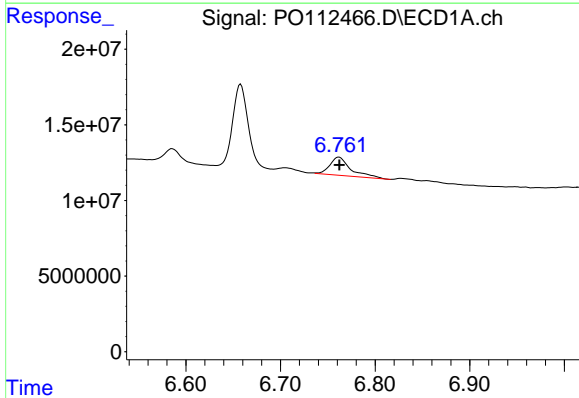
R.T.: 6.344 min
 Delta R.T.: 0.000 min
 Response: 98408542
 Conc: 179.02 ng/ml

Instrument :
 ECD_O
 ClientSampleId :
 AR1248CCC500



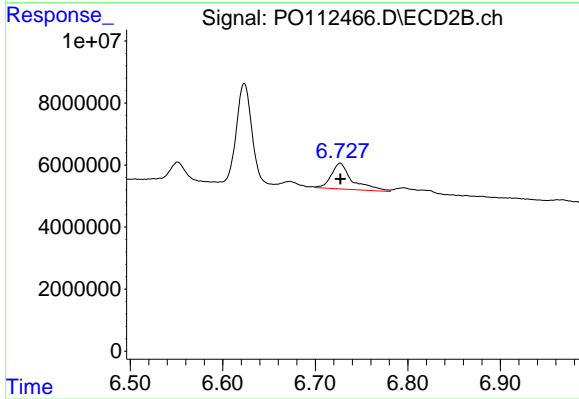
#29 AR-1254-4

R.T.: 6.311 min
 Delta R.T.: 0.000 min
 Response: 51051546
 Conc: 187.03 ng/ml



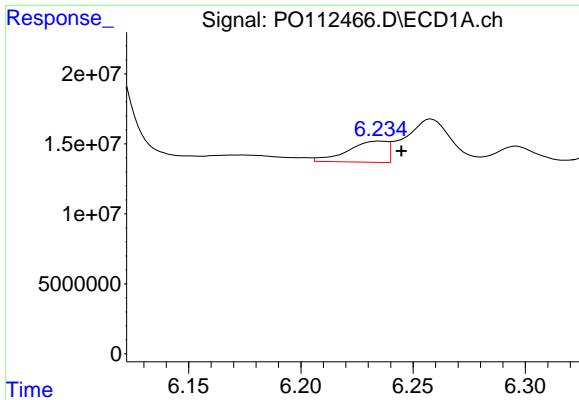
#30 AR-1254-5

R.T.: 6.762 min
 Delta R.T.: 0.000 min
 Response: 18446205
 Conc: 26.06 ng/ml



#30 AR-1254-5

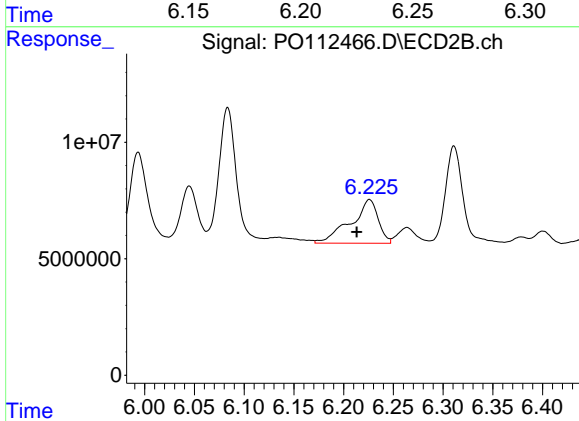
R.T.: 6.727 min
 Delta R.T.: 0.000 min
 Response: 13129107
 Conc: 39.31 ng/ml



#31 AR-1260-1

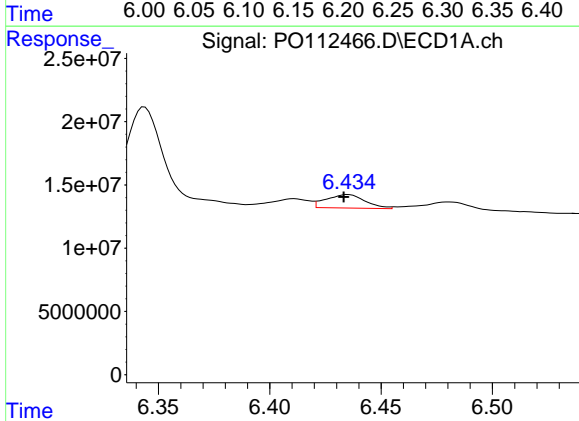
R.T.: 6.235 min
 Delta R.T.: -0.009 min
 Response: 18517426
 Conc: 42.15 ng/ml

Instrument :
 ECD_O
 ClientSampleId :
 AR1248CCC500



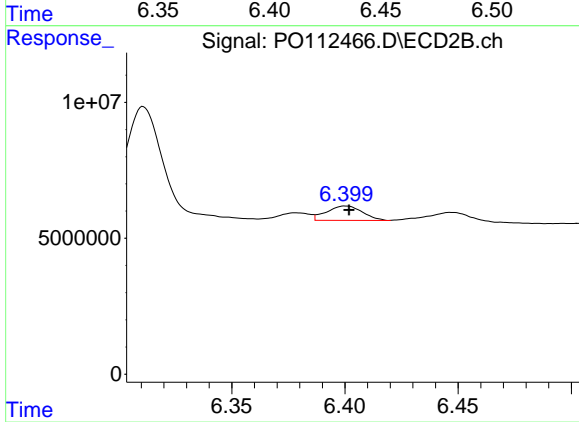
#31 AR-1260-1

R.T.: 6.226 min
 Delta R.T.: 0.013 min
 Response: 35956774
 Conc: 144.69 ng/ml



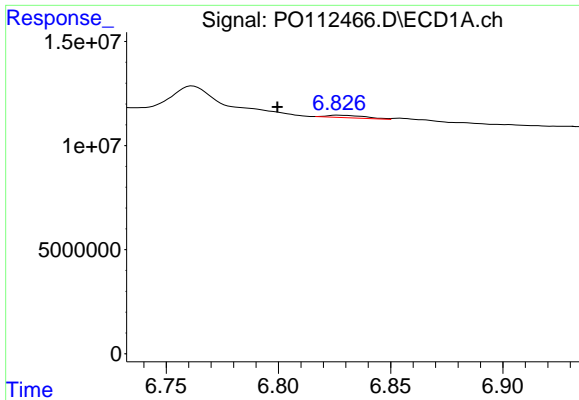
#32 AR-1260-2

R.T.: 6.435 min
 Delta R.T.: 0.002 min
 Response: 13100674
 Conc: 19.04 ng/ml



#32 AR-1260-2

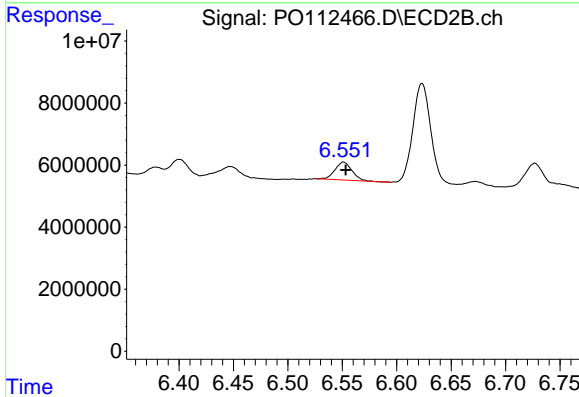
R.T.: 6.400 min
 Delta R.T.: -0.001 min
 Response: 5833854
 Conc: 17.71 ng/ml



#33 AR-1260-3

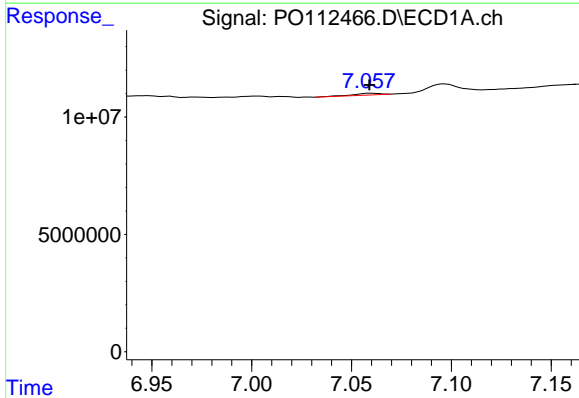
R.T.: 6.827 min
 Delta R.T.: 0.027 min
 Response: 1405554
 Conc: 2.39 ng/ml

Instrument :
 ECD_O
 ClientSampleId :
 AR1248CCC500



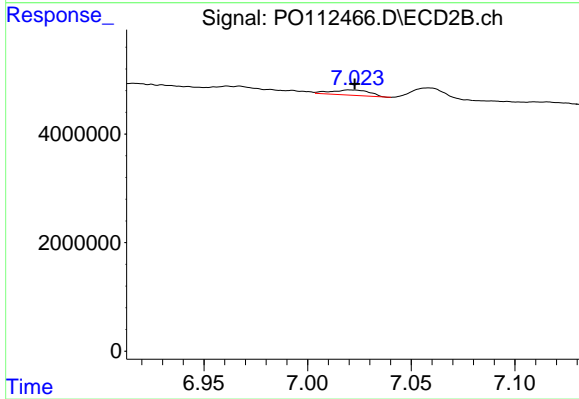
#33 AR-1260-3

R.T.: 6.551 min
 Delta R.T.: -0.002 min
 Response: 6281935
 Conc: 24.45 ng/ml



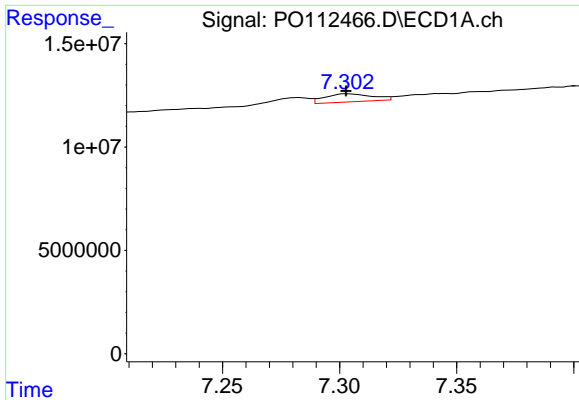
#34 AR-1260-4

R.T.: 7.059 min
 Delta R.T.: 0.000 min
 Response: 670069
 Conc: 1.49 ng/ml



#34 AR-1260-4

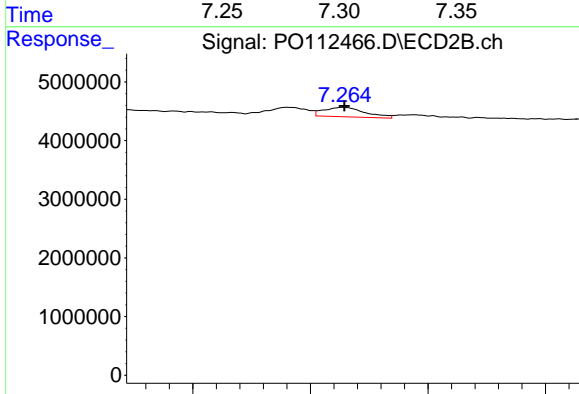
R.T.: 7.021 min
 Delta R.T.: -0.002 min
 Response: 1244424
 Conc: 6.50 ng/ml



#35 AR-1260-5

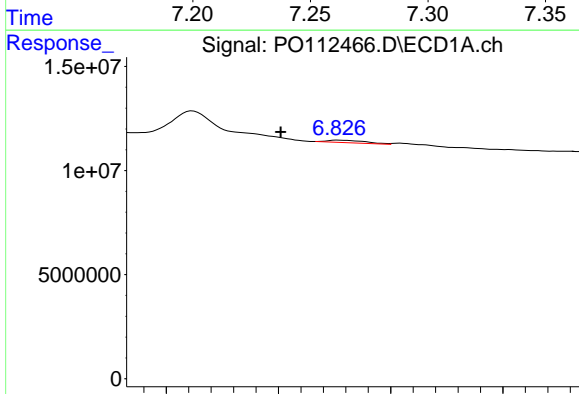
R.T.: 7.303 min
 Delta R.T.: 0.000 min
 Response: 5495461
 Conc: 4.43 ng/ml

Instrument :
 ECD_O
 ClientSampleId :
 AR1248CCC500



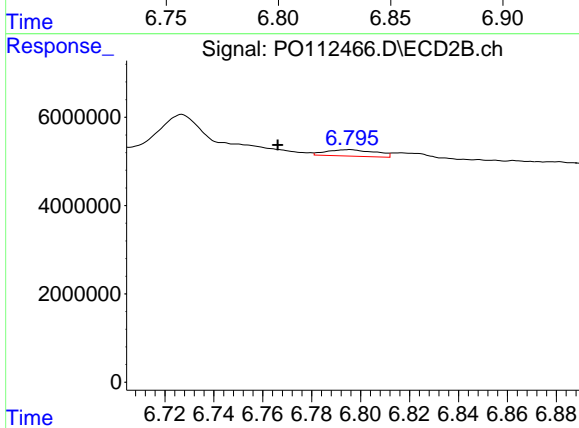
#35 AR-1260-5

R.T.: 7.264 min
 Delta R.T.: 0.000 min
 Response: 1981208
 Conc: 4.81 ng/ml



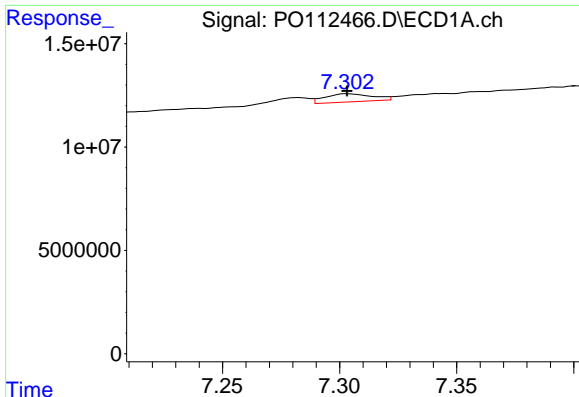
#36 AR-1262-1

R.T.: 6.827 min
 Delta R.T.: 0.026 min
 Response: 1405554
 Conc: 1.51 ng/ml



#36 AR-1262-1

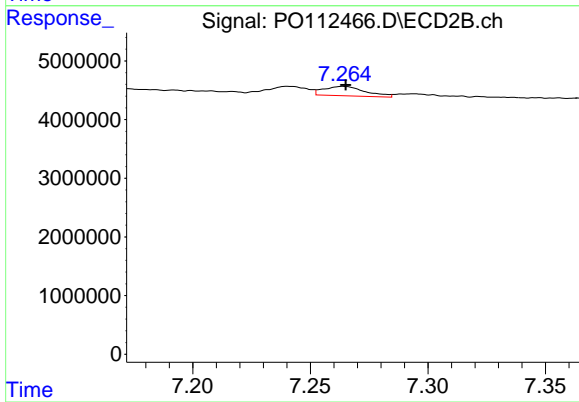
R.T.: 6.795 min
 Delta R.T.: 0.029 min
 Response: 2036525
 Conc: 4.91 ng/ml



#37 AR-1262-2

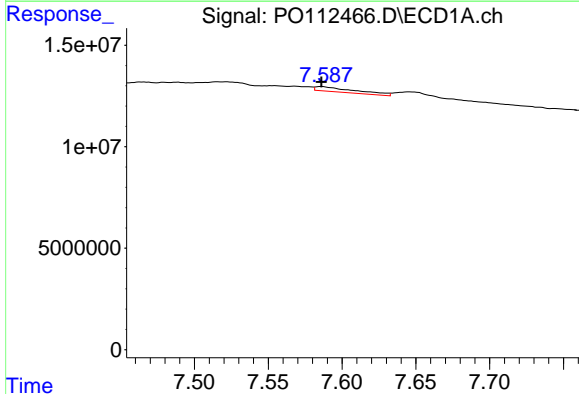
R.T.: 7.303 min
 Delta R.T.: 0.000 min
 Response: 5495461
 Conc: 3.70 ng/ml

Instrument :
 ECD_O
 ClientSampleId :
 AR1248CCC500



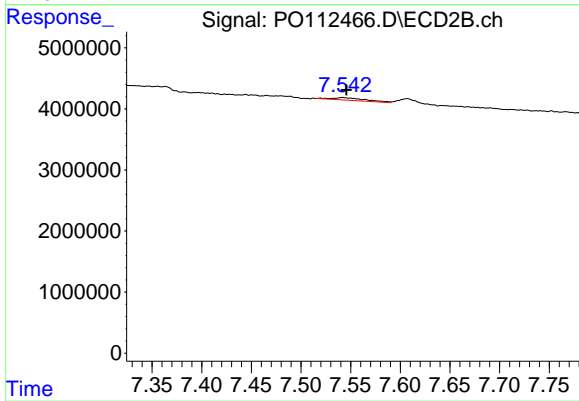
#37 AR-1262-2

R.T.: 7.264 min
 Delta R.T.: 0.000 min
 Response: 1981208
 Conc: 3.84 ng/ml



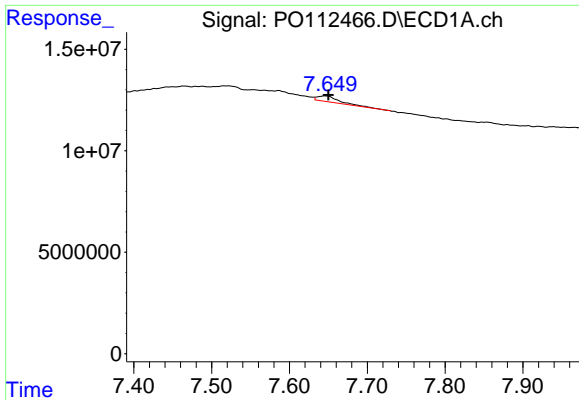
#38 AR-1262-3

R.T.: 7.586 min
 Delta R.T.: 0.000 min
 Response: 4554851
 Conc: 7.72 ng/ml



#38 AR-1262-3

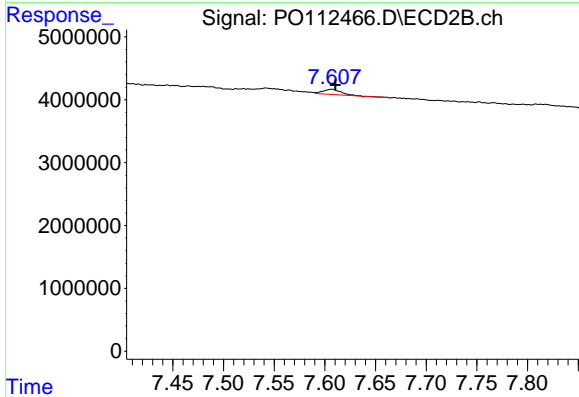
R.T.: 7.542 min
 Delta R.T.: -0.004 min
 Response: 974391
 Conc: 5.22 ng/ml



#39 AR-1262-4

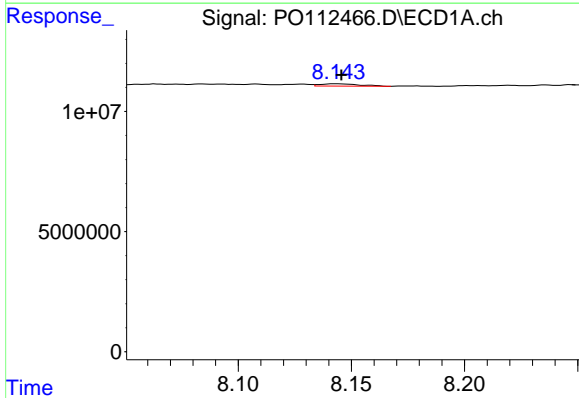
R.T.: 7.646 min
 Delta R.T.: -0.004 min
 Response: 5295875
 Conc: 5.33 ng/ml

Instrument :
 ECD_O
 ClientSampleId :
 AR1248CCC500



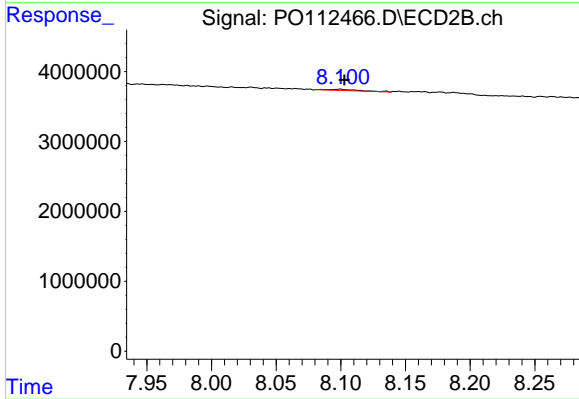
#39 AR-1262-4

R.T.: 7.607 min
 Delta R.T.: -0.004 min
 Response: 1029076
 Conc: 3.57 ng/ml



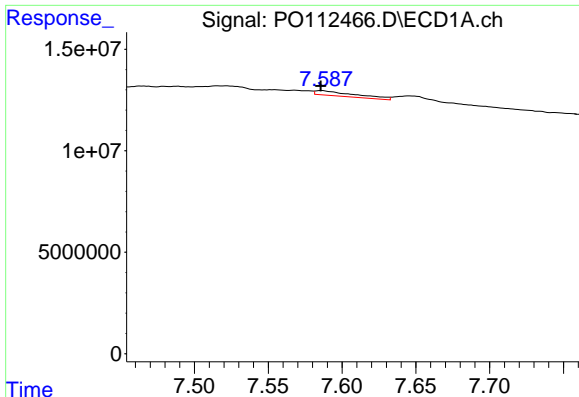
#40 AR-1262-5

R.T.: 8.143 min
 Delta R.T.: -0.002 min
 Response: 1167440
 Conc: 2.69 ng/ml



#40 AR-1262-5

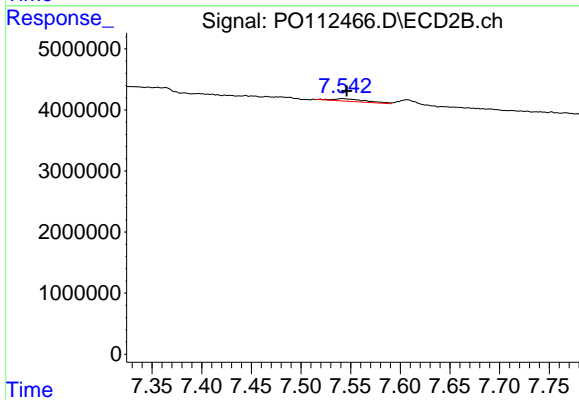
R.T.: 8.100 min
 Delta R.T.: -0.003 min
 Response: 268512
 Conc: 2.70 ng/ml



#41 AR-1268-1

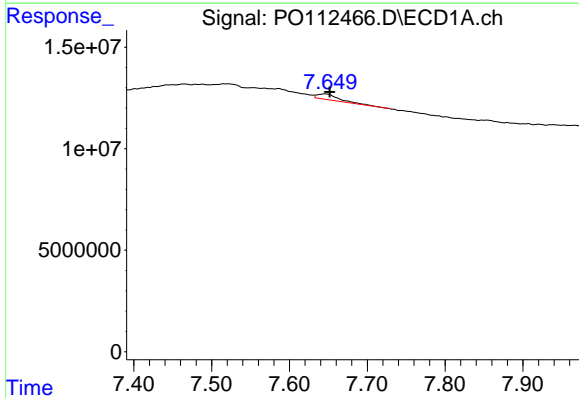
R.T.: 7.586 min
 Delta R.T.: 0.000 min
 Response: 4554851
 Conc: 2.60 ng/ml

Instrument :
 ECD_O
 ClientSampleId :
 AR1248CCC500



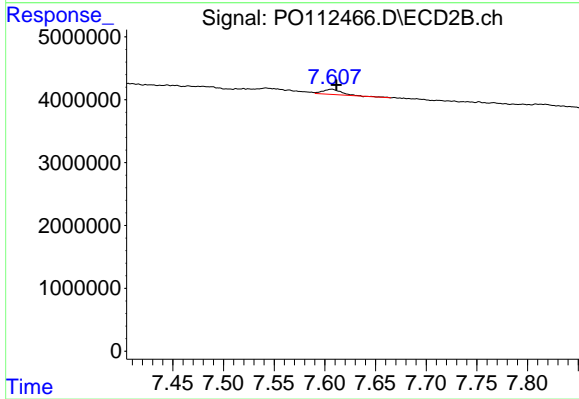
#41 AR-1268-1

R.T.: 7.542 min
 Delta R.T.: -0.004 min
 Response: 974391
 Conc: 1.88 ng/ml



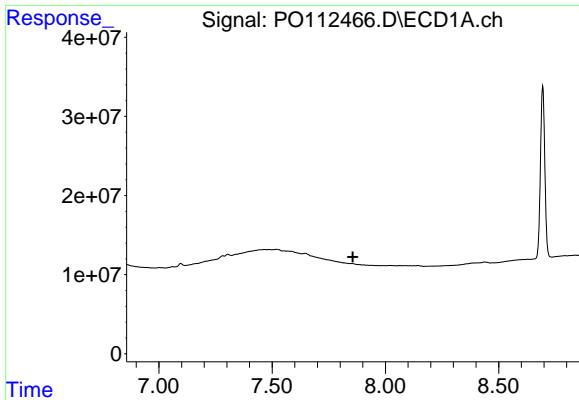
#42 AR-1268-2

R.T.: 7.646 min
 Delta R.T.: -0.006 min
 Response: 5295875
 Conc: 3.60 ng/ml



#42 AR-1268-2

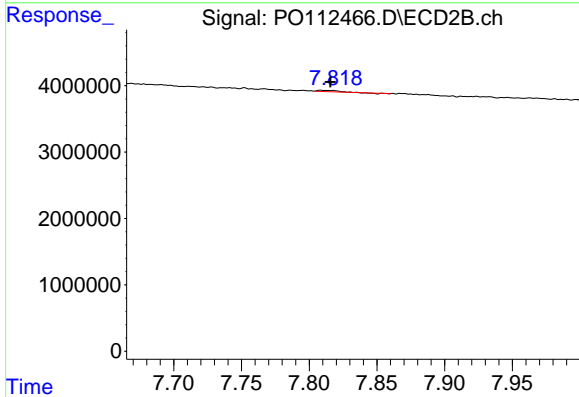
R.T.: 7.607 min
 Delta R.T.: -0.005 min
 Response: 1029076
 Conc: 2.42 ng/ml



#43 AR-1268-3

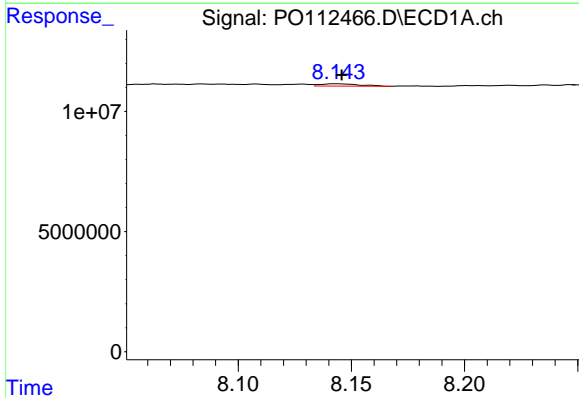
R.T.: 0.000 min
 Exp R.T.: 7.857 min
 Response: 0
 Conc: N.D.

Instrument :
 ECD_O
 ClientSampleId :
 AR1248CCC500



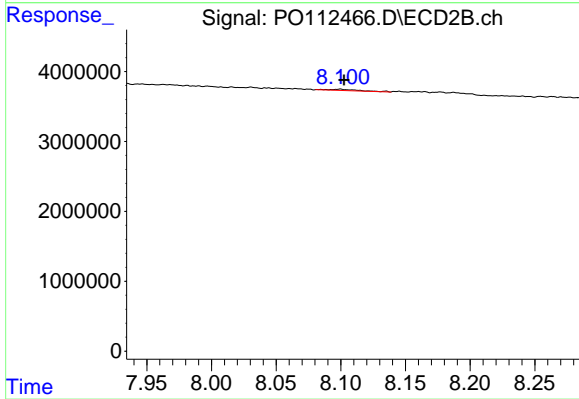
#43 AR-1268-3

R.T.: 7.809 min
 Delta R.T.: -0.007 min
 Response: 179242
 Conc: 0.56 ng/ml



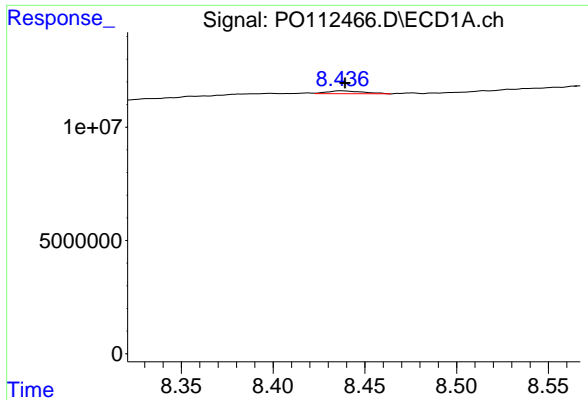
#44 AR-1268-4

R.T.: 8.143 min
 Delta R.T.: -0.002 min
 Response: 1167440
 Conc: 2.42 ng/ml



#44 AR-1268-4

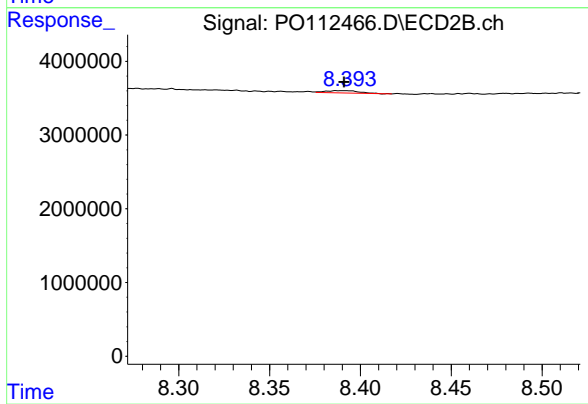
R.T.: 8.100 min
 Delta R.T.: -0.003 min
 Response: 268512
 Conc: 2.41 ng/ml



#45 AR-1268-5

R.T.: 8.437 min
 Delta R.T.: -0.002 min
 Response: 1774136
 Conc: 0.53 ng/ml

Instrument :
 ECD_O
 ClientSampleId :
 AR1248CCC500



#45 AR-1268-5

R.T.: 8.391 min
 Delta R.T.: 0.000 min
 Response: 396088
 Conc: 0.54 ng/ml