

Data Path : Z:\pestpcbsrv\HPCHEM1\ECD\_0\Data\P0072425\  
 Data File : PO112467.D  
 Signal(s) : Signal #1: ECD1A.ch Signal #2: ECD2B.ch  
 Acq On : 24 Jul 2025 16:17  
 Operator : YP/AJ  
 Sample : AR1254CCC500  
 Misc :  
 ALS Vial : 6 Sample Multiplier: 1

Instrument :  
 ECD\_0  
 ClientSampleId :  
 AR1254CCC500

Integration File signal 1: autoint1.e  
 Integration File signal 2: autoint2.e  
 Quant Time: Jul 24 23:43:30 2025  
 Quant Method : Z:\pestpcbsrv\HPCHEM1\ECD\_0\methods\P0072325.M  
 Quant Title : GC EXTRACTABLES  
 QLast Update : Thu Jul 24 04:54:06 2025  
 Response via : Initial Calibration  
 Integrator: ChemStation

Volume Inj. : 2 µl  
 Signal #1 Phase : ZB-MR1 Signal #2 Phase: ZB-MR2  
 Signal #1 Info : 30Mx0.32mmx 0.50µ Signal #2 Info : 30M x 0.32mm x 0.25µm

Compound	RT#1	RT#2	Resp#1	Resp#2	ng/ml	ng/ml
-----						
System Monitoring Compounds						
1) SA Tetrachlo...	3.668	3.663	460.8E6	277.1E6	56.667	55.757
2) SA Decachlor...	8.693	8.640	293.2E6	85466203	40.097	48.365
Target Compounds						
3) L1 AR-1016-1	4.754	4.738	4431839	3693262	16.514	21.104 #
4) L1 AR-1016-2	4.773	4.756	3386420	2948698	8.339	11.320 #
5) L1 AR-1016-3	4.831	4.932	2829577	1770950	10.813	13.025
6) L1 AR-1016-4	4.951	4.973	3086555	68395983	14.570	615.710 #
7) L1 AR-1016-5	5.206	5.185	73843487	44365043	336.462	309.589
8) L2 AR-1221-1	3.877	3.875	158925	164663	1.644	2.448 #
9) L2 AR-1221-2	3.969	3.960	6846303	4467220	95.270	88.062
10) L2 AR-1221-3	4.043	4.030	468634	1010318	1.971	6.373 #
11) L3 AR-1232-1	4.043	4.030	468634	1010318	2.506	7.984 #
12) L3 AR-1232-2	4.537	4.756	4351131	2948698	40.429	22.483 #
13) L3 AR-1232-3	4.773	4.932	3386420	1770950	16.375	26.355 #
14) L3 AR-1232-4	4.951	5.014	3086555	21727297	29.469	363.156 #
15) L3 AR-1232-5	4.991	5.185	100.9E6	44365043	1485.810	680.414 #
16) L4 AR-1242-1	4.754	4.738	4431839	3693262	17.900	23.317 #
17) L4 AR-1242-2	4.773	4.756	3386420	2948698	9.158	12.619 #
18) L4 AR-1242-3	4.831	4.932	2829577	1770950	11.956	14.613
19) L4 AR-1242-4	4.951	5.014	3086555	21727297	15.887	177.020 #
20) L4 AR-1242-5	5.600	5.535	35572655	172.2E6	166.293	1069.566 #
21) L5 AR-1248-1	4.754	4.738	4431839	3693262	23.673	30.395 #
22) L5 AR-1248-2	4.991	4.973	100.9E6	68395983	395.348	404.041
23) L5 AR-1248-3	5.206	5.014	73843487	21727297	214.848	122.306 #
24) L5 AR-1248-4	5.559	5.185	290.5E6	44365043	571.742	212.931 #
25) L5 AR-1248-5	5.600	5.575	35572655	22975728	101.755	106.981
26) L6 AR-1254-1	5.559	5.535	290.5E6	172.2E6	529.164	523.915
27) L6 AR-1254-2	5.708	5.683	261.9E6	152.4E6	539.029	526.419
28) L6 AR-1254-3	6.112	6.083	393.9E6	226.1E6	529.259	528.826
29) L6 AR-1254-4	6.341	6.311	290.7E6	143.7E6	528.746	526.465
30) L6 AR-1254-5	6.760	6.727	306.4E6	172.6E6	432.850	516.689
31) L7 AR-1260-1	6.243	6.214	186.9E6	105.3E6	425.346	423.655
32) L7 AR-1260-2	6.432	6.402	192.9E6	91151922	280.429	276.643
33) L7 AR-1260-3	6.830	6.552	20790010	80956594	35.356	315.103 #
34) L7 AR-1260-4	7.058	7.022	10404768	7132933	23.070	37.285 #
35) L7 AR-1260-5	7.300	7.264	37819999	15204248	30.521	36.886
36) L8 AR-1262-1	6.830	6.796	20790010	13400208	22.374	32.303 #
37) L8 AR-1262-2	7.300	7.264	37819999	15204248	25.433	29.492
38) L8 AR-1262-3	7.586	7.544	10403683	1739874	17.626	9.328 #
39) L8 AR-1262-4	7.644	7.606	45330496	12488895	45.596	43.349
40) L8 AR-1262-5	8.143	8.102	2139732	175380	4.930	1.763 #
41) L9 AR-1268-1	7.586	7.544	10403683	1739874	5.941	3.360 #

Data Path : Z:\pestpcbsrv\HPCHEM1\ECD\_0\Data\P0072425\  
 Data File : P0112467.D  
 Signal(s) : Signal #1: ECD1A.ch Signal #2: ECD2B.ch  
 Acq On : 24 Jul 2025 16:17  
 Operator : YP/AJ  
 Sample : AR1254CCC500  
 Misc :  
 ALS Vial : 6 Sample Multiplier: 1

Instrument :  
 ECD\_0  
 ClientSampleId :  
 AR1254CCC500

Integration File signal 1: autoint1.e  
 Integration File signal 2: autoint2.e  
 Quant Time: Jul 24 23:43:30 2025  
 Quant Method : Z:\pestpcbsrv\HPCHEM1\ECD\_0\methods\P0072325.M  
 Quant Title : GC EXTRACTABLES  
 QLast Update : Thu Jul 24 04:54:06 2025  
 Response via : Initial Calibration  
 Integrator: ChemStation

Volume Inj. : 2 µl  
 Signal #1 Phase : ZB-MR1 Signal #2 Phase: ZB-MR2  
 Signal #1 Info : 30Mx0.32mmx 0.50µ Signal #2 Info : 30M x 0.32mm x 0.25µm

	Compound	RT#1	RT#2	Resp#1	Resp#2	ng/ml	ng/ml
42)	L9 AR-1268-2	7.644	7.606	45330496	12488895	30.774	29.381
43)	L9 AR-1268-3	7.899f	7.816	691415	288391	0.552	0.898 #
44)	L9 AR-1268-4	8.143	8.102	2139732	175380	4.441	1.576 #
45)	L9 AR-1268-5	8.439	8.389	2551559	151657	0.760	0.207 #

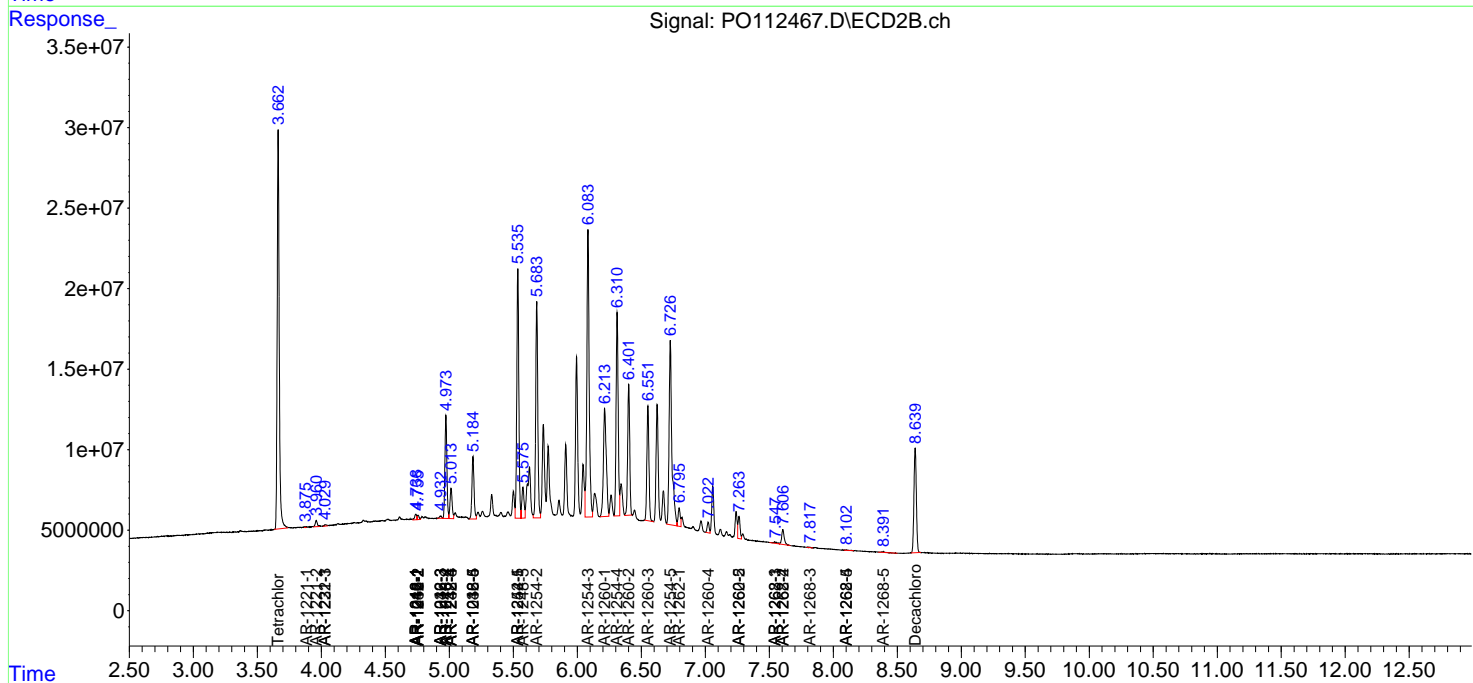
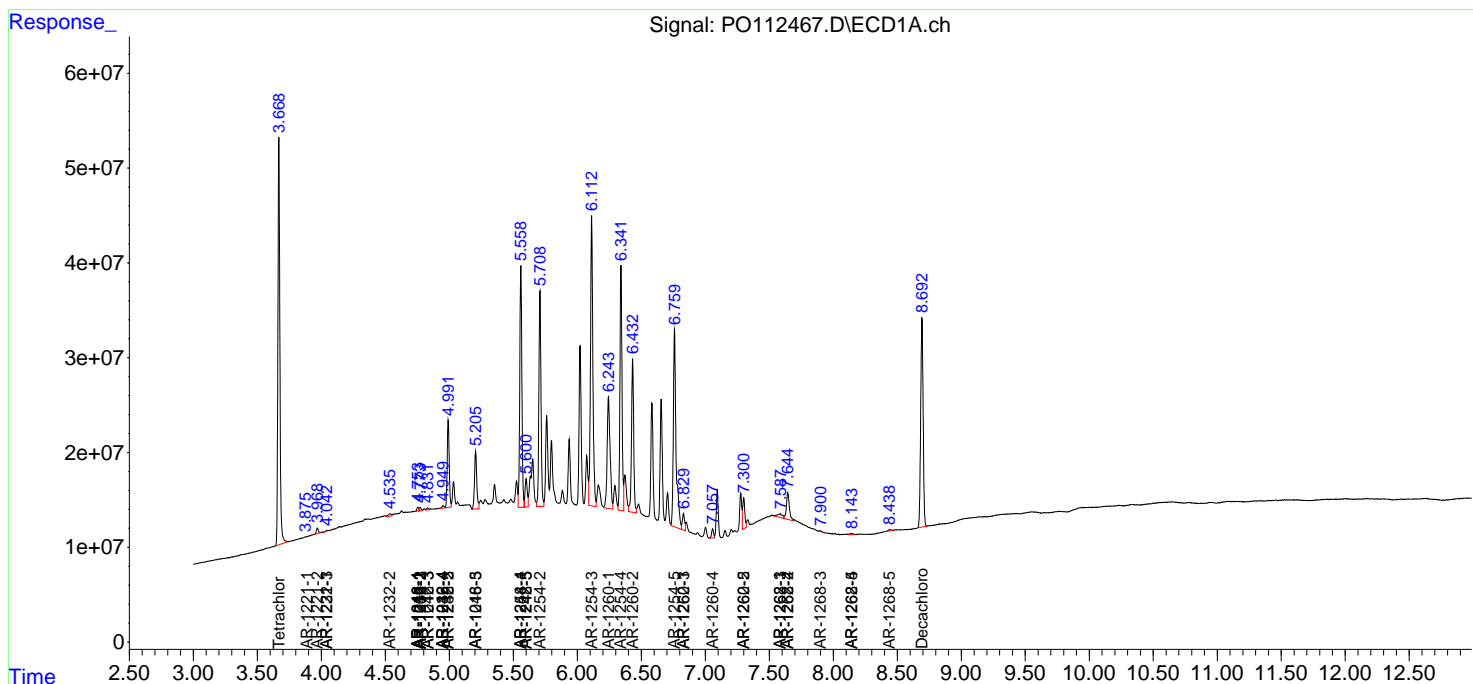
(f)=RT Delta > 1/2 Window (#)=Amounts differ by > 25% (m)=manual int.

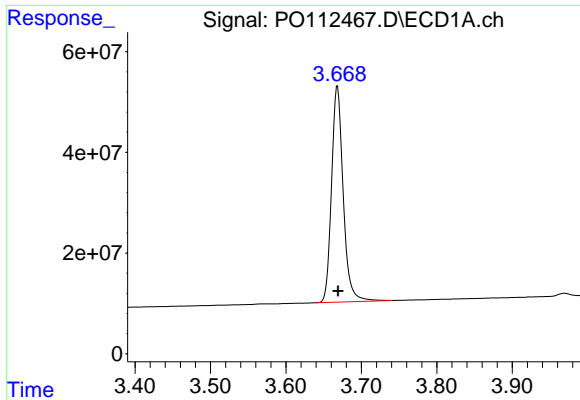
Data Path : Z:\pestpcbsrv\HPCHEM1\ECD\_O\Data\PO072425\  
 Data File : PO112467.D  
 Signal(s) : Signal #1: ECD1A.ch Signal #2: ECD2B.ch  
 Acq On : 24 Jul 2025 16:17  
 Operator : YP/AJ  
 Sample : AR1254CCC500  
 Misc :  
 ALS Vial : 6 Sample Multiplier: 1

Instrument :  
 ECD\_O  
 ClientSampleId :  
 AR1254CCC500

Integration File signal 1: autoint1.e  
 Integration File signal 2: autoint2.e  
 Quant Time: Jul 24 23:43:30 2025  
 Quant Method : Z:\pestpcbsrv\HPCHEM1\ECD\_O\methods\PO072325.M  
 Quant Title : GC EXTRACTABLES  
 QLast Update : Thu Jul 24 04:54:06 2025  
 Response via : Initial Calibration  
 Integrator: ChemStation

Volume Inj. : 2 µl  
 Signal #1 Phase : ZB-MR1 Signal #2 Phase: ZB-MR2  
 Signal #1 Info : 30Mx0.32mmx 0.50µ Signal #2 Info : 30M x 0.32mm x 0.25µm

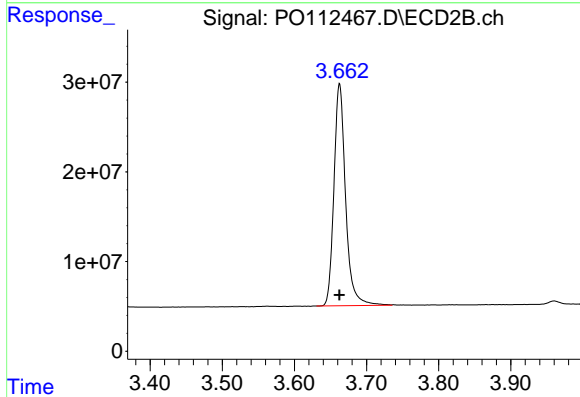




#1 Tetrachloro-m-xylene

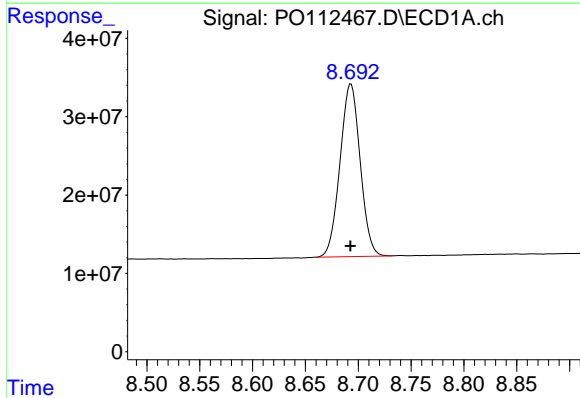
R.T.: 3.668 min  
 Delta R.T.: 0.000 min  
 Response: 460795174  
 Conc: 56.67 ng/ml

Instrument :  
 ECD\_O  
 ClientSampleId :  
 AR1254CCC500



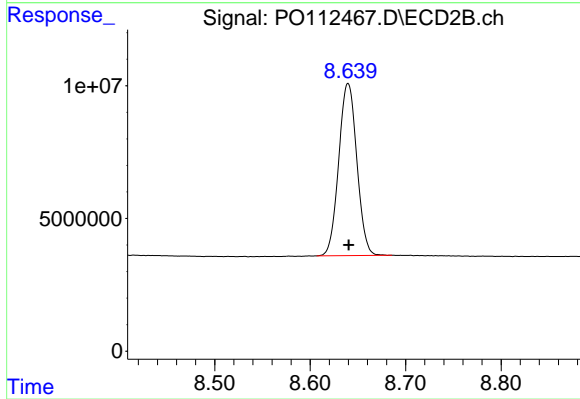
#1 Tetrachloro-m-xylene

R.T.: 3.663 min  
 Delta R.T.: 0.000 min  
 Response: 277067155  
 Conc: 55.76 ng/ml



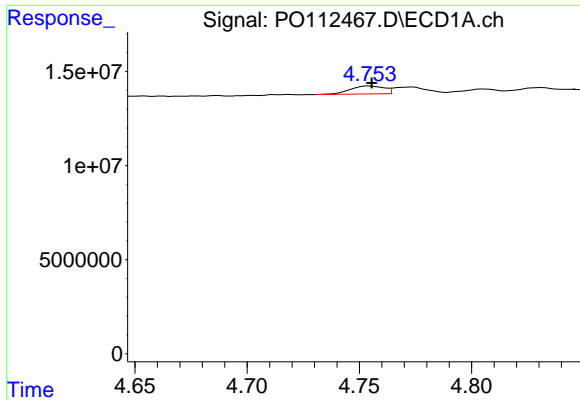
#2 Decachlorobiphenyl

R.T.: 8.693 min  
 Delta R.T.: 0.000 min  
 Response: 293178367  
 Conc: 40.10 ng/ml



#2 Decachlorobiphenyl

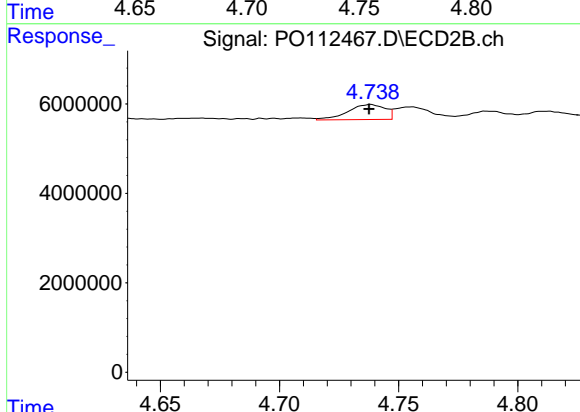
R.T.: 8.640 min  
 Delta R.T.: 0.000 min  
 Response: 85466203  
 Conc: 48.36 ng/ml



#3 AR-1016-1

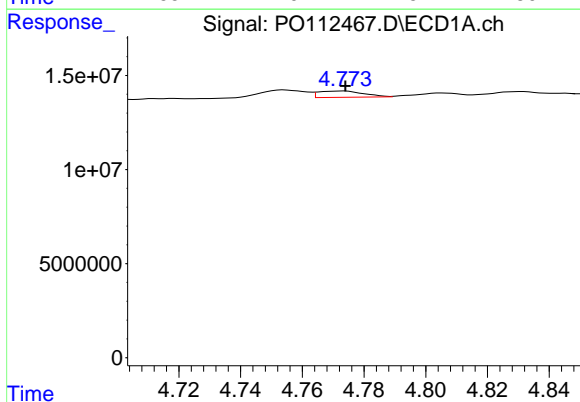
R.T.: 4.754 min  
 Delta R.T.: -0.001 min  
 Response: 4431839  
 Conc: 16.51 ng/ml

Instrument :  
 ECD\_O  
 ClientSampleId :  
 AR1254CCC500



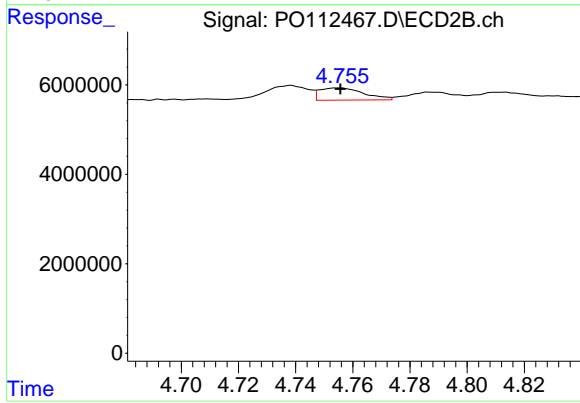
#3 AR-1016-1

R.T.: 4.738 min  
 Delta R.T.: 0.000 min  
 Response: 3693262  
 Conc: 21.10 ng/ml



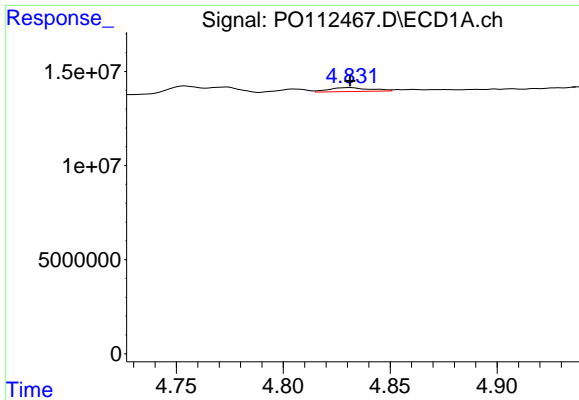
#4 AR-1016-2

R.T.: 4.773 min  
 Delta R.T.: 0.000 min  
 Response: 3386420  
 Conc: 8.34 ng/ml



#4 AR-1016-2

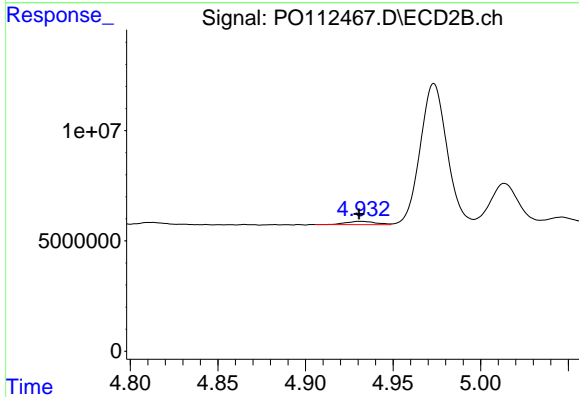
R.T.: 4.756 min  
 Delta R.T.: 0.000 min  
 Response: 2948698  
 Conc: 11.32 ng/ml



#5 AR-1016-3

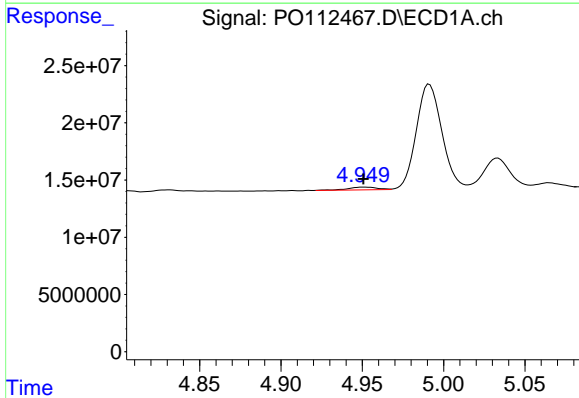
R.T.: 4.831 min  
 Delta R.T.: 0.000 min  
 Response: 2829577  
 Conc: 10.81 ng/ml

Instrument :  
 ECD\_O  
 ClientSampleId :  
 AR1254CCC500



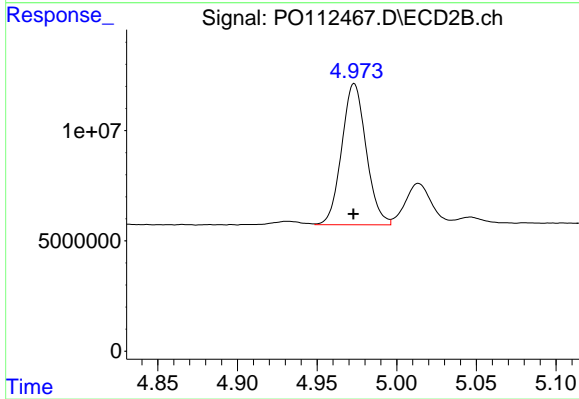
#5 AR-1016-3

R.T.: 4.932 min  
 Delta R.T.: 0.001 min  
 Response: 1770950  
 Conc: 13.02 ng/ml



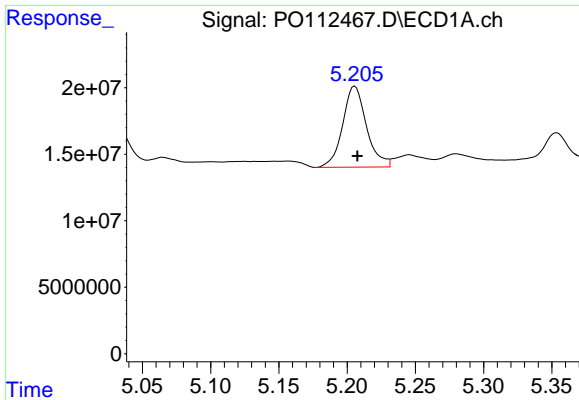
#6 AR-1016-4

R.T.: 4.951 min  
 Delta R.T.: 0.000 min  
 Response: 3086555  
 Conc: 14.57 ng/ml



#6 AR-1016-4

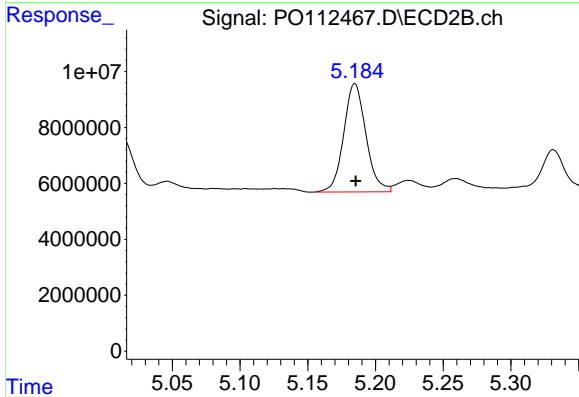
R.T.: 4.973 min  
 Delta R.T.: 0.000 min  
 Response: 68395983  
 Conc: 615.71 ng/ml



#7 AR-1016-5

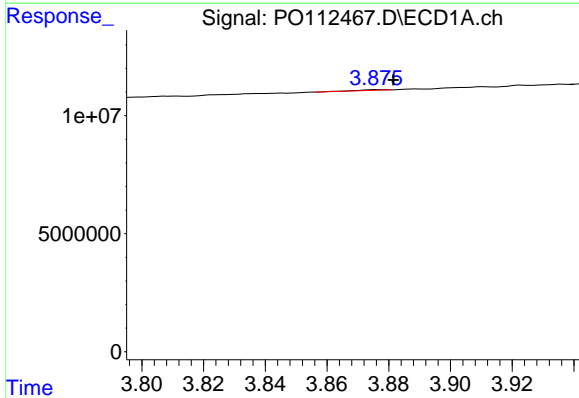
R.T.: 5.206 min  
 Delta R.T.: -0.002 min  
 Response: 73843487  
 Conc: 336.46 ng/ml

Instrument :  
 ECD\_O  
 ClientSampleId :  
 AR1254CCC500



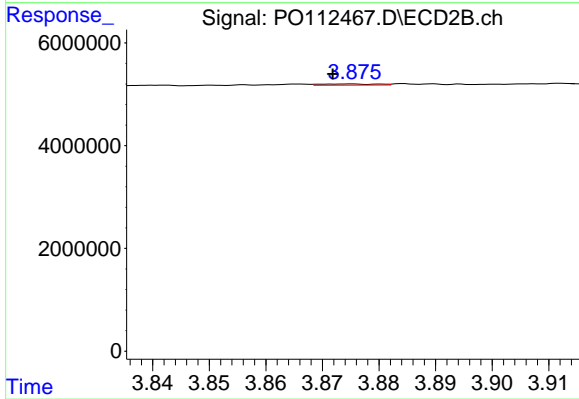
#7 AR-1016-5

R.T.: 5.185 min  
 Delta R.T.: 0.000 min  
 Response: 44365043  
 Conc: 309.59 ng/ml



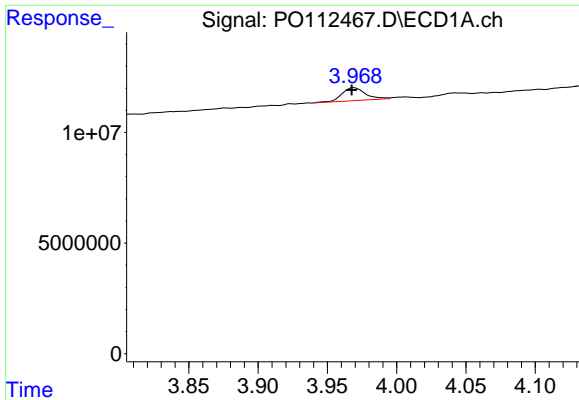
#8 AR-1221-1

R.T.: 3.877 min  
 Delta R.T.: -0.005 min  
 Response: 158925  
 Conc: 1.64 ng/ml



#8 AR-1221-1

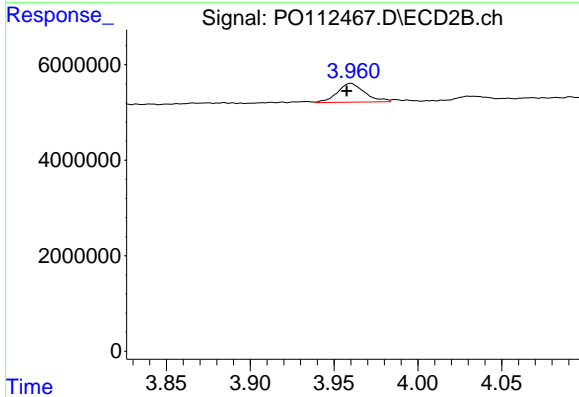
R.T.: 3.875 min  
 Delta R.T.: 0.004 min  
 Response: 164663  
 Conc: 2.45 ng/ml



#9 AR-1221-2

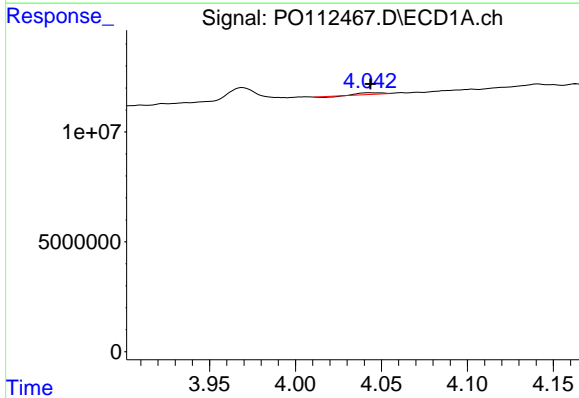
R.T.: 3.969 min  
 Delta R.T.: 0.002 min  
 Response: 6846303  
 Conc: 95.27 ng/ml

Instrument :  
 ECD\_O  
 ClientSampleId :  
 AR1254CCC500



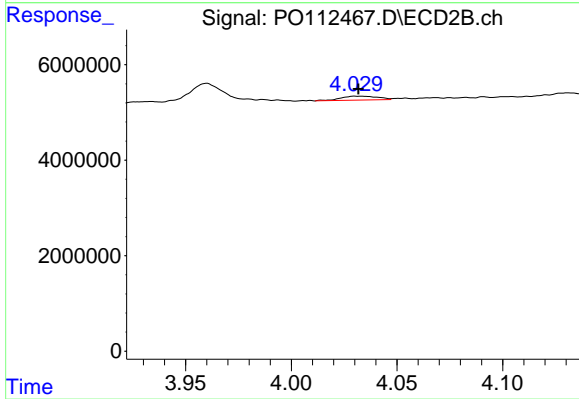
#9 AR-1221-2

R.T.: 3.960 min  
 Delta R.T.: 0.003 min  
 Response: 4467220  
 Conc: 88.06 ng/ml



#10 AR-1221-3

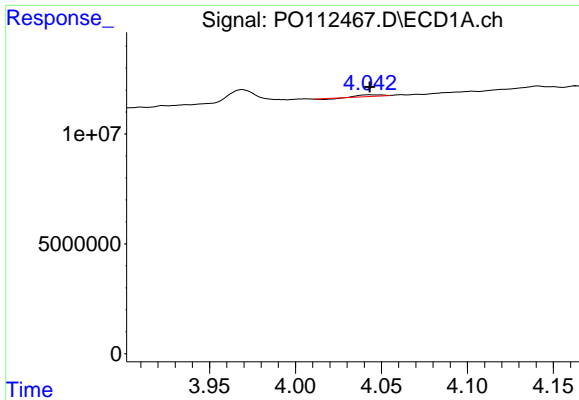
R.T.: 4.043 min  
 Delta R.T.: 0.000 min  
 Response: 468634  
 Conc: 1.97 ng/ml



#10 AR-1221-3

R.T.: 4.030 min  
 Delta R.T.: -0.002 min  
 Response: 1010318  
 Conc: 6.37 ng/ml

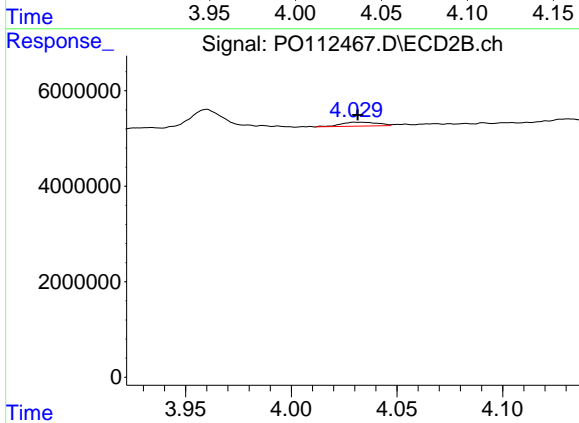




#11 AR-1232-1

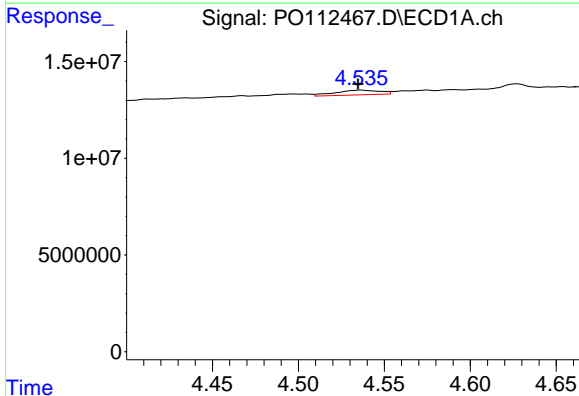
R.T.: 4.043 min  
 Delta R.T.: 0.000 min  
 Response: 468634  
 Conc: 2.51 ng/ml

Instrument :  
 ECD\_O  
 ClientSampleId :  
 AR1254CCC500



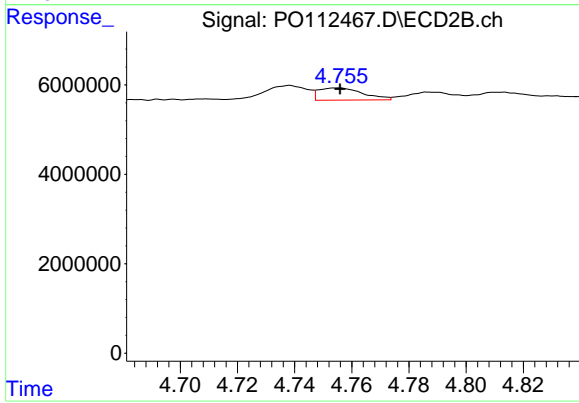
#11 AR-1232-1

R.T.: 4.030 min  
 Delta R.T.: -0.001 min  
 Response: 1010318  
 Conc: 7.98 ng/ml



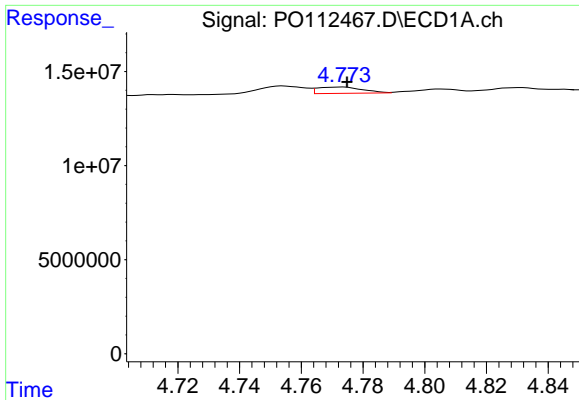
#12 AR-1232-2

R.T.: 4.537 min  
 Delta R.T.: 0.002 min  
 Response: 4351131  
 Conc: 40.43 ng/ml



#12 AR-1232-2

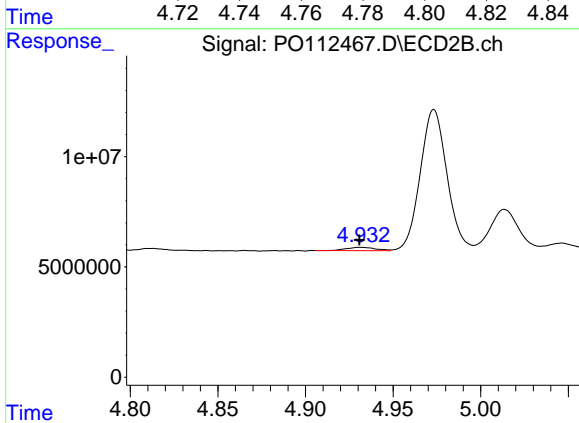
R.T.: 4.756 min  
 Delta R.T.: 0.000 min  
 Response: 2948698  
 Conc: 22.48 ng/ml



#13 AR-1232-3

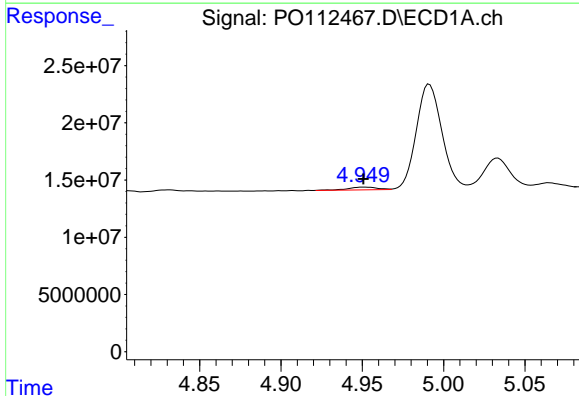
R.T.: 4.773 min  
 Delta R.T.: -0.002 min  
 Response: 3386420  
 Conc: 16.38 ng/ml

Instrument :  
 ECD\_O  
 ClientSampleId :  
 AR1254CCC500



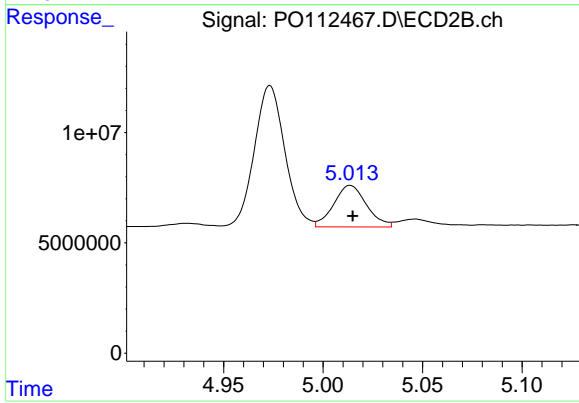
#13 AR-1232-3

R.T.: 4.932 min  
 Delta R.T.: 0.001 min  
 Response: 1770950  
 Conc: 26.35 ng/ml



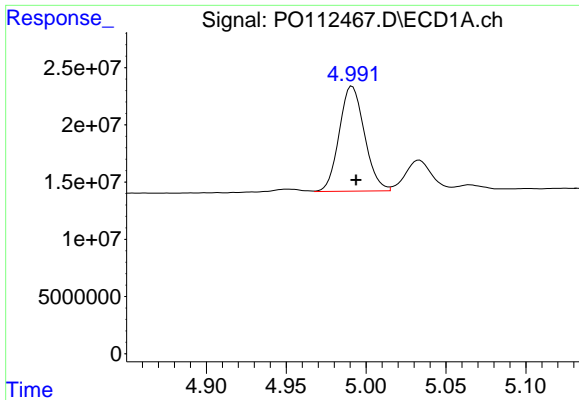
#14 AR-1232-4

R.T.: 4.951 min  
 Delta R.T.: 0.000 min  
 Response: 3086555  
 Conc: 29.47 ng/ml



#14 AR-1232-4

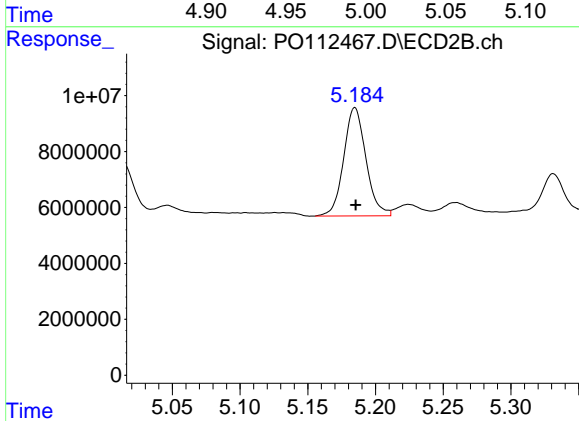
R.T.: 5.014 min  
 Delta R.T.: -0.001 min  
 Response: 21727297  
 Conc: 363.16 ng/ml



#15 AR-1232-5

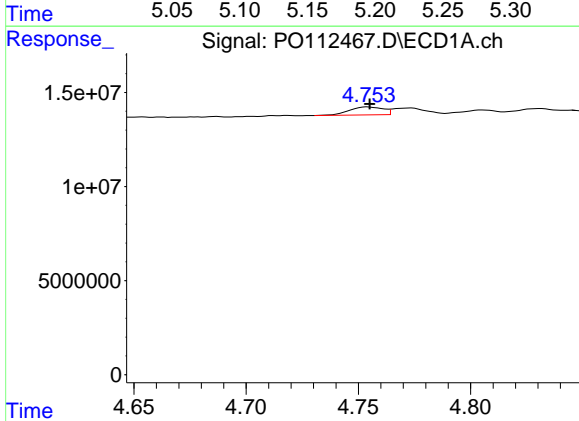
R.T.: 4.991 min  
 Delta R.T.: -0.003 min  
 Response: 100858121  
 Conc: 1485.81 ng/ml

Instrument :  
 ECD\_O  
 ClientSampleId :  
 AR1254CCC500



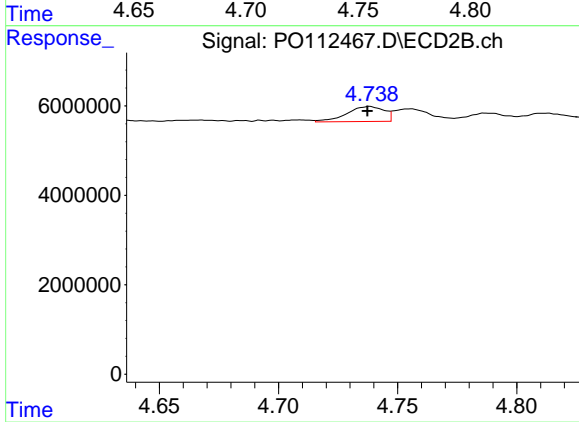
#15 AR-1232-5

R.T.: 5.185 min  
 Delta R.T.: 0.000 min  
 Response: 44365043  
 Conc: 680.41 ng/ml



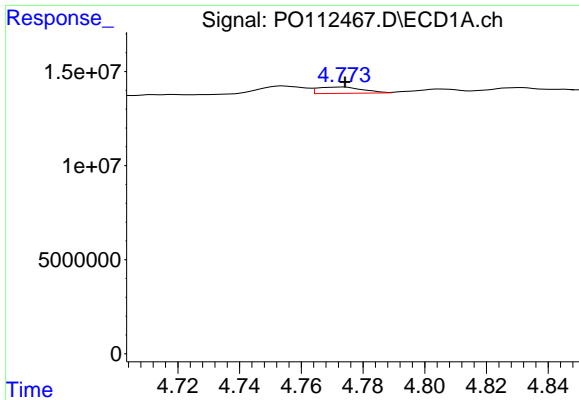
#16 AR-1242-1

R.T.: 4.754 min  
 Delta R.T.: 0.000 min  
 Response: 4431839  
 Conc: 17.90 ng/ml



#16 AR-1242-1

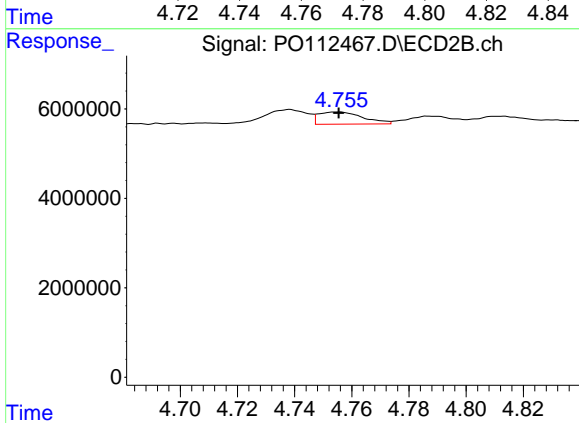
R.T.: 4.738 min  
 Delta R.T.: 0.001 min  
 Response: 3693262  
 Conc: 23.32 ng/ml



#17 AR-1242-2

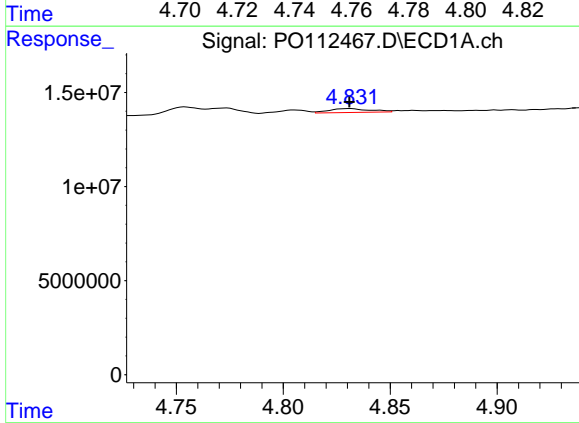
R.T.: 4.773 min  
 Delta R.T.: 0.000 min  
 Response: 3386420  
 Conc: 9.16 ng/ml

Instrument :  
 ECD\_O  
 ClientSampleId :  
 AR1254CCC500



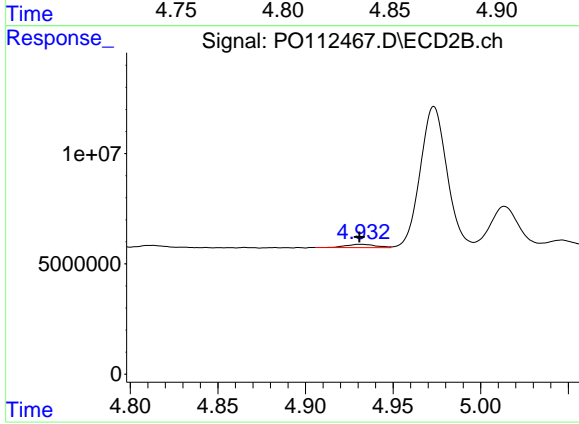
#17 AR-1242-2

R.T.: 4.756 min  
 Delta R.T.: 0.000 min  
 Response: 2948698  
 Conc: 12.62 ng/ml



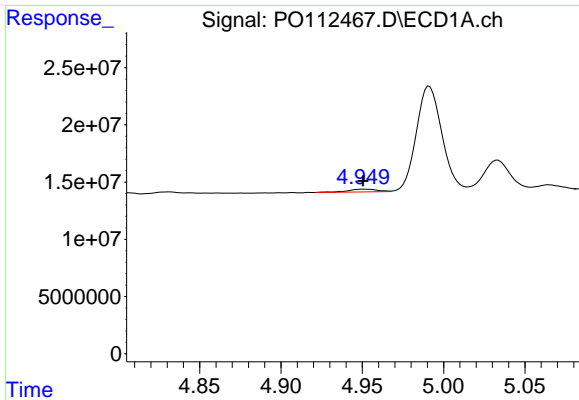
#18 AR-1242-3

R.T.: 4.831 min  
 Delta R.T.: 0.000 min  
 Response: 2829577  
 Conc: 11.96 ng/ml



#18 AR-1242-3

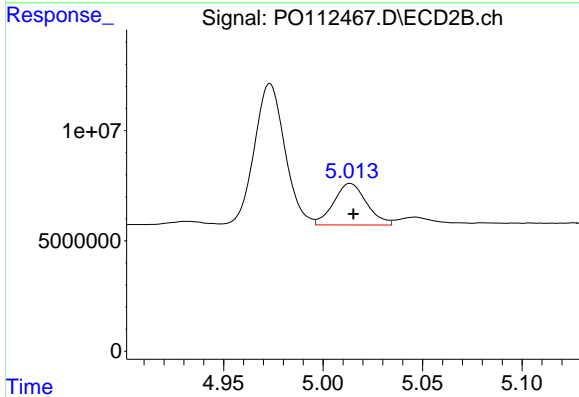
R.T.: 4.932 min  
 Delta R.T.: 0.001 min  
 Response: 1770950  
 Conc: 14.61 ng/ml



#19 AR-1242-4

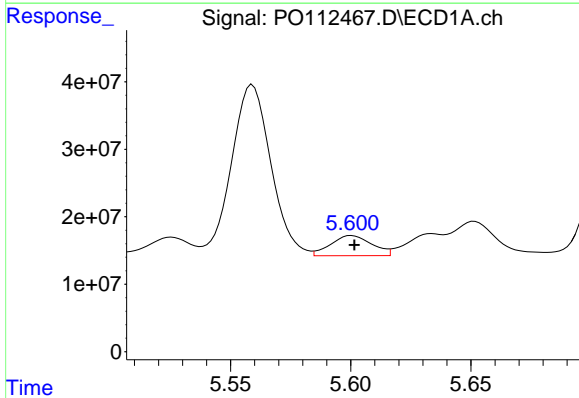
R.T.: 4.951 min  
 Delta R.T.: 0.000 min  
 Response: 3086555  
 Conc: 15.89 ng/ml

Instrument :  
 ECD\_O  
 ClientSampleId :  
 AR1254CCC500



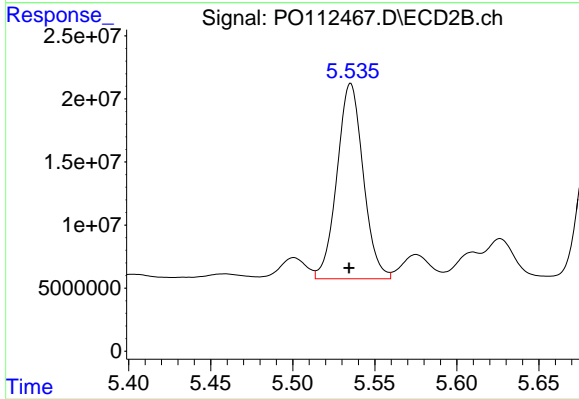
#19 AR-1242-4

R.T.: 5.014 min  
 Delta R.T.: -0.002 min  
 Response: 21727297  
 Conc: 177.02 ng/ml



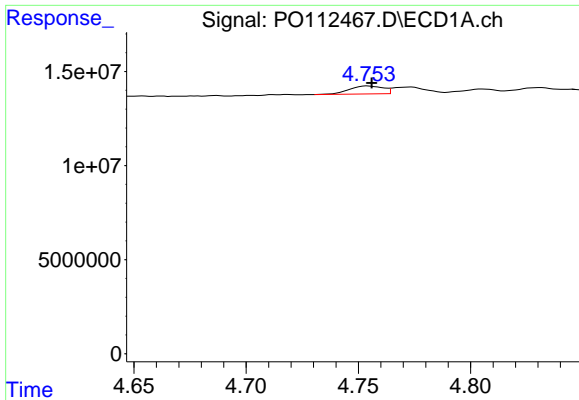
#20 AR-1242-5

R.T.: 5.600 min  
 Delta R.T.: -0.001 min  
 Response: 35572655  
 Conc: 166.29 ng/ml



#20 AR-1242-5

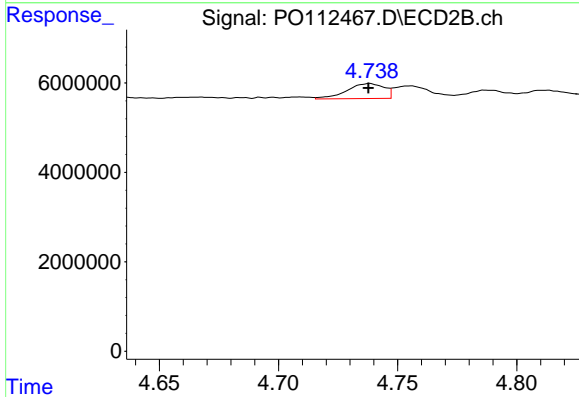
R.T.: 5.535 min  
 Delta R.T.: 0.001 min  
 Response: 172169443  
 Conc: 1069.57 ng/ml



#21 AR-1248-1

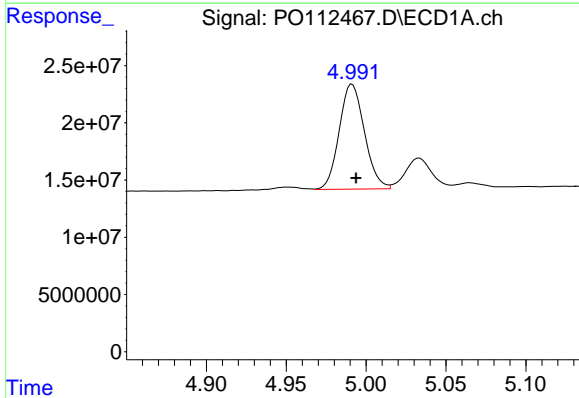
R.T.: 4.754 min  
 Delta R.T.: -0.002 min  
 Response: 4431839  
 Conc: 23.67 ng/ml

Instrument :  
 ECD\_O  
 ClientSampleId :  
 AR1254CCC500



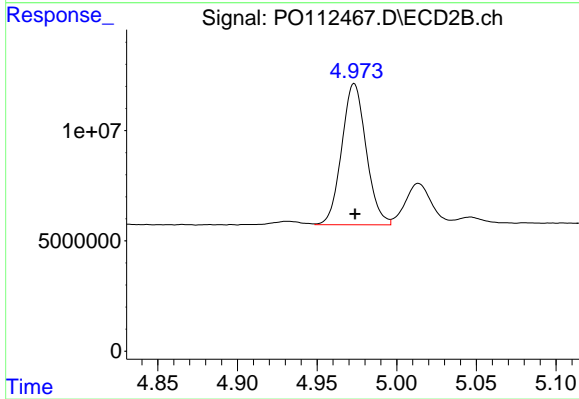
#21 AR-1248-1

R.T.: 4.738 min  
 Delta R.T.: 0.000 min  
 Response: 3693262  
 Conc: 30.39 ng/ml



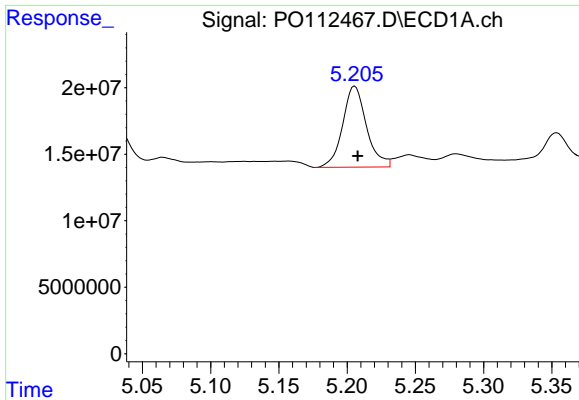
#22 AR-1248-2

R.T.: 4.991 min  
 Delta R.T.: -0.003 min  
 Response: 100858121  
 Conc: 395.35 ng/ml



#22 AR-1248-2

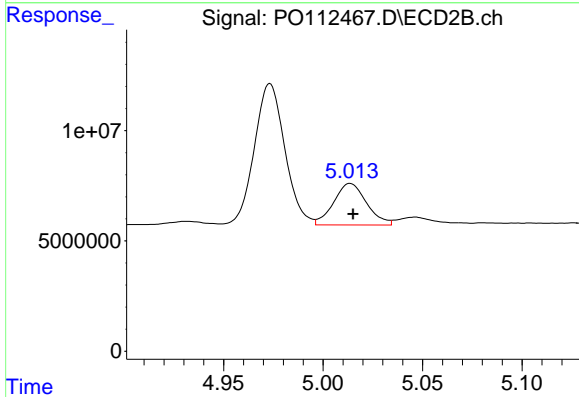
R.T.: 4.973 min  
 Delta R.T.: 0.000 min  
 Response: 68395983  
 Conc: 404.04 ng/ml



#23 AR-1248-3

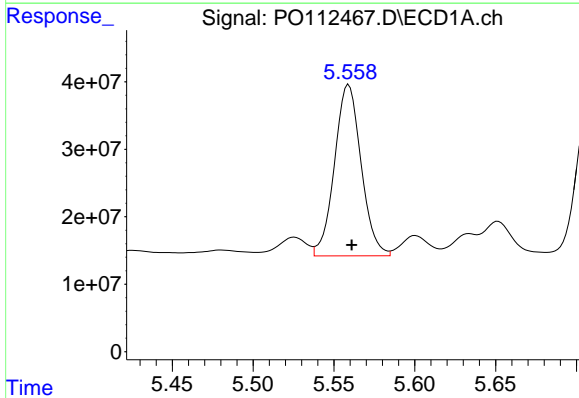
R.T.: 5.206 min  
 Delta R.T.: -0.002 min  
 Response: 73843487  
 Conc: 214.85 ng/ml

Instrument :  
 ECD\_O  
 ClientSampleId :  
 AR1254CCC500



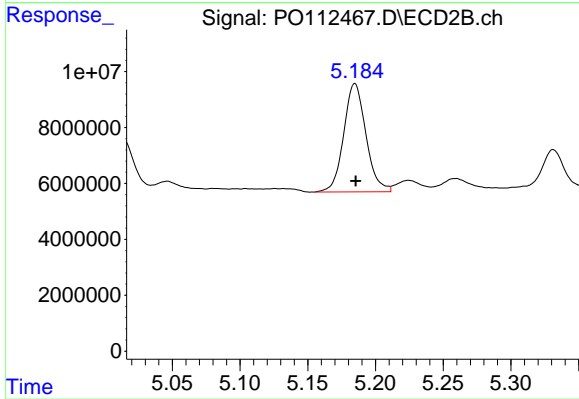
#23 AR-1248-3

R.T.: 5.014 min  
 Delta R.T.: -0.001 min  
 Response: 21727297  
 Conc: 122.31 ng/ml



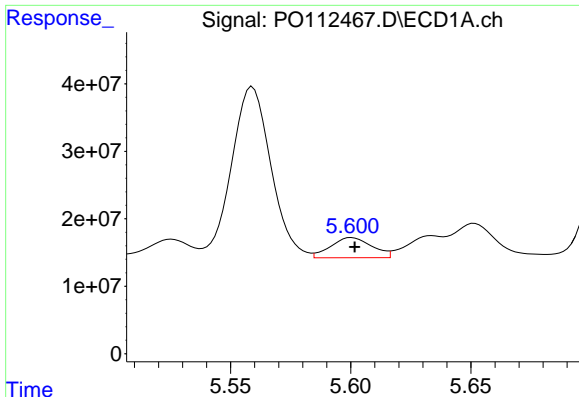
#24 AR-1248-4

R.T.: 5.559 min  
 Delta R.T.: -0.002 min  
 Response: 290489360  
 Conc: 571.74 ng/ml



#24 AR-1248-4

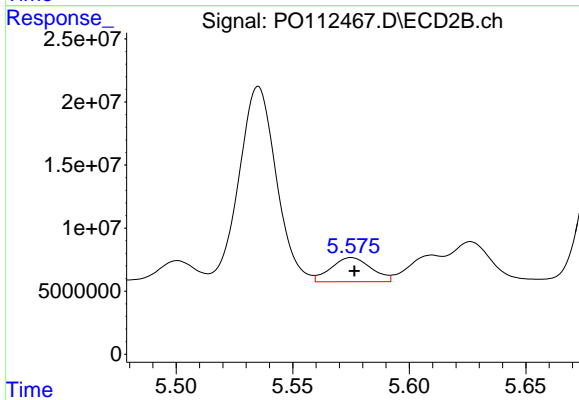
R.T.: 5.185 min  
 Delta R.T.: 0.000 min  
 Response: 44365043  
 Conc: 212.93 ng/ml



#25 AR-1248-5

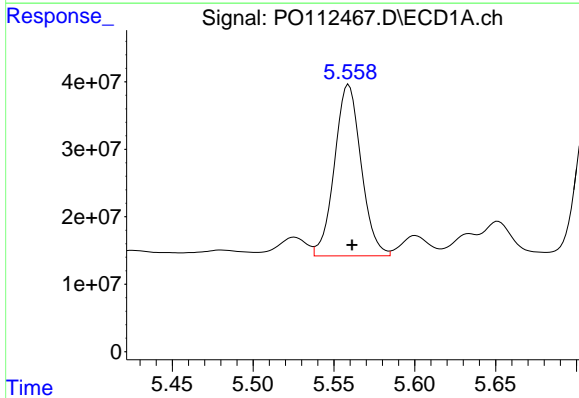
R.T.: 5.600 min  
 Delta R.T.: -0.001 min  
 Response: 35572655  
 Conc: 101.76 ng/ml

Instrument :  
 ECD\_O  
 ClientSampleId :  
 AR1254CCC500



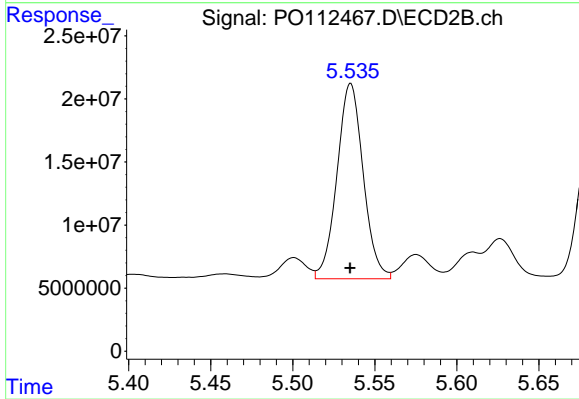
#25 AR-1248-5

R.T.: 5.575 min  
 Delta R.T.: -0.001 min  
 Response: 22975728  
 Conc: 106.98 ng/ml



#26 AR-1254-1

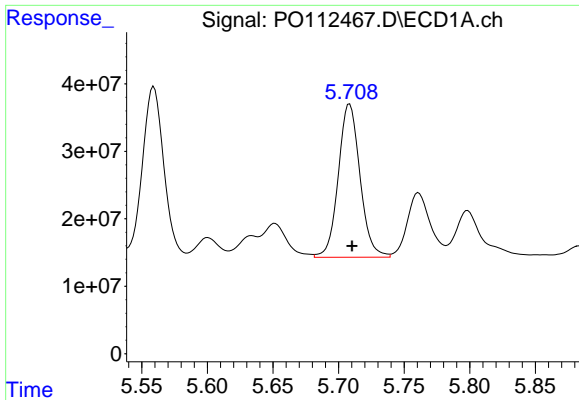
R.T.: 5.559 min  
 Delta R.T.: -0.002 min  
 Response: 290489360  
 Conc: 529.16 ng/ml



#26 AR-1254-1

R.T.: 5.535 min  
 Delta R.T.: 0.000 min  
 Response: 172169443  
 Conc: 523.91 ng/ml

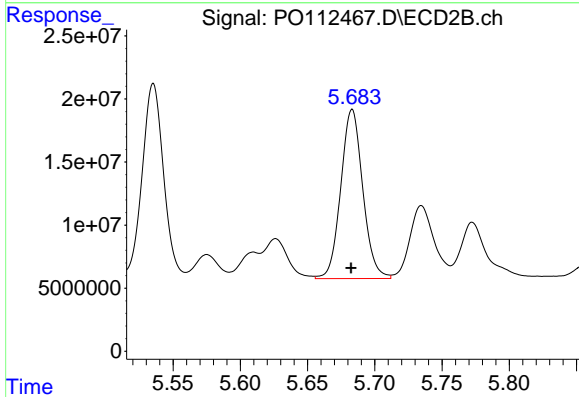




#27 AR-1254-2

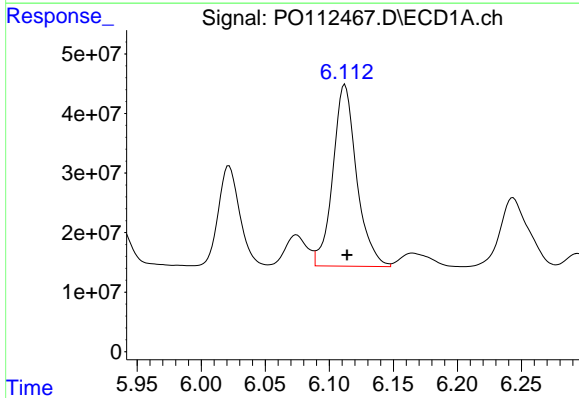
R.T.: 5.708 min  
 Delta R.T.: -0.002 min  
 Response: 261924480  
 Conc: 539.03 ng/ml

Instrument :  
 ECD\_O  
 ClientSampleId :  
 AR1254CCC500



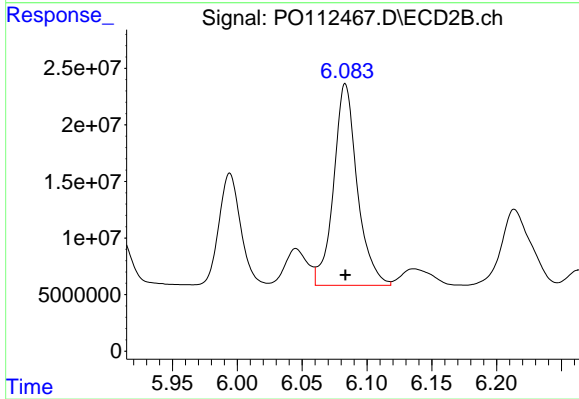
#27 AR-1254-2

R.T.: 5.683 min  
 Delta R.T.: 0.000 min  
 Response: 152393408  
 Conc: 526.42 ng/ml



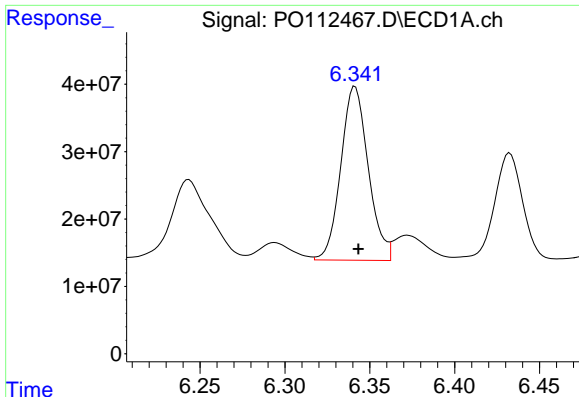
#28 AR-1254-3

R.T.: 6.112 min  
 Delta R.T.: -0.002 min  
 Response: 393920614  
 Conc: 529.26 ng/ml



#28 AR-1254-3

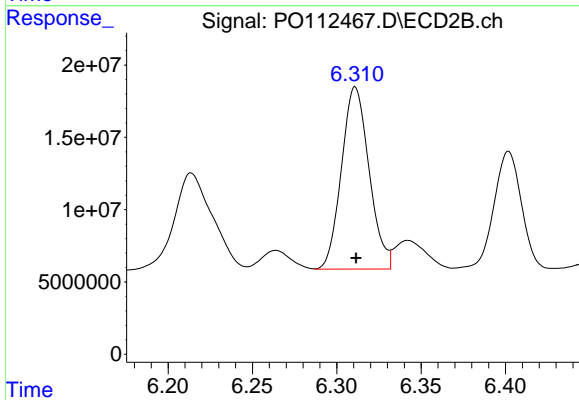
R.T.: 6.083 min  
 Delta R.T.: 0.000 min  
 Response: 226052582  
 Conc: 528.83 ng/ml



#29 AR-1254-4

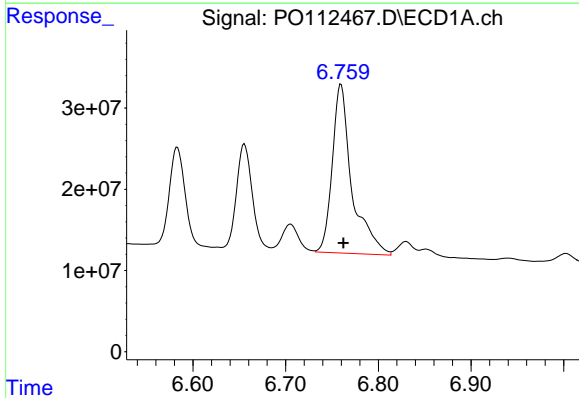
R.T.: 6.341 min  
 Delta R.T.: -0.002 min  
 Response: 290653598  
 Conc: 528.75 ng/ml

Instrument :  
 ECD\_O  
 ClientSampleId :  
 AR1254CCC500



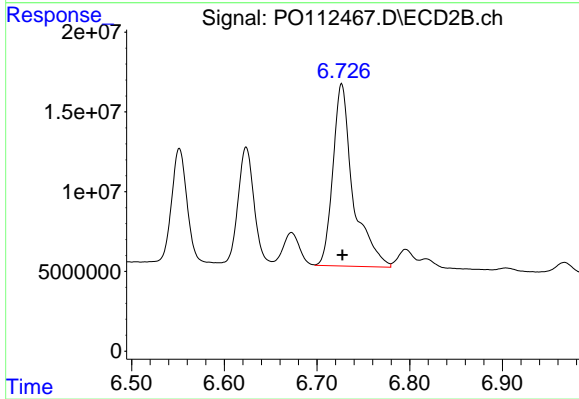
#29 AR-1254-4

R.T.: 6.311 min  
 Delta R.T.: 0.000 min  
 Response: 143705431  
 Conc: 526.46 ng/ml



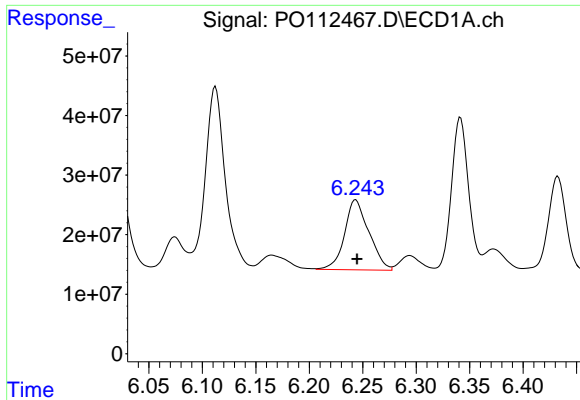
#30 AR-1254-5

R.T.: 6.760 min  
 Delta R.T.: -0.002 min  
 Response: 306381782  
 Conc: 432.85 ng/ml



#30 AR-1254-5

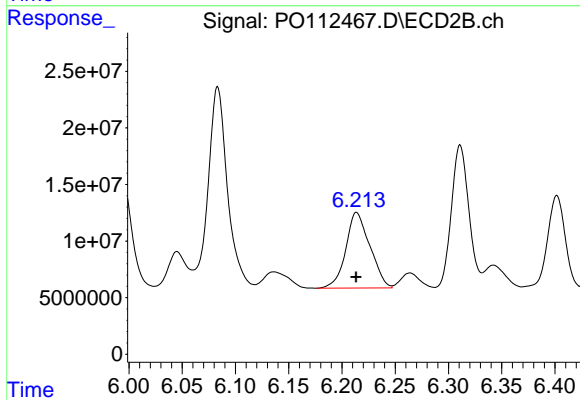
R.T.: 6.727 min  
 Delta R.T.: 0.000 min  
 Response: 172584208  
 Conc: 516.69 ng/ml



#31 AR-1260-1

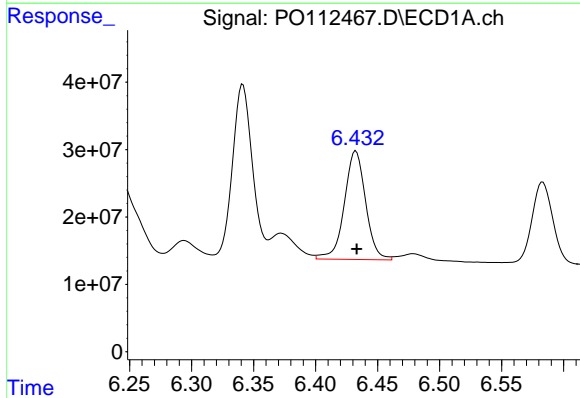
R.T.: 6.243 min  
 Delta R.T.: -0.001 min  
 Response: 186867891  
 Conc: 425.35 ng/ml

Instrument :  
 ECD\_O  
 ClientSampleId :  
 AR1254CCC500



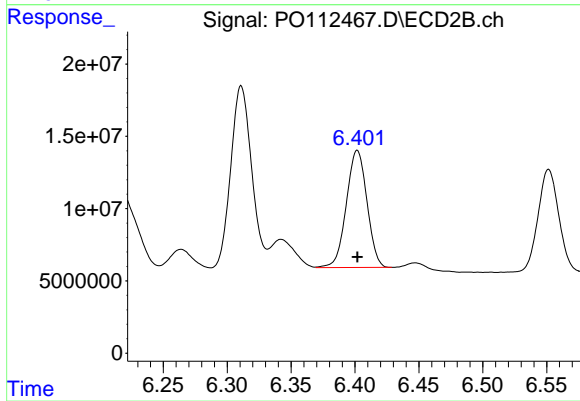
#31 AR-1260-1

R.T.: 6.214 min  
 Delta R.T.: 0.000 min  
 Response: 105283029  
 Conc: 423.66 ng/ml



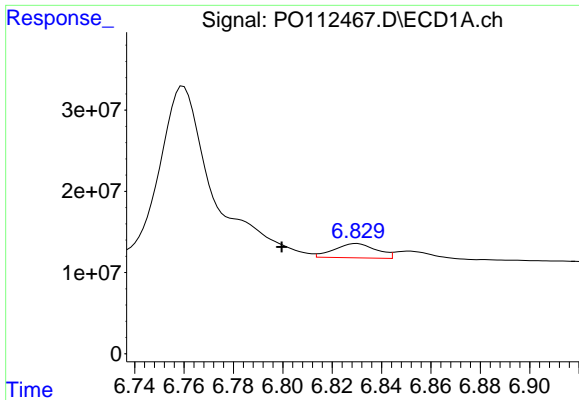
#32 AR-1260-2

R.T.: 6.432 min  
 Delta R.T.: 0.000 min  
 Response: 192905144  
 Conc: 280.43 ng/ml



#32 AR-1260-2

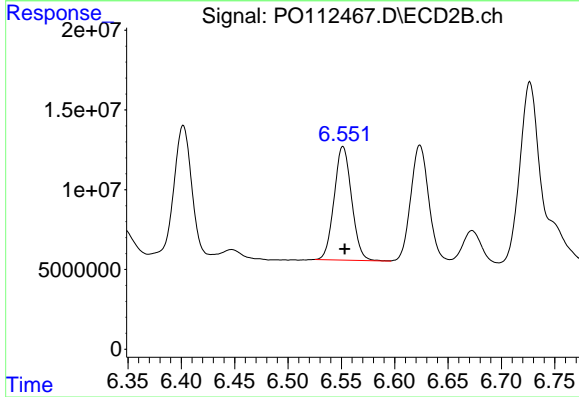
R.T.: 6.402 min  
 Delta R.T.: 0.000 min  
 Response: 91151922  
 Conc: 276.64 ng/ml



#33 AR-1260-3

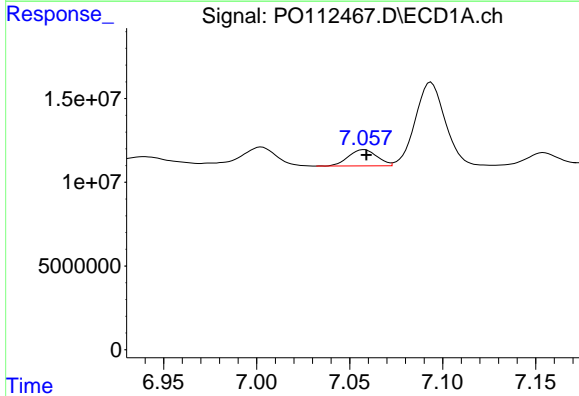
R.T.: 6.830 min  
 Delta R.T.: 0.030 min  
 Response: 20790010  
 Conc: 35.36 ng/ml

Instrument :  
 ECD\_O  
 ClientSampleId :  
 AR1254CCC500



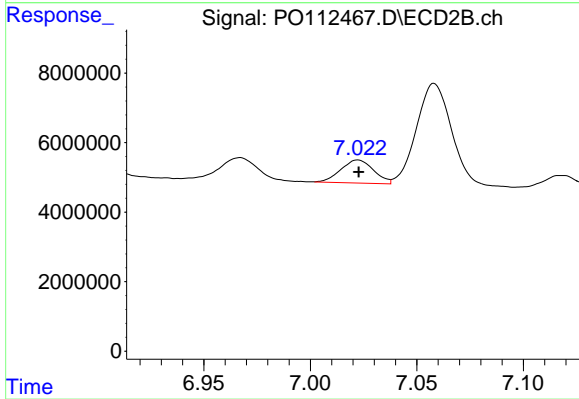
#33 AR-1260-3

R.T.: 6.552 min  
 Delta R.T.: -0.002 min  
 Response: 80956594  
 Conc: 315.10 ng/ml



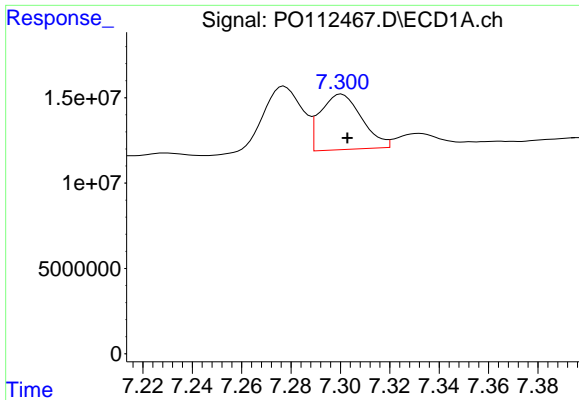
#34 AR-1260-4

R.T.: 7.058 min  
 Delta R.T.: -0.001 min  
 Response: 10404768  
 Conc: 23.07 ng/ml



#34 AR-1260-4

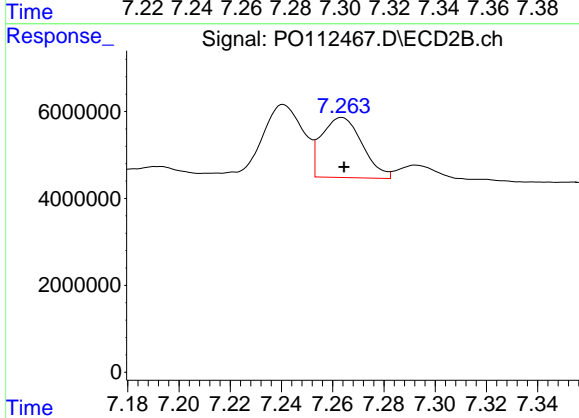
R.T.: 7.022 min  
 Delta R.T.: 0.000 min  
 Response: 7132933  
 Conc: 37.28 ng/ml



#35 AR-1260-5

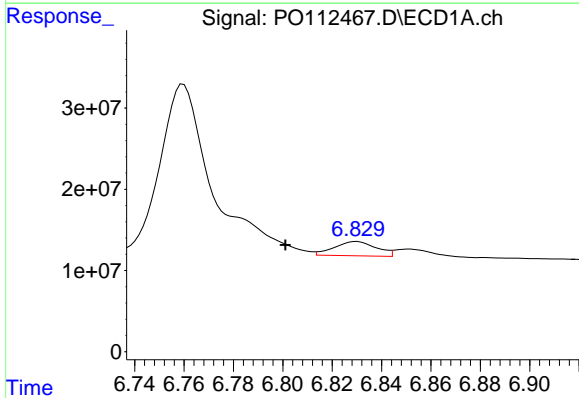
R.T.: 7.300 min  
 Delta R.T.: -0.002 min  
 Response: 37819999  
 Conc: 30.52 ng/ml

Instrument :  
 ECD\_O  
 ClientSampleId :  
 AR1254CCC500



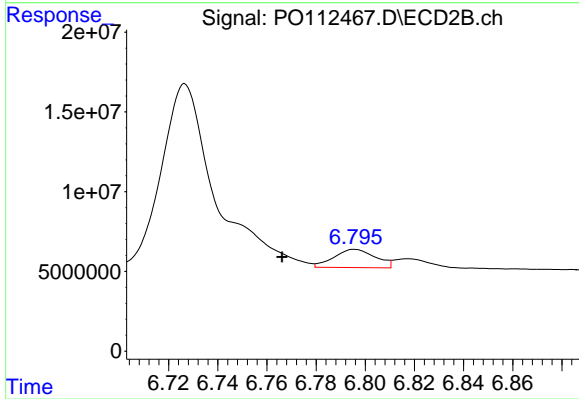
#35 AR-1260-5

R.T.: 7.264 min  
 Delta R.T.: 0.000 min  
 Response: 15204248  
 Conc: 36.89 ng/ml



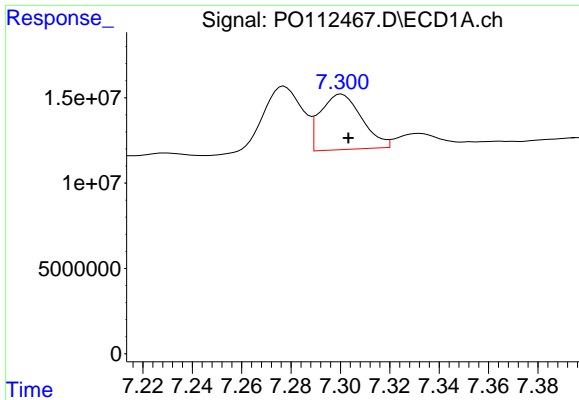
#36 AR-1262-1

R.T.: 6.830 min  
 Delta R.T.: 0.029 min  
 Response: 20790010  
 Conc: 22.37 ng/ml



#36 AR-1262-1

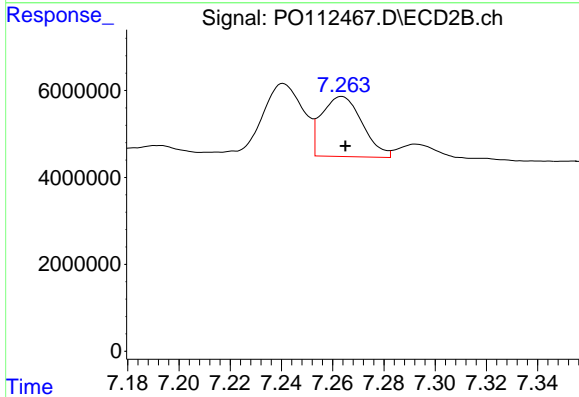
R.T.: 6.796 min  
 Delta R.T.: 0.030 min  
 Response: 13400208  
 Conc: 32.30 ng/ml



#37 AR-1262-2

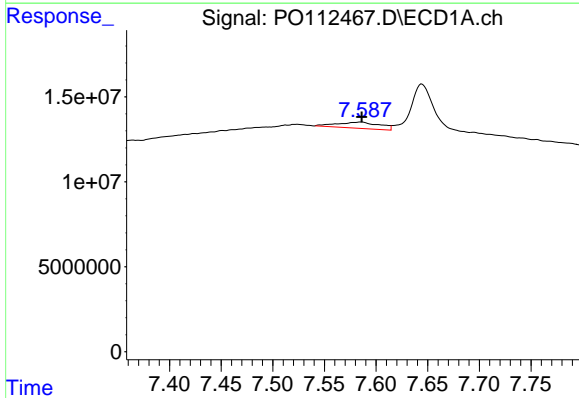
R.T.: 7.300 min  
 Delta R.T.: -0.003 min  
 Response: 37819999  
 Conc: 25.43 ng/ml

Instrument :  
 ECD\_O  
 ClientSampleId :  
 AR1254CCC500



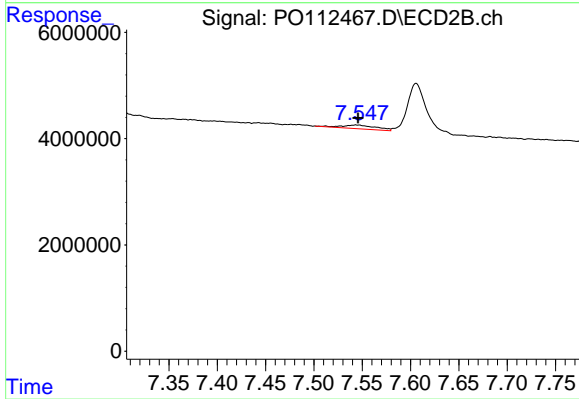
#37 AR-1262-2

R.T.: 7.264 min  
 Delta R.T.: -0.001 min  
 Response: 15204248  
 Conc: 29.49 ng/ml



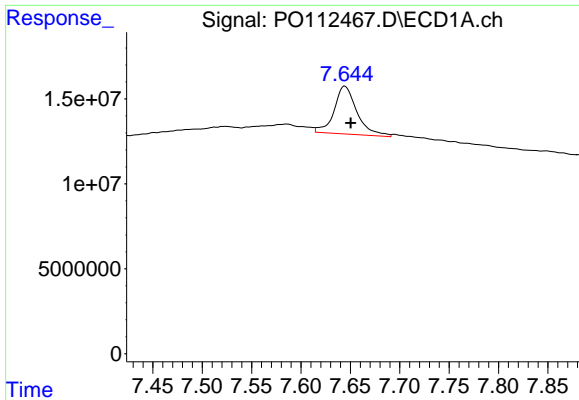
#38 AR-1262-3

R.T.: 7.586 min  
 Delta R.T.: 0.000 min  
 Response: 10403683  
 Conc: 17.63 ng/ml



#38 AR-1262-3

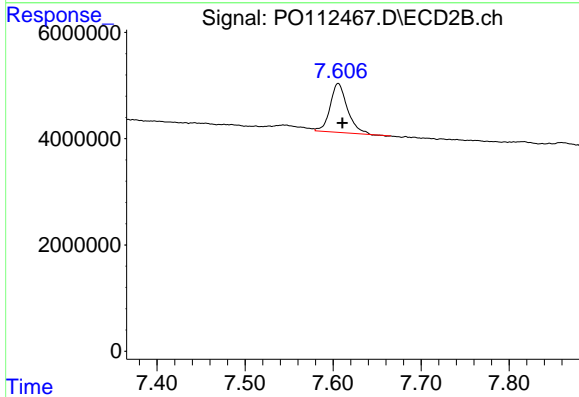
R.T.: 7.544 min  
 Delta R.T.: -0.002 min  
 Response: 1739874  
 Conc: 9.33 ng/ml



#39 AR-1262-4

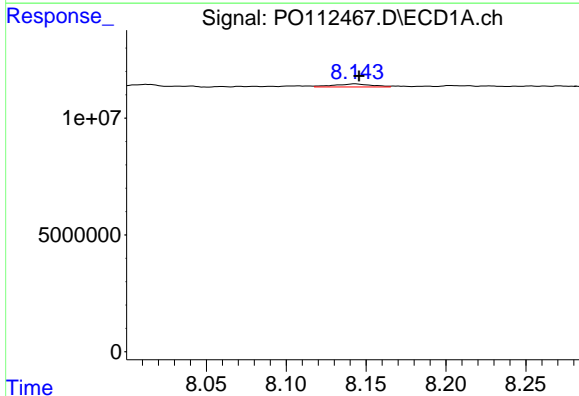
R.T.: 7.644 min  
Delta R.T.: -0.006 min  
Response: 45330496  
Conc: 45.60 ng/ml

Instrument :  
ECD\_O  
ClientSampleId :  
AR1254CCC500



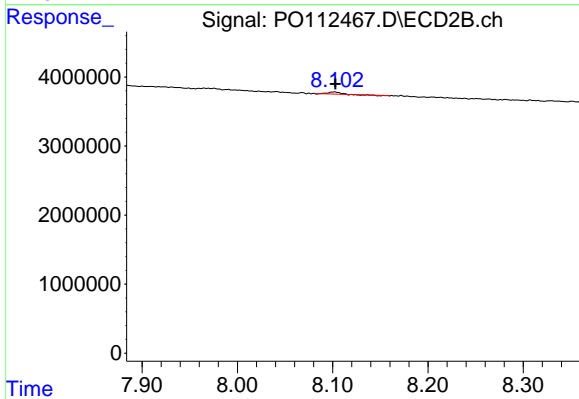
#39 AR-1262-4

R.T.: 7.606 min  
Delta R.T.: -0.005 min  
Response: 12488895  
Conc: 43.35 ng/ml



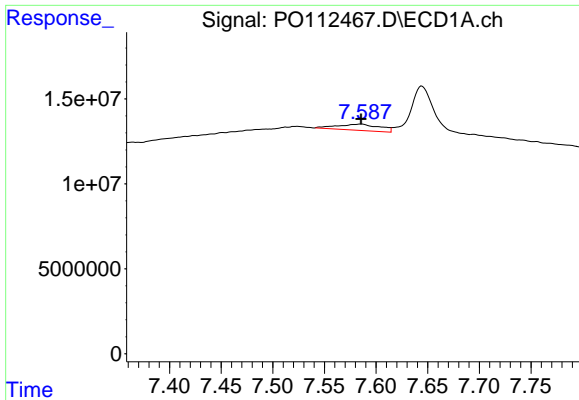
#40 AR-1262-5

R.T.: 8.143 min  
Delta R.T.: -0.002 min  
Response: 2139732  
Conc: 4.93 ng/ml



#40 AR-1262-5

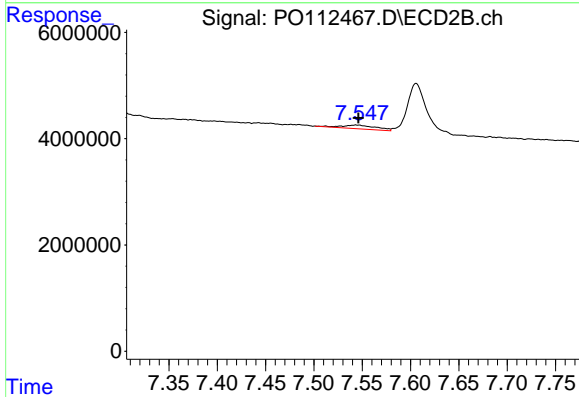
R.T.: 8.102 min  
Delta R.T.: -0.001 min  
Response: 175380  
Conc: 1.76 ng/ml



#41 AR-1268-1

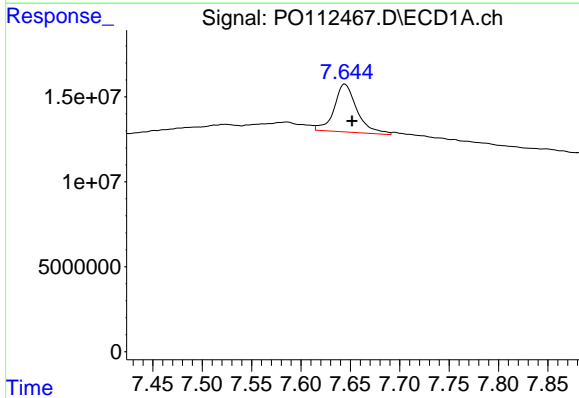
R.T.: 7.586 min  
 Delta R.T.: 0.000 min  
 Response: 10403683  
 Conc: 5.94 ng/ml

Instrument :  
 ECD\_O  
 ClientSampleId :  
 AR1254CCC500



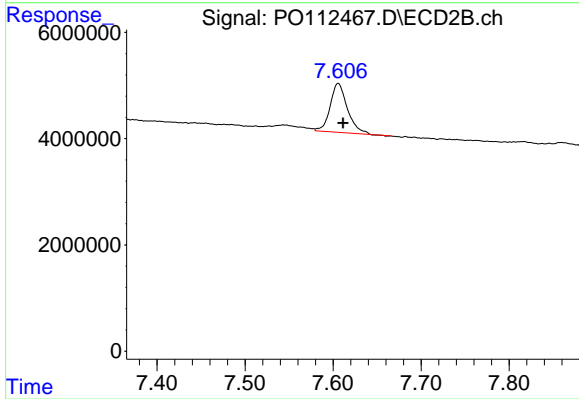
#41 AR-1268-1

R.T.: 7.544 min  
 Delta R.T.: -0.002 min  
 Response: 1739874  
 Conc: 3.36 ng/ml



#42 AR-1268-2

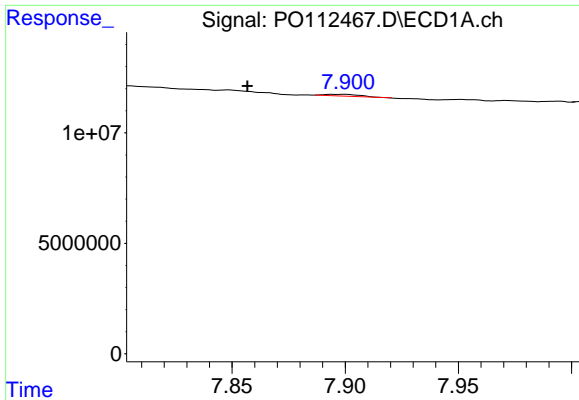
R.T.: 7.644 min  
 Delta R.T.: -0.007 min  
 Response: 45330496  
 Conc: 30.77 ng/ml



#42 AR-1268-2

R.T.: 7.606 min  
 Delta R.T.: -0.006 min  
 Response: 12488895  
 Conc: 29.38 ng/ml

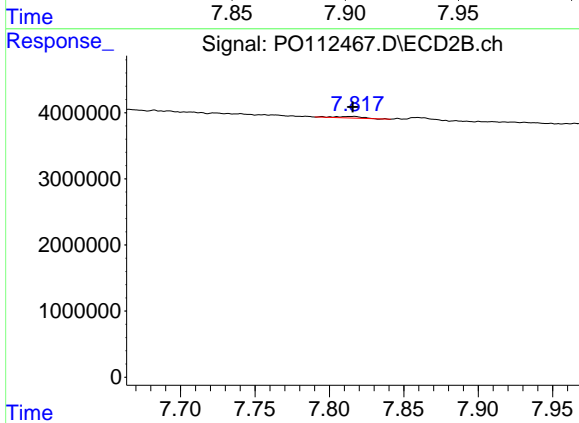




#43 AR-1268-3

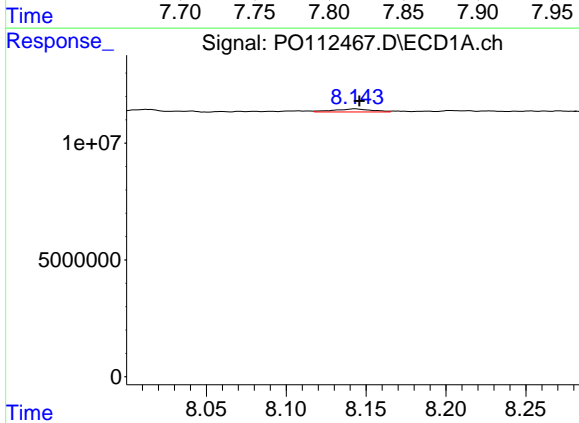
R.T.: 7.899 min  
 Delta R.T.: 0.043 min  
 Response: 691415  
 Conc: 0.55 ng/ml

Instrument :  
 ECD\_O  
 ClientSampleId :  
 AR1254CCC500



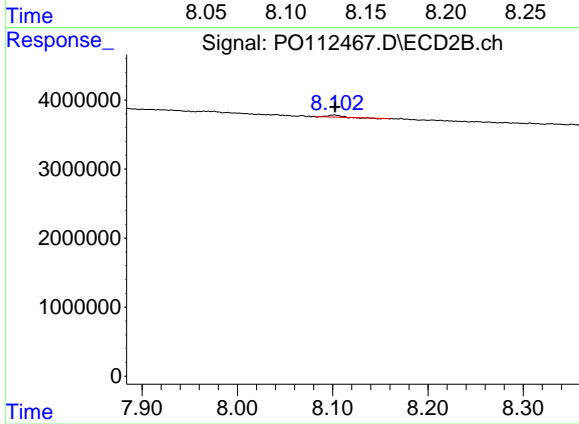
#43 AR-1268-3

R.T.: 7.816 min  
 Delta R.T.: 0.000 min  
 Response: 288391  
 Conc: 0.90 ng/ml



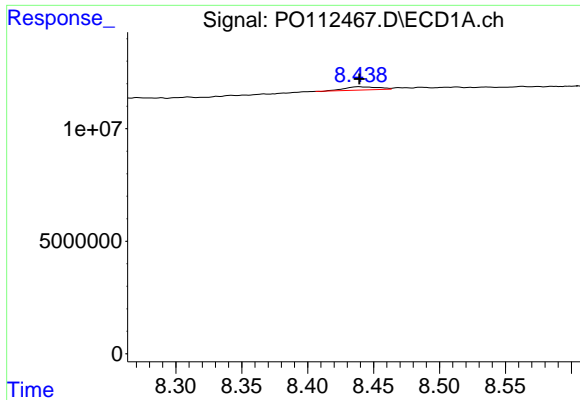
#44 AR-1268-4

R.T.: 8.143 min  
 Delta R.T.: -0.003 min  
 Response: 2139732  
 Conc: 4.44 ng/ml



#44 AR-1268-4

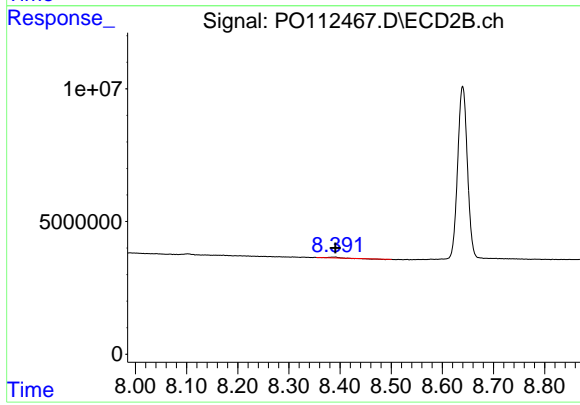
R.T.: 8.102 min  
 Delta R.T.: 0.000 min  
 Response: 175380  
 Conc: 1.58 ng/ml



#45 AR-1268-5

R.T.: 8.439 min  
 Delta R.T.: 0.000 min  
 Response: 2551559  
 Conc: 0.76 ng/ml

Instrument :  
 ECD\_O  
 ClientSampleId :  
 AR1254CCC500



#45 AR-1268-5

R.T.: 8.389 min  
 Delta R.T.: -0.002 min  
 Response: 151657  
 Conc: 0.21 ng/ml