

Data Path : Z:\pestpcbsrv\HPCHEM1\ECD_0\Data\P0072425\
 Data File : PO112468.D
 Signal(s) : Signal #1: ECD1A.ch Signal #2: ECD2B.ch
 Acq On : 24 Jul 2025 16:36
 Operator : YP/AJ
 Sample : I.BLK
 Misc :
 ALS Vial : 2 Sample Multiplier: 1

Instrument :
 ECD_0
 ClientSampleId :
 I.BLK

Integration File signal 1: autoint1.e
 Integration File signal 2: autoint2.e
 Quant Time: Jul 24 23:43:56 2025
 Quant Method : Z:\pestpcbsrv\HPCHEM1\ECD_0\methods\P0072325.M
 Quant Title : GC EXTRACTABLES
 QLast Update : Thu Jul 24 04:54:06 2025
 Response via : Initial Calibration
 Integrator: ChemStation

Volume Inj. : 2 µl
 Signal #1 Phase : ZB-MR1 Signal #2 Phase: ZB-MR2
 Signal #1 Info : 30Mx0.32mmx 0.50µ Signal #2 Info : 30M x 0.32mm x 0.25µm

| Compound | RT#1 | RT#2 | Resp#1 | Resp#2 | ng/ml | ng/ml |
|-----------------------------|--------|-------|----------|----------|--------|----------|
| System Monitoring Compounds | | | | | | |
| 1) SA Tetrachlo... | 3.670 | 3.662 | 170.1E6 | 105.0E6 | 20.921 | 21.121 |
| 2) SA Decachlor... | 8.694 | 8.640 | 110.1E6 | 33634465 | 15.056 | 19.034 # |
| Target Compounds | | | | | | |
| 3) L1 AR-1016-1 | 4.767 | 4.737 | 691926 | 265132 | 2.578 | 1.515 # |
| 4) L1 AR-1016-2 | 4.767 | 4.755 | 691926 | 93818 | 1.704 | 0.360 # |
| 5) L1 AR-1016-3 | 4.841 | 4.930 | 998367 | 115418 | 3.815 | 0.849 # |
| 6) L1 AR-1016-4 | 4.952 | 4.967 | 896015 | 33249 | 4.230 | 0.299 # |
| 7) L1 AR-1016-5 | 5.210 | 5.188 | 5361638 | 670395 | 24.430 | 4.678 # |
| 8) L2 AR-1221-1 | 3.839f | 3.872 | 783977 | 63294 | 8.111 | 0.941 # |
| 9) L2 AR-1221-2 | 3.972 | 3.960 | 2404736 | 1814489 | 33.463 | 35.769 |
| 10) L2 AR-1221-3 | 4.073 | 4.033 | 39432 | 121268 | 0.166 | 0.765 # |
| 11) L3 AR-1232-1 | 4.073 | 4.033 | 39432 | 121268 | 0.211 | 0.958 # |
| 12) L3 AR-1232-2 | 4.518 | 4.755 | 956769 | 93818 | 8.890 | 0.715 # |
| 13) L3 AR-1232-3 | 4.767 | 4.930 | 691926 | 115418 | 3.346 | 1.718 # |
| 14) L3 AR-1232-4 | 4.952 | 5.014 | 896015 | 297497 | 8.555 | 4.972 # |
| 15) L3 AR-1232-5 | 4.973 | 5.188 | 1654244 | 670395 | 24.370 | 10.282 # |
| 16) L4 AR-1242-1 | 4.767 | 4.737 | 691926 | 265132 | 2.795 | 1.674 # |
| 17) L4 AR-1242-2 | 4.767 | 4.755 | 691926 | 93818 | 1.871 | 0.402 # |
| 18) L4 AR-1242-3 | 4.841 | 4.930 | 998367 | 115418 | 4.219 | 0.952 # |
| 19) L4 AR-1242-4 | 4.952 | 5.014 | 896015 | 297497 | 4.612 | 2.424 # |
| 20) L4 AR-1242-5 | 5.617 | 5.535 | 9296288 | 3164963 | 43.458 | 19.662 # |
| 21) L5 AR-1248-1 | 4.767 | 4.737 | 691926 | 265132 | 3.696 | 2.182 # |
| 22) L5 AR-1248-2 | 4.973 | 4.967 | 1654244 | 33249 | 6.484 | 0.196 # |
| 23) L5 AR-1248-3 | 5.210 | 5.014 | 5361638 | 297497 | 15.600 | 1.675 # |
| 24) L5 AR-1248-4 | 5.565 | 5.188 | 11323669 | 670395 | 22.287 | 3.218 # |
| 25) L5 AR-1248-5 | 5.617 | 5.574 | 9296288 | 2761698 | 26.592 | 12.859 # |
| 26) L6 AR-1254-1 | 5.565 | 5.535 | 11323669 | 3164963 | 20.628 | 9.631 # |
| 27) L6 AR-1254-2 | 5.720 | 5.681 | 13121036 | 745189 | 27.003 | 2.574 # |
| 28) L6 AR-1254-3 | 6.108 | 6.083 | 1124793 | 995388 | 1.511 | 2.329 # |
| 29) L6 AR-1254-4 | 6.337 | 6.318 | 1432255 | 489534 | 2.606 | 1.793 # |
| 30) L6 AR-1254-5 | 6.773 | 6.717 | 134015 | 931458 | 0.189 | 2.789 # |
| 31) L7 AR-1260-1 | 6.249 | 6.216 | 685576 | 509394 | 1.560 | 2.050 # |
| 32) L7 AR-1260-2 | 6.410 | 6.406 | 9108899 | 147890 | 13.242 | 0.449 # |
| 33) L7 AR-1260-3 | 6.773 | 6.554 | 134015 | 135260 | 0.228 | 0.526 # |
| 34) L7 AR-1260-4 | 7.095f | 6.994 | 253803 | 164373 | 0.563 | 0.859 # |
| 35) L7 AR-1260-5 | 7.248f | 7.262 | 385689 | 432409 | 0.311 | 1.049 # |
| 36) L8 AR-1262-1 | 6.773 | 6.776 | 134015 | 28284 | 0.144 | 0.068 # |
| 37) L8 AR-1262-2 | 7.248f | 7.262 | 385689 | 432409 | 0.259 | 0.839 # |
| 38) L8 AR-1262-3 | 7.586 | 7.539 | 8734766 | 238562 | 14.798 | 1.279 # |
| 39) L8 AR-1262-4 | 7.645 | 7.604 | 11811727 | 158513 | 11.881 | 0.550 # |
| 40) L8 AR-1262-5 | 8.149 | 8.107 | 275579 | 69148 | 0.635 | 0.695 |
| 41) L9 AR-1268-1 | 7.586 | 7.539 | 8734766 | 238562 | 4.988 | 0.461 # |

Data Path : Z:\pestpcbsrv\HPCHEM1\ECD_0\Data\P0072425\
 Data File : P0112468.D
 Signal(s) : Signal #1: ECD1A.ch Signal #2: ECD2B.ch
 Acq On : 24 Jul 2025 16:36
 Operator : YP/AJ
 Sample : I.BLK
 Misc :
 ALS Vial : 2 Sample Multiplier: 1

Instrument :
 ECD_0
 ClientSampleId :
 I.BLK

Integration File signal 1: autoint1.e
 Integration File signal 2: autoint2.e
 Quant Time: Jul 24 23:43:56 2025
 Quant Method : Z:\pestpcbsrv\HPCHEM1\ECD_0\methods\P0072325.M
 Quant Title : GC EXTRACTABLES
 QLast Update : Thu Jul 24 04:54:06 2025
 Response via : Initial Calibration
 Integrator: ChemStation

Volume Inj. : 2 µl
 Signal #1 Phase : ZB-MR1 Signal #2 Phase: ZB-MR2
 Signal #1 Info : 30Mx0.32mmx 0.50µ Signal #2 Info : 30M x 0.32mm x 0.25µm

| | Compound | RT#1 | RT#2 | Resp#1 | Resp#2 | ng/ml | ng/ml |
|-----|--------------|-------|-------|----------|--------|-------|---------|
| 42) | L9 AR-1268-2 | 7.645 | 7.604 | 11811727 | 158513 | 8.019 | 0.373 # |
| 43) | L9 AR-1268-3 | 0.000 | 7.820 | 0 | 20903 | N.D. | 0.065 # |
| 44) | L9 AR-1268-4 | 8.149 | 8.107 | 275579 | 69148 | 0.572 | 0.621 |
| 45) | L9 AR-1268-5 | 8.450 | 8.392 | 1285128 | 86058 | 0.383 | 0.118 # |

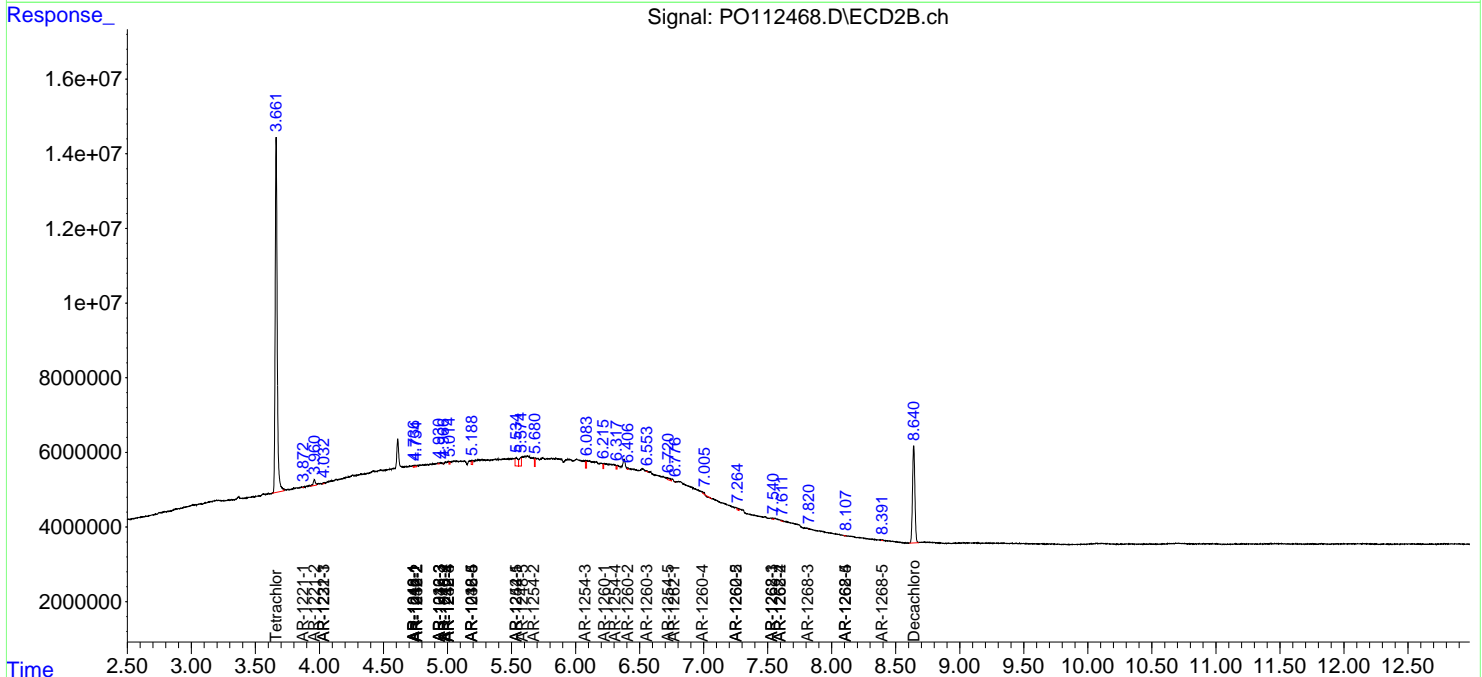
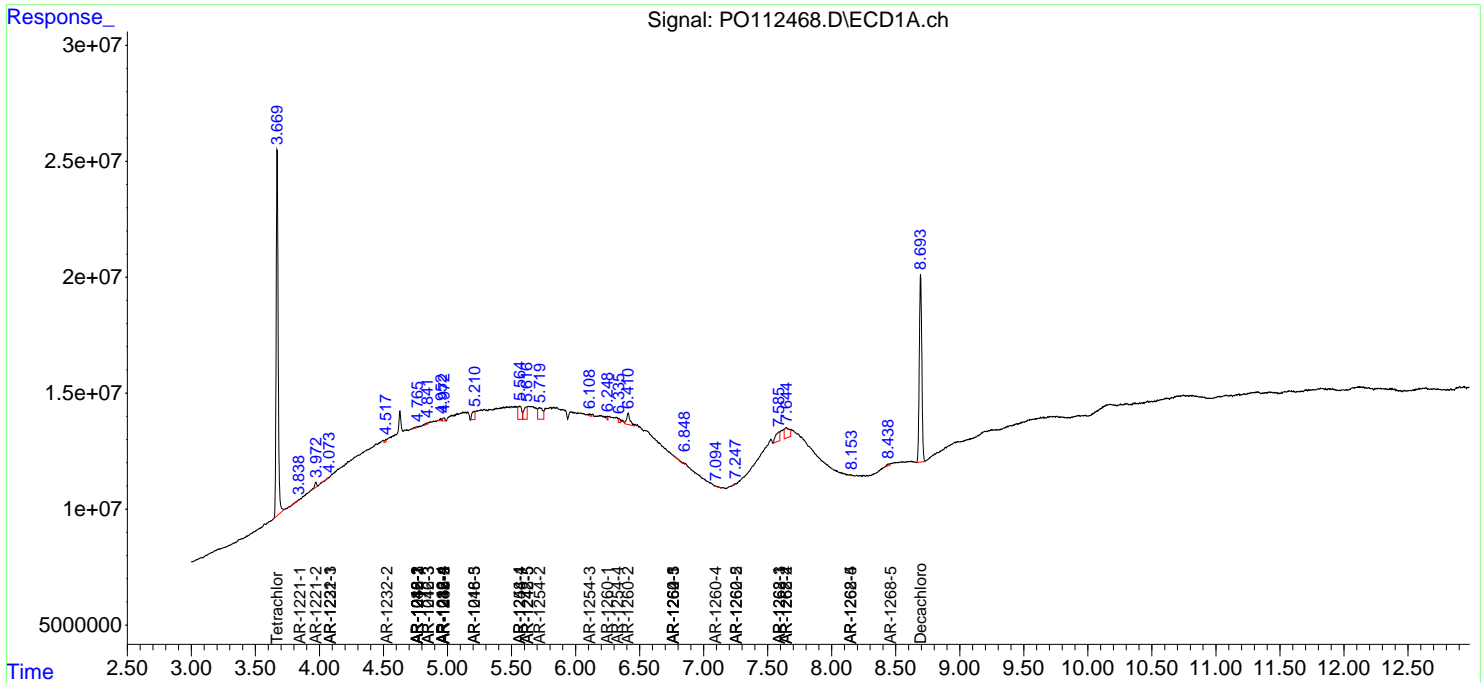
(f)=RT Delta > 1/2 Window (#)=Amounts differ by > 25% (m)=manual int.

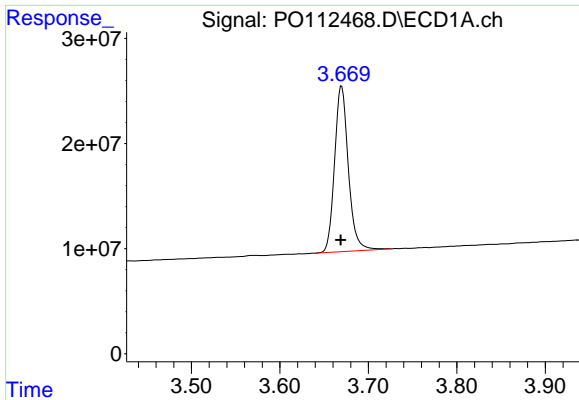
Data Path : Z:\pestpcbsrv\HPCHEM1\ECD_O\Data\PO072425\
 Data File : PO112468.D
 Signal(s) : Signal #1: ECD1A.ch Signal #2: ECD2B.ch
 Acq On : 24 Jul 2025 16:36
 Operator : YP/AJ
 Sample : I.BLK
 Misc :
 ALS Vial : 2 Sample Multiplier: 1

Instrument :
 ECD_O
 ClientSampleId :
 I.BLK

Integration File signal 1: autoint1.e
 Integration File signal 2: autoint2.e
 Quant Time: Jul 24 23:43:56 2025
 Quant Method : Z:\pestpcbsrv\HPCHEM1\ECD_O\methods\PO072325.M
 Quant Title : GC EXTRACTABLES
 QLast Update : Thu Jul 24 04:54:06 2025
 Response via : Initial Calibration
 Integrator: ChemStation

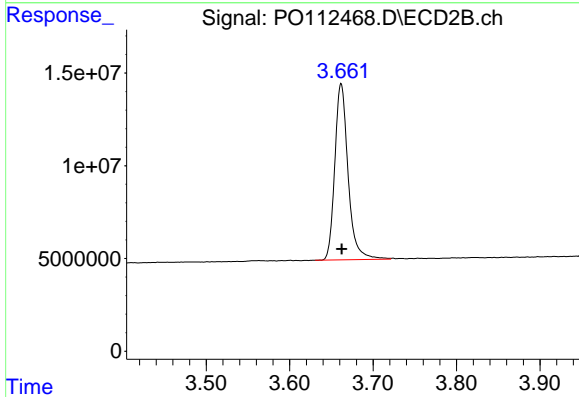
Volume Inj. : 2 µl
 Signal #1 Phase : ZB-MR1 Signal #2 Phase: ZB-MR2
 Signal #1 Info : 30Mx0.32mmx 0.50µ Signal #2 Info : 30M x 0.32mm x 0.25µm



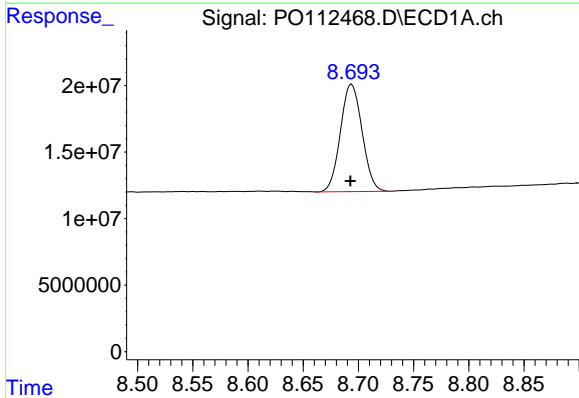


#1 Tetrachloro-m-xylene
 R.T.: 3.670 min
 Delta R.T.: 0.000 min
 Response: 170117231
 Conc: 20.92 ng/ml

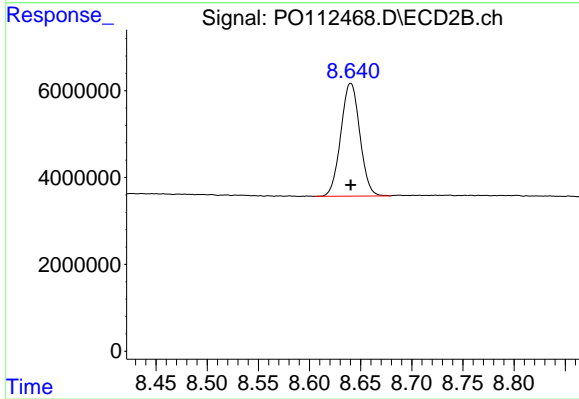
Instrument :
 ECD_O
 ClientSampleId :
 I.BLK



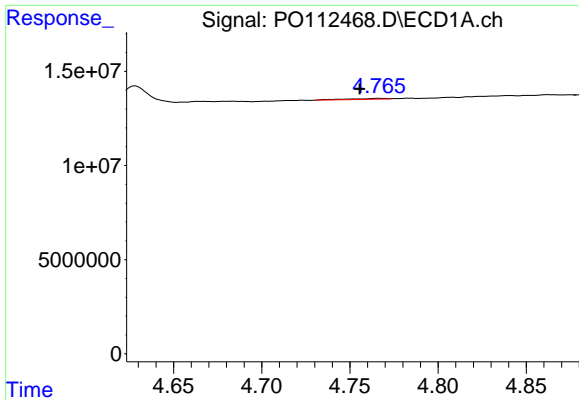
#1 Tetrachloro-m-xylene
 R.T.: 3.662 min
 Delta R.T.: 0.000 min
 Response: 104952244
 Conc: 21.12 ng/ml



#2 Decachlorobiphenyl
 R.T.: 8.694 min
 Delta R.T.: 0.001 min
 Response: 110085197
 Conc: 15.06 ng/ml



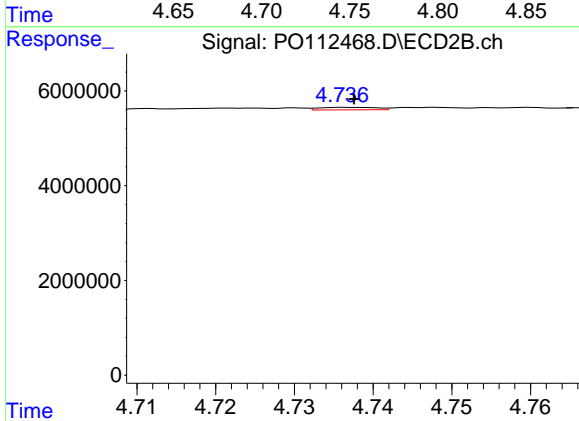
#2 Decachlorobiphenyl
 R.T.: 8.640 min
 Delta R.T.: 0.000 min
 Response: 33634465
 Conc: 19.03 ng/ml



#3 AR-1016-1

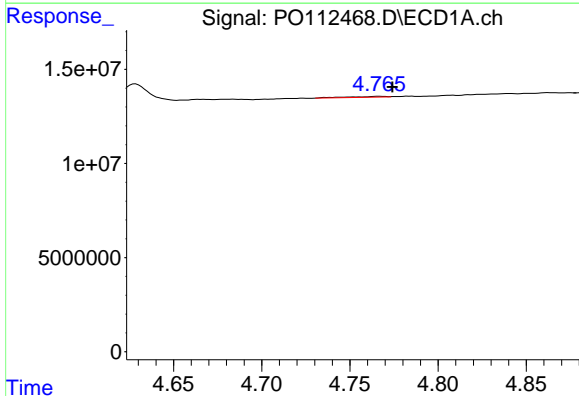
R.T.: 4.767 min
 Delta R.T.: 0.011 min
 Response: 691926
 Conc: 2.58 ng/ml

Instrument :
 ECD_O
 ClientSampleId :
 I.BLK



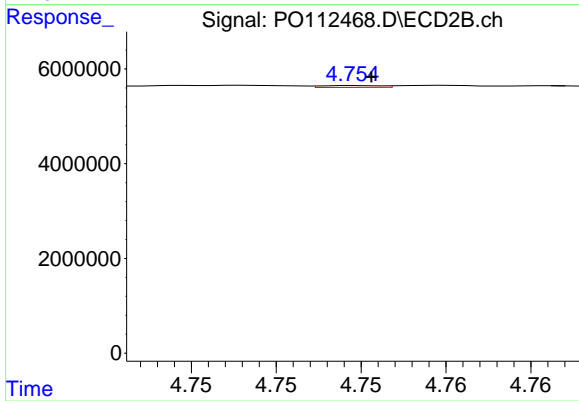
#3 AR-1016-1

R.T.: 4.737 min
 Delta R.T.: 0.000 min
 Response: 265132
 Conc: 1.51 ng/ml



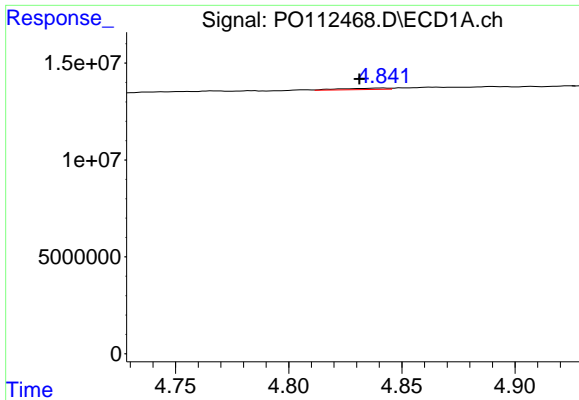
#4 AR-1016-2

R.T.: 4.767 min
 Delta R.T.: -0.007 min
 Response: 691926
 Conc: 1.70 ng/ml



#4 AR-1016-2

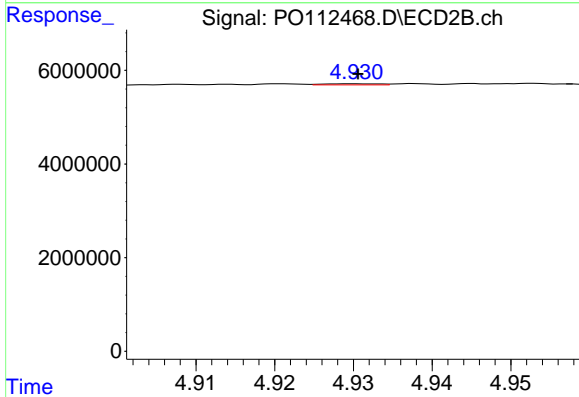
R.T.: 4.755 min
 Delta R.T.: 0.000 min
 Response: 93818
 Conc: 0.36 ng/ml



#5 AR-1016-3

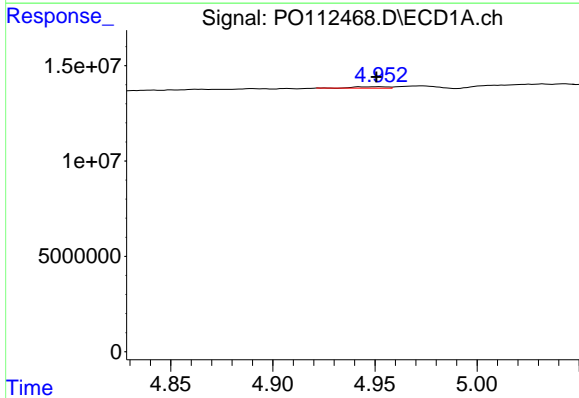
R.T.: 4.841 min
 Delta R.T.: 0.010 min
 Response: 998367
 Conc: 3.82 ng/ml

Instrument :
 ECD_O
 ClientSampleId :
 I.BLK



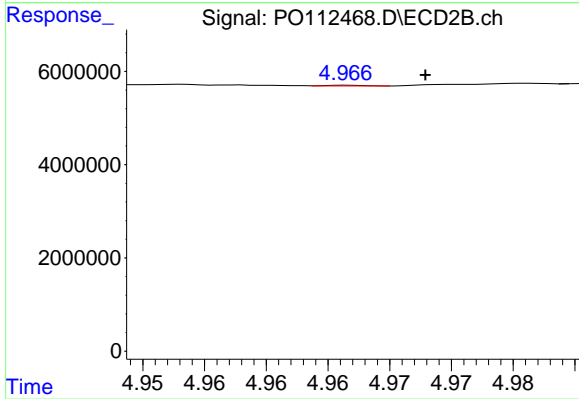
#5 AR-1016-3

R.T.: 4.930 min
 Delta R.T.: 0.000 min
 Response: 115418
 Conc: 0.85 ng/ml



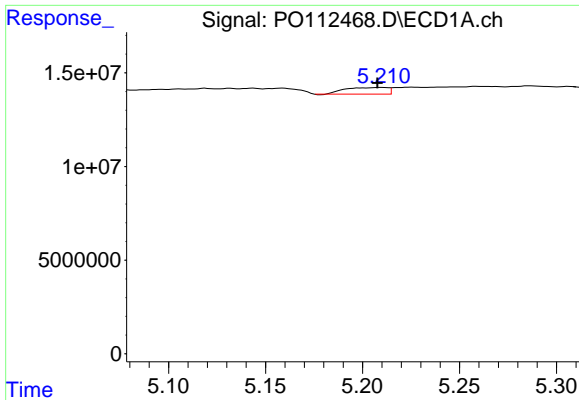
#6 AR-1016-4

R.T.: 4.952 min
 Delta R.T.: 0.002 min
 Response: 896015
 Conc: 4.23 ng/ml



#6 AR-1016-4

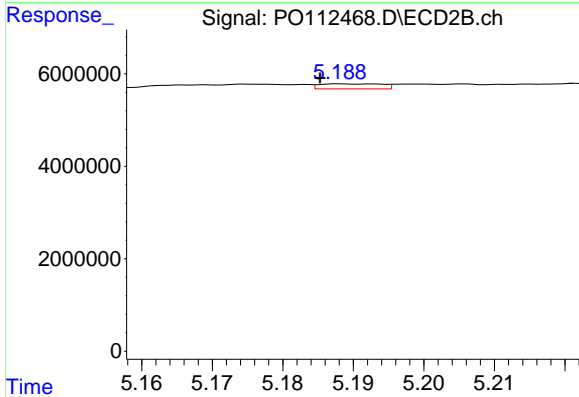
R.T.: 4.967 min
 Delta R.T.: -0.006 min
 Response: 33249
 Conc: 0.30 ng/ml



#7 AR-1016-5

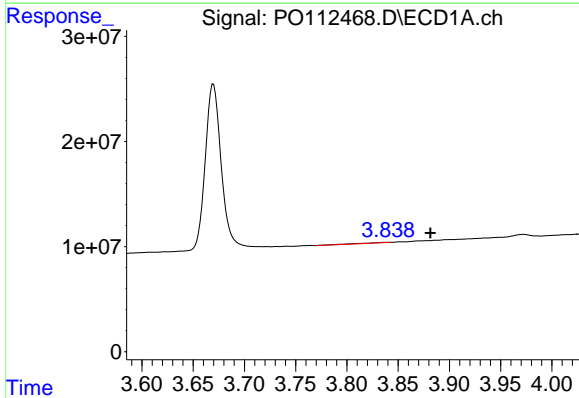
R.T.: 5.210 min
 Delta R.T.: 0.002 min
 Response: 5361638
 Conc: 24.43 ng/ml

Instrument :
 ECD_O
 ClientSampleId :
 I.BLK



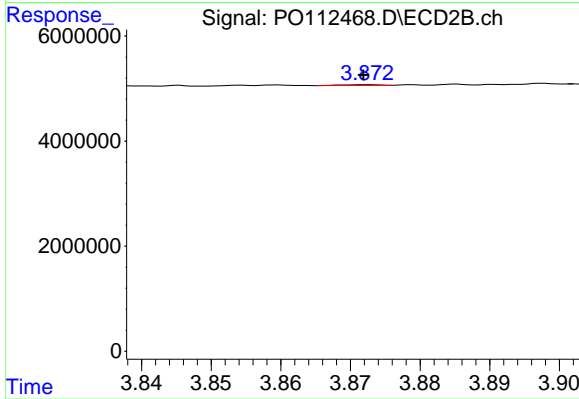
#7 AR-1016-5

R.T.: 5.188 min
 Delta R.T.: 0.003 min
 Response: 670395
 Conc: 4.68 ng/ml



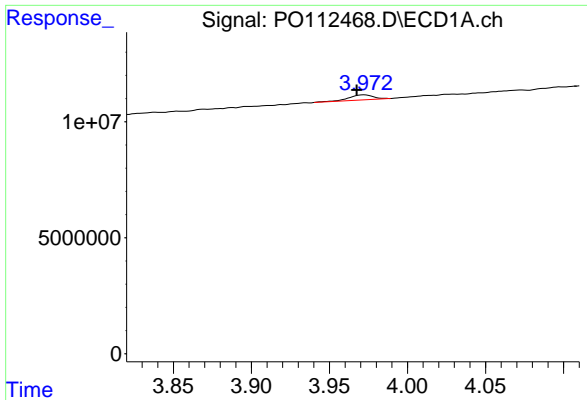
#8 AR-1221-1

R.T.: 3.839 min
 Delta R.T.: -0.043 min
 Response: 783977
 Conc: 8.11 ng/ml



#8 AR-1221-1

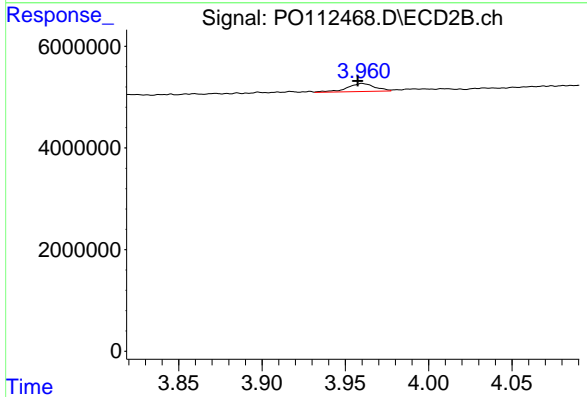
R.T.: 3.872 min
 Delta R.T.: 0.000 min
 Response: 63294
 Conc: 0.94 ng/ml



#9 AR-1221-2

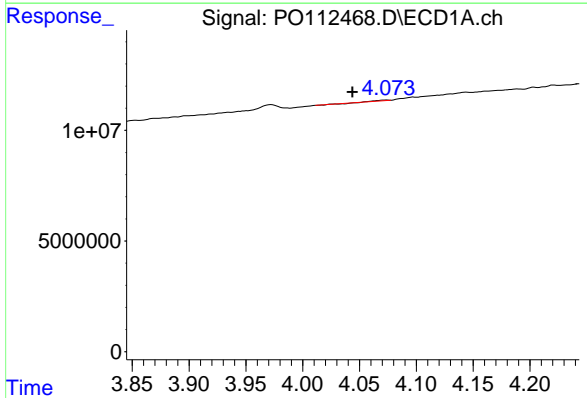
R.T.: 3.972 min
 Delta R.T.: 0.005 min
 Response: 2404736
 Conc: 33.46 ng/ml

Instrument :
 ECD_O
 ClientSampleId :
 I.BLK



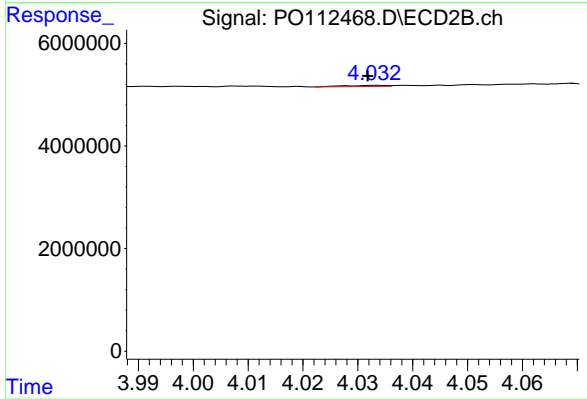
#9 AR-1221-2

R.T.: 3.960 min
 Delta R.T.: 0.003 min
 Response: 1814489
 Conc: 35.77 ng/ml



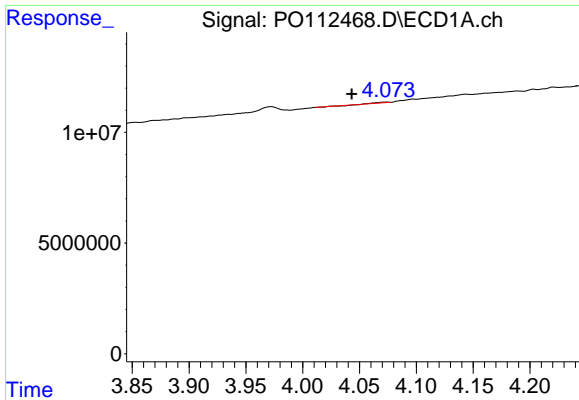
#10 AR-1221-3

R.T.: 4.073 min
 Delta R.T.: 0.030 min
 Response: 39432
 Conc: 0.17 ng/ml



#10 AR-1221-3

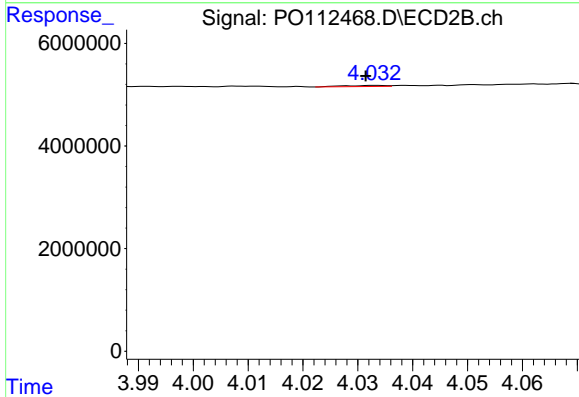
R.T.: 4.033 min
 Delta R.T.: 0.001 min
 Response: 121268
 Conc: 0.76 ng/ml



#11 AR-1232-1

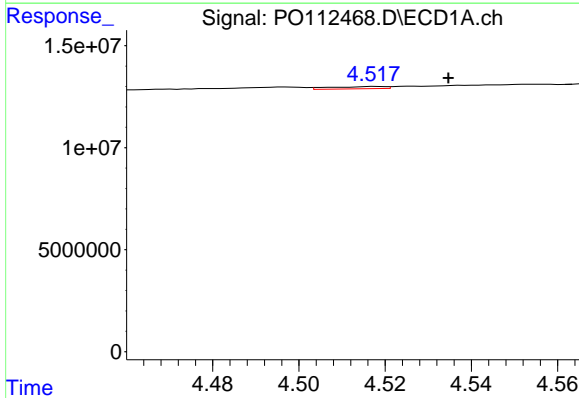
R.T.: 4.073 min
 Delta R.T.: 0.030 min
 Response: 39432
 Conc: 0.21 ng/ml

Instrument :
 ECD_O
 ClientSampleId :
 I.BLK



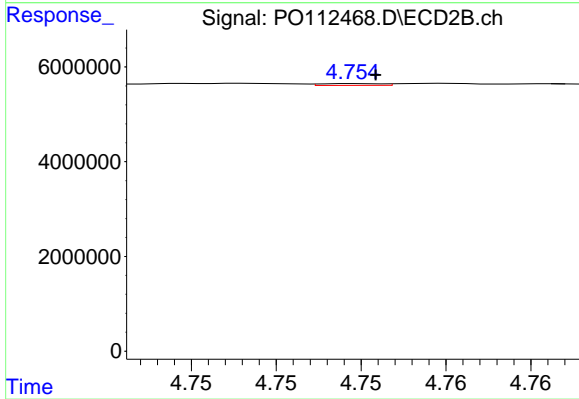
#11 AR-1232-1

R.T.: 4.033 min
 Delta R.T.: 0.002 min
 Response: 121268
 Conc: 0.96 ng/ml



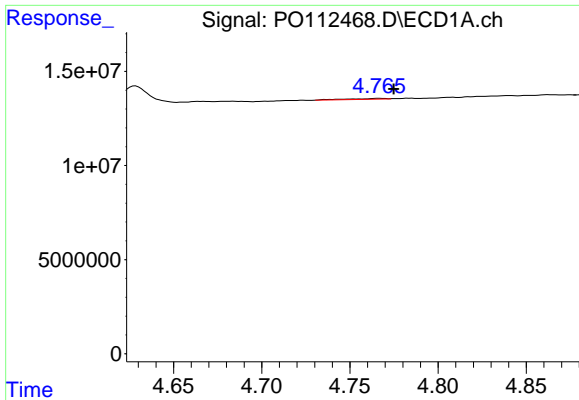
#12 AR-1232-2

R.T.: 4.518 min
 Delta R.T.: -0.017 min
 Response: 956769
 Conc: 8.89 ng/ml



#12 AR-1232-2

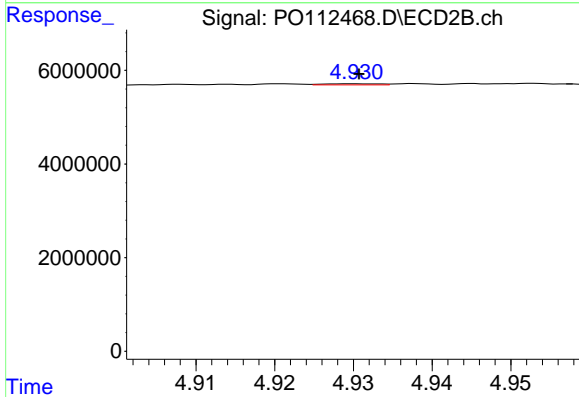
R.T.: 4.755 min
 Delta R.T.: 0.000 min
 Response: 93818
 Conc: 0.72 ng/ml



#13 AR-1232-3

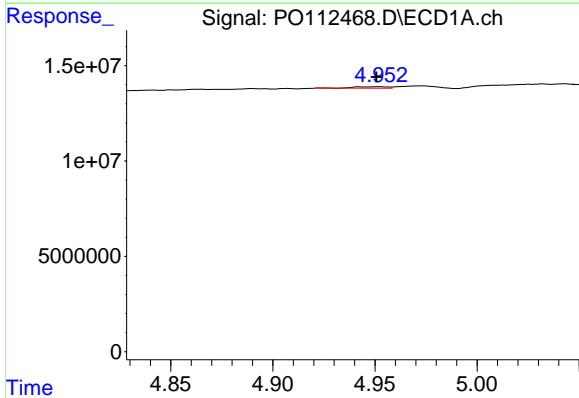
R.T.: 4.767 min
 Delta R.T.: -0.008 min
 Response: 691926
 Conc: 3.35 ng/ml

Instrument :
 ECD_O
 ClientSampleId :
 I.BLK



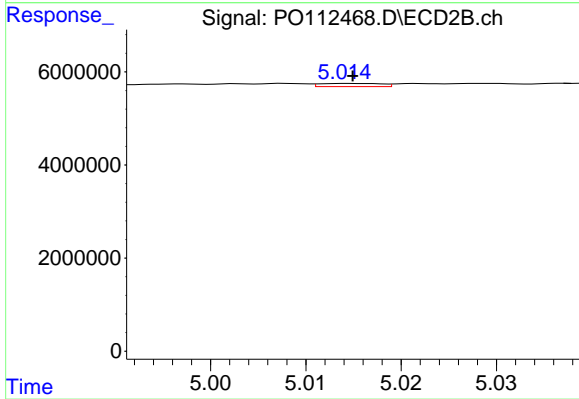
#13 AR-1232-3

R.T.: 4.930 min
 Delta R.T.: 0.000 min
 Response: 115418
 Conc: 1.72 ng/ml



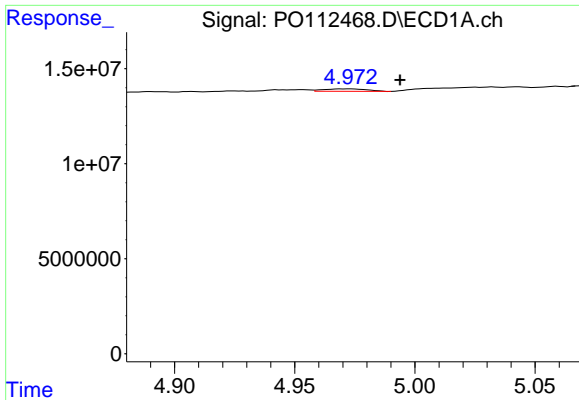
#14 AR-1232-4

R.T.: 4.952 min
 Delta R.T.: 0.002 min
 Response: 896015
 Conc: 8.55 ng/ml



#14 AR-1232-4

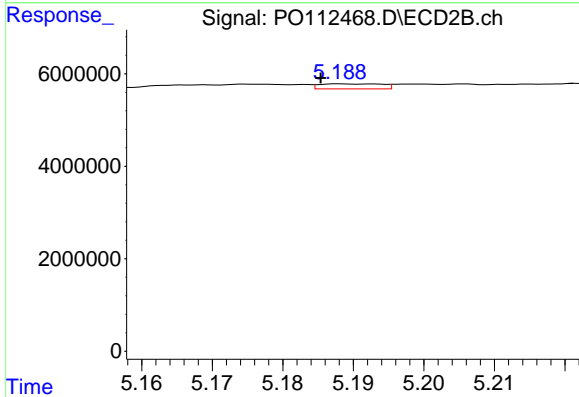
R.T.: 5.014 min
 Delta R.T.: 0.000 min
 Response: 297497
 Conc: 4.97 ng/ml



#15 AR-1232-5

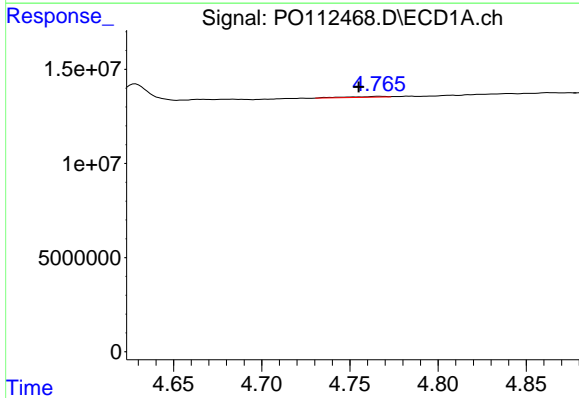
R.T.: 4.973 min
 Delta R.T.: -0.021 min
 Response: 1654244
 Conc: 24.37 ng/ml

Instrument :
 ECD_O
 ClientSampleId :
 I.BLK



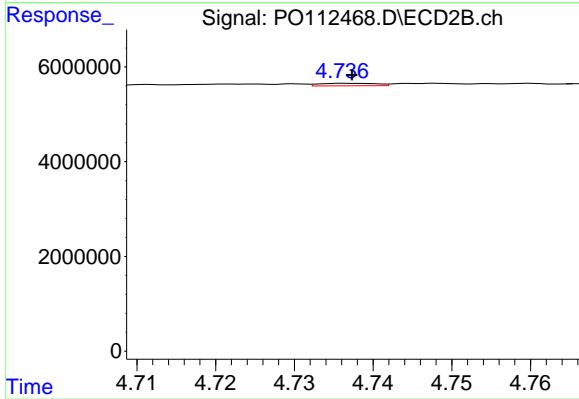
#15 AR-1232-5

R.T.: 5.188 min
 Delta R.T.: 0.003 min
 Response: 670395
 Conc: 10.28 ng/ml



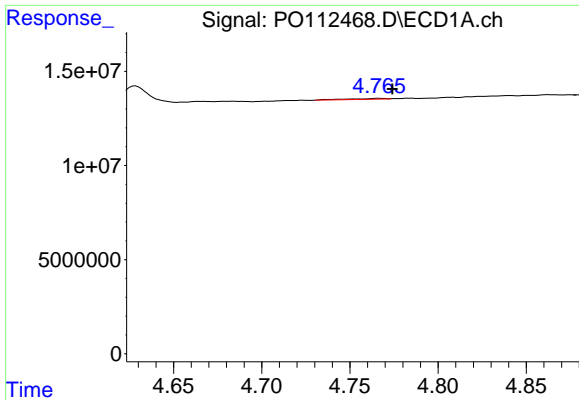
#16 AR-1242-1

R.T.: 4.767 min
 Delta R.T.: 0.012 min
 Response: 691926
 Conc: 2.79 ng/ml



#16 AR-1242-1

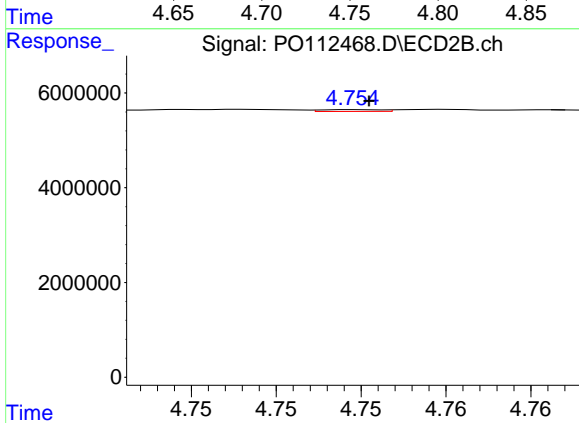
R.T.: 4.737 min
 Delta R.T.: 0.000 min
 Response: 265132
 Conc: 1.67 ng/ml



#17 AR-1242-2

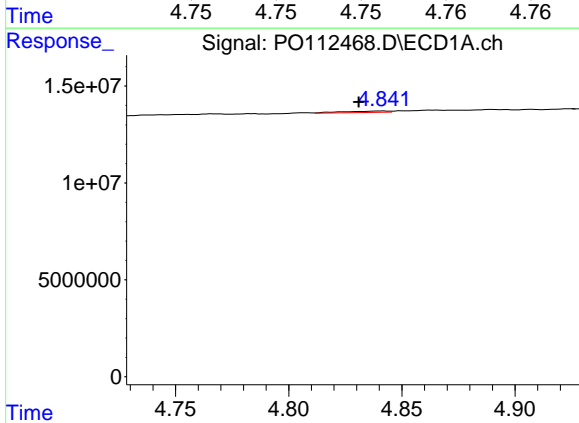
R.T.: 4.767 min
 Delta R.T.: -0.008 min
 Response: 691926
 Conc: 1.87 ng/ml

Instrument :
 ECD_O
 ClientSampleId :
 I.BLK



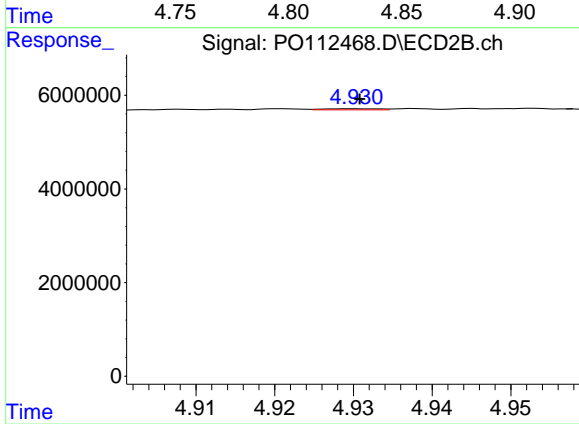
#17 AR-1242-2

R.T.: 4.755 min
 Delta R.T.: 0.000 min
 Response: 93818
 Conc: 0.40 ng/ml



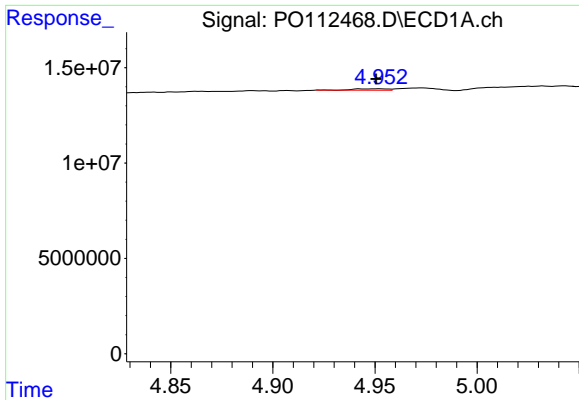
#18 AR-1242-3

R.T.: 4.841 min
 Delta R.T.: 0.010 min
 Response: 998367
 Conc: 4.22 ng/ml



#18 AR-1242-3

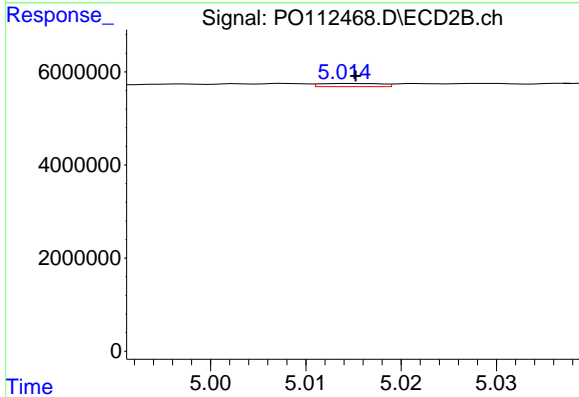
R.T.: 4.930 min
 Delta R.T.: 0.000 min
 Response: 115418
 Conc: 0.95 ng/ml



#19 AR-1242-4

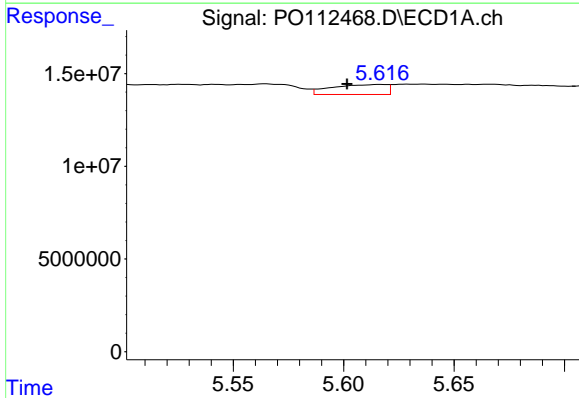
R.T.: 4.952 min
 Delta R.T.: 0.002 min
 Response: 896015
 Conc: 4.61 ng/ml

Instrument :
 ECD_O
 ClientSampleId :
 I.BLK



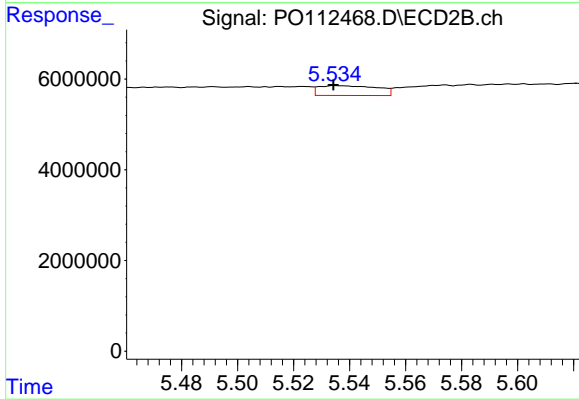
#19 AR-1242-4

R.T.: 5.014 min
 Delta R.T.: 0.000 min
 Response: 297497
 Conc: 2.42 ng/ml



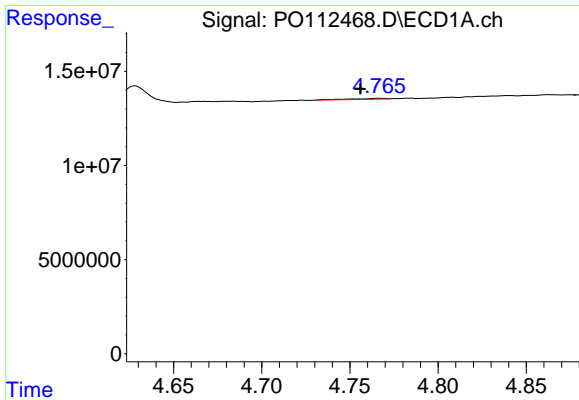
#20 AR-1242-5

R.T.: 5.617 min
 Delta R.T.: 0.015 min
 Response: 9296288
 Conc: 43.46 ng/ml



#20 AR-1242-5

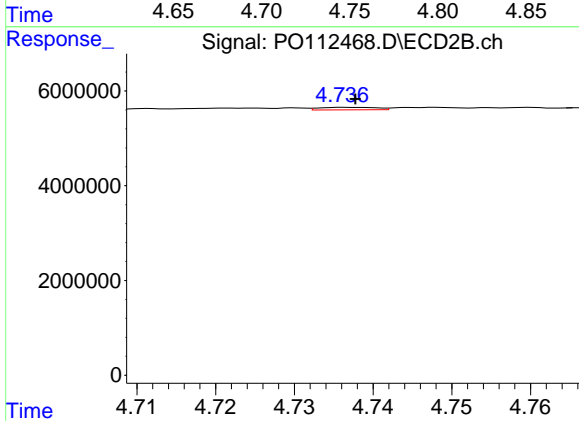
R.T.: 5.535 min
 Delta R.T.: 0.000 min
 Response: 3164963
 Conc: 19.66 ng/ml



#21 AR-1248-1

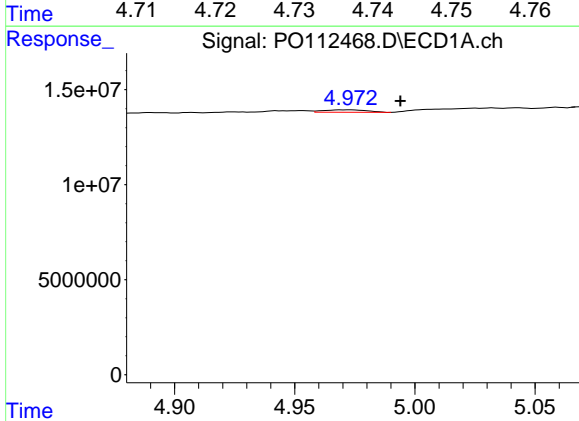
R.T.: 4.767 min
 Delta R.T.: 0.011 min
 Response: 691926
 Conc: 3.70 ng/ml

Instrument :
 ECD_O
 ClientSampleId :
 I.BLK



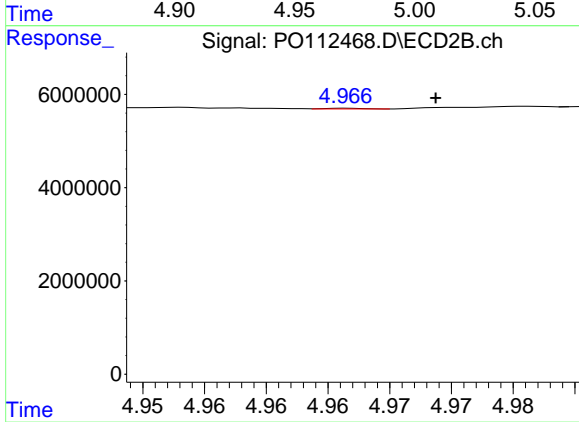
#21 AR-1248-1

R.T.: 4.737 min
 Delta R.T.: -0.001 min
 Response: 265132
 Conc: 2.18 ng/ml



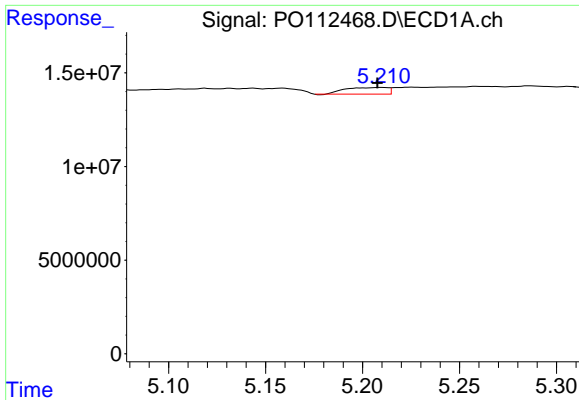
#22 AR-1248-2

R.T.: 4.973 min
 Delta R.T.: -0.021 min
 Response: 1654244
 Conc: 6.48 ng/ml



#22 AR-1248-2

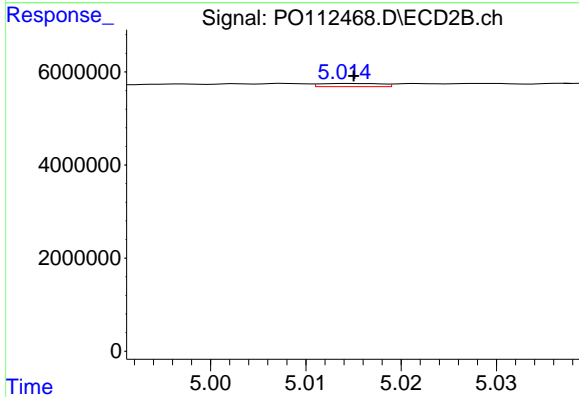
R.T.: 4.967 min
 Delta R.T.: -0.007 min
 Response: 33249
 Conc: 0.20 ng/ml



#23 AR-1248-3

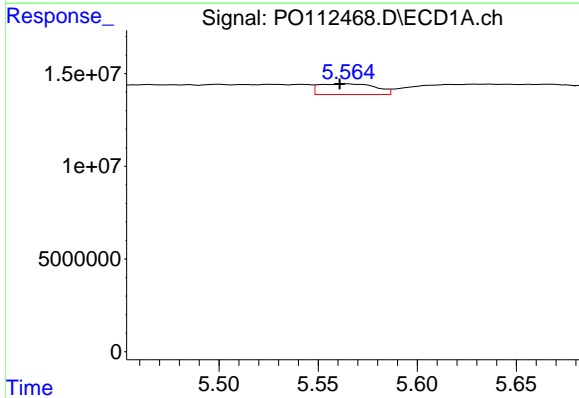
R.T.: 5.210 min
 Delta R.T.: 0.002 min
 Response: 5361638
 Conc: 15.60 ng/ml

Instrument :
 ECD_O
 ClientSampleId :
 I.BLK



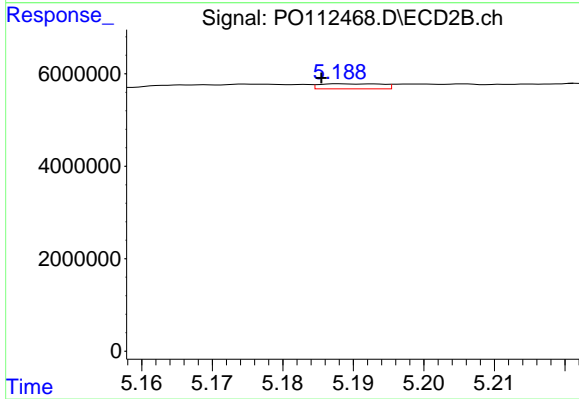
#23 AR-1248-3

R.T.: 5.014 min
 Delta R.T.: 0.000 min
 Response: 297497
 Conc: 1.67 ng/ml



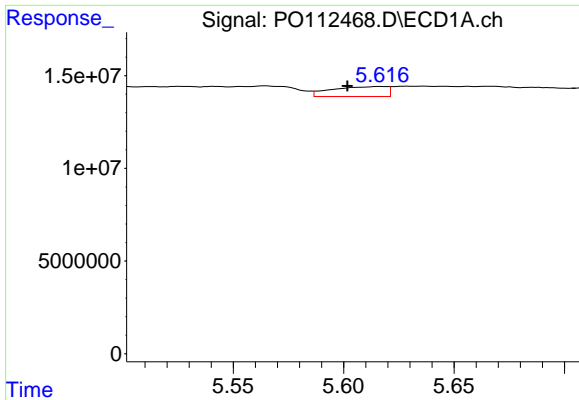
#24 AR-1248-4

R.T.: 5.565 min
 Delta R.T.: 0.004 min
 Response: 11323669
 Conc: 22.29 ng/ml



#24 AR-1248-4

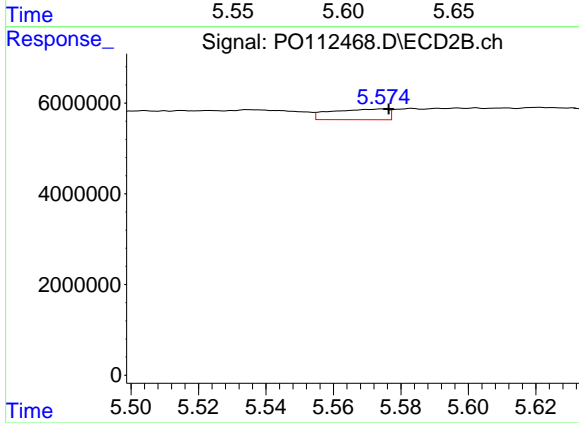
R.T.: 5.188 min
 Delta R.T.: 0.003 min
 Response: 670395
 Conc: 3.22 ng/ml



#25 AR-1248-5

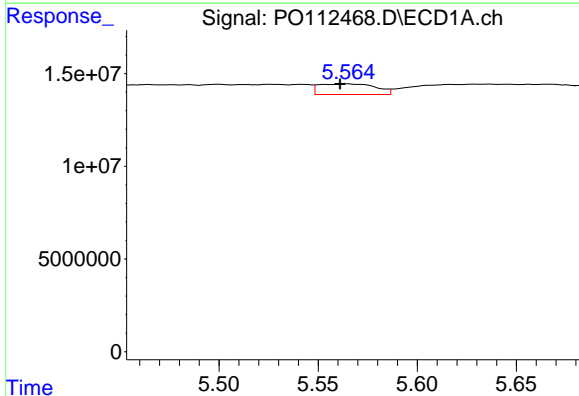
R.T.: 5.617 min
 Delta R.T.: 0.015 min
 Response: 9296288
 Conc: 26.59 ng/ml

Instrument :
 ECD_O
 ClientSampleId :
 I.BLK



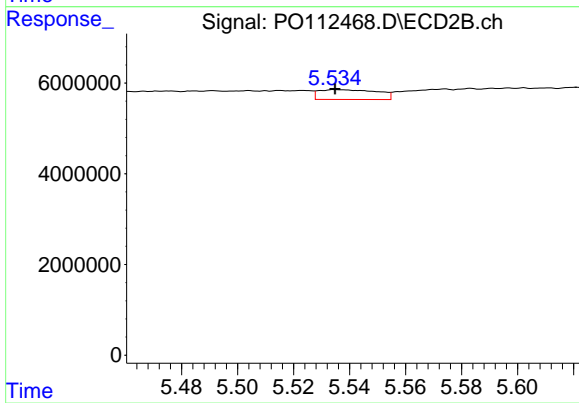
#25 AR-1248-5

R.T.: 5.574 min
 Delta R.T.: -0.002 min
 Response: 2761698
 Conc: 12.86 ng/ml



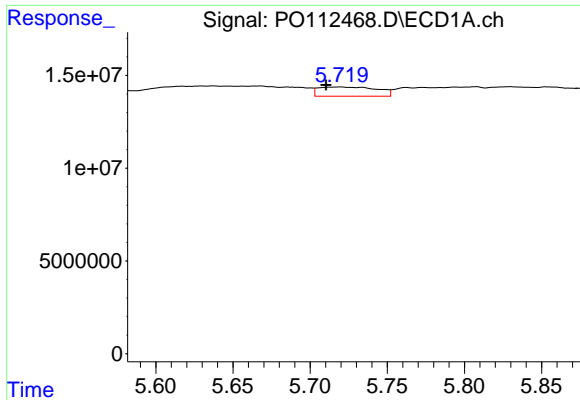
#26 AR-1254-1

R.T.: 5.565 min
 Delta R.T.: 0.004 min
 Response: 11323669
 Conc: 20.63 ng/ml



#26 AR-1254-1

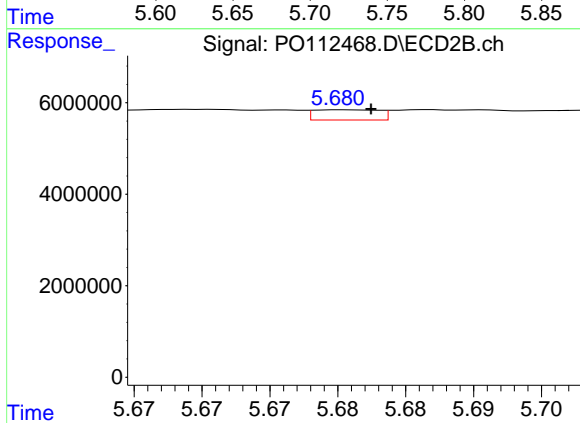
R.T.: 5.535 min
 Delta R.T.: 0.000 min
 Response: 3164963
 Conc: 9.63 ng/ml



#27 AR-1254-2

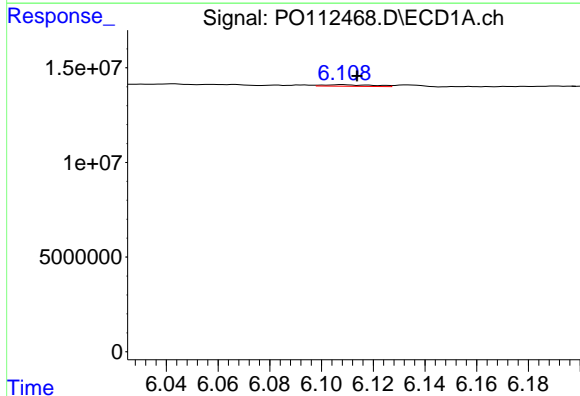
R.T.: 5.720 min
 Delta R.T.: 0.009 min
 Response: 13121036
 Conc: 27.00 ng/ml

Instrument :
 ECD_O
 ClientSampleId :
 I.BLK



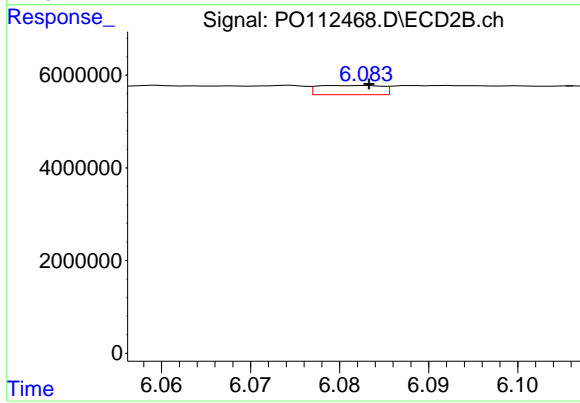
#27 AR-1254-2

R.T.: 5.681 min
 Delta R.T.: -0.002 min
 Response: 745189
 Conc: 2.57 ng/ml



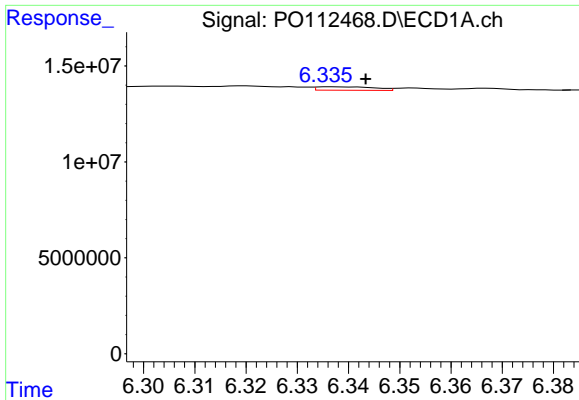
#28 AR-1254-3

R.T.: 6.108 min
 Delta R.T.: -0.005 min
 Response: 1124793
 Conc: 1.51 ng/ml



#28 AR-1254-3

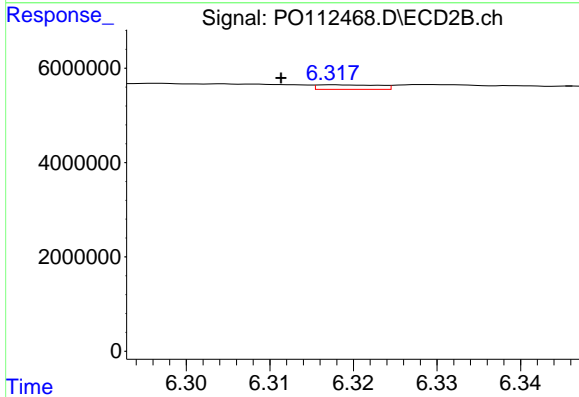
R.T.: 6.083 min
 Delta R.T.: 0.000 min
 Response: 995388
 Conc: 2.33 ng/ml



#29 AR-1254-4

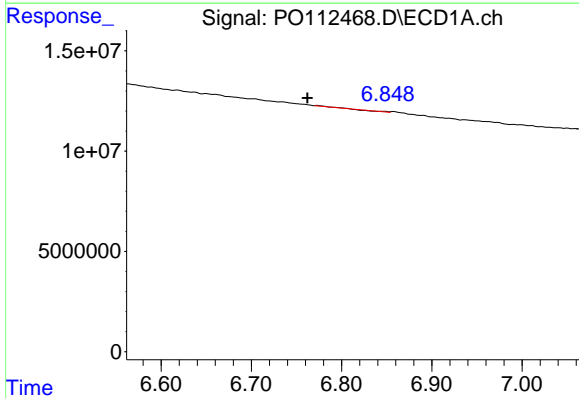
R.T.: 6.337 min
 Delta R.T.: -0.007 min
 Response: 1432255
 Conc: 2.61 ng/ml

Instrument :
 ECD_O
 ClientSampleId :
 I.BLK



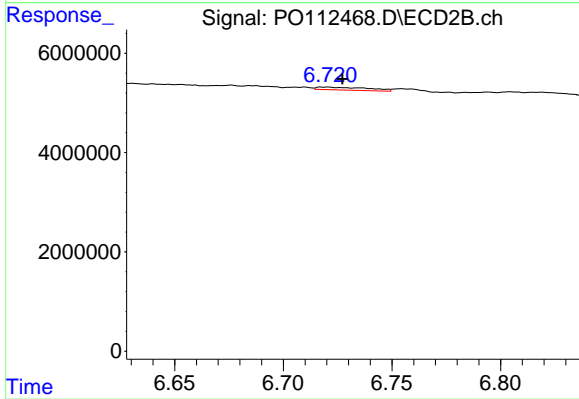
#29 AR-1254-4

R.T.: 6.318 min
 Delta R.T.: 0.006 min
 Response: 489534
 Conc: 1.79 ng/ml



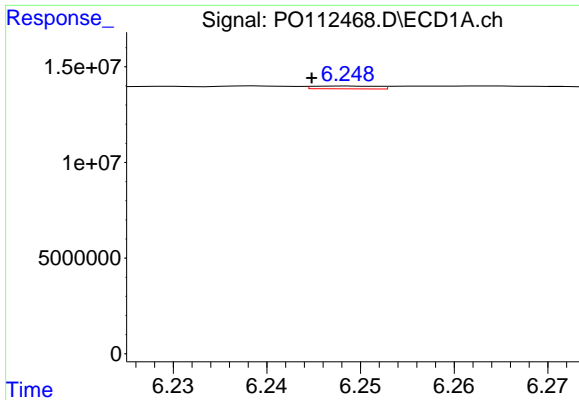
#30 AR-1254-5

R.T.: 6.773 min
 Delta R.T.: 0.011 min
 Response: 134015
 Conc: 0.19 ng/ml



#30 AR-1254-5

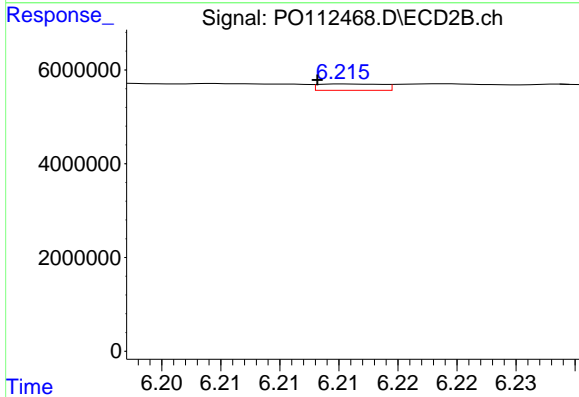
R.T.: 6.717 min
 Delta R.T.: -0.010 min
 Response: 931458
 Conc: 2.79 ng/ml



#31 AR-1260-1

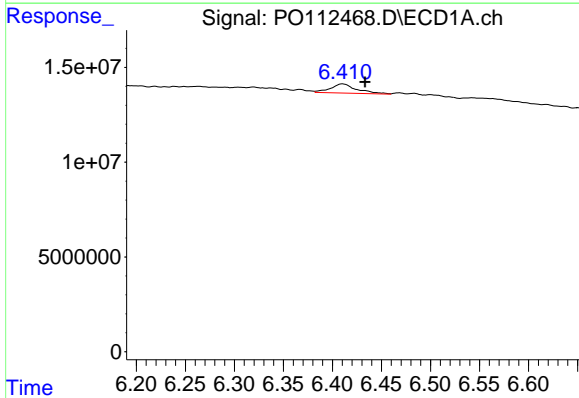
R.T.: 6.249 min
 Delta R.T.: 0.004 min
 Response: 685576
 Conc: 1.56 ng/ml

Instrument :
 ECD_O
 ClientSampleId :
 I.BLK



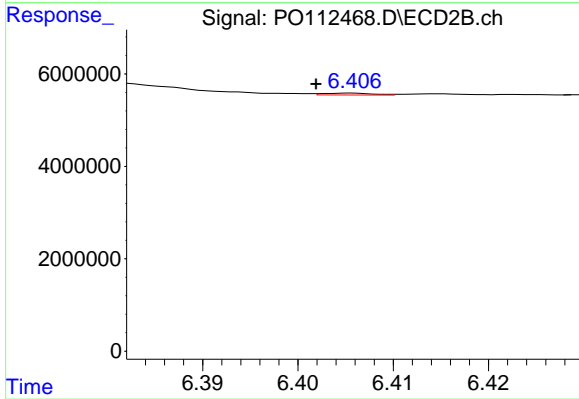
#31 AR-1260-1

R.T.: 6.216 min
 Delta R.T.: 0.002 min
 Response: 509394
 Conc: 2.05 ng/ml



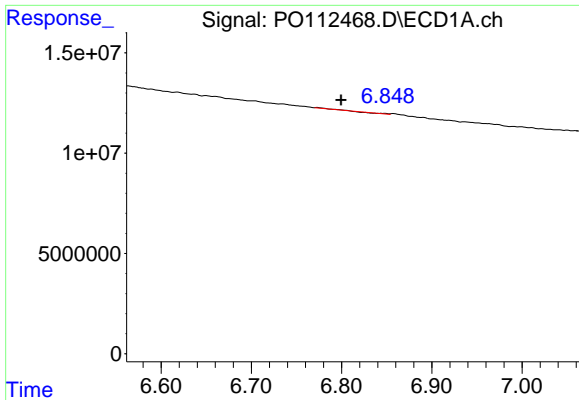
#32 AR-1260-2

R.T.: 6.410 min
 Delta R.T.: -0.023 min
 Response: 9108899
 Conc: 13.24 ng/ml



#32 AR-1260-2

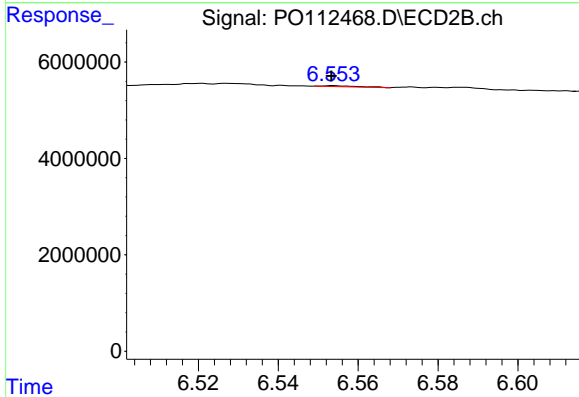
R.T.: 6.406 min
 Delta R.T.: 0.004 min
 Response: 147890
 Conc: 0.45 ng/ml



#33 AR-1260-3

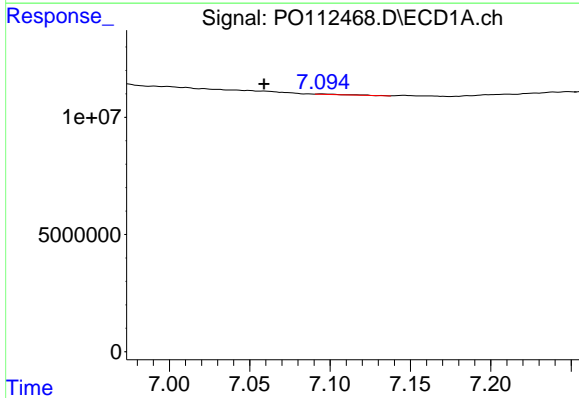
R.T.: 6.773 min
 Delta R.T.: -0.026 min
 Response: 134015
 Conc: 0.23 ng/ml

Instrument :
 ECD_O
 ClientSampleId :
 I.BLK



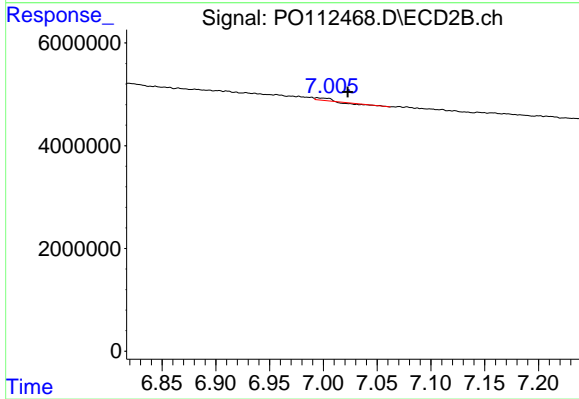
#33 AR-1260-3

R.T.: 6.554 min
 Delta R.T.: 0.000 min
 Response: 135260
 Conc: 0.53 ng/ml



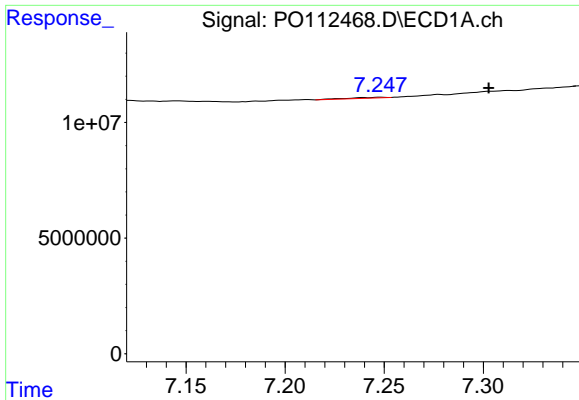
#34 AR-1260-4

R.T.: 7.095 min
 Delta R.T.: 0.036 min
 Response: 253803
 Conc: 0.56 ng/ml



#34 AR-1260-4

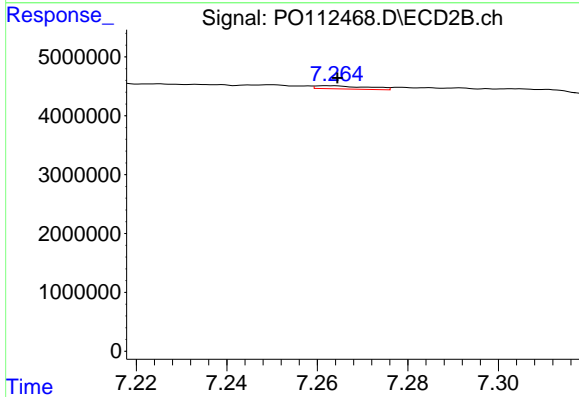
R.T.: 6.994 min
 Delta R.T.: -0.028 min
 Response: 164373
 Conc: 0.86 ng/ml



#35 AR-1260-5

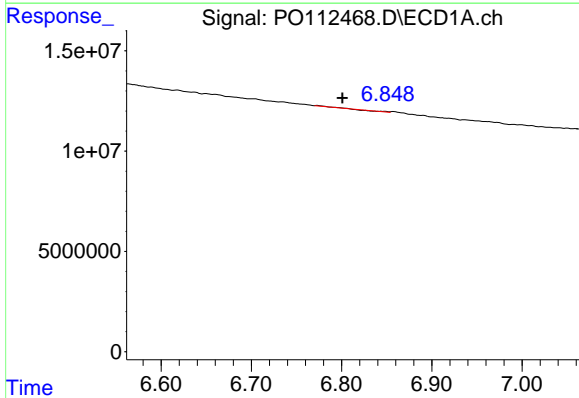
R.T.: 7.248 min
 Delta R.T.: -0.055 min
 Response: 385689
 Conc: 0.31 ng/ml

Instrument :
 ECD_O
 ClientSampleId :
 I.BLK



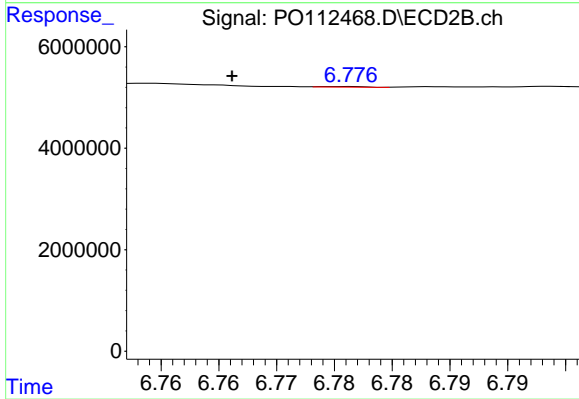
#35 AR-1260-5

R.T.: 7.262 min
 Delta R.T.: -0.002 min
 Response: 432409
 Conc: 1.05 ng/ml



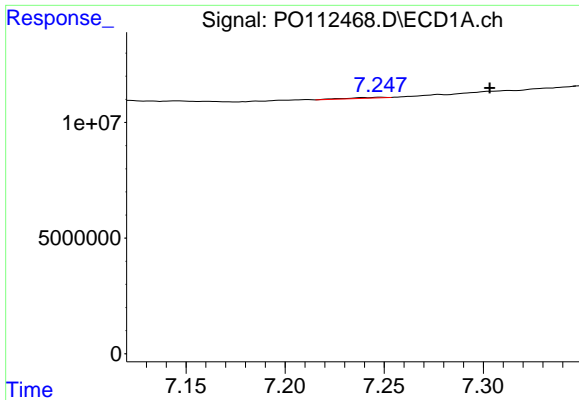
#36 AR-1262-1

R.T.: 6.773 min
 Delta R.T.: -0.028 min
 Response: 134015
 Conc: 0.14 ng/ml



#36 AR-1262-1

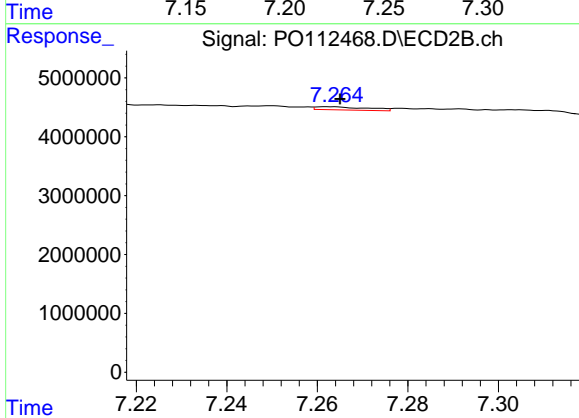
R.T.: 6.776 min
 Delta R.T.: 0.010 min
 Response: 28284
 Conc: 0.07 ng/ml



#37 AR-1262-2

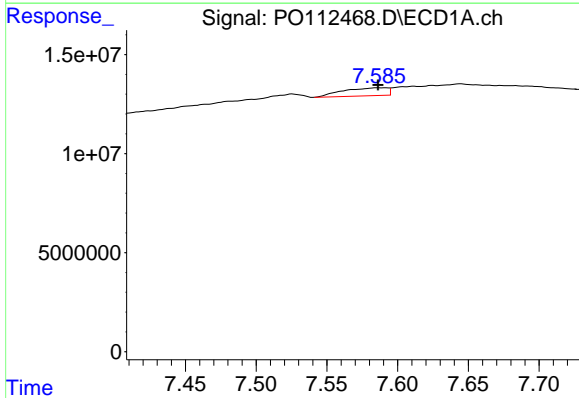
R.T.: 7.248 min
 Delta R.T.: -0.055 min
 Response: 385689
 Conc: 0.26 ng/ml

Instrument :
 ECD_O
 ClientSampleId :
 I.BLK



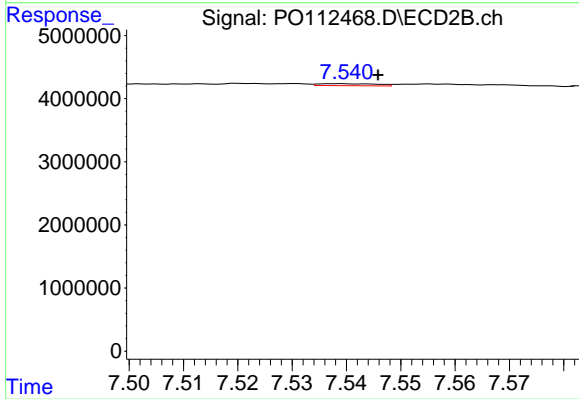
#37 AR-1262-2

R.T.: 7.262 min
 Delta R.T.: -0.003 min
 Response: 432409
 Conc: 0.84 ng/ml



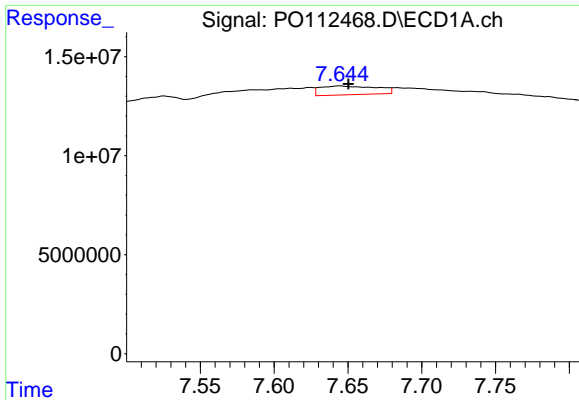
#38 AR-1262-3

R.T.: 7.586 min
 Delta R.T.: 0.000 min
 Response: 8734766
 Conc: 14.80 ng/ml



#38 AR-1262-3

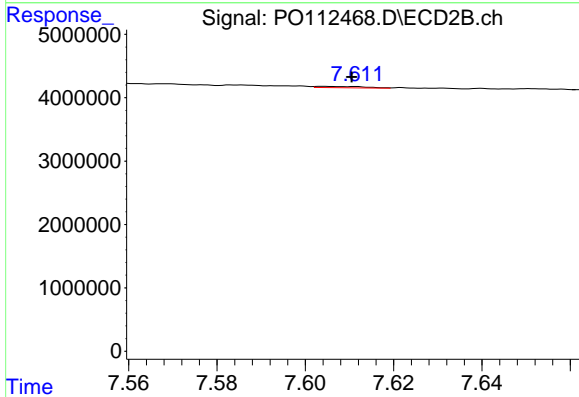
R.T.: 7.539 min
 Delta R.T.: -0.007 min
 Response: 238562
 Conc: 1.28 ng/ml



#39 AR-1262-4

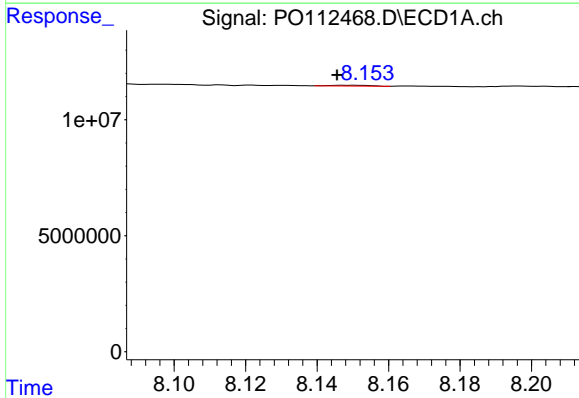
R.T.: 7.645 min
 Delta R.T.: -0.006 min
 Response: 11811727
 Conc: 11.88 ng/ml

Instrument :
 ECD_O
 ClientSampleId :
 I.BLK



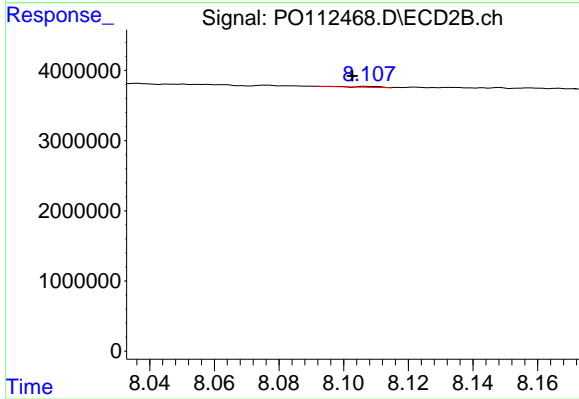
#39 AR-1262-4

R.T.: 7.604 min
 Delta R.T.: -0.006 min
 Response: 158513
 Conc: 0.55 ng/ml



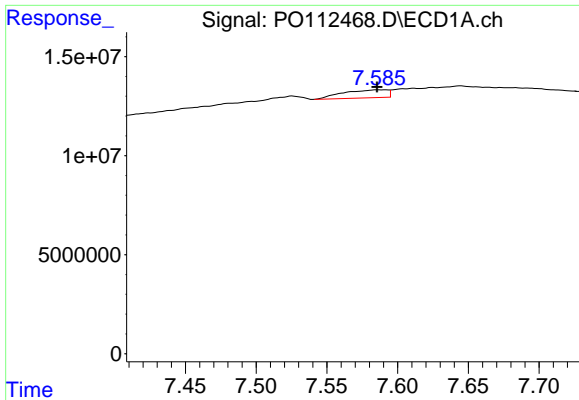
#40 AR-1262-5

R.T.: 8.149 min
 Delta R.T.: 0.003 min
 Response: 275579
 Conc: 0.63 ng/ml



#40 AR-1262-5

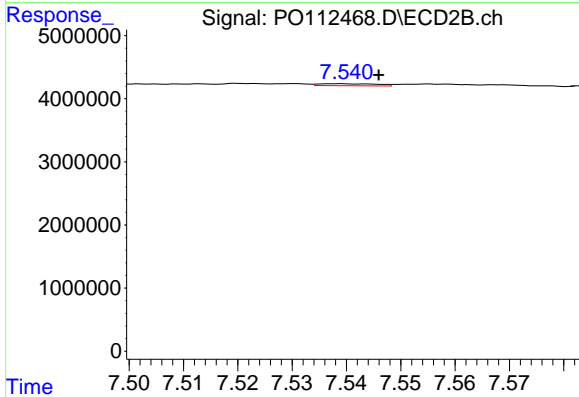
R.T.: 8.107 min
 Delta R.T.: 0.004 min
 Response: 69148
 Conc: 0.69 ng/ml



#41 AR-1268-1

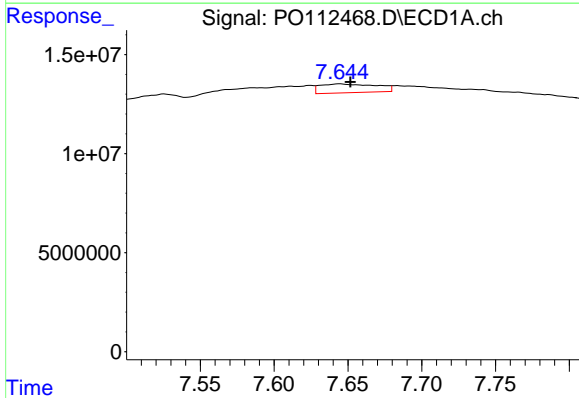
R.T.: 7.586 min
 Delta R.T.: 0.000 min
 Response: 8734766
 Conc: 4.99 ng/ml

Instrument :
 ECD_O
 ClientSampleId :
 I.BLK



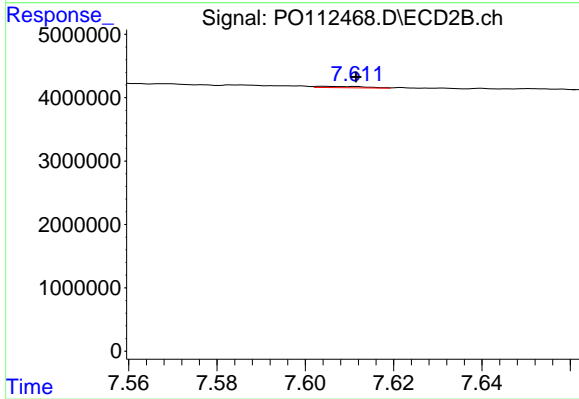
#41 AR-1268-1

R.T.: 7.539 min
 Delta R.T.: -0.007 min
 Response: 238562
 Conc: 0.46 ng/ml



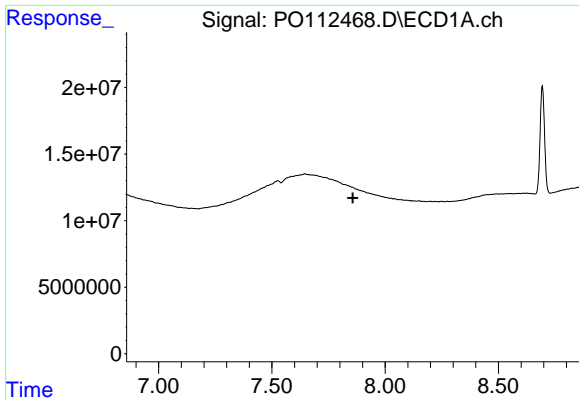
#42 AR-1268-2

R.T.: 7.645 min
 Delta R.T.: -0.007 min
 Response: 11811727
 Conc: 8.02 ng/ml



#42 AR-1268-2

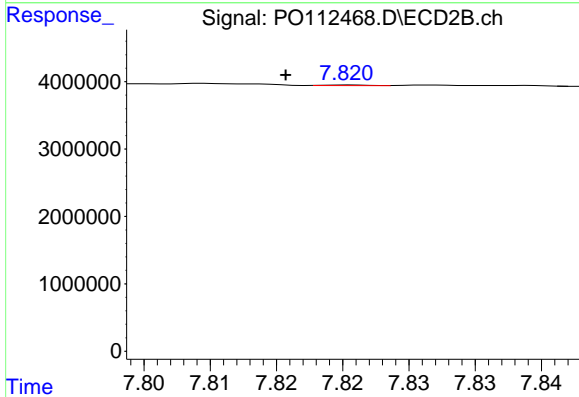
R.T.: 7.604 min
 Delta R.T.: -0.007 min
 Response: 158513
 Conc: 0.37 ng/ml



#43 AR-1268-3

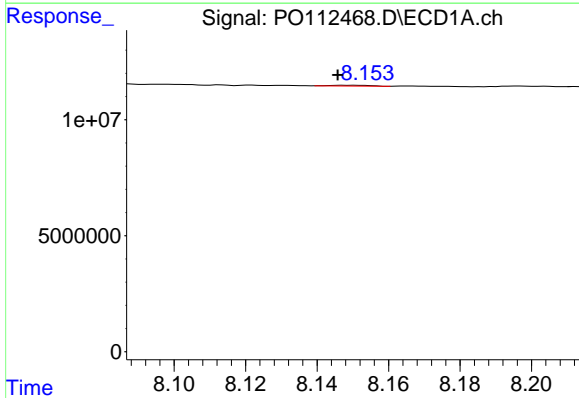
R.T.: 0.000 min
 Exp R.T.: 7.857 min
 Response: 0
 Conc: N.D.

Instrument :
 ECD_O
 ClientSampleId :
 I.BLK



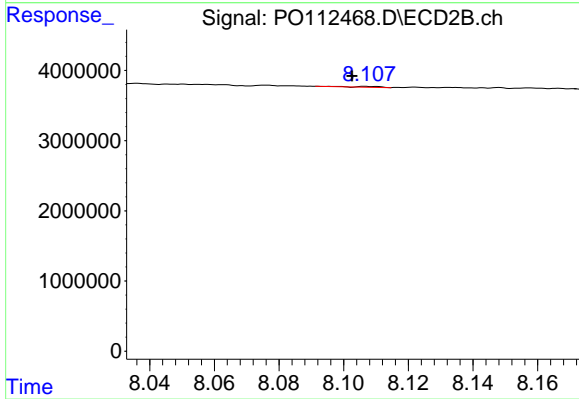
#43 AR-1268-3

R.T.: 7.820 min
 Delta R.T.: 0.005 min
 Response: 20903
 Conc: 0.07 ng/ml



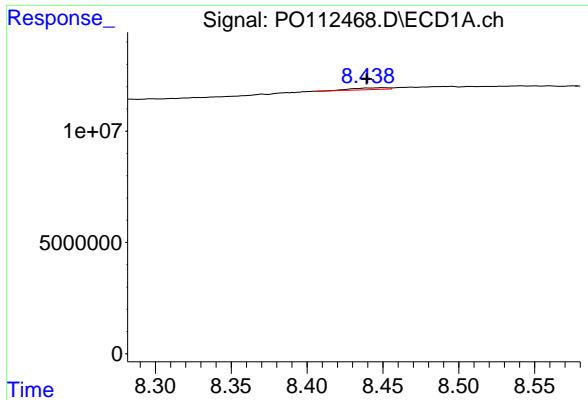
#44 AR-1268-4

R.T.: 8.149 min
 Delta R.T.: 0.003 min
 Response: 275579
 Conc: 0.57 ng/ml



#44 AR-1268-4

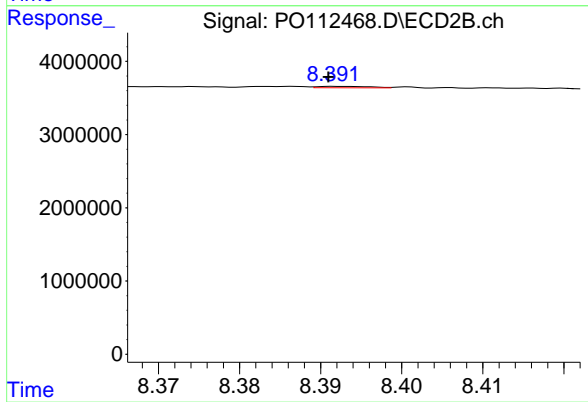
R.T.: 8.107 min
 Delta R.T.: 0.004 min
 Response: 69148
 Conc: 0.62 ng/ml



#45 AR-1268-5

R.T.: 8.450 min
 Delta R.T.: 0.011 min
 Response: 1285128
 Conc: 0.38 ng/ml

Instrument :
 ECD_O
 ClientSampleId :
 I.BLK



#45 AR-1268-5

R.T.: 8.392 min
 Delta R.T.: 0.001 min
 Response: 86058
 Conc: 0.12 ng/ml