

Data Path : Z:\pestpcbsrv\HPCHEM1\ECD_0\Data\P0072425\
 Data File : PO112469.D
 Signal(s) : Signal #1: ECD1A.ch Signal #2: ECD2B.ch
 Acq On : 24 Jul 2025 16:54
 Operator : YP/AJ
 Sample : PB168989BL
 Misc :
 ALS Vial : 17 Sample Multiplier: 1

Instrument :
 ECD_0
 ClientSampleId :
 PB168989BL

Integration File signal 1: autoint1.e
 Integration File signal 2: autoint2.e
 Quant Time: Jul 24 23:44:19 2025
 Quant Method : Z:\pestpcbsrv\HPCHEM1\ECD_0\methods\P0072325.M
 Quant Title : GC EXTRACTABLES
 QLast Update : Thu Jul 24 04:54:06 2025
 Response via : Initial Calibration
 Integrator: ChemStation

Volume Inj. : 2 µl
 Signal #1 Phase : ZB-MR2 Signal #2 Phase: ZB-MR2
 Signal #1 Info : 30Mx0.32mmx 0.50µ Signal #2 Info : 30M x 0.32mm x 0.25µm

Compound	RT#1	RT#2	Resp#1	Resp#2	ng/ml	ng/ml
System Monitoring Compounds						
1) SA Tetrachlo...	3.671	3.663	163.3E6	100.0E6	20.085	20.132
2) SA Decachlor...	8.695	8.640	109.7E6	32479222	15.004	18.380
Target Compounds						
3) L1 AR-1016-1	4.753	4.741	199972	169264	0.745	0.967 #
4) L1 AR-1016-2	4.773	4.757	322690	163431	0.795	0.627
5) L1 AR-1016-3	4.834	4.927	510739	44561	1.952	0.328 #
6) L1 AR-1016-4	4.970	4.970	749395	30736	3.538	0.277 #
7) L1 AR-1016-5	5.200	5.186	913375	183989	4.162	1.284 #
8) L2 AR-1221-1	0.000	3.879	0	162226	N.D.	2.412 #
9) L2 AR-1221-2	3.972	3.961	2371097	1640574	32.995	32.341
10) L2 AR-1221-3	0.000	4.039	0	160172	N.D.	1.010 #
11) L3 AR-1232-1	0.000	4.039	0	160172	N.D.	1.266 #
12) L3 AR-1232-2	4.534	4.757	2439395	163431	22.666	1.246 #
13) L3 AR-1232-3	4.773	4.927	322690	44561	1.560	0.663 #
14) L3 AR-1232-4	4.970	5.017	749395	277031	7.155	4.630 #
15) L3 AR-1232-5	4.980	5.186	228250	183989	3.363	2.822
16) L4 AR-1242-1	4.753	4.741	199972	169264	0.808	1.069 #
17) L4 AR-1242-2	4.773	4.757	322690	163431	0.873	0.699
18) L4 AR-1242-3	4.834	4.927	510739	44561	2.158	0.368 #
19) L4 AR-1242-4	4.970	5.017	749395	277031	3.857	2.257 #
20) L4 AR-1242-5	5.631	5.532	7889622	1342876	36.882	8.342 #
21) L5 AR-1248-1	4.753	4.741	199972	169264	1.068	1.393 #
22) L5 AR-1248-2	4.980	4.970	228250	30736	0.895	0.182 #
23) L5 AR-1248-3	5.200	5.017	913375	277031	2.657	1.559 #
24) L5 AR-1248-4	5.569	5.186	4691871	183989	9.235	0.883 #
25) L5 AR-1248-5	5.631	5.576	7889622	1882010	22.568	8.763 #
26) L6 AR-1254-1	5.569	5.532	4691871	1342876	8.547	4.086 #
27) L6 AR-1254-2	5.708	5.682	2152414	974594	4.430	3.367
28) L6 AR-1254-3	6.124	6.085	1009008	1560652	1.356	3.651 #
29) L6 AR-1254-4	6.343	6.315	2087789	499268	3.798	1.829 #
30) L6 AR-1254-5	6.827f	6.727	210402	130409	0.297	0.390 #
31) L7 AR-1260-1	6.254	6.213	1271338	1062103	2.894	4.274 #
32) L7 AR-1260-2	6.417	6.412	3008425	314489	4.373	0.954 #
33) L7 AR-1260-3	6.827	6.549	210402	-15685	0.358	N.D. #
35) L7 AR-1260-5	7.281	7.269	177685	23583	0.143	0.057 #
36) L8 AR-1262-1	6.827	6.766	210402	176803	0.226	0.426 #
37) L8 AR-1262-2	7.281	7.269	177685	23583	0.119	0.046 #
38) L8 AR-1262-3	7.652f	7.550	9994775	78641	16.933	0.422 #
39) L8 AR-1262-4	7.652	7.610	9994775	16555	10.053	0.057 #
40) L8 AR-1262-5	8.148	8.101	494814	45586	1.140	0.458 #
41) L9 AR-1268-1	7.652f	7.550	9994775	78641	5.708	0.152 #
42) L9 AR-1268-2	7.652	7.610	9994775	16555	6.785	0.039 #

Data Path : Z:\pestpcbsrv\HPCHEM1\ECD_0\Data\P0072425\
 Data File : PO112469.D
 Signal(s) : Signal #1: ECD1A.ch Signal #2: ECD2B.ch
 Acq On : 24 Jul 2025 16:54
 Operator : YP/AJ
 Sample : PB168989BL
 Misc :
 ALS Vial : 17 Sample Multiplier: 1

Instrument :
 ECD_0
ClientSampleId :
 PB168989BL

Integration File signal 1: autoint1.e
 Integration File signal 2: autoint2.e
 Quant Time: Jul 24 23:44:19 2025
 Quant Method : Z:\pestpcbsrv\HPCHEM1\ECD_0\methods\P0072325.M
 Quant Title : GC EXTRACTABLES
 QLast Update : Thu Jul 24 04:54:06 2025
 Response via : Initial Calibration
 Integrator: ChemStation

Volume Inj. : 2 µl
 Signal #1 Phase : ZB-MR1 Signal #2 Phase: ZB-MR2
 Signal #1 Info : 30Mx0.32mmx 0.50µ Signal #2 Info : 30M x 0.32mm x 0.25µm

	Compound	RT#1	RT#2	Resp#1	Resp#2	ng/ml	ng/ml
43)	L9 AR-1268-3	0.000	7.812	0	146326	N.D.	0.455 #
44)	L9 AR-1268-4	8.148	8.101	494814	45586	1.027	0.410 #
45)	L9 AR-1268-5	8.457	8.397	612212	192316	0.182	0.263 #

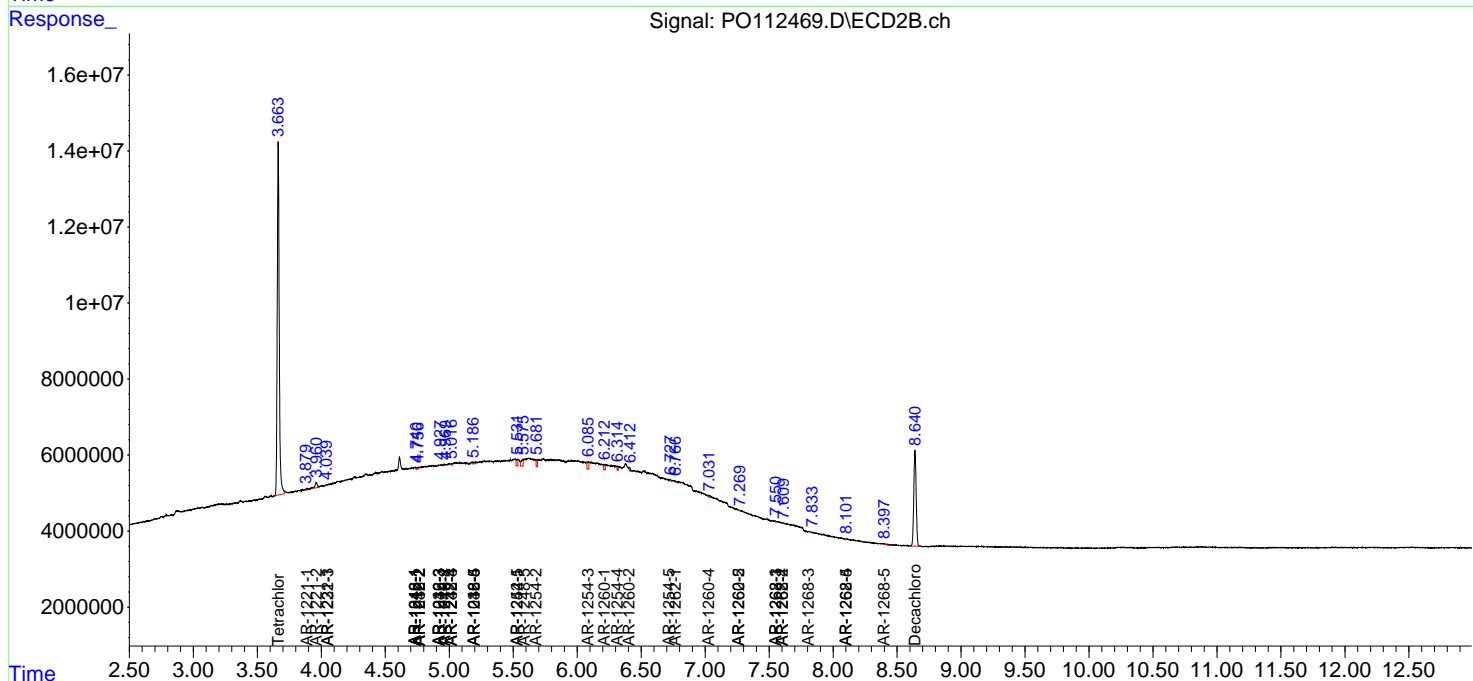
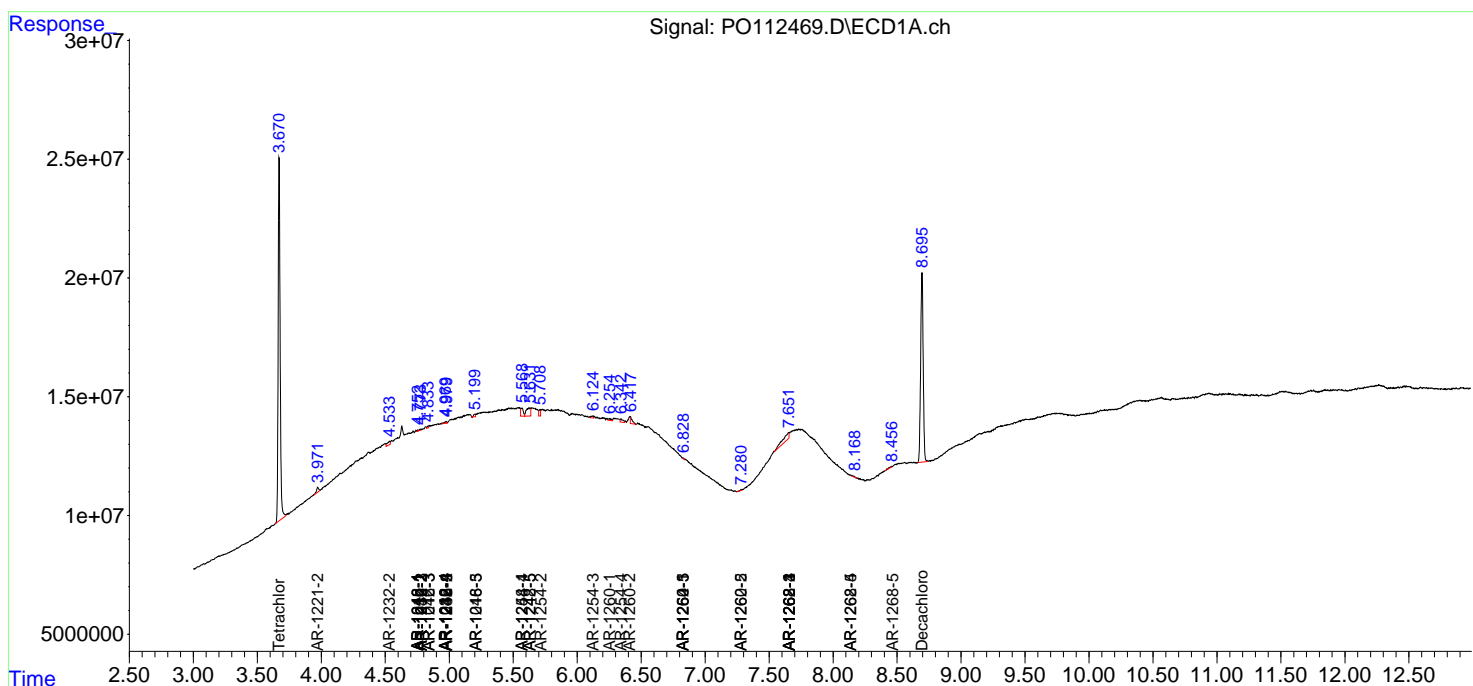
(f)=RT Delta > 1/2 Window (#)=Amounts differ by > 25% (m)=manual int.

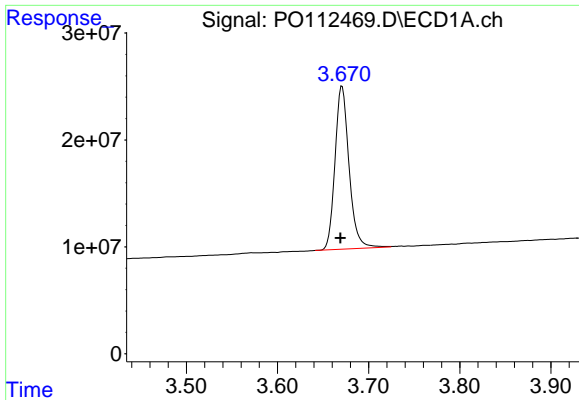
Data Path : Z:\pestpcbsrv\HPCHEM1\ECD_O\Data\PO072425\
 Data File : PO112469.D
 Signal(s) : Signal #1: ECD1A.ch Signal #2: ECD2B.ch
 Acq On : 24 Jul 2025 16:54
 Operator : YP/AJ
 Sample : PB168989BL
 Misc :
 ALS Vial : 17 Sample Multiplier: 1

Instrument :
 ECD_O
 ClientSampleId :
 PB168989BL

Integration File signal 1: autoint1.e
 Integration File signal 2: autoint2.e
 Quant Time: Jul 24 23:44:19 2025
 Quant Method : Z:\pestpcbsrv\HPCHEM1\ECD_O\methods\PO072325.M
 Quant Title : GC EXTRACTABLES
 QLast Update : Thu Jul 24 04:54:06 2025
 Response via : Initial Calibration
 Integrator: ChemStation

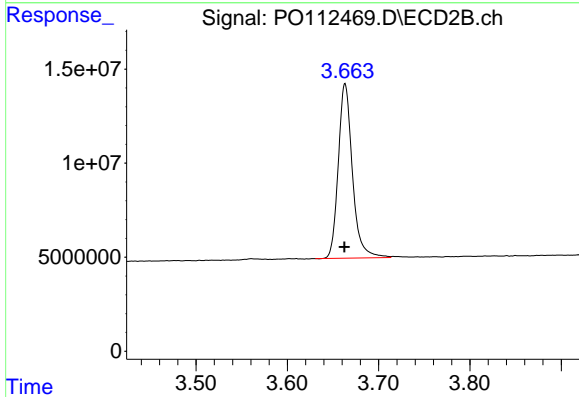
Volume Inj. : 2 µl
 Signal #1 Phase : ZB-MR1 Signal #2 Phase: ZB-MR2
 Signal #1 Info : 30Mx0.32mmx 0.50µ Signal #2 Info : 30M x 0.32mm x 0.25µm



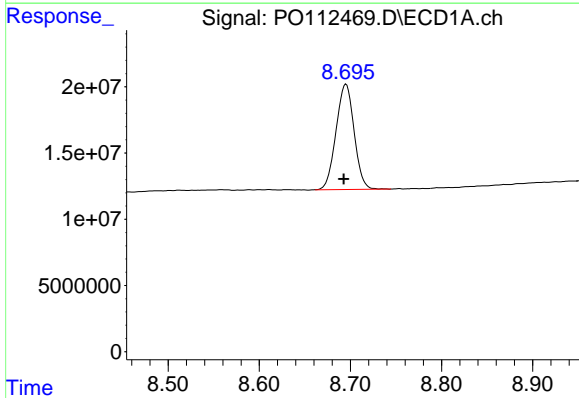


#1 Tetrachloro-m-xylene
 R.T.: 3.671 min
 Delta R.T.: 0.002 min
 Response: 163326025
 Conc: 20.09 ng/ml

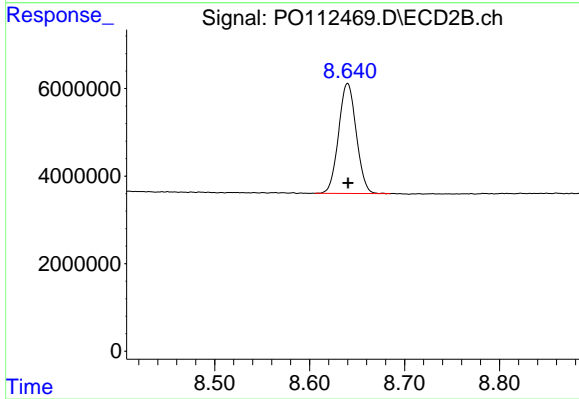
Instrument :
 ECD_O
 ClientSampleId :
 PB168989BL



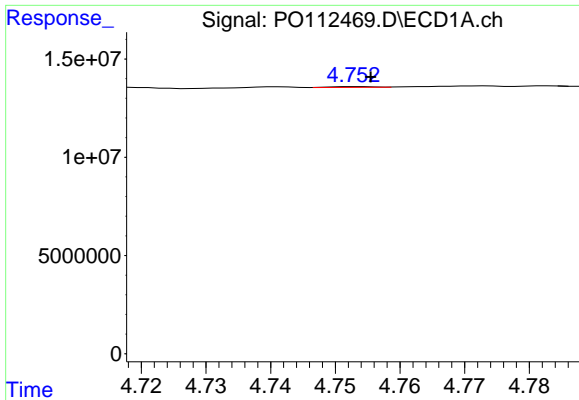
#1 Tetrachloro-m-xylene
 R.T.: 3.663 min
 Delta R.T.: 0.000 min
 Response: 100038404
 Conc: 20.13 ng/ml



#2 Decachlorobiphenyl
 R.T.: 8.695 min
 Delta R.T.: 0.002 min
 Response: 109705458
 Conc: 15.00 ng/ml



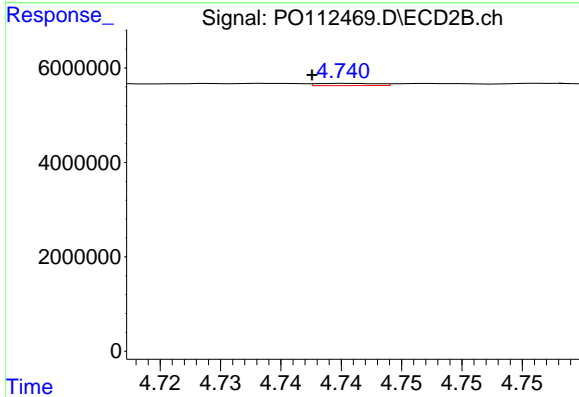
#2 Decachlorobiphenyl
 R.T.: 8.640 min
 Delta R.T.: 0.000 min
 Response: 32479222
 Conc: 18.38 ng/ml



#3 AR-1016-1

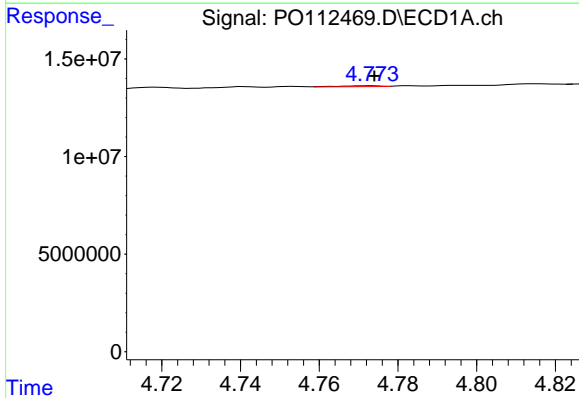
R.T.: 4.753 min
 Delta R.T.: -0.002 min
 Response: 199972
 Conc: 0.75 ng/ml

Instrument :
 ECD_O
 ClientSampleId :
 PB168989BL



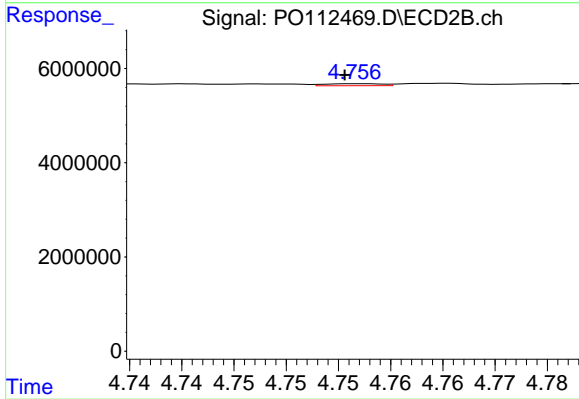
#3 AR-1016-1

R.T.: 4.741 min
 Delta R.T.: 0.003 min
 Response: 169264
 Conc: 0.97 ng/ml



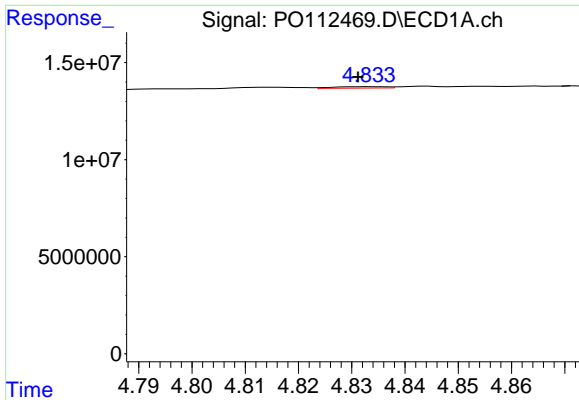
#4 AR-1016-2

R.T.: 4.773 min
 Delta R.T.: 0.000 min
 Response: 322690
 Conc: 0.79 ng/ml



#4 AR-1016-2

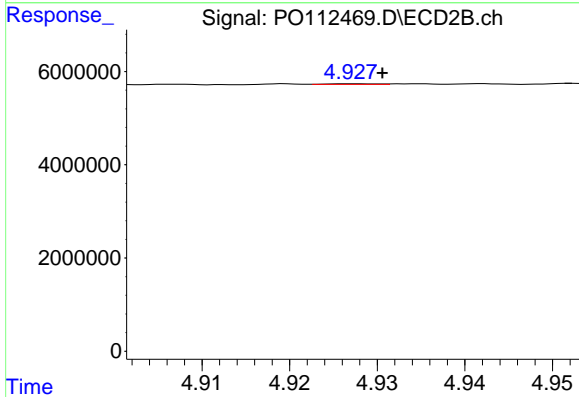
R.T.: 4.757 min
 Delta R.T.: 0.001 min
 Response: 163431
 Conc: 0.63 ng/ml



#5 AR-1016-3

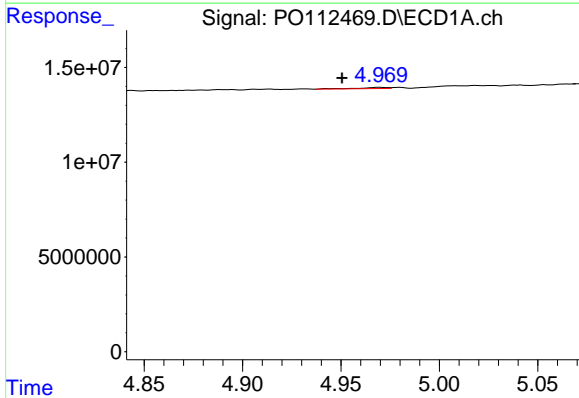
R.T.: 4.834 min
 Delta R.T.: 0.003 min
 Response: 510739
 Conc: 1.95 ng/ml

Instrument :
 ECD_O
 ClientSampleId :
 PB168989BL



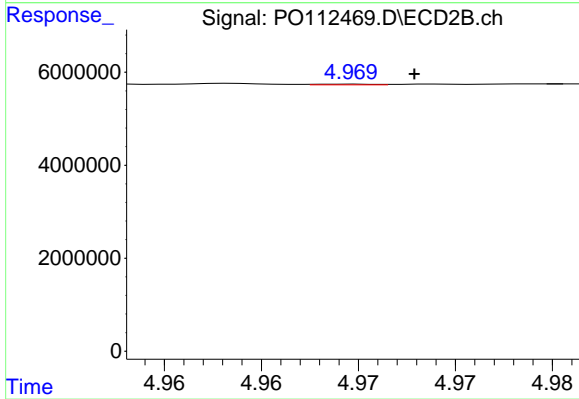
#5 AR-1016-3

R.T.: 4.927 min
 Delta R.T.: -0.003 min
 Response: 44561
 Conc: 0.33 ng/ml



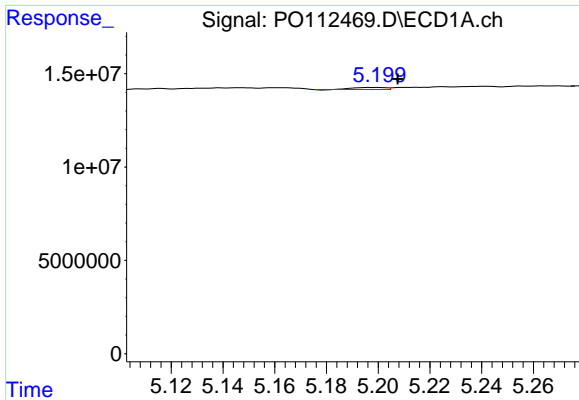
#6 AR-1016-4

R.T.: 4.970 min
 Delta R.T.: 0.019 min
 Response: 749395
 Conc: 3.54 ng/ml



#6 AR-1016-4

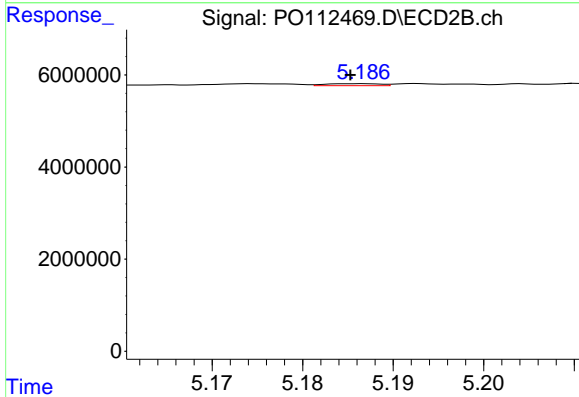
R.T.: 4.970 min
 Delta R.T.: -0.003 min
 Response: 30736
 Conc: 0.28 ng/ml



#7 AR-1016-5

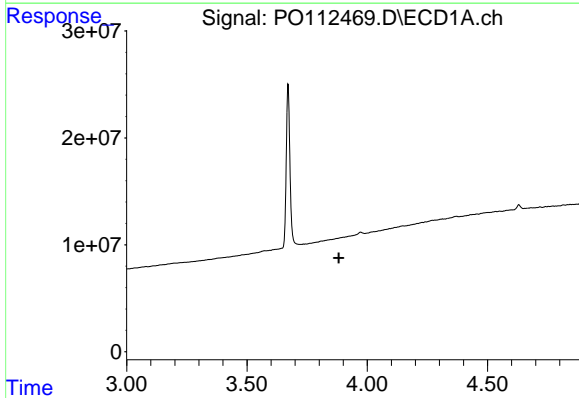
R.T.: 5.200 min
 Delta R.T.: -0.008 min
 Response: 913375
 Conc: 4.16 ng/ml

Instrument :
 ECD_O
 ClientSampleId :
 PB168989BL



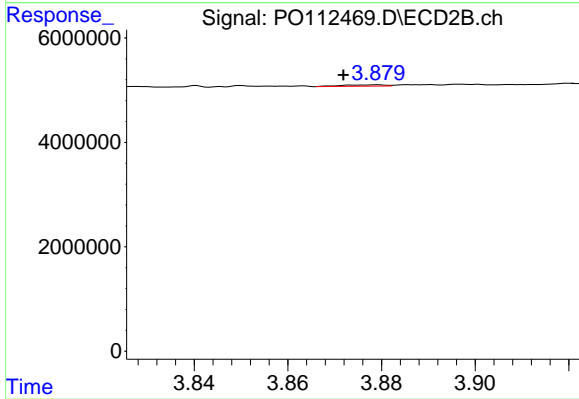
#7 AR-1016-5

R.T.: 5.186 min
 Delta R.T.: 0.000 min
 Response: 183989
 Conc: 1.28 ng/ml



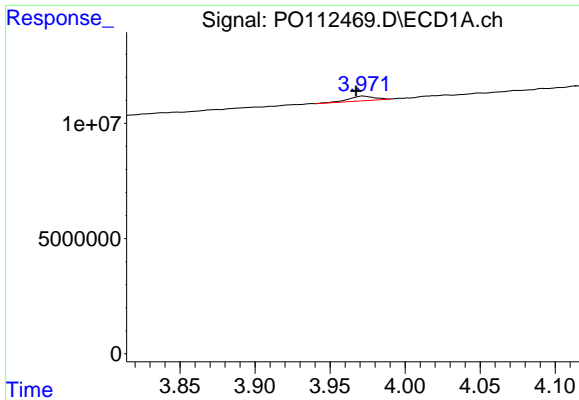
#8 AR-1221-1

R.T.: 0.000 min
 Exp R.T. : 3.882 min
 Response: 0
 Conc: N.D.



#8 AR-1221-1

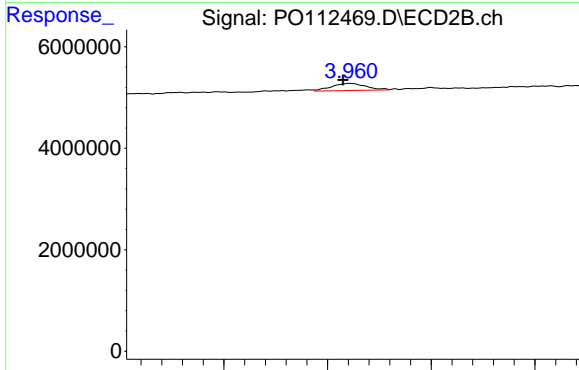
R.T.: 3.879 min
 Delta R.T.: 0.007 min
 Response: 162226
 Conc: 2.41 ng/ml



#9 AR-1221-2

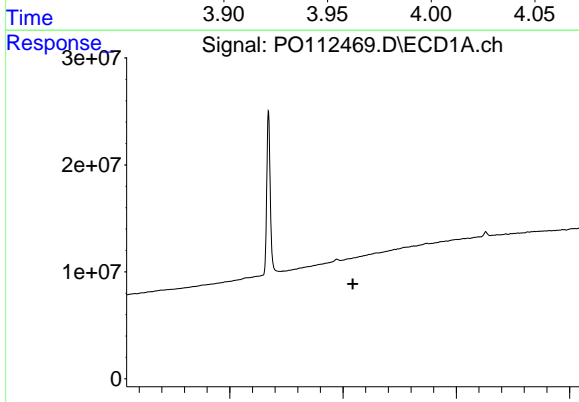
R.T.: 3.972 min
 Delta R.T.: 0.005 min
 Response: 2371097
 Conc: 33.00 ng/ml

Instrument :
 ECD_O
 ClientSampleId :
 PB168989BL



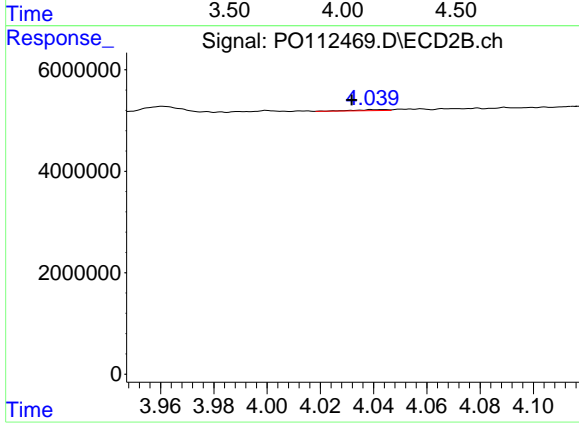
#9 AR-1221-2

R.T.: 3.961 min
 Delta R.T.: 0.003 min
 Response: 1640574
 Conc: 32.34 ng/ml



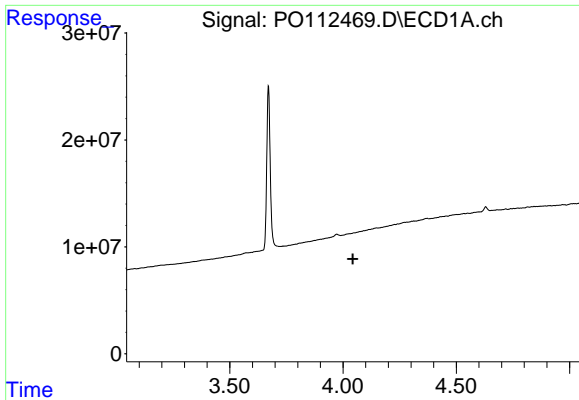
#10 AR-1221-3

R.T.: 0.000 min
 Exp R.T. : 4.044 min
 Response: 0
 Conc: N.D.



#10 AR-1221-3

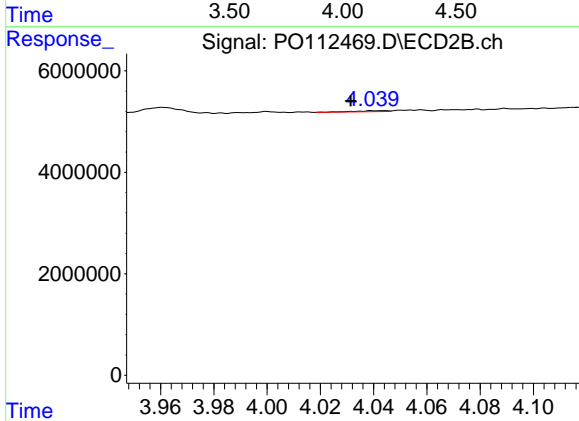
R.T.: 4.039 min
 Delta R.T.: 0.007 min
 Response: 160172
 Conc: 1.01 ng/ml



#11 AR-1232-1

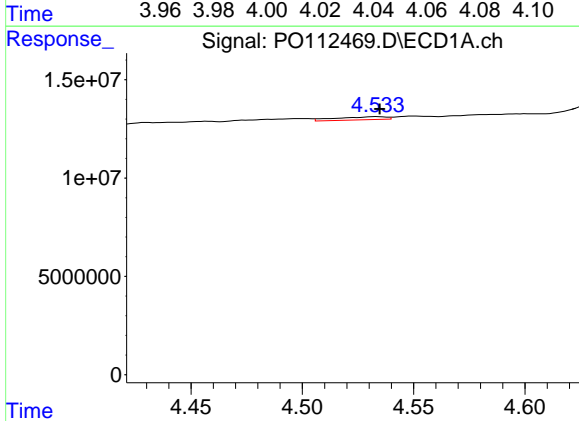
R.T.: 0.000 min
 Exp R.T.: 4.043 min
 Response: 0
 Conc: N.D.

Instrument :
 ECD_O
 ClientSampleId :
 PB168989BL



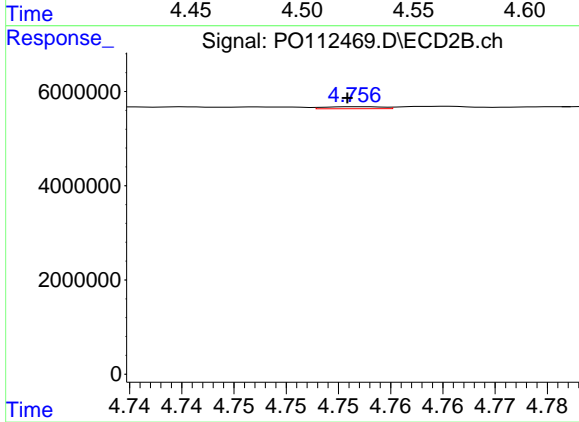
#11 AR-1232-1

R.T.: 4.039 min
 Delta R.T.: 0.008 min
 Response: 160172
 Conc: 1.27 ng/ml



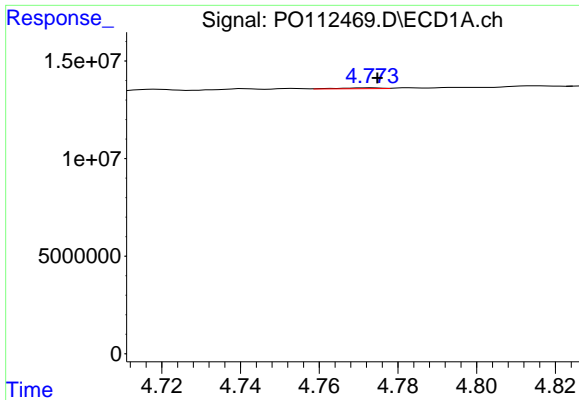
#12 AR-1232-2

R.T.: 4.534 min
 Delta R.T.: -0.001 min
 Response: 2439395
 Conc: 22.67 ng/ml



#12 AR-1232-2

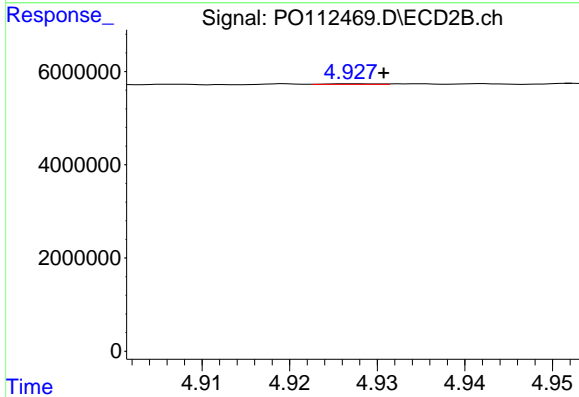
R.T.: 4.757 min
 Delta R.T.: 0.000 min
 Response: 163431
 Conc: 1.25 ng/ml



#13 AR-1232-3

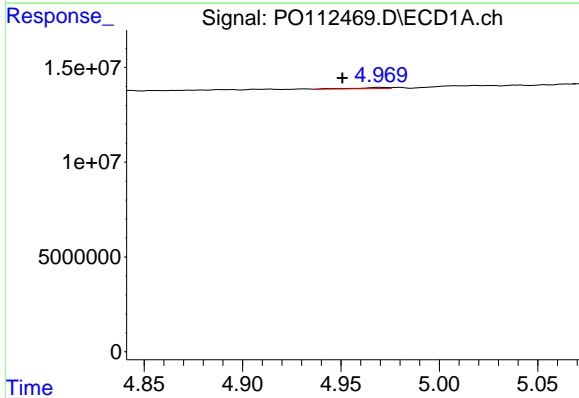
R.T.: 4.773 min
 Delta R.T.: -0.002 min
 Response: 322690
 Conc: 1.56 ng/ml

Instrument :
 ECD_O
 ClientSampleId :
 PB168989BL



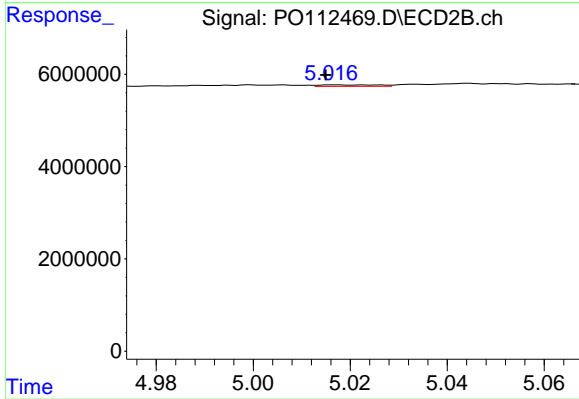
#13 AR-1232-3

R.T.: 4.927 min
 Delta R.T.: -0.003 min
 Response: 44561
 Conc: 0.66 ng/ml



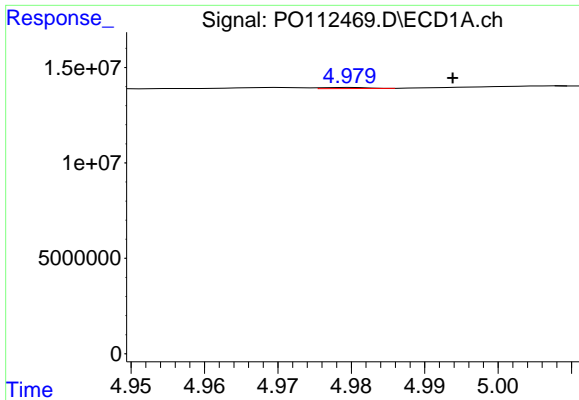
#14 AR-1232-4

R.T.: 4.970 min
 Delta R.T.: 0.019 min
 Response: 749395
 Conc: 7.15 ng/ml



#14 AR-1232-4

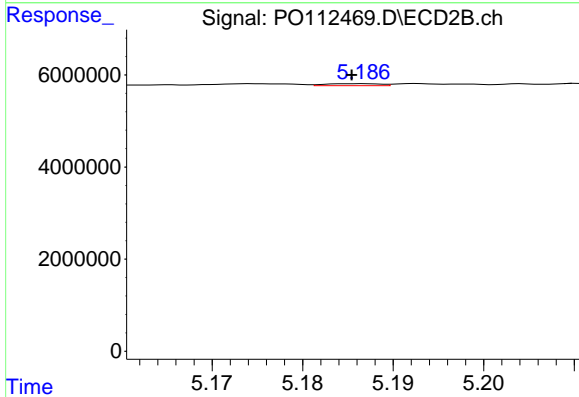
R.T.: 5.017 min
 Delta R.T.: 0.002 min
 Response: 277031
 Conc: 4.63 ng/ml



#15 AR-1232-5

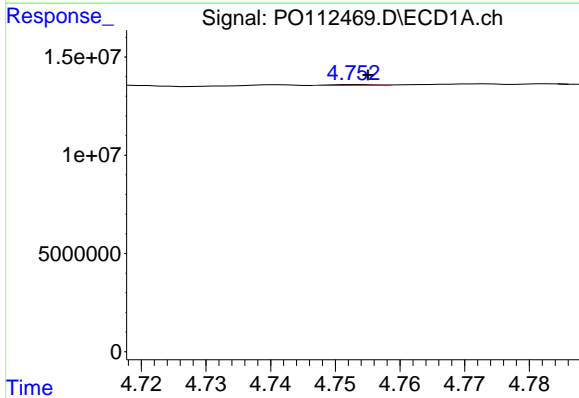
R.T.: 4.980 min
 Delta R.T.: -0.014 min
 Response: 228250
 Conc: 3.36 ng/ml

Instrument :
 ECD_O
 ClientSampleId :
 PB168989BL



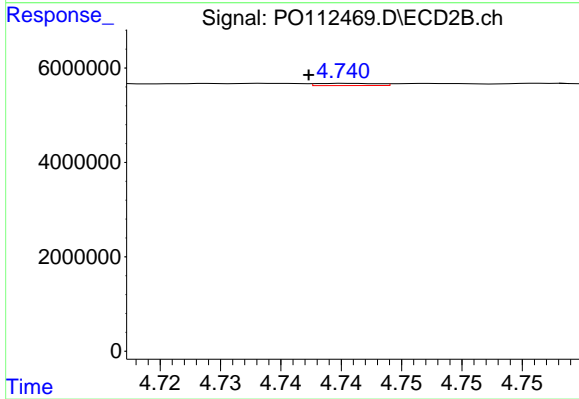
#15 AR-1232-5

R.T.: 5.186 min
 Delta R.T.: 0.000 min
 Response: 183989
 Conc: 2.82 ng/ml



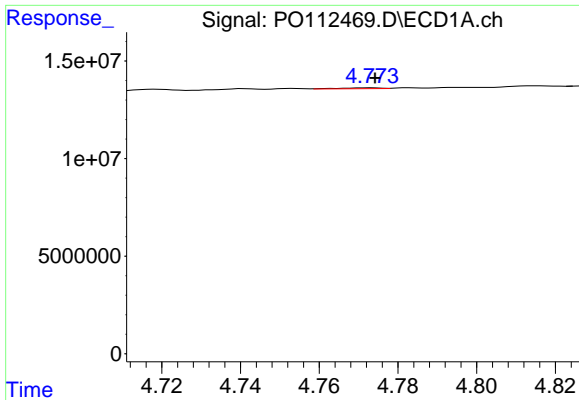
#16 AR-1242-1

R.T.: 4.753 min
 Delta R.T.: -0.002 min
 Response: 199972
 Conc: 0.81 ng/ml



#16 AR-1242-1

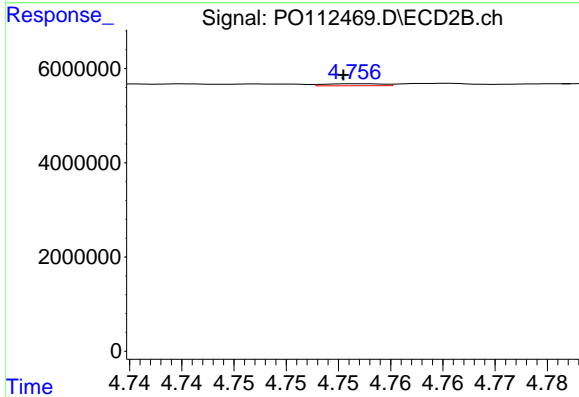
R.T.: 4.741 min
 Delta R.T.: 0.003 min
 Response: 169264
 Conc: 1.07 ng/ml



#17 AR-1242-2

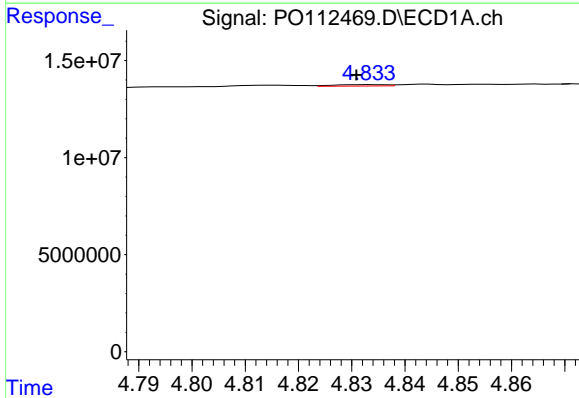
R.T.: 4.773 min
 Delta R.T.: -0.001 min
 Response: 322690
 Conc: 0.87 ng/ml

Instrument :
 ECD_O
 ClientSampleId :
 PB168989BL



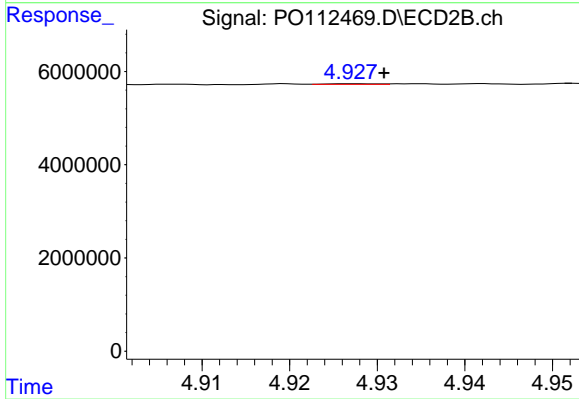
#17 AR-1242-2

R.T.: 4.757 min
 Delta R.T.: 0.001 min
 Response: 163431
 Conc: 0.70 ng/ml



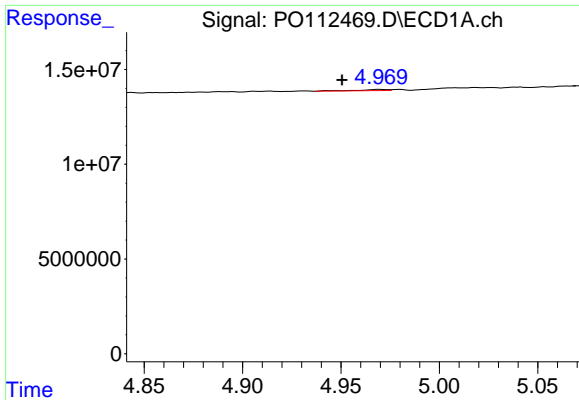
#18 AR-1242-3

R.T.: 4.834 min
 Delta R.T.: 0.003 min
 Response: 510739
 Conc: 2.16 ng/ml



#18 AR-1242-3

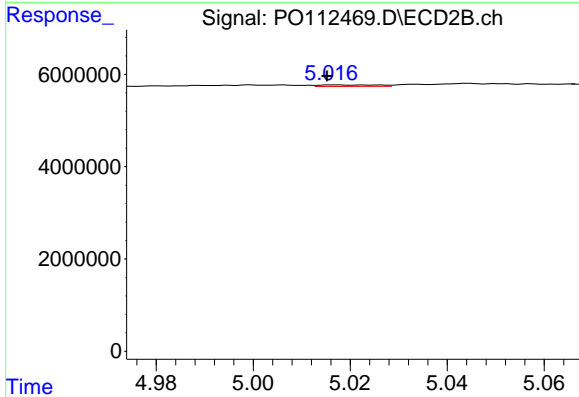
R.T.: 4.927 min
 Delta R.T.: -0.003 min
 Response: 44561
 Conc: 0.37 ng/ml



#19 AR-1242-4

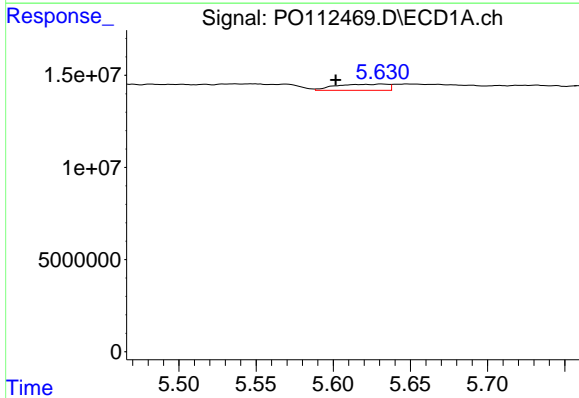
R.T.: 4.970 min
 Delta R.T.: 0.019 min
 Response: 749395
 Conc: 3.86 ng/ml

Instrument :
 ECD_O
 ClientSampleId :
 PB168989BL



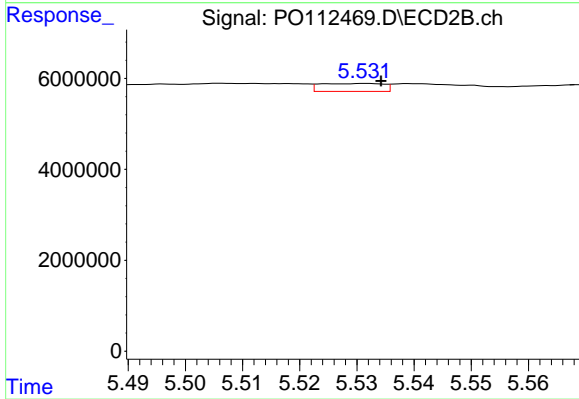
#19 AR-1242-4

R.T.: 5.017 min
 Delta R.T.: 0.001 min
 Response: 277031
 Conc: 2.26 ng/ml



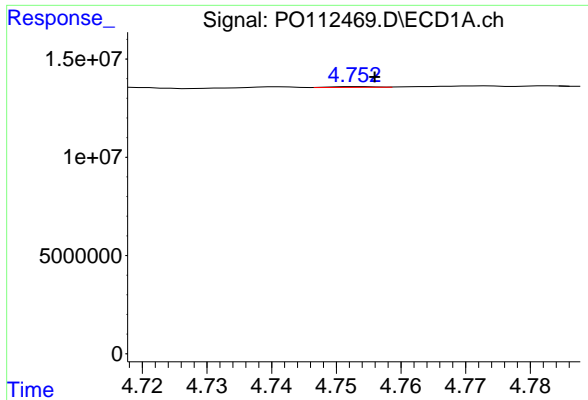
#20 AR-1242-5

R.T.: 5.631 min
 Delta R.T.: 0.030 min
 Response: 7889622
 Conc: 36.88 ng/ml



#20 AR-1242-5

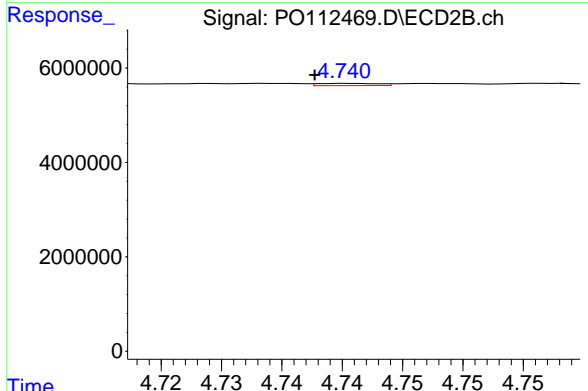
R.T.: 5.532 min
 Delta R.T.: -0.003 min
 Response: 1342876
 Conc: 8.34 ng/ml



#21 AR-1248-1

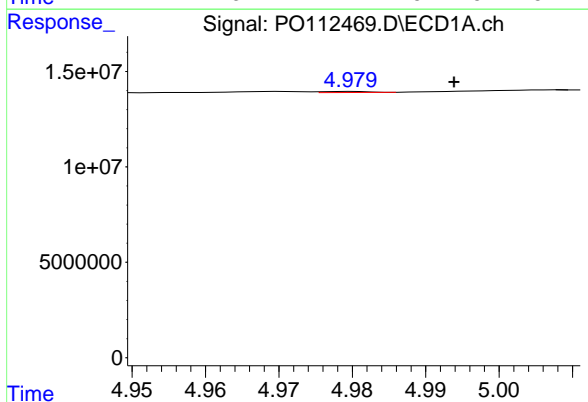
R.T.: 4.753 min
 Delta R.T.: -0.003 min
 Response: 199972
 Conc: 1.07 ng/ml

Instrument :
 ECD_O
 ClientSampleId :
 PB168989BL



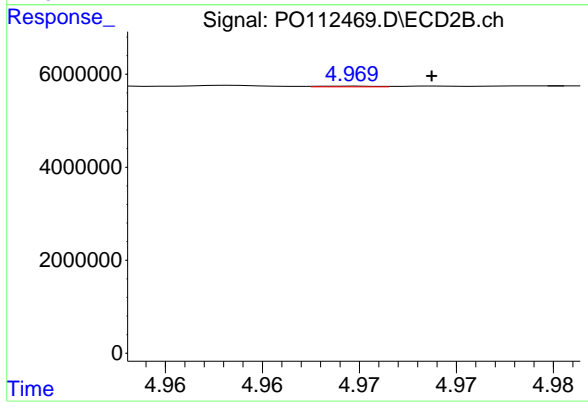
#21 AR-1248-1

R.T.: 4.741 min
 Delta R.T.: 0.003 min
 Response: 169264
 Conc: 1.39 ng/ml



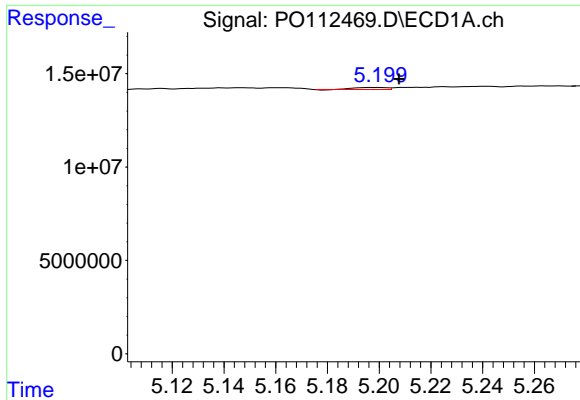
#22 AR-1248-2

R.T.: 4.980 min
 Delta R.T.: -0.014 min
 Response: 228250
 Conc: 0.89 ng/ml



#22 AR-1248-2

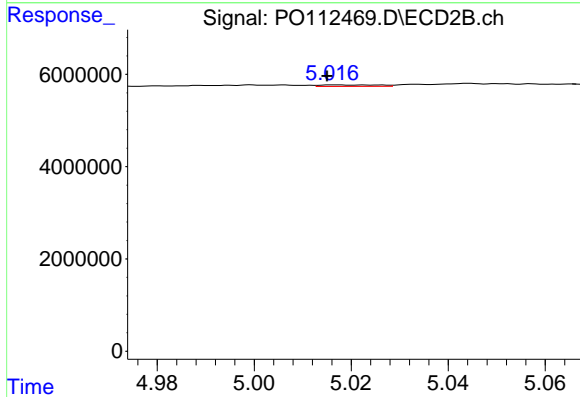
R.T.: 4.970 min
 Delta R.T.: -0.004 min
 Response: 30736
 Conc: 0.18 ng/ml



#23 AR-1248-3

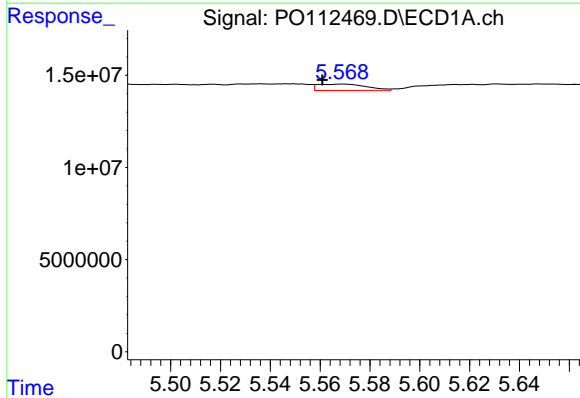
R.T.: 5.200 min
 Delta R.T.: -0.008 min
 Response: 913375
 Conc: 2.66 ng/ml

Instrument :
 ECD_O
 ClientSampleId :
 PB168989BL



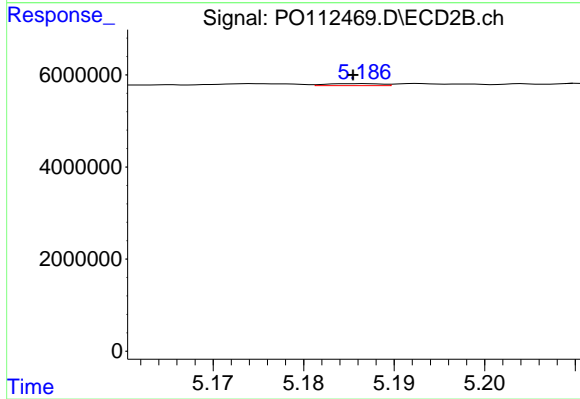
#23 AR-1248-3

R.T.: 5.017 min
 Delta R.T.: 0.002 min
 Response: 277031
 Conc: 1.56 ng/ml



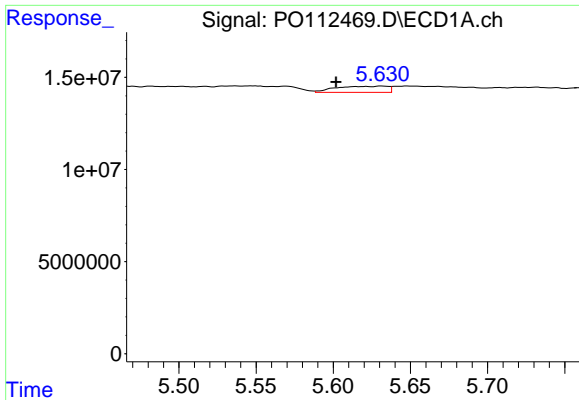
#24 AR-1248-4

R.T.: 5.569 min
 Delta R.T.: 0.008 min
 Response: 4691871
 Conc: 9.23 ng/ml



#24 AR-1248-4

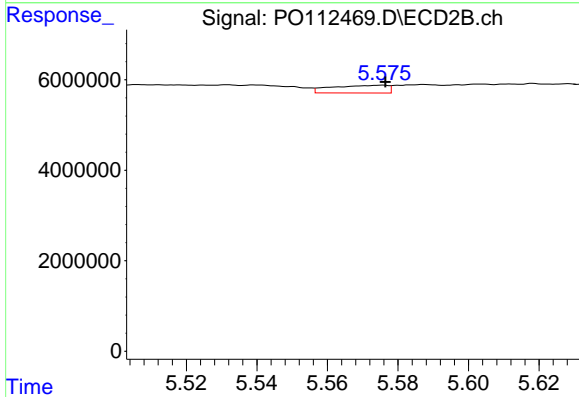
R.T.: 5.186 min
 Delta R.T.: 0.000 min
 Response: 183989
 Conc: 0.88 ng/ml



#25 AR-1248-5

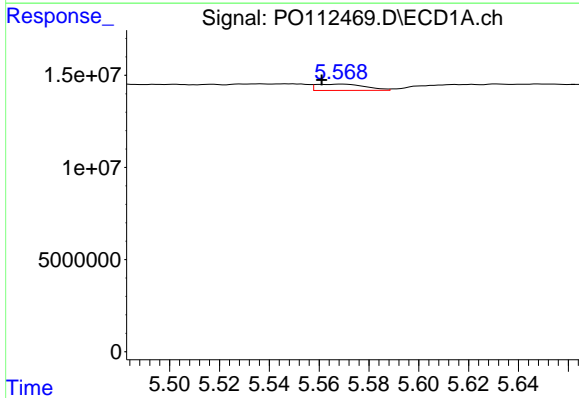
R.T.: 5.631 min
 Delta R.T.: 0.029 min
 Response: 7889622
 Conc: 22.57 ng/ml

Instrument :
 ECD_O
 ClientSampleId :
 PB168989BL



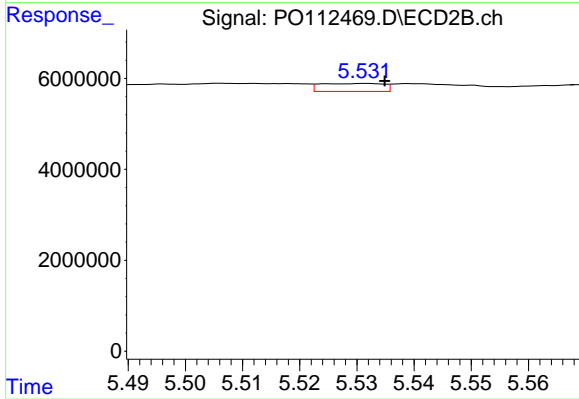
#25 AR-1248-5

R.T.: 5.576 min
 Delta R.T.: 0.000 min
 Response: 1882010
 Conc: 8.76 ng/ml



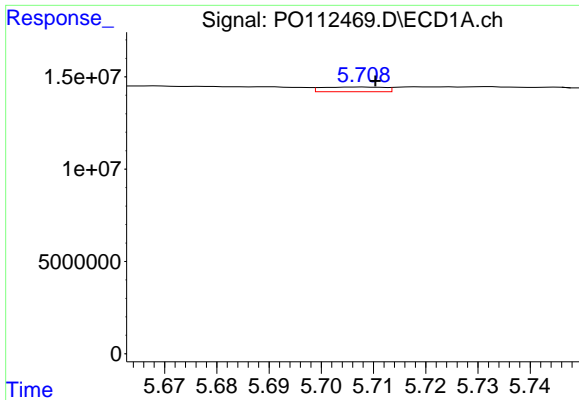
#26 AR-1254-1

R.T.: 5.569 min
 Delta R.T.: 0.008 min
 Response: 4691871
 Conc: 8.55 ng/ml



#26 AR-1254-1

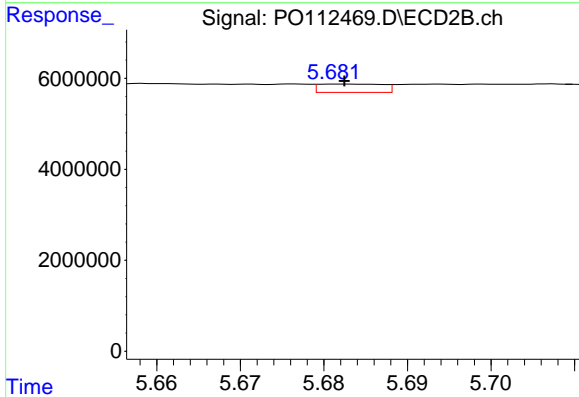
R.T.: 5.532 min
 Delta R.T.: -0.003 min
 Response: 1342876
 Conc: 4.09 ng/ml



#27 AR-1254-2

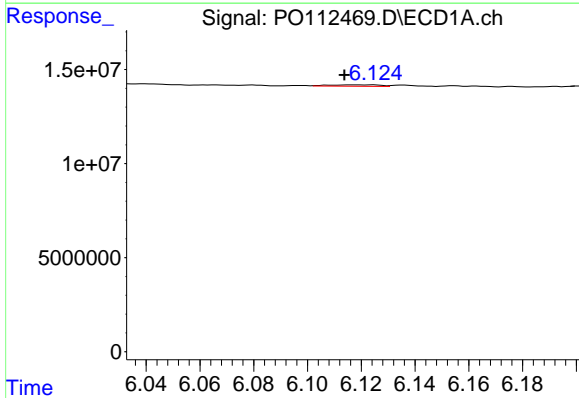
R.T.: 5.708 min
 Delta R.T.: -0.002 min
 Response: 2152414
 Conc: 4.43 ng/ml

Instrument :
 ECD_O
 ClientSampleId :
 PB168989BL



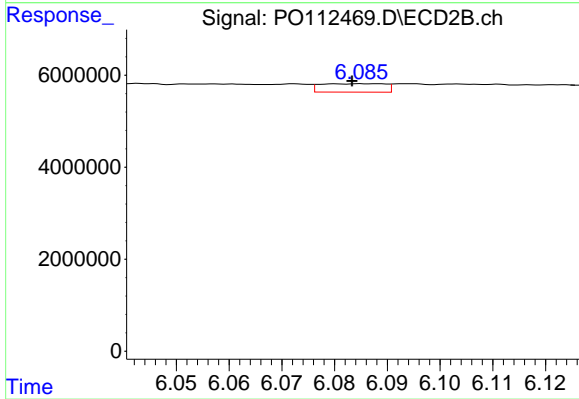
#27 AR-1254-2

R.T.: 5.682 min
 Delta R.T.: 0.000 min
 Response: 974594
 Conc: 3.37 ng/ml



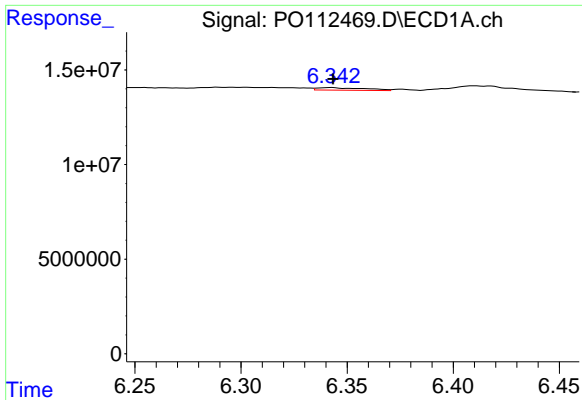
#28 AR-1254-3

R.T.: 6.124 min
 Delta R.T.: 0.011 min
 Response: 1009008
 Conc: 1.36 ng/ml



#28 AR-1254-3

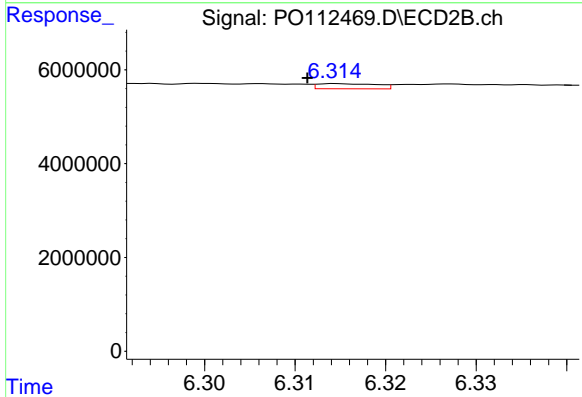
R.T.: 6.085 min
 Delta R.T.: 0.002 min
 Response: 1560652
 Conc: 3.65 ng/ml



#29 AR-1254-4

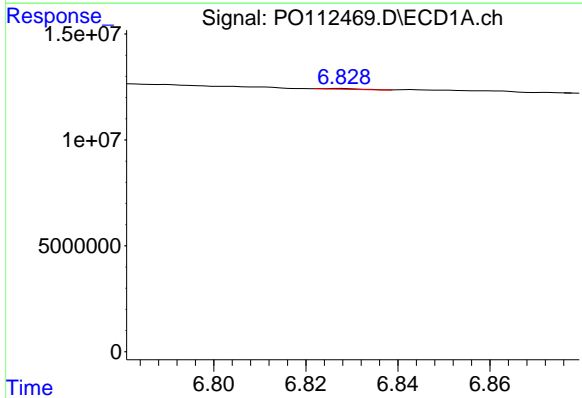
R.T.: 6.343 min
 Delta R.T.: 0.000 min
 Response: 2087789
 Conc: 3.80 ng/ml

Instrument :
 ECD_O
 ClientSampleId :
 PB168989BL



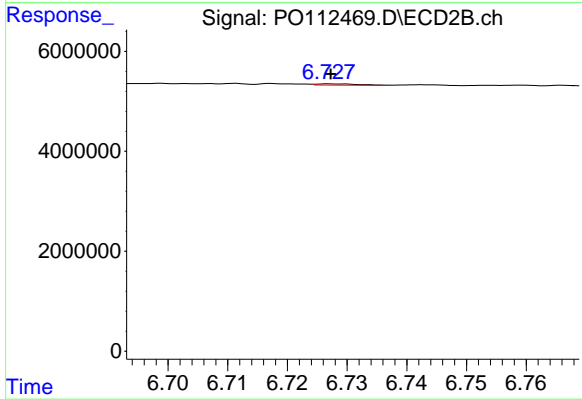
#29 AR-1254-4

R.T.: 6.315 min
 Delta R.T.: 0.003 min
 Response: 499268
 Conc: 1.83 ng/ml



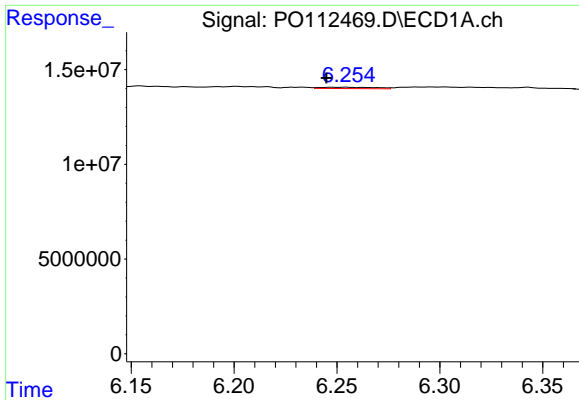
#30 AR-1254-5

R.T.: 6.827 min
 Delta R.T.: 0.065 min
 Response: 210402
 Conc: 0.30 ng/ml



#30 AR-1254-5

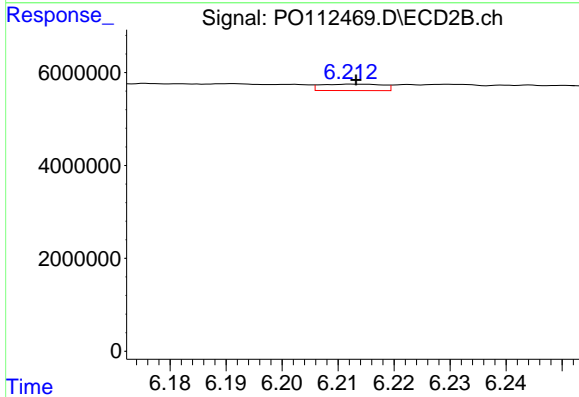
R.T.: 6.727 min
 Delta R.T.: 0.000 min
 Response: 130409
 Conc: 0.39 ng/ml



#31 AR-1260-1

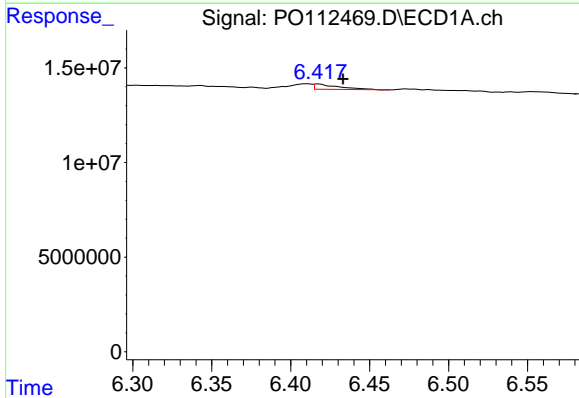
R.T.: 6.254 min
 Delta R.T.: 0.010 min
 Response: 1271338
 Conc: 2.89 ng/ml

Instrument :
 ECD_O
 ClientSampleId :
 PB168989BL



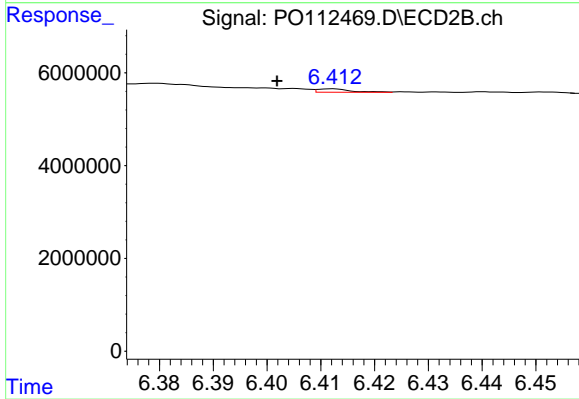
#31 AR-1260-1

R.T.: 6.213 min
 Delta R.T.: 0.000 min
 Response: 1062103
 Conc: 4.27 ng/ml



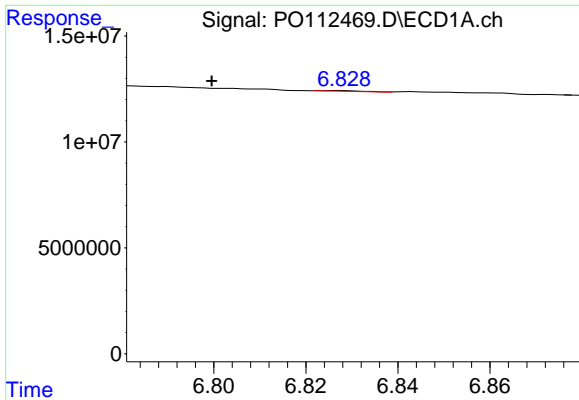
#32 AR-1260-2

R.T.: 6.417 min
 Delta R.T.: -0.016 min
 Response: 3008425
 Conc: 4.37 ng/ml



#32 AR-1260-2

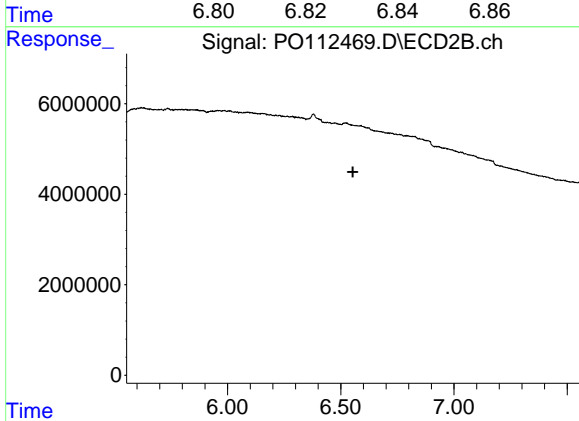
R.T.: 6.412 min
 Delta R.T.: 0.010 min
 Response: 314489
 Conc: 0.95 ng/ml



#33 AR-1260-3

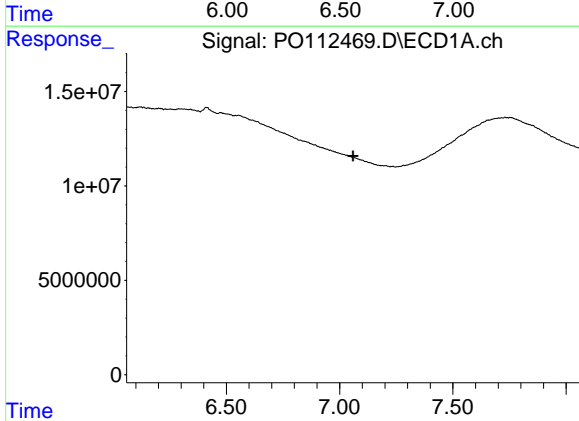
R.T.: 6.827 min
 Delta R.T.: 0.028 min
 Response: 210402
 Conc: 0.36 ng/ml

Instrument :
 ECD_O
 ClientSampleId :
 PB168989BL



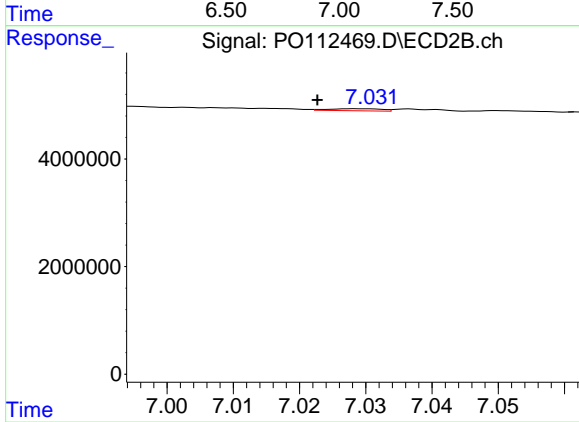
#33 AR-1260-3

R.T.: 6.549 min
 Delta R.T.: -0.005 min
 Response: -15685
 Conc: N.D.



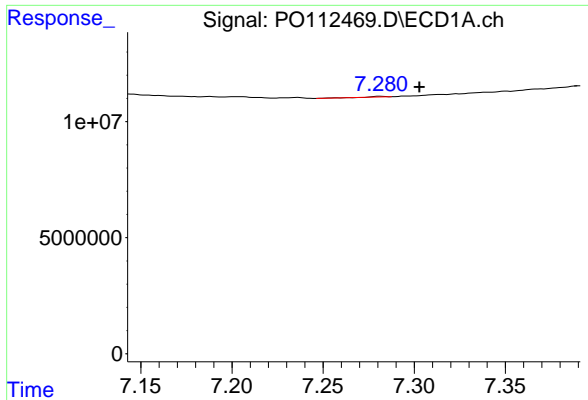
#34 AR-1260-4

R.T.: 7.033 min
 Delta R.T.: -0.026 min
 Response: -777502
 Conc: N.D.



#34 AR-1260-4

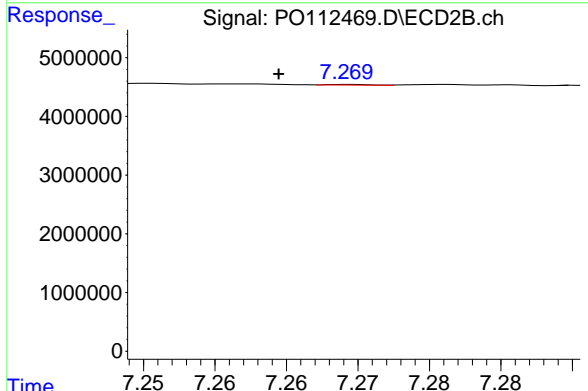
R.T.: 7.028 min
 Delta R.T.: 0.006 min
 Response: 214680
 Conc: 1.12 ng/ml



#35 AR-1260-5

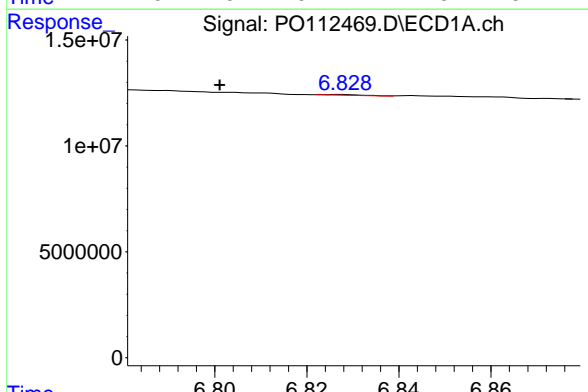
R.T.: 7.281 min
 Delta R.T.: -0.021 min
 Response: 177685
 Conc: 0.14 ng/ml

Instrument :
 ECD_O
 ClientSampleId :
 PB168989BL



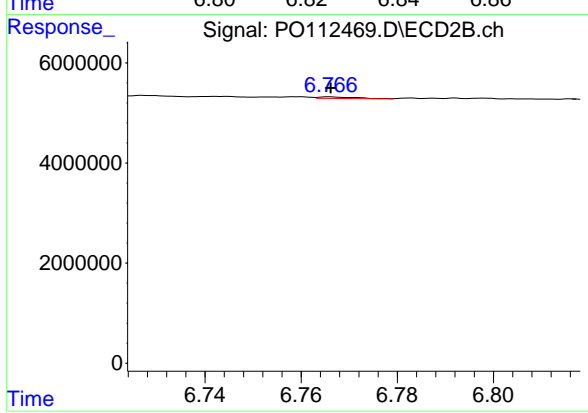
#35 AR-1260-5

R.T.: 7.269 min
 Delta R.T.: 0.005 min
 Response: 23583
 Conc: 0.06 ng/ml



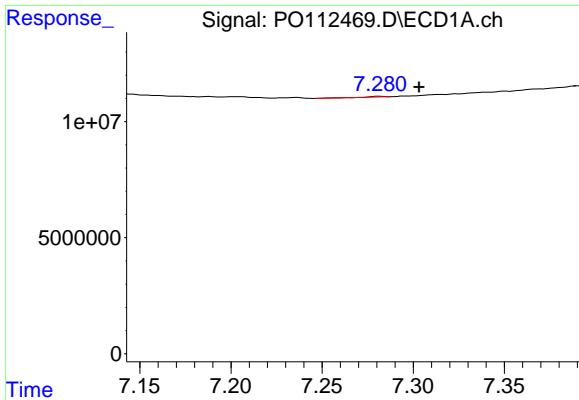
#36 AR-1262-1

R.T.: 6.827 min
 Delta R.T.: 0.026 min
 Response: 210402
 Conc: 0.23 ng/ml



#36 AR-1262-1

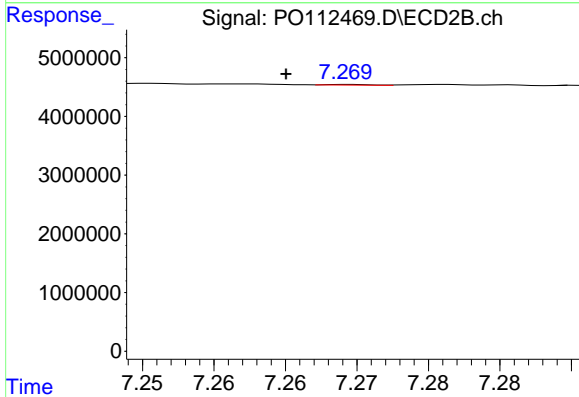
R.T.: 6.766 min
 Delta R.T.: 0.000 min
 Response: 176803
 Conc: 0.43 ng/ml



#37 AR-1262-2

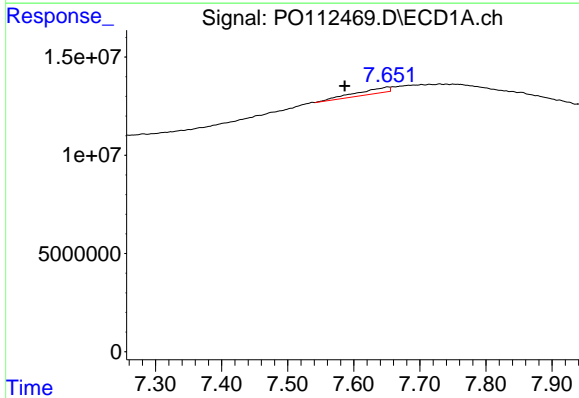
R.T.: 7.281 min
 Delta R.T.: -0.022 min
 Response: 177685
 Conc: 0.12 ng/ml

Instrument :
 ECD_O
 ClientSampleId :
 PB168989BL



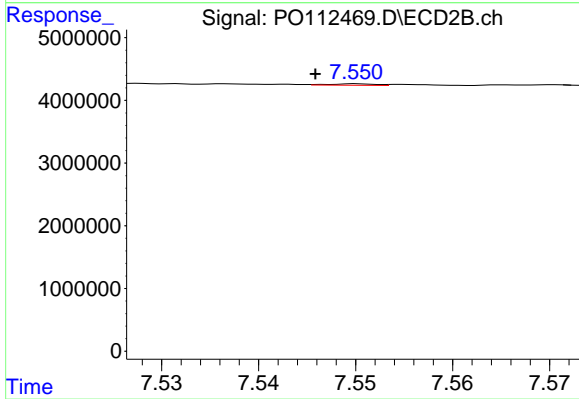
#37 AR-1262-2

R.T.: 7.269 min
 Delta R.T.: 0.004 min
 Response: 23583
 Conc: 0.05 ng/ml



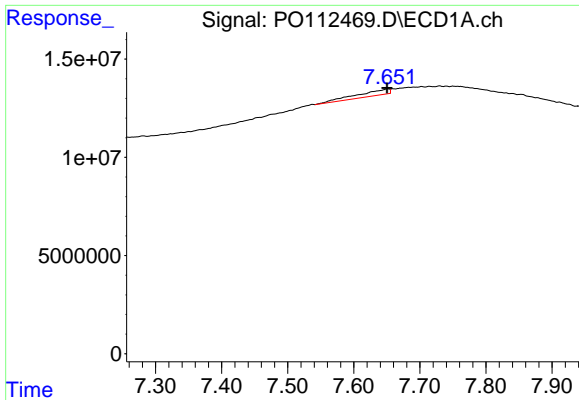
#38 AR-1262-3

R.T.: 7.652 min
 Delta R.T.: 0.065 min
 Response: 9994775
 Conc: 16.93 ng/ml



#38 AR-1262-3

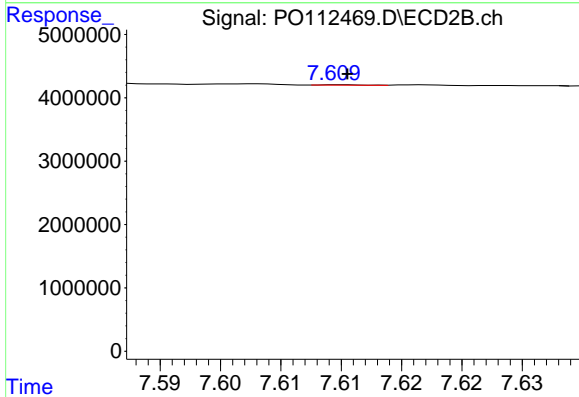
R.T.: 7.550 min
 Delta R.T.: 0.004 min
 Response: 78641
 Conc: 0.42 ng/ml



#39 AR-1262-4

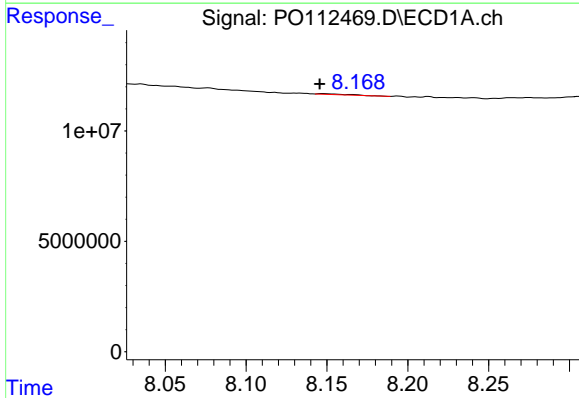
R.T.: 7.652 min
 Delta R.T.: 0.001 min
 Response: 9994775
 Conc: 10.05 ng/ml

Instrument :
 ECD_O
 ClientSampleId :
 PB168989BL



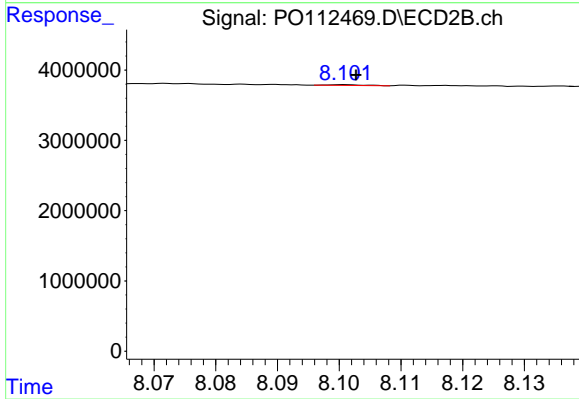
#39 AR-1262-4

R.T.: 7.610 min
 Delta R.T.: 0.000 min
 Response: 16555
 Conc: 0.06 ng/ml



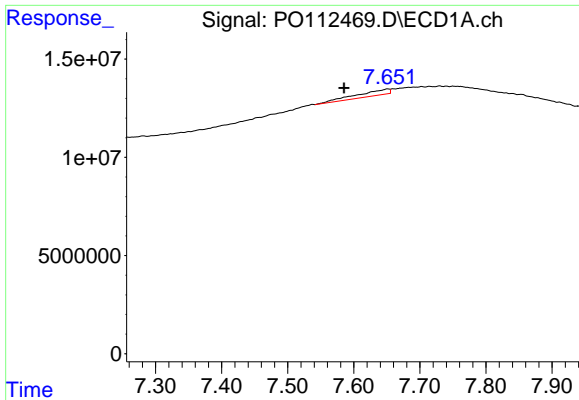
#40 AR-1262-5

R.T.: 8.148 min
 Delta R.T.: 0.002 min
 Response: 494814
 Conc: 1.14 ng/ml



#40 AR-1262-5

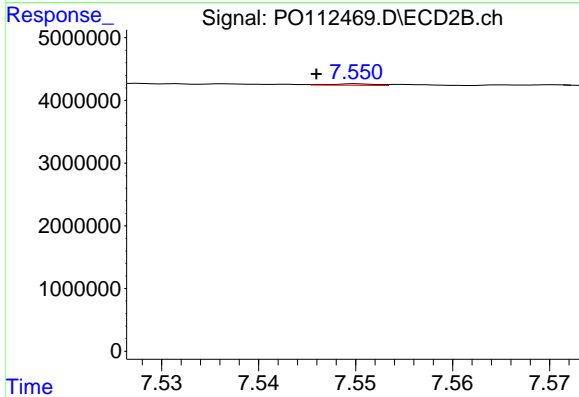
R.T.: 8.101 min
 Delta R.T.: -0.002 min
 Response: 45586
 Conc: 0.46 ng/ml



#41 AR-1268-1

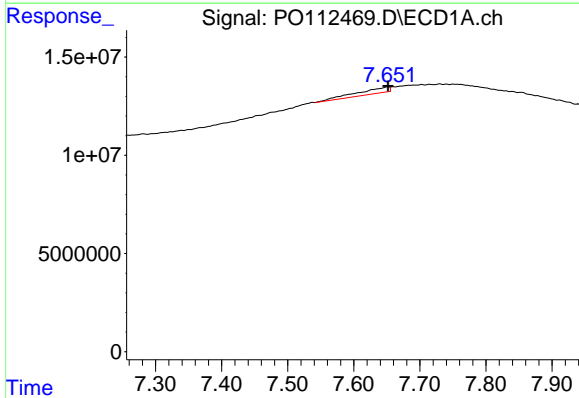
R.T.: 7.652 min
 Delta R.T.: 0.066 min
 Response: 9994775
 Conc: 5.71 ng/ml

Instrument :
 ECD_O
 ClientSampleId :
 PB168989BL



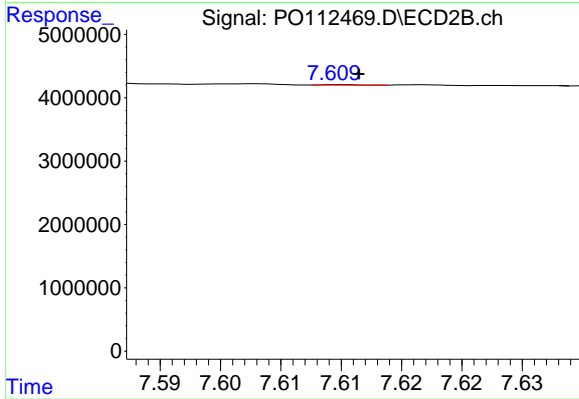
#41 AR-1268-1

R.T.: 7.550 min
 Delta R.T.: 0.004 min
 Response: 78641
 Conc: 0.15 ng/ml



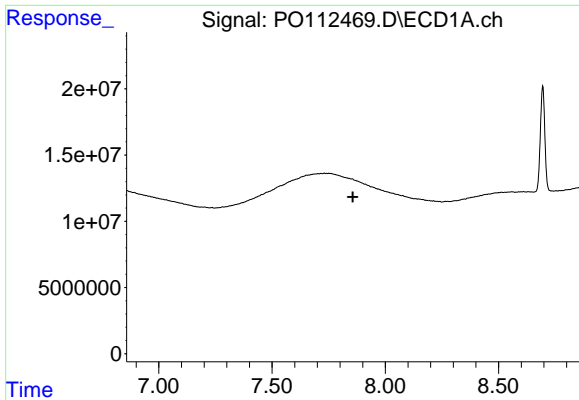
#42 AR-1268-2

R.T.: 7.652 min
 Delta R.T.: 0.000 min
 Response: 9994775
 Conc: 6.79 ng/ml



#42 AR-1268-2

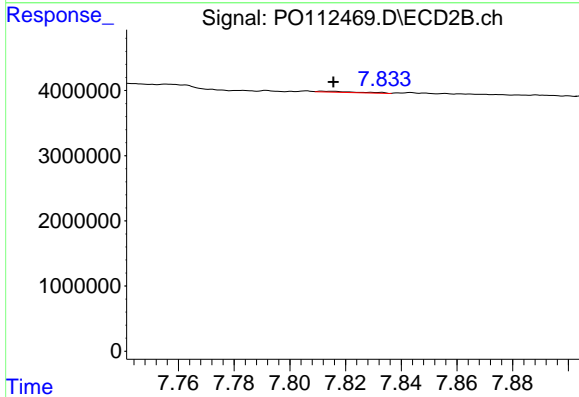
R.T.: 7.610 min
 Delta R.T.: -0.002 min
 Response: 16555
 Conc: 0.04 ng/ml



#43 AR-1268-3

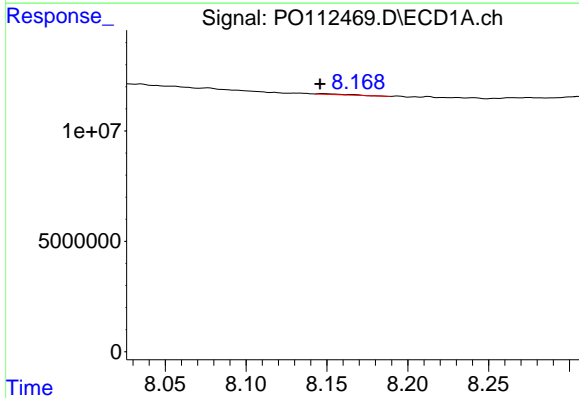
R.T.: 0.000 min
 Exp R.T.: 7.857 min
 Response: 0
 Conc: N.D.

Instrument :
 ECD_O
 ClientSampleId :
 PB168989BL



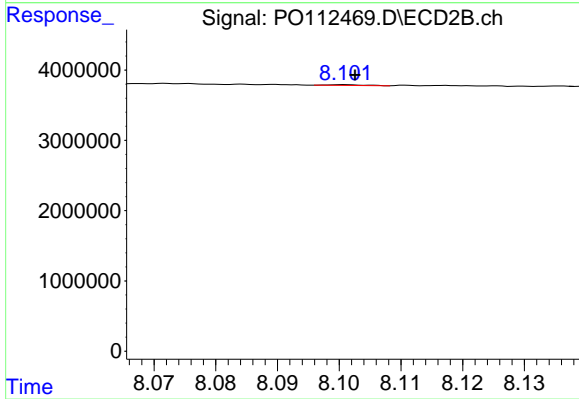
#43 AR-1268-3

R.T.: 7.812 min
 Delta R.T.: -0.004 min
 Response: 146326
 Conc: 0.46 ng/ml



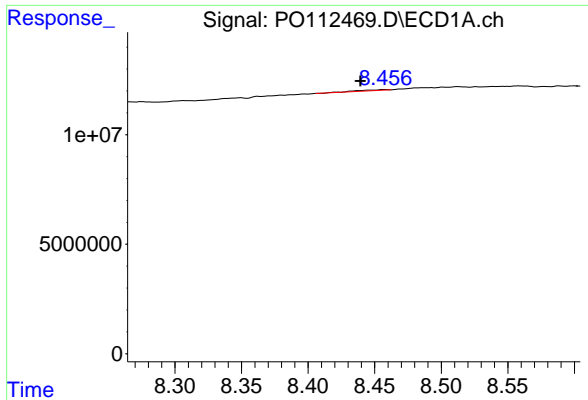
#44 AR-1268-4

R.T.: 8.148 min
 Delta R.T.: 0.002 min
 Response: 494814
 Conc: 1.03 ng/ml



#44 AR-1268-4

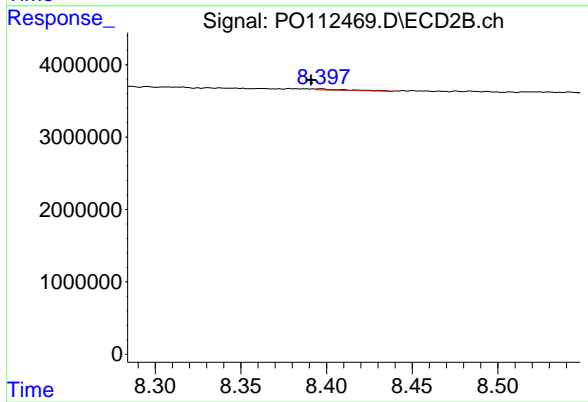
R.T.: 8.101 min
 Delta R.T.: -0.002 min
 Response: 45586
 Conc: 0.41 ng/ml



#45 AR-1268-5

R.T.: 8.457 min
 Delta R.T.: 0.018 min
 Response: 612212
 Conc: 0.18 ng/ml

Instrument :
 ECD_O
 ClientSampleId :
 PB168989BL



#45 AR-1268-5

R.T.: 8.397 min
 Delta R.T.: 0.006 min
 Response: 192316
 Conc: 0.26 ng/ml