

Data Path : Z:\pestpcbsrv\HPCHEM1\ECD_0\Data\P0072425\
 Data File : PO112471.D
 Signal(s) : Signal #1: ECD1A.ch Signal #2: ECD2B.ch
 Acq On : 24 Jul 2025 17:31
 Operator : YP/AJ
 Sample : PB168990BL
 Misc :
 ALS Vial : 19 Sample Multiplier: 1

Instrument :
 ECD_0
 ClientSampleId :
 PB168990BL

Integration File signal 1: autoint1.e
 Integration File signal 2: autoint2.e
 Quant Time: Jul 24 23:45:09 2025
 Quant Method : Z:\pestpcbsrv\HPCHEM1\ECD_0\methods\P0072325.M
 Quant Title : GC EXTRACTABLES
 QLast Update : Thu Jul 24 04:54:06 2025
 Response via : Initial Calibration
 Integrator: ChemStation

Volume Inj. : 2 µl
 Signal #1 Phase : ZB-MR1 Signal #2 Phase: ZB-MR2
 Signal #1 Info : 30Mx0.32mmx 0.50µ Signal #2 Info : 30M x 0.32mm x 0.25µm

| Compound | RT#1 | RT#2 | Resp#1 | Resp#2 | ng/ml | ng/ml |
|-----------------------------|--------|-------|----------|----------|--------|----------|
| System Monitoring Compounds | | | | | | |
| 1) SA Tetrachlo... | 3.670 | 3.662 | 169.3E6 | 104.0E6 | 20.819 | 20.930 |
| 2) SA Decachlor... | 8.695 | 8.640 | 117.4E6 | 33810832 | 16.053 | 19.133 |
| Target Compounds | | | | | | |
| 3) L1 AR-1016-1 | 4.756 | 4.741 | 281536 | 177990 | 1.049 | 1.017 |
| 4) L1 AR-1016-2 | 4.771 | 4.754 | 454547 | 325793 | 1.119 | 1.251 |
| 5) L1 AR-1016-3 | 4.829 | 4.930 | 988375 | 140591 | 3.777 | 1.034 # |
| 6) L1 AR-1016-4 | 4.947 | 4.955 | 610743 | 414505 | 2.883 | 3.731 # |
| 7) L1 AR-1016-5 | 5.211 | 5.186 | 9130039 | 1468711 | 41.600 | 10.249 # |
| 8) L2 AR-1221-1 | 0.000 | 3.875 | 0 | 61560 | N.D. | 0.915 # |
| 9) L2 AR-1221-2 | 3.971 | 3.960 | 1774224 | 1616390 | 24.689 | 31.864 # |
| 10) L2 AR-1221-3 | 4.097f | 4.030 | 1272825 | 53696 | 5.355 | 0.339 # |
| 11) L3 AR-1232-1 | 4.097f | 4.030 | 1272825 | 53696 | 6.807 | 0.424 # |
| 12) L3 AR-1232-2 | 4.528 | 4.754 | 1045508 | 325793 | 9.714 | 2.484 # |
| 13) L3 AR-1232-3 | 4.771 | 4.930 | 454547 | 140591 | 2.198 | 2.092 |
| 14) L3 AR-1232-4 | 4.947 | 5.019 | 610743 | 1031360 | 5.831 | 17.238 # |
| 15) L3 AR-1232-5 | 4.971 | 5.186 | 891297 | 1468711 | 13.130 | 22.525 # |
| 16) L4 AR-1242-1 | 4.756 | 4.741 | 281536 | 177990 | 1.137 | 1.124 |
| 17) L4 AR-1242-2 | 4.771 | 4.754 | 454547 | 325793 | 1.229 | 1.394 |
| 18) L4 AR-1242-3 | 4.829 | 4.930 | 988375 | 140591 | 4.176 | 1.160 # |
| 19) L4 AR-1242-4 | 4.947 | 5.019 | 610743 | 1031360 | 3.144 | 8.403 # |
| 20) L4 AR-1242-5 | 5.610 | 5.532 | 7103435 | 2019898 | 33.207 | 12.548 # |
| 21) L5 AR-1248-1 | 4.756 | 4.741 | 281536 | 177990 | 1.504 | 1.465 |
| 22) L5 AR-1248-2 | 4.971 | 4.992 | 891297 | 865566 | 3.494 | 5.113 # |
| 23) L5 AR-1248-3 | 5.211 | 5.019 | 9130039 | 1031360 | 26.564 | 5.806 # |
| 24) L5 AR-1248-4 | 5.561 | 5.186 | 13371789 | 1468711 | 26.318 | 7.049 # |
| 25) L5 AR-1248-5 | 5.610 | 5.572 | 7103435 | 2322026 | 20.319 | 10.812 # |
| 26) L6 AR-1254-1 | 5.561 | 5.532 | 13371789 | 2019898 | 24.358 | 6.147 # |
| 27) L6 AR-1254-2 | 5.720 | 5.678 | 16040689 | 2068467 | 33.011 | 7.145 # |
| 28) L6 AR-1254-3 | 6.116 | 6.082 | 1196729 | 2627105 | 1.608 | 6.146 # |
| 29) L6 AR-1254-4 | 6.347 | 6.311 | 1349959 | 225658 | 2.456 | 0.827 # |
| 30) L6 AR-1254-5 | 6.758 | 6.726 | 6838468 | 565791 | 9.661 | 1.694 # |
| 31) L7 AR-1260-1 | 6.249 | 6.213 | 401642 | 1703009 | 0.914 | 6.853 # |
| 32) L7 AR-1260-2 | 6.411 | 6.400 | 9518990 | 268437 | 13.838 | 0.815 # |
| 33) L7 AR-1260-3 | 6.790 | 6.548 | 9695735 | 344011 | 16.489 | 1.339 # |
| 34) L7 AR-1260-4 | 7.027 | 7.018 | 1773256 | 396241 | 3.932 | 2.071 # |
| 35) L7 AR-1260-5 | 7.314 | 7.261 | 96070 | 721806 | 0.078 | 1.751 # |
| 36) L8 AR-1262-1 | 6.790 | 6.756 | 9695735 | 165884 | 10.434 | 0.400 # |
| 37) L8 AR-1262-2 | 7.314 | 7.261 | 96070 | 721806 | 0.065 | 1.400 # |
| 38) L8 AR-1262-3 | 0.000 | 7.541 | 0 | 362773 | N.D. | 1.945 # |
| 39) L8 AR-1262-4 | 0.000 | 7.613 | 0 | 179316 | N.D. | 0.622 # |
| 40) L8 AR-1262-5 | 0.000 | 8.099 | 0 | 33360 | N.D. | 0.335 # |
| 41) L9 AR-1268-1 | 0.000 | 7.541 | 0 | 362773 | N.D. | 0.701 # |

Data Path : Z:\pestpcbsrv\HPCHEM1\ECD_0\Data\P0072425\
 Data File : P0112471.D
 Signal(s) : Signal #1: ECD1A.ch Signal #2: ECD2B.ch
 Acq On : 24 Jul 2025 17:31
 Operator : YP/AJ
 Sample : PB168990BL
 Misc :
 ALS Vial : 19 Sample Multiplier: 1

Instrument :
 ECD_0
 ClientSampleId :
 PB168990BL

Integration File signal 1: autoint1.e
 Integration File signal 2: autoint2.e
 Quant Time: Jul 24 23:45:09 2025
 Quant Method : Z:\pestpcbsrv\HPCHEM1\ECD_0\methods\P0072325.M
 Quant Title : GC EXTRACTABLES
 QLast Update : Thu Jul 24 04:54:06 2025
 Response via : Initial Calibration
 Integrator: ChemStation

Volume Inj. : 2 µl
 Signal #1 Phase : ZB-MR1 Signal #2 Phase: ZB-MR2
 Signal #1 Info : 30Mx0.32mmx 0.50µ Signal #2 Info : 30M x 0.32mm x 0.25µm

| | Compound | RT#1 | RT#2 | Resp#1 | Resp#2 | ng/ml | ng/ml |
|-----|--------------|-------|-------|---------|--------|-------|---------|
| 42) | L9 AR-1268-2 | 0.000 | 7.613 | 0 | 179316 | N.D. | 0.422 # |
| 43) | L9 AR-1268-3 | 7.856 | 7.819 | 3807152 | 91337 | 3.040 | 0.284 # |
| 44) | L9 AR-1268-4 | 0.000 | 8.099 | 0 | 33360 | N.D. | 0.300 # |
| 45) | L9 AR-1268-5 | 8.455 | 8.391 | 1223429 | 292620 | 0.364 | 0.400 |

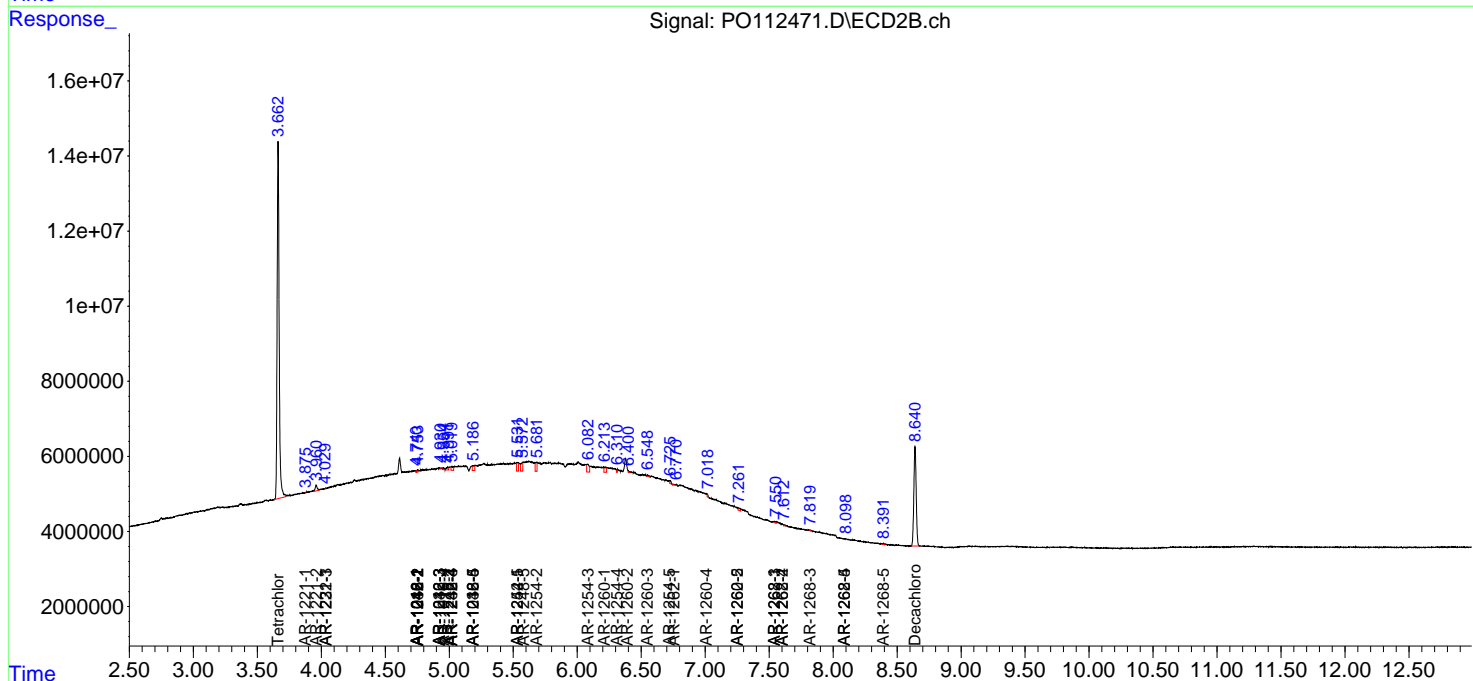
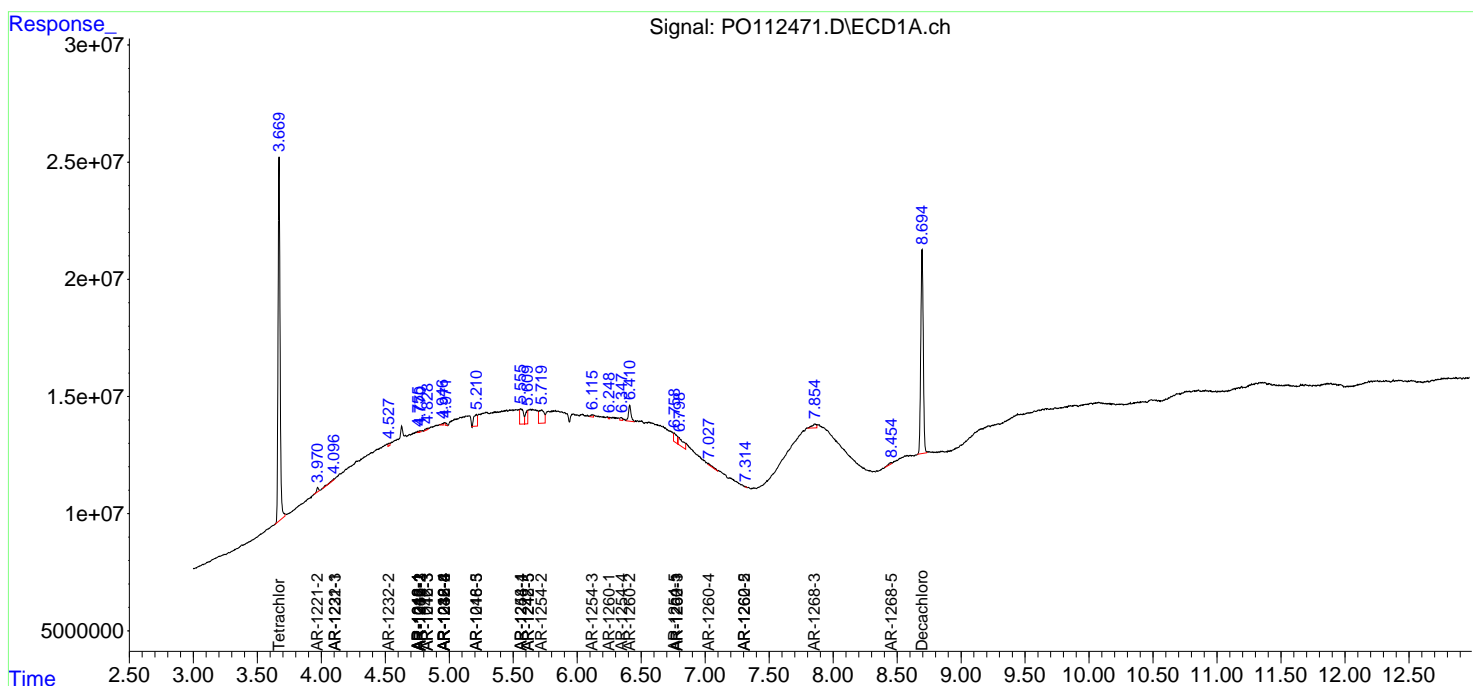
(f)=RT Delta > 1/2 Window (#)=Amounts differ by > 25% (m)=manual int.

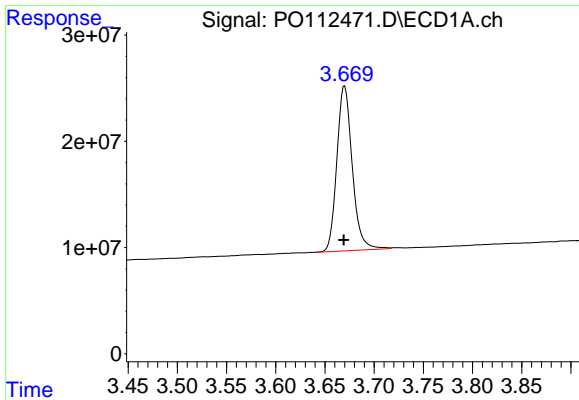
Data Path : Z:\pestpcbsrv\HPCHEM1\ECD_O\Data\PO072425\
 Data File : PO112471.D
 Signal(s) : Signal #1: ECD1A.ch Signal #2: ECD2B.ch
 Acq On : 24 Jul 2025 17:31
 Operator : YP/AJ
 Sample : PB168990BL
 Misc :
 ALS Vial : 19 Sample Multiplier: 1

Instrument :
 ECD_O
 ClientSampleId :
 PB168990BL

Integration File signal 1: autoint1.e
 Integration File signal 2: autoint2.e
 Quant Time: Jul 24 23:45:09 2025
 Quant Method : Z:\pestpcbsrv\HPCHEM1\ECD_O\methods\PO072325.M
 Quant Title : GC EXTRACTABLES
 QLast Update : Thu Jul 24 04:54:06 2025
 Response via : Initial Calibration
 Integrator: ChemStation

Volume Inj. : 2 µl
 Signal #1 Phase : ZB-MR1 Signal #2 Phase: ZB-MR2
 Signal #1 Info : 30Mx0.32mmx 0.50µ Signal #2 Info : 30M x 0.32mm x 0.25µm

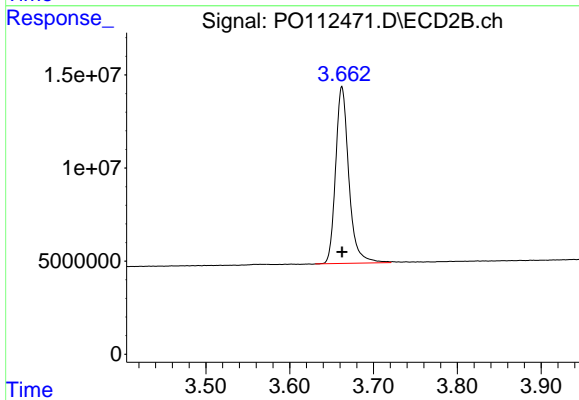




#1 Tetrachloro-m-xylene

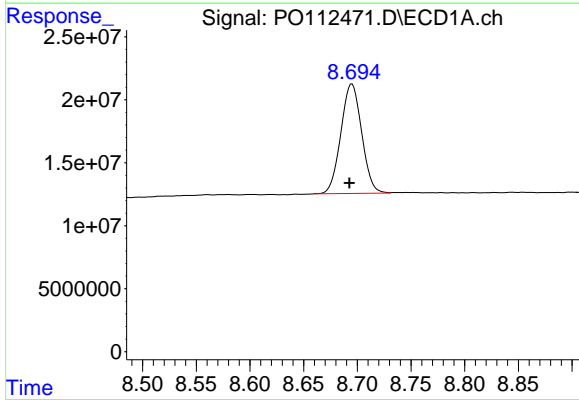
R.T.: 3.670 min
 Delta R.T.: 0.000 min
 Response: 169293574
 Conc: 20.82 ng/ml

Instrument :
 ECD_O
 ClientSampleId :
 PB168990BL



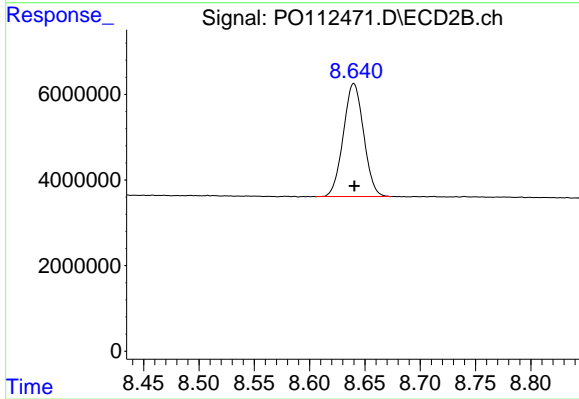
#1 Tetrachloro-m-xylene

R.T.: 3.662 min
 Delta R.T.: 0.000 min
 Response: 104002907
 Conc: 20.93 ng/ml



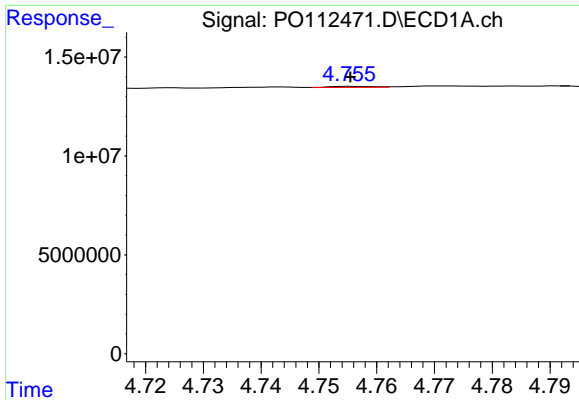
#2 Decachlorobiphenyl

R.T.: 8.695 min
 Delta R.T.: 0.002 min
 Response: 117374567
 Conc: 16.05 ng/ml



#2 Decachlorobiphenyl

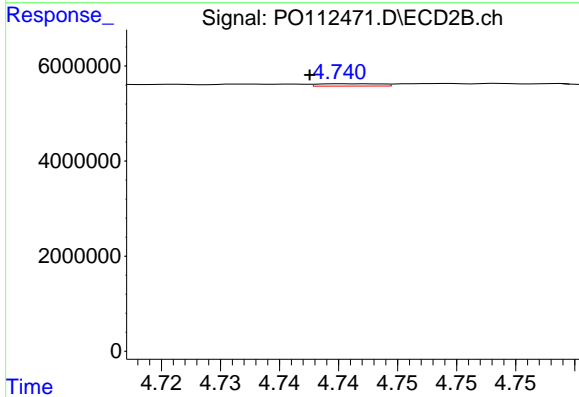
R.T.: 8.640 min
 Delta R.T.: 0.000 min
 Response: 33810832
 Conc: 19.13 ng/ml



#3 AR-1016-1

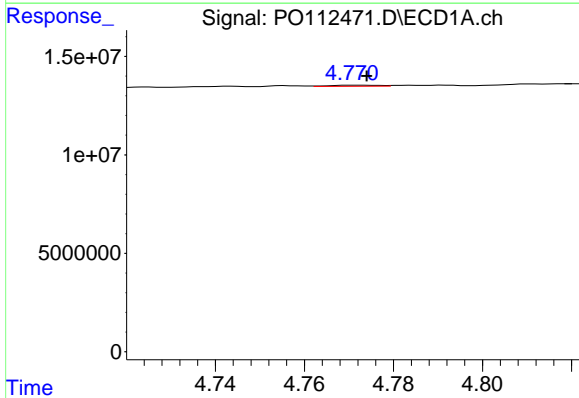
R.T.: 4.756 min
 Delta R.T.: 0.000 min
 Response: 281536
 Conc: 1.05 ng/ml

Instrument :
 ECD_O
 ClientSampleId :
 PB168990BL



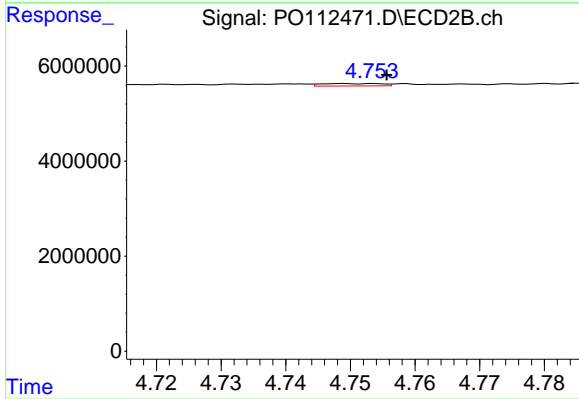
#3 AR-1016-1

R.T.: 4.741 min
 Delta R.T.: 0.003 min
 Response: 177990
 Conc: 1.02 ng/ml



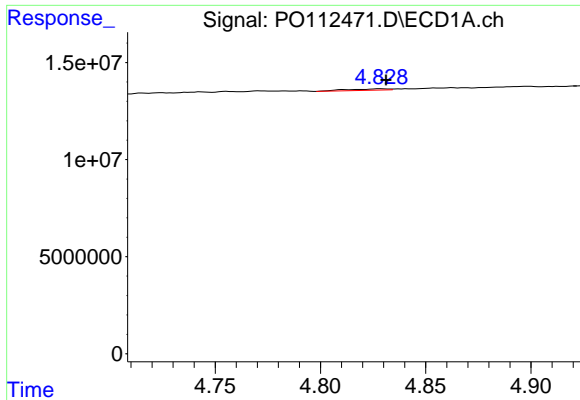
#4 AR-1016-2

R.T.: 4.771 min
 Delta R.T.: -0.003 min
 Response: 454547
 Conc: 1.12 ng/ml



#4 AR-1016-2

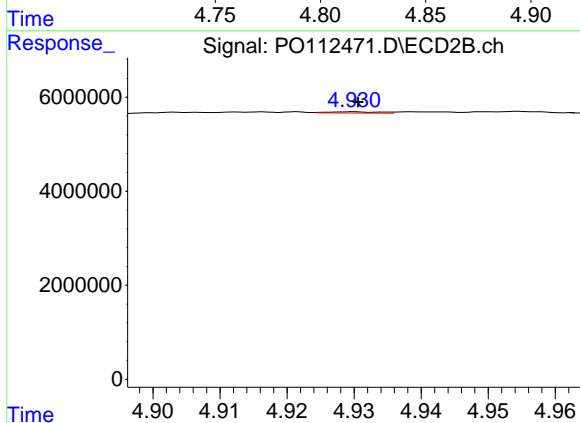
R.T.: 4.754 min
 Delta R.T.: -0.002 min
 Response: 325793
 Conc: 1.25 ng/ml



#5 AR-1016-3

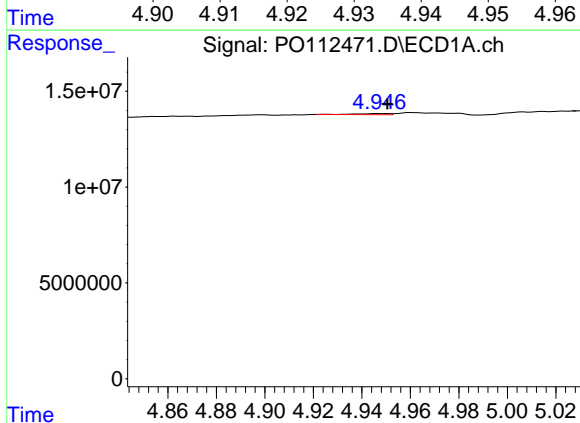
R.T.: 4.829 min
 Delta R.T.: -0.003 min
 Response: 988375
 Conc: 3.78 ng/ml

Instrument :
 ECD_O
 ClientSampleId :
 PB168990BL



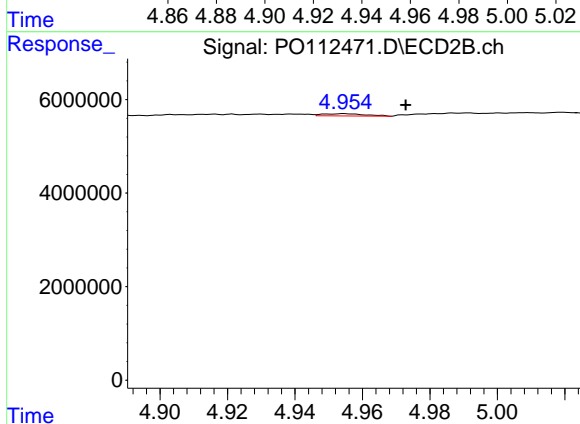
#5 AR-1016-3

R.T.: 4.930 min
 Delta R.T.: 0.000 min
 Response: 140591
 Conc: 1.03 ng/ml



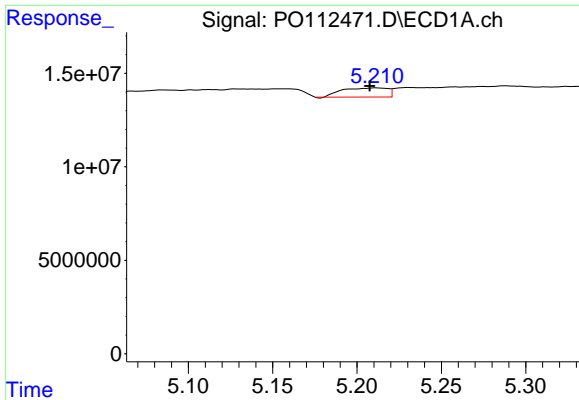
#6 AR-1016-4

R.T.: 4.947 min
 Delta R.T.: -0.003 min
 Response: 610743
 Conc: 2.88 ng/ml



#6 AR-1016-4

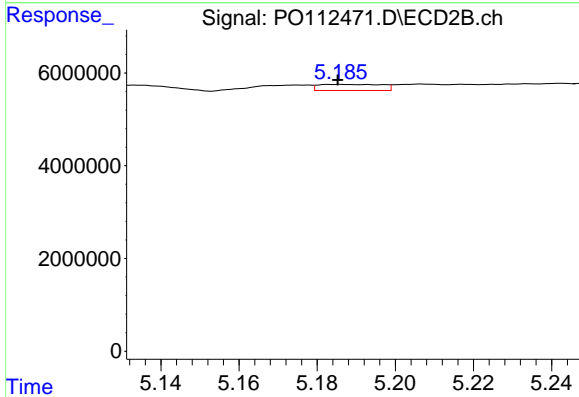
R.T.: 4.955 min
 Delta R.T.: -0.018 min
 Response: 414505
 Conc: 3.73 ng/ml



#7 AR-1016-5

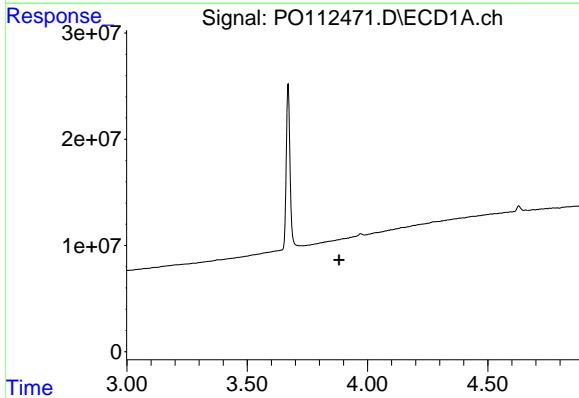
R.T.: 5.211 min
 Delta R.T.: 0.004 min
 Response: 9130039
 Conc: 41.60 ng/ml

Instrument :
 ECD_O
 ClientSampleId :
 PB168990BL



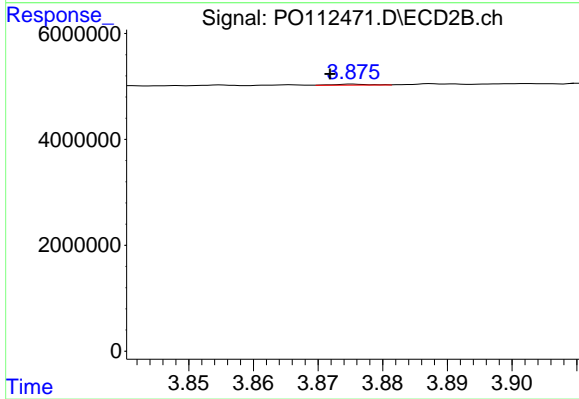
#7 AR-1016-5

R.T.: 5.186 min
 Delta R.T.: 0.000 min
 Response: 1468711
 Conc: 10.25 ng/ml



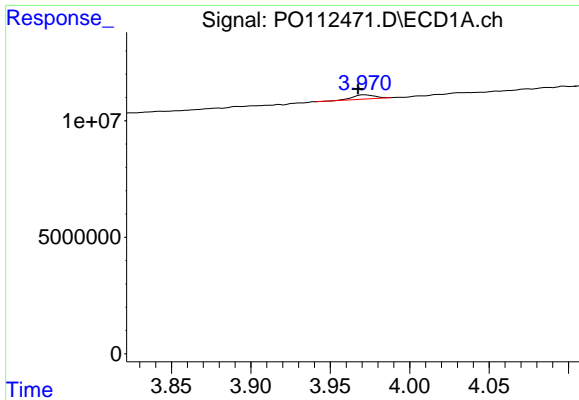
#8 AR-1221-1

R.T.: 0.000 min
 Exp R.T. : 3.882 min
 Response: 0
 Conc: N.D.



#8 AR-1221-1

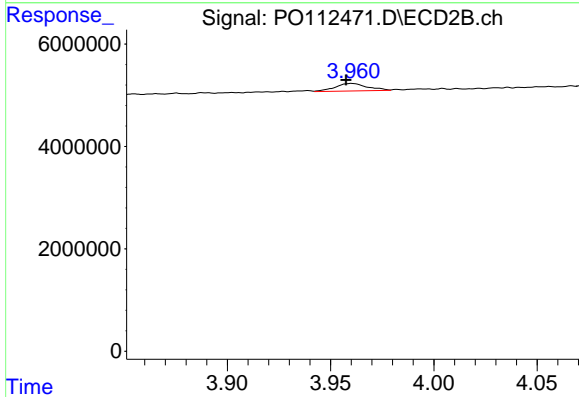
R.T.: 3.875 min
 Delta R.T.: 0.004 min
 Response: 61560
 Conc: 0.92 ng/ml



#9 AR-1221-2

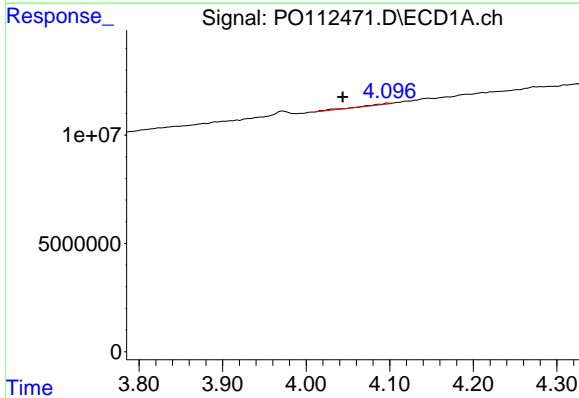
R.T.: 3.971 min
 Delta R.T.: 0.004 min
 Response: 1774224
 Conc: 24.69 ng/ml

Instrument :
 ECD_O
 ClientSampleId :
 PB168990BL



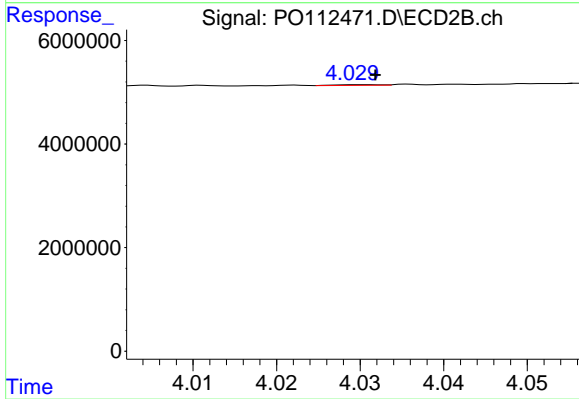
#9 AR-1221-2

R.T.: 3.960 min
 Delta R.T.: 0.003 min
 Response: 1616390
 Conc: 31.86 ng/ml



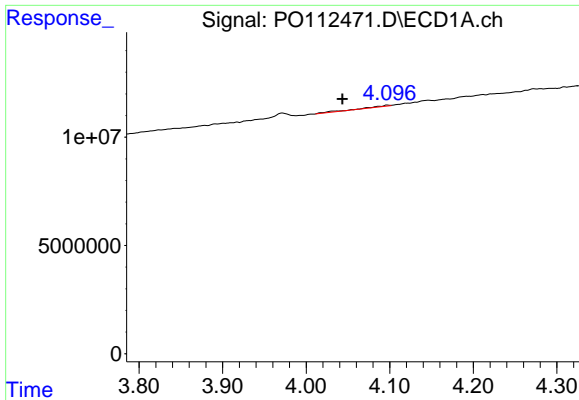
#10 AR-1221-3

R.T.: 4.097 min
 Delta R.T.: 0.054 min
 Response: 1272825
 Conc: 5.35 ng/ml



#10 AR-1221-3

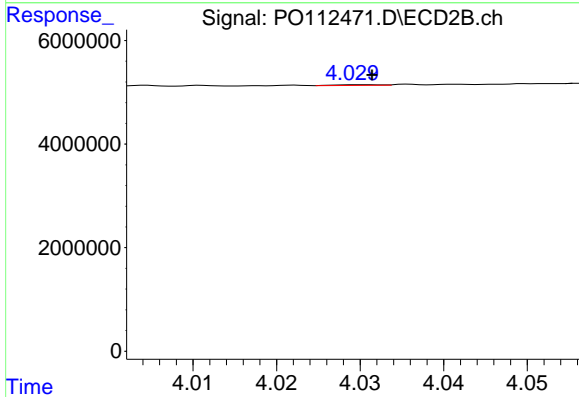
R.T.: 4.030 min
 Delta R.T.: -0.002 min
 Response: 53696
 Conc: 0.34 ng/ml



#11 AR-1232-1

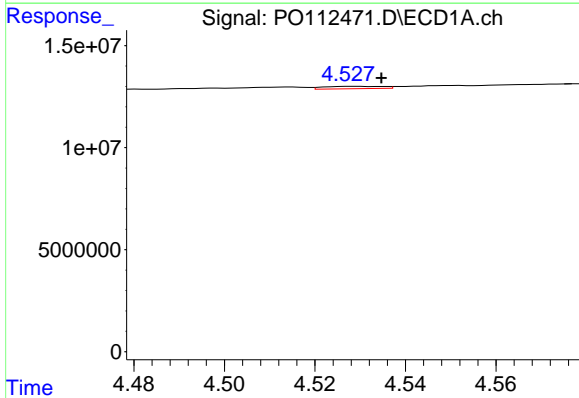
R.T.: 4.097 min
 Delta R.T.: 0.054 min
 Response: 1272825
 Conc: 6.81 ng/ml

Instrument :
 ECD_O
 ClientSampleId :
 PB168990BL



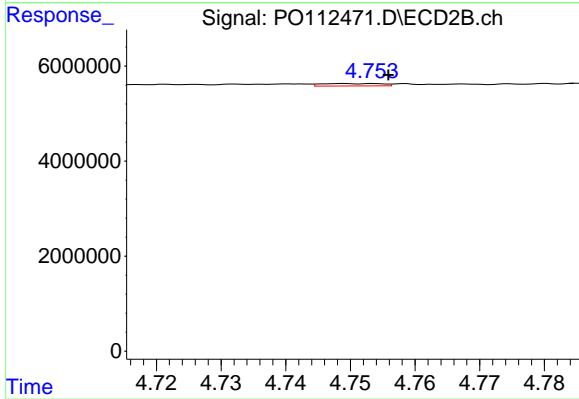
#11 AR-1232-1

R.T.: 4.030 min
 Delta R.T.: -0.001 min
 Response: 53696
 Conc: 0.42 ng/ml



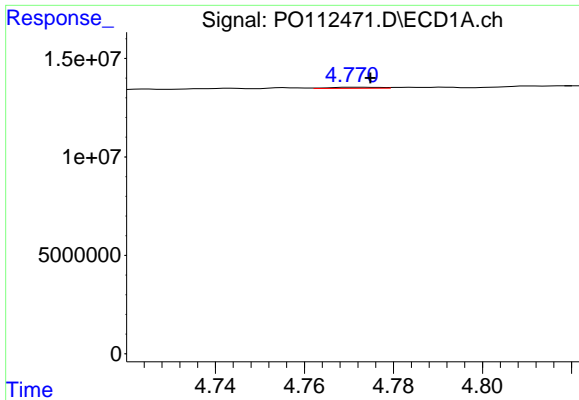
#12 AR-1232-2

R.T.: 4.528 min
 Delta R.T.: -0.006 min
 Response: 1045508
 Conc: 9.71 ng/ml



#12 AR-1232-2

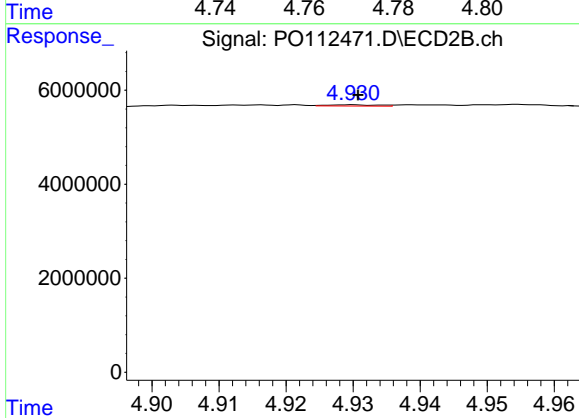
R.T.: 4.754 min
 Delta R.T.: -0.002 min
 Response: 325793
 Conc: 2.48 ng/ml



#13 AR-1232-3

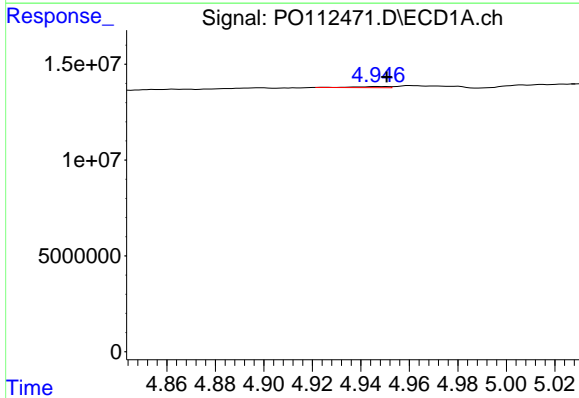
R.T.: 4.771 min
 Delta R.T.: -0.003 min
 Response: 454547
 Conc: 2.20 ng/ml

Instrument :
 ECD_O
 ClientSampleId :
 PB168990BL



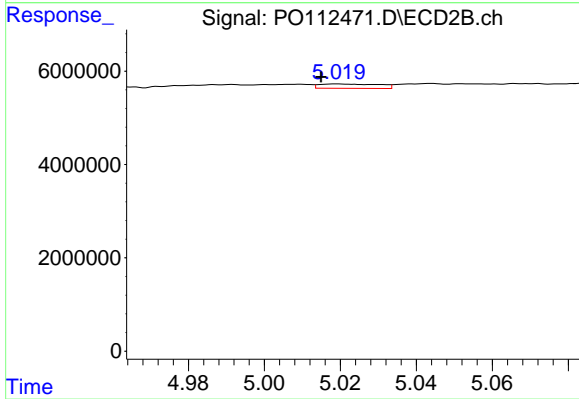
#13 AR-1232-3

R.T.: 4.930 min
 Delta R.T.: 0.000 min
 Response: 140591
 Conc: 2.09 ng/ml



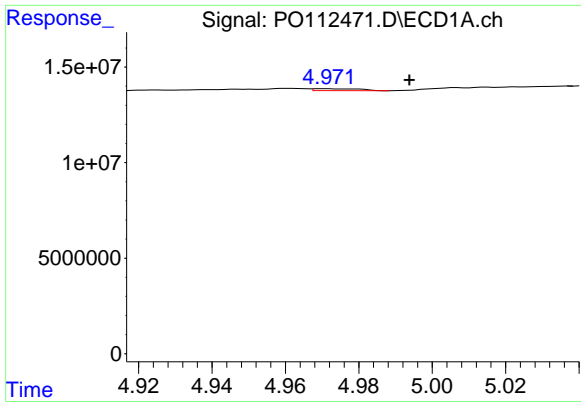
#14 AR-1232-4

R.T.: 4.947 min
 Delta R.T.: -0.003 min
 Response: 610743
 Conc: 5.83 ng/ml



#14 AR-1232-4

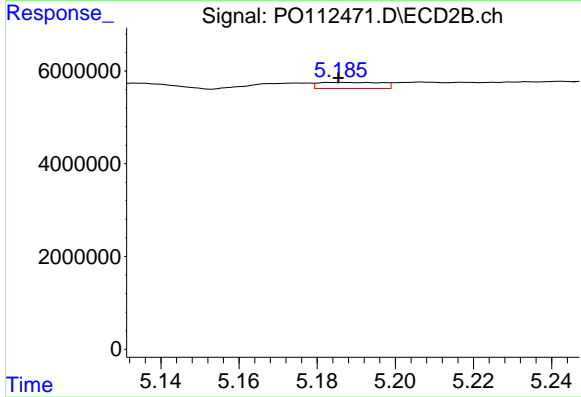
R.T.: 5.019 min
 Delta R.T.: 0.004 min
 Response: 1031360
 Conc: 17.24 ng/ml



#15 AR-1232-5

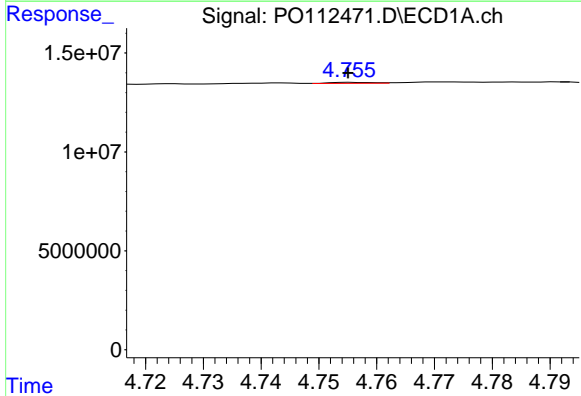
R.T.: 4.971 min
 Delta R.T.: -0.023 min
 Response: 891297
 Conc: 13.13 ng/ml

Instrument :
 ECD_O
 ClientSampleId :
 PB168990BL



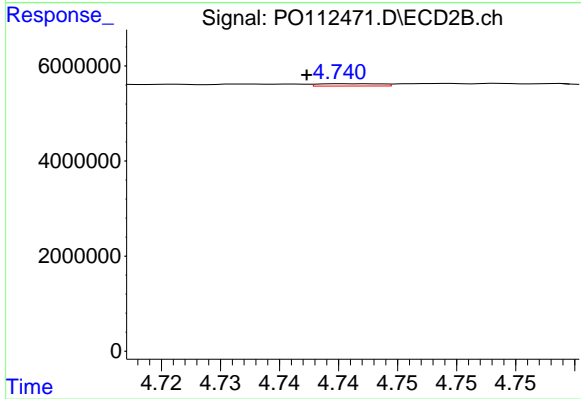
#15 AR-1232-5

R.T.: 5.186 min
 Delta R.T.: 0.000 min
 Response: 1468711
 Conc: 22.53 ng/ml



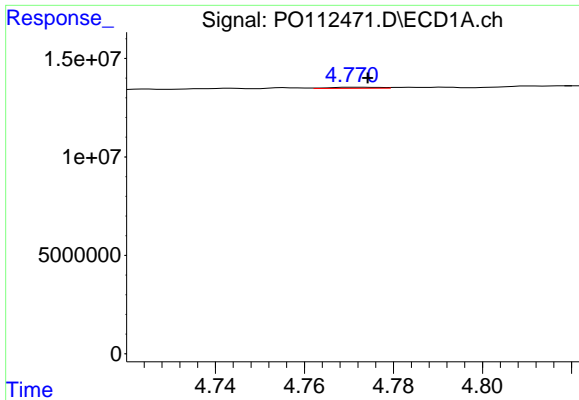
#16 AR-1242-1

R.T.: 4.756 min
 Delta R.T.: 0.000 min
 Response: 281536
 Conc: 1.14 ng/ml



#16 AR-1242-1

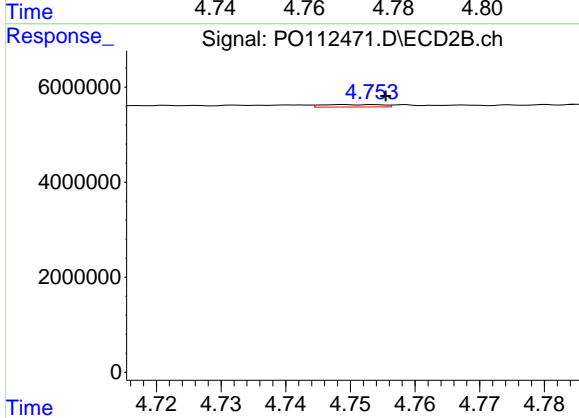
R.T.: 4.741 min
 Delta R.T.: 0.003 min
 Response: 177990
 Conc: 1.12 ng/ml



#17 AR-1242-2

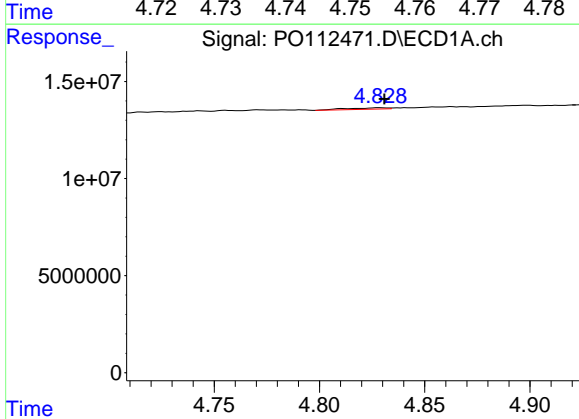
R.T.: 4.771 min
 Delta R.T.: -0.003 min
 Response: 454547
 Conc: 1.23 ng/ml

Instrument :
 ECD_O
 ClientSampleId :
 PB168990BL



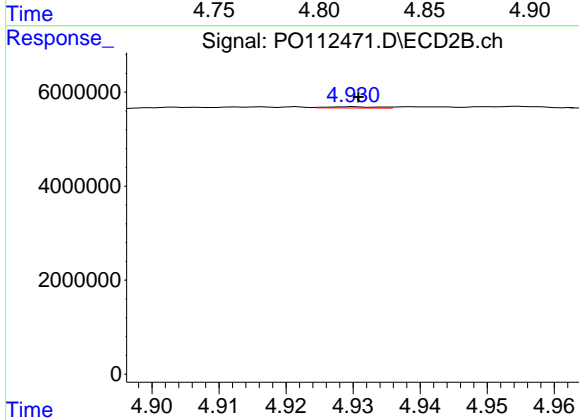
#17 AR-1242-2

R.T.: 4.754 min
 Delta R.T.: -0.002 min
 Response: 325793
 Conc: 1.39 ng/ml



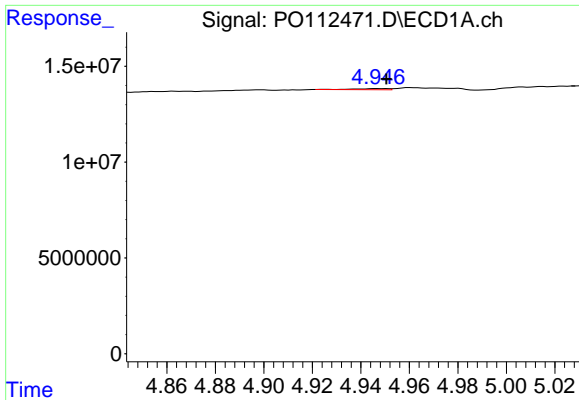
#18 AR-1242-3

R.T.: 4.829 min
 Delta R.T.: -0.002 min
 Response: 988375
 Conc: 4.18 ng/ml



#18 AR-1242-3

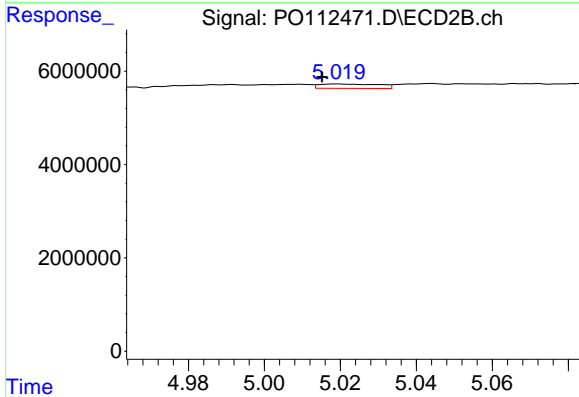
R.T.: 4.930 min
 Delta R.T.: 0.000 min
 Response: 140591
 Conc: 1.16 ng/ml



#19 AR-1242-4

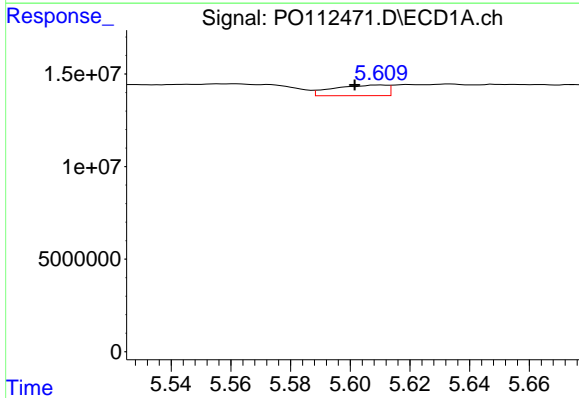
R.T.: 4.947 min
 Delta R.T.: -0.003 min
 Response: 610743
 Conc: 3.14 ng/ml

Instrument :
 ECD_O
 ClientSampleId :
 PB168990BL



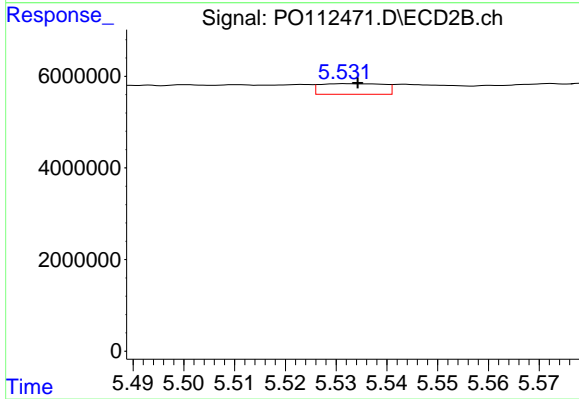
#19 AR-1242-4

R.T.: 5.019 min
 Delta R.T.: 0.004 min
 Response: 1031360
 Conc: 8.40 ng/ml



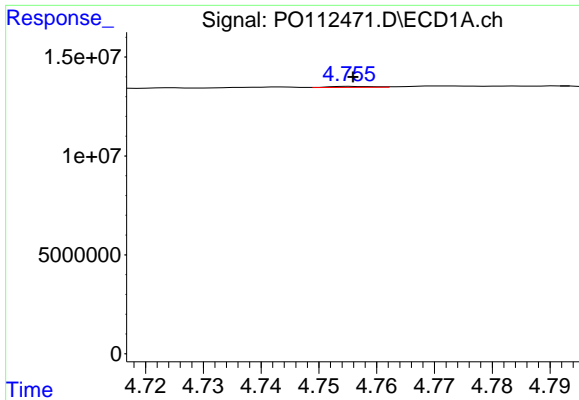
#20 AR-1242-5

R.T.: 5.610 min
 Delta R.T.: 0.008 min
 Response: 7103435
 Conc: 33.21 ng/ml



#20 AR-1242-5

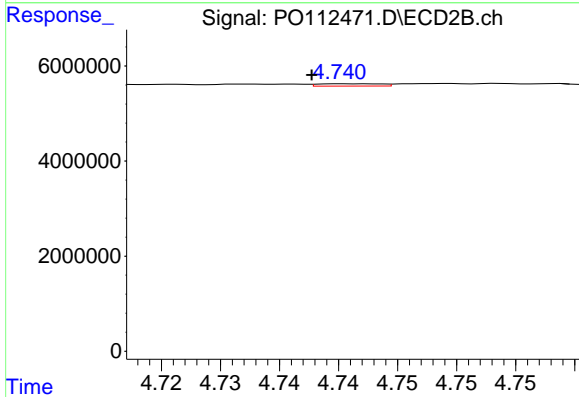
R.T.: 5.532 min
 Delta R.T.: -0.003 min
 Response: 2019898
 Conc: 12.55 ng/ml



#21 AR-1248-1

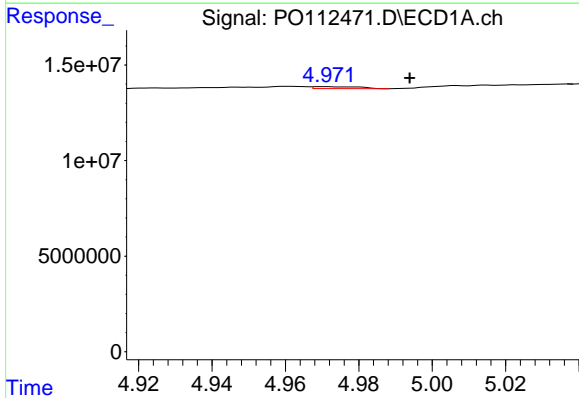
R.T.: 4.756 min
 Delta R.T.: 0.000 min
 Response: 281536
 Conc: 1.50 ng/ml

Instrument :
 ECD_O
 ClientSampleId :
 PB168990BL



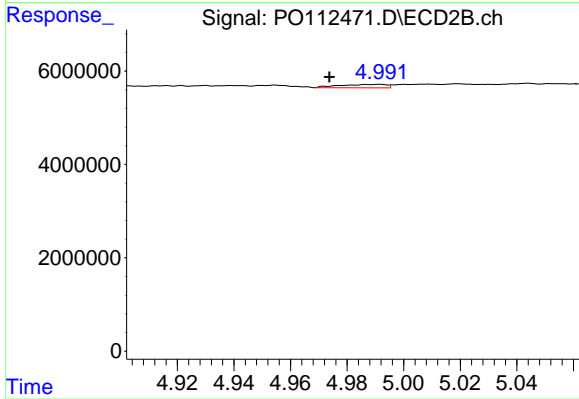
#21 AR-1248-1

R.T.: 4.741 min
 Delta R.T.: 0.003 min
 Response: 177990
 Conc: 1.46 ng/ml



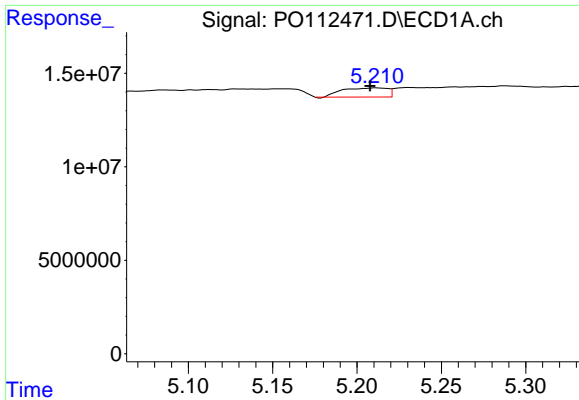
#22 AR-1248-2

R.T.: 4.971 min
 Delta R.T.: -0.023 min
 Response: 891297
 Conc: 3.49 ng/ml



#22 AR-1248-2

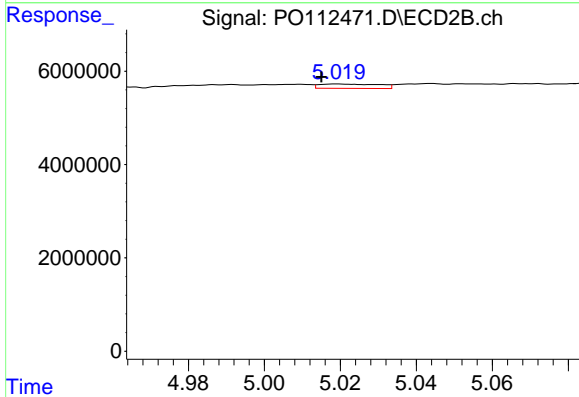
R.T.: 4.992 min
 Delta R.T.: 0.018 min
 Response: 865566
 Conc: 5.11 ng/ml



#23 AR-1248-3

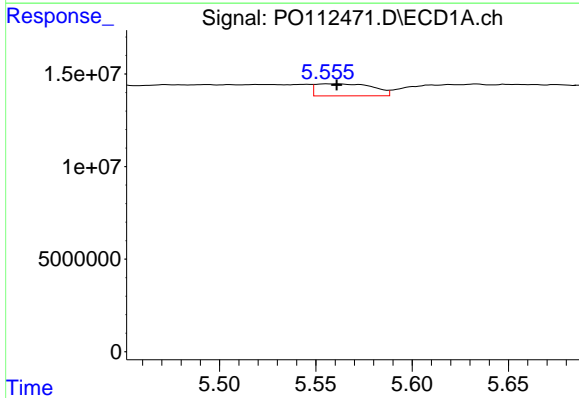
R.T.: 5.211 min
 Delta R.T.: 0.003 min
 Response: 9130039
 Conc: 26.56 ng/ml

Instrument :
 ECD_O
 ClientSampleId :
 PB168990BL



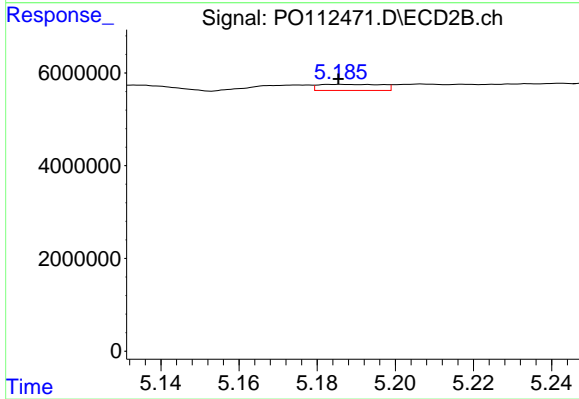
#23 AR-1248-3

R.T.: 5.019 min
 Delta R.T.: 0.004 min
 Response: 1031360
 Conc: 5.81 ng/ml



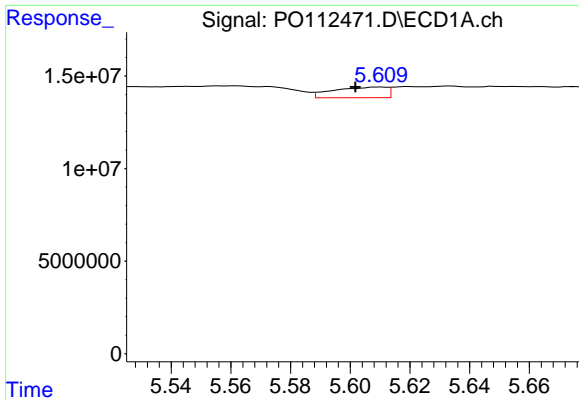
#24 AR-1248-4

R.T.: 5.561 min
 Delta R.T.: 0.000 min
 Response: 13371789
 Conc: 26.32 ng/ml



#24 AR-1248-4

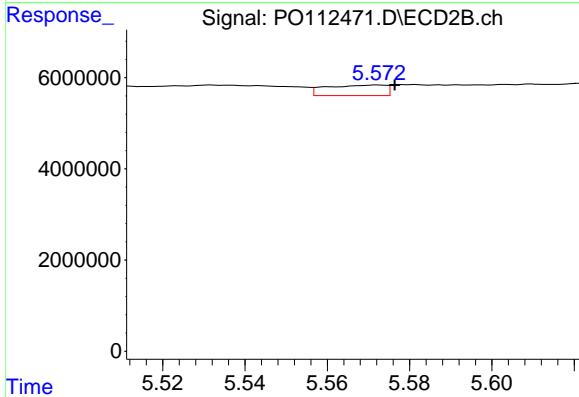
R.T.: 5.186 min
 Delta R.T.: 0.000 min
 Response: 1468711
 Conc: 7.05 ng/ml



#25 AR-1248-5

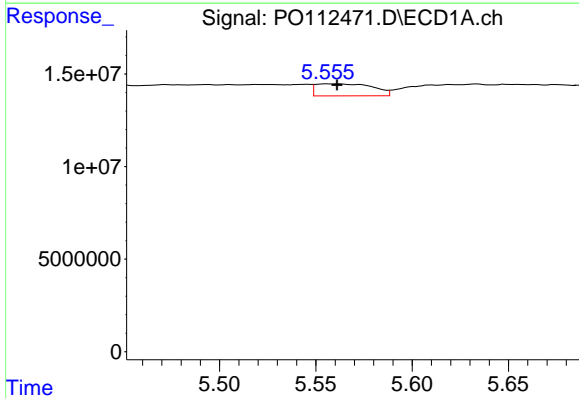
R.T.: 5.610 min
 Delta R.T.: 0.008 min
 Response: 7103435
 Conc: 20.32 ng/ml

Instrument :
 ECD_O
 ClientSampleId :
 PB168990BL



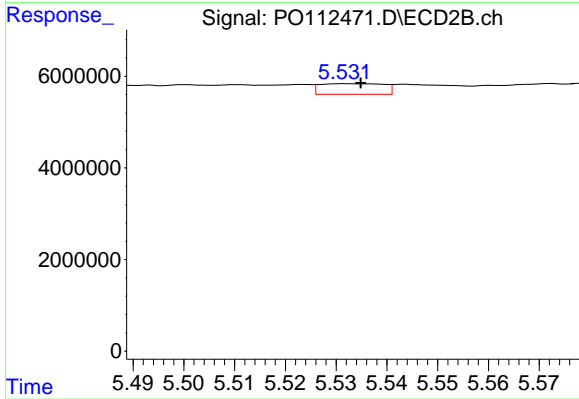
#25 AR-1248-5

R.T.: 5.572 min
 Delta R.T.: -0.004 min
 Response: 2322026
 Conc: 10.81 ng/ml



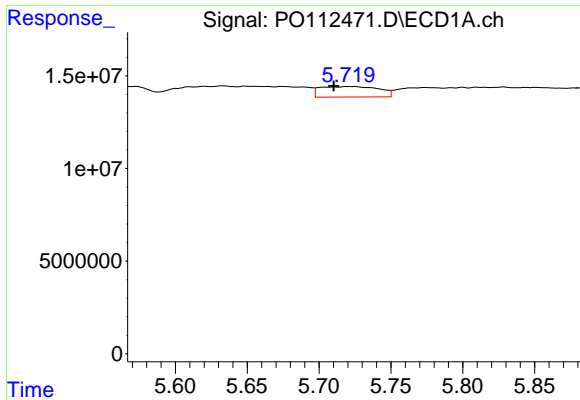
#26 AR-1254-1

R.T.: 5.561 min
 Delta R.T.: 0.000 min
 Response: 13371789
 Conc: 24.36 ng/ml



#26 AR-1254-1

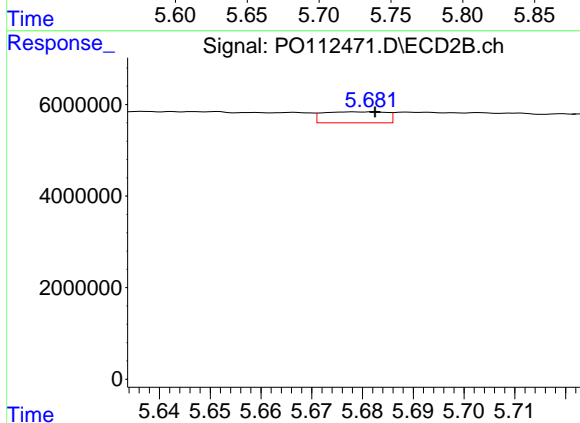
R.T.: 5.532 min
 Delta R.T.: -0.003 min
 Response: 2019898
 Conc: 6.15 ng/ml



#27 AR-1254-2

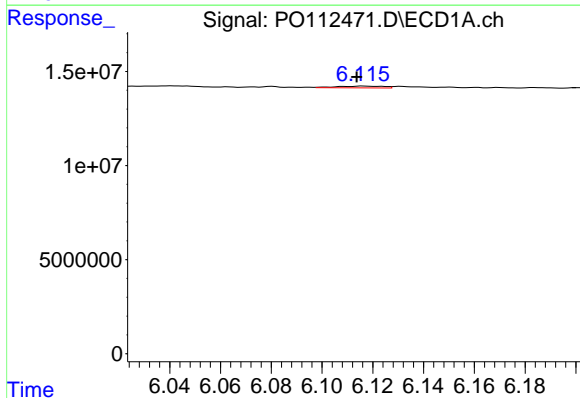
R.T.: 5.720 min
 Delta R.T.: 0.010 min
 Response: 16040689
 Conc: 33.01 ng/ml

Instrument :
 ECD_O
 ClientSampleId :
 PB168990BL



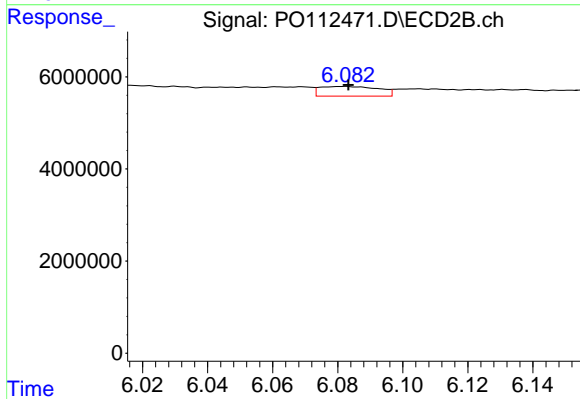
#27 AR-1254-2

R.T.: 5.678 min
 Delta R.T.: -0.004 min
 Response: 2068467
 Conc: 7.15 ng/ml



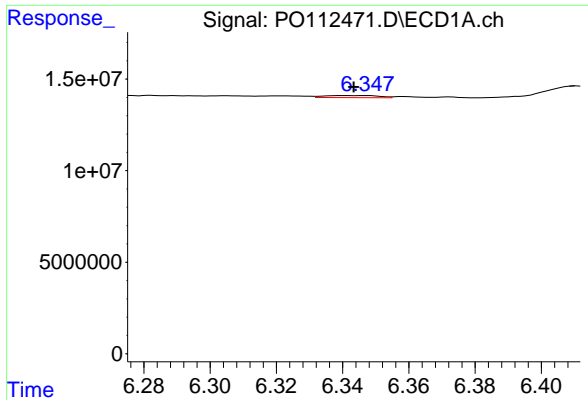
#28 AR-1254-3

R.T.: 6.116 min
 Delta R.T.: 0.003 min
 Response: 1196729
 Conc: 1.61 ng/ml



#28 AR-1254-3

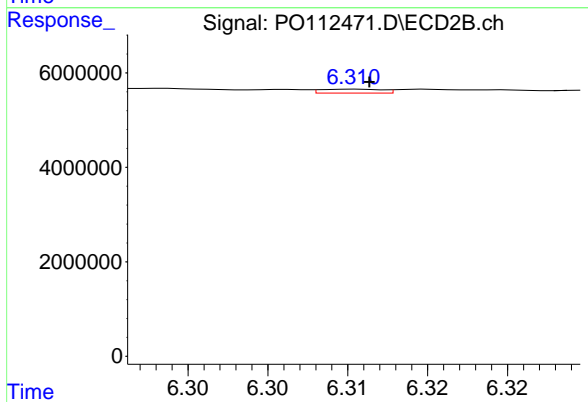
R.T.: 6.082 min
 Delta R.T.: 0.000 min
 Response: 2627105
 Conc: 6.15 ng/ml



#29 AR-1254-4

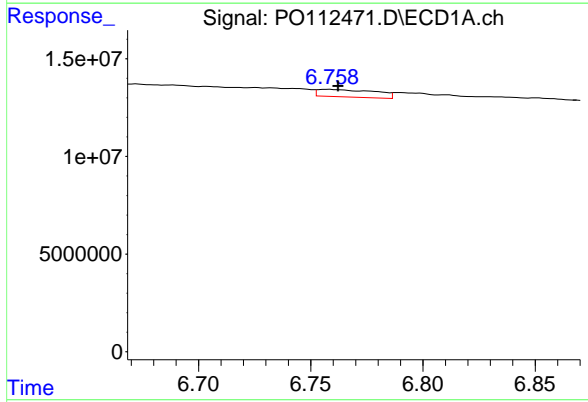
R.T.: 6.347 min
 Delta R.T.: 0.003 min
 Response: 1349959
 Conc: 2.46 ng/ml

Instrument :
 ECD_O
 ClientSampleId :
 PB168990BL



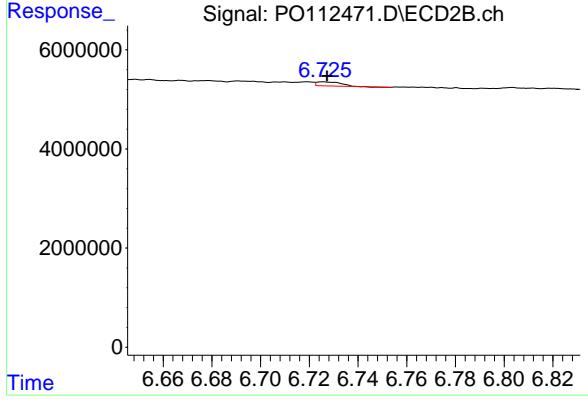
#29 AR-1254-4

R.T.: 6.311 min
 Delta R.T.: 0.000 min
 Response: 225658
 Conc: 0.83 ng/ml



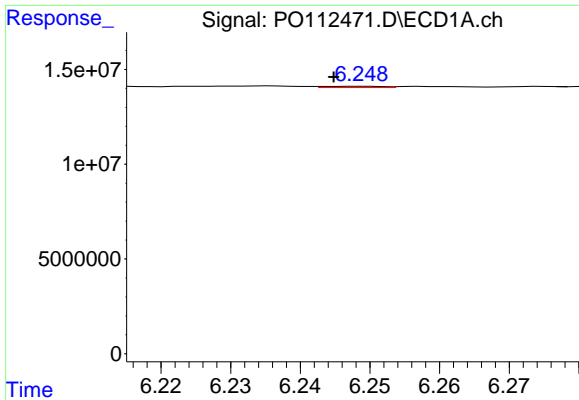
#30 AR-1254-5

R.T.: 6.758 min
 Delta R.T.: -0.005 min
 Response: 6838468
 Conc: 9.66 ng/ml



#30 AR-1254-5

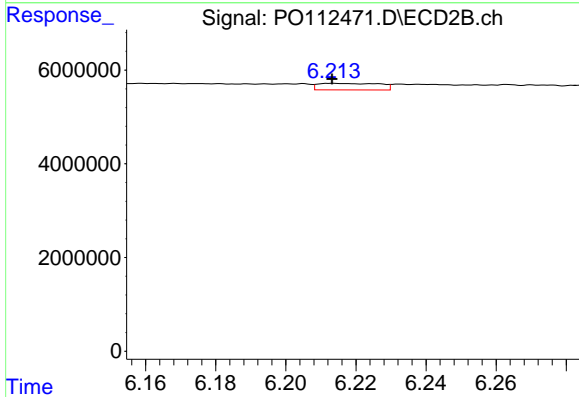
R.T.: 6.726 min
 Delta R.T.: -0.002 min
 Response: 565791
 Conc: 1.69 ng/ml



#31 AR-1260-1

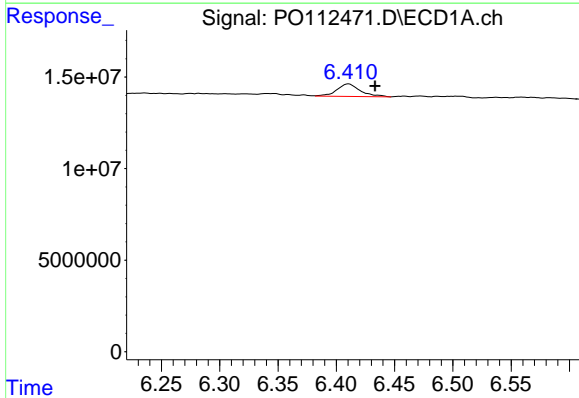
R.T.: 6.249 min
 Delta R.T.: 0.004 min
 Response: 401642
 Conc: 0.91 ng/ml

Instrument :
 ECD_O
 ClientSampleId :
 PB168990BL



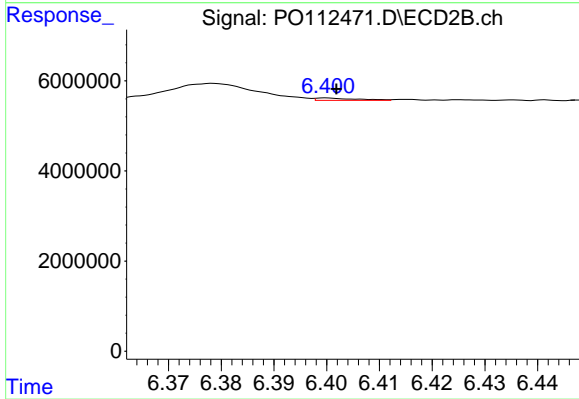
#31 AR-1260-1

R.T.: 6.213 min
 Delta R.T.: 0.000 min
 Response: 1703009
 Conc: 6.85 ng/ml



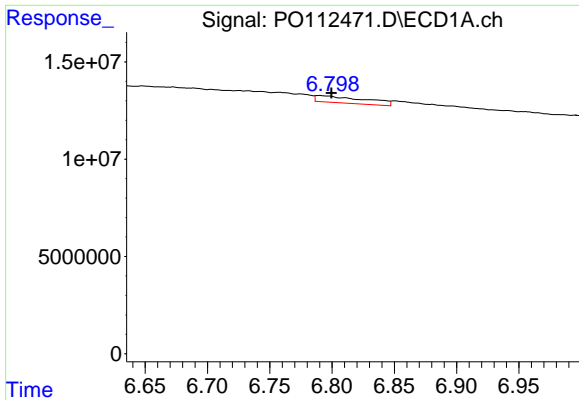
#32 AR-1260-2

R.T.: 6.411 min
 Delta R.T.: -0.023 min
 Response: 9518990
 Conc: 13.84 ng/ml



#32 AR-1260-2

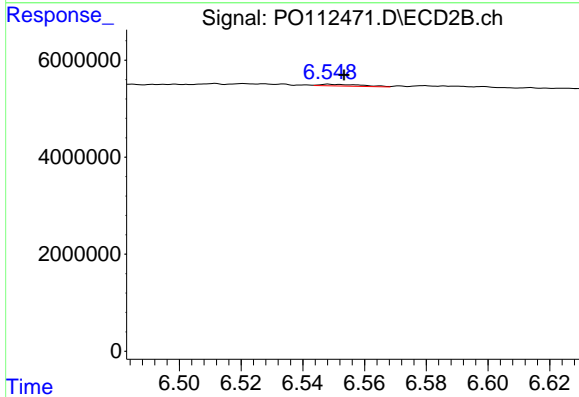
R.T.: 6.400 min
 Delta R.T.: -0.002 min
 Response: 268437
 Conc: 0.81 ng/ml



#33 AR-1260-3

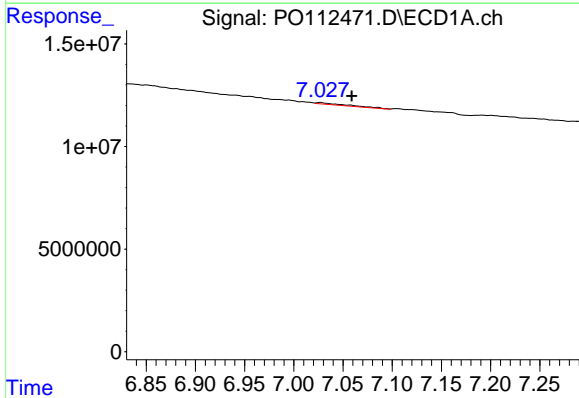
R.T.: 6.790 min
 Delta R.T.: -0.010 min
 Response: 9695735
 Conc: 16.49 ng/ml

Instrument :
 ECD_O
 ClientSampleId :
 PB168990BL



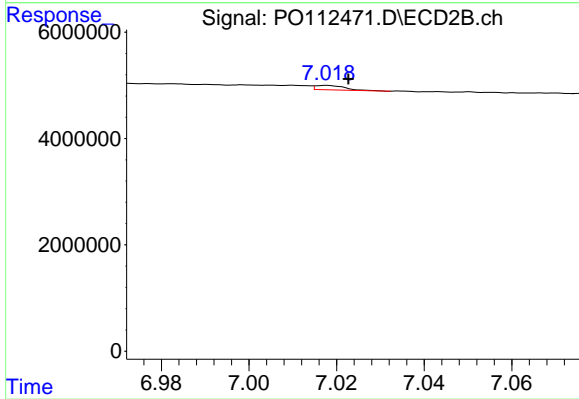
#33 AR-1260-3

R.T.: 6.548 min
 Delta R.T.: -0.005 min
 Response: 344011
 Conc: 1.34 ng/ml



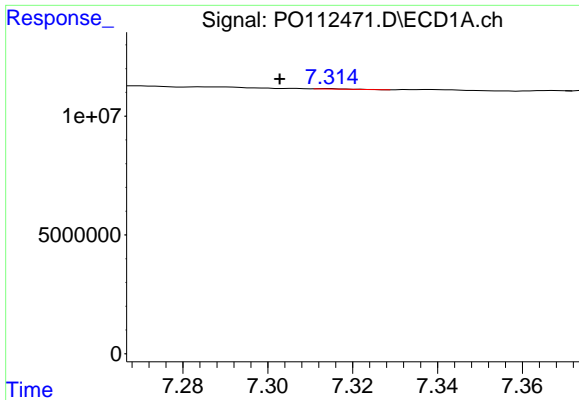
#34 AR-1260-4

R.T.: 7.027 min
 Delta R.T.: -0.032 min
 Response: 1773256
 Conc: 3.93 ng/ml



#34 AR-1260-4

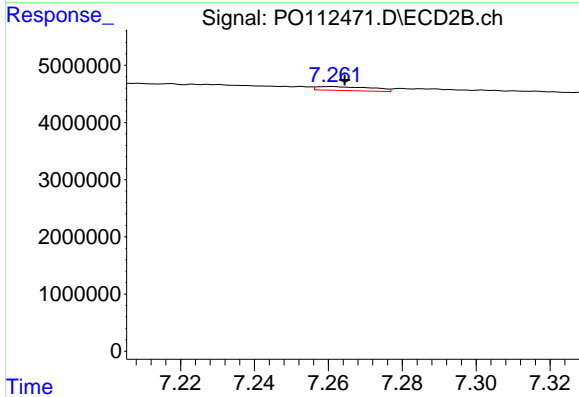
R.T.: 7.018 min
 Delta R.T.: -0.005 min
 Response: 396241
 Conc: 2.07 ng/ml



#35 AR-1260-5

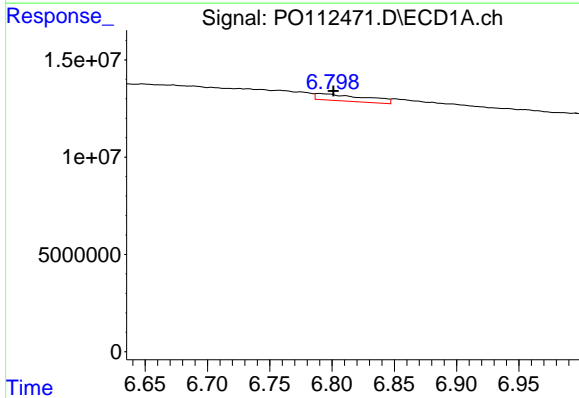
R.T.: 7.314 min
 Delta R.T.: 0.011 min
 Response: 96070
 Conc: 0.08 ng/ml

Instrument :
 ECD_O
 ClientSampleId :
 PB168990BL



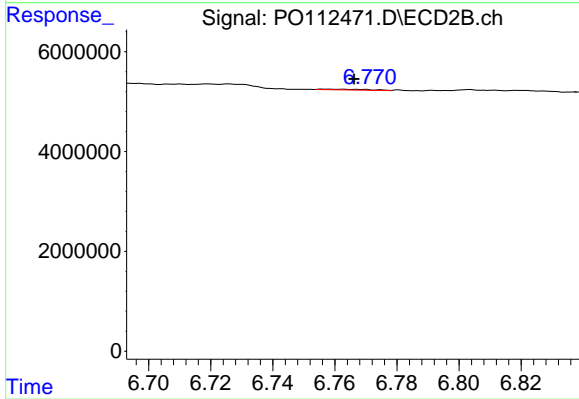
#35 AR-1260-5

R.T.: 7.261 min
 Delta R.T.: -0.003 min
 Response: 721806
 Conc: 1.75 ng/ml



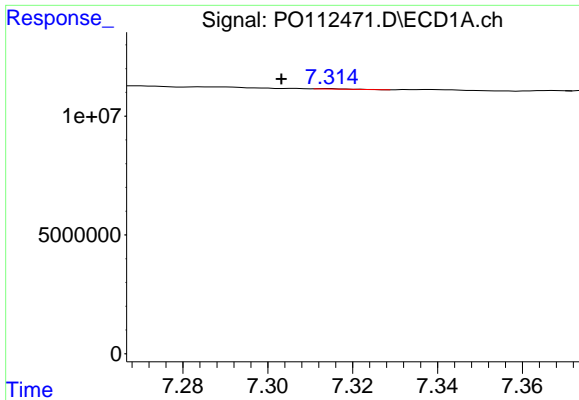
#36 AR-1262-1

R.T.: 6.790 min
 Delta R.T.: -0.011 min
 Response: 9695735
 Conc: 10.43 ng/ml



#36 AR-1262-1

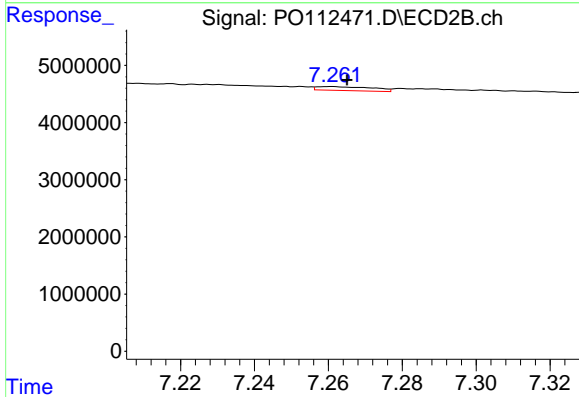
R.T.: 6.756 min
 Delta R.T.: -0.010 min
 Response: 165884
 Conc: 0.40 ng/ml



#37 AR-1262-2

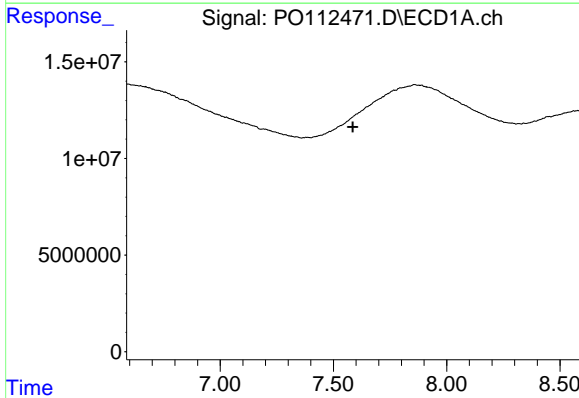
R.T.: 7.314 min
 Delta R.T.: 0.011 min
 Response: 96070
 Conc: 0.06 ng/ml

Instrument :
 ECD_O
 ClientSampleId :
 PB168990BL



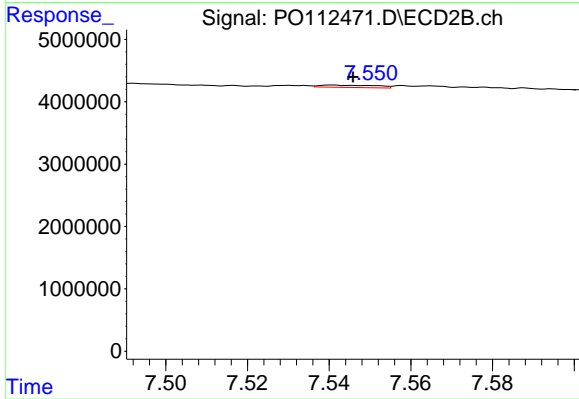
#37 AR-1262-2

R.T.: 7.261 min
 Delta R.T.: -0.004 min
 Response: 721806
 Conc: 1.40 ng/ml



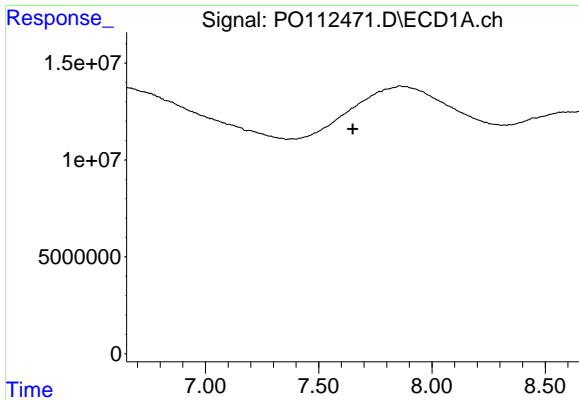
#38 AR-1262-3

R.T.: 0.000 min
 Exp R.T. : 7.586 min
 Response: 0
 Conc: N.D.



#38 AR-1262-3

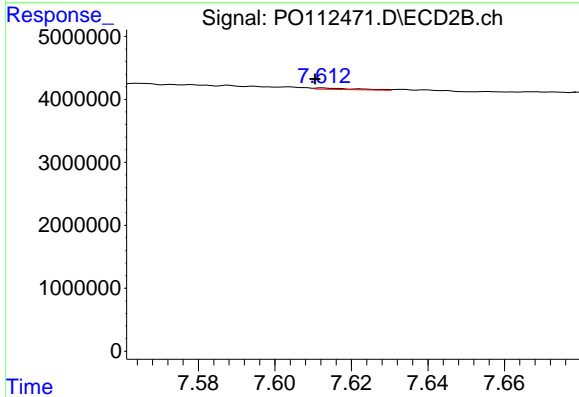
R.T.: 7.541 min
 Delta R.T.: -0.005 min
 Response: 362773
 Conc: 1.94 ng/ml



#39 AR-1262-4

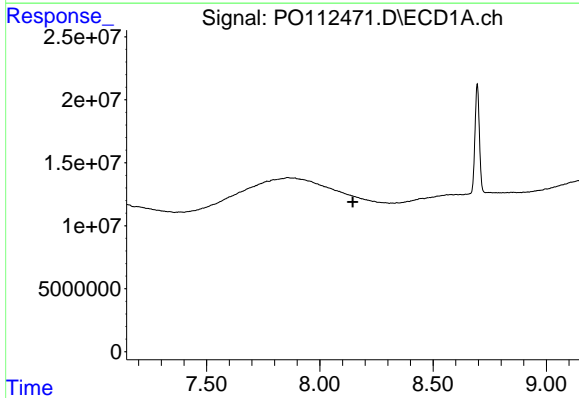
R.T.: 0.000 min
 Exp R.T.: 7.650 min
 Response: 0
 Conc: N.D.

Instrument :
 ECD_O
 ClientSampleId :
 PB168990BL



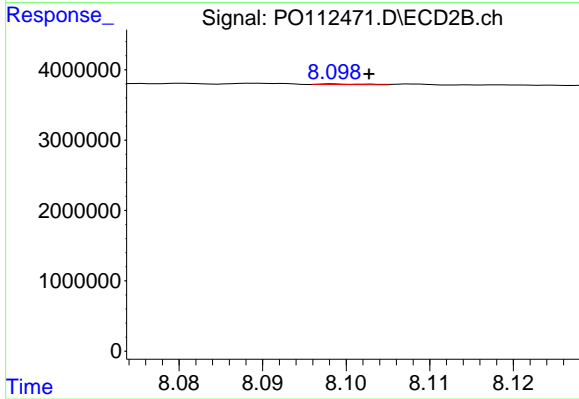
#39 AR-1262-4

R.T.: 7.613 min
 Delta R.T.: 0.002 min
 Response: 179316
 Conc: 0.62 ng/ml



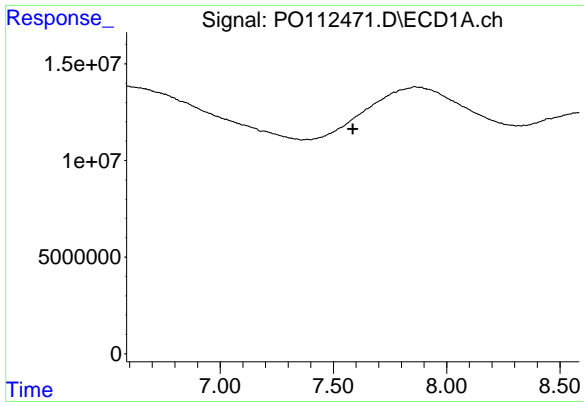
#40 AR-1262-5

R.T.: 0.000 min
 Exp R.T.: 8.146 min
 Response: 0
 Conc: N.D.



#40 AR-1262-5

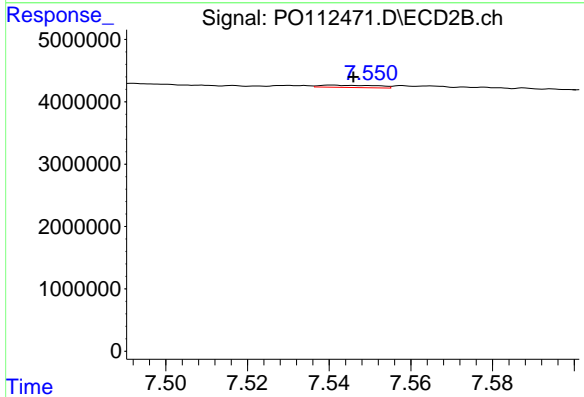
R.T.: 8.099 min
 Delta R.T.: -0.004 min
 Response: 33360
 Conc: 0.34 ng/ml



#41 AR-1268-1

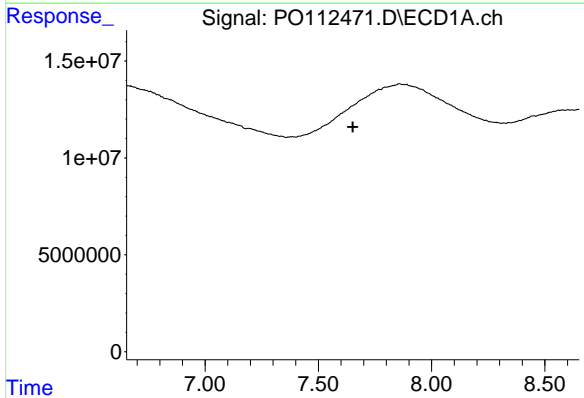
R.T.: 0.000 min
 Exp R.T.: 7.586 min
 Response: 0
 Conc: N.D.

Instrument :
 ECD_O
 ClientSampleId :
 PB168990BL



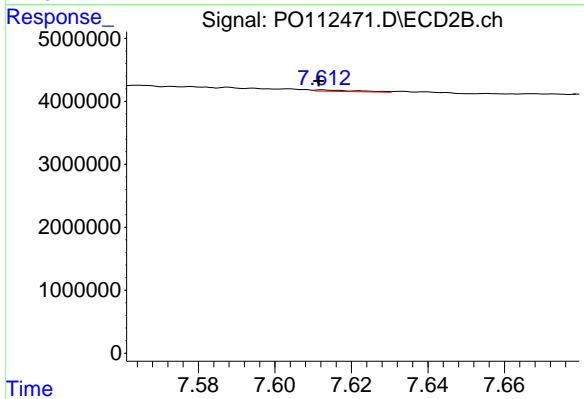
#41 AR-1268-1

R.T.: 7.541 min
 Delta R.T.: -0.005 min
 Response: 362773
 Conc: 0.70 ng/ml



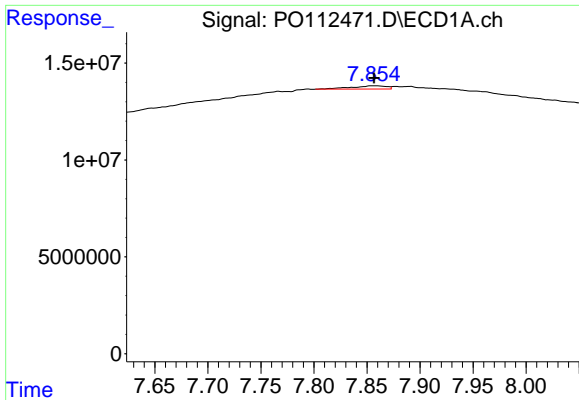
#42 AR-1268-2

R.T.: 0.000 min
 Exp R.T.: 7.652 min
 Response: 0
 Conc: N.D.



#42 AR-1268-2

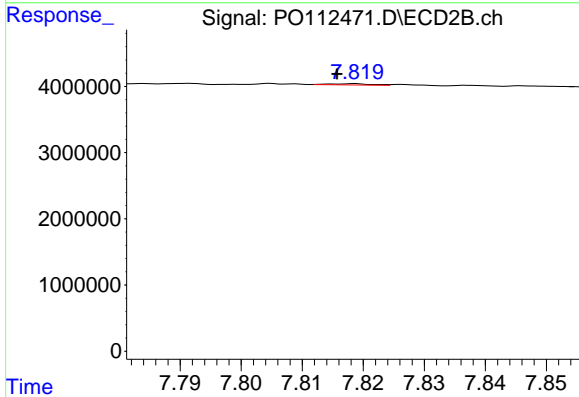
R.T.: 7.613 min
 Delta R.T.: 0.001 min
 Response: 179316
 Conc: 0.42 ng/ml



#43 AR-1268-3

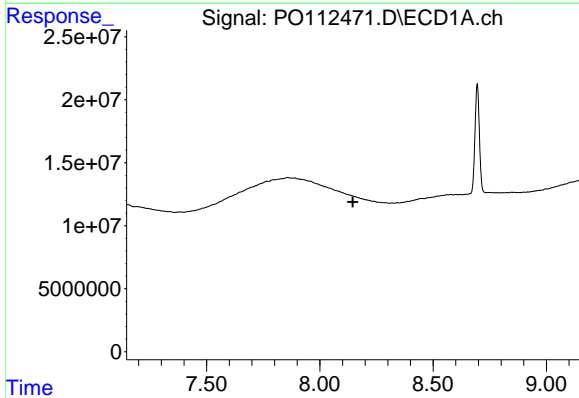
R.T.: 7.856 min
 Delta R.T.: -0.001 min
 Response: 3807152
 Conc: 3.04 ng/ml

Instrument :
 ECD_O
 ClientSampleId :
 PB168990BL



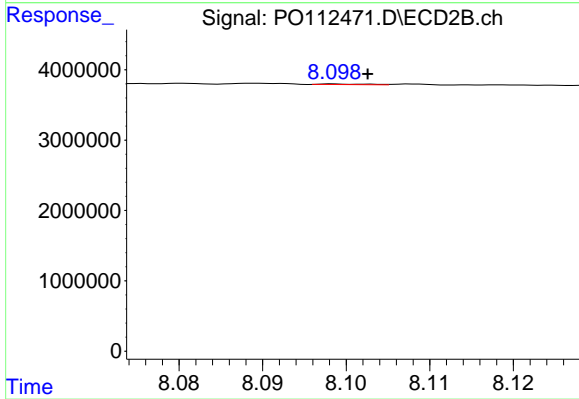
#43 AR-1268-3

R.T.: 7.819 min
 Delta R.T.: 0.003 min
 Response: 91337
 Conc: 0.28 ng/ml



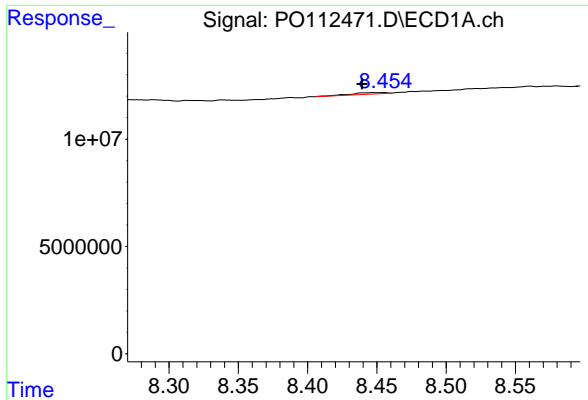
#44 AR-1268-4

R.T.: 0.000 min
 Exp R.T. : 8.146 min
 Response: 0
 Conc: N.D.



#44 AR-1268-4

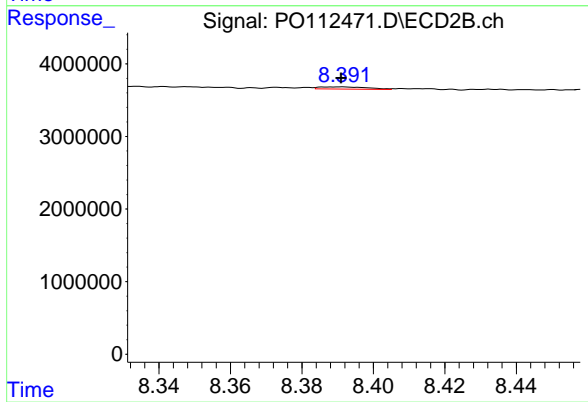
R.T.: 8.099 min
 Delta R.T.: -0.004 min
 Response: 33360
 Conc: 0.30 ng/ml



#45 AR-1268-5

R.T.: 8.455 min
 Delta R.T.: 0.016 min
 Response: 1223429
 Conc: 0.36 ng/ml

Instrument :
 ECD_O
 ClientSampleId :
 PB168990BL



#45 AR-1268-5

R.T.: 8.391 min
 Delta R.T.: 0.000 min
 Response: 292620
 Conc: 0.40 ng/ml