

Data Path : Z:\pestpcbsrv\HPCHEM1\ECD_0\Data\P0072425\
 Data File : PO112472.D
 Signal(s) : Signal #1: ECD1A.ch Signal #2: ECD2B.ch
 Acq On : 24 Jul 2025 17:49
 Operator : YP/AJ
 Sample : PB168990BS
 Misc :
 ALS Vial : 20 Sample Multiplier: 1

Instrument :
 ECD_0
 ClientSampleId :
 PB168990BS

Integration File signal 1: autoint1.e
 Integration File signal 2: autoint2.e
 Quant Time: Jul 24 23:45:31 2025
 Quant Method : Z:\pestpcbsrv\HPCHEM1\ECD_0\methods\P0072325.M
 Quant Title : GC EXTRACTABLES
 QLast Update : Thu Jul 24 04:54:06 2025
 Response via : Initial Calibration
 Integrator: ChemStation

Volume Inj. : 2 µl
 Signal #1 Phase : ZB-MR2 Signal #2 Phase: ZB-MR2
 Signal #1 Info : 30Mx0.32mmx 0.50µ Signal #2 Info : 30M x 0.32mm x 0.25µm

Compound	RT#1	RT#2	Resp#1	Resp#2	ng/ml	ng/ml
System Monitoring Compounds						
1) SA Tetrachlo...	3.667	3.661	162.9E6	99637299	20.036	20.051
2) SA Decachlor...	8.692	8.639	119.0E6	34461992	16.271	19.502
Target Compounds						
3) L1 AR-1016-1	4.753	4.736	154.5E6	96103197	575.848	549.139
4) L1 AR-1016-2	4.772	4.755	228.5E6	140.6E6	562.584	539.579
5) L1 AR-1016-3	4.828	4.930	144.3E6	73865178	551.559	543.260
6) L1 AR-1016-4	4.948	4.972	117.3E6	58733996	553.496	528.731
7) L1 AR-1016-5	5.205	5.184	120.5E6	75802566	549.140	528.967
8) L2 AR-1221-1	3.877	3.869	11544774	8694313	119.437	129.253
9) L2 AR-1221-2	3.965	3.956	15598975	11092941	217.069	218.675
10) L2 AR-1221-3	4.040	4.031	72002213	48316798	302.898	304.781
11) L3 AR-1232-1	4.040	4.031	72002213	48316798	385.083	381.800
12) L3 AR-1232-2	4.532	4.755	115.4E6	140.6E6	1072.551	1071.693
13) L3 AR-1232-3	4.772	4.930	228.5E6	73865178	1104.816	1099.236
14) L3 AR-1232-4	4.948	5.014	117.3E6	72352117	1119.468	1209.313
15) L3 AR-1232-5	4.991	5.184	89296992	75802566	1315.495	1162.562
16) L4 AR-1242-1	4.753	4.736	154.5E6	96103197	624.164	606.735
17) L4 AR-1242-2	4.772	4.755	228.5E6	140.6E6	617.845	601.532
18) L4 AR-1242-3	4.828	4.930	144.3E6	73865178	609.862	609.503
19) L4 AR-1242-4	4.948	5.014	117.3E6	72352117	603.532	589.478
20) L4 AR-1242-5	5.600	5.534	16436352	63363886	76.836	393.635 #
21) L5 AR-1248-1	4.753	4.736	154.5E6	96103197	825.485	790.912
22) L5 AR-1248-2	4.991	4.972	89296992	58733996	350.030	346.964
23) L5 AR-1248-3	5.205	5.014	120.5E6	72352117	350.654	407.280
24) L5 AR-1248-4	5.558	5.184	102.0E6	75802566	200.731	363.815 #
25) L5 AR-1248-5	5.600	5.574	16436352	11500904	47.016	53.551
26) L6 AR-1254-1	5.558	5.534	102.0E6	63363886	185.782	192.818
27) L6 AR-1254-2	5.708	5.682	104.4E6	63722272	214.866	220.119
28) L6 AR-1254-3	6.127	6.098	191.1E6	108.7E6	256.782	254.334
29) L6 AR-1254-4	6.341	6.310	20443922	11719807	37.191	42.936
30) L6 AR-1254-5	6.759	6.726	382.4E6	177.0E6	540.238	529.972
31) L7 AR-1260-1	6.242	6.213	248.1E6	141.3E6	564.823	568.633
32) L7 AR-1260-2	6.432	6.401	381.7E6	181.9E6	554.825	551.953
33) L7 AR-1260-3	6.798	6.552	295.0E6	147.6E6	501.623	574.664
34) L7 AR-1260-4	7.057	7.022	189.0E6	93626927	419.135	489.397
35) L7 AR-1260-5	7.301	7.264	478.2E6	202.8E6	385.927	491.980 #
36) L8 AR-1262-1	6.798	6.764	295.0E6	132.2E6	317.436	318.595
37) L8 AR-1262-2	7.301	7.264	478.2E6	202.8E6	321.595	393.352
38) L8 AR-1262-3	7.583	7.545	87350684	33907200	147.989	181.783
39) L8 AR-1262-4	7.646	7.608	317.7E6	101.8E6	319.521	353.183
40) L8 AR-1262-5	8.143	8.102	93310123	24639248	214.970	247.622
41) L9 AR-1268-1	7.583	7.545	87350684	33907200	49.882	65.475 #

Data Path : Z:\pestpcbsrv\HPCHEM1\ECD_0\Data\P0072425\
 Data File : P0112472.D
 Signal(s) : Signal #1: ECD1A.ch Signal #2: ECD2B.ch
 Acq On : 24 Jul 2025 17:49
 Operator : YP/AJ
 Sample : PB168990BS
 Misc :
 ALS Vial : 20 Sample Multiplier: 1

Instrument :
 ECD_0
ClientSampleId :
 PB168990BS

Integration File signal 1: autoint1.e
 Integration File signal 2: autoint2.e
 Quant Time: Jul 24 23:45:31 2025
 Quant Method : Z:\pestpcbsrv\HPCHEM1\ECD_0\methods\P0072325.M
 Quant Title : GC EXTRACTABLES
 QLast Update : Thu Jul 24 04:54:06 2025
 Response via : Initial Calibration
 Integrator: ChemStation

Volume Inj. : 2 µl
 Signal #1 Phase : ZB-MR1 Signal #2 Phase: ZB-MR2
 Signal #1 Info : 30Mx0.32mmx 0.50µ Signal #2 Info : 30M x 0.32mm x 0.25µm

	Compound	RT#1	RT#2	Resp#1	Resp#2	ng/ml	ng/ml
42)	L9 AR-1268-2	7.646	7.608	317.7E6	101.8E6	215.649	239.383
43)	L9 AR-1268-3	7.856	7.814	9760950	2083542	7.795	6.485
44)	L9 AR-1268-4	8.143	8.102	93310123	24639248	193.644	221.386
45)	L9 AR-1268-5	8.437	8.390	24293442	7354236	7.236	10.050 #

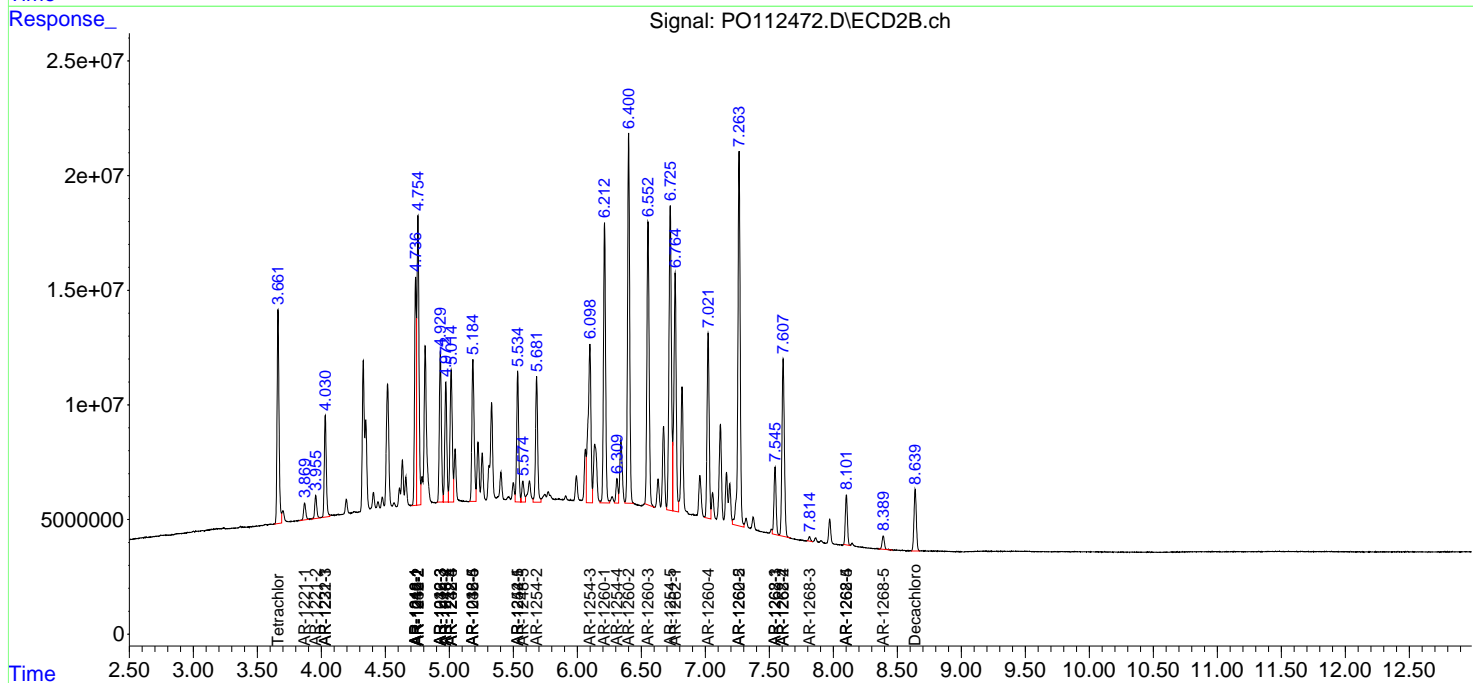
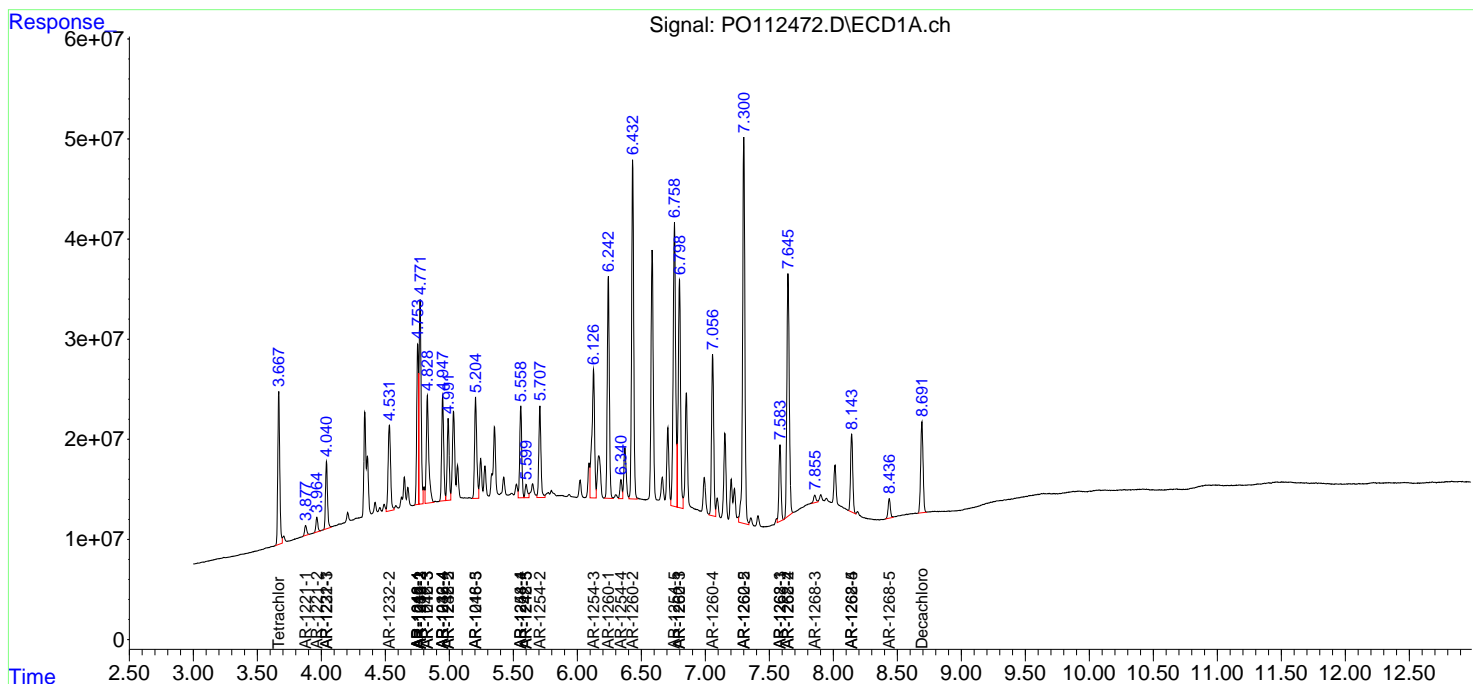
(f)=RT Delta > 1/2 Window (#)=Amounts differ by > 25% (m)=manual int.

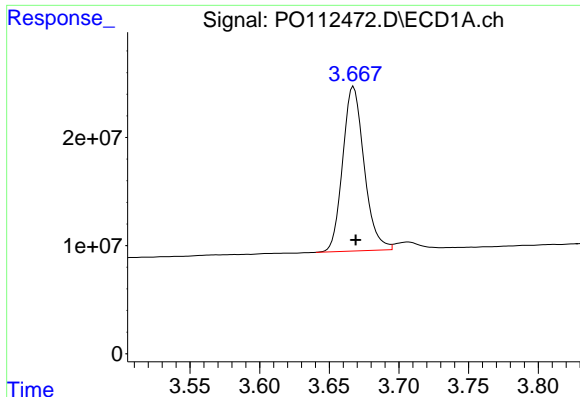
Data Path : Z:\pestpcbsrv\HPCHEM1\ECD_O\Data\PO072425\
 Data File : PO112472.D
 Signal(s) : Signal #1: ECD1A.ch Signal #2: ECD2B.ch
 Acq On : 24 Jul 2025 17:49
 Operator : YP/AJ
 Sample : PB168990BS
 Misc :
 ALS Vial : 20 Sample Multiplier: 1

Instrument :
 ECD_O
 ClientSampleId :
 PB168990BS

Integration File signal 1: autoint1.e
 Integration File signal 2: autoint2.e
 Quant Time: Jul 24 23:45:31 2025
 Quant Method : Z:\pestpcbsrv\HPCHEM1\ECD_O\methods\PO072325.M
 Quant Title : GC EXTRACTABLES
 QLast Update : Thu Jul 24 04:54:06 2025
 Response via : Initial Calibration
 Integrator: ChemStation

Volume Inj. : 2 µl
 Signal #1 Phase : ZB-MR1 Signal #2 Phase: ZB-MR2
 Signal #1 Info : 30Mx0.32mmx 0.50µ Signal #2 Info : 30M x 0.32mm x 0.25µm

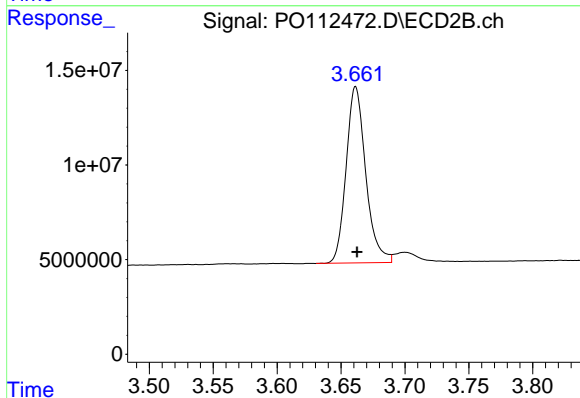




#1 Tetrachloro-m-xylene

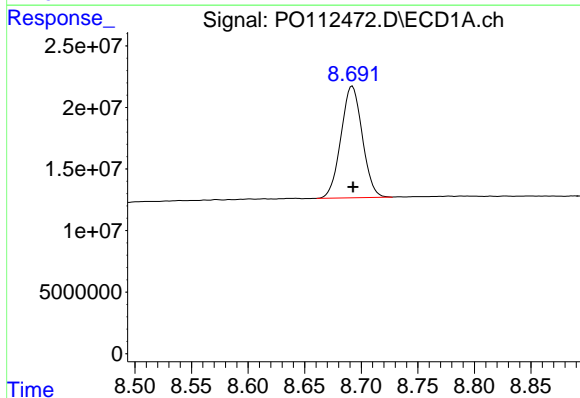
R.T.: 3.667 min
 Delta R.T.: -0.002 min
 Response: 162923131
 Conc: 20.04 ng/ml

Instrument :
 ECD_O
 ClientSampleId :
 PB168990BS



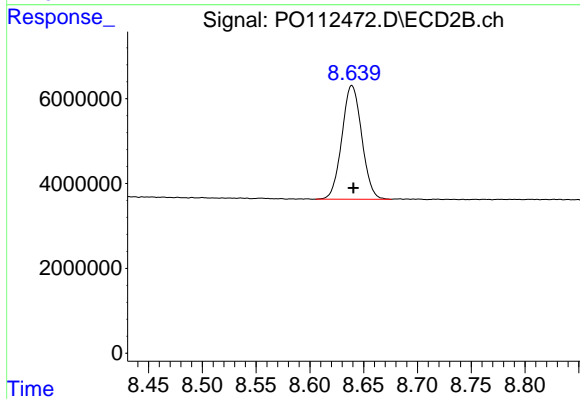
#1 Tetrachloro-m-xylene

R.T.: 3.661 min
 Delta R.T.: 0.000 min
 Response: 99637299
 Conc: 20.05 ng/ml



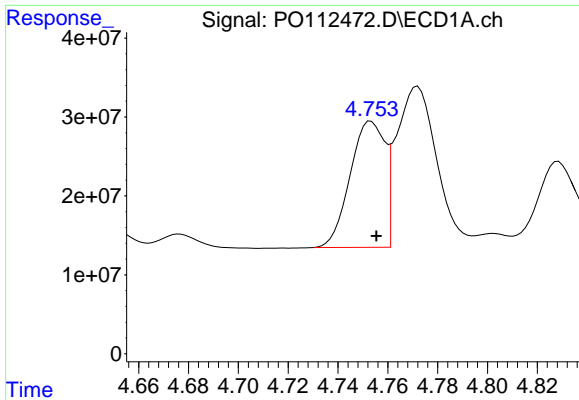
#2 Decachlorobiphenyl

R.T.: 8.692 min
 Delta R.T.: 0.000 min
 Response: 118972077
 Conc: 16.27 ng/ml



#2 Decachlorobiphenyl

R.T.: 8.639 min
 Delta R.T.: -0.001 min
 Response: 34461992
 Conc: 19.50 ng/ml

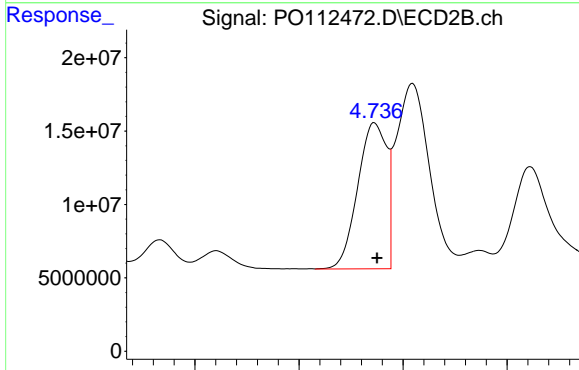


#3 AR-1016-1

R.T.: 4.753 min
 Delta R.T.: -0.002 min
 Response: 154537929
 Conc: 575.85 ng/ml

Instrument :
 ECD_O
 ClientSampleId :
 PB168990BS

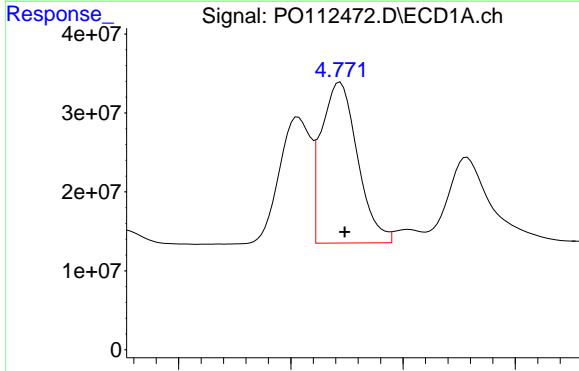
Time 4.66 4.68 4.70 4.72 4.74 4.76 4.78 4.80 4.82



#3 AR-1016-1

R.T.: 4.736 min
 Delta R.T.: -0.001 min
 Response: 96103197
 Conc: 549.14 ng/ml

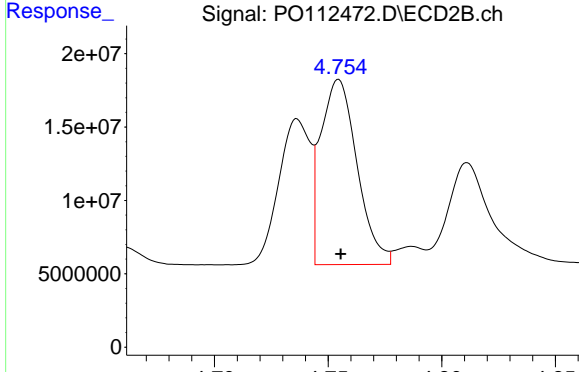
Time 4.65 4.70 4.75 4.80



#4 AR-1016-2

R.T.: 4.772 min
 Delta R.T.: -0.002 min
 Response: 228475140
 Conc: 562.58 ng/ml

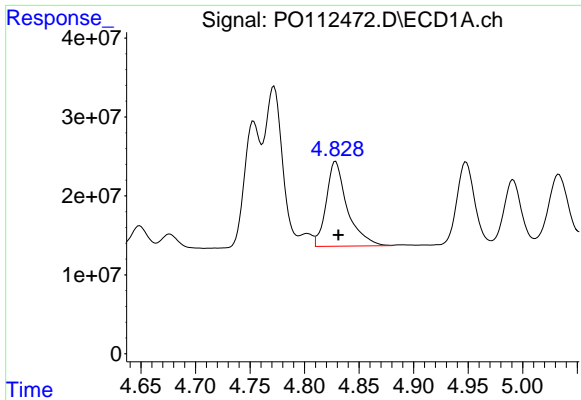
Time 4.70 4.75 4.80 4.85



#4 AR-1016-2

R.T.: 4.755 min
 Delta R.T.: 0.000 min
 Response: 140557726
 Conc: 539.58 ng/ml

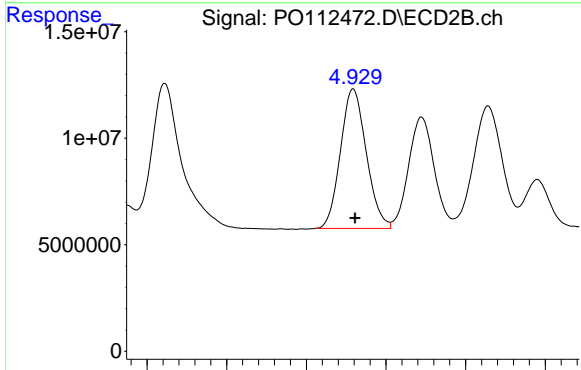
Time 4.70 4.75 4.80 4.85



#5 AR-1016-3

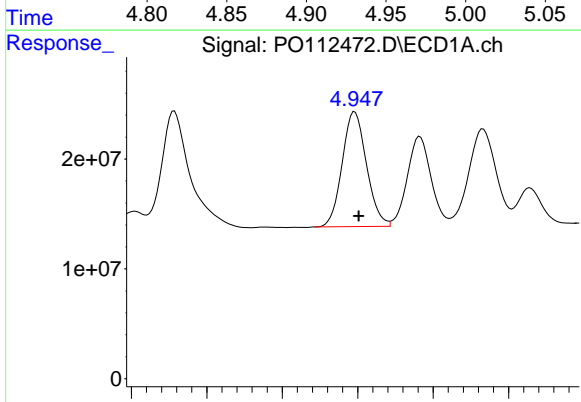
R.T.: 4.828 min
Delta R.T.: -0.003 min
Response: 144328674
Conc: 551.56 ng/ml

Instrument :
ECD_O
ClientSampleId :
PB168990BS



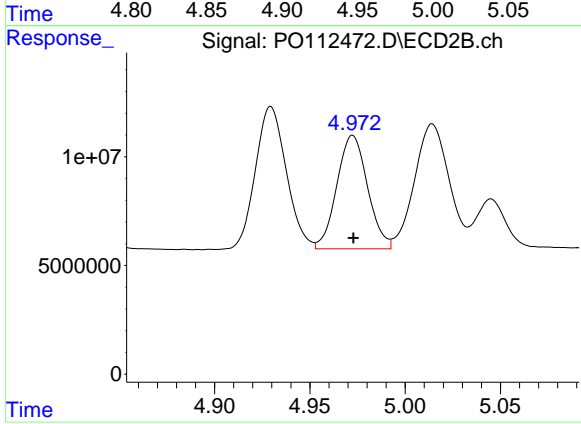
#5 AR-1016-3

R.T.: 4.930 min
Delta R.T.: -0.001 min
Response: 73865178
Conc: 543.26 ng/ml



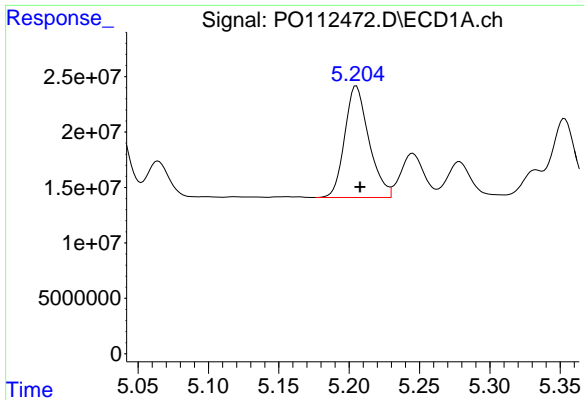
#6 AR-1016-4

R.T.: 4.948 min
Delta R.T.: -0.003 min
Response: 117253397
Conc: 553.50 ng/ml



#6 AR-1016-4

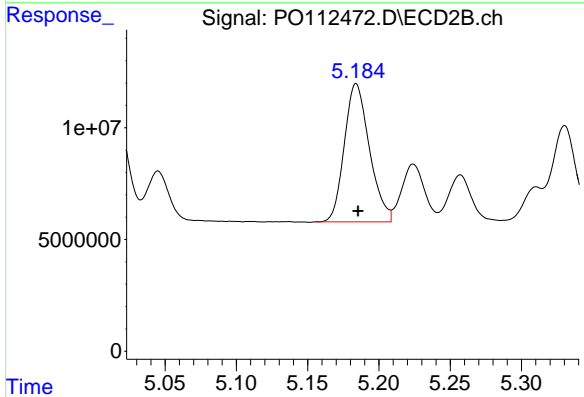
R.T.: 4.972 min
Delta R.T.: 0.000 min
Response: 58733996
Conc: 528.73 ng/ml



#7 AR-1016-5

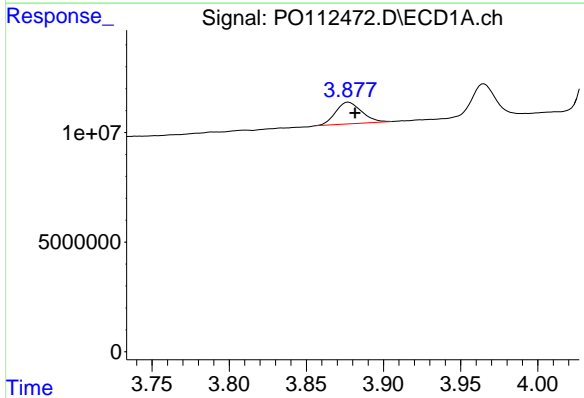
R.T.: 5.205 min
 Delta R.T.: -0.002 min
 Response: 120520175
 Conc: 549.14 ng/ml

Instrument :
 ECD_O
 ClientSampleId :
 PB168990BS



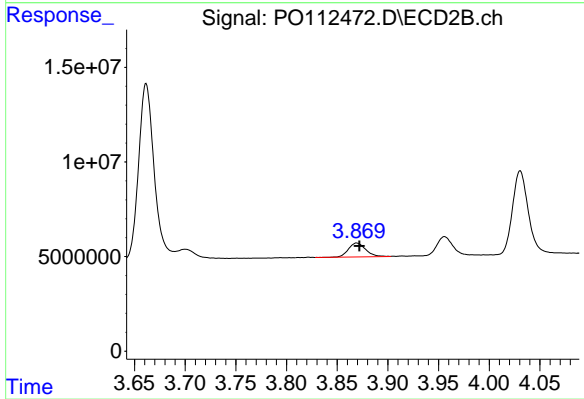
#7 AR-1016-5

R.T.: 5.184 min
 Delta R.T.: -0.001 min
 Response: 75802566
 Conc: 528.97 ng/ml



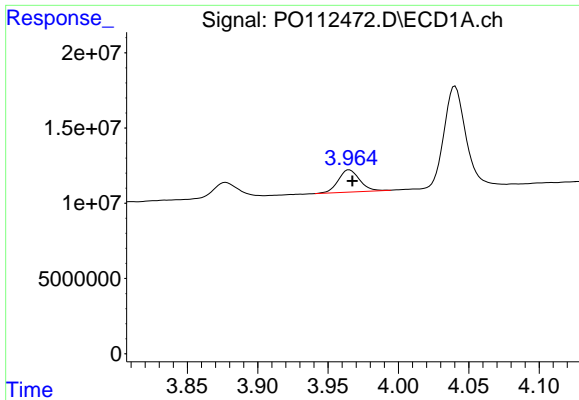
#8 AR-1221-1

R.T.: 3.877 min
 Delta R.T.: -0.004 min
 Response: 11544774
 Conc: 119.44 ng/ml



#8 AR-1221-1

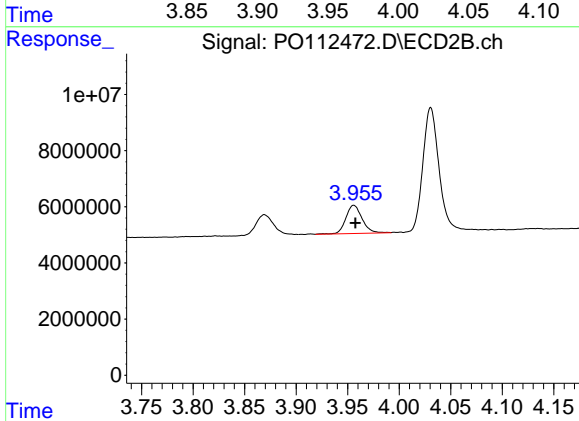
R.T.: 3.869 min
 Delta R.T.: -0.003 min
 Response: 8694313
 Conc: 129.25 ng/ml



#9 AR-1221-2

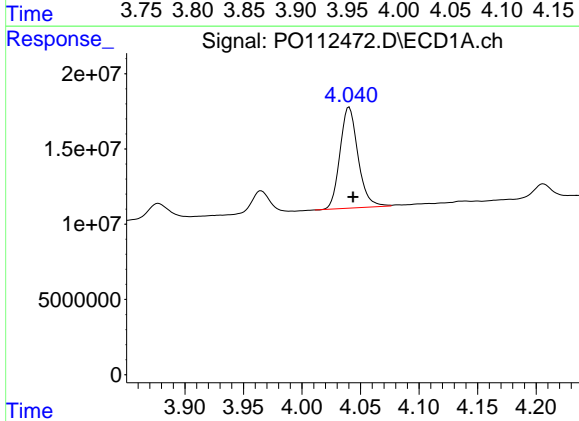
R.T.: 3.965 min
 Delta R.T.: -0.002 min
 Response: 15598975
 Conc: 217.07 ng/ml

Instrument :
 ECD_O
 ClientSampleId :
 PB168990BS



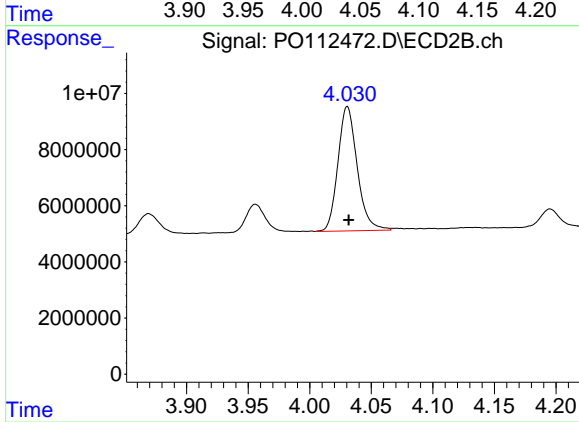
#9 AR-1221-2

R.T.: 3.956 min
 Delta R.T.: -0.002 min
 Response: 11092941
 Conc: 218.67 ng/ml



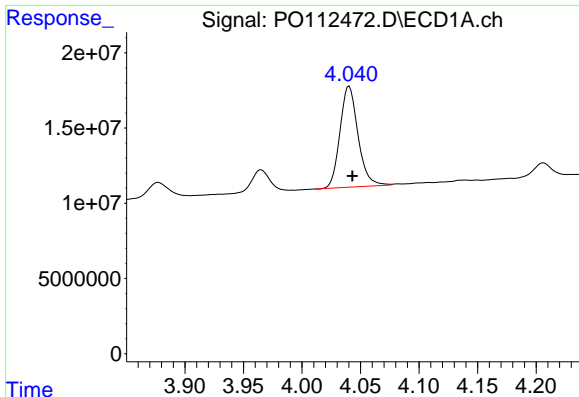
#10 AR-1221-3

R.T.: 4.040 min
 Delta R.T.: -0.003 min
 Response: 72002213
 Conc: 302.90 ng/ml



#10 AR-1221-3

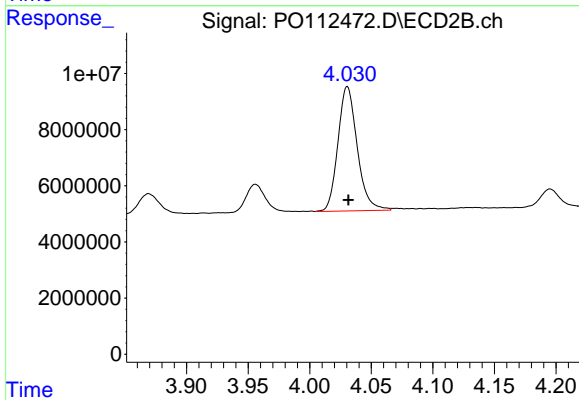
R.T.: 4.031 min
 Delta R.T.: -0.001 min
 Response: 48316798
 Conc: 304.78 ng/ml



#11 AR-1232-1

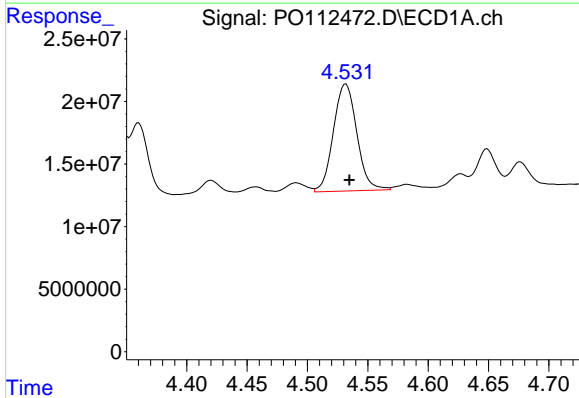
R.T.: 4.040 min
 Delta R.T.: -0.003 min
 Response: 72002213
 Conc: 385.08 ng/ml

Instrument :
 ECD_O
 ClientSampleId :
 PB168990BS



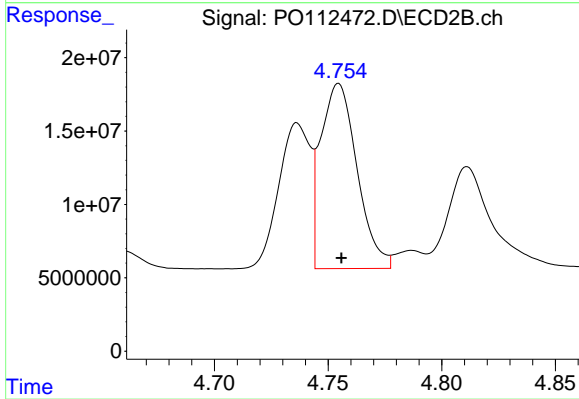
#11 AR-1232-1

R.T.: 4.031 min
 Delta R.T.: 0.000 min
 Response: 48316798
 Conc: 381.80 ng/ml



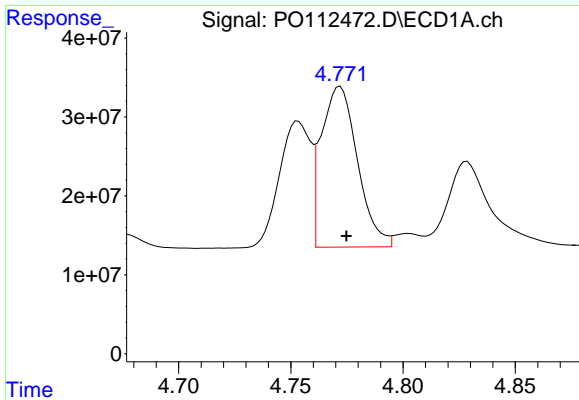
#12 AR-1232-2

R.T.: 4.532 min
 Delta R.T.: -0.003 min
 Response: 115432976
 Conc: 1072.55 ng/ml



#12 AR-1232-2

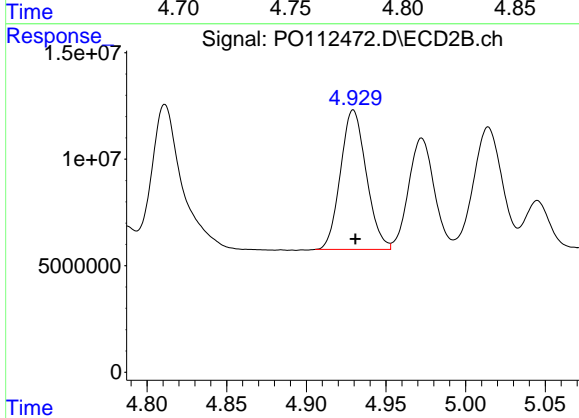
R.T.: 4.755 min
 Delta R.T.: -0.001 min
 Response: 140557726
 Conc: 1071.69 ng/ml



#13 AR-1232-3

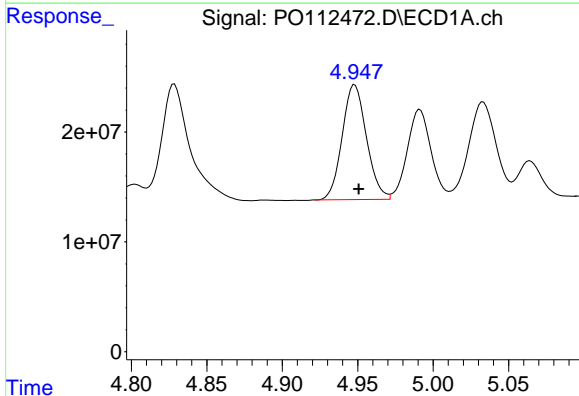
R.T.: 4.772 min
 Delta R.T.: -0.003 min
 Response: 228475140
 Conc: 1104.82 ng/ml

Instrument :
 ECD_O
 ClientSampleId :
 PB168990BS



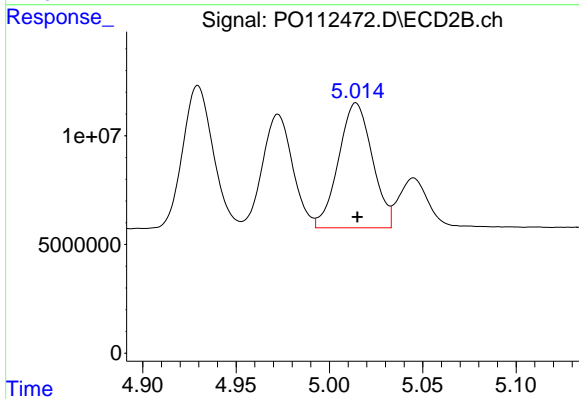
#13 AR-1232-3

R.T.: 4.930 min
 Delta R.T.: -0.001 min
 Response: 73865178
 Conc: 1099.24 ng/ml



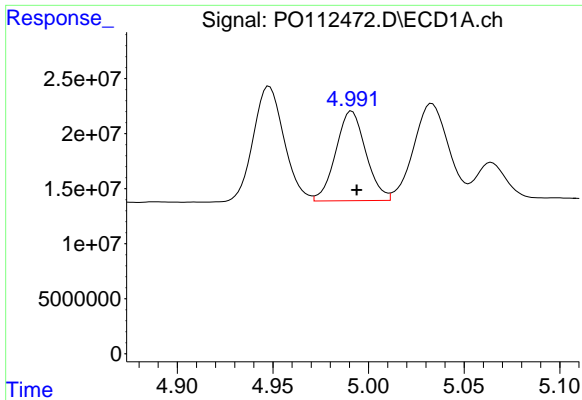
#14 AR-1232-4

R.T.: 4.948 min
 Delta R.T.: -0.003 min
 Response: 117253397
 Conc: 1119.47 ng/ml



#14 AR-1232-4

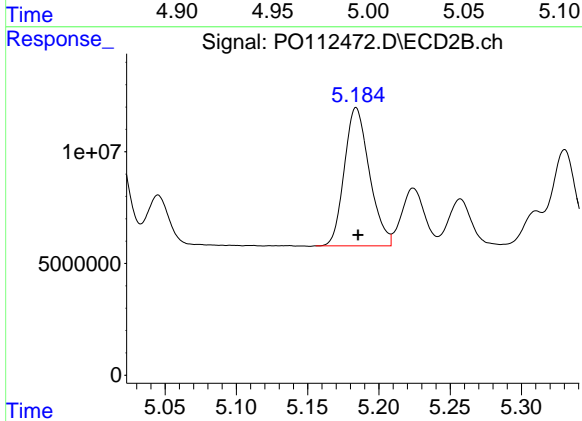
R.T.: 5.014 min
 Delta R.T.: 0.000 min
 Response: 72352117
 Conc: 1209.31 ng/ml



#15 AR-1232-5

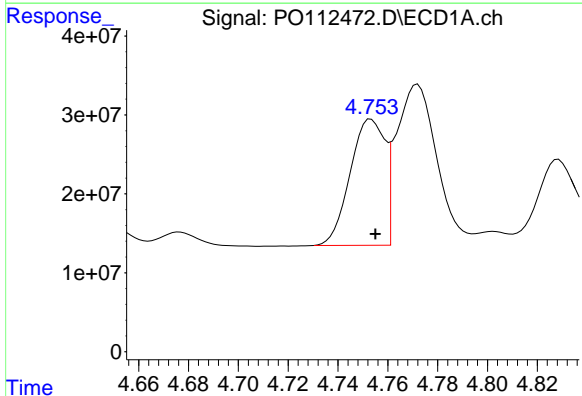
R.T.: 4.991 min
 Delta R.T.: -0.003 min
 Response: 89296992
 Conc: 1315.50 ng/ml

Instrument :
 ECD_O
 ClientSampleId :
 PB168990BS



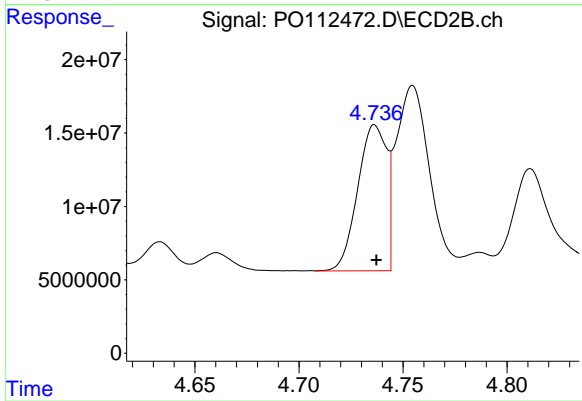
#15 AR-1232-5

R.T.: 5.184 min
 Delta R.T.: -0.001 min
 Response: 75802566
 Conc: 1162.56 ng/ml



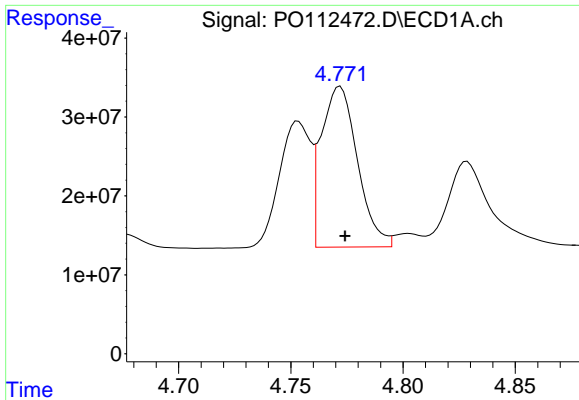
#16 AR-1242-1

R.T.: 4.753 min
 Delta R.T.: -0.002 min
 Response: 154537929
 Conc: 624.16 ng/ml



#16 AR-1242-1

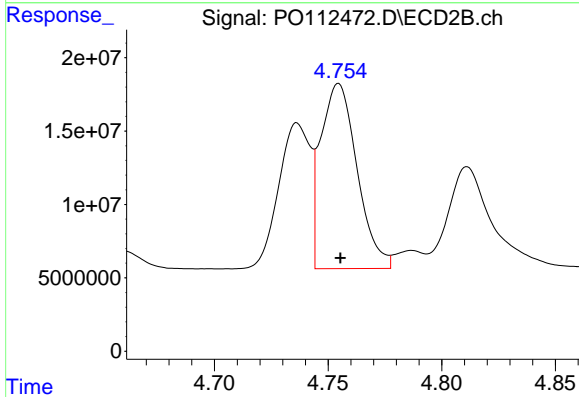
R.T.: 4.736 min
 Delta R.T.: -0.001 min
 Response: 96103197
 Conc: 606.73 ng/ml



#17 AR-1242-2

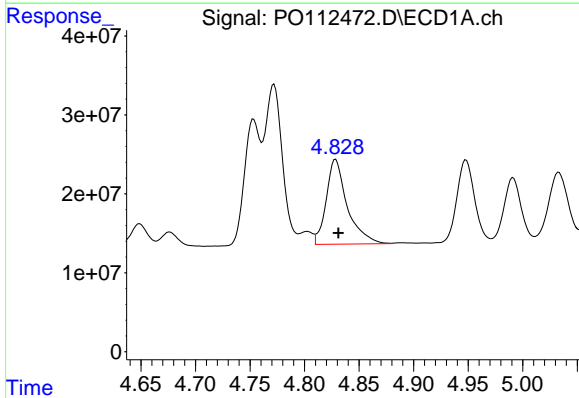
R.T.: 4.772 min
 Delta R.T.: -0.002 min
 Response: 228475140
 Conc: 617.85 ng/ml

Instrument :
 ECD_O
 ClientSampleId :
 PB168990BS



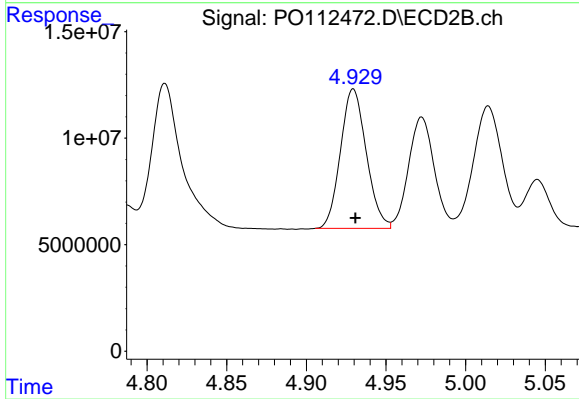
#17 AR-1242-2

R.T.: 4.755 min
 Delta R.T.: 0.000 min
 Response: 140557726
 Conc: 601.53 ng/ml



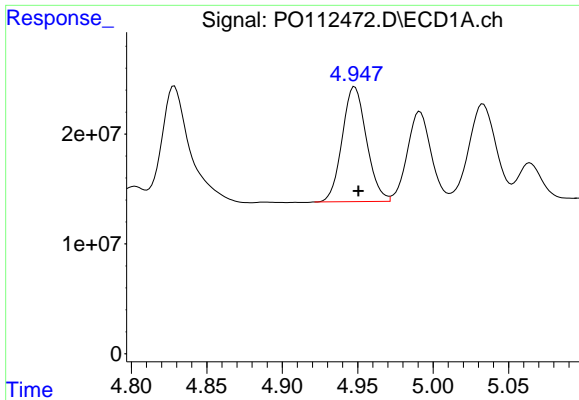
#18 AR-1242-3

R.T.: 4.828 min
 Delta R.T.: -0.002 min
 Response: 144328674
 Conc: 609.86 ng/ml



#18 AR-1242-3

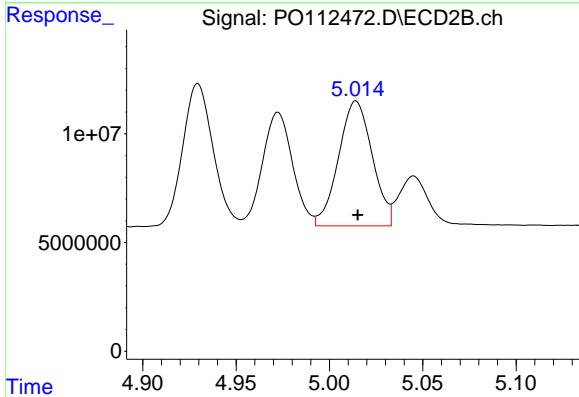
R.T.: 4.930 min
 Delta R.T.: -0.001 min
 Response: 73865178
 Conc: 609.50 ng/ml



#19 AR-1242-4

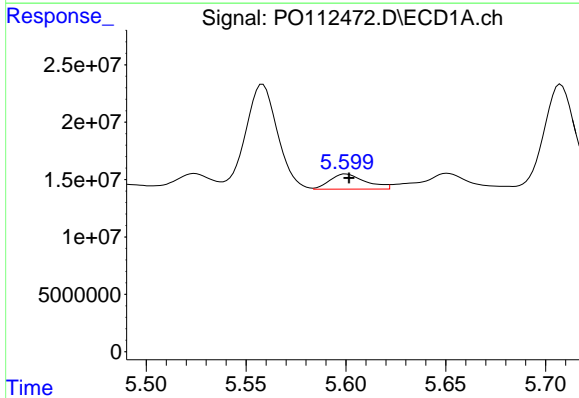
R.T.: 4.948 min
 Delta R.T.: -0.002 min
 Response: 117253397
 Conc: 603.53 ng/ml

Instrument :
 ECD_O
 ClientSampleId :
 PB168990BS



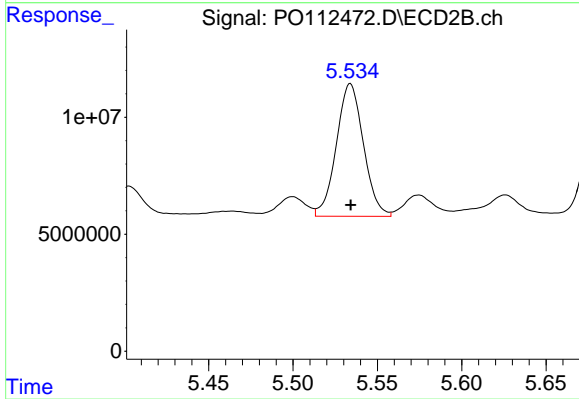
#19 AR-1242-4

R.T.: 5.014 min
 Delta R.T.: 0.000 min
 Response: 72352117
 Conc: 589.48 ng/ml



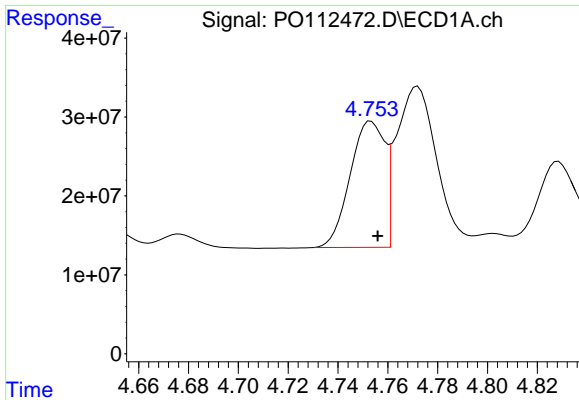
#20 AR-1242-5

R.T.: 5.600 min
 Delta R.T.: -0.001 min
 Response: 16436352
 Conc: 76.84 ng/ml



#20 AR-1242-5

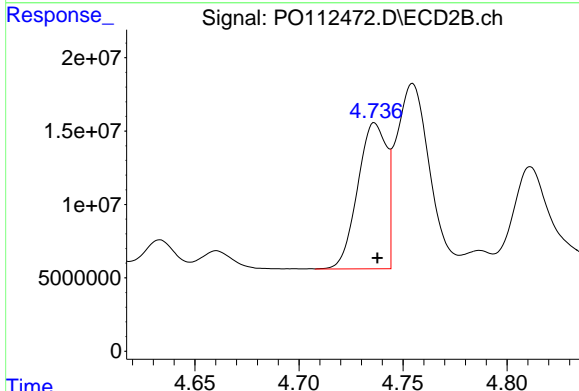
R.T.: 5.534 min
 Delta R.T.: 0.000 min
 Response: 63363886
 Conc: 393.63 ng/ml



#21 AR-1248-1

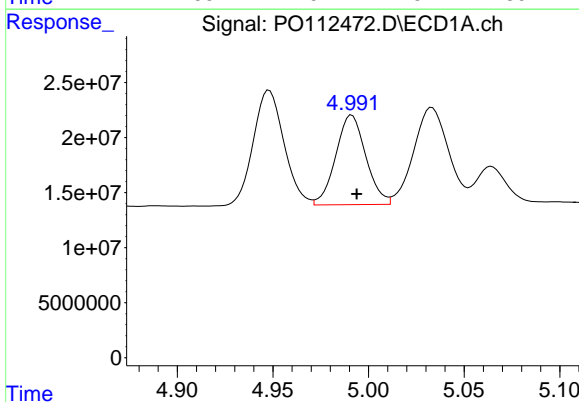
R.T.: 4.753 min
 Delta R.T.: -0.003 min
 Response: 154537929
 Conc: 825.48 ng/ml

Instrument :
 ECD_O
 ClientSampleId :
 PB168990BS



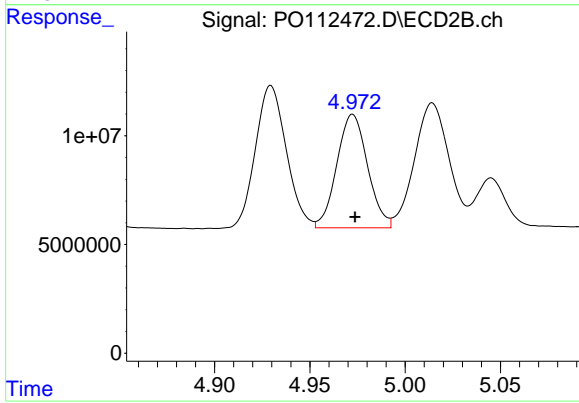
#21 AR-1248-1

R.T.: 4.736 min
 Delta R.T.: -0.001 min
 Response: 96103197
 Conc: 790.91 ng/ml



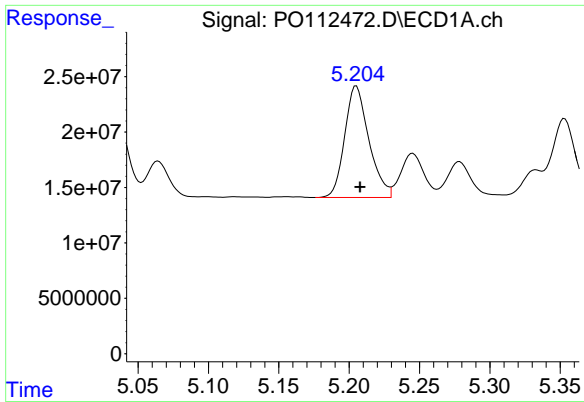
#22 AR-1248-2

R.T.: 4.991 min
 Delta R.T.: -0.003 min
 Response: 89296992
 Conc: 350.03 ng/ml



#22 AR-1248-2

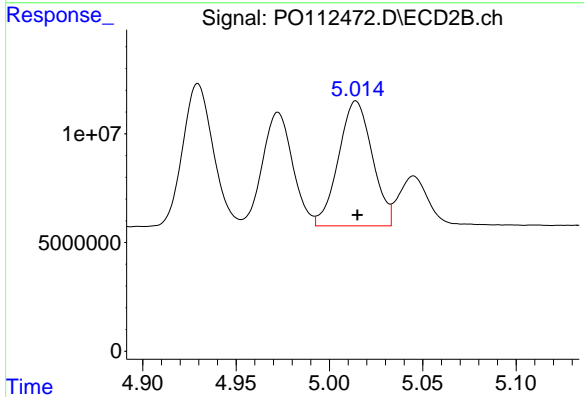
R.T.: 4.972 min
 Delta R.T.: -0.001 min
 Response: 58733996
 Conc: 346.96 ng/ml



#23 AR-1248-3

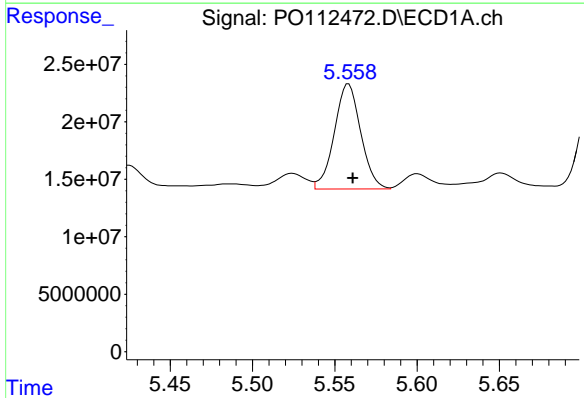
R.T.: 5.205 min
 Delta R.T.: -0.003 min
 Response: 120520175
 Conc: 350.65 ng/ml

Instrument :
 ECD_O
 ClientSampleId :
 PB168990BS



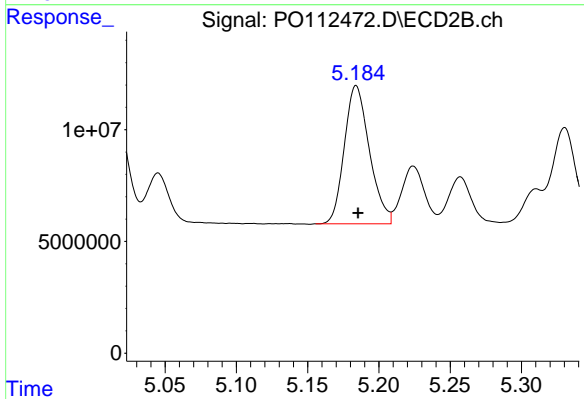
#23 AR-1248-3

R.T.: 5.014 min
 Delta R.T.: 0.000 min
 Response: 72352117
 Conc: 407.28 ng/ml



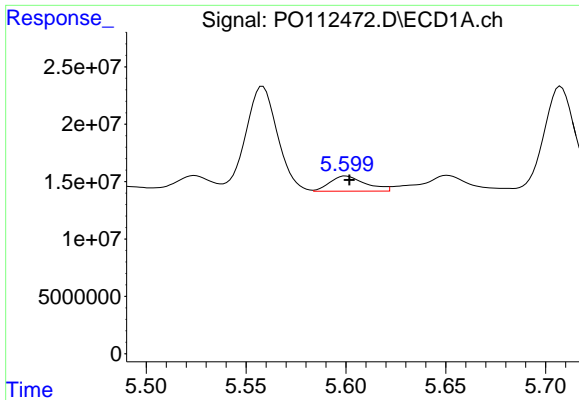
#24 AR-1248-4

R.T.: 5.558 min
 Delta R.T.: -0.003 min
 Response: 101986784
 Conc: 200.73 ng/ml



#24 AR-1248-4

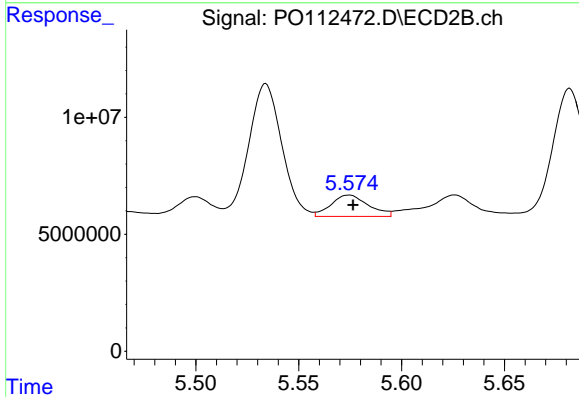
R.T.: 5.184 min
 Delta R.T.: -0.001 min
 Response: 75802566
 Conc: 363.82 ng/ml



#25 AR-1248-5

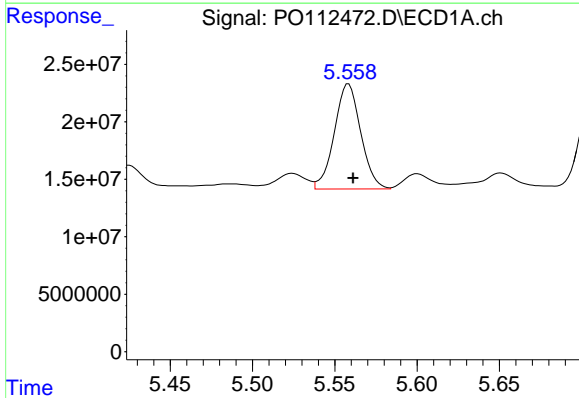
R.T.: 5.600 min
 Delta R.T.: -0.002 min
 Response: 16436352
 Conc: 47.02 ng/ml

Instrument :
 ECD_O
 ClientSampleId :
 PB168990BS



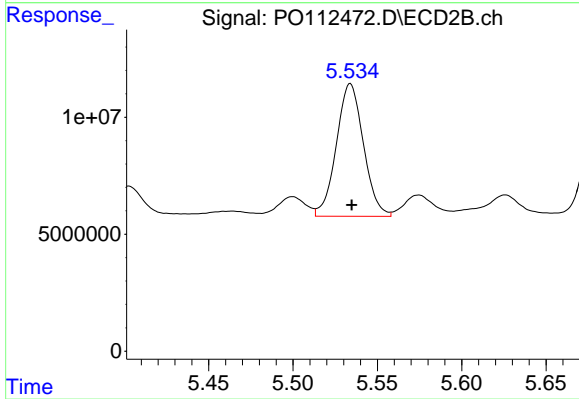
#25 AR-1248-5

R.T.: 5.574 min
 Delta R.T.: -0.002 min
 Response: 11500904
 Conc: 53.55 ng/ml



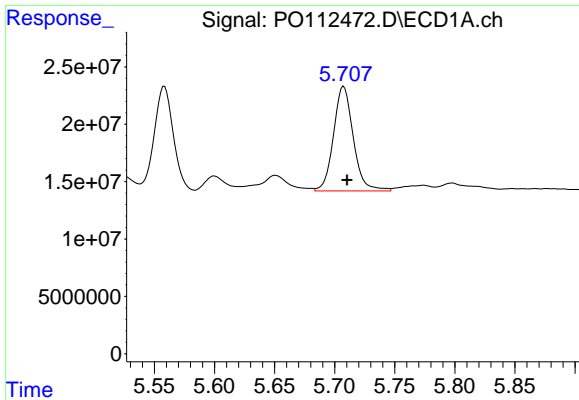
#26 AR-1254-1

R.T.: 5.558 min
 Delta R.T.: -0.003 min
 Response: 101986784
 Conc: 185.78 ng/ml



#26 AR-1254-1

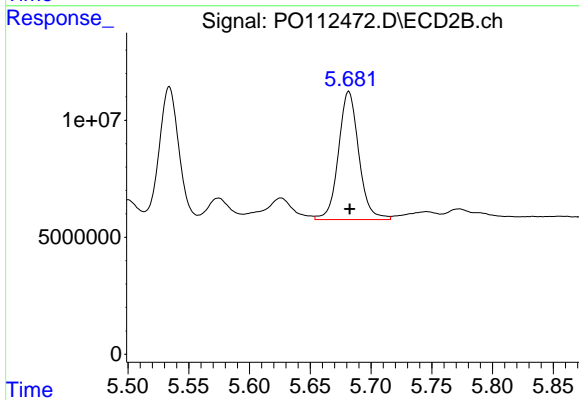
R.T.: 5.534 min
 Delta R.T.: 0.000 min
 Response: 63363886
 Conc: 192.82 ng/ml



#27 AR-1254-2

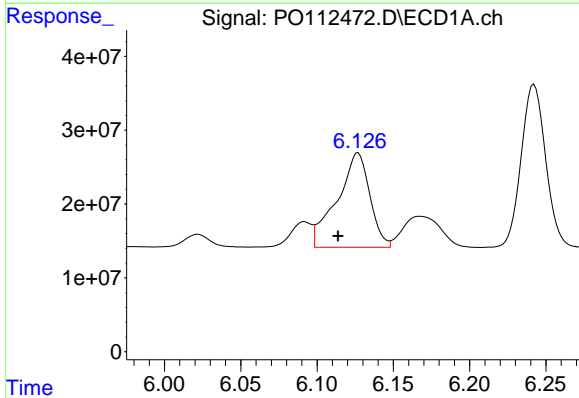
R.T.: 5.708 min
Delta R.T.: -0.003 min
Response: 104407496
Conc: 214.87 ng/ml

Instrument :
ECD_O
ClientSampleId :
PB168990BS



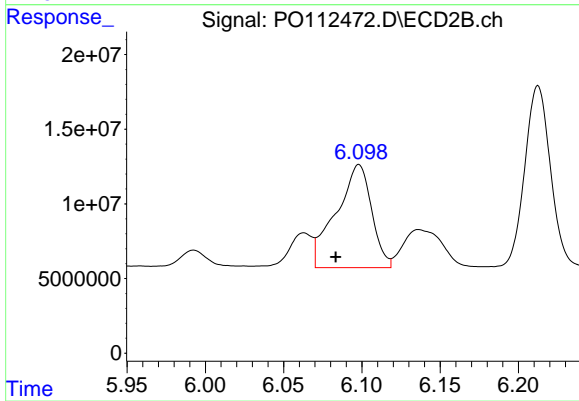
#27 AR-1254-2

R.T.: 5.682 min
Delta R.T.: 0.000 min
Response: 63722272
Conc: 220.12 ng/ml



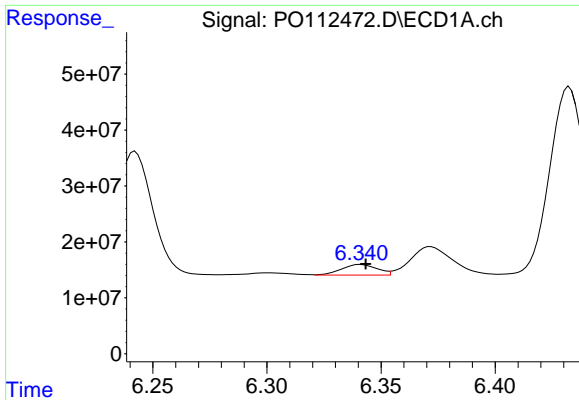
#28 AR-1254-3

R.T.: 6.127 min
Delta R.T.: 0.013 min
Response: 191119415
Conc: 256.78 ng/ml



#28 AR-1254-3

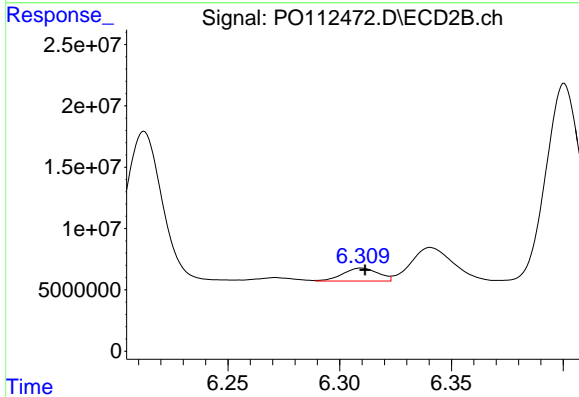
R.T.: 6.098 min
Delta R.T.: 0.015 min
Response: 108718063
Conc: 254.33 ng/ml



#29 AR-1254-4

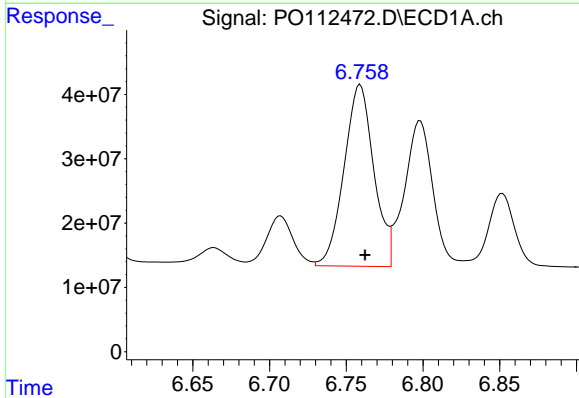
R.T.: 6.341 min
 Delta R.T.: -0.002 min
 Response: 20443922
 Conc: 37.19 ng/ml

Instrument :
 ECD_O
 ClientSampleId :
 PB168990BS



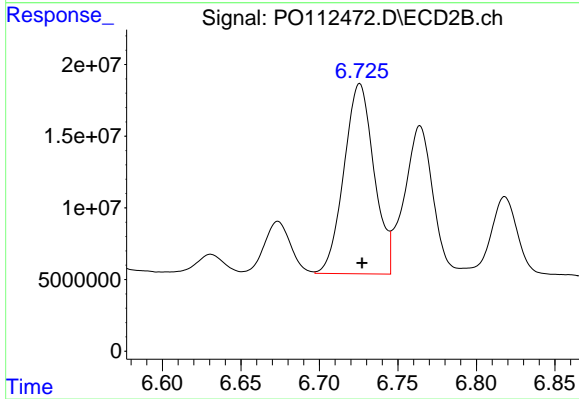
#29 AR-1254-4

R.T.: 6.310 min
 Delta R.T.: -0.002 min
 Response: 11719807
 Conc: 42.94 ng/ml



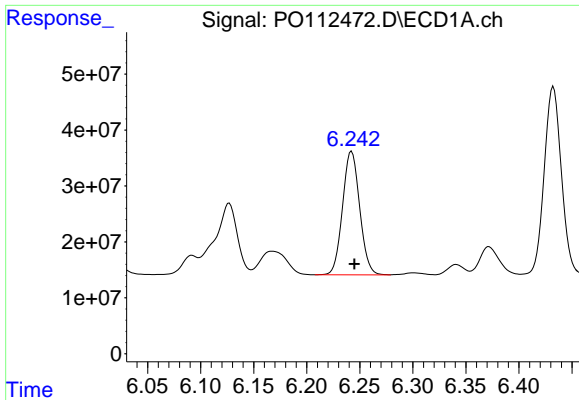
#30 AR-1254-5

R.T.: 6.759 min
 Delta R.T.: -0.003 min
 Response: 382393640
 Conc: 540.24 ng/ml



#30 AR-1254-5

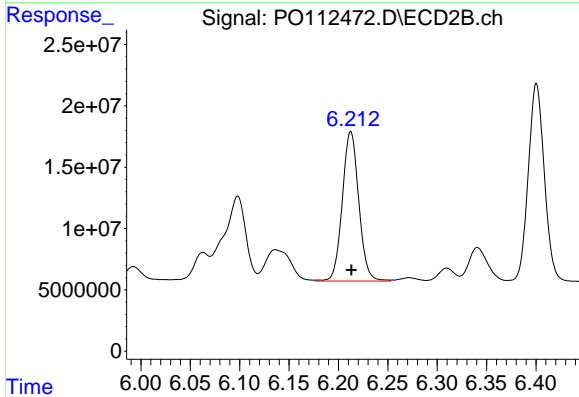
R.T.: 6.726 min
 Delta R.T.: -0.002 min
 Response: 177021166
 Conc: 529.97 ng/ml



#31 AR-1260-1

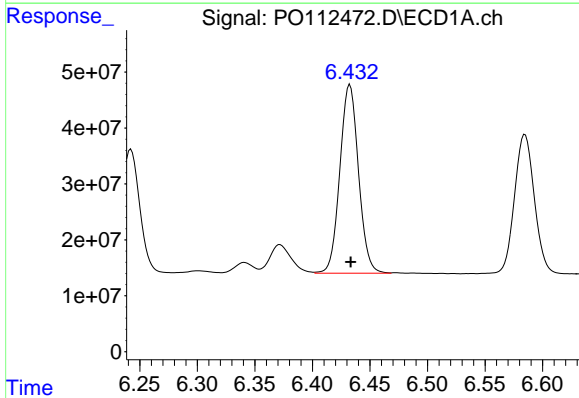
R.T.: 6.242 min
 Delta R.T.: -0.003 min
 Response: 248144438
 Conc: 564.82 ng/ml

Instrument :
 ECD_O
 ClientSampleId :
 PB168990BS



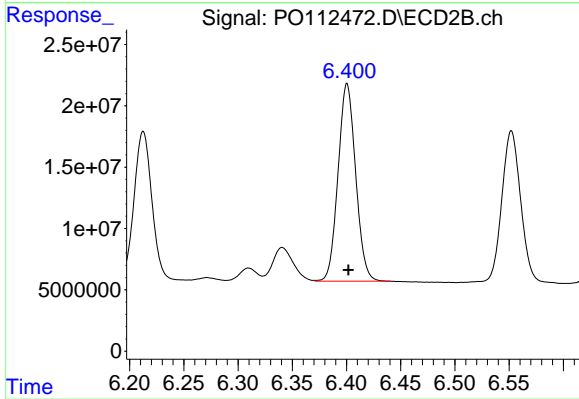
#31 AR-1260-1

R.T.: 6.213 min
 Delta R.T.: 0.000 min
 Response: 141311620
 Conc: 568.63 ng/ml



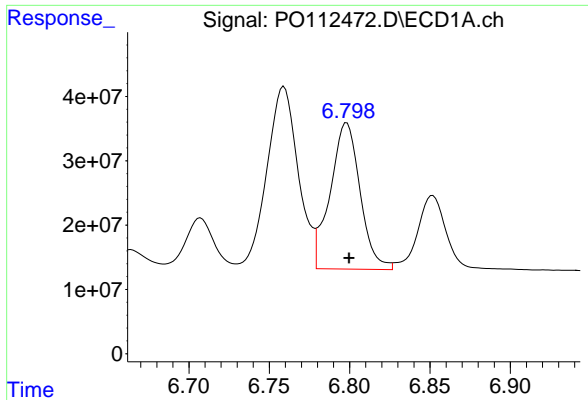
#32 AR-1260-2

R.T.: 6.432 min
 Delta R.T.: 0.000 min
 Response: 381661012
 Conc: 554.83 ng/ml



#32 AR-1260-2

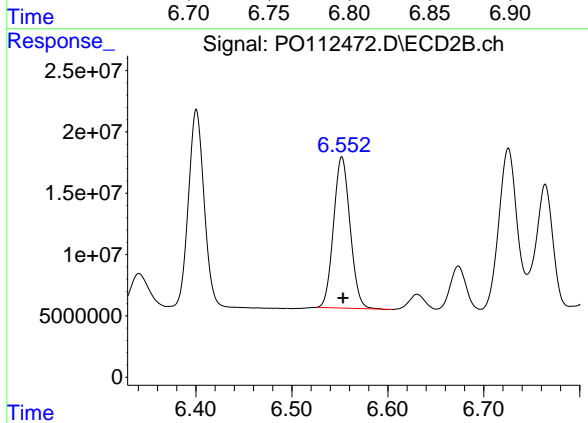
R.T.: 6.401 min
 Delta R.T.: -0.001 min
 Response: 181864960
 Conc: 551.95 ng/ml



#33 AR-1260-3

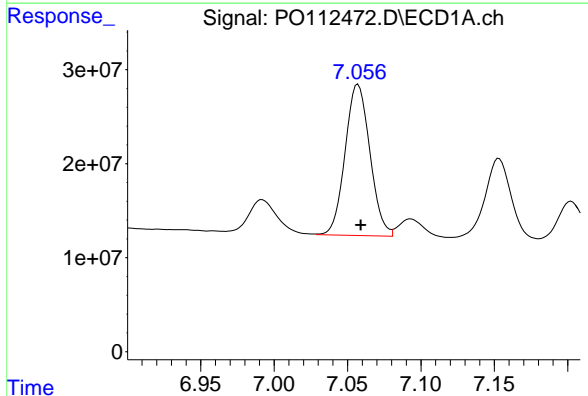
R.T.: 6.798 min
 Delta R.T.: -0.001 min
 Response: 294964143
 Conc: 501.62 ng/ml

Instrument :
 ECD_O
 ClientSampleId :
 PB168990BS



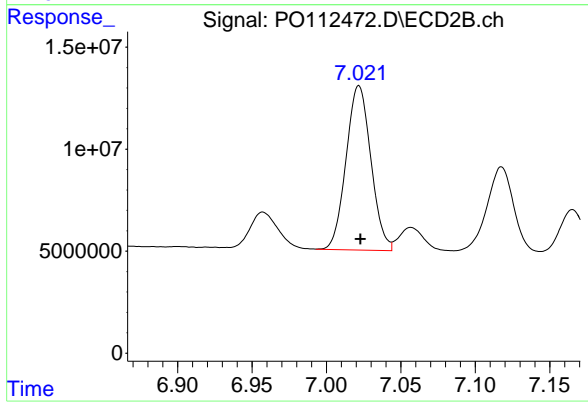
#33 AR-1260-3

R.T.: 6.552 min
 Delta R.T.: -0.001 min
 Response: 147643233
 Conc: 574.66 ng/ml



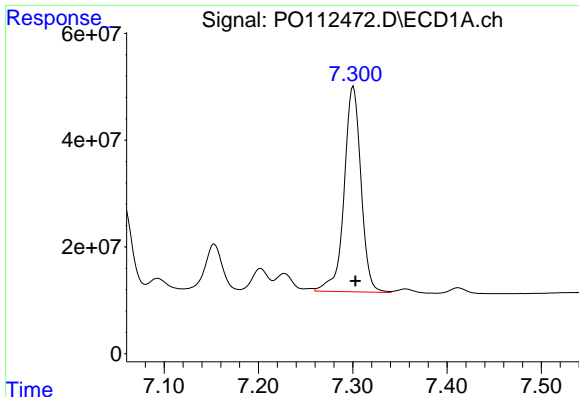
#34 AR-1260-4

R.T.: 7.057 min
 Delta R.T.: -0.002 min
 Response: 189031937
 Conc: 419.14 ng/ml



#34 AR-1260-4

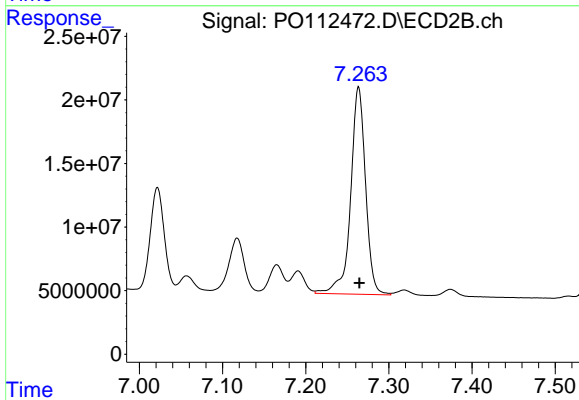
R.T.: 7.022 min
 Delta R.T.: 0.000 min
 Response: 93626927
 Conc: 489.40 ng/ml



#35 AR-1260-5

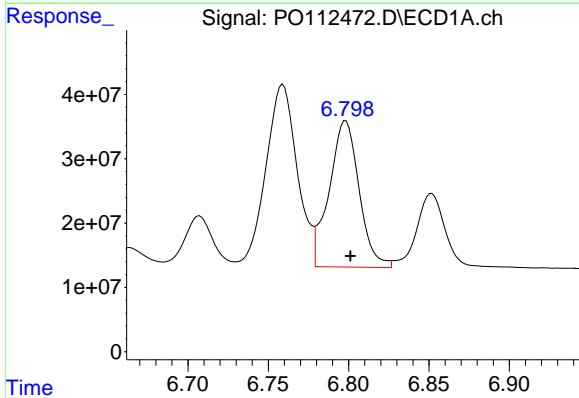
R.T.: 7.301 min
 Delta R.T.: -0.002 min
 Response: 478217190
 Conc: 385.93 ng/ml

Instrument :
 ECD_O
 ClientSampleId :
 PB168990BS



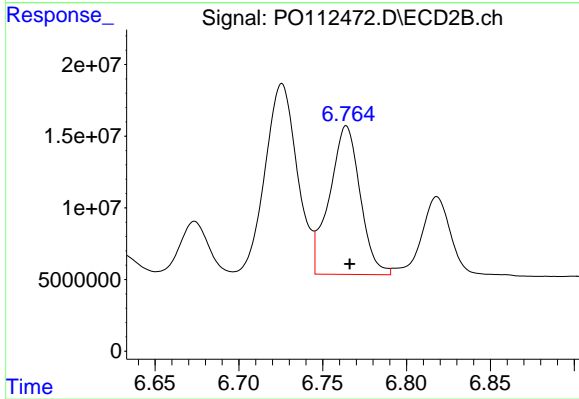
#35 AR-1260-5

R.T.: 7.264 min
 Delta R.T.: 0.000 min
 Response: 202791190
 Conc: 491.98 ng/ml



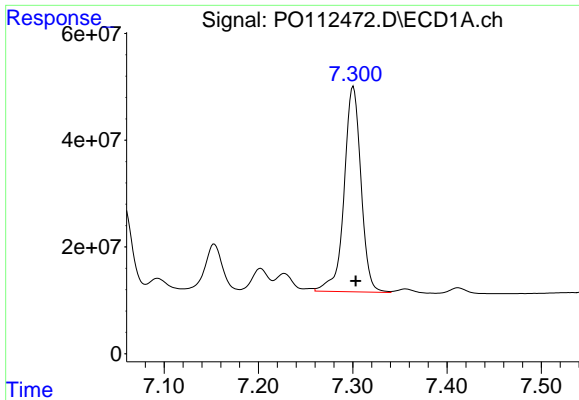
#36 AR-1262-1

R.T.: 6.798 min
 Delta R.T.: -0.003 min
 Response: 294964143
 Conc: 317.44 ng/ml



#36 AR-1262-1

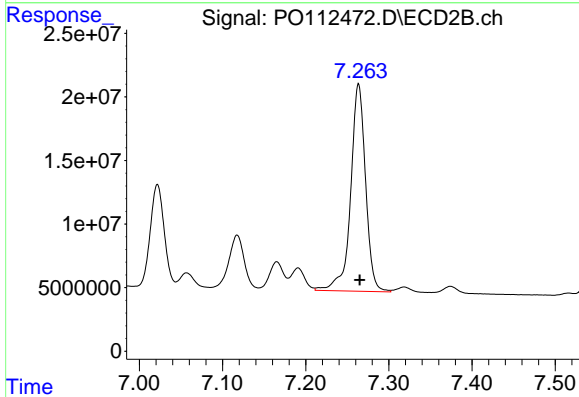
R.T.: 6.764 min
 Delta R.T.: -0.002 min
 Response: 132161990
 Conc: 318.59 ng/ml



#37 AR-1262-2

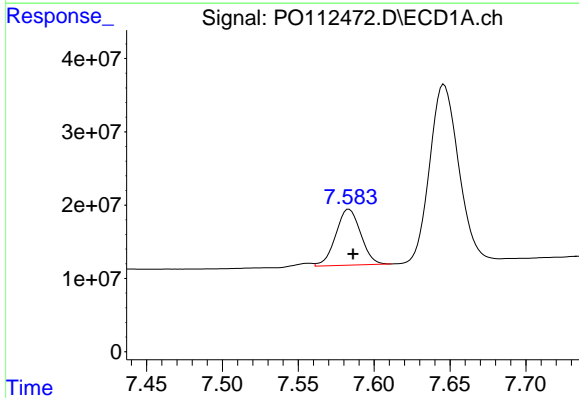
R.T.: 7.301 min
 Delta R.T.: -0.003 min
 Response: 478217190
 Conc: 321.59 ng/ml

Instrument :
 ECD_O
 ClientSampleId :
 PB168990BS



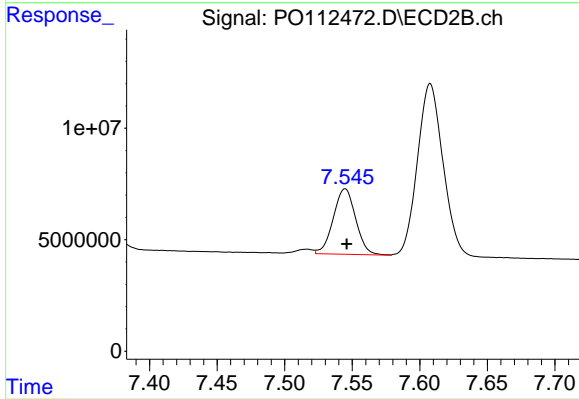
#37 AR-1262-2

R.T.: 7.264 min
 Delta R.T.: -0.001 min
 Response: 202791190
 Conc: 393.35 ng/ml



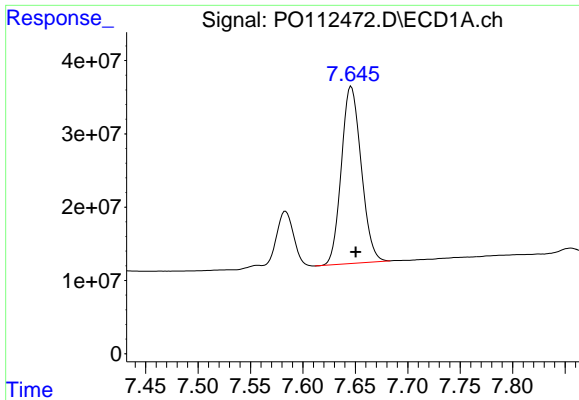
#38 AR-1262-3

R.T.: 7.583 min
 Delta R.T.: -0.003 min
 Response: 87350684
 Conc: 147.99 ng/ml



#38 AR-1262-3

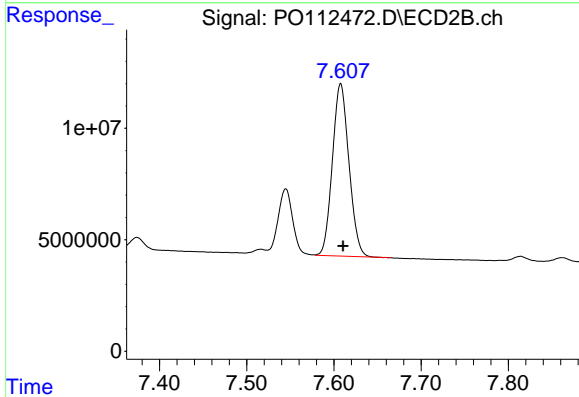
R.T.: 7.545 min
 Delta R.T.: -0.001 min
 Response: 33907200
 Conc: 181.78 ng/ml



#39 AR-1262-4

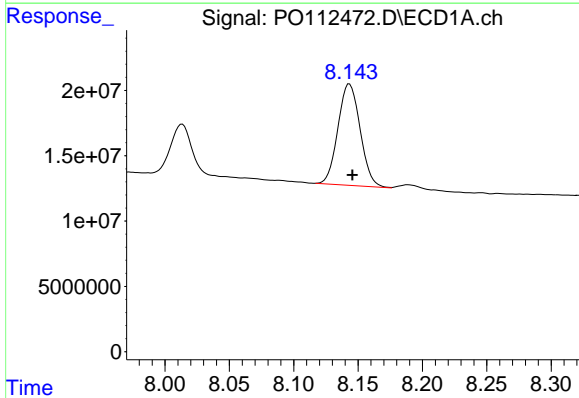
R.T.: 7.646 min
 Delta R.T.: -0.004 min
 Response: 317656604
 Conc: 319.52 ng/ml

Instrument :
 ECD_O
 ClientSampleId :
 PB168990BS



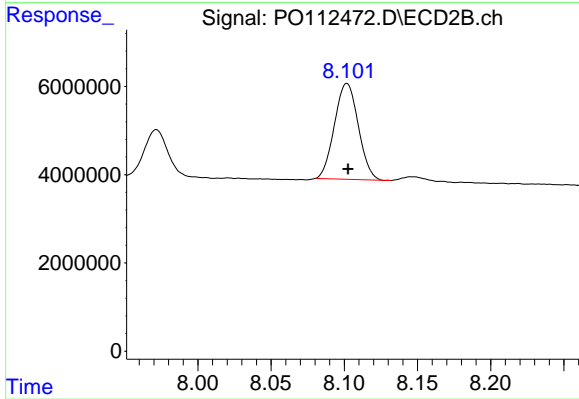
#39 AR-1262-4

R.T.: 7.608 min
 Delta R.T.: -0.003 min
 Response: 101753266
 Conc: 353.18 ng/ml



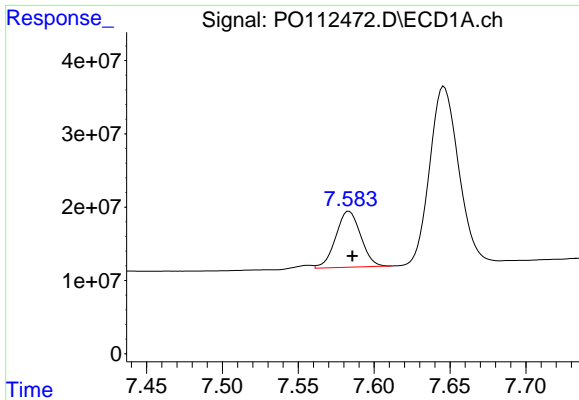
#40 AR-1262-5

R.T.: 8.143 min
 Delta R.T.: -0.002 min
 Response: 93310123
 Conc: 214.97 ng/ml



#40 AR-1262-5

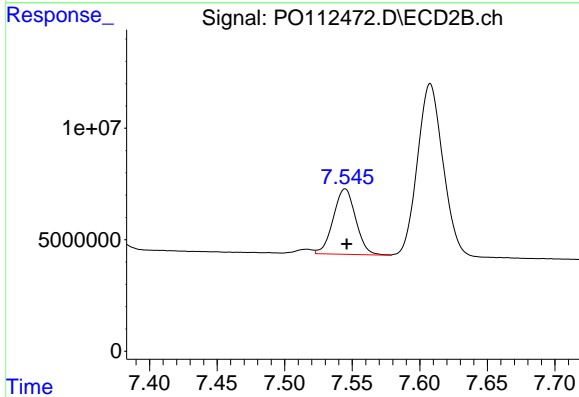
R.T.: 8.102 min
 Delta R.T.: 0.000 min
 Response: 24639248
 Conc: 247.62 ng/ml



#41 AR-1268-1

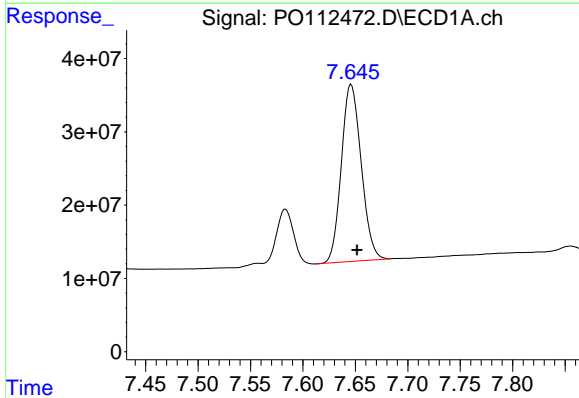
R.T.: 7.583 min
 Delta R.T.: -0.002 min
 Response: 87350684
 Conc: 49.88 ng/ml

Instrument :
 ECD_O
 ClientSampleId :
 PB168990BS



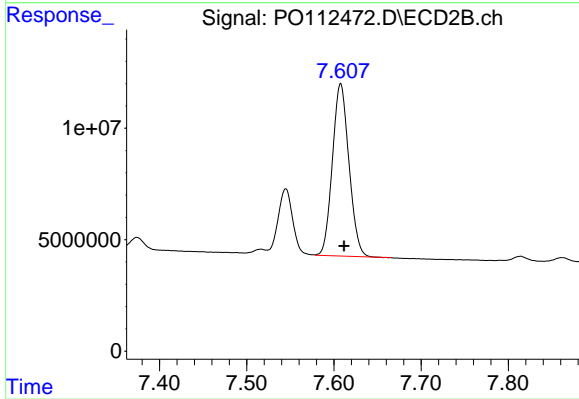
#41 AR-1268-1

R.T.: 7.545 min
 Delta R.T.: -0.001 min
 Response: 33907200
 Conc: 65.48 ng/ml



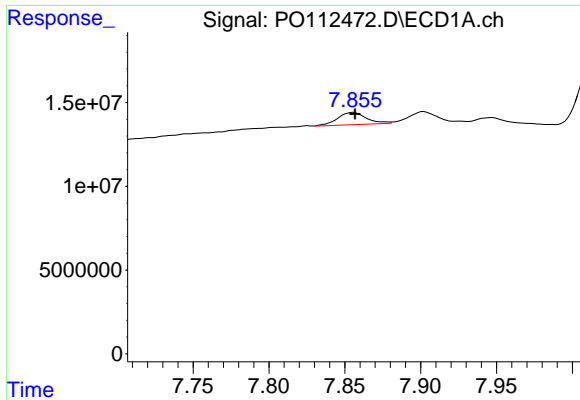
#42 AR-1268-2

R.T.: 7.646 min
 Delta R.T.: -0.006 min
 Response: 317656604
 Conc: 215.65 ng/ml



#42 AR-1268-2

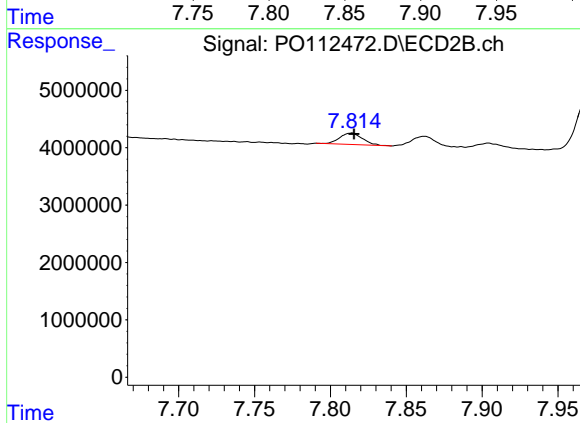
R.T.: 7.608 min
 Delta R.T.: -0.004 min
 Response: 101753266
 Conc: 239.38 ng/ml



#43 AR-1268-3

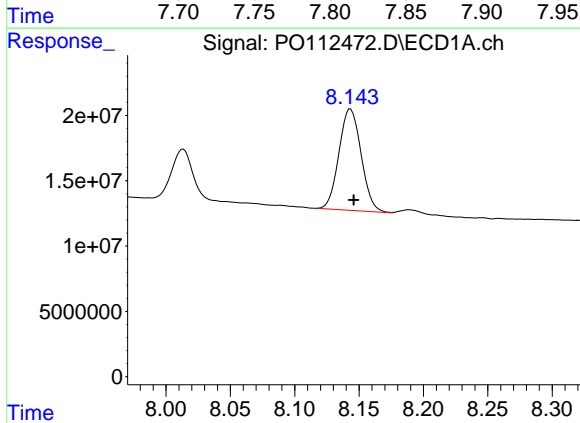
R.T.: 7.856 min
 Delta R.T.: -0.001 min
 Response: 9760950
 Conc: 7.79 ng/ml

Instrument :
 ECD_O
 ClientSampleId :
 PB168990BS



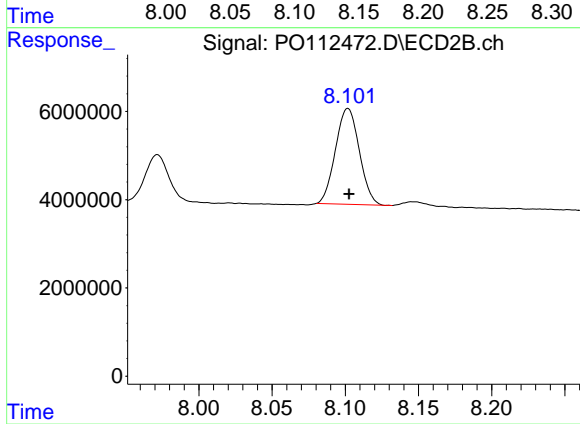
#43 AR-1268-3

R.T.: 7.814 min
 Delta R.T.: -0.002 min
 Response: 2083542
 Conc: 6.49 ng/ml



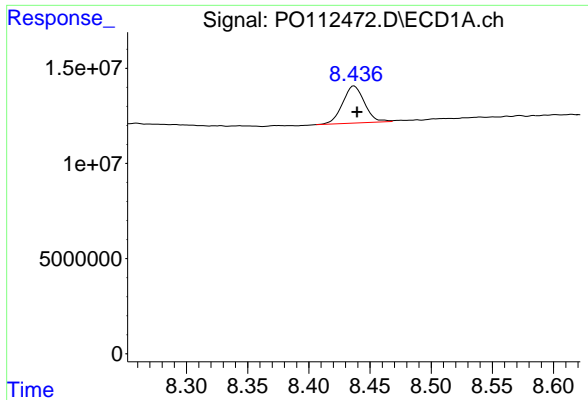
#44 AR-1268-4

R.T.: 8.143 min
 Delta R.T.: -0.002 min
 Response: 93310123
 Conc: 193.64 ng/ml



#44 AR-1268-4

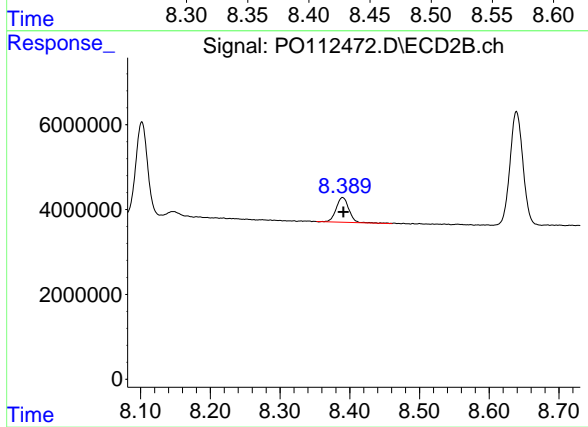
R.T.: 8.102 min
 Delta R.T.: 0.000 min
 Response: 24639248
 Conc: 221.39 ng/ml



#45 AR-1268-5

R.T.: 8.437 min
Delta R.T.: -0.002 min
Response: 24293442
Conc: 7.24 ng/ml

Instrument :
ECD_O
ClientSampleId :
PB168990BS



#45 AR-1268-5

R.T.: 8.390 min
Delta R.T.: -0.001 min
Response: 7354236
Conc: 10.05 ng/ml