

Data Path : Z:\pestpcbsrv\HPCHEM1\ECD\_0\Data\P0072425\  
 Data File : PO112473.D  
 Signal(s) : Signal #1: ECD1A.ch Signal #2: ECD2B.ch  
 Acq On : 24 Jul 2025 18:07  
 Operator : YP/AJ  
 Sample : Q2673-01  
 Misc :  
 ALS Vial : 21 Sample Multiplier: 1

Instrument :  
 ECD\_0  
 ClientSampleId :  
 TRE-25-0081

Integration File signal 1: autoint1.e  
 Integration File signal 2: autoint2.e  
 Quant Time: Jul 24 23:45:57 2025  
 Quant Method : Z:\pestpcbsrv\HPCHEM1\ECD\_0\methods\P0072325.M  
 Quant Title : GC EXTRACTABLES  
 QLast Update : Thu Jul 24 04:54:06 2025  
 Response via : Initial Calibration  
 Integrator: ChemStation

Volume Inj. : 2 µl  
 Signal #1 Phase : ZB-MR1 Signal #2 Phase: ZB-MR2  
 Signal #1 Info : 30Mx0.32mmx 0.50µ Signal #2 Info : 30M x 0.32mm x 0.25µm

Compound	RT#1	RT#2	Resp#1	Resp#2	ng/ml	ng/ml
-----						
System Monitoring Compounds						
1) SA Tetrachlo...	3.670	3.663	166.1E6	111.2E6	20.430	22.384
2) SA Decachlor...	8.694	8.640	121.7E6	34837066	16.643	19.714
Target Compounds						
3) L1 AR-1016-1	4.764	4.744	33017303	29465661	123.031	168.368 #
4) L1 AR-1016-2	4.764	4.744	33017303	29465661	81.300	113.114 #
5) L1 AR-1016-3	4.838	4.962	11728935	11430138	44.823	84.066 #
6) L1 AR-1016-4	4.983	4.962	-2536346	11430138	N.D.	102.896 #
7) L1 AR-1016-5	5.216	5.193	7002253	6242487	31.905	43.561 #
8) L2 AR-1221-1	3.894	3.880	923264	3906934	9.552	58.082 #
9) L2 AR-1221-2	3.917f	3.928	5409238	3874216	75.273	76.372
10) L2 AR-1221-3	4.037	4.025	6639396	11593883	27.931	73.134 #
11) L3 AR-1232-1	4.037	4.025	6639396	11593883	35.509	91.615 #
12) L3 AR-1232-2	4.535	4.744	77589376	29465661	720.925	224.663 #
13) L3 AR-1232-3	4.764	4.962	33017303	11430138	159.659	170.099
14) L3 AR-1232-4	4.983	5.027	-2536346	7047384	N.D.	117.792 #
15) L3 AR-1232-5	4.983	5.193	-2536346	6242487	N.D.	95.739 #
16) L4 AR-1242-1	4.764	4.744	33017303	29465661	133.354	186.028 #
17) L4 AR-1242-2	4.764	4.744	33017303	29465661	89.286	126.101 #
18) L4 AR-1242-3	4.838	4.962	11728935	11430138	49.561	94.317 #
19) L4 AR-1242-4	4.983	5.027	-2536346	7047384	N.D.	57.417 #
20) L4 AR-1242-5	5.610	5.525	22594427	16280000	105.623	101.136
21) L5 AR-1248-1	4.764	4.744	33017303	29465661	176.366	242.497 #
22) L5 AR-1248-2	4.983	4.962	-2536346	11430138	N.D.	67.522 #
23) L5 AR-1248-3	5.216	5.027	7002253	7047384	20.373	39.671 #
24) L5 AR-1248-4	5.552	5.193	20751690	6242487	40.844	29.961 #
25) L5 AR-1248-5	5.610	5.581	22594427	8403848	64.631	39.130 #
26) L6 AR-1254-1	5.552	5.525	20751690	16280000	37.802	49.540 #
27) L6 AR-1254-2	5.727	5.697	19968436	14158932	41.094	48.910
28) L6 AR-1254-3	6.126	6.094	6918766	5804598	9.296	13.579 #
29) L6 AR-1254-4	6.340	6.309	1795941	1557625	3.267	5.706 #
30) L6 AR-1254-5	6.766	6.725	4776695	1722352	6.748	5.156
31) L7 AR-1260-1	6.242	6.205	1435386	1323572	3.267	5.326 #
32) L7 AR-1260-2	6.439	6.402	1998605	1508525	2.905	4.578 #
33) L7 AR-1260-3	6.798	6.541	1006576	1018215	1.712	3.963 #
34) L7 AR-1260-4	7.060	7.030	1809134	688087	4.011	3.597
35) L7 AR-1260-5	7.310	7.263	934465	535360	0.754	1.299 #
36) L8 AR-1262-1	6.798	6.761	1006576	507818	1.083	1.224
37) L8 AR-1262-2	7.310	7.263	934465	535360	0.628	1.038 #
38) L8 AR-1262-3	7.605	7.531	2498977	61074	4.234	0.327 #
39) L8 AR-1262-4	7.638	7.595	1037973	800559	1.044	2.779 #
40) L8 AR-1262-5	8.137	8.099	1233086	87088	2.841	0.875 #
41) L9 AR-1268-1	7.605	7.531	2498977	61074	1.427	0.118 #

Data Path : Z:\pestpcbsrv\HPCHEM1\ECD\_0\Data\P0072425\  
 Data File : P0112473.D  
 Signal(s) : Signal #1: ECD1A.ch Signal #2: ECD2B.ch  
 Acq On : 24 Jul 2025 18:07  
 Operator : YP/AJ  
 Sample : Q2673-01  
 Misc :  
 ALS Vial : 21 Sample Multiplier: 1

Instrument :  
 ECD\_0  
 ClientSampleId :  
 TRE-25-0081

Integration File signal 1: autoint1.e  
 Integration File signal 2: autoint2.e  
 Quant Time: Jul 24 23:45:57 2025  
 Quant Method : Z:\pestpcbsrv\HPCHEM1\ECD\_0\methods\P0072325.M  
 Quant Title : GC EXTRACTABLES  
 QLast Update : Thu Jul 24 04:54:06 2025  
 Response via : Initial Calibration  
 Integrator: ChemStation

Volume Inj. : 2 µl  
 Signal #1 Phase : ZB-MR1 Signal #2 Phase: ZB-MR2  
 Signal #1 Info : 30Mx0.32mmx 0.50µ Signal #2 Info : 30M x 0.32mm x 0.25µm

	Compound	RT#1	RT#2	Resp#1	Resp#2	ng/ml	ng/ml
42)	L9 AR-1268-2	7.638	7.595	1037973	800559	0.705	1.883 #
43)	L9 AR-1268-3	7.881	7.751f	632530	245315	0.505	0.764 #
44)	L9 AR-1268-4	8.137	8.099	1233086	87088	2.559	0.782 #
45)	L9 AR-1268-5	8.443	8.390	619949	146944	0.185	0.201

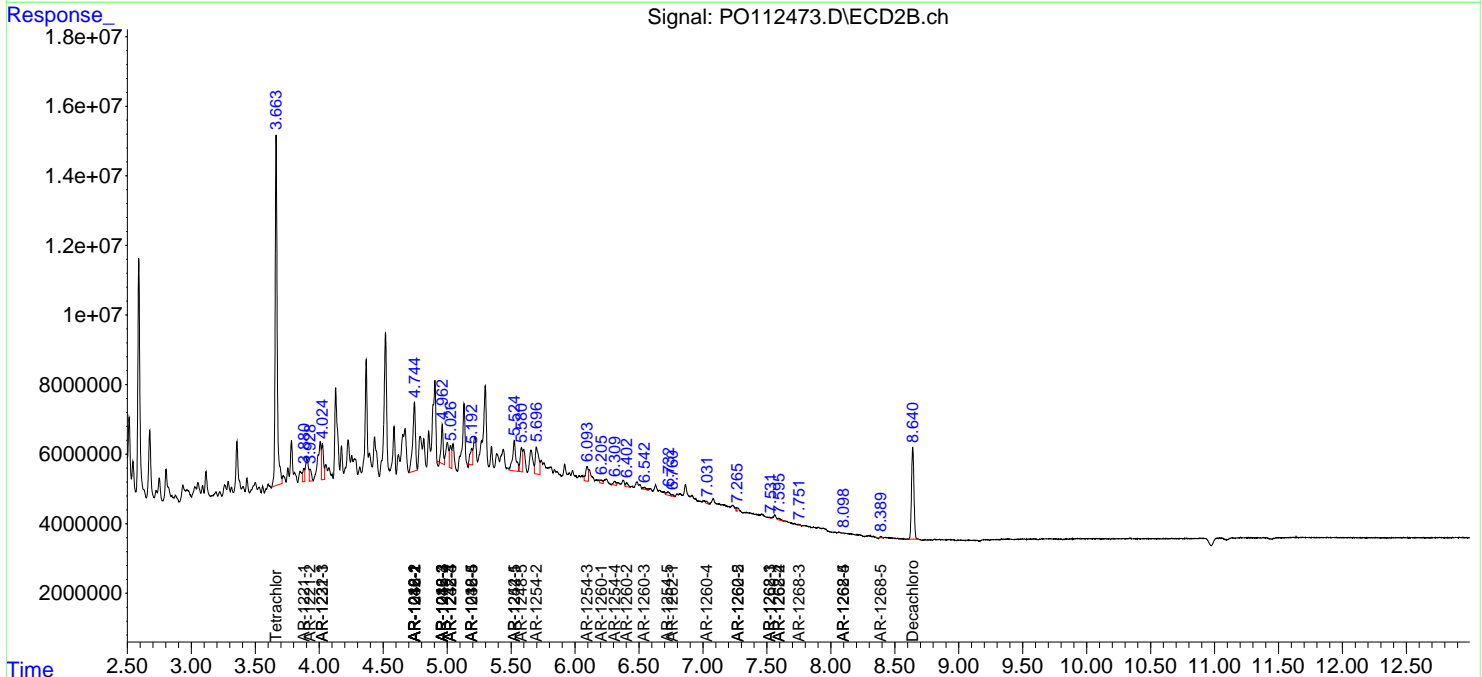
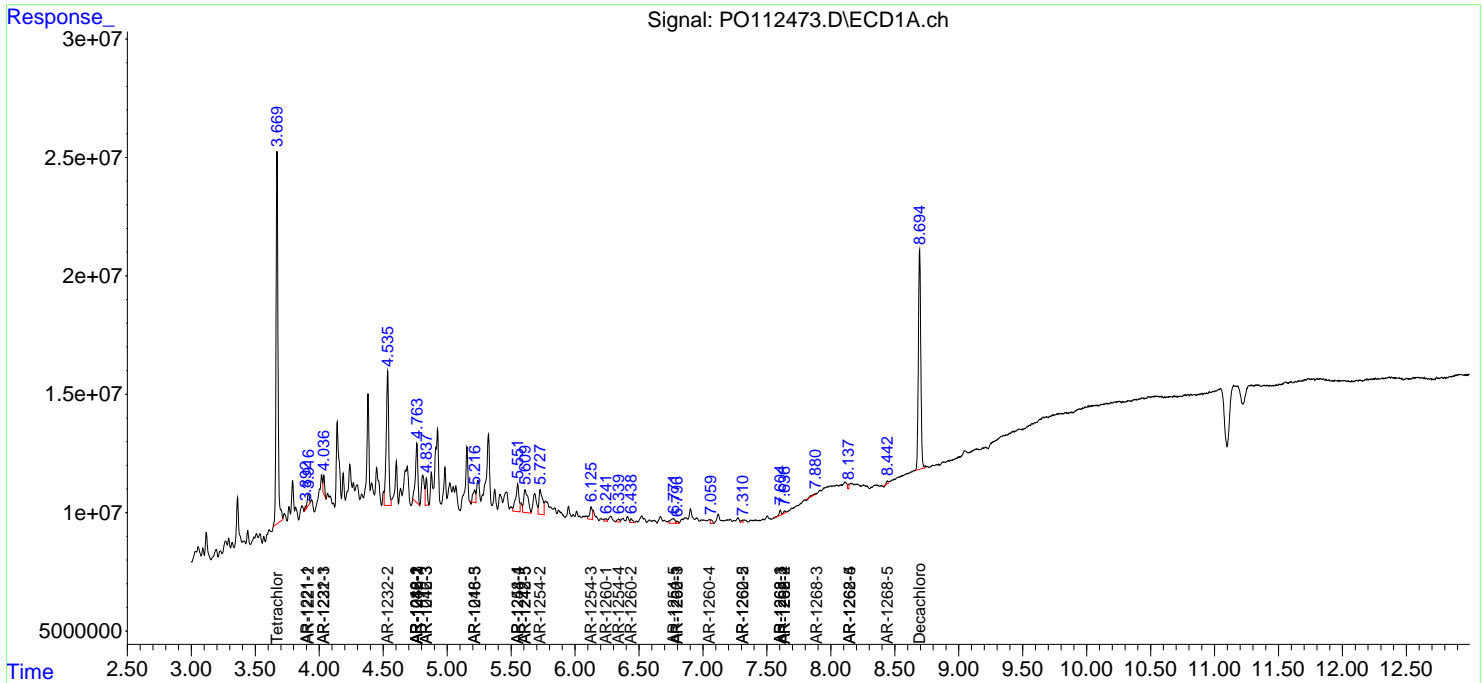
(f)=RT Delta > 1/2 Window (#)=Amounts differ by > 25% (m)=manual int.

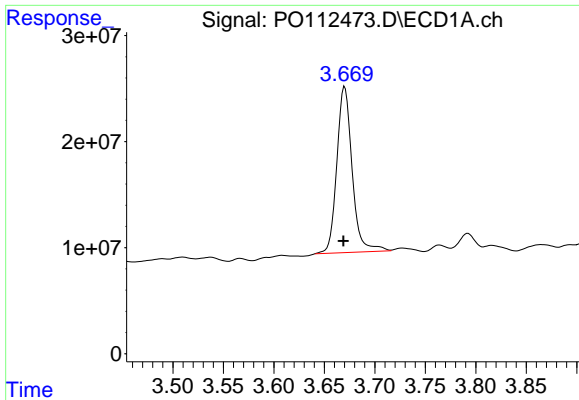
Data Path : Z:\pestpcbsrv\HPCHEM1\ECD\_O\Data\PO072425\  
 Data File : PO112473.D  
 Signal(s) : Signal #1: ECD1A.ch Signal #2: ECD2B.ch  
 Acq On : 24 Jul 2025 18:07  
 Operator : YP/AJ  
 Sample : Q2673-01  
 Misc :  
 ALS Vial : 21 Sample Multiplier: 1

Instrument :  
 ECD\_O  
 ClientSampleId :  
 TRE-25-0081

Integration File signal 1: autoint1.e  
 Integration File signal 2: autoint2.e  
 Quant Time: Jul 24 23:45:57 2025  
 Quant Method : Z:\pestpcbsrv\HPCHEM1\ECD\_O\methods\PO072325.M  
 Quant Title : GC EXTRACTABLES  
 QLast Update : Thu Jul 24 04:54:06 2025  
 Response via : Initial Calibration  
 Integrator: ChemStation

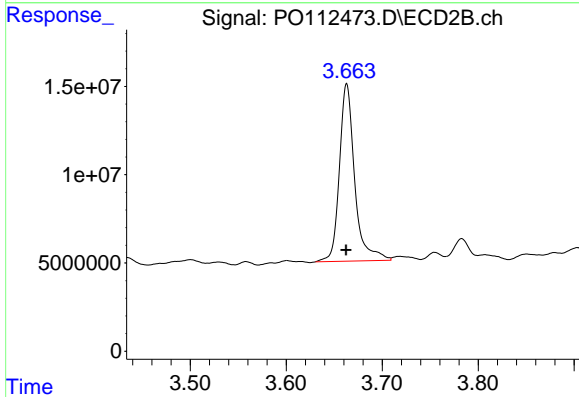
Volume Inj. : 2 µl  
 Signal #1 Phase : ZB-MR1 Signal #2 Phase: ZB-MR2  
 Signal #1 Info : 30Mx0.32mmx 0.50µ Signal #2 Info : 30M x 0.32mm x 0.25µm



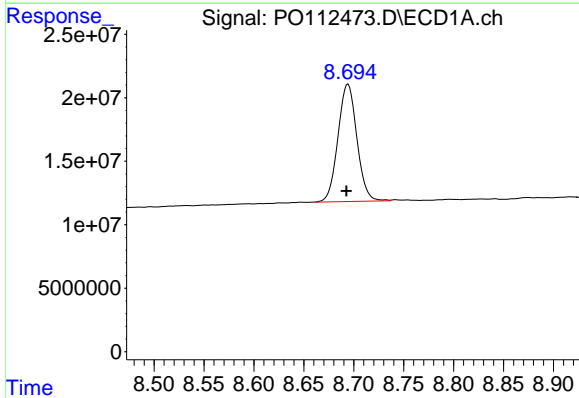


#1 Tetrachloro-m-xylene  
 R.T.: 3.670 min  
 Delta R.T.: 0.001 min  
 Response: 166124137  
 Conc: 20.43 ng/ml

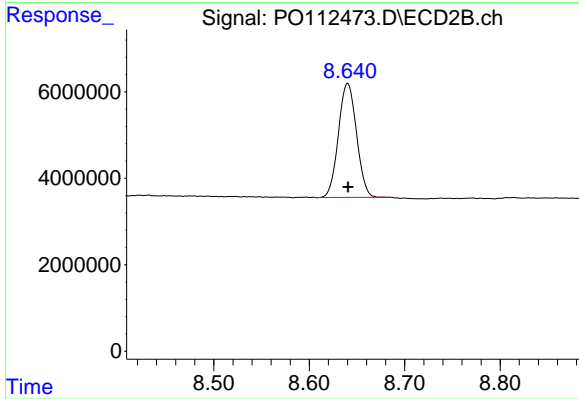
Instrument :  
 ECD\_O  
 ClientSampleId :  
 TRE-25-0081



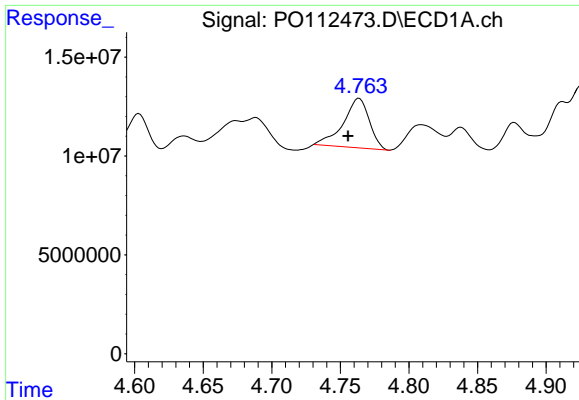
#1 Tetrachloro-m-xylene  
 R.T.: 3.663 min  
 Delta R.T.: 0.000 min  
 Response: 111228889  
 Conc: 22.38 ng/ml



#2 Decachlorobiphenyl  
 R.T.: 8.694 min  
 Delta R.T.: 0.002 min  
 Response: 121690094  
 Conc: 16.64 ng/ml



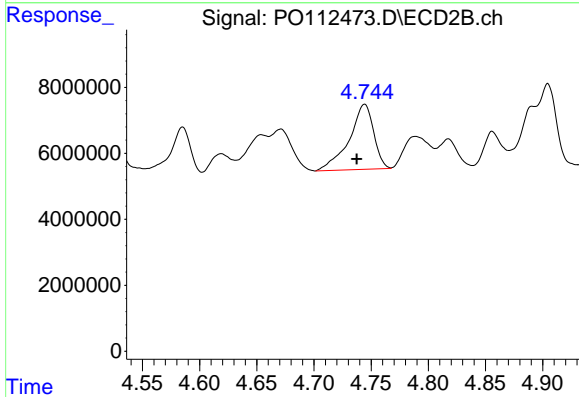
#2 Decachlorobiphenyl  
 R.T.: 8.640 min  
 Delta R.T.: 0.000 min  
 Response: 34837066  
 Conc: 19.71 ng/ml



#3 AR-1016-1

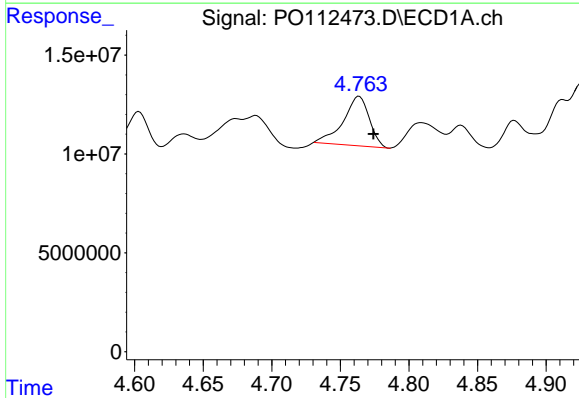
R.T.: 4.764 min  
 Delta R.T.: 0.008 min  
 Response: 33017303  
 Conc: 123.03 ng/ml

Instrument :  
 ECD\_O  
 ClientSampleId :  
 TRE-25-0081



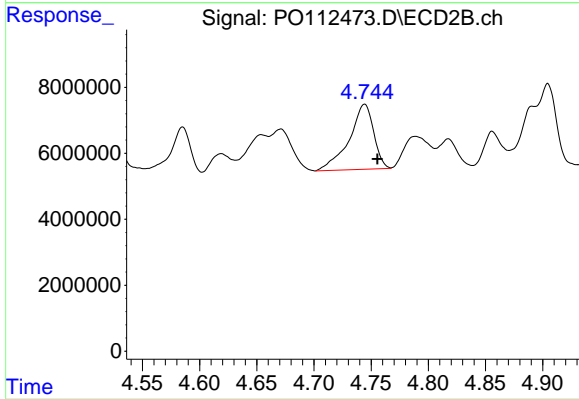
#3 AR-1016-1

R.T.: 4.744 min  
 Delta R.T.: 0.007 min  
 Response: 29465661  
 Conc: 168.37 ng/ml



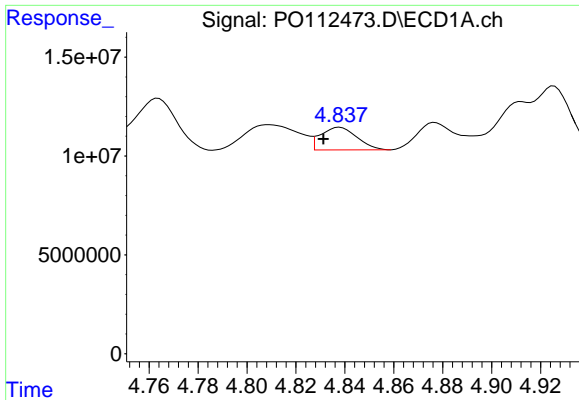
#4 AR-1016-2

R.T.: 4.764 min  
 Delta R.T.: -0.010 min  
 Response: 33017303  
 Conc: 81.30 ng/ml



#4 AR-1016-2

R.T.: 4.744 min  
 Delta R.T.: -0.011 min  
 Response: 29465661  
 Conc: 113.11 ng/ml

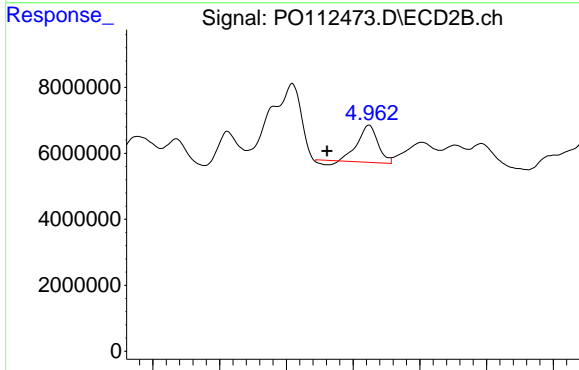


#5 AR-1016-3

R.T.: 4.838 min  
 Delta R.T.: 0.007 min  
 Response: 11728935  
 Conc: 44.82 ng/ml

Instrument :  
 ECD\_O  
 ClientSampleId :  
 TRE-25-0081

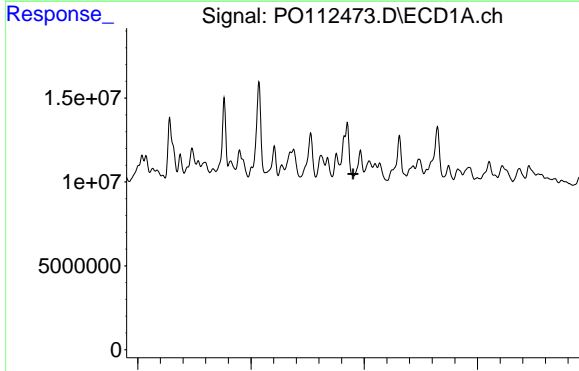
Time 4.76 4.78 4.80 4.82 4.84 4.86 4.88 4.90 4.92



#5 AR-1016-3

R.T.: 4.962 min  
 Delta R.T.: 0.031 min  
 Response: 11430138  
 Conc: 84.07 ng/ml

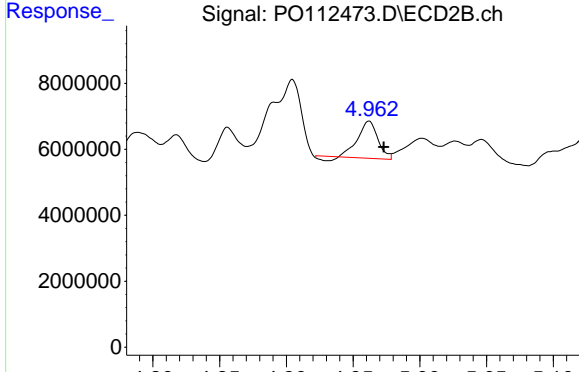
Time 4.80 4.85 4.90 4.95 5.00 5.05 5.10



#6 AR-1016-4

R.T.: 4.983 min  
 Delta R.T.: 0.033 min  
 Response: -2536346  
 Conc: N.D.

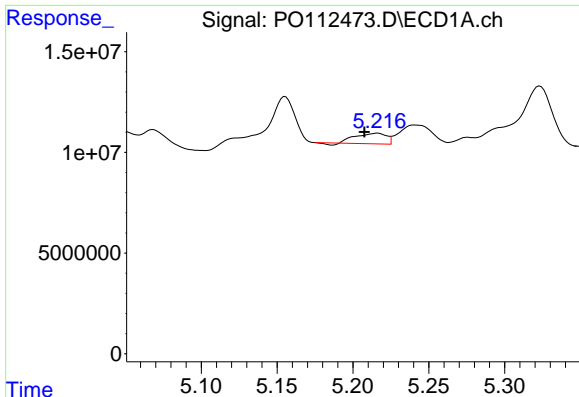
Time 4.00 4.50 5.00 5.50



#6 AR-1016-4

R.T.: 4.962 min  
 Delta R.T.: -0.011 min  
 Response: 11430138  
 Conc: 102.90 ng/ml

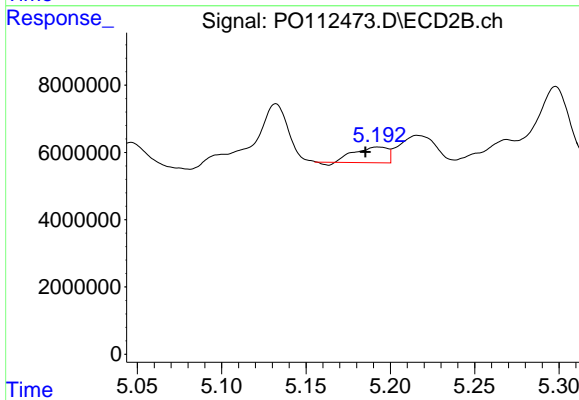
Time 4.80 4.85 4.90 4.95 5.00 5.05 5.10



#7 AR-1016-5

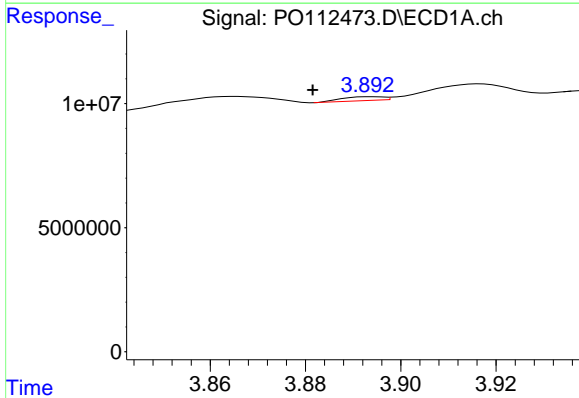
R.T.: 5.216 min  
 Delta R.T.: 0.009 min  
 Response: 7002253  
 Conc: 31.91 ng/ml

Instrument :  
 ECD\_O  
 ClientSampleId :  
 TRE-25-0081



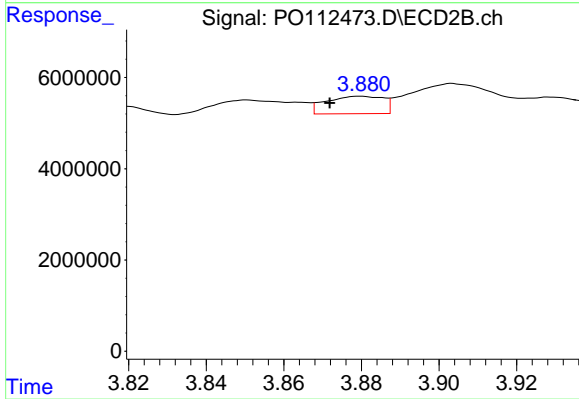
#7 AR-1016-5

R.T.: 5.193 min  
 Delta R.T.: 0.007 min  
 Response: 6242487  
 Conc: 43.56 ng/ml



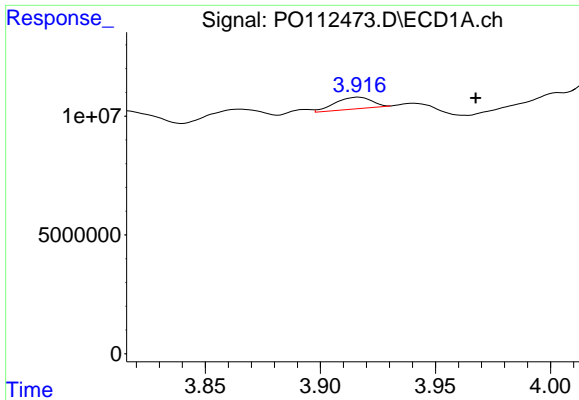
#8 AR-1221-1

R.T.: 3.894 min  
 Delta R.T.: 0.013 min  
 Response: 923264  
 Conc: 9.55 ng/ml



#8 AR-1221-1

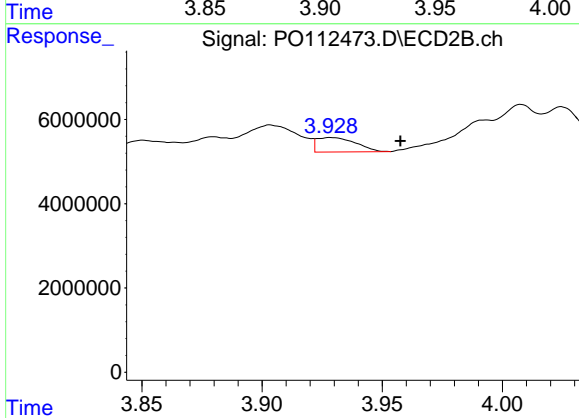
R.T.: 3.880 min  
 Delta R.T.: 0.008 min  
 Response: 3906934  
 Conc: 58.08 ng/ml



#9 AR-1221-2

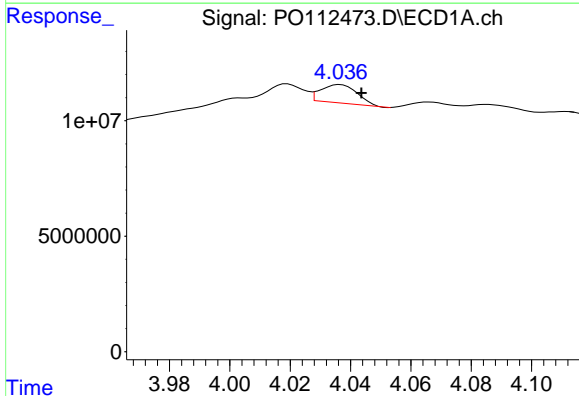
R.T.: 3.917 min  
 Delta R.T.: -0.051 min  
 Response: 5409238  
 Conc: 75.27 ng/ml

Instrument :  
 ECD\_O  
 ClientSampleId :  
 TRE-25-0081



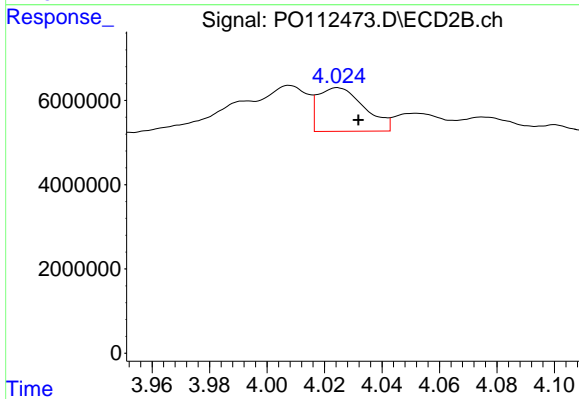
#9 AR-1221-2

R.T.: 3.928 min  
 Delta R.T.: -0.029 min  
 Response: 3874216  
 Conc: 76.37 ng/ml



#10 AR-1221-3

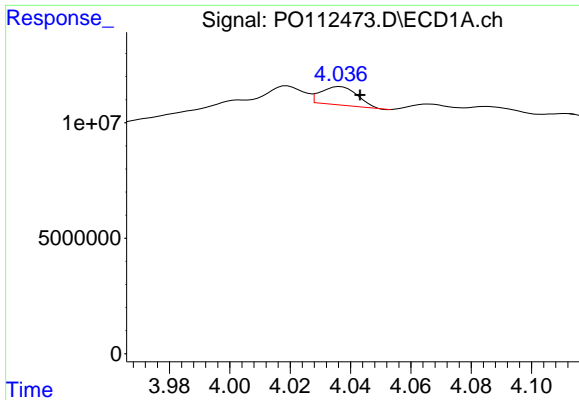
R.T.: 4.037 min  
 Delta R.T.: -0.007 min  
 Response: 6639396  
 Conc: 27.93 ng/ml



#10 AR-1221-3

R.T.: 4.025 min  
 Delta R.T.: -0.007 min  
 Response: 11593883  
 Conc: 73.13 ng/ml

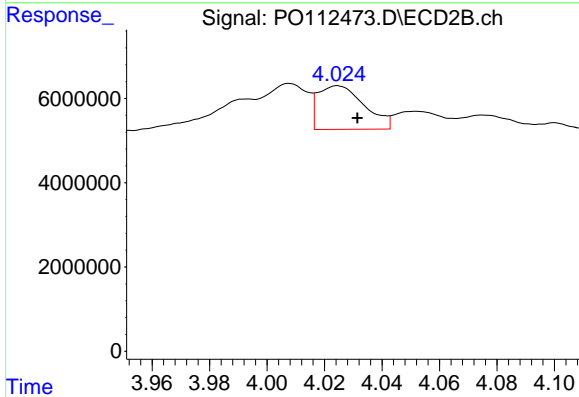




#11 AR-1232-1

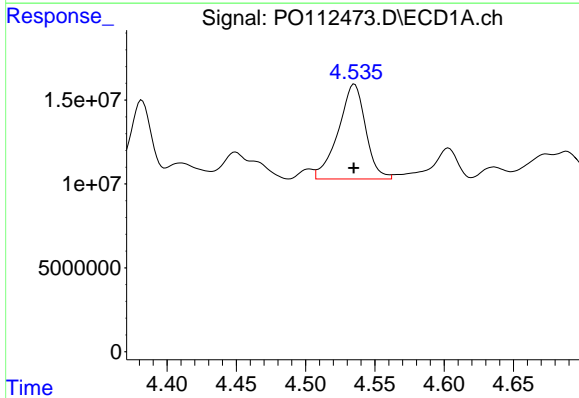
R.T.: 4.037 min  
 Delta R.T.: -0.007 min  
 Response: 6639396  
 Conc: 35.51 ng/ml

Instrument :  
 ECD\_O  
 ClientSampleId :  
 TRE-25-0081



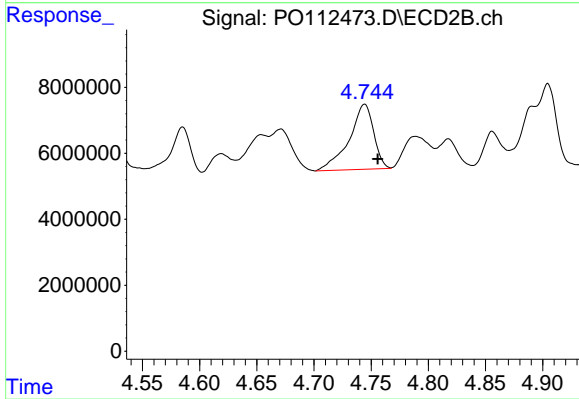
#11 AR-1232-1

R.T.: 4.025 min  
 Delta R.T.: -0.007 min  
 Response: 11593883  
 Conc: 91.62 ng/ml



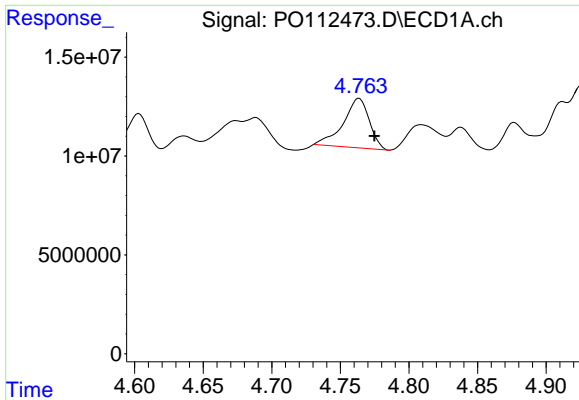
#12 AR-1232-2

R.T.: 4.535 min  
 Delta R.T.: 0.000 min  
 Response: 77589376  
 Conc: 720.93 ng/ml



#12 AR-1232-2

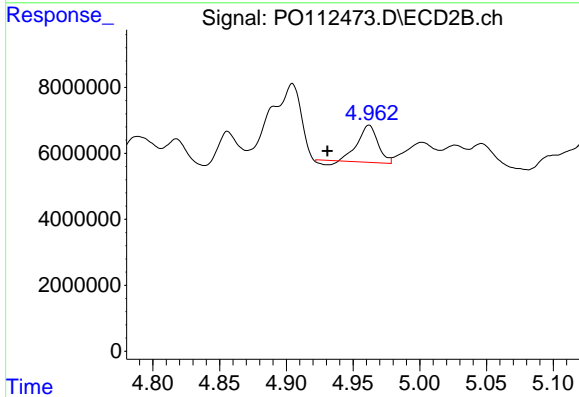
R.T.: 4.744 min  
 Delta R.T.: -0.011 min  
 Response: 29465661  
 Conc: 224.66 ng/ml



#13 AR-1232-3

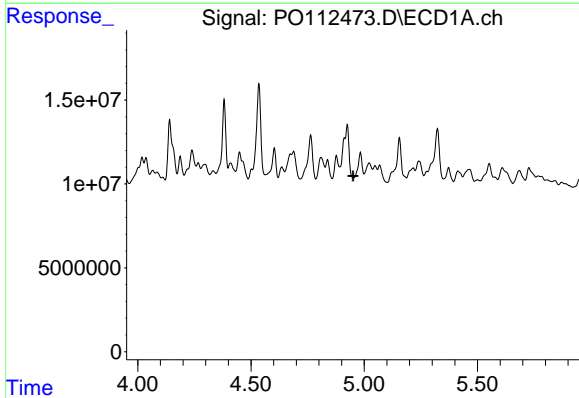
R.T.: 4.764 min  
 Delta R.T.: -0.011 min  
 Response: 33017303  
 Conc: 159.66 ng/ml

Instrument :  
 ECD\_O  
 ClientSampleId :  
 TRE-25-0081



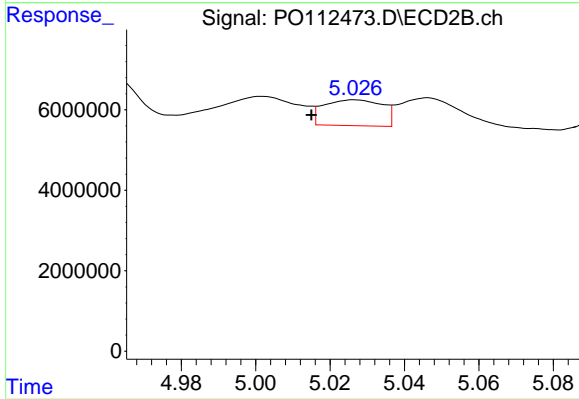
#13 AR-1232-3

R.T.: 4.962 min  
 Delta R.T.: 0.031 min  
 Response: 11430138  
 Conc: 170.10 ng/ml



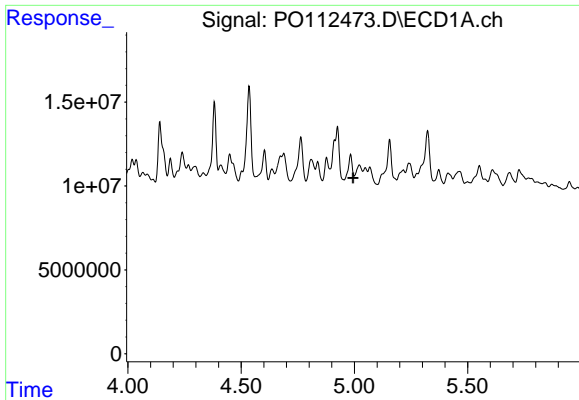
#14 AR-1232-4

R.T.: 4.983 min  
 Delta R.T.: 0.033 min  
 Response: -2536346  
 Conc: N.D.



#14 AR-1232-4

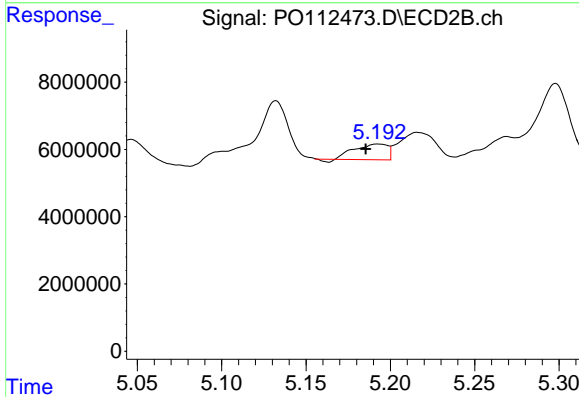
R.T.: 5.027 min  
 Delta R.T.: 0.012 min  
 Response: 7047384  
 Conc: 117.79 ng/ml



#15 AR-1232-5

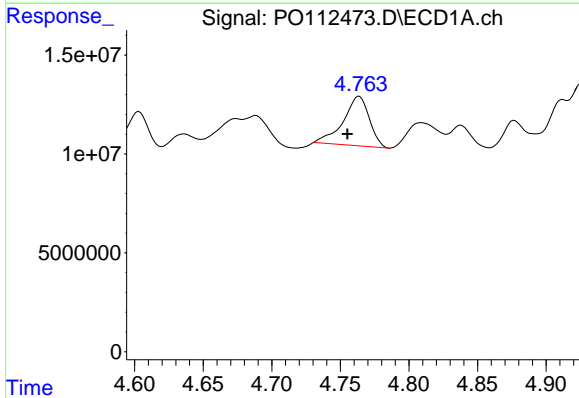
R.T.: 4.983 min  
 Delta R.T.: -0.011 min  
 Response: -2536346  
 Conc: N.D.

Instrument :  
 ECD\_O  
 ClientSampleId :  
 TRE-25-0081



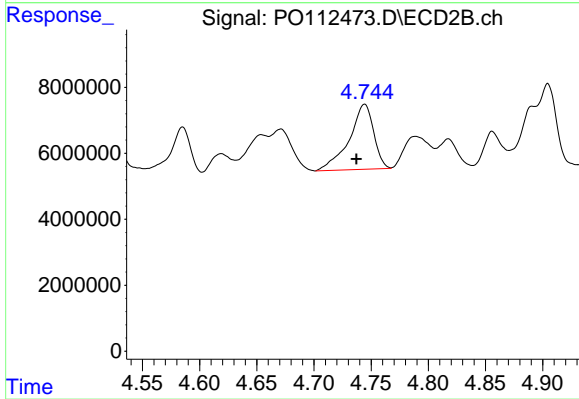
#15 AR-1232-5

R.T.: 5.193 min  
 Delta R.T.: 0.007 min  
 Response: 6242487  
 Conc: 95.74 ng/ml



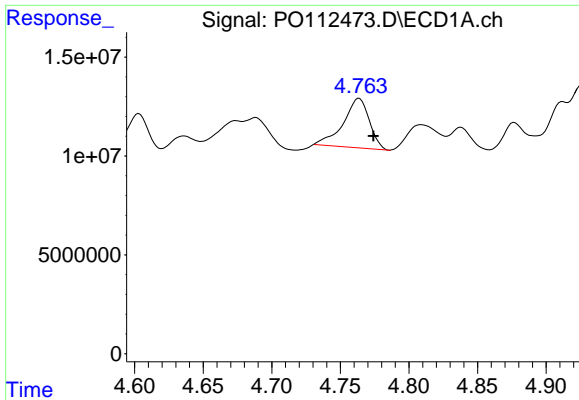
#16 AR-1242-1

R.T.: 4.764 min  
 Delta R.T.: 0.009 min  
 Response: 33017303  
 Conc: 133.35 ng/ml



#16 AR-1242-1

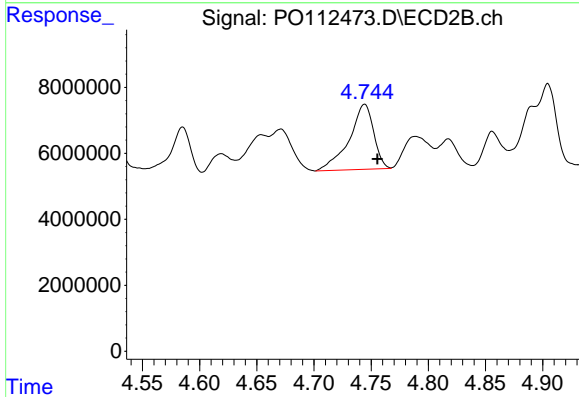
R.T.: 4.744 min  
 Delta R.T.: 0.007 min  
 Response: 29465661  
 Conc: 186.03 ng/ml



#17 AR-1242-2

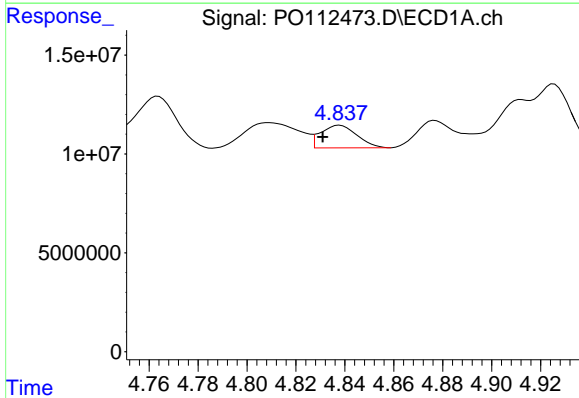
R.T.: 4.764 min  
 Delta R.T.: -0.011 min  
 Response: 33017303  
 Conc: 89.29 ng/ml

Instrument :  
 ECD\_O  
 ClientSampleId :  
 TRE-25-0081



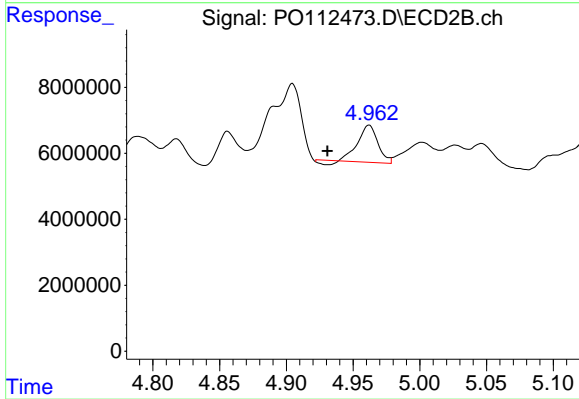
#17 AR-1242-2

R.T.: 4.744 min  
 Delta R.T.: -0.011 min  
 Response: 29465661  
 Conc: 126.10 ng/ml



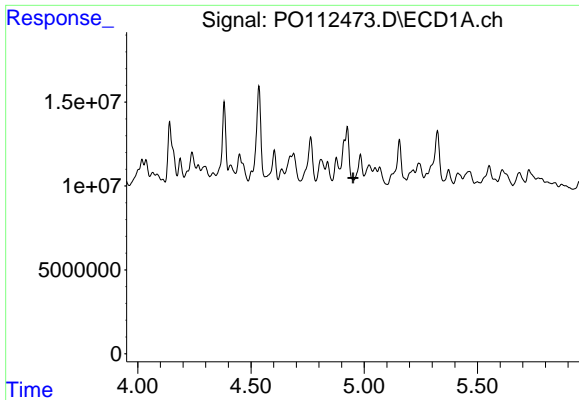
#18 AR-1242-3

R.T.: 4.838 min  
 Delta R.T.: 0.007 min  
 Response: 11728935  
 Conc: 49.56 ng/ml



#18 AR-1242-3

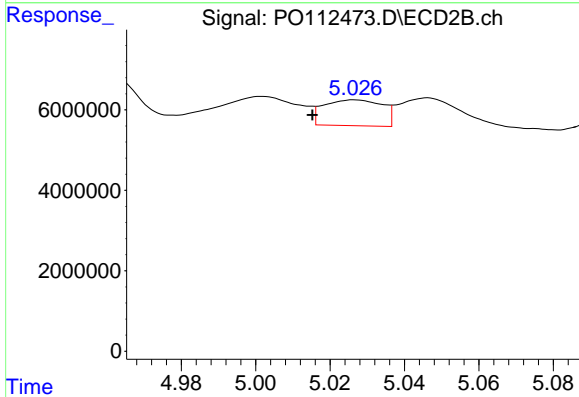
R.T.: 4.962 min  
 Delta R.T.: 0.031 min  
 Response: 11430138  
 Conc: 94.32 ng/ml



#19 AR-1242-4

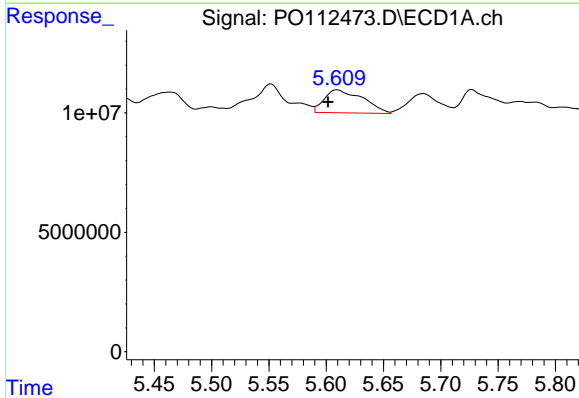
R.T.: 4.983 min  
 Delta R.T.: 0.033 min  
 Response: -2536346  
 Conc: N.D.

Instrument :  
 ECD\_O  
 ClientSampleId :  
 TRE-25-0081



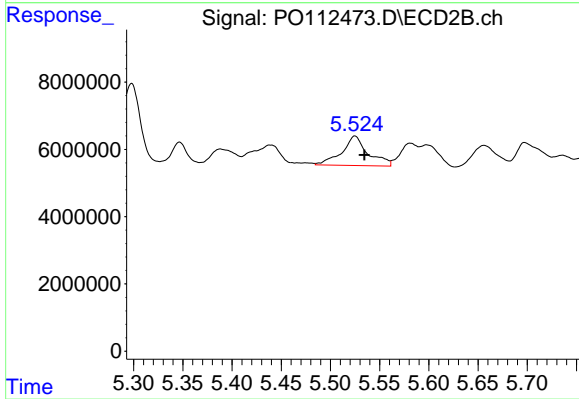
#19 AR-1242-4

R.T.: 5.027 min  
 Delta R.T.: 0.011 min  
 Response: 7047384  
 Conc: 57.42 ng/ml



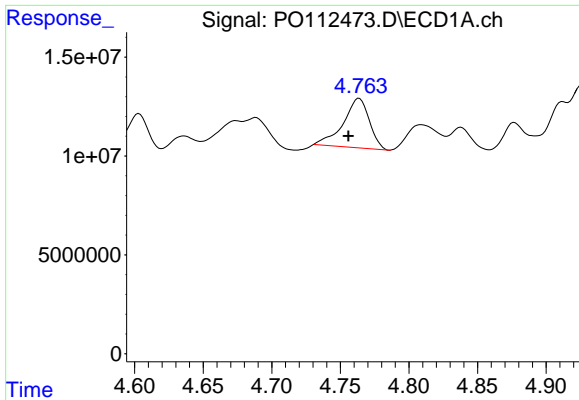
#20 AR-1242-5

R.T.: 5.610 min  
 Delta R.T.: 0.008 min  
 Response: 22594427  
 Conc: 105.62 ng/ml



#20 AR-1242-5

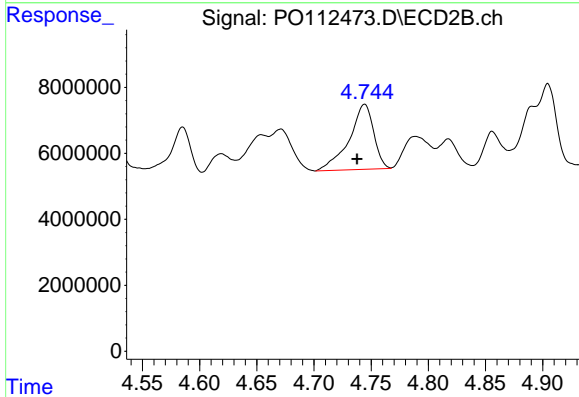
R.T.: 5.525 min  
 Delta R.T.: -0.009 min  
 Response: 16280000  
 Conc: 101.14 ng/ml



#21 AR-1248-1

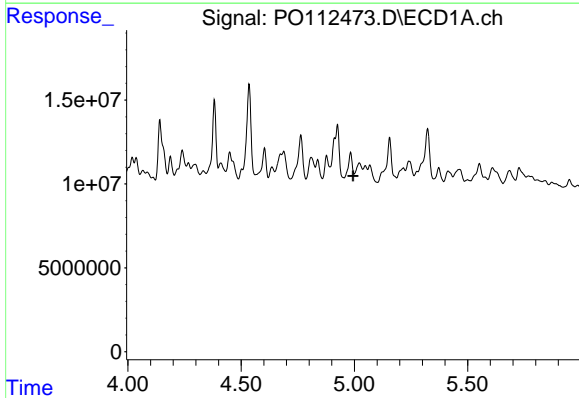
R.T.: 4.764 min  
 Delta R.T.: 0.008 min  
 Response: 33017303  
 Conc: 176.37 ng/ml

Instrument :  
 ECD\_O  
 ClientSampleId :  
 TRE-25-0081



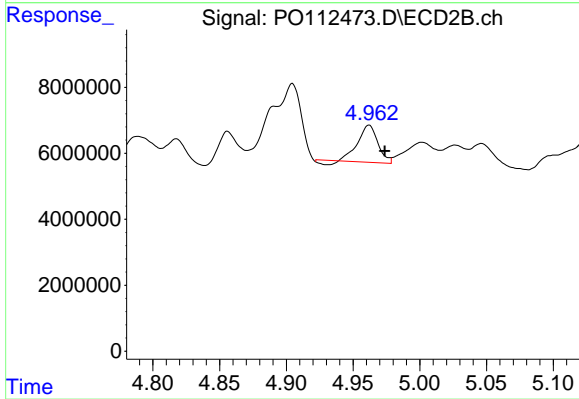
#21 AR-1248-1

R.T.: 4.744 min  
 Delta R.T.: 0.007 min  
 Response: 29465661  
 Conc: 242.50 ng/ml



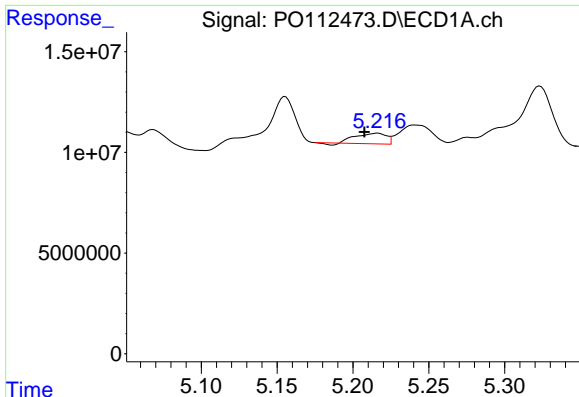
#22 AR-1248-2

R.T.: 4.983 min  
 Delta R.T.: -0.011 min  
 Response: -2536346  
 Conc: N.D.



#22 AR-1248-2

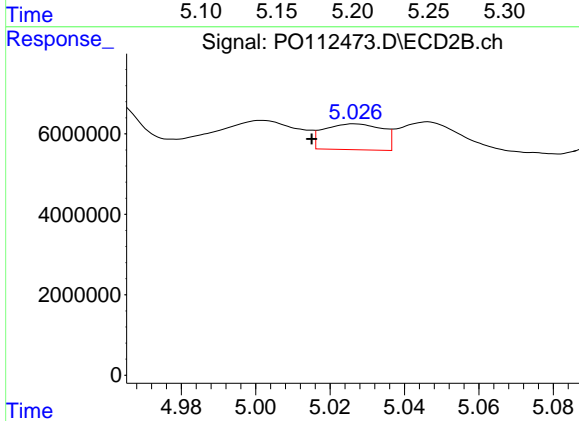
R.T.: 4.962 min  
 Delta R.T.: -0.012 min  
 Response: 11430138  
 Conc: 67.52 ng/ml



#23 AR-1248-3

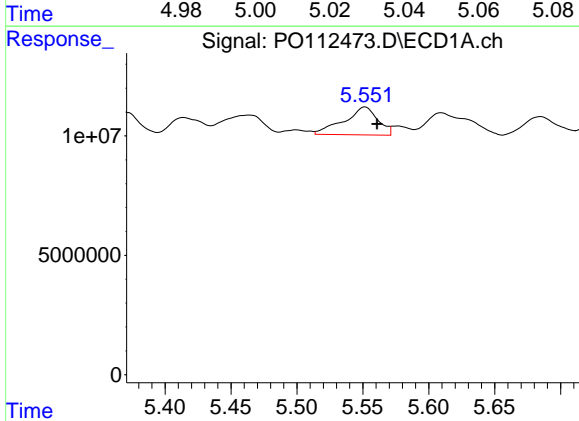
R.T.: 5.216 min  
 Delta R.T.: 0.009 min  
 Response: 7002253  
 Conc: 20.37 ng/ml

Instrument :  
 ECD\_O  
 ClientSampleId :  
 TRE-25-0081



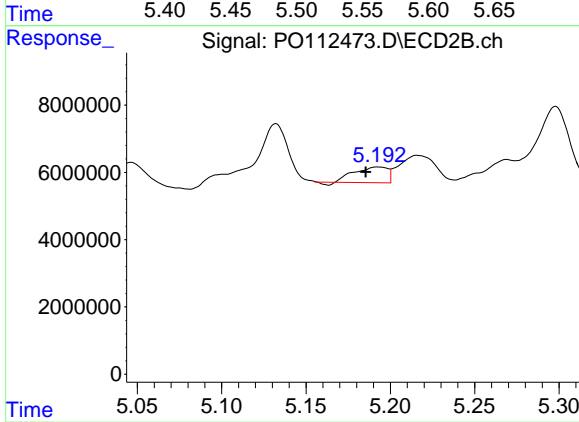
#23 AR-1248-3

R.T.: 5.027 min  
 Delta R.T.: 0.012 min  
 Response: 7047384  
 Conc: 39.67 ng/ml



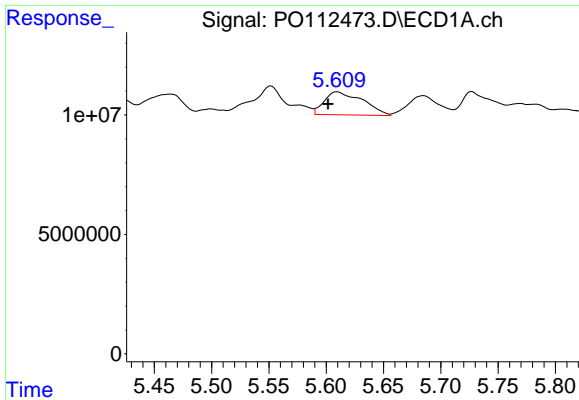
#24 AR-1248-4

R.T.: 5.552 min  
 Delta R.T.: -0.009 min  
 Response: 20751690  
 Conc: 40.84 ng/ml



#24 AR-1248-4

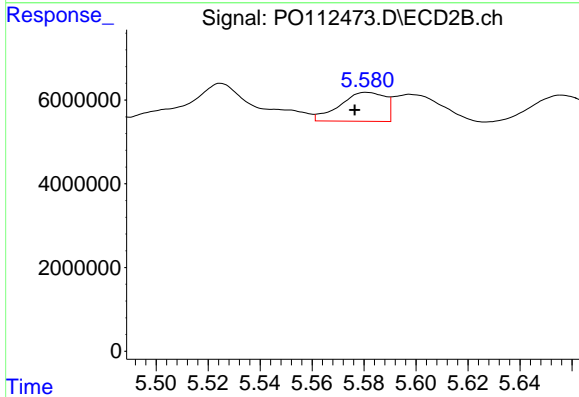
R.T.: 5.193 min  
 Delta R.T.: 0.007 min  
 Response: 6242487  
 Conc: 29.96 ng/ml



#25 AR-1248-5

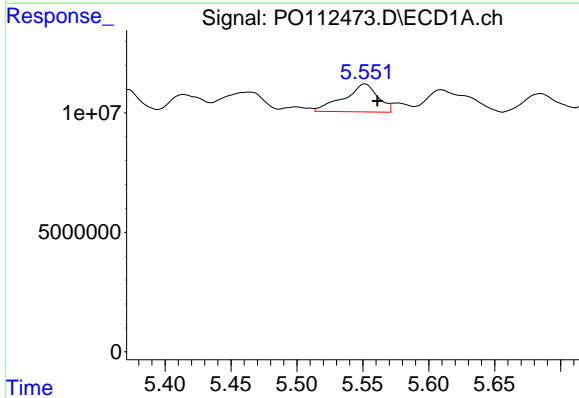
R.T.: 5.610 min  
 Delta R.T.: 0.008 min  
 Response: 22594427  
 Conc: 64.63 ng/ml

Instrument :  
 ECD\_O  
 ClientSampleId :  
 TRE-25-0081



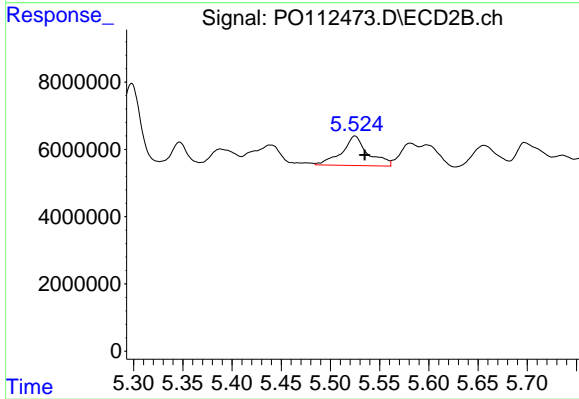
#25 AR-1248-5

R.T.: 5.581 min  
 Delta R.T.: 0.005 min  
 Response: 8403848  
 Conc: 39.13 ng/ml



#26 AR-1254-1

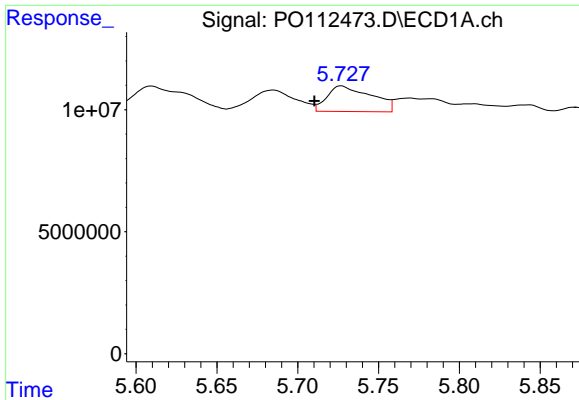
R.T.: 5.552 min  
 Delta R.T.: -0.009 min  
 Response: 20751690  
 Conc: 37.80 ng/ml



#26 AR-1254-1

R.T.: 5.525 min  
 Delta R.T.: -0.010 min  
 Response: 16280000  
 Conc: 49.54 ng/ml

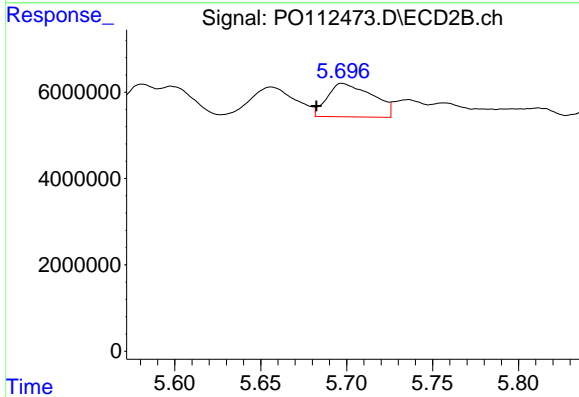




#27 AR-1254-2

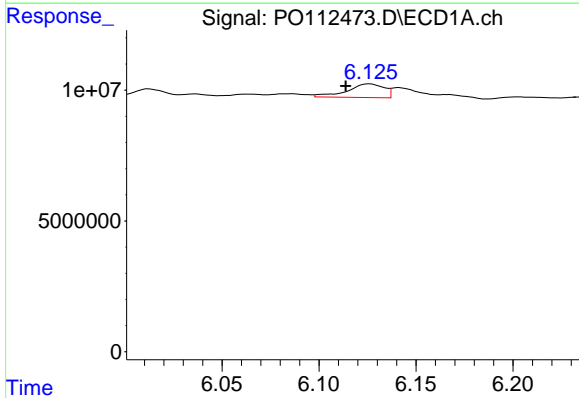
R.T.: 5.727 min  
 Delta R.T.: 0.017 min  
 Response: 19968436  
 Conc: 41.09 ng/ml

Instrument :  
 ECD\_O  
 ClientSampleId :  
 TRE-25-0081



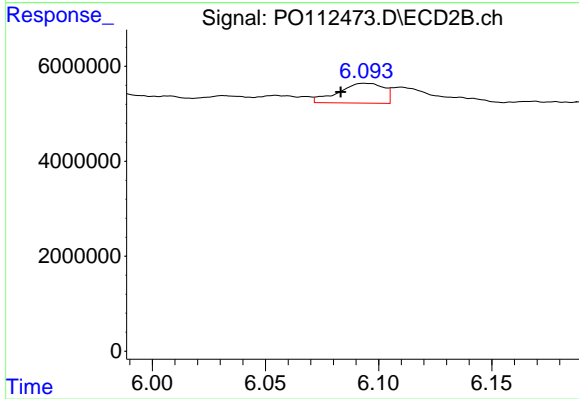
#27 AR-1254-2

R.T.: 5.697 min  
 Delta R.T.: 0.015 min  
 Response: 14158932  
 Conc: 48.91 ng/ml



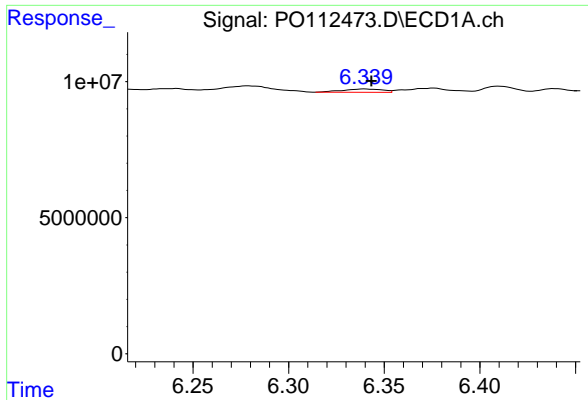
#28 AR-1254-3

R.T.: 6.126 min  
 Delta R.T.: 0.012 min  
 Response: 6918766  
 Conc: 9.30 ng/ml



#28 AR-1254-3

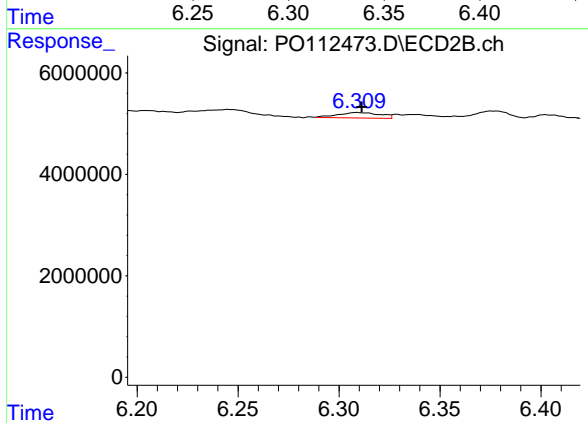
R.T.: 6.094 min  
 Delta R.T.: 0.011 min  
 Response: 5804598  
 Conc: 13.58 ng/ml



#29 AR-1254-4

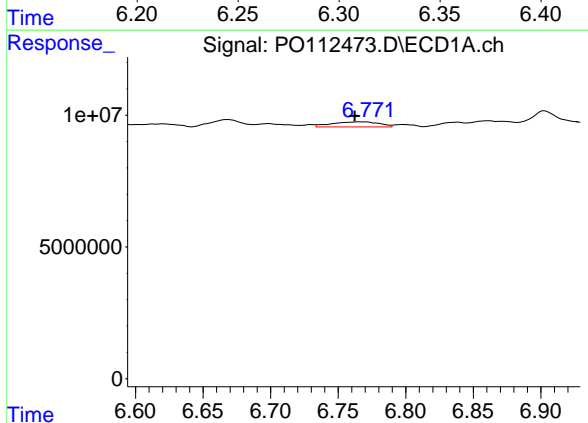
R.T.: 6.340 min  
 Delta R.T.: -0.003 min  
 Response: 1795941  
 Conc: 3.27 ng/ml

Instrument :  
 ECD\_O  
 ClientSampleId :  
 TRE-25-0081



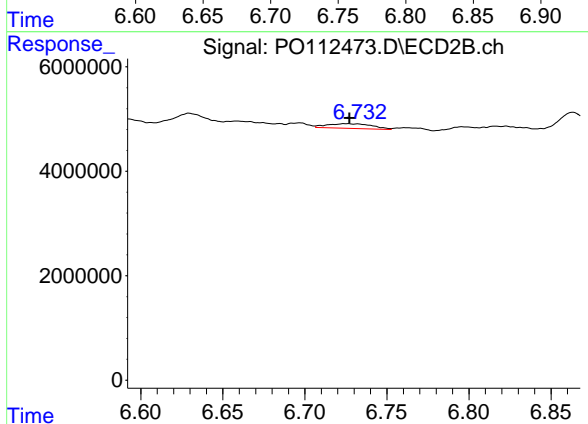
#29 AR-1254-4

R.T.: 6.309 min  
 Delta R.T.: -0.002 min  
 Response: 1557625  
 Conc: 5.71 ng/ml



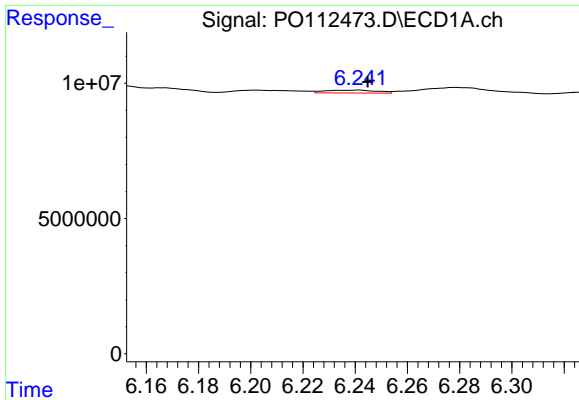
#30 AR-1254-5

R.T.: 6.766 min  
 Delta R.T.: 0.003 min  
 Response: 4776695  
 Conc: 6.75 ng/ml



#30 AR-1254-5

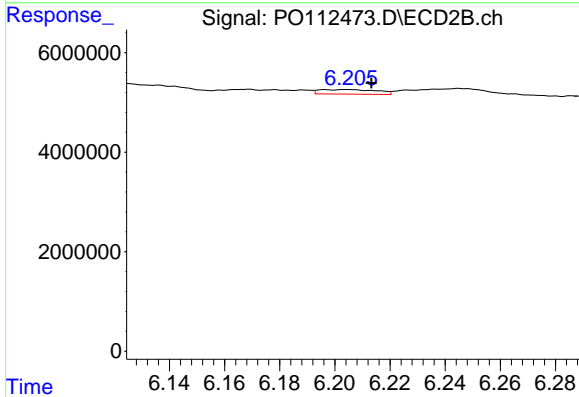
R.T.: 6.725 min  
 Delta R.T.: -0.002 min  
 Response: 1722352  
 Conc: 5.16 ng/ml



#31 AR-1260-1

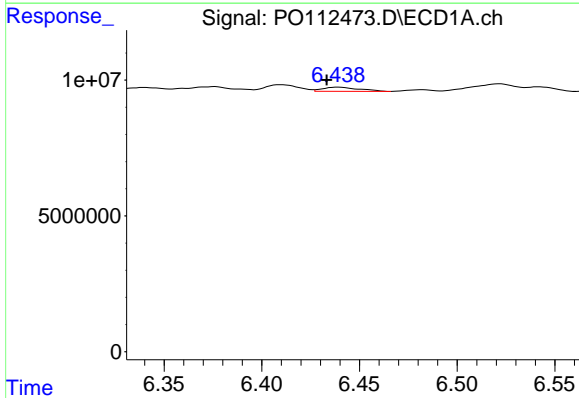
R.T.: 6.242 min  
 Delta R.T.: -0.003 min  
 Response: 1435386  
 Conc: 3.27 ng/ml

Instrument :  
 ECD\_O  
 ClientSampleId :  
 TRE-25-0081



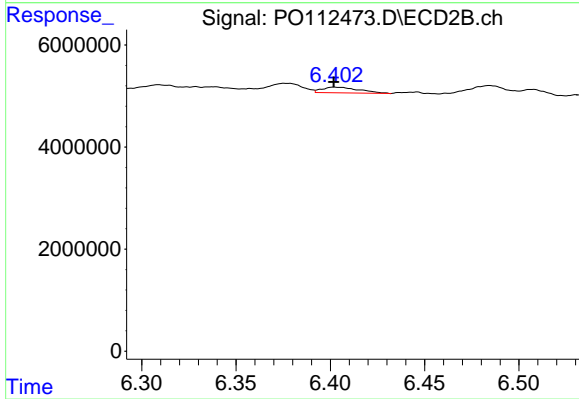
#31 AR-1260-1

R.T.: 6.205 min  
 Delta R.T.: -0.009 min  
 Response: 1323572  
 Conc: 5.33 ng/ml



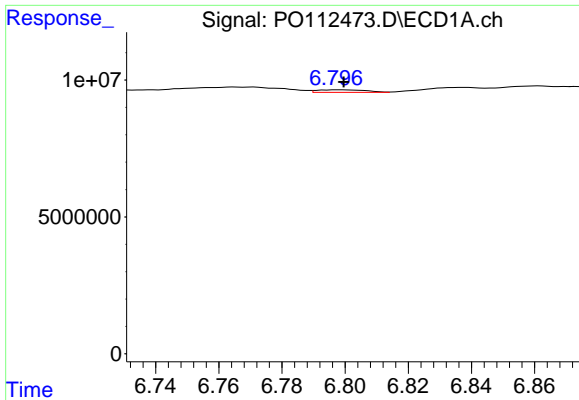
#32 AR-1260-2

R.T.: 6.439 min  
 Delta R.T.: 0.006 min  
 Response: 1998605  
 Conc: 2.91 ng/ml



#32 AR-1260-2

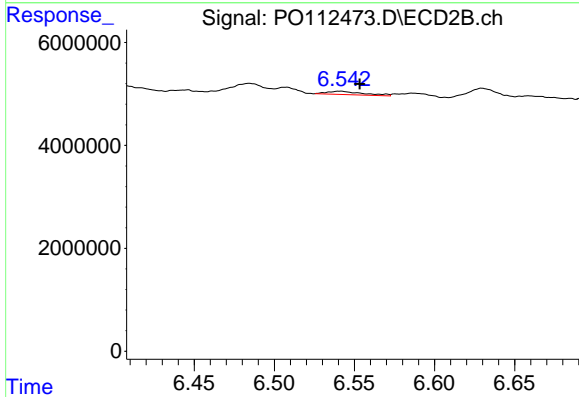
R.T.: 6.402 min  
 Delta R.T.: 0.000 min  
 Response: 1508525  
 Conc: 4.58 ng/ml



#33 AR-1260-3

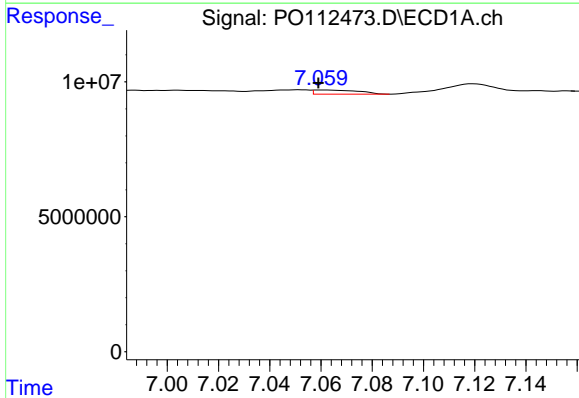
R.T.: 6.798 min  
 Delta R.T.: -0.002 min  
 Response: 1006576  
 Conc: 1.71 ng/ml

Instrument :  
 ECD\_O  
 ClientSampleId :  
 TRE-25-0081



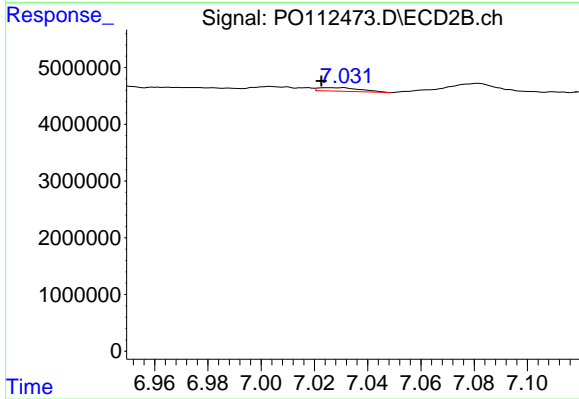
#33 AR-1260-3

R.T.: 6.541 min  
 Delta R.T.: -0.012 min  
 Response: 1018215  
 Conc: 3.96 ng/ml



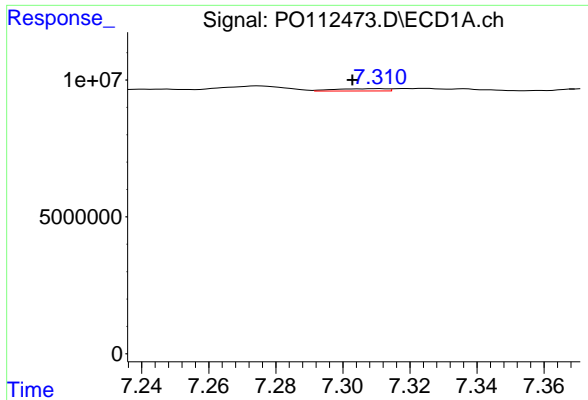
#34 AR-1260-4

R.T.: 7.060 min  
 Delta R.T.: 0.000 min  
 Response: 1809134  
 Conc: 4.01 ng/ml



#34 AR-1260-4

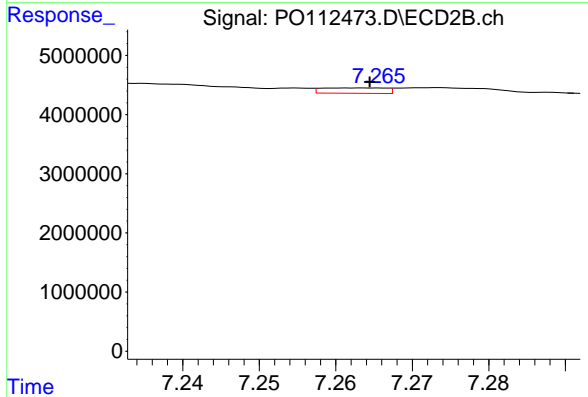
R.T.: 7.030 min  
 Delta R.T.: 0.007 min  
 Response: 688087  
 Conc: 3.60 ng/ml



#35 AR-1260-5

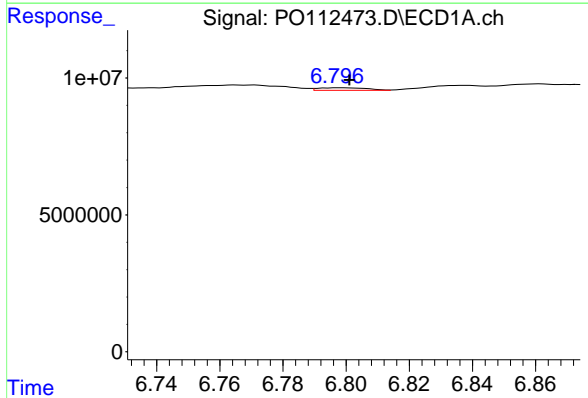
R.T.: 7.310 min  
 Delta R.T.: 0.008 min  
 Response: 934465  
 Conc: 0.75 ng/ml

Instrument :  
 ECD\_O  
 ClientSampleId :  
 TRE-25-0081



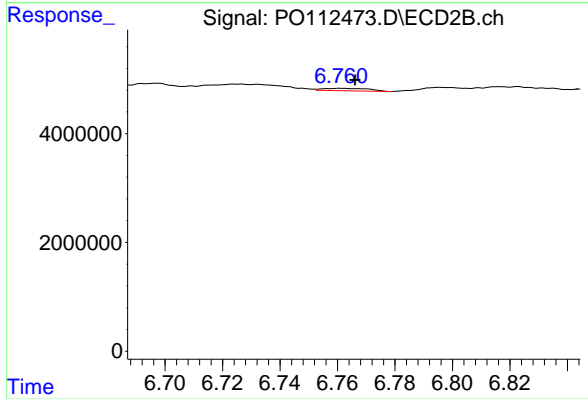
#35 AR-1260-5

R.T.: 7.263 min  
 Delta R.T.: -0.001 min  
 Response: 535360  
 Conc: 1.30 ng/ml



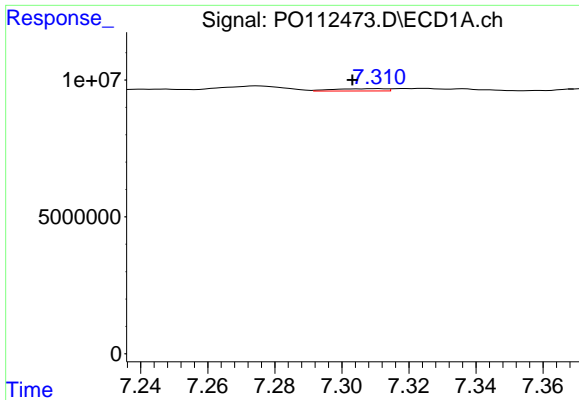
#36 AR-1262-1

R.T.: 6.798 min  
 Delta R.T.: -0.003 min  
 Response: 1006576  
 Conc: 1.08 ng/ml



#36 AR-1262-1

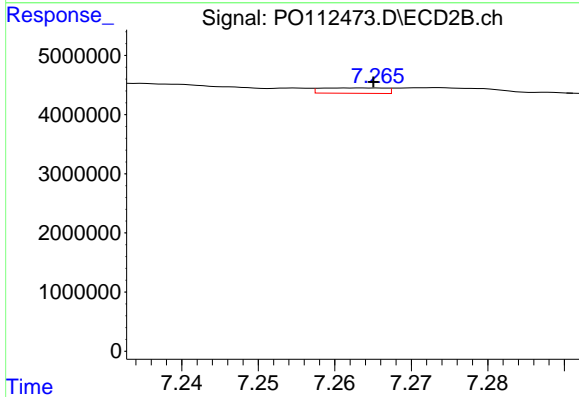
R.T.: 6.761 min  
 Delta R.T.: -0.005 min  
 Response: 507818  
 Conc: 1.22 ng/ml



#37 AR-1262-2

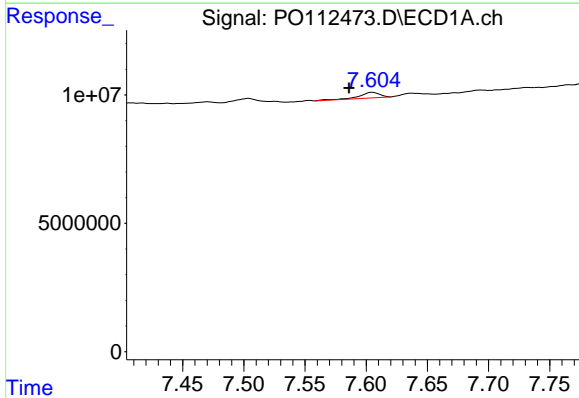
R.T.: 7.310 min  
 Delta R.T.: 0.007 min  
 Response: 934465  
 Conc: 0.63 ng/ml

Instrument :  
 ECD\_O  
 ClientSampleId :  
 TRE-25-0081



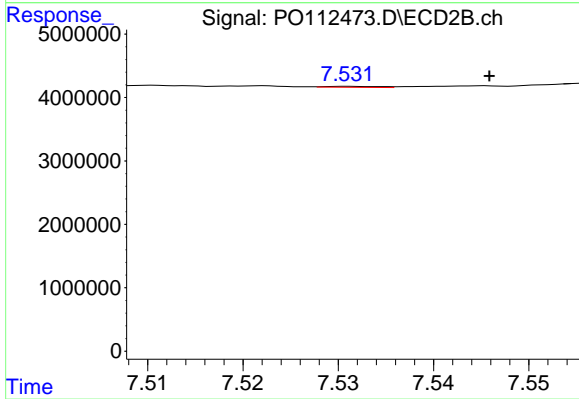
#37 AR-1262-2

R.T.: 7.263 min  
 Delta R.T.: -0.002 min  
 Response: 535360  
 Conc: 1.04 ng/ml



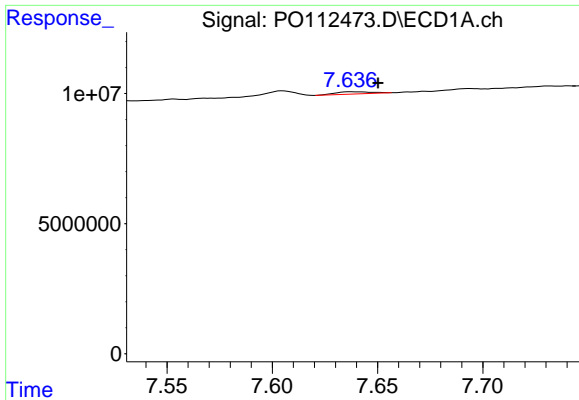
#38 AR-1262-3

R.T.: 7.605 min  
 Delta R.T.: 0.019 min  
 Response: 2498977  
 Conc: 4.23 ng/ml



#38 AR-1262-3

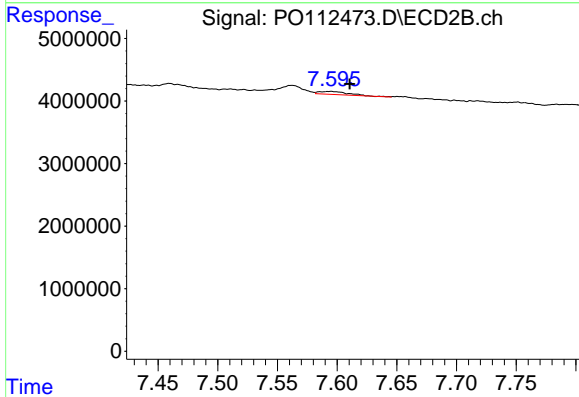
R.T.: 7.531 min  
 Delta R.T.: -0.015 min  
 Response: 61074  
 Conc: 0.33 ng/ml



#39 AR-1262-4

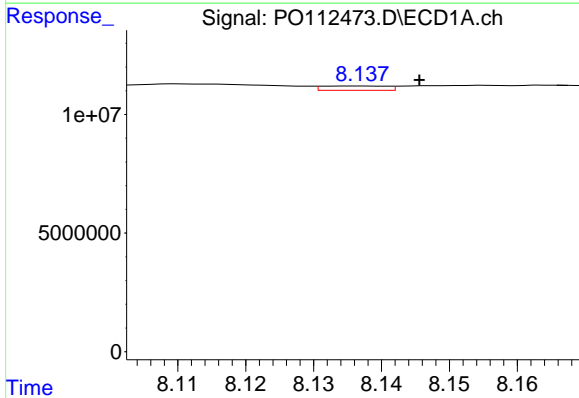
R.T.: 7.638 min  
 Delta R.T.: -0.013 min  
 Response: 1037973  
 Conc: 1.04 ng/ml

Instrument :  
 ECD\_O  
 ClientSampleId :  
 TRE-25-0081



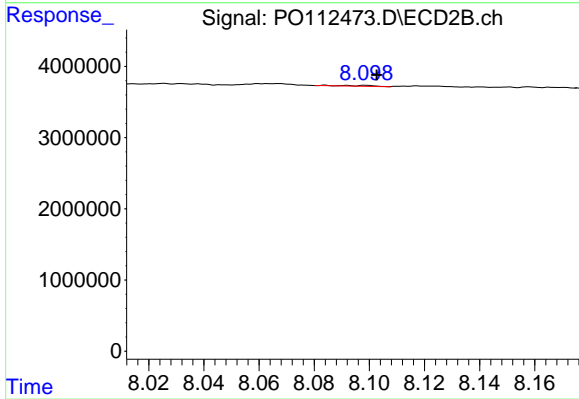
#39 AR-1262-4

R.T.: 7.595 min  
 Delta R.T.: -0.016 min  
 Response: 800559  
 Conc: 2.78 ng/ml



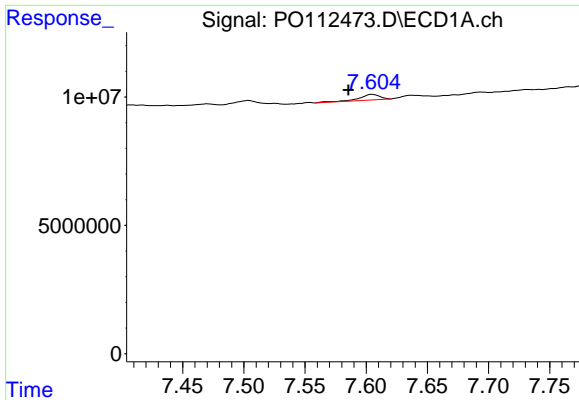
#40 AR-1262-5

R.T.: 8.137 min  
 Delta R.T.: -0.008 min  
 Response: 1233086  
 Conc: 2.84 ng/ml



#40 AR-1262-5

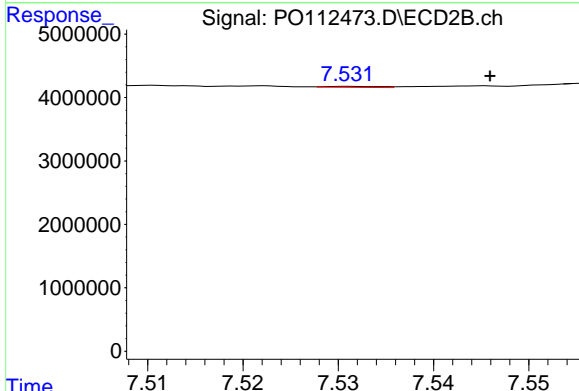
R.T.: 8.099 min  
 Delta R.T.: -0.004 min  
 Response: 87088  
 Conc: 0.88 ng/ml



#41 AR-1268-1

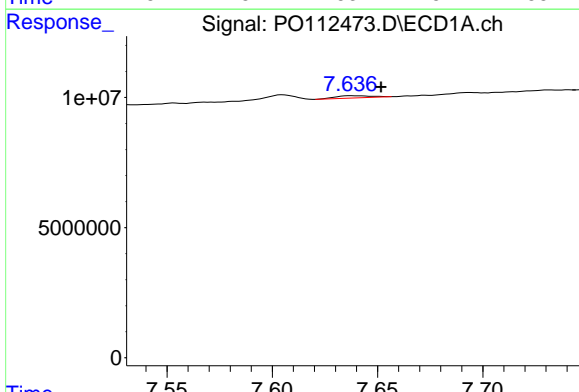
R.T.: 7.605 min  
 Delta R.T.: 0.020 min  
 Response: 2498977  
 Conc: 1.43 ng/ml

Instrument :  
 ECD\_O  
 ClientSampleId :  
 TRE-25-0081



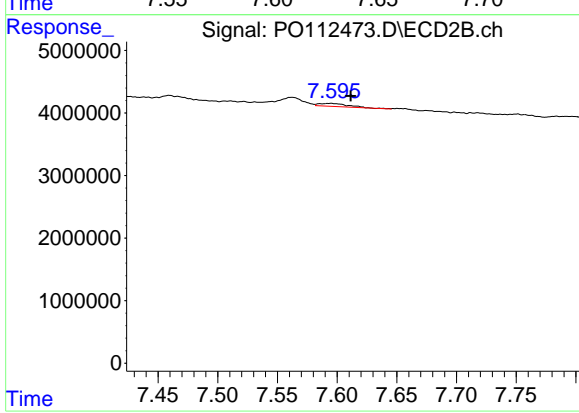
#41 AR-1268-1

R.T.: 7.531 min  
 Delta R.T.: -0.015 min  
 Response: 61074  
 Conc: 0.12 ng/ml



#42 AR-1268-2

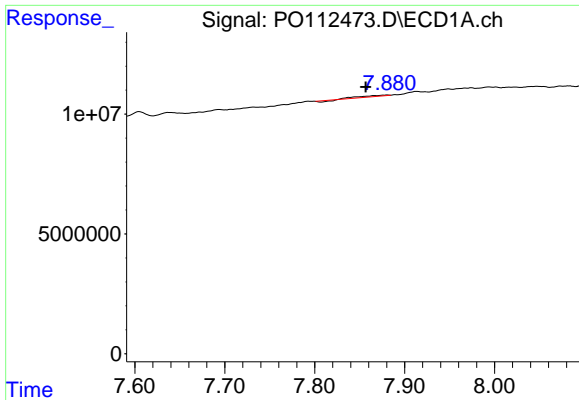
R.T.: 7.638 min  
 Delta R.T.: -0.014 min  
 Response: 1037973  
 Conc: 0.70 ng/ml



#42 AR-1268-2

R.T.: 7.595 min  
 Delta R.T.: -0.017 min  
 Response: 800559  
 Conc: 1.88 ng/ml

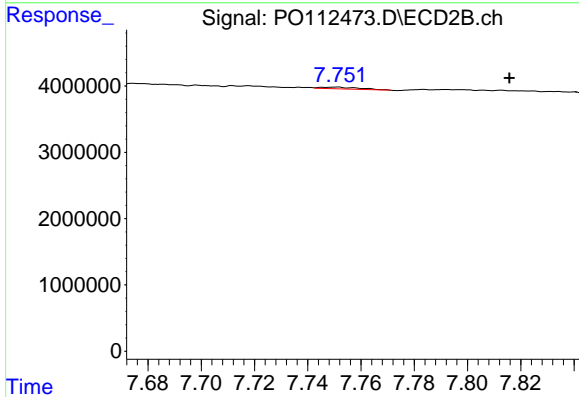




#43 AR-1268-3

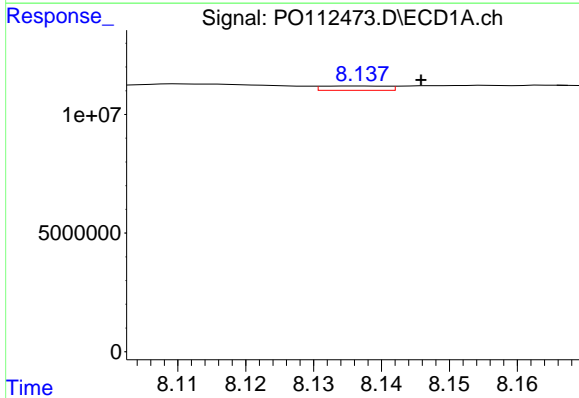
R.T.: 7.881 min  
 Delta R.T.: 0.024 min  
 Response: 632530  
 Conc: 0.51 ng/ml

Instrument :  
 ECD\_O  
 ClientSampleId :  
 TRE-25-0081



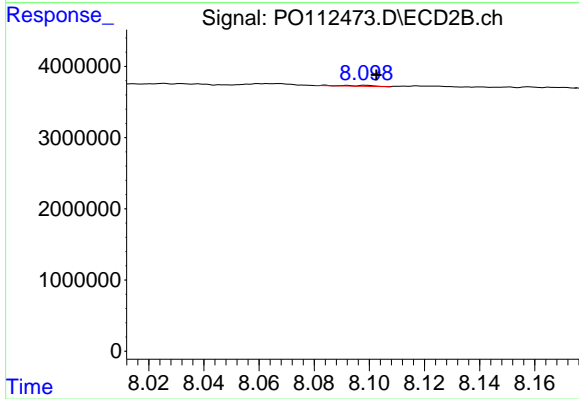
#43 AR-1268-3

R.T.: 7.751 min  
 Delta R.T.: -0.065 min  
 Response: 245315  
 Conc: 0.76 ng/ml



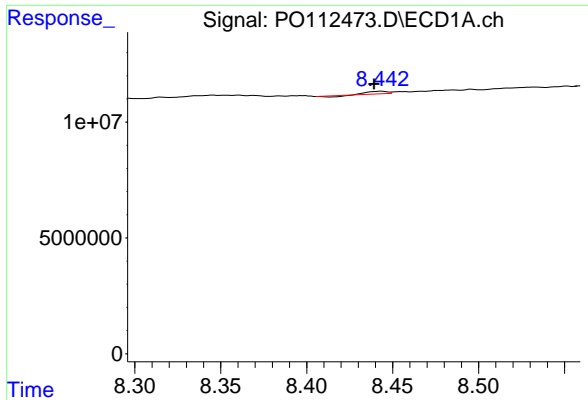
#44 AR-1268-4

R.T.: 8.137 min  
 Delta R.T.: -0.009 min  
 Response: 1233086  
 Conc: 2.56 ng/ml



#44 AR-1268-4

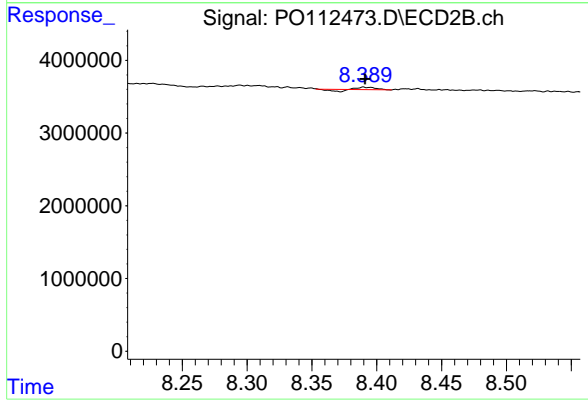
R.T.: 8.099 min  
 Delta R.T.: -0.004 min  
 Response: 87088  
 Conc: 0.78 ng/ml



#45 AR-1268-5

R.T.: 8.443 min  
 Delta R.T.: 0.004 min  
 Response: 619949  
 Conc: 0.18 ng/ml

Instrument :  
 ECD\_O  
 ClientSampleId :  
 TRE-25-0081



#45 AR-1268-5

R.T.: 8.390 min  
 Delta R.T.: 0.000 min  
 Response: 146944  
 Conc: 0.20 ng/ml