

Data Path : Z:\pestpcbsrv\HPCHEM1\ECD\_0\Data\P0072425\  
 Data File : PO112474.D  
 Signal(s) : Signal #1: ECD1A.ch Signal #2: ECD2B.ch  
 Acq On : 24 Jul 2025 18:25  
 Operator : YP/AJ  
 Sample : Q2678-01 10X  
 Misc :  
 ALS Vial : 22 Sample Multiplier: 1

Instrument :  
 ECD\_0  
 ClientSampleId :  
 I-1361-USED-OIL

Integration File signal 1: autoint1.e  
 Integration File signal 2: autoint2.e  
 Quant Time: Jul 24 23:46:18 2025  
 Quant Method : Z:\pestpcbsrv\HPCHEM1\ECD\_0\methods\P0072325.M  
 Quant Title : GC EXTRACTABLES  
 QLast Update : Thu Jul 24 04:54:06 2025  
 Response via : Initial Calibration  
 Integrator: ChemStation

Volume Inj. : 2 µl  
 Signal #1 Phase : ZB-MR1 Signal #2 Phase: ZB-MR2  
 Signal #1 Info : 30Mx0.32mmx 0.50µ Signal #2 Info : 30M x 0.32mm x 0.25µm

Compound	RT#1	RT#2	Resp#1	Resp#2	ng/ml	ng/ml
System Monitoring Compounds						
1) SA Tetrachlo...	3.670	3.663	9311049	7198456	1.145	1.449 #
2) SA Decachlor...	8.698	8.642	7536086	1573149	1.031	0.890
Target Compounds						
3) L1 AR-1016-1	4.710f	4.749	3885965	786056	14.480	4.492 #
4) L1 AR-1016-2	4.806	4.749	12928180	786056	31.834	3.018 #
5) L1 AR-1016-3	4.806	4.933	12928180	113942	49.406	0.838 #
6) L1 AR-1016-4	4.938	4.969	-82611	70981	N.D.	0.639 #
8) L2 AR-1221-1	3.894	3.880	87506	394217	0.905	5.861 #
9) L2 AR-1221-2	3.913f	3.947	1290222	376140	17.954	7.415 #
10) L2 AR-1221-3	4.095f	4.034	2907031	1168571	12.229	7.371 #
11) L3 AR-1232-1	4.095f	4.034	2907031	1168571	15.547	9.234 #
12) L3 AR-1232-2	4.553	4.749	6423098	786056	59.681	5.993 #
13) L3 AR-1232-3	4.806	4.933	12928180	113942	62.516	1.696 #
14) L3 AR-1232-4	4.938	5.023	-82611	482409	N.D.	8.063 #
15) L3 AR-1232-5	4.983	5.190	355348	51214	5.235	0.785 #
16) L4 AR-1242-1	4.710f	4.749	3885965	786056	15.695	4.963 #
17) L4 AR-1242-2	4.806	4.749	12928180	786056	34.961	3.364 #
18) L4 AR-1242-3	4.806	4.933	12928180	113942	54.628	0.940 #
19) L4 AR-1242-4	4.938	5.023	-82611	482409	N.D.	3.930 #
20) L4 AR-1242-5	5.580	5.518	4660375	1469912	21.786	9.132 #
21) L5 AR-1248-1	4.710f	4.749	3885965	786056	20.757	6.469 #
22) L5 AR-1248-2	4.983	4.969	355348	70981	1.393	0.419 #
23) L5 AR-1248-3	5.211	5.023	-220900	482409	N.D.	2.716 #
24) L5 AR-1248-4	5.546	5.190	3491569	51214	6.872	0.246 #
25) L5 AR-1248-5	5.580	5.574	4660375	607024	13.331	2.826 #
26) L6 AR-1254-1	5.546	5.518	3491569	1469912	6.360	4.473 #
27) L6 AR-1254-2	5.704	5.677	2081645	735310	4.284	2.540 #
28) L6 AR-1254-3	6.106	6.083	209952	266738	0.282	0.624 #
29) L6 AR-1254-4	6.387f	6.311	1059906	232138	1.928	0.850 #
30) L6 AR-1254-5	6.762	6.725	909715	620240	1.285	1.857 #
31) L7 AR-1260-1	6.267	6.233	218452	392553	0.497	1.580 #
32) L7 AR-1260-2	6.444	6.415	656866	66107	0.955	0.201 #
33) L7 AR-1260-3	6.786	6.557	1914329	92093	3.256	0.358 #
34) L7 AR-1260-4	7.064	7.016	1826016	1068789	4.049	5.587 #
35) L7 AR-1260-5	7.312	7.268	321671	224669	0.260	0.545 #
36) L8 AR-1262-1	6.786	6.763	1914329	634403	2.060	1.529 #
37) L8 AR-1262-2	7.312	7.268	321671	224669	0.216	0.436 #
38) L8 AR-1262-3	7.583	7.542	47981	170572	0.081	0.914 #
39) L8 AR-1262-4	7.648	7.607	735729	100674	0.740	0.349 #
40) L8 AR-1262-5	8.098f	8.119	366821	98970	0.845	0.995
41) L9 AR-1268-1	7.583	7.542	47981	170572	0.027	0.329 #
42) L9 AR-1268-2	7.648	7.614	735729	71911	0.499	0.169 #

Data Path : Z:\pestpcbsrv\HPCHEM1\ECD\_0\Data\P0072425\  
 Data File : P0112474.D  
 Signal(s) : Signal #1: ECD1A.ch Signal #2: ECD2B.ch  
 Acq On : 24 Jul 2025 18:25  
 Operator : YP/AJ  
 Sample : Q2678-01 10X  
 Misc :  
 ALS Vial : 22 Sample Multiplier: 1

Instrument :  
 ECD\_0  
 ClientSampleId :  
 I-1361-USED-OIL

Integration File signal 1: autoint1.e  
 Integration File signal 2: autoint2.e  
 Quant Time: Jul 24 23:46:18 2025  
 Quant Method : Z:\pestpcbsrv\HPCHEM1\ECD\_0\methods\P0072325.M  
 Quant Title : GC EXTRACTABLES  
 QLast Update : Thu Jul 24 04:54:06 2025  
 Response via : Initial Calibration  
 Integrator: ChemStation

Volume Inj. : 2 µl  
 Signal #1 Phase : ZB-MR1 Signal #2 Phase: ZB-MR2  
 Signal #1 Info : 30Mx0.32mmx 0.50µ Signal #2 Info : 30M x 0.32mm x 0.25µm

	Compound	RT#1	RT#2	Resp#1	Resp#2	ng/ml	ng/ml
43)	L9 AR-1268-3	7.860	7.819	2846942	169061	2.273	0.526 #
44)	L9 AR-1268-4	8.098f	8.119	366821	98970	0.761	0.889
45)	L9 AR-1268-5	8.433	8.388	1435528	-92826	0.428	N.D. #

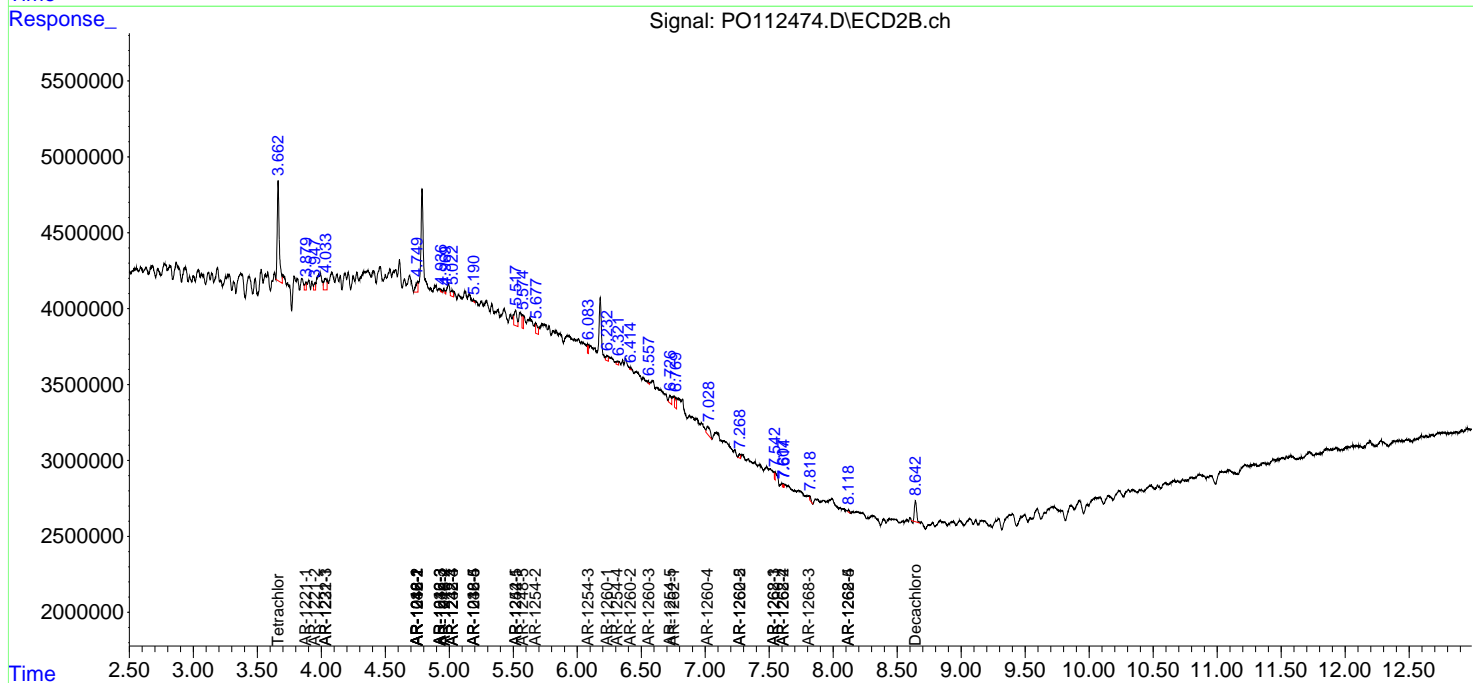
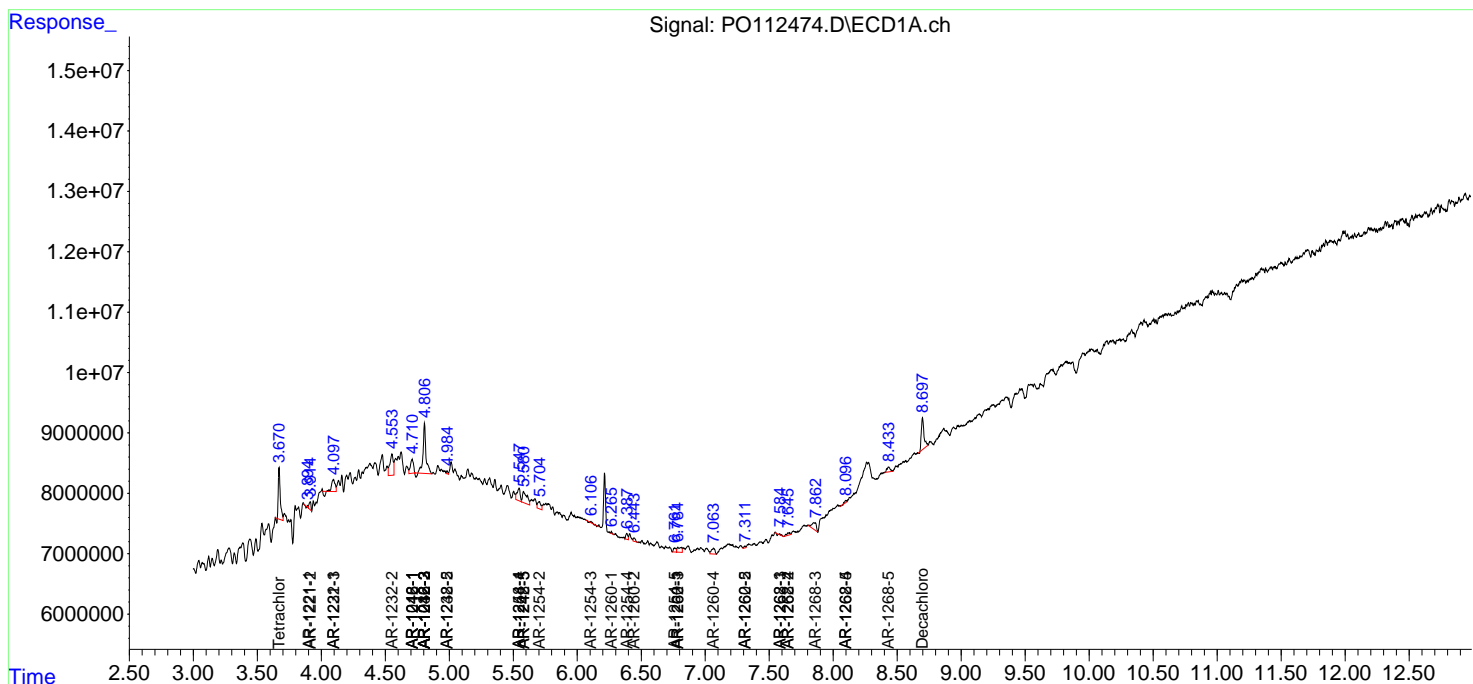
(f)=RT Delta > 1/2 Window (#)=Amounts differ by > 25% (m)=manual int.

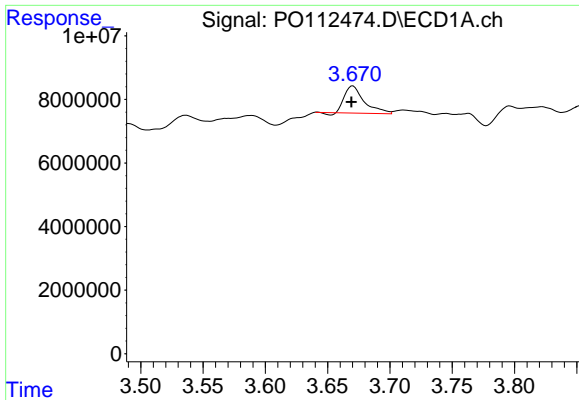
Data Path : Z:\pestpcbsrv\HPCHEM1\ECD\_O\Data\PO072425\  
 Data File : PO112474.D  
 Signal(s) : Signal #1: ECD1A.ch Signal #2: ECD2B.ch  
 Acq On : 24 Jul 2025 18:25  
 Operator : YP/AJ  
 Sample : Q2678-01 10X  
 Misc :  
 ALS Vial : 22 Sample Multiplier: 1

Instrument :  
 ECD\_O  
 ClientSampleId :  
 I-1361-USED-OIL

Integration File signal 1: autoint1.e  
 Integration File signal 2: autoint2.e  
 Quant Time: Jul 24 23:46:18 2025  
 Quant Method : Z:\pestpcbsrv\HPCHEM1\ECD\_O\methods\PO072325.M  
 Quant Title : GC EXTRACTABLES  
 QLast Update : Thu Jul 24 04:54:06 2025  
 Response via : Initial Calibration  
 Integrator: ChemStation

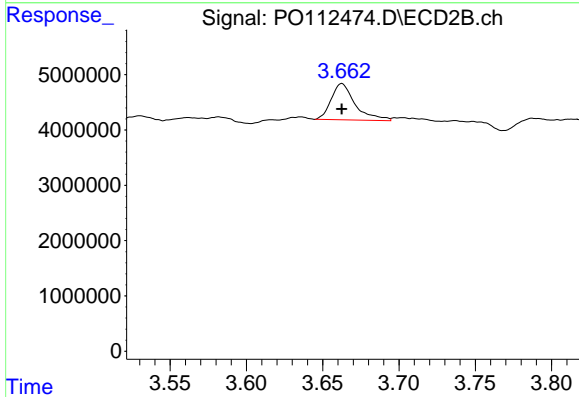
Volume Inj. : 2 µl  
 Signal #1 Phase : ZB-MR1 Signal #2 Phase: ZB-MR2  
 Signal #1 Info : 30Mx0.32mmx 0.50µ Signal #2 Info : 30M x 0.32mm x 0.25µm



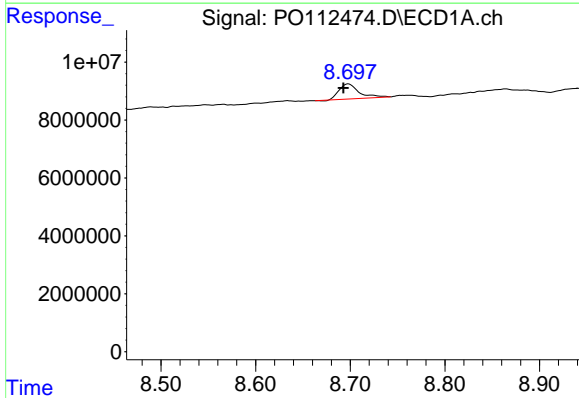


#1 Tetrachloro-m-xylene  
 R.T.: 3.670 min  
 Delta R.T.: 0.001 min  
 Response: 9311049  
 Conc: 1.15 ng/ml

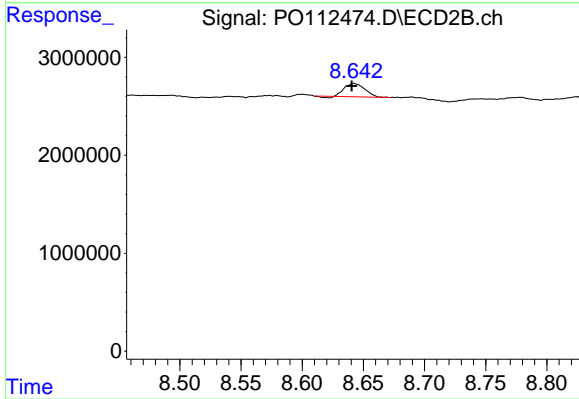
Instrument :  
 ECD\_O  
 ClientSampleId :  
 I-1361-USED-OIL



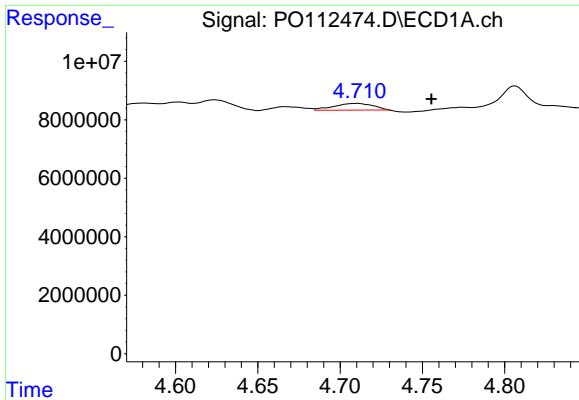
#1 Tetrachloro-m-xylene  
 R.T.: 3.663 min  
 Delta R.T.: 0.000 min  
 Response: 7198456  
 Conc: 1.45 ng/ml



#2 Decachlorobiphenyl  
 R.T.: 8.698 min  
 Delta R.T.: 0.005 min  
 Response: 7536086  
 Conc: 1.03 ng/ml



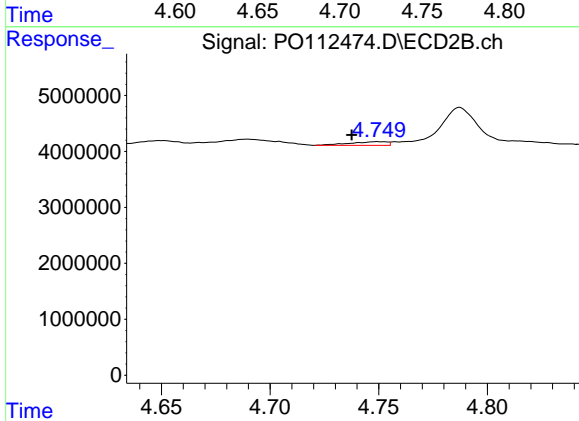
#2 Decachlorobiphenyl  
 R.T.: 8.642 min  
 Delta R.T.: 0.002 min  
 Response: 1573149  
 Conc: 0.89 ng/ml



#3 AR-1016-1

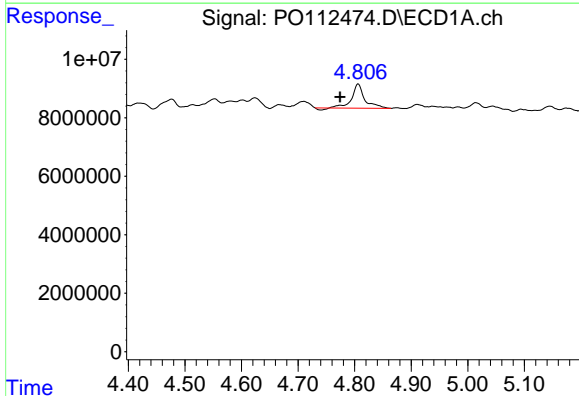
R.T.: 4.710 min  
 Delta R.T.: -0.046 min  
 Response: 3885965  
 Conc: 14.48 ng/ml

Instrument :  
 ECD\_O  
 ClientSampleId :  
 I-1361-USED-OIL



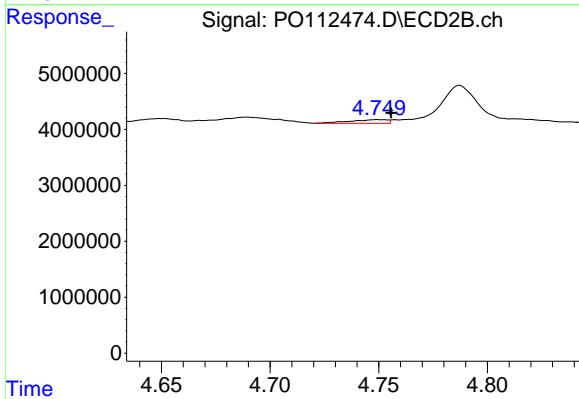
#3 AR-1016-1

R.T.: 4.749 min  
 Delta R.T.: 0.012 min  
 Response: 786056  
 Conc: 4.49 ng/ml



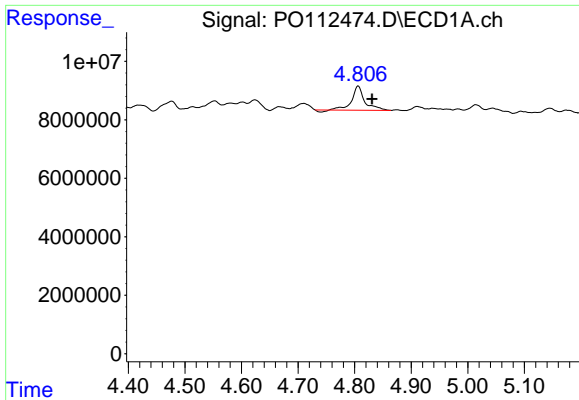
#4 AR-1016-2

R.T.: 4.806 min  
 Delta R.T.: 0.032 min  
 Response: 12928180  
 Conc: 31.83 ng/ml



#4 AR-1016-2

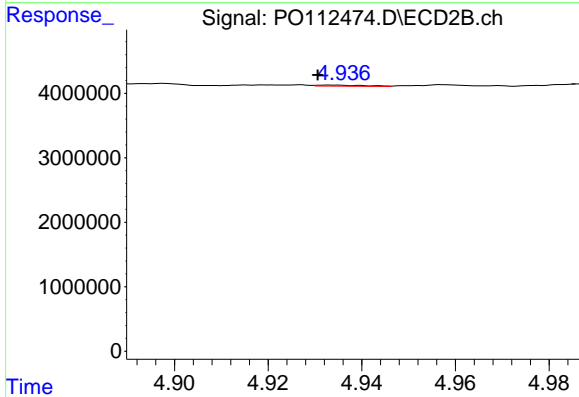
R.T.: 4.749 min  
 Delta R.T.: -0.006 min  
 Response: 786056  
 Conc: 3.02 ng/ml



#5 AR-1016-3

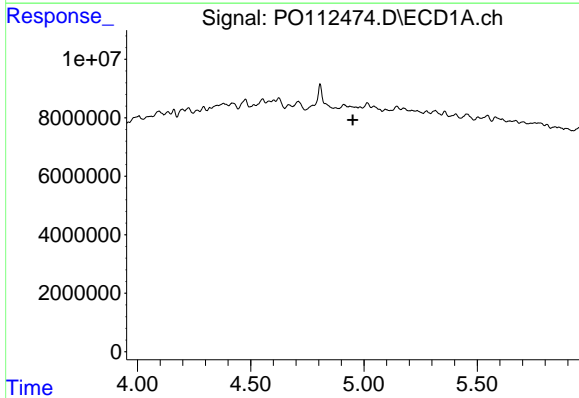
R.T.: 4.806 min  
Delta R.T.: -0.025 min  
Response: 12928180  
Conc: 49.41 ng/ml

Instrument :  
ECD\_O  
ClientSampleId :  
I-1361-USED-OIL



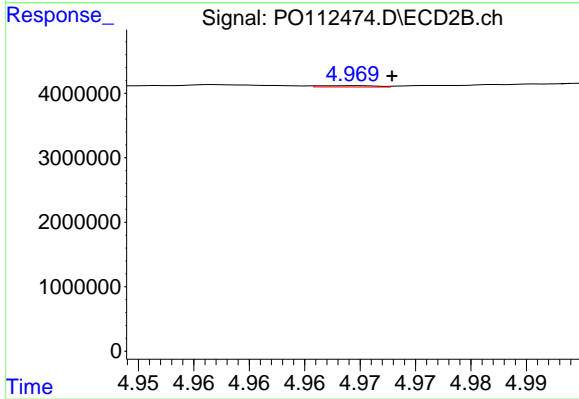
#5 AR-1016-3

R.T.: 4.933 min  
Delta R.T.: 0.003 min  
Response: 113942  
Conc: 0.84 ng/ml



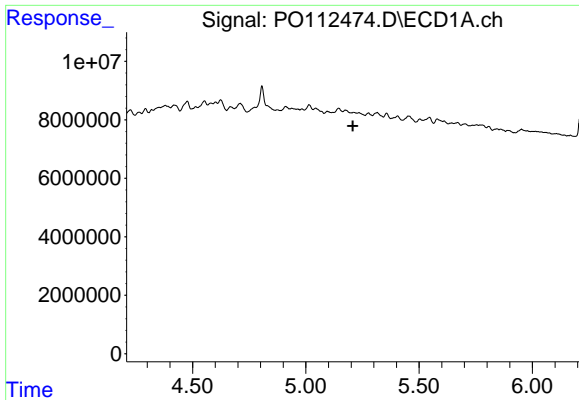
#6 AR-1016-4

R.T.: 4.938 min  
Delta R.T.: -0.012 min  
Response: -82611  
Conc: N.D.



#6 AR-1016-4

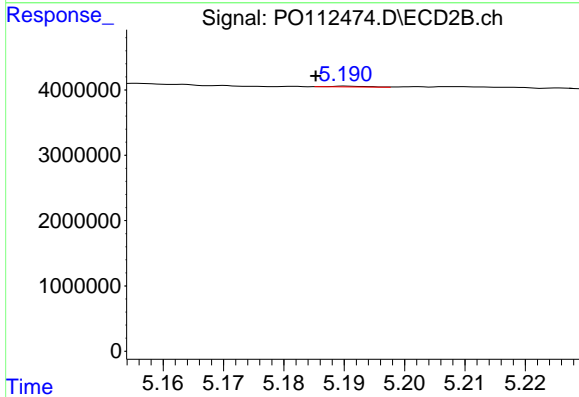
R.T.: 4.969 min  
Delta R.T.: -0.003 min  
Response: 70981  
Conc: 0.64 ng/ml



#7 AR-1016-5

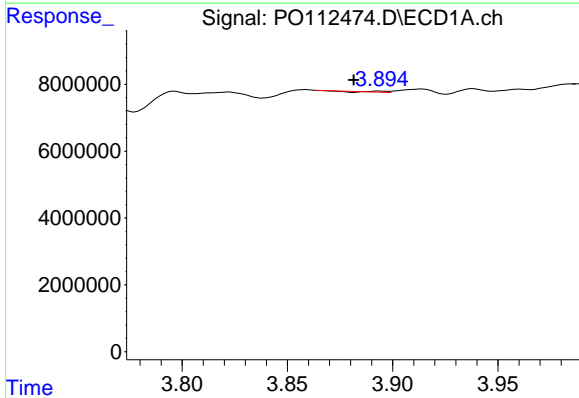
R.T.: 5.211 min  
 Delta R.T.: 0.003 min  
 Response: -220900  
 Conc: N.D.

Instrument :  
 ECD\_O  
 ClientSampleId :  
 I-1361-USED-OIL



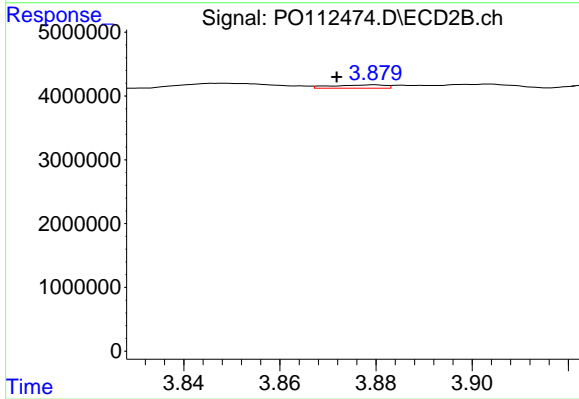
#7 AR-1016-5

R.T.: 5.190 min  
 Delta R.T.: 0.005 min  
 Response: 51214  
 Conc: 0.36 ng/ml



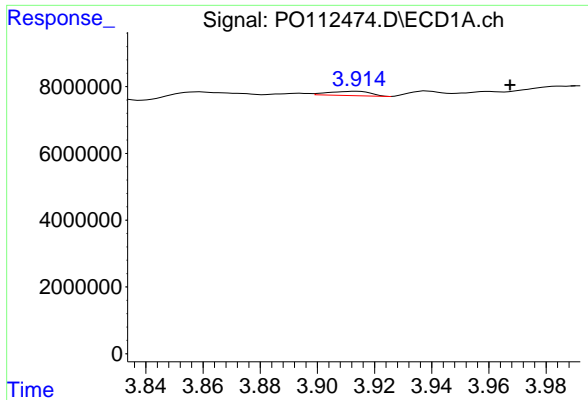
#8 AR-1221-1

R.T.: 3.894 min  
 Delta R.T.: 0.012 min  
 Response: 87506  
 Conc: 0.91 ng/ml



#8 AR-1221-1

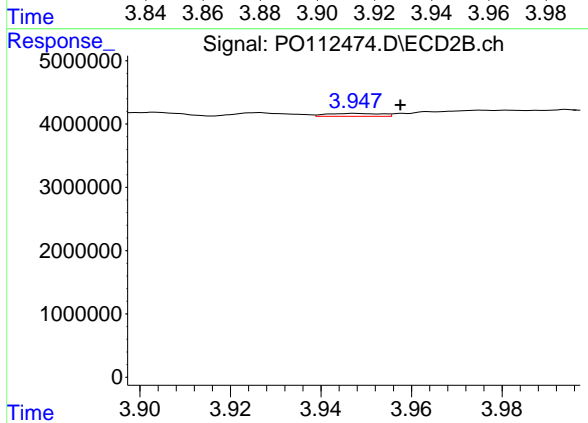
R.T.: 3.880 min  
 Delta R.T.: 0.008 min  
 Response: 394217  
 Conc: 5.86 ng/ml



#9 AR-1221-2

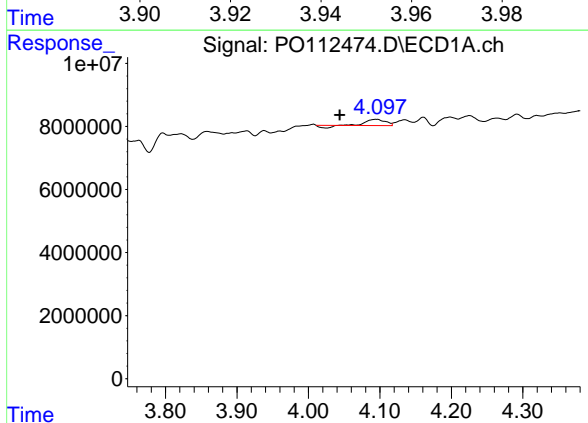
R.T.: 3.913 min  
 Delta R.T.: -0.054 min  
 Response: 1290222  
 Conc: 17.95 ng/ml

Instrument :  
 ECD\_O  
 ClientSampleId :  
 I-1361-USED-OIL



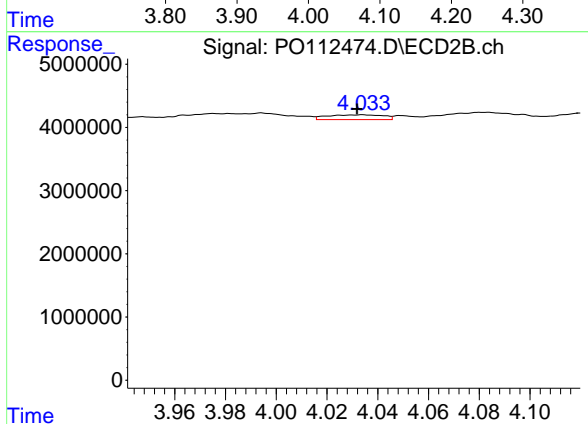
#9 AR-1221-2

R.T.: 3.947 min  
 Delta R.T.: -0.010 min  
 Response: 376140  
 Conc: 7.41 ng/ml



#10 AR-1221-3

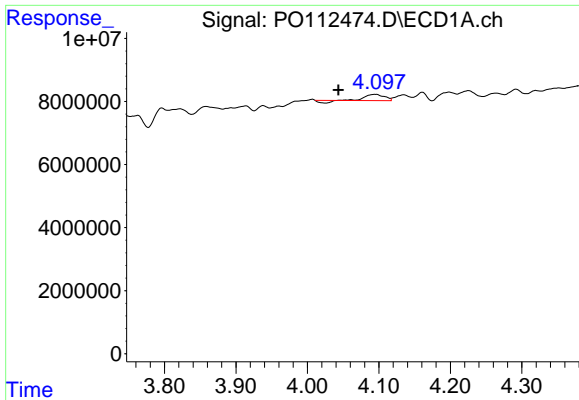
R.T.: 4.095 min  
 Delta R.T.: 0.051 min  
 Response: 2907031  
 Conc: 12.23 ng/ml



#10 AR-1221-3

R.T.: 4.034 min  
 Delta R.T.: 0.002 min  
 Response: 1168571  
 Conc: 7.37 ng/ml

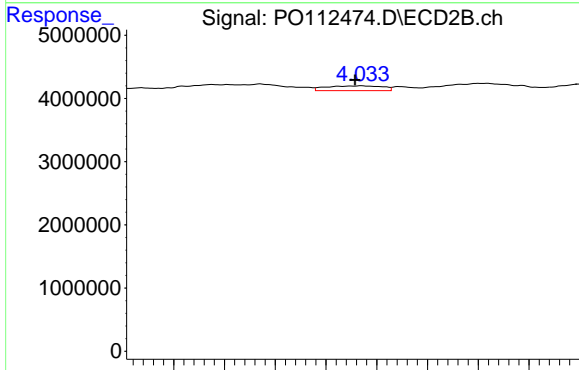




#11 AR-1232-1

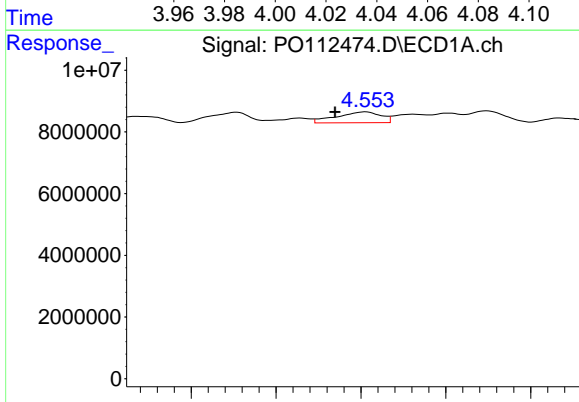
R.T.: 4.095 min  
 Delta R.T.: 0.052 min  
 Response: 2907031  
 Conc: 15.55 ng/ml

Instrument :  
 ECD\_O  
 ClientSampleId :  
 I-1361-USED-OIL



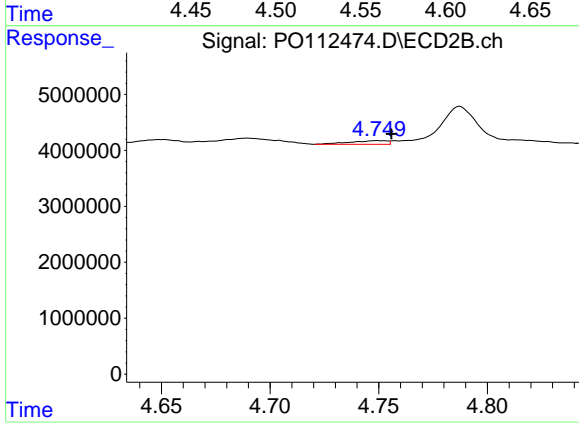
#11 AR-1232-1

R.T.: 4.034 min  
 Delta R.T.: 0.003 min  
 Response: 1168571  
 Conc: 9.23 ng/ml



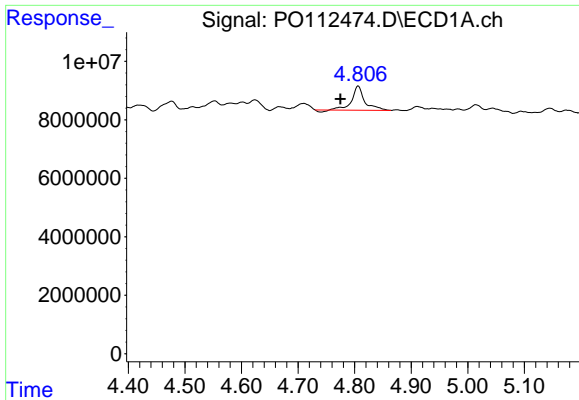
#12 AR-1232-2

R.T.: 4.553 min  
 Delta R.T.: 0.018 min  
 Response: 6423098  
 Conc: 59.68 ng/ml



#12 AR-1232-2

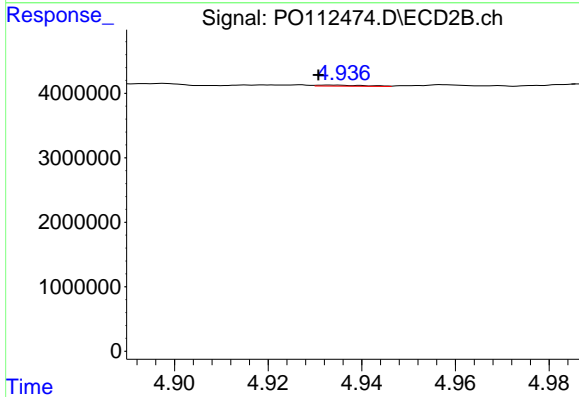
R.T.: 4.749 min  
 Delta R.T.: -0.007 min  
 Response: 786056  
 Conc: 5.99 ng/ml



#13 AR-1232-3

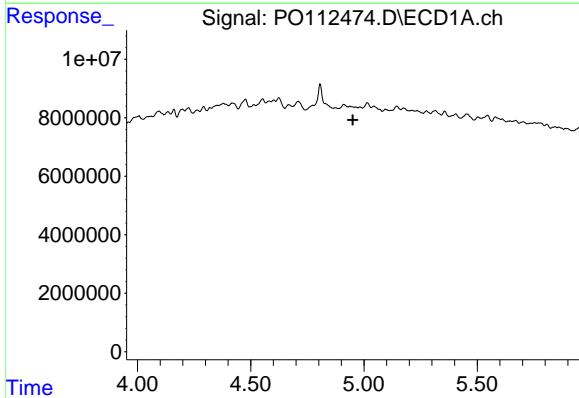
R.T.: 4.806 min  
 Delta R.T.: 0.032 min  
 Response: 12928180  
 Conc: 62.52 ng/ml

Instrument :  
 ECD\_O  
 ClientSampleId :  
 I-1361-USED-OIL



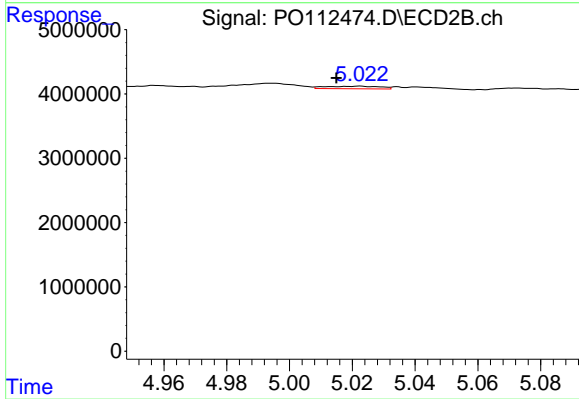
#13 AR-1232-3

R.T.: 4.933 min  
 Delta R.T.: 0.003 min  
 Response: 113942  
 Conc: 1.70 ng/ml



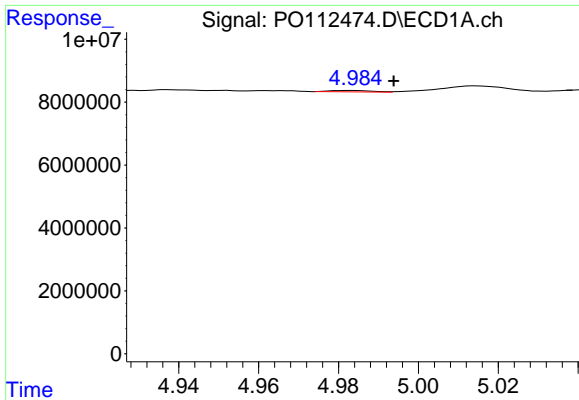
#14 AR-1232-4

R.T.: 4.938 min  
 Delta R.T.: -0.012 min  
 Response: -82611  
 Conc: N.D.



#14 AR-1232-4

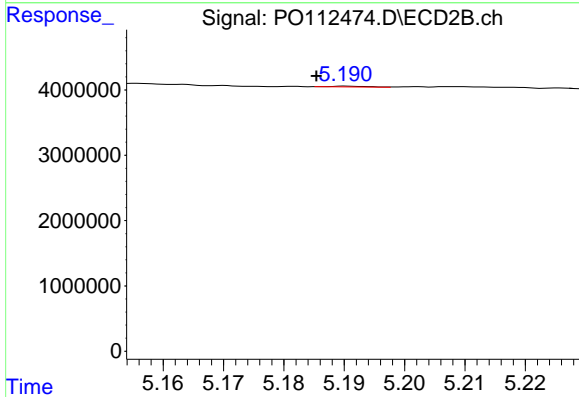
R.T.: 5.023 min  
 Delta R.T.: 0.008 min  
 Response: 482409  
 Conc: 8.06 ng/ml



#15 AR-1232-5

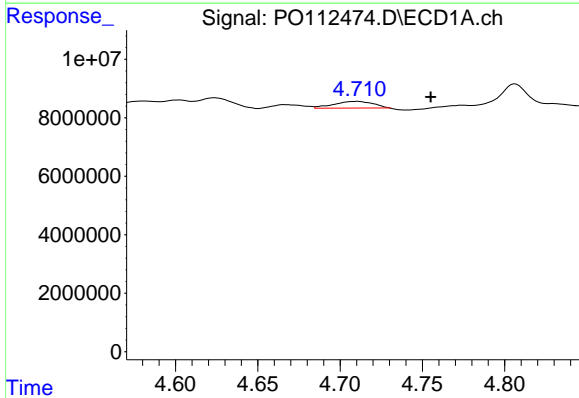
R.T.: 4.983 min  
 Delta R.T.: -0.011 min  
 Response: 355348  
 Conc: 5.23 ng/ml

Instrument :  
 ECD\_O  
 ClientSampleId :  
 I-1361-USED-OIL



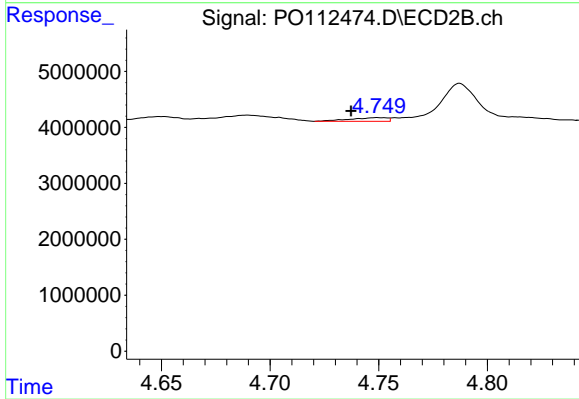
#15 AR-1232-5

R.T.: 5.190 min  
 Delta R.T.: 0.005 min  
 Response: 51214  
 Conc: 0.79 ng/ml



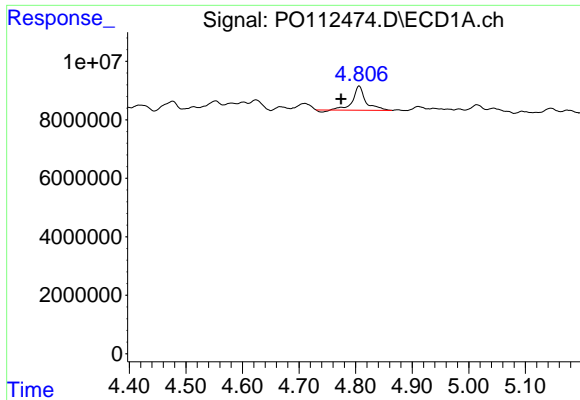
#16 AR-1242-1

R.T.: 4.710 min  
 Delta R.T.: -0.045 min  
 Response: 3885965  
 Conc: 15.70 ng/ml



#16 AR-1242-1

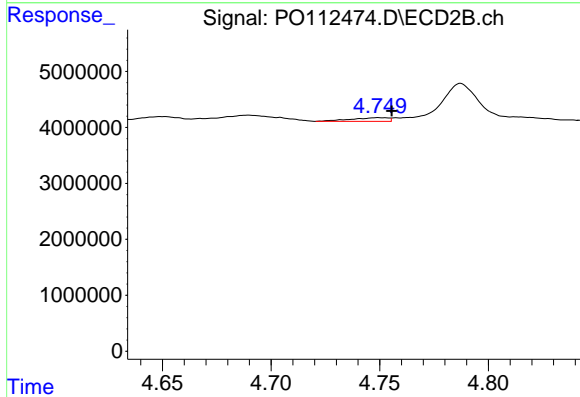
R.T.: 4.749 min  
 Delta R.T.: 0.012 min  
 Response: 786056  
 Conc: 4.96 ng/ml



#17 AR-1242-2

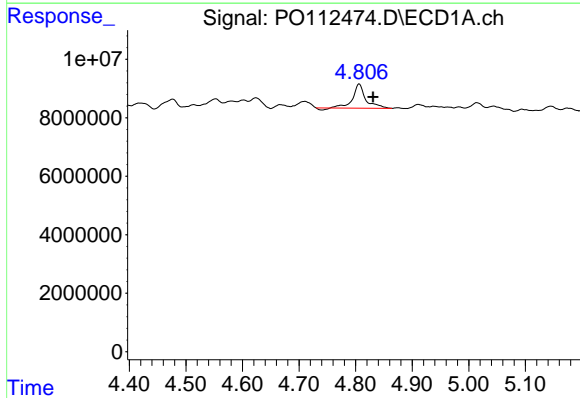
R.T.: 4.806 min  
 Delta R.T.: 0.032 min  
 Response: 12928180  
 Conc: 34.96 ng/ml

Instrument :  
 ECD\_O  
 ClientSampleId :  
 I-1361-USED-OIL



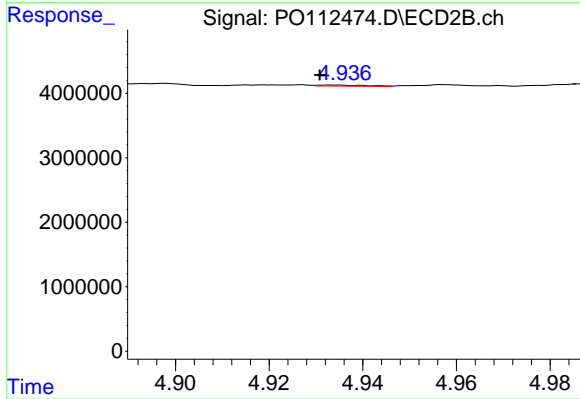
#17 AR-1242-2

R.T.: 4.749 min  
 Delta R.T.: -0.006 min  
 Response: 786056  
 Conc: 3.36 ng/ml



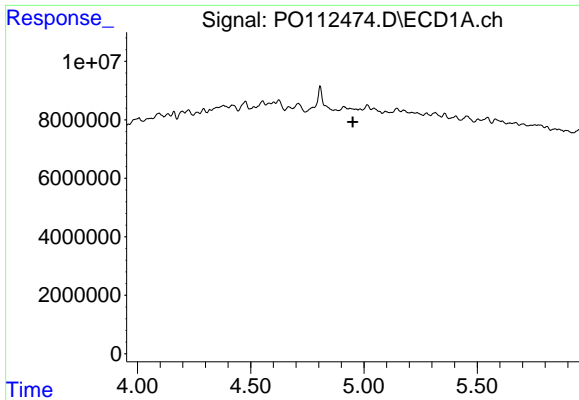
#18 AR-1242-3

R.T.: 4.806 min  
 Delta R.T.: -0.024 min  
 Response: 12928180  
 Conc: 54.63 ng/ml



#18 AR-1242-3

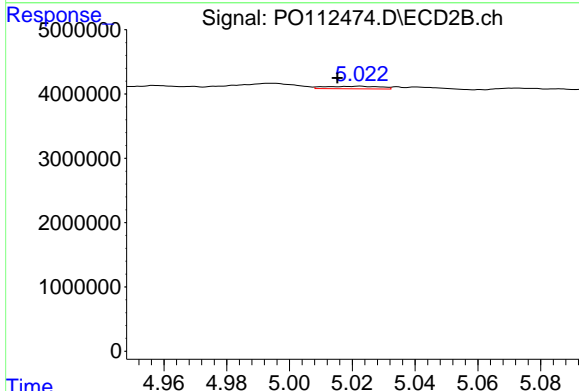
R.T.: 4.933 min  
 Delta R.T.: 0.003 min  
 Response: 113942  
 Conc: 0.94 ng/ml



#19 AR-1242-4

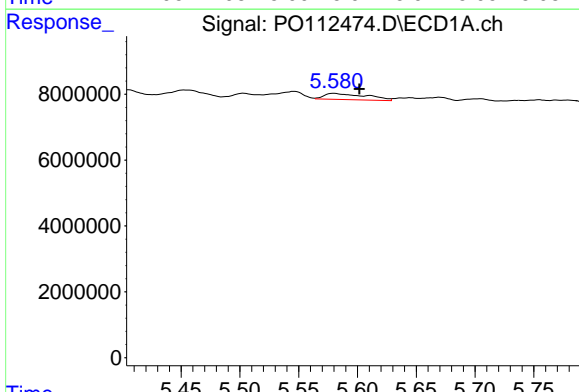
R.T.: 4.938 min  
 Delta R.T.: -0.012 min  
 Response: -82611  
 Conc: N.D.

Instrument :  
 ECD\_O  
 ClientSampleId :  
 I-1361-USED-OIL



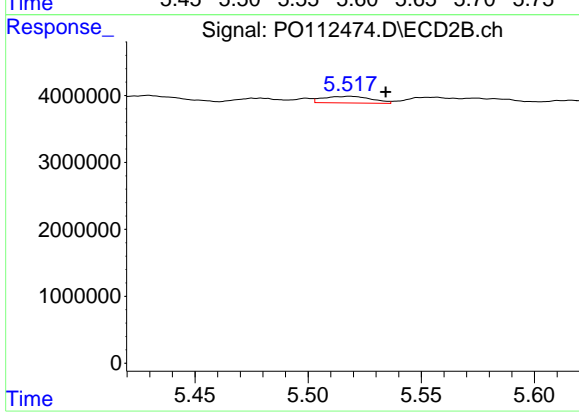
#19 AR-1242-4

R.T.: 5.023 min  
 Delta R.T.: 0.007 min  
 Response: 482409  
 Conc: 3.93 ng/ml



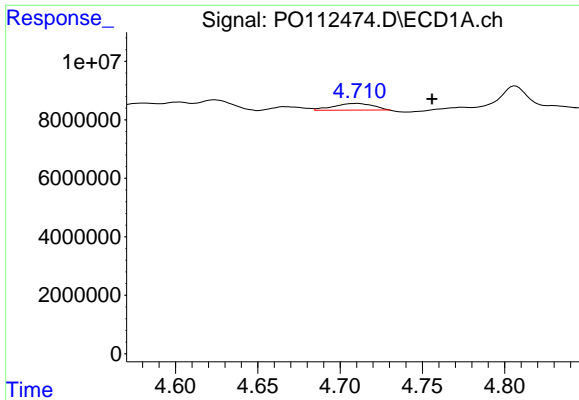
#20 AR-1242-5

R.T.: 5.580 min  
 Delta R.T.: -0.021 min  
 Response: 4660375  
 Conc: 21.79 ng/ml



#20 AR-1242-5

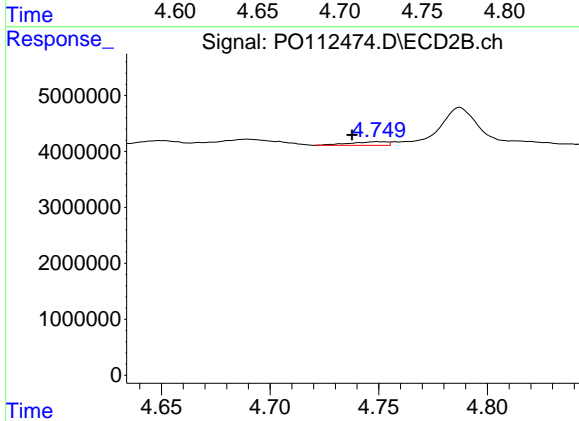
R.T.: 5.518 min  
 Delta R.T.: -0.016 min  
 Response: 1469912  
 Conc: 9.13 ng/ml



#21 AR-1248-1

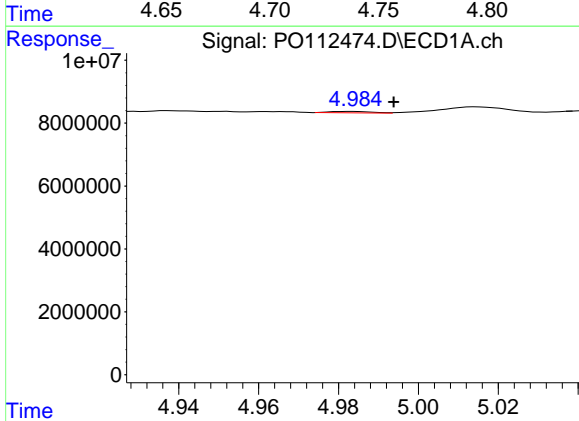
R.T.: 4.710 min  
 Delta R.T.: -0.046 min  
 Response: 3885965  
 Conc: 20.76 ng/ml

Instrument :  
 ECD\_O  
 ClientSampleId :  
 I-1361-USED-OIL



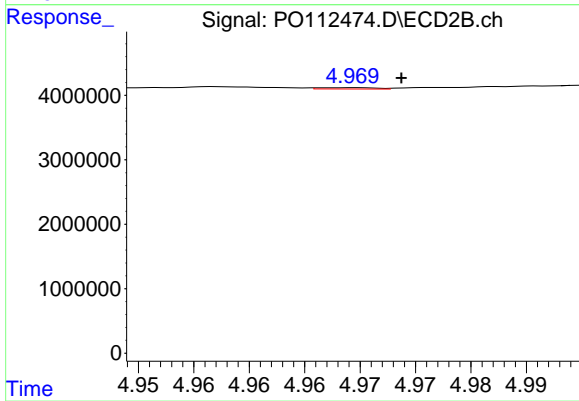
#21 AR-1248-1

R.T.: 4.749 min  
 Delta R.T.: 0.012 min  
 Response: 786056  
 Conc: 6.47 ng/ml



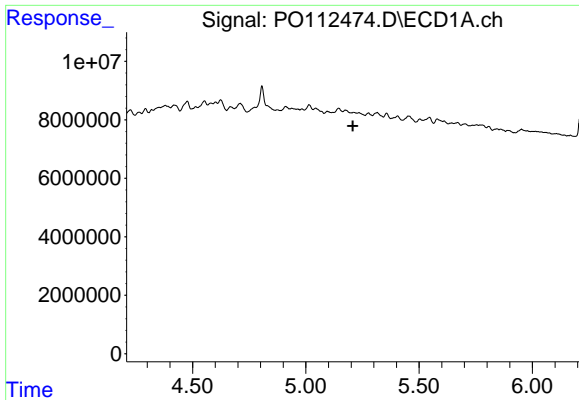
#22 AR-1248-2

R.T.: 4.983 min  
 Delta R.T.: -0.011 min  
 Response: 355348  
 Conc: 1.39 ng/ml



#22 AR-1248-2

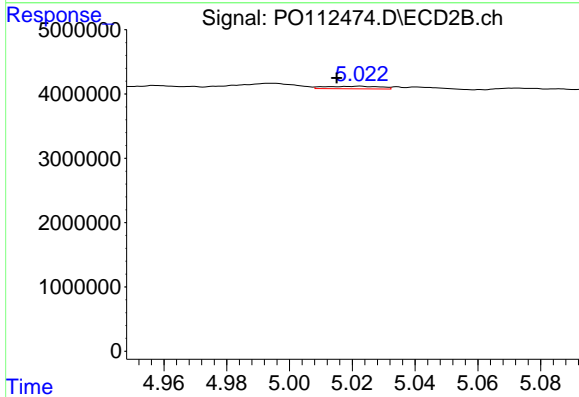
R.T.: 4.969 min  
 Delta R.T.: -0.004 min  
 Response: 70981  
 Conc: 0.42 ng/ml



#23 AR-1248-3

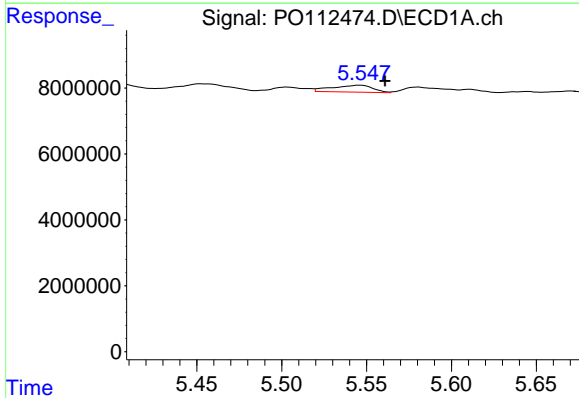
R.T.: 5.211 min  
 Delta R.T.: 0.003 min  
 Response: -220900  
 Conc: N.D.

Instrument :  
 ECD\_O  
 ClientSampleId :  
 I-1361-USED-OIL



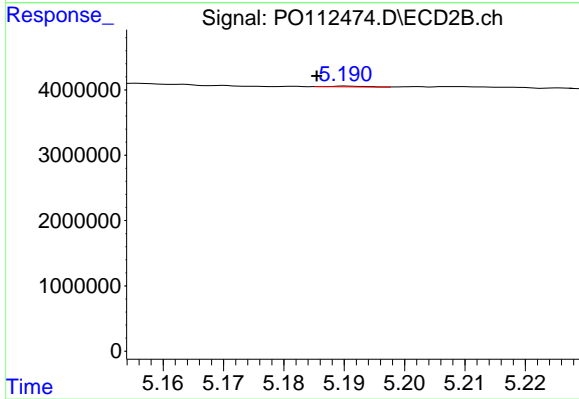
#23 AR-1248-3

R.T.: 5.023 min  
 Delta R.T.: 0.008 min  
 Response: 482409  
 Conc: 2.72 ng/ml



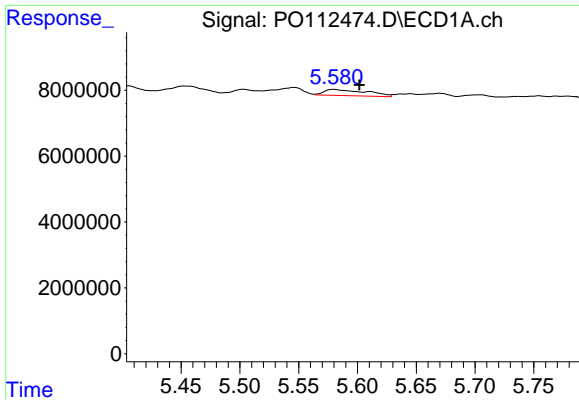
#24 AR-1248-4

R.T.: 5.546 min  
 Delta R.T.: -0.015 min  
 Response: 3491569  
 Conc: 6.87 ng/ml



#24 AR-1248-4

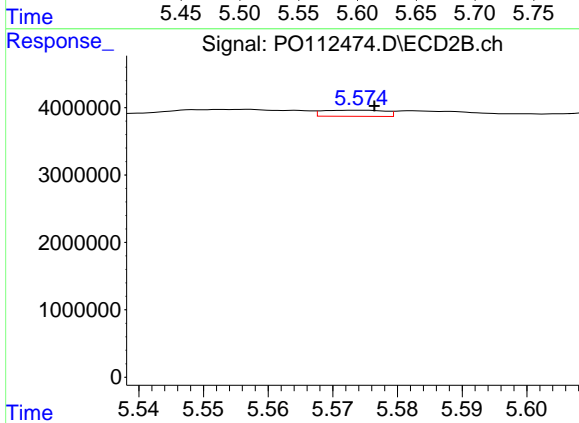
R.T.: 5.190 min  
 Delta R.T.: 0.005 min  
 Response: 51214  
 Conc: 0.25 ng/ml



#25 AR-1248-5

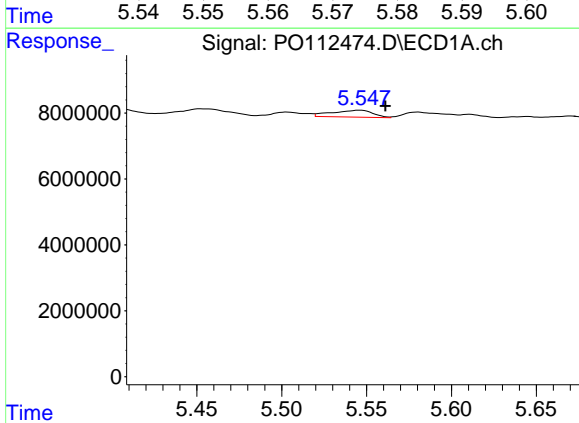
R.T.: 5.580 min  
 Delta R.T.: -0.021 min  
 Response: 4660375  
 Conc: 13.33 ng/ml

Instrument :  
 ECD\_O  
 ClientSampleId :  
 I-1361-USED-OIL



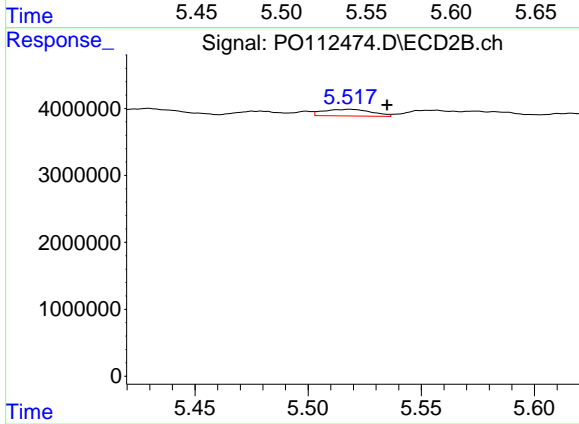
#25 AR-1248-5

R.T.: 5.574 min  
 Delta R.T.: -0.002 min  
 Response: 607024  
 Conc: 2.83 ng/ml



#26 AR-1254-1

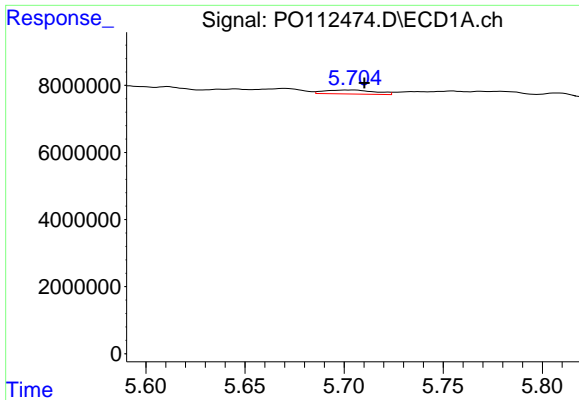
R.T.: 5.546 min  
 Delta R.T.: -0.015 min  
 Response: 3491569  
 Conc: 6.36 ng/ml



#26 AR-1254-1

R.T.: 5.518 min  
 Delta R.T.: -0.017 min  
 Response: 1469912  
 Conc: 4.47 ng/ml

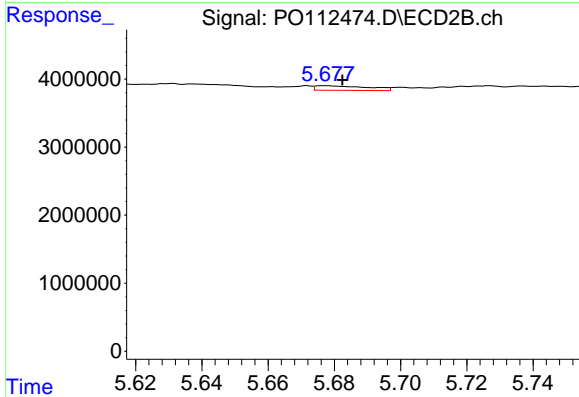




#27 AR-1254-2

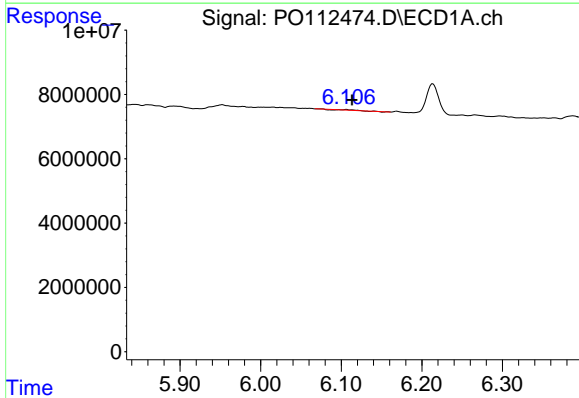
R.T.: 5.704 min  
 Delta R.T.: -0.007 min  
 Response: 2081645  
 Conc: 4.28 ng/ml

Instrument :  
 ECD\_O  
 ClientSampleId :  
 I-1361-USED-OIL



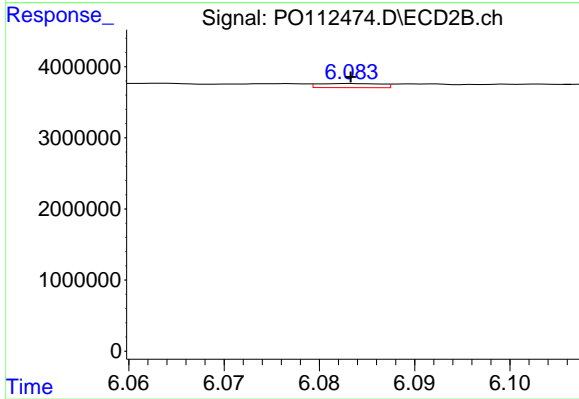
#27 AR-1254-2

R.T.: 5.677 min  
 Delta R.T.: -0.005 min  
 Response: 735310  
 Conc: 2.54 ng/ml



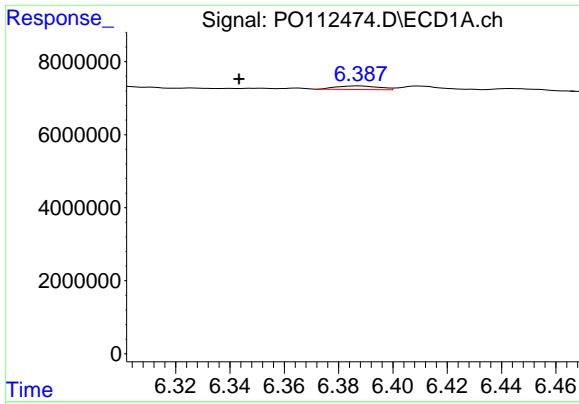
#28 AR-1254-3

R.T.: 6.106 min  
 Delta R.T.: -0.008 min  
 Response: 209952  
 Conc: 0.28 ng/ml



#28 AR-1254-3

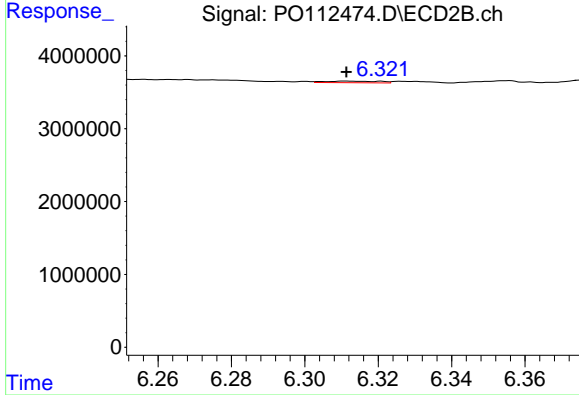
R.T.: 6.083 min  
 Delta R.T.: 0.000 min  
 Response: 266738  
 Conc: 0.62 ng/ml



#29 AR-1254-4

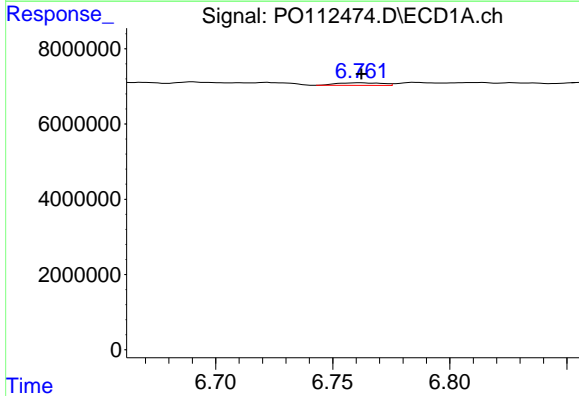
R.T.: 6.387 min  
 Delta R.T.: 0.044 min  
 Response: 1059906  
 Conc: 1.93 ng/ml

Instrument :  
 ECD\_O  
 ClientSampleId :  
 I-1361-USED-OIL



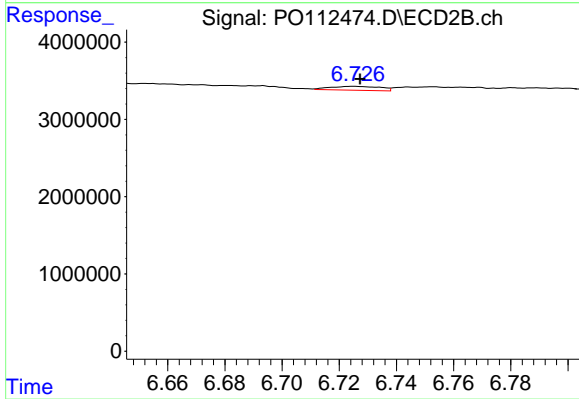
#29 AR-1254-4

R.T.: 6.311 min  
 Delta R.T.: 0.000 min  
 Response: 232138  
 Conc: 0.85 ng/ml



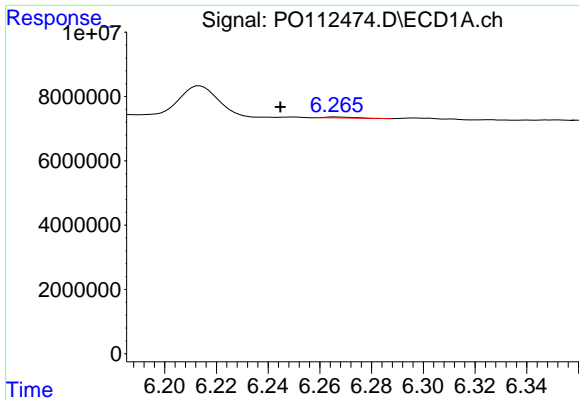
#30 AR-1254-5

R.T.: 6.762 min  
 Delta R.T.: 0.000 min  
 Response: 909715  
 Conc: 1.29 ng/ml



#30 AR-1254-5

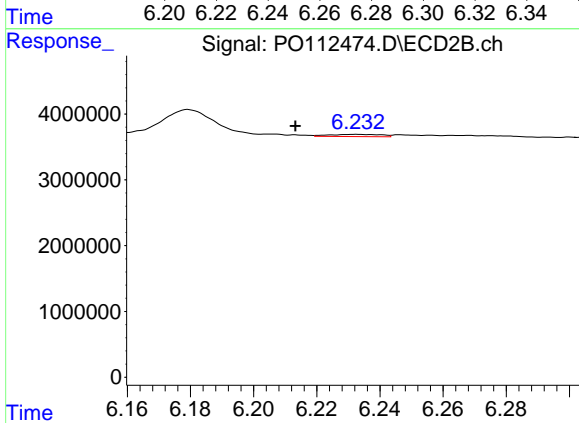
R.T.: 6.725 min  
 Delta R.T.: -0.002 min  
 Response: 620240  
 Conc: 1.86 ng/ml



#31 AR-1260-1

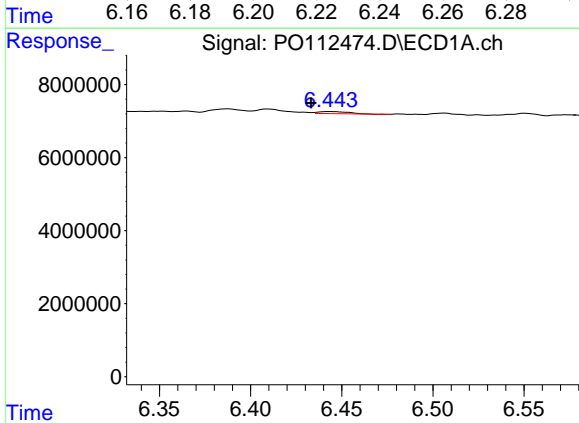
R.T.: 6.267 min  
 Delta R.T.: 0.022 min  
 Response: 218452  
 Conc: 0.50 ng/ml

Instrument :  
 ECD\_O  
 ClientSampleId :  
 I-1361-USED-OIL



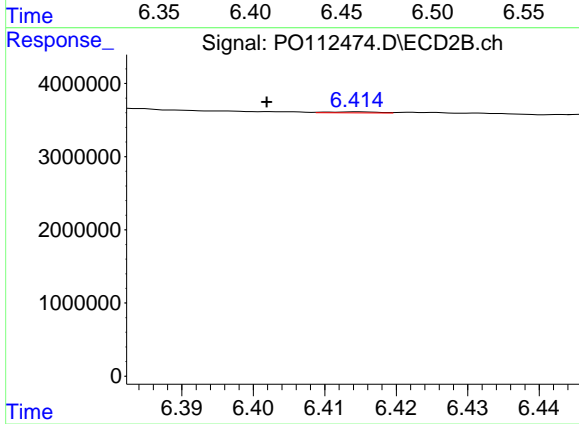
#31 AR-1260-1

R.T.: 6.233 min  
 Delta R.T.: 0.019 min  
 Response: 392553  
 Conc: 1.58 ng/ml



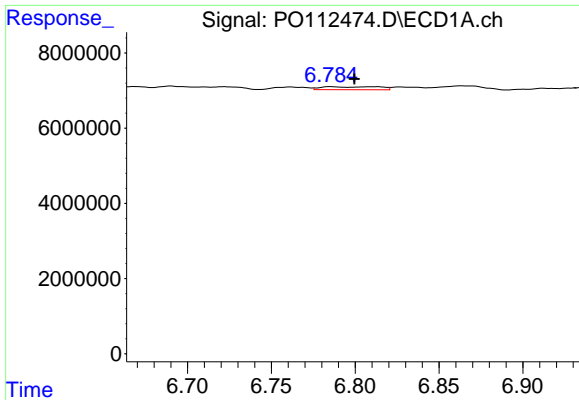
#32 AR-1260-2

R.T.: 6.444 min  
 Delta R.T.: 0.011 min  
 Response: 656866  
 Conc: 0.95 ng/ml



#32 AR-1260-2

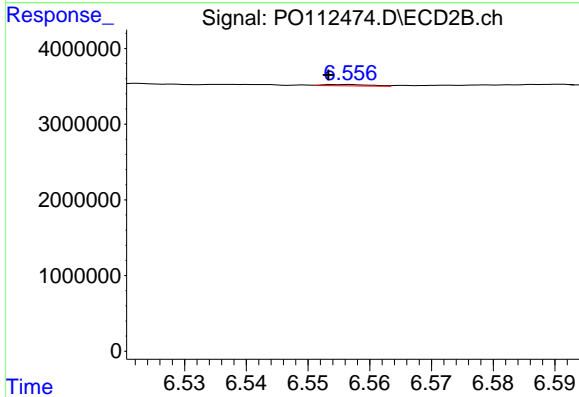
R.T.: 6.415 min  
 Delta R.T.: 0.013 min  
 Response: 66107  
 Conc: 0.20 ng/ml



#33 AR-1260-3

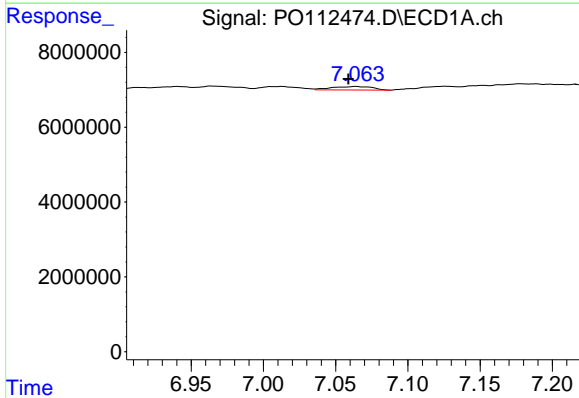
R.T.: 6.786 min  
 Delta R.T.: -0.014 min  
 Response: 1914329  
 Conc: 3.26 ng/ml

Instrument :  
 ECD\_O  
 ClientSampleId :  
 I-1361-USED-OIL



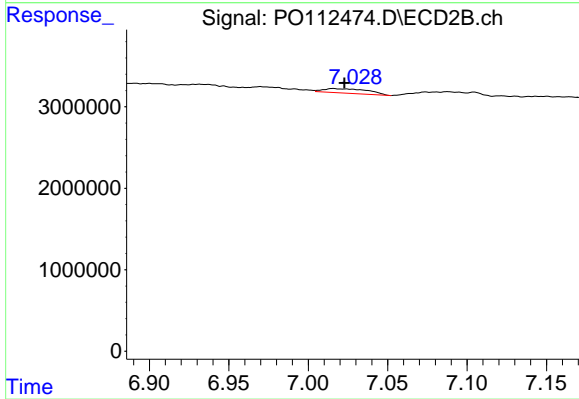
#33 AR-1260-3

R.T.: 6.557 min  
 Delta R.T.: 0.004 min  
 Response: 92093  
 Conc: 0.36 ng/ml



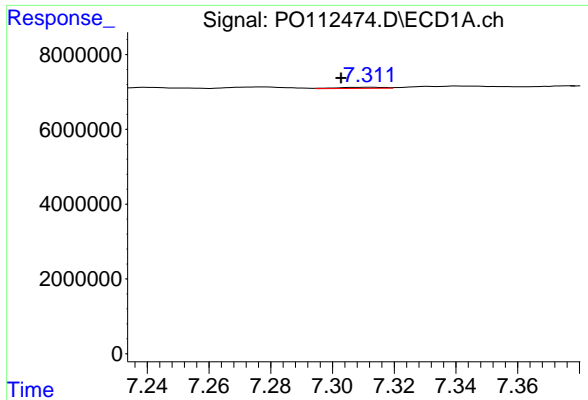
#34 AR-1260-4

R.T.: 7.064 min  
 Delta R.T.: 0.005 min  
 Response: 1826016  
 Conc: 4.05 ng/ml



#34 AR-1260-4

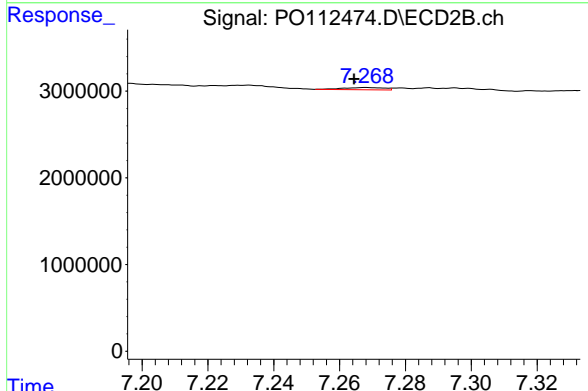
R.T.: 7.016 min  
 Delta R.T.: -0.007 min  
 Response: 1068789  
 Conc: 5.59 ng/ml



#35 AR-1260-5

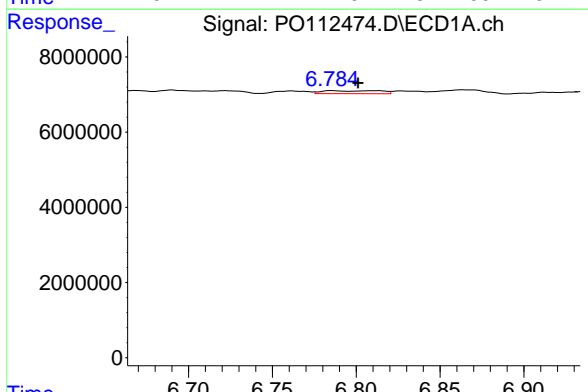
R.T.: 7.312 min  
 Delta R.T.: 0.009 min  
 Response: 321671  
 Conc: 0.26 ng/ml

Instrument :  
 ECD\_O  
 ClientSampleId :  
 I-1361-USED-OIL



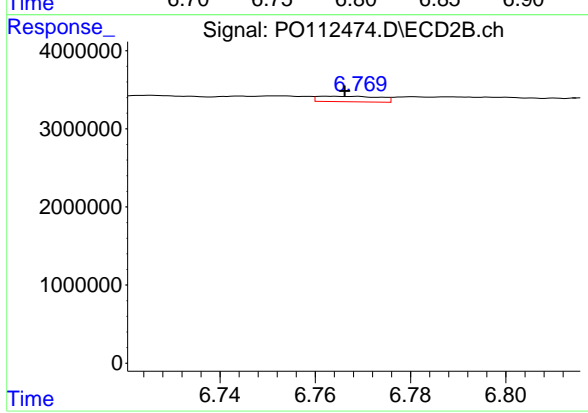
#35 AR-1260-5

R.T.: 7.268 min  
 Delta R.T.: 0.004 min  
 Response: 224669  
 Conc: 0.55 ng/ml



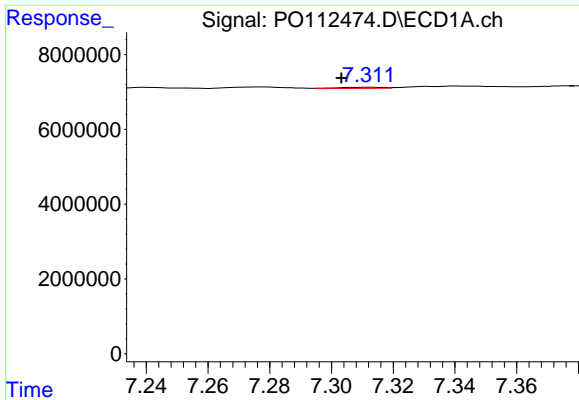
#36 AR-1262-1

R.T.: 6.786 min  
 Delta R.T.: -0.015 min  
 Response: 1914329  
 Conc: 2.06 ng/ml



#36 AR-1262-1

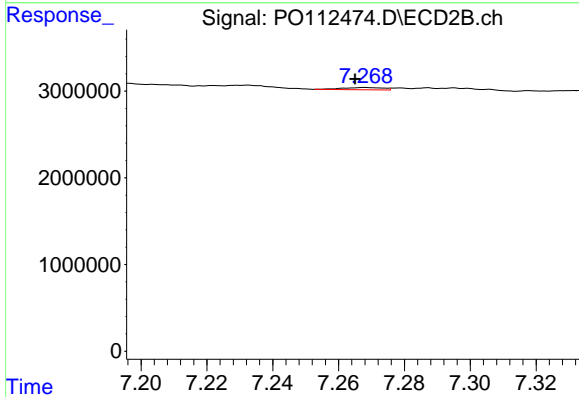
R.T.: 6.763 min  
 Delta R.T.: -0.004 min  
 Response: 634403  
 Conc: 1.53 ng/ml



#37 AR-1262-2

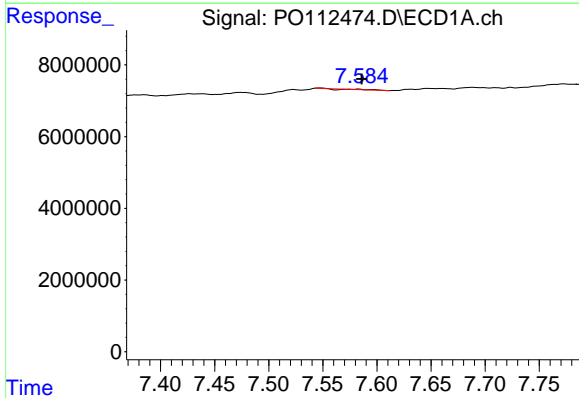
R.T.: 7.312 min  
 Delta R.T.: 0.009 min  
 Response: 321671  
 Conc: 0.22 ng/ml

Instrument :  
 ECD\_O  
 ClientSampleId :  
 I-1361-USED-OIL



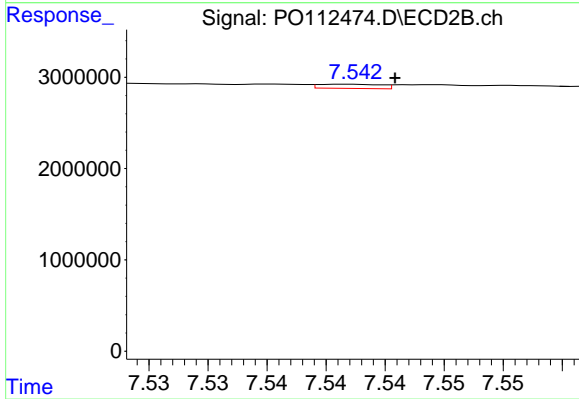
#37 AR-1262-2

R.T.: 7.268 min  
 Delta R.T.: 0.003 min  
 Response: 224669  
 Conc: 0.44 ng/ml



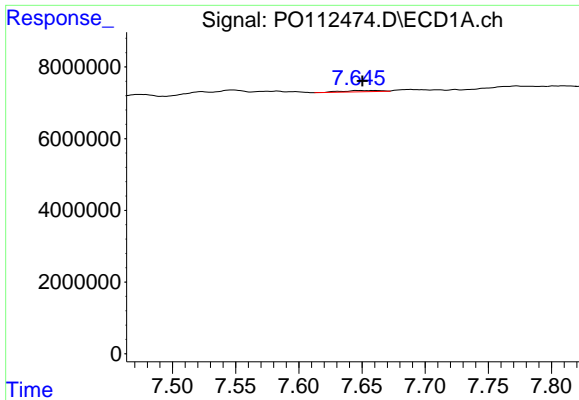
#38 AR-1262-3

R.T.: 7.583 min  
 Delta R.T.: -0.004 min  
 Response: 47981  
 Conc: 0.08 ng/ml



#38 AR-1262-3

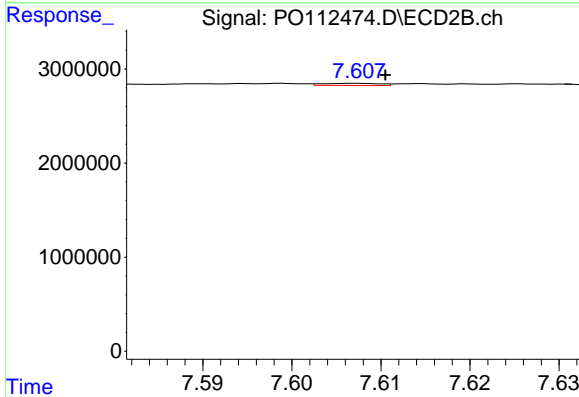
R.T.: 7.542 min  
 Delta R.T.: -0.004 min  
 Response: 170572  
 Conc: 0.91 ng/ml



#39 AR-1262-4

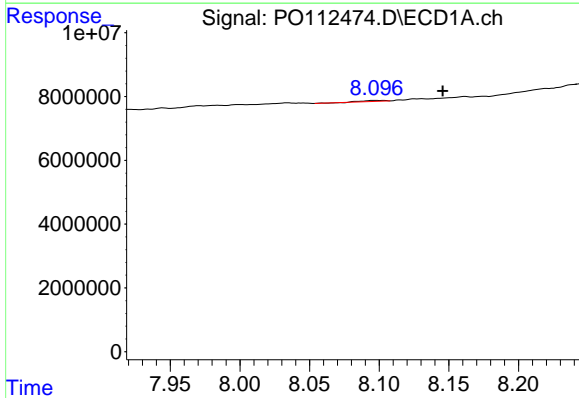
R.T.: 7.648 min  
 Delta R.T.: -0.002 min  
 Response: 735729  
 Conc: 0.74 ng/ml

Instrument :  
 ECD\_O  
 ClientSampleId :  
 I-1361-USED-OIL



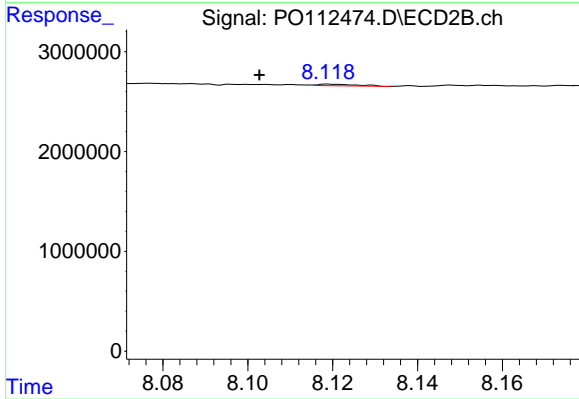
#39 AR-1262-4

R.T.: 7.607 min  
 Delta R.T.: -0.003 min  
 Response: 100674  
 Conc: 0.35 ng/ml



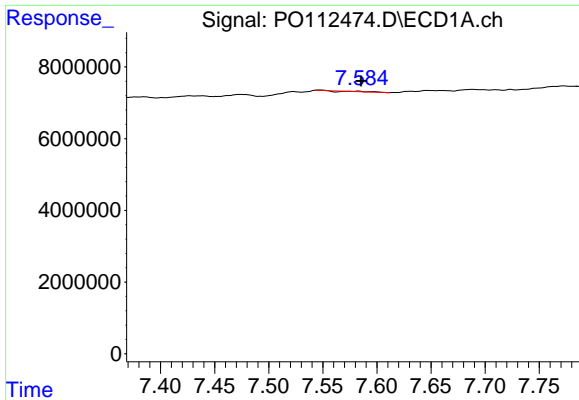
#40 AR-1262-5

R.T.: 8.098 min  
 Delta R.T.: -0.047 min  
 Response: 366821  
 Conc: 0.85 ng/ml



#40 AR-1262-5

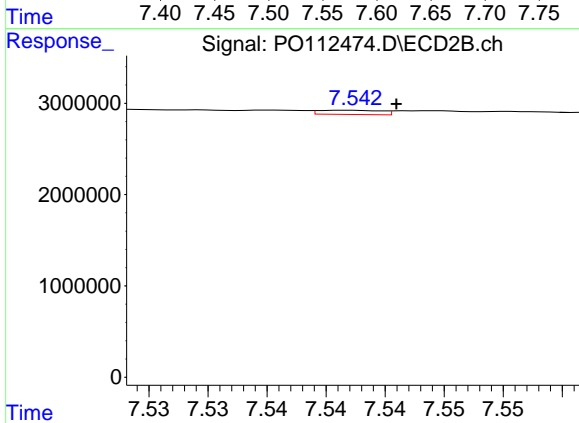
R.T.: 8.119 min  
 Delta R.T.: 0.016 min  
 Response: 98970  
 Conc: 0.99 ng/ml



#41 AR-1268-1

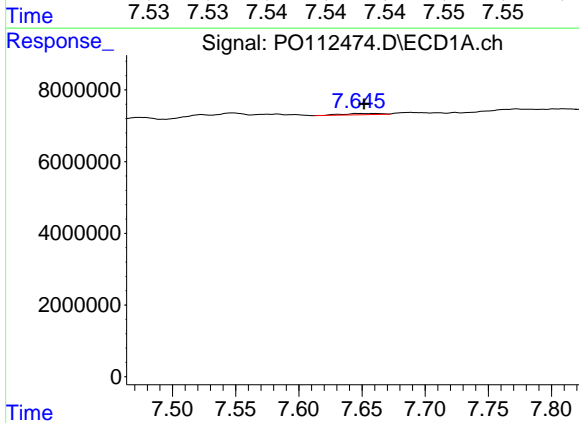
R.T.: 7.583 min  
 Delta R.T.: -0.003 min  
 Response: 47981  
 Conc: 0.03 ng/ml

Instrument :  
 ECD\_O  
 ClientSampleId :  
 I-1361-USED-OIL



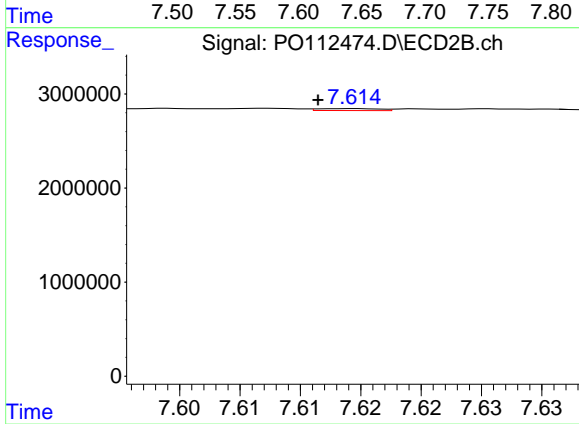
#41 AR-1268-1

R.T.: 7.542 min  
 Delta R.T.: -0.004 min  
 Response: 170572  
 Conc: 0.33 ng/ml



#42 AR-1268-2

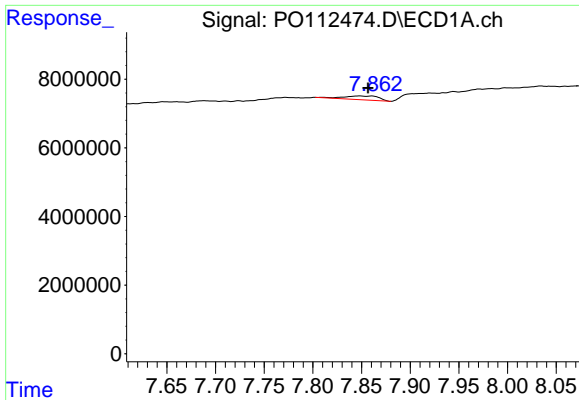
R.T.: 7.648 min  
 Delta R.T.: -0.004 min  
 Response: 735729  
 Conc: 0.50 ng/ml



#42 AR-1268-2

R.T.: 7.614 min  
 Delta R.T.: 0.003 min  
 Response: 71911  
 Conc: 0.17 ng/ml

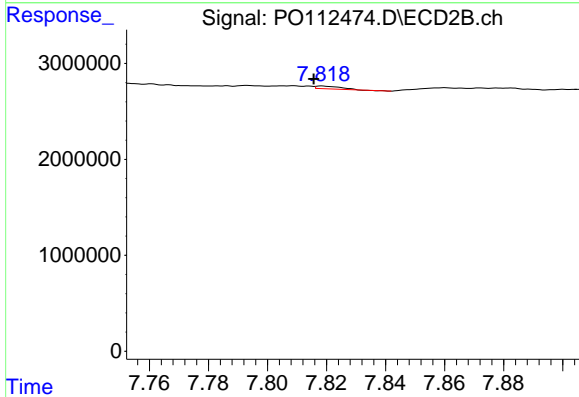




#43 AR-1268-3

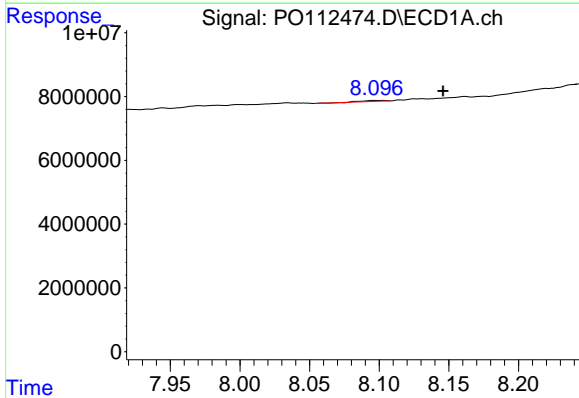
R.T.: 7.860 min  
 Delta R.T.: 0.003 min  
 Response: 2846942  
 Conc: 2.27 ng/ml

Instrument :  
 ECD\_O  
 ClientSampleId :  
 I-1361-USED-OIL



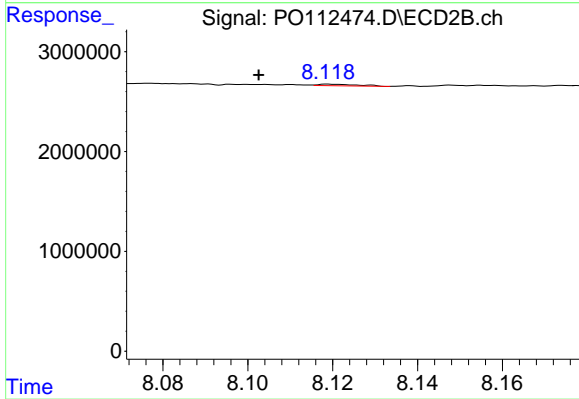
#43 AR-1268-3

R.T.: 7.819 min  
 Delta R.T.: 0.003 min  
 Response: 169061  
 Conc: 0.53 ng/ml



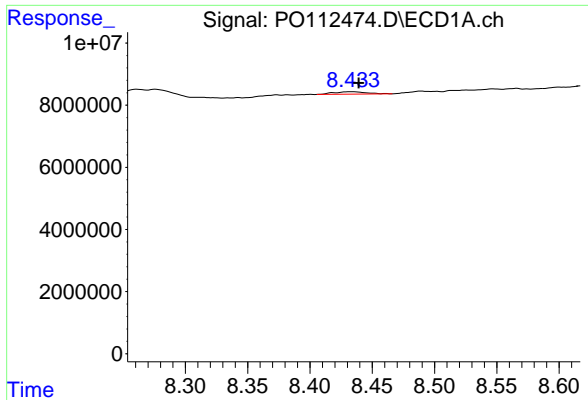
#44 AR-1268-4

R.T.: 8.098 min  
 Delta R.T.: -0.047 min  
 Response: 366821  
 Conc: 0.76 ng/ml



#44 AR-1268-4

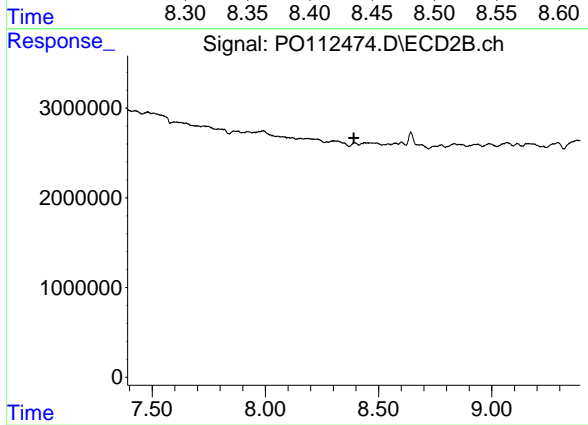
R.T.: 8.119 min  
 Delta R.T.: 0.016 min  
 Response: 98970  
 Conc: 0.89 ng/ml



#45 AR-1268-5

R.T.: 8.433 min  
 Delta R.T.: -0.006 min  
 Response: 1435528  
 Conc: 0.43 ng/ml

Instrument :  
 ECD\_O  
 ClientSampleId :  
 I-1361-USED-OIL



#45 AR-1268-5

R.T.: 8.388 min  
 Delta R.T.: -0.003 min  
 Response: -92826  
 Conc: N.D.