

Data Path : Z:\pestpcbsrv\HPCHEM1\ECD_0\Data\P0072425\
 Data File : PO112475.D
 Signal(s) : Signal #1: ECD1A.ch Signal #2: ECD2B.ch
 Acq On : 24 Jul 2025 18:44
 Operator : YP/AJ
 Sample : Q2679-01 10X
 Misc :
 ALS Vial : 23 Sample Multiplier: 1

Instrument :
 ECD_0
 ClientSampleId :
 M2239

Integration File signal 1: autoint1.e
 Integration File signal 2: autoint2.e
 Quant Time: Jul 24 23:46:43 2025
 Quant Method : Z:\pestpcbsrv\HPCHEM1\ECD_0\methods\P0072325.M
 Quant Title : GC EXTRACTABLES
 QLast Update : Thu Jul 24 04:54:06 2025
 Response via : Initial Calibration
 Integrator: ChemStation

Volume Inj. : 2 µl
 Signal #1 Phase : ZB-MR1 Signal #2 Phase: ZB-MR2
 Signal #1 Info : 30Mx0.32mmx 0.50µ Signal #2 Info : 30M x 0.32mm x 0.25µm

Compound	RT#1	RT#2	Resp#1	Resp#2	ng/ml	ng/ml

System Monitoring Compounds						
1) SA Tetrachlo...	3.670	3.663	3021429	3044344	0.372	0.613 #
2) SA Decachlor...	8.696	8.641	5584650	2017552	0.764	1.142 #
Target Compounds						
3) L1 AR-1016-1	4.792f	4.773f	3229358	4079264	12.033	23.309 #
4) L1 AR-1016-2	4.792	4.773	3229358	4079264	7.952	15.660 #
5) L1 AR-1016-3	4.830	4.943	1974977	102068	7.547	0.751 #
6) L1 AR-1016-4	4.965	4.995	-1308418	3965785	N.D.	35.701 #
8) L2 AR-1221-1	3.869	3.885	722060	142923	7.470	2.125 #
9) L2 AR-1221-2	4.005f	3.952	10372	205748	0.144	4.056 #
10) L2 AR-1221-3	4.005f	4.036	10372	221713	0.044	1.399 #
11) L3 AR-1232-1	4.005f	4.036	10372	221713	0.055	1.752 #
12) L3 AR-1232-2	4.554	4.773	15926972	4079264	147.986	31.103 #
13) L3 AR-1232-3	4.792	4.943	3229358	102068	15.616	1.519 #
14) L3 AR-1232-4	4.965	5.021	-1308418	1977001	N.D.	33.044 #
15) L3 AR-1232-5	5.016	5.202	10536276	18733	155.217	0.287 #
16) L4 AR-1242-1	4.792f	4.773f	3229358	4079264	13.043	25.754 #
17) L4 AR-1242-2	4.792	4.773	3229358	4079264	8.733	17.458 #
18) L4 AR-1242-3	4.830	4.943	1974977	102068	8.345	0.842 #
19) L4 AR-1242-4	4.965	5.021	-1308418	1977001	N.D.	16.107 #
20) L4 AR-1242-5	5.585	5.518	6070354	3611384	28.377	22.435
21) L5 AR-1248-1	4.792f	4.773f	3229358	4079264	17.250	33.572 #
22) L5 AR-1248-2	5.016	4.995	10536276	3965785	41.301	23.427 #
23) L5 AR-1248-3	5.224	5.021	-970278	1977001	N.D.	11.129 #
24) L5 AR-1248-4	5.546	5.202	7454512	18733	14.672	0.090 #
25) L5 AR-1248-5	5.585	5.589	6070354	1440669	17.364	6.708 #
26) L6 AR-1254-1	5.546	5.518	7454512	3611384	13.579	10.990
27) L6 AR-1254-2	5.706	5.677	2246506	1904243	4.623	6.578 #
28) L6 AR-1254-3	6.117	6.088	1784509	1991004	2.398	4.658 #
29) L6 AR-1254-4	6.378	6.346	7056279	2755181	12.837	10.094
30) L6 AR-1254-5	6.735	6.725	7050956	1444697	9.961	4.325 #
31) L7 AR-1260-1	6.248	6.214	2022227	1893750	4.603	7.620 #
32) L7 AR-1260-2	6.442	6.410	1693284	316591	2.462	0.961 #
33) L7 AR-1260-3	6.819	6.547	7431862	1245151	12.639	4.846 #
34) L7 AR-1260-4	7.058	7.037	8146106	1435873	18.062	7.505 #
35) L7 AR-1260-5	7.306	7.267	8065067	6372376	6.509	15.460 #
36) L8 AR-1262-1	6.819	6.762	7431862	1075863	7.998	2.594 #
37) L8 AR-1262-2	7.306	7.267	8065067	6372376	5.424	12.360 #
38) L8 AR-1262-3	7.571	7.520	1174440	623570	1.990	3.343 #
39) L8 AR-1262-4	7.653	7.607	3152878	892400	3.171	3.097
40) L8 AR-1262-5	8.118	8.135	4487375	220069	10.338	2.212 #
41) L9 AR-1268-1	7.571	7.520	1174440	623570	0.671	1.204 #
42) L9 AR-1268-2	7.653	7.607	3152878	892400	2.140	2.099

Data Path : Z:\pestpcbsrv\HPCHEM1\ECD_0\Data\P0072425\
 Data File : P0112475.D
 Signal(s) : Signal #1: ECD1A.ch Signal #2: ECD2B.ch
 Acq On : 24 Jul 2025 18:44
 Operator : YP/AJ
 Sample : Q2679-01 10X
 Misc :
 ALS Vial : 23 Sample Multiplier: 1

Instrument :
 ECD_0
 ClientSampleId :
 M2239

Integration File signal 1: autoint1.e
 Integration File signal 2: autoint2.e
 Quant Time: Jul 24 23:46:43 2025
 Quant Method : Z:\pestpcbsrv\HPCHEM1\ECD_0\methods\P0072325.M
 Quant Title : GC EXTRACTABLES
 QLast Update : Thu Jul 24 04:54:06 2025
 Response via : Initial Calibration
 Integrator: ChemStation

Volume Inj. : 2 µl
 Signal #1 Phase : ZB-MR1 Signal #2 Phase: ZB-MR2
 Signal #1 Info : 30Mx0.32mmx 0.50µ Signal #2 Info : 30M x 0.32mm x 0.25µm

	Compound	RT#1	RT#2	Resp#1	Resp#2	ng/ml	ng/ml
43)	L9 AR-1268-3	7.812f	7.797	278843	245676	0.223	0.765 #
44)	L9 AR-1268-4	8.118	8.135	4487375	220069	9.313	1.977 #
45)	L9 AR-1268-5	8.449	8.405	475895	935869	0.142	1.279 #

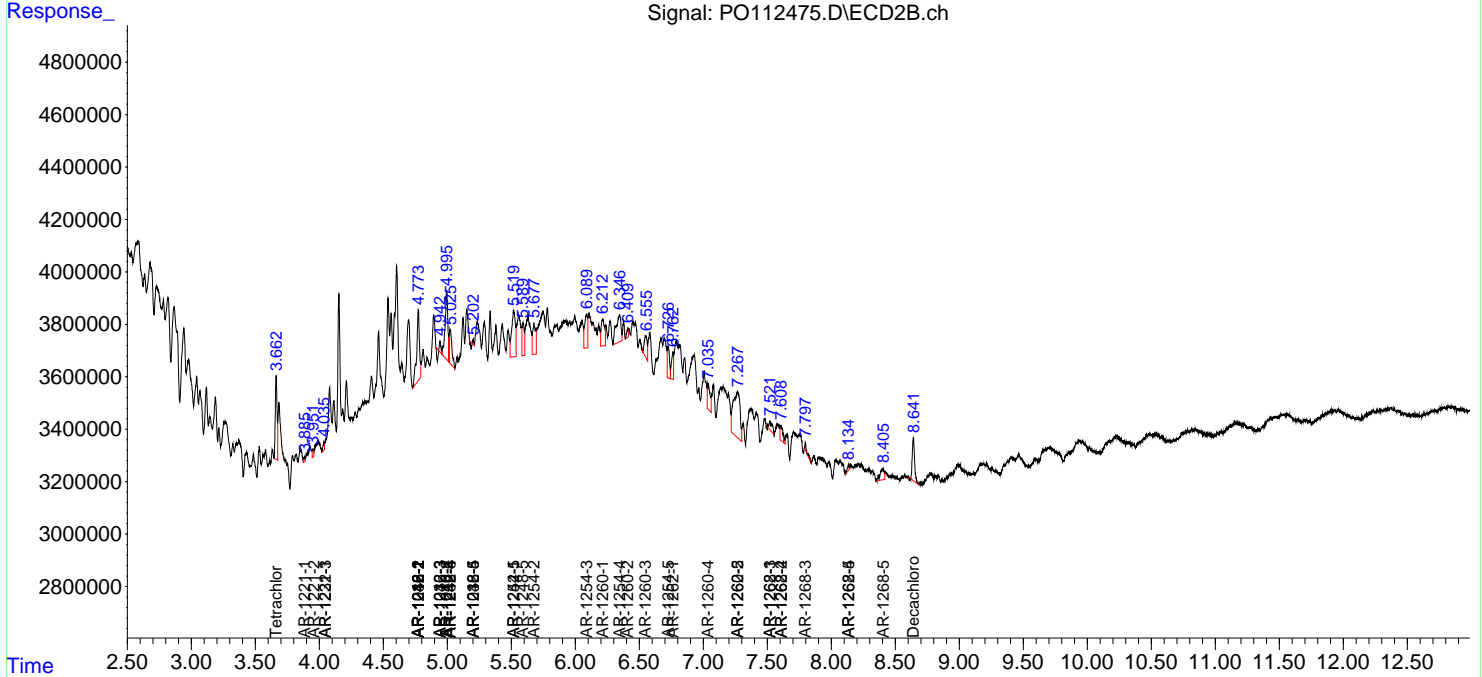
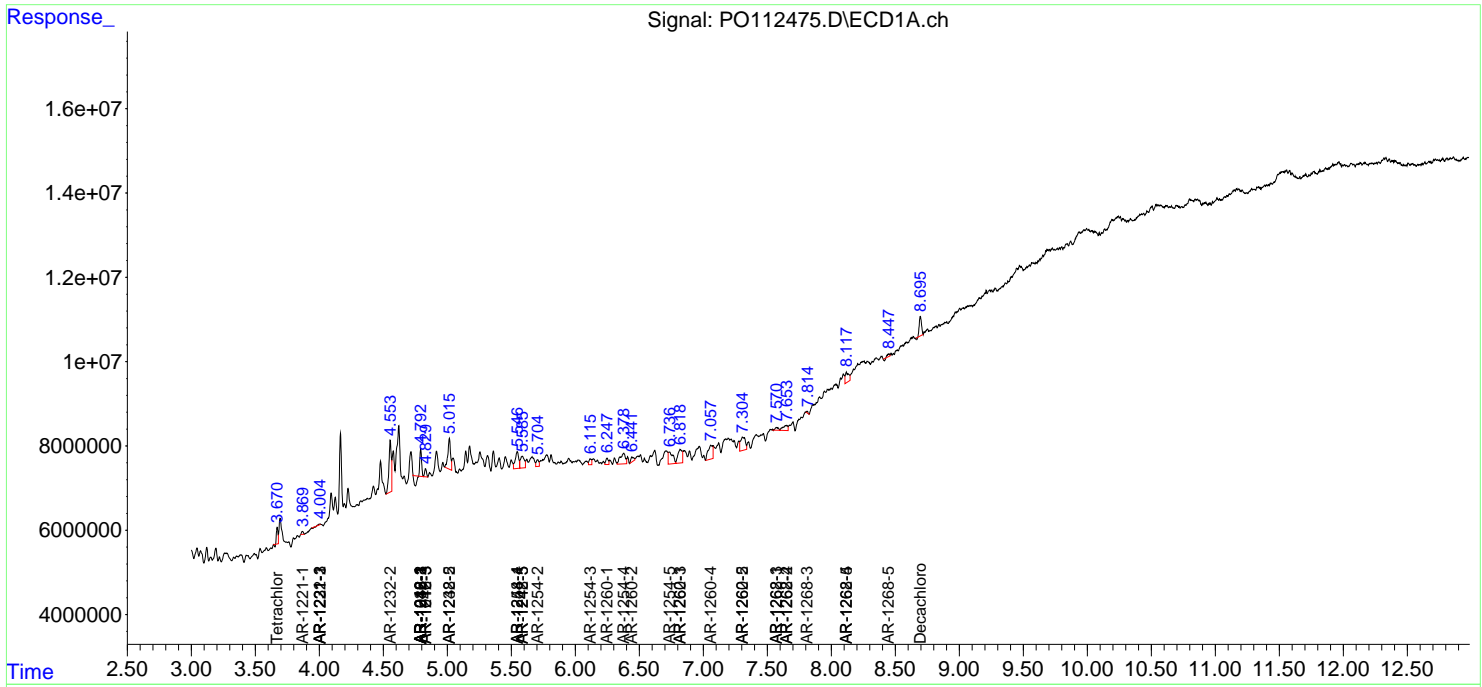
(f)=RT Delta > 1/2 Window (#)=Amounts differ by > 25% (m)=manual int.

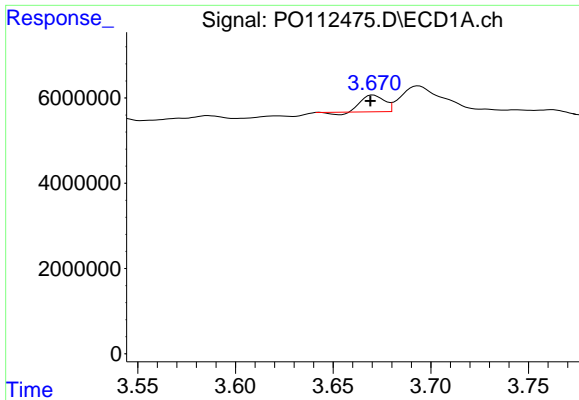
Data Path : Z:\pestpcbsrv\HPCHEM1\ECD_O\Data\PO072425\
 Data File : PO112475.D
 Signal(s) : Signal #1: ECD1A.ch Signal #2: ECD2B.ch
 Acq On : 24 Jul 2025 18:44
 Operator : YP/AJ
 Sample : Q2679-01 10X
 Misc :
 ALS Vial : 23 Sample Multiplier: 1

Instrument :
 ECD_O
 ClientSampleId :
 M2239

Integration File signal 1: autoint1.e
 Integration File signal 2: autoint2.e
 Quant Time: Jul 24 23:46:43 2025
 Quant Method : Z:\pestpcbsrv\HPCHEM1\ECD_O\methods\PO072325.M
 Quant Title : GC EXTRACTABLES
 QLast Update : Thu Jul 24 04:54:06 2025
 Response via : Initial Calibration
 Integrator: ChemStation

Volume Inj. : 2 µl
 Signal #1 Phase : ZB-MR1 Signal #2 Phase: ZB-MR2
 Signal #1 Info : 30Mx0.32mmx 0.50µ Signal #2 Info : 30M x 0.32mm x 0.25µm

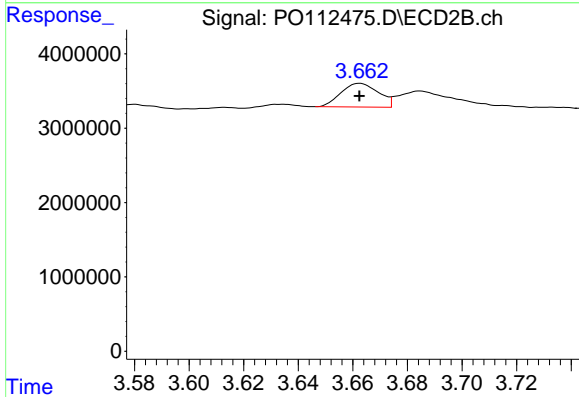




#1 Tetrachloro-m-xylene

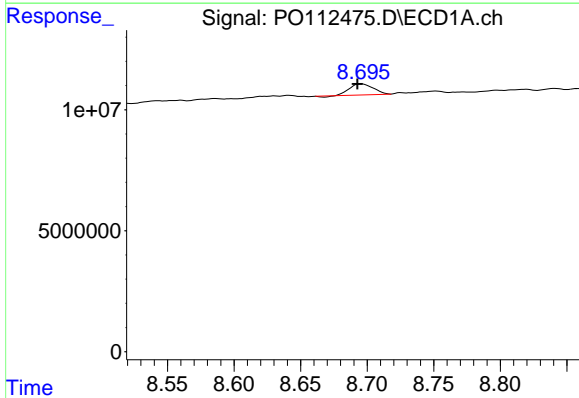
R.T.: 3.670 min
 Delta R.T.: 0.001 min
 Response: 3021429
 Conc: 0.37 ng/ml

Instrument :
 ECD_O
 ClientSampleId :
 M2239



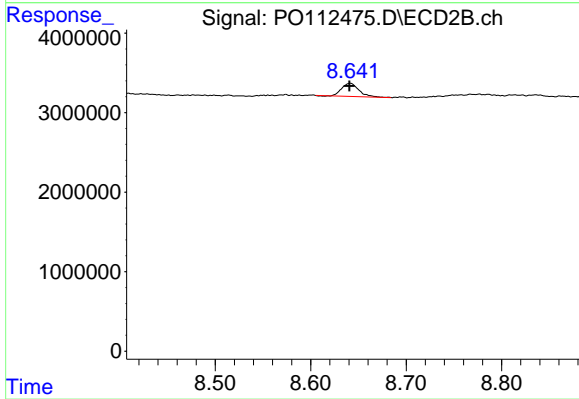
#1 Tetrachloro-m-xylene

R.T.: 3.663 min
 Delta R.T.: 0.000 min
 Response: 3044344
 Conc: 0.61 ng/ml



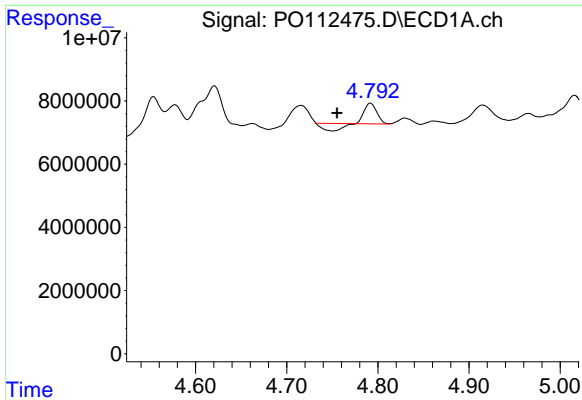
#2 Decachlorobiphenyl

R.T.: 8.696 min
 Delta R.T.: 0.003 min
 Response: 5584650
 Conc: 0.76 ng/ml



#2 Decachlorobiphenyl

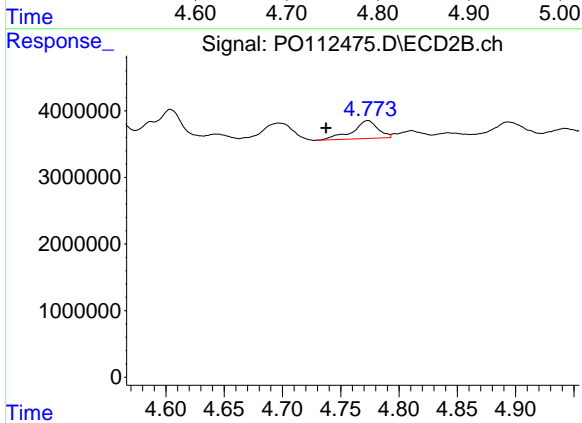
R.T.: 8.641 min
 Delta R.T.: 0.001 min
 Response: 2017552
 Conc: 1.14 ng/ml



#3 AR-1016-1

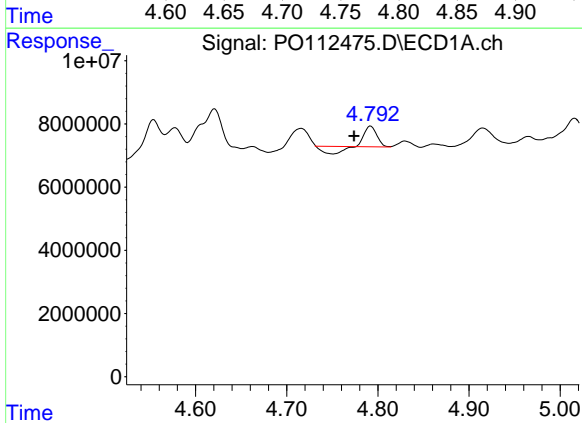
R.T.: 4.792 min
 Delta R.T.: 0.037 min
 Response: 3229358
 Conc: 12.03 ng/ml

Instrument :
 ECD_O
 ClientSampleId :
 M2239



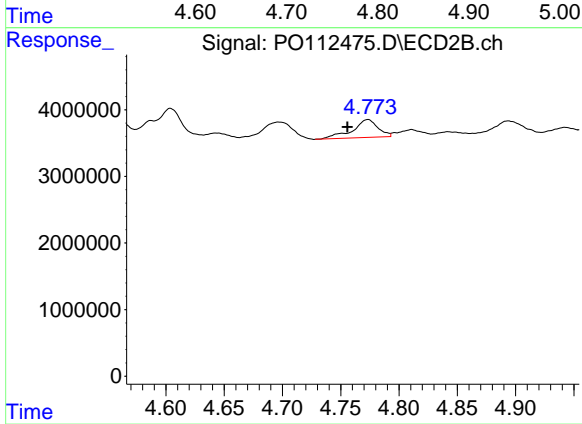
#3 AR-1016-1

R.T.: 4.773 min
 Delta R.T.: 0.036 min
 Response: 4079264
 Conc: 23.31 ng/ml



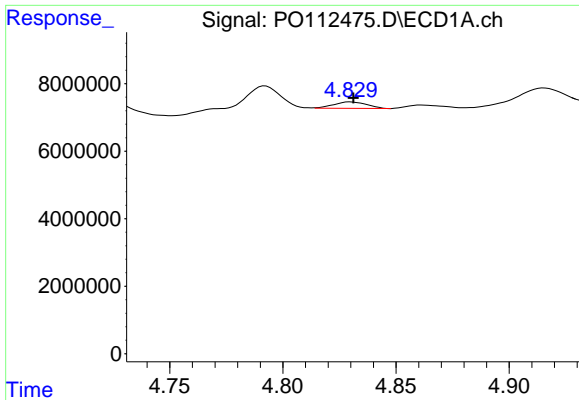
#4 AR-1016-2

R.T.: 4.792 min
 Delta R.T.: 0.018 min
 Response: 3229358
 Conc: 7.95 ng/ml



#4 AR-1016-2

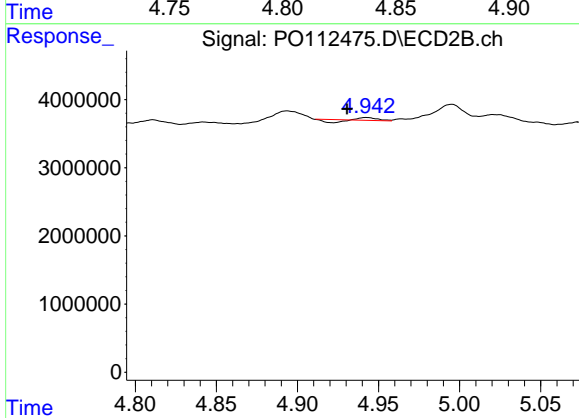
R.T.: 4.773 min
 Delta R.T.: 0.018 min
 Response: 4079264
 Conc: 15.66 ng/ml



#5 AR-1016-3

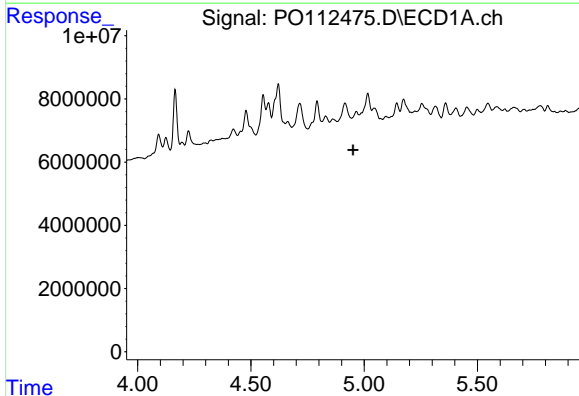
R.T.: 4.830 min
 Delta R.T.: -0.001 min
 Response: 1974977
 Conc: 7.55 ng/ml

Instrument :
 ECD_O
 ClientSampleId :
 M2239



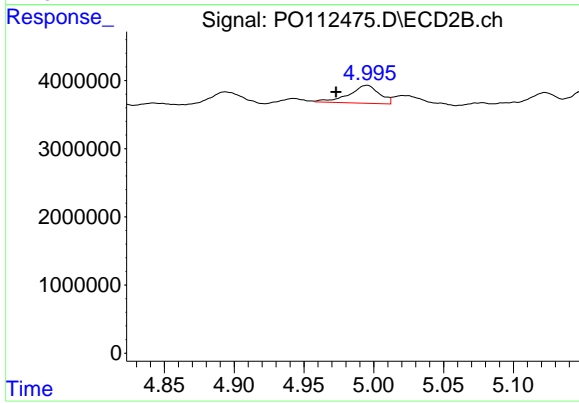
#5 AR-1016-3

R.T.: 4.943 min
 Delta R.T.: 0.012 min
 Response: 102068
 Conc: 0.75 ng/ml



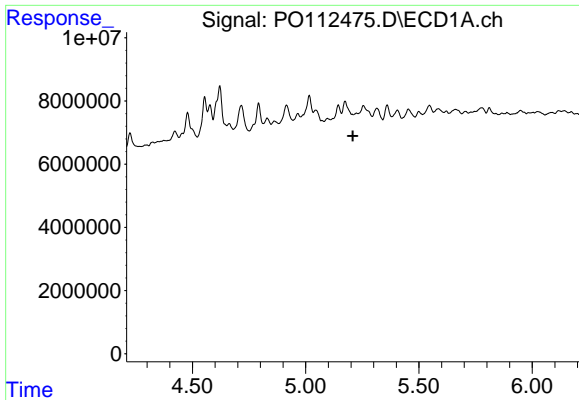
#6 AR-1016-4

R.T.: 4.965 min
 Delta R.T.: 0.015 min
 Response: -1308418
 Conc: N.D.



#6 AR-1016-4

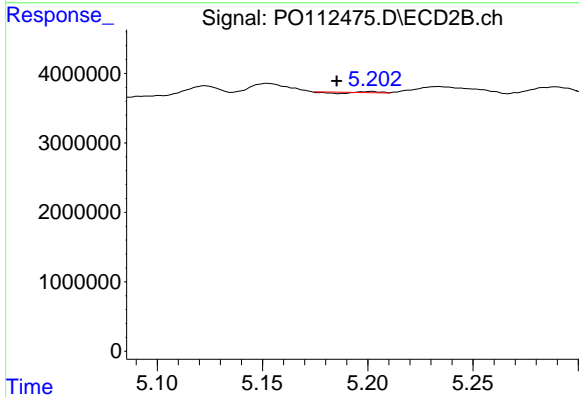
R.T.: 4.995 min
 Delta R.T.: 0.022 min
 Response: 3965785
 Conc: 35.70 ng/ml



#7 AR-1016-5

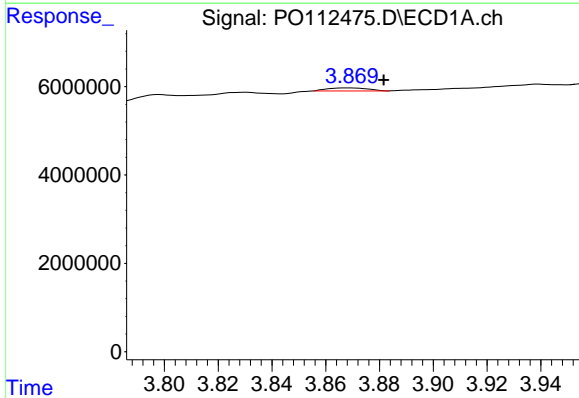
R.T.: 5.224 min
Delta R.T.: 0.016 min
Response: -970278
Conc: N.D.

Instrument :
ECD_O
ClientSampleId :
M2239



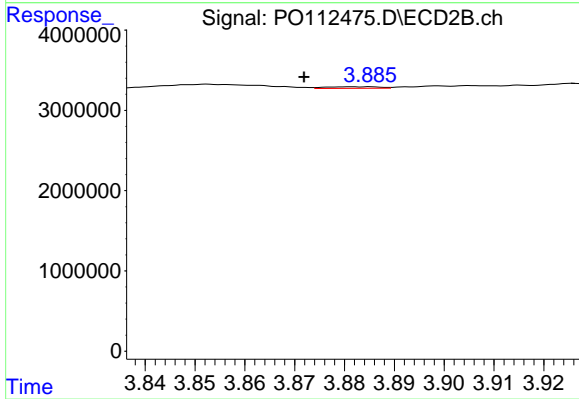
#7 AR-1016-5

R.T.: 5.202 min
Delta R.T.: 0.017 min
Response: 18733
Conc: 0.13 ng/ml



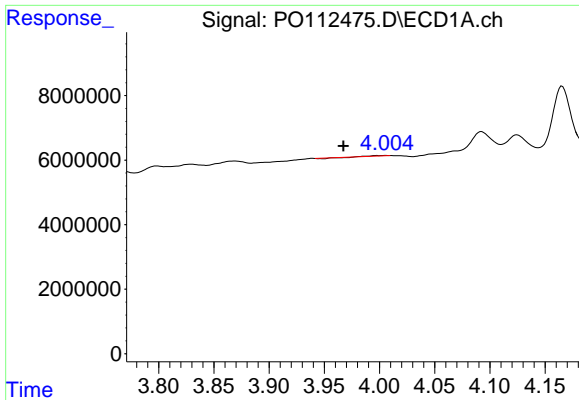
#8 AR-1221-1

R.T.: 3.869 min
Delta R.T.: -0.013 min
Response: 722060
Conc: 7.47 ng/ml



#8 AR-1221-1

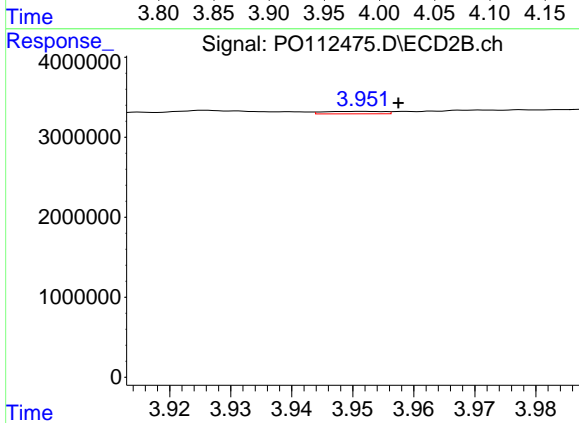
R.T.: 3.885 min
Delta R.T.: 0.013 min
Response: 142923
Conc: 2.12 ng/ml



#9 AR-1221-2

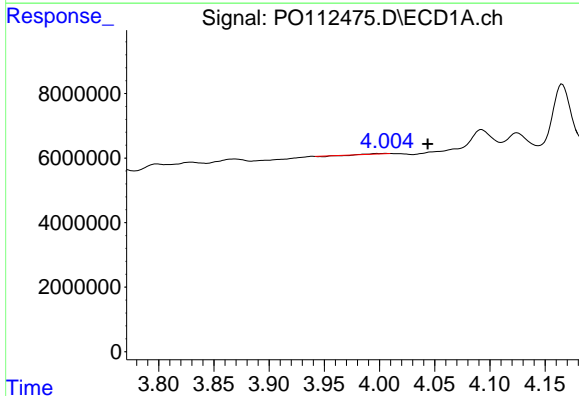
R.T.: 4.005 min
 Delta R.T.: 0.038 min
 Response: 10372
 Conc: 0.14 ng/ml

Instrument :
 ECD_O
 ClientSampleId :
 M2239



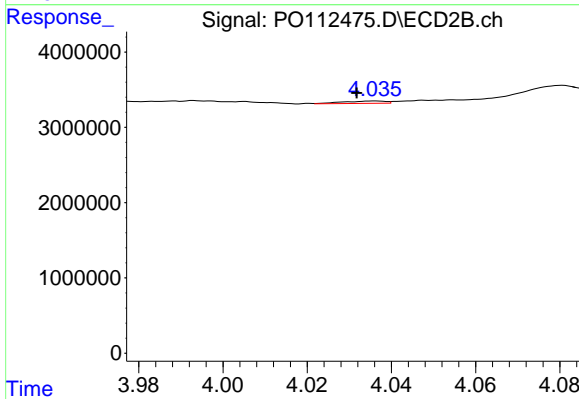
#9 AR-1221-2

R.T.: 3.952 min
 Delta R.T.: -0.006 min
 Response: 205748
 Conc: 4.06 ng/ml



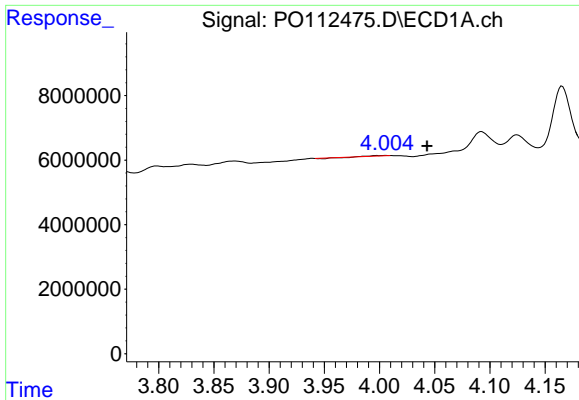
#10 AR-1221-3

R.T.: 4.005 min
 Delta R.T.: -0.038 min
 Response: 10372
 Conc: 0.04 ng/ml



#10 AR-1221-3

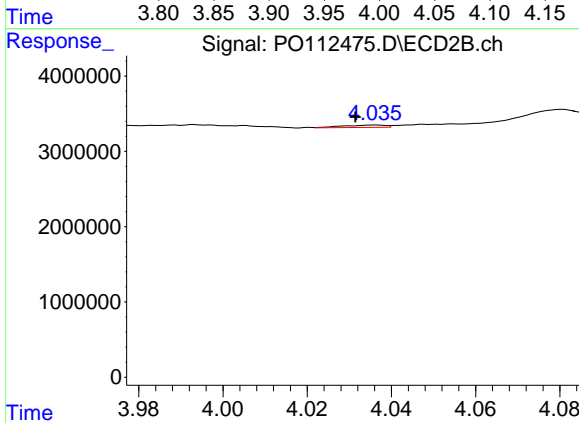
R.T.: 4.036 min
 Delta R.T.: 0.004 min
 Response: 221713
 Conc: 1.40 ng/ml



#11 AR-1232-1

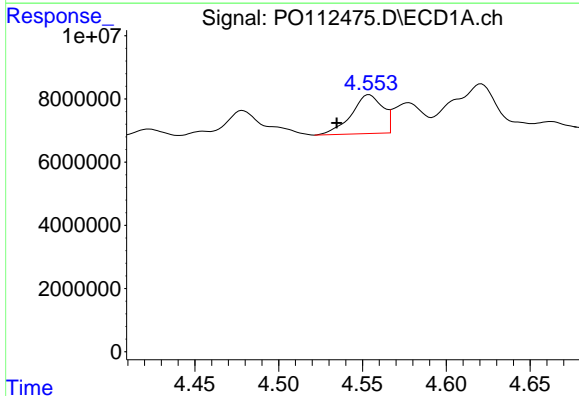
R.T.: 4.005 min
 Delta R.T.: -0.038 min
 Response: 10372
 Conc: 0.06 ng/ml

Instrument :
 ECD_O
 ClientSampleId :
 M2239



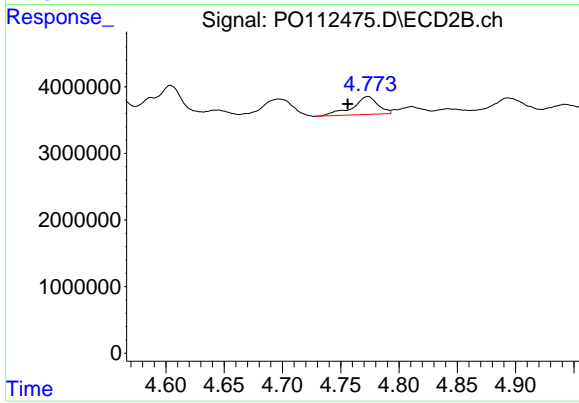
#11 AR-1232-1

R.T.: 4.036 min
 Delta R.T.: 0.005 min
 Response: 221713
 Conc: 1.75 ng/ml



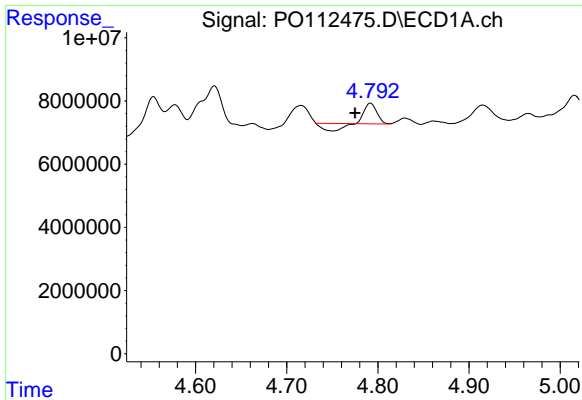
#12 AR-1232-2

R.T.: 4.554 min
 Delta R.T.: 0.019 min
 Response: 15926972
 Conc: 147.99 ng/ml



#12 AR-1232-2

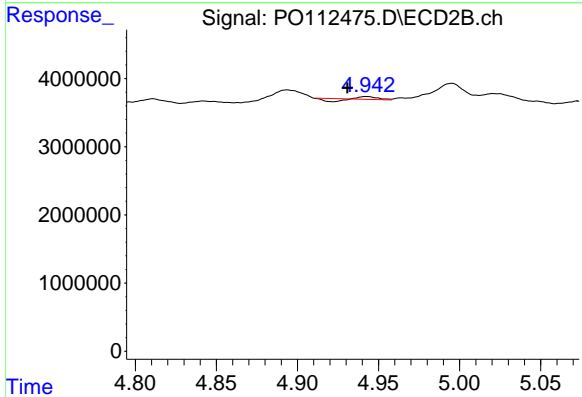
R.T.: 4.773 min
 Delta R.T.: 0.017 min
 Response: 4079264
 Conc: 31.10 ng/ml



#13 AR-1232-3

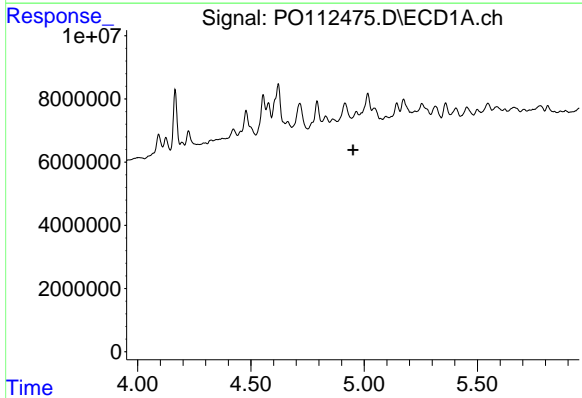
R.T.: 4.792 min
 Delta R.T.: 0.017 min
 Response: 3229358
 Conc: 15.62 ng/ml

Instrument :
 ECD_O
 ClientSampleId :
 M2239



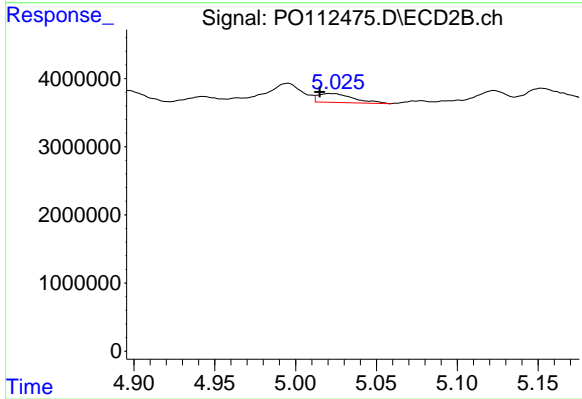
#13 AR-1232-3

R.T.: 4.943 min
 Delta R.T.: 0.012 min
 Response: 102068
 Conc: 1.52 ng/ml



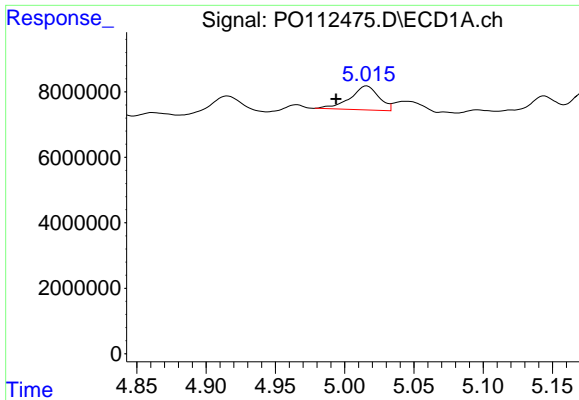
#14 AR-1232-4

R.T.: 4.965 min
 Delta R.T.: 0.015 min
 Response: -1308418
 Conc: N.D.



#14 AR-1232-4

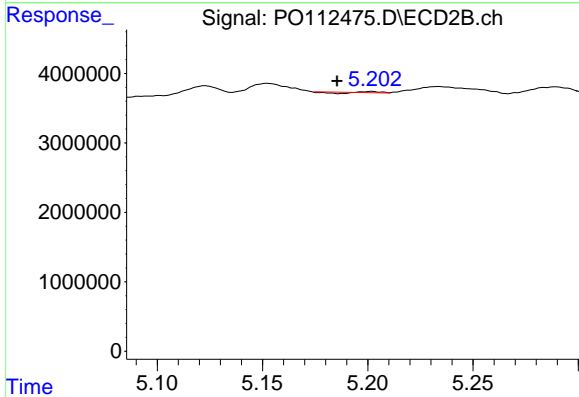
R.T.: 5.021 min
 Delta R.T.: 0.006 min
 Response: 1977001
 Conc: 33.04 ng/ml



#15 AR-1232-5

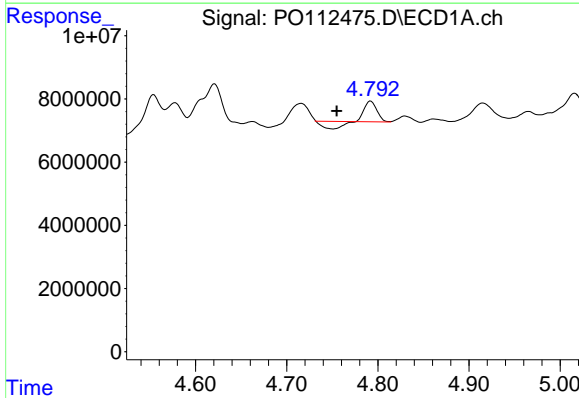
R.T.: 5.016 min
 Delta R.T.: 0.022 min
 Response: 10536276
 Conc: 155.22 ng/ml

Instrument :
 ECD_O
 ClientSampleId :
 M2239



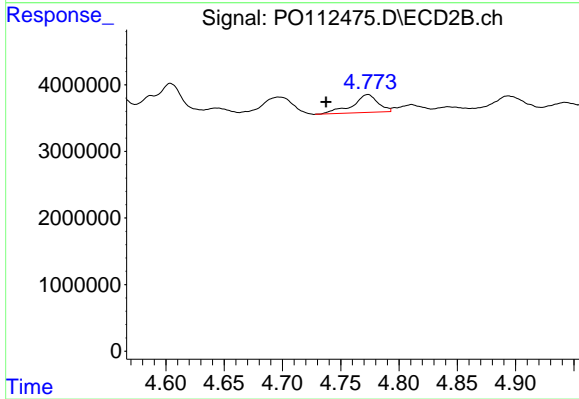
#15 AR-1232-5

R.T.: 5.202 min
 Delta R.T.: 0.017 min
 Response: 18733
 Conc: 0.29 ng/ml



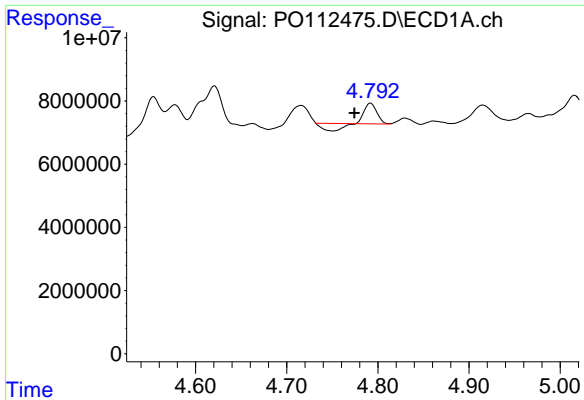
#16 AR-1242-1

R.T.: 4.792 min
 Delta R.T.: 0.037 min
 Response: 3229358
 Conc: 13.04 ng/ml



#16 AR-1242-1

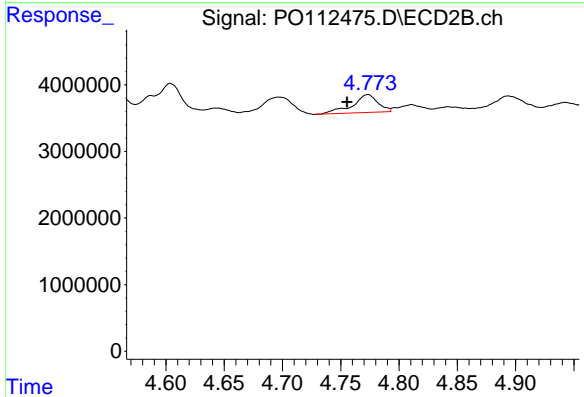
R.T.: 4.773 min
 Delta R.T.: 0.036 min
 Response: 4079264
 Conc: 25.75 ng/ml



#17 AR-1242-2

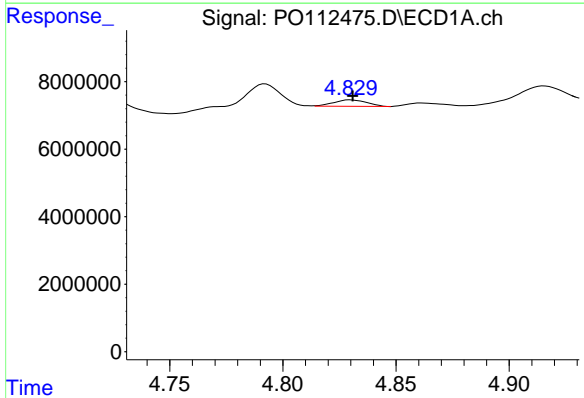
R.T.: 4.792 min
 Delta R.T.: 0.018 min
 Response: 3229358
 Conc: 8.73 ng/ml

Instrument :
 ECD_O
 ClientSampleId :
 M2239



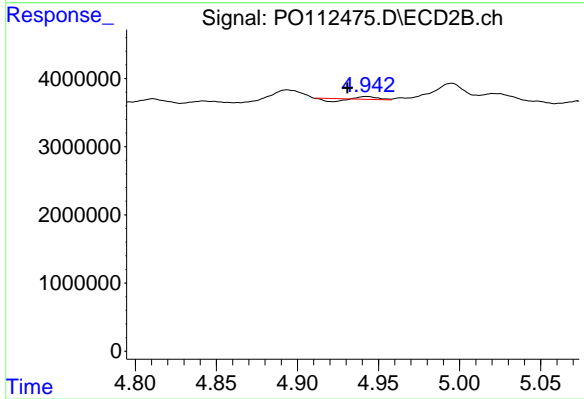
#17 AR-1242-2

R.T.: 4.773 min
 Delta R.T.: 0.018 min
 Response: 4079264
 Conc: 17.46 ng/ml



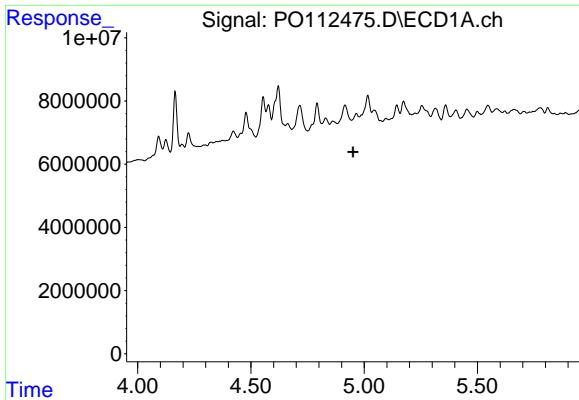
#18 AR-1242-3

R.T.: 4.830 min
 Delta R.T.: -0.001 min
 Response: 1974977
 Conc: 8.35 ng/ml



#18 AR-1242-3

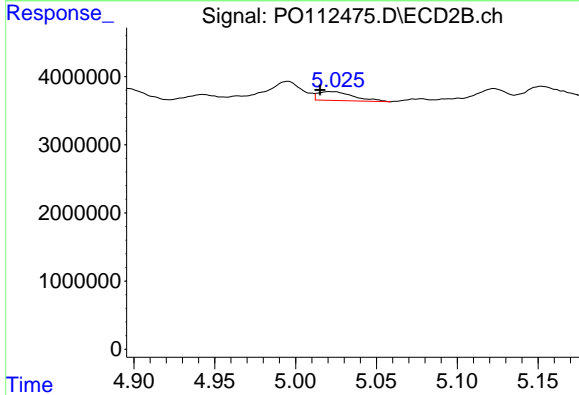
R.T.: 4.943 min
 Delta R.T.: 0.012 min
 Response: 102068
 Conc: 0.84 ng/ml



#19 AR-1242-4

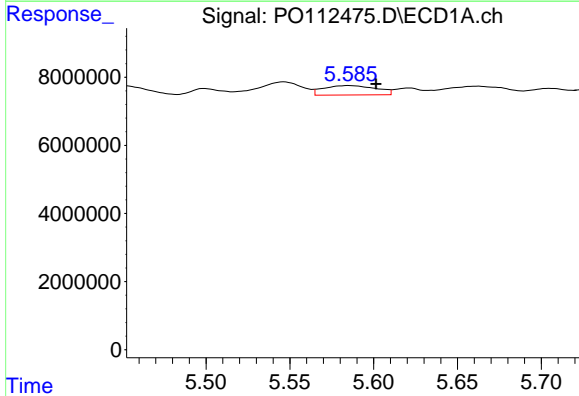
R.T.: 4.965 min
 Delta R.T.: 0.015 min
 Response: -1308418
 Conc: N.D.

Instrument :
 ECD_O
 ClientSampleId :
 M2239



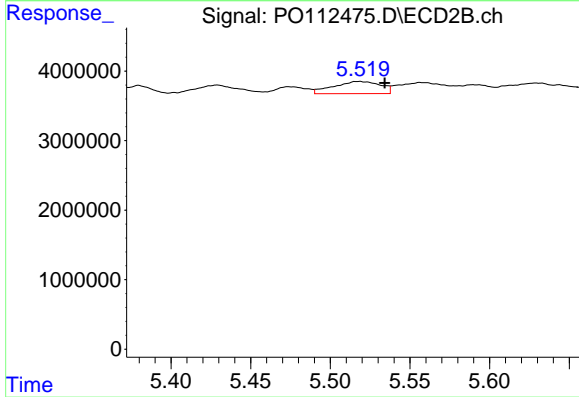
#19 AR-1242-4

R.T.: 5.021 min
 Delta R.T.: 0.006 min
 Response: 1977001
 Conc: 16.11 ng/ml



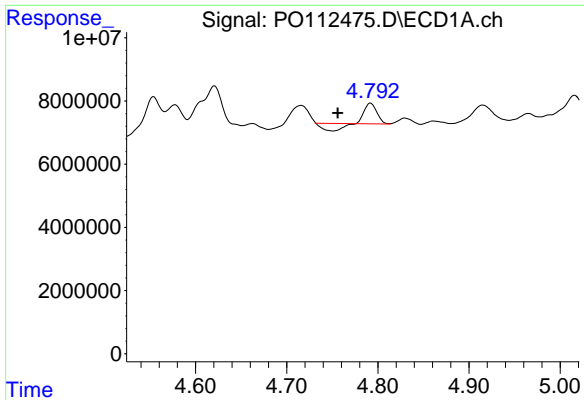
#20 AR-1242-5

R.T.: 5.585 min
 Delta R.T.: -0.016 min
 Response: 6070354
 Conc: 28.38 ng/ml



#20 AR-1242-5

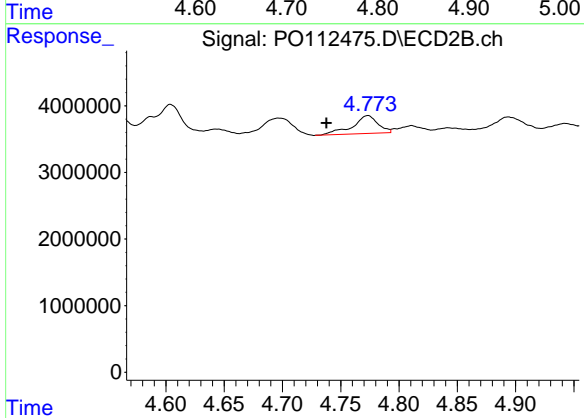
R.T.: 5.518 min
 Delta R.T.: -0.016 min
 Response: 3611384
 Conc: 22.43 ng/ml



#21 AR-1248-1

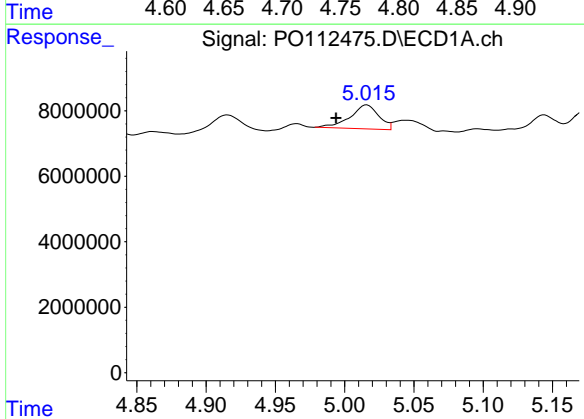
R.T.: 4.792 min
 Delta R.T.: 0.036 min
 Response: 3229358
 Conc: 17.25 ng/ml

Instrument :
 ECD_O
 ClientSampleId :
 M2239



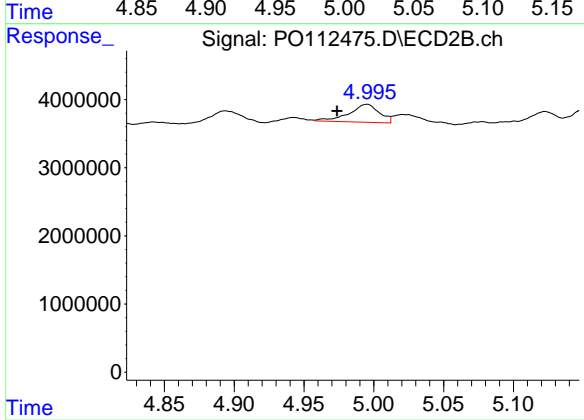
#21 AR-1248-1

R.T.: 4.773 min
 Delta R.T.: 0.035 min
 Response: 4079264
 Conc: 33.57 ng/ml



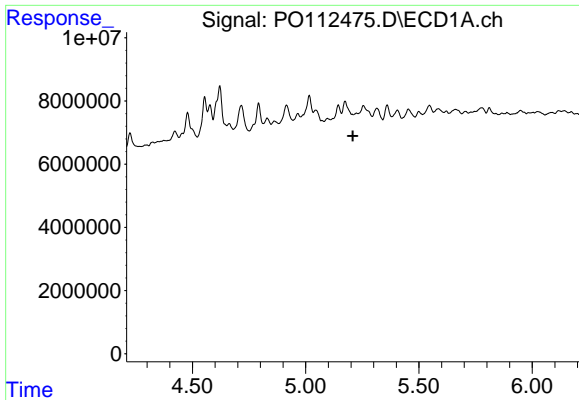
#22 AR-1248-2

R.T.: 5.016 min
 Delta R.T.: 0.022 min
 Response: 10536276
 Conc: 41.30 ng/ml



#22 AR-1248-2

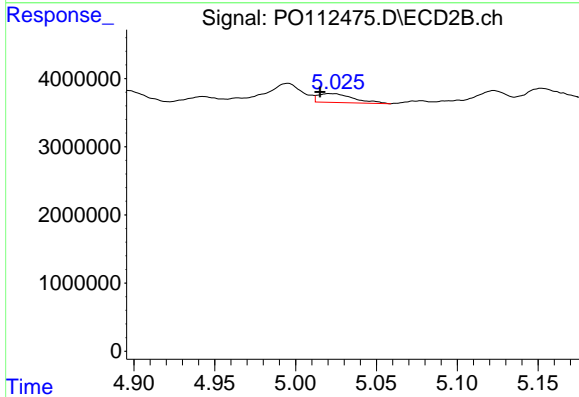
R.T.: 4.995 min
 Delta R.T.: 0.021 min
 Response: 3965785
 Conc: 23.43 ng/ml



#23 AR-1248-3

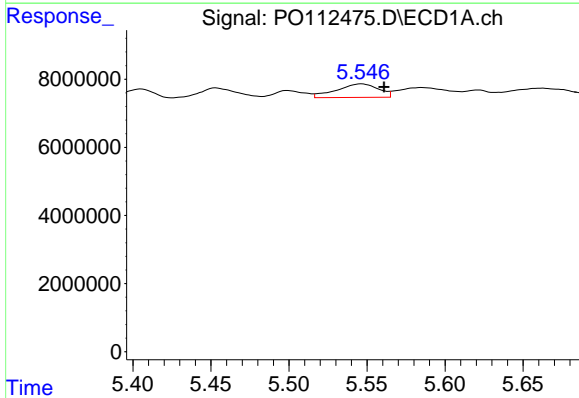
R.T.: 5.224 min
Delta R.T.: 0.016 min
Response: -970278
Conc: N.D.

Instrument :
ECD_O
ClientSampleId :
M2239



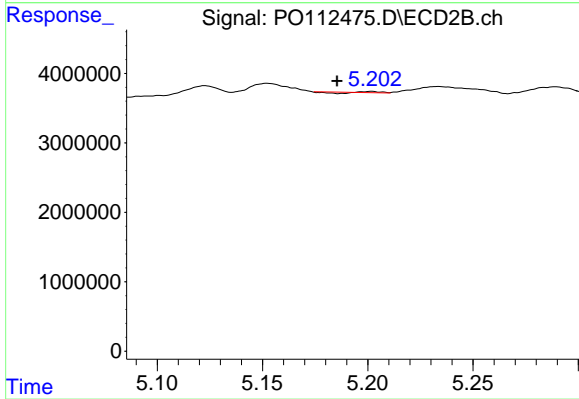
#23 AR-1248-3

R.T.: 5.021 min
Delta R.T.: 0.006 min
Response: 1977001
Conc: 11.13 ng/ml



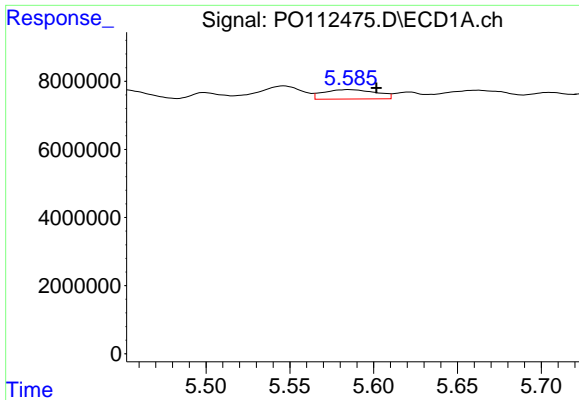
#24 AR-1248-4

R.T.: 5.546 min
Delta R.T.: -0.014 min
Response: 7454512
Conc: 14.67 ng/ml



#24 AR-1248-4

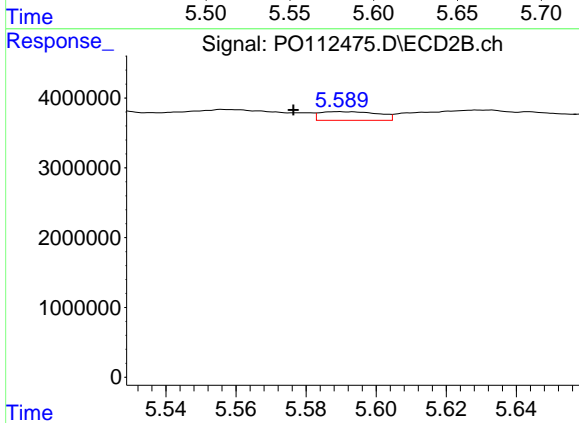
R.T.: 5.202 min
Delta R.T.: 0.016 min
Response: 18733
Conc: 0.09 ng/ml



#25 AR-1248-5

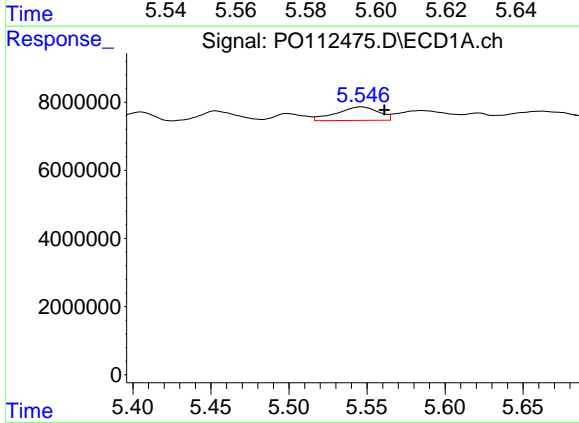
R.T.: 5.585 min
 Delta R.T.: -0.016 min
 Response: 6070354
 Conc: 17.36 ng/ml

Instrument :
 ECD_O
 ClientSampleId :
 M2239



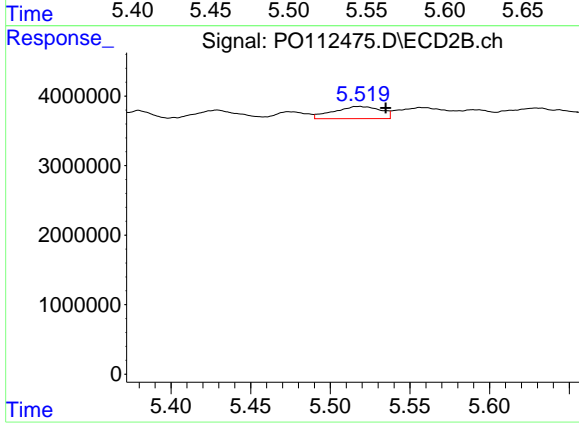
#25 AR-1248-5

R.T.: 5.589 min
 Delta R.T.: 0.013 min
 Response: 1440669
 Conc: 6.71 ng/ml



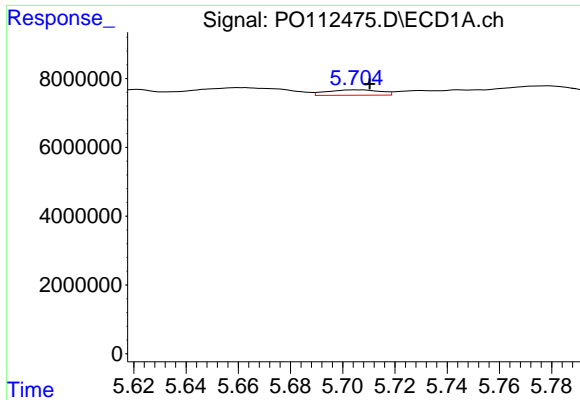
#26 AR-1254-1

R.T.: 5.546 min
 Delta R.T.: -0.015 min
 Response: 7454512
 Conc: 13.58 ng/ml



#26 AR-1254-1

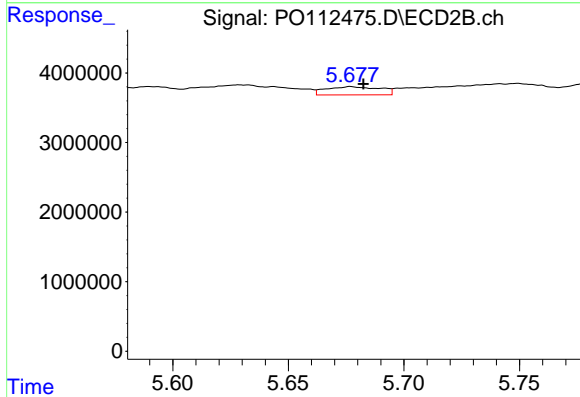
R.T.: 5.518 min
 Delta R.T.: -0.017 min
 Response: 3611384
 Conc: 10.99 ng/ml



#27 AR-1254-2

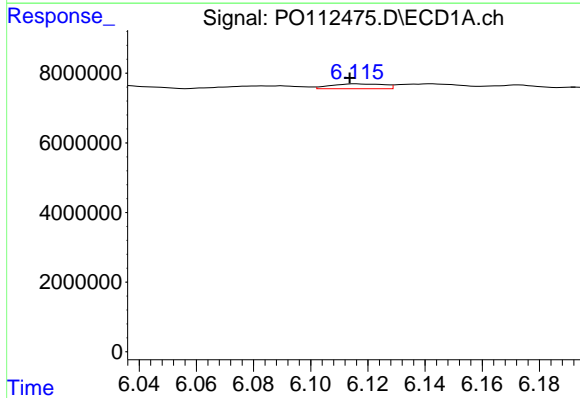
R.T.: 5.706 min
 Delta R.T.: -0.005 min
 Response: 2246506
 Conc: 4.62 ng/ml

Instrument :
 ECD_O
 ClientSampleId :
 M2239



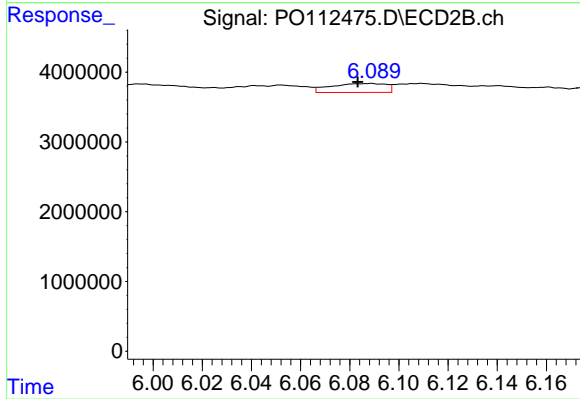
#27 AR-1254-2

R.T.: 5.677 min
 Delta R.T.: -0.005 min
 Response: 1904243
 Conc: 6.58 ng/ml



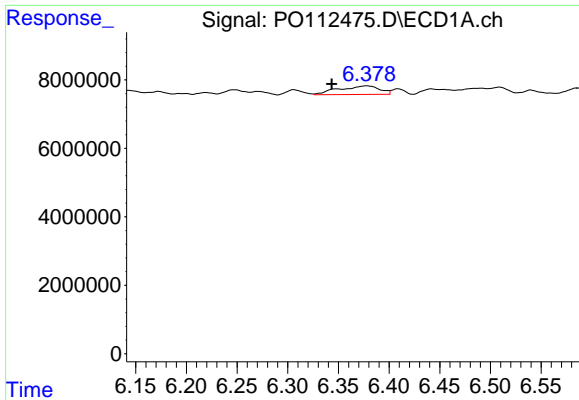
#28 AR-1254-3

R.T.: 6.117 min
 Delta R.T.: 0.003 min
 Response: 1784509
 Conc: 2.40 ng/ml



#28 AR-1254-3

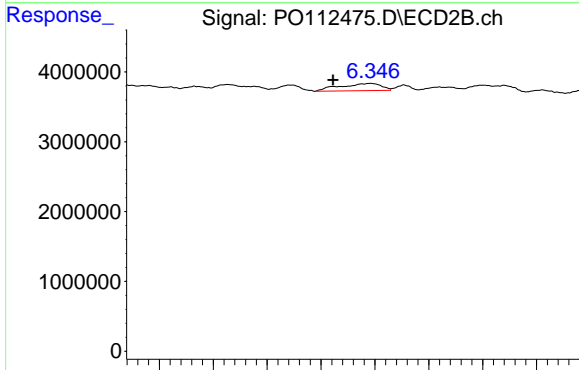
R.T.: 6.088 min
 Delta R.T.: 0.005 min
 Response: 1991004
 Conc: 4.66 ng/ml



#29 AR-1254-4

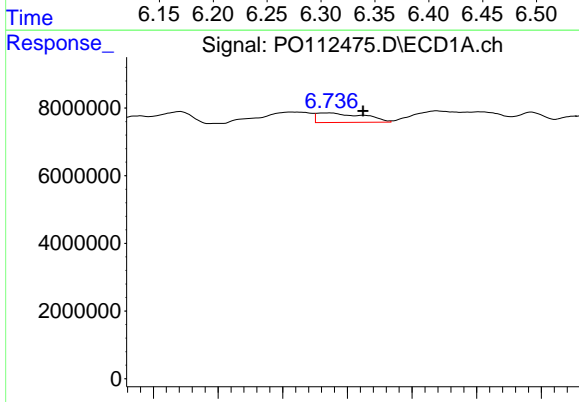
R.T.: 6.378 min
 Delta R.T.: 0.035 min
 Response: 7056279
 Conc: 12.84 ng/ml

Instrument :
 ECD_O
 ClientSampleId :
 M2239



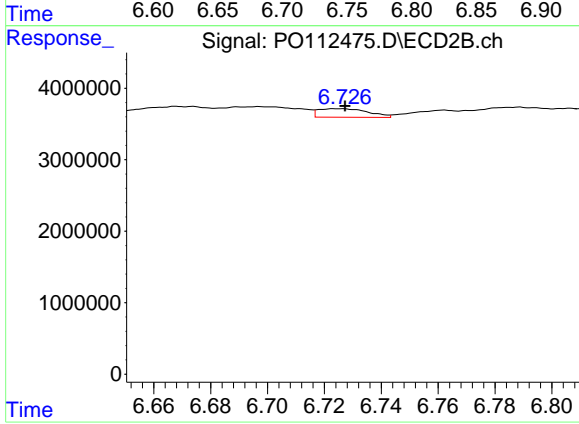
#29 AR-1254-4

R.T.: 6.346 min
 Delta R.T.: 0.035 min
 Response: 2755181
 Conc: 10.09 ng/ml



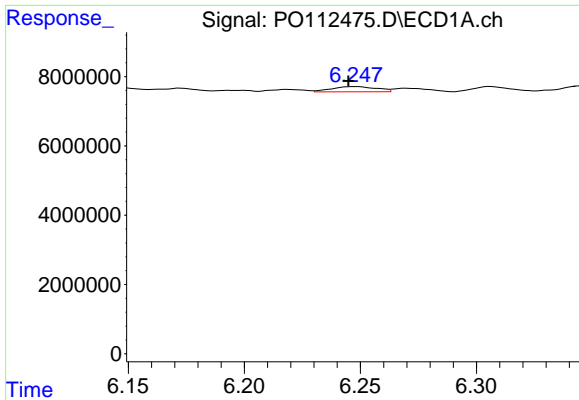
#30 AR-1254-5

R.T.: 6.735 min
 Delta R.T.: -0.027 min
 Response: 7050956
 Conc: 9.96 ng/ml



#30 AR-1254-5

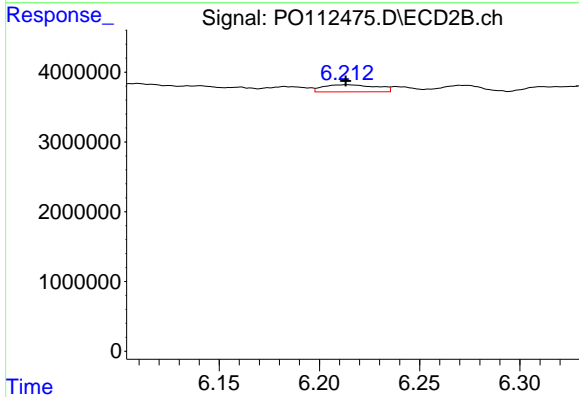
R.T.: 6.725 min
 Delta R.T.: -0.002 min
 Response: 1444697
 Conc: 4.33 ng/ml



#31 AR-1260-1

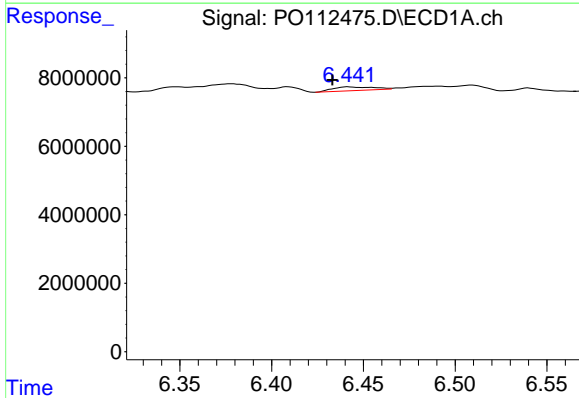
R.T.: 6.248 min
 Delta R.T.: 0.003 min
 Response: 2022227
 Conc: 4.60 ng/ml

Instrument :
 ECD_O
 ClientSampleId :
 M2239



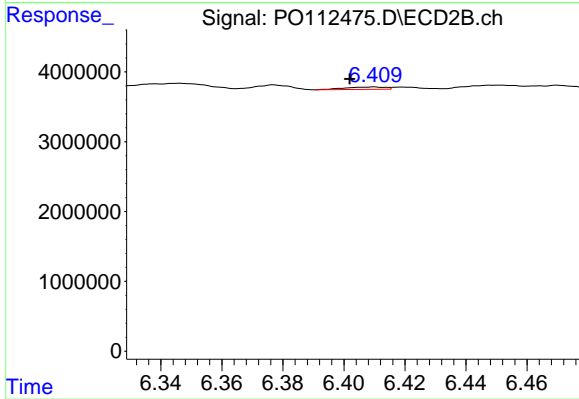
#31 AR-1260-1

R.T.: 6.214 min
 Delta R.T.: 0.000 min
 Response: 1893750
 Conc: 7.62 ng/ml



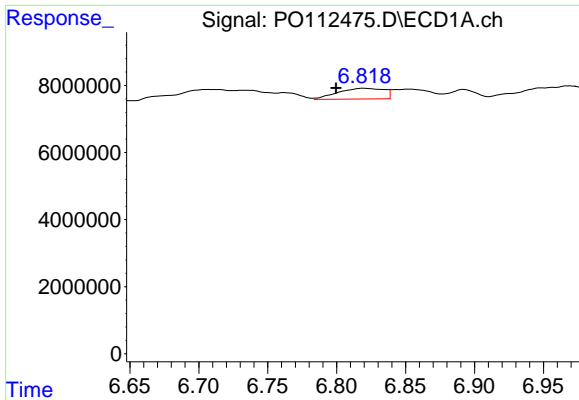
#32 AR-1260-2

R.T.: 6.442 min
 Delta R.T.: 0.009 min
 Response: 1693284
 Conc: 2.46 ng/ml



#32 AR-1260-2

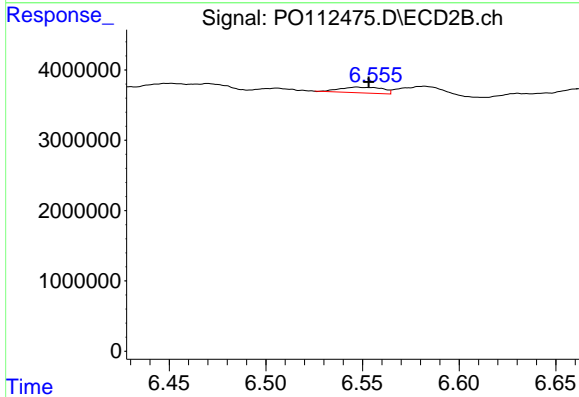
R.T.: 6.410 min
 Delta R.T.: 0.008 min
 Response: 316591
 Conc: 0.96 ng/ml



#33 AR-1260-3

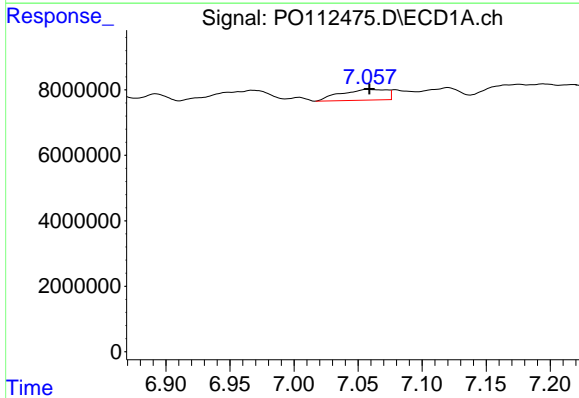
R.T.: 6.819 min
 Delta R.T.: 0.020 min
 Response: 7431862
 Conc: 12.64 ng/ml

Instrument :
 ECD_O
 ClientSampleId :
 M2239



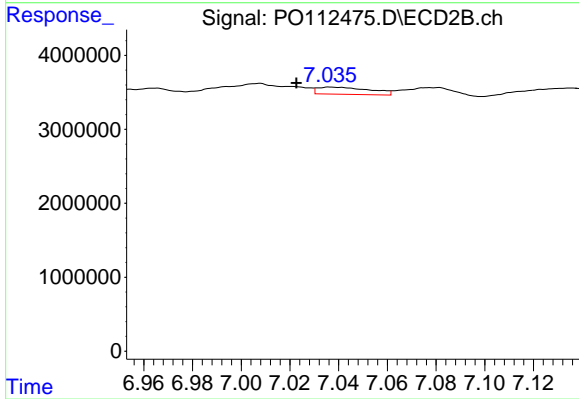
#33 AR-1260-3

R.T.: 6.547 min
 Delta R.T.: -0.006 min
 Response: 1245151
 Conc: 4.85 ng/ml



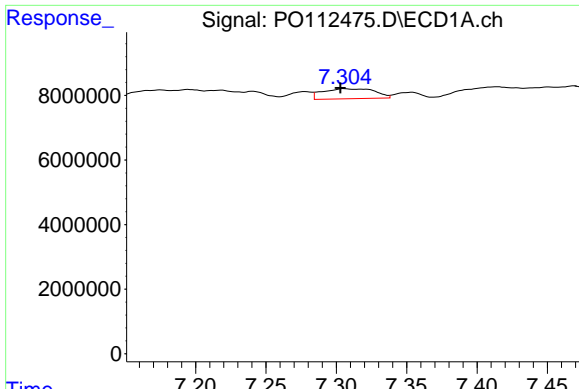
#34 AR-1260-4

R.T.: 7.058 min
 Delta R.T.: 0.000 min
 Response: 8146106
 Conc: 18.06 ng/ml



#34 AR-1260-4

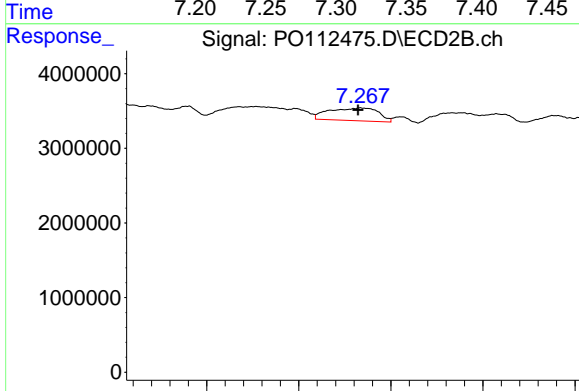
R.T.: 7.037 min
 Delta R.T.: 0.014 min
 Response: 1435873
 Conc: 7.51 ng/ml



#35 AR-1260-5

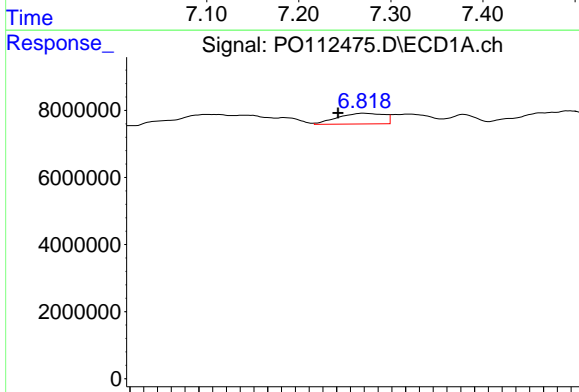
R.T.: 7.306 min
 Delta R.T.: 0.003 min
 Response: 8065067
 Conc: 6.51 ng/ml

Instrument :
 ECD_O
 ClientSampleId :
 M2239



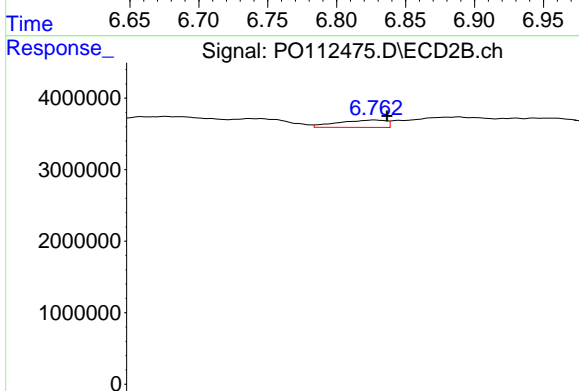
#35 AR-1260-5

R.T.: 7.267 min
 Delta R.T.: 0.002 min
 Response: 6372376
 Conc: 15.46 ng/ml



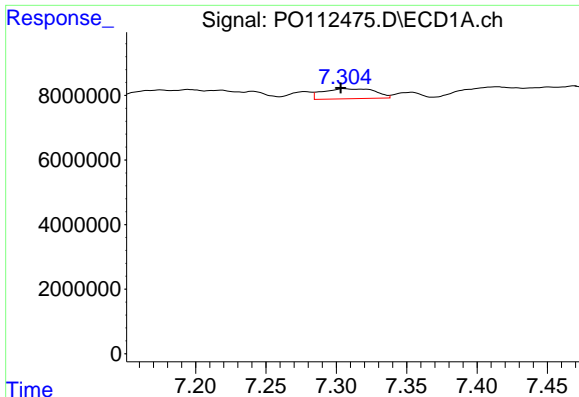
#36 AR-1262-1

R.T.: 6.819 min
 Delta R.T.: 0.018 min
 Response: 7431862
 Conc: 8.00 ng/ml



#36 AR-1262-1

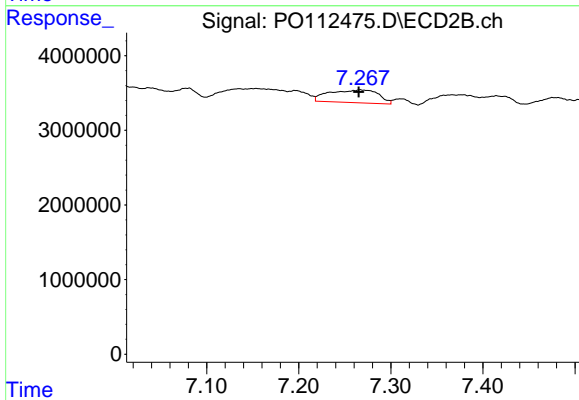
R.T.: 6.762 min
 Delta R.T.: -0.004 min
 Response: 1075863
 Conc: 2.59 ng/ml



#37 AR-1262-2

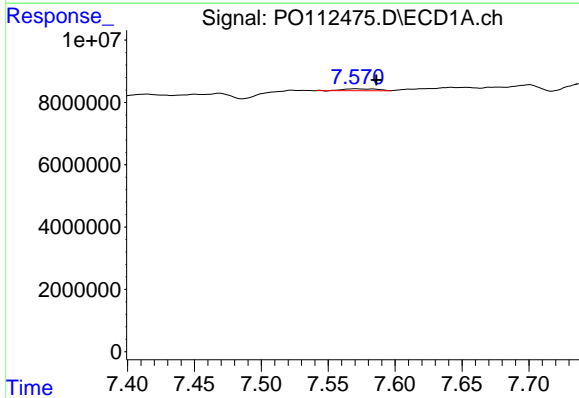
R.T.: 7.306 min
 Delta R.T.: 0.003 min
 Response: 8065067
 Conc: 5.42 ng/ml

Instrument :
 ECD_O
 ClientSampleId :
 M2239



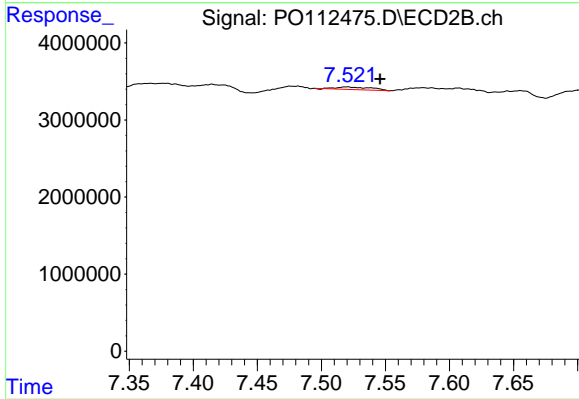
#37 AR-1262-2

R.T.: 7.267 min
 Delta R.T.: 0.002 min
 Response: 6372376
 Conc: 12.36 ng/ml



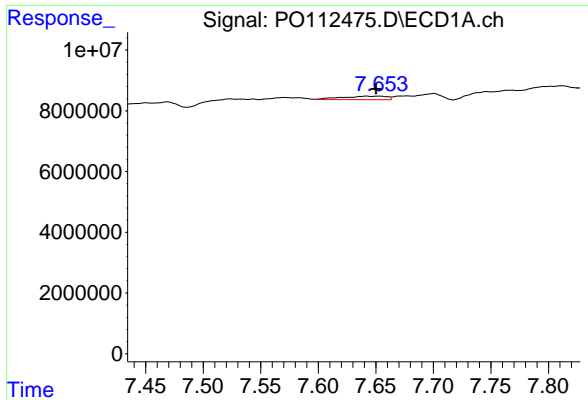
#38 AR-1262-3

R.T.: 7.571 min
 Delta R.T.: -0.015 min
 Response: 1174440
 Conc: 1.99 ng/ml



#38 AR-1262-3

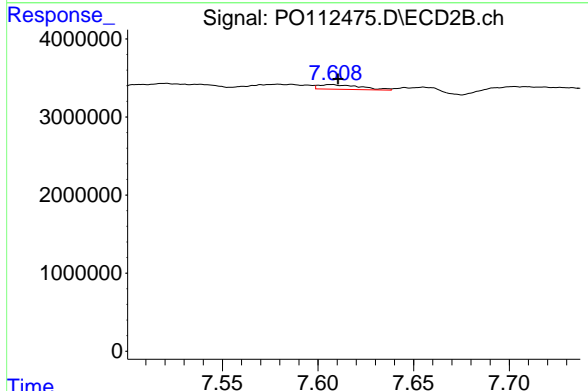
R.T.: 7.520 min
 Delta R.T.: -0.026 min
 Response: 623570
 Conc: 3.34 ng/ml



#39 AR-1262-4

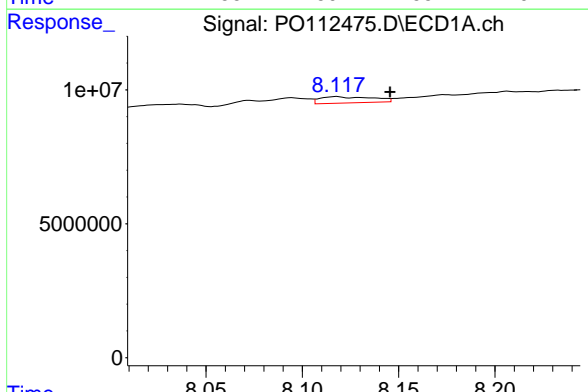
R.T.: 7.653 min
 Delta R.T.: 0.003 min
 Response: 3152878
 Conc: 3.17 ng/ml

Instrument :
 ECD_O
 ClientSampleId :
 M2239



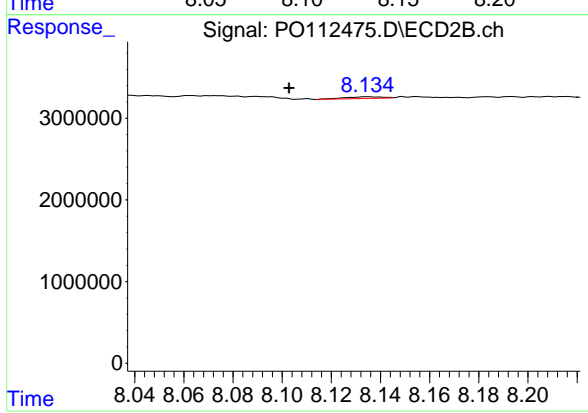
#39 AR-1262-4

R.T.: 7.607 min
 Delta R.T.: -0.004 min
 Response: 892400
 Conc: 3.10 ng/ml



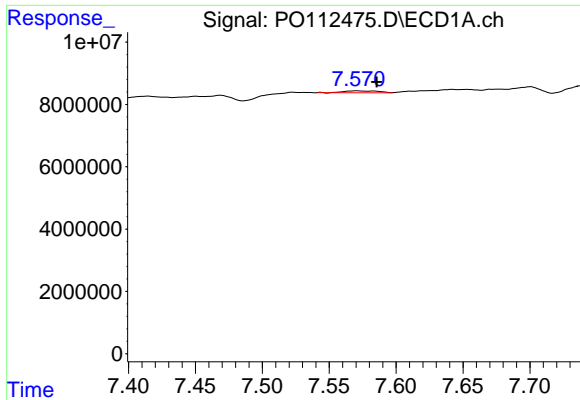
#40 AR-1262-5

R.T.: 8.118 min
 Delta R.T.: -0.028 min
 Response: 4487375
 Conc: 10.34 ng/ml



#40 AR-1262-5

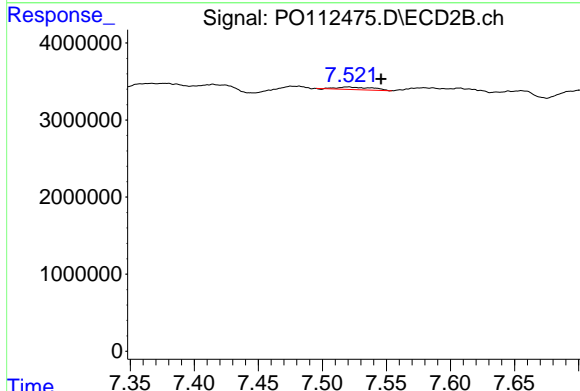
R.T.: 8.135 min
 Delta R.T.: 0.032 min
 Response: 220069
 Conc: 2.21 ng/ml



#41 AR-1268-1

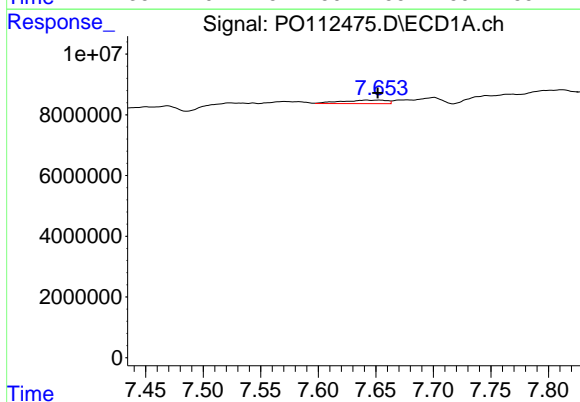
R.T.: 7.571 min
 Delta R.T.: -0.015 min
 Response: 1174440
 Conc: 0.67 ng/ml

Instrument :
 ECD_O
 ClientSampleId :
 M2239



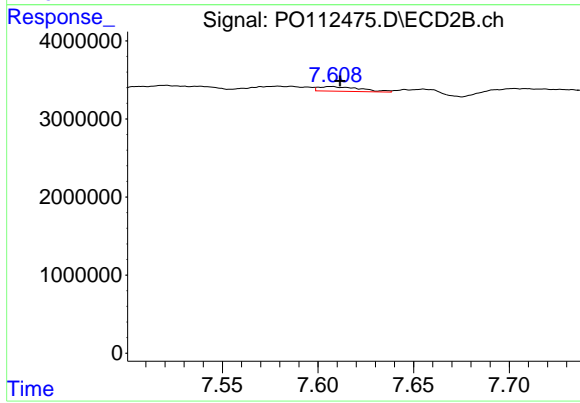
#41 AR-1268-1

R.T.: 7.520 min
 Delta R.T.: -0.026 min
 Response: 623570
 Conc: 1.20 ng/ml



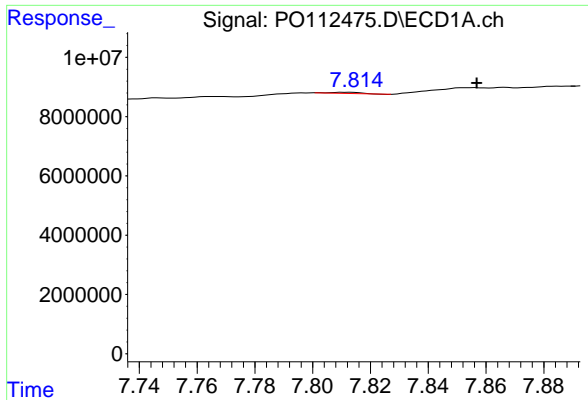
#42 AR-1268-2

R.T.: 7.653 min
 Delta R.T.: 0.001 min
 Response: 3152878
 Conc: 2.14 ng/ml



#42 AR-1268-2

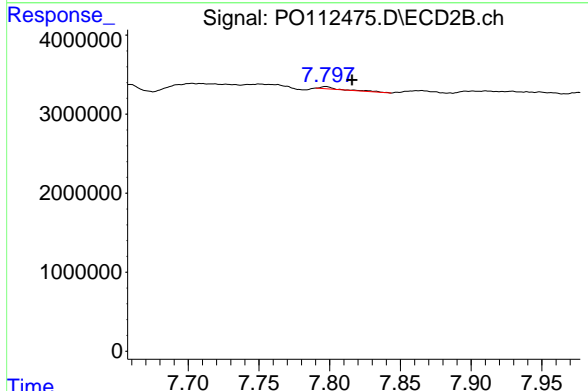
R.T.: 7.607 min
 Delta R.T.: -0.005 min
 Response: 892400
 Conc: 2.10 ng/ml



#43 AR-1268-3

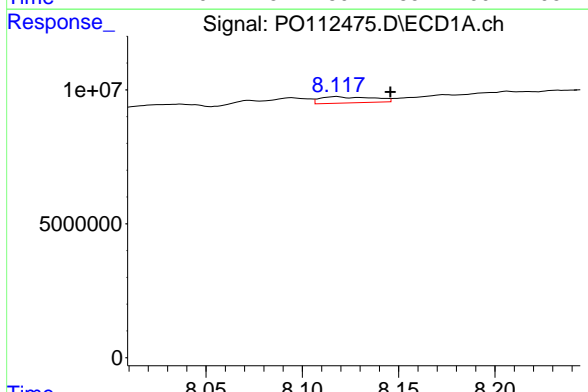
R.T.: 7.812 min
 Delta R.T.: -0.045 min
 Response: 278843
 Conc: 0.22 ng/ml

Instrument :
 ECD_O
 ClientSampleId :
 M2239



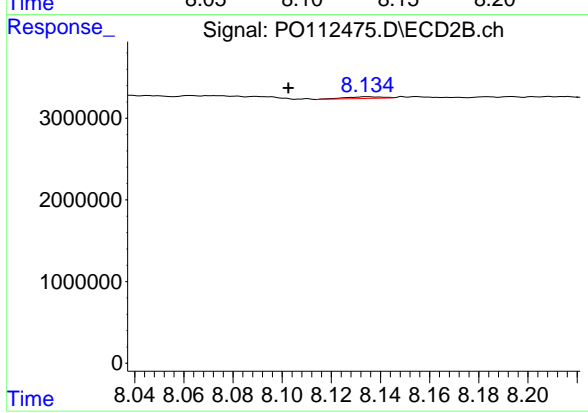
#43 AR-1268-3

R.T.: 7.797 min
 Delta R.T.: -0.018 min
 Response: 245676
 Conc: 0.76 ng/ml



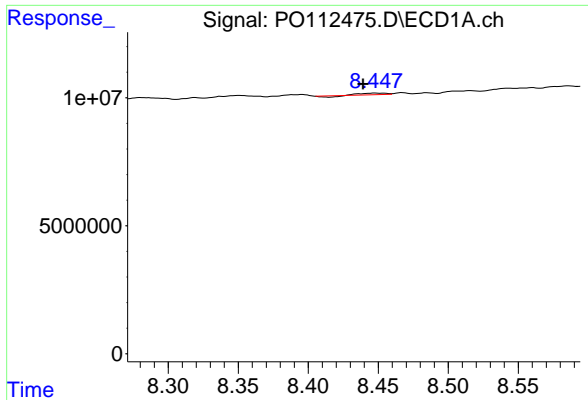
#44 AR-1268-4

R.T.: 8.118 min
 Delta R.T.: -0.028 min
 Response: 4487375
 Conc: 9.31 ng/ml



#44 AR-1268-4

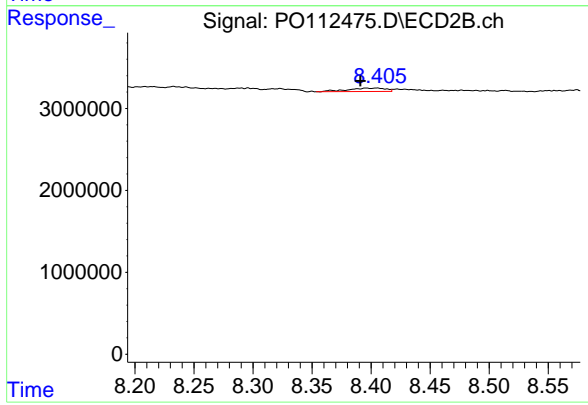
R.T.: 8.135 min
 Delta R.T.: 0.032 min
 Response: 220069
 Conc: 1.98 ng/ml



#45 AR-1268-5

R.T.: 8.449 min
 Delta R.T.: 0.009 min
 Response: 475895
 Conc: 0.14 ng/ml

Instrument :
 ECD_O
 ClientSampleId :
 M2239



#45 AR-1268-5

R.T.: 8.405 min
 Delta R.T.: 0.014 min
 Response: 935869
 Conc: 1.28 ng/ml