

Data Path : Z:\pestpcbsrv\HPCHEM1\ECD\_0\Data\P0072425\  
 Data File : PO112476.D  
 Signal(s) : Signal #1: ECD1A.ch Signal #2: ECD2B.ch  
 Acq On : 24 Jul 2025 19:01  
 Operator : YP/AJ  
 Sample : Q2688-09 10X  
 Misc :  
 ALS Vial : 24 Sample Multiplier: 1

Instrument :  
 ECD\_0  
 ClientSampleId :  
 SOM-81

Integration File signal 1: autoint1.e  
 Integration File signal 2: autoint2.e  
 Quant Time: Jul 24 23:47:06 2025  
 Quant Method : Z:\pestpcbsrv\HPCHEM1\ECD\_0\methods\P0072325.M  
 Quant Title : GC EXTRACTABLES  
 QLast Update : Thu Jul 24 04:54:06 2025  
 Response via : Initial Calibration  
 Integrator: ChemStation

Volume Inj. : 2 µl  
 Signal #1 Phase : ZB-MR2 Signal #2 Phase: ZB-MR2  
 Signal #1 Info : 30Mx0.32mmx 0.50µ Signal #2 Info : 30M x 0.32mm x 0.25µm

Compound	RT#1	RT#2	Resp#1	Resp#2	ng/ml	ng/ml
System Monitoring Compounds						
1) SA Tetrachlo...	3.669	3.662	3495316	2351743	0.430	0.473
2) SA Decachlor...	8.693	8.640	11800733	3253724	1.614	1.841
Target Compounds						
3) L1 AR-1016-1	4.768	4.751	6371005	10791110	23.740	61.661 #
4) L1 AR-1016-2	4.768	4.751	6371005	10791110	15.688	41.425 #
5) L1 AR-1016-3	4.829	4.930	8408586	1690667	32.134	12.434 #
6) L1 AR-1016-4	4.951	4.978	-3255394	16116338	N.D.	145.081 #
7) L1 AR-1016-5	5.208	5.186	-1078864	1273776	N.D.	8.889 #
8) L2 AR-1221-1	3.871	3.862	971261	921016	10.048	13.692 #
9) L2 AR-1221-2	3.953	3.943	4364527	3010846	60.735	59.353
10) L2 AR-1221-3	4.045	4.032	73373	437428	0.309	2.759 #
11) L3 AR-1232-1	4.045	4.032	73373	437428	0.392	3.457 #
12) L3 AR-1232-2	4.553	4.751	32545677	10791110	302.400	82.278 #
13) L3 AR-1232-3	4.768	4.930	6371005	1690667	30.808	25.160
14) L3 AR-1232-4	4.951	5.015	-3255394	3532747	N.D.	59.047 #
15) L3 AR-1232-5	4.997	5.186	30526284	1273776	449.704	19.536 #
16) L4 AR-1242-1	4.768	4.751	6371005	10791110	25.732	68.128 #
17) L4 AR-1242-2	4.768	4.751	6371005	10791110	17.229	46.182 #
18) L4 AR-1242-3	4.829	4.930	8408586	1690667	35.531	13.951 #
19) L4 AR-1242-4	4.951	5.015	-3255394	3532747	N.D.	28.783 #
20) L4 AR-1242-5	5.615	5.536	23718065	45618389	110.876	283.395 #
21) L5 AR-1248-1	4.768	4.751	6371005	10791110	34.032	88.809 #
22) L5 AR-1248-2	4.997	4.978	30526284	16116338	119.658	95.205
23) L5 AR-1248-3	5.208	5.015	-1078864	3532747	N.D.	19.886 #
24) L5 AR-1248-4	5.560	5.186	72260385	1273776	142.223	6.114 #
25) L5 AR-1248-5	5.615	5.588	23718065	16046902	67.845	74.718
26) L6 AR-1254-1	5.560	5.536	72260385	45618389	131.632	138.818
27) L6 AR-1254-2	5.709	5.683	72068879	48714473	148.315	168.276
28) L6 AR-1254-3	6.128	6.099	185.6E6	102.8E6	249.411	240.453
29) L6 AR-1254-4	6.342	6.311	27683291	17878096	50.360	65.496 #
30) L6 AR-1254-5	6.759	6.726	277.4E6	153.7E6	391.966	460.271
31) L7 AR-1260-1	6.244	6.213	176.8E6	113.8E6	402.350	458.122
32) L7 AR-1260-2	6.433	6.402	285.0E6	157.9E6	414.269	479.146
33) L7 AR-1260-3	6.799	6.555	299.8E6	178.1E6	509.929	693.330 #
34) L7 AR-1260-4	7.058	7.023	229.4E6	111.5E6	508.668	582.615
35) L7 AR-1260-5	7.302	7.264	664.3E6	272.9E6	536.122	662.159
36) L8 AR-1262-1	6.799	6.765	299.8E6	156.0E6	322.692	376.092
37) L8 AR-1262-2	7.302	7.264	664.3E6	272.9E6	446.753	529.415
38) L8 AR-1262-3	7.585	7.545	153.1E6	61564164	259.439	330.058 #
39) L8 AR-1262-4	7.647	7.609	428.1E6	154.6E6	430.639	536.628
40) L8 AR-1262-5	8.144	8.102	204.4E6	46213264	470.806	464.439
41) L9 AR-1268-1	7.585	7.545	153.1E6	61564164	87.448	118.881 #

Data Path : Z:\pestpcbsrv\HPCHEM1\ECD\_0\Data\P0072425\  
 Data File : P0112476.D  
 Signal(s) : Signal #1: ECD1A.ch Signal #2: ECD2B.ch  
 Acq On : 24 Jul 2025 19:01  
 Operator : YP/AJ  
 Sample : Q2688-09 10X  
 Misc :  
 ALS Vial : 24 Sample Multiplier: 1

Instrument :  
 ECD\_0  
 ClientSampleId :  
 SOM-81

Integration File signal 1: autoint1.e  
 Integration File signal 2: autoint2.e  
 Quant Time: Jul 24 23:47:06 2025  
 Quant Method : Z:\pestpcbsrv\HPCHEM1\ECD\_0\methods\P0072325.M  
 Quant Title : GC EXTRACTABLES  
 QLast Update : Thu Jul 24 04:54:06 2025  
 Response via : Initial Calibration  
 Integrator: ChemStation

Volume Inj. : 2 µl  
 Signal #1 Phase : ZB-MR1 Signal #2 Phase: ZB-MR2  
 Signal #1 Info : 30Mx0.32mmx 0.50µ Signal #2 Info : 30M x 0.32mm x 0.25µm

	Compound	RT#1	RT#2	Resp#1	Resp#2	ng/ml	ng/ml
42)	L9 AR-1268-2	7.647	7.609	428.1E6	154.6E6	290.645	363.720 #
43)	L9 AR-1268-3	7.858	7.817	11734309	1747307	9.371	5.439 #
44)	L9 AR-1268-4	8.144	8.102	204.4E6	46213264	424.100	415.230
45)	L9 AR-1268-5	8.438	8.389	41856893	11400522	12.468	15.580

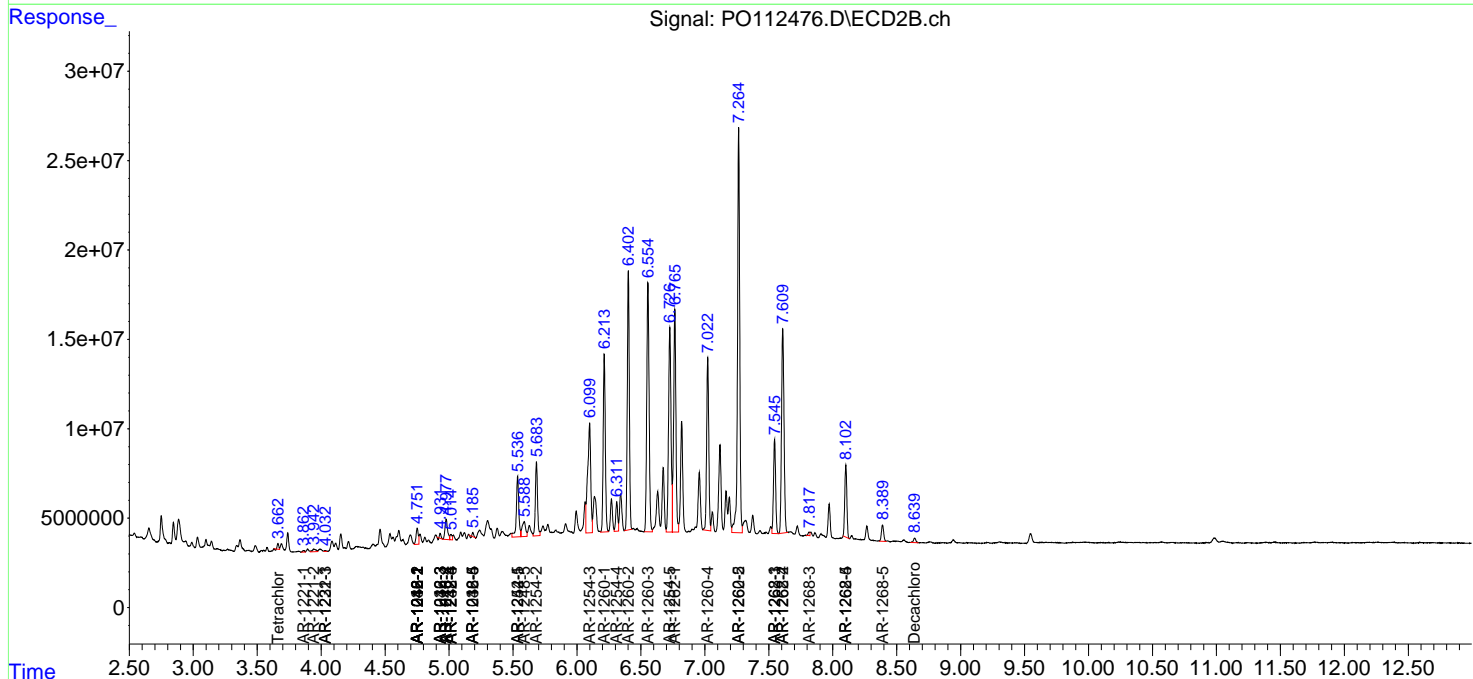
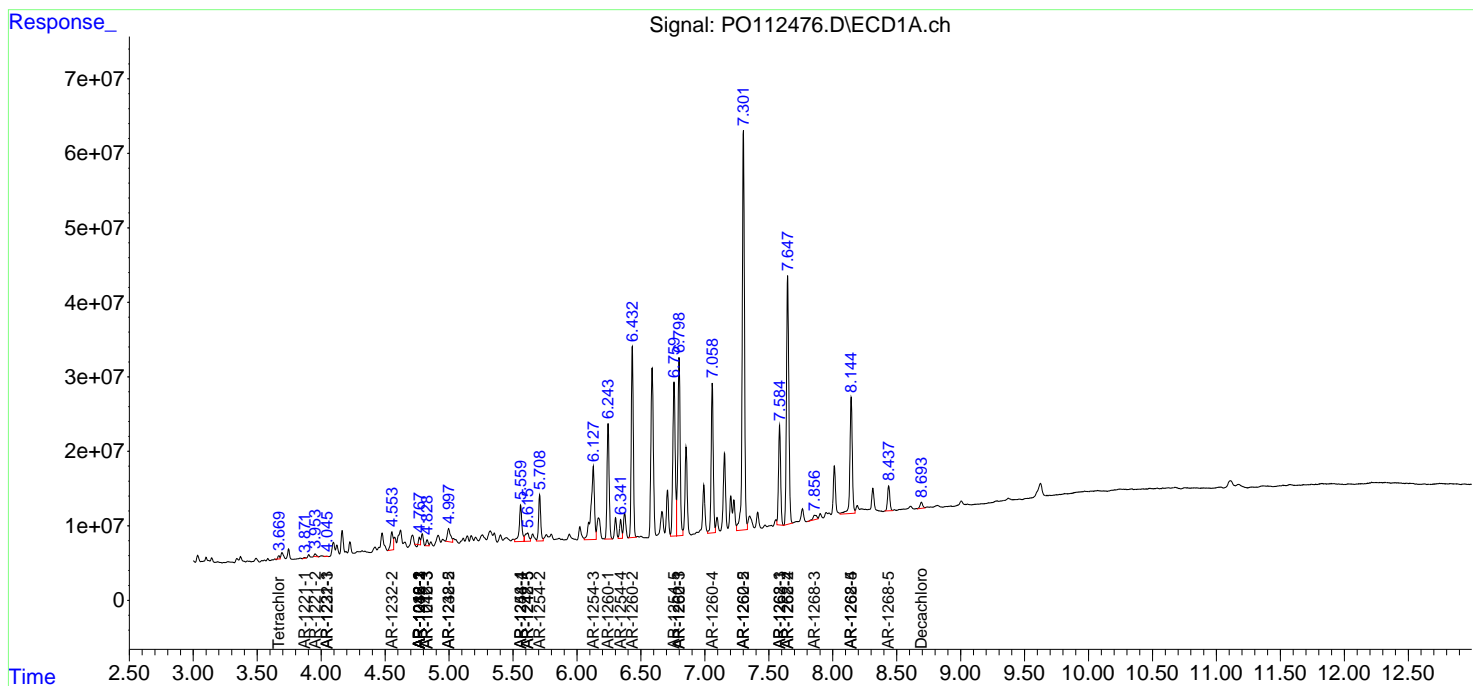
(f)=RT Delta > 1/2 Window (#)=Amounts differ by > 25% (m)=manual int.

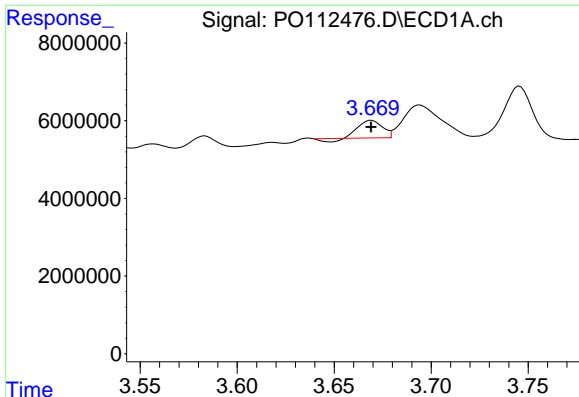
Data Path : Z:\pestpcbsrv\HPCHEM1\ECD\_O\Data\PO072425\  
 Data File : PO112476.D  
 Signal(s) : Signal #1: ECD1A.ch Signal #2: ECD2B.ch  
 Acq On : 24 Jul 2025 19:01  
 Operator : YP/AJ  
 Sample : Q2688-09 10X  
 Misc :  
 ALS Vial : 24 Sample Multiplier: 1

Instrument :  
 ECD\_O  
 ClientSampleId :  
 SOM-81

Integration File signal 1: autoint1.e  
 Integration File signal 2: autoint2.e  
 Quant Time: Jul 24 23:47:06 2025  
 Quant Method : Z:\pestpcbsrv\HPCHEM1\ECD\_O\methods\PO072325.M  
 Quant Title : GC EXTRACTABLES  
 QLast Update : Thu Jul 24 04:54:06 2025  
 Response via : Initial Calibration  
 Integrator: ChemStation

Volume Inj. : 2 µl  
 Signal #1 Phase : ZB-MR1 Signal #2 Phase: ZB-MR2  
 Signal #1 Info : 30Mx0.32mmx 0.50µ Signal #2 Info : 30M x 0.32mm x 0.25µm

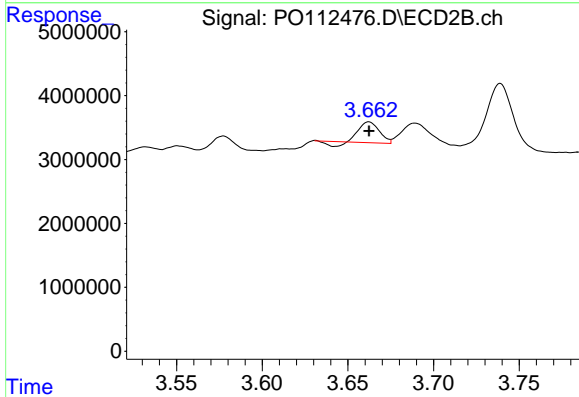




#1 Tetrachloro-m-xylene

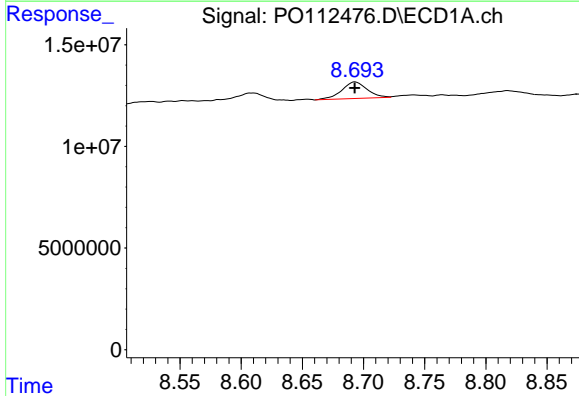
R.T.: 3.669 min  
 Delta R.T.: 0.000 min  
 Response: 3495316  
 Conc: 0.43 ng/ml

Instrument :  
 ECD\_O  
 ClientSampleId :  
 SOM-81



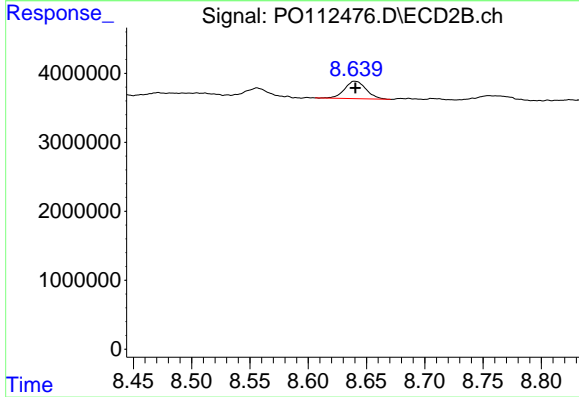
#1 Tetrachloro-m-xylene

R.T.: 3.662 min  
 Delta R.T.: 0.000 min  
 Response: 2351743  
 Conc: 0.47 ng/ml



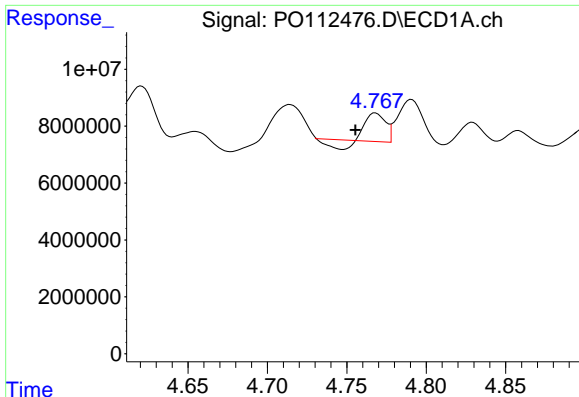
#2 Decachlorobiphenyl

R.T.: 8.693 min  
 Delta R.T.: 0.000 min  
 Response: 11800733  
 Conc: 1.61 ng/ml



#2 Decachlorobiphenyl

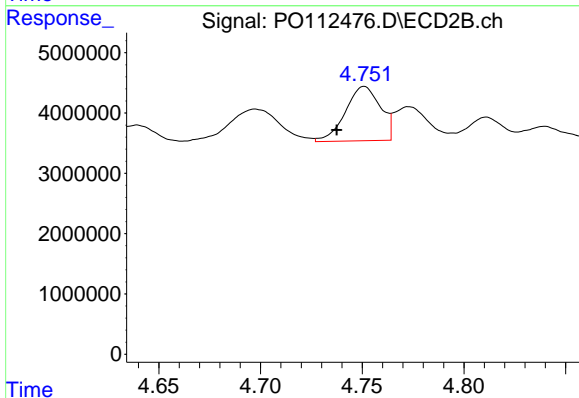
R.T.: 8.640 min  
 Delta R.T.: 0.000 min  
 Response: 3253724  
 Conc: 1.84 ng/ml



#3 AR-1016-1

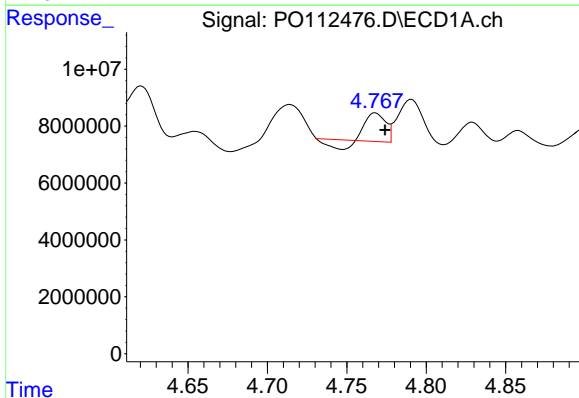
R.T.: 4.768 min  
 Delta R.T.: 0.013 min  
 Response: 6371005  
 Conc: 23.74 ng/ml

Instrument :  
 ECD\_O  
 ClientSampleId :  
 SOM-81



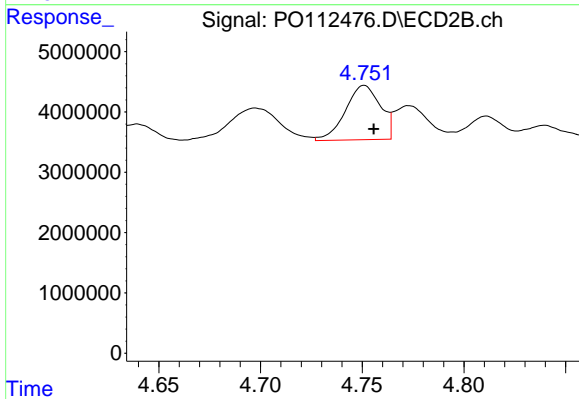
#3 AR-1016-1

R.T.: 4.751 min  
 Delta R.T.: 0.013 min  
 Response: 10791110  
 Conc: 61.66 ng/ml



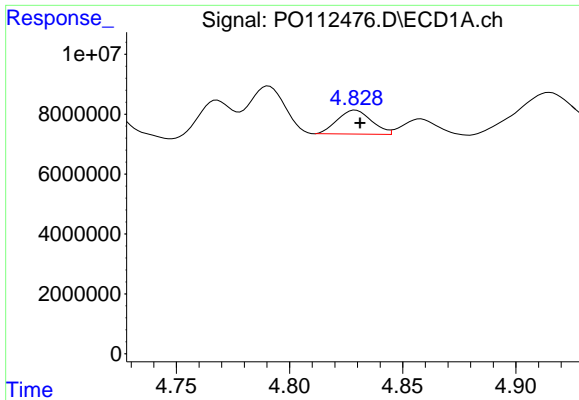
#4 AR-1016-2

R.T.: 4.768 min  
 Delta R.T.: -0.006 min  
 Response: 6371005  
 Conc: 15.69 ng/ml



#4 AR-1016-2

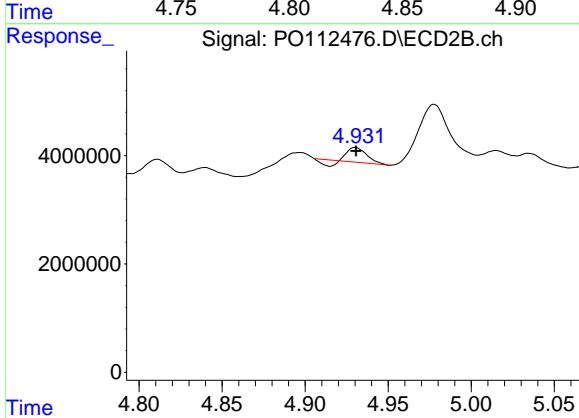
R.T.: 4.751 min  
 Delta R.T.: -0.005 min  
 Response: 10791110  
 Conc: 41.43 ng/ml



#5 AR-1016-3

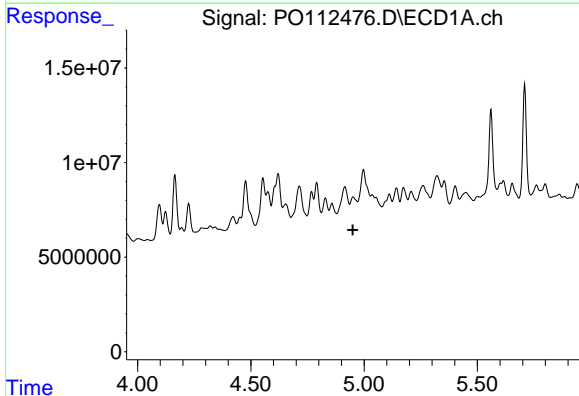
R.T.: 4.829 min  
 Delta R.T.: -0.002 min  
 Response: 8408586  
 Conc: 32.13 ng/ml

Instrument :  
 ECD\_O  
 ClientSampleId :  
 SOM-81



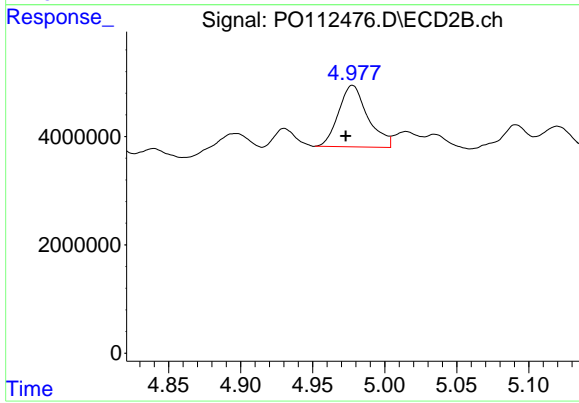
#5 AR-1016-3

R.T.: 4.930 min  
 Delta R.T.: 0.000 min  
 Response: 1690667  
 Conc: 12.43 ng/ml



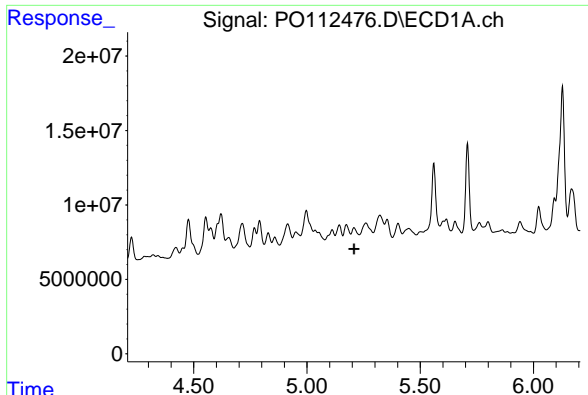
#6 AR-1016-4

R.T.: 4.951 min  
 Delta R.T.: 0.000 min  
 Response: -3255394  
 Conc: N.D.



#6 AR-1016-4

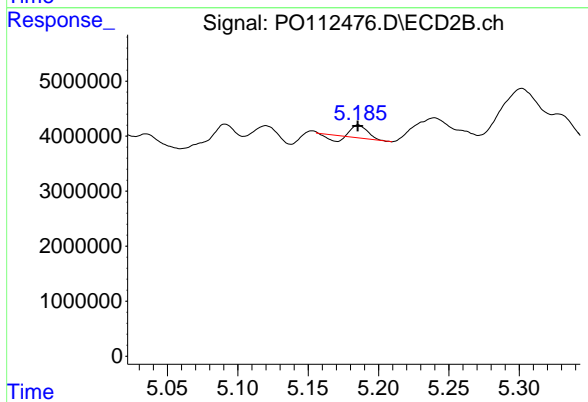
R.T.: 4.978 min  
 Delta R.T.: 0.005 min  
 Response: 16116338  
 Conc: 145.08 ng/ml



#7 AR-1016-5

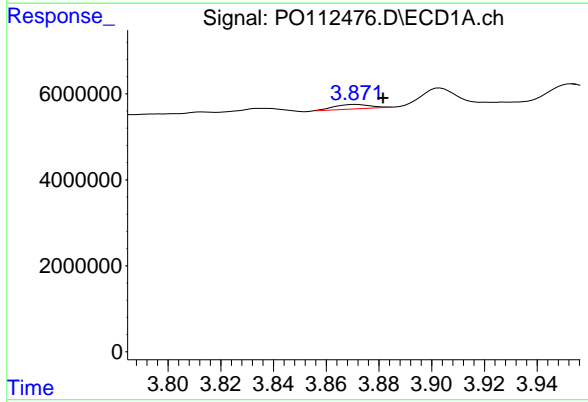
R.T.: 5.208 min  
 Delta R.T.: 0.000 min  
 Response: -1078864  
 Conc: N.D.

Instrument :  
 ECD\_O  
 ClientSampleId :  
 SOM-81



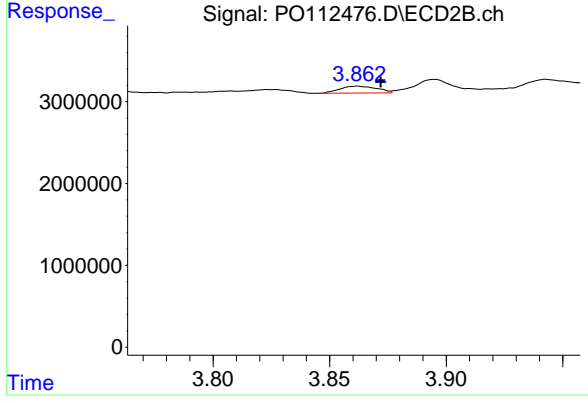
#7 AR-1016-5

R.T.: 5.186 min  
 Delta R.T.: 0.000 min  
 Response: 1273776  
 Conc: 8.89 ng/ml



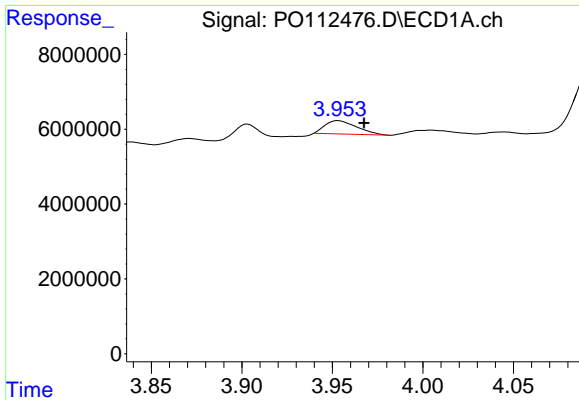
#8 AR-1221-1

R.T.: 3.871 min  
 Delta R.T.: -0.010 min  
 Response: 971261  
 Conc: 10.05 ng/ml



#8 AR-1221-1

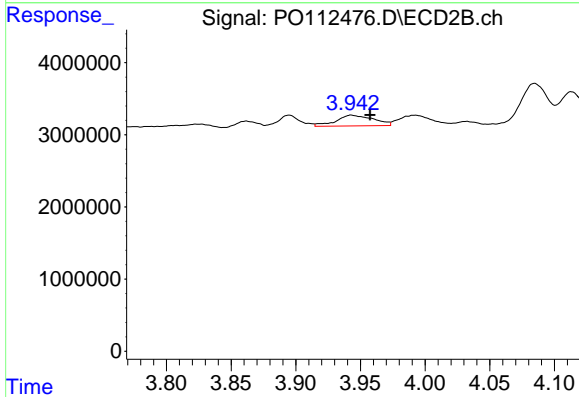
R.T.: 3.862 min  
 Delta R.T.: -0.010 min  
 Response: 921016  
 Conc: 13.69 ng/ml



#9 AR-1221-2

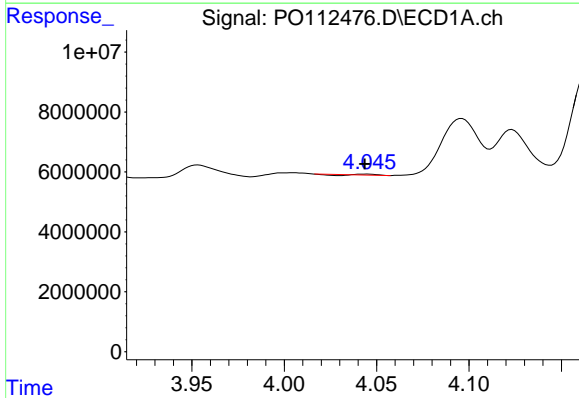
R.T.: 3.953 min  
 Delta R.T.: -0.014 min  
 Response: 4364527  
 Conc: 60.73 ng/ml

Instrument :  
 ECD\_O  
 ClientSampleId :  
 SOM-81



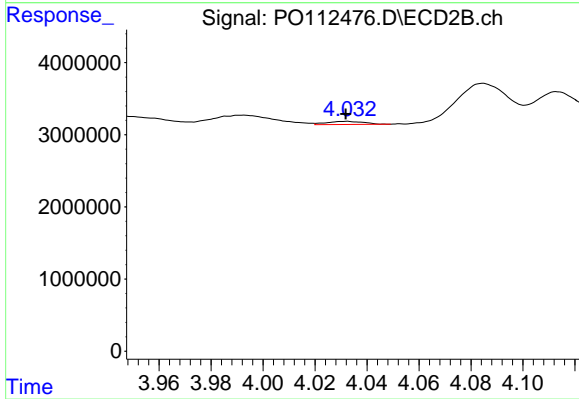
#9 AR-1221-2

R.T.: 3.943 min  
 Delta R.T.: -0.015 min  
 Response: 3010846  
 Conc: 59.35 ng/ml



#10 AR-1221-3

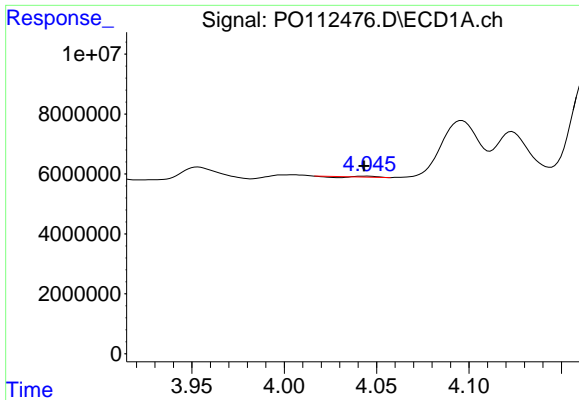
R.T.: 4.045 min  
 Delta R.T.: 0.001 min  
 Response: 73373  
 Conc: 0.31 ng/ml



#10 AR-1221-3

R.T.: 4.032 min  
 Delta R.T.: 0.000 min  
 Response: 437428  
 Conc: 2.76 ng/ml

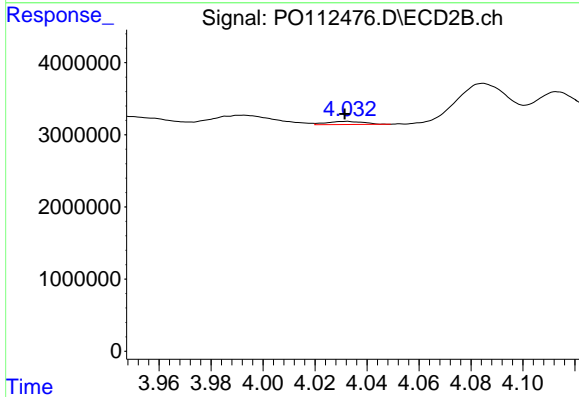




#11 AR-1232-1

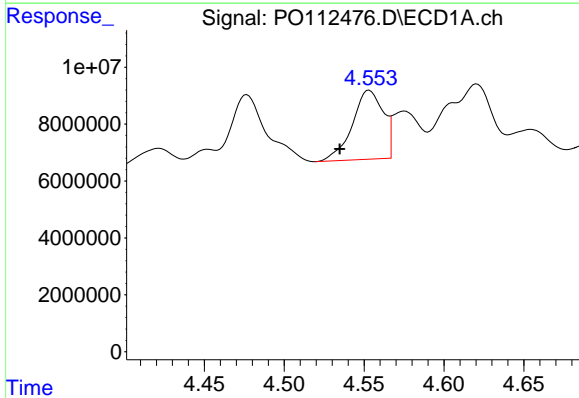
R.T.: 4.045 min  
 Delta R.T.: 0.002 min  
 Response: 73373  
 Conc: 0.39 ng/ml

Instrument :  
 ECD\_O  
 ClientSampleId :  
 SOM-81



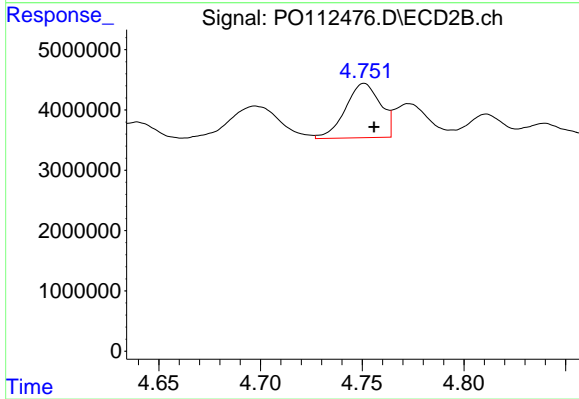
#11 AR-1232-1

R.T.: 4.032 min  
 Delta R.T.: 0.000 min  
 Response: 437428  
 Conc: 3.46 ng/ml



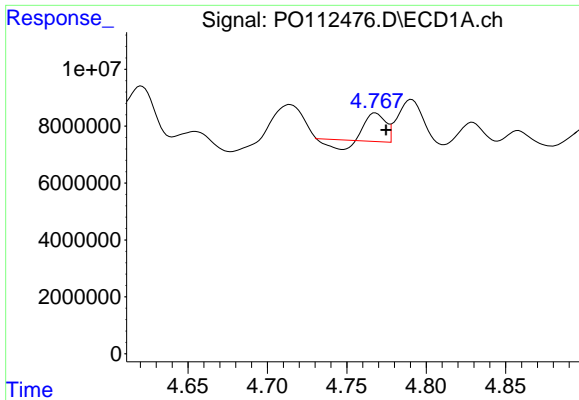
#12 AR-1232-2

R.T.: 4.553 min  
 Delta R.T.: 0.019 min  
 Response: 32545677  
 Conc: 302.40 ng/ml



#12 AR-1232-2

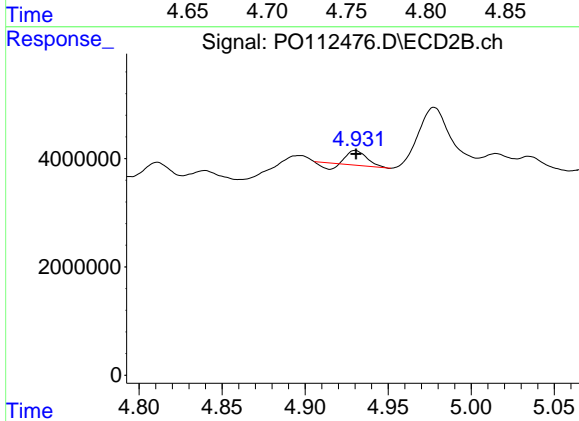
R.T.: 4.751 min  
 Delta R.T.: -0.005 min  
 Response: 10791110  
 Conc: 82.28 ng/ml



#13 AR-1232-3

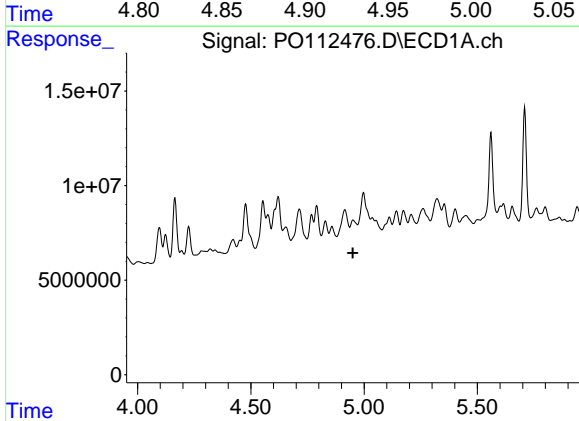
R.T.: 4.768 min  
 Delta R.T.: -0.007 min  
 Response: 6371005  
 Conc: 30.81 ng/ml

Instrument :  
 ECD\_O  
 ClientSampleId :  
 SOM-81



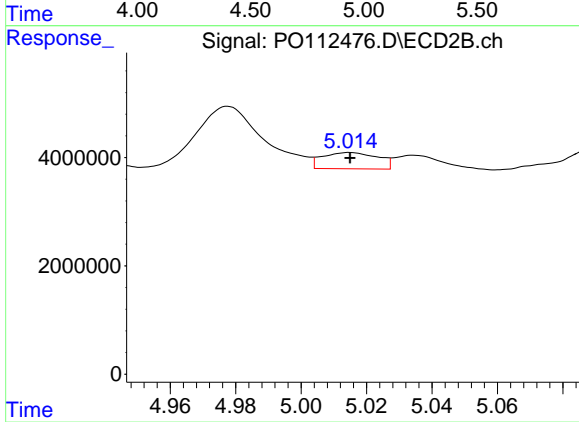
#13 AR-1232-3

R.T.: 4.930 min  
 Delta R.T.: 0.000 min  
 Response: 1690667  
 Conc: 25.16 ng/ml



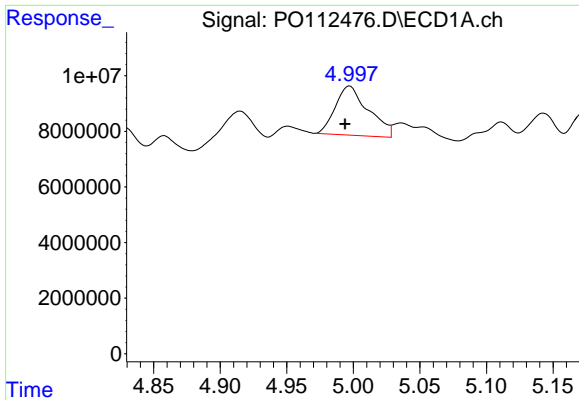
#14 AR-1232-4

R.T.: 4.951 min  
 Delta R.T.: 0.000 min  
 Response: -3255394  
 Conc: N.D.



#14 AR-1232-4

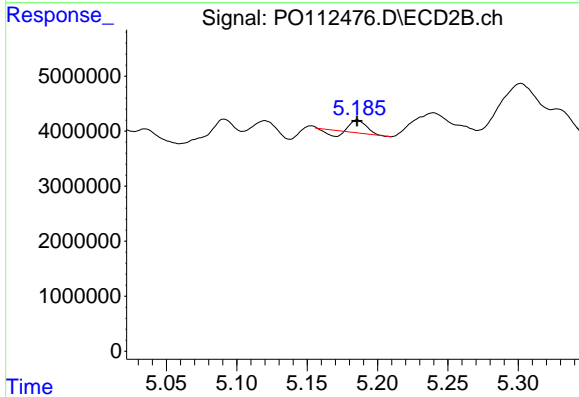
R.T.: 5.015 min  
 Delta R.T.: 0.000 min  
 Response: 3532747  
 Conc: 59.05 ng/ml



#15 AR-1232-5

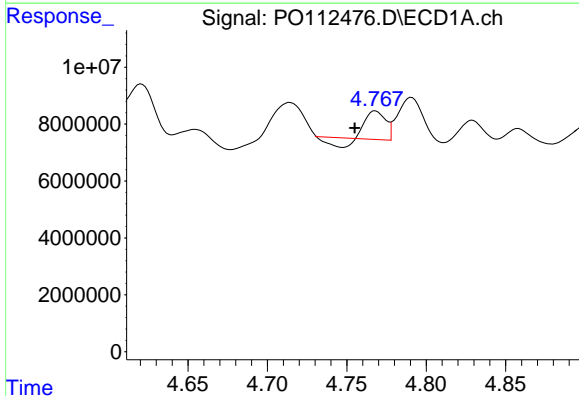
R.T.: 4.997 min  
 Delta R.T.: 0.003 min  
 Response: 30526284  
 Conc: 449.70 ng/ml

Instrument :  
 ECD\_O  
 ClientSampleId :  
 SOM-81



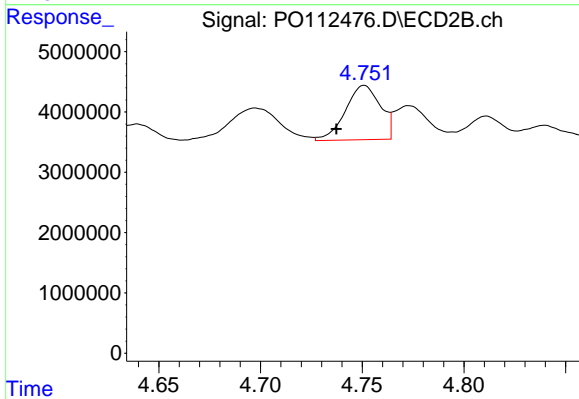
#15 AR-1232-5

R.T.: 5.186 min  
 Delta R.T.: 0.000 min  
 Response: 1273776  
 Conc: 19.54 ng/ml



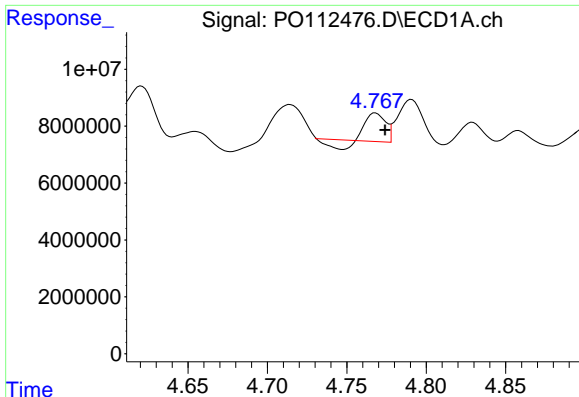
#16 AR-1242-1

R.T.: 4.768 min  
 Delta R.T.: 0.013 min  
 Response: 6371005  
 Conc: 25.73 ng/ml



#16 AR-1242-1

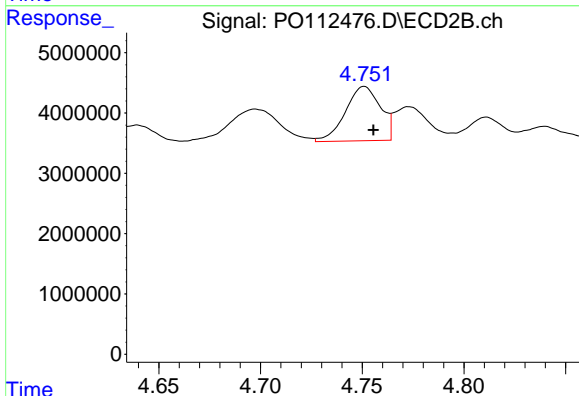
R.T.: 4.751 min  
 Delta R.T.: 0.014 min  
 Response: 10791110  
 Conc: 68.13 ng/ml



#17 AR-1242-2

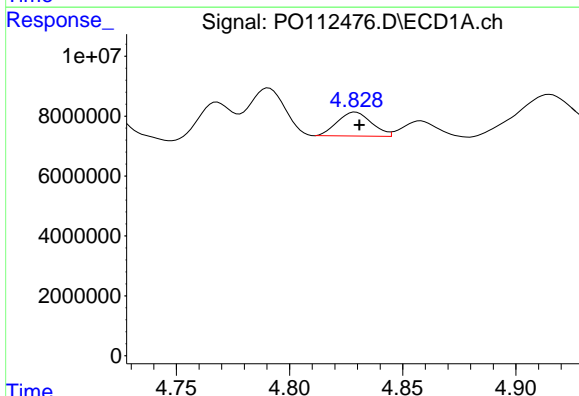
R.T.: 4.768 min  
 Delta R.T.: -0.006 min  
 Response: 6371005  
 Conc: 17.23 ng/ml

Instrument :  
 ECD\_O  
 ClientSampleId :  
 SOM-81



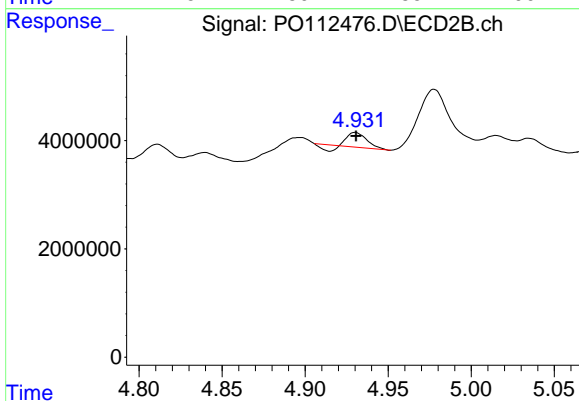
#17 AR-1242-2

R.T.: 4.751 min  
 Delta R.T.: -0.004 min  
 Response: 10791110  
 Conc: 46.18 ng/ml



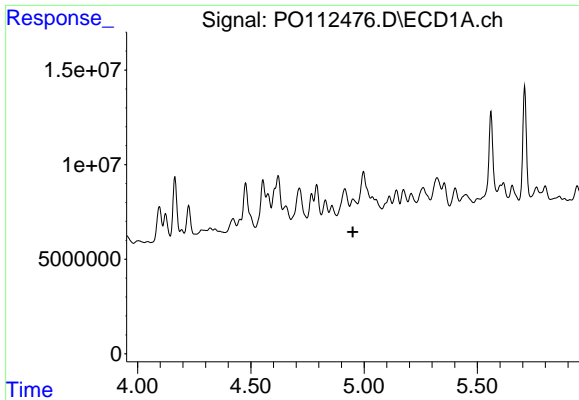
#18 AR-1242-3

R.T.: 4.829 min  
 Delta R.T.: -0.002 min  
 Response: 8408586  
 Conc: 35.53 ng/ml



#18 AR-1242-3

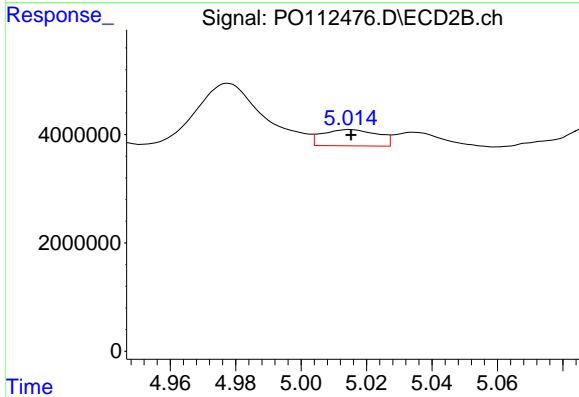
R.T.: 4.930 min  
 Delta R.T.: 0.000 min  
 Response: 1690667  
 Conc: 13.95 ng/ml



#19 AR-1242-4

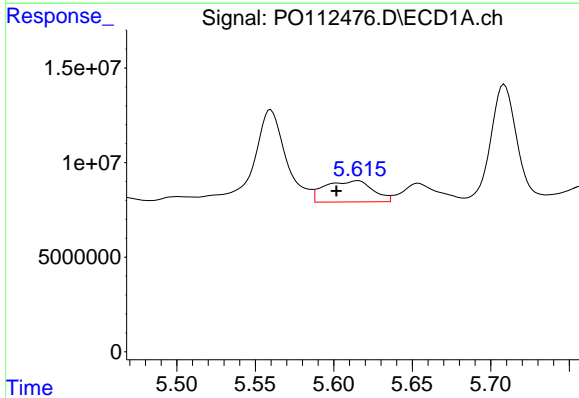
R.T.: 4.951 min  
 Delta R.T.: 0.000 min  
 Response: -3255394  
 Conc: N.D.

Instrument :  
 ECD\_O  
 ClientSampleId :  
 SOM-81



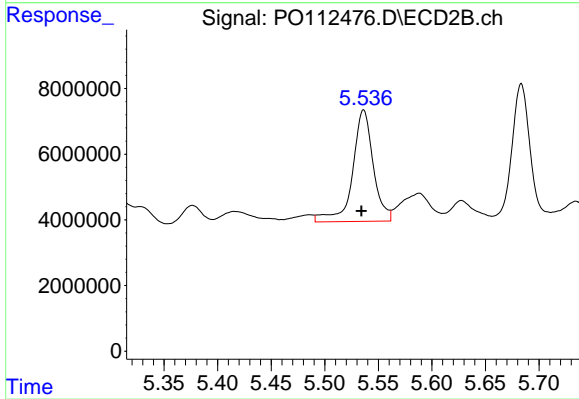
#19 AR-1242-4

R.T.: 5.015 min  
 Delta R.T.: 0.000 min  
 Response: 3532747  
 Conc: 28.78 ng/ml



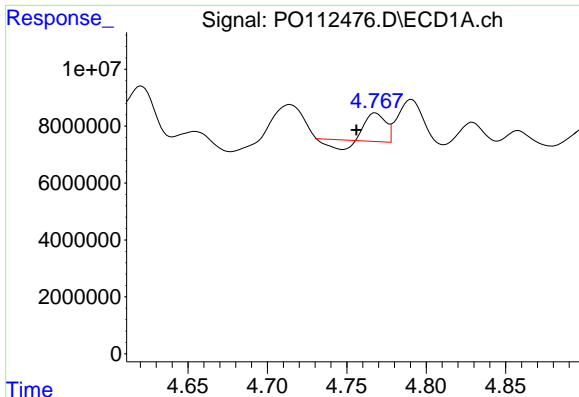
#20 AR-1242-5

R.T.: 5.615 min  
 Delta R.T.: 0.014 min  
 Response: 23718065  
 Conc: 110.88 ng/ml



#20 AR-1242-5

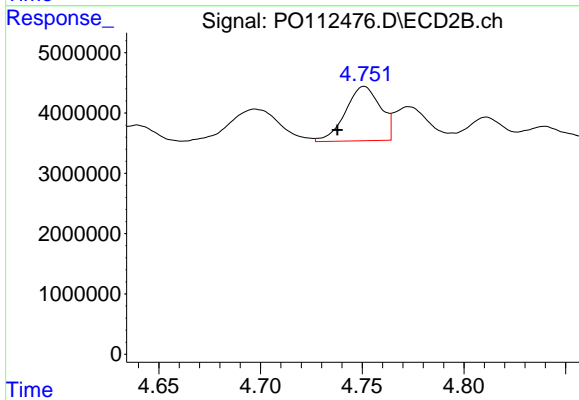
R.T.: 5.536 min  
 Delta R.T.: 0.002 min  
 Response: 45618389  
 Conc: 283.39 ng/ml



#21 AR-1248-1

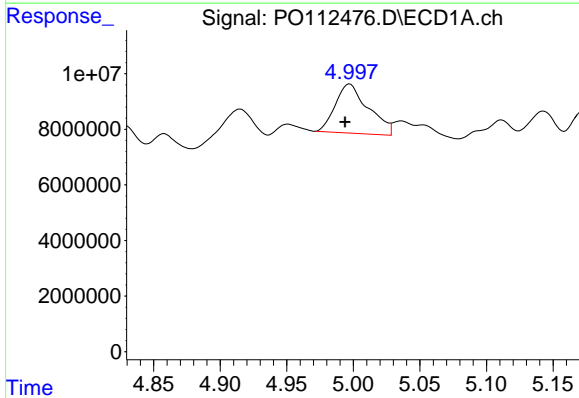
R.T.: 4.768 min  
 Delta R.T.: 0.012 min  
 Response: 6371005  
 Conc: 34.03 ng/ml

Instrument :  
 ECD\_O  
 ClientSampleId :  
 SOM-81



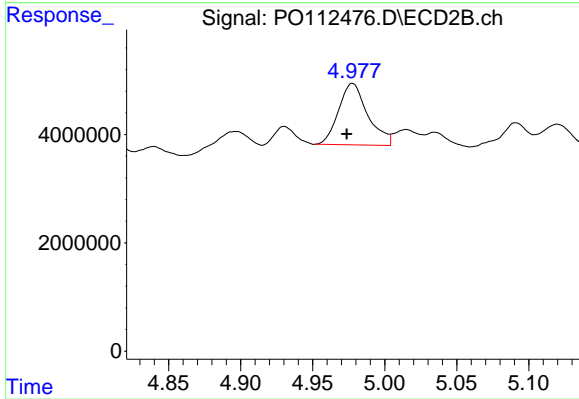
#21 AR-1248-1

R.T.: 4.751 min  
 Delta R.T.: 0.013 min  
 Response: 10791110  
 Conc: 88.81 ng/ml



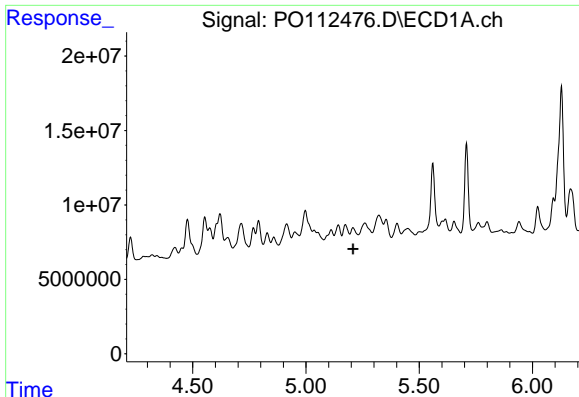
#22 AR-1248-2

R.T.: 4.997 min  
 Delta R.T.: 0.003 min  
 Response: 30526284  
 Conc: 119.66 ng/ml



#22 AR-1248-2

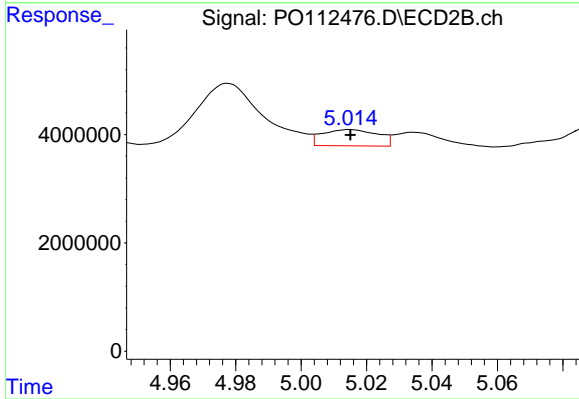
R.T.: 4.978 min  
 Delta R.T.: 0.004 min  
 Response: 16116338  
 Conc: 95.21 ng/ml



#23 AR-1248-3

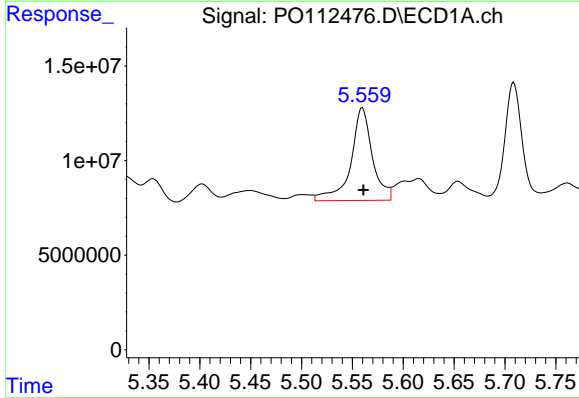
R.T.: 5.208 min  
 Delta R.T.: 0.000 min  
 Response: -1078864  
 Conc: N.D.

Instrument :  
 ECD\_O  
 ClientSampleId :  
 SOM-81



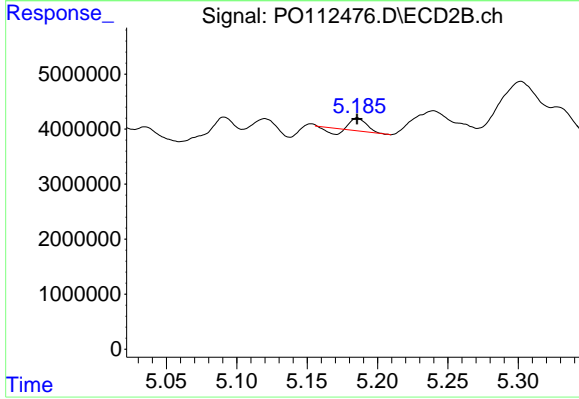
#23 AR-1248-3

R.T.: 5.015 min  
 Delta R.T.: 0.000 min  
 Response: 3532747  
 Conc: 19.89 ng/ml



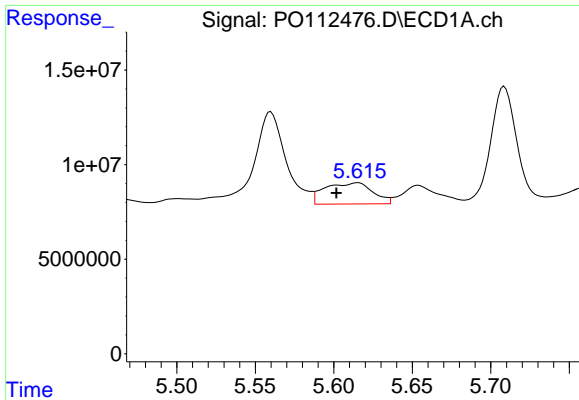
#24 AR-1248-4

R.T.: 5.560 min  
 Delta R.T.: 0.000 min  
 Response: 72260385  
 Conc: 142.22 ng/ml



#24 AR-1248-4

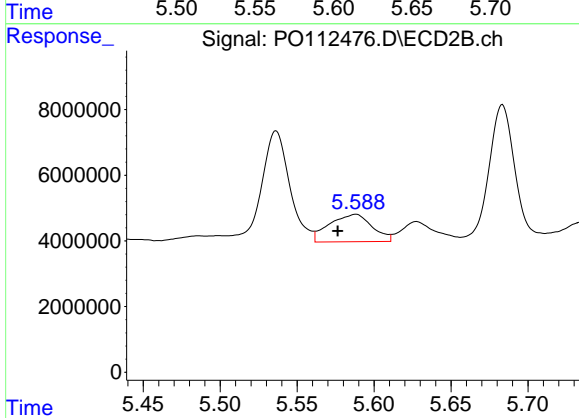
R.T.: 5.186 min  
 Delta R.T.: 0.000 min  
 Response: 1273776  
 Conc: 6.11 ng/ml



#25 AR-1248-5

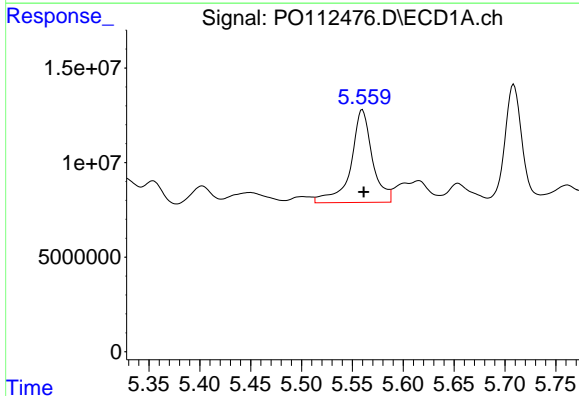
R.T.: 5.615 min  
 Delta R.T.: 0.013 min  
 Response: 23718065  
 Conc: 67.85 ng/ml

Instrument :  
 ECD\_O  
 ClientSampleId :  
 SOM-81



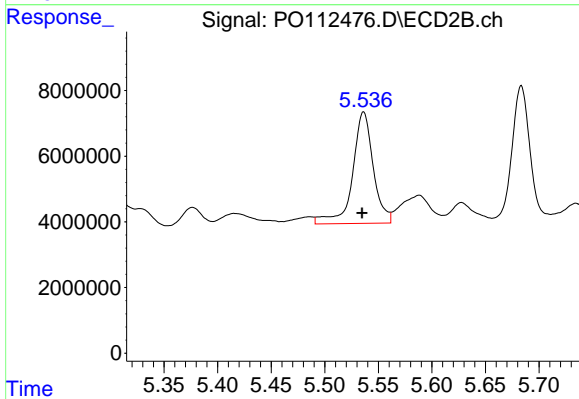
#25 AR-1248-5

R.T.: 5.588 min  
 Delta R.T.: 0.012 min  
 Response: 16046902  
 Conc: 74.72 ng/ml



#26 AR-1254-1

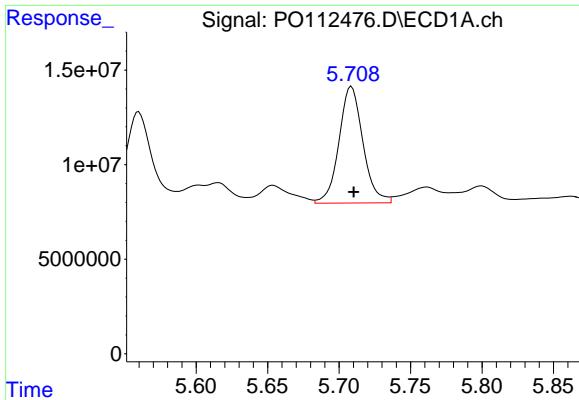
R.T.: 5.560 min  
 Delta R.T.: -0.001 min  
 Response: 72260385  
 Conc: 131.63 ng/ml



#26 AR-1254-1

R.T.: 5.536 min  
 Delta R.T.: 0.001 min  
 Response: 45618389  
 Conc: 138.82 ng/ml

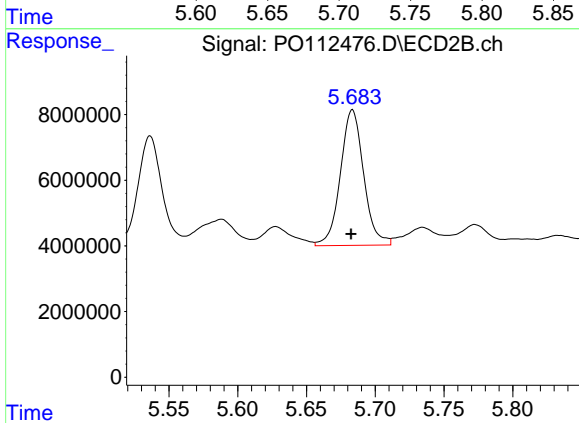




#27 AR-1254-2

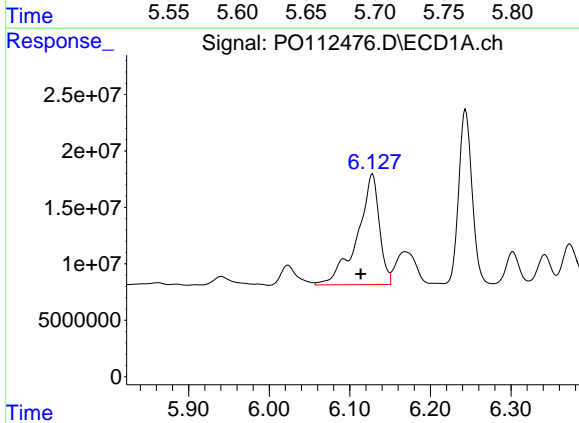
R.T.: 5.709 min  
 Delta R.T.: -0.002 min  
 Response: 72068879  
 Conc: 148.31 ng/ml

Instrument :  
 ECD\_O  
 ClientSampleId :  
 SOM-81



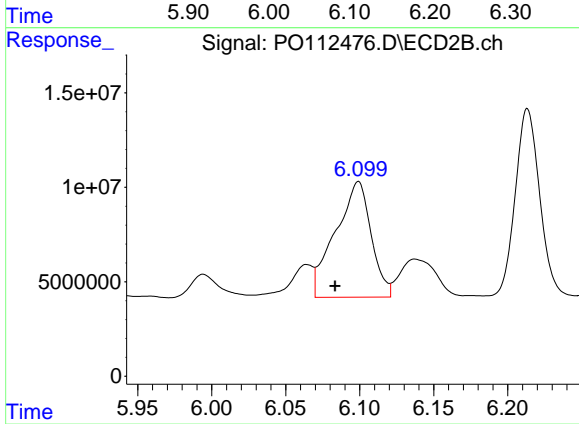
#27 AR-1254-2

R.T.: 5.683 min  
 Delta R.T.: 0.000 min  
 Response: 48714473  
 Conc: 168.28 ng/ml



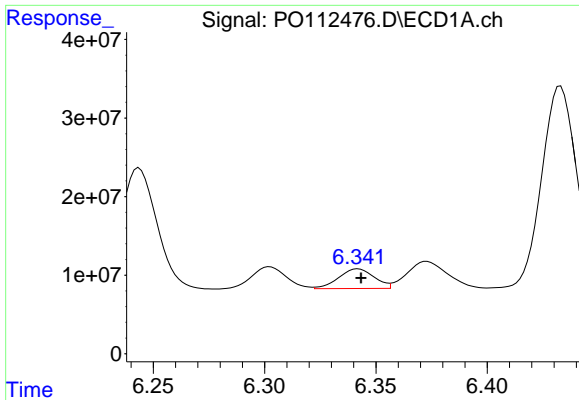
#28 AR-1254-3

R.T.: 6.128 min  
 Delta R.T.: 0.014 min  
 Response: 185633328  
 Conc: 249.41 ng/ml



#28 AR-1254-3

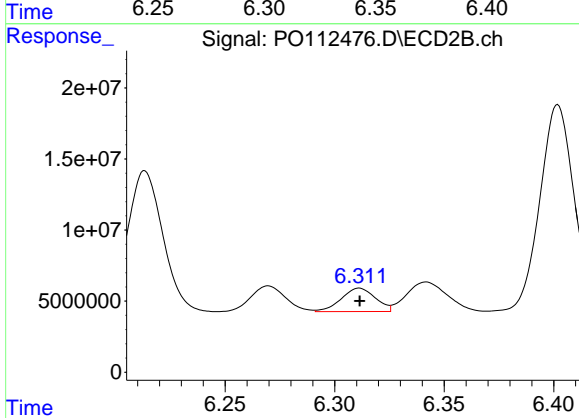
R.T.: 6.099 min  
 Delta R.T.: 0.016 min  
 Response: 102784196  
 Conc: 240.45 ng/ml



#29 AR-1254-4

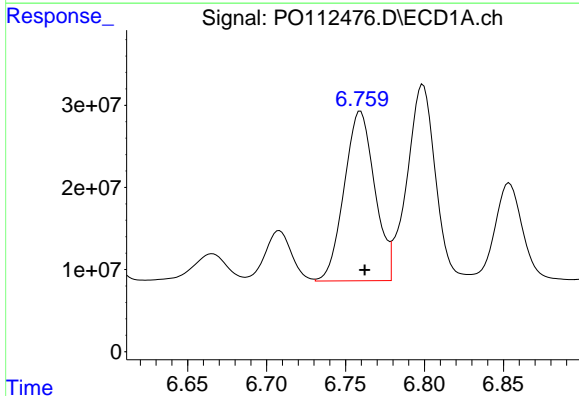
R.T.: 6.342 min  
 Delta R.T.: -0.001 min  
 Response: 27683291  
 Conc: 50.36 ng/ml

Instrument :  
 ECD\_O  
 ClientSampleId :  
 SOM-81



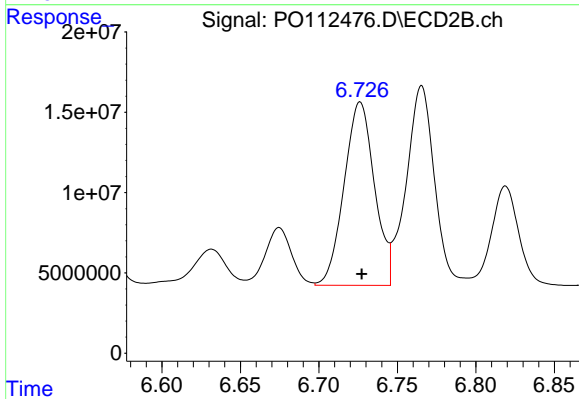
#29 AR-1254-4

R.T.: 6.311 min  
 Delta R.T.: 0.000 min  
 Response: 17878096  
 Conc: 65.50 ng/ml



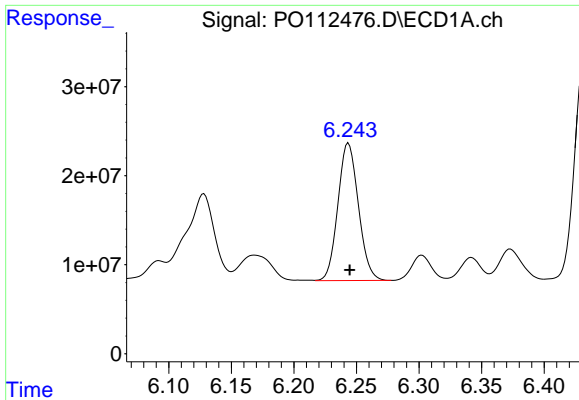
#30 AR-1254-5

R.T.: 6.759 min  
 Delta R.T.: -0.003 min  
 Response: 277443076  
 Conc: 391.97 ng/ml



#30 AR-1254-5

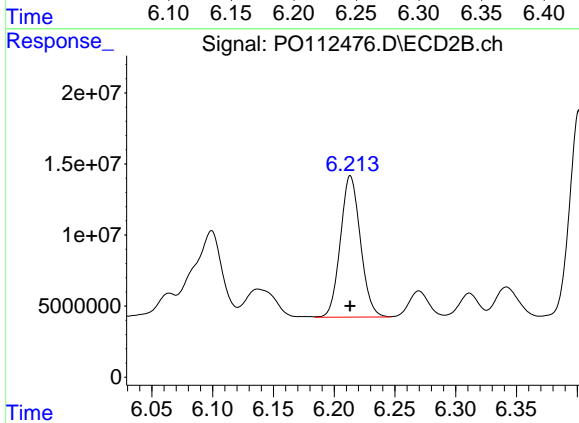
R.T.: 6.726 min  
 Delta R.T.: 0.000 min  
 Response: 153739491  
 Conc: 460.27 ng/ml



#31 AR-1260-1

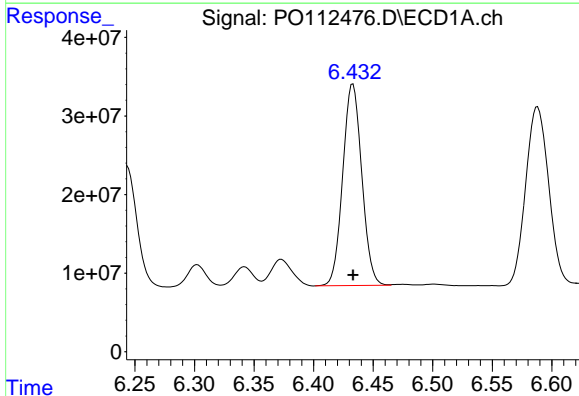
R.T.: 6.244 min  
 Delta R.T.: -0.001 min  
 Response: 176764754  
 Conc: 402.35 ng/ml

Instrument :  
 ECD\_O  
 ClientSampleId :  
 SOM-81



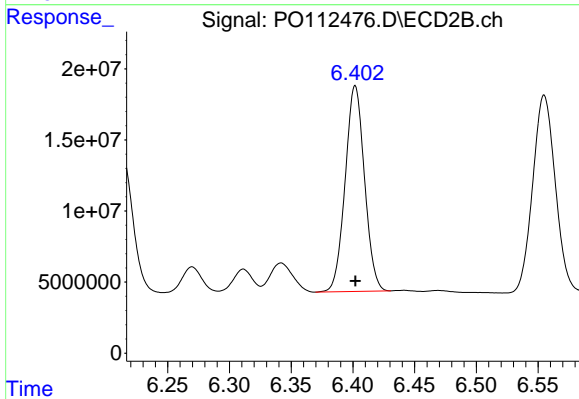
#31 AR-1260-1

R.T.: 6.213 min  
 Delta R.T.: 0.000 min  
 Response: 113848518  
 Conc: 458.12 ng/ml



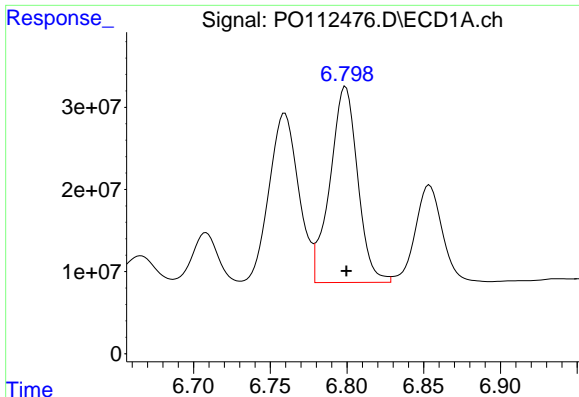
#32 AR-1260-2

R.T.: 6.433 min  
 Delta R.T.: 0.000 min  
 Response: 284973397  
 Conc: 414.27 ng/ml



#32 AR-1260-2

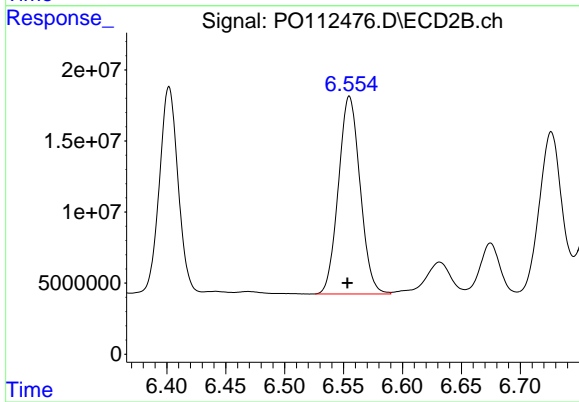
R.T.: 6.402 min  
 Delta R.T.: 0.000 min  
 Response: 157875340  
 Conc: 479.15 ng/ml



#33 AR-1260-3

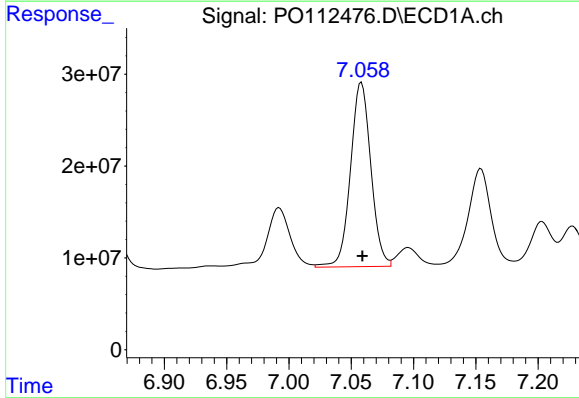
R.T.: 6.799 min  
 Delta R.T.: 0.000 min  
 Response: 299848337  
 Conc: 509.93 ng/ml

Instrument :  
 ECD\_O  
 ClientSampleId :  
 SOM-81



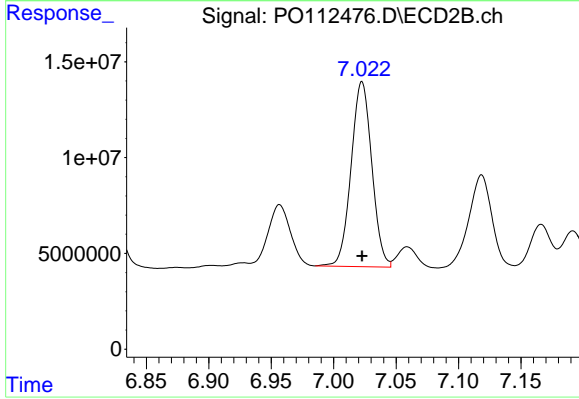
#33 AR-1260-3

R.T.: 6.555 min  
 Delta R.T.: 0.002 min  
 Response: 178131064  
 Conc: 693.33 ng/ml



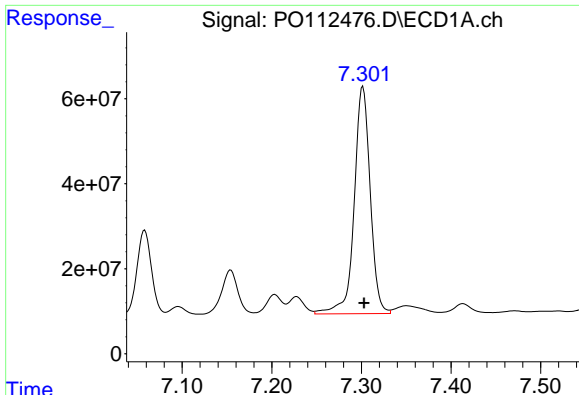
#34 AR-1260-4

R.T.: 7.058 min  
 Delta R.T.: 0.000 min  
 Response: 229411806  
 Conc: 508.67 ng/ml



#34 AR-1260-4

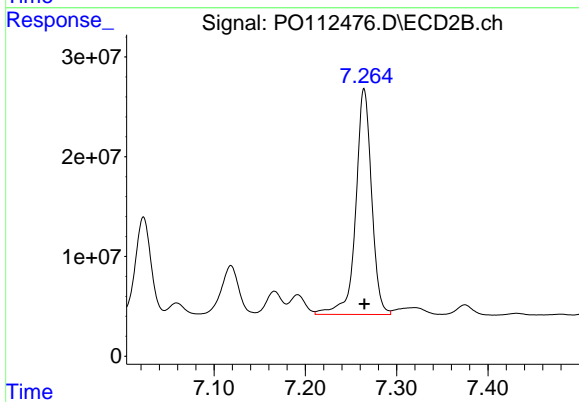
R.T.: 7.023 min  
 Delta R.T.: 0.000 min  
 Response: 111460532  
 Conc: 582.62 ng/ml



#35 AR-1260-5

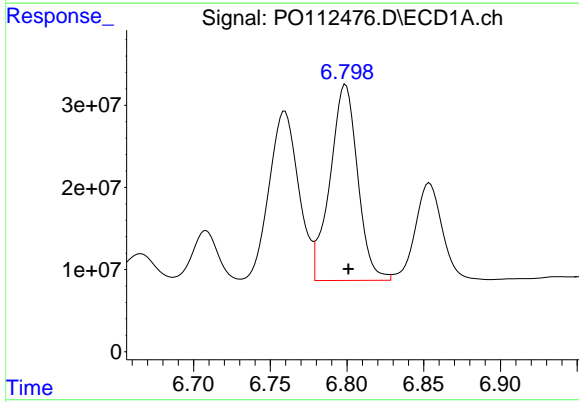
R.T.: 7.302 min  
 Delta R.T.: -0.001 min  
 Response: 664329255  
 Conc: 536.12 ng/ml

Instrument :  
 ECD\_O  
 ClientSampleId :  
 SOM-81



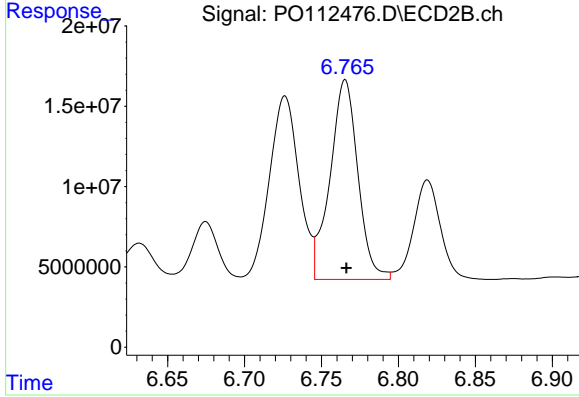
#35 AR-1260-5

R.T.: 7.264 min  
 Delta R.T.: 0.000 min  
 Response: 272937838  
 Conc: 662.16 ng/ml



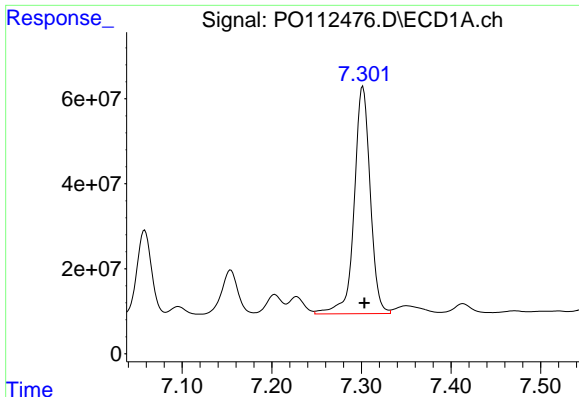
#36 AR-1262-1

R.T.: 6.799 min  
 Delta R.T.: -0.002 min  
 Response: 299848337  
 Conc: 322.69 ng/ml



#36 AR-1262-1

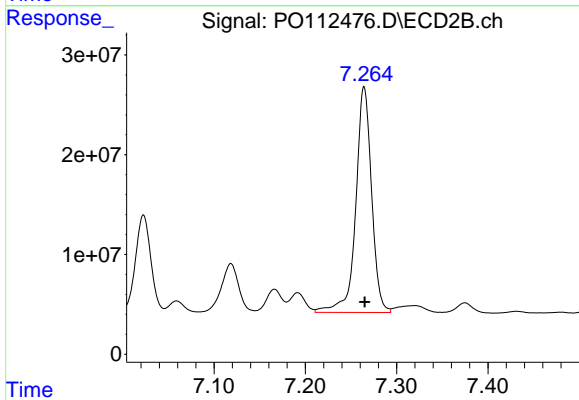
R.T.: 6.765 min  
 Delta R.T.: 0.000 min  
 Response: 156013298  
 Conc: 376.09 ng/ml



#37 AR-1262-2

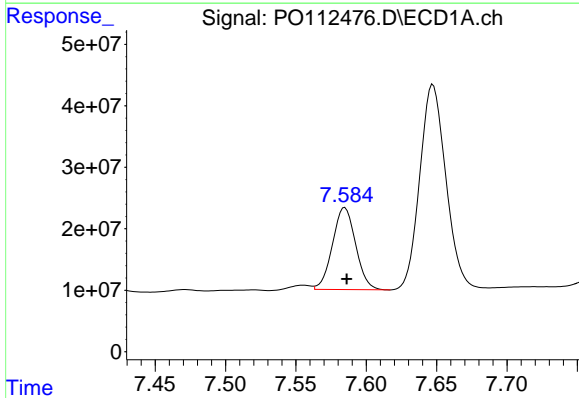
R.T.: 7.302 min  
 Delta R.T.: -0.002 min  
 Response: 664329255  
 Conc: 446.75 ng/ml

Instrument :  
 ECD\_O  
 ClientSampleId :  
 SOM-81



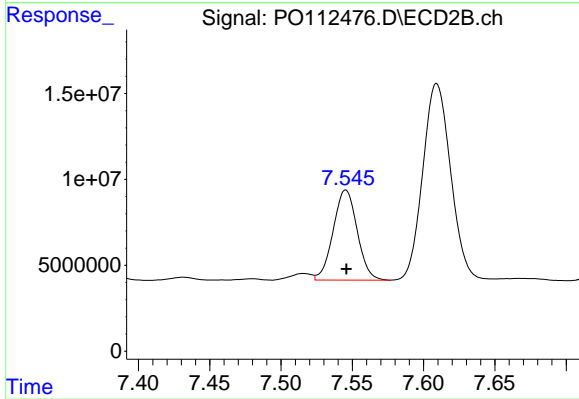
#37 AR-1262-2

R.T.: 7.264 min  
 Delta R.T.: 0.000 min  
 Response: 272937838  
 Conc: 529.42 ng/ml



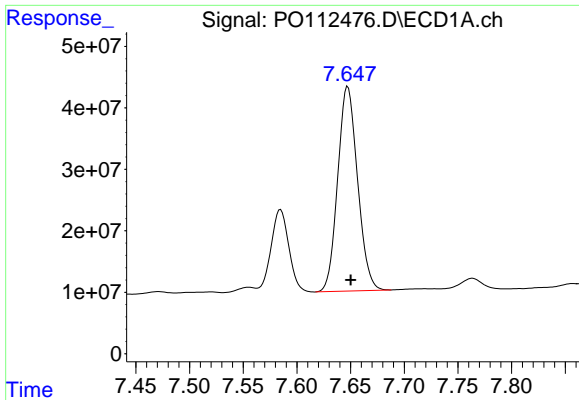
#38 AR-1262-3

R.T.: 7.585 min  
 Delta R.T.: -0.001 min  
 Response: 153134428  
 Conc: 259.44 ng/ml



#38 AR-1262-3

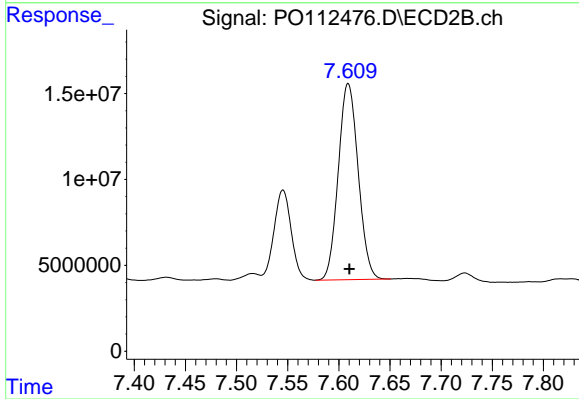
R.T.: 7.545 min  
 Delta R.T.: 0.000 min  
 Response: 61564164  
 Conc: 330.06 ng/ml



#39 AR-1262-4

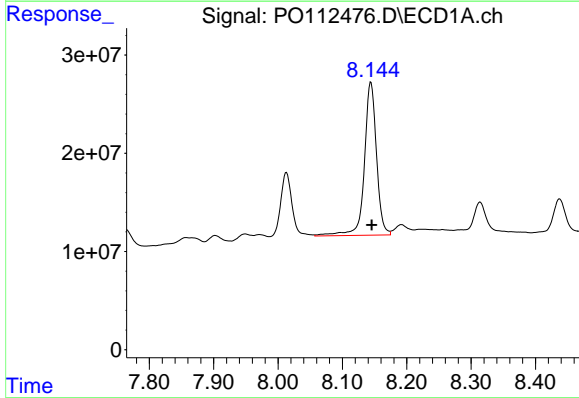
R.T.: 7.647 min  
 Delta R.T.: -0.003 min  
 Response: 428127247  
 Conc: 430.64 ng/ml

Instrument :  
 ECD\_O  
 ClientSampleId :  
 SOM-81



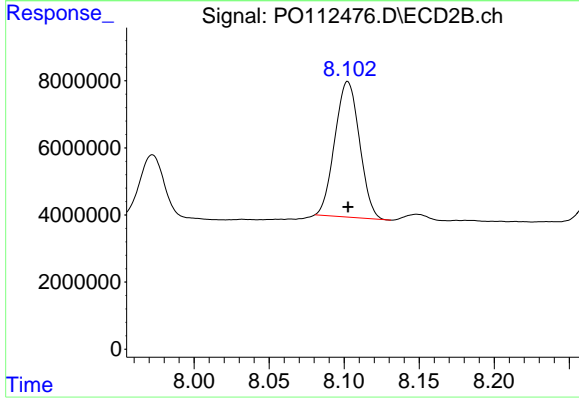
#39 AR-1262-4

R.T.: 7.609 min  
 Delta R.T.: -0.001 min  
 Response: 154604382  
 Conc: 536.63 ng/ml



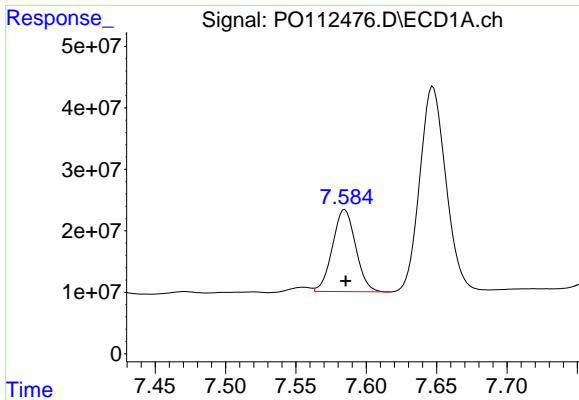
#40 AR-1262-5

R.T.: 8.144 min  
 Delta R.T.: -0.001 min  
 Response: 204358683  
 Conc: 470.81 ng/ml



#40 AR-1262-5

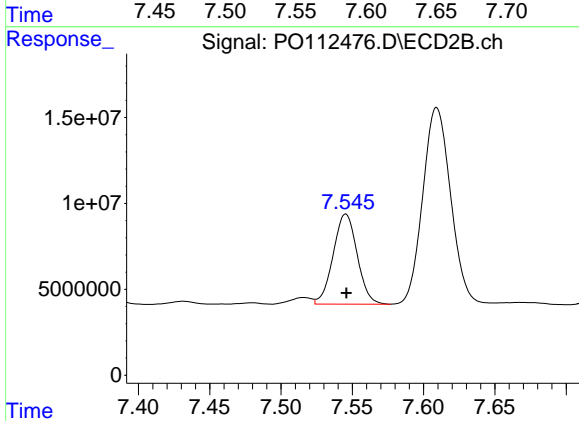
R.T.: 8.102 min  
 Delta R.T.: 0.000 min  
 Response: 46213264  
 Conc: 464.44 ng/ml



#41 AR-1268-1

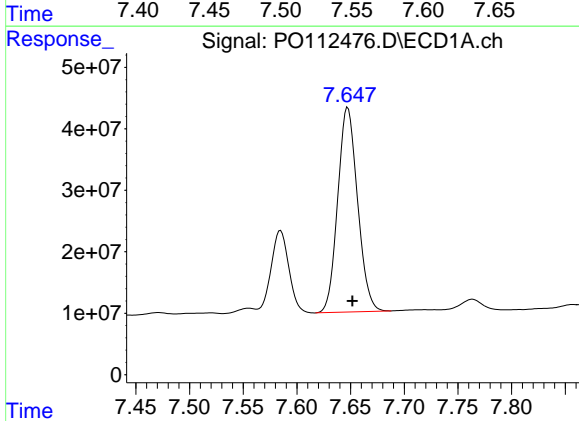
R.T.: 7.585 min  
 Delta R.T.: 0.000 min  
 Response: 153134428  
 Conc: 87.45 ng/ml

Instrument :  
 ECD\_O  
 ClientSampleId :  
 SOM-81



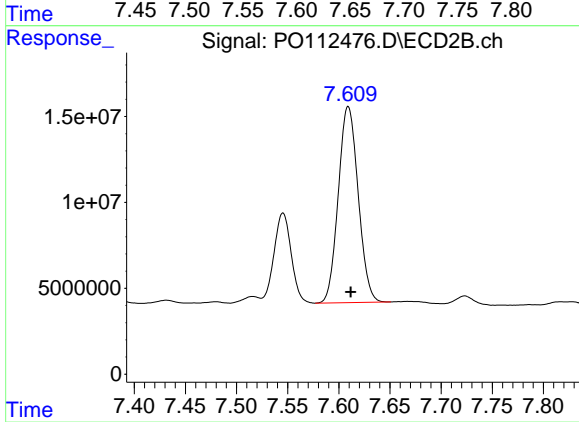
#41 AR-1268-1

R.T.: 7.545 min  
 Delta R.T.: 0.000 min  
 Response: 61564164  
 Conc: 118.88 ng/ml



#42 AR-1268-2

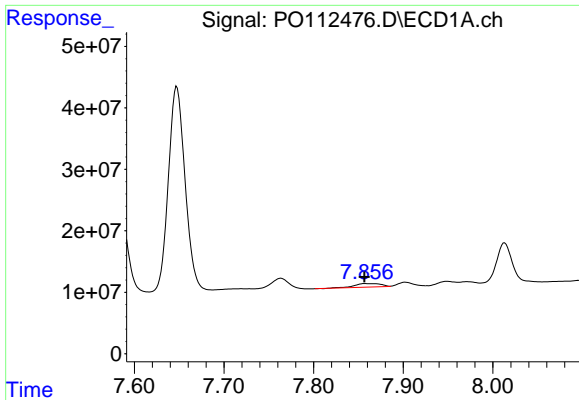
R.T.: 7.647 min  
 Delta R.T.: -0.004 min  
 Response: 428127247  
 Conc: 290.65 ng/ml



#42 AR-1268-2

R.T.: 7.609 min  
 Delta R.T.: -0.002 min  
 Response: 154604382  
 Conc: 363.72 ng/ml

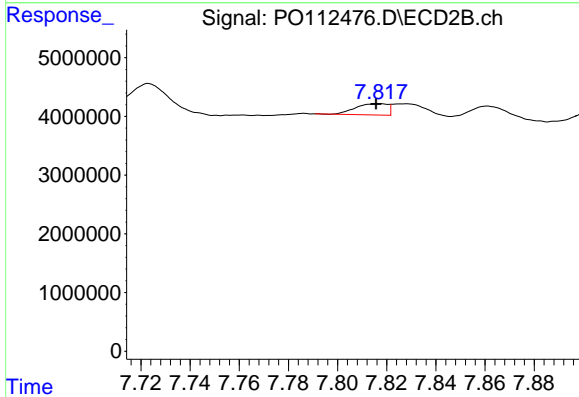




#43 AR-1268-3

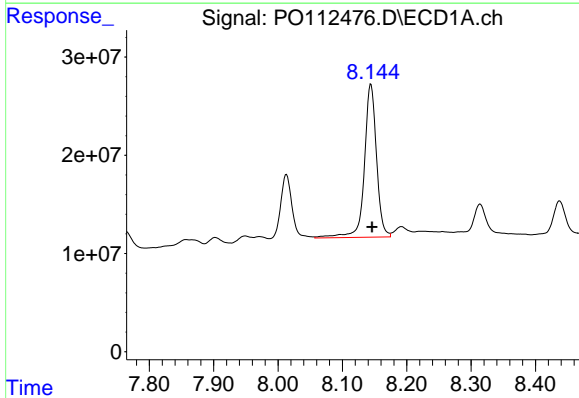
R.T.: 7.858 min  
 Delta R.T.: 0.001 min  
 Response: 11734309  
 Conc: 9.37 ng/ml

Instrument :  
 ECD\_O  
 ClientSampleId :  
 SOM-81



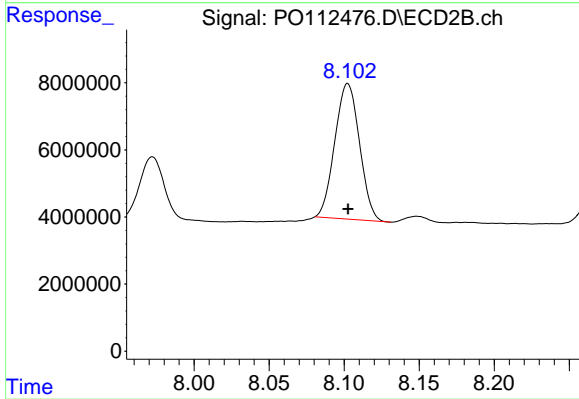
#43 AR-1268-3

R.T.: 7.817 min  
 Delta R.T.: 0.001 min  
 Response: 1747307  
 Conc: 5.44 ng/ml



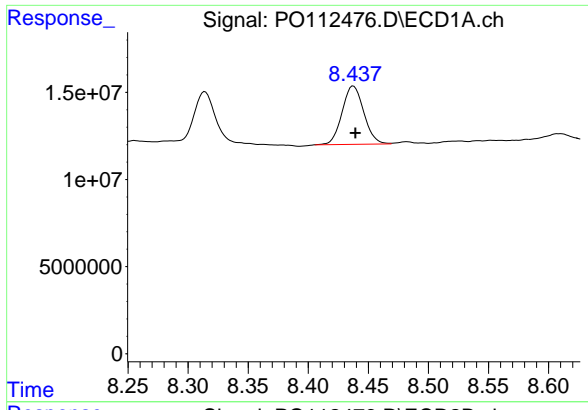
#44 AR-1268-4

R.T.: 8.144 min  
 Delta R.T.: -0.001 min  
 Response: 204358683  
 Conc: 424.10 ng/ml



#44 AR-1268-4

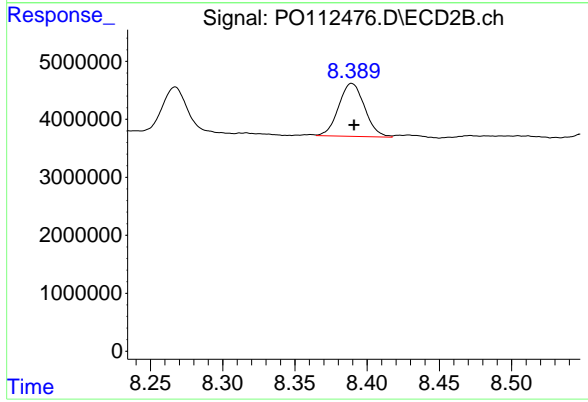
R.T.: 8.102 min  
 Delta R.T.: 0.000 min  
 Response: 46213264  
 Conc: 415.23 ng/ml



#45 AR-1268-5

R.T.: 8.438 min  
 Delta R.T.: -0.002 min  
 Response: 41856893  
 Conc: 12.47 ng/ml

Instrument :  
 ECD\_O  
 ClientSampleId :  
 SOM-81



#45 AR-1268-5

R.T.: 8.389 min  
 Delta R.T.: -0.002 min  
 Response: 11400522  
 Conc: 15.58 ng/ml