

Data Path : Z:\pestpcbsrv\HPCHEM1\ECD\_0\Data\P0072425\  
 Data File : PO112477.D  
 Signal(s) : Signal #1: ECD1A.ch Signal #2: ECD2B.ch  
 Acq On : 24 Jul 2025 19:20  
 Operator : YP/AJ  
 Sample : Q2688-11 10X  
 Misc :  
 ALS Vial : 25 Sample Multiplier: 1

Instrument :  
 ECD\_0  
 ClientSampleId :  
 SOM-77

Integration File signal 1: autoint1.e  
 Integration File signal 2: autoint2.e  
 Quant Time: Jul 24 23:47:30 2025  
 Quant Method : Z:\pestpcbsrv\HPCHEM1\ECD\_0\methods\P0072325.M  
 Quant Title : GC EXTRACTABLES  
 QLast Update : Thu Jul 24 04:54:06 2025  
 Response via : Initial Calibration  
 Integrator: ChemStation

Volume Inj. : 2 µl  
 Signal #1 Phase : ZB-MR1 Signal #2 Phase: ZB-MR2  
 Signal #1 Info : 30Mx0.32mmx 0.50µ Signal #2 Info : 30M x 0.32mm x 0.25µm

Compound	RT#1	RT#2	Resp#1	Resp#2	ng/ml	ng/ml
System Monitoring Compounds						
1) SA Tetrachlo...	3.672	3.663	6183497	5530955	0.760	1.113 #
2) SA Decachlor...	8.694	8.640	10823553	3482496	1.480	1.971 #
Target Compounds						
5) L1 AR-1016-3	4.841	4.932	2718663	8094956	10.390	59.536 #
6) L1 AR-1016-4	4.955	5.002	34453766	53357432	162.639	480.331 #
7) L1 AR-1016-5	5.198	5.173	12301426	8364405	56.050	58.369
8) L2 AR-1221-1	3.888	3.876	1290235	10807643	13.348	160.671 #
9) L2 AR-1221-2	3.986	3.975	-4090817	11380932	N.D.	224.352 #
10) L2 AR-1221-3	4.054	4.040	13104691	14567985	55.129	91.895 #
11) L3 AR-1232-1	4.054	4.040	13104691	14567985	70.087	115.116 #
12) L3 AR-1232-2	4.542	4.768	4968991	1320430	46.170	10.068 #
13) L3 AR-1232-3	4.788	4.932	-14098101	8094956	N.D.	120.466 #
14) L3 AR-1232-4	4.955	5.002	34453766	53357432	328.945	891.831 #
15) L3 AR-1232-5	5.025	5.173	110.3E6	8364405	1624.195	128.282 #
18) L4 AR-1242-3	4.841	4.932	2718663	8094956	11.488	66.796 #
19) L4 AR-1242-4	4.955	5.002	34453766	53357432	177.342	434.721 #
20) L4 AR-1242-5	5.585	5.524	9646662	2308821	45.096	14.343 #
22) L5 AR-1248-2	5.025	5.002	110.3E6	53357432	432.170	315.203 #
23) L5 AR-1248-3	5.198	5.002	12301426	53357432	35.791	300.356 #
24) L5 AR-1248-4	5.557	5.173	3878705	8364405	7.634	40.145 #
25) L5 AR-1248-5	5.585	5.559	9646662	8040295	27.594	37.438 #
26) L6 AR-1254-1	5.557	5.524	3878705	2308821	7.066	7.026
27) L6 AR-1254-2	5.726	5.699	4694123	4716217	9.660	16.291 #
28) L6 AR-1254-3	6.114	6.083	6112027	5705193	8.212	13.347 #
29) L6 AR-1254-4	6.294f	6.341	18778735	1309326	34.162	4.797 #
30) L6 AR-1254-5	6.766	6.720	8452705	966621	11.942	2.894 #
31) L7 AR-1260-1	6.244	6.206	10410609	3651262	23.697	14.693 #
32) L7 AR-1260-2	6.414	6.380	15506924	2352150	22.543	7.139 #
33) L7 AR-1260-3	6.802	6.558	4006397	215189	6.813	0.838 #
34) L7 AR-1260-4	7.048	7.054	13365280	2075420	29.634	10.848 #
35) L7 AR-1260-5	7.307	7.266	4845286	763047	3.910	1.851 #
36) L8 AR-1262-1	6.802	6.764	4006397	252937	4.312	0.610 #
37) L8 AR-1262-2	7.307	7.266	4845286	763047	3.258	1.480 #
38) L8 AR-1262-3	7.645f	7.548	842333	1629191	1.427	8.734 #
39) L8 AR-1262-4	7.645	7.548f	842333	1629191	0.847	5.655 #
40) L8 AR-1262-5	8.122	8.133	58985078	25354	135.891	0.255 #
41) L9 AR-1268-1	7.645f	7.548	842333	1629191	0.481	3.146 #
42) L9 AR-1268-2	7.645	7.548f	842333	1629191	0.572	3.833 #
43) L9 AR-1268-3	0.000	7.866f	0	59266	N.D.	0.184 #
44) L9 AR-1268-4	8.122	8.133	58985078	25354	122.410	0.228 #

Data Path : Z:\pestpcbsrv\HPCHEM1\ECD\_0\Data\P0072425\  
Data File : P0112477.D  
Signal(s) : Signal #1: ECD1A.ch Signal #2: ECD2B.ch  
Acq On : 24 Jul 2025 19:20  
Operator : YP/AJ  
Sample : Q2688-11 10X  
Misc :  
ALS Vial : 25 Sample Multiplier: 1

Instrument :  
ECD\_0  
ClientSampleId :  
SOM-77

Integration File signal 1: autoint1.e  
Integration File signal 2: autoint2.e  
Quant Time: Jul 24 23:47:30 2025  
Quant Method : Z:\pestpcbsrv\HPCHEM1\ECD\_0\methods\P0072325.M  
Quant Title : GC EXTRACTABLES  
QLast Update : Thu Jul 24 04:54:06 2025  
Response via : Initial Calibration  
Integrator: ChemStation

Volume Inj. : 2 µl  
Signal #1 Phase : ZB-MR1 Signal #2 Phase: ZB-MR2  
Signal #1 Info : 30Mx0.32mmx 0.50µ Signal #2 Info : 30M x 0.32mm x 0.25µm

Compound	RT#1	RT#2	Resp#1	Resp#2	ng/ml	ng/ml
----------	------	------	--------	--------	-------	-------

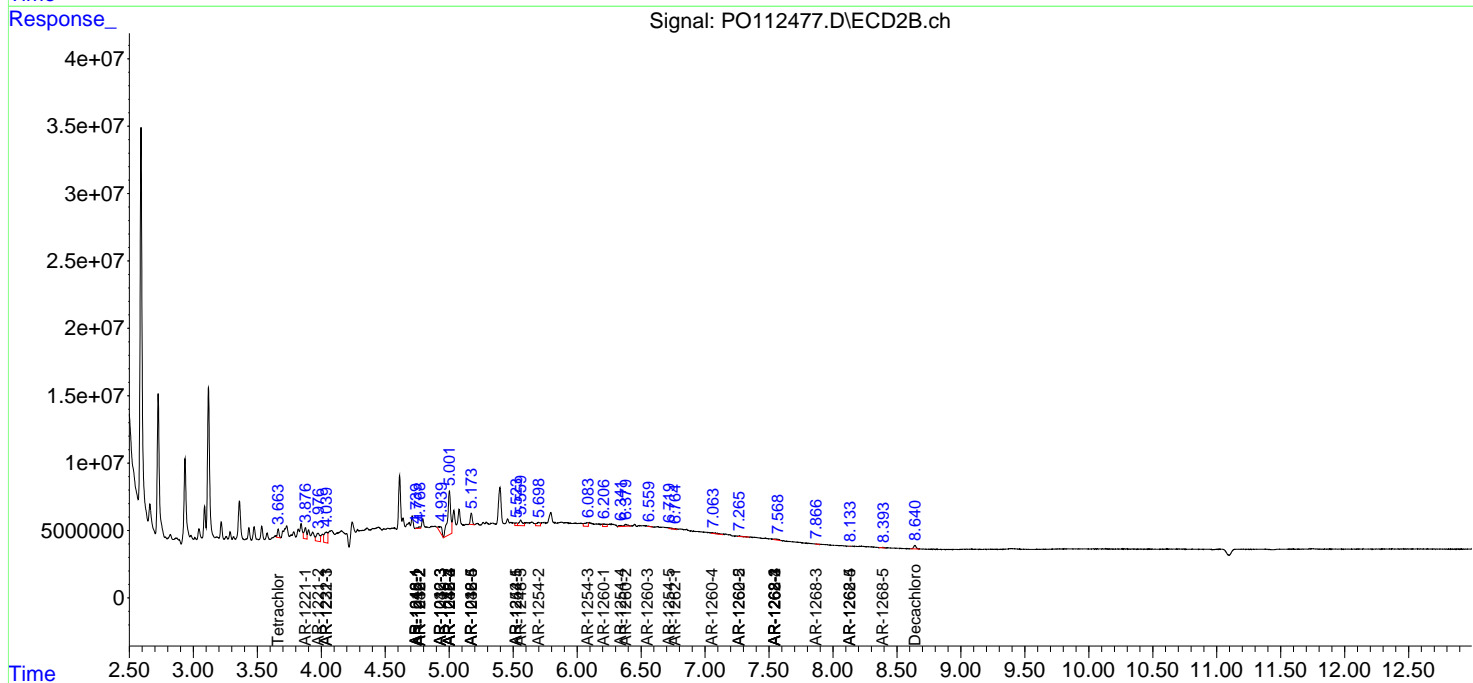
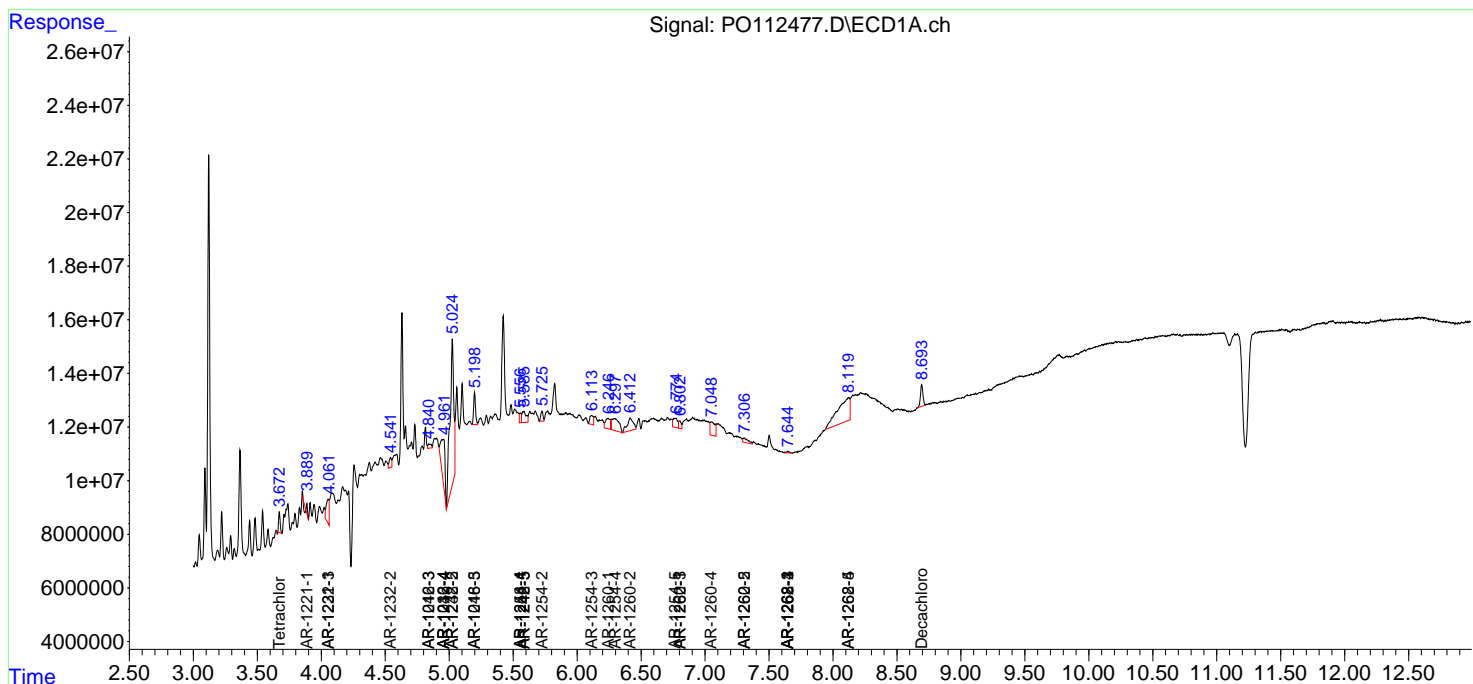
-----  
(f)=RT Delta > 1/2 Window (#)=Amounts differ by > 25% (m)=manual int.

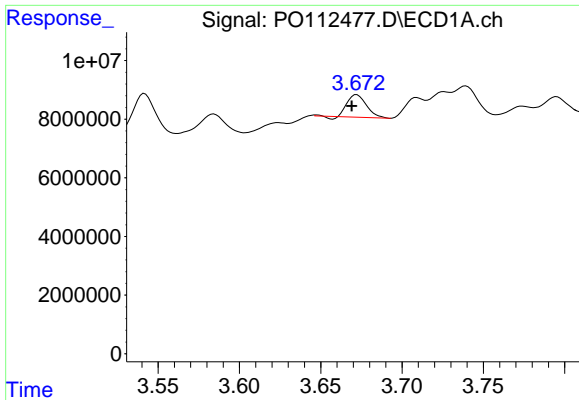
Data Path : Z:\pestpcbsrv\HPCHEM1\ECD\_O\Data\P0072425\  
 Data File : P0112477.D  
 Signal(s) : Signal #1: ECD1A.ch Signal #2: ECD2B.ch  
 Acq On : 24 Jul 2025 19:20  
 Operator : YP/AJ  
 Sample : Q2688-11 10X  
 Misc :  
 ALS Vial : 25 Sample Multiplier: 1

Instrument :  
 ECD\_O  
 ClientSampleId :  
 SOM-77

Integration File signal 1: autoint1.e  
 Integration File signal 2: autoint2.e  
 Quant Time: Jul 24 23:47:30 2025  
 Quant Method : Z:\pestpcbsrv\HPCHEM1\ECD\_O\methods\P0072325.M  
 Quant Title : GC EXTRACTABLES  
 QLast Update : Thu Jul 24 04:54:06 2025  
 Response via : Initial Calibration  
 Integrator: ChemStation

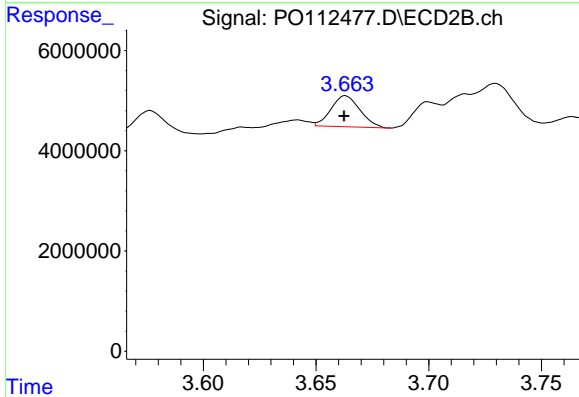
Volume Inj. : 2 µl  
 Signal #1 Phase : ZB-MR1 Signal #2 Phase: ZB-MR2  
 Signal #1 Info : 30Mx0.32mmx 0.50µ Signal #2 Info : 30M x 0.32mm x 0.25µm



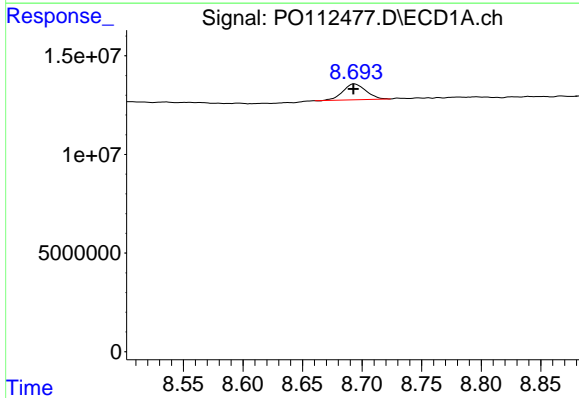


#1 Tetrachloro-m-xylene  
 R.T.: 3.672 min  
 Delta R.T.: 0.003 min  
 Response: 6183497  
 Conc: 0.76 ng/ml

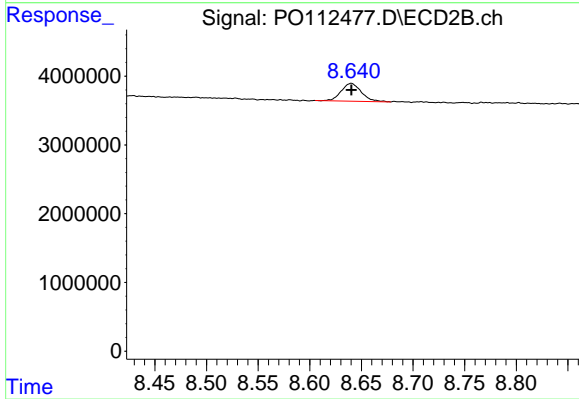
Instrument :  
 ECD\_O  
 ClientSampleId :  
 SOM-77



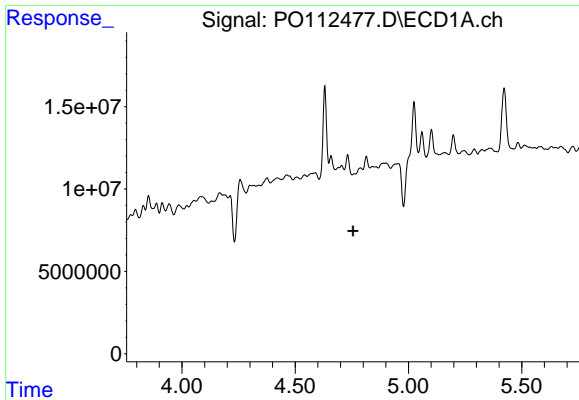
#1 Tetrachloro-m-xylene  
 R.T.: 3.663 min  
 Delta R.T.: 0.000 min  
 Response: 5530955  
 Conc: 1.11 ng/ml



#2 Decachlorobiphenyl  
 R.T.: 8.694 min  
 Delta R.T.: 0.001 min  
 Response: 10823553  
 Conc: 1.48 ng/ml



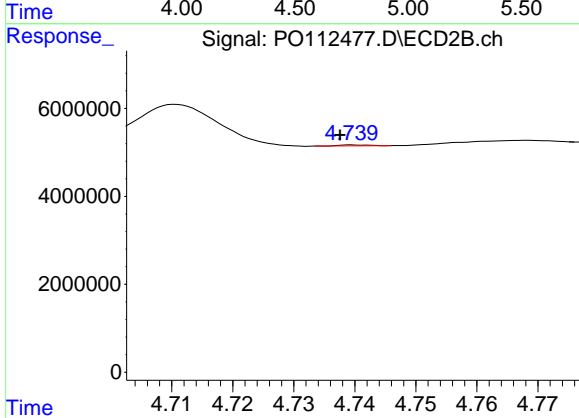
#2 Decachlorobiphenyl  
 R.T.: 8.640 min  
 Delta R.T.: 0.000 min  
 Response: 3482496  
 Conc: 1.97 ng/ml



#3 AR-1016-1

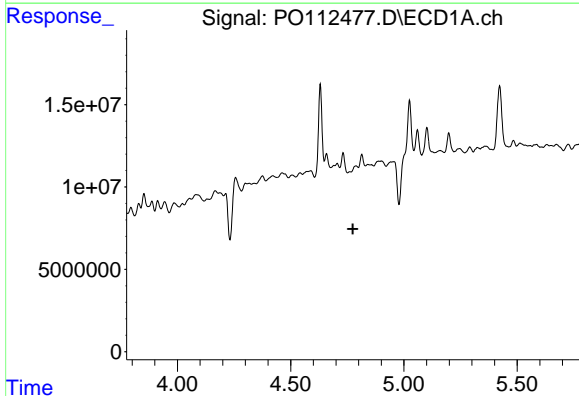
R.T.: 4.788 min  
 Delta R.T.: 0.033 min  
 Response: -14098101  
 Conc: N.D.

Instrument :  
 ECD\_O  
 ClientSampleId :  
 SOM-77



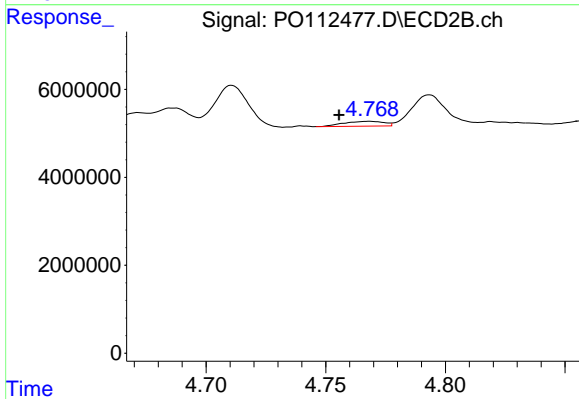
#3 AR-1016-1

R.T.: 4.740 min  
 Delta R.T.: 0.003 min  
 Response: 83861  
 Conc: 0.48 ng/ml



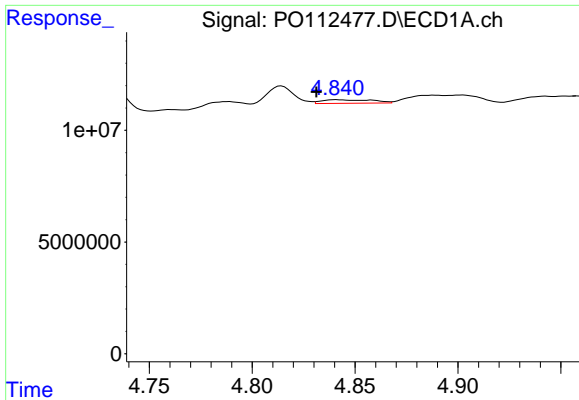
#4 AR-1016-2

R.T.: 4.788 min  
 Delta R.T.: 0.014 min  
 Response: -14098101  
 Conc: N.D.



#4 AR-1016-2

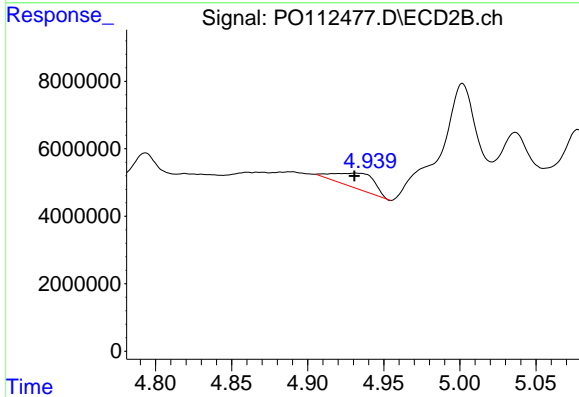
R.T.: 4.768 min  
 Delta R.T.: 0.013 min  
 Response: 1320430  
 Conc: 5.07 ng/ml



#5 AR-1016-3

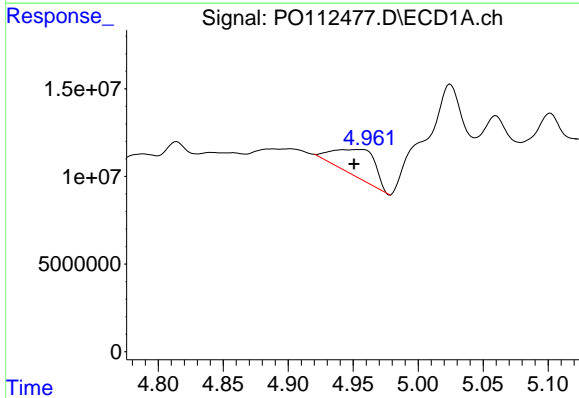
R.T.: 4.841 min  
 Delta R.T.: 0.010 min  
 Response: 2718663  
 Conc: 10.39 ng/ml

Instrument :  
 ECD\_O  
 ClientSampleId :  
 SOM-77



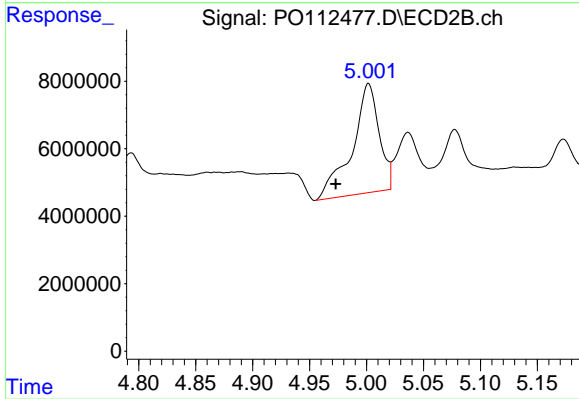
#5 AR-1016-3

R.T.: 4.932 min  
 Delta R.T.: 0.001 min  
 Response: 8094956  
 Conc: 59.54 ng/ml



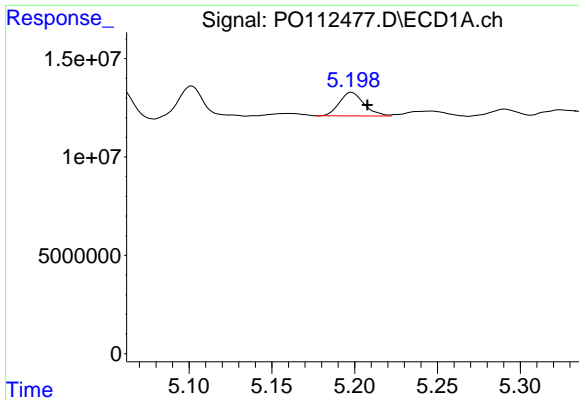
#6 AR-1016-4

R.T.: 4.955 min  
 Delta R.T.: 0.005 min  
 Response: 34453766  
 Conc: 162.64 ng/ml



#6 AR-1016-4

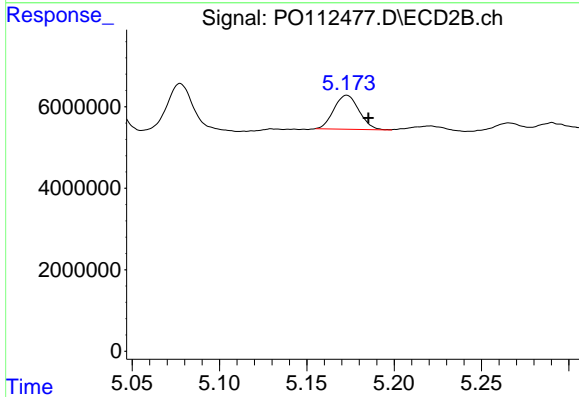
R.T.: 5.002 min  
 Delta R.T.: 0.029 min  
 Response: 53357432  
 Conc: 480.33 ng/ml



#7 AR-1016-5

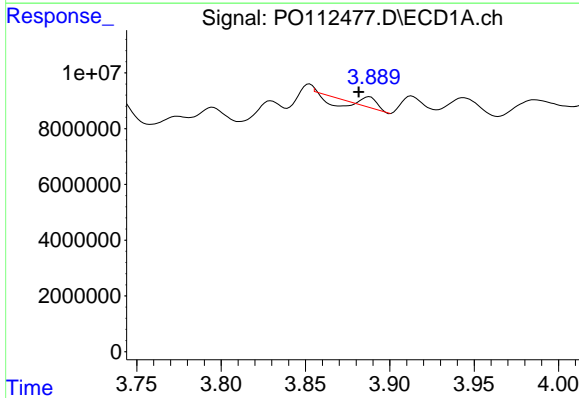
R.T.: 5.198 min  
 Delta R.T.: -0.009 min  
 Response: 12301426  
 Conc: 56.05 ng/ml

Instrument :  
 ECD\_O  
 ClientSampleId :  
 SOM-77



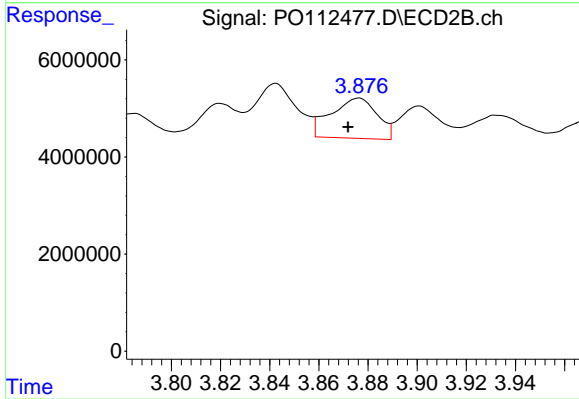
#7 AR-1016-5

R.T.: 5.173 min  
 Delta R.T.: -0.012 min  
 Response: 8364405  
 Conc: 58.37 ng/ml



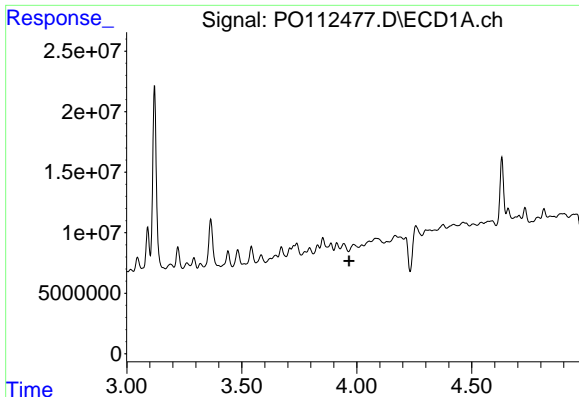
#8 AR-1221-1

R.T.: 3.888 min  
 Delta R.T.: 0.006 min  
 Response: 1290235  
 Conc: 13.35 ng/ml



#8 AR-1221-1

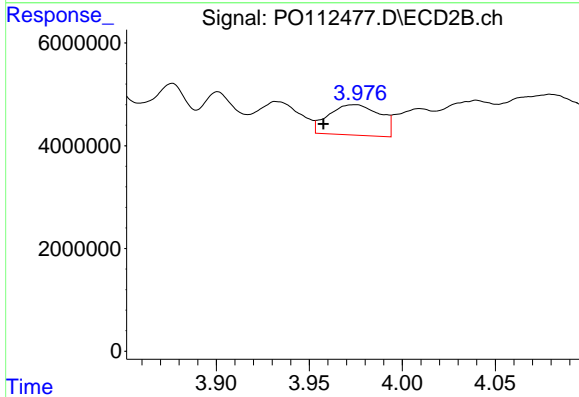
R.T.: 3.876 min  
 Delta R.T.: 0.005 min  
 Response: 10807643  
 Conc: 160.67 ng/ml



#9 AR-1221-2

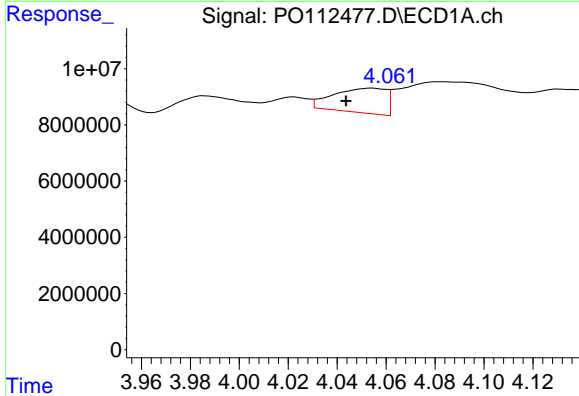
R.T.: 3.986 min  
 Delta R.T.: 0.019 min  
 Response: -4090817  
 Conc: N.D.

Instrument :  
 ECD\_O  
 ClientSampleId :  
 SOM-77



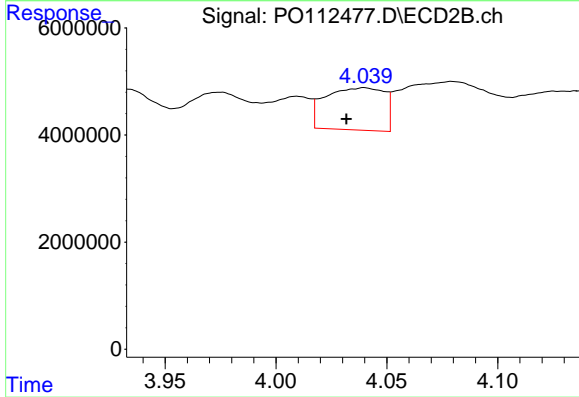
#9 AR-1221-2

R.T.: 3.975 min  
 Delta R.T.: 0.018 min  
 Response: 11380932  
 Conc: 224.35 ng/ml



#10 AR-1221-3

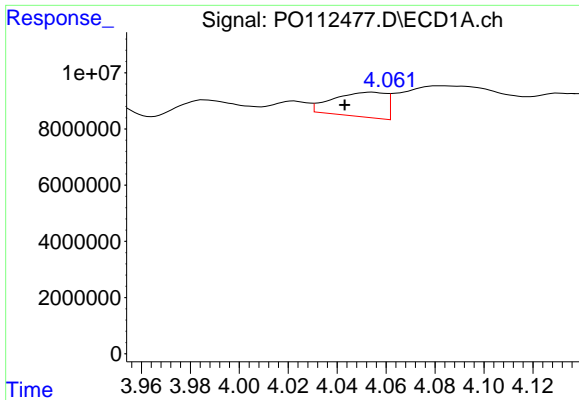
R.T.: 4.054 min  
 Delta R.T.: 0.011 min  
 Response: 13104691  
 Conc: 55.13 ng/ml



#10 AR-1221-3

R.T.: 4.040 min  
 Delta R.T.: 0.008 min  
 Response: 14567985  
 Conc: 91.89 ng/ml

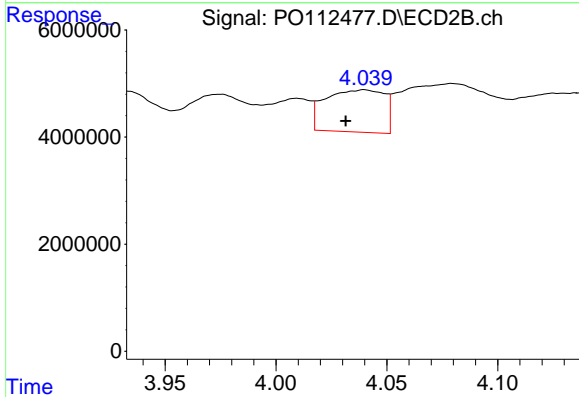




#11 AR-1232-1

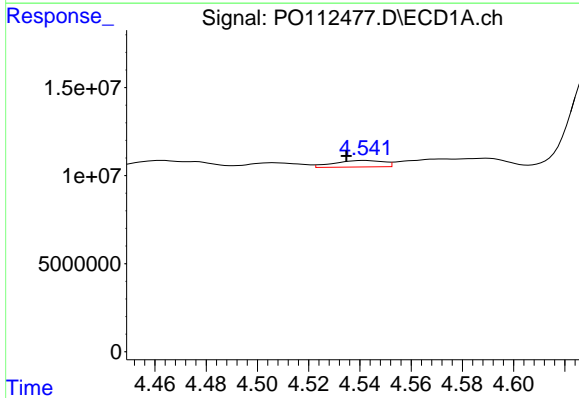
R.T.: 4.054 min  
 Delta R.T.: 0.011 min  
 Response: 13104691  
 Conc: 70.09 ng/ml

Instrument :  
 ECD\_O  
 ClientSampleId :  
 SOM-77



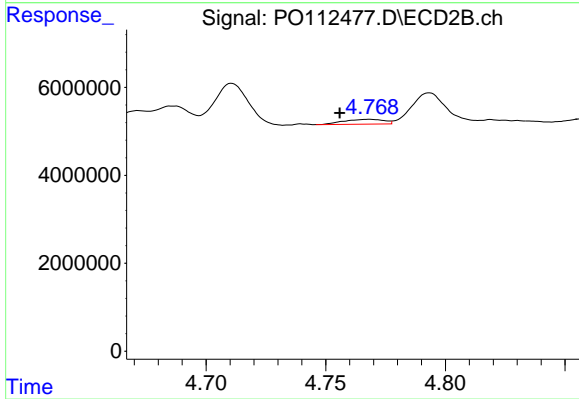
#11 AR-1232-1

R.T.: 4.040 min  
 Delta R.T.: 0.008 min  
 Response: 14567985  
 Conc: 115.12 ng/ml



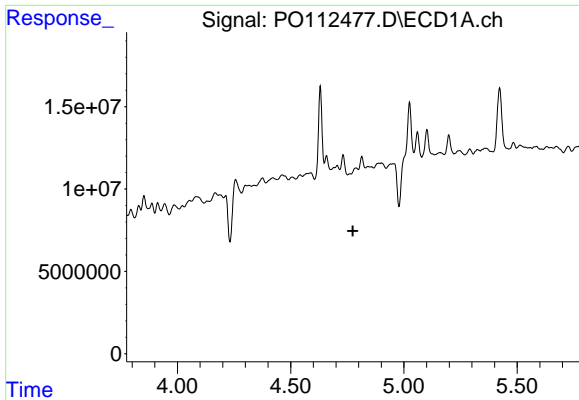
#12 AR-1232-2

R.T.: 4.542 min  
 Delta R.T.: 0.007 min  
 Response: 4968991  
 Conc: 46.17 ng/ml



#12 AR-1232-2

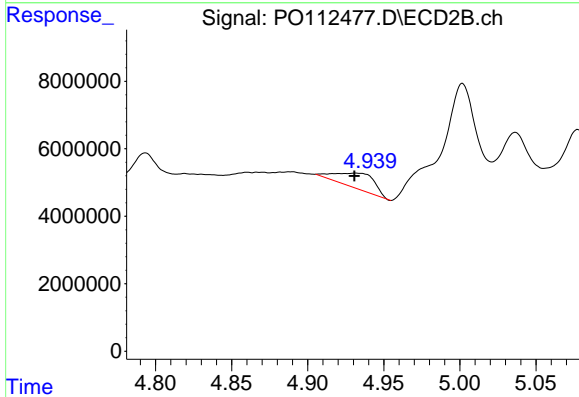
R.T.: 4.768 min  
 Delta R.T.: 0.012 min  
 Response: 1320430  
 Conc: 10.07 ng/ml



#13 AR-1232-3

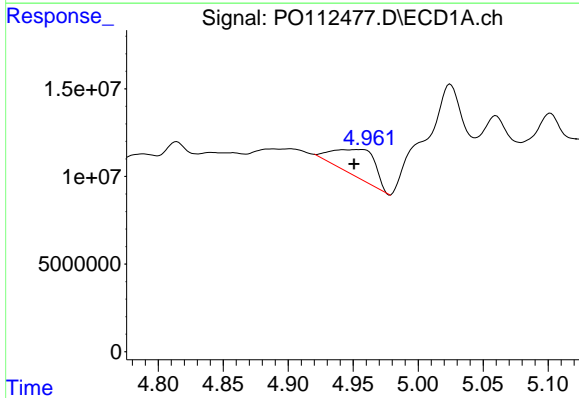
R.T.: 4.788 min  
 Delta R.T.: 0.014 min  
 Response: -14098101  
 Conc: N.D.

Instrument :  
 ECD\_O  
 ClientSampleId :  
 SOM-77



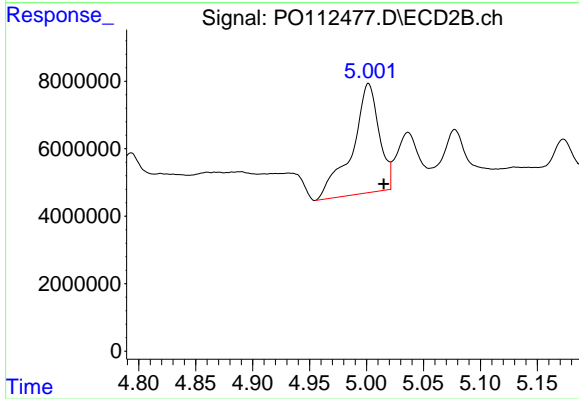
#13 AR-1232-3

R.T.: 4.932 min  
 Delta R.T.: 0.001 min  
 Response: 8094956  
 Conc: 120.47 ng/ml



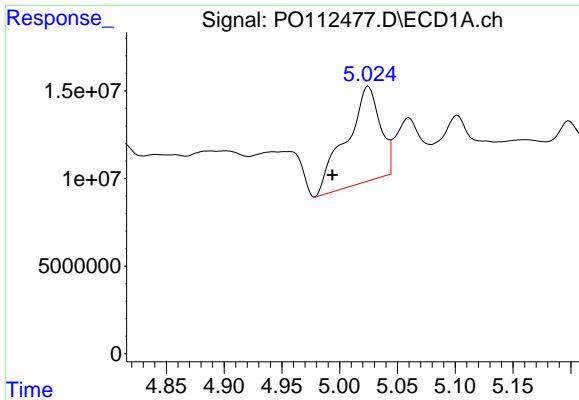
#14 AR-1232-4

R.T.: 4.955 min  
 Delta R.T.: 0.005 min  
 Response: 34453766  
 Conc: 328.94 ng/ml



#14 AR-1232-4

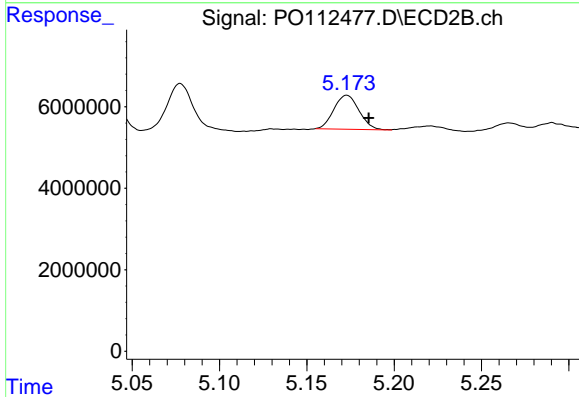
R.T.: 5.002 min  
 Delta R.T.: -0.013 min  
 Response: 53357432  
 Conc: 891.83 ng/ml



#15 AR-1232-5

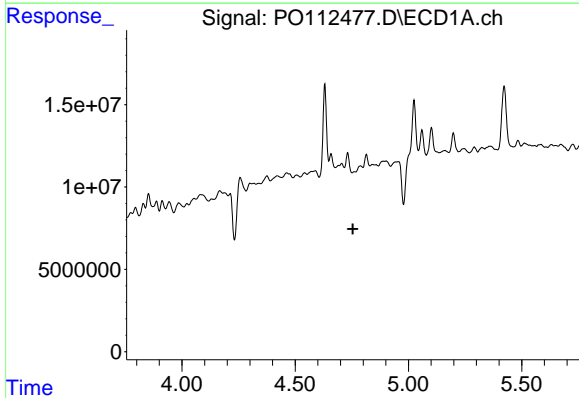
R.T.: 5.025 min  
 Delta R.T.: 0.031 min  
 Response: 110251809  
 Conc: 1624.20 ng/ml

Instrument :  
 ECD\_O  
 ClientSampleId :  
 SOM-77



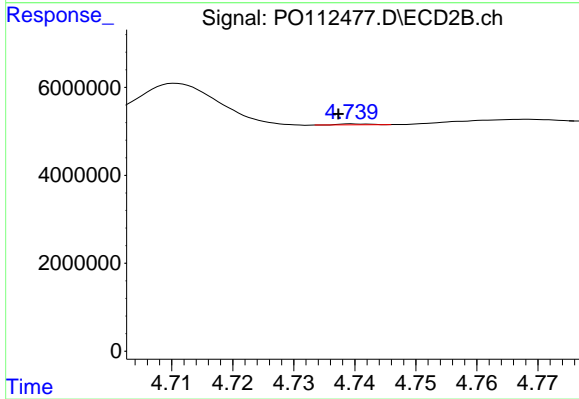
#15 AR-1232-5

R.T.: 5.173 min  
 Delta R.T.: -0.012 min  
 Response: 8364405  
 Conc: 128.28 ng/ml



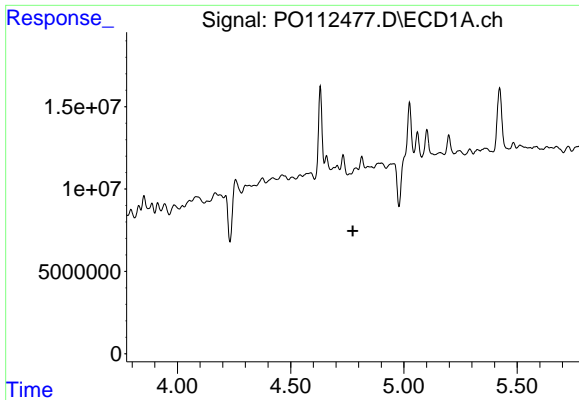
#16 AR-1242-1

R.T.: 4.788 min  
 Delta R.T.: 0.033 min  
 Response: -14098101  
 Conc: N.D.



#16 AR-1242-1

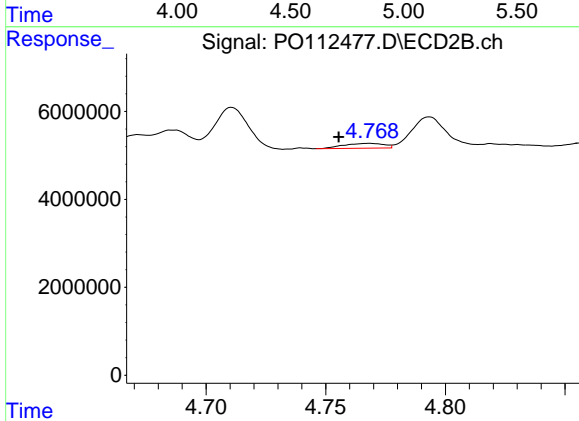
R.T.: 4.740 min  
 Delta R.T.: 0.003 min  
 Response: 83861  
 Conc: 0.53 ng/ml



#17 AR-1242-2

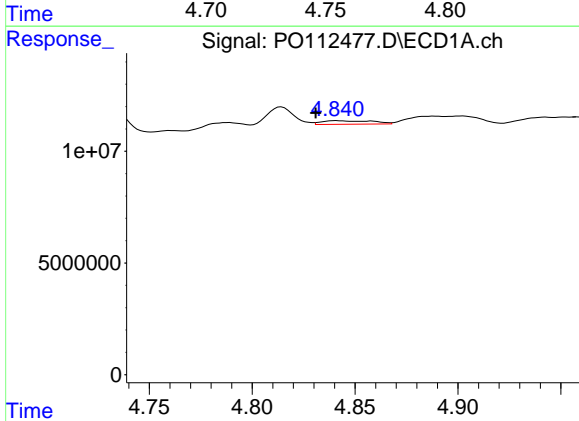
R.T.: 4.788 min  
 Delta R.T.: 0.014 min  
 Response: -14098101  
 Conc: N.D.

Instrument :  
 ECD\_O  
 ClientSampleId :  
 SOM-77



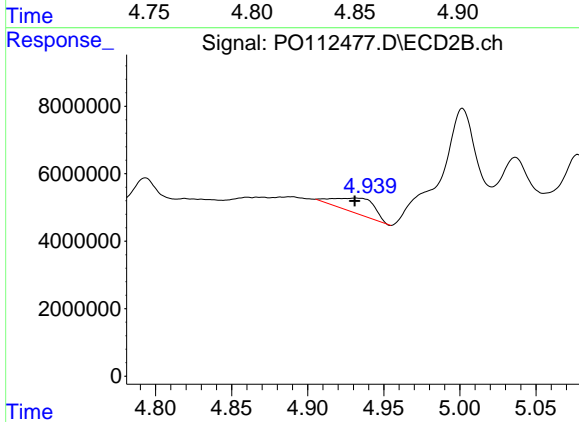
#17 AR-1242-2

R.T.: 4.768 min  
 Delta R.T.: 0.013 min  
 Response: 1320430  
 Conc: 5.65 ng/ml



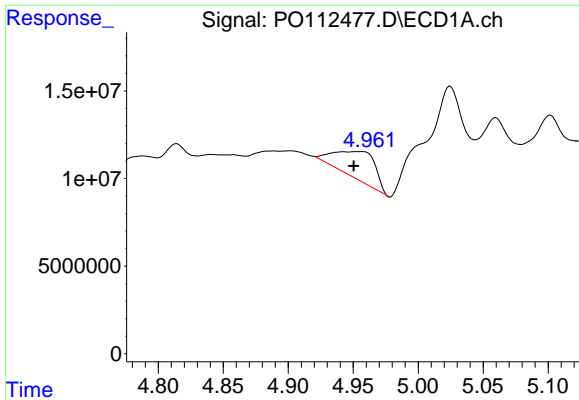
#18 AR-1242-3

R.T.: 4.841 min  
 Delta R.T.: 0.010 min  
 Response: 2718663  
 Conc: 11.49 ng/ml



#18 AR-1242-3

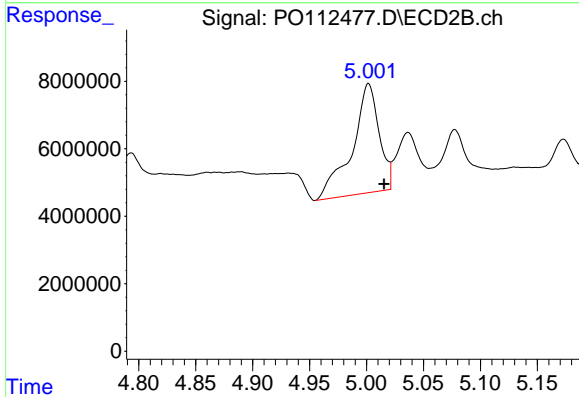
R.T.: 4.932 min  
 Delta R.T.: 0.001 min  
 Response: 8094956  
 Conc: 66.80 ng/ml



#19 AR-1242-4

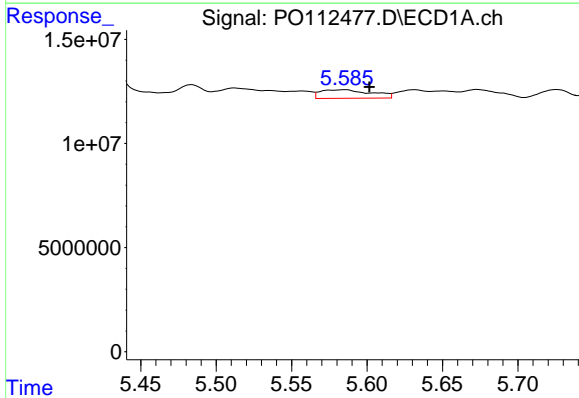
R.T.: 4.955 min  
 Delta R.T.: 0.005 min  
 Response: 34453766  
 Conc: 177.34 ng/ml

Instrument :  
 ECD\_O  
 ClientSampleId :  
 SOM-77



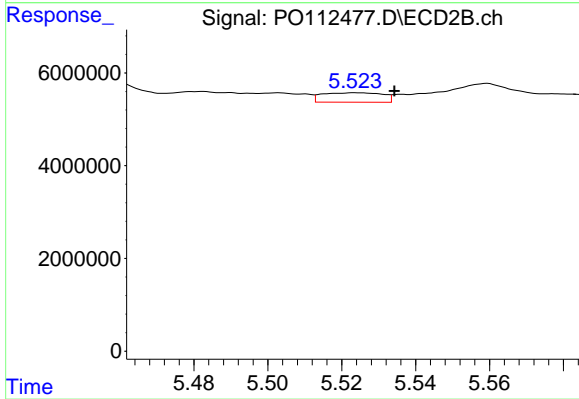
#19 AR-1242-4

R.T.: 5.002 min  
 Delta R.T.: -0.013 min  
 Response: 53357432  
 Conc: 434.72 ng/ml



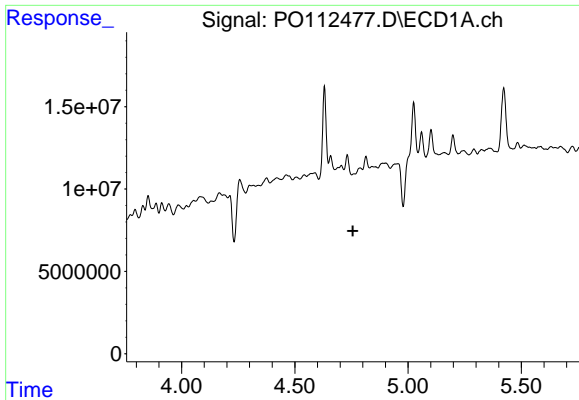
#20 AR-1242-5

R.T.: 5.585 min  
 Delta R.T.: -0.016 min  
 Response: 9646662  
 Conc: 45.10 ng/ml



#20 AR-1242-5

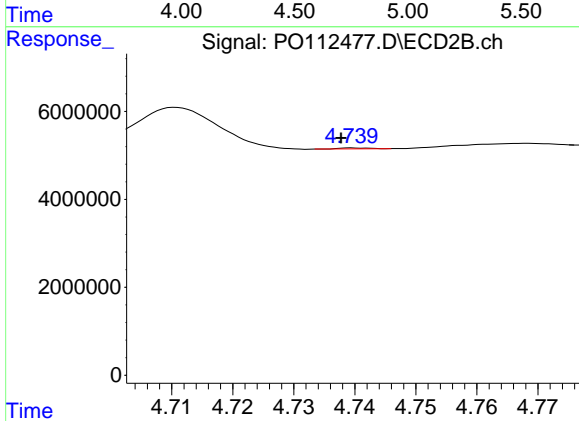
R.T.: 5.524 min  
 Delta R.T.: -0.010 min  
 Response: 2308821  
 Conc: 14.34 ng/ml



#21 AR-1248-1

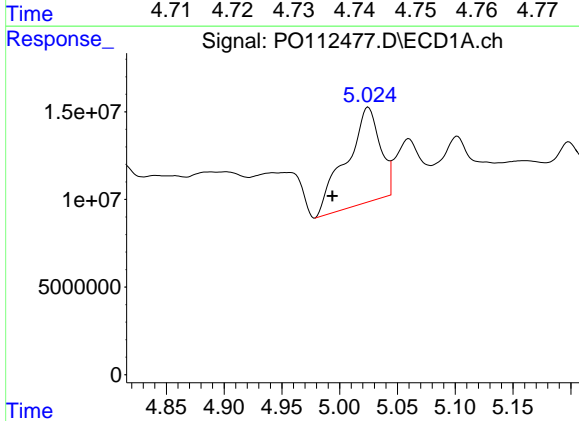
R.T.: 4.788 min  
 Delta R.T.: 0.032 min  
 Response: -14098101  
 Conc: N.D.

Instrument :  
 ECD\_O  
 ClientSampleId :  
 SOM-77



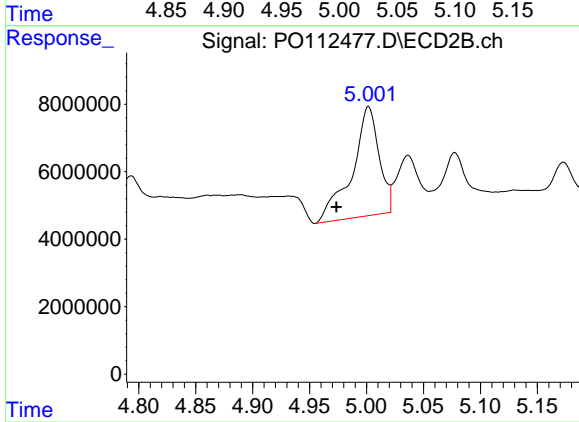
#21 AR-1248-1

R.T.: 4.740 min  
 Delta R.T.: 0.003 min  
 Response: 83861  
 Conc: 0.69 ng/ml



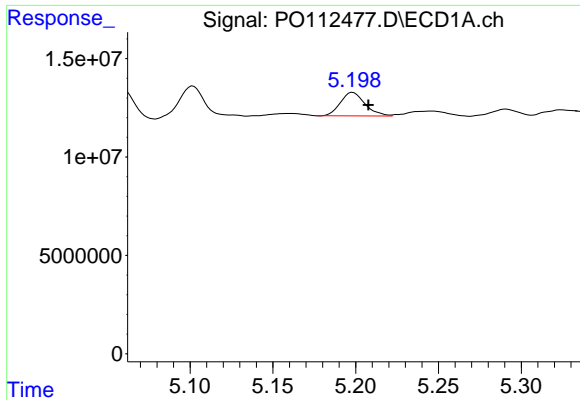
#22 AR-1248-2

R.T.: 5.025 min  
 Delta R.T.: 0.031 min  
 Response: 110251809  
 Conc: 432.17 ng/ml



#22 AR-1248-2

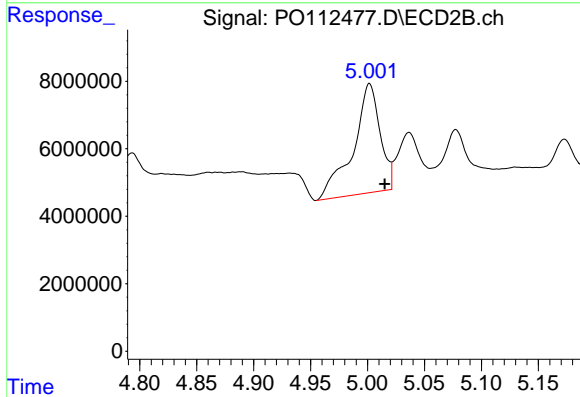
R.T.: 5.002 min  
 Delta R.T.: 0.028 min  
 Response: 53357432  
 Conc: 315.20 ng/ml



#23 AR-1248-3

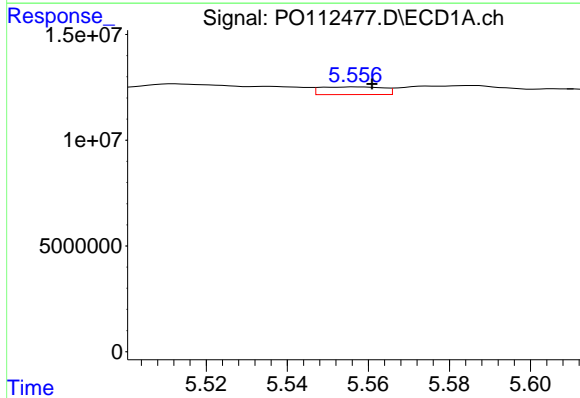
R.T.: 5.198 min  
 Delta R.T.: -0.009 min  
 Response: 12301426  
 Conc: 35.79 ng/ml

Instrument :  
 ECD\_O  
 ClientSampleId :  
 SOM-77



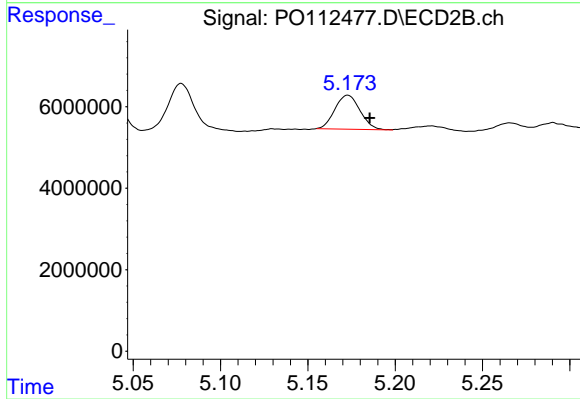
#23 AR-1248-3

R.T.: 5.002 min  
 Delta R.T.: -0.013 min  
 Response: 53357432  
 Conc: 300.36 ng/ml



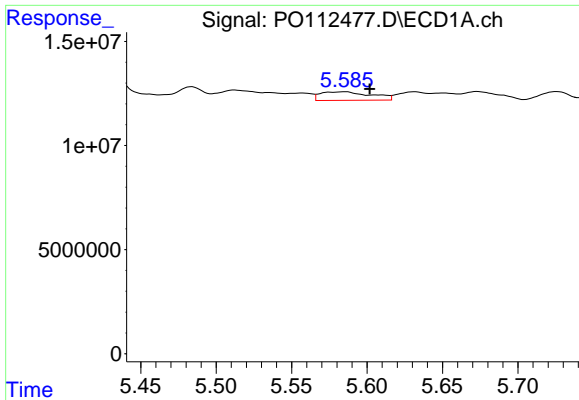
#24 AR-1248-4

R.T.: 5.557 min  
 Delta R.T.: -0.004 min  
 Response: 3878705  
 Conc: 7.63 ng/ml



#24 AR-1248-4

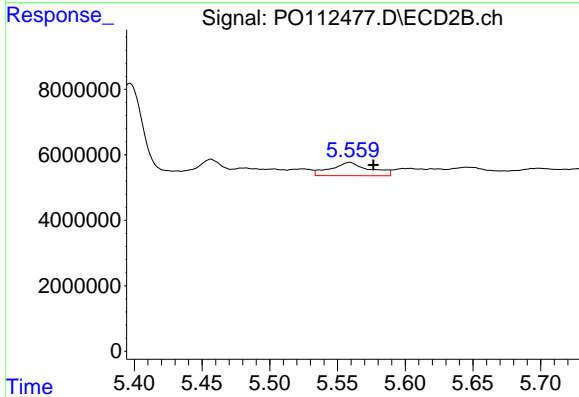
R.T.: 5.173 min  
 Delta R.T.: -0.013 min  
 Response: 8364405  
 Conc: 40.15 ng/ml



#25 AR-1248-5

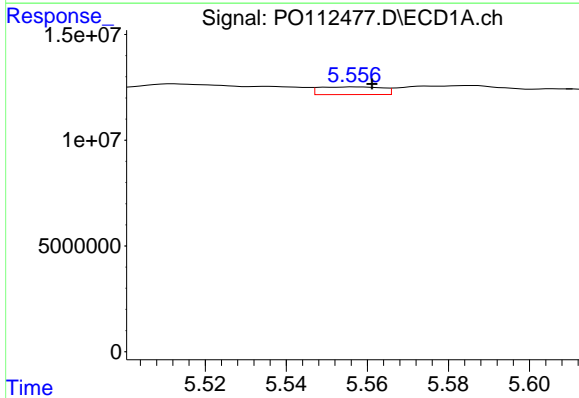
R.T.: 5.585 min  
 Delta R.T.: -0.017 min  
 Response: 9646662  
 Conc: 27.59 ng/ml

Instrument :  
 ECD\_O  
 ClientSampleId :  
 SOM-77



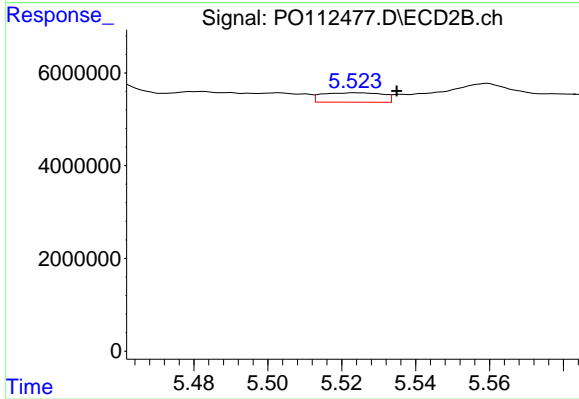
#25 AR-1248-5

R.T.: 5.559 min  
 Delta R.T.: -0.017 min  
 Response: 8040295  
 Conc: 37.44 ng/ml



#26 AR-1254-1

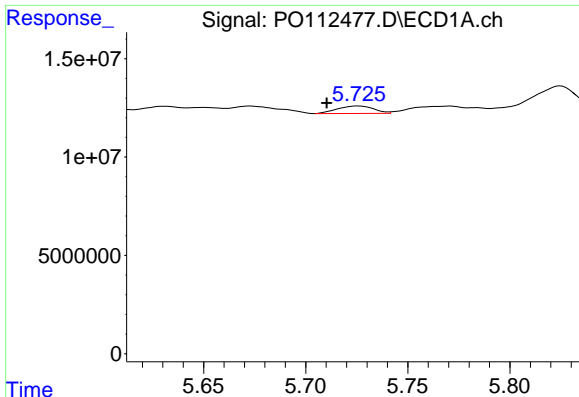
R.T.: 5.557 min  
 Delta R.T.: -0.004 min  
 Response: 3878705  
 Conc: 7.07 ng/ml



#26 AR-1254-1

R.T.: 5.524 min  
 Delta R.T.: -0.011 min  
 Response: 2308821  
 Conc: 7.03 ng/ml

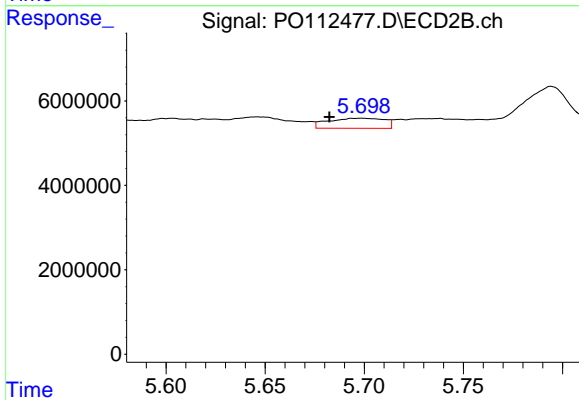




#27 AR-1254-2

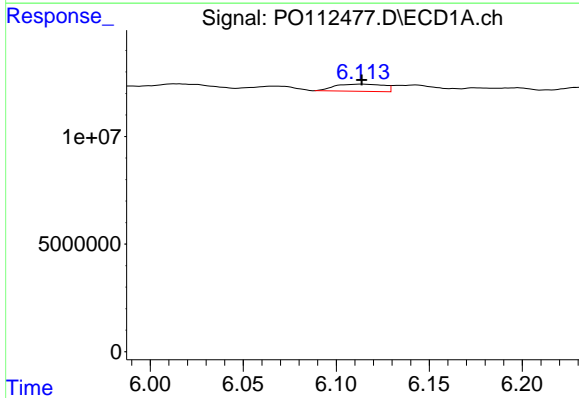
R.T.: 5.726 min  
 Delta R.T.: 0.015 min  
 Response: 4694123  
 Conc: 9.66 ng/ml

Instrument :  
 ECD\_O  
 ClientSampleId :  
 SOM-77



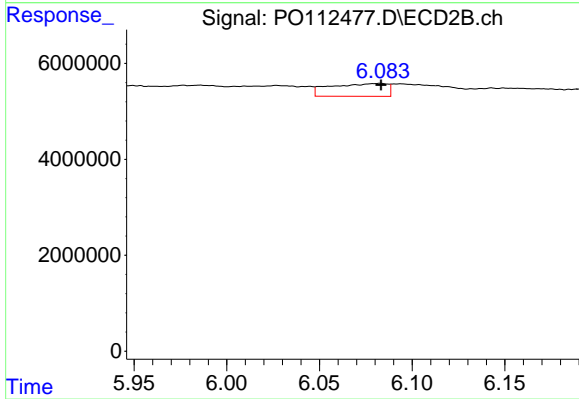
#27 AR-1254-2

R.T.: 5.699 min  
 Delta R.T.: 0.016 min  
 Response: 4716217  
 Conc: 16.29 ng/ml



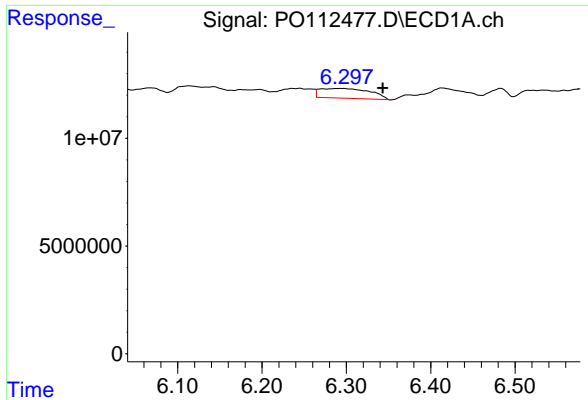
#28 AR-1254-3

R.T.: 6.114 min  
 Delta R.T.: 0.000 min  
 Response: 6112027  
 Conc: 8.21 ng/ml



#28 AR-1254-3

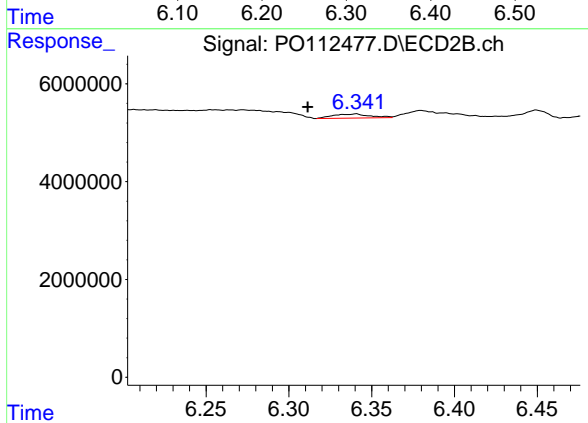
R.T.: 6.083 min  
 Delta R.T.: 0.000 min  
 Response: 5705193  
 Conc: 13.35 ng/ml



#29 AR-1254-4

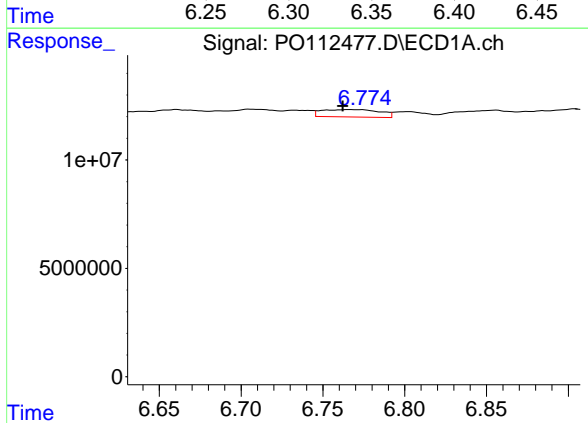
R.T.: 6.294 min  
 Delta R.T.: -0.050 min  
 Response: 18778735  
 Conc: 34.16 ng/ml

Instrument :  
 ECD\_O  
 ClientSampleId :  
 SOM-77



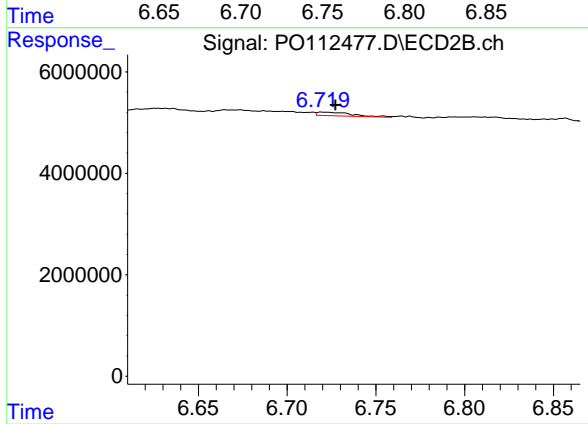
#29 AR-1254-4

R.T.: 6.341 min  
 Delta R.T.: 0.029 min  
 Response: 1309326  
 Conc: 4.80 ng/ml



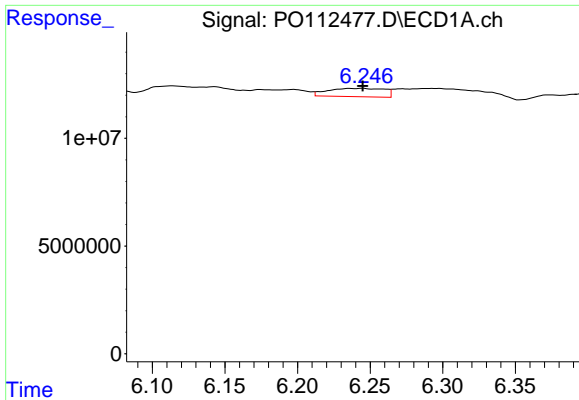
#30 AR-1254-5

R.T.: 6.766 min  
 Delta R.T.: 0.004 min  
 Response: 8452705  
 Conc: 11.94 ng/ml



#30 AR-1254-5

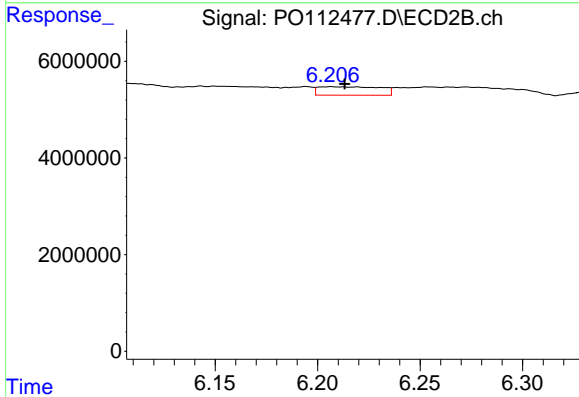
R.T.: 6.720 min  
 Delta R.T.: -0.007 min  
 Response: 966621  
 Conc: 2.89 ng/ml



#31 AR-1260-1

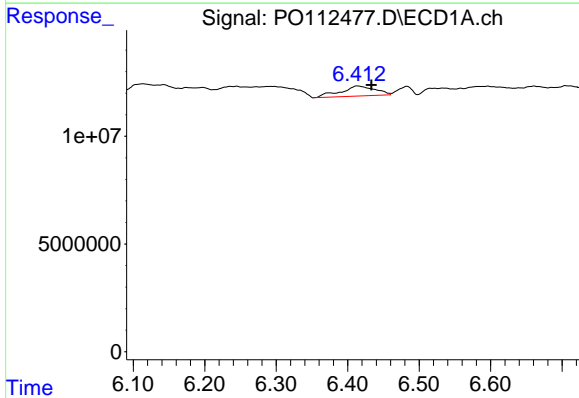
R.T.: 6.244 min  
 Delta R.T.: 0.000 min  
 Response: 10410609  
 Conc: 23.70 ng/ml

Instrument :  
 ECD\_O  
 ClientSampleId :  
 SOM-77



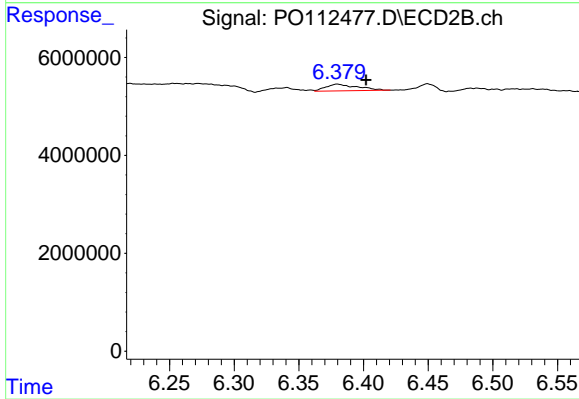
#31 AR-1260-1

R.T.: 6.206 min  
 Delta R.T.: -0.007 min  
 Response: 3651262  
 Conc: 14.69 ng/ml



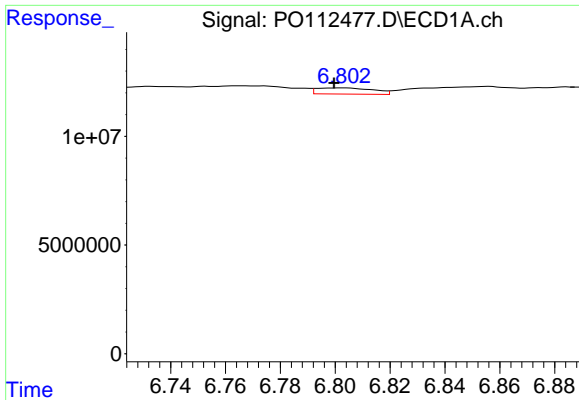
#32 AR-1260-2

R.T.: 6.414 min  
 Delta R.T.: -0.019 min  
 Response: 15506924  
 Conc: 22.54 ng/ml



#32 AR-1260-2

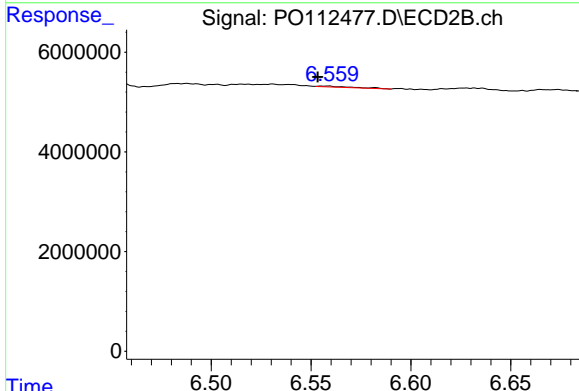
R.T.: 6.380 min  
 Delta R.T.: -0.022 min  
 Response: 2352150  
 Conc: 7.14 ng/ml



#33 AR-1260-3

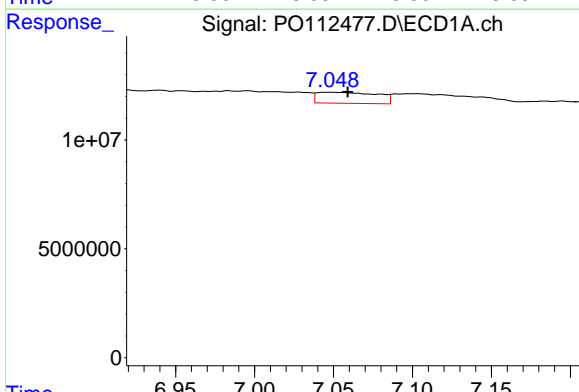
R.T.: 6.802 min  
 Delta R.T.: 0.002 min  
 Response: 4006397  
 Conc: 6.81 ng/ml

Instrument :  
 ECD\_O  
 ClientSampleId :  
 SOM-77



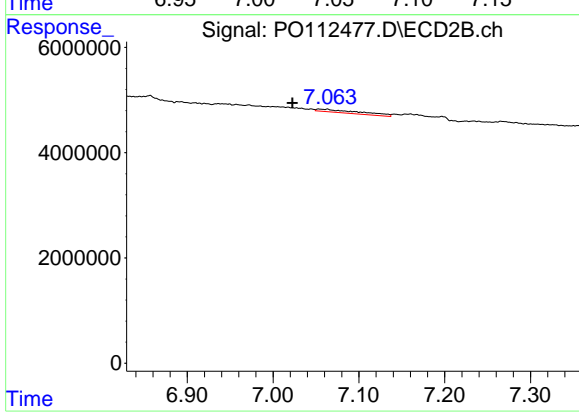
#33 AR-1260-3

R.T.: 6.558 min  
 Delta R.T.: 0.005 min  
 Response: 215189  
 Conc: 0.84 ng/ml



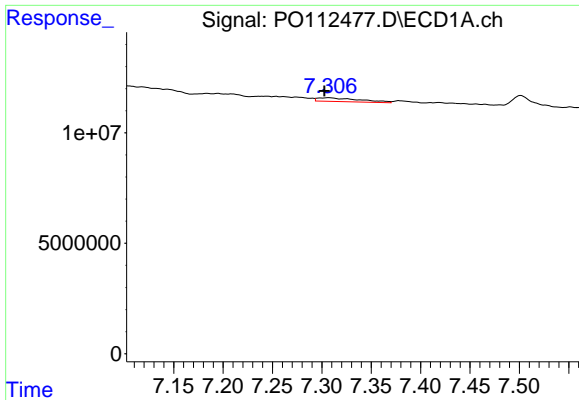
#34 AR-1260-4

R.T.: 7.048 min  
 Delta R.T.: -0.011 min  
 Response: 13365280  
 Conc: 29.63 ng/ml



#34 AR-1260-4

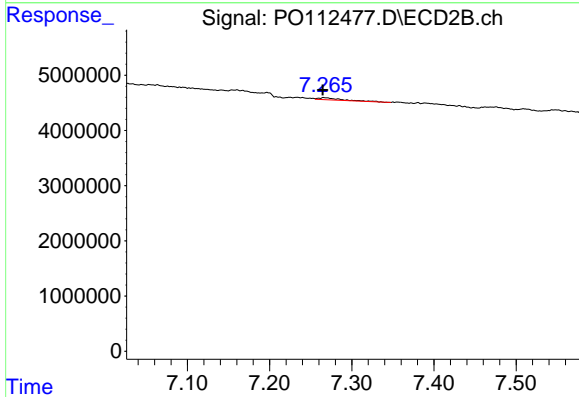
R.T.: 7.054 min  
 Delta R.T.: 0.031 min  
 Response: 2075420  
 Conc: 10.85 ng/ml



#35 AR-1260-5

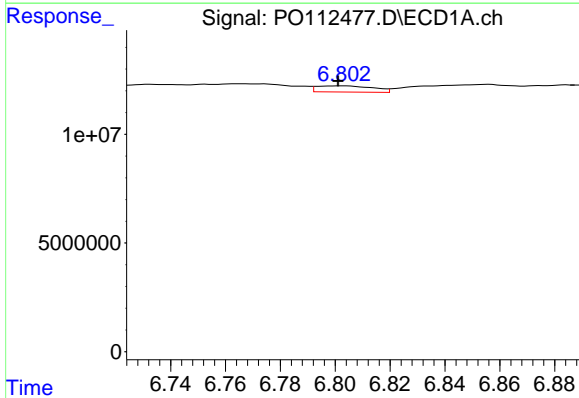
R.T.: 7.307 min  
 Delta R.T.: 0.004 min  
 Response: 4845286  
 Conc: 3.91 ng/ml

Instrument :  
 ECD\_O  
 ClientSampleId :  
 SOM-77



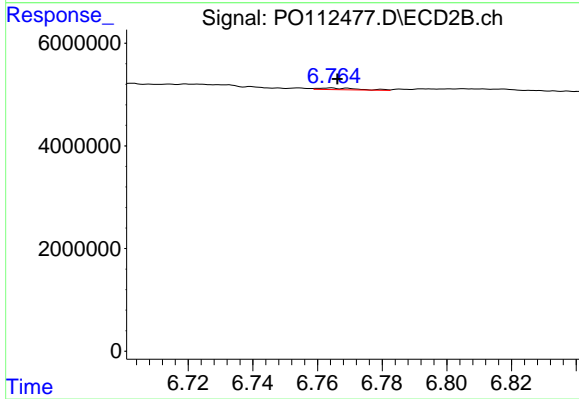
#35 AR-1260-5

R.T.: 7.266 min  
 Delta R.T.: 0.002 min  
 Response: 763047  
 Conc: 1.85 ng/ml



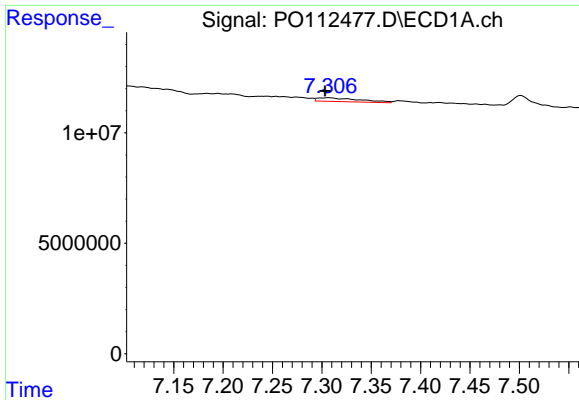
#36 AR-1262-1

R.T.: 6.802 min  
 Delta R.T.: 0.000 min  
 Response: 4006397  
 Conc: 4.31 ng/ml



#36 AR-1262-1

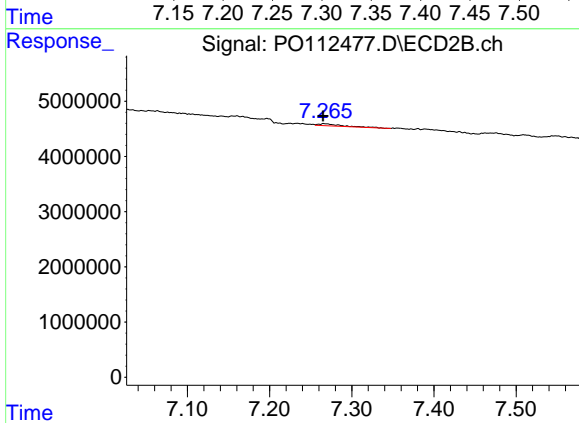
R.T.: 6.764 min  
 Delta R.T.: -0.002 min  
 Response: 252937  
 Conc: 0.61 ng/ml



#37 AR-1262-2

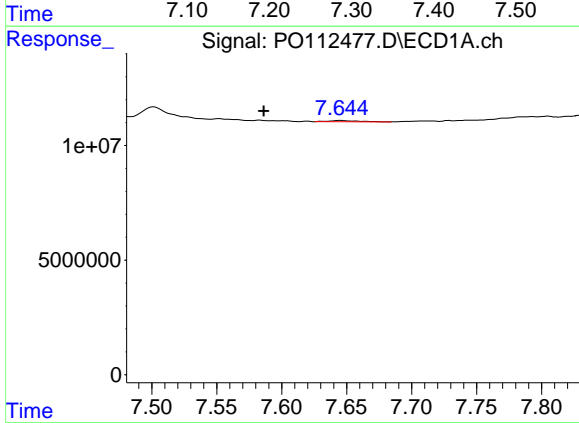
R.T.: 7.307 min  
 Delta R.T.: 0.004 min  
 Response: 4845286  
 Conc: 3.26 ng/ml

Instrument :  
 ECD\_O  
 ClientSampleId :  
 SOM-77



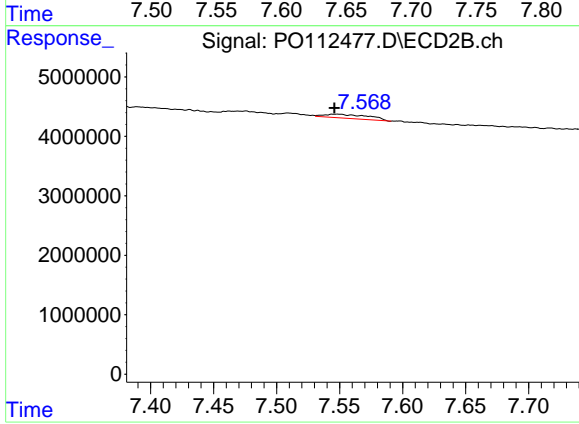
#37 AR-1262-2

R.T.: 7.266 min  
 Delta R.T.: 0.000 min  
 Response: 763047  
 Conc: 1.48 ng/ml



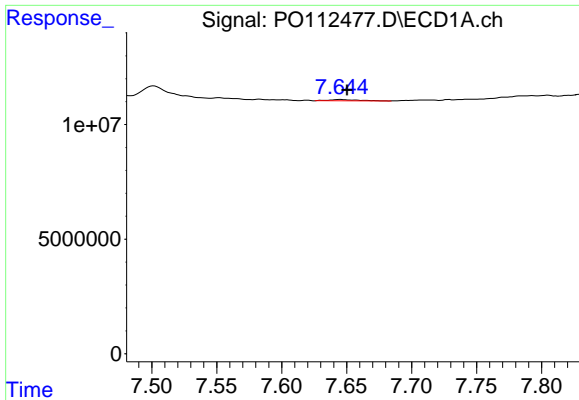
#38 AR-1262-3

R.T.: 7.645 min  
 Delta R.T.: 0.059 min  
 Response: 842333  
 Conc: 1.43 ng/ml



#38 AR-1262-3

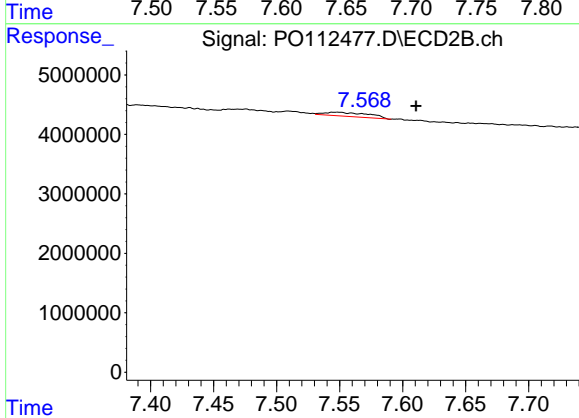
R.T.: 7.548 min  
 Delta R.T.: 0.002 min  
 Response: 1629191  
 Conc: 8.73 ng/ml



#39 AR-1262-4

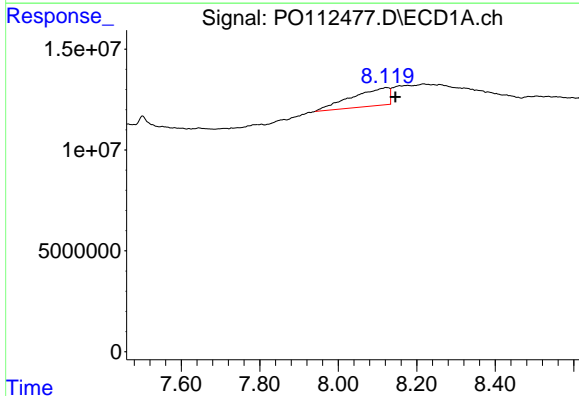
R.T.: 7.645 min  
 Delta R.T.: -0.005 min  
 Response: 842333  
 Conc: 0.85 ng/ml

Instrument :  
 ECD\_O  
 ClientSampleId :  
 SOM-77



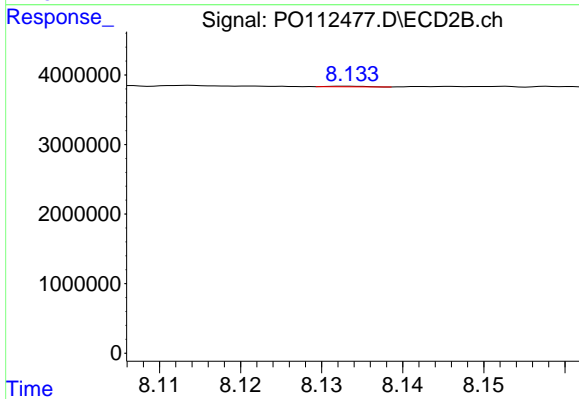
#39 AR-1262-4

R.T.: 7.548 min  
 Delta R.T.: -0.062 min  
 Response: 1629191  
 Conc: 5.65 ng/ml



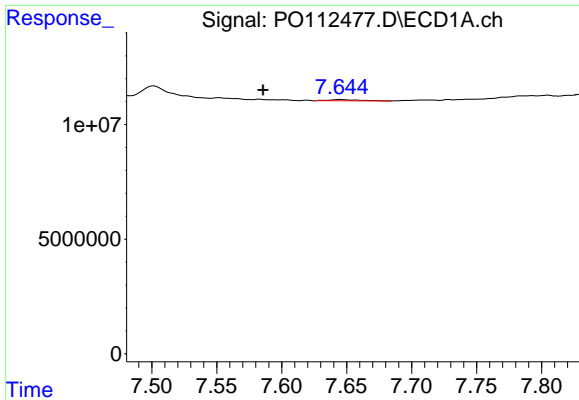
#40 AR-1262-5

R.T.: 8.122 min  
 Delta R.T.: -0.024 min  
 Response: 58985078  
 Conc: 135.89 ng/ml



#40 AR-1262-5

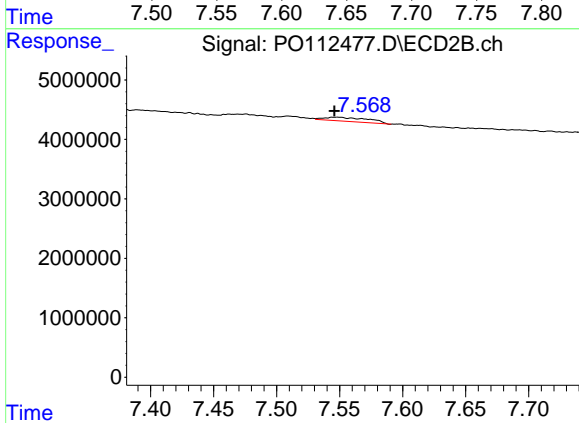
R.T.: 8.133 min  
 Delta R.T.: 0.030 min  
 Response: 25354  
 Conc: 0.25 ng/ml



#41 AR-1268-1

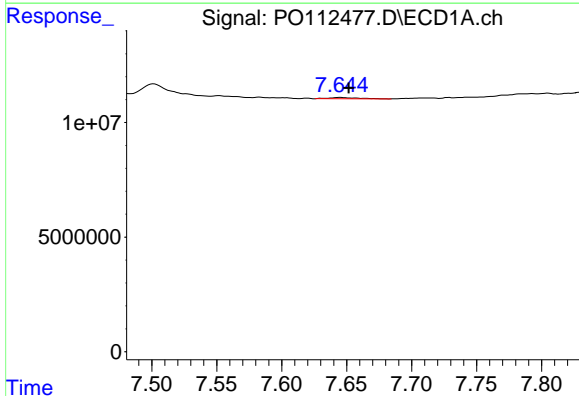
R.T.: 7.645 min  
 Delta R.T.: 0.060 min  
 Response: 842333  
 Conc: 0.48 ng/ml

Instrument :  
 ECD\_O  
 ClientSampleId :  
 SOM-77



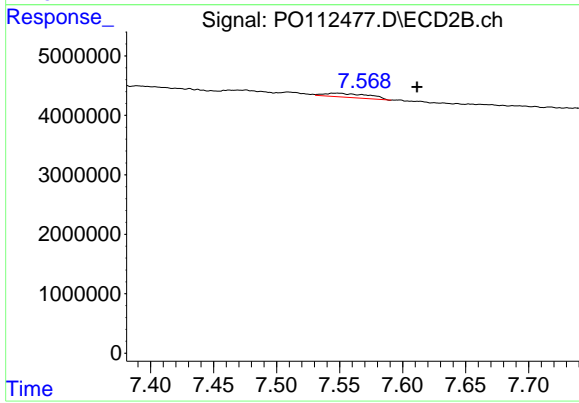
#41 AR-1268-1

R.T.: 7.548 min  
 Delta R.T.: 0.002 min  
 Response: 1629191  
 Conc: 3.15 ng/ml



#42 AR-1268-2

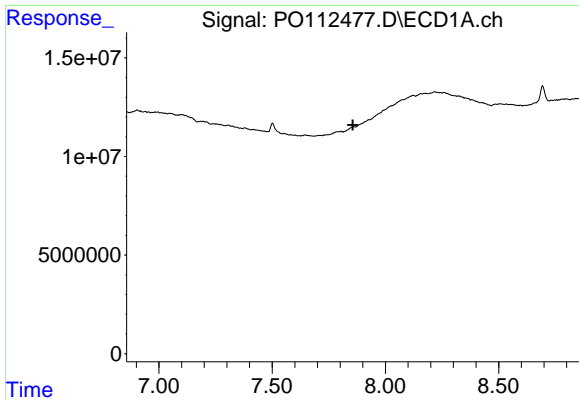
R.T.: 7.645 min  
 Delta R.T.: -0.007 min  
 Response: 842333  
 Conc: 0.57 ng/ml



#42 AR-1268-2

R.T.: 7.548 min  
 Delta R.T.: -0.063 min  
 Response: 1629191  
 Conc: 3.83 ng/ml

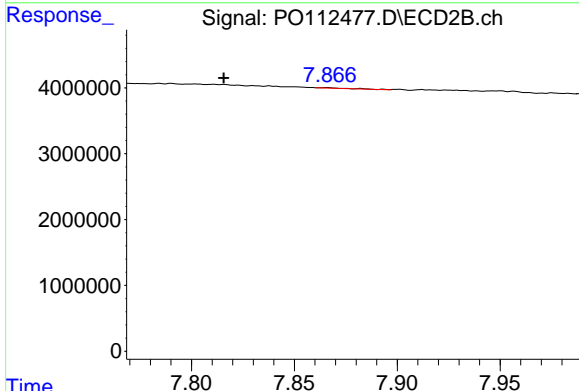




#43 AR-1268-3

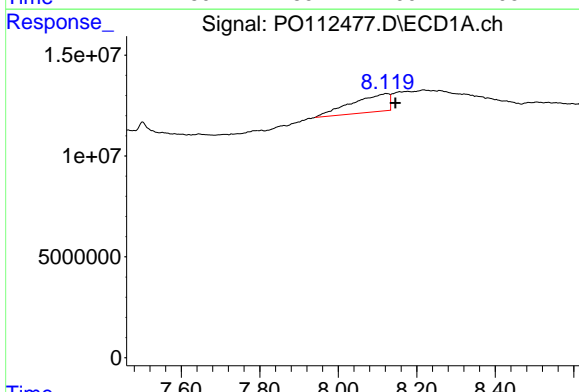
R.T.: 0.000 min  
 Exp R.T.: 7.857 min  
 Response: 0  
 Conc: N.D.

Instrument :  
 ECD\_O  
 ClientSampleId :  
 SOM-77



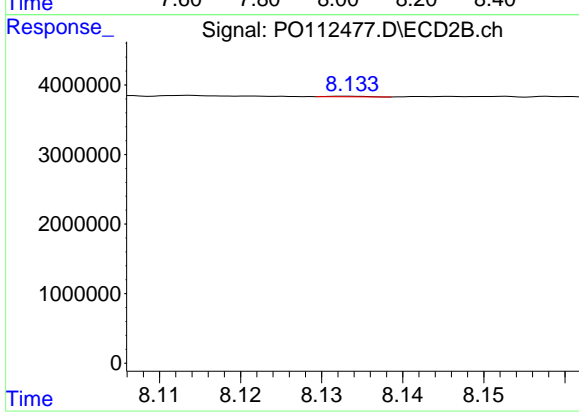
#43 AR-1268-3

R.T.: 7.866 min  
 Delta R.T.: 0.050 min  
 Response: 59266  
 Conc: 0.18 ng/ml



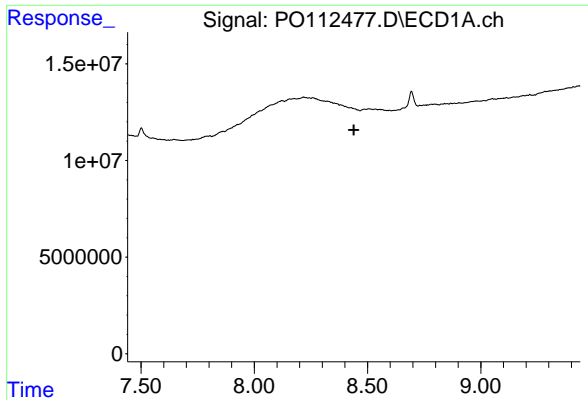
#44 AR-1268-4

R.T.: 8.122 min  
 Delta R.T.: -0.024 min  
 Response: 58985078  
 Conc: 122.41 ng/ml



#44 AR-1268-4

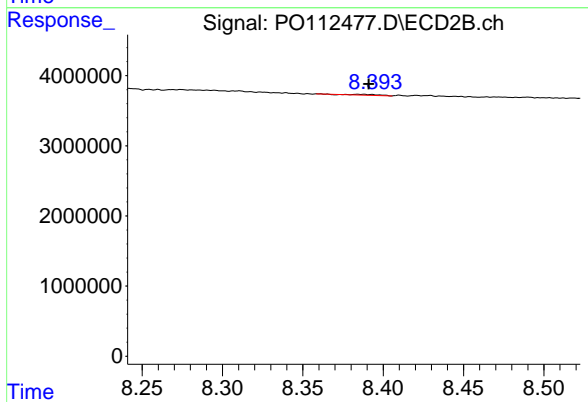
R.T.: 8.133 min  
 Delta R.T.: 0.030 min  
 Response: 25354  
 Conc: 0.23 ng/ml



#45 AR-1268-5

R.T.: 8.486 min  
 Delta R.T.: 0.047 min  
 Response: -922268  
 Conc: N.D.

Instrument :  
 ECD\_O  
 ClientSampleId :  
 SOM-77



#45 AR-1268-5

R.T.: 8.385 min  
 Delta R.T.: -0.006 min  
 Response: 141988  
 Conc: 0.19 ng/ml