

Data Path : Z:\pestpcbsrv\HPCHEM1\ECD_0\Data\P0072425\
 Data File : PO112478.D
 Signal(s) : Signal #1: ECD1A.ch Signal #2: ECD2B.ch
 Acq On : 24 Jul 2025 19:37
 Operator : YP/AJ
 Sample : Q2689-01
 Misc :
 ALS Vial : 26 Sample Multiplier: 1

Instrument :
 ECD_0
 ClientSampleId :
 OR-03-07232025

Integration File signal 1: autoint1.e
 Integration File signal 2: autoint2.e
 Quant Time: Jul 24 23:47:50 2025
 Quant Method : Z:\pestpcbsrv\HPCHEM1\ECD_0\methods\P0072325.M
 Quant Title : GC EXTRACTABLES
 QLast Update : Thu Jul 24 04:54:06 2025
 Response via : Initial Calibration
 Integrator: ChemStation

Volume Inj. : 2 µl
 Signal #1 Phase : ZB-MR1 Signal #2 Phase: ZB-MR2
 Signal #1 Info : 30Mx0.32mmx 0.50µ Signal #2 Info : 30M x 0.32mm x 0.25µm

| Compound | RT#1 | RT#2 | Resp#1 | Resp#2 | ng/ml | ng/ml |
|-----------------------------|-------|-------|----------|----------|---------|-----------|
| ----- | | | | | | |
| System Monitoring Compounds | | | | | | |
| 1) SA Tetrachlo... | 3.668 | 3.662 | 181.7E6 | 110.5E6 | 22.343 | 22.239 |
| 2) SA Decachlor... | 8.692 | 8.640 | 106.5E6 | 30523836 | 14.559 | 17.273 |
| Target Compounds | | | | | | |
| 3) L1 AR-1016-1 | 4.745 | 4.730 | 4166210 | 14735901 | 15.524 | 84.202 # |
| 4) L1 AR-1016-2 | 4.745 | 4.774 | 4166210 | 9356118 | 10.259 | 35.917 # |
| 5) L1 AR-1016-3 | 4.822 | 4.929 | 21488658 | 3982467 | 82.120 | 29.290 # |
| 6) L1 AR-1016-4 | 4.949 | 4.980 | 13863226 | 13166249 | 65.442 | 118.524 # |
| 7) L1 AR-1016-5 | 5.195 | 5.175 | 3363435 | 822633 | 15.325 | 5.741 # |
| 8) L2 AR-1221-1 | 3.887 | 3.879 | 2355832 | 2264715 | 24.372 | 33.668 # |
| 9) L2 AR-1221-2 | 3.973 | 3.962 | 2122150 | 10293319 | 29.531 | 202.912 # |
| 10) L2 AR-1221-3 | 4.024 | 4.032 | -30939 | 2230642 | N.D. | 14.071 # |
| 11) L3 AR-1232-1 | 4.024 | 4.032 | -30939 | 2230642 | N.D. | 17.627 # |
| 12) L3 AR-1232-2 | 4.543 | 4.774 | 29283070 | 9356118 | 272.085 | 71.336 # |
| 13) L3 AR-1232-3 | 4.745 | 4.929 | 4166210 | 3982467 | 20.146 | 59.266 # |
| 14) L3 AR-1232-4 | 4.949 | 5.035 | 13863226 | 13480318 | 132.358 | 225.314 # |
| 15) L3 AR-1232-5 | 4.997 | 5.175 | 27014254 | 822633 | 397.966 | 12.616 # |
| 16) L4 AR-1242-1 | 4.745 | 4.730 | 4166210 | 14735901 | 16.827 | 93.033 # |
| 17) L4 AR-1242-2 | 4.745 | 4.774 | 4166210 | 9356118 | 11.266 | 40.040 # |
| 18) L4 AR-1242-3 | 4.822 | 4.929 | 21488658 | 3982467 | 90.801 | 32.862 # |
| 19) L4 AR-1242-4 | 4.949 | 5.035 | 13863226 | 13480318 | 71.357 | 109.829 # |
| 20) L4 AR-1242-5 | 5.613 | 5.540 | 43254798 | 14796961 | 202.205 | 91.923 # |
| 21) L5 AR-1248-1 | 4.745 | 4.730 | 4166210 | 14735901 | 22.254 | 121.274 # |
| 22) L5 AR-1248-2 | 4.997 | 4.980 | 27014254 | 13166249 | 105.892 | 77.778 # |
| 23) L5 AR-1248-3 | 5.195 | 5.035 | 3363435 | 13480318 | 9.786 | 75.883 # |
| 24) L5 AR-1248-4 | 5.565 | 5.175 | 42981921 | 822633 | 84.597 | 3.948 # |
| 25) L5 AR-1248-5 | 5.613 | 5.587 | 43254798 | 10749429 | 123.730 | 50.052 # |
| 26) L6 AR-1254-1 | 5.565 | 5.540 | 42981921 | 14796961 | 78.297 | 45.027 # |
| 27) L6 AR-1254-2 | 5.704 | 5.678 | 53996532 | 17621031 | 111.123 | 60.869 # |
| 28) L6 AR-1254-3 | 6.103 | 6.076 | 51948049 | 27638189 | 69.796 | 64.657 # |
| 29) L6 AR-1254-4 | 6.326 | 6.296 | 49978247 | 6670849 | 90.919 | 24.439 # |
| 30) L6 AR-1254-5 | 6.758 | 6.724 | 21547994 | 6901238 | 30.443 | 20.661 # |
| 31) L7 AR-1260-1 | 6.251 | 6.217 | 55639438 | 20855955 | 126.646 | 83.924 # |
| 32) L7 AR-1260-2 | 6.434 | 6.401 | 43382129 | 3118870 | 63.065 | 9.466 # |
| 33) L7 AR-1260-3 | 6.823 | 6.551 | 5387216 | -1448800 | 9.162 | N.D. # |
| 34) L7 AR-1260-4 | 7.059 | 7.025 | 20756065 | 3312105 | 46.022 | 17.313 # |
| 35) L7 AR-1260-5 | 7.301 | 7.263 | 12066630 | 3941514 | 9.738 | 9.562 # |
| 36) L8 AR-1262-1 | 6.823 | 6.752 | 5387216 | 934352 | 5.798 | 2.252 # |
| 37) L8 AR-1262-2 | 7.301 | 7.263 | 12066630 | 3941514 | 8.115 | 7.645 # |
| 38) L8 AR-1262-3 | 7.581 | 7.543 | 7394384 | 6331369 | 12.527 | 33.944 # |
| 39) L8 AR-1262-4 | 7.650 | 7.611 | 16341968 | 9483871 | 16.438 | 32.918 # |
| 40) L8 AR-1262-5 | 8.142 | 8.097 | 8007102 | 356062 | 18.447 | 3.578 # |
| 41) L9 AR-1268-1 | 7.581 | 7.543 | 7394384 | 6331369 | 4.223 | 12.226 # |

Data Path : Z:\pestpcbsrv\HPCHEM1\ECD_0\Data\P0072425\
 Data File : P0112478.D
 Signal(s) : Signal #1: ECD1A.ch Signal #2: ECD2B.ch
 Acq On : 24 Jul 2025 19:37
 Operator : YP/AJ
 Sample : Q2689-01
 Misc :
 ALS Vial : 26 Sample Multiplier: 1

Instrument :
 ECD_0
 ClientSampleId :
 OR-03-07232025

Integration File signal 1: autoint1.e
 Integration File signal 2: autoint2.e
 Quant Time: Jul 24 23:47:50 2025
 Quant Method : Z:\pestpcbsrv\HPCHEM1\ECD_0\methods\P0072325.M
 Quant Title : GC EXTRACTABLES
 QLast Update : Thu Jul 24 04:54:06 2025
 Response via : Initial Calibration
 Integrator: ChemStation

Volume Inj. : 2 µl
 Signal #1 Phase : ZB-MR1 Signal #2 Phase: ZB-MR2
 Signal #1 Info : 30Mx0.32mmx 0.50µ Signal #2 Info : 30M x 0.32mm x 0.25µm

| | Compound | RT#1 | RT#2 | Resp#1 | Resp#2 | ng/ml | ng/ml |
|-----|--------------|-------|-------|----------|---------|--------|----------|
| 42) | L9 AR-1268-2 | 7.650 | 7.611 | 16341968 | 9483871 | 11.094 | 22.312 # |
| 43) | L9 AR-1268-3 | 7.858 | 7.811 | 242542 | 790664 | 0.194 | 2.461 # |
| 44) | L9 AR-1268-4 | 8.142 | 8.097 | 8007102 | 356062 | 16.617 | 3.199 # |
| 45) | L9 AR-1268-5 | 8.437 | 8.385 | 977667 | 514079 | 0.291 | 0.703 # |

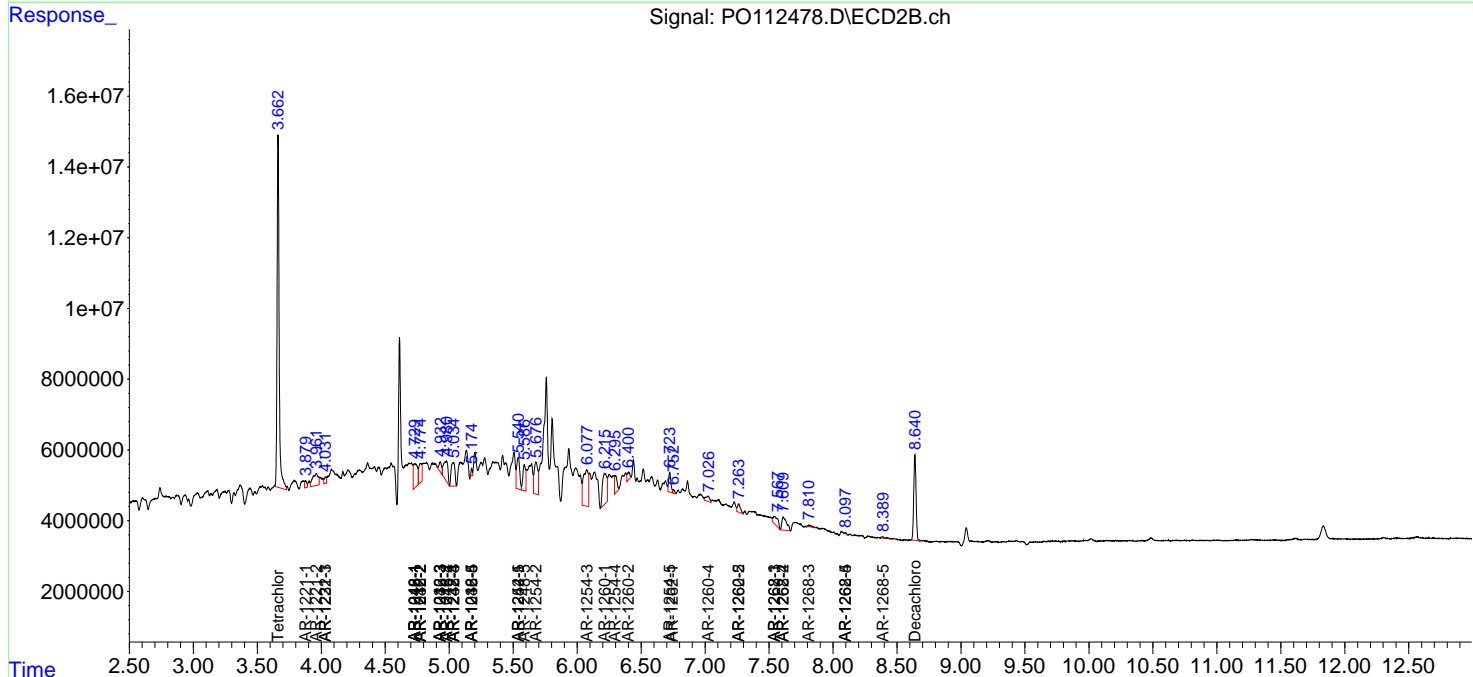
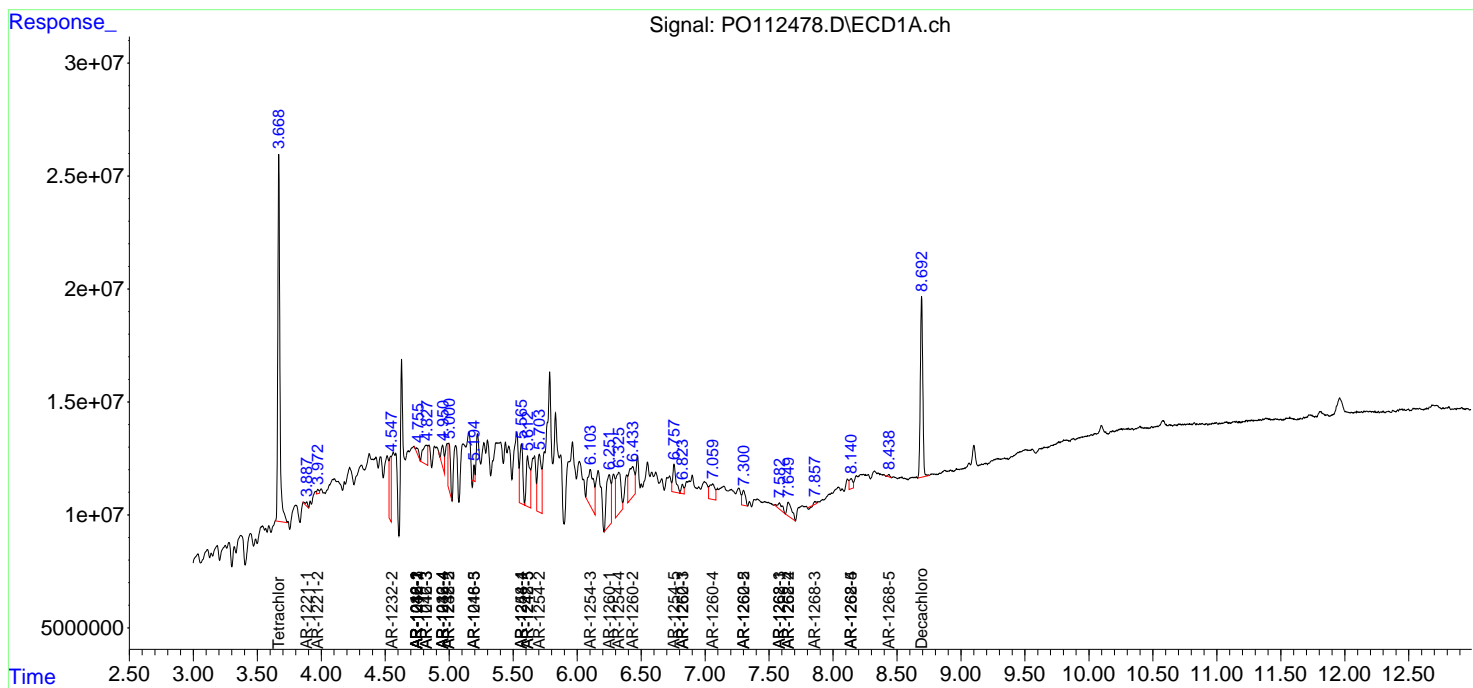
(f)=RT Delta > 1/2 Window (#)=Amounts differ by > 25% (m)=manual int.

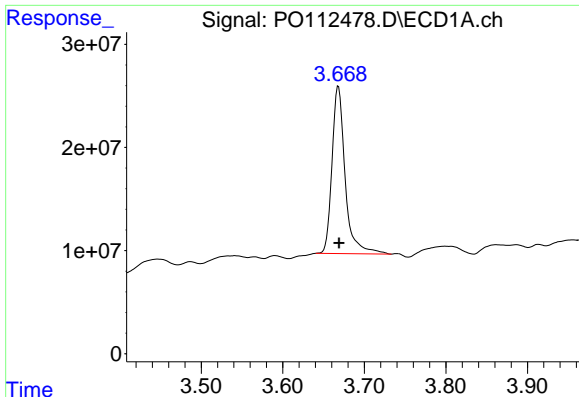
Data Path : Z:\pestpcbsrv\HPCHEM1\ECD_O\Data\PO072425\
 Data File : PO112478.D
 Signal(s) : Signal #1: ECD1A.ch Signal #2: ECD2B.ch
 Acq On : 24 Jul 2025 19:37
 Operator : YP/AJ
 Sample : Q2689-01
 Misc :
 ALS Vial : 26 Sample Multiplier: 1

Instrument :
 ECD_O
 ClientSampleId :
 OR-03-07232025

Integration File signal 1: autoint1.e
 Integration File signal 2: autoint2.e
 Quant Time: Jul 24 23:47:50 2025
 Quant Method : Z:\pestpcbsrv\HPCHEM1\ECD_O\methods\PO072325.M
 Quant Title : GC EXTRACTABLES
 QLast Update : Thu Jul 24 04:54:06 2025
 Response via : Initial Calibration
 Integrator: ChemStation

Volume Inj. : 2 µl
 Signal #1 Phase : ZB-MR1 Signal #2 Phase: ZB-MR2
 Signal #1 Info : 30Mx0.32mmx 0.50µ Signal #2 Info : 30M x 0.32mm x 0.25µm

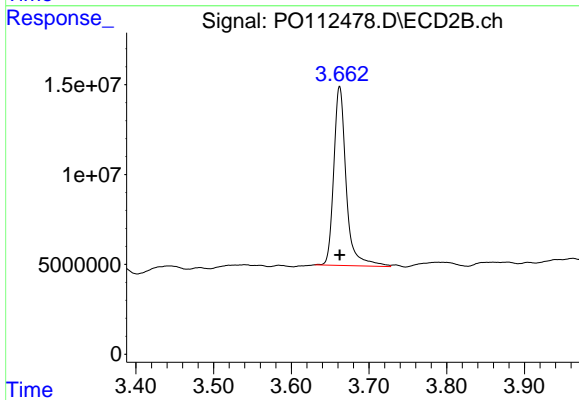




#1 Tetrachloro-m-xylene

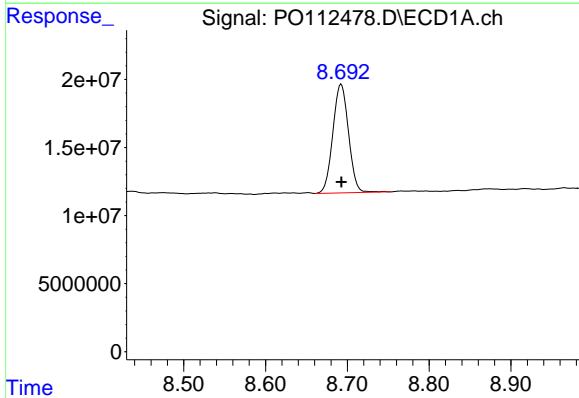
R.T.: 3.668 min
 Delta R.T.: 0.000 min
 Response: 181680039
 Conc: 22.34 ng/ml

Instrument :
 ECD_O
 ClientSampleId :
 OR-03-07232025



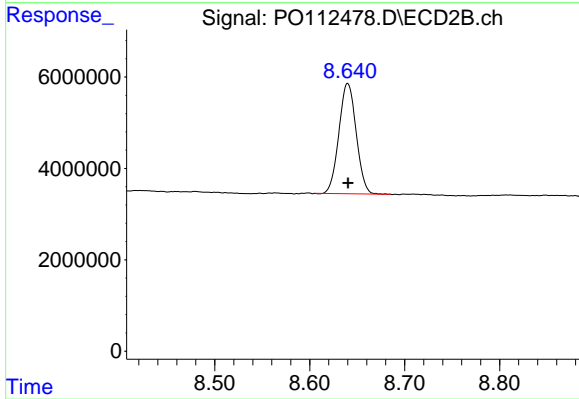
#1 Tetrachloro-m-xylene

R.T.: 3.662 min
 Delta R.T.: 0.000 min
 Response: 110508839
 Conc: 22.24 ng/ml



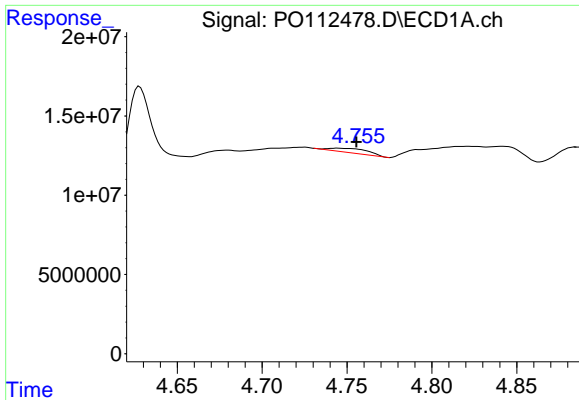
#2 Decachlorobiphenyl

R.T.: 8.692 min
 Delta R.T.: 0.000 min
 Response: 106452440
 Conc: 14.56 ng/ml



#2 Decachlorobiphenyl

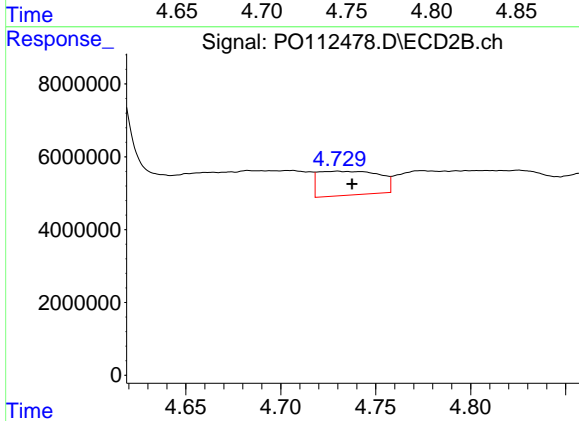
R.T.: 8.640 min
 Delta R.T.: 0.000 min
 Response: 30523836
 Conc: 17.27 ng/ml



#3 AR-1016-1

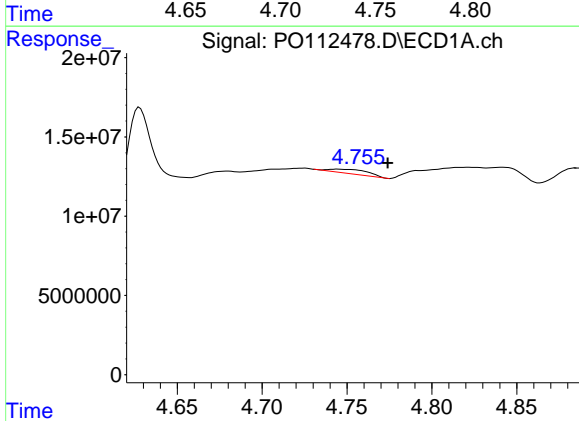
R.T.: 4.745 min
Delta R.T.: -0.011 min
Response: 4166210
Conc: 15.52 ng/ml

Instrument :
ECD_O
ClientSampleId :
OR-03-07232025



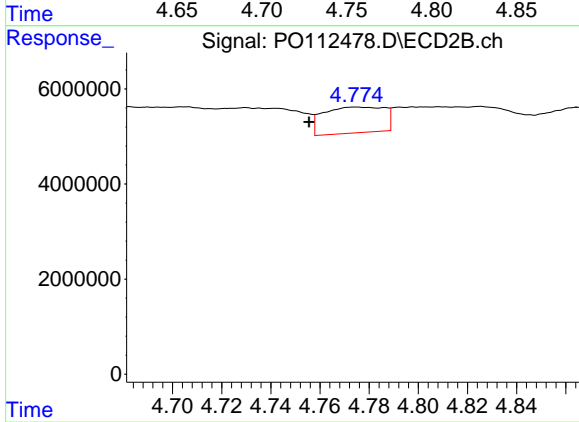
#3 AR-1016-1

R.T.: 4.730 min
Delta R.T.: -0.008 min
Response: 14735901
Conc: 84.20 ng/ml



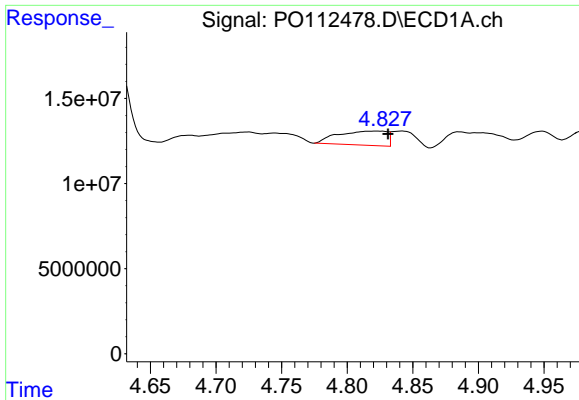
#4 AR-1016-2

R.T.: 4.745 min
Delta R.T.: -0.029 min
Response: 4166210
Conc: 10.26 ng/ml



#4 AR-1016-2

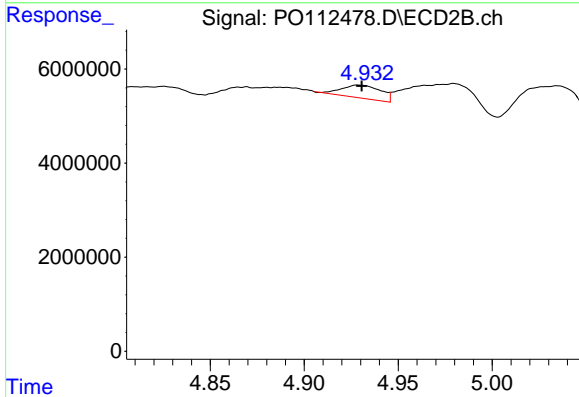
R.T.: 4.774 min
Delta R.T.: 0.019 min
Response: 9356118
Conc: 35.92 ng/ml



#5 AR-1016-3

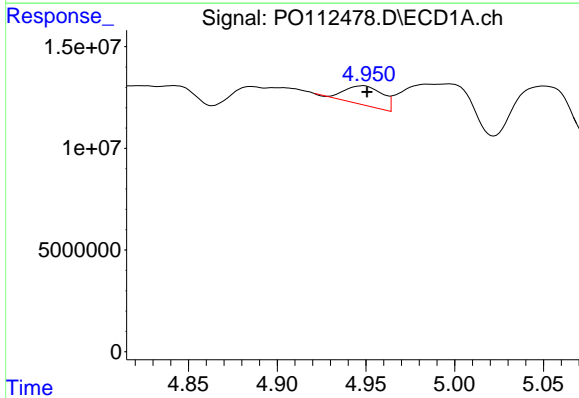
R.T.: 4.822 min
 Delta R.T.: -0.009 min
 Response: 21488658
 Conc: 82.12 ng/ml

Instrument :
 ECD_O
 ClientSampleId :
 OR-03-07232025



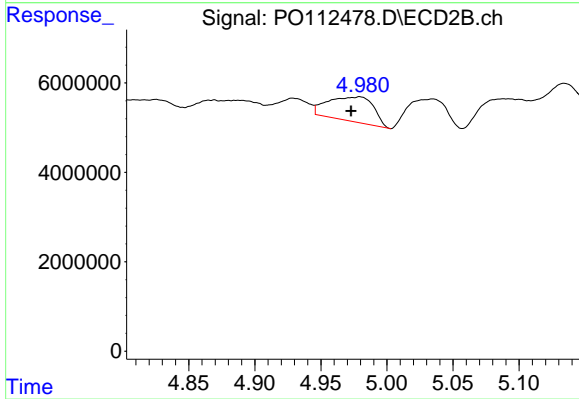
#5 AR-1016-3

R.T.: 4.929 min
 Delta R.T.: -0.002 min
 Response: 3982467
 Conc: 29.29 ng/ml



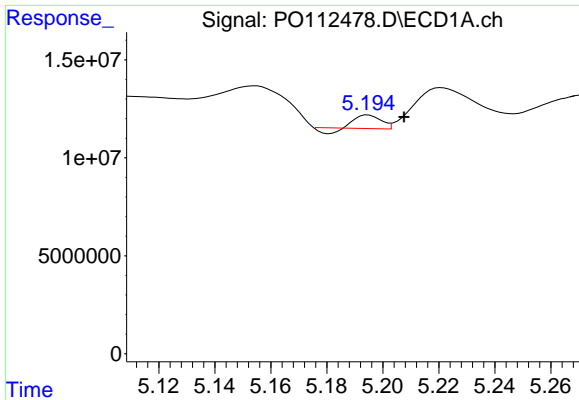
#6 AR-1016-4

R.T.: 4.949 min
 Delta R.T.: -0.002 min
 Response: 13863226
 Conc: 65.44 ng/ml



#6 AR-1016-4

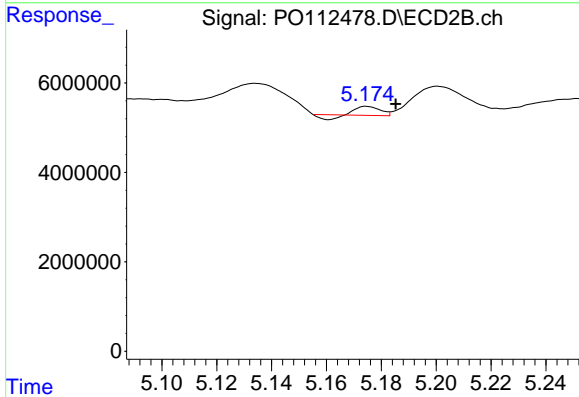
R.T.: 4.980 min
 Delta R.T.: 0.007 min
 Response: 13166249
 Conc: 118.52 ng/ml



#7 AR-1016-5

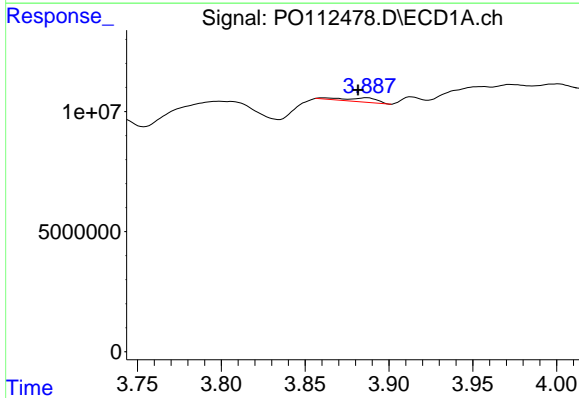
R.T.: 5.195 min
 Delta R.T.: -0.013 min
 Response: 3363435
 Conc: 15.33 ng/ml

Instrument :
 ECD_O
 ClientSampleId :
 OR-03-07232025



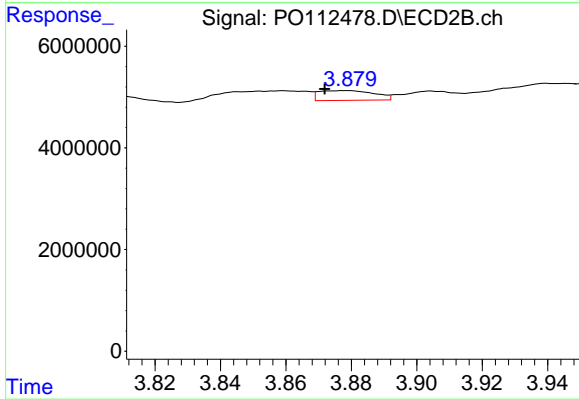
#7 AR-1016-5

R.T.: 5.175 min
 Delta R.T.: -0.011 min
 Response: 822633
 Conc: 5.74 ng/ml



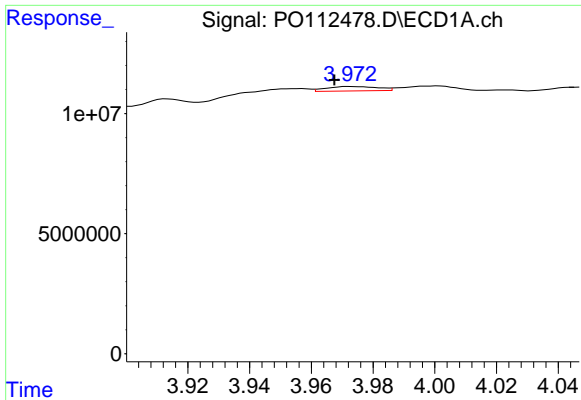
#8 AR-1221-1

R.T.: 3.887 min
 Delta R.T.: 0.005 min
 Response: 2355832
 Conc: 24.37 ng/ml



#8 AR-1221-1

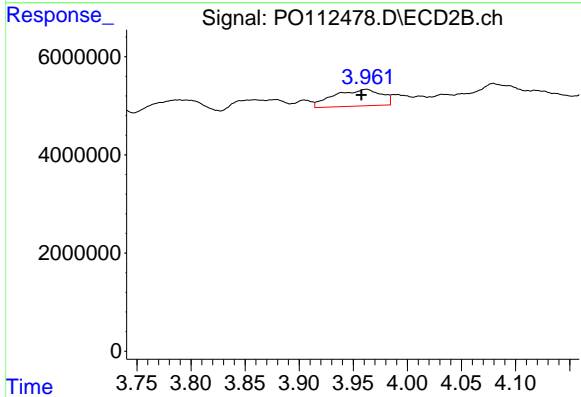
R.T.: 3.879 min
 Delta R.T.: 0.007 min
 Response: 2264715
 Conc: 33.67 ng/ml



#9 AR-1221-2

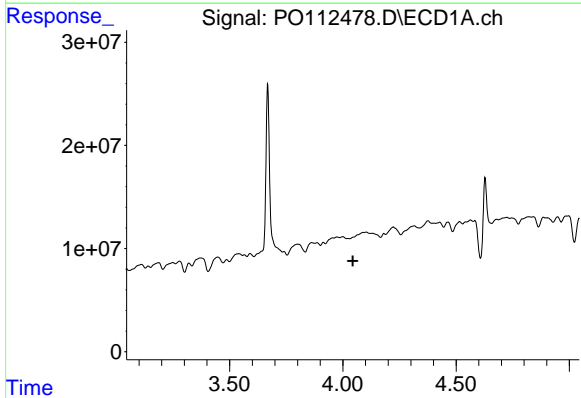
R.T.: 3.973 min
 Delta R.T.: 0.005 min
 Response: 2122150
 Conc: 29.53 ng/ml

Instrument :
 ECD_O
 ClientSampleId :
 OR-03-07232025



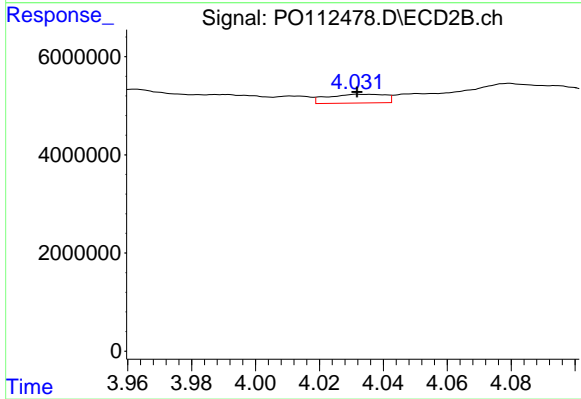
#9 AR-1221-2

R.T.: 3.962 min
 Delta R.T.: 0.004 min
 Response: 10293319
 Conc: 202.91 ng/ml



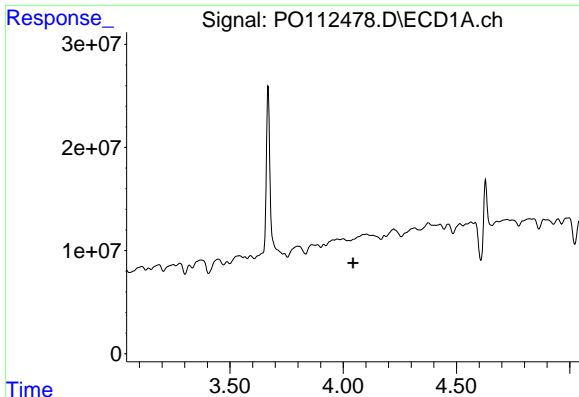
#10 AR-1221-3

R.T.: 4.024 min
 Delta R.T.: -0.019 min
 Response: -30939
 Conc: N.D.



#10 AR-1221-3

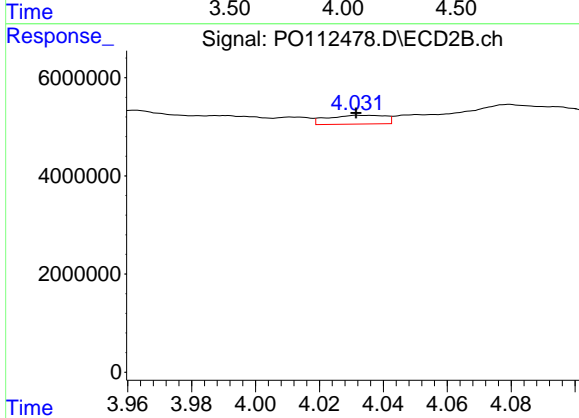
R.T.: 4.032 min
 Delta R.T.: 0.000 min
 Response: 2230642
 Conc: 14.07 ng/ml



#11 AR-1232-1

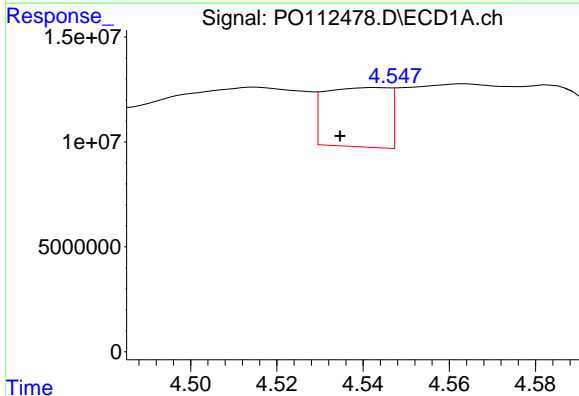
R.T.: 4.024 min
 Delta R.T.: -0.019 min
 Response: -30939
 Conc: N.D.

Instrument :
 ECD_O
 ClientSampleId :
 OR-03-07232025



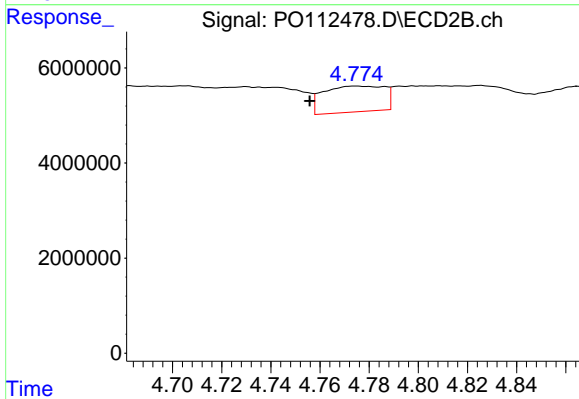
#11 AR-1232-1

R.T.: 4.032 min
 Delta R.T.: 0.001 min
 Response: 2230642
 Conc: 17.63 ng/ml



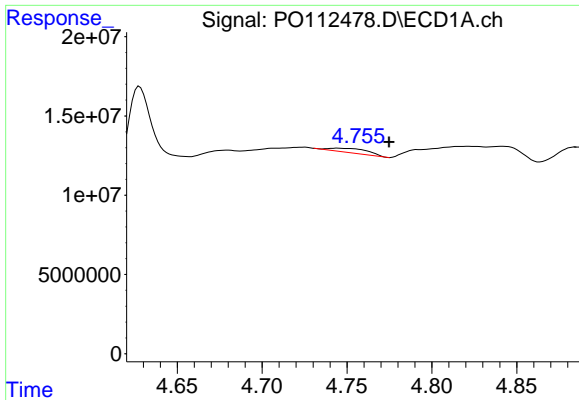
#12 AR-1232-2

R.T.: 4.543 min
 Delta R.T.: 0.008 min
 Response: 29283070
 Conc: 272.08 ng/ml



#12 AR-1232-2

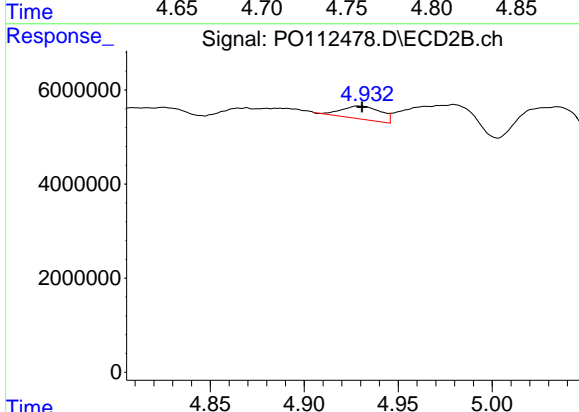
R.T.: 4.774 min
 Delta R.T.: 0.018 min
 Response: 9356118
 Conc: 71.34 ng/ml



#13 AR-1232-3

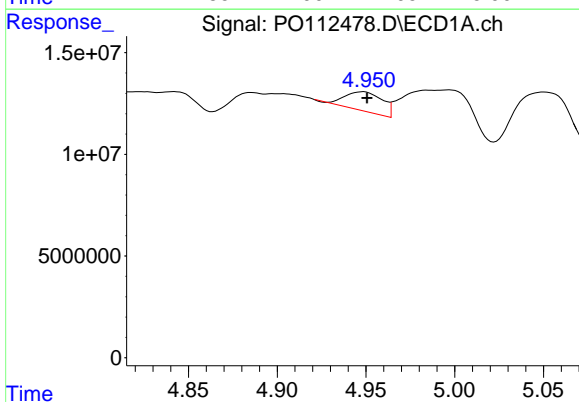
R.T.: 4.745 min
 Delta R.T.: -0.030 min
 Response: 4166210
 Conc: 20.15 ng/ml

Instrument :
 ECD_O
 ClientSampleId :
 OR-03-07232025



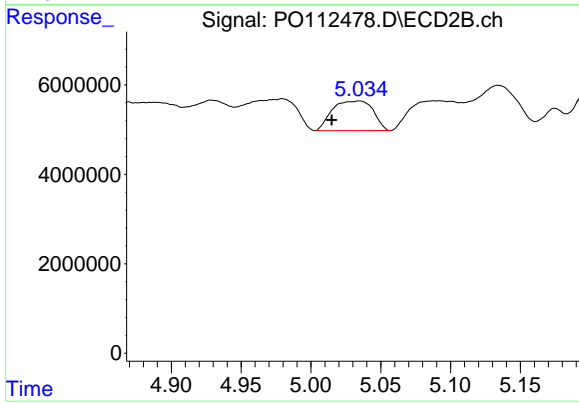
#13 AR-1232-3

R.T.: 4.929 min
 Delta R.T.: -0.002 min
 Response: 3982467
 Conc: 59.27 ng/ml



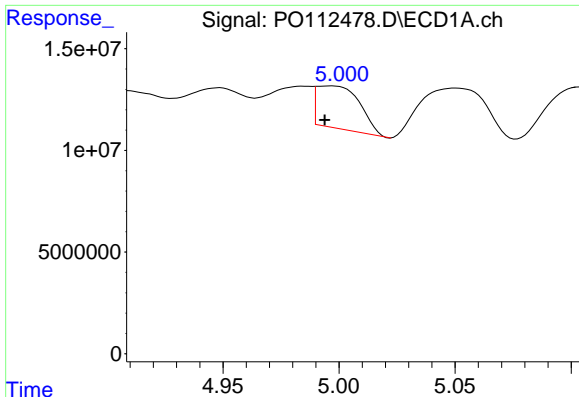
#14 AR-1232-4

R.T.: 4.949 min
 Delta R.T.: -0.002 min
 Response: 13863226
 Conc: 132.36 ng/ml



#14 AR-1232-4

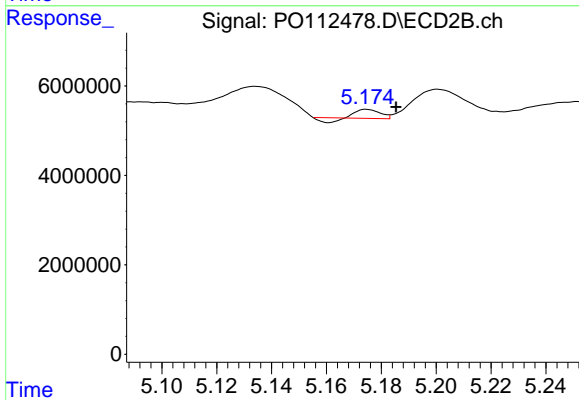
R.T.: 5.035 min
 Delta R.T.: 0.020 min
 Response: 13480318
 Conc: 225.31 ng/ml



#15 AR-1232-5

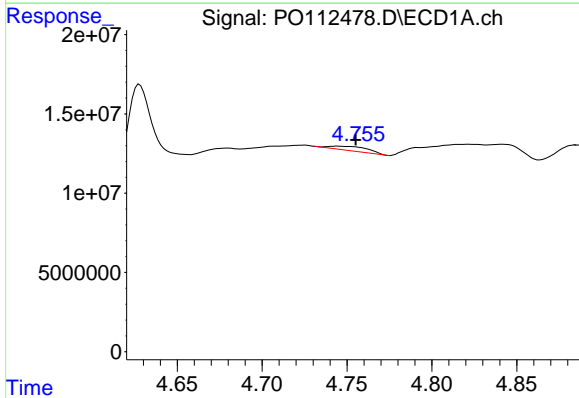
R.T.: 4.997 min
 Delta R.T.: 0.003 min
 Response: 27014254
 Conc: 397.97 ng/ml

Instrument :
 ECD_O
 ClientSampleId :
 OR-03-07232025



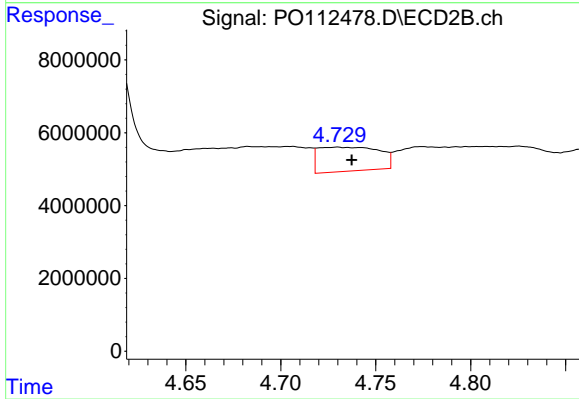
#15 AR-1232-5

R.T.: 5.175 min
 Delta R.T.: -0.011 min
 Response: 822633
 Conc: 12.62 ng/ml



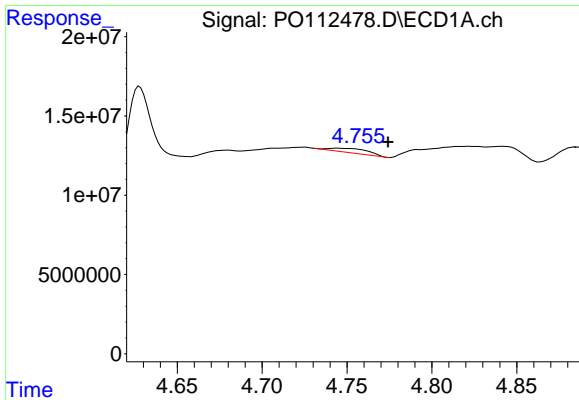
#16 AR-1242-1

R.T.: 4.745 min
 Delta R.T.: -0.010 min
 Response: 4166210
 Conc: 16.83 ng/ml



#16 AR-1242-1

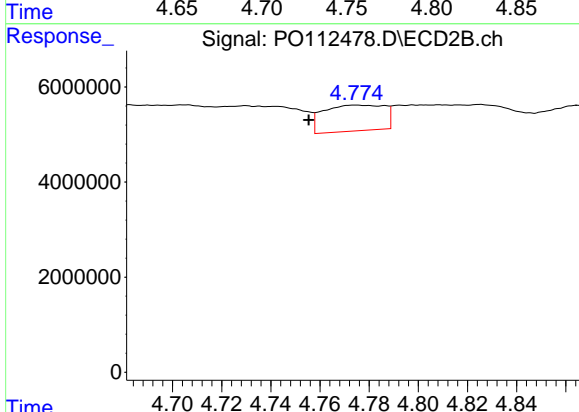
R.T.: 4.730 min
 Delta R.T.: -0.008 min
 Response: 14735901
 Conc: 93.03 ng/ml



#17 AR-1242-2

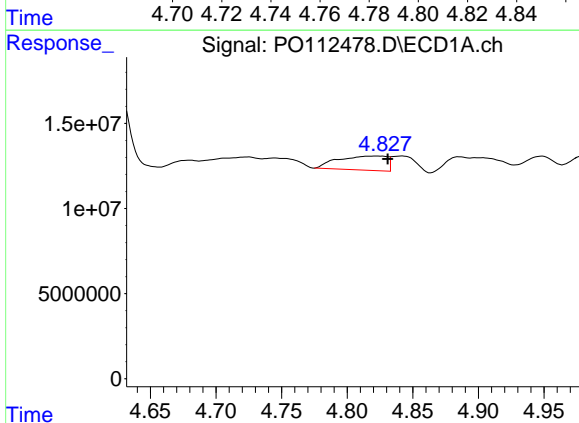
R.T.: 4.745 min
 Delta R.T.: -0.029 min
 Response: 4166210
 Conc: 11.27 ng/ml

Instrument :
 ECD_O
 ClientSampleId :
 OR-03-07232025



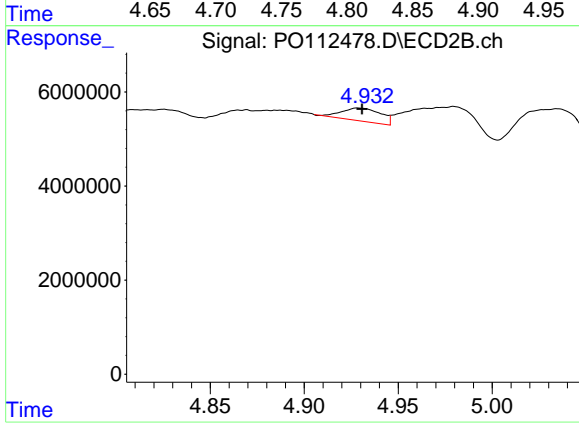
#17 AR-1242-2

R.T.: 4.774 min
 Delta R.T.: 0.019 min
 Response: 9356118
 Conc: 40.04 ng/ml



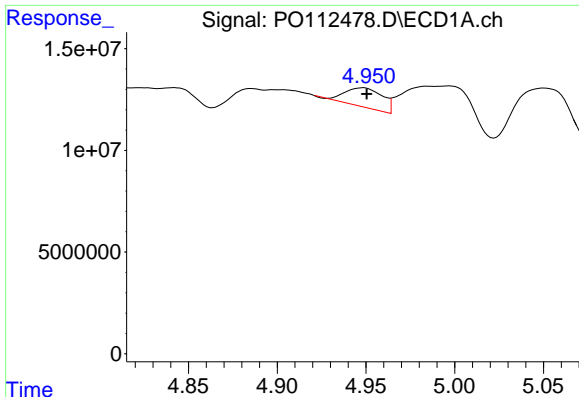
#18 AR-1242-3

R.T.: 4.822 min
 Delta R.T.: -0.009 min
 Response: 21488658
 Conc: 90.80 ng/ml



#18 AR-1242-3

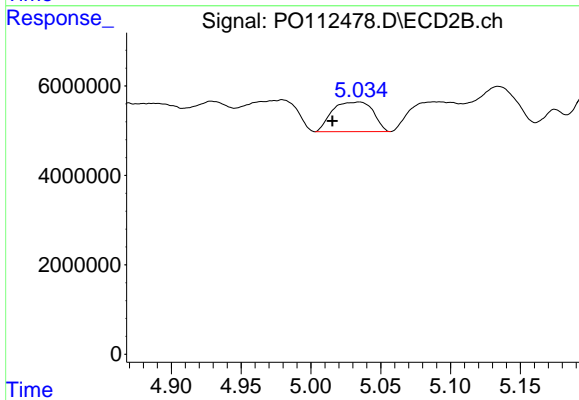
R.T.: 4.929 min
 Delta R.T.: -0.002 min
 Response: 3982467
 Conc: 32.86 ng/ml



#19 AR-1242-4

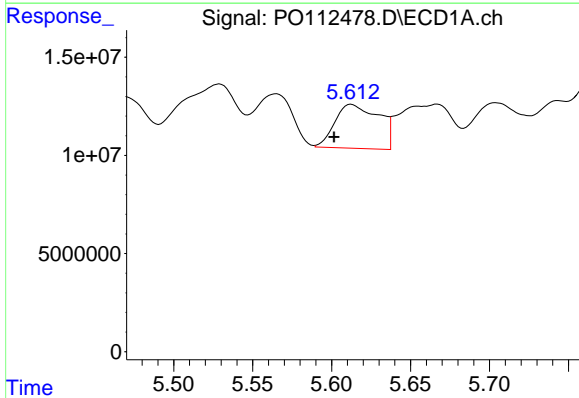
R.T.: 4.949 min
 Delta R.T.: -0.002 min
 Response: 13863226
 Conc: 71.36 ng/ml

Instrument :
 ECD_O
 ClientSampleId :
 OR-03-07232025



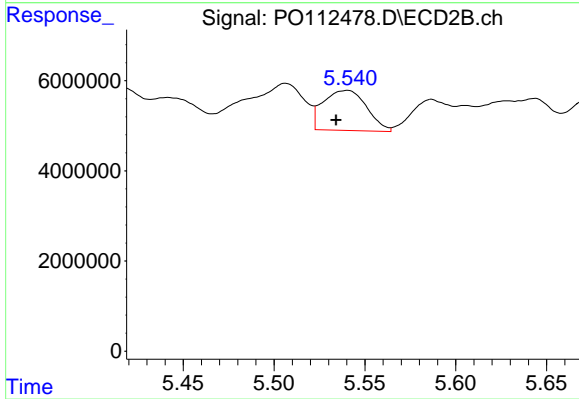
#19 AR-1242-4

R.T.: 5.035 min
 Delta R.T.: 0.019 min
 Response: 13480318
 Conc: 109.83 ng/ml



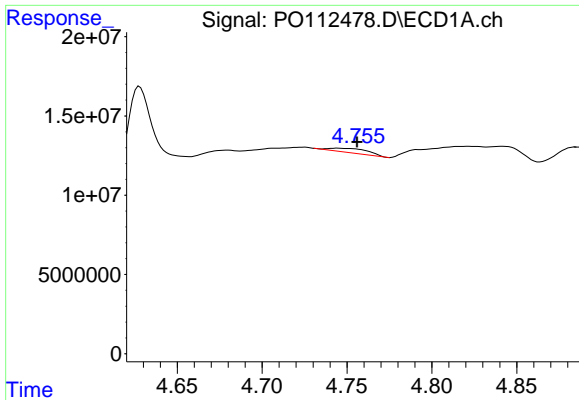
#20 AR-1242-5

R.T.: 5.613 min
 Delta R.T.: 0.011 min
 Response: 43254798
 Conc: 202.20 ng/ml



#20 AR-1242-5

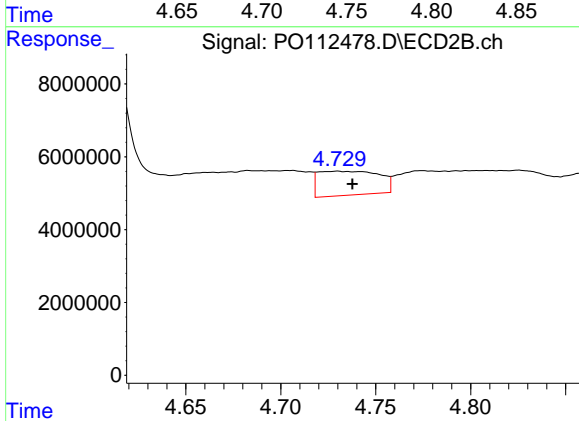
R.T.: 5.540 min
 Delta R.T.: 0.006 min
 Response: 14796961
 Conc: 91.92 ng/ml



#21 AR-1248-1

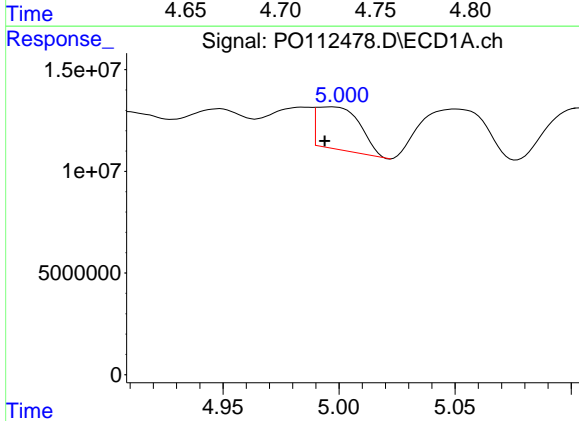
R.T.: 4.745 min
 Delta R.T.: -0.011 min
 Response: 4166210
 Conc: 22.25 ng/ml

Instrument :
 ECD_O
 ClientSampleId :
 OR-03-07232025



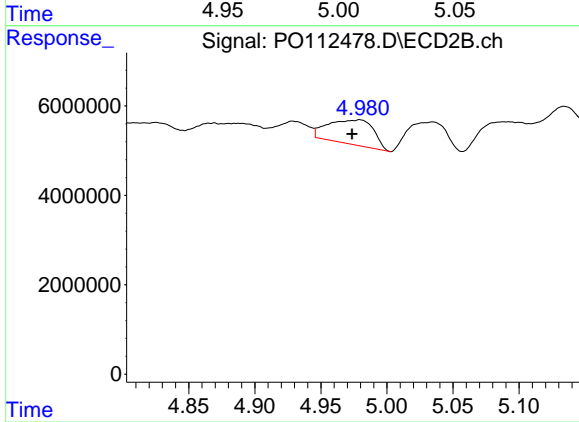
#21 AR-1248-1

R.T.: 4.730 min
 Delta R.T.: -0.008 min
 Response: 14735901
 Conc: 121.27 ng/ml



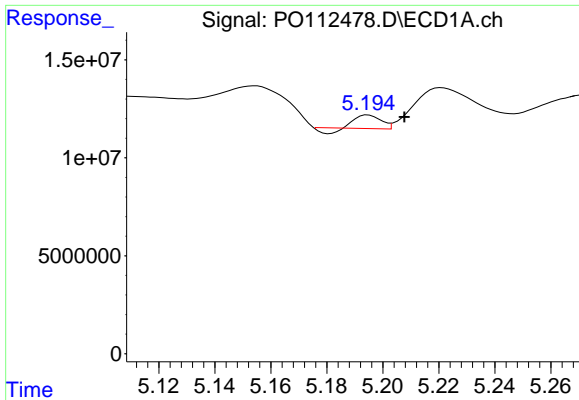
#22 AR-1248-2

R.T.: 4.997 min
 Delta R.T.: 0.003 min
 Response: 27014254
 Conc: 105.89 ng/ml



#22 AR-1248-2

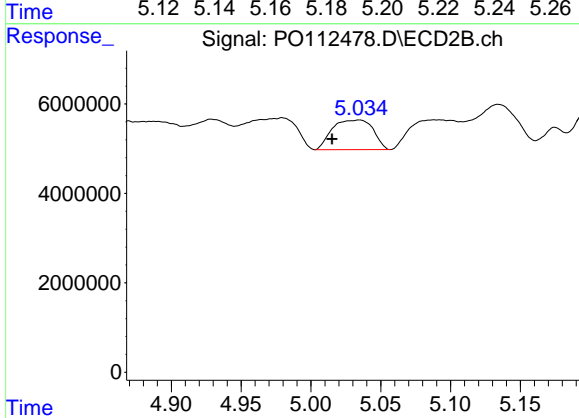
R.T.: 4.980 min
 Delta R.T.: 0.006 min
 Response: 13166249
 Conc: 77.78 ng/ml



#23 AR-1248-3

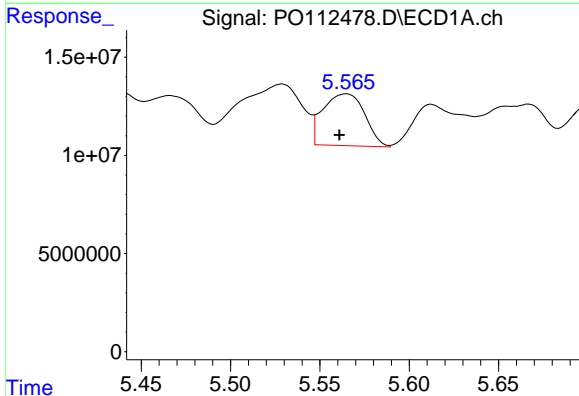
R.T.: 5.195 min
 Delta R.T.: -0.013 min
 Response: 3363435
 Conc: 9.79 ng/ml

Instrument :
 ECD_O
 ClientSampleId :
 OR-03-07232025



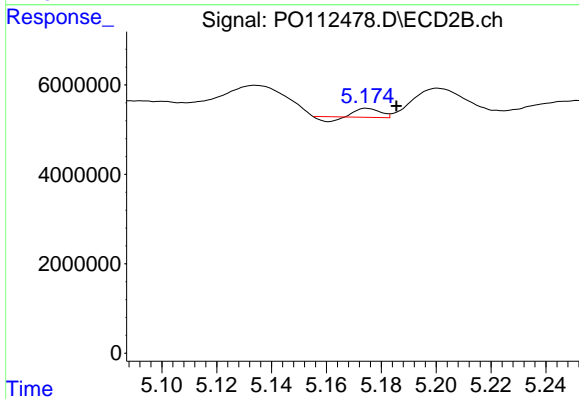
#23 AR-1248-3

R.T.: 5.035 min
 Delta R.T.: 0.020 min
 Response: 13480318
 Conc: 75.88 ng/ml



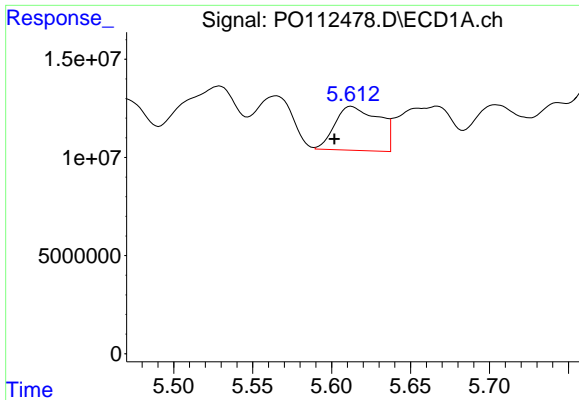
#24 AR-1248-4

R.T.: 5.565 min
 Delta R.T.: 0.004 min
 Response: 42981921
 Conc: 84.60 ng/ml



#24 AR-1248-4

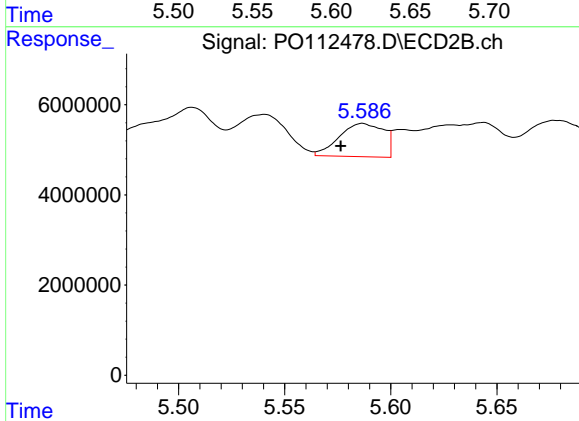
R.T.: 5.175 min
 Delta R.T.: -0.011 min
 Response: 822633
 Conc: 3.95 ng/ml



#25 AR-1248-5

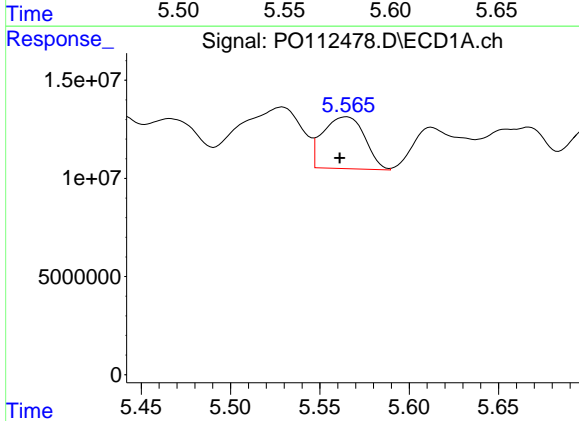
R.T.: 5.613 min
 Delta R.T.: 0.011 min
 Response: 43254798
 Conc: 123.73 ng/ml

Instrument :
 ECD_O
 ClientSampleId :
 OR-03-07232025



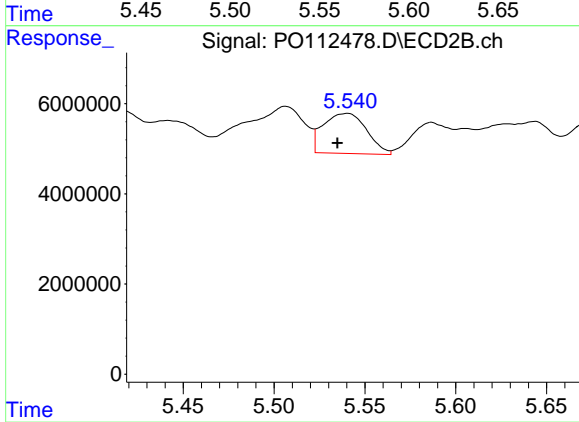
#25 AR-1248-5

R.T.: 5.587 min
 Delta R.T.: 0.010 min
 Response: 10749429
 Conc: 50.05 ng/ml



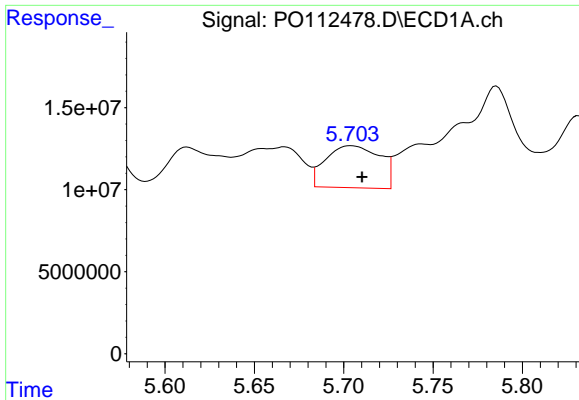
#26 AR-1254-1

R.T.: 5.565 min
 Delta R.T.: 0.004 min
 Response: 42981921
 Conc: 78.30 ng/ml



#26 AR-1254-1

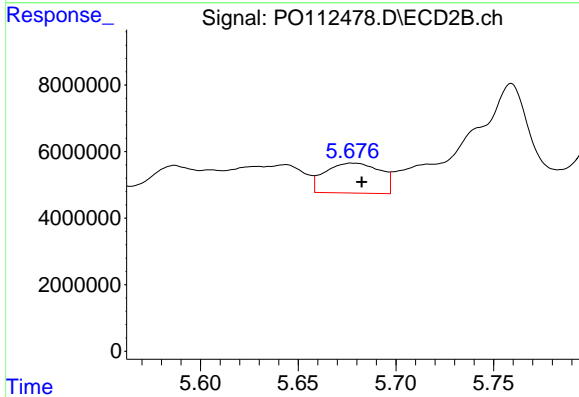
R.T.: 5.540 min
 Delta R.T.: 0.005 min
 Response: 14796961
 Conc: 45.03 ng/ml



#27 AR-1254-2

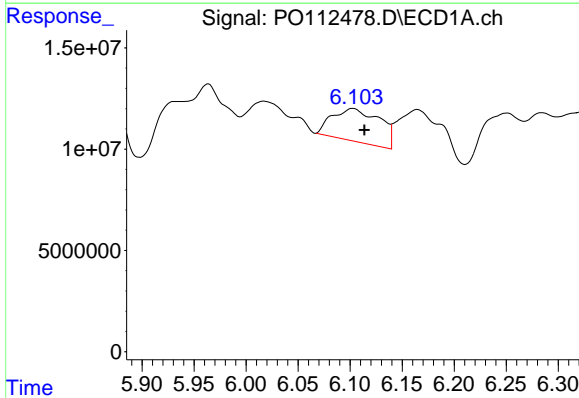
R.T.: 5.704 min
Delta R.T.: -0.006 min
Response: 53996532
Conc: 111.12 ng/ml

Instrument :
ECD_O
ClientSampleId :
OR-03-07232025



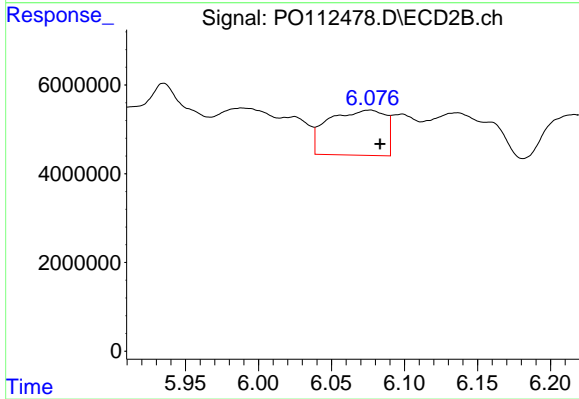
#27 AR-1254-2

R.T.: 5.678 min
Delta R.T.: -0.005 min
Response: 17621031
Conc: 60.87 ng/ml



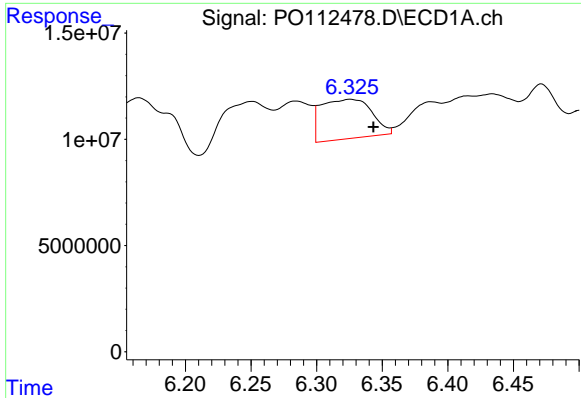
#28 AR-1254-3

R.T.: 6.103 min
Delta R.T.: -0.011 min
Response: 51948049
Conc: 69.80 ng/ml



#28 AR-1254-3

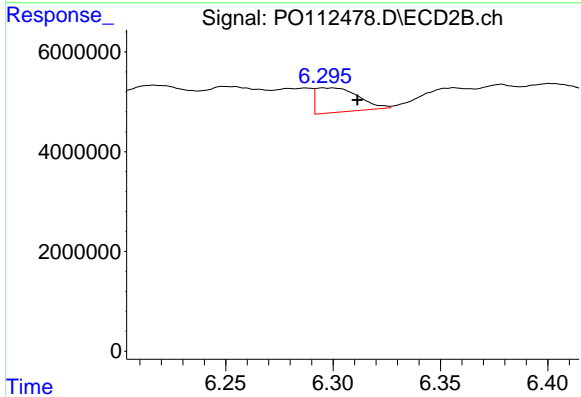
R.T.: 6.076 min
Delta R.T.: -0.007 min
Response: 27638189
Conc: 64.66 ng/ml



#29 AR-1254-4

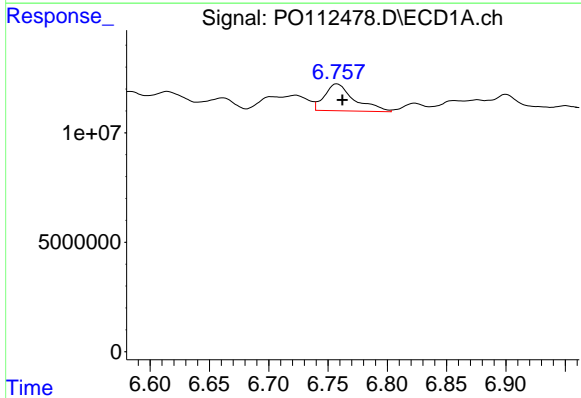
R.T.: 6.326 min
 Delta R.T.: -0.018 min
 Response: 49978247
 Conc: 90.92 ng/ml

Instrument :
 ECD_O
 ClientSampleId :
 OR-03-07232025



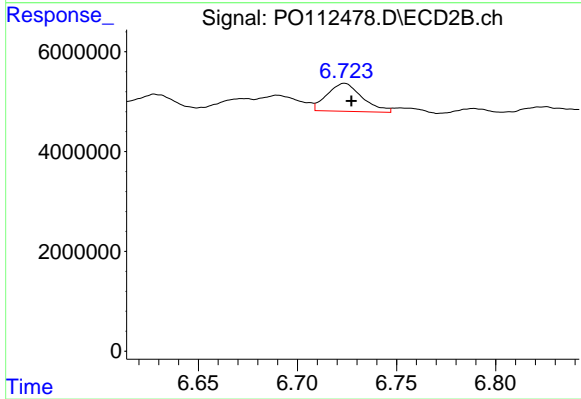
#29 AR-1254-4

R.T.: 6.296 min
 Delta R.T.: -0.016 min
 Response: 6670849
 Conc: 24.44 ng/ml



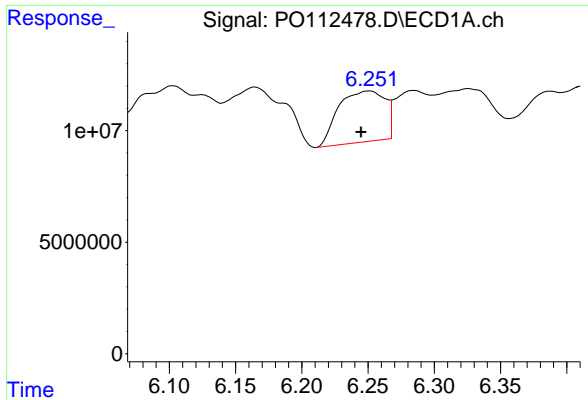
#30 AR-1254-5

R.T.: 6.758 min
 Delta R.T.: -0.004 min
 Response: 21547994
 Conc: 30.44 ng/ml



#30 AR-1254-5

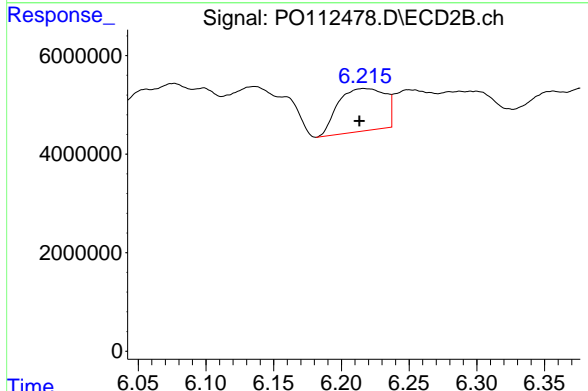
R.T.: 6.724 min
 Delta R.T.: -0.003 min
 Response: 6901238
 Conc: 20.66 ng/ml



#31 AR-1260-1

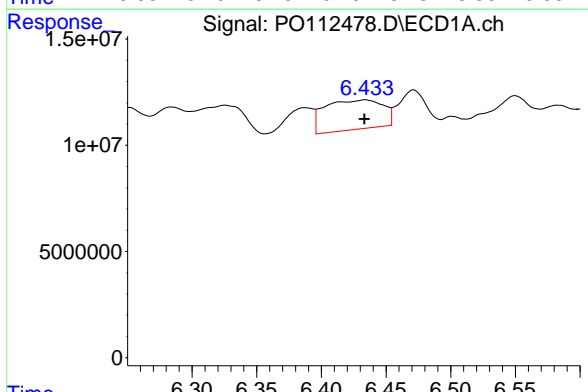
R.T.: 6.251 min
 Delta R.T.: 0.006 min
 Response: 55639438
 Conc: 126.65 ng/ml

Instrument :
 ECD_O
 ClientSampleId :
 OR-03-07232025



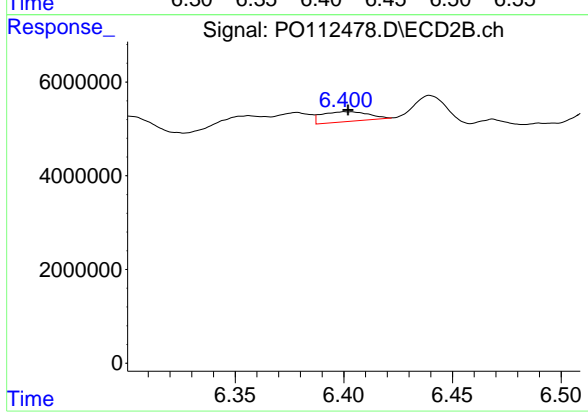
#31 AR-1260-1

R.T.: 6.217 min
 Delta R.T.: 0.003 min
 Response: 20855955
 Conc: 83.92 ng/ml



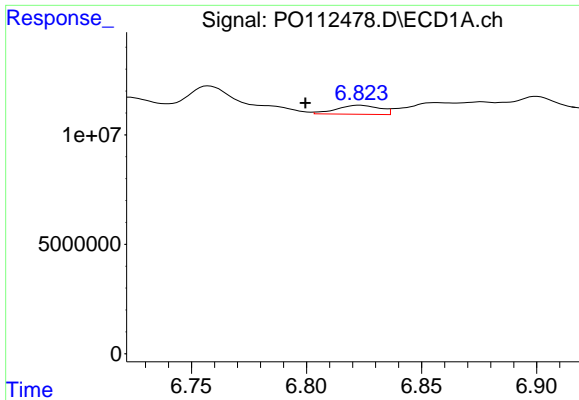
#32 AR-1260-2

R.T.: 6.434 min
 Delta R.T.: 0.000 min
 Response: 43382129
 Conc: 63.07 ng/ml



#32 AR-1260-2

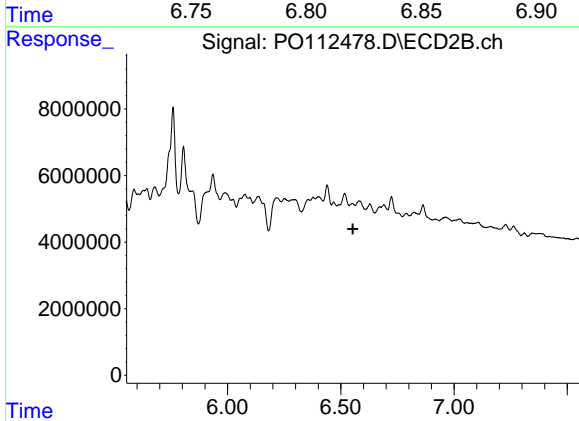
R.T.: 6.401 min
 Delta R.T.: 0.000 min
 Response: 3118870
 Conc: 9.47 ng/ml



#33 AR-1260-3

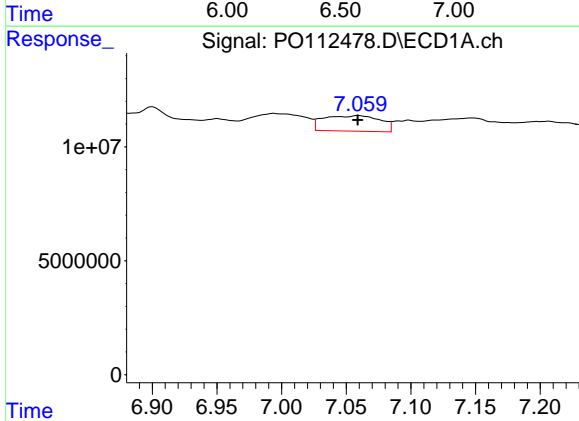
R.T.: 6.823 min
 Delta R.T.: 0.024 min
 Response: 5387216
 Conc: 9.16 ng/ml

Instrument :
 ECD_O
 ClientSampleId :
 OR-03-07232025



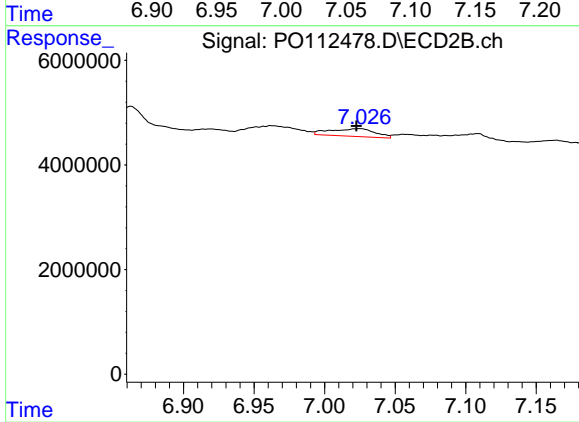
#33 AR-1260-3

R.T.: 6.551 min
 Delta R.T.: -0.002 min
 Response: -1448800
 Conc: N.D.



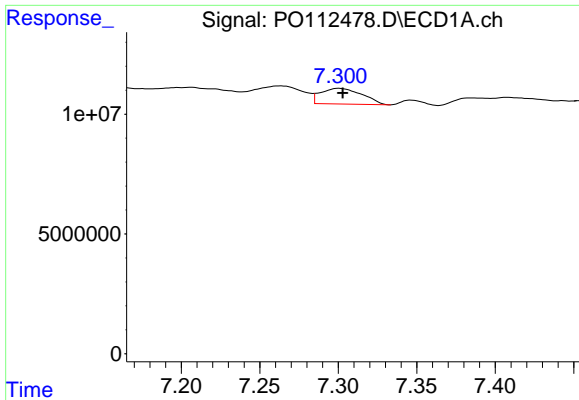
#34 AR-1260-4

R.T.: 7.059 min
 Delta R.T.: 0.000 min
 Response: 20756065
 Conc: 46.02 ng/ml



#34 AR-1260-4

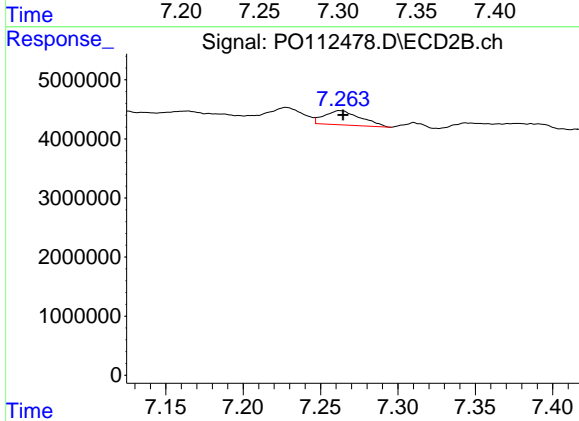
R.T.: 7.025 min
 Delta R.T.: 0.002 min
 Response: 3312105
 Conc: 17.31 ng/ml



#35 AR-1260-5

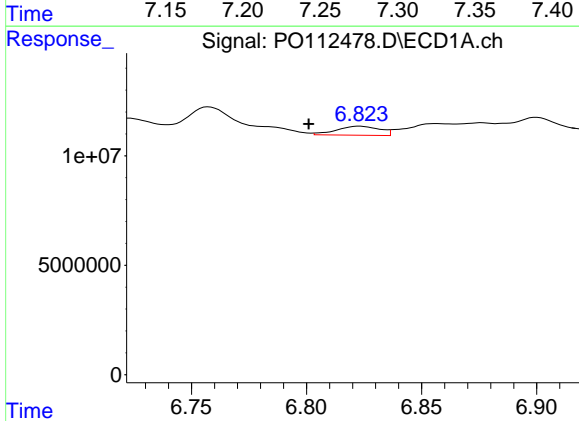
R.T.: 7.301 min
 Delta R.T.: -0.002 min
 Response: 12066630
 Conc: 9.74 ng/ml

Instrument :
 ECD_O
 ClientSampleId :
 OR-03-07232025



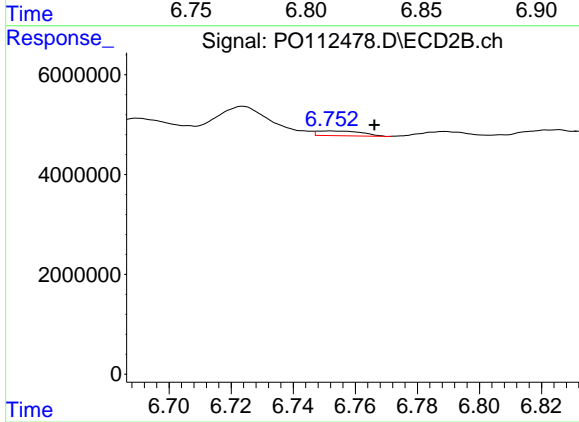
#35 AR-1260-5

R.T.: 7.263 min
 Delta R.T.: -0.002 min
 Response: 3941514
 Conc: 9.56 ng/ml



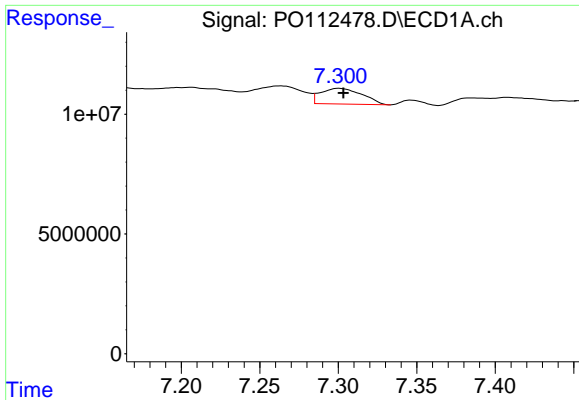
#36 AR-1262-1

R.T.: 6.823 min
 Delta R.T.: 0.022 min
 Response: 5387216
 Conc: 5.80 ng/ml



#36 AR-1262-1

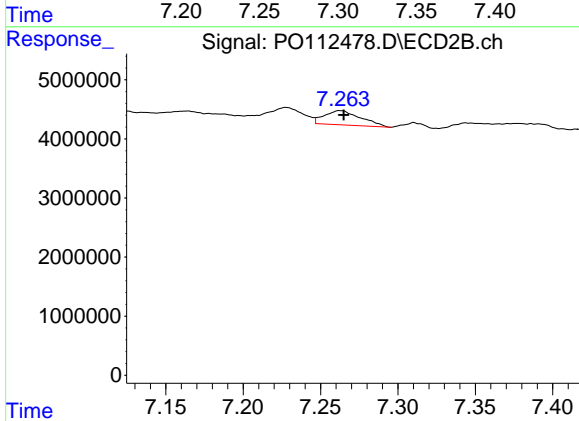
R.T.: 6.752 min
 Delta R.T.: -0.014 min
 Response: 934352
 Conc: 2.25 ng/ml



#37 AR-1262-2

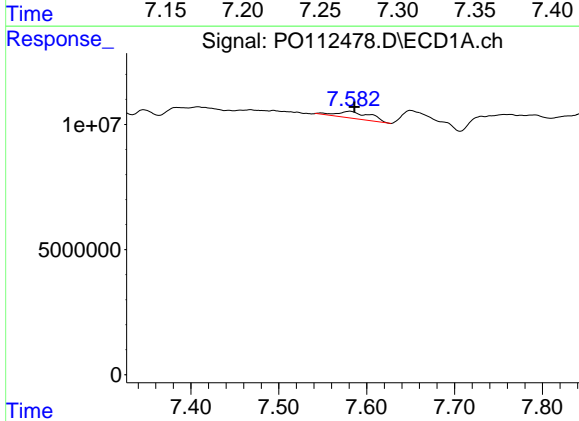
R.T.: 7.301 min
 Delta R.T.: -0.003 min
 Response: 12066630
 Conc: 8.11 ng/ml

Instrument :
 ECD_O
 ClientSampleId :
 OR-03-07232025



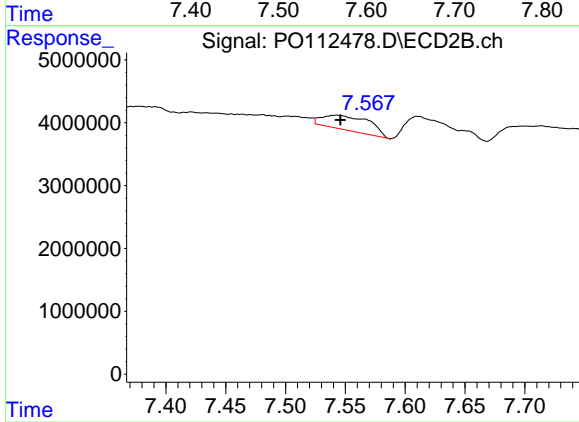
#37 AR-1262-2

R.T.: 7.263 min
 Delta R.T.: -0.002 min
 Response: 3941514
 Conc: 7.65 ng/ml



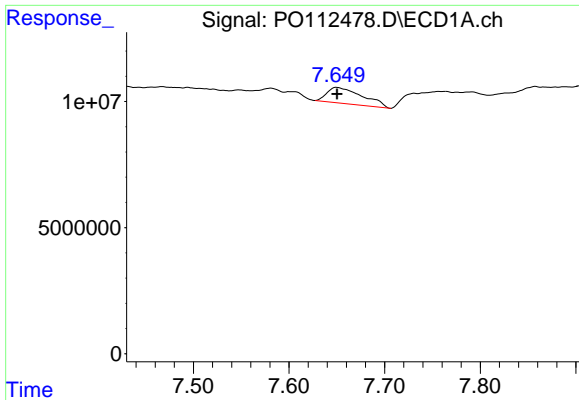
#38 AR-1262-3

R.T.: 7.581 min
 Delta R.T.: -0.005 min
 Response: 7394384
 Conc: 12.53 ng/ml



#38 AR-1262-3

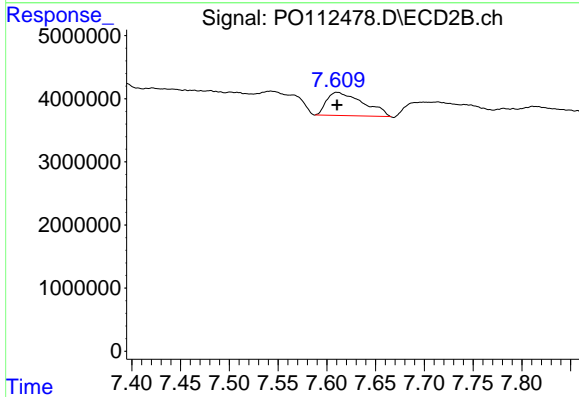
R.T.: 7.543 min
 Delta R.T.: -0.003 min
 Response: 6331369
 Conc: 33.94 ng/ml



#39 AR-1262-4

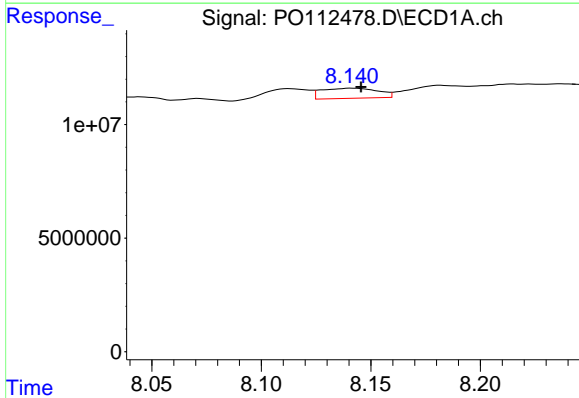
R.T.: 7.650 min
 Delta R.T.: 0.000 min
 Response: 16341968
 Conc: 16.44 ng/ml

Instrument :
 ECD_O
 ClientSampleId :
 OR-03-07232025



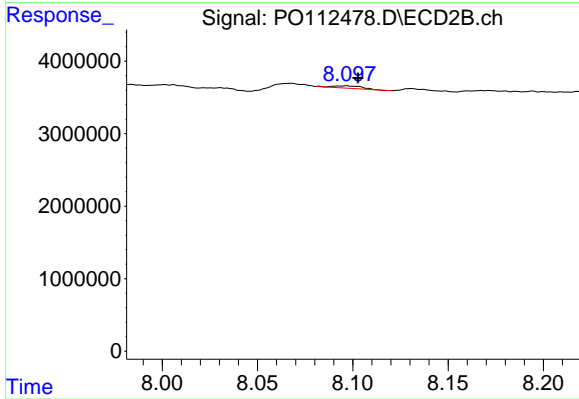
#39 AR-1262-4

R.T.: 7.611 min
 Delta R.T.: 0.000 min
 Response: 9483871
 Conc: 32.92 ng/ml



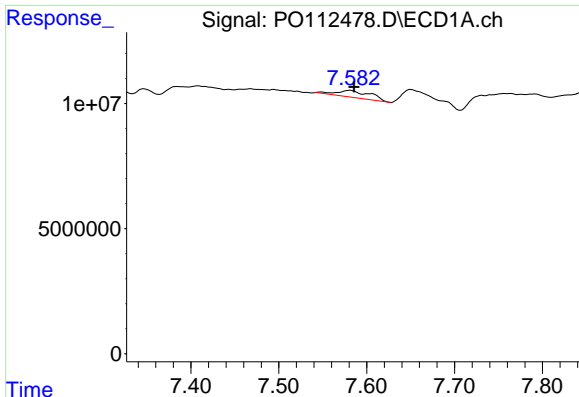
#40 AR-1262-5

R.T.: 8.142 min
 Delta R.T.: -0.004 min
 Response: 8007102
 Conc: 18.45 ng/ml



#40 AR-1262-5

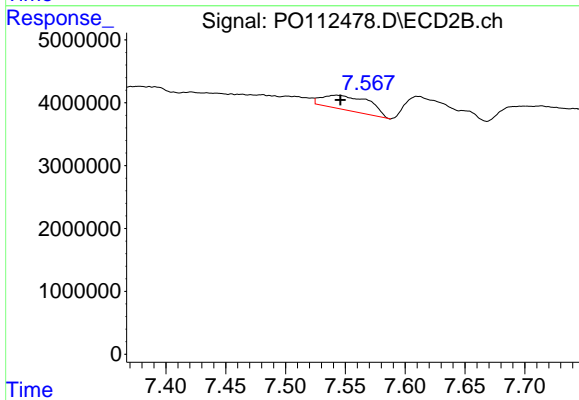
R.T.: 8.097 min
 Delta R.T.: -0.006 min
 Response: 356062
 Conc: 3.58 ng/ml



#41 AR-1268-1

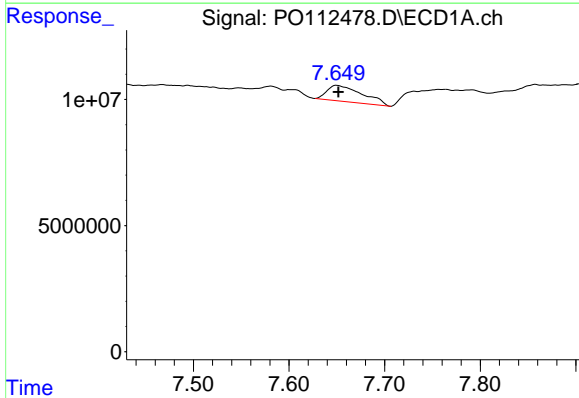
R.T.: 7.581 min
 Delta R.T.: -0.005 min
 Response: 7394384
 Conc: 4.22 ng/ml

Instrument :
 ECD_O
 ClientSampleId :
 OR-03-07232025



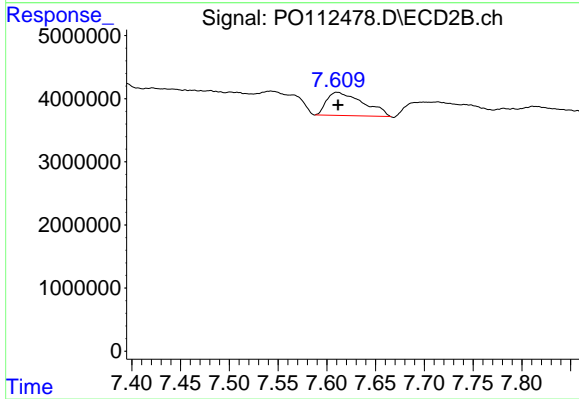
#41 AR-1268-1

R.T.: 7.543 min
 Delta R.T.: -0.003 min
 Response: 6331369
 Conc: 12.23 ng/ml



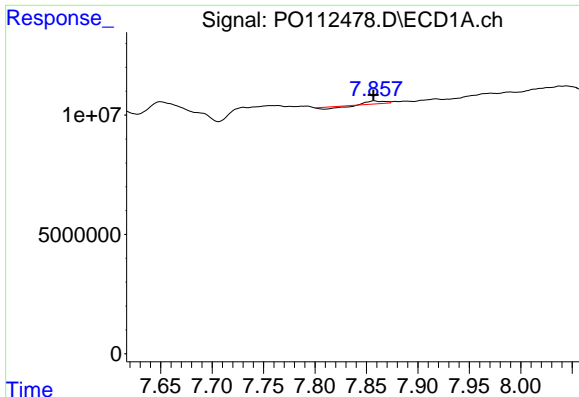
#42 AR-1268-2

R.T.: 7.650 min
 Delta R.T.: -0.001 min
 Response: 16341968
 Conc: 11.09 ng/ml



#42 AR-1268-2

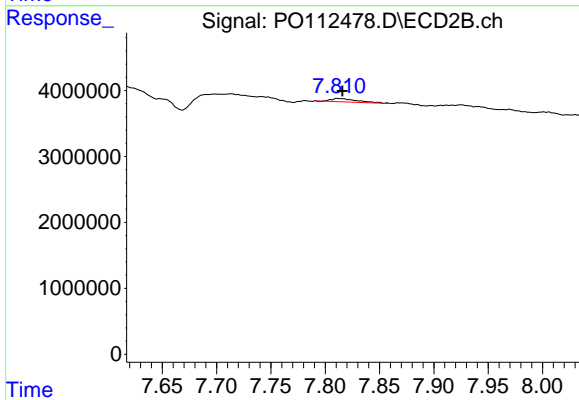
R.T.: 7.611 min
 Delta R.T.: 0.000 min
 Response: 9483871
 Conc: 22.31 ng/ml



#43 AR-1268-3

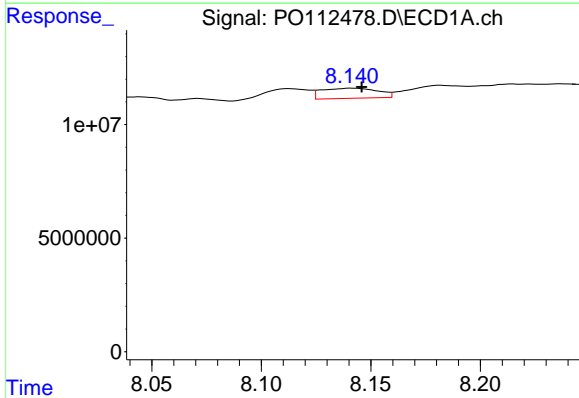
R.T.: 7.858 min
 Delta R.T.: 0.001 min
 Response: 242542
 Conc: 0.19 ng/ml

Instrument :
 ECD_O
 ClientSampleId :
 OR-03-07232025



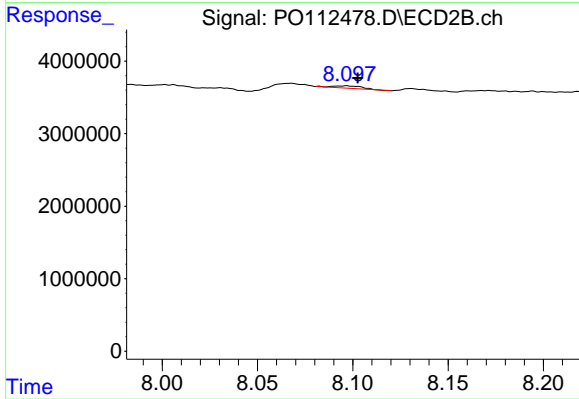
#43 AR-1268-3

R.T.: 7.811 min
 Delta R.T.: -0.004 min
 Response: 790664
 Conc: 2.46 ng/ml



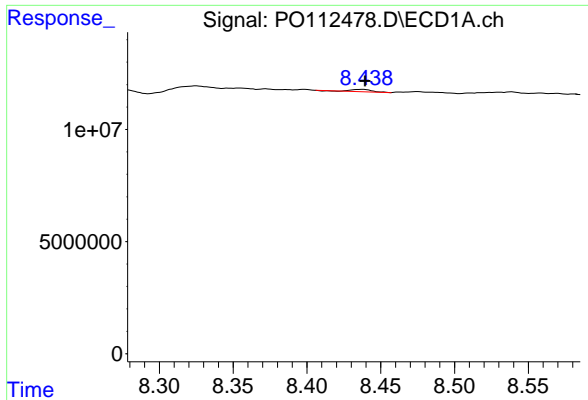
#44 AR-1268-4

R.T.: 8.142 min
 Delta R.T.: -0.004 min
 Response: 8007102
 Conc: 16.62 ng/ml



#44 AR-1268-4

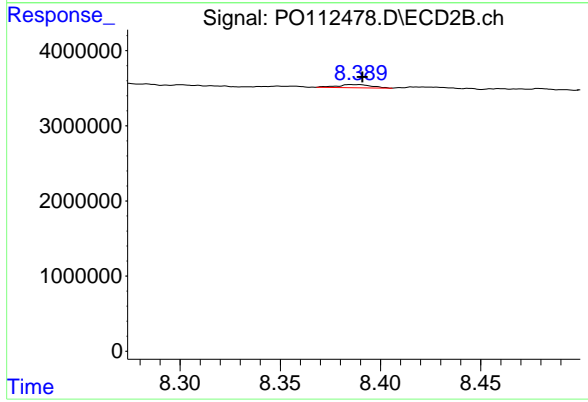
R.T.: 8.097 min
 Delta R.T.: -0.006 min
 Response: 356062
 Conc: 3.20 ng/ml



#45 AR-1268-5

R.T.: 8.437 min
 Delta R.T.: -0.003 min
 Response: 977667
 Conc: 0.29 ng/ml

Instrument :
 ECD_O
 ClientSampleId :
 OR-03-07232025



#45 AR-1268-5

R.T.: 8.385 min
 Delta R.T.: -0.006 min
 Response: 514079
 Conc: 0.70 ng/ml