

Data Path : Z:\pestpcbsrv\HPCHEM1\ECD\_0\Data\P0072425\  
 Data File : PO112479.D  
 Signal(s) : Signal #1: ECD1A.ch Signal #2: ECD2B.ch  
 Acq On : 24 Jul 2025 20:46  
 Operator : YP/AJ  
 Sample : AR1660CCC500  
 Misc :  
 ALS Vial : 3 Sample Multiplier: 1

Instrument :  
 ECD\_0  
 ClientSampleId :  
 AR1660CCC500

Integration File signal 1: autoint1.e  
 Integration File signal 2: autoint2.e  
 Quant Time: Jul 24 23:48:14 2025  
 Quant Method : Z:\pestpcbsrv\HPCHEM1\ECD\_0\methods\P0072325.M  
 Quant Title : GC EXTRACTABLES  
 QLast Update : Thu Jul 24 04:54:06 2025  
 Response via : Initial Calibration  
 Integrator: ChemStation

Volume Inj. : 2 µl  
 Signal #1 Phase : ZB-MR1 Signal #2 Phase: ZB-MR2  
 Signal #1 Info : 30Mx0.32mmx 0.50µ Signal #2 Info : 30M x 0.32mm x 0.25µm

Compound	RT#1	RT#2	Resp#1	Resp#2	ng/ml	ng/ml
-----						
System Monitoring Compounds						
1) SA Tetrachlo...	3.670	3.663	448.0E6	269.2E6	55.092	54.168
2) SA Decachlor...	8.694	8.641	315.5E6	83245406	43.148	47.108
Target Compounds						
3) L1 AR-1016-1	4.756	4.738	145.6E6	91046976	542.592	520.247
4) L1 AR-1016-2	4.774	4.756	216.8E6	135.6E6	533.806	520.704
5) L1 AR-1016-3	4.831	4.931	136.5E6	71214979	521.547	523.769
6) L1 AR-1016-4	4.951	4.973	109.7E6	57625965	518.051	518.757
7) L1 AR-1016-5	5.208	5.185	124.7E6	77829866	568.322	543.114
8) L2 AR-1221-1	3.880	3.870	12307572	9105192	127.329	135.361
9) L2 AR-1221-2	3.968	3.958	19336595	13790538	269.080	271.853
10) L2 AR-1221-3	4.042	4.031	72590442	49634857	305.372	313.096
11) L3 AR-1232-1	4.042	4.031	72590442	49634857	388.228	392.216
12) L3 AR-1232-2	4.535	4.756	110.9E6	135.6E6	1030.607	1034.204
13) L3 AR-1232-3	4.774	4.931	216.8E6	71214979	1048.302	1059.797
14) L3 AR-1232-4	4.951	5.015	109.7E6	69938290	1047.778	1168.968
15) L3 AR-1232-5	4.994	5.185	82523962	77829866	1215.717	1193.654
16) L4 AR-1242-1	4.756	4.738	145.6E6	91046976	588.117	574.813
17) L4 AR-1242-2	4.774	4.756	216.8E6	135.6E6	586.241	580.489
18) L4 AR-1242-3	4.831	4.931	136.5E6	71214979	576.678	587.635
19) L4 AR-1242-4	4.951	5.015	109.7E6	69938290	564.883	569.811
20) L4 AR-1242-5	5.602	5.535	38933207	79103634	182.003	491.415 #
21) L5 AR-1248-1	4.756	4.738	145.6E6	91046976	777.812	749.300
22) L5 AR-1248-2	4.994	4.973	82523962	57625965	323.481	340.419
23) L5 AR-1248-3	5.208	5.015	124.7E6	69938290	362.903	393.692
24) L5 AR-1248-4	5.561	5.185	136.7E6	77829866	269.058	373.545 #
25) L5 AR-1248-5	5.602	5.575	38933207	22583133	111.368	105.153
26) L6 AR-1254-1	5.561	5.535	136.7E6	79103634	249.021	240.714
27) L6 AR-1254-2	5.710	5.683	106.0E6	58044441	218.105	200.505
28) L6 AR-1254-3	6.129	6.099	175.5E6	102.0E6	235.834	238.622
29) L6 AR-1254-4	6.343	6.311	23083880	13551085	41.993	49.644
30) L6 AR-1254-5	6.761	6.726	307.0E6	150.2E6	433.769	449.657
31) L7 AR-1260-1	6.245	6.214	218.4E6	129.0E6	497.048	519.006
32) L7 AR-1260-2	6.434	6.402	333.9E6	167.7E6	485.401	509.013
33) L7 AR-1260-3	6.800	6.553	299.2E6	133.7E6	508.789	520.260
34) L7 AR-1260-4	7.059	7.023	234.5E6	98011323	520.014	512.315
35) L7 AR-1260-5	7.302	7.265	600.3E6	215.2E6	484.467	522.084
36) L8 AR-1262-1	6.800	6.765	299.2E6	140.3E6	321.971	338.111
37) L8 AR-1262-2	7.302	7.265	600.3E6	215.2E6	403.709	417.421
38) L8 AR-1262-3	7.586	7.546	118.0E6	44988003	199.992	241.190
39) L8 AR-1262-4	7.649	7.609	337.7E6	116.9E6	339.698	405.808
40) L8 AR-1262-5	8.146	8.103	122.1E6	32445048	281.190	326.070
41) L9 AR-1268-1	7.586	7.546	118.0E6	44988003	67.411	86.873 #

Data Path : Z:\pestpcbsrv\HPCHEM1\ECD\_0\Data\P0072425\  
 Data File : P0112479.D  
 Signal(s) : Signal #1: ECD1A.ch Signal #2: ECD2B.ch  
 Acq On : 24 Jul 2025 20:46  
 Operator : YP/AJ  
 Sample : AR1660CCC500  
 Misc :  
 ALS Vial : 3 Sample Multiplier: 1

Instrument :  
 ECD\_0  
 ClientSampleId :  
 AR1660CCC500

Integration File signal 1: autoint1.e  
 Integration File signal 2: autoint2.e  
 Quant Time: Jul 24 23:48:14 2025  
 Quant Method : Z:\pestpcbsrv\HPCHEM1\ECD\_0\methods\P0072325.M  
 Quant Title : GC EXTRACTABLES  
 QLast Update : Thu Jul 24 04:54:06 2025  
 Response via : Initial Calibration  
 Integrator: ChemStation

Volume Inj. : 2 µl  
 Signal #1 Phase : ZB-MR1 Signal #2 Phase: ZB-MR2  
 Signal #1 Info : 30Mx0.32mmx 0.50µ Signal #2 Info : 30M x 0.32mm x 0.25µm

	Compound	RT#1	RT#2	Resp#1	Resp#2	ng/ml	ng/ml
42)	L9 AR-1268-2	7.649	7.609	337.7E6	116.9E6	229.268	275.052
43)	L9 AR-1268-3	7.857	7.815	4641871	1835591	3.707	5.714 #
44)	L9 AR-1268-4	8.146	8.103	122.1E6	32445048	253.295	291.521
45)	L9 AR-1268-5	8.438	8.391	30853176	7991952	9.190	10.922

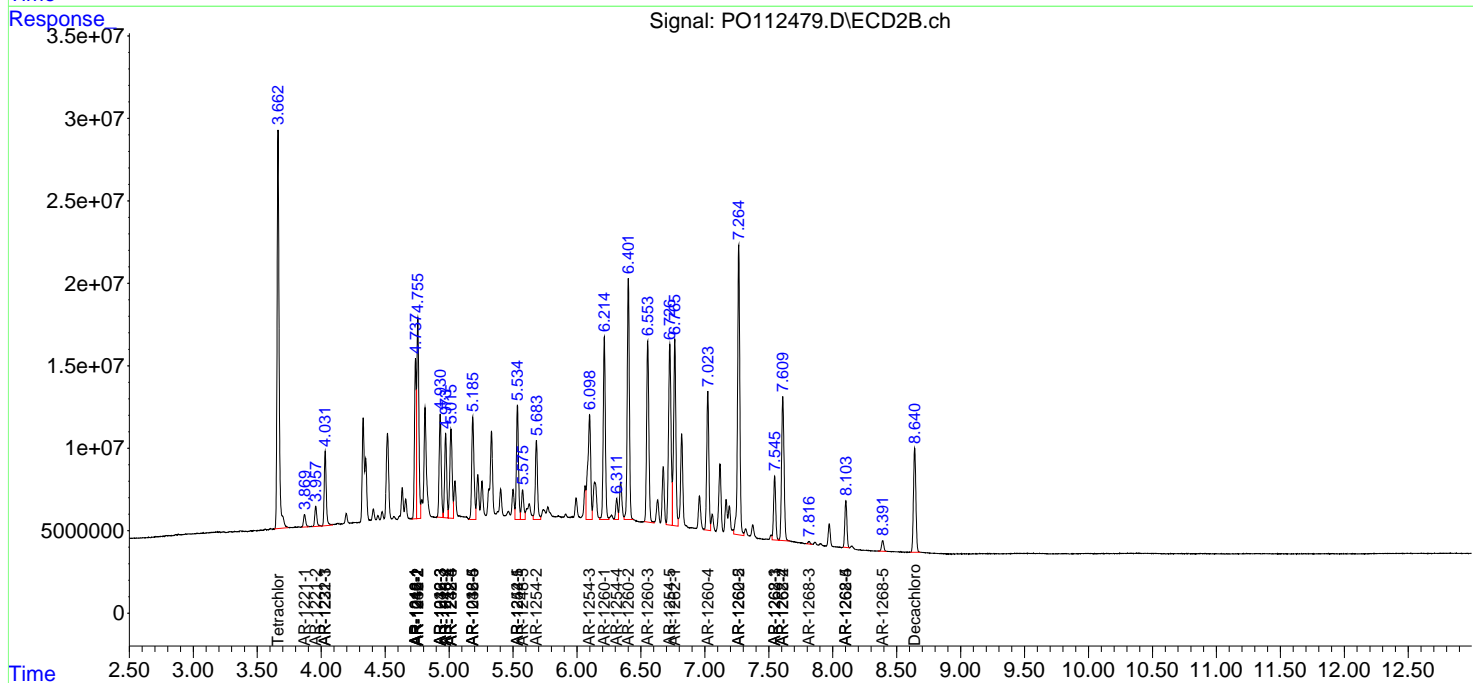
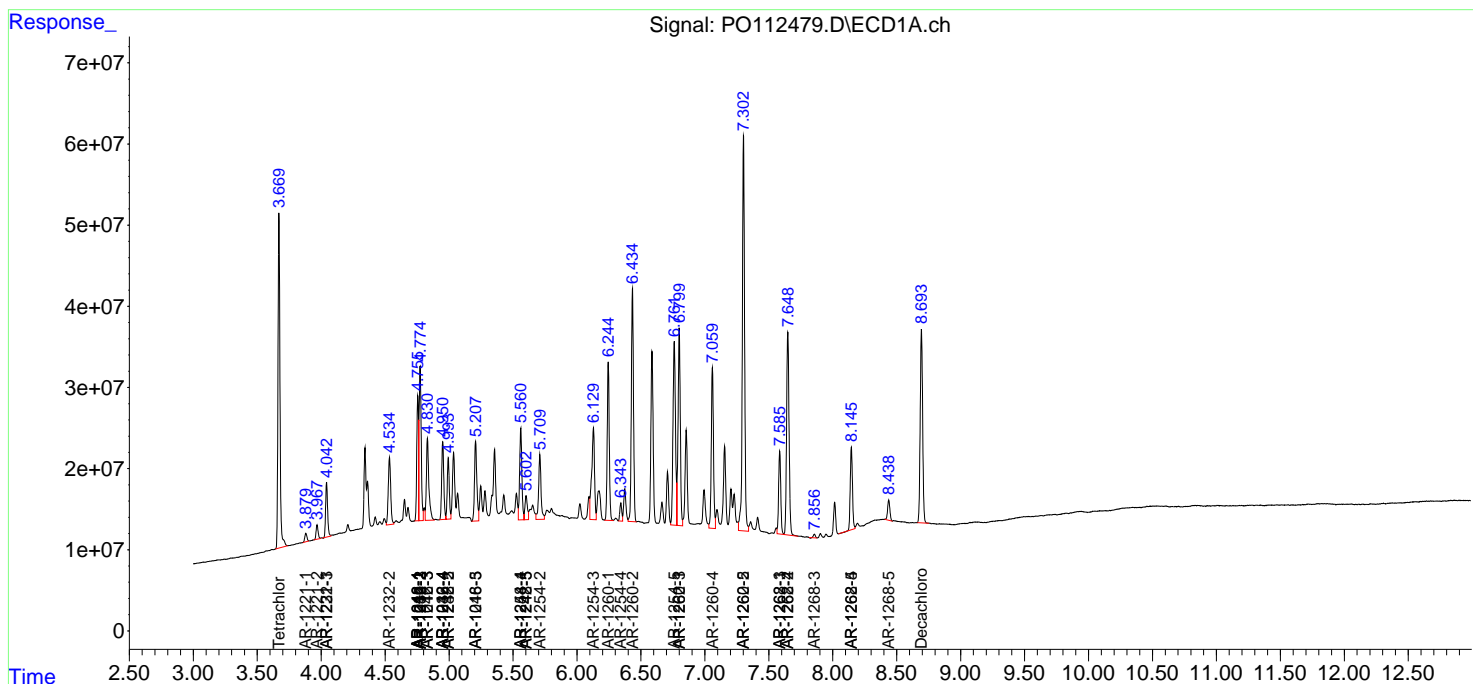
(f)=RT Delta > 1/2 Window (#)=Amounts differ by > 25% (m)=manual int.

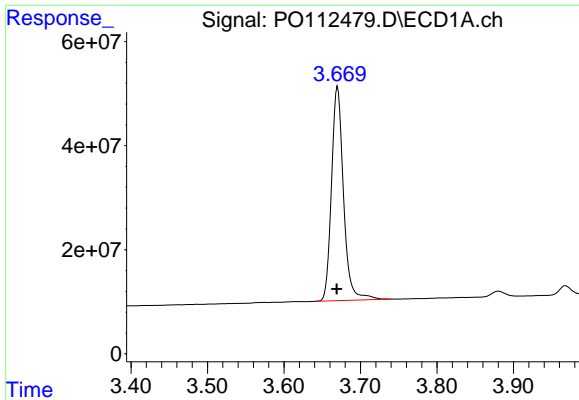
Data Path : Z:\pestpcbsrv\HPCHEM1\ECD\_O\Data\PO072425\  
 Data File : PO112479.D  
 Signal(s) : Signal #1: ECD1A.ch Signal #2: ECD2B.ch  
 Acq On : 24 Jul 2025 20:46  
 Operator : YP/AJ  
 Sample : AR1660CCC500  
 Misc :  
 ALS Vial : 3 Sample Multiplier: 1

Instrument :  
 ECD\_O  
 ClientSampleId :  
 AR1660CCC500

Integration File signal 1: autoint1.e  
 Integration File signal 2: autoint2.e  
 Quant Time: Jul 24 23:48:14 2025  
 Quant Method : Z:\pestpcbsrv\HPCHEM1\ECD\_O\methods\PO072325.M  
 Quant Title : GC EXTRACTABLES  
 QLast Update : Thu Jul 24 04:54:06 2025  
 Response via : Initial Calibration  
 Integrator: ChemStation

Volume Inj. : 2 µl  
 Signal #1 Phase : ZB-MR1 Signal #2 Phase: ZB-MR2  
 Signal #1 Info : 30Mx0.32mmx 0.50µ Signal #2 Info : 30M x 0.32mm x 0.25µm

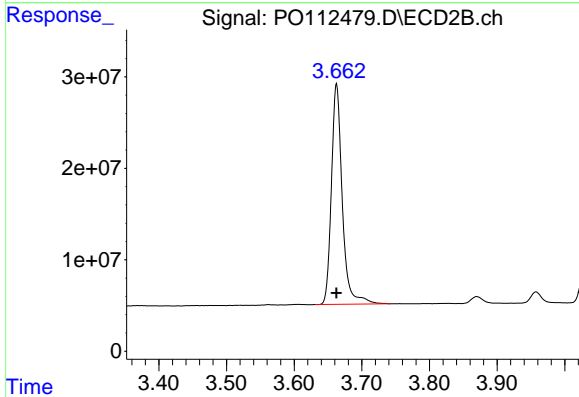




#1 Tetrachloro-m-xylene

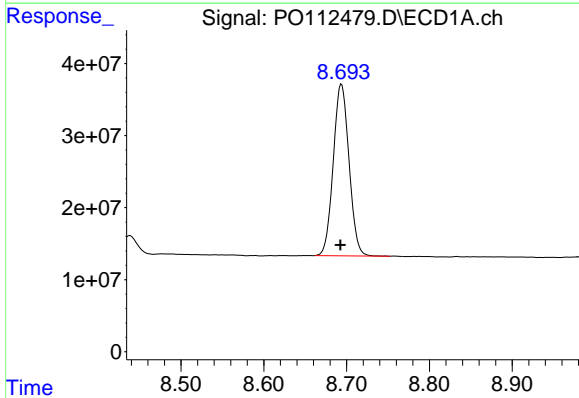
R.T.: 3.670 min  
 Delta R.T.: 0.001 min  
 Response: 447980910  
 Conc: 55.09 ng/ml

Instrument :  
 ECD\_O  
 ClientSampleId :  
 AR1660CCC500



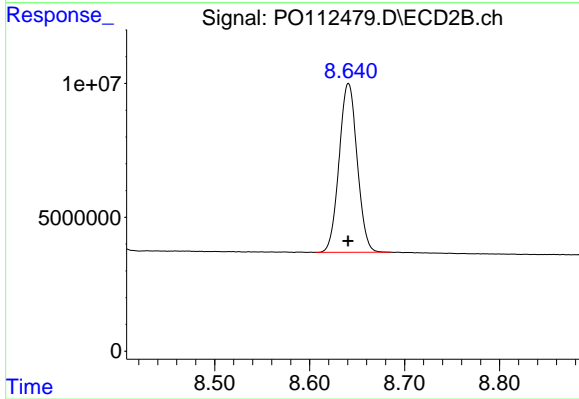
#1 Tetrachloro-m-xylene

R.T.: 3.663 min  
 Delta R.T.: 0.000 min  
 Response: 269167911  
 Conc: 54.17 ng/ml



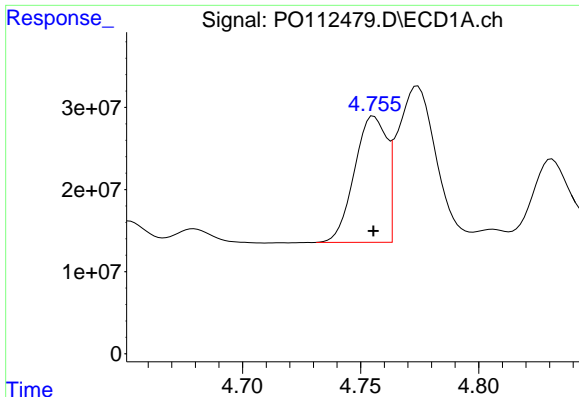
#2 Decachlorobiphenyl

R.T.: 8.694 min  
 Delta R.T.: 0.001 min  
 Response: 315486966  
 Conc: 43.15 ng/ml



#2 Decachlorobiphenyl

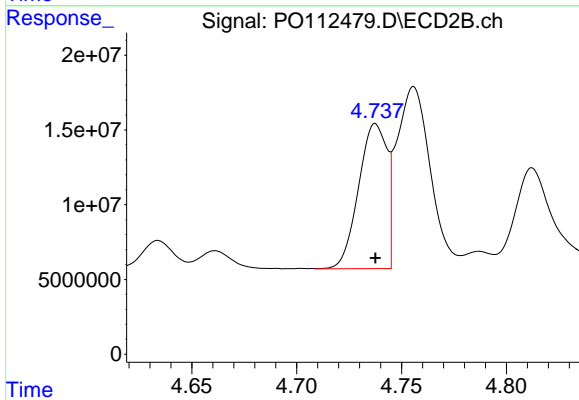
R.T.: 8.641 min  
 Delta R.T.: 0.000 min  
 Response: 83245406  
 Conc: 47.11 ng/ml



#3 AR-1016-1

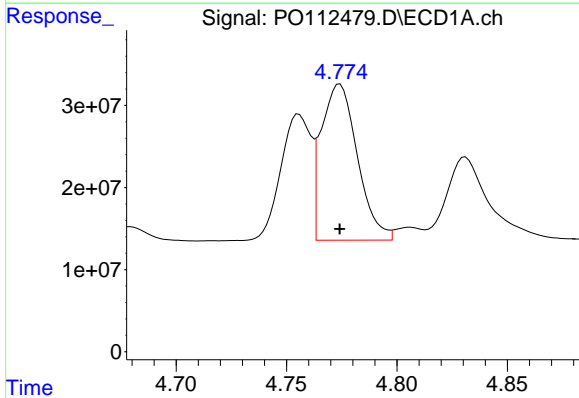
R.T.: 4.756 min  
 Delta R.T.: 0.000 min  
 Response: 145613171  
 Conc: 542.59 ng/ml

Instrument :  
 ECD\_O  
 ClientSampleId :  
 AR1660CCC500



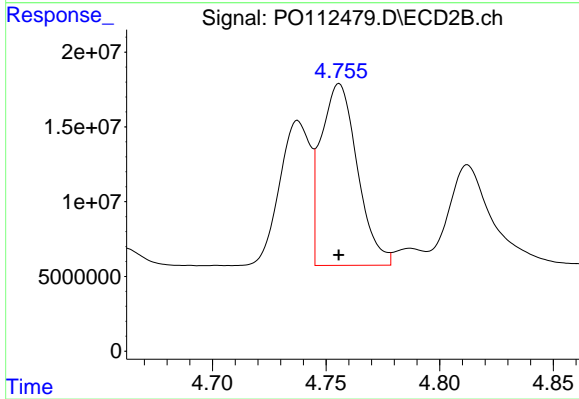
#3 AR-1016-1

R.T.: 4.738 min  
 Delta R.T.: 0.000 min  
 Response: 91046976  
 Conc: 520.25 ng/ml



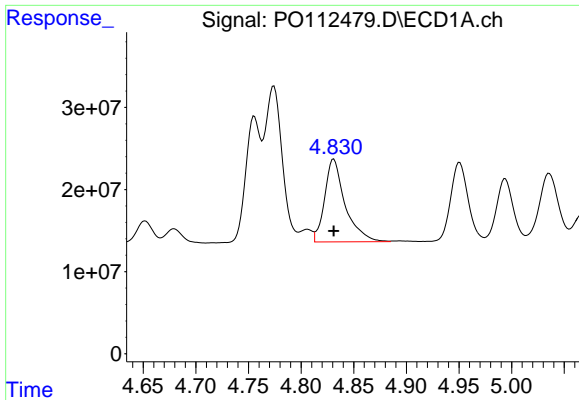
#4 AR-1016-2

R.T.: 4.774 min  
 Delta R.T.: 0.000 min  
 Response: 216788113  
 Conc: 533.81 ng/ml



#4 AR-1016-2

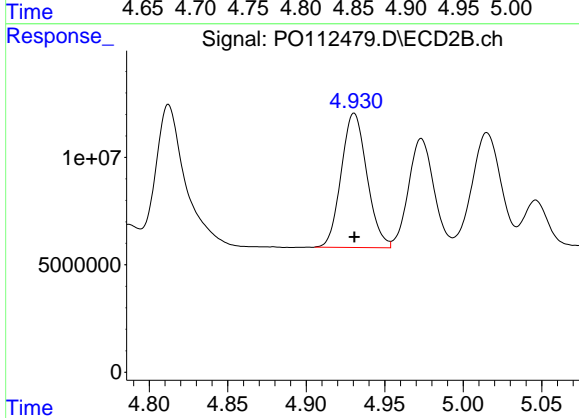
R.T.: 4.756 min  
 Delta R.T.: 0.000 min  
 Response: 135640850  
 Conc: 520.70 ng/ml



#5 AR-1016-3

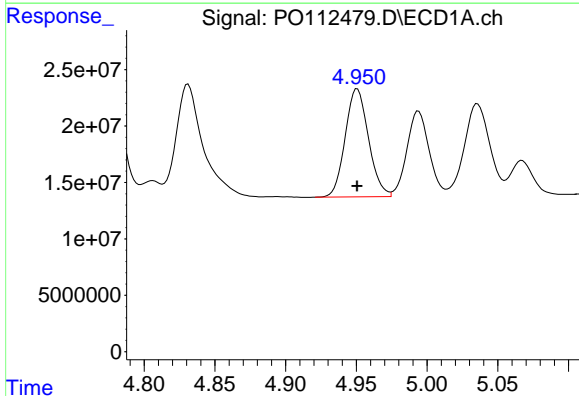
R.T.: 4.831 min  
 Delta R.T.: 0.000 min  
 Response: 136475407  
 Conc: 521.55 ng/ml

Instrument :  
 ECD\_O  
 ClientSampleId :  
 AR1660CCC500



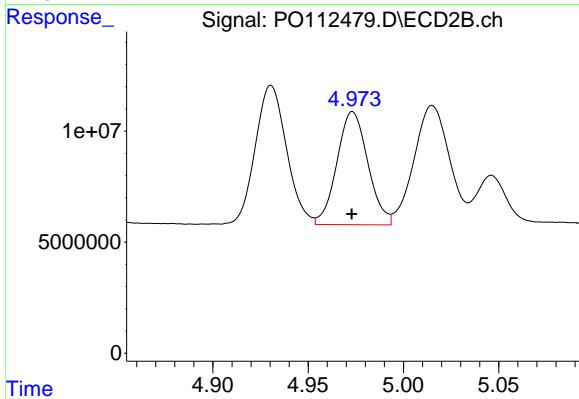
#5 AR-1016-3

R.T.: 4.931 min  
 Delta R.T.: 0.000 min  
 Response: 71214979  
 Conc: 523.77 ng/ml



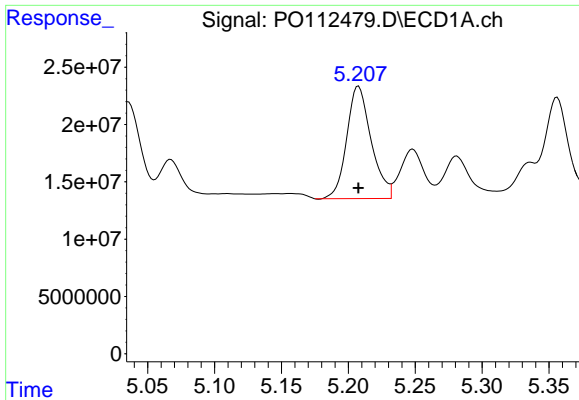
#6 AR-1016-4

R.T.: 4.951 min  
 Delta R.T.: 0.000 min  
 Response: 109744593  
 Conc: 518.05 ng/ml



#6 AR-1016-4

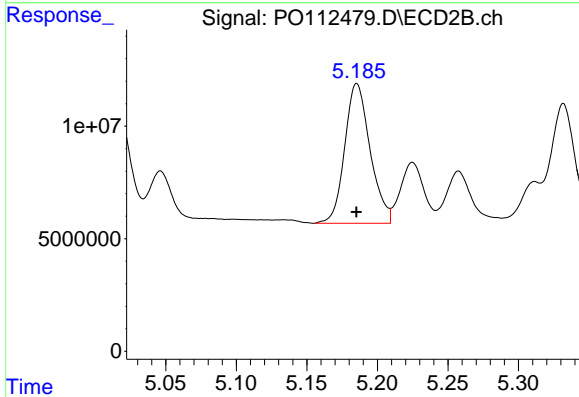
R.T.: 4.973 min  
 Delta R.T.: 0.000 min  
 Response: 57625965  
 Conc: 518.76 ng/ml



#7 AR-1016-5

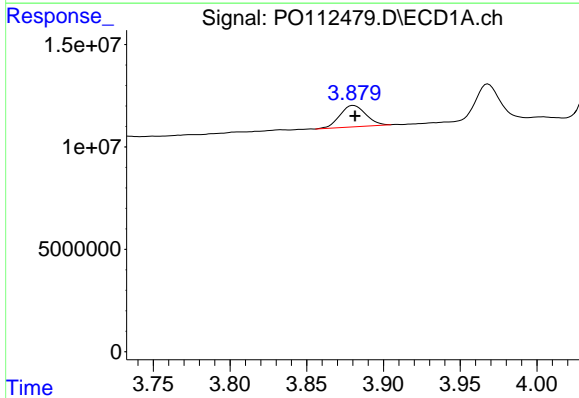
R.T.: 5.208 min  
 Delta R.T.: 0.000 min  
 Response: 124730084  
 Conc: 568.32 ng/ml

Instrument :  
 ECD\_O  
 ClientSampleId :  
 AR1660CCC500



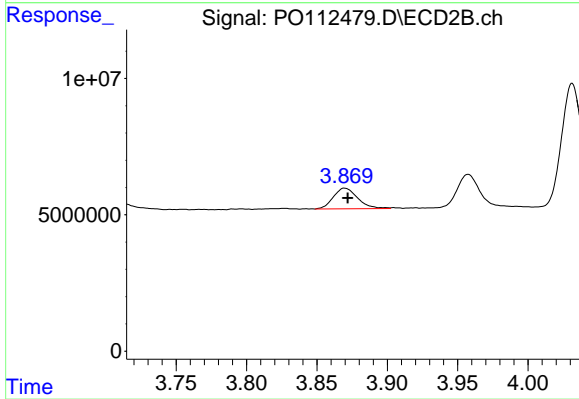
#7 AR-1016-5

R.T.: 5.185 min  
 Delta R.T.: 0.000 min  
 Response: 77829866  
 Conc: 543.11 ng/ml



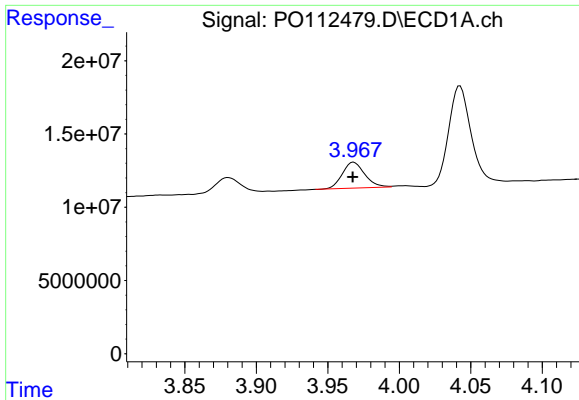
#8 AR-1221-1

R.T.: 3.880 min  
 Delta R.T.: -0.001 min  
 Response: 12307572  
 Conc: 127.33 ng/ml



#8 AR-1221-1

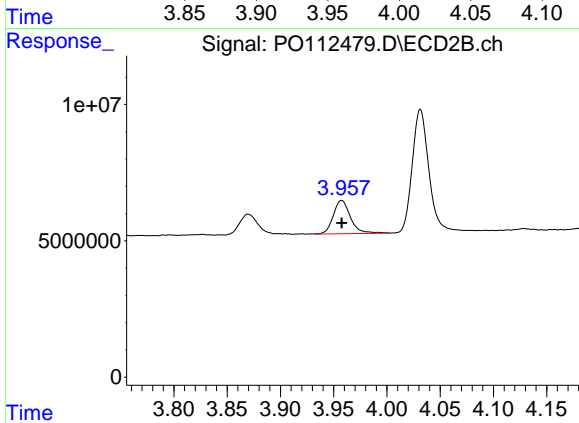
R.T.: 3.870 min  
 Delta R.T.: -0.002 min  
 Response: 9105192  
 Conc: 135.36 ng/ml



#9 AR-1221-2

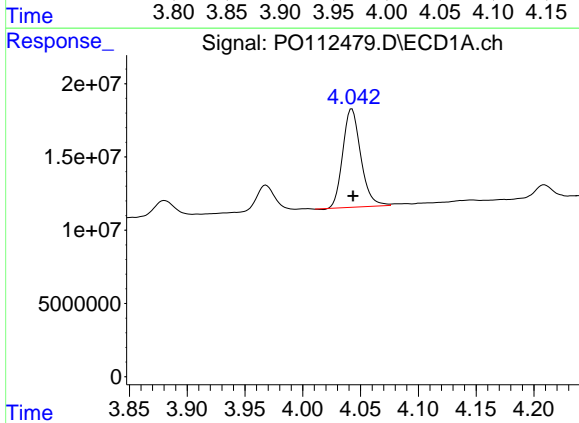
R.T.: 3.968 min  
 Delta R.T.: 0.000 min  
 Response: 19336595  
 Conc: 269.08 ng/ml

Instrument :  
 ECD\_O  
 ClientSampleId :  
 AR1660CCC500



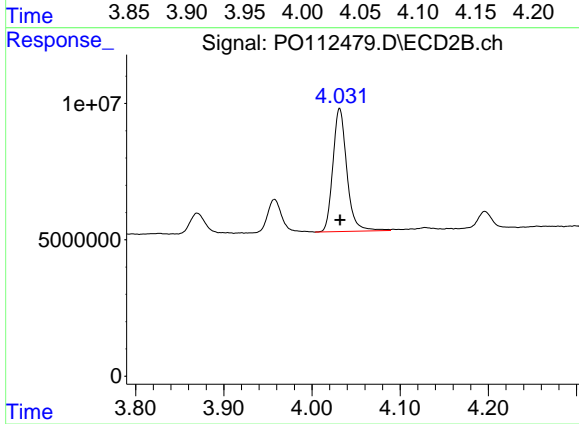
#9 AR-1221-2

R.T.: 3.958 min  
 Delta R.T.: 0.000 min  
 Response: 13790538  
 Conc: 271.85 ng/ml



#10 AR-1221-3

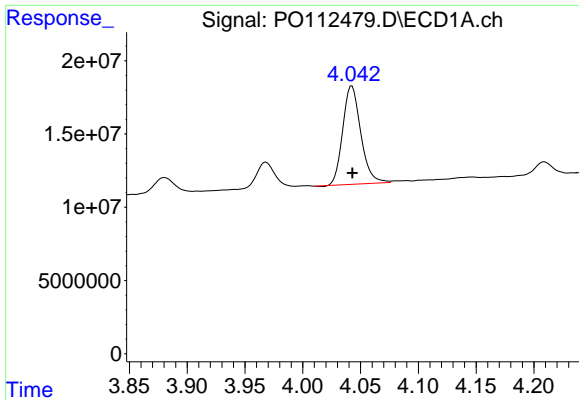
R.T.: 4.042 min  
 Delta R.T.: -0.001 min  
 Response: 72590442  
 Conc: 305.37 ng/ml



#10 AR-1221-3

R.T.: 4.031 min  
 Delta R.T.: 0.000 min  
 Response: 49634857  
 Conc: 313.10 ng/ml

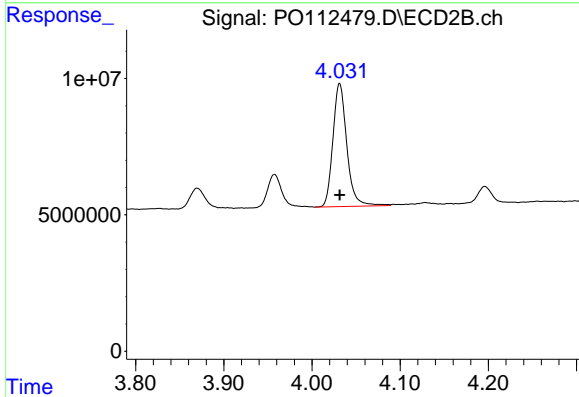




#11 AR-1232-1

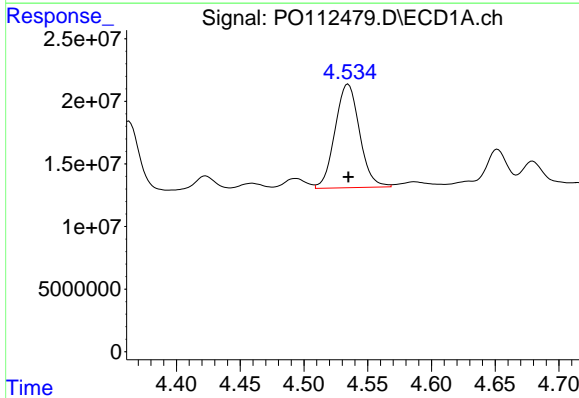
R.T.: 4.042 min  
 Delta R.T.: 0.000 min  
 Response: 72590442  
 Conc: 388.23 ng/ml

Instrument :  
 ECD\_O  
 ClientSampleId :  
 AR1660CCC500



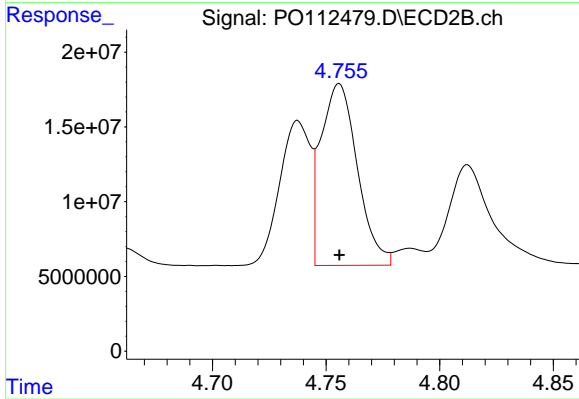
#11 AR-1232-1

R.T.: 4.031 min  
 Delta R.T.: 0.000 min  
 Response: 49634857  
 Conc: 392.22 ng/ml



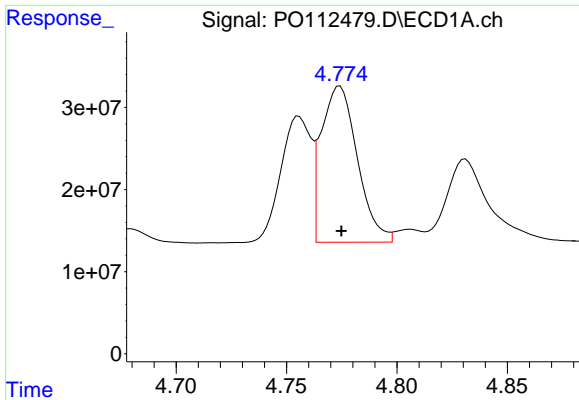
#12 AR-1232-2

R.T.: 4.535 min  
 Delta R.T.: 0.000 min  
 Response: 110918774  
 Conc: 1030.61 ng/ml



#12 AR-1232-2

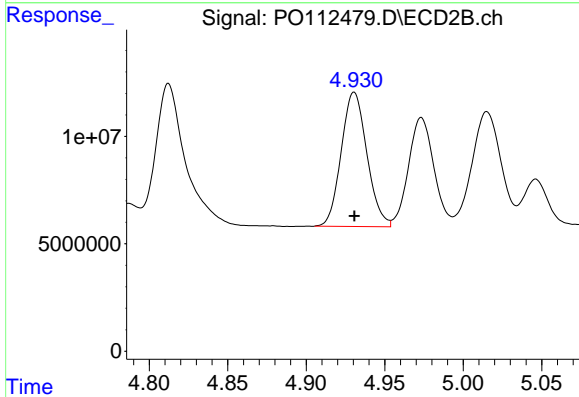
R.T.: 4.756 min  
 Delta R.T.: 0.000 min  
 Response: 135640850  
 Conc: 1034.20 ng/ml



#13 AR-1232-3

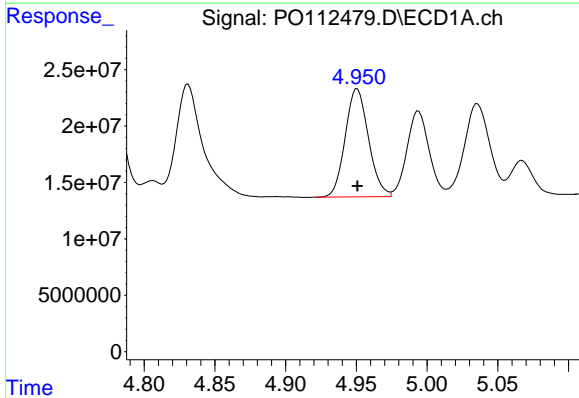
R.T.: 4.774 min  
 Delta R.T.: 0.000 min  
 Response: 216788113  
 Conc: 1048.30 ng/ml

Instrument :  
 ECD\_O  
 ClientSampleId :  
 AR1660CCC500



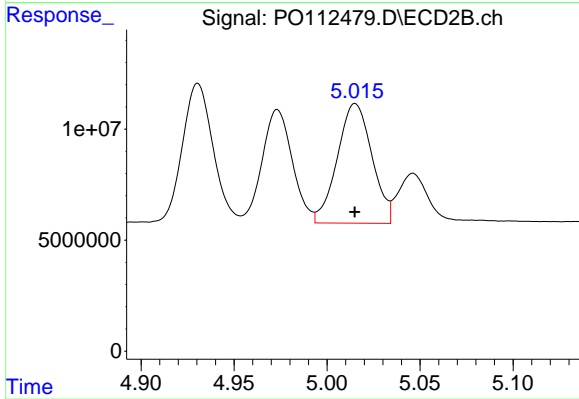
#13 AR-1232-3

R.T.: 4.931 min  
 Delta R.T.: 0.000 min  
 Response: 71214979  
 Conc: 1059.80 ng/ml



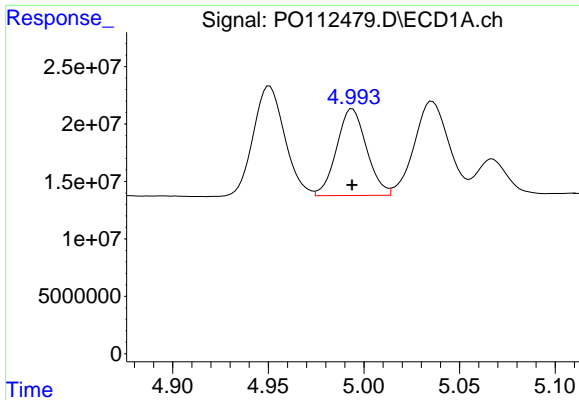
#14 AR-1232-4

R.T.: 4.951 min  
 Delta R.T.: 0.000 min  
 Response: 109744593  
 Conc: 1047.78 ng/ml



#14 AR-1232-4

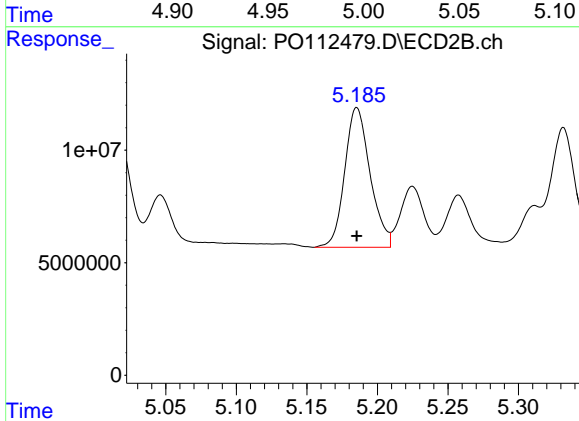
R.T.: 5.015 min  
 Delta R.T.: 0.000 min  
 Response: 69938290  
 Conc: 1168.97 ng/ml



#15 AR-1232-5

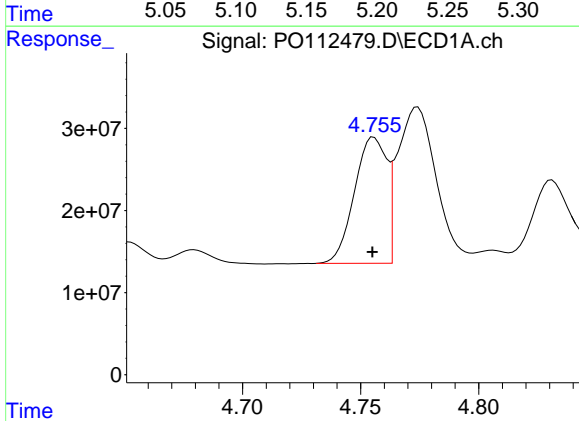
R.T.: 4.994 min  
 Delta R.T.: 0.000 min  
 Response: 82523962  
 Conc: 1215.72 ng/ml

Instrument :  
 ECD\_O  
 ClientSampleId :  
 AR1660CCC500



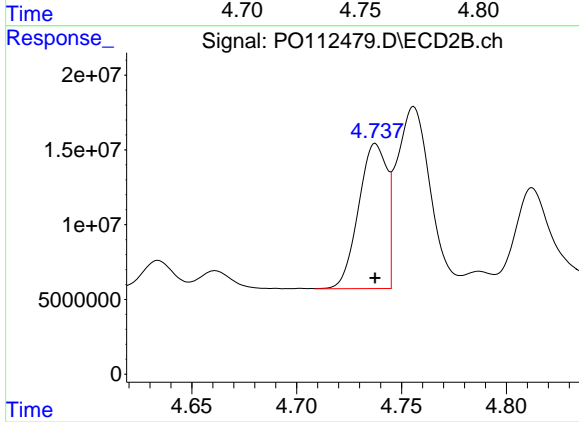
#15 AR-1232-5

R.T.: 5.185 min  
 Delta R.T.: 0.000 min  
 Response: 77829866  
 Conc: 1193.65 ng/ml



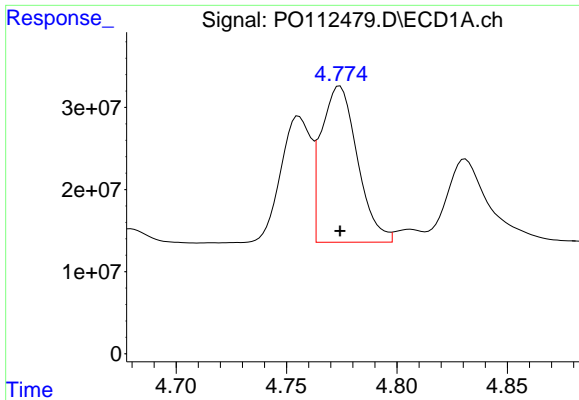
#16 AR-1242-1

R.T.: 4.756 min  
 Delta R.T.: 0.000 min  
 Response: 145613171  
 Conc: 588.12 ng/ml



#16 AR-1242-1

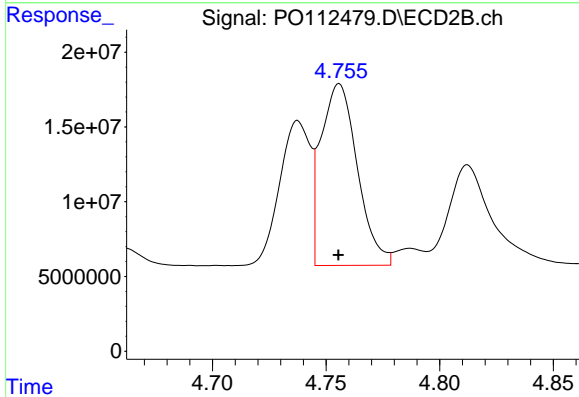
R.T.: 4.738 min  
 Delta R.T.: 0.000 min  
 Response: 91046976  
 Conc: 574.81 ng/ml



#17 AR-1242-2

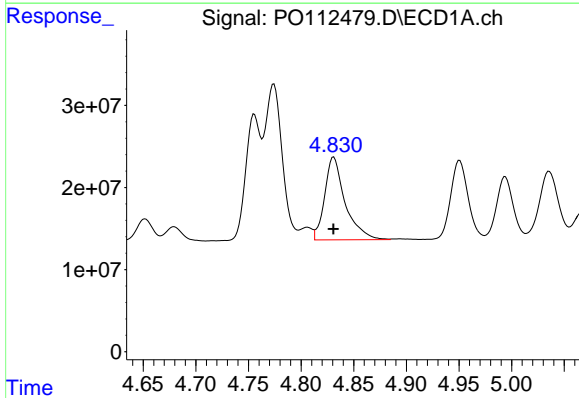
R.T.: 4.774 min  
 Delta R.T.: 0.000 min  
 Response: 216788113  
 Conc: 586.24 ng/ml

Instrument :  
 ECD\_O  
 ClientSampleId :  
 AR1660CCC500



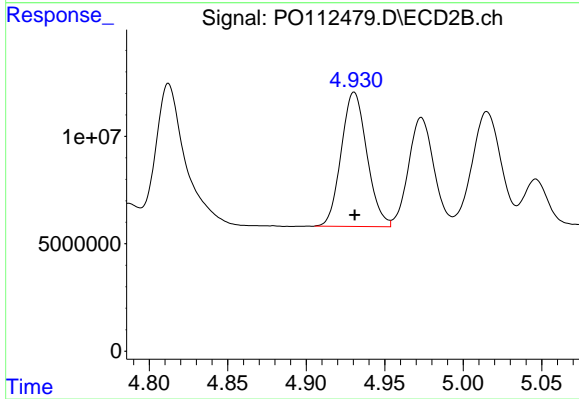
#17 AR-1242-2

R.T.: 4.756 min  
 Delta R.T.: 0.000 min  
 Response: 135640850  
 Conc: 580.49 ng/ml



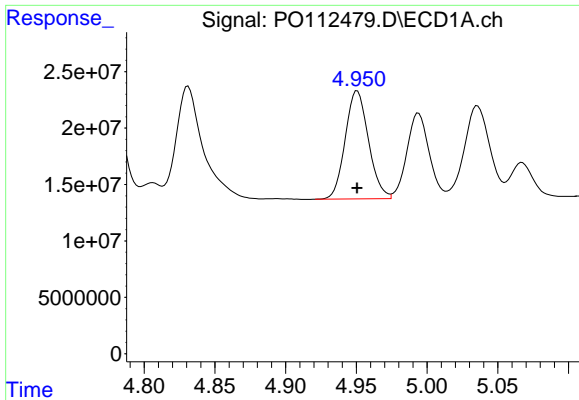
#18 AR-1242-3

R.T.: 4.831 min  
 Delta R.T.: 0.000 min  
 Response: 136475407  
 Conc: 576.68 ng/ml



#18 AR-1242-3

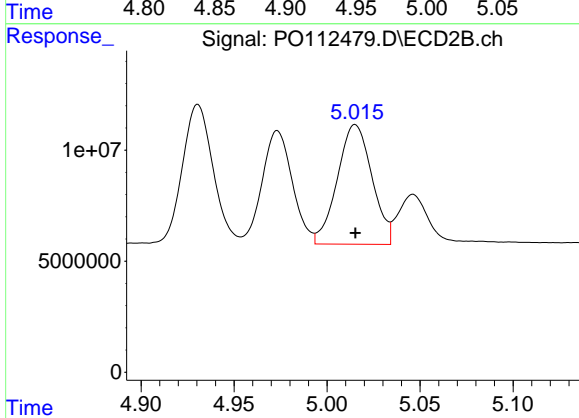
R.T.: 4.931 min  
 Delta R.T.: 0.000 min  
 Response: 71214979  
 Conc: 587.64 ng/ml



#19 AR-1242-4

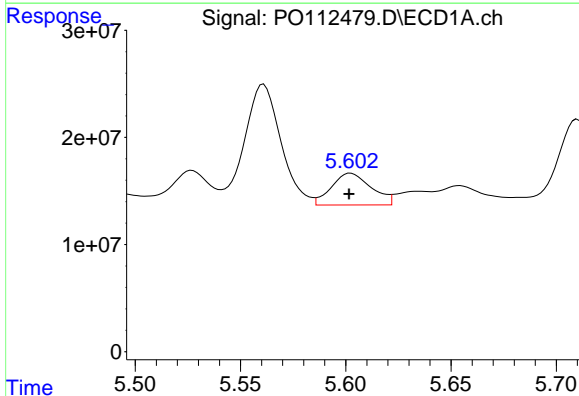
R.T.: 4.951 min  
 Delta R.T.: 0.000 min  
 Response: 109744593  
 Conc: 564.88 ng/ml

Instrument :  
 ECD\_O  
 ClientSampleId :  
 AR1660CCC500



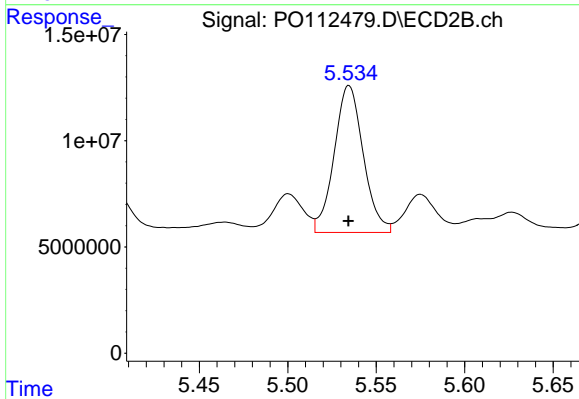
#19 AR-1242-4

R.T.: 5.015 min  
 Delta R.T.: 0.000 min  
 Response: 69938290  
 Conc: 569.81 ng/ml



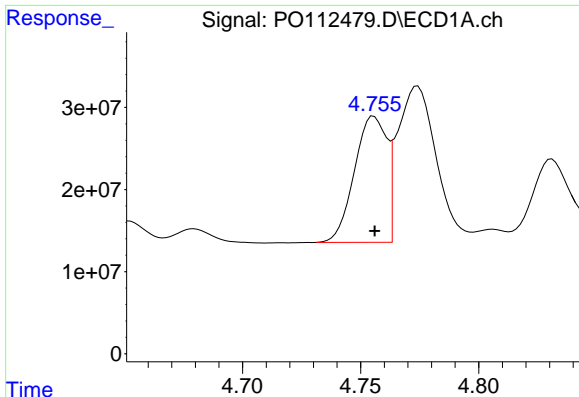
#20 AR-1242-5

R.T.: 5.602 min  
 Delta R.T.: 0.000 min  
 Response: 38933207  
 Conc: 182.00 ng/ml



#20 AR-1242-5

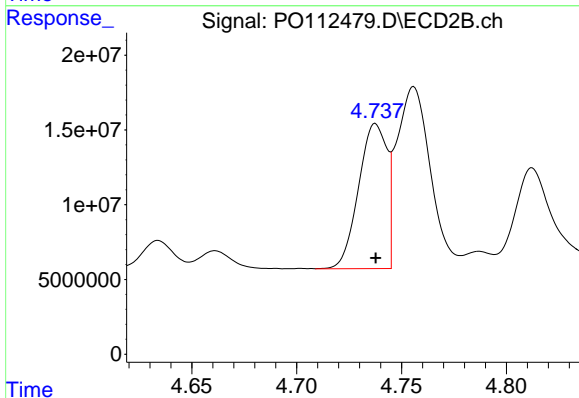
R.T.: 5.535 min  
 Delta R.T.: 0.000 min  
 Response: 79103634  
 Conc: 491.41 ng/ml



#21 AR-1248-1

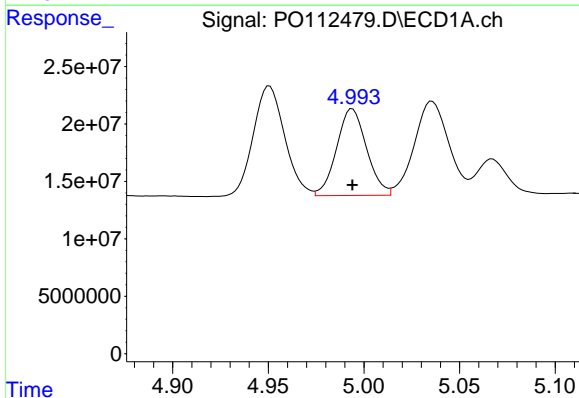
R.T.: 4.756 min  
 Delta R.T.: 0.000 min  
 Response: 145613171  
 Conc: 777.81 ng/ml

Instrument :  
 ECD\_O  
 ClientSampleId :  
 AR1660CCC500



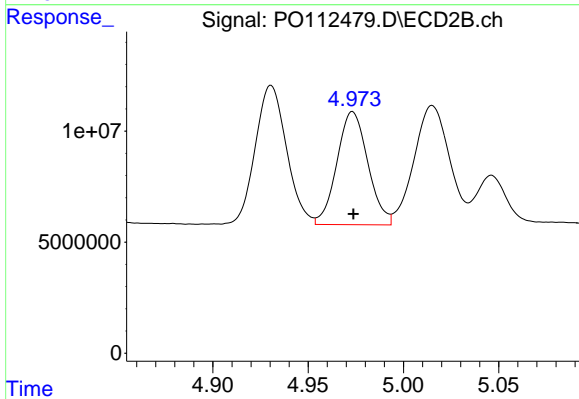
#21 AR-1248-1

R.T.: 4.738 min  
 Delta R.T.: 0.000 min  
 Response: 91046976  
 Conc: 749.30 ng/ml



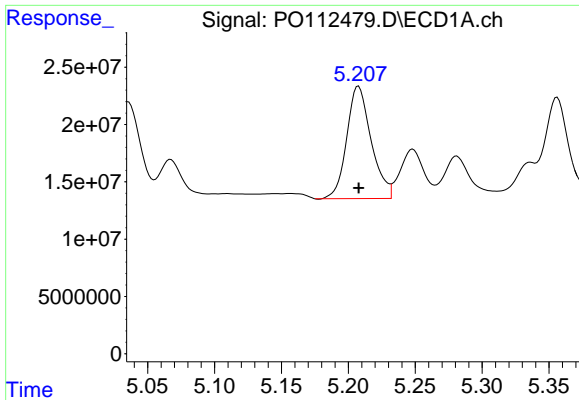
#22 AR-1248-2

R.T.: 4.994 min  
 Delta R.T.: 0.000 min  
 Response: 82523962  
 Conc: 323.48 ng/ml



#22 AR-1248-2

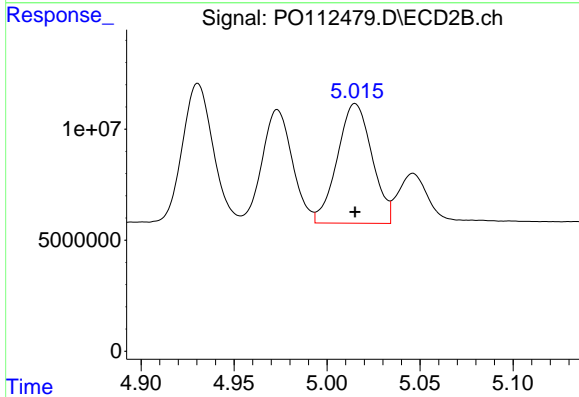
R.T.: 4.973 min  
 Delta R.T.: 0.000 min  
 Response: 57625965  
 Conc: 340.42 ng/ml



#23 AR-1248-3

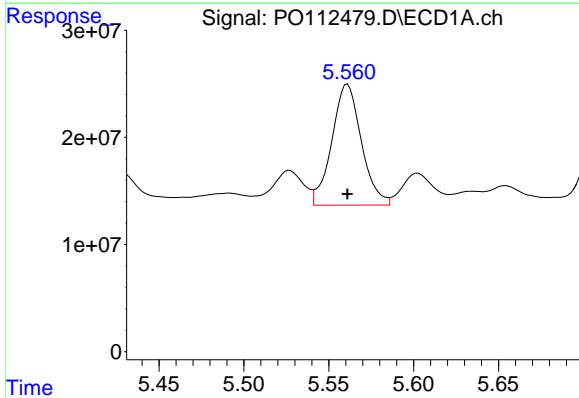
R.T.: 5.208 min  
 Delta R.T.: 0.000 min  
 Response: 124730084  
 Conc: 362.90 ng/ml

Instrument :  
 ECD\_O  
 ClientSampleId :  
 AR1660CCC500



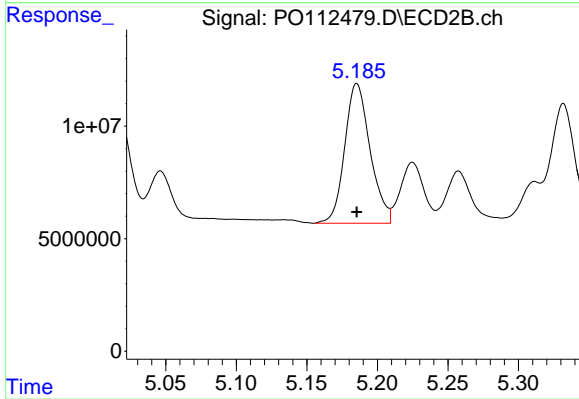
#23 AR-1248-3

R.T.: 5.015 min  
 Delta R.T.: 0.000 min  
 Response: 69938290  
 Conc: 393.69 ng/ml



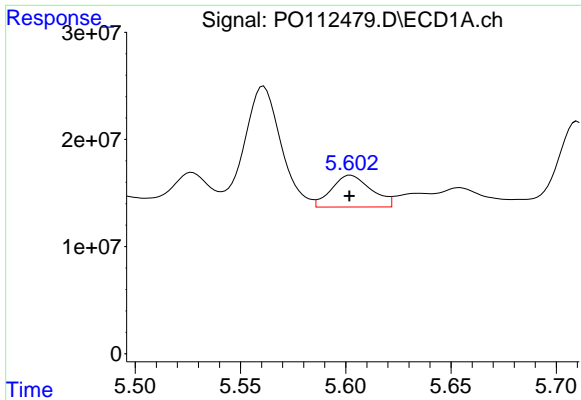
#24 AR-1248-4

R.T.: 5.561 min  
 Delta R.T.: 0.000 min  
 Response: 136702351  
 Conc: 269.06 ng/ml



#24 AR-1248-4

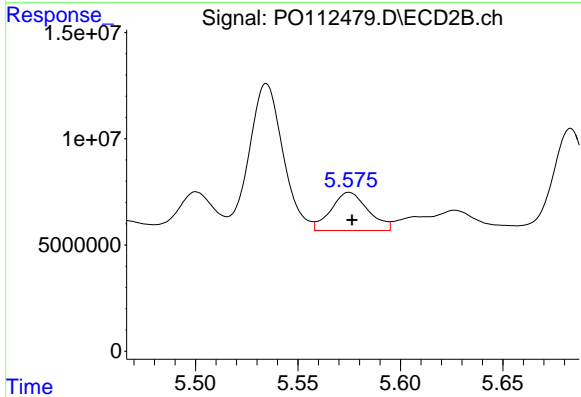
R.T.: 5.185 min  
 Delta R.T.: 0.000 min  
 Response: 77829866  
 Conc: 373.55 ng/ml



#25 AR-1248-5

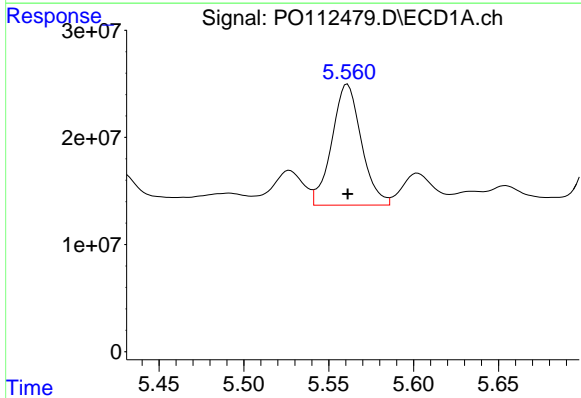
R.T.: 5.602 min  
 Delta R.T.: 0.000 min  
 Response: 38933207  
 Conc: 111.37 ng/ml

Instrument :  
 ECD\_O  
 ClientSampleId :  
 AR1660CCC500



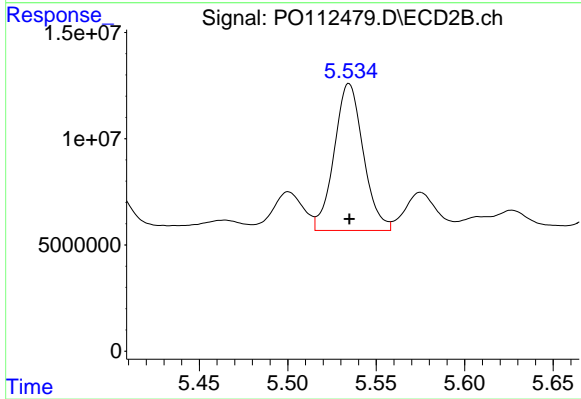
#25 AR-1248-5

R.T.: 5.575 min  
 Delta R.T.: -0.001 min  
 Response: 22583133  
 Conc: 105.15 ng/ml



#26 AR-1254-1

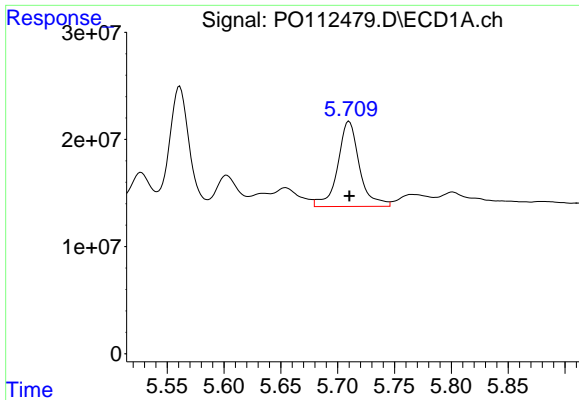
R.T.: 5.561 min  
 Delta R.T.: 0.000 min  
 Response: 136702351  
 Conc: 249.02 ng/ml



#26 AR-1254-1

R.T.: 5.535 min  
 Delta R.T.: 0.000 min  
 Response: 79103634  
 Conc: 240.71 ng/ml

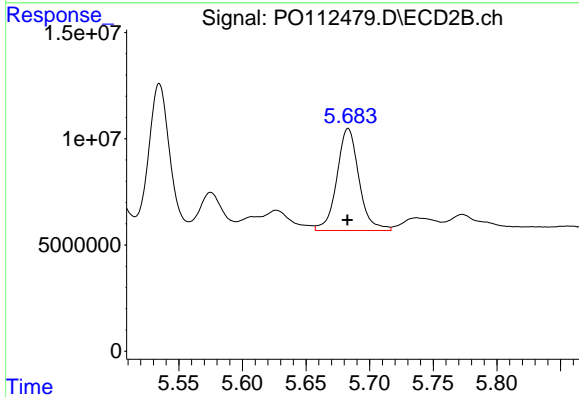




#27 AR-1254-2

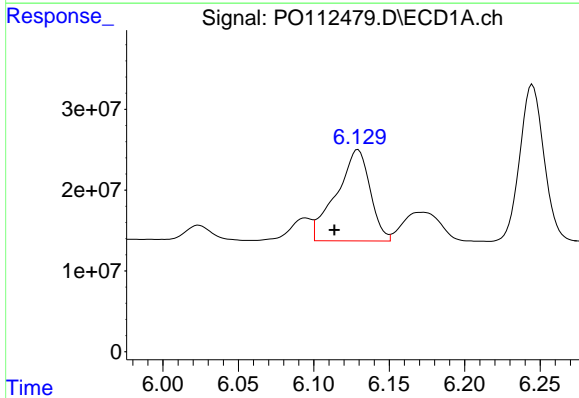
R.T.: 5.710 min  
 Delta R.T.: 0.000 min  
 Response: 105981359  
 Conc: 218.11 ng/ml

Instrument :  
 ECD\_O  
 ClientSampleId :  
 AR1660CCC500



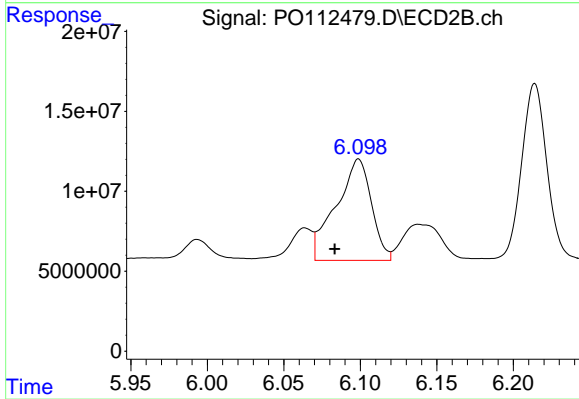
#27 AR-1254-2

R.T.: 5.683 min  
 Delta R.T.: 0.000 min  
 Response: 58044441  
 Conc: 200.51 ng/ml



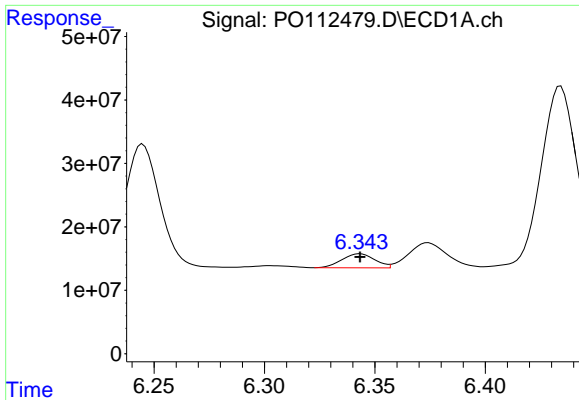
#28 AR-1254-3

R.T.: 6.129 min  
 Delta R.T.: 0.016 min  
 Response: 175528330  
 Conc: 235.83 ng/ml



#28 AR-1254-3

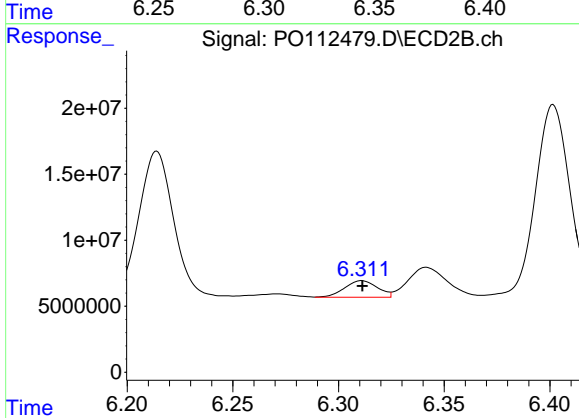
R.T.: 6.099 min  
 Delta R.T.: 0.016 min  
 Response: 102001890  
 Conc: 238.62 ng/ml



#29 AR-1254-4

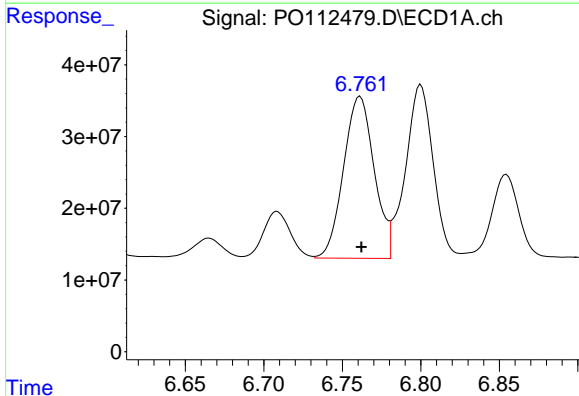
R.T.: 6.343 min  
 Delta R.T.: 0.000 min  
 Response: 23083880  
 Conc: 41.99 ng/ml

Instrument :  
 ECD\_O  
 ClientSampleId :  
 AR1660CCC500



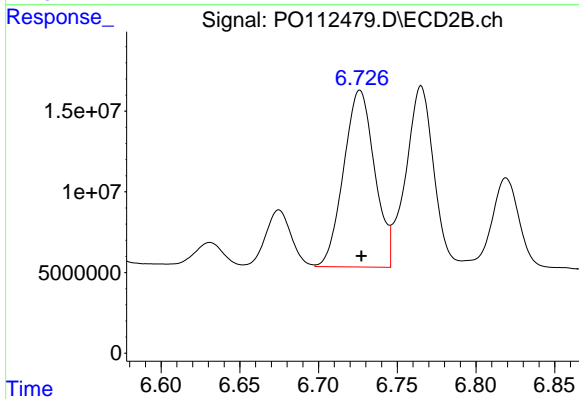
#29 AR-1254-4

R.T.: 6.311 min  
 Delta R.T.: 0.000 min  
 Response: 13551085  
 Conc: 49.64 ng/ml



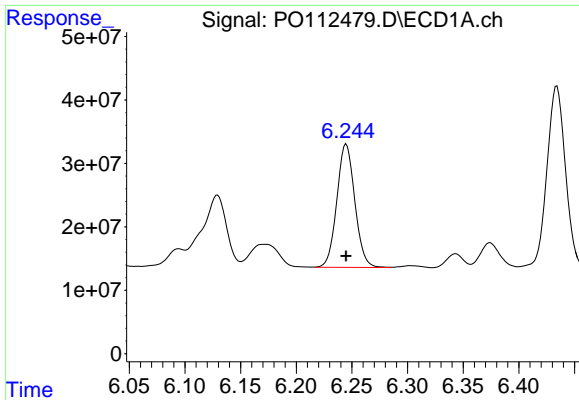
#30 AR-1254-5

R.T.: 6.761 min  
 Delta R.T.: 0.000 min  
 Response: 307032543  
 Conc: 433.77 ng/ml



#30 AR-1254-5

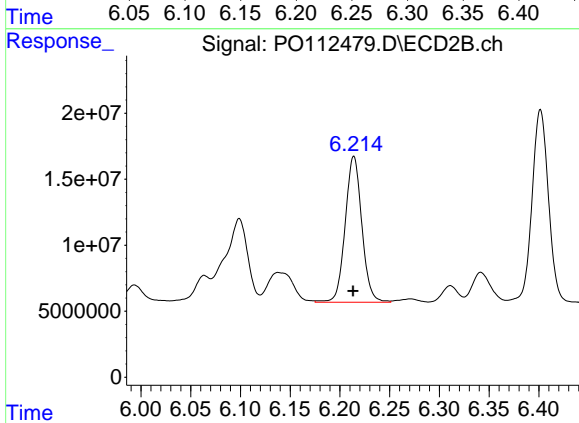
R.T.: 6.726 min  
 Delta R.T.: 0.000 min  
 Response: 150194185  
 Conc: 449.66 ng/ml



#31 AR-1260-1

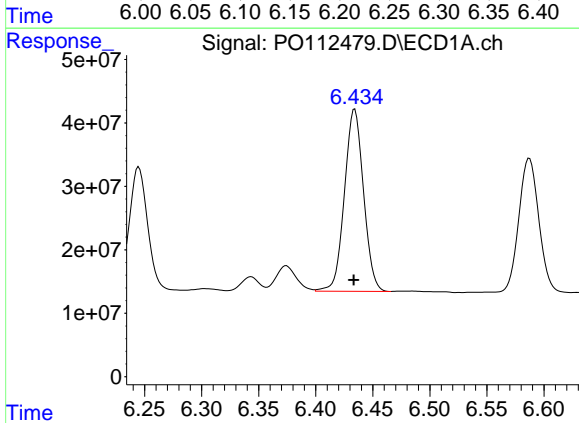
R.T.: 6.245 min  
 Delta R.T.: 0.000 min  
 Response: 218368684  
 Conc: 497.05 ng/ml

Instrument :  
 ECD\_O  
 ClientSampleId :  
 AR1660CCC500



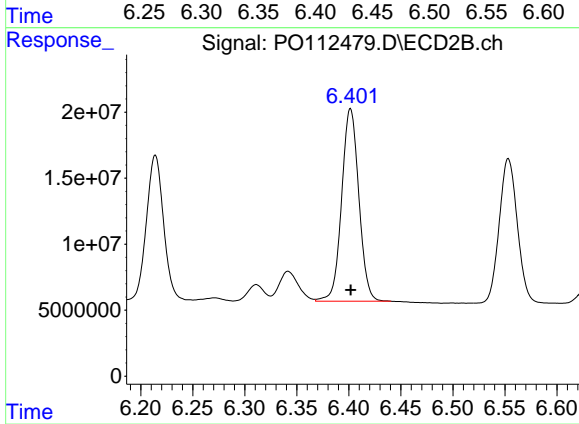
#31 AR-1260-1

R.T.: 6.214 min  
 Delta R.T.: 0.000 min  
 Response: 128978807  
 Conc: 519.01 ng/ml



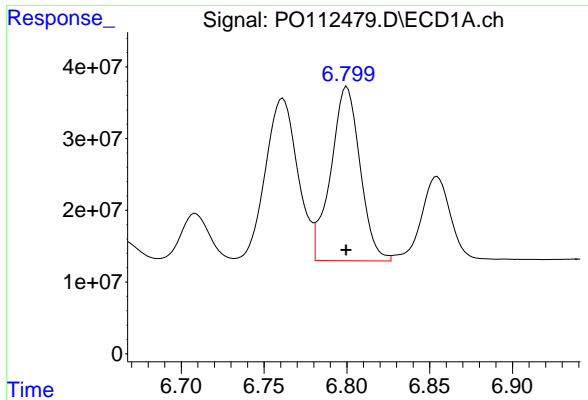
#32 AR-1260-2

R.T.: 6.434 min  
 Delta R.T.: 0.000 min  
 Response: 333904628  
 Conc: 485.40 ng/ml



#32 AR-1260-2

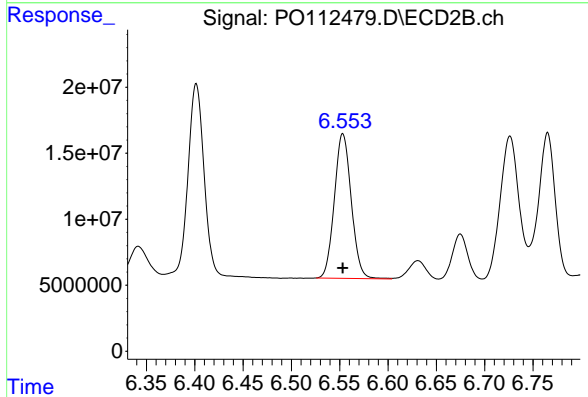
R.T.: 6.402 min  
 Delta R.T.: 0.000 min  
 Response: 167716542  
 Conc: 509.01 ng/ml



#33 AR-1260-3

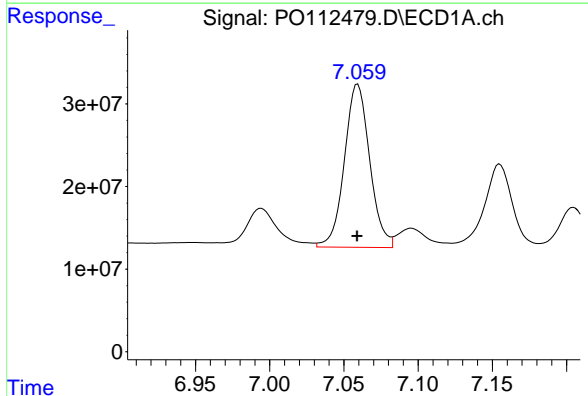
R.T.: 6.800 min  
 Delta R.T.: 0.000 min  
 Response: 299177884  
 Conc: 508.79 ng/ml

Instrument :  
 ECD\_O  
 ClientSampleId :  
 AR1660CCC500



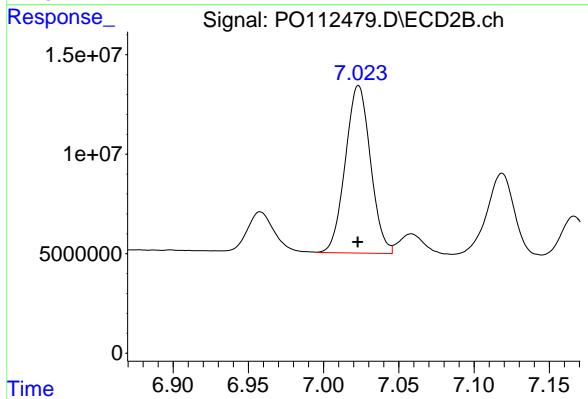
#33 AR-1260-3

R.T.: 6.553 min  
 Delta R.T.: 0.000 min  
 Response: 133665873  
 Conc: 520.26 ng/ml



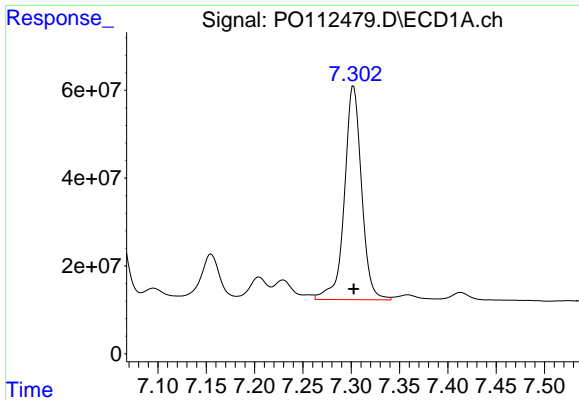
#34 AR-1260-4

R.T.: 7.059 min  
 Delta R.T.: 0.000 min  
 Response: 234528640  
 Conc: 520.01 ng/ml



#34 AR-1260-4

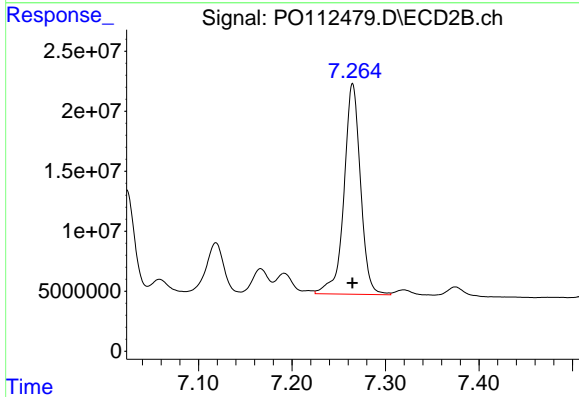
R.T.: 7.023 min  
 Delta R.T.: 0.000 min  
 Response: 98011323  
 Conc: 512.31 ng/ml



#35 AR-1260-5

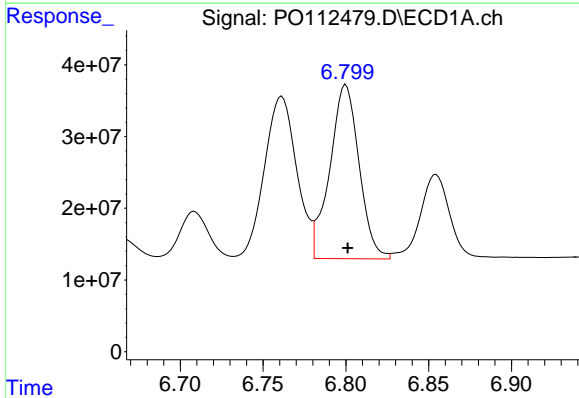
R.T.: 7.302 min  
 Delta R.T.: 0.000 min  
 Response: 600322105  
 Conc: 484.47 ng/ml

Instrument :  
 ECD\_O  
 ClientSampleId :  
 AR1660CCC500



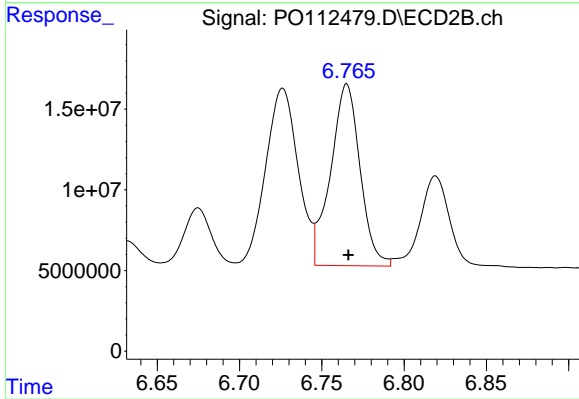
#35 AR-1260-5

R.T.: 7.265 min  
 Delta R.T.: 0.000 min  
 Response: 215199536  
 Conc: 522.08 ng/ml



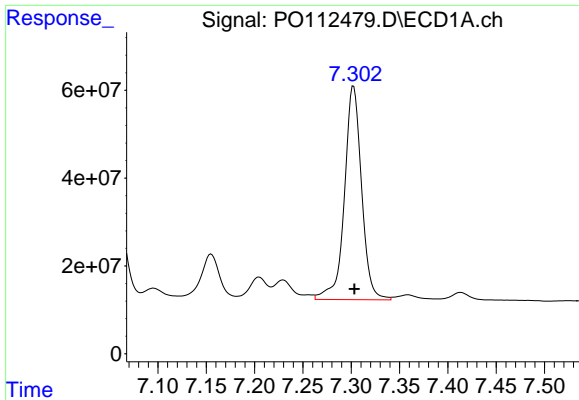
#36 AR-1262-1

R.T.: 6.800 min  
 Delta R.T.: -0.001 min  
 Response: 299177884  
 Conc: 321.97 ng/ml



#36 AR-1262-1

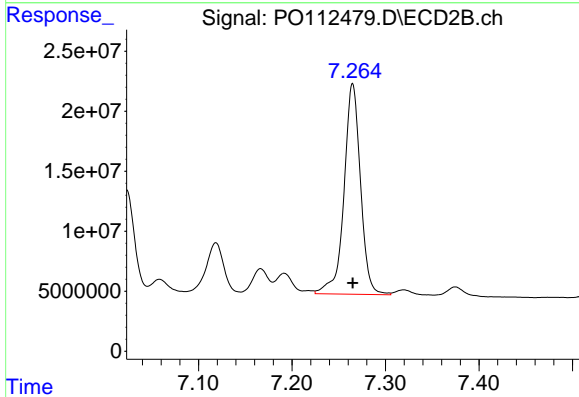
R.T.: 6.765 min  
 Delta R.T.: 0.000 min  
 Response: 140257702  
 Conc: 338.11 ng/ml



#37 AR-1262-2

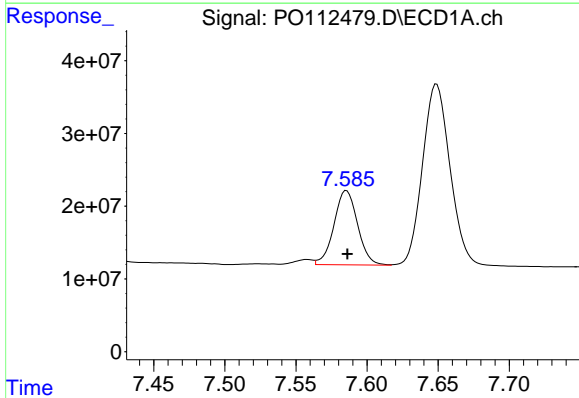
R.T.: 7.302 min  
 Delta R.T.: 0.000 min  
 Response: 600322105  
 Conc: 403.71 ng/ml

Instrument :  
 ECD\_O  
 ClientSampleId :  
 AR1660CCC500



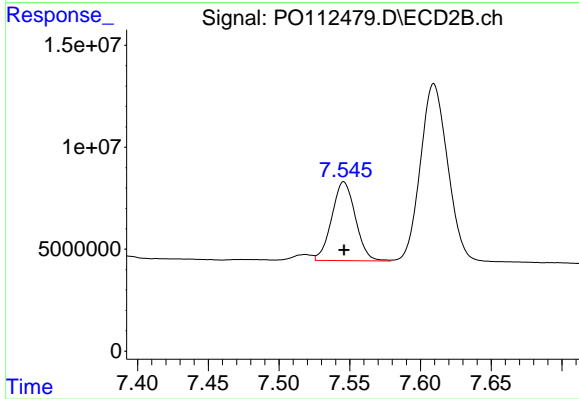
#37 AR-1262-2

R.T.: 7.265 min  
 Delta R.T.: 0.000 min  
 Response: 215199536  
 Conc: 417.42 ng/ml



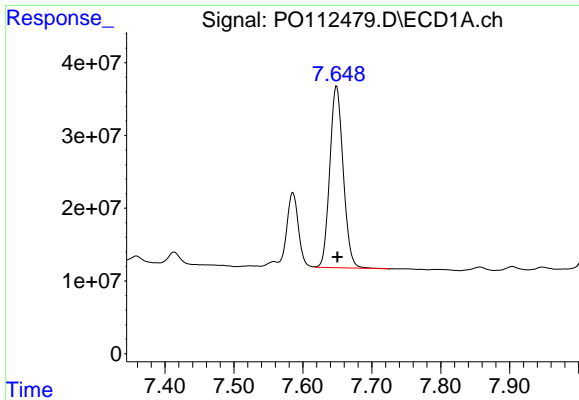
#38 AR-1262-3

R.T.: 7.586 min  
 Delta R.T.: 0.000 min  
 Response: 118045586  
 Conc: 199.99 ng/ml



#38 AR-1262-3

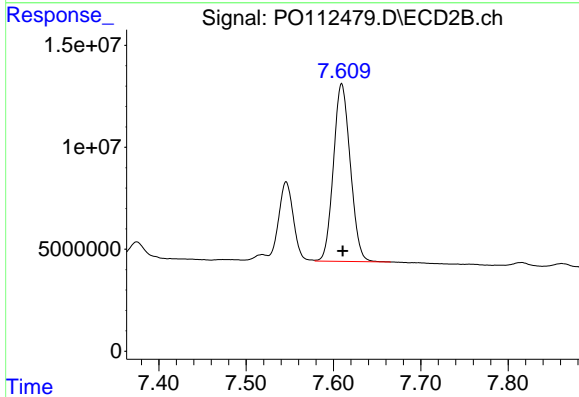
R.T.: 7.546 min  
 Delta R.T.: 0.000 min  
 Response: 44988003  
 Conc: 241.19 ng/ml



#39 AR-1262-4

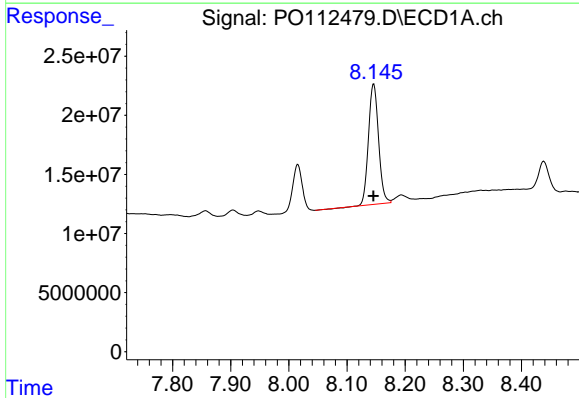
R.T.: 7.649 min  
 Delta R.T.: -0.001 min  
 Response: 337716765  
 Conc: 339.70 ng/ml

Instrument :  
 ECD\_O  
 ClientSampleId :  
 AR1660CCC500



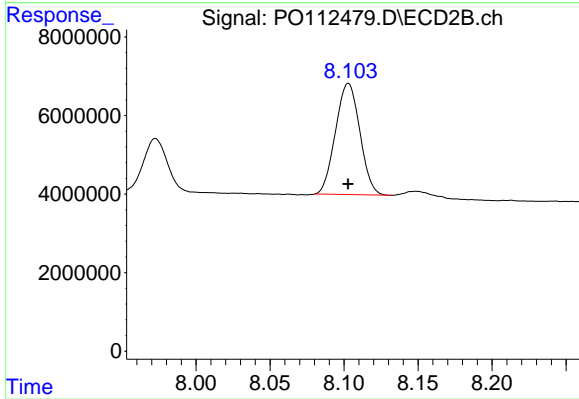
#39 AR-1262-4

R.T.: 7.609 min  
 Delta R.T.: -0.001 min  
 Response: 116914595  
 Conc: 405.81 ng/ml



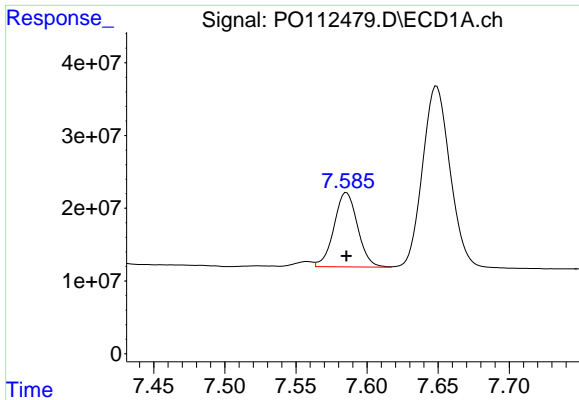
#40 AR-1262-5

R.T.: 8.146 min  
 Delta R.T.: 0.000 min  
 Response: 122053647  
 Conc: 281.19 ng/ml



#40 AR-1262-5

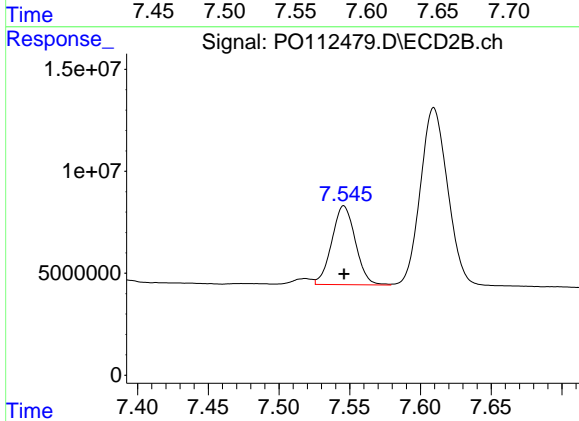
R.T.: 8.103 min  
 Delta R.T.: 0.000 min  
 Response: 32445048  
 Conc: 326.07 ng/ml



#41 AR-1268-1

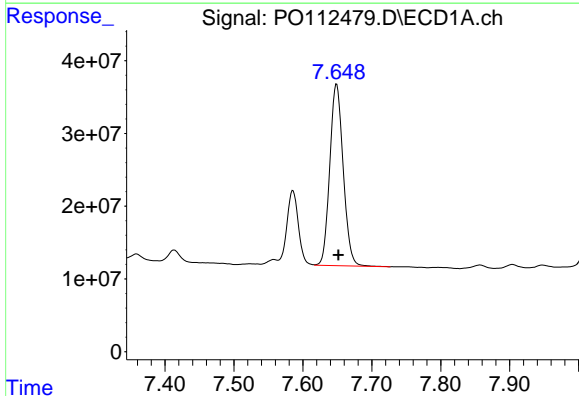
R.T.: 7.586 min  
 Delta R.T.: 0.000 min  
 Response: 118045586  
 Conc: 67.41 ng/ml

Instrument :  
 ECD\_O  
 ClientSampleId :  
 AR1660CCC500



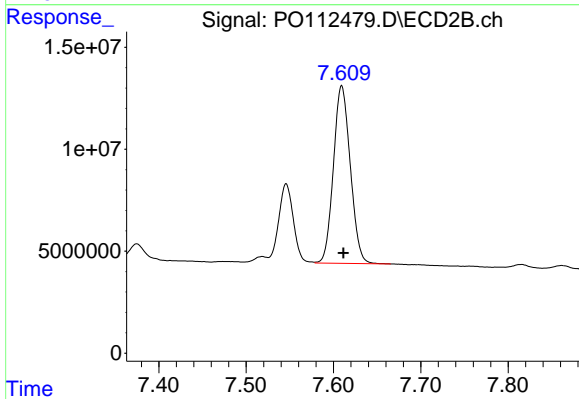
#41 AR-1268-1

R.T.: 7.546 min  
 Delta R.T.: 0.000 min  
 Response: 44988003  
 Conc: 86.87 ng/ml



#42 AR-1268-2

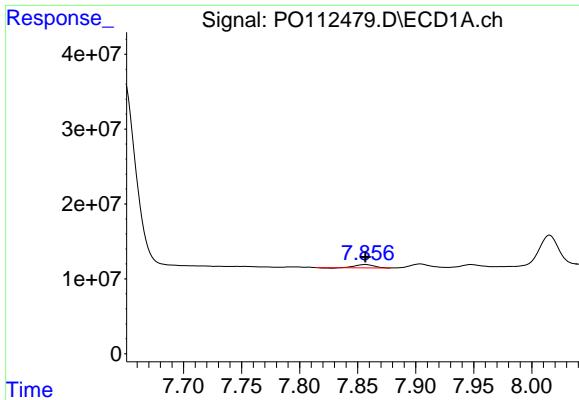
R.T.: 7.649 min  
 Delta R.T.: -0.003 min  
 Response: 337716765  
 Conc: 229.27 ng/ml



#42 AR-1268-2

R.T.: 7.609 min  
 Delta R.T.: -0.002 min  
 Response: 116914595  
 Conc: 275.05 ng/ml

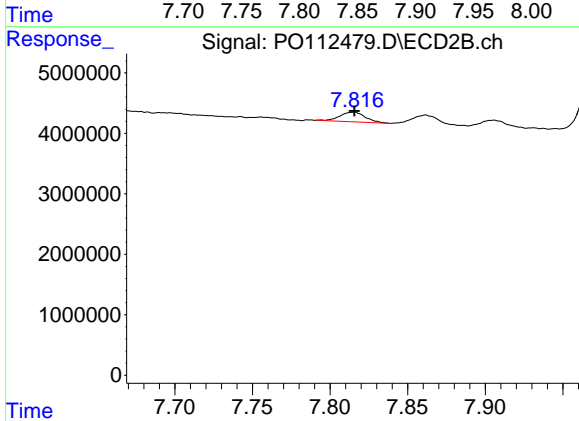




#43 AR-1268-3

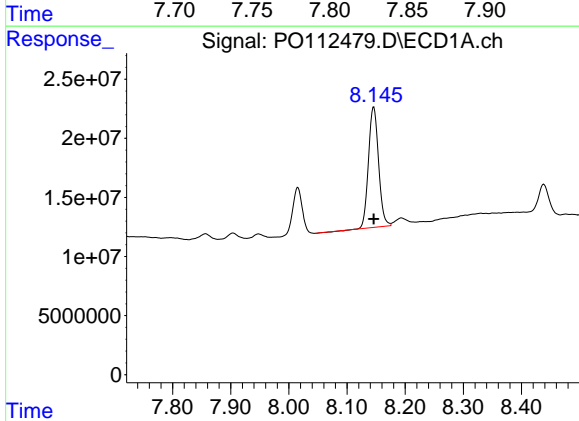
R.T.: 7.857 min  
 Delta R.T.: 0.000 min  
 Response: 4641871  
 Conc: 3.71 ng/ml

Instrument :  
 ECD\_O  
 ClientSampleId :  
 AR1660CCC500



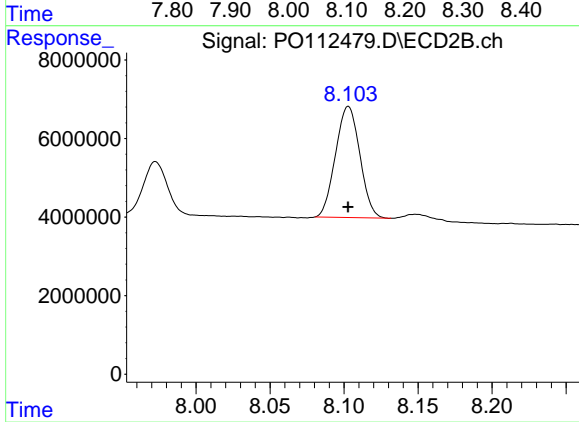
#43 AR-1268-3

R.T.: 7.815 min  
 Delta R.T.: 0.000 min  
 Response: 1835591  
 Conc: 5.71 ng/ml



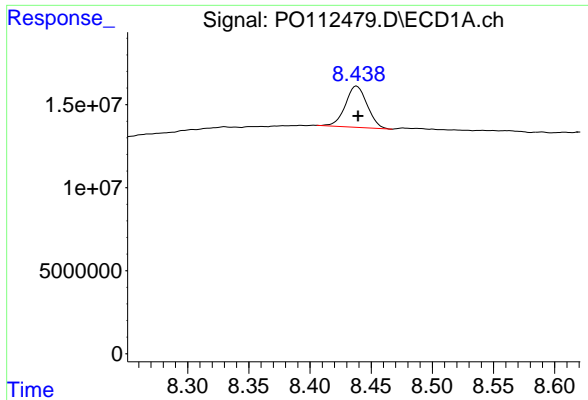
#44 AR-1268-4

R.T.: 8.146 min  
 Delta R.T.: 0.000 min  
 Response: 122053647  
 Conc: 253.29 ng/ml



#44 AR-1268-4

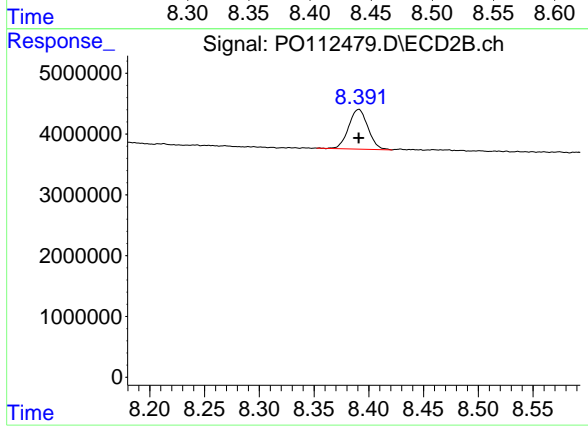
R.T.: 8.103 min  
 Delta R.T.: 0.000 min  
 Response: 32445048  
 Conc: 291.52 ng/ml



#45 AR-1268-5

R.T.: 8.438 min  
 Delta R.T.: -0.001 min  
 Response: 30853176  
 Conc: 9.19 ng/ml

Instrument :  
 ECD\_O  
 ClientSampleId :  
 AR1660CCC500



#45 AR-1268-5

R.T.: 8.391 min  
 Delta R.T.: 0.000 min  
 Response: 7991952  
 Conc: 10.92 ng/ml