

Data Path : Z:\pestpcbsrv\HPCHEM1\ECD\_0\Data\P0072425\  
 Data File : PO112480.D  
 Signal(s) : Signal #1: ECD1A.ch Signal #2: ECD2B.ch  
 Acq On : 24 Jul 2025 21:42  
 Operator : YP/AJ  
 Sample : AR1242CCC500  
 Misc :  
 ALS Vial : 4 Sample Multiplier: 1

Instrument :  
 ECD\_0  
 ClientSampleId :  
 AR1242CCC500

Integration File signal 1: autoint1.e  
 Integration File signal 2: autoint2.e  
 Quant Time: Jul 24 23:48:39 2025  
 Quant Method : Z:\pestpcbsrv\HPCHEM1\ECD\_0\methods\P0072325.M  
 Quant Title : GC EXTRACTABLES  
 QLast Update : Thu Jul 24 04:54:06 2025  
 Response via : Initial Calibration  
 Integrator: ChemStation

Volume Inj. : 2 µl  
 Signal #1 Phase : ZB-MR1 Signal #2 Phase: ZB-MR2  
 Signal #1 Info : 30Mx0.32mmx 0.50µ Signal #2 Info : 30M x 0.32mm x 0.25µm

Compound	RT#1	RT#2	Resp#1	Resp#2	ng/ml	ng/ml
System Monitoring Compounds						
1) SA Tetrachlo...	3.670	3.663	484.7E6	290.5E6	59.611	58.463
2) SA Decachlor...	8.695	8.641	366.4E6	92301508	50.112	52.233
Target Compounds						
3) L1 AR-1016-1	4.756	4.738	136.0E6	84661898	506.766	483.763
4) L1 AR-1016-2	4.775	4.756	202.9E6	123.8E6	499.605	475.399
5) L1 AR-1016-3	4.832	4.931	130.0E6	66480087	496.723	488.945
6) L1 AR-1016-4	4.951	4.974	104.8E6	50437848	494.603	454.048
7) L1 AR-1016-5	5.208	5.186	123.0E6	73747259	560.521	514.625
8) L2 AR-1221-1	3.881	3.871	11870180	8844089	122.804	131.480
9) L2 AR-1221-2	3.969	3.958	19008443	13727265	264.513	270.605
10) L2 AR-1221-3	4.043	4.032	68314126	47034902	287.383	296.695
11) L3 AR-1232-1	4.043	4.032	68314126	47034902	365.358	371.671
12) L3 AR-1232-2	4.535	4.756	102.5E6	123.8E6	952.802	944.221
13) L3 AR-1232-3	4.775	4.931	202.9E6	66480087	981.137	989.334
14) L3 AR-1232-4	4.951	5.016	104.8E6	66208409	1000.354	1106.626
15) L3 AR-1232-5	4.994	5.186	72587960	73747259	1069.343	1131.040
16) L4 AR-1242-1	4.756	4.738	136.0E6	84661898	549.285	534.502
17) L4 AR-1242-2	4.775	4.756	202.9E6	123.8E6	548.680	529.982
18) L4 AR-1242-3	4.832	4.931	130.0E6	66480087	549.229	548.565
19) L4 AR-1242-4	4.951	5.016	104.8E6	66208409	539.315	539.423
20) L4 AR-1242-5	5.602	5.535	119.8E6	88858508	559.808	552.015
21) L5 AR-1248-1	4.756	4.738	136.0E6	84661898	726.454	696.752
22) L5 AR-1248-2	4.994	4.974	72587960	50437848	284.533	297.956
23) L5 AR-1248-3	5.208	5.016	123.0E6	66208409	357.921	372.696
24) L5 AR-1248-4	5.562	5.186	148.6E6	73747259	292.453	353.951
25) L5 AR-1248-5	5.602	5.576	119.8E6	75091401	342.548	349.644
26) L6 AR-1254-1	5.562	5.535	148.6E6	88858508	270.674	270.398
27) L6 AR-1254-2	5.710	5.683	47189480	29999468	97.114	103.628
28) L6 AR-1254-3	6.114	6.083	41992942	30240424	56.420	70.744 #
29) L6 AR-1254-4	6.344	6.311	38897378	20515042	70.761	75.157
30) L6 AR-1254-5	6.763	6.727	12279103	5036823	17.348	15.079
31) L7 AR-1260-1	6.232	6.199	12272479	8061678	27.934	32.440
32) L7 AR-1260-2	6.433	6.401	6634535	2570951	9.645	7.803
34) L7 AR-1260-4	7.062	7.022	1022011	874962	2.266	4.574 #
35) L7 AR-1260-5	7.304	7.264	3963926	1376077	3.199	3.338
36) L8 AR-1262-1	6.835	6.750	1518574	1728765	1.634	4.167 #
37) L8 AR-1262-2	7.304	7.264	3963926	1376077	2.666	2.669
38) L8 AR-1262-3	7.582	7.552	4235011	3385372	7.175	18.150 #
39) L8 AR-1262-4	7.639	7.605	1823189	853408	1.834	2.962 #
40) L8 AR-1262-5	8.136	0.000	146292	0	0.337	N.D. #
41) L9 AR-1268-1	7.582	7.552	4235011	3385372	2.418	6.537 #
42) L9 AR-1268-2	7.639	7.605	1823189	853408	1.238	2.008 #

Data Path : Z:\pestpcbsrv\HPCHEM1\ECD\_0\Data\P0072425\  
 Data File : P0112480.D  
 Signal(s) : Signal #1: ECD1A.ch Signal #2: ECD2B.ch  
 Acq On : 24 Jul 2025 21:42  
 Operator : YP/AJ  
 Sample : AR1242CCC500  
 Misc :  
 ALS Vial : 4 Sample Multiplier: 1

Instrument :  
 ECD\_0  
 ClientSampleId :  
 AR1242CCC500

Integration File signal 1: autoint1.e  
 Integration File signal 2: autoint2.e  
 Quant Time: Jul 24 23:48:39 2025  
 Quant Method : Z:\pestpcbsrv\HPCHEM1\ECD\_0\methods\P0072325.M  
 Quant Title : GC EXTRACTABLES  
 QLast Update : Thu Jul 24 04:54:06 2025  
 Response via : Initial Calibration  
 Integrator: ChemStation

Volume Inj. : 2 µl  
 Signal #1 Phase : ZB-MR1 Signal #2 Phase: ZB-MR2  
 Signal #1 Info : 30Mx0.32mmx 0.50µ Signal #2 Info : 30M x 0.32mm x 0.25µm

	Compound	RT#1	RT#2	Resp#1	Resp#2	ng/ml	ng/ml
43)	L9 AR-1268-3	7.855	7.816	12459	295116	0.010	0.919 #
44)	L9 AR-1268-4	8.136	0.000	146292	0	0.304	N.D. #
45)	L9 AR-1268-5	8.445	8.389	2359055	474009	0.703	0.648

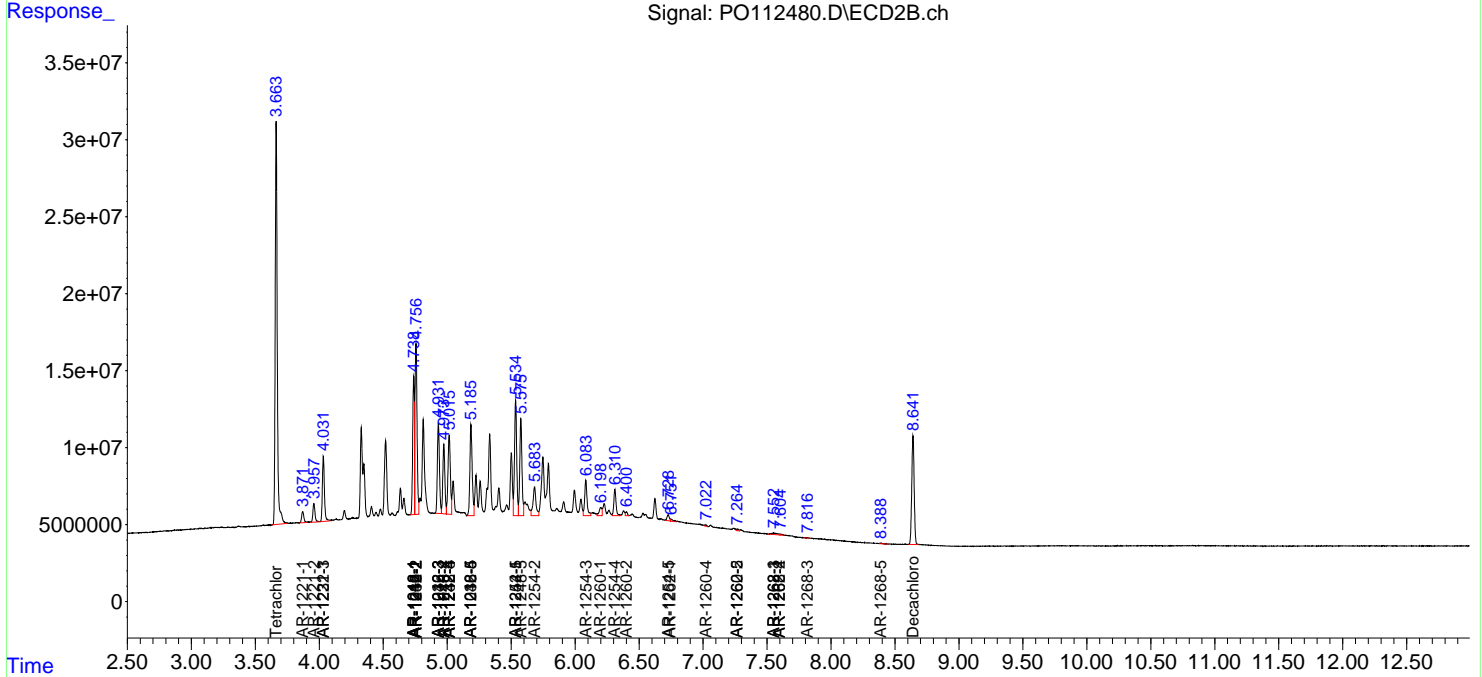
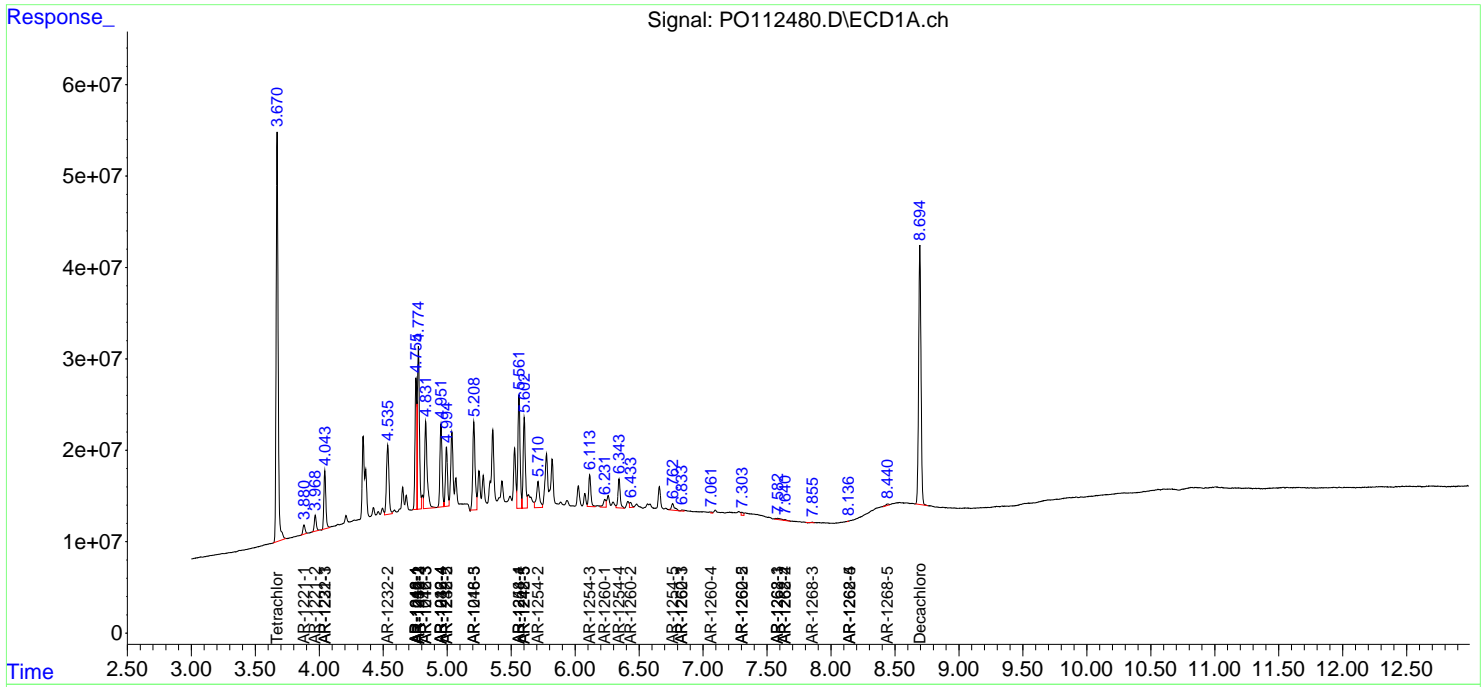
(f)=RT Delta > 1/2 Window (#)=Amounts differ by > 25% (m)=manual int.

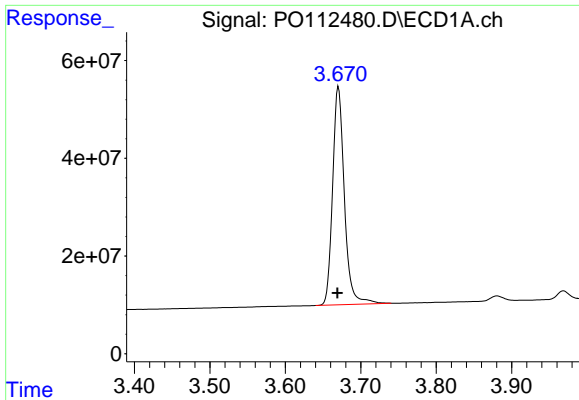
Data Path : Z:\pestpcbsrv\HPCHEM1\ECD\_O\Data\P0072425\  
 Data File : P0112480.D  
 Signal(s) : Signal #1: ECD1A.ch Signal #2: ECD2B.ch  
 Acq On : 24 Jul 2025 21:42  
 Operator : YP/AJ  
 Sample : AR1242CCC500  
 Misc :  
 ALS Vial : 4 Sample Multiplier: 1

Instrument :  
 ECD\_O  
 ClientSampleId :  
 AR1242CCC500

Integration File signal 1: autoint1.e  
 Integration File signal 2: autoint2.e  
 Quant Time: Jul 24 23:48:39 2025  
 Quant Method : Z:\pestpcbsrv\HPCHEM1\ECD\_O\methods\P0072325.M  
 Quant Title : GC EXTRACTABLES  
 QLast Update : Thu Jul 24 04:54:06 2025  
 Response via : Initial Calibration  
 Integrator: ChemStation

Volume Inj. : 2 µl  
 Signal #1 Phase : ZB-MR1 Signal #2 Phase: ZB-MR2  
 Signal #1 Info : 30Mx0.32mmx 0.50µ Signal #2 Info : 30M x 0.32mm x 0.25µm

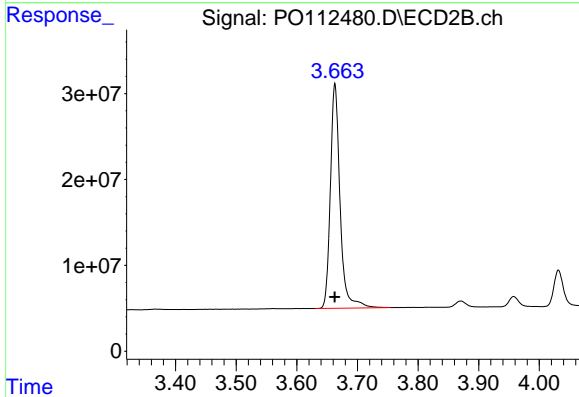




#1 Tetrachloro-m-xylene

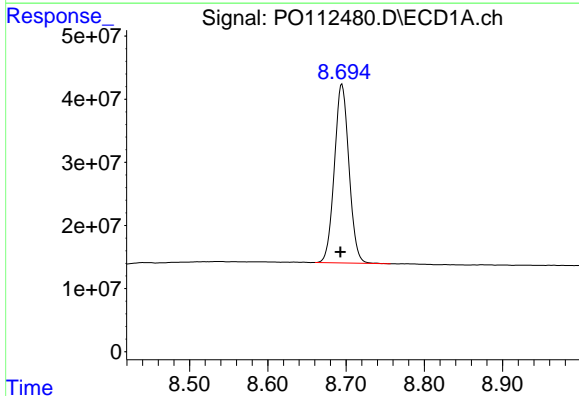
R.T.: 3.670 min  
 Delta R.T.: 0.001 min  
 Response: 484733714  
 Conc: 59.61 ng/ml

Instrument :  
 ECD\_O  
 ClientSampleId :  
 AR1242CCC500



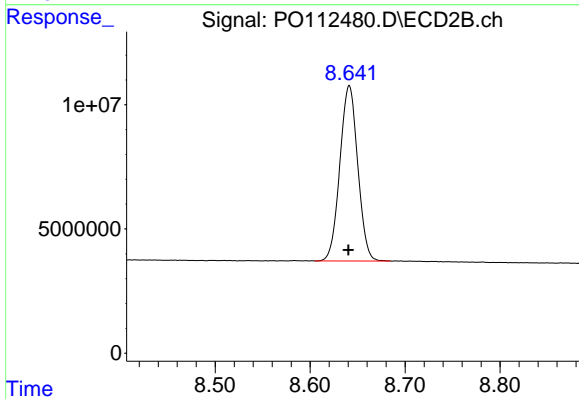
#1 Tetrachloro-m-xylene

R.T.: 3.663 min  
 Delta R.T.: 0.000 min  
 Response: 290512813  
 Conc: 58.46 ng/ml



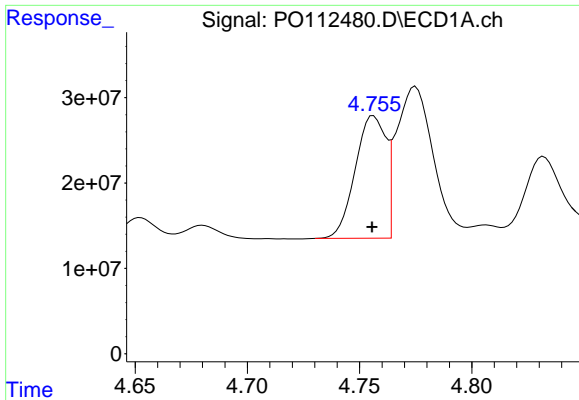
#2 Decachlorobiphenyl

R.T.: 8.695 min  
 Delta R.T.: 0.002 min  
 Response: 366411847  
 Conc: 50.11 ng/ml



#2 Decachlorobiphenyl

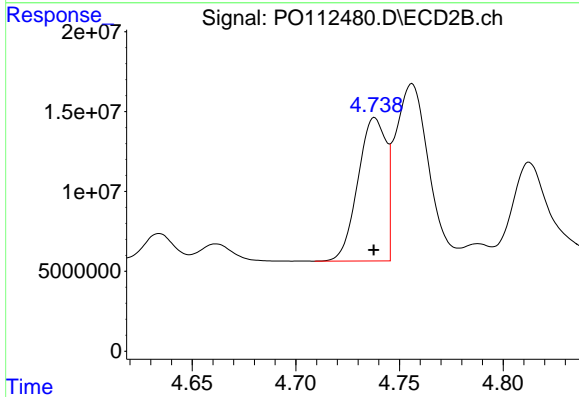
R.T.: 8.641 min  
 Delta R.T.: 0.000 min  
 Response: 92301508  
 Conc: 52.23 ng/ml



#3 AR-1016-1

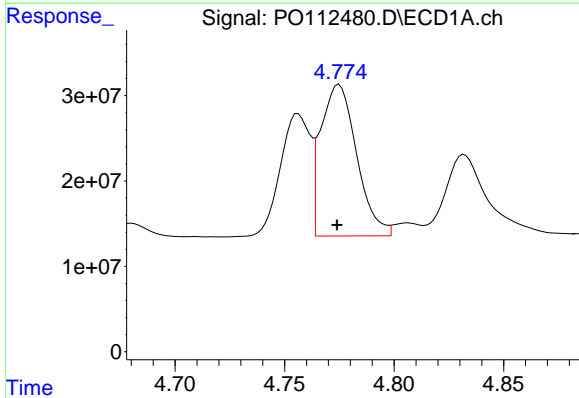
R.T.: 4.756 min  
 Delta R.T.: 0.000 min  
 Response: 135998592  
 Conc: 506.77 ng/ml

Instrument :  
 ECD\_O  
 ClientSampleId :  
 AR1242CCC500



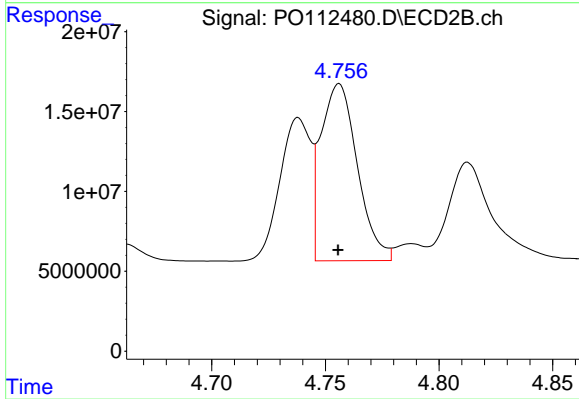
#3 AR-1016-1

R.T.: 4.738 min  
 Delta R.T.: 0.000 min  
 Response: 84661898  
 Conc: 483.76 ng/ml



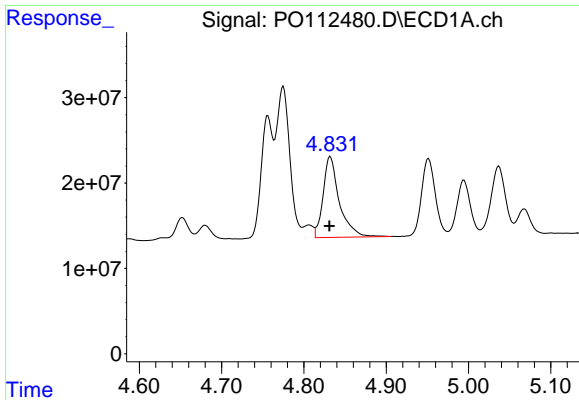
#4 AR-1016-2

R.T.: 4.775 min  
 Delta R.T.: 0.000 min  
 Response: 202898480  
 Conc: 499.61 ng/ml



#4 AR-1016-2

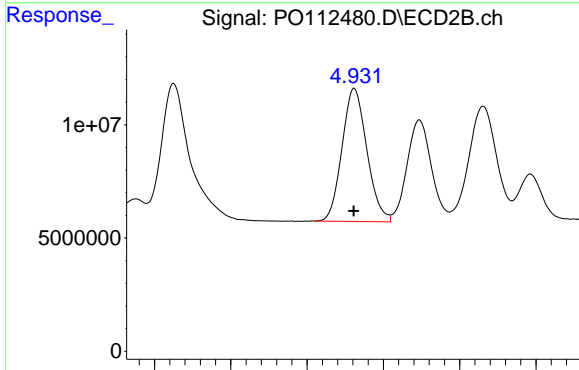
R.T.: 4.756 min  
 Delta R.T.: 0.000 min  
 Response: 123839091  
 Conc: 475.40 ng/ml



#5 AR-1016-3

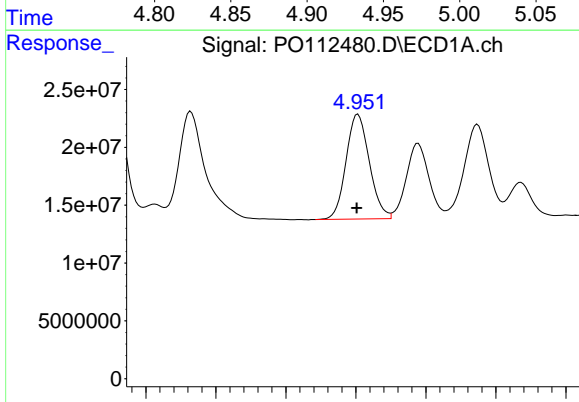
R.T.: 4.832 min  
 Delta R.T.: 0.000 min  
 Response: 129979381  
 Conc: 496.72 ng/ml

Instrument :  
 ECD\_O  
 ClientSampleId :  
 AR1242CCC500



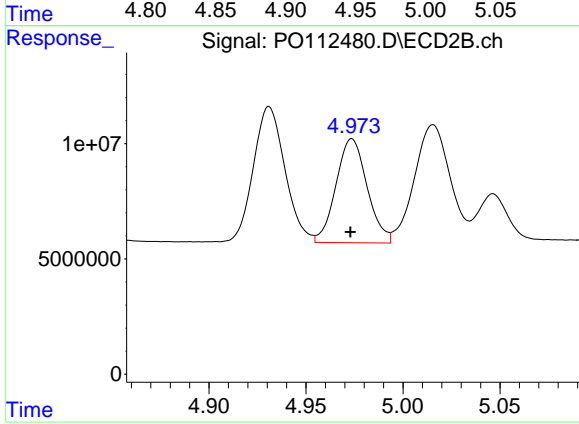
#5 AR-1016-3

R.T.: 4.931 min  
 Delta R.T.: 0.000 min  
 Response: 66480087  
 Conc: 488.94 ng/ml



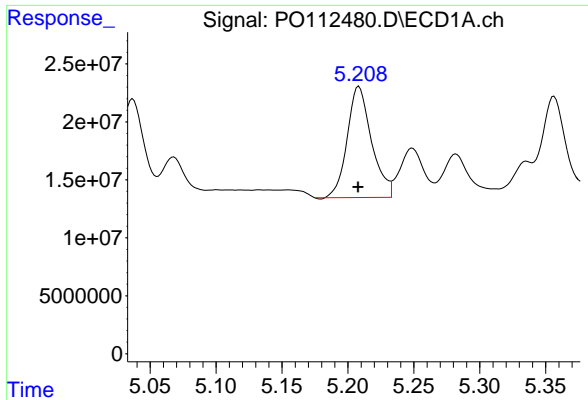
#6 AR-1016-4

R.T.: 4.951 min  
 Delta R.T.: 0.000 min  
 Response: 104777427  
 Conc: 494.60 ng/ml



#6 AR-1016-4

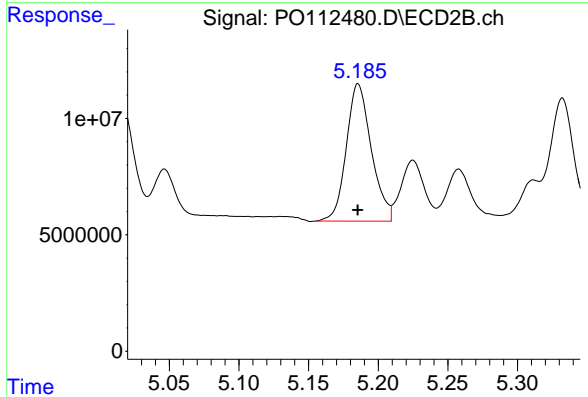
R.T.: 4.974 min  
 Delta R.T.: 0.000 min  
 Response: 50437848  
 Conc: 454.05 ng/ml



#7 AR-1016-5

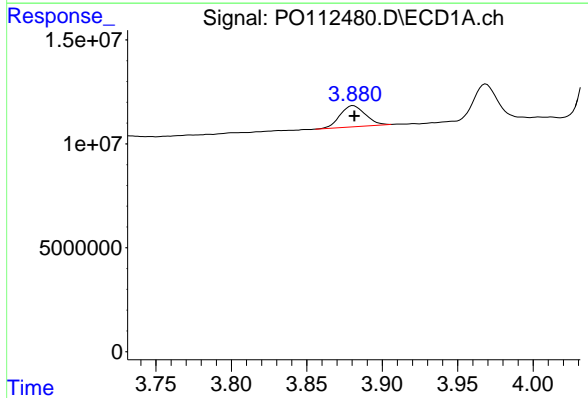
R.T.: 5.208 min  
 Delta R.T.: 0.000 min  
 Response: 123017988  
 Conc: 560.52 ng/ml

Instrument :  
 ECD\_O  
 ClientSampleId :  
 AR1242CCC500



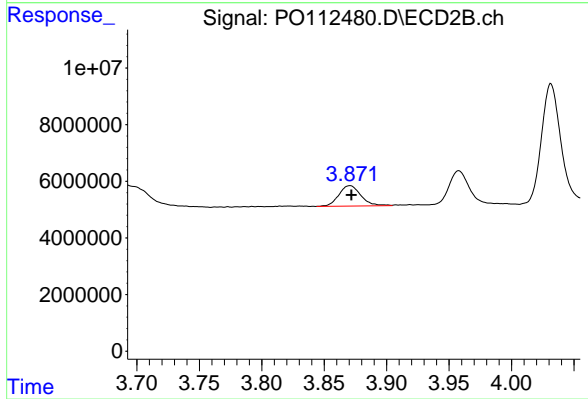
#7 AR-1016-5

R.T.: 5.186 min  
 Delta R.T.: 0.000 min  
 Response: 73747259  
 Conc: 514.62 ng/ml



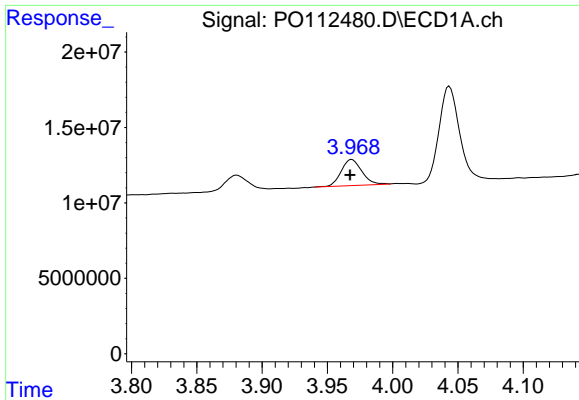
#8 AR-1221-1

R.T.: 3.881 min  
 Delta R.T.: 0.000 min  
 Response: 11870180  
 Conc: 122.80 ng/ml



#8 AR-1221-1

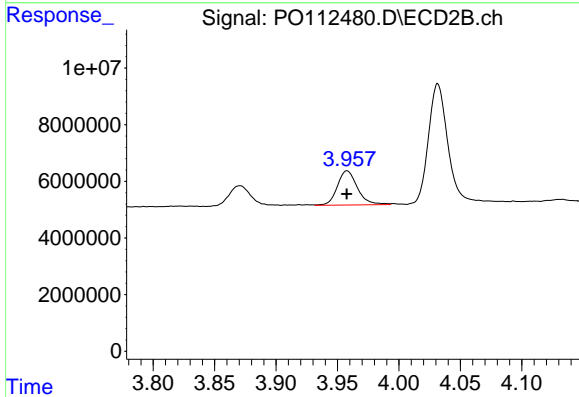
R.T.: 3.871 min  
 Delta R.T.: -0.001 min  
 Response: 8844089  
 Conc: 131.48 ng/ml



#9 AR-1221-2

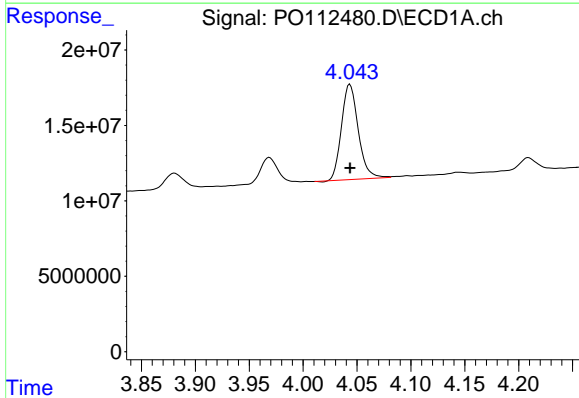
R.T.: 3.969 min  
 Delta R.T.: 0.001 min  
 Response: 19008443  
 Conc: 264.51 ng/ml

Instrument :  
 ECD\_O  
 ClientSampleId :  
 AR1242CCC500



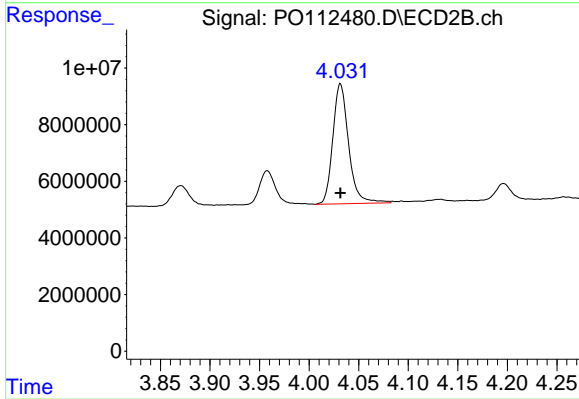
#9 AR-1221-2

R.T.: 3.958 min  
 Delta R.T.: 0.000 min  
 Response: 13727265  
 Conc: 270.61 ng/ml



#10 AR-1221-3

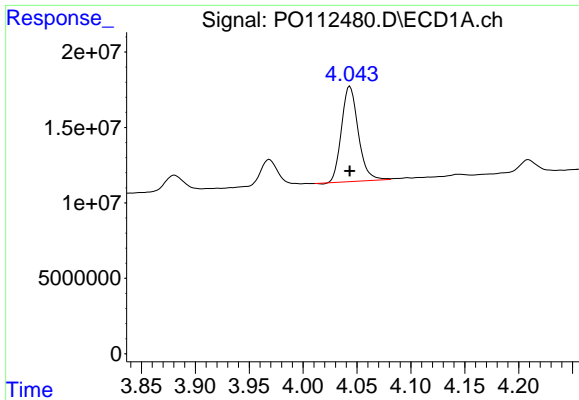
R.T.: 4.043 min  
 Delta R.T.: 0.000 min  
 Response: 68314126  
 Conc: 287.38 ng/ml



#10 AR-1221-3

R.T.: 4.032 min  
 Delta R.T.: 0.000 min  
 Response: 47034902  
 Conc: 296.70 ng/ml

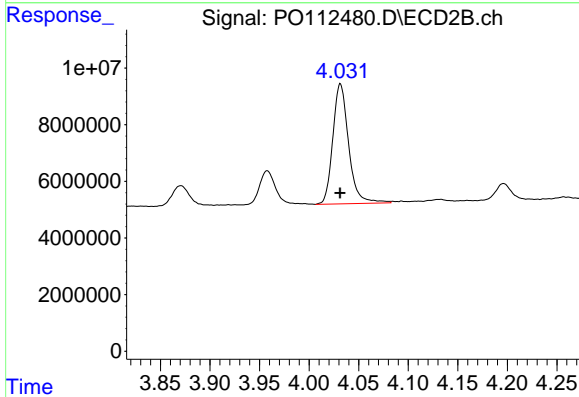




#11 AR-1232-1

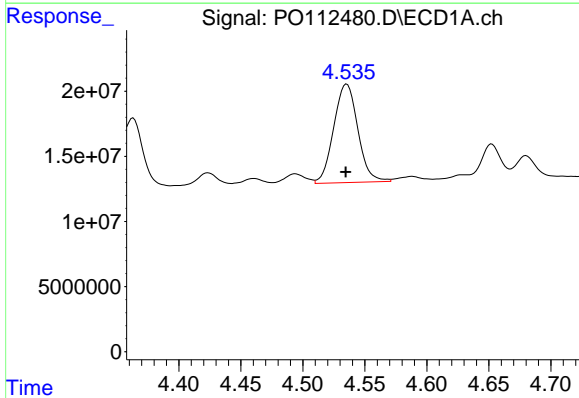
R.T.: 4.043 min  
 Delta R.T.: 0.000 min  
 Response: 68314126  
 Conc: 365.36 ng/ml

Instrument :  
 ECD\_O  
 ClientSampleId :  
 AR1242CCC500



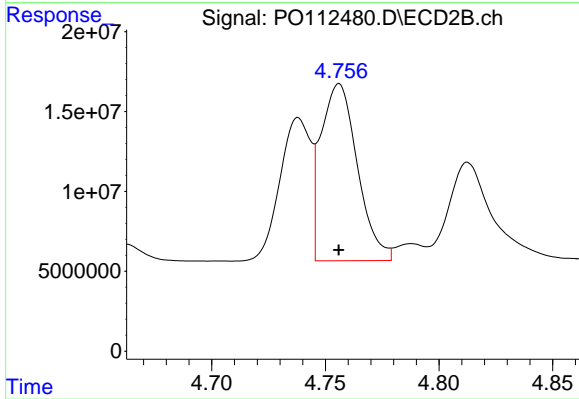
#11 AR-1232-1

R.T.: 4.032 min  
 Delta R.T.: 0.000 min  
 Response: 47034902  
 Conc: 371.67 ng/ml



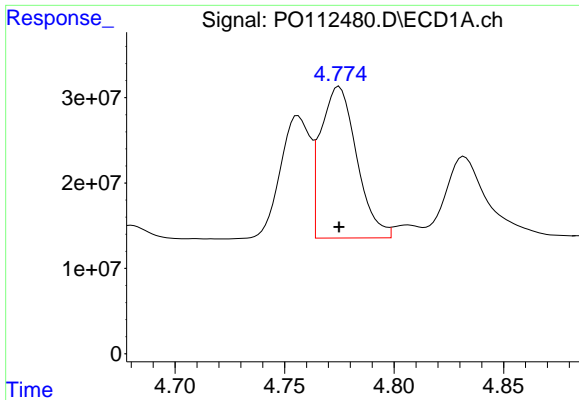
#12 AR-1232-2

R.T.: 4.535 min  
 Delta R.T.: 0.000 min  
 Response: 102545011  
 Conc: 952.80 ng/ml



#12 AR-1232-2

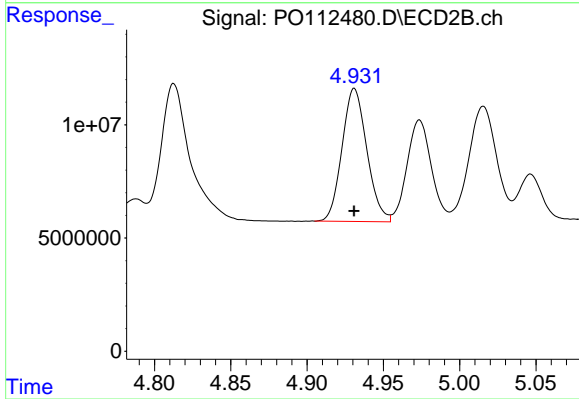
R.T.: 4.756 min  
 Delta R.T.: 0.000 min  
 Response: 123839091  
 Conc: 944.22 ng/ml



#13 AR-1232-3

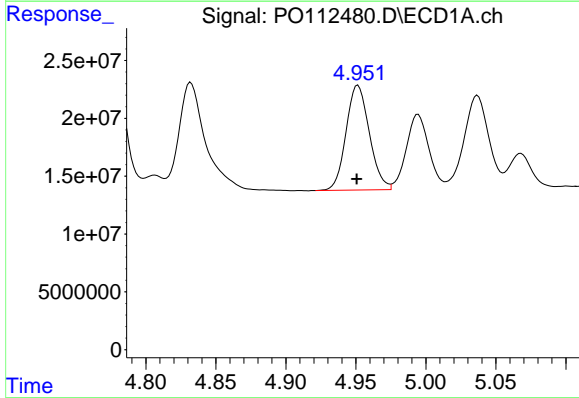
R.T.: 4.775 min  
 Delta R.T.: 0.000 min  
 Response: 202898480  
 Conc: 981.14 ng/ml

Instrument :  
 ECD\_O  
 ClientSampleId :  
 AR1242CCC500



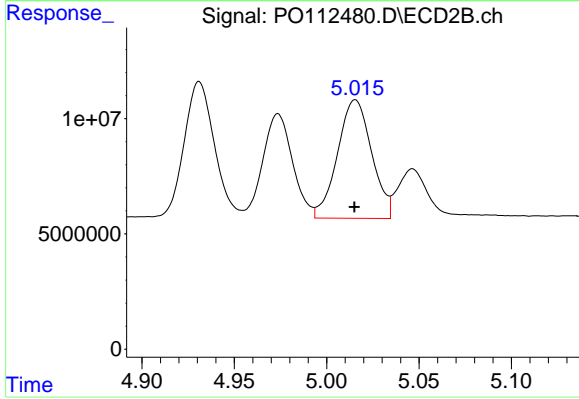
#13 AR-1232-3

R.T.: 4.931 min  
 Delta R.T.: 0.000 min  
 Response: 66480087  
 Conc: 989.33 ng/ml



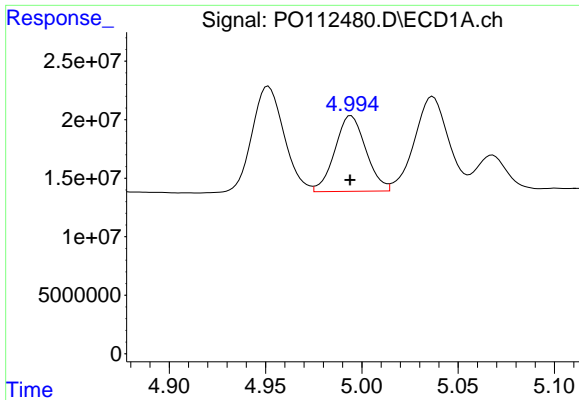
#14 AR-1232-4

R.T.: 4.951 min  
 Delta R.T.: 0.000 min  
 Response: 104777427  
 Conc: 1000.35 ng/ml



#14 AR-1232-4

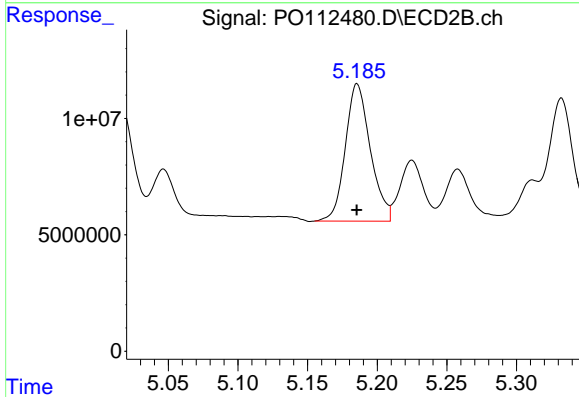
R.T.: 5.016 min  
 Delta R.T.: 0.000 min  
 Response: 66208409  
 Conc: 1106.63 ng/ml



#15 AR-1232-5

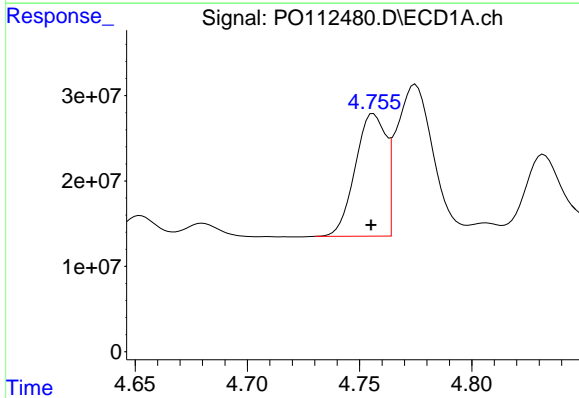
R.T.: 4.994 min  
 Delta R.T.: 0.000 min  
 Response: 72587960  
 Conc: 1069.34 ng/ml

Instrument :  
 ECD\_O  
 ClientSampleId :  
 AR1242CCC500



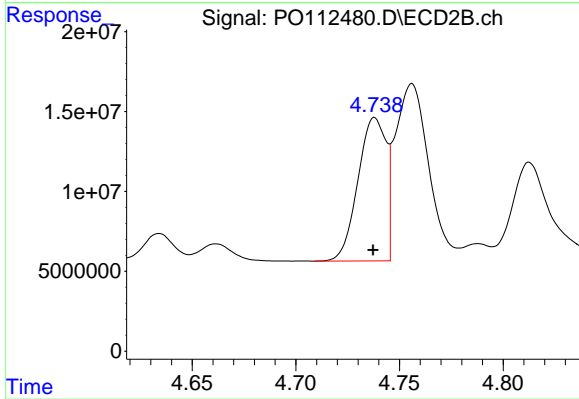
#15 AR-1232-5

R.T.: 5.186 min  
 Delta R.T.: 0.000 min  
 Response: 73747259  
 Conc: 1131.04 ng/ml



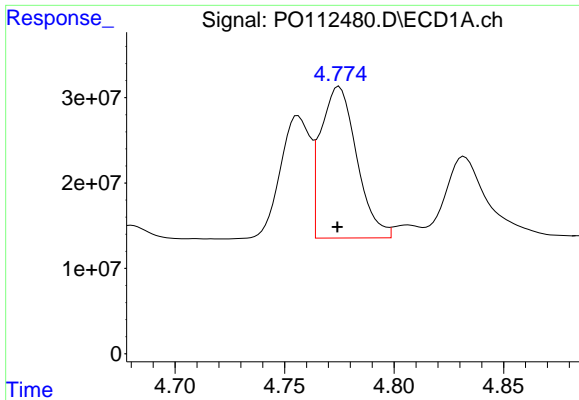
#16 AR-1242-1

R.T.: 4.756 min  
 Delta R.T.: 0.001 min  
 Response: 135998592  
 Conc: 549.29 ng/ml



#16 AR-1242-1

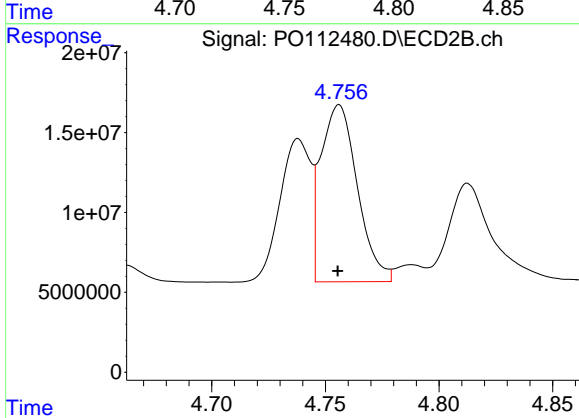
R.T.: 4.738 min  
 Delta R.T.: 0.000 min  
 Response: 84661898  
 Conc: 534.50 ng/ml



#17 AR-1242-2

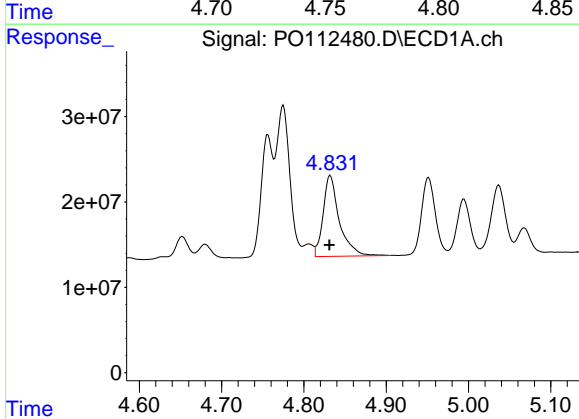
R.T.: 4.775 min  
 Delta R.T.: 0.000 min  
 Response: 202898480  
 Conc: 548.68 ng/ml

Instrument :  
 ECD\_O  
 ClientSampleId :  
 AR1242CCC500



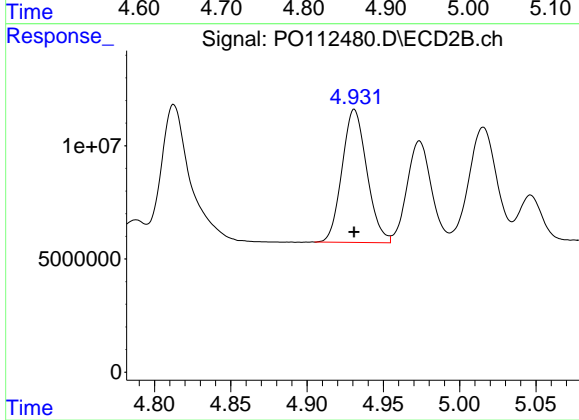
#17 AR-1242-2

R.T.: 4.756 min  
 Delta R.T.: 0.000 min  
 Response: 123839091  
 Conc: 529.98 ng/ml



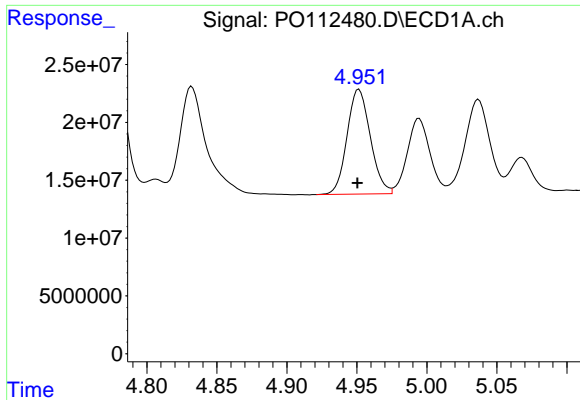
#18 AR-1242-3

R.T.: 4.832 min  
 Delta R.T.: 0.001 min  
 Response: 129979381  
 Conc: 549.23 ng/ml



#18 AR-1242-3

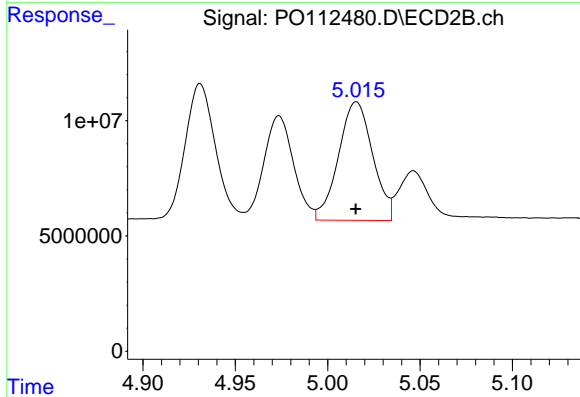
R.T.: 4.931 min  
 Delta R.T.: 0.000 min  
 Response: 66480087  
 Conc: 548.56 ng/ml



#19 AR-1242-4

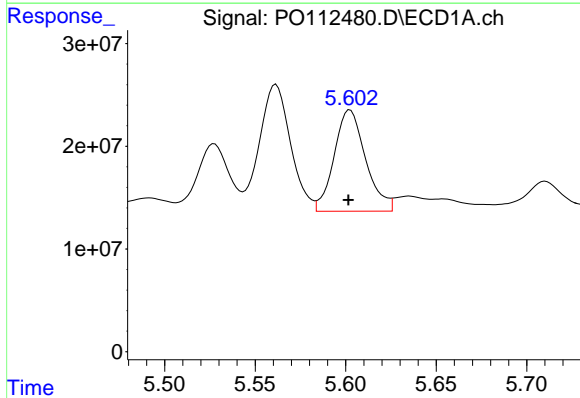
R.T.: 4.951 min  
Delta R.T.: 0.000 min  
Response: 104777427  
Conc: 539.32 ng/ml

Instrument :  
ECD\_O  
ClientSampleId :  
AR1242CCC500



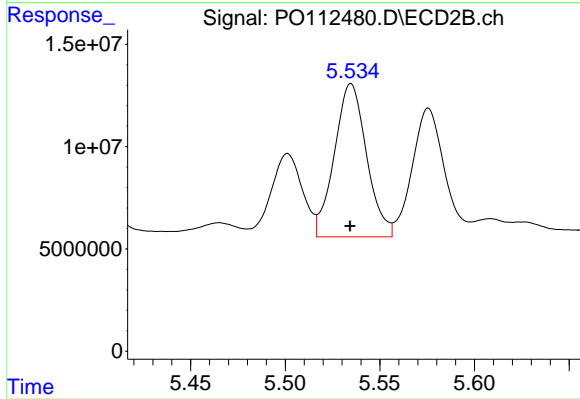
#19 AR-1242-4

R.T.: 5.016 min  
Delta R.T.: 0.000 min  
Response: 66208409  
Conc: 539.42 ng/ml



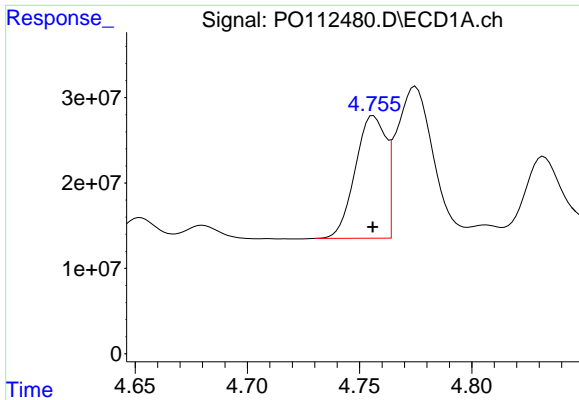
#20 AR-1242-5

R.T.: 5.602 min  
Delta R.T.: 0.000 min  
Response: 119751579  
Conc: 559.81 ng/ml



#20 AR-1242-5

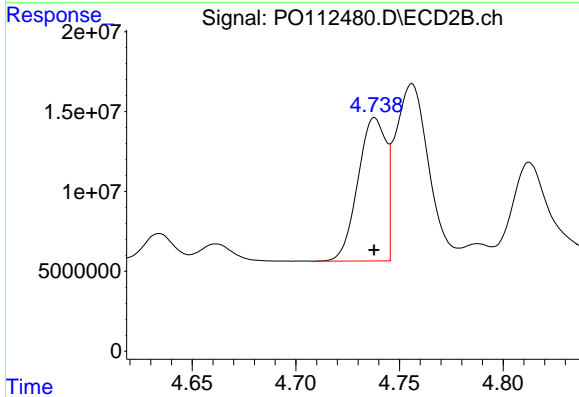
R.T.: 5.535 min  
Delta R.T.: 0.000 min  
Response: 88858508  
Conc: 552.01 ng/ml



#21 AR-1248-1

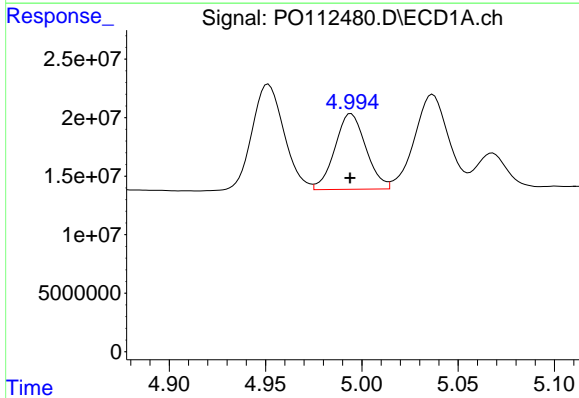
R.T.: 4.756 min  
 Delta R.T.: 0.000 min  
 Response: 135998592  
 Conc: 726.45 ng/ml

Instrument :  
 ECD\_O  
 ClientSampleId :  
 AR1242CCC500



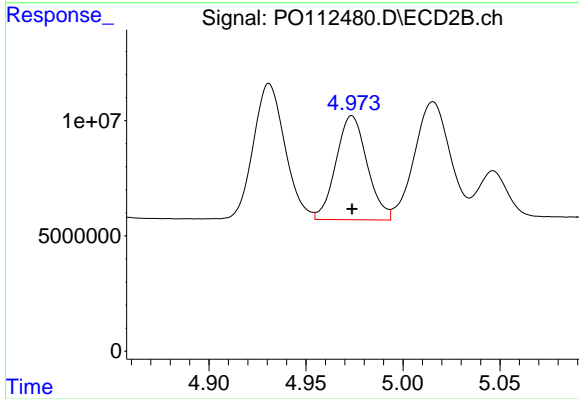
#21 AR-1248-1

R.T.: 4.738 min  
 Delta R.T.: 0.000 min  
 Response: 84661898  
 Conc: 696.75 ng/ml



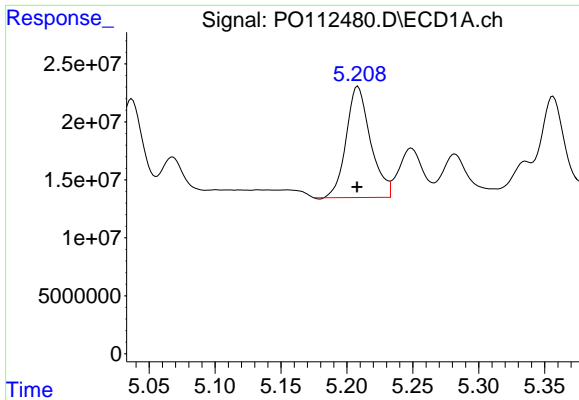
#22 AR-1248-2

R.T.: 4.994 min  
 Delta R.T.: 0.000 min  
 Response: 72587960  
 Conc: 284.53 ng/ml



#22 AR-1248-2

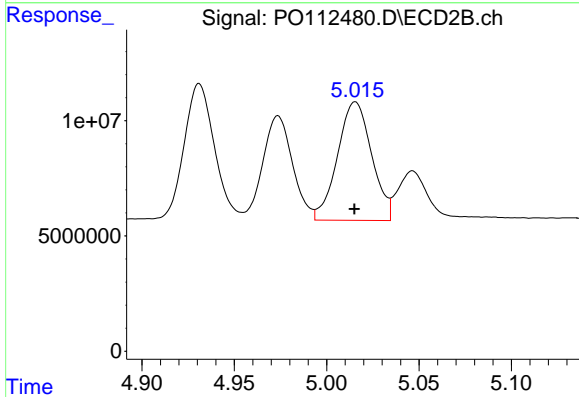
R.T.: 4.974 min  
 Delta R.T.: 0.000 min  
 Response: 50437848  
 Conc: 297.96 ng/ml



#23 AR-1248-3

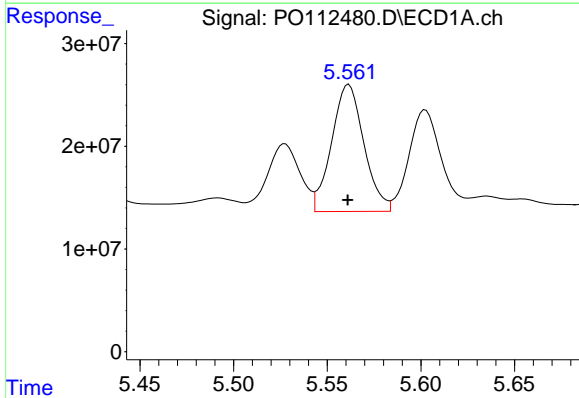
R.T.: 5.208 min  
 Delta R.T.: 0.000 min  
 Response: 123017988  
 Conc: 357.92 ng/ml

Instrument :  
 ECD\_O  
 ClientSampleId :  
 AR1242CCC500



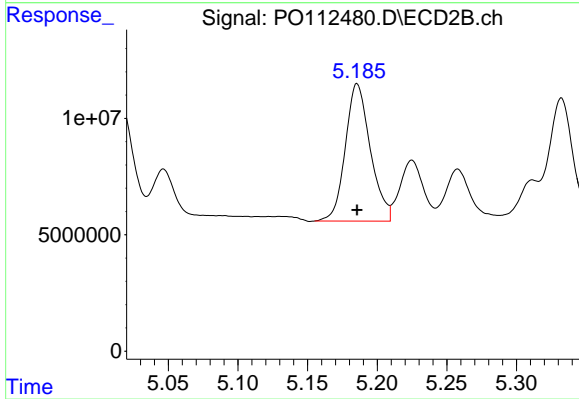
#23 AR-1248-3

R.T.: 5.016 min  
 Delta R.T.: 0.000 min  
 Response: 66208409  
 Conc: 372.70 ng/ml



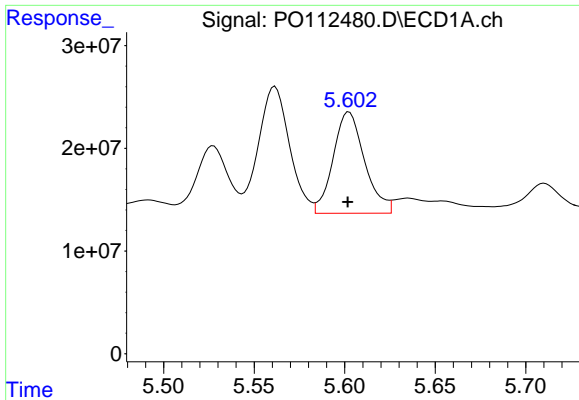
#24 AR-1248-4

R.T.: 5.562 min  
 Delta R.T.: 0.000 min  
 Response: 148588870  
 Conc: 292.45 ng/ml



#24 AR-1248-4

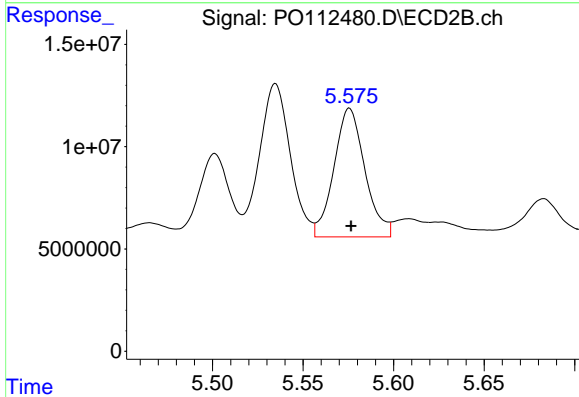
R.T.: 5.186 min  
 Delta R.T.: 0.000 min  
 Response: 73747259  
 Conc: 353.95 ng/ml



#25 AR-1248-5

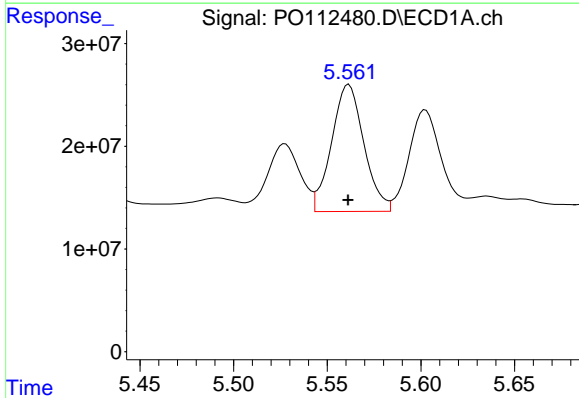
R.T.: 5.602 min  
 Delta R.T.: 0.000 min  
 Response: 119751579  
 Conc: 342.55 ng/ml

Instrument :  
 ECD\_O  
 ClientSampleId :  
 AR1242CCC500



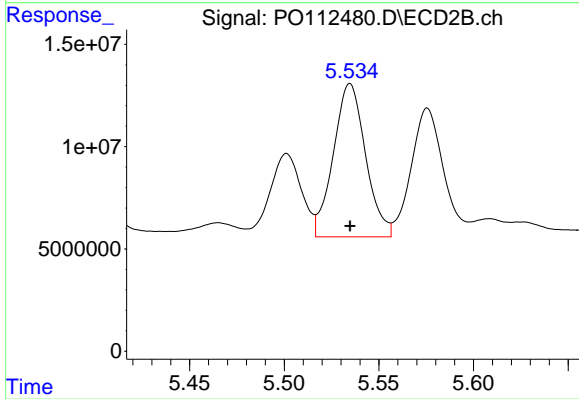
#25 AR-1248-5

R.T.: 5.576 min  
 Delta R.T.: 0.000 min  
 Response: 75091401  
 Conc: 349.64 ng/ml



#26 AR-1254-1

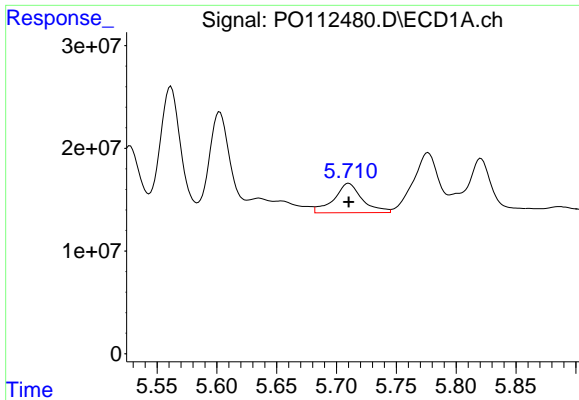
R.T.: 5.562 min  
 Delta R.T.: 0.000 min  
 Response: 148588870  
 Conc: 270.67 ng/ml



#26 AR-1254-1

R.T.: 5.535 min  
 Delta R.T.: 0.000 min  
 Response: 88858508  
 Conc: 270.40 ng/ml

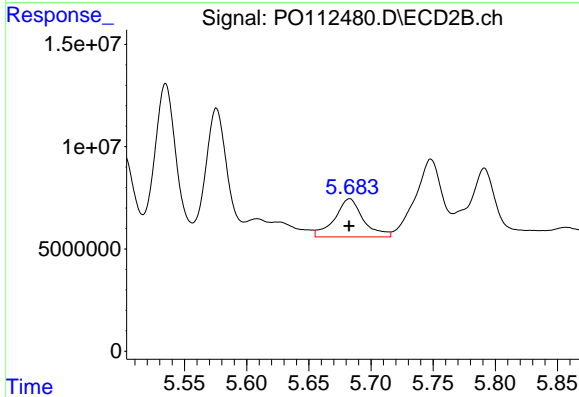




#27 AR-1254-2

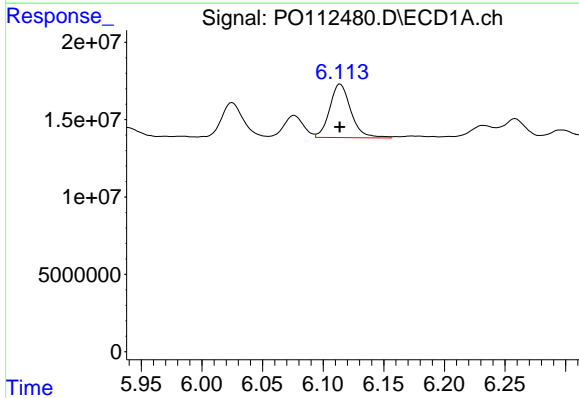
R.T.: 5.710 min  
 Delta R.T.: 0.000 min  
 Response: 47189480  
 Conc: 97.11 ng/ml

Instrument :  
 ECD\_O  
 ClientSampleId :  
 AR1242CCC500



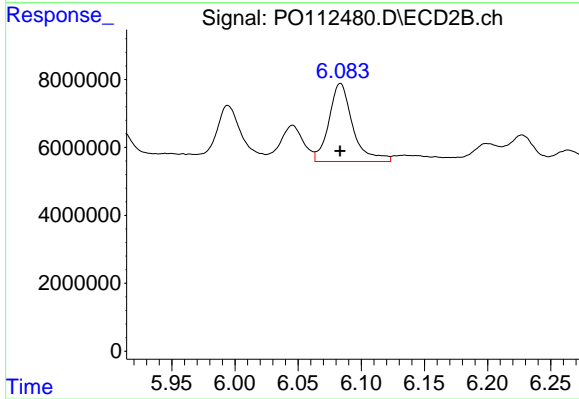
#27 AR-1254-2

R.T.: 5.683 min  
 Delta R.T.: 0.000 min  
 Response: 29999468  
 Conc: 103.63 ng/ml



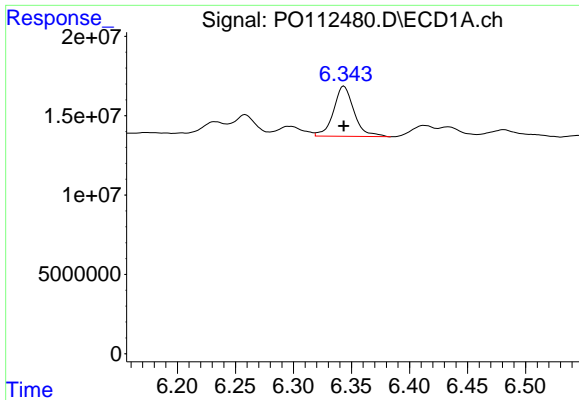
#28 AR-1254-3

R.T.: 6.114 min  
 Delta R.T.: 0.000 min  
 Response: 41992942  
 Conc: 56.42 ng/ml



#28 AR-1254-3

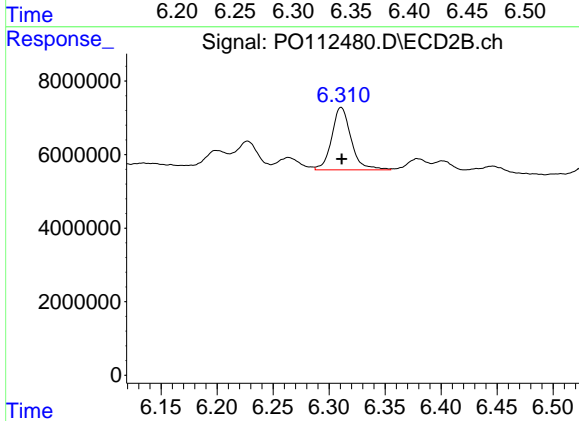
R.T.: 6.083 min  
 Delta R.T.: 0.000 min  
 Response: 30240424  
 Conc: 70.74 ng/ml



#29 AR-1254-4

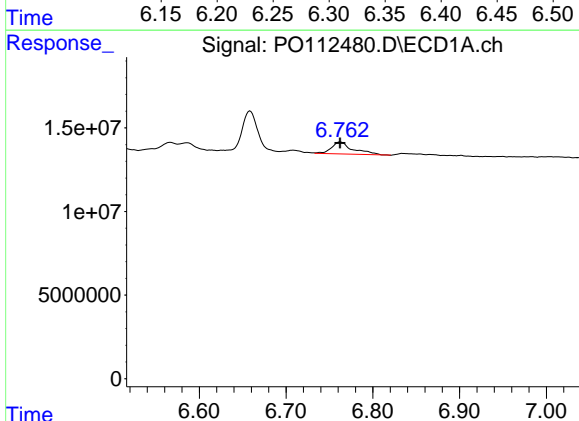
R.T.: 6.344 min  
 Delta R.T.: 0.000 min  
 Response: 38897378  
 Conc: 70.76 ng/ml

Instrument :  
 ECD\_O  
 ClientSampleId :  
 AR1242CCC500



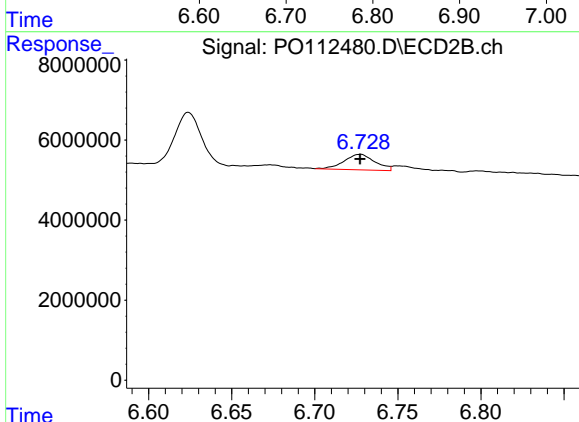
#29 AR-1254-4

R.T.: 6.311 min  
 Delta R.T.: 0.000 min  
 Response: 20515042  
 Conc: 75.16 ng/ml



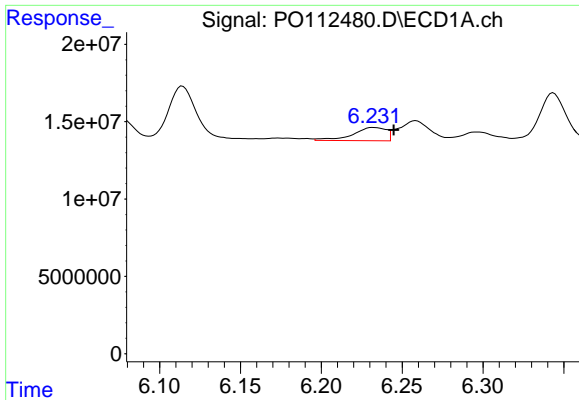
#30 AR-1254-5

R.T.: 6.763 min  
 Delta R.T.: 0.000 min  
 Response: 12279103  
 Conc: 17.35 ng/ml



#30 AR-1254-5

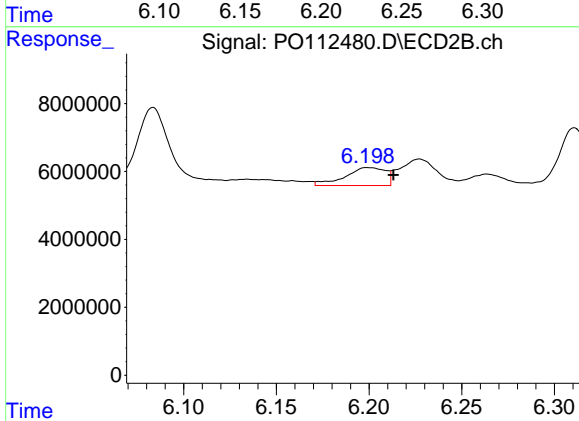
R.T.: 6.727 min  
 Delta R.T.: 0.000 min  
 Response: 5036823  
 Conc: 15.08 ng/ml



#31 AR-1260-1

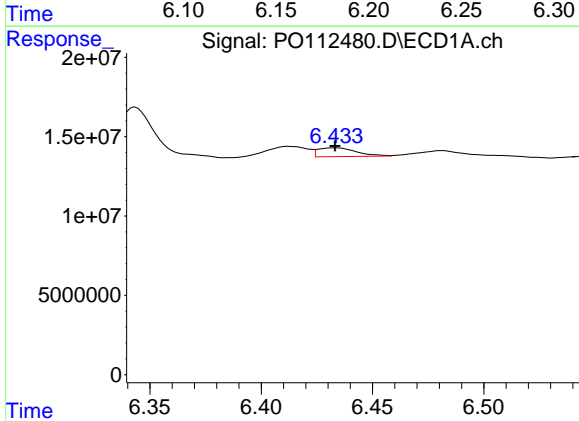
R.T.: 6.232 min  
 Delta R.T.: -0.012 min  
 Response: 12272479  
 Conc: 27.93 ng/ml

Instrument :  
 ECD\_O  
 ClientSampleId :  
 AR1242CCC500



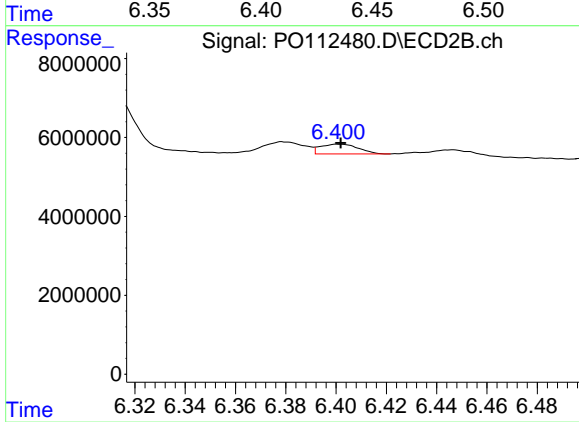
#31 AR-1260-1

R.T.: 6.199 min  
 Delta R.T.: -0.014 min  
 Response: 8061678  
 Conc: 32.44 ng/ml



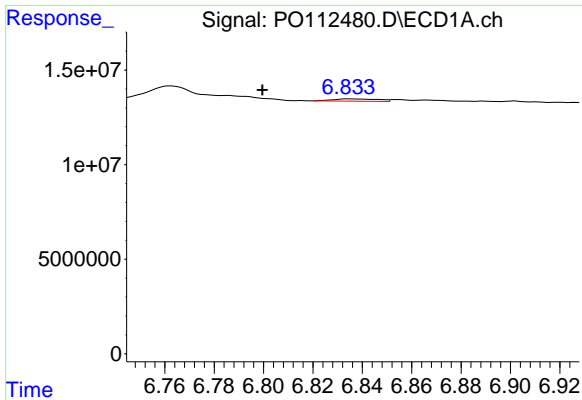
#32 AR-1260-2

R.T.: 6.433 min  
 Delta R.T.: 0.000 min  
 Response: 6634535  
 Conc: 9.64 ng/ml



#32 AR-1260-2

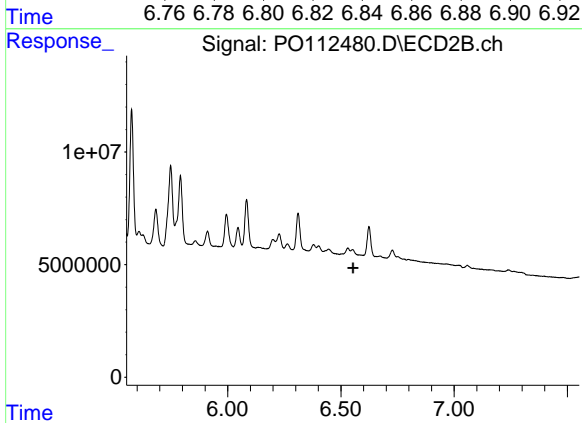
R.T.: 6.401 min  
 Delta R.T.: 0.000 min  
 Response: 2570951  
 Conc: 7.80 ng/ml



#33 AR-1260-3

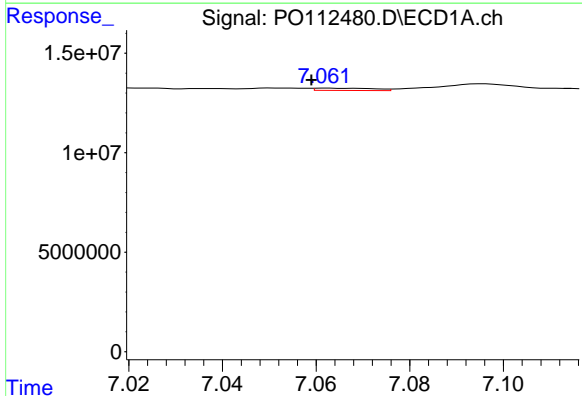
R.T.: 6.835 min  
 Delta R.T.: 0.035 min  
 Response: 1518574  
 Conc: 2.58 ng/ml

Instrument :  
 ECD\_O  
 ClientSampleId :  
 AR1242CCC500



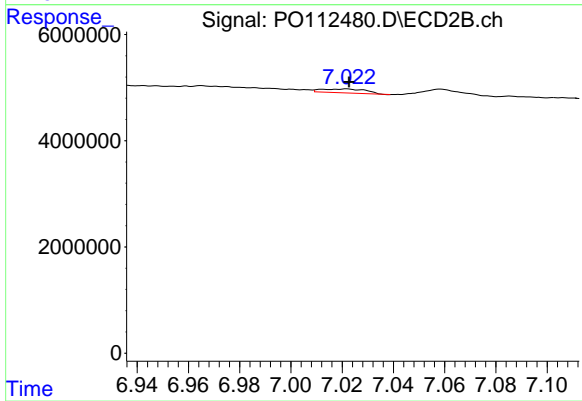
#33 AR-1260-3

R.T.: 6.552 min  
 Delta R.T.: -0.002 min  
 Response: -991764  
 Conc: N.D.



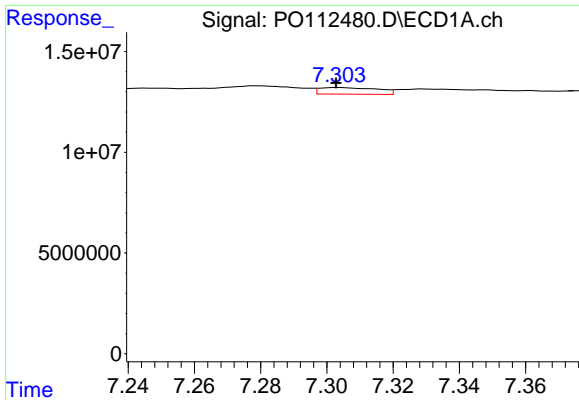
#34 AR-1260-4

R.T.: 7.062 min  
 Delta R.T.: 0.003 min  
 Response: 1022011  
 Conc: 2.27 ng/ml



#34 AR-1260-4

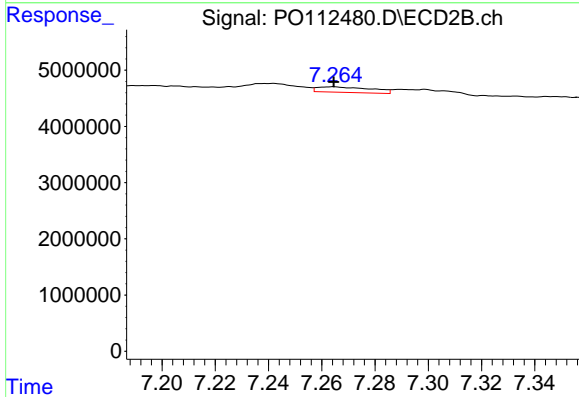
R.T.: 7.022 min  
 Delta R.T.: 0.000 min  
 Response: 874962  
 Conc: 4.57 ng/ml



#35 AR-1260-5

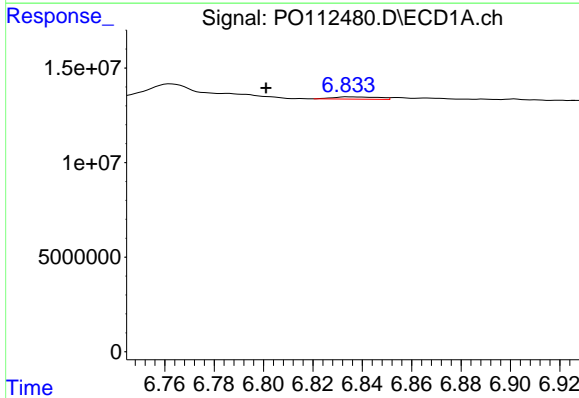
R.T.: 7.304 min  
 Delta R.T.: 0.000 min  
 Response: 3963926  
 Conc: 3.20 ng/ml

Instrument :  
 ECD\_O  
 ClientSampleId :  
 AR1242CCC500



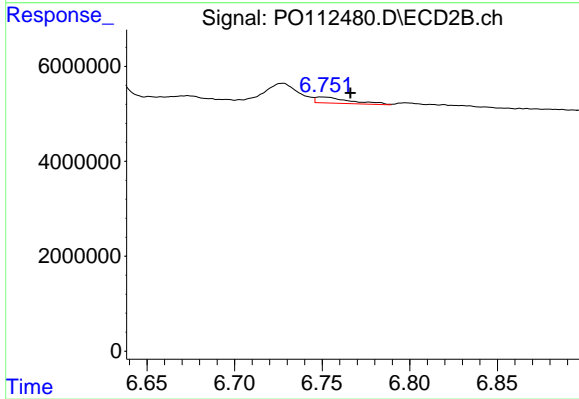
#35 AR-1260-5

R.T.: 7.264 min  
 Delta R.T.: 0.000 min  
 Response: 1376077  
 Conc: 3.34 ng/ml



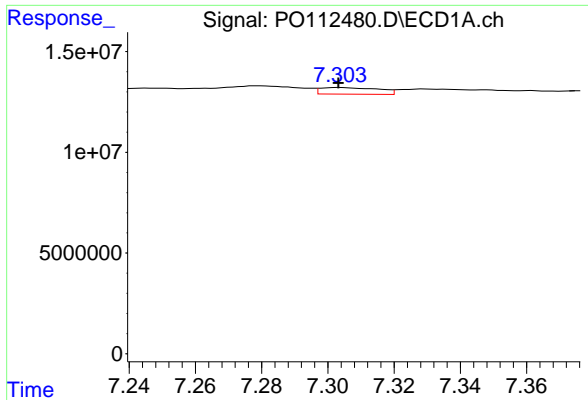
#36 AR-1262-1

R.T.: 6.835 min  
 Delta R.T.: 0.034 min  
 Response: 1518574  
 Conc: 1.63 ng/ml



#36 AR-1262-1

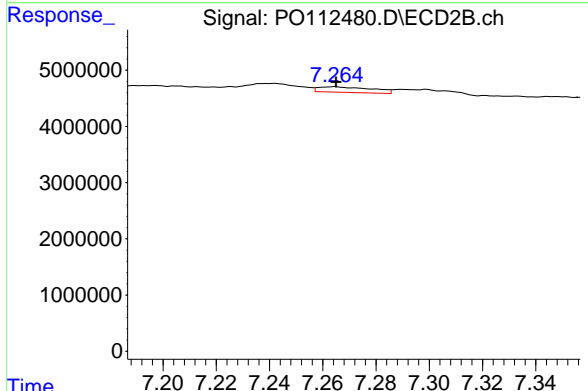
R.T.: 6.750 min  
 Delta R.T.: -0.016 min  
 Response: 1728765  
 Conc: 4.17 ng/ml



#37 AR-1262-2

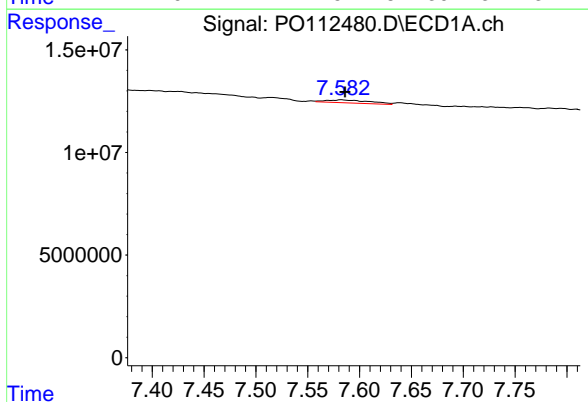
R.T.: 7.304 min  
 Delta R.T.: 0.000 min  
 Response: 3963926  
 Conc: 2.67 ng/ml

Instrument :  
 ECD\_O  
 ClientSampleId :  
 AR1242CCC500



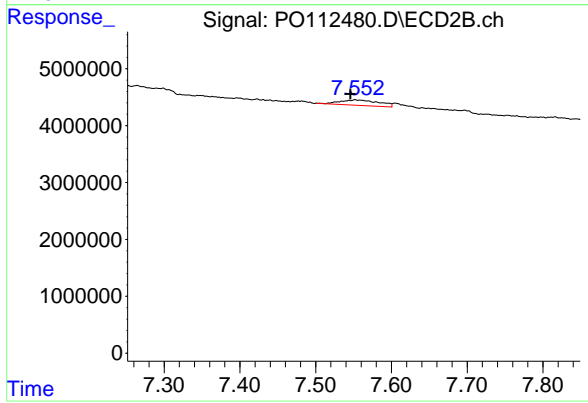
#37 AR-1262-2

R.T.: 7.264 min  
 Delta R.T.: 0.000 min  
 Response: 1376077  
 Conc: 2.67 ng/ml



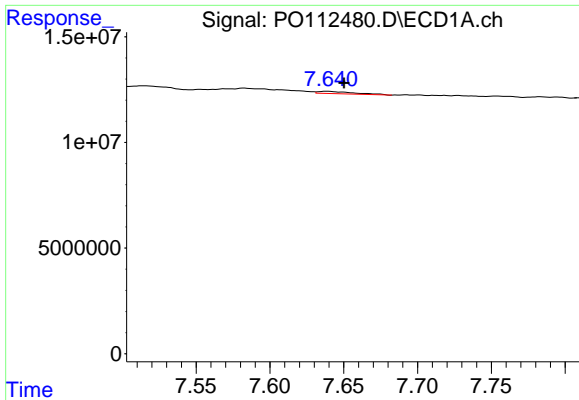
#38 AR-1262-3

R.T.: 7.582 min  
 Delta R.T.: -0.004 min  
 Response: 4235011  
 Conc: 7.17 ng/ml



#38 AR-1262-3

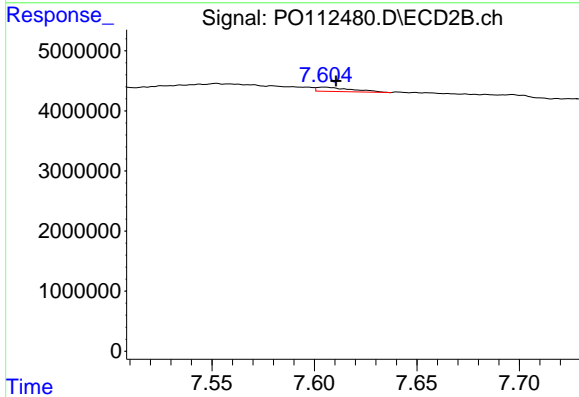
R.T.: 7.552 min  
 Delta R.T.: 0.006 min  
 Response: 3385372  
 Conc: 18.15 ng/ml



#39 AR-1262-4

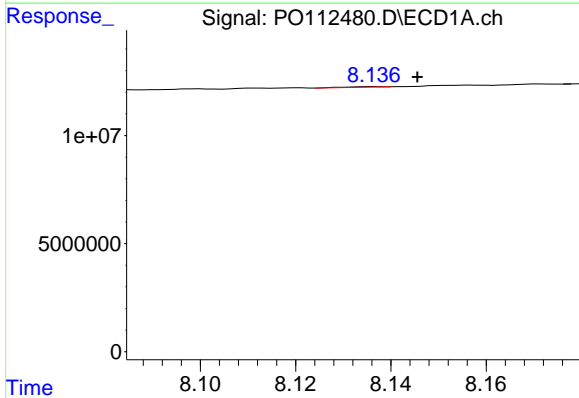
R.T.: 7.639 min  
 Delta R.T.: -0.011 min  
 Response: 1823189  
 Conc: 1.83 ng/ml

Instrument :  
 ECD\_O  
 ClientSampleId :  
 AR1242CCC500



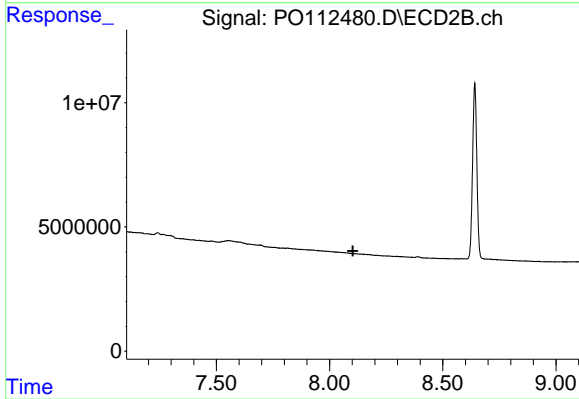
#39 AR-1262-4

R.T.: 7.605 min  
 Delta R.T.: -0.006 min  
 Response: 853408  
 Conc: 2.96 ng/ml



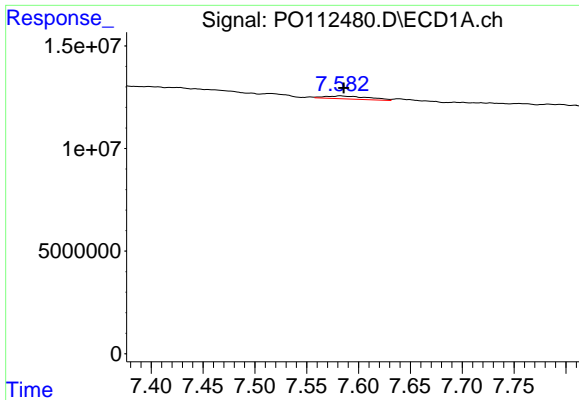
#40 AR-1262-5

R.T.: 8.136 min  
 Delta R.T.: -0.009 min  
 Response: 146292  
 Conc: 0.34 ng/ml



#40 AR-1262-5

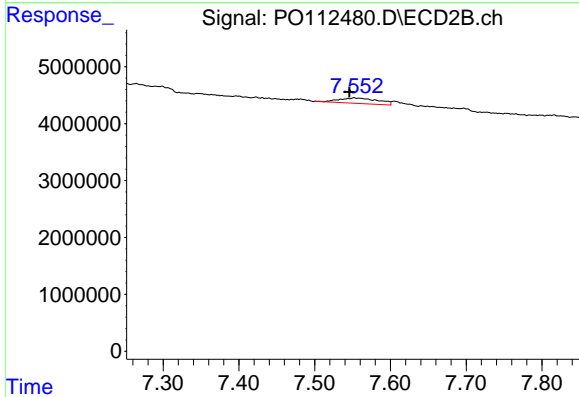
R.T.: 0.000 min  
 Exp R.T.: 8.103 min  
 Response: 0  
 Conc: N.D.



#41 AR-1268-1

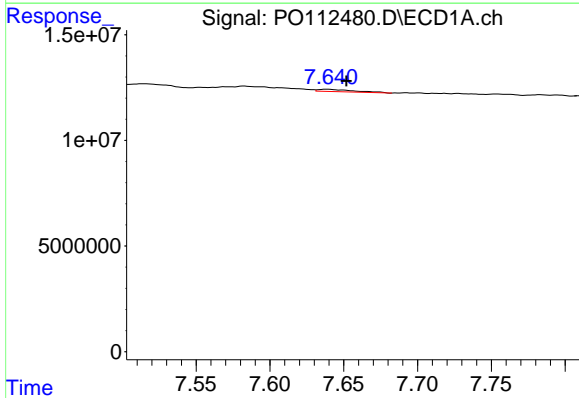
R.T.: 7.582 min  
 Delta R.T.: -0.003 min  
 Response: 4235011  
 Conc: 2.42 ng/ml

Instrument :  
 ECD\_O  
 ClientSampleId :  
 AR1242CCC500



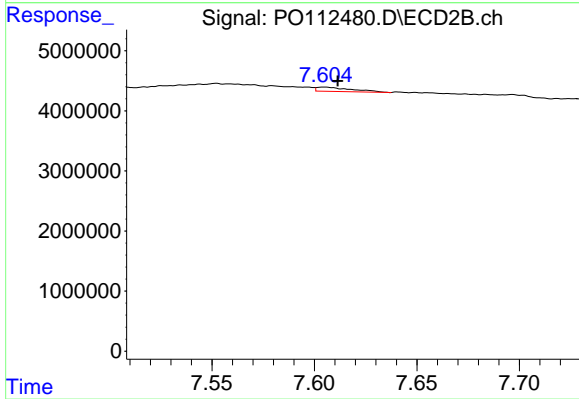
#41 AR-1268-1

R.T.: 7.552 min  
 Delta R.T.: 0.006 min  
 Response: 3385372  
 Conc: 6.54 ng/ml



#42 AR-1268-2

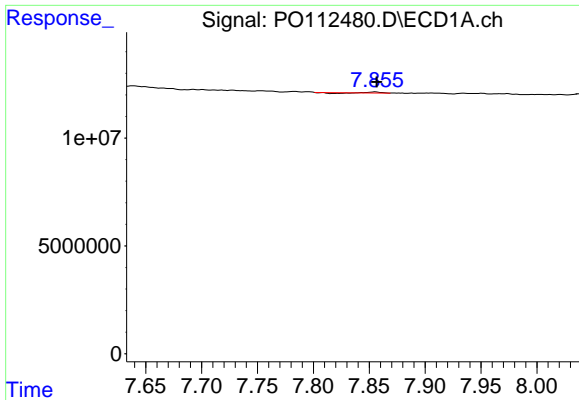
R.T.: 7.639 min  
 Delta R.T.: -0.013 min  
 Response: 1823189  
 Conc: 1.24 ng/ml



#42 AR-1268-2

R.T.: 7.605 min  
 Delta R.T.: -0.007 min  
 Response: 853408  
 Conc: 2.01 ng/ml

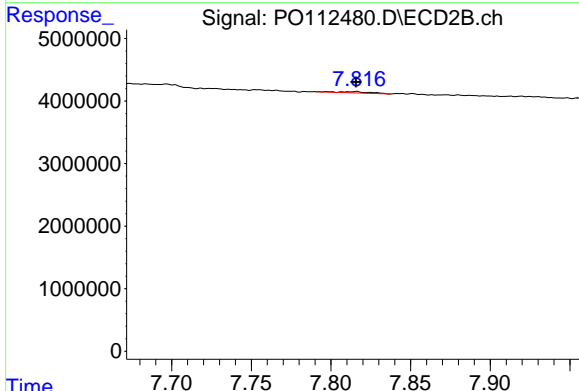




#43 AR-1268-3

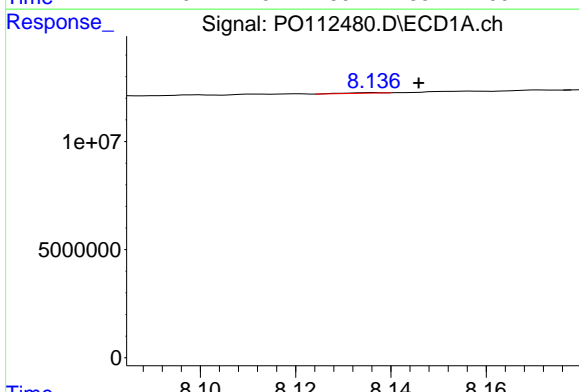
R.T.: 7.855 min  
 Delta R.T.: -0.001 min  
 Response: 12459  
 Conc: 0.01 ng/ml

Instrument : ECD\_O  
 ClientSampleId : AR1242CCC500



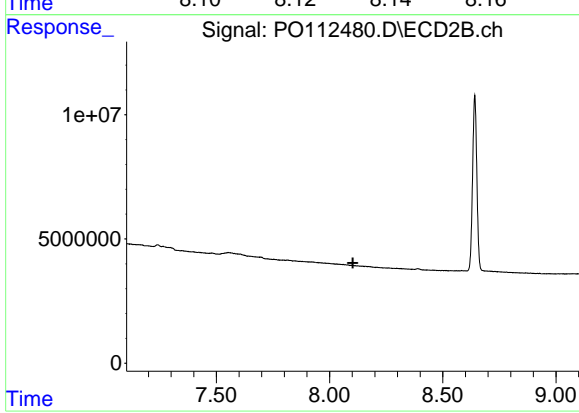
#43 AR-1268-3

R.T.: 7.816 min  
 Delta R.T.: 0.000 min  
 Response: 295116  
 Conc: 0.92 ng/ml



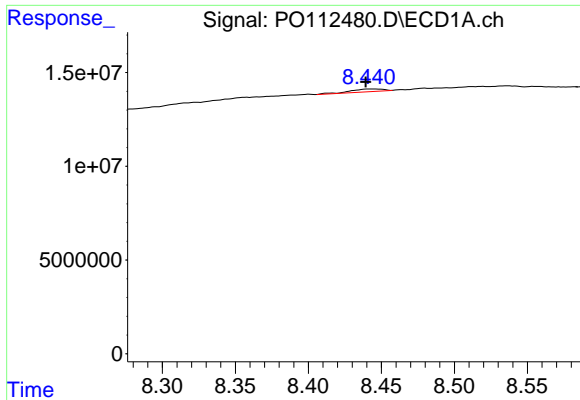
#44 AR-1268-4

R.T.: 8.136 min  
 Delta R.T.: -0.010 min  
 Response: 146292  
 Conc: 0.30 ng/ml



#44 AR-1268-4

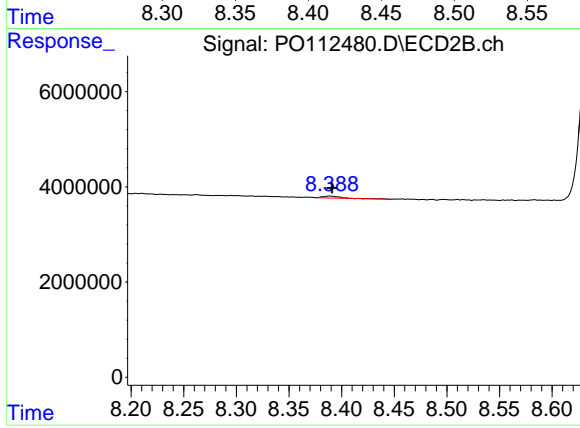
R.T.: 0.000 min  
 Exp R.T. : 8.103 min  
 Response: 0  
 Conc: N.D.



#45 AR-1268-5

R.T.: 8.445 min  
 Delta R.T.: 0.006 min  
 Response: 2359055  
 Conc: 0.70 ng/ml

Instrument :  
 ECD\_O  
 ClientSampleId :  
 AR1242CCC500



#45 AR-1268-5

R.T.: 8.389 min  
 Delta R.T.: -0.002 min  
 Response: 474009  
 Conc: 0.65 ng/ml