

Data Path : Z:\pestpcbsrv\HPCHEM1\ECD\_O\Data\P0072425\  
 Data File : PO112481.D  
 Signal(s) : Signal #1: ECD1A.ch Signal #2: ECD2B.ch  
 Acq On : 24 Jul 2025 21:59  
 Operator : YP/AJ  
 Sample : AR1248CCC500  
 Misc :  
 ALS Vial : 5 Sample Multiplier: 1

Instrument :  
 ECD\_O  
 ClientSampleId :  
 AR1248CCC500

Integration File signal 1: autoint1.e  
 Integration File signal 2: autoint2.e  
 Quant Time: Jul 24 23:49:00 2025  
 Quant Method : Z:\pestpcbsrv\HPCHEM1\ECD\_O\methods\P0072325.M  
 Quant Title : GC EXTRACTABLES  
 QLast Update : Thu Jul 24 04:54:06 2025  
 Response via : Initial Calibration  
 Integrator: ChemStation

Volume Inj. : 2 µl  
 Signal #1 Phase : ZB-MR2 Signal #2 Phase: ZB-MR2  
 Signal #1 Info : 30Mx0.32mmx 0.50µ Signal #2 Info : 30M x 0.32mm x 0.25µm

Compound	RT#1	RT#2	Resp#1	Resp#2	ng/ml	ng/ml
-----						
System Monitoring Compounds						
1) SA Tetrachlo...	3.669	3.662	456.3E6	271.8E6	56.109	54.697
2) SA Decachlor...	8.694	8.640	362.3E6	89636411	49.556	50.725
Target Compounds						
3) L1 AR-1016-1	4.754	4.737	96442851	62100037	359.371	354.843
4) L1 AR-1016-2	4.773	4.755	105.0E6	65926834	258.605	253.083
5) L1 AR-1016-3	4.830	4.932	59867976	42490427	228.788	312.507 #
6) L1 AR-1016-4	4.951	4.973	66906142	85291875	315.831	767.809 #
7) L1 AR-1016-5	5.206	5.185	183.0E6	109.6E6	833.861	764.785
8) L2 AR-1221-1	3.884	3.872	987439	615126	10.216	9.145
9) L2 AR-1221-2	3.969	3.960	6312800	5003788	87.846	98.640
10) L2 AR-1221-3	4.042	4.031	6420280	4986126	27.009	31.452
11) L3 AR-1232-1	4.042	4.031	6420280	4986126	34.337	39.400
12) L3 AR-1232-2	4.532	4.755	42289253	65926834	392.933	502.664 #
13) L3 AR-1232-3	4.773	4.932	105.0E6	42490427	507.854	632.328
14) L3 AR-1232-4	4.951	5.014	66906142	91526361	638.781	1529.797 #
15) L3 AR-1232-5	4.992	5.185	128.8E6	109.6E6	1896.756	1680.841
16) L4 AR-1242-1	4.754	4.737	96442851	62100037	389.523	392.060
17) L4 AR-1242-2	4.773	4.755	105.0E6	65926834	284.007	282.141
18) L4 AR-1242-3	4.830	4.932	59867976	42490427	252.973	350.613 #
19) L4 AR-1242-4	4.951	5.014	66906142	91526361	344.382	745.697 #
20) L4 AR-1242-5	5.600	5.534	184.3E6	158.2E6	861.386	982.553
21) L5 AR-1248-1	4.754	4.737	96442851	62100037	515.162	511.072
22) L5 AR-1248-2	4.992	4.973	128.8E6	85291875	504.693	503.852
23) L5 AR-1248-3	5.206	5.014	183.0E6	91526361	532.462	515.214
24) L5 AR-1248-4	5.559	5.185	270.0E6	109.6E6	531.435	526.007
25) L5 AR-1248-5	5.600	5.575	184.3E6	112.4E6	527.084	523.479
26) L6 AR-1254-1	5.559	5.534	270.0E6	158.2E6	491.860	481.292
27) L6 AR-1254-2	5.709	5.683	82213712	54155433	169.192	187.071
28) L6 AR-1254-3	6.113	6.083	106.9E6	71727324	143.637	167.798
29) L6 AR-1254-4	6.342	6.311	108.2E6	52256039	196.758	191.440
30) L6 AR-1254-5	6.761	6.726	58575496	14538855	82.754	43.527 #
31) L7 AR-1260-1	6.257	6.226	58959027	38170600	134.202	153.597
32) L7 AR-1260-2	6.432	6.401	24035203	6854852	34.940	20.804 #
33) L7 AR-1260-3	6.761f	6.551	58575496	6367390	99.615	24.783 #
34) L7 AR-1260-4	7.056	7.018	19227553	778906	42.633	4.071 #
35) L7 AR-1260-5	7.301	7.262	19647455	2480860	15.856	6.019 #
36) L8 AR-1262-1	6.761f	6.797	58575496	2068491	63.038	4.986 #
37) L8 AR-1262-2	7.301	7.262	19647455	2480860	13.213	4.812 #
38) L8 AR-1262-3	7.583	7.546	4391159	1363364	7.439	7.309
39) L8 AR-1262-4	7.644	7.605	4522179	1475958	4.549	5.123
40) L8 AR-1262-5	8.107f	8.104	2904965	172591	6.693	1.735 #
41) L9 AR-1268-1	7.583	7.546	4391159	1363364	2.508	2.633

Data Path : Z:\pestpcbsrv\HPCHEM1\ECD\_0\Data\P0072425\  
 Data File : PO112481.D  
 Signal(s) : Signal #1: ECD1A.ch Signal #2: ECD2B.ch  
 Acq On : 24 Jul 2025 21:59  
 Operator : YP/AJ  
 Sample : AR1248CCC500  
 Misc :  
 ALS Vial : 5 Sample Multiplier: 1

Instrument :  
 ECD\_0  
 ClientSampleId :  
 AR1248CCC500

Integration File signal 1: autoint1.e  
 Integration File signal 2: autoint2.e  
 Quant Time: Jul 24 23:49:00 2025  
 Quant Method : Z:\pestpcbsrv\HPCHEM1\ECD\_0\methods\P0072325.M  
 Quant Title : GC EXTRACTABLES  
 QLast Update : Thu Jul 24 04:54:06 2025  
 Response via : Initial Calibration  
 Integrator: ChemStation

Volume Inj. : 2 µl  
 Signal #1 Phase : ZB-MR1 Signal #2 Phase: ZB-MR2  
 Signal #1 Info : 30Mx0.32mmx 0.50µ Signal #2 Info : 30M x 0.32mm x 0.25µm

	Compound	RT#1	RT#2	Resp#1	Resp#2	ng/ml	ng/ml
42)	L9 AR-1268-2	7.644	7.605	4522179	1475958	3.070	3.472
44)	L9 AR-1268-4	8.107f	8.104	2904965	172591	6.029	1.551 #
45)	L9 AR-1268-5	8.437	8.385	6443806	565770	1.919	0.773 #

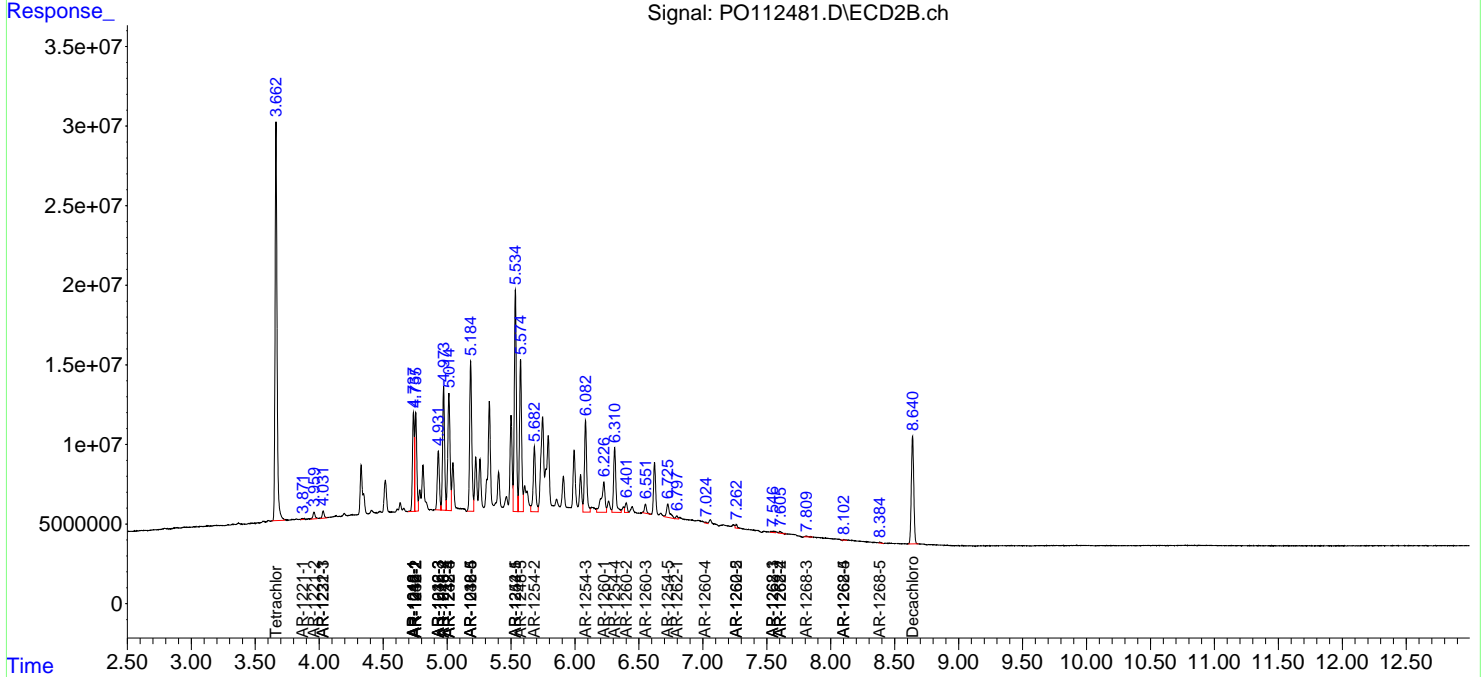
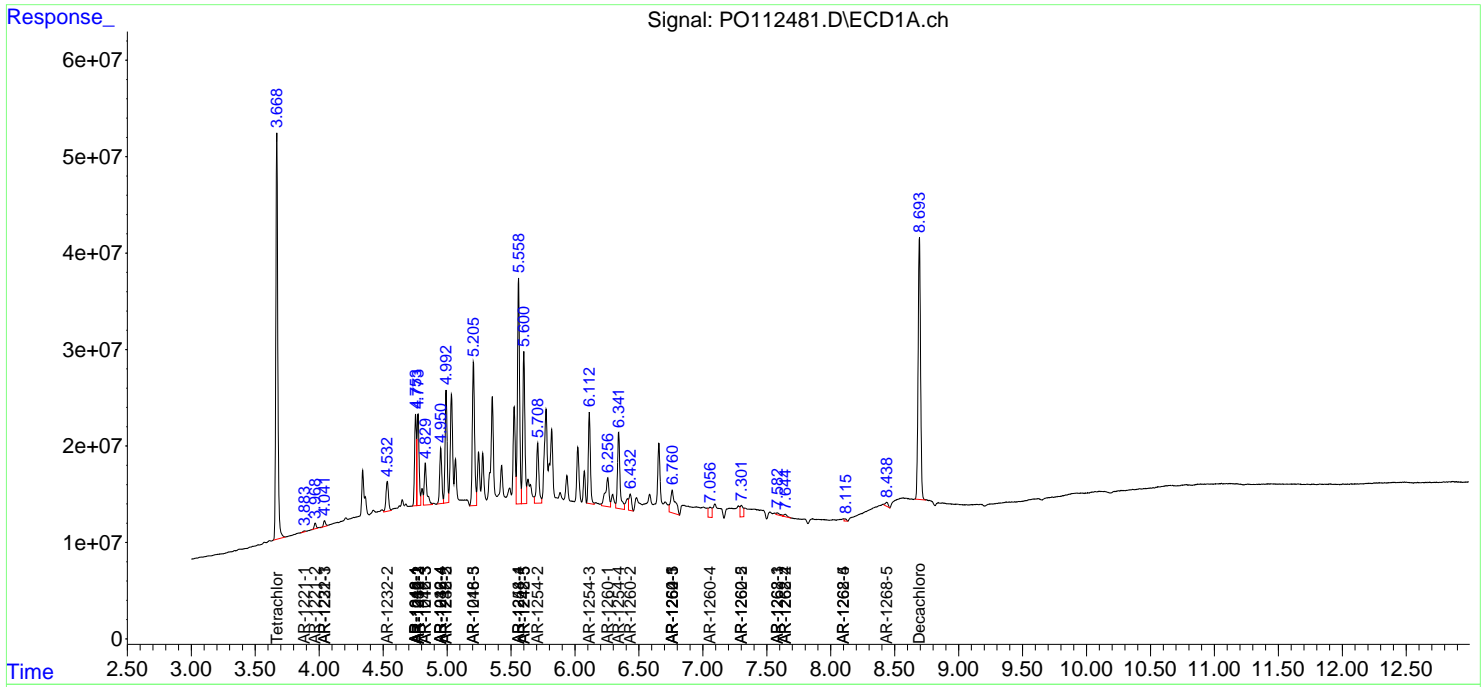
(f)=RT Delta > 1/2 Window (#)=Amounts differ by > 25% (m)=manual int.

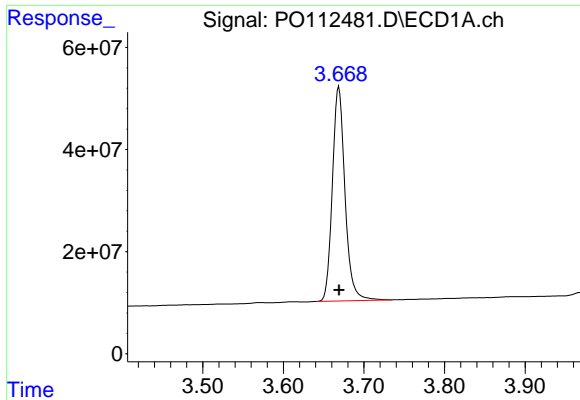
Data Path : Z:\pestpcbsrv\HPCHEM1\ECD\_O\Data\PO072425\  
 Data File : PO112481.D  
 Signal(s) : Signal #1: ECD1A.ch Signal #2: ECD2B.ch  
 Acq On : 24 Jul 2025 21:59  
 Operator : YP/AJ  
 Sample : AR1248CCC500  
 Misc :  
 ALS Vial : 5 Sample Multiplier: 1

Instrument :  
 ECD\_O  
 ClientSampleId :  
 AR1248CCC500

Integration File signal 1: autoint1.e  
 Integration File signal 2: autoint2.e  
 Quant Time: Jul 24 23:49:00 2025  
 Quant Method : Z:\pestpcbsrv\HPCHEM1\ECD\_O\methods\PO072325.M  
 Quant Title : GC EXTRACTABLES  
 QLast Update : Thu Jul 24 04:54:06 2025  
 Response via : Initial Calibration  
 Integrator: ChemStation

Volume Inj. : 2 µl  
 Signal #1 Phase : ZB-MR1 Signal #2 Phase: ZB-MR2  
 Signal #1 Info : 30Mx0.32mmx 0.50µ Signal #2 Info : 30M x 0.32mm x 0.25µm

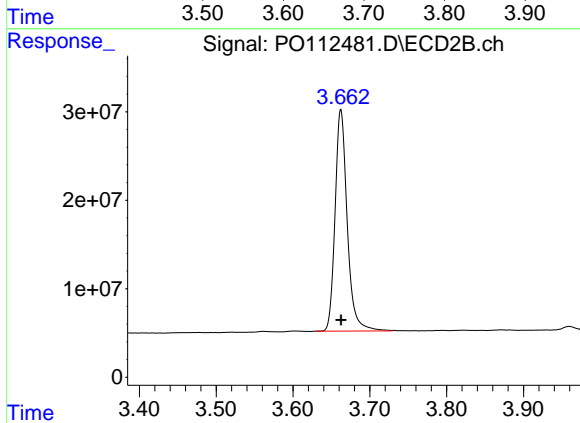




#1 Tetrachloro-m-xylene

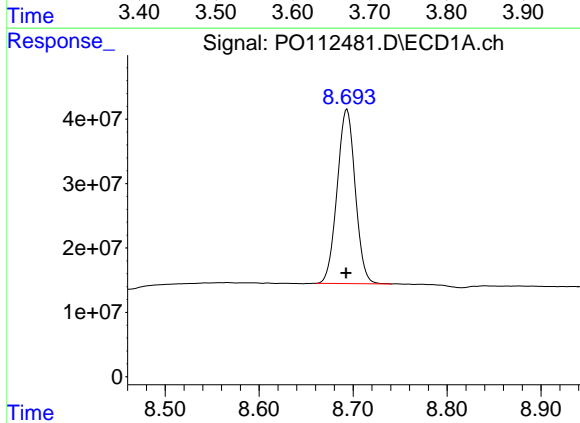
R.T.: 3.669 min  
 Delta R.T.: 0.000 min  
 Response: 456250937  
 Conc: 56.11 ng/ml

Instrument :  
 ECD\_O  
 ClientSampleId :  
 AR1248CCC500



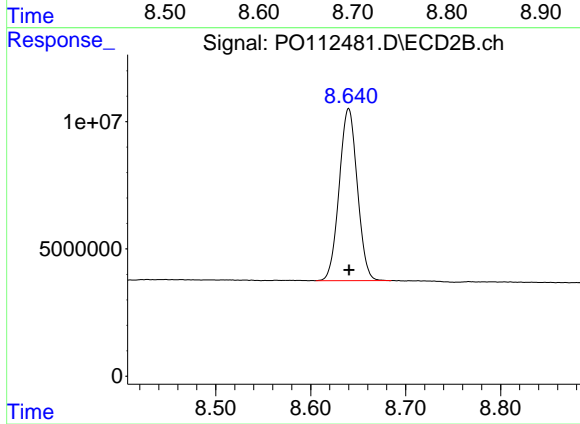
#1 Tetrachloro-m-xylene

R.T.: 3.662 min  
 Delta R.T.: 0.000 min  
 Response: 271798644  
 Conc: 54.70 ng/ml



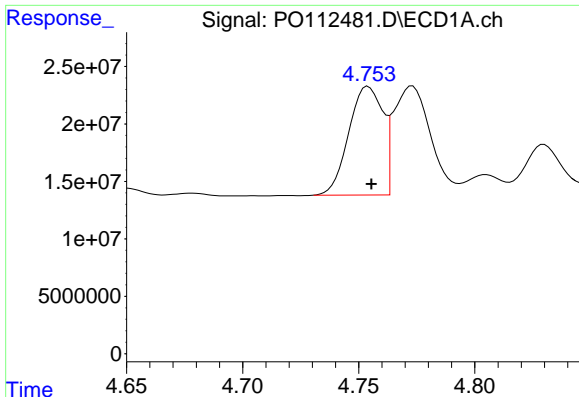
#2 Decachlorobiphenyl

R.T.: 8.694 min  
 Delta R.T.: 0.000 min  
 Response: 362340122  
 Conc: 49.56 ng/ml



#2 Decachlorobiphenyl

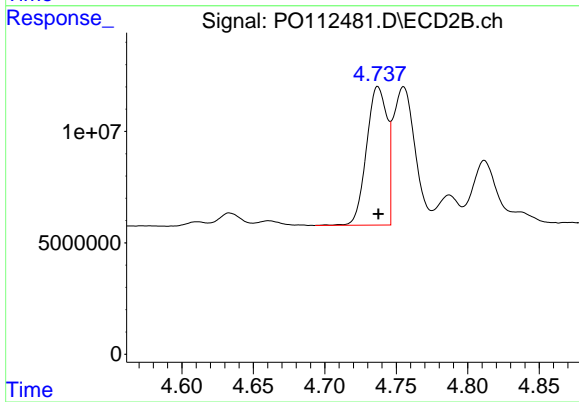
R.T.: 8.640 min  
 Delta R.T.: 0.000 min  
 Response: 89636411  
 Conc: 50.72 ng/ml



#3 AR-1016-1

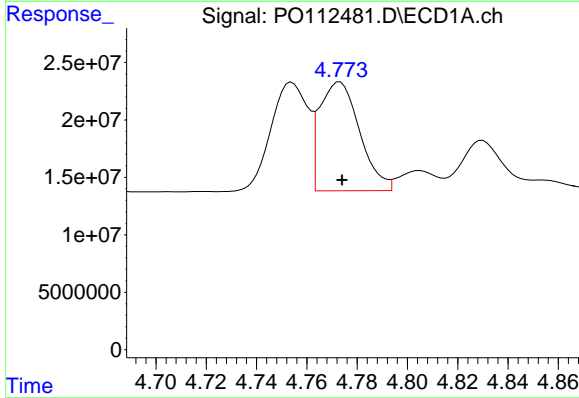
R.T.: 4.754 min  
 Delta R.T.: -0.001 min  
 Response: 96442851  
 Conc: 359.37 ng/ml

Instrument :  
 ECD\_O  
 ClientSampleId :  
 AR1248CCC500



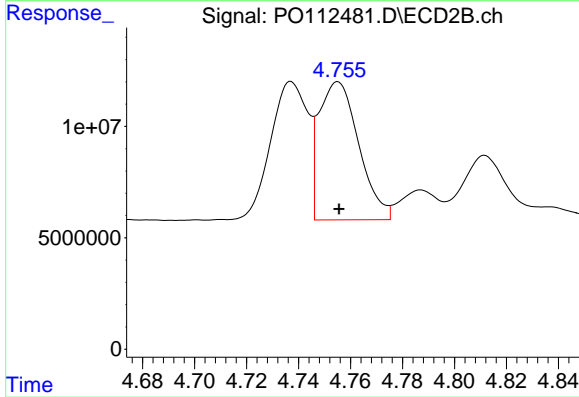
#3 AR-1016-1

R.T.: 4.737 min  
 Delta R.T.: 0.000 min  
 Response: 62100037  
 Conc: 354.84 ng/ml



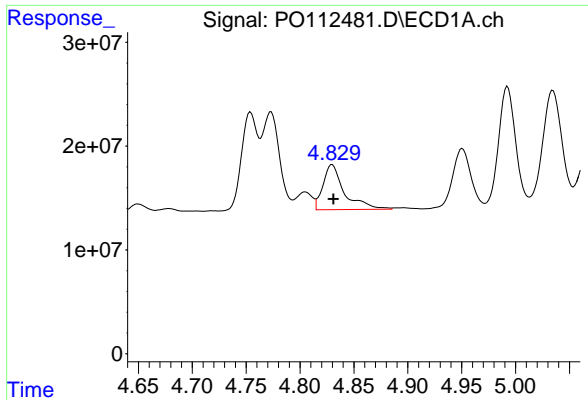
#4 AR-1016-2

R.T.: 4.773 min  
 Delta R.T.: 0.000 min  
 Response: 105023896  
 Conc: 258.60 ng/ml



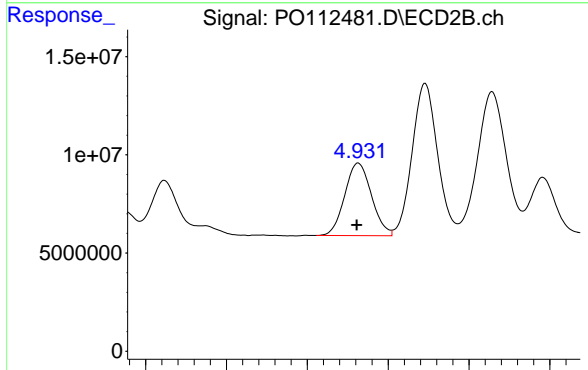
#4 AR-1016-2

R.T.: 4.755 min  
 Delta R.T.: 0.000 min  
 Response: 65926834  
 Conc: 253.08 ng/ml

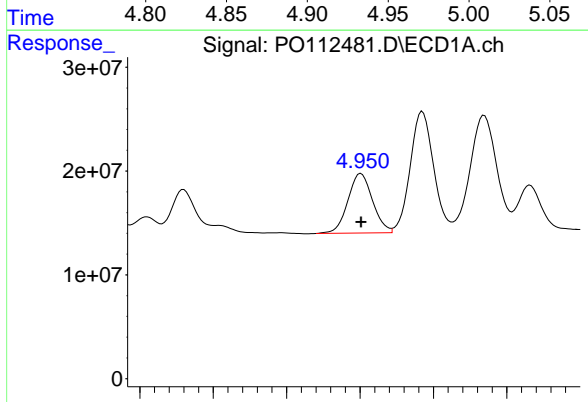


#5 AR-1016-3  
 R.T.: 4.830 min  
 Delta R.T.: -0.001 min  
 Response: 59867976  
 Conc: 228.79 ng/ml

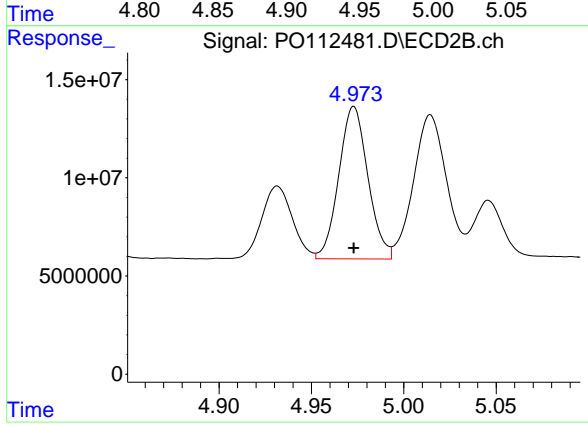
Instrument :  
 ECD\_O  
 ClientSampleId :  
 AR1248CCC500



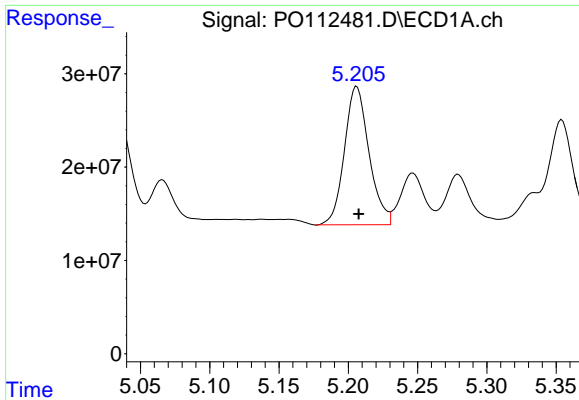
#5 AR-1016-3  
 R.T.: 4.932 min  
 Delta R.T.: 0.000 min  
 Response: 42490427  
 Conc: 312.51 ng/ml



#6 AR-1016-4  
 R.T.: 4.951 min  
 Delta R.T.: 0.000 min  
 Response: 66906142  
 Conc: 315.83 ng/ml



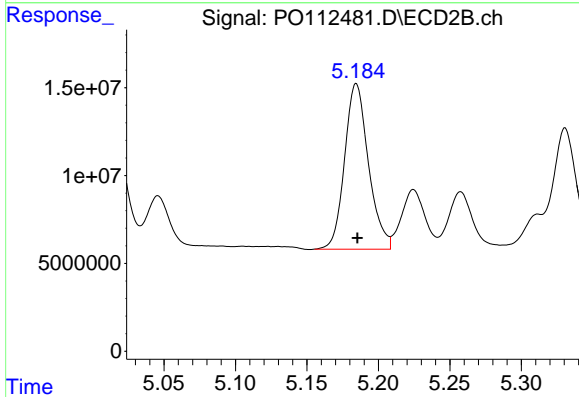
#6 AR-1016-4  
 R.T.: 4.973 min  
 Delta R.T.: 0.000 min  
 Response: 85291875  
 Conc: 767.81 ng/ml



#7 AR-1016-5

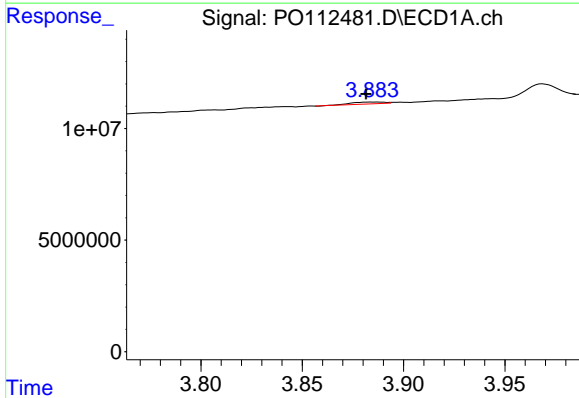
R.T.: 5.206 min  
 Delta R.T.: -0.001 min  
 Response: 183007897  
 Conc: 833.86 ng/ml

Instrument :  
 ECD\_O  
 ClientSampleId :  
 AR1248CCC500



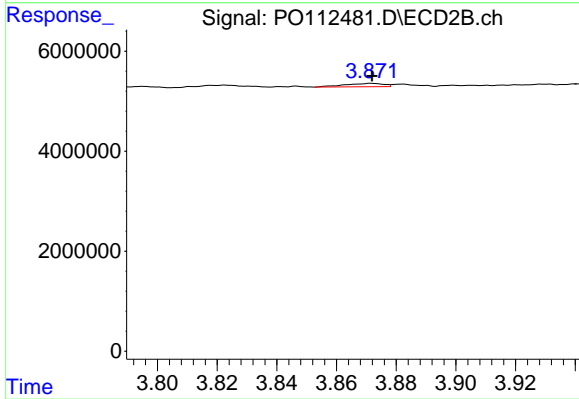
#7 AR-1016-5

R.T.: 5.185 min  
 Delta R.T.: 0.000 min  
 Response: 109595954  
 Conc: 764.78 ng/ml



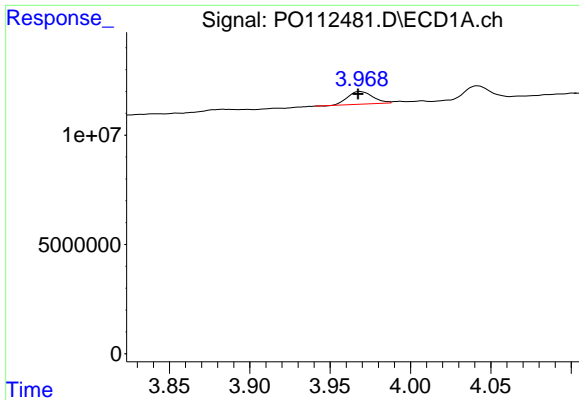
#8 AR-1221-1

R.T.: 3.884 min  
 Delta R.T.: 0.002 min  
 Response: 987439  
 Conc: 10.22 ng/ml



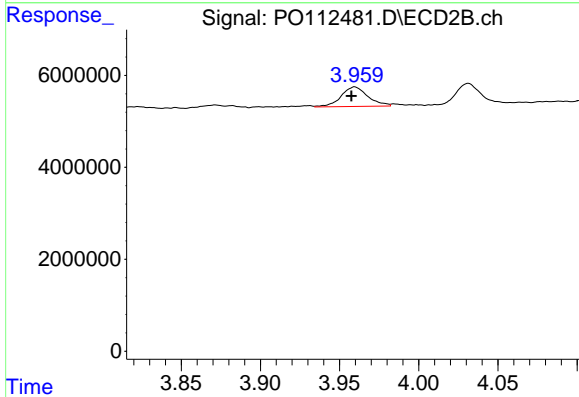
#8 AR-1221-1

R.T.: 3.872 min  
 Delta R.T.: 0.000 min  
 Response: 615126  
 Conc: 9.14 ng/ml

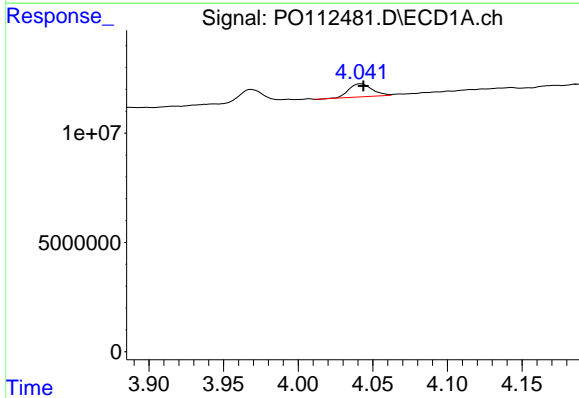


#9 AR-1221-2  
 R.T.: 3.969 min  
 Delta R.T.: 0.001 min  
 Response: 6312800  
 Conc: 87.85 ng/ml

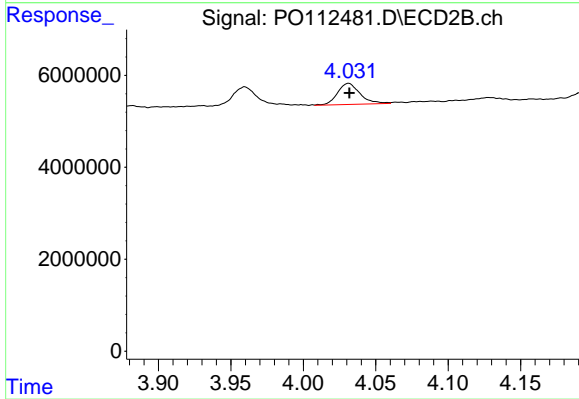
Instrument :  
 ECD\_O  
 ClientSampleId :  
 AR1248CCC500



#9 AR-1221-2  
 R.T.: 3.960 min  
 Delta R.T.: 0.002 min  
 Response: 5003788  
 Conc: 98.64 ng/ml

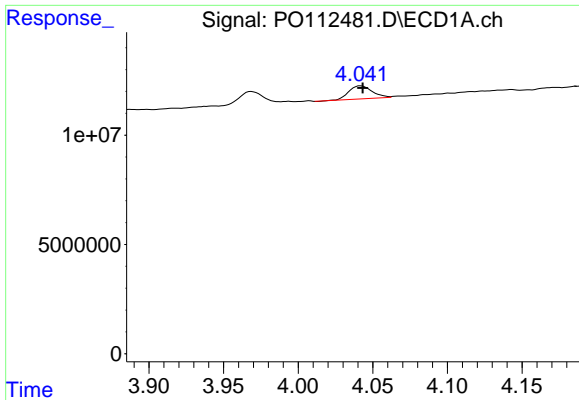


#10 AR-1221-3  
 R.T.: 4.042 min  
 Delta R.T.: -0.002 min  
 Response: 6420280  
 Conc: 27.01 ng/ml



#10 AR-1221-3  
 R.T.: 4.031 min  
 Delta R.T.: 0.000 min  
 Response: 4986126  
 Conc: 31.45 ng/ml

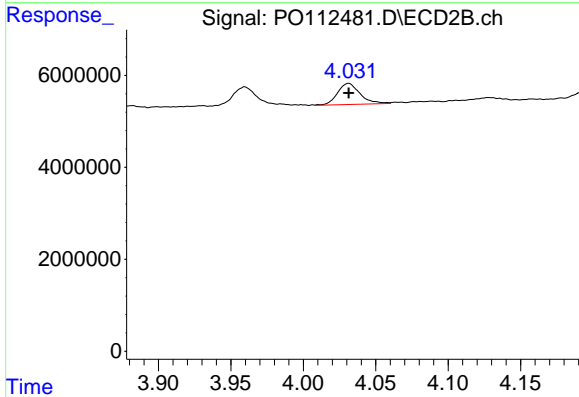




#11 AR-1232-1

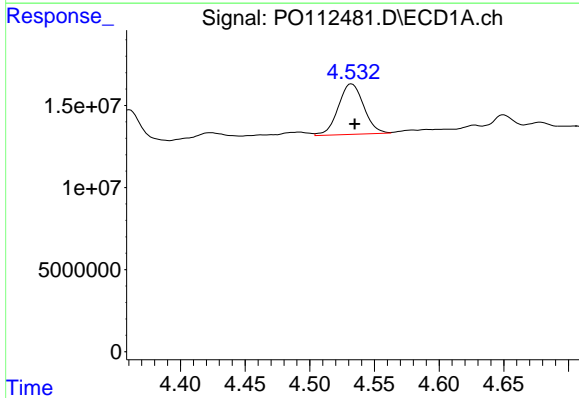
R.T.: 4.042 min  
 Delta R.T.: -0.001 min  
 Response: 6420280  
 Conc: 34.34 ng/ml

Instrument :  
 ECD\_O  
 ClientSampleId :  
 AR1248CCC500



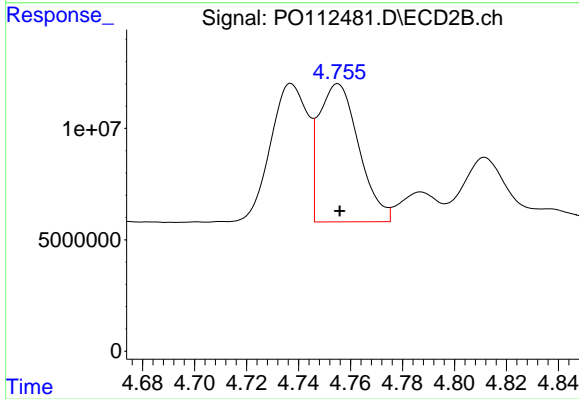
#11 AR-1232-1

R.T.: 4.031 min  
 Delta R.T.: 0.000 min  
 Response: 4986126  
 Conc: 39.40 ng/ml



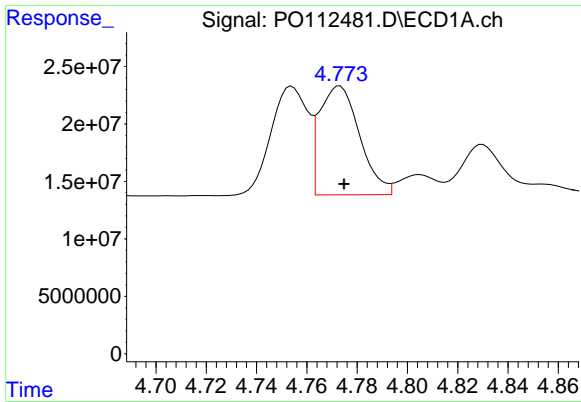
#12 AR-1232-2

R.T.: 4.532 min  
 Delta R.T.: -0.002 min  
 Response: 42289253  
 Conc: 392.93 ng/ml



#12 AR-1232-2

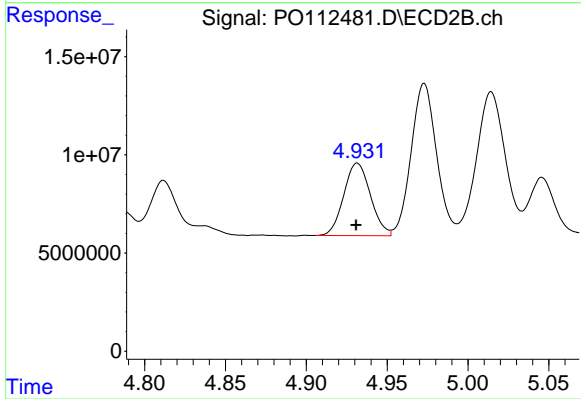
R.T.: 4.755 min  
 Delta R.T.: 0.000 min  
 Response: 65926834  
 Conc: 502.66 ng/ml



#13 AR-1232-3

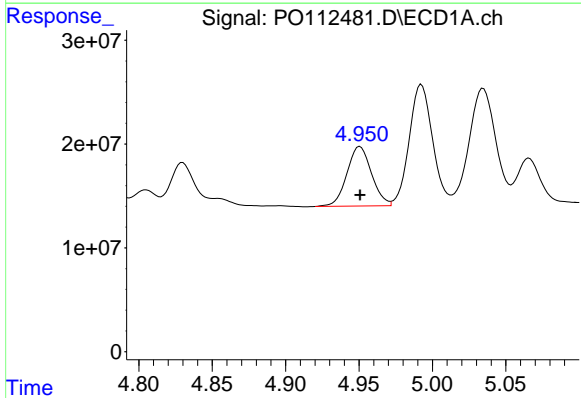
R.T.: 4.773 min  
 Delta R.T.: -0.002 min  
 Response: 105023896  
 Conc: 507.85 ng/ml

Instrument :  
 ECD\_O  
 ClientSampleId :  
 AR1248CCC500



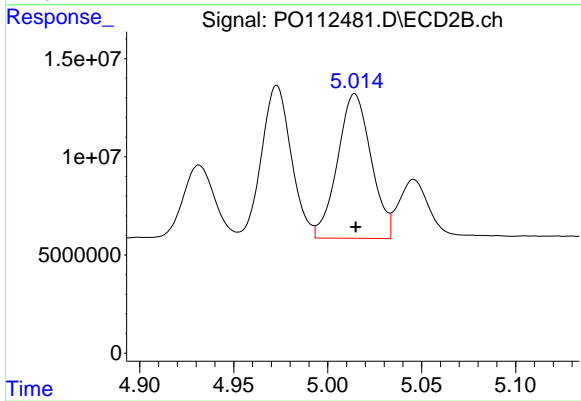
#13 AR-1232-3

R.T.: 4.932 min  
 Delta R.T.: 0.000 min  
 Response: 42490427  
 Conc: 632.33 ng/ml



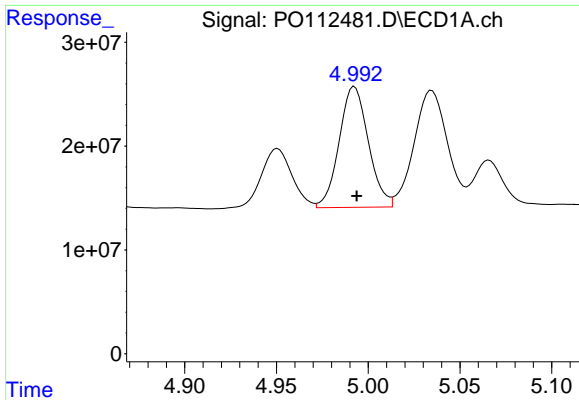
#14 AR-1232-4

R.T.: 4.951 min  
 Delta R.T.: 0.000 min  
 Response: 66906142  
 Conc: 638.78 ng/ml



#14 AR-1232-4

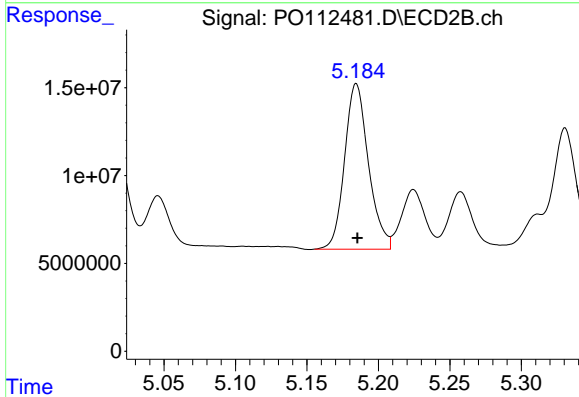
R.T.: 5.014 min  
 Delta R.T.: 0.000 min  
 Response: 91526361  
 Conc: 1529.80 ng/ml



#15 AR-1232-5

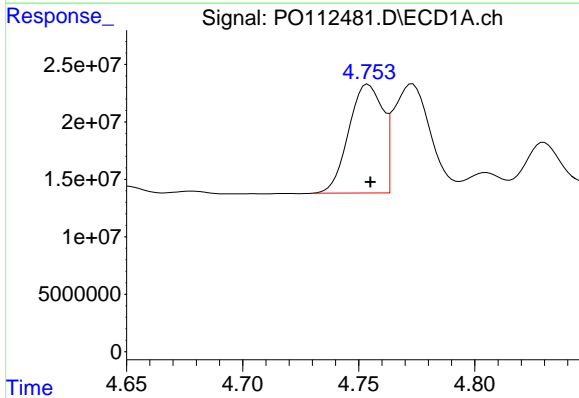
R.T.: 4.992 min  
 Delta R.T.: -0.001 min  
 Response: 128753454  
 Conc: 1896.76 ng/ml

Instrument :  
 ECD\_O  
 ClientSampleId :  
 AR1248CCC500



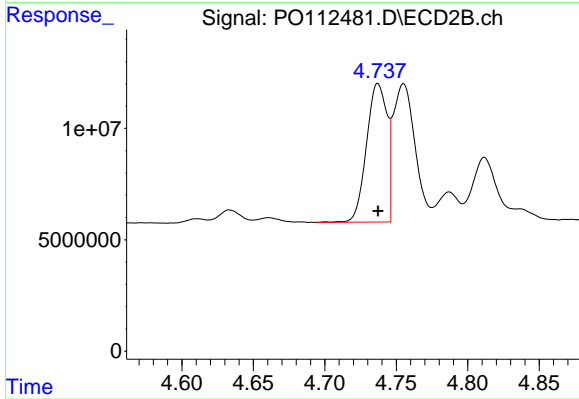
#15 AR-1232-5

R.T.: 5.185 min  
 Delta R.T.: 0.000 min  
 Response: 109595954  
 Conc: 1680.84 ng/ml



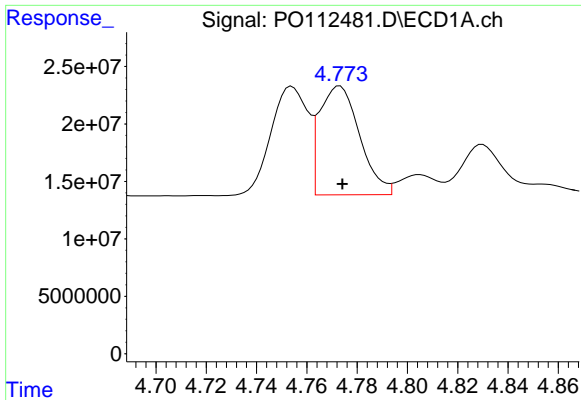
#16 AR-1242-1

R.T.: 4.754 min  
 Delta R.T.: 0.000 min  
 Response: 96442851  
 Conc: 389.52 ng/ml



#16 AR-1242-1

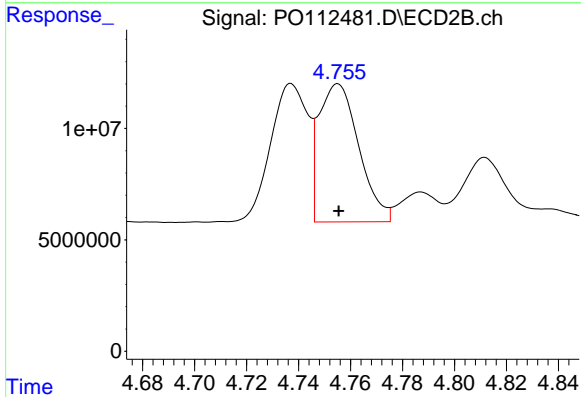
R.T.: 4.737 min  
 Delta R.T.: 0.000 min  
 Response: 62100037  
 Conc: 392.06 ng/ml



#17 AR-1242-2

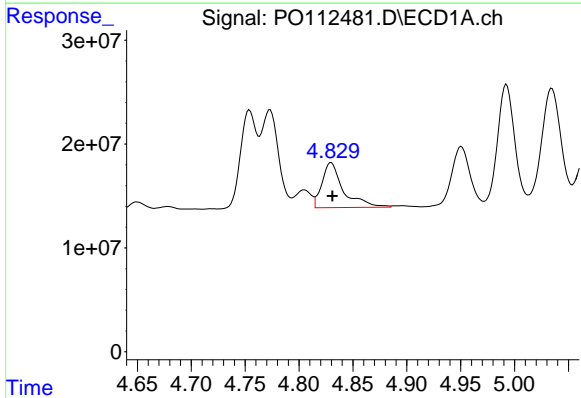
R.T.: 4.773 min  
 Delta R.T.: -0.001 min  
 Response: 105023896  
 Conc: 284.01 ng/ml

Instrument :  
 ECD\_O  
 ClientSampleId :  
 AR1248CCC500



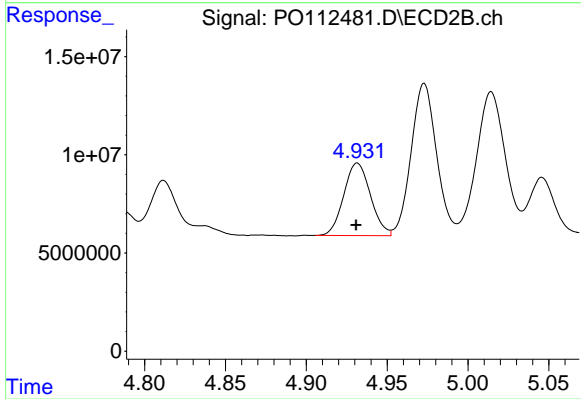
#17 AR-1242-2

R.T.: 4.755 min  
 Delta R.T.: 0.000 min  
 Response: 65926834  
 Conc: 282.14 ng/ml



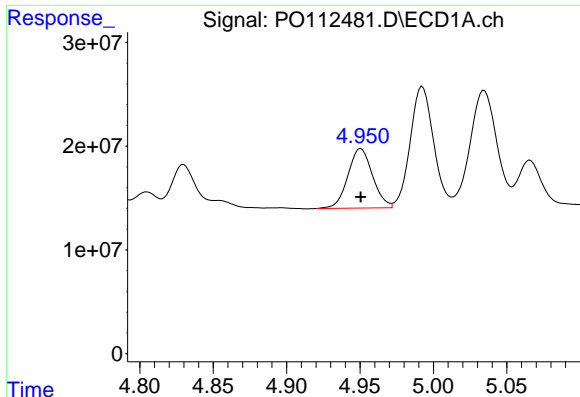
#18 AR-1242-3

R.T.: 4.830 min  
 Delta R.T.: -0.001 min  
 Response: 59867976  
 Conc: 252.97 ng/ml



#18 AR-1242-3

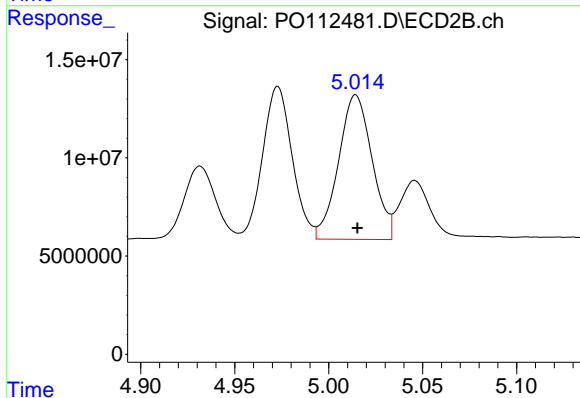
R.T.: 4.932 min  
 Delta R.T.: 0.000 min  
 Response: 42490427  
 Conc: 350.61 ng/ml



#19 AR-1242-4

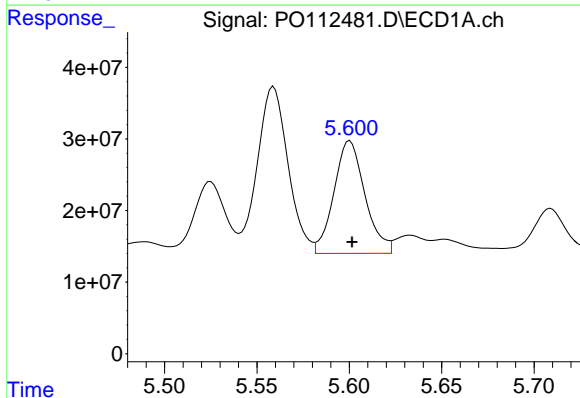
R.T.: 4.951 min  
 Delta R.T.: 0.000 min  
 Response: 66906142  
 Conc: 344.38 ng/ml

Instrument :  
 ECD\_O  
 ClientSampleId :  
 AR1248CCC500



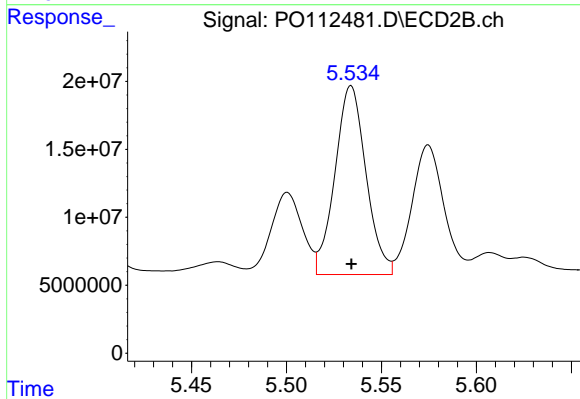
#19 AR-1242-4

R.T.: 5.014 min  
 Delta R.T.: 0.000 min  
 Response: 91526361  
 Conc: 745.70 ng/ml



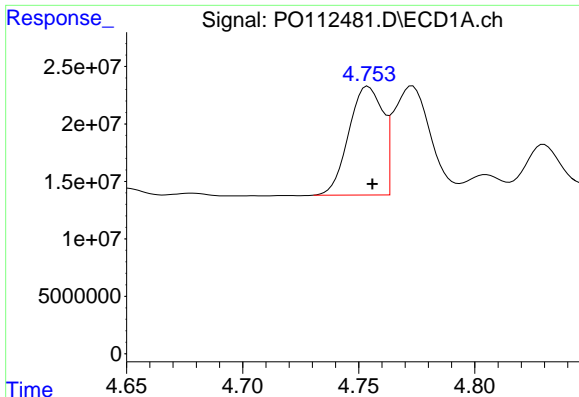
#20 AR-1242-5

R.T.: 5.600 min  
 Delta R.T.: -0.001 min  
 Response: 184263806  
 Conc: 861.39 ng/ml



#20 AR-1242-5

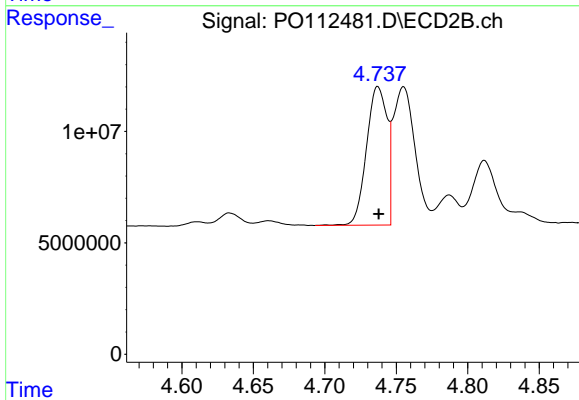
R.T.: 5.534 min  
 Delta R.T.: 0.000 min  
 Response: 158162735  
 Conc: 982.55 ng/ml



#21 AR-1248-1

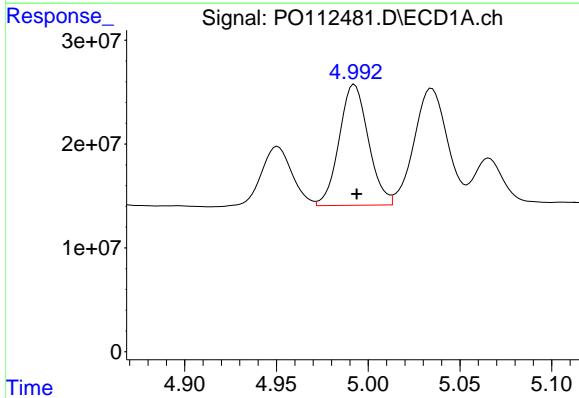
R.T.: 4.754 min  
 Delta R.T.: -0.002 min  
 Response: 96442851  
 Conc: 515.16 ng/ml

Instrument :  
 ECD\_O  
 ClientSampleId :  
 AR1248CCC500



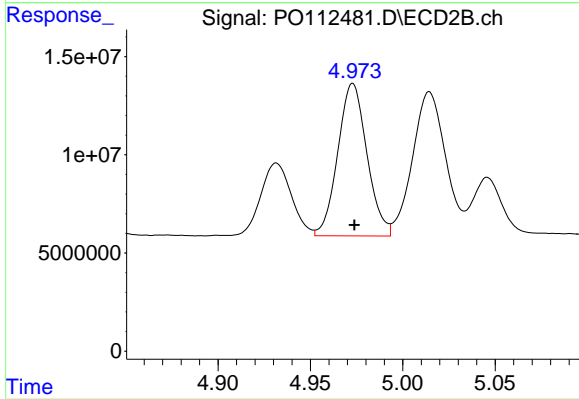
#21 AR-1248-1

R.T.: 4.737 min  
 Delta R.T.: 0.000 min  
 Response: 62100037  
 Conc: 511.07 ng/ml



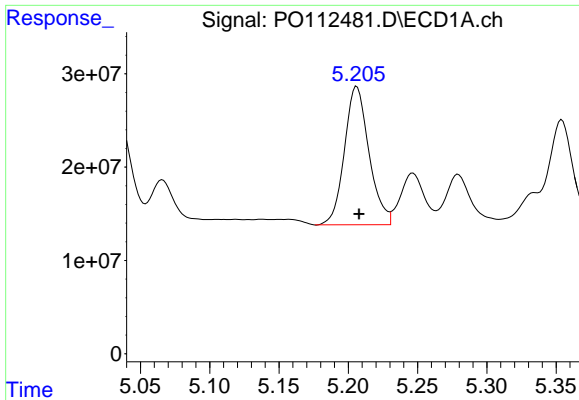
#22 AR-1248-2

R.T.: 4.992 min  
 Delta R.T.: -0.001 min  
 Response: 128753454  
 Conc: 504.69 ng/ml



#22 AR-1248-2

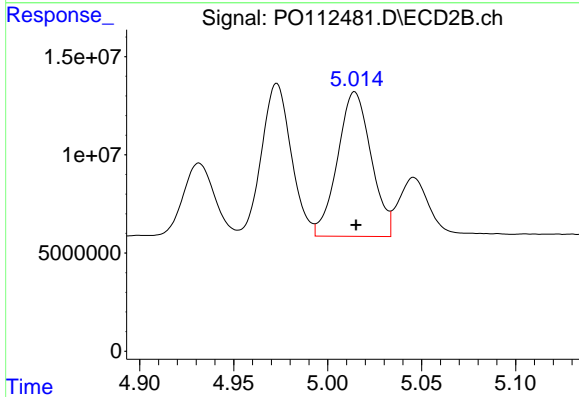
R.T.: 4.973 min  
 Delta R.T.: 0.000 min  
 Response: 85291875  
 Conc: 503.85 ng/ml



#23 AR-1248-3

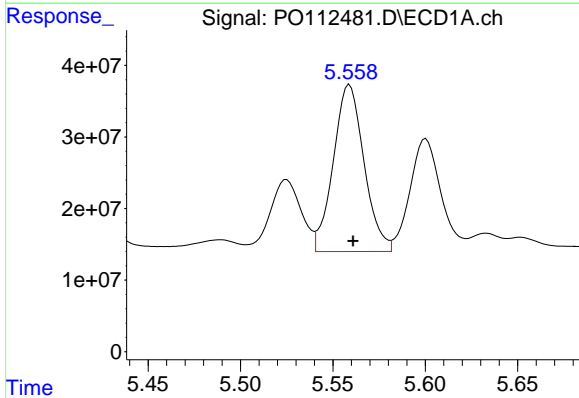
R.T.: 5.206 min  
 Delta R.T.: -0.002 min  
 Response: 183007897  
 Conc: 532.46 ng/ml

Instrument :  
 ECD\_O  
 ClientSampleId :  
 AR1248CCC500



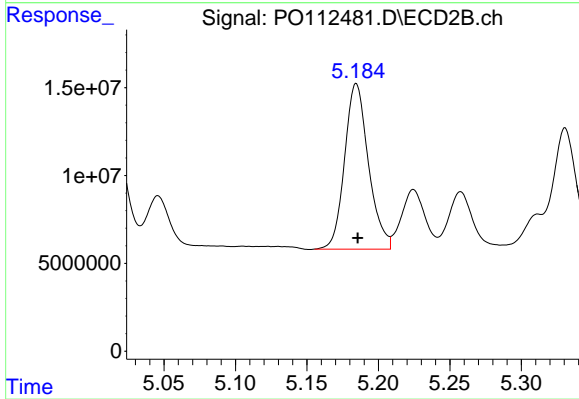
#23 AR-1248-3

R.T.: 5.014 min  
 Delta R.T.: 0.000 min  
 Response: 91526361  
 Conc: 515.21 ng/ml



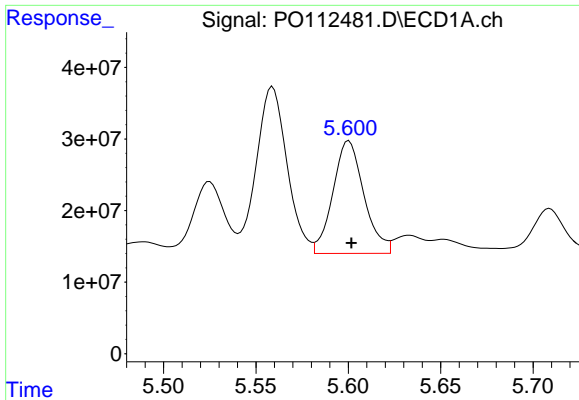
#24 AR-1248-4

R.T.: 5.559 min  
 Delta R.T.: -0.002 min  
 Response: 270010540  
 Conc: 531.44 ng/ml



#24 AR-1248-4

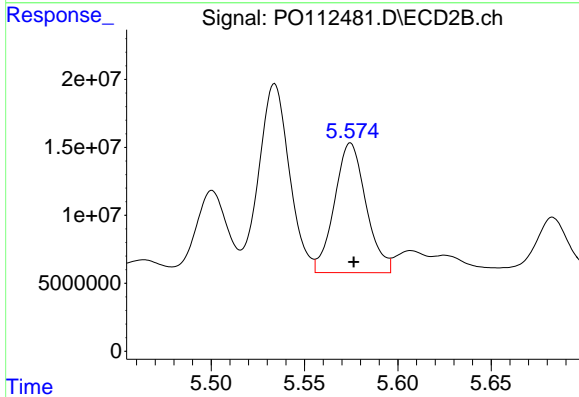
R.T.: 5.185 min  
 Delta R.T.: 0.000 min  
 Response: 109595954  
 Conc: 526.01 ng/ml



#25 AR-1248-5

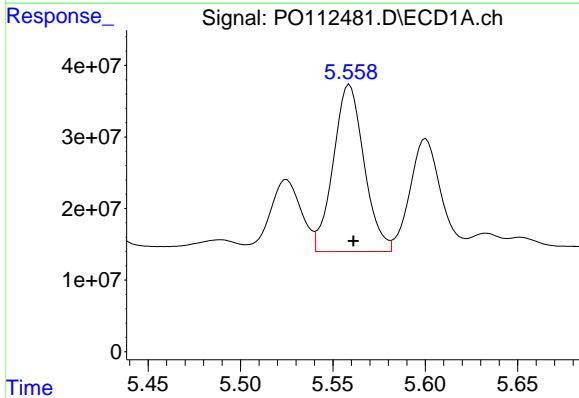
R.T.: 5.600 min  
 Delta R.T.: -0.001 min  
 Response: 184263806  
 Conc: 527.08 ng/ml

Instrument :  
 ECD\_O  
 ClientSampleId :  
 AR1248CCC500



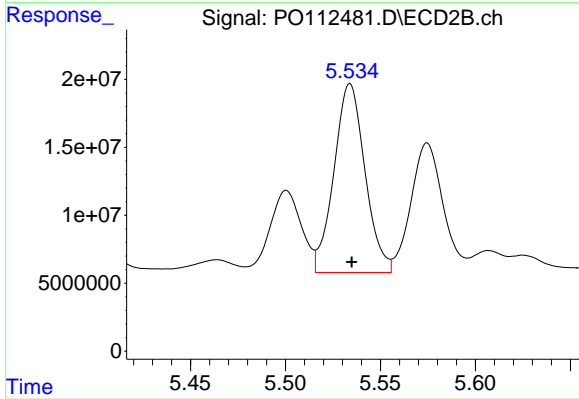
#25 AR-1248-5

R.T.: 5.575 min  
 Delta R.T.: -0.002 min  
 Response: 112425082  
 Conc: 523.48 ng/ml



#26 AR-1254-1

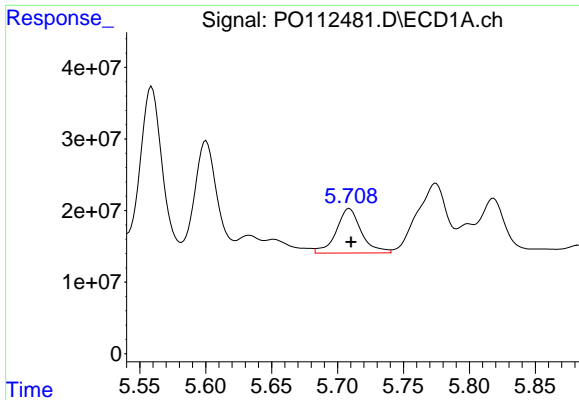
R.T.: 5.559 min  
 Delta R.T.: -0.002 min  
 Response: 270010540  
 Conc: 491.86 ng/ml



#26 AR-1254-1

R.T.: 5.534 min  
 Delta R.T.: 0.000 min  
 Response: 158162735  
 Conc: 481.29 ng/ml

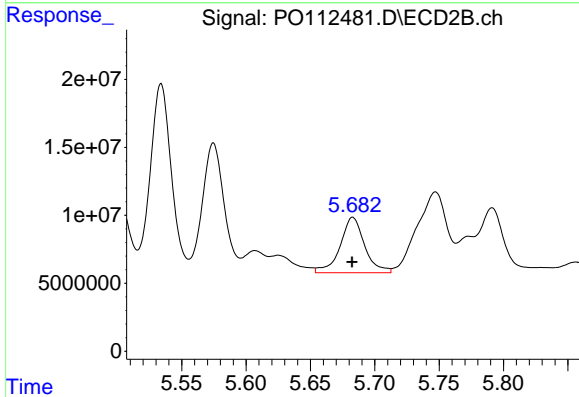




#27 AR-1254-2

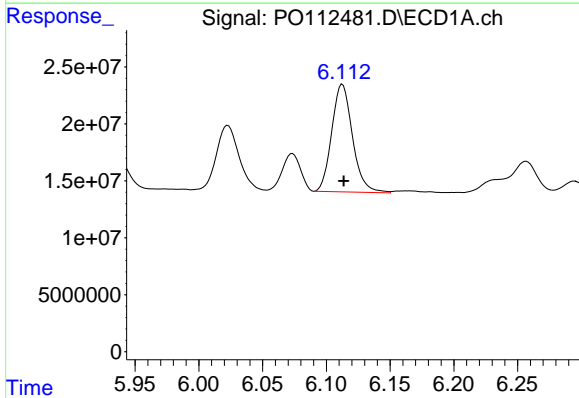
R.T.: 5.709 min  
 Delta R.T.: -0.001 min  
 Response: 82213712  
 Conc: 169.19 ng/ml

Instrument :  
 ECD\_O  
 ClientSampleId :  
 AR1248CCC500



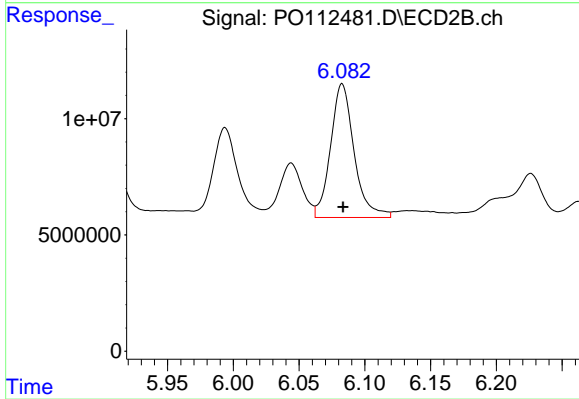
#27 AR-1254-2

R.T.: 5.683 min  
 Delta R.T.: 0.000 min  
 Response: 54155433  
 Conc: 187.07 ng/ml



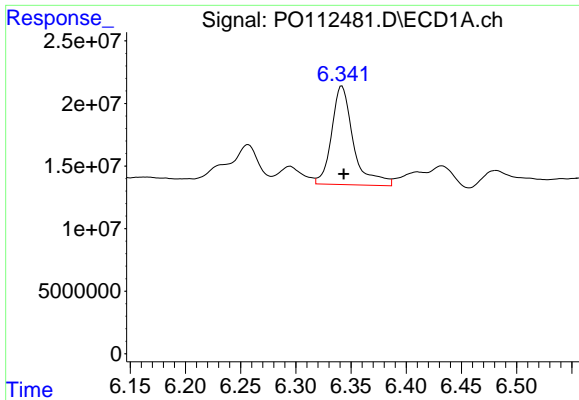
#28 AR-1254-3

R.T.: 6.113 min  
 Delta R.T.: -0.001 min  
 Response: 106907134  
 Conc: 143.64 ng/ml



#28 AR-1254-3

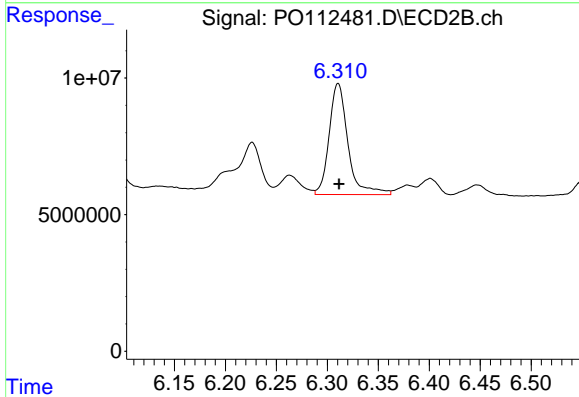
R.T.: 6.083 min  
 Delta R.T.: 0.000 min  
 Response: 71727324  
 Conc: 167.80 ng/ml



#29 AR-1254-4

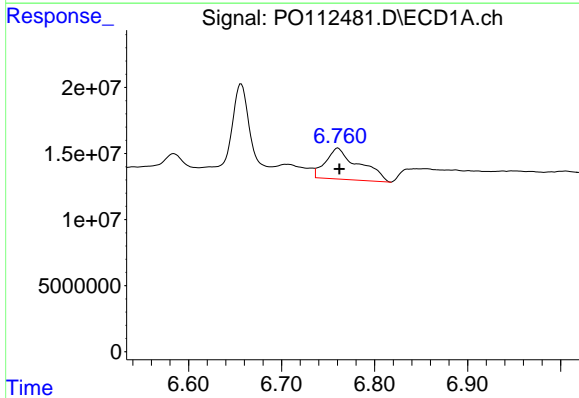
R.T.: 6.342 min  
 Delta R.T.: -0.002 min  
 Response: 108158714  
 Conc: 196.76 ng/ml

Instrument :  
 ECD\_O  
 ClientSampleId :  
 AR1248CCC500



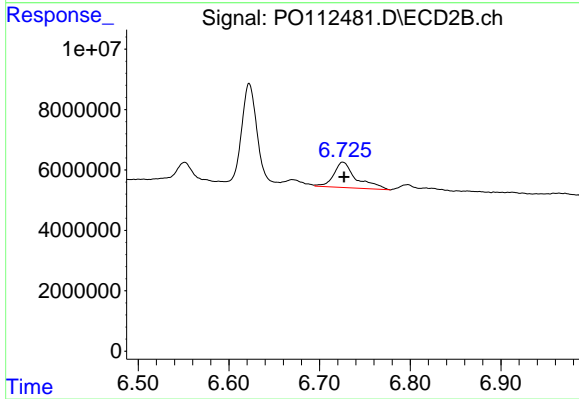
#29 AR-1254-4

R.T.: 6.311 min  
 Delta R.T.: 0.000 min  
 Response: 52256039  
 Conc: 191.44 ng/ml



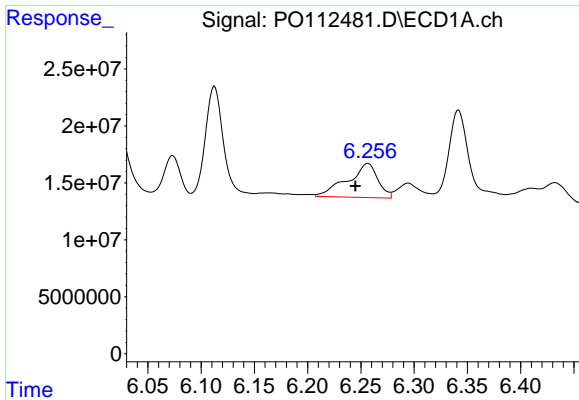
#30 AR-1254-5

R.T.: 6.761 min  
 Delta R.T.: -0.002 min  
 Response: 58575496  
 Conc: 82.75 ng/ml



#30 AR-1254-5

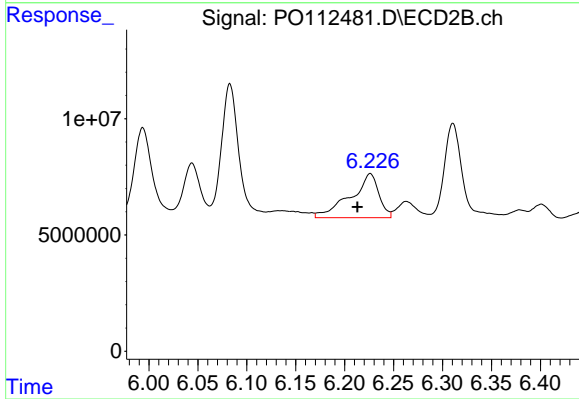
R.T.: 6.726 min  
 Delta R.T.: -0.002 min  
 Response: 14538855  
 Conc: 43.53 ng/ml



#31 AR-1260-1

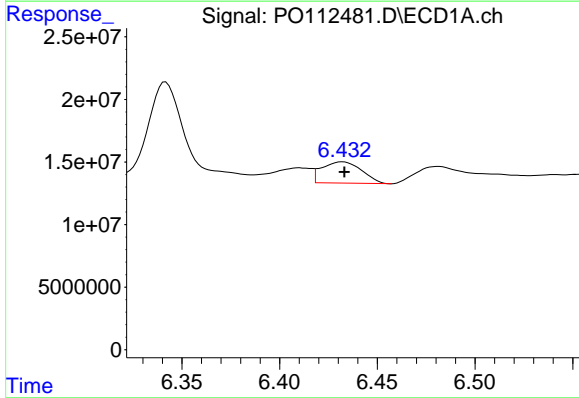
R.T.: 6.257 min  
 Delta R.T.: 0.012 min  
 Response: 58959027  
 Conc: 134.20 ng/ml

Instrument :  
 ECD\_O  
 ClientSampleId :  
 AR1248CCC500



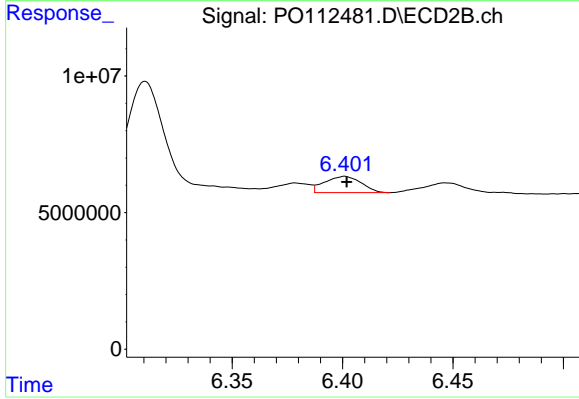
#31 AR-1260-1

R.T.: 6.226 min  
 Delta R.T.: 0.013 min  
 Response: 38170600  
 Conc: 153.60 ng/ml



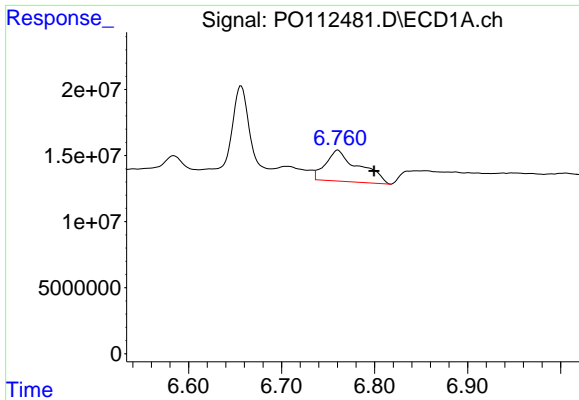
#32 AR-1260-2

R.T.: 6.432 min  
 Delta R.T.: 0.000 min  
 Response: 24035203  
 Conc: 34.94 ng/ml



#32 AR-1260-2

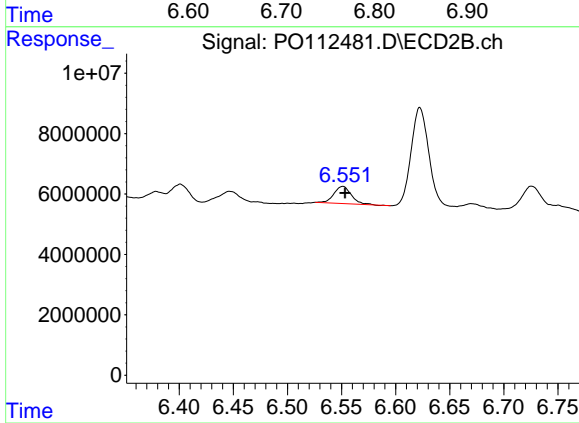
R.T.: 6.401 min  
 Delta R.T.: 0.000 min  
 Response: 6854852  
 Conc: 20.80 ng/ml



#33 AR-1260-3

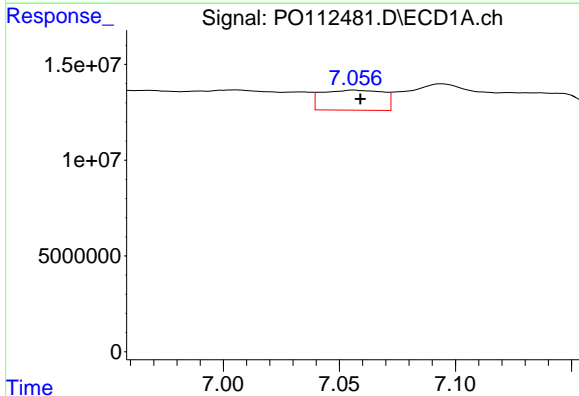
R.T.: 6.761 min  
 Delta R.T.: -0.039 min  
 Response: 58575496  
 Conc: 99.61 ng/ml

Instrument :  
 ECD\_O  
 ClientSampleId :  
 AR1248CCC500



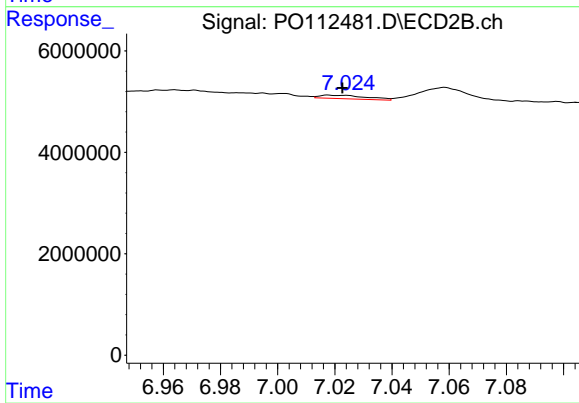
#33 AR-1260-3

R.T.: 6.551 min  
 Delta R.T.: -0.002 min  
 Response: 6367390  
 Conc: 24.78 ng/ml



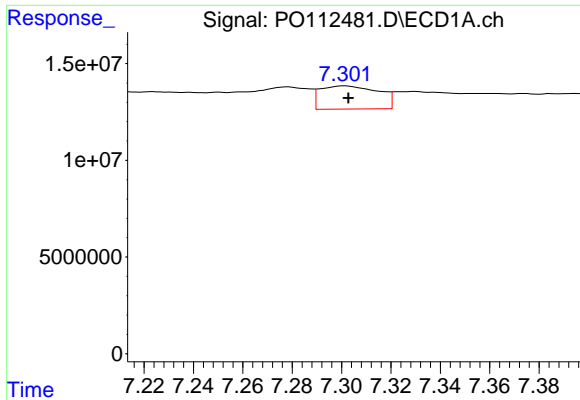
#34 AR-1260-4

R.T.: 7.056 min  
 Delta R.T.: -0.003 min  
 Response: 19227553  
 Conc: 42.63 ng/ml



#34 AR-1260-4

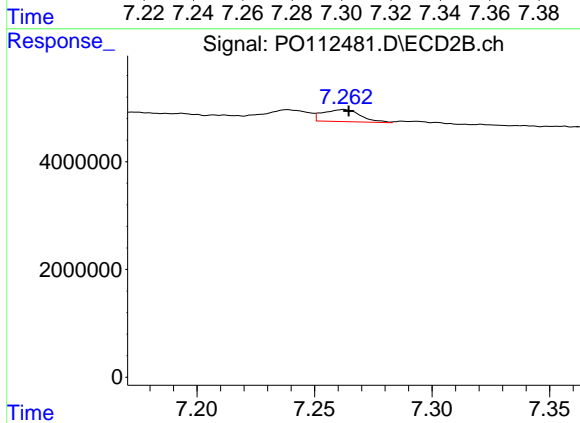
R.T.: 7.018 min  
 Delta R.T.: -0.005 min  
 Response: 778906  
 Conc: 4.07 ng/ml



#35 AR-1260-5

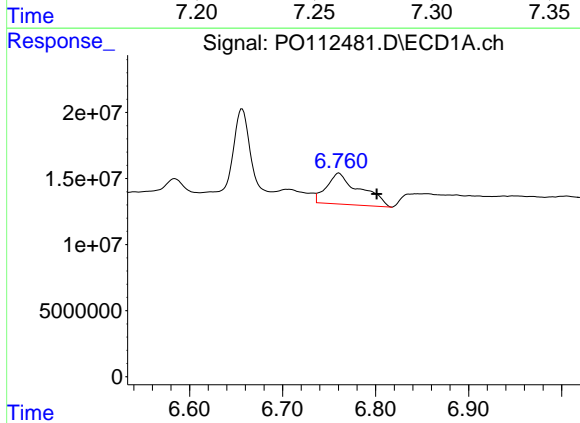
R.T.: 7.301 min  
 Delta R.T.: -0.001 min  
 Response: 19647455  
 Conc: 15.86 ng/ml

Instrument :  
 ECD\_O  
 ClientSampleId :  
 AR1248CCC500



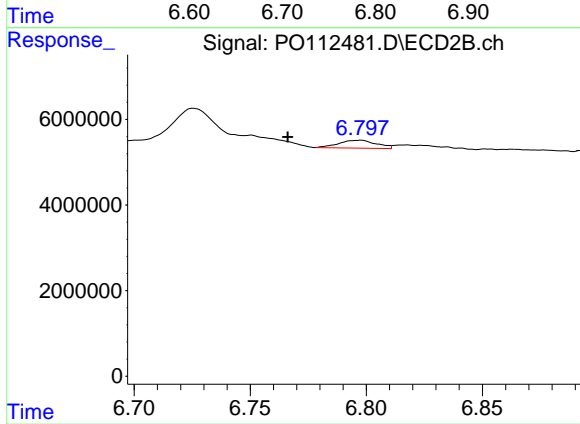
#35 AR-1260-5

R.T.: 7.262 min  
 Delta R.T.: -0.002 min  
 Response: 2480860  
 Conc: 6.02 ng/ml



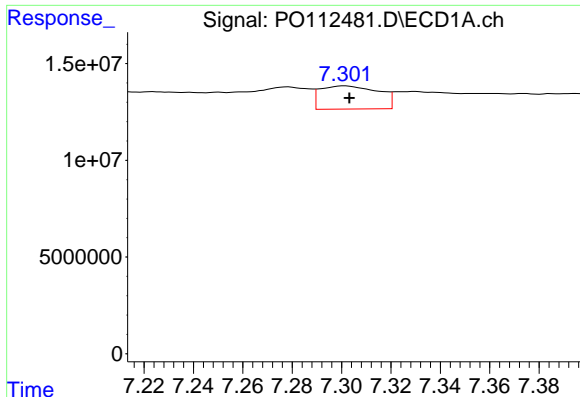
#36 AR-1262-1

R.T.: 6.761 min  
 Delta R.T.: -0.040 min  
 Response: 58575496  
 Conc: 63.04 ng/ml



#36 AR-1262-1

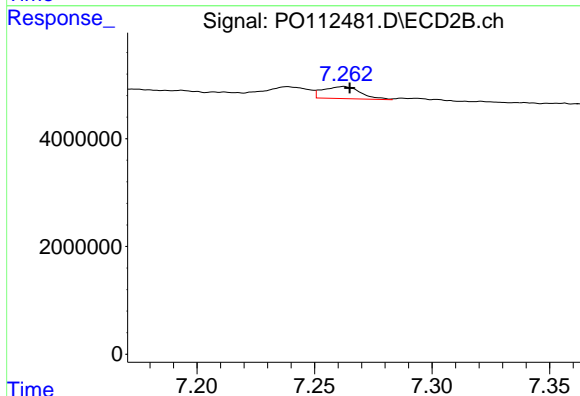
R.T.: 6.797 min  
 Delta R.T.: 0.031 min  
 Response: 2068491  
 Conc: 4.99 ng/ml



#37 AR-1262-2

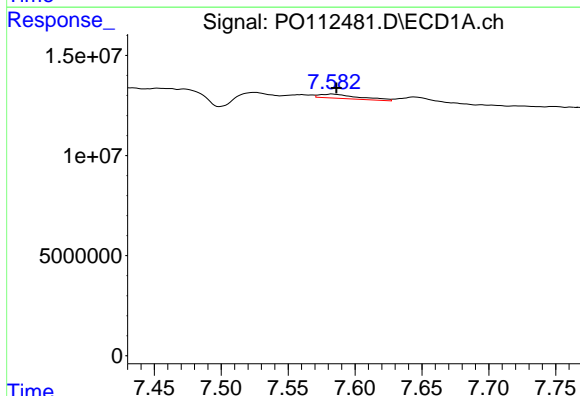
R.T.: 7.301 min  
 Delta R.T.: -0.002 min  
 Response: 19647455  
 Conc: 13.21 ng/ml

Instrument :  
 ECD\_O  
 ClientSampleId :  
 AR1248CCC500



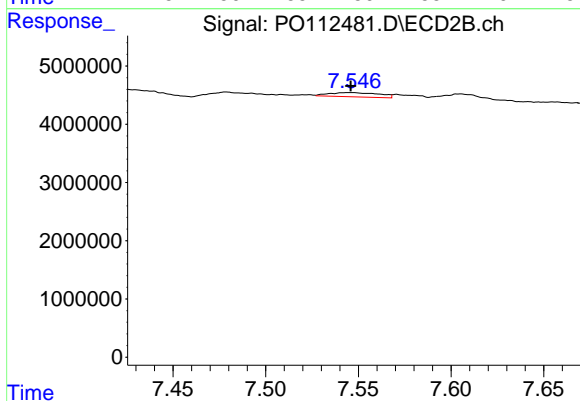
#37 AR-1262-2

R.T.: 7.262 min  
 Delta R.T.: -0.003 min  
 Response: 2480860  
 Conc: 4.81 ng/ml



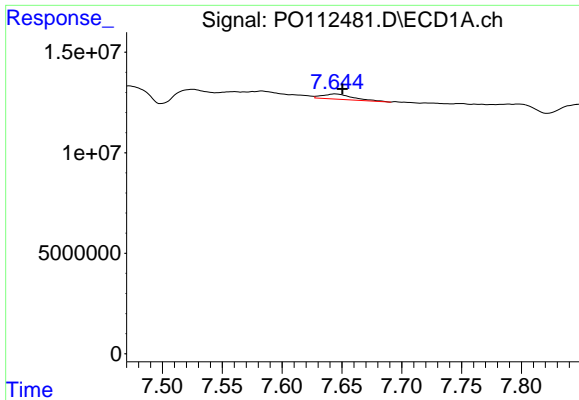
#38 AR-1262-3

R.T.: 7.583 min  
 Delta R.T.: -0.003 min  
 Response: 4391159  
 Conc: 7.44 ng/ml



#38 AR-1262-3

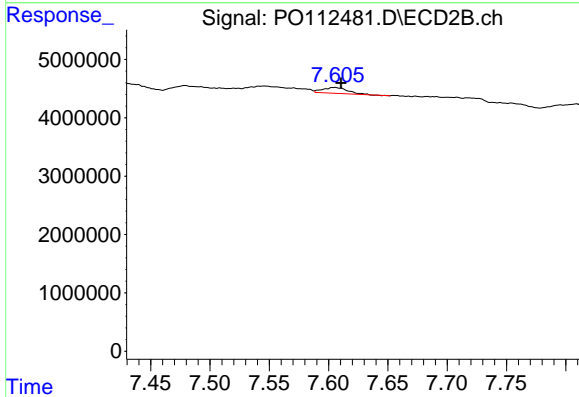
R.T.: 7.546 min  
 Delta R.T.: 0.000 min  
 Response: 1363364  
 Conc: 7.31 ng/ml



#39 AR-1262-4

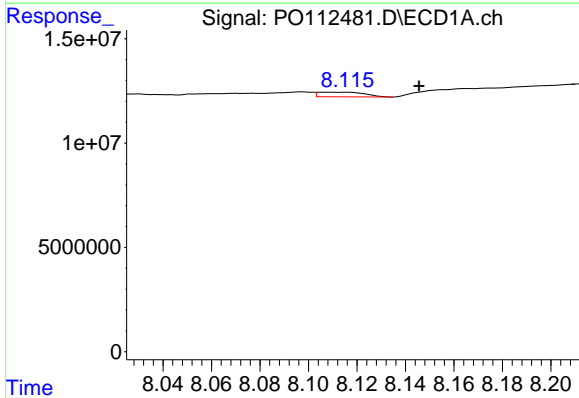
R.T.: 7.644 min  
 Delta R.T.: -0.006 min  
 Response: 4522179  
 Conc: 4.55 ng/ml

Instrument :  
 ECD\_O  
 ClientSampleId :  
 AR1248CCC500



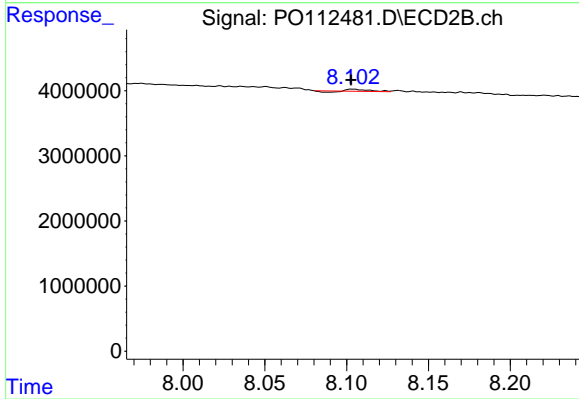
#39 AR-1262-4

R.T.: 7.605 min  
 Delta R.T.: -0.006 min  
 Response: 1475958  
 Conc: 5.12 ng/ml



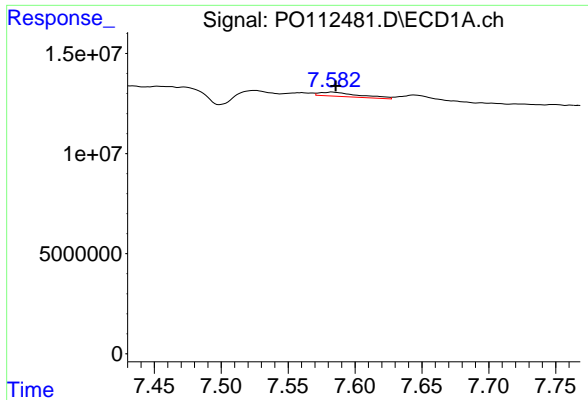
#40 AR-1262-5

R.T.: 8.107 min  
 Delta R.T.: -0.039 min  
 Response: 2904965  
 Conc: 6.69 ng/ml



#40 AR-1262-5

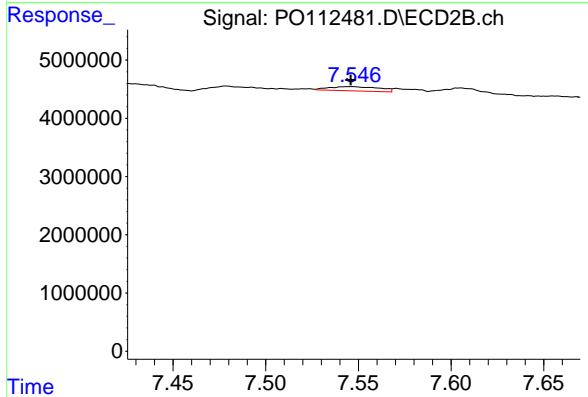
R.T.: 8.104 min  
 Delta R.T.: 0.001 min  
 Response: 172591  
 Conc: 1.73 ng/ml



#41 AR-1268-1

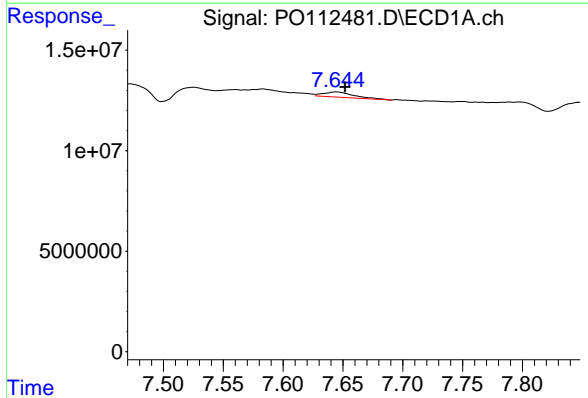
R.T.: 7.583 min  
 Delta R.T.: -0.002 min  
 Response: 4391159  
 Conc: 2.51 ng/ml

Instrument :  
 ECD\_O  
 ClientSampleId :  
 AR1248CCC500



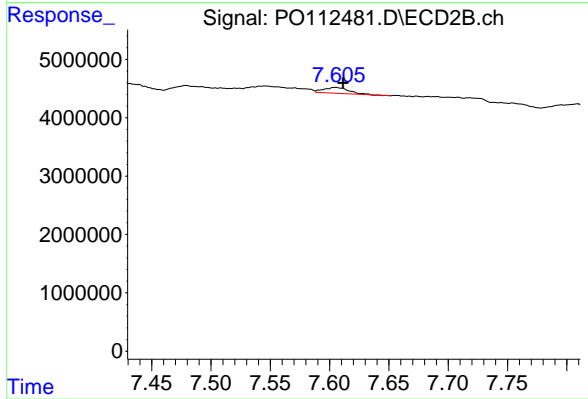
#41 AR-1268-1

R.T.: 7.546 min  
 Delta R.T.: 0.000 min  
 Response: 1363364  
 Conc: 2.63 ng/ml



#42 AR-1268-2

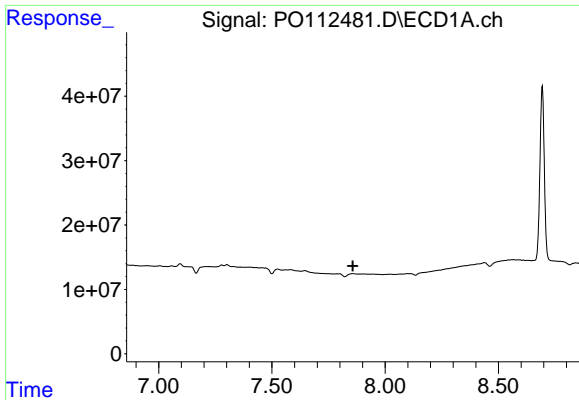
R.T.: 7.644 min  
 Delta R.T.: -0.007 min  
 Response: 4522179  
 Conc: 3.07 ng/ml



#42 AR-1268-2

R.T.: 7.605 min  
 Delta R.T.: -0.007 min  
 Response: 1475958  
 Conc: 3.47 ng/ml

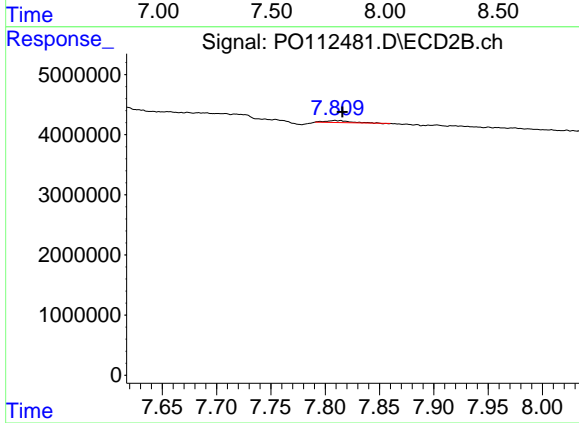




#43 AR-1268-3

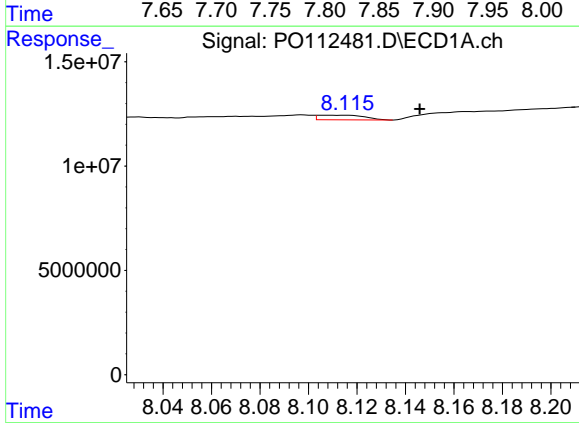
R.T.: 7.857 min  
 Delta R.T.: 0.000 min  
 Response: -2168022  
 Conc: N.D.

Instrument :  
 ECD\_O  
 ClientSampleId :  
 AR1248CCC500



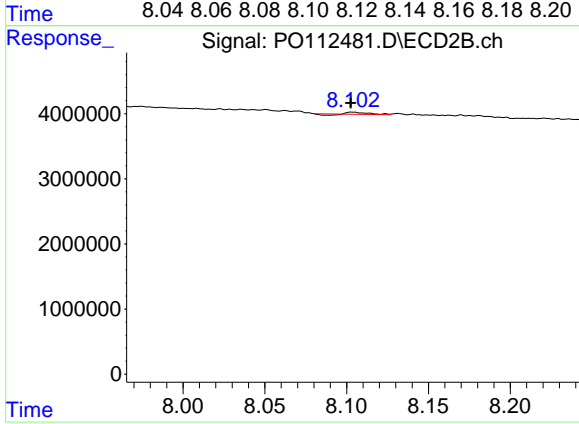
#43 AR-1268-3

R.T.: 7.809 min  
 Delta R.T.: -0.007 min  
 Response: 536858  
 Conc: 1.67 ng/ml



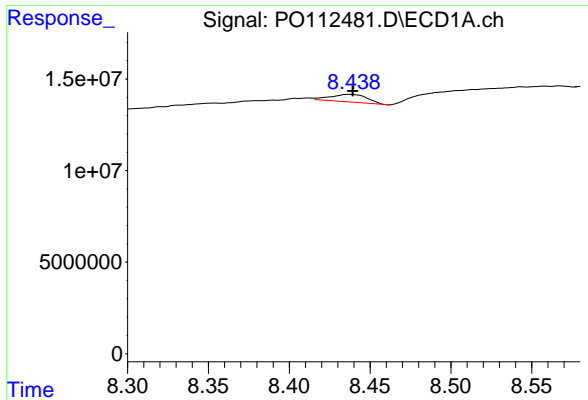
#44 AR-1268-4

R.T.: 8.107 min  
 Delta R.T.: -0.039 min  
 Response: 2904965  
 Conc: 6.03 ng/ml



#44 AR-1268-4

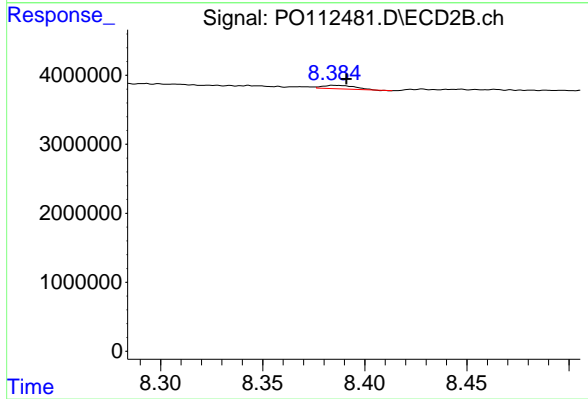
R.T.: 8.104 min  
 Delta R.T.: 0.001 min  
 Response: 172591  
 Conc: 1.55 ng/ml



#45 AR-1268-5

R.T.: 8.437 min  
 Delta R.T.: -0.002 min  
 Response: 6443806  
 Conc: 1.92 ng/ml

Instrument :  
 ECD\_O  
 ClientSampleId :  
 AR1248CCC500



#45 AR-1268-5

R.T.: 8.385 min  
 Delta R.T.: -0.006 min  
 Response: 565770  
 Conc: 0.77 ng/ml