

Data Path : Z:\pestpcbsrv\HPCHEM1\ECD_0\Data\P0072425\
 Data File : PO112482.D
 Signal(s) : Signal #1: ECD1A.ch Signal #2: ECD2B.ch
 Acq On : 24 Jul 2025 22:17
 Operator : YP/AJ
 Sample : AR1254CCC500
 Misc :
 ALS Vial : 6 Sample Multiplier: 1

Instrument :
 ECD_0
 ClientSampleId :
 AR1254CCC500

Integration File signal 1: autoint1.e
 Integration File signal 2: autoint2.e
 Quant Time: Jul 24 23:49:22 2025
 Quant Method : Z:\pestpcbsrv\HPCHEM1\ECD_0\methods\P0072325.M
 Quant Title : GC EXTRACTABLES
 QLast Update : Thu Jul 24 04:54:06 2025
 Response via : Initial Calibration
 Integrator: ChemStation

Volume Inj. : 2 µl
 Signal #1 Phase : ZB-MR1 Signal #2 Phase: ZB-MR2
 Signal #1 Info : 30Mx0.32mmx 0.50µ Signal #2 Info : 30M x 0.32mm x 0.25µm

Compound	RT#1	RT#2	Resp#1	Resp#2	ng/ml	ng/ml

System Monitoring Compounds						
1) SA Tetrachlo...	3.670	3.663	468.8E6	279.5E6	57.655	56.252
2) SA Decachlor...	8.694	8.640	372.3E6	90021102	50.924	50.942
Target Compounds						
3) L1 AR-1016-1	4.755	4.738	4454658	3780211	16.599	21.600 #
4) L1 AR-1016-2	4.774	4.755	3957278	3206317	9.744	12.309 #
5) L1 AR-1016-3	4.834	4.931	2874394	1883404	10.985	13.852 #
6) L1 AR-1016-4	4.953	4.973	3162891	68991935	14.930	621.075 #
7) L1 AR-1016-5	5.208	5.185	74538593	45221070	339.629	315.563
8) L2 AR-1221-1	3.830f	3.874	145218	204577	1.502	3.041 #
9) L2 AR-1221-2	3.971	3.960	6085117	4354296	84.678	85.836
10) L2 AR-1221-3	4.050	4.034	649554	856207	2.733	5.401 #
11) L3 AR-1232-1	4.050	4.034	649554	856207	3.474	6.766 #
12) L3 AR-1232-2	4.537	4.755	4520149	3206317	41.999	24.447 #
13) L3 AR-1232-3	4.774	4.931	3957278	1883404	19.136	28.028 #
14) L3 AR-1232-4	4.953	5.014	3162891	22185413	30.197	370.813 #
15) L3 AR-1232-5	4.994	5.185	103.6E6	45221070	1526.721	693.542 #
16) L4 AR-1242-1	4.755	4.738	4454658	3780211	17.992	23.866 #
17) L4 AR-1242-2	4.774	4.755	3957278	3206317	10.701	13.722 #
18) L4 AR-1242-3	4.834	4.931	2874394	1883404	12.146	15.541 #
19) L4 AR-1242-4	4.953	5.014	3162891	22185413	16.280	180.752 #
20) L4 AR-1242-5	5.602	5.535	39060369	173.2E6	182.597	1075.879 #
21) L5 AR-1248-1	4.755	4.738	4454658	3780211	23.795	31.110 #
22) L5 AR-1248-2	4.994	4.973	103.6E6	68991935	406.234	407.562
23) L5 AR-1248-3	5.208	5.014	74538593	22185413	216.870	124.885 #
24) L5 AR-1248-4	5.561	5.185	297.3E6	45221070	585.227	217.039 #
25) L5 AR-1248-5	5.602	5.575	39060369	23846113	111.732	111.033
26) L6 AR-1254-1	5.561	5.535	297.3E6	173.2E6	541.645	527.007
27) L6 AR-1254-2	5.710	5.683	268.4E6	153.1E6	552.347	528.695
28) L6 AR-1254-3	6.114	6.083	392.5E6	224.3E6	527.284	524.771
29) L6 AR-1254-4	6.344	6.311	281.5E6	142.4E6	512.022	521.857
30) L6 AR-1254-5	6.762	6.727	381.4E6	178.3E6	538.890	533.935
31) L7 AR-1260-1	6.246	6.214	179.8E6	104.6E6	409.154	421.000
32) L7 AR-1260-2	6.434	6.401	188.6E6	90778191	274.147	275.508
33) L7 AR-1260-3	6.833	6.551	28001784	80793375	47.620	314.468 #
34) L7 AR-1260-4	7.060	7.022	19034618	8174474	42.205	42.729
35) L7 AR-1260-5	7.303	7.264	46822186	18116248	37.786	43.951
36) L8 AR-1262-1	6.833	6.796	28001784	14511912	30.135	34.983
37) L8 AR-1262-2	7.303	7.264	46822186	18116248	31.487	35.140
38) L8 AR-1262-3	7.580	7.545	3711988	1690792	6.289	9.065 #
39) L8 AR-1262-4	7.647	7.606	35392007	12667689	35.600	43.969
40) L8 AR-1262-5	8.150	8.099	1364311	334066	3.143	3.357
41) L9 AR-1268-1	7.580	7.545	3711988	1690792	2.120	3.265 #

Data Path : Z:\pestpcbsrv\HPCHEM1\ECD_0\Data\P0072425\
 Data File : P0112482.D
 Signal(s) : Signal #1: ECD1A.ch Signal #2: ECD2B.ch
 Acq On : 24 Jul 2025 22:17
 Operator : YP/AJ
 Sample : AR1254CCC500
 Misc :
 ALS Vial : 6 Sample Multiplier: 1

Instrument :
 ECD_0
 ClientSampleId :
 AR1254CCC500

Integration File signal 1: autoint1.e
 Integration File signal 2: autoint2.e
 Quant Time: Jul 24 23:49:22 2025
 Quant Method : Z:\pestpcbsrv\HPCHEM1\ECD_0\methods\P0072325.M
 Quant Title : GC EXTRACTABLES
 QLast Update : Thu Jul 24 04:54:06 2025
 Response via : Initial Calibration
 Integrator: ChemStation

Volume Inj. : 2 µl
 Signal #1 Phase : ZB-MR1 Signal #2 Phase: ZB-MR2
 Signal #1 Info : 30Mx0.32mmx 0.50µ Signal #2 Info : 30M x 0.32mm x 0.25µm

	Compound	RT#1	RT#2	Resp#1	Resp#2	ng/ml	ng/ml
42)	L9 AR-1268-2	7.647	7.606	35392007	12667689	24.027	29.802
43)	L9 AR-1268-3	7.855	7.813	694403	293081	0.555	0.912 #
44)	L9 AR-1268-4	8.150	8.099	1364311	334066	2.831	3.002
45)	L9 AR-1268-5	8.444	8.389	2342272	353085	0.698	0.483 #

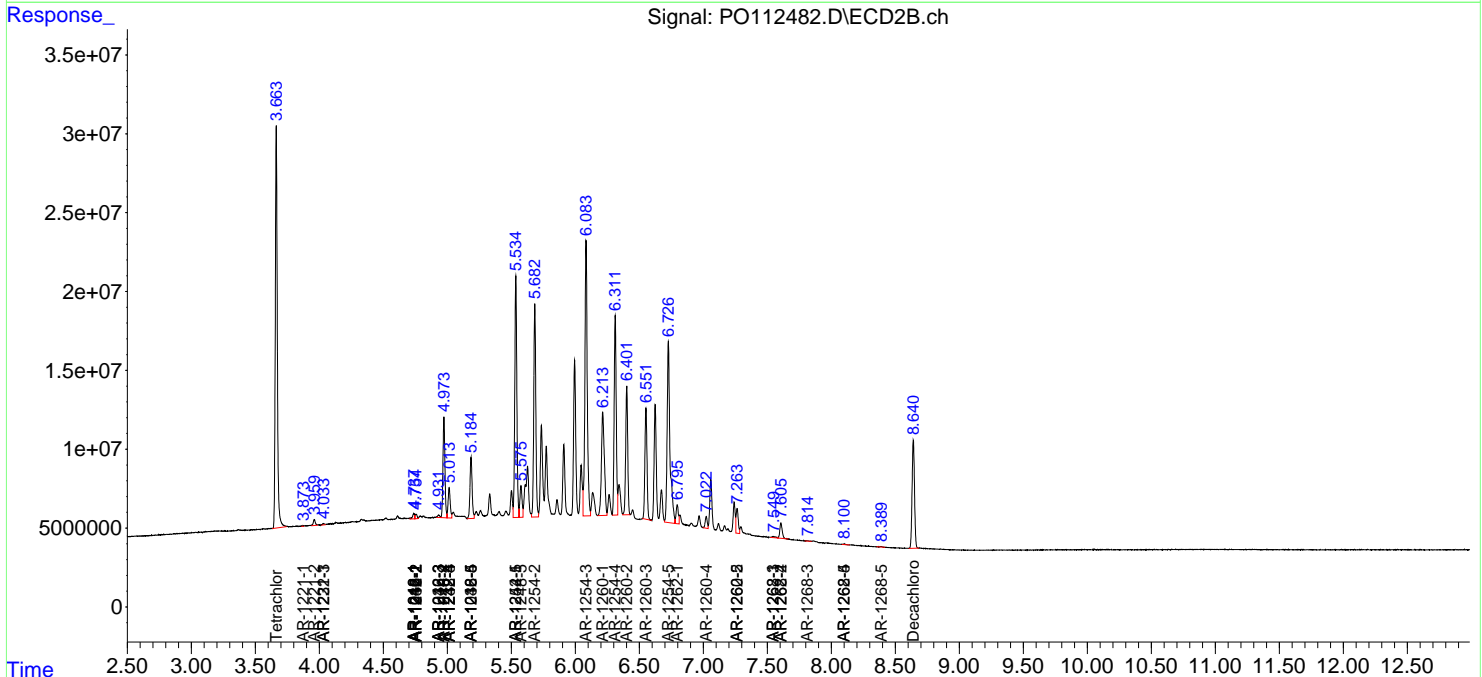
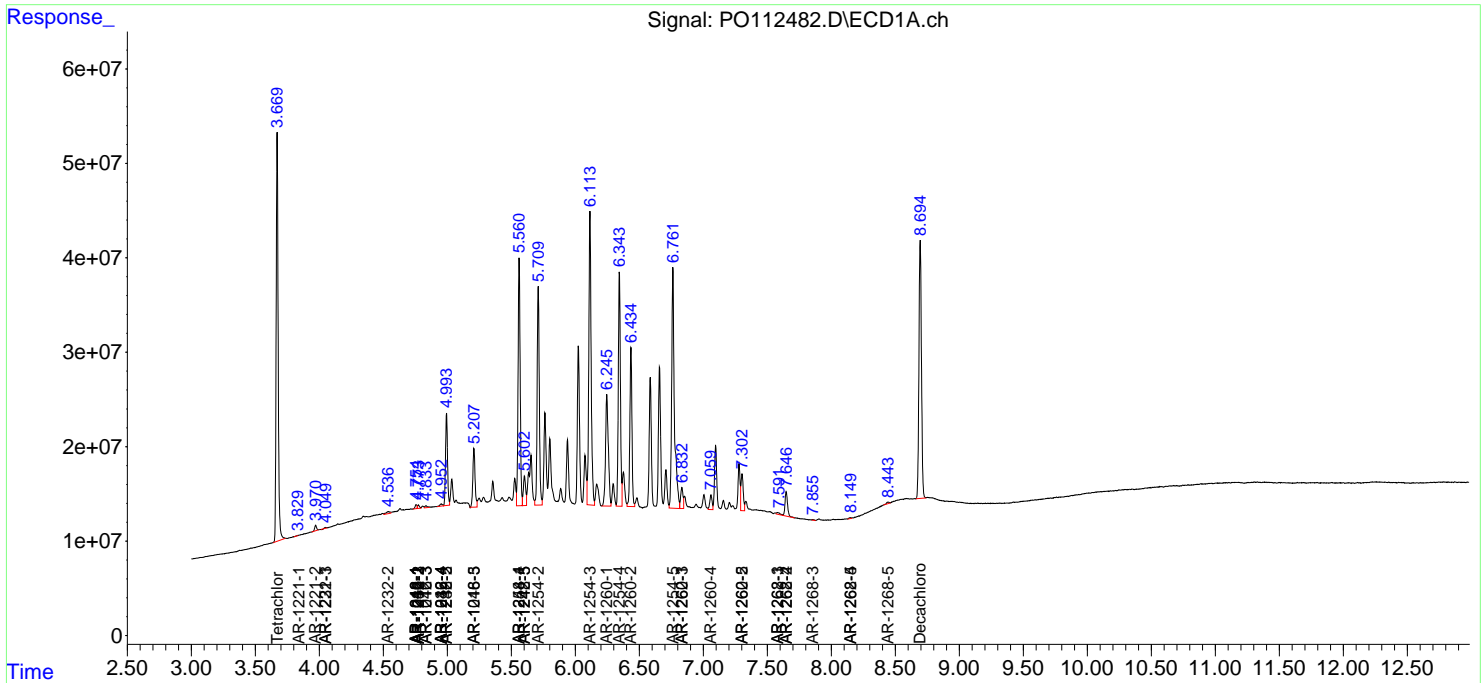
(f)=RT Delta > 1/2 Window (#)=Amounts differ by > 25% (m)=manual int.

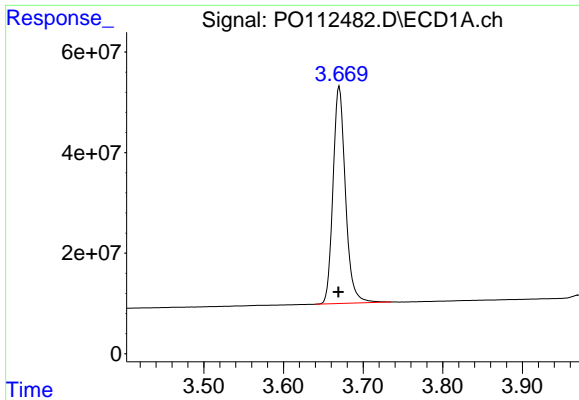
Data Path : Z:\pestpcbsrv\HPCHEM1\ECD_O\Data\P0072425\
 Data File : P0112482.D
 Signal(s) : Signal #1: ECD1A.ch Signal #2: ECD2B.ch
 Acq On : 24 Jul 2025 22:17
 Operator : YP/AJ
 Sample : AR1254CCC500
 Misc :
 ALS Vial : 6 Sample Multiplier: 1

Instrument :
 ECD_O
 ClientSampleId :
 AR1254CCC500

Integration File signal 1: autoint1.e
 Integration File signal 2: autoint2.e
 Quant Time: Jul 24 23:49:22 2025
 Quant Method : Z:\pestpcbsrv\HPCHEM1\ECD_O\methods\P0072325.M
 Quant Title : GC EXTRACTABLES
 QLast Update : Thu Jul 24 04:54:06 2025
 Response via : Initial Calibration
 Integrator: ChemStation

Volume Inj. : 2 µl
 Signal #1 Phase : ZB-MR1 Signal #2 Phase: ZB-MR2
 Signal #1 Info : 30Mx0.32mmx 0.50µ Signal #2 Info : 30M x 0.32mm x 0.25µm

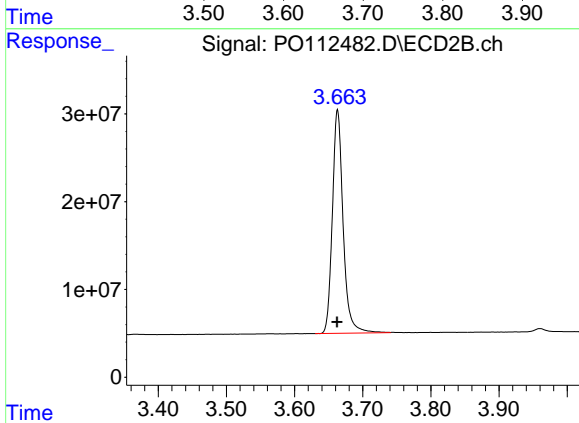




#1 Tetrachloro-m-xylene

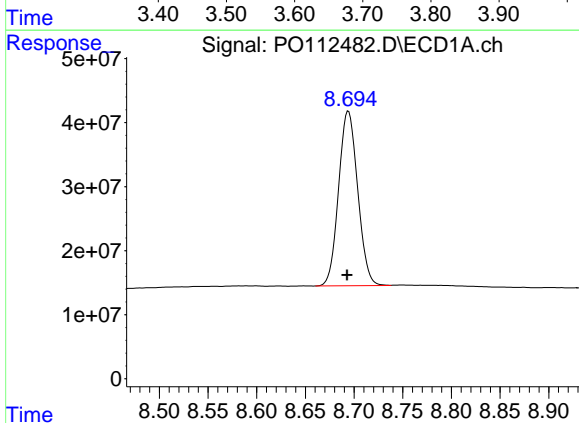
R.T.: 3.670 min
 Delta R.T.: 0.001 min
 Response: 468825313
 Conc: 57.65 ng/ml

Instrument :
 ECD_O
 ClientSampleId :
 AR1254CCC500



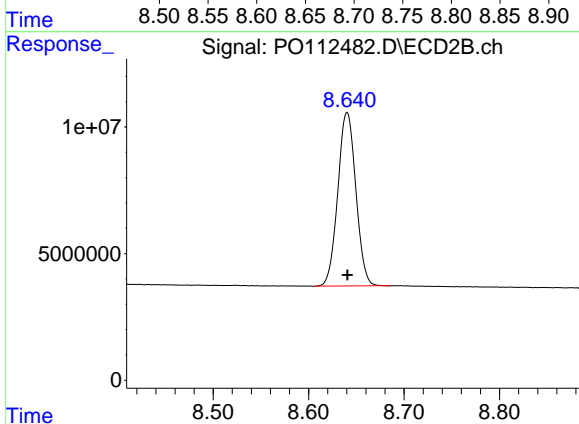
#1 Tetrachloro-m-xylene

R.T.: 3.663 min
 Delta R.T.: 0.000 min
 Response: 279525793
 Conc: 56.25 ng/ml



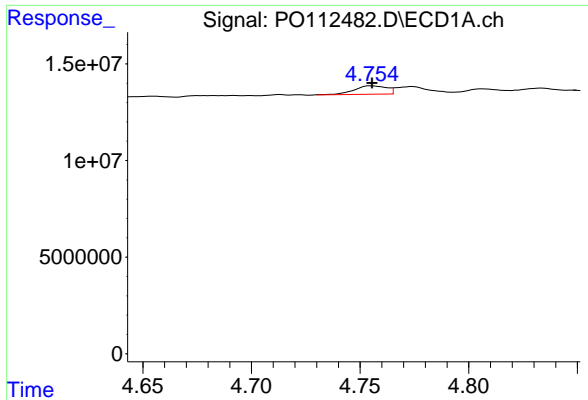
#2 Decachlorobiphenyl

R.T.: 8.694 min
 Delta R.T.: 0.002 min
 Response: 372343674
 Conc: 50.92 ng/ml



#2 Decachlorobiphenyl

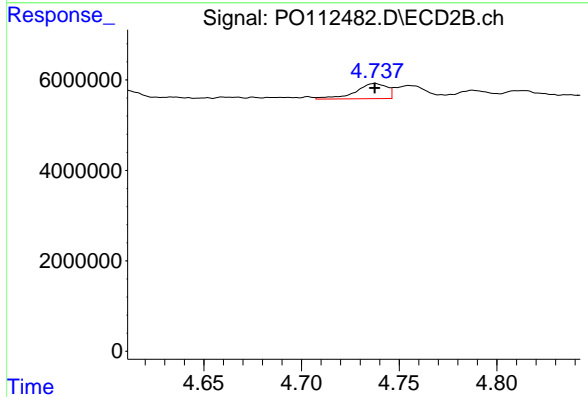
R.T.: 8.640 min
 Delta R.T.: 0.000 min
 Response: 90021102
 Conc: 50.94 ng/ml



#3 AR-1016-1

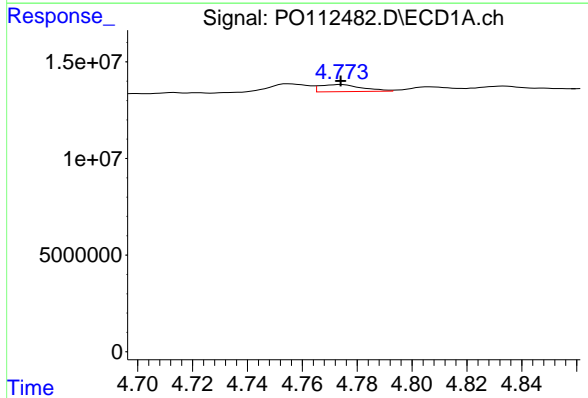
R.T.: 4.755 min
 Delta R.T.: 0.000 min
 Response: 4454658
 Conc: 16.60 ng/ml

Instrument :
 ECD_O
 ClientSampleId :
 AR1254CCC500



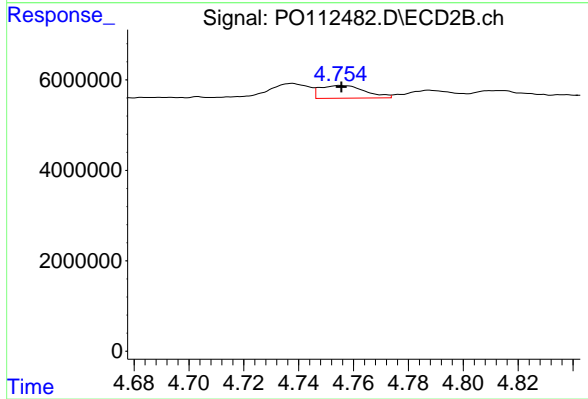
#3 AR-1016-1

R.T.: 4.738 min
 Delta R.T.: 0.000 min
 Response: 3780211
 Conc: 21.60 ng/ml



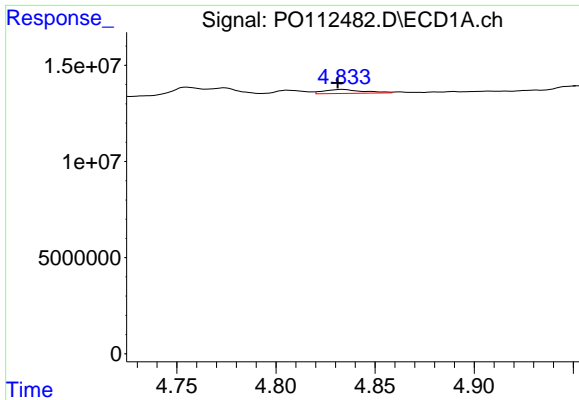
#4 AR-1016-2

R.T.: 4.774 min
 Delta R.T.: 0.000 min
 Response: 3957278
 Conc: 9.74 ng/ml



#4 AR-1016-2

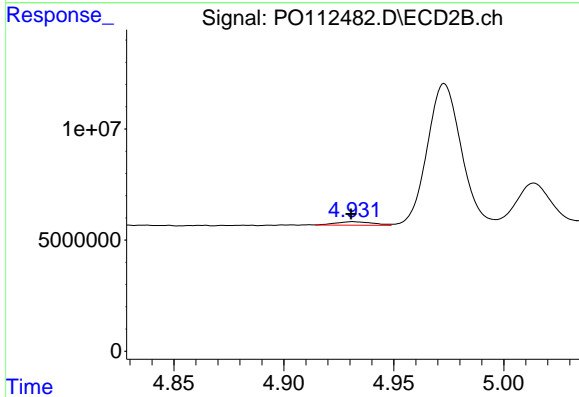
R.T.: 4.755 min
 Delta R.T.: 0.000 min
 Response: 3206317
 Conc: 12.31 ng/ml



#5 AR-1016-3

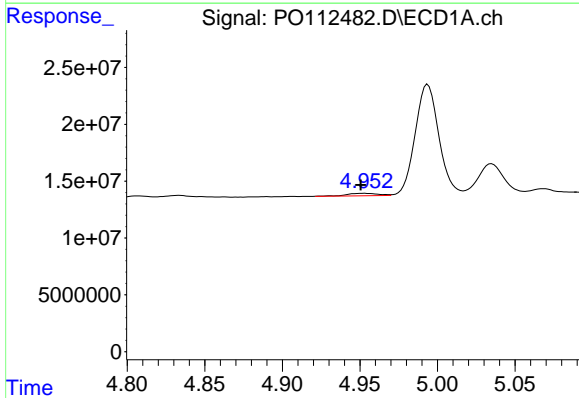
R.T.: 4.834 min
 Delta R.T.: 0.002 min
 Response: 2874394
 Conc: 10.98 ng/ml

Instrument :
 ECD_O
 ClientSampleId :
 AR1254CCC500



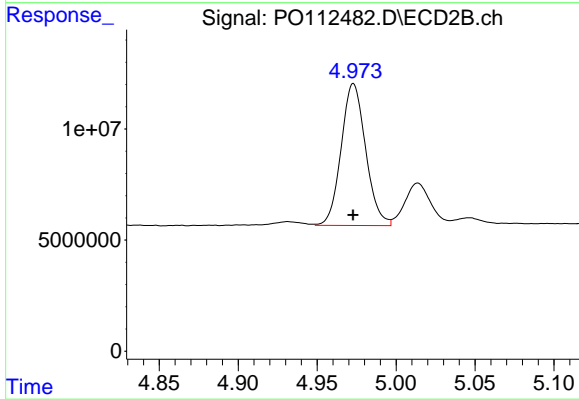
#5 AR-1016-3

R.T.: 4.931 min
 Delta R.T.: 0.000 min
 Response: 1883404
 Conc: 13.85 ng/ml



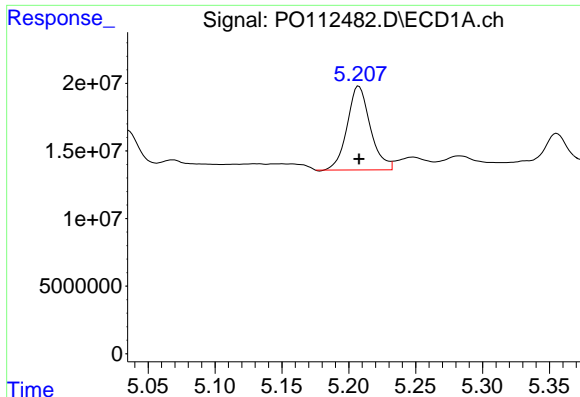
#6 AR-1016-4

R.T.: 4.953 min
 Delta R.T.: 0.002 min
 Response: 3162891
 Conc: 14.93 ng/ml



#6 AR-1016-4

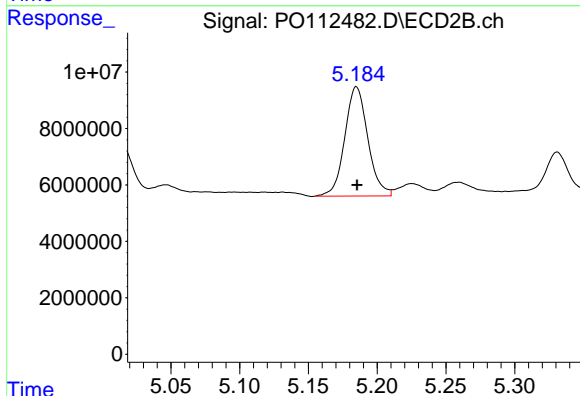
R.T.: 4.973 min
 Delta R.T.: 0.000 min
 Response: 68991935
 Conc: 621.07 ng/ml



#7 AR-1016-5

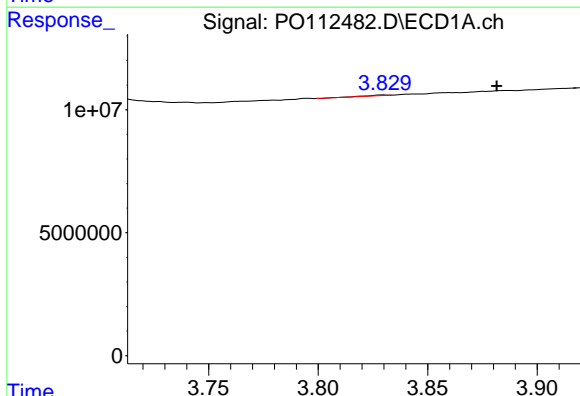
R.T.: 5.208 min
 Delta R.T.: 0.000 min
 Response: 74538593
 Conc: 339.63 ng/ml

Instrument :
 ECD_O
 ClientSampleId :
 AR1254CCC500



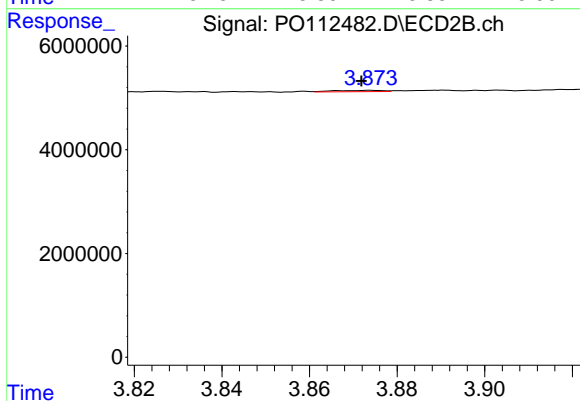
#7 AR-1016-5

R.T.: 5.185 min
 Delta R.T.: 0.000 min
 Response: 45221070
 Conc: 315.56 ng/ml



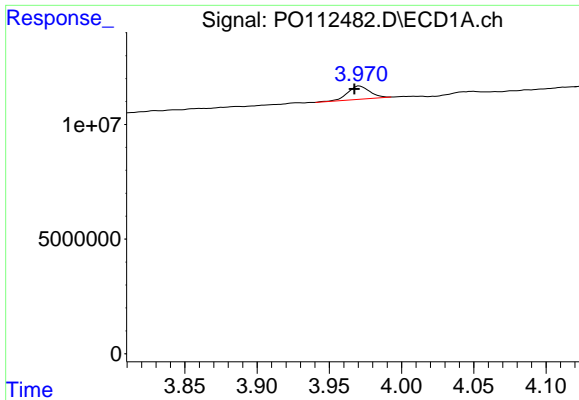
#8 AR-1221-1

R.T.: 3.830 min
 Delta R.T.: -0.052 min
 Response: 145218
 Conc: 1.50 ng/ml



#8 AR-1221-1

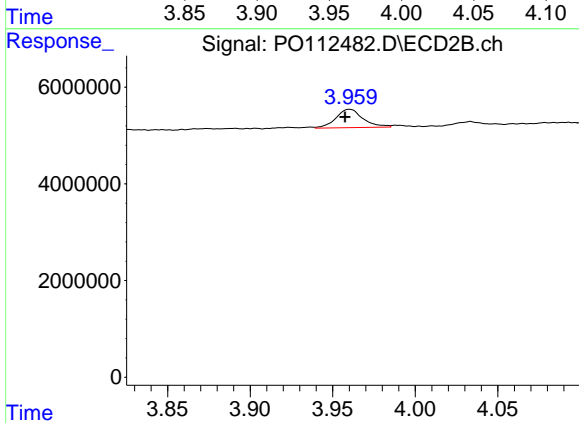
R.T.: 3.874 min
 Delta R.T.: 0.002 min
 Response: 204577
 Conc: 3.04 ng/ml



#9 AR-1221-2

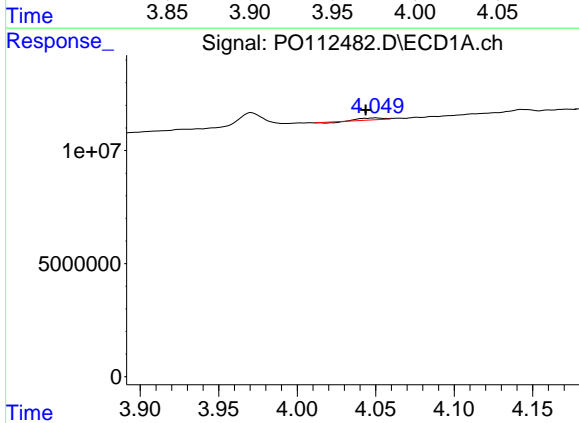
R.T.: 3.971 min
 Delta R.T.: 0.003 min
 Response: 6085117
 Conc: 84.68 ng/ml

Instrument :
 ECD_O
 ClientSampleId :
 AR1254CCC500



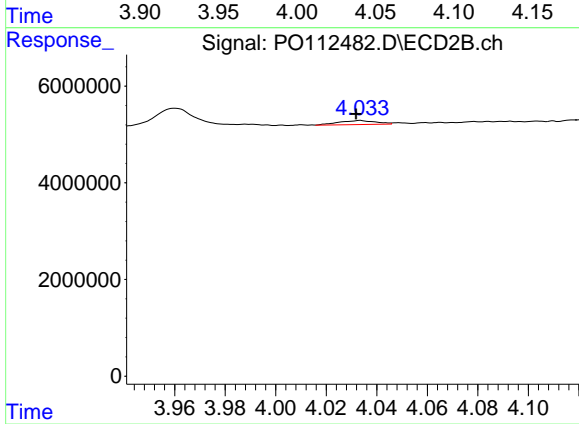
#9 AR-1221-2

R.T.: 3.960 min
 Delta R.T.: 0.003 min
 Response: 4354296
 Conc: 85.84 ng/ml



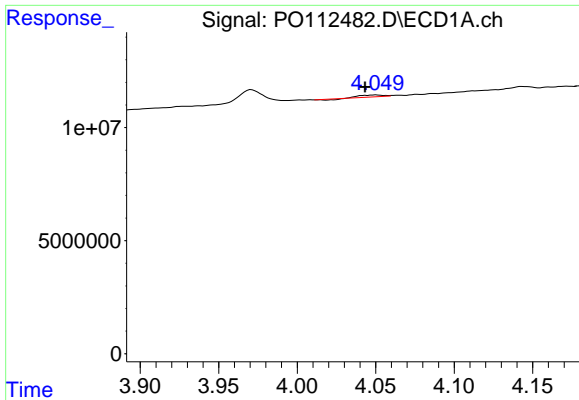
#10 AR-1221-3

R.T.: 4.050 min
 Delta R.T.: 0.006 min
 Response: 649554
 Conc: 2.73 ng/ml



#10 AR-1221-3

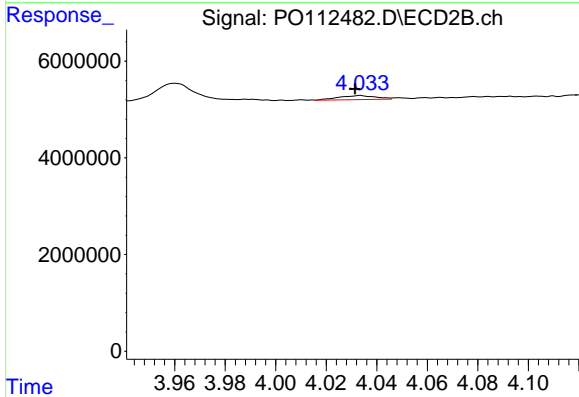
R.T.: 4.034 min
 Delta R.T.: 0.002 min
 Response: 856207
 Conc: 5.40 ng/ml



#11 AR-1232-1

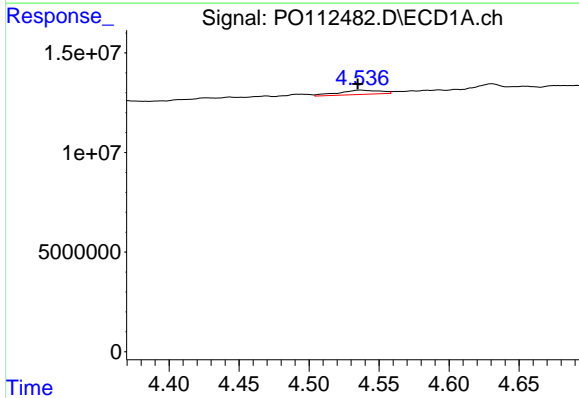
R.T.: 4.050 min
 Delta R.T.: 0.006 min
 Response: 649554
 Conc: 3.47 ng/ml

Instrument :
 ECD_O
 ClientSampleId :
 AR1254CCC500



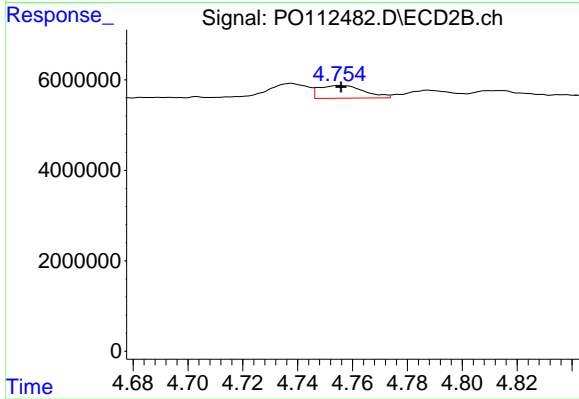
#11 AR-1232-1

R.T.: 4.034 min
 Delta R.T.: 0.002 min
 Response: 856207
 Conc: 6.77 ng/ml



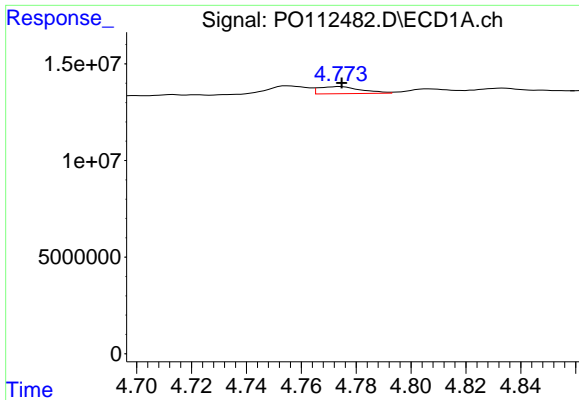
#12 AR-1232-2

R.T.: 4.537 min
 Delta R.T.: 0.002 min
 Response: 4520149
 Conc: 42.00 ng/ml



#12 AR-1232-2

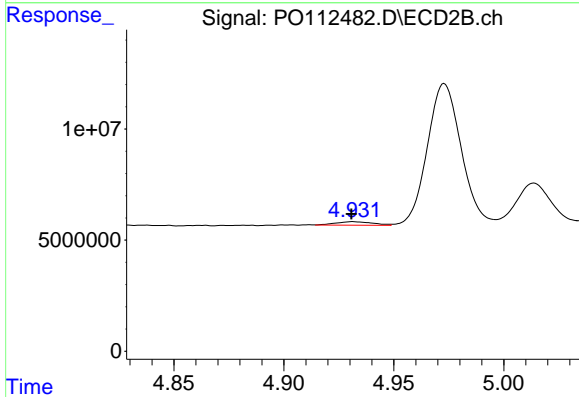
R.T.: 4.755 min
 Delta R.T.: 0.000 min
 Response: 3206317
 Conc: 24.45 ng/ml



#13 AR-1232-3

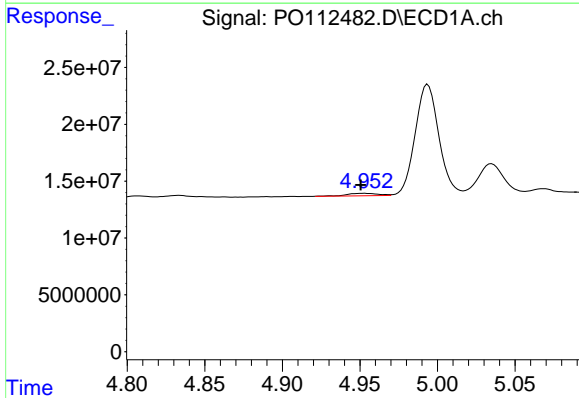
R.T.: 4.774 min
 Delta R.T.: 0.000 min
 Response: 3957278
 Conc: 19.14 ng/ml

Instrument :
 ECD_O
 ClientSampleId :
 AR1254CCC500



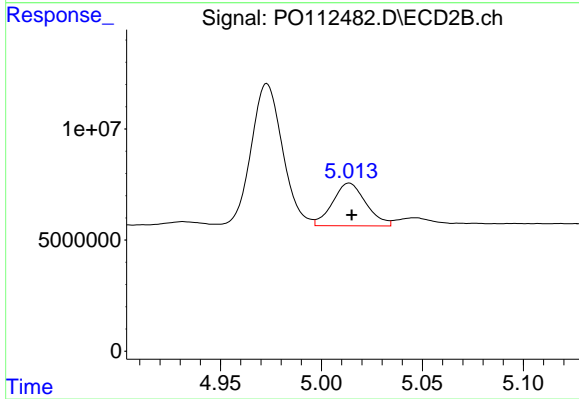
#13 AR-1232-3

R.T.: 4.931 min
 Delta R.T.: 0.000 min
 Response: 1883404
 Conc: 28.03 ng/ml



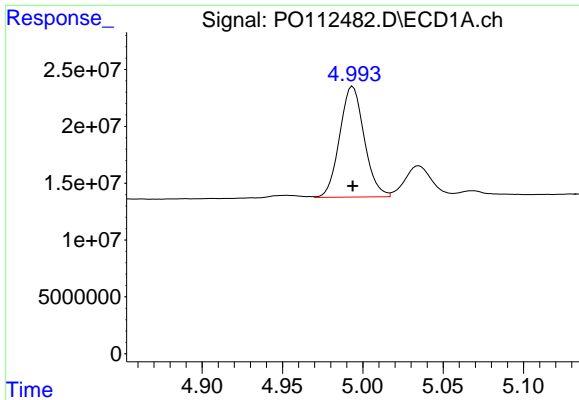
#14 AR-1232-4

R.T.: 4.953 min
 Delta R.T.: 0.002 min
 Response: 3162891
 Conc: 30.20 ng/ml



#14 AR-1232-4

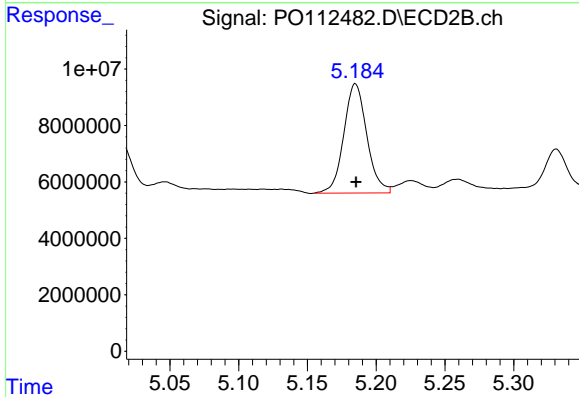
R.T.: 5.014 min
 Delta R.T.: -0.001 min
 Response: 22185413
 Conc: 370.81 ng/ml



#15 AR-1232-5

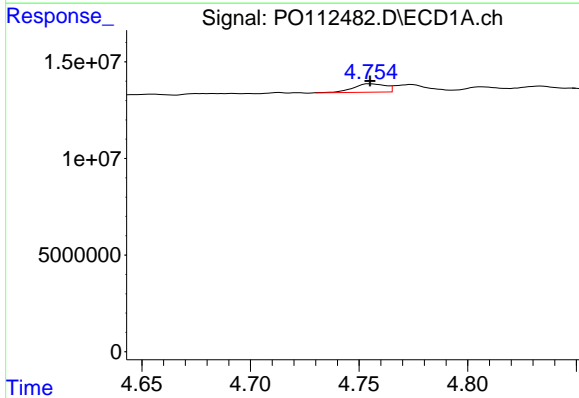
R.T.: 4.994 min
 Delta R.T.: 0.000 min
 Response: 103635164
 Conc: 1526.72 ng/ml

Instrument :
 ECD_O
 ClientSampleId :
 AR1254CCC500



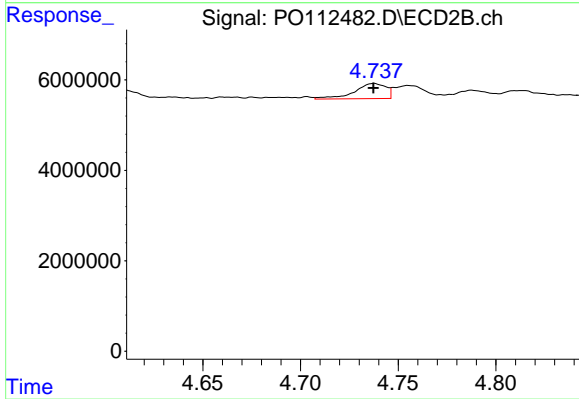
#15 AR-1232-5

R.T.: 5.185 min
 Delta R.T.: 0.000 min
 Response: 45221070
 Conc: 693.54 ng/ml



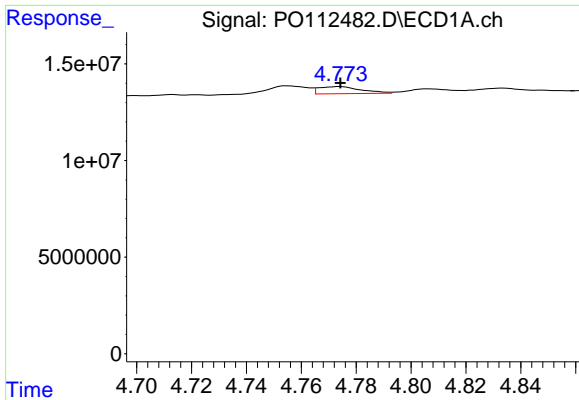
#16 AR-1242-1

R.T.: 4.755 min
 Delta R.T.: 0.000 min
 Response: 4454658
 Conc: 17.99 ng/ml



#16 AR-1242-1

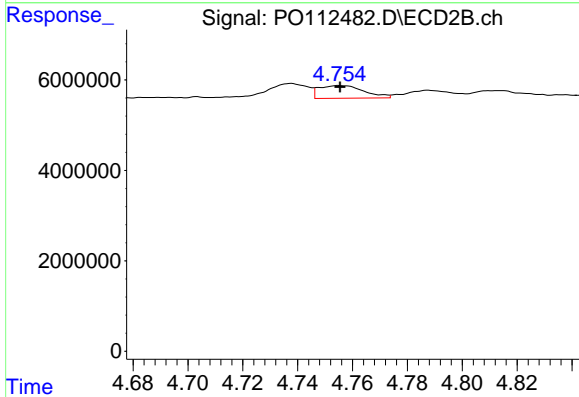
R.T.: 4.738 min
 Delta R.T.: 0.000 min
 Response: 3780211
 Conc: 23.87 ng/ml



#17 AR-1242-2

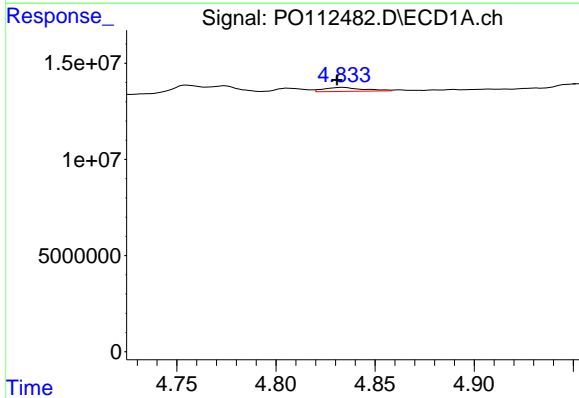
R.T.: 4.774 min
 Delta R.T.: 0.000 min
 Response: 3957278
 Conc: 10.70 ng/ml

Instrument :
 ECD_O
 ClientSampleId :
 AR1254CCC500



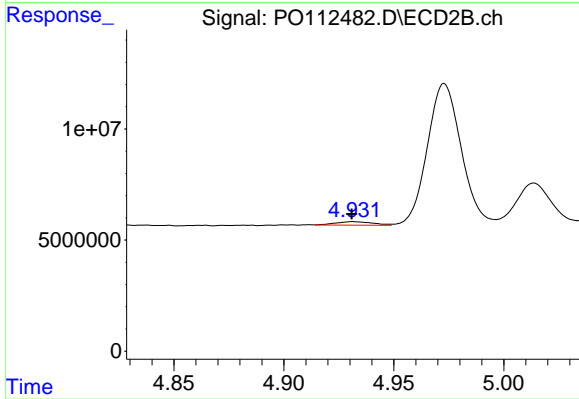
#17 AR-1242-2

R.T.: 4.755 min
 Delta R.T.: 0.000 min
 Response: 3206317
 Conc: 13.72 ng/ml



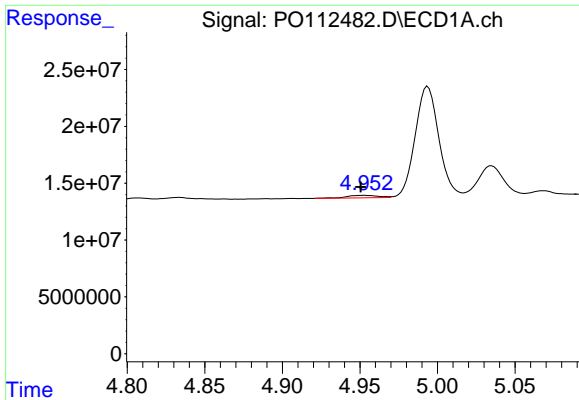
#18 AR-1242-3

R.T.: 4.834 min
 Delta R.T.: 0.003 min
 Response: 2874394
 Conc: 12.15 ng/ml



#18 AR-1242-3

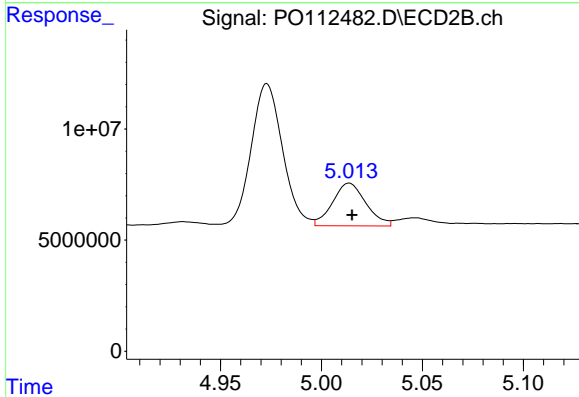
R.T.: 4.931 min
 Delta R.T.: 0.000 min
 Response: 1883404
 Conc: 15.54 ng/ml



#19 AR-1242-4

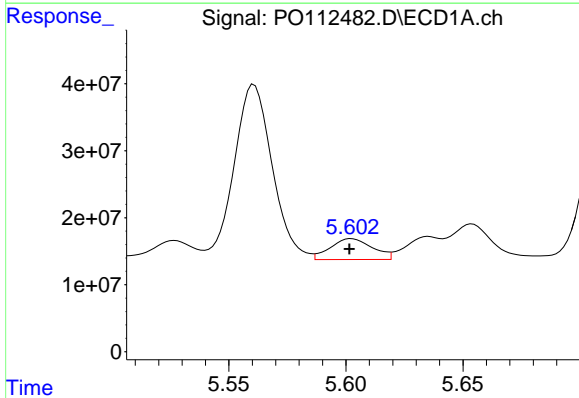
R.T.: 4.953 min
 Delta R.T.: 0.002 min
 Response: 3162891
 Conc: 16.28 ng/ml

Instrument :
 ECD_O
 ClientSampleId :
 AR1254CCC500



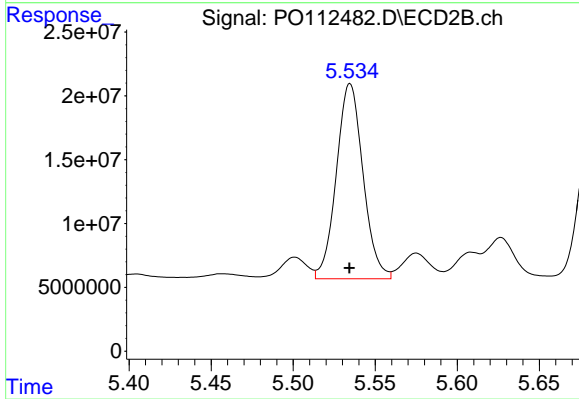
#19 AR-1242-4

R.T.: 5.014 min
 Delta R.T.: -0.001 min
 Response: 22185413
 Conc: 180.75 ng/ml



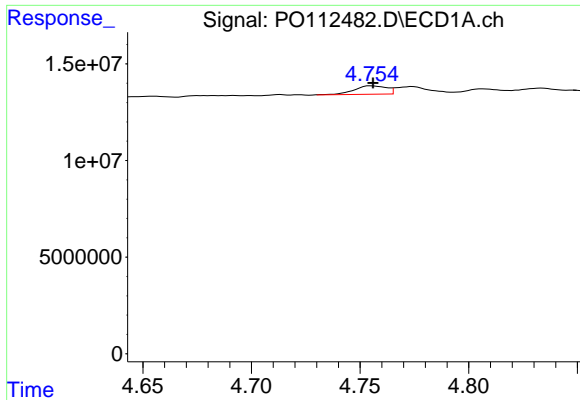
#20 AR-1242-5

R.T.: 5.602 min
 Delta R.T.: 0.000 min
 Response: 39060369
 Conc: 182.60 ng/ml



#20 AR-1242-5

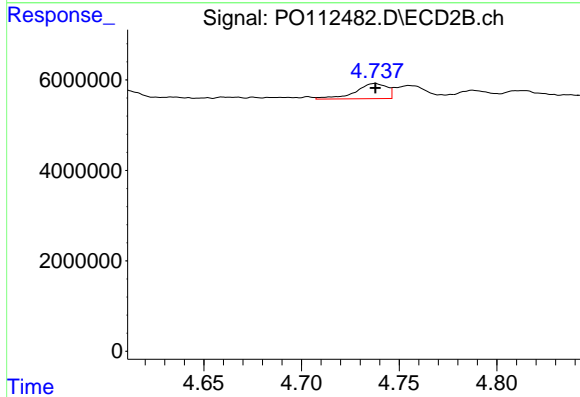
R.T.: 5.535 min
 Delta R.T.: 0.000 min
 Response: 173185615
 Conc: 1075.88 ng/ml



#21 AR-1248-1

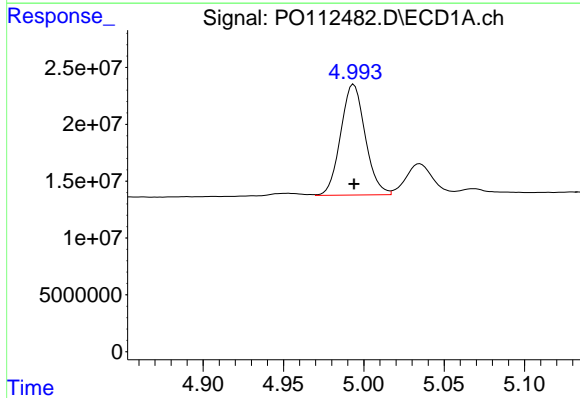
R.T.: 4.755 min
 Delta R.T.: 0.000 min
 Response: 4454658
 Conc: 23.80 ng/ml

Instrument :
 ECD_O
 ClientSampleId :
 AR1254CCC500



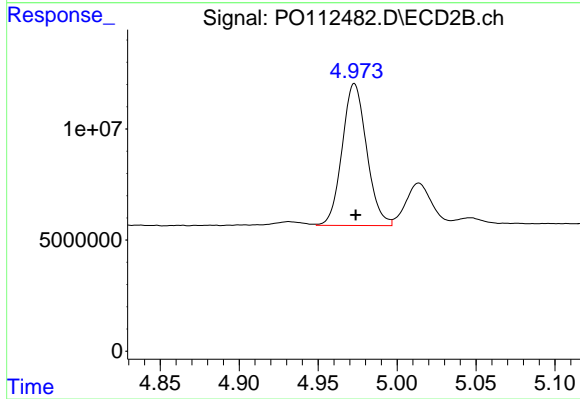
#21 AR-1248-1

R.T.: 4.738 min
 Delta R.T.: 0.000 min
 Response: 3780211
 Conc: 31.11 ng/ml



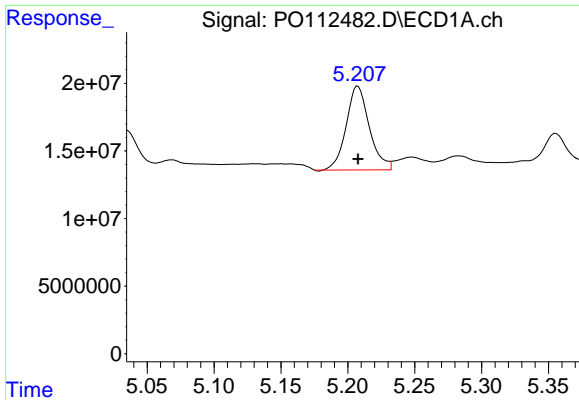
#22 AR-1248-2

R.T.: 4.994 min
 Delta R.T.: 0.000 min
 Response: 103635164
 Conc: 406.23 ng/ml



#22 AR-1248-2

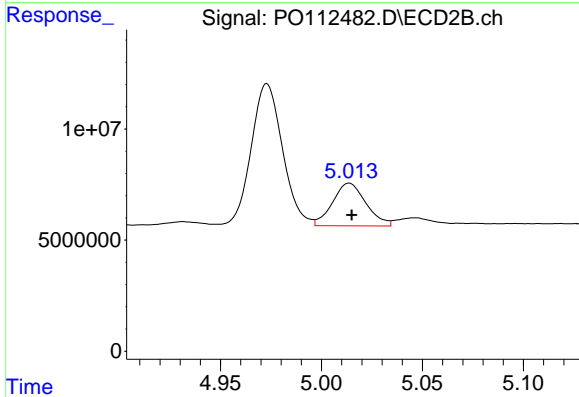
R.T.: 4.973 min
 Delta R.T.: 0.000 min
 Response: 68991935
 Conc: 407.56 ng/ml



#23 AR-1248-3

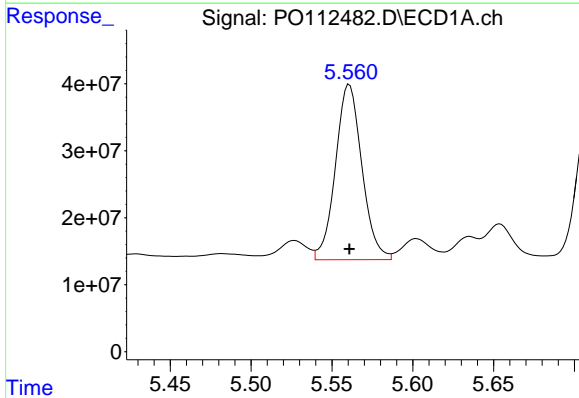
R.T.: 5.208 min
 Delta R.T.: 0.000 min
 Response: 74538593
 Conc: 216.87 ng/ml

Instrument :
 ECD_O
 ClientSampleId :
 AR1254CCC500



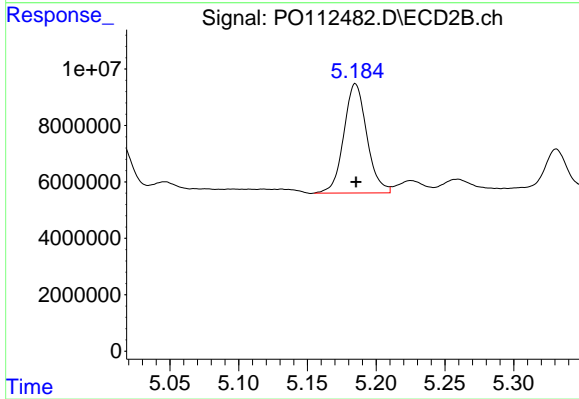
#23 AR-1248-3

R.T.: 5.014 min
 Delta R.T.: -0.001 min
 Response: 22185413
 Conc: 124.88 ng/ml



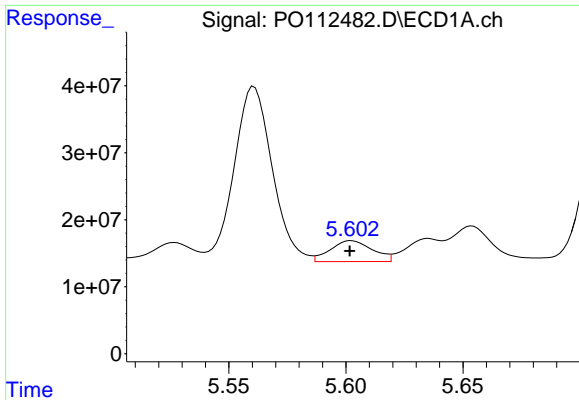
#24 AR-1248-4

R.T.: 5.561 min
 Delta R.T.: 0.000 min
 Response: 297340777
 Conc: 585.23 ng/ml



#24 AR-1248-4

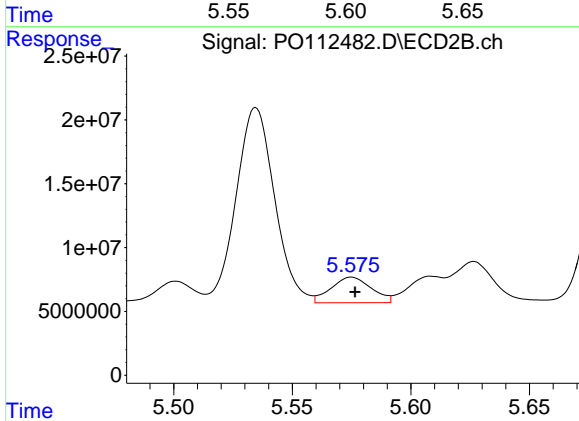
R.T.: 5.185 min
 Delta R.T.: 0.000 min
 Response: 45221070
 Conc: 217.04 ng/ml



#25 AR-1248-5

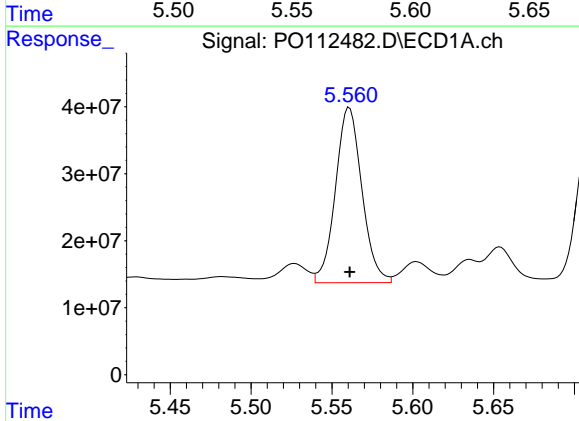
R.T.: 5.602 min
 Delta R.T.: 0.000 min
 Response: 39060369
 Conc: 111.73 ng/ml

Instrument :
 ECD_O
 ClientSampleId :
 AR1254CCC500



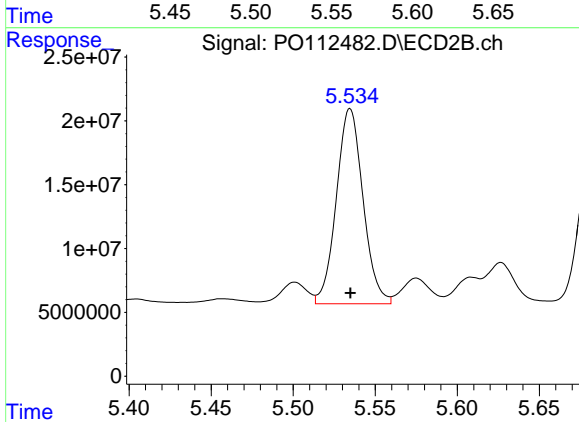
#25 AR-1248-5

R.T.: 5.575 min
 Delta R.T.: -0.001 min
 Response: 23846113
 Conc: 111.03 ng/ml



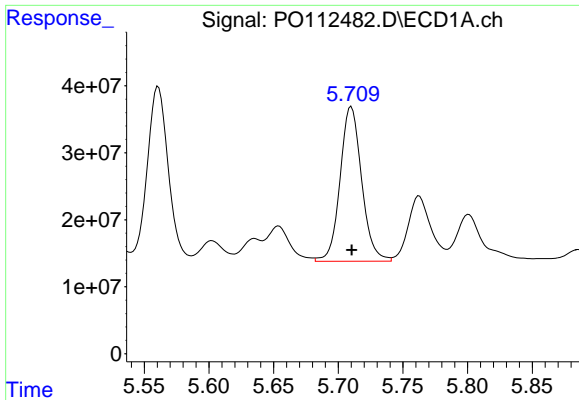
#26 AR-1254-1

R.T.: 5.561 min
 Delta R.T.: 0.000 min
 Response: 297340777
 Conc: 541.65 ng/ml



#26 AR-1254-1

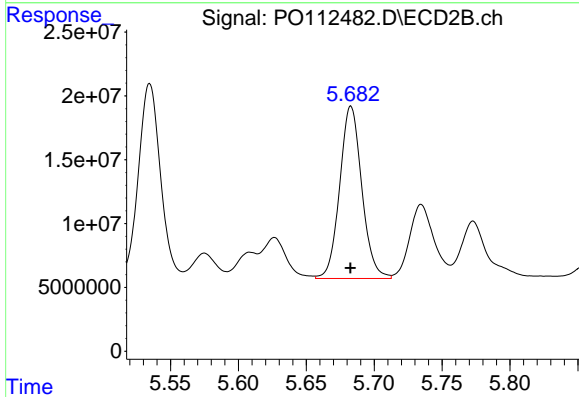
R.T.: 5.535 min
 Delta R.T.: 0.000 min
 Response: 173185615
 Conc: 527.01 ng/ml



#27 AR-1254-2

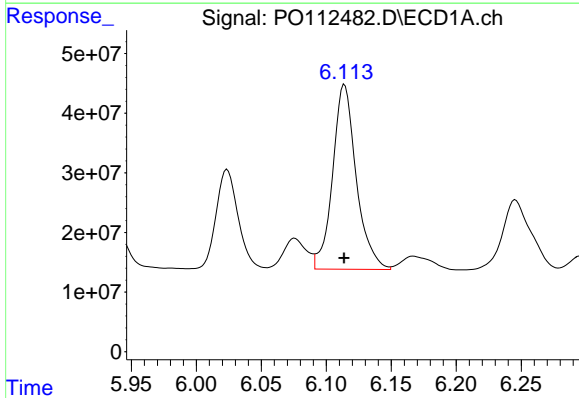
R.T.: 5.710 min
 Delta R.T.: 0.000 min
 Response: 268395941
 Conc: 552.35 ng/ml

Instrument :
 ECD_O
 ClientSampleId :
 AR1254CCC500



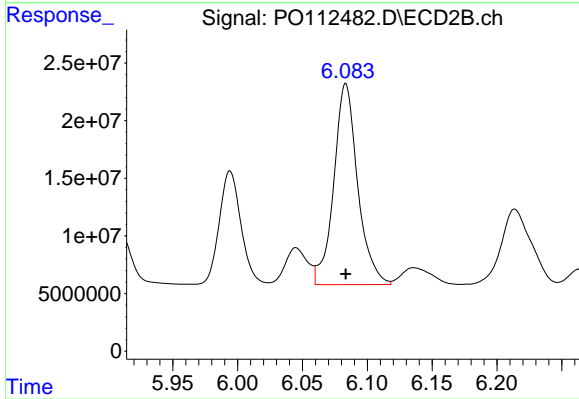
#27 AR-1254-2

R.T.: 5.683 min
 Delta R.T.: 0.000 min
 Response: 153052281
 Conc: 528.69 ng/ml



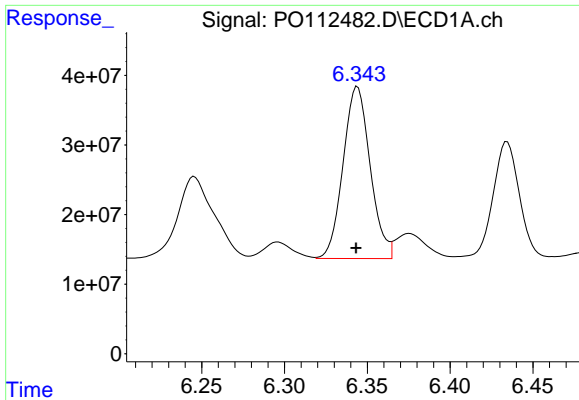
#28 AR-1254-3

R.T.: 6.114 min
 Delta R.T.: 0.000 min
 Response: 392450379
 Conc: 527.28 ng/ml



#28 AR-1254-3

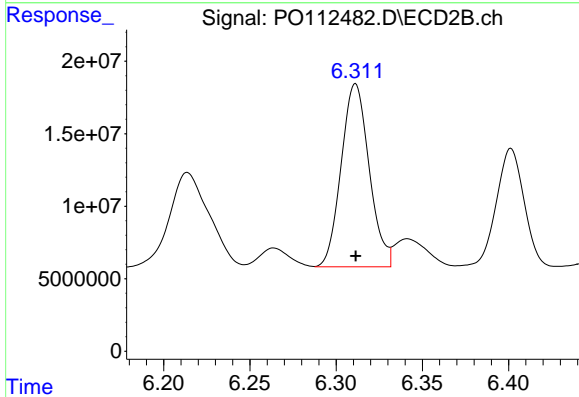
R.T.: 6.083 min
 Delta R.T.: 0.000 min
 Response: 224319369
 Conc: 524.77 ng/ml



#29 AR-1254-4

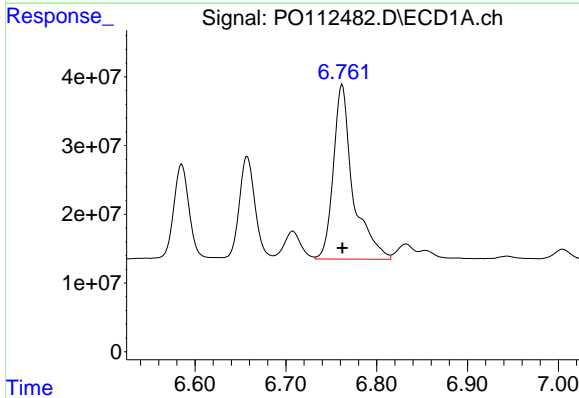
R.T.: 6.344 min
 Delta R.T.: 0.000 min
 Response: 281460336
 Conc: 512.02 ng/ml

Instrument :
 ECD_O
 ClientSampleId :
 AR1254CCC500



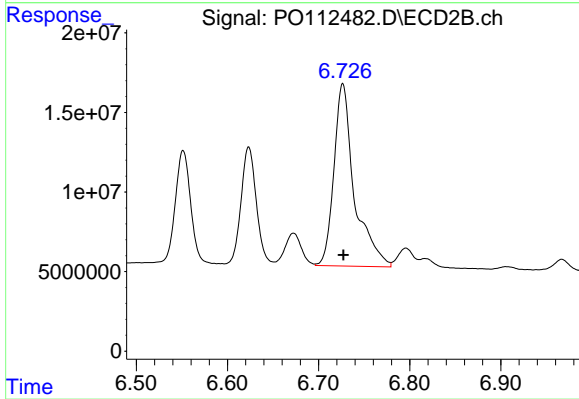
#29 AR-1254-4

R.T.: 6.311 min
 Delta R.T.: 0.000 min
 Response: 142447558
 Conc: 521.86 ng/ml



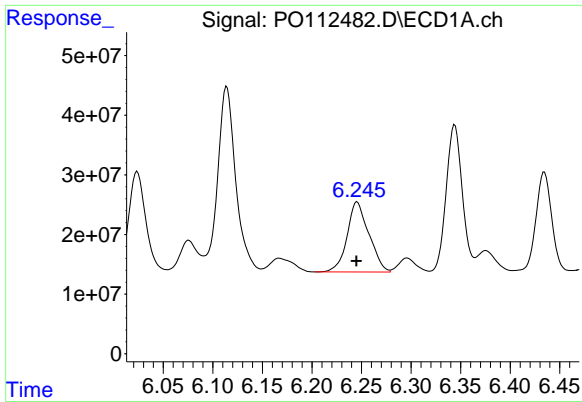
#30 AR-1254-5

R.T.: 6.762 min
 Delta R.T.: 0.000 min
 Response: 381439469
 Conc: 538.89 ng/ml



#30 AR-1254-5

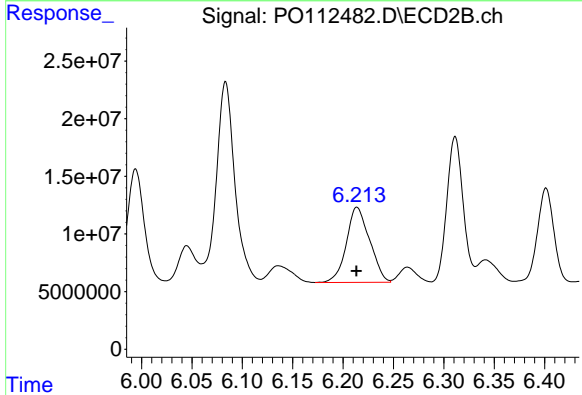
R.T.: 6.727 min
 Delta R.T.: 0.000 min
 Response: 178344738
 Conc: 533.93 ng/ml



#31 AR-1260-1

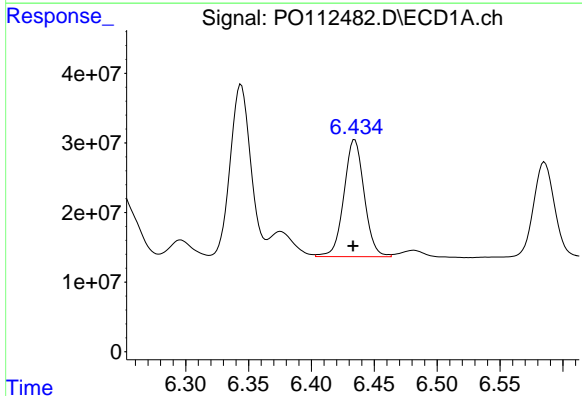
R.T.: 6.246 min
 Delta R.T.: 0.000 min
 Response: 179754214
 Conc: 409.15 ng/ml

Instrument :
 ECD_O
 ClientSampleId :
 AR1254CCC500



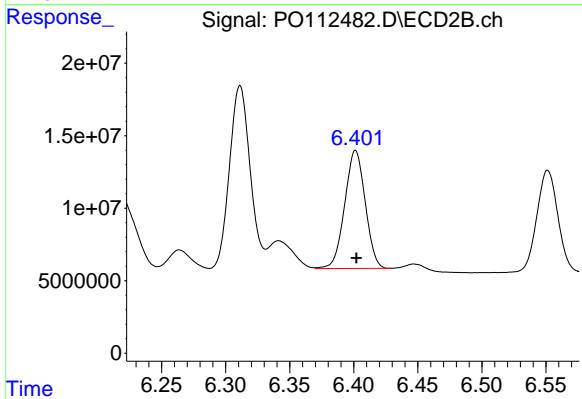
#31 AR-1260-1

R.T.: 6.214 min
 Delta R.T.: 0.000 min
 Response: 104623168
 Conc: 421.00 ng/ml



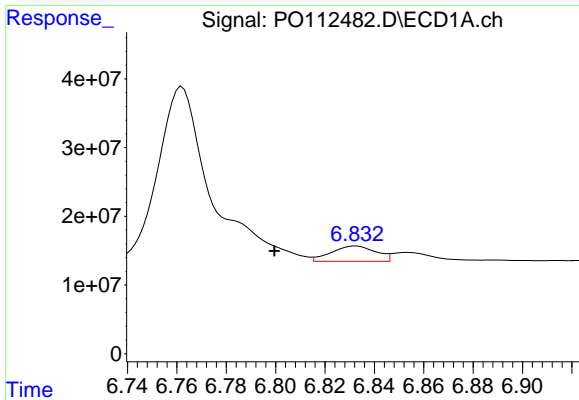
#32 AR-1260-2

R.T.: 6.434 min
 Delta R.T.: 0.001 min
 Response: 188584142
 Conc: 274.15 ng/ml



#32 AR-1260-2

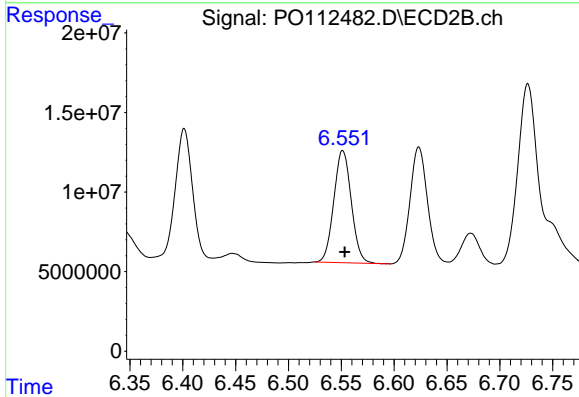
R.T.: 6.401 min
 Delta R.T.: 0.000 min
 Response: 90778191
 Conc: 275.51 ng/ml



#33 AR-1260-3

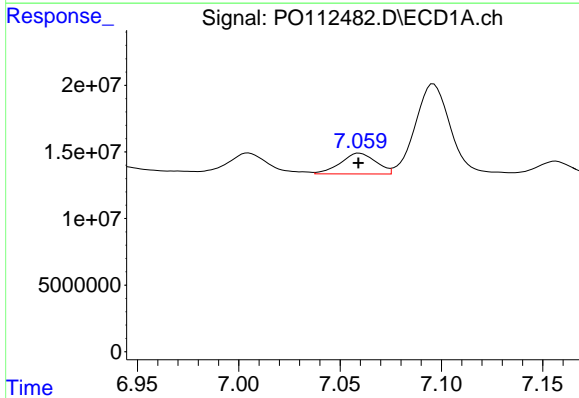
R.T.: 6.833 min
 Delta R.T.: 0.033 min
 Response: 28001784
 Conc: 47.62 ng/ml

Instrument :
 ECD_O
 ClientSampleId :
 AR1254CCC500



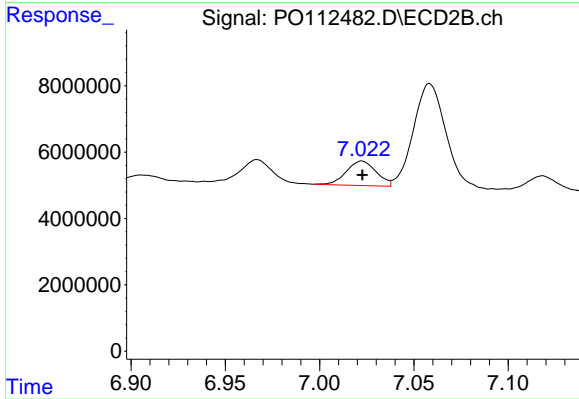
#33 AR-1260-3

R.T.: 6.551 min
 Delta R.T.: -0.002 min
 Response: 80793375
 Conc: 314.47 ng/ml



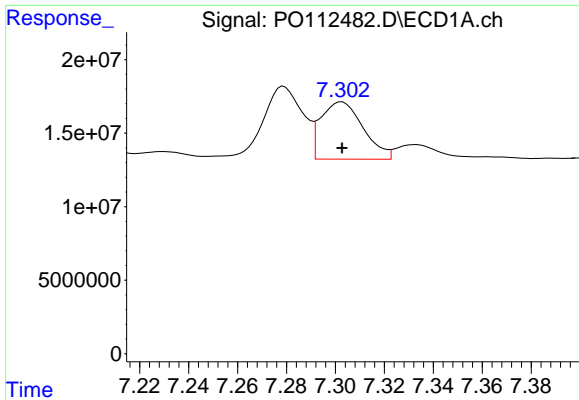
#34 AR-1260-4

R.T.: 7.060 min
 Delta R.T.: 0.000 min
 Response: 19034618
 Conc: 42.20 ng/ml



#34 AR-1260-4

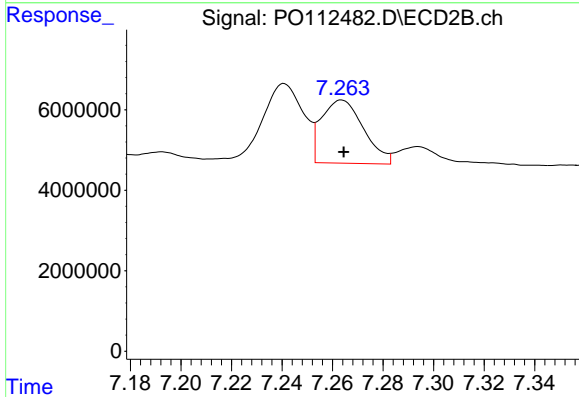
R.T.: 7.022 min
 Delta R.T.: 0.000 min
 Response: 8174474
 Conc: 42.73 ng/ml



#35 AR-1260-5

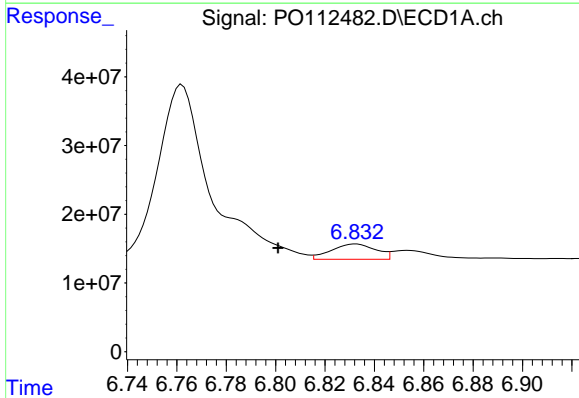
R.T.: 7.303 min
 Delta R.T.: 0.000 min
 Response: 46822186
 Conc: 37.79 ng/ml

Instrument :
 ECD_O
 ClientSampleId :
 AR1254CCC500



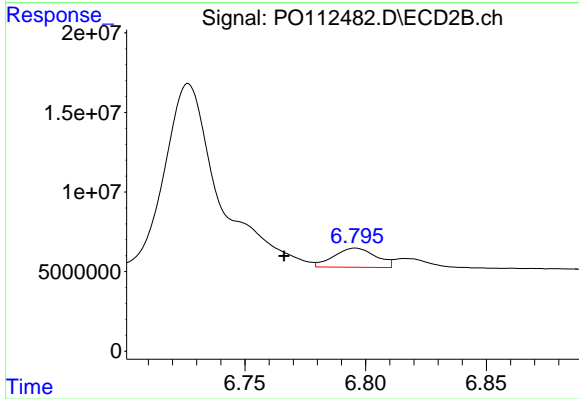
#35 AR-1260-5

R.T.: 7.264 min
 Delta R.T.: 0.000 min
 Response: 18116248
 Conc: 43.95 ng/ml



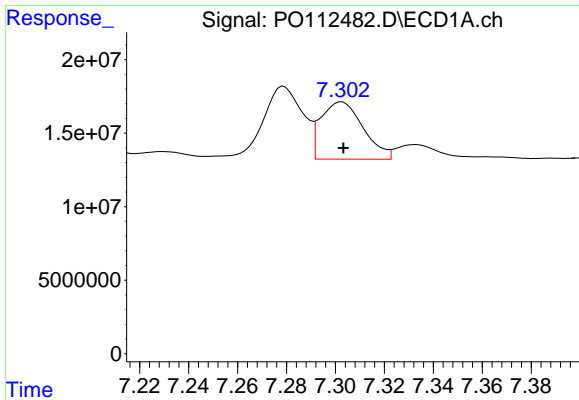
#36 AR-1262-1

R.T.: 6.833 min
 Delta R.T.: 0.031 min
 Response: 28001784
 Conc: 30.14 ng/ml



#36 AR-1262-1

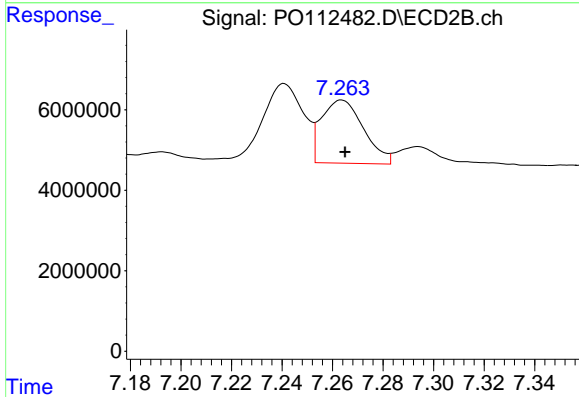
R.T.: 6.796 min
 Delta R.T.: 0.030 min
 Response: 14511912
 Conc: 34.98 ng/ml



#37 AR-1262-2

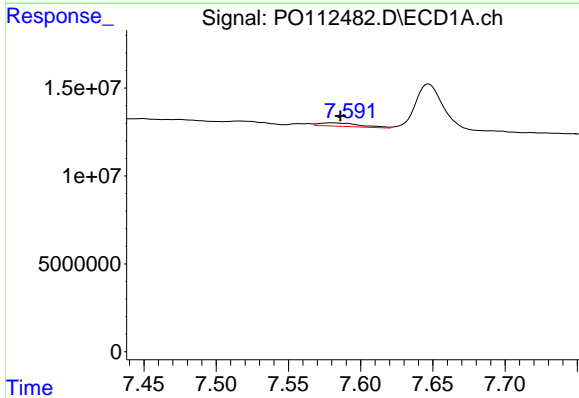
R.T.: 7.303 min
 Delta R.T.: 0.000 min
 Response: 46822186
 Conc: 31.49 ng/ml

Instrument :
 ECD_O
 ClientSampleId :
 AR1254CCC500



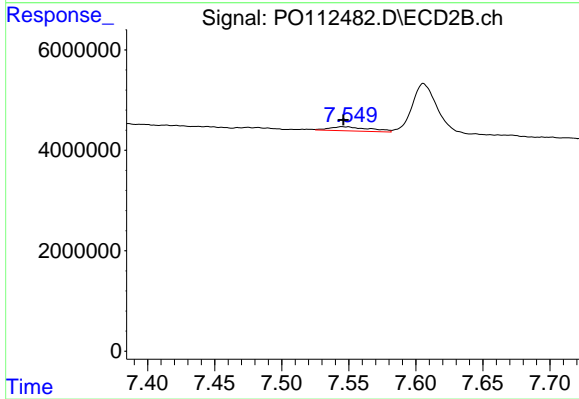
#37 AR-1262-2

R.T.: 7.264 min
 Delta R.T.: -0.001 min
 Response: 18116248
 Conc: 35.14 ng/ml



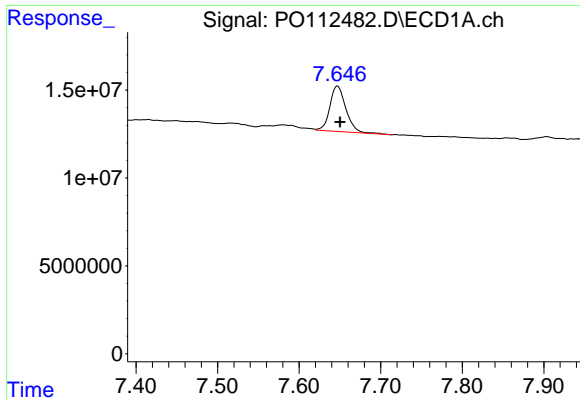
#38 AR-1262-3

R.T.: 7.580 min
 Delta R.T.: -0.006 min
 Response: 3711988
 Conc: 6.29 ng/ml



#38 AR-1262-3

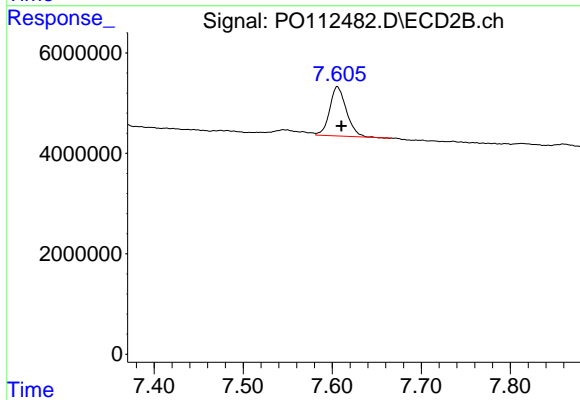
R.T.: 7.545 min
 Delta R.T.: 0.000 min
 Response: 1690792
 Conc: 9.06 ng/ml



#39 AR-1262-4

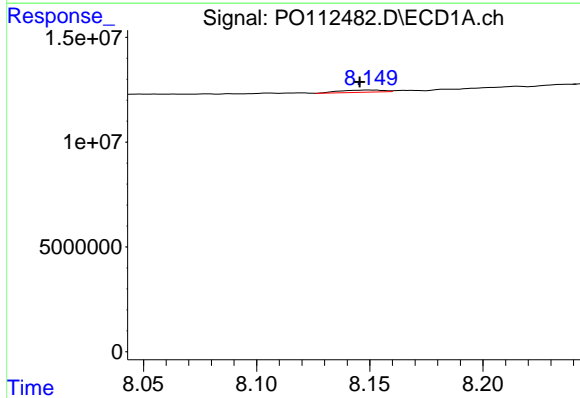
R.T.: 7.647 min
 Delta R.T.: -0.003 min
 Response: 35392007
 Conc: 35.60 ng/ml

Instrument :
 ECD_O
 ClientSampleId :
 AR1254CCC500



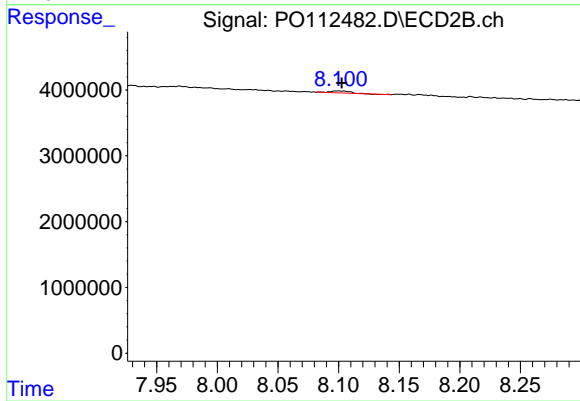
#39 AR-1262-4

R.T.: 7.606 min
 Delta R.T.: -0.005 min
 Response: 12667689
 Conc: 43.97 ng/ml



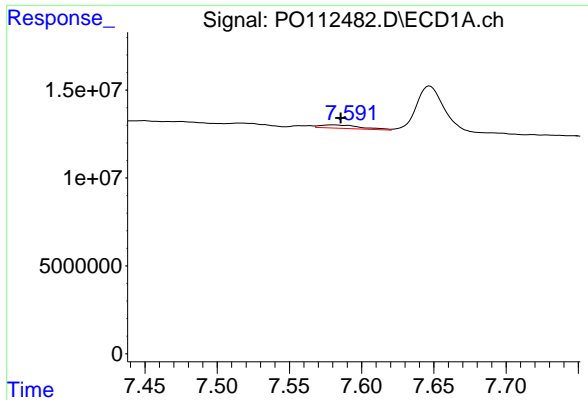
#40 AR-1262-5

R.T.: 8.150 min
 Delta R.T.: 0.004 min
 Response: 1364311
 Conc: 3.14 ng/ml



#40 AR-1262-5

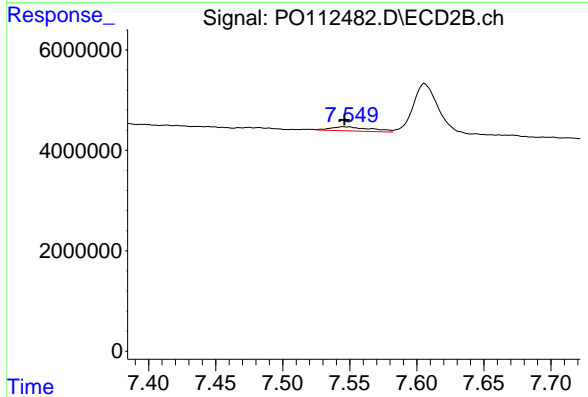
R.T.: 8.099 min
 Delta R.T.: -0.003 min
 Response: 334066
 Conc: 3.36 ng/ml



#41 AR-1268-1

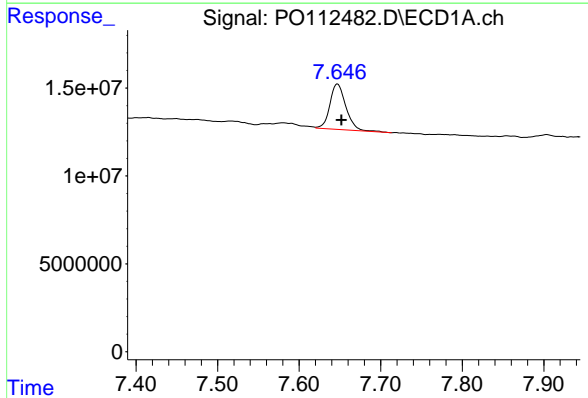
R.T.: 7.580 min
 Delta R.T.: -0.005 min
 Response: 3711988
 Conc: 2.12 ng/ml

Instrument :
 ECD_O
 ClientSampleId :
 AR1254CCC500



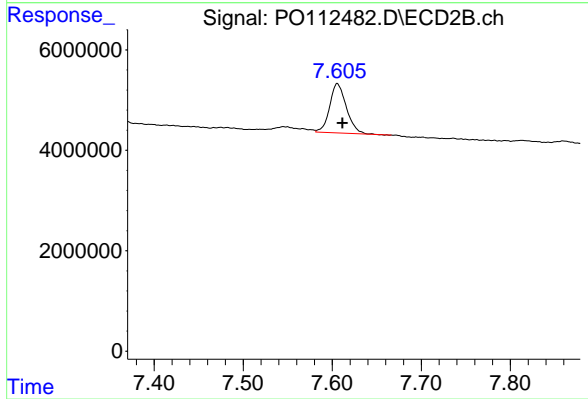
#41 AR-1268-1

R.T.: 7.545 min
 Delta R.T.: 0.000 min
 Response: 1690792
 Conc: 3.26 ng/ml



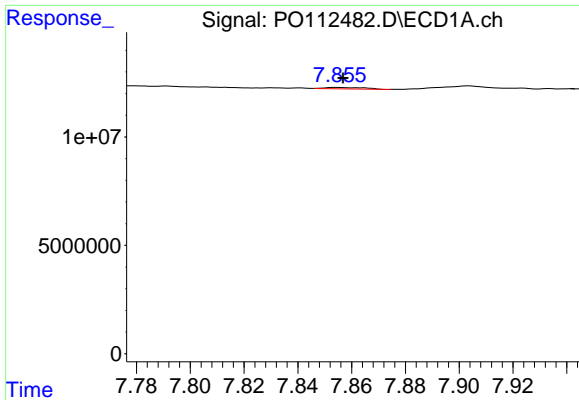
#42 AR-1268-2

R.T.: 7.647 min
 Delta R.T.: -0.005 min
 Response: 35392007
 Conc: 24.03 ng/ml



#42 AR-1268-2

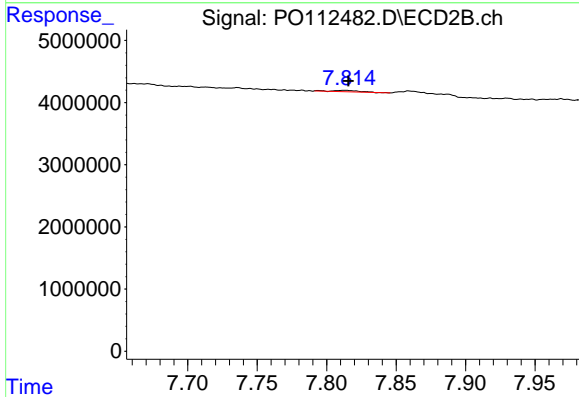
R.T.: 7.606 min
 Delta R.T.: -0.006 min
 Response: 12667689
 Conc: 29.80 ng/ml



#43 AR-1268-3

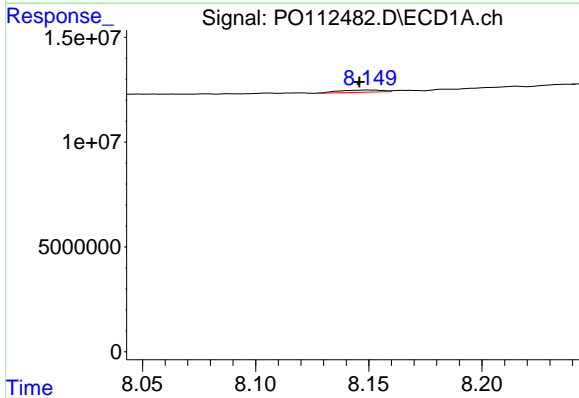
R.T.: 7.855 min
 Delta R.T.: -0.002 min
 Response: 694403
 Conc: 0.55 ng/ml

Instrument :
 ECD_O
 ClientSampleId :
 AR1254CCC500



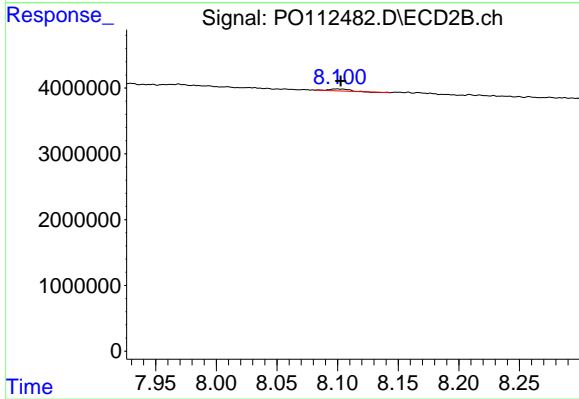
#43 AR-1268-3

R.T.: 7.813 min
 Delta R.T.: -0.003 min
 Response: 293081
 Conc: 0.91 ng/ml



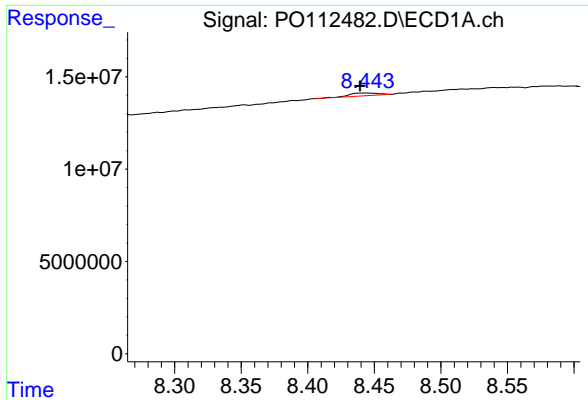
#44 AR-1268-4

R.T.: 8.150 min
 Delta R.T.: 0.004 min
 Response: 1364311
 Conc: 2.83 ng/ml



#44 AR-1268-4

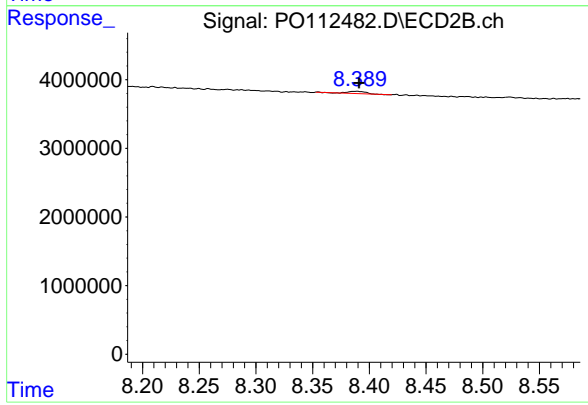
R.T.: 8.099 min
 Delta R.T.: -0.003 min
 Response: 334066
 Conc: 3.00 ng/ml



#45 AR-1268-5

R.T.: 8.444 min
 Delta R.T.: 0.004 min
 Response: 2342272
 Conc: 0.70 ng/ml

Instrument :
 ECD_O
 ClientSampleId :
 AR1254CCC500



#45 AR-1268-5

R.T.: 8.389 min
 Delta R.T.: -0.002 min
 Response: 353085
 Conc: 0.48 ng/ml