

Data Path : Z:\pestpcbsrv\HPCHEM1\ECD_0\Data\P0072425\
 Data File : PO112483.D
 Signal(s) : Signal #1: ECD1A.ch Signal #2: ECD2B.ch
 Acq On : 25 Jul 2025 01:40
 Operator : YP/AJ
 Sample : I.BLK
 Misc :
 ALS Vial : 2 Sample Multiplier: 1

Instrument :
 ECD_0
 ClientSampleId :
 I.BLK

Integration File signal 1: autoint1.e
 Integration File signal 2: autoint2.e
 Quant Time: Jul 25 02:33:57 2025
 Quant Method : Z:\pestpcbsrv\HPCHEM1\ECD_0\methods\P0072325.M
 Quant Title : GC EXTRACTABLES
 QLast Update : Thu Jul 24 04:54:06 2025
 Response via : Initial Calibration
 Integrator: ChemStation

Volume Inj. : 2 µl
 Signal #1 Phase : ZB-MR1 Signal #2 Phase: ZB-MR2
 Signal #1 Info : 30Mx0.32mmx 0.50µ Signal #2 Info : 30M x 0.32mm x 0.25µm

Compound	RT#1	RT#2	Resp#1	Resp#2	ng/ml	ng/ml
System Monitoring Compounds						
1) SA Tetrachlo...	3.675	3.660	175.9E6	102.1E6	21.626	20.556
2) SA Decachlor...	8.705	8.643	159.3E6	37960772	21.793	21.482
Target Compounds						
3) L1 AR-1016-1	4.761	4.732	134695	217433	0.502	1.242 #
4) L1 AR-1016-2	4.778	4.756	190395	198723	0.469	0.763 #
5) L1 AR-1016-3	4.842	4.926	710468	279792	2.715	2.058
6) L1 AR-1016-4	4.951	4.980	1109890	589769	5.239	5.309
7) L1 AR-1016-5	5.222	5.186	2609307	467457	11.889	3.262 #
8) L2 AR-1221-1	3.872	3.877	125363	196876	1.297	2.927 #
9) L2 AR-1221-2	3.976	3.960	2375809	2091370	33.061	41.227
10) L2 AR-1221-3	4.017	4.033	99679	73630	0.419	0.464
11) L3 AR-1232-1	4.017	4.033	99679	73630	0.533	0.582
12) L3 AR-1232-2	4.520	4.756	552402	198723	5.133	1.515 #
13) L3 AR-1232-3	4.778	4.926	190395	279792	0.921	4.164 #
14) L3 AR-1232-4	4.951	5.018	1109890	622451	10.597	10.404
15) L3 AR-1232-5	4.982	5.186	1355005	467457	19.962	7.169 #
16) L4 AR-1242-1	4.761	4.732	134695	217433	0.544	1.373 #
17) L4 AR-1242-2	4.778	4.756	190395	198723	0.515	0.850 #
18) L4 AR-1242-3	4.842	4.926	710468	279792	3.002	2.309
19) L4 AR-1242-4	4.951	5.018	1109890	622451	5.713	5.071
20) L4 AR-1242-5	5.618	5.542	6796891	2522959	31.774	15.673 #
21) L5 AR-1248-1	4.761	4.732	134695	217433	0.719	1.789 #
22) L5 AR-1248-2	4.982	4.980	1355005	589769	5.311	3.484 #
23) L5 AR-1248-3	5.222	5.018	2609307	622451	7.592	3.504 #
24) L5 AR-1248-4	5.563	5.186	2064373	467457	4.063	2.244 #
25) L5 AR-1248-5	5.618	5.578	6796891	1643320	19.442	7.652 #
26) L6 AR-1254-1	5.563	5.542	2064373	2522959	3.761	7.677 #
27) L6 AR-1254-2	5.701	5.683	6475294	1717822	13.326	5.934 #
28) L6 AR-1254-3	6.106	6.082	399052	927312	0.536	2.169 #
29) L6 AR-1254-4	6.346	6.310	990209	444010	1.801	1.627
30) L6 AR-1254-5	6.756	6.728	2940287	383801	4.154	1.149 #
31) L7 AR-1260-1	6.247	6.217	534649	825725	1.217	3.323 #
32) L7 AR-1260-2	6.420	6.414	8507951	138863	12.368	0.421 #
33) L7 AR-1260-3	6.816	6.565	625007	33541	1.063	0.131 #
34) L7 AR-1260-4	7.062	7.021	1659342	173746	3.679	0.908 #
35) L7 AR-1260-5	7.309	7.263	6350116	1038654	5.125	2.520 #
36) L8 AR-1262-1	6.816	6.770	625007	198140	0.673	0.478 #
37) L8 AR-1262-2	7.309	7.263	6350116	1038654	4.270	2.015 #
38) L8 AR-1262-3	7.585	7.558	76183	4136178	0.129	22.175 #
39) L8 AR-1262-4	7.651	7.558f	2229937	4136178	2.243	14.357 #
40) L8 AR-1262-5	8.137	8.107	173421	383424	0.400	3.853 #
41) L9 AR-1268-1	7.585	7.558	76183	4136178	0.044	7.987 #

Data Path : Z:\pestpcbsrv\HPCHEM1\ECD_0\Data\P0072425\
 Data File : P0112483.D
 Signal(s) : Signal #1: ECD1A.ch Signal #2: ECD2B.ch
 Acq On : 25 Jul 2025 01:40
 Operator : YP/AJ
 Sample : I.BLK
 Misc :
 ALS Vial : 2 Sample Multiplier: 1

Instrument :
 ECD_0
 ClientSampleId :
 I.BLK

Integration File signal 1: autoint1.e
 Integration File signal 2: autoint2.e
 Quant Time: Jul 25 02:33:57 2025
 Quant Method : Z:\pestpcbsrv\HPCHEM1\ECD_0\methods\P0072325.M
 Quant Title : GC EXTRACTABLES
 QLast Update : Thu Jul 24 04:54:06 2025
 Response via : Initial Calibration
 Integrator: ChemStation

Volume Inj. : 2 µl
 Signal #1 Phase : ZB-MR1 Signal #2 Phase: ZB-MR2
 Signal #1 Info : 30Mx0.32mmx 0.50µ Signal #2 Info : 30M x 0.32mm x 0.25µm

	Compound	RT#1	RT#2	Resp#1	Resp#2	ng/ml	ng/ml
42)	L9 AR-1268-2	7.651	7.558f	2229937	4136178	1.514	9.731 #
43)	L9 AR-1268-3	7.872	7.806	2369492	212466	1.892	0.661 #
44)	L9 AR-1268-4	8.137	8.107	173421	383424	0.360	3.445 #
45)	L9 AR-1268-5	8.453	8.390	2072108	232397	0.617	0.318 #

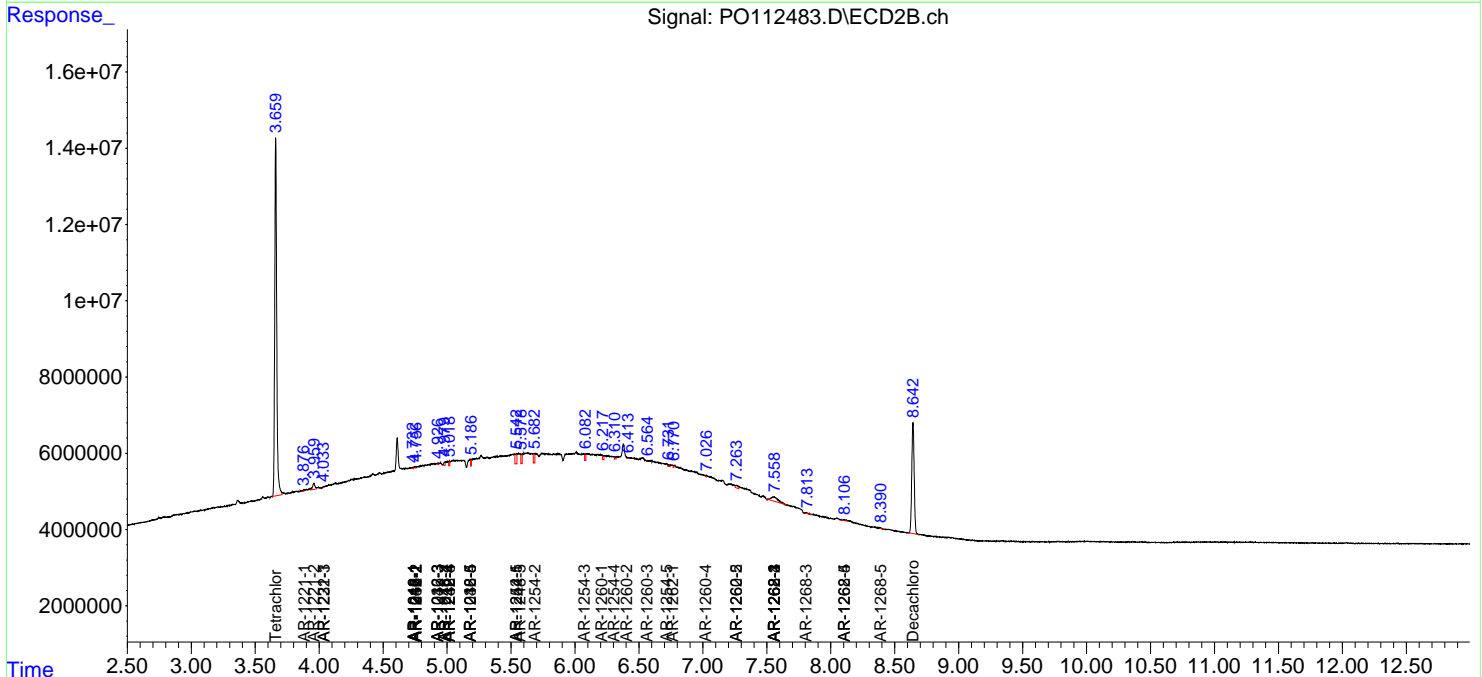
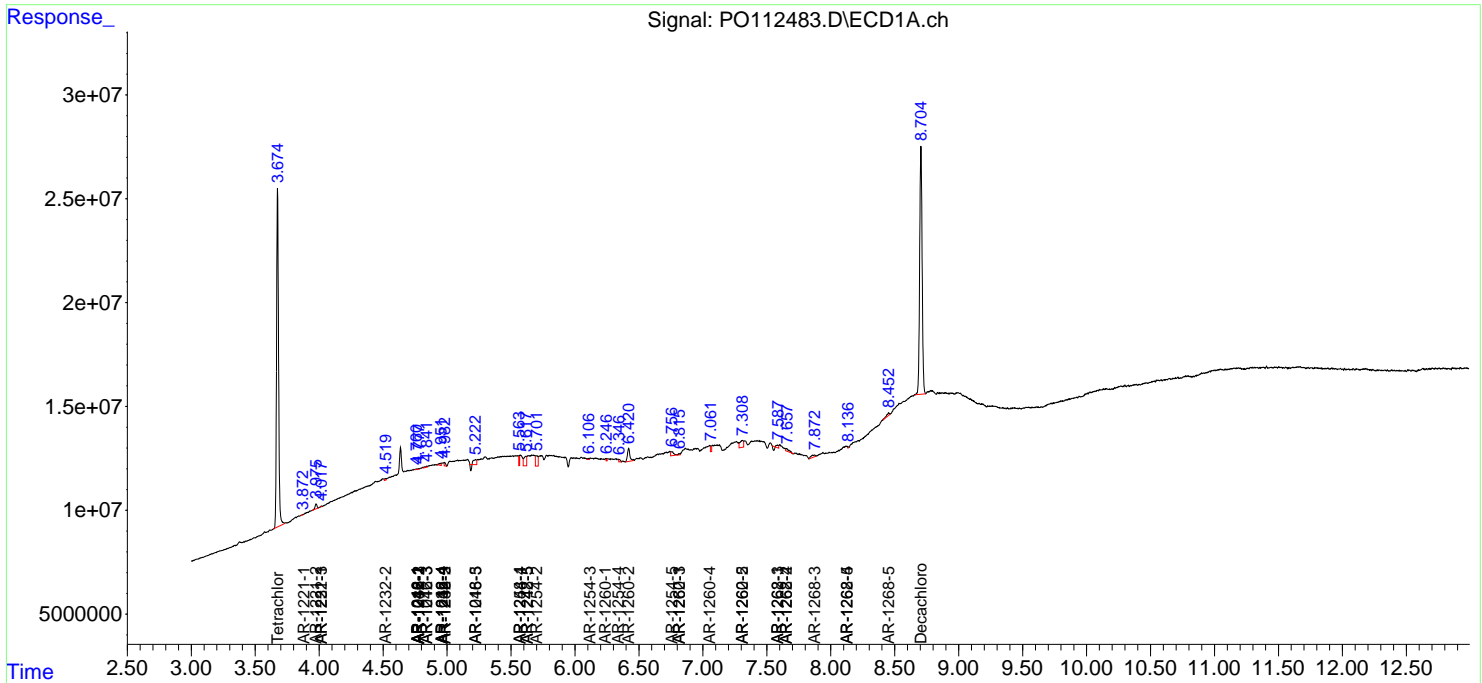
(f)=RT Delta > 1/2 Window (#)=Amounts differ by > 25% (m)=manual int.

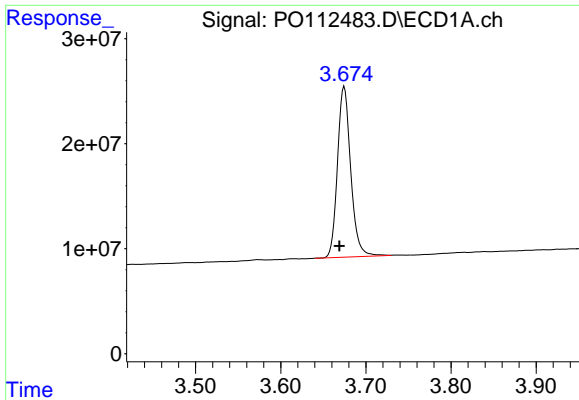
Data Path : Z:\pestpcbsrv\HPCHEM1\ECD_O\Data\PO072425\
 Data File : PO112483.D
 Signal(s) : Signal #1: ECD1A.ch Signal #2: ECD2B.ch
 Acq On : 25 Jul 2025 01:40
 Operator : YP/AJ
 Sample : I.BLK
 Misc :
 ALS Vial : 2 Sample Multiplier: 1

Instrument :
 ECD_O
 ClientSampleId :
 I.BLK

Integration File signal 1: autoint1.e
 Integration File signal 2: autoint2.e
 Quant Time: Jul 25 02:33:57 2025
 Quant Method : Z:\pestpcbsrv\HPCHEM1\ECD_O\methods\PO072325.M
 Quant Title : GC EXTRACTABLES
 QLast Update : Thu Jul 24 04:54:06 2025
 Response via : Initial Calibration
 Integrator: ChemStation

Volume Inj. : 2 µl
 Signal #1 Phase : ZB-MR1 Signal #2 Phase: ZB-MR2
 Signal #1 Info : 30Mx0.32mmx 0.50µ Signal #2 Info : 30M x 0.32mm x 0.25µm

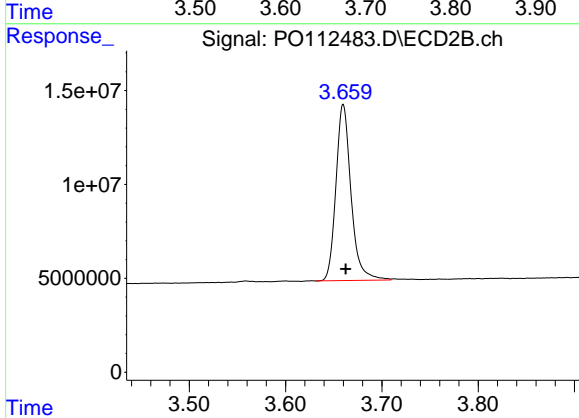




#1 Tetrachloro-m-xylene

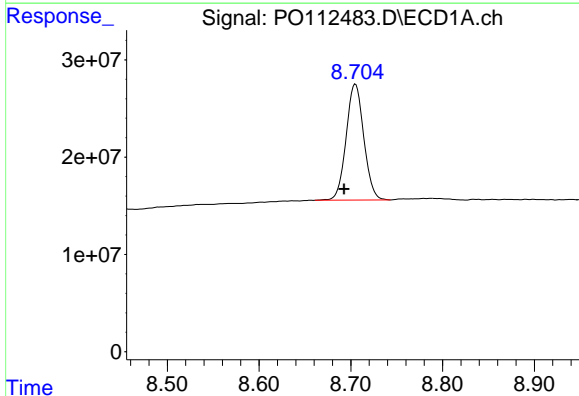
R.T.: 3.675 min
 Delta R.T.: 0.006 min
 Response: 175851455
 Conc: 21.63 ng/ml

Instrument :
 ECD_O
 ClientSampleId :
 I.BLK



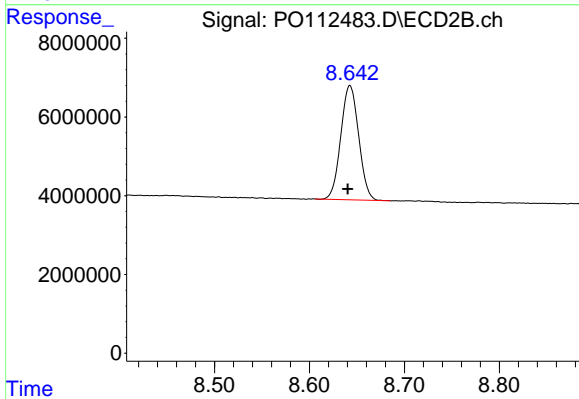
#1 Tetrachloro-m-xylene

R.T.: 3.660 min
 Delta R.T.: -0.002 min
 Response: 102148180
 Conc: 20.56 ng/ml



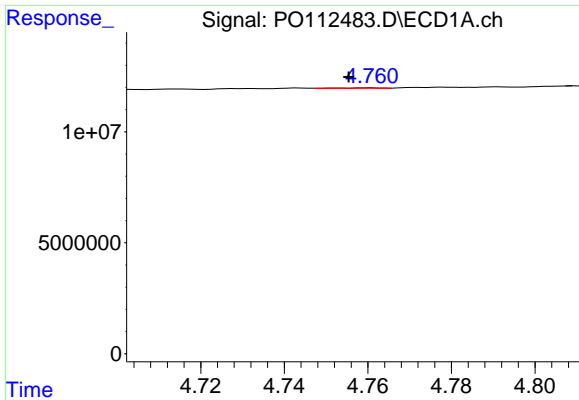
#2 Decachlorobiphenyl

R.T.: 8.705 min
 Delta R.T.: 0.012 min
 Response: 159347984
 Conc: 21.79 ng/ml



#2 Decachlorobiphenyl

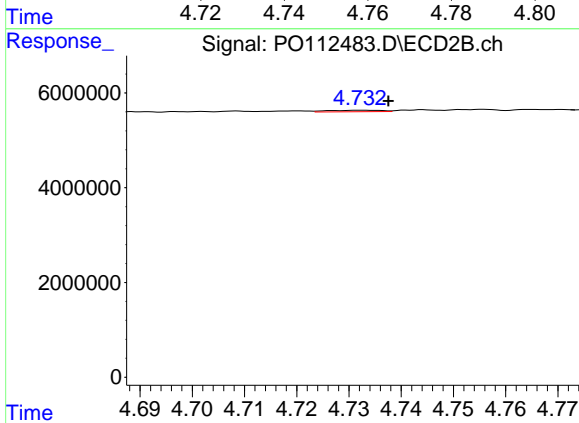
R.T.: 8.643 min
 Delta R.T.: 0.002 min
 Response: 37960772
 Conc: 21.48 ng/ml



#3 AR-1016-1

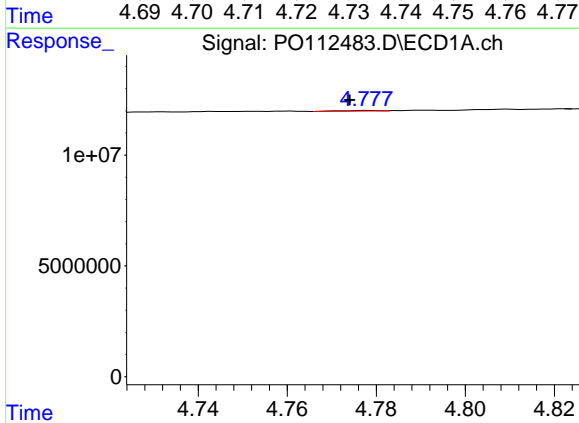
R.T.: 4.761 min
 Delta R.T.: 0.005 min
 Response: 134695
 Conc: 0.50 ng/ml

Instrument :
 ECD_O
 ClientSampleId :
 I.BLK



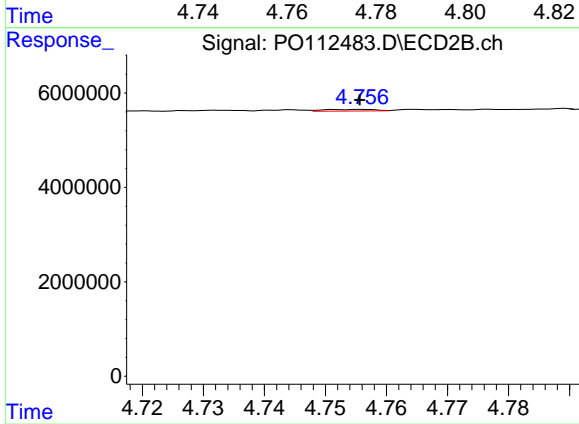
#3 AR-1016-1

R.T.: 4.732 min
 Delta R.T.: -0.005 min
 Response: 217433
 Conc: 1.24 ng/ml



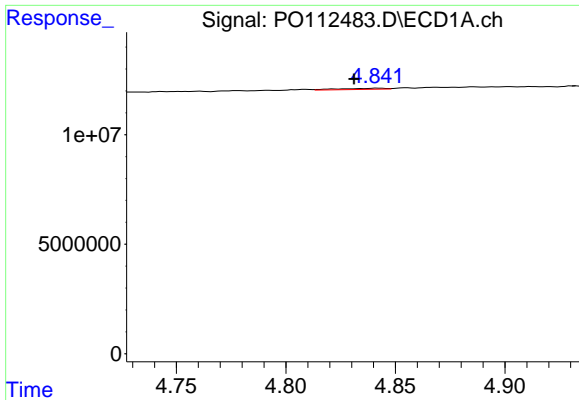
#4 AR-1016-2

R.T.: 4.778 min
 Delta R.T.: 0.004 min
 Response: 190395
 Conc: 0.47 ng/ml



#4 AR-1016-2

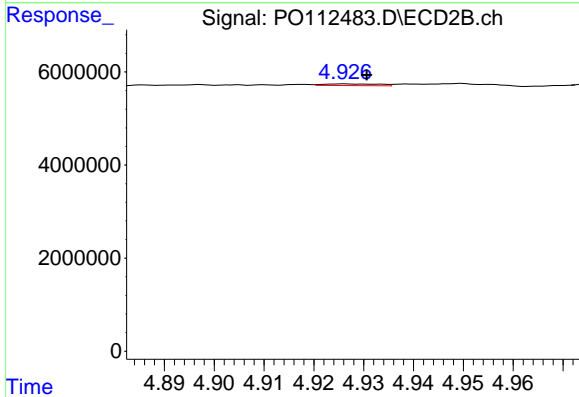
R.T.: 4.756 min
 Delta R.T.: 0.000 min
 Response: 198723
 Conc: 0.76 ng/ml



#5 AR-1016-3

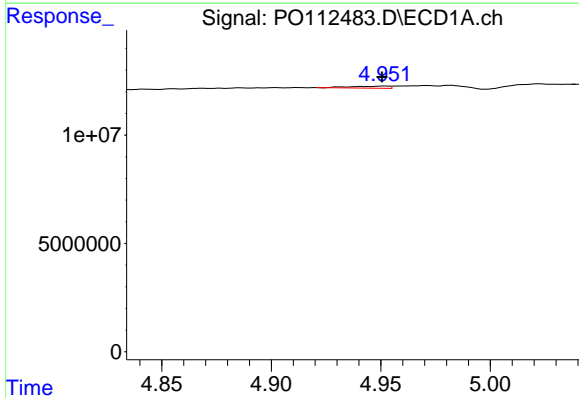
R.T.: 4.842 min
 Delta R.T.: 0.011 min
 Response: 710468
 Conc: 2.72 ng/ml

Instrument :
 ECD_O
 ClientSampleId :
 I.BLK



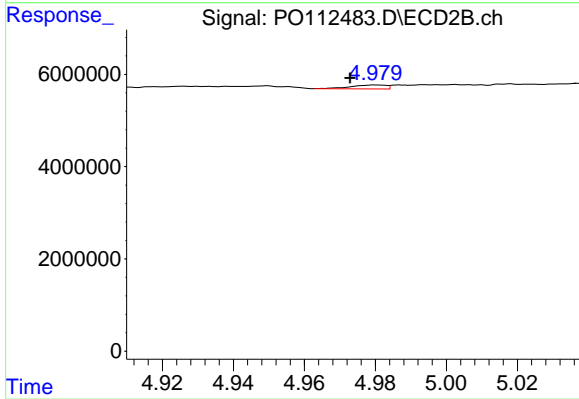
#5 AR-1016-3

R.T.: 4.926 min
 Delta R.T.: -0.005 min
 Response: 279792
 Conc: 2.06 ng/ml



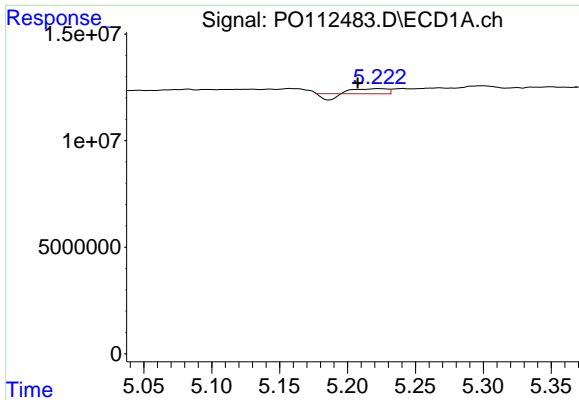
#6 AR-1016-4

R.T.: 4.951 min
 Delta R.T.: 0.000 min
 Response: 1109890
 Conc: 5.24 ng/ml



#6 AR-1016-4

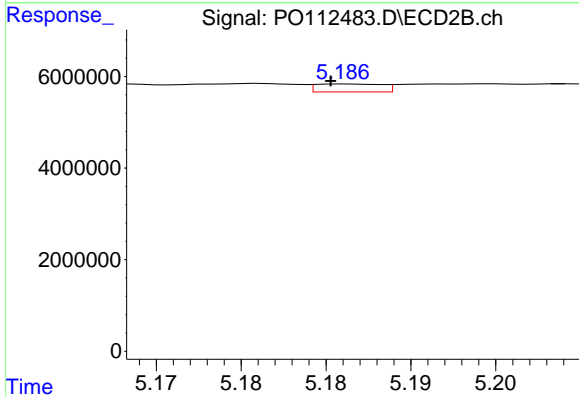
R.T.: 4.980 min
 Delta R.T.: 0.007 min
 Response: 589769
 Conc: 5.31 ng/ml



#7 AR-1016-5

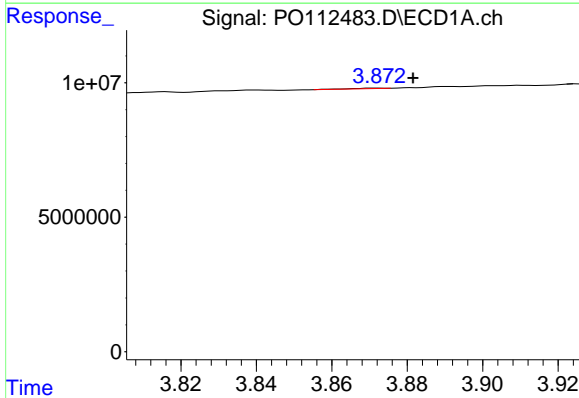
R.T.: 5.222 min
 Delta R.T.: 0.015 min
 Response: 2609307
 Conc: 11.89 ng/ml

Instrument :
 ECD_O
 ClientSampleId :
 I.BLK



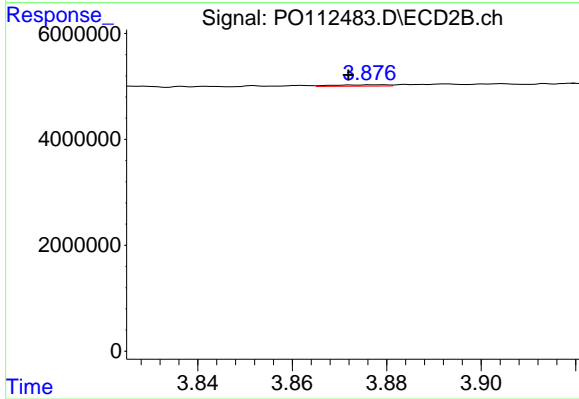
#7 AR-1016-5

R.T.: 5.186 min
 Delta R.T.: 0.000 min
 Response: 467457
 Conc: 3.26 ng/ml



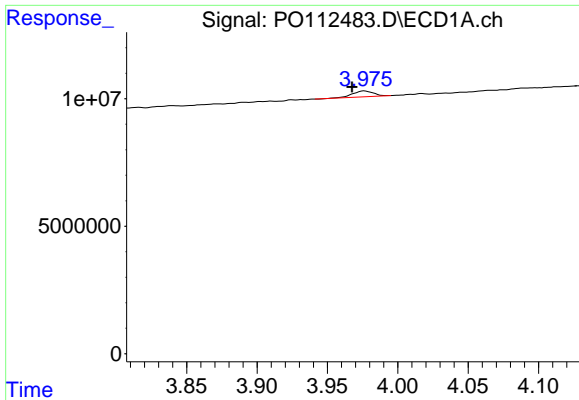
#8 AR-1221-1

R.T.: 3.872 min
 Delta R.T.: -0.009 min
 Response: 125363
 Conc: 1.30 ng/ml



#8 AR-1221-1

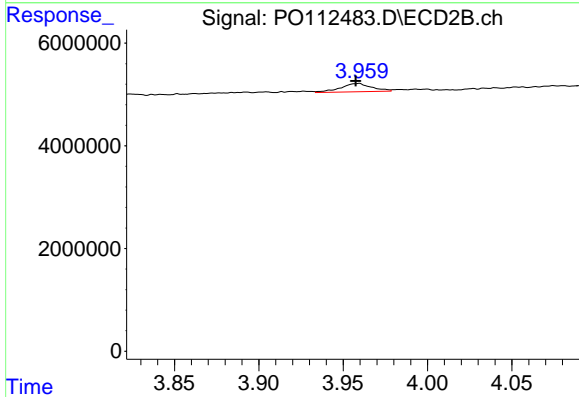
R.T.: 3.877 min
 Delta R.T.: 0.005 min
 Response: 196876
 Conc: 2.93 ng/ml



#9 AR-1221-2

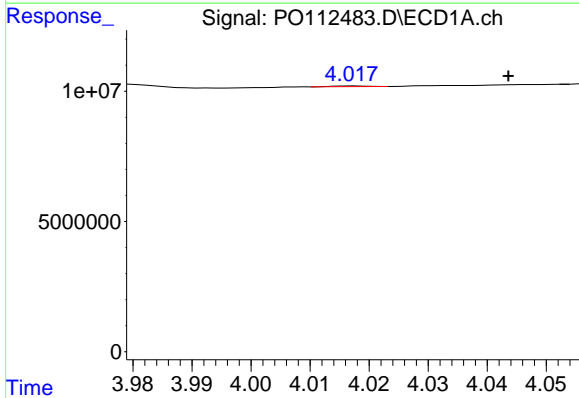
R.T.: 3.976 min
 Delta R.T.: 0.009 min
 Response: 2375809
 Conc: 33.06 ng/ml

Instrument :
 ECD_O
 ClientSampleId :
 I.BLK



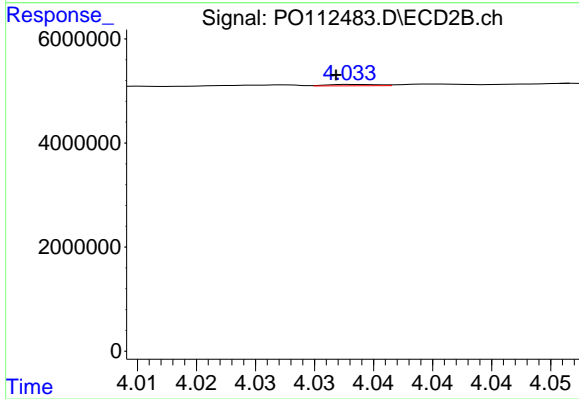
#9 AR-1221-2

R.T.: 3.960 min
 Delta R.T.: 0.002 min
 Response: 2091370
 Conc: 41.23 ng/ml



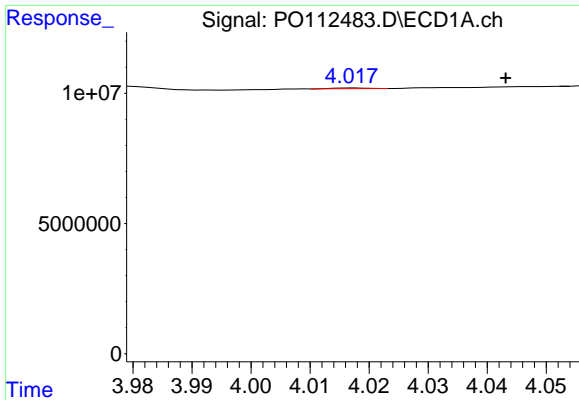
#10 AR-1221-3

R.T.: 4.017 min
 Delta R.T.: -0.026 min
 Response: 99679
 Conc: 0.42 ng/ml



#10 AR-1221-3

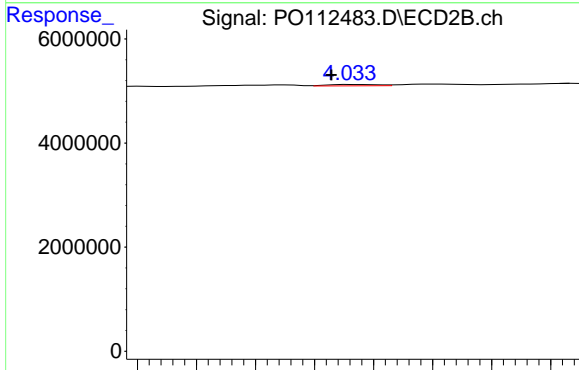
R.T.: 4.033 min
 Delta R.T.: 0.002 min
 Response: 73630
 Conc: 0.46 ng/ml



#11 AR-1232-1

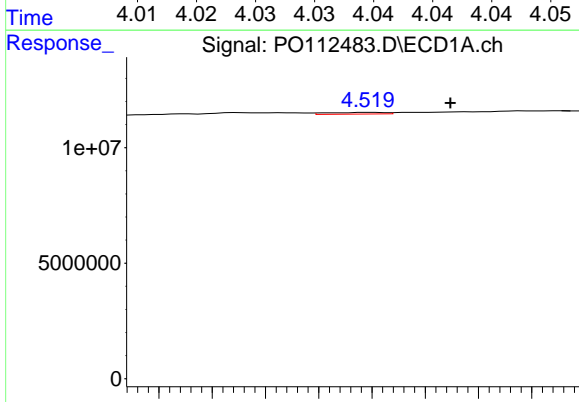
R.T.: 4.017 min
 Delta R.T.: -0.026 min
 Response: 99679
 Conc: 0.53 ng/ml

Instrument :
 ECD_O
 ClientSampleId :
 I.BLK



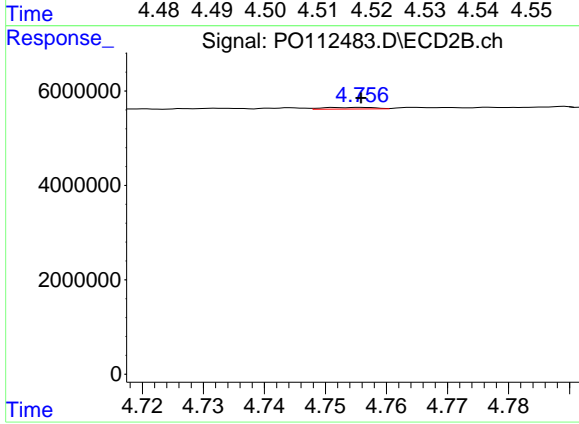
#11 AR-1232-1

R.T.: 4.033 min
 Delta R.T.: 0.002 min
 Response: 73630
 Conc: 0.58 ng/ml



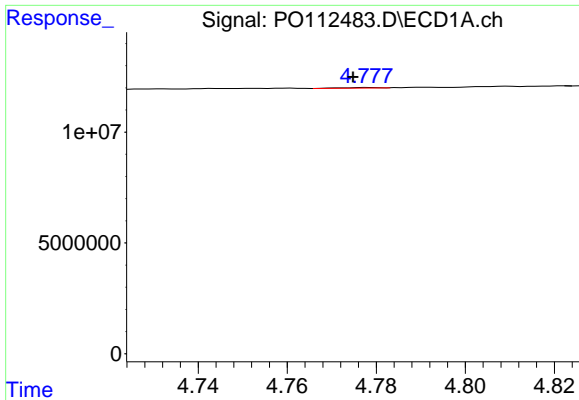
#12 AR-1232-2

R.T.: 4.520 min
 Delta R.T.: -0.015 min
 Response: 552402
 Conc: 5.13 ng/ml



#12 AR-1232-2

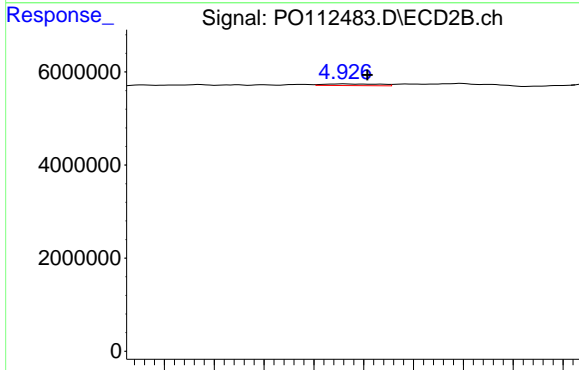
R.T.: 4.756 min
 Delta R.T.: 0.000 min
 Response: 198723
 Conc: 1.52 ng/ml



#13 AR-1232-3

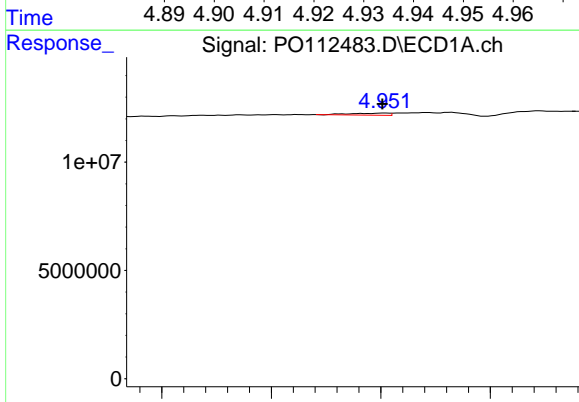
R.T.: 4.778 min
 Delta R.T.: 0.003 min
 Response: 190395
 Conc: 0.92 ng/ml

Instrument :
 ECD_O
 ClientSampleId :
 I.BLK



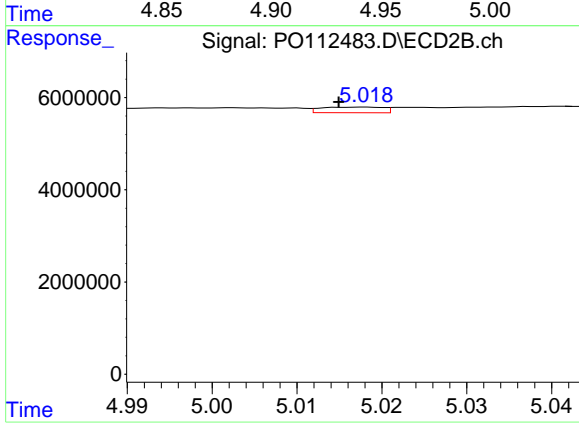
#13 AR-1232-3

R.T.: 4.926 min
 Delta R.T.: -0.005 min
 Response: 279792
 Conc: 4.16 ng/ml



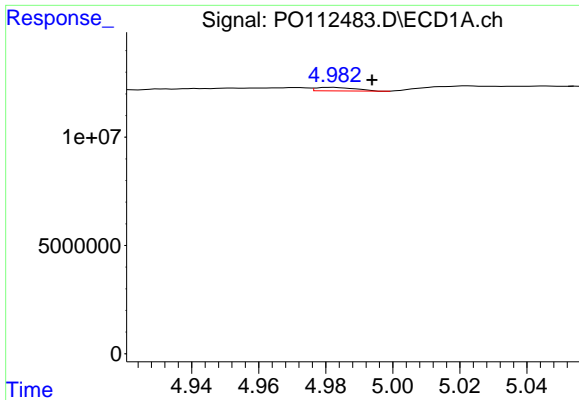
#14 AR-1232-4

R.T.: 4.951 min
 Delta R.T.: 0.000 min
 Response: 1109890
 Conc: 10.60 ng/ml



#14 AR-1232-4

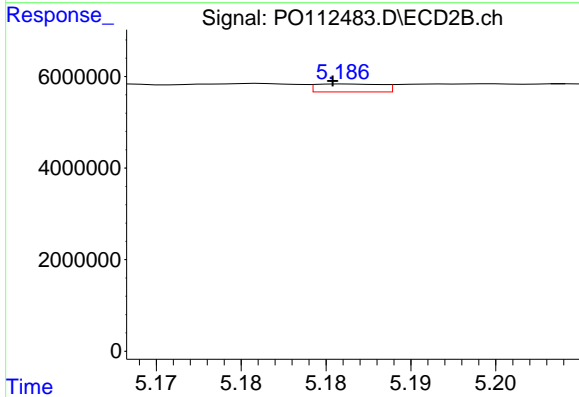
R.T.: 5.018 min
 Delta R.T.: 0.003 min
 Response: 622451
 Conc: 10.40 ng/ml



#15 AR-1232-5

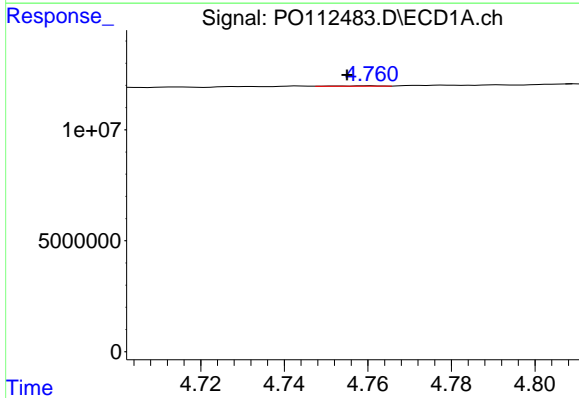
R.T.: 4.982 min
 Delta R.T.: -0.012 min
 Response: 1355005
 Conc: 19.96 ng/ml

Instrument :
 ECD_O
 ClientSampleId :
 I.BLK



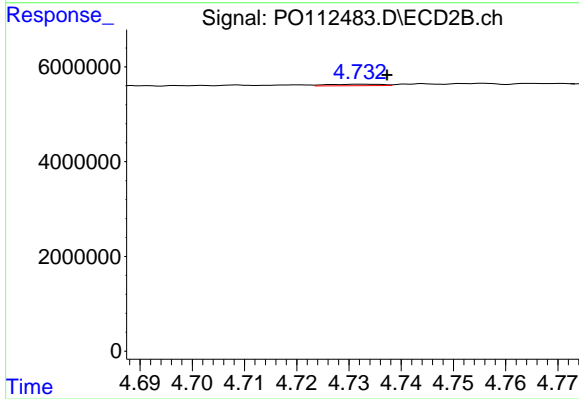
#15 AR-1232-5

R.T.: 5.186 min
 Delta R.T.: 0.000 min
 Response: 467457
 Conc: 7.17 ng/ml



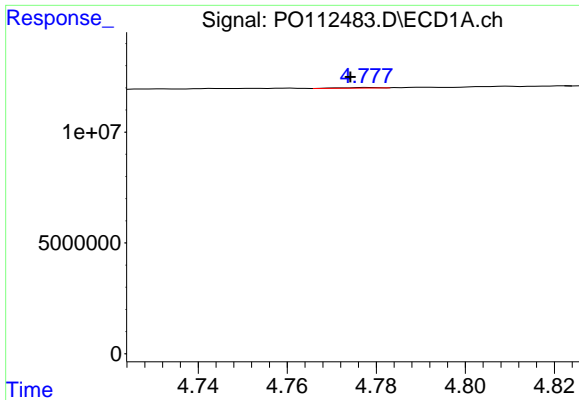
#16 AR-1242-1

R.T.: 4.761 min
 Delta R.T.: 0.006 min
 Response: 134695
 Conc: 0.54 ng/ml



#16 AR-1242-1

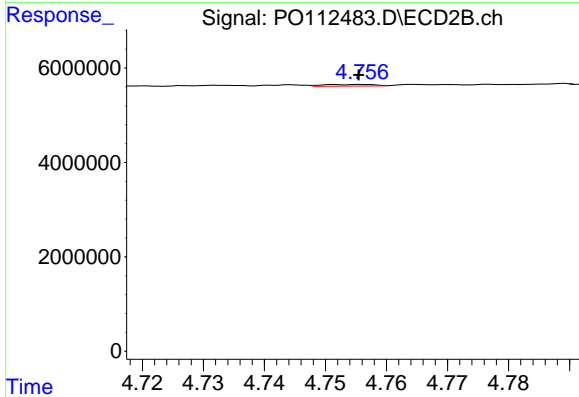
R.T.: 4.732 min
 Delta R.T.: -0.005 min
 Response: 217433
 Conc: 1.37 ng/ml



#17 AR-1242-2

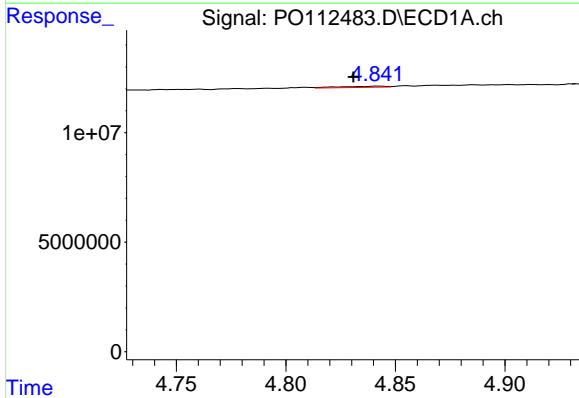
R.T.: 4.778 min
 Delta R.T.: 0.004 min
 Response: 190395
 Conc: 0.51 ng/ml

Instrument :
 ECD_O
 ClientSampleId :
 I.BLK



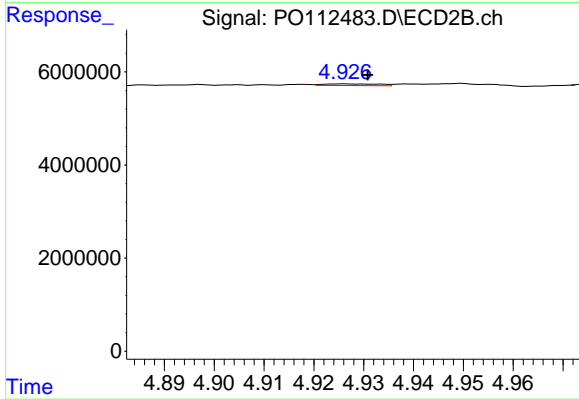
#17 AR-1242-2

R.T.: 4.756 min
 Delta R.T.: 0.000 min
 Response: 198723
 Conc: 0.85 ng/ml



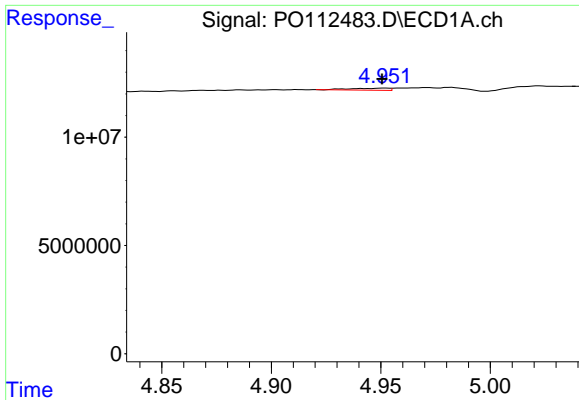
#18 AR-1242-3

R.T.: 4.842 min
 Delta R.T.: 0.011 min
 Response: 710468
 Conc: 3.00 ng/ml



#18 AR-1242-3

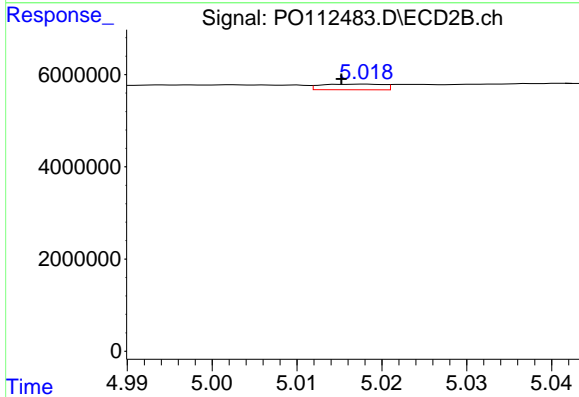
R.T.: 4.926 min
 Delta R.T.: -0.005 min
 Response: 279792
 Conc: 2.31 ng/ml



#19 AR-1242-4

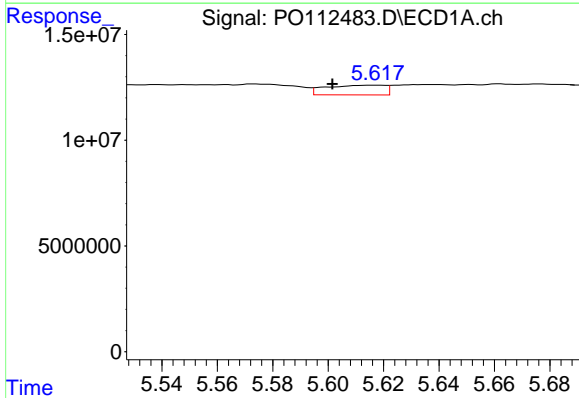
R.T.: 4.951 min
 Delta R.T.: 0.000 min
 Response: 1109890
 Conc: 5.71 ng/ml

Instrument :
 ECD_O
 ClientSampleId :
 I.BLK



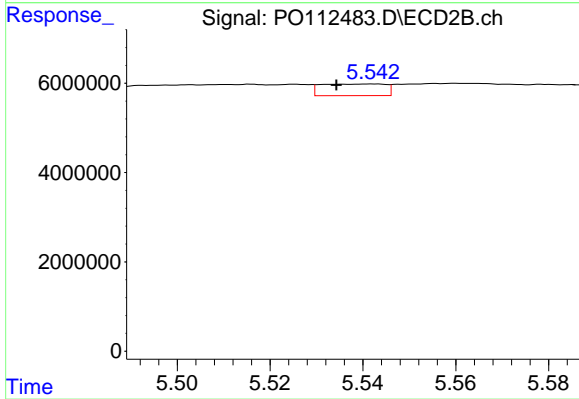
#19 AR-1242-4

R.T.: 5.018 min
 Delta R.T.: 0.003 min
 Response: 622451
 Conc: 5.07 ng/ml



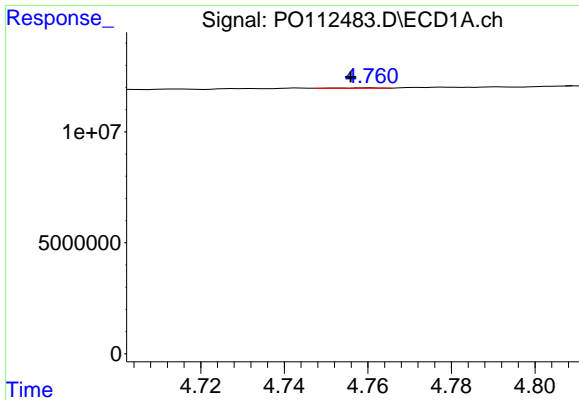
#20 AR-1242-5

R.T.: 5.618 min
 Delta R.T.: 0.016 min
 Response: 6796891
 Conc: 31.77 ng/ml



#20 AR-1242-5

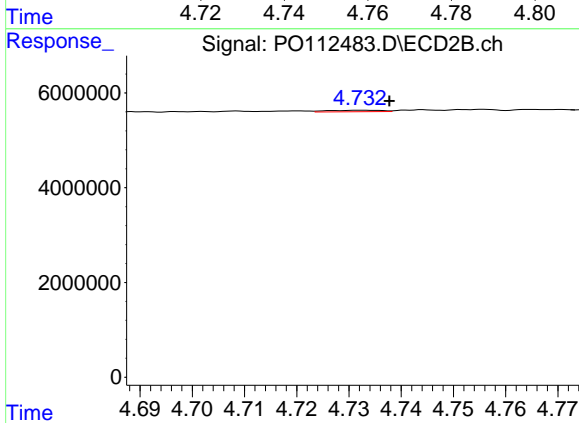
R.T.: 5.542 min
 Delta R.T.: 0.008 min
 Response: 2522959
 Conc: 15.67 ng/ml



#21 AR-1248-1

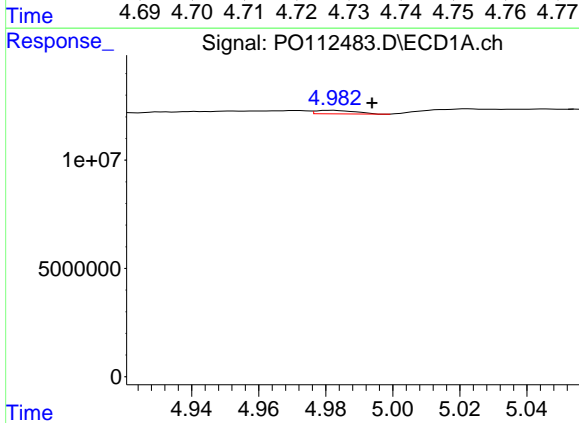
R.T.: 4.761 min
 Delta R.T.: 0.005 min
 Response: 134695
 Conc: 0.72 ng/ml

Instrument :
 ECD_O
 ClientSampleId :
 I.BLK



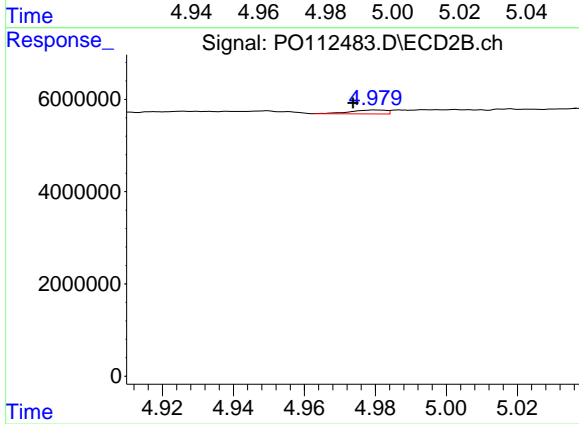
#21 AR-1248-1

R.T.: 4.732 min
 Delta R.T.: -0.005 min
 Response: 217433
 Conc: 1.79 ng/ml



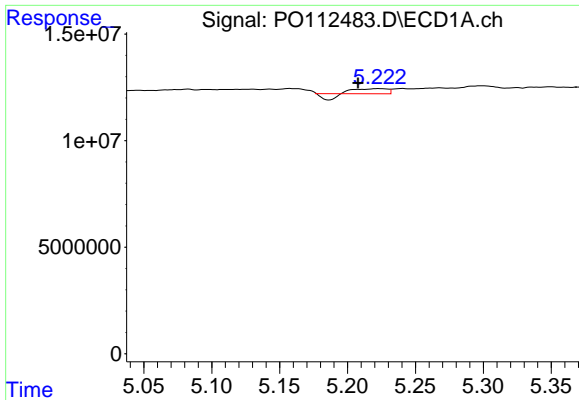
#22 AR-1248-2

R.T.: 4.982 min
 Delta R.T.: -0.012 min
 Response: 1355005
 Conc: 5.31 ng/ml



#22 AR-1248-2

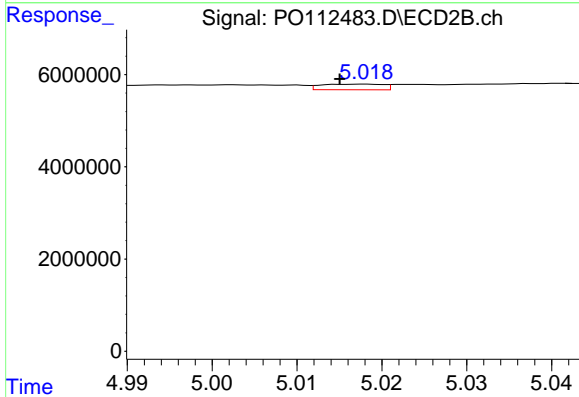
R.T.: 4.980 min
 Delta R.T.: 0.006 min
 Response: 589769
 Conc: 3.48 ng/ml



#23 AR-1248-3

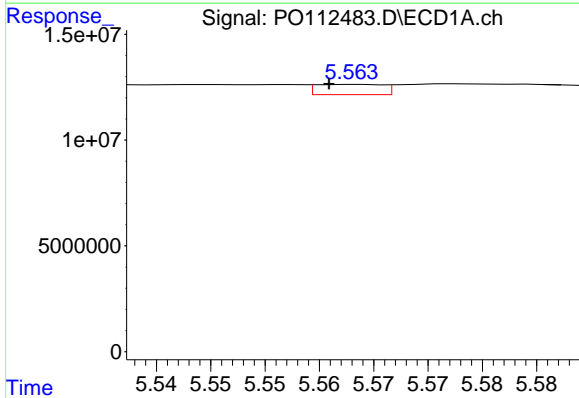
R.T.: 5.222 min
 Delta R.T.: 0.015 min
 Response: 2609307
 Conc: 7.59 ng/ml

Instrument :
 ECD_O
 ClientSampleId :
 I.BLK



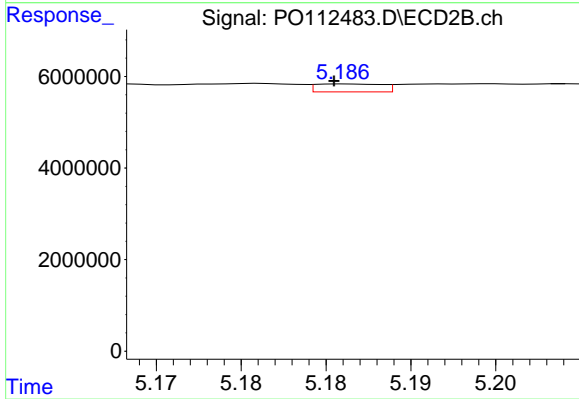
#23 AR-1248-3

R.T.: 5.018 min
 Delta R.T.: 0.003 min
 Response: 622451
 Conc: 3.50 ng/ml



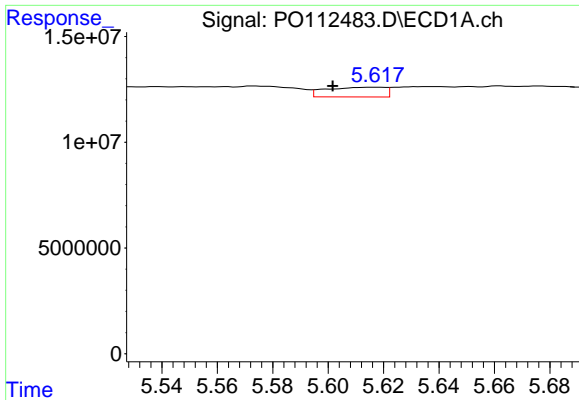
#24 AR-1248-4

R.T.: 5.563 min
 Delta R.T.: 0.002 min
 Response: 2064373
 Conc: 4.06 ng/ml



#24 AR-1248-4

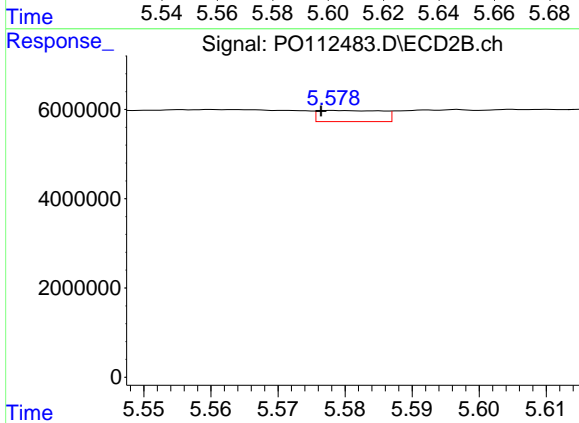
R.T.: 5.186 min
 Delta R.T.: 0.000 min
 Response: 467457
 Conc: 2.24 ng/ml



#25 AR-1248-5

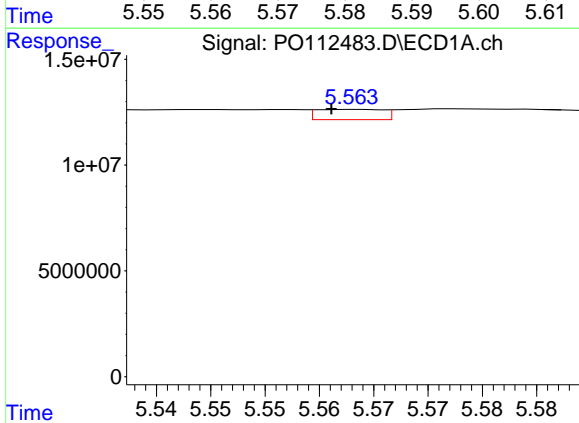
R.T.: 5.618 min
 Delta R.T.: 0.016 min
 Response: 6796891
 Conc: 19.44 ng/ml

Instrument :
 ECD_O
 ClientSampleId :
 I.BLK



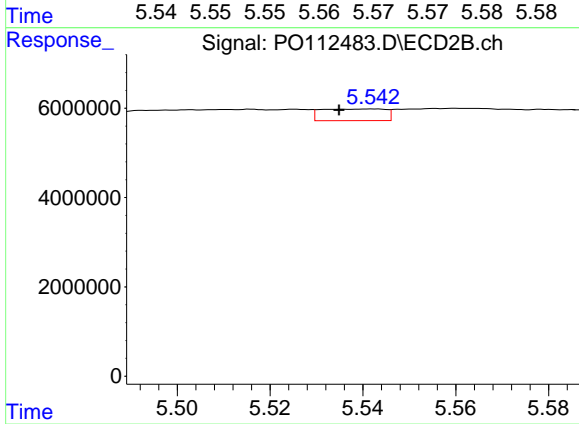
#25 AR-1248-5

R.T.: 5.578 min
 Delta R.T.: 0.002 min
 Response: 1643320
 Conc: 7.65 ng/ml



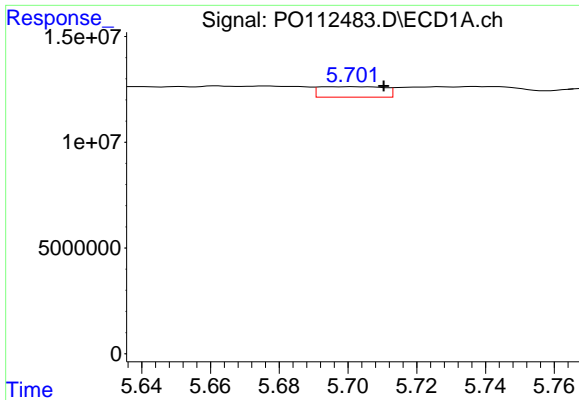
#26 AR-1254-1

R.T.: 5.563 min
 Delta R.T.: 0.002 min
 Response: 2064373
 Conc: 3.76 ng/ml



#26 AR-1254-1

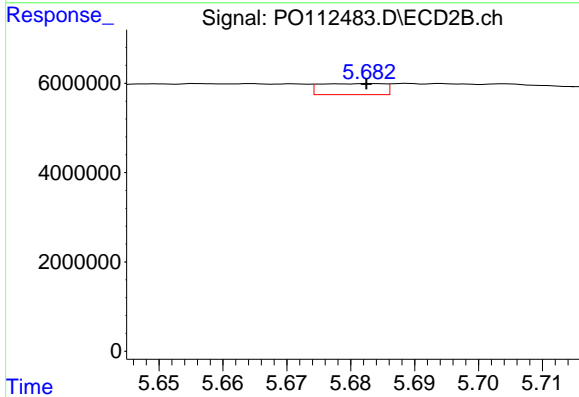
R.T.: 5.542 min
 Delta R.T.: 0.007 min
 Response: 2522959
 Conc: 7.68 ng/ml



#27 AR-1254-2

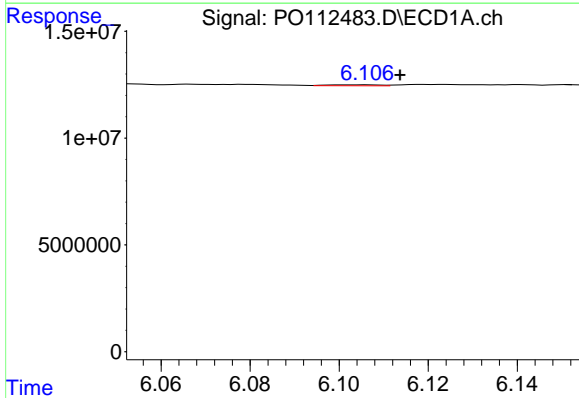
R.T.: 5.701 min
 Delta R.T.: -0.009 min
 Response: 6475294
 Conc: 13.33 ng/ml

Instrument :
 ECD_O
 ClientSampleId :
 I.BLK



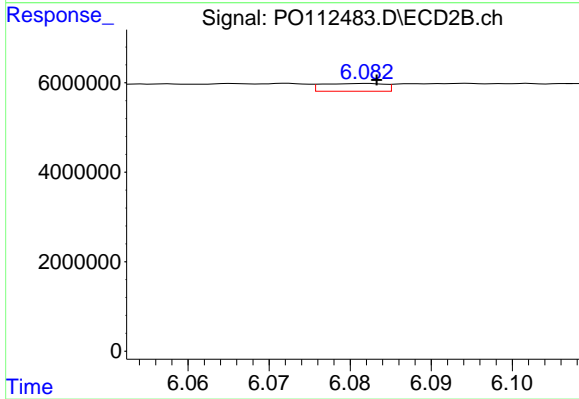
#27 AR-1254-2

R.T.: 5.683 min
 Delta R.T.: 0.000 min
 Response: 1717822
 Conc: 5.93 ng/ml



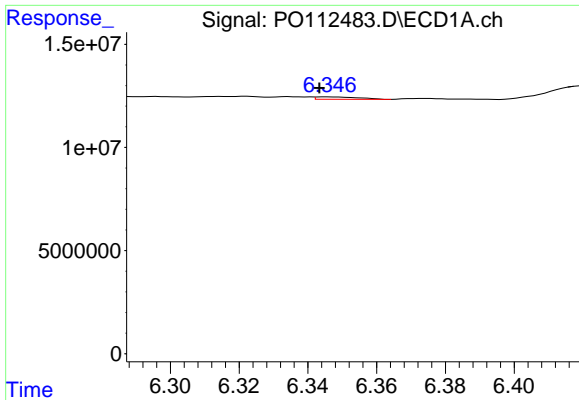
#28 AR-1254-3

R.T.: 6.106 min
 Delta R.T.: -0.007 min
 Response: 399052
 Conc: 0.54 ng/ml



#28 AR-1254-3

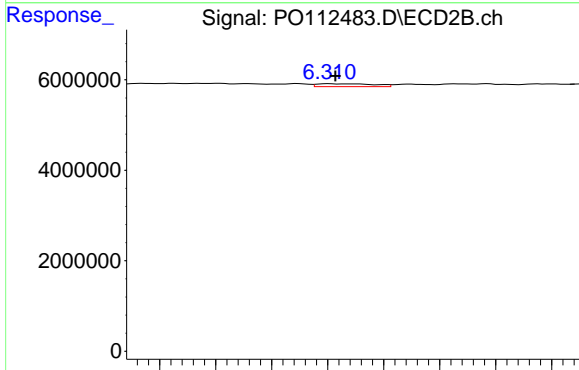
R.T.: 6.082 min
 Delta R.T.: -0.001 min
 Response: 927312
 Conc: 2.17 ng/ml



#29 AR-1254-4

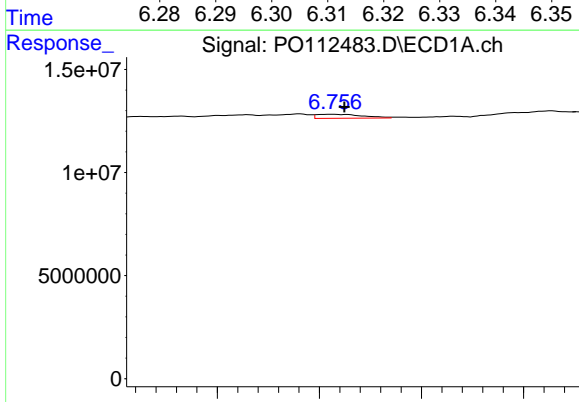
R.T.: 6.346 min
 Delta R.T.: 0.003 min
 Response: 990209
 Conc: 1.80 ng/ml

Instrument :
 ECD_O
 ClientSampleId :
 I.BLK



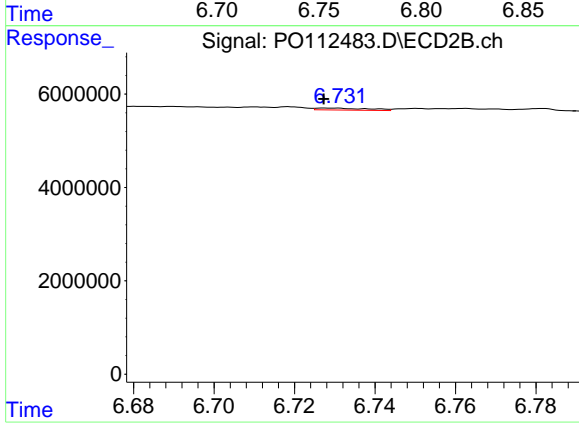
#29 AR-1254-4

R.T.: 6.310 min
 Delta R.T.: -0.001 min
 Response: 444010
 Conc: 1.63 ng/ml



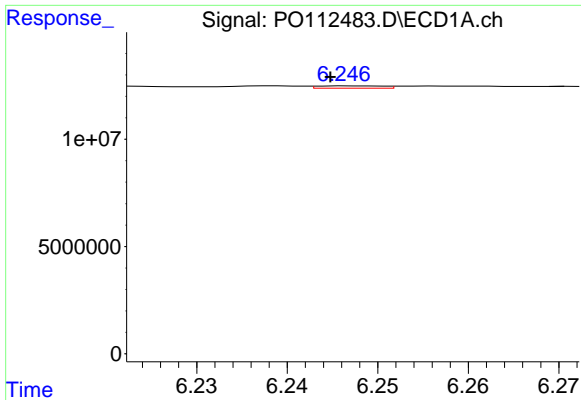
#30 AR-1254-5

R.T.: 6.756 min
 Delta R.T.: -0.006 min
 Response: 2940287
 Conc: 4.15 ng/ml



#30 AR-1254-5

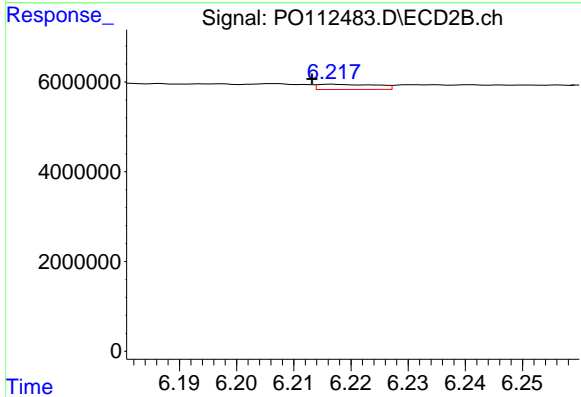
R.T.: 6.728 min
 Delta R.T.: 0.000 min
 Response: 383801
 Conc: 1.15 ng/ml



#31 AR-1260-1

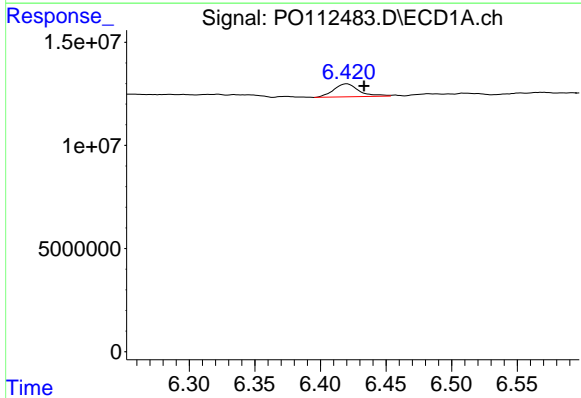
R.T.: 6.247 min
 Delta R.T.: 0.002 min
 Response: 534649
 Conc: 1.22 ng/ml

Instrument :
 ECD_O
 ClientSampleId :
 I.BLK



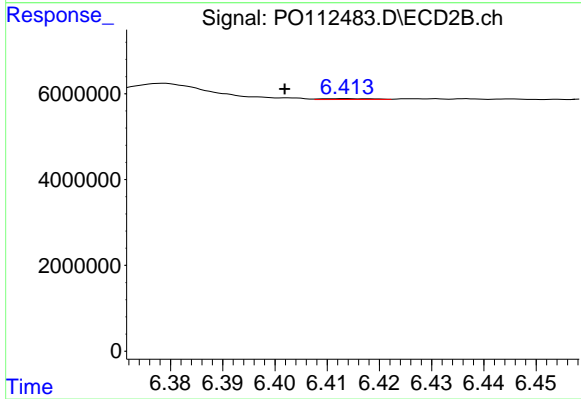
#31 AR-1260-1

R.T.: 6.217 min
 Delta R.T.: 0.004 min
 Response: 825725
 Conc: 3.32 ng/ml



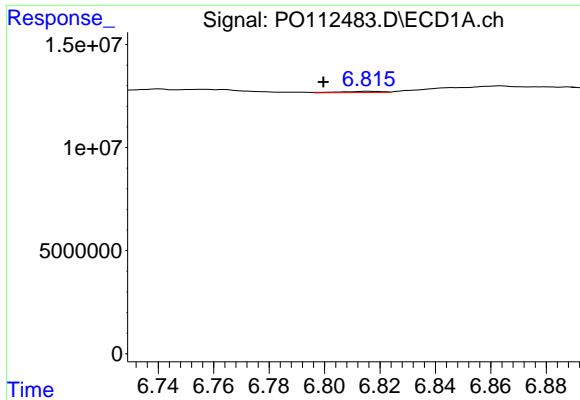
#32 AR-1260-2

R.T.: 6.420 min
 Delta R.T.: -0.013 min
 Response: 8507951
 Conc: 12.37 ng/ml



#32 AR-1260-2

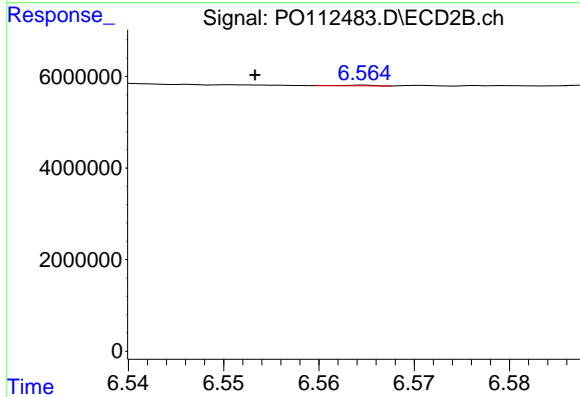
R.T.: 6.414 min
 Delta R.T.: 0.012 min
 Response: 138863
 Conc: 0.42 ng/ml



#33 AR-1260-3

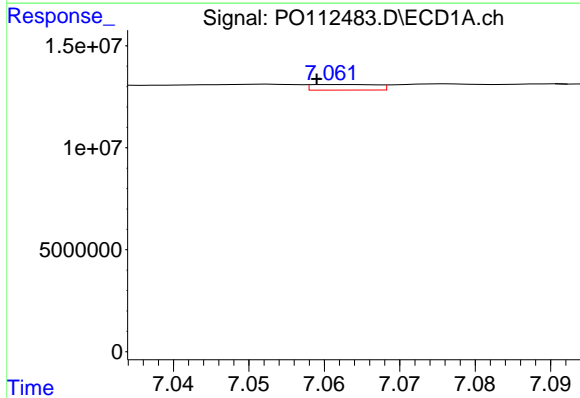
R.T.: 6.816 min
 Delta R.T.: 0.016 min
 Response: 625007
 Conc: 1.06 ng/ml

Instrument :
 ECD_O
 ClientSampleId :
 I.BLK



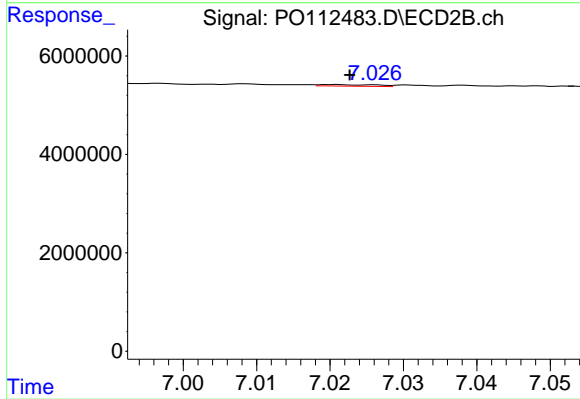
#33 AR-1260-3

R.T.: 6.565 min
 Delta R.T.: 0.011 min
 Response: 33541
 Conc: 0.13 ng/ml



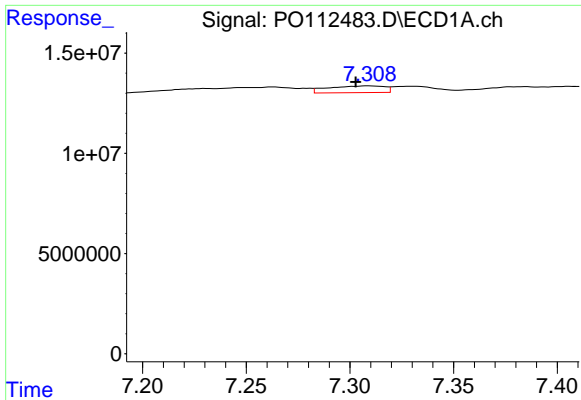
#34 AR-1260-4

R.T.: 7.062 min
 Delta R.T.: 0.003 min
 Response: 1659342
 Conc: 3.68 ng/ml



#34 AR-1260-4

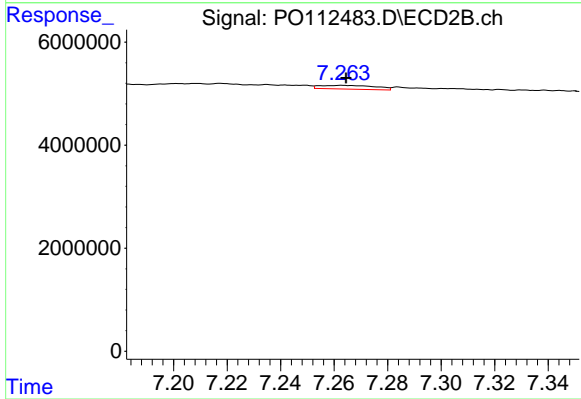
R.T.: 7.021 min
 Delta R.T.: -0.002 min
 Response: 173746
 Conc: 0.91 ng/ml



#35 AR-1260-5

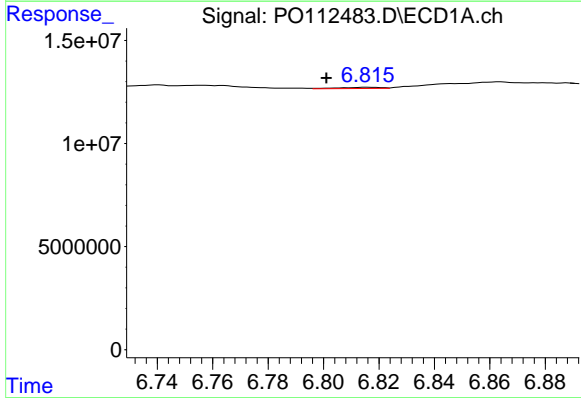
R.T.: 7.309 min
 Delta R.T.: 0.006 min
 Response: 6350116
 Conc: 5.12 ng/ml

Instrument :
 ECD_O
 ClientSampleId :
 I.BLK



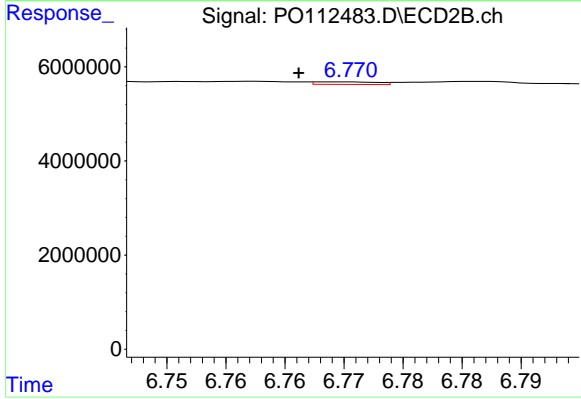
#35 AR-1260-5

R.T.: 7.263 min
 Delta R.T.: -0.001 min
 Response: 1038654
 Conc: 2.52 ng/ml



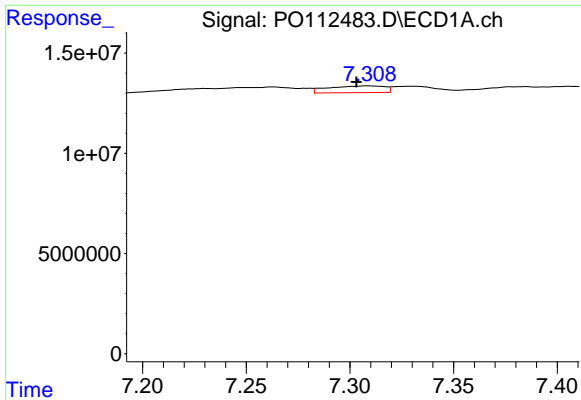
#36 AR-1262-1

R.T.: 6.816 min
 Delta R.T.: 0.015 min
 Response: 625007
 Conc: 0.67 ng/ml



#36 AR-1262-1

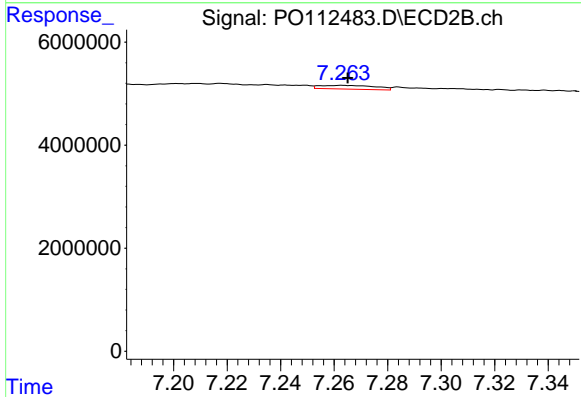
R.T.: 6.770 min
 Delta R.T.: 0.004 min
 Response: 198140
 Conc: 0.48 ng/ml



#37 AR-1262-2

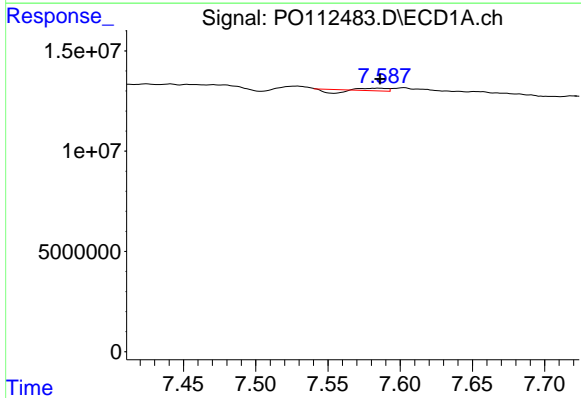
R.T.: 7.309 min
 Delta R.T.: 0.006 min
 Response: 6350116
 Conc: 4.27 ng/ml

Instrument :
 ECD_O
 ClientSampleId :
 I.BLK



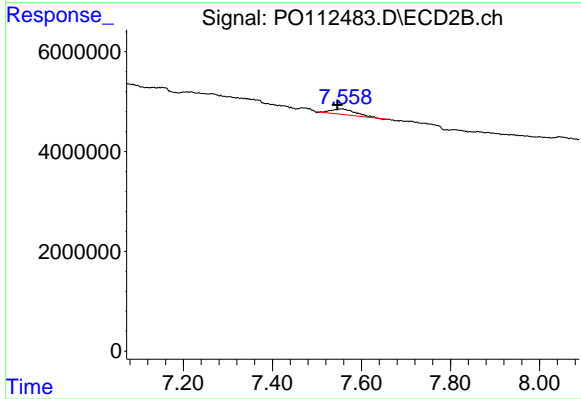
#37 AR-1262-2

R.T.: 7.263 min
 Delta R.T.: -0.002 min
 Response: 1038654
 Conc: 2.01 ng/ml



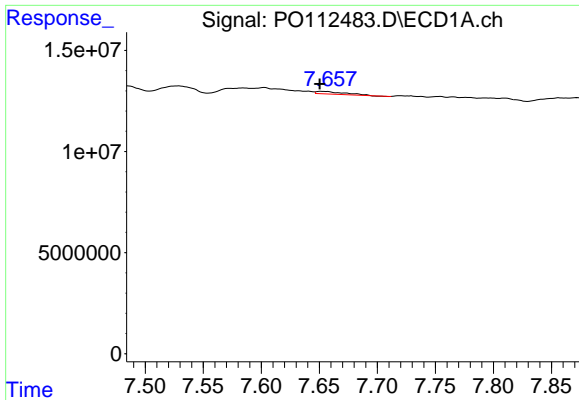
#38 AR-1262-3

R.T.: 7.585 min
 Delta R.T.: -0.001 min
 Response: 76183
 Conc: 0.13 ng/ml



#38 AR-1262-3

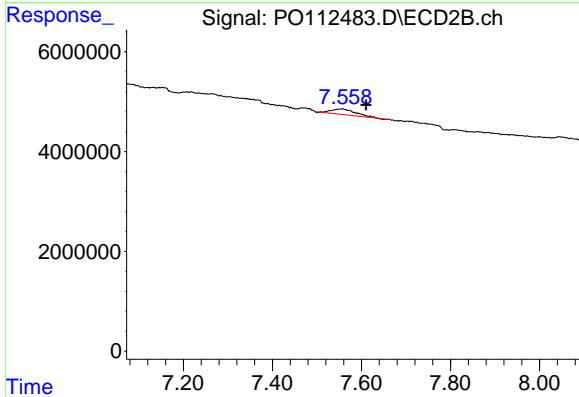
R.T.: 7.558 min
 Delta R.T.: 0.012 min
 Response: 4136178
 Conc: 22.17 ng/ml



#39 AR-1262-4

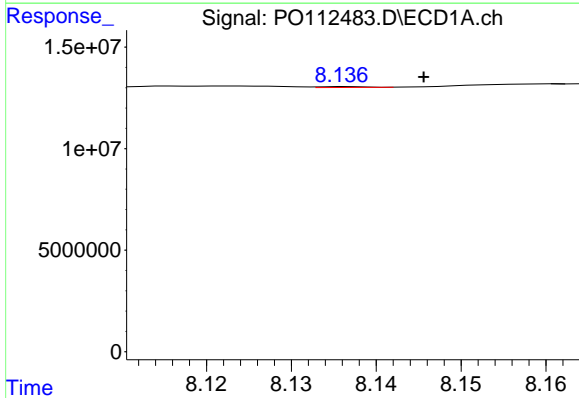
R.T.: 7.651 min
 Delta R.T.: 0.001 min
 Response: 2229937
 Conc: 2.24 ng/ml

Instrument :
 ECD_O
 ClientSampleId :
 I.BLK



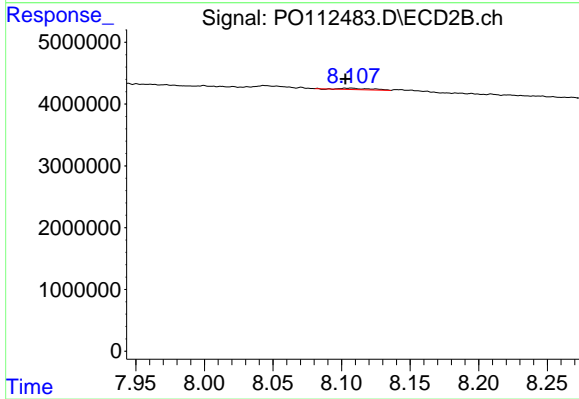
#39 AR-1262-4

R.T.: 7.558 min
 Delta R.T.: -0.052 min
 Response: 4136178
 Conc: 14.36 ng/ml



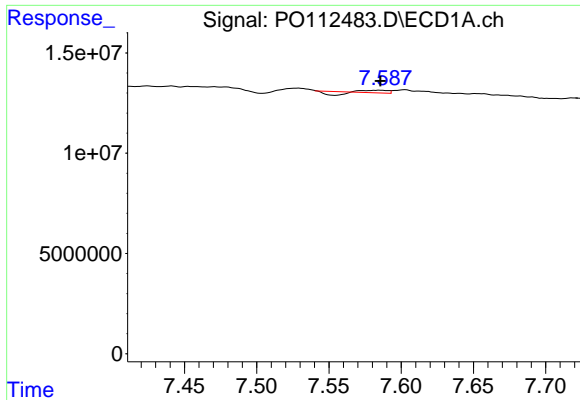
#40 AR-1262-5

R.T.: 8.137 min
 Delta R.T.: -0.009 min
 Response: 173421
 Conc: 0.40 ng/ml



#40 AR-1262-5

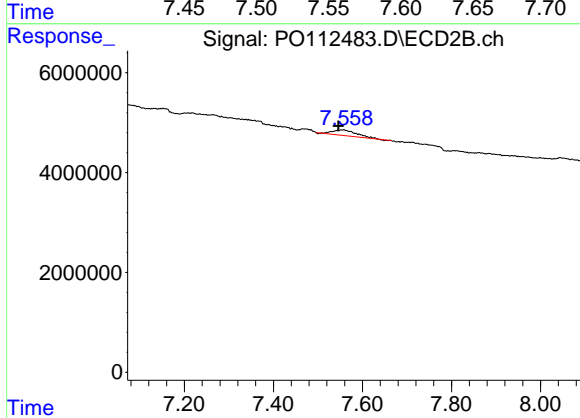
R.T.: 8.107 min
 Delta R.T.: 0.005 min
 Response: 383424
 Conc: 3.85 ng/ml



#41 AR-1268-1

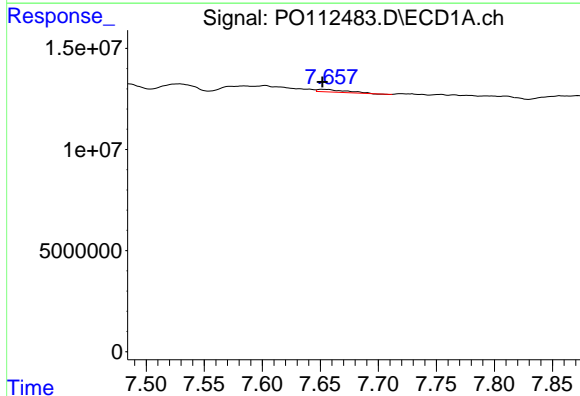
R.T.: 7.585 min
 Delta R.T.: 0.000 min
 Response: 76183
 Conc: 0.04 ng/ml

Instrument :
 ECD_O
 ClientSampleId :
 I.BLK



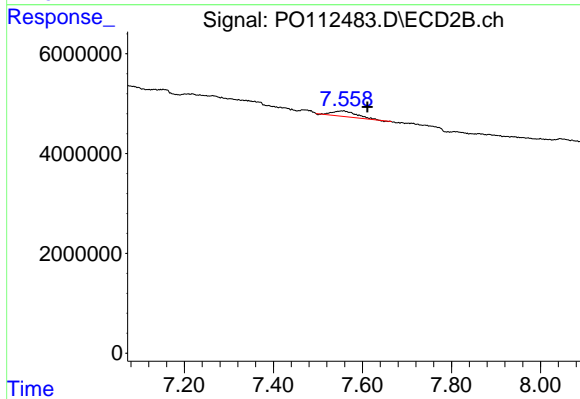
#41 AR-1268-1

R.T.: 7.558 min
 Delta R.T.: 0.012 min
 Response: 4136178
 Conc: 7.99 ng/ml



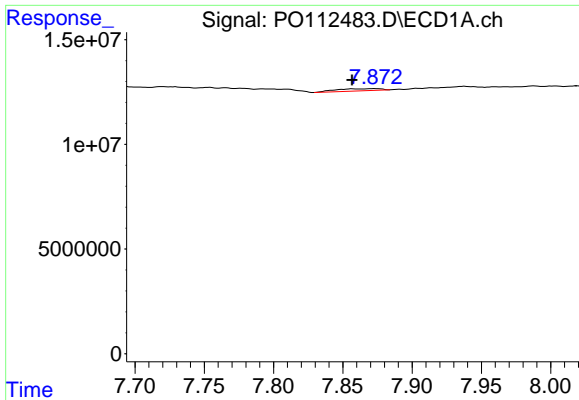
#42 AR-1268-2

R.T.: 7.651 min
 Delta R.T.: 0.000 min
 Response: 2229937
 Conc: 1.51 ng/ml



#42 AR-1268-2

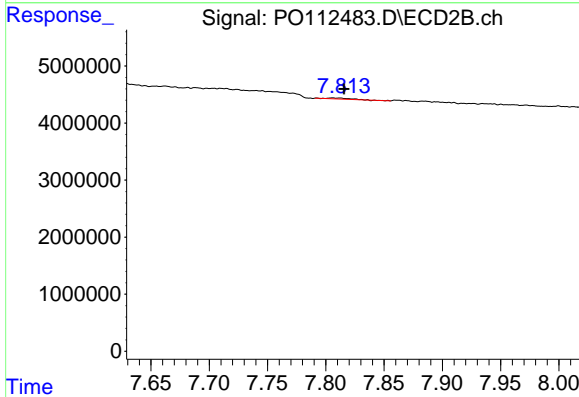
R.T.: 7.558 min
 Delta R.T.: -0.053 min
 Response: 4136178
 Conc: 9.73 ng/ml



#43 AR-1268-3

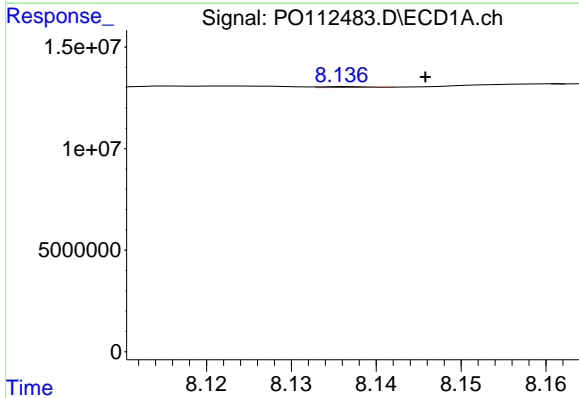
R.T.: 7.872 min
 Delta R.T.: 0.015 min
 Response: 2369492
 Conc: 1.89 ng/ml

Instrument :
 ECD_O
 ClientSampleId :
 I.BLK



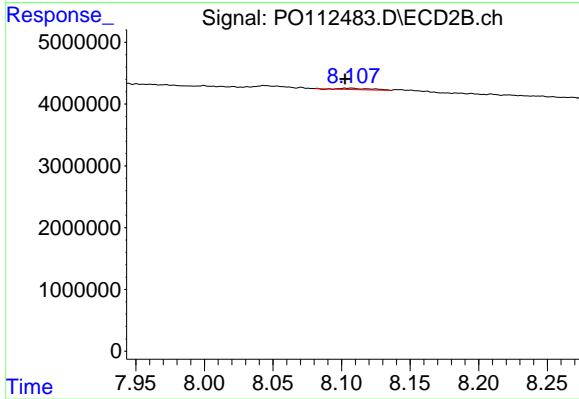
#43 AR-1268-3

R.T.: 7.806 min
 Delta R.T.: -0.010 min
 Response: 212466
 Conc: 0.66 ng/ml



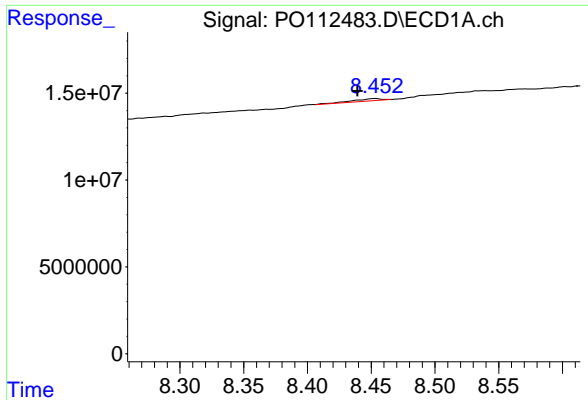
#44 AR-1268-4

R.T.: 8.137 min
 Delta R.T.: -0.009 min
 Response: 173421
 Conc: 0.36 ng/ml



#44 AR-1268-4

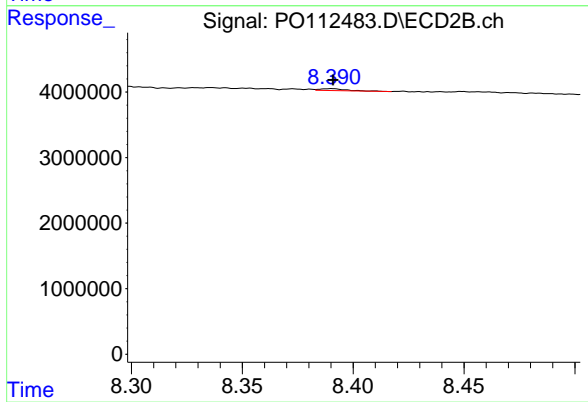
R.T.: 8.107 min
 Delta R.T.: 0.005 min
 Response: 383424
 Conc: 3.45 ng/ml



#45 AR-1268-5

R.T.: 8.453 min
 Delta R.T.: 0.014 min
 Response: 2072108
 Conc: 0.62 ng/ml

Instrument :
 ECD_O
 ClientSampleId :
 I.BLK



#45 AR-1268-5

R.T.: 8.390 min
 Delta R.T.: 0.000 min
 Response: 232397
 Conc: 0.32 ng/ml