

Data Path : Z:\pestpcbsrv\HPCHEM1\ECD_0\Data\P0072425\
 Data File : PO112484.D
 Signal(s) : Signal #1: ECD1A.ch Signal #2: ECD2B.ch
 Acq On : 25 Jul 2025 01:58
 Operator : YP/AJ
 Sample : PB168997BL
 Misc :
 ALS Vial : 27 Sample Multiplier: 1

Instrument :
 ECD_0
 ClientSampleId :
 PB168997BL

Integration File signal 1: autoint1.e
 Integration File signal 2: autoint2.e
 Quant Time: Jul 25 06:23:40 2025
 Quant Method : Z:\pestpcbsrv\HPCHEM1\ECD_0\methods\P0072325.M
 Quant Title : GC EXTRACTABLES
 QLast Update : Thu Jul 24 04:54:06 2025
 Response via : Initial Calibration
 Integrator: ChemStation

Volume Inj. : 2 µl
 Signal #1 Phase : ZB-MR2 Signal #2 Phase: ZB-MR2
 Signal #1 Info : 30Mx0.32mmx 0.50µ Signal #2 Info : 30M x 0.32mm x 0.25µm

Compound	RT#1	RT#2	Resp#1	Resp#2	ng/ml	ng/ml

System Monitoring Compounds						
1) SA Tetrachlo...	3.669	3.661	181.8E6	107.6E6	22.354	21.650
2) SA Decachlor...	8.695	8.639	156.2E6	37114735	21.364	21.003
Target Compounds						
3) L1 AR-1016-1	4.764	4.735	59282	189591	0.221	1.083 #
4) L1 AR-1016-2	4.764	4.754	59282	176341	0.146	0.677 #
5) L1 AR-1016-3	4.833	4.927	324478	175501	1.240	1.291
6) L1 AR-1016-4	4.960	4.972	609325	156961	2.876	1.413 #
7) L1 AR-1016-5	5.209	5.186	1500649	167991	6.838	1.172 #
8) L2 AR-1221-1	3.880	3.876	128893	226115	1.333	3.362 #
9) L2 AR-1221-2	3.971	3.957	2380325	1787899	33.124	35.245
10) L2 AR-1221-3	4.060	4.029	189616	23795	0.798	0.150 #
11) L3 AR-1232-1	4.060	4.029	189616	23795	1.014	0.188 #
12) L3 AR-1232-2	4.536	4.754	338961	176341	3.149	1.345 #
13) L3 AR-1232-3	4.764	4.927	59282	175501	0.287	2.612 #
14) L3 AR-1232-4	4.960	5.018	609325	98067	5.817	1.639 #
15) L3 AR-1232-5	4.989	5.186	216533	167991	3.190	2.576
16) L4 AR-1242-1	4.764	4.735	59282	189591	0.239	1.197 #
17) L4 AR-1242-2	4.764	4.754	59282	176341	0.160	0.755 #
18) L4 AR-1242-3	4.833	4.927	324478	175501	1.371	1.448
19) L4 AR-1242-4	4.960	5.018	609325	98067	3.136	0.799 #
20) L4 AR-1242-5	5.616	5.535	3883614	433961	18.155	2.696 #
21) L5 AR-1248-1	4.764	4.735	59282	189591	0.317	1.560 #
22) L5 AR-1248-2	4.989	4.972	216533	156961	0.849	0.927
23) L5 AR-1248-3	5.209	5.018	1500649	98067	4.366	0.552 #
24) L5 AR-1248-4	5.558	5.186	1407844	167991	2.771	0.806 #
25) L5 AR-1248-5	5.616	5.589	3883614	2800167	11.109	13.038
26) L6 AR-1254-1	5.558	5.535	1407844	433961	2.565	1.321 #
27) L6 AR-1254-2	5.714	5.681	3459544	1204177	7.120	4.160 #
28) L6 AR-1254-3	6.121	6.078	902915	524062	1.213	1.226
29) L6 AR-1254-4	6.354	6.305	294351	710693	0.535	2.604 #
30) L6 AR-1254-5	6.757	6.727	541068	167856	0.764	0.503 #
31) L7 AR-1260-1	6.239	6.209	650582	562946	1.481	2.265 #
32) L7 AR-1260-2	6.447	6.399	193023	386896	0.281	1.174 #
33) L7 AR-1260-3	6.803	6.552	1268281	64343	2.157	0.250 #
34) L7 AR-1260-4	7.056	7.021	1233572	267743	2.735	1.400 #
35) L7 AR-1260-5	7.305	7.267	1458193	404946	1.177	0.982
36) L8 AR-1262-1	6.803	6.758	1268281	365441	1.365	0.881 #
37) L8 AR-1262-2	7.305	7.267	1458193	404946	0.981	0.785
38) L8 AR-1262-3	7.568	7.546	386993	53390	0.656	0.286 #
39) L8 AR-1262-4	0.000	7.603	0	52312	N.D.	0.182 #
40) L8 AR-1262-5	8.150	8.105	128546	73562	0.296	0.739 #
41) L9 AR-1268-1	7.568	7.546	386993	53390	0.221	0.103 #

Data Path : Z:\pestpcbsrv\HPCHEM1\ECD_0\Data\P0072425\
 Data File : P0112484.D
 Signal(s) : Signal #1: ECD1A.ch Signal #2: ECD2B.ch
 Acq On : 25 Jul 2025 01:58
 Operator : YP/AJ
 Sample : PB168997BL
 Misc :
 ALS Vial : 27 Sample Multiplier: 1

Instrument :
 ECD_0
 ClientSampleId :
 PB168997BL

Integration File signal 1: autoint1.e
 Integration File signal 2: autoint2.e
 Quant Time: Jul 25 06:23:40 2025
 Quant Method : Z:\pestpcbsrv\HPCHEM1\ECD_0\methods\P0072325.M
 Quant Title : GC EXTRACTABLES
 QLast Update : Thu Jul 24 04:54:06 2025
 Response via : Initial Calibration
 Integrator: ChemStation

Volume Inj. : 2 µl
 Signal #1 Phase : ZB-MR1 Signal #2 Phase: ZB-MR2
 Signal #1 Info : 30Mx0.32mmx 0.50µ Signal #2 Info : 30M x 0.32mm x 0.25µm

	Compound	RT#1	RT#2	Resp#1	Resp#2	ng/ml	ng/ml
42)	L9 AR-1268-2	0.000	7.603	0	52312	N.D.	0.123 #
43)	L9 AR-1268-3	7.860	7.816	251332	134104	0.201	0.417 #
44)	L9 AR-1268-4	8.150	8.105	128546	73562	0.267	0.661 #
45)	L9 AR-1268-5	8.446	8.382	608395	171819	0.181	0.235 #

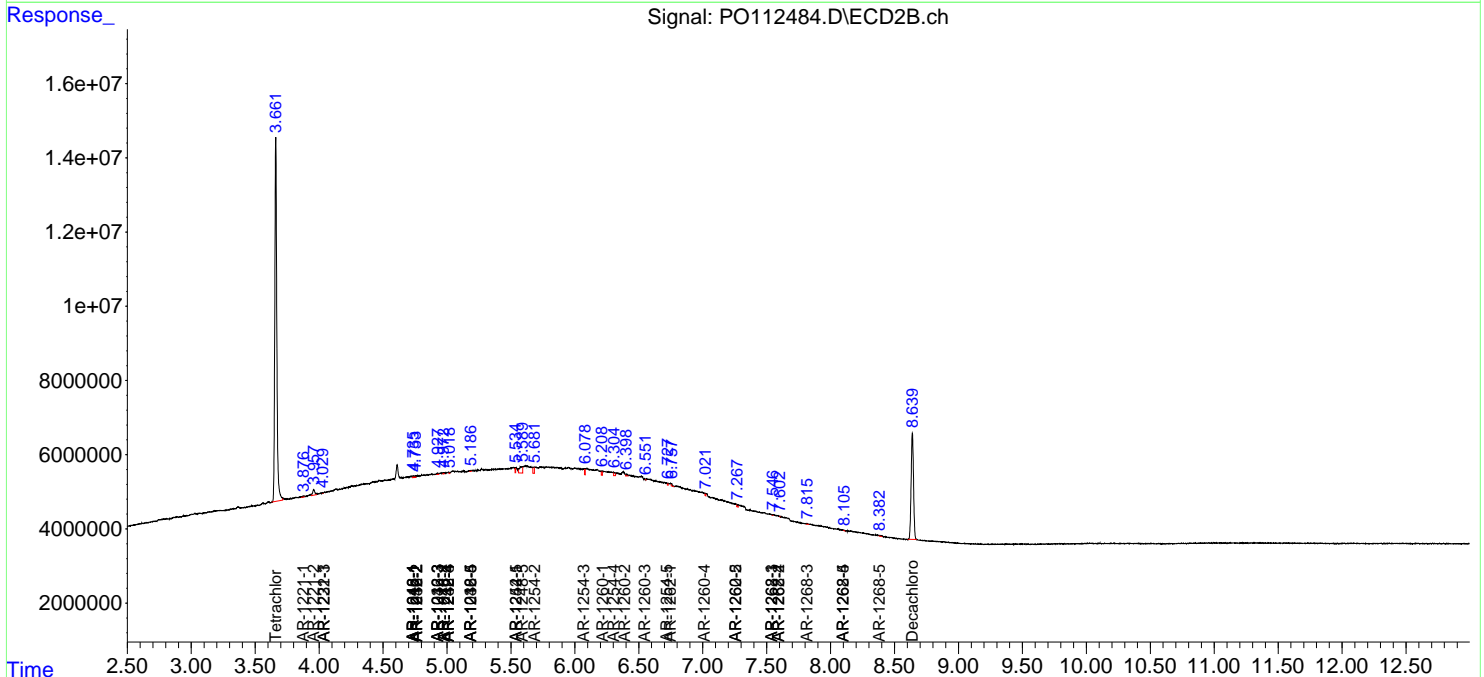
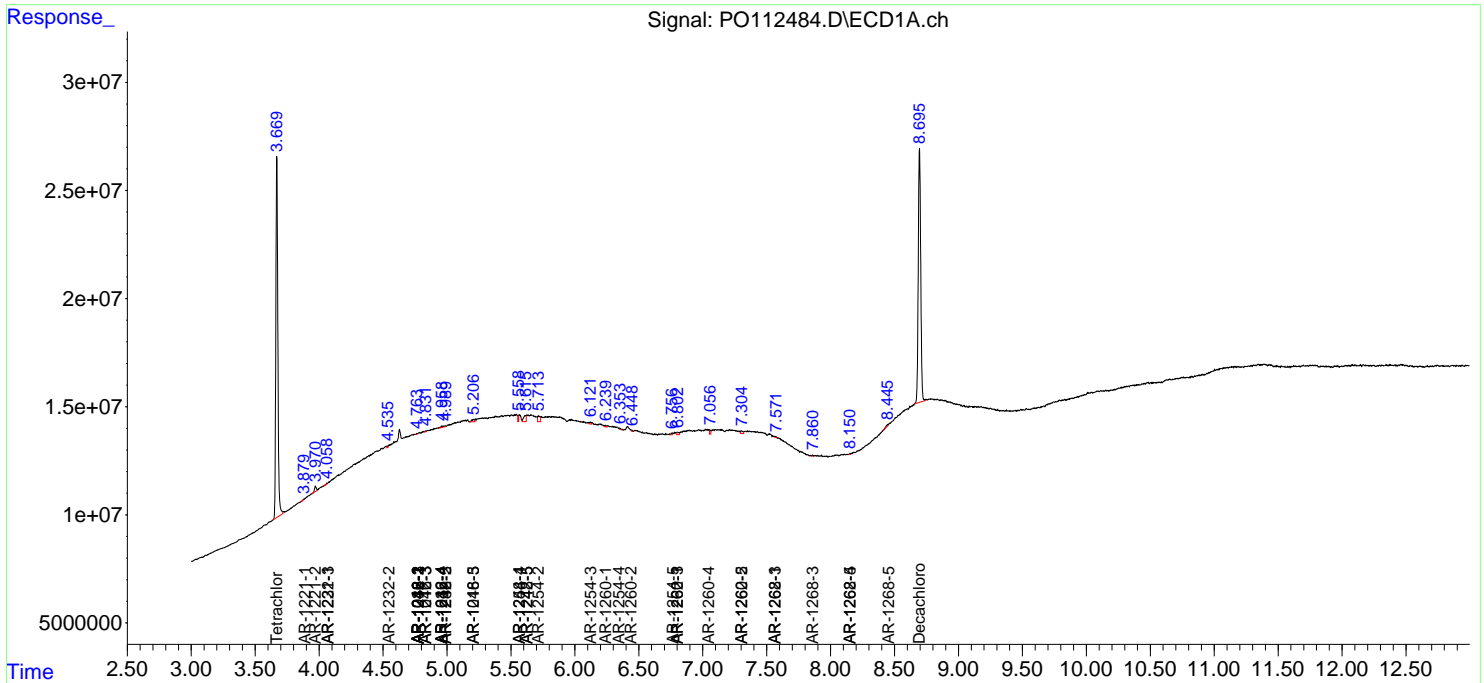
(f)=RT Delta > 1/2 Window (#)=Amounts differ by > 25% (m)=manual int.

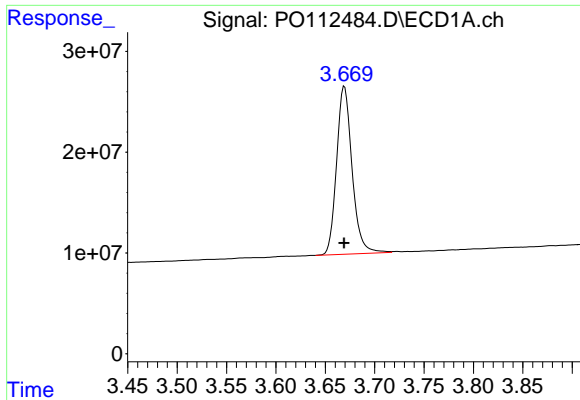
Data Path : Z:\pestpcbsrv\HPCHEM1\ECD_O\Data\PO072425\
 Data File : PO112484.D
 Signal(s) : Signal #1: ECD1A.ch Signal #2: ECD2B.ch
 Acq On : 25 Jul 2025 01:58
 Operator : YP/AJ
 Sample : PB168997BL
 Misc :
 ALS Vial : 27 Sample Multiplier: 1

Instrument :
 ECD_O
 ClientSampleId :
 PB168997BL

Integration File signal 1: autoint1.e
 Integration File signal 2: autoint2.e
 Quant Time: Jul 25 06:23:40 2025
 Quant Method : Z:\pestpcbsrv\HPCHEM1\ECD_O\methods\PO072325.M
 Quant Title : GC EXTRACTABLES
 QLast Update : Thu Jul 24 04:54:06 2025
 Response via : Initial Calibration
 Integrator: ChemStation

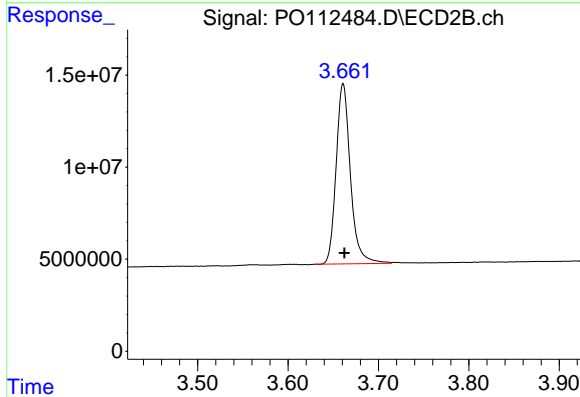
Volume Inj. : 2 µl
 Signal #1 Phase : ZB-MR1 Signal #2 Phase: ZB-MR2
 Signal #1 Info : 30Mx0.32mmx 0.50µ Signal #2 Info : 30M x 0.32mm x 0.25µm



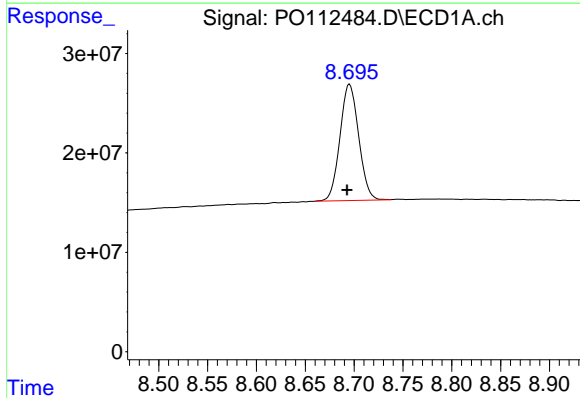


#1 Tetrachloro-m-xylene
 R.T.: 3.669 min
 Delta R.T.: 0.000 min
 Response: 181770287
 Conc: 22.35 ng/ml

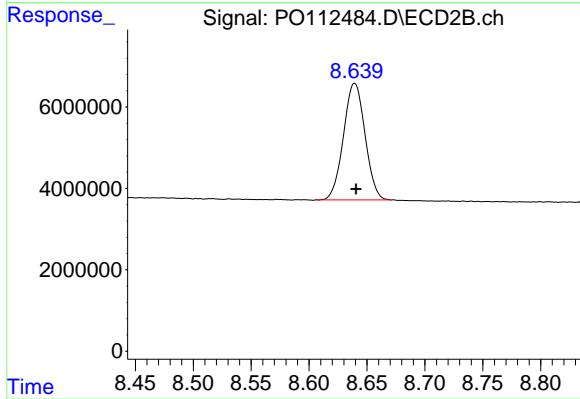
Instrument :
 ECD_O
 ClientSampleId :
 PB168997BL



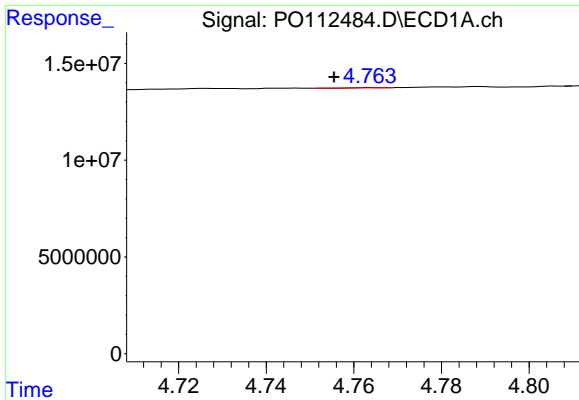
#1 Tetrachloro-m-xylene
 R.T.: 3.661 min
 Delta R.T.: -0.001 min
 Response: 107583507
 Conc: 21.65 ng/ml



#2 Decachlorobiphenyl
 R.T.: 8.695 min
 Delta R.T.: 0.003 min
 Response: 156206342
 Conc: 21.36 ng/ml



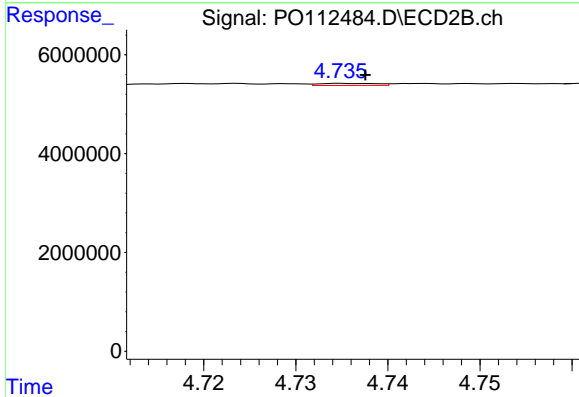
#2 Decachlorobiphenyl
 R.T.: 8.639 min
 Delta R.T.: -0.001 min
 Response: 37114735
 Conc: 21.00 ng/ml



#3 AR-1016-1

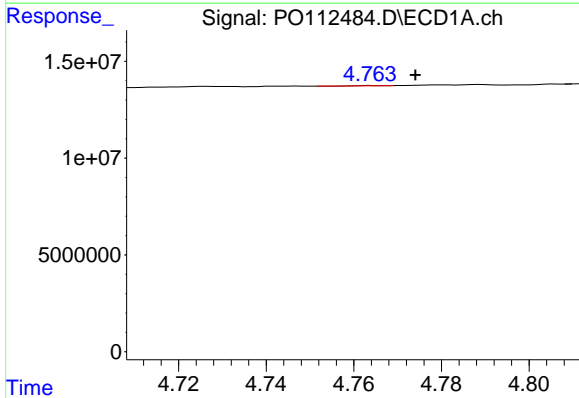
R.T.: 4.764 min
 Delta R.T.: 0.008 min
 Response: 59282
 Conc: 0.22 ng/ml

Instrument :
 ECD_O
 ClientSampleId :
 PB168997BL



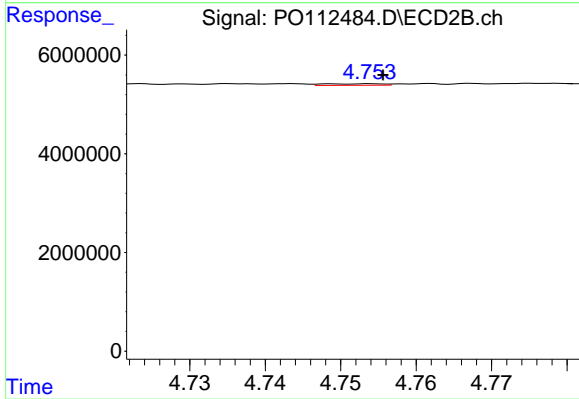
#3 AR-1016-1

R.T.: 4.735 min
 Delta R.T.: -0.002 min
 Response: 189591
 Conc: 1.08 ng/ml



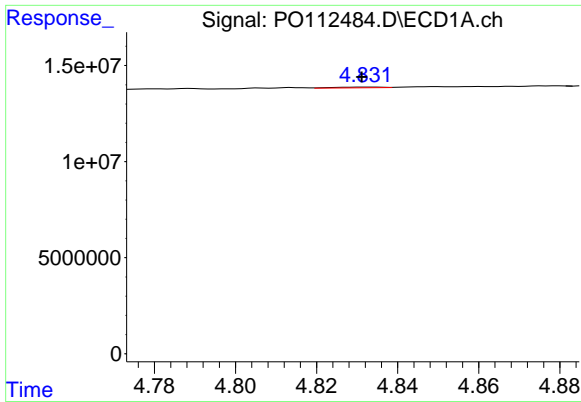
#4 AR-1016-2

R.T.: 4.764 min
 Delta R.T.: -0.010 min
 Response: 59282
 Conc: 0.15 ng/ml



#4 AR-1016-2

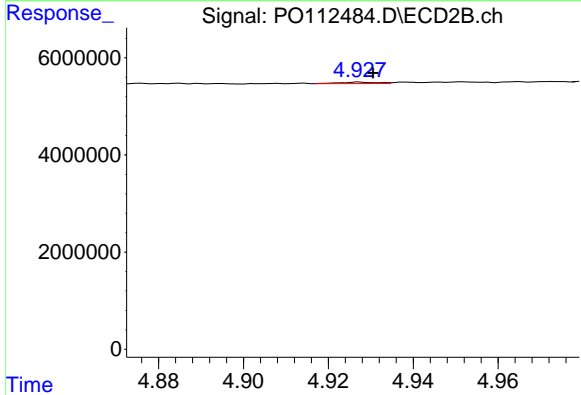
R.T.: 4.754 min
 Delta R.T.: -0.002 min
 Response: 176341
 Conc: 0.68 ng/ml



#5 AR-1016-3

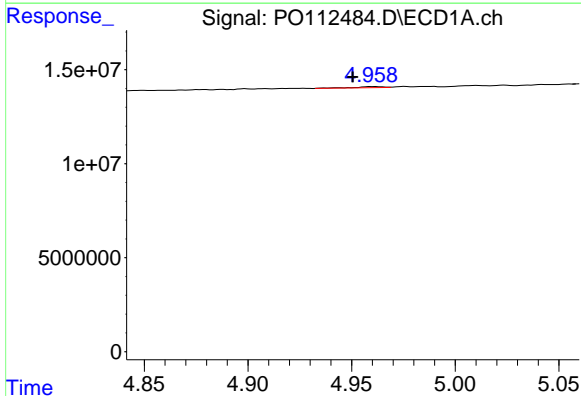
R.T.: 4.833 min
 Delta R.T.: 0.002 min
 Response: 324478
 Conc: 1.24 ng/ml

Instrument :
 ECD_O
 ClientSampleId :
 PB168997BL



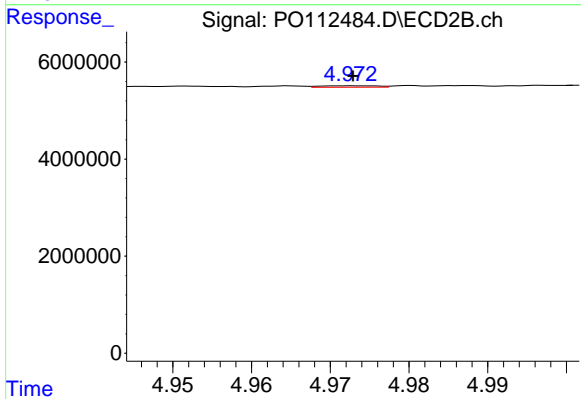
#5 AR-1016-3

R.T.: 4.927 min
 Delta R.T.: -0.003 min
 Response: 175501
 Conc: 1.29 ng/ml



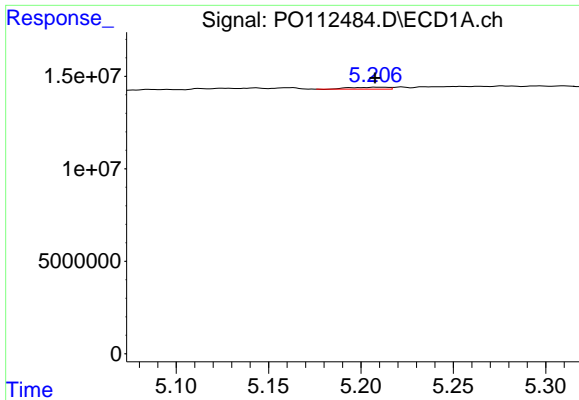
#6 AR-1016-4

R.T.: 4.960 min
 Delta R.T.: 0.010 min
 Response: 609325
 Conc: 2.88 ng/ml



#6 AR-1016-4

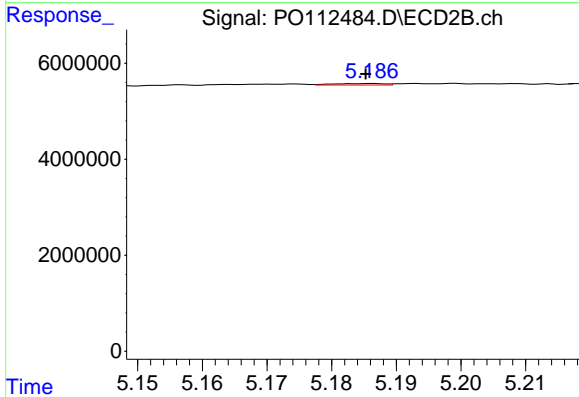
R.T.: 4.972 min
 Delta R.T.: 0.000 min
 Response: 156961
 Conc: 1.41 ng/ml



#7 AR-1016-5

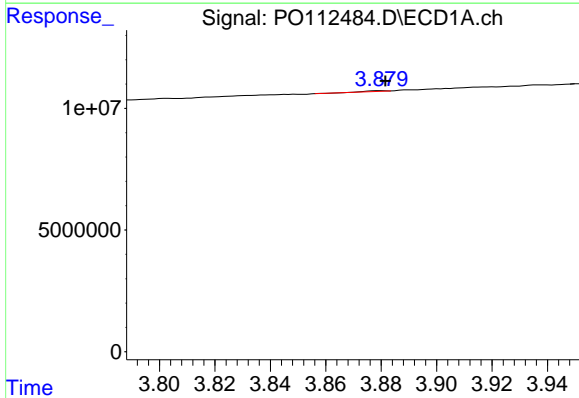
R.T.: 5.209 min
 Delta R.T.: 0.001 min
 Response: 1500649
 Conc: 6.84 ng/ml

Instrument :
 ECD_O
 ClientSampleId :
 PB168997BL



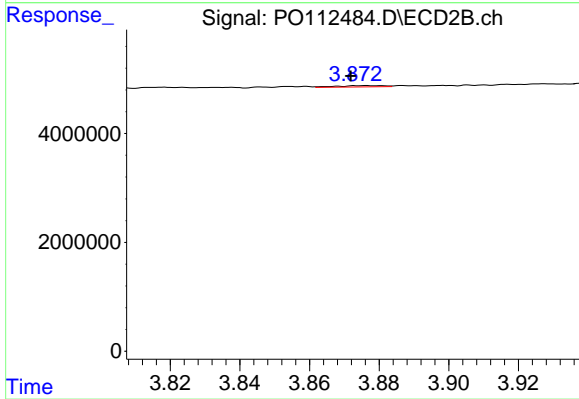
#7 AR-1016-5

R.T.: 5.186 min
 Delta R.T.: 0.001 min
 Response: 167991
 Conc: 1.17 ng/ml



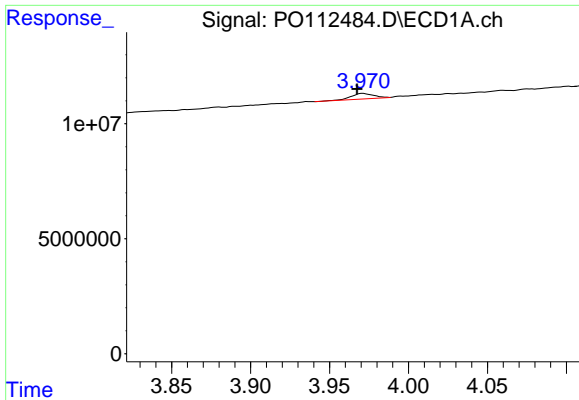
#8 AR-1221-1

R.T.: 3.880 min
 Delta R.T.: -0.002 min
 Response: 128893
 Conc: 1.33 ng/ml



#8 AR-1221-1

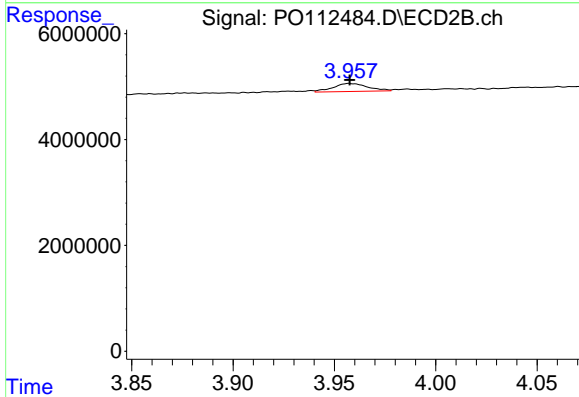
R.T.: 3.876 min
 Delta R.T.: 0.005 min
 Response: 226115
 Conc: 3.36 ng/ml



#9 AR-1221-2

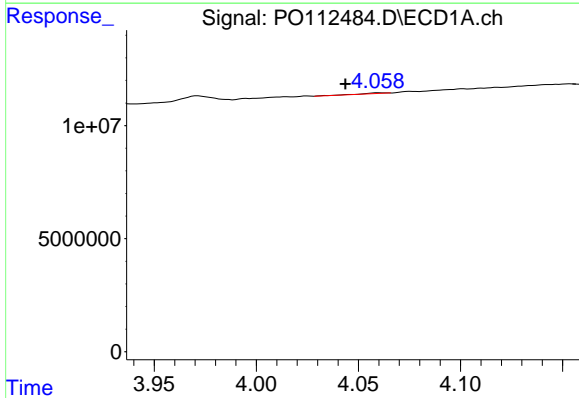
R.T.: 3.971 min
 Delta R.T.: 0.004 min
 Response: 2380325
 Conc: 33.12 ng/ml

Instrument :
 ECD_O
 ClientSampleId :
 PB168997BL



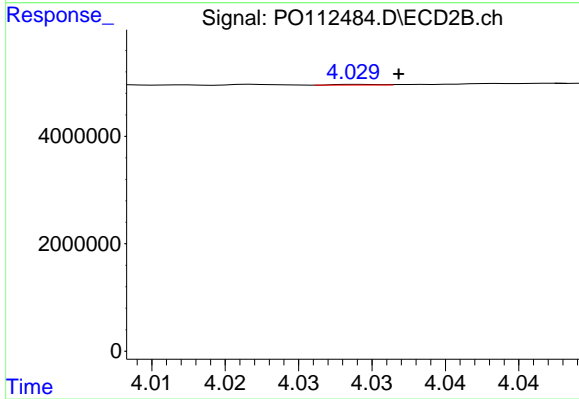
#9 AR-1221-2

R.T.: 3.957 min
 Delta R.T.: 0.000 min
 Response: 1787899
 Conc: 35.24 ng/ml



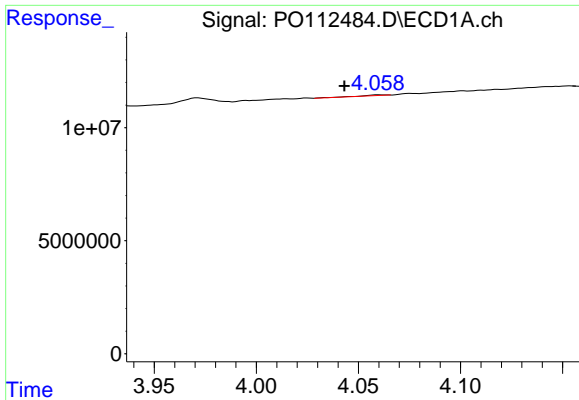
#10 AR-1221-3

R.T.: 4.060 min
 Delta R.T.: 0.016 min
 Response: 189616
 Conc: 0.80 ng/ml



#10 AR-1221-3

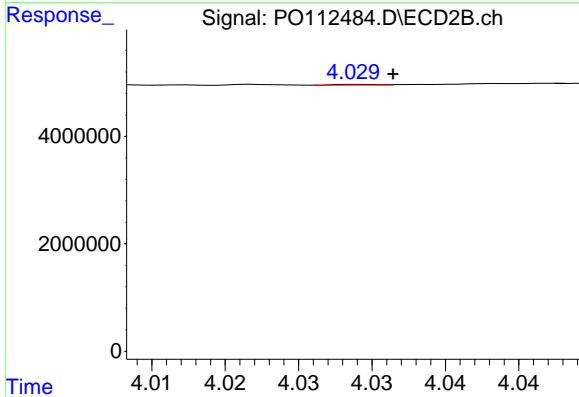
R.T.: 4.029 min
 Delta R.T.: -0.003 min
 Response: 23795
 Conc: 0.15 ng/ml



#11 AR-1232-1

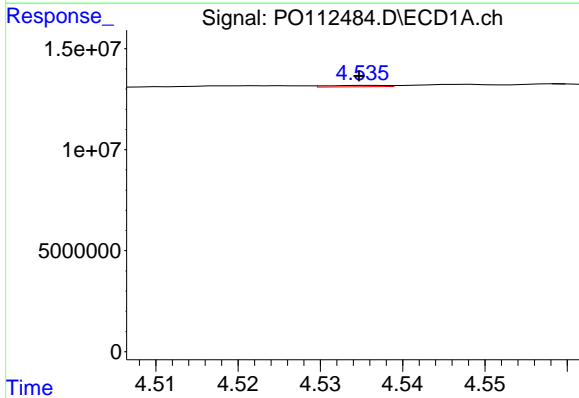
R.T.: 4.060 min
 Delta R.T.: 0.017 min
 Response: 189616
 Conc: 1.01 ng/ml

Instrument :
 ECD_O
 ClientSampleId :
 PB168997BL



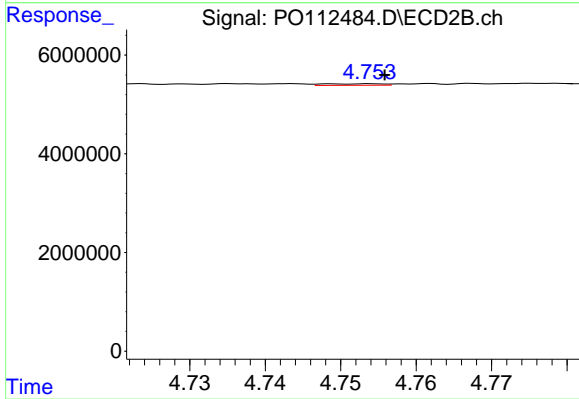
#11 AR-1232-1

R.T.: 4.029 min
 Delta R.T.: -0.002 min
 Response: 23795
 Conc: 0.19 ng/ml



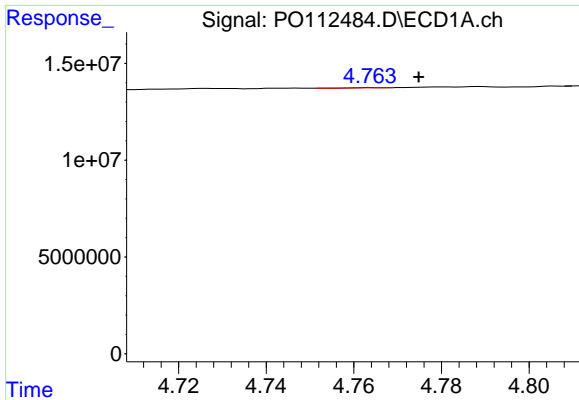
#12 AR-1232-2

R.T.: 4.536 min
 Delta R.T.: 0.001 min
 Response: 338961
 Conc: 3.15 ng/ml



#12 AR-1232-2

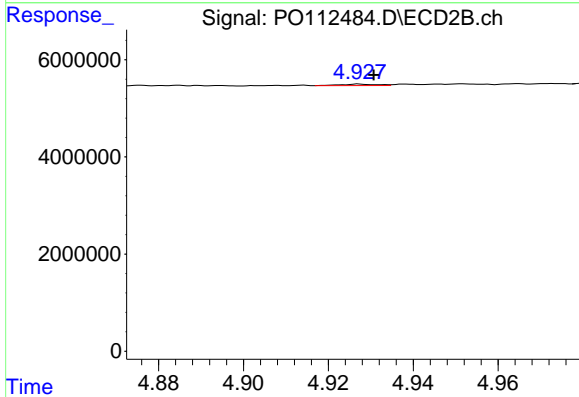
R.T.: 4.754 min
 Delta R.T.: -0.002 min
 Response: 176341
 Conc: 1.34 ng/ml



#13 AR-1232-3

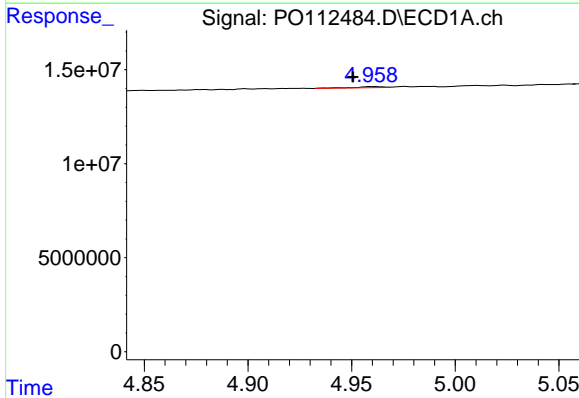
R.T.: 4.764 min
 Delta R.T.: -0.011 min
 Response: 59282
 Conc: 0.29 ng/ml

Instrument :
 ECD_O
 ClientSampleId :
 PB168997BL



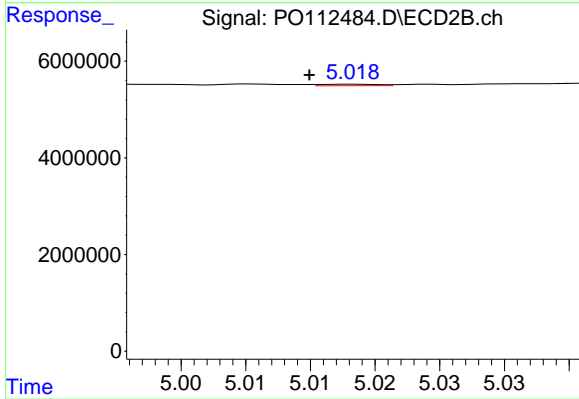
#13 AR-1232-3

R.T.: 4.927 min
 Delta R.T.: -0.003 min
 Response: 175501
 Conc: 2.61 ng/ml



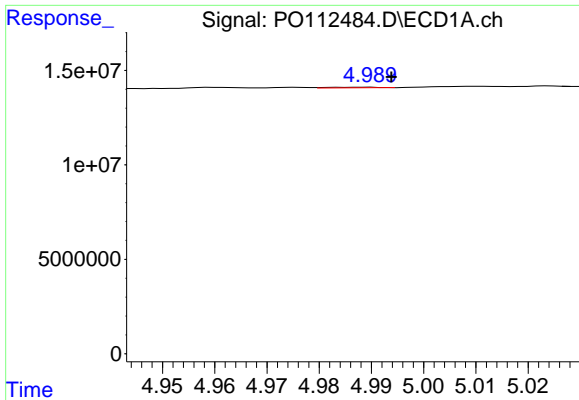
#14 AR-1232-4

R.T.: 4.960 min
 Delta R.T.: 0.010 min
 Response: 609325
 Conc: 5.82 ng/ml



#14 AR-1232-4

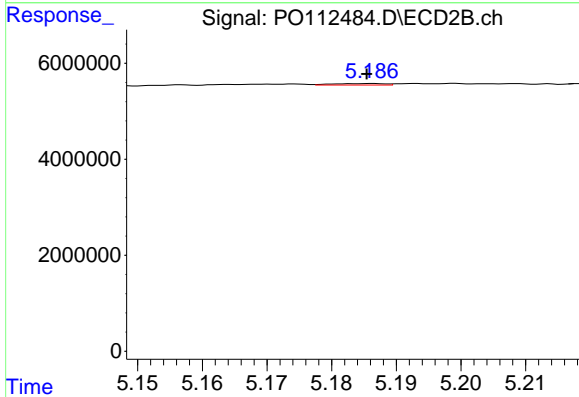
R.T.: 5.018 min
 Delta R.T.: 0.003 min
 Response: 98067
 Conc: 1.64 ng/ml



#15 AR-1232-5

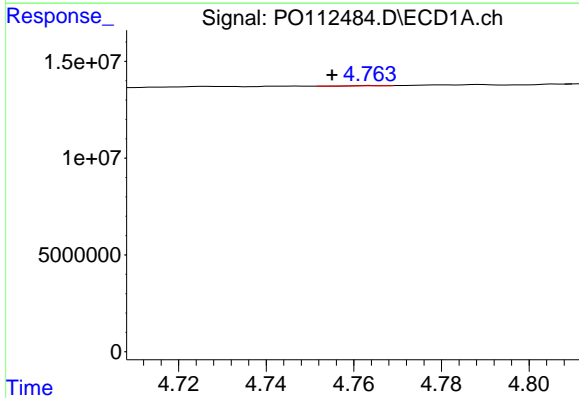
R.T.: 4.989 min
 Delta R.T.: -0.005 min
 Response: 216533
 Conc: 3.19 ng/ml

Instrument :
 ECD_O
 ClientSampleId :
 PB168997BL



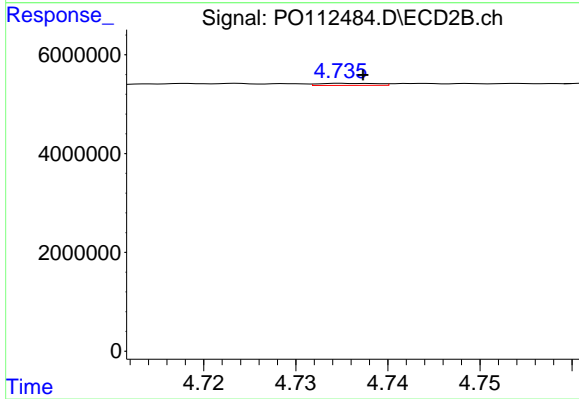
#15 AR-1232-5

R.T.: 5.186 min
 Delta R.T.: 0.001 min
 Response: 167991
 Conc: 2.58 ng/ml



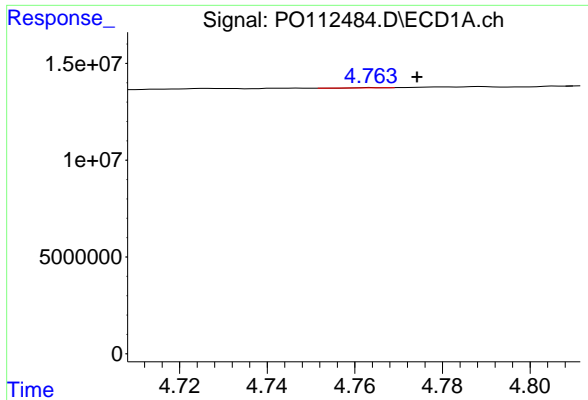
#16 AR-1242-1

R.T.: 4.764 min
 Delta R.T.: 0.009 min
 Response: 59282
 Conc: 0.24 ng/ml



#16 AR-1242-1

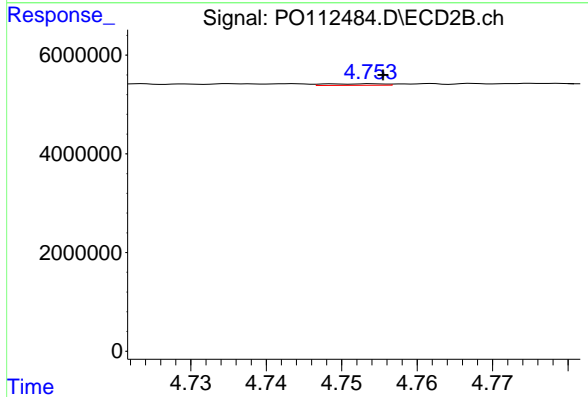
R.T.: 4.735 min
 Delta R.T.: -0.002 min
 Response: 189591
 Conc: 1.20 ng/ml



#17 AR-1242-2

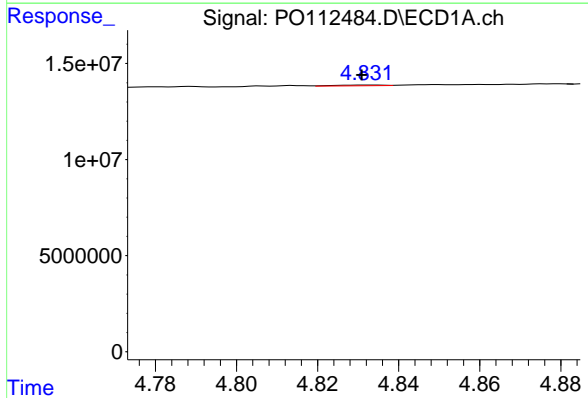
R.T.: 4.764 min
 Delta R.T.: -0.010 min
 Response: 59282
 Conc: 0.16 ng/ml

Instrument :
 ECD_O
 ClientSampleId :
 PB168997BL



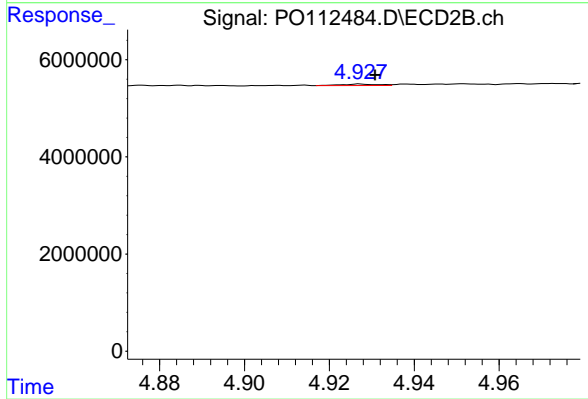
#17 AR-1242-2

R.T.: 4.754 min
 Delta R.T.: -0.002 min
 Response: 176341
 Conc: 0.75 ng/ml



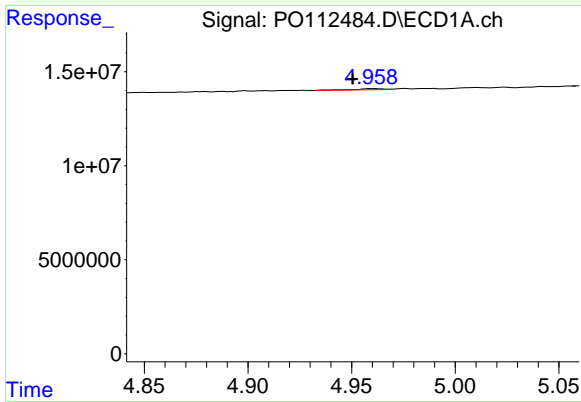
#18 AR-1242-3

R.T.: 4.833 min
 Delta R.T.: 0.002 min
 Response: 324478
 Conc: 1.37 ng/ml



#18 AR-1242-3

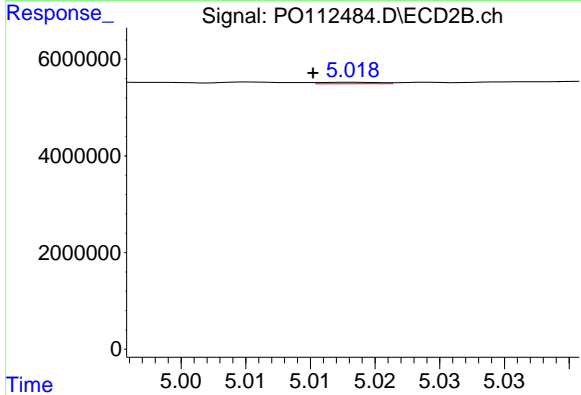
R.T.: 4.927 min
 Delta R.T.: -0.004 min
 Response: 175501
 Conc: 1.45 ng/ml



#19 AR-1242-4

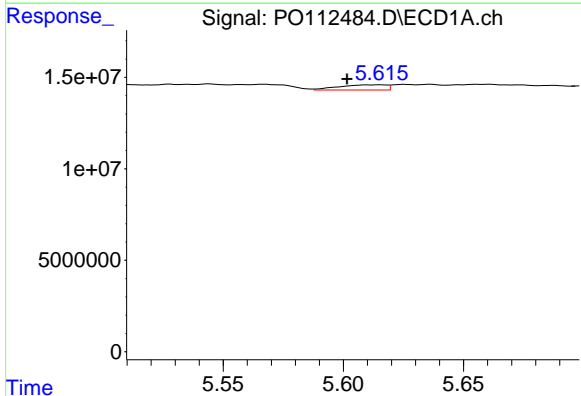
R.T.: 4.960 min
 Delta R.T.: 0.010 min
 Response: 609325
 Conc: 3.14 ng/ml

Instrument :
 ECD_O
 ClientSampleId :
 PB168997BL



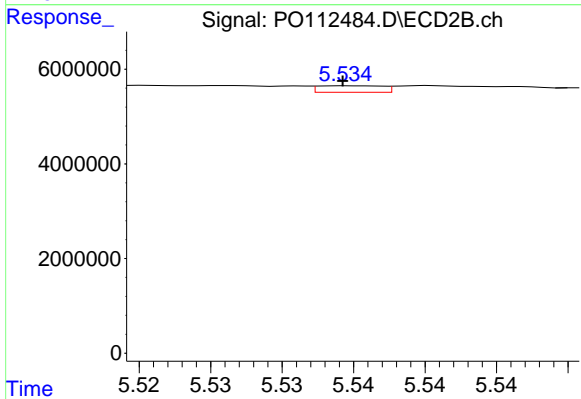
#19 AR-1242-4

R.T.: 5.018 min
 Delta R.T.: 0.003 min
 Response: 98067
 Conc: 0.80 ng/ml



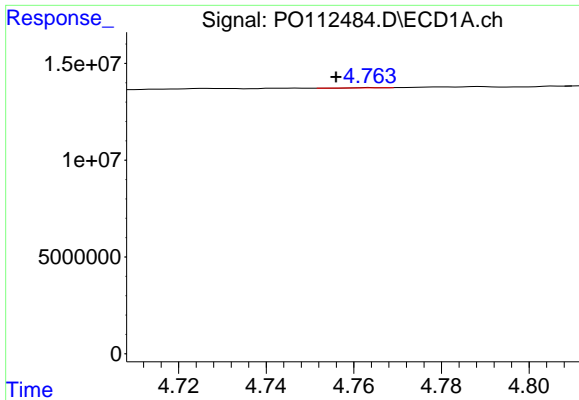
#20 AR-1242-5

R.T.: 5.616 min
 Delta R.T.: 0.014 min
 Response: 3883614
 Conc: 18.15 ng/ml



#20 AR-1242-5

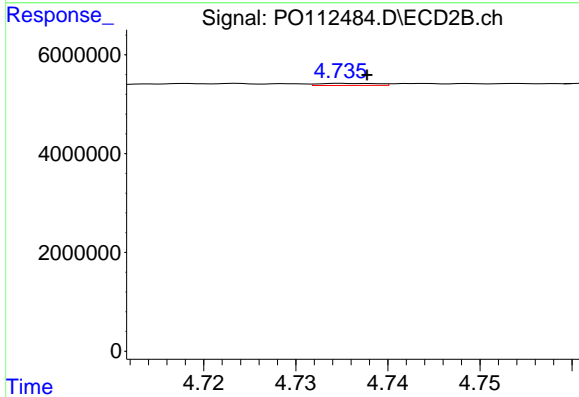
R.T.: 5.535 min
 Delta R.T.: 0.000 min
 Response: 433961
 Conc: 2.70 ng/ml



#21 AR-1248-1

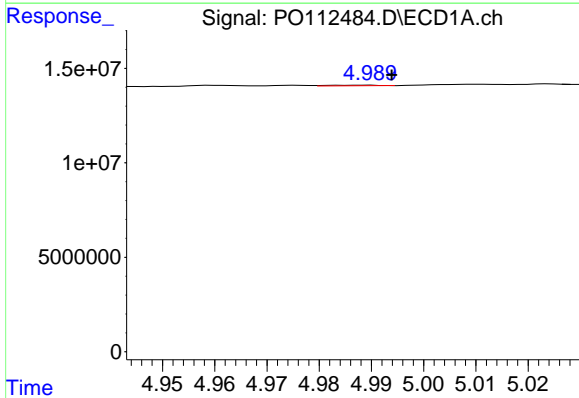
R.T.: 4.764 min
 Delta R.T.: 0.008 min
 Response: 59282
 Conc: 0.32 ng/ml

Instrument :
 ECD_O
 ClientSampleId :
 PB168997BL



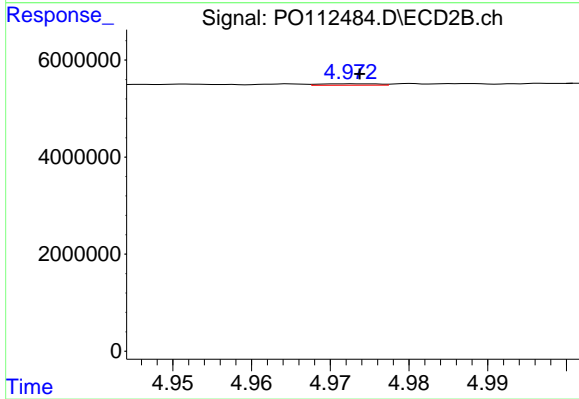
#21 AR-1248-1

R.T.: 4.735 min
 Delta R.T.: -0.003 min
 Response: 189591
 Conc: 1.56 ng/ml



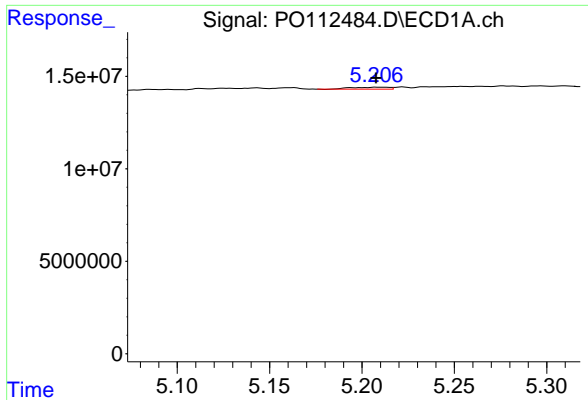
#22 AR-1248-2

R.T.: 4.989 min
 Delta R.T.: -0.005 min
 Response: 216533
 Conc: 0.85 ng/ml



#22 AR-1248-2

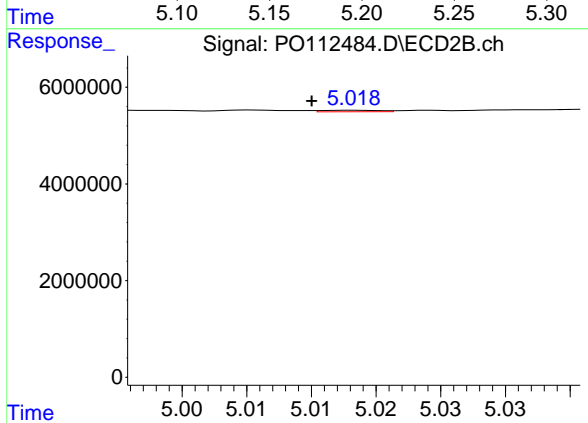
R.T.: 4.972 min
 Delta R.T.: -0.001 min
 Response: 156961
 Conc: 0.93 ng/ml



#23 AR-1248-3

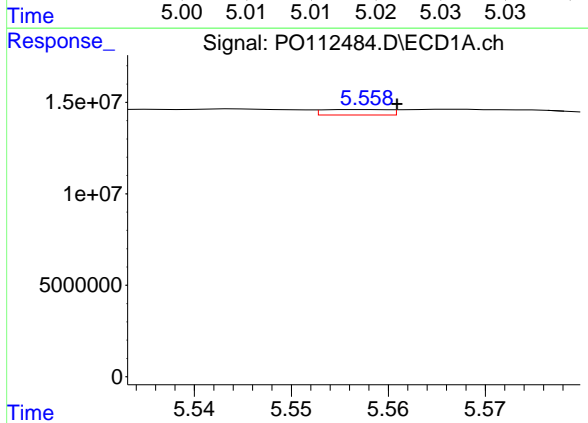
R.T.: 5.209 min
 Delta R.T.: 0.001 min
 Response: 1500649
 Conc: 4.37 ng/ml

Instrument :
 ECD_O
 ClientSampleId :
 PB168997BL



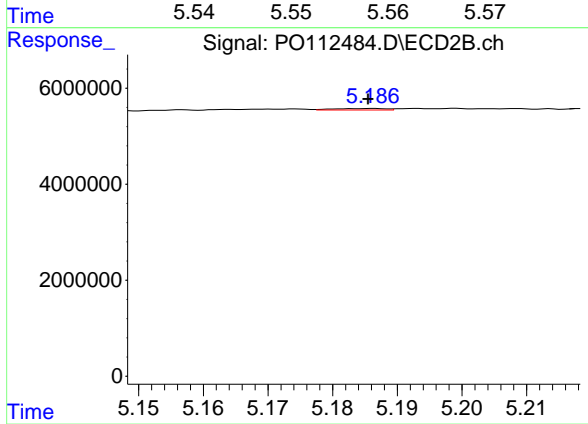
#23 AR-1248-3

R.T.: 5.018 min
 Delta R.T.: 0.003 min
 Response: 98067
 Conc: 0.55 ng/ml



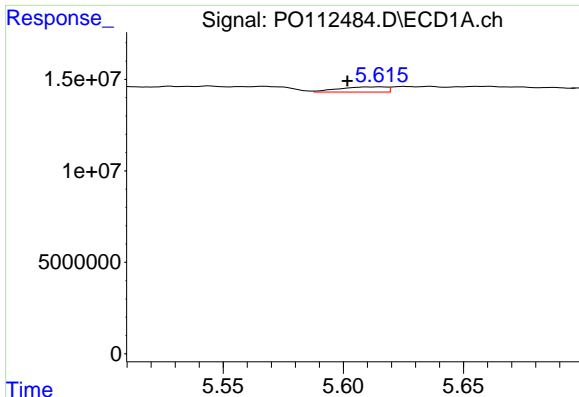
#24 AR-1248-4

R.T.: 5.558 min
 Delta R.T.: -0.003 min
 Response: 1407844
 Conc: 2.77 ng/ml



#24 AR-1248-4

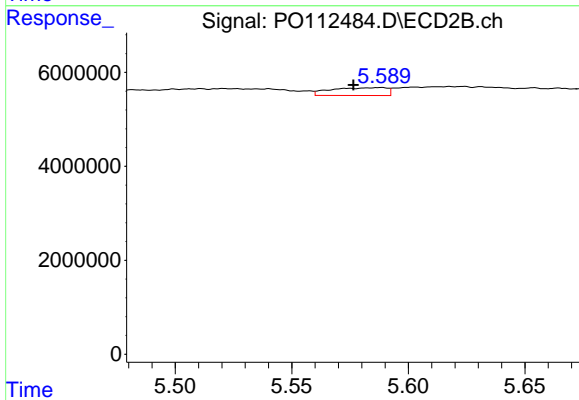
R.T.: 5.186 min
 Delta R.T.: 0.000 min
 Response: 167991
 Conc: 0.81 ng/ml



#25 AR-1248-5

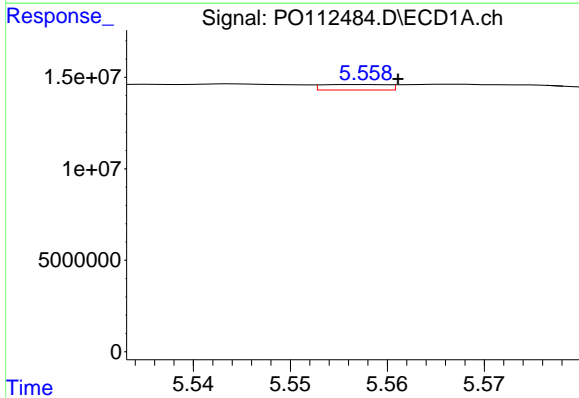
R.T.: 5.616 min
 Delta R.T.: 0.014 min
 Response: 3883614
 Conc: 11.11 ng/ml

Instrument :
 ECD_O
 ClientSampleId :
 PB168997BL



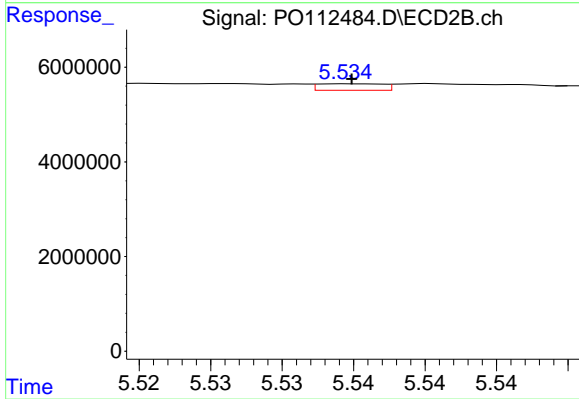
#25 AR-1248-5

R.T.: 5.589 min
 Delta R.T.: 0.012 min
 Response: 2800167
 Conc: 13.04 ng/ml



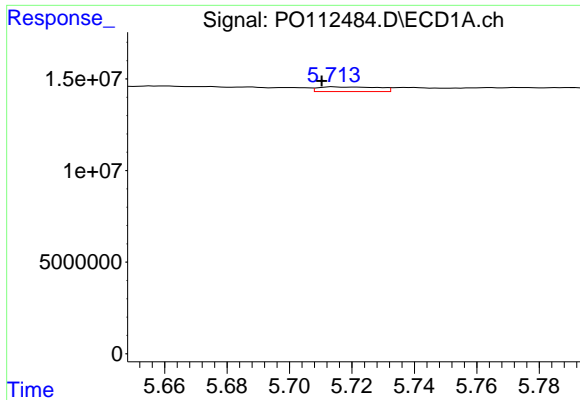
#26 AR-1254-1

R.T.: 5.558 min
 Delta R.T.: -0.003 min
 Response: 1407844
 Conc: 2.56 ng/ml



#26 AR-1254-1

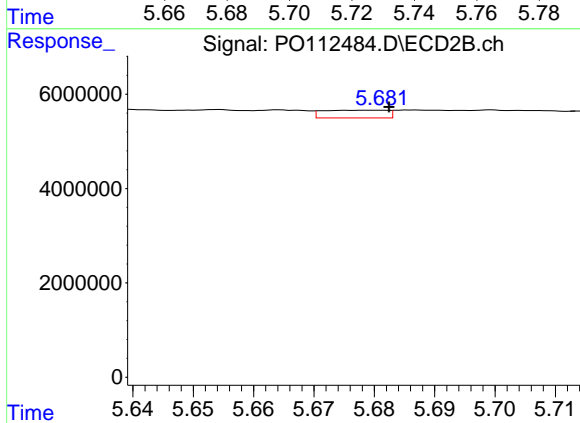
R.T.: 5.535 min
 Delta R.T.: 0.000 min
 Response: 433961
 Conc: 1.32 ng/ml



#27 AR-1254-2

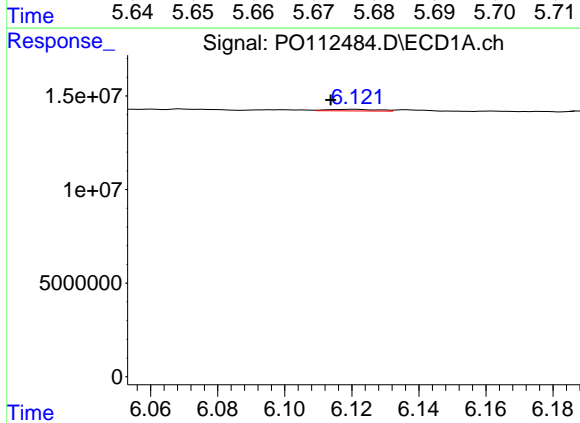
R.T.: 5.714 min
 Delta R.T.: 0.004 min
 Response: 3459544
 Conc: 7.12 ng/ml

Instrument :
 ECD_O
 ClientSampleId :
 PB168997BL



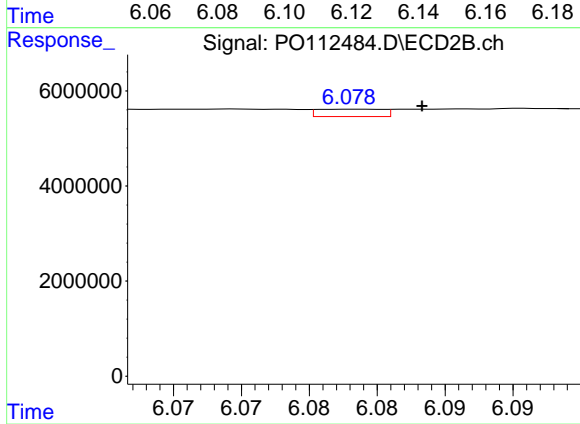
#27 AR-1254-2

R.T.: 5.681 min
 Delta R.T.: -0.002 min
 Response: 1204177
 Conc: 4.16 ng/ml



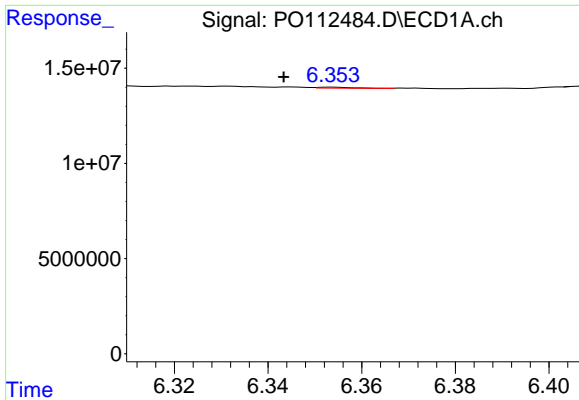
#28 AR-1254-3

R.T.: 6.121 min
 Delta R.T.: 0.008 min
 Response: 902915
 Conc: 1.21 ng/ml



#28 AR-1254-3

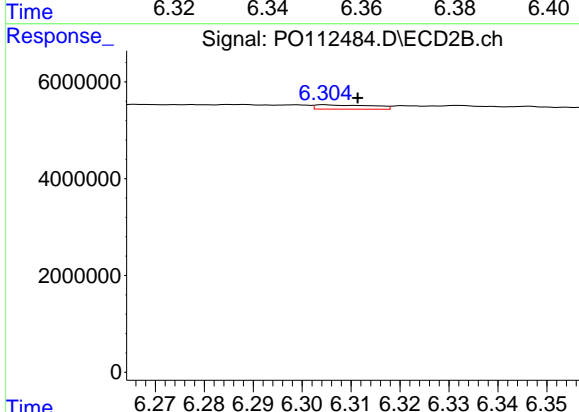
R.T.: 6.078 min
 Delta R.T.: -0.005 min
 Response: 524062
 Conc: 1.23 ng/ml



#29 AR-1254-4

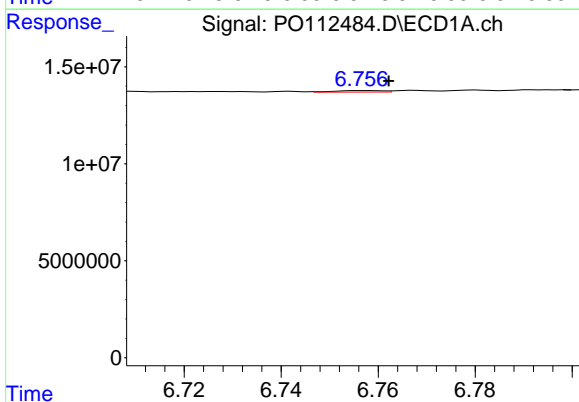
R.T.: 6.354 min
 Delta R.T.: 0.011 min
 Response: 294351
 Conc: 0.54 ng/ml

Instrument :
 ECD_O
 ClientSampleId :
 PB168997BL



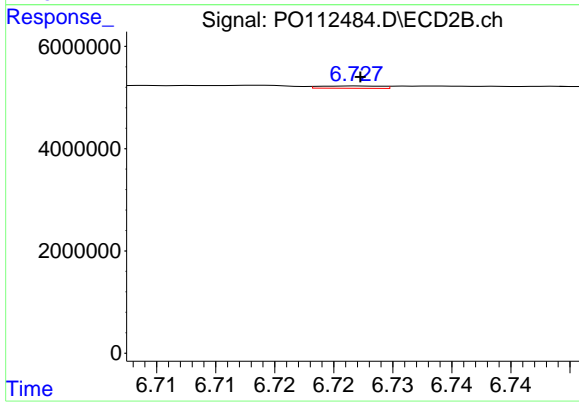
#29 AR-1254-4

R.T.: 6.305 min
 Delta R.T.: -0.007 min
 Response: 710693
 Conc: 2.60 ng/ml



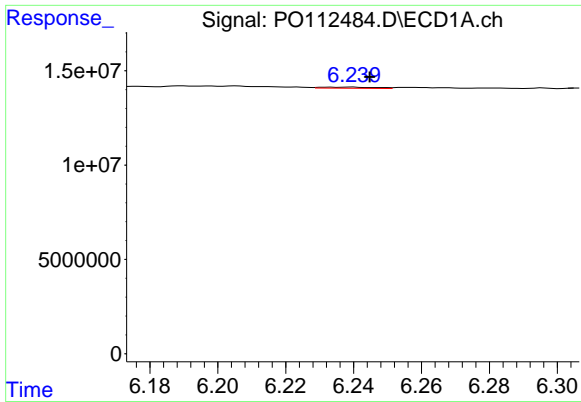
#30 AR-1254-5

R.T.: 6.757 min
 Delta R.T.: -0.005 min
 Response: 541068
 Conc: 0.76 ng/ml



#30 AR-1254-5

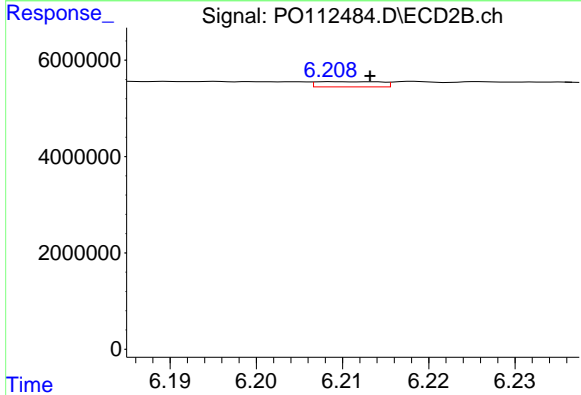
R.T.: 6.727 min
 Delta R.T.: 0.000 min
 Response: 167856
 Conc: 0.50 ng/ml



#31 AR-1260-1

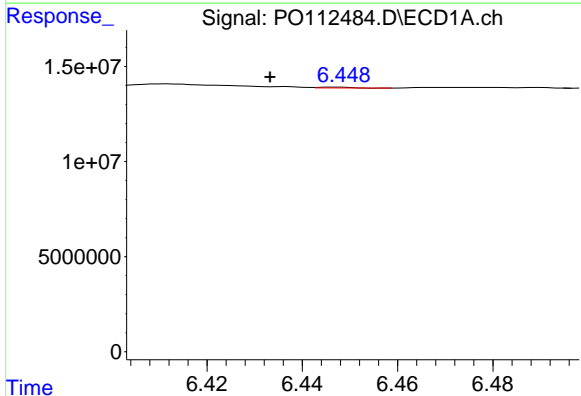
R.T.: 6.239 min
 Delta R.T.: -0.005 min
 Response: 650582
 Conc: 1.48 ng/ml

Instrument :
 ECD_O
 ClientSampleId :
 PB168997BL



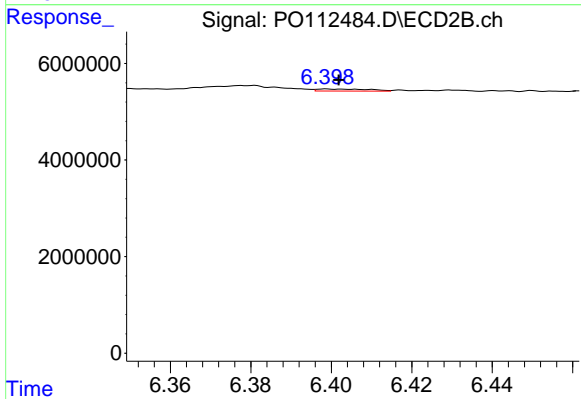
#31 AR-1260-1

R.T.: 6.209 min
 Delta R.T.: -0.004 min
 Response: 562946
 Conc: 2.27 ng/ml



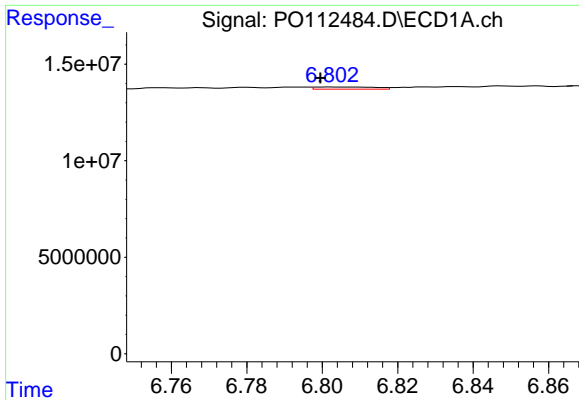
#32 AR-1260-2

R.T.: 6.447 min
 Delta R.T.: 0.014 min
 Response: 193023
 Conc: 0.28 ng/ml



#32 AR-1260-2

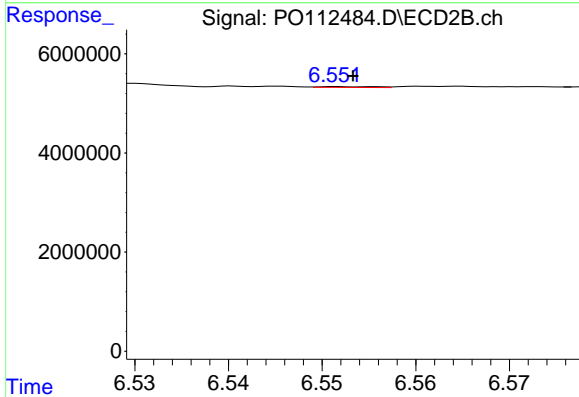
R.T.: 6.399 min
 Delta R.T.: -0.003 min
 Response: 386896
 Conc: 1.17 ng/ml



#33 AR-1260-3

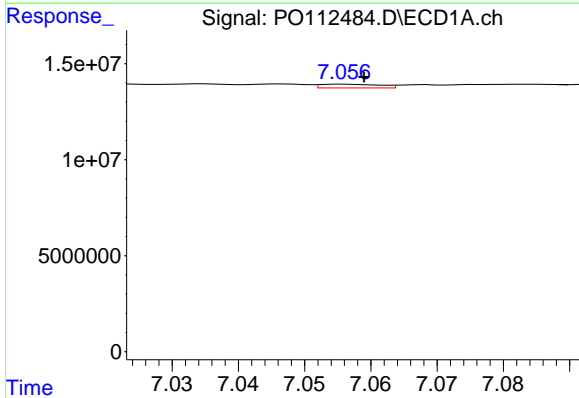
R.T.: 6.803 min
 Delta R.T.: 0.003 min
 Response: 1268281
 Conc: 2.16 ng/ml

Instrument :
 ECD_O
 ClientSampleId :
 PB168997BL



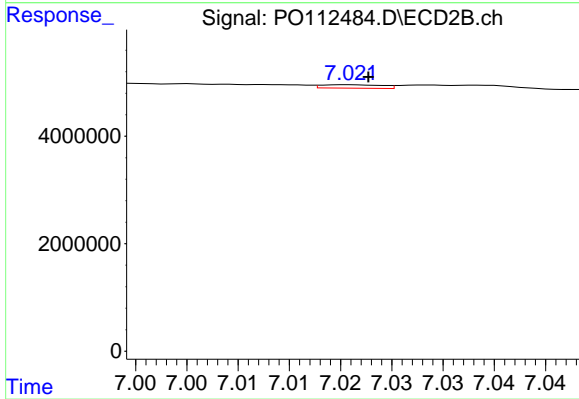
#33 AR-1260-3

R.T.: 6.552 min
 Delta R.T.: -0.002 min
 Response: 64343
 Conc: 0.25 ng/ml



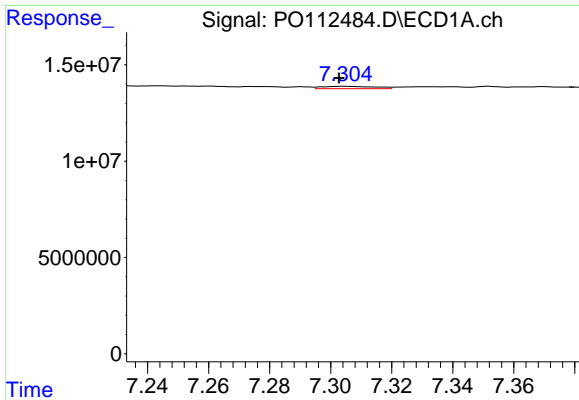
#34 AR-1260-4

R.T.: 7.056 min
 Delta R.T.: -0.003 min
 Response: 1233572
 Conc: 2.74 ng/ml



#34 AR-1260-4

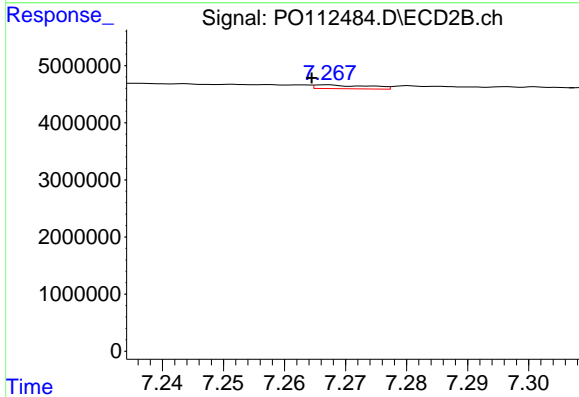
R.T.: 7.021 min
 Delta R.T.: -0.002 min
 Response: 267743
 Conc: 1.40 ng/ml



#35 AR-1260-5

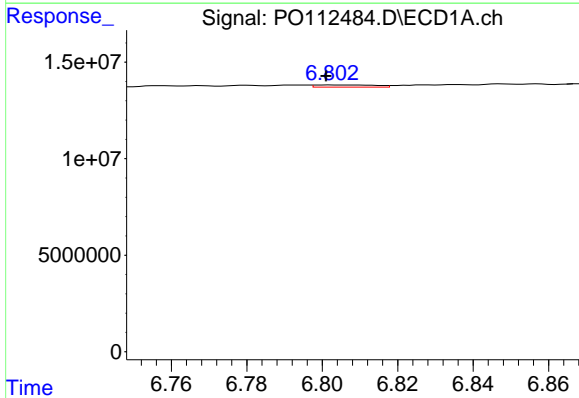
R.T.: 7.305 min
 Delta R.T.: 0.002 min
 Response: 1458193
 Conc: 1.18 ng/ml

Instrument :
 ECD_O
 ClientSampleId :
 PB168997BL



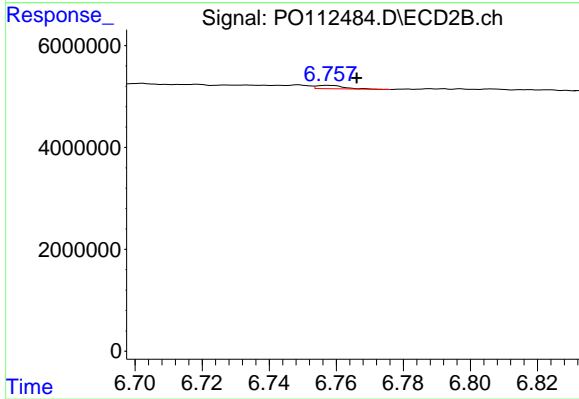
#35 AR-1260-5

R.T.: 7.267 min
 Delta R.T.: 0.003 min
 Response: 404946
 Conc: 0.98 ng/ml



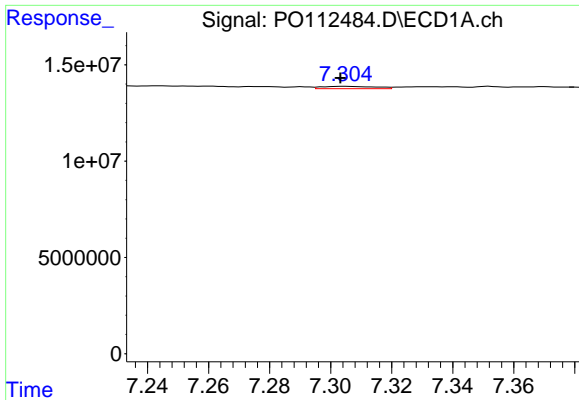
#36 AR-1262-1

R.T.: 6.803 min
 Delta R.T.: 0.002 min
 Response: 1268281
 Conc: 1.36 ng/ml



#36 AR-1262-1

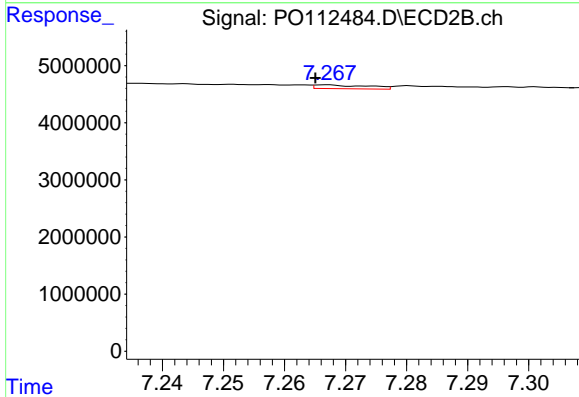
R.T.: 6.758 min
 Delta R.T.: -0.008 min
 Response: 365441
 Conc: 0.88 ng/ml



#37 AR-1262-2

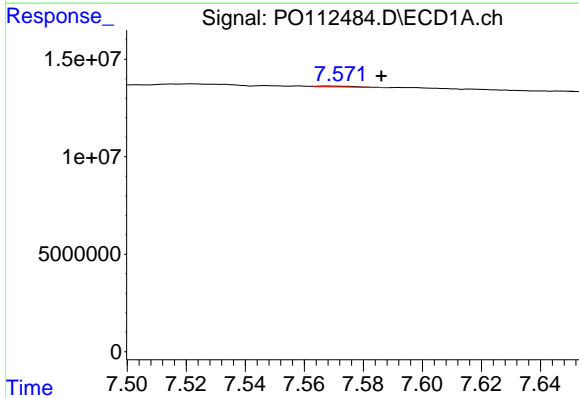
R.T.: 7.305 min
 Delta R.T.: 0.001 min
 Response: 1458193
 Conc: 0.98 ng/ml

Instrument :
 ECD_O
 ClientSampleId :
 PB168997BL



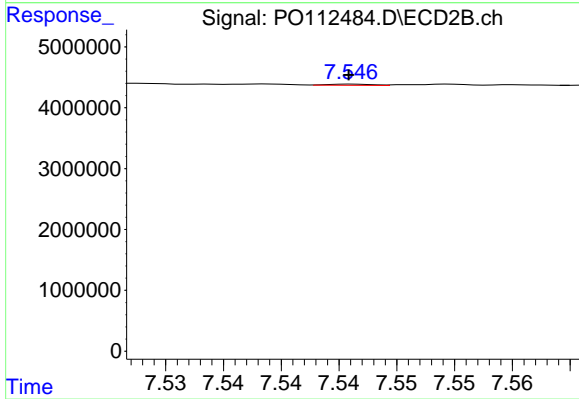
#37 AR-1262-2

R.T.: 7.267 min
 Delta R.T.: 0.002 min
 Response: 404946
 Conc: 0.79 ng/ml



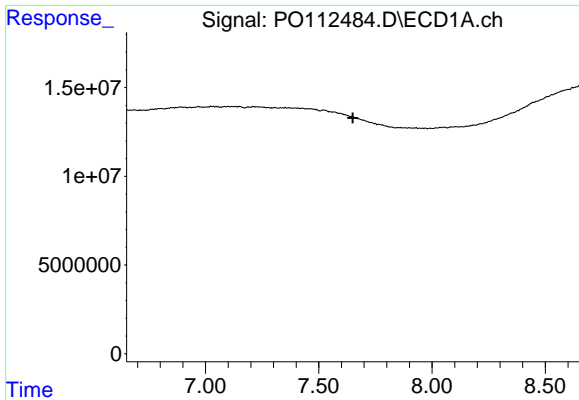
#38 AR-1262-3

R.T.: 7.568 min
 Delta R.T.: -0.018 min
 Response: 386993
 Conc: 0.66 ng/ml



#38 AR-1262-3

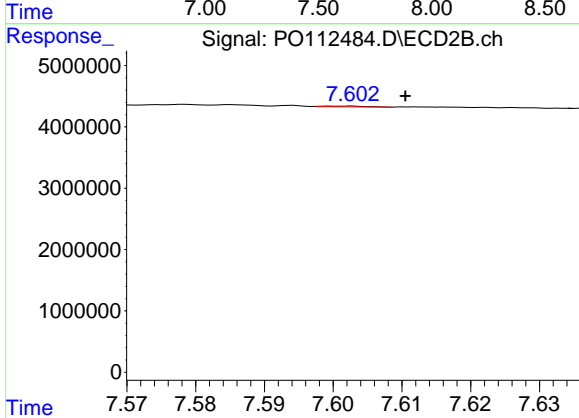
R.T.: 7.546 min
 Delta R.T.: 0.000 min
 Response: 53390
 Conc: 0.29 ng/ml



#39 AR-1262-4

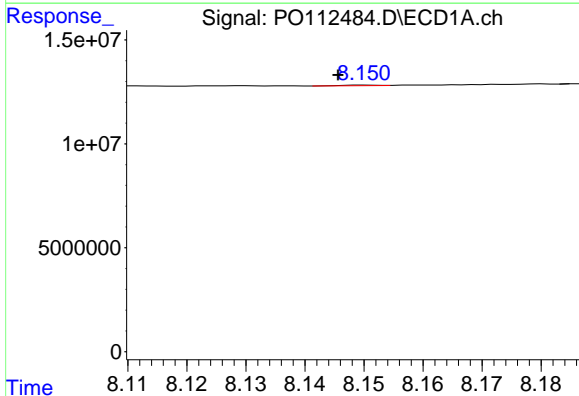
R.T.: 0.000 min
 Exp R.T.: 7.650 min
 Response: 0
 Conc: N.D.

Instrument :
 ECD_O
 ClientSampleId :
 PB168997BL



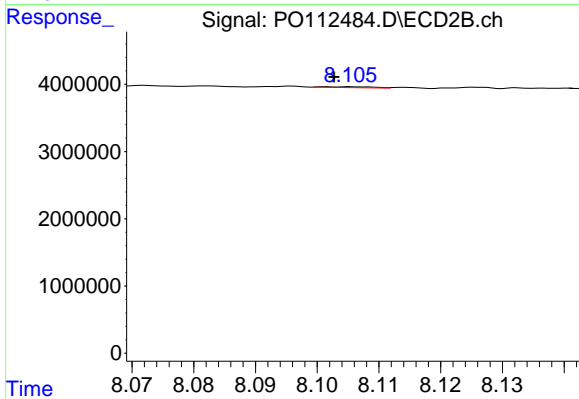
#39 AR-1262-4

R.T.: 7.603 min
 Delta R.T.: -0.008 min
 Response: 52312
 Conc: 0.18 ng/ml



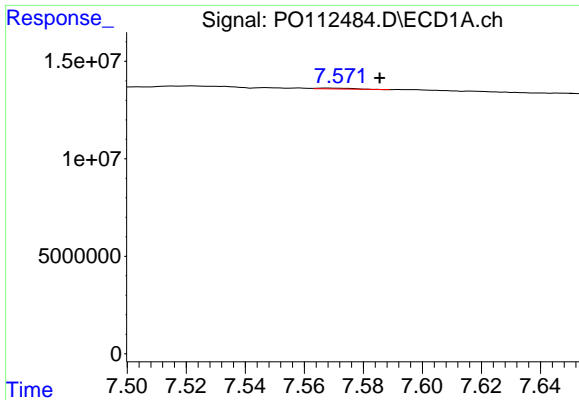
#40 AR-1262-5

R.T.: 8.150 min
 Delta R.T.: 0.005 min
 Response: 128546
 Conc: 0.30 ng/ml



#40 AR-1262-5

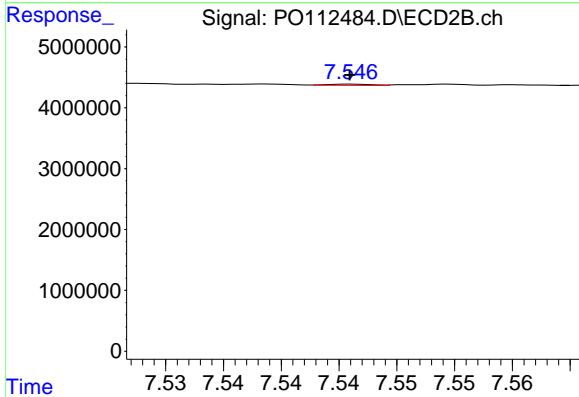
R.T.: 8.105 min
 Delta R.T.: 0.003 min
 Response: 73562
 Conc: 0.74 ng/ml



#41 AR-1268-1

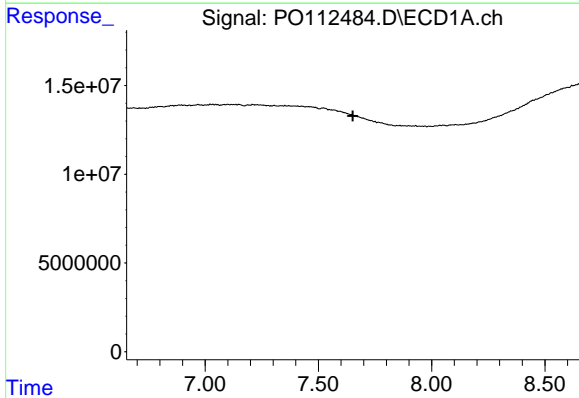
R.T.: 7.568 min
 Delta R.T.: -0.017 min
 Response: 386993
 Conc: 0.22 ng/ml

Instrument :
 ECD_O
 ClientSampleId :
 PB168997BL



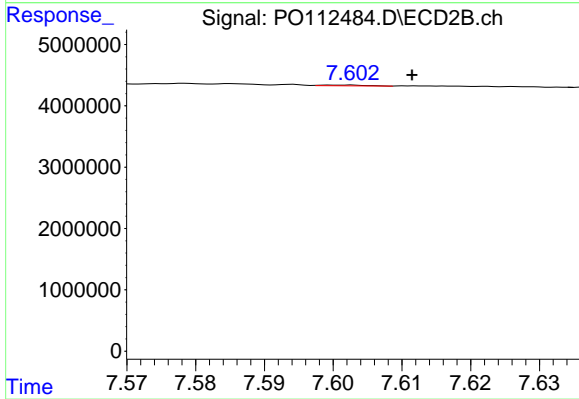
#41 AR-1268-1

R.T.: 7.546 min
 Delta R.T.: 0.000 min
 Response: 53390
 Conc: 0.10 ng/ml



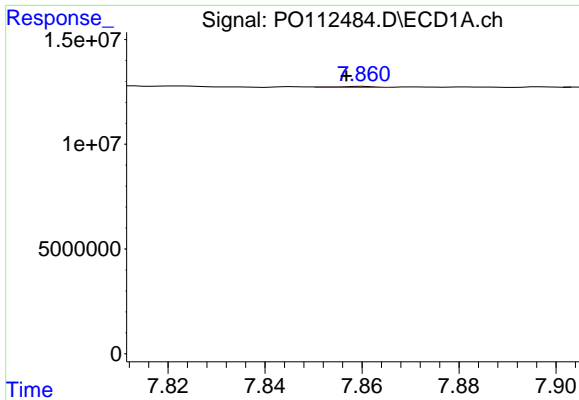
#42 AR-1268-2

R.T.: 0.000 min
 Exp R.T. : 7.652 min
 Response: 0
 Conc: N.D.



#42 AR-1268-2

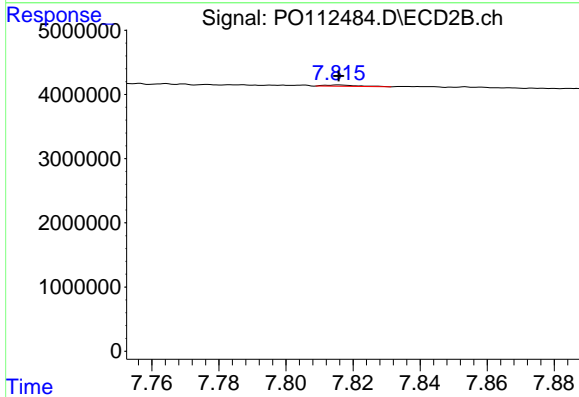
R.T.: 7.603 min
 Delta R.T.: -0.009 min
 Response: 52312
 Conc: 0.12 ng/ml



#43 AR-1268-3

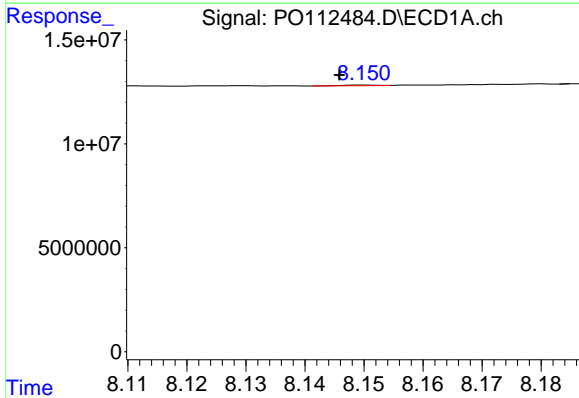
R.T.: 7.860 min
 Delta R.T.: 0.004 min
 Response: 251332
 Conc: 0.20 ng/ml

Instrument :
 ECD_O
 ClientSampleId :
 PB168997BL



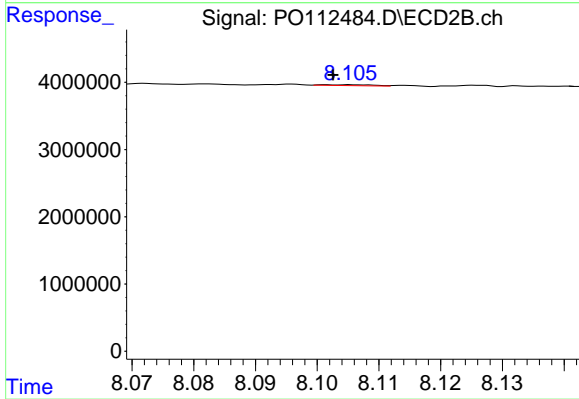
#43 AR-1268-3

R.T.: 7.816 min
 Delta R.T.: 0.000 min
 Response: 134104
 Conc: 0.42 ng/ml



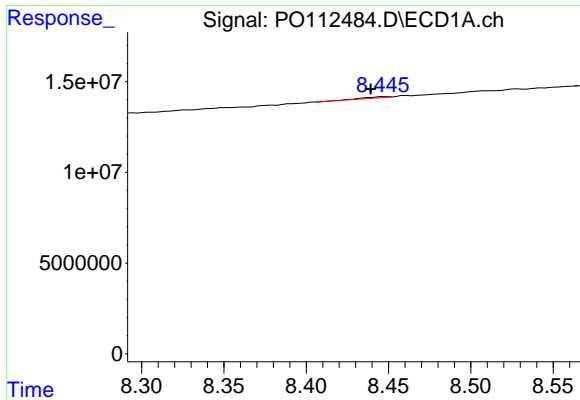
#44 AR-1268-4

R.T.: 8.150 min
 Delta R.T.: 0.004 min
 Response: 128546
 Conc: 0.27 ng/ml



#44 AR-1268-4

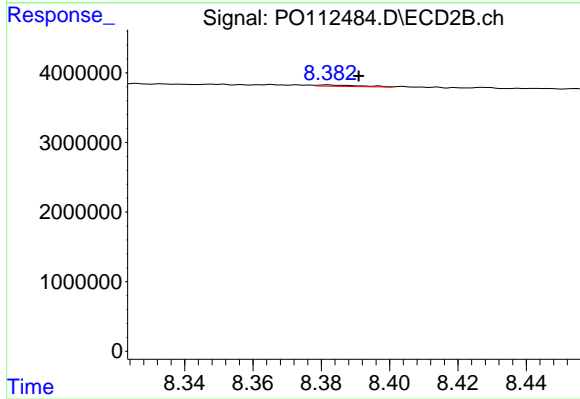
R.T.: 8.105 min
 Delta R.T.: 0.003 min
 Response: 73562
 Conc: 0.66 ng/ml



#45 AR-1268-5

R.T.: 8.446 min
 Delta R.T.: 0.007 min
 Response: 608395
 Conc: 0.18 ng/ml

Instrument :
 ECD_O
 ClientSampleId :
 PB168997BL



#45 AR-1268-5

R.T.: 8.382 min
 Delta R.T.: -0.009 min
 Response: 171819
 Conc: 0.23 ng/ml