

Data Path : Z:\pestpcbsrv\HPCHEM1\ECD_0\Data\P0072425\
 Data File : PO112485.D
 Signal(s) : Signal #1: ECD1A.ch Signal #2: ECD2B.ch
 Acq On : 25 Jul 2025 02:15
 Operator : YP/AJ
 Sample : PB168997BS
 Misc :
 ALS Vial : 28 Sample Multiplier: 1

Instrument :
 ECD_0
 ClientSampleId :
 PB168997BS

Integration File signal 1: autoint1.e
 Integration File signal 2: autoint2.e
 Quant Time: Jul 25 06:23:58 2025
 Quant Method : Z:\pestpcbsrv\HPCHEM1\ECD_0\methods\P0072325.M
 Quant Title : GC EXTRACTABLES
 QLast Update : Thu Jul 24 04:54:06 2025
 Response via : Initial Calibration
 Integrator: ChemStation

Volume Inj. : 2 µl
 Signal #1 Phase : ZB-MR1 Signal #2 Phase: ZB-MR2
 Signal #1 Info : 30Mx0.32mmx 0.50µ Signal #2 Info : 30M x 0.32mm x 0.25µm

Compound	RT#1	RT#2	Resp#1	Resp#2	ng/ml	ng/ml
System Monitoring Compounds						
1) SA Tetrachlo...	3.667	3.661	179.6E6	106.7E6	22.088	21.476
2) SA Decachlor...	8.692	8.638	162.3E6	38933034	22.202	22.032
Target Compounds						
3) L1 AR-1016-1	4.753	4.736	165.8E6	100.1E6	617.779	572.138
4) L1 AR-1016-2	4.772	4.754	249.2E6	148.2E6	613.697	569.065
5) L1 AR-1016-3	4.829	4.929	156.6E6	77542874	598.509	570.309
6) L1 AR-1016-4	4.948	4.972	127.8E6	61334620	603.197	552.142
7) L1 AR-1016-5	5.205	5.183	130.3E6	79681051	593.531	556.032
8) L2 AR-1221-1	3.878	3.868	13119071	9393245	135.724	139.644
9) L2 AR-1221-2	3.965	3.955	16670231	11962323	231.976	235.813
10) L2 AR-1221-3	4.040	4.030	77885870	51708621	327.649	326.177
11) L3 AR-1232-1	4.040	4.030	77885870	51708621	416.550	408.602
12) L3 AR-1232-2	4.532	4.754	123.2E6	148.2E6	1144.290	1130.257
13) L3 AR-1232-3	4.772	4.929	249.2E6	77542874	1205.192	1153.967
14) L3 AR-1232-4	4.948	5.013	127.8E6	75803009	1219.991	1266.992
15) L3 AR-1232-5	4.991	5.183	96472467	79681051	1421.202	1222.045
16) L4 AR-1242-1	4.753	4.736	165.8E6	100.1E6	669.612	632.146
17) L4 AR-1242-2	4.772	4.754	249.2E6	148.2E6	673.978	634.403
18) L4 AR-1242-3	4.829	4.929	156.6E6	77542874	661.775	639.850
19) L4 AR-1242-4	4.948	5.013	127.8E6	75803009	657.727	617.593
20) L4 AR-1242-5	5.599	5.533	18988681	66882904	88.767	415.496 #
21) L5 AR-1248-1	4.753	4.736	165.8E6	100.1E6	885.592	824.037
22) L5 AR-1248-2	4.991	4.972	96472467	61334620	378.157	362.327
23) L5 AR-1248-3	5.205	5.013	130.3E6	75803009	379.000	426.705
24) L5 AR-1248-4	5.558	5.183	111.1E6	79681051	218.757	382.430 #
25) L5 AR-1248-5	5.599	5.574	18988681	11933187	54.317	55.564
26) L6 AR-1254-1	5.558	5.533	111.1E6	66882904	202.466	203.526
27) L6 AR-1254-2	5.708	5.681	114.2E6	66797707	234.975	230.742
28) L6 AR-1254-3	6.127	6.097	206.7E6	112.9E6	277.693	264.057
29) L6 AR-1254-4	6.341	6.309	22174785	12116924	40.340	44.390
30) L6 AR-1254-5	6.758	6.724	395.4E6	182.4E6	558.610	546.204
31) L7 AR-1260-1	6.242	6.212	269.0E6	146.7E6	612.294	590.419
32) L7 AR-1260-2	6.432	6.400	408.9E6	189.4E6	594.465	574.750
33) L7 AR-1260-3	6.797	6.551	306.0E6	153.7E6	520.420	598.389
34) L7 AR-1260-4	7.058	7.021	238.3E6	95643284	528.417	499.937
35) L7 AR-1260-5	7.300	7.263	664.2E6	207.7E6	536.014	503.851
36) L8 AR-1262-1	6.797	6.764	306.0E6	134.6E6	329.331	324.431
37) L8 AR-1262-2	7.300	7.263	664.2E6	207.7E6	446.663	402.843
38) L8 AR-1262-3	7.584	7.544	116.3E6	36243189	197.079	194.307
39) L8 AR-1262-4	7.647	7.608	389.7E6	110.7E6	392.005	384.321
40) L8 AR-1262-5	8.144	8.101	100.0E6	26617016	230.490	267.499
41) L9 AR-1268-1	7.584	7.544	116.3E6	36243189	66.429	69.986

Data Path : Z:\pestpcbsrv\HPCHEM1\ECD_0\Data\P0072425\
 Data File : P0112485.D
 Signal(s) : Signal #1: ECD1A.ch Signal #2: ECD2B.ch
 Acq On : 25 Jul 2025 02:15
 Operator : YP/AJ
 Sample : PB168997BS
 Misc :
 ALS Vial : 28 Sample Multiplier: 1

Instrument :
 ECD_0
ClientSampleId :
 PB168997BS

Integration File signal 1: autoint1.e
 Integration File signal 2: autoint2.e
 Quant Time: Jul 25 06:23:58 2025
 Quant Method : Z:\pestpcbsrv\HPCHEM1\ECD_0\methods\P0072325.M
 Quant Title : GC EXTRACTABLES
 QLast Update : Thu Jul 24 04:54:06 2025
 Response via : Initial Calibration
 Integrator: ChemStation

Volume Inj. : 2 µl
 Signal #1 Phase : ZB-MR1 Signal #2 Phase: ZB-MR2
 Signal #1 Info : 30Mx0.32mmx 0.50µ Signal #2 Info : 30M x 0.32mm x 0.25µm

	Compound	RT#1	RT#2	Resp#1	Resp#2	ng/ml	ng/ml
42)	L9 AR-1268-2	7.647	7.608	389.7E6	110.7E6	264.570	260.489
43)	L9 AR-1268-3	7.854	7.813	7348103	2445245	5.868	7.611 #
44)	L9 AR-1268-4	8.144	8.101	100.0E6	26617016	207.624	239.156
45)	L9 AR-1268-5	8.438	8.388	29305858	8098214	8.729	11.067 #

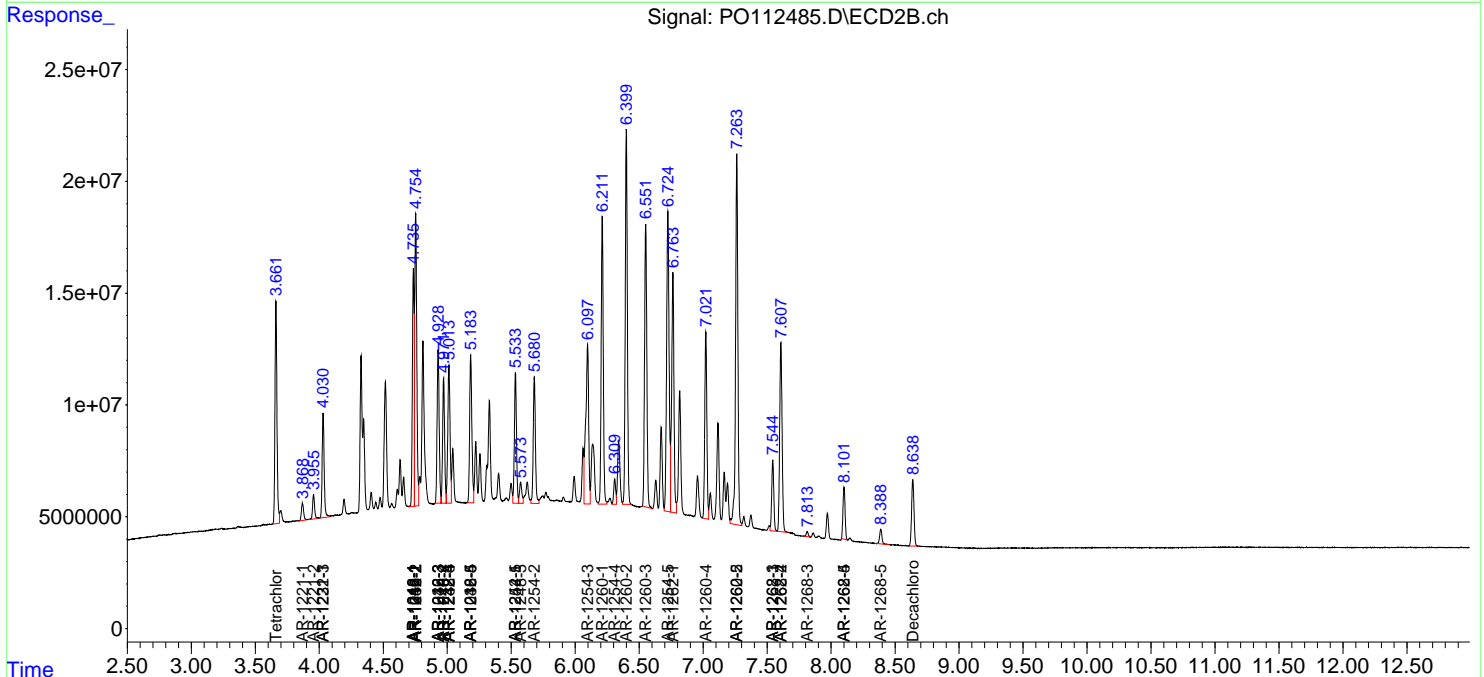
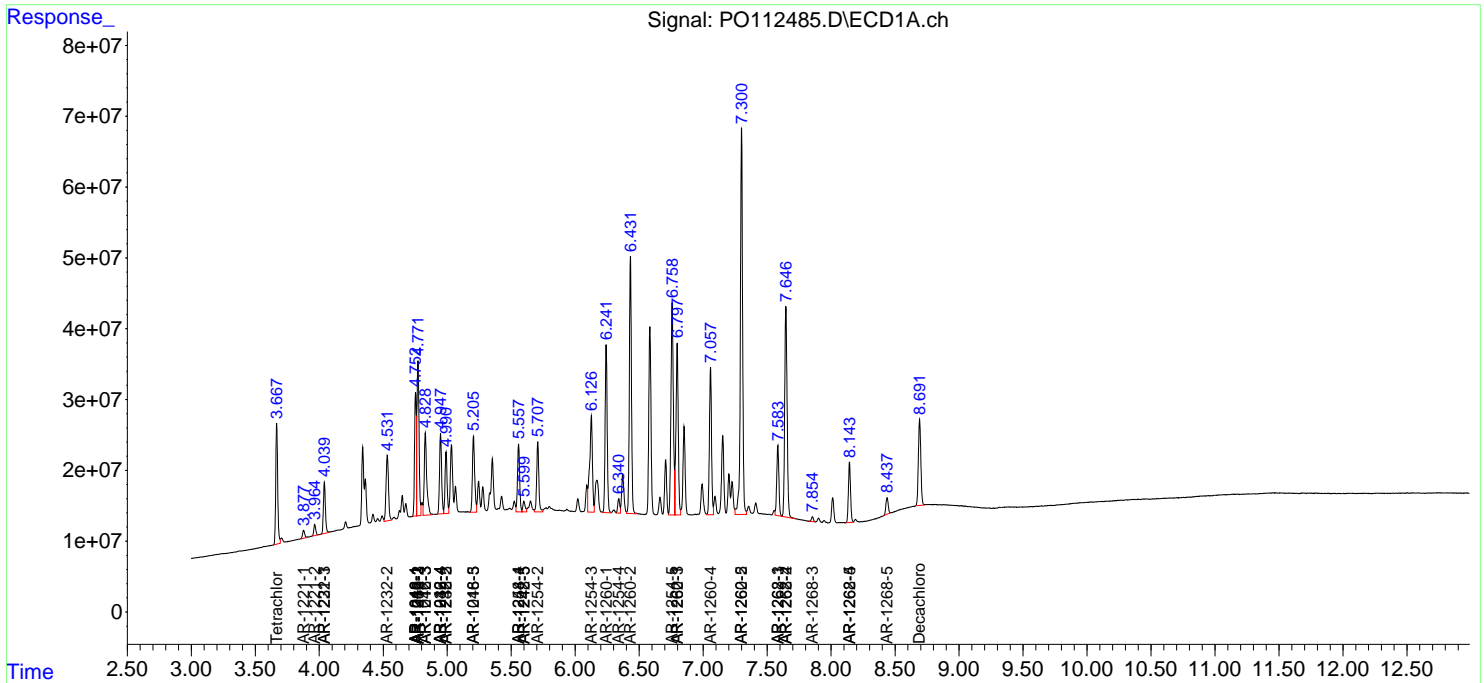
(f)=RT Delta > 1/2 Window (#)=Amounts differ by > 25% (m)=manual int.

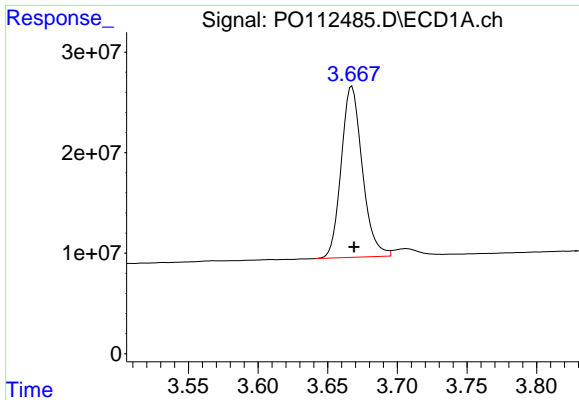
Data Path : Z:\pestpcbsrv\HPCHEM1\ECD_O\Data\PO072425\
 Data File : PO112485.D
 Signal(s) : Signal #1: ECD1A.ch Signal #2: ECD2B.ch
 Acq On : 25 Jul 2025 02:15
 Operator : YP/AJ
 Sample : PB168997BS
 Misc :
 ALS Vial : 28 Sample Multiplier: 1

Instrument :
 ECD_O
 ClientSampleId :
 PB168997BS

Integration File signal 1: autoint1.e
 Integration File signal 2: autoint2.e
 Quant Time: Jul 25 06:23:58 2025
 Quant Method : Z:\pestpcbsrv\HPCHEM1\ECD_O\methods\PO072325.M
 Quant Title : GC EXTRACTABLES
 QLast Update : Thu Jul 24 04:54:06 2025
 Response via : Initial Calibration
 Integrator: ChemStation

Volume Inj. : 2 µl
 Signal #1 Phase : ZB-MR1 Signal #2 Phase: ZB-MR2
 Signal #1 Info : 30Mx0.32mmx 0.50µ Signal #2 Info : 30M x 0.32mm x 0.25µm

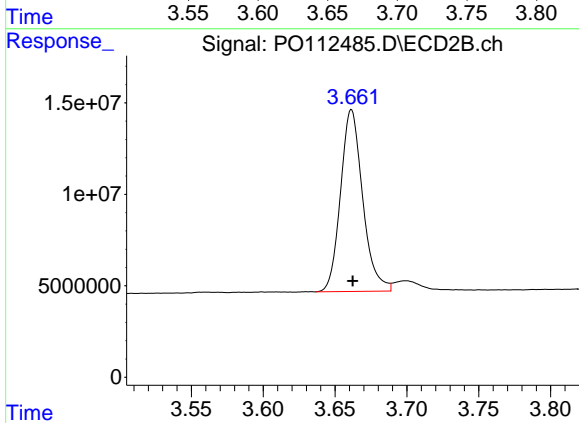




#1 Tetrachloro-m-xylene

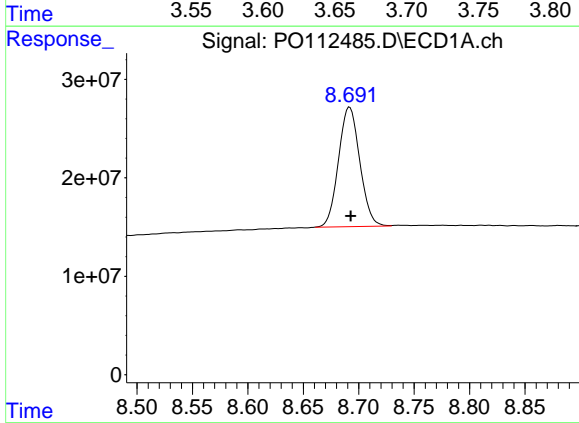
R.T.: 3.667 min
Delta R.T.: -0.002 min
Response: 179613484
Conc: 22.09 ng/ml

Instrument :
ECD_O
ClientSampleId :
PB168997BS



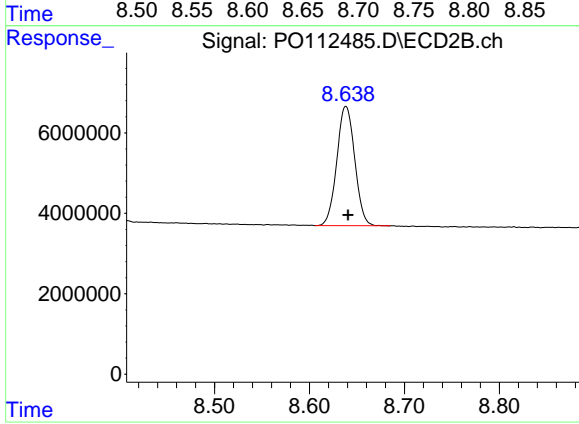
#1 Tetrachloro-m-xylene

R.T.: 3.661 min
Delta R.T.: 0.000 min
Response: 106716626
Conc: 21.48 ng/ml



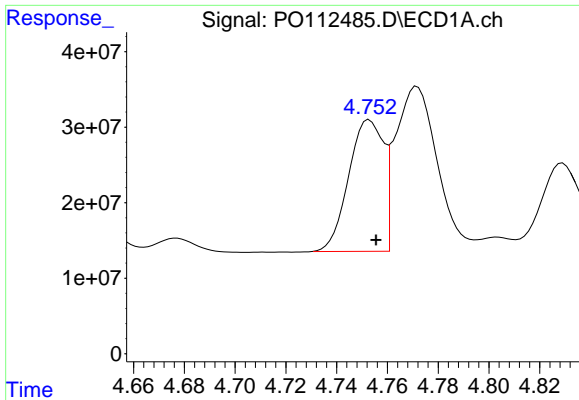
#2 Decachlorobiphenyl

R.T.: 8.692 min
Delta R.T.: 0.000 min
Response: 162335807
Conc: 22.20 ng/ml



#2 Decachlorobiphenyl

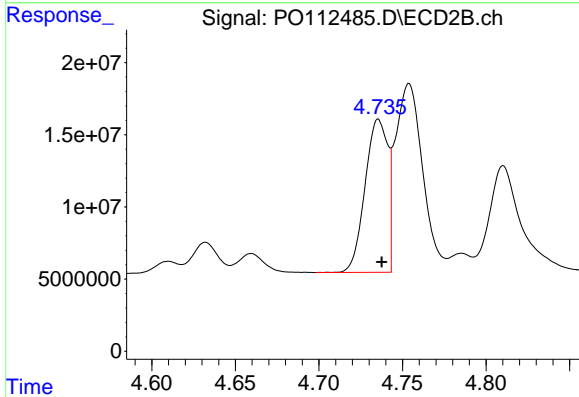
R.T.: 8.638 min
Delta R.T.: -0.002 min
Response: 38933034
Conc: 22.03 ng/ml



#3 AR-1016-1

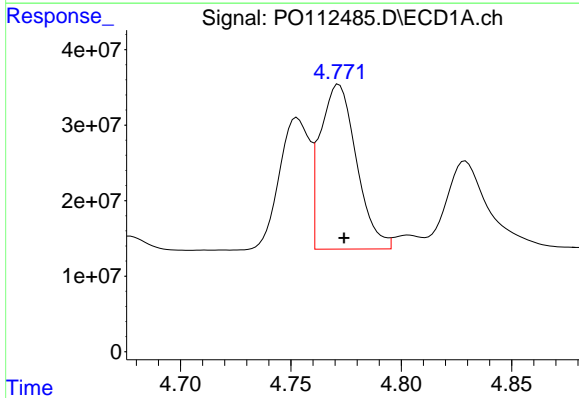
R.T.: 4.753 min
 Delta R.T.: -0.003 min
 Response: 165790635
 Conc: 617.78 ng/ml

Instrument :
 ECD_O
 ClientSampleId :
 PB168997BS



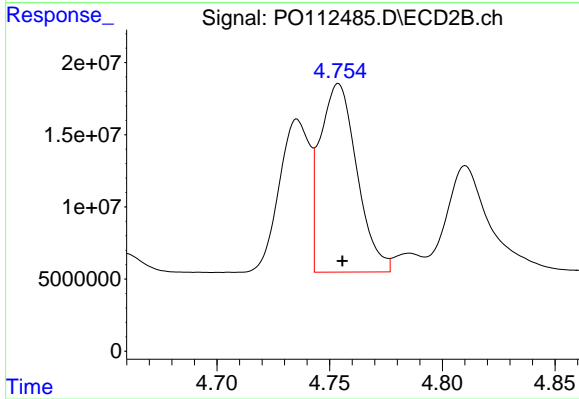
#3 AR-1016-1

R.T.: 4.736 min
 Delta R.T.: -0.002 min
 Response: 100128174
 Conc: 572.14 ng/ml



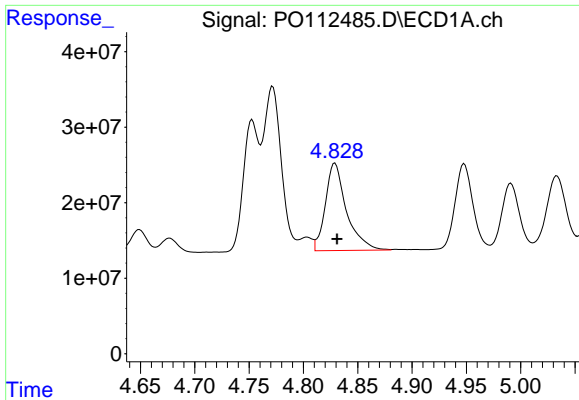
#4 AR-1016-2

R.T.: 4.772 min
 Delta R.T.: -0.002 min
 Response: 249232906
 Conc: 613.70 ng/ml



#4 AR-1016-2

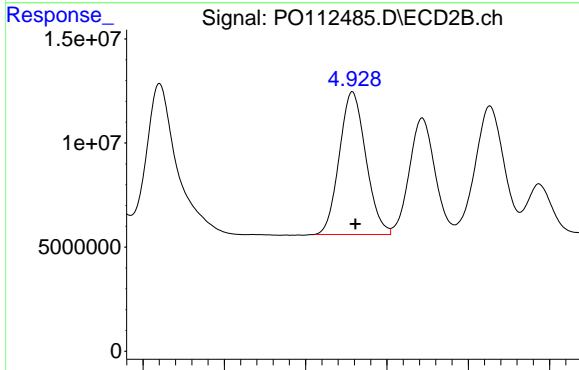
R.T.: 4.754 min
 Delta R.T.: -0.002 min
 Response: 148238638
 Conc: 569.07 ng/ml



#5 AR-1016-3

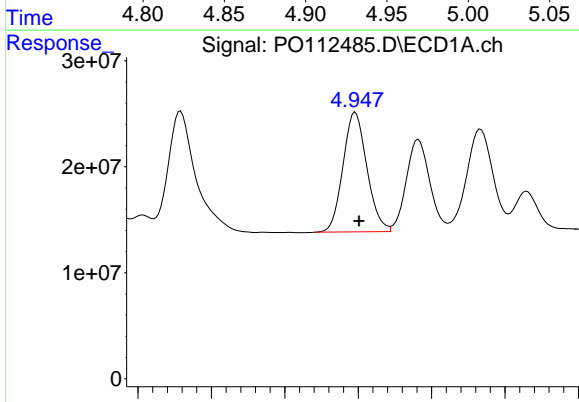
R.T.: 4.829 min
 Delta R.T.: -0.002 min
 Response: 156614227
 Conc: 598.51 ng/ml

Instrument :
 ECD_O
 ClientSampleId :
 PB168997BS



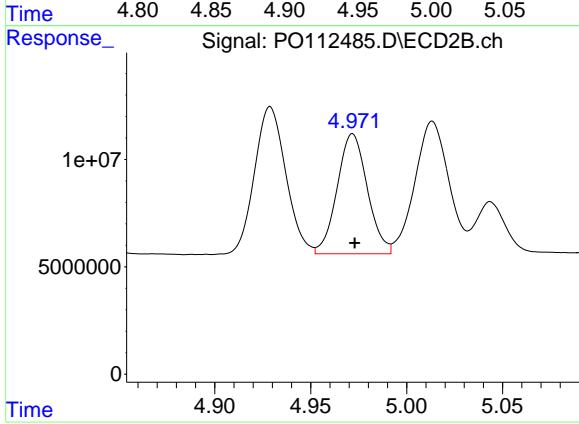
#5 AR-1016-3

R.T.: 4.929 min
 Delta R.T.: -0.002 min
 Response: 77542874
 Conc: 570.31 ng/ml



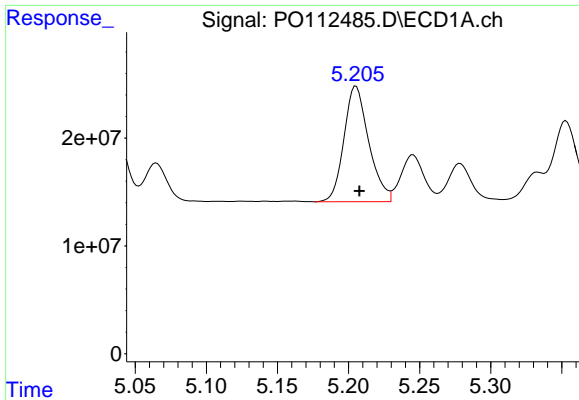
#6 AR-1016-4

R.T.: 4.948 min
 Delta R.T.: -0.002 min
 Response: 127782205
 Conc: 603.20 ng/ml



#6 AR-1016-4

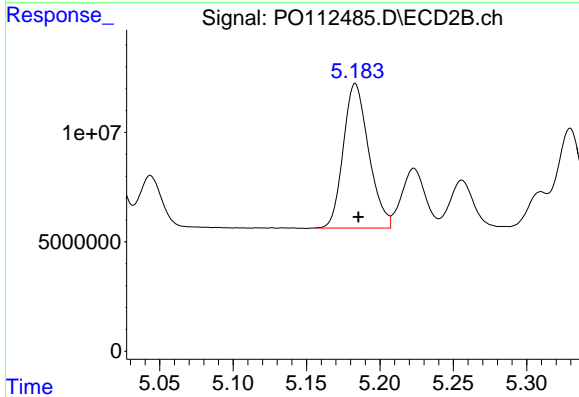
R.T.: 4.972 min
 Delta R.T.: -0.001 min
 Response: 61334620
 Conc: 552.14 ng/ml



#7 AR-1016-5

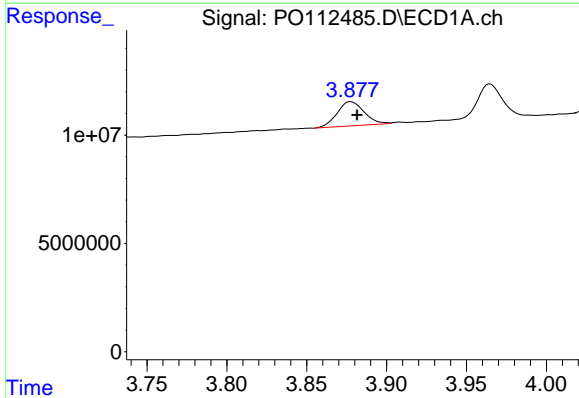
R.T.: 5.205 min
 Delta R.T.: -0.002 min
 Response: 130262691
 Conc: 593.53 ng/ml

Instrument :
 ECD_O
 ClientSampleId :
 PB168997BS



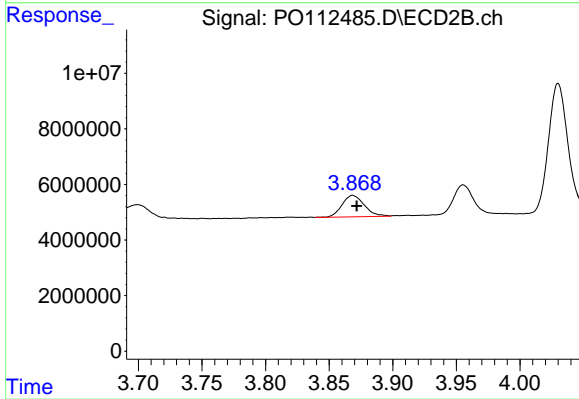
#7 AR-1016-5

R.T.: 5.183 min
 Delta R.T.: -0.002 min
 Response: 79681051
 Conc: 556.03 ng/ml



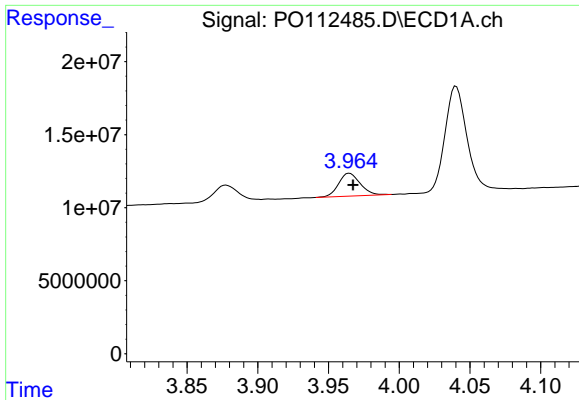
#8 AR-1221-1

R.T.: 3.878 min
 Delta R.T.: -0.004 min
 Response: 13119071
 Conc: 135.72 ng/ml



#8 AR-1221-1

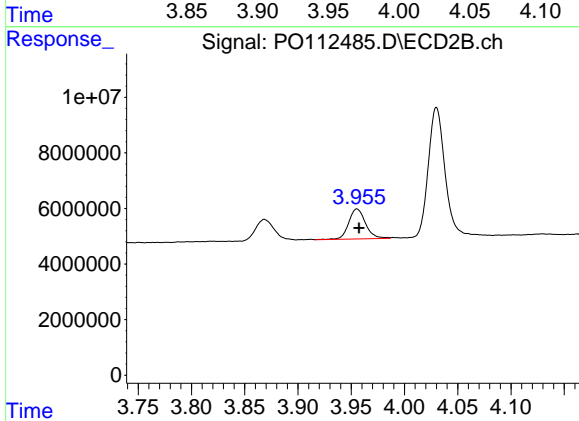
R.T.: 3.868 min
 Delta R.T.: -0.003 min
 Response: 9393245
 Conc: 139.64 ng/ml



#9 AR-1221-2

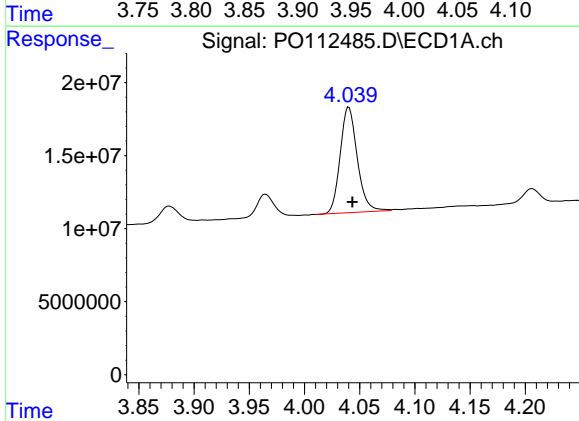
R.T.: 3.965 min
 Delta R.T.: -0.003 min
 Response: 16670231
 Conc: 231.98 ng/ml

Instrument :
 ECD_O
 ClientSampleId :
 PB168997BS



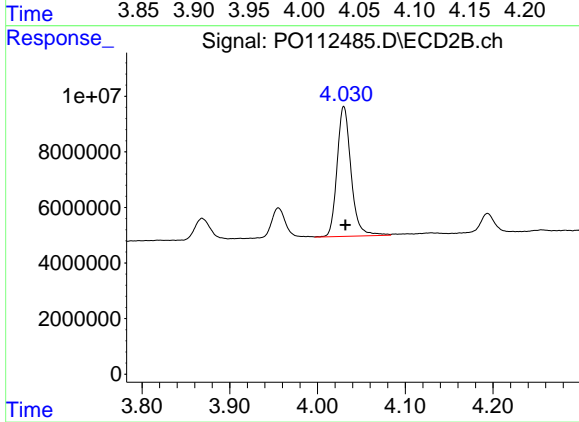
#9 AR-1221-2

R.T.: 3.955 min
 Delta R.T.: -0.002 min
 Response: 11962323
 Conc: 235.81 ng/ml



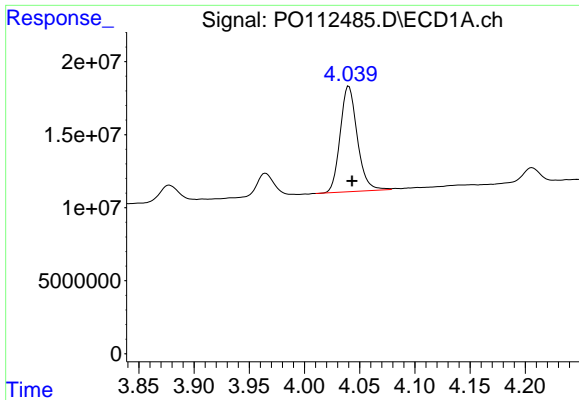
#10 AR-1221-3

R.T.: 4.040 min
 Delta R.T.: -0.003 min
 Response: 77885870
 Conc: 327.65 ng/ml



#10 AR-1221-3

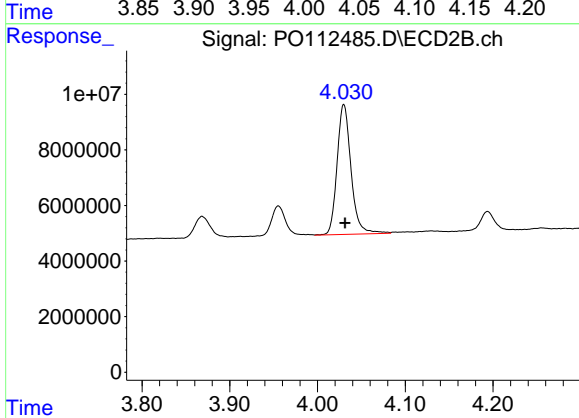
R.T.: 4.030 min
 Delta R.T.: -0.002 min
 Response: 51708621
 Conc: 326.18 ng/ml



#11 AR-1232-1

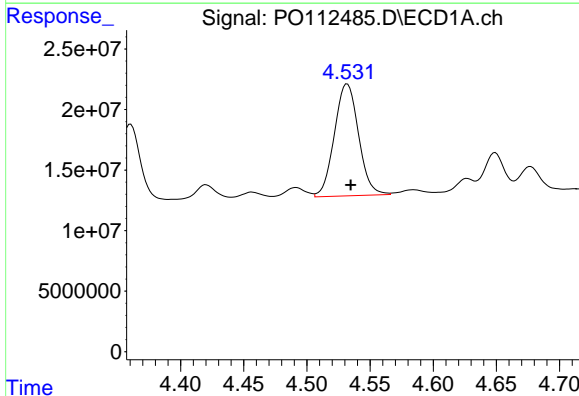
R.T.: 4.040 min
 Delta R.T.: -0.003 min
 Response: 77885870
 Conc: 416.55 ng/ml

Instrument :
 ECD_O
 ClientSampleId :
 PB168997BS



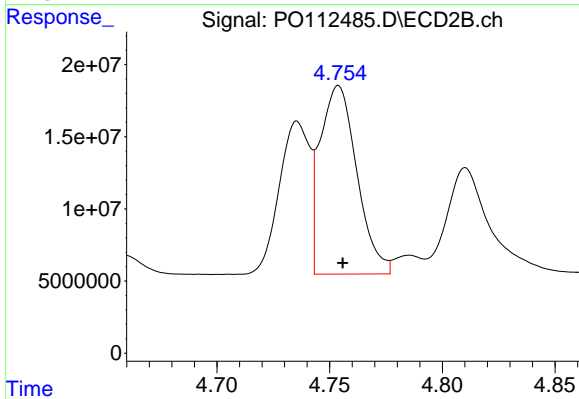
#11 AR-1232-1

R.T.: 4.030 min
 Delta R.T.: -0.001 min
 Response: 51708621
 Conc: 408.60 ng/ml



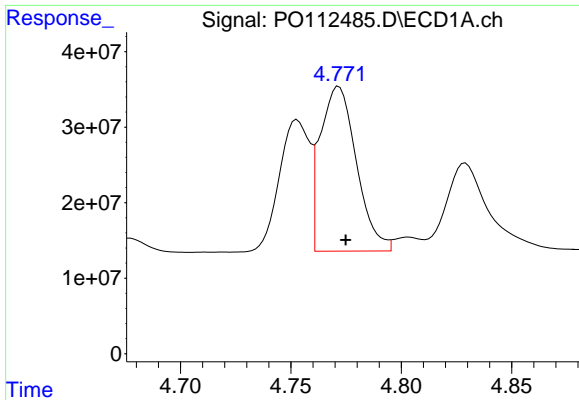
#12 AR-1232-2

R.T.: 4.532 min
 Delta R.T.: -0.003 min
 Response: 123153931
 Conc: 1144.29 ng/ml



#12 AR-1232-2

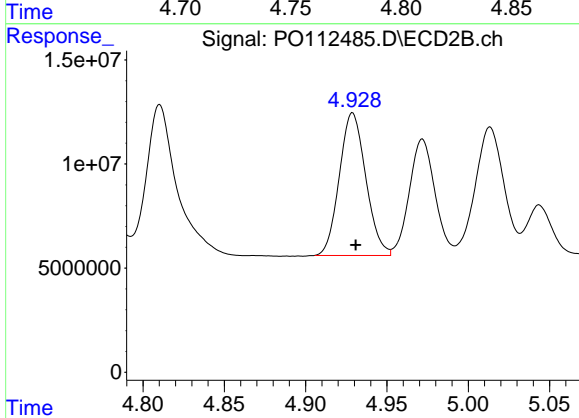
R.T.: 4.754 min
 Delta R.T.: -0.002 min
 Response: 148238638
 Conc: 1130.26 ng/ml



#13 AR-1232-3

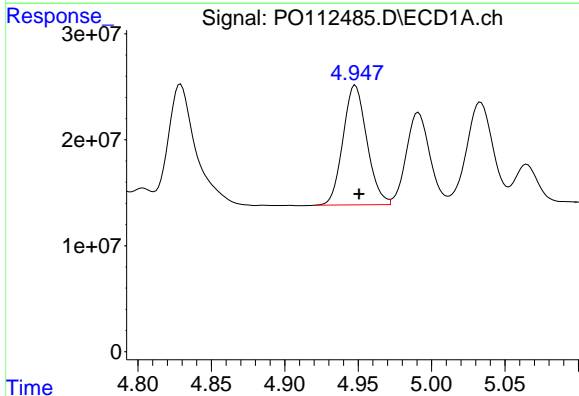
R.T.: 4.772 min
 Delta R.T.: -0.003 min
 Response: 249232906
 Conc: 1205.19 ng/ml

Instrument :
 ECD_O
 ClientSampleId :
 PB168997BS



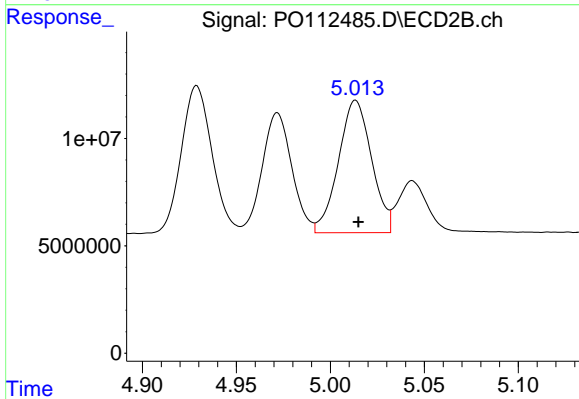
#13 AR-1232-3

R.T.: 4.929 min
 Delta R.T.: -0.002 min
 Response: 77542874
 Conc: 1153.97 ng/ml



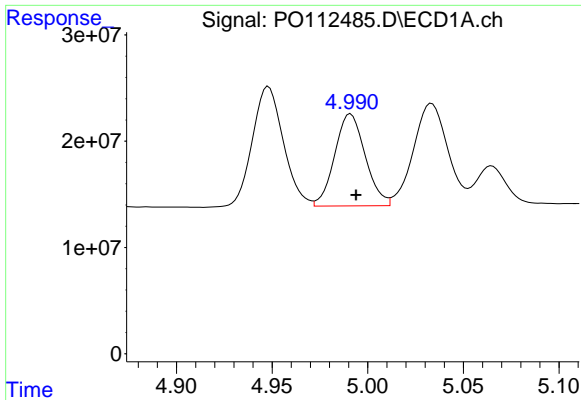
#14 AR-1232-4

R.T.: 4.948 min
 Delta R.T.: -0.003 min
 Response: 127782205
 Conc: 1219.99 ng/ml



#14 AR-1232-4

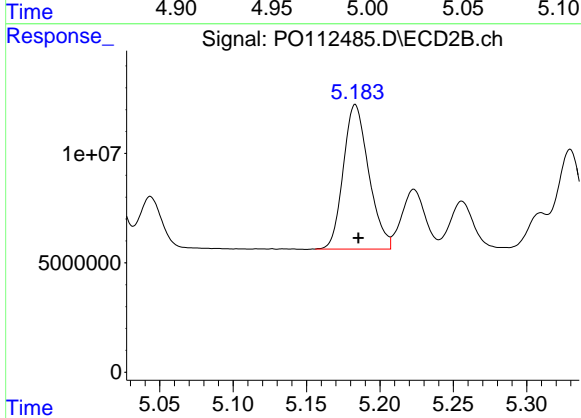
R.T.: 5.013 min
 Delta R.T.: -0.002 min
 Response: 75803009
 Conc: 1266.99 ng/ml



#15 AR-1232-5

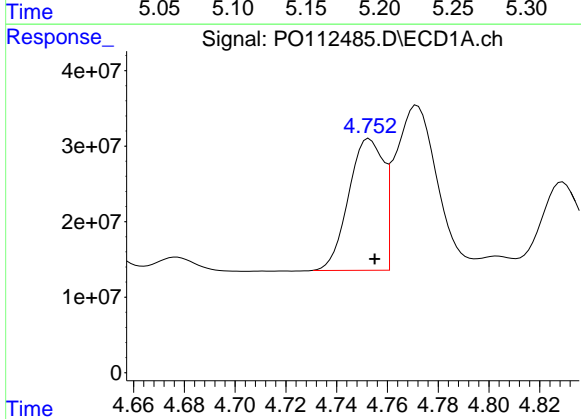
R.T.: 4.991 min
 Delta R.T.: -0.003 min
 Response: 96472467
 Conc: 1421.20 ng/ml

Instrument :
 ECD_O
 ClientSampleId :
 PB168997BS



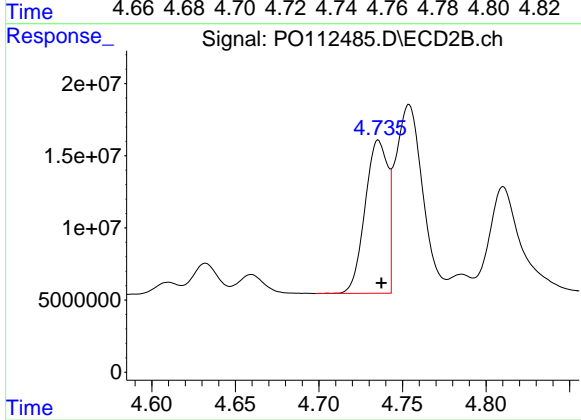
#15 AR-1232-5

R.T.: 5.183 min
 Delta R.T.: -0.002 min
 Response: 79681051
 Conc: 1222.05 ng/ml



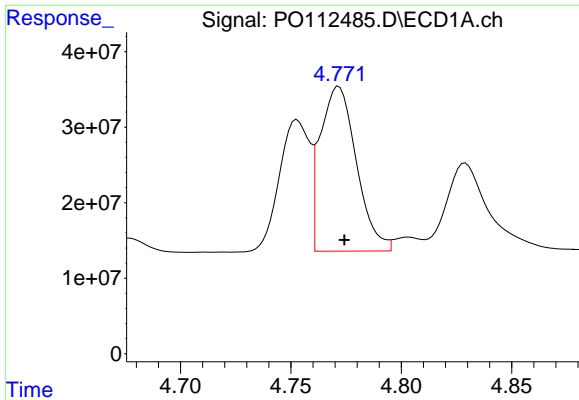
#16 AR-1242-1

R.T.: 4.753 min
 Delta R.T.: -0.002 min
 Response: 165790635
 Conc: 669.61 ng/ml



#16 AR-1242-1

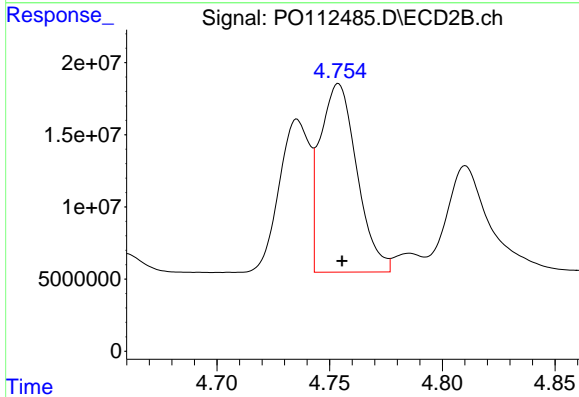
R.T.: 4.736 min
 Delta R.T.: -0.002 min
 Response: 100128174
 Conc: 632.15 ng/ml



#17 AR-1242-2

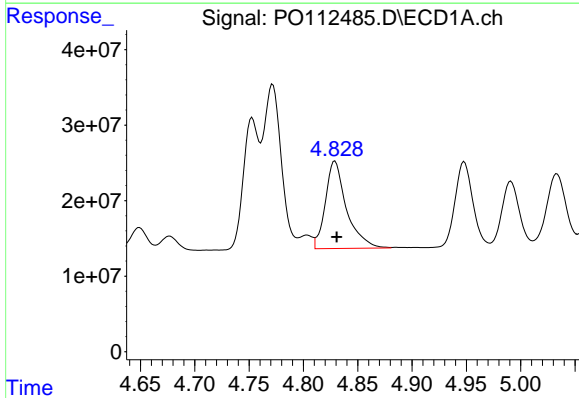
R.T.: 4.772 min
 Delta R.T.: -0.002 min
 Response: 249232906
 Conc: 673.98 ng/ml

Instrument :
 ECD_O
 ClientSampleId :
 PB168997BS



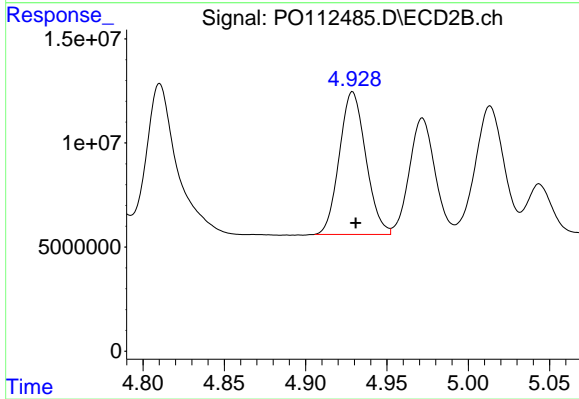
#17 AR-1242-2

R.T.: 4.754 min
 Delta R.T.: -0.002 min
 Response: 148238638
 Conc: 634.40 ng/ml



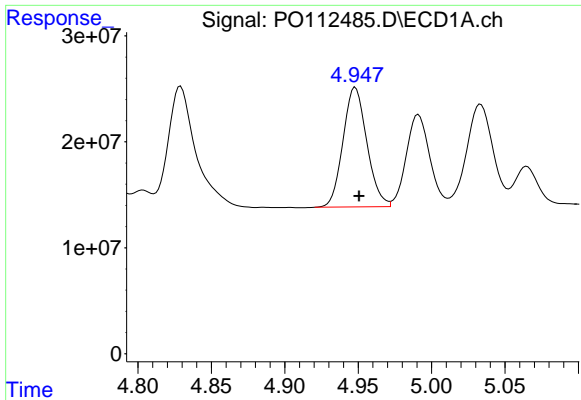
#18 AR-1242-3

R.T.: 4.829 min
 Delta R.T.: -0.002 min
 Response: 156614227
 Conc: 661.77 ng/ml



#18 AR-1242-3

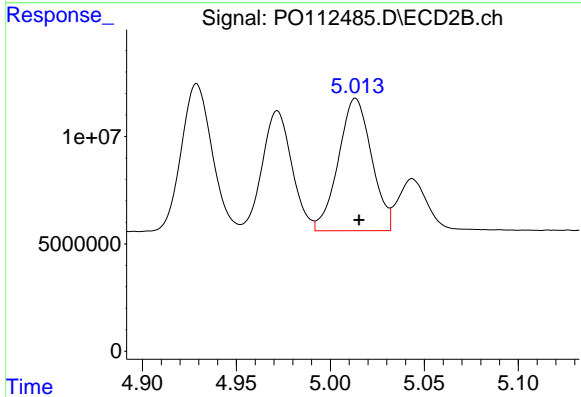
R.T.: 4.929 min
 Delta R.T.: -0.002 min
 Response: 77542874
 Conc: 639.85 ng/ml



#19 AR-1242-4

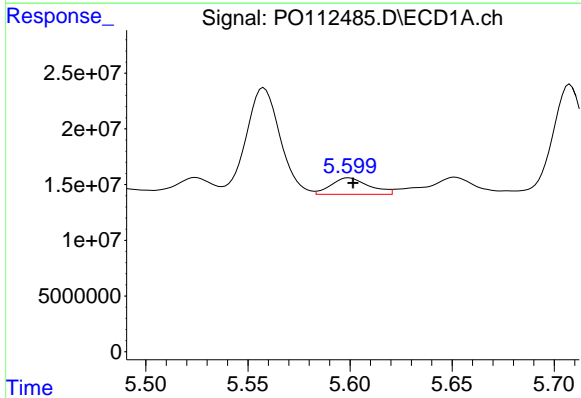
R.T.: 4.948 min
 Delta R.T.: -0.002 min
 Response: 127782205
 Conc: 657.73 ng/ml

Instrument :
 ECD_O
 ClientSampleId :
 PB168997BS



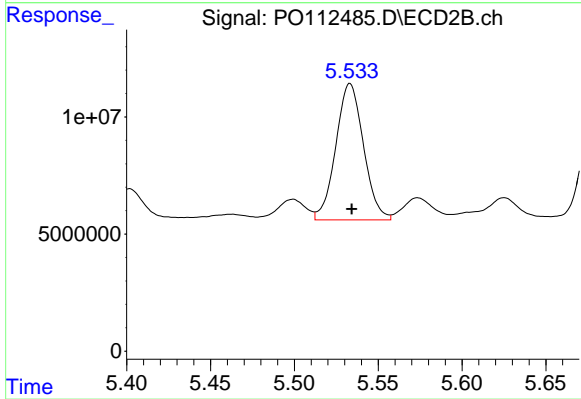
#19 AR-1242-4

R.T.: 5.013 min
 Delta R.T.: -0.002 min
 Response: 75803009
 Conc: 617.59 ng/ml



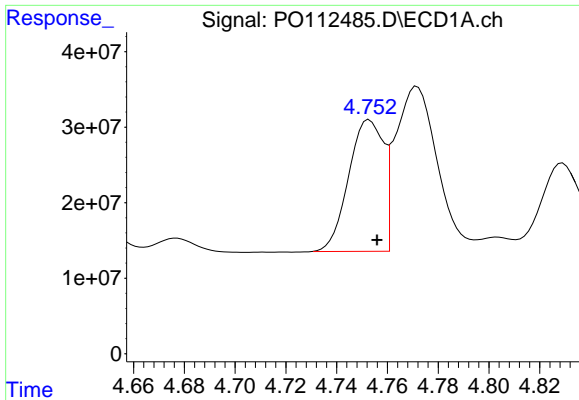
#20 AR-1242-5

R.T.: 5.599 min
 Delta R.T.: -0.002 min
 Response: 18988681
 Conc: 88.77 ng/ml



#20 AR-1242-5

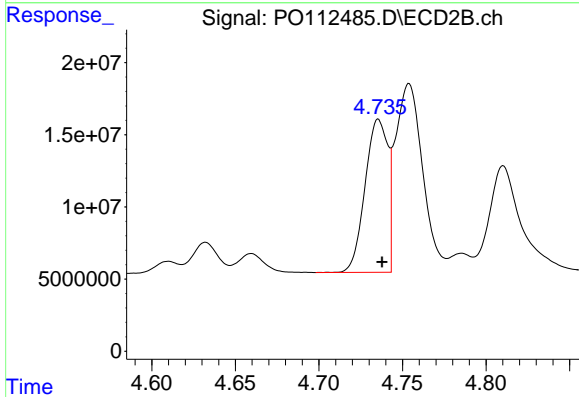
R.T.: 5.533 min
 Delta R.T.: -0.001 min
 Response: 66882904
 Conc: 415.50 ng/ml



#21 AR-1248-1

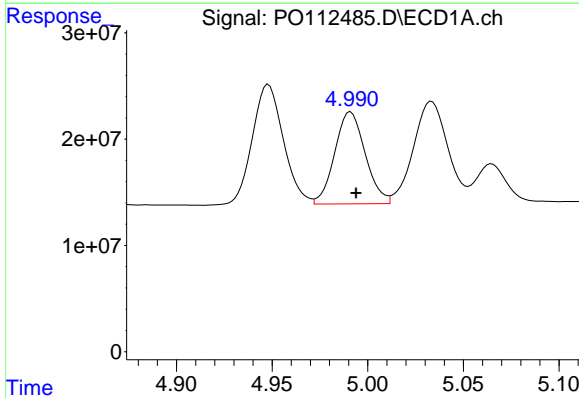
R.T.: 4.753 min
 Delta R.T.: -0.003 min
 Response: 165790635
 Conc: 885.59 ng/ml

Instrument :
 ECD_O
 ClientSampleId :
 PB168997BS



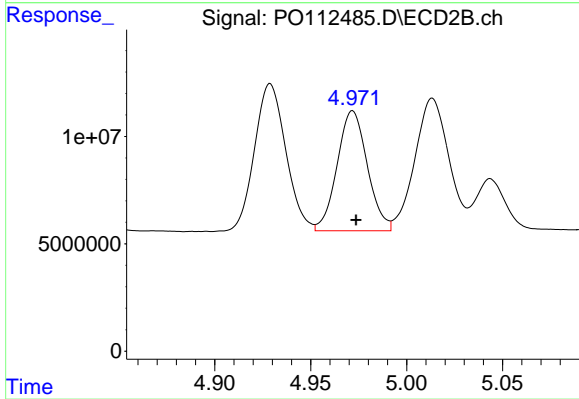
#21 AR-1248-1

R.T.: 4.736 min
 Delta R.T.: -0.002 min
 Response: 100128174
 Conc: 824.04 ng/ml



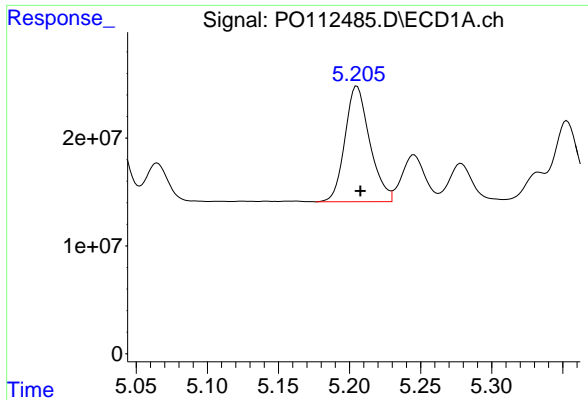
#22 AR-1248-2

R.T.: 4.991 min
 Delta R.T.: -0.003 min
 Response: 96472467
 Conc: 378.16 ng/ml



#22 AR-1248-2

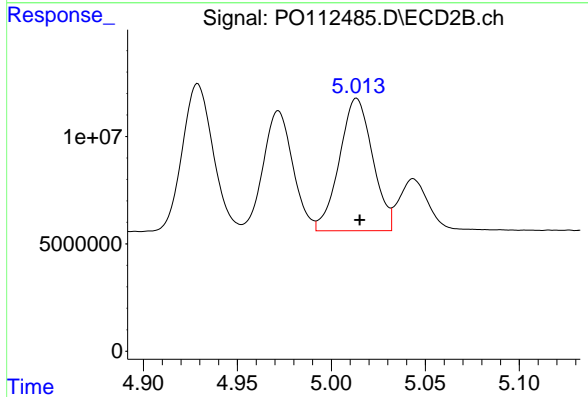
R.T.: 4.972 min
 Delta R.T.: -0.002 min
 Response: 61334620
 Conc: 362.33 ng/ml



#23 AR-1248-3

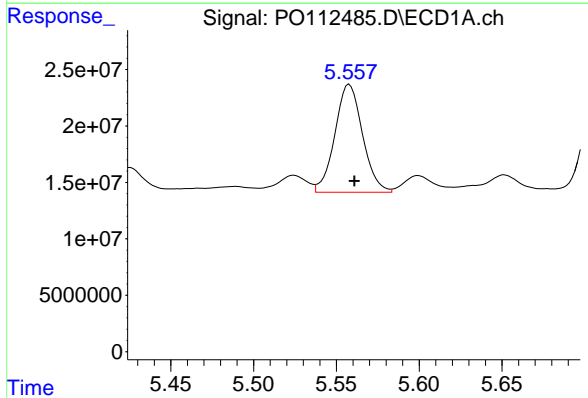
R.T.: 5.205 min
 Delta R.T.: -0.002 min
 Response: 130262691
 Conc: 379.00 ng/ml

Instrument :
 ECD_O
 ClientSampleId :
 PB168997BS



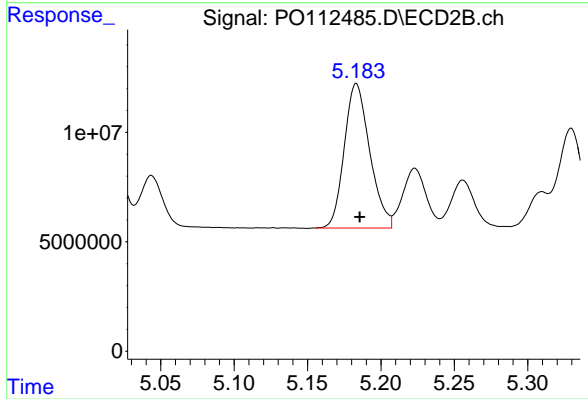
#23 AR-1248-3

R.T.: 5.013 min
 Delta R.T.: -0.002 min
 Response: 75803009
 Conc: 426.71 ng/ml



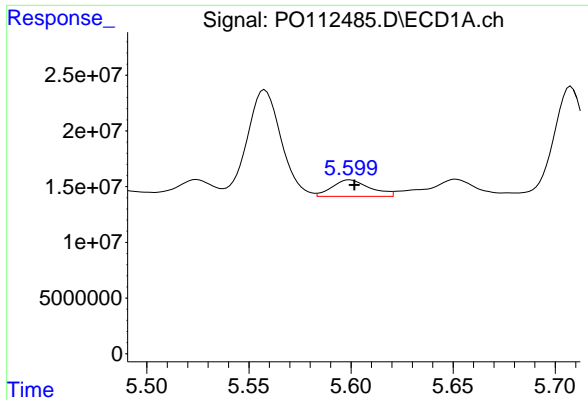
#24 AR-1248-4

R.T.: 5.558 min
 Delta R.T.: -0.003 min
 Response: 111145633
 Conc: 218.76 ng/ml



#24 AR-1248-4

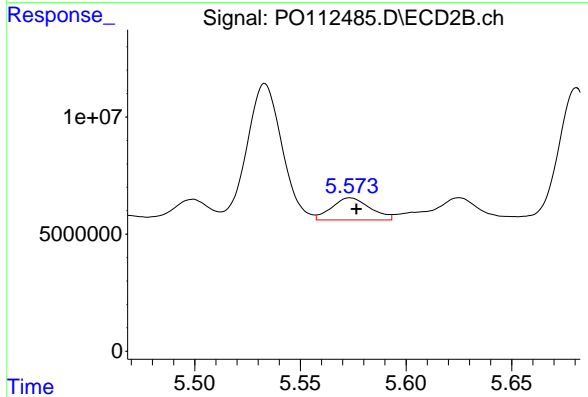
R.T.: 5.183 min
 Delta R.T.: -0.002 min
 Response: 79681051
 Conc: 382.43 ng/ml



#25 AR-1248-5

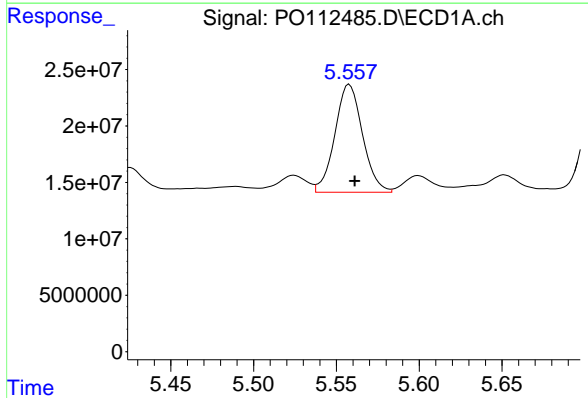
R.T.: 5.599 min
 Delta R.T.: -0.002 min
 Response: 18988681
 Conc: 54.32 ng/ml

Instrument :
 ECD_O
 ClientSampleId :
 PB168997BS



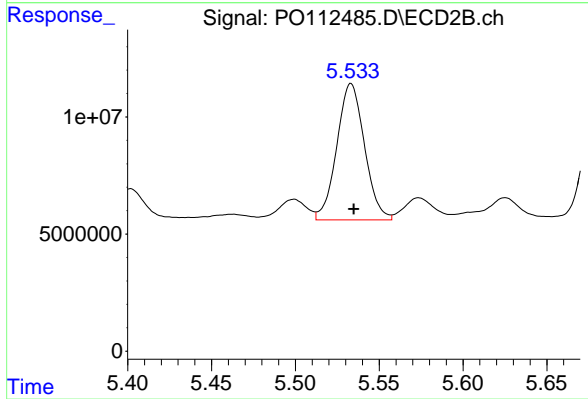
#25 AR-1248-5

R.T.: 5.574 min
 Delta R.T.: -0.003 min
 Response: 11933187
 Conc: 55.56 ng/ml



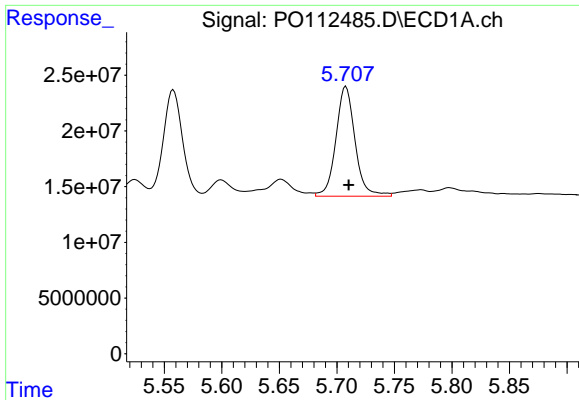
#26 AR-1254-1

R.T.: 5.558 min
 Delta R.T.: -0.003 min
 Response: 111145633
 Conc: 202.47 ng/ml



#26 AR-1254-1

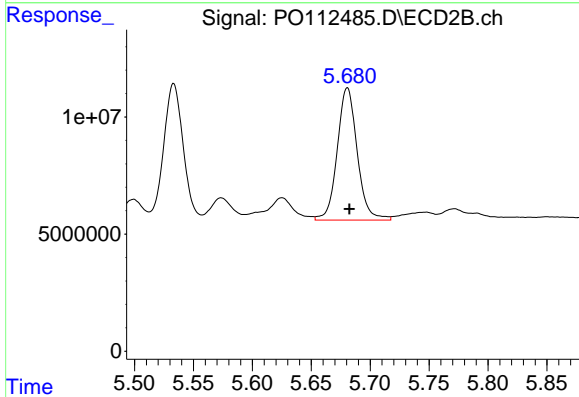
R.T.: 5.533 min
 Delta R.T.: -0.002 min
 Response: 66882904
 Conc: 203.53 ng/ml



#27 AR-1254-2

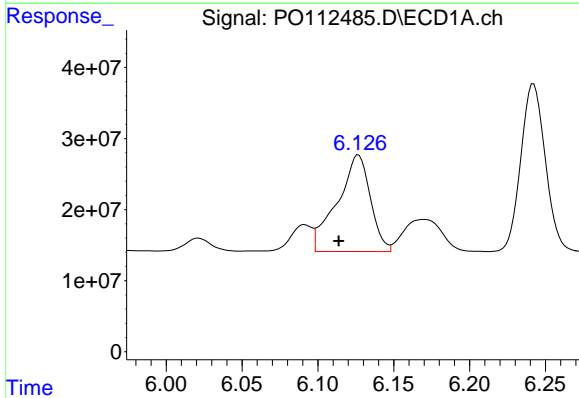
R.T.: 5.708 min
 Delta R.T.: -0.003 min
 Response: 114178891
 Conc: 234.98 ng/ml

Instrument :
 ECD_O
 ClientSampleId :
 PB168997BS



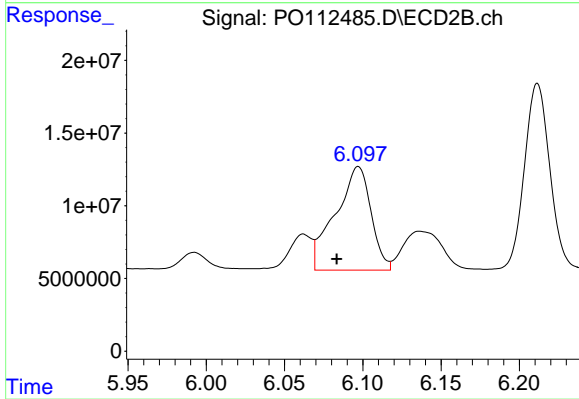
#27 AR-1254-2

R.T.: 5.681 min
 Delta R.T.: -0.002 min
 Response: 66797707
 Conc: 230.74 ng/ml



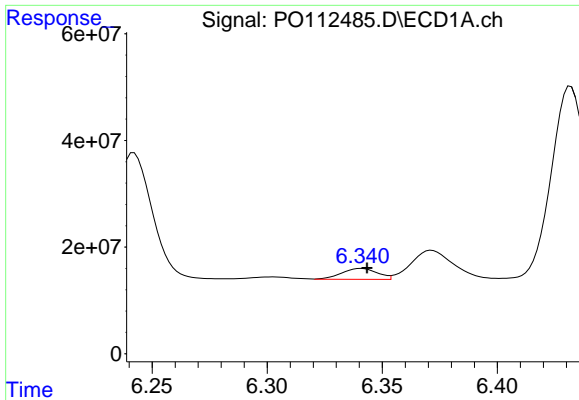
#28 AR-1254-3

R.T.: 6.127 min
 Delta R.T.: 0.013 min
 Response: 206683380
 Conc: 277.69 ng/ml



#28 AR-1254-3

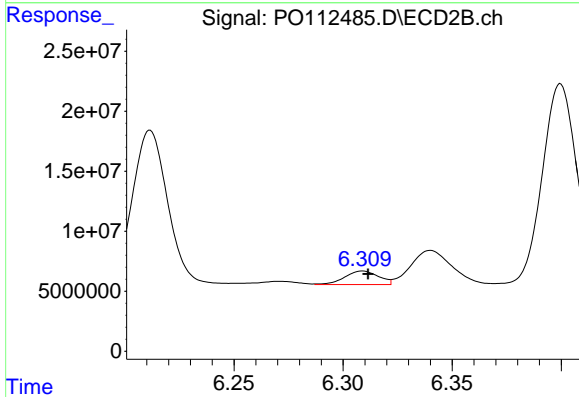
R.T.: 6.097 min
 Delta R.T.: 0.014 min
 Response: 112874233
 Conc: 264.06 ng/ml



#29 AR-1254-4

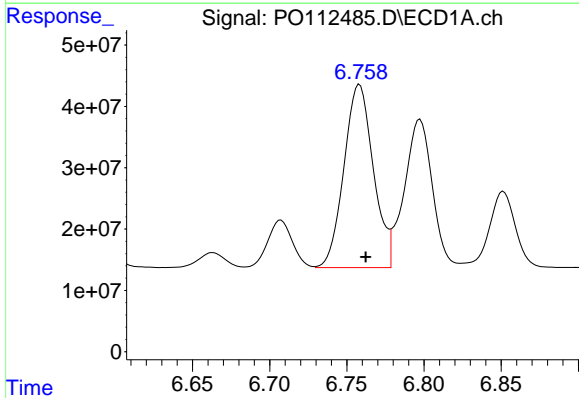
R.T.: 6.341 min
Delta R.T.: -0.002 min
Response: 22174785
Conc: 40.34 ng/ml

Instrument :
ECD_O
ClientSampleId :
PB168997BS



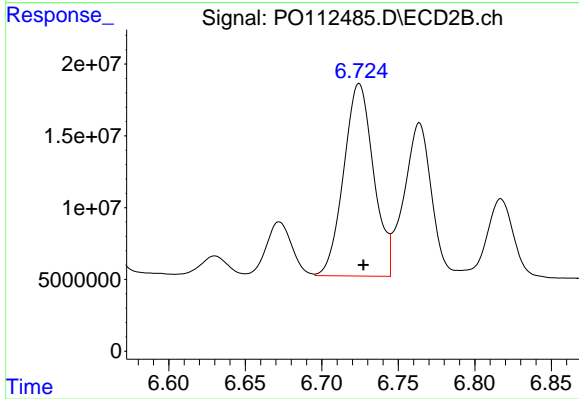
#29 AR-1254-4

R.T.: 6.309 min
Delta R.T.: -0.002 min
Response: 12116924
Conc: 44.39 ng/ml



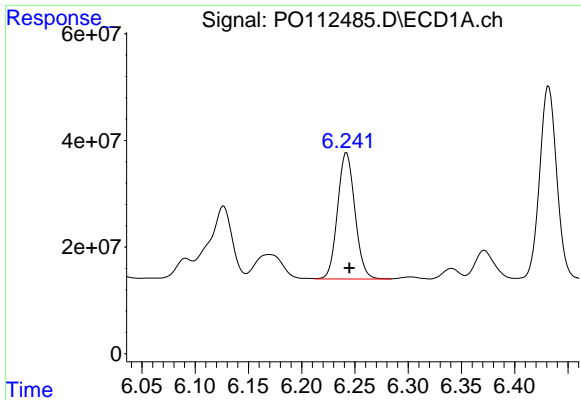
#30 AR-1254-5

R.T.: 6.758 min
Delta R.T.: -0.004 min
Response: 395397361
Conc: 558.61 ng/ml



#30 AR-1254-5

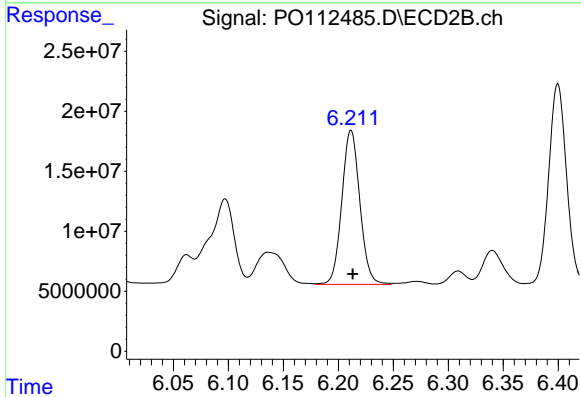
R.T.: 6.724 min
Delta R.T.: -0.003 min
Response: 182442717
Conc: 546.20 ng/ml



#31 AR-1260-1

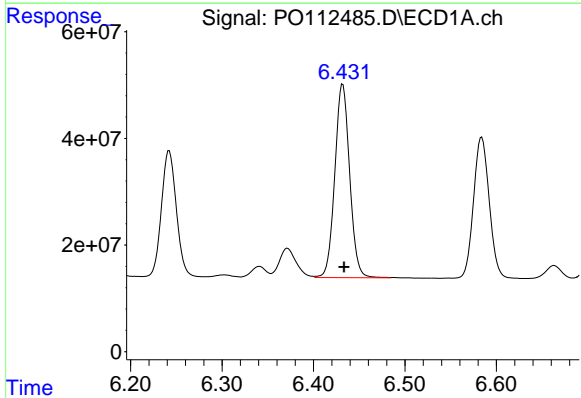
R.T.: 6.242 min
 Delta R.T.: -0.003 min
 Response: 268999804
 Conc: 612.29 ng/ml

Instrument :
 ECD_O
 ClientSampleId :
 PB168997BS



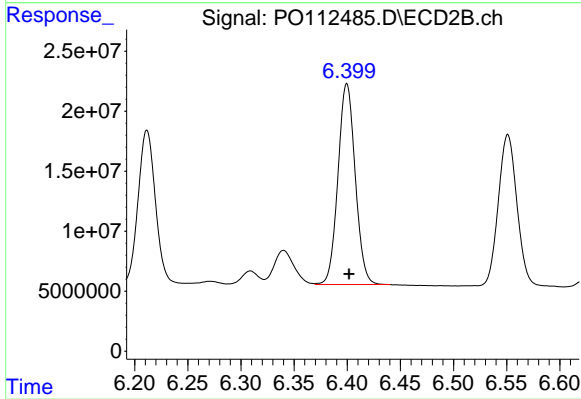
#31 AR-1260-1

R.T.: 6.212 min
 Delta R.T.: -0.002 min
 Response: 146725611
 Conc: 590.42 ng/ml



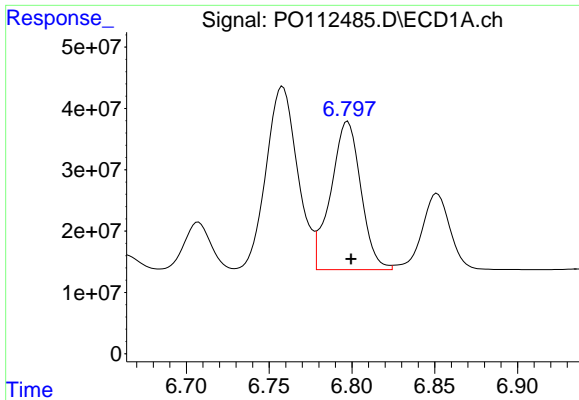
#32 AR-1260-2

R.T.: 6.432 min
 Delta R.T.: -0.001 min
 Response: 408928673
 Conc: 594.46 ng/ml



#32 AR-1260-2

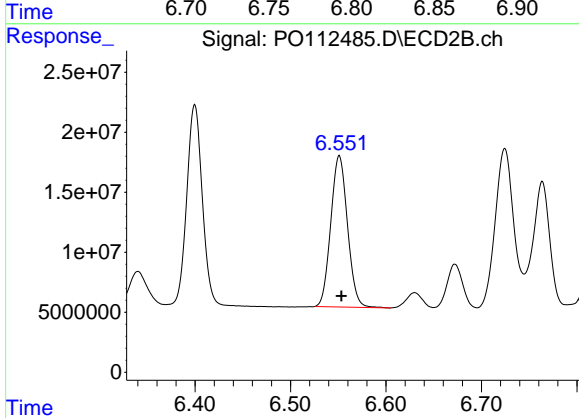
R.T.: 6.400 min
 Delta R.T.: -0.002 min
 Response: 189376347
 Conc: 574.75 ng/ml



#33 AR-1260-3

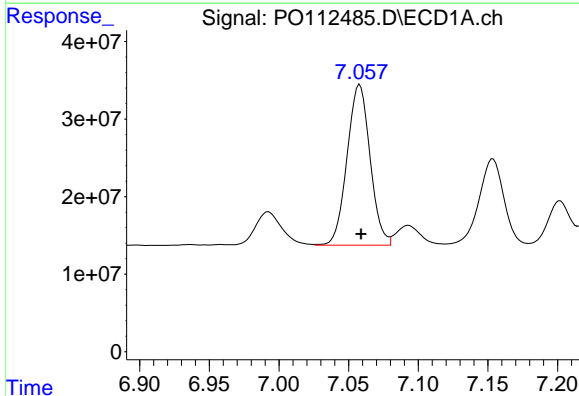
R.T.: 6.797 min
 Delta R.T.: -0.002 min
 Response: 306017135
 Conc: 520.42 ng/ml

Instrument :
 ECD_O
 ClientSampleId :
 PB168997BS



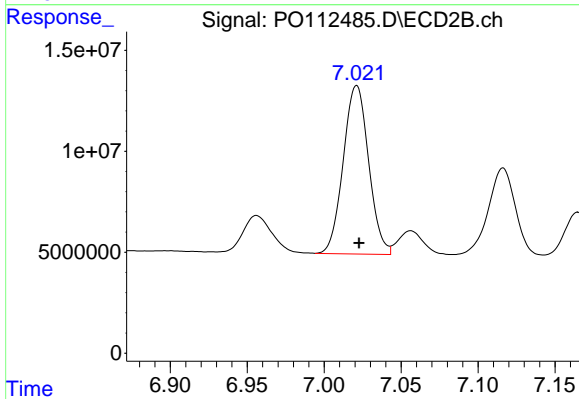
#33 AR-1260-3

R.T.: 6.551 min
 Delta R.T.: -0.002 min
 Response: 153738872
 Conc: 598.39 ng/ml



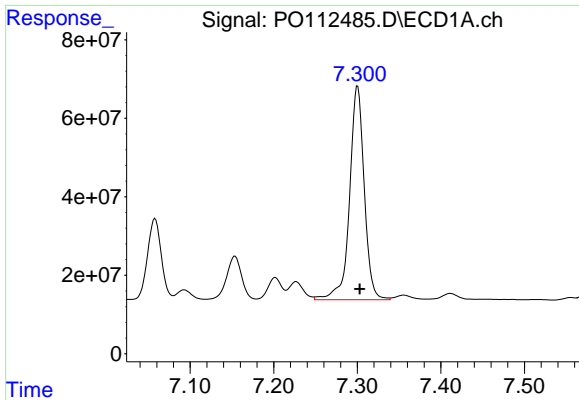
#34 AR-1260-4

R.T.: 7.058 min
 Delta R.T.: -0.001 min
 Response: 238318718
 Conc: 528.42 ng/ml



#34 AR-1260-4

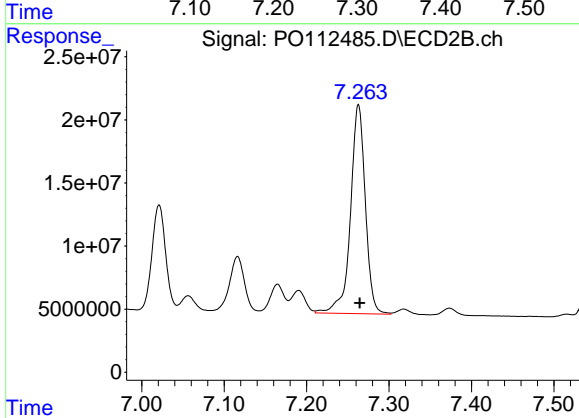
R.T.: 7.021 min
 Delta R.T.: -0.002 min
 Response: 95643284
 Conc: 499.94 ng/ml



#35 AR-1260-5

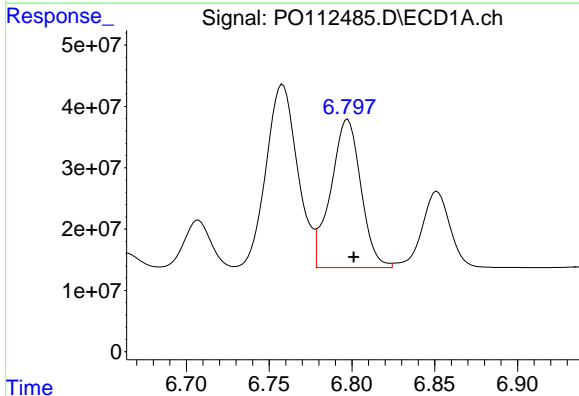
R.T.: 7.300 min
Delta R.T.: -0.002 min
Response: 664195578
Conc: 536.01 ng/ml

Instrument :
ECD_O
ClientSampleId :
PB168997BS



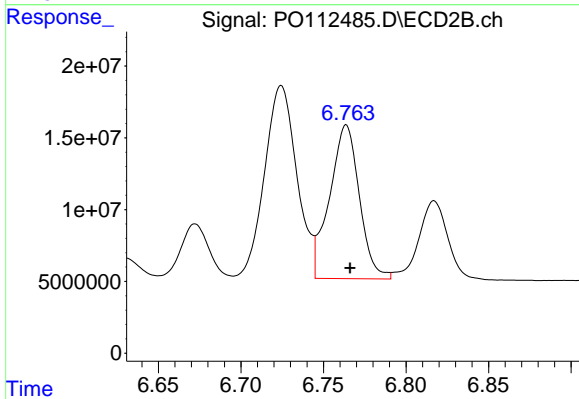
#35 AR-1260-5

R.T.: 7.263 min
Delta R.T.: -0.002 min
Response: 207684019
Conc: 503.85 ng/ml



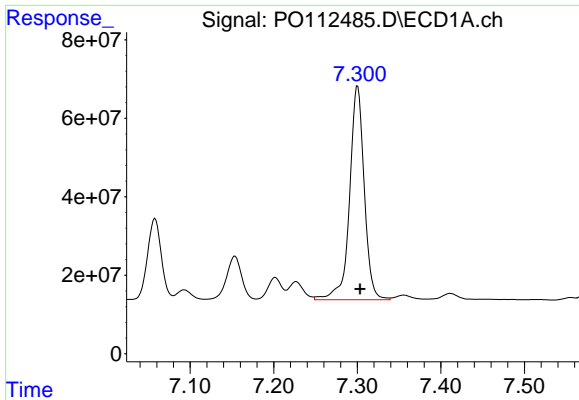
#36 AR-1262-1

R.T.: 6.797 min
Delta R.T.: -0.004 min
Response: 306017135
Conc: 329.33 ng/ml



#36 AR-1262-1

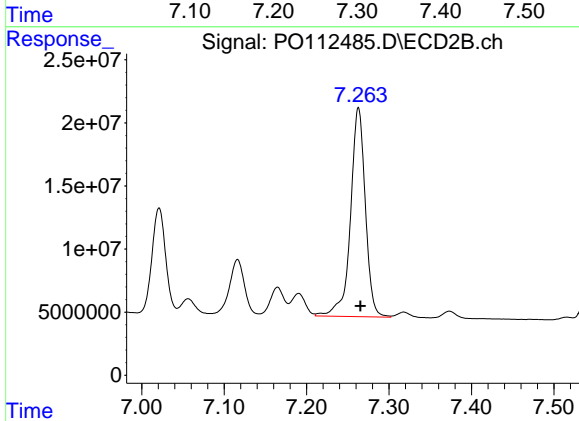
R.T.: 6.764 min
Delta R.T.: -0.002 min
Response: 134582841
Conc: 324.43 ng/ml



#37 AR-1262-2

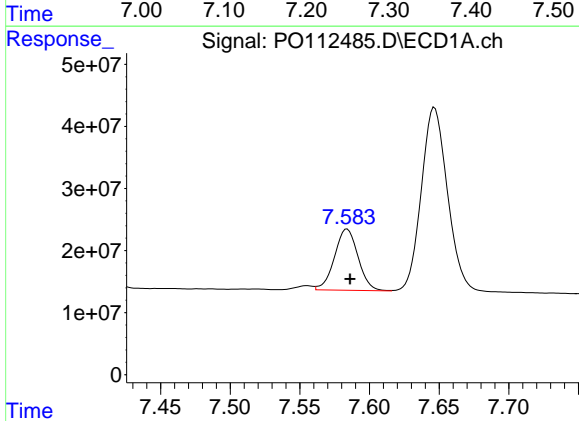
R.T.: 7.300 min
 Delta R.T.: -0.003 min
 Response: 664195578
 Conc: 446.66 ng/ml

Instrument :
 ECD_O
 ClientSampleId :
 PB168997BS



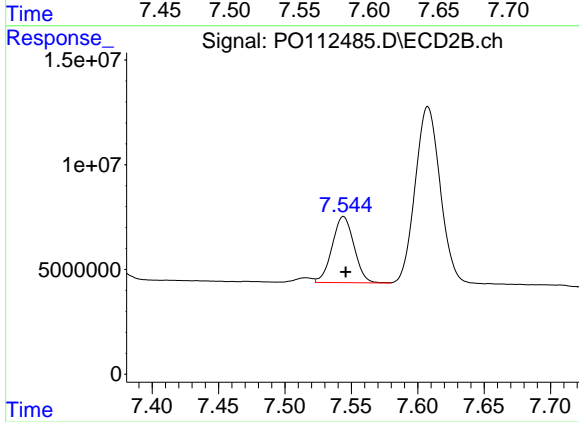
#37 AR-1262-2

R.T.: 7.263 min
 Delta R.T.: -0.002 min
 Response: 207684019
 Conc: 402.84 ng/ml



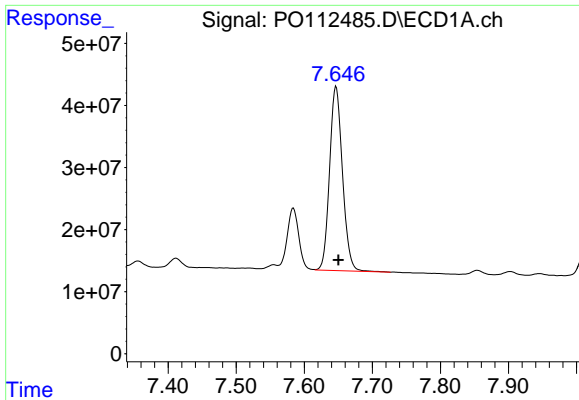
#38 AR-1262-3

R.T.: 7.584 min
 Delta R.T.: -0.002 min
 Response: 116326209
 Conc: 197.08 ng/ml



#38 AR-1262-3

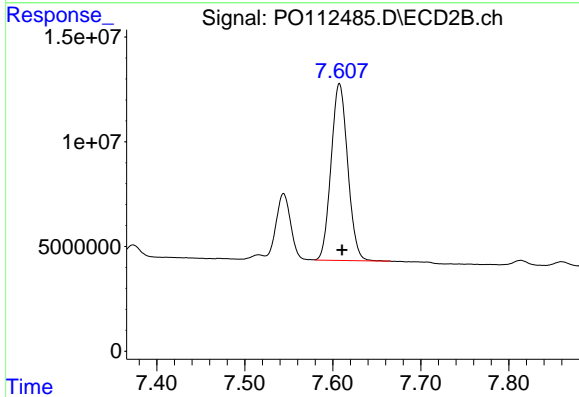
R.T.: 7.544 min
 Delta R.T.: -0.002 min
 Response: 36243189
 Conc: 194.31 ng/ml



#39 AR-1262-4

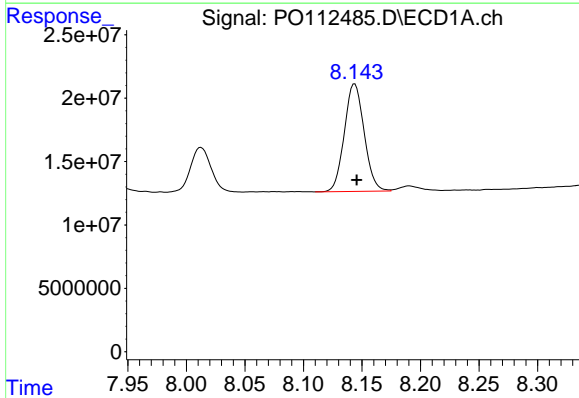
R.T.: 7.647 min
 Delta R.T.: -0.004 min
 Response: 389718164
 Conc: 392.00 ng/ml

Instrument :
 ECD_O
 ClientSampleId :
 PB168997BS



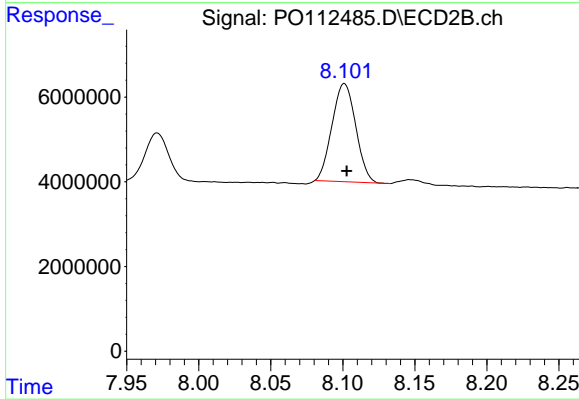
#39 AR-1262-4

R.T.: 7.608 min
 Delta R.T.: -0.003 min
 Response: 110724363
 Conc: 384.32 ng/ml



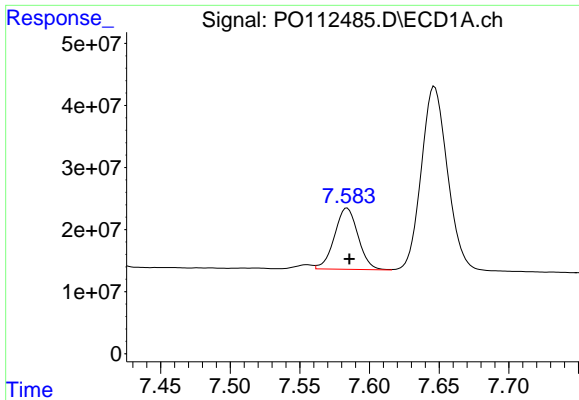
#40 AR-1262-5

R.T.: 8.144 min
 Delta R.T.: -0.002 min
 Response: 100046697
 Conc: 230.49 ng/ml



#40 AR-1262-5

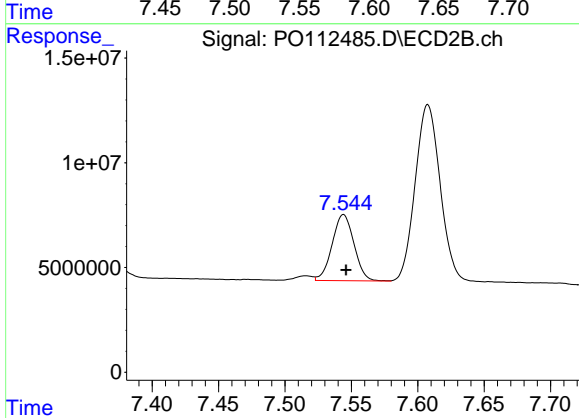
R.T.: 8.101 min
 Delta R.T.: -0.002 min
 Response: 26617016
 Conc: 267.50 ng/ml



#41 AR-1268-1

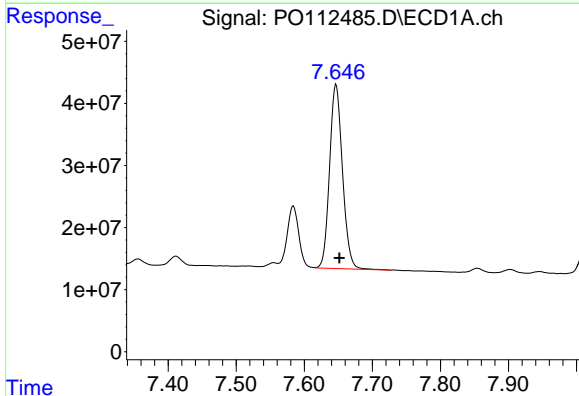
R.T.: 7.584 min
 Delta R.T.: -0.002 min
 Response: 116326209
 Conc: 66.43 ng/ml

Instrument :
 ECD_O
 ClientSampleId :
 PB168997BS



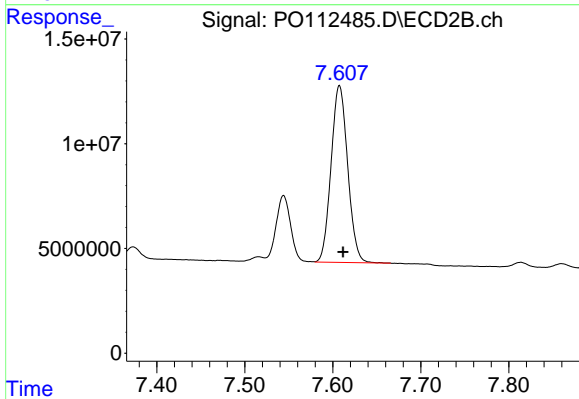
#41 AR-1268-1

R.T.: 7.544 min
 Delta R.T.: -0.002 min
 Response: 36243189
 Conc: 69.99 ng/ml



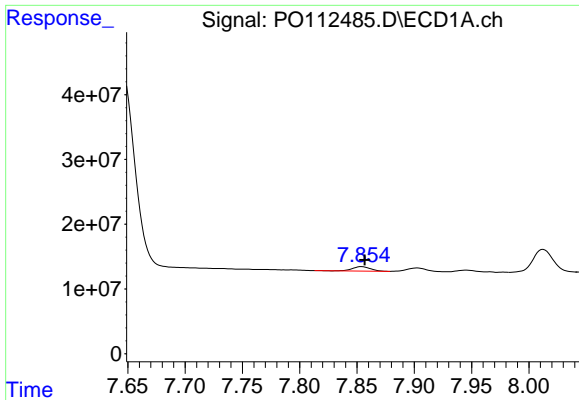
#42 AR-1268-2

R.T.: 7.647 min
 Delta R.T.: -0.005 min
 Response: 389718164
 Conc: 264.57 ng/ml



#42 AR-1268-2

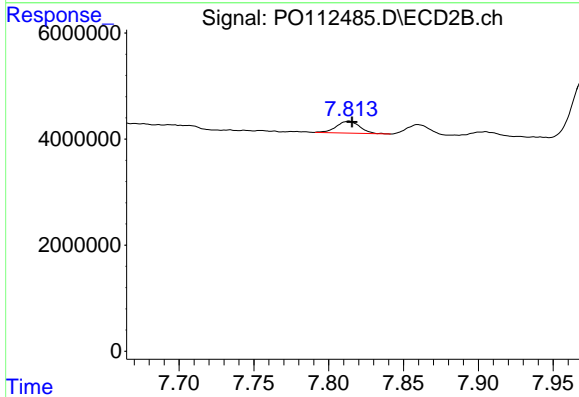
R.T.: 7.608 min
 Delta R.T.: -0.004 min
 Response: 110724363
 Conc: 260.49 ng/ml



#43 AR-1268-3

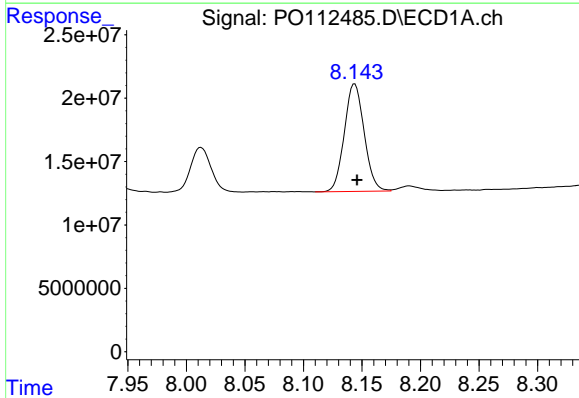
R.T.: 7.854 min
 Delta R.T.: -0.002 min
 Response: 7348103
 Conc: 5.87 ng/ml

Instrument :
 ECD_O
 ClientSampleId :
 PB168997BS



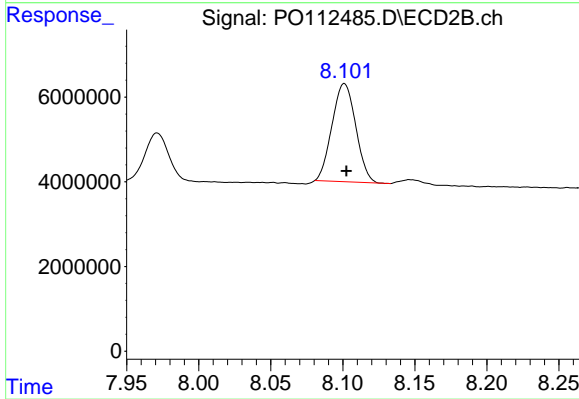
#43 AR-1268-3

R.T.: 7.813 min
 Delta R.T.: -0.002 min
 Response: 2445245
 Conc: 7.61 ng/ml



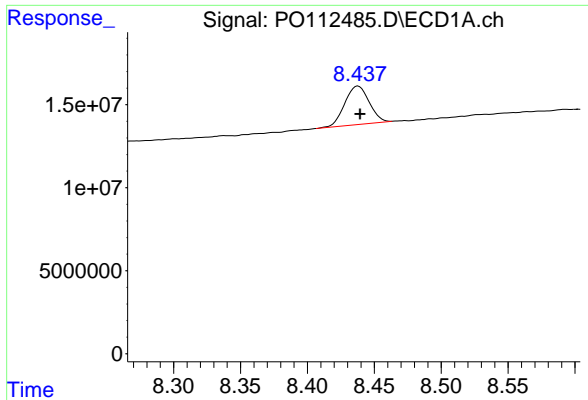
#44 AR-1268-4

R.T.: 8.144 min
 Delta R.T.: -0.002 min
 Response: 100046697
 Conc: 207.62 ng/ml



#44 AR-1268-4

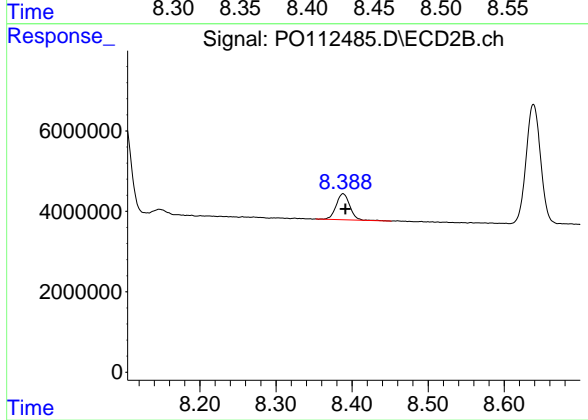
R.T.: 8.101 min
 Delta R.T.: -0.001 min
 Response: 26617016
 Conc: 239.16 ng/ml



#45 AR-1268-5

R.T.: 8.438 min
Delta R.T.: -0.001 min
Response: 29305858
Conc: 8.73 ng/ml

Instrument :
ECD_O
ClientSampleId :
PB168997BS



#45 AR-1268-5

R.T.: 8.388 min
Delta R.T.: -0.003 min
Response: 8098214
Conc: 11.07 ng/ml