

Data Path : Z:\pestpcbsrv\HPCHEM1\ECD_0\Data\P0072425\
 Data File : PO112486.D
 Signal(s) : Signal #1: ECD1A.ch Signal #2: ECD2B.ch
 Acq On : 25 Jul 2025 02:34
 Operator : YP/AJ
 Sample : Q2681-01 10X
 Misc :
 ALS Vial : 29 Sample Multiplier: 1

Instrument :
 ECD_0
ClientSampleId :
 NYPA-POUCH-SPENT-CARBON

Integration File signal 1: autoint1.e
 Integration File signal 2: autoint2.e
 Quant Time: Jul 25 06:24:15 2025
 Quant Method : Z:\pestpcbsrv\HPCHEM1\ECD_0\methods\P0072325.M
 Quant Title : GC EXTRACTABLES
 QLast Update : Thu Jul 24 04:54:06 2025
 Response via : Initial Calibration
 Integrator: ChemStation

Volume Inj. : 2 µl
 Signal #1 Phase : ZB-MR1 Signal #2 Phase: ZB-MR2
 Signal #1 Info : 30Mx0.32mmx 0.50µ Signal #2 Info : 30M x 0.32mm x 0.25µm

Compound	RT#1	RT#2	Resp#1	Resp#2	ng/ml	ng/ml
System Monitoring Compounds						
1) SA Tetrachlo...	3.672	3.664	20656596	12483489	2.540	2.512
2) SA Decachlor...	8.694	8.642	4431448	788906	0.606	0.446 #
Target Compounds						
3) L1 AR-1016-1	4.751	4.738	16458274	62926045	61.328	359.563 #
4) L1 AR-1016-2	4.788	4.769	84384483	65444973	207.783	251.233
5) L1 AR-1016-3	4.833	4.951	36267176	12358312	138.597	90.892 #
6) L1 AR-1016-4	4.971	4.951	11584793	12358312	54.686	111.251 #
7) L1 AR-1016-5	5.191	5.169	9765538	7599170	44.496	53.029
8) L2 AR-1221-1	3.886	3.877	538.2E6	632.9E6	5568.060	9409.218 #
9) L2 AR-1221-2	3.986	3.976	57870237	67759638	805.297	1335.745 #
10) L2 AR-1221-3	4.041	4.031	210.5E6	220.3E6	885.439	1389.897 #
11) L3 AR-1232-1	4.041	4.031	210.5E6	220.3E6	1125.683	1741.126 #
12) L3 AR-1232-2	4.526	4.769	40779383	65444973	378.903	498.990 #
13) L3 AR-1232-3	4.788	4.951	84384483	12358312	408.050	183.912 #
14) L3 AR-1232-4	4.971	4.998	11584793	61218877	110.605	1023.229 #
15) L3 AR-1232-5	4.971	5.169	11584793	7599170	170.664	116.546 #
16) L4 AR-1242-1	4.751	4.738	16458274	62926045	66.473	397.275 #
17) L4 AR-1242-2	4.788	4.769	84384483	65444973	228.193	280.079
18) L4 AR-1242-3	4.833	4.951	36267176	12358312	153.247	101.975 #
19) L4 AR-1242-4	4.971	4.998	11584793	61218877	59.630	498.771 #
20) L4 AR-1242-5	5.620	5.543	81001859	7125348	378.663	44.265 #
21) L5 AR-1248-1	4.751	4.738	16458274	62926045	87.914	517.870 #
22) L5 AR-1248-2	4.971	4.951	11584793	12358312	45.411	73.005 #
23) L5 AR-1248-3	5.191	4.998	9765538	61218877	28.413	344.609 #
24) L5 AR-1248-4	5.570	5.169	11818449	7599170	23.261	36.472 #
25) L5 AR-1248-5	5.620	5.595	81001859	63405738	231.705	295.233 #
26) L6 AR-1254-1	5.570	5.543	11818449	7125348	21.529	21.683
27) L6 AR-1254-2	5.669f	5.644f	36980837	29341270	76.105	101.355 #
28) L6 AR-1254-3	6.088	6.059	20888827	13696931	28.066	32.042
29) L6 AR-1254-4	6.354	6.322	12529218	9471274	22.793	34.698 #
30) L6 AR-1254-5	6.798f	6.760	86269753	31797441	121.880	95.196
31) L7 AR-1260-1	6.261	6.228	2710195	1162157	6.169	4.676
32) L7 AR-1260-2	6.439	6.404	4080180	2707408	5.931	8.217 #
33) L7 AR-1260-3	6.798	6.540	86269753	6716900	146.712	26.144 #
34) L7 AR-1260-4	7.062	7.022	28188614	4452163	62.502	23.272 #
35) L7 AR-1260-5	7.279	7.238	10329318	2118101	8.336	5.139 #
36) L8 AR-1262-1	6.798	6.760	86269753	31797441	92.842	76.652
37) L8 AR-1262-2	7.279	7.238	10329318	2118101	6.946	4.108 #
38) L8 AR-1262-3	7.565	7.562	566005	476359	0.959	2.554 #
39) L8 AR-1262-4	7.685	7.607	4273657	102492	4.299	0.356 #
40) L8 AR-1262-5	8.174	8.109	1699144	470864	3.915	4.732
41) L9 AR-1268-1	7.565	7.562	566005	476359	0.323	0.920 #

Data Path : Z:\pestpcbsrv\HPCHEM1\ECD_0\Data\P0072425\
 Data File : P0112486.D
 Signal(s) : Signal #1: ECD1A.ch Signal #2: ECD2B.ch
 Acq On : 25 Jul 2025 02:34
 Operator : YP/AJ
 Sample : Q2681-01 10X
 Misc :
 ALS Vial : 29 Sample Multiplier: 1

Instrument :
 ECD_0
ClientSampleId :
 NYPA-POUCH-SPENT-CARBON

Integration File signal 1: autoint1.e
 Integration File signal 2: autoint2.e
 Quant Time: Jul 25 06:24:15 2025
 Quant Method : Z:\pestpcbsrv\HPCHEM1\ECD_0\methods\P0072325.M
 Quant Title : GC EXTRACTABLES
 QLast Update : Thu Jul 24 04:54:06 2025
 Response via : Initial Calibration
 Integrator: ChemStation

Volume Inj. : 2 µl
 Signal #1 Phase : ZB-MR1 Signal #2 Phase: ZB-MR2
 Signal #1 Info : 30Mx0.32mmx 0.50µ Signal #2 Info : 30M x 0.32mm x 0.25µm

	Compound	RT#1	RT#2	Resp#1	Resp#2	ng/ml	ng/ml
42)	L9 AR-1268-2	7.685	7.607	4273657	102492	2.901	0.241 #
43)	L9 AR-1268-3	7.860	7.814	1258962	101936	1.005	0.317 #
44)	L9 AR-1268-4	8.174	8.109	1699144	470864	3.526	4.231
45)	L9 AR-1268-5	0.000	8.370	0	169493	N.D.	0.232 #

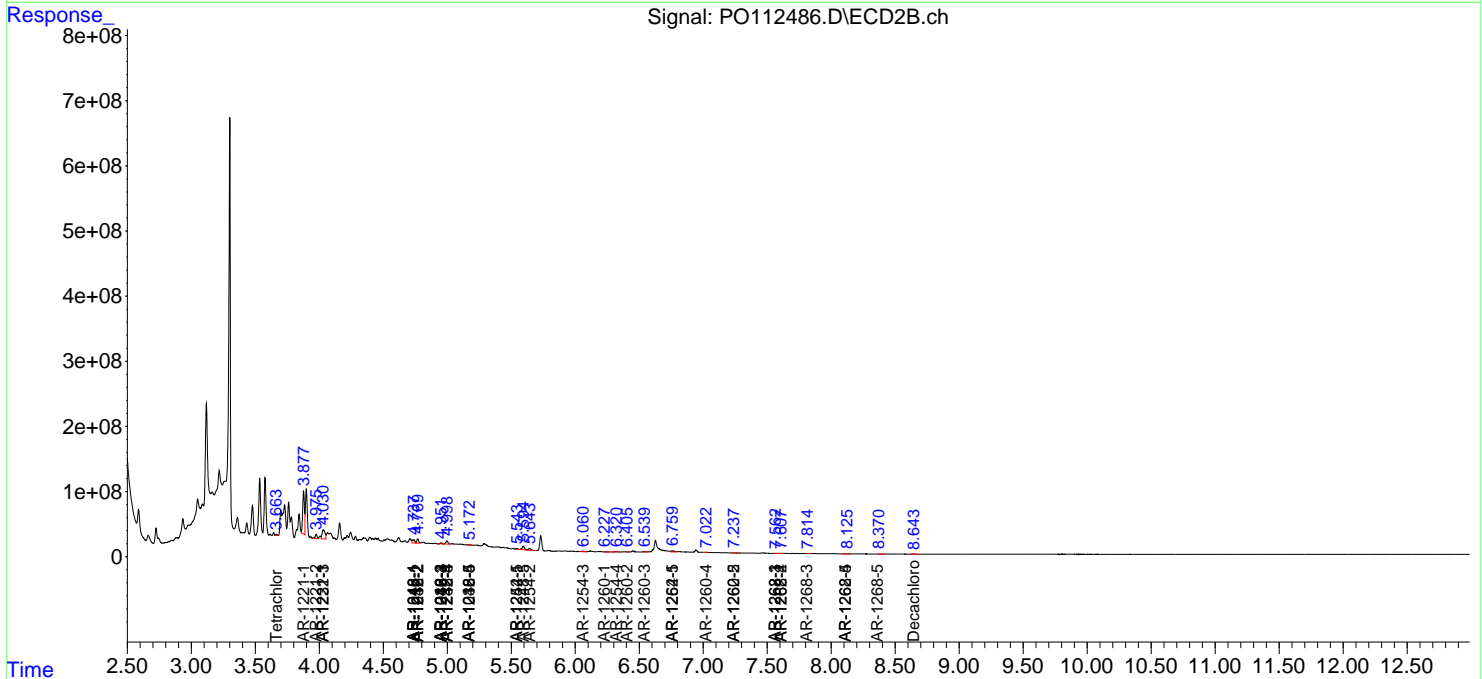
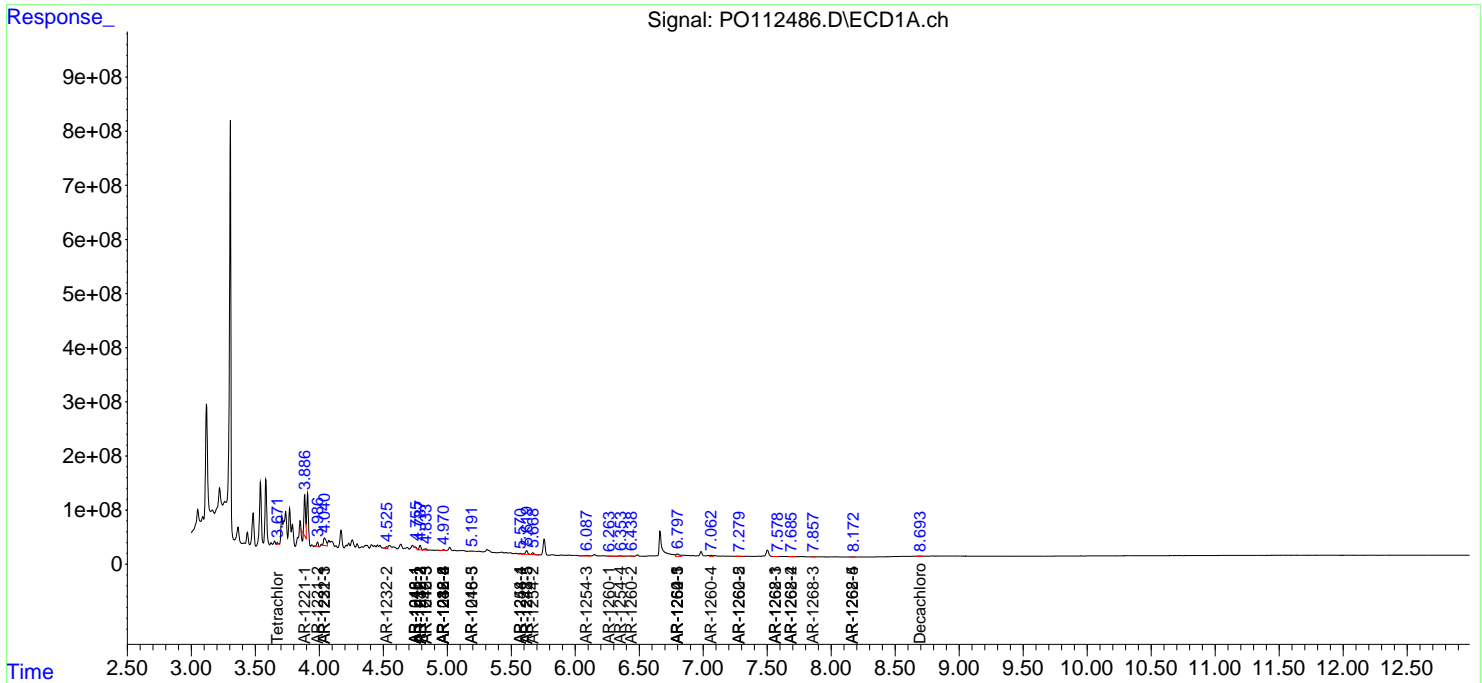
(f)=RT Delta > 1/2 Window (#)=Amounts differ by > 25% (m)=manual int.

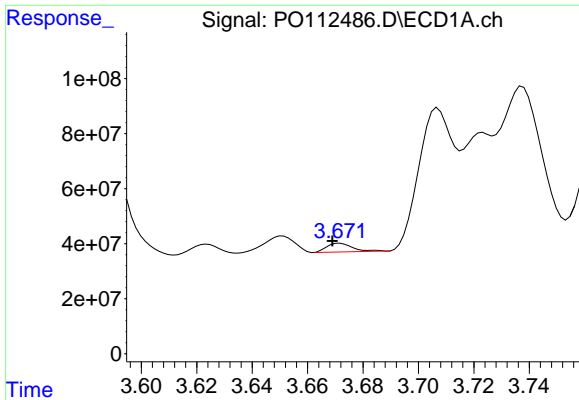
Data Path : Z:\pestpcbsrv\HPCHEM1\ECD_O\Data\P0072425\
 Data File : P0112486.D
 Signal(s) : Signal #1: ECD1A.ch Signal #2: ECD2B.ch
 Acq On : 25 Jul 2025 02:34
 Operator : YP/AJ
 Sample : Q2681-01 10X
 Misc :
 ALS Vial : 29 Sample Multiplier: 1

Instrument :
 ECD_O
ClientSampleId :
 NYPA-POUCH-SPENT-CARBON

Integration File signal 1: autoint1.e
 Integration File signal 2: autoint2.e
 Quant Time: Jul 25 06:24:15 2025
 Quant Method : Z:\pestpcbsrv\HPCHEM1\ECD_O\methods\P0072325.M
 Quant Title : GC EXTRACTABLES
 QLast Update : Thu Jul 24 04:54:06 2025
 Response via : Initial Calibration
 Integrator: ChemStation

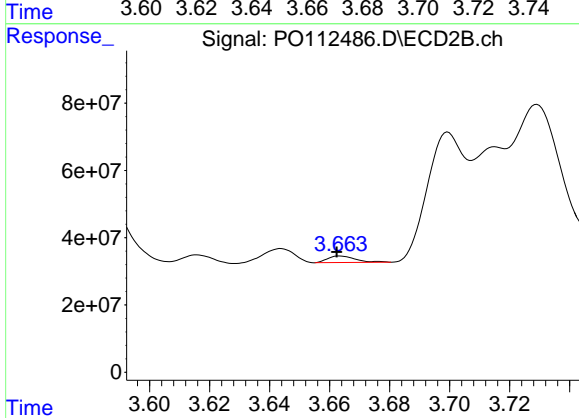
Volume Inj. : 2 µl
 Signal #1 Phase : ZB-MR1 Signal #2 Phase: ZB-MR2
 Signal #1 Info : 30Mx0.32mmx 0.50µ Signal #2 Info : 30M x 0.32mm x 0.25µm



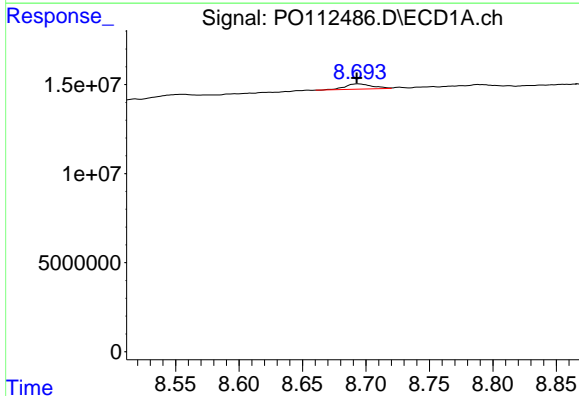


#1 Tetrachloro-m-xylene
 R.T.: 3.672 min
 Delta R.T.: 0.003 min
 Response: 20656596
 Conc: 2.54 ng/ml

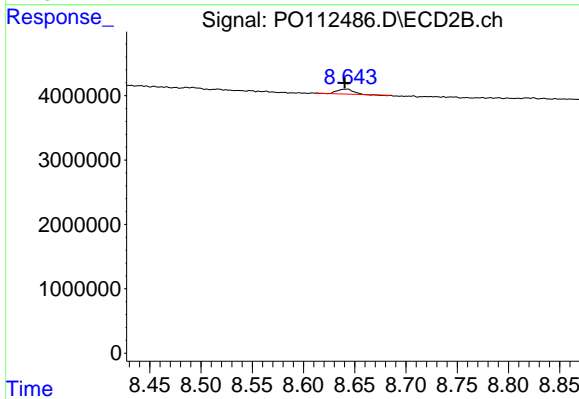
Instrument : ECD_O
 ClientSampleId : NYPA-POUCH-SPENT-CARBON



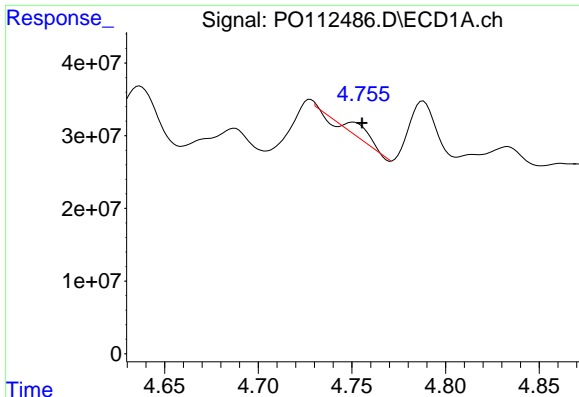
#1 Tetrachloro-m-xylene
 R.T.: 3.664 min
 Delta R.T.: 0.001 min
 Response: 12483489
 Conc: 2.51 ng/ml



#2 Decachlorobiphenyl
 R.T.: 8.694 min
 Delta R.T.: 0.001 min
 Response: 4431448
 Conc: 0.61 ng/ml



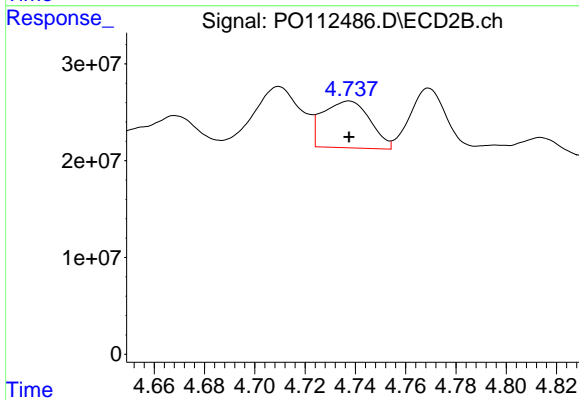
#2 Decachlorobiphenyl
 R.T.: 8.642 min
 Delta R.T.: 0.002 min
 Response: 788906
 Conc: 0.45 ng/ml



#3 AR-1016-1

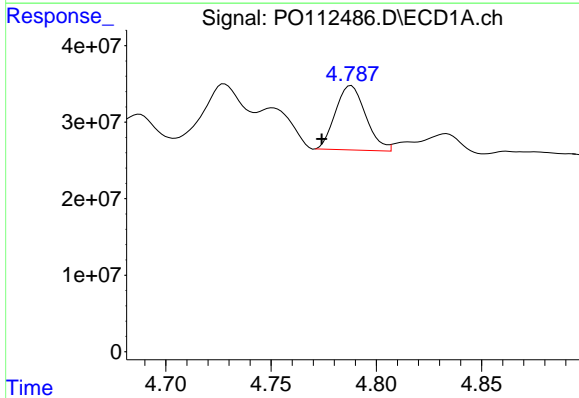
R.T.: 4.751 min
 Delta R.T.: -0.005 min
 Response: 16458274
 Conc: 61.33 ng/ml

Instrument :
 ECD_O
 ClientSampleId :
 NYPA-POUCH-SPENT-CARBON



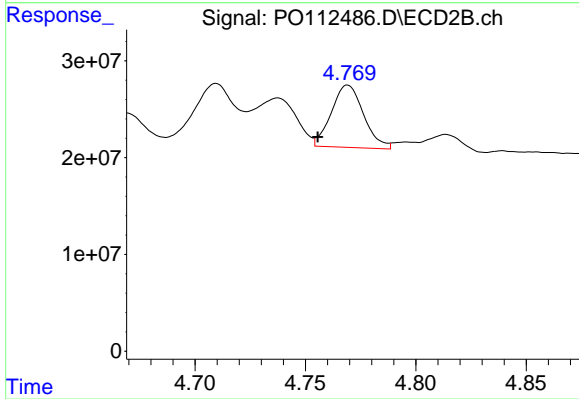
#3 AR-1016-1

R.T.: 4.738 min
 Delta R.T.: 0.000 min
 Response: 62926045
 Conc: 359.56 ng/ml



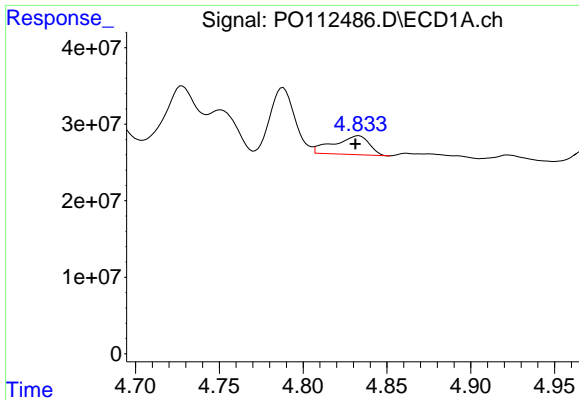
#4 AR-1016-2

R.T.: 4.788 min
 Delta R.T.: 0.014 min
 Response: 84384483
 Conc: 207.78 ng/ml



#4 AR-1016-2

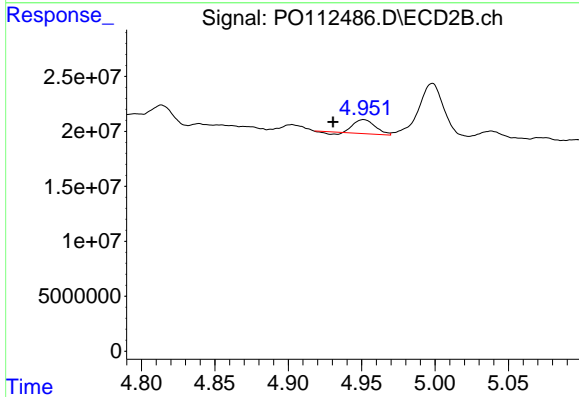
R.T.: 4.769 min
 Delta R.T.: 0.014 min
 Response: 65444973
 Conc: 251.23 ng/ml



#5 AR-1016-3

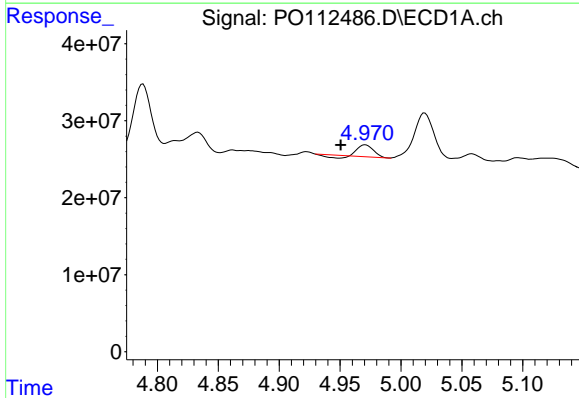
R.T.: 4.833 min
 Delta R.T.: 0.002 min
 Response: 36267176
 Conc: 138.60 ng/ml

Instrument :
 ECD_O
 ClientSampleId :
 NYPA-POUCH-SPENT-CARBON



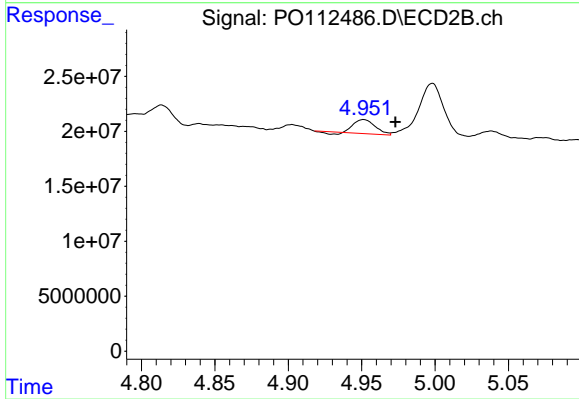
#5 AR-1016-3

R.T.: 4.951 min
 Delta R.T.: 0.021 min
 Response: 12358312
 Conc: 90.89 ng/ml



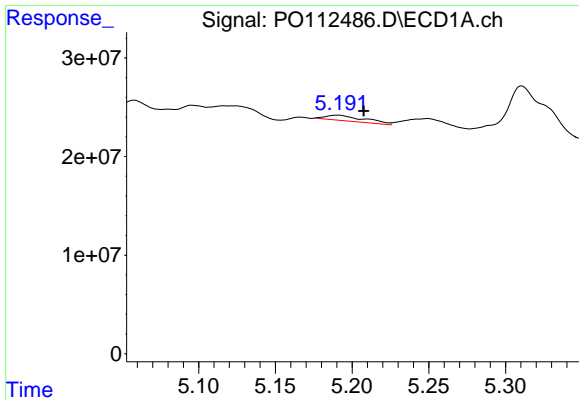
#6 AR-1016-4

R.T.: 4.971 min
 Delta R.T.: 0.020 min
 Response: 11584793
 Conc: 54.69 ng/ml



#6 AR-1016-4

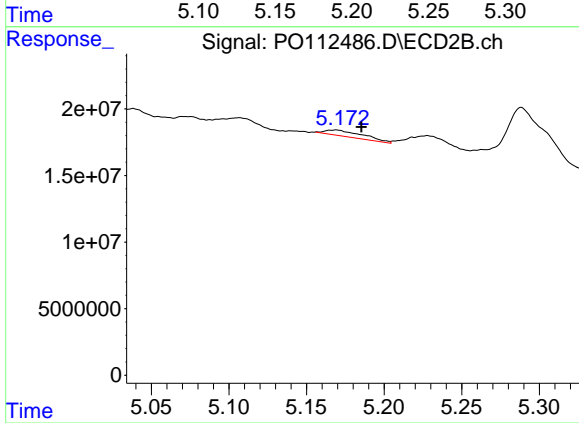
R.T.: 4.951 min
 Delta R.T.: -0.021 min
 Response: 12358312
 Conc: 111.25 ng/ml



#7 AR-1016-5

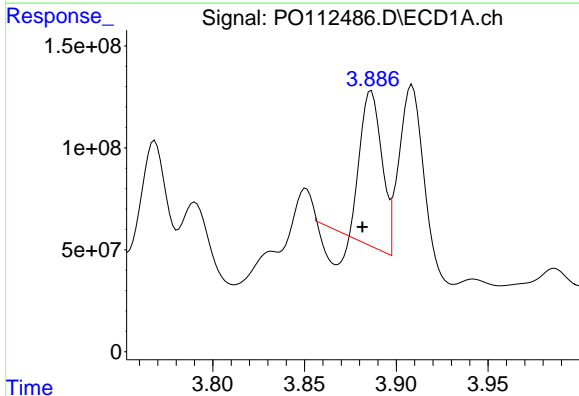
R.T.: 5.191 min
 Delta R.T.: -0.017 min
 Response: 9765538
 Conc: 44.50 ng/ml

Instrument :
 ECD_O
 ClientSampleId :
 NYPA-POUCH-SPENT-CARBON



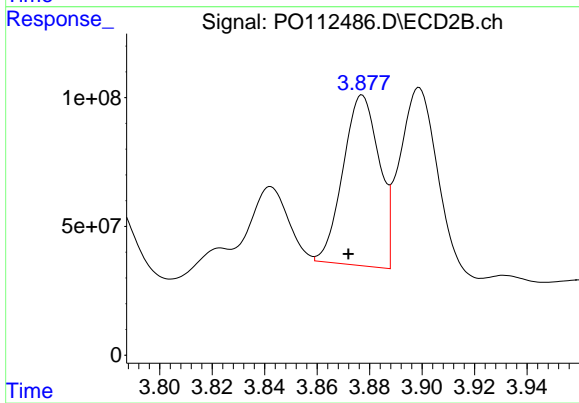
#7 AR-1016-5

R.T.: 5.169 min
 Delta R.T.: -0.016 min
 Response: 7599170
 Conc: 53.03 ng/ml



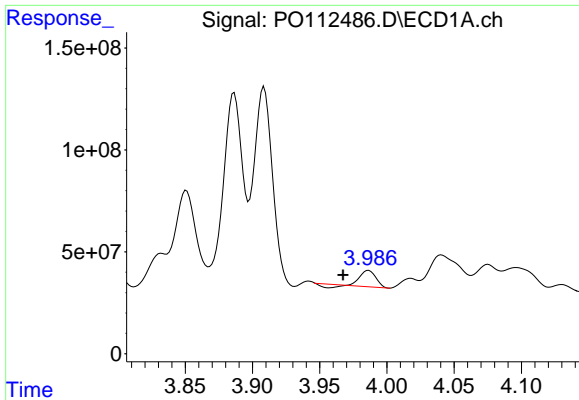
#8 AR-1221-1

R.T.: 3.886 min
 Delta R.T.: 0.005 min
 Response: 538206742
 Conc: 5568.06 ng/ml



#8 AR-1221-1

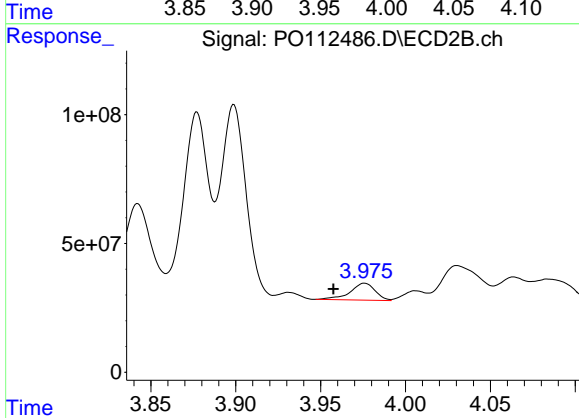
R.T.: 3.877 min
 Delta R.T.: 0.005 min
 Response: 632919295
 Conc: 9409.22 ng/ml



#9 AR-1221-2

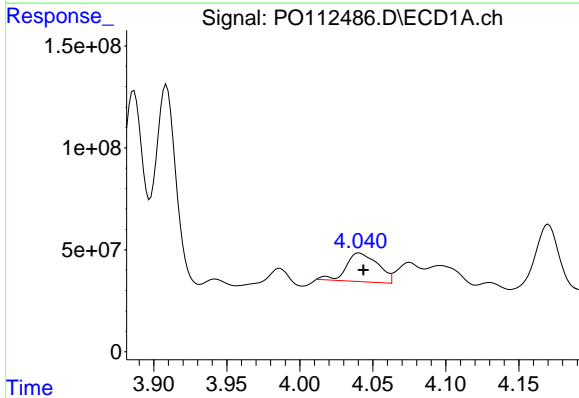
R.T.: 3.986 min
 Delta R.T.: 0.019 min
 Response: 57870237
 Conc: 805.30 ng/ml

Instrument :
 ECD_O
 ClientSampleId :
 NYPA-POUCH-SPENT-CARBON



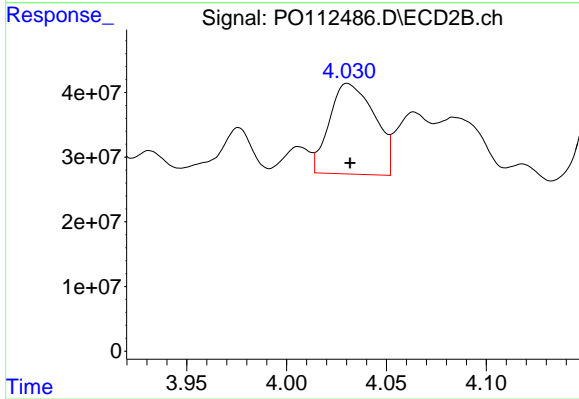
#9 AR-1221-2

R.T.: 3.976 min
 Delta R.T.: 0.018 min
 Response: 67759638
 Conc: 1335.74 ng/ml



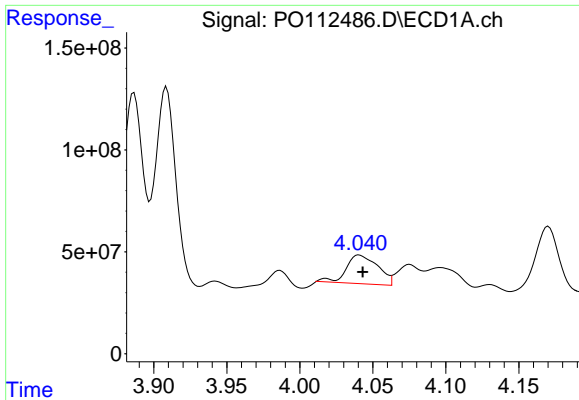
#10 AR-1221-3

R.T.: 4.041 min
 Delta R.T.: -0.003 min
 Response: 210478685
 Conc: 885.44 ng/ml



#10 AR-1221-3

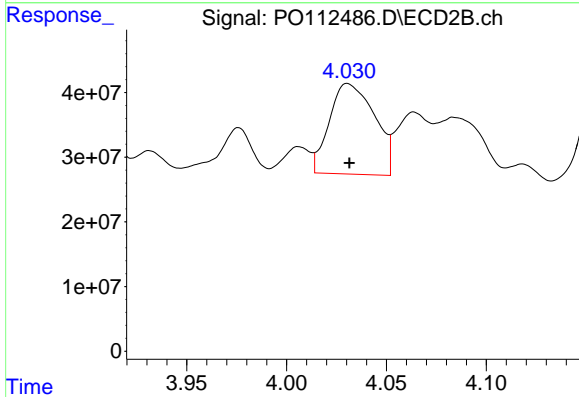
R.T.: 4.031 min
 Delta R.T.: -0.001 min
 Response: 220339446
 Conc: 1389.90 ng/ml



#11 AR-1232-1

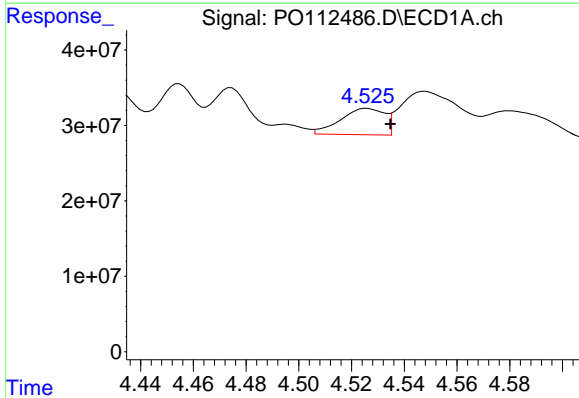
R.T.: 4.041 min
 Delta R.T.: -0.003 min
 Response: 210478685
 Conc: 1125.68 ng/ml

Instrument :
 ECD_O
 ClientSampleId :
 NYPA-POUCH-SPENT-CARBON



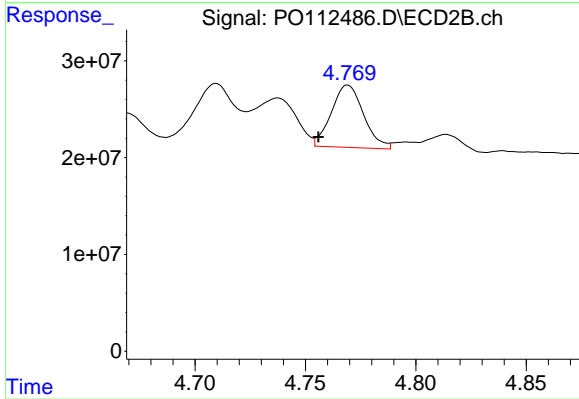
#11 AR-1232-1

R.T.: 4.031 min
 Delta R.T.: 0.000 min
 Response: 220339446
 Conc: 1741.13 ng/ml



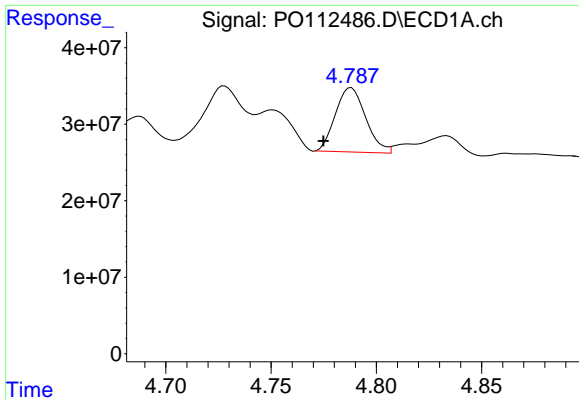
#12 AR-1232-2

R.T.: 4.526 min
 Delta R.T.: -0.009 min
 Response: 40779383
 Conc: 378.90 ng/ml



#12 AR-1232-2

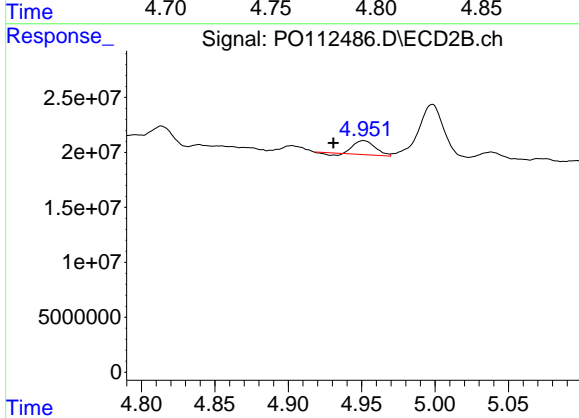
R.T.: 4.769 min
 Delta R.T.: 0.013 min
 Response: 65444973
 Conc: 498.99 ng/ml



#13 AR-1232-3

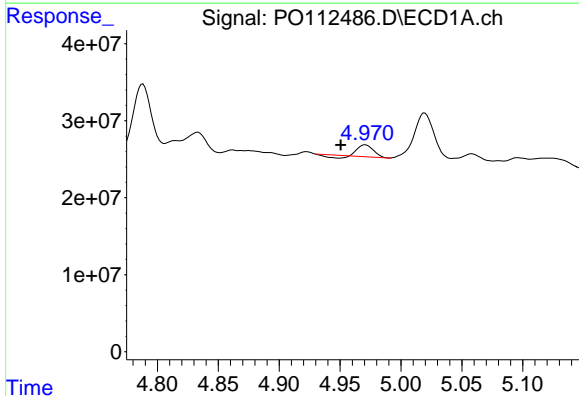
R.T.: 4.788 min
 Delta R.T.: 0.013 min
 Response: 84384483
 Conc: 408.05 ng/ml

Instrument :
 ECD_O
 ClientSampleId :
 NYPA-POUCH-SPENT-CARBON



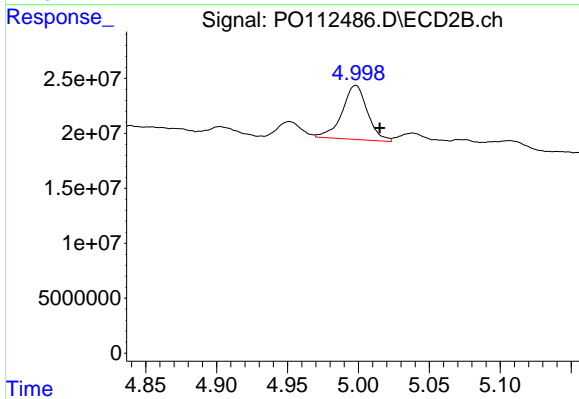
#13 AR-1232-3

R.T.: 4.951 min
 Delta R.T.: 0.021 min
 Response: 12358312
 Conc: 183.91 ng/ml



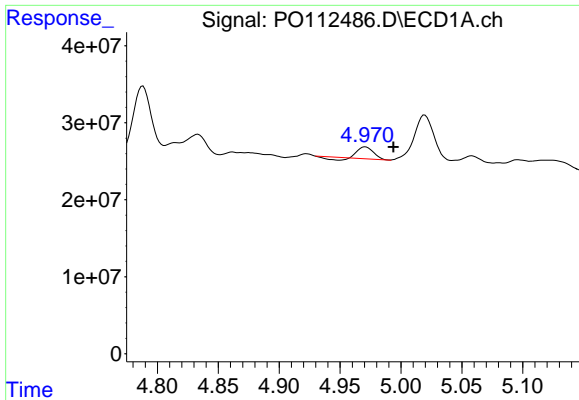
#14 AR-1232-4

R.T.: 4.971 min
 Delta R.T.: 0.020 min
 Response: 11584793
 Conc: 110.60 ng/ml



#14 AR-1232-4

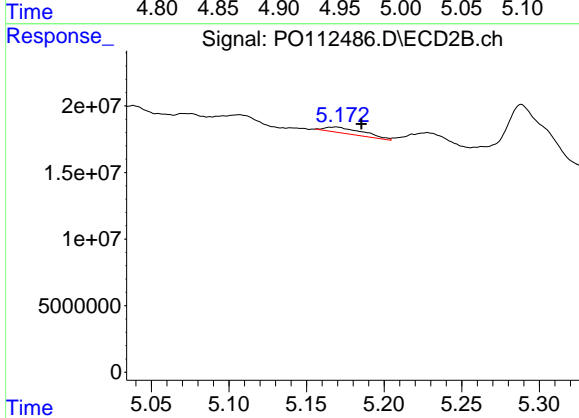
R.T.: 4.998 min
 Delta R.T.: -0.017 min
 Response: 61218877
 Conc: 1023.23 ng/ml



#15 AR-1232-5

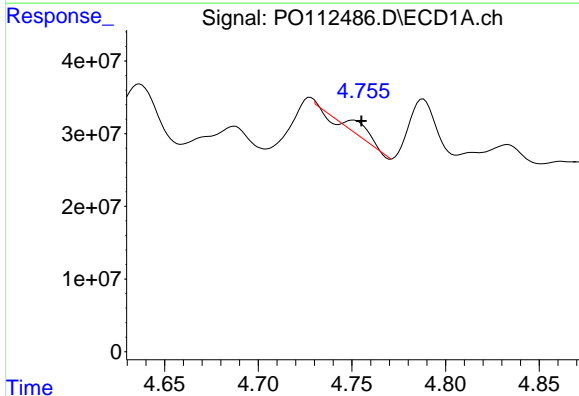
R.T.: 4.971 min
 Delta R.T.: -0.023 min
 Response: 11584793
 Conc: 170.66 ng/ml

Instrument :
 ECD_O
 ClientSampleId :
 NYPA-POUCH-SPENT-CARBON



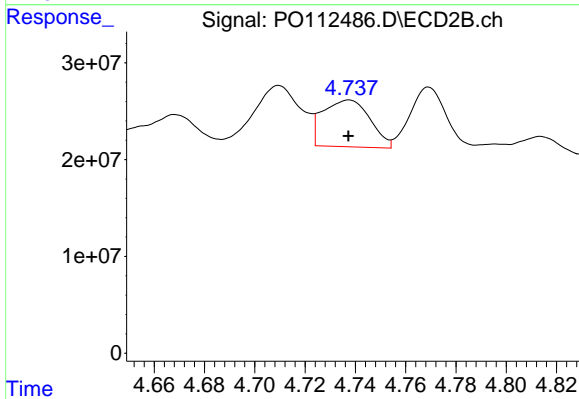
#15 AR-1232-5

R.T.: 5.169 min
 Delta R.T.: -0.016 min
 Response: 7599170
 Conc: 116.55 ng/ml



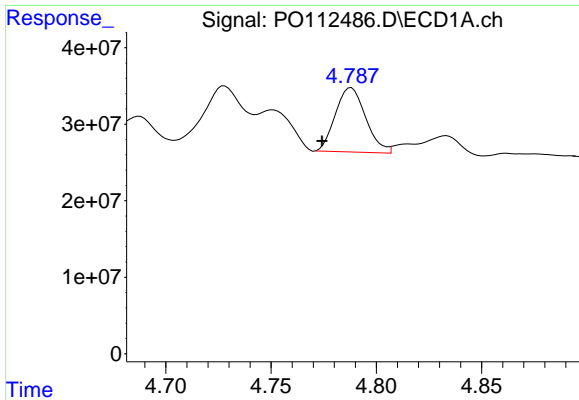
#16 AR-1242-1

R.T.: 4.751 min
 Delta R.T.: -0.004 min
 Response: 16458274
 Conc: 66.47 ng/ml



#16 AR-1242-1

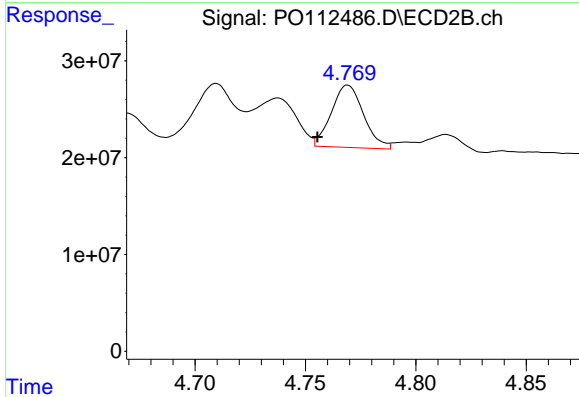
R.T.: 4.738 min
 Delta R.T.: 0.000 min
 Response: 62926045
 Conc: 397.28 ng/ml



#17 AR-1242-2

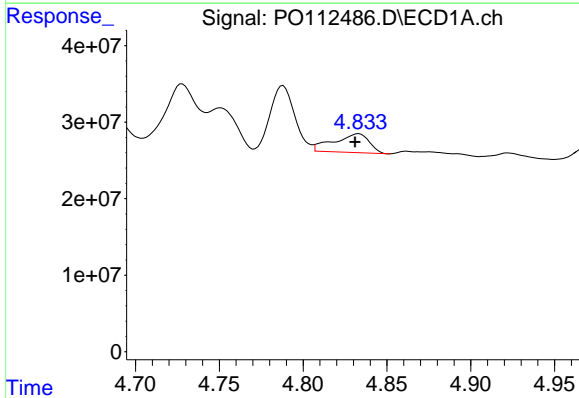
R.T.: 4.788 min
 Delta R.T.: 0.014 min
 Response: 84384483
 Conc: 228.19 ng/ml

Instrument :
 ECD_O
 ClientSampleId :
 NYPA-POUCH-SPENT-CARBON



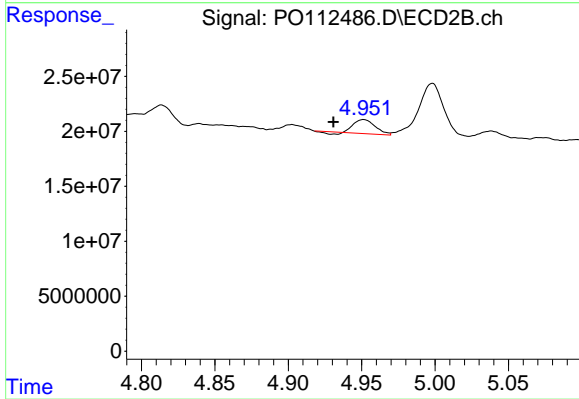
#17 AR-1242-2

R.T.: 4.769 min
 Delta R.T.: 0.014 min
 Response: 65444973
 Conc: 280.08 ng/ml



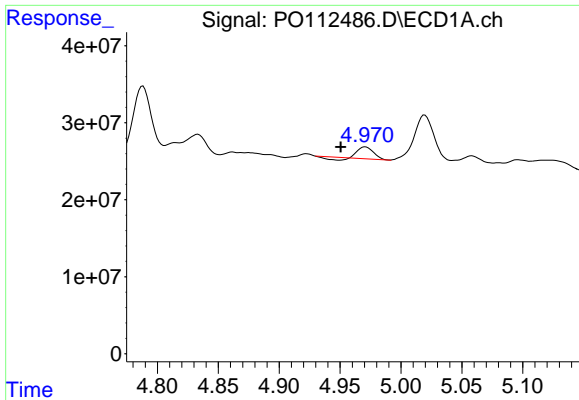
#18 AR-1242-3

R.T.: 4.833 min
 Delta R.T.: 0.002 min
 Response: 36267176
 Conc: 153.25 ng/ml



#18 AR-1242-3

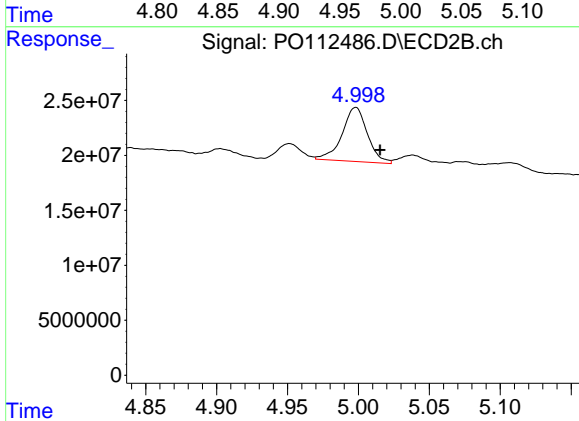
R.T.: 4.951 min
 Delta R.T.: 0.021 min
 Response: 12358312
 Conc: 101.98 ng/ml



#19 AR-1242-4

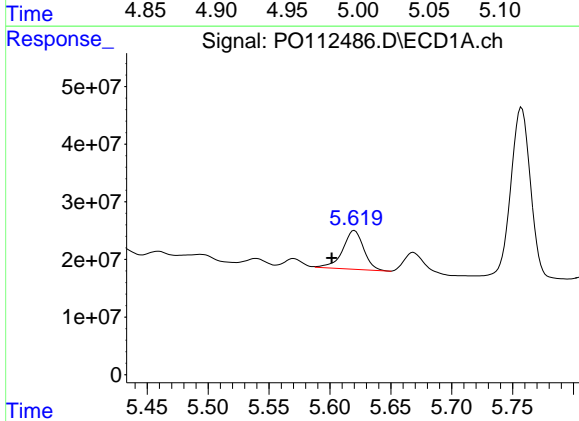
R.T.: 4.971 min
 Delta R.T.: 0.020 min
 Response: 11584793
 Conc: 59.63 ng/ml

Instrument : ECD_O
 ClientSampleId : NYPA-POUCH-SPENT-CARBON



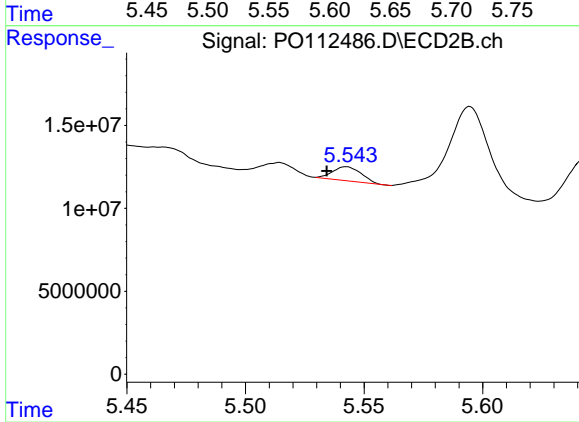
#19 AR-1242-4

R.T.: 4.998 min
 Delta R.T.: -0.017 min
 Response: 61218877
 Conc: 498.77 ng/ml



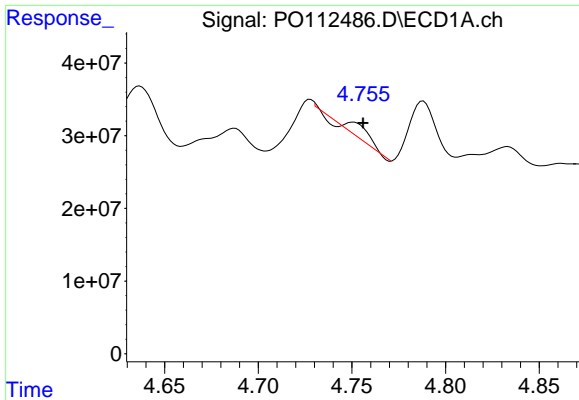
#20 AR-1242-5

R.T.: 5.620 min
 Delta R.T.: 0.019 min
 Response: 81001859
 Conc: 378.66 ng/ml



#20 AR-1242-5

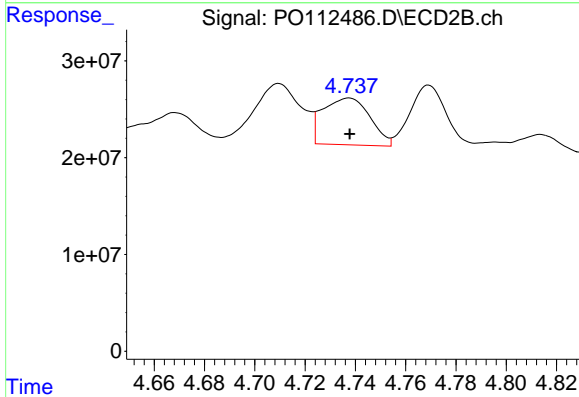
R.T.: 5.543 min
 Delta R.T.: 0.008 min
 Response: 7125348
 Conc: 44.26 ng/ml



#21 AR-1248-1

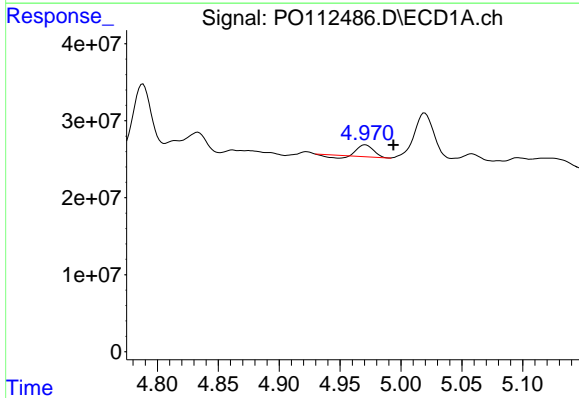
R.T.: 4.751 min
 Delta R.T.: -0.005 min
 Response: 16458274
 Conc: 87.91 ng/ml

Instrument :
 ECD_O
 ClientSampleId :
 NYPA-POUCH-SPENT-CARBON



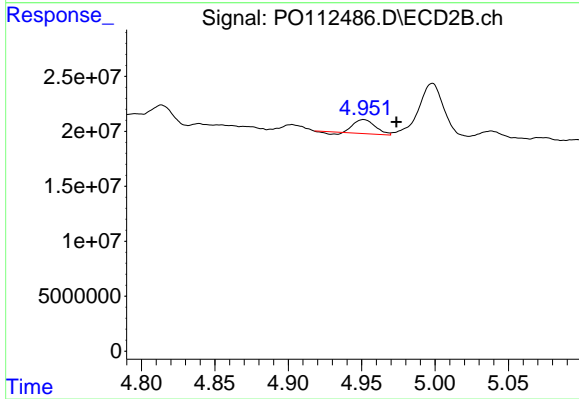
#21 AR-1248-1

R.T.: 4.738 min
 Delta R.T.: 0.000 min
 Response: 62926045
 Conc: 517.87 ng/ml



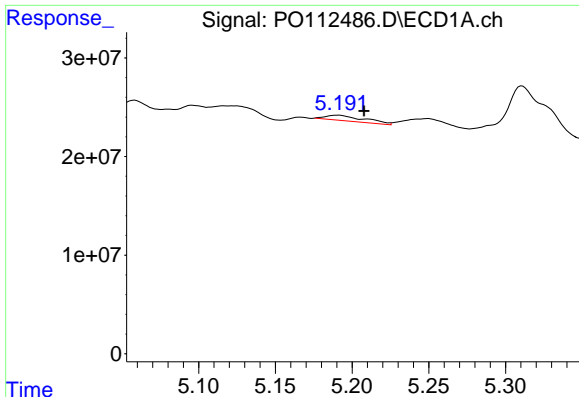
#22 AR-1248-2

R.T.: 4.971 min
 Delta R.T.: -0.023 min
 Response: 11584793
 Conc: 45.41 ng/ml



#22 AR-1248-2

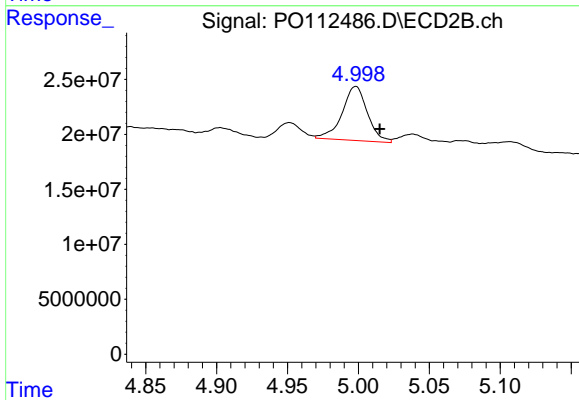
R.T.: 4.951 min
 Delta R.T.: -0.022 min
 Response: 12358312
 Conc: 73.01 ng/ml



#23 AR-1248-3

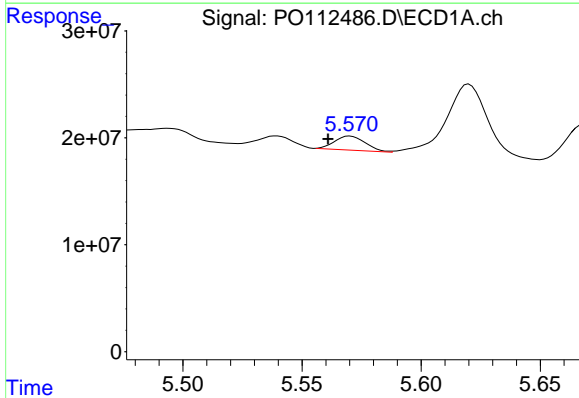
R.T.: 5.191 min
 Delta R.T.: -0.017 min
 Response: 9765538
 Conc: 28.41 ng/ml

Instrument :
 ECD_O
 ClientSampleId :
 NYPA-POUCH-SPENT-CARBON



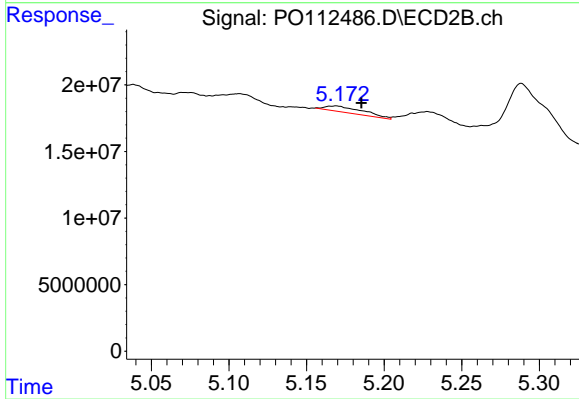
#23 AR-1248-3

R.T.: 4.998 min
 Delta R.T.: -0.017 min
 Response: 61218877
 Conc: 344.61 ng/ml



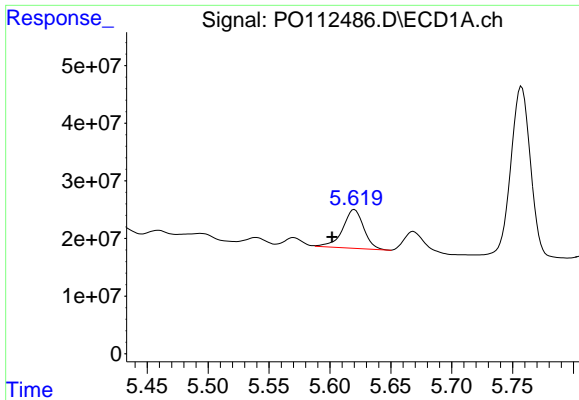
#24 AR-1248-4

R.T.: 5.570 min
 Delta R.T.: 0.009 min
 Response: 11818449
 Conc: 23.26 ng/ml



#24 AR-1248-4

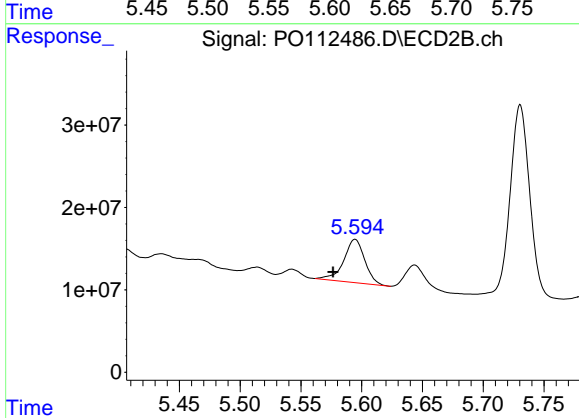
R.T.: 5.169 min
 Delta R.T.: -0.016 min
 Response: 7599170
 Conc: 36.47 ng/ml



#25 AR-1248-5

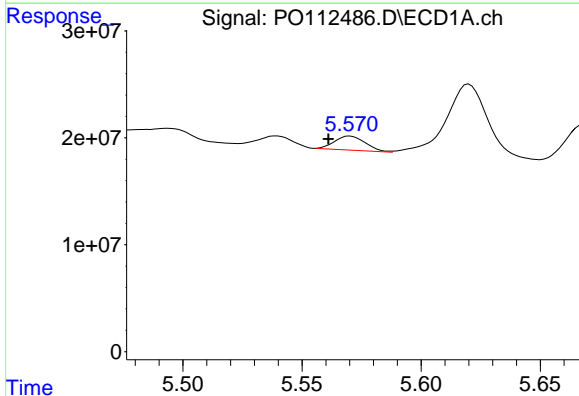
R.T.: 5.620 min
 Delta R.T.: 0.018 min
 Response: 81001859
 Conc: 231.70 ng/ml

Instrument :
 ECD_O
 ClientSampleId :
 NYPA-POUCH-SPENT-CARBON



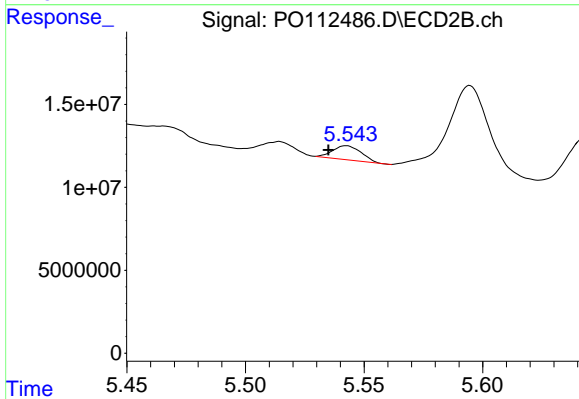
#25 AR-1248-5

R.T.: 5.595 min
 Delta R.T.: 0.018 min
 Response: 63405738
 Conc: 295.23 ng/ml



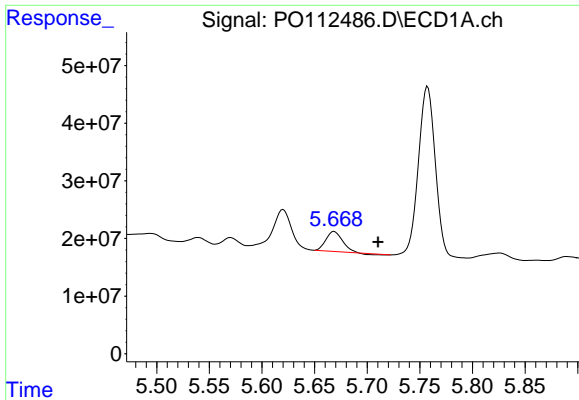
#26 AR-1254-1

R.T.: 5.570 min
 Delta R.T.: 0.009 min
 Response: 11818449
 Conc: 21.53 ng/ml



#26 AR-1254-1

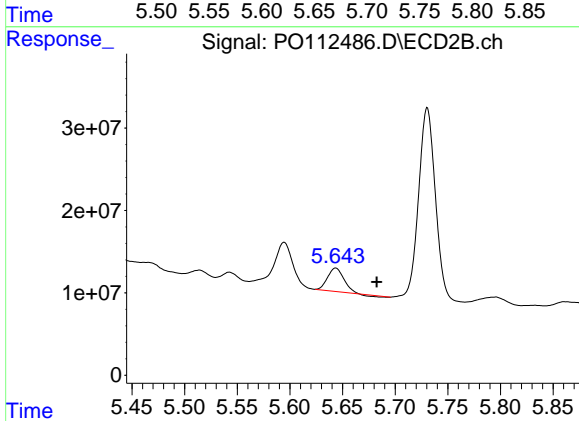
R.T.: 5.543 min
 Delta R.T.: 0.008 min
 Response: 7125348
 Conc: 21.68 ng/ml



#27 AR-1254-2

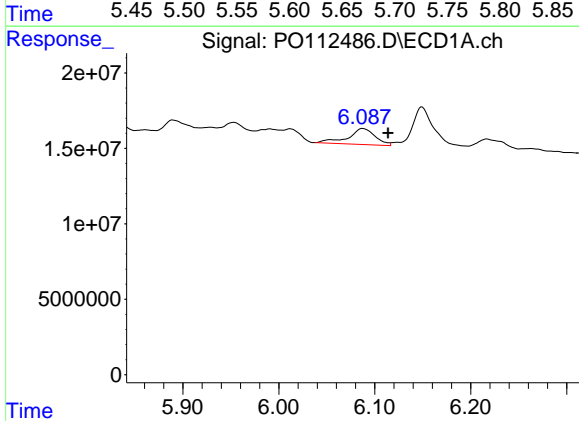
R.T.: 5.669 min
 Delta R.T.: -0.042 min
 Response: 36980837
 Conc: 76.10 ng/ml

Instrument :
 ECD_O
 ClientSampleId :
 NYPA-POUCH-SPENT-CARBON



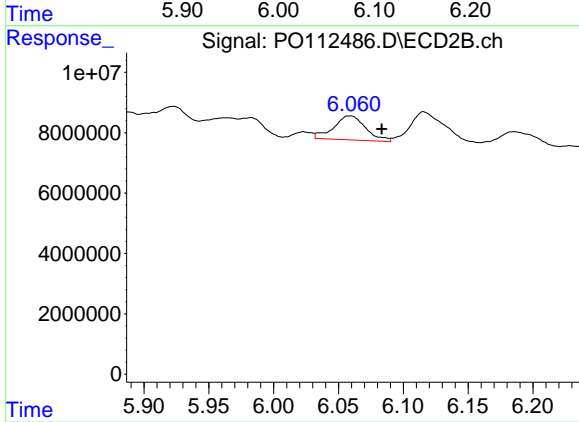
#27 AR-1254-2

R.T.: 5.644 min
 Delta R.T.: -0.039 min
 Response: 29341270
 Conc: 101.35 ng/ml



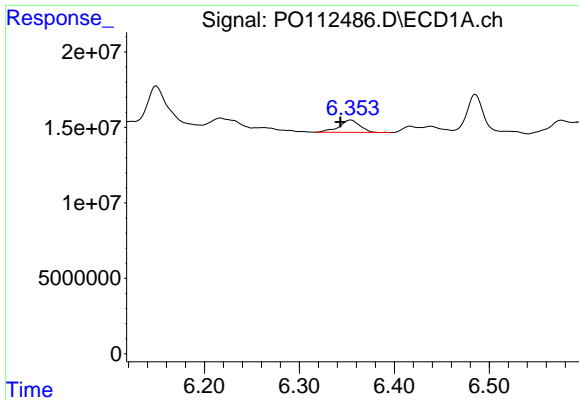
#28 AR-1254-3

R.T.: 6.088 min
 Delta R.T.: -0.026 min
 Response: 20888827
 Conc: 28.07 ng/ml



#28 AR-1254-3

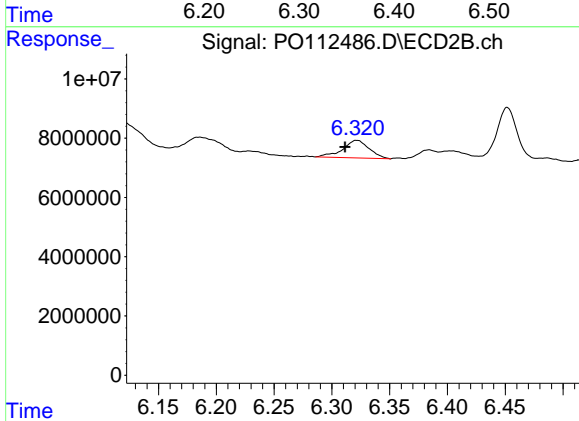
R.T.: 6.059 min
 Delta R.T.: -0.025 min
 Response: 13696931
 Conc: 32.04 ng/ml



#29 AR-1254-4

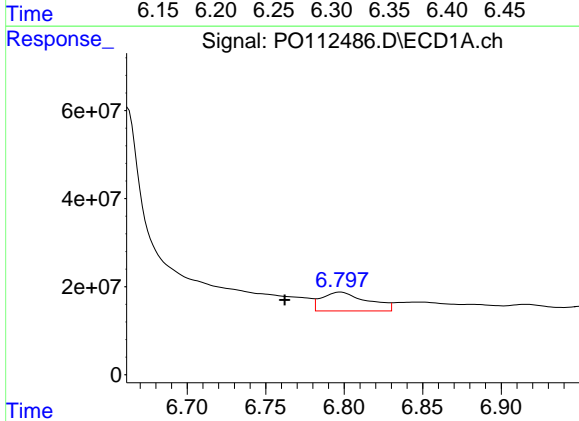
R.T.: 6.354 min
 Delta R.T.: 0.011 min
 Response: 12529218
 Conc: 22.79 ng/ml

Instrument :
 ECD_O
 ClientSampleId :
 NYPA-POUCH-SPENT-CARBON



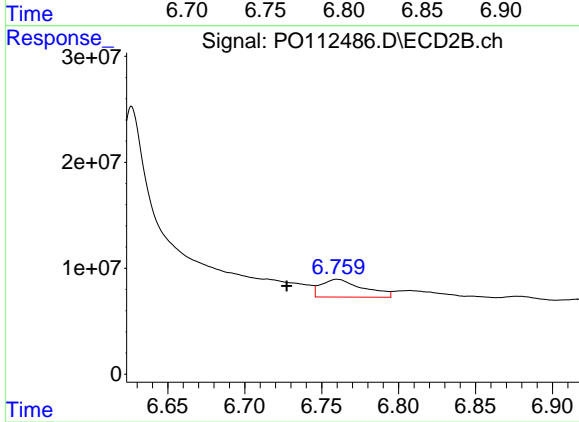
#29 AR-1254-4

R.T.: 6.322 min
 Delta R.T.: 0.010 min
 Response: 9471274
 Conc: 34.70 ng/ml



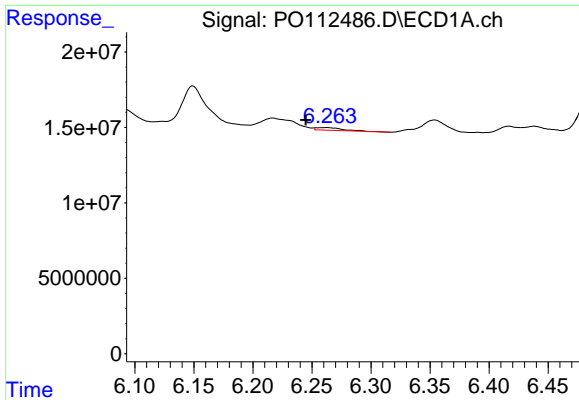
#30 AR-1254-5

R.T.: 6.798 min
 Delta R.T.: 0.035 min
 Response: 86269753
 Conc: 121.88 ng/ml



#30 AR-1254-5

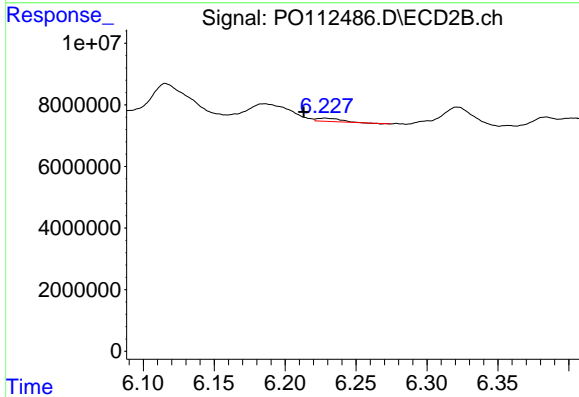
R.T.: 6.760 min
 Delta R.T.: 0.033 min
 Response: 31797441
 Conc: 95.20 ng/ml



#31 AR-1260-1

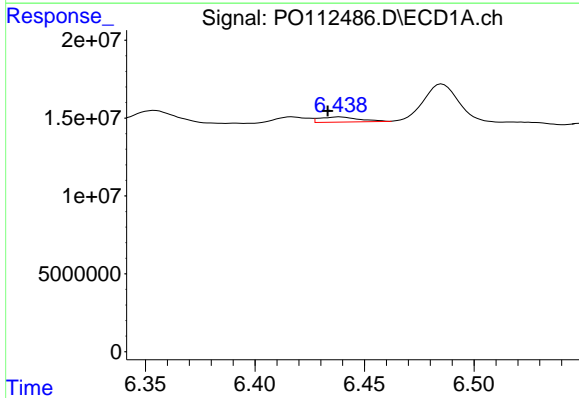
R.T.: 6.261 min
 Delta R.T.: 0.017 min
 Response: 2710195
 Conc: 6.17 ng/ml

Instrument : ECD_O
 ClientSampleId : NYPA-POUCH-SPENT-CARBON



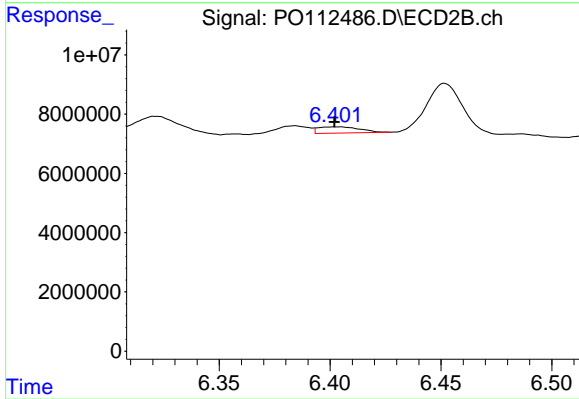
#31 AR-1260-1

R.T.: 6.228 min
 Delta R.T.: 0.015 min
 Response: 1162157
 Conc: 4.68 ng/ml



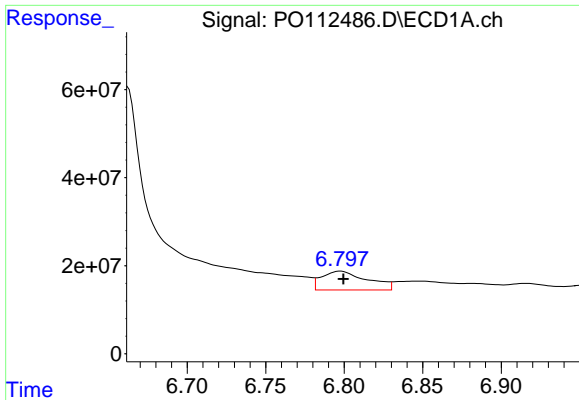
#32 AR-1260-2

R.T.: 6.439 min
 Delta R.T.: 0.005 min
 Response: 4080180
 Conc: 5.93 ng/ml



#32 AR-1260-2

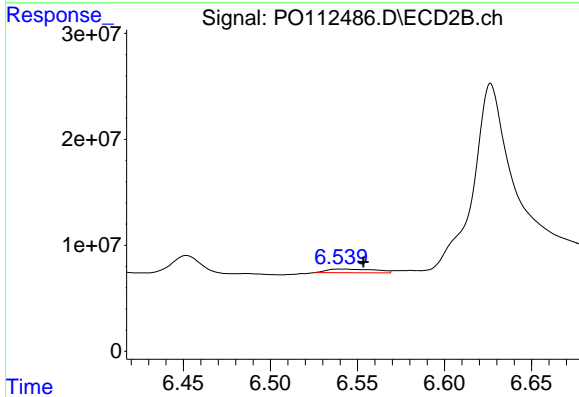
R.T.: 6.404 min
 Delta R.T.: 0.002 min
 Response: 2707408
 Conc: 8.22 ng/ml



#33 AR-1260-3

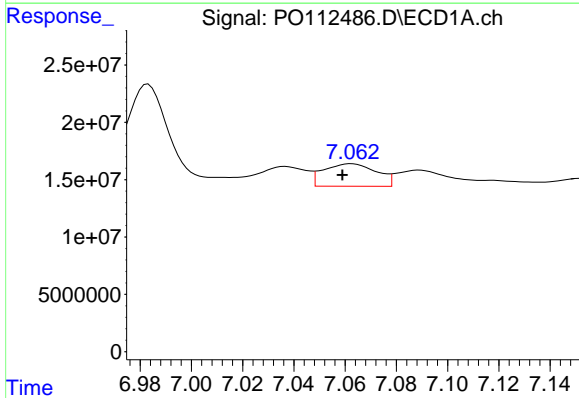
R.T.: 6.798 min
 Delta R.T.: -0.002 min
 Response: 86269753
 Conc: 146.71 ng/ml

Instrument :
 ECD_O
 ClientSampleId :
 NYPA-POUCH-SPENT-CARBON



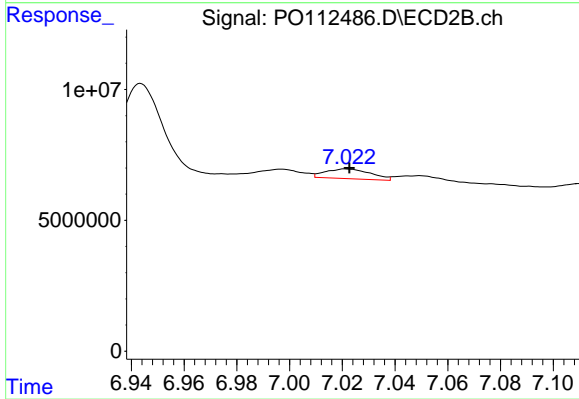
#33 AR-1260-3

R.T.: 6.540 min
 Delta R.T.: -0.013 min
 Response: 6716900
 Conc: 26.14 ng/ml



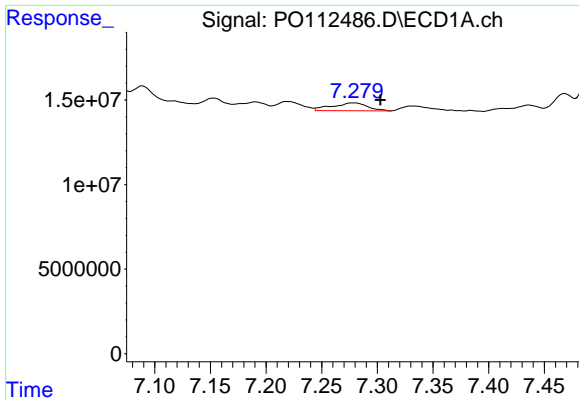
#34 AR-1260-4

R.T.: 7.062 min
 Delta R.T.: 0.004 min
 Response: 28188614
 Conc: 62.50 ng/ml



#34 AR-1260-4

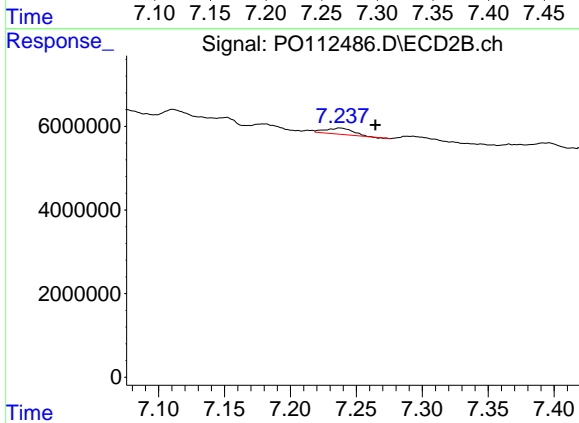
R.T.: 7.022 min
 Delta R.T.: -0.001 min
 Response: 4452163
 Conc: 23.27 ng/ml



#35 AR-1260-5

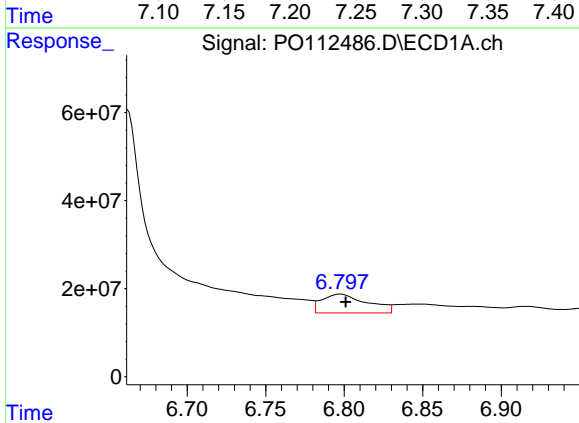
R.T.: 7.279 min
 Delta R.T.: -0.024 min
 Response: 10329318
 Conc: 8.34 ng/ml

Instrument :
 ECD_O
 ClientSampleId :
 NYPA-POUCH-SPENT-CARBON



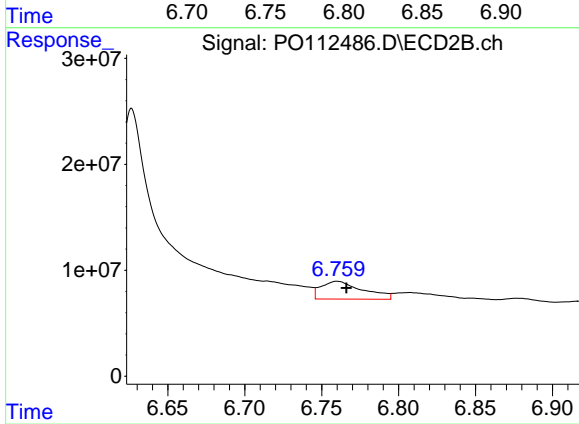
#35 AR-1260-5

R.T.: 7.238 min
 Delta R.T.: -0.027 min
 Response: 2118101
 Conc: 5.14 ng/ml



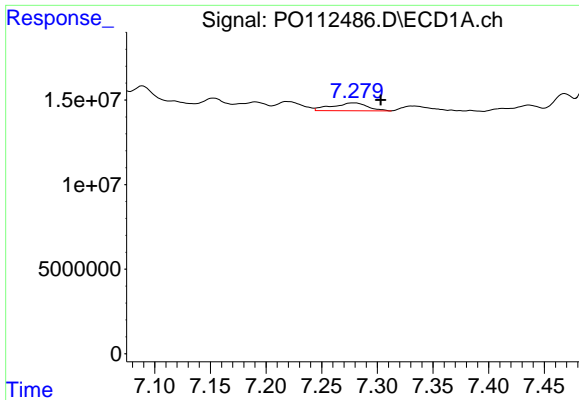
#36 AR-1262-1

R.T.: 6.798 min
 Delta R.T.: -0.003 min
 Response: 86269753
 Conc: 92.84 ng/ml



#36 AR-1262-1

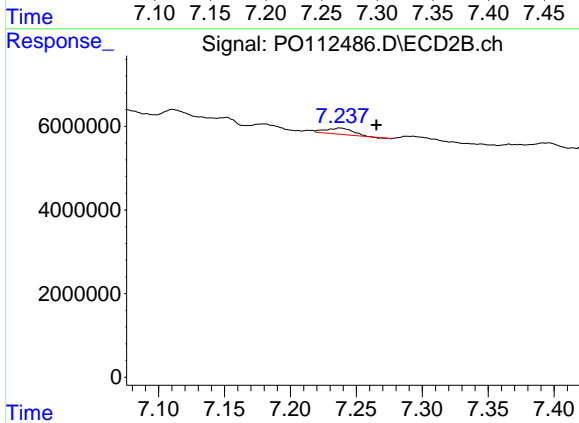
R.T.: 6.760 min
 Delta R.T.: -0.006 min
 Response: 31797441
 Conc: 76.65 ng/ml



#37 AR-1262-2

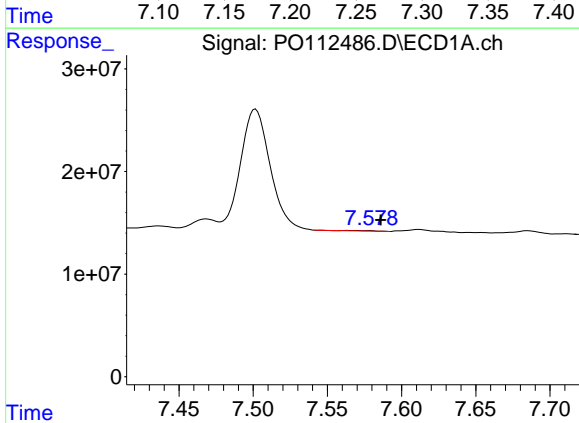
R.T.: 7.279 min
 Delta R.T.: -0.024 min
 Response: 10329318
 Conc: 6.95 ng/ml

Instrument :
 ECD_O
 ClientSampleId :
 NYPA-POUCH-SPENT-CARBON



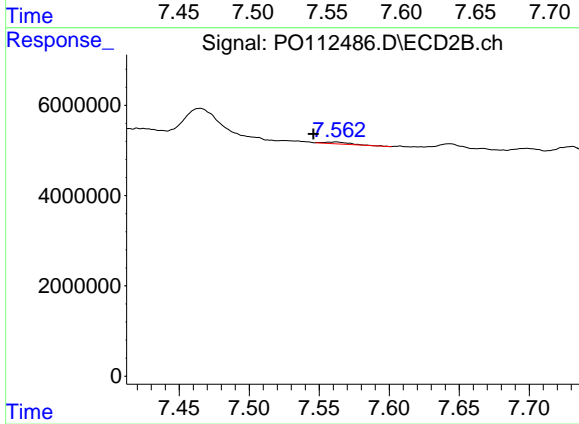
#37 AR-1262-2

R.T.: 7.238 min
 Delta R.T.: -0.027 min
 Response: 2118101
 Conc: 4.11 ng/ml



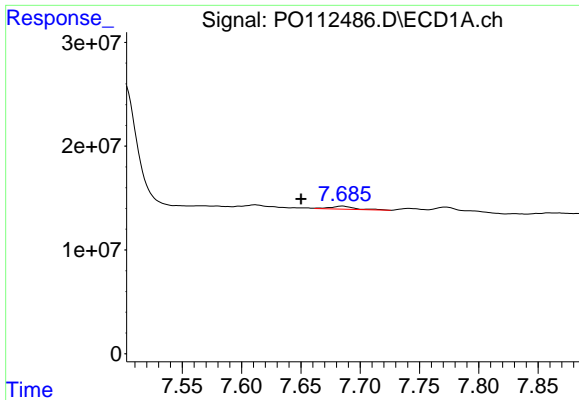
#38 AR-1262-3

R.T.: 7.565 min
 Delta R.T.: -0.021 min
 Response: 566005
 Conc: 0.96 ng/ml



#38 AR-1262-3

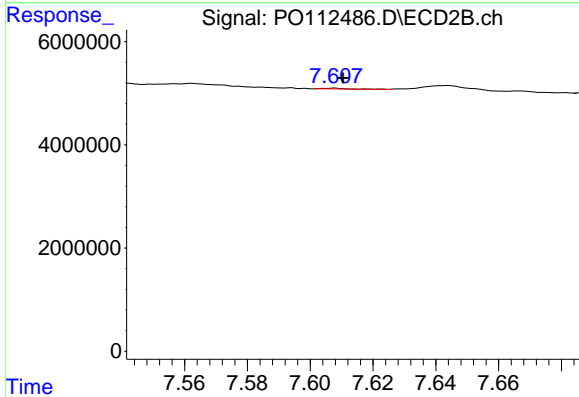
R.T.: 7.562 min
 Delta R.T.: 0.016 min
 Response: 476359
 Conc: 2.55 ng/ml



#39 AR-1262-4

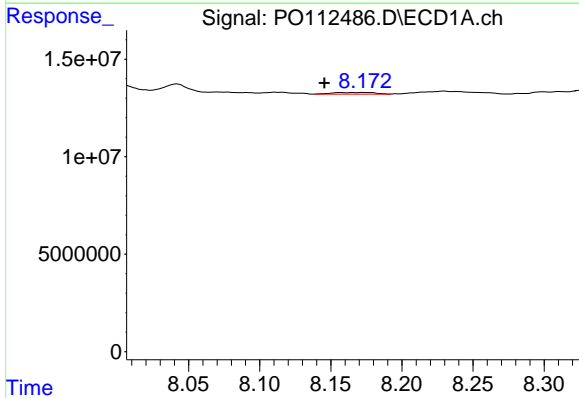
R.T.: 7.685 min
 Delta R.T.: 0.035 min
 Response: 4273657
 Conc: 4.30 ng/ml

Instrument : ECD_O
 ClientSampleId : NYPA-POUCH-SPENT-CARBON



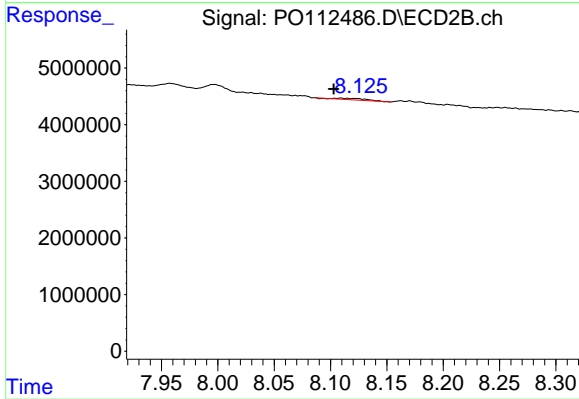
#39 AR-1262-4

R.T.: 7.607 min
 Delta R.T.: -0.003 min
 Response: 102492
 Conc: 0.36 ng/ml



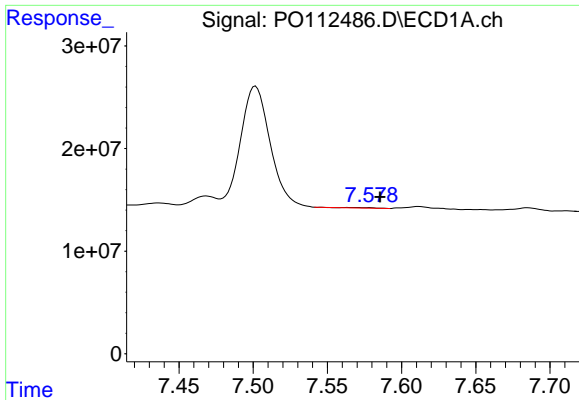
#40 AR-1262-5

R.T.: 8.174 min
 Delta R.T.: 0.028 min
 Response: 1699144
 Conc: 3.91 ng/ml



#40 AR-1262-5

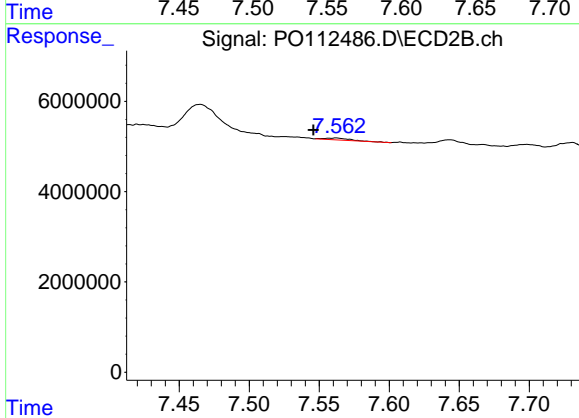
R.T.: 8.109 min
 Delta R.T.: 0.006 min
 Response: 470864
 Conc: 4.73 ng/ml



#41 AR-1268-1

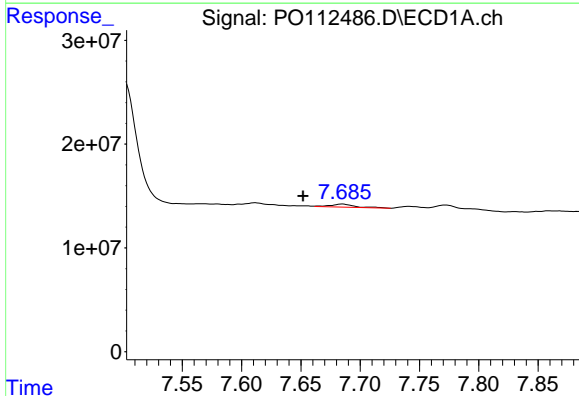
R.T.: 7.565 min
 Delta R.T.: -0.020 min
 Response: 566005
 Conc: 0.32 ng/ml

Instrument :
 ECD_O
 ClientSampleId :
 NYPA-POUCH-SPENT-CARBON



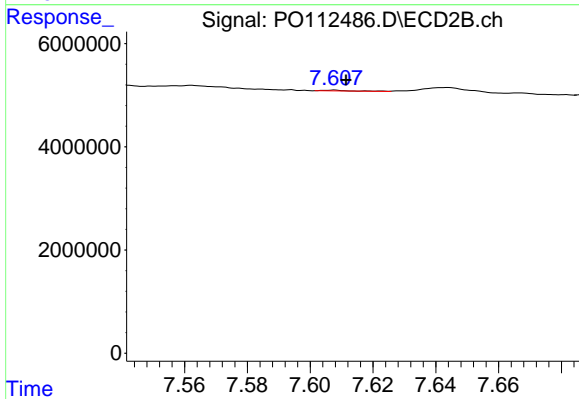
#41 AR-1268-1

R.T.: 7.562 min
 Delta R.T.: 0.016 min
 Response: 476359
 Conc: 0.92 ng/ml



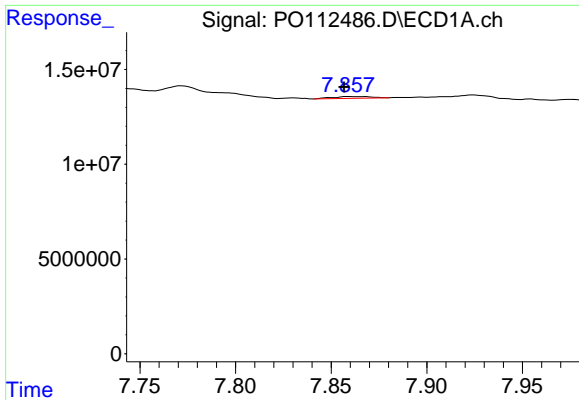
#42 AR-1268-2

R.T.: 7.685 min
 Delta R.T.: 0.033 min
 Response: 4273657
 Conc: 2.90 ng/ml



#42 AR-1268-2

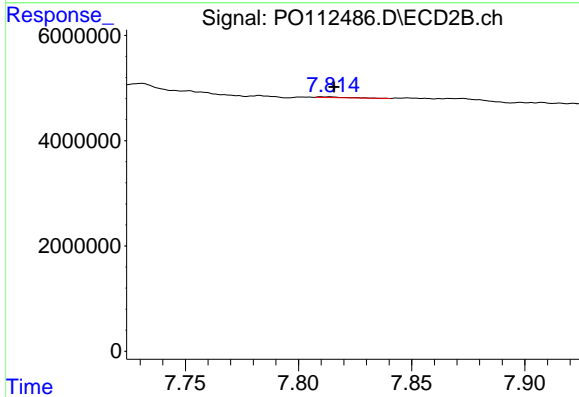
R.T.: 7.607 min
 Delta R.T.: -0.004 min
 Response: 102492
 Conc: 0.24 ng/ml



#43 AR-1268-3

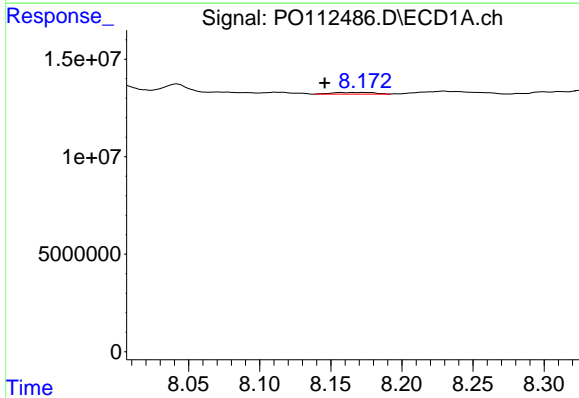
R.T.: 7.860 min
 Delta R.T.: 0.004 min
 Response: 1258962
 Conc: 1.01 ng/ml

Instrument :
 ECD_O
 ClientSampleId :
 NYPA-POUCH-SPENT-CARBON



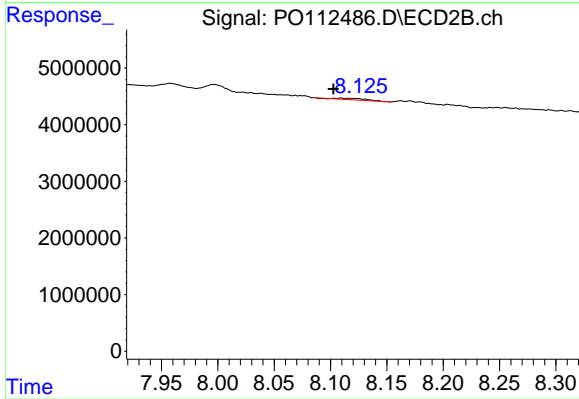
#43 AR-1268-3

R.T.: 7.814 min
 Delta R.T.: -0.002 min
 Response: 101936
 Conc: 0.32 ng/ml



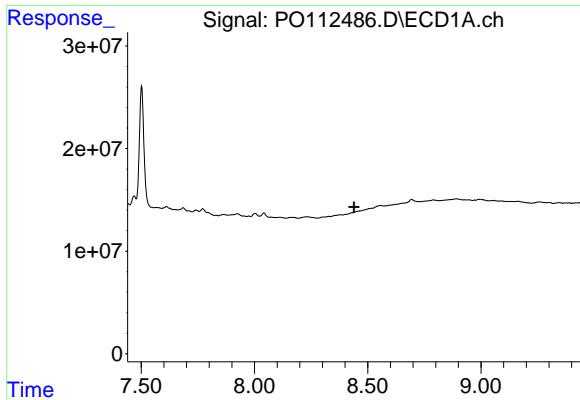
#44 AR-1268-4

R.T.: 8.174 min
 Delta R.T.: 0.028 min
 Response: 1699144
 Conc: 3.53 ng/ml



#44 AR-1268-4

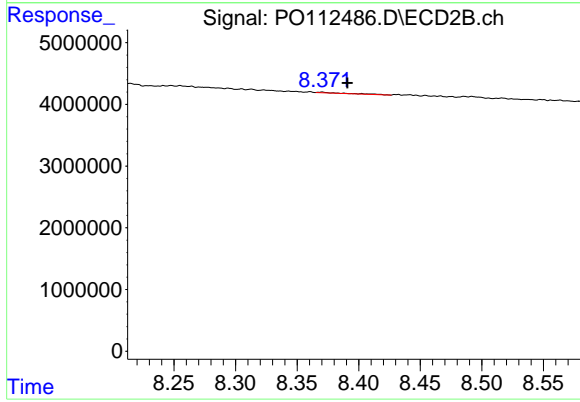
R.T.: 8.109 min
 Delta R.T.: 0.007 min
 Response: 470864
 Conc: 4.23 ng/ml



#45 AR-1268-5

R.T.: 0.000 min
 Exp R.T.: 8.439 min
 Response: 0
 Conc: N.D.

Instrument :
 ECD_O
 ClientSampleId :
 NYPA-POUCH-SPENT-CARBON



#45 AR-1268-5

R.T.: 8.370 min
 Delta R.T.: -0.021 min
 Response: 169493
 Conc: 0.23 ng/ml