

Data Path : Z:\pestpcbsrv\HPCHEM1\ECD_0\Data\P0072425\
 Data File : PO112487.D
 Signal(s) : Signal #1: ECD1A.ch Signal #2: ECD2B.ch
 Acq On : 25 Jul 2025 02:52
 Operator : YP/AJ
 Sample : Q2684-01
 Misc :
 ALS Vial : 30 Sample Multiplier: 1

Instrument :
 ECD_0
 ClientSampleId :
 PL-02-07232025

Integration File signal 1: autoint1.e
 Integration File signal 2: autoint2.e
 Quant Time: Jul 25 06:24:38 2025
 Quant Method : Z:\pestpcbsrv\HPCHEM1\ECD_0\methods\P0072325.M
 Quant Title : GC EXTRACTABLES
 QLast Update : Thu Jul 24 04:54:06 2025
 Response via : Initial Calibration
 Integrator: ChemStation

Volume Inj. : 2 µl
 Signal #1 Phase : ZB-MR1 Signal #2 Phase: ZB-MR2
 Signal #1 Info : 30Mx0.32mmx 0.50µ Signal #2 Info : 30M x 0.32mm x 0.25µm

Compound	RT#1	RT#2	Resp#1	Resp#2	ng/ml	ng/ml
System Monitoring Compounds						
1) SA Tetrachlo...	3.671	3.663	177.5E6	102.0E6	21.823	20.535
2) SA Decachlor...	8.696	8.642	94261825	26949172	12.892	15.250
Target Compounds						
3) L1 AR-1016-1	4.756	4.738	71336	4281873	0.266	24.467 #
4) L1 AR-1016-2	4.756	4.743	71336	3487565	0.176	13.388 #
5) L1 AR-1016-3	4.846	4.931	17640861	2163663	67.415	15.913 #
6) L1 AR-1016-4	4.952	4.961	1931453	25206742	9.117	226.914 #
7) L1 AR-1016-5	5.218	5.193	100.1E6	57410605	456.243	400.624
8) L2 AR-1221-1	3.891	3.881	700572	1561487	7.248	23.214 #
9) L2 AR-1221-2	3.979	3.965	-737262	4435324	N.D.	87.433 #
10) L2 AR-1221-3	4.022	4.035	192988	4048060	0.812	25.535 #
11) L3 AR-1232-1	4.022	4.035	192988	4048060	1.032	31.988 #
12) L3 AR-1232-2	4.514	4.743	19423907	3487565	180.478	26.591 #
13) L3 AR-1232-3	4.793	4.931	7560642	2163663	36.560	32.199
14) L3 AR-1232-4	4.952	4.994	1931453	18874999	18.440	315.482 #
15) L3 AR-1232-5	4.982	5.193	36048061	57410605	531.049	880.490 #
16) L4 AR-1242-1	4.756	4.738	71336	4281873	0.288	27.033 #
17) L4 AR-1242-2	4.756	4.743	71336	3487565	0.193	14.925 #
18) L4 AR-1242-3	4.846	4.931	17640861	2163663	74.542	17.854 #
19) L4 AR-1242-4	4.952	4.994	1931453	18874999	9.942	153.781 #
20) L4 AR-1242-5	5.601	5.512	65529886	71361407	306.335	443.318 #
21) L5 AR-1248-1	4.756	4.738	71336	4281873	0.381	35.239 #
22) L5 AR-1248-2	4.982	4.961	36048061	25206742	141.303	148.906
23) L5 AR-1248-3	5.218	4.994	100.1E6	18874999	291.334	106.250 #
24) L5 AR-1248-4	5.537	5.193	91593427	57410605	180.274	275.543 #
25) L5 AR-1248-5	5.601	5.575	65529886	56603565	187.447	263.560 #
26) L6 AR-1254-1	5.537	5.512	91593427	71361407	166.849	217.154 #
27) L6 AR-1254-2	5.703	5.677	29936111	23414965	61.607	80.883 #
28) L6 AR-1254-3	6.115	6.084	27671857	20013496	37.179	46.819 #
29) L6 AR-1254-4	6.341	6.310	4201786	2720541	7.644	9.967 #
30) L6 AR-1254-5	6.760	6.725	20869280	12444881	29.484	37.258 #
31) L7 AR-1260-1	6.249	6.218	11461179	11771390	26.088	47.368 #
32) L7 AR-1260-2	6.437	6.403	9573791	2572165	13.918	7.806 #
33) L7 AR-1260-3	6.800	6.552	6372951	-2222803	10.838	N.D. #
34) L7 AR-1260-4	7.062	7.023	7675603	2172213	17.019	11.354 #
35) L7 AR-1260-5	7.304	7.265	5593244	2852095	4.514	6.919 #
36) L8 AR-1262-1	6.800	6.762	6372951	1388472	6.858	3.347 #
37) L8 AR-1262-2	7.304	7.265	5593244	2852095	3.761	5.532 #
38) L8 AR-1262-3	7.590	7.545	2208670	1232947	3.742	6.610 #
39) L8 AR-1262-4	7.630	7.609	19506364	3592941	19.621	12.471 #
40) L8 AR-1262-5	8.144	8.098	1729427	159821	3.984	1.606 #
41) L9 AR-1268-1	7.590	7.545	2208670	1232947	1.261	2.381 #

Data Path : Z:\pestpcbsrv\HPCHEM1\ECD_0\Data\P0072425\
 Data File : P0112487.D
 Signal(s) : Signal #1: ECD1A.ch Signal #2: ECD2B.ch
 Acq On : 25 Jul 2025 02:52
 Operator : YP/AJ
 Sample : Q2684-01
 Misc :
 ALS Vial : 30 Sample Multiplier: 1

Instrument :
 ECD_0
 ClientSampleId :
 PL-02-07232025

Integration File signal 1: autoint1.e
 Integration File signal 2: autoint2.e
 Quant Time: Jul 25 06:24:38 2025
 Quant Method : Z:\pestpcbsrv\HPCHEM1\ECD_0\methods\P0072325.M
 Quant Title : GC EXTRACTABLES
 QLast Update : Thu Jul 24 04:54:06 2025
 Response via : Initial Calibration
 Integrator: ChemStation

Volume Inj. : 2 µl
 Signal #1 Phase : ZB-MR1 Signal #2 Phase: ZB-MR2
 Signal #1 Info : 30Mx0.32mmx 0.50µ Signal #2 Info : 30M x 0.32mm x 0.25µm

	Compound	RT#1	RT#2	Resp#1	Resp#2	ng/ml	ng/ml
42)	L9 AR-1268-2	7.630	7.609	19506364	3592941	13.242	8.453 #
43)	L9 AR-1268-3	7.870	7.817	900299	437996	0.719	1.363 #
44)	L9 AR-1268-4	8.144	8.098	1729427	159821	3.589	1.436 #
45)	L9 AR-1268-5	8.438	8.389	708780	13072	0.211	0.018 #

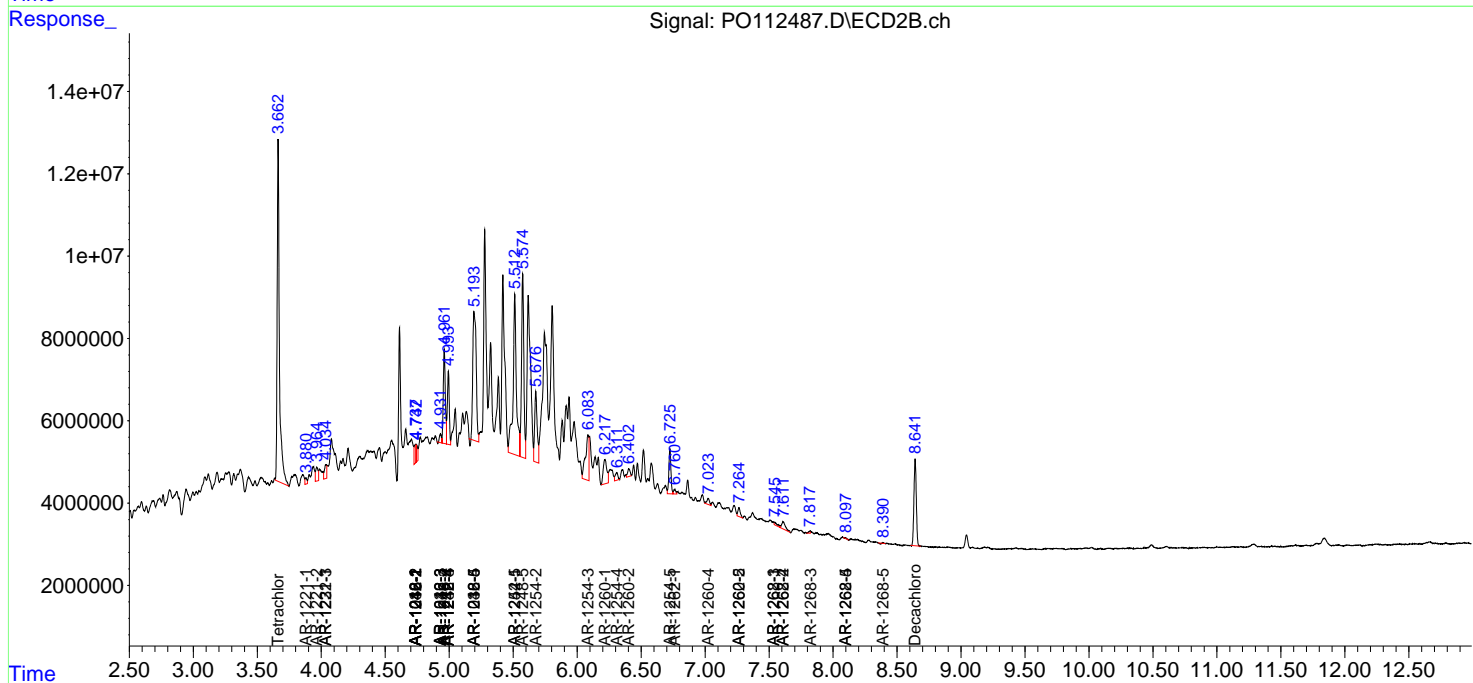
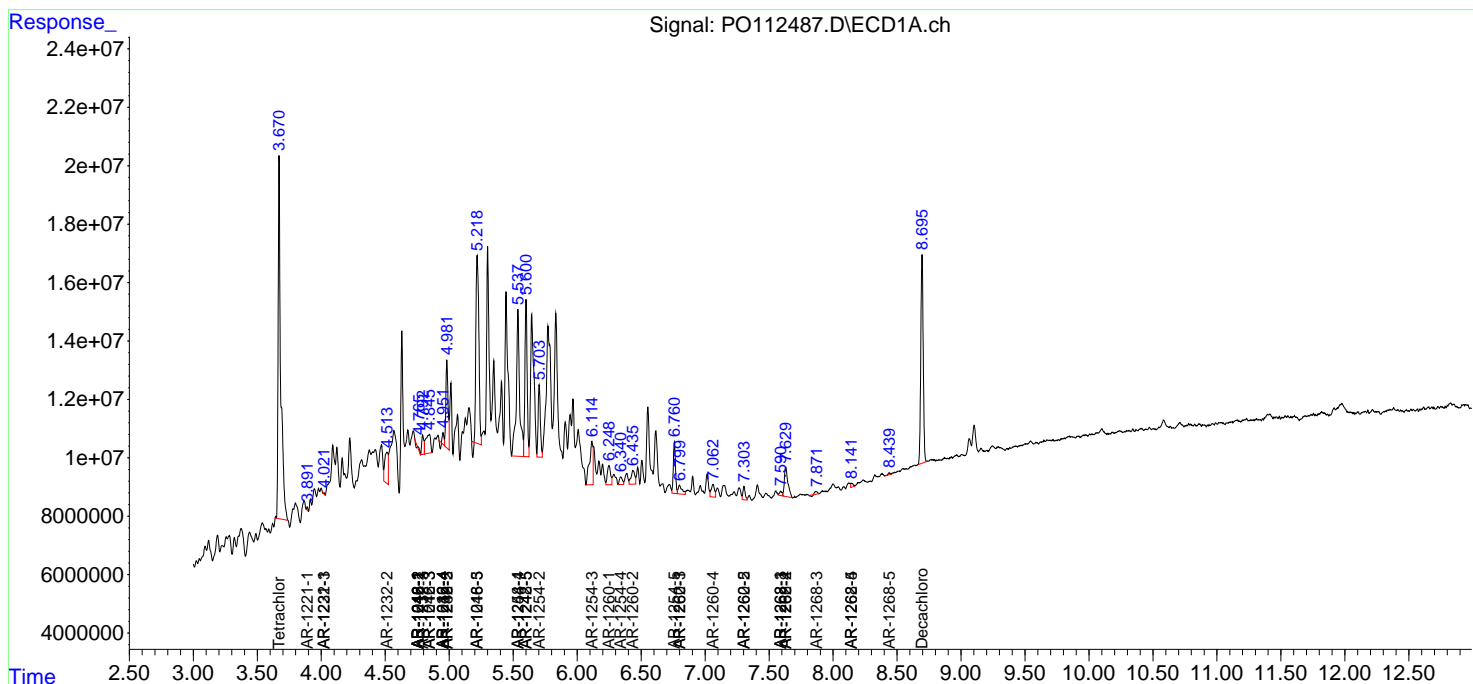
(f)=RT Delta > 1/2 Window (#)=Amounts differ by > 25% (m)=manual int.

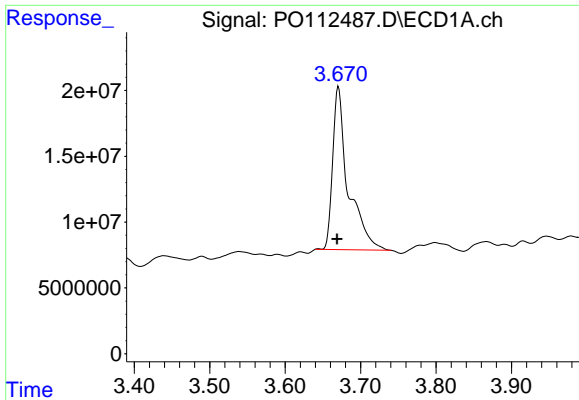
Data Path : Z:\pestpcbsrv\HPCHEM1\ECD_O\Data\PO072425\
 Data File : PO112487.D
 Signal(s) : Signal #1: ECD1A.ch Signal #2: ECD2B.ch
 Acq On : 25 Jul 2025 02:52
 Operator : YP/AJ
 Sample : Q2684-01
 Misc :
 ALS Vial : 30 Sample Multiplier: 1

Instrument :
 ECD_O
 ClientSampleId :
 PL-02-07232025

Integration File signal 1: autoint1.e
 Integration File signal 2: autoint2.e
 Quant Time: Jul 25 06:24:38 2025
 Quant Method : Z:\pestpcbsrv\HPCHEM1\ECD_O\methods\PO072325.M
 Quant Title : GC EXTRACTABLES
 QLast Update : Thu Jul 24 04:54:06 2025
 Response via : Initial Calibration
 Integrator: ChemStation

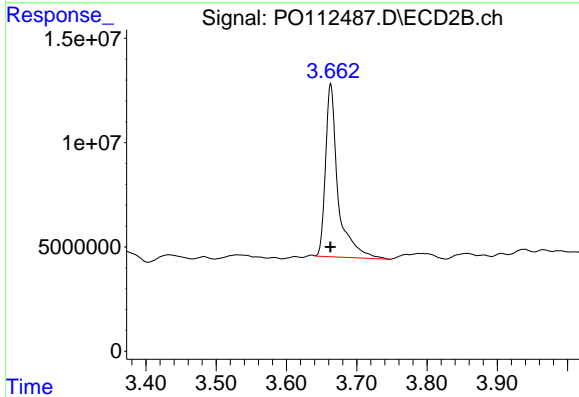
Volume Inj. : 2 µl
 Signal #1 Phase : ZB-MR1 Signal #2 Phase: ZB-MR2
 Signal #1 Info : 30Mx0.32mmx 0.50µ Signal #2 Info : 30M x 0.32mm x 0.25µm



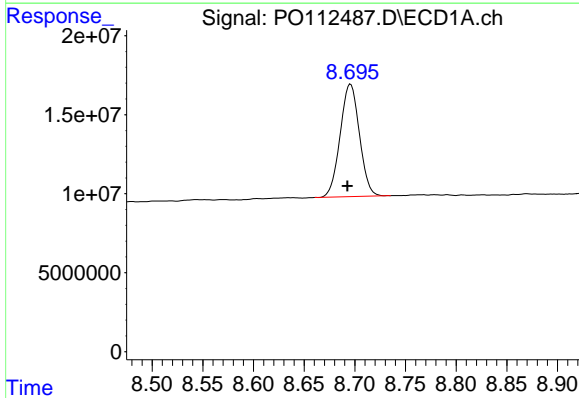


#1 Tetrachloro-m-xylene
 R.T.: 3.671 min
 Delta R.T.: 0.002 min
 Response: 177453151
 Conc: 21.82 ng/ml

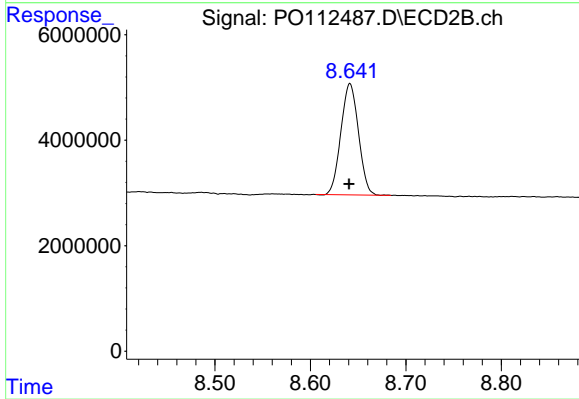
Instrument :
 ECD_O
 ClientSampleId :
 PL-02-07232025



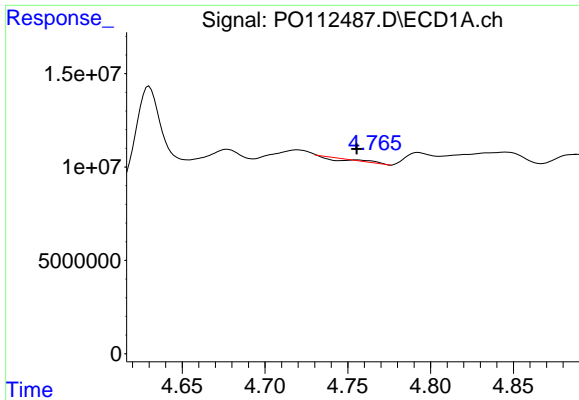
#1 Tetrachloro-m-xylene
 R.T.: 3.663 min
 Delta R.T.: 0.000 min
 Response: 102042615
 Conc: 20.54 ng/ml



#2 Decachlorobiphenyl
 R.T.: 8.696 min
 Delta R.T.: 0.003 min
 Response: 94261825
 Conc: 12.89 ng/ml



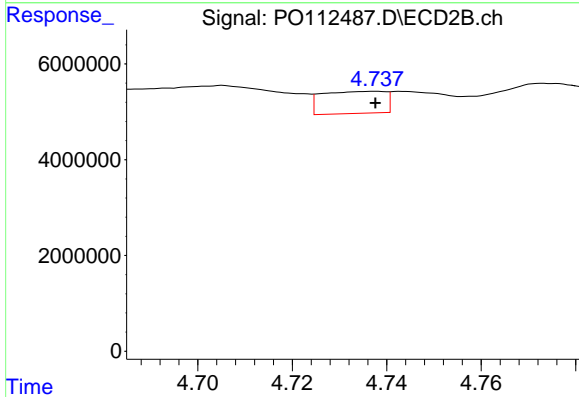
#2 Decachlorobiphenyl
 R.T.: 8.642 min
 Delta R.T.: 0.001 min
 Response: 26949172
 Conc: 15.25 ng/ml



#3 AR-1016-1

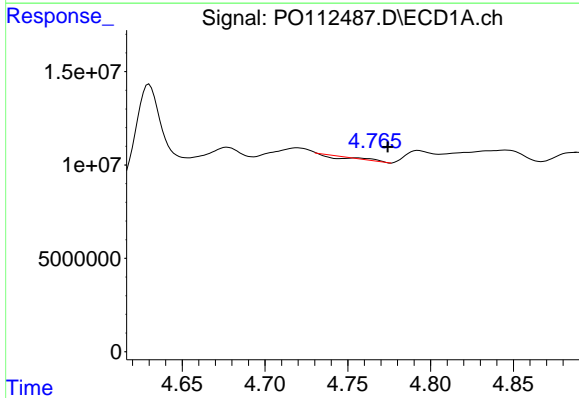
R.T.: 4.756 min
 Delta R.T.: 0.000 min
 Response: 71336
 Conc: 0.27 ng/ml

Instrument :
 ECD_O
 ClientSampleId :
 PL-02-07232025



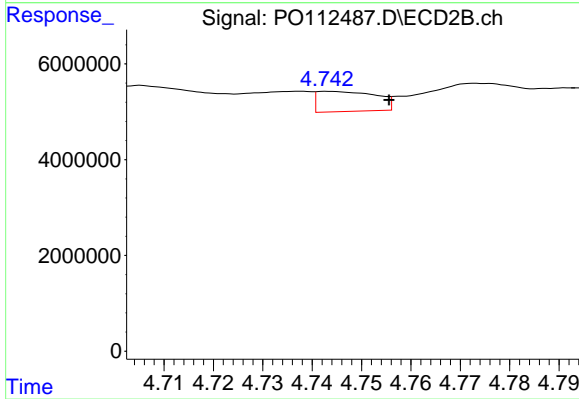
#3 AR-1016-1

R.T.: 4.738 min
 Delta R.T.: 0.000 min
 Response: 4281873
 Conc: 24.47 ng/ml



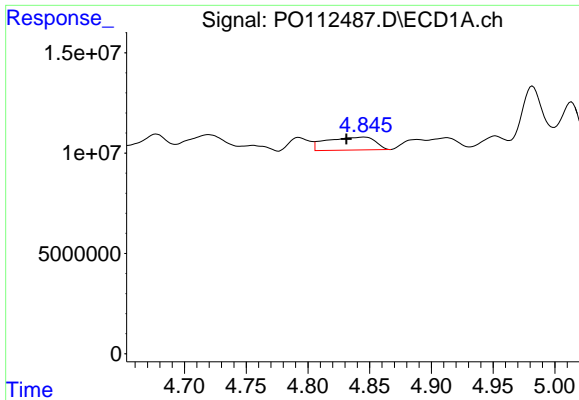
#4 AR-1016-2

R.T.: 4.756 min
 Delta R.T.: -0.018 min
 Response: 71336
 Conc: 0.18 ng/ml



#4 AR-1016-2

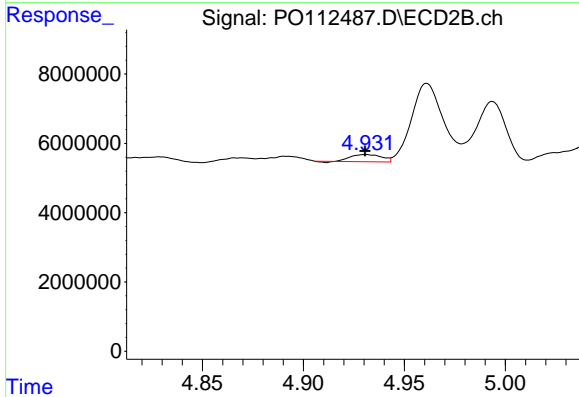
R.T.: 4.743 min
 Delta R.T.: -0.012 min
 Response: 3487565
 Conc: 13.39 ng/ml



#5 AR-1016-3

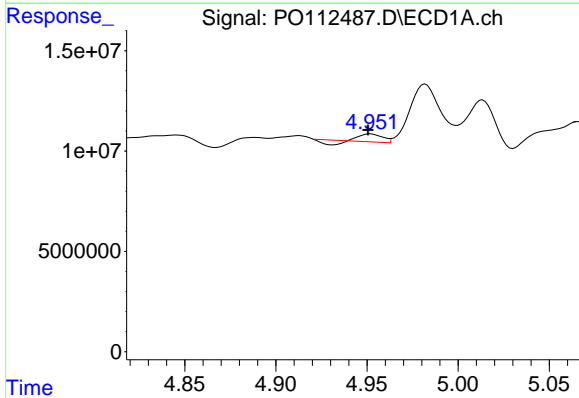
R.T.: 4.846 min
 Delta R.T.: 0.015 min
 Response: 17640861
 Conc: 67.42 ng/ml

Instrument :
 ECD_O
 ClientSampleId :
 PL-02-07232025



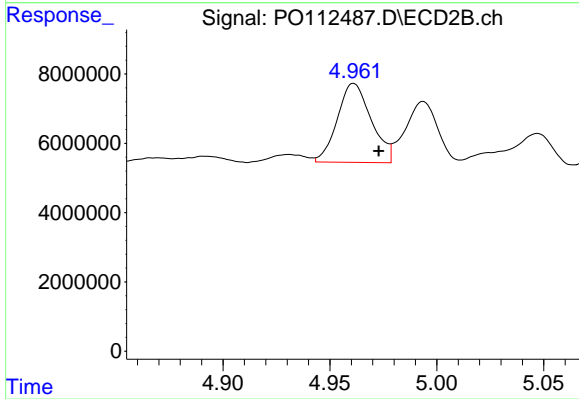
#5 AR-1016-3

R.T.: 4.931 min
 Delta R.T.: 0.000 min
 Response: 2163663
 Conc: 15.91 ng/ml



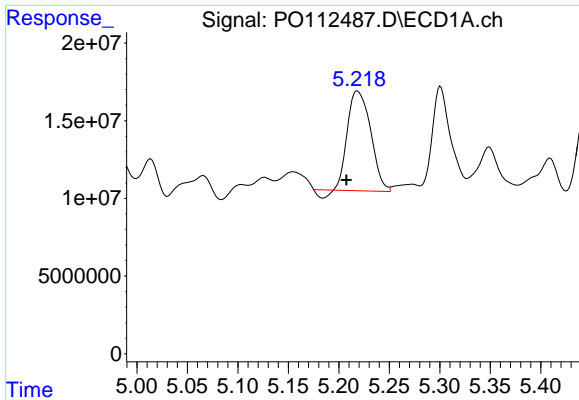
#6 AR-1016-4

R.T.: 4.952 min
 Delta R.T.: 0.001 min
 Response: 1931453
 Conc: 9.12 ng/ml



#6 AR-1016-4

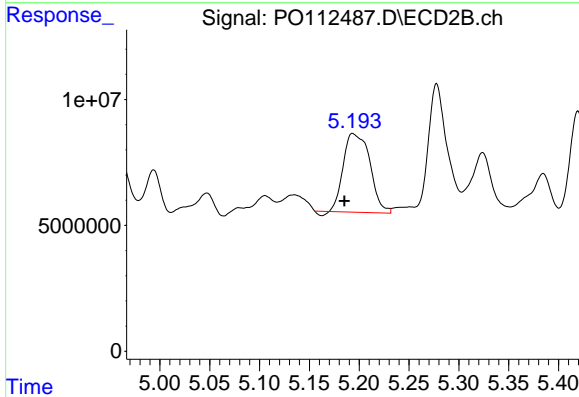
R.T.: 4.961 min
 Delta R.T.: -0.012 min
 Response: 25206742
 Conc: 226.91 ng/ml



#7 AR-1016-5

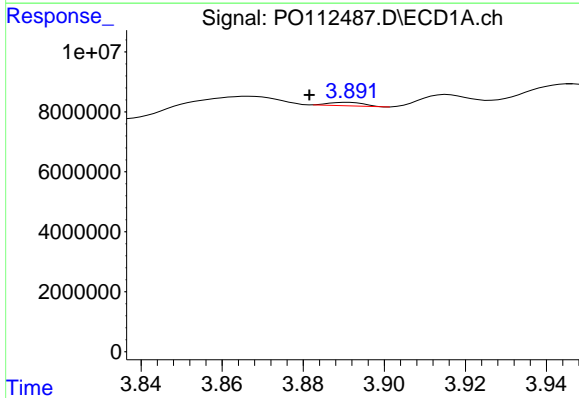
R.T.: 5.218 min
 Delta R.T.: 0.011 min
 Response: 100131832
 Conc: 456.24 ng/ml

Instrument :
 ECD_O
 ClientSampleId :
 PL-02-07232025



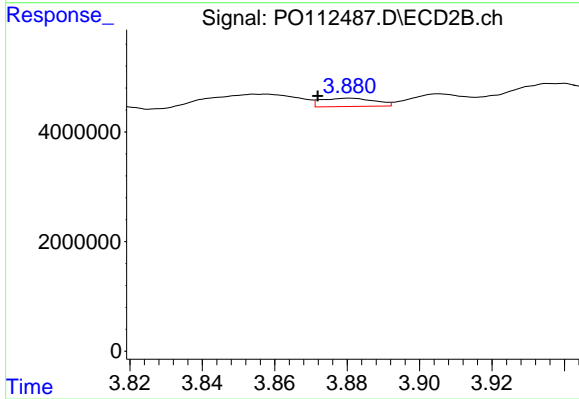
#7 AR-1016-5

R.T.: 5.193 min
 Delta R.T.: 0.008 min
 Response: 57410605
 Conc: 400.62 ng/ml



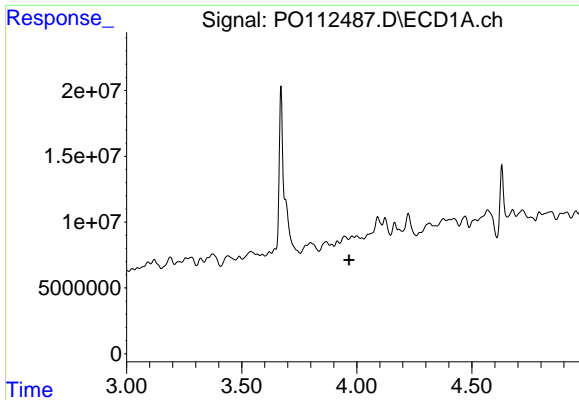
#8 AR-1221-1

R.T.: 3.891 min
 Delta R.T.: 0.009 min
 Response: 700572
 Conc: 7.25 ng/ml



#8 AR-1221-1

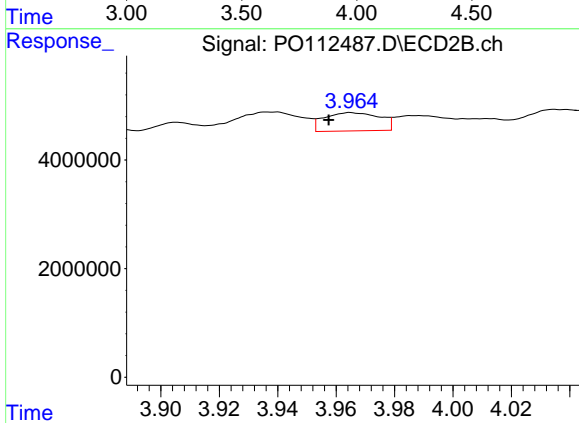
R.T.: 3.881 min
 Delta R.T.: 0.009 min
 Response: 1561487
 Conc: 23.21 ng/ml



#9 AR-1221-2

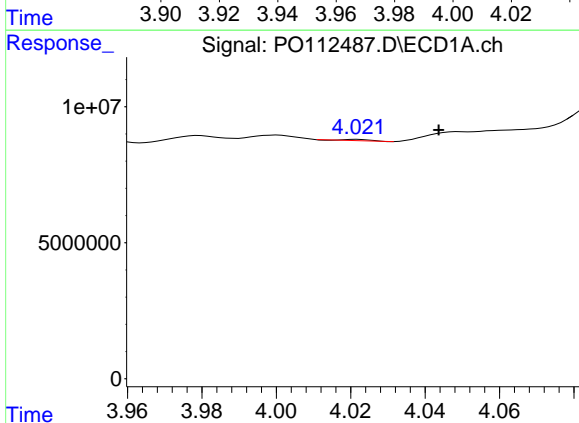
R.T.: 3.979 min
 Delta R.T.: 0.012 min
 Response: -737262
 Conc: N.D.

Instrument :
 ECD_O
 ClientSampleId :
 PL-02-07232025



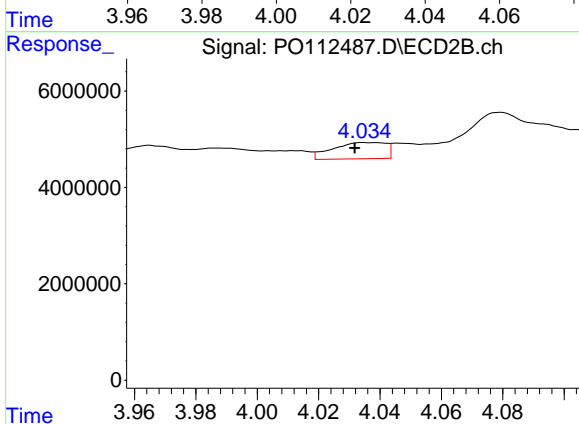
#9 AR-1221-2

R.T.: 3.965 min
 Delta R.T.: 0.007 min
 Response: 4435324
 Conc: 87.43 ng/ml



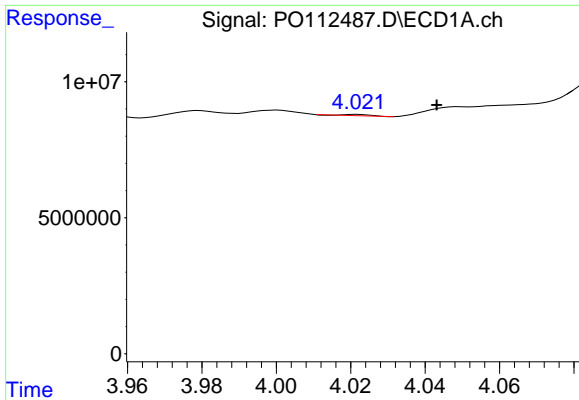
#10 AR-1221-3

R.T.: 4.022 min
 Delta R.T.: -0.022 min
 Response: 192988
 Conc: 0.81 ng/ml



#10 AR-1221-3

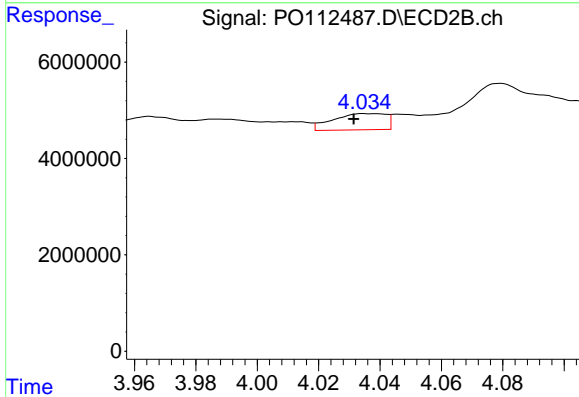
R.T.: 4.035 min
 Delta R.T.: 0.003 min
 Response: 4048060
 Conc: 25.54 ng/ml



#11 AR-1232-1

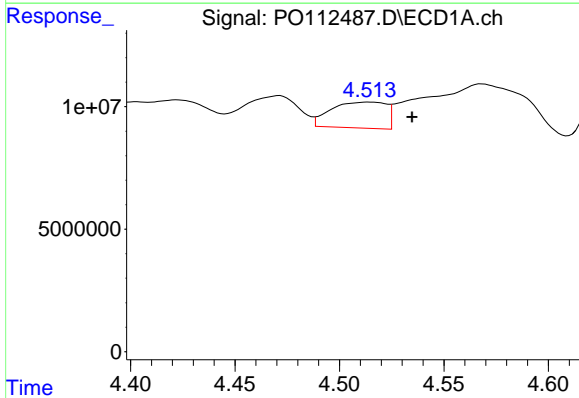
R.T.: 4.022 min
 Delta R.T.: -0.021 min
 Response: 192988
 Conc: 1.03 ng/ml

Instrument :
 ECD_O
 ClientSampleId :
 PL-02-07232025



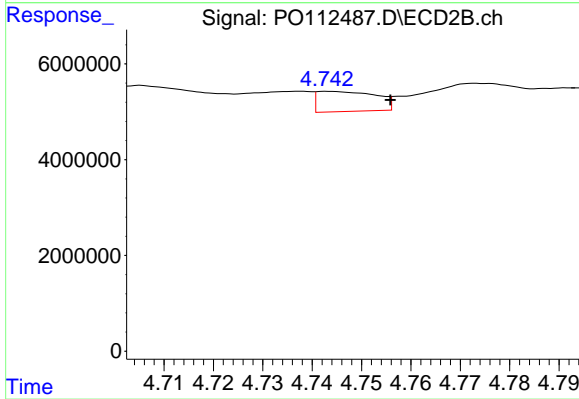
#11 AR-1232-1

R.T.: 4.035 min
 Delta R.T.: 0.003 min
 Response: 4048060
 Conc: 31.99 ng/ml



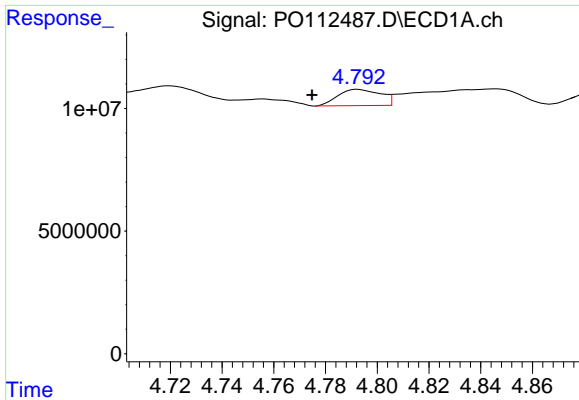
#12 AR-1232-2

R.T.: 4.514 min
 Delta R.T.: -0.021 min
 Response: 19423907
 Conc: 180.48 ng/ml



#12 AR-1232-2

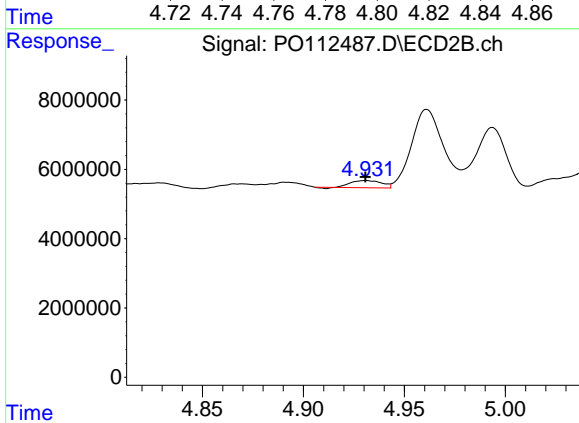
R.T.: 4.743 min
 Delta R.T.: -0.013 min
 Response: 3487565
 Conc: 26.59 ng/ml



#13 AR-1232-3

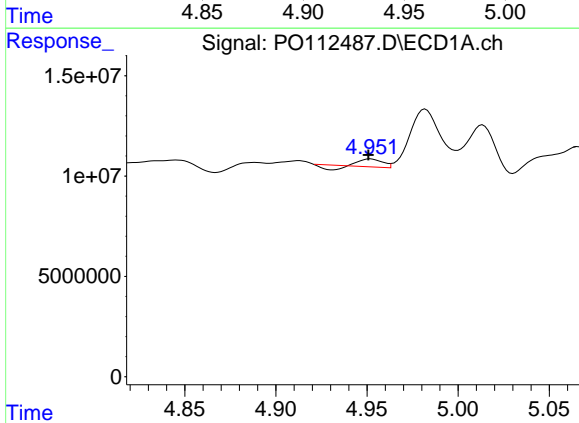
R.T.: 4.793 min
 Delta R.T.: 0.018 min
 Response: 7560642
 Conc: 36.56 ng/ml

Instrument :
 ECD_O
 ClientSampleId :
 PL-02-07232025



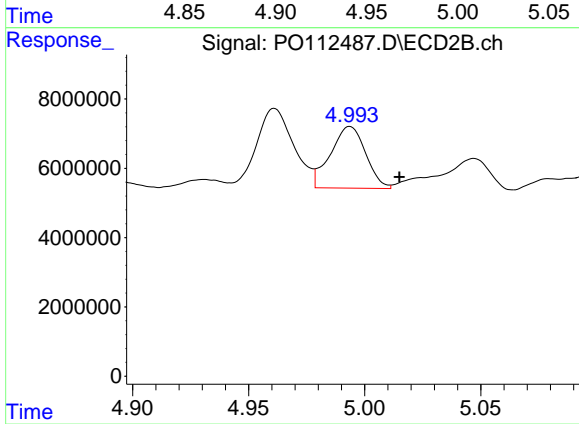
#13 AR-1232-3

R.T.: 4.931 min
 Delta R.T.: 0.000 min
 Response: 2163663
 Conc: 32.20 ng/ml



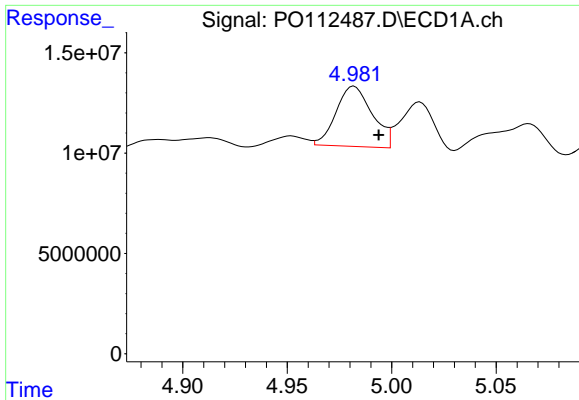
#14 AR-1232-4

R.T.: 4.952 min
 Delta R.T.: 0.001 min
 Response: 1931453
 Conc: 18.44 ng/ml



#14 AR-1232-4

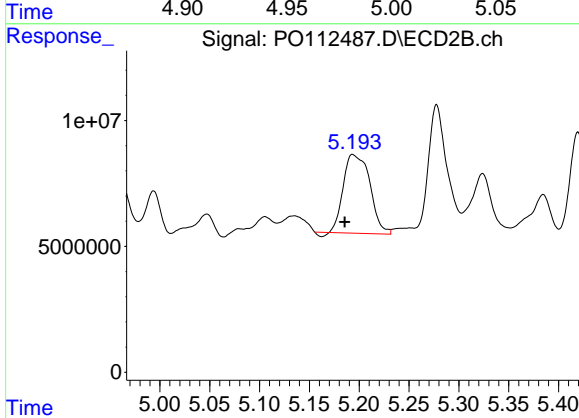
R.T.: 4.994 min
 Delta R.T.: -0.021 min
 Response: 18874999
 Conc: 315.48 ng/ml



#15 AR-1232-5

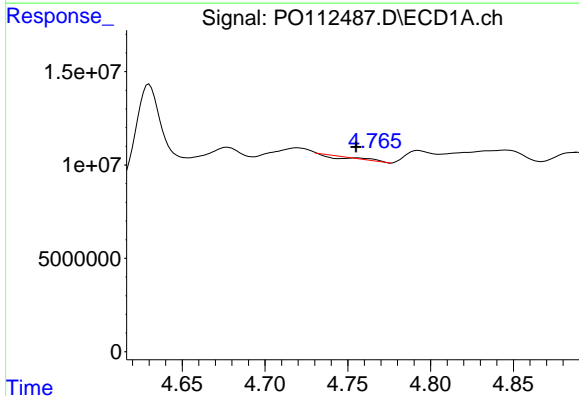
R.T.: 4.982 min
 Delta R.T.: -0.012 min
 Response: 36048061
 Conc: 531.05 ng/ml

Instrument :
 ECD_O
 ClientSampleId :
 PL-02-07232025



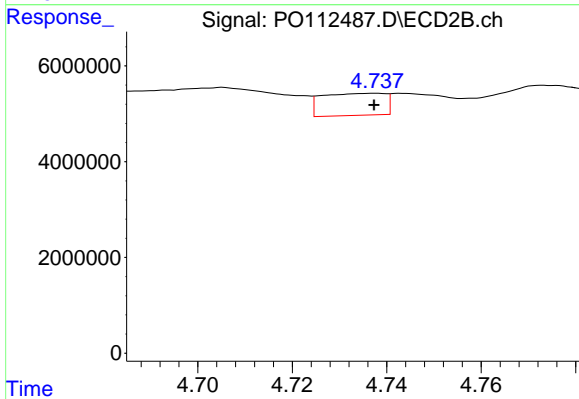
#15 AR-1232-5

R.T.: 5.193 min
 Delta R.T.: 0.008 min
 Response: 57410605
 Conc: 880.49 ng/ml



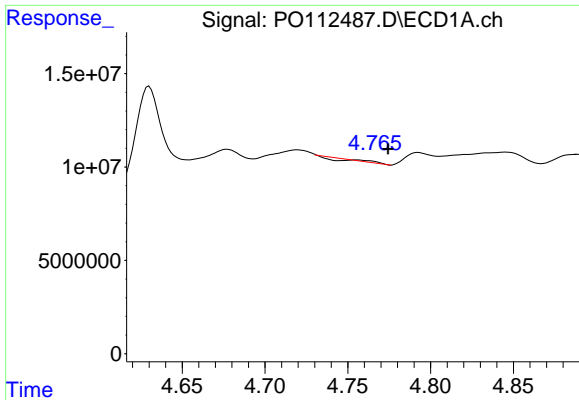
#16 AR-1242-1

R.T.: 4.756 min
 Delta R.T.: 0.000 min
 Response: 71336
 Conc: 0.29 ng/ml



#16 AR-1242-1

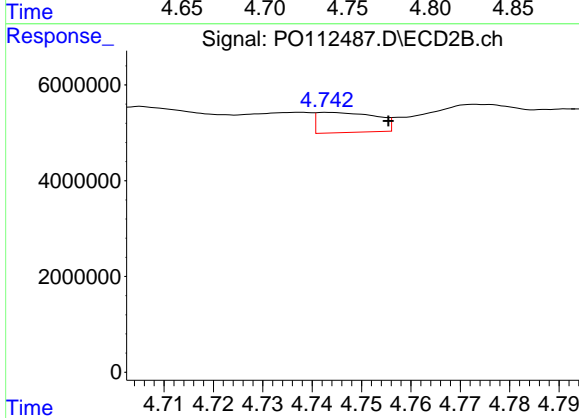
R.T.: 4.738 min
 Delta R.T.: 0.000 min
 Response: 4281873
 Conc: 27.03 ng/ml



#17 AR-1242-2

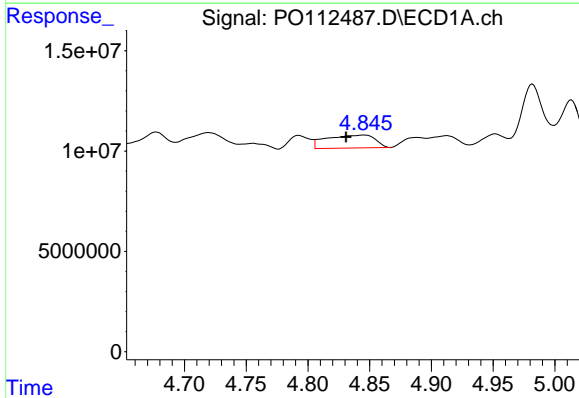
R.T.: 4.756 min
 Delta R.T.: -0.018 min
 Response: 71336
 Conc: 0.19 ng/ml

Instrument :
 ECD_O
 ClientSampleId :
 PL-02-07232025



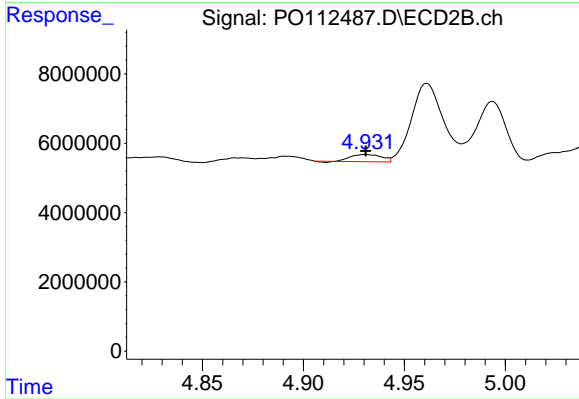
#17 AR-1242-2

R.T.: 4.743 min
 Delta R.T.: -0.012 min
 Response: 3487565
 Conc: 14.93 ng/ml



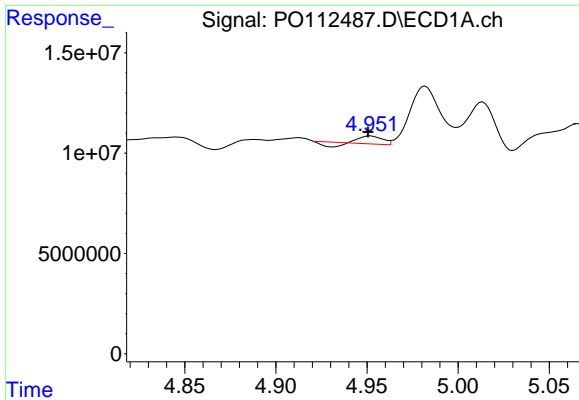
#18 AR-1242-3

R.T.: 4.846 min
 Delta R.T.: 0.015 min
 Response: 17640861
 Conc: 74.54 ng/ml



#18 AR-1242-3

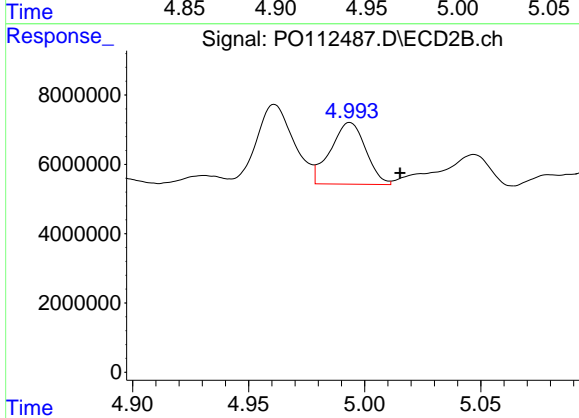
R.T.: 4.931 min
 Delta R.T.: 0.000 min
 Response: 2163663
 Conc: 17.85 ng/ml



#19 AR-1242-4

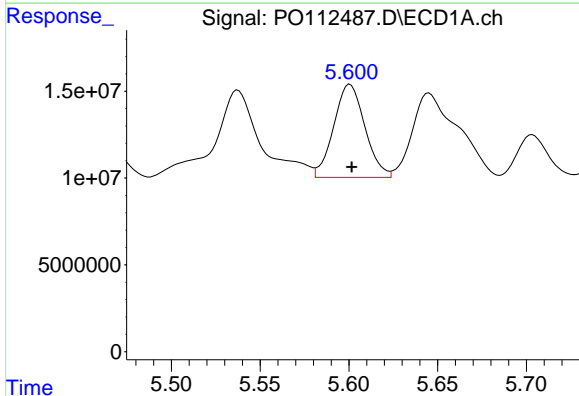
R.T.: 4.952 min
 Delta R.T.: 0.001 min
 Response: 1931453
 Conc: 9.94 ng/ml

Instrument :
 ECD_O
 ClientSampleId :
 PL-02-07232025



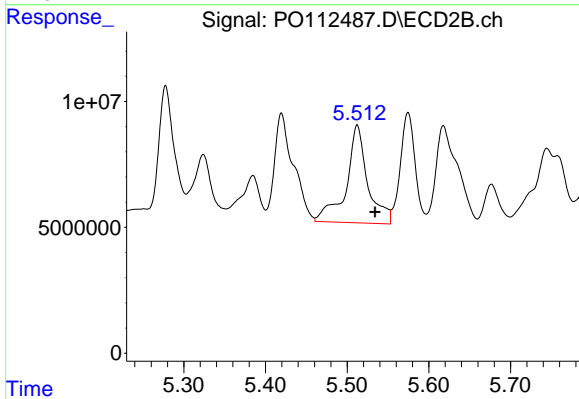
#19 AR-1242-4

R.T.: 4.994 min
 Delta R.T.: -0.022 min
 Response: 18874999
 Conc: 153.78 ng/ml



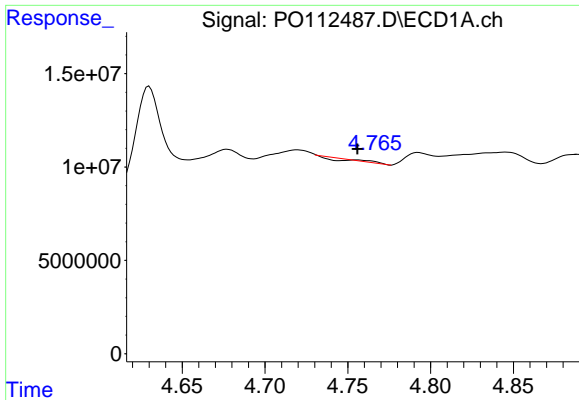
#20 AR-1242-5

R.T.: 5.601 min
 Delta R.T.: 0.000 min
 Response: 65529886
 Conc: 306.34 ng/ml



#20 AR-1242-5

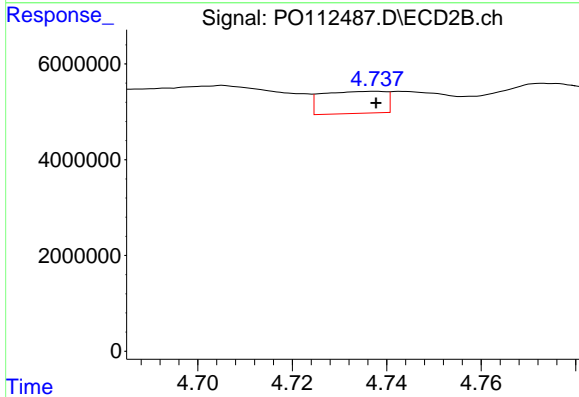
R.T.: 5.512 min
 Delta R.T.: -0.022 min
 Response: 71361407
 Conc: 443.32 ng/ml



#21 AR-1248-1

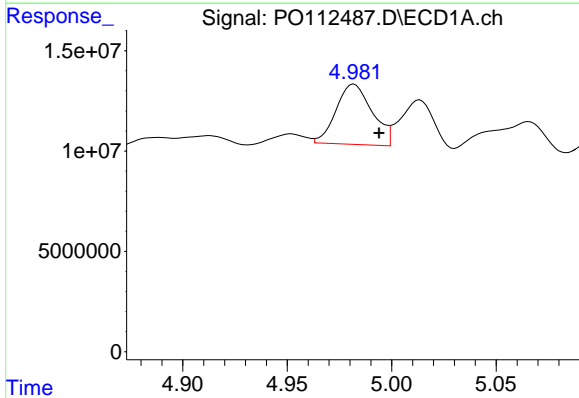
R.T.: 4.756 min
 Delta R.T.: 0.000 min
 Response: 71336
 Conc: 0.38 ng/ml

Instrument :
 ECD_O
 ClientSampleId :
 PL-02-07232025



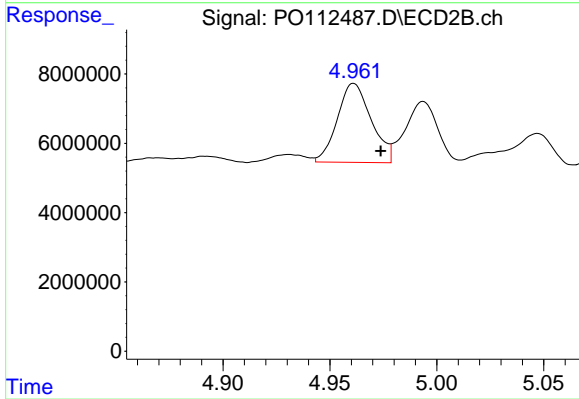
#21 AR-1248-1

R.T.: 4.738 min
 Delta R.T.: 0.000 min
 Response: 4281873
 Conc: 35.24 ng/ml



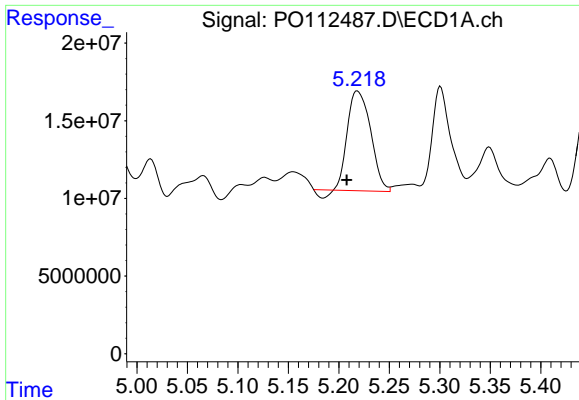
#22 AR-1248-2

R.T.: 4.982 min
 Delta R.T.: -0.012 min
 Response: 36048061
 Conc: 141.30 ng/ml



#22 AR-1248-2

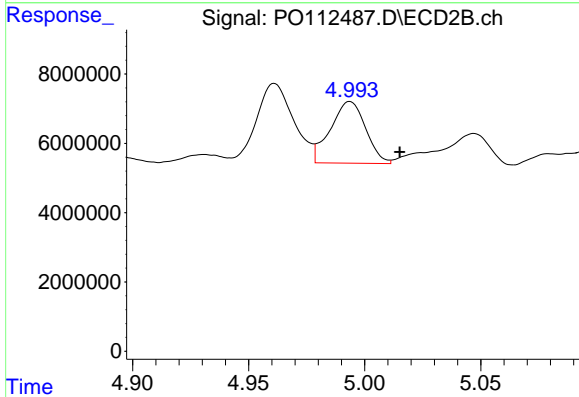
R.T.: 4.961 min
 Delta R.T.: -0.013 min
 Response: 25206742
 Conc: 148.91 ng/ml



#23 AR-1248-3

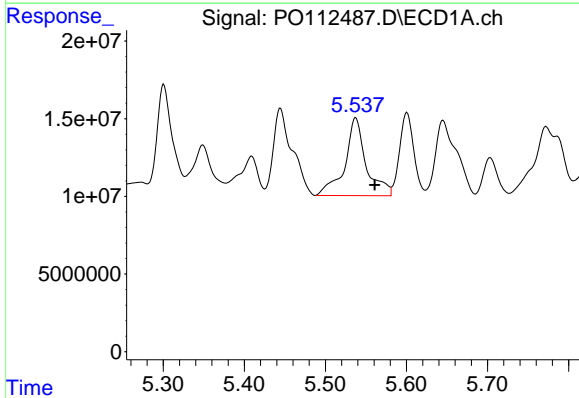
R.T.: 5.218 min
 Delta R.T.: 0.011 min
 Response: 100131832
 Conc: 291.33 ng/ml

Instrument :
 ECD_O
 ClientSampleId :
 PL-02-07232025



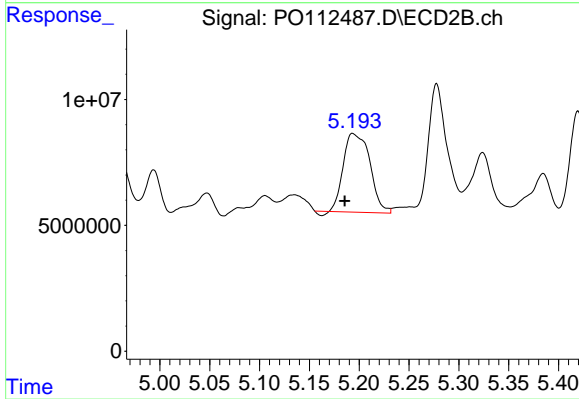
#23 AR-1248-3

R.T.: 4.994 min
 Delta R.T.: -0.021 min
 Response: 18874999
 Conc: 106.25 ng/ml



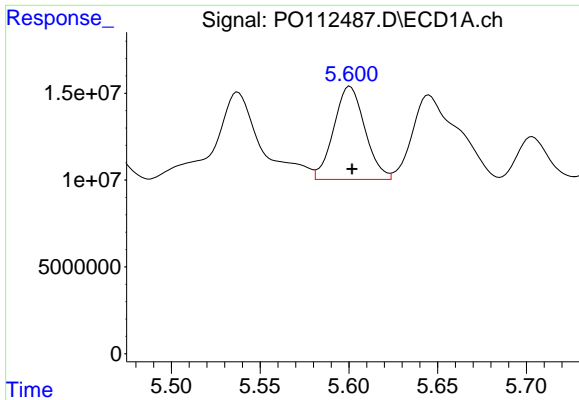
#24 AR-1248-4

R.T.: 5.537 min
 Delta R.T.: -0.023 min
 Response: 91593427
 Conc: 180.27 ng/ml



#24 AR-1248-4

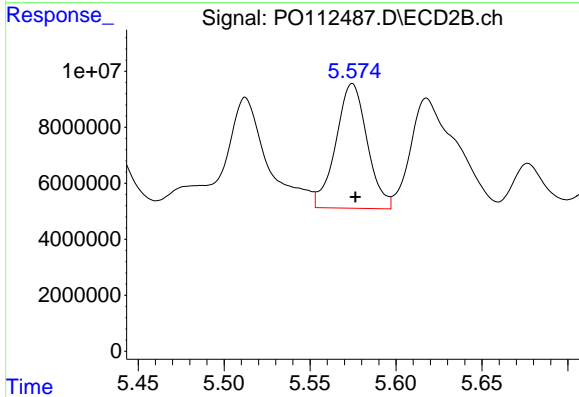
R.T.: 5.193 min
 Delta R.T.: 0.008 min
 Response: 57410605
 Conc: 275.54 ng/ml



#25 AR-1248-5

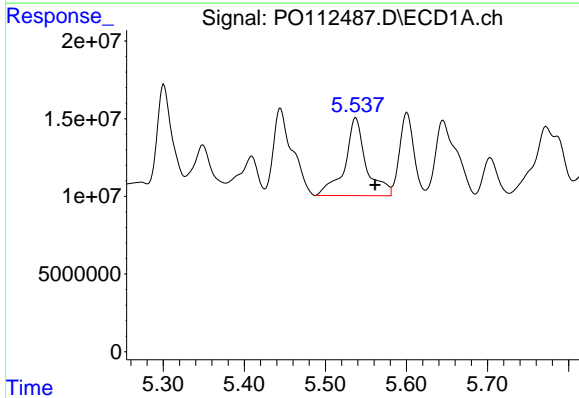
R.T.: 5.601 min
 Delta R.T.: -0.001 min
 Response: 65529886
 Conc: 187.45 ng/ml

Instrument :
 ECD_O
 ClientSampleId :
 PL-02-07232025



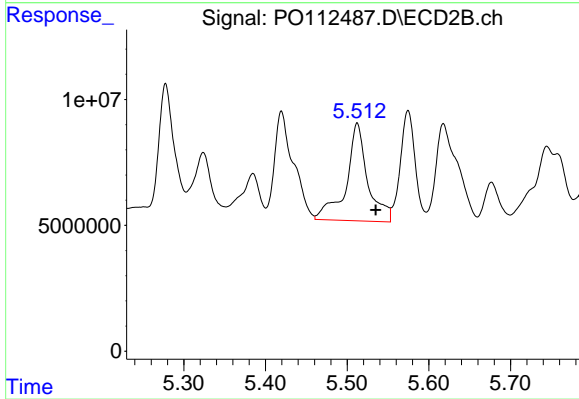
#25 AR-1248-5

R.T.: 5.575 min
 Delta R.T.: -0.002 min
 Response: 56603565
 Conc: 263.56 ng/ml



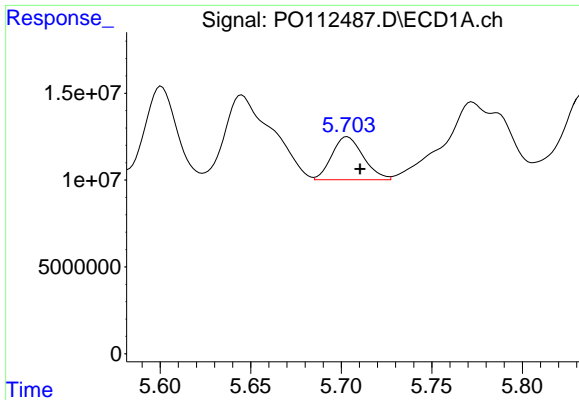
#26 AR-1254-1

R.T.: 5.537 min
 Delta R.T.: -0.024 min
 Response: 91593427
 Conc: 166.85 ng/ml



#26 AR-1254-1

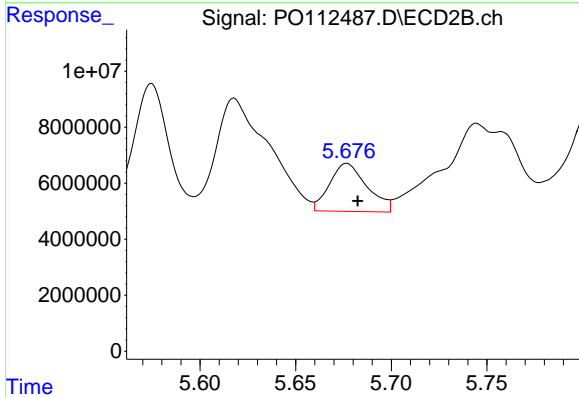
R.T.: 5.512 min
 Delta R.T.: -0.023 min
 Response: 71361407
 Conc: 217.15 ng/ml



#27 AR-1254-2

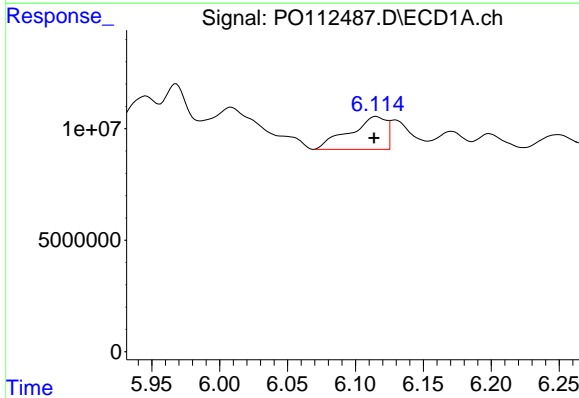
R.T.: 5.703 min
 Delta R.T.: -0.007 min
 Response: 29936111
 Conc: 61.61 ng/ml

Instrument :
 ECD_O
 ClientSampleId :
 PL-02-07232025



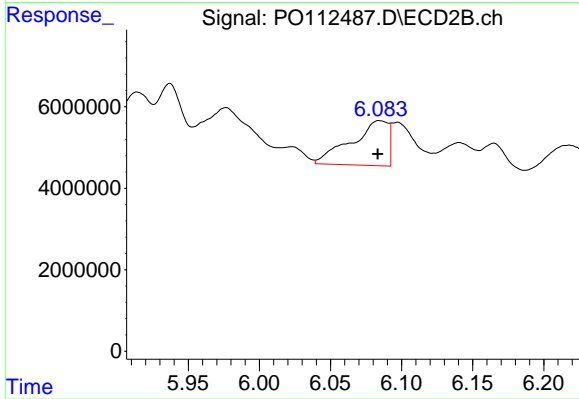
#27 AR-1254-2

R.T.: 5.677 min
 Delta R.T.: -0.006 min
 Response: 23414965
 Conc: 80.88 ng/ml



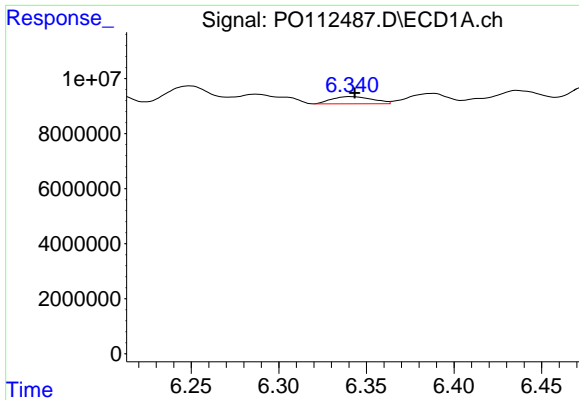
#28 AR-1254-3

R.T.: 6.115 min
 Delta R.T.: 0.001 min
 Response: 27671857
 Conc: 37.18 ng/ml



#28 AR-1254-3

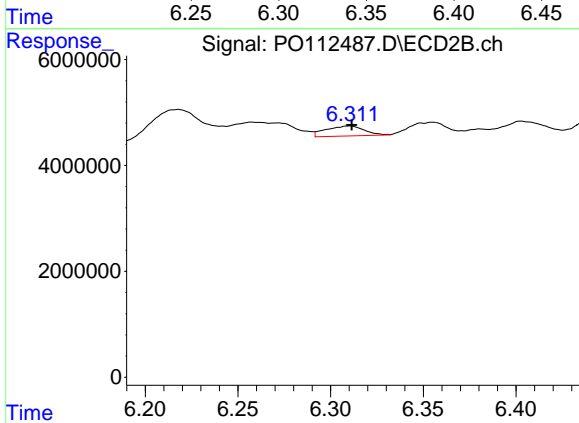
R.T.: 6.084 min
 Delta R.T.: 0.001 min
 Response: 20013496
 Conc: 46.82 ng/ml



#29 AR-1254-4

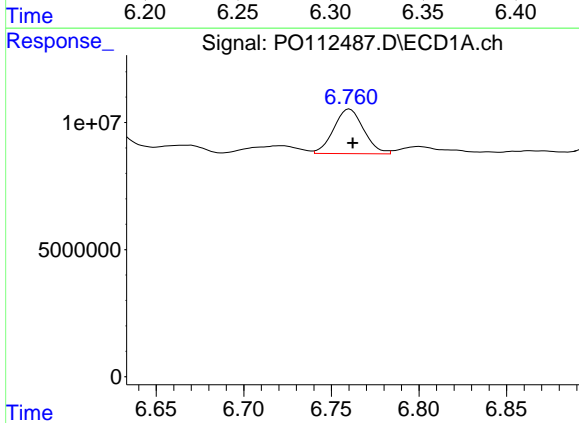
R.T.: 6.341 min
 Delta R.T.: -0.002 min
 Response: 4201786
 Conc: 7.64 ng/ml

Instrument :
 ECD_O
 ClientSampleId :
 PL-02-07232025



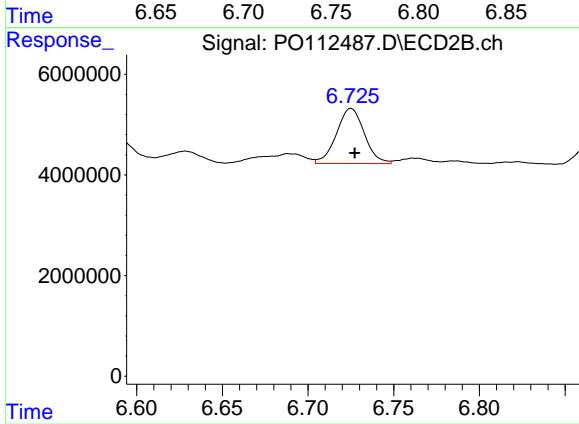
#29 AR-1254-4

R.T.: 6.310 min
 Delta R.T.: -0.001 min
 Response: 2720541
 Conc: 9.97 ng/ml



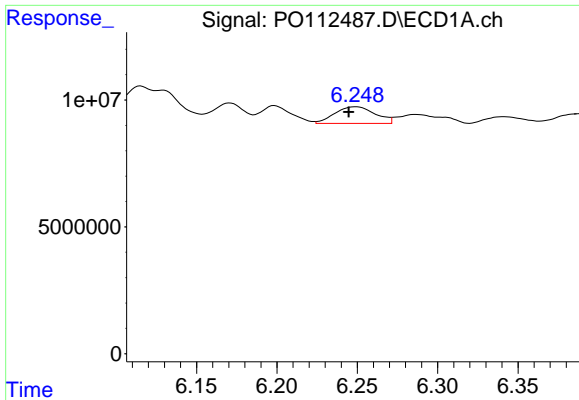
#30 AR-1254-5

R.T.: 6.760 min
 Delta R.T.: -0.002 min
 Response: 20869280
 Conc: 29.48 ng/ml



#30 AR-1254-5

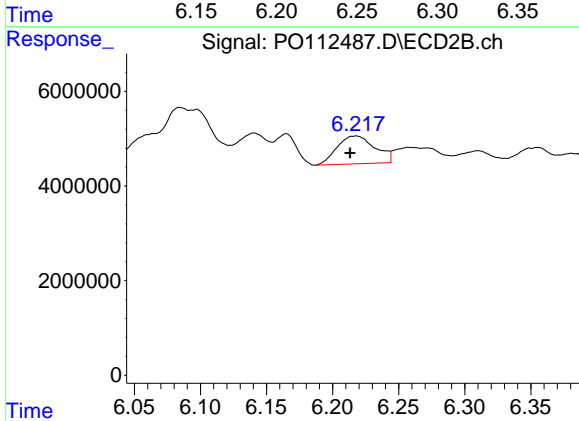
R.T.: 6.725 min
 Delta R.T.: -0.002 min
 Response: 12444881
 Conc: 37.26 ng/ml



#31 AR-1260-1

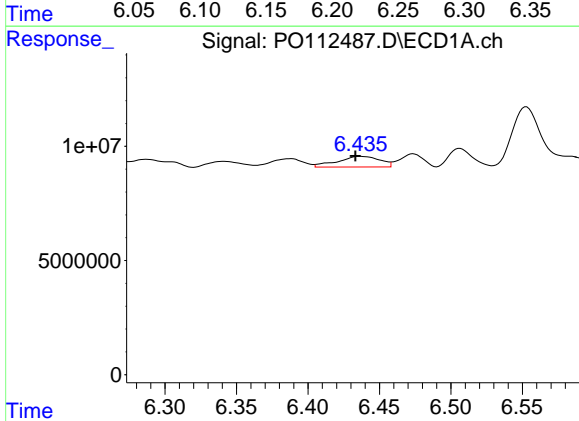
R.T.: 6.249 min
 Delta R.T.: 0.004 min
 Response: 11461179
 Conc: 26.09 ng/ml

Instrument :
 ECD_O
 ClientSampleId :
 PL-02-07232025



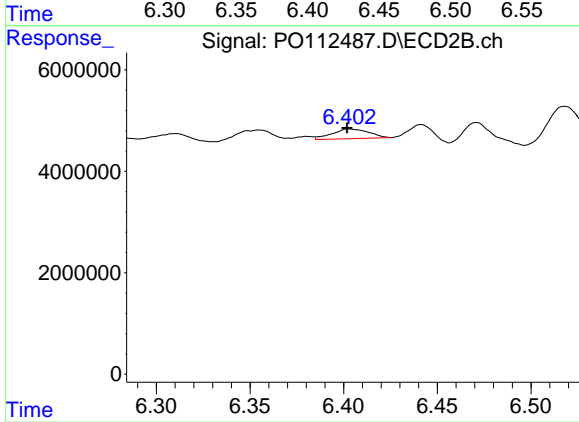
#31 AR-1260-1

R.T.: 6.218 min
 Delta R.T.: 0.004 min
 Response: 11771390
 Conc: 47.37 ng/ml



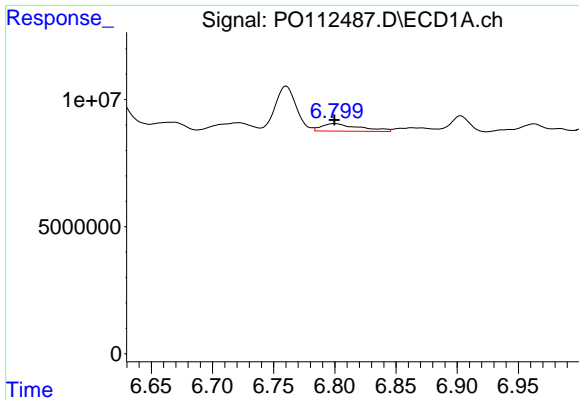
#32 AR-1260-2

R.T.: 6.437 min
 Delta R.T.: 0.003 min
 Response: 9573791
 Conc: 13.92 ng/ml



#32 AR-1260-2

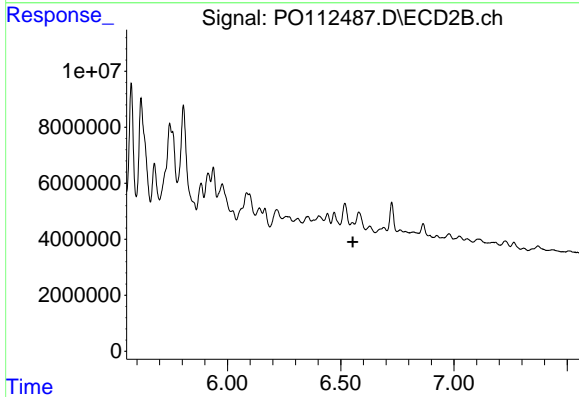
R.T.: 6.403 min
 Delta R.T.: 0.000 min
 Response: 2572165
 Conc: 7.81 ng/ml



#33 AR-1260-3

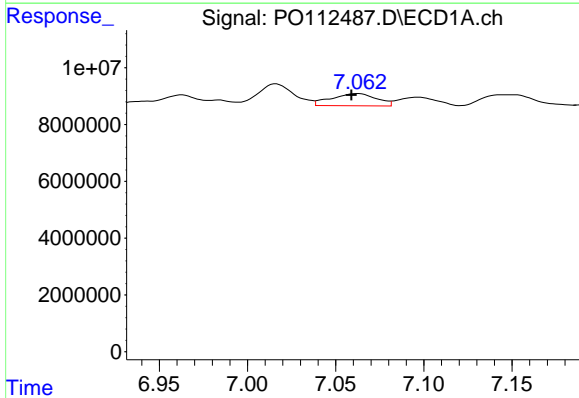
R.T.: 6.800 min
 Delta R.T.: 0.000 min
 Response: 6372951
 Conc: 10.84 ng/ml

Instrument :
 ECD_O
 ClientSampleId :
 PL-02-07232025



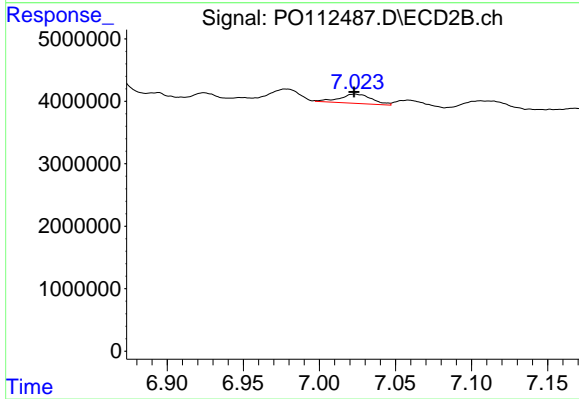
#33 AR-1260-3

R.T.: 6.552 min
 Delta R.T.: -0.002 min
 Response: -2222803
 Conc: N.D.



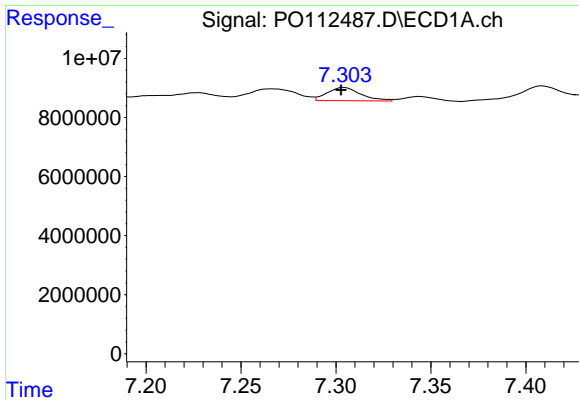
#34 AR-1260-4

R.T.: 7.062 min
 Delta R.T.: 0.003 min
 Response: 7675603
 Conc: 17.02 ng/ml



#34 AR-1260-4

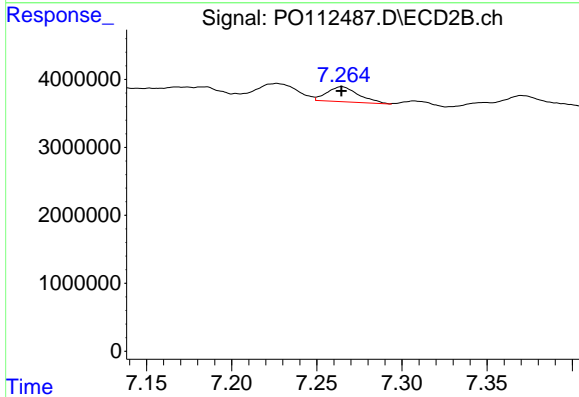
R.T.: 7.023 min
 Delta R.T.: 0.000 min
 Response: 2172213
 Conc: 11.35 ng/ml



#35 AR-1260-5

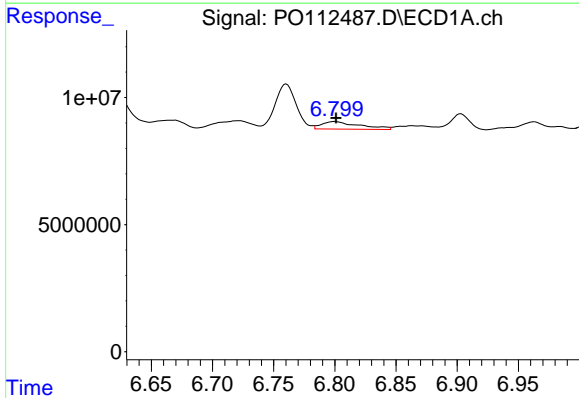
R.T.: 7.304 min
 Delta R.T.: 0.001 min
 Response: 5593244
 Conc: 4.51 ng/ml

Instrument :
 ECD_O
 ClientSampleId :
 PL-02-07232025



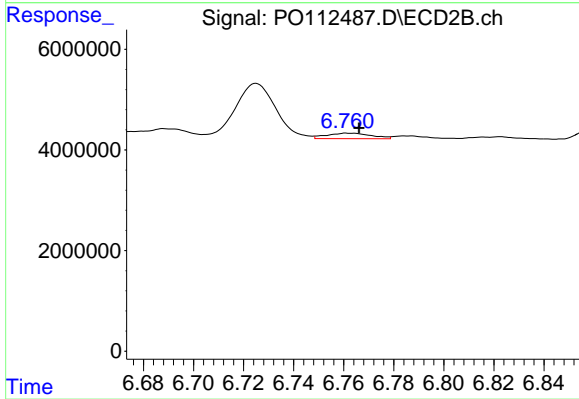
#35 AR-1260-5

R.T.: 7.265 min
 Delta R.T.: 0.000 min
 Response: 2852095
 Conc: 6.92 ng/ml



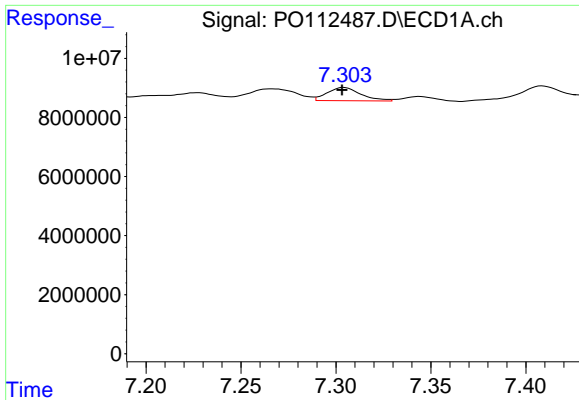
#36 AR-1262-1

R.T.: 6.800 min
 Delta R.T.: 0.000 min
 Response: 6372951
 Conc: 6.86 ng/ml



#36 AR-1262-1

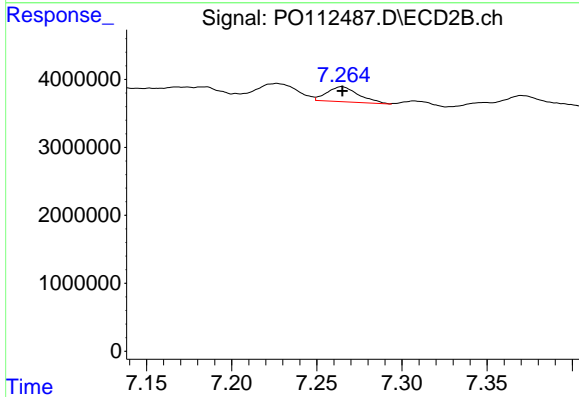
R.T.: 6.762 min
 Delta R.T.: -0.004 min
 Response: 1388472
 Conc: 3.35 ng/ml



#37 AR-1262-2

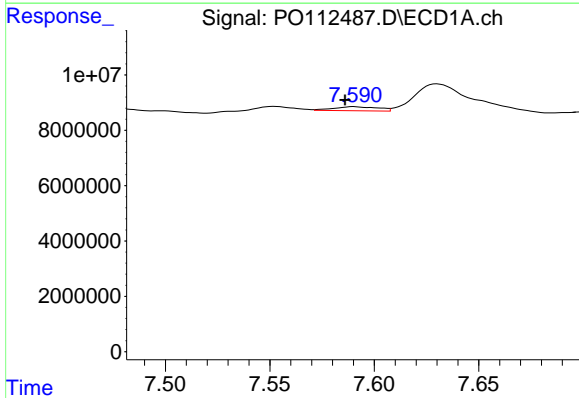
R.T.: 7.304 min
 Delta R.T.: 0.001 min
 Response: 5593244
 Conc: 3.76 ng/ml

Instrument :
 ECD_O
 ClientSampleId :
 PL-02-07232025



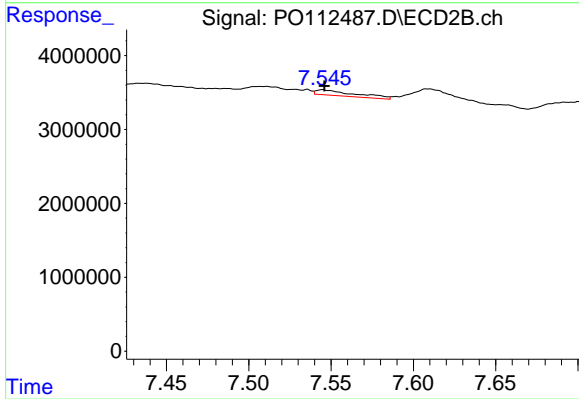
#37 AR-1262-2

R.T.: 7.265 min
 Delta R.T.: 0.000 min
 Response: 2852095
 Conc: 5.53 ng/ml



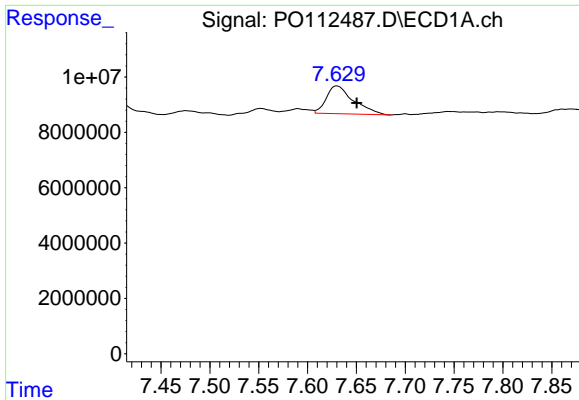
#38 AR-1262-3

R.T.: 7.590 min
 Delta R.T.: 0.004 min
 Response: 2208670
 Conc: 3.74 ng/ml



#38 AR-1262-3

R.T.: 7.545 min
 Delta R.T.: -0.001 min
 Response: 1232947
 Conc: 6.61 ng/ml

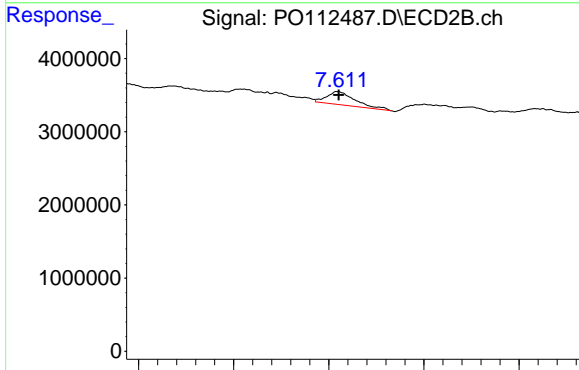


#39 AR-1262-4

R.T.: 7.630 min
 Delta R.T.: -0.020 min
 Response: 19506364
 Conc: 19.62 ng/ml

Instrument :
 ECD_O
 ClientSampleId :
 PL-02-07232025

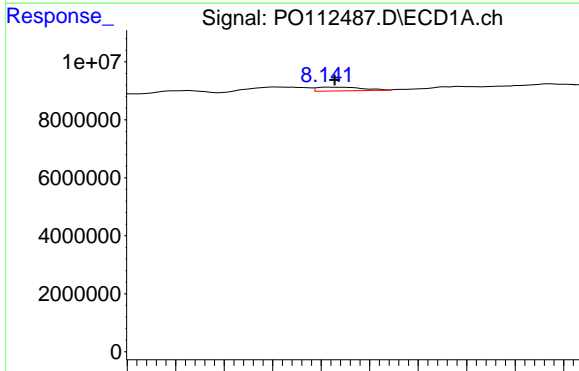
Time 7.45 7.50 7.55 7.60 7.65 7.70 7.75 7.80 7.85



#39 AR-1262-4

R.T.: 7.609 min
 Delta R.T.: -0.002 min
 Response: 3592941
 Conc: 12.47 ng/ml

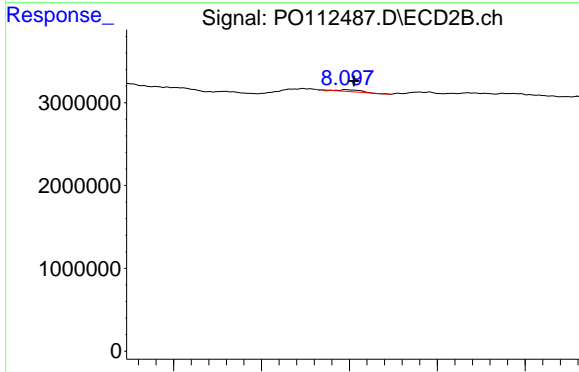
Time 7.40 7.50 7.60 7.70 7.80



#40 AR-1262-5

R.T.: 8.144 min
 Delta R.T.: -0.001 min
 Response: 1729427
 Conc: 3.98 ng/ml

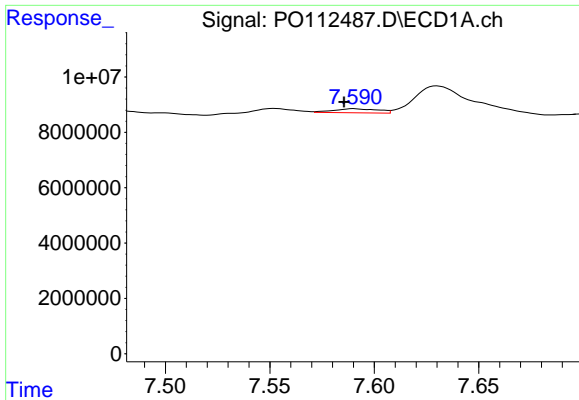
Time 8.06 8.08 8.10 8.12 8.14 8.16 8.18 8.20 8.22



#40 AR-1262-5

R.T.: 8.098 min
 Delta R.T.: -0.004 min
 Response: 159821
 Conc: 1.61 ng/ml

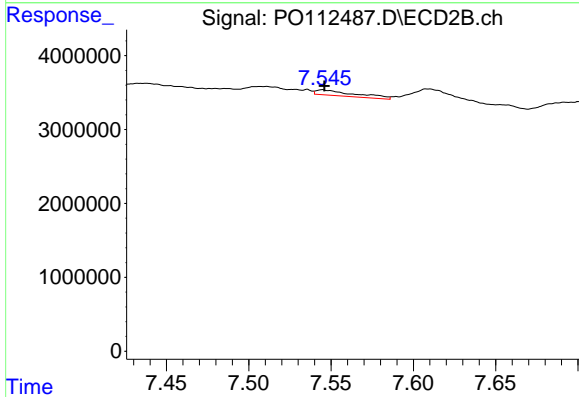
Time 8.00 8.05 8.10 8.15 8.20



#41 AR-1268-1

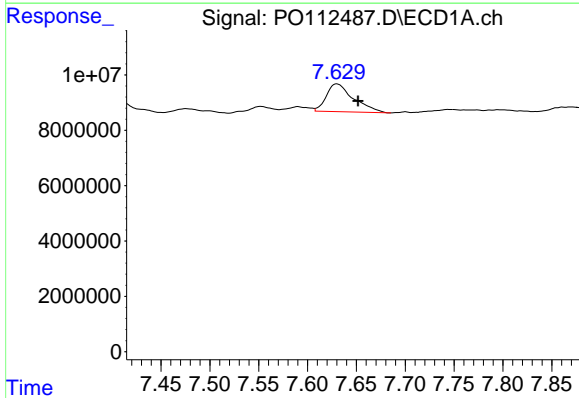
R.T.: 7.590 min
 Delta R.T.: 0.005 min
 Response: 2208670
 Conc: 1.26 ng/ml

Instrument :
 ECD_O
 ClientSampleId :
 PL-02-07232025



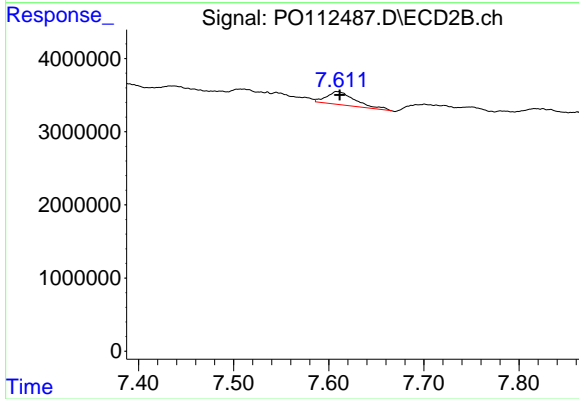
#41 AR-1268-1

R.T.: 7.545 min
 Delta R.T.: -0.001 min
 Response: 1232947
 Conc: 2.38 ng/ml



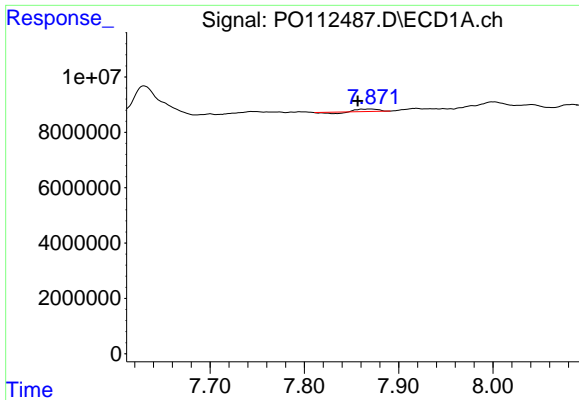
#42 AR-1268-2

R.T.: 7.630 min
 Delta R.T.: -0.021 min
 Response: 19506364
 Conc: 13.24 ng/ml



#42 AR-1268-2

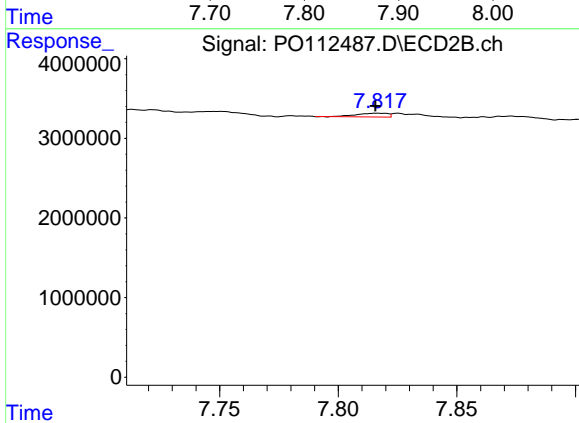
R.T.: 7.609 min
 Delta R.T.: -0.002 min
 Response: 3592941
 Conc: 8.45 ng/ml



#43 AR-1268-3

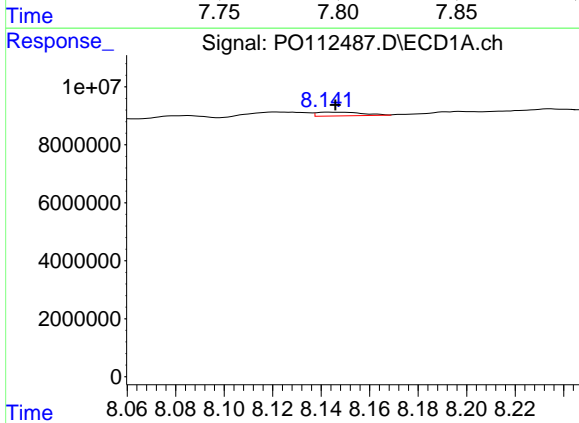
R.T.: 7.870 min
 Delta R.T.: 0.013 min
 Response: 900299
 Conc: 0.72 ng/ml

Instrument :
 ECD_O
 ClientSampleId :
 PL-02-07232025



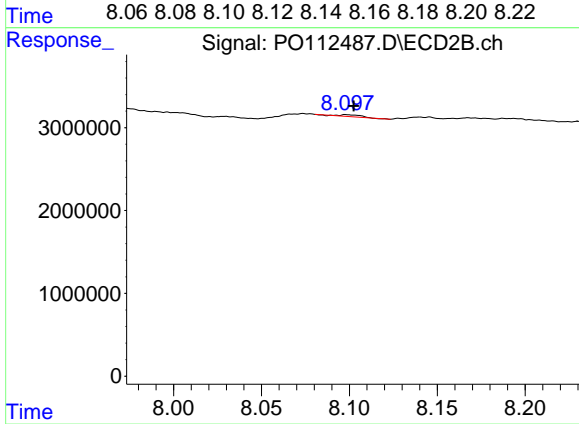
#43 AR-1268-3

R.T.: 7.817 min
 Delta R.T.: 0.001 min
 Response: 437996
 Conc: 1.36 ng/ml



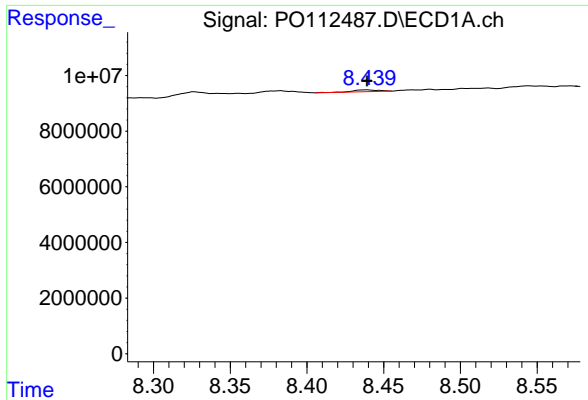
#44 AR-1268-4

R.T.: 8.144 min
 Delta R.T.: -0.001 min
 Response: 1729427
 Conc: 3.59 ng/ml



#44 AR-1268-4

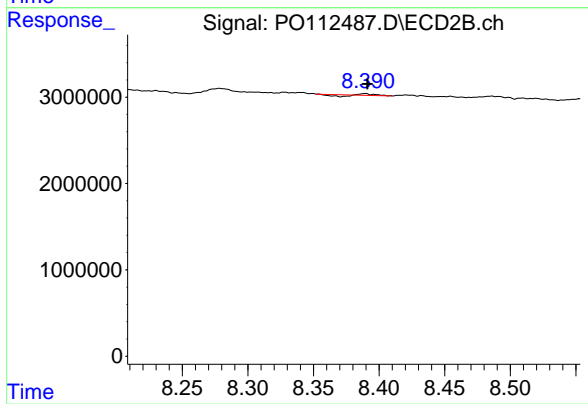
R.T.: 8.098 min
 Delta R.T.: -0.004 min
 Response: 159821
 Conc: 1.44 ng/ml



#45 AR-1268-5

R.T.: 8.438 min
 Delta R.T.: 0.000 min
 Response: 708780
 Conc: 0.21 ng/ml

Instrument :
 ECD_O
 ClientSampleId :
 PL-02-07232025



#45 AR-1268-5

R.T.: 8.389 min
 Delta R.T.: -0.002 min
 Response: 13072
 Conc: 0.02 ng/ml