

Data Path : Z:\pestpcbsrv\HPCHEM1\ECD_0\Data\P0072425\
 Data File : PO112488.D
 Signal(s) : Signal #1: ECD1A.ch Signal #2: ECD2B.ch
 Acq On : 25 Jul 2025 03:11
 Operator : YP/AJ
 Sample : Q2684-01MS
 Misc :
 ALS Vial : 31 Sample Multiplier: 1

Instrument :
 ECD_0
 ClientSampleId :
 PL-02-07232025MS

Integration File signal 1: autoint1.e
 Integration File signal 2: autoint2.e
 Quant Time: Jul 25 06:24:57 2025
 Quant Method : Z:\pestpcbsrv\HPCHEM1\ECD_0\methods\P0072325.M
 Quant Title : GC EXTRACTABLES
 QLast Update : Thu Jul 24 04:54:06 2025
 Response via : Initial Calibration
 Integrator: ChemStation

Volume Inj. : 2 µl
 Signal #1 Phase : ZB-MR1 Signal #2 Phase: ZB-MR2
 Signal #1 Info : 30Mx0.32mmx 0.50µ Signal #2 Info : 30M x 0.32mm x 0.25µm

Compound	RT#1	RT#2	Resp#1	Resp#2	ng/ml	ng/ml
System Monitoring Compounds						
1) SA Tetrachlo...	3.670	3.663	116.2E6	90625221	14.294	18.237 #
2) SA Decachlor...	8.695	8.642	83852597	23995070	11.468	13.579
Target Compounds						
3) L1 AR-1016-1	4.756	4.738	87869153	71790866	327.423	410.217 #
4) L1 AR-1016-2	4.774	4.756	131.4E6	99775457	323.442	383.023
5) L1 AR-1016-3	4.831	4.931	83989455	50467971	320.970	371.180
6) L1 AR-1016-4	4.951	4.973	67146171	58265111	316.964	524.510 #
7) L1 AR-1016-5	5.212	5.188	140.2E6	85354555	638.947	595.623
8) L2 AR-1221-1	3.877	3.870	9687593	9599487	100.224	142.710 #
9) L2 AR-1221-2	3.967	3.958	8296947	10680319	115.457	210.541 #
10) L2 AR-1221-3	4.043	4.032	48732928	37836794	205.009	238.674
11) L3 AR-1232-1	4.043	4.032	48732928	37836794	260.634	298.987
12) L3 AR-1232-2	4.535	4.756	85752406	99775457	796.772	760.746
13) L3 AR-1232-3	4.774	4.931	131.4E6	50467971	635.183	751.047
14) L3 AR-1232-4	4.951	5.016	67146171	56645783	641.073	946.793 #
15) L3 AR-1232-5	4.993	5.188	89765641	85354555	1322.399	1309.058
16) L4 AR-1242-1	4.756	4.738	87869153	71790866	354.895	453.242 #
17) L4 AR-1242-2	4.774	4.756	131.4E6	99775457	355.213	427.000
18) L4 AR-1242-3	4.831	4.931	83989455	50467971	354.898	416.440
19) L4 AR-1242-4	4.951	5.016	67146171	56645783	345.618	461.513 #
20) L4 AR-1242-5	5.600	5.536	59393489	45715967	277.649	284.001
21) L5 AR-1248-1	4.756	4.738	87869153	71790866	469.365	590.826 #
22) L5 AR-1248-2	4.993	4.973	89765641	58265111	351.867	344.194
23) L5 AR-1248-3	5.212	5.016	140.2E6	56645783	408.000	318.867
24) L5 AR-1248-4	5.561	5.188	61502347	85354555	121.049	409.660 #
25) L5 AR-1248-5	5.600	5.575	59393489	47671586	169.894	221.971 #
26) L6 AR-1254-1	5.561	5.536	61502347	45715967	112.035	139.115
27) L6 AR-1254-2	5.709	5.682	73103862	53271900	150.445	184.019
28) L6 AR-1254-3	6.131	6.100	117.2E6	77248343	157.467	180.714
29) L6 AR-1254-4	6.344	6.312	13223573	7190613	24.056	26.343
30) L6 AR-1254-5	6.761	6.727	210.3E6	117.6E6	297.074	351.982
31) L7 AR-1260-1	6.246	6.215	129.4E6	84370933	294.554	339.506
32) L7 AR-1260-2	6.435	6.403	191.7E6	105.4E6	278.670	319.792
33) L7 AR-1260-3	6.801	6.554	143.6E6	79733015	244.162	310.340 #
34) L7 AR-1260-4	7.060	7.024	105.8E6	52010781	234.583	271.866
35) L7 AR-1260-5	7.303	7.266	300.9E6	120.0E6	242.843	291.195
36) L8 AR-1262-1	6.801	6.766	143.6E6	73698021	154.510	177.659
37) L8 AR-1262-2	7.303	7.266	300.9E6	120.0E6	202.362	232.819
38) L8 AR-1262-3	7.587	7.547	53550345	21933445	90.724	117.590 #
39) L8 AR-1262-4	7.649	7.609	203.3E6	67923632	204.509	235.761
40) L8 AR-1262-5	8.147	8.104	57683598	16659504	132.893	167.427 #
41) L9 AR-1268-1	7.587	7.547	53550345	21933445	30.580	42.354 #

Data Path : Z:\pestpcbsrv\HPCHEM1\ECD_0\Data\P0072425\
 Data File : P0112488.D
 Signal(s) : Signal #1: ECD1A.ch Signal #2: ECD2B.ch
 Acq On : 25 Jul 2025 03:11
 Operator : YP/AJ
 Sample : Q2684-01MS
 Misc :
 ALS Vial : 31 Sample Multiplier: 1

Instrument :
 ECD_0
 ClientSampleId :
 PL-02-07232025MS

Integration File signal 1: autoint1.e
 Integration File signal 2: autoint2.e
 Quant Time: Jul 25 06:24:57 2025
 Quant Method : Z:\pestpcbsrv\HPCHEM1\ECD_0\methods\P0072325.M
 Quant Title : GC EXTRACTABLES
 QLast Update : Thu Jul 24 04:54:06 2025
 Response via : Initial Calibration
 Integrator: ChemStation

Volume Inj. : 2 µl
 Signal #1 Phase : ZB-MR1 Signal #2 Phase: ZB-MR2
 Signal #1 Info : 30Mx0.32mmx 0.50µ Signal #2 Info : 30M x 0.32mm x 0.25µm

	Compound	RT#1	RT#2	Resp#1	Resp#2	ng/ml	ng/ml
42)	L9 AR-1268-2	7.649	7.609	203.3E6	67923632	138.027	159.796
43)	L9 AR-1268-3	7.857	7.816	4811824	1865908	3.843	5.808 #
44)	L9 AR-1268-4	8.147	8.104	57683598	16659504	119.709	149.687 #
45)	L9 AR-1268-5	8.439	8.391	18250994	5046969	5.436	6.897 #

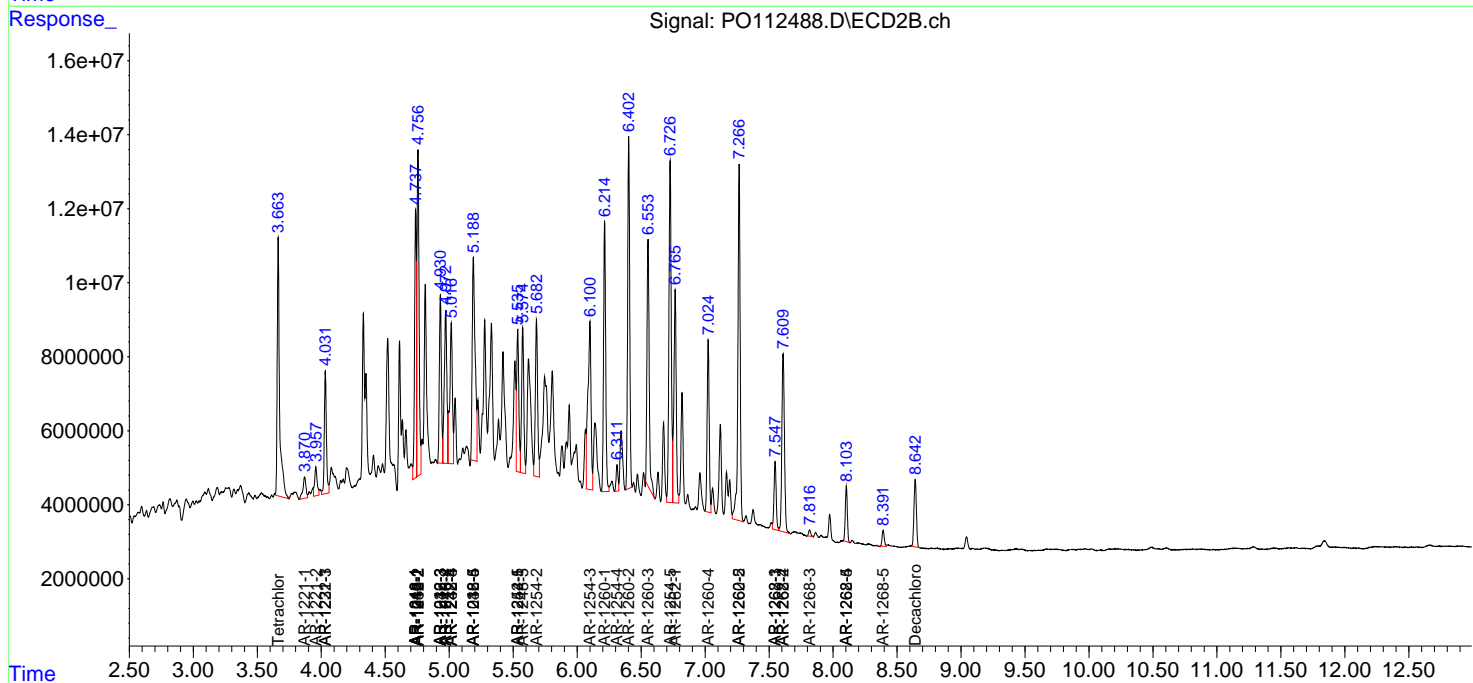
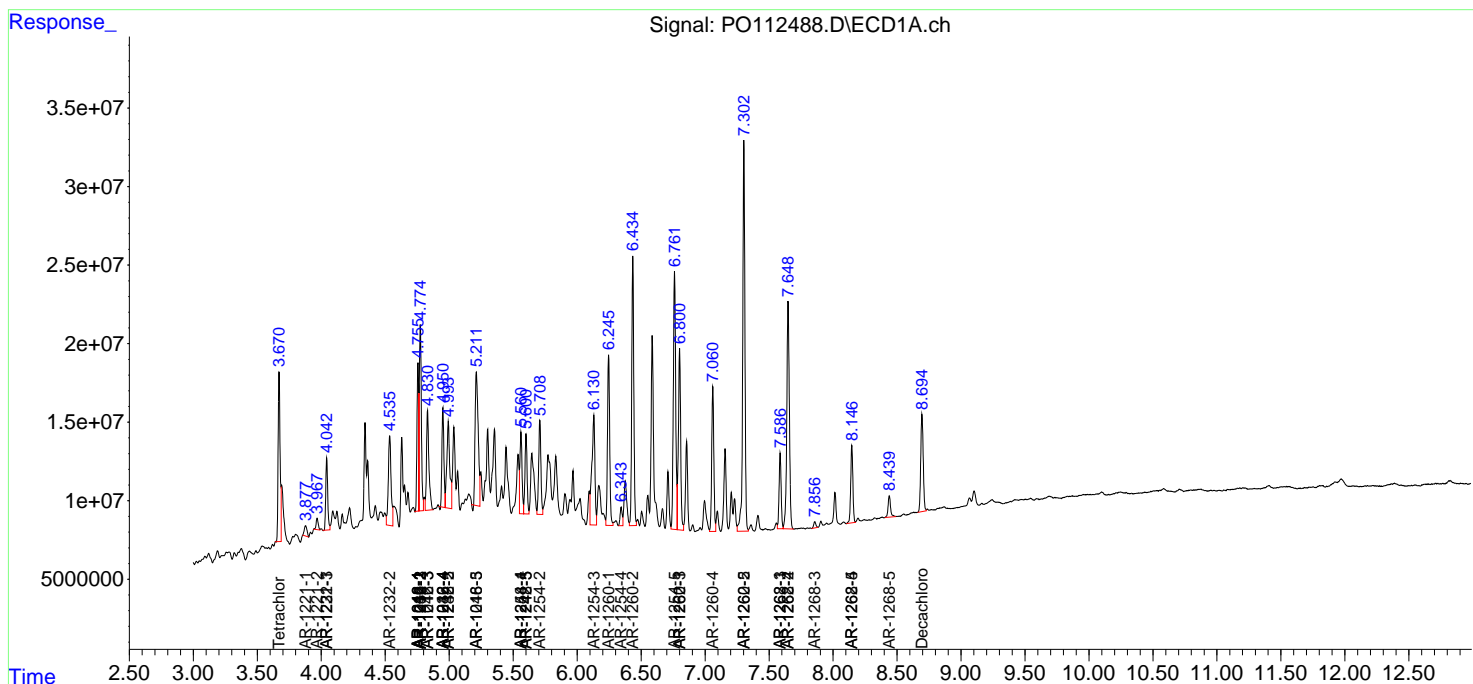
(f)=RT Delta > 1/2 Window (#)=Amounts differ by > 25% (m)=manual int.

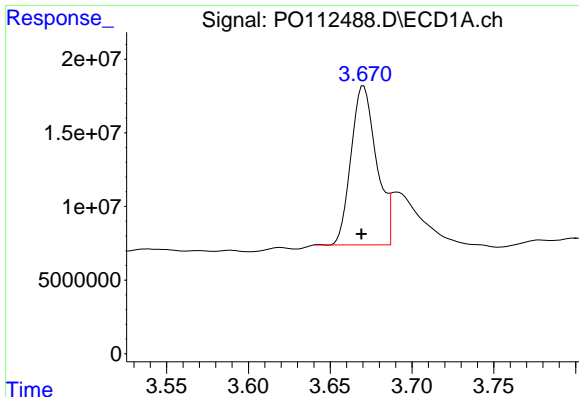
Data Path : Z:\pestpcbsrv\HPCHEM1\ECD_O\Data\PO072425\
 Data File : PO112488.D
 Signal(s) : Signal #1: ECD1A.ch Signal #2: ECD2B.ch
 Acq On : 25 Jul 2025 03:11
 Operator : YP/AJ
 Sample : Q2684-01MS
 Misc :
 ALS Vial : 31 Sample Multiplier: 1

Instrument :
 ECD_O
 ClientSampleId :
 PL-02-07232025MS

Integration File signal 1: autoint1.e
 Integration File signal 2: autoint2.e
 Quant Time: Jul 25 06:24:57 2025
 Quant Method : Z:\pestpcbsrv\HPCHEM1\ECD_O\methods\PO072325.M
 Quant Title : GC EXTRACTABLES
 QLast Update : Thu Jul 24 04:54:06 2025
 Response via : Initial Calibration
 Integrator: ChemStation

Volume Inj. : 2 µl
 Signal #1 Phase : ZB-MR1 Signal #2 Phase: ZB-MR2
 Signal #1 Info : 30Mx0.32mmx 0.50µ Signal #2 Info : 30M x 0.32mm x 0.25µm

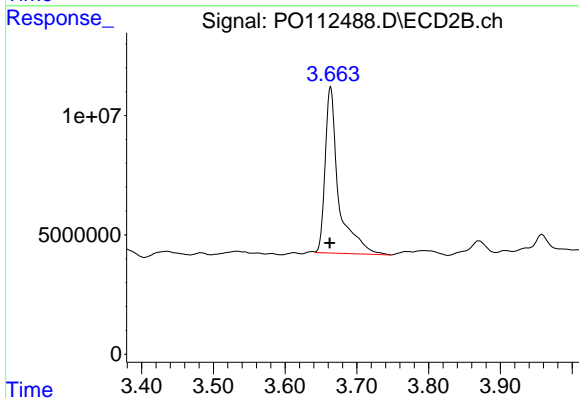




#1 Tetrachloro-m-xylene

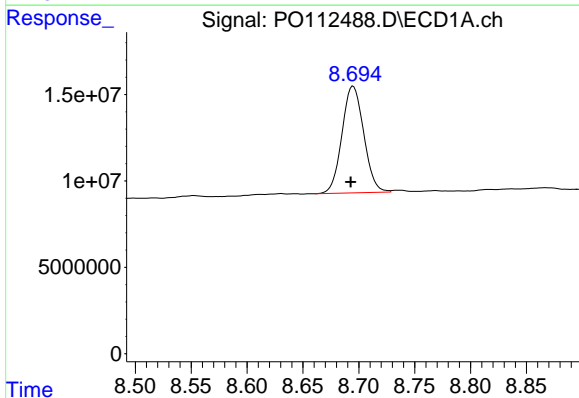
R.T.: 3.670 min
 Delta R.T.: 0.001 min
 Response: 116236062
 Conc: 14.29 ng/ml

Instrument :
 ECD_O
 ClientSampleId :
 PL-02-07232025MS



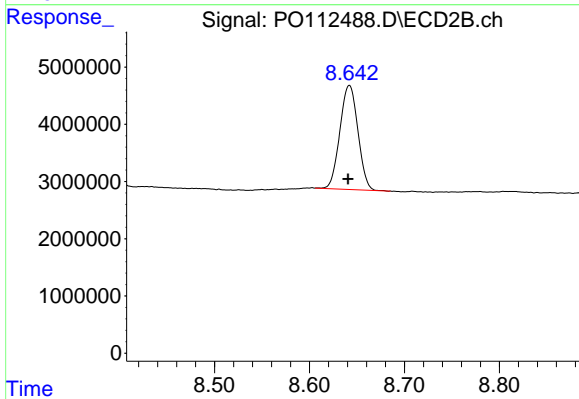
#1 Tetrachloro-m-xylene

R.T.: 3.663 min
 Delta R.T.: 0.000 min
 Response: 90625221
 Conc: 18.24 ng/ml



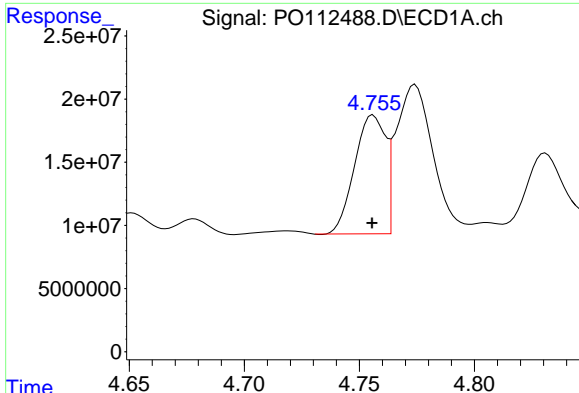
#2 Decachlorobiphenyl

R.T.: 8.695 min
 Delta R.T.: 0.002 min
 Response: 83852597
 Conc: 11.47 ng/ml



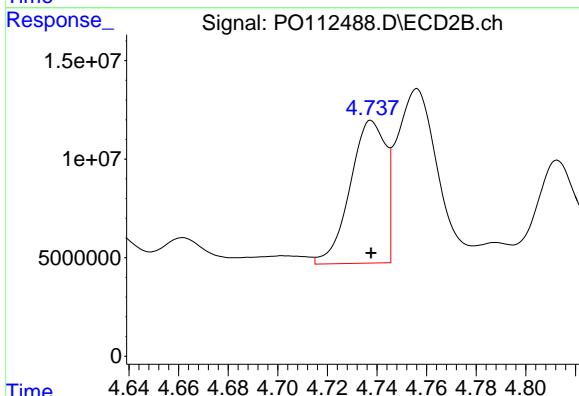
#2 Decachlorobiphenyl

R.T.: 8.642 min
 Delta R.T.: 0.002 min
 Response: 23995070
 Conc: 13.58 ng/ml

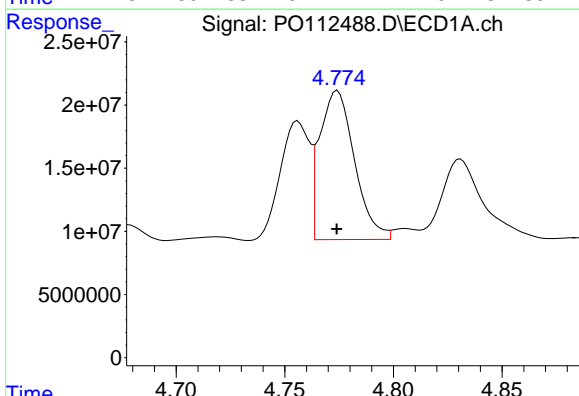


#3 AR-1016-1
 R.T.: 4.756 min
 Delta R.T.: 0.000 min
 Response: 87869153
 Conc: 327.42 ng/ml

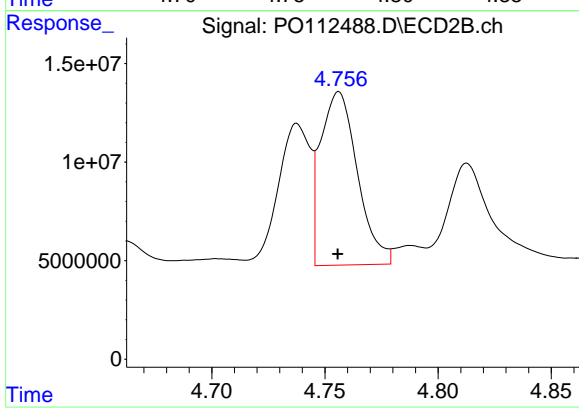
Instrument :
 ECD_O
 ClientSampleId :
 PL-02-07232025MS



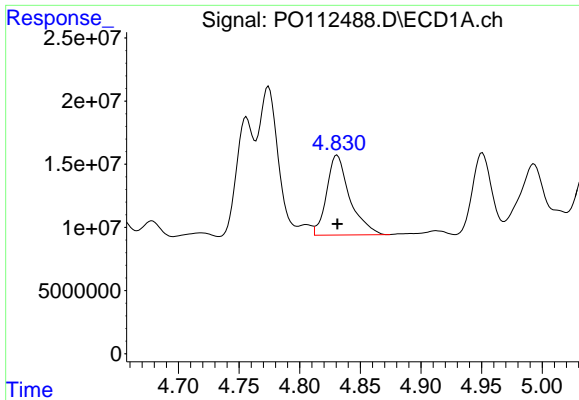
#3 AR-1016-1
 R.T.: 4.738 min
 Delta R.T.: 0.000 min
 Response: 71790866
 Conc: 410.22 ng/ml



#4 AR-1016-2
 R.T.: 4.774 min
 Delta R.T.: 0.000 min
 Response: 131355403
 Conc: 323.44 ng/ml



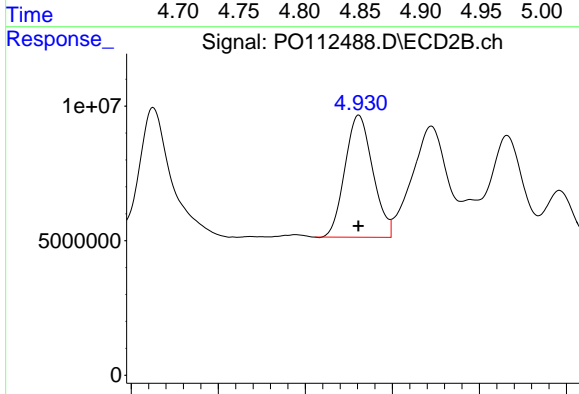
#4 AR-1016-2
 R.T.: 4.756 min
 Delta R.T.: 0.000 min
 Response: 99775457
 Conc: 383.02 ng/ml



#5 AR-1016-3

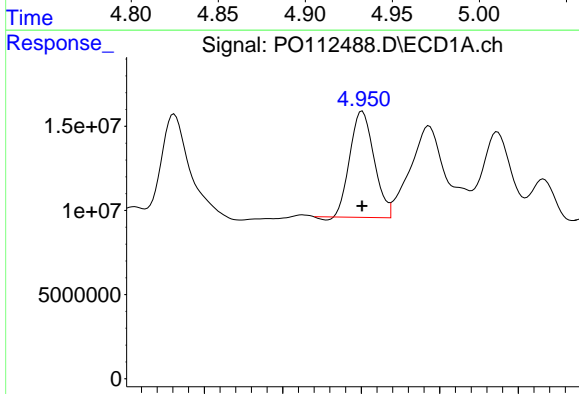
R.T.: 4.831 min
 Delta R.T.: 0.000 min
 Response: 83989455
 Conc: 320.97 ng/ml

Instrument :
 ECD_O
 ClientSampleId :
 PL-02-07232025MS



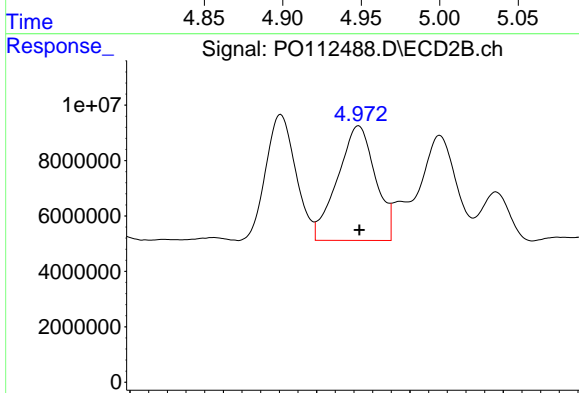
#5 AR-1016-3

R.T.: 4.931 min
 Delta R.T.: 0.000 min
 Response: 50467971
 Conc: 371.18 ng/ml



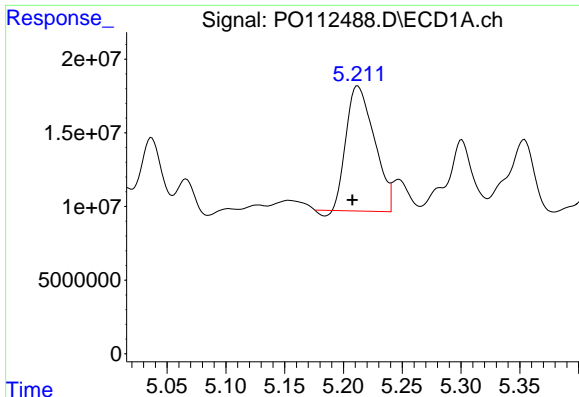
#6 AR-1016-4

R.T.: 4.951 min
 Delta R.T.: 0.000 min
 Response: 67146171
 Conc: 316.96 ng/ml



#6 AR-1016-4

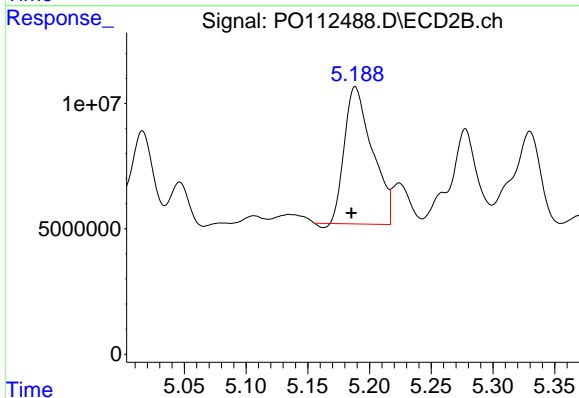
R.T.: 4.973 min
 Delta R.T.: 0.000 min
 Response: 58265111
 Conc: 524.51 ng/ml



#7 AR-1016-5

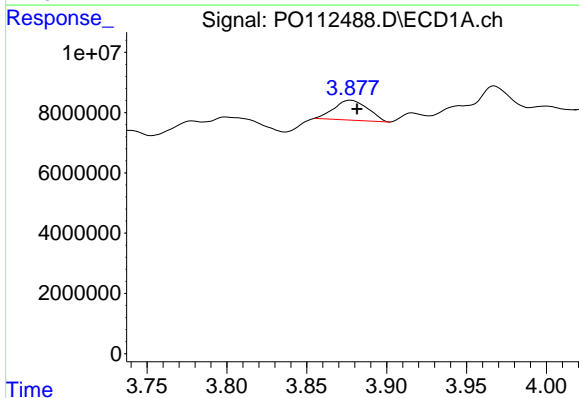
R.T.: 5.212 min
 Delta R.T.: 0.005 min
 Response: 140230068
 Conc: 638.95 ng/ml

Instrument :
 ECD_O
 ClientSampleId :
 PL-02-07232025MS



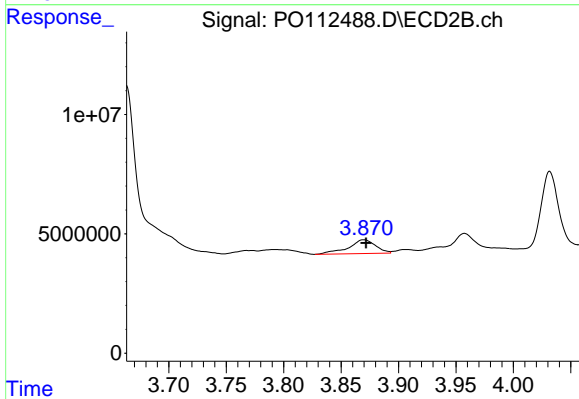
#7 AR-1016-5

R.T.: 5.188 min
 Delta R.T.: 0.003 min
 Response: 85354555
 Conc: 595.62 ng/ml



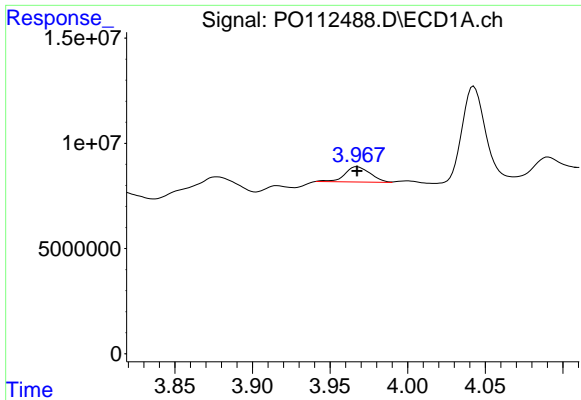
#8 AR-1221-1

R.T.: 3.877 min
 Delta R.T.: -0.004 min
 Response: 9687593
 Conc: 100.22 ng/ml



#8 AR-1221-1

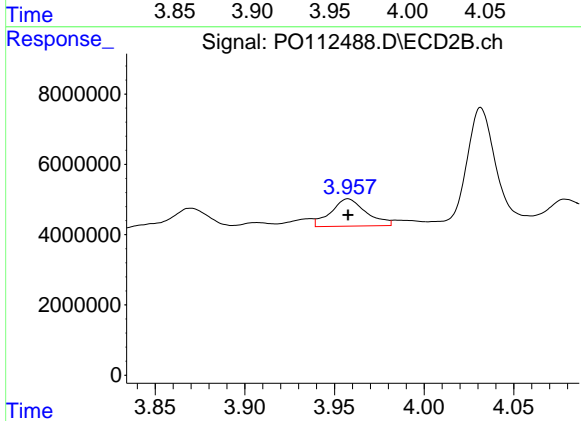
R.T.: 3.870 min
 Delta R.T.: -0.002 min
 Response: 9599487
 Conc: 142.71 ng/ml



#9 AR-1221-2

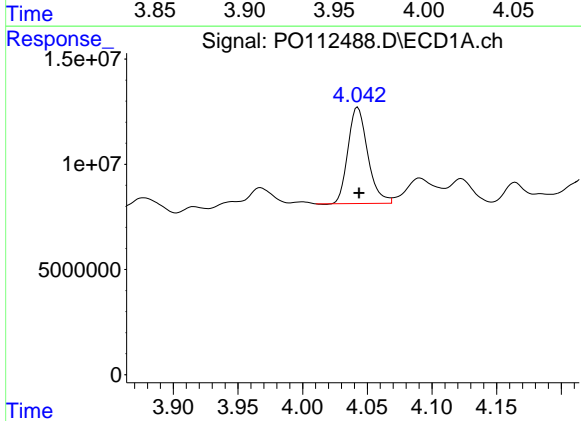
R.T.: 3.967 min
 Delta R.T.: 0.000 min
 Response: 8296947
 Conc: 115.46 ng/ml

Instrument :
 ECD_O
 ClientSampleId :
 PL-02-07232025MS



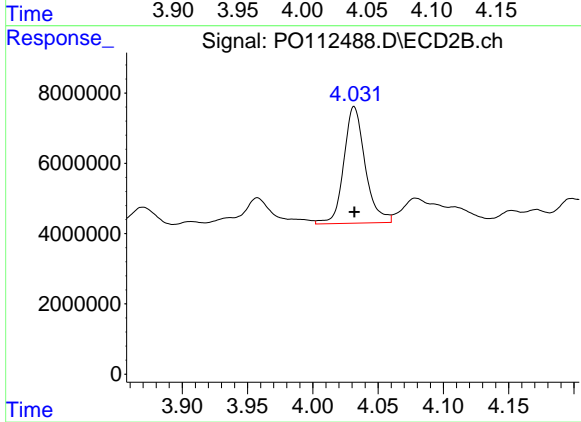
#9 AR-1221-2

R.T.: 3.958 min
 Delta R.T.: 0.000 min
 Response: 10680319
 Conc: 210.54 ng/ml



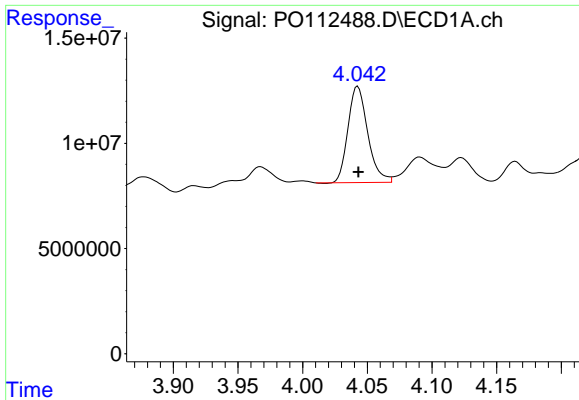
#10 AR-1221-3

R.T.: 4.043 min
 Delta R.T.: 0.000 min
 Response: 48732928
 Conc: 205.01 ng/ml



#10 AR-1221-3

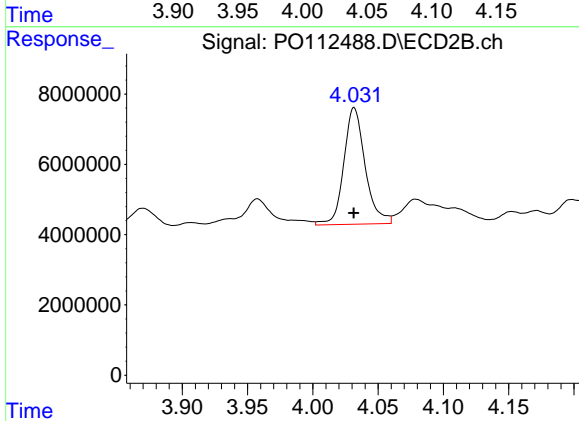
R.T.: 4.032 min
 Delta R.T.: 0.000 min
 Response: 37836794
 Conc: 238.67 ng/ml



#11 AR-1232-1

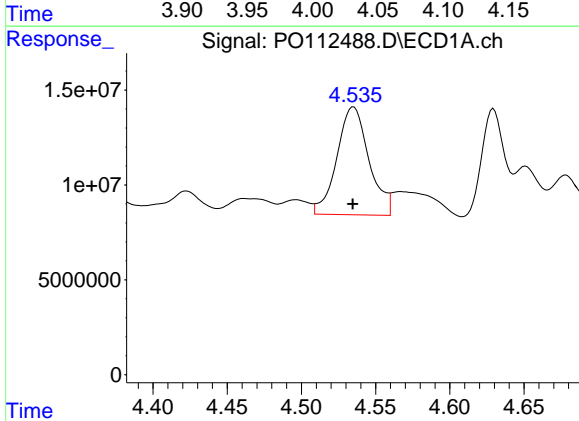
R.T.: 4.043 min
 Delta R.T.: 0.000 min
 Response: 48732928
 Conc: 260.63 ng/ml

Instrument :
 ECD_O
 ClientSampleId :
 PL-02-07232025MS



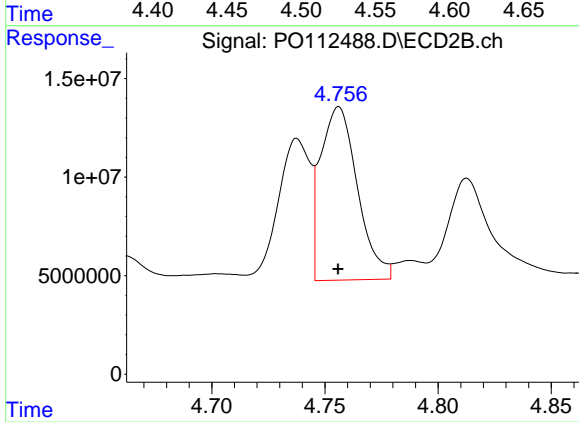
#11 AR-1232-1

R.T.: 4.032 min
 Delta R.T.: 0.000 min
 Response: 37836794
 Conc: 298.99 ng/ml



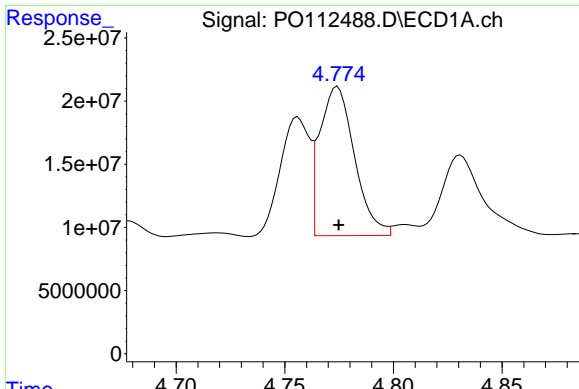
#12 AR-1232-2

R.T.: 4.535 min
 Delta R.T.: 0.000 min
 Response: 85752406
 Conc: 796.77 ng/ml



#12 AR-1232-2

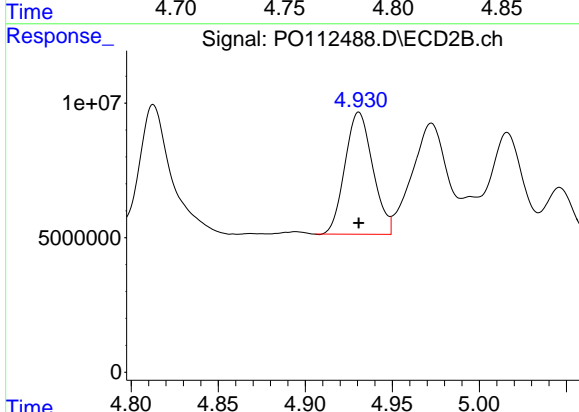
R.T.: 4.756 min
 Delta R.T.: 0.000 min
 Response: 99775457
 Conc: 760.75 ng/ml



#13 AR-1232-3

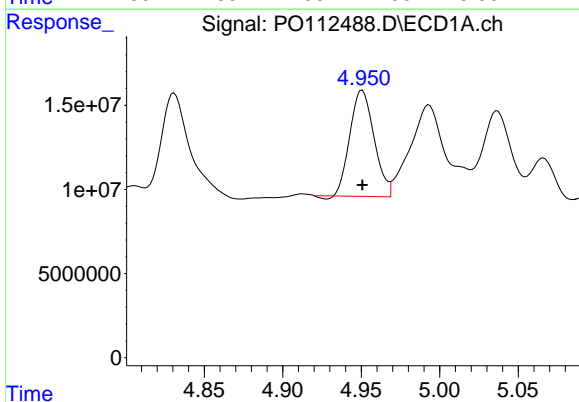
R.T.: 4.774 min
 Delta R.T.: 0.000 min
 Response: 131355403
 Conc: 635.18 ng/ml

Instrument :
 ECD_O
 ClientSampleId :
 PL-02-07232025MS



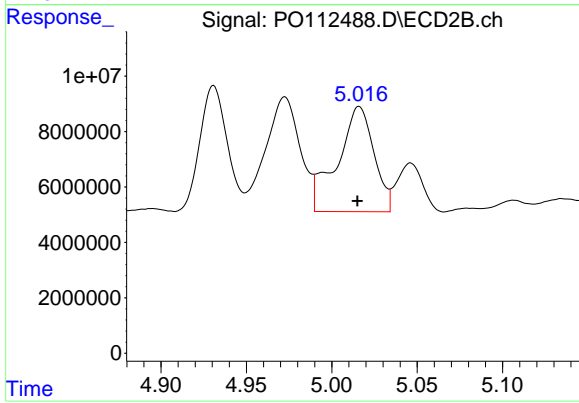
#13 AR-1232-3

R.T.: 4.931 min
 Delta R.T.: 0.000 min
 Response: 50467971
 Conc: 751.05 ng/ml



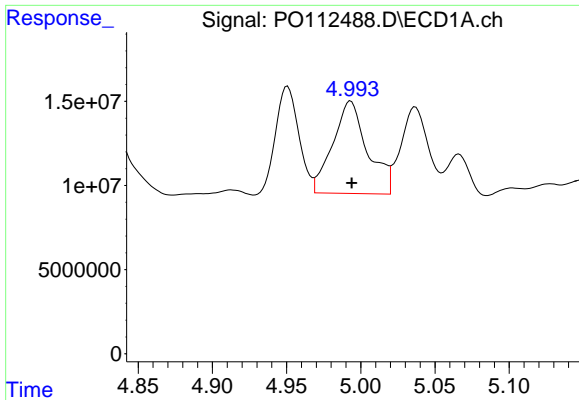
#14 AR-1232-4

R.T.: 4.951 min
 Delta R.T.: 0.000 min
 Response: 67146171
 Conc: 641.07 ng/ml



#14 AR-1232-4

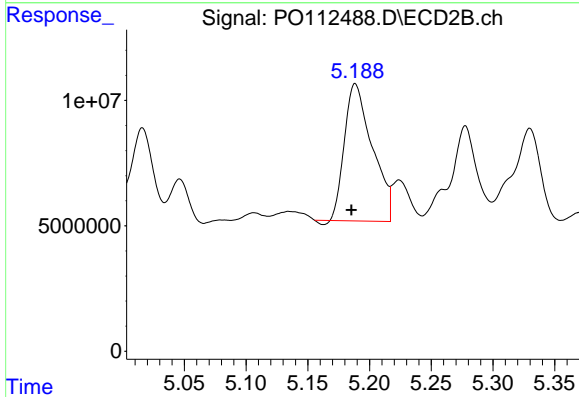
R.T.: 5.016 min
 Delta R.T.: 0.001 min
 Response: 56645783
 Conc: 946.79 ng/ml



#15 AR-1232-5

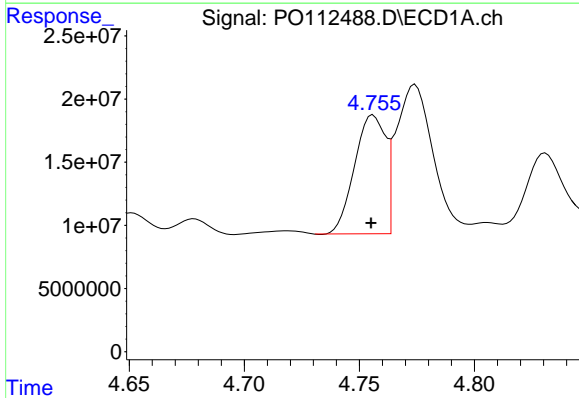
R.T.: 4.993 min
 Delta R.T.: 0.000 min
 Response: 89765641
 Conc: 1322.40 ng/ml

Instrument :
 ECD_O
 ClientSampleId :
 PL-02-07232025MS



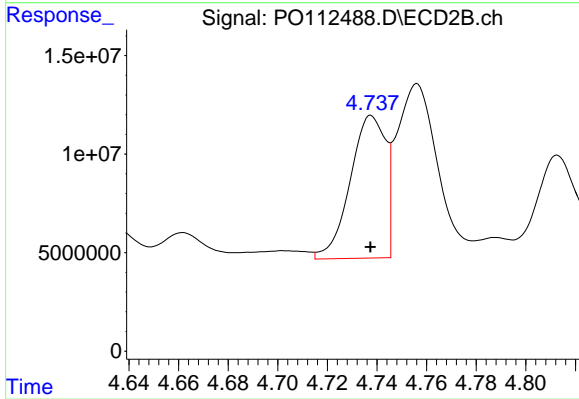
#15 AR-1232-5

R.T.: 5.188 min
 Delta R.T.: 0.003 min
 Response: 85354555
 Conc: 1309.06 ng/ml



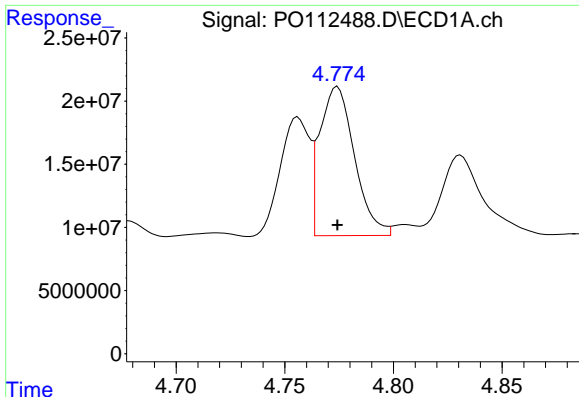
#16 AR-1242-1

R.T.: 4.756 min
 Delta R.T.: 0.000 min
 Response: 87869153
 Conc: 354.89 ng/ml



#16 AR-1242-1

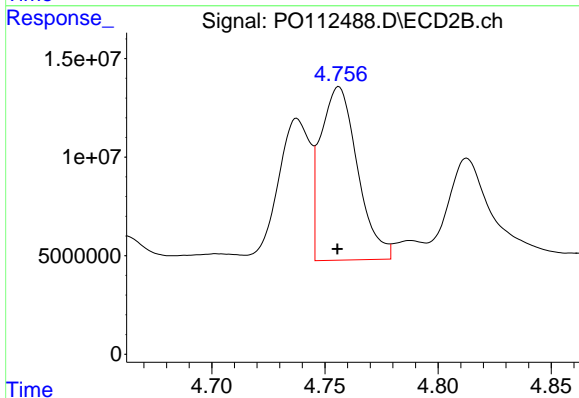
R.T.: 4.738 min
 Delta R.T.: 0.000 min
 Response: 71790866
 Conc: 453.24 ng/ml



#17 AR-1242-2

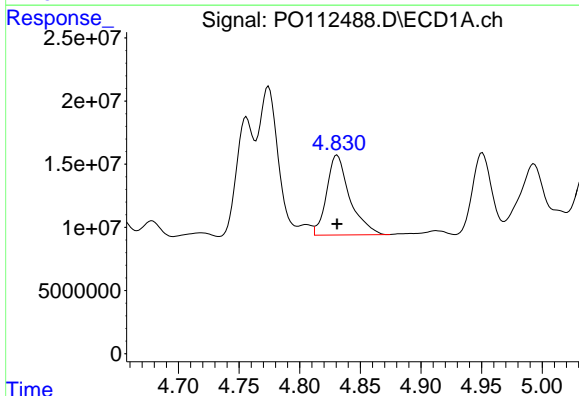
R.T.: 4.774 min
 Delta R.T.: 0.000 min
 Response: 131355403
 Conc: 355.21 ng/ml

Instrument :
 ECD_O
 ClientSampleId :
 PL-02-07232025MS



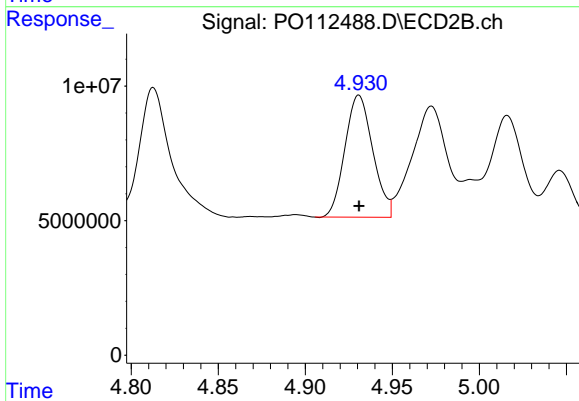
#17 AR-1242-2

R.T.: 4.756 min
 Delta R.T.: 0.000 min
 Response: 99775457
 Conc: 427.00 ng/ml



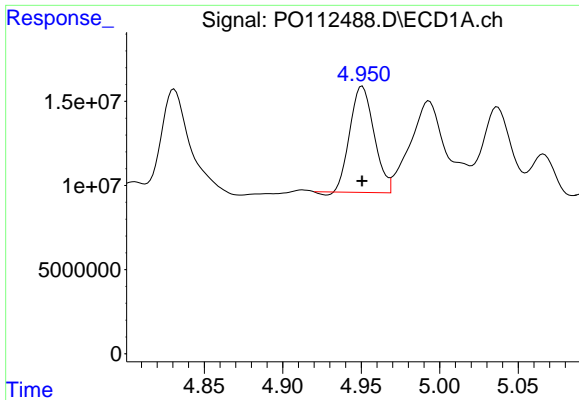
#18 AR-1242-3

R.T.: 4.831 min
 Delta R.T.: 0.000 min
 Response: 83989455
 Conc: 354.90 ng/ml



#18 AR-1242-3

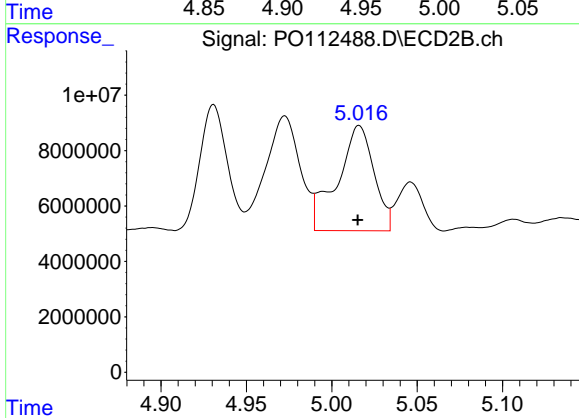
R.T.: 4.931 min
 Delta R.T.: 0.000 min
 Response: 50467971
 Conc: 416.44 ng/ml



#19 AR-1242-4

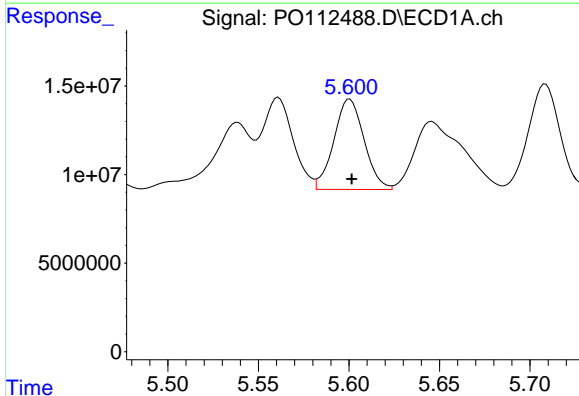
R.T.: 4.951 min
 Delta R.T.: 0.000 min
 Response: 67146171
 Conc: 345.62 ng/ml

Instrument :
 ECD_O
 ClientSampleId :
 PL-02-07232025MS



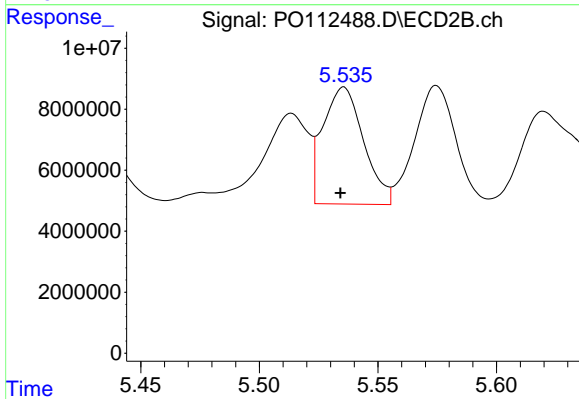
#19 AR-1242-4

R.T.: 5.016 min
 Delta R.T.: 0.000 min
 Response: 56645783
 Conc: 461.51 ng/ml



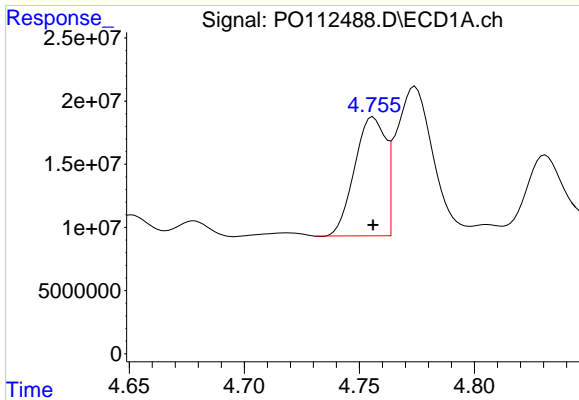
#20 AR-1242-5

R.T.: 5.600 min
 Delta R.T.: -0.001 min
 Response: 59393489
 Conc: 277.65 ng/ml



#20 AR-1242-5

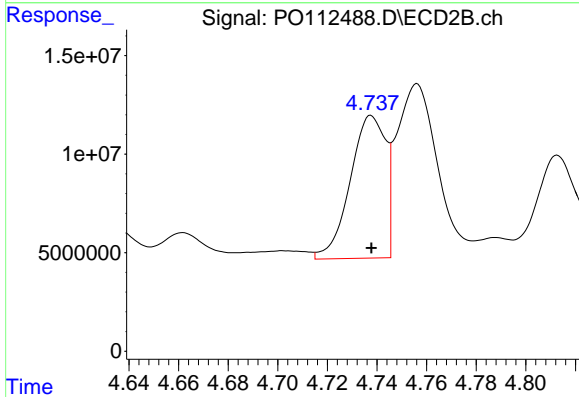
R.T.: 5.536 min
 Delta R.T.: 0.001 min
 Response: 45715967
 Conc: 284.00 ng/ml



#21 AR-1248-1

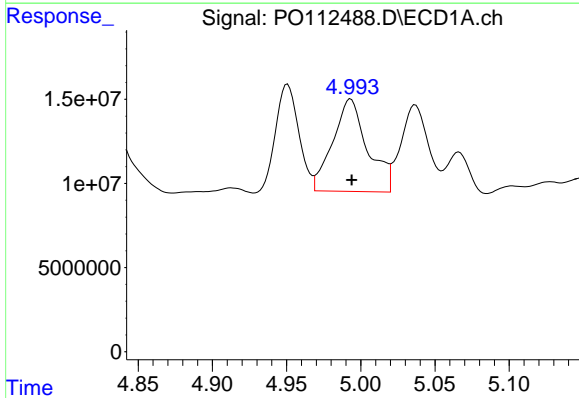
R.T.: 4.756 min
 Delta R.T.: 0.000 min
 Response: 87869153
 Conc: 469.36 ng/ml

Instrument :
 ECD_O
 ClientSampleId :
 PL-02-07232025MS



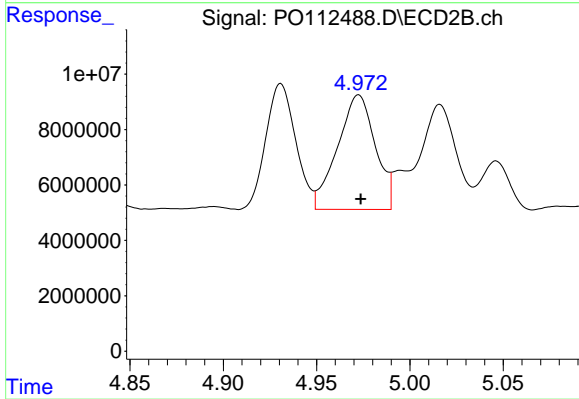
#21 AR-1248-1

R.T.: 4.738 min
 Delta R.T.: 0.000 min
 Response: 71790866
 Conc: 590.83 ng/ml



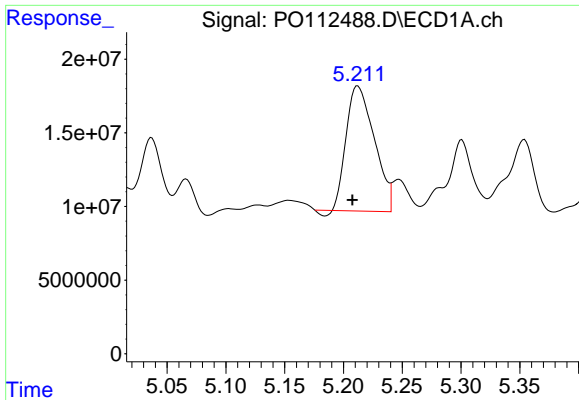
#22 AR-1248-2

R.T.: 4.993 min
 Delta R.T.: 0.000 min
 Response: 89765641
 Conc: 351.87 ng/ml



#22 AR-1248-2

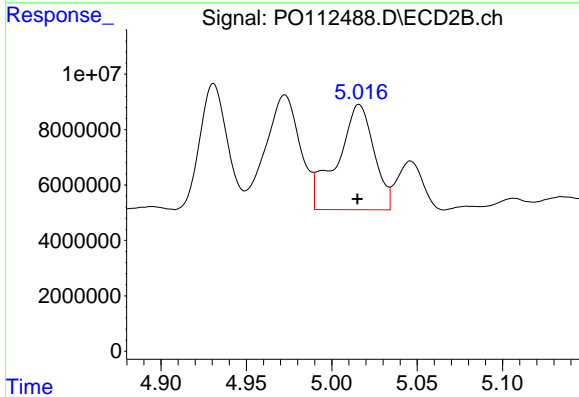
R.T.: 4.973 min
 Delta R.T.: -0.001 min
 Response: 58265111
 Conc: 344.19 ng/ml



#23 AR-1248-3

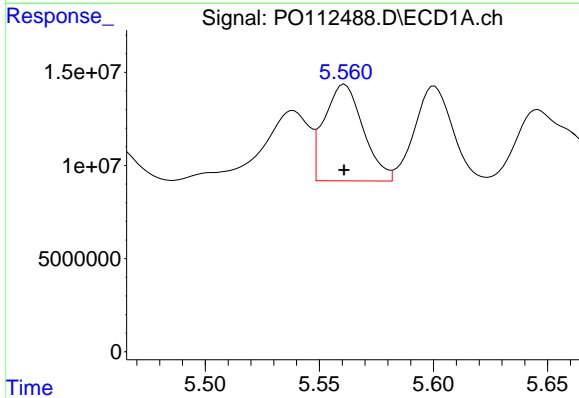
R.T.: 5.212 min
 Delta R.T.: 0.004 min
 Response: 140230068
 Conc: 408.00 ng/ml

Instrument :
 ECD_O
 ClientSampleId :
 PL-02-07232025MS



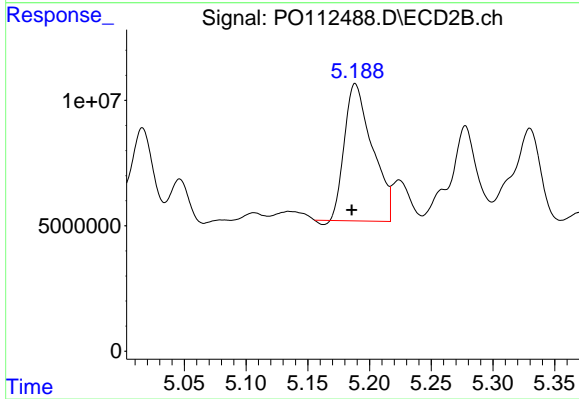
#23 AR-1248-3

R.T.: 5.016 min
 Delta R.T.: 0.000 min
 Response: 56645783
 Conc: 318.87 ng/ml



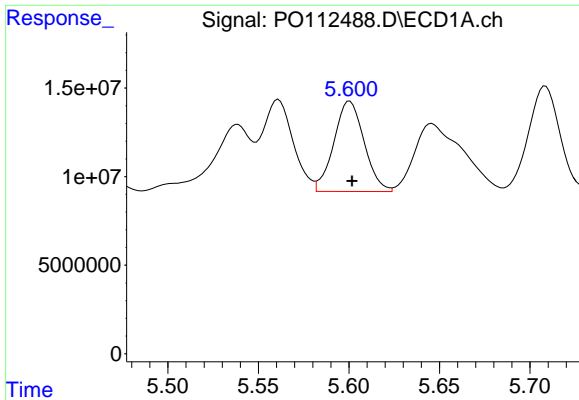
#24 AR-1248-4

R.T.: 5.561 min
 Delta R.T.: 0.000 min
 Response: 61502347
 Conc: 121.05 ng/ml



#24 AR-1248-4

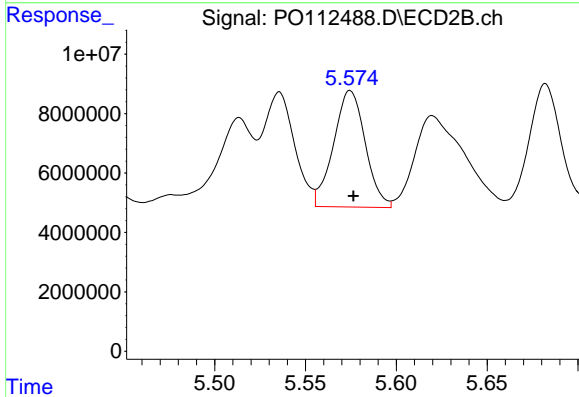
R.T.: 5.188 min
 Delta R.T.: 0.003 min
 Response: 85354555
 Conc: 409.66 ng/ml



#25 AR-1248-5

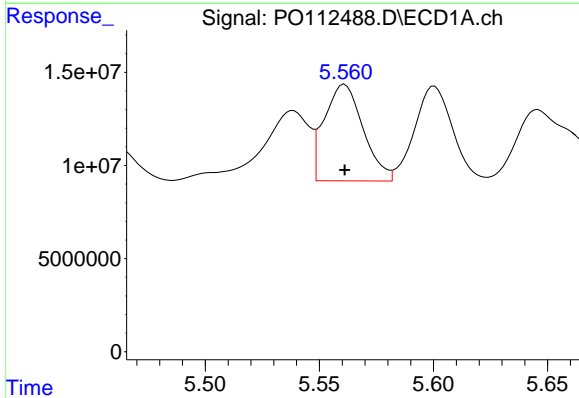
R.T.: 5.600 min
 Delta R.T.: -0.001 min
 Response: 59393489
 Conc: 169.89 ng/ml

Instrument :
 ECD_O
 ClientSampleId :
 PL-02-07232025MS



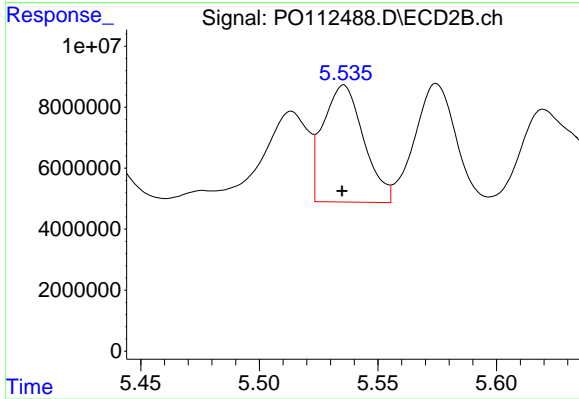
#25 AR-1248-5

R.T.: 5.575 min
 Delta R.T.: -0.002 min
 Response: 47671586
 Conc: 221.97 ng/ml



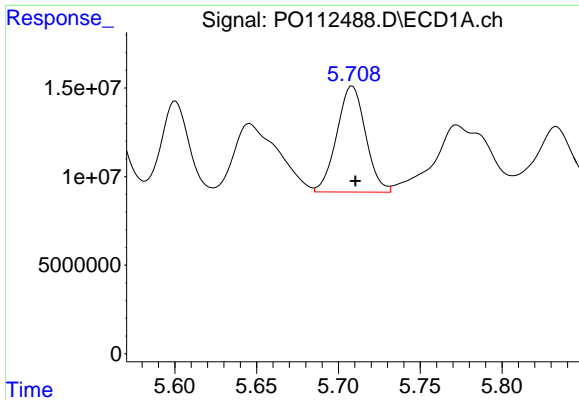
#26 AR-1254-1

R.T.: 5.561 min
 Delta R.T.: 0.000 min
 Response: 61502347
 Conc: 112.03 ng/ml



#26 AR-1254-1

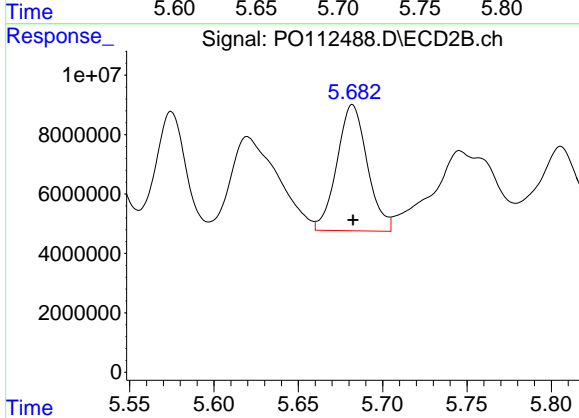
R.T.: 5.536 min
 Delta R.T.: 0.000 min
 Response: 45715967
 Conc: 139.11 ng/ml



#27 AR-1254-2

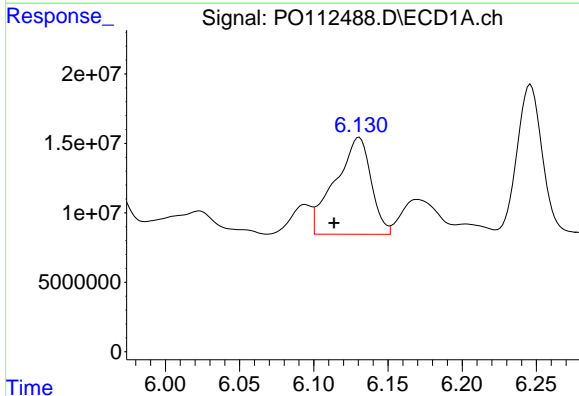
R.T.: 5.709 min
 Delta R.T.: -0.002 min
 Response: 73103862
 Conc: 150.44 ng/ml

Instrument :
 ECD_O
 ClientSampleId :
 PL-02-07232025MS



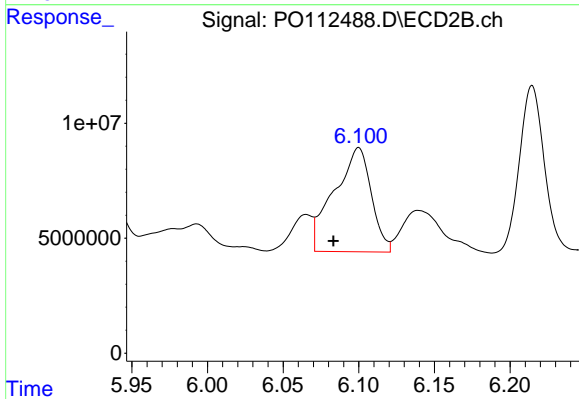
#27 AR-1254-2

R.T.: 5.682 min
 Delta R.T.: 0.000 min
 Response: 53271900
 Conc: 184.02 ng/ml



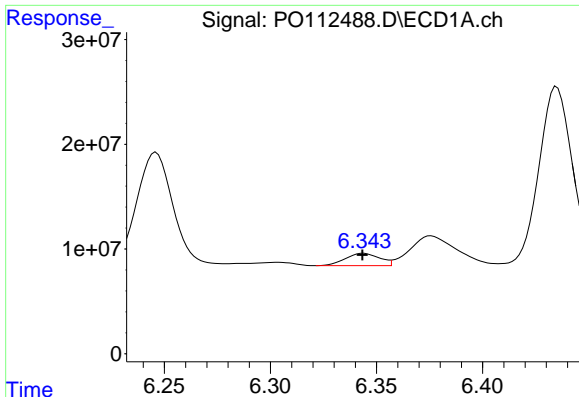
#28 AR-1254-3

R.T.: 6.131 min
 Delta R.T.: 0.017 min
 Response: 117200430
 Conc: 157.47 ng/ml



#28 AR-1254-3

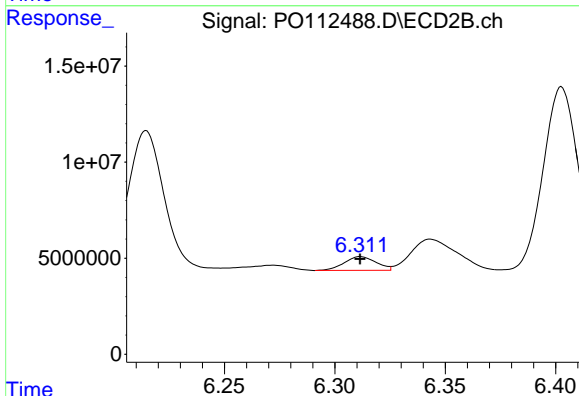
R.T.: 6.100 min
 Delta R.T.: 0.017 min
 Response: 77248343
 Conc: 180.71 ng/ml



#29 AR-1254-4

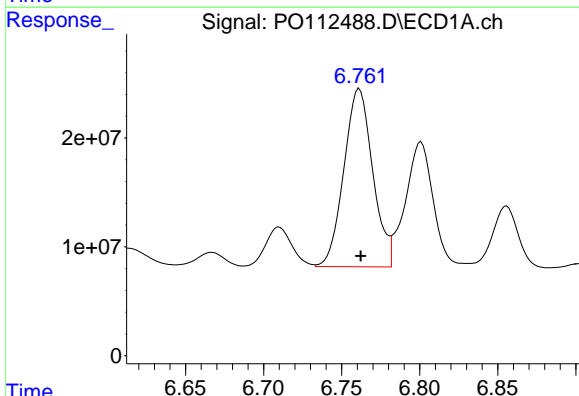
R.T.: 6.344 min
 Delta R.T.: 0.000 min
 Response: 13223573
 Conc: 24.06 ng/ml

Instrument :
 ECD_O
 ClientSampleId :
 PL-02-07232025MS



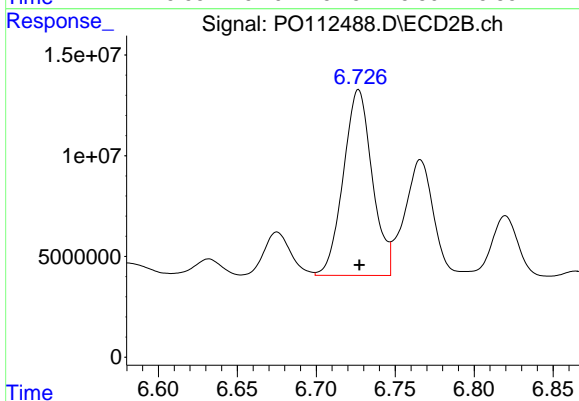
#29 AR-1254-4

R.T.: 6.312 min
 Delta R.T.: 0.000 min
 Response: 7190613
 Conc: 26.34 ng/ml



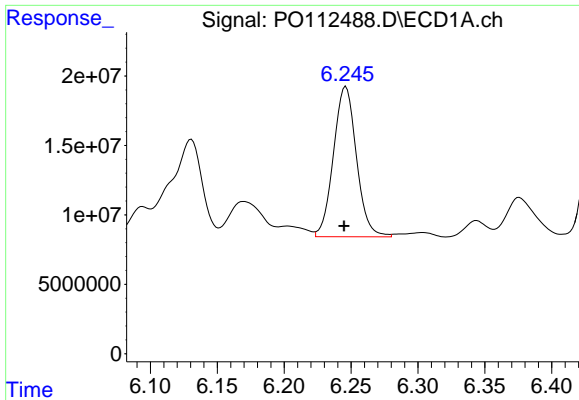
#30 AR-1254-5

R.T.: 6.761 min
 Delta R.T.: 0.000 min
 Response: 210275941
 Conc: 297.07 ng/ml



#30 AR-1254-5

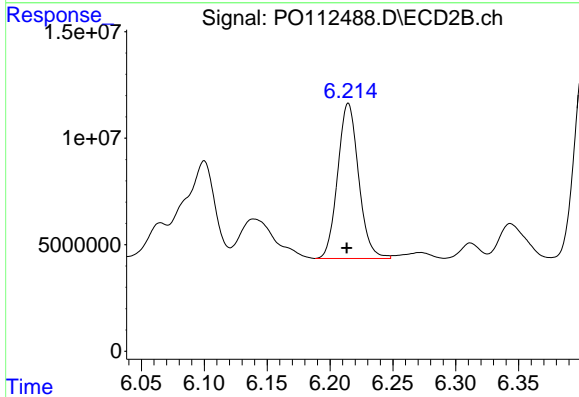
R.T.: 6.727 min
 Delta R.T.: 0.000 min
 Response: 117568806
 Conc: 351.98 ng/ml



#31 AR-1260-1

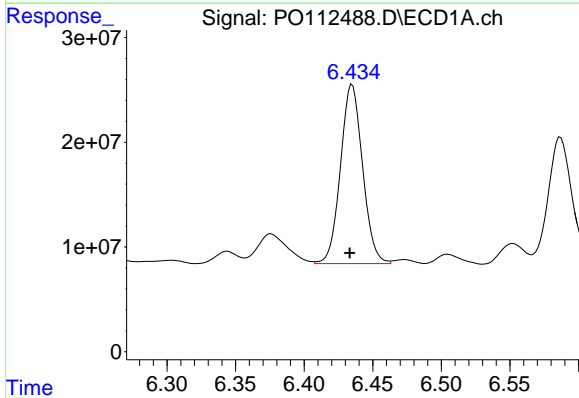
R.T.: 6.246 min
 Delta R.T.: 0.001 min
 Response: 129406506
 Conc: 294.55 ng/ml

Instrument :
 ECD_O
 ClientSampleId :
 PL-02-07232025MS



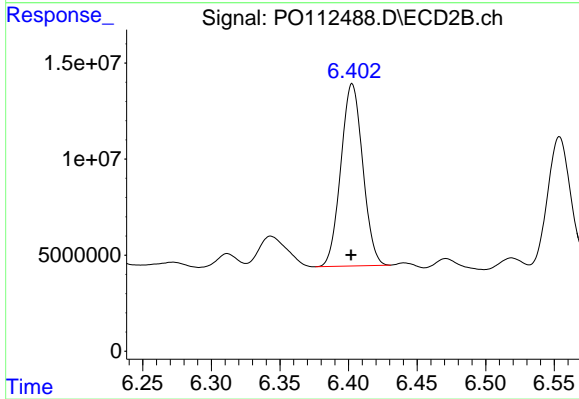
#31 AR-1260-1

R.T.: 6.215 min
 Delta R.T.: 0.001 min
 Response: 84370933
 Conc: 339.51 ng/ml



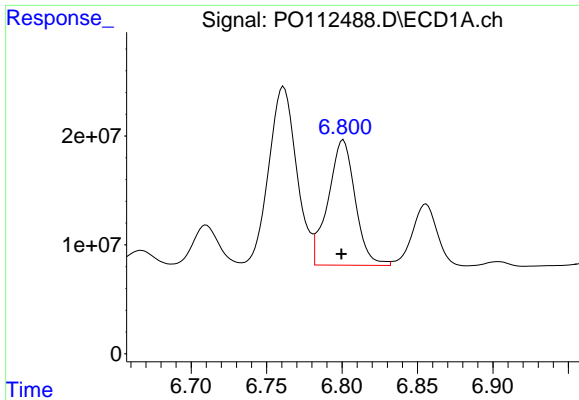
#32 AR-1260-2

R.T.: 6.435 min
 Delta R.T.: 0.002 min
 Response: 191695104
 Conc: 278.67 ng/ml



#32 AR-1260-2

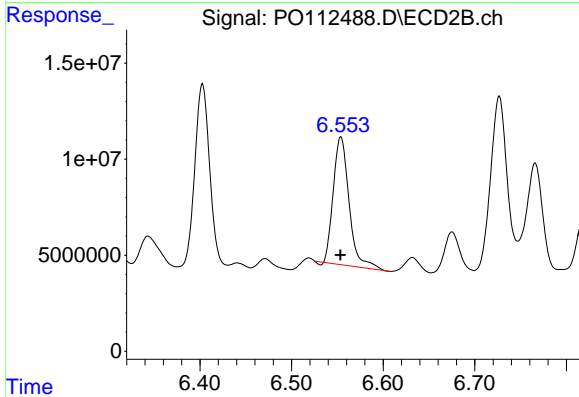
R.T.: 6.403 min
 Delta R.T.: 0.000 min
 Response: 105369237
 Conc: 319.79 ng/ml



#33 AR-1260-3

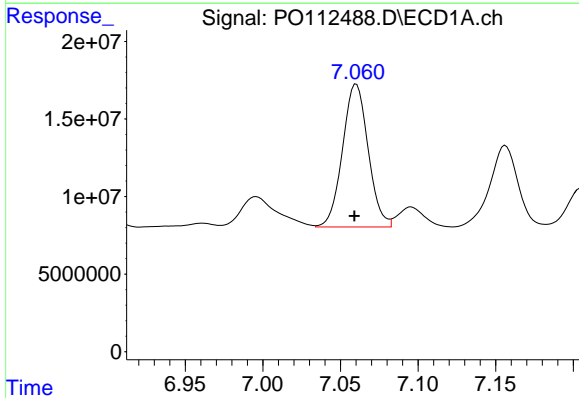
R.T.: 6.801 min
 Delta R.T.: 0.001 min
 Response: 143571847
 Conc: 244.16 ng/ml

Instrument :
 ECD_O
 ClientSampleId :
 PL-02-07232025MS



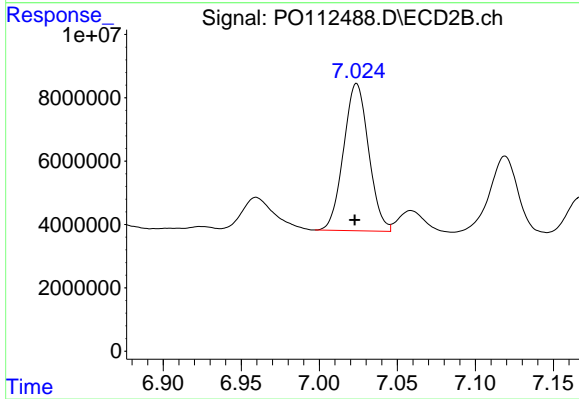
#33 AR-1260-3

R.T.: 6.554 min
 Delta R.T.: 0.000 min
 Response: 79733015
 Conc: 310.34 ng/ml



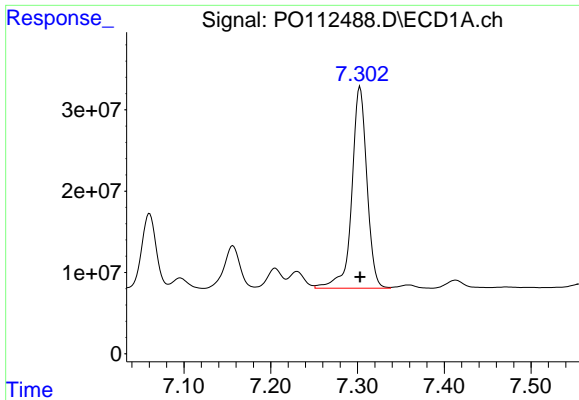
#34 AR-1260-4

R.T.: 7.060 min
 Delta R.T.: 0.001 min
 Response: 105798160
 Conc: 234.58 ng/ml



#34 AR-1260-4

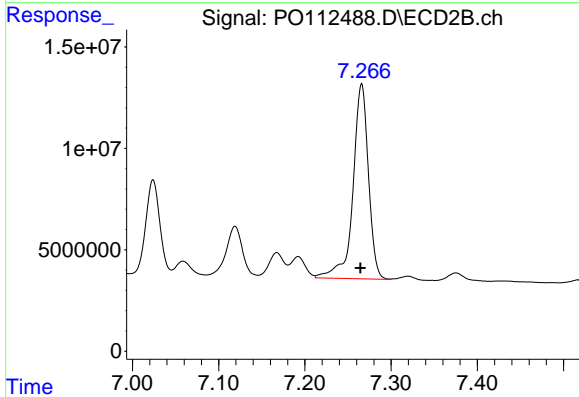
R.T.: 7.024 min
 Delta R.T.: 0.001 min
 Response: 52010781
 Conc: 271.87 ng/ml



#35 AR-1260-5

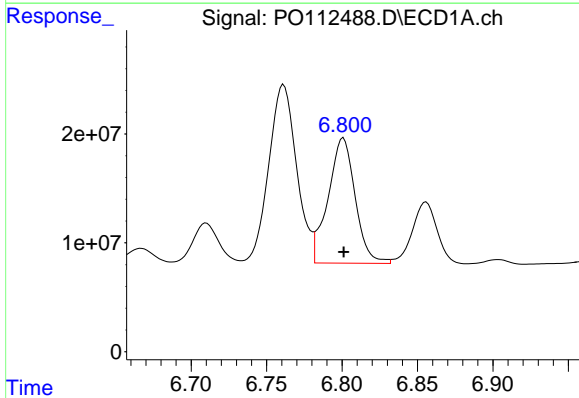
R.T.: 7.303 min
 Delta R.T.: 0.000 min
 Response: 300916062
 Conc: 242.84 ng/ml

Instrument :
 ECD_O
 ClientSampleId :
 PL-02-07232025MS



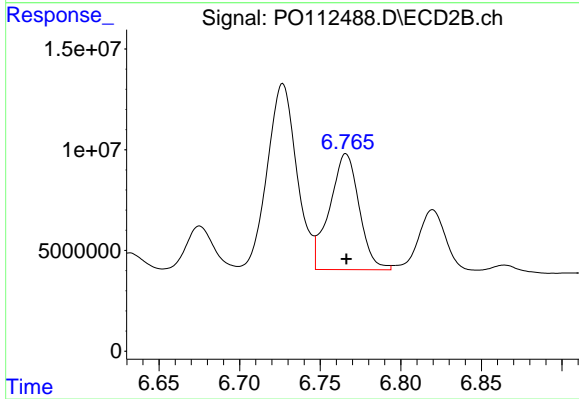
#35 AR-1260-5

R.T.: 7.266 min
 Delta R.T.: 0.001 min
 Response: 120028612
 Conc: 291.19 ng/ml



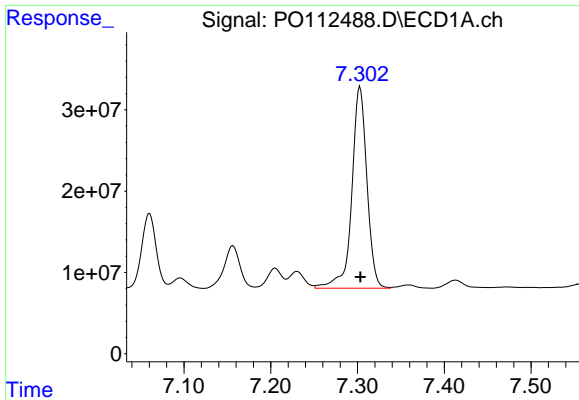
#36 AR-1262-1

R.T.: 6.801 min
 Delta R.T.: 0.000 min
 Response: 143571847
 Conc: 154.51 ng/ml



#36 AR-1262-1

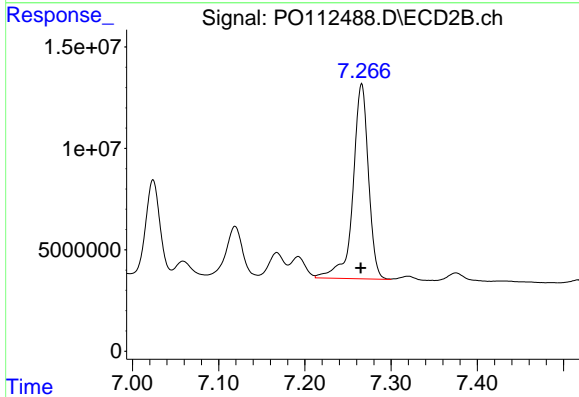
R.T.: 6.766 min
 Delta R.T.: 0.000 min
 Response: 73698021
 Conc: 177.66 ng/ml



#37 AR-1262-2

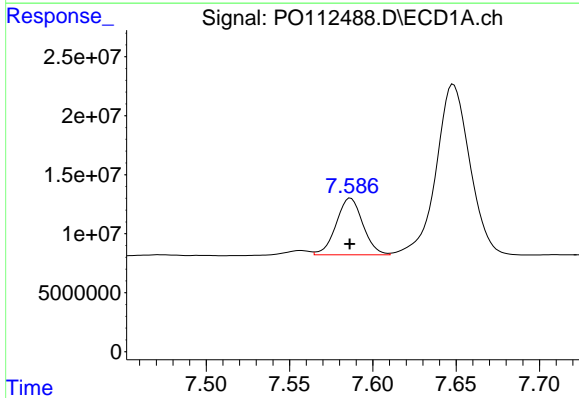
R.T.: 7.303 min
 Delta R.T.: 0.000 min
 Response: 300916062
 Conc: 202.36 ng/ml

Instrument :
 ECD_O
 ClientSampleId :
 PL-02-07232025MS



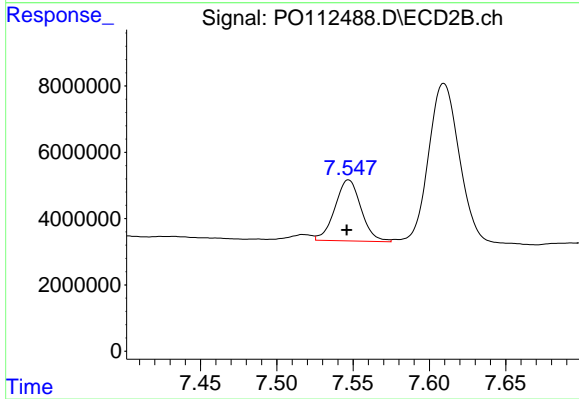
#37 AR-1262-2

R.T.: 7.266 min
 Delta R.T.: 0.000 min
 Response: 120028612
 Conc: 232.82 ng/ml



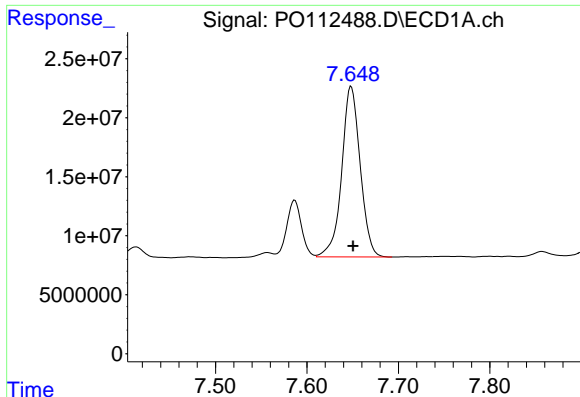
#38 AR-1262-3

R.T.: 7.587 min
 Delta R.T.: 0.000 min
 Response: 53550345
 Conc: 90.72 ng/ml



#38 AR-1262-3

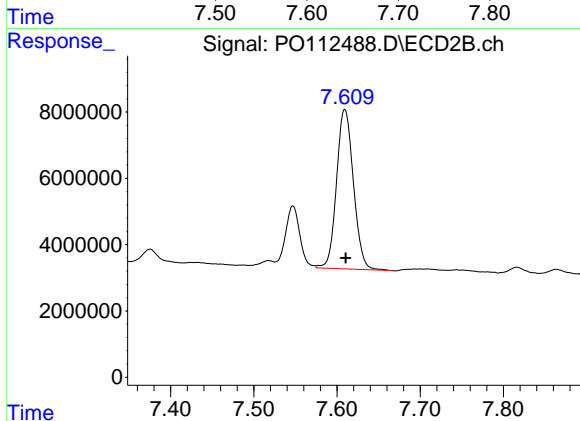
R.T.: 7.547 min
 Delta R.T.: 0.001 min
 Response: 21933445
 Conc: 117.59 ng/ml



#39 AR-1262-4

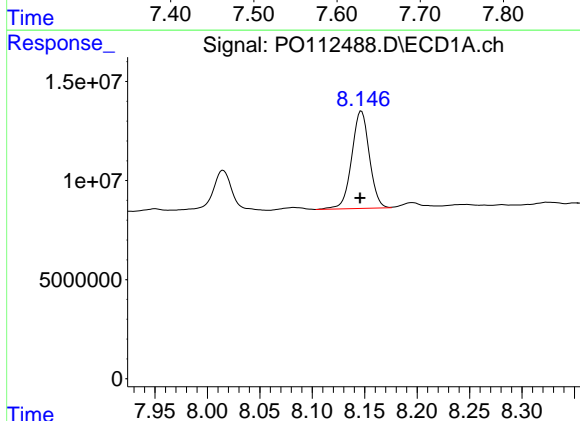
R.T.: 7.649 min
 Delta R.T.: -0.002 min
 Response: 203316295
 Conc: 204.51 ng/ml

Instrument :
 ECD_O
 ClientSampleId :
 PL-02-07232025MS



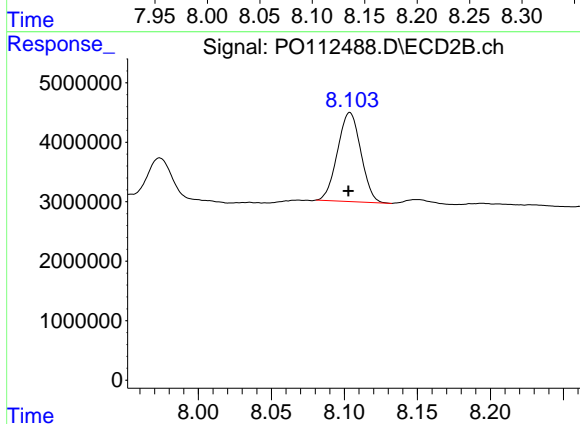
#39 AR-1262-4

R.T.: 7.609 min
 Delta R.T.: -0.001 min
 Response: 67923632
 Conc: 235.76 ng/ml



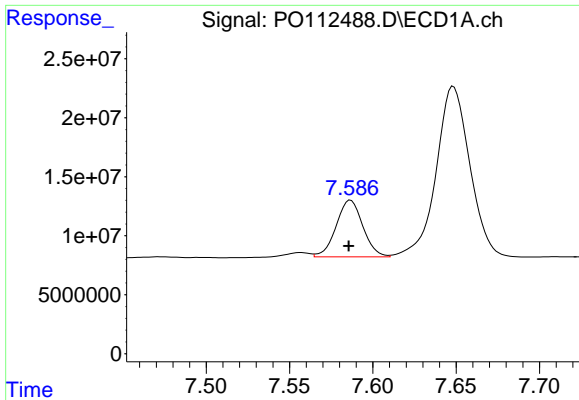
#40 AR-1262-5

R.T.: 8.147 min
 Delta R.T.: 0.001 min
 Response: 57683598
 Conc: 132.89 ng/ml



#40 AR-1262-5

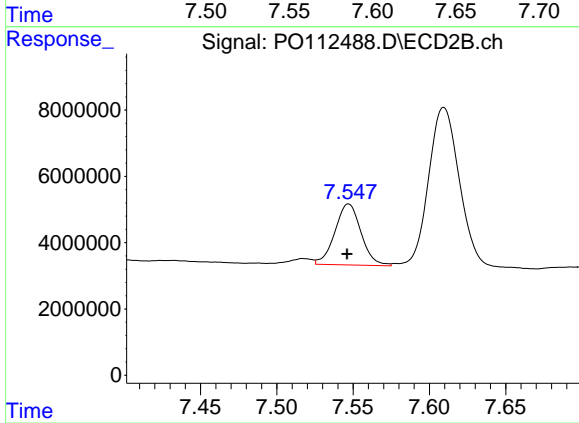
R.T.: 8.104 min
 Delta R.T.: 0.001 min
 Response: 16659504
 Conc: 167.43 ng/ml



#41 AR-1268-1

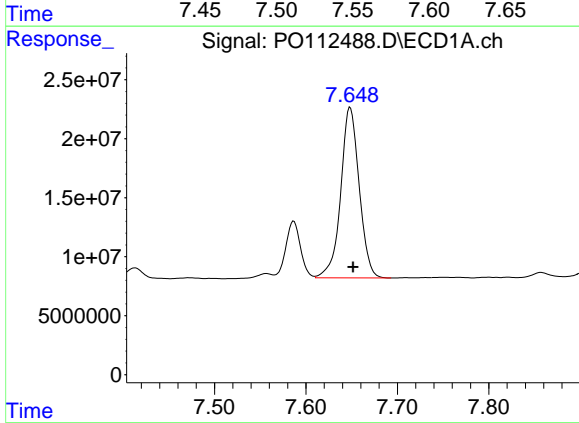
R.T.: 7.587 min
 Delta R.T.: 0.001 min
 Response: 53550345
 Conc: 30.58 ng/ml

Instrument :
 ECD_O
 ClientSampleId :
 PL-02-07232025MS



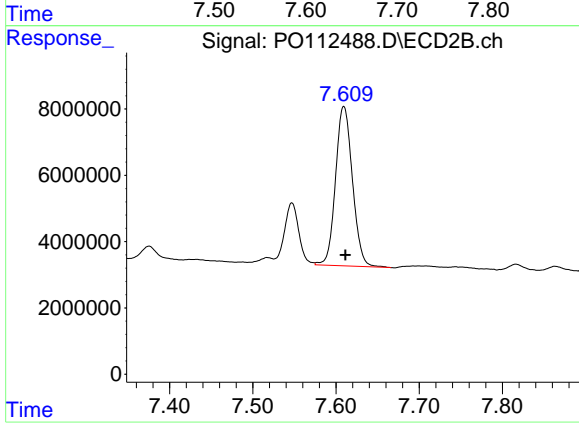
#41 AR-1268-1

R.T.: 7.547 min
 Delta R.T.: 0.001 min
 Response: 21933445
 Conc: 42.35 ng/ml



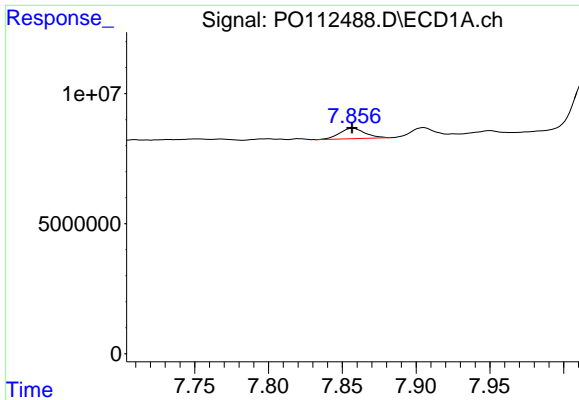
#42 AR-1268-2

R.T.: 7.649 min
 Delta R.T.: -0.003 min
 Response: 203316295
 Conc: 138.03 ng/ml



#42 AR-1268-2

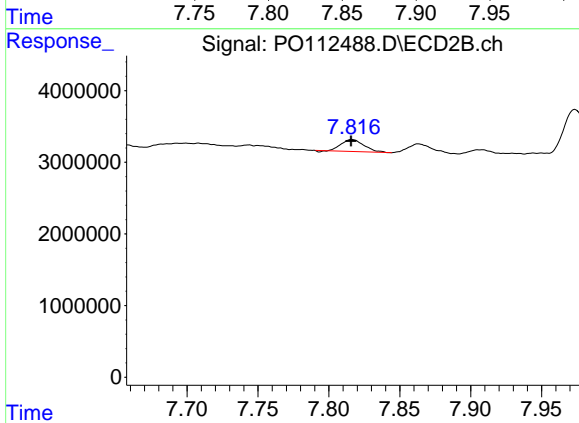
R.T.: 7.609 min
 Delta R.T.: -0.002 min
 Response: 67923632
 Conc: 159.80 ng/ml



#43 AR-1268-3

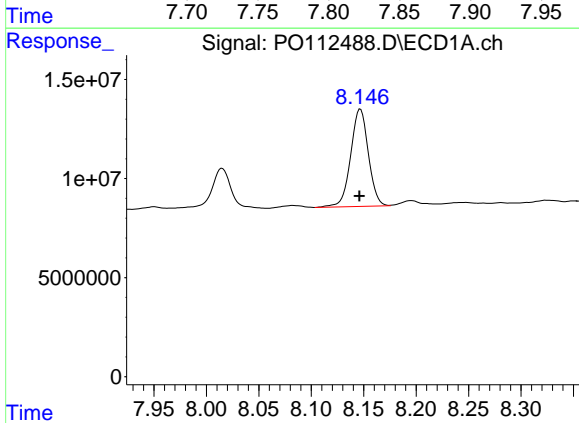
R.T.: 7.857 min
 Delta R.T.: 0.000 min
 Response: 4811824
 Conc: 3.84 ng/ml

Instrument :
 ECD_O
 ClientSampleId :
 PL-02-07232025MS



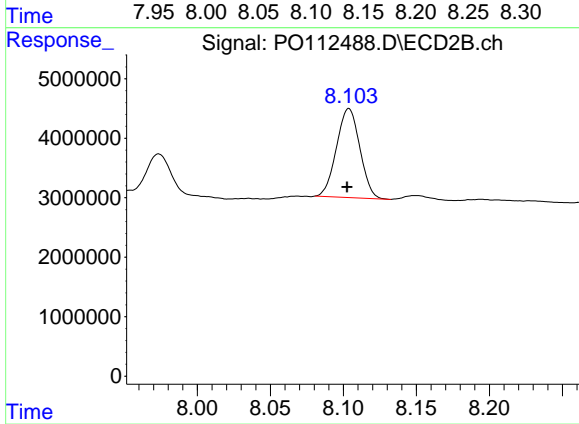
#43 AR-1268-3

R.T.: 7.816 min
 Delta R.T.: 0.000 min
 Response: 1865908
 Conc: 5.81 ng/ml



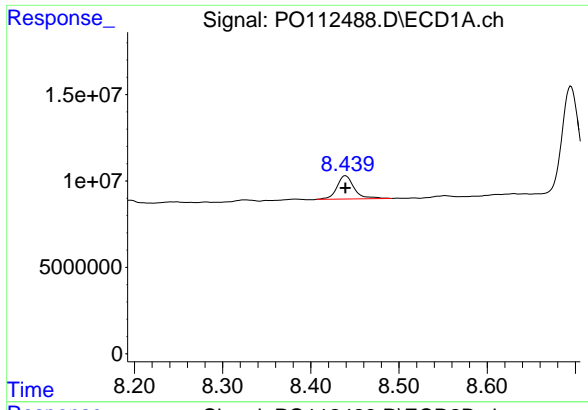
#44 AR-1268-4

R.T.: 8.147 min
 Delta R.T.: 0.000 min
 Response: 57683598
 Conc: 119.71 ng/ml



#44 AR-1268-4

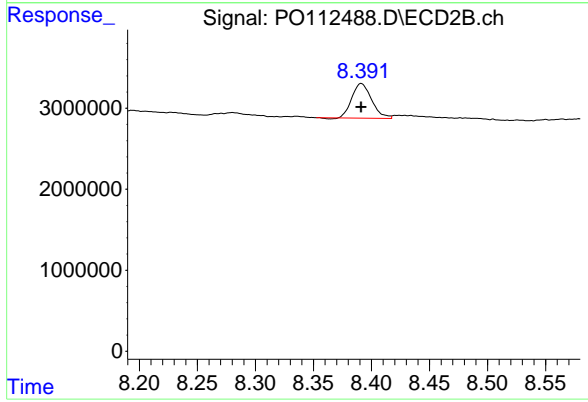
R.T.: 8.104 min
 Delta R.T.: 0.001 min
 Response: 16659504
 Conc: 149.69 ng/ml



#45 AR-1268-5

R.T.: 8.439 min
 Delta R.T.: 0.000 min
 Response: 18250994
 Conc: 5.44 ng/ml

Instrument :
 ECD_O
 ClientSampleId :
 PL-02-07232025MS



#45 AR-1268-5

R.T.: 8.391 min
 Delta R.T.: 0.000 min
 Response: 5046969
 Conc: 6.90 ng/ml